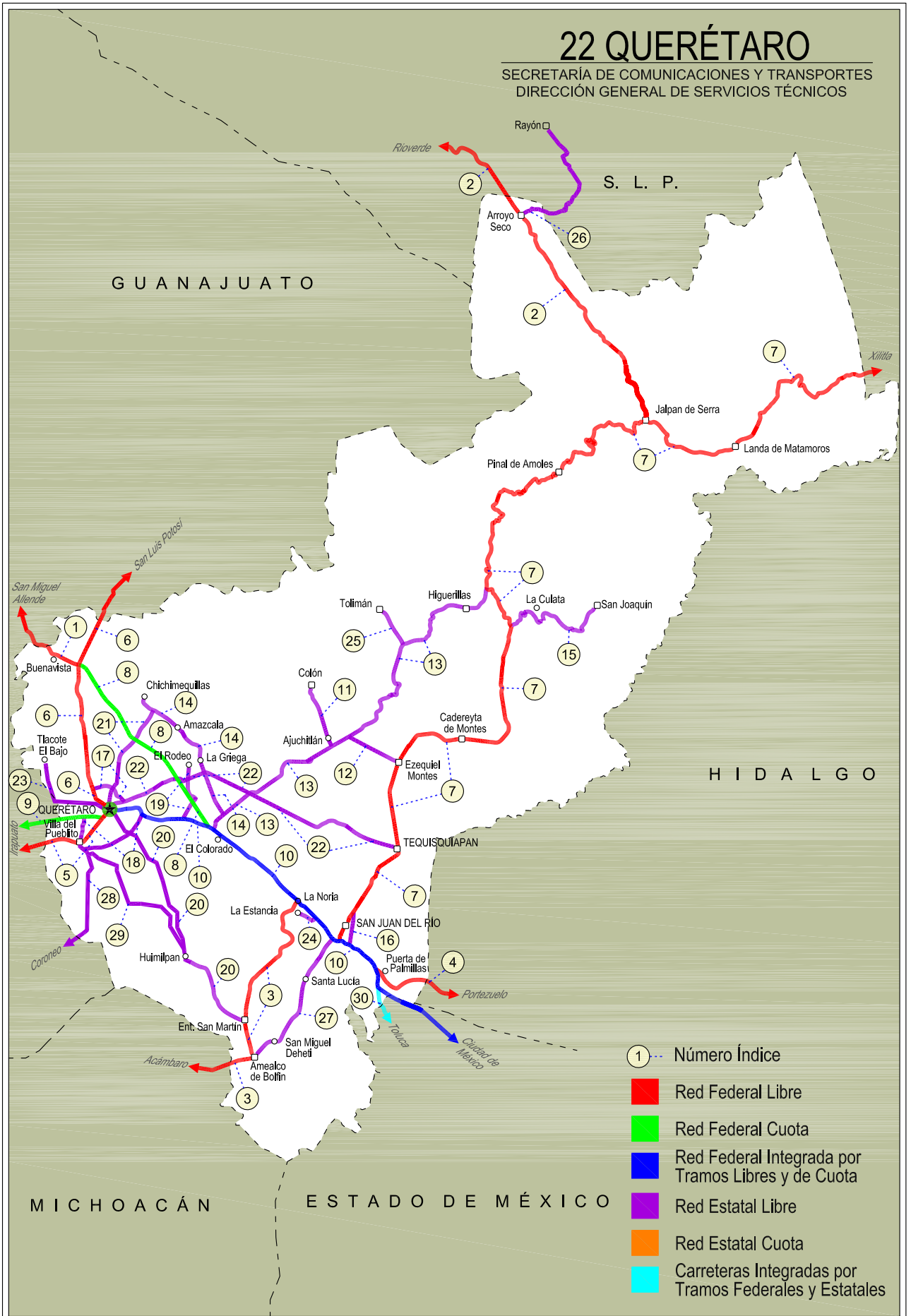
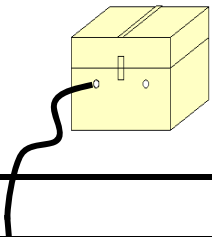


22 QUERÉTARO

SECRETARÍA DE COMUNICACIONES Y TRANSPORTES
DIRECCIÓN GENERAL DE SERVICIOS TÉCNICOS





QUERETARO

NO. INDICE	CARRETERA	RUTA
---RED FEDERAL LIBRE---		
1	Ent. Buenavista - San Miguel de Allende	MEX-057
2	Jalpan de Serra - Rioverde	MEX-069
3	La Noria - Acámbaro	MEX-120
4	Portezuelo - Palmillas	MEX-045
5	Querétaro - Irapuato (Libre)	MEX-045
6	Querétaro - San Luis Potosí	MEX-057
7	San Juan del Río - Xilitla	MEX-120
---RED FEDERAL DE CUOTA---		
8	Libramiento Nororiental de Querétaro (Cuota)	MEX-057D
9	Querétaro - Irapuato (Cuota)	MEX-045D
---RED FEDERAL INTEGRADA POR TRAMOS LIBRES Y DE CUOTA---		
10	México - Querétaro (Cuota)	MEX-057-MEX-057D
---RED ESTATAL LIBRE---		
11	Ajuchitlán - Colón	QRO-005
12	Ajuchitlán - Ezequiel Montes	QRO-005
13	El Colorado - Higuera	QRO-004
14	Hacienda Paraíso - Chichimequillas	QRO-001
15	La Culata - San Joaquín	QRO-021
16	Libramiento de San Juan del Río	QRO
17	Libramiento Norte de Querétaro	QRO
18	Libramiento Surponiente de Querétaro	QRO
19	Peña Colorada - El Rodeo	QRO
20	Querétaro - Ent. San Martín	QRO
21	Querétaro - Estación Chichimequillas	QRO
22	Querétaro - Tequisquiapan	QRO
23	Querétaro - Tlacote El Bajo	QRO
24	Ramal a La Estancia	QRO
25	Ramal a Tolimán	QRO
26	Rayón - Arroyo Seco	SLP-011
27	San Juan del Río - Amealco	QRO
28	T. C. (Villa del Pueblito - Huimilpan) - Coroneo	QRO-GTO
29	Villa del Pueblito - Huimilpan	QRO
---CARRETERAS INTEGRADAS POR TRAMOS FEDERALES Y ESTATALES---		
30	Toluca - Palmillas	EM(D)-MEX-055

QUERETARO

1 CARR: Ent. Buenavista - San Miguel de Allende

CLAVE: 00111

RUTA: MEX-057

AÑO: 2015

LUGAR	ESTACION				CLASIFICACION VEHICULAR EN PORCIENTO														COORDENADAS	
	KM	TE	SC	TDPA	M	A	B	C2	C3	T3S2	T3S3	T3S2R4	OTROS	A	B	C	K'	D	LATITUD	LONGITUD
T. C. Querétaro - San Luis Potosí	0.00	3	0	11743	0.1	84.6	2.6	5.4	2.5	2.7	1.2	0.6	0.3	84.7	2.6	12.7	0.077	0.518	20.821640	-100.455230
Lim. Edos. Term. Qro. Ppia. Gto.	7.91																			
T. Izq. Guadalupe	12.00	1	0	7233	0.1	88.4	2.1	3.5	1.5	2.2	1.1	0.7	0.4	88.5	2.1	9.4	0.086	0.513	20.882670	-100.570590
San Miguel de Allende	35.11	1	0	10972	0.1	87.0	3.3	4.9	1.8	1.6	0.6	0.3	0.4	87.1	3.3	9.6	0.095	0.504	20.902480	-100.709710

2 CARR: Jalpan de Serra - Rioverde

CLAVE: 00265

RUTA: MEX-069

AÑO: 2015

LUGAR	ESTACION				CLASIFICACION VEHICULAR EN PORCIENTO														COORDENADAS	
	KM	TE	SC	TDPA	M	A	B	C2	C3	T3S2	T3S3	T3S2R4	OTROS	A	B	C	K'	D	LATITUD	LONGITUD
Jalpan de Serra	0.00	3	0	6288	0.2	89.2	2.4	4.8	1.4	0.9	0.5	0.4	0.2	89.4	2.4	8.2	0.076	0.507	21.231840	-99.479450
T. Izq. Conca	35.01	1	0	2289	0.2	89.8	1.1	6.2	1.6	0.6	0.2	0.2	0.1	90.0	1.1	8.9	0.084	0.507	21.436560	-99.619840
Arroyo Seco	48.60	1	0	1536	0.3	85.2	1.6	8.0	2.3	1.4	0.5	0.2	0.5	85.5	1.6	12.9	0.087	0.529	21.541570	-99.687730
Lim. Edos. Term. Qro. Ppia. S. L. P.	52.27																			
San Ciro de Acosta	69.42	1	0	1853	5.9	76.6	0.5	13.4	1.2	1.6	0.7	0.0	0.1	82.5	0.5	17.0	0.086	0.501	21.648028	-99.808562
San Ciro de Acosta	69.42	3	0	2772	6.1	80.0	0.2	8.3	1.1	3.0	0.6	0.2	0.5	86.1	0.2	13.7	0.089	0.502	21.659038	-99.825152
Rioverde	105.43	1	0	5909	6.6	76.7	0.4	11.6	0.7	2.9	0.6	0.2	0.3	83.3	0.4	16.3	0.091	0.504	21.883607	-99.976348

3 CARR: La Noria - Acámbaro

CLAVE: 00131

RUTA: MEX-120

AÑO: 2015

LUGAR	ESTACION				CLASIFICACION VEHICULAR EN PORCIENTO														COORDENADAS	
	KM	TE	SC	TDPA	M	A	B	C2	C3	T3S2	T3S3	T3S2R4	OTROS	A	B	C	K'	D	LATITUD	LONGITUD
La Noria	0.00	3	0	7207	0.1	90.1	2.0	3.9	1.2	1.8	0.6	0.2	0.1	90.2	2.0	7.8	0.084	0.510	20.438000	-100.074520
Amealco	34.66	1	0	4806	0.3	85.9	1.0	8.4	1.9	1.5	0.6	0.3	0.1	86.2	1.0	12.8	0.092	0.504	20.198750	-100.149890
Amealco	34.66	3	0	4826	0.2	89.7	1.4	5.0	1.9	1.0	0.5	0.2	0.1	89.9	1.4	8.7	0.109	0.504	20.187410	-100.152440
Lim. Edos. Term. Qro. Ppia. Mich.	39.15																			
Lim. Edos. Term. Mich. Ppia. Gto.	55.90																			
Coroneo	59.35	3	0	1904	0.5	86.9	2.2	6.7	1.7	1.0	0.5	0.4	0.1	87.4	2.2	10.4	0.076	0.511	20.195140	-100.373400
Jerécuaro	79.70	3	0	2404	2.1	82.4	1.7	10.5	0.7	1.4	1.0	0.1	0.1	84.5	1.7	13.8	0.099	0.503	20.148660	-100.548030
Acámbaro	111.12	1	0	7512	0.2	82.4	1.7	11.5	2.0	1.3	0.5	0.3	0.1	82.6	1.7	15.7	0.072	0.504	20.048160	-100.703890

4 CARR: Portezuelo - Palmillas

CLAVE: 00194

RUTA: MEX-045

AÑO: 2015

LUGAR	ESTACION				CLASIFICACION VEHICULAR EN PORCIENTO														COORDENADAS	
	KM	TE	SC	TDPA	M	A	B	C2	C3	T3S2	T3S3	T3S2R4	OTROS	A	B	C	K'	D	LATITUD	LONGITUD
Portezuelo	0.00	3	1	4661	0.4	80.5	3.3	4.8	2.2	4.3	2.8	1.3	0.4	80.9	3.3	15.8	0.077	0.501	20.486447	-99.302078

QUERETARO

4 CARR: Portezuelo - Palmillas

CLAVE: 00194

RUTA: MEX-045

AÑO: 2015

LUGAR	ESTACION				CLASIFICACION VEHICULAR EN PORCIENTO														COORDENADAS	
	KM	TE	SC	TDPA	M	A	B	C2	C3	T3S2	T3S3	T3S2R4	OTROS	A	B	C	K'	D	LATITUD	LONGITUD
Portezuelo	0.00	3	2	4639	0.3	81.8	3.1	5.1	2.1	4.6	2.1	0.6	0.3	82.1	3.1	14.8	0.072	0.501	20.486447	-99.302078
Jonacapa	29.41	3	0	6959	0.4	68.3	5.0	9.6	3.7	7.2	3.9	1.5	0.4	68.7	5.0	26.3	0.064	0.503	20.435536	-99.536894
Huichapan	45.10	1	0	9097	0.2	77.3	4.0	6.2	2.4	5.3	2.9	1.2	0.5	77.5	4.0	18.5	0.073	0.509	20.392095	-99.638728
T. Izq. Nopala	56.15	1	0	8543	0.2	78.3	3.9	5.2	2.6	4.8	2.9	1.7	0.4	78.5	3.9	17.6	0.074	0.501	20.318207	-99.713145
Lim. Edos. Term. Hgo. Ppia. Qro.	71.40																			
Palmillas	80.00	1	0	8958	0.2	79.3	2.4	6.1	2.6	6.1	2.3	0.8	0.2	79.5	2.4	18.1	0.077	0.510	20.325070	-99.930960

5 CARR: Querétaro - Irapuato (Libre)

CLAVE: 00154

RUTA: MEX-045

AÑO: 2015

LUGAR	ESTACION				CLASIFICACION VEHICULAR EN PORCIENTO														COORDENADAS	
	KM	TE	SC	TDPA	M	A	B	C2	C3	T3S2	T3S3	T3S2R4	OTROS	A	B	C	K'	D	LATITUD	LONGITUD
Querétaro Poniente	0.00	3	1	45851	0.0	90.7	1.3	3.1	1.7	1.5	0.7	0.7	0.3	90.7	1.3	8.0	0.057	0.505	20.553806	-100.421528
Querétaro Poniente	0.00	3	2	46820	0.0	91.1	1.1	3.8	1.2	1.7	0.7	0.3	0.1	91.1	1.1	7.8	0.063	0.505	20.553806	-100.421528
T. Der. Villa del Pueblito	6.67	3	1	17347	0.8	76.8	3.3	7.4	2.8	5.1	1.9	1.0	0.9	77.6	3.3	19.1	0.070	0.501	20.533111	-100.447167
T. Der. Villa del Pueblito	6.67	3	2	17587	1.1	74.5	3.8	7.9	3.1	5.5	2.0	1.1	1.0	75.6	3.8	20.6	0.074	0.501	20.533111	-100.447167
Los Ángeles	12.60	3	1	18008	0.0	84.4	2.2	3.5	1.4	5.5	1.7	1.0	0.3	84.4	2.2	13.4	0.064	0.522	20.533556	-100.501528
Los Ángeles	12.60	3	2	19676	0.0	81.2	2.2	4.8	1.9	6.1	2.3	1.2	0.3	81.2	2.2	16.6	0.057	0.522	20.533556	-100.501528
Lim. Edos. Term. Qro. Ppia. Gto.	13.49																			
T. Izq. Apaseo El Alto	28.37	3	1	17773	0.0	74.7	2.5	7.9	2.3	6.1	3.8	1.8	0.9	74.7	2.5	22.8	0.067	0.508	20.470000	-100.638500
T. Izq. Apaseo El Alto	28.37	3	2	17229	0.0	75.7	2.5	8.0	2.5	6.6	3.0	1.4	0.3	75.7	2.5	21.8	0.069	0.508	20.470000	-100.638500
T. Der. Apaseo El Grande	40.11	3	1	17719	0.0	76.6	2.9	6.9	2.6	6.2	2.5	1.9	0.4	76.6	2.9	20.5	0.069	0.514	20.535472	-100.704944
T. Der. Apaseo El Grande	40.11	3	2	18744	0.0	77.2	2.8	5.6	2.2	7.1	2.2	2.4	0.5	77.2	2.8	20.0	0.071	0.514	20.535472	-100.704944
T. Izq. Libramiento de Celaya Ote.	49.90	1	1	18106	0.0	73.1	4.4	7.6	3.0	6.9	3.0	1.7	0.3	73.1	4.4	22.5	0.066	0.523	20.519889	-100.754139
T. Izq. Libramiento de Celaya Ote.	49.90	1	2	19882	0.0	72.3	4.3	6.9	3.2	6.9	3.8	2.2	0.4	72.3	4.3	23.4	0.069	0.523	20.519889	-100.754139
T. Izq. Libramiento de Celaya Pte.	55.61	3	1	25515	0.0	83.7	2.6	4.1	1.7	4.1	2.1	1.5	0.2	83.7	2.6	13.7	0.071	0.528	20.516639	-100.879694
T. Izq. Libramiento de Celaya Pte.	55.61	3	2	22799	0.0	82.1	2.8	5.2	2.5	4.5	1.3	1.4	0.2	82.1	2.8	15.1	0.071	0.528	20.516639	-100.879694
T. Izq. Cortazar	67.50	3	1	22750	0.0	80.9	2.7	5.6	2.8	4.4	1.9	1.3	0.4	80.9	2.7	16.4	0.063	0.505	20.510028	-100.968278
T. Izq. Cortazar	67.50	3	2	22322	0.0	79.1	3.0	6.6	3.2	5.0	1.5	1.1	0.5	79.1	3.0	17.9	0.062	0.505	20.510028	-100.968278
T. Izq. Libramiento de Salamanca	93.80	1	1	19323	0.0	73.8	3.5	9.6	4.1	5.1	2.7	0.6	0.6	73.8	3.5	22.7	0.074	0.502	20.556028	-101.159028
T. Izq. Libramiento de Salamanca	93.80	1	2	19182	0.0	73.3	4.8	9.5	2.6	5.6	2.5	1.4	0.3	73.3	4.8	21.9	0.067	0.502	20.556028	-101.159028
Irapuato	113.70	1	1	15306	0.1	86.3	2.8	6.2	2.2	1.1	0.5	0.5	0.3	86.4	2.8	10.8	0.069	0.520	20.662890	-101.317400
Irapuato	113.70	1	2	14111	0.1	88.8	1.9	6.0	1.4	0.6	0.2	0.8	0.2	88.9	1.9	9.2	0.066	0.520	20.662890	-101.317400

QUERETARO

6 CARR : Querétaro - San Luis Potosi

CLAVE: 00165

ruta: MEX-057

AÑO : 2015

LUGAR	ESTACION				CLASIFICACION VEHICULAR EN PORCIENTO										COORDENADAS					
	KM	TE	SC	TDPA	M	A	B	C2	C3	T3S2	T3S3	T3S2R4	OTROS	A	B	C	K'	D	LATITUD	LONGITUD
Querétaro	0.00																			
T. Der. Libramiento de Querétaro	6.28	3	1	45143	0.0	88.6	1.3	4.8	1.7	1.5	0.6	0.6	0.9	88.6	1.3	10.1	0.065	0.513	20.634840	-100.427620
T. Der. Libramiento de Querétaro	6.28	3	2	47505	0.0	89.5	1.3	4.5	1.4	1.7	0.8	0.6	0.2	89.5	1.3	9.2	0.064	0.513	20.634840	-100.427620
T. Izq. Juriquilla	15.63	3	1	31486	0.6	82.5	1.9	10.0	1.5	2.4	0.7	0.3	0.1	83.1	1.9	15.0	0.097	0.513	20.697060	-100.436520
T. Izq. Juriquilla	15.63	3	2	31944	0.4	86.1	0.2	3.1	1.0	4.0	3.0	0.6	1.6	86.5	0.2	13.3	0.071	0.513	20.697060	-100.436520
T. Izq. San Miguel de Allende	28.53	1	1	22612	0.0	84.4	2.1	5.3	1.5	4.6	1.1	0.8	0.2	84.4	2.1	13.5	0.102	0.509	20.809430	-100.448870
T. Izq. San Miguel de Allende	28.53	1	2	23437	0.0	83.7	1.7	5.8	2.1	4.2	1.3	1.0	0.2	83.7	1.7	14.6	0.084	0.509	20.809430	-100.448870
T. Izq. San Miguel de Allende	28.53	3	1	17142	0.0	73.8	1.9	6.1	2.5	10.8	2.9	1.6	0.4	73.8	1.9	24.3	0.064	0.508	20.837070	-100.439290
T. Izq. San Miguel de Allende	28.53	3	2	16572	0.0	70.7	2.1	5.7	2.9	11.8	4.5	1.9	0.4	70.7	2.1	27.2	0.075	0.508	20.836770	-100.439510
Lim. Edos. Term. Qro. Ppia. Gto.	36.70																			
X. C. San José Iturbide - El Arenal	46.83	1	1	16092	0.0	72.5	2.2	6.5	2.8	10.0	4.1	1.5	0.4	72.5	2.2	25.3	0.064	0.503	20.968290	-100.429080
X. C. San José Iturbide - El Arenal	46.83	1	2	16263	0.0	71.2	2.0	6.3	1.4	13.2	4.4	1.1	0.4	71.2	2.0	26.8	0.075	0.503	20.968290	-100.429080
X. C. Ent. San Miguel de Allende - Dr. Mora	61.93	1	1	13718	0.0	69.0	4.4	6.1	2.1	10.5	4.7	2.8	0.4	69.0	4.4	26.6	0.065	0.506	21.077270	-100.512430
X. C. Ent. San Miguel de Allende - Dr. Mora	61.93	1	2	13410	0.0	65.9	4.9	7.6	2.9	10.8	4.6	3.0	0.3	65.9	4.9	29.2	0.059	0.506	21.077270	-100.512430
X. C. San Luis de La Paz - Guanajuato	86.68	1	1	12957	0.0	75.3	3.1	5.8	2.1	9.5	3.4	0.1	0.7	75.3	3.1	21.6	0.061	0.506	21.281511	-100.591650
X. C. San Luis de La Paz - Guanajuato	86.68	1	2	13255	0.0	73.4	3.5	5.0	2.9	11.2	3.2	0.1	0.7	73.4	3.5	23.1	0.075	0.506	21.281511	-100.591650
T. Izq. San Diego de La Unión	119.07	3	1	9703	0.0	78.8	2.0	5.0	2.5	8.0	3.1	0.1	0.5	78.8	2.0	19.2	0.070	0.543	21.538815	-100.746040
T. Izq. San Diego de La Unión	119.07	3	2	11517	0.0	78.7	2.1	4.7	2.6	8.4	3.0	0.1	0.4	78.7	2.1	19.2	0.061	0.543	21.538815	-100.746040
Lim. Edos. Term. Gto. Ppia. S. L. P.	124.74																			
T. Izq. Santa María del Río	155.88	3	1	10952	2.0	57.3	4.9	7.4	2.9	15.9	5.1	3.6	0.9	59.3	4.9	35.8	0.065	0.518	21.823296	-100.728017
T. Izq. Santa María del Río	155.88	3	2	11783	1.3	53.2	5.3	8.1	3.2	17.7	5.9	4.3	1.0	54.5	5.3	40.2	0.067	0.518	21.820788	-100.729582
T. Izq. Villa de Reyes	176.35	1	1	13101	1.1	47.4	5.8	9.9	3.2	24.3	3.1	4.7	0.5	48.5	5.8	45.7	0.063	0.505	21.958688	-100.810222
T. Izq. Villa de Reyes	176.35	1	2	13351	0.6	41.2	6.5	11.5	3.4	27.4	3.6	5.3	0.5	41.8	6.5	51.7	0.066	0.505	21.960237	-100.811376
T. Izq. Villa de Reyes	176.35	3	1	19005	1.0	53.5	4.0	10.9	3.1	20.9	2.6	3.4	0.6	54.5	4.0	41.5	0.069	0.504	21.973784	-100.818405
T. Izq. Villa de Reyes	176.35	3	2	19332	0.7	49.8	4.3	11.7	3.6	22.8	2.9	3.6	0.6	50.5	4.3	45.2	0.076	0.504	21.973796	-100.818412
X. C. Libramiento de San Luis Potosí	184.80	1	1	23095	1.8	65.2	3.0	9.4	3.3	11.7	2.2	2.6	0.8	67.0	3.0	30.0	0.086	0.528	22.030440	-100.849469
X. C. Libramiento de San Luis Potosí	184.80	1	2	25855	1.0	62.8	3.1	10.4	3.5	12.8	2.6	3.0	0.8	63.8	3.1	33.1	0.088	0.528	22.030446	-100.849466
X. Periférico de San Luis Potosí (Central)	197.50	1	1	33049	1.1	87.0	0.9	2.6	0.8	2.2	3.8	1.1	0.5	88.1	0.9	11.0	0.065	0.514	22.121194	-100.912816
X. Periférico de San Luis Potosí (Lateral)	197.50	1	1	14512	4.5	68.0	2.2	12.0	3.3	4.9	2.5	1.3	1.3	72.5	2.2	25.3	0.110	0.516	22.121194	-100.912816
X. Periférico de San Luis Potosí (Lateral)	197.50	1	2	13592	5.6	64.0	2.5	13.7	3.3	5.2	2.7	1.5	1.5	69.6	2.5	27.9	0.093	0.516	22.121190	-100.912816
X. Periférico de San Luis Potosí (Central)	197.50	1	2	34993	1.3	85.6	1.0	2.9	0.9	2.4	4.2	1.1	0.6	86.9	1.0	12.1	0.063	0.514	22.121190	-100.912816
San Luis Potosí	201.66																			

QUERETARO

7 CARR : San Juan del Río - Xilitla

CLAVE: 00183

RUTA: MEX-120

AÑO : 2015

LUGAR	ESTACION				CLASIFICACION VEHICULAR EN PORCIENTO													COORDENADAS			
	KM	TE	SC	TDPA	M	A	B	C2	C3	T3S2	T3S3	T3S2R4	OTROS	A	B	C	K'	D	LATITUD	LONGITUD	
San Juan del Río	0.00																				
T. Der. Libramiento de San Juan del Río	5.20	3	1	10683	0.1	92.9	1.5	2.0	1.2	1.1	0.6	0.5	0.1	93.0	1.5	5.5	0.115	0.521	20.433310	-99.969990	
T. Der. Libramiento de San Juan del Río	5.20	3	2	11619	0.1	92.2	1.8	2.3	1.2	1.2	0.5	0.6	0.1	92.3	1.8	5.9	0.107	0.521	20.433310	-99.969990	
T. Der. Tequisquiapan	19.80	1	1	9018	0.0	89.9	1.6	3.8	1.6	1.4	0.8	0.6	0.3	89.9	1.6	8.5	0.120	0.508	20.515130	-99.902950	
T. Der. Tequisquiapan	19.80	1	2	9320	0.1	89.4	2.0	3.1	2.0	1.7	0.6	0.8	0.3	89.5	2.0	8.5	0.107	0.508	20.515130	-99.902950	
T. Der. Tequisquiapan	19.80	3	1	8549	0.1	89.5	1.1	5.3	1.6	1.3	0.5	0.4	0.2	89.6	1.1	9.3	0.104	0.509	20.536490	-99.900790	
T. Der. Tequisquiapan	19.80	3	2	8879	0.1	88.6	1.7	6.0	1.1	1.5	0.6	0.3	0.1	88.7	1.7	9.6	0.113	0.509	20.536490	-99.900790	
Ezequiel Montes	36.50	1	1	6878	0.2	91.3	1.2	4.3	1.0	0.9	0.5	0.4	0.2	91.5	1.2	7.3	0.095	0.505	20.640830	-99.907010	
Ezequiel Montes	36.50	1	2	7018	0.2	89.8	2.0	4.4	1.0	1.4	0.6	0.4	0.2	90.0	2.0	8.0	0.094	0.505	20.640830	-99.907010	
Ezequiel Montes	36.50	3	0	11187	0.1	84.5	2.7	7.8	2.2	1.7	0.6	0.3	0.1	84.6	2.7	12.7	0.081	0.500	20.674840	-99.892760	
Cadereyta	47.90	3	0	9332	0.1	86.0	2.6	5.8	2.3	1.7	1.0	0.3	0.2	86.1	2.6	11.3	0.085	0.502	20.701790	-99.806320	
Vizarrón de Montes	73.50	3	0	3736	0.3	79.4	3.6	8.0	2.4	3.3	1.7	1.1	0.2	79.7	3.6	16.7	0.080	0.509	20.839040	-99.717030	
T. Der. San Joaquín	79.50	3	0	1284	0.4	84.5	2.0	8.7	2.1	1.2	0.6	0.3	0.2	84.9	2.0	13.1	0.097	0.524	20.884796	-99.707043	
T. Izq. Higuerrillas	89.10	3	0	1440	0.9	77.5	2.2	14.5	2.6	1.6	0.5	0.0	0.2	78.4	2.2	19.4	0.124	0.502	20.950910	-99.748940	
T. Izq. Peñamiller	103.00	3	0	1452	0.4	85.0	2.1	8.4	2.1	1.3	0.3	0.2	0.2	85.4	2.1	12.5	0.127	0.505	20.039493	-99.737282	
Pinal de Amoles	140.00	3	0	1866	0.3	88.1	2.0	6.1	2.1	0.8	0.3	0.2	0.1	88.4	2.0	9.6	0.111	0.502	21.139030	-99.620105	
Jalpan de Serra	179.30	3	0	6229	0.1	92.8	1.1	3.9	1.1	0.5	0.3	0.2	0.0	92.9	1.1	6.0	0.089	0.508	21.211940	-99.456640	
Landa de Matamoros	201.60	3	0	2810	0.2	88.9	1.7	6.0	2.3	0.6	0.2	0.1	0.0	89.1	1.7	9.2	0.084	0.510	21.186160	-99.314310	
El Lobo	236.40	3	0	918	0.3	86.9	2.0	7.6	2.2	0.6	0.2	0.1	0.1	87.2	2.0	10.8	0.094	0.503	21.291650	-99.114640	
Lim. Edos. Term. Qro. Ppia. S. L. P.	238.33																				
Xilitla	266.40	1	0	1600	6.2	76.1	1.2	12.3	1.6	1.7	0.6	0.0	0.3	82.3	1.2	16.5	0.098	0.503	21.379062	-98.999011	
T. C. Portezuelo - Cd. Valles	276.98	1	0	2735	6.1	80.3	0.4	9.0	1.6	1.9	0.5	0.0	0.2	86.4	0.4	13.2	0.086	0.500	21.443878	-98.929014	

8 CARR : Libramiento Nororiente de Querétaro (Cuota)

CLAVE: 22266

RUTA: MEX-057D

AÑO : 2015

LUGAR	ESTACION				CLASIFICACION VEHICULAR EN PORCIENTO													COORDENADAS		
	KM	TE	SC	TDPA	M	A	B	C2	C3	T3S2	T3S3	T3S2R4	OTROS	A	B	C	K'	D	LATITUD	LONGITUD
T. C. México - Querétaro	0.00	3	1	7228	0.1	62.3	3.3	4.0	2.7	20.1	4.2	3.0	0.3	62.4	3.3	34.3	0.081	0.508	20.564330	-100.231060
T. C. México - Querétaro	0.00	3	2	7448	0.1	60.9	3.3	4.6	2.3	21.5	3.5	3.1	0.7	61.0	3.3	35.7	0.090	0.508	20.564330	-100.231060
Caseta de Cobro Chichimequillas	20.32	2	1	7622	0.2	39.0	3.6	5.6	6.2	34.2	3.5	6.8	0.9	39.2	3.6	57.2	0.066	0.500	20.705575	-100.343908
Caseta de Cobro Chichimequillas	20.32	2	2	7622	0.2	39.0	3.6	5.6	6.2	34.2	3.5	6.8	0.9	39.2	3.6	57.2	0.066	0.500	20.705575	-100.343908
T. C. Querétaro - San Luis Potosí	37.50	1	1	7954	0.1	53.0	3.5	6.4	4.1	20.9	6.3	3.4	2.3	53.1	3.5	43.4	0.059	0.528	20.772070	-100.406600
T. C. Querétaro - San Luis Potosí	37.50	1	2	7761	0.1	56.7	3.8	6.2	3.9	19.7	4.9	3.5	1.2	56.8	3.8	39.4	0.069	0.528	20.772080	-100.406570

QUERETARO

9 CARR : Querétaro - Irapuato (Cuota)

CLAVE: 00423

RUTA: MEX-045D

AÑO : 2015

LUGAR	ESTACION				CLASIFICACION VEHICULAR EN PORCIENTO										COORDENADAS					
	KM	TE	SC	TDPA	M	A	B	C2	C3	T3S2	T3S3	T3S2R4	OTROS	A	B	C	K'	D	LATITUD	LONGITUD
Querétaro	0.00	3	1	17762	0.0	74.3	4.4	5.8	4.1	5.6	3.3	2.4	0.1	74.3	4.4	21.3	0.061	0.507	20.576667	-100.420667
Querétaro	0.00	3	2	17299	0.1	73.4	4.9	5.9	3.1	6.1	3.8	2.4	0.3	73.5	4.9	21.6	0.064	0.507	20.576667	-100.420667
Caseta de Cobro Querétaro	7.00	2	1	10360	0.2	63.2	5.3	4.6	6.2	13.2	1.5	4.9	0.9	63.4	5.3	31.3	0.079	0.500	20.572188	-100.472977
Caseta de Cobro Querétaro	7.00	2	2	10360	0.2	63.2	5.3	4.6	6.2	13.2	1.5	4.9	0.9	63.4	5.3	31.3	0.079	0.500	20.572188	-100.472977
Lim. Edos. Term. Oro. Ppia. Gto.	8.97																			
X. C. Celaya - Dolores Hidalgo	44.10	1	1	17726	0.0	73.4	4.4	5.7	3.0	8.4	3.3	1.6	0.2	73.4	4.4	22.2	0.060	0.507	20.557111	-100.815528
X. C. Celaya - Dolores Hidalgo	44.10	1	2	17239	0.0	72.6	4.9	6.7	2.6	7.6	3.7	1.6	0.3	72.6	4.9	22.5	0.060	0.507	20.557111	-100.815528
T. Izq. Salamanca	81.54	1	1	6807	0.1	68.2	5.7	8.0	4.4	9.5	2.1	1.6	0.4	68.3	5.7	26.0	0.067	0.505	20.596940	-101.173100
T. Izq. Salamanca	81.54	1	2	6954	0.1	70.0	4.1	6.1	3.9	11.6	2.8	1.2	0.2	70.1	4.1	25.8	0.079	0.505	20.596860	-101.173120
T. Izq. Salamanca	81.54	3	1	7370	0.1	69.6	5.4	8.7	3.5	8.5	2.6	1.4	0.2	69.7	5.4	24.9	0.079	0.504	20.599530	-101.186220
T. Izq. Salamanca	81.54	3	2	7500	0.1	67.1	5.7	9.9	4.2	7.5	3.0	2.2	0.3	67.2	5.7	27.1	0.072	0.504	20.599400	-101.185840
Caseta de Cobro Salamanca	83.25	2	1	6334	0.2	55.1	5.1	4.6	6.2	19.1	1.6	7.3	0.8	55.3	5.1	39.6	0.079	0.500	20.598618	-101.180922
Caseta de Cobro Salamanca	83.25	2	2	6334	0.2	55.1	5.1	4.6	6.2	19.1	1.6	7.3	0.8	55.3	5.1	39.6	0.079	0.500	20.598618	-101.180922
T. Der. Libramiento de Irapuato	96.30	1	1	9048	0.1	72.2	3.3	7.9	3.0	8.3	2.8	2.0	0.4	72.3	3.3	24.4	0.068	0.501	20.651880	-101.285000
T. Der. Libramiento de Irapuato	96.30	1	2	9094	0.1	74.5	3.0	6.9	2.9	8.7	2.1	1.5	0.3	74.6	3.0	22.4	0.065	0.501	20.651880	-101.285000
T. Der. Libramiento de Irapuato	96.30	3	1	18780	0.8	75.5	3.4	5.2	3.8	6.4	1.9	2.1	0.9	76.3	3.4	20.3	0.074	0.537	20.654540	-101.294530
T. Der. Libramiento de Irapuato	96.30	3	2	16999	0.1	74.9	3.4	6.3	2.6	7.8	2.5	2.1	0.3	75.0	3.4	21.6	0.051	0.520	20.654530	-101.294540
T. C. Irapuato - Zapotlanejo	104.70																			

10 CARR : México - Querétaro (Cuota)

CLAVE: 00411

RUTA: MEX-057-MEX-057D

AÑO : 2015

LUGAR	ESTACION				CLASIFICACION VEHICULAR EN PORCIENTO										COORDENADAS					
	KM	TE	SC	TDPA	M	A	B	C2	C3	T3S2	T3S3	T3S2R4	OTROS	A	B	C	K'	D	LATITUD	LONGITUD
México	0.00																			
Lim. Edos. Term. D. F. Ppia. Mex.	11.30																			
Caseta de Cobro Tepetzotlán	43.01	2	1	26721	0.3	69.2	6.4	5.1	4.6	10.7	0.9	2.4	0.4	69.5	6.4	24.1	0.077	0.500	19.715358	-99.207587
Caseta de Cobro Tepetzotlán	43.01	2	2	26721	0.3	69.2	6.4	5.1	4.6	10.7	0.9	2.4	0.4	69.5	6.4	24.1	0.077	0.500	19.715358	-99.207587
Ent. Jorobas	56.18	1	1	28764	2.0	70.3	4.0	7.8	2.9	7.8	1.8	2.4	1.0	72.3	4.0	23.7	0.071	0.504	19.823000	-99.246250
Ent. Jorobas	56.18	1	2	29411	1.2	68.1	4.6	8.6	3.3	8.4	2.1	2.7	1.0	69.3	4.6	26.1	0.080	0.504	19.822900	-99.246190
Ent. Jorobas	56.18	3	1	28862	0.0	79.0	3.5	7.0	3.0	2.9	2.0	1.9	0.7	79.0	3.5	17.5	0.064	0.568	19.828810	-99.257000
Ent. Jorobas	56.18	3	2	28493	0.0	76.3	4.0	5.4	2.5	6.5	2.9	2.0	0.4	76.3	4.0	19.7	0.078	0.568	19.828810	-99.257000
Lim. Edos. Term. Mex. Ppia. Hgo.	59.85																			
T. Der. Tepeji del Río	69.36	1	1	27484	0.0	73.3	3.7	6.6	3.3	8.4	2.6	1.5	0.6	73.3	3.7	23.0	0.066	0.509	19.875840	-99.337600
T. Der. Tepeji del Río	69.36	1	2	26500	0.0	73.2	4.1	5.7	2.6	9.1	3.2	1.5	0.6	73.2	4.1	22.7	0.080	0.509	19.875840	-99.337600
T. Der. Tepeji del Río	69.36	3	1	24561	1.1	66.1	6.7	6.8	3.5	10.2	2.6	2.3	0.7	67.2	6.7	26.1	0.066	0.506	19.914617	-99.362453

QUERETARO

10 CARR : México - Querétaro (Cuota)

CLAVE: 00411

RUTA: MEX-057-MEX-057D

AÑO : 2015

LUGAR	ESTACION				CLASIFICACION VEHICULAR EN PORCIENTO													COORDENADAS		
	KM	TE	SC	TDPA	M	A	B	C2	C3	T3S2	T3S3	T3S2R4	OTROS	A	B	C	K'	D	LATITUD	LONGITUD
T. Der. Tepeji del Río	69.36	3	2	25253	1.0	62.1	7.4	7.4	4.1	12.0	2.7	2.6	0.7	63.1	7.4	29.5	0.070	0.506	19.914617	-99.362453
T. Izq. Jilotepec	83.75	1	1	25472	0.0	69.6	6.7	5.2	3.9	8.7	2.3	3.1	0.5	69.6	6.7	23.7	0.063	0.523	19.975800	-99.436070
T. Izq. Jilotepec	83.75	1	2	27949	0.0	72.0	6.9	5.3	3.2	7.9	2.2	1.7	0.8	72.0	6.9	21.1	0.084	0.523	19.975800	-99.436070
T. Izq. Jilotepec	83.75	3	1	23018	0.0	70.8	5.3	4.1	3.5	10.9	2.7	2.4	0.3	70.8	5.3	23.9	0.063	0.514	19.985670	-99.443640
T. Izq. Jilotepec	83.75	3	2	24312	0.0	71.3	6.0	5.1	3.0	9.5	2.2	2.2	0.7	71.3	6.0	22.7	0.095	0.514	19.985670	-99.443640
Lim. Edos. Term. Hgo. Ppia. Mex.	86.00																			
X. C. Jilotepec - Maravillas	107.00	1	1	24281	0.0	69.7	5.4	4.5	3.4	10.7	2.7	3.0	0.6	69.7	5.4	24.9	0.059	0.524	20.082660	-99.625120
X. C. Jilotepec - Maravillas	107.00	1	2	26719	0.0	70.2	6.4	5.0	2.4	9.6	3.7	2.3	0.4	70.2	6.4	23.4	0.082	0.524	20.082660	-99.625120
X. C. Jilotepec - Maravillas	107.00	3	1	24871	0.0	67.0	5.0	5.3	4.5	11.6	3.1	2.8	0.7	67.0	5.0	28.0	0.059	0.507	20.080840	-99.646160
X. C. Jilotepec - Maravillas	107.00	3	2	25580	0.0	73.5	4.5	4.9	2.4	10.0	2.5	1.6	0.6	73.5	4.5	22.0	0.078	0.507	20.080840	-99.646160
T. Izq. Aculco	125.00	1	1	24670	0.0	68.3	4.3	5.3	4.1	10.6	3.9	2.8	0.7	68.3	4.3	27.4	0.060	0.515	20.097470	-99.692940
T. Izq. Aculco	125.00	1	2	26165	0.0	72.9	4.4	4.4	2.9	9.4	2.5	2.7	0.8	72.9	4.4	22.7	0.084	0.515	20.097470	-99.692940
T. Izq. Aculco	125.00	3	1	23131	0.0	66.8	5.5	4.8	3.7	11.1	4.1	3.4	0.6	66.8	5.5	27.7	0.062	0.517	20.116980	-99.717850
T. Izq. Aculco	125.00	3	2	25364	0.0	69.3	5.1	4.5	2.5	10.9	3.5	3.5	0.7	69.3	5.1	25.6	0.077	0.517	20.116980	-99.717850
Lim. Edos. Term. Mex. Ppia. Qro.	145.50																			
Caseta de Cobro Palmillas	145.80	2	1	24040	0.2	57.2	4.7	5.5	6.6	18.6	1.8	4.7	0.7	57.4	4.7	37.9	0.077	0.500	20.296103	-99.928994
Caseta de Cobro Palmillas	145.80	2	2	24040	0.2	57.2	4.7	5.5	6.6	18.6	1.8	4.7	0.7	57.4	4.7	37.9	0.077	0.500	20.296103	-99.928994
T. Izq. Toluca	148.50	1	1	22472	0.0	68.3	5.2	6.0	3.3	9.7	4.0	3.1	0.4	68.3	5.2	26.5	0.057	0.508	20.292080	-99.921750
T. Izq. Toluca	148.50	1	2	21756	0.0	69.4	4.9	4.5	3.5	10.5	3.6	3.1	0.5	69.4	4.9	25.7	0.075	0.508	20.292080	-99.921750
T. Izq. Toluca	148.50	3	1	30583	0.0	69.0	4.9	5.7	3.0	9.5	3.5	3.3	1.1	69.0	4.9	26.1	0.052	0.536	20.302808	-99.934810
T. Izq. Toluca	148.50	3	2	28994	0.0	68.6	4.7	5.3	3.3	10.4	4.2	2.7	0.8	68.6	4.7	26.7	0.054	0.536	20.303050	-99.935184
T. Der. Poniente San Juan del Río	164.10	3	1	20432	0.0	75.0	5.0	6.0	3.3	6.1	2.4	1.8	0.4	75.0	5.0	20.0	0.075	0.548	20.372690	-99.991580
T. Der. Poniente San Juan del Río	164.10	3	2	24727	0.0	75.5	4.1	4.8	4.0	6.3	2.9	2.0	0.4	75.5	4.1	20.4	0.075	0.548	20.372690	-99.991580
T. Izq. Acámbaro	170.45	3	1	39840	0.0	69.4	5.5	8.2	3.3	7.4	2.6	3.2	0.4	69.4	5.5	25.1	0.061	0.508	20.446930	-100.078360
T. Izq. Acámbaro	170.45	3	2	38527	0.0	75.4	4.8	7.9	1.9	6.5	1.9	1.3	0.3	75.4	4.8	19.8	0.061	0.508	20.446930	-100.078360
T. Der. Libramiento de Querétaro a San Luis Potosí	207.00	1	1	50048	0.3	82.1	2.7	5.1	3.6	4.4	0.8	0.8	0.2	82.4	2.7	14.9	0.097	0.522	20.584826	-100.343115
T. Der. Libramiento de Querétaro a San Luis Potosí	207.00	1	2	46661	0.5	79.9	3.1	5.7	3.9	4.9	1.0	0.8	0.2	80.4	3.1	16.5	0.095	0.522	20.584826	-100.343115
T. Der. Libramiento de Querétaro a San Luis Potosí	207.00	3	1	49663	0.7	86.4	1.7	2.6	2.9	4.1	0.8	0.7	0.1	87.1	1.7	11.2	0.074	0.510	20.578879	-100.378216
T. Der. Libramiento de Querétaro a San Luis Potosí	207.00	3	2	47075	0.7	85.2	1.9	2.9	3.3	4.4	0.8	0.7	0.1	85.9	1.9	12.2	0.077	0.510	20.578879	-100.378216
Querétaro	211.60																			

QUERETARO

11 CARR: Ajuchitlán - Colón

CLAVE: 22010

RUTA: QRO-005

AÑO: 2015

LUGAR	ESTACION				CLASIFICACION VEHICULAR EN PORCIENTO														COORDENADAS	
	KM	TE	SC	TDPA	M	A	B	C2	C3	T3S2	T3S3	T3S2R4	OTROS	A	B	C	K'	D	LATITUD	LONGITUD
T. C. El Colorado - Higuierillas	0.00	3	0	7654	0.2	86.3	2.4	5.3	1.8	1.9	0.9	0.9	0.3	86.5	2.4	11.1	0.085	0.511	20.692710	-100.015580
Colón	14.00	1	0	6972	0.2	90.4	1.7	3.0	1.6	1.8	0.5	0.6	0.2	90.6	1.7	7.7	0.078	0.557	20.752440	-100.038380

12 CARR: Ajuchitlán - Ezequiel Montes

CLAVE: 22005

RUTA: QRO-005

AÑO: 2015

LUGAR	ESTACION				CLASIFICACION VEHICULAR EN PORCIENTO														COORDENADAS	
	KM	TE	SC	TDPA	M	A	B	C2	C3	T3S2	T3S3	T3S2R4	OTROS	A	B	C	K'	D	LATITUD	LONGITUD
T. C. El Colorado - Higuierillas	0.00	3	1	6423	0.2	81.1	2.6	9.0	2.5	2.3	1.1	0.9	0.3	81.3	2.6	16.1	0.082	0.507	20.704170	-99.979300
T. C. El Colorado - Higuierillas	0.00	3	2	6595	0.1	80.9	2.3	10.9	2.3	1.7	0.9	0.6	0.3	81.0	2.3	16.7	0.083	0.507	20.704170	-99.979300
Ezequiel Montes	10.60	1	0	10578	0.1	76.1	2.3	15.4	2.1	2.3	1.1	0.5	0.1	76.2	2.3	21.5	0.139	0.506	20.674080	-99.893334

13 CARR: El Colorado - Higuierillas

CLAVE: 22004

RUTA: QRO-004

AÑO: 2015

LUGAR	ESTACION				CLASIFICACION VEHICULAR EN PORCIENTO														COORDENADAS	
	KM	TE	SC	TDPA	M	A	B	C2	C3	T3S2	T3S3	T3S2R4	OTROS	A	B	C	K'	D	LATITUD	LONGITUD
T. C. México - Querétaro (Cuota)	0.00	3	1	16129	0.0	83.4	2.5	7.3	2.4	1.9	1.1	1.3	0.1	83.4	2.5	14.1	0.100	0.510	20.570670	-100.211170
T. C. México - Querétaro (Cuota)	0.00	3	2	16788	0.0	84.1	2.5	7.3	2.3	1.9	0.7	1.0	0.2	84.1	2.5	13.4	0.086	0.510	20.570670	-100.211170
T. Izq. Chichimequillas	3.80	3	1	11680	0.1	88.4	1.6	5.8	1.8	1.1	0.6	0.4	0.2	88.5	1.6	9.9	0.126	0.501	20.592030	-100.183760
T. Izq. Chichimequillas	3.80	3	2	11718	0.0	86.2	1.9	5.8	2.3	1.7	1.4	0.5	0.2	86.2	1.9	11.9	0.120	0.501	20.592030	-100.183760
X. C. Querétaro - Tequisquiapan	9.10	3	1	4366	1.8	83.8	1.4	7.2	1.9	1.5	1.1	0.7	0.6	85.6	1.4	13.0	0.088	0.502	20.617220	-100.140500
X. C. Querétaro - Tequisquiapan	9.10	3	2	4397	1.5	82.0	1.6	8.2	2.1	1.9	1.3	0.7	0.7	83.5	1.6	14.9	0.089	0.502	20.617220	-100.140500
T. Der. Ezequiel Montes	31.90	1	1	5679	0.2	76.0	2.4	14.1	2.4	2.7	1.4	0.5	0.3	76.2	2.4	21.4	0.089	0.505	20.704050	-99.989670
T. Der. Ezequiel Montes	31.90	1	2	5784	0.2	73.4	3.3	12.9	3.5	3.5	1.8	0.9	0.5	73.6	3.3	23.1	0.098	0.505	20.704050	-99.989670
T. Der. Ezequiel Montes	31.90	3	1	3662	0.1	82.1	2.5	7.7	2.9	2.4	1.5	0.5	0.3	82.2	2.5	15.3	0.109	0.503	20.710230	-99.978550
T. Der. Ezequiel Montes	31.90	3	2	3703	0.2	83.2	2.9	7.1	2.3	1.9	1.4	0.8	0.2	83.4	2.9	13.7	0.114	0.503	20.710230	-99.978550
T. Izq. San Pablo Tolimán	57.00	3	0	1143	0.4	88.8	1.7	5.5	2.1	0.8	0.4	0.2	0.1	89.2	1.7	9.1	0.112	0.508	20.856440	-99.884410
T. C. San Juan del Río - Xilitla	81.90	1	0	1217	0.3	84.2	2.2	8.9	2.8	1.2	0.4	0.0	0.0	84.5	2.2	13.3	0.121	0.500	20.941350	-99.750060

14 CARR: Hacienda Paraiso - Chichimequillas

CLAVE: 22001

RUTA: QRO-001

AÑO: 2015

LUGAR	ESTACION				CLASIFICACION VEHICULAR EN PORCIENTO														COORDENADAS	
	KM	TE	SC	TDPA	M	A	B	C2	C3	T3S2	T3S3	T3S2R4	OTROS	A	B	C	K'	D	LATITUD	LONGITUD
Hacienda Paraiso	0.00	3	1	3908	0.3	79.1	1.7	8.1	4.3	4.0	1.0	1.3	0.2	79.4	1.7	18.9	0.082	0.511	20.581950	-100.200410
Hacienda Paraiso	0.00	3	2	4078	0.2	82.7	1.4	6.8	3.3	3.8	0.8	0.8	0.2	82.9	1.4	15.7	0.090	0.511	20.581950	-100.200410
T. Der. Navajas	7.90	3	0	6626	0.2	82.1	1.8	8.2	2.0	4.1	1.0	0.5	0.1	82.3	1.8	15.9	0.089	0.503	20.646320	-100.232550

QUERETARO

14 CARR: Hacienda Paraíso - Chichimequillas

CLAVE: 22001

RUTA: QRO-001

AÑO: 2015

LUGAR	ESTACION				CLASIFICACION VEHICULAR EN PORCIENTO													COORDENADAS		
	KM	TE	SC	TDPA	M	A	B	C2	C3	T3S2	T3S3	T3S2R4	OTROS	A	B	C	K'	D	LATITUD	LONGITUD
La Griega	10.35	3	0	6776	0.2	83.3	2.4	7.7	1.9	2.8	1.1	0.4	0.2	83.5	2.4	14.1	0.086	0.504	20.676140	-100.239840
Amazcala	15.45	3	0	6885	0.1	79.0	3.2	10.9	4.2	1.5	0.6	0.3	0.2	79.1	3.2	17.7	0.081	0.506	20.694820	-100.253840
Chichimequillas	26.61																			

15 CARR: La Culata - San Joaquín

CLAVE: 22021

RUTA: QRO-021

AÑO: 2015

LUGAR	ESTACION				CLASIFICACION VEHICULAR EN PORCIENTO													COORDENADAS		
	KM	TE	SC	TDPA	M	A	B	C2	C3	T3S2	T3S3	T3S2R4	OTROS	A	B	C	K'	D	LATITUD	LONGITUD
La Culata	0.00	3	0	1341	0.8	79.8	2.0	7.7	2.0	3.0	4.1	0.2	0.4	80.6	2.0	17.4	0.088	0.502	20.883079	-99.706006
San Joaquín	31.80	1	0	2438	1.0	84.3	1.2	10.0	0.2	2.2	0.5	0.1	0.5	85.3	1.2	13.5	0.073	0.501	20.888130	-99.583630

16 CARR: Libramiento de San Juan del Río

CLAVE: 22266

RUTA: QRO

AÑO: 2015

LUGAR	ESTACION				CLASIFICACION VEHICULAR EN PORCIENTO													COORDENADAS		
	KM	TE	SC	TDPA	M	A	B	C2	C3	T3S2	T3S3	T3S2R4	OTROS	A	B	C	K'	D	LATITUD	LONGITUD
T. C. México - Querétaro (Después del F.F.C.C.)	0.00	3	1	15471	0.0	87.8	1.2	4.1	2.3	2.1	1.1	1.3	0.1	87.8	1.2	11.0	0.060	0.507	20.378630	-99.985820
T. C. México - Querétaro (Después del F.F.C.C.)	0.00	3	2	15026	0.0	89.5	1.9	3.6	1.1	1.8	1.1	0.8	0.2	89.5	1.9	8.6	0.057	0.507	20.378630	-99.985820
T. C. San Juan del Río - Xilitla	5.05	1	1	11516	0.1	90.6	0.8	3.5	0.8	1.8	1.1	1.1	0.2	90.7	0.8	8.5	0.087	0.503	20.413560	-99.981260
T. C. San Juan del Río - Xilitla	5.05	1	2	11395	0.1	92.3	0.9	3.1	0.8	1.1	0.5	1.0	0.2	92.4	0.9	6.7	0.089	0.503	20.413560	-99.981260

17 CARR: Libramiento Norte de Querétaro

CLAVE: 22500

RUTA: QRO

AÑO: 2015

LUGAR	ESTACION				CLASIFICACION VEHICULAR EN PORCIENTO													COORDENADAS		
	KM	TE	SC	TDPA	M	A	B	C2	C3	T3S2	T3S3	T3S2R4	OTROS	A	B	C	K'	D	LATITUD	LONGITUD
T. C. Querétaro - San Luis Potosí	0.00	3	1	59227	0.7	93.6	0.1	1.7	0.1	0.8	2.5	0.2	0.3	94.3	0.1	5.6	0.075	0.525	20.618090	-100.406730
T. C. Querétaro - San Luis Potosí	0.00	3	2	60349	0.8	92.8	0.1	1.9	0.1	0.9	2.9	0.2	0.3	93.6	0.1	6.3	0.072	0.525	20.618500	-100.407000
T. C. México - Querétaro	8.00	1	1	39284	0.0	92.8	1.0	3.3	1.3	0.8	0.3	0.2	0.3	92.8	1.0	6.2	0.061	0.508	20.584939	-100.362325
T. C. México - Querétaro	8.00	1	2	40643	0.0	93.5	0.8	2.6	1.3	0.9	0.3	0.3	0.3	93.5	0.8	5.7	0.065	0.508	20.584939	-100.362325

18 CARR: Libramiento Surponiente de Querétaro

CLAVE: 22501

RUTA: QRO

AÑO: 2015

LUGAR	ESTACION				CLASIFICACION VEHICULAR EN PORCIENTO													COORDENADAS		
	KM	TE	SC	TDPA	M	A	B	C2	C3	T3S2	T3S3	T3S2R4	OTROS	A	B	C	K'	D	LATITUD	LONGITUD
T. C. México - Querétaro	0.00	3	1	15604	0.0	96.4	0.6	1.3	0.7	0.5	0.2	0.2	0.1	96.4	0.6	3.0	0.073	0.514	20.567495	-100.357700
T. C. México - Querétaro	0.00	3	2	16483	0.1	96.8	0.4	1.4	0.5	0.4	0.1	0.2	0.1	96.9	0.4	2.7	0.089	0.514	20.567495	-100.357700

QUERETARO

18 CARR : Libramiento Surponiente de Querétaro

CLAVE: 22501

RUTA: QRO

AÑO: 2015

LUGAR	ESTACION				CLASIFICACION VEHICULAR EN PORCIENTO														COORDENADAS	
	KM	TE	SC	TDPA	M	A	B	C2	C3	T3S2	T3S3	T3S2R4	OTROS	A	B	C	K'	D	LATITUD	LONGITUD
X. C. Querétaro - Ent. San Martín	4.00	3	1	19426	0.0	95.5	0.4	1.8	1.0	0.5	0.3	0.4	0.1	95.5	0.4	4.1	0.075	0.513	20.550578	-100.373190
X. C. Querétaro - Ent. San Martín	4.00	3	2	18472	0.0	94.3	0.7	2.5	1.2	0.7	0.3	0.2	0.1	94.3	0.7	5.0	0.079	0.513	20.550578	-100.373190
T. Der. a Candiles	7.40	1	1	19740	0.0	94.1	1.1	2.8	1.1	0.5	0.2	0.1	0.1	94.1	1.1	4.8	0.076	0.517	20.537537	-100.394013
T. Der. a Candiles	7.40	1	2	18470	0.1	91.7	2.1	2.6	1.7	0.9	0.3	0.3	0.3	91.8	2.1	6.1	0.095	0.517	20.537537	-100.394013
T. Izq. a Santa Barbara (1° acceso)	8.20	1	1	10861	0.1	93.5	1.8	2.0	0.9	0.9	0.4	0.3	0.1	93.6	1.8	4.6	0.095	0.523	20.532001	-100.403241
T. Izq. a Santa Barbara (1° acceso)	8.20	1	2	9921	0.1	92.7	1.5	2.5	1.7	0.7	0.3	0.3	0.2	92.8	1.5	5.7	0.110	0.523	20.532001	-100.403241
T. Izq. a Santa Barbara (2° acceso)	10.50	3	1	10396	0.1	91.7	2.3	2.9	1.3	0.8	0.4	0.4	0.1	91.8	2.3	5.9	0.074	0.505	20.525451	-100.424930
T. Izq. a Santa Barbara (2° acceso)	10.50	3	2	10210	0.0	92.9	2.2	2.8	1.2	0.5	0.2	0.1	0.1	92.9	2.2	4.9	0.095	0.505	20.525451	-100.424930
T. Izq. a La Negreta	13.40	3	1	8891	0.1	92.3	2.2	2.9	1.2	0.7	0.2	0.3	0.1	92.4	2.2	5.4	0.069	0.506	20.530521	-100.448406
T. Izq. a La Negreta	13.40	3	2	8693	0.1	91.3	2.0	4.0	1.3	0.8	0.2	0.2	0.1	91.4	2.0	6.6	0.083	0.506	20.530521	-100.448406
T. C. Villa del Pueblito - Huimilpan	14.39	3	1	5790	2.2	88.4	1.1	5.0	1.4	0.8	0.8	0.1	0.2	90.6	1.1	8.3	0.103	0.566	20.529884	-100.445861
T. C. Villa del Pueblito - Huimilpan	14.39	3	2	7655	2.0	88.5	1.1	5.0	1.4	0.9	0.8	0.1	0.2	90.5	1.1	8.4	0.142	0.566	20.529884	-100.445861
Querétaro - Irapuato	18.30	1	1	4076	0.0	90.2	2.5	3.6	1.4	1.5	0.4	0.3	0.1	90.2	2.5	7.3	0.079	0.514	20.534044	-100.479700
Querétaro - Irapuato	18.30	1	2	3852	0.2	87.9	2.5	4.9	1.5	1.8	0.6	0.5	0.1	88.1	2.5	9.4	0.093	0.514	20.534044	-100.479700
T. C. Querétaro - Irapuato (Cuota)	21.90	1	1	11633	0.1	86.3	2.2	4.3	1.5	2.7	1.2	1.5	0.2	86.4	2.2	11.4	0.080	0.514	20.558536	-100.482393
T. C. Querétaro - Irapuato (Cuota)	21.90	1	2	11015	0.0	86.7	2.7	4.0	1.4	3.1	1.6	0.4	0.1	86.7	2.7	10.6	0.076	0.514	20.558536	-100.482393
T. C- Querétaro - Irapuato (Cuota)	21.90	3	1	10801	0.1	86.7	2.2	2.8	1.5	3.9	1.5	1.2	0.1	86.8	2.2	11.0	0.090	0.503	20.577973	-100.483187
T. C- Querétaro - Irapuato (Cuota)	21.90	3	2	10909	0.1	85.6	2.3	3.8	2.0	3.8	1.4	0.9	0.1	85.7	2.3	12.0	0.117	0.503	20.577973	-100.483187
T. Der. a Las Adjuntas	24.30	3	1	11306	0.1	88.7	1.8	3.3	1.4	2.6	1.0	0.8	0.3	88.8	1.8	9.4	0.082	0.506	20.598720	-100.490440
T. Der. a Las Adjuntas	24.30	3	2	11053	0.1	90.4	1.7	2.1	1.7	1.6	0.8	1.2	0.4	90.5	1.7	7.8	0.129	0.506	20.598720	-100.490440
T. Der. a Tlacote el Bajo	31.00	1	1	6420	0.2	85.6	2.8	5.7	2.0	1.8	0.7	1.0	0.2	85.8	2.8	11.4	0.145	0.501	20.664360	-100.513620
T. Der. a Tlacote el Bajo	31.00	1	2	6458	0.2	85.1	2.2	4.2	1.2	3.4	2.0	1.4	0.3	85.3	2.2	12.5	0.120	0.501	20.664360	-100.513620
T. Der. a Tlacote el Bajo	31.00	3	1	5646	0.2	83.4	2.8	4.4	2.1	3.7	1.7	1.5	0.2	83.6	2.8	13.6	0.164	0.502	20.670380	-100.508540
T. Der. a Tlacote el Bajo	31.00	3	2	5702	0.1	87.2	2.2	4.3	1.2	2.9	1.2	0.7	0.2	87.3	2.2	10.5	0.157	0.502	20.670370	-100.508540
Obrajuelos (El Zapote)	33.00	3	1	4657	0.2	86.1	2.7	4.0	1.7	2.9	1.3	0.9	0.2	86.3	2.7	11.0	0.175	0.545	20.658590	-100.519140
Obrajuelos (El Zapote)	33.00	3	2	4704	0.1	86.8	2.2	4.0	1.1	3.0	1.6	0.8	0.4	86.9	2.2	10.9	0.148	0.545	20.658290	-100.519200
Santo Niño de Praga	34.50	3	1	5178	0.1	83.0	2.7	4.7	2.2	3.7	1.9	1.4	0.3	83.1	2.7	14.2	0.148	0.503	20.674218	-100.508160
Santo Niño de Praga	34.50	3	2	5242	0.2	85.6	2.6	3.7	2.1	3.4	1.5	0.6	0.3	85.8	2.6	11.6	0.165	0.503	20.674218	-100.508160
X. C. juriquilla - Mompani	37.30	3	1	3950	0.2	86.2	2.5	4.2	1.8	2.7	1.4	0.8	0.2	86.4	2.5	11.1	0.194	0.506	20.690810	-100.496260
X. C. juriquilla - Mompani	37.30	3	2	4046	0.1	86.4	2.3	3.9	2.2	3.1	1.2	0.6	0.2	86.5	2.3	11.2	0.194	0.506	20.690810	-100.496260
T. Der. a El Nabo	39.60	3	1	4352	0.2	82.6	2.8	5.0	2.2	4.2	1.7	1.0	0.3	82.8	2.8	14.4	0.188	0.509	20.702885	-100.479334
T. Der. a El Nabo	39.60	3	2	4194	0.1	83.5	2.8	5.8	2.0	4.0	1.1	0.5	0.2	83.6	2.8	13.6	0.175	0.509	20.702885	-100.479334
Pie de Gallo	47.40	1	1	5250	0.2	82.1	2.8	5.0	2.5	4.7	1.6	0.9	0.2	82.3	2.8	14.9	0.158	0.538	20.747770	-100.458010
Pie de Gallo	47.40	1	2	5364	0.2	83.2	2.1	4.7	2.5	4.4	1.4	1.0	0.5	83.4	2.1	14.5	0.155	0.538	20.747770	-100.458010
Pie de Gallo	47.40	3	1	5023	0.2	85.5	2.9	3.8	2.1	3.2	1.3	0.7	0.3	85.7	2.9	11.4	0.178	0.505	20.754000	-100.453910

QUERETARO

18 CARR: Libramiento Surponiente de Querétaro

CLAVE: 22501

RUTA: QRO

AÑO: 2015

LUGAR	ESTACION				CLASIFICACION VEHICULAR EN PORCIENTO														COORDENADAS	
	KM	TE	SC	TDPA	M	A	B	C2	C3	T3S2	T3S3	T3S2R4	OTROS	A	B	C	K'	D	LATITUD	LONGITUD
Pie de Gallo	47.40	3	2	4929	0.2	82.8	3.0	4.6	1.9	4.3	2.1	0.8	0.3	83.0	3.0	14.0	0.160	0.505	20.754030	-100.453900
T. C. Querétaro - San Luis Potosí	49.00																			

19 CARR: Peña Colorada - El Rodeo

CLAVE: 22002

RUTA: QRO

AÑO: 2015

LUGAR	ESTACION				CLASIFICACION VEHICULAR EN PORCIENTO														COORDENADAS	
	KM	TE	SC	TDPA	M	A	B	C2	C3	T3S2	T3S3	T3S2R4	OTROS	A	B	C	K'	D	LATITUD	LONGITUD
T. C. México - Querétaro	0.00	3	0	10677	0.1	85.4	1.6	6.8	1.8	2.2	0.9	0.4	0.8	85.5	1.6	12.9	0.084	0.505	20.594290	-100.247380
X. C. Querétaro - Tequisquiapan	9.00	1	0	10248	0.1	84.3	1.4	9.1	2.5	1.4	0.6	0.4	0.2	84.4	1.4	14.2	0.078	0.507	20.633660	-100.260240
El Rodeo	11.00	1	0	1504	0.6	84.0	2.0	10.8	1.7	0.6	0.1	0.1	0.1	84.6	2.0	13.4	0.074	0.527	20.661570	-100.258670

20 CARR: Querétaro - Ent. San Martín

CLAVE: 22067

RUTA: QRO

AÑO: 2015

LUGAR	ESTACION				CLASIFICACION VEHICULAR EN PORCIENTO														COORDENADAS	
	KM	TE	SC	TDPA	M	A	B	C2	C3	T3S2	T3S3	T3S2R4	OTROS	A	B	C	K'	D	LATITUD	LONGITUD
T. C. México - Querétaro	0.00	3	1	6134	0.1	95.3	0.7	2.0	1.0	0.4	0.1	0.3	0.1	95.4	0.7	3.9	0.102	0.512	20.558569	-100.366793
T. C. México - Querétaro	0.00	3	2	6440	0.1	94.2	0.7	2.6	1.0	0.7	0.4	0.2	0.1	94.3	0.7	5.0	0.123	0.512	20.558569	-100.366793
Lagunillas	18.70	1	0	3950	0.1	80.4	0.8	13.8	2.3	1.4	0.8	0.2	0.2	80.5	0.8	18.7	0.097	0.516	20.471123	-100.304973
T. Der. Huimilpan	32.70	1	0	3420	0.1	83.8	1.1	12.3	1.2	0.8	0.4	0.2	0.1	83.9	1.1	15.0	0.096	0.511	20.390519	-100.267762
Ent. San Martín	53.00	1	0	1570	0.3	90.7	0.3	7.2	0.7	0.6	0.1	0.1	0.0	91.0	0.3	8.7	0.108	0.507	20.278600	-100.159260

21 CARR: Querétaro - Estación Chichimequillas

CLAVE: 22270

RUTA: QRO

AÑO: 2015

LUGAR	ESTACION				CLASIFICACION VEHICULAR EN PORCIENTO														COORDENADAS	
	KM	TE	SC	TDPA	M	A	B	C2	C3	T3S2	T3S3	T3S2R4	OTROS	A	B	C	K'	D	LATITUD	LONGITUD
T. C. Libramiento de Querétaro	0.00	3	1	12427	0.1	89.7	1.2	6.7	1.1	0.5	0.3	0.3	0.1	89.8	1.2	9.0	0.073	0.507	20.625640	-100.387320
T. C. Libramiento de Querétaro	0.00	3	2	12074	0.0	91.0	0.9	5.8	1.0	0.5	0.2	0.4	0.2	91.0	0.9	8.1	0.070	0.507	20.625650	-100.387310
X. C. Hacienda Paraíso - Chichimequillas	18.00	1	0	5631	0.3	89.8	1.2	6.1	1.4	0.6	0.2	0.3	0.1	90.1	1.2	8.7	0.104	0.522	20.751190	-100.322210
Estación Chichimequillas	19.20																			

22 CARR: Querétaro - Tequisquiapan

CLAVE: 22502

RUTA: QRO

AÑO: 2015

LUGAR	ESTACION				CLASIFICACION VEHICULAR EN PORCIENTO														COORDENADAS	
	KM	TE	SC	TDPA	M	A	B	C2	C3	T3S2	T3S3	T3S2R4	OTROS	A	B	C	K'	D	LATITUD	LONGITUD
Querétaro	0.00	3	1	7190	0.0	86.7	1.7	5.4	1.7	2.8	1.4	0.1	0.2	86.7	1.7	11.6	0.082	0.503	20.600154	-100.350657

QUERETARO

22 CARR: Querétaro - Tequisquiapan

CLAVE: 22502

RUTA: QRO

AÑO: 2015

LUGAR	ESTACION				CLASIFICACION VEHICULAR EN PORCIENTO														COORDENADAS	
	KM	TE	SC	TDPA	M	A	B	C2	C3	T3S2	T3S3	T3S2R4	OTROS	A	B	C	K'	D	LATITUD	LONGITUD
Querétaro	0.00	3	2	7117	0.1	85.5	2.2	5.7	1.5	2.5	1.1	0.9	0.5	85.6	2.2	12.2	0.085	0.503	20.600154	-100.350657
X. C. Peña Colorada - El Rodeo	14.00	1	0	10814	0.1	88.3	1.1	6.1	1.5	1.9	0.3	0.4	0.3	88.4	1.1	10.5	0.082	0.510	20.635770	-100.262100
T. Izq. La Griega	16.60	3	0	5126	1.5	75.4	2.9	12.8	2.2	3.3	1.0	0.3	0.6	76.9	2.9	20.2	0.085	0.537	20.643300	-100.227600
X. C. El Colorado - Higuierillas	25.70	1	1	5128	0.1	87.9	1.9	5.9	2.2	1.3	0.3	0.3	0.1	88.0	1.9	10.1	0.111	0.501	20.615940	-100.161630
X. C. El Colorado - Higuierillas	25.70	1	2	5113	0.1	84.8	2.8	7.6	2.1	1.6	0.5	0.4	0.1	84.9	2.8	12.3	0.111	0.501	20.615940	-100.161630
X. C. San Juan del Río - Xilitla	56.90	1	0	8029	0.1	85.4	2.7	7.0	1.9	1.4	0.6	0.4	0.5	85.5	2.7	11.8	0.122	0.510	20.528820	-99.907960
Tequisquiapan	57.40	1	0	9333	0.1	89.6	1.5	4.1	1.5	1.5	0.8	0.5	0.4	89.7	1.5	8.8	0.090	0.500	20.533830	-99.897580

23 CARR: Querétaro - Tlacote El Bajo

CLAVE: 22069

RUTA: QRO

AÑO: 2015

LUGAR	ESTACION				CLASIFICACION VEHICULAR EN PORCIENTO														COORDENADAS	
	KM	TE	SC	TDPA	M	A	B	C2	C3	T3S2	T3S3	T3S2R4	OTROS	A	B	C	K'	D	LATITUD	LONGITUD
Querétaro	0.00	3	1	10472	1.6	84.1	2.5	5.4	0.5	4.0	1.0	0.3	0.6	85.7	2.5	11.8	0.099	0.503	20.588220	-100.421000
Querétaro	0.00	3	2	10669	0.0	85.5	2.6	4.2	1.9	3.6	1.2	0.8	0.2	85.5	2.6	11.9	0.076	0.502	20.588220	-100.421000
Tlacote El Bajo	18.00																			

24 CARR: Ramal a La Estancia

CLAVE: 22504

RUTA: QRO

AÑO: 2015

LUGAR	ESTACION				CLASIFICACION VEHICULAR EN PORCIENTO														COORDENADAS	
	KM	TE	SC	TDPA	M	A	B	C2	C3	T3S2	T3S3	T3S2R4	OTROS	A	B	C	K'	D	LATITUD	LONGITUD
T. C. México - Querétaro (Cuota)	0.00	3	0	4657	0.2	93.1	1.2	2.4	0.8	1.1	0.5	0.5	0.2	93.3	1.2	5.5	0.100	0.510	20.425690	-100.059640
La Estancia	3.00																			

25 CARR: Ramal a Tolimán

CLAVE: 22265

RUTA: QRO

AÑO: 2015

LUGAR	ESTACION				CLASIFICACION VEHICULAR EN PORCIENTO														COORDENADAS	
	KM	TE	SC	TDPA	M	A	B	C2	C3	T3S2	T3S3	T3S2R4	OTROS	A	B	C	K'	D	LATITUD	LONGITUD
T. C. El Colorado - Higuierillas	0.00	3	0	3316	0.2	82.5	1.5	12.2	2.1	0.8	0.4	0.2	0.1	82.7	1.5	15.8	0.069	0.503	20.867980	-99.900110
Tolimán	7.00	1	0	3586	0.2	85.6	2.5	6.7	3.4	0.6	0.3	0.4	0.3	85.8	2.5	11.7	0.082	0.504	20.903320	-99.922420

26 CARR: Rayón - Arroyo Seco

CLAVE: 24008

RUTA: SLP-011

AÑO: 2015

LUGAR	ESTACION				CLASIFICACION VEHICULAR EN PORCIENTO														COORDENADAS	
	KM	TE	SC	TDPA	M	A	B	C2	C3	T3S2	T3S3	T3S2R4	OTROS	A	B	C	K'	D	LATITUD	LONGITUD
Rayón	0.00	3	0	938	5.3	72.4	0.4	16.9	2.4	1.7	0.5	0.1	0.3	77.7	0.4	21.9	0.113	0.508	21.848112	-99.626996

QUERETARO

26 CARR: Rayón - Arroyo Seco

CLAVE: 24008

RUTA: SLP-011

AÑO: 2015

LUGAR	ESTACION				CLASIFICACION VEHICULAR EN PORCIENTO														COORDENADAS	
	KM	TE	SC	TDPA	M	A	B	C2	C3	T3S2	T3S3	T3S2R4	OTROS	A	B	C	K'	D	LATITUD	LONGITUD
Lagunillas	36.00	1	0	300	5.0	77.0	0.1	16.3	1.4	0.2	0.0	0.0	0.0	82.0	0.1	17.9	0.110	0.504	21.595111	-99.564754
Lim. De Edos. Term. S.L.P. Ppia Qro.	51.00																			
Arroyo Seco	57.00	1	0	540	0.9	88.3	1.9	7.0	1.4	0.0	0.3	0.1	0.1	89.2	1.9	8.9	0.093	0.501	21.554400	-99.680960

27 CARR: San Juan del Río - Amealco

CLAVE: 22011

RUTA: QRO

AÑO: 2015

LUGAR	ESTACION				CLASIFICACION VEHICULAR EN PORCIENTO														COORDENADAS	
	KM	TE	SC	TDPA	M	A	B	C2	C3	T3S2	T3S3	T3S2R4	OTROS	A	B	C	K'	D	LATITUD	LONGITUD
T. C. México - Querétaro	0.00	3	0	10229	0.1	87.3	2.8	5.5	1.6	1.5	0.6	0.4	0.2	87.4	2.8	9.8	0.093	0.508	20.376910	-100.016240
Amealco	28.00	1	0	4458	0.2	91.8	1.9	3.5	1.1	0.8	0.4	0.2	0.1	92.0	1.9	6.1	0.087	0.501	20.192480	-100.140880

28 CARR: T. C. (Villa del Pueblito - Huimilpan) - Coroneo

CLAVE: 00155

RUTA: QRO-GTO

AÑO: 2015

LUGAR	ESTACION				CLASIFICACION VEHICULAR EN PORCIENTO														COORDENADAS	
	KM	TE	SC	TDPA	M	A	B	C2	C3	T3S2	T3S3	T3S2R4	OTROS	A	B	C	K'	D	LATITUD	LONGITUD
T. C. Villa del Pueblito - Huimilpan	0.00	3	0	6474	0.3	81.2	2.8	7.3	2.9	3.3	1.3	0.7	0.2	81.5	2.8	15.7	0.099	0.504	20.517139	-100.430139
Lim. Edos. Term. Qro. Ppia. Gto.	20.00																			
Coroneo	45.20	1	0	3047	0.2	92.2	0.5	5.4	0.9	0.6	0.2	0.0	0.0	92.4	0.5	7.1	0.117	0.504	20.213470	-100.366540

29 CARR: Villa del Pueblito - Huimilpan

CLAVE: 22503

RUTA: QRO

AÑO: 2015

LUGAR	ESTACION				CLASIFICACION VEHICULAR EN PORCIENTO														COORDENADAS	
	KM	TE	SC	TDPA	M	A	B	C2	C3	T3S2	T3S3	T3S2R4	OTROS	A	B	C	K'	D	LATITUD	LONGITUD
T. C. Querétaro - Irapuato (Libre)	0.00	3	1	14236	0.1	93.7	0.4	2.6	1.1	0.7	0.4	0.8	0.2	93.8	0.4	5.8	0.061	0.524	20.530306	-100.441556
T. C. Querétaro - Irapuato (Libre)	0.00	3	2	15688	0.1	93.2	0.6	2.9	1.0	0.9	0.5	0.6	0.2	93.3	0.6	6.1	0.065	0.524	20.530306	-100.441556
Huimilpan	27.00	1	0	1830	0.4	91.1	0.2	6.3	1.4	0.3	0.1	0.1	0.1	91.5	0.2	8.3	0.144	0.510	20.378873	-100.278189

30 CARR: Toluca - Palmillas

CLAVE: 00496

RUTA: EM(D)-MEX-055

AÑO: 2015

LUGAR	ESTACION				CLASIFICACION VEHICULAR EN PORCIENTO														COORDENADAS	
	KM	TE	SC	TDPA	M	A	B	C2	C3	T3S2	T3S3	T3S2R4	OTROS	A	B	C	K'	D	LATITUD	LONGITUD
Toluca	0.00																			
T. Izq. Calixtlahuaca de Rayón (Alta)	7.21	3	1	18141	0.0	92.0	1.3	3.4	2.1	0.4	0.2	0.5	0.1	92.0	1.3	6.7	0.077	0.504	19.337970	-99.668980
T. Izq. Calixtlahuaca de Rayón (Baja)	7.21	3	1	12136	0.0	73.1	5.0	8.9	3.3	6.3	2.0	1.2	0.2	73.1	5.0	21.9	0.086	0.522	19.337970	-99.668980
T. Izq. Calixtlahuaca de Rayón (Alta)	7.21	3	2	17860	0.0	93.4	1.1	3.4	1.2	0.5	0.2	0.2	0.0	93.4	1.1	5.5	0.088	0.504	19.338900	-99.669910

QUERETARO

30 CARR : Toluca - Palmillas

CLAVE: 00496

RUTA: EM(D)-MEX-055

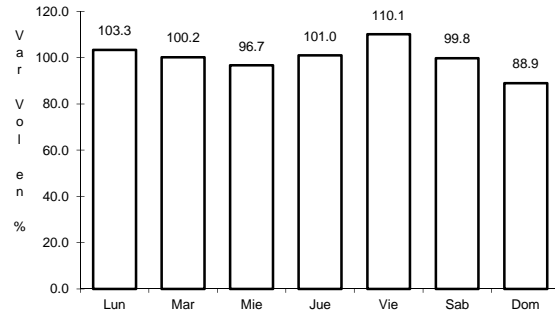
AÑO : 2015

LUGAR	ESTACION				CLASIFICACION VEHICULAR EN PORCIENTO														COORDENADAS	
	KM	TE	SC	TDPA	M	A	B	C2	C3	T3S2	T3S3	T3S2R4	OTROS	A	B	C	K'	D	LATITUD	LONGITUD
T. Izq. Calixtlahuaca de Rayón (Baja)	7.21	3	2	17509	0.0	75.6	4.1	7.3	3.8	6.5	1.4	1.0	0.3	75.6	4.1	20.3	0.069	0.522	19.338900	-99.669910
X. C. Lib. Nororiente de Toluca (Cuota)	14.21	1	1	24330	0.0	81.0	2.8	7.9	2.1	3.4	1.2	1.4	0.2	81.0	2.8	16.2	0.067	0.512	19.382240	-99.704870
X. C. Lib. Nororiente de Toluca (Cuota)	14.21	1	2	25497	0.0	81.6	3.9	6.4	2.4	3.3	1.1	1.1	0.2	81.6	3.9	14.5	0.070	0.512	19.382240	-99.704870
El Dorado	16.00	1	1	25108	0.0	75.9	5.2	8.5	2.5	4.6	1.7	1.4	0.2	75.9	5.2	18.9	0.076	0.536	19.403330	-99.713920
El Dorado	16.00	1	2	23117	0.0	77.9	3.9	7.8	3.0	3.8	1.8	1.6	0.2	77.9	3.9	18.2	0.069	0.536	19.403330	-99.713920
Ixtlahuaca de Rayón	35.58	1	1	20072	0.0	78.0	5.3	6.0	2.8	4.6	1.5	1.6	0.2	78.0	5.3	16.7	0.071	0.508	19.557220	-99.759640
Ixtlahuaca de Rayón	35.58	1	2	20739	0.0	78.8	4.3	8.2	2.4	3.4	1.3	1.3	0.3	78.8	4.3	16.9	0.071	0.508	19.557220	-99.759640
Ixtlahuaca de Rayón	35.58	3	1	20152	0.0	81.2	4.4	6.4	2.3	3.6	1.1	0.8	0.2	81.2	4.4	14.4	0.072	0.502	19.584582	-99.765027
Ixtlahuaca de Rayón	35.58	3	2	20337	0.0	84.3	3.8	5.1	2.2	1.8	0.9	1.6	0.3	84.3	3.8	11.9	0.074	0.502	19.583602	-99.769142
Pastejé	45.20	1	1	16242	0.0	78.5	4.4	6.8	2.1	4.6	1.7	1.6	0.3	78.5	4.4	17.1	0.077	0.502	19.647570	-99.786250
Pastejé	45.20	1	2	16348	0.0	79.3	4.1	7.8	1.7	3.6	1.6	1.7	0.2	79.3	4.1	16.6	0.086	0.502	19.647570	-99.786250
Atlacomulco	65.00	1	1	16000	0.0	83.6	2.8	6.0	1.2	4.0	1.4	0.8	0.2	83.6	2.8	13.6	0.074	0.560	19.783020	-99.864940
Atlacomulco	65.00	1	2	16243	0.0	81.7	3.4	6.7	1.9	3.8	1.2	1.0	0.3	81.7	3.4	14.9	0.071	0.560	19.783020	-99.864940
Atlacomulco	65.00	3	1	12946	0.0	82.2	2.7	5.9	1.9	3.9	1.2	1.9	0.3	82.2	2.7	15.1	0.080	0.503	19.808680	-99.872800
Atlacomulco	65.00	3	2	13077	0.0	82.4	2.9	5.3	2.0	3.7	1.5	1.7	0.5	82.4	2.9	14.7	0.069	0.503	19.808680	-99.872800
Acambay	85.64	3	0	9442	0.1	82.5	2.4	7.5	2.1	3.1	1.4	0.6	0.3	82.6	2.4	15.0	0.076	0.507	19.964660	-99.852490
T. Der. Aculco de Espinoza	104.43	3	1	4019	0.0	76.1	3.0	5.4	2.9	9.1	2.5	0.7	0.3	76.1	3.0	20.9	0.085	0.504	20.092970	-99.862140
T. Der. Aculco de Espinoza	104.43	3	2	4081	0.2	72.7	4.2	6.1	2.6	10.4	2.7	0.9	0.2	72.9	4.2	22.9	0.087	0.504	20.092970	-99.862140
T. Der. Polotitlán	122.73	1	1	4395	0.1	76.0	2.6	7.5	2.4	7.8	2.8	0.7	0.1	76.1	2.6	21.3	0.071	0.508	20.226440	-99.900000
T. Der. Polotitlán	122.73	1	2	4254	0.2	77.8	2.6	5.4	2.6	7.9	2.6	0.6	0.3	78.0	2.6	19.4	0.077	0.508	20.226440	-99.900000
Lim. Edos. Term. Mex. Ppia. Qro.	128.10																			
T. C. México - Querétaro	131.52	1	1	6196	0.1	72.1	4.9	6.7	2.7	10.3	2.2	0.8	0.2	72.2	4.9	22.9	0.073	0.501	20.294830	-99.933230
T. C. México - Querétaro	131.52	1	2	6174	0.2	74.1	3.8	5.1	2.8	10.2	2.5	1.1	0.2	74.3	3.8	21.9	0.090	0.501	20.294830	-99.933230

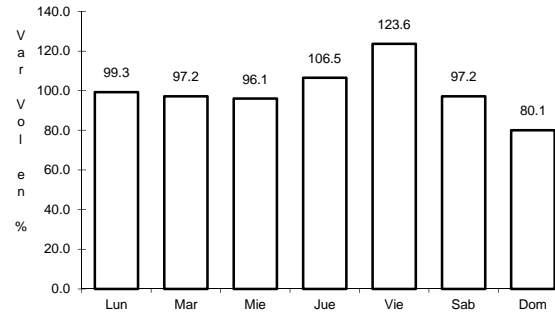
1 CARR: Ent. Buenavista - San Miguel de Allende

CLAVE: 00111

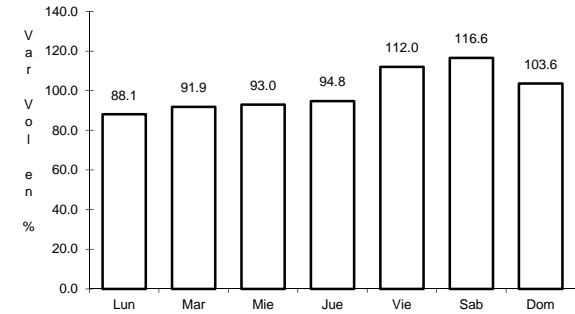
RUTA: MEX-057



Km: 0.00 Tipo: 3 Sent: 0



Km: 12.00 Tipo: 1 Sent: 0

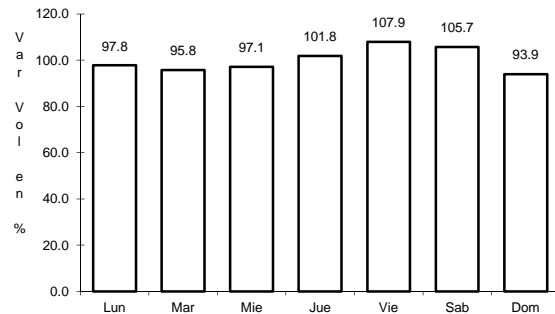


Km: 35.11 Tipo: 1 Sent: 0

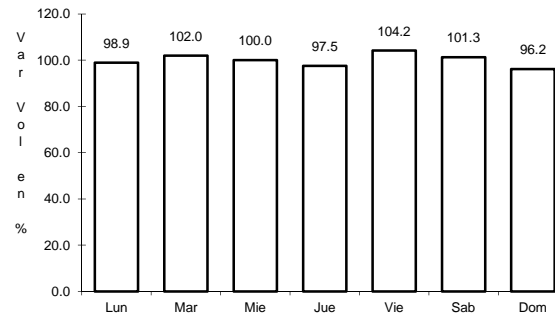
2 CARR: Jalpan de Serra - Rioverde

CLAVE: 00265

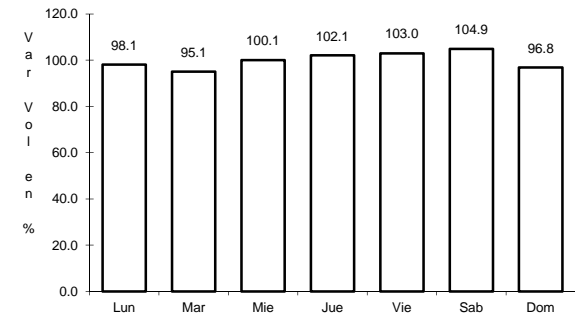
RUTA: MEX-069



Km: 0.00 Tipo: 3 Sent: 0



Km: 48.60 Tipo: 1 Sent: 0

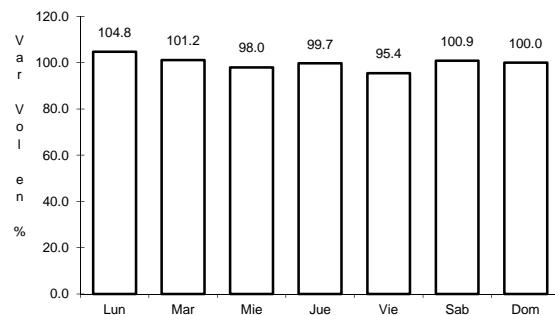


Km: 105.43 Tipo: 1 Sent: 0

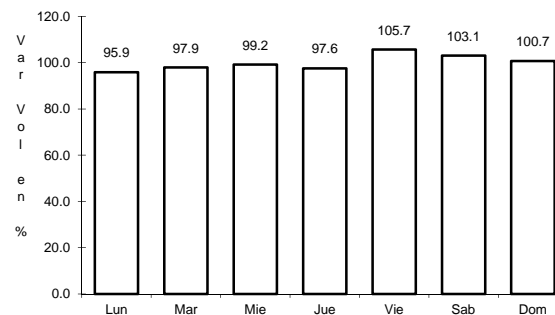
3 CARR: La Noria - Acámbaro

CLAVE: 00131

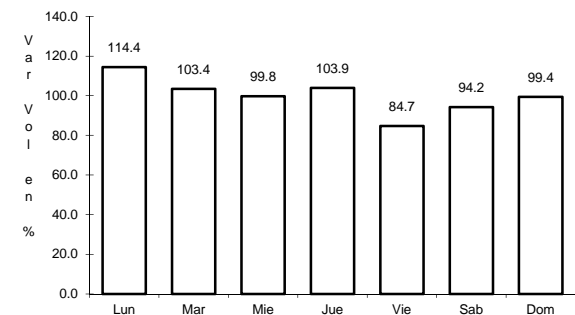
RUTA: MEX-120



Km: 0.00 Tipo: 3 Sent: 0



Km: 59.35 Tipo: 3 Sent: 0

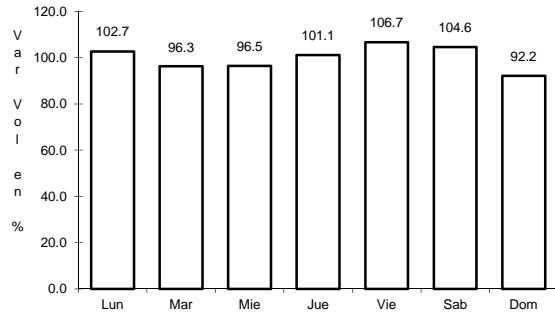


Km: 111.12 Tipo: 1 Sent: 0

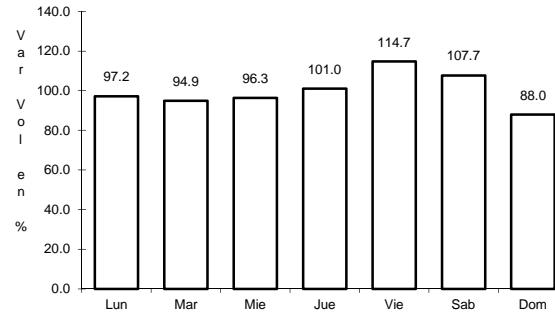
4 CARR: Portezuelo - Palmillas

CLAVE: 00194

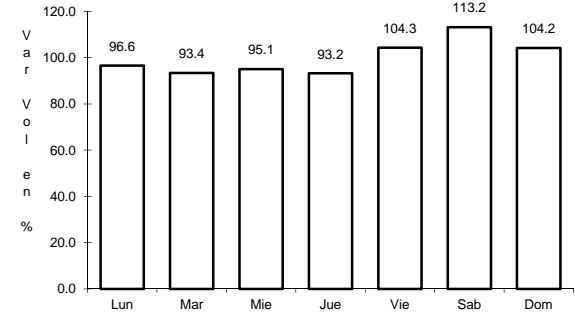
RUTA: MEX-045



Km: 0.00 Tipo: 3 Sent: 1



Km: 0.00 Tipo: 3 Sent: 2

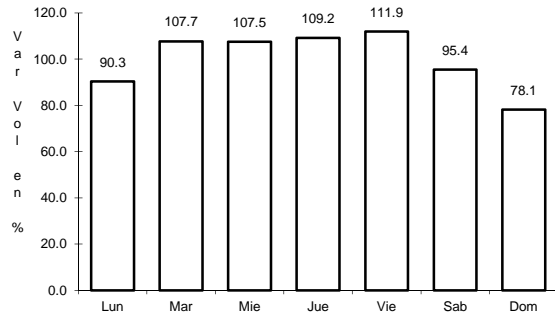


Km: 80.00 Tipo: 1 Sent: 0

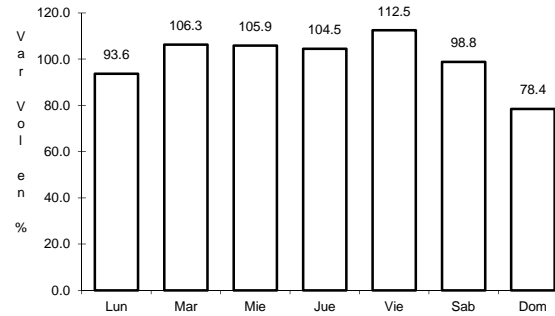
5 CARR: Querétaro - Irapuato (Libre)

CLAVE: 00154

RUTA: MEX-045



Km: 0.00 Tipo: 3 Sent: 1

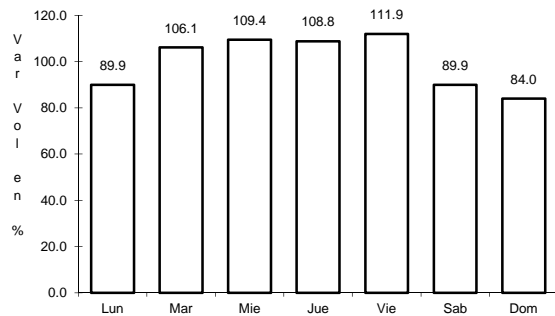


Km: 0.00 Tipo: 3 Sent: 2

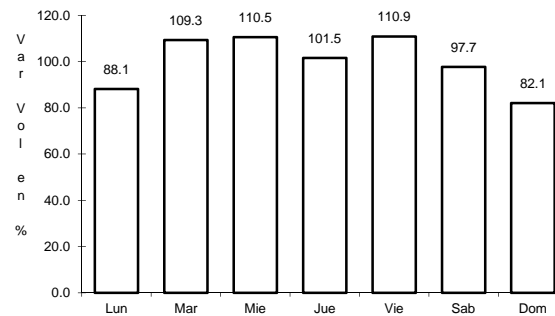
6 CARR: Querétaro - San Luis Potosí

CLAVE: 00165

RUTA: MEX-057



Km: 6.28 Tipo: 3 Sent: 1

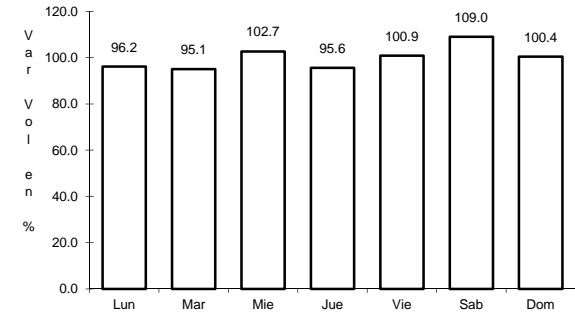
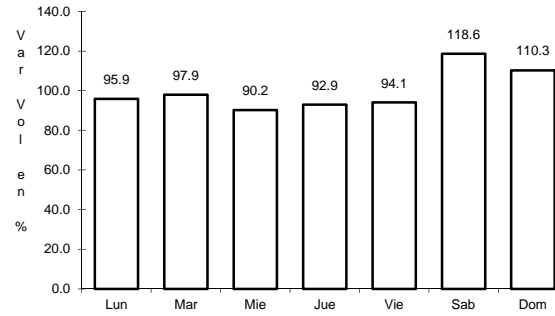
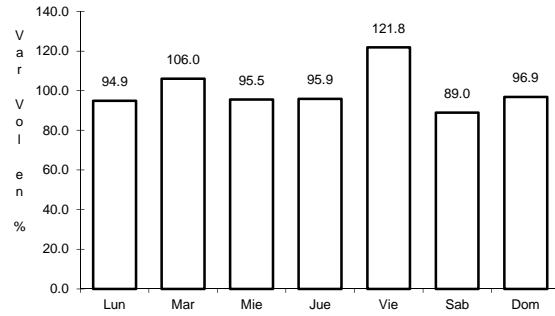


Km: 6.28 Tipo: 3 Sent: 2

7 CARR: San Juan del Río - Xilitla

CLAVE: 00183

RUTA: MEX-120



Km: 5.20 Tipo: 3 Sent: 1

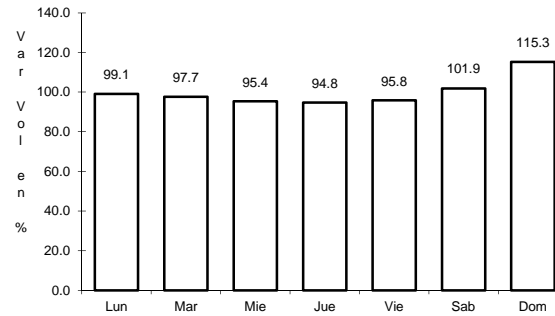
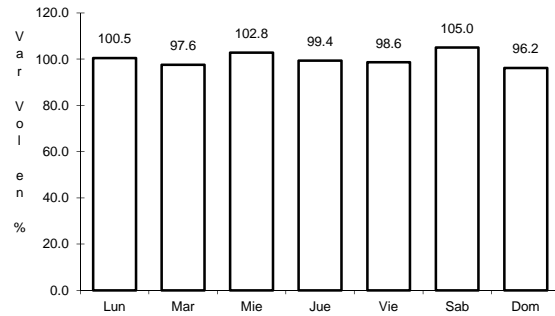
Km: 5.20 Tipo: 3 Sent: 2

Km: 276.98 Tipo: 1 Sent: 0

8 CARR: Libramiento Nororiente de Querétaro (Cuota)

CLAVE: 22266

RUTA: MEX-057D



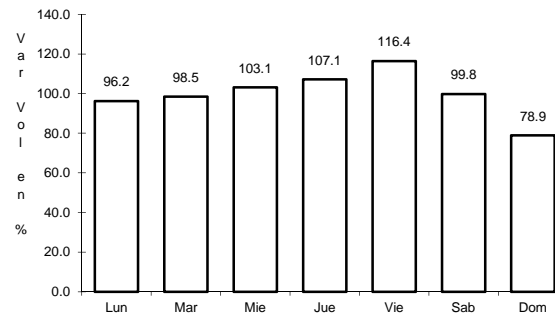
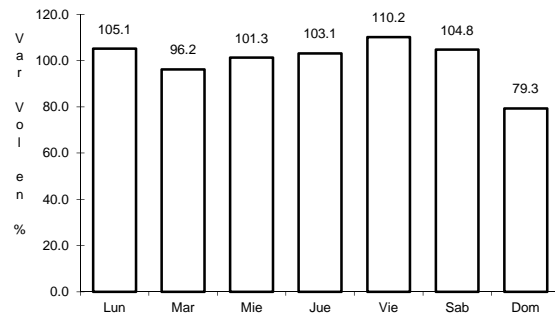
Km: 0.00 Tipo: 3 Sent: 1

Km: 0.00 Tipo: 3 Sent: 2

9 CARR: Querétaro - Irapuato (Cuota)

CLAVE: 00423

RUTA: MEX-045D



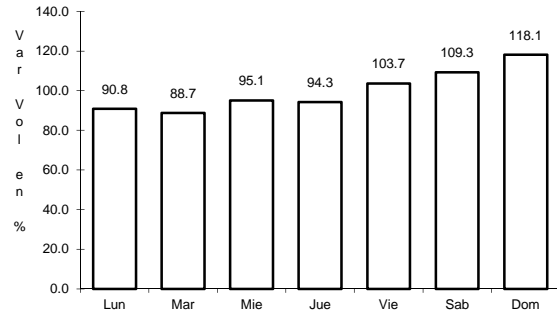
Km: 0.00 Tipo: 3 Sent: 1

Km: 0.00 Tipo: 3 Sent: 2

10 CARR: México - Querétaro (Cuota)

CLAVE: 00411

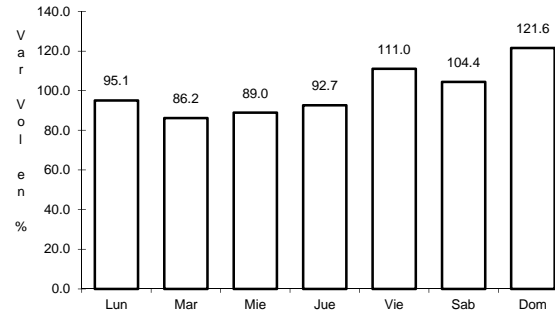
RUTA: MEX-057-MEX-057D



Km: 56.18

Tipo: 1

Sent: 1



Km: 56.18

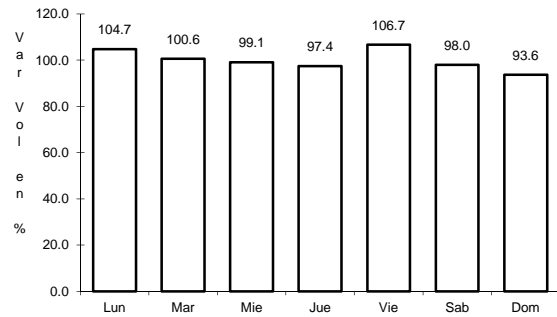
Tipo: 1

Sent: 2

11 CARR: Ajuchitlán - Colón

CLAVE: 22010

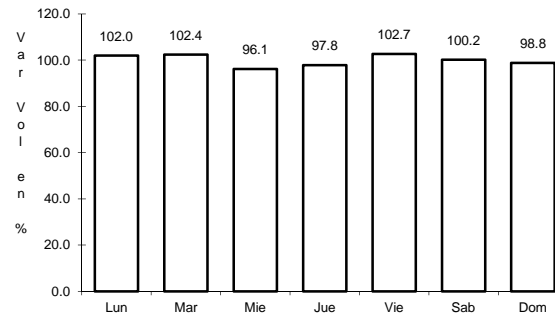
RUTA: QRO-005



Km: 0.00

Tipo: 3

Sent: 0



Km: 14.00

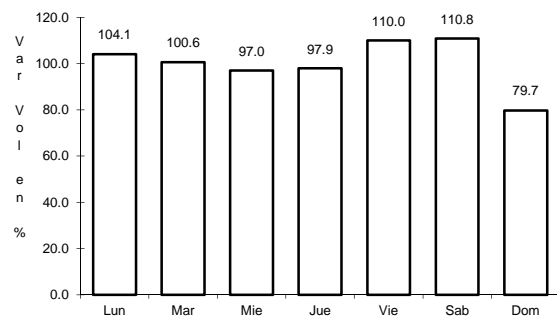
Tipo: 1

Sent: 0

12 CARR: Ajuchitlán - Ezequiel Montes

CLAVE: 22005

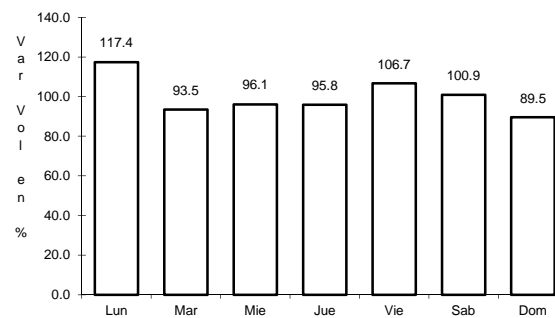
RUTA: QRO-005



Km: 0.00

Tipo: 3

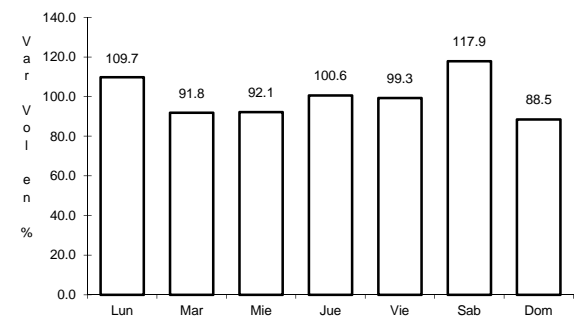
Sent: 1



Km: 0.00

Tipo: 3

Sent: 2



Km: 10.60

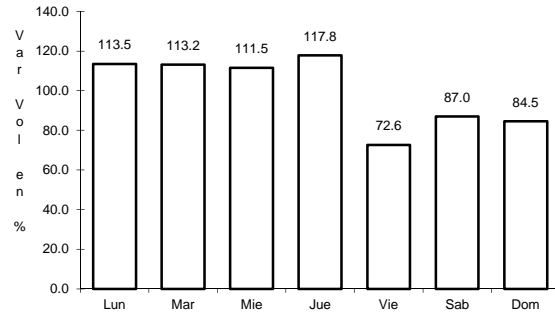
Tipo: 1

Sent: 0

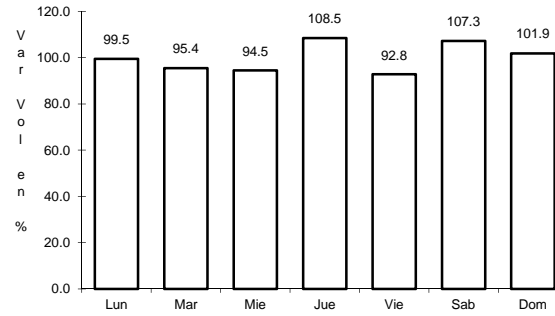
13 CARR: El Colorado - Higuierillas

CLAVE: 22004

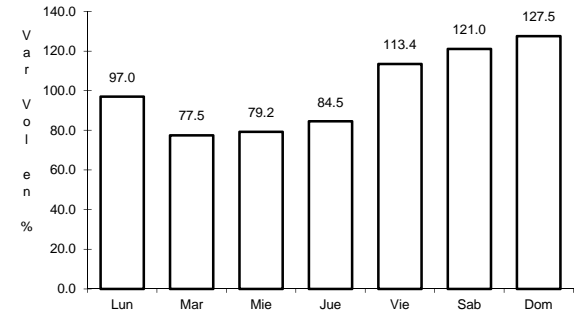
RUTA: QRO-004



Km: 0.00 Tipo: 3 Sent: 1



Km: 0.00 Tipo: 3 Sent: 2

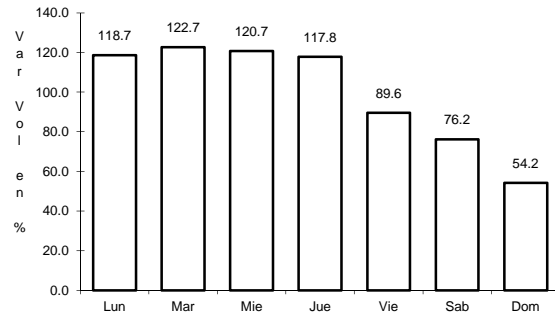


Km: 81.90 Tipo: 1 Sent: 0

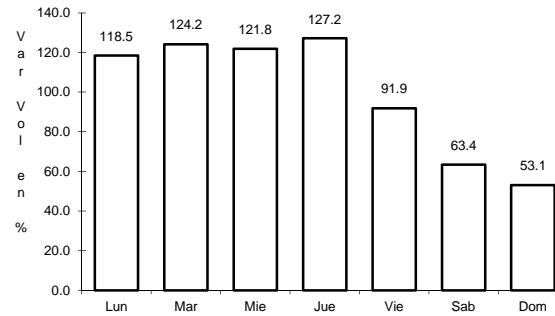
14 CARR: Hacienda Paraíso - Chichimequillas

CLAVE: 22001

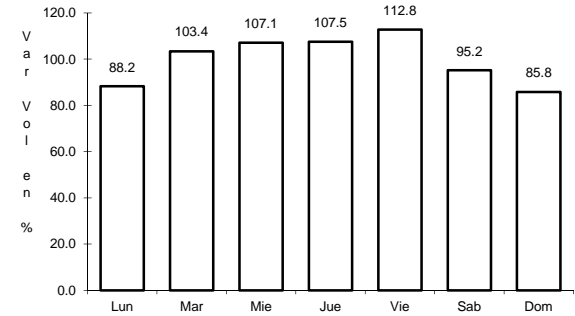
RUTA: QRO-001



Km: 0.00 Tipo: 3 Sent: 1



Km: 0.00 Tipo: 3 Sent: 2

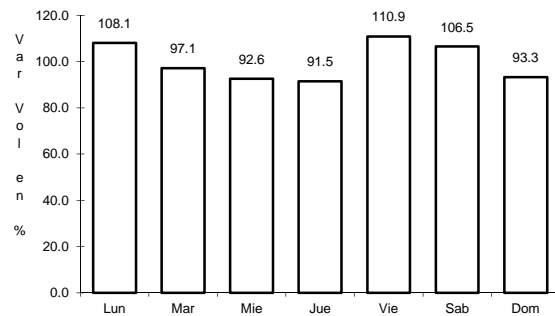


Km: 15.45 Tipo: 3 Sent: 0

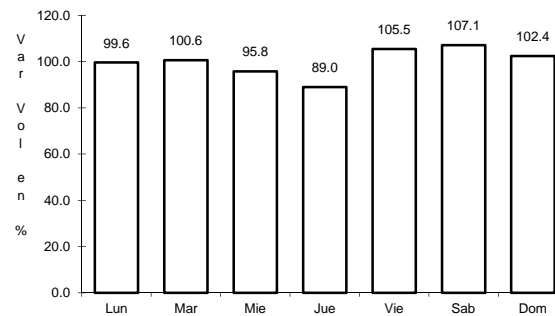
15 CARR: La Culata - San Joaquín

CLAVE: 22021

RUTA: QRO-021



Km: 0.00 Tipo: 3 Sent: 0

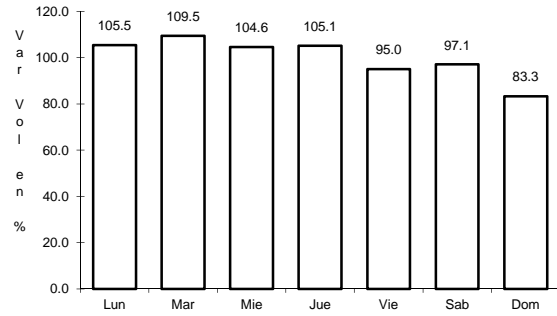


Km: 31.80 Tipo: 1 Sent: 0

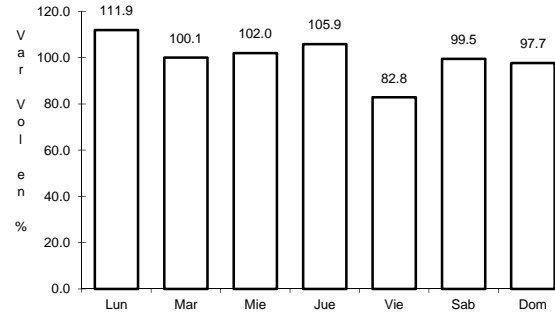
16 CARR: Libramiento de San Juan del Río

CLAVE: 22266

RUTA: QRO



Km: 0.00 Tipo: 3 Sent: 1

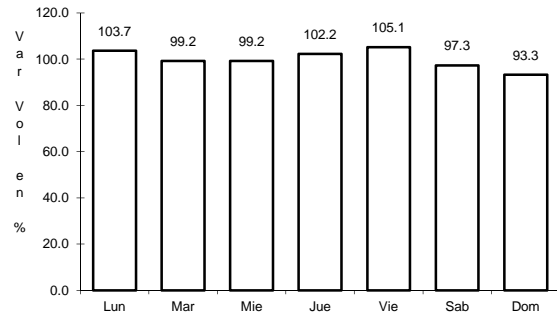


Km: 0.00 Tipo: 3 Sent: 2

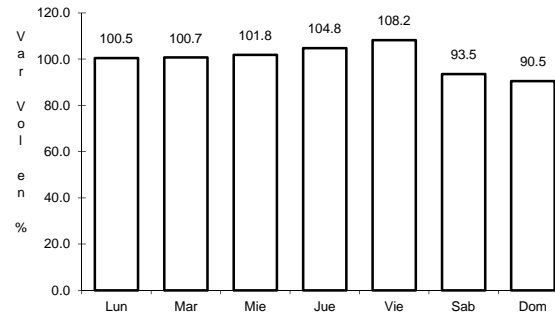
17 CARR: Libramiento Norte de Querétaro

CLAVE: 22500

RUTA: QRO



Km: 0.00 Tipo: 3 Sent: 1

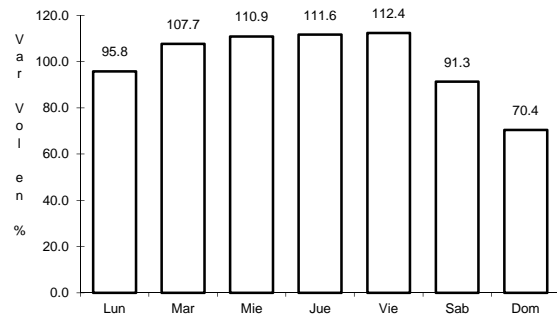


Km: 0.00 Tipo: 3 Sent: 2

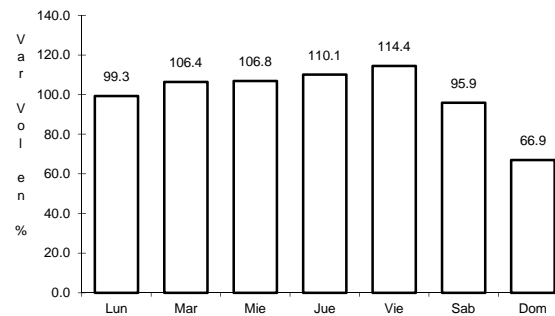
18 CARR: Libramiento Surponiente de Querétaro

CLAVE: 22501

RUTA: QRO



Km: 0.00 Tipo: 3 Sent: 1

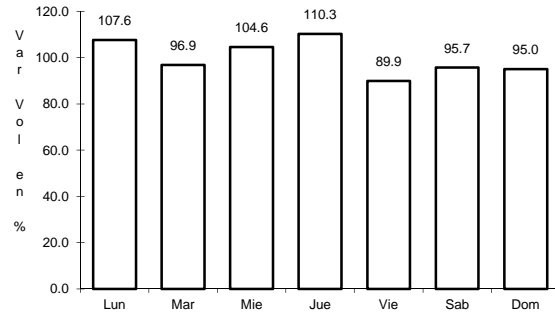


Km: 0.00 Tipo: 3 Sent: 2

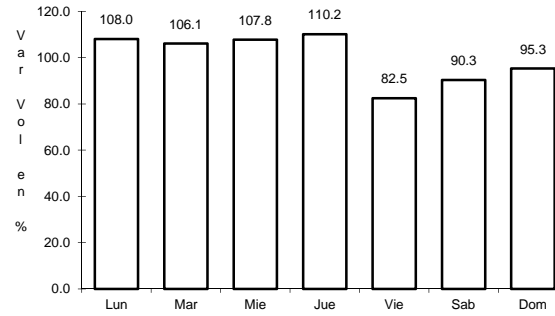
19 CARR: Peña Colorada - El Rodeo

CLAVE: 22002

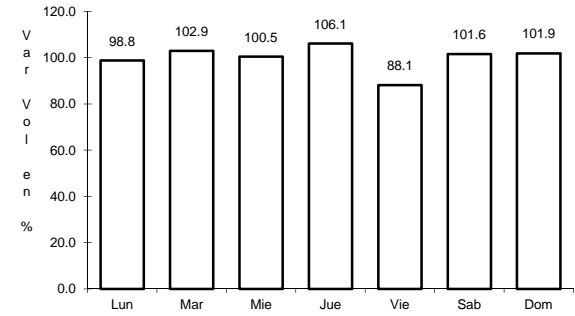
RUTA: QRO



Km: 0.00 Tipo: 3 Sent: 0



Km: 9.00 Tipo: 1 Sent: 0

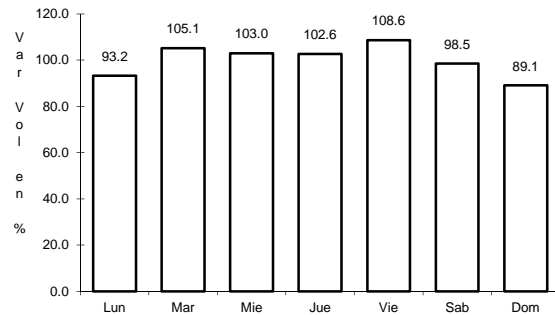


Km: 11.00 Tipo: 1 Sent: 0

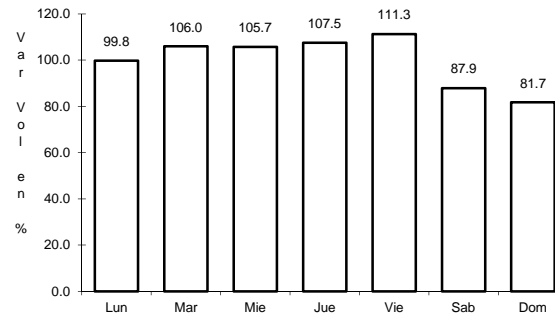
20 CARR: Querétaro - Ent. San Martín

CLAVE: 22067

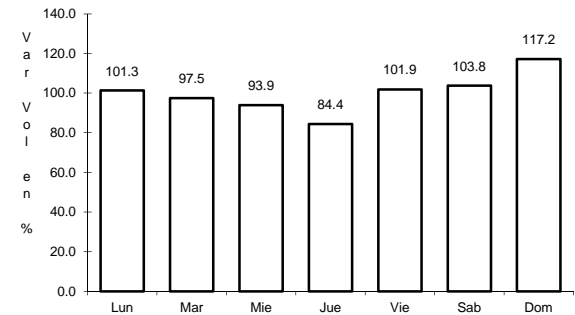
RUTA: QRO



Km: 0.00 Tipo: 3 Sent: 1



Km: 0.00 Tipo: 3 Sent: 2

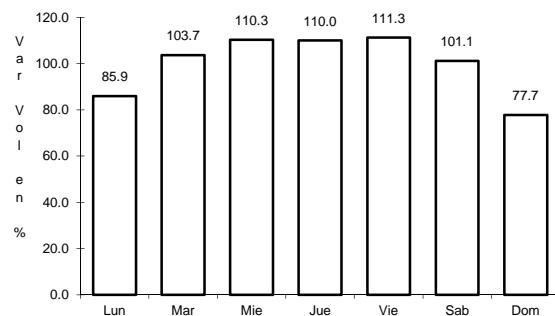


Km: 53.00 Tipo: 1 Sent: 0

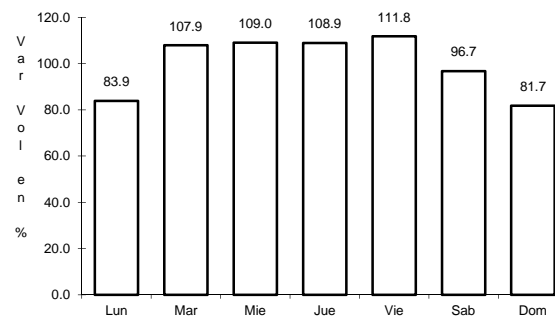
21 CARR: Querétaro - Estación Chichimequillas

CLAVE: 22270

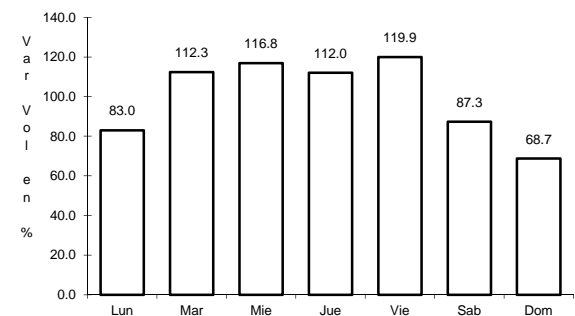
RUTA: QRO



Km: 0.00 Tipo: 3 Sent: 1



Km: 0.00 Tipo: 3 Sent: 2

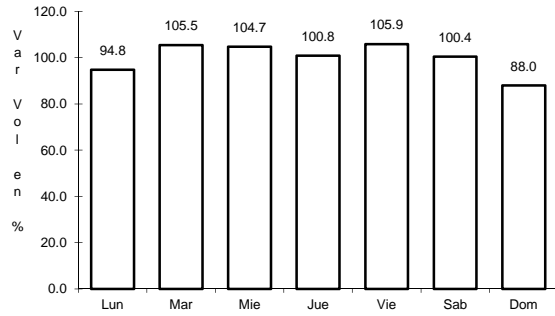


Km: 18.00 Tipo: 1 Sent: 0

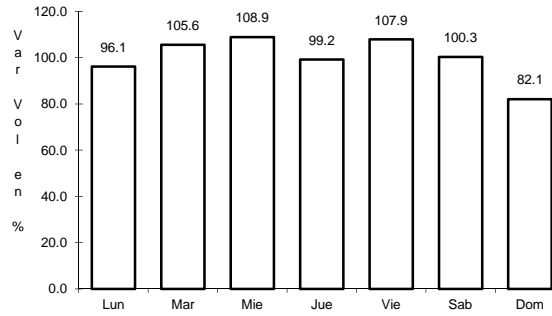
22 CARR: Querétaro - Tequisquiapan

CLAVE: 22502

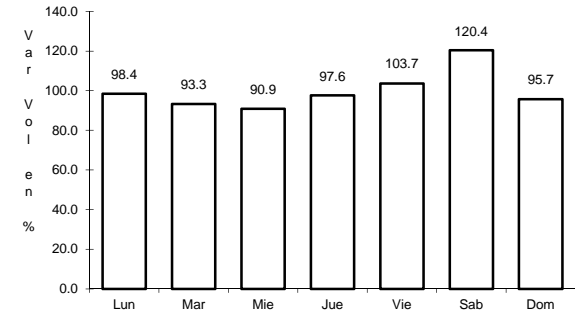
RUTA: QRO



Km: 0.00 Tipo: 3 Sent: 1



Km: 0.00 Tipo: 3 Sent: 2

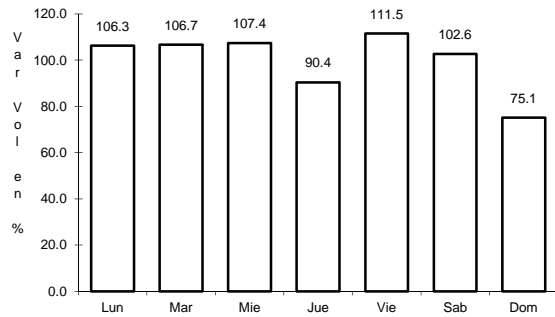


Km: 57.40 Tipo: 1 Sent: 0

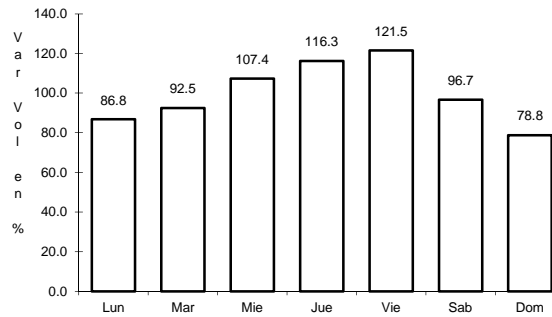
23 CARR: Querétaro - Tlacote El Bajo

CLAVE: 22069

RUTA: QRO



Km: 0.00 Tipo: 3 Sent: 1

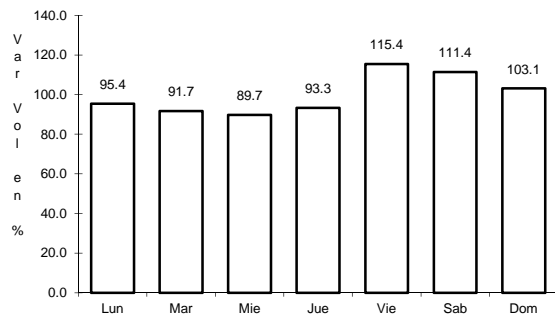


Km: 0.00 Tipo: 3 Sent: 2

24 CARR: Ramal a La Estancia

CLAVE: 22504

RUTA: QRO

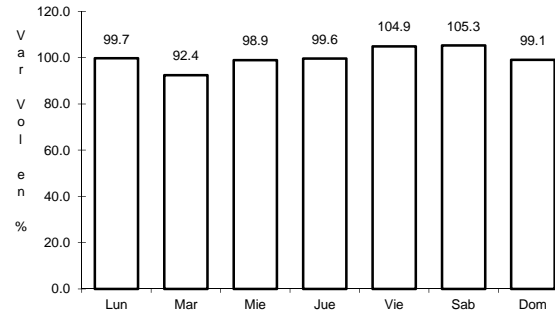
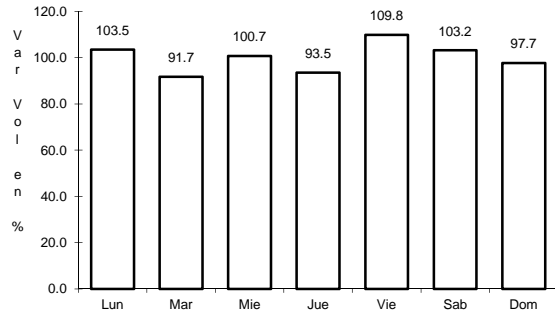


Km: 0.00 Tipo: 3 Sent: 0

25 CARR: Ramal a Tolimán

CLAVE: 22265

ruta: QRO



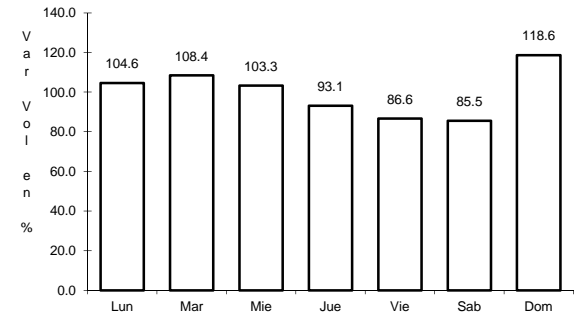
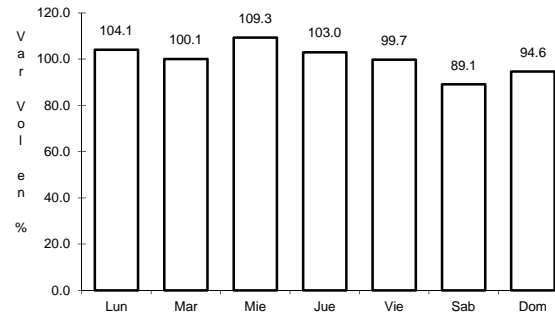
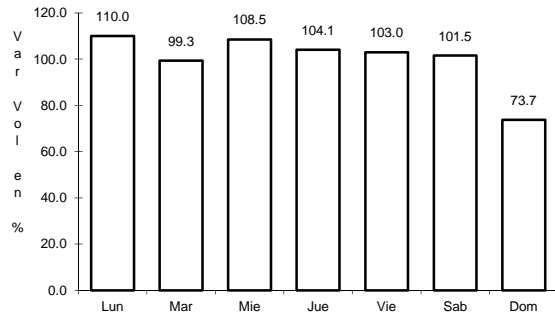
Km: 0.00 Tipo: 3 Sent: 0

Km: 7.00 Tipo: 1 Sent: 0

26 CARR: Rayón - Arroyo Seco

CLAVE: 24008

ruta: SLP-011



Km: 0.00 Tipo: 3 Sent: 0

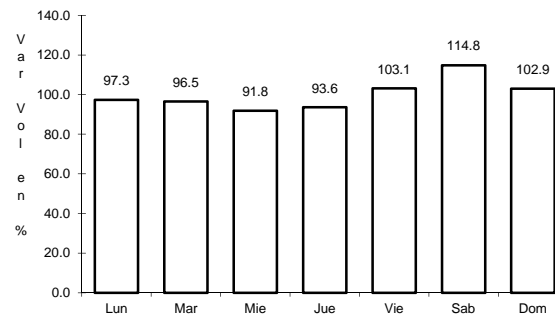
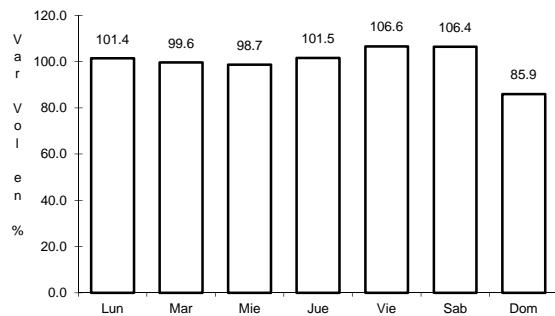
Km: 36.00 Tipo: 1 Sent: 0

Km: 57.00 Tipo: 1 Sent: 0

27 CARR: San Juan del Río - Amealco

CLAVE: 22011

ruta: QRO



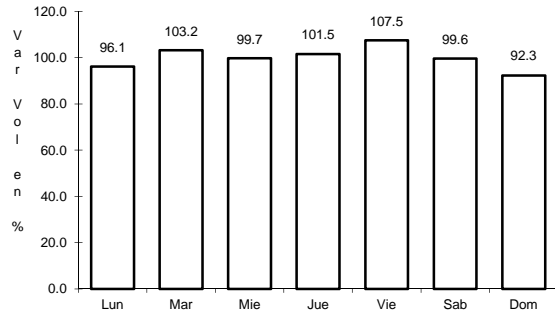
Km: 0.00 Tipo: 3 Sent: 0

Km: 28.00 Tipo: 1 Sent: 0

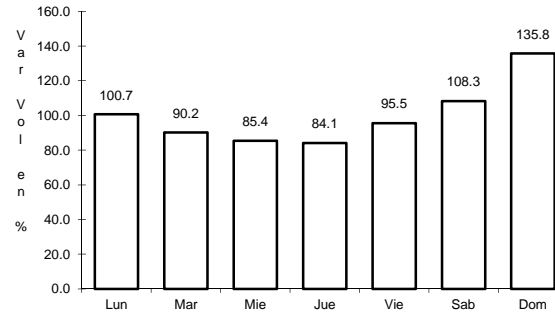
28 CARR: T. C. (Villa del Pueblito - Huimilpan) - Coroneo

CLAVE: 00155

RUTA: QRO-GTO



Km: 0.00 Tipo: 3 Sent: 0

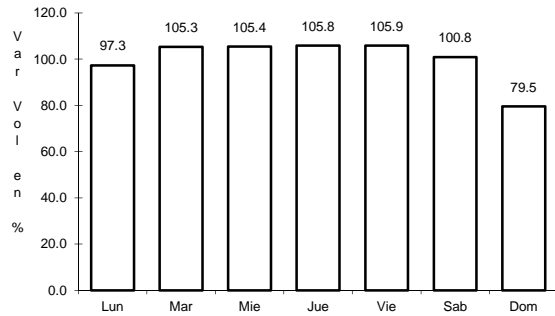


Km: 45.20 Tipo: 1 Sent: 0

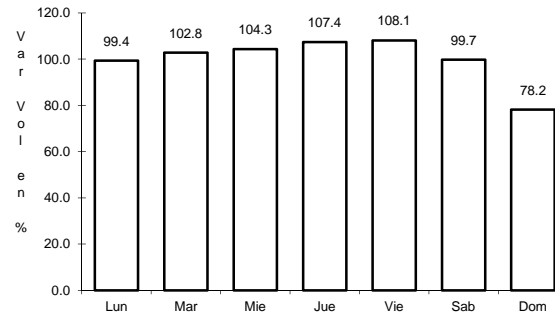
29 CARR: Villa del Pueblito - Huimilpan

CLAVE: 22503

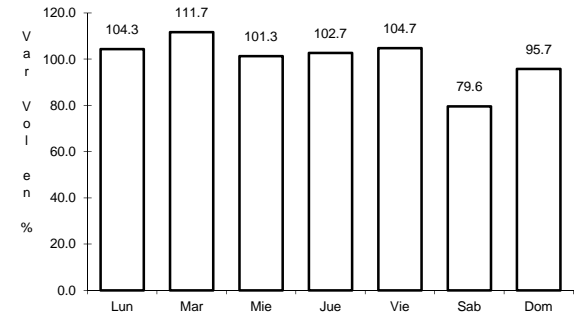
RUTA: QRO



Km: 0.00 Tipo: 3 Sent: 1



Km: 0.00 Tipo: 3 Sent: 2

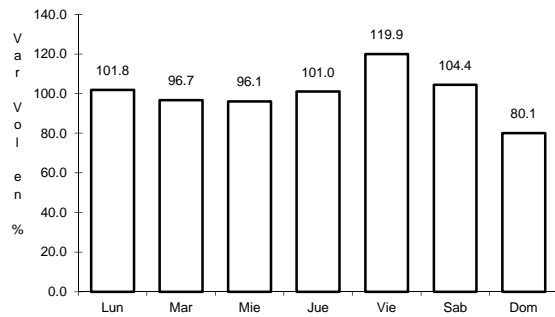


Km: 27.00 Tipo: 1 Sent: 0

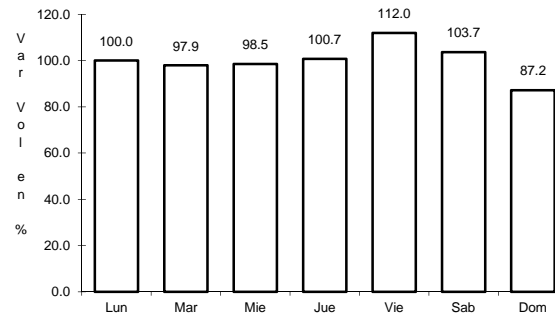
30 CARR: Toluca - Palmillas

CLAVE: 00496

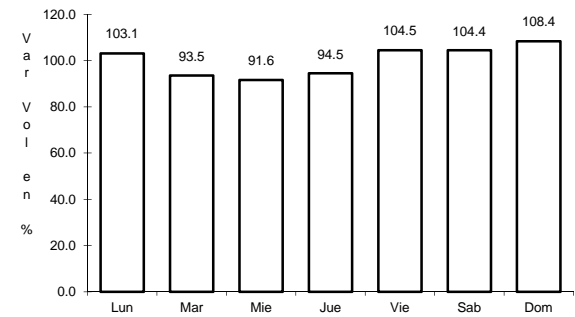
RUTA: EM(D)-MEX-055



Km: 14.21 Tipo: 1 Sent: 1



Km: 14.21 Tipo: 1 Sent: 2



Km: 85.64 Tipo: 3 Sent: 0

