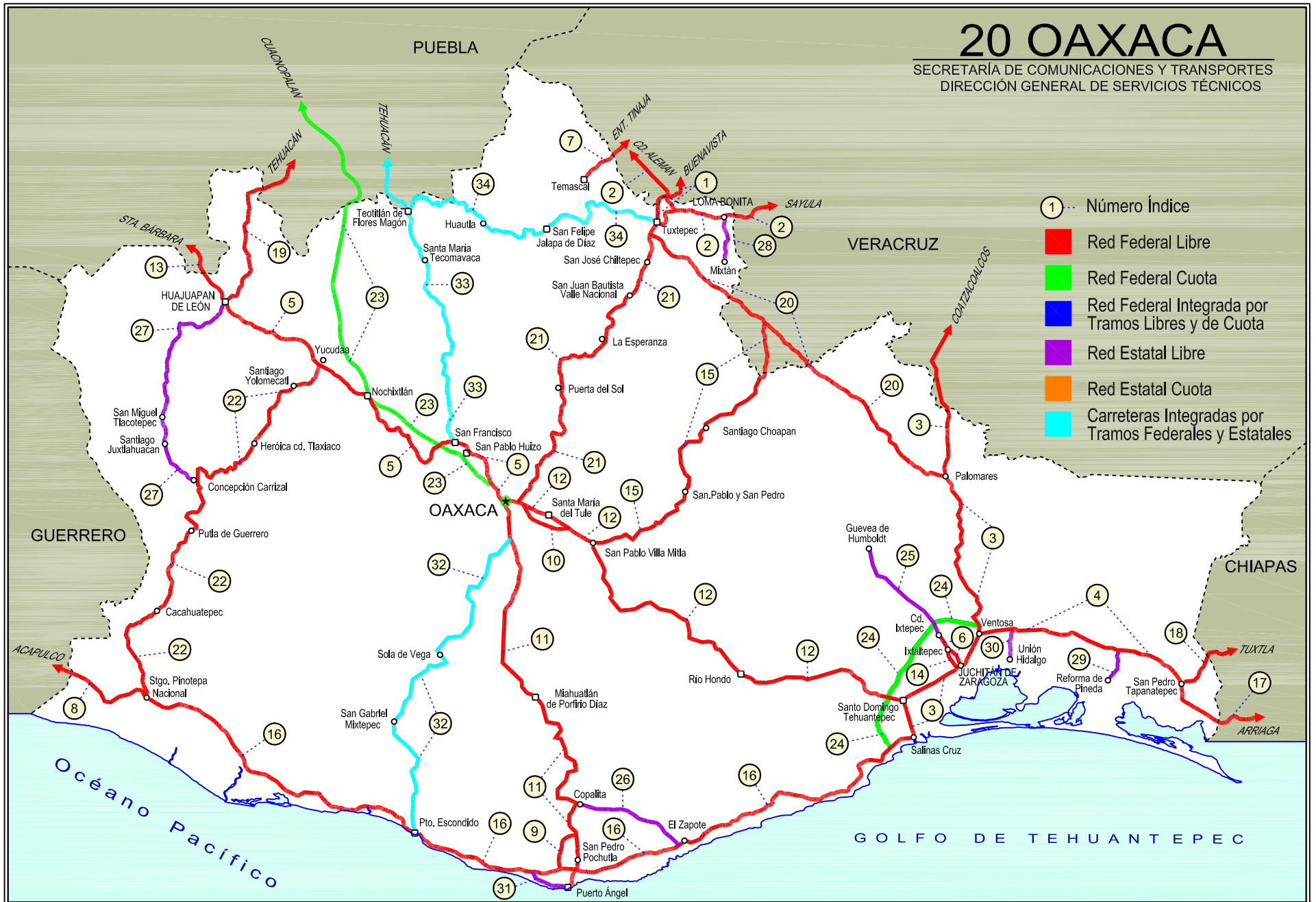
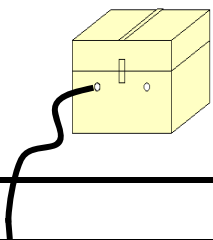


20 OAXACA

SECRETARÍA DE COMUNICACIONES Y TRANSPORTES
DIRECCIÓN GENERAL DE SERVICIOS TÉCNICOS





OAXACA

NO. INDICE	CARRETERA	RUTA
---RED FEDERAL LIBRE---		
1	Buenavista - Tuxtepec	MEX-175
2	Cd. Alemán - Sayula	MEX-145
3	Coatzacoalcos - Salina Cruz	MEX-185
4	Ent. La Ventosa - San Pedro Tapanatepec	MEX-190
5	Huajuapán de León - Oaxaca	MEX-190
6	Juchitán - Ixtepec	MEX-185
7	La Granja - Temascal	MEX-145
8	Las Cruces - Pinotepa Nacional	MEX-200
9	Libramiento de Pochutla	MEX-200
10	Libramiento de Santa María del Tule	MEX-190
11	Oaxaca - Puerto Ángel	MEX-175
12	Oaxaca - Tehuantepec	MEX-190
13	Puebla - Huajuapán de León	MEX-190
14	Ramal a Asunción Ixtaltepec	MEX-185
15	San Pablo Villa de Mitla - T. C. (Tuxtepec - Palomares)	MEX-179
16	Santiago Pinotepa Nacional - Salina Cruz	MEX-200
17	Tapanatepec - Talismán	MEX-200
18	Tapanatepec - Tuxtla Gutiérrez	MEX-190
19	Tehuacán - Huajuapán de León	MEX-125
20	Tuxtepec - Ent. Palomares	MEX-147
21	Tuxtepec - T. C. (Oaxaca - Tehuantepec)	MEX-175
22	Yucudaa - Santiago Pinotepa Nacional	MEX-125
---RED FEDERAL DE CUOTA---		
23	Cuacnopalan - Oaxaca (Cuota)	MEX-135D
24	Salina Cruz - La Ventosa (Cuota)	MEX-185D
---RED ESTATAL LIBRE---		
25	Cd. Ixtepec - Guevea de Humboldt	OAX
26	El Zapote - Copalita	OAX
27	Huajuapán de León - El Carrizal	OAX
28	Loma Bonita - Mixtán	OAX
29	Ramal a Reforma de Pineda	OAX
30	Ramal a Unión Hidalgo	OAX
31	San Antonio - Puerto Ángel	OAX
---CARRETERAS INTEGRADAS POR TRAMOS FEDERALES Y ESTATALES---		
32	T. C. (Oaxaca - Puerto Ángel) - Puerto Escondido	MEX-OAX-161
33	Tehuacán - Huitzo	PUE-MEX-135
34	Teotitlán de Flores Magón - Tuxtepec	OAX-PUE-MEX-182

OAXACA

1 CARR: Buenavista - Tuxtepec

CLAVE: 00624

RUTA: MEX-175

AÑO: 2015

LUGAR	ESTACION				CLASIFICACION VEHICULAR EN PORCIENTO													COORDENADAS		
	KM	TE	SC	TDPA	M	A	B	C2	C3	T3S2	T3S3	T3S2R4	OTROS	A	B	C	K'	D	LATITUD	LONGITUD
T. C. Paso del Toro - Acayucan	0.00	3	0	1441	6.0	75.1	1.3	10.4	3.8	2.5	0.7	0.2	0.0	81.1	1.3	17.6	0.085	0.500	18.713465	-95.637976
Puente Tlacotalpan	1.55	2	0	1399	6.0	81.2	5.3	4.0	2.2	0.9	0.2	0.2	0.0	87.2	5.3	7.5	0.085	0.500	18.704596	-95.641294
Tlacotalpan	18.00	1	0	1789	12.5	67.2	1.3	10.9	4.8	2.4	0.6	0.1	0.2	79.7	1.3	19.0	0.085	0.502	18.614884	-95.645005
Tlacotalpan	18.00	3	0	1925	13.8	70.4	1.0	11.0	1.1	1.8	0.7	0.1	0.1	84.2	1.0	14.8	0.077	0.523	18.616840	-95.676786
Carlos A. Carrillo	56.00	1	0	4031	20.8	65.3	1.0	6.9	1.0	2.6	1.2	0.5	0.7	86.1	1.0	12.9	0.076	0.523	18.380055	-95.742598
Cosamaloapan	60.00	1	0	11069	17.8	68.1	0.8	5.9	0.2	5.0	1.2	0.2	0.8	85.9	0.8	13.3	0.086	0.513	18.365477	-95.776762
Cosamaloapan	60.00	3	0	8056	4.7	81.0	1.9	6.3	1.2	3.0	1.0	0.4	0.5	85.7	1.9	12.4	0.063	0.504	18.353853	-95.805420
T. C. La Tinaja - Santa Cruz	107.00	1	0	3583	5.8	77.1	1.5	9.7	1.2	2.7	0.7	0.9	0.4	82.9	1.5	15.6	0.083	0.504	18.168856	-96.087968
T. C. Cd. Alemán - Sayula	108.92	1	0	3587	5.4	75.9	1.9	10.2	1.3	3.0	0.8	0.9	0.6	81.3	1.9	16.8	0.073	0.513	18.168283	-96.093152
T. C. Cd. Alemán - Sayula	108.92	3	0	7176	3.2	72.3	2.5	11.3	1.9	3.7	1.0	3.6	0.5	75.5	2.5	22.0	0.071	0.503	18.168947	-96.101588
Lim. Edos. Term. Ver. Ppia. Oax.	115.00																			
Puente Caracol	117.20	2	0	5942	4.6	72.3	8.5	4.7	3.0	1.9	0.3	4.6	0.1	76.9	8.5	14.6	0.085	0.500	18.133058	-96.136687
Tuxtepec	121.25	1	1	5115	7.8	73.0	2.7	9.8	1.6	1.5	0.6	2.7	0.3	80.8	2.7	16.5	0.073	0.516	18.113675	-96.134331
Tuxtepec	121.25	1	2	4805	6.9	72.2	2.7	10.8	1.8	1.7	0.6	3.0	0.3	79.1	2.7	18.2	0.067	0.516	18.113884	-96.134451

2 CARR: Cd. Alemán - Sayula

CLAVE: 00301

RUTA: MEX-145

AÑO: 2015

LUGAR	ESTACION				CLASIFICACION VEHICULAR EN PORCIENTO													COORDENADAS		
	KM	TE	SC	TDPA	M	A	B	C2	C3	T3S2	T3S3	T3S2R4	OTROS	A	B	C	K'	D	LATITUD	LONGITUD
Cd. Alemán	0.00	3	0	6720	2.6	65.2	4.8	8.0	4.0	9.3	1.5	3.7	0.9	67.8	4.8	27.4	0.075	0.501	18.182955	-96.093691
Lim. Edos. Term. Ver. Ppia. Oax.	1.80																			
Puente Papaloapan	3.50	2	0	2912	2.8	47.8	4.6	10.9	11.5	18.3	1.1	2.3	0.7	50.6	4.6	44.8	0.076	0.500	18.159461	-96.096585
T. Izq. Loma Bonita	36.70	1	0	5398	4.7	58.8	3.8	10.0	4.9	12.3	2.2	2.4	0.9	63.5	3.8	32.7	0.059	0.523	18.094803	-95.881060
T. Der. Villa Azueta	41.50	1	0	4608	4.2	58.1	4.2	10.3	4.2	12.2	2.4	2.6	1.8	62.3	4.2	33.5	0.070	0.541	18.090594	-95.782803
Lim. Edos. Term. Oax. Ppia. Ver.	43.16																			
T. Izq. Tesechoacán	56.70	1	0	3767	2.1	51.0	5.9	11.3	5.4	16.2	3.0	4.0	1.1	53.1	5.9	41.0	0.059	0.552	18.127737	-95.655361
X. C. Santiago Tuxtla - Playa Vicente	71.40	1	0	4833	2.3	58.7	3.8	10.8	5.6	12.0	2.5	3.4	0.9	61.0	3.8	35.2	0.064	0.527	18.069179	-95.535568
San Juan Evangelista	118.35	1	0	5077	2.1	56.6	4.0	9.8	5.3	15.3	2.5	3.3	1.1	58.7	4.0	37.3	0.060	0.524	17.910020	-95.128546
Sayula de Alemán	136.40	1	0	6262	2.3	64.4	3.0	7.4	4.1	12.4	2.8	2.4	1.2	66.7	3.0	30.3	0.068	0.524	17.886908	-94.962516

3 CARR: Coatzacoalcos - Salina Cruz

CLAVE: 00147

RUTA: MEX-185

AÑO: 2015

LUGAR	ESTACION				CLASIFICACION VEHICULAR EN PORCIENTO													COORDENADAS		
	KM	TE	SC	TDPA	M	A	B	C2	C3	T3S2	T3S3	T3S2R4	OTROS	A	B	C	K'	D	LATITUD	LONGITUD
Coatzacoalcos	0.00	3	1	12012	1.4	83.9	1.9	7.0	1.3	1.7	1.5	0.9	0.4	85.3	1.9	12.8	0.073	0.504	18.096293	-94.460243

OAXACA

3 CARR : Coatzacoalcos - Salina Cruz

CLAVE: 00147

RUTA: MEX-185

AÑO: 2015

LUGAR	ESTACION				CLASIFICACION VEHICULAR EN PORCIENTO														COORDENADAS	
	KM	TE	SC	TDPA	M	A	B	C2	C3	T3S2	T3S3	T3S2R4	OTROS	A	B	C	K'	D	LATITUD	LONGITUD
Coatzacoalcos	0.00	3	2	12230	1.2	83.1	2.0	7.5	1.4	1.8	1.7	0.9	0.4	84.3	2.0	13.7	0.070	0.504	18.096311	-94.460236
T. C. Nuevo Teapa - Cosoleacaque	21.00	1	1	13085	1.6	82.4	2.9	8.0	1.0	1.7	1.4	0.6	0.4	84.0	2.9	13.1	0.072	0.510	18.021741	-94.542588
T. C. Nuevo Teapa - Cosoleacaque	21.00	1	2	12593	1.3	81.7	3.2	8.3	1.0	1.7	1.6	0.8	0.4	83.0	3.2	13.8	0.068	0.510	18.021748	-94.542589
Minatitlán	21.60	3	1	14253	1.7	86.4	1.1	5.6	0.4	1.4	2.3	0.6	0.5	88.1	1.1	10.8	0.073	0.524	17.998056	-94.587634
Minatitlán	21.60	3	2	12966	1.5	85.6	1.3	6.2	0.4	1.5	2.4	0.6	0.5	87.1	1.3	11.6	0.070	0.524	17.998064	-94.587661
Cosoleacaque	31.50	1	0	25203	2.3	81.8	1.1	9.0	1.1	2.1	1.6	0.7	0.3	84.1	1.1	14.8	0.058	0.517	18.006793	-94.627853
Jáltipan de Morelos	38.60	3	0	10841	2.9	74.6	2.1	7.3	1.7	7.6	1.6	1.4	0.8	77.5	2.1	20.4	0.061	0.512	17.961492	-94.730050
Acayucan	59.60	1	0	10546	2.6	74.0	2.6	9.6	2.0	5.8	1.3	1.4	0.7	76.6	2.6	20.8	0.061	0.510	17.953347	-94.878756
Sayula de Alemán	71.00	1	1	9118	2.3	76.3	2.4	6.4	2.1	5.8	1.7	2.1	0.9	78.6	2.4	19.0	0.063	0.519	17.892891	-94.952700
Sayula de Alemán	71.00	1	2	8449	2.0	74.0	2.6	7.2	2.4	6.5	1.9	2.5	0.9	76.0	2.6	21.4	0.063	0.519	17.892889	-94.952703
Sayula de Alemán	71.00	3	0	7294	3.4	73.1	2.8	4.5	2.2	7.7	2.2	3.2	0.9	76.5	2.8	20.7	0.077	0.513	17.875903	-94.966001
Campo Nuevo	94.50	3	0	5826	2.2	64.0	5.4	8.6	3.0	8.2	2.3	5.3	1.0	66.2	5.4	28.4	0.076	0.535	17.695265	-95.075036
T. Izq. Jesús Carranza	126.80	1	0	4680	2.2	65.7	4.5	7.3	2.9	8.8	2.5	5.0	1.1	67.9	4.5	27.6	0.074	0.548	17.436641	-95.077595
T. Izq. Jesús Carranza	126.80	3	0	4763	2.9	66.0	5.2	5.7	2.4	8.9	2.7	5.2	1.0	68.9	5.2	25.9	0.081	0.543	17.433216	-95.076693
Lim. Edos. Term. Ver. Ppia. Oax.	139.90																			
T. Der. Tuxtepec	166.20	1	0	4679	3.8	58.3	6.2	7.6	3.2	9.7	3.3	7.2	0.7	62.1	6.2	31.7	0.067	0.512	17.146694	-95.064222
T. Der. Tuxtepec	166.20	3	0	5813	3.5	64.9	4.6	6.0	2.9	9.0	2.7	5.6	0.8	68.4	4.6	27.0	0.067	0.510	17.131889	-95.059889
T. Der. Estación Mogoñe	182.15	1	0	5776	2.4	66.5	4.9	6.3	2.7	8.4	2.7	5.2	0.9	68.9	4.9	26.2	0.068	0.513	17.013111	-95.009861
T. Der. Matías Romero	196.00	1	0	9435	5.5	71.6	2.7	5.7	1.6	7.2	1.9	3.0	0.8	77.1	2.7	20.2	0.065	0.501	16.883389	-95.020361
T. Der. Barrio de La Soledad	203.05	1	0	8166	2.7	70.0	3.5	7.5	2.6	7.0	2.2	3.8	0.7	72.7	3.5	23.8	0.068	0.505	16.822694	-95.031806
T. Der. Barrio de La Soledad	203.05	3	0	6071	2.4	64.0	4.4	7.5	2.8	8.9	4.3	4.9	0.8	66.4	4.4	29.2	0.068	0.510	16.812389	-95.032444
T. C. La Ventosa - Salina Cruz (Cuota)	236.00	1	0	6132	1.2	60.5	4.5	12.5	2.6	8.6	4.0	5.4	0.7	61.7	4.5	33.8	0.063	0.505	16.595722	-94.944778
T. C. La Ventosa - Salina Cruz (Cuota)	236.00	3	0	3610	1.0	77.8	4.3	8.8	2.0	3.0	1.5	1.2	0.4	78.8	4.3	16.9	0.083	0.507	16.580736	-94.944132
T. Izq. San Pedro Tapanatepec (2º Acceso)	241.70	1	0	3786	2.2	75.8	5.2	8.1	1.5	4.0	1.5	1.1	0.6	78.0	5.2	16.8	0.089	0.505	16.555682	-94.948792
T. Izq. San Pedro Tapanatepec (2º Acceso)	241.70	3	0	7485	1.2	80.1	3.6	8.0	1.8	3.3	1.0	0.5	0.5	81.3	3.6	15.1	0.078	0.501	16.544045	-94.952688
Juchitán de Zaragoza	255.55	1	0	8636	3.3	78.5	3.5	7.1	1.0	4.1	1.2	0.5	0.8	81.8	3.5	14.7	0.076	0.506	16.456223	-95.000984
Juchitán de Zaragoza	255.55	3	1	8906	6.9	83.1	1.3	5.1	0.6	1.4	1.1	0.2	0.3	90.0	1.3	8.7	0.071	0.509	16.437584	-95.032137
Juchitán de Zaragoza	255.55	3	2	9231	6.2	82.7	1.4	6.0	0.6	1.4	1.2	0.2	0.3	88.9	1.4	9.7	0.067	0.509	16.437566	-95.032138
Santo Domingo Tehuantepec	283.95	1	1	4603	2.6	79.6	4.0	10.7	1.0	0.9	0.7	0.4	0.1	82.2	4.0	13.8	0.082	0.513	16.347303	-95.209502
Santo Domingo Tehuantepec	283.95	1	2	4369	2.7	78.4	4.4	11.4	1.0	0.9	0.7	0.4	0.1	81.1	4.4	14.5	0.088	0.513	16.347311	-95.209510
Santo Domingo Tehuantepec	283.95	3	1	10811	2.6	88.9	0.7	4.1	0.4	1.2	1.3	0.5	0.3	91.5	0.7	7.8	0.087	0.509	16.313741	-95.237090
Santo Domingo Tehuantepec	283.95	3	2	11224	2.6	88.0	0.8	4.7	0.4	1.3	1.4	0.5	0.3	90.6	0.8	8.6	0.069	0.509	16.313759	-95.237069
Salina Cruz	302.35	1	1	12045	2.3	88.0	0.8	5.7	0.4	0.9	1.1	0.6	0.2	90.3	0.8	8.9	0.096	0.503	16.237470	-95.213440
Salina Cruz	302.35	1	2	11880	2.2	87.7	0.8	6.0	0.4	0.9	1.2	0.6	0.2	89.9	0.8	9.3	0.073	0.503	16.237471	-95.213421

OAXACA

4 CARR : Ent. La Ventosa - San Pedro Tapanatepec

CLAVE: 20059

RUTA: MEX-190

AÑO : 2015

LUGAR	ESTACION				CLASIFICACION VEHICULAR EN PORCIENTO													COORDENADAS		
	KM	TE	SC	TDPA	M	A	B	C2	C3	T3S2	T3S3	T3S2R4	OTROS	A	B	C	K'	D	LATITUD	LONGITUD
La Ventosa	0.00	3	0	3902	1.9	81.3	3.5	8.9	0.9	2.5	0.5	0.2	0.3	83.2	3.5	13.3	0.070	0.509	16.550306	-94.944111
T. C. La Ventosa - Salina Cruz (Cuota)	7.20	3	0	6041	1.7	65.2	3.8	7.8	3.0	8.2	4.2	5.2	0.9	66.9	3.8	29.3	0.057	0.502	16.571722	-94.884111
T. Izq. Nilttepec	38.01	3	0	3875	1.8	64.4	4.5	6.0	3.3	9.7	3.3	6.4	0.6	66.2	4.5	29.3	0.061	0.515	16.554528	-94.599444
Santo Domingo Zanatepec	68.25	3	0	3581	2.0	60.3	4.7	7.0	3.0	10.9	4.2	7.1	0.8	62.3	4.7	33.0	0.063	0.515	16.475944	-94.337167
San Pedro Tapanatepec	91.80	1	0	2046	7.0	75.1	4.0	8.6	0.9	2.5	1.1	0.7	0.1	82.1	4.0	13.9	0.074	0.518	16.379944	-94.198889

5 CARR : Huajuapán de León - Oaxaca

CLAVE: 20056

RUTA: MEX-190

AÑO : 2015

LUGAR	ESTACION				CLASIFICACION VEHICULAR EN PORCIENTO													COORDENADAS		
	KM	TE	SC	TDPA	M	A	B	C2	C3	T3S2	T3S3	T3S2R4	OTROS	A	B	C	K'	D	LATITUD	LONGITUD
Huajuapán de León	0.00																			
T. Izq. Tehuacán	1.35	1	0	15608	4.2	78.6	0.3	3.2	0.1	9.4	1.3	0.5	2.4	82.8	0.3	16.9	0.059	0.505	17.813733	-97.763743
T. Izq. Tehuacán	1.35	3	0	8795	7.4	74.9	0.4	8.4	0.4	6.9	0.5	0.2	0.9	82.3	0.4	17.3	0.065	0.503	17.809852	-97.759813
Tamazulapán	38.61	1	0	2810	2.4	86.8	1.1	7.0	0.6	1.2	0.5	0.1	0.3	89.2	1.1	9.7	0.068	0.513	17.685744	-97.584597
Tamazulapán	38.61	3	0	3436	1.5	83.9	0.9	10.2	0.9	1.8	0.4	0.1	0.3	85.4	0.9	13.7	0.070	0.505	17.671637	-97.559484
T. Izq. Santiago Tejupan	49.62	3	0	2883	1.3	77.7	2.5	14.0	1.5	2.2	0.5	0.1	0.2	79.0	2.5	18.5	0.066	0.506	17.657557	-97.473552
T. Der. Tlaxiaco	61.43	3	0	2970	1.3	74.8	1.2	17.5	1.6	2.3	0.7	0.3	0.3	76.1	1.2	22.7	0.076	0.504	17.576720	-97.420393
Asunción Nochixtlán	90.40	1	0	7125	2.3	81.9	0.9	9.3	0.8	3.5	0.6	0.2	0.5	84.2	0.9	14.9	0.066	0.502	17.465016	-97.259588
T. Izq. Tehuacán	161.73	1	0	825	6.6	85.9	0.2	5.2	1.2	0.8	0.1	0.0	0.0	92.5	0.2	7.3	0.087	0.512	17.285551	-96.910525
T. Izq. Tehuacán	161.73	3	0	5988	3.8	87.0	0.4	4.5	0.6	2.7	0.5	0.2	0.3	90.8	0.4	8.8	0.078	0.502	17.284835	-96.900122
T. Der. Tlaltinango	170.29	1	0	8553	3.0	88.5	0.2	4.6	0.6	2.5	0.3	0.1	0.2	91.5	0.2	8.3	0.073	0.503	17.246751	-96.849528
T. Der. Tlaltinango	170.29	3	0	8798	2.9	89.8	0.2	2.9	0.6	2.8	0.3	0.2	0.3	92.7	0.2	7.1	0.071	0.507	17.244509	-96.844544
T. Der. Nazareno Etla	179.23	3	1	14398	3.4	92.7	0.1	3.0	0.5	0.1	0.1	0.1	0.0	96.1	0.1	3.8	0.105	0.507	17.168171	-96.788381
T. Der. Nazareno Etla	179.23	3	2	14808	3.3	92.6	0.1	3.2	0.5	0.1	0.1	0.1	0.0	95.9	0.1	4.0	0.087	0.507	17.168109	-96.788098
T. Aut. Cuacnopalan - Oaxaca	181.80	3	1	24029	4.3	87.8	0.8	3.9	0.6	0.9	1.0	0.4	0.3	92.1	0.8	7.1	0.081	0.502	17.143639	-96.778179
T. Aut. Cuacnopalan - Oaxaca	181.80	3	2	24218	2.6	88.5	0.9	4.4	0.8	1.0	1.1	0.4	0.3	91.1	0.9	8.0	0.065	0.502	17.143685	-96.777944
Oaxaca	190.60	1	1	32374	3.2	88.2	0.4	5.5	0.3	0.7	1.4	0.1	0.2	91.4	0.4	8.2	0.074	0.522	17.096335	-96.749698
Oaxaca	190.60	1	2	29585	3.6	87.2	0.4	5.9	0.3	0.8	1.5	0.1	0.2	90.8	0.4	8.8	0.067	0.522	17.096310	-96.749637

6 CARR : Juchitán - Ixtepec

CLAVE: 20359

RUTA: MEX-185

AÑO : 2015

LUGAR	ESTACION				CLASIFICACION VEHICULAR EN PORCIENTO													COORDENADAS		
	KM	TE	SC	TDPA	M	A	B	C2	C3	T3S2	T3S3	T3S2R4	OTROS	A	B	C	K'	D	LATITUD	LONGITUD
Juchitán de Zaragoza	0.00																			
X. C. Coatzacoalcos - Salina Cruz	0.15	3	1	10694	6.1	86.5	3.2	2.1	0.1	0.7	0.8	0.1	0.4	92.6	3.2	4.2	0.066	0.523	16.450389	-95.026333

OAXACA

6 CARR: Juchitán - Ixtepec

CLAVE: 20359

RUTA: MEX-185

AÑO: 2015

LUGAR	ESTACION				CLASIFICACION VEHICULAR EN PORCIENTO														COORDENADAS	
	KM	TE	SC	TDPA	M	A	B	C2	C3	T3S2	T3S3	T3S2R4	OTROS	A	B	C	K'	D	LATITUD	LONGITUD
X. C. Coatzacoalcos - Salina Cruz	0.15	3	2	9746	6.5	85.6	3.2	2.4	0.1	0.8	0.9	0.1	0.4	92.1	3.2	4.7	0.071	0.523	16.450333	-95.026528
Asunción Ixtaltepec	7.40	1	1	3868	6.9	82.3	5.2	4.0	0.5	0.5	0.4	0.1	0.1	89.2	5.2	5.6	0.073	0.507	16.511250	-95.066278
Asunción Ixtaltepec	7.40	1	2	3757	6.1	81.9	5.9	4.5	0.5	0.5	0.4	0.1	0.1	88.0	5.9	6.1	0.073	0.507	16.511194	-95.066389
Asunción Ixtaltepec	7.40	3	1	4177	7.5	84.3	4.1	2.3	0.2	0.9	0.4	0.1	0.2	91.8	4.1	4.1	0.092	0.506	16.503917	-95.054056
Asunción Ixtaltepec	7.40	3	2	4076	7.1	84.0	4.5	2.6	0.2	0.9	0.4	0.1	0.2	91.1	4.5	4.4	0.091	0.506	16.501389	-95.054806
Ixtepec	16.00	1	1	4563	8.3	82.9	4.4	3.4	0.3	0.4	0.2	0.0	0.1	91.2	4.4	4.4	0.066	0.501	16.536361	-95.079703
Ixtepec	16.00	1	2	4589	8.1	82.2	4.6	4.1	0.3	0.4	0.2	0.0	0.1	90.3	4.6	5.1	0.068	0.501	16.536250	-95.079722

7 CARR: La Granja - Temascal

CLAVE: 00275

RUTA: MEX-145

AÑO: 2015

LUGAR	ESTACION				CLASIFICACION VEHICULAR EN PORCIENTO														COORDENADAS	
	KM	TE	SC	TDPA	M	A	B	C2	C3	T3S2	T3S3	T3S2R4	OTROS	A	B	C	K'	D	LATITUD	LONGITUD
T. C. La Tinaja - Santa Cruz	0.00	3	0	3314	17.2	66.8	0.9	8.1	3.0	2.7	0.8	0.1	0.4	84.0	0.9	15.1	0.080	0.509	18.352808	-96.261860
Lim. Edos. Term. Ver. Ppia. Oax.	5.00																			
Temascal	23.00	1	0	3552	20.6	68.1	0.3	7.7	0.8	2.0	0.2	0.0	0.3	88.7	0.3	11.0	0.090	0.502	18.253469	-96.394834

8 CARR: Las Cruces - Pinotepa Nacional

CLAVE: 00073

RUTA: MEX-200

AÑO: 2015

LUGAR	ESTACION				CLASIFICACION VEHICULAR EN PORCIENTO														COORDENADAS	
	KM	TE	SC	TDPA	M	A	B	C2	C3	T3S2	T3S3	T3S2R4	OTROS	A	B	C	K'	D	LATITUD	LONGITUD
T. C. Chilpancingo - Acapulco	0.00	3	1	14386	3.7	88.0	0.7	3.2	0.5	1.9	1.0	0.3	0.7	91.7	0.7	7.6	0.056	0.507	16.885766	-99.832747
T. C. Chilpancingo - Acapulco	0.00	3	2	14765	2.4	88.4	0.8	3.7	0.5	2.1	1.1	0.3	0.7	90.8	0.8	8.4	0.051	0.507	16.885762	-99.832738
T. Der. Puerto Marqués	4.62	1	1	17293	3.8	87.5	1.0	3.7	0.5	1.5	1.4	0.2	0.4	91.3	1.0	7.7	0.058	0.508	16.867360	-99.810826
T. Der. Puerto Marqués	4.62	1	2	16752	4.0	86.6	1.1	3.9	0.5	1.7	1.6	0.2	0.4	90.6	1.1	8.3	0.064	0.508	16.867352	-99.810821
T. Der. Puerto Marqués	4.62	3	0	15441	2.9	89.3	0.6	4.0	1.0	0.9	0.8	0.3	0.2	92.2	0.6	7.2	0.064	0.530	16.857667	-99.806172
X. C. Puerto Marqués - La Venta (Cuota)	11.70	1	1	4171	3.5	87.4	0.7	5.0	1.0	1.2	0.9	0.2	0.1	90.9	0.7	8.4	0.089	0.510	16.831041	-99.764386
X. C. Puerto Marqués - La Venta (Cuota)	11.70	1	2	4009	3.3	87.1	0.8	5.3	1.1	1.2	0.9	0.2	0.1	90.4	0.8	8.8	0.081	0.510	16.831024	-99.764371
X. C. Puerto Marqués - La Venta (Cuota)	11.70	3	1	5093	3.3	87.5	1.0	5.0	1.0	1.2	0.7	0.1	0.2	90.8	1.0	8.2	0.082	0.526	16.830485	-99.754079
X. C. Puerto Marqués - La Venta (Cuota)	11.70	3	2	4584	3.6	86.1	1.0	6.0	1.0	1.2	0.8	0.1	0.2	89.7	1.0	9.3	0.073	0.526	16.830491	-99.754063
San Marcos	58.90	1	0	5768	2.1	83.8	1.3	5.0	1.2	4.6	1.1	0.2	0.7	85.9	1.3	12.8	0.089	0.546	16.786702	-99.396354
Nexpa	84.96	3	0	4999	1.3	82.3	1.9	6.5	2.2	3.6	1.2	0.5	0.5	83.6	1.9	14.5	0.090	0.550	16.780069	-99.199840
T. Izq. Copala (1º Acceso)	117.50	1	0	5437	1.2	80.6	2.3	6.7	3.2	4.0	1.1	0.4	0.5	81.8	2.3	15.9	0.085	0.547	16.608982	-98.988988
T. Izq. Copala (1º Acceso)	117.50	3	0	6585	1.6	82.7	1.6	6.5	1.6	4.3	0.9	0.3	0.5	84.3	1.6	14.1	0.086	0.544	16.603535	-98.972471
T. Izq. Ometepec	175.88	1	0	4553	1.8	81.3	2.2	6.8	2.0	3.8	1.1	0.4	0.6	83.1	2.2	14.7	0.096	0.539	16.655485	-98.503168
Cuajinicuilapa	200.60	3	0	2650	2.3	82.5	2.8	5.8	1.9	3.1	1.1	0.2	0.3	84.8	2.8	12.4	0.097	0.538	16.463529	-98.396664

OAXACA

8 CARR: Las Cruces - Pinotepa Nacional

CLAVE: 00073

RUTA: MEX-200

AÑO: 2015

LUGAR	ESTACION				CLASIFICACION VEHICULAR EN PORCIENTO													COORDENADAS			
	KM	TE	SC	TDPA	M	A	B	C2	C3	T3S2	T3S3	T3S2R4	OTROS	A	B	C	K'	D	LATITUD	LONGITUD	
Lim. Edos. Term. Gro. Ppia. Oax.	207.80																				
T. Izq. San Pedro Orizaba	215.00	3	0	2089	3.3	77.8	2.6	7.8	3.0	3.4	1.6	0.2	0.3	81.1	2.6	16.3	0.076	0.510	16.442460	-98.341920	
T. Izq. Tlaxiaco	245.47	1	0	3553	3.0	81.5	1.8	7.7	1.5	3.1	0.9	0.1	0.4	84.5	1.8	13.7	0.071	0.505	16.379483	-98.094193	
T. Izq. Tlaxiaco	245.47	3	0	6768	5.1	81.8	1.1	6.1	0.9	3.1	1.0	0.2	0.7	86.9	1.1	12.0	0.069	0.502	16.375243	-98.092553	
Pinotepa Nacional	252.50																				

9 CARR: Libramiento de Pochutla

CLAVE:

RUTA: MEX-200

AÑO: 2015

LUGAR	ESTACION				CLASIFICACION VEHICULAR EN PORCIENTO													COORDENADAS		
	KM	TE	SC	TDPA	M	A	B	C2	C3	T3S2	T3S3	T3S2R4	OTROS	A	B	C	K'	D	LATITUD	LONGITUD
T. C. Santiago Pinotepa Nacional - Salina Cruz	0.00	3	0	976	16.4	76.2	0.4	3.8	1.2	1.5	0.4	0.0	0.1	92.6	0.4	7.0	0.140	0.507	15.734990	-96.480675
Pio Macaya	2.40	1	0	811	21.5	66.9	0.7	6.9	1.8	1.4	0.7	0.0	0.1	88.4	0.7	10.9	0.080	0.516	15.748147	-96.477333
Pio Macaya	2.40	3	0	701	21.6	65.5	1.2	7.7	2.0	1.6	0.4	0.0	0.0	87.1	1.2	11.7	0.091	0.510	15.756901	-96.474098
T. C. Oaxaca - Puerto Angel	5.20	1	0	757	15.2	73.3	1.0	6.9	1.8	1.3	0.5	0.0	0.0	88.5	1.0	10.5	0.087	0.523	15.762464	-96.466189

10 CARR: Libramiento de Santa María del Tule

CLAVE:

RUTA: MEX-190

AÑO: 2015

LUGAR	ESTACION				CLASIFICACION VEHICULAR EN PORCIENTO													COORDENADAS		
	KM	TE	SC	TDPA	M	A	B	C2	C3	T3S2	T3S3	T3S2R4	OTROS	A	B	C	K'	D	LATITUD	LONGITUD
T. C. Oaxaca - Tehuantepec	0.00	3	0	16727	1.1	86.0	0.8	5.0	1.0	3.8	0.9	0.6	0.8	87.1	0.8	12.1	0.080	0.518	17.052360	-96.657781
T. C. Oaxaca - Tehuantepec	5.80	1	0	16954	1.2	85.3	1.1	5.1	1.1	3.8	1.0	0.5	0.9	86.5	1.1	12.4	0.080	0.504	17.036814	-96.624827

11 CARR: Oaxaca - Puerto Ángel

CLAVE: 20091

RUTA: MEX-175

AÑO: 2015

LUGAR	ESTACION				CLASIFICACION VEHICULAR EN PORCIENTO													COORDENADAS		
	KM	TE	SC	TDPA	M	A	B	C2	C3	T3S2	T3S3	T3S2R4	OTROS	A	B	C	K'	D	LATITUD	LONGITUD
Oaxaca	0.00	3	1	29889	4.8	86.2	0.3	4.5	0.3	1.4	1.9	0.2	0.4	91.0	0.3	8.7	0.064	0.500	17.032417	-96.712922
Oaxaca	0.00	3	2	29944	4.5	85.5	0.3	5.3	0.3	1.5	2.0	0.2	0.4	90.0	0.3	9.7	0.072	0.500	17.032400	-96.712888
T. Der. Aeropuerto	10.46	1	1	26297	4.0	87.5	0.4	7.0	0.5	0.2	0.3	0.1	0.0	91.5	0.4	8.1	0.077	0.503	17.007872	-96.713011
T. Der. Aeropuerto	10.46	1	2	26613	4.1	86.7	0.4	7.7	0.5	0.2	0.3	0.1	0.0	90.8	0.4	8.8	0.073	0.503	17.007832	-96.713034
T. Der. Puerto Escondido	19.07	1	1	14958	3.0	86.2	0.5	6.8	0.5	1.1	1.4	0.2	0.3	89.2	0.5	10.3	0.091	0.504	16.932923	-96.704260
T. Der. Puerto Escondido	19.07	1	2	14744	3.0	85.3	0.5	7.4	0.5	1.2	1.6	0.2	0.3	88.3	0.5	11.2	0.075	0.504	16.932923	-96.704254
T. Der. Puerto Escondido	19.07	3	0	14887	3.3	78.2	0.6	7.9	0.9	6.1	1.3	0.5	1.2	81.5	0.6	17.9	0.072	0.502	16.926958	-96.702254
Ocotlán	35.67	3	0	8916	2.6	81.7	0.4	9.5	1.1	3.6	0.4	0.2	0.5	84.3	0.4	15.3	0.088	0.509	16.744042	-96.685995
Ejutla de Crespo	64.04	1	0	5362	1.8	80.0	2.0	12.1	1.4	1.9	0.4	0.1	0.3	81.8	2.0	16.2	0.083	0.508	16.605031	-96.738069

OAXACA

11 CARR : Oaxaca - Puerto Ángel

CLAVE: 20091

RUTA: MEX-175

AÑO : 2015

LUGAR	ESTACION				CLASIFICACION VEHICULAR EN PORCIENTO										COORDENADAS					
	KM	TE	SC	TDPA	M	A	B	C2	C3	T3S2	T3S3	T3S2R4	OTROS	A	B	C	K'	D	LATITUD	LONGITUD
Ejutla de Crespo	64.04	3	0	3762	1.9	75.4	2.6	15.1	1.8	2.2	0.6	0.1	0.3	77.3	2.6	20.1	0.083	0.511	16.516304	-96.736355
Miahuatlán de Porfirio Díaz	100.64	3	0	3838	5.1	80.2	0.7	9.8	1.8	1.7	0.4	0.1	0.2	85.3	0.7	14.0	0.070	0.506	16.285267	-96.584034
San Miguel Suchixtepec	144.00	1	0	1404	2.0	80.4	1.1	12.0	2.4	1.2	0.6	0.0	0.3	82.4	1.1	16.5	0.072	0.507	16.103239	-96.471869
Candelaria Loxicha	195.00	1	0	1464	9.6	77.5	1.2	8.8	1.2	1.4	0.2	0.0	0.1	87.1	1.2	11.7	0.072	0.508	15.931104	-96.483137
San Pedro Pochutla	238.00	1	0	4242	10.9	81.6	0.4	3.8	0.4	2.2	0.4	0.0	0.3	92.5	0.4	7.1	0.066	0.506	15.762857	-96.463664
Puerto Ángel	245.40	1	0	3231	14.7	78.4	0.2	3.0	0.2	1.8	1.0	0.3	0.4	93.1	0.2	6.7	0.066	0.503	15.678316	-96.482675

12 CARR : Oaxaca - Tehuantepec

CLAVE: 20057

RUTA: MEX-190

AÑO : 2015

LUGAR	ESTACION				CLASIFICACION VEHICULAR EN PORCIENTO										COORDENADAS					
	KM	TE	SC	TDPA	M	A	B	C2	C3	T3S2	T3S3	T3S2R4	OTROS	A	B	C	K'	D	LATITUD	LONGITUD
Oaxaca	0.00	3	1	20779	3.9	89.7	0.4	5.3	0.2	0.3	0.2	0.0	0.0	93.6	0.4	6.0	0.070	0.505	17.067487	-96.686899
Oaxaca	0.00	3	2	21213	4.2	89.1	0.4	5.6	0.2	0.3	0.2	0.0	0.0	93.3	0.4	6.3	0.086	0.505	17.067494	-96.686932
T. Izq. Guelatao	8.69	3	1	18818	3.5	91.6	0.3	3.8	0.2	0.2	0.4	0.0	0.0	95.1	0.3	4.6	0.068	0.508	17.064123	-96.674624
T. Izq. Guelatao	8.69	3	2	19415	2.8	91.6	0.3	4.5	0.2	0.2	0.4	0.0	0.0	94.4	0.3	5.3	0.084	0.508	17.064139	-96.674630
Libramiento Santa María el Tule	12.00	1	1	15610	3.4	90.7	0.5	4.5	0.3	0.3	0.3	0.0	0.0	94.1	0.5	5.4	0.078	0.509	17.061416	-96.665512
Libramiento Santa María el Tule	12.00	1	2	16161	4.1	89.6	0.5	4.9	0.3	0.3	0.3	0.0	0.0	93.7	0.5	5.8	0.096	0.509	17.061424	-96.665540
Santa María El Tule	13.90	1	1	7658	4.2	91.4	0.1	3.2	0.1	0.4	0.5	0.0	0.1	95.6	0.1	4.3	0.072	0.509	17.048873	-96.642100
Santa María El Tule	13.90	1	2	7386	3.3	91.9	0.1	3.6	0.1	0.4	0.5	0.0	0.1	95.2	0.1	4.7	0.090	0.509	17.048884	-96.642099
Santa María El Tule	13.90	3	0	4819	4.1	87.3	0.1	5.4	0.2	2.5	0.1	0.1	0.2	91.4	0.1	8.5	0.075	0.509	17.043515	-96.629426
T. Izq. Teotitlán del Valle	26.50	1	0	16131	1.8	89.8	1.0	5.6	0.7	0.5	0.4	0.1	0.1	91.6	1.0	7.4	0.070	0.502	16.998223	-96.530852
T. Izq. Teotitlán del Valle	26.50	3	0	14937	2.0	88.0	1.1	6.5	0.8	0.8	0.4	0.3	0.1	90.0	1.1	8.9	0.076	0.500	16.993514	-96.523645
T. Der. Tlacolula	33.64	1	0	14377	2.2	83.0	1.2	6.5	0.7	4.5	0.8	0.3	0.8	85.2	1.2	13.6	0.073	0.504	16.970521	-96.489291
T. Der. Tlacolula	33.64	3	1	5230	1.5	86.0	1.6	8.0	0.9	0.7	0.6	0.5	0.2	87.5	1.6	10.9	0.073	0.507	16.948226	-96.460129
T. Der. Tlacolula	33.64	3	2	5083	1.4	85.4	1.7	8.6	0.9	0.7	0.7	0.4	0.2	86.8	1.7	11.5	0.066	0.507	16.948248	-96.460146
T. Izq. Villa de Mitla	42.66	1	0	8704	0.9	84.6	1.8	7.5	1.0	2.7	0.7	0.5	0.3	85.5	1.8	12.7	0.071	0.503	16.921131	-96.405004
T. Izq. Villa de Mitla	42.66	3	0	4932	1.2	80.7	3.1	8.0	1.6	2.6	1.1	1.1	0.6	81.9	3.1	15.0	0.070	0.503	16.912498	-96.397816
San Pedro Totolapan	81.00	1	0	2966	1.9	71.0	6.0	12.1	2.1	2.8	2.1	1.7	0.3	72.9	6.0	21.1	0.062	0.511	16.672507	-96.306947
T. Izq. Nejapa de Madero	127.00	1	0	2260	3.7	73.1	5.0	10.1	2.2	2.4	1.7	1.4	0.4	76.8	5.0	18.2	0.077	0.508	16.622317	-96.039040
La Reforma	184.62	1	0	1963	0.5	69.4	7.8	13.0	2.4	2.7	2.3	1.8	0.1	69.9	7.8	22.3	0.079	0.504	16.399536	-95.767392
La Reforma	184.62	3	0	1989	0.8	70.5	7.4	11.3	2.6	2.8	2.0	2.1	0.5	71.3	7.4	21.3	0.070	0.515	16.398468	-95.760939
T. Der. Magdalena Tequisistlán	206.66	1	0	2858	4.0	74.7	4.5	8.3	1.9	3.0	1.8	1.6	0.2	78.7	4.5	16.8	0.065	0.501	16.414148	-95.596200
T. Izq. Jalapa de Márquez	224.60	3	0	3823	2.9	76.6	3.7	10.7	1.4	2.4	1.2	0.9	0.2	79.5	3.7	16.8	0.071	0.502	16.427651	-95.425480
X. C. La Ventosa - Salina Cruz (Cuota)	246.18	1	0	3542	1.6	77.6	4.0	10.9	1.5	2.0	1.2	1.1	0.1	79.2	4.0	16.8	0.068	0.506	16.334515	-95.285355
X. C. La Ventosa - Salina Cruz (Cuota)	246.18	3	0	5622	2.7	79.6	1.9	7.7	1.1	3.0	1.2	2.4	0.4	82.3	1.9	15.8	0.061	0.504	16.331431	-95.272468

OAXACA

12 CARR: Oaxaca - Tehuantepec

CLAVE: 20057

RUTA: MEX-190

AÑO: 2015

LUGAR	ESTACION				CLASIFICACION VEHICULAR EN PORCIENTO														COORDENADAS	
	KM	TE	SC	TDPA	M	A	B	C2	C3	T3S2	T3S3	T3S2R4	OTROS	A	B	C	K'	D	LATITUD	LONGITUD
Tehuantepec	250.60	1	0	6565	3.1	77.7	2.3	8.4	1.2	3.9	1.1	2.0	0.3	80.8	2.3	16.9	0.062	0.503	16.328909	-95.262215

13 CARR: Puebla - Huajuapán de León

CLAVE: 00049

RUTA: MEX-190

AÑO: 2015

LUGAR	ESTACION				CLASIFICACION VEHICULAR EN PORCIENTO														COORDENADAS	
	KM	TE	SC	TDPA	M	A	B	C2	C3	T3S2	T3S3	T3S2R4	OTROS	A	B	C	K'	D	LATITUD	LONGITUD
Puebla	0.00	3	1	20420	1.7	93.0	0.2	3.2	0.7	0.4	0.4	0.1	0.3	94.7	0.2	5.1	0.068	0.526	19.033123	-98.264696
Puebla	0.00	3	2	22667	1.3	92.8	0.2	3.6	0.9	0.4	0.4	0.1	0.3	94.1	0.2	5.7	0.067	0.526	19.033118	-98.264710
Atlixco	29.88	1	0	20038	3.1	85.4	0.4	6.7	1.2	1.1	1.1	0.9	0.1	88.5	0.4	11.1	0.072	0.505	18.930732	-98.406985
Atlixco	29.88	3	1	7306	2.7	85.3	0.9	5.5	1.2	1.7	1.2	1.2	0.3	88.0	0.9	11.1	0.087	0.502	18.866345	-98.440282
Atlixco	29.88	3	2	7370	2.6	84.4	0.9	5.9	1.3	2.1	1.3	1.2	0.3	87.0	0.9	12.1	0.082	0.502	18.866364	-98.440304
Tepeojuma	51.90	1	1	5232	2.1	79.6	2.1	9.3	1.4	2.0	1.5	1.6	0.4	81.7	2.1	16.2	0.078	0.505	18.726860	-98.449660
Tepeojuma	51.90	1	2	5342	2.0	78.2	2.2	9.8	1.6	2.3	1.7	1.8	0.4	80.2	2.2	17.6	0.089	0.505	18.726849	-98.449657
Izúcar de Matamoros	67.00	1	0	10887	2.5	76.6	1.7	8.9	1.6	4.4	1.9	1.7	0.7	79.1	1.7	19.2	0.070	0.509	18.631213	-98.469056
T. Der. Cuautla	70.00	3	0	9074	10.7	69.0	2.7	11.2	1.1	3.6	0.9	0.4	0.4	79.7	2.7	17.6	0.068	0.520	18.582546	-98.451877
Tehuizingo	113.30	1	0	5596	3.0	78.8	3.1	7.4	1.7	3.9	1.0	0.4	0.7	81.8	3.1	15.1	0.082	0.504	18.338150	-98.282868
Acatlán de Osorio	154.20	1	0	6961	2.5	83.1	1.3	8.4	0.6	2.9	0.5	0.2	0.5	85.6	1.3	13.1	0.068	0.503	18.180775	-98.059301
Chila	192.30	3	0	2409	2.2	80.1	4.0	8.2	1.9	1.7	0.8	0.7	0.4	82.3	4.0	13.7	0.066	0.509	17.967084	-97.864349
Lim. Edos. Term. Pue. Ppia. Oax.	200.30																			
T. Izq. Las Palmas	202.10	1	0	2189	1.8	77.6	5.0	10.9	1.8	1.8	0.5	0.5	0.1	79.4	5.0	15.6	0.069	0.507	17.883262	-97.837825
Huajuapán de León	219.30	1	0	3648	3.2	82.4	2.8	7.3	1.1	2.3	0.4	0.2	0.3	85.6	2.8	11.6	0.072	0.510	17.836351	-97.790607

14 CARR: Ramal a Asunción Ixtaltepec

CLAVE: 20624

RUTA: MEX-185

AÑO: 2015

LUGAR	ESTACION				CLASIFICACION VEHICULAR EN PORCIENTO														COORDENADAS	
	KM	TE	SC	TDPA	M	A	B	C2	C3	T3S2	T3S3	T3S2R4	OTROS	A	B	C	K'	D	LATITUD	LONGITUD
T. C. Coatzacoalcos - Salina Cruz	0.00	3	0	2957	11.5	78.8	0.3	5.5	0.6	2.5	0.6	0.0	0.2	90.3	0.3	9.4	0.094	0.513	16.443028	-95.034333
Asunción Ixtaltepec	9.70	1	0	3459	7.5	82.3	0.2	5.0	0.4	3.5	0.5	0.1	0.5	89.8	0.2	10.0	0.081	0.501	16.499583	-95.064611

15 CARR: San Pablo Villa de Mitla - T. C. (Tuxtepec - Palomares)

CLAVE: 00106

RUTA: MEX-179

AÑO: 2015

LUGAR	ESTACION				CLASIFICACION VEHICULAR EN PORCIENTO														COORDENADAS	
	KM	TE	SC	TDPA	M	A	B	C2	C3	T3S2	T3S3	T3S2R4	OTROS	A	B	C	K'	D	LATITUD	LONGITUD
T. C. Oaxaca - Tehuantepec	0.00	3	0	4138	1.7	88.0	0.6	6.1	0.6	2.2	0.4	0.1	0.3	89.7	0.6	9.7	0.094	0.507	16.918361	-96.393930
San Pedro y San Pablo Ayutla	55.00	1	0	1626	1.3	89.8	0.1	5.9	0.9	1.5	0.4	0.0	0.1	91.1	0.1	8.8	0.082	0.509	17.017090	-96.082166

OAXACA

15 CARR: San Pablo Villa de Mitla - T. C. (Tuxtepec - Palomares)

CLAVE: 00106

RUTA: MEX-179

AÑO: 2015

LUGAR	ESTACION				CLASIFICACION VEHICULAR EN PORCIENTO													COORDENADAS		
	KM	TE	SC	TDPA	M	A	B	C2	C3	T3S2	T3S3	T3S2R4	OTROS	A	B	C	K'	D	LATITUD	LONGITUD
T. Der. Zacatepec	90.00	1	0	498	1.7	86.9	0.1	9.3	1.4	0.4	0.1	0.0	0.1	88.6	0.1	11.3	0.122	0.509	17.147856	-96.033649
Lim. Edos. Term. Oax. Ppia. Ver.	217.70																			
T. C. Tuxtepec - Ent. Palomares	238.70	1	0	1155	11.2	77.5	0.7	8.4	0.8	1.4	0.0	0.0	0.0	88.7	0.7	10.6	0.105	0.511	17.702255	-95.734770

16 CARR: Santiago Pinotepa Nacional - Salina Cruz

CLAVE: 20074

RUTA: MEX-200

AÑO: 2015

LUGAR	ESTACION				CLASIFICACION VEHICULAR EN PORCIENTO													COORDENADAS		
	KM	TE	SC	TDPA	M	A	B	C2	C3	T3S2	T3S3	T3S2R4	OTROS	A	B	C	K'	D	LATITUD	LONGITUD
Santiago Pinotepa Nacional	0.00	3	0	4656	7.8	78.3	1.2	6.8	1.2	3.5	0.7	0.1	0.4	86.1	1.2	12.7	0.084	0.501	16.333466	-98.034388
San Andrés Huaxpaltepec	18.07	3	0	3345	7.1	81.5	1.4	5.4	1.2	2.3	0.7	0.1	0.3	88.6	1.4	10.0	0.083	0.504	16.324062	-97.904508
San José del Progreso	59.51	1	0	3697	5.7	77.3	2.1	8.6	1.9	2.3	1.2	0.4	0.5	83.0	2.1	14.9	0.073	0.518	16.109819	-97.708965
T. Izq. Tututepec	65.85	3	0	4853	4.3	82.6	1.0	7.4	0.9	2.7	0.7	0.1	0.3	86.9	1.0	12.1	0.079	0.504	16.078798	-97.632638
T. Izq. Bajos de Chila	131.94	1	0	3834	6.7	80.4	1.7	6.9	0.9	2.4	0.8	0.1	0.1	87.1	1.7	11.2	0.072	0.504	15.919098	-97.130136
T. Izq. Aeropuerto	137.40	1	0	7313	7.0	81.3	0.9	5.8	0.5	3.1	0.7	0.2	0.5	88.3	0.9	10.8	0.065	0.500	15.873476	-97.095471
Puerto Escondido	141.54	1	1	6340	7.6	83.7	0.6	6.2	0.4	0.8	0.6	0.0	0.1	91.3	0.6	8.1	0.070	0.504	15.868596	-97.082759
Puerto Escondido	141.54	1	2	6434	7.8	82.5	0.8	6.9	0.4	0.9	0.6	0.0	0.1	90.3	0.8	8.9	0.069	0.504	15.868606	-97.082758
Puerto Escondido	141.54	3	1	7801	7.8	83.4	0.4	6.1	0.3	1.0	0.7	0.1	0.2	91.2	0.4	8.4	0.067	0.522	15.854970	-97.054504
Puerto Escondido	141.54	3	2	8535	7.0	83.8	0.4	6.3	0.3	1.2	0.7	0.1	0.2	90.8	0.4	8.8	0.073	0.522	15.854958	-97.054552
T. Der. Mazunte	198.87	1	0	4647	7.4	77.6	1.7	7.7	0.9	2.9	1.2	0.2	0.4	85.0	1.7	13.3	0.068	0.504	15.716264	-96.585574
T. Der. Mazunte	198.87	3	0	5584	6.7	78.3	1.8	7.0	0.6	3.9	0.9	0.3	0.5	85.0	1.8	13.2	0.066	0.507	15.716417	-96.582132
T. Izq. Sta. María Tonameca	202.93	3	0	5214	5.1	78.5	3.0	6.9	1.0	3.0	1.2	0.6	0.7	83.6	3.0	13.4	0.073	0.514	15.731572	-96.533704
T. Libramiento de Pochutla	209.15	1	0	5355	5.9	79.9	1.9	7.2	0.6	2.9	1.0	0.3	0.3	85.8	1.9	12.3	0.072	0.503	15.731807	-96.483914
X. C. Oaxaca - Puerto Ángel	209.95	1	0	6132	6.5	79.3	1.4	5.9	0.6	4.1	1.1	0.4	0.7	85.8	1.4	12.8	0.068	0.500	15.730718	-96.475897
X. C. Oaxaca - Puerto Ángel	209.95	3	0	4489	11.3	74.1	1.3	6.4	0.5	3.8	1.4	0.4	0.8	85.4	1.3	13.3	0.068	0.509	15.728765	-96.470233
T. Der. Cuatunulco	226.00	1	0	2953	5.1	75.6	3.1	10.3	0.8	2.7	1.6	0.3	0.5	80.7	3.1	16.2	0.076	0.507	15.732747	-96.352375
T. Der. Cuatunulco	226.00	3	0	2952	5.1	75.5	3.1	9.5	1.2	3.1	1.6	0.4	0.5	80.6	3.1	16.3	0.071	0.506	15.735312	-96.344826
T. C. El Zapote - Copalita	236.00	1	0	4132	6.1	78.1	2.5	7.3	0.8	3.5	1.1	0.2	0.4	84.2	2.5	13.3	0.073	0.505	15.761521	-96.274198
T. C. El Zapote - Copalita	236.00	3	0	6893	5.0	80.8	1.1	8.2	0.6	2.9	0.8	0.2	0.4	85.8	1.1	13.1	0.075	0.502	15.763855	-96.269663
T. Izq. Aeropuerto	237.68	3	0	6291	3.3	79.9	3.0	8.2	0.9	2.9	1.0	0.4	0.4	83.2	3.0	13.8	0.086	0.506	15.770371	-96.252455
T. Der. Santa Cruz Huatulco	250.00	1	0	7456	4.0	81.8	1.2	7.4	0.5	3.5	0.9	0.2	0.5	85.8	1.2	13.0	0.075	0.509	15.781260	-96.163138
T. Der. Santa Cruz Huatulco	250.00	3	0	1981	6.3	72.6	0.5	8.4	3.2	4.8	2.4	1.2	0.6	78.9	0.5	20.6	0.094	0.549	15.783462	-96.155629
T. Der. Tangolunda	263.00	1	0	1459	4.0	67.0	5.0	12.3	1.6	5.1	3.3	1.1	0.6	71.0	5.0	24.0	0.090	0.531	15.818463	-96.068696
T. C. La Ventosa - Salina Cruz (Cuota)	380.00	1	0	2823	2.4	79.4	3.0	7.1	1.6	3.2	2.0	0.8	0.5	81.8	3.0	15.2	0.069	0.503	16.145853	-95.290378
T. C. La Ventosa - Salina Cruz (Cuota)	380.00	3	0	2715	2.4	82.7	2.3	7.7	0.7	2.4	1.6	0.1	0.1	85.1	2.3	12.6	0.073	0.503	16.158374	-95.275057
Salina Cruz	394.00																			

OAXACA

17 CARR : Tapanatepec - Talismán

CLAVE: 00075

RUTA: MEX-200

AÑO: 2015

LUGAR	ESTACION				CLASIFICACION VEHICULAR EN PORCIENTO														COORDENADAS	
	KM	TE	SC	TDPA	M	A	B	C2	C3	T3S2	T3S3	T3S2R4	OTROS	A	B	C	K'	D	LATITUD	LONGITUD
Tapanatepec	0.00	3	0	4732	3.2	67.1	2.9	8.0	2.5	8.5	2.0	5.3	0.5	70.3	2.9	26.8	0.066	0.501	16.344222	-94.190417
Lim. Edos. Term. Oax. Ppia. Chis.	25.90																			
T. Der. Emiliano Zapata	26.20	1	0	3222	3.4	67.2	3.0	6.3	3.2	7.6	3.4	5.4	0.5	70.6	3.0	26.4	0.071	0.507	16.217083	-94.051528
T. Der. Emiliano Zapata	26.20	3	0	3783	3.1	69.0	2.9	7.5	2.5	7.9	1.5	5.0	0.6	72.1	2.9	25.0	0.069	0.536	16.214667	-94.039250
Arriaga	45.00	1	0	5182	5.2	67.9	2.8	6.9	2.3	7.9	1.9	4.7	0.4	73.1	2.8	24.1	0.069	0.503	16.221972	-93.936528
Arriaga	45.00	3	1	3709	6.0	81.6	2.7	7.3	0.7	0.9	0.4	0.3	0.1	87.6	2.7	9.7	0.075	0.515	16.238028	-93.883167
Arriaga	45.00	3	2	3940	9.1	77.2	2.8	8.3	0.8	1.0	0.4	0.3	0.1	86.3	2.8	10.9	0.070	0.515	16.238556	-93.883139
X. C. Arriaga- Ocozocoautla (Cuota)	47.00	3	1	4345	4.7	82.0	1.9	6.4	1.2	1.8	0.5	1.2	0.3	86.7	1.9	11.4	0.074	0.501	16.230806	-93.874222
X. C. Arriaga- Ocozocoautla (Cuota)	47.00	3	2	4329	4.6	80.9	2.1	7.0	1.2	2.2	0.6	1.2	0.2	85.5	2.1	12.4	0.082	0.501	16.233611	-93.877111
T. Der. Libramiento de Arriaga	49.50	1	1	3749	3.2	79.6	2.5	7.9	1.5	2.6	0.7	1.8	0.2	82.8	2.5	14.7	0.070	0.505	16.224583	-93.868917
T. Der. Libramiento de Arriaga	49.50	1	2	3696	3.1	78.7	2.8	8.1	1.7	2.7	0.7	2.0	0.2	81.8	2.8	15.4	0.086	0.505	16.224528	-93.869000
T. Der. Libramiento de Arriaga	49.50	3	1	4361	3.3	75.7	2.7	7.7	1.9	4.5	1.2	2.5	0.5	79.0	2.7	18.3	0.079	0.504	16.208667	-93.855778
T. Der. Libramiento de Arriaga	49.50	3	2	4286	3.3	73.7	2.9	8.7	1.9	4.9	1.3	2.8	0.5	77.0	2.9	20.1	0.081	0.504	16.210306	-93.856833
Tonalá	68.80	1	1	5331	4.4	78.1	2.4	6.9	1.6	3.9	1.0	1.4	0.3	82.5	2.4	15.1	0.073	0.507	16.106556	-93.779778
Tonalá	68.80	1	2	5185	3.7	76.7	2.7	8.0	1.8	4.2	1.1	1.5	0.3	80.4	2.7	16.9	0.076	0.507	16.107167	-93.779583
T. Der. Puerto Arista	73.00	1	1	2666	3.4	67.7	4.5	8.8	2.4	7.7	1.4	3.8	0.3	71.1	4.5	24.4	0.073	0.509	16.059972	-93.741833
T. Der. Puerto Arista	73.00	1	2	2768	3.6	64.4	5.1	9.7	2.8	8.3	1.6	4.2	0.3	68.0	5.1	26.9	0.096	0.509	16.060167	-93.741889
T. Der. Puerto Arista	73.00	3	1	2879	3.3	68.8	3.8	6.4	2.0	5.7	1.6	3.5	4.9	72.1	3.8	24.1	0.078	0.510	16.055528	-93.734000
T. Der. Puerto Arista	73.00	3	2	2997	3.5	66.5	4.0	7.1	2.3	5.9	1.8	3.8	5.1	70.0	4.0	26.0	0.070	0.510	16.056056	-93.734500
T. Der. Tres Picos	100.40	1	1	2741	3.1	70.4	4.4	7.7	1.8	7.0	1.8	3.3	0.5	73.5	4.4	22.1	0.076	0.512	15.917528	-93.546833
T. Der. Tres Picos	100.40	1	2	2616	3.4	67.0	4.7	9.0	2.1	7.2	2.1	4.0	0.5	70.4	4.7	24.9	0.081	0.512	15.917972	-93.546806
T. Der. Tres Picos	100.40	3	1	2372	3.6	69.3	4.0	6.7	2.6	7.7	1.8	3.8	0.5	72.9	4.0	23.1	0.079	0.501	15.907194	-93.525806
T. Der. Tres Picos	100.40	3	2	2381	3.3	66.9	4.6	7.3	2.7	8.6	1.8	4.4	0.4	70.2	4.6	25.2	0.097	0.501	15.907278	-93.525750
T. Der. Los Patos	114.75	1	1	2489	3.4	68.6	3.9	7.7	2.4	7.4	2.0	4.1	0.5	72.0	3.9	24.1	0.075	0.514	15.841278	-93.437778
T. Der. Los Patos	114.75	1	2	2354	3.7	64.5	4.1	8.4	3.0	8.5	2.3	4.9	0.6	68.2	4.1	27.7	0.072	0.514	15.841361	-93.437472
T. Der. Los Patos	114.75	3	1	2505	1.9	70.0	5.1	6.4	2.3	7.9	1.5	4.4	0.5	71.9	5.1	23.0	0.074	0.514	15.832417	-93.431000
T. Der. Los Patos	114.75	3	2	2372	2.1	66.7	5.7	7.3	2.6	8.4	1.9	4.8	0.5	68.8	5.7	25.5	0.070	0.514	15.832917	-93.431083
T. Der. San Isidro	125.00	1	1	2666	4.5	66.5	4.4	7.8	2.4	8.0	2.0	3.8	0.6	71.0	4.4	24.6	0.075	0.512	15.780314	-93.365666
T. Der. San Isidro	125.00	1	2	2540	4.1	64.1	4.8	8.4	2.7	8.7	2.1	4.6	0.5	68.2	4.8	27.0	0.091	0.512	15.781639	-93.364806
T. Der. San Isidro	125.00	3	1	2636	3.3	68.0	2.9	7.9	4.0	7.8	1.6	4.1	0.4	71.3	2.9	25.8	0.070	0.507	15.776500	-93.356306
T. Der. San Isidro	125.00	3	2	2565	3.3	64.6	3.2	8.5	4.4	8.9	1.7	4.9	0.5	67.9	3.2	28.9	0.078	0.507	15.778333	-93.358556
Pijijiapan	144.45	1	1	4204	8.8	64.7	3.6	10.0	1.9	6.3	1.2	3.2	0.3	73.5	3.6	22.9	0.071	0.514	15.701028	-93.216500
Pijijiapan	144.45	1	2	3978	9.0	62.1	4.2	10.6	2.1	7.0	1.3	3.4	0.3	71.1	4.2	24.7	0.079	0.514	15.702389	-93.216444
T. Der. Mapastepec	188.85	3	1	3882	8.9	66.7	3.2	7.7	1.9	6.6	1.2	3.4	0.4	75.6	3.2	21.2	0.070	0.510	15.455028	-92.881806
T. Der. Mapastepec	188.85	3	2	3736	8.3	65.4	3.7	8.1	2.2	7.1	1.3	3.6	0.3	73.7	3.7	22.6	0.095	0.510	15.455528	-92.880972

OAXACA

17 CARR: Tapanatepec - Talismán

CLAVE: 00075

RUTA: MEX-200

AÑO: 2015

LUGAR	ESTACION				CLASIFICACION VEHICULAR EN PORCIENTO														COORDENADAS	
	KM	TE	SC	TDPA	M	A	B	C2	C3	T3S2	T3S3	T3S2R4	OTROS	A	B	C	K'	D	LATITUD	LONGITUD
T. Der. Estación Soconusco	213.30	1	1	3607	6.6	67.3	3.7	8.8	2.2	6.3	1.3	3.6	0.2	73.9	3.7	22.4	0.075	0.503	15.339389	-92.713000
T. Der. Estación Soconusco	213.30	1	2	3560	6.9	63.5	3.9	9.9	2.4	7.7	1.4	4.0	0.3	70.4	3.9	25.7	0.090	0.503	15.352750	-92.697750
T. Der. Estación Soconusco	213.30	3	1	4057	5.6	71.5	2.8	7.9	1.8	5.6	1.1	3.3	0.4	77.1	2.8	20.1	0.073	0.511	15.336500	-92.709333
T. Der. Estación Soconusco	213.30	3	2	4246	9.4	66.0	3.1	8.7	1.9	6.0	1.1	3.5	0.3	75.4	3.1	21.5	0.085	0.511	15.348944	-92.690444
Huixtla	250.50	1	1	4680	4.4	76.8	2.2	7.0	1.4	4.5	1.0	2.5	0.2	81.2	2.2	16.6	0.076	0.512	15.159278	-92.511333
Huixtla	250.50	1	2	4461	4.2	75.5	2.5	7.4	1.6	5.0	1.0	2.5	0.3	79.7	2.5	17.8	0.087	0.512	15.159472	-92.511278
Huixtla	250.50	3	1	8262	9.1	77.3	1.6	5.0	1.3	2.9	1.0	1.3	0.5	86.4	1.6	12.0	0.073	0.505	15.133917	-92.445889
Huixtla	250.50	3	2	8103	8.5	76.7	1.8	5.2	1.5	3.3	1.0	1.5	0.5	85.2	1.8	13.0	0.082	0.505	15.134000	-92.445833
T. Izq. Hamburgo	262.70	3	1	6192	5.0	80.8	1.9	4.6	1.0	3.3	1.2	1.7	0.5	85.8	1.9	12.3	0.087	0.508	15.106083	-92.431361
T. Izq. Hamburgo	262.70	3	2	5991	6.1	78.5	2.0	5.0	1.1	3.7	1.2	1.9	0.5	84.6	2.0	13.4	0.081	0.508	15.106222	-92.431167
T. Izq. Huehuetán	273.70	1	1	6568	8.0	74.3	2.1	5.7	2.1	3.6	1.3	1.9	1.0	82.3	2.1	15.6	0.078	0.535	15.017639	-92.403056
T. Izq. Huehuetán	273.70	1	2	5704	5.7	74.4	2.2	6.5	2.4	4.1	1.4	2.2	1.1	80.1	2.2	17.7	0.095	0.535	15.017722	-92.402889
T. Izq. Huehuetán	273.70	3	1	6804	3.7	81.5	2.0	6.8	0.9	2.4	0.7	1.6	0.4	85.2	2.0	12.8	0.077	0.502	14.993472	-92.402528
T. Izq. Huehuetán	273.70	3	2	6754	3.5	80.0	2.2	7.6	1.1	2.7	0.8	1.7	0.4	83.5	2.2	14.3	0.086	0.502	14.993528	-92.402472
Tapachula	292.25	1	1	9297	2.8	83.7	1.1	6.6	1.1	2.7	0.6	1.0	0.4	86.5	1.1	12.4	0.075	0.503	14.909556	-92.332167
Tapachula	292.25	1	2	9193	3.0	82.4	1.3	7.1	1.1	3.1	0.6	1.0	0.4	85.4	1.3	13.3	0.081	0.503	14.909666	-92.332086
T. Der. Cd. Hidalgo	302.75	1	1	9872	2.5	90.8	0.4	2.8	0.3	1.9	0.5	0.5	0.3	93.3	0.4	6.3	0.073	0.500	14.913667	-92.194667
T. Der. Cd. Hidalgo	302.75	1	2	9855	2.2	90.6	0.4	3.1	0.3	2.1	0.5	0.5	0.3	92.8	0.4	6.8	0.073	0.500	14.913833	-92.194750
Tuxtla Chico	307.00	1	0	10585	3.9	86.5	0.4	4.1	0.2	3.8	0.4	0.1	0.6	90.4	0.4	9.2	0.070	0.507	14.930861	-92.164806
Talismán	310.77	1	0	2038	26.3	66.5	1.5	3.7	0.0	1.6	0.2	0.1	0.1	92.8	1.5	5.7	0.070	0.525	14.960500	-92.151250

18 CARR: Tapanatepec - Tuxtla Gutiérrez

CLAVE: 00060

RUTA: MEX-190

AÑO: 2015

LUGAR	ESTACION				CLASIFICACION VEHICULAR EN PORCIENTO														COORDENADAS		
	KM	TE	SC	TDPA	M	A	B	C2	C3	T3S2	T3S3	T3S2R4	OTROS	A	B	C	K'	D	LATITUD	LONGITUD	
Tapanatepec	0.00	3	0	2325	5.3	77.8	3.1	7.7	1.3	2.0	1.3	0.8	0.7	83.1	3.1	13.8	0.073	0.515	16.371000	-94.185278	
Lim. Edos. Term. Oax. Ppia. Chis.	17.90																				
Rizo de Oro	26.60	1	0	753	3.0	64.6	3.1	8.4	4.9	4.9	6.8	3.2	1.1	67.6	3.1	29.3	0.088	0.509	16.475611	-94.088083	
T. Der. Arriaga	56.80	1	0	2240	4.4	77.9	1.8	8.4	1.5	2.5	2.3	0.9	0.3	82.3	1.8	15.9	0.080	0.502	16.570361	-93.847500	
T. Der. Arriaga	56.80	3	0	3695	3.0	77.2	4.6	8.2	2.1	2.6	1.5	0.6	0.2	80.2	4.6	15.2	0.082	0.505	16.574222	-93.841417	
T. Der. Jiquipilas	82.00	1	0	7593	4.3	79.2	1.4	8.0	1.5	3.8	1.0	0.4	0.4	83.5	1.4	15.1	0.072	0.504	16.687917	-93.667028	
T. Der. Jiquipilas	82.00	3	0	5203	2.6	77.8	2.9	9.5	2.1	3.2	1.2	0.5	0.2	80.4	2.9	16.7	0.071	0.501	16.688361	-93.665528	
Ocozocoautla	123.29	1	0	4196	3.2	81.7	0.9	6.6	2.6	3.0	1.2	0.5	0.3	84.9	0.9	14.2	0.082	0.510	16.772028	-93.390861	
Ocozocoautla	123.29	3	0	5038	4.3	78.1	0.6	12.0	0.2	3.2	0.9	0.1	0.6	82.4	0.6	17.0	0.066	0.520	16.757972	-93.362361	
T. Izq. Aeropuerto	132.70	1	0	5174	4.7	77.6	0.3	14.4	0.1	2.2	0.3	0.0	0.4	82.3	0.3	17.4	0.069	0.536	16.753000	-93.340111	

OAXACA

18 CARR: Tapanatepec - Tuxtla Gutiérrez

CLAVE: 00060

RUTA: MEX-190

AÑO: 2015

LUGAR	ESTACION				CLASIFICACION VEHICULAR EN PORCIENTO														COORDENADAS	
	KM	TE	SC	TDPA	M	A	B	C2	C3	T3S2	T3S3	T3S2R4	OTROS	A	B	C	K'	D	LATITUD	LONGITUD
T. Izq. Berriozábal (1° Acceso)	136.40	1	1	9086	0.9	82.7	2.5	5.9	1.6	2.7	1.3	1.8	0.6	83.6	2.5	13.9	0.095	0.504	16.767528	-93.295583
T. Izq. Berriozábal (1° Acceso)	136.40	1	2	8955	1.4	80.5	2.6	6.6	2.0	2.9	1.4	2.0	0.6	81.9	2.6	15.5	0.083	0.504	16.767694	-93.295556
T. Izq. Berriozábal (1° Acceso)	136.40	3	1	10171	0.9	83.4	1.4	7.2	1.8	2.3	1.0	1.5	0.5	84.3	1.4	14.3	0.091	0.503	16.769083	-93.278861
T. Izq. Berriozábal (1° Acceso)	136.40	3	2	10051	1.2	81.0	1.6	8.2	2.1	2.6	1.2	1.6	0.5	82.2	1.6	16.2	0.083	0.503	16.769222	-93.278889
T. Izq. San Fernando	151.70	1	1	14437	1.7	85.2	1.3	6.0	0.8	1.6	1.9	0.8	0.7	86.9	1.3	11.8	0.080	0.514	16.771000	-93.197972
T. Izq. San Fernando	151.70	1	2	13646	1.5	83.7	1.4	6.8	0.9	2.0	2.0	1.0	0.7	85.2	1.4	13.4	0.069	0.514	16.771139	-93.197889
Tuxtla Gutiérrez	159.00	1	1	12557	2.0	84.4	0.6	7.6	1.0	1.9	1.5	0.5	0.5	86.4	0.6	13.0	0.079	0.510	16.767611	-93.192861
Tuxtla Gutiérrez	159.00	1	2	12088	1.8	83.3	0.6	8.3	1.2	2.2	1.5	0.5	0.6	85.1	0.6	14.3	0.074	0.510	16.767750	-93.192778

19 CARR: Tehuacán - Huajuapán de León

CLAVE: 00211

RUTA: MEX-125

AÑO: 2015

LUGAR	ESTACION				CLASIFICACION VEHICULAR EN PORCIENTO														COORDENADAS	
	KM	TE	SC	TDPA	M	A	B	C2	C3	T3S2	T3S3	T3S2R4	OTROS	A	B	C	K'	D	LATITUD	LONGITUD
Tehuacán	0.00	3	1	6325	8.6	83.7	0.5	2.8	1.4	1.4	1.0	0.1	0.5	92.3	0.5	7.2	0.087	0.501	18.436725	-97.401745
Tehuacán	0.00	3	2	6366	7.2	84.5	0.5	3.0	1.5	1.6	1.1	0.1	0.5	91.7	0.5	7.8	0.084	0.501	18.436727	-97.401740
Zapotitlán Salinas	28.00	1	0	2347	3.7	75.3	1.4	13.1	2.0	2.9	1.0	0.4	0.2	79.0	1.4	19.6	0.076	0.507	18.334015	-97.461145
Lim. Edos. Term. Pue. Ppia. Oax.	55.80																			
Santiago Chazumba	63.02	1	0	1616	2.6	78.1	1.5	9.5	2.2	3.5	1.6	0.7	0.3	80.7	1.5	17.8	0.077	0.501	18.198483	-97.679592
Santiago Chazumba	63.02	3	0	1550	2.9	78.0	1.3	10.4	1.9	3.3	1.5	0.6	0.1	80.9	1.3	17.8	0.087	0.501	18.184596	-97.679898
T. Izq. Santa María Camotlán	103.13	1	0	1614	1.6	80.2	1.3	8.9	2.1	3.4	1.7	0.7	0.1	81.8	1.3	16.9	0.073	0.506	17.907761	-97.687706
T. C. Huajuapán de León - Oaxaca	119.40	1	0	9850	5.5	82.4	0.4	4.9	0.5	4.3	0.8	0.3	0.9	87.9	0.4	11.7	0.068	0.501	17.821599	-97.758847

20 CARR: Tuxtepec - Ent. Palomares

CLAVE: 00180

RUTA: MEX-147

AÑO: 2015

LUGAR	ESTACION				CLASIFICACION VEHICULAR EN PORCIENTO														COORDENADAS	
	KM	TE	SC	TDPA	M	A	B	C2	C3	T3S2	T3S3	T3S2R4	OTROS	A	B	C	K'	D	LATITUD	LONGITUD
T. C. Tuxtepec - Oaxaca	0.00	3	0	4189	7.9	65.6	2.5	16.6	2.9	3.2	0.7	0.2	0.4	73.5	2.5	24.0	0.078	0.527	18.037287	-96.159964
X. C. El Rodeo - Reforma	15.20	3	0	2381	6.1	71.5	3.1	12.5	2.5	2.9	0.9	0.1	0.4	77.6	3.1	19.3	0.097	0.505	17.950345	-96.069212
Lim. Edos. Term. Oax. Ppia. Ver.	40.00																			
X. C. Playa Vicente - El Tomate	48.16	1	0	2109	4.4	77.5	2.6	10.3	2.4	2.1	0.4	0.2	0.1	81.9	2.6	15.5	0.092	0.525	17.783727	-95.832944
X. C. Playa Vicente - El Tomate	48.16	3	0	2442	4.2	80.6	2.0	8.6	1.6	2.2	0.5	0.1	0.2	84.8	2.0	13.2	0.109	0.530	17.783194	-95.830409
T. Der. Xochiapa	65.00	3	0	1671	7.9	79.2	1.6	7.0	1.5	2.0	0.5	0.2	0.1	87.1	1.6	11.3	0.099	0.539	17.703067	-95.733392
T. Izq. San Juan Evangelista	81.20	1	0	1429	8.0	78.3	1.4	7.1	1.5	2.6	0.6	0.2	0.3	86.3	1.4	12.3	0.097	0.537	17.614904	-95.635332
Lim. Edos. Term. Ver. Ppia. Oax.	87.00																			
María Lombardo de Caso	110.50	1	0	2770	7.6	81.5	0.7	5.6	0.9	2.2	0.8	0.3	0.4	89.1	0.7	10.2	0.095	0.511	17.451306	-95.431444

OAXACA

20 CARR : Tuxtepec - Ent. Palomares

CLAVE: 00180

RUTA: MEX-147

AÑO : 2015

LUGAR	ESTACION				CLASIFICACION VEHICULAR EN PORCIENTO														COORDENADAS	
	KM	TE	SC	TDPA	M	A	B	C2	C3	T3S2	T3S3	T3S2R4	OTROS	A	B	C	K'	D	LATITUD	LONGITUD
T. C. Coatzacoalcos - Salina Cruz	175.00	1	0	2476	9.0	82.5	0.5	4.3	0.6	2.1	0.6	0.1	0.3	91.5	0.5	8.0	0.082	0.501	17.138750	-95.065639

21 CARR : Tuxtepec - T. C. (Oaxaca - Tehuantepec)

CLAVE: 20090

RUTA: MEX-175

AÑO : 2015

LUGAR	ESTACION				CLASIFICACION VEHICULAR EN PORCIENTO														COORDENADAS	
	KM	TE	SC	TDPA	M	A	B	C2	C3	T3S2	T3S3	T3S2R4	OTROS	A	B	C	K'	D	LATITUD	LONGITUD
Tuxtepec	0.00	3	1	7135	10.4	74.2	1.2	9.0	1.6	1.5	0.9	0.6	0.6	84.6	1.2	14.2	0.069	0.501	18.052430	-96.154343
Tuxtepec	0.00	3	2	7108	10.0	73.9	1.2	9.3	1.7	1.8	0.9	0.5	0.7	83.9	1.2	14.9	0.068	0.501	18.052430	-96.154343
T. Izq. Palomares	5.75	3	0	6114	13.1	72.8	0.9	8.1	0.8	2.1	0.5	0.4	1.3	85.9	0.9	13.2	0.062	0.522	18.036231	-96.164937
San José Chiltepec	17.93	3	0	3394	12.5	78.0	0.8	4.9	0.9	2.1	0.4	0.1	0.3	90.5	0.8	8.7	0.070	0.502	17.944188	-96.173072
Valle Nacional	47.07	1	0	3286	7.8	81.9	0.7	6.6	0.7	1.8	0.1	0.2	0.2	89.7	0.7	9.6	0.073	0.530	17.779218	-96.293101
Valle Nacional	47.07	3	0	2755	12.2	78.8	0.6	6.1	0.5	1.4	0.3	0.0	0.1	91.0	0.6	8.4	0.065	0.537	17.767372	-96.310996
La Esperanza	79.85	3	0	549	0.7	72.1	2.9	21.3	1.9	0.6	0.5	0.0	0.0	72.8	2.9	24.3	0.082	0.507	17.626584	-96.367447
Puerta del Sol	125.00	3	0	613	0.6	75.4	2.8	17.8	2.3	1.0	0.1	0.0	0.0	76.0	2.8	21.2	0.080	0.522	17.528905	-96.511672
T. Der. Ixtepeji	181.39	3	0	1975	1.6	84.2	0.8	10.4	1.2	1.2	0.5	0.0	0.1	85.8	0.8	13.4	0.091	0.500	17.238786	-96.562466
T. Izq. Yuvila	193.67	1	0	2373	1.8	83.9	1.1	9.6	1.1	1.3	0.7	0.1	0.4	85.7	1.1	13.2	0.080	0.502	17.174841	-96.604900
T. C. Oaxaca - Tehuantepec	212.70	1	1	6362	5.7	87.3	0.3	5.2	0.3	0.6	0.5	0.0	0.1	93.0	0.3	6.7	0.088	0.506	17.067837	-96.676818
T. C. Oaxaca - Tehuantepec	212.70	1	2	6205	4.8	87.9	0.3	5.5	0.3	0.6	0.5	0.0	0.1	92.7	0.3	7.0	0.088	0.506	17.067641	-96.676768

22 CARR : Yucudaa - Santiago Pinotepa Nacional

CLAVE: 20030

RUTA: MEX-125

AÑO : 2015

LUGAR	ESTACION				CLASIFICACION VEHICULAR EN PORCIENTO														COORDENADAS	
	KM	TE	SC	TDPA	M	A	B	C2	C3	T3S2	T3S3	T3S2R4	OTROS	A	B	C	K'	D	LATITUD	LONGITUD
T. C. Huajuapán de León - Oaxaca	0.00	3	0	2643	1.1	74.5	3.2	13.6	2.4	3.0	1.3	0.3	0.6	75.6	3.2	21.2	0.074	0.502	17.569960	-97.424502
Yolomécatl	24.40	3	0	2547	1.3	77.2	2.2	12.7	1.9	2.8	1.4	0.1	0.4	78.5	2.2	19.3	0.089	0.501	17.462971	-97.573792
Tlaxiaco	57.00	3	0	3559	2.7	86.2	0.6	6.2	0.7	2.5	0.6	0.1	0.4	88.9	0.6	10.5	0.071	0.504	17.235144	-97.700809
T. Der. Santiago Juxcatlán	104.00	1	0	915	2.2	77.0	3.0	11.0	2.8	2.3	1.1	0.1	0.5	79.2	3.0	17.8	0.078	0.504	17.152212	-97.889989
Putla de Guerrero	145.00	1	0	2642	9.5	75.4	1.1	9.0	1.6	2.5	0.5	0.1	0.3	84.9	1.1	14.0	0.077	0.501	17.037824	-97.915692
Cacahuatpec	229.00	1	0	1698	7.9	81.2	0.8	6.8	1.3	1.5	0.4	0.0	0.1	89.1	0.8	10.1	0.078	0.502	16.623399	-98.147823
T. C. Las Cruces - Pinotepa Nacional	268.00	1	0	4016	6.6	85.0	0.7	3.5	0.5	1.8	1.5	0.1	0.3	91.6	0.7	7.7	0.071	0.501	16.379917	-98.091106

OAXACA

23 CARR: Cuacnopalan - Oaxaca (Cuota)

CLAVE: 00109

RUTA: MEX-135D

AÑO: 2015

LUGAR	ESTACION				CLASIFICACION VEHICULAR EN PORCIENTO														COORDENADAS	
	KM	TE	SC	TDPA	M	A	B	C2	C3	T3S2	T3S3	T3S2R4	OTROS	A	B	C	K'	D	LATITUD	LONGITUD
T. C. Puebla - Córdoba (Cuota)	0.00	3	0	9344	0.4	71.4	5.7	7.9	3.2	6.1	1.6	2.7	1.0	71.8	5.7	22.5	0.068	0.503	18.818104	-97.491108
T. Der. Cuacnopalan	1.80	3	0	8374	0.4	69.7	7.0	7.9	3.1	6.3	1.5	3.2	0.9	70.1	7.0	22.9	0.066	0.508	18.810302	-97.490528
Caseta de Cobro Tehuacán	40.00	2	0	9137	0.3	72.8	7.1	5.1	4.9	5.4	0.9	2.9	0.6	73.1	7.1	19.8	0.083	0.500	18.487160	-97.456032
T. C. Puebla - Tehuacán	40.00	3	0	4828	0.5	63.0	9.1	10.5	4.5	6.0	1.8	3.7	0.9	63.5	9.1	27.4	0.073	0.507	18.483085	-97.456466
X. C. Tehuacán - Huajuapán de León	48.00	3	0	5736	0.8	68.0	7.6	8.9	3.8	5.5	1.6	3.1	0.7	68.8	7.6	23.6	0.065	0.515	18.423554	-97.413239
T. Izq. San Gabriel Chilac	61.00	3	0	5019	0.6	65.5	8.0	9.0	5.4	5.4	1.7	3.6	0.8	66.1	8.0	25.9	0.075	0.531	18.297322	-97.349162
Caseta de Cobro Miahuatlán	71.42	2	0	4794	0.4	66.3	8.6	6.4	7.3	5.7	1.1	3.5	0.7	66.7	8.6	24.7	0.083	0.500	18.264654	-97.315569
Lim. Edos. Term. Pue. Ppia. Oax.	83.50																			
Caseta de Cobro Coixtlahuaca	141.30	2	0	4044	0.4	65.9	9.0	5.6	7.1	6.1	1.0	4.1	0.8	66.3	9.0	24.7	0.083	0.500	17.726231	-97.351913
T. Izq. Asunción Nochistlán	174.90	1	0	4438	0.8	62.1	9.6	10.4	4.4	5.7	1.8	4.2	1.0	62.9	9.6	27.5	0.061	0.511	17.468034	-97.250245
T. Izq. Asunción Nochistlán	175.50	3	0	6431	0.8	66.1	6.5	12.0	3.6	5.3	1.4	3.4	0.9	66.9	6.5	26.6	0.067	0.506	17.457546	-97.243029
Caseta de Cobro Huitzo	220.00	2	0	6151	0.4	77.5	5.6	4.5	4.5	3.8	0.7	2.5	0.5	77.9	5.6	16.5	0.083	0.500	17.274916	-96.915367
T. C. Huajuapán de León - Oaxaca	242.70	1	1	3649	1.8	72.1	4.8	11.1	3.2	3.4	1.0	2.1	0.5	73.9	4.8	21.3	0.068	0.510	17.147452	-96.784714
T. C. Huajuapán de León - Oaxaca	242.70	1	2	3499	1.9	68.9	5.4	12.9	3.3	3.8	1.0	2.4	0.4	70.8	5.4	23.8	0.079	0.510	17.147452	-96.784714

24 CARR: Salina Cruz - La Ventosa (Cuota)

CLAVE: 00275

RUTA: MEX-185D

AÑO: 2015

LUGAR	ESTACION				CLASIFICACION VEHICULAR EN PORCIENTO														COORDENADAS	
	KM	TE	SC	TDPA	M	A	B	C2	C3	T3S2	T3S3	T3S2R4	OTROS	A	B	C	K'	D	LATITUD	LONGITUD
T. C. Santiago Pinotepa Nacional - Salina Cruz	0.00																			
Caseta de Cobro Tehuantepec	1.89	2	0	836	1.5	78.9	3.3	3.4	3.7	4.7	1.8	2.0	0.7	80.4	3.3	16.3	0.082	0.500	16.162108	-95.289212
X. C. Oaxaca - Tehuantepec	23.19	1	0	1159	3.4	76.7	2.7	6.7	2.0	4.4	1.6	1.9	0.6	80.1	2.7	17.2	0.079	0.512	16.328559	-95.279522
X. C. Oaxaca - Tehuantepec	23.19	3	0	2503	2.1	70.6	2.1	7.5	2.7	4.0	2.3	8.3	0.4	72.7	2.1	25.2	0.070	0.523	16.337797	-95.277231
Caseta de Cobro Ixtepec	47.49	2	0	1214	0.4	56.4	3.0	4.2	5.3	7.7	4.0	17.6	1.4	56.8	3.0	40.2	0.082	0.500	16.561158	-95.135619
T. C. Coatzacoalcos - Salina Cruz	75.39	1	0	1836	0.6	56.7	3.0	8.6	4.7	6.8	5.5	12.8	1.3	57.3	3.0	39.7	0.063	0.508	16.586879	-94.955513

25 CARR: Cd. Ixtepec - Guevea de Humboldt

CLAVE: 00301

RUTA: OAX

AÑO: 2015

LUGAR	ESTACION				CLASIFICACION VEHICULAR EN PORCIENTO														COORDENADAS	
	KM	TE	SC	TDPA	M	A	B	C2	C3	T3S2	T3S3	T3S2R4	OTROS	A	B	C	K'	D	LATITUD	LONGITUD
Ciudad Ixtepec	0.00																			
T. C. La Ventosa - Salina Cruz (Cuota)	4.00	1	1	2156	6.8	86.1	0.4	5.5	0.5	0.5	0.1	0.1	0.0	92.9	0.4	6.7	0.084	0.502	16.560770	-95.127438
T. C. La Ventosa - Salina Cruz (Cuota)	4.00	1	2	2170	7.0	85.0	0.4	6.4	0.5	0.5	0.1	0.1	0.0	92.0	0.4	7.6	0.076	0.502	16.560778	-95.127442
T. C. La Ventosa - Salina Cruz (Cuota)	4.00	3	0	2304	7.6	80.8	1.6	6.6	0.8	1.3	0.8	0.3	0.2	88.4	1.6	10.0	0.096	0.502	16.564710	-95.143340
Guevea de Humboldt	57.05																			

OAXACA

26 CARR: El Zapote - Copalita

CLAVE: 00109

RUTA: OAX

AÑO: 2015

LUGAR	ESTACION				CLASIFICACION VEHICULAR EN PORCIENTO														COORDENADAS	
	KM	TE	SC	TDPA	M	A	B	C2	C3	T3S2	T3S3	T3S2R4	OTROS	A	B	C	K'	D	LATITUD	LONGITUD
T. C. Santiago Pinotepa Nacional - Salina Cruz	0.00	3	0	3945	6.6	80.8	0.7	8.5	0.5	2.2	0.3	0.0	0.4	87.4	0.7	11.9	0.074	0.512	15.763984	-96.272811
Copalita	43.04																			

27 CARR: Huajuapán de León - El Carrizal

CLAVE: 00109

RUTA: OAX

AÑO: 2015

LUGAR	ESTACION				CLASIFICACION VEHICULAR EN PORCIENTO														COORDENADAS	
	KM	TE	SC	TDPA	M	A	B	C2	C3	T3S2	T3S3	T3S2R4	OTROS	A	B	C	K'	D	LATITUD	LONGITUD
Hujuapán de León	0.00	3	0	2569	3.7	83.2	0.8	7.3	1.1	2.7	0.8	0.1	0.3	86.9	0.8	12.3	0.081	0.504	17.779860	-97.789620
San Miguel Tlacotepec	83.60	1	0	1389	2.3	84.2	1.2	7.8	1.1	2.0	0.9	0.2	0.3	86.5	1.2	12.3	0.072	0.503	17.460874	-98.004141
Santiago Juxtlahuaca	100.00																			
Santiago Juxtlahuaca	100.00	1	0	6193	2.8	87.0	0.2	5.5	0.4	3.1	0.4	0.1	0.5	89.8	0.2	10.0	0.081	0.506	17.349536	-98.014755
Putla	130.00	1	0	709	3.3	84.0	0.5	8.3	2.0	1.3	0.5	0.0	0.1	87.3	0.5	12.2	0.075	0.509	17.154538	-97.893511
El Carrizal	131.30																			

28 CARR: Loma Bonita - Mixtán

CLAVE: 20043

RUTA: OAX

AÑO: 2015

LUGAR	ESTACION				CLASIFICACION VEHICULAR EN PORCIENTO														COORDENADAS	
	KM	TE	SC	TDPA	M	A	B	C2	C3	T3S2	T3S3	T3S2R4	OTROS	A	B	C	K'	D	LATITUD	LONGITUD
Loma Bonita	0.00																			
X. C. Cd. Alemán - Sayula	1.00	1	1	5371	17.6	69.5	1.1	8.8	1.0	0.9	0.6	0.1	0.4	87.1	1.1	11.8	0.068	0.501	18.098155	-95.877401
X. C. Cd. Alemán - Sayula	1.00	1	2	5392	16.8	69.6	1.1	9.0	1.1	1.1	0.8	0.1	0.4	86.4	1.1	12.5	0.073	0.501	18.098155	-95.877401
X. C. Cd. Alemán - Sayula	1.00	3	0	2325	19.2	69.1	0.4	7.9	0.9	2.0	0.2	0.0	0.3	88.3	0.4	11.3	0.070	0.513	18.094212	-95.876221
T. Izq. Aeropuerto	12.00	3	0	783	8.3	74.1	0.8	12.4	2.2	1.8	0.4	0.0	0.0	82.4	0.8	16.8	0.079	0.512	18.016285	-95.869232
Mixtán	27.00																			

29 CARR: Ramal a Reforma de Pineda

CLAVE: 20010

RUTA: OAX

AÑO: 2015

LUGAR	ESTACION				CLASIFICACION VEHICULAR EN PORCIENTO														COORDENADAS	
	KM	TE	SC	TDPA	M	A	B	C2	C3	T3S2	T3S3	T3S2R4	OTROS	A	B	C	K'	D	LATITUD	LONGITUD
T. C. La Ventosa - San Pedro Tapanatepec	0.00	3	0	1404	5.4	84.9	1.6	6.9	0.5	0.6	0.1	0.0	0.0	90.3	1.6	8.1	0.104	0.504	16.491472	-94.427722
Reforma de Pineda	12.00																			

OAXACA

30 CARR: Ramal a Unión Hidalgo

CLAVE: 20044

RUTA: OAX

AÑO: 2015

LUGAR	ESTACION				CLASIFICACION VEHICULAR EN PORCIENTO										COORDENADAS					
	KM	TE	SC	TDPA	M	A	B	C2	C3	T3S2	T3S3	T3S2R4	OTROS	A	B	C	K'	D	LATITUD	LONGITUD
T. C. La Ventosa - San Pedro Tapanatepec	0.00	3	1	1529	10.9	83.7	0.3	3.8	0.6	0.5	0.1	0.0	0.1	94.6	0.3	5.1	0.072	0.505	16.574056	-94.816417
T. C. La Ventosa - San Pedro Tapanatepec	0.00	3	2	1501	9.0	85.1	0.3	4.4	0.5	0.5	0.1	0.0	0.1	94.1	0.3	5.6	0.076	0.505	16.574056	-94.816306
Unión Hidalgo	12.00	1	0	1365	5.4	86.2	0.1	6.2	0.8	1.2	0.1	0.0	0.0	91.6	0.1	8.3	0.078	0.503	16.490278	-94.832417

31 CARR: San Antonio - Puerto Angel

CLAVE:

RUTA: OAX

AÑO: 2015

LUGAR	ESTACION				CLASIFICACION VEHICULAR EN PORCIENTO										COORDENADAS					
	KM	TE	SC	TDPA	M	A	B	C2	C3	T3S2	T3S3	T3S2R4	OTROS	A	B	C	K'	D	LATITUD	LONGITUD
T. C. Santiago Pinotepa Nacional - Salina Cruz	0.00	3	0	1921	10.9	84.0	0.2	3.5	0.1	1.2	0.1	0.0	0.0	94.9	0.2	4.9	0.074	0.501	15.713403	-96.582161
Mazunte	7.30	1	0	1889	11.6	82.5	0.1	4.3	0.0	1.1	0.3	0.0	0.1	94.1	0.1	5.8	0.078	0.501	15.670924	-96.558678
Mazunte	7.30	3	0	1323	13.4	80.3	0.1	4.1	0.1	1.5	0.2	0.0	0.3	93.7	0.1	6.2	0.101	0.503	15.666647	-96.540721
Puerto Angel	15.90																			

32 CARR: T. C. (Oaxaca - Puerto Ángel) - Puerto Escondido

CLAVE: 20009

RUTA: MEX-OAX-161

AÑO: 2015

LUGAR	ESTACION				CLASIFICACION VEHICULAR EN PORCIENTO										COORDENADAS					
	KM	TE	SC	TDPA	M	A	B	C2	C3	T3S2	T3S3	T3S2R4	OTROS	A	B	C	K'	D	LATITUD	LONGITUD
T. C. Oaxaca - Puerto Ángel	0.00	3	1	8580	3.3	87.7	0.3	6.8	0.6	0.7	0.5	0.0	0.1	91.0	0.3	8.7	0.119	0.504	16.927062	-96.705616
T. C. Oaxaca - Puerto Ángel	0.00	3	2	8447	2.9	87.3	0.3	7.6	0.6	0.7	0.5	0.0	0.1	90.2	0.3	9.5	0.098	0.504	16.927079	-96.705629
T. Izq. San Pablo Huixtepec	16.80	1	0	7797	3.6	79.3	1.6	10.3	1.1	3.2	0.4	0.1	0.4	82.9	1.6	15.5	0.073	0.504	16.837611	-96.788352
T. Izq. San Pablo Huixtepec	16.80	3	0	7663	3.8	80.4	2.6	7.8	1.2	3.4	0.4	0.1	0.3	84.2	2.6	13.2	0.069	0.505	16.828178	-96.788945
T. Der. El Trapiche	30.00	1	0	4220	4.2	80.3	0.8	9.8	1.9	2.2	0.4	0.1	0.3	84.5	0.8	14.7	0.077	0.507	16.760118	-96.851506
T. Der. El Trapiche	30.00	3	0	4073	2.8	78.8	2.6	10.7	2.2	2.0	0.6	0.1	0.2	81.6	2.6	15.8	0.076	0.517	16.760323	-96.859292
T. Der. Cofradía San Pedro	53.00	3	0	1776	2.5	76.5	2.5	12.9	2.4	2.0	0.9	0.1	0.2	79.0	2.5	18.5	0.072	0.511	16.600454	-96.890842
Sola de Vega	78.40	3	0	1529	3.4	76.9	3.0	11.5	2.1	2.1	0.9	0.0	0.1	80.3	3.0	16.7	0.067	0.513	16.506617	-96.986201
T. Der. Yalotepec	134.50	1	0	1228	1.6	74.5	3.0	14.4	3.1	1.9	1.1	0.0	0.4	76.1	3.0	20.9	0.071	0.522	16.256310	-97.151803
San Gabriel Mixtepec	208.00	1	0	1512	9.1	77.2	2.0	7.9	1.4	1.7	0.6	0.0	0.1	86.3	2.0	11.7	0.122	0.504	16.093571	-97.075278
Puerto Escondido	248.00	1	0	3916	11.3	75.9	0.6	8.7	0.8	2.1	0.4	0.0	0.2	87.2	0.6	12.2	0.073	0.503	15.894136	-97.076782

33 CARR: Tehuacán - Huitzo

CLAVE: 00211

RUTA: PUE-MEX-135

AÑO: 2015

LUGAR	ESTACION				CLASIFICACION VEHICULAR EN PORCIENTO										COORDENADAS					
	KM	TE	SC	TDPA	M	A	B	C2	C3	T3S2	T3S3	T3S2R4	OTROS	A	B	C	K'	D	LATITUD	LONGITUD
Tehuacán	0.00	3	0	8802	5.2	83.3	0.1	4.5	0.8	4.6	0.5	0.2	0.8	88.5	0.1	11.4	0.073	0.529	18.450595	-97.370778
T. Der. San Gabriel Chilac	14.40	1	0	7339	7.0	78.3	0.1	7.2	0.7	4.5	1.0	0.3	0.9	85.3	0.1	14.6	0.065	0.522	18.404516	-97.329802

OAXACA

33 CARR: Tehuacán - Huitzo

CLAVE: 00211

RUTA: PUE-MEX-135

AÑO: 2015

LUGAR	ESTACION				CLASIFICACION VEHICULAR EN PORCIENTO														COORDENADAS	
	KM	TE	SC	TDPA	M	A	B	C2	C3	T3S2	T3S3	T3S2R4	OTROS	A	B	C	K'	D	LATITUD	LONGITUD
San Sebastián Zinacatepec	23.00	3	0	5529	8.0	77.2	1.0	8.1	2.0	2.3	0.5	0.4	0.5	85.2	1.0	13.8	0.062	0.510	18.325904	-97.230320
Lim. Edos. Term. Pue. Ppia. Oax.	60.90																			
Teotitlán del Camino	63.15	3	0	2516	6.1	86.5	0.4	4.9	0.4	1.4	0.1	0.1	0.1	92.6	0.4	7.0	0.076	0.502	18.121370	-97.073918
Santa María Tecomavaca	88.34	1	0	1398	3.8	88.0	0.6	5.2	0.8	1.0	0.2	0.2	0.2	91.8	0.6	7.6	0.097	0.506	17.960071	-97.028859
Santa María Tecomavaca	88.34	3	0	1051	3.9	84.0	0.7	8.0	1.9	1.1	0.3	0.1	0.0	87.9	0.7	11.4	0.077	0.509	17.949515	-97.022336
T. Izq. Cuicatlán	118.80	1	0	1158	8.7	80.7	0.9	7.6	0.7	1.1	0.2	0.0	0.1	89.4	0.9	9.7	0.098	0.502	17.794054	-96.960145
T. Izq. Nacaltepec	169.84	1	0	663	1.4	84.3	0.9	9.6	2.4	0.9	0.5	0.0	0.0	85.7	0.9	13.4	0.071	0.507	17.505776	-96.932976
T. C. Huajuapán de León - Oaxaca	202.70	1	0	7119	5.2	85.1	0.2	3.6	0.2	4.5	0.5	0.1	0.6	90.3	0.2	9.5	0.062	0.506	17.286772	-96.903499

34 CARR: Teotitlán de Flores Magón - Tuxtepec

CLAVE: 00108

RUTA: OAX-PUE-MEX-182

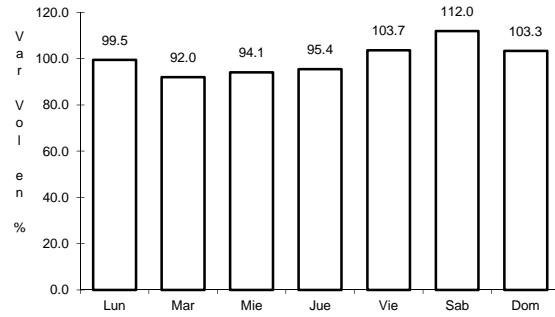
AÑO: 2015

LUGAR	ESTACION				CLASIFICACION VEHICULAR EN PORCIENTO														COORDENADAS	
	KM	TE	SC	TDPA	M	A	B	C2	C3	T3S2	T3S3	T3S2R4	OTROS	A	B	C	K'	D	LATITUD	LONGITUD
Teotitlán del Camino	0.00	3	0	1018	2.1	80.7	3.5	8.9	2.6	1.3	0.7	0.0	0.2	82.8	3.5	13.7	0.074	0.501	18.138850	-97.062915
Lim. Edos. Term. Oax. Ppia. Pue.	2.00																			
Lim. Edos. Term. Pue. Ppia. Oax.	10.00																			
Huautla	65.00	1	0	1717	1.8	84.5	1.2	9.7	1.0	1.1	0.5	0.0	0.2	86.3	1.2	12.5	0.077	0.549	18.125591	-96.846127
San Felipe Jalapa de Díaz	140.00	3	0	4081	10.7	80.0	0.3	5.5	0.4	2.4	0.4	0.1	0.2	90.7	0.3	9.0	0.071	0.503	18.081976	-96.522351
Tuxtepec	185.00	1	0	8795	16.6	68.9	0.4	7.7	0.6	4.2	0.5	0.3	0.8	85.5	0.4	14.1	0.060	0.501	18.089511	-96.170377

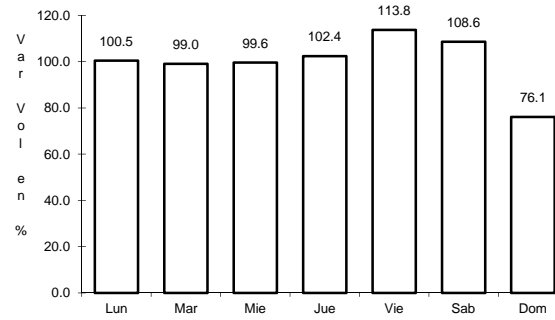
1 CARR: Buenavista - Tuxtepec

CLAVE: 00624

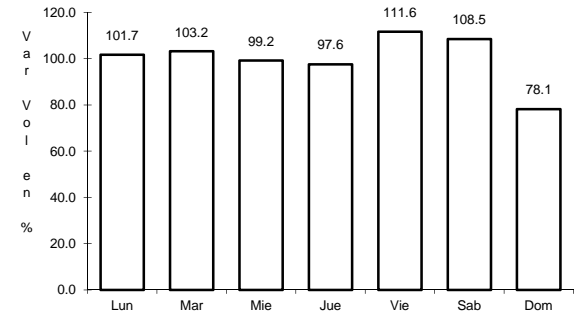
RUTA: MEX-175



Km: 0.00 Tipo: 3 Sent: 0



Km: 121.25 Tipo: 1 Sent: 1

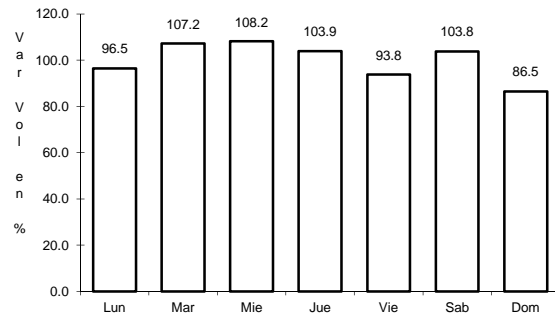


Km: 121.25 Tipo: 1 Sent: 2

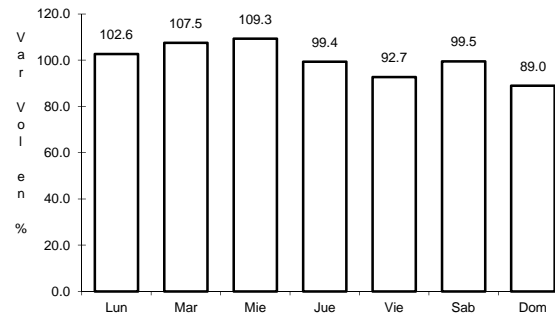
2 CARR: Cd. Alemán - Sayula

CLAVE: 00301

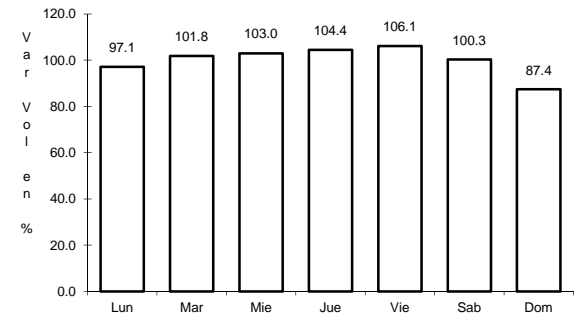
RUTA: MEX-145



Km: 0.00 Tipo: 3 Sent: 0



Km: 71.40 Tipo: 1 Sent: 0

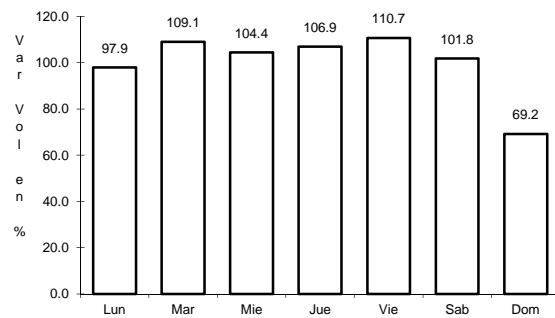


Km: 136.40 Tipo: 1 Sent: 0

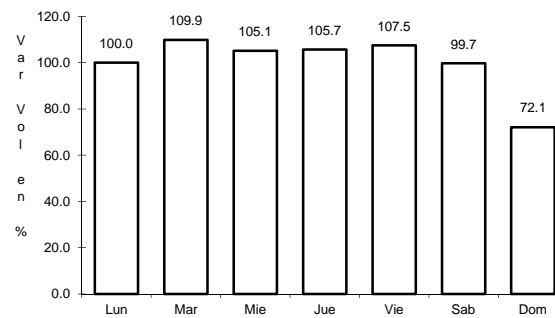
3 CARR: Coatzacoalcos - Salina Cruz

CLAVE: 00147

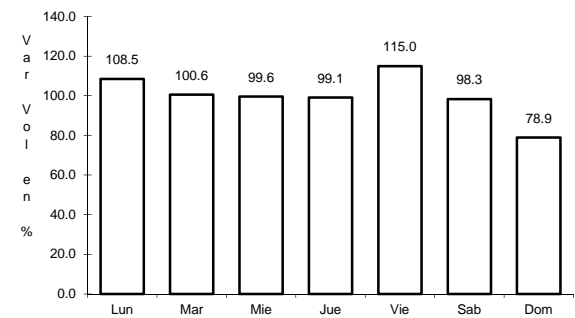
RUTA: MEX-185



Km: 0.00 Tipo: 3 Sent: 1



Km: 0.00 Tipo: 3 Sent: 2

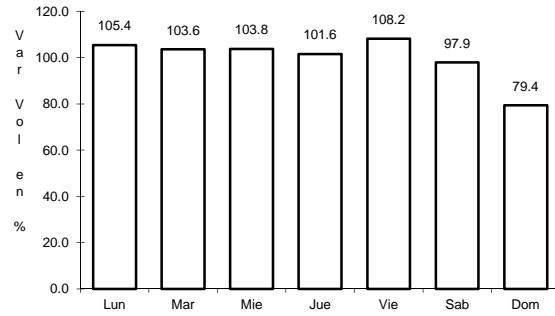


Km: 241.70 Tipo: 1 Sent: 0

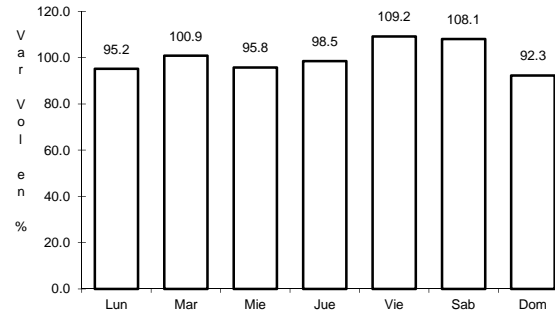
4 CARR: Ent. La Ventosa - San Pedro Tapanatepec

CLAVE: 20059

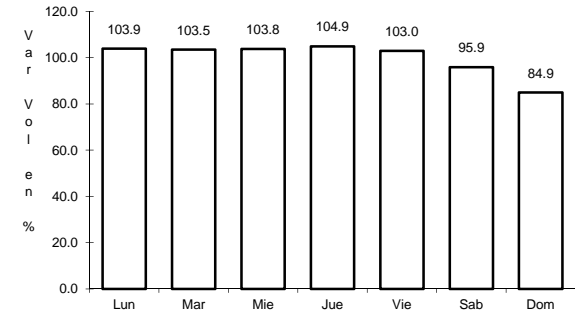
RUTA: MEX-190



Km: 0.00 Tipo: 3 Sent: 0



Km: 38.01 Tipo: 3 Sent: 0

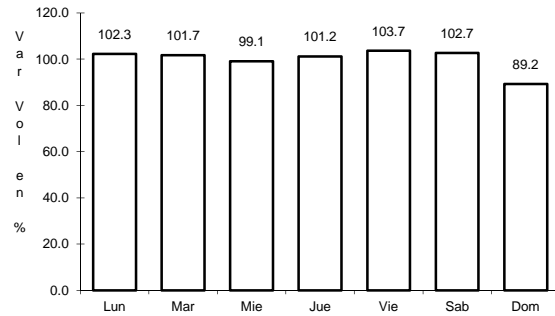


Km: 91.80 Tipo: 1 Sent: 0

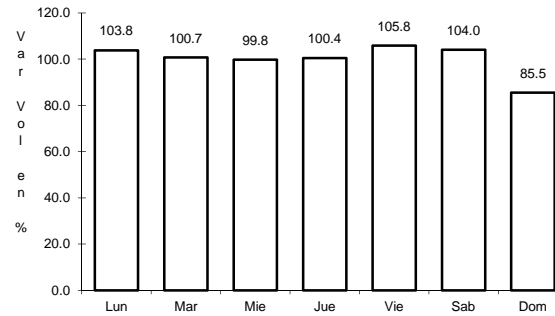
5 CARR: Huajuapán de León - Oaxaca

CLAVE: 20056

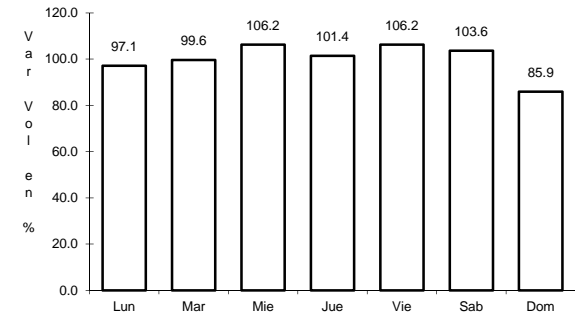
RUTA: MEX-190



Km: 1.35 Tipo: 1 Sent: 0



Km: 190.60 Tipo: 1 Sent: 1

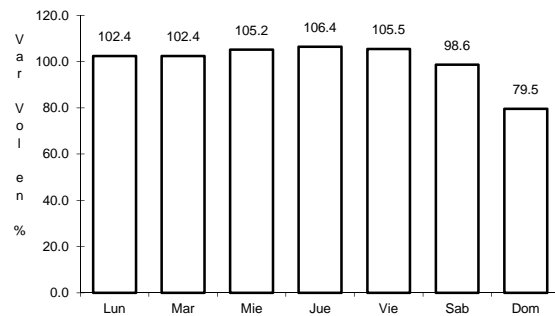


Km: 190.60 Tipo: 1 Sent: 2

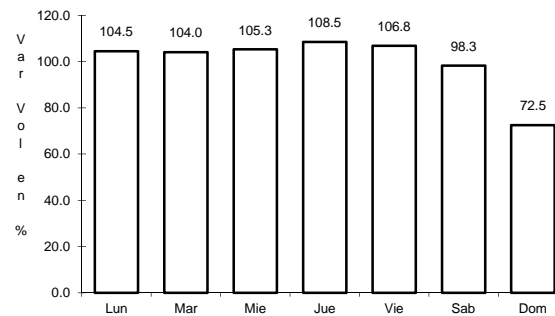
6 CARR: Juchitán - Ixtepéc

CLAVE: 20359

RUTA: MEX-185



Km: 0.15 Tipo: 3 Sent: 1

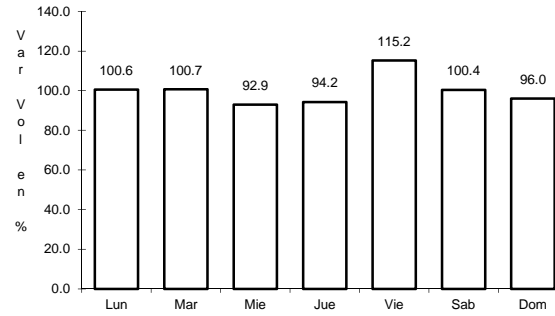
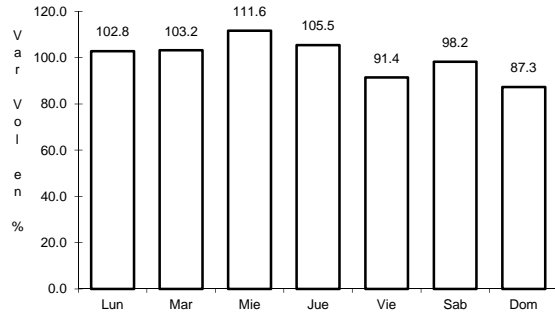


Km: 0.15 Tipo: 3 Sent: 2

7 CARR: La Granja - Temascal

CLAVE: 00275

RUTA: MEX-145



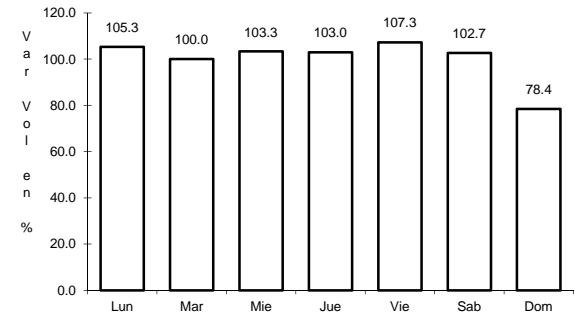
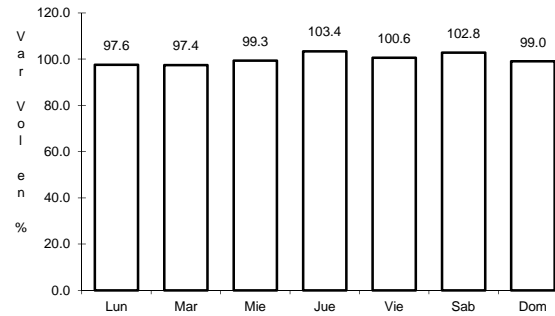
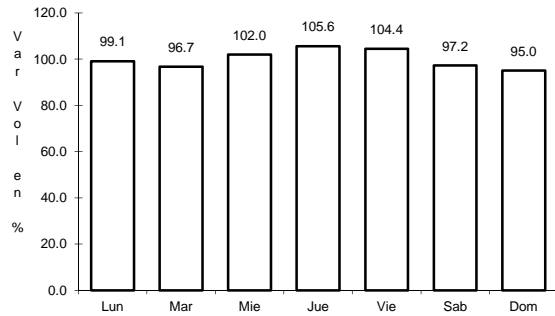
Km: 0.00 Tipo: 3 Sent: 0

Km: 23.00 Tipo: 1 Sent: 0

8 CARR: Las Cruces - Pinotepa Nacional

CLAVE: 00073

RUTA: MEX-200



Km: 0.00 Tipo: 3 Sent: 1

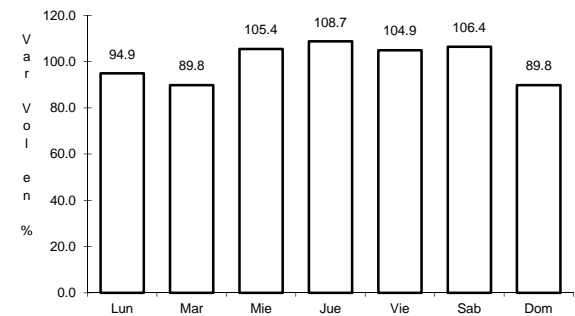
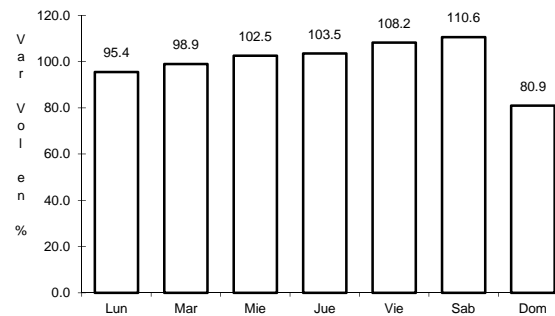
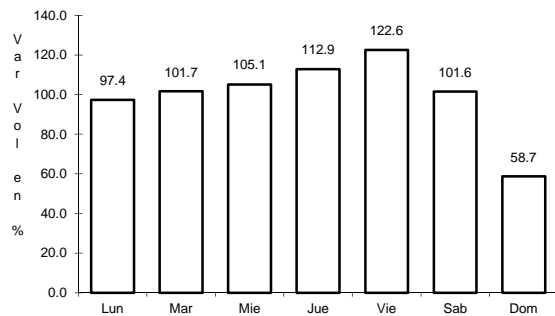
Km: 0.00 Tipo: 3 Sent: 2

Km: 245.47 Tipo: 3 Sent: 0

9 CARR: Libramiento de Pochutla

CLAVE:

RUTA: MEX-200



Km: 0.00 Tipo: 3 Sent: 0

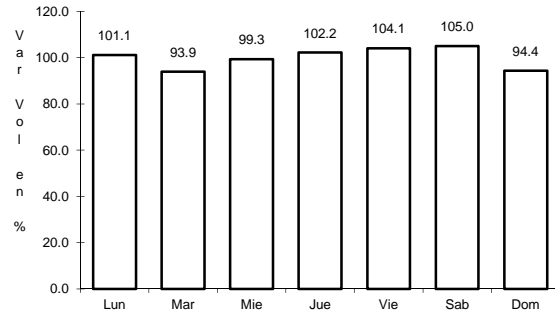
Km: 2.40 Tipo: 1 Sent: 0

Km: 5.20 Tipo: 1 Sent: 0

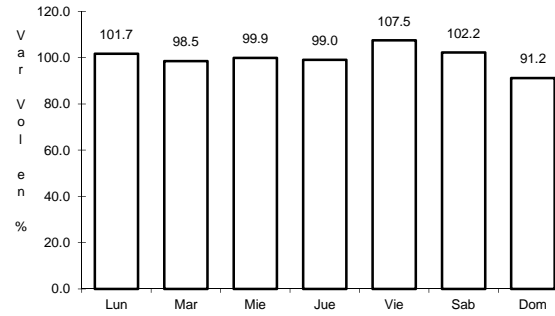
10 CARR: Libramiento de Santa María del Tule

CLAVE:

RUTA: MEX-190



Km: 0.00 Tipo: 3 Sent: 0

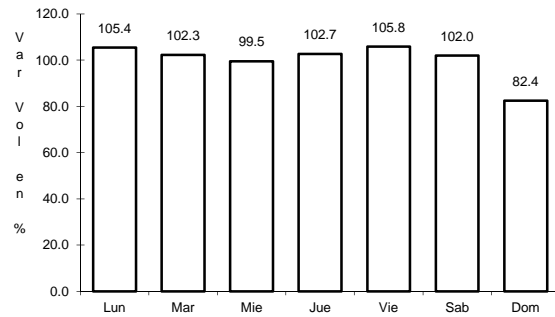


Km: 5.80 Tipo: 1 Sent: 0

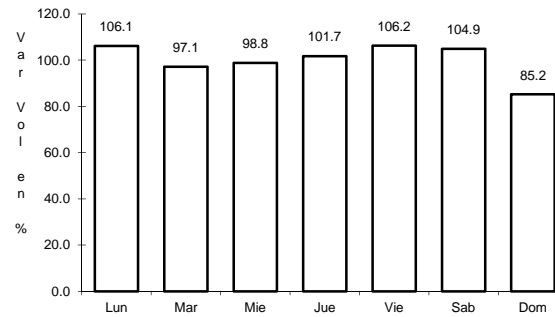
11 CARR: Oaxaca - Puerto Ángel

CLAVE: 20091

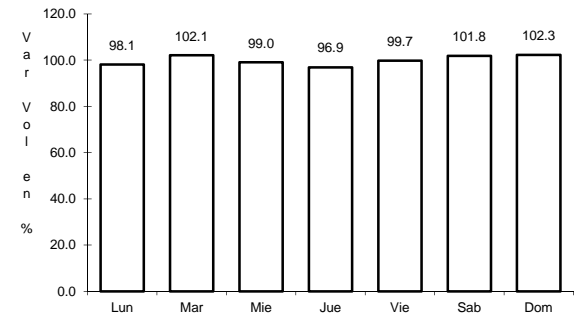
RUTA: MEX-175



Km: 0.00 Tipo: 3 Sent: 1



Km: 0.00 Tipo: 3 Sent: 2

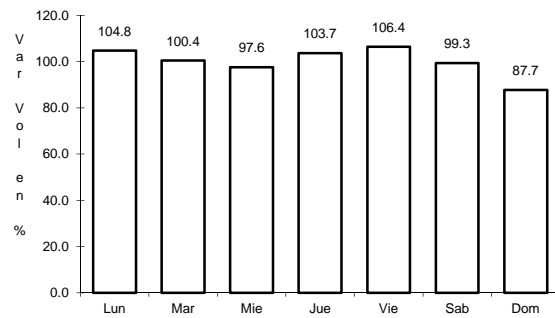


Km: 245.40 Tipo: 1 Sent: 0

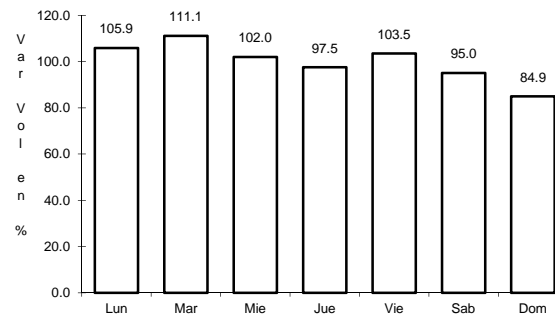
12 CARR: Oaxaca - Tehuantepec

CLAVE: 20057

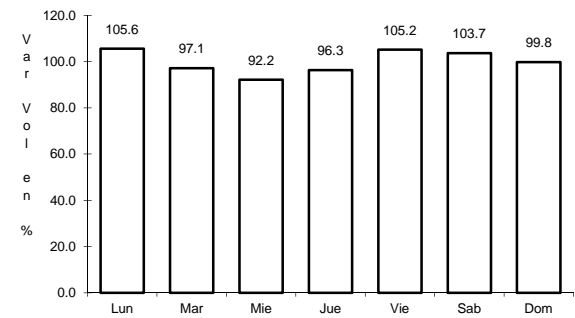
RUTA: MEX-190



Km: 0.00 Tipo: 3 Sent: 1



Km: 0.00 Tipo: 3 Sent: 2

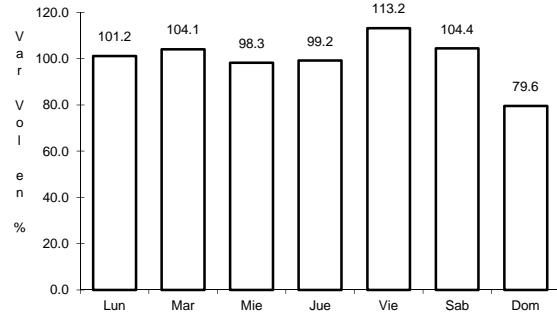


Km: 250.60 Tipo: 1 Sent: 0

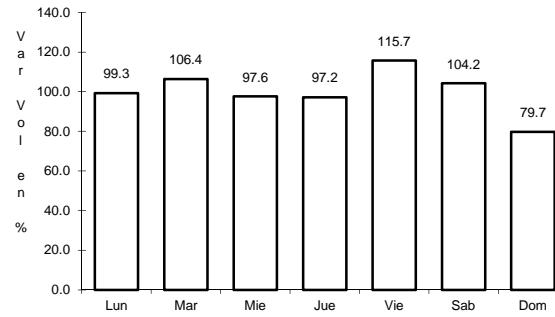
13 CARR: Puebla - Huajuapán de León

CLAVE: 00049

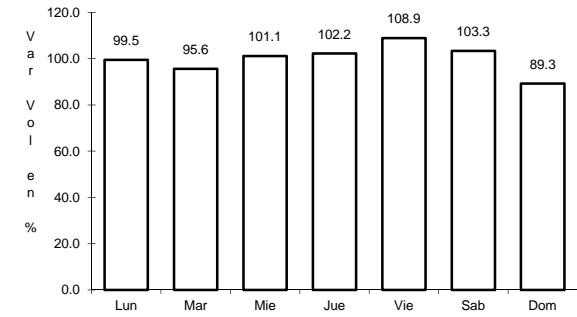
RUTA: MEX-190



Km: 0.00 Tipo: 3 Sent: 1



Km: 0.00 Tipo: 3 Sent: 2

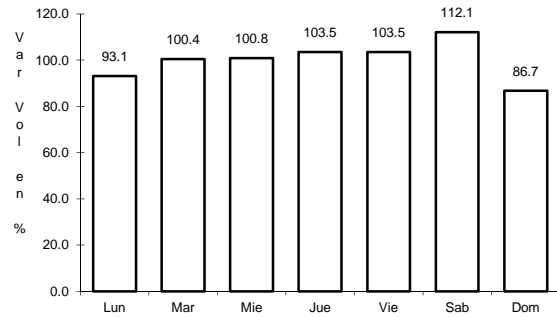


Km: 219.30 Tipo: 1 Sent: 0

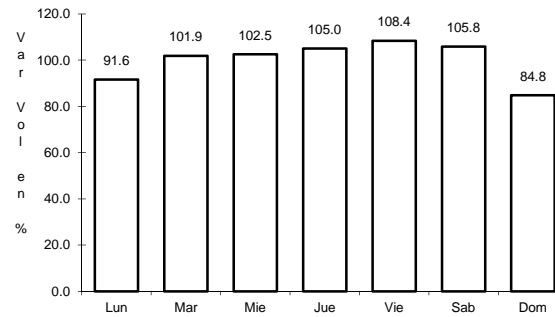
14 CARR: Ramal a Asunción Ixtaltepec

CLAVE: 20624

RUTA: MEX-185



Km: 0.00 Tipo: 3 Sent: 0

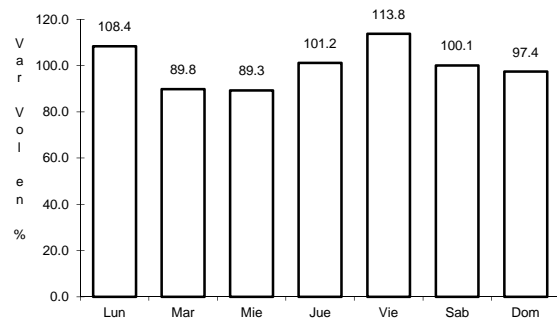


Km: 9.70 Tipo: 1 Sent: 0

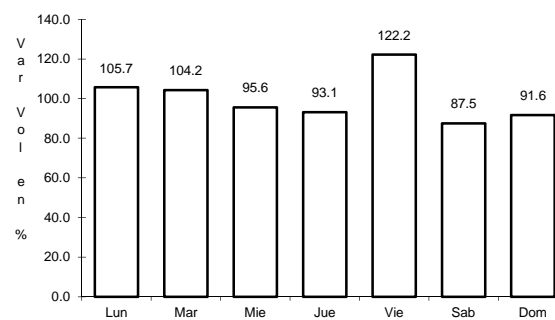
15 CARR: San Pablo Villa de Mitla - T. C. (Tuxtpec - Palomares)

CLAVE: 00106

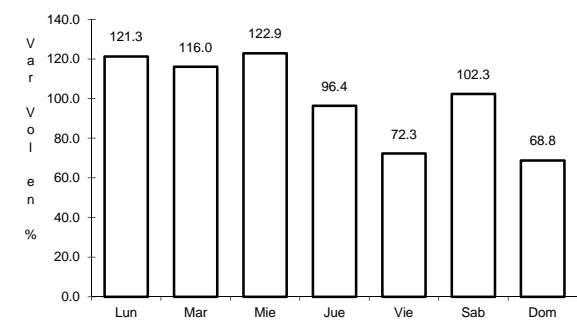
RUTA: MEX-179



Km: 0.00 Tipo: 3 Sent: 0



Km: 90.00 Tipo: 1 Sent: 0

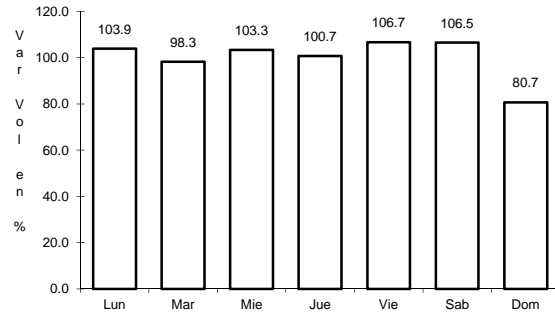


Km: 238.70 Tipo: 1 Sent: 0

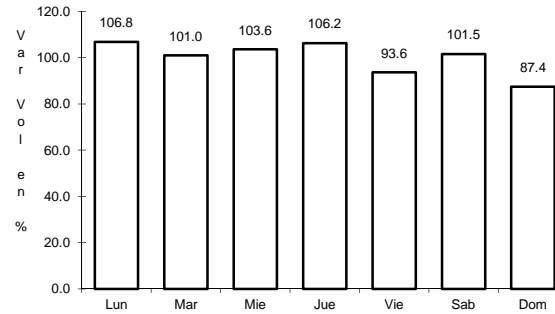
16 CARR: Santiago Pinotepa Nacional - Salina Cruz

CLAVE: 20074

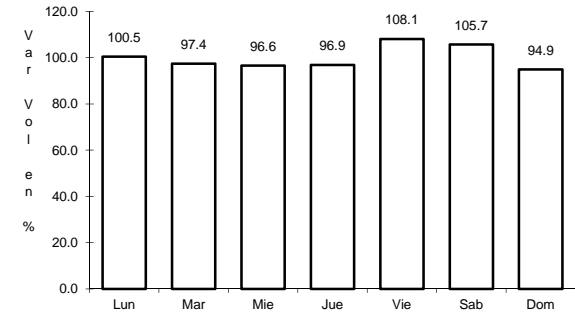
RUTA: MEX-200



Km: 0.00 Tipo: 3 Sent: 0



Km: 209.95 Tipo: 1 Sent: 0

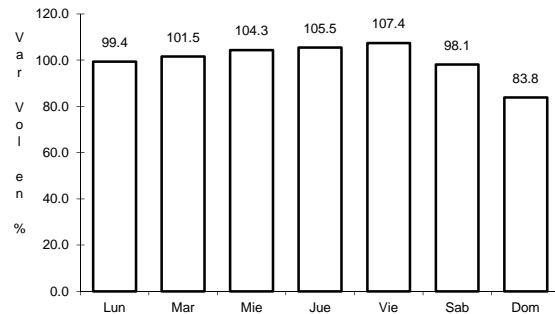


Km: 380.00 Tipo: 3 Sent: 0

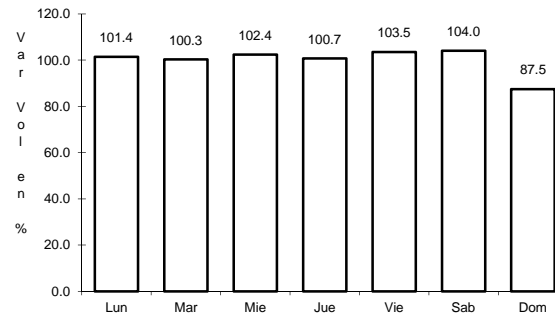
17 CARR: Tapanatepec - Talismán

CLAVE: 00075

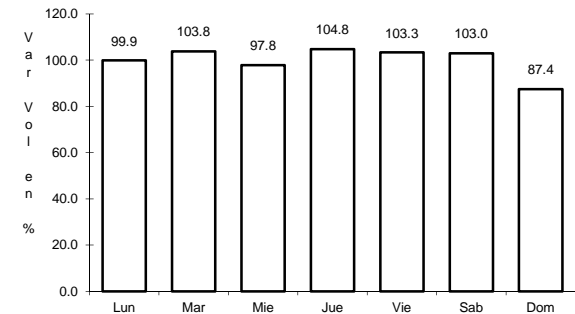
RUTA: MEX-200



Km: 0.00 Tipo: 3 Sent: 0



Km: 45.00 Tipo: 1 Sent: 0

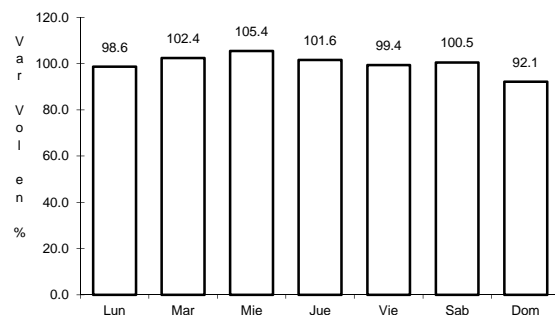


Km: 310.77 Tipo: 1 Sent: 0

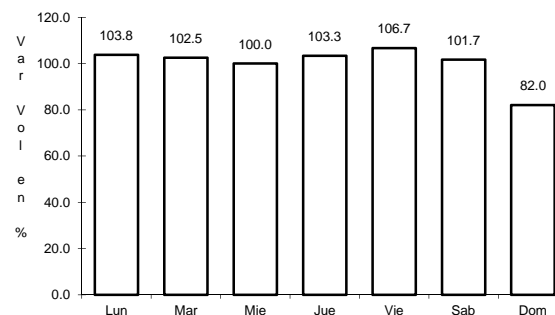
18 CARR: Tapanatepec - Tuxtla Gutiérrez

CLAVE: 00060

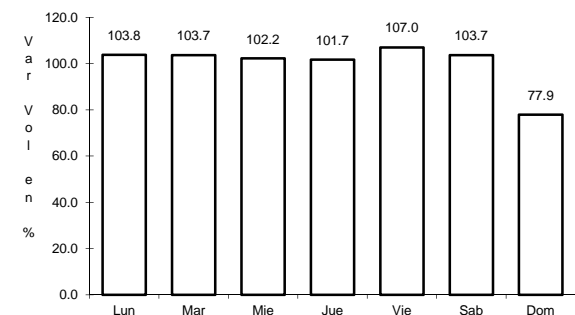
RUTA: MEX-190



Km: 0.00 Tipo: 3 Sent: 0



Km: 159.00 Tipo: 1 Sent: 1

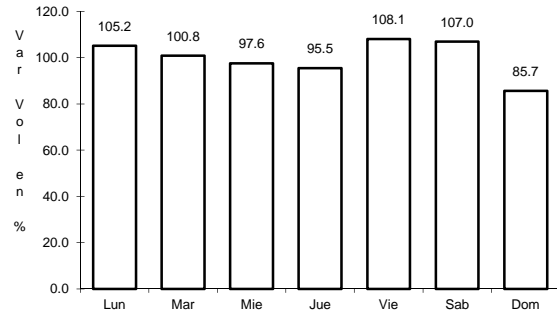


Km: 159.00 Tipo: 1 Sent: 2

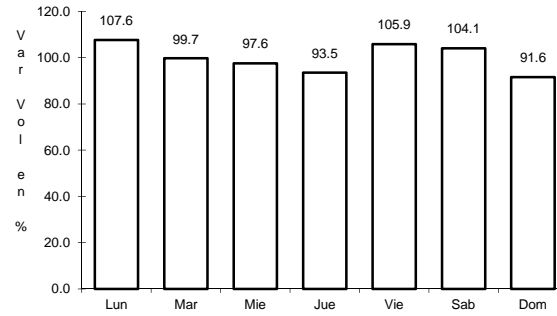
19 CARR: Tehuacán - Huajuapán de León

CLAVE: 00211

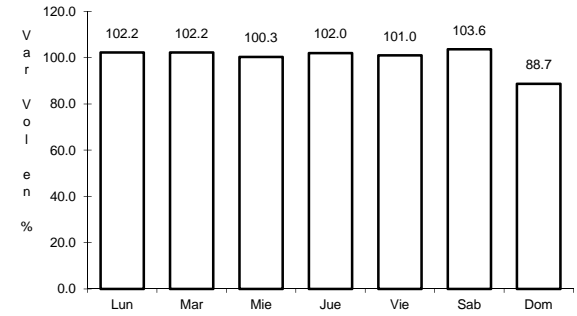
ruta: MEX-125



Km: 0.00 Tipo: 3 Sent: 1



Km: 0.00 Tipo: 3 Sent: 2

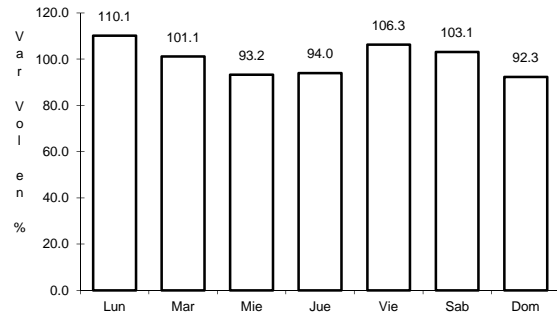


Km: 119.40 Tipo: 1 Sent: 0

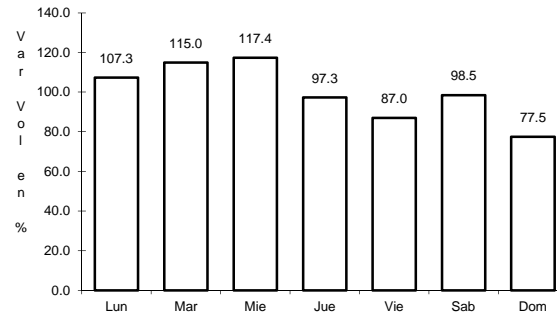
20 CARR: Tuxtepec - Ent. Palomares

CLAVE: 00180

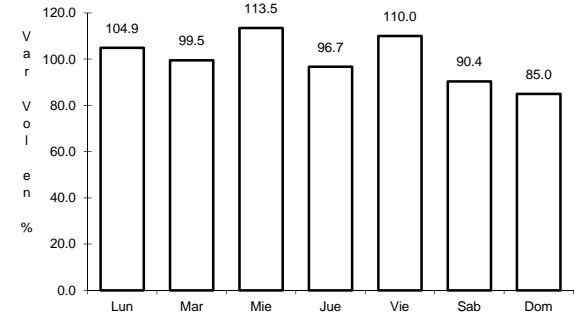
ruta: MEX-147



Km: 0.00 Tipo: 3 Sent: 0



Km: 81.20 Tipo: 1 Sent: 0

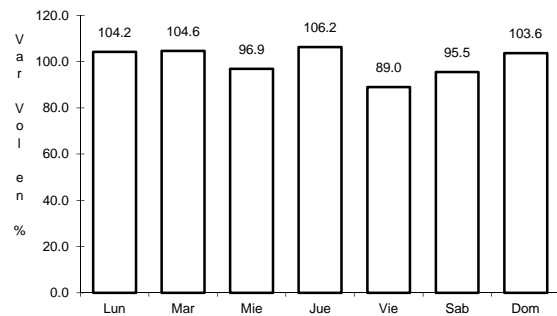


Km: 175.00 Tipo: 1 Sent: 0

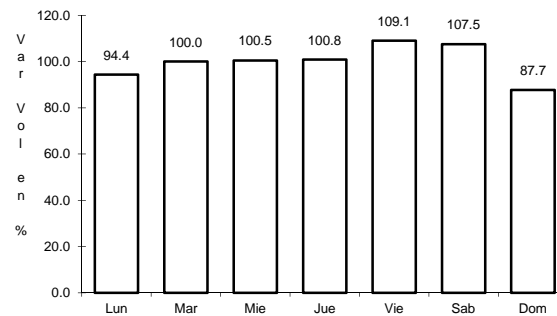
21 CARR: Tuxtepec - T. C. (Oaxaca - Tehuantepec)

CLAVE: 20090

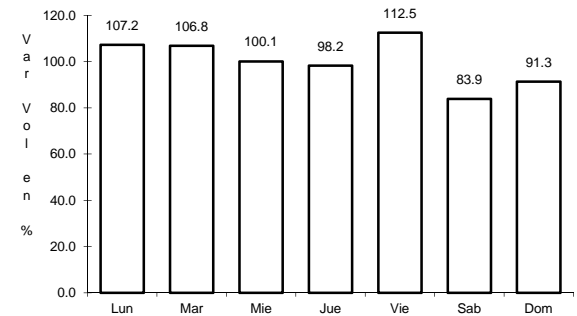
ruta: MEX-175



Km: 0.00 Tipo: 3 Sent: 1



Km: 0.00 Tipo: 3 Sent: 2

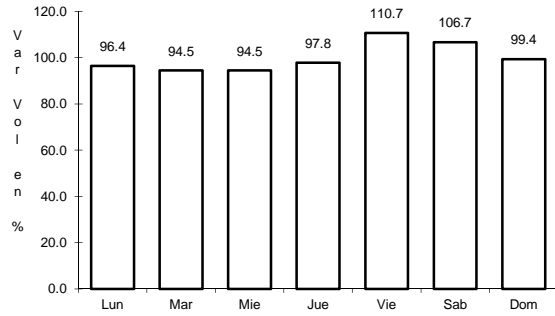


Km: 125.00 Tipo: 3 Sent: 0

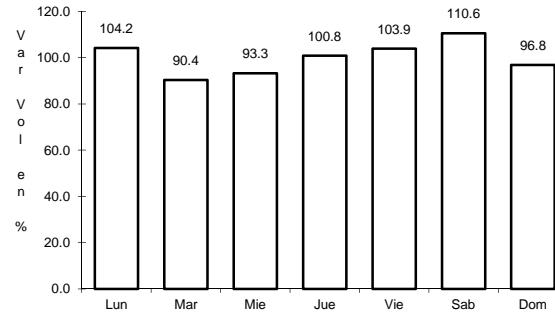
22 CARR: Yucudaa - Santiago Pinotepa Nacional

CLAVE: 20030

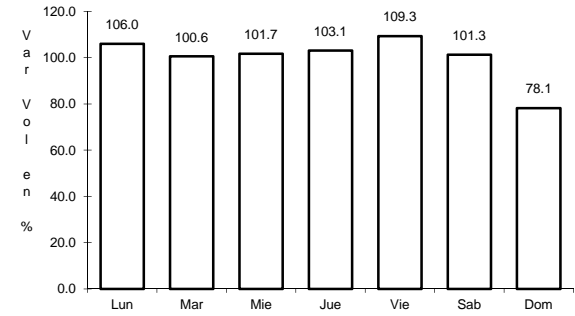
RUTA: MEX-125



Km: 0.00 Tipo: 3 Sent: 0



Km: 104.00 Tipo: 1 Sent: 0

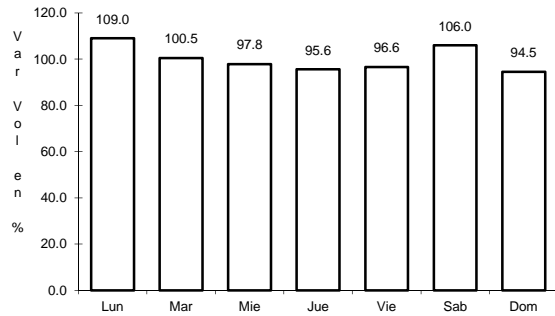


Km: 268.00 Tipo: 1 Sent: 0

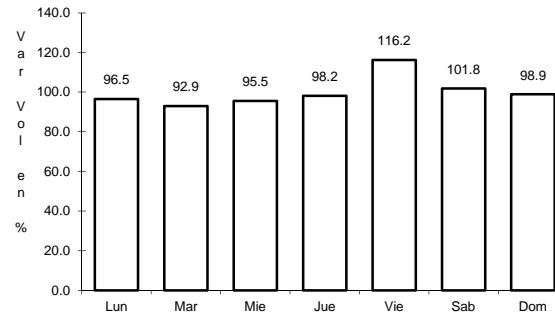
23 CARR: Cuacnopalan - Oaxaca (Cuota)

CLAVE: 00109

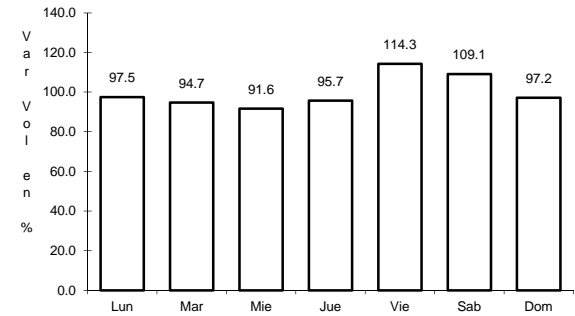
RUTA: MEX-135D



Km: 0.00 Tipo: 3 Sent: 0



Km: 242.70 Tipo: 1 Sent: 1

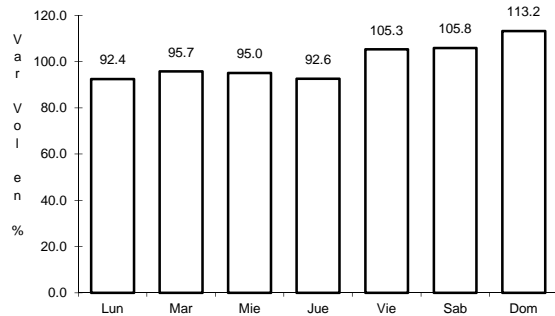


Km: 242.70 Tipo: 1 Sent: 2

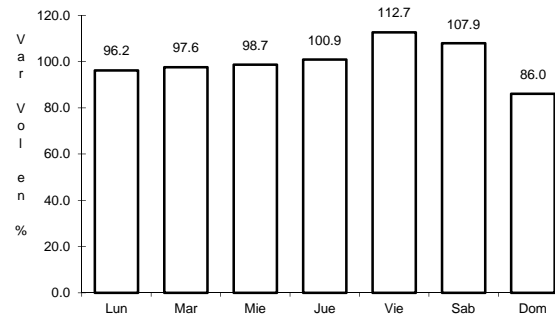
24 CARR: Salina Cruz - La Ventosa (Cuota)

CLAVE: 00275

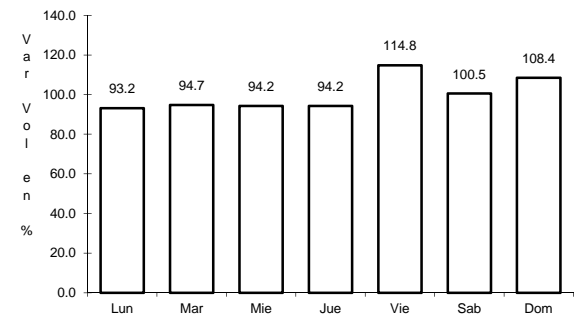
RUTA: MEX-185D



Km: 23.19 Tipo: 1 Sent: 0



Km: 23.19 Tipo: 3 Sent: 0

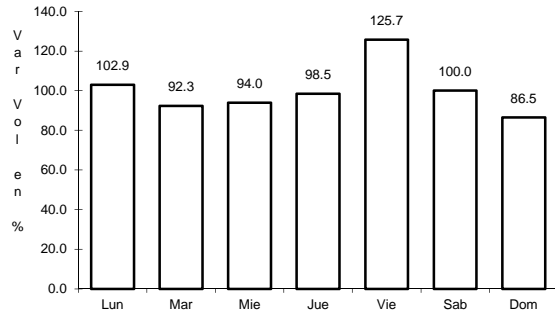


Km: 75.39 Tipo: 1 Sent: 0

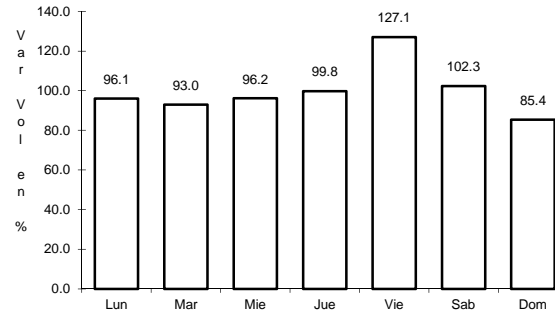
25 CARR: Cd. Ixtepec - Guevea de Humboldt

CLAVE: 00301

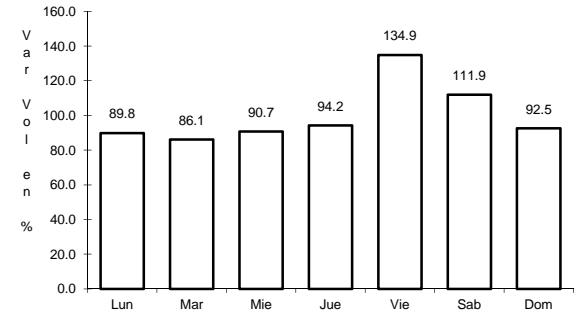
RUTA: OAX



Km: 4.00 Tipo: 1 Sent: 1



Km: 4.00 Tipo: 1 Sent: 2

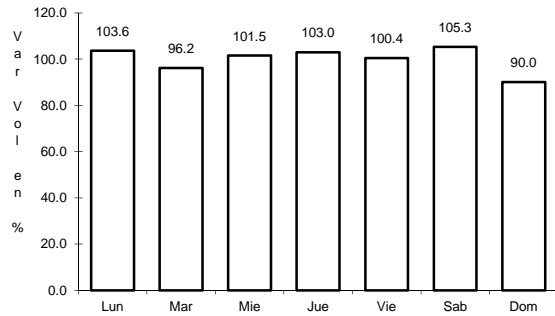


Km: 4.00 Tipo: 3 Sent: 0

26 CARR: El Zapote - Copalita

CLAVE: 00109

RUTA: OAX

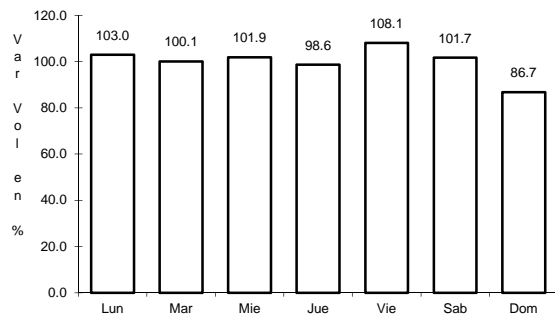


Km: 0.00 Tipo: 3 Sent: 0

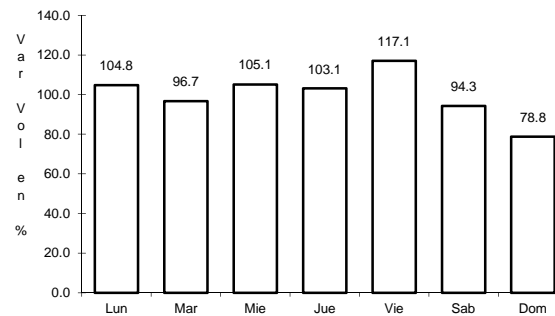
27 CARR: Huajuapán de León - El Carrizal

CLAVE: 00109

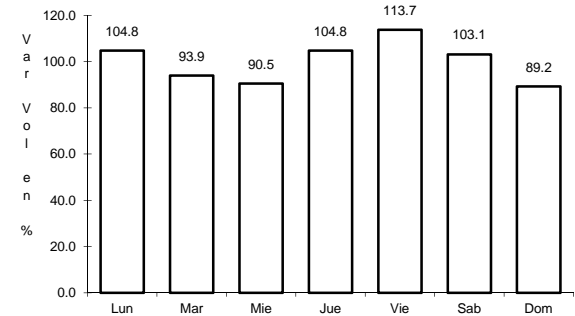
RUTA: OAX



Km: 0.00 Tipo: 3 Sent: 0



Km: 83.60 Tipo: 1 Sent: 0

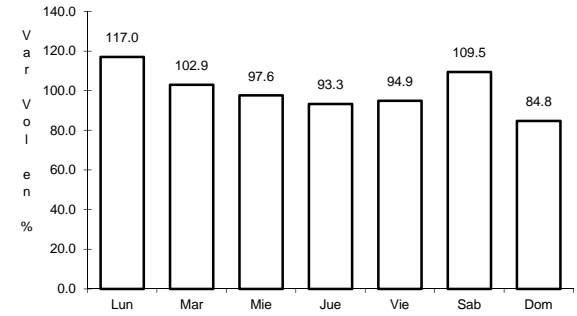
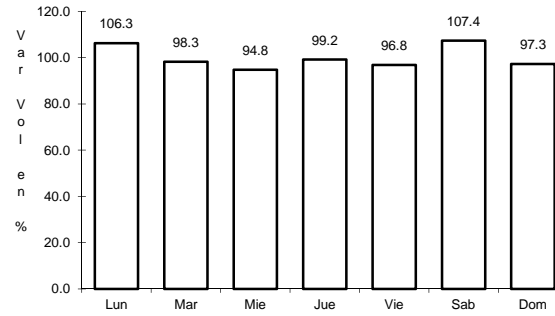
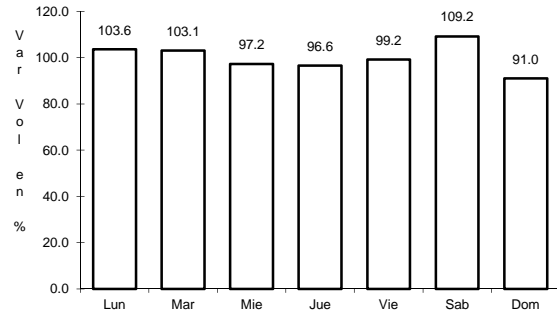


Km: 130.00 Tipo: 1 Sent: 0

28 CARR: Loma Bonita - Mixtán

CLAVE: 20043

RUTA: OAX



Km: 1.00 Tipo: 1 Sent: 1

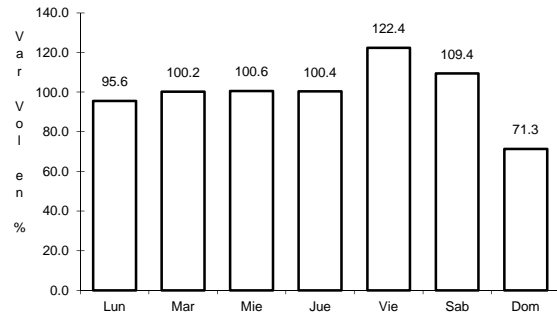
Km: 1.00 Tipo: 1 Sent: 2

Km: 12.00 Tipo: 3 Sent: 0

29 CARR: Ramal a Reforma de Pineda

CLAVE: 20010

RUTA: OAX

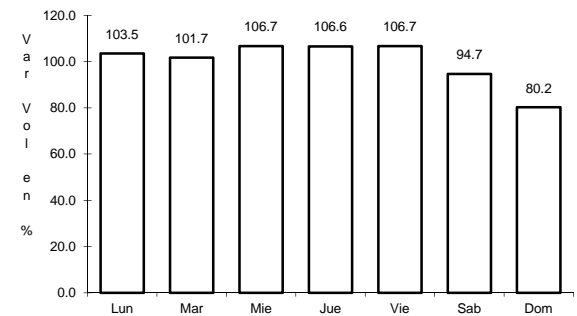
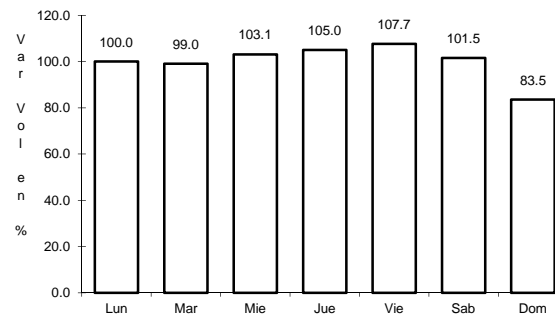
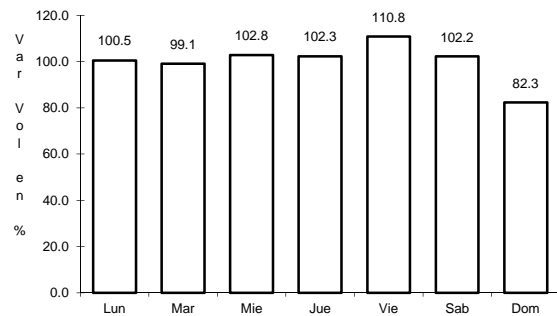


Km: 0.00 Tipo: 3 Sent: 0

30 CARR: Ramal a Unión Hidalgo

CLAVE: 20044

RUTA: OAX



Km: 0.00 Tipo: 3 Sent: 1

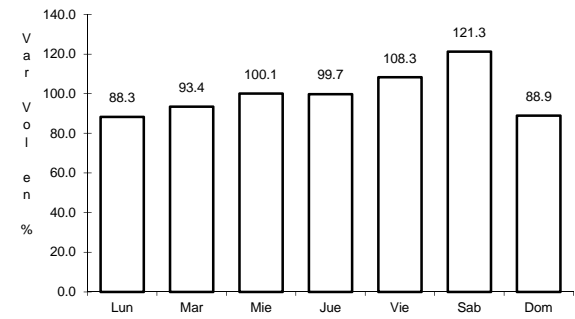
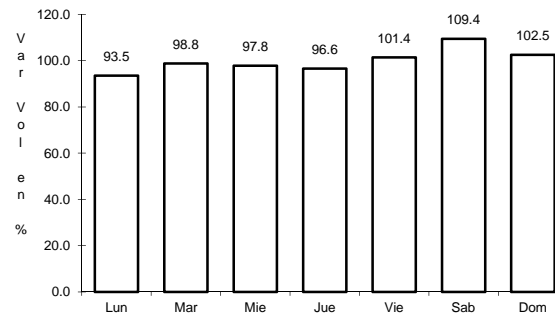
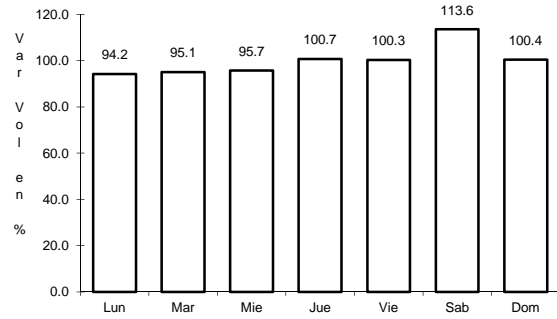
Km: 0.00 Tipo: 3 Sent: 2

Km: 12.00 Tipo: 1 Sent: 0

31 CARR: San Antonio - Puerto Angel

CLAVE:

RUTA: OAX



Km: 0.00 Tipo: 3 Sent: 0

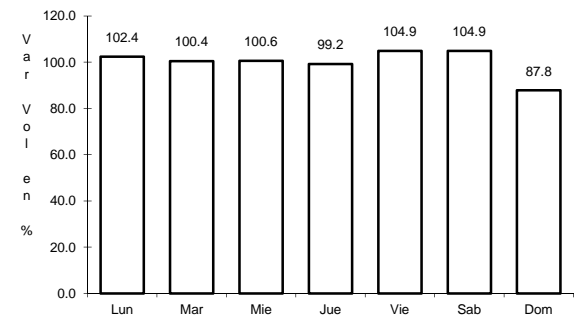
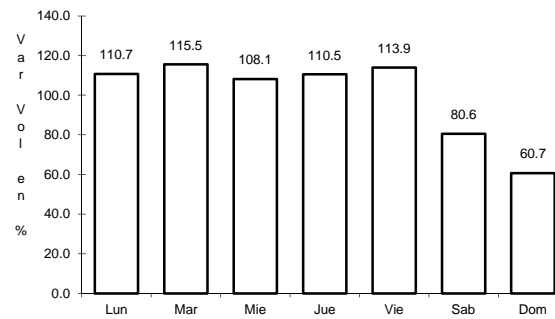
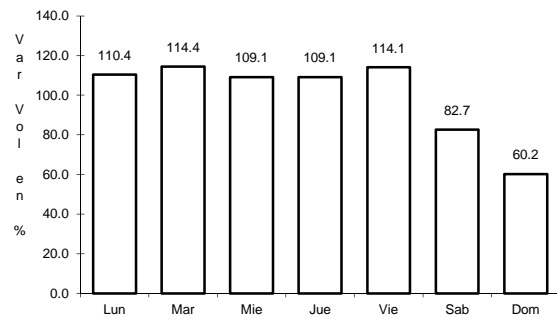
Km: 7.30 Tipo: 1 Sent: 0

Km: 7.30 Tipo: 3 Sent: 0

32 CARR: T. C. (Oaxaca - Puerto Ángel) - Puerto Escondido

CLAVE: 20009

RUTA: MEX-OAX-161



Km: 0.00 Tipo: 3 Sent: 1

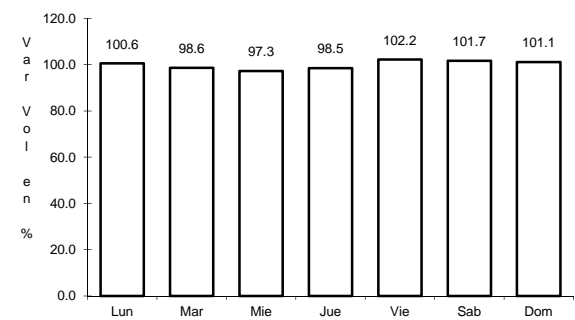
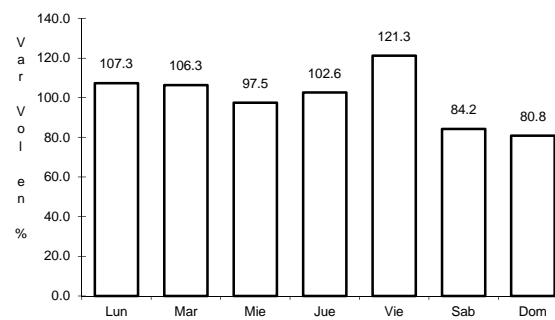
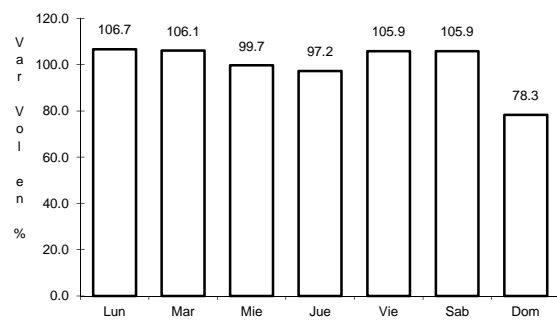
Km: 0.00 Tipo: 3 Sent: 2

Km: 248.00 Tipo: 1 Sent: 0

33 CARR: Tehuacán - Huitzo

CLAVE: 00211

RUTA: PUE-MEX-135

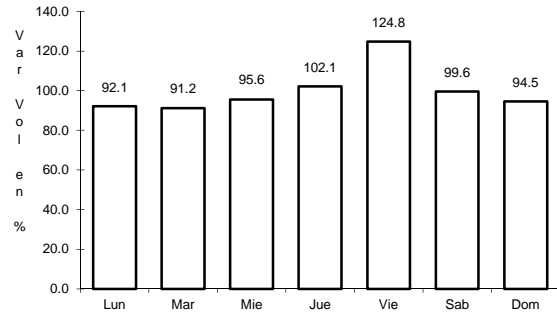


Km: 0.00 Tipo: 3 Sent: 0

Km: 118.80 Tipo: 1 Sent: 0

Km: 202.70 Tipo: 1 Sent: 0

34 CARR: Teotitlán de Flores Magón - Tuxtepec

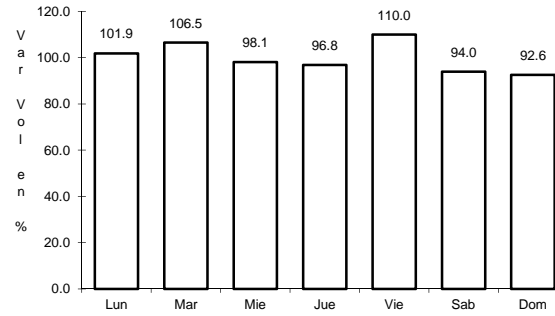


Km: 0.00

Tipo: 3

Sent: 0

CLAVE: 00108

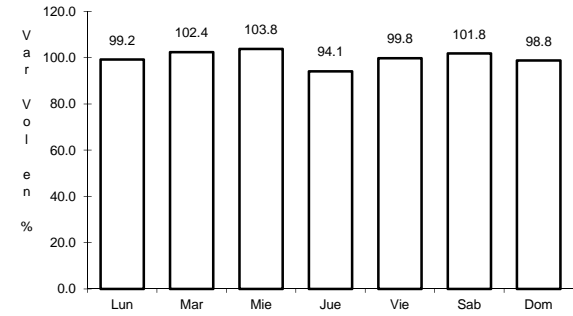


Km: 65.00

Tipo: 1

Sent: 0

RUTA: OAX-PUE-MEX-182



Km: 185.00

Tipo: 1

Sent: 0