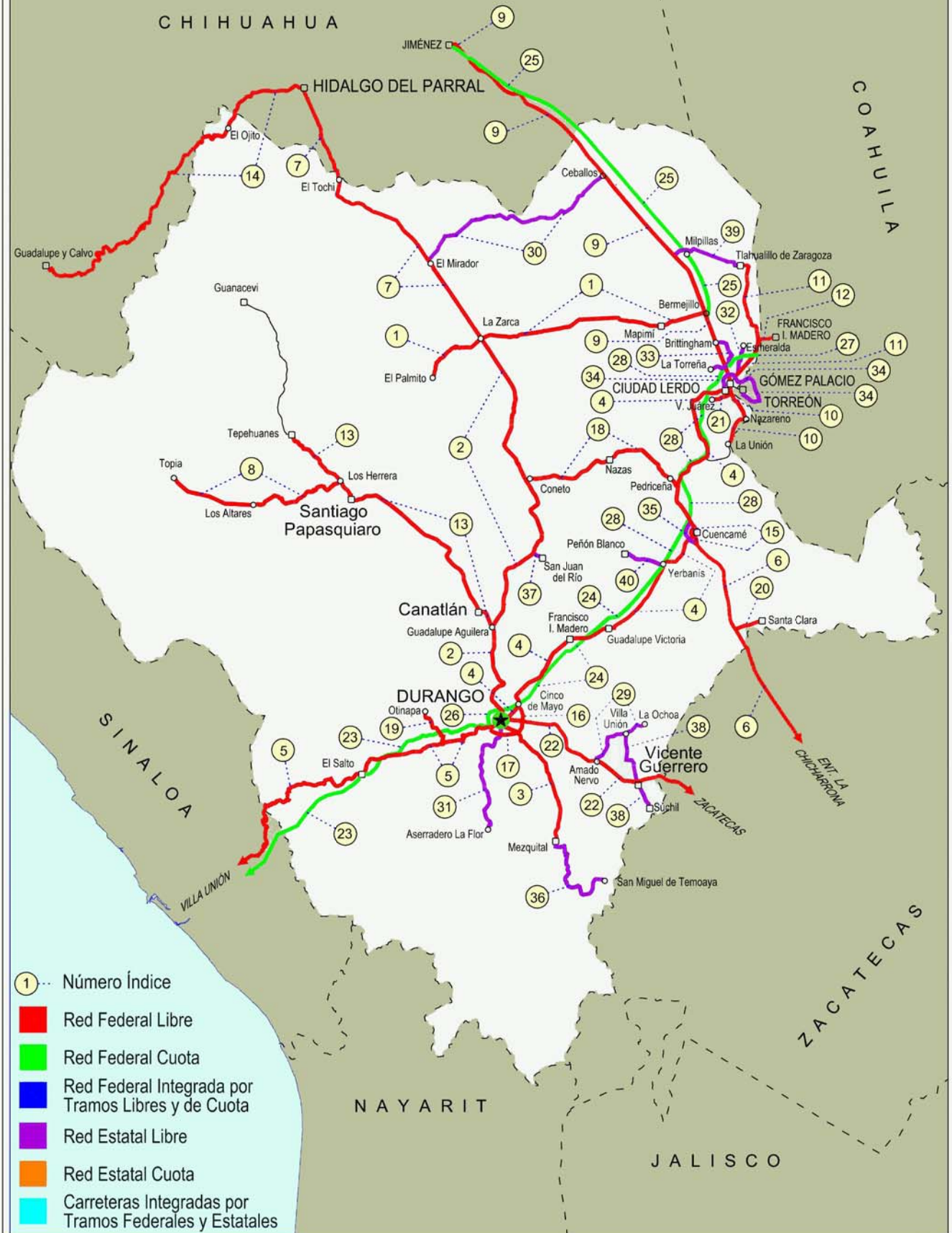
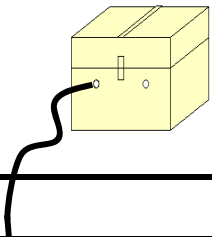


10 DURANGO

SECRETARÍA DE COMUNICACIONES Y TRANSPORTES
DIRECCIÓN GENERAL DE SERVICIOS TÉCNICOS





DURANGO

---RED FEDERAL LIBRE---

1	Bermejillo - El Palmito	MEX-030
2	Durango - Ent. La Zarca	MEX-045
3	Durango - Mezquital	MEX-023
4	Durango - Torreón	MEX-040
5	Durango - Villa Unión	MEX-040
6	Ent. La Chicharrona - Cuencamé	MEX-049
7	Ent. La Zarca - Hidalgo del Parral	MEX-045
8	Ent. Los Herrera - Topia	MEX-036
9	Gómez Palacio - Jiménez	MEX-049
10	Gómez Palacio - La Unión	MEX-040
11	Gómez Palacio - Tlahualillo	MEX-040
12	Gregorio García - Francisco I. Madero	MEX-040
13	Guadalupe Aguilera - Tepehuanes	MEX-023
14	Hidalgo del Parral - Guadalupe y Calvo	MEX-024
15	Libramiento Cuencamé	MEX
16	Libramiento Oriente de Durango	MEX-045
17	Libramiento Sur de Durango	MEX-045
18	Pedriceña - Ent. Rodeo	MEX-034
19	Ramal a Otinapa	MEX
20	Ramal a Santa Clara	MEX-049
21	Ramal a Villa Juárez	MEX-040
22	Zacatecas - Durango	MEX-045

---RED FEDERAL DE CUOTA---

23	Durango - Mazatlán (Cuota)	MEX-040D
24	Durango - Yerbanís (Cuota)	MEX-040D
25	Gómez Palacio - Corralitos (Cuota)	MEX-049D
26	Libramiento de Durango (Cuota)	MEX-040D
27	Libramiento Norte de Torreón	MEX-040D
28	Yerbanís - Gómez Palicio (Cuota)	MEX-040D

---RED ESTATAL LIBRE---

29	Amado Nervo - La Ochoa	DGO-542
30	Ceballos - El Mirador	DGO-044
31	Durango - Aserradero La Flor	DGO-115
32	Jabonoso - Esmeralda	DGO-363
33	La Torreña - Brittingham	DGO-325
34	Libramiento de Torreón	COA
35	Libramiento Exterior Cuencamé	DGO
36	Mezquital - San Miguel de Temoaya	DGO
37	Ramal a San Juan del Río	DGO-290
38	Súchil - Villa Unión	DGO-241
39	Tlahualillo de Zaragoza - T.C. Gómez Palacio - Jiménez	DGO
40	Yerbanís - Peñón Blanco	DGO-316

DURANGO

1 CARR: Bermejillo - El Palmito

CLAVE: 10105

RUTA: MEX-030

AÑO: 2015

LUGAR	ESTACION				CLASIFICACION VEHICULAR EN PORCIENTO													COORDENADAS		
	KM	TE	SC	TDPA	M	A	B	C2	C3	T3S2	T3S3	T3S2R4	OTROS	A	B	C	K'	D	LATITUD	LONGITUD
Bermejillo	0.00	3	0	2983	0.7	66.7	1.1	13.5	5.7	6.2	1.9	2.2	2.0	67.4	1.1	31.5	0.075	0.510	25.892219	-103.631999
Santo Domingo	86.00	1	0	516	0.0	85.0	0.0	5.8	2.7	3.3	1.6	0.8	0.8	85.0	0.0	15.0	0.089	0.516	25.814272	-104.442077
Santo Domingo	86.00	3	0	536	0.0	70.1	0.3	15.7	5.2	5.2	1.5	2.0	0.0	70.1	0.3	29.6	0.151	0.501	25.813595	-104.448104
Ent. La Zarca	120.00	1	0	656	0.1	77.4	0.0	14.8	0.7	5.5	1.1	0.0	0.4	77.5	0.0	22.5	0.104	0.507	25.783541	-104.761184
Ent. La Zarca	120.00	3	0	363	0.0	79.2	0.0	18.0	0.0	1.6	0.0	0.0	1.2	79.2	0.0	20.8	0.077	0.501	25.781792	-104.765405
El Palmito	160.00	1	0	290	0.0	83.7	0.0	14.8	0.6	0.2	0.0	0.0	0.7	83.7	0.0	16.3	0.121	0.511	25.616149	-105.000677

2 CARR: Durango - Ent. La Zarca

CLAVE: 10016

RUTA: MEX-045

AÑO: 2015

LUGAR	ESTACION				CLASIFICACION VEHICULAR EN PORCIENTO													COORDENADAS		
	KM	TE	SC	TDPA	M	A	B	C2	C3	T3S2	T3S3	T3S2R4	OTROS	A	B	C	K'	D	LATITUD	LONGITUD
Durango	0.00	3	1	15176	2.5	88.6	0.0	2.5	2.3	1.2	0.4	0.2	2.3	91.1	0.0	8.9	0.085	0.510	24.038852	-104.657857
Durango	0.00	3	2	15791	2.3	90.6	0.0	2.6	2.0	0.6	0.1	0.2	1.6	92.9	0.0	7.1	0.081	0.510	24.038852	-104.657857
Caseta Fiscal Zona Industrial	5.30	1	1	8566	1.7	87.3	0.4	2.9	3.2	1.5	1.1	0.3	1.6	89.0	0.4	10.6	0.079	0.507	24.050346	-104.657883
Caseta Fiscal Zona Industrial	5.30	1	2	8332	1.0	87.5	0.3	2.4	3.5	2.1	1.1	0.3	1.8	88.5	0.3	11.2	0.084	0.507	24.050346	-104.657883
Caseta Fiscal Zona Industrial	5.30	3	1	7896	1.9	85.1	1.0	3.7	3.1	1.7	0.7	0.2	2.6	87.0	1.0	12.0	0.076	0.504	24.061278	-104.655876
Caseta Fiscal Zona Industrial	5.30	3	2	8011	1.6	85.7	0.9	3.2	3.8	1.8	1.0	0.2	1.8	87.3	0.9	11.8	0.063	0.504	24.061278	-104.655876
X. Periférico de Durango	6.20	3	1	6711	0.5	78.1	3.4	10.6	3.1	2.3	1.6	0.2	0.2	78.6	3.4	18.0	0.081	0.505	24.070940	-104.655886
X. Periférico de Durango	6.20	3	2	6835	0.5	77.8	3.8	9.9	3.5	2.5	1.8	0.2	0.0	78.3	3.8	17.9	0.078	0.505	24.070940	-104.655886
T. Der. San José del Molino	28.00	1	0	445	2.2	73.7	0.3	20.9	1.5	0.4	0.8	0.1	0.1	75.9	0.3	23.8	0.099	0.559	24.206577	-104.660980
T. Izq. Canatlán	55.25	1	0	5729	0.7	78.3	3.0	9.4	2.0	4.4	1.7	0.0	0.5	79.0	3.0	18.0	0.072	0.511	24.431597	-104.698891
T. Izq. Canatlán	55.25	3	0	2937	1.2	87.5	0.6	3.8	2.6	1.5	0.4	0.0	2.4	88.7	0.6	10.7	0.076	0.513	24.446030	-104.699033
T. Der. San Juan del Río	105.81	1	0	2867	0.6	92.0	0.4	3.6	1.0	1.0	0.3	0.0	1.1	92.6	0.4	7.0	0.080	0.517	24.790751	-104.506087
T. Der. San Juan del Río	105.81	3	0	2014	0.3	87.0	3.7	4.5	1.7	1.3	1.0	0.2	0.3	87.3	3.7	9.0	0.076	0.508	24.802260	-104.498260
T. Der. Nazas	155.50	3	0	2717	1.0	90.9	0.0	3.6	1.5	1.5	1.3	0.2	0.0	91.9	0.0	8.1	0.065	0.509	25.131223	-104.540842
T. Der. Rodeo	160.70	1	0	2889	0.9	92.4	0.5	3.0	1.1	1.0	0.6	0.1	0.4	93.3	0.5	6.2	0.069	0.506	25.164440	-104.552754
T. Izq. Abasolo	178.00	3	0	1027	0.5	81.0	5.0	7.3	2.0	2.1	1.0	0.1	1.0	81.5	5.0	13.5	0.082	0.510	25.310554	-104.639710
Ent. La Zarca	239.50	1	0	709	0.6	77.7	5.7	8.5	2.3	3.0	1.7	0.1	0.4	78.3	5.7	16.0	0.083	0.506	25.779686	-104.761243

3 CARR: Durango - Mezquital

CLAVE: 10423

RUTA: MEX-023

AÑO: 2015

LUGAR	ESTACION				CLASIFICACION VEHICULAR EN PORCIENTO													COORDENADAS		
	KM	TE	SC	TDPA	M	A	B	C2	C3	T3S2	T3S3	T3S2R4	OTROS	A	B	C	K'	D	LATITUD	LONGITUD
Durango	0.00	3	1	6991	1.2	88.3	1.5	7.3	1.1	0.3	0.2	0.0	0.1	89.5	1.5	9.0	0.094	0.502	23.994574	-104.632940
Durango	0.00	3	2	7034	1.2	88.8	1.3	7.1	1.0	0.3	0.2	0.0	0.1	90.0	1.3	8.7	0.073	0.502	23.994574	-104.632940

DURANGO

3 CARR: Durango - Mezquital

CLAVE: 10423

RUTA: MEX-023

AÑO: 2015

LUGAR	ESTACION				CLASIFICACION VEHICULAR EN PORCIENTO													COORDENADAS		
	KM	TE	SC	TDPA	M	A	B	C2	C3	T3S2	T3S3	T3S2R4	OTROS	A	B	C	K'	D	LATITUD	LONGITUD
Gabino Santillán	8.00	3	1	3136	2.6	85.9	1.4	6.1	2.5	0.7	0.6	0.0	0.2	88.5	1.4	10.1	0.103	0.502	23.980729	-104.591990
Gabino Santillán	8.00	3	2	3117	1.9	87.5	0.7	5.9	2.3	0.8	0.6	0.0	0.3	89.4	0.7	9.9	0.088	0.502	23.980729	-104.591990
T. Izq. Monte Morelos	13.00	3	0	3783	2.0	82.9	1.8	8.3	3.5	1.1	0.2	0.0	0.2	84.9	1.8	13.3	0.080	0.503	23.952626	-104.562631
Pino Suarez	24.20	3	0	1600	2.5	81.9	3.5	9.3	1.8	0.3	0.2	0.0	0.5	84.4	3.5	12.1	0.113	0.503	23.875279	-104.484283
Mezquital	82.00	1	1	965	3.8	92.0	0.2	1.8	1.3	0.1	0.2	0.0	0.6	95.8	0.2	4.0	0.081	0.501	23.485359	-104.385616
Mezquital	82.00	1	2	968	5.4	91.0	0.1	2.1	0.6	0.3	0.2	0.0	0.3	96.4	0.1	3.5	0.069	0.501	23.485359	-104.385616

4 CARR: Durango - Torreón

CLAVE: 10085

RUTA: MEX-040

AÑO: 2015

LUGAR	ESTACION				CLASIFICACION VEHICULAR EN PORCIENTO													COORDENADAS		
	KM	TE	SC	TDPA	M	A	B	C2	C3	T3S2	T3S3	T3S2R4	OTROS	A	B	C	K'	D	LATITUD	LONGITUD
Durango	0.00	3	1	9096	0.8	89.1	3.0	4.0	1.1	1.3	0.4	0.1	0.2	89.9	3.0	7.1	0.077	0.513	24.077214	-104.590476
Durango	0.00	3	2	9574	1.4	86.0	3.2	6.4	1.1	1.3	0.3	0.1	0.2	87.4	3.2	9.4	0.072	0.513	24.077214	-104.590476
T. Der. Cd. de Los Niños	7.70	3	1	6099	2.9	82.0	4.0	3.5	1.6	2.1	0.8	1.0	2.1	84.9	4.0	11.1	0.072	0.506	24.082005	-104.586528
T. Der. Cd. de Los Niños	7.70	3	2	6238	1.5	89.7	1.7	2.2	1.1	1.5	0.4	1.0	0.9	91.2	1.7	7.1	0.073	0.506	24.082005	-104.586528
X. Periférico de Durango	9.00	1	1	6874	13.9	71.8	4.0	5.2	1.3	1.7	0.6	0.9	0.6	85.7	4.0	10.3	0.069	0.512	24.089488	-104.579960
X. Periférico de Durango	9.00	1	2	6545	1.4	85.0	5.5	2.9	1.1	1.5	0.6	0.9	1.1	86.4	5.5	8.1	0.072	0.512	24.089488	-104.579960
T. Der. Aeropuerto	9.42	1	1	5794	0.8	85.9	3.2	5.2	1.3	2.3	0.7	0.4	0.2	86.7	3.2	10.1	0.099	0.506	24.092381	-104.577642
T. Der. Aeropuerto	9.42	1	2	5942	0.6	85.2	3.7	6.0	1.4	2.0	0.5	0.3	0.3	85.8	3.7	10.5	0.089	0.506	24.092381	-104.577642
T. Der. Aeropuerto	9.42	3	1	5175	1.6	81.1	0.7	7.8	2.2	3.0	2.0	0.3	1.3	82.7	0.7	16.6	0.097	0.504	24.098612	-104.576291
T. Der. Aeropuerto	9.42	3	2	5111	2.1	80.1	1.3	9.2	1.8	2.7	1.1	0.1	1.6	82.2	1.3	16.5	0.077	0.504	24.098612	-104.576291
La Calera	10.85	3	0	7947	1.1	79.2	1.5	6.3	1.7	4.0	1.8	0.9	3.5	80.3	1.5	18.2	0.072	0.504	24.110154	-104.571849
Abraham González	27.10	3	0	4227	1.0	75.7	4.2	6.8	3.0	6.1	1.9	0.6	0.7	76.7	4.2	19.1	0.070	0.505	24.206300	-104.515267
Francisco I. Madero	56.30	1	0	4578	0.6	68.5	4.1	11.2	2.3	8.4	3.7	0.8	0.4	69.1	4.1	26.8	0.069	0.506	24.392980	-104.330017
Francisco I. Madero	56.30	3	0	4351	0.6	77.4	3.6	5.1	2.3	6.8	2.9	0.8	0.5	78.0	3.6	18.4	0.073	0.503	24.405101	-104.305497
Guadalupe Victoria	77.50	1	0	5154	0.4	78.3	3.7	5.3	2.0	6.4	2.7	0.8	0.4	78.7	3.7	17.6	0.069	0.504	24.446762	-104.139644
Guadalupe Victoria	77.50	3	0	7006	0.9	85.8	0.3	2.5	1.5	4.1	2.5	1.4	1.0	86.7	0.3	13.0	0.077	0.509	24.457947	-104.094983
T. Der. Ignacio Allende	90.13	1	0	4332	0.6	75.8	3.5	6.8	2.7	7.0	2.1	0.9	0.6	76.4	3.5	20.1	0.071	0.511	24.497518	-104.023577
T. Der. Ignacio Allende	90.13	3	0	3033	0.6	69.3	4.2	6.8	4.1	9.6	3.4	1.4	0.6	69.9	4.2	25.9	0.069	0.502	24.501085	-104.017766
T. Izq. Peñón Blanco	120.90	1	0	2342	0.6	61.0	6.0	7.7	5.0	12.4	4.8	1.7	0.8	61.6	6.0	32.4	0.070	0.503	24.732442	-103.843736
T. Izq. Peñón Blanco	120.90	3	0	2187	0.3	57.8	4.9	6.4	4.6	15.9	6.7	2.7	0.7	58.1	4.9	37.0	0.064	0.505	24.745765	-103.836075
Cuencamé	144.30	1	0	2039	2.7	92.3	0.0	3.3	1.7	0.0	0.0	0.0	0.0	95.0	0.0	5.0	0.059	0.512	24.861759	-103.700414
Cuencamé	144.30	3	0	6868	0.5	48.4	5.2	10.6	5.8	16.7	5.8	5.9	1.1	48.9	5.2	45.9	0.066	0.508	24.908573	-103.704620
T. Izq. Nazas	171.61	1	0	4554	1.5	46.6	6.9	9.4	7.3	19.3	4.9	2.8	1.3	48.1	6.9	45.0	0.067	0.511	25.085989	-103.771166
T. Izq. Nazas	171.61	3	0	5695	1.2	54.6	5.2	8.4	5.5	16.6	5.0	2.4	1.1	55.8	5.2	39.0	0.063	0.517	25.091886	-103.769798

DURANGO

4 CARR : Durango - Torreón

CLAVE: 10085

RUTA: MEX-040

AÑO : 2015

LUGAR	ESTACION				CLASIFICACION VEHICULAR EN PORCIENTO													COORDENADAS		
	KM	TE	SC	TDPA	M	A	B	C2	C3	T3S2	T3S3	T3S2R4	OTROS	A	B	C	K'	D	LATITUD	LONGITUD
T. Der. Villa Juárez	194.40	3	0	4351	0.9	49.8	6.4	10.4	7.4	12.8	7.5	3.2	1.6	50.7	6.4	42.9	0.066	0.500	25.225830	-103.628616
León Guzmán	229.58	3	0	10327	5.3	68.7	0.9	4.3	2.8	9.2	3.4	4.2	1.2	74.0	0.9	25.1	0.064	0.529	25.513775	-103.645549
Cd. Lerdo	244.80	1	1	6903	1.2	71.8	2.4	6.4	3.1	8.1	3.6	2.2	1.2	73.0	2.4	24.6	0.066	0.509	25.511867	-103.538594
Cd. Lerdo	244.80	1	2	6649	1.1	73.2	2.2	7.0	2.8	7.4	3.2	2.2	0.9	74.3	2.2	23.5	0.063	0.509	25.511867	-103.538594
T. Izq. Gómez Palacio	248.90	3	1	8188	0.5	87.3	2.3	7.3	2.0	0.3	0.2	0.0	0.1	87.8	2.3	9.9	0.072	0.563	25.554198	-103.481511
T. Izq. Gómez Palacio	248.90	3	2	10528	0.6	91.1	0.9	4.9	1.9	0.3	0.2	0.0	0.1	91.7	0.9	7.4	0.070	0.563	25.554198	-103.481511
Lim. Edos. Term. Dgo. Ppia. Coah.	251.00																			
Torreón	255.80	1	1	18956	2.0	89.8	0.9	4.4	0.3	1.0	1.5	0.0	0.1	91.8	0.9	7.3	0.067	0.502	25.547300	-103.470912
Torreón	255.80	1	2	18823	2.4	88.7	1.1	4.8	0.3	1.1	1.5	0.0	0.1	91.1	1.1	7.8	0.066	0.502	25.546122	-103.469062

5 CARR : Durango - Villa Unión

CLAVE: 0083

RUTA: MEX-040

AÑO : 2015

LUGAR	ESTACION				CLASIFICACION VEHICULAR EN PORCIENTO													COORDENADAS		
	KM	TE	SC	TDPA	M	A	B	C2	C3	T3S2	T3S3	T3S2R4	OTROS	A	B	C	K'	D	LATITUD	LONGITUD
Durango	0.00	3	0	1985	2.6	71.6	2.1	5.1	2.7	6.5	2.5	0.3	6.6	74.2	2.1	23.7	0.069	0.501	23.994774	-104.719742
T. Der. Pino	22.86	3	0	1946	5.6	68.5	3.6	6.2	6.6	6.6	2.1	0.1	0.7	74.1	3.6	22.3	0.153	0.533	23.967380	-104.820119
T. Izq. Estación Navios	58.42	3	0	1729	6.3	65.4	4.6	6.7	7.2	6.6	2.4	0.1	0.7	71.7	4.6	23.7	0.156	0.538	23.897209	-105.050366
Llano Grande	77.23	1	0	1898	3.7	68.7	4.0	8.1	6.2	6.5	2.2	0.0	0.6	72.4	4.0	23.6	0.102	0.527	23.869423	-105.191779
El Salto	99.76	3	0	2381	0.0	92.7	0.0	4.3	0.9	1.3	0.7	0.1	0.0	92.7	0.0	7.3	0.073	0.516	23.781646	-105.381243
La Ciudad	145.50	1	0	704	2.1	71.2	4.4	8.1	3.6	7.8	2.3	0.0	0.5	73.3	4.4	22.3	0.082	0.514	23.731639	-105.667638
La Ciudad	145.50	3	0	482	4.6	64.4	4.7	8.2	5.8	9.0	2.6	0.0	0.7	69.0	4.7	26.3	0.102	0.502	23.727302	-105.691607
Lim. Edos. Term. Dgo. Ppia. Sin.	198.50																			
T. C. Tepic - Mazatlán	294.40	1	0	3633	2.4	78.6	5.8	6.9	2.5	2.6	0.8	0.0	0.4	81.0	5.8	13.2	0.072	0.545	23.204029	-106.199272

6 CARR : Ent. La Chicharrona - Cuencamé

CLAVE: 00152

RUTA: MEX-049

AÑO : 2015

LUGAR	ESTACION				CLASIFICACION VEHICULAR EN PORCIENTO													COORDENADAS		
	KM	TE	SC	TDPA	M	A	B	C2	C3	T3S2	T3S3	T3S2R4	OTROS	A	B	C	K'	D	LATITUD	LONGITUD
Ent. La Chicharrona	0.00	3	1	4586	0.3	58.8	5.0	9.2	3.4	14.2	3.4	4.6	1.1	59.1	5.0	35.9	0.070	0.507	23.305578	-102.958641
Ent. La Chicharrona	0.00	3	2	4711	0.4	55.4	5.6	9.8	3.6	15.1	3.6	5.3	1.2	55.8	5.6	38.6	0.086	0.507	23.304798	-102.958925
T. Der. Cañitas de Felipe Pescador	25.86	1	1	3843	0.3	59.0	5.0	4.7	3.6	17.2	3.8	5.5	0.9	59.3	5.0	35.7	0.073	0.505	23.524146	-102.959618
T. Der. Cañitas de Felipe Pescador	25.86	1	2	3922	0.3	55.0	5.2	5.3	3.8	19.1	4.1	6.2	1.0	55.3	5.2	39.5	0.080	0.505	23.524140	-102.959810
Río Grande	60.00	1	0	5608	0.7	56.3	5.5	10.1	2.6	15.4	3.5	5.1	0.8	57.0	5.5	37.5	0.096	0.514	23.793212	-103.016702
Río Grande	60.00	3	0	6717	0.7	50.8	6.1	10.7	2.9	17.6	4.3	5.9	1.0	51.5	6.1	42.4	0.068	0.501	23.880015	-103.095886
T. Der. Nieves	78.00	3	0	5859	0.8	44.2	7.6	8.6	3.8	21.2	5.1	7.8	0.9	45.0	7.6	47.4	0.067	0.506	23.925478	-103.161129

DURANGO

6 CARR: Ent. La Chicharrona - Cuencamé

CLAVE: 00152

RUTA: MEX-049

AÑO: 2015

LUGAR	ESTACION				CLASIFICACION VEHICULAR EN PORCIENTO														COORDENADAS	
	KM	TE	SC	TDPA	M	A	B	C2	C3	T3S2	T3S3	T3S2R4	OTROS	A	B	C	K'	D	LATITUD	LONGITUD
X. C. Juan Aldama - Miguel Auza	124.50	1	0	6506	0.8	48.8	6.4	8.7	3.4	19.4	4.8	6.8	0.9	49.6	6.4	44.0	0.061	0.502	24.272384	-103.400154
X. C. Juan Aldama - Miguel Auza	124.50	3	0	5491	0.8	42.1	7.1	8.9	3.6	23.5	5.4	7.8	0.8	42.9	7.1	50.0	0.063	0.501	24.296534	-103.410204
Lim. Edos. Term. Zac. Ppia. Dgo.	134.30																			
T. Der. Santa Clara	144.00	1	0	5068	1.4	40.8	8.7	7.2	4.7	22.8	4.7	8.6	1.1	42.2	8.7	49.1	0.055	0.503	24.436028	-103.486234
T. Der. Santa Clara	144.00	3	0	4111	1.7	34.5	10.1	6.7	5.5	25.3	5.3	9.8	1.1	36.2	10.1	53.7	0.064	0.520	24.443084	-103.491010
Cuencamé	199.10	1	0	4975	1.4	52.6	2.5	4.1	5.6	18.6	5.1	7.4	2.7	54.0	2.5	43.5	0.066	0.502	24.852808	-103.693146

7 CARR: Ent. La Zarca - Hidalgo del Parral

CLAVE: 00488

RUTA: MEX-045

AÑO: 2015

LUGAR	ESTACION				CLASIFICACION VEHICULAR EN PORCIENTO														COORDENADAS	
	KM	TE	SC	TDPA	M	A	B	C2	C3	T3S2	T3S3	T3S2R4	OTROS	A	B	C	K'	D	LATITUD	LONGITUD
Ent. La Zarca	0.00	3	0	1003	0.0	69.8	6.0	12.8	3.0	5.5	1.9	0.7	0.3	69.8	6.0	24.2	0.071	0.548	25.785791	-104.765692
T. Der. Ceballos	47.85	1	0	670	0.5	79.6	5.8	5.8	2.3	3.0	1.6	0.1	1.3	80.1	5.8	14.1	0.082	0.511	26.137978	-105.027262
T. Der. Ceballos	47.85	3	0	1500	2.3	68.5	2.6	13.2	2.4	4.5	4.0	2.3	0.2	70.8	2.6	26.6	0.069	0.545	26.144575	-105.032190
T. Izq. Canutillo	92.35	3	0	1018	0.2	82.2	4.9	5.3	2.3	2.4	1.8	0.1	0.8	82.4	4.9	12.7	0.074	0.506	26.389670	-105.353610
Las Nieves	97.60	3	0	2622	0.8	76.0	2.6	12.7	1.7	3.6	1.9	0.2	0.5	76.8	2.6	20.6	0.079	0.532	26.399835	-105.411109
T. Izq. Ocampo	109.22	3	0	1493	0.0	70.8	3.9	14.6	2.5	5.1	2.5	0.4	0.2	70.8	3.9	25.3	0.062	0.518	26.447299	-105.495153
Lim. Edos. Term. Dgo. Ppia. Chih.	122.89																			
Matamoros	148.00	1	0	1190	0.5	80.8	4.2	7.4	4.1	1.5	0.9	0.1	0.5	81.3	4.2	14.5	0.084	0.512	26.749736	-105.580583
Hidalgo del Parral	171.00	1	0	2974	0.3	88.5	2.7	4.9	1.6	1.0	0.7	0.0	0.3	88.8	2.7	8.5	0.076	0.528	26.917630	-105.639648

8 CARR: Ent. Los Herrera - Topia

CLAVE: 10090

RUTA: MEX-036

AÑO: 2015

LUGAR	ESTACION				CLASIFICACION VEHICULAR EN PORCIENTO														COORDENADAS	
	KM	TE	SC	TDPA	M	A	B	C2	C3	T3S2	T3S3	T3S2R4	OTROS	A	B	C	K'	D	LATITUD	LONGITUD
T. C. Guadalupe Aguilera - Tepehuanes	0.00	3	0	727	0.2	61.1	4.7	17.4	3.6	7.6	4.8	0.0	0.6	61.3	4.7	34.0	0.111	0.518	25.121567	-105.482118
Los Altares	80.00	1	0	439	1.1	66.7	3.6	12.9	7.3	5.2	2.5	0.0	0.7	67.8	3.6	28.6	0.121	0.535	25.016251	-105.898939
Topia	229.00																			

9 CARR: Gómez Palacio - Jiménez

CLAVE: 00006

RUTA: MEX-049

AÑO: 2015

LUGAR	ESTACION				CLASIFICACION VEHICULAR EN PORCIENTO														COORDENADAS	
	KM	TE	SC	TDPA	M	A	B	C2	C3	T3S2	T3S3	T3S2R4	OTROS	A	B	C	K'	D	LATITUD	LONGITUD
Gómez Palacio	0.00	3	1	17047	2.4	72.4	0.6	4.2	3.4	7.0	2.9	4.8	2.3	74.8	0.6	24.6	0.062	0.530	25.614875	-103.513545
Gómez Palacio	0.00	3	2	15123	1.6	73.9	0.7	4.6	3.0	6.2	2.6	4.8	2.6	75.5	0.7	23.8	0.078	0.530	25.614875	-103.513545

DURANGO

9 CARR: Gómez Palacio - Jiménez

CLAVE: 00006

RUTA: MEX-049

AÑO: 2015

LUGAR	ESTACION				CLASIFICACION VEHICULAR EN PORCIENTO													COORDENADAS		
	KM	TE	SC	TDPA	M	A	B	C2	C3	T3S2	T3S3	T3S2R4	OTROS	A	B	C	K'	D	LATITUD	LONGITUD
X. C. La Torreña - Brittingham	10.96	1	1	8284	1.6	63.0	5.2	7.0	5.2	12.1	2.5	2.7	0.7	64.6	5.2	30.2	0.068	0.510	25.638839	-103.523102
X. C. La Torreña - Brittingham	10.96	1	2	8630	2.2	64.8	5.8	7.1	5.4	9.7	2.0	1.8	1.2	67.0	5.8	27.2	0.063	0.510	25.638839	-103.523102
T. Izq. Dinamita	26.27	1	1	6198	2.3	58.2	6.0	8.2	5.2	13.4	2.4	2.5	1.8	60.5	6.0	33.5	0.070	0.503	25.753705	-103.568868
T. Izq. Dinamita	26.27	1	2	6128	2.8	59.0	7.8	7.4	4.6	12.7	2.1	2.5	1.1	61.8	7.8	30.4	0.065	0.503	25.753705	-103.568868
Bermejillo	39.30	1	0	6758	1.0	64.8	4.3	5.7	3.4	15.5	3.3	1.5	0.5	65.8	4.3	29.9	0.064	0.503	25.874662	-103.616492
T. Izq. Ent. La Zarca	40.89	3	0	3336	1.8	41.4	5.1	7.5	5.8	28.4	6.4	2.8	0.8	43.2	5.1	51.7	0.057	0.526	25.904938	-103.629001
Yermo	107.95	1	0	2911	1.0	37.2	6.4	5.9	5.6	31.0	8.0	3.6	1.3	38.2	6.4	55.4	0.068	0.545	26.378251	-103.993858
Yermo	107.95	3	0	3138	0.8	43.1	4.6	5.7	4.7	28.1	7.6	4.1	1.3	43.9	4.6	51.5	0.061	0.500	26.396833	-104.011288
Ceballos	127.20	1	0	2737	1.8	32.4	7.4	10.5	6.9	29.2	6.3	3.0	2.5	34.2	7.4	58.4	0.053	0.512	26.518675	-104.122132
Ceballos	127.20	3	0	2590	2.5	32.2	5.9	10.0	7.0	30.6	6.9	3.6	1.3	34.7	5.9	59.4	0.053	0.505	26.536241	-104.138705
Lim. Edos. Term. Dgo. Ppia. Chih.	146.15																			
Estación Escalón	160.89	3	0	2372	3.2	23.6	11.7	10.2	7.3	31.9	7.2	3.4	1.5	26.8	11.7	61.5	0.052	0.503	26.757115	-104.342460
Jiménez	223.00	1	1	1346	0.3	40.9	6.2	6.8	4.1	29.8	8.0	3.3	0.6	41.2	6.2	52.6	0.062	0.504	27.117680	-104.890853
Jiménez	223.00	1	2	1323	0.5	36.1	6.5	7.6	4.3	32.8	8.5	3.3	0.4	36.6	6.5	56.9	0.067	0.504	27.117680	-104.890853

10 CARR: Gómez Palacio - La Unión

CLAVE: 10009

RUTA: MEX-040

AÑO: 2015

LUGAR	ESTACION				CLASIFICACION VEHICULAR EN PORCIENTO													COORDENADAS		
	KM	TE	SC	TDPA	M	A	B	C2	C3	T3S2	T3S3	T3S2R4	OTROS	A	B	C	K'	D	LATITUD	LONGITUD
Gómez Palacio	0.00	3	0	5279	0.2	92.3	1.3	4.0	1.5	0.5	0.1	0.0	0.1	92.5	1.3	6.2	0.070	0.524	25.536521	-103.501070
X. C. Torreón - Villa Juárez	4.30	3	0	4316	0.2	85.3	4.0	8.0	1.7	0.5	0.1	0.1	0.1	85.5	4.0	10.5	0.074	0.516	25.517333	-103.487152
Nazareno	20.90	1	0	2549	1.3	85.2	0.3	10.2	1.9	0.4	0.3	0.2	0.2	86.5	0.3	13.2	0.069	0.505	25.405458	-103.423660
Nazareno	20.90	3	0	2335	4.6	76.1	0.1	14.9	2.8	0.5	0.3	0.4	0.3	80.7	0.1	19.2	0.074	0.508	25.395828	-103.435600
La Unión	42.20	1	0	609	14.2	70.1	0.4	12.0	1.1	0.4	0.0	1.4	0.4	84.3	0.4	15.3	0.085	0.503	25.295177	-103.507905

11 CARR: Gómez Palacio - Tlahualillo

CLAVE: 10005

RUTA: MEX-040

AÑO: 2015

LUGAR	ESTACION				CLASIFICACION VEHICULAR EN PORCIENTO													COORDENADAS		
	KM	TE	SC	TDPA	M	A	B	C2	C3	T3S2	T3S3	T3S2R4	OTROS	A	B	C	K'	D	LATITUD	LONGITUD
T. C. Gómez Palacio - Jiménez	0.00																			
T. Izq. Esmeralda	5.60	1	0	13287	6.4	79.4	0.1	3.4	2.2	2.5	0.9	3.9	1.2	85.8	0.1	14.1	0.070	0.508	25.608184	-103.463939
T. Izq. Esmeralda	5.60	3	0	10186	4.2	79.2	0.6	5.3	2.8	3.1	1.3	1.8	1.7	83.4	0.6	16.0	0.064	0.511	25.614074	-103.457858
Gregorio García	26.00	3	0	5985	1.7	82.4	0.0	7.2	2.0	2.8	0.7	2.3	0.9	84.1	0.0	15.9	0.061	0.501	25.753057	-103.348915
T. Izq. Esmeralda	31.44	1	0	6257	1.7	83.7	1.7	6.1	2.9	1.8	0.6	0.9	0.6	85.4	1.7	12.9	0.080	0.524	25.757550	-103.352444
San Francisco	48.90	1	0	2288	1.4	70.6	3.7	12.1	9.0	2.3	0.4	0.3	0.2	72.0	3.7	24.3	0.072	0.517	25.928957	-103.416788

DURANGO

11 CARR : Gómez Palacio - Tlahualillo

CLAVE: 10005

RUTA: MEX-040

AÑO: 2015

LUGAR	ESTACION				CLASIFICACION VEHICULAR EN PORCIENTO										COORDENADAS					
	KM	TE	SC	TDPA	M	A	B	C2	C3	T3S2	T3S3	T3S2R4	OTROS	A	B	C	K'	D	LATITUD	LONGITUD
San Francisco	48.90	3	0	1664	3.2	64.6	7.2	13.7	9.4	1.0	0.3	0.4	0.2	67.8	7.2	25.0	0.078	0.506	25.943740	-103.420979
Tlahualillo	72.90	1	0	2135	2.0	79.6	4.2	11.1	1.8	0.9	0.1	0.2	0.1	81.6	4.2	14.2	0.069	0.500	26.109624	-103.423638

12 CARR : Gregorio García - Francisco I. Madero

CLAVE: 00110

RUTA: MEX-040

AÑO: 2015

LUGAR	ESTACION				CLASIFICACION VEHICULAR EN PORCIENTO										COORDENADAS						
	KM	TE	SC	TDPA	M	A	B	C2	C3	T3S2	T3S3	T3S2R4	OTROS	A	B	C	K'	D	LATITUD	LONGITUD	
T. C. Gómez Palacio - Tlahualillo	0.00																				
Lim. Edos. Term. Dgo. Ppia. Coah.	3.60																				
Francisco I. Madero	9.60	1	0	6091	3.0	78.8	2.2	8.5	2.2	3.7	1.0	0.3	0.3	81.8	2.2	16.0	0.078	0.504	25.772668	-103.290750	

13 CARR : Guadalupe Aguilera - Tepehuanes

CLAVE: 10220

RUTA: MEX-023

AÑO: 2015

LUGAR	ESTACION				CLASIFICACION VEHICULAR EN PORCIENTO										COORDENADAS					
	KM	TE	SC	TDPA	M	A	B	C2	C3	T3S2	T3S3	T3S2R4	OTROS	A	B	C	K'	D	LATITUD	LONGITUD
Guadalupe Aguilera	0.00	3	1	2840	1.0	81.2	2.8	11.0	1.3	1.5	1.2	0.0	0.0	82.2	2.8	15.0	0.085	0.503	24.464871	-104.713415
Guadalupe Aguilera	0.00	3	2	2876	0.8	81.5	2.5	11.6	1.1	1.4	1.1	0.0	0.0	82.3	2.5	15.2	0.096	0.503	24.464871	-104.713415
Canatlán	14.00	3	0	3141	0.3	87.5	0.2	4.1	2.5	2.4	1.6	0.3	1.1	87.8	0.2	12.0	0.089	0.523	24.539861	-104.776417
La Soledad	45.80	3	0	2734	0.6	83.2	4.0	5.6	1.9	2.4	1.8	0.1	0.4	83.8	4.0	12.2	0.089	0.502	24.763505	-104.926548
T. Der. Coneto de Comonfort	51.60	1	0	2534	0.5	84.6	3.7	4.9	1.9	2.2	1.7	0.1	0.4	85.1	3.7	11.2	0.097	0.505	24.803412	-104.924167
José María Morelos	90.20	1	0	2533	0.5	83.5	3.8	5.9	2.1	2.0	1.6	0.1	0.5	84.0	3.8	12.2	0.081	0.504	25.007930	-105.202602
Santiago Papasquiario	117.00	3	0	3972	0.6	86.9	1.4	5.1	3.6	1.6	0.6	0.0	0.2	87.5	1.4	11.1	0.075	0.505	25.078424	-105.431313
Las Herreras	133.00	3	0	1192	0.0	86.7	0.3	4.2	4.4	2.9	0.8	0.2	0.5	86.7	0.3	13.0	0.073	0.508	25.159228	-105.508628
Tepehuanes	169.00	1	0	1278	0.0	76.0	3.4	13.4	3.1	2.6	1.2	0.2	0.1	76.0	3.4	20.6	0.075	0.513	25.321846	-105.714148

14 CARR : Hidalgo del Parral - Guadalupe y Calvo

CLAVE: 00802

RUTA: MEX-024

AÑO: 2015

LUGAR	ESTACION				CLASIFICACION VEHICULAR EN PORCIENTO										COORDENADAS					
	KM	TE	SC	TDPA	M	A	B	C2	C3	T3S2	T3S3	T3S2R4	OTROS	A	B	C	K'	D	LATITUD	LONGITUD
T. C. Hidalgo del Parral - Santa Bárbara	0.00	3	0	2786	1.2	79.0	2.4	10.3	3.6	1.6	0.7	0.0	1.2	80.2	2.4	17.4	0.078	0.522	26.916891	-105.769440
T. Der. Guacho chic	35.00	1	0	888	0.4	66.3	3.4	12.0	8.9	4.8	1.9	0.0	2.3	66.7	3.4	29.9	0.088	0.507	26.815871	-106.014924
T. Der. Guacho chic	35.00	3	0	844	0.3	62.5	3.3	15.4	9.2	4.7	2.0	0.0	2.6	62.8	3.3	33.9	0.098	0.502	26.807952	-106.016741
Lim. Edos. Term. Chih. Ppia. Dgo	38.00																			
Lim. Edos. Term. Dgo. Ppia. Chih.	57.00																			
El Vergel	110.00	1	0	973	0.3	66.7	3.0	16.2	7.1	3.8	1.1	0.0	1.8	67.0	3.0	30.0	0.108	0.505	26.497435	-106.363479

DURANGO

14 CARR: Hidalgo del Parral - Guadalupe y Calvo

CLAVE: 00802

RUTA: MEX-024

AÑO: 2015

LUGAR	ESTACION				CLASIFICACION VEHICULAR EN PORCIENTO														COORDENADAS	
	KM	TE	SC	TDPA	M	A	B	C2	C3	T3S2	T3S3	T3S2R4	OTROS	A	B	C	K'	D	LATITUD	LONGITUD
Puerto Sabinas	212.00	1	0	507	0.2	79.8	1.5	8.1	6.5	2.2	0.8	0.0	0.9	80.0	1.5	18.5	0.116	0.526	26.068810	-106.781210
Guadalupe y Calvo	234.00																			

15 CARR: Libramiento Cuencamé

CLAVE: 10006

RUTA: MEX

AÑO: 2015

LUGAR	ESTACION				CLASIFICACION VEHICULAR EN PORCIENTO														COORDENADAS	
	KM	TE	SC	TDPA	M	A	B	C2	C3	T3S2	T3S3	T3S2R4	OTROS	A	B	C	K'	D	LATITUD	LONGITUD
T. C. La Chicharrona - Cuencamé	0.00	3	1	1184	1.5	77.3	3.0	10.5	2.6	3.1	2.0	0.0	0.0	78.8	3.0	18.2	0.071	0.509	24.864408	-103.700155
T. C. La Chicharrona - Cuencamé	0.00	3	2	1230	2.1	76.0	3.2	10.9	2.7	3.0	2.1	0.0	0.0	78.1	3.2	18.7	0.074	0.509	24.864408	-103.700155
T. C. Durango - Torreón	2.60	1	1	803	2.3	73.8	3.6	9.6	2.9	4.4	1.8	1.3	0.3	76.1	3.6	20.3	0.093	0.527	24.880661	-103.700569
T. C. Durango - Torreón	2.60	1	2	905	1.8	72.8	4.0	9.8	3.5	4.4	2.1	1.1	0.5	74.6	4.0	21.4	0.081	0.527	24.880661	-103.700569

16 CARR: Libramiento Oriente de Durango

CLAVE:

RUTA: MEX-045

AÑO: 2015

LUGAR	ESTACION				CLASIFICACION VEHICULAR EN PORCIENTO														COORDENADAS	
	KM	TE	SC	TDPA	M	A	B	C2	C3	T3S2	T3S3	T3S2R4	OTROS	A	B	C	K'	D	LATITUD	LONGITUD
T. C. Zacatecas - Durango	0.00	3	1	2752	1.3	77.9	5.9	5.4	2.1	2.5	1.0	1.1	2.8	79.2	5.9	14.9	0.103	0.561	24.026506	-104.518904
T. C. Zacatecas - Durango	0.00	3	2	2150	27.1	45.1	13.9	3.6	2.4	2.5	2.2	1.5	1.7	72.2	13.9	13.9	0.087	0.561	24.026506	-104.518904
T. C. Durango - Ent. La Zarca	10.50	1	1	2267	5.4	78.7	0.8	2.5	2.9	4.1	2.3	1.8	1.5	84.1	0.8	15.1	0.068	0.512	24.091519	-104.570511
T. C. Durango - Ent. La Zarca	10.50	1	2	2384	4.7	76.1	3.9	3.4	2.1	4.4	1.6	1.8	2.0	80.8	3.9	15.3	0.067	0.512	24.091519	-104.570511

17 CARR: Libramiento Sur de Durango

CLAVE:

RUTA: MEX-045

AÑO: 2015

LUGAR	ESTACION				CLASIFICACION VEHICULAR EN PORCIENTO														COORDENADAS	
	KM	TE	SC	TDPA	M	A	B	C2	C3	T3S2	T3S3	T3S2R4	OTROS	A	B	C	K'	D	LATITUD	LONGITUD
T. C. Zacatecas - Durango	0.00	3	0	2096	1.2	19.6	9.0	68.9	1.0	0.0	0.0	0.1	0.2	20.8	9.0	70.2	0.063	0.573	24.015303	-104.523597
T. C. Durango - Mezquital	8.45	1	0	2243	1.2	80.1	2.2	5.7	3.7	4.1	1.8	0.6	0.6	81.3	2.2	16.5	0.086	0.514	23.968922	-104.574196
T. C. Durango - Mezquital	8.45	3	0	1013	5.6	84.0	0.6	2.7	3.2	1.5	0.5	0.1	1.8	89.6	0.6	9.8	0.112	0.510	23.965562	-104.579191
T. C. Durango - Aserradero La Flor	19.50	1	0	675	2.0	77.2	3.1	7.7	3.9	3.2	0.9	1.3	0.7	79.2	3.1	17.7	0.077	0.545	23.952272	-104.663924
T. C. Durango - Aserradero La Flor	19.50	3	0	659	1.9	79.5	2.6	5.4	3.7	3.6	1.1	1.6	0.6	81.4	2.6	16.0	0.108	0.519	23.952749	-104.670225
T. C. Durango - Villa Unión	27.70	1	0	752	1.3	87.7	0.3	2.4	3.4	2.5	0.6	0.3	1.5	89.0	0.3	10.7	0.115	0.559	23.992850	-104.721584

DURANGO

18 CARR: Pedriceña - Ent. Rodeo

CLAVE: 10002

RUTA: MEX-034

AÑO: 2015

LUGAR	ESTACION				CLASIFICACION VEHICULAR EN PORCIENTO										COORDENADAS					
	KM	TE	SC	TDPA	M	A	B	C2	C3	T3S2	T3S3	T3S2R4	OTROS	A	B	C	K'	D	LATITUD	LONGITUD
T. C. Cuencamé - Torreón	0.00	3	0	3131	0.7	92.4	0.0	3.5	1.1	1.1	0.8	0.0	0.4	93.1	0.0	6.9	0.074	0.504	25.091680	-103.773502
Nazas	45.00	1	0	2335	3.1	76.4	0.5	16.1	1.6	1.7	0.4	0.1	0.1	79.5	0.5	20.0	0.060	0.501	25.235573	-104.100303
Nazas	45.00	3	0	880	0.9	87.4	1.2	7.1	1.3	1.0	0.3	0.1	0.7	88.3	1.2	10.5	0.103	0.510	25.217823	-104.125034
T. C. (Durango - Ent. La Zarca)-Ent. Rodeo	98.00	1	0	641	0.1	91.0	1.1	5.8	0.5	0.7	0.4	0.1	0.3	91.1	1.1	7.8	0.120	0.521	25.129344	-104.537014

19 CARR: Ramal a Otinapa

CLAVE: 10002

RUTA: MEX

AÑO: 2015

LUGAR	ESTACION				CLASIFICACION VEHICULAR EN PORCIENTO										COORDENADAS					
	KM	TE	SC	TDPA	M	A	B	C2	C3	T3S2	T3S3	T3S2R4	OTROS	A	B	C	K'	D	LATITUD	LONGITUD
T. C. Durango - Villa Unión	0.00	3	0	219	0.7	80.5	1.5	6.2	6.5	2.5	0.9	0.1	1.1	81.2	1.5	17.3	0.119	0.567	23.926188	-104.940459
Otinapa	19.65																			

20 CARR: Ramal a Santa Clara

CLAVE: 10287

RUTA: MEX-049

AÑO: 2015

LUGAR	ESTACION				CLASIFICACION VEHICULAR EN PORCIENTO										COORDENADAS					
	KM	TE	SC	TDPA	M	A	B	C2	C3	T3S2	T3S3	T3S2R4	OTROS	A	B	C	K'	D	LATITUD	LONGITUD
T. C. Ent. La Chicharrona - Cuencamé	0.00	3	0	875	0.2	91.2	2.3	5.2	0.6	0.1	0.1	0.0	0.3	91.4	2.3	6.3	0.104	0.504	24.440392	-103.486239
Santa Clara	14.00																			

21 CARR: Ramal a Villa Juárez

CLAVE: 10287

RUTA: MEX-040

AÑO: 2015

LUGAR	ESTACION				CLASIFICACION VEHICULAR EN PORCIENTO										COORDENADAS					
	KM	TE	SC	TDPA	M	A	B	C2	C3	T3S2	T3S3	T3S2R4	OTROS	A	B	C	K'	D	LATITUD	LONGITUD
T. C. Gómez Palacio - La Unión	0.00	3	1	2034	8.7	84.6	0.2	3.7	0.7	0.3	0.3	0.2	1.3	93.3	0.2	6.5	0.124	0.508	25.517742	-103.494400
T. C. Gómez Palacio - La Unión	0.00	3	2	2098	6.8	86.3	0.2	3.9	1.0	0.3	0.2	0.1	1.2	93.1	0.2	6.7	0.086	0.508	25.517742	-103.494400
Villa Juárez	13.00																			

22 CARR: Zacatecas - Durango

CLAVE: 00544

RUTA: MEX-045

AÑO: 2015

LUGAR	ESTACION				CLASIFICACION VEHICULAR EN PORCIENTO										COORDENADAS					
	KM	TE	SC	TDPA	M	A	B	C2	C3	T3S2	T3S3	T3S2R4	OTROS	A	B	C	K'	D	LATITUD	LONGITUD
Zacatecas	0.00																			
T. Izq. Guadalajara	6.40	3	1	12357	1.2	79.4	2.3	6.8	2.0	4.2	1.9	1.3	0.9	80.6	2.3	17.1	0.078	0.501	22.783479	-102.626940
T. Izq. Guadalajara	6.40	3	2	12304	1.5	77.4	2.5	7.4	2.2	4.5	2.0	1.5	1.0	78.9	2.5	18.6	0.082	0.501	22.783511	-102.627125
T. Der. Saltillo (T. Morelos)	15.00	3	1	11826	0.9	73.2	3.5	7.1	2.4	6.7	2.2	3.1	0.9	74.1	3.5	22.4	0.075	0.502	22.867654	-102.630072

DURANGO

22 CARR: Zacatecas - Durango

CLAVE: 00544

RUTA: MEX-045

AÑO: 2015

LUGAR	ESTACION				CLASIFICACION VEHICULAR EN PORCIENTO										COORDENADAS					
	KM	TE	SC	TDPA	M	A	B	C2	C3	T3S2	T3S3	T3S2R4	OTROS	A	B	C	K'	D	LATITUD	LONGITUD
T. Der. Saltillo (T. Morelos)	15.00	3	2	11931	0.9	70.2	4.0	7.9	2.8	7.3	2.5	3.3	1.1	71.1	4.0	24.9	0.087	0.502	22.864368	-102.649304
Víctor Rosales	28.00	1	1	11433	1.5	73.9	3.1	6.6	2.6	6.1	2.1	3.2	0.9	75.4	3.1	21.5	0.081	0.501	22.929987	-102.685387
Víctor Rosales	28.00	1	2	11499	1.3	71.7	3.2	7.3	2.8	6.8	2.4	3.5	1.0	73.0	3.2	23.8	0.083	0.501	22.929982	-102.685861
T. Der. Facultad de Veterinaria	32.30	1	1	6643	0.9	68.2	5.2	7.6	3.1	8.5	2.7	2.8	1.0	69.1	5.2	25.7	0.090	0.512	22.971213	-102.719395
T. Der. Facultad de Veterinaria	32.30	1	2	6333	0.7	65.8	5.3	8.1	3.4	9.5	2.9	3.2	1.1	66.5	5.3	28.2	0.094	0.512	22.971153	-102.719475
Gral. Enrique Estrada	34.60	3	1	8577	1.4	71.2	5.0	7.6	2.4	6.7	2.3	2.5	0.9	72.6	5.0	22.4	0.080	0.514	23.012464	-102.751762
Gral. Enrique Estrada	34.60	3	2	9078	1.5	68.0	5.3	8.4	2.7	7.9	2.5	2.7	1.0	69.5	5.3	25.2	0.083	0.514	23.012444	-102.752080
Fresnillo	58.50	1	1	7664	1.3	81.0	2.9	7.9	2.0	2.6	1.3	0.5	0.5	82.3	2.9	14.8	0.092	0.505	23.158561	-102.851368
Fresnillo	58.50	1	2	7518	1.4	79.6	3.2	8.5	2.1	2.8	1.4	0.5	0.5	81.0	3.2	15.8	0.086	0.505	23.158469	-102.851466
Ent. La Chicharrona	74.30	1	1	7427	0.5	64.0	5.1	11.1	2.7	9.6	2.9	3.1	1.0	64.5	5.1	30.4	0.073	0.502	23.292872	-102.954563
Ent. La Chicharrona	74.30	1	2	7372	0.6	59.5	5.6	12.2	3.2	10.9	3.3	3.5	1.2	60.1	5.6	34.3	0.077	0.502	23.292320	-102.954496
Ent. La Chicharrona	74.30	3	0	6231	0.6	68.7	5.4	13.9	2.7	4.5	2.5	1.1	0.6	69.3	5.4	25.3	0.073	0.504	23.309736	-102.966124
T. Der. Sain Alto	121.00	3	0	3956	0.7	70.0	4.7	12.4	2.4	5.5	2.2	1.3	0.8	70.7	4.7	24.6	0.075	0.516	23.581788	-103.274314
T. Izq. Sombrerete (2º Acceso)	161.50	3	0	5041	1.7	72.0	3.2	12.4	1.8	5.2	1.8	1.1	0.8	73.7	3.2	23.1	0.086	0.501	23.644936	-103.648551
Lim. Edos. Term. Zac. Ppia. Dgo.	190.08																			
X. C. Súchil - Villa Unión	206.98	1	0	3089	1.1	62.6	7.4	15.3	3.0	5.5	3.6	1.5	0.0	63.7	7.4	28.9	0.062	0.502	23.744902	-103.979532
X. C. Súchil - Villa Unión	206.98	3	0	5485	1.9	74.3	9.1	4.1	2.5	3.0	1.8	1.7	1.6	76.2	9.1	14.7	0.084	0.508	23.743761	-103.994618
T. Izq. Graceros	210.00	1	0	4861	2.1	83.0	2.5	5.6	1.8	1.9	0.9	0.8	1.4	85.1	2.5	12.4	0.069	0.509	23.747350	-104.025686
Amado Nervo	231.51	1	0	4028	1.8	66.6	4.8	14.4	3.0	3.2	2.0	2.0	2.2	68.4	4.8	26.8	0.070	0.501	23.838287	-104.178113
Amado Nervo	231.51	3	0	5118	8.6	66.9	6.5	12.2	2.0	2.0	0.7	0.5	0.6	75.5	6.5	18.0	0.075	0.533	23.850646	-104.177297
Nombre de Dios	236.80	1	0	5143	1.7	74.5	3.8	14.2	1.3	2.6	0.8	0.7	0.4	76.2	3.8	20.0	0.062	0.505	23.844171	-104.221714
Nombre de Dios	236.80	3	0	5641	1.7	90.0	0.3	5.4	0.7	0.6	0.2	0.1	1.0	91.7	0.3	8.0	0.073	0.525	23.855127	-104.252693
T. Der. Constanacia	240.60	3	0	5015	1.0	79.4	6.6	6.8	1.9	2.3	1.0	0.7	0.3	80.4	6.6	13.0	0.082	0.516	23.871646	-104.267156
T. Der. Tuitán	250.80	3	0	4849	0.6	85.0	1.5	4.2	2.0	2.6	1.8	1.2	1.1	85.6	1.5	12.9	0.077	0.509	23.923353	-104.337282
T. Der. Independencia y Libertad	261.70	1	0	6077	0.8	71.8	3.4	10.0	3.2	4.4	3.0	1.8	1.6	72.6	3.4	24.0	0.069	0.505	23.995468	-104.375433
T. Der. Independencia y Libertad	261.70	3	1	2928	0.3	81.1	5.4	5.7	2.0	3.2	1.1	0.9	0.3	81.4	5.4	13.2	0.106	0.503	24.012795	-104.395703
T. Der. Independencia y Libertad	261.70	3	2	2898	0.5	81.1	5.2	5.8	1.7	2.8	1.6	1.0	0.3	81.6	5.2	13.2	0.109	0.503	24.012795	-104.395703
T. Izq. Parras de La Fuente	276.60	1	1	4050	0.4	82.9	4.4	5.3	1.6	3.0	1.1	0.9	0.4	83.3	4.4	12.3	0.094	0.503	24.020016	-104.514044
T. Izq. Parras de La Fuente	276.60	1	2	4101	1.9	79.0	6.5	8.1	2.3	0.9	0.5	0.2	0.6	80.9	6.5	12.6	0.085	0.503	24.020016	-104.514044
T. Izq. Parras de La Fuente	276.60	3	1	3796	0.3	85.8	3.9	5.0	1.9	2.1	0.4	0.4	0.2	86.1	3.9	10.0	0.087	0.507	24.021161	-104.525642
T. Izq. Parras de La Fuente	276.60	3	2	3689	0.5	86.0	4.4	4.9	1.7	1.7	0.3	0.3	0.2	86.5	4.4	9.1	0.091	0.507	24.021161	-104.525642
Durango	287.30	1	1	4627	0.4	86.8	1.5	7.8	1.8	1.0	0.2	0.1	0.4	87.2	1.5	11.3	0.094	0.507	24.026507	-104.574964
Durango	287.30	1	2	4767	1.7	85.3	2.7	7.8	1.4	0.6	0.1	0.1	0.3	87.0	2.7	10.3	0.090	0.507	24.026507	-104.574964

DURANGO

23 CARR: Durango - Mazatlán (Cuota)

CLAVE: 00084

RUTA: MEX-040D

AÑO: 2015

LUGAR	ESTACION				CLASIFICACION VEHICULAR EN PORCIENTO														COORDENADAS	
	KM	TE	SC	TDPA	M	A	B	C2	C3	T3S2	T3S3	T3S2R4	OTROS	A	B	C	K'	D	LATITUD	LONGITUD
Libramiento de Durango	20.50	3	0	2329	3.5	83.5	0.0	10.2	0.5	0.4	0.3	0.0	1.6	87.0	0.0	13.0	0.137	0.526	24.006332	-104.730705
Caseta de Cobro Durango	22.20	2	0	2561	0.8	74.9	4.0	2.6	2.9	8.7	1.0	4.7	0.4	75.7	4.0	20.3	0.108	0.500	24.005149	-104.734493
Ent. Otinapa	44.50	1	0	2226	0.0	80.1	0.3	5.7	1.6	3.5	1.5	1.8	5.5	80.1	0.3	19.6	0.070	0.504	23.982127	-104.948282
Caseta de Cobro Llano Grande	78.10	2	0	2241	0.8	73.1	4.5	2.6	2.5	9.7	1.1	5.4	0.3	73.9	4.5	21.6	0.108	0.500	23.868855	-105.205733
Lim. Edos. Term. Dgo. Ppia. Sin.	157.40																			
Concordia	188.35	3	0	1782	1.0	76.2	5.8	1.4	1.3	8.7	1.8	3.8	0.0	77.2	5.8	17.0	0.075	0.502	23.251809	-106.058563
Villa Unión	208.35	1	0	1915	1.3	75.3	5.5	1.6	1.6	7.9	2.0	3.3	1.5	76.6	5.5	17.9	0.076	0.503	23.198480	-106.170009

24 CARR: Durango - Yerbanís (Cuota)

CLAVE: 10003

RUTA: MEX-040D

AÑO: 2015

LUGAR	ESTACION				CLASIFICACION VEHICULAR EN PORCIENTO														COORDENADAS	
	KM	TE	SC	TDPA	M	A	B	C2	C3	T3S2	T3S3	T3S2R4	OTROS	A	B	C	K'	D	LATITUD	LONGITUD
T. C. Durango - Torreón	0.00																			
T. Der. Aeropuerto	5.30	1	1	2843	0.8	84.1	4.2	3.0	1.3	3.8	0.6	1.7	0.5	84.9	4.2	10.9	0.101	0.506	24.124232	-104.540294
T. Der. Aeropuerto	5.30	1	2	2916	0.7	83.5	4.2	3.7	1.2	3.9	0.6	1.8	0.4	84.2	4.2	11.6	0.102	0.506	24.124232	-104.540294
Caseta de Cobro Durango	5.50	2	1	1244	0.6	70.2	7.0	3.8	2.0	9.6	1.4	4.9	0.5	70.8	7.0	22.2	0.117	0.500	24.131744	-104.534063
Caseta de Cobro Durango	5.50	2	2	1244	0.6	70.2	7.0	3.8	2.0	9.6	1.4	4.9	0.5	70.8	7.0	22.2	0.117	0.500	24.131744	-104.534063
Caseta de Cobro Yerbanís	112.19	2	1	1041	0.7	67.3	7.7	3.9	2.1	10.6	1.4	5.7	0.6	68.0	7.7	24.3	0.117	0.500	24.730279	-103.862552
Caseta de Cobro Yerbanís	112.19	2	2	1041	0.7	67.3	7.7	3.9	2.1	10.6	1.4	5.7	0.6	68.0	7.7	24.3	0.117	0.500	24.730279	-103.862552
Ent. Yerbanís	118.00																			

25 CARR: Gómez Palacio - Corralitos (Cuota)

CLAVE: 00016

RUTA: MEX-049D

AÑO: 2015

LUGAR	ESTACION				CLASIFICACION VEHICULAR EN PORCIENTO														COORDENADAS	
	KM	TE	SC	TDPA	M	A	B	C2	C3	T3S2	T3S3	T3S2R4	OTROS	A	B	C	K'	D	LATITUD	LONGITUD
T. C. Gómez Palacio - Jiménez (Libre)	0.00																			
T. Izq. Bermejillo	2.21	1	1	1776	1.8	45.0	10.2	6.5	3.1	19.7	5.4	7.0	1.3	46.8	10.2	43.0	0.078	0.510	25.882646	-103.611059
T. Izq. Bermejillo	2.21	1	2	1847	1.7	46.1	10.1	6.7	2.9	19.2	5.2	7.1	1.0	47.8	10.1	42.1	0.071	0.510	25.882646	-103.611059
T. Izq. Bermejillo	2.21	3	1	1710	0.9	42.4	8.0	8.3	2.7	23.2	5.2	8.1	1.2	43.3	8.0	48.7	0.086	0.502	25.894937	-103.611160
T. Izq. Bermejillo	2.21	3	2	1685	0.8	42.9	8.0	8.3	2.6	23.2	5.2	8.1	0.9	43.7	8.0	48.3	0.084	0.502	25.894937	-103.611160
Caseta de Cobro Bermejillo	5.00	2	1	1548	0.2	39.9	10.0	5.9	1.8	25.2	5.1	10.1	1.8	40.1	10.0	49.9	0.079	0.500	25.923654	-103.622041
Caseta de Cobro Bermejillo	5.00	2	2	1548	0.2	39.9	10.0	5.9	1.8	25.2	5.1	10.1	1.8	40.1	10.0	49.9	0.079	0.500	25.923654	-103.622041
Caseta de Cobro Ceballos	89.00	2	1	1525	0.2	39.5	10.2	6.0	1.6	25.3	5.2	10.2	1.8	39.7	10.2	50.1	0.079	0.500	26.586790	-104.057602
Caseta de Cobro Ceballos	89.00	2	2	1525	0.2	39.5	10.2	6.0	1.6	25.3	5.2	10.2	1.8	39.7	10.2	50.1	0.079	0.500	26.586790	-104.057602
Lim. Edos. Term. Dgo. Ppia. Chih.	112.00																			

DURANGO

25 CARR: Gómez Palacio - Corralitos (Cuota)

CLAVE: 00016

RUTA: MEX-049D

AÑO: 2015

LUGAR	ESTACION				CLASIFICACION VEHICULAR EN PORCIENTO														COORDENADAS		
	KM	TE	SC	TDPA	M	A	B	C2	C3	T3S2	T3S3	T3S2R4	OTROS	A	B	C	K'	D	LATITUD	LONGITUD	
T. C. Libramiento Jiménez	150.59																				
T. C. Gómez Palacio - Jiménez (Libre)	194.00	1	1	1859	1.0	42.0	11.0	7.4	4.1	21.8	3.6	8.7	0.4	43.0	11.0	46.0	0.066	0.508	27.088101	-104.849546	
T. C. Gómez Palacio - Jiménez (Libre)	194.00	1	2	1923	1.1	36.8	11.3	8.1	4.2	24.9	4.5	8.6	0.5	37.9	11.3	50.8	0.066	0.508	27.088101	-104.849546	

26 CARR: Libramiento de Durango (Cuota)

CLAVE: 10006

RUTA: MEX-040D

AÑO: 2015

LUGAR	ESTACION				CLASIFICACION VEHICULAR EN PORCIENTO														COORDENADAS	
	KM	TE	SC	TDPA	M	A	B	C2	C3	T3S2	T3S3	T3S2R4	OTROS	A	B	C	K'	D	LATITUD	LONGITUD
T. C. Durango - Torreón	0.00	3	0	3694	1.2	66.8	3.7	7.2	4.5	9.9	3.3	2.6	0.8	68.0	3.7	28.3	0.065	0.524	24.093548	-104.583375
T. C. Durango - Villa Unión (Cuota)	21.60	1	0	2448	1.2	62.7	6.4	7.4	5.8	10.3	2.5	2.5	1.2	63.9	6.4	29.7	0.083	0.524	24.014838	-104.727127

27 CARR: Libramiento Norte de Torreón

CLAVE:

RUTA: MEX-040D

AÑO: 2015

LUGAR	ESTACION				CLASIFICACION VEHICULAR EN PORCIENTO														COORDENADAS		
	KM	TE	SC	TDPA	M	A	B	C2	C3	T3S2	T3S3	T3S2R4	OTROS	A	B	C	K'	D	LATITUD	LONGITUD	
X. C. Gomez Palacio - Jimenez	0.00	3	0	1719	0.9	53.3	2.7	6.4	2.9	18.0	5.0	8.2	2.6	54.2	2.7	43.1	0.100	0.515	25.628072	-103.510047	
Lim. Edos. Term. Dgo. Ppia. Coah.	15.60																				
X. C. La Cuchilla - Torreón	17.36	1	0	2660	0.8	59.1	3.2	9.7	2.4	13.7	3.9	6.3	0.9	59.9	3.2	36.9	0.074	0.517	25.655134	-103.381174	
X. C. La Cuchilla - Torreón	17.36	1	0	1314	1.0	42.4	2.7	4.9	4.3	23.4	4.8	14.2	2.3	43.4	2.7	53.9	0.078	0.513	25.647697	-103.353136	
X. C. Torreón - Saltillo	40.70	1	0	1321	1.2	43.0	3.9	7.4	2.9	21.4	6.5	11.9	1.8	44.2	3.9	51.9	0.089	0.502	25.547020	-103.223886	

28 CARR: Yerbanís - Gómez Palicio (Cuota)

CLAVE: 10003

RUTA: MEX-040D

AÑO: 2015

LUGAR	ESTACION				CLASIFICACION VEHICULAR EN PORCIENTO														COORDENADAS		
	KM	TE	SC	TDPA	M	A	B	C2	C3	T3S2	T3S3	T3S2R4	OTROS	A	B	C	K'	D	LATITUD	LONGITUD	
Ent. Yerbanís	118.00																				
Caseta de Cobro Cuencamé	143.22	2	1	1026	0.7	68.3	8.5	3.8	2.1	9.8	1.3	5.0	0.5	69.0	8.5	22.5	0.089	0.500	24.981673	-103.735239	
Caseta de Cobro Cuencamé	143.22	2	2	1026	0.7	68.3	8.5	3.8	2.1	9.8	1.3	5.0	0.5	69.0	8.5	22.5	0.089	0.500	24.981673	-103.735239	
X. C. Cuencamé - Torreón	180.00	1	1	1884	7.3	42.0	2.0	11.0	5.3	11.3	4.0	8.5	8.6	49.3	2.0	48.7	0.068	0.552	25.133674	-103.754967	
X. C. Cuencamé - Torreón	180.00	1	2	2338	5.5	49.9	4.5	9.4	4.3	7.8	3.0	8.0	7.6	55.4	4.5	40.1	0.066	0.552	25.133674	-103.754967	
X. C. Cuencamé - Torreón	180.00	3	1	2247	1.7	51.4	12.7	8.6	2.9	10.0	3.6	7.3	1.8	53.1	12.7	34.2	0.119	0.508	25.145226	-103.754426	
X. C. Cuencamé - Torreón	180.00	3	2	2315	1.1	45.6	14.6	9.5	3.3	12.1	4.4	7.2	2.2	46.7	14.6	38.7	0.092	0.508	25.145226	-103.754426	
Caseta de Cobro León Guzmán	212.71	1	1	2287	2.3	51.4	13.5	9.4	6.0	8.5	1.8	5.1	2.0	53.7	13.5	32.8	0.086	0.529	25.505666	-103.639724	
Caseta de Cobro León Guzmán	212.71	1	2	2566	2.8	52.3	13.6	12.4	5.0	6.8	1.8	2.4	2.9	55.1	13.6	31.3	0.066	0.529	25.505666	-103.639724	
Caseta de Cobro León Guzmán	212.71	2	1	1589	0.3	51.6	11.6	3.5	3.2	17.4	3.4	8.1	0.9	51.9	11.6	36.5	0.089	0.500	25.520712	-103.639620	

DURANGO

28 CARR: Yerbanis - Gómez Palicio (Cuota)

CLAVE: 10003

RUTA: MEX-040D

AÑO: 2015

LUGAR	ESTACION				CLASIFICACION VEHICULAR EN PORCIENTO														COORDENADAS	
	KM	TE	SC	TDPA	M	A	B	C2	C3	T3S2	T3S3	T3S2R4	OTROS	A	B	C	K'	D	LATITUD	LONGITUD
Caseta de Cobro León Guzmán	212.71	2	2	1589	0.3	51.6	11.6	3.5	3.2	17.4	3.4	8.1	0.9	51.9	11.6	36.5	0.089	0.500	25.520712	-103.639620
Caseta de Cobro León Guzmán	212.71	3	1	1779	1.1	41.8	13.8	5.3	3.9	21.0	5.3	7.2	0.6	42.9	13.8	43.3	0.080	0.512	25.536025	-103.638275
Caseta de Cobro León Guzmán	212.71	3	2	1694	1.3	43.1	14.0	6.8	6.8	17.6	2.5	6.5	1.4	44.4	14.0	41.6	0.077	0.512	25.536025	-103.638275
T. C. Gómez Palacio - Jiménez	220.00																			

29 CARR: Amado Nervo - La Ochoa

CLAVE: 10012

RUTA: DGO-542

AÑO: 2015

LUGAR	ESTACION				CLASIFICACION VEHICULAR EN PORCIENTO														COORDENADAS	
	KM	TE	SC	TDPA	M	A	B	C2	C3	T3S2	T3S3	T3S2R4	OTROS	A	B	C	K'	D	LATITUD	LONGITUD
Amado Nervo	0.00	3	0	1900	2.8	86.9	2.7	6.5	0.5	0.3	0.1	0.0	0.2	89.7	2.7	7.6	0.084	0.520	23.848849	-104.182949
Villa Unión	25.00	1	0	2789	2.4	91.7	1.9	3.6	0.1	0.2	0.0	0.0	0.1	94.1	1.9	4.0	0.099	0.509	23.960753	-104.052050
La Ochoa	42.00	1	0	362	0.7	86.0	4.0	9.1	0.0	0.0	0.0	0.0	0.2	86.7	4.0	9.3	0.144	0.511	24.019699	-103.927999

30 CARR: Ceballos - El Mirador

CLAVE: 10417

RUTA: DGO-044

AÑO: 2015

LUGAR	ESTACION				CLASIFICACION VEHICULAR EN PORCIENTO														COORDENADAS	
	KM	TE	SC	TDPA	M	A	B	C2	C3	T3S2	T3S3	T3S2R4	OTROS	A	B	C	K'	D	LATITUD	LONGITUD
Ceballos	0.00	3	0	889	0.0	74.4	0.0	18.5	3.9	2.7	0.2	0.0	0.3	74.4	0.0	25.6	0.074	0.519	26.529938	-104.134250
T. C. Ent. La Zarca - Hidalgo del Parral	113.50	1	0	226	0.4	89.9	0.7	5.4	2.5	0.4	0.2	0.0	0.5	90.3	0.7	9.0	0.115	0.508	26.141981	-105.027949

31 CARR: Durango - Aserradero La Flor

CLAVE: 10422

RUTA: DGO-115

AÑO: 2015

LUGAR	ESTACION				CLASIFICACION VEHICULAR EN PORCIENTO														COORDENADAS	
	KM	TE	SC	TDPA	M	A	B	C2	C3	T3S2	T3S3	T3S2R4	OTROS	A	B	C	K'	D	LATITUD	LONGITUD
Durango	0.00	3	1	8642	1.7	90.0	1.0	6.2	0.8	0.2	0.0	0.0	0.1	91.7	1.0	7.3	0.070	0.555	23.984297	-104.664492
Durango	0.00	3	2	10778	1.5	88.3	1.0	8.2	0.8	0.1	0.0	0.0	0.1	89.8	1.0	9.2	0.077	0.555	23.984297	-104.664492
T. Der. Presa Guadalupe Victoria	4.00	3	1	5196	1.0	92.4	0.7	4.8	0.7	0.2	0.1	0.0	0.1	93.4	0.7	5.9	0.099	0.503	23.976965	-104.664480
T. Der. Presa Guadalupe Victoria	4.00	3	2	5263	1.8	93.3	0.5	3.3	0.7	0.3	0.1	0.0	0.0	95.1	0.5	4.4	0.089	0.503	23.976965	-104.664480
Periférico Sur de Durango	8.00	3	0	404	0.6	81.1	0.9	5.2	7.3	4.4	0.3	0.0	0.2	81.7	0.9	17.4	0.104	0.519	23.947644	-104.673877
La Casita	39.00	1	0	147	1.0	61.5	1.1	10.1	17.5	8.1	0.0	0.0	0.7	62.5	1.1	36.4	0.116	0.544	23.754422	-104.757114
Aserradero La Flor	72.00																			

DURANGO

32 CARR: Jabonoso - Esmeralda

CLAVE: 10004

RUTA: DGO-363

AÑO: 2015

LUGAR	ESTACION				CLASIFICACION VEHICULAR EN PORCIENTO														COORDENADAS	
	KM	TE	SC	TDPA	M	A	B	C2	C3	T3S2	T3S3	T3S2R4	OTROS	A	B	C	K'	D	LATITUD	LONGITUD
Jabonoso	0.00	3	0	3347	4.9	71.2	4.7	10.9	4.5	1.5	0.6	1.1	0.6	76.1	4.7	19.2	0.085	0.503	25.644502	-103.457060
T. Izq. Chimal	10.00	3	0	4358	4.9	78.5	1.1	5.4	6.9	1.3	0.8	0.9	0.2	83.4	1.1	15.5	0.075	0.538	25.692783	-103.443107
Esmeralda	16.30	1	0	2580	6.9	74.4	4.9	3.8	7.8	0.9	0.6	0.5	0.2	81.3	4.9	13.8	0.070	0.541	25.734815	-103.432558

33 CARR: La Torreña - Brittingham

CLAVE: 10010

RUTA: DGO-325

AÑO: 2015

LUGAR	ESTACION				CLASIFICACION VEHICULAR EN PORCIENTO														COORDENADAS	
	KM	TE	SC	TDPA	M	A	B	C2	C3	T3S2	T3S3	T3S2R4	OTROS	A	B	C	K'	D	LATITUD	LONGITUD
La Torreña	0.00	3	0	3205	13.2	59.5	1.2	4.9	6.7	5.5	3.5	3.0	2.5	72.7	1.2	26.1	0.080	0.508	25.639191	-103.579917
X. C. Gómez Palacio - Jiménez	7.00	1	0	3826	4.8	72.3	4.2	8.5	4.0	3.2	1.7	1.0	0.3	77.1	4.2	18.7	0.064	0.525	25.638966	-103.534311
X. C. Gómez Palacio - Jiménez	7.00	3	0	2955	1.4	78.9	3.0	7.0	4.9	3.2	0.7	0.5	0.4	80.3	3.0	16.7	0.099	0.515	25.641333	-103.520328
Chimal	16.00	1	0	1931	4.2	68.5	2.7	9.1	7.4	5.0	1.7	0.9	0.5	72.7	2.7	24.6	0.081	0.523	25.690790	-103.490781
Chimal	16.00	3	0	1417	10.5	64.4	2.3	7.0	8.7	4.8	1.6	0.7	0.0	74.9	2.3	22.8	0.073	0.514	25.694325	-103.488737
Brittingham	33.00	1	0	1400	3.8	72.3	3.3	5.7	5.3	7.2	1.1	0.9	0.4	76.1	3.3	20.6	0.101	0.546	25.773173	-103.574829

34 CARR: Libramiento de Torreón

CLAVE: 05516

RUTA: COA

AÑO: 2015

LUGAR	ESTACION				CLASIFICACION VEHICULAR EN PORCIENTO														COORDENADAS	
	KM	TE	SC	TDPA	M	A	B	C2	C3	T3S2	T3S3	T3S2R4	OTROS	A	B	C	K'	D	LATITUD	LONGITUD
X. C. Saltillo - Torreón	0.00	3	1	34431	1.3	85.3	1.0	4.6	1.3	2.8	2.1	0.9	0.7	86.6	1.0	12.4	0.068	0.508	25.541257	-103.370410
X. C. Saltillo - Torreón	0.00	3	2	35566	1.4	84.0	1.1	5.4	1.3	2.9	2.3	0.9	0.7	85.4	1.1	13.5	0.065	0.508	25.539791	-103.370893
T. C. La Cuchilla - Torreón (Baja)	7.30	1	1	17621	1.3	83.9	1.1	3.9	1.5	3.5	2.4	1.3	1.1	85.2	1.1	13.7	0.071	0.510	25.582692	-103.402692
T. C. La Cuchilla - Torreón (Alta)	7.30	1	1	16852	1.4	83.2	0.7	5.1	1.8	3.8	2.2	0.9	0.9	84.6	0.7	14.7	0.097	0.508	25.582681	-103.402662
T. C. La Cuchilla - Torreón (Baja)	7.30	1	2	18324	1.3	82.4	1.3	4.4	1.7	3.7	2.5	1.5	1.2	83.7	1.3	15.0	0.103	0.510	25.582670	-103.402650
T. C. La Cuchilla - Torreón (Alta)	7.30	1	2	16317	1.1	81.9	0.7	5.5	1.9	4.5	2.4	1.0	1.0	83.0	0.7	16.3	0.075	0.508	25.582679	-103.402645
Lim. Edos. Term. Coah. Ppia. Dgo.	11.80																			
T. C. Durango - Torreón	28.60																			

35 CARR: Libramiento Exterior Cuencamé

CLAVE: 10006

RUTA: DGO

AÑO: 2015

LUGAR	ESTACION				CLASIFICACION VEHICULAR EN PORCIENTO														COORDENADAS	
	KM	TE	SC	TDPA	M	A	B	C2	C3	T3S2	T3S3	T3S2R4	OTROS	A	B	C	K'	D	LATITUD	LONGITUD
Ent. La Chicharrona - Cuencamé	0.00	3	0	4225	5.2	29.6	12.8	12.1	8.9	19.1	3.3	6.8	2.2	34.8	12.8	52.4	0.053	0.547	24.841602	-103.693418
T. C. Durango - Torreón	8.40																			

DURANGO

36 CARR: Mezquital - San Miguel de Temoaya

CLAVE: 10006

RUTA: DGO

AÑO: 2015

LUGAR	ESTACION				CLASIFICACION VEHICULAR EN PORCIENTO										COORDENADAS					
	KM	TE	SC	TDPA	M	A	B	C2	C3	T3S2	T3S3	T3S2R4	OTROS	A	B	C	K'	D	LATITUD	LONGITUD
T. C. Durango - Mezquital	0.00	3	0	260	0.8	86.6	1.1	7.4	2.7	0.5	0.6	0.0	0.3	87.4	1.1	11.5	0.127	0.505	23.497048	-104.387811
San Miguel de Temoaya	48.00	1	0	182	0.7	78.5	3.4	12.4	3.2	0.6	0.7	0.0	0.5	79.2	3.4	17.4	0.165	0.528	23.304076	-104.507188

37 CARR: Ramal a San Juan del Río

CLAVE: 10001

RUTA: DGO-290

AÑO: 2015

LUGAR	ESTACION				CLASIFICACION VEHICULAR EN PORCIENTO										COORDENADAS					
	KM	TE	SC	TDPA	M	A	B	C2	C3	T3S2	T3S3	T3S2R4	OTROS	A	B	C	K'	D	LATITUD	LONGITUD
T. C. Durango - Ent. La Zarca	0.00	3	0	2462	0.6	95.4	0.0	2.6	1.4	0.0	0.0	0.0	0.0	96.0	0.0	4.0	0.074	0.502	24.796110	-104.495456
San Juan del Río	5.00	1	1	1578	0.2	94.4	1.3	3.3	0.3	0.2	0.0	0.2	0.1	94.6	1.3	4.1	0.094	0.504	24.781480	-104.469279
San Juan del Río	5.00	1	2	1601	0.3	94.3	1.4	3.1	0.4	0.1	0.2	0.1	0.1	94.6	1.4	4.0	0.104	0.504	24.781480	-104.469279

38 CARR: Súchil - Villa Unión

CLAVE: 10419

RUTA: DGO-241

AÑO: 2015

LUGAR	ESTACION				CLASIFICACION VEHICULAR EN PORCIENTO										COORDENADAS					
	KM	TE	SC	TDPA	M	A	B	C2	C3	T3S2	T3S3	T3S2R4	OTROS	A	B	C	K'	D	LATITUD	LONGITUD
Súchil	0.00	3	1	1128	0.2	91.0	1.9	5.9	0.6	0.1	0.1	0.0	0.2	91.2	1.9	6.9	0.097	0.501	23.622815	-103.921317
Súchil	0.00	3	2	1123	0.8	92.6	1.3	4.3	0.7	0.1	0.0	0.0	0.2	93.4	1.3	5.3	0.095	0.501	23.622815	-103.921317
Vicente Guerrero	13.40	1	0	1928	0.9	87.7	2.5	7.8	0.8	0.1	0.0	0.0	0.2	88.6	2.5	8.9	0.087	0.503	23.715669	-103.972445
X. C. Zacatecas - Durango	14.50	1	1	3894	0.8	89.5	3.2	5.6	0.5	0.1	0.1	0.0	0.2	90.3	3.2	6.5	0.102	0.501	23.742567	-103.985388
X. C. Zacatecas - Durango	14.50	1	2	3871	0.9	92.2	2.3	3.8	0.5	0.1	0.1	0.0	0.1	93.1	2.3	4.6	0.084	0.501	23.742567	-103.985388
X. C. Zacatecas - Durango	14.50	3	0	2378	0.2	90.0	2.1	7.1	0.3	0.1	0.0	0.0	0.2	90.2	2.1	7.7	0.086	0.507	23.744498	-103.987071
Villa Unión	41.40	1	0	2180	0.0	92.7	0.0	4.0	0.9	1.2	0.9	0.1	0.2	92.7	0.0	7.3	0.085	0.514	23.959925	-104.049590

39 CARR: Tlahualillo de Zaragoza - T.C. Gómez Palacio - Jiménez

CLAVE: 10419

RUTA: DGO

AÑO: 2015

LUGAR	ESTACION				CLASIFICACION VEHICULAR EN PORCIENTO										COORDENADAS					
	KM	TE	SC	TDPA	M	A	B	C2	C3	T3S2	T3S3	T3S2R4	OTROS	A	B	C	K'	D	LATITUD	LONGITUD
Tlahualillo de Zaragoza	0.00	3	0	756	1.0	87.0	1.2	2.9	2.5	3.4	0.5	1.0	0.5	88.0	1.2	10.8	0.106	0.514	26.117507	-103.445803
T. C. Gómez Palacio - Jiménez	37.00	1	0	833	5.9	74.1	0.9	9.1	3.8	5.9	0.0	0.3	0.0	80.0	0.9	19.1	0.091	0.542	26.156590	-103.775353

40 CARR: Yerbanís - Peñón Blanco

CLAVE: 10032

RUTA: DGO-316

AÑO: 2015

LUGAR	ESTACION				CLASIFICACION VEHICULAR EN PORCIENTO										COORDENADAS					
	KM	TE	SC	TDPA	M	A	B	C2	C3	T3S2	T3S3	T3S2R4	OTROS	A	B	C	K'	D	LATITUD	LONGITUD
Yerbanís	0.00	3	0	1150	0.0	65.1	0.0	2.3	27.1	2.7	0.9	0.7	1.2	65.1	0.0	34.9	0.074	0.504	24.736024	-103.845796

DURANGO

40 CARR: Yerbanís - Peñón Blanco

CLAVE: 10032

RUTA: DGO-316

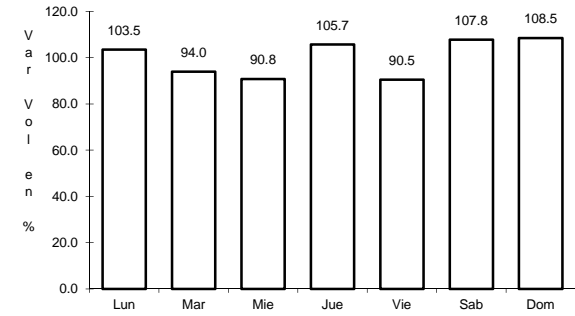
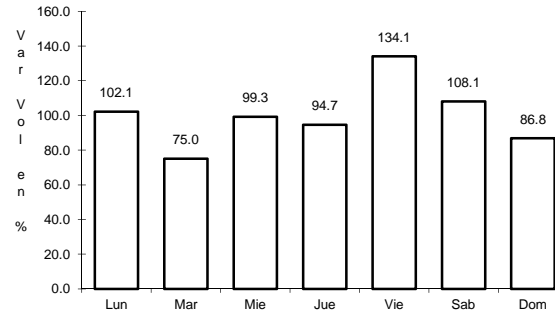
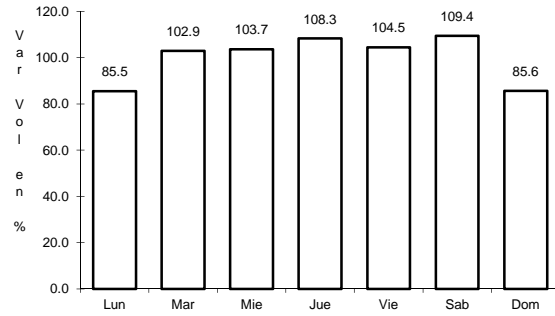
AÑO: 2015

L U G A R	E S T A C I O N				C L A S I F I C A C I O N V E H I C U L A R E N P O R C I E N T O														C O O R D E N A D A S	
	KM	TE	SC	TDPA	M	A	B	C2	C3	T3S2	T3S3	T3S2R4	OTROS	A	B	C	K'	D	LATITUD	LONGITUD
Peñón Blanco	22.00	1	0	1066	0.9	96.2	0.1	1.1	1.1	0.1	0.1	0.0	0.4	97.1	0.1	2.8	0.077	0.509	24.782714	-104.012224

1 CARR: Bermejillo - El Palmito

CLAVE: 10105

RUTA: MEX-030



Km: 0.00 Tipo: 3 Sent: 0

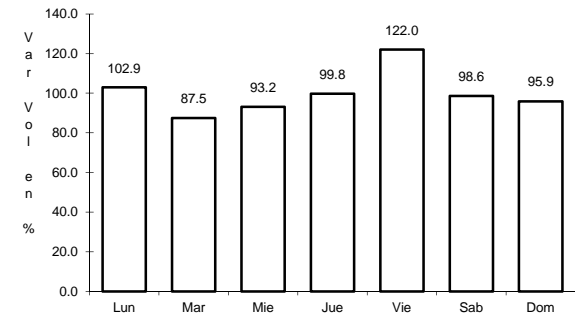
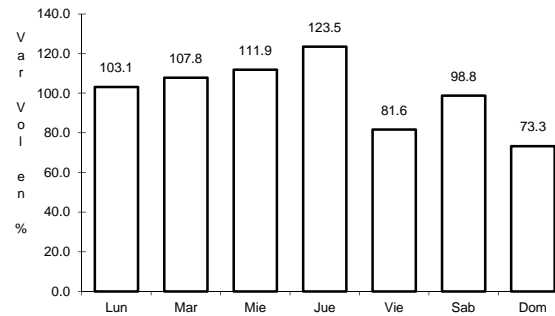
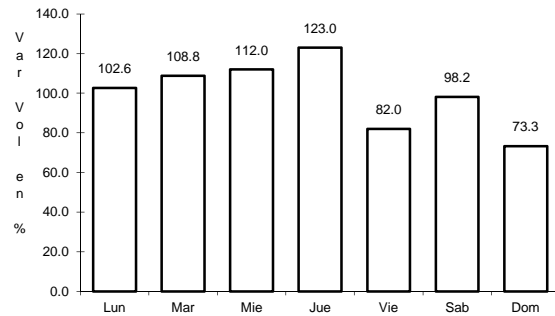
Km: 86.00 Tipo: 1 Sent: 0

Km: 160.00 Tipo: 1 Sent: 0

2 CARR: Durango - Ent. La Zarca

CLAVE: 10016

RUTA: MEX-045



Km: 0.00 Tipo: 3 Sent: 1

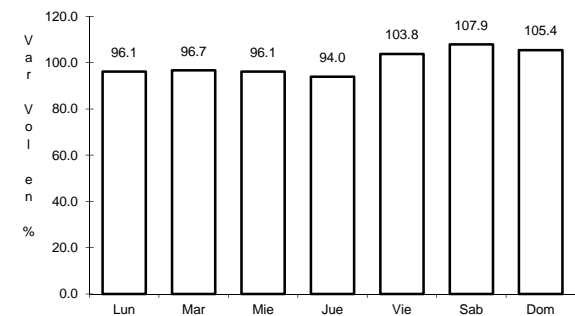
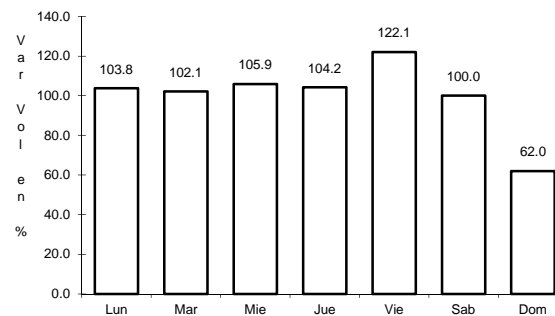
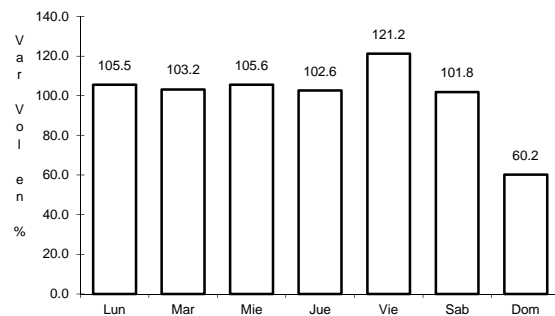
Km: 0.00 Tipo: 3 Sent: 2

Km: 239.50 Tipo: 1 Sent: 0

3 CARR: Durango - Mezquital

CLAVE: 10423

RUTA: MEX-023



Km: 0.00 Tipo: 3 Sent: 1

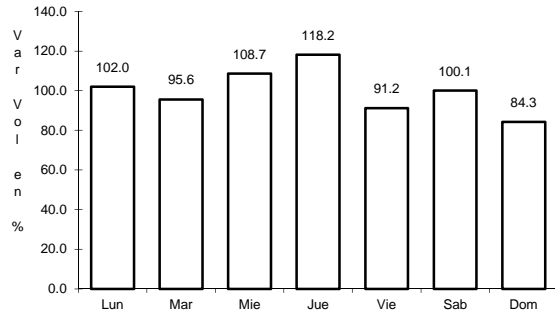
Km: 0.00 Tipo: 3 Sent: 2

Km: 13.00 Tipo: 3 Sent: 0

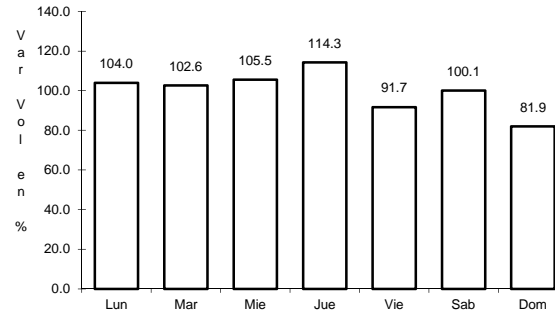
4 CARR: Durango - Torreón

CLAVE: 10085

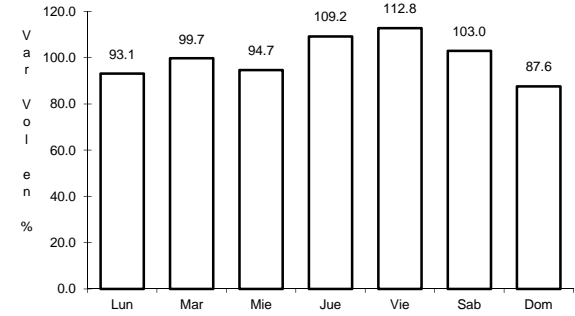
RUTA: MEX-040



Km: 0.00 Tipo: 3 Sent: 1



Km: 0.00 Tipo: 3 Sent: 2

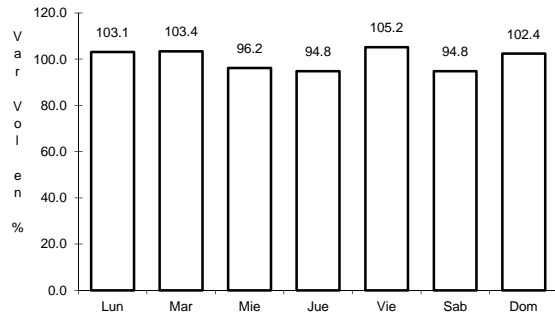


Km: 120.90 Tipo: 1 Sent: 0

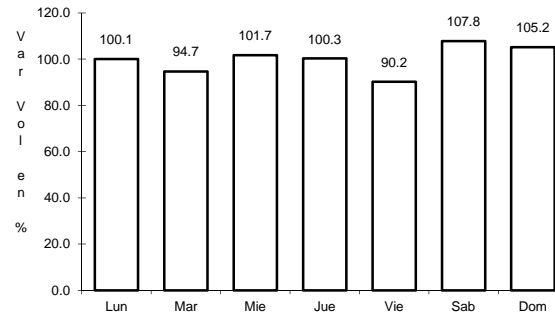
5 CARR: Durango - Villa Unión

CLAVE: 0083

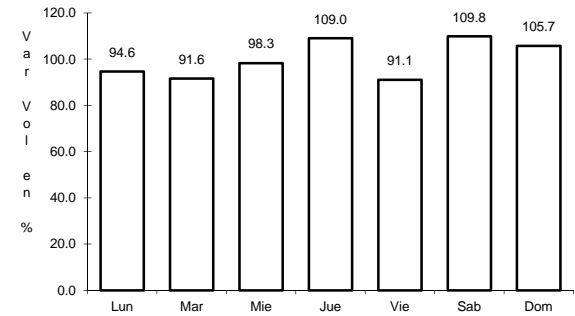
RUTA: MEX-040



Km: 0.00 Tipo: 3 Sent: 0



Km: 145.50 Tipo: 1 Sent: 0

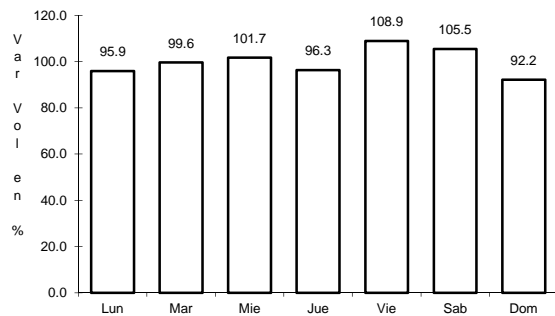


Km: 294.40 Tipo: 1 Sent: 0

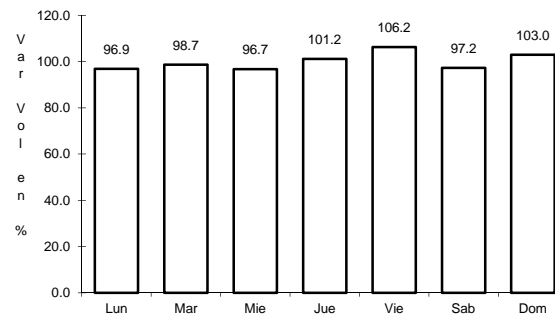
6 CARR: Ent. La Chicharrona - Cuencamé

CLAVE: 00152

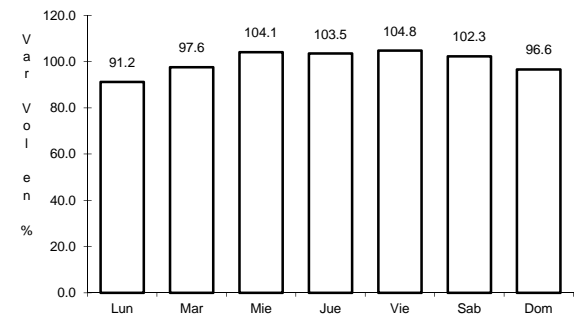
RUTA: MEX-049



Km: 0.00 Tipo: 3 Sent: 1



Km: 0.00 Tipo: 3 Sent: 2

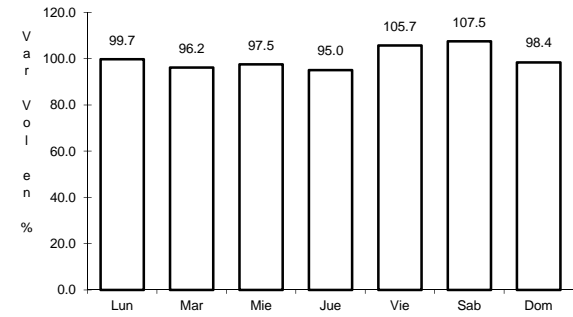
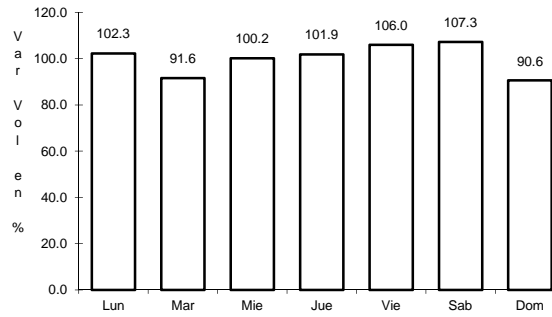
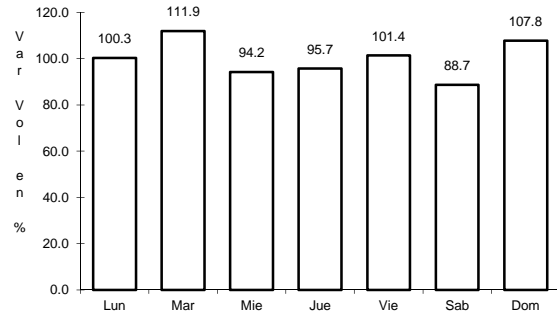


Km: 124.50 Tipo: 1 Sent: 0

7 CARR: Ent. La Zarca - Hidalgo del Parral

CLAVE: 00488

RUTA: MEX-045



Km: 0.00 Tipo: 3 Sent: 0

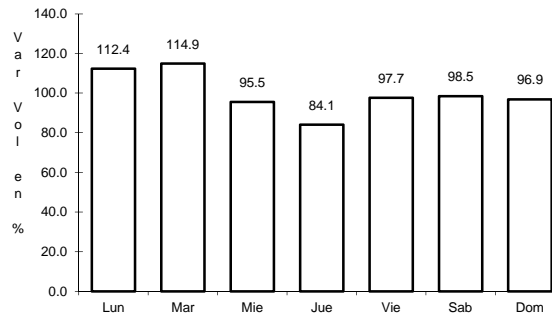
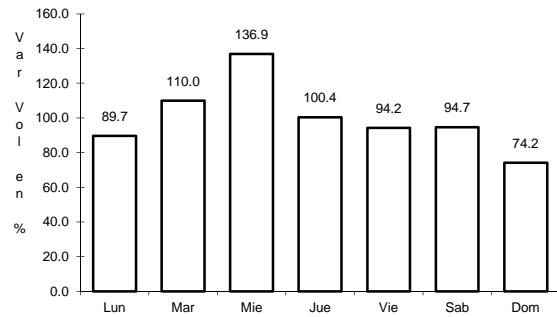
Km: 92.35 Tipo: 3 Sent: 0

Km: 171.00 Tipo: 1 Sent: 0

8 CARR: Ent. Los Herrera - Topia

CLAVE: 10090

RUTA: MEX-036



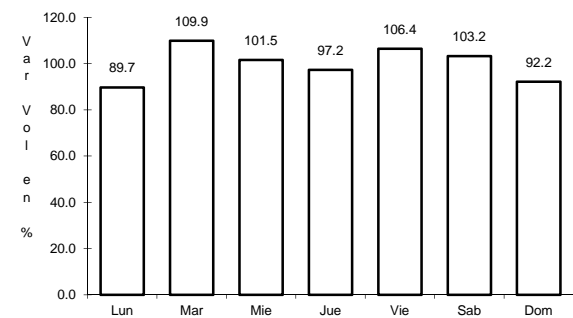
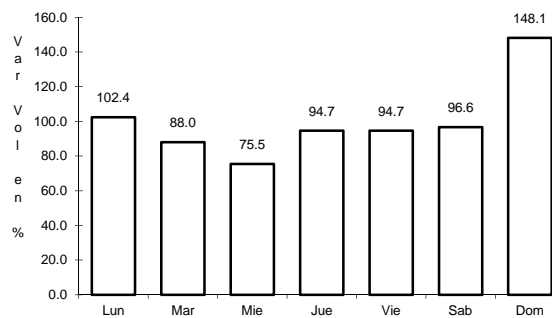
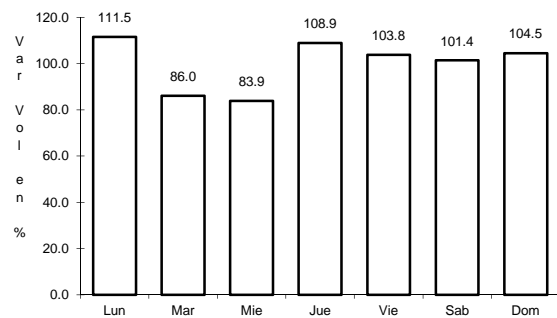
Km: 0.00 Tipo: 3 Sent: 0

Km: 80.00 Tipo: 1 Sent: 0

9 CARR: Gómez Palacio - Jiménez

CLAVE: 00006

RUTA: MEX-049



Km: 0.00 Tipo: 3 Sent: 1

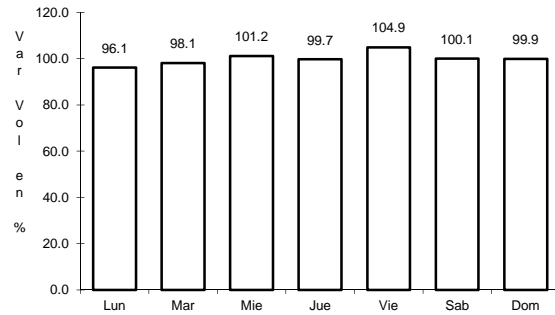
Km: 0.00 Tipo: 3 Sent: 2

Km: 107.95 Tipo: 1 Sent: 0

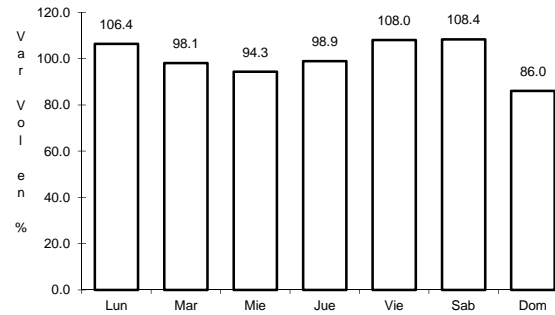
10 CARR: Gómez Palacio - La Unión

CLAVE: 10009

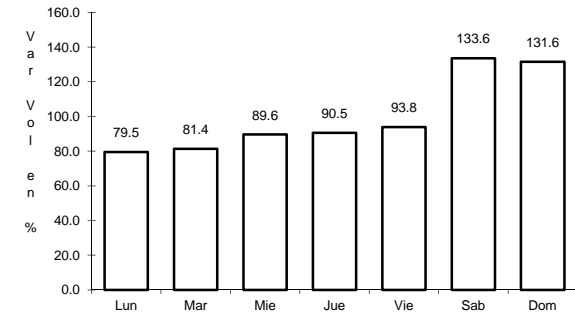
RUTA: MEX-040



Km: 0.00 Tipo: 3 Sent: 0



Km: 20.90 Tipo: 1 Sent: 0

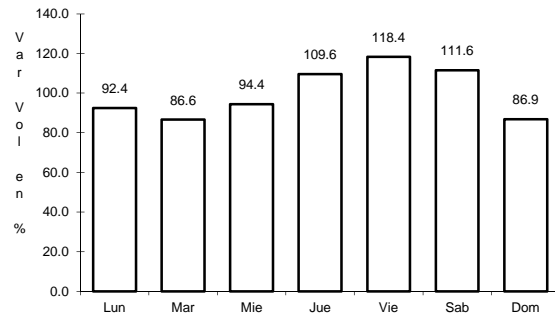


Km: 42.20 Tipo: 1 Sent: 0

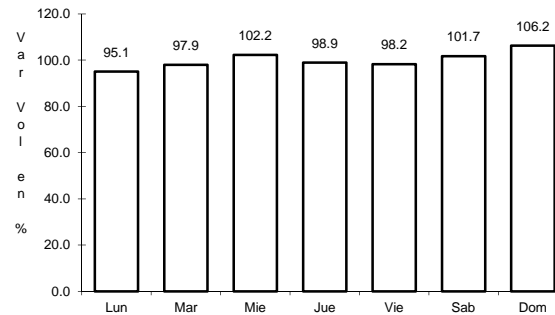
11 CARR: Gómez Palacio - Tlahualillo

CLAVE: 10005

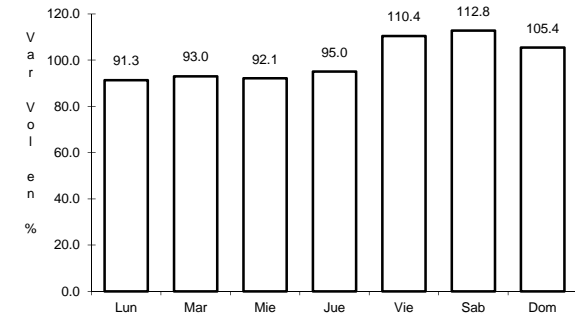
RUTA: MEX-040



Km: 5.60 Tipo: 1 Sent: 0



Km: 31.44 Tipo: 1 Sent: 0

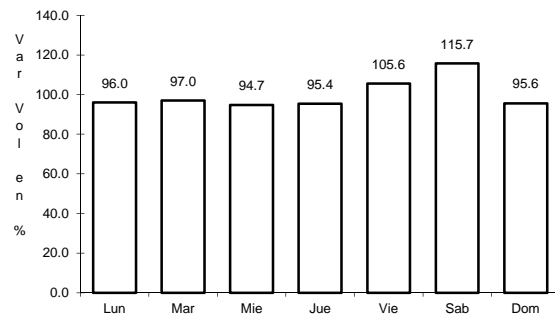


Km: 72.90 Tipo: 1 Sent: 0

12 CARR: Gregorio García - Francisco I. Madero

CLAVE: 00110

RUTA: MEX-040

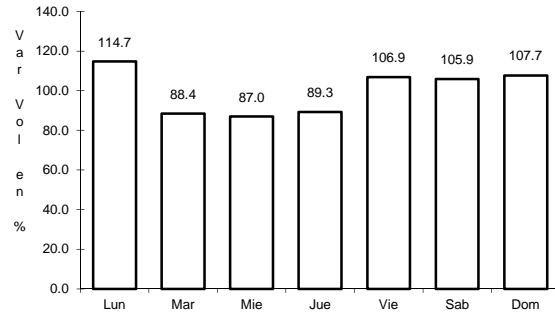


Km: 9.60 Tipo: 1 Sent: 0

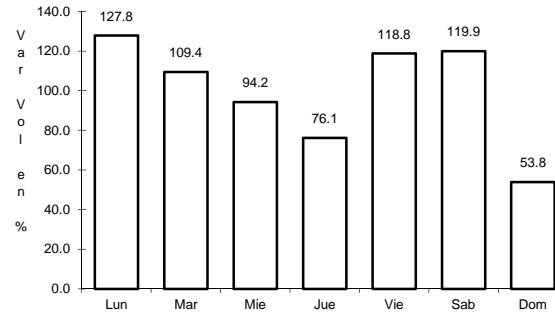
13 CARR: Guadalupe Aguilera - Tepehuanes

CLAVE: 10220

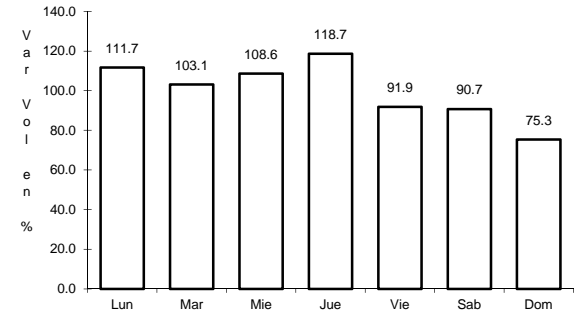
ruta: MEX-023



Km: 0.00 Tipo: 3 Sent: 1



Km: 0.00 Tipo: 3 Sent: 2

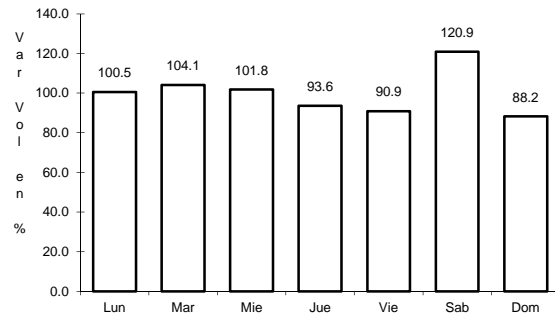


Km: 169.00 Tipo: 1 Sent: 0

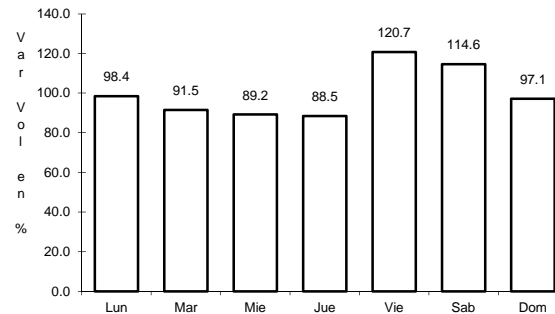
14 CARR: Hidalgo del Parral - Guadalupe y Calvo

CLAVE: 00802

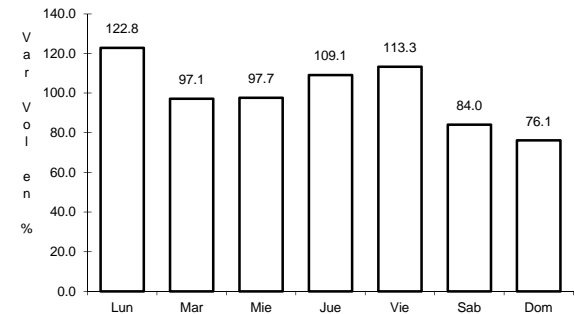
ruta: MEX-024



Km: 0.00 Tipo: 3 Sent: 0



Km: 110.00 Tipo: 1 Sent: 0

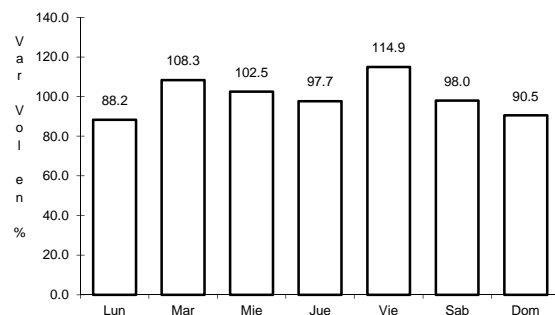


Km: 212.00 Tipo: 1 Sent: 0

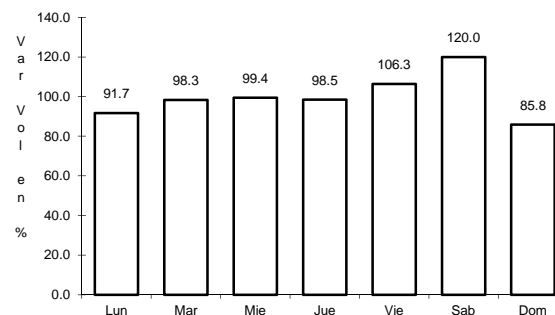
15 CARR: Libramiento Cuencamé

CLAVE: 10006

ruta: MEX



Km: 0.00 Tipo: 3 Sent: 1

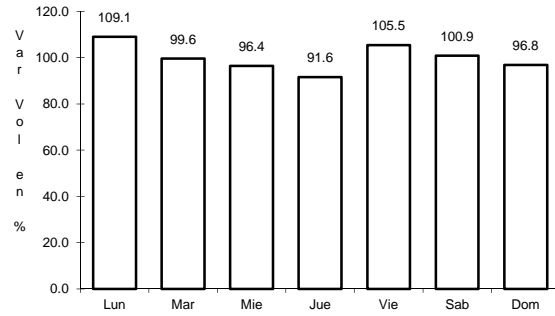


Km: 0.00 Tipo: 3 Sent: 2

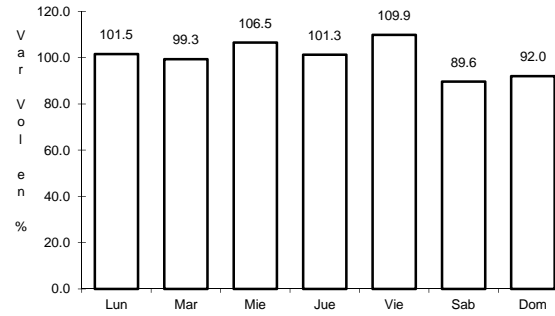
16 CARR: Libramiento Oriente de Durango

CLAVE:

RUTA: MEX-045



Km: 0.00 Tipo: 3 Sent: 1

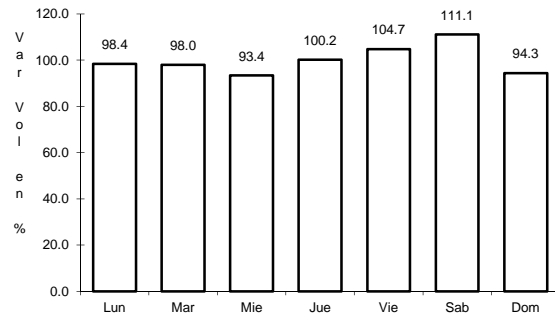


Km: 0.00 Tipo: 3 Sent: 2

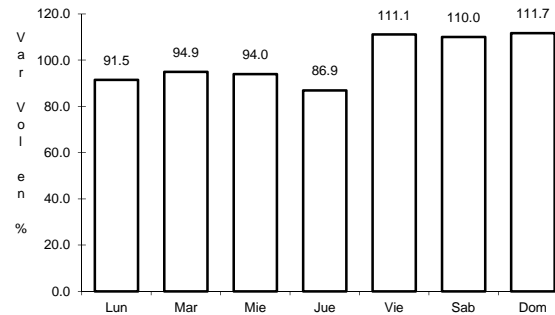
17 CARR: Libramiento Sur de Durango

CLAVE:

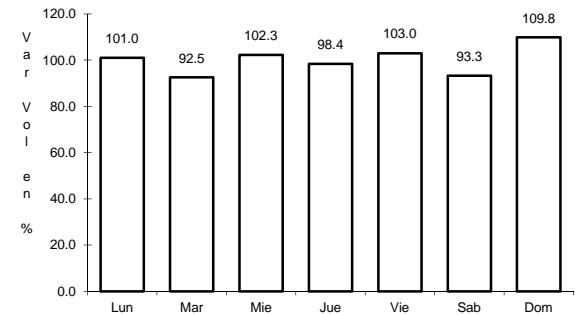
RUTA: MEX-045



Km: 0.00 Tipo: 3 Sent: 0



Km: 19.50 Tipo: 1 Sent: 0

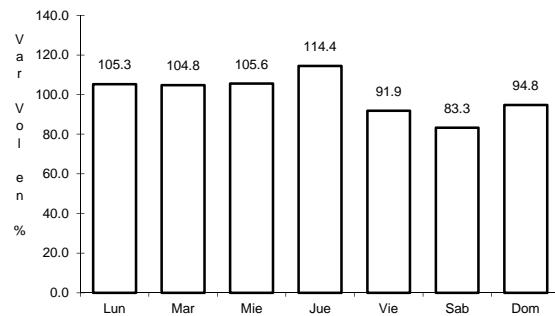


Km: 27.70 Tipo: 1 Sent: 0

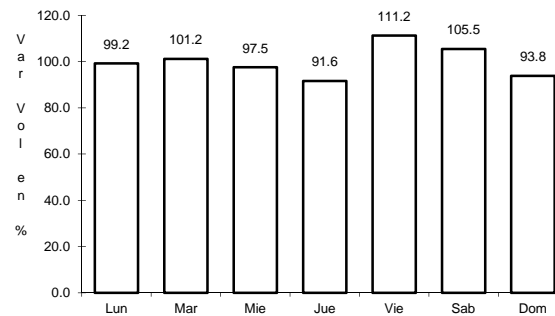
18 CARR: Pedriceña - Ent. Rodeo

CLAVE: 10002

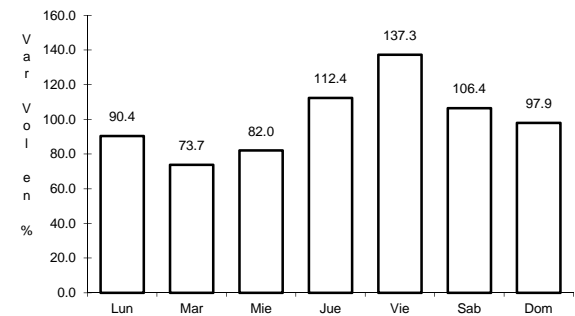
RUTA: MEX-034



Km: 0.00 Tipo: 3 Sent: 0



Km: 45.00 Tipo: 1 Sent: 0

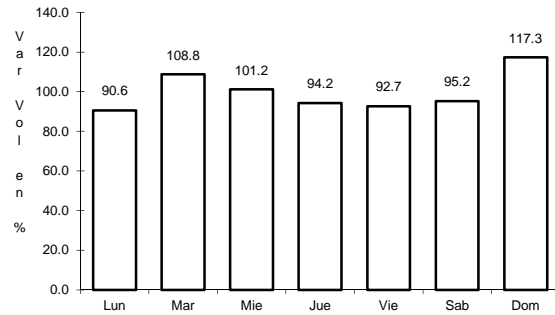


Km: 98.00 Tipo: 1 Sent: 0

19 CARR: Ramal a Otinapa

CLAVE: 10002

RUTA: MEX



Km: 0.00

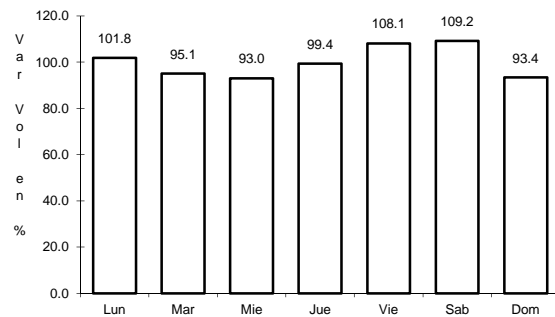
Tipo: 3

Sent: 0

20 CARR: Ramal a Santa Clara

CLAVE: 10287

RUTA: MEX-049



Km: 0.00

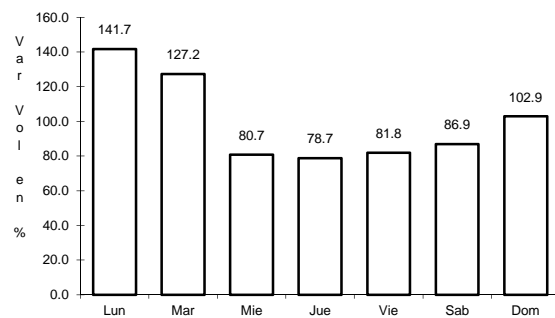
Tipo: 3

Sent: 0

21 CARR: Ramal a Villa Juárez

CLAVE: 10287

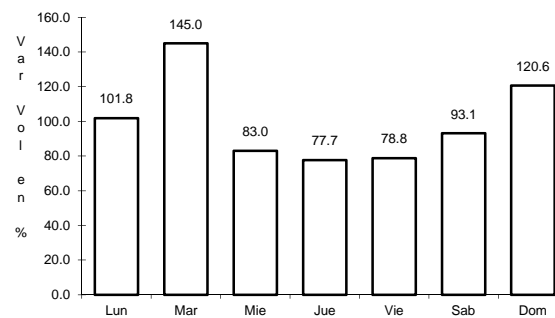
RUTA: MEX-040



Km: 0.00

Tipo: 3

Sent: 1



Km: 0.00

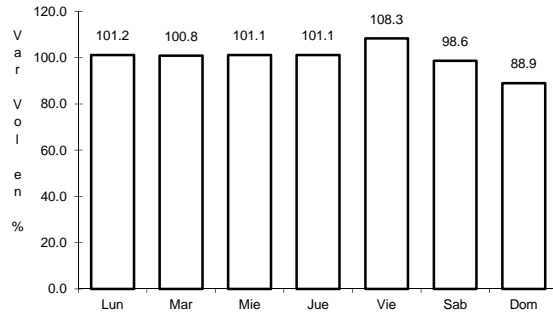
Tipo: 3

Sent: 2

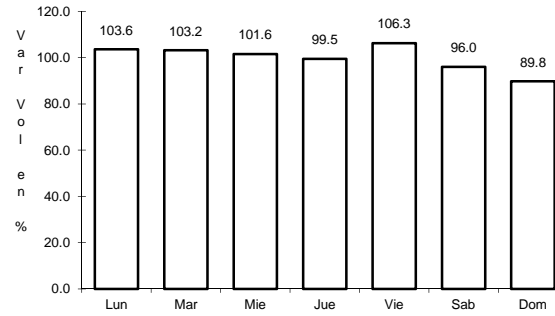
22 CARR: Zacatecas - Durango

CLAVE: 00544

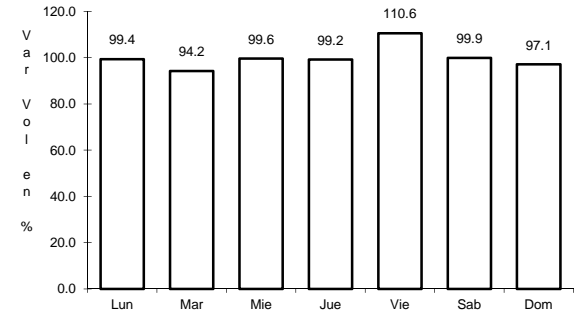
RUTA: MEX-045



Km: 6.40 Tipo: 3 Sent: 1



Km: 6.40 Tipo: 3 Sent: 2

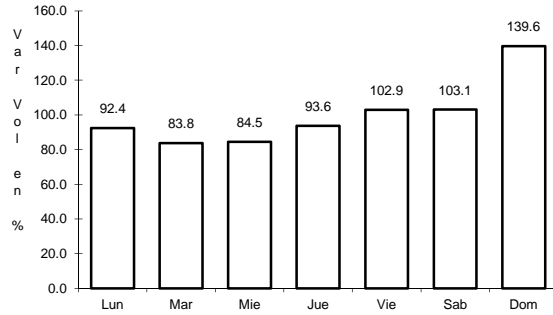


Km: 121.00 Tipo: 3 Sent: 0

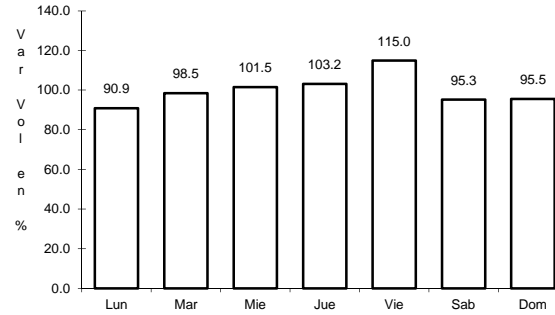
23 CARR: Durango - Mazatlán (Cuota)

CLAVE: 00084

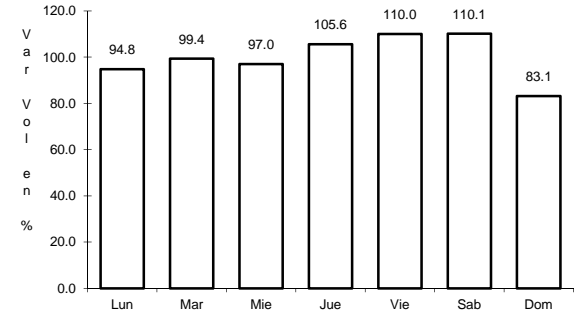
RUTA: MEX-040D



Km: 20.50 Tipo: 3 Sent: 0



Km: 44.50 Tipo: 1 Sent: 0

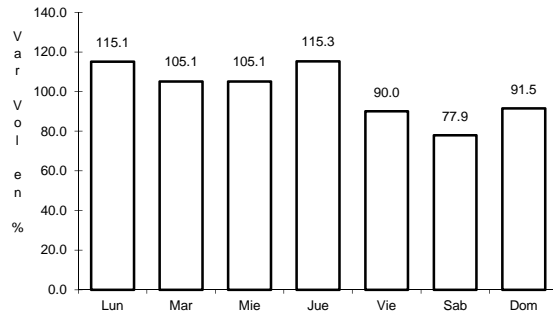


Km: 208.35 Tipo: 1 Sent: 0

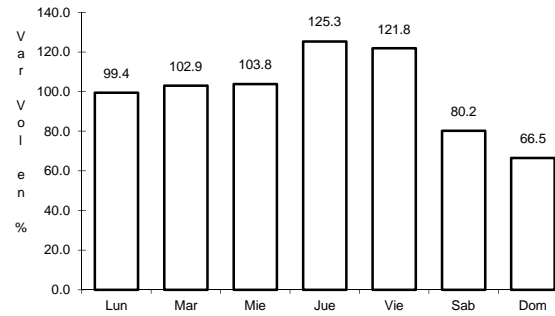
24 CARR: Durango - Yerbanís (Cuota)

CLAVE: 10003

RUTA: MEX-040D



Km: 5.30 Tipo: 1 Sent: 1

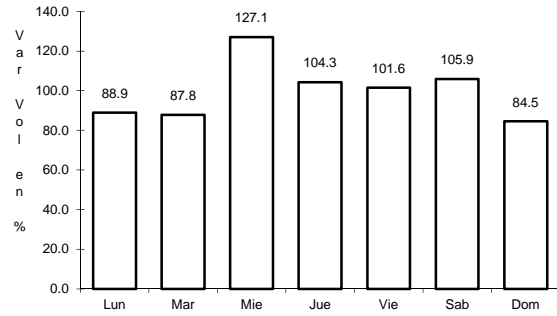


Km: 5.30 Tipo: 1 Sent: 2

25 CARR: Gómez Palacio - Corralitos (Cuota)

CLAVE: 00016

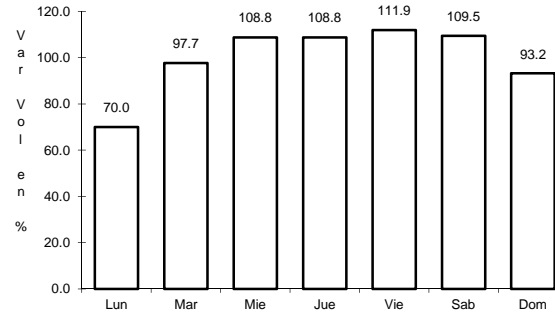
RUTA: MEX-049D



Km: 2.21

Tipo: 1

Sent: 1



Km: 2.21

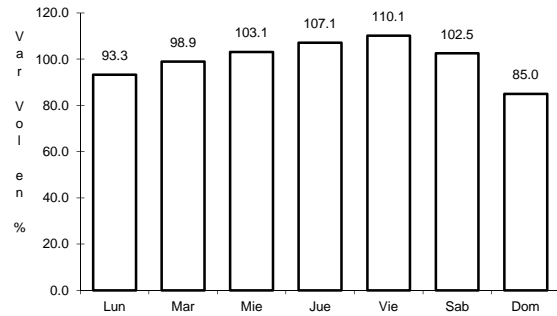
Tipo: 1

Sent: 2

26 CARR: Libramiento de Durango (Cuota)

CLAVE: 10006

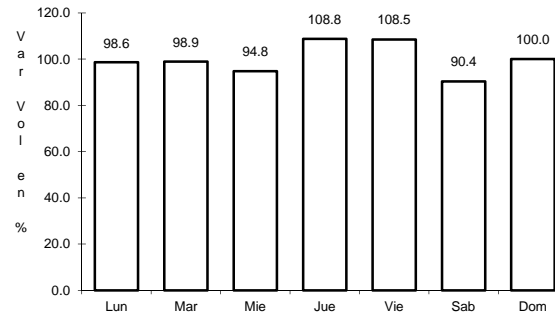
RUTA: MEX-040D



Km: 0.00

Tipo: 3

Sent: 0



Km: 21.60

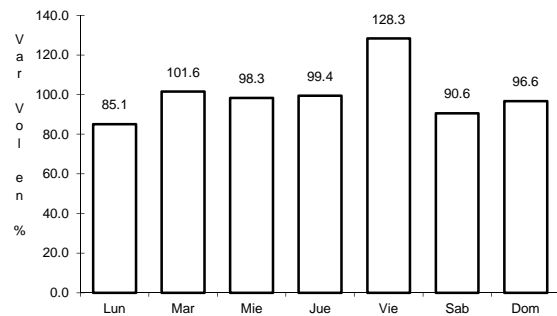
Tipo: 1

Sent: 0

27 CARR: Libramiento Norte de Torreón

CLAVE:

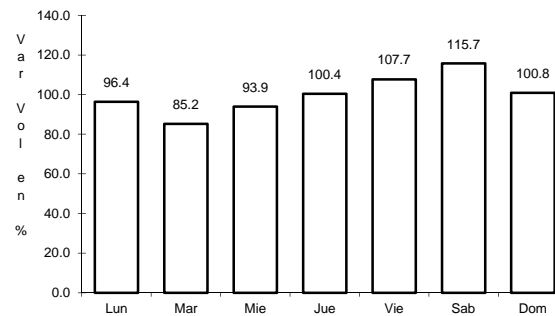
RUTA: MEX-040D



Km: 0.00

Tipo: 3

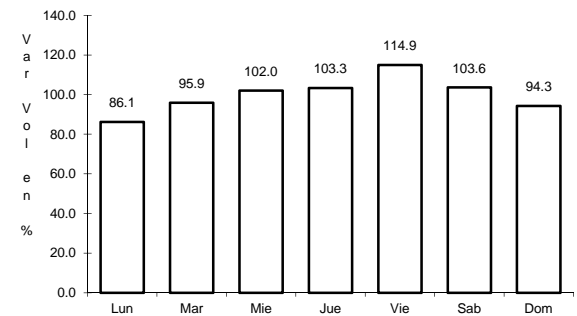
Sent: 0



Km: 17.36

Tipo: 1

Sent: 0



Km: 40.70

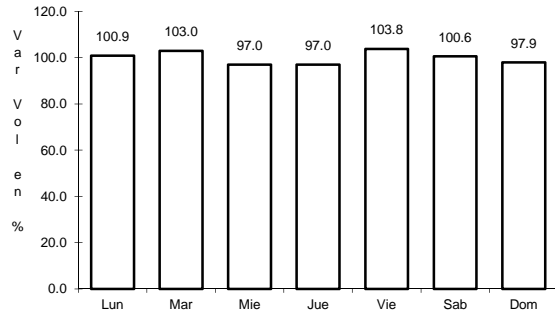
Tipo: 1

Sent: 0

28 CARR: Yerbanís - Gómez Palicio (Cuota)

CLAVE: 10003

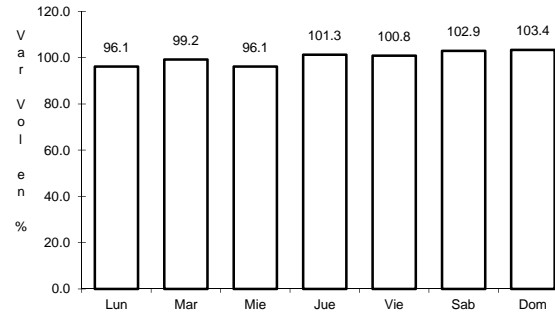
RUTA: MEX-040D



Km: 180.00

Tipo: 1

Sent: 1



Km: 180.00

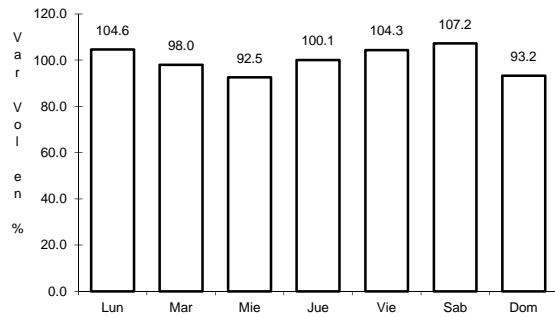
Tipo: 1

Sent: 2

29 CARR: Amado Neruo - La Ochoa

CLAVE: 10012

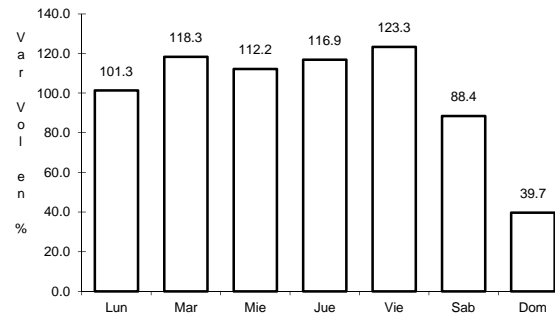
RUTA: DGO-542



Km: 0.00

Tipo: 3

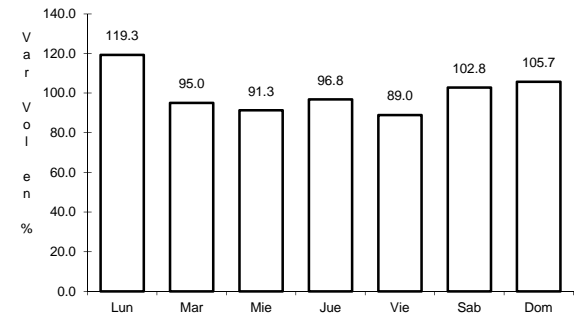
Sent: 0



Km: 25.00

Tipo: 1

Sent: 0



Km: 42.00

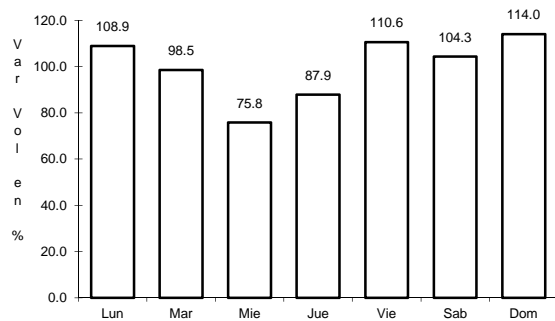
Tipo: 1

Sent: 0

30 CARR: Ceballos - El Mirador

CLAVE: 10417

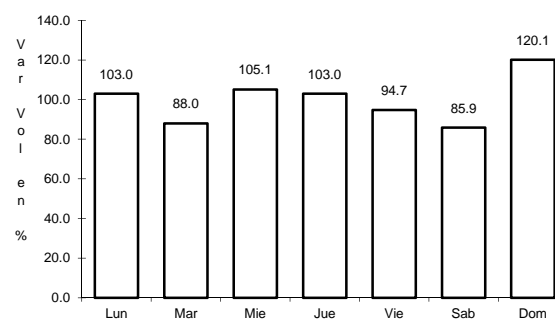
RUTA: DGO-044



Km: 0.00

Tipo: 3

Sent: 0



Km: 113.50

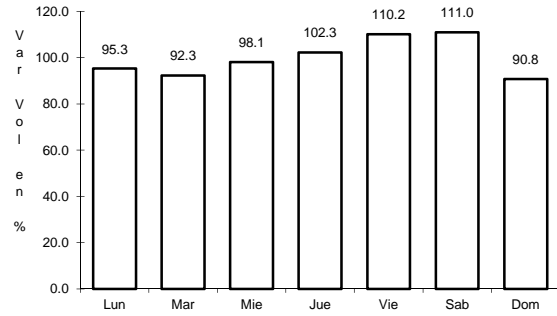
Tipo: 1

Sent: 0

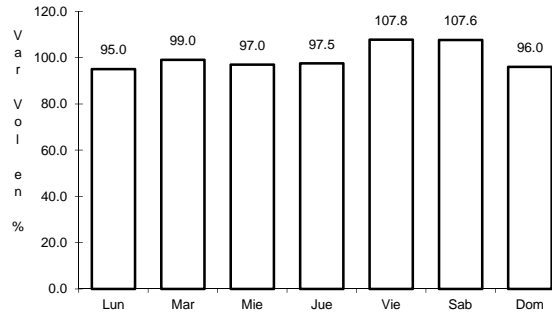
31 CARR: Durango - Aserradero La Flor

CLAVE: 10422

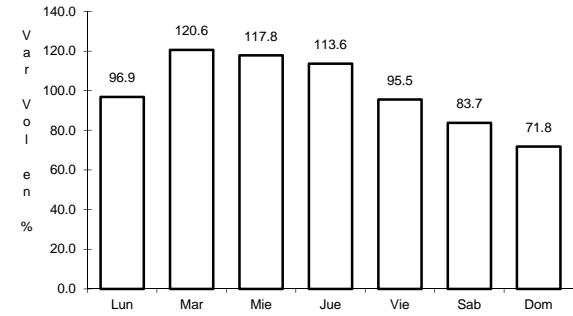
RUTA: DGO-115



Km: 0.00 Tipo: 3 Sent: 1



Km: 0.00 Tipo: 3 Sent: 2

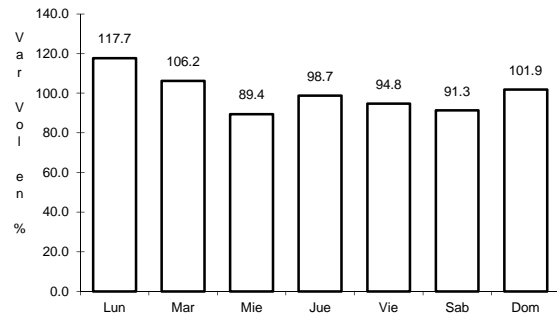


Km: 39.00 Tipo: 1 Sent: 0

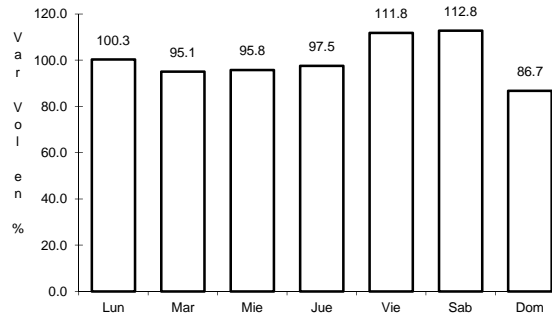
32 CARR: Jabonoso - Esmeralda

CLAVE: 10004

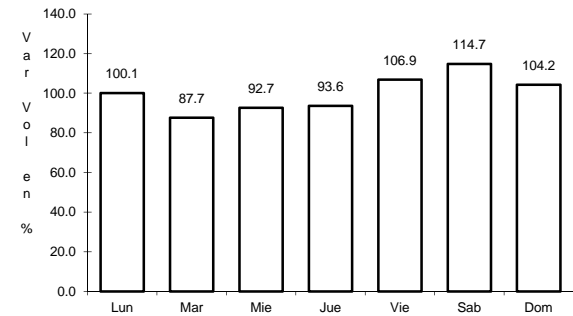
RUTA: DGO-363



Km: 0.00 Tipo: 3 Sent: 0



Km: 10.00 Tipo: 3 Sent: 0

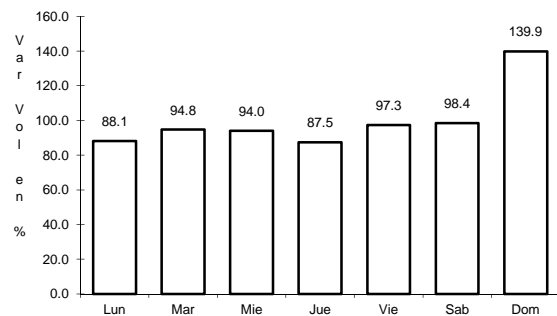


Km: 16.30 Tipo: 1 Sent: 0

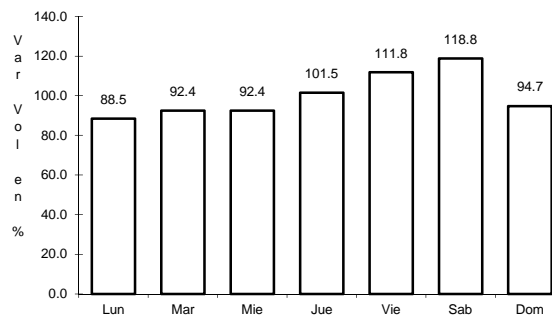
33 CARR: La Torreña - Brittingham

CLAVE: 10010

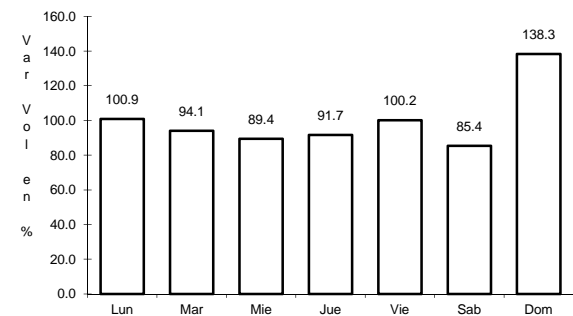
RUTA: DGO-325



Km: 0.00 Tipo: 3 Sent: 0



Km: 16.00 Tipo: 1 Sent: 0

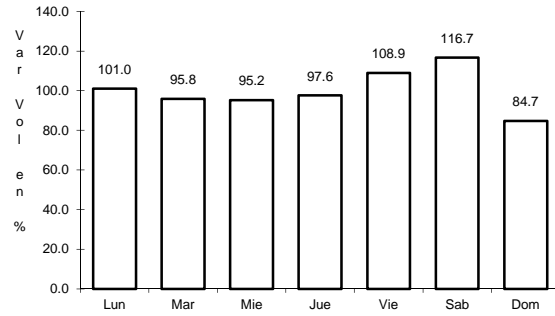


Km: 33.00 Tipo: 1 Sent: 0

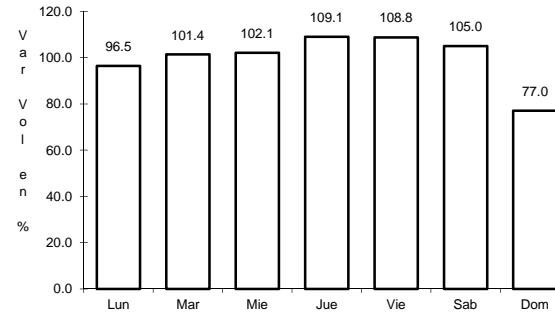
34 CARR: Libramiento de Torreón

CLAVE: 05516

RUTA: COA



Km: 0.00 Tipo: 3 Sent: 1

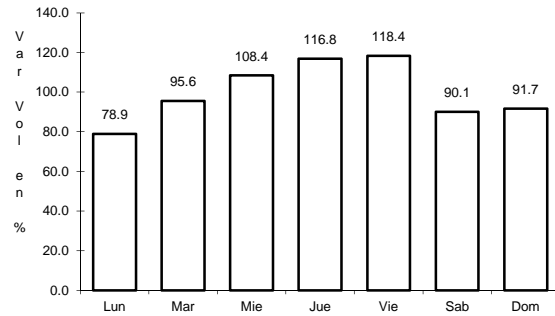


Km: 0.00 Tipo: 3 Sent: 2

35 CARR: Libramiento Exterior Cuencamé

CLAVE: 10006

RUTA: DGO

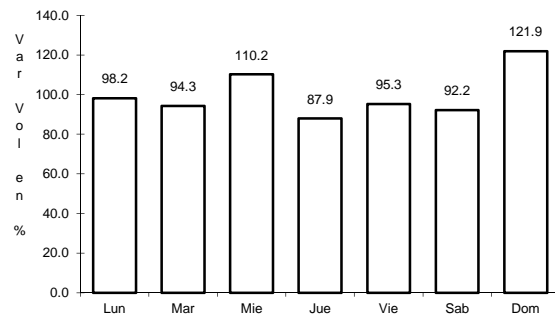


Km: 0.00 Tipo: 3 Sent: 0

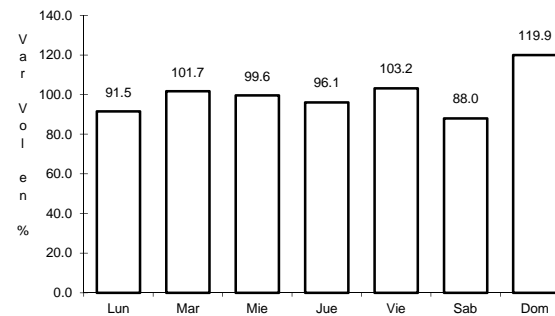
36 CARR: Mezquital - San Miguel de Temoaya

CLAVE: 10006

RUTA: DGO



Km: 0.00 Tipo: 3 Sent: 0

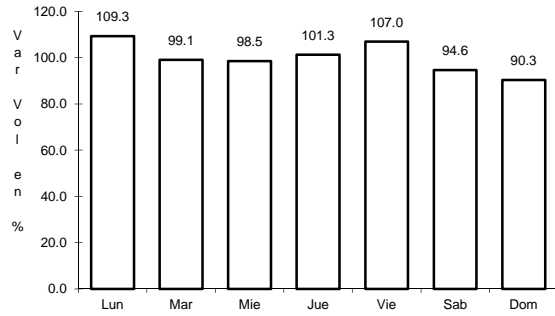


Km: 48.00 Tipo: 1 Sent: 0

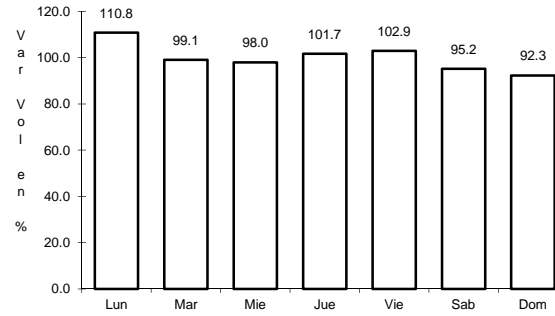
37 CARR: Ramal a San Juan del Río

CLAVE: 10001

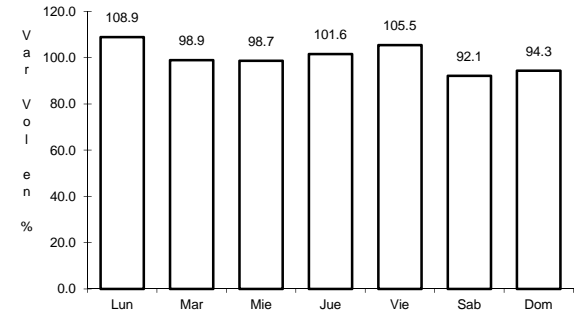
RUTA: DGO-290



Km: 0.00 Tipo: 3 Sent: 0



Km: 5.00 Tipo: 1 Sent: 1

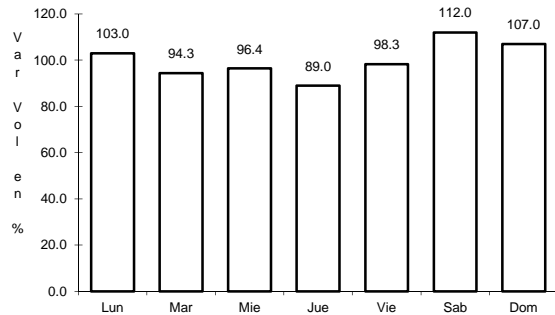


Km: 5.00 Tipo: 1 Sent: 2

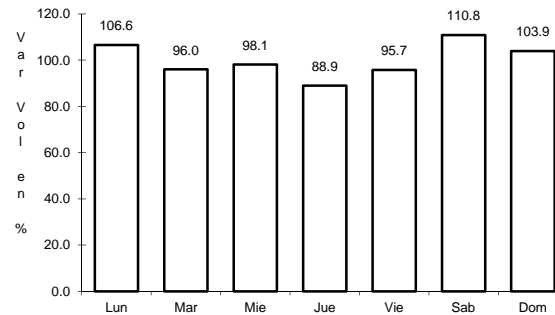
38 CARR: Súchil - Villa Unión

CLAVE: 10419

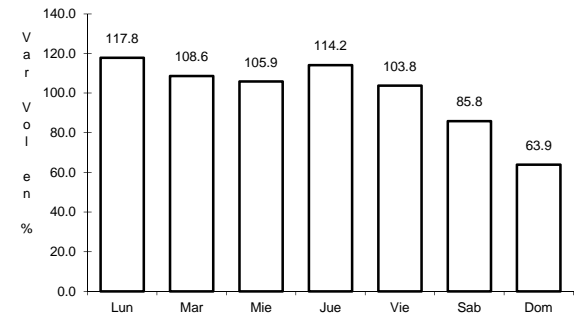
RUTA: DGO-241



Km: 0.00 Tipo: 3 Sent: 1



Km: 0.00 Tipo: 3 Sent: 2

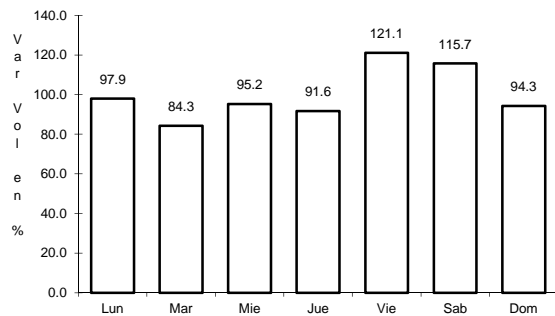


Km: 41.40 Tipo: 1 Sent: 0

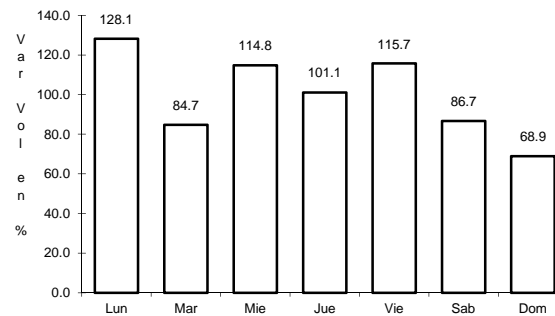
39 CARR: Tlahualillo de Zaragoza - T.C. Gómez Palacio - Jiménez

CLAVE: 10419

RUTA: DGO



Km: 0.00 Tipo: 3 Sent: 0

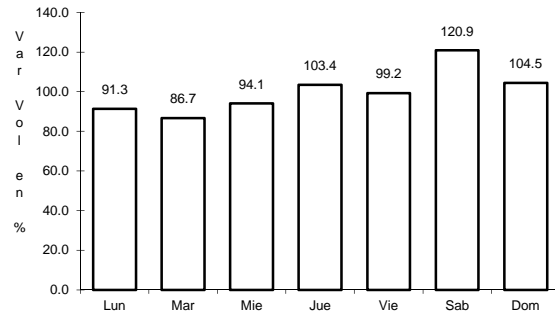


Km: 37.00 Tipo: 1 Sent: 0

40 CARR: Yerbanís - Peñón Blanco

CLAVE: 10032

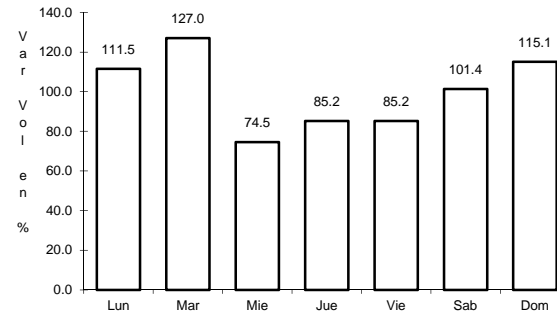
RUTA: DGO-316



Km: 0.00

Tipo: 3

Sent: 0



Km: 22.00

Tipo: 1

Sent: 0

