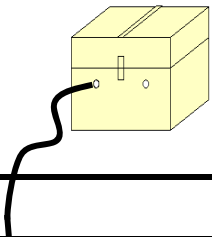


06 COLIMA

SECRETARÍA DE COMUNICACIONES Y TRANSPORTES
DIRECCIÓN GENERAL DE SERVICIOS TÉCNICOS





COLIMA

NO. INDICE	CARRETERA	RUTA
---RED FEDERAL LIBRE---		
1	Cd. Guzmán - Colima	MEX-054
2	Colima - Ent. Tecomán	MEX-110
3	Ent. Playa Azul - Manzanillo	MEX-200
4	Jiquilpan - Colima	MEX-110
5	Libramiento de Colima	MEX-054
6	Libramiento de Manzanillo (Libre)	MEX-200
7	Libramiento de Manzanillo Norte	MEX-200
8	Manzanillo - Puerto Vallarta	MEX-200
9	Minatitlán - Ent. Pez Vela	MEX-098
10	Paso por La Salada	MEX-110
11	Paso por Los Asmoles	MEX-110
12	Ramal a Cerro de Los Juanes	MEX-098
13	Ramal a Cerro de Ortega	MEX-200
14	Ramal a Cuyutlán	MEX-200
15	Tecomán - Boca de Pascuales	MEX-200
---RED FEDERAL DE CUOTA---		
16	Armería - Manzanillo (Cuota)	MEX-200D
17	Guadalajara - Colima (Cuota)	MEX-054D
---RED ESTATAL LIBRE---		
18	Armería - Playa El Paraíso	COL
19	Colima - Comala	COL-016
20	Colima - Coquimatlán	COL-034
21	Comala - San Antonio	COL-016
22	Coquimatlán - Pueblo Juárez	COL-034
23	Costera Laguna de Cuyutlán	COL
24	Cuahtémoc - Colima	COL-019
25	Libramiento de Tecomán	COL
26	Libramiento Poniente Arco Sur de Tecomán	COL
27	Libramiento Poniente de Colima	COL
28	Los Limones - Loma de Juárez	COL
29	Puerta de Caleras - Madrid	COL-014
30	Quesería - El Naranjal	COL-001
31	Ramal a Aeropuerto de Colima	COL
32	Ramal a Aeropuerto Manzanillo	COL
33	Ramal a Camotlán de Miraflores	COL
34	Ramal a Ixtlahuacán	COL-005
35	Ramal a Las Brisas	COL
36	Ramal a Los Tepames	COL-004
37	Ramal a Rancho Valle Nuevo	COL
38	Ramal a Rincón de López	COL
39	Ramal a Tecuanillo	COL-009
40	Tecomán - La Mascota	COL
41	Trapichillos - Estación Alzada	COL-003
42	Villa de Álvarez - Minatitlán	COL

COLIMA

1 CARR: Cd. Guzmán - Colima

CLAVE: 00117

RUTA: MEX-054

AÑO: 2015

LUGAR	ESTACION				CLASIFICACION VEHICULAR EN PORCIENTO														COORDENADAS	
	KM	TE	SC	TDPA	M	A	B	C2	C3	T3S2	T3S3	T3S2R4	OTROS	A	B	C	K'	D	LATITUD	LONGITUD
Cd. Guzmán	0.00	3	1	10632	3.1	81.2	0.8	8.7	2.0	1.5	1.5	0.4	0.8	84.3	0.8	14.9	0.089	0.507	19.676194	-103.475750
Cd. Guzmán	0.00	3	2	10327	2.5	81.3	0.8	8.8	2.1	1.6	1.6	0.4	0.9	83.8	0.8	15.4	0.087	0.507	19.676194	-103.475750
T. Izq. Zapotiltic	4.35	3	0	4540	1.6	80.9	1.2	9.1	3.0	2.6	1.0	0.1	0.5	82.5	1.2	16.3	0.073	0.520	19.649556	-103.472889
T. Der. Tepozal y Nevado de Colima	15.50	1	0	4486	1.2	65.6	2.4	24.4	2.1	2.5	1.2	0.2	0.4	66.8	2.4	30.8	0.072	0.549	19.564472	-103.442278
Atenquique	31.90	1	0	2808	1.6	70.4	2.5	8.9	4.9	7.4	2.6	0.7	1.0	72.0	2.5	25.5	0.078	0.521	19.529694	-103.434611
Atenquique	31.90	3	0	2395	1.2	71.5	1.7	8.9	6.1	8.1	2.1	0.2	0.2	72.7	1.7	25.6	0.075	0.541	19.528056	-103.439583
Lim. Edos. Term. Jal. Ppia. Col.	56.50																			
T. Der. Quesería	58.35	1	0	3177	3.3	73.2	3.0	12.0	3.9	2.7	1.4	0.2	0.3	76.5	3.0	20.5	0.088	0.504	19.392500	-103.564917
Cuahtémoc	66.25	1	0	4116	2.5	83.4	0.6	9.4	0.6	2.5	0.7	0.0	0.3	85.9	0.6	13.5	0.076	0.501	19.326472	-103.594583
Cuahtémoc	66.25	3	0	4328	3.2	82.9	1.2	7.8	2.0	2.1	0.6	0.1	0.1	86.1	1.2	12.7	0.072	0.539	19.324250	-103.608944
El Trapiche	76.55	3	1	11676	1.1	72.3	2.8	10.6	1.7	4.4	2.1	4.5	0.5	73.4	2.8	23.8	0.090	0.503	19.283167	-103.660972
El Trapiche	76.55	3	2	11802	1.6	69.8	2.8	11.4	1.9	4.8	2.4	4.8	0.5	71.4	2.8	25.8	0.120	0.503	19.283167	-103.660972
T. Izq. Libramiento de Colima	78.05	1	1	14450	1.5	80.8	1.6	4.6	1.8	3.5	1.9	3.6	0.7	82.3	1.6	16.1	0.087	0.515	19.267750	-103.677944
T. Izq. Libramiento de Colima	78.05	1	2	13606	1.8	78.6	1.8	5.1	2.1	4.0	2.0	3.9	0.7	80.4	1.8	17.8	0.114	0.515	19.267750	-103.677944
T. C. Cuahtémoc - Colima	83.40																			

2 CARR: Colima - Ent. Tecomán

CLAVE: 06119

RUTA: MEX-110

AÑO: 2015

LUGAR	ESTACION				CLASIFICACION VEHICULAR EN PORCIENTO														COORDENADAS	
	KM	TE	SC	TDPA	M	A	B	C2	C3	T3S2	T3S3	T3S2R4	OTROS	A	B	C	K'	D	LATITUD	LONGITUD
T. C. Jiquilpan - Colima	0.00	3	1	15488	2.3	80.5	1.2	4.6	1.6	3.7	2.1	3.0	1.0	82.8	1.2	16.0	0.055	0.542	19.212861	-103.724972
T. C. Jiquilpan - Colima	0.00	3	2	15288	2.0	78.8	1.3	5.2	1.9	3.9	2.3	3.5	1.1	80.8	1.3	17.9	0.063	0.542	19.212861	-103.724972
T. Izq. Los Asmoles	13.00	3	1	10700	0.9	77.6	1.9	6.1	2.1	4.4	2.8	3.6	0.6	78.5	1.9	19.6	0.103	0.527	19.110474	-103.775932
T. Izq. Los Asmoles	13.00	3	2	9619	1.2	73.7	2.2	7.1	2.5	5.3	3.1	4.3	0.6	74.9	2.2	22.9	0.095	0.527	19.110487	-103.775916
T. Der. Caleras	34.55	1	1	10541	1.1	77.3	2.7	6.0	1.8	4.3	2.4	3.6	0.8	78.4	2.7	18.9	0.110	0.526	18.979076	-103.856190
T. Der. Caleras	34.55	1	2	9517	1.1	75.5	3.0	7.0	1.8	4.4	2.8	3.6	0.8	76.6	3.0	20.4	0.096	0.526	18.979059	-103.856196
T. C. Ent. Playa Azul - Manzanillo	40.10	1	1	11752	2.3	75.2	2.1	7.4	1.9	4.3	2.5	3.5	0.8	77.5	2.1	20.4	0.102	0.516	18.954456	-103.885829
T. C. Ent. Playa Azul - Manzanillo	40.10	1	2	11031	2.6	73.5	2.4	7.7	2.2	4.5	2.7	3.5	0.9	76.1	2.4	21.5	0.079	0.516	18.952764	-103.887844

3 CARR: Ent. Playa Azul - Manzanillo

CLAVE: 00495

RUTA: MEX-200

AÑO: 2015

LUGAR	ESTACION				CLASIFICACION VEHICULAR EN PORCIENTO														COORDENADAS	
	KM	TE	SC	TDPA	M	A	B	C2	C3	T3S2	T3S3	T3S2R4	OTROS	A	B	C	K'	D	LATITUD	LONGITUD
T. C. Carapan - Playa Azul	0.00	3	0	3597	2.4	82.5	1.4	8.7	1.5	2.1	0.8	0.4	0.2	84.9	1.4	13.7	0.078	0.500	18.020837	-102.342834
Caleta de Campos	50.24	1	0	1770	6.2	78.4	0.6	8.9	1.1	2.2	1.6	0.6	0.4	84.6	0.6	14.8	0.097	0.501	18.077257	-102.745619

COLIMA

3 CARR : Ent. Playa Azul - Manzanillo

CLAVE: 00495

RUTA: MEX-200

AÑO : 2015

LUGAR	ESTACION				CLASIFICACION VEHICULAR EN PORCIENTO													COORDENADAS		
	KM	TE	SC	TDPA	M	A	B	C2	C3	T3S2	T3S3	T3S2R4	OTROS	A	B	C	K'	D	LATITUD	LONGITUD
Tizupan	106.60	1	0	518	7.6	67.5	1.5	10.8	2.1	4.0	4.8	1.3	0.4	75.1	1.5	23.4	0.112	0.504	18.226518	-103.126009
Maruata	149.75	1	0	544	6.3	67.8	2.1	10.2	2.2	4.4	5.3	1.4	0.3	74.1	2.1	23.8	0.105	0.506	18.273352	-103.342264
Maruata	149.75	3	0	1029	9.4	74.9	0.7	8.1	1.0	2.1	2.8	0.7	0.3	84.3	0.7	15.0	0.108	0.502	18.279000	-103.353631
T. Der. Aquila	190.10	3	0	2459	3.7	73.9	2.9	10.1	2.3	3.2	2.9	0.6	0.4	77.6	2.9	19.5	0.060	0.502	18.566482	-103.623351
Lim. Edos. Term. Mich. Ppia. Col.	229.60																			
Cerro de Ortega	233.20	1	0	5283	14.3	64.6	2.3	10.3	1.9	4.0	2.0	0.3	0.3	78.9	2.3	18.8	0.076	0.512	18.743479	-103.723975
El Balcón	242.95	1	0	5076	4.5	73.9	2.3	9.9	2.6	4.0	2.1	0.3	0.4	78.4	2.3	19.3	0.074	0.505	18.783060	-103.771014
El Balcón	242.95	3	0	4933	3.3	77.6	1.0	9.2	2.5	4.2	1.6	0.3	0.3	80.9	1.0	18.1	0.072	0.503	18.785147	-103.776769
Cofradía de Morelos	252.45	1	0	8031	9.1	71.8	2.1	9.3	2.8	2.9	1.8	0.1	0.1	80.9	2.1	17.0	0.080	0.506	18.860367	-103.835306
Cofradía de Morelos	252.45	3	1	4660	9.4	75.3	0.9	7.9	1.9	2.9	1.4	0.1	0.2	84.7	0.9	14.4	0.089	0.505	18.873183	-103.843329
Cofradía de Morelos	252.45	3	2	4748	9.5	73.3	1.0	9.1	2.1	3.1	1.6	0.1	0.2	82.8	1.0	16.2	0.095	0.505	18.873199	-103.843308
T. C. Colima - Ent. Tecomán	263.75	1	1	5631	10.1	75.8	0.9	7.7	2.0	1.8	1.3	0.1	0.3	85.9	0.9	13.2	0.088	0.505	18.894343	-103.857088
T. C. Colima - Ent. Tecomán	263.75	1	2	5743	9.5	75.1	1.1	8.3	2.1	2.0	1.5	0.1	0.3	84.6	1.1	14.3	0.098	0.505	18.893670	-103.856650
T. Der. Rincón de López	269.25	1	0	5683	7.2	63.8	1.0	10.8	3.9	7.9	4.0	0.3	1.1	71.0	1.0	28.0	0.072	0.501	18.950907	-103.946372
Armería	272.50	1	0	5537	11.9	60.6	1.5	10.3	2.8	8.1	3.7	0.3	0.8	72.5	1.5	26.0	0.068	0.505	18.940797	-103.947582
T. Izq. Cuyutlán	278.17	1	0	5630	3.0	69.5	1.2	11.4	2.6	7.5	3.7	0.2	0.9	72.5	1.2	26.3	0.070	0.511	18.935409	-104.017601
Santa Rita	292.50	1	0	5354	2.8	70.2	1.0	10.0	2.7	8.1	3.9	0.3	1.0	73.0	1.0	26.0	0.073	0.505	19.011055	-104.084658
Santa Rita	292.50	3	0	6376	6.7	68.5	1.2	10.9	2.0	6.1	3.5	0.2	0.9	75.2	1.2	23.6	0.069	0.501	19.013330	-104.103443
Las Nuevas Juntas	310.65	1	0	6011	2.9	69.4	1.2	12.1	2.4	7.1	3.3	0.5	1.1	72.3	1.2	26.5	0.066	0.516	19.043977	-104.220649
T. Der. Libramiento de Manzanillo (Libre)	312.65	1	0	10443	8.6	65.8	1.0	10.3	2.6	6.9	2.5	1.2	1.1	74.4	1.0	24.6	0.063	0.515	19.055551	-104.235105
T. Der. Libramiento de Manzanillo (Libre)	312.65	3	0	5218	14.4	68.9	0.5	11.6	0.5	3.3	0.3	0.1	0.4	83.3	0.5	16.2	0.069	0.517	19.055626	-104.244512
Manzanillo	321.12	1	0	7075	13.8	70.8	1.2	9.8	0.2	3.0	0.6	0.1	0.5	84.6	1.2	14.2	0.068	0.510	19.049505	-104.292188

4 CARR : Jiquilpan - Colima

CLAVE: 00156

RUTA: MEX-110

AÑO : 2015

LUGAR	ESTACION				CLASIFICACION VEHICULAR EN PORCIENTO													COORDENADAS		
	KM	TE	SC	TDPA	M	A	B	C2	C3	T3S2	T3S3	T3S2R4	OTROS	A	B	C	K'	D	LATITUD	LONGITUD
Jiquilpan	0.00	3	0	4934	2.0	76.0	1.1	10.6	3.0	5.0	1.3	0.3	0.7	78.0	1.1	20.9	0.069	0.511	19.995500	-102.744944
San José de Gracia	37.93	1	0	3805	4.0	82.3	0.8	8.4	1.5	2.3	0.4	0.1	0.2	86.3	0.8	12.9	0.071	0.500	20.000444	-103.015028
Lim. Edos. Term. Mich. Ppia. Jal.	41.00																			
Mazamitla	48.65	1	0	3564	2.9	82.6	0.7	10.5	1.1	1.9	0.2	0.0	0.1	85.5	0.7	13.8	0.074	0.503	19.940222	-103.009361
Mazamitla	48.65	3	0	3704	2.4	72.4	1.5	11.6	3.7	6.0	1.4	0.4	0.6	74.8	1.5	23.7	0.078	0.506	19.923722	-103.049000
T. Izq. Tamazula de Gordiano (2º Acceso)	96.70	3	0	7812	5.4	72.4	1.3	7.4	4.7	5.2	2.2	0.5	0.9	77.8	1.3	20.9	0.073	0.504	19.682778	-103.262556
T. Der. Cd. Guzmán	108.50	3	0	3458	1.4	68.7	1.6	9.4	8.6	6.0	3.1	0.7	0.5	70.1	1.6	28.3	0.082	0.506	19.645194	-103.335556
Tecalitlán	132.00	3	0	2581	3.7	75.4	1.0	13.8	3.0	1.2	1.2	0.2	0.5	79.1	1.0	19.9	0.079	0.520	19.462222	-103.318972

COLIMA

4 CARR: Jiquilpan - Colima

CLAVE: 00156

RUTA: MEX-110

AÑO: 2015

LUGAR	ESTACION				CLASIFICACION VEHICULAR EN PORCIENTO										COORDENADAS					
	KM	TE	SC	TDPA	M	A	B	C2	C3	T3S2	T3S3	T3S2R4	OTROS	A	B	C	K'	D	LATITUD	LONGITUD
T. Der. Atenquique	137.67	3	0	1395	2.1	71.0	2.0	15.5	6.1	1.1	1.5	0.0	0.7	73.1	2.0	24.9	0.087	0.501	19.457667	-103.347556
Pihuamo	168.19	3	0	2646	2.0	81.6	1.2	8.1	4.9	1.1	0.5	0.1	0.5	83.6	1.2	15.2	0.091	0.513	19.253333	-103.386889
Lim. Edos. Term. Jal. Ppia. Col.	189.60																			
T. Der. Estación Alzada	198.60	3	0	1684	2.0	73.0	0.7	10.7	1.5	6.1	4.9	0.1	1.0	75.0	0.7	24.3	0.099	0.501	19.160889	-103.529056
T. Izq. Los Tepames	214.20	1	0	2162	1.8	82.3	1.0	8.9	1.0	2.1	2.0	0.3	0.6	84.1	1.0	14.9	0.098	0.502	19.175028	-103.657528
X. C. Libramiento de Colima	220.00	1	0	7874	4.5	81.6	0.2	6.0	0.8	4.5	1.4	0.3	0.7	86.1	0.2	13.7	0.076	0.504	19.210611	-103.721222
Colima	222.00	1	1	9103	3.7	88.8	0.8	4.6	0.5	0.8	0.5	0.1	0.2	92.5	0.8	6.7	0.071	0.507	19.218361	-103.722194
Colima	222.00	1	2	9377	4.2	87.8	0.8	5.1	0.5	0.8	0.5	0.1	0.2	92.0	0.8	7.2	0.076	0.507	19.218361	-103.722194

5 CARR: Libramiento de Colima

CLAVE: 06573

RUTA: MEX-054

AÑO: 2015

LUGAR	ESTACION				CLASIFICACION VEHICULAR EN PORCIENTO										COORDENADAS					
	KM	TE	SC	TDPA	M	A	B	C2	C3	T3S2	T3S3	T3S2R4	OTROS	A	B	C	K'	D	LATITUD	LONGITUD
T. C. Cd. Guzmán - Colima	0.00	3	1	7610	2.3	75.4	1.8	4.2	2.4	5.4	2.9	4.4	1.2	77.7	1.8	20.5	0.066	0.531	19.258694	-103.683694
T. C. Cd. Guzmán - Colima	0.00	3	2	8625	1.5	74.4	2.0	4.7	2.4	5.5	3.4	4.9	1.2	75.9	2.0	22.1	0.078	0.531	19.258694	-103.683694
T. C. Colima - Ent. Tecomán	9.00	1	1	15999	2.6	81.2	1.2	5.2	1.4	3.1	1.9	2.7	0.7	83.8	1.2	15.0	0.073	0.512	19.215278	-103.717778
T. C. Colima - Ent. Tecomán	9.00	1	2	15269	2.1	79.8	1.3	5.5	1.6	3.5	2.2	3.1	0.9	81.9	1.3	16.8	0.071	0.512	19.215278	-103.717778

6 CARR: Libramiento de Manzanillo (Libre)

CLAVE: 06574

RUTA: MEX-200

AÑO: 2015

LUGAR	ESTACION				CLASIFICACION VEHICULAR EN PORCIENTO										COORDENADAS					
	KM	TE	SC	TDPA	M	A	B	C2	C3	T3S2	T3S3	T3S2R4	OTROS	A	B	C	K'	D	LATITUD	LONGITUD
T. C. Ent. Playa Azul - Manzanillo	0.00	3	0	8206	6.6	67.6	1.0	8.0	3.2	7.3	3.2	2.0	1.1	74.2	1.0	24.8	0.071	0.503	19.057094	-104.243104
T. C. Manzanillo - Puerto Vallarta	6.30	1	1	7714	7.2	70.6	1.5	5.7	3.2	3.9	3.2	3.9	0.8	77.8	1.5	20.7	0.079	0.517	19.071919	-104.278997
T. C. Manzanillo - Puerto Vallarta	6.30	1	2	7207	6.4	69.4	1.6	6.1	3.3	4.2	3.4	4.6	1.0	75.8	1.6	22.6	0.073	0.517	19.071924	-104.279001

7 CARR: Libramiento de Manzanillo Norte

CLAVE: 06122

RUTA: MEX-200

AÑO: 2015

LUGAR	ESTACION				CLASIFICACION VEHICULAR EN PORCIENTO										COORDENADAS					
	KM	TE	SC	TDPA	M	A	B	C2	C3	T3S2	T3S3	T3S2R4	OTROS	A	B	C	K'	D	LATITUD	LONGITUD
T. C. Libramiento de Manzanillo (Libre)	0.00																			
T. C. Minatitlán - Ent. Pez Vela	3.00	3	0	14063	6.6	77.1	0.7	6.2	1.8	4.9	1.0	0.8	0.9	83.7	0.7	15.6	0.072	0.502	19.095279	-104.276571
T. C. Manzanillo - Puerto Vallarta	19.00	1	0	4027	4.4	81.4	1.5	7.1	1.9	2.6	0.7	0.2	0.2	85.8	1.5	12.7	0.088	0.516	19.127255	-104.396039

COLIMA

8 CARR: Manzanillo - Puerto Vallarta

CLAVE: 00070

RUTA: MEX-200

AÑO: 2015

LUGAR	ESTACION				CLASIFICACION VEHICULAR EN PORCIENTO										COORDENADAS					
	KM	TE	SC	TDPA	M	A	B	C2	C3	T3S2	T3S3	T3S2R4	OTROS	A	B	C	K'	D	LATITUD	LONGITUD
Manzanillo	0.00	3	1	18143	10.1	81.1	3.3	5.0	0.2	0.0	0.3	0.0	0.0	91.2	3.3	5.5	0.073	0.528	19.055264	-104.299613
Manzanillo	0.00	3	2	16249	9.2	81.1	3.6	5.6	0.2	0.0	0.3	0.0	0.0	90.3	3.6	6.1	0.071	0.528	19.055244	-104.299660
T. Der. Minatitlán	3.14	1	1	19681	9.0	83.8	0.2	5.5	0.2	0.6	0.6	0.0	0.1	92.8	0.2	7.0	0.086	0.525	19.071356	-104.284819
T. Der. Minatitlán	3.14	1	2	17779	10.6	81.3	0.2	6.3	0.2	0.6	0.7	0.0	0.1	91.9	0.2	7.9	0.070	0.525	19.071374	-104.284831
Santiago	13.24	1	1	12270	6.1	83.7	0.5	6.5	0.1	0.9	1.8	0.1	0.3	89.8	0.5	9.7	0.081	0.520	19.115249	-104.348153
Santiago	13.24	1	2	11316	5.8	82.9	0.6	7.0	0.1	1.1	2.1	0.1	0.3	88.7	0.6	10.7	0.076	0.520	19.115257	-104.348133
Santiago	13.24	3	1	6144	5.7	83.2	0.6	7.6	0.1	0.8	1.5	0.2	0.3	88.9	0.6	10.5	0.063	0.518	19.119118	-104.364716
Santiago	13.24	3	2	6599	6.7	82.0	0.6	7.7	0.1	0.9	1.6	0.1	0.3	88.7	0.6	10.7	0.069	0.518	19.119124	-104.364718
San Juan de Cuatro Vientos	39.04	3	0	5172	5.1	79.8	2.1	7.5	1.7	2.6	0.7	0.2	0.3	84.9	2.1	13.0	0.080	0.501	19.193070	-104.539096
T. Izq. Aeropuerto Manzanillo	40.55	3	0	5354	7.0	76.6	2.5	7.7	1.7	3.0	1.0	0.2	0.3	83.6	2.5	13.9	0.078	0.502	19.195583	-104.551072
Lim. Edos. Term. Col. Ppia. Jal.	43.50																			
Cihuatlán	47.92	1	0	7766	12.6	73.4	1.5	6.4	1.5	3.0	0.6	0.2	0.8	86.0	1.5	12.5	0.071	0.502	19.235280	-104.551895
Cihuatlán	47.92	3	0	8163	9.3	74.2	1.9	8.7	1.6	3.1	0.6	0.1	0.5	83.5	1.9	14.6	0.072	0.508	19.230777	-104.580722
T. Izq. San Francisco	50.18	3	0	7288	6.6	74.9	2.3	9.3	1.7	3.5	1.0	0.3	0.4	81.5	2.3	16.2	0.077	0.502	19.214921	-104.621021
Melaque	61.64	1	0	11803	15.2	70.0	0.6	6.8	1.0	5.2	0.5	0.2	0.5	85.2	0.6	14.2	0.066	0.500	19.228885	-104.690496
Melaque	61.64	3	0	6097	12.9	69.9	1.0	10.8	1.0	3.0	0.4	0.1	0.9	82.8	1.0	16.2	0.072	0.501	19.238960	-104.711208
T. Izq. Tenacatita	90.44	3	0	2351	2.3	81.0	1.0	10.0	2.0	2.2	0.6	0.4	0.5	83.3	1.0	15.7	0.072	0.541	19.348652	-104.882519
T. Der. Tomatlán	177.64	1	0	2359	5.6	72.7	1.9	8.5	5.4	4.0	1.2	0.4	0.3	78.3	1.9	19.8	0.085	0.503	19.872899	-105.332307
T. Der. Tomatlán	177.64	3	0	2453	9.0	72.8	1.1	8.7	5.2	2.0	0.8	0.2	0.2	81.8	1.1	17.1	0.090	0.506	19.876597	-105.336136
T. Izq. El Tuito	230.64	3	0	2784	4.8	76.5	2.0	10.3	3.1	2.1	0.6	0.3	0.3	81.3	2.0	16.7	0.099	0.500	20.329444	-105.317032
Puerto Vallarta	273.64	1	0	8534	2.9	80.1	1.4	9.3	0.8	3.3	1.0	0.5	0.7	83.0	1.4	15.6	0.061	0.519	20.570599	-105.250234

9 CARR: Minatitlán - Ent. Pez Vela

CLAVE: 06015

RUTA: MEX-098

AÑO: 2015

LUGAR	ESTACION				CLASIFICACION VEHICULAR EN PORCIENTO										COORDENADAS					
	KM	TE	SC	TDPA	M	A	B	C2	C3	T3S2	T3S3	T3S2R4	OTROS	A	B	C	K'	D	LATITUD	LONGITUD
Minatitlán	0.00																			
T. Der. Jalipa	49.50	1	0	2364	9.7	75.3	0.5	9.1	2.2	1.7	0.4	0.9	0.2	85.0	0.5	14.5	0.069	0.505	19.132371	-104.264352
T. Der. Jalipa	49.50	3	0	5758	9.4	65.9	0.5	6.6	4.9	6.5	2.1	3.9	0.2	75.3	0.5	24.2	0.089	0.509	19.109102	-104.263432
T. C. Manzanillo - Puerto Vallarta	58.50	1	1	7884	4.7	70.5	1.6	4.4	3.9	6.7	1.9	5.5	0.8	75.2	1.6	23.2	0.065	0.501	19.086271	-104.281541
T. C. Manzanillo - Puerto Vallarta	58.50	1	2	7901	6.2	65.6	1.9	5.1	4.2	7.6	2.1	6.5	0.8	71.8	1.9	26.3	0.067	0.501	19.086489	-104.281059

COLIMA

10 CARR: Paso por La Salada

CLAVE: 06121

RUTA: MEX-110

AÑO: 2015

LUGAR	ESTACION				CLASIFICACION VEHICULAR EN PORCIENTO														COORDENADAS	
	KM	TE	SC	TDPA	M	A	B	C2	C3	T3S2	T3S3	T3S2R4	OTROS	A	B	C	K'	D	LATITUD	LONGITUD
La Salada	0.00	3	0	36	2.6	96.1	0.0	1.3	0.0	0.0	0.0	0.0	0.0	98.7	0.0	1.3	0.194	0.548	19.053976	-103.785426
T. C. Ramal a Ixtlahuacán	6.00																			

11 CARR: Paso por Los Asmoles

CLAVE: 06120

RUTA: MEX-110

AÑO: 2015

LUGAR	ESTACION				CLASIFICACION VEHICULAR EN PORCIENTO														COORDENADAS	
	KM	TE	SC	TDPA	M	A	B	C2	C3	T3S2	T3S3	T3S2R4	OTROS	A	B	C	K'	D	LATITUD	LONGITUD
T. C. Colima - Ent. Tecomán	0.00																			
Los Asmoles	1.80	3	0	1803	2.6	87.0	0.2	7.9	1.3	0.8	0.2	0.0	0.0	89.6	0.2	10.2	0.067	0.550	19.125516	-103.773232
T. C. Colima - Ent. Tecomán	2.90																			

12 CARR: Ramal a Cerro de Los Juanes

CLAVE: 06009

RUTA: MEX-098

AÑO: 2015

LUGAR	ESTACION				CLASIFICACION VEHICULAR EN PORCIENTO														COORDENADAS	
	KM	TE	SC	TDPA	M	A	B	C2	C3	T3S2	T3S3	T3S2R4	OTROS	A	B	C	K'	D	LATITUD	LONGITUD
T. C. Minatitlán - Ent. Pez Vela	0.00	3	0	865	1.8	77.2	5.4	13.9	0.3	1.1	0.2	0.0	0.1	79.0	5.4	15.6	0.096	0.508	19.377980	-104.079010
Cerro de Los Juanes	3.30																			

13 CARR: Ramal a Cerro de Ortega

CLAVE: 06009

RUTA: MEX-200

AÑO: 2015

LUGAR	ESTACION				CLASIFICACION VEHICULAR EN PORCIENTO														COORDENADAS	
	KM	TE	SC	TDPA	M	A	B	C2	C3	T3S2	T3S3	T3S2R4	OTROS	A	B	C	K'	D	LATITUD	LONGITUD
T. C. Ent. Playa Azul - Manzanillo	0.00	3	0	2513	39.9	49.5	1.1	5.2	0.1	2.9	0.7	0.1	0.5	89.4	1.1	9.5	0.076	0.517	18.754114	-103.722096
Cerro de Ortega	1.00																			

14 CARR: Ramal a Cuyutlán

CLAVE: 06225

RUTA: MEX-200

AÑO: 2015

LUGAR	ESTACION				CLASIFICACION VEHICULAR EN PORCIENTO														COORDENADAS	
	KM	TE	SC	TDPA	M	A	B	C2	C3	T3S2	T3S3	T3S2R4	OTROS	A	B	C	K'	D	LATITUD	LONGITUD
T. C. Ent. Playa Azul - Manzanillo	0.00	3	0	722	5.1	85.5	0.5	6.7	1.0	0.6	0.5	0.0	0.1	90.6	0.5	8.9	0.130	0.520	18.933522	-104.019805
Cuyutlán	7.00	1	0	598	8.6	79.6	1.0	7.9	2.0	0.8	0.1	0.0	0.0	88.2	1.0	10.8	0.197	0.506	18.912048	-104.055732

COLIMA

15 CARR: Tecomán - Boca de Pascuales

CLAVE: 06226

ruta: MEX-200

AÑO: 2015

LUGAR	ESTACION				CLASIFICACION VEHICULAR EN PORCIENTO														COORDENADAS	
	KM	TE	SC	TDPA	M	A	B	C2	C3	T3S2	T3S3	T3S2R4	OTROS	A	B	C	K'	D	LATITUD	LONGITUD
Tecomán	0.00	3	0	2702	17.2	71.7	0.4	7.8	0.6	1.6	0.5	0.1	0.1	88.9	0.4	10.7	0.140	0.520	18.901394	-103.912631
Boca de Pascuales	12.00																			

16 CARR: América - Manzanillo (Cuota)

CLAVE: 06585

ruta: MEX-200D

AÑO: 2015

LUGAR	ESTACION				CLASIFICACION VEHICULAR EN PORCIENTO														COORDENADAS	
	KM	TE	SC	TDPA	M	A	B	C2	C3	T3S2	T3S3	T3S2R4	OTROS	A	B	C	K'	D	LATITUD	LONGITUD
T. C. Ent. Playa Azul - Manzanillo	0.00																			
T. Izq. Playa Paraíso	3.50	3	1	4125	1.1	78.2	2.6	4.0	1.0	4.0	1.5	6.7	0.9	79.3	2.6	18.1	0.179	0.506	18.928341	-103.968780
T. Izq. Playa Paraíso	3.50	3	2	4026	1.1	75.8	3.0	4.6	1.2	4.6	1.6	7.2	0.9	76.9	3.0	20.1	0.160	0.506	18.928340	-103.968768
T. Izq. Cuyutlán	17.58	3	1	3358	0.6	69.8	3.6	6.1	1.7	4.5	2.8	10.0	0.9	70.4	3.6	26.0	0.160	0.507	18.930488	-104.086309
T. Izq. Cuyutlán	17.58	3	2	3267	0.7	65.6	3.9	6.7	1.9	5.3	3.3	11.6	1.0	66.3	3.9	29.8	0.193	0.507	18.930492	-104.086306
Caseta de Cobro Cuyutlán	18.00	2	1	3110	0.4	62.5	4.3	2.5	2.7	6.4	3.4	15.8	2.0	62.9	4.3	32.8	0.096	0.500	18.927735	-104.081626
Caseta de Cobro Cuyutlán	18.00	2	2	3110	0.4	62.5	4.3	2.5	2.7	6.4	3.4	15.8	2.0	62.9	4.3	32.8	0.096	0.500	18.927735	-104.081626
T. C. Ent. Playa Azul - Manzanillo	44.00	3	1	4362	3.4	70.4	3.2	5.6	1.7	4.2	2.6	8.1	0.8	73.8	3.2	23.0	0.194	0.501	19.063242	-104.270187
T. C. Ent. Playa Azul - Manzanillo	44.00	3	2	4382	4.5	66.3	3.5	6.2	1.9	4.7	2.8	9.1	1.0	70.8	3.5	25.7	0.141	0.501	19.063254	-104.270176
T. C. Libramiento de Manzanillo (Libre)	46.00																			

17 CARR: Guadalajara - Colima (Cuota)

CLAVE: 00118

ruta: MEX-054D

AÑO: 2015

LUGAR	ESTACION				CLASIFICACION VEHICULAR EN PORCIENTO														COORDENADAS	
	KM	TE	SC	TDPA	M	A	B	C2	C3	T3S2	T3S3	T3S2R4	OTROS	A	B	C	K'	D	LATITUD	LONGITUD
T. C. Ent. Santa Cruz - Melaque	0.00																			
Caseta de Cobro Acatlán	0.20	2	1	4853	0.2	69.0	4.2	3.7	3.4	5.7	2.4	10.1	1.3	69.2	4.2	26.6	0.084	0.500	20.415921	-103.557055
Caseta de Cobro Acatlán	0.20	2	2	4853	0.2	69.0	4.2	3.7	3.4	5.7	2.4	10.1	1.3	69.2	4.2	26.6	0.084	0.500	20.415921	-103.557055
Caseta de Cobro Acatlán	0.20	3	1	5429	0.4	71.5	3.8	5.7	2.5	5.1	3.0	7.0	1.0	71.9	3.8	24.3	0.148	0.524	20.410833	-103.558528
Caseta de Cobro Acatlán	0.20	3	2	4926	0.4	69.0	3.9	5.7	2.8	5.7	3.3	8.2	1.0	69.4	3.9	26.7	0.090	0.524	20.410833	-103.558528
T. Izq. San Marcos	10.80	1	1	5292	0.3	73.7	1.8	4.5	3.5	5.2	2.6	7.5	0.9	74.0	1.8	24.2	0.156	0.518	20.335000	-103.570250
T. Izq. San Marcos	10.80	1	2	4920	0.3	70.6	2.0	5.0	3.9	5.9	2.8	8.5	1.0	70.9	2.0	27.1	0.093	0.518	20.335000	-103.570250
T. Der. Usmajac	67.80	1	1	6522	0.4	67.0	3.4	8.0	3.3	6.5	3.1	7.3	1.0	67.4	3.4	29.2	0.130	0.520	19.891194	-103.519750
T. Der. Usmajac	67.80	1	2	6017	0.7	63.2	3.6	8.9	3.7	7.2	3.2	8.5	1.0	63.9	3.6	32.5	0.120	0.520	19.891194	-103.519750
T. Izq. Cd. Guzmán	86.70	1	1	6682	0.3	65.3	3.6	8.2	3.8	6.8	3.6	7.7	0.7	65.6	3.6	30.8	0.125	0.514	19.707139	-103.500667
T. Izq. Cd. Guzmán	86.70	1	2	6325	0.8	61.2	3.9	8.5	4.2	8.0	3.7	9.0	0.7	62.0	3.9	34.1	0.126	0.514	19.707139	-103.500667
Caseta de Cobro San Marcos	122.50	2	1	4422	0.2	59.0	3.6	4.2	5.2	9.0	4.0	12.2	2.6	59.2	3.6	37.2	0.084	0.500	19.433636	-103.494843
Caseta de Cobro San Marcos	122.50	2	2	4422	0.2	59.0	3.6	4.2	5.2	9.0	4.0	12.2	2.6	59.2	3.6	37.2	0.084	0.500	19.433636	-103.494843

COLIMA

17 CARR: Guadalajara - Colima (Cuota)

CLAVE: 00118

RUTA: MEX-054D

AÑO: 2015

LUGAR	ESTACION				CLASIFICACION VEHICULAR EN PORCIENTO													COORDENADAS			
	KM	TE	SC	TDPA	M	A	B	C2	C3	T3S2	T3S3	T3S2R4	OTROS	A	B	C	K'	D	LATITUD	LONGITUD	
Lim. Edos. Term. Jal. Ppia. Col.	129.50																				
T. C. Cd. Guzmán - Colima	148.00																				

18 CARR: América - Playa El Paraíso

CLAVE: 06580

RUTA: COL

AÑO: 2015

LUGAR	ESTACION				CLASIFICACION VEHICULAR EN PORCIENTO													COORDENADAS		
	KM	TE	SC	TDPA	M	A	B	C2	C3	T3S2	T3S3	T3S2R4	OTROS	A	B	C	K'	D	LATITUD	LONGITUD
T. C. Ent. Playa Azul - Manzanillo	0.00	3	0	2804	12.7	76.8	0.2	6.9	0.9	1.7	0.5	0.0	0.3	89.5	0.2	10.3	0.088	0.505	18.925405	-103.963949
Playa Paraíso	7.50	1	0	1480	11.9	82.0	0.2	4.2	0.4	1.3	0.0	0.0	0.0	93.9	0.2	5.9	0.145	0.502	18.878626	-103.989354

19 CARR: Colima - Comala

CLAVE: 06016

RUTA: COL-016

AÑO: 2015

LUGAR	ESTACION				CLASIFICACION VEHICULAR EN PORCIENTO													COORDENADAS			
	KM	TE	SC	TDPA	M	A	B	C2	C3	T3S2	T3S3	T3S2R4	OTROS	A	B	C	K'	D	LATITUD	LONGITUD	
Colima	0.00																				
Villa Álvarez	3.00	3	1	10379	4.8	89.0	0.2	4.1	0.4	0.6	0.8	0.0	0.1	93.8	0.2	6.0	0.114	0.502	19.286967	-103.746016	
Villa Álvarez	3.00	3	2	10297	4.7	88.7	0.2	4.4	0.4	0.6	0.9	0.0	0.1	93.4	0.2	6.4	0.089	0.502	19.286933	-103.746080	
Comala	10.00																				

20 CARR: Colima - Coquimatlán

CLAVE: 06034

RUTA: COL-034

AÑO: 2015

LUGAR	ESTACION				CLASIFICACION VEHICULAR EN PORCIENTO													COORDENADAS			
	KM	TE	SC	TDPA	M	A	B	C2	C3	T3S2	T3S3	T3S2R4	OTROS	A	B	C	K'	D	LATITUD	LONGITUD	
Colima	0.00																				
T. Der. Villa Álvarez	3.00	3	1	15418	6.0	87.7	0.3	5.3	0.3	0.2	0.2	0.0	0.0	93.7	0.3	6.0	0.074	0.518	19.242861	-103.752167	
T. Der. Villa Álvarez	3.00	3	2	14345	6.2	86.9	0.3	5.9	0.3	0.2	0.2	0.0	0.0	93.1	0.3	6.6	0.069	0.518	19.242861	-103.752167	
Coquimatlán	11.00	1	1	6532	7.3	85.2	0.3	5.8	0.4	0.5	0.4	0.0	0.1	92.5	0.3	7.2	0.084	0.505	19.217139	-103.802736	
Coquimatlán	11.00	1	2	6409	6.6	85.3	0.3	6.4	0.4	0.5	0.4	0.0	0.1	91.9	0.3	7.8	0.089	0.505	19.217142	-103.802716	

21 CARR: Comala - San Antonio

CLAVE: 06030

RUTA: COL-016

AÑO: 2015

LUGAR	ESTACION				CLASIFICACION VEHICULAR EN PORCIENTO													COORDENADAS		
	KM	TE	SC	TDPA	M	A	B	C2	C3	T3S2	T3S3	T3S2R4	OTROS	A	B	C	K'	D	LATITUD	LONGITUD
Comala	0.00	3	1	2381	3.7	84.9	4.8	5.9	0.5	0.1	0.1	0.0	0.0	88.6	4.8	6.6	0.197	0.507	19.332583	-103.748194
Comala	0.00	3	2	2444	3.4	84.1	5.4	6.4	0.5	0.1	0.1	0.0	0.0	87.5	5.4	7.1	0.175	0.507	19.332583	-103.748194

COLIMA

21 CARR: Comala - San Antonio

CLAVE: 06030

RUTA: COL-016

AÑO: 2015

LUGAR	ESTACION				CLASIFICACION VEHICULAR EN PORCIENTO														COORDENADAS	
	KM	TE	SC	TDPA	M	A	B	C2	C3	T3S2	T3S3	T3S2R4	OTROS	A	B	C	K'	D	LATITUD	LONGITUD
Suchitlán	10.00	1	0	3877	4.0	86.6	0.2	6.2	0.2	2.1	0.4	0.0	0.3	90.6	0.2	9.2	0.153	0.501	19.375306	-103.718806
San Antonio	20.50																			

22 CARR: Coquimatlán - Pueblo Juárez

CLAVE: 06029

RUTA: COL-034

AÑO: 2015

LUGAR	ESTACION				CLASIFICACION VEHICULAR EN PORCIENTO														COORDENADAS	
	KM	TE	SC	TDPA	M	A	B	C2	C3	T3S2	T3S3	T3S2R4	OTROS	A	B	C	K'	D	LATITUD	LONGITUD
Coquimatlán	0.00	3	0	2830	5.9	84.4	0.3	7.1	0.8	1.2	0.2	0.0	0.1	90.3	0.3	9.4	0.093	0.527	19.198224	-103.817655
Pueblo Juárez	16.00																			

23 CARR: Costera Laguna de Cuyutlán

CLAVE: 06010

RUTA: COL

AÑO: 2015

LUGAR	ESTACION				CLASIFICACION VEHICULAR EN PORCIENTO														COORDENADAS	
	KM	TE	SC	TDPA	M	A	B	C2	C3	T3S2	T3S3	T3S2R4	OTROS	A	B	C	K'	D	LATITUD	LONGITUD
T. C. Armería - Manzanillo (Cuota)	0.00	3	0	931	17.1	68.8	1.4	8.3	1.9	2.4	0.0	0.1	0.0	85.9	1.4	12.7	0.095	0.504	19.021211	-104.311884
Manzanillo	13.00	1	0	3981	7.4	80.9	0.7	7.4	0.5	2.2	0.4	0.1	0.4	88.3	0.7	11.0	0.104	0.502	19.034145	-104.330516

24 CARR: Cuauhtémoc - Colima

CLAVE: 06019

RUTA: COL-019

AÑO: 2015

LUGAR	ESTACION				CLASIFICACION VEHICULAR EN PORCIENTO														COORDENADAS	
	KM	TE	SC	TDPA	M	A	B	C2	C3	T3S2	T3S3	T3S2R4	OTROS	A	B	C	K'	D	LATITUD	LONGITUD
Cuauhtémoc	0.00	3	0	6096	1.5	87.8	1.2	4.3	1.4	2.5	0.7	0.3	0.3	89.3	1.2	9.5	0.061	0.548	19.315556	-103.603694
X. C. Libramiento de Colima	19.50	1	1	14911	6.4	86.1	0.2	6.2	0.1	0.5	0.4	0.0	0.1	92.5	0.2	7.3	0.068	0.502	19.236139	-103.701194
X. C. Libramiento de Colima	19.50	1	2	15013	5.5	86.4	0.2	6.8	0.1	0.5	0.4	0.0	0.1	91.9	0.2	7.9	0.066	0.502	19.236139	-103.701194
Colima	22.40																			

25 CARR: Libramiento de Tecomán

CLAVE: 06122

RUTA: COL

AÑO: 2015

LUGAR	ESTACION				CLASIFICACION VEHICULAR EN PORCIENTO														COORDENADAS	
	KM	TE	SC	TDPA	M	A	B	C2	C3	T3S2	T3S3	T3S2R4	OTROS	A	B	C	K'	D	LATITUD	LONGITUD
T. C. Ent. Playa Azul - Manzanillo	0.00	3	1	2125	8.3	70.2	0.9	8.3	3.6	4.3	3.0	0.7	0.7	78.5	0.9	20.6	0.074	0.524	18.899100	-103.858545
T. C. Ent. Playa Azul - Manzanillo	0.00	3	2	1934	9.4	66.2	1.1	10.0	4.1	4.7	3.3	0.7	0.5	75.6	1.1	23.3	0.093	0.524	18.899099	-103.858530
T. C. Ent. Playa Azul - Manzanillo	7.90	1	1	3262	8.9	75.5	0.9	7.0	2.3	2.8	1.8	0.3	0.5	84.4	0.9	14.7	0.074	0.505	18.940900	-103.892246
T. C. Ent. Playa Azul - Manzanillo	7.90	1	2	3330	9.0	73.5	1.0	7.6	2.7	3.3	2.2	0.3	0.4	82.5	1.0	16.5	0.071	0.505	18.940890	-103.892296

COLIMA

26 CARR: Libramiento Poniente Arco Sur de Tecomán

CLAVE:

RUTA: COL

AÑO: 2015

LUGAR	ESTACION				CLASIFICACION VEHICULAR EN PORCIENTO														COORDENADAS	
	KM	TE	SC	TDPA	M	A	B	C2	C3	T3S2	T3S3	T3S2R4	OTROS	A	B	C	K'	D	LATITUD	LONGITUD
Ent. C. Playa Azul - Manzanillo	0.00	3	0	1970	6.8	75.0	1.2	9.9	2.6	2.5	1.6	0.3	0.1	81.8	1.2	17.0	0.108	0.505	18.939741	-103.897230
X. C. Tecomán - Boca de Pascuales	4.60	3	0	1245	8.3	71.7	1.6	9.4	3.5	3.0	2.1	0.2	0.2	80.0	1.6	18.4	0.145	0.522	18.900736	-103.905120
X. C. Tecomán - La Mascota	6.90	3	0	1145	10.2	69.7	1.8	9.5	3.7	2.6	2.0	0.2	0.3	79.9	1.8	18.3	0.100	0.504	18.888763	-103.887772
Ent. C. Playa Azul - Manzanillo	11.17																			

27 CARR: Libramiento Poniente de Colima

CLAVE: 06122

RUTA: COL

AÑO: 2015

LUGAR	ESTACION				CLASIFICACION VEHICULAR EN PORCIENTO														COORDENADAS	
	KM	TE	SC	TDPA	M	A	B	C2	C3	T3S2	T3S3	T3S2R4	OTROS	A	B	C	K'	D	LATITUD	LONGITUD
T. C. Colima - Ent. Tecomán	0.00	3	1	8552	4.2	86.9	0.4	5.0	1.0	0.9	1.0	0.3	0.3	91.1	0.4	8.5	0.083	0.514	19.216704	-103.744674
T. C. Colima - Ent. Tecomán	0.00	3	2	9063	3.9	85.8	0.4	5.9	1.2	1.0	1.2	0.3	0.3	89.7	0.4	9.9	0.115	0.514	19.216694	-103.744669
T. C. Colima - Coquimatlán	6.00																			

28 CARR: Los Limones - Loma de Juárez

CLAVE: 06122

RUTA: COL

AÑO: 2015

LUGAR	ESTACION				CLASIFICACION VEHICULAR EN PORCIENTO														COORDENADAS	
	KM	TE	SC	TDPA	M	A	B	C2	C3	T3S2	T3S3	T3S2R4	OTROS	A	B	C	K'	D	LATITUD	LONGITUD
Los Limones	0.00																			
T. C. Colima - Ent. Tecomán	2.00	1	0	1315	3.4	87.7	0.5	6.2	0.9	0.7	0.4	0.0	0.2	91.1	0.5	8.4	0.100	0.519	19.189443	-103.751715

29 CARR: Puerta de Caleras - Madrid

CLAVE: 06014

RUTA: COL-014

AÑO: 2015

LUGAR	ESTACION				CLASIFICACION VEHICULAR EN PORCIENTO														COORDENADAS	
	KM	TE	SC	TDPA	M	A	B	C2	C3	T3S2	T3S3	T3S2R4	OTROS	A	B	C	K'	D	LATITUD	LONGITUD
T. C. Colima - Ent. Tecomán	0.00	3	0	3237	10.4	70.0	1.2	7.6	2.6	3.2	3.0	1.1	0.9	80.4	1.2	18.4	0.062	0.501	18.979546	-103.862621
Madrid	14.00																			

30 CARR: Quesería - El Naranjal

CLAVE: 06001

RUTA: COL-001

AÑO: 2015

LUGAR	ESTACION				CLASIFICACION VEHICULAR EN PORCIENTO														COORDENADAS	
	KM	TE	SC	TDPA	M	A	B	C2	C3	T3S2	T3S3	T3S2R4	OTROS	A	B	C	K'	D	LATITUD	LONGITUD
Quesería	0.00	3	0	1144	3.2	74.8	0.7	11.6	8.1	1.2	0.3	0.0	0.1	78.0	0.7	21.3	0.135	0.509	19.390250	-103.584750
El Naranjal	10.00	1	0	529	6.1	69.6	1.7	9.5	12.6	0.3	0.1	0.0	0.1	75.7	1.7	22.6	0.166	0.502	19.411583	-103.654139

COLIMA

31 CARR: Ramal a Aeropuerto de Colima

CLAVE: 06224

RUTA: COL

AÑO: 2015

LUGAR	ESTACION				CLASIFICACION VEHICULAR EN PORCIENTO														COORDENADAS	
	KM	TE	SC	TDPA	M	A	B	C2	C3	T3S2	T3S3	T3S2R4	OTROS	A	B	C	K'	D	LATITUD	LONGITUD
T. C. Cuauhtémoc - Colima	0.00	3	0	1178	0.6	94.3	0.1	4.4	0.4	0.1	0.0	0.0	0.1	94.9	0.1	5.0	0.134	0.515	19.292389	-103.595583
Aeropuerto de Colima	1.00																			

32 CARR: Ramal a Aeropuerto Manzanillo

CLAVE: 06582

RUTA: COL

AÑO: 2015

LUGAR	ESTACION				CLASIFICACION VEHICULAR EN PORCIENTO														COORDENADAS	
	KM	TE	SC	TDPA	M	A	B	C2	C3	T3S2	T3S3	T3S2R4	OTROS	A	B	C	K'	D	LATITUD	LONGITUD
T. C. Manzanillo - Puerto Vallarta	0.00	3	0	1166	9.1	79.0	0.3	9.5	0.5	1.0	0.2	0.2	0.2	88.1	0.3	11.6	0.136	0.502	19.189493	-104.550653
Aeropuerto Manzanillo	5.50	1	0	906	4.9	89.6	0.2	4.3	0.3	0.5	0.1	0.1	0.0	94.5	0.2	5.3	0.147	0.507	19.151915	-104.560159

33 CARR: Ramal a Camotlán de Miraflores

CLAVE: 06009

RUTA: COL

AÑO: 2015

LUGAR	ESTACION				CLASIFICACION VEHICULAR EN PORCIENTO														COORDENADAS	
	KM	TE	SC	TDPA	M	A	B	C2	C3	T3S2	T3S3	T3S2R4	OTROS	A	B	C	K'	D	LATITUD	LONGITUD
T. C. Minatitlán - Ent. Pez Vela	0.00	3	0	1905	15.4	71.5	1.2	7.7	0.3	2.6	0.7	0.1	0.5	86.9	1.2	11.9	0.087	0.517	19.216701	-104.233050
Camotlán de Miraflores	1.00																			

34 CARR: Ramal a Ixtlahuacán

CLAVE: 06577

RUTA: COL-005

AÑO: 2015

LUGAR	ESTACION				CLASIFICACION VEHICULAR EN PORCIENTO														COORDENADAS	
	KM	TE	SC	TDPA	M	A	B	C2	C3	T3S2	T3S3	T3S2R4	OTROS	A	B	C	K'	D	LATITUD	LONGITUD
T. C. Colima - Ent. Tecomán	0.00	3	0	536	5.0	81.0	1.0	7.9	2.1	1.3	1.6	0.1	0.0	86.0	1.0	13.0	0.119	0.510	19.025968	-103.790877
Ixtlahuacán	8.50																			

35 CARR: Ramal a Las Brisas

CLAVE: 06571

RUTA: COL

AÑO: 2015

LUGAR	ESTACION				CLASIFICACION VEHICULAR EN PORCIENTO														COORDENADAS	
	KM	TE	SC	TDPA	M	A	B	C2	C3	T3S2	T3S3	T3S2R4	OTROS	A	B	C	K'	D	LATITUD	LONGITUD
T. C. Manzanillo - Puerto Vallarta (Central)	0.00	3	0	6152	6.5	86.8	0.1	3.3	0.1	2.7	0.2	0.0	0.3	93.3	0.1	6.6	0.086	0.502	19.082958	-104.307586
T. C. Manzanillo - Puerto Vallarta (Lateral)	0.00	3	1	5561	6.9	87.0	5.1	0.2	0.2	0.3	0.3	0.0	0.0	93.9	5.1	1.0	0.084	0.597	19.082958	-104.307586
T. C. Manzanillo - Puerto Vallarta (Lateral)	0.00	3	2	3753	6.0	87.4	5.7	0.2	0.2	0.2	0.3	0.0	0.0	93.4	5.7	0.9	0.083	0.597	19.082958	-104.307586
Las Brisas	2.30																			

COLIMA

36 CARR: Ramal a Los Tepames

CLAVE: 06004

RUTA: COL-004

AÑO: 2015

LUGAR	ESTACION				CLASIFICACION VEHICULAR EN PORCIENTO														COORDENADAS	
	KM	TE	SC	TDPA	M	A	B	C2	C3	T3S2	T3S3	T3S2R4	OTROS	A	B	C	K'	D	LATITUD	LONGITUD
T. C. Jiquilpan - Colima	0.00	3	0	1587	2.5	87.2	0.5	8.0	0.8	0.9	0.1	0.0	0.0	89.7	0.5	9.8	0.093	0.501	19.172028	-103.659472
Los Tepames	9.50																			

37 CARR: Ramal a Rancho Valle Nuevo

CLAVE: 06583

RUTA: COL

AÑO: 2015

LUGAR	ESTACION				CLASIFICACION VEHICULAR EN PORCIENTO														COORDENADAS	
	KM	TE	SC	TDPA	M	A	B	C2	C3	T3S2	T3S3	T3S2R4	OTROS	A	B	C	K'	D	LATITUD	LONGITUD
T. C. Ent. Playa Azul - Manzanillo	0.00	3	0	490	21.1	62.9	1.1	11.4	1.6	1.3	0.6	0.0	0.0	84.0	1.1	14.9	0.122	0.502	18.816876	-103.809085
Rancho Valle Nuevo	4.00																			

38 CARR: Ramal a Rincón de López

CLAVE: 06578

RUTA: COL

AÑO: 2015

LUGAR	ESTACION				CLASIFICACION VEHICULAR EN PORCIENTO														COORDENADAS	
	KM	TE	SC	TDPA	M	A	B	C2	C3	T3S2	T3S3	T3S2R4	OTROS	A	B	C	K'	D	LATITUD	LONGITUD
T. C. Ent. Playa Azul - Manzanillo	0.00	3	0	3154	15.0	71.5	0.2	8.5	0.7	3.0	0.6	0.1	0.4	86.5	0.2	13.3	0.101	0.504	18.952973	-103.947269
Rincón de López	14.00																			

39 CARR: Ramal a Tecuanillo

CLAVE: 06009

RUTA: COL-009

AÑO: 2015

LUGAR	ESTACION				CLASIFICACION VEHICULAR EN PORCIENTO														COORDENADAS	
	KM	TE	SC	TDPA	M	A	B	C2	C3	T3S2	T3S3	T3S2R4	OTROS	A	B	C	K'	D	LATITUD	LONGITUD
T. C. Ent. Playa Azul - Manzanillo	0.00	3	0	1567	16.2	63.2	0.5	8.6	9.2	1.7	0.4	0.0	0.2	79.4	0.5	20.1	0.098	0.511	18.890443	-103.855389
Tecuanillo	10.00																			

40 CARR: Tecomán - La Mascota

CLAVE: 06572

RUTA: COL

AÑO: 2015

LUGAR	ESTACION				CLASIFICACION VEHICULAR EN PORCIENTO														COORDENADAS	
	KM	TE	SC	TDPA	M	A	B	C2	C3	T3S2	T3S3	T3S2R4	OTROS	A	B	C	K'	D	LATITUD	LONGITUD
X. Libramiento Poniente Arco Sur de Tecomán	0.00	3	0	1886	12.7	76.5	0.4	8.5	0.7	0.9	0.2	0.0	0.1	89.2	0.4	10.4	0.153	0.501	18.886111	-103.894417
Tecomán	0.00	3	0	2017	10.1	78.9	0.3	7.8	1.1	1.4	0.2	0.1	0.1	89.0	0.3	10.7	0.171	0.523	18.892632	-103.890071
La Mascota	11.00																			

COLIMA

41 CARR: Trapichillos - Estación Alzada

CLAVE: 06003

RUTA: COL-003

AÑO: 2015

LUGAR	ESTACION				CLASIFICACION VEHICULAR EN PORCIENTO														COORDENADAS	
	KM	TE	SC	TDPA	M	A	B	C2	C3	T3S2	T3S3	T3S2R4	OTROS	A	B	C	K'	D	LATITUD	LONGITUD
T. C. Jiquilpan - Colima	0.00	3	0	424	2.6	57.5	1.0	6.5	7.6	19.0	2.0	0.2	3.6	60.1	1.0	38.9	0.106	0.529	19.160833	-103.524667
Estación Alzada	12.50	1	0	417	2.7	64.0	1.5	12.1	13.3	2.6	2.6	0.2	1.0	66.7	1.5	31.8	0.103	0.533	19.252528	-103.530083

42 CARR: Villa de Álvarez - Minatitlán

CLAVE: 06040

RUTA: COL

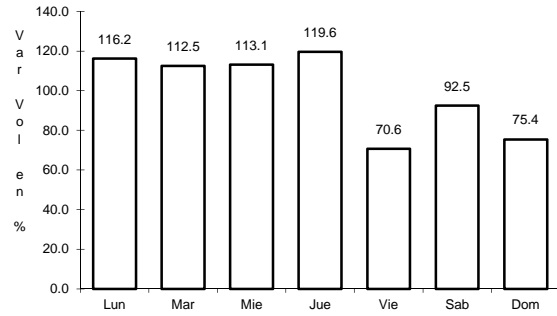
AÑO: 2015

LUGAR	ESTACION				CLASIFICACION VEHICULAR EN PORCIENTO														COORDENADAS	
	KM	TE	SC	TDPA	M	A	B	C2	C3	T3S2	T3S3	T3S2R4	OTROS	A	B	C	K'	D	LATITUD	LONGITUD
T. C. Colima - Comala	0.00	3	0	10377	4.6	79.0	0.5	6.4	1.6	5.5	1.2	0.3	0.9	83.6	0.5	15.9	0.082	0.518	19.274389	-103.754167
T. C. Minatitlán - Ent. Pez Vela	55.00																			

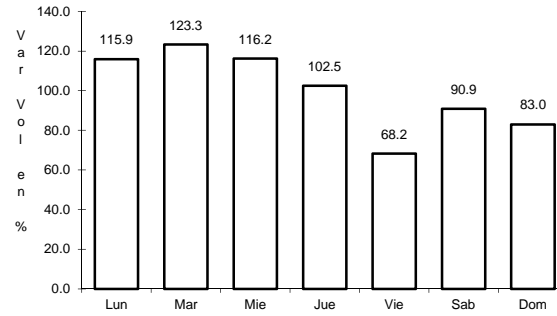
1 CARR: Cd. Guzmán - Colima

CLAVE: 00117

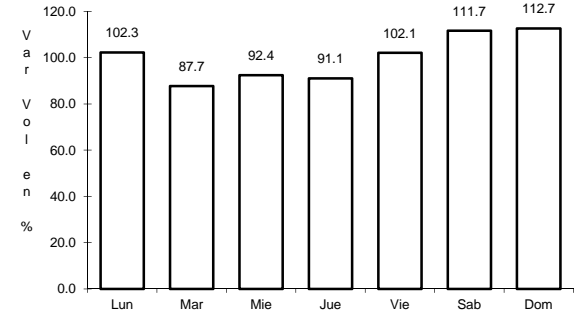
RUTA: MEX-054



Km: 0.00 Tipo: 3 Sent: 1



Km: 0.00 Tipo: 3 Sent: 2

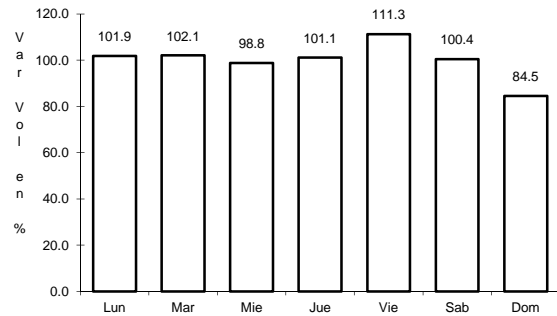


Km: 58.35 Tipo: 1 Sent: 0

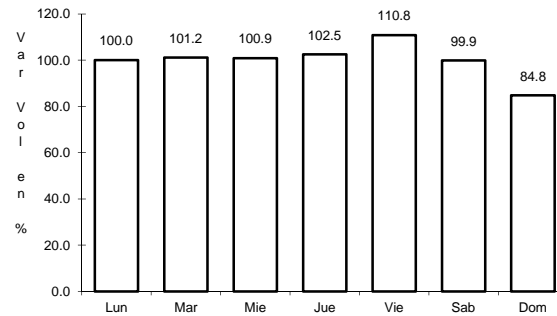
2 CARR: Colima - Ent. Tecmán

CLAVE: 06119

RUTA: MEX-110



Km: 0.00 Tipo: 3 Sent: 1

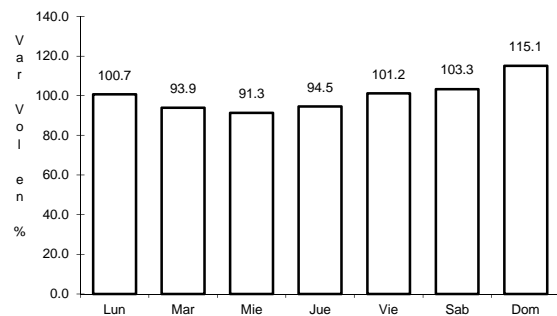


Km: 0.00 Tipo: 3 Sent: 2

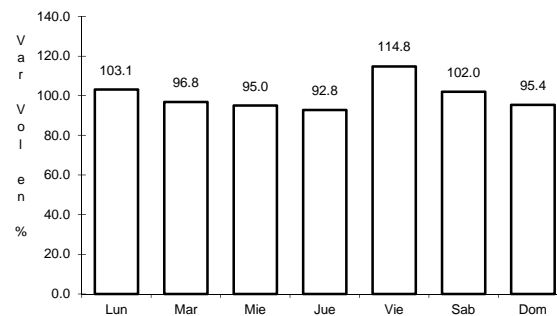
3 CARR: Ent. Playa Azul - Manzanillo

CLAVE: 00495

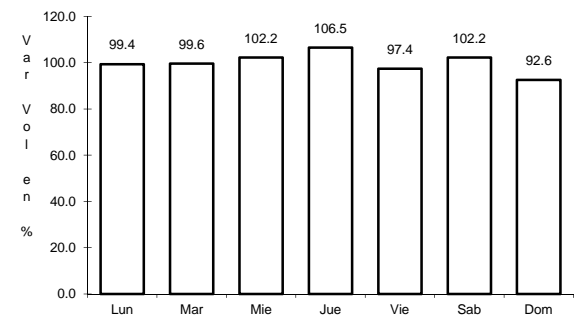
RUTA: MEX-200



Km: 0.00 Tipo: 3 Sent: 0



Km: 190.10 Tipo: 3 Sent: 0

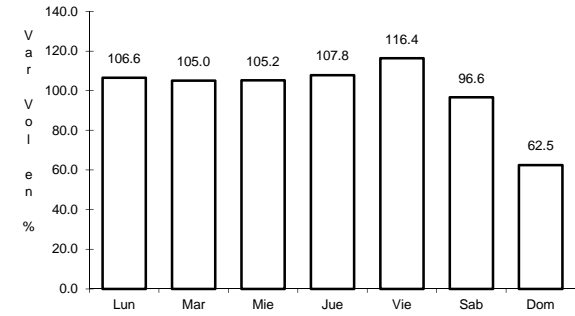
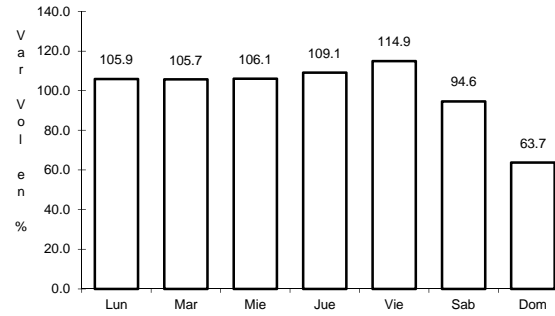
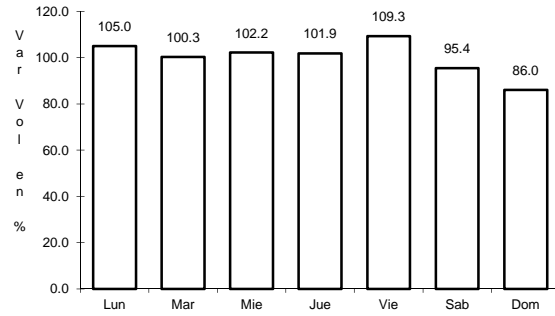


Km: 321.12 Tipo: 1 Sent: 0

4 CARR: Jiquilpan - Colima

CLAVE: 00156

RUTA: MEX-110



Km: 0.00 Tipo: 3 Sent: 0

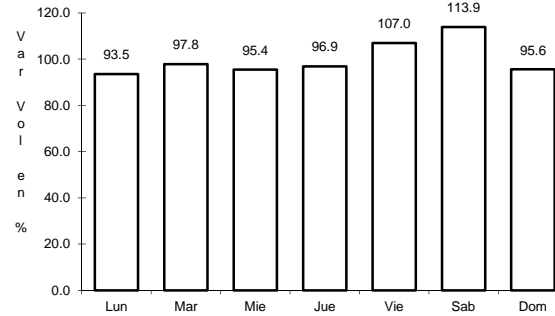
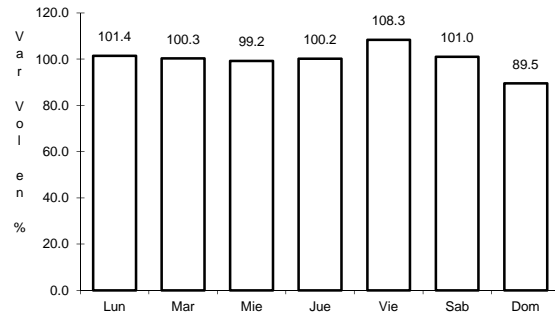
Km: 222.00 Tipo: 1 Sent: 1

Km: 222.00 Tipo: 1 Sent: 2

5 CARR: Libramiento de Colima

CLAVE: 06573

RUTA: MEX-054



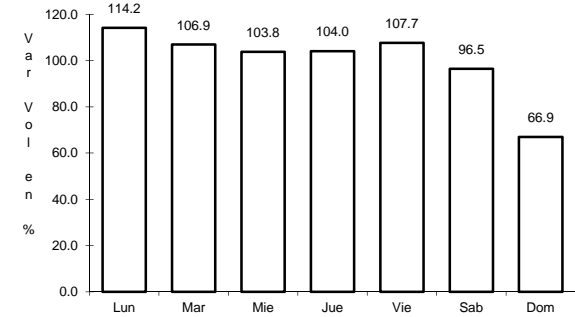
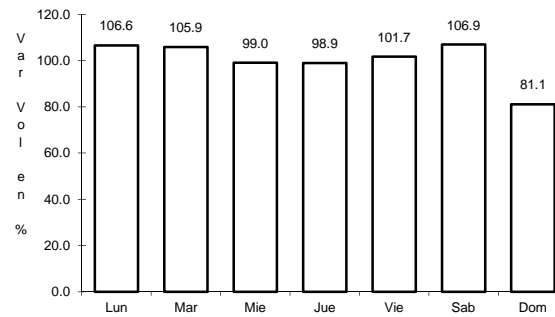
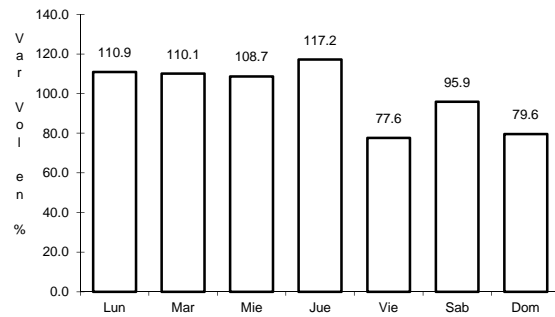
Km: 0.00 Tipo: 3 Sent: 1

Km: 0.00 Tipo: 3 Sent: 2

6 CARR: Libramiento de Manzanillo (Libre)

CLAVE: 06574

RUTA: MEX-200



Km: 0.00 Tipo: 3 Sent: 0

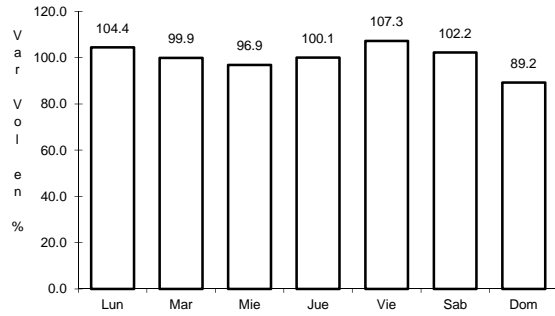
Km: 6.30 Tipo: 1 Sent: 1

Km: 6.30 Tipo: 1 Sent: 2

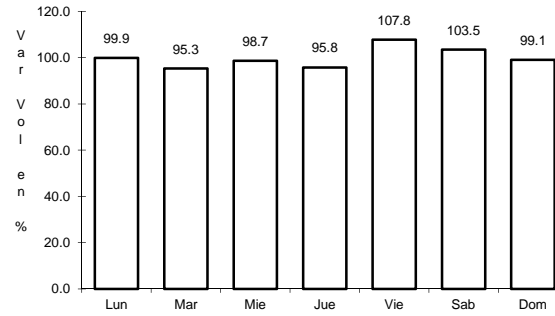
7 CARR: Libramiento de Manzanillo Norte

CLAVE: 06122

RUTA: MEX-200



Km: 3.00 Tipo: 3 Sent: 0

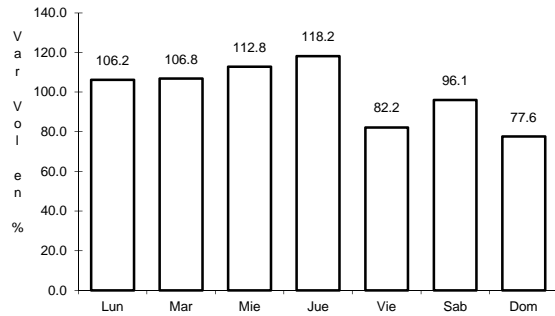


Km: 19.00 Tipo: 1 Sent: 0

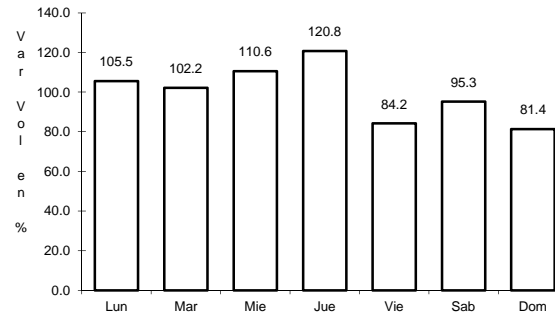
8 CARR: Manzanillo - Puerto Vallarta

CLAVE: 00070

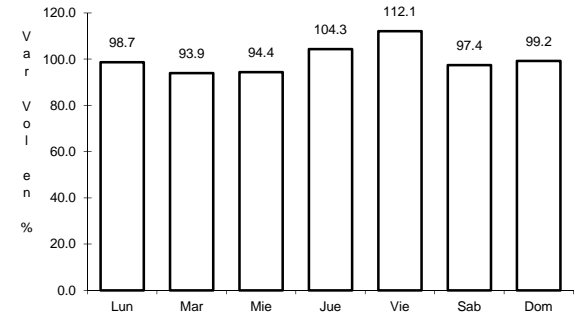
RUTA: MEX-200



Km: 0.00 Tipo: 3 Sent: 1



Km: 0.00 Tipo: 3 Sent: 2

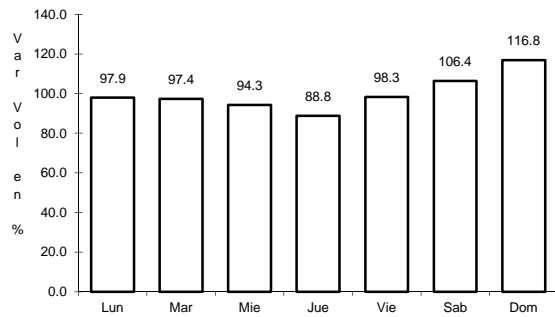


Km: 273.64 Tipo: 1 Sent: 0

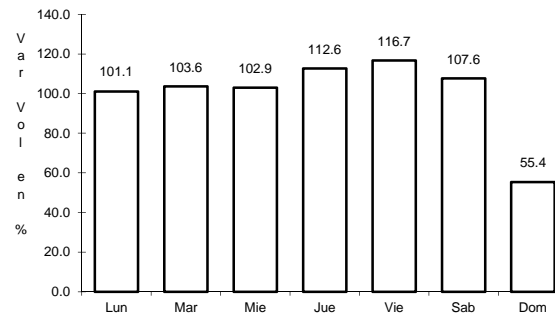
9 CARR: Minatitlán - Ent. Pez Vela

CLAVE: 06015

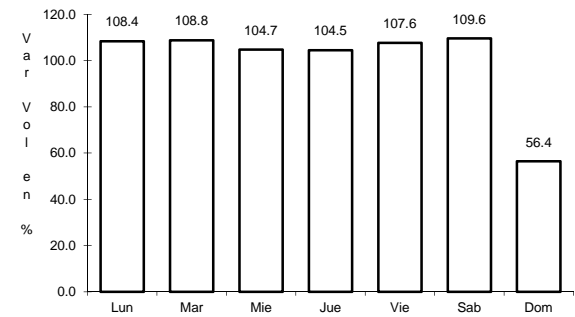
RUTA: MEX-098



Km: 49.50 Tipo: 1 Sent: 0



Km: 58.50 Tipo: 1 Sent: 1

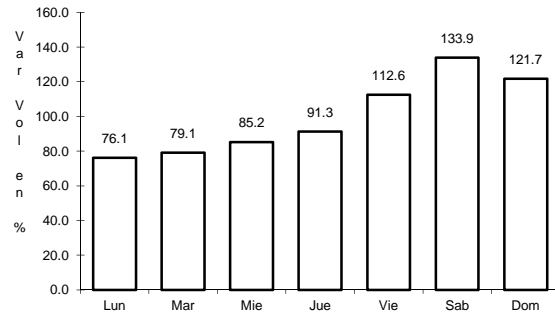


Km: 58.50 Tipo: 1 Sent: 2

10 CARR: Paso por La Salada

CLAVE: 06121

RUTA: MEX-110



Km: 0.00

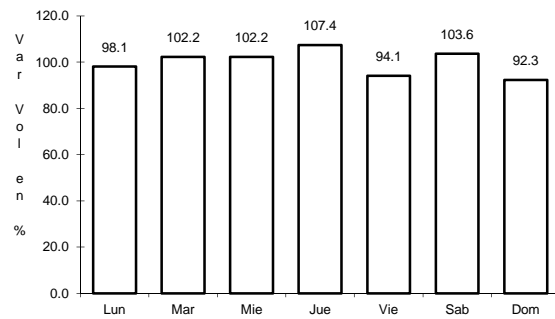
Tipo: 3

Sent: 0

11 CARR: Paso por Los Asmoles

CLAVE: 06120

RUTA: MEX-110



Km: 1.80

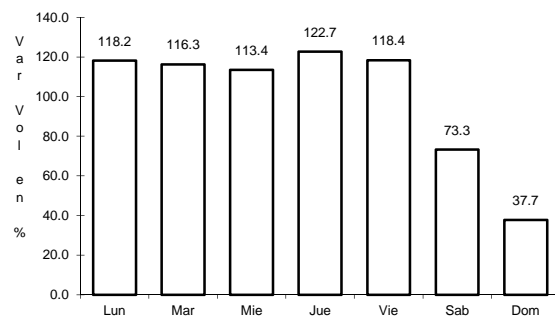
Tipo: 3

Sent: 0

12 CARR: Ramal a Cerro de Los Juanes

CLAVE: 06009

RUTA: MEX-098



Km: 0.00

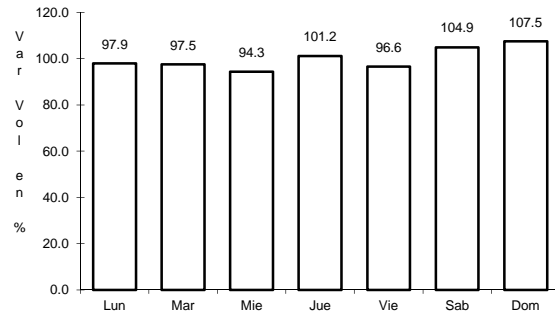
Tipo: 3

Sent: 0

13 CARR: Ramal a Cerro de Ortega

CLAVE: 06009

ruta: MEX-200



Km: 0.00

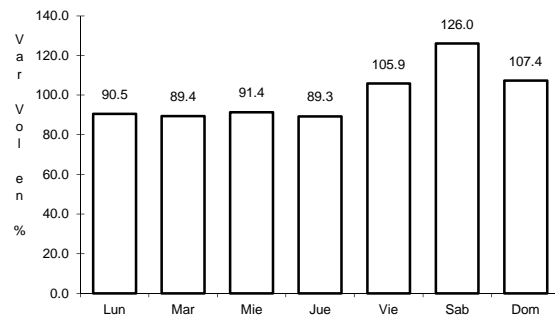
Tipo: 3

Sent: 0

14 CARR: Ramal a Cuyutlán

CLAVE: 06225

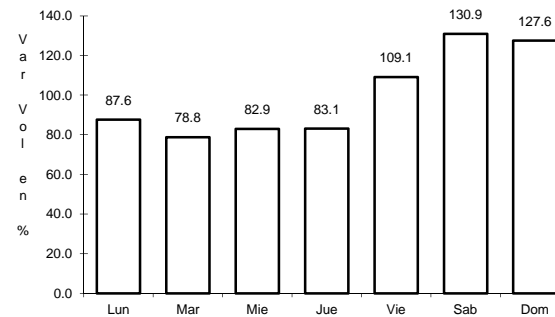
ruta: MEX-200



Km: 0.00

Tipo: 3

Sent: 0



Km: 7.00

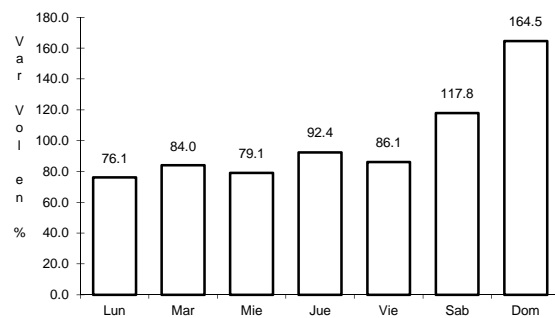
Tipo: 1

Sent: 0

15 CARR: Tecomán - Boca de Pascuales

CLAVE: 06226

ruta: MEX-200



Km: 0.00

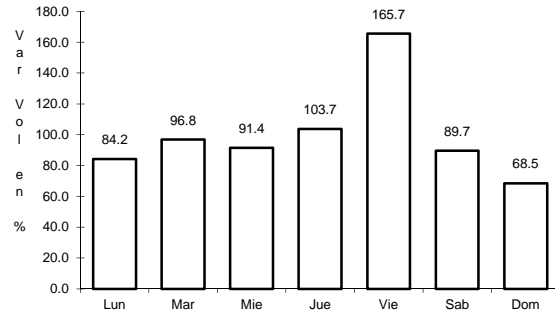
Tipo: 3

Sent: 0

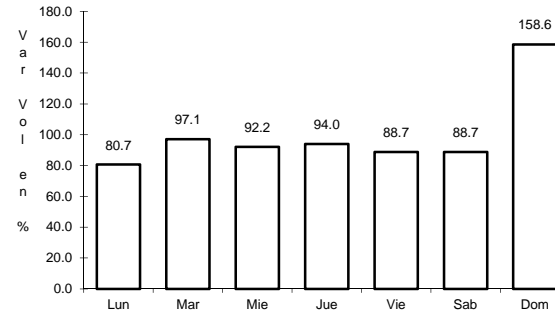
16 CARR: Armería - Manzanillo (Cuota)

CLAVE: 06585

RUTA: MEX-200D



Km: 3.50 Tipo: 3 Sent: 1

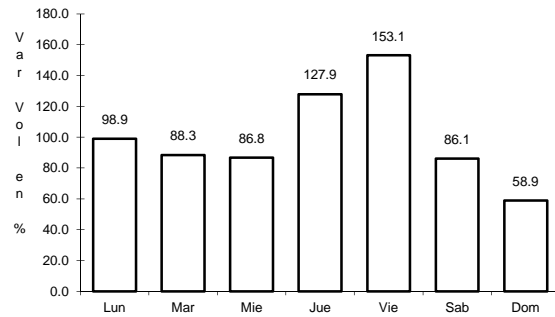


Km: 3.50 Tipo: 3 Sent: 2

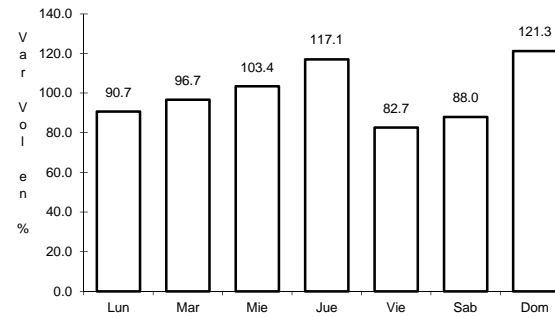
17 CARR: Guadalajara - Colima (Cuota)

CLAVE: 00118

RUTA: MEX-054D



Km: 0.20 Tipo: 3 Sent: 1

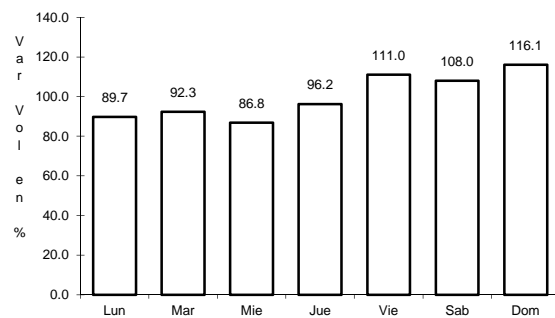


Km: 0.20 Tipo: 3 Sent: 2

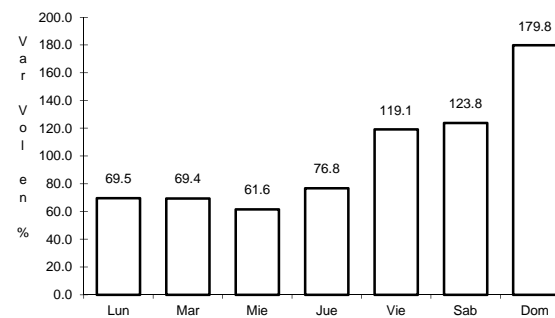
18 CARR: Armería - Playa El Paraíso

CLAVE: 06580

RUTA: COL



Km: 0.00 Tipo: 3 Sent: 0

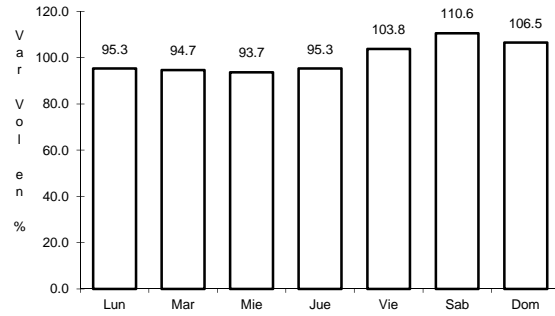


Km: 7.50 Tipo: 1 Sent: 0

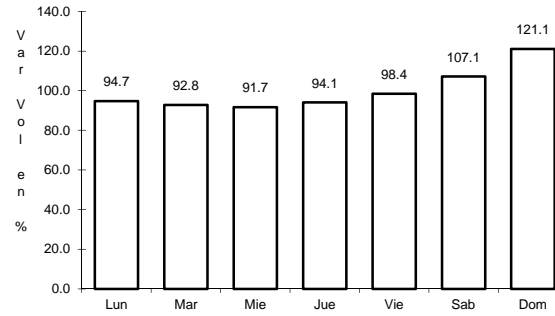
19 CARR: Colima - Comala

CLAVE: 06016

RUTA: COL-016



Km: 3.00 Tipo: 3 Sent: 1

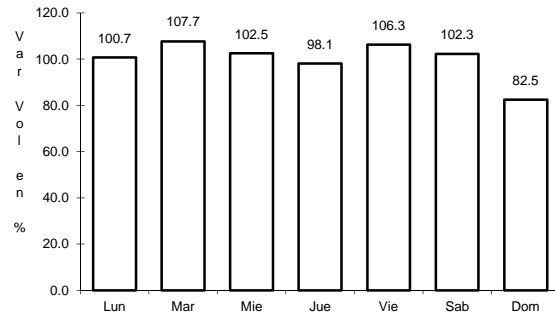


Km: 3.00 Tipo: 3 Sent: 2

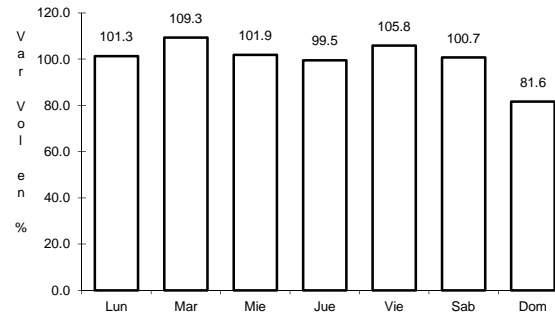
20 CARR: Colima - Coquimatlán

CLAVE: 06034

RUTA: COL-034



Km: 3.00 Tipo: 3 Sent: 1

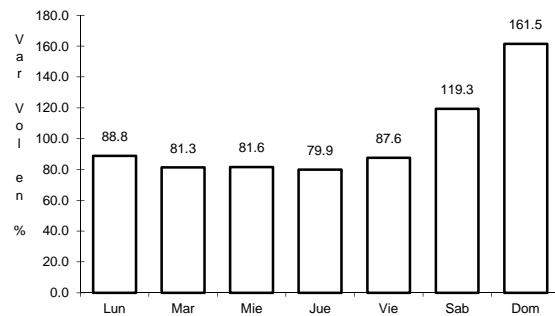


Km: 3.00 Tipo: 3 Sent: 2

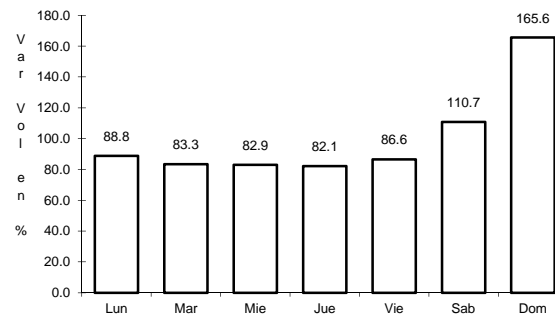
21 CARR: Comala - San Antonio

CLAVE: 06030

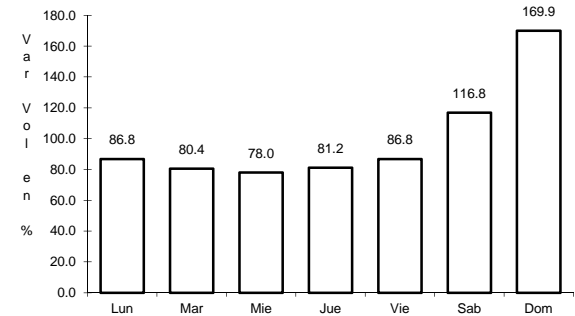
RUTA: COL-016



Km: 0.00 Tipo: 3 Sent: 1



Km: 0.00 Tipo: 3 Sent: 2

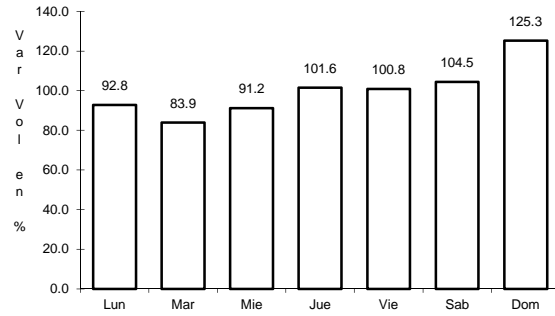


Km: 10.00 Tipo: 1 Sent: 0

22 CARR: Coquimatlán - Pueblo Juárez

CLAVE: 06029

RUTA: COL-034



Km: 0.00

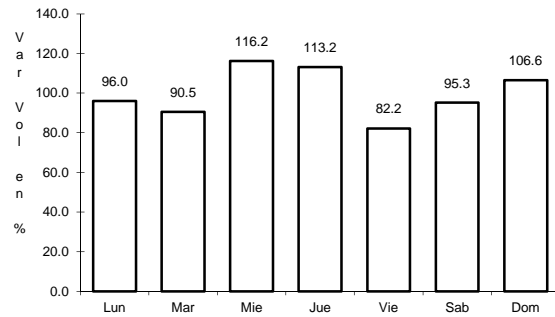
Tipo: 3

Sent: 0

23 CARR: Costera Laguna de Cuyutlán

CLAVE: 06010

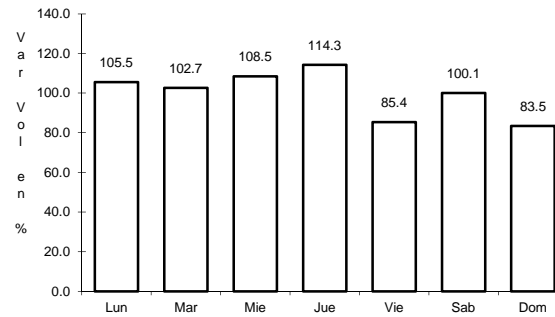
RUTA: COL



Km: 0.00

Tipo: 3

Sent: 0



Km: 13.00

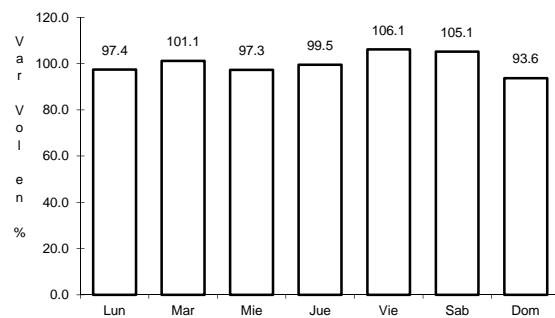
Tipo: 1

Sent: 0

24 CARR: Cuauhtémoc - Colima

CLAVE: 06019

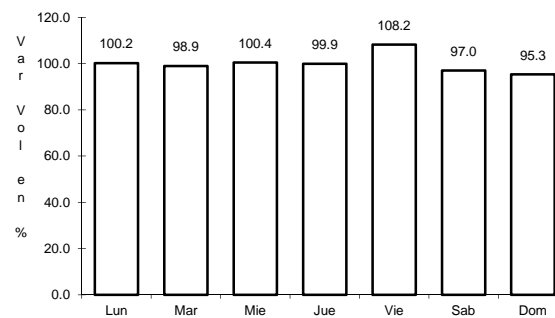
RUTA: COL-019



Km: 0.00

Tipo: 3

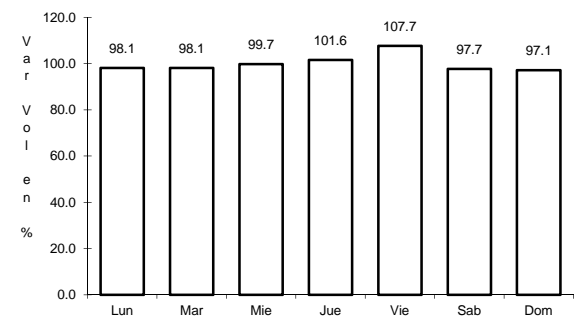
Sent: 0



Km: 19.50

Tipo: 1

Sent: 1



Km: 19.50

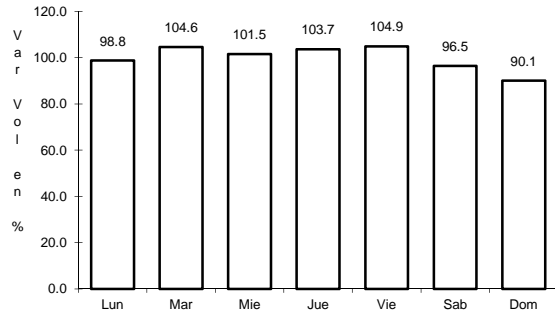
Tipo: 1

Sent: 2

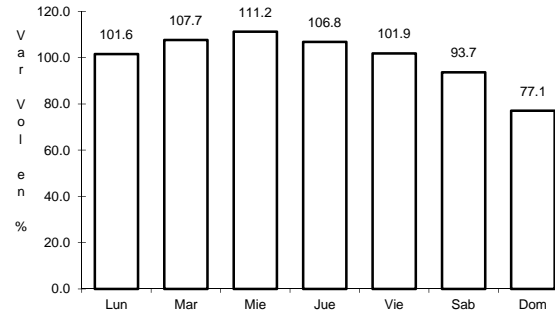
25 CARR: Libramiento de Tecomán

CLAVE: 06122

RUTA: COL



Km: 0.00 Tipo: 3 Sent: 1

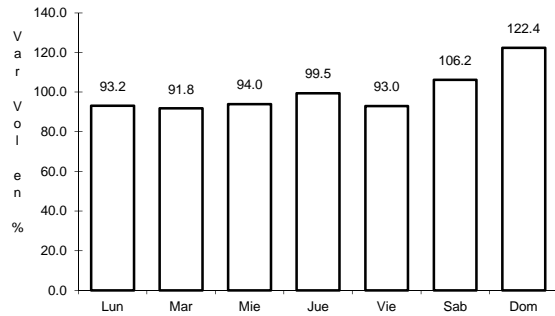


Km: 0.00 Tipo: 3 Sent: 2

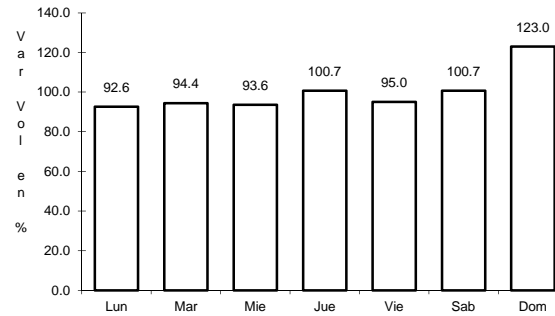
26 CARR: Libramiento Poniente Arco Sur de Tecomán

CLAVE:

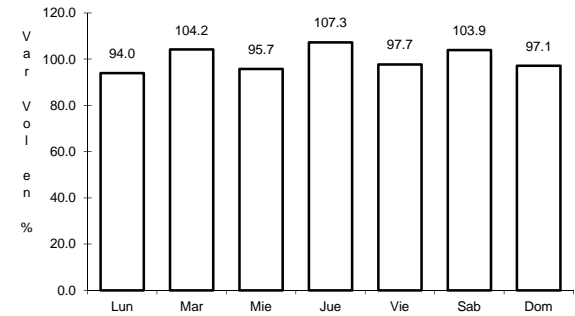
RUTA: COL



Km: 0.00 Tipo: 3 Sent: 0



Km: 4.60 Tipo: 3 Sent: 0

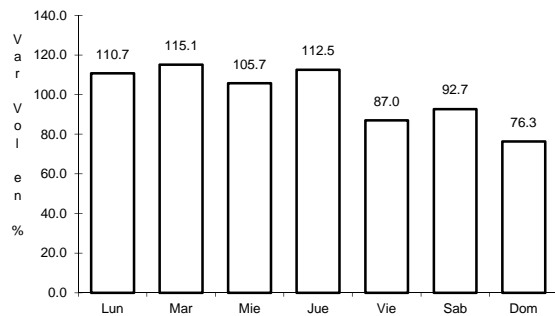


Km: 6.90 Tipo: 3 Sent: 0

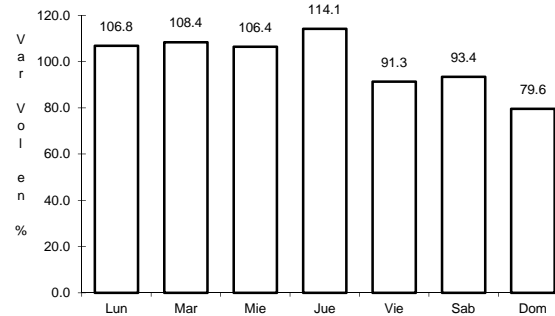
27 CARR: Libramiento Poniente de Colima

CLAVE: 06122

RUTA: COL



Km: 0.00 Tipo: 3 Sent: 1

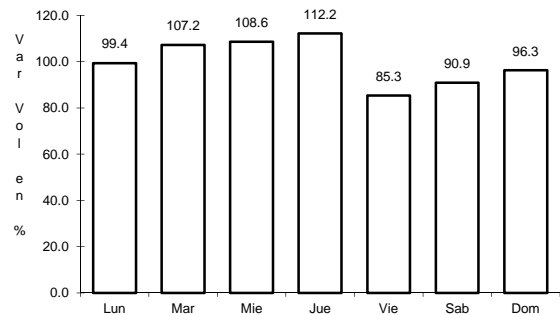


Km: 0.00 Tipo: 3 Sent: 2

28 CARR: Los Limones - Loma de Juárez

CLAVE: 06122

RUTA: COL



Km: 2.00

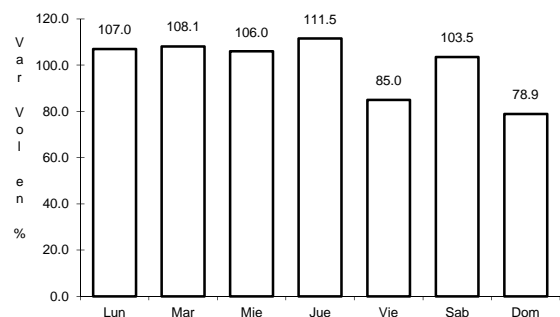
Tipo: 1

Sent: 0

29 CARR: Puerta de Caleras - Madrid

CLAVE: 06014

RUTA: COL-014



Km: 0.00

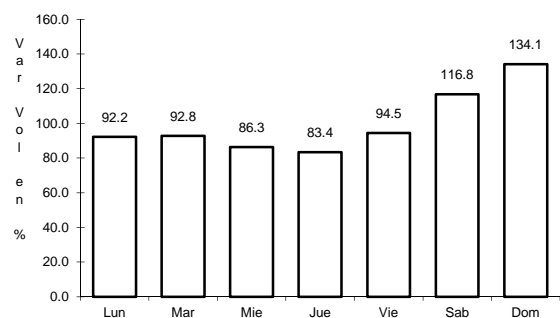
Tipo: 3

Sent: 0

30 CARR: Quesería - El Naranjal

CLAVE: 06001

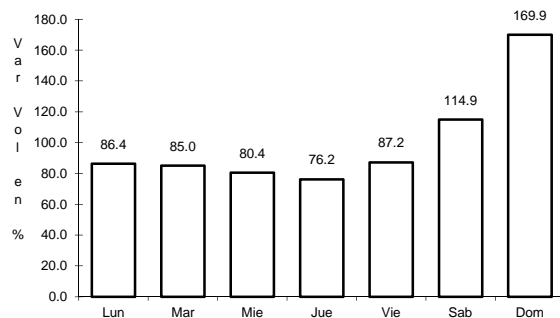
RUTA: COL-001



Km: 0.00

Tipo: 3

Sent: 0



Km: 10.00

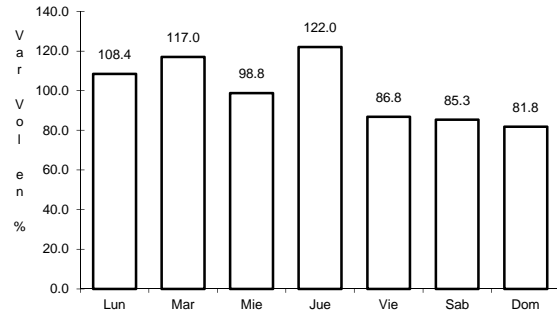
Tipo: 1

Sent: 0

31 CARR: Ramal a Aeropuerto de Colima

CLAVE: 06224

RUTA: COL



Km: 0.00

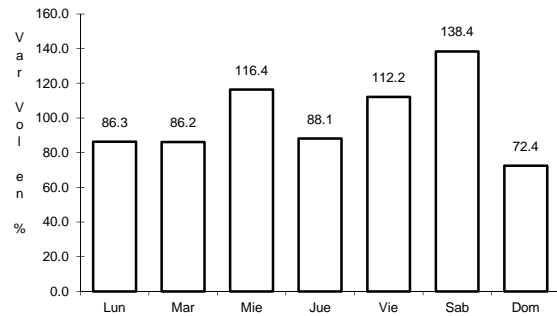
Tipo: 3

Sent: 0

32 CARR: Ramal a Aeropuerto Manzanillo

CLAVE: 06582

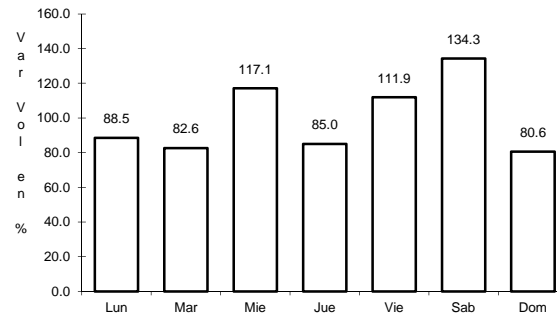
RUTA: COL



Km: 0.00

Tipo: 3

Sent: 0



Km: 5.50

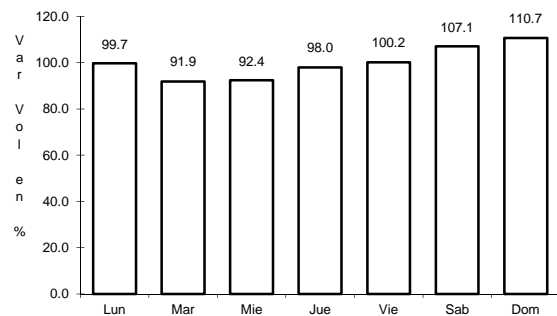
Tipo: 1

Sent: 0

33 CARR: Ramal a Camotlán de Miraflores

CLAVE: 06009

RUTA: COL



Km: 0.00

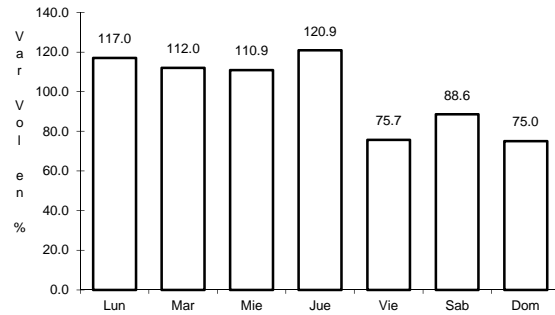
Tipo: 3

Sent: 0

34 CARR: Ramal a Ixtlahuacán

CLAVE: 06577

RUTA: COL-005

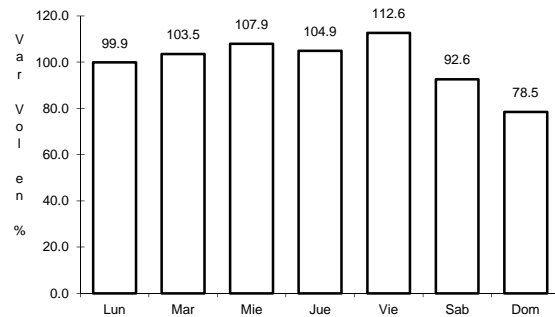


Km: 0.00 Tipo: 3 Sent: 0

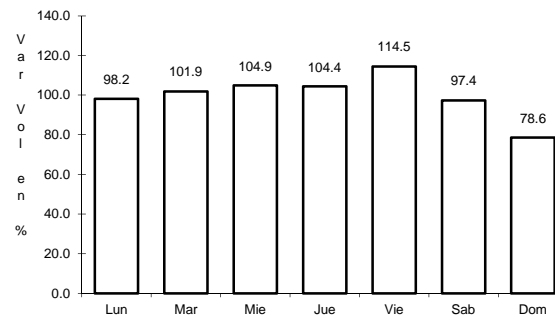
35 CARR: Ramal a Las Brisas

CLAVE: 06571

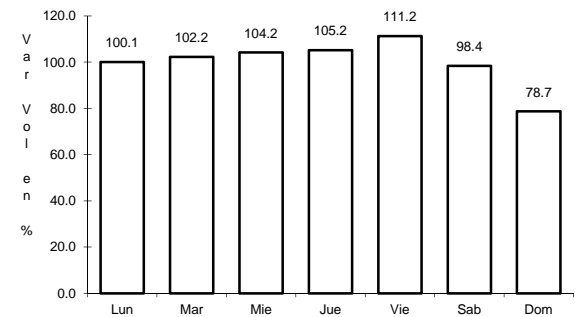
RUTA: COL



Km: 0.00 Tipo: 3 Sent: 0



Km: 0.00 Tipo: 3 Sent: 1

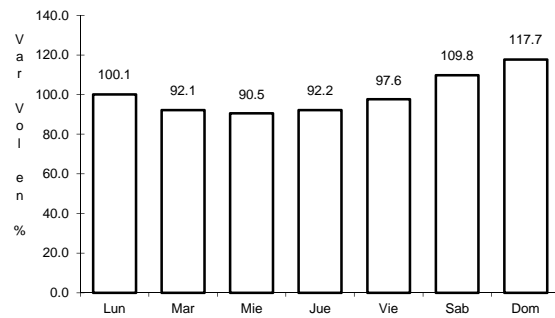


Km: 0.00 Tipo: 3 Sent: 2

36 CARR: Ramal a Los Tepames

CLAVE: 06004

RUTA: COL-004

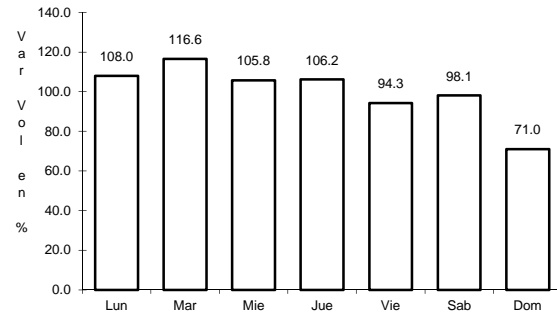


Km: 0.00 Tipo: 3 Sent: 0

37 CARR: Ramal a Rancho Valle Nuevo

CLAVE: 06583

RUTA: COL



Km: 0.00

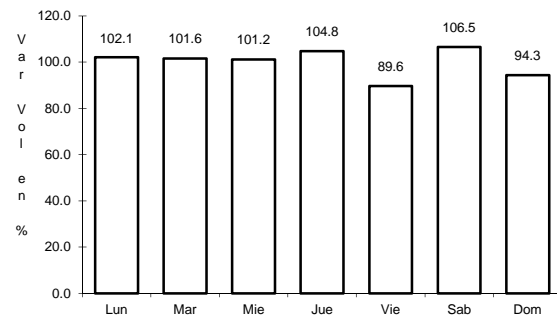
Tipo: 3

Sent: 0

38 CARR: Ramal a Rincón de López

CLAVE: 06578

RUTA: COL



Km: 0.00

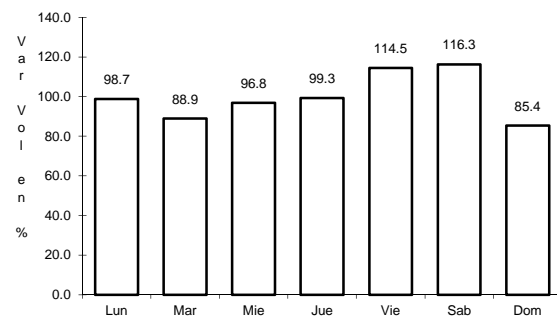
Tipo: 3

Sent: 0

39 CARR: Ramal a Tecuanillo

CLAVE: 06009

RUTA: COL-009



Km: 0.00

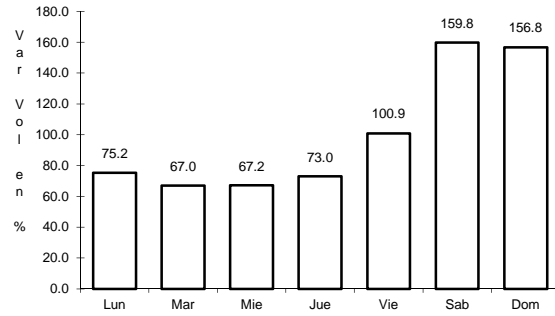
Tipo: 3

Sent: 0

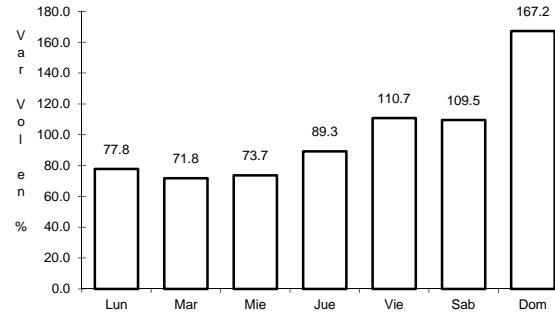
40 CARR: Tecomán - La Mascota

CLAVE: 06572

RUTA: COL



Km: 0.00 Tipo: 3 Sent: 0

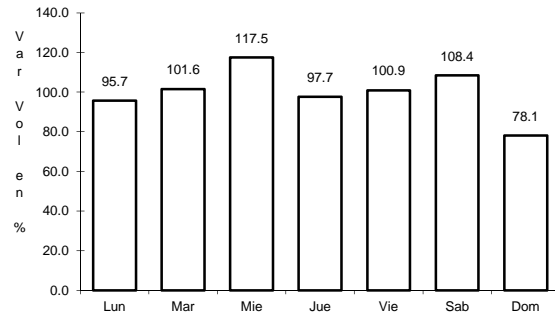


Km: 0.00 Tipo: 3 Sent: 0

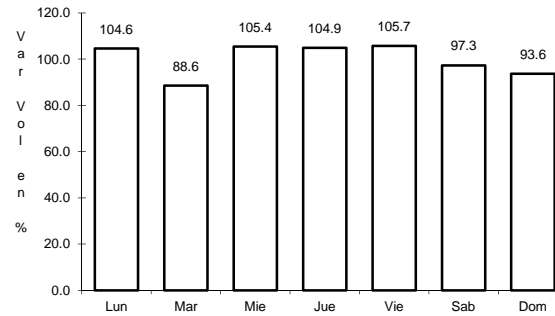
41 CARR: Trapichillos - Estación Alzada

CLAVE: 06003

RUTA: COL-003



Km: 0.00 Tipo: 3 Sent: 0

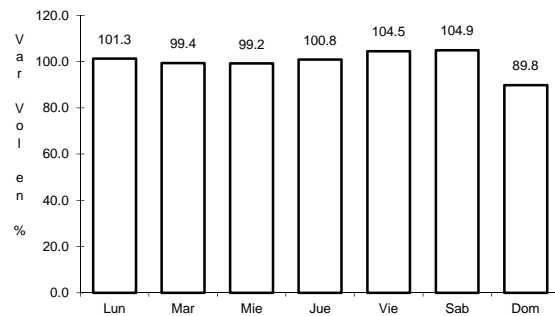


Km: 12.50 Tipo: 1 Sent: 0

42 CARR: Villa de Álvarez - Minatitlán

CLAVE: 06040

RUTA: COL



Km: 0.00 Tipo: 3 Sent: 0