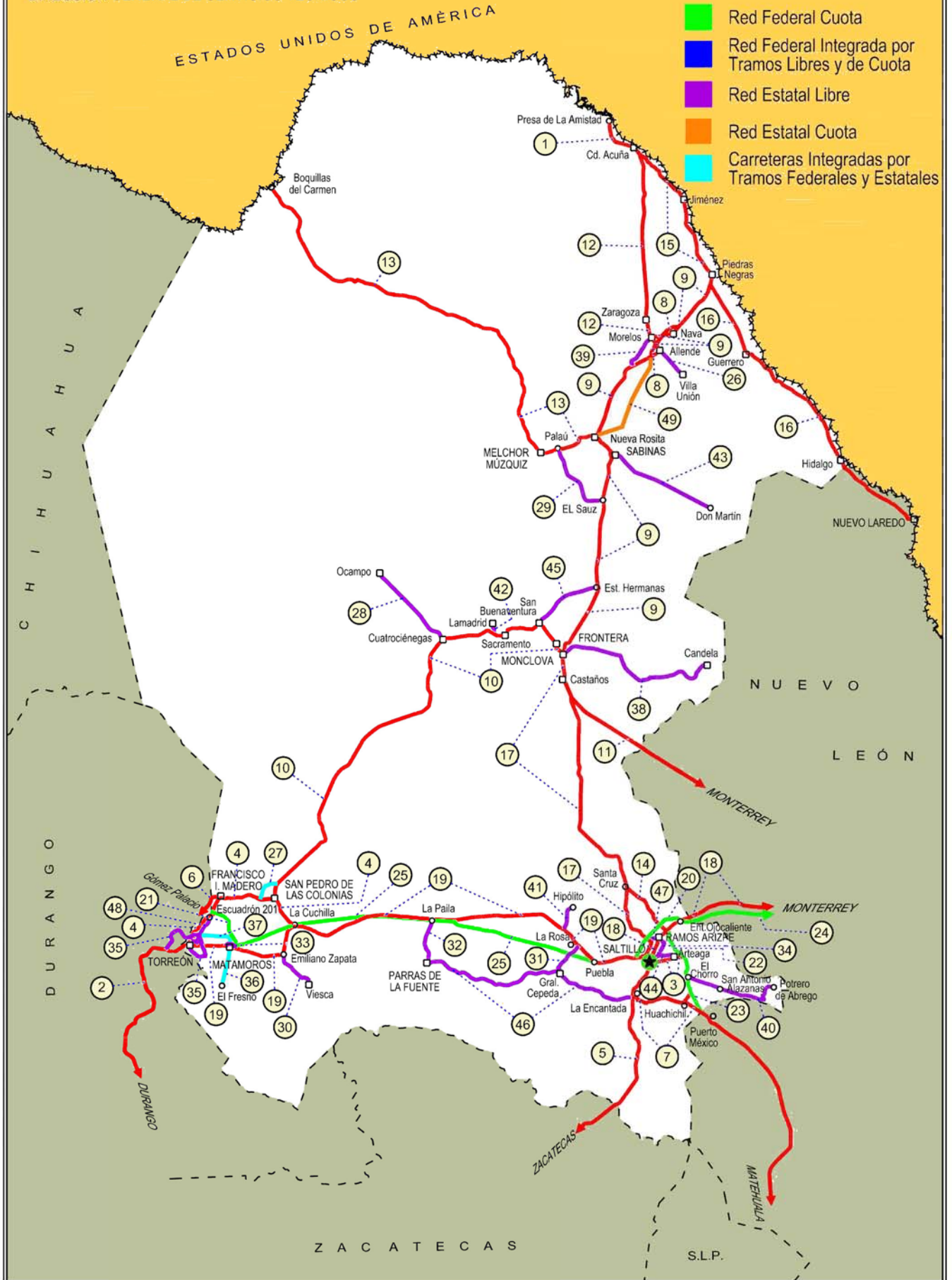


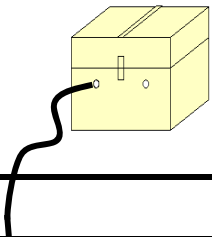
# 05 COAHUILA

SECRETARÍA DE COMUNICACIONES Y TRANSPORTES  
DIRECCIÓN GENERAL DE SERVICIOS TÉCNICOS

- ① --- Número Índice
- Red Federal Libre
- Red Federal Cuota
- Red Federal Integrada por Tramos Libres y de Cuota
- Red Estatal Libre
- Red Estatal Cuota
- Carreteras Integradas por Tramos Federales y Estatales







COAHUILA

NO. INDICE	CARRETERA	RUTA
---RED FEDERAL LIBRE---		
1	Cd. Acuña - Presa de La Amistad	MEX-002
2	Durango - Torreón	MEX-040
3	Ent. Bella Unión - Saltillo	MEX-057
4	Ent. La Cuchilla - Torreón	MEX-040
5	Ent. Morelos - Saltillo	MEX-054
6	Gregorio García - Francisco I. Madero	MEX-040
7	Huachichil - La Encantada	MEX-057
8	Libramiento Allende - Nava	MEX-057
9	Monclova - Piedras Negras	MEX-057
10	Monclova - San Pedro de Las Colonias	MEX-030
11	Monterrey - Castaños	MEX-053
12	Morelos - Cd. Acuña	MEX-029
13	Nueva Rosita - Boquillas del Carmen	MEX-053
14	Ojo Caliente - Santa Cruz	MEX-057
15	Piedras Negras - Cd. Acuña	MEX-002
16	Piedras Negras - Nuevo Laredo	MEX-002
17	Saltillo - Monclova	MEX-057
18	Saltillo - Monterrey	MEX-040
19	Saltillo - Torreón	MEX-040
---RED FEDERAL DE CUOTA---		
20	Libramiento Norponiente de Saltillo (Cuota)	MEX-S30
21	Libramiento Norte de Torreón	MEX-040D
22	Libramiento Oriente de Saltillo (Cuota)	MEX-057D
23	Puerto México - La Carbonera (Cuota)	MEX-057D
24	Saltillo - Monterrey (Cuota)	MEX-040D
25	Torreón - Saltillo (Cuota)	MEX-040D
---RED ESTATAL LIBRE---		
26	Allende - Villa Unión	COA-015
27	Corredor Libramiento de San Pedro	COA-087
28	Cuatro Ciénegas - Ocampo	COA-048
29	El Sauz - Palau	COA-022
30	Emiliano Zapata - Viesca	COA-082
31	Ent. La Rosa - General Cepeda	COA-034
32	Ent. Paila - Parras de La Fuente	COA-102
33	Libramiento de Matamoros	COA
34	Libramiento de Saltillo J.L.P.	COA
35	Libramiento de Torreón	COA
36	Matamoros - El Fresno	COA-078
37	Matamoros - La Unión	COA-070
38	Monclova - Estación Candela	COA-030-NL
39	Morelos - Ent. Las Corrientes	COA-010
40	Puerto de Flores - El Hondable	COA-112
41	Ramal a Hipólito	COA-114
42	Ramal a Lamadrid	COA-042
43	Sabinas - Don Martín	COA-025
44	Saltillo - Arteaga	COA-106
45	San Buenaventura - Estación Hermanas	COA-034
46	T. C. (Ent. Morelos - Saltillo) - Parras de La Fuente	COA-105
47	T. C. (Saltillo - Monclova) - Ramos Arizpe	COA
48	Torreón - Escuadrón 201	COA-011
---RED ESTATAL DE CUOTA---		
49	Nueva Rosita - Ent. Allende (Cuota)	COA-D

COAHUILA

1 CARR : Cd. Acuña - Presa de La Amistad

CLAVE: 05085

RUTA: MEX-002

AÑO : 2015

LUGAR	ESTACION				CLASIFICACION VEHICULAR EN PORCIENTO										COORDENADAS					
	KM	TE	SC	TDPA	M	A	B	C2	C3	T3S2	T3S3	T3S2R4	OTROS	A	B	C	K'	D	LATITUD	LONGITUD
Cd. Acuña	0.00	3	1	10868	1.1	88.0	1.9	5.7	0.4	1.2	1.2	0.1	0.4	89.1	1.9	9.0	0.079	0.501	29.333939	-100.964404
Cd. Acuña	0.00	3	2	10899	1.1	86.6	2.1	6.6	0.4	1.4	1.3	0.1	0.4	87.7	2.1	10.2	0.097	0.501	29.333969	-100.964409
T. Izq. Santa Eulalia	10.60	1	1	3066	1.2	81.3	4.8	9.1	1.1	2.0	0.3	0.0	0.2	82.5	4.8	12.7	0.161	0.502	29.342630	-101.001249
T. Izq. Santa Eulalia	10.60	1	2	3047	1.0	79.6	5.4	10.0	1.3	2.2	0.3	0.0	0.2	80.6	5.4	14.0	0.177	0.502	29.342650	-101.001245
Presa de La Amistad	23.00	1	0	484	1.2	78.0	0.1	19.1	1.3	0.3	0.0	0.0	0.0	79.2	0.1	20.7	0.090	0.596	29.447696	-101.072596

2 CARR : Durango - Torreón

CLAVE: 10085

RUTA: MEX-040

AÑO : 2015

LUGAR	ESTACION				CLASIFICACION VEHICULAR EN PORCIENTO										COORDENADAS					
	KM	TE	SC	TDPA	M	A	B	C2	C3	T3S2	T3S3	T3S2R4	OTROS	A	B	C	K'	D	LATITUD	LONGITUD
Durango	0.00	3	1	9096	0.8	89.1	3.0	4.0	1.1	1.3	0.4	0.1	0.2	89.9	3.0	7.1	0.077	0.513	24.077214	-104.590476
Durango	0.00	3	2	9574	1.4	86.0	3.2	6.4	1.1	1.3	0.3	0.1	0.2	87.4	3.2	9.4	0.072	0.513	24.077214	-104.590476
T. Der. Cd. de Los Niños	7.70	3	1	6099	2.9	82.0	4.0	3.5	1.6	2.1	0.8	1.0	2.1	84.9	4.0	11.1	0.072	0.506	24.082005	-104.586528
T. Der. Cd. de Los Niños	7.70	3	2	6238	1.5	89.7	1.7	2.2	1.1	1.5	0.4	1.0	0.9	91.2	1.7	7.1	0.073	0.506	24.082005	-104.586528
X. Periférico de Durango	9.00	1	1	6874	13.9	71.8	4.0	5.2	1.3	1.7	0.6	0.9	0.6	85.7	4.0	10.3	0.069	0.512	24.089488	-104.579960
X. Periférico de Durango	9.00	1	2	6545	1.4	85.0	5.5	2.9	1.1	1.5	0.6	0.9	1.1	86.4	5.5	8.1	0.072	0.512	24.089488	-104.579960
T. Der. Aeropuerto	9.42	1	1	5794	0.8	85.9	3.2	5.2	1.3	2.3	0.7	0.4	0.2	86.7	3.2	10.1	0.099	0.506	24.092381	-104.577642
T. Der. Aeropuerto	9.42	1	2	5942	0.6	85.2	3.7	6.0	1.4	2.0	0.5	0.3	0.3	85.8	3.7	10.5	0.089	0.506	24.092381	-104.577642
T. Der. Aeropuerto	9.42	3	1	5175	1.6	81.1	0.7	7.8	2.2	3.0	2.0	0.3	1.3	82.7	0.7	16.6	0.097	0.504	24.098612	-104.576291
T. Der. Aeropuerto	9.42	3	2	5111	2.1	80.1	1.3	9.2	1.8	2.7	1.1	0.1	1.6	82.2	1.3	16.5	0.077	0.504	24.098612	-104.576291
La Calera	10.85	3	0	7947	1.1	79.2	1.5	6.3	1.7	4.0	1.8	0.9	3.5	80.3	1.5	18.2	0.072	0.504	24.110154	-104.571849
Abraham González	27.10	3	0	4227	1.0	75.7	4.2	6.8	3.0	6.1	1.9	0.6	0.7	76.7	4.2	19.1	0.070	0.505	24.206300	-104.515267
Francisco I. Madero	56.30	1	0	4578	0.6	68.5	4.1	11.2	2.3	8.4	3.7	0.8	0.4	69.1	4.1	26.8	0.069	0.506	24.392980	-104.330017
Francisco I. Madero	56.30	3	0	4351	0.6	77.4	3.6	5.1	2.3	6.8	2.9	0.8	0.5	78.0	3.6	18.4	0.073	0.503	24.405101	-104.305497
Guadalupe Victoria	77.50	1	0	5154	0.4	78.3	3.7	5.3	2.0	6.4	2.7	0.8	0.4	78.7	3.7	17.6	0.069	0.504	24.446762	-104.139644
Guadalupe Victoria	77.50	3	0	7006	0.9	85.8	0.3	2.5	1.5	4.1	2.5	1.4	1.0	86.7	0.3	13.0	0.077	0.509	24.457947	-104.094983
T. Der. Ignacio Allende	90.13	1	0	4332	0.6	75.8	3.5	6.8	2.7	7.0	2.1	0.9	0.6	76.4	3.5	20.1	0.071	0.511	24.497518	-104.023577
T. Der. Ignacio Allende	90.13	3	0	3033	0.6	69.3	4.2	6.8	4.1	9.6	3.4	1.4	0.6	69.9	4.2	25.9	0.069	0.502	24.501085	-104.017766
T. Izq. Peñón Blanco	120.90	1	0	2342	0.6	61.0	6.0	7.7	5.0	12.4	4.8	1.7	0.8	61.6	6.0	32.4	0.070	0.503	24.732442	-103.843736
T. Izq. Peñón Blanco	120.90	3	0	2187	0.3	57.8	4.9	6.4	4.6	15.9	6.7	2.7	0.7	58.1	4.9	37.0	0.064	0.505	24.745765	-103.836075
Cuencamé	144.30	1	0	2039	2.7	92.3	0.0	3.3	1.7	0.0	0.0	0.0	0.0	95.0	0.0	5.0	0.059	0.512	24.861759	-103.700414
Cuencamé	144.30	3	0	6868	0.5	48.4	5.2	10.6	5.8	16.7	5.8	5.9	1.1	48.9	5.2	45.9	0.066	0.508	24.908573	-103.704620
T. Izq. Nazas	171.61	1	0	4554	1.5	46.6	6.9	9.4	7.3	19.3	4.9	2.8	1.3	48.1	6.9	45.0	0.067	0.511	25.085989	-103.771166
T. Izq. Nazas	171.61	3	0	5695	1.2	54.6	5.2	8.4	5.5	16.6	5.0	2.4	1.1	55.8	5.2	39.0	0.063	0.517	25.091886	-103.769798
T. Der. Villa Juárez	194.40	3	0	4351	0.9	49.8	6.4	10.4	7.4	12.8	7.5	3.2	1.6	50.7	6.4	42.9	0.066	0.500	25.225830	-103.628616

COAHUILA

2 CARR: Durango - Torreón

CLAVE: 10085

RUTA: MEX-040

AÑO: 2015

LUGAR	ESTACION				CLASIFICACION VEHICULAR EN PORCIENTO										COORDENADAS					
	KM	TE	SC	TDPA	M	A	B	C2	C3	T3S2	T3S3	T3S2R4	OTROS	A	B	C	K'	D	LATITUD	LONGITUD
León Guzmán	229.58	3	0	10327	5.3	68.7	0.9	4.3	2.8	9.2	3.4	4.2	1.2	74.0	0.9	25.1	0.064	0.529	25.513775	-103.645549
Cd. Lerdo	244.80	1	1	6903	1.2	71.8	2.4	6.4	3.1	8.1	3.6	2.2	1.2	73.0	2.4	24.6	0.066	0.509	25.511867	-103.538594
Cd. Lerdo	244.80	1	2	6649	1.1	73.2	2.2	7.0	2.8	7.4	3.2	2.2	0.9	74.3	2.2	23.5	0.063	0.509	25.511867	-103.538594
T. Izq. Gómez Palacio	248.90	3	1	8188	0.5	87.3	2.3	7.3	2.0	0.3	0.2	0.0	0.1	87.8	2.3	9.9	0.072	0.563	25.554198	-103.481511
T. Izq. Gómez Palacio	248.90	3	2	10528	0.6	91.1	0.9	4.9	1.9	0.3	0.2	0.0	0.1	91.7	0.9	7.4	0.070	0.563	25.554198	-103.481511
Lim. Edos. Term. Dgo. Ppia. Coah.	251.00																			
Torreón	255.80	1	1	18956	2.0	89.8	0.9	4.4	0.3	1.0	1.5	0.0	0.1	91.8	0.9	7.3	0.067	0.502	25.547300	-103.470912
Torreón	255.80	1	2	18823	2.4	88.7	1.1	4.8	0.3	1.1	1.5	0.0	0.1	91.1	1.1	7.8	0.066	0.502	25.546122	-103.469062

3 CARR: Ent. Bella Unión - Saltillo

CLAVE: 05003

RUTA: MEX-057

AÑO: 2015

LUGAR	ESTACION				CLASIFICACION VEHICULAR EN PORCIENTO										COORDENADAS					
	KM	TE	SC	TDPA	M	A	B	C2	C3	T3S2	T3S3	T3S2R4	OTROS	A	B	C	K'	D	LATITUD	LONGITUD
T. C. Ent. Puerto México - Ent. Ojo Caliente (Cuota)	0.00																			
T. Der. Arteaga	4.61	1	1	4208	1.8	87.6	0.2	8.5	0.7	0.9	0.2	0.0	0.1	89.4	0.2	10.4	0.139	0.520	25.443847	-100.834623
T. Der. Arteaga	4.61	1	2	4206	1.8	86.1	0.2	10.0	0.8	0.9	0.1	0.0	0.1	87.9	0.2	11.9	0.093	0.520	25.443845	-100.834636
Saltillo	17.00	1	1	18199	0.7	86.6	0.5	6.4	1.7	3.0	0.4	0.3	0.4	87.3	0.5	12.2	0.117	0.506	25.436719	-100.907205
Saltillo	17.00	1	2	18637	0.9	85.1	0.5	7.5	1.9	3.0	0.4	0.3	0.4	86.0	0.5	13.5	0.093	0.506	25.436719	-100.907205

4 CARR: Ent. La Cuchilla - Torreón

CLAVE: 05021

RUTA: MEX-040

AÑO: 2015

LUGAR	ESTACION				CLASIFICACION VEHICULAR EN PORCIENTO										COORDENADAS					
	KM	TE	SC	TDPA	M	A	B	C2	C3	T3S2	T3S3	T3S2R4	OTROS	A	B	C	K'	D	LATITUD	LONGITUD
La Cuchilla	0.00	3	0	909	4.3	73.9	0.1	7.5	3.0	7.0	1.6	1.8	0.8	78.2	0.1	21.7	0.095	0.520	25.626781	-102.882694
T. Der. Mayran	3.30	3	0	1234	5.8	67.2	2.8	15.5	1.7	4.6	0.9	1.1	0.4	73.0	2.8	24.2	0.085	0.516	25.646856	-102.905082
T. Izq. San Patricio	9.07	3	0	1617	8.2	63.4	2.7	18.0	1.5	4.1	1.1	0.8	0.2	71.6	2.7	25.7	0.080	0.517	25.680125	-102.935661
San Pedro de Las Colonias	18.70	1	1	2191	14.9	63.2	3.7	14.5	0.9	1.7	0.5	0.4	0.2	78.1	3.7	18.2	0.068	0.503	25.746447	-102.969164
San Pedro de Las Colonias	18.70	1	2	2161	14.2	62.1	4.0	15.7	0.9	1.9	0.5	0.5	0.2	76.3	4.0	19.7	0.082	0.503	25.746443	-102.969166
San Pedro de Las Colonias	18.70	3	1	4946	2.9	78.3	2.7	11.5	0.9	2.0	0.8	0.6	0.3	81.2	2.7	16.1	0.079	0.520	25.757670	-103.004768
San Pedro de Las Colonias	18.70	3	2	5355	3.5	77.1	2.8	11.9	0.9	2.0	0.9	0.6	0.3	80.6	2.8	16.6	0.081	0.520	25.757635	-103.004345
Urquizo	33.00	1	1	4576	2.9	77.5	1.9	11.0	1.2	3.1	0.9	1.1	0.4	80.4	1.9	17.7	0.078	0.501	25.764249	-103.081229
Urquizo	33.00	1	2	4562	2.8	75.6	2.2	12.2	1.3	3.3	1.0	1.2	0.4	78.4	2.2	19.4	0.073	0.501	25.764219	-103.081194
Urquizo	33.00	3	1	4422	3.0	78.9	2.5	10.1	1.4	2.2	0.9	0.6	0.4	81.9	2.5	15.6	0.078	0.506	25.771089	-103.139796
Urquizo	33.00	3	2	4317	3.0	75.8	2.9	12.1	1.5	2.4	1.0	0.8	0.5	78.8	2.9	18.3	0.074	0.506	25.771089	-103.139941
T. Izq. San Lorenzo	37.30	3	1	4087	2.5	75.8	2.3	11.5	1.8	3.8	1.3	0.6	0.4	78.3	2.3	19.4	0.089	0.501	25.762555	-103.156989

COAHUILA

4 CARR: Ent. La Cuchilla - Torreón

CLAVE: 05021

RUTA: MEX-040

AÑO: 2015

LUGAR	ESTACION				CLASIFICACION VEHICULAR EN PORCIENTO													COORDENADAS		
	KM	TE	SC	TDPA	M	A	B	C2	C3	T3S2	T3S3	T3S2R4	OTROS	A	B	C	K'	D	LATITUD	LONGITUD
T. Izq. San Lorenzo	37.30	3	2	4064	2.7	74.1	2.7	11.5	2.2	4.2	1.4	0.8	0.4	76.8	2.7	20.5	0.077	0.501	25.762617	-103.156889
T. Der. Colón	41.00	3	1	5462	1.8	78.7	1.6	10.4	1.9	3.5	1.2	0.6	0.3	80.5	1.6	17.9	0.077	0.506	25.760671	-103.192640
T. Der. Colón	41.00	3	2	5339	2.0	76.1	1.9	11.2	2.3	4.2	1.3	0.7	0.3	78.1	1.9	20.0	0.076	0.506	25.760615	-103.192935
T. Izq. Guadalupe Victoria	41.78	3	1	5352	2.4	78.6	2.0	10.3	1.8	3.0	1.0	0.5	0.4	81.0	2.0	17.0	0.081	0.503	25.761946	-103.226756
T. Izq. Guadalupe Victoria	41.78	3	2	5291	1.2	77.8	2.3	11.2	2.0	3.5	1.2	0.5	0.3	79.0	2.3	18.7	0.084	0.503	25.761947	-103.226748
T. Der. Fco. I. Madero	43.80	1	1	6097	3.2	79.0	1.8	9.0	1.6	3.2	1.2	0.5	0.5	82.2	1.8	16.0	0.078	0.504	25.763449	-103.239461
T. Der. Fco. I. Madero	43.80	1	2	6008	3.0	76.4	2.1	10.6	1.8	3.7	1.3	0.6	0.5	79.4	2.1	18.5	0.079	0.504	25.763475	-103.239381
T. Der. Fco. I. Madero	43.80	3	1	6078	2.7	82.8	1.1	8.0	1.2	2.4	0.9	0.4	0.5	85.5	1.1	13.4	0.096	0.509	25.753722	-103.291702
T. Der. Fco. I. Madero	43.80	3	2	6308	2.6	81.1	1.2	9.4	1.3	2.5	1.0	0.4	0.5	83.7	1.2	15.1	0.092	0.509	25.753794	-103.291650
T. Izq. Escuadrón 201	62.40	3	1	8621	2.0	82.1	1.4	8.5	1.5	2.3	1.2	0.5	0.5	84.1	1.4	14.5	0.079	0.503	25.670869	-103.351562
T. Izq. Escuadrón 201	62.40	3	2	8527	1.8	80.3	1.5	9.8	1.5	2.7	1.4	0.5	0.5	82.1	1.5	16.4	0.082	0.503	25.670916	-103.351463
Torreón	84.00	1	1	22756	1.7	91.4	0.8	4.4	0.3	0.5	0.4	0.2	0.3	93.1	0.8	6.1	0.086	0.507	25.579718	-103.413721
Torreón	84.00	1	2	22114	2.0	90.3	1.0	5.0	0.3	0.5	0.4	0.2	0.3	92.3	1.0	6.7	0.080	0.507	25.579727	-103.413711

5 CARR: Ent. Morelos - Saltillo

CLAVE: 00149

RUTA: MEX-054

AÑO: 2015

LUGAR	ESTACION				CLASIFICACION VEHICULAR EN PORCIENTO													COORDENADAS		
	KM	TE	SC	TDPA	M	A	B	C2	C3	T3S2	T3S3	T3S2R4	OTROS	A	B	C	K'	D	LATITUD	LONGITUD
T. C. Zacatecas - Durango	0.00	3	1	3609	2.2	70.1	3.7	9.8	2.3	6.6	1.9	2.4	1.0	72.3	3.7	24.0	0.103	0.508	22.868986	-102.619520
T. C. Zacatecas - Durango	0.00	3	2	3490	2.2	67.8	4.1	9.9	2.6	7.3	2.3	2.7	1.1	70.0	4.1	25.9	0.087	0.508	22.869033	-102.619590
T. Der. Sta. Mónica	11.00	1	1	3612	2.3	66.3	4.3	9.2	2.3	9.5	2.3	2.8	1.0	68.6	4.3	27.1	0.106	0.503	22.937537	-102.570182
T. Der. Sta. Mónica	11.00	1	2	3573	2.3	63.8	4.5	9.8	2.7	10.1	2.6	3.1	1.1	66.1	4.5	29.4	0.092	0.503	22.937584	-102.570285
T. Der. Sta. Mónica	11.00	3	1	2515	2.6	61.9	4.4	8.9	3.0	11.3	3.1	3.5	1.3	64.5	4.4	31.1	0.131	0.506	22.950479	-102.559132
T. Der. Sta. Mónica	11.00	3	2	2455	2.7	57.9	5.1	9.7	3.2	12.8	3.3	4.0	1.3	60.6	5.1	34.3	0.110	0.506	22.950533	-102.559190
T. Izq. Villa de Cos	53.90	1	1	3302	0.4	66.7	4.1	7.4	2.7	12.5	2.1	3.2	0.9	67.1	4.1	28.8	0.074	0.515	23.265343	-102.333013
T. Izq. Villa de Cos	53.90	1	2	3115	0.7	61.8	4.8	8.6	2.9	14.5	2.4	3.3	1.0	62.5	4.8	32.7	0.081	0.515	23.265392	-102.333095
T. Izq. Villa de Cos	53.90	3	1	2855	0.9	60.7	5.0	9.5	2.7	14.2	2.4	3.7	0.9	61.6	5.0	33.4	0.082	0.518	23.279310	-102.322858
T. Izq. Villa de Cos	53.90	3	2	2660	0.6	57.2	5.4	10.7	2.9	15.5	2.6	4.2	0.9	57.8	5.4	36.8	0.073	0.518	23.279446	-102.323064
Sierra Vieja	85.50	3	1	1936	0.5	51.5	7.1	11.6	2.9	17.5	3.1	5.0	0.8	52.0	7.1	40.9	0.113	0.519	23.522763	-102.101668
Sierra Vieja	85.50	3	2	1796	0.6	46.6	8.0	13.0	3.1	19.1	3.4	5.2	1.0	47.2	8.0	44.8	0.087	0.519	23.522890	-102.101777
T. Der. Majoma	144.50	3	1	1729	0.6	48.3	7.2	11.4	2.8	20.0	3.2	5.4	1.1	48.9	7.2	43.9	0.116	0.525	23.878088	-101.735509
T. Der. Majoma	144.50	3	2	1563	0.5	44.4	8.2	12.4	2.9	21.2	3.6	5.4	1.4	44.9	8.2	46.9	0.092	0.525	23.878069	-101.735496
T. Der. San Tiburcio	185.25	1	1	1777	3.5	53.0	6.3	10.9	2.4	15.1	2.8	5.3	0.7	56.5	6.3	37.2	0.154	0.510	24.157108	-101.496251
T. Der. San Tiburcio	185.25	1	2	1709	3.5	50.5	7.0	11.7	2.7	15.2	2.9	5.7	0.8	54.0	7.0	39.0	0.126	0.510	24.157112	-101.496253
T. Der. San Tiburcio	185.25	3	1	2017	3.6	53.7	6.2	11.9	2.3	14.4	2.3	4.5	1.1	57.3	6.2	36.5	0.159	0.501	24.160601	-101.493766

COAHUILA

5 CARR: Ent. Morelos - Saltillo

CLAVE: 00149

RUTA: MEX-054

AÑO: 2015

LUGAR	ESTACION				CLASIFICACION VEHICULAR EN PORCIENTO														COORDENADAS	
	KM	TE	SC	TDPA	M	A	B	C2	C3	T3S2	T3S3	T3S2R4	OTROS	A	B	C	K'	D	LATITUD	LONGITUD
T. Der. San Tiburcio	185.25	3	2	2011	2.9	50.2	6.8	13.9	2.4	15.1	2.5	5.1	1.1	53.1	6.8	40.1	0.122	0.501	24.160595	-101.493772
T. Izq. Concepción del Oro	240.00	1	1	2955	2.5	63.4	4.5	11.1	1.7	10.9	1.6	3.6	0.7	65.9	4.5	29.6	0.124	0.506	24.611349	-101.368599
T. Izq. Concepción del Oro	240.00	1	2	2886	2.8	59.4	5.3	12.7	1.7	12.1	1.6	3.7	0.7	62.2	5.3	32.5	0.098	0.506	24.611340	-101.368576
T. Izq. Concepción del Oro	240.00	3	1	3057	2.1	64.2	4.7	11.6	1.6	10.7	1.3	3.2	0.6	66.3	4.7	29.0	0.128	0.509	24.626356	-101.381157
T. Izq. Concepción del Oro	240.00	3	2	2946	2.3	59.6	5.3	13.3	1.9	11.9	1.5	3.5	0.7	61.9	5.3	32.8	0.092	0.509	24.626357	-101.381161
Lim. Edos. Term. Zac. Ppia. Coah.	266.50																			
Agua Nueva	322.00	1	0	5774	0.5	61.3	4.3	12.2	2.0	13.7	2.2	3.1	0.7	61.8	4.3	33.9	0.135	0.504	25.182828	-101.094011
T. Der. La Trinidad	333.00	3	0	12848	0.5	74.6	3.3	12.2	1.6	5.4	1.1	0.4	0.9	75.1	3.3	21.6	0.094	0.510	25.283628	-101.086896
X. C. Libramiento de Saltillo	348.00	1	1	14874	1.7	82.1	1.7	10.7	0.9	2.2	0.4	0.1	0.2	83.8	1.7	14.5	0.082	0.512	25.367962	-101.015225
X. C. Libramiento de Saltillo	348.00	1	2	14202	1.2	80.2	2.0	12.7	1.0	2.2	0.4	0.1	0.2	81.4	2.0	16.6	0.078	0.512	25.367995	-101.015249
Saltillo	354.00	1	1	13442	1.1	90.9	0.8	5.9	0.3	0.6	0.3	0.0	0.1	92.0	0.8	7.2	0.084	0.520	25.387739	-101.006259
Saltillo	354.00	1	2	12397	0.9	90.1	1.0	6.6	0.3	0.7	0.3	0.0	0.1	91.0	1.0	8.0	0.089	0.520	25.387748	-101.006277

6 CARR: Gregorio García - Francisco I. Madero

CLAVE: 00110

RUTA: MEX-040

AÑO: 2015

LUGAR	ESTACION				CLASIFICACION VEHICULAR EN PORCIENTO														COORDENADAS	
	KM	TE	SC	TDPA	M	A	B	C2	C3	T3S2	T3S3	T3S2R4	OTROS	A	B	C	K'	D	LATITUD	LONGITUD
T. C. Gómez Palacio - Tlahualillo	0.00																			
Lim. Edos. Term. Dgo. Ppia. Coah.	3.60																			
Francisco I. Madero	9.60	1	0	6091	3.0	78.8	2.2	8.5	2.2	3.7	1.0	0.3	0.3	81.8	2.2	16.0	0.078	0.504	25.772668	-103.290750

7 CARR: Huachichil - La Encantada

CLAVE: 05002

RUTA: MEX-057

AÑO: 2015

LUGAR	ESTACION				CLASIFICACION VEHICULAR EN PORCIENTO														COORDENADAS	
	KM	TE	SC	TDPA	M	A	B	C2	C3	T3S2	T3S3	T3S2R4	OTROS	A	B	C	K'	D	LATITUD	LONGITUD
T. C. Aut. Puerto México - Ojo Caliente	0.00	3	0	1639	1.6	49.2	8.3	15.9	2.3	17.9	1.5	2.7	0.6	50.8	8.3	40.9	0.070	0.522	25.230320	-100.825346
Lim. Edos. Term. N. L. Ppia. Coah.	3.50	3	0																	
T. C. Ent. Morelos - Saltillo	41.00	1	0	1840	1.3	51.8	7.4	17.1	2.5	15.9	1.4	2.3	0.3	53.1	7.4	39.5	0.082	0.527	25.260273	-101.084995

8 CARR: Libramiento Allende - Nava

CLAVE: 05518

RUTA: MEX-057

AÑO: 2015

LUGAR	ESTACION				CLASIFICACION VEHICULAR EN PORCIENTO														COORDENADAS	
	KM	TE	SC	TDPA	M	A	B	C2	C3	T3S2	T3S3	T3S2R4	OTROS	A	B	C	K'	D	LATITUD	LONGITUD
T. C. Monclova - Piedras Negras	0.00	3	1	3691	0.5	64.8	0.9	11.3	1.9	11.8	4.5	3.0	1.3	65.3	0.9	33.8	0.082	0.513	28.326106	-100.886417
T. C. Monclova - Piedras Negras	0.00	3	2	3893	0.3	59.8	1.1	13.2	2.2	13.7	5.0	3.3	1.4	60.1	1.1	38.8	0.086	0.513	28.326093	-100.886430



COAHUILA

8 CARR: Libramiento Allende - Nava

CLAVE: 05518

RUTA: MEX-057

AÑO: 2015

LUGAR	ESTACION				CLASIFICACION VEHICULAR EN PORCIENTO													COORDENADAS		
	KM	TE	SC	TDPA	M	A	B	C2	C3	T3S2	T3S3	T3S2R4	OTROS	A	B	C	K'	D	LATITUD	LONGITUD
X. Der. Allende - Izq. Morelos	6.06	3	1	4750	0.6	71.4	2.1	11.2	1.3	7.1	3.6	2.0	0.7	72.0	2.1	25.9	0.085	0.501	28.377133	-100.858978
X. Der. Allende - Izq. Morelos	6.06	3	2	4739	0.6	68.3	2.2	13.3	1.4	7.5	3.8	2.0	0.9	68.9	2.2	28.9	0.092	0.501	28.377114	-100.858984
T. C. Monclova - Piedras Negras	17.55	1	1	4413	0.7	72.4	1.1	9.5	1.6	7.6	4.1	2.1	0.9	73.1	1.1	25.8	0.101	0.514	28.431634	-100.779584
T. C. Monclova - Piedras Negras	17.55	1	2	4669	0.3	70.2	1.3	10.5	1.8	8.3	4.4	2.3	0.9	70.5	1.3	28.2	0.095	0.514	28.431638	-100.779593

9 CARR: Monclova - Piedras Negras

CLAVE: 05407

RUTA: MEX-057

AÑO: 2015

LUGAR	ESTACION				CLASIFICACION VEHICULAR EN PORCIENTO													COORDENADAS		
	KM	TE	SC	TDPA	M	A	B	C2	C3	T3S2	T3S3	T3S2R4	OTROS	A	B	C	K'	D	LATITUD	LONGITUD
Monclova	0.00	3	1	9270	1.1	84.6	1.5	9.5	0.6	1.2	1.1	0.1	0.3	85.7	1.5	12.8	0.079	0.500	26.954473	-101.411565
Monclova	0.00	3	2	9267	1.3	83.1	1.7	10.3	0.6	1.4	1.2	0.1	0.3	84.4	1.7	13.9	0.078	0.500	26.954489	-101.411571
T. Der. Libramiento de Monclova	10.80	3	1	3750	0.7	62.5	2.2	22.3	1.8	6.3	1.0	2.7	0.5	63.2	2.2	34.6	0.079	0.523	26.978397	-101.375819
T. Der. Libramiento de Monclova	10.80	3	2	4108	1.7	57.9	2.4	24.5	2.0	6.9	1.1	3.0	0.5	59.6	2.4	38.0	0.087	0.523	26.978385	-101.375824
T. Der. Progreso	61.50	1	1	2849	0.4	67.4	2.8	9.7	2.4	10.7	1.8	4.0	0.8	67.8	2.8	29.4	0.080	0.502	27.383390	-101.215384
T. Der. Progreso	61.50	1	2	2867	0.4	64.1	2.9	10.7	2.6	12.0	2.0	4.4	0.9	64.5	2.9	32.6	0.103	0.502	27.383381	-101.215405
T. Izq. Palau	88.50	1	1	2886	0.9	59.8	3.4	17.0	2.5	9.5	2.2	4.1	0.6	60.7	3.4	35.9	0.090	0.504	27.634655	-101.181881
T. Izq. Palau	88.50	1	2	2930	1.0	54.2	3.8	19.2	2.7	11.4	2.4	4.6	0.7	55.2	3.8	41.0	0.103	0.504	27.634682	-101.181897
T. Izq. Palau	88.50	3	1	3246	0.4	66.4	2.0	11.4	2.2	9.6	3.3	4.0	0.7	66.8	2.0	31.2	0.080	0.509	27.642431	-101.184093
T. Izq. Palau	88.50	3	2	3129	0.4	62.6	2.3	13.0	2.5	10.5	3.6	4.4	0.7	63.0	2.3	34.7	0.080	0.509	27.642441	-101.184101
T. Der. Sabinas (2º Acceso)	115.00	1	1	5005	0.8	69.5	2.8	13.4	2.3	6.3	2.1	2.0	0.8	70.3	2.8	26.9	0.074	0.534	27.862997	-101.136066
T. Der. Sabinas (2º Acceso)	115.00	1	2	5728	0.9	66.8	3.0	14.4	2.4	6.9	2.4	2.4	0.8	67.7	3.0	29.3	0.090	0.534	27.862993	-101.136064
Agujita	118.85	1	1	10723	1.3	79.1	1.4	10.1	0.9	2.9	2.6	1.0	0.7	80.4	1.4	18.2	0.071	0.525	27.882855	-101.145125
Agujita	118.85	1	2	11836	1.3	77.4	1.6	10.6	1.0	3.3	2.9	1.1	0.8	78.7	1.6	19.7	0.064	0.525	27.882842	-101.145118
T. Izq. Nueva Rosita (1º Acceso)	126.30	3	0	4748	0.3	56.6	1.2	15.1	2.1	13.4	6.8	3.6	0.9	56.9	1.2	41.9	0.076	0.509	27.957346	-101.200200
T. Izq. Libramiento de Allende	182.00	1	0	5175	0.7	57.7	1.2	15.1	1.6	12.9	7.1	3.2	0.5	58.4	1.2	40.4	0.073	0.502	28.313196	-100.908524
Allende	187.20	3	1	4712	1.0	88.9	1.9	7.0	0.5	0.3	0.3	0.0	0.1	89.9	1.9	8.2	0.074	0.519	28.361519	-100.858538
Allende	187.20	3	2	5074	0.9	88.3	2.1	7.4	0.6	0.3	0.3	0.0	0.1	89.2	2.1	8.7	0.074	0.519	28.361528	-100.858534
Nava	206.85	1	1	2276	1.5	78.5	4.0	14.5	0.9	0.5	0.1	0.0	0.0	80.0	4.0	16.0	0.074	0.516	28.421541	-100.788422
Nava	206.85	1	2	2427	1.3	76.0	4.6	16.5	1.0	0.5	0.1	0.0	0.0	77.3	4.6	18.1	0.073	0.516	28.421197	-100.788604
Nava	206.85	3	1	6558	0.4	72.1	2.5	11.9	1.4	6.2	3.2	1.4	0.9	72.5	2.5	25.0	0.103	0.508	28.443717	-100.754525
Nava	206.85	3	2	6343	0.7	69.2	2.9	12.8	1.6	6.8	3.3	1.6	1.1	69.9	2.9	27.2	0.096	0.508	28.443722	-100.754513
T. Der. Guerrero	240.28	1	1	9146	1.1	78.9	1.8	11.0	1.6	3.4	1.2	0.4	0.6	80.0	1.8	18.2	0.102	0.501	28.641227	-100.558879
T. Der. Guerrero	240.28	1	2	9106	1.1	78.2	1.9	11.0	1.9	3.6	1.3	0.4	0.6	79.3	1.9	18.8	0.130	0.501	28.640744	-100.559321
Piedras Negras	248.00																			

COAHUILA

10 CARR: Monclova - San Pedro de Las Colonias

CLAVE: 05062

RUTA: MEX-030

AÑO: 2015

LUGAR	ESTACION				CLASIFICACION VEHICULAR EN PORCIENTO													COORDENADAS			
	KM	TE	SC	TDPA	M	A	B	C2	C3	T3S2	T3S3	T3S2R4	OTROS	A	B	C	K'	D	LATITUD	LONGITUD	
Monclova	0.00																				
Frontera	2.00	3	1	9032	1.4	87.5	0.8	6.8	0.7	1.4	0.8	0.3	0.3	88.9	0.8	10.3	0.078	0.501	26.958478	-101.461016	
Frontera	2.00	3	2	8991	1.5	85.8	0.9	8.1	0.7	1.6	0.8	0.3	0.3	87.3	0.9	11.8	0.083	0.501	26.958490	-101.461031	
8 de Enero	11.00	3	1	7530	1.2	86.3	1.7	7.5	0.8	1.5	0.5	0.3	0.2	87.5	1.7	10.8	0.094	0.503	27.008845	-101.501100	
8 de Enero	11.00	3	2	7426	1.1	85.6	2.0	7.9	0.8	1.6	0.5	0.3	0.2	86.7	2.0	11.3	0.088	0.503	27.008845	-101.501081	
Nadadores	27.00	3	1	2327	0.6	81.6	1.6	9.2	1.1	3.5	1.0	1.1	0.3	82.2	1.6	16.2	0.087	0.513	27.032025	-101.605290	
Nadadores	27.00	3	2	2210	0.7	79.2	2.0	10.8	1.0	3.8	1.1	1.1	0.3	79.9	2.0	18.1	0.087	0.513	27.032046	-101.605290	
Sacramento	45.27	1	1	1829	0.6	78.4	3.3	9.4	1.1	3.9	1.5	1.2	0.6	79.0	3.3	17.7	0.102	0.511	27.011053	-101.719653	
Sacramento	45.27	1	2	1750	0.5	76.5	4.0	10.2	1.2	4.3	1.5	1.2	0.6	77.0	4.0	19.0	0.097	0.511	27.011080	-101.719691	
T. Der. La Madrid	51.00	3	1	1115	0.5	76.3	3.0	8.2	2.0	5.6	1.8	2.2	0.4	76.8	3.0	20.2	0.102	0.502	27.019388	-101.799906	
T. Der. La Madrid	51.00	3	2	1104	0.3	75.0	3.5	8.7	2.0	6.2	1.8	2.1	0.4	75.3	3.5	21.2	0.092	0.502	27.019397	-101.799890	
Cuatro Ciénegas	80.15	3	0	1129	1.9	65.2	3.8	7.7	4.0	7.8	3.7	5.0	0.9	67.1	3.8	29.1	0.089	0.511	26.975798	-102.071276	
San Pedro de Las Colonias	267.00	1	1	728	5.5	63.5	2.4	9.3	3.0	8.9	2.5	3.7	1.2	69.0	2.4	28.6	0.088	0.510	25.782101	-102.979334	
San Pedro de Las Colonias	267.00	1	2	759	4.8	61.5	2.7	10.5	3.4	9.2	2.9	3.7	1.3	66.3	2.7	31.0	0.108	0.510	25.782172	-102.979232	

11 CARR: Monterrey - Castaños

CLAVE: 00128

RUTA: MEX-053

AÑO: 2015

LUGAR	ESTACION				CLASIFICACION VEHICULAR EN PORCIENTO													COORDENADAS		
	KM	TE	SC	TDPA	M	A	B	C2	C3	T3S2	T3S3	T3S2R4	OTROS	A	B	C	K'	D	LATITUD	LONGITUD
T. C. Monterrey - Nuevo Laredo	0.00	3	0	16687	2.3	78.1	0.7	12.3	3.0	2.1	1.0	0.3	0.2	80.4	0.7	18.9	0.087	0.528	25.808851	-100.282909
X. C. Libramiento Noroeste de Monterrey	3.46	3	1	12932	2.1	71.1	2.0	10.9	3.2	5.9	2.7	1.1	1.0	73.2	2.0	24.8	0.087	0.506	25.831861	-100.307903
X. C. Libramiento Noroeste de Monterrey	3.46	3	2	12645	1.2	68.9	2.3	11.6	3.7	6.9	3.1	1.3	1.0	70.1	2.3	27.6	0.084	0.506	25.831866	-100.307934
T. Der. Villa del Carmen	13.80	1	1	8004	0.4	75.0	0.9	9.7	2.8	5.4	3.4	1.8	0.6	75.4	0.9	23.7	0.089	0.520	25.895496	-100.351282
T. Der. Villa del Carmen	13.80	1	2	7388	0.5	72.6	1.0	10.8	2.9	6.0	3.7	1.9	0.6	73.1	1.0	25.9	0.093	0.520	25.895456	-100.351341
T. Izq. Hidalgo	24.78	1	0	12915	0.7	71.2	1.2	13.6	2.0	5.3	3.7	1.7	0.6	71.9	1.2	26.9	0.074	0.503	25.952465	-100.421472
T. Izq. Hidalgo	24.78	3	0	7184	0.8	61.9	2.6	12.7	2.5	9.4	6.1	3.0	1.0	62.7	2.6	34.7	0.071	0.514	25.995890	-100.462996
T. Izq. Mina	34.75	1	0	7149	0.8	59.1	3.4	15.7	1.7	9.3	5.8	3.2	1.0	59.9	3.4	36.7	0.082	0.507	26.000608	-100.512623
T. Izq. Espinazo	91.90	1	0	3850	0.9	51.6	2.7	12.7	3.1	13.1	9.7	5.2	1.0	52.5	2.7	44.8	0.084	0.505	26.362756	-100.878778
T. Izq. Espinazo	91.90	3	0	3719	0.4	54.0	2.7	9.1	3.0	14.0	10.3	5.6	0.9	54.4	2.7	42.9	0.085	0.506	26.364934	-100.882379
Lim. Edos. Term. N. L. Ppia. Coah.	115.90																			
T. C. Saltillo - Monclova	155.90	1	1	2033	0.1	60.6	1.9	7.4	2.8	12.5	9.1	4.9	0.7	60.7	1.9	37.4	0.078	0.509	26.693329	-101.383939
T. C. Saltillo - Monclova	155.90	1	2	2109	0.1	57.2	2.1	7.8	3.1	12.8	10.8	5.2	0.9	57.3	2.1	40.6	0.079	0.509	26.693341	-101.383923

COAHUILA

12 CARR: Morelos - Cd. Acuña

CLAVE: 05029

RUTA: MEX-029

AÑO: 2015

LUGAR	ESTACION				CLASIFICACION VEHICULAR EN PORCIENTO													COORDENADAS		
	KM	TE	SC	TDPA	M	A	B	C2	C3	T3S2	T3S3	T3S2R4	OTROS	A	B	C	K'	D	LATITUD	LONGITUD
Morelos	0.00	3	1	2890	1.0	69.9	2.4	22.8	0.8	2.4	0.3	0.2	0.2	70.9	2.4	26.7	0.079	0.504	28.421302	-100.891764
Morelos	0.00	3	2	2931	1.1	67.1	2.6	24.6	0.9	2.9	0.3	0.3	0.2	68.2	2.6	29.2	0.078	0.504	28.421286	-100.891772
T. Izq. El Remolino	40.10	1	0	1416	0.3	61.5	2.3	23.4	2.1	8.6	0.6	1.0	0.2	61.8	2.3	35.9	0.107	0.510	28.721358	-100.912152
T. Izq. El Remolino	40.10	3	0	1238	0.3	61.7	2.1	23.0	2.2	8.6	0.7	1.1	0.3	62.0	2.1	35.9	0.111	0.514	28.725112	-100.912208
San Carlos	73.84	1	0	1558	0.4	63.6	1.9	22.0	2.0	7.9	0.8	1.1	0.3	64.0	1.9	34.1	0.085	0.514	29.012626	-100.905439
T. Der. Piedras Negras	104.50	3	1	5318	0.9	74.4	3.1	17.2	1.1	1.9	0.8	0.2	0.4	75.3	3.1	21.6	0.095	0.515	29.299933	-100.917809
T. Der. Piedras Negras	104.50	3	2	5646	1.1	72.5	3.7	18.1	1.2	2.0	0.9	0.2	0.3	73.6	3.7	22.7	0.081	0.515	29.299922	-100.917773
Cd. Acuña	109.10	1	1	6703	1.1	82.6	1.4	12.8	0.5	1.0	0.4	0.0	0.2	83.7	1.4	14.9	0.070	0.522	29.304111	-100.922884
Cd. Acuña	109.10	1	2	7320	1.2	81.8	1.6	13.2	0.5	1.1	0.4	0.0	0.2	83.0	1.6	15.4	0.069	0.522	29.304123	-100.922886

13 CARR: Nueva Rosita - Boquillas del Carmen

CLAVE: 05028

RUTA: MEX-053

AÑO: 2015

LUGAR	ESTACION				CLASIFICACION VEHICULAR EN PORCIENTO													COORDENADAS		
	KM	TE	SC	TDPA	M	A	B	C2	C3	T3S2	T3S3	T3S2R4	OTROS	A	B	C	K'	D	LATITUD	LONGITUD
Nueva Rosita	0.00	3	1	4814	1.7	73.1	2.3	16.5	1.3	2.3	1.8	0.5	0.5	74.8	2.3	22.9	0.069	0.501	27.947603	-101.244060
Nueva Rosita	0.00	3	2	4832	1.7	71.3	2.5	17.6	1.3	2.5	2.1	0.5	0.5	73.0	2.5	24.5	0.073	0.501	27.947604	-101.244026
T. Der. Santa María	14.00	3	1	3028	1.2	72.2	1.8	15.6	1.9	3.0	2.9	0.4	1.0	73.4	1.8	24.8	0.071	0.501	27.911408	-101.324308
T. Der. Santa María	14.00	3	2	3019	1.2	68.7	2.1	18.0	2.1	3.4	3.2	0.4	0.9	69.9	2.1	28.0	0.082	0.501	27.911479	-101.324203
Palau	25.00	1	1	4023	1.5	74.0	0.5	16.1	2.9	2.6	1.5	0.3	0.6	75.5	0.5	24.0	0.077	0.511	27.887194	-101.411461
Palau	25.00	1	2	3849	1.3	72.0	0.5	17.8	3.0	2.9	1.6	0.3	0.6	73.3	0.5	26.2	0.073	0.511	27.887189	-101.411445
Palau	25.00	3	1	4454	1.5	78.0	0.7	13.1	3.0	1.9	0.9	0.3	0.6	79.5	0.7	19.8	0.086	0.501	27.882301	-101.441807
Palau	25.00	3	2	4463	1.4	75.2	0.7	15.1	3.4	2.1	1.1	0.3	0.7	76.6	0.7	22.7	0.084	0.501	27.882301	-101.441824
Melchor Múzquiz	35.00	3	0	2988	2.7	70.6	0.2	21.0	2.0	2.1	0.5	0.4	0.5	73.3	0.2	26.5	0.075	0.501	27.895581	-101.532019
Boquillas del Carmen	250.00																			

14 CARR: Ojo Caliente - Santa Cruz

CLAVE: 05007

RUTA: MEX-057

AÑO: 2015

LUGAR	ESTACION				CLASIFICACION VEHICULAR EN PORCIENTO													COORDENADAS		
	KM	TE	SC	TDPA	M	A	B	C2	C3	T3S2	T3S3	T3S2R4	OTROS	A	B	C	K'	D	LATITUD	LONGITUD
T. C. Saltillo - Monterrey	0.00	3	0	5838	0.7	61.4	3.5	10.4	2.6	11.1	4.6	4.8	0.9	62.1	3.5	34.4	0.078	0.513	25.597569	-100.893194
T. C. Saltillo - Monclova	34.00	1	0	3380	0.3	68.4	3.2	9.4	1.5	7.3	3.5	5.6	0.8	68.7	3.2	28.1	0.102	0.505	25.785941	-101.106325

COAHUILA

15 CARR: Piedras Negras - Cd. Acuña

CLAVE: 05061

RUTA: MEX-002

AÑO: 2015

LUGAR	ESTACION				CLASIFICACION VEHICULAR EN PORCIENTO													COORDENADAS		
	KM	TE	SC	TDPA	M	A	B	C2	C3	T3S2	T3S3	T3S2R4	OTROS	A	B	C	K'	D	LATITUD	LONGITUD
Piedras Negras	0.00	3	1	2695	2.0	72.0	2.7	16.4	2.9	1.8	1.7	0.3	0.2	74.0	2.7	23.3	0.092	0.503	28.727786	-100.573189
Piedras Negras	0.00	3	2	2664	1.9	71.0	2.8	16.7	3.3	2.0	1.8	0.2	0.3	72.9	2.8	24.3	0.078	0.503	28.727803	-100.573178
T. C. Morelos - Cd. Acuña	83.30	1	0	3181	0.9	68.2	4.3	19.4	1.9	3.2	1.0	0.6	0.5	69.1	4.3	26.6	0.094	0.500	29.291752	-100.911067

16 CARR: Piedras Negras - Nuevo Laredo

CLAVE: 00503

RUTA: MEX-002

AÑO: 2015

LUGAR	ESTACION				CLASIFICACION VEHICULAR EN PORCIENTO													COORDENADAS		
	KM	TE	SC	TDPA	M	A	B	C2	C3	T3S2	T3S3	T3S2R4	OTROS	A	B	C	K'	D	LATITUD	LONGITUD
T. C. Monclova - Piedras Negras	0.00	3	1	3981	1.6	70.3	0.9	15.0	2.1	7.0	1.8	0.6	0.7	71.9	0.9	27.2	0.083	0.507	28.633369	-100.547776
T. C. Monclova - Piedras Negras	0.00	3	2	4102	1.5	68.0	0.9	16.4	2.4	7.4	1.9	0.7	0.8	69.5	0.9	29.6	0.082	0.507	28.633319	-100.547803
El Saucito	16.90	3	0	1279	2.8	56.2	2.9	25.0	2.3	7.1	0.6	2.9	0.2	59.0	2.9	38.1	0.088	0.509	28.501157	-100.466846
T. Der. Villa Unión	37.00	1	0	1106	0.9	64.0	3.1	15.3	3.1	9.4	0.7	3.3	0.2	64.9	3.1	32.0	0.091	0.504	28.340063	-100.390617
T. Der. Villa Unión	37.00	3	0	1080	2.2	65.0	2.9	12.6	2.8	9.5	1.2	3.6	0.2	67.2	2.9	29.9	0.085	0.502	28.335434	-100.389207
Guerrero	42.00	3	0	932	0.2	59.0	3.4	15.0	4.0	13.1	0.9	4.1	0.3	59.2	3.4	37.4	0.086	0.502	28.307452	-100.364347
Lim. Edos. Term. Coah. Ppia. N. L.	124.40																			
T. C. Monclova - Colombia	134.00	3	0	2733	1.3	60.2	2.0	17.3	3.3	12.1	1.2	2.1	0.5	61.5	2.0	36.5	0.084	0.501	27.687505	-99.776242
Lim. Edos. Term. N. L. Ppia. Tamps.	138.20																			
T. Der. Libramiento de Nuevo Laredo	157.70	1	1	4157	9.8	40.8	1.1	7.4	12.2	25.4	1.3	1.0	1.0	50.6	1.1	48.3	0.114	0.511	27.571972	-99.597031
T. Der. Libramiento de Nuevo Laredo	157.70	1	2	4353	0.7	46.9	1.3	8.0	13.0	26.5	1.5	1.1	1.0	47.6	1.3	51.1	0.098	0.511	27.571993	-99.597015
Nuevo Laredo	175.00	1	1	7844	1.6	49.9	1.4	10.4	9.6	23.4	1.8	1.0	0.9	51.5	1.4	47.1	0.099	0.509	27.544778	-99.576938
Nuevo Laredo	175.00	1	2	8118	2.1	44.3	1.8	11.9	10.6	25.2	2.0	1.1	1.0	46.4	1.8	51.8	0.101	0.509	27.545146	-99.576787

17 CARR: Saltillo - Monclova

CLAVE: 05406

RUTA: MEX-057

AÑO: 2015

LUGAR	ESTACION				CLASIFICACION VEHICULAR EN PORCIENTO													COORDENADAS		
	KM	TE	SC	TDPA	M	A	B	C2	C3	T3S2	T3S3	T3S2R4	OTROS	A	B	C	K'	D	LATITUD	LONGITUD
Saltillo	0.00																			
T. Der. Ramos Arizpe	13.00	1	0	4860	1.4	57.9	1.0	13.4	3.6	17.5	2.6	1.5	1.1	59.3	1.0	39.7	0.072	0.509	25.527030	-101.002100
T. Der. Ramos Arizpe	13.00	3	0	1882	2.3	69.1	1.9	17.1	3.2	3.7	2.1	0.4	0.2	71.4	1.9	26.7	0.082	0.504	25.528939	-101.005049
T. C. Ojo Caliente - Santa Cruz	49.60	1	0	465	0.7	73.4	1.5	14.4	1.6	5.0	2.1	0.8	0.5	74.1	1.5	24.4	0.127	0.523	25.781307	-101.111916
T. C. Ojo Caliente - Santa Cruz	49.60	3	0	3579	0.3	65.4	3.4	11.0	1.4	9.0	3.7	5.2	0.6	65.7	3.4	30.9	0.098	0.510	25.795501	-101.115285
T. Der. Paredón	64.00	1	0	3659	0.4	66.8	3.1	10.3	1.3	8.8	3.3	5.4	0.6	67.2	3.1	29.7	0.096	0.515	25.906660	-101.149629
T. Der. Paredón	64.00	3	0	3407	0.3	67.0	3.0	9.5	1.6	9.2	3.4	5.3	0.7	67.3	3.0	29.7	0.100	0.512	25.917337	-101.154977
T. Izq. Hipólito	78.00	1	0	3388	0.3	65.8	3.5	10.5	1.5	9.0	3.4	5.4	0.6	66.1	3.5	30.4	0.097	0.518	25.972035	-101.261386
T. Izq. Hipólito	78.00	3	0	3497	0.4	69.8	3.1	7.4	1.5	7.9	3.7	5.6	0.6	70.2	3.1	26.7	0.075	0.506	25.975091	-101.264766

COAHUILA

17 CARR : Saltillo - Monclova

CLAVE: 05406

RUTA: MEX-057

AÑO: 2015

LUGAR	ESTACION				CLASIFICACION VEHICULAR EN PORCIENTO														COORDENADAS	
	KM	TE	SC	TDPA	M	A	B	C2	C3	T3S2	T3S3	T3S2R4	OTROS	A	B	C	K'	D	LATITUD	LONGITUD
T. Der. Monterrey	165.50	1	0	3627	3.5	75.0	2.4	5.4	0.6	5.6	2.8	3.8	0.9	78.5	2.4	19.1	0.100	0.509	26.685274	-101.387313
T. Der. Monterrey	165.50	3	1	4220	0.3	58.4	2.7	9.7	2.6	12.2	7.3	5.5	1.3	58.7	2.7	38.6	0.067	0.512	26.704595	-101.391225
T. Der. Monterrey	165.50	3	2	4020	0.4	53.7	2.7	10.6	2.6	13.4	8.7	6.4	1.5	54.1	2.7	43.2	0.067	0.512	26.704591	-101.391213
T. Der. Libramiento de Castaños (1º Acceso)	175.20	1	1	5304	1.1	79.7	1.2	5.9	1.6	4.1	3.0	2.3	1.1	80.8	1.2	18.0	0.086	0.516	26.762978	-101.411039
T. Der. Libramiento de Castaños (1º Acceso)	175.20	1	2	4969	0.9	77.5	1.3	6.4	1.9	4.8	3.4	2.6	1.2	78.4	1.3	20.3	0.148	0.516	26.762981	-101.411052
T. Der. Libramiento de Castaños (2º Acceso)	177.10	3	1	9231	1.0	78.3	1.9	7.8	2.5	3.7	2.8	1.7	0.3	79.3	1.9	18.8	0.076	0.503	26.802171	-101.421479
T. Der. Libramiento de Castaños (2º Acceso)	177.10	3	2	9327	0.8	76.9	2.0	8.1	2.7	4.2	3.0	2.0	0.3	77.7	2.0	20.3	0.085	0.503	26.802195	-101.421504
T. Izq. Libramiento Lic. Carlos Salinas De Gortari	184.10	1	1	11762	1.6	82.5	1.5	7.8	2.1	1.7	1.5	0.7	0.6	84.1	1.5	14.4	0.095	0.501	26.830534	-101.422137
T. Izq. Libramiento Lic. Carlos Salinas De Gortari	184.10	1	2	11798	1.0	80.8	1.8	8.9	2.5	1.8	1.8	0.8	0.6	81.8	1.8	16.4	0.085	0.501	26.830548	-101.422126
T. Izq. Libramiento Lic. Carlos Salinas De Gortari	184.10	3	1	22327	1.5	85.4	0.9	6.0	1.8	1.8	1.8	0.4	0.4	86.9	0.9	12.2	0.071	0.500	26.863318	-101.427121
T. Izq. Libramiento Lic. Carlos Salinas De Gortari	184.10	3	2	22347	1.0	84.9	1.0	6.5	2.0	1.9	1.9	0.4	0.4	85.9	1.0	13.1	0.067	0.500	26.864771	-101.427432
Monclova	192.00	1	1	29975	1.2	88.5	0.7	6.2	0.7	1.1	1.2	0.1	0.3	89.7	0.7	9.6	0.072	0.501	26.875246	-101.426666
Monclova	192.00	1	2	29897	1.3	87.5	0.8	6.8	0.8	1.1	1.3	0.1	0.3	88.8	0.8	10.4	0.065	0.501	26.875259	-101.426673

18 CARR : Saltillo - Monterrey

CLAVE: 00087

RUTA: MEX-040

AÑO: 2015

LUGAR	ESTACION				CLASIFICACION VEHICULAR EN PORCIENTO														COORDENADAS	
	KM	TE	SC	TDPA	M	A	B	C2	C3	T3S2	T3S3	T3S2R4	OTROS	A	B	C	K'	D	LATITUD	LONGITUD
T. C. Saltillo - Arteaga	0.00																			
T. Izq. Zinacamex	4.25	3	1	41857	0.4	87.7	1.2	5.9	0.7	1.4	2.0	0.3	0.4	88.1	1.2	10.7	0.071	0.501	25.483394	-100.971723
T. Izq. Zinacamex	4.25	3	2	41949	0.4	86.5	1.4	6.6	0.7	1.6	2.1	0.3	0.4	86.9	1.4	11.7	0.076	0.501	25.481079	-100.973263
Ramos Arizpe	11.30	1	1	38103	0.4	86.6	1.2	7.7	1.0	1.4	1.3	0.2	0.2	87.0	1.2	11.8	0.085	0.503	25.516072	-100.957338
Ramos Arizpe	11.30	1	2	37704	1.1	84.7	1.2	8.6	1.0	1.6	1.4	0.2	0.2	85.8	1.2	13.0	0.084	0.503	25.516222	-100.957650
T. Der. Aeropuerto	13.00	3	1	24422	0.5	78.5	2.4	10.3	1.8	4.1	1.2	0.5	0.7	79.0	2.4	18.6	0.134	0.529	25.555247	-100.926377
T. Der. Aeropuerto	13.00	3	2	21708	0.4	76.0	2.5	11.6	2.0	4.9	1.4	0.5	0.7	76.4	2.5	21.1	0.131	0.529	25.554410	-100.928080
T. Der. Libramiento J.L.P.	16.00	3	1	23873	0.6	76.5	2.0	9.8	2.5	6.9	0.9	0.6	0.2	77.1	2.0	20.9	0.124	0.508	25.567895	-100.912300
T. Der. Libramiento J.L.P.	16.00	3	2	23093	0.4	75.3	2.0	10.6	2.6	7.0	1.1	0.8	0.2	75.7	2.0	22.3	0.110	0.508	25.565332	-100.915145
Ojo Caliente	26.30	1	1	16791	0.6	61.4	2.7	7.7	2.7	19.8	2.4	2.5	0.2	62.0	2.7	35.3	0.080	0.510	25.610935	-100.843532
Ojo Caliente	26.30	1	2	17450	0.8	57.3	3.3	8.5	3.1	21.4	2.7	2.7	0.2	58.1	3.3	38.6	0.077	0.510	25.612982	-100.846911
Lim. Edos. Term. Coah. Ppia. N. L.	33.00																			
T. Izq. Libramiento Noroeste de Monterrey	54.00	1	1	16099	0.8	52.7	3.5	9.3	2.8	23.4	3.1	3.2	1.2	53.5	3.5	43.0	0.073	0.523	25.698179	-100.563155
T. Izq. Libramiento Noroeste de Monterrey	54.00	1	2	17644	0.5	46.8	3.7	10.1	3.0	27.7	3.2	3.7	1.3	47.3	3.7	49.0	0.061	0.523	25.698773	-100.562629
T. Der. Santa Catarina (1º Acceso)	62.46	1	1	30449	0.9	82.0	1.8	8.3	1.5	2.8	1.7	0.7	0.3	82.9	1.8	15.3	0.067	0.546	25.686956	-100.494338
T. Der. Santa Catarina (1º Acceso)	62.46	1	2	36683	1.1	79.8	2.0	9.6	1.6	3.0	1.8	0.8	0.3	80.9	2.0	17.1	0.073	0.546	25.687523	-100.495004
Ppia. Monterrey	79.20	1	1	50930	0.7	84.9	1.0	5.7	1.3	2.4	3.0	0.5	0.5	85.6	1.0	13.4	0.067	0.537	25.674373	-100.425387

COAHUILA

18 CARR: Saltillo - Monterrey

CLAVE: 00087

RUTA: MEX-040

AÑO: 2015

LUGAR	ESTACION				CLASIFICACION VEHICULAR EN PORCIENTO														COORDENADAS	
	KM	TE	SC	TDPA	M	A	B	C2	C3	T3S2	T3S3	T3S2R4	OTROS	A	B	C	K'	D	LATITUD	LONGITUD
Ppia. Monterrey	79.20	1	2	58962	0.7	83.3	1.1	6.2	1.4	2.8	3.4	0.6	0.5	84.0	1.1	14.9	0.065	0.537	25.674435	-100.425540

19 CARR: Saltillo - Torreón

CLAVE: 05086

RUTA: MEX-040

AÑO: 2015

LUGAR	ESTACION				CLASIFICACION VEHICULAR EN PORCIENTO														COORDENADAS	
	KM	TE	SC	TDPA	M	A	B	C2	C3	T3S2	T3S3	T3S2R4	OTROS	A	B	C	K'	D	LATITUD	LONGITUD
Saltillo	0.00																			
T. Der. Monclova	6.10	3	1	4964	0.5	64.4	3.3	8.4	2.1	12.9	3.2	4.3	0.9	64.9	3.3	31.8	0.090	0.508	25.453590	-101.073806
T. Der. Monclova	6.10	3	2	4804	0.7	59.6	3.6	9.5	2.4	14.9	3.7	4.5	1.1	60.3	3.6	36.1	0.119	0.508	25.453620	-101.073809
T. Izq. General Cepeda	44.14	1	0	4385	1.4	54.4	3.5	13.4	2.8	15.7	4.6	3.0	1.2	55.8	3.5	40.7	0.070	0.548	25.505459	-101.375631
T. Izq. General Cepeda	44.14	3	0	3181	0.4	53.0	4.1	12.7	2.8	17.7	5.1	3.0	1.2	53.4	4.1	42.5	0.082	0.517	25.511922	-101.381888
T. Der. Estación Marte	91.20	1	0	2385	0.4	41.1	3.9	12.4	4.0	25.7	7.1	4.3	1.1	41.5	3.9	54.6	0.074	0.524	25.658786	-101.764918
Ent. Paila	127.90	1	1	3931	0.5	60.7	3.2	6.8	2.9	14.7	4.8	5.8	0.6	61.2	3.2	35.6	0.099	0.513	25.649166	-102.135686
Ent. Paila	127.90	1	2	4139	1.6	56.1	3.5	7.3	3.2	16.3	5.4	6.0	0.6	57.7	3.5	38.8	0.086	0.513	25.649160	-102.135694
T. Der. San Pedro de Las Colonias (La Cuchilla)	204.58	1	1	3373	0.8	53.3	4.2	6.8	2.4	19.7	5.6	6.0	1.2	54.1	4.2	41.7	0.079	0.515	25.632463	-102.866557
T. Der. San Pedro de Las Colonias (La Cuchilla)	204.58	1	2	3183	6.0	42.7	4.9	8.0	2.9	21.3	6.2	6.7	1.3	48.7	4.9	46.4	0.076	0.515	25.625268	-102.865552
Emiliano Zapata	221.68	1	0	1566	1.9	33.3	0.9	11.6	7.1	28.6	8.6	5.0	3.0	35.2	0.9	63.9	0.059	0.508	25.495562	-102.943916
Emiliano Zapata	221.68	3	0	2287	1.1	50.6	2.0	14.2	3.2	18.7	5.7	3.2	1.3	51.7	2.0	46.3	0.069	0.517	25.489014	-102.955053
T. Der. Libramiento de Matamoros (1º Acceso)	246.80	1	0	5231	2.8	56.1	4.4	17.2	3.6	9.5	3.6	1.8	1.0	58.9	4.4	36.7	0.075	0.502	25.526486	-103.213051
T. Der. Libramiento de Matamoros (1º Acceso)	246.80	3	1	3974	6.7	78.5	1.9	9.7	0.9	1.1	0.6	0.4	0.2	85.2	1.9	12.9	0.080	0.502	25.527741	-103.218411
T. Der. Libramiento de Matamoros (1º Acceso)	246.80	3	2	4004	5.0	78.7	2.1	10.6	1.0	1.3	0.8	0.3	0.2	83.7	2.1	14.2	0.083	0.502	25.527744	-103.218414
Matamoros	252.80	3	1	8822	5.9	85.2	0.1	6.9	0.1	0.9	0.7	0.0	0.2	91.1	0.1	8.8	0.074	0.513	25.534831	-103.247649
Matamoros	252.80	3	2	9300	4.3	85.9	0.1	7.6	0.1	1.0	0.8	0.0	0.2	90.2	0.1	9.7	0.070	0.513	25.534811	-103.247638
T. Der. Libramiento de Matamoros (2º Acceso)	253.12	3	1	11989	4.9	73.6	3.0	7.9	1.2	5.0	2.0	1.6	0.8	78.5	3.0	18.5	0.072	0.528	25.535160	-103.259950
T. Der. Libramiento de Matamoros (2º Acceso)	253.12	3	2	10735	7.0	69.4	3.2	8.5	1.3	5.8	2.2	1.7	0.9	76.4	3.2	20.4	0.076	0.528	25.535159	-103.259929
T. Der. Libramiento de Torreón	264.50	3	1	37680	1.7	89.3	1.0	3.7	0.4	1.7	1.8	0.2	0.2	91.0	1.0	8.0	0.080	0.507	25.535293	-103.377943
T. Der. Libramiento de Torreón	264.50	3	2	38678	1.8	88.3	1.0	4.2	0.4	1.9	2.0	0.2	0.2	90.1	1.0	8.9	0.070	0.507	25.534942	-103.378033
Torreón	291.00																			

20 CARR: Libramiento Norponiente de Saltillo (Cuota)

CLAVE: 05022

RUTA: MEX-S30

AÑO: 2015

LUGAR	ESTACION				CLASIFICACION VEHICULAR EN PORCIENTO														COORDENADAS	
	KM	TE	SC	TDPA	M	A	B	C2	C3	T3S2	T3S3	T3S2R4	OTROS	A	B	C	K'	D	LATITUD	LONGITUD
T. C. Ent. Morelos - Saltillo	0.00	3	0	3970	2.1	41.8	3.9	7.3	4.1	30.2	3.5	5.0	2.1	43.9	3.9	52.2	0.095	0.520	25.288942	-101.091259
X. C. Saltillo - Torreón	22.44	1	0	3522	1.9	37.3	4.2	6.3	4.1	34.2	4.2	6.2	1.6	39.2	4.2	56.6	0.099	0.521	25.444806	-101.067961

COAHUILA

20 CARR: Libramiento Norponiente de Saltillo (Cuota)

CLAVE: 05022

RUTA: MEX-S30

AÑO: 2015

LUGAR	ESTACION				CLASIFICACION VEHICULAR EN PORCIENTO													COORDENADAS		
	KM	TE	SC	TDPA	M	A	B	C2	C3	T3S2	T3S3	T3S2R4	OTROS	A	B	C	K'	D	LATITUD	LONGITUD
X. C. Saltillo - Torreón	22.44	3	0	6768	1.1	38.2	4.7	6.0	3.0	31.0	6.0	8.4	1.6	39.3	4.7	56.0	0.084	0.517	25.459986	-101.058186
X. C. Saltillo - Monclova	32.44	1	0	6685	1.1	33.8	4.8	6.3	3.6	34.1	5.6	9.1	1.6	34.9	4.8	60.3	0.065	0.513	25.517115	-101.000686
X. C. Saltillo - Monclova	32.44	3	0	6373	1.6	36.6	5.7	5.8	3.7	31.0	5.4	9.2	1.0	38.2	5.7	56.1	0.069	0.508	25.526831	-100.985713
Ojo Caliente	46.21	1	0	7030	2.4	35.1	3.9	4.6	3.9	33.2	5.5	9.7	1.7	37.5	3.9	58.6	0.058	0.519	25.609244	-100.917756

21 CARR: Libramiento Norte de Torreón

CLAVE:

RUTA: MEX-040D

AÑO: 2015

LUGAR	ESTACION				CLASIFICACION VEHICULAR EN PORCIENTO													COORDENADAS		
	KM	TE	SC	TDPA	M	A	B	C2	C3	T3S2	T3S3	T3S2R4	OTROS	A	B	C	K'	D	LATITUD	LONGITUD
X. C. Gomez Palacio - Jimenez	0.00	3	0	1719	0.9	53.3	2.7	6.4	2.9	18.0	5.0	8.2	2.6	54.2	2.7	43.1	0.100	0.515	25.628072	-103.510047
Lim. Edos. Term. Dgo. Ppia. Coah.	15.60																			
X. C. La Cuchilla - Torreón	17.36	1	0	2660	0.8	59.1	3.2	9.7	2.4	13.7	3.9	6.3	0.9	59.9	3.2	36.9	0.074	0.517	25.655134	-103.381174
X. C. La Cuchilla - Torreón	17.36	1	0	1314	1.0	42.4	2.7	4.9	4.3	23.4	4.8	14.2	2.3	43.4	2.7	53.9	0.078	0.513	25.647697	-103.353136
X. C. Torreón - Saltillo	40.70	1	0	1321	1.2	43.0	3.9	7.4	2.9	21.4	6.5	11.9	1.8	44.2	3.9	51.9	0.089	0.502	25.547020	-103.223886

22 CARR: Libramiento Oriente de Saltillo (Cuota)

CLAVE: 00115

RUTA: MEX-057D

AÑO: 2015

LUGAR	ESTACION				CLASIFICACION VEHICULAR EN PORCIENTO													COORDENADAS		
	KM	TE	SC	TDPA	M	A	B	C2	C3	T3S2	T3S3	T3S2R4	OTROS	A	B	C	K'	D	LATITUD	LONGITUD
Ent. La Carbonera	0.00																			
Caseta de Cobro Carbonera	12.30	2	1	2107	0.2	36.1	3.6	4.4	4.6	30.1	7.0	11.8	2.2	36.3	3.6	60.1	0.072	0.500	25.457012	-101.063660
Caseta de Cobro Carbonera	12.30	2	2	2107	0.2	36.1	3.6	4.4	4.6	30.1	7.0	11.8	2.2	36.3	3.6	60.1	0.072	0.500	25.457012	-101.063660
Caseta de Cobro Carbonera	12.30	3	1	7759	1.2	45.8	3.7	7.3	2.1	28.4	5.7	4.9	0.9	47.0	3.7	49.3	0.089	0.502	25.521713	-100.864903
Caseta de Cobro Carbonera	12.30	3	2	7700	1.3	38.5	4.2	8.2	2.2	33.2	6.2	5.1	1.1	39.8	4.2	56.0	0.075	0.502	25.521703	-100.864924
T. C. Saltillo - Monterrey	21.00																			

23 CARR: Puerto México - La Carbonera (Cuota)

CLAVE: 00115

RUTA: MEX-057D

AÑO: 2015

LUGAR	ESTACION				CLASIFICACION VEHICULAR EN PORCIENTO													COORDENADAS		
	KM	TE	SC	TDPA	M	A	B	C2	C3	T3S2	T3S3	T3S2R4	OTROS	A	B	C	K'	D	LATITUD	LONGITUD
Ent. Puerto México	202.00																			
Caseta de Cobro Los Chorros	203.64	2	1	5862	0.1	36.0	5.2	4.3	2.3	41.5	3.5	6.0	1.1	36.1	5.2	58.7	0.076	0.500	25.186795	-100.732080
Caseta de Cobro Los Chorros	203.64	2	2	5862	0.1	36.0	5.2	4.3	2.3	41.5	3.5	6.0	1.1	36.1	5.2	58.7	0.076	0.500	25.186795	-100.732080
Lim. Edos. Term. N. L. Ppia. Coah.	204.07																			
Lim. Edos. Term. Coah. Ppia. N. L.	204.50																			

COAHUILA

23 CARR: Puerto México - La Carbonera (Cuota)

CLAVE: 00115

RUTA: MEX-057D

AÑO: 2015

LUGAR	ESTACION				CLASIFICACION VEHICULAR EN PORCIENTO										COORDENADAS					
	KM	TE	SC	TDPA	M	A	B	C2	C3	T3S2	T3S3	T3S2R4	OTROS	A	B	C	K'	D	LATITUD	LONGITUD
Lim. Edos. Term. N. L. Ppia. Coah.	205.76																			
T. Der. San Antonio de Las Alazanas	224.94	1	1	6787	1.7	43.4	3.8	8.2	2.3	29.9	4.4	4.9	1.4	45.1	3.8	51.1	0.068	0.510	25.344599	-100.794714
T. Der. San Antonio de Las Alazanas	224.94	1	2	7054	1.2	38.4	4.3	8.4	2.5	33.3	5.1	5.3	1.5	39.6	4.3	56.1	0.074	0.510	25.344714	-100.794673
T. Der. San Antonio de Las Alazanas	224.94	3	1	7635	1.5	51.2	3.0	7.8	1.9	24.6	4.6	4.0	1.4	52.7	3.0	44.3	0.065	0.507	25.352873	-100.794436
T. Der. San Antonio de Las Alazanas	224.94	3	2	7844	1.4	46.8	3.1	8.3	2.1	27.4	5.2	4.1	1.6	48.2	3.1	48.7	0.069	0.507	25.352895	-100.794446
Los Lirios	228.30	3	1	8628	1.7	46.0	3.4	9.6	2.2	28.9	3.6	3.7	0.9	47.7	3.4	48.9	0.097	0.501	25.392715	-100.796533
Los Lirios	228.30	3	2	8649	1.4	43.1	4.1	9.9	2.4	30.1	3.9	4.1	1.0	44.5	4.1	51.4	0.081	0.501	25.392268	-100.796776
Ent. La Carbonera	235.60																			

24 CARR: Saltillo - Monterrey (Cuota)

CLAVE: 00087

RUTA: MEX-040D

AÑO: 2015

LUGAR	ESTACION				CLASIFICACION VEHICULAR EN PORCIENTO										COORDENADAS					
	KM	TE	SC	TDPA	M	A	B	C2	C3	T3S2	T3S3	T3S2R4	OTROS	A	B	C	K'	D	LATITUD	LONGITUD
Ojo Caliente	46.21	3	1	3037	0.6	47.4	5.0	10.0	4.0	19.8	4.6	7.4	1.2	48.0	5.0	47.0	0.076	0.501	25.617112	-100.906481
Ojo Caliente	46.21	3	2	3027	0.6	41.5	5.9	11.7	4.7	20.7	5.1	8.6	1.2	42.1	5.9	52.0	0.091	0.501	25.617117	-100.906571
Lim. Edos. Term. Coah. Ppia. N. L.	61.08																			
T. Izq. Anillo Periférico de Monterrey (Cuota)	82.00	1	1	6910	1.6	72.6	4.5	6.4	1.1	7.4	1.8	3.7	0.9	74.2	4.5	21.3	0.078	0.503	25.698201	-100.602051
T. Izq. Anillo Periférico de Monterrey (Cuota)	82.00	1	2	6984	0.9	70.1	5.3	7.0	1.3	8.4	2.1	4.0	0.9	71.0	5.3	23.7	0.091	0.503	25.698234	-100.601983
T. Izq. Anillo Periférico de Monterrey (Cuota)	82.00	3	1	3274	0.7	91.6	2.2	5.3	0.1	0.1	0.0	0.0	0.0	92.3	2.2	5.5	0.147	0.550	25.690710	-100.558440
T. Izq. Anillo Periférico de Monterrey (Cuota)	82.00	3	2	2681	0.6	90.5	2.5	6.1	0.2	0.1	0.0	0.0	0.0	91.1	2.5	6.4	0.124	0.550	25.690791	-100.557953
Morones Prieto	96.10																			

25 CARR: Torreón - Saltillo (Cuota)

CLAVE:

RUTA: MEX-040D

AÑO: 2015

LUGAR	ESTACION				CLASIFICACION VEHICULAR EN PORCIENTO										COORDENADAS					
	KM	TE	SC	TDPA	M	A	B	C2	C3	T3S2	T3S3	T3S2R4	OTROS	A	B	C	K'	D	LATITUD	LONGITUD
Matamoros	0.00																			
Caseta de Cobro La Cuchilla	37.00	2	1	2377	0.3	49.7	6.1	4.7	1.4	21.8	4.8	9.8	1.4	50.0	6.1	43.9	0.091	0.500	25.626987	-102.878211
Caseta de Cobro La Cuchilla	37.00	2	2	2377	0.3	49.7	6.1	4.7	1.4	21.8	4.8	9.8	1.4	50.0	6.1	43.9	0.091	0.500	25.626987	-102.878211
Caseta de Cobro Plan de Ayala	205.00	2	1	2417	0.4	54.8	6.8	3.9	1.4	17.9	4.0	9.2	1.6	55.2	6.8	38.0	0.091	0.500	25.444124	-101.303943
Caseta de Cobro Plan de Ayala	205.00	2	2	2417	0.4	54.8	6.8	3.9	1.4	17.9	4.0	9.2	1.6	55.2	6.8	38.0	0.091	0.500	25.444124	-101.303943
T. C. Saltillo - Torreón (Libre)	206.80																			



COAHUILA

26 CARR: Allende - Villa Unión

CLAVE: 05001

RUTA: COA-015

AÑO: 2015

LUGAR	ESTACION				CLASIFICACION VEHICULAR EN PORCIENTO														COORDENADAS	
	KM	TE	SC	TDPA	M	A	B	C2	C3	T3S2	T3S3	T3S2R4	OTROS	A	B	C	K'	D	LATITUD	LONGITUD
Allende	0.00	3	0	2135	1.7	70.9	2.7	23.2	0.4	1.0	0.0	0.0	0.1	72.6	2.7	24.7	0.083	0.502	28.335675	-100.838358
Villa Unión	19.00																			

27 CARR: Corredor Libramiento de San Pedro

CLAVE: 05023

RUTA: COA-087

AÑO: 2015

LUGAR	ESTACION				CLASIFICACION VEHICULAR EN PORCIENTO														COORDENADAS	
	KM	TE	SC	TDPA	M	A	B	C2	C3	T3S2	T3S3	T3S2R4	OTROS	A	B	C	K'	D	LATITUD	LONGITUD
T. C. Monclova - San Pedro de las Colonias	0.00	3	0	2405	12.3	58.4	2.1	10.9	2.5	7.7	2.6	3.1	0.4	70.7	2.1	27.2	0.088	0.505	25.774646	-102.982804
T. C. La Cuchilla - Torreón	3.60	1	0	3608	10.3	67.1	1.8	7.8	1.3	6.9	1.9	2.2	0.7	77.4	1.8	20.8	0.084	0.503	25.759351	-103.000107

28 CARR: Cuatro Ciénegas - Ocampo

CLAVE: 05026

RUTA: COA-048

AÑO: 2015

LUGAR	ESTACION				CLASIFICACION VEHICULAR EN PORCIENTO														COORDENADAS	
	KM	TE	SC	TDPA	M	A	B	C2	C3	T3S2	T3S3	T3S2R4	OTROS	A	B	C	K'	D	LATITUD	LONGITUD
Cuatro Ciénegas	0.00	3	0	1148	1.4	75.9	0.5	19.9	0.7	1.6	0.0	0.0	0.0	77.3	0.5	22.2	0.072	0.500	27.000204	-102.072619
Ocampo	50.00																			

29 CARR: El Sauz - Palau

CLAVE: 05060

RUTA: COA-022

AÑO: 2015

LUGAR	ESTACION				CLASIFICACION VEHICULAR EN PORCIENTO														COORDENADAS	
	KM	TE	SC	TDPA	M	A	B	C2	C3	T3S2	T3S3	T3S2R4	OTROS	A	B	C	K'	D	LATITUD	LONGITUD
El Sauz	0.00	3	1	1349	0.8	69.7	1.6	15.1	2.2	4.3	3.6	1.9	0.8	70.5	1.6	27.9	0.078	0.506	27.640601	-101.189257
El Sauz	0.00	3	2	1319	0.5	66.3	1.8	17.2	2.4	4.8	4.1	1.8	1.1	66.8	1.8	31.4	0.080	0.506	27.640609	-101.189237
Minas de Barroterán	31.00	3	1	1278	1.9	70.0	0.9	16.6	2.0	5.0	1.7	1.1	0.8	71.9	0.9	27.2	0.074	0.503	27.662660	-101.288963
Minas de Barroterán	31.00	3	2	1294	2.0	67.5	0.8	18.2	2.4	5.1	1.9	1.2	0.9	69.5	0.8	29.7	0.077	0.503	27.662670	-101.288966
Palau	42.50	1	1	1134	2.0	69.4	1.5	16.7	1.6	4.2	2.3	1.2	1.1	71.4	1.5	27.1	0.084	0.512	27.874818	-101.415426
Palau	42.50	1	2	1188	2.1	64.7	1.5	19.7	1.9	5.1	2.6	1.4	1.0	66.8	1.5	31.7	0.087	0.512	27.874820	-101.415443

30 CARR: Emiliano Zapata - Viesca

CLAVE: 05521

RUTA: COA-082

AÑO: 2015

LUGAR	ESTACION				CLASIFICACION VEHICULAR EN PORCIENTO														COORDENADAS	
	KM	TE	SC	TDPA	M	A	B	C2	C3	T3S2	T3S3	T3S2R4	OTROS	A	B	C	K'	D	LATITUD	LONGITUD
Emiliano Zapata	0.00	3	0	753	2.6	79.4	1.1	14.5	1.5	0.7	0.1	0.0	0.1	82.0	1.1	16.9	0.110	0.503	25.484072	-102.943297
Viesca	24.00																			

COAHUILA

31 CARR: Ent. La Rosa - General Cepeda

CLAVE: 05034

ruta: COA-034

AÑO: 2015

LUGAR	ESTACION				CLASIFICACION VEHICULAR EN PORCIENTO													COORDENADAS		
	KM	TE	SC	TDPA	M	A	B	C2	C3	T3S2	T3S3	T3S2R4	OTROS	A	B	C	K'	D	LATITUD	LONGITUD
T. C. Saltillo - Torreón	0.00	3	0	1154	0.2	80.9	0.7	14.7	1.0	1.7	0.4	0.2	0.2	81.1	0.7	18.2	0.159	0.538	25.505714	-101.380149
Gral. Cepeda	21.00	1	0	1205	1.1	74.5	3.0	19.2	0.8	1.0	0.3	0.0	0.1	75.6	3.0	21.4	0.127	0.519	25.390532	-101.478145

32 CARR: Ent. Paila - Parras de La Fuente

CLAVE: 05014

ruta: COA-102

AÑO: 2015

LUGAR	ESTACION				CLASIFICACION VEHICULAR EN PORCIENTO													COORDENADAS		
	KM	TE	SC	TDPA	M	A	B	C2	C3	T3S2	T3S3	T3S2R4	OTROS	A	B	C	K'	D	LATITUD	LONGITUD
Ent. Paila	0.00	3	0	2077	1.7	78.0	2.0	13.0	1.0	2.9	0.5	0.5	0.4	79.7	2.0	18.3	0.124	0.509	25.644310	-102.148387
Parras de La Fuente	20.05	1	1	1883	5.4	81.1	1.8	9.0	0.6	1.1	0.4	0.3	0.3	86.5	1.8	11.7	0.146	0.513	25.469745	-102.173719
Parras de La Fuente	20.05	1	2	1789	8.0	76.4	2.2	10.7	0.7	1.1	0.4	0.3	0.2	84.4	2.2	13.4	0.141	0.513	25.469389	-102.173763

33 CARR: Libramiento de Matamoros

CLAVE: 05032

ruta: COA

AÑO: 2015

LUGAR	ESTACION				CLASIFICACION VEHICULAR EN PORCIENTO													COORDENADAS		
	KM	TE	SC	TDPA	M	A	B	C2	C3	T3S2	T3S3	T3S2R4	OTROS	A	B	C	K'	D	LATITUD	LONGITUD
T. C. Saltillo - Torreón	0.00	3	0	8103	1.5	68.0	2.3	12.5	3.0	8.0	2.6	1.1	1.0	69.5	2.3	28.2	0.068	0.529	25.533065	-103.219858
X. C. Matamoros - La Unión	3.70	3	1	7379	2.3	68.4	2.8	9.5	2.6	8.8	2.5	2.3	0.8	70.7	2.8	26.5	0.062	0.511	25.539164	-103.230207
X. C. Matamoros - La Unión	3.70	3	2	7064	1.8	64.8	2.9	10.9	3.0	10.0	2.9	2.7	1.0	66.6	2.9	30.5	0.071	0.511	25.539185	-103.230180
T. C. Saltillo - Torreón	5.32	1	1	8044	2.2	69.6	3.0	7.8	2.9	7.8	2.8	2.8	1.1	71.8	3.0	25.2	0.062	0.519	25.536288	-103.246705
T. C. Saltillo - Torreón	5.32	1	2	7444	2.0	66.2	3.3	8.3	3.2	9.2	3.3	3.2	1.3	68.2	3.3	28.5	0.066	0.519	25.536305	-103.246717

34 CARR: Libramiento de Saltillo J.L.P.

CLAVE: 05031

ruta: COA

AÑO: 2015

LUGAR	ESTACION				CLASIFICACION VEHICULAR EN PORCIENTO													COORDENADAS		
	KM	TE	SC	TDPA	M	A	B	C2	C3	T3S2	T3S3	T3S2R4	OTROS	A	B	C	K'	D	LATITUD	LONGITUD
T. C. Ent. Bella Unión - Saltillo	0.00																			
X. C. Saltillo - Arteaga	2.50	3	1	9504	0.9	73.5	0.9	8.7	4.8	7.4	2.2	0.7	0.9	74.4	0.9	24.7	0.118	0.525	25.448412	-100.891956
X. C. Saltillo - Arteaga	2.50	3	2	9554	0.8	71.4	1.0	9.5	5.6	7.7	2.4	0.7	0.9	72.2	1.0	26.8	0.116	0.525	25.448423	-100.891971
T. C. Saltillo - Monterrey	18.00	1	1	6864	0.6	70.6	1.1	8.7	4.5	10.7	2.0	0.9	0.9	71.2	1.1	27.7	0.124	0.522	25.554855	-100.921795
T. C. Saltillo - Monterrey	18.00	1	2	7485	0.7	68.1	1.2	9.8	4.9	11.3	2.1	1.0	0.9	68.8	1.2	30.0	0.098	0.522	25.554857	-100.921817

COAHUILA

35 CARR : Libramiento de Torreón

CLAVE: 05516

RUTA: COA

AÑO : 2015

LUGAR	ESTACION				CLASIFICACION VEHICULAR EN PORCIENTO										COORDENADAS					
	KM	TE	SC	TDPA	M	A	B	C2	C3	T3S2	T3S3	T3S2R4	OTROS	A	B	C	K'	D	LATITUD	LONGITUD
X. C. Saltillo - Torreón	0.00	3	1	34431	1.3	85.3	1.0	4.6	1.3	2.8	2.1	0.9	0.7	86.6	1.0	12.4	0.068	0.508	25.541257	-103.370410
X. C. Saltillo - Torreón	0.00	3	2	35566	1.4	84.0	1.1	5.4	1.3	2.9	2.3	0.9	0.7	85.4	1.1	13.5	0.065	0.508	25.539791	-103.370893
T. C. La Cuchilla - Torreón (Alta)	7.30	1	1	16852	1.4	83.2	0.7	5.1	1.8	3.8	2.2	0.9	0.9	84.6	0.7	14.7	0.097	0.508	25.582681	-103.402662
T. C. La Cuchilla - Torreón (Baja)	7.30	1	1	17621	1.3	83.9	1.1	3.9	1.5	3.5	2.4	1.3	1.1	85.2	1.1	13.7	0.071	0.510	25.582692	-103.402692
T. C. La Cuchilla - Torreón (Baja)	7.30	1	2	18324	1.3	82.4	1.3	4.4	1.7	3.7	2.5	1.5	1.2	83.7	1.3	15.0	0.103	0.510	25.582670	-103.402650
T. C. La Cuchilla - Torreón (Alta)	7.30	1	2	16317	1.1	81.9	0.7	5.5	1.9	4.5	2.4	1.0	1.0	83.0	0.7	16.3	0.075	0.508	25.582679	-103.402645
Lim. Edos. Term. Coah. Ppia. Dgo.	11.80																			
T. C. Durango - Torreón	28.60																			

36 CARR : Matamoros - El Fresno

CLAVE: 05023

RUTA: COA-078

AÑO : 2015

LUGAR	ESTACION				CLASIFICACION VEHICULAR EN PORCIENTO										COORDENADAS					
	KM	TE	SC	TDPA	M	A	B	C2	C3	T3S2	T3S3	T3S2R4	OTROS	A	B	C	K'	D	LATITUD	LONGITUD
Matamoros	0.00	3	0	2975	12.9	60.1	1.2	18.3	3.9	2.2	1.0	0.3	0.1	73.0	1.2	25.8	0.085	0.505	25.501205	-103.224480
El Fresno	12.60	1	0	1199	15.7	55.6	6.2	15.2	3.6	3.5	0.2	0.0	0.0	71.3	6.2	22.5	0.098	0.528	25.427863	-103.229847

37 CARR : Matamoros - La Unión

CLAVE: 05023

RUTA: COA-070

AÑO : 2015

LUGAR	ESTACION				CLASIFICACION VEHICULAR EN PORCIENTO										COORDENADAS					
	KM	TE	SC	TDPA	M	A	B	C2	C3	T3S2	T3S3	T3S2R4	OTROS	A	B	C	K'	D	LATITUD	LONGITUD
X. C. Libramiento de Matamoros	1.00	3	1	1443	3.5	76.0	3.2	13.4	1.3	1.4	0.6	0.3	0.3	79.5	3.2	17.3	0.121	0.502	25.542761	-103.222480
X. C. Libramiento de Matamoros	1.00	3	2	1429	2.5	74.5	3.8	15.0	1.5	1.5	0.6	0.4	0.2	77.0	3.8	19.2	0.103	0.502	25.542762	-103.222491
La Partida	14.09	1	0	2898	9.6	70.4	0.5	10.5	4.3	3.0	0.8	0.4	0.5	80.0	0.5	19.5	0.104	0.502	25.586291	-103.297410
La Partida	14.09	3	0	4377	7.6	68.2	2.0	12.5	3.1	3.2	1.7	0.9	0.8	75.8	2.0	22.2	0.083	0.516	25.594549	-103.314886
X. C. Antigua Carretera a San Pedro	22.00	1	1	7229	5.8	84.0	0.9	5.2	1.9	1.1	0.5	0.3	0.3	89.8	0.9	9.3	0.088	0.502	25.598176	-103.374754
X. C. Antigua Carretera a San Pedro	22.00	1	2	7165	5.4	82.9	0.9	6.1	2.2	1.3	0.6	0.3	0.3	88.3	0.9	10.8	0.072	0.502	25.598191	-103.374765
La Unión	25.00	1	1	7680	4.8	85.1	0.8	6.3	0.8	1.3	0.6	0.1	0.2	89.9	0.8	9.3	0.113	0.502	25.597284	-103.398374
La Unión	25.00	1	2	7625	5.6	82.7	0.8	7.5	1.0	1.4	0.7	0.1	0.2	88.3	0.8	10.9	0.109	0.502	25.597297	-103.398379

38 CARR : Monclova - Estación Candela

CLAVE: 00501

RUTA: COA-030-NL

AÑO : 2015

LUGAR	ESTACION				CLASIFICACION VEHICULAR EN PORCIENTO										COORDENADAS					
	KM	TE	SC	TDPA	M	A	B	C2	C3	T3S2	T3S3	T3S2R4	OTROS	A	B	C	K'	D	LATITUD	LONGITUD
T. C. Monclova - Piedras Negras	0.00																			
T. Izq. Libramiento de Monclova	5.10	1	1	1892	3.4	77.7	0.7	15.6	1.0	1.0	0.4	0.0	0.2	81.1	0.7	18.2	0.103	0.503	26.930706	-101.387201

COAHUILA

38 CARR: Monclova - Estación Candela

CLAVE: 00501

RUTA: COA-030-NL

AÑO: 2015

LUGAR	ESTACION				CLASIFICACION VEHICULAR EN PORCIENTO														COORDENADAS	
	KM	TE	SC	TDPA	M	A	B	C2	C3	T3S2	T3S3	T3S2R4	OTROS	A	B	C	K'	D	LATITUD	LONGITUD
T. Izq. Libramiento de Monclova	5.10	1	2	1916	3.3	76.1	0.9	16.7	1.2	1.2	0.4	0.0	0.2	79.4	0.9	19.7	0.112	0.503	26.930714	-101.387188
Lim. Edos. Term. Coah. Ppia. N. L.	118.00																			
T. C. Monterrey - Colombia	125.50	1	0	387	1.1	61.5	3.7	18.0	2.0	10.3	0.9	1.9	0.6	62.6	3.7	33.7	0.121	0.501	26.838211	-100.494909

39 CARR: Morelos - Ent. Las Corrientes

CLAVE: 05500

RUTA: COA-010

AÑO: 2015

LUGAR	ESTACION				CLASIFICACION VEHICULAR EN PORCIENTO														COORDENADAS	
	KM	TE	SC	TDPA	M	A	B	C2	C3	T3S2	T3S3	T3S2R4	OTROS	A	B	C	K'	D	LATITUD	LONGITUD
T. C. Morelos - Cd. Acuña	0.00	3	0	1434	2.4	71.8	0.8	23.4	0.5	0.7	0.2	0.0	0.2	74.2	0.8	25.0	0.094	0.519	28.399979	-100.898457
Los Álamos	9.20	1	0	898	3.1	63.8	1.4	30.3	0.6	0.7	0.1	0.0	0.0	66.9	1.4	31.7	0.115	0.503	28.355760	-100.941795
T. C. Monclova - Piedras Negras	20.00																			

40 CARR: Puerto de Flores - El Hondable

CLAVE: 05512

RUTA: COA-112

AÑO: 2015

LUGAR	ESTACION				CLASIFICACION VEHICULAR EN PORCIENTO														COORDENADAS	
	KM	TE	SC	TDPA	M	A	B	C2	C3	T3S2	T3S3	T3S2R4	OTROS	A	B	C	K'	D	LATITUD	LONGITUD
T. C. Aut. Puerto México - Ojo Caliente	0.00	3	0	1838	0.5	79.4	1.2	16.0	0.8	1.5	0.1	0.4	0.1	79.9	1.2	18.9	0.147	0.505	25.346050	-100.788173
San Antonio de Las Alazanas	24.00	1	0	1772	1.8	82.8	0.9	12.4	0.4	1.5	0.1	0.0	0.1	84.6	0.9	14.5	0.150	0.503	25.274918	-100.590598
El Hondable	50.50																			

41 CARR: Ramal a Hipólito

CLAVE: 05509

RUTA: COA-114

AÑO: 2015

LUGAR	ESTACION				CLASIFICACION VEHICULAR EN PORCIENTO														COORDENADAS	
	KM	TE	SC	TDPA	M	A	B	C2	C3	T3S2	T3S3	T3S2R4	OTROS	A	B	C	K'	D	LATITUD	LONGITUD
T. C. Saltillo - Torreón	0.00	3	0	411	0.7	71.7	0.2	15.6	1.4	4.6	3.1	2.1	0.6	72.4	0.2	27.4	0.187	0.511	25.594332	-101.452372
Hipólito	13.00																			

42 CARR: Ramal a Lamadrid

CLAVE: 05522

RUTA: COA-042

AÑO: 2015

LUGAR	ESTACION				CLASIFICACION VEHICULAR EN PORCIENTO														COORDENADAS	
	KM	TE	SC	TDPA	M	A	B	C2	C3	T3S2	T3S3	T3S2R4	OTROS	A	B	C	K'	D	LATITUD	LONGITUD
T. C. Monclova - San Pedro de Las Colonias	0.00	3	0	960	0.4	77.0	3.6	17.5	0.7	0.7	0.1	0.0	0.0	77.4	3.6	19.0	0.113	0.502	27.016744	-101.791917
Lamadrid	4.00																			

COAHUILA

43 CARR: Sabinas - Don Martín

CLAVE: 05501

RUTA: COA-025

AÑO: 2015

LUGAR	ESTACION				CLASIFICACION VEHICULAR EN PORCIENTO										COORDENADAS					
	KM	TE	SC	TDPA	M	A	B	C2	C3	T3S2	T3S3	T3S2R4	OTROS	A	B	C	K'	D	LATITUD	LONGITUD
Sabinas	0.00	3	0	2176	4.4	72.1	0.2	19.1	1.0	1.7	0.6	0.7	0.2	76.5	0.2	23.3	0.077	0.500	27.849866	-101.097153
T. Izq. La Mezquitosa	3.00	3	0	1869	2.9	67.5	0.5	22.1	1.4	3.4	1.0	0.5	0.7	70.4	0.5	29.1	0.082	0.511	27.833785	-101.073818
Juárez	53.00	3	0	378	0.6	68.0	1.0	24.6	2.7	2.1	0.2	0.7	0.1	68.6	1.0	30.4	0.183	0.526	27.619357	-100.704633
Don Martín	66.00	1	0	370	1.0	60.1	0.9	33.3	2.1	1.6	0.1	0.9	0.0	61.1	0.9	38.0	0.119	0.529	27.532969	-100.622953

44 CARR: Saltillo - Arteaga

CLAVE: 05008

RUTA: COA-106

AÑO: 2015

LUGAR	ESTACION				CLASIFICACION VEHICULAR EN PORCIENTO										COORDENADAS					
	KM	TE	SC	TDPA	M	A	B	C2	C3	T3S2	T3S3	T3S2R4	OTROS	A	B	C	K'	D	LATITUD	LONGITUD
Saltillo	0.00	3	1	7726	1.0	87.9	0.6	9.1	0.6	0.6	0.2	0.0	0.0	88.9	0.6	10.5	0.096	0.504	25.443348	-100.945759
Saltillo	0.00	3	2	7843	1.0	86.6	0.6	10.3	0.6	0.7	0.2	0.0	0.0	87.6	0.6	11.8	0.080	0.504	25.443649	-100.944857
X. C. Libramiento de Matehuala - Monterrey	9.00	1	1	5401	1.4	78.5	1.1	12.0	3.1	2.6	0.8	0.1	0.4	79.9	1.1	19.0	0.133	0.535	25.444471	-100.897235
X. C. Libramiento de Matehuala - Monterrey	9.00	1	2	5390	1.2	75.6	1.1	13.9	3.5	3.3	0.9	0.1	0.4	76.8	1.1	22.1	0.120	0.535	25.444456	-100.897324
X. C. Libramiento de Matehuala - Monterrey	9.00	3	1	3124	1.5	82.0	0.8	13.3	1.3	0.8	0.2	0.0	0.1	83.5	0.8	15.7	0.113	0.512	25.449490	-100.885390
X. C. Libramiento de Matehuala - Monterrey	9.00	3	2	3281	1.4	80.3	0.8	14.8	1.5	0.9	0.2	0.0	0.1	81.7	0.8	17.5	0.155	0.512	25.449479	-100.885414
Arteaga	12.00	1	1	2893	1.7	85.6	4.2	5.6	1.0	1.4	0.3	0.0	0.2	87.3	4.2	8.5	0.155	0.516	25.448719	-100.869663
Arteaga	12.00	1	2	3084	1.7	84.0	4.6	6.5	1.2	1.5	0.3	0.0	0.2	85.7	4.6	9.7	0.145	0.516	25.448706	-100.869666
T. C. Ent. Bella Unión - Saltillo	18.00																			

45 CARR: San Buenaventura - Estación Hermanas

CLAVE: 05004

RUTA: COA-034

AÑO: 2015

LUGAR	ESTACION				CLASIFICACION VEHICULAR EN PORCIENTO										COORDENADAS					
	KM	TE	SC	TDPA	M	A	B	C2	C3	T3S2	T3S3	T3S2R4	OTROS	A	B	C	K'	D	LATITUD	LONGITUD
San Buenaventura	0.00	3	0	1817	3.8	78.5	0.5	12.3	2.4	1.6	0.7	0.1	0.1	82.3	0.5	17.2	0.078	0.510	27.078604	-101.531753
T. Izq. Santa Gertrudis	2.48	1	0	1535	1.6	78.3	0.6	14.3	3.0	1.5	0.6	0.1	0.0	79.9	0.6	19.5	0.081	0.511	27.089880	-101.512831
Abasolo	15.71	1	0	780	0.8	81.5	0.6	13.2	2.0	1.3	0.3	0.3	0.0	82.3	0.6	17.1	0.085	0.510	27.174769	-101.431040
Los Rodríguez	31.00	3	0	384	1.3	71.9	1.1	20.4	2.5	2.0	0.5	0.2	0.1	73.2	1.1	25.7	0.107	0.534	27.199390	-101.350936
Estación Hermanas	50.00	1	0	522	0.7	82.0	1.9	10.1	2.4	2.1	0.6	0.1	0.1	82.7	1.9	15.4	0.105	0.517	27.223179	-101.229546

46 CARR: T. C. (Ent. Morelos - Saltillo) - Parras de La Fuente

CLAVE: 05510

RUTA: COA-105

AÑO: 2015

LUGAR	ESTACION				CLASIFICACION VEHICULAR EN PORCIENTO										COORDENADAS					
	KM	TE	SC	TDPA	M	A	B	C2	C3	T3S2	T3S3	T3S2R4	OTROS	A	B	C	K'	D	LATITUD	LONGITUD
T. C. Morelos - Saltillo	0.00	3	1	5561	1.7	68.9	1.4	11.6	2.8	11.0	1.2	0.4	1.0	70.6	1.4	28.0	0.134	0.502	25.261021	-101.102199
T. C. Morelos - Saltillo	0.00	3	2	5510	2.3	64.5	1.6	13.5	3.2	11.9	1.4	0.4	1.2	66.8	1.6	31.6	0.140	0.502	25.261016	-101.102183

COAHUILA

46 CARR: T. C. (Ent. Morelos - Saltillo) - Parras de La Fuente

CLAVE: 05510

RUTA: COA-105

AÑO: 2015

LUGAR	ESTACION				CLASIFICACION VEHICULAR EN PORCIENTO														COORDENADAS	
	KM	TE	SC	TDPA	M	A	B	C2	C3	T3S2	T3S3	T3S2R4	OTROS	A	B	C	K'	D	LATITUD	LONGITUD
Gral. Cepeda	40.00	1	0	1117	2.2	71.9	4.9	19.2	0.2	1.2	0.2	0.0	0.2	74.1	4.9	21.0	0.124	0.512	25.365708	-101.480597
Gral. Cepeda	40.00	3	0	698	1.6	70.3	4.7	22.2	0.3	0.9	0.0	0.0	0.0	71.9	4.7	23.4	0.099	0.508	25.378704	-101.485027
Parras de La Fuente	102.00	1	0	1885	16.1	66.5	1.3	13.6	0.5	1.6	0.1	0.2	0.1	82.6	1.3	16.1	0.088	0.502	25.443405	-102.157531

47 CARR: T. C. (Saltillo - Monclova) - Ramos Arizpe

CLAVE: 05508

RUTA: COA

AÑO: 2015

LUGAR	ESTACION				CLASIFICACION VEHICULAR EN PORCIENTO														COORDENADAS	
	KM	TE	SC	TDPA	M	A	B	C2	C3	T3S2	T3S3	T3S2R4	OTROS	A	B	C	K'	D	LATITUD	LONGITUD
T. C. Saltillo - Monclova	0.00	3	0	4047	1.7	56.8	2.3	11.1	4.2	18.5	2.7	1.7	1.0	58.5	2.3	39.2	0.086	0.509	25.529019	-101.002947
Ramos Arizpe	12.00																			

48 CARR: Torreón - Escuadrón 201

CLAVE: 05022

RUTA: COA-011

AÑO: 2015

LUGAR	ESTACION				CLASIFICACION VEHICULAR EN PORCIENTO														COORDENADAS	
	KM	TE	SC	TDPA	M	A	B	C2	C3	T3S2	T3S3	T3S2R4	OTROS	A	B	C	K'	D	LATITUD	LONGITUD
Torreón	0.00	3	1	15261	3.3	85.2	0.3	5.5	1.2	1.9	1.8	0.3	0.5	88.5	0.3	11.2	0.081	0.503	25.583122	-103.388687
Torreón	0.00	3	2	15072	3.4	84.6	0.3	5.6	1.2	2.1	2.0	0.3	0.5	88.0	0.3	11.7	0.078	0.503	25.583106	-103.388658
El Aguila	11.35	1	0	3509	10.2	74.9	0.4	11.5	1.1	1.7	0.1	0.0	0.1	85.1	0.4	14.5	0.064	0.508	25.631969	-103.359111
Escuadrón 201	17.06	1	0	1073	8.4	69.2	0.5	19.4	1.2	1.1	0.2	0.0	0.0	77.6	0.5	21.9	0.089	0.523	25.670499	-103.348086

49 CARR: Nueva Rosita - Ent. Allende (Cuota)

CLAVE: 05500

RUTA: COA-D

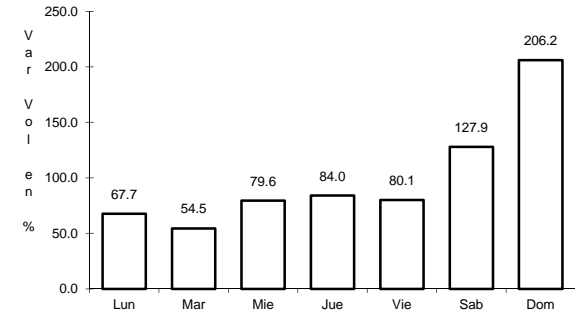
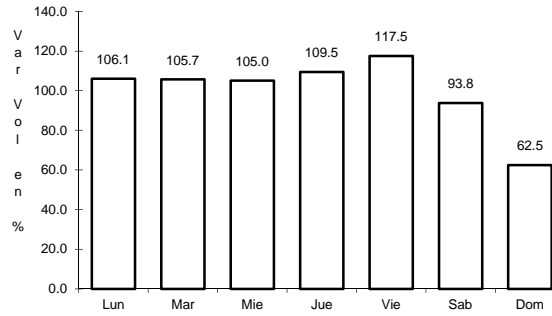
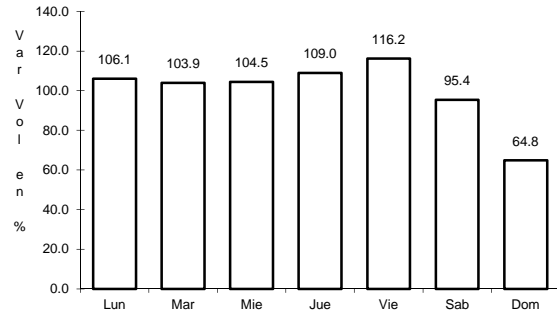
AÑO: 2015

LUGAR	ESTACION				CLASIFICACION VEHICULAR EN PORCIENTO														COORDENADAS	
	KM	TE	SC	TDPA	M	A	B	C2	C3	T3S2	T3S3	T3S2R4	OTROS	A	B	C	K'	D	LATITUD	LONGITUD
T. C. Monclova - Piedras Negras	0.00	3	1	1349	0.5	70.9	4.2	11.6	1.8	6.7	1.5	2.3	0.5	71.4	4.2	24.4	0.113	0.504	27.940701	-101.191424
T. C. Monclova - Piedras Negras	0.00	3	2	1326	0.3	67.2	4.6	13.6	2.0	7.5	1.6	2.6	0.6	67.5	4.6	27.9	0.112	0.504	27.940715	-101.191451
Allende	52.20																			

1 CARR: Cd. Acuña - Presa de La Amistad

CLAVE: 05085

RUTA: MEX-002



Km: 0.00                      Tipo: 3                      Sent: 1

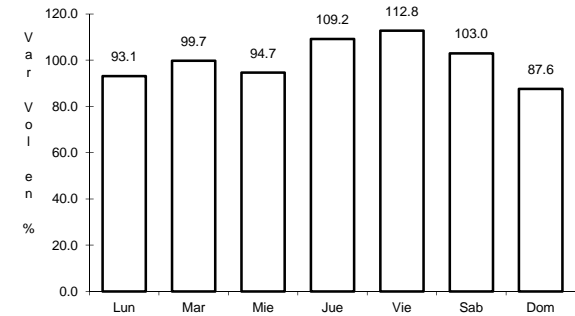
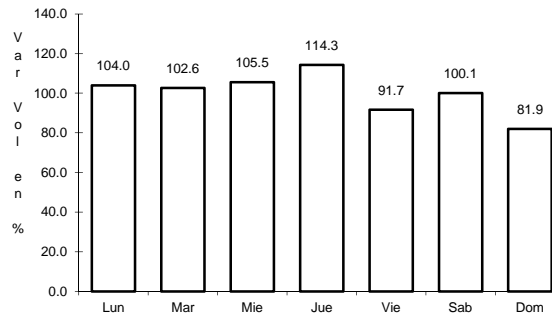
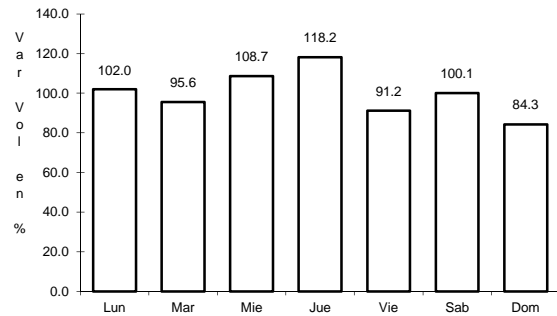
Km: 0.00                      Tipo: 3                      Sent: 2

Km: 23.00                      Tipo: 1                      Sent: 0

2 CARR: Durango - Torreón

CLAVE: 10085

RUTA: MEX-040



Km: 0.00                      Tipo: 3                      Sent: 1

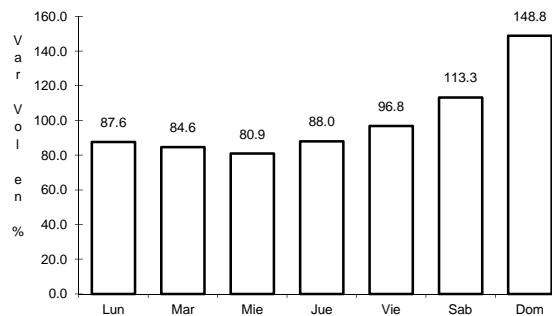
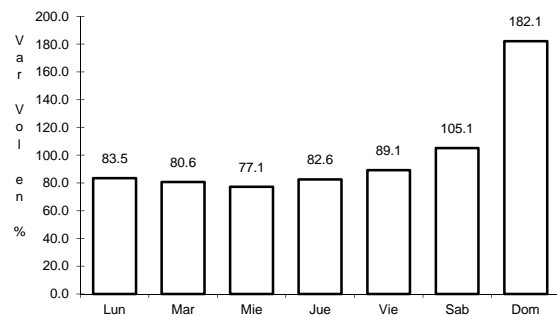
Km: 0.00                      Tipo: 3                      Sent: 2

Km: 120.90                      Tipo: 1                      Sent: 0

3 CARR: Ent. Bella Unión - Saltillo

CLAVE: 05003

RUTA: MEX-057



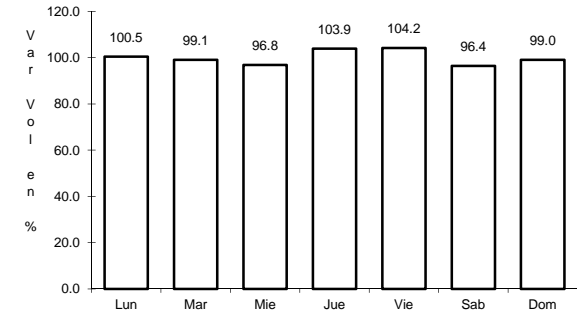
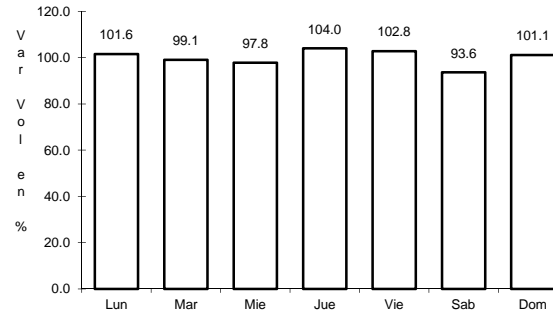
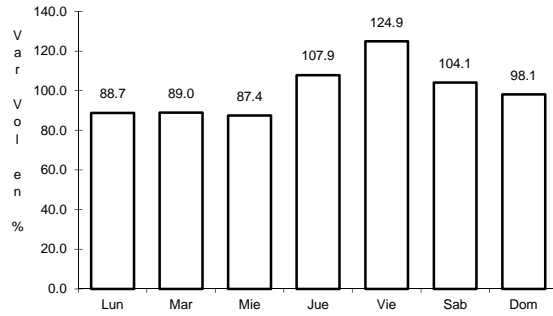
Km: 4.61                      Tipo: 1                      Sent: 1

Km: 4.61                      Tipo: 1                      Sent: 2

4 CARR: Ent. La Cuchilla - Torreón

CLAVE: 05021

RUTA: MEX-040



Km: 0.00                      Tipo: 3                      Sent: 0

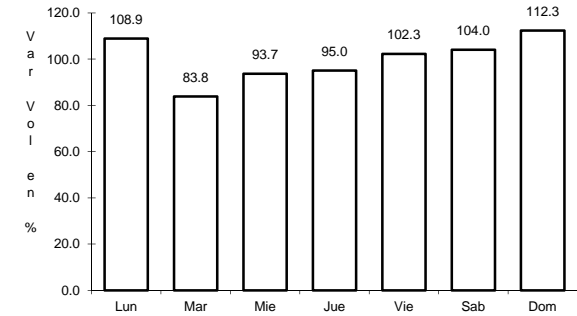
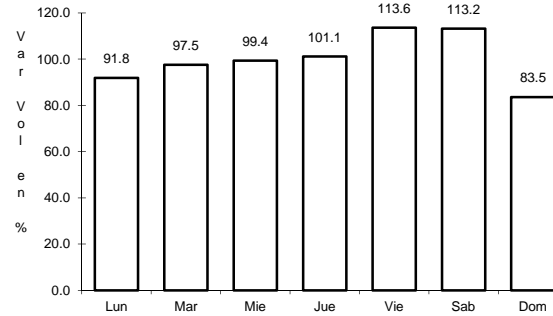
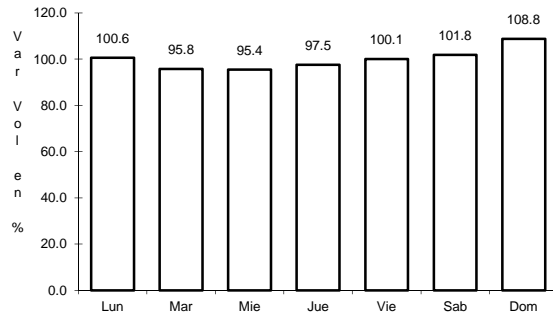
Km: 84.00                      Tipo: 1                      Sent: 1

Km: 84.00                      Tipo: 1                      Sent: 2

5 CARR: Ent. Morelos - Saltillo

CLAVE: 00149

RUTA: MEX-054



Km: 0.00                      Tipo: 3                      Sent: 1

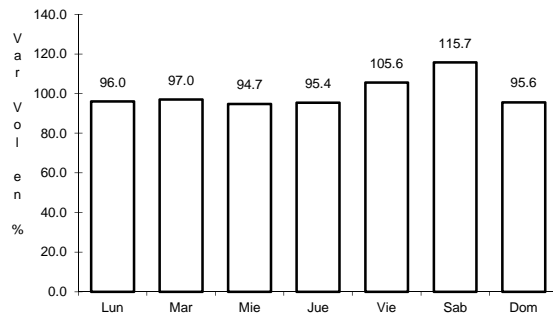
Km: 0.00                      Tipo: 3                      Sent: 2

Km: 333.00                      Tipo: 3                      Sent: 0

6 CARR: Gregorio García - Francisco I. Madero

CLAVE: 00110

RUTA: MEX-040



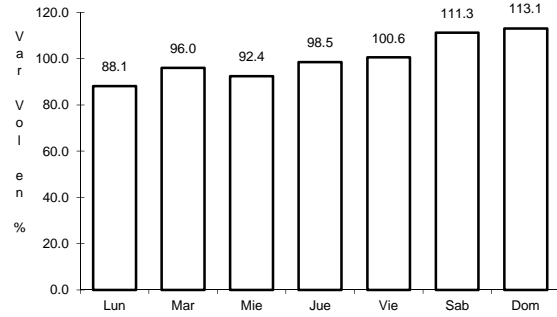
Km: 9.60                      Tipo: 1                      Sent: 0



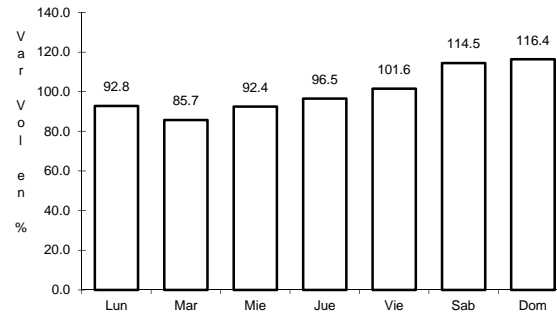
7 CARR: Huachichil - La Encantada

CLAVE: 05002

RUTA: MEX-057



Km: 0.00                      Tipo: 3                      Sent: 0

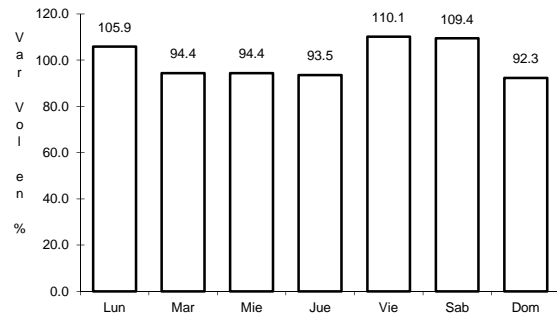


Km: 41.00                      Tipo: 1                      Sent: 0

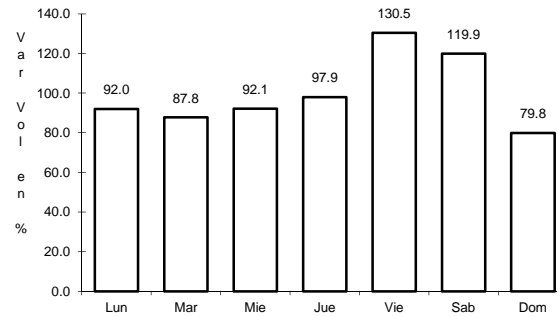
8 CARR: Libramiento Allende - Nava

CLAVE: 05518

RUTA: MEX-057



Km: 0.00                      Tipo: 3                      Sent: 1

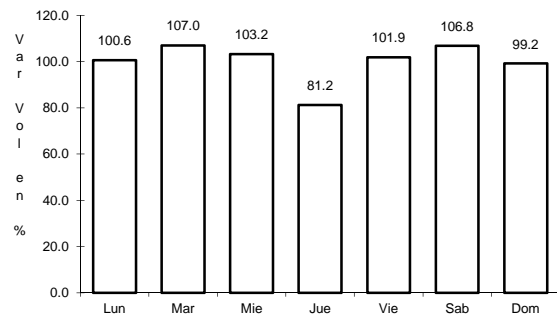


Km: 0.00                      Tipo: 3                      Sent: 2

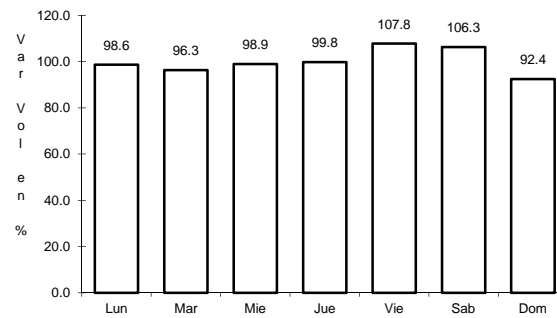
9 CARR: Monclova - Piedras Negras

CLAVE: 05407

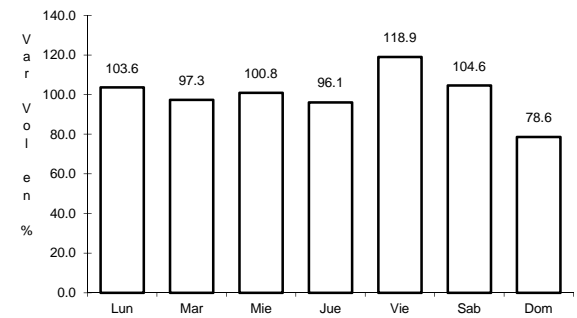
RUTA: MEX-057



Km: 0.00                      Tipo: 3                      Sent: 1



Km: 0.00                      Tipo: 3                      Sent: 2

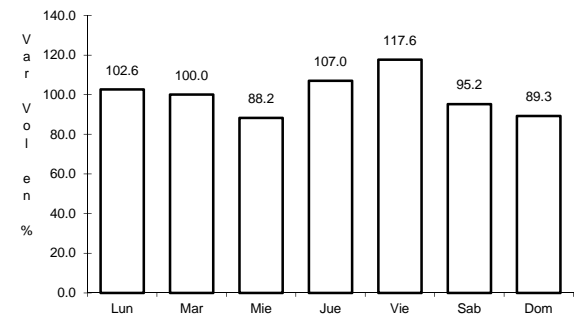
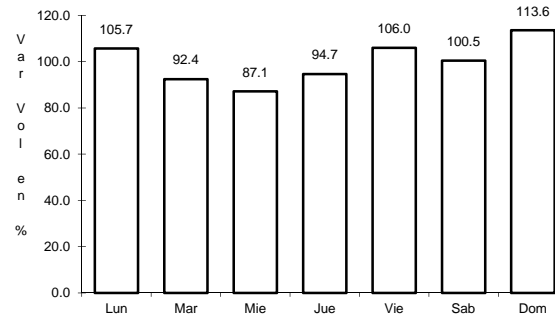
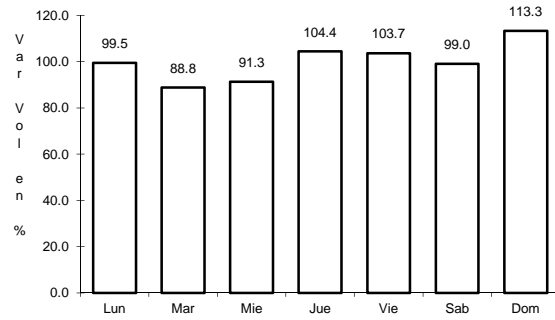


Km: 126.30                      Tipo: 3                      Sent: 0

10 CARR: Monclova - San Pedro de Las Colonias

CLAVE: 05062

RUTA: MEX-030



Km: 2.00 Tipo: 3 Sent: 1

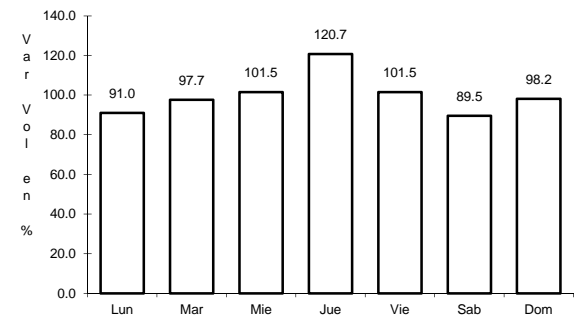
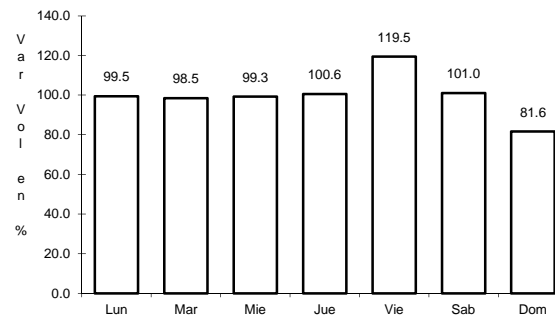
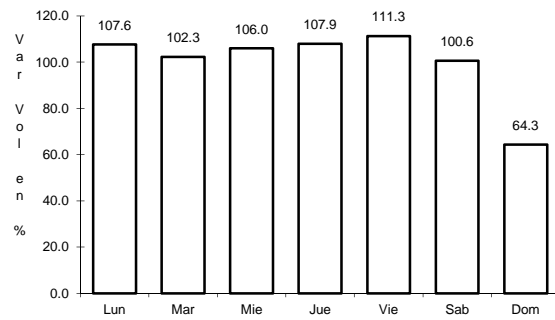
Km: 2.00 Tipo: 3 Sent: 2

Km: 80.15 Tipo: 3 Sent: 0

11 CARR: Monterrey - Castaños

CLAVE: 00128

RUTA: MEX-053



Km: 0.00 Tipo: 3 Sent: 0

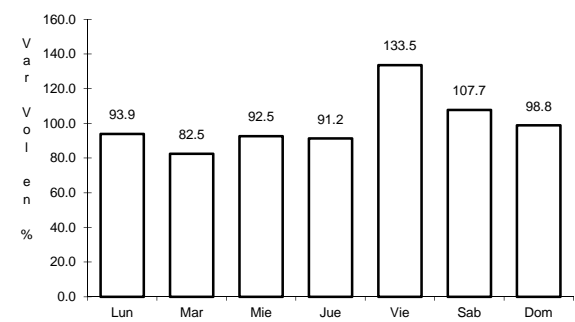
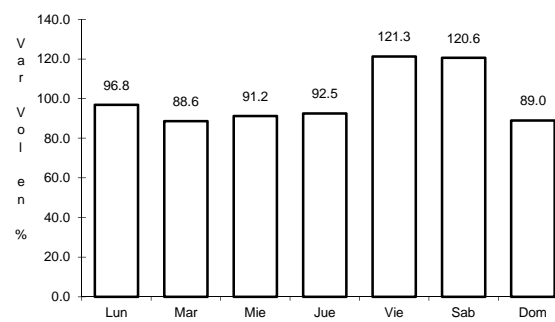
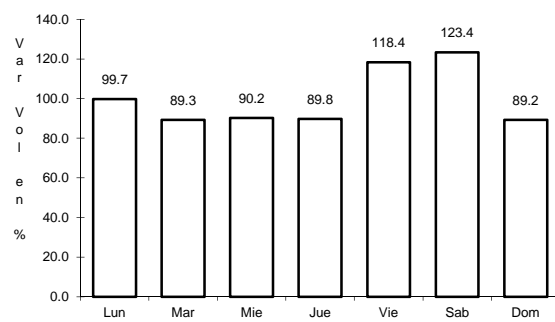
Km: 155.90 Tipo: 1 Sent: 1

Km: 155.90 Tipo: 1 Sent: 2

12 CARR: Morelos - Cd. Acuña

CLAVE: 05029

RUTA: MEX-029



Km: 0.00 Tipo: 3 Sent: 1

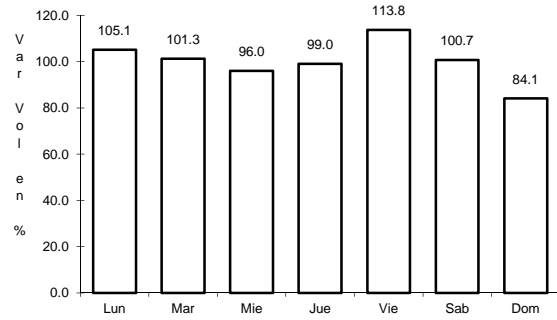
Km: 0.00 Tipo: 3 Sent: 2

Km: 73.84 Tipo: 1 Sent: 0

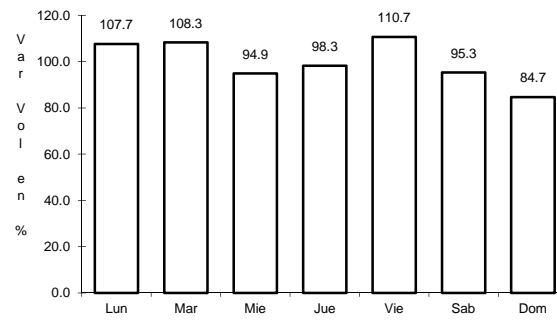
13 CARR: Nueva Rosita - Boquillas del Carmen

CLAVE: 05028

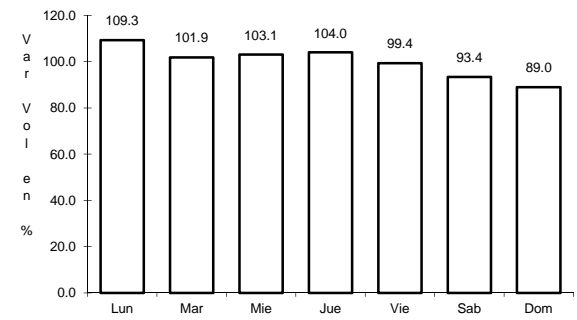
RUTA: MEX-053



Km: 0.00                      Tipo: 3                      Sent: 1



Km: 0.00                      Tipo: 3                      Sent: 2

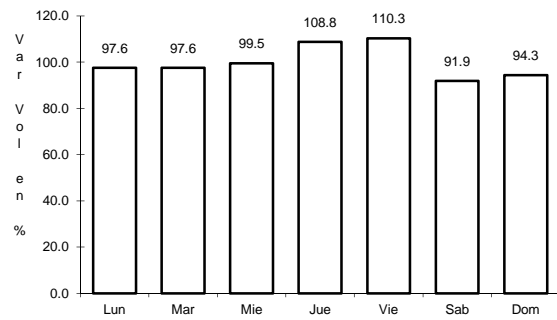


Km: 35.00                      Tipo: 3                      Sent: 0

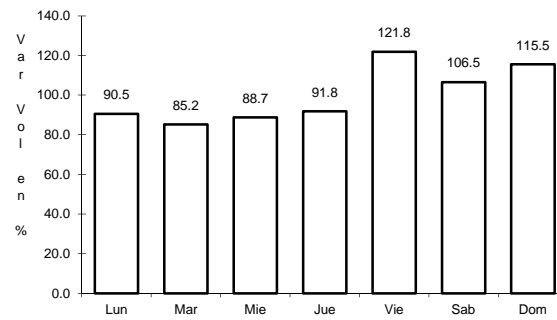
14 CARR: Ojo Caliente - Santa Cruz

CLAVE: 05007

RUTA: MEX-057



Km: 0.00                      Tipo: 3                      Sent: 0

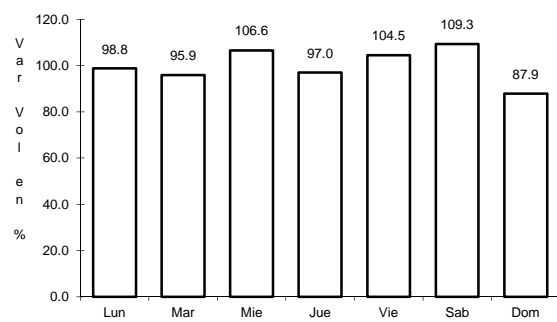


Km: 34.00                      Tipo: 1                      Sent: 0

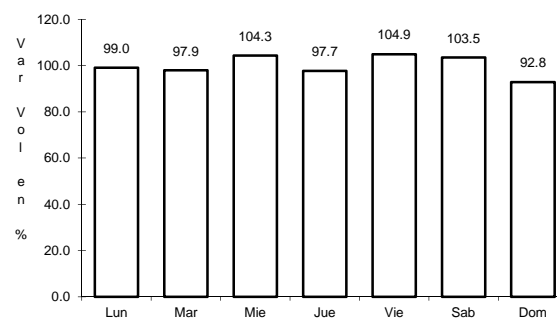
15 CARR: Piedras Negras - Cd. Acuña

CLAVE: 05061

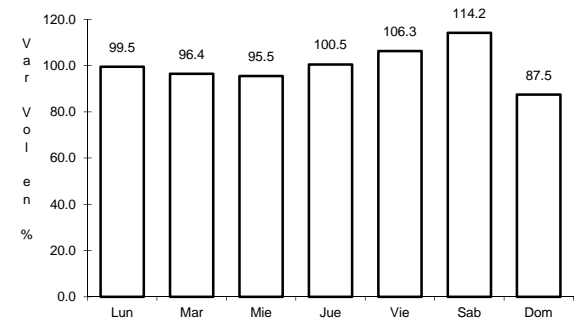
RUTA: MEX-002



Km: 0.00                      Tipo: 3                      Sent: 1



Km: 0.00                      Tipo: 3                      Sent: 2

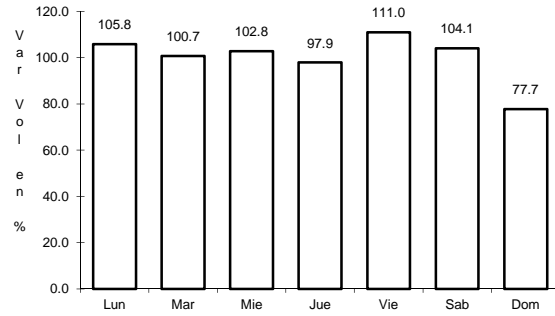


Km: 83.30                      Tipo: 1                      Sent: 0

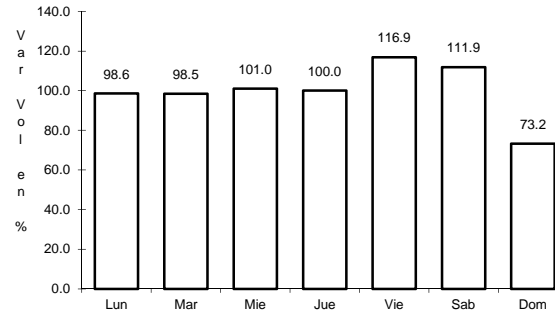
16 CARR: Piedras Negras - Nuevo Laredo

CLAVE: 00503

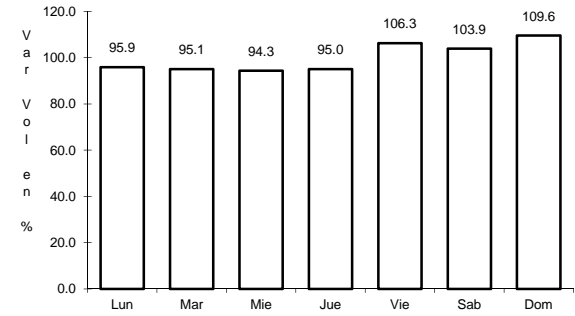
RUTA: MEX-002



Km: 0.00      Tipo: 3      Sent: 1



Km: 0.00      Tipo: 3      Sent: 2

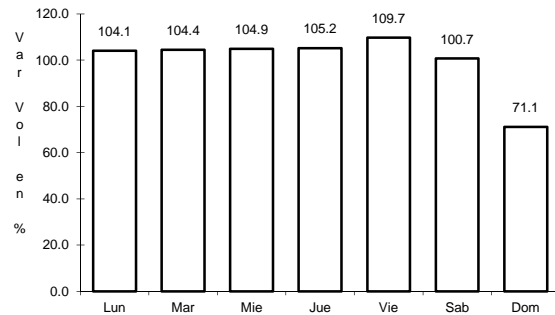


Km: 134.00      Tipo: 3      Sent: 0

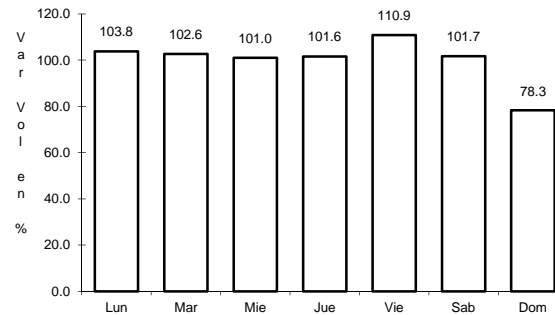
17 CARR: Saltillo - Monclova

CLAVE: 05406

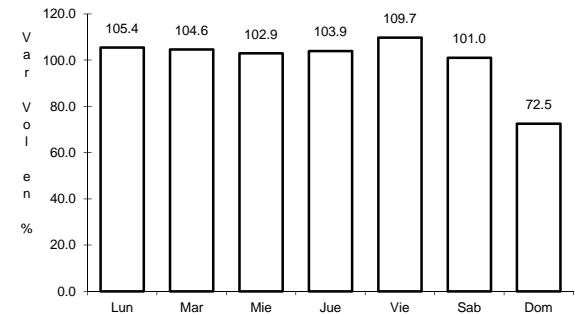
RUTA: MEX-057



Km: 13.00      Tipo: 1      Sent: 0



Km: 192.00      Tipo: 1      Sent: 1

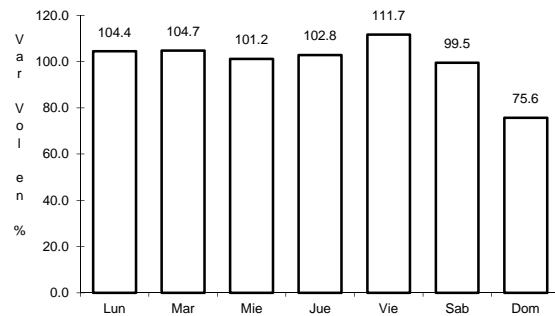


Km: 192.00      Tipo: 1      Sent: 2

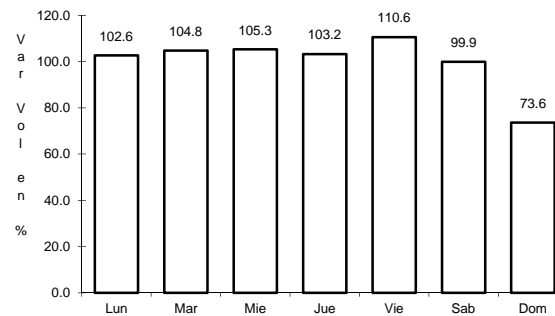
18 CARR: Saltillo - Monterrey

CLAVE: 00087

RUTA: MEX-040



Km: 4.25      Tipo: 3      Sent: 1

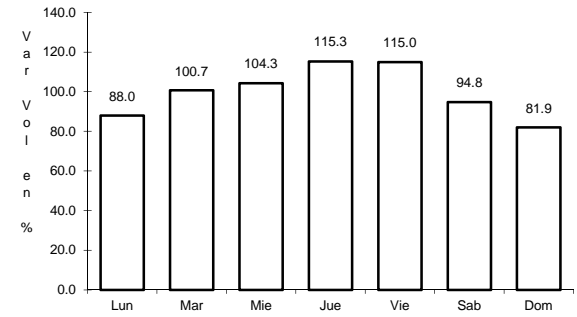
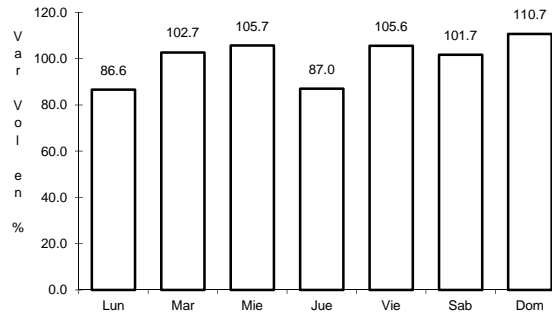
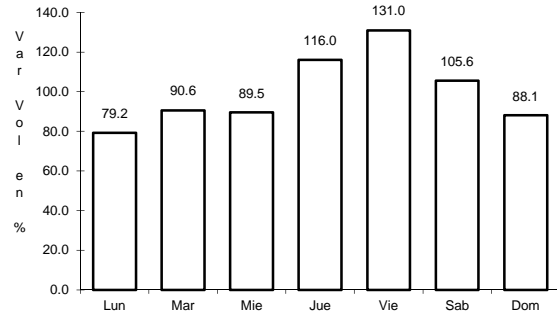


Km: 4.25      Tipo: 3      Sent: 2

19 CARR: Saltillo - Torreón

CLAVE: 05086

RUTA: MEX-040



Km: 6.10

Tipo: 3

Sent: 1

Km: 6.10

Tipo: 3

Sent: 2

Km: 91.20

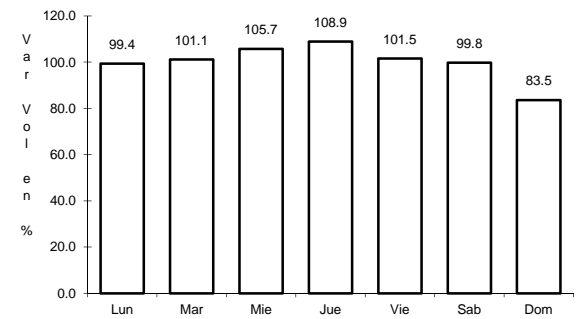
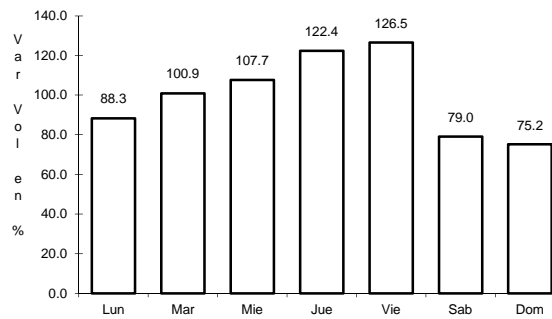
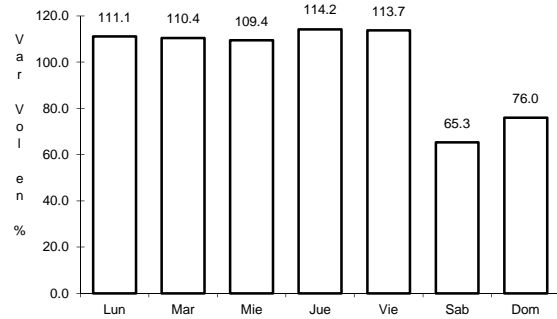
Tipo: 1

Sent: 0

20 CARR: Libramiento Norponiente de Saltillo (Cuota)

CLAVE: 05022

RUTA: MEX-S30



Km: 0.00

Tipo: 3

Sent: 0

Km: 22.44

Tipo: 3

Sent: 0

Km: 46.21

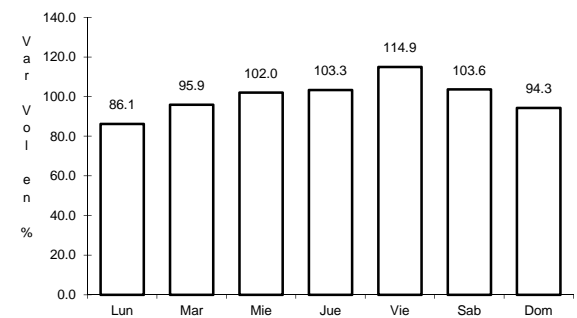
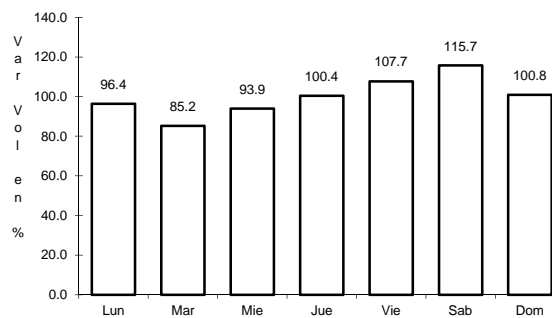
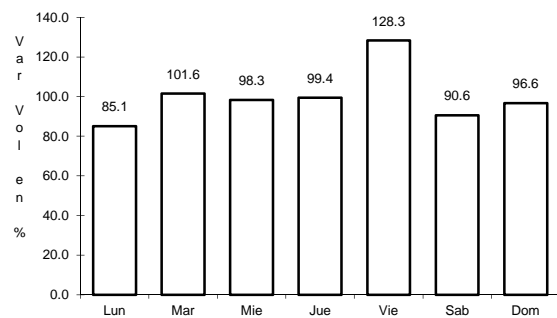
Tipo: 1

Sent: 0

21 CARR: Libramiento Norte de Torreón

CLAVE:

RUTA: MEX-040D



Km: 0.00

Tipo: 3

Sent: 0

Km: 17.36

Tipo: 1

Sent: 0

Km: 40.70

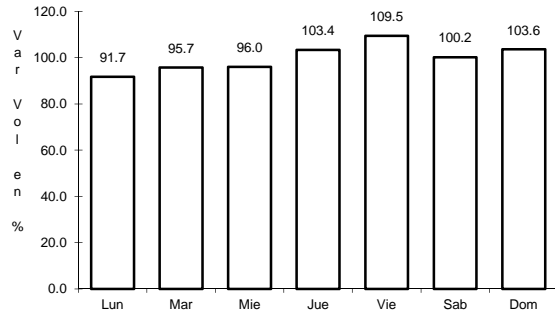
Tipo: 1

Sent: 0

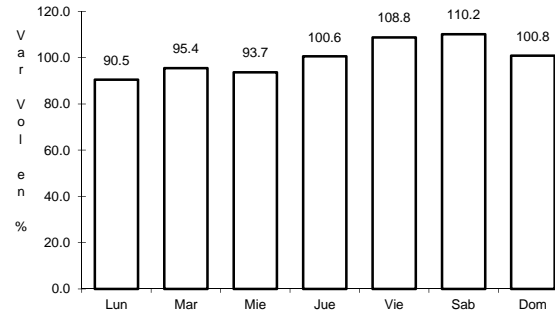
22 CARR: Libramiento Oriente de Saltillo (Cuota)

CLAVE: 00115

RUTA: MEX-057D



Km: 12.30 Tipo: 3 Sent: 1

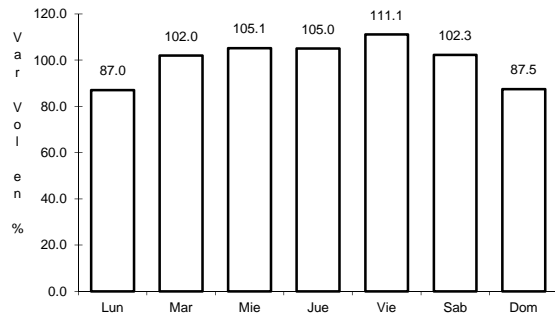


Km: 12.30 Tipo: 3 Sent: 2

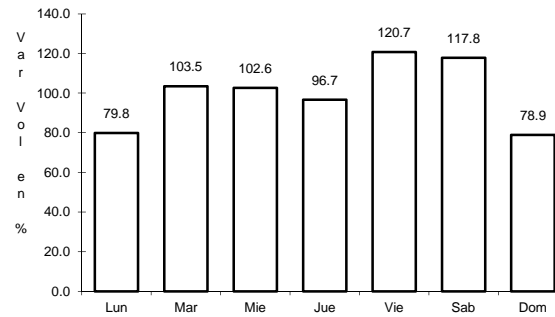
23 CARR: Puerto México - La Carbonera (Cuota)

CLAVE: 00115

RUTA: MEX-057D



Km: 224.94 Tipo: 1 Sent: 1

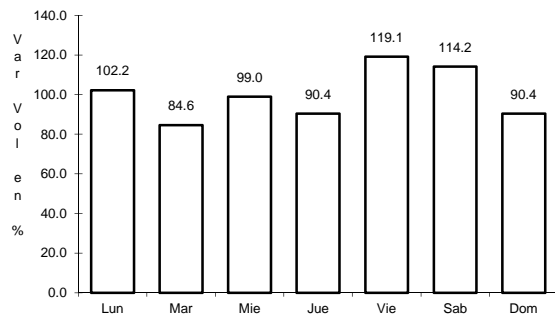


Km: 224.94 Tipo: 1 Sent: 2

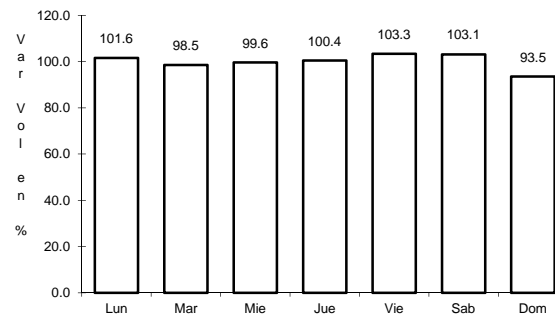
24 CARR: Saltillo - Monterrey (Cuota)

CLAVE: 00087

RUTA: MEX-040D



Km: 46.21 Tipo: 3 Sent: 1

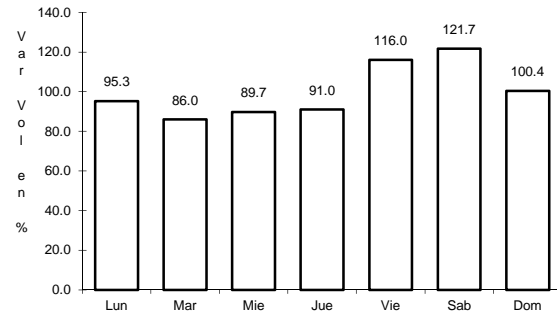


Km: 46.21 Tipo: 3 Sent: 2

26 CARR: Allende - Villa Unión

CLAVE: 05001

RUTA: COA-015



Km: 0.00

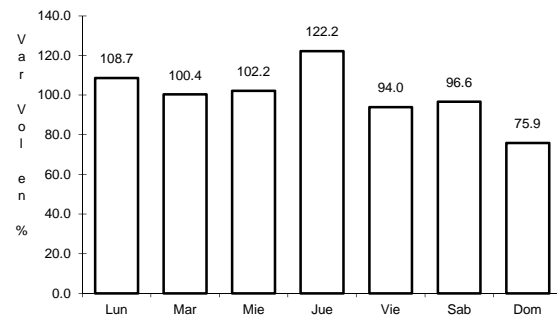
Tipo: 3

Sent: 0

27 CARR: Corredor Libramiento de San Pedro

CLAVE: 05023

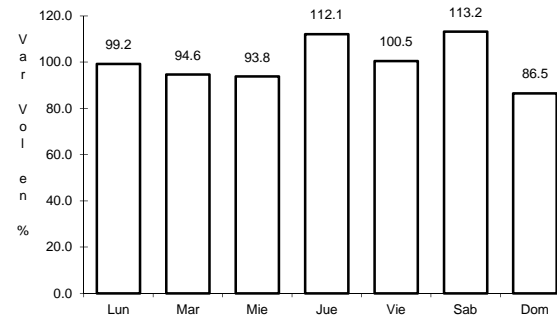
RUTA: COA-087



Km: 0.00

Tipo: 3

Sent: 0



Km: 3.60

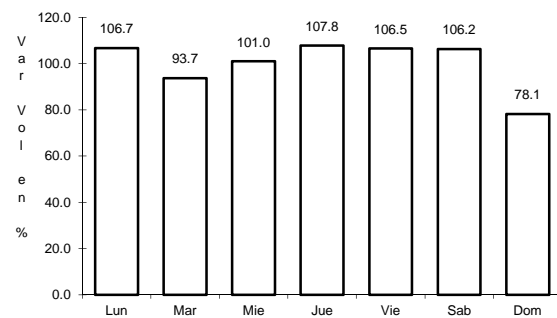
Tipo: 1

Sent: 0

28 CARR: Cuatro Ciénegas - Ocampo

CLAVE: 05026

RUTA: COA-048



Km: 0.00

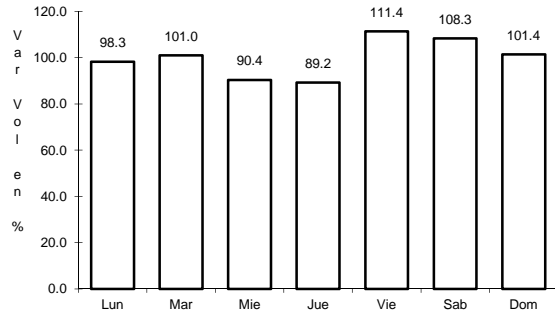
Tipo: 3

Sent: 0

29 CARR: El Sauz - Palau

CLAVE: 05060

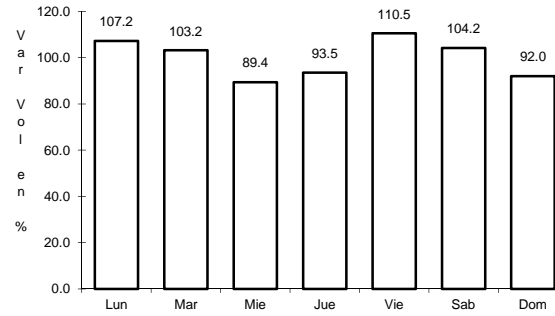
RUTA: COA-022



Km: 0.00

Tipo: 3

Sent: 1



Km: 0.00

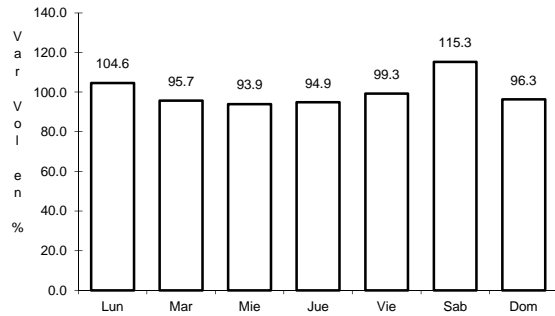
Tipo: 3

Sent: 2

30 CARR: Emiliano Zapata - Viesca

CLAVE: 05521

RUTA: COA-082



Km: 0.00

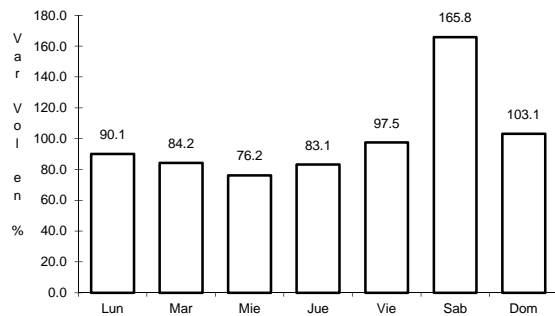
Tipo: 3

Sent: 0

31 CARR: Ent. La Rosa - General Cepeda

CLAVE: 05034

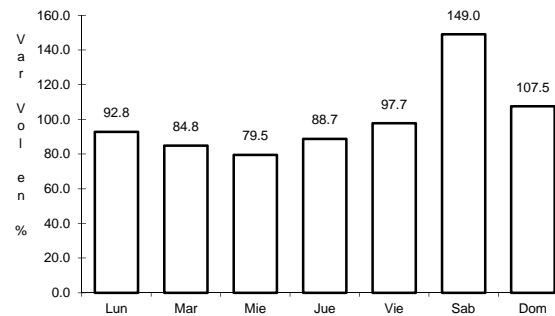
RUTA: COA-034



Km: 0.00

Tipo: 3

Sent: 0



Km: 21.00

Tipo: 1

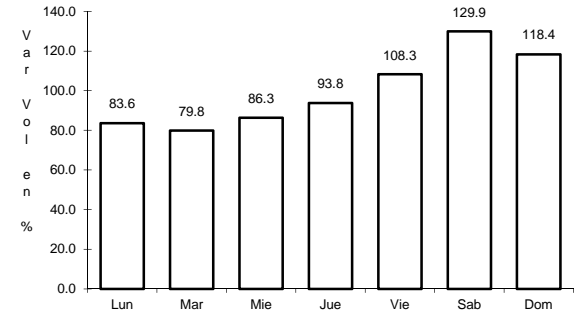
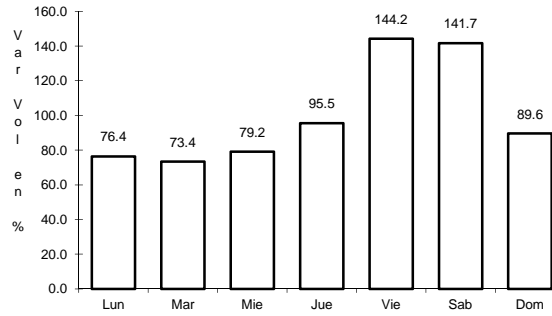
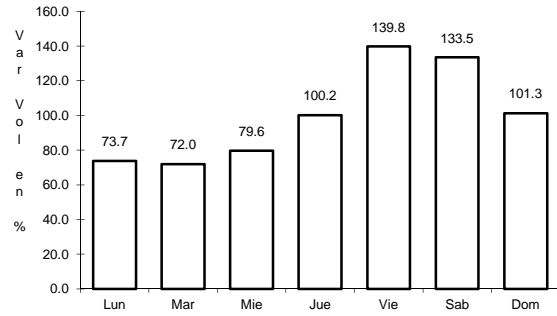
Sent: 0



32 CARR: Ent. Paila - Parras de La Fuente

CLAVE: 05014

RUTA: COA-102



Km: 0.00                      Tipo: 3                      Sent: 0

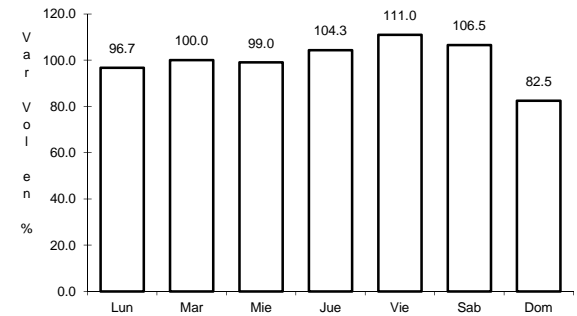
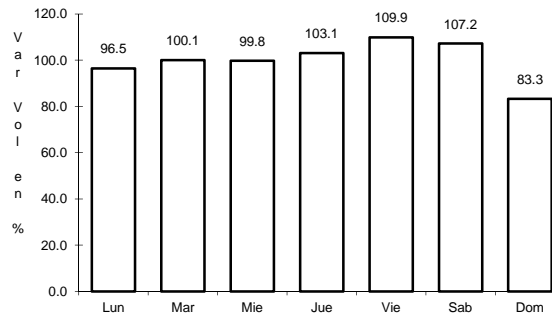
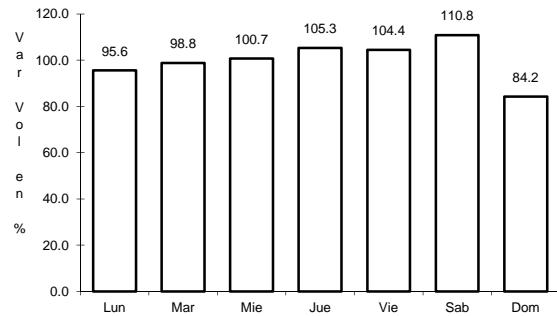
Km: 20.05                      Tipo: 1                      Sent: 1

Km: 20.05                      Tipo: 1                      Sent: 2

33 CARR: Libramiento de Matamoros

CLAVE: 05032

RUTA: COA



Km: 0.00                      Tipo: 3                      Sent: 0

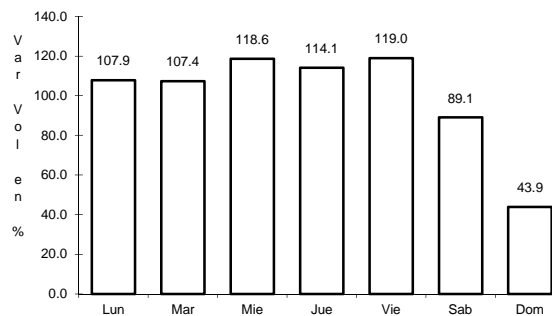
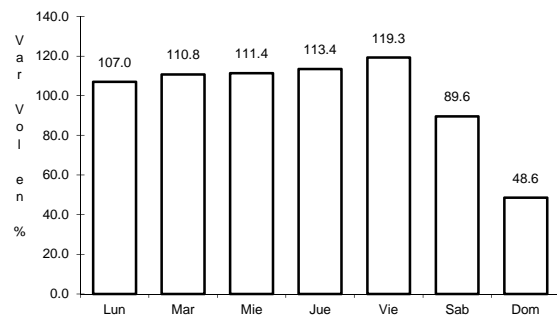
Km: 5.32                      Tipo: 1                      Sent: 1

Km: 5.32                      Tipo: 1                      Sent: 2

34 CARR: Libramiento de Saltillo J.L.P.

CLAVE: 05031

RUTA: COA



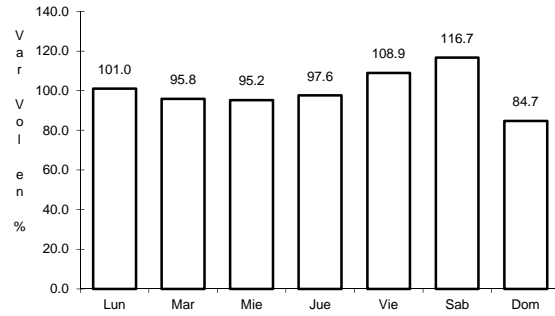
Km: 2.50                      Tipo: 3                      Sent: 1

Km: 2.50                      Tipo: 3                      Sent: 2

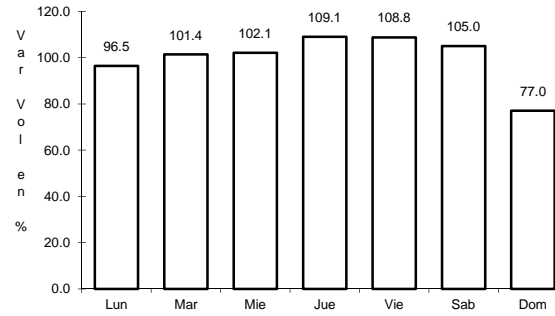
35 CARR: Libramiento de Torreón

CLAVE: 05516

RUTA: COA



Km: 0.00      Tipo: 3      Sent: 1

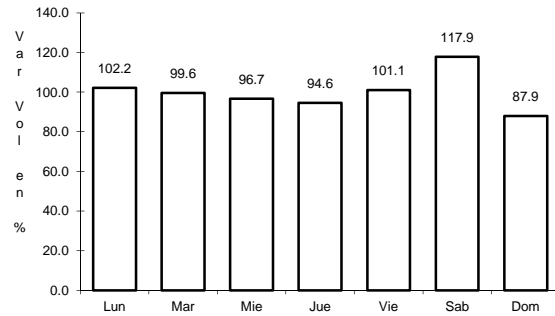


Km: 0.00      Tipo: 3      Sent: 2

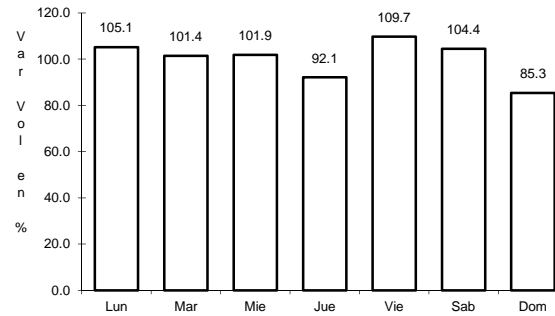
36 CARR: Matamoras - El Fresno

CLAVE: 05023

RUTA: COA-078



Km: 0.00      Tipo: 3      Sent: 0

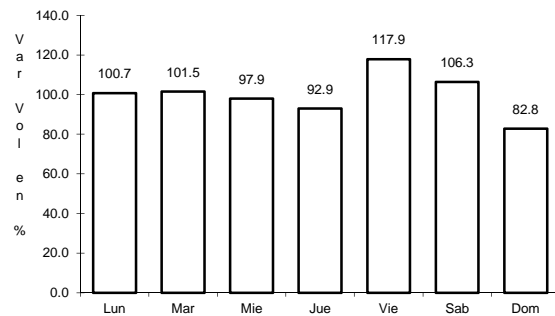


Km: 12.60      Tipo: 1      Sent: 0

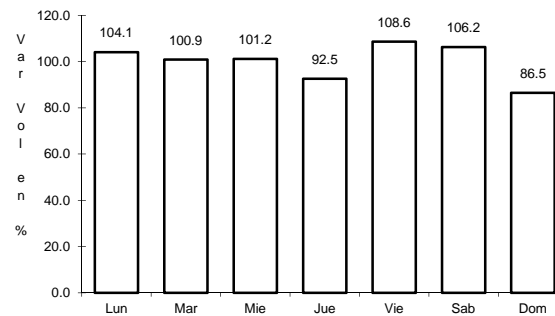
37 CARR: Matamoras - La Unión

CLAVE: 05023

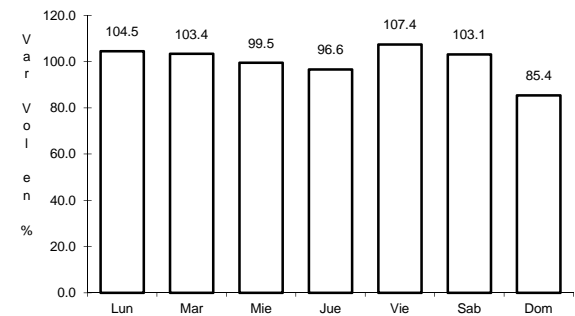
RUTA: COA-070



Km: 1.00      Tipo: 3      Sent: 1



Km: 1.00      Tipo: 3      Sent: 2

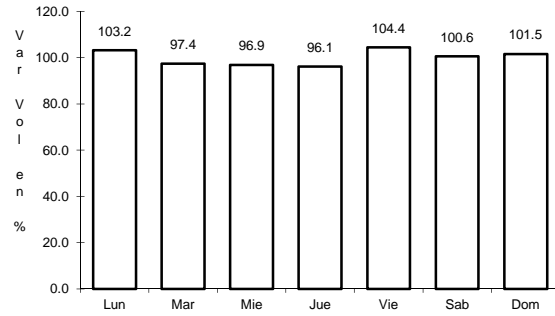


Km: 14.09      Tipo: 1      Sent: 0

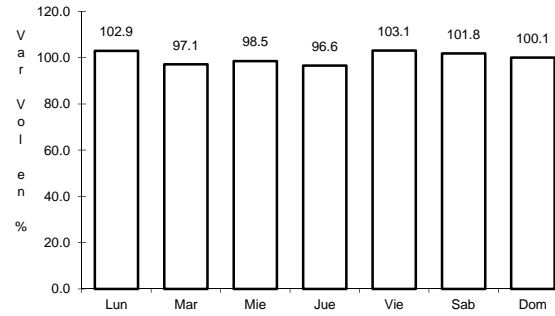
38 CARR: Monclova - Estación Candela

CLAVE: 00501

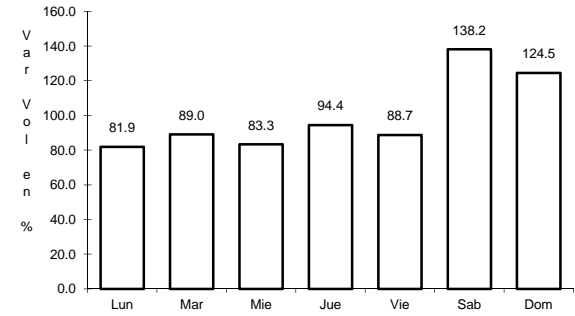
RUTA: COA-030-NL



Km: 5.10                      Tipo: 1                      Sent: 1



Km: 5.10                      Tipo: 1                      Sent: 2

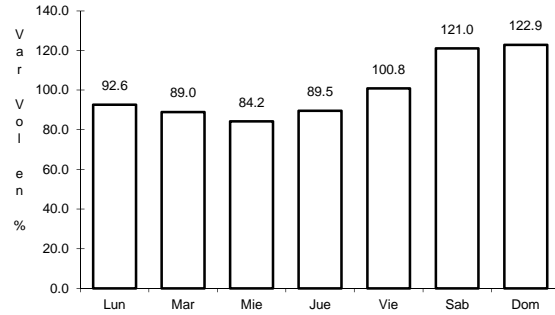


Km: 125.50                      Tipo: 1                      Sent: 0

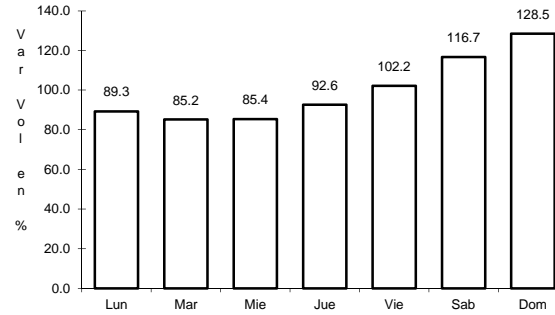
39 CARR: Morelos - Ent. Las Corrientes

CLAVE: 05500

RUTA: COA-010



Km: 0.00                      Tipo: 3                      Sent: 0

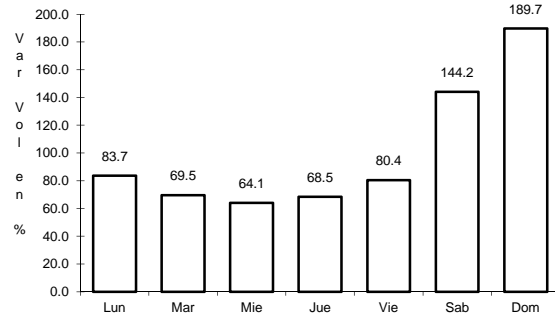


Km: 9.20                      Tipo: 1                      Sent: 0

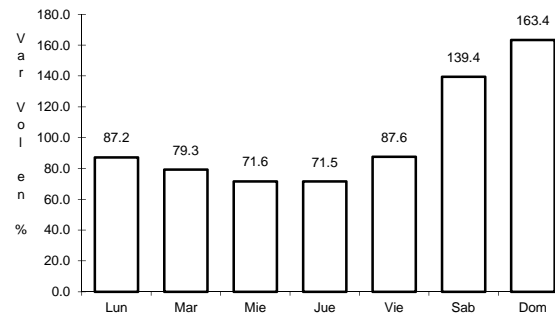
40 CARR: Puerto de Flores - El Hondable

CLAVE: 05512

RUTA: COA-112



Km: 0.00                      Tipo: 3                      Sent: 0

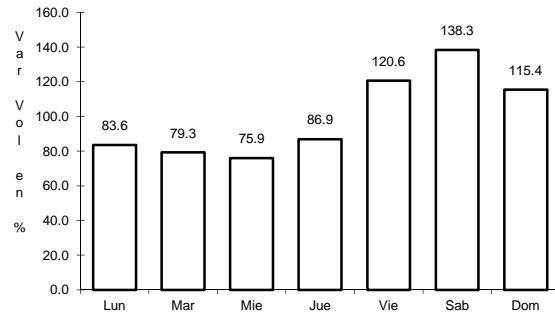


Km: 24.00                      Tipo: 1                      Sent: 0

41 CARR: Ramal a Hipólito

CLAVE: 05509

RUTA: COA-114



Km: 0.00

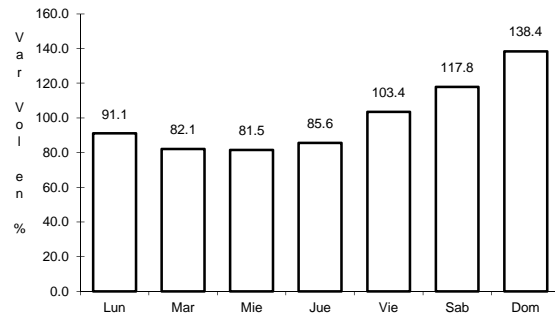
Tipo: 3

Sent: 0

42 CARR: Ramal a Lamadrid

CLAVE: 05522

RUTA: COA-042



Km: 0.00

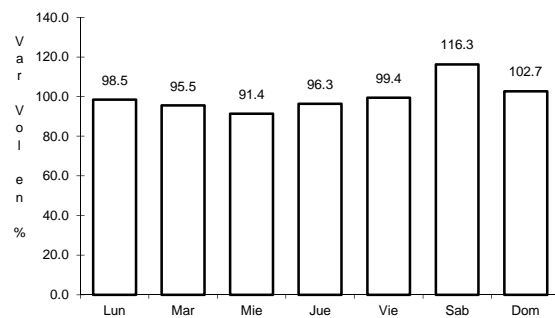
Tipo: 3

Sent: 0

43 CARR: Sabinas - Don Martín

CLAVE: 05501

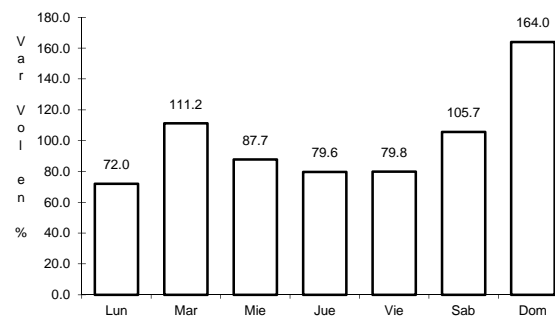
RUTA: COA-025



Km: 0.00

Tipo: 3

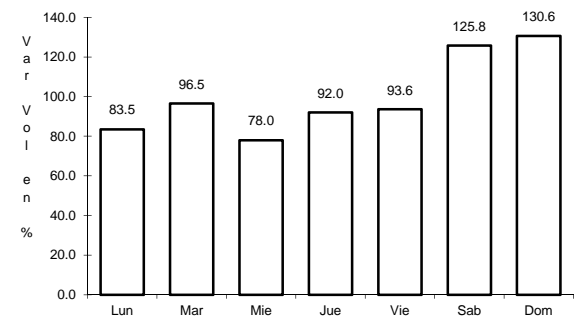
Sent: 0



Km: 53.00

Tipo: 3

Sent: 0



Km: 66.00

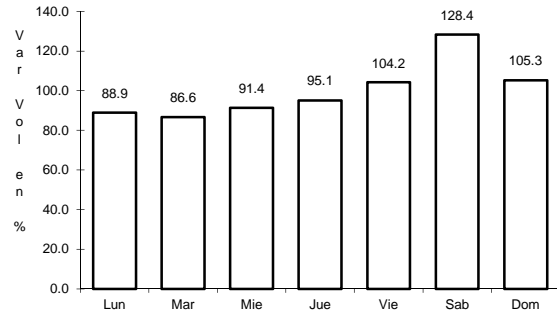
Tipo: 1

Sent: 0

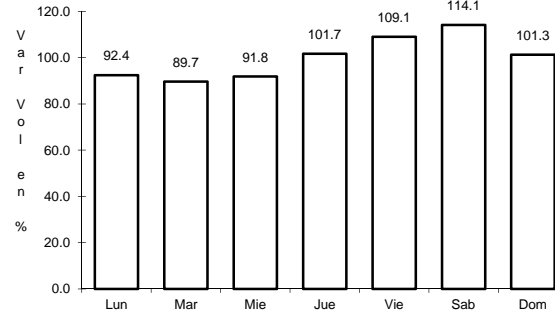
44 CARR: Saltillo - Arteaga

CLAVE: 05008

RUTA: COA-106



Km: 0.00                      Tipo: 3                      Sent: 1

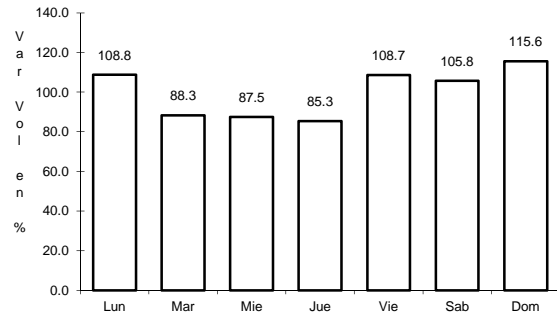


Km: 0.00                      Tipo: 3                      Sent: 2

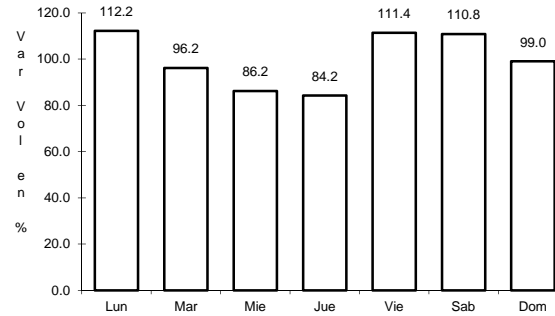
45 CARR: San Buenaventura - Estación Hermanas

CLAVE: 05004

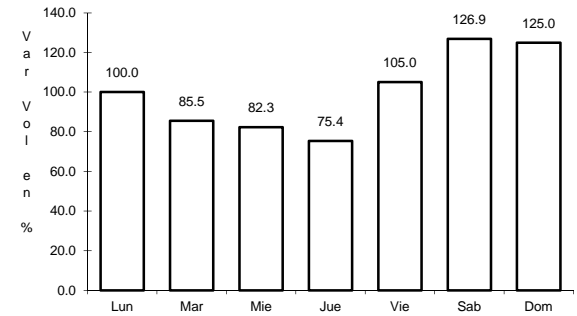
RUTA: COA-034



Km: 0.00                      Tipo: 3                      Sent: 0



Km: 15.71                      Tipo: 1                      Sent: 0

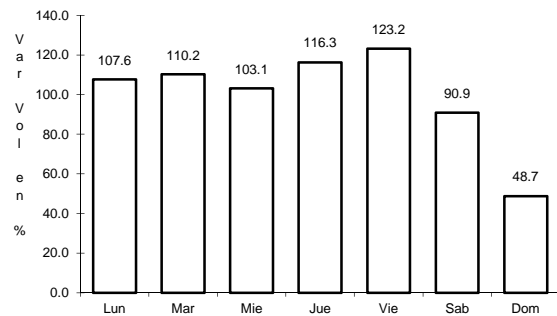


Km: 50.00                      Tipo: 1                      Sent: 0

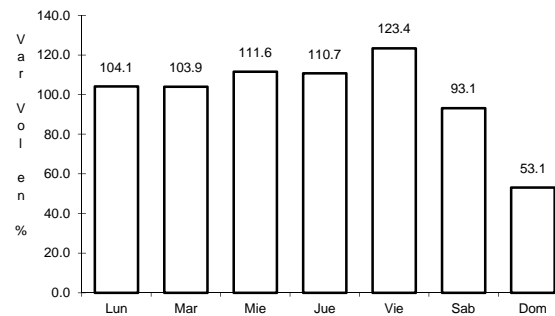
46 CARR: T. C. (Ent. Morelos - Saltillo) - Parras de La Fuente

CLAVE: 05510

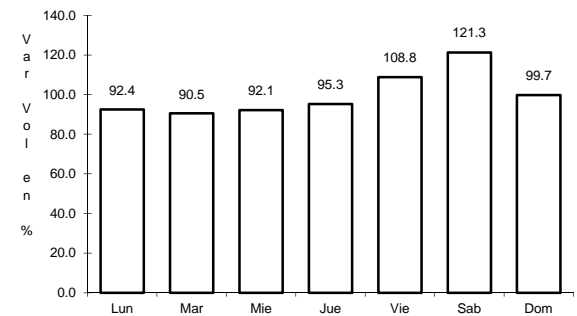
RUTA: COA-105



Km: 0.00                      Tipo: 3                      Sent: 1



Km: 0.00                      Tipo: 3                      Sent: 2

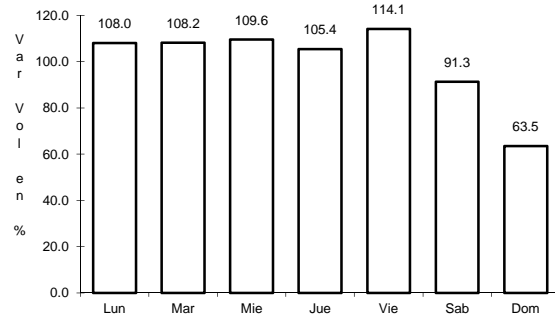


Km: 102.00                      Tipo: 1                      Sent: 0

47 CARR: T. C. (Saltillo - Monclova) - Ramos Arizpe

CLAVE: 05508

RUTA: COA

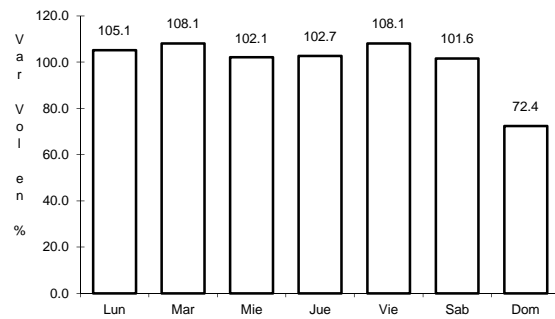


Km: 0.00      Tipo: 3      Sent: 0

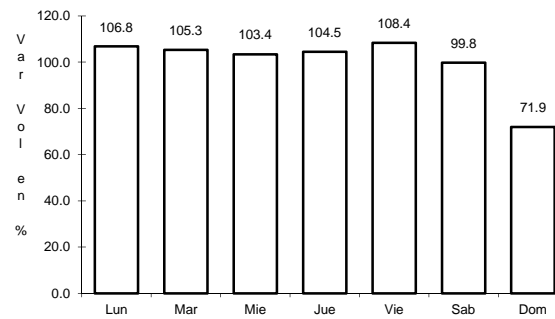
48 CARR: Torreón - Escuadrón 201

CLAVE: 05022

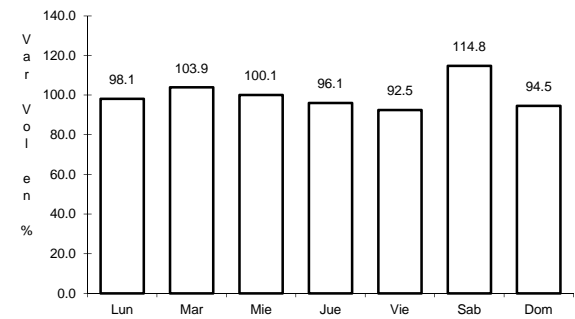
RUTA: COA-011



Km: 0.00      Tipo: 3      Sent: 1



Km: 0.00      Tipo: 3      Sent: 2

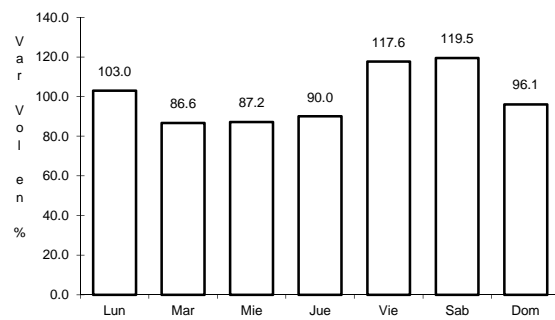


Km: 17.06      Tipo: 1      Sent: 0

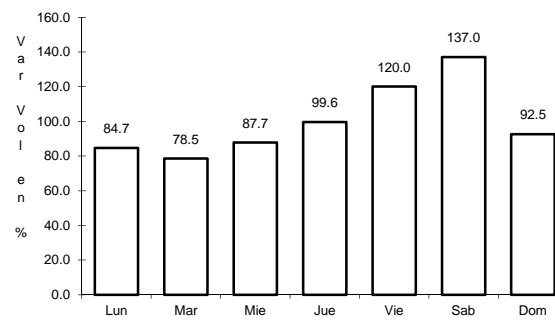
49 CARR: Nueva Rosita - Ent. Allende (Cuota)

CLAVE: 05500

RUTA: COA-D



Km: 0.00      Tipo: 3      Sent: 1



Km: 0.00      Tipo: 3      Sent: 2