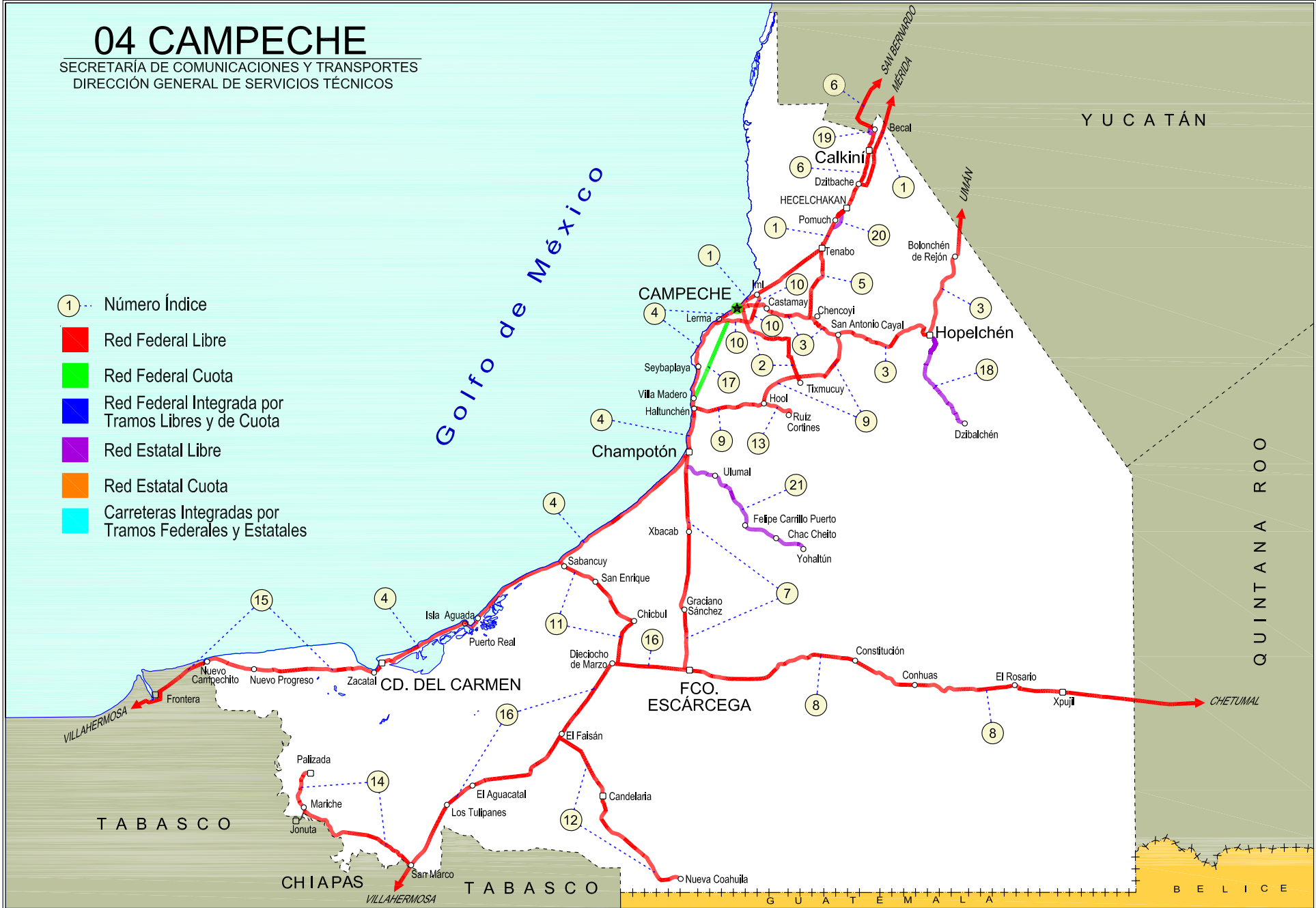
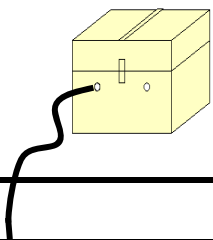


# 04 CAMPECHE

SECRETARÍA DE COMUNICACIONES Y TRANSPORTES  
DIRECCIÓN GENERAL DE SERVICIOS TÉCNICOS







CAMPECHE

NO. INDICE	CARRETERA	RUTA
---RED FEDERAL LIBRE---		
1	Campeche - Mérida	MEX-180
2	Campeche - Tixmucuy	MEX-180
3	Campeche - Umán	MEX-261
4	Cd. del Carmen - Campeche	MEX-180
5	Chencoyi - Tenabo	MEX-180
6	Dzitbalché - Ent. San Bernardo	MEX-180
7	Francisco Escárcega - Champotón	MEX-201
8	Francisco Escárcega - Chetumal	MEX-186
9	Haltunchén - San Antonio Cayal	MEX-180
10	Periférico Pablo García y Montilla (Libramiento de Campeche)	MEX-180
11	Presidente Díaz Ordaz - Sabancuy	MEX-186
12	Ramal a Nuevo Coahuila	MEX-186
13	Ramal a Ruíz Cortines	MEX-180
14	San Marco - Palizada	MEX-186
15	Villahermosa - Cd. del Carmen	MEX-180
16	Villahermosa - Francisco Escárcega	MEX-186
--RED FEDERAL DE CUOTA--		
17	Champotón - Campeche (Cuota)	MEX-180D
---RED ESTATAL LIBRE---		
18	Hopelchén - Dzibalchén	CAM-261
19	Libramiento de Becal	CAM
20	Libramiento de Pomuch	CAM
21	T. C. (Francisco Escárcega - Champotón) - Yohaltún	CAM

CAMPECHE

1 CARR : Campeche - Mérida

CLAVE: 00066

RUTA: MEX-180

AÑO: 2015

LUGAR	ESTACION				CLASIFICACION VEHICULAR EN PORCIENTO														COORDENADAS	
	KM	TE	SC	TDPA	M	A	B	C2	C3	T3S2	T3S3	T3S2R4	OTROS	A	B	C	K'	D	LATITUD	LONGITUD
Campeche	0.00	3	1	5643	5.2	86.8	0.4	6.2	0.5	0.5	0.3	0.0	0.1	92.0	0.4	7.6	0.091	0.523	19.874793	-90.492101
Campeche	0.00	3	2	5139	2.6	88.6	0.4	6.9	0.5	0.6	0.3	0.0	0.1	91.2	0.4	8.4	0.078	0.523	19.874774	-90.492076
T. Der. Periférico Pablo García y Montilla (Libramiento De Campeche)	7.00	3	1	5709	3.0	77.8	2.6	5.5	1.8	4.5	1.1	3.1	0.6	80.8	2.6	16.6	0.102	0.503	19.895812	-90.456514
T. Der. Periférico Pablo García y Montilla (Libramiento De Campeche)	7.00	3	2	5770	3.2	75.8	3.0	6.2	1.8	4.9	1.2	3.2	0.7	79.0	3.0	18.0	0.073	0.503	19.895832	-90.456572
Tenabo	40.00	1	1	5014	1.5	77.4	3.3	4.4	1.6	5.2	1.2	4.8	0.6	78.9	3.3	17.8	0.111	0.505	20.027456	-90.242917
Tenabo	40.00	1	2	4921	1.1	75.9	3.6	5.0	1.8	5.9	1.2	5.0	0.5	77.0	3.6	19.4	0.074	0.505	20.027457	-90.242920
T. Der. Libramiento de Pomuch (2º Acceso)	50.00	3	1	4905	1.5	79.5	2.2	3.9	2.1	4.9	0.9	4.5	0.5	81.0	2.2	16.8	0.106	0.501	20.149063	-90.163476
T. Der. Libramiento de Pomuch (2º Acceso)	50.00	3	2	4920	2.1	76.9	2.2	4.2	2.5	5.9	1.0	4.7	0.5	79.0	2.2	18.8	0.075	0.501	20.149063	-90.163476
Lim. Edos. Term. Camp. Ppia. Yuc.	96.96																			
Kopomá	124.29	3	1	4370	4.7	73.1	3.6	7.7	1.9	4.6	1.1	2.7	0.6	77.8	3.6	18.6	0.061	0.520	20.663190	-89.890127
Kopomá	124.29	3	2	4740	1.3	74.1	4.1	8.6	1.9	5.1	1.2	3.2	0.5	75.4	4.1	20.5	0.078	0.520	20.663200	-89.890139
T. Der. Libramiento de Chocholá (1º Acceso)	137.89	1	1	5024	2.0	72.4	3.9	8.3	2.9	4.5	1.7	3.7	0.6	74.4	3.9	21.7	0.070	0.506	20.731853	-89.840205
T. Der. Libramiento de Chocholá (1º Acceso)	137.89	1	2	5142	1.5	69.9	4.4	9.2	3.3	5.1	2.0	4.0	0.6	71.4	4.4	24.2	0.073	0.506	20.731848	-89.840231
T. Izq. Umán	146.99	3	1	4213	1.7	78.6	3.0	4.8	2.4	4.0	1.9	2.8	0.8	80.3	3.0	16.7	0.062	0.522	20.805274	-89.801690
T. Izq. Umán	146.99	3	2	4605	1.8	76.8	3.2	5.1	3.0	4.3	1.9	3.1	0.8	78.6	3.2	18.2	0.070	0.522	20.805259	-89.801672
X. C. Campeche - Umán	160.49	1	1	4821	1.8	70.8	3.0	9.4	3.3	5.4	1.3	4.5	0.5	72.6	3.0	24.4	0.087	0.502	20.836126	-89.755063
X. C. Campeche - Umán	160.49	1	2	4785	1.7	68.2	3.4	10.2	3.6	6.1	1.5	4.8	0.5	69.9	3.4	26.7	0.101	0.502	20.836115	-89.755066
T. C. Periférico de Mérida	171.21																			

2 CARR : Campeche - Tixmucuy

CLAVE: 04575

RUTA: MEX-180

AÑO: 2015

LUGAR	ESTACION				CLASIFICACION VEHICULAR EN PORCIENTO														COORDENADAS	
	KM	TE	SC	TDPA	M	A	B	C2	C3	T3S2	T3S3	T3S2R4	OTROS	A	B	C	K'	D	LATITUD	LONGITUD
Campeche	0.00	3	1	5580	11.4	77.7	0.8	7.1	1.2	1.0	0.4	0.3	0.1	89.1	0.8	10.1	0.104	0.514	19.810205	-90.505815
Campeche	0.00	3	2	5286	11.0	77.3	0.9	7.6	1.3	1.1	0.4	0.3	0.1	88.3	0.9	10.8	0.087	0.514	19.810203	-90.505820
T. Der. Periférico Pablo García y Montilla (Libramiento De Campeche)	4.00	3	1	2626	18.9	73.3	0.3	6.4	0.6	0.3	0.2	0.0	0.0	92.2	0.3	7.5	0.086	0.502	19.787832	-90.500306
T. Der. Periférico Pablo García y Montilla (Libramiento De Campeche)	4.00	3	2	2604	20.1	71.5	0.3	7.1	0.5	0.3	0.2	0.0	0.0	91.6	0.3	8.1	0.085	0.502	19.787832	-90.500306
X. C. Haltunchén - Cayal	39.00	1	0	1227	6.1	83.2	1.1	6.0	1.4	1.2	0.5	0.4	0.1	89.3	1.1	9.6	0.095	0.503	19.604791	-90.319516
Tixmucuy	42.00	1	0	460	14.1	73.1	1.4	10.0	0.2	0.8	0.4	0.0	0.0	87.2	1.4	11.4	0.102	0.506	19.585611	-90.317653

3 CARR : Campeche - Umán

CLAVE: 00164

RUTA: MEX-261

AÑO: 2015

LUGAR	ESTACION				CLASIFICACION VEHICULAR EN PORCIENTO														COORDENADAS	
	KM	TE	SC	TDPA	M	A	B	C2	C3	T3S2	T3S3	T3S2R4	OTROS	A	B	C	K'	D	LATITUD	LONGITUD
Campeche	0.00																			

CAMPECHE

3 CARR : Campeche - Umán

CLAVE: 00164

RUTA: MEX-261

AÑO : 2015

LUGAR	ESTACION				CLASIFICACION VEHICULAR EN PORCIENTO										COORDENADAS					
	KM	TE	SC	TDPA	M	A	B	C2	C3	T3S2	T3S3	T3S2R4	OTROS	A	B	C	K'	D	LATITUD	LONGITUD
T. Der. Periferico Pablo García y Montilla (Libramiento De Campeche)	7.00	1	0	4755	9.3	78.8	0.8	6.2	1.0	2.8	0.5	0.2	0.4	88.1	0.8	11.1	0.082	0.515	19.849833	-90.470638
T. Der. Periferico Pablo García y Montilla (Libramiento De Campeche)	7.00	3	0	2322	7.6	80.1	3.3	5.3	1.2	1.6	0.4	0.2	0.3	87.7	3.3	9.0	0.090	0.503	19.849205	-90.465492
T. Izq. Tenabo	30.88	1	0	1349	7.8	78.5	0.9	10.0	0.9	1.0	0.4	0.3	0.2	86.3	0.9	12.8	0.093	0.504	19.804836	-90.277324
T. Izq. Tenabo	30.88	3	0	1403	8.7	79.0	1.0	8.1	1.2	1.4	0.4	0.2	0.0	87.7	1.0	11.3	0.084	0.501	19.804496	-90.270823
T. Der. Edzna	44.51	1	0	1342	13.6	73.2	1.1	8.7	1.1	1.5	0.5	0.2	0.1	86.8	1.1	12.1	0.085	0.509	19.743711	-90.177979
T. Der. Edzna	44.51	3	0	1276	8.6	78.9	2.7	6.2	1.1	1.2	0.5	0.3	0.5	87.5	2.7	9.8	0.082	0.515	19.745822	-90.169893
Hopelchén	84.88	1	0	1725	7.3	76.3	1.2	11.8	0.8	2.0	0.6	0.0	0.0	83.6	1.2	15.2	0.093	0.503	19.752431	-89.854479
Bolonchén de Rejón	117.88	3	0	969	16.3	68.5	1.2	7.3	2.1	2.0	1.1	1.4	0.1	84.8	1.2	14.0	0.084	0.503	20.011201	-89.734199
Lim. Edos. Term. Camp. Ppia. Yuc.	126.88																			
T. Der. Sayil	140.88	1	0	539	5.7	76.2	1.1	8.4	2.8	2.4	1.7	1.7	0.0	81.9	1.1	17.0	0.087	0.510	20.207628	-89.672114
Santa Elena	158.88	1	0	899	30.1	52.4	1.5	8.7	2.2	2.0	0.9	2.1	0.1	82.5	1.5	16.0	0.110	0.521	20.318610	-89.643335
T. Izq. Ruinas de Uxmal	172.48	1	0	614	20.3	60.7	1.0	10.3	2.6	2.2	1.1	1.7	0.1	81.0	1.0	18.0	0.093	0.503	20.362468	-89.765561
Muna	187.43	1	0	1154	16.6	69.5	1.0	7.6	1.5	1.6	0.9	1.1	0.2	86.1	1.0	12.9	0.104	0.535	20.460987	-89.725098
Muna	187.43	3	0	3546	5.3	78.0	0.7	10.4	1.8	2.3	0.7	0.6	0.2	83.3	0.7	16.0	0.089	0.519	20.511060	-89.709290
Xtepén	225.38	1	0	4434	1.5	80.0	1.0	8.2	1.9	2.0	4.6	0.6	0.2	81.5	1.0	17.5	0.085	0.506	20.803619	-89.734231
Umán	230.83	1	0	3169	14.6	67.7	1.0	6.8	2.5	6.0	0.6	0.4	0.4	82.3	1.0	16.7	0.085	0.515	20.869380	-89.746466

4 CARR : Cd. del Carmen - Campeche

CLAVE: 04065

RUTA: MEX-180

AÑO : 2015

LUGAR	ESTACION				CLASIFICACION VEHICULAR EN PORCIENTO										COORDENADAS					
	KM	TE	SC	TDPA	M	A	B	C2	C3	T3S2	T3S3	T3S2R4	OTROS	A	B	C	K'	D	LATITUD	LONGITUD
Cd. del Carmen	0.00	3	1	12102	3.5	85.5	1.0	4.5	0.9	2.3	0.7	0.8	0.8	89.0	1.0	10.0	0.091	0.510	18.659111	-91.774389
Cd. del Carmen	0.00	3	2	12577	4.1	83.6	1.2	5.0	1.0	2.5	0.9	0.8	0.9	87.7	1.2	11.1	0.076	0.510	18.659111	-91.774389
Isla Aguada	37.75	3	0	4512	2.3	70.8	4.5	7.9	1.6	5.8	1.5	4.9	0.7	73.1	4.5	22.4	0.093	0.507	18.796778	-91.483778
T. Der. Sabancuy	78.05	3	0	3571	1.6	67.5	6.3	8.0	1.9	6.1	1.6	6.1	0.9	69.1	6.3	24.6	0.086	0.504	18.992194	-91.186917
Chamotón	141.80	1	0	5105	9.2	67.7	2.9	5.4	2.1	6.4	1.3	4.3	0.7	76.9	2.9	20.2	0.077	0.521	19.325340	-90.743480
Chamotón	141.80	3	1	5195	8.4	71.7	2.7	6.2	1.6	4.2	1.6	2.8	0.8	80.1	2.7	17.2	0.068	0.503	19.369054	-90.721507
Chamotón	141.80	3	2	5256	6.0	71.7	3.1	7.0	1.9	4.7	1.6	3.2	0.8	77.7	3.1	19.2	0.066	0.503	19.369067	-90.721526
T. Der. Libramiento de Seybaplaya (1º Acceso)	175.71	1	0	2946	7.6	80.9	0.5	7.1	1.8	1.5	0.4	0.1	0.1	88.5	0.5	11.0	0.086	0.507	19.620688	-90.685660
T. Der. Libramiento de Seybaplaya (1º Acceso)	175.71	3	1	592	14.6	75.5	0.8	8.5	0.2	0.3	0.1	0.0	0.0	90.1	0.8	9.1	0.101	0.504	19.625797	-90.685095
T. Der. Libramiento de Seybaplaya (1º Acceso)	175.71	3	2	601	13.7	75.2	0.9	9.5	0.2	0.3	0.2	0.0	0.0	88.9	0.9	10.2	0.090	0.504	19.625803	-90.685098
T. Der. Periferico Pablo García y Montilla (Libramiento De Campeche)	195.70	1	0	2357	6.2	78.6	0.9	8.1	1.9	2.7	0.8	0.3	0.5	84.8	0.9	14.3	0.086	0.500	19.786561	-90.625306
Lerma	199.51	1	1	1319	12.8	77.4	0.1	7.6	0.5	0.3	1.1	0.2	0.0	90.2	0.1	9.7	0.110	0.504	19.791927	-90.619017
Lerma	199.51	1	2	1297	12.4	77.1	0.1	8.4	0.5	0.2	1.1	0.2	0.0	89.5	0.1	10.4	0.096	0.504	19.791937	-90.619027
Campeche	203.18																			

CAMPECHE

5 CARR: Chencoyi - Tenabo

CLAVE: 04576

RUTA: MEX-180

AÑO: 2015

LUGAR	ESTACION				CLASIFICACION VEHICULAR EN PORCIENTO													COORDENADAS			
	KM	TE	SC	TDPA	M	A	B	C2	C3	T3S2	T3S3	T3S2R4	OTROS	A	B	C	K'	D	LATITUD	LONGITUD	
T. C. Campeche - Umán	0.00																				
Tenabo	28.00	1	0	895	9.5	75.8	0.5	7.4	2.3	2.6	0.8	1.0	0.1	85.3	0.5	14.2	0.082	0.506	20.027493	-90.226568	

6 CARR: Dzitbalché - Ent. San Bernardo

CLAVE: 00162

RUTA: MEX-180

AÑO: 2015

LUGAR	ESTACION				CLASIFICACION VEHICULAR EN PORCIENTO													COORDENADAS			
	KM	TE	SC	TDPA	M	A	B	C2	C3	T3S2	T3S3	T3S2R4	OTROS	A	B	C	K'	D	LATITUD	LONGITUD	
T. C. Campeche - Mérida	0.00																				
T. Izq. Libramiento de Becal (1º Acceso)	12.33	1	0	3021	16.1	75.1	1.1	4.9	0.3	2.1	0.1	0.2	0.1	91.2	1.1	7.7	0.079	0.507	20.418320	-90.034095	
T. Izq. Libramiento de Becal (2º Acceso)	15.41	3	0	1630	16.7	71.8	1.2	7.9	0.8	1.5	0.1	0.0	0.0	88.5	1.2	10.3	0.078	0.509	20.451455	-90.041333	
Lim. Edos. Term. Camp. Ppia. Yuc.	15.80																				
Halachó	21.08	1	0	1757	19.5	70.7	1.3	6.1	0.8	1.4	0.1	0.0	0.1	90.2	1.3	8.5	0.082	0.501	20.469444	-90.066639	
T. Izq. Libramiento de Maxcanú (1º Acceso)	35.60	1	0	2442	24.4	62.5	1.1	9.0	1.0	1.6	0.2	0.2	0.0	86.9	1.1	12.0	0.072	0.505	20.577269	-90.035333	
T. Der. Muna	40.36	3	0	3000	6.8	69.8	1.6	17.2	1.4	2.1	0.4	0.4	0.3	76.6	1.6	21.8	0.090	0.501	20.601644	-89.975549	
Ent. San Bernardo	41.53																				

7 CARR: Francisco Escárcega - Champotón

CLAVE: 04103

RUTA: MEX-201

AÑO: 2015

LUGAR	ESTACION				CLASIFICACION VEHICULAR EN PORCIENTO													COORDENADAS		
	KM	TE	SC	TDPA	M	A	B	C2	C3	T3S2	T3S3	T3S2R4	OTROS	A	B	C	K'	D	LATITUD	LONGITUD
Francisco Escárcega	0.00	3	0	3787	9.9	58.1	2.2	11.1	2.3	8.9	1.8	4.9	0.8	68.0	2.2	29.8	0.085	0.501	18.622107	-90.741988
T. Izq. Ley Federal de La Reforma Agraria	51.40	1	0	3200	3.3	59.1	3.4	10.5	2.5	11.3	2.4	6.7	0.8	62.4	3.4	34.2	0.078	0.501	19.064284	-90.725162
T. Der. Ulumal y Patzajol	77.00	1	0	3929	8.0	64.0	2.1	9.7	2.0	7.8	1.7	4.1	0.6	72.0	2.1	25.9	0.080	0.505	19.294053	-90.732244
Champotón	81.40	1	0	5252	8.2	64.9	2.2	8.9	1.7	7.7	1.5	4.2	0.7	73.1	2.2	24.7	0.077	0.504	19.313003	-90.729665

8 CARR: Francisco Escárcega - Chetumal

CLAVE: 00093

RUTA: MEX-186

AÑO: 2015

LUGAR	ESTACION				CLASIFICACION VEHICULAR EN PORCIENTO													COORDENADAS		
	KM	TE	SC	TDPA	M	A	B	C2	C3	T3S2	T3S3	T3S2R4	OTROS	A	B	C	K'	D	LATITUD	LONGITUD
Francisco Escárcega	0.00	3	0	3231	10.8	64.9	2.9	6.7	1.4	6.7	1.4	4.5	0.7	75.7	2.9	21.4	0.071	0.505	18.604117	-90.718253
Adolfo López Mateos	41.50	1	0	2267	3.4	63.4	5.0	9.9	2.0	6.9	2.0	6.9	0.5	66.8	5.0	28.2	0.085	0.526	18.639413	-90.305387
T. Der. Silvituc	55.70	1	0	2277	5.7	63.4	3.1	7.5	2.7	8.4	2.2	6.0	1.0	69.1	3.1	27.8	0.064	0.506	18.651338	-90.275566
T. Der. Silvituc	55.70	3	0	2050	4.4	59.3	7.1	8.2	1.7	9.0	1.9	7.6	0.8	63.7	7.1	29.2	0.071	0.504	18.649372	-90.261370
Conhuás	100.00	1	0	1833	4.5	56.9	7.8	8.7	1.8	9.3	2.2	8.0	0.8	61.4	7.8	30.8	0.070	0.505	18.539999	-89.910639
Xpujil	155.73	1	0	2751	6.9	63.7	2.6	8.6	2.7	6.7	2.1	5.7	1.0	70.6	2.6	26.8	0.069	0.502	18.509555	-89.412742

CAMPECHE

8 CARR : Francisco Escárcega - Chetumal

CLAVE: 00093

RUTA: MEX-186

AÑO : 2015

LUGAR	ESTACION				CLASIFICACION VEHICULAR EN PORCIENTO														COORDENADAS		
	KM	TE	SC	TDPA	M	A	B	C2	C3	T3S2	T3S3	T3S2R4	OTROS	A	B	C	K'	D	LATITUD	LONGITUD	
Lim. Edos. Term. Camp. Ppia. Qroo.	179.90																				
Nicolás Bravo	206.01	1	0	2558	5.9	68.0	4.9	7.1	0.8	6.3	1.8	4.3	0.9	73.9	4.9	21.2	0.105	0.512	18.458619	-88.937750	
Nicolás Bravo	206.01	3	0	2973	4.1	71.0	4.6	6.6	0.9	6.6	1.2	4.4	0.6	75.1	4.6	20.3	0.073	0.540	18.459120	-88.920932	
T. Izq. Morocoy	214.90	1	0	2636	2.1	67.3	5.3	7.6	1.6	7.5	1.5	6.3	0.8	69.4	5.3	25.3	0.079	0.510	18.478845	-88.818048	
T. Izq. Morocoy	214.90	3	0	2531	2.1	68.2	5.3	8.0	1.4	7.4	1.3	5.7	0.6	70.3	5.3	24.4	0.079	0.505	18.479152	-88.807895	
T. Der. Unión	247.50	1	0	4955	4.9	73.6	2.5	7.6	1.0	5.8	1.1	3.0	0.5	78.5	2.5	19.0	0.066	0.512	18.505095	-88.527271	
T. Der. Unión	247.50	3	0	6321	4.1	76.9	1.9	7.8	1.0	4.6	0.8	2.3	0.6	81.0	1.9	17.1	0.076	0.509	18.507475	-88.513350	
T. Izq. Fpe. Carrillo Puerto	255.15	1	0	6768	3.2	77.9	2.2	7.2	1.4	4.6	0.8	2.3	0.4	81.1	2.2	16.7	0.079	0.509	18.525888	-88.469918	
T. Der. Subteniente López	268.57	1	1	7733	3.0	86.0	1.2	6.6	0.8	1.0	0.5	0.5	0.4	89.0	1.2	9.8	0.110	0.508	18.516888	-88.378375	
T. Der. Subteniente López	268.57	1	2	7500	2.7	85.2	1.3	7.4	0.8	1.1	0.6	0.5	0.4	87.9	1.3	10.8	0.097	0.508	18.516866	-88.378361	
T. Izq. Av. Insurgentes	270.00	1	1	11665	3.5	89.4	0.7	4.1	0.5	0.8	0.6	0.2	0.2	92.9	0.7	6.4	0.096	0.502	18.513343	-88.363240	
T. Izq. Av. Insurgentes	270.00	1	2	11583	3.3	88.6	0.8	4.7	0.5	1.0	0.7	0.2	0.2	91.9	0.8	7.3	0.088	0.502	18.513340	-88.363219	
T. Izq. Av. Insurgentes	270.00	3	1	5135	3.3	89.5	0.2	5.6	0.3	0.6	0.2	0.2	0.1	92.8	0.2	7.0	0.076	0.510	18.510708	-88.354014	
T. Izq. Av. Insurgentes	270.00	3	2	4936	4.2	88.2	0.2	5.8	0.3	0.6	0.3	0.3	0.1	92.4	0.2	7.4	0.085	0.510	18.510678	-88.354076	
Chetumal	277.36	1	1	7296	4.2	89.7	0.3	4.5	0.2	0.5	0.4	0.1	0.1	93.9	0.3	5.8	0.081	0.503	18.501784	-88.320859	
Chetumal	277.36	1	2	7387	5.0	88.8	0.3	4.6	0.2	0.5	0.4	0.1	0.1	93.8	0.3	5.9	0.079	0.503	18.501756	-88.320867	

9 CARR : Haltunchén - San Antonio Cayal

CLAVE: 04009

RUTA: MEX-180

AÑO : 2015

LUGAR	ESTACION				CLASIFICACION VEHICULAR EN PORCIENTO														COORDENADAS	
	KM	TE	SC	TDPA	M	A	B	C2	C3	T3S2	T3S3	T3S2R4	OTROS	A	B	C	K'	D	LATITUD	LONGITUD
T. C. Cd. del Carmen - Campeche	0.00	3	0	1133	12.8	76.8	0.9	5.8	1.4	1.7	0.3	0.3	0.0	89.6	0.9	9.5	0.086	0.504	19.498940	-90.699360
Sihochac	14.00	3	0	971	23.7	62.2	1.4	8.8	1.7	1.3	0.5	0.4	0.0	85.9	1.4	12.7	0.101	0.503	19.502451	-90.570806
X. C. China - Tixmucuy	47.10	1	0	597	6.7	76.2	1.3	9.0	3.1	2.0	0.8	0.9	0.0	82.9	1.3	15.8	0.094	0.514	19.603424	-90.321166
Edzna	59.00	1	0	1243	6.5	79.1	1.0	8.6	1.5	2.0	0.7	0.3	0.3	85.6	1.0	13.4	0.081	0.508	19.604156	-90.227488
T. Der. Pichucalco	60.00	3	0	549	14.9	66.1	1.4	11.2	2.7	2.0	0.8	0.8	0.1	81.0	1.4	17.6	0.109	0.509	19.608886	-90.220450
San Antonio Cayal	79.00	1	0	510	25.0	60.5	1.0	7.1	1.9	2.5	1.0	0.7	0.3	85.5	1.0	13.5	0.112	0.521	19.740741	-90.173827

10 CARR : Periférico Pablo García y Montilla (Libramiento de Campeche)

CLAVE: 04573

RUTA: MEX-180

AÑO : 2015

LUGAR	ESTACION				CLASIFICACION VEHICULAR EN PORCIENTO														COORDENADAS	
	KM	TE	SC	TDPA	M	A	B	C2	C3	T3S2	T3S3	T3S2R4	OTROS	A	B	C	K'	D	LATITUD	LONGITUD
Ent. Lerma	0.00	3	1	1649	8.3	76.8	0.8	8.3	1.8	1.9	1.0	0.7	0.4	85.1	0.8	14.1	0.080	0.545	19.797811	-90.587203
Ent. Lerma	0.00	3	2	2112	8.1	76.7	0.7	8.8	1.9	2.0	1.0	0.5	0.3	84.8	0.7	14.5	0.092	0.545	19.797811	-90.587203
X. C. Campeche - Umán	21.00	1	1	4023	3.0	73.0	2.8	7.9	1.9	4.9	1.8	3.8	0.9	76.0	2.8	21.2	0.090	0.548	19.844984	-90.470488



CAMPECHE

10 CARR: Periférico Pablo García y Montilla (Libramiento de Campeche)

CLAVE: 04573

RUTA: MEX-180

AÑO: 2015

LUGAR	ESTACION				CLASIFICACION VEHICULAR EN PORCIENTO														COORDENADAS	
	KM	TE	SC	TDPA	M	A	B	C2	C3	T3S2	T3S3	T3S2R4	OTROS	A	B	C	K'	D	LATITUD	LONGITUD
X. C. Campeche - Umán	21.00	1	2	4426	2.0	71.5	3.3	8.8	2.3	5.2	2.0	4.0	0.9	73.5	3.3	23.2	0.073	0.548	19.845010	-90.470461
T. C. Campeche - Mérida	26.00	1	1	3747	2.9	68.0	4.1	7.8	2.3	6.9	1.5	5.7	0.8	70.9	4.1	25.0	0.081	0.522	19.882229	-90.462610
T. C. Campeche - Mérida	26.00	1	2	3717	2.8	65.2	4.4	8.9	2.5	7.3	1.7	6.4	0.8	68.0	4.4	27.6	0.065	0.522	19.882221	-90.462625

11 CARR: Presidente Díaz Ordaz - Sabancuy

CLAVE: 04570

RUTA: MEX-186

AÑO: 2015

LUGAR	ESTACION				CLASIFICACION VEHICULAR EN PORCIENTO														COORDENADAS	
	KM	TE	SC	TDPA	M	A	B	C2	C3	T3S2	T3S3	T3S2R4	OTROS	A	B	C	K'	D	LATITUD	LONGITUD
T. C. Villahermosa - Francisco Escárcega	0.00	3	0	1394	9.3	75.5	1.5	8.2	1.7	1.7	0.5	1.4	0.2	84.8	1.5	13.7	0.078	0.505	18.633250	-90.982639
Chicbul	18.00	1	0	1550	13.2	71.4	1.6	8.2	1.4	2.1	0.6	1.3	0.2	84.6	1.6	13.8	0.075	0.504	18.771861	-90.929556
T. C. Cd. del Carmen - Campeche	57.00	1	0	1743	4.9	75.0	3.4	10.2	1.7	2.5	1.0	1.2	0.1	79.9	3.4	16.7	0.090	0.502	18.988028	-91.189167

12 CARR: Ramal a Nuevo Coahuila

CLAVE: 04015

RUTA: MEX-186

AÑO: 2015

LUGAR	ESTACION				CLASIFICACION VEHICULAR EN PORCIENTO														COORDENADAS	
	KM	TE	SC	TDPA	M	A	B	C2	C3	T3S2	T3S3	T3S2R4	OTROS	A	B	C	K'	D	LATITUD	LONGITUD
T. C. Villahermosa - Francisco Escárcega	0.00	3	0	971	5.5	76.0	1.9	9.6	1.8	2.4	1.6	1.1	0.1	81.5	1.9	16.6	0.067	0.512	18.376472	-91.194333
Candelaria	28.00	3	0	2650	9.4	80.3	0.3	5.5	0.6	2.6	0.7	0.1	0.5	89.7	0.3	10.0	0.066	0.504	18.176680	-91.053218
Reforma	44.50	3	0	1124	11.6	78.5	0.6	6.3	0.8	1.3	0.4	0.3	0.2	90.1	0.6	9.3	0.088	0.502	18.072022	-91.023742
T. Izq. Pedro Baranda	54.80	1	0	749	10.3	79.2	0.4	8.0	0.7	0.6	0.5	0.3	0.0	89.5	0.4	10.1	0.087	0.511	17.970714	-90.908268
T. Izq. Pedro Baranda	54.80	3	0	598	12.0	78.4	0.5	6.1	0.9	1.3	0.4	0.4	0.0	90.4	0.5	9.1	0.100	0.501	17.966896	-90.904195
Nuevo Coahuila	70.00	1	0	533	15.3	72.8	0.8	8.7	0.8	1.1	0.4	0.1	0.0	88.1	0.8	11.1	0.094	0.515	17.894252	-90.792246

13 CARR: Ramal a Ruíz Cortines

CLAVE: 04101

RUTA: MEX-180

AÑO: 2015

LUGAR	ESTACION				CLASIFICACION VEHICULAR EN PORCIENTO														COORDENADAS	
	KM	TE	SC	TDPA	M	A	B	C2	C3	T3S2	T3S3	T3S2R4	OTROS	A	B	C	K'	D	LATITUD	LONGITUD
Hool	0.00																			
T. Der. Hool	1.00	3	0	254	29.0	58.2	1.3	8.9	1.6	0.9	0.1	0.0	0.0	87.2	1.3	11.5	0.154	0.504	19.510476	-90.444022
Ruíz Cortines	12.00																			

CAMPECHE

14 CARR: San Marco - Palizada

CLAVE: 00490

RUTA: MEX-186

AÑO: 2015

LUGAR	ESTACION				CLASIFICACION VEHICULAR EN PORCIENTO													COORDENADAS		
	KM	TE	SC	TDPA	M	A	B	C2	C3	T3S2	T3S3	T3S2R4	OTROS	A	B	C	K'	D	LATITUD	LONGITUD
T. C. Villahermosa - Francisco Escárcega	0.00	3	0	795	6.3	79.9	0.6	8.9	2.9	0.8	0.5	0.1	0.0	86.2	0.6	13.2	0.091	0.503	17.943278	-91.736306
Lim. Edos. Term. Tab. Ppia. Camp.	1.50																			
T. Izq. Jonuta	46.20	1	0	778	5.7	83.8	0.5	6.4	2.7	0.8	0.1	0.0	0.0	89.5	0.5	10.0	0.085	0.505	18.125917	-92.106250
T. Izq. Jonuta	46.20	3	0	881	7.7	81.0	0.4	8.8	1.4	0.7	0.0	0.0	0.0	88.7	0.4	10.9	0.082	0.500	18.131417	-92.113528
Palizada	68.00																			

15 CARR: Villahermosa - Cd. del Carmen

CLAVE: 00064

RUTA: MEX-180

AÑO: 2015

LUGAR	ESTACION				CLASIFICACION VEHICULAR EN PORCIENTO													COORDENADAS		
	KM	TE	SC	TDPA	M	A	B	C2	C3	T3S2	T3S3	T3S2R4	OTROS	A	B	C	K'	D	LATITUD	LONGITUD
Villahermosa	0.00																			
T. Izq. Cd. Industrial	4.30	3	1	29382	2.2	88.3	1.1	4.8	0.8	1.3	0.6	0.7	0.2	90.5	1.1	8.4	0.086	0.512	18.037889	-92.901278
T. Izq. Cd. Industrial	4.30	3	2	30832	2.3	87.3	1.1	5.3	0.9	1.5	0.7	0.7	0.2	89.6	1.1	9.3	0.072	0.512	18.037889	-92.901278
Macultepec	18.60	1	1	10853	1.6	86.7	1.5	3.6	1.5	2.7	0.8	1.1	0.5	88.3	1.5	10.2	0.073	0.501	18.142889	-92.864278
Macultepec	18.60	1	2	10817	1.3	85.7	1.6	4.1	1.7	2.8	1.0	1.3	0.5	87.0	1.6	11.4	0.072	0.501	18.142889	-92.864278
Macultepec	18.60	3	1	6405	1.2	81.5	3.2	6.3	2.6	2.6	1.0	1.3	0.3	82.7	3.2	14.1	0.080	0.500	18.168667	-92.858139
Macultepec	18.60	3	2	6411	1.0	79.4	3.3	7.1	3.2	3.1	1.0	1.5	0.4	80.4	3.3	16.3	0.087	0.500	18.168667	-92.858139
El Espino	33.20	1	0	8897	0.6	76.3	4.1	6.4	2.3	4.9	1.5	3.1	0.8	76.9	4.1	19.0	0.074	0.500	18.240139	-92.830250
El Espino	33.20	3	0	8743	0.6	74.8	4.3	7.7	2.3	5.2	1.5	2.8	0.8	75.4	4.3	20.3	0.073	0.507	18.254694	-92.832000
T. Izq. El Bellote	49.67	3	0	8782	1.7	72.5	4.7	8.6	1.4	5.6	1.5	3.2	0.8	74.2	4.7	21.1	0.071	0.504	18.397583	-92.798611
Frontera	74.59	1	0	9901	3.2	74.6	3.8	6.9	1.4	5.4	1.5	2.3	0.9	77.8	3.8	18.4	0.070	0.503	18.513417	-92.661056
Frontera	74.59	3	0	6523	4.2	71.9	4.8	5.9	1.6	5.6	1.5	3.8	0.7	76.1	4.8	19.1	0.076	0.522	18.542361	-92.631694
T. Izq. Escolleras	78.00	3	0	6253	3.3	70.2	4.6	10.3	1.7	5.5	1.4	2.3	0.7	73.5	4.6	21.9	0.079	0.501	18.561361	-92.602917
Puente San Pedro	96.50	3	0	5008	1.1	68.0	7.3	8.1	2.0	6.8	1.9	3.9	0.9	69.1	7.3	23.6	0.084	0.507	18.641667	-92.462278
Lim. Edos. Term. Tab. Ppia. Camp.	99.75																			
Nuevo Campechito	100.00	3	0	5248	1.0	64.7	5.1	13.1	2.1	6.7	1.9	4.4	1.0	65.7	5.1	29.2	0.082	0.508	18.642778	-92.455833
Nuevo Progreso	116.57	1	0	5327	2.4	64.4	7.2	11.1	1.6	6.1	1.8	4.7	0.7	66.8	7.2	26.0	0.084	0.506	18.626528	-92.326389
Puente Zacatal	162.41	2	0	5471	0.9	71.7	7.4	5.0	3.3	5.3	1.2	4.8	0.4	72.6	7.4	20.0	0.077	0.500	18.641877	-92.460302
Zacatal	163.17	1	0	6306	1.6	66.9	6.2	10.5	1.8	6.4	1.7	4.1	0.8	68.5	6.2	25.3	0.088	0.509	18.614917	-91.868944
Cd. del Carmen	167.50																			

CAMPECHE

16 CARR : Villahermosa - Francisco Escárcega

CLAVE: 00092

RUTA: MEX-186

AÑO: 2015

LUGAR	ESTACION				CLASIFICACION VEHICULAR EN PORCIENTO														COORDENADAS	
	KM	TE	SC	TDPA	M	A	B	C2	C3	T3S2	T3S3	T3S2R4	OTROS	A	B	C	K'	D	LATITUD	LONGITUD
Villahermosa	0.00	3	1	16685	1.9	83.3	1.1	7.4	1.4	2.9	0.8	1.1	0.1	85.2	1.1	13.7	0.074	0.501	18.000972	-92.890694
Villahermosa	0.00	3	2	16592	1.8	81.0	1.2	9.0	1.5	3.3	0.9	1.2	0.1	82.8	1.2	16.0	0.075	0.501	18.001194	-92.890639
T. Izq. Aeropuerto (Baja)	12.00	1	1	1417	17.4	70.1	1.0	6.3	1.4	2.3	0.6	0.6	0.3	87.5	1.0	11.5	0.084	0.527	17.983861	-92.828056
T. Izq. Aeropuerto (Alta)	12.00	1	1	15117	1.3	83.0	1.3	6.8	1.3	3.3	1.2	1.2	0.6	84.3	1.3	14.4	0.069	0.516	17.983833	-92.827806
T. Izq. Aeropuerto (Alta)	12.00	1	2	14191	1.4	81.9	1.5	7.1	1.4	3.5	1.3	1.3	0.6	83.3	1.5	15.2	0.073	0.516	17.983556	-92.827333
T. Izq. Aeropuerto (Baja)	12.00	1	2	1270	12.9	72.5	1.3	7.6	1.5	2.6	0.6	0.7	0.3	85.4	1.3	13.3	0.078	0.527	17.983722	-92.827250
Puente Grijalva	17.60	2	1	8102	1.2	79.3	4.3	3.7	2.6	4.8	1.3	2.5	0.3	80.5	4.3	15.2	0.079	0.500	17.947556	-92.785240
Puente Grijalva	17.60	2	2	8102	1.2	79.3	4.3	3.7	2.6	4.8	1.3	2.5	0.3	80.5	4.3	15.2	0.079	0.500	17.947556	-92.785240
X. C. Cacaos - La Granja	32.46	1	1	8933	1.3	77.9	1.3	7.3	3.0	5.0	1.6	2.0	0.6	79.2	1.3	19.5	0.074	0.502	17.828750	-92.717361
X. C. Cacaos - La Granja	32.46	1	2	8846	1.4	75.2	1.5	8.0	3.4	5.7	1.7	2.3	0.8	76.6	1.5	21.9	0.072	0.502	17.829278	-92.717222
X. C. Cacaos - La Granja	32.46	3	1	6412	0.8	75.7	2.1	8.0	2.6	5.7	1.8	2.8	0.5	76.5	2.1	21.4	0.089	0.501	17.820917	-92.712833
X. C. Cacaos - La Granja	32.46	3	2	6447	0.8	73.8	2.3	8.3	2.8	6.4	2.0	2.9	0.7	74.6	2.3	23.1	0.068	0.501	17.820972	-92.712722
X. C. Jalapa - Jonuta	40.00	3	1	7246	0.8	75.4	2.7	8.2	2.2	5.7	1.5	2.9	0.6	76.2	2.7	21.1	0.071	0.503	17.773861	-92.672361
X. C. Jalapa - Jonuta	40.00	3	2	7151	0.8	73.2	3.0	8.8	2.5	6.2	1.7	3.1	0.7	74.0	3.0	23.0	0.079	0.503	17.773972	-92.672278
T. Izq. Macuspana	46.20	1	1	7425	0.5	75.6	2.0	8.2	2.4	5.9	1.7	2.9	0.8	76.1	2.0	21.9	0.072	0.504	17.745611	-92.636083
T. Izq. Macuspana	46.20	1	2	7542	1.4	73.3	2.2	8.5	2.5	6.3	1.8	3.2	0.8	74.7	2.2	23.1	0.073	0.504	17.745722	-92.636000
T. Izq. Macuspana	46.20	3	1	6339	1.8	71.8	2.7	8.8	2.4	6.6	1.9	3.2	0.8	73.6	2.7	23.7	0.072	0.503	17.735917	-92.623667
T. Izq. Macuspana	46.20	3	2	6267	3.1	67.9	3.0	9.5	2.5	7.4	2.1	3.6	0.9	71.0	3.0	26.0	0.083	0.503	17.736056	-92.623528
X. C. Estación Macuspana - Vernet	54.30	1	0	8829	2.0	67.8	3.7	9.3	3.6	7.5	2.3	3.1	0.7	69.8	3.7	26.5	0.073	0.503	17.711194	-92.578389
T. Der. Chivalito (Est. Pino Suárez)	70.00	1	0	8409	3.9	65.4	3.9	9.1	2.4	8.1	2.2	4.4	0.6	69.3	3.9	26.8	0.076	0.505	17.670833	-92.447667
T. Der. Chivalito (Est. Pino Suárez)	70.00	3	1	3599	1.7	74.2	2.7	7.1	2.8	6.1	2.0	2.5	0.9	75.9	2.7	21.4	0.092	0.502	17.666083	-92.432194
T. Der. Chivalito (Est. Pino Suárez)	70.00	3	2	3565	2.6	71.3	2.9	8.1	3.0	6.4	2.1	2.7	0.9	73.9	2.9	23.2	0.107	0.502	17.666194	-92.432222
T. Der. Estación Zopo	71.00	1	0	6964	1.9	69.2	2.4	8.5	2.6	7.9	2.3	4.2	1.0	71.1	2.4	26.5	0.081	0.502	17.670139	-92.418472
T. Der. Estación Zopo	71.00	3	1	3455	1.5	72.9	2.5	8.4	2.4	6.0	2.0	3.5	0.8	74.4	2.5	23.1	0.083	0.506	17.680028	-92.403250
T. Der. Estación Zopo	71.00	3	2	3378	2.0	69.7	2.9	8.8	2.5	6.7	2.3	4.2	0.9	71.7	2.9	25.4	0.096	0.506	17.680111	-92.403306
Lim. Edos. Term. Tab. Ppia. Chis.	76.90																			
T. Izq. Bonanza	88.00	1	0	6989	3.7	61.1	4.2	12.3	2.9	8.6	2.3	4.0	0.9	64.8	4.2	31.0	0.062	0.500	17.697917	-92.270250
T. Izq. Jonuta	101.00	1	0	6323	1.4	64.5	4.0	9.9	2.5	10.3	2.3	4.1	1.0	65.9	4.0	30.1	0.080	0.502	17.697944	-92.139417
T. Izq. Jonuta	101.00	3	0	6186	1.8	66.9	4.0	9.0	2.8	9.4	1.8	3.4	0.9	68.7	4.0	27.3	0.072	0.506	17.697417	-92.119389
X. C. Catazajá - Palenque	114.00	1	0	6052	1.9	65.0	3.0	9.1	2.6	10.5	1.8	5.1	1.0	66.9	3.0	30.1	0.076	0.502	17.708333	-92.022528
X. C. Catazajá - Palenque	114.00	3	0	6302	2.3	64.4	4.8	10.2	2.4	8.6	1.5	5.3	0.5	66.7	4.8	28.5	0.077	0.501	17.715139	-92.001222
T. Der. Emiliano Zapata	134.70	1	0	6288	1.1	66.7	3.6	8.9	2.6	9.5	2.0	4.7	0.9	67.8	3.6	28.6	0.067	0.501	17.770278	-91.838750
T. Der. Emiliano Zapata	134.70	3	0	4324	1.7	60.8	3.7	10.0	2.7	10.9	2.3	6.9	1.0	62.5	3.7	33.8	0.073	0.509	17.778500	-91.823861
Lim. Edos. Term. Chis. Ppia. Tab.	140.70																			
Puente Usumacinta	145.20	2	0	4184	1.3	60.8	4.1	5.7	4.9	12.8	1.7	7.7	1.0	62.1	4.1	33.8	0.079	0.500	17.859876	-91.783607

CAMPECHE

16 CARR: Villahermosa - Francisco Escárcega

CLAVE: 00092

RUTA: MEX-186

AÑO: 2015

LUGAR	ESTACION				CLASIFICACION VEHICULAR EN PORCIENTO													COORDENADAS		
	KM	TE	SC	TDPA	M	A	B	C2	C3	T3S2	T3S3	T3S2R4	OTROS	A	B	C	K'	D	LATITUD	LONGITUD
T. Izq. Palizada	154.05	1	0	3588	2.8	59.3	5.0	9.0	3.2	11.3	2.6	5.8	1.0	62.1	5.0	32.9	0.078	0.502	17.924000	-91.746833
T. Izq. Palizada	154.05	3	0	3207	1.2	51.5	6.4	8.0	3.0	14.6	4.1	10.2	1.0	52.7	6.4	40.9	0.089	0.507	17.945221	-91.731078
Lim. Edos. Term. Tab. Ppia. Camp.	154.60																			
T. Der. Candelaria	233.40	1	0	3386	3.0	51.3	6.1	9.3	2.6	14.4	2.9	9.4	1.0	54.3	6.1	39.6	0.074	0.501	18.373250	-91.201750
T. Der. Felipe Ángeles	253.00	1	0	3507	3.8	52.6	5.6	10.4	3.3	12.8	2.7	7.7	1.1	56.4	5.6	38.0	0.071	0.508	18.503889	-91.106500
T. Izq. Sabancuy	274.10	1	0	3802	5.4	57.0	4.6	8.7	2.6	11.2	2.8	6.8	0.9	62.4	4.6	33.0	0.085	0.509	18.629639	-90.988528
Francisco Escárcega	297.04	1	0	7654	8.2	63.6	2.6	8.3	1.6	8.8	1.6	4.3	1.0	71.8	2.6	25.6	0.071	0.503	18.608881	-90.764338

17 CARR: Champotón - Campeche (Cuota)

CLAVE: 04014

RUTA: MEX-180D

AÑO: 2015

LUGAR	ESTACION				CLASIFICACION VEHICULAR EN PORCIENTO													COORDENADAS		
	KM	TE	SC	TDPA	M	A	B	C2	C3	T3S2	T3S3	T3S2R4	OTROS	A	B	C	K'	D	LATITUD	LONGITUD
T. C. Cd. del Carmen - Campeche	0.00	3	1	3178	0.6	72.5	4.0	5.9	2.3	6.8	1.5	5.7	0.7	73.1	4.0	22.9	0.094	0.514	19.513455	-90.698557
T. C. Cd. del Carmen - Campeche	0.00	3	2	3001	0.7	68.9	4.6	6.8	2.7	7.7	1.8	6.1	0.7	69.6	4.6	25.8	0.070	0.514	19.513463	-90.698558
Caseta de Cobro Seybaplaya	14.50	2	1	3003	0.6	68.8	4.5	4.2	3.9	8.7	1.5	7.1	0.7	69.4	4.5	26.1	0.088	0.500	19.636271	-90.671557
Caseta de Cobro Seybaplaya	14.50	2	2	3003	0.6	68.8	4.5	4.2	3.9	8.7	1.5	7.1	0.7	69.4	4.5	26.1	0.088	0.500	19.636271	-90.671557
T. Der. Periferico Pablo García y Montilla (Libramiento De Campeche)	39.00	1	1	3527	1.2	68.0	3.8	10.2	1.9	6.9	1.5	5.8	0.7	69.2	3.8	27.0	0.096	0.501	19.791742	-90.535350
T. Der. Periferico Pablo García y Montilla (Libramiento De Campeche)	39.00	1	2	3519	1.2	64.9	4.3	11.0	2.1	7.7	1.7	6.4	0.7	66.1	4.3	29.6	0.073	0.501	19.791746	-90.535334

18 CARR: Hopelchén - Dzibalchén

CLAVE: 04572

RUTA: CAM-261

AÑO: 2015

LUGAR	ESTACION				CLASIFICACION VEHICULAR EN PORCIENTO													COORDENADAS		
	KM	TE	SC	TDPA	M	A	B	C2	C3	T3S2	T3S3	T3S2R4	OTROS	A	B	C	K'	D	LATITUD	LONGITUD
Hopelchén	0.00	3	0	1334	9.2	73.4	1.0	13.9	1.2	0.7	0.2	0.2	0.2	82.6	1.0	16.4	0.079	0.518	19.729572	-89.835269
Dzibalchén	41.00																			

19 CARR: Libramiento de Becal

CLAVE: 04010

RUTA: CAM

AÑO: 2015

LUGAR	ESTACION				CLASIFICACION VEHICULAR EN PORCIENTO													COORDENADAS		
	KM	TE	SC	TDPA	M	A	B	C2	C3	T3S2	T3S3	T3S2R4	OTROS	A	B	C	K'	D	LATITUD	LONGITUD
T. C. Dzitalché - Ent. San Bernardo (1° Acceso)	0.00																			
T. C. Campeche - Mérida (2° Acceso)	2.30	1	0	1574	16.4	76.2	1.4	3.2	1.0	1.7	0.1	0.0	0.0	92.6	1.4	6.0	0.084	0.502	20.440520	-90.034329

CAMPECHE

20 CARR: Libramiento de Pomuch

CLAVE: 04579

RUTA: CAM

AÑO: 2015

LUGAR	ESTACION				CLASIFICACION VEHICULAR EN PORCIENTO														COORDENADAS	
	KM	TE	SC	TDPA	M	A	B	C2	C3	T3S2	T3S3	T3S2R4	OTROS	A	B	C	K'	D	LATITUD	LONGITUD
T. C. Campeche - Mérida (1° Acceso)	0.00	3	1	4389	1.2	73.9	3.7	5.9	2.1	6.1	1.1	5.4	0.6	75.1	3.7	21.2	0.107	0.512	20.122199	-90.177280
T. C. Campeche - Mérida (1° Acceso)	0.00	3	2	4185	1.3	72.5	3.9	6.5	2.2	6.2	1.2	5.5	0.7	73.8	3.9	22.3	0.081	0.512	20.122197	-90.177272
T. C. Campeche - Mérida (2° Acceso)	4.10																			

21 CARR: T. C. (Francisco Escárcega - Champotón) - Yohaltún

CLAVE: 04581

RUTA: CAM

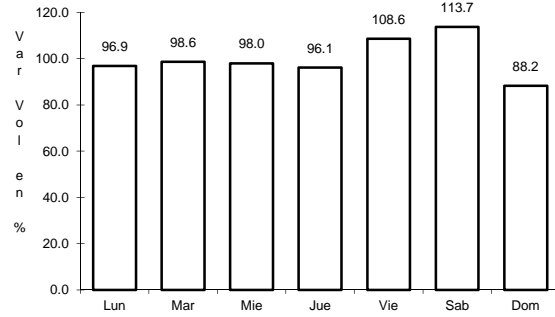
AÑO: 2015

LUGAR	ESTACION				CLASIFICACION VEHICULAR EN PORCIENTO														COORDENADAS	
	KM	TE	SC	TDPA	M	A	B	C2	C3	T3S2	T3S3	T3S2R4	OTROS	A	B	C	K'	D	LATITUD	LONGITUD
T. C. Francisco Escárcega - Champotón	0.00	3	0	1376	17.7	68.8	1.6	10.0	0.7	0.9	0.3	0.0	0.0	86.5	1.6	11.9	0.081	0.509	19.298352	-90.724688
Felipe Carrillo Puerto	36.50	1	0	680	20.6	68.8	1.3	8.1	0.1	0.5	0.3	0.3	0.0	89.4	1.3	9.3	0.087	0.502	19.101160	-90.516804
Felipe Carrillo Puerto	36.50	3	0	644	29.3	64.6	0.3	2.7	1.7	0.5	0.8	0.0	0.1	93.9	0.3	5.8	0.087	0.511	19.086508	-90.511259
Yohaltún	70.60																			

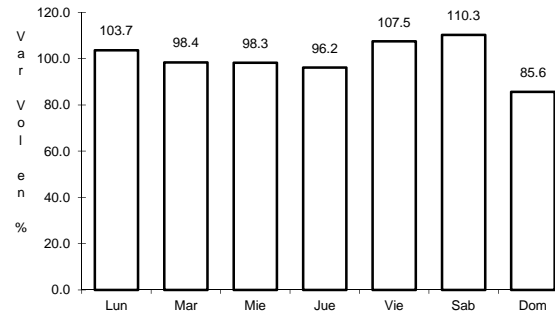
1 CARR: Campeche - Mérida

CLAVE: 00066

RUTA: MEX-180



Km: 0.00                      Tipo: 3                      Sent: 1

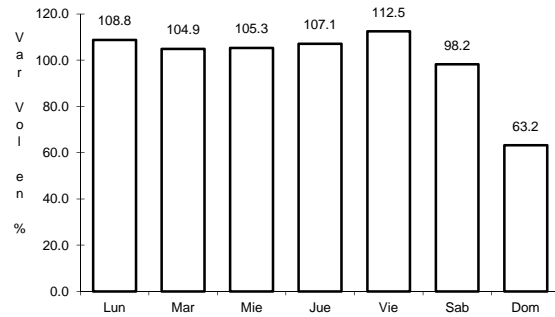


Km: 0.00                      Tipo: 3                      Sent: 2

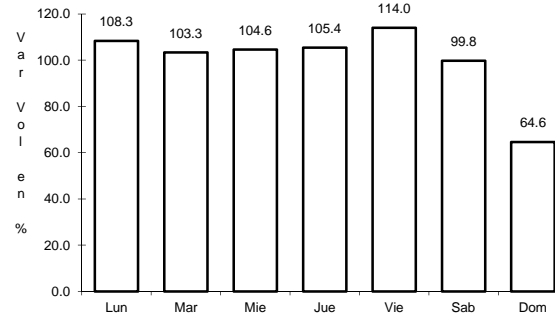
2 CARR: Campeche - Tixmucuy

CLAVE: 04575

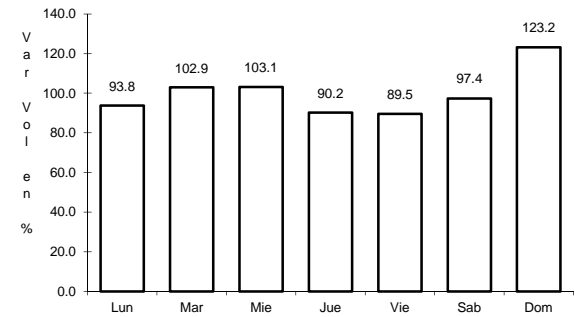
RUTA: MEX-180



Km: 0.00                      Tipo: 3                      Sent: 1



Km: 0.00                      Tipo: 3                      Sent: 2

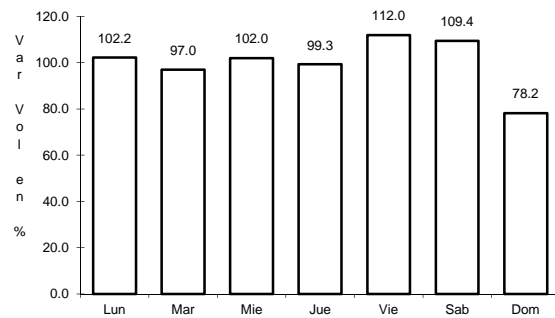


Km: 42.00                      Tipo: 1                      Sent: 0

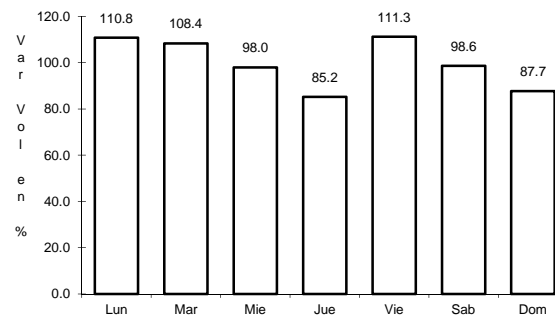
3 CARR: Campeche - Umán

CLAVE: 00164

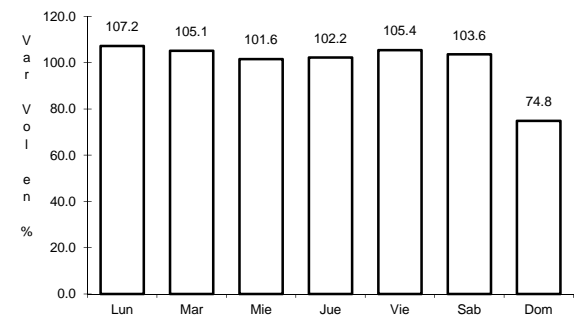
RUTA: MEX-261



Km: 7.00                      Tipo: 1                      Sent: 0



Km: 117.88                      Tipo: 3                      Sent: 0

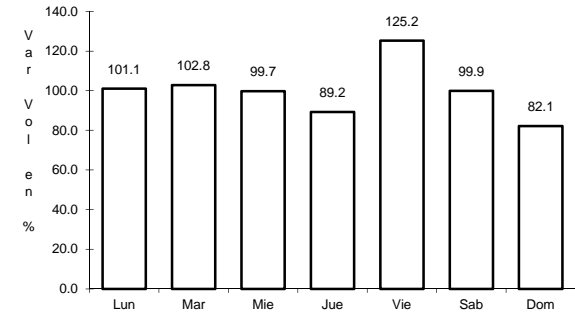
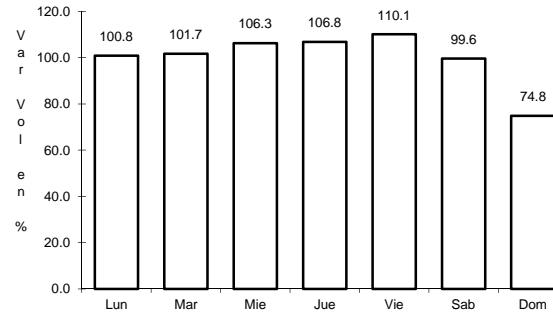
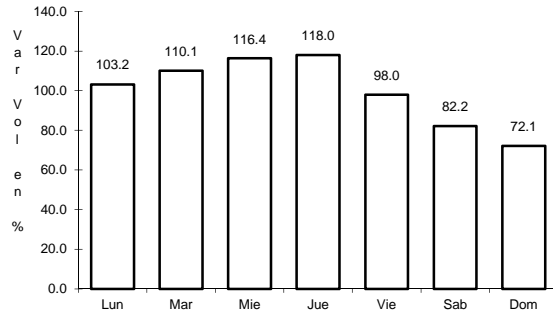


Km: 230.83                      Tipo: 1                      Sent: 0

4 CARR: Cd. del Carmen - Campeche

CLAVE: 04065

RUTA: MEX-180



Km: 0.00                      Tipo: 3                      Sent: 1

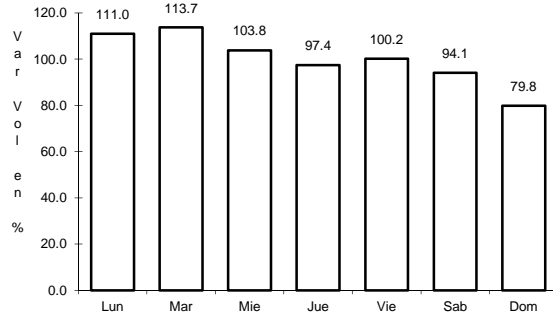
Km: 0.00                      Tipo: 3                      Sent: 2

Km: 141.80                      Tipo: 1                      Sent: 0

5 CARR: Chencoyi - Tenabo

CLAVE: 04576

RUTA: MEX-180

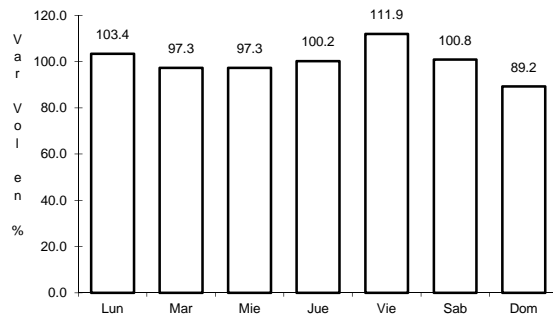


Km: 28.00                      Tipo: 1                      Sent: 0

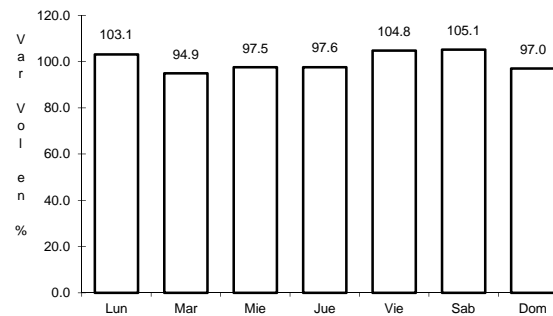
6 CARR: Dzitbalché - Ent. San Bernardo

CLAVE: 00162

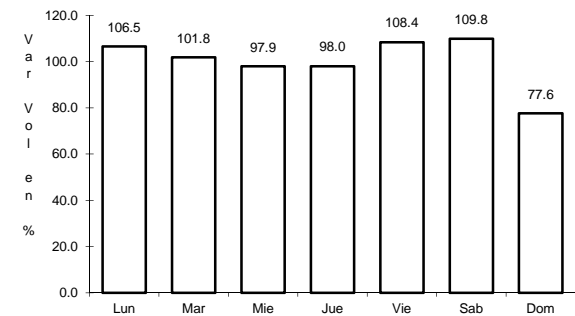
RUTA: MEX-180



Km: 12.33                      Tipo: 1                      Sent: 0



Km: 21.08                      Tipo: 1                      Sent: 0

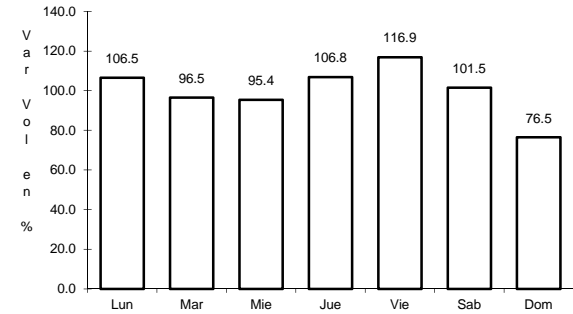
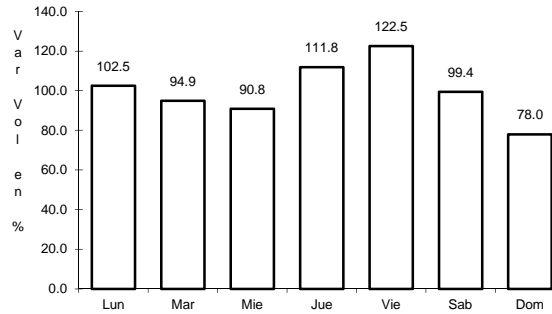
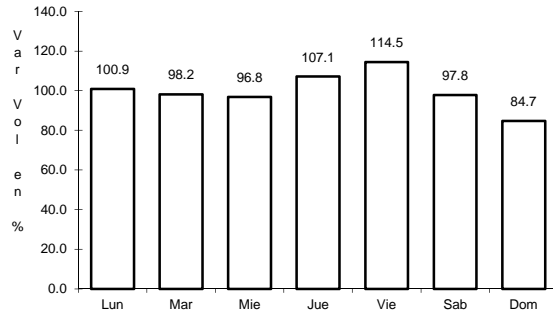


Km: 40.36                      Tipo: 3                      Sent: 0

7 CARR: Francisco Escárcega - Champotón

CLAVE: 04103

RUTA: MEX-201



Km: 0.00                      Tipo: 3                      Sent: 0

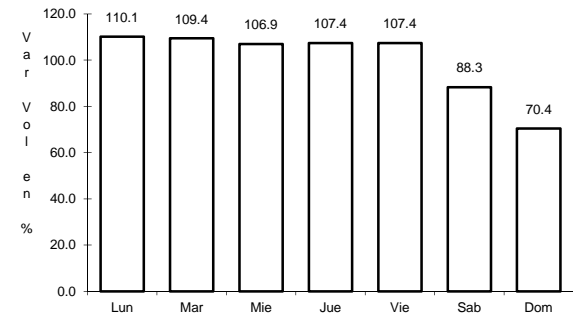
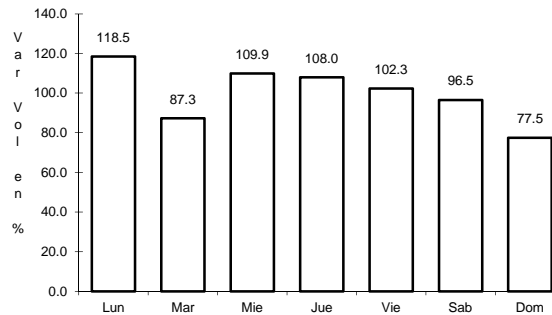
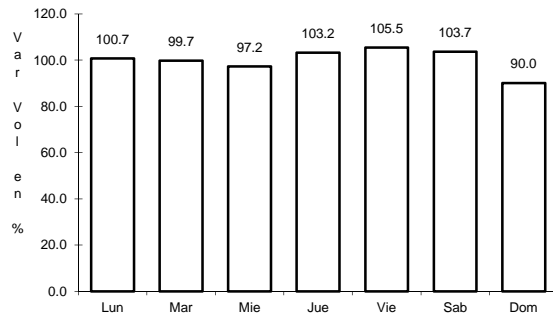
Km: 51.40                      Tipo: 1                      Sent: 0

Km: 81.40                      Tipo: 1                      Sent: 0

8 CARR: Francisco Escárcega - Chetumal

CLAVE: 00093

RUTA: MEX-186



Km: 0.00                      Tipo: 3                      Sent: 0

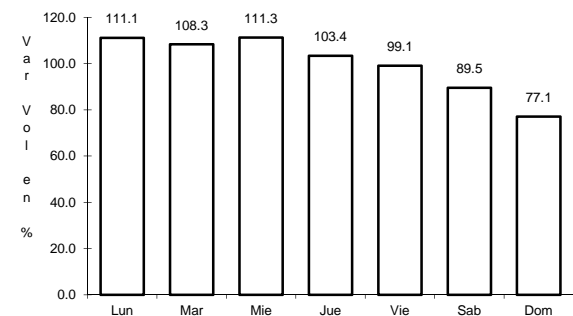
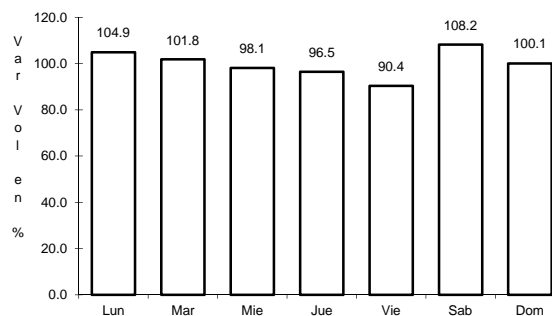
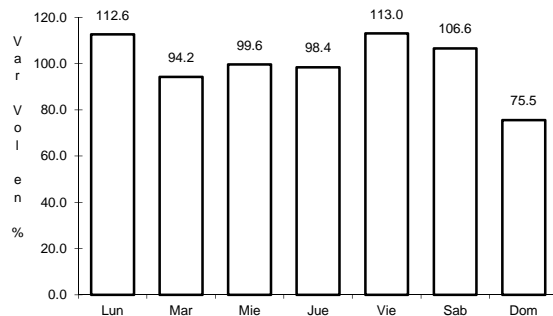
Km: 277.36                      Tipo: 1                      Sent: 1

Km: 277.36                      Tipo: 1                      Sent: 2

9 CARR: Haltunchén - San Antonio Cayal

CLAVE: 04009

RUTA: MEX-180



Km: 0.00                      Tipo: 3                      Sent: 0

Km: 47.10                      Tipo: 1                      Sent: 0

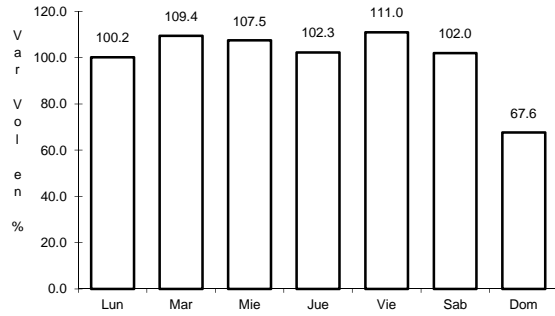
Km: 79.00                      Tipo: 1                      Sent: 0



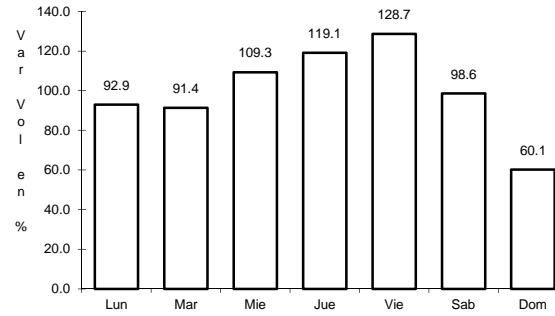
10 CARR: Periférico Pablo García y Montilla (Libramiento de Campeche)

CLAVE: 04573

RUTA: MEX-180



Km: 0.00                      Tipo: 3                      Sent: 1

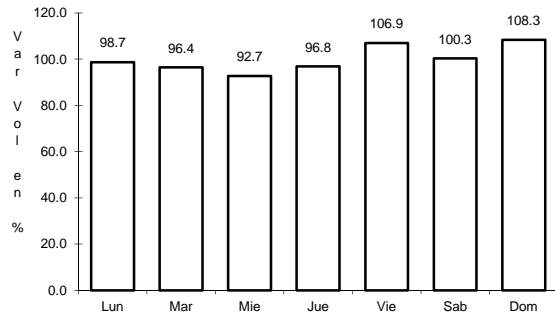


Km: 0.00                      Tipo: 3                      Sent: 2

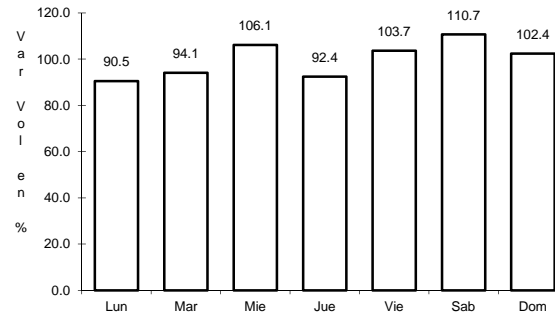
11 CARR: Presidente Díaz Ordaz - Sabancuy

CLAVE: 04570

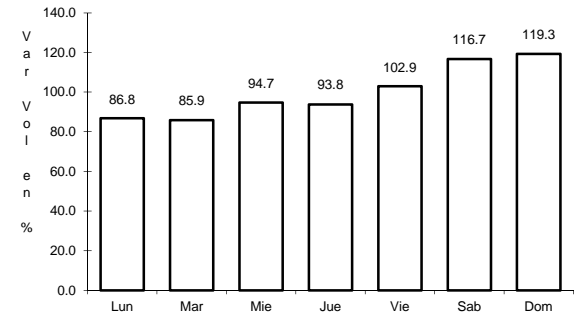
RUTA: MEX-186



Km: 0.00                      Tipo: 3                      Sent: 0



Km: 18.00                      Tipo: 1                      Sent: 0

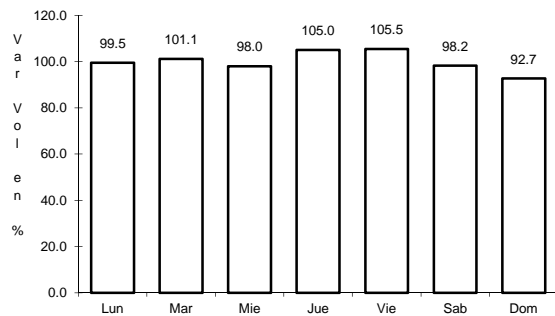


Km: 57.00                      Tipo: 1                      Sent: 0

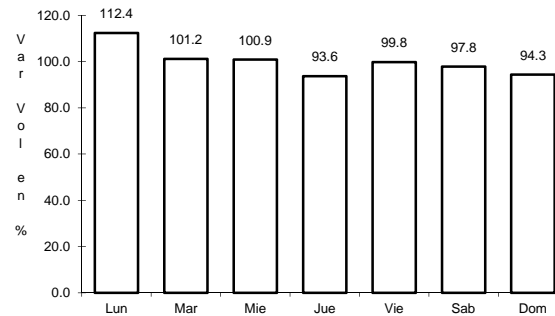
12 CARR: Ramal a Nuevo Coahuila

CLAVE: 04015

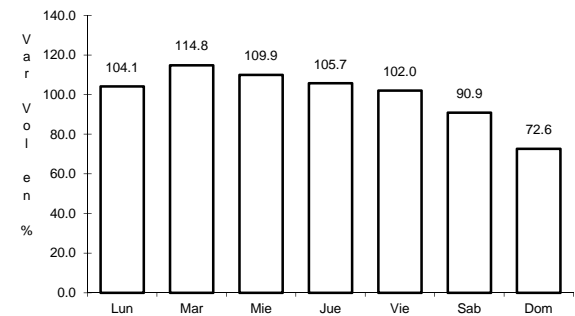
RUTA: MEX-186



Km: 0.00                      Tipo: 3                      Sent: 0



Km: 44.50                      Tipo: 3                      Sent: 0

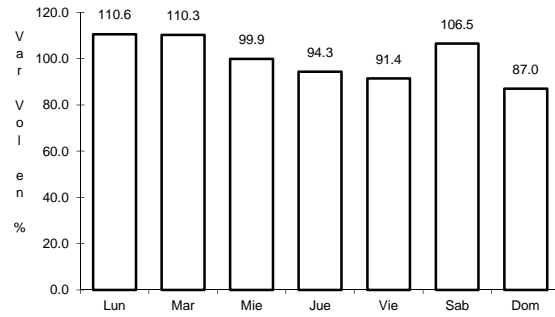


Km: 70.00                      Tipo: 1                      Sent: 0

13 CARR: Ramal a Ruíz Cortines

CLAVE: 04101

RUTA: MEX-180

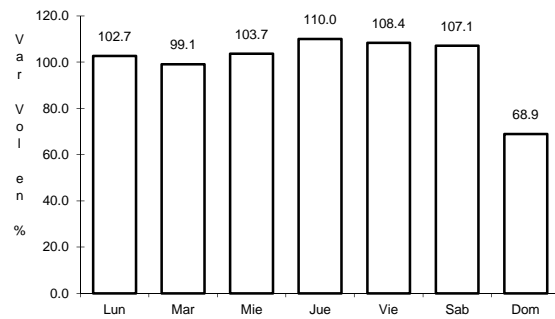


Km: 1.00                      Tipo: 3                      Sent: 0

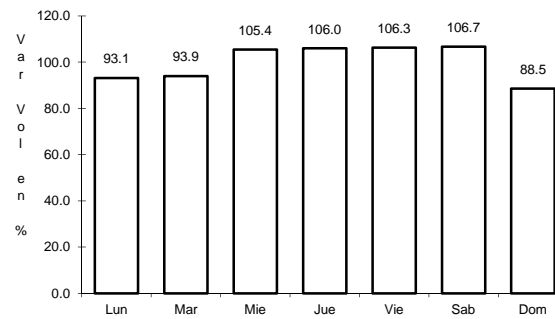
14 CARR: San Marco - Palizada

CLAVE: 00490

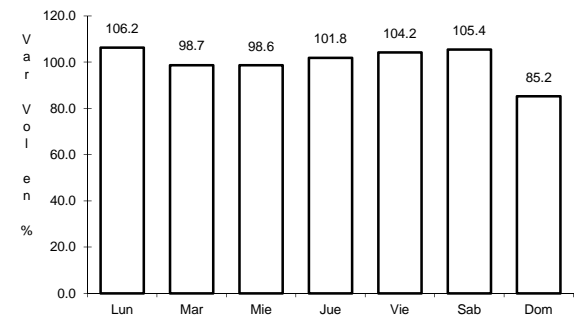
RUTA: MEX-186



Km: 0.00                      Tipo: 3                      Sent: 0



Km: 46.20                      Tipo: 1                      Sent: 0

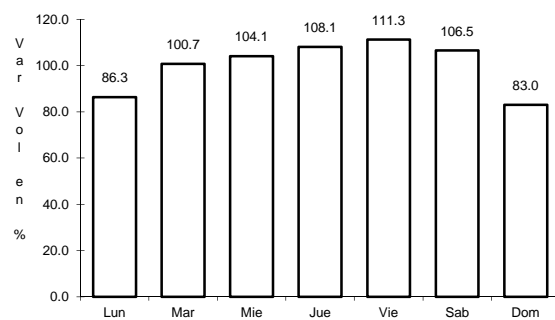


Km: 46.20                      Tipo: 3                      Sent: 0

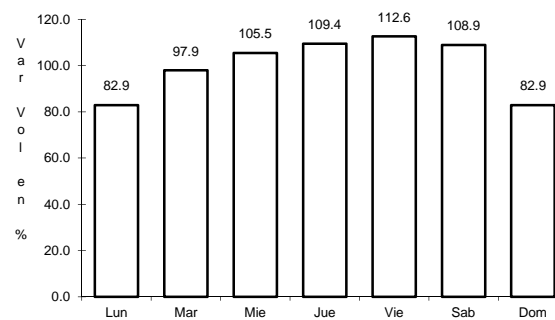
15 CARR: Villahermosa - Cd. del Carmen

CLAVE: 00064

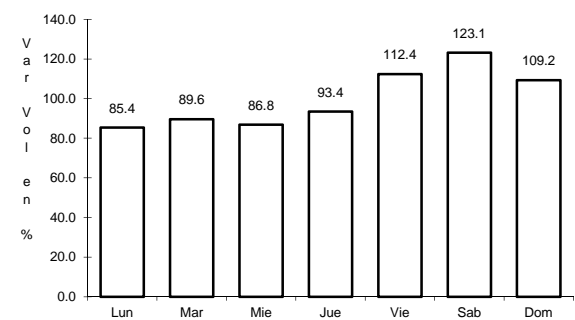
RUTA: MEX-180



Km: 4.30                      Tipo: 3                      Sent: 1



Km: 4.30                      Tipo: 3                      Sent: 2

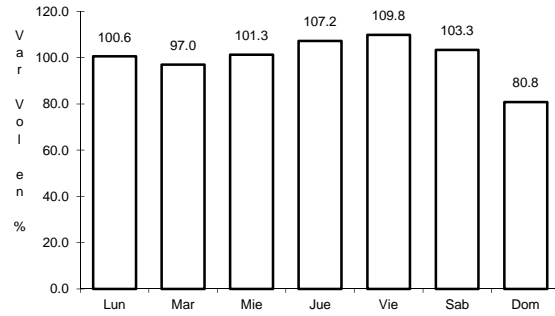


Km: 163.17                      Tipo: 1                      Sent: 0

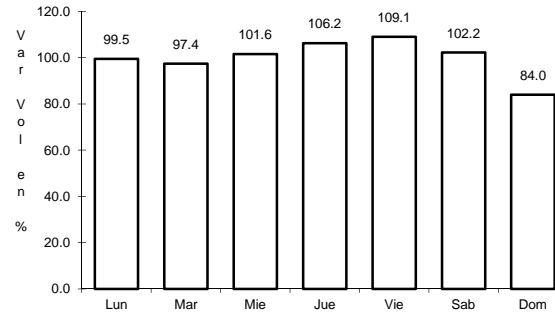
16 CARR: Villahermosa - Francisco Escárcega

CLAVE: 00092

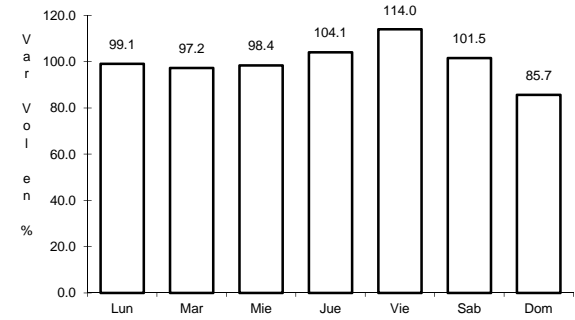
ruta: MEX-186



Km: 0.00                      Tipo: 3                      Sent: 1



Km: 0.00                      Tipo: 3                      Sent: 2

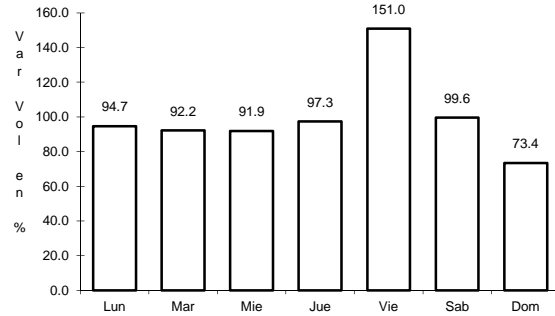


Km: 297.04                      Tipo: 1                      Sent: 0

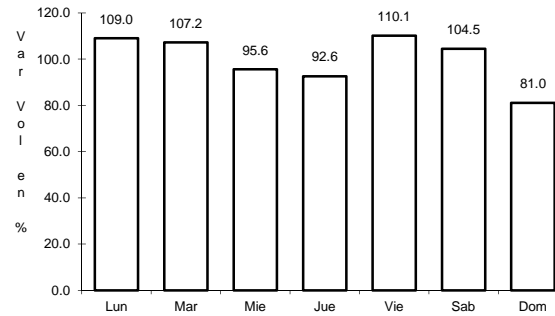
17 CARR: Champotón - Campeche (Cuota)

CLAVE: 04014

ruta: MEX-180D



Km: 0.00                      Tipo: 3                      Sent: 1

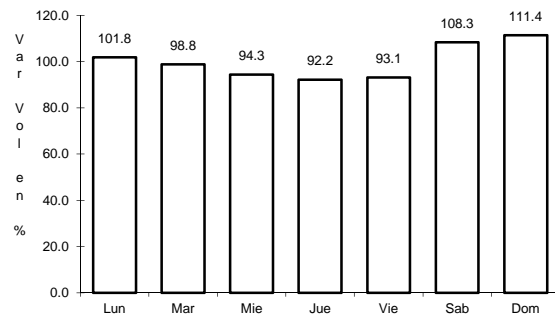


Km: 0.00                      Tipo: 3                      Sent: 2

18 CARR: Hopelchén - Dzibalchén

CLAVE: 04572

ruta: CAM-261

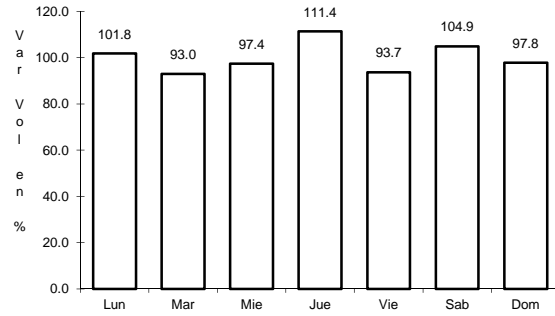


Km: 0.00                      Tipo: 3                      Sent: 0

19 CARR: Libramiento de Becal

CLAVE: 04010

RUTA: CAM



Km: 2.30

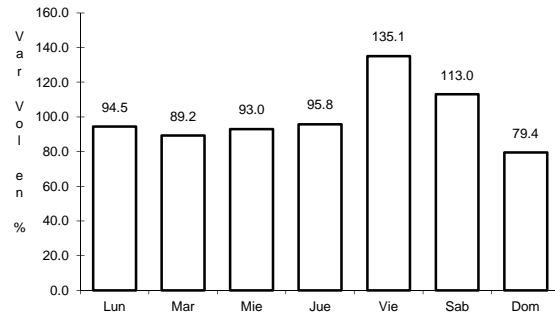
Tipo: 1

Sent: 0

20 CARR: Libramiento de Pomuch

CLAVE: 04579

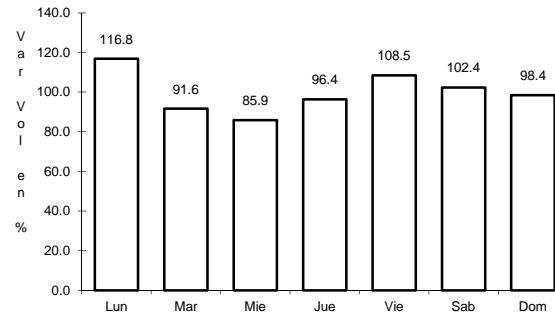
RUTA: CAM



Km: 0.00

Tipo: 3

Sent: 1



Km: 0.00

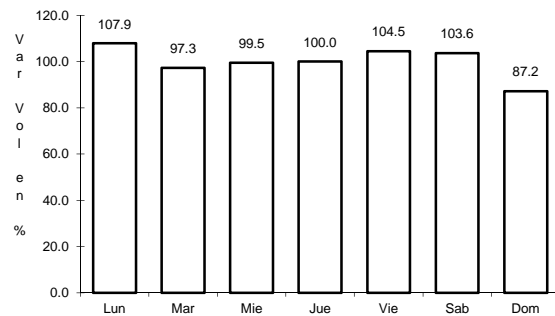
Tipo: 3

Sent: 2

21 CARR: T. C. (Francisco Escárcega - Champotón) - Yohaltún

CLAVE: 04581

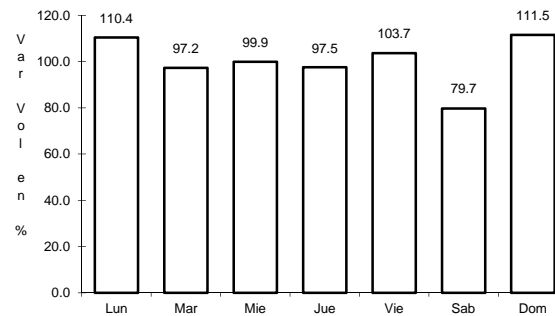
RUTA: CAM



Km: 0.00

Tipo: 3

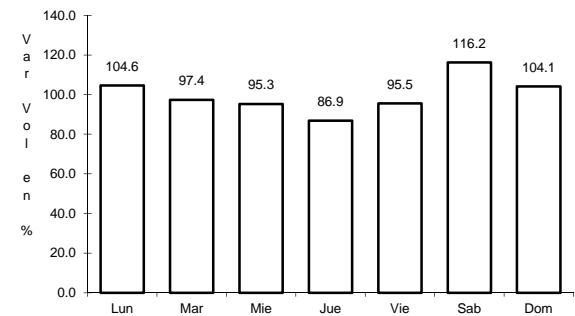
Sent: 0



Km: 36.50

Tipo: 1

Sent: 0



Km: 36.50

Tipo: 3

Sent: 0