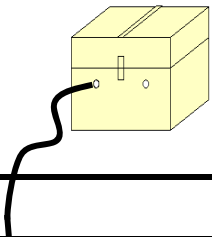


03 BAJA CALIFORNIA SUR

SECRETARÍA DE COMUNICACIONES Y TRANSPORTES
DIRECCIÓN GENERAL DE SERVICIOS TÉCNICOS



- ① --- Número Índice
- Red Federal Libre
- Red Federal Cuota
- Red Federal Integrada por Tramos Libres y de Cuota
- Red Estatal Libre
- Red Estatal Cuota
- Carreteras Integradas por Tramos Federales y Estatales



BAJA CALIFORNIA SUR

NO. INDICE	CARRETERA	RUTA
---RED FEDERAL LIBRE---		
1	Cabo San Lucas - La Paz	MEX-001
2	Cd. Constitución - Puerto San Carlos	MEX-001
3	Cd. Insurgentes - Loreto	MEX-001
4	Ent. Punta Prieta - Guerrero Negro	MEX-001
5	La Paz - Cd. Insurgentes	MEX-001
6	La Paz - Pichilingue	MEX-011
7	Libramiento de Cabo San Lucas	MEX-001
8	Loreto - Santa Rosalía	MEX-001
9	Ramal a Aeropuerto de La Paz	MEX-001
10	Ramal a Aeropuerto de Los Cabos	MEX-001
11	Ramal a Los Paredones	MEX-001
12	Ramal a Miraflores	MEX-001
13	Ramal a Puerto Escondido	MEX-001
14	Ramal a San Ignacio	MEX-001
15	Ramal a Santiago	MEX-001
16	San Pedro - Cabo San Lucas	MEX-019
17	Santa Rosalía - Guerrero Negro	MEX-001
---RED FEDERAL DE CUOTA---		
18	Libramiento San José del Cabo - Aeropuerto Los Cabos (Cuota)	MEX-001D
---RED ESTATAL LIBRE---		
19	Cd. Insurgentes - La Purísima	BCS-001
20	Cd. Insurgentes - Pto. Adolfo López Mateos	BCS
21	Ent. Campo Fisher - Punta Abreojos	BCS
22	La Paz - Ensenada de Muertos	BCS-246
23	Libramiento de La Paz	BCS
24	Libramiento Norte de La Paz	BCS
25	Ramal a Benito Juárez	BCS
26	Ramal a Ejido Ley Federal de Aguas Número Cuatro	BCS
27	Ramal a El Carrizal	BCS
28	Ramal a Guerrero Negro	BCS
29	Ramal a La Ribera	BCS
30	Ramal a Melitón Albáñez	BCS
31	Ramal a Santa Catarina	BCS
---CARRETERAS INTEGRADAS POR TRAMOS FEDERALES Y ESTATALES---		
32	Ramal a Bahía de Tortugas	MEX-001-BCS
33	Ramal a Ejido Ley Federal de Aguas Número Dos	BCS-MEX-001
34	Ramal a Ley Federal de Aguas Número Cinco	BCS-MEX-001
35	Ramal a San Juan de La Costa	BCS-163-MEX-001

BAJA CALIFORNIA SUR

1 CARR: Cabo San Lucas - La Paz

CLAVE: 03102

RUTA: MEX-001

AÑO: 2015

LUGAR	ESTACION				CLASIFICACION VEHICULAR EN PORCIENTO													COORDENADAS		
	KM	TE	SC	TDPA	M	A	B	C2	C3	T3S2	T3S3	T3S2R4	OTROS	A	B	C	K'	D	LATITUD	LONGITUD
Cabo San Lucas	0.00	3	1	20984	1.4	87.2	2.7	6.0	0.9	0.7	0.5	0.3	0.3	88.6	2.7	8.7	0.070	0.503	22.900808	-109.897051
Cabo San Lucas	0.00	3	2	21233	1.2	86.7	3.0	6.6	0.8	0.6	0.6	0.3	0.2	87.9	3.0	9.1	0.083	0.503	22.900808	-109.897051
El Tule	13.00	3	1	12599	0.6	90.1	2.4	5.0	1.2	0.4	0.1	0.1	0.1	90.7	2.4	6.9	0.078	0.524	22.978868	-109.773068
El Tule	13.00	3	2	11428	0.2	83.4	3.1	11.5	1.2	0.3	0.1	0.1	0.1	83.6	3.1	13.3	0.082	0.524	22.978868	-109.773068
San José del Cabo	33.00	1	1	20105	0.9	89.7	2.8	4.5	1.0	0.5	0.5	0.0	0.1	90.6	2.8	6.6	0.076	0.501	23.029847	-109.715631
San José del Cabo	33.00	1	2	20044	0.8	89.8	2.9	4.8	0.9	0.3	0.4	0.0	0.1	90.6	2.9	6.5	0.068	0.501	23.029847	-109.715631
San José del Cabo	33.00	3	1	23407	2.2	89.1	2.0	4.8	0.6	0.2	0.0	0.0	1.1	91.3	2.0	6.7	0.070	0.531	23.114880	-109.712167
San José del Cabo	33.00	3	2	26470	2.6	88.9	2.2	4.6	0.5	0.3	0.0	0.0	0.9	91.5	2.2	6.3	0.069	0.531	23.114880	-109.712167
T. Der. Santa Catarina	41.00	1	1	14464	1.3	83.0	3.1	7.3	1.6	1.4	1.3	0.3	0.7	84.3	3.1	12.6	0.059	0.503	23.127782	-109.710965
T. Der. Santa Catarina	41.00	1	2	14611	1.5	81.9	3.3	8.0	1.7	1.2	1.5	0.3	0.6	83.4	3.3	13.3	0.059	0.503	23.127782	-109.710965
T. Izq. Aeropuerto	43.46	1	1	11254	0.6	90.0	1.1	7.3	0.6	0.2	0.1	0.0	0.1	90.6	1.1	8.3	0.059	0.521	23.153253	-109.708463
T. Izq. Aeropuerto	43.46	1	2	10328	0.2	90.7	1.2	6.9	0.7	0.2	0.1	0.0	0.0	90.9	1.2	7.9	0.062	0.521	23.153253	-109.708463
Santa Anita	46.00	1	0	6668	0.3	78.8	4.6	14.6	1.0	0.3	0.2	0.0	0.2	79.1	4.6	16.3	0.108	0.523	23.175660	-109.701856
Santa Anita	46.00	3	0	3979	0.6	89.9	1.3	4.5	2.2	0.8	0.5	0.0	0.2	90.5	1.3	8.2	0.164	0.501	23.187944	-109.707834
T. Izq. Miraflores	71.50	3	0	1786	0.2	90.2	2.0	5.0	1.1	1.2	0.2	0.0	0.1	90.4	2.0	7.6	0.100	0.568	23.372776	-109.751667
T. Izq. Santiago	84.00	3	0	1982	0.3	88.9	1.9	6.8	0.8	1.1	0.1	0.0	0.1	89.2	1.9	8.9	0.086	0.504	23.477109	-109.694431
La Cueva	95.20	3	0	2081	0.3	89.9	2.2	5.8	0.8	0.8	0.1	0.0	0.1	90.2	2.2	7.6	0.074	0.501	23.563567	-109.677289
T. Der. Bahía de Las Palmas	110.00	3	0	3715	0.8	83.3	2.5	8.7	0.7	2.9	0.5	0.4	0.2	84.1	2.5	13.4	0.081	0.516	23.685076	-109.726251
San Bartolo	128.50	1	0	2155	1.1	82.7	1.7	7.1	1.7	3.1	0.9	1.3	0.4	83.8	1.7	14.5	0.084	0.503	23.739377	-109.837213
San Antonio	156.00	3	0	2096	0.8	79.6	2.8	8.0	1.7	3.7	1.3	1.6	0.5	80.4	2.8	16.8	0.070	0.502	23.809081	-110.060980
El Triunfo	162.80	1	0	1164	0.8	90.9	1.8	3.3	1.0	1.7	0.3	0.0	0.2	91.7	1.8	6.5	0.120	0.506	23.805735	-110.103513
El Triunfo	162.80	3	0	1453	0.6	90.3	1.7	4.4	1.0	1.6	0.3	0.0	0.1	90.9	1.7	7.4	0.103	0.501	23.795970	-110.111524
T. Izq. Todos Santos	184.40	1	0	1502	0.8	86.7	1.3	9.1	0.8	1.0	0.1	0.0	0.2	87.5	1.3	11.2	0.121	0.542	23.882878	-110.248178
T. Izq. Todos Santos	184.40	3	1	3370	0.8	85.4	2.1	4.7	2.1	3.0	0.8	0.9	0.2	86.2	2.1	11.7	0.095	0.502	23.889549	-110.256952
T. Izq. Todos Santos	184.40	3	2	3403	0.4	83.9	2.2	6.9	1.9	2.8	0.9	0.9	0.1	84.3	2.2	13.5	0.079	0.502	23.889549	-110.256952
San Pedro	191.00	1	1	3817	0.7	84.7	1.5	6.2	1.4	2.9	0.9	1.1	0.6	85.4	1.5	13.1	0.061	0.504	23.922912	-110.262832
San Pedro	191.00	1	2	3875	0.6	85.6	1.6	6.1	1.2	2.7	0.7	1.1	0.4	86.2	1.6	12.2	0.064	0.504	23.922912	-110.262832
San Pedro	191.00	3	1	4639	0.6	85.5	1.7	6.1	1.5	2.5	1.0	0.8	0.3	86.1	1.7	12.2	0.090	0.509	23.938645	-110.274708
San Pedro	191.00	3	2	4484	0.9	84.6	1.5	6.7	1.7	2.7	1.1	0.7	0.1	85.5	1.5	13.0	0.065	0.509	23.938645	-110.274708
Limite Zona Urbana de La Paz	211.00	1	1	7855	1.5	87.5	1.1	5.6	1.4	1.2	0.7	0.6	0.4	89.0	1.1	9.9	0.064	0.516	24.031893	-110.297642
Limite Zona Urbana de La Paz	211.00	1	2	8385	1.4	88.6	1.0	5.2	1.2	1.1	0.6	0.6	0.3	90.0	1.0	9.0	0.063	0.516	24.031893	-110.297642
La Paz	213.00																			

BAJA CALIFORNIA SUR

2 CARR: Cd. Constitución - Puerto San Carlos

CLAVE: 03231

RUTA: MEX-001

AÑO: 2015

LUGAR	ESTACION				CLASIFICACION VEHICULAR EN PORCIENTO														COORDENADAS	
	KM	TE	SC	TDPA	M	A	B	C2	C3	T3S2	T3S3	T3S2R4	OTROS	A	B	C	K'	D	LATITUD	LONGITUD
Cd. Constitución	0.00	3	0	2792	0.5	84.1	2.4	8.7	1.3	1.9	0.3	0.2	0.6	84.6	2.4	13.0	0.078	0.502	25.039525	-111.684032
T. Der. Benito Juárez	10.00	1	0	2415	1.2	89.1	1.4	5.8	1.3	0.5	0.3	0.0	0.4	90.3	1.4	8.3	0.062	0.503	25.041478	-111.755830
T. Der. Benito Juárez	10.00	3	0	1585	0.5	91.4	1.7	4.9	0.5	0.4	0.3	0.3	0.0	91.9	1.7	6.4	0.065	0.500	25.035251	-111.770148
Puerto San Carlos	57.70																			

3 CARR: Cd. Insurgentes - Loreto

CLAVE: 03092

RUTA: MEX-001

AÑO: 2015

LUGAR	ESTACION				CLASIFICACION VEHICULAR EN PORCIENTO														COORDENADAS	
	KM	TE	SC	TDPA	M	A	B	C2	C3	T3S2	T3S3	T3S2R4	OTROS	A	B	C	K'	D	LATITUD	LONGITUD
Cd. Insurgentes	0.00	3	0	3397	0.8	80.0	2.4	8.5	1.3	5.2	0.8	0.5	0.5	80.8	2.4	16.8	0.073	0.504	25.262965	-111.759850
T. Izq. Ley Federal de Aguas Número Uno	7.00	3	0	1257	0.7	75.1	4.0	6.5	2.8	7.8	1.9	1.0	0.2	75.8	4.0	20.2	0.079	0.535	25.334478	-111.632214
T. Der. Ley Federal de Aguas Número Dos	17.00	3	0	1876	0.6	72.4	1.8	10.4	1.8	9.4	1.9	1.5	0.2	73.0	1.8	25.2	0.066	0.506	25.319503	-111.653878
T. Der. Puerto Agua Verde	65.00	1	0	1479	0.4	77.6	3.1	8.2	0.4	6.7	2.6	0.7	0.3	78.0	3.1	18.9	0.060	0.505	25.607788	-111.316930
T. Der. Puerto Agua Verde	65.00	3	0	1167	0.7	74.5	3.9	5.9	2.0	9.4	2.3	1.1	0.2	75.2	3.9	20.9	0.069	0.548	25.610197	-111.312936
El Ligüi	84.50	1	0	1822	0.3	75.8	2.9	11.8	0.6	5.5	1.5	0.8	0.8	76.1	2.9	21.0	0.074	0.501	25.732654	-111.269014
T. Der. Puerto Escondido	95.40	1	0	1881	0.4	71.7	2.7	11.9	2.1	8.4	1.9	0.7	0.2	72.1	2.7	25.2	0.067	0.501	25.801113	-111.327526
T. Der. Puerto Escondido	95.40	3	0	2103	0.2	70.8	3.3	13.6	1.9	7.7	1.9	0.4	0.2	71.0	3.3	25.7	0.064	0.501	25.804054	-111.328726
Nopoló	109.50	1	0	2391	0.6	77.9	2.9	10.3	2.1	3.8	1.1	0.9	0.4	78.5	2.9	18.6	0.077	0.501	25.935439	-111.368819
T. Der. Aeropuerto de Loreto	117.30	1	0	3431	0.5	79.2	2.2	11.4	1.9	3.0	0.9	0.6	0.3	79.7	2.2	18.1	0.076	0.502	25.976501	-111.367334
T. Der. Loreto	120.00	1	0	4065	1.2	85.3	2.3	6.3	2.1	1.9	0.4	0.2	0.3	86.5	2.3	11.2	0.076	0.507	26.002385	-111.366416

4 CARR: Ent. Punta Prieta - Guerrero Negro

CLAVE: 00321

RUTA: MEX-001

AÑO: 2015

LUGAR	ESTACION				CLASIFICACION VEHICULAR EN PORCIENTO														COORDENADAS	
	KM	TE	SC	TDPA	M	A	B	C2	C3	T3S2	T3S3	T3S2R4	OTROS	A	B	C	K'	D	LATITUD	LONGITUD
Parador Punta Prieta	0.00	3	0	611	1.9	63.7	6.0	7.0	2.5	16.8	1.6	0.2	0.3	65.6	6.0	28.4	0.098	0.528	29.041282	-114.152092
Rosarito	50.60	3	0	1020	0.3	68.5	2.8	8.1	0.3	17.4	1.5	0.3	0.8	68.8	2.8	28.4	0.066	0.509	28.629827	-114.023800
Tanatán	70.10	3	0	932	0.3	61.9	2.7	10.1	0.6	21.7	1.3	0.3	1.1	62.2	2.7	35.1	0.079	0.513	28.496486	-114.016339
Tampico	105.00	1	0	1178	0.4	61.9	2.5	11.7	1.7	18.2	1.8	0.8	1.0	62.3	2.5	35.2	0.071	0.508	28.217589	-113.999966
Lim. Edos. Term. B.C. Ppia. B.C.S. (Paralelo 28)	128.56																			
Ent. Guerrero Negro	130.00	1	0	1793	1.0	81.4	2.6	4.5	0.9	8.4	0.9	0.1	0.2	82.4	2.6	15.0	0.064	0.500	27.971550	-114.013737

BAJA CALIFORNIA SUR

5 CARR : La Paz - Cd. Insurgentes

CLAVE: 03101

RUTA: MEX-001

AÑO : 2015

LUGAR	ESTACION				CLASIFICACION VEHICULAR EN PORCIENTO													COORDENADAS		
	KM	TE	SC	TDPA	M	A	B	C2	C3	T3S2	T3S3	T3S2R4	OTROS	A	B	C	K'	D	LATITUD	LONGITUD
La Paz	0.00	3	1	12280	0.9	87.7	1.2	3.7	0.7	2.0	2.7	0.6	0.5	88.6	1.2	10.2	0.063	0.514	24.120624	-110.337849
La Paz	0.00	3	2	11615	0.8	86.2	1.6	4.4	0.6	2.2	3.0	0.6	0.6	87.0	1.6	11.4	0.067	0.514	24.120624	-110.337849
T. Izq. Aeropuerto	8.90	1	1	11176	1.1	91.0	0.8	4.8	1.1	0.8	0.2	0.1	0.1	92.1	0.8	7.1	0.068	0.512	24.108928	-110.358863
T. Izq. Aeropuerto	8.90	1	2	10647	0.5	93.5	0.6	3.2	1.0	0.8	0.2	0.1	0.1	94.0	0.6	5.4	0.074	0.512	24.108928	-110.358863
T. Izq. Aeropuerto	8.90	3	1	8807	1.1	91.1	0.9	4.4	1.0	1.0	0.3	0.1	0.1	92.2	0.9	6.9	0.069	0.511	24.104715	-110.369007
T. Izq. Aeropuerto	8.90	3	2	8414	0.9	91.2	1.0	4.5	1.1	0.9	0.2	0.1	0.1	92.1	1.0	6.9	0.080	0.511	24.104715	-110.369007
El Centenario	13.50	3	1	3803	1.4	86.8	1.2	6.1	1.6	1.9	0.6	0.3	0.1	88.2	1.2	10.6	0.087	0.514	24.111344	-110.420872
El Centenario	13.50	3	2	4022	1.8	87.3	1.1	5.9	1.5	1.7	0.4	0.2	0.1	89.1	1.1	9.8	0.105	0.514	24.111344	-110.420872
T. Der. San Juan de La Costa	17.00	1	0	6375	0.9	85.6	1.4	6.4	1.9	2.7	0.7	0.3	0.1	86.5	1.4	12.1	0.070	0.500	24.118153	-110.432157
T. Der. San Juan de La Costa	17.00	3	0	2180	0.8	78.5	2.8	7.0	2.6	5.6	1.6	0.9	0.2	79.3	2.8	17.9	0.099	0.502	24.119968	-110.442307
T. Der. Alfredo V. Bonfil	24.00	3	0	3039	0.2	81.1	2.0	7.0	1.1	5.7	1.7	1.0	0.2	81.3	2.0	16.7	0.068	0.503	24.085967	-110.526566
T. Izq. El Conejo	79.60	1	0	2935	0.5	81.4	2.9	9.2	1.1	3.6	0.8	0.3	0.2	81.9	2.9	15.2	0.062	0.503	24.179060	-110.940618
T. Izq. El Conejo	79.60	3	0	2193	0.7	77.4	3.2	6.4	2.2	7.0	1.8	1.1	0.2	78.1	3.2	18.7	0.089	0.513	24.194396	-110.945823
El Ciento Veintiocho	118.20	1	0	2397	0.3	80.8	2.2	5.8	1.3	6.5	1.7	1.3	0.1	81.1	2.2	16.7	0.077	0.501	24.464572	-111.213110
Santa Rita	156.70	1	0	2532	0.3	76.1	2.7	10.3	1.3	5.8	1.6	1.3	0.6	76.4	2.7	20.9	0.080	0.502	24.586891	-111.462059
Santa Rita	156.70	3	0	2531	0.8	72.1	3.3	12.5	1.6	6.3	1.5	1.4	0.5	72.9	3.3	23.8	0.073	0.502	24.596409	-111.472626
Cd. Constitución	213.00	1	0	4639	0.8	83.6	2.0	7.2	1.6	3.4	0.7	0.4	0.3	84.4	2.0	13.6	0.060	0.510	25.011628	-111.663633
Cd. Constitución	213.00	3	1	4322	0.9	83.2	1.0	9.9	1.4	2.0	0.6	0.5	0.5	84.1	1.0	14.9	0.066	0.518	25.046229	-111.679530
Cd. Constitución	213.00	3	2	4648	1.0	82.5	0.9	10.5	1.0	2.6	0.5	0.5	0.5	83.5	0.9	15.6	0.058	0.518	25.046229	-111.679530
T. Der. Ley Federal de Aguas Número Cuatro	229.00	1	1	2768	0.2	85.4	1.4	10.6	0.7	0.8	0.6	0.2	0.1	85.6	1.4	13.0	0.080	0.506	25.195121	-111.748356
T. Der. Ley Federal de Aguas Número Cuatro	229.00	1	2	2834	0.4	85.4	1.3	10.3	1.3	0.6	0.5	0.0	0.2	85.8	1.3	12.9	0.064	0.506	25.195121	-111.748356
Cd. Insurgentes	236.50	1	1	2489	0.5	83.5	1.0	10.3	1.3	1.9	0.5	0.5	0.5	84.0	1.0	15.0	0.084	0.528	25.244159	-111.770895
Cd. Insurgentes	236.50	1	2	2782	0.6	81.8	1.4	10.6	1.1	2.3	0.7	0.5	1.0	82.4	1.4	16.2	0.078	0.528	25.244159	-111.770895

6 CARR : La Paz - Pichilingue

CLAVE: 03230

RUTA: MEX-011

AÑO : 2015

LUGAR	ESTACION				CLASIFICACION VEHICULAR EN PORCIENTO													COORDENADAS		
	KM	TE	SC	TDPA	M	A	B	C2	C3	T3S2	T3S3	T3S2R4	OTROS	A	B	C	K'	D	LATITUD	LONGITUD
La Paz	0.00	3	1	6146	1.3	95.5	0.5	2.4	0.3	0.0	0.0	0.0	0.0	96.8	0.5	2.7	0.082	0.538	24.172833	-110.306247
La Paz	0.00	3	2	5286	0.2	94.9	0.5	4.1	0.3	0.0	0.0	0.0	0.0	95.1	0.5	4.4	0.120	0.538	24.172833	-110.306247
Escuela Técnica Pesquera	9.30	3	0	1969	0.8	83.2	0.3	5.4	4.1	2.0	2.4	1.1	0.7	84.0	0.3	15.7	0.099	0.529	24.231998	-110.306327
Pichilingue	17.00	1	0	2523	0.7	71.3	3.0	7.5	6.7	7.4	1.6	1.5	0.3	72.0	3.0	25.0	0.136	0.506	24.271863	-110.323068

BAJA CALIFORNIA SUR

7 CARR: Libramiento de Cabo San Lucas

CLAVE: 03100

RUTA: MEX-001

AÑO: 2015

LUGAR	ESTACION				CLASIFICACION VEHICULAR EN PORCIENTO													COORDENADAS		
	KM	TE	SC	TDPA	M	A	B	C2	C3	T3S2	T3S3	T3S2R4	OTROS	A	B	C	K'	D	LATITUD	LONGITUD
T. C. San Pedro - Cabo San Lucas	0.00	3	1	16609	6.2	75.8	3.7	12.2	1.7	0.2	0.0	0.0	0.2	82.0	3.7	14.3	0.081	0.551	22.899438	-109.923347
T. C. San Pedro - Cabo San Lucas	0.00	3	2	20407	8.4	51.4	4.5	34.1	0.9	0.1	0.0	0.0	0.6	59.8	4.5	35.7	0.079	0.551	22.899438	-109.923347
T. C. Cabo San Lucas - La Paz	3.00	1	1	19892	1.6	86.9	1.0	7.4	1.2	0.9	0.5	0.3	0.2	88.5	1.0	10.5	0.064	0.501	22.898698	-109.907164
T. C. Cabo San Lucas - La Paz	3.00	1	2	19995	1.4	87.2	1.2	7.6	0.8	1.1	0.3	0.3	0.1	88.6	1.2	10.2	0.079	0.501	22.898698	-109.907164

8 CARR: Loreto - Santa Rosalía

CLAVE: 03393

RUTA: MEX-001

AÑO: 2015

LUGAR	ESTACION				CLASIFICACION VEHICULAR EN PORCIENTO													COORDENADAS		
	KM	TE	SC	TDPA	M	A	B	C2	C3	T3S2	T3S3	T3S2R4	OTROS	A	B	C	K'	D	LATITUD	LONGITUD
Loreto	0.00	3	0	1652	0.6	80.5	2.8	7.6	1.4	4.9	1.4	0.6	0.2	81.1	2.8	16.1	0.077	0.501	26.031256	-111.360513
Rosarito	63.00	1	0	983	0.6	75.2	3.3	8.1	1.0	8.5	1.3	1.1	0.9	75.8	3.3	20.9	0.077	0.512	26.455082	-111.647339
Rosarito	63.00	3	0	867	1.0	67.9	5.0	6.6	1.9	13.3	2.1	1.8	0.4	68.9	5.0	26.1	0.080	0.511	26.459492	-111.652971
Mulegé	135.00	1	0	3339	0.5	86.4	2.2	5.1	0.9	3.6	0.8	0.3	0.2	86.9	2.2	10.9	0.065	0.501	26.889598	-111.979060
Mulegé	135.00	3	0	1501	0.9	69.8	3.6	12.8	1.5	9.2	0.8	1.0	0.4	70.7	3.6	25.7	0.078	0.502	26.891838	-111.996941
T. Izq. Santa Águeda	189.00	1	0	2701	0.5	78.2	2.7	11.5	1.2	4.1	0.7	0.5	0.6	78.7	2.7	18.6	0.061	0.505	27.274451	-112.244578
T. Izq. Santa Águeda	189.00	3	0	2482	0.3	78.5	2.9	8.2	3.0	5.4	1.1	0.4	0.2	78.8	2.9	18.3	0.069	0.503	27.276944	-112.244547
Santa Rosalía	197.00	1	0	3420	0.9	85.2	1.7	7.0	1.1	3.3	0.3	0.2	0.3	86.1	1.7	12.2	0.068	0.504	27.329220	-112.257228

9 CARR: Ramal a Aeropuerto de La Paz

CLAVE: 03396

RUTA: MEX-001

AÑO: 2015

LUGAR	ESTACION				CLASIFICACION VEHICULAR EN PORCIENTO													COORDENADAS		
	KM	TE	SC	TDPA	M	A	B	C2	C3	T3S2	T3S3	T3S2R4	OTROS	A	B	C	K'	D	LATITUD	LONGITUD
T. C. La Paz - Cd. Insurgentes	0.00	3	1	3089	0.7	91.7	0.7	6.0	0.7	0.2	0.0	0.0	0.0	92.4	0.7	6.9	0.067	0.505	24.101127	-110.366980
T. C. La Paz - Cd. Insurgentes	0.00	3	2	3152	0.8	91.1	0.5	6.8	0.7	0.1	0.0	0.0	0.0	91.9	0.5	7.6	0.075	0.505	24.101127	-110.366980
Aeropuerto	3.44																			

10 CARR: Ramal a Aeropuerto de Los Cabos

CLAVE: 03394

RUTA: MEX-001

AÑO: 2015

LUGAR	ESTACION				CLASIFICACION VEHICULAR EN PORCIENTO													COORDENADAS		
	KM	TE	SC	TDPA	M	A	B	C2	C3	T3S2	T3S3	T3S2R4	OTROS	A	B	C	K'	D	LATITUD	LONGITUD
T. C. Cabo San Lucas - La Paz	0.00	3	0	8676	0.4	80.7	6.8	11.6	0.3	0.2	0.0	0.0	0.0	81.1	6.8	12.1	0.076	0.501	23.159098	-109.711390
Aeropuerto Los Cabos	1.00																			

BAJA CALIFORNIA SUR

11 CARR: Ramal a Los Paredones

CLAVE: 03407

RUTA: MEX-001

AÑO: 2015

LUGAR	ESTACION				CLASIFICACION VEHICULAR EN PORCIENTO														COORDENADAS	
	KM	TE	SC	TDPA	M	A	B	C2	C3	T3S2	T3S3	T3S2R4	OTROS	A	B	C	K'	D	LATITUD	LONGITUD
T. C. Cd. Santa Rosalía - Guerrero Negro	0.00	3	0	982	0.0	96.8	0.3	2.7	0.2	0.0	0.0	0.0	0.0	96.8	0.3	2.9	0.072	0.501	27.301278	-112.899030
Paredones	1.40																			

12 CARR: Ramal a Miraflores

CLAVE: 03407

RUTA: MEX-001

AÑO: 2015

LUGAR	ESTACION				CLASIFICACION VEHICULAR EN PORCIENTO														COORDENADAS	
	KM	TE	SC	TDPA	M	A	B	C2	C3	T3S2	T3S3	T3S2R4	OTROS	A	B	C	K'	D	LATITUD	LONGITUD
T. C. Cabo San Lucas - La Paz	0.00	3	1	1064	0.0	93.3	0.7	5.9	0.1	0.0	0.0	0.0	0.0	93.3	0.7	6.0	0.119	0.507	23.370763	-109.753689
T. C. Cabo San Lucas - La Paz	0.00	3	2	1035	0.0	97.3	0.4	2.2	0.1	0.0	0.0	0.0	0.0	97.3	0.4	2.3	0.166	0.507	23.370763	-109.753689
Miraflores	2.20																			

13 CARR: Ramal a Puerto Escondido

CLAVE: 03407

RUTA: MEX-001

AÑO: 2015

LUGAR	ESTACION				CLASIFICACION VEHICULAR EN PORCIENTO														COORDENADAS	
	KM	TE	SC	TDPA	M	A	B	C2	C3	T3S2	T3S3	T3S2R4	OTROS	A	B	C	K'	D	LATITUD	LONGITUD
T. C. Cd. Insurgentes - Loreto	0.00	3	0	371	0.4	89.0	1.3	8.3	1.0	0.0	0.0	0.0	0.0	89.4	1.3	9.3	0.097	0.507	25.802867	-111.326787
Puerto Escondido	2.50																			

14 CARR: Ramal a San Ignacio

CLAVE: 03413

RUTA: MEX-001

AÑO: 2015

LUGAR	ESTACION				CLASIFICACION VEHICULAR EN PORCIENTO														COORDENADAS	
	KM	TE	SC	TDPA	M	A	B	C2	C3	T3S2	T3S3	T3S2R4	OTROS	A	B	C	K'	D	LATITUD	LONGITUD
T. C. Santa Rosalía - Guerrero Negro	0.00	3	0	1903	0.7	89.3	0.8	7.4	1.1	0.2	0.0	0.0	0.5	90.0	0.8	9.2	0.071	0.501	27.300948	-112.893488
San Ignacio	2.70																			

15 CARR: Ramal a Santiago

CLAVE: 03051

RUTA: MEX-001

AÑO: 2015

LUGAR	ESTACION				CLASIFICACION VEHICULAR EN PORCIENTO														COORDENADAS	
	KM	TE	SC	TDPA	M	A	B	C2	C3	T3S2	T3S3	T3S2R4	OTROS	A	B	C	K'	D	LATITUD	LONGITUD
T. C. Cabo San Lucas - La Paz	0.00	3	1	673	0.1	95.5	1.3	2.3	0.6	0.1	0.0	0.0	0.1	95.6	1.3	3.1	0.156	0.520	23.474273	-109.695410
T. C. Cabo San Lucas - La Paz	0.00	3	2	620	0.7	95.2	1.5	2.0	0.6	0.0	0.0	0.0	0.0	95.9	1.5	2.6	0.131	0.520	23.474155	-109.695442
Santiago	2.30																			

BAJA CALIFORNIA SUR

16 CARR : San Pedro - Cabo San Lucas

CLAVE: 03003

RUTA: MEX-019

AÑO : 2015

LUGAR	ESTACION				CLASIFICACION VEHICULAR EN PORCIENTO										COORDENADAS					
	KM	TE	SC	TDPA	M	A	B	C2	C3	T3S2	T3S3	T3S2R4	OTROS	A	B	C	K'	D	LATITUD	LONGITUD
T. C. Cabo San Lucas - La Paz	0.00	3	1	2527	0.7	87.1	2.0	3.0	1.8	3.0	1.0	0.7	0.7	87.8	2.0	10.2	0.077	0.503	23.878622	-110.254347
T. C. Cabo San Lucas - La Paz	0.00	3	2	2495	0.6	87.7	2.1	3.1	1.6	3.1	0.7	0.7	0.4	88.3	2.1	9.6	0.077	0.503	23.878622	-110.254347
T. Der. Melitón Albáñez	16.00	1	1	2396	23.0	59.8	3.4	7.7	2.0	1.2	0.1	0.1	2.7	82.8	3.4	13.8	0.084	0.556	23.654742	-110.224510
T. Der. Melitón Albáñez	16.00	1	2	2294	1.8	84.9	2.5	4.7	2.2	2.2	0.5	0.8	0.4	86.7	2.5	10.8	0.101	0.556	23.654742	-110.224510
T. Der. Melitón Albáñez	16.00	3	1	2332	0.5	85.1	2.5	5.0	2.3	2.9	0.4	0.9	0.4	85.6	2.5	11.9	0.090	0.502	23.650190	-110.225458
T. Der. Melitón Albáñez	16.00	3	2	2345	0.6	84.4	2.3	4.9	2.0	3.5	1.0	1.2	0.1	85.0	2.3	12.7	0.097	0.502	23.650190	-110.225458
Todos Santos	52.00	1	0	7294	0.9	82.4	1.0	6.3	1.8	5.3	1.3	0.6	0.4	83.3	1.0	15.7	0.065	0.501	23.458280	-110.219970
Todos Santos	52.00	3	0	6626	0.5	83.2	1.2	6.5	2.2	4.0	1.5	0.6	0.3	83.7	1.2	15.1	0.076	0.503	23.440166	-110.219376
El Pescadero	62.00	1	1	2868	0.8	83.1	2.5	7.2	1.9	2.6	0.8	1.0	0.1	83.9	2.5	13.6	0.078	0.506	23.377123	-110.180243
El Pescadero	62.00	1	2	2935	0.7	86.7	1.8	5.7	1.5	2.4	0.4	0.7	0.1	87.4	1.8	10.8	0.085	0.506	23.377230	-110.180060
El Pescadero	62.00	3	1	2499	0.6	79.3	3.6	8.9	2.2	3.1	1.2	0.7	0.4	79.9	3.6	16.5	0.069	0.501	23.353119	-110.163476
El Pescadero	62.00	3	2	2505	0.8	77.5	4.1	9.5	2.5	3.6	0.8	0.8	0.4	78.3	4.1	17.6	0.069	0.501	23.353119	-110.163476
Migriño	102.50	1	1	1792	0.8	82.9	2.3	5.3	3.2	3.0	1.2	1.2	0.1	83.7	2.3	14.0	0.097	0.502	23.050297	-110.094156
Migriño	102.50	1	2	1773	0.5	84.1	1.7	4.5	2.8	3.8	1.1	1.4	0.1	84.6	1.7	13.7	0.111	0.502	23.050297	-110.094156
Cabo San Lucas	131.00	1	1	7112	2.0	81.3	2.1	8.0	2.9	1.5	1.1	0.9	0.2	83.3	2.1	14.6	0.067	0.500	22.905547	-109.941345
Cabo San Lucas	131.00	1	2	7113	1.9	81.5	2.3	7.7	2.8	1.6	0.9	1.0	0.3	83.4	2.3	14.3	0.062	0.500	22.905547	-109.941345

17 CARR : Santa Rosalía - Guerrero Negro

CLAVE: 03095

RUTA: MEX-001

AÑO : 2015

LUGAR	ESTACION				CLASIFICACION VEHICULAR EN PORCIENTO										COORDENADAS					
	KM	TE	SC	TDPA	M	A	B	C2	C3	T3S2	T3S3	T3S2R4	OTROS	A	B	C	K'	D	LATITUD	LONGITUD
Santa Rosalía	0.00	3	0	4599	0.7	76.6	3.1	15.0	1.3	2.2	0.3	0.4	0.4	77.3	3.1	19.6	0.099	0.509	27.361536	-112.281356
Cuesta Infiernillo	12.00	1	0	1209	1.2	71.9	3.6	6.8	4.9	9.6	1.3	0.2	0.5	73.1	3.6	23.3	0.073	0.510	27.386810	-112.356675
Cuesta Infiernillo	12.00	3	0	1205	1.2	69.9	3.6	5.8	7.4	10.1	1.2	0.3	0.5	71.1	3.6	25.3	0.070	0.507	27.389912	-112.368530
T. Izq. San Ignacio	73.60	1	0	2823	1.2	86.4	1.2	5.8	0.8	3.8	0.5	0.2	0.1	87.6	1.2	11.2	0.079	0.501	27.301604	-112.892343
T. Izq. San Ignacio	73.60	3	0	1962	0.6	86.2	3.0	3.0	1.5	5.1	0.4	0.1	0.1	86.8	3.0	10.2	0.070	0.526	27.301357	-112.899234
T. Izq. Punta Abreojos	95.70	1	0	1132	0.8	78.6	5.0	7.5	0.7	6.3	0.5	0.4	0.2	79.4	5.0	15.6	0.071	0.503	27.327142	-113.115665
T. Izq. Punta Abreojos	95.70	3	0	1087	0.6	71.7	3.2	11.9	1.7	9.1	0.9	0.5	0.4	72.3	3.2	24.5	0.075	0.503	27.330504	-113.117203
Los Ángeles	117.90	1	0	1451	0.2	71.2	2.1	12.3	1.3	10.2	1.0	0.9	0.8	71.4	2.1	26.5	0.110	0.507	27.480469	-113.293542
Los Ángeles	117.90	3	0	1332	1.2	72.7	5.4	8.7	4.1	6.3	0.7	0.4	0.5	73.9	5.4	20.7	0.066	0.512	27.492613	-113.300408
T. Izq. Vizcaino	144.00	1	0	2829	0.8	81.1	4.2	5.7	2.2	5.0	0.5	0.2	0.3	81.9	4.2	13.9	0.069	0.509	27.634175	-113.378501
T. Izq. Vizcaino	144.00	3	0	1714	0.8	74.4	6.2	6.9	2.1	8.2	0.9	0.3	0.2	75.2	6.2	18.6	0.080	0.510	27.662399	-113.392111
T. Der. El Arco	189.00	1	0	1256	1.3	74.3	4.4	6.3	2.2	10.2	0.8	0.2	0.3	75.6	4.4	20.0	0.084	0.517	27.852003	-113.765341
T. Der. El Arco	189.00	3	0	1274	0.7	76.4	3.6	8.1	0.9	8.7	0.8	0.5	0.3	77.1	3.6	19.3	0.082	0.502	27.857161	-113.778702
Ent. Guerrero Negro	216.85	1	0	1682	1.3	76.9	4.2	7.6	1.8	6.8	0.7	0.2	0.5	78.2	4.2	17.6	0.084	0.514	27.965046	-114.010108

BAJA CALIFORNIA SUR

18 CARR: Libramiento San José del Cabo - Aeropuerto Los Cabos (Cuota)

CLAVE: 03392

RUTA: MEX-001D

AÑO: 2015

LUGAR	ESTACION				CLASIFICACION VEHICULAR EN PORCIENTO													COORDENADAS		
	KM	TE	SC	TDPA	M	A	B	C2	C3	T3S2	T3S3	T3S2R4	OTROS	A	B	C	K'	D	LATITUD	LONGITUD
T. C. Cabo San Lucas - La Paz	0.00	3	0	4433	1.4	93.5	1.1	3.0	0.9	0.1	0.0	0.0	0.0	94.9	1.1	4.0	0.074	0.500	23.049025	-109.714016
Caseta de Cobro Los Cabos	1.52	2	0	3052	0.1	98.4	0.7	0.2	0.2	0.1	0.1	0.2	0.0	98.5	0.7	0.8	0.102	0.500	23.049954	-109.719556
Aeropuerto de Los Cabos	19.50																			

19 CARR: Cd. Insurgentes - La Purísima

CLAVE: 03005

RUTA: BCS-001

AÑO: 2015

LUGAR	ESTACION				CLASIFICACION VEHICULAR EN PORCIENTO													COORDENADAS		
	KM	TE	SC	TDPA	M	A	B	C2	C3	T3S2	T3S3	T3S2R4	OTROS	A	B	C	K'	D	LATITUD	LONGITUD
Cd. Insurgentes	0.00	3	0	3438	0.4	82.9	1.1	10.9	2.1	2.1	0.4	0.0	0.1	83.3	1.1	15.6	0.060	0.505	25.272194	-111.784069
Ignacio Zaragoza	18.00	1	0	2150	0.3	91.5	1.9	2.9	1.9	1.2	0.3	0.0	0.0	91.8	1.9	6.3	0.062	0.503	25.387158	-111.837428
Ignacio Zaragoza	18.00	3	1	747	0.3	94.3	0.2	2.9	2.0	0.1	0.1	0.0	0.1	94.6	0.2	5.2	0.102	0.507	25.402854	-111.844465
Ignacio Zaragoza	18.00	3	2	769	0.2	95.6	0.2	2.2	1.8	0.0	0.0	0.0	0.0	95.8	0.2	4.0	0.079	0.507	25.402888	-111.844748
T. Izq. Santo Domingo	28.70	1	0	696	0.0	87.5	0.6	5.8	5.4	0.3	0.3	0.0	0.1	87.5	0.6	11.9	0.111	0.502	25.487054	-111.883712
Francisco Villa	64.00	3	0	293	0.8	94.8	1.0	2.3	1.1	0.0	0.0	0.0	0.0	95.6	1.0	3.4	0.092	0.505	25.805445	-112.031230
La Purísima	107.00	1	0	296	0.0	98.0	0.9	1.1	0.0	0.0	0.0	0.0	0.0	98.0	0.9	1.1	0.078	0.501	26.179775	-112.099724

20 CARR: Cd. Insurgentes - Pto. Adolfo López Mateos

CLAVE: 03404

RUTA: BCS

AÑO: 2015

LUGAR	ESTACION				CLASIFICACION VEHICULAR EN PORCIENTO													COORDENADAS		
	KM	TE	SC	TDPA	M	A	B	C2	C3	T3S2	T3S3	T3S2R4	OTROS	A	B	C	K'	D	LATITUD	LONGITUD
T. C. Cd. Insurgentes - La Purísima	0.00	3	0	871	0.7	81.3	1.6	13.5	1.6	0.6	0.0	0.0	0.7	82.0	1.6	16.4	0.062	0.507	25.274397	-111.788234
Puerto Adolfo López Mateos	35.50	1	0	882	0.8	94.2	0.7	3.6	0.4	0.3	0.0	0.0	0.0	95.0	0.7	4.3	0.073	0.508	25.193165	-112.098174

21 CARR: Ent. Campo Fisher - Punta Abrejos

CLAVE: 03411

RUTA: BCS

AÑO: 2015

LUGAR	ESTACION				CLASIFICACION VEHICULAR EN PORCIENTO													COORDENADAS		
	KM	TE	SC	TDPA	M	A	B	C2	C3	T3S2	T3S3	T3S2R4	OTROS	A	B	C	K'	D	LATITUD	LONGITUD
T. C. Santa Rosalía - Paralelo 28	0.00	3	0	241	1.0	89.2	1.8	5.0	1.1	1.1	0.8	0.0	0.0	90.2	1.8	8.0	0.095	0.506	27.327743	-113.117393
Punta Abrejos	88.00																			

22 CARR: La Paz - Ensenada de Muertos

CLAVE: 03103

RUTA: BCS-246

AÑO: 2015

LUGAR	ESTACION				CLASIFICACION VEHICULAR EN PORCIENTO													COORDENADAS		
	KM	TE	SC	TDPA	M	A	B	C2	C3	T3S2	T3S3	T3S2R4	OTROS	A	B	C	K'	D	LATITUD	LONGITUD
La Paz	0.00	3	0	2877	0.9	93.5	0.3	4.7	0.6	0.0	0.0	0.0	0.0	94.4	0.3	5.3	0.084	0.536	24.114236	-110.293277

BAJA CALIFORNIA SUR

22 CARR: La Paz - Ensenada de Muertos

CLAVE: 03103

RUTA: BCS-246

AÑO: 2015

LUGAR	ESTACION				CLASIFICACION VEHICULAR EN PORCIENTO										COORDENADAS					
	KM	TE	SC	TDPA	M	A	B	C2	C3	T3S2	T3S3	T3S2R4	OTROS	A	B	C	K'	D	LATITUD	LONGITUD
T. Izq. El Sargento	45.00	1	0	1199	0.4	92.7	0.4	5.4	0.9	0.1	0.1	0.0	0.0	93.1	0.4	6.5	0.112	0.516	23.983137	-109.995845
T. Izq. El Sargento	45.00	3	0	1470	0.5	93.5	0.5	5.0	0.3	0.1	0.0	0.0	0.1	94.0	0.5	5.5	0.080	0.500	23.979863	-109.984835
Ensenada de Muertos	57.50	1	0	289	0.8	87.7	0.7	9.8	0.3	0.7	0.0	0.0	0.0	88.5	0.7	10.8	0.104	0.505	24.003470	-109.843093

23 CARR: Libramiento de La Paz

CLAVE: 03004

RUTA: BCS

AÑO: 2015

LUGAR	ESTACION				CLASIFICACION VEHICULAR EN PORCIENTO										COORDENADAS					
	KM	TE	SC	TDPA	M	A	B	C2	C3	T3S2	T3S3	T3S2R4	OTROS	A	B	C	K'	D	LATITUD	LONGITUD
T. C. Cabo San Lucas - La Paz	0.00	3	0	14930	0.8	89.7	1.2	4.4	1.6	1.2	0.5	0.4	0.2	90.5	1.2	8.3	0.059	0.501	24.107520	-110.314476
T. C. La Paz - Cd. Insurgentes	10.00																			

24 CARR: Libramiento Norte de La Paz

CLAVE: 03006

RUTA: BCS

AÑO: 2015

LUGAR	ESTACION				CLASIFICACION VEHICULAR EN PORCIENTO										COORDENADAS					
	KM	TE	SC	TDPA	M	A	B	C2	C3	T3S2	T3S3	T3S2R4	OTROS	A	B	C	K'	D	LATITUD	LONGITUD
T. C. La Paz - Pichilingue	0.00	3	0	2213	1.1	64.8	2.1	5.2	10.3	10.3	3.6	2.3	0.3	65.9	2.1	32.0	0.148	0.547	24.231976	-110.300536
T. C. La Paz - Ensenada de Muertos	18.80	1	0	8861	1.3	84.0	0.7	5.9	3.2	2.3	1.0	1.0	0.6	85.3	0.7	14.0	0.068	0.557	24.123010	-110.291879
T. C. La Paz - Ensenada de Muertos	18.80	3	0	5022	1.6	73.4	1.1	6.1	7.0	5.1	2.1	1.8	1.8	75.0	1.1	23.9	0.068	0.504	24.120098	-110.297294
T. C. Cabo San Lucas - La Paz	20.70	1	0	12026	1.5	84.0	1.6	5.3	4.1	1.9	0.8	0.5	0.3	85.5	1.6	12.9	0.063	0.501	24.114792	-110.307274

25 CARR: Ramal a Benito Juárez

CLAVE: 03405

RUTA: BCS

AÑO: 2015

LUGAR	ESTACION				CLASIFICACION VEHICULAR EN PORCIENTO										COORDENADAS					
	KM	TE	SC	TDPA	M	A	B	C2	C3	T3S2	T3S3	T3S2R4	OTROS	A	B	C	K'	D	LATITUD	LONGITUD
T. C. Cd. Constitución - Puerto San Carlos	0.00	3	0	770	0.4	93.3	0.7	4.8	0.4	0.4	0.0	0.0	0.0	93.7	0.7	5.6	0.074	0.504	25.043193	-111.774603
Benito Juárez	11.50	1	0	765	0.1	94.1	2.6	2.6	0.3	0.2	0.0	0.0	0.1	94.2	2.6	3.2	0.097	0.527	25.110069	-111.821069

26 CARR: Ramal a Ejido Ley Federal de Aguas Número Cuatro

CLAVE: 03007

RUTA: BCS

AÑO: 2015

LUGAR	ESTACION				CLASIFICACION VEHICULAR EN PORCIENTO										COORDENADAS					
	KM	TE	SC	TDPA	M	A	B	C2	C3	T3S2	T3S3	T3S2R4	OTROS	A	B	C	K'	D	LATITUD	LONGITUD
T. C. La Paz - Cd. Insurgentes	0.00	3	0	982	0.3	91.5	0.6	2.8	3.0	1.5	0.3	0.0	0.0	91.8	0.6	7.6	0.071	0.502	25.198640	-111.748914
Ejido Ley Federal de Aguas Número Cuatro	19.20																			

BAJA CALIFORNIA SUR

27 CARR: Ramal a El Carrizal

CLAVE: 03050

RUTA: BCS

AÑO: 2015

LUGAR	ESTACION				CLASIFICACION VEHICULAR EN PORCIENTO														COORDENADAS	
	KM	TE	SC	TDPA	M	A	B	C2	C3	T3S2	T3S3	T3S2R4	OTROS	A	B	C	K'	D	LATITUD	LONGITUD
T. C. San Pedro - Cabo San Lucas Carrizal	0.00	3	0	502	0.6	94.2	1.5	2.4	0.6	0.7	0.0	0.0	0.0	94.8	1.5	3.7	0.076	0.501	23.833227	-110.249836
	10.00																			

28 CARR: Ramal a Guerrero Negro

CLAVE: 03395

RUTA: BCS

AÑO: 2015

LUGAR	ESTACION				CLASIFICACION VEHICULAR EN PORCIENTO														COORDENADAS	
	KM	TE	SC	TDPA	M	A	B	C2	C3	T3S2	T3S3	T3S2R4	OTROS	A	B	C	K'	D	LATITUD	LONGITUD
T. C. Santa Rosalía - Guerrero Negro Guerrero Negro	0.00	3	0	2975	0.6	84.9	2.3	9.0	0.9	1.3	0.3	0.2	0.5	85.5	2.3	12.2	0.070	0.503	27.967465	-114.019052
	4.50																			

29 CARR: Ramal a La Ribera

CLAVE: 03406

RUTA: BCS

AÑO: 2015

LUGAR	ESTACION				CLASIFICACION VEHICULAR EN PORCIENTO														COORDENADAS	
	KM	TE	SC	TDPA	M	A	B	C2	C3	T3S2	T3S3	T3S2R4	OTROS	A	B	C	K'	D	LATITUD	LONGITUD
T. C. Cabo San Lucas - La Paz La Ribera	0.00	3	0	1226	0.4	90.0	0.7	8.5	0.3	0.0	0.0	0.0	0.1	90.4	0.7	8.9	0.090	0.502	23.539713	-109.668844
	12.00																			

30 CARR: Ramal a Melitón Albáñez

CLAVE: 03407

RUTA: BCS

AÑO: 2015

LUGAR	ESTACION				CLASIFICACION VEHICULAR EN PORCIENTO														COORDENADAS	
	KM	TE	SC	TDPA	M	A	B	C2	C3	T3S2	T3S3	T3S2R4	OTROS	A	B	C	K'	D	LATITUD	LONGITUD
T. C. San Pedro - Cabo San Lucas Melitón Albáñez	0.00	3	0	538	0.5	85.6	5.8	6.0	1.6	0.5	0.0	0.0	0.0	86.1	5.8	8.1	0.091	0.512	23.653118	-110.226361
	23.50																			

31 CARR: Ramal a Santa Catarina

CLAVE: 03052

RUTA: BCS

AÑO: 2015

LUGAR	ESTACION				CLASIFICACION VEHICULAR EN PORCIENTO														COORDENADAS	
	KM	TE	SC	TDPA	M	A	B	C2	C3	T3S2	T3S3	T3S2R4	OTROS	A	B	C	K'	D	LATITUD	LONGITUD
T. C. Cabo San Lucas - La Paz Santa Catarina	0.00	3	0	1757	1.8	81.0	2.6	8.9	5.5	0.1	0.0	0.0	0.1	82.8	2.6	14.6	0.081	0.522	23.136027	-109.702510
	1.00																			

BAJA CALIFORNIA SUR

32 CARR: Ramal a Bahía de Tortugas

CLAVE: 03397

RUTA: MEX-001-BCS

AÑO: 2015

LUGAR	ESTACION				CLASIFICACION VEHICULAR EN PORCIENTO										COORDENADAS					
	KM	TE	SC	TDPA	M	A	B	C2	C3	T3S2	T3S3	T3S2R4	OTROS	A	B	C	K'	D	LATITUD	LONGITUD
T. C. Santa Rosalía - Guerrero Negro	0.00	3	0	7843	0.2	80.5	3.1	10.1	1.1	4.0	0.4	0.2	0.4	80.7	3.1	16.2	0.068	0.501	27.641716	-113.400799
Vizcaino	6.00	3	0	1478	0.4	79.4	5.9	10.1	0.7	2.4	0.7	0.0	0.4	79.8	5.9	14.3	0.067	0.504	27.642570	-113.462444
Bahía de Tortugas	198.00																			

33 CARR: Ramal a Ejido Ley Federal de Aguas Número Dos

CLAVE: 03050

RUTA: BCS-MEX-001

AÑO: 2015

LUGAR	ESTACION				CLASIFICACION VEHICULAR EN PORCIENTO										COORDENADAS					
	KM	TE	SC	TDPA	M	A	B	C2	C3	T3S2	T3S3	T3S2R4	OTROS	A	B	C	K'	D	LATITUD	LONGITUD
T. C. Cd. Insurgentes - Loreto	0.00	3	0	141	0.1	95.8	1.3	2.2	0.2	0.4	0.0	0.0	0.0	95.9	1.3	2.8	0.135	0.501	25.315268	-111.659881
Ejido Ley Federal de Aguas Número Dos	10.00																			

34 CARR: Ramal a Ley Federal de Aguas Número Cinco

CLAVE: 03407

RUTA: BCS-MEX-001

AÑO: 2015

LUGAR	ESTACION				CLASIFICACION VEHICULAR EN PORCIENTO										COORDENADAS					
	KM	TE	SC	TDPA	M	A	B	C2	C3	T3S2	T3S3	T3S2R4	OTROS	A	B	C	K'	D	LATITUD	LONGITUD
Cd. Constitución	0.00	3	1	826	1.8	84.5	1.8	9.0	1.8	0.6	0.5	0.0	0.0	86.3	1.8	11.9	0.070	0.516	25.034751	-111.631378
Cd. Constitución	0.00	3	2	774	1.7	84.2	2.0	9.4	2.1	0.3	0.3	0.0	0.0	85.9	2.0	12.1	0.070	0.516	25.034751	-111.631378
Ley Federal de Aguas Número Cinco	17.50																			

35 CARR: Ramal a San Juan de La Costa

CLAVE: 03403

RUTA: BCS-163-MEX-001

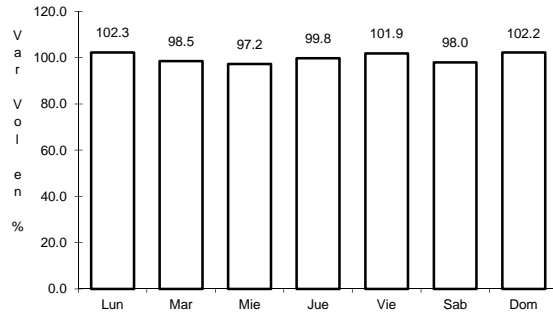
AÑO: 2015

LUGAR	ESTACION				CLASIFICACION VEHICULAR EN PORCIENTO										COORDENADAS					
	KM	TE	SC	TDPA	M	A	B	C2	C3	T3S2	T3S3	T3S2R4	OTROS	A	B	C	K'	D	LATITUD	LONGITUD
T. C. La Paz - Cd. Insurgentes	0.00	3	0	1118	0.3	82.1	0.8	12.4	3.7	0.5	0.1	0.0	0.1	82.4	0.8	16.8	0.080	0.520	24.123759	-110.442224
Puerto Cajete	23.00	3	0	594	0.1	74.6	0.6	22.3	1.7	0.5	0.1	0.1	0.0	74.7	0.6	24.7	0.077	0.509	24.251575	-110.609333
San Juan de La Costa	40.70	1	0	584	0.3	74.8	1.7	17.2	2.6	3.1	0.2	0.1	0.0	75.1	1.7	23.2	0.096	0.519	24.364093	-110.685674

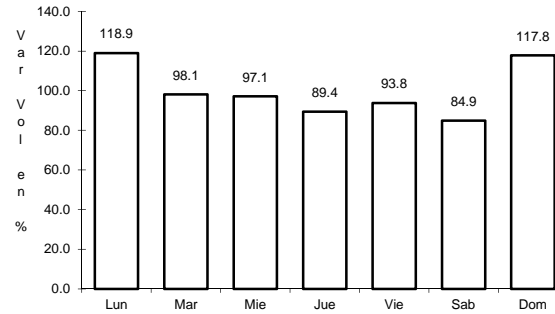
1 CARR: Cabo San Lucas - La Paz

CLAVE: 03102

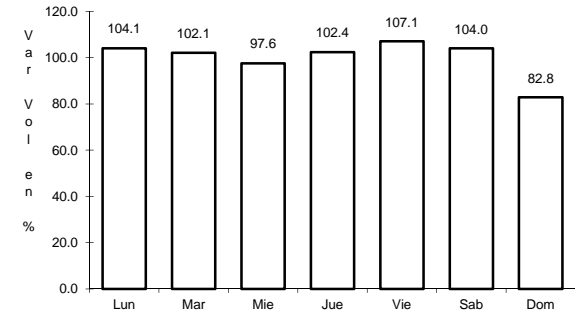
RUTA: MEX-001



Km: 0.00 Tipo: 3 Sent: 1



Km: 0.00 Tipo: 3 Sent: 2

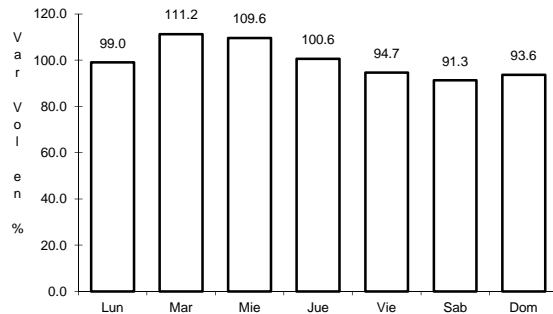


Km: 110.00 Tipo: 3 Sent: 0

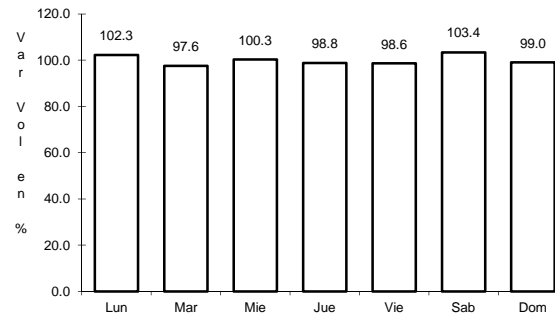
2 CARR: Cd. Constitución - Puerto San Carlos

CLAVE: 03231

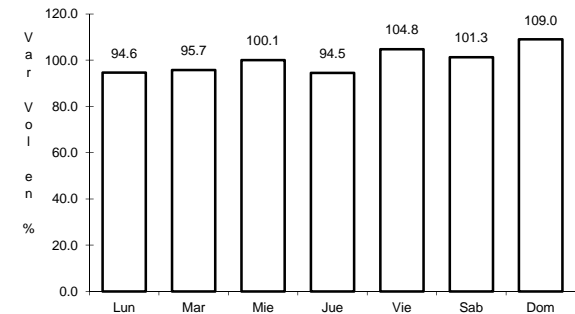
RUTA: MEX-001



Km: 0.00 Tipo: 3 Sent: 0



Km: 10.00 Tipo: 1 Sent: 0

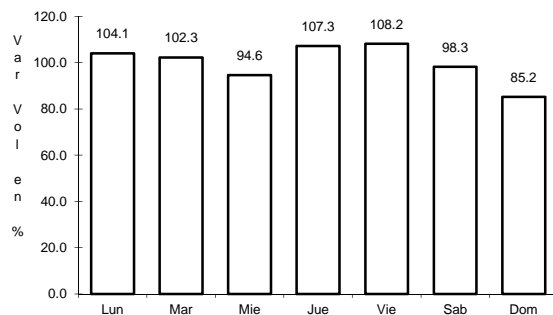


Km: 10.00 Tipo: 3 Sent: 0

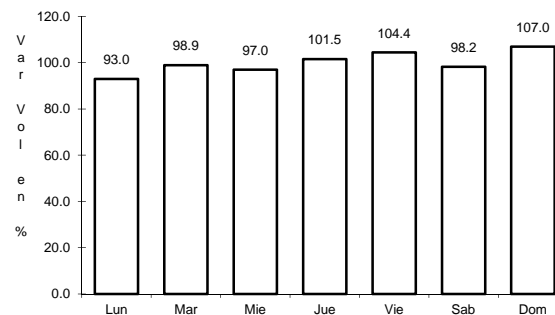
3 CARR: Cd. Insurgentes - Loreto

CLAVE: 03092

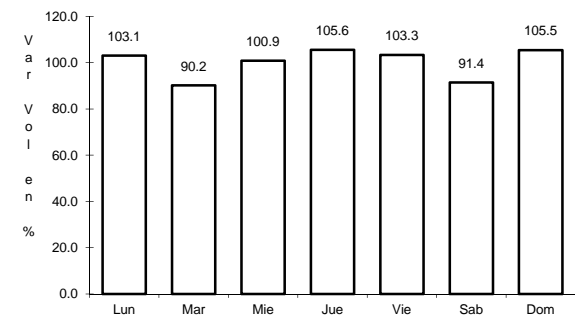
RUTA: MEX-001



Km: 0.00 Tipo: 3 Sent: 0



Km: 65.00 Tipo: 1 Sent: 0

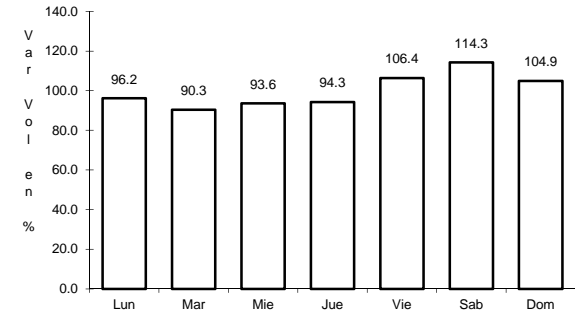
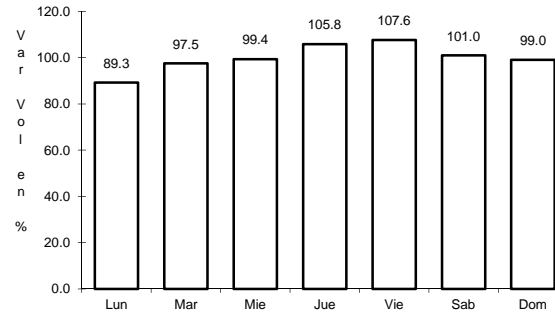
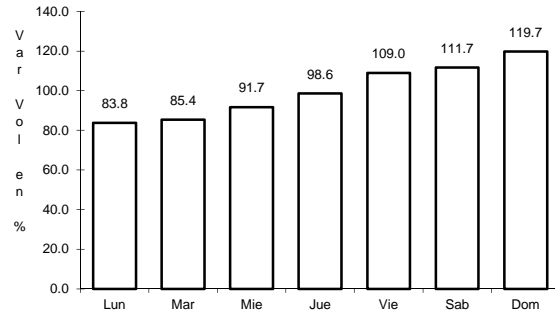


Km: 117.30 Tipo: 1 Sent: 0

4 CARR: Ent. Punta Prieta - Guerrero Negro

CLAVE: 00321

RUTA: MEX-001



Km: 0.00 Tipo: 3 Sent: 0

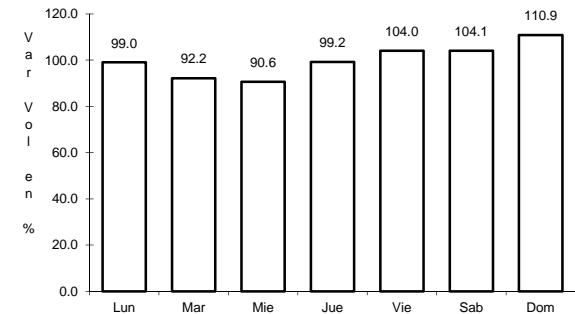
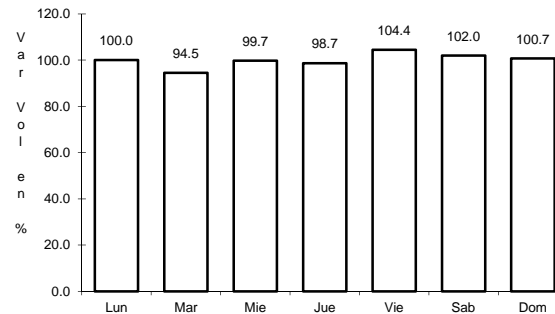
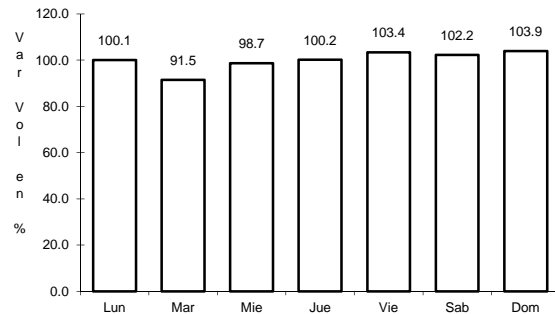
Km: 70.10 Tipo: 3 Sent: 0

Km: 130.00 Tipo: 1 Sent: 0

5 CARR: La Paz - Cd. Insurgentes

CLAVE: 03101

RUTA: MEX-001



Km: 0.00 Tipo: 3 Sent: 1

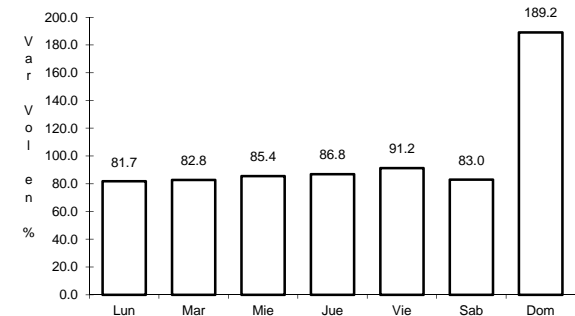
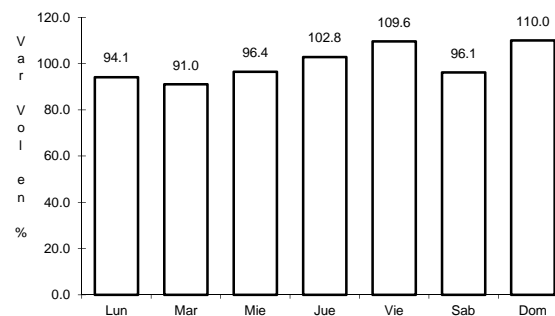
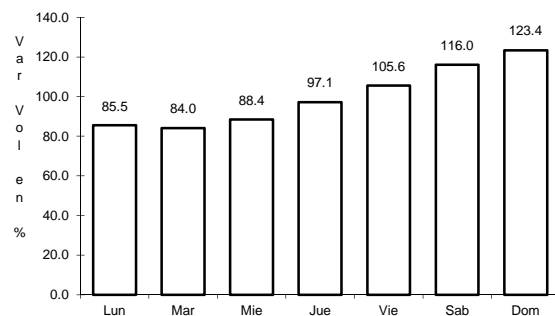
Km: 0.00 Tipo: 3 Sent: 2

Km: 118.20 Tipo: 1 Sent: 0

6 CARR: La Paz - Pichilingue

CLAVE: 03230

RUTA: MEX-011



Km: 0.00 Tipo: 3 Sent: 1

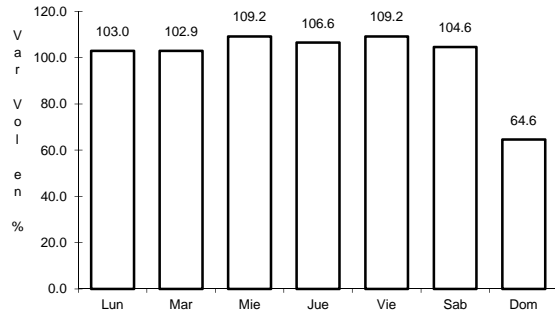
Km: 0.00 Tipo: 3 Sent: 2

Km: 17.00 Tipo: 1 Sent: 0

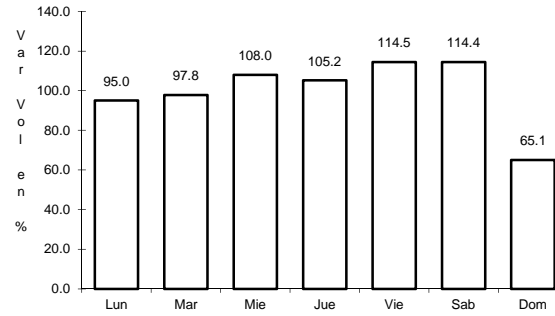
7 CARR: Libramiento de Cabo San Lucas

CLAVE: 03100

RUTA: MEX-001



Km: 0.00 Tipo: 3 Sent: 1

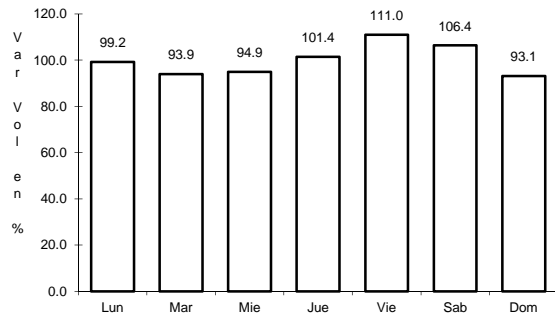


Km: 0.00 Tipo: 3 Sent: 2

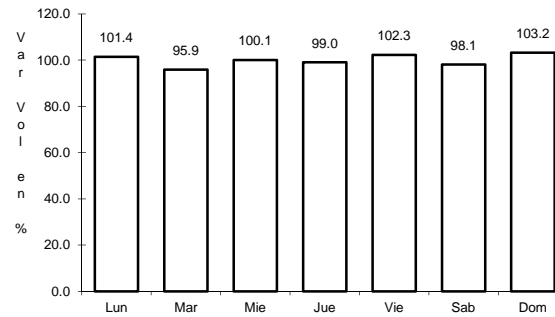
8 CARR: Loreto - Santa Rosalía

CLAVE: 03393

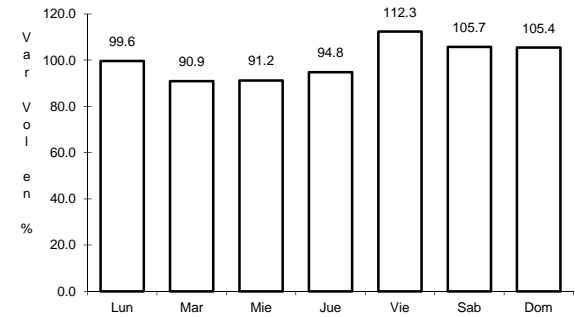
RUTA: MEX-001



Km: 0.00 Tipo: 3 Sent: 0



Km: 135.00 Tipo: 1 Sent: 0

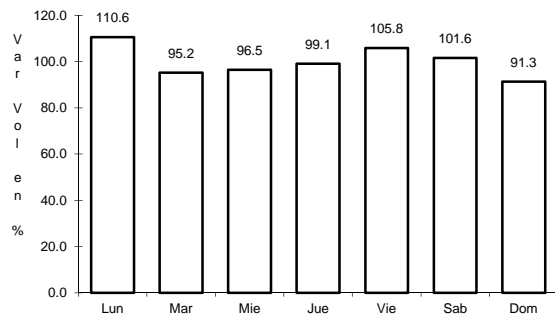


Km: 197.00 Tipo: 1 Sent: 0

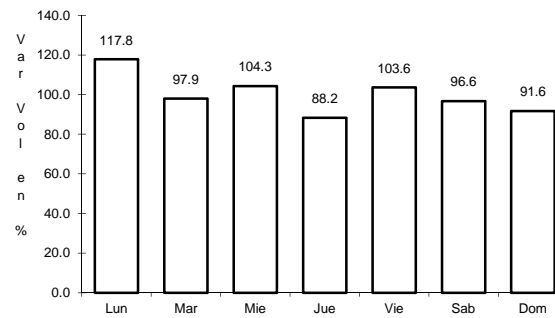
9 CARR: Ramal a Aeropuerto de La Paz

CLAVE: 03396

RUTA: MEX-001



Km: 0.00 Tipo: 3 Sent: 1

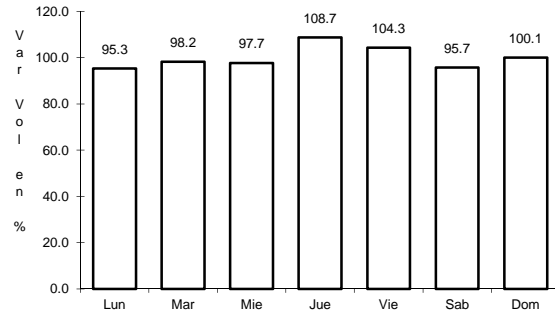


Km: 0.00 Tipo: 3 Sent: 2

10 CARR: Ramal a Aeropuerto de Los Cabos

CLAVE: 03394

RUTA: MEX-001

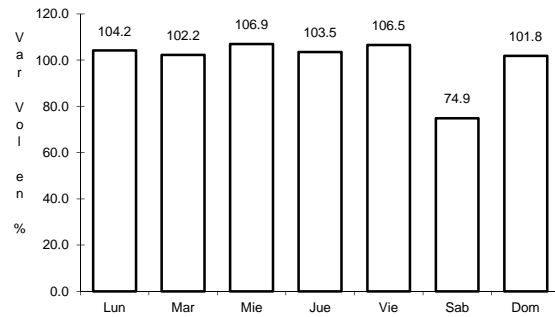


Km: 0.00 Tipo: 3 Sent: 0

11 CARR: Ramal a Los Paredones

CLAVE: 03407

RUTA: MEX-001

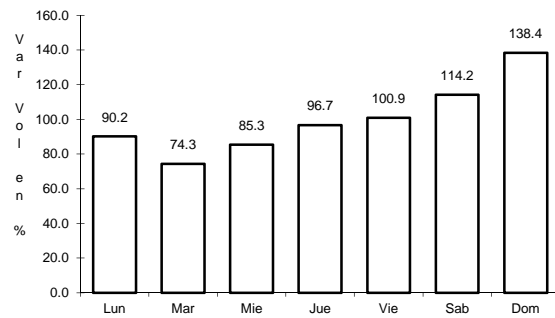


Km: 0.00 Tipo: 3 Sent: 0

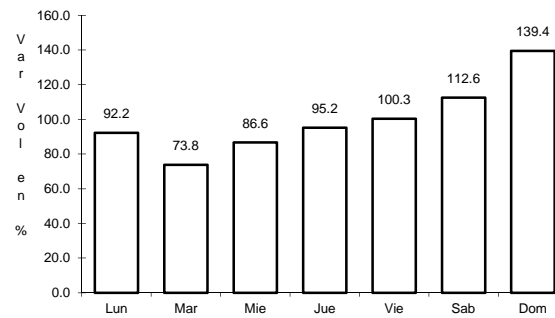
12 CARR: Ramal a Miraflores

CLAVE: 03407

RUTA: MEX-001



Km: 0.00 Tipo: 3 Sent: 1

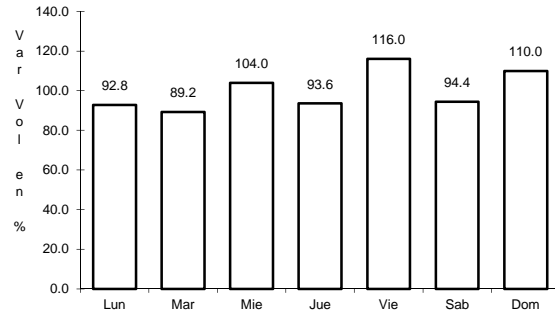


Km: 0.00 Tipo: 3 Sent: 2

13 CARR: Ramal a Puerto Escondido

CLAVE: 03407

RUTA: MEX-001

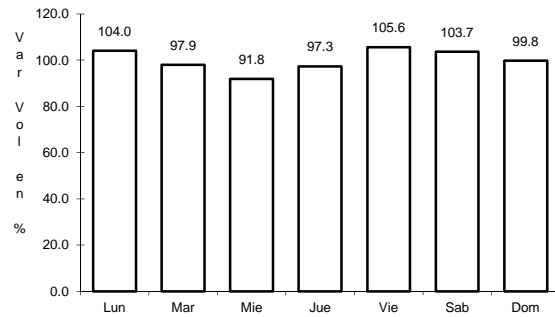


Km: 0.00 Tipo: 3 Sent: 0

14 CARR: Ramal a San Ignacio

CLAVE: 03413

RUTA: MEX-001

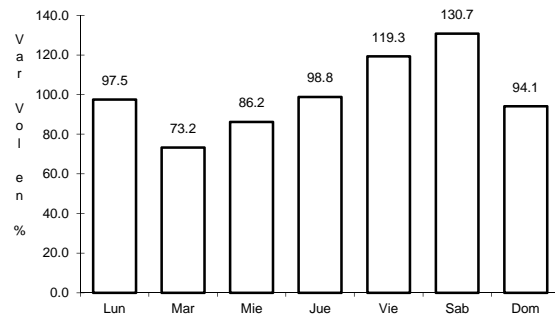


Km: 0.00 Tipo: 3 Sent: 0

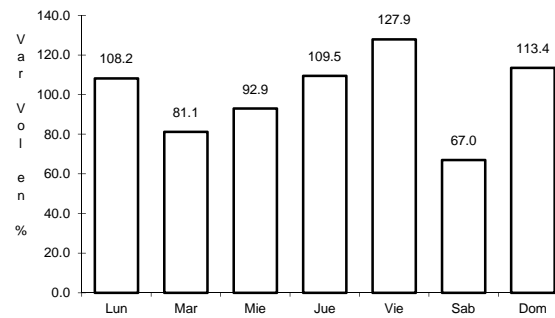
15 CARR: Ramal a Santiago

CLAVE: 03051

RUTA: MEX-001



Km: 0.00 Tipo: 3 Sent: 1

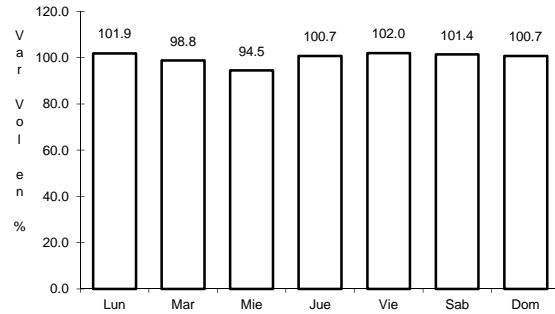


Km: 0.00 Tipo: 3 Sent: 2

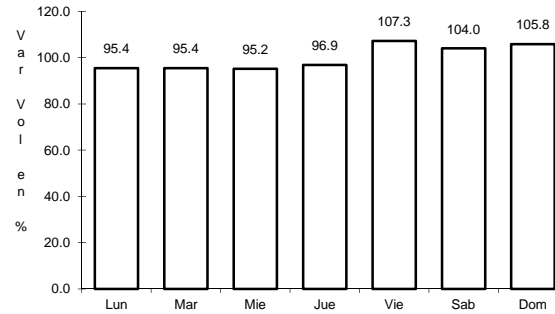
16 CARR: San Pedro - Cabo San Lucas

CLAVE: 03003

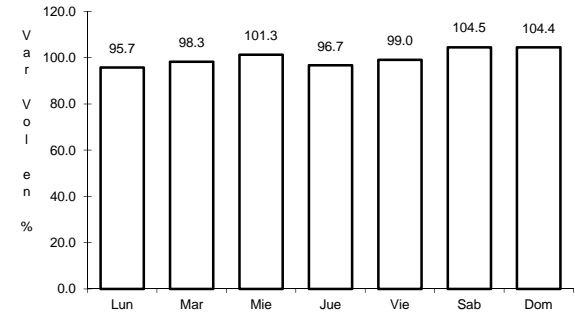
RUTA: MEX-019



Km: 0.00 Tipo: 3 Sent: 1



Km: 0.00 Tipo: 3 Sent: 2

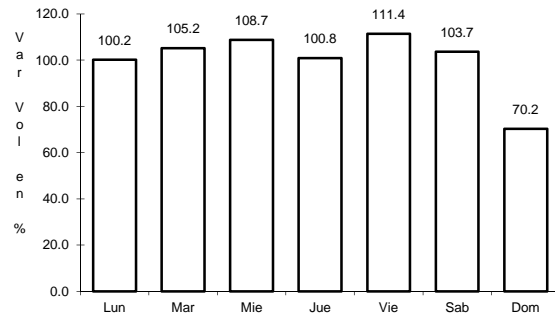


Km: 52.00 Tipo: 1 Sent: 0

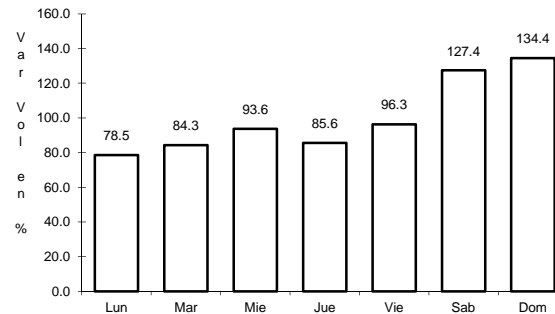
17 CARR: Santa Rosalía - Guerrero Negro

CLAVE: 03095

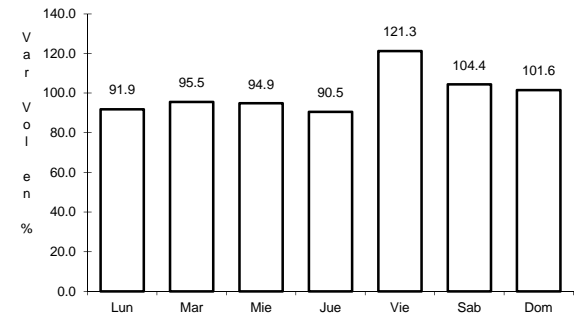
RUTA: MEX-001



Km: 0.00 Tipo: 3 Sent: 0



Km: 117.90 Tipo: 1 Sent: 0

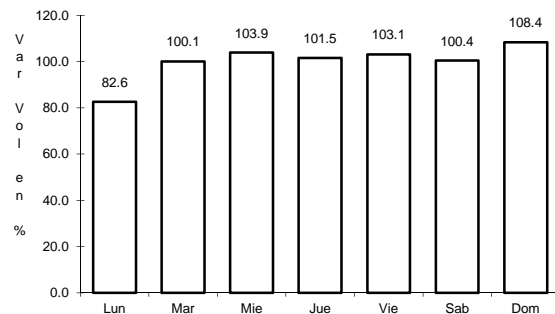


Km: 216.85 Tipo: 1 Sent: 0

18 CARR: Libramiento San José del Cabo - Aeropuerto Los Cabos (Cuota)

CLAVE: 03392

RUTA: MEX-001D

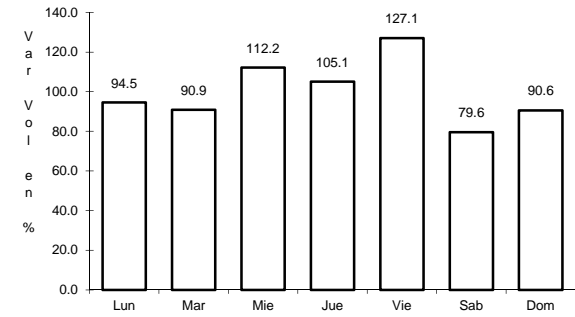
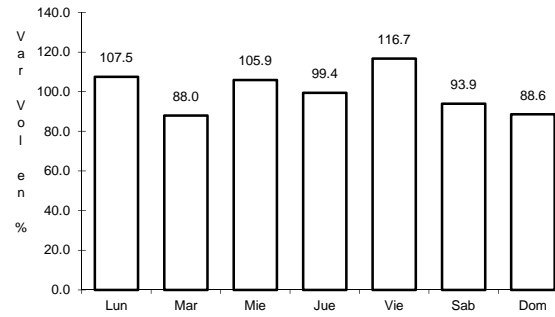
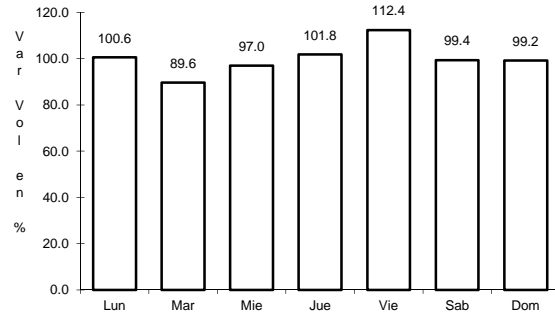


Km: 0.00 Tipo: 3 Sent: 0

19 CARR: Cd. Insurgentes - La Purísima

CLAVE: 03005

RUTA: BCS-001



Km: 0.00 Tipo: 3 Sent: 0

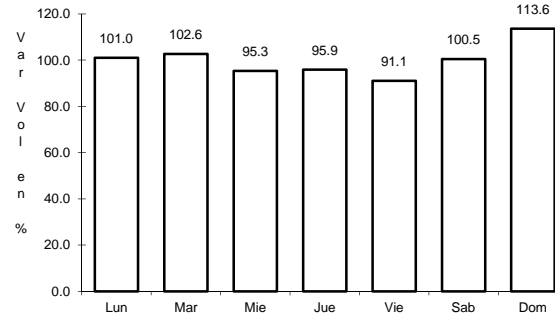
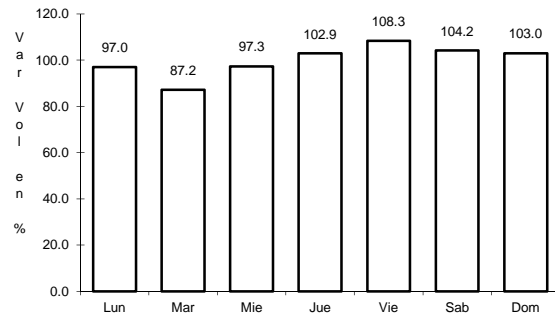
Km: 64.00 Tipo: 3 Sent: 0

Km: 107.00 Tipo: 1 Sent: 0

20 CARR: Cd. Insurgentes - Pto. Adolfo López Mateos

CLAVE: 03404

RUTA: BCS



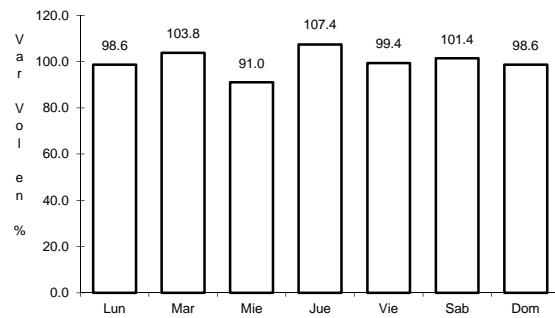
Km: 0.00 Tipo: 3 Sent: 0

Km: 35.50 Tipo: 1 Sent: 0

21 CARR: Ent. Campo Fisher - Punta Abreojos

CLAVE: 03411

RUTA: BCS

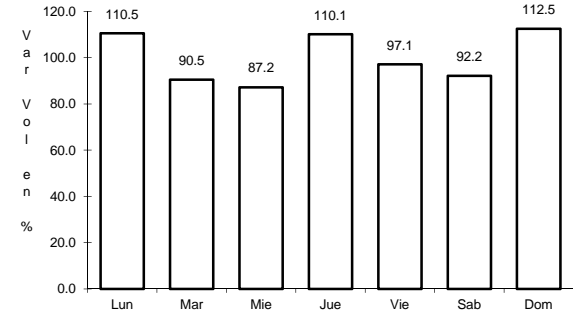
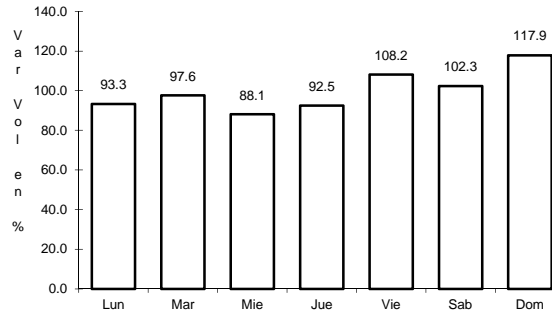
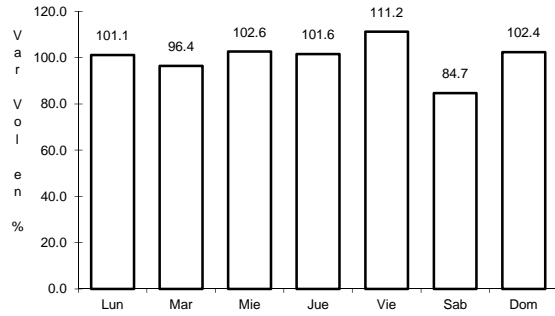


Km: 0.00 Tipo: 3 Sent: 0

22 CARR: La Paz - Ensenada de Muertos

CLAVE: 03103

RUTA: BCS-246



Km: 0.00 Tipo: 3 Sent: 0

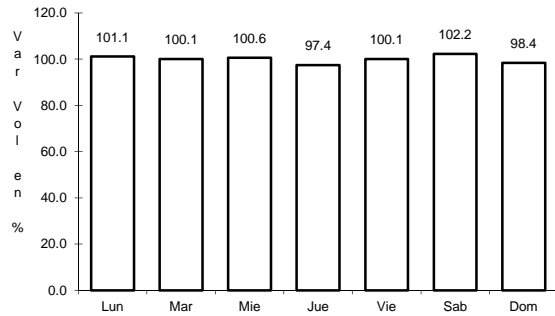
Km: 45.00 Tipo: 1 Sent: 0

Km: 57.50 Tipo: 1 Sent: 0

23 CARR: Libramiento de La Paz

CLAVE: 03004

RUTA: BCS

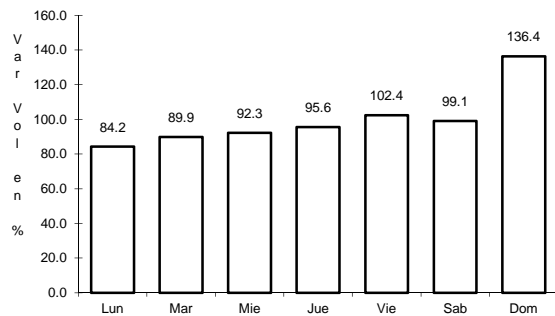


Km: 0.00 Tipo: 3 Sent: 0

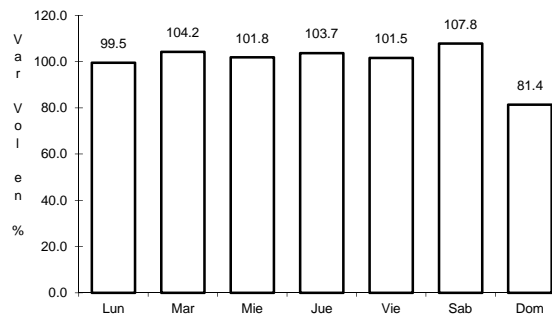
24 CARR: Libramiento Norte de La Paz

CLAVE: 03006

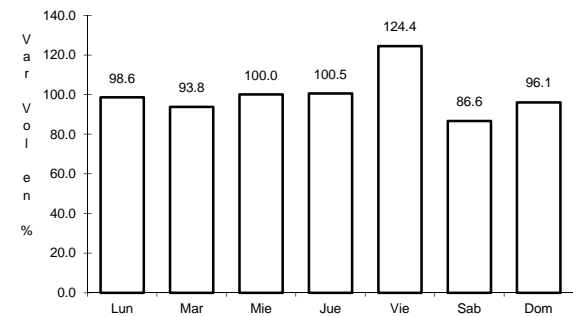
RUTA: BCS



Km: 0.00 Tipo: 3 Sent: 0



Km: 18.80 Tipo: 1 Sent: 0

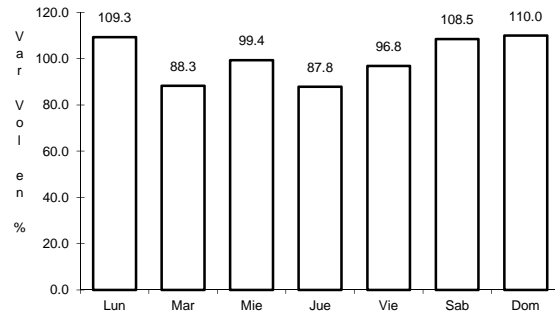


Km: 20.70 Tipo: 1 Sent: 0

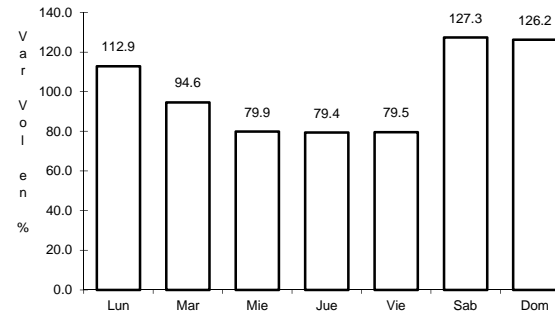
25 CARR: Ramal a Benito Juárez

CLAVE: 03405

RUTA: BCS



Km: 0.00 Tipo: 3 Sent: 0

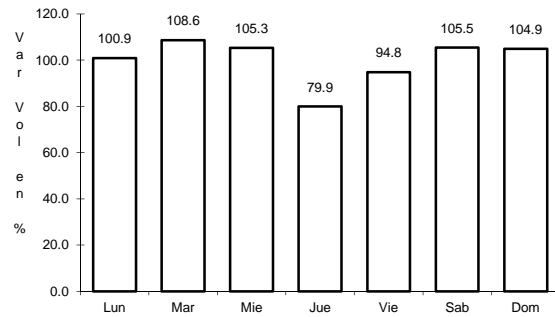


Km: 11.50 Tipo: 1 Sent: 0

26 CARR: Ramal a Ejido Ley Federal de Aguas Número Cuatro

CLAVE: 03007

RUTA: BCS

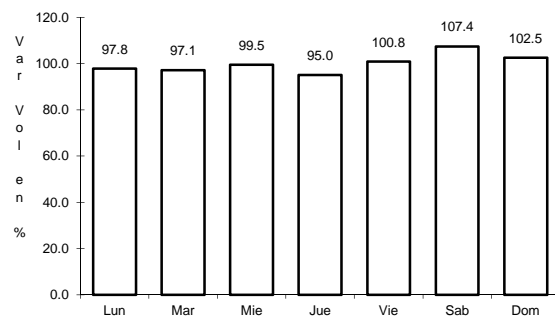


Km: 0.00 Tipo: 3 Sent: 0

27 CARR: Ramal a El Carrizal

CLAVE: 03050

RUTA: BCS

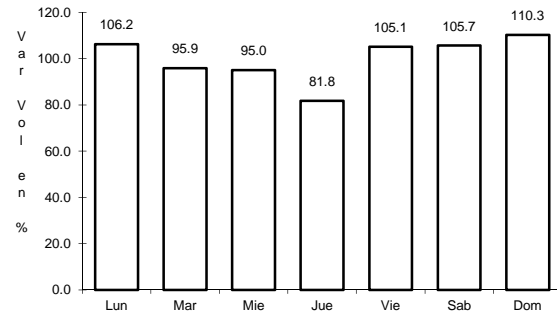


Km: 0.00 Tipo: 3 Sent: 0

28 CARR: Ramal a Guerrero Negro

CLAVE: 03395

RUTA: BCS



Km: 0.00

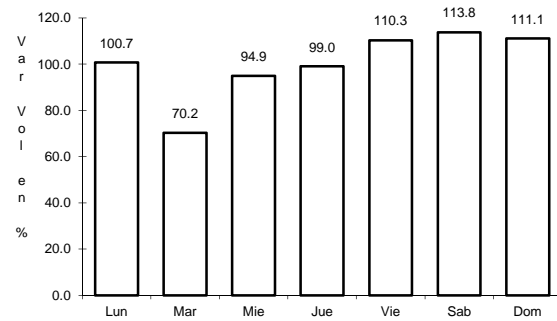
Tipo: 3

Sent: 0

29 CARR: Ramal a La Ribera

CLAVE: 03406

RUTA: BCS



Km: 0.00

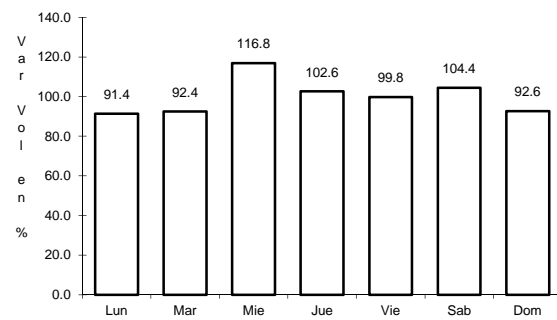
Tipo: 3

Sent: 0

30 CARR: Ramal a Melitón Albáñez

CLAVE: 03407

RUTA: BCS



Km: 0.00

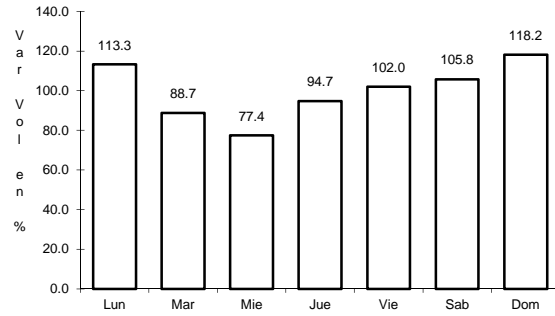
Tipo: 3

Sent: 0

31 CARR: Ramal a Santa Catarina

CLAVE: 03052

RUTA: BCS



Km: 0.00

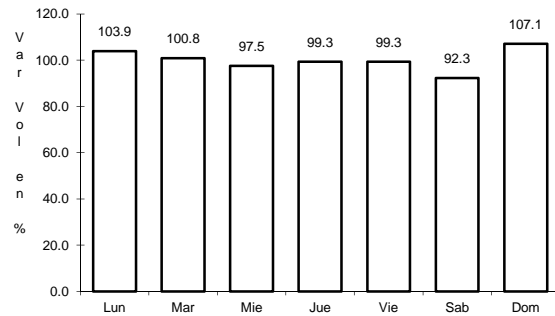
Tipo: 3

Sent: 0

32 CARR: Ramal a Bahía de Tortugas

CLAVE: 03397

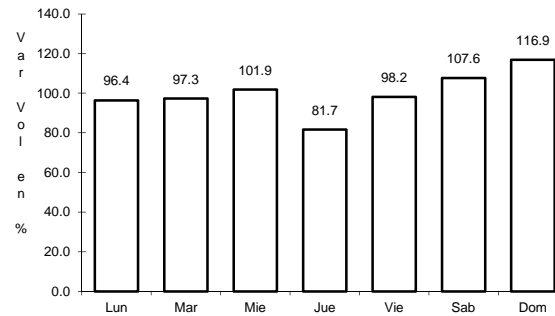
RUTA: MEX-001-BCS



Km: 0.00

Tipo: 3

Sent: 0



Km: 6.00

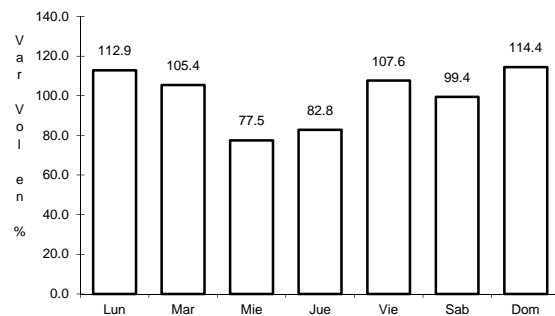
Tipo: 3

Sent: 0

33 CARR: Ramal a Ejido Ley Federal de Aguas Número Dos

CLAVE: 03050

RUTA: BCS-MEX-001



Km: 0.00

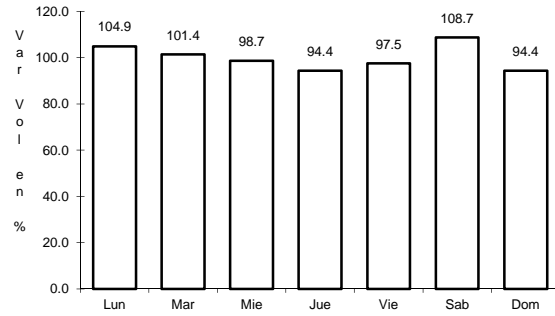
Tipo: 3

Sent: 0

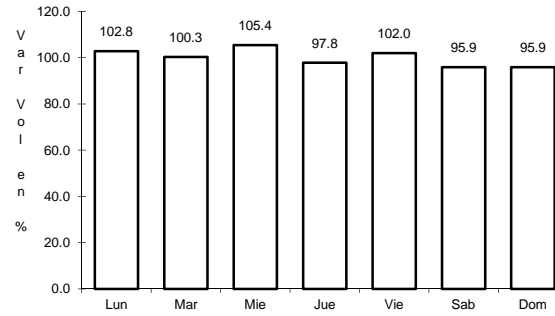
34 CARR: Ramal a Ley Federal de Aguas Número Cinco

CLAVE: 03407

RUTA: BCS-MEX-001



Km: 0.00 Tipo: 3 Sent: 1

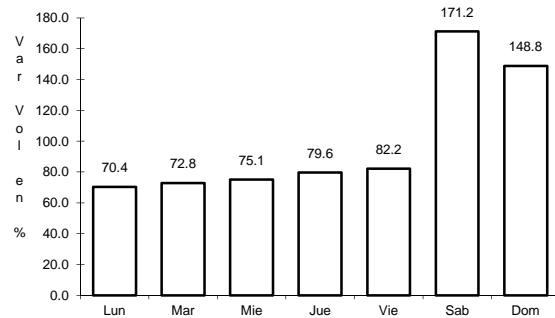


Km: 0.00 Tipo: 3 Sent: 2

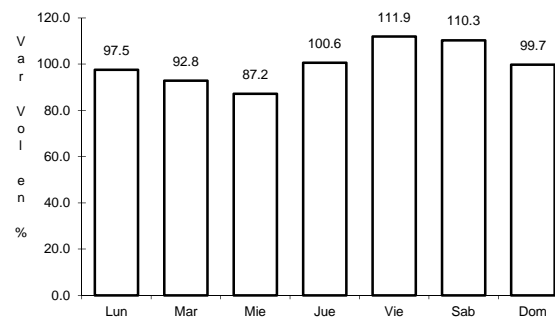
35 CARR: Ramal a San Juan de La Costa

CLAVE: 03403

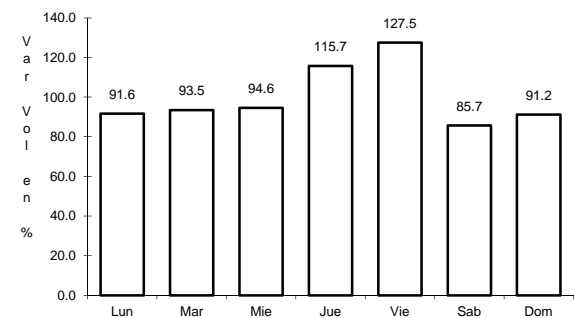
RUTA: BCS-163-MEX-001



Km: 0.00 Tipo: 3 Sent: 0



Km: 23.00 Tipo: 3 Sent: 0



Km: 40.70 Tipo: 1 Sent: 0