

# 01 AGUASCALIENTES

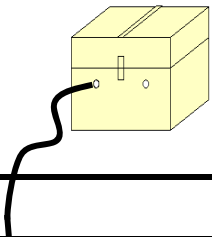
SECRETARÍA DE COMUNICACIONES Y TRANSPORTES  
DIRECCIÓN GENERAL DE SERVICIOS TÉCNICOS

① --- Número Índice

- Red Federal Libre
- Red Federal Cuota
- Red Federal Integrada por Tramos Libres y de Cuota
- Red Estatal Libre
- Red Estatal Cuota
- Carreteras Integradas por Tramos Federales y Estatales







# AGUASCALIENTES

NO. INDICE	CARRETERA	RUTA
---RED FEDERAL LIBRE---		
1	Acceso a Pabellón de Arteaga	MEX-045
2	Aguascalientes - Jalpa	MEX-070
3	Aguascalientes - Zacatecas	MEX-045
4	El Retoño - Ent. Asturias	MEX-070
5	Ent. Penitenciaria - Villa Hidalgo	MEX-071
6	Ent. Rivier - San Marcos	MEX-066
7	León - Aguascalientes	MEX-045
8	Libramiento Rincón de Romos	MEX-045
9	Ojo Caliente - Malpaso	MEX-070
10	Ojuelos - Aguascalientes	MEX-070
11	Providencia - Luis Moya	MEX-071
12	Ramal a Aeropuerto de Aguascalientes	MEX-045
13	Rincón de Romos - Ciénega Grande	MEX-039
---RED ESTATAL LIBRE---		
14	Aguascalientes - Ent. Cd. de Los Niños	AGS
15	Aguascalientes - Jesús María	AGS-095
16	Aguascalientes - José María Morelos	AGS
17	Carboneras - Villa Juárez	AGS-004
18	Cosío - Santa María de La Paz	AGS
19	Crucero Ojo de Agua de Crucitas - Santa Rosa	AGS
20	El Tanque - San José de La Ordeña	AGS
21	El Taray - T. C.(Ramal Aeropuerto de Aguascalientes)	AGS-002
22	Ent. Arellano - El Retoño	AGS
23	Ent. Buenavista - Gracias a Dios	AGS
24	Ent. El Novillo - Villa Juárez	AGS-005
25	Ent. La Calavera - Ent. San Pedro	AGS-043
26	Ent. La Chirida - San Francisco de Los Romo	AGS
27	Ent. Pabellón de Arteaga - California	AGS
28	Ent. Pabellón de Arteaga - San José de Gracia	AGS-019
29	Ent. Rincón de Romos - La Boquilla	AGS
30	Ent. San Carlos - Ent. El Milagro	AGS-010
31	Ent. San Felipe - Jesús María	AGS
32	Ent. San Isidro - Ent. El Salitre	AGS-016
33	Est. Coyotes - Ent. San Bartolo	AGS-069
34	Fracc. Ojo Caliente - El Conejal	AGS-079
35	Jesús María - Palomas	AGS-018
36	La Panadera - Palo Alto	AGS-017
37	La Punta - Mesillas	AGS-026
38	La Rinconada - El Terrero del Refugio	AGS-007
39	Las Norias de Ojo Caliente - La Luz	AGS-068
40	Libramiento San Francisco de Los Romo	AGS
41	Pabellón de Hidalgo - Rincón de Romos	AGS
42	Pilotos - Los Campos	AGS-030
43	Pocitos - Granja Miravalle	AGS-053
44	Ramal a San Pedro Piedra Gorda	ZAC-AGS
45	San Gil - Jarillas	AGS-012-ZAC
46	San Isidro El Grande - Bajío de San José	AGS-036
47	San Rafael - Villa García	AGS-ZAC
48	Santa Rosa - Pabellón de Hidalgo	AGS
49	T. Caldera - Ent. Ojo de Agua de Los Montes	AGS
50	Viñedos de California - Adolfo López Mateos	AGS
---RED ESTATAL DE CUOTA---		
51	Libramiento Surponiente de Aguascalientes (Cuota)	MEX-A40
---CARRETERAS INTEGRADAS POR TRAMOS FEDERALES Y ESTATALES---		
52	Guadalupe - Cosío	MEX-ZAC

AGUASCALIENTES

1 CARR: Acceso a Pabellón de Arteaga

CLAVE: 01113

RUTA: MEX-045

AÑO: 2015

LUGAR	ESTACION				CLASIFICACION VEHICULAR EN PORCIENTO													COORDENADAS		
	KM	TE	SC	TDPA	M	A	B	C2	C3	T3S2	T3S3	T3S2R4	OTROS	A	B	C	K'	D	LATITUD	LONGITUD
T. C. Aguascalientes - Zacatecas (Baja)	0.00	3	1	923	8.6	82.1	1.9	6.0	0.4	0.6	0.3	0.1	0.0	90.7	1.9	7.4	0.105	0.501	22.146810	-102.291189
T. C. Aguascalientes - Zacatecas (Alta)	0.00	3	1	6148	1.8	90.6	0.3	5.2	0.4	0.7	0.8	0.1	0.1	92.4	0.3	7.3	0.070	0.514	22.146618	-102.291243
T. C. Aguascalientes - Zacatecas (Baja)	0.00	3	2	926	6.5	83.0	2.2	7.1	0.4	0.5	0.2	0.1	0.0	89.5	2.2	8.3	0.108	0.501	22.146810	-102.291189
T. C. Aguascalientes - Zacatecas (Alta)	0.00	3	2	5701	1.6	89.7	0.3	6.0	0.4	0.8	1.0	0.1	0.1	91.3	0.3	8.4	0.075	0.514	22.146618	-102.291243
Pabellón de Arteaga	1.80	1	1	6270	1.7	90.9	0.5	4.9	0.4	0.7	0.7	0.0	0.2	92.6	0.5	6.9	0.072	0.529	22.147211	-102.282220
Pabellón de Arteaga	1.80	1	2	7045	1.9	90.1	0.5	5.4	0.4	0.7	0.8	0.0	0.2	92.0	0.5	7.5	0.081	0.529	22.147349	-102.282230
T. C. Providencia - Luis Moya	4.70																			

2 CARR: Aguascalientes - Jalpa

CLAVE: 00095

RUTA: MEX-070

AÑO: 2015

LUGAR	ESTACION				CLASIFICACION VEHICULAR EN PORCIENTO													COORDENADAS		
	KM	TE	SC	TDPA	M	A	B	C2	C3	T3S2	T3S3	T3S2R4	OTROS	A	B	C	K'	D	LATITUD	LONGITUD
Aguascalientes	0.00	3	1	9337	1.0	87.6	0.3	7.3	1.1	1.3	0.6	0.7	0.1	88.6	0.3	11.1	0.103	0.502	21.874500	-102.336139
Aguascalientes	0.00	3	2	9255	1.6	85.8	0.3	8.0	1.3	1.5	0.6	0.8	0.1	87.4	0.3	12.3	0.079	0.502	21.874500	-102.336139
T. Der. Jesús María	7.30	1	1	8680	1.0	83.6	1.7	9.1	1.2	1.3	1.0	0.8	0.3	84.6	1.7	13.7	0.097	0.521	21.881556	-102.363000
T. Der. Jesús María	7.30	1	2	7988	1.9	81.2	1.8	9.9	1.2	1.5	1.2	1.0	0.3	83.1	1.8	15.1	0.085	0.521	21.881556	-102.363000
T. Izq. Villa Hidalgo	7.80	3	1	5715	0.4	90.4	0.4	6.5	0.7	0.8	0.6	0.1	0.1	90.8	0.4	8.8	0.119	0.504	21.884056	-102.372083
T. Izq. Villa Hidalgo	7.80	3	2	5810	0.4	89.0	0.4	7.7	0.8	0.8	0.7	0.1	0.1	89.4	0.4	10.2	0.122	0.504	21.884056	-102.372083
Libramiento Poniente de Aguascalientes	11.00	1	1	5346	0.7	85.7	0.8	10.8	0.8	0.8	0.2	0.1	0.1	86.4	0.8	12.8	0.132	0.502	21.889639	-102.392083
Libramiento Poniente de Aguascalientes	11.00	1	2	5301	0.4	85.0	0.8	11.8	0.8	0.8	0.2	0.1	0.1	85.4	0.8	13.8	0.128	0.502	21.889639	-102.392083
Libramiento Poniente de Aguascalientes	11.00	3	1	5628	0.8	89.5	1.3	5.7	0.7	1.0	0.6	0.1	0.3	90.3	1.3	8.4	0.130	0.507	21.892556	-102.403889
Libramiento Poniente de Aguascalientes	11.00	3	2	5482	1.5	87.5	1.5	6.5	0.8	1.2	0.6	0.1	0.3	89.0	1.5	9.5	0.127	0.507	21.892556	-102.403889
T. Der. Gracias a Dios	20.00	3	0	8265	0.5	87.1	1.1	6.1	1.2	2.6	0.6	0.3	0.5	87.6	1.1	11.3	0.087	0.533	21.886944	-102.466000
T. Izq. Malpaso	45.10	1	0	7065	0.4	83.1	2.3	9.6	1.2	2.5	0.5	0.1	0.3	83.5	2.3	14.2	0.084	0.523	21.882000	-102.659028
T. Der. Presa La Codorniz	49.30	3	1	9148	1.2	90.3	0.3	6.0	0.6	1.0	0.5	0.0	0.1	91.5	0.3	8.2	0.078	0.501	21.864116	-102.692234
T. Der. Presa La Codorniz	49.30	3	2	9106	1.3	89.7	0.3	6.4	0.6	1.1	0.5	0.0	0.1	91.0	0.3	8.7	0.076	0.501	21.864113	-102.692218
Calvillo	52.30	3	1	4746	0.4	90.1	0.5	7.1	0.9	0.6	0.3	0.0	0.1	90.5	0.5	9.0	0.083	0.502	21.837049	-102.743157
Calvillo	52.30	3	2	4711	1.2	88.0	0.5	8.2	1.0	0.7	0.3	0.0	0.1	89.2	0.5	10.3	0.076	0.502	21.837029	-102.743160
T. Der. Jaltiche de Abajo	63.80	3	0	2649	0.9	81.0	1.4	11.8	2.0	2.0	0.6	0.0	0.3	81.9	1.4	16.7	0.077	0.501	21.769713	-102.804733
Lim. Edos. Term. Ags. Ppia. Zac.	65.66																			
T. C. Guadalajara - Zacatecas	91.10	1	0	4739	2.8	81.3	1.0	10.6	1.3	2.4	0.5	0.0	0.1	84.1	1.0	14.9	0.071	0.507	21.652423	-102.964026

AGUASCALIENTES

3 CARR: Aguascalientes - Zacatecas

CLAVE: 00524

RUTA: MEX-045

AÑO: 2015

LUGAR	ESTACION				CLASIFICACION VEHICULAR EN PORCIENTO														COORDENADAS	
	KM	TE	SC	TDPA	M	A	B	C2	C3	T3S2	T3S3	T3S2R4	OTROS	A	B	C	K'	D	LATITUD	LONGITUD
Aguascalientes	0.00																			
T. Izq. Pocitos	6.00	1	1	19571	1.7	91.1	1.2	4.3	0.2	0.5	0.7	0.1	0.2	92.8	1.2	6.0	0.081	0.509	21.903577	-102.292366
T. Izq. Pocitos	6.00	1	2	20308	2.1	89.9	1.4	4.7	0.2	0.5	0.9	0.1	0.2	92.0	1.4	6.6	0.078	0.509	21.903467	-102.292546
T. Der. Loreto	9.83	3	1	22896	1.2	82.4	1.4	5.6	1.4	3.8	1.9	1.4	0.9	83.6	1.4	15.0	0.088	0.507	21.970976	-102.289346
T. Der. Loreto	9.83	3	2	23580	1.1	80.4	1.5	6.7	1.6	4.2	2.0	1.5	1.0	81.5	1.5	17.0	0.083	0.507	21.970957	-102.289533
Santa Fé	16.00	1	1	23529	1.0	79.2	2.0	7.6	2.2	4.2	1.4	2.0	0.4	80.2	2.0	17.8	0.084	0.502	22.016226	-102.285937
Santa Fé	16.00	1	2	23740	1.0	77.3	2.1	8.1	2.3	4.9	1.6	2.3	0.4	78.3	2.1	19.6	0.094	0.502	22.016250	-102.286199
Santa Fé	16.00	3	1	23509	0.4	79.2	2.0	8.4	2.2	4.2	1.3	2.0	0.3	79.6	2.0	18.4	0.096	0.518	22.026231	-102.283405
Santa Fé	16.00	3	2	25295	0.6	77.2	2.2	9.2	2.4	4.7	1.4	2.0	0.3	77.8	2.2	20.0	0.077	0.518	22.026205	-102.283550
La Concepción	18.00	3	1	20759	0.8	79.6	1.9	7.4	1.9	4.4	1.5	2.0	0.5	80.4	1.9	17.7	0.079	0.515	22.035045	-102.281347
La Concepción	18.00	3	2	22054	0.6	78.1	2.1	7.9	2.3	4.7	1.6	2.2	0.5	78.7	2.1	19.2	0.086	0.515	22.035063	-102.281466
San Francisco de Los Romo	22.73	1	1	6023	3.0	88.3	0.6	6.1	0.4	1.0	0.4	0.0	0.2	91.3	0.6	8.1	0.094	0.529	22.072475	-102.273859
San Francisco de Los Romo	22.73	1	2	5361	2.2	88.0	0.6	7.1	0.4	1.1	0.4	0.0	0.2	90.2	0.6	9.2	0.092	0.529	22.072609	-102.274131
T. Der. Estación Pabellón	31.00	1	1	13405	0.6	81.6	1.9	5.5	1.9	5.0	0.9	2.3	0.3	82.2	1.9	15.9	0.066	0.516	22.134008	-102.287252
T. Der. Estación Pabellón	31.00	1	2	14316	0.8	79.2	2.2	5.9	2.1	5.8	1.1	2.6	0.3	80.0	2.2	17.8	0.078	0.516	22.134016	-102.287412
T. Der. Estación Pabellón	31.00	3	1	12051	0.8	77.3	3.1	8.0	2.3	4.7	1.2	2.3	0.3	78.1	3.1	18.8	0.086	0.501	22.152139	-102.295056
T. Der. Estación Pabellón	31.00	3	2	12086	1.0	73.8	3.6	9.1	2.7	5.5	1.4	2.6	0.3	74.8	3.6	21.6	0.081	0.501	22.152111	-102.295167
Rincón de Romos	40.90	3	0	5685	3.6	84.6	0.5	7.9	0.3	2.6	0.2	0.0	0.3	88.2	0.5	11.3	0.100	0.519	22.236778	-102.317806
La Punta	51.00	1	1	6907	0.4	70.9	4.5	8.3	2.6	7.1	2.0	3.4	0.8	71.3	4.5	24.2	0.091	0.505	22.314278	-102.296629
La Punta	51.00	1	2	7060	0.6	68.1	4.7	8.6	2.7	8.3	2.3	3.9	0.8	68.7	4.7	26.6	0.090	0.505	22.314281	-102.296727
Cosío	56.00	3	1	7103	0.6	65.0	5.8	8.2	3.0	9.1	2.3	5.4	0.6	65.6	5.8	28.6	0.071	0.574	22.376972	-102.299028
Cosío	56.00	3	2	5268	0.5	60.6	6.6	9.4	3.2	10.8	2.4	5.8	0.7	61.1	6.6	32.3	0.075	0.574	22.377056	-102.299722
Lim. Edos. Term. Ags. Ppia. Zac.	62.67																			
Luis Moya	65.80	1	0	3805	1.9	78.3	2.0	10.2	2.4	3.1	1.5	0.5	0.1	80.2	2.0	17.8	0.075	0.500	22.424861	-102.255500
Luis Moya	65.80	3	0	5619	1.3	79.7	1.5	9.9	2.1	3.0	1.4	0.7	0.4	81.0	1.5	17.5	0.081	0.509	22.451583	-102.255972
T. Der. San Luis Potosí	100.00	1	0	5432	0.7	80.0	1.5	10.4	2.1	3.1	1.4	0.7	0.1	80.7	1.5	17.8	0.084	0.508	22.714694	-102.327139
T. Der. San Luis Potosí	100.00	3	1	5843	0.9	68.8	4.0	8.0	3.2	8.1	2.6	3.6	0.8	69.7	4.0	26.3	0.073	0.512	22.728750	-102.337278
T. Der. San Luis Potosí	100.00	3	2	5579	0.9	65.3	4.3	9.1	3.6	9.5	2.6	3.9	0.8	66.2	4.3	29.5	0.079	0.512	22.729306	-102.337722
T. Izq. Aguascalientes (Cuota)	113.50	1	1	10293	0.8	73.1	2.5	11.2	2.9	5.3	1.5	2.5	0.2	73.9	2.5	23.6	0.079	0.506	22.751333	-102.432111
T. Izq. Aguascalientes (Cuota)	113.50	1	2	10030	0.8	70.6	2.9	12.2	3.2	5.8	1.6	2.7	0.2	71.4	2.9	25.7	0.085	0.506	22.751139	-102.432111
T. Izq. Libramiento de Guadalupe y Zacatecas	118.20	1	1	18380	1.0	82.1	1.9	7.7	2.0	2.9	1.0	1.2	0.2	83.1	1.9	15.0	0.079	0.510	22.750750	-102.492500
T. Izq. Libramiento de Guadalupe y Zacatecas	118.20	1	2	17688	1.0	80.8	2.2	8.4	2.1	3.0	1.0	1.3	0.2	81.8	2.2	16.0	0.086	0.510	22.750667	-102.492528
Zacatecas	126.84																			

AGUASCALIENTES

4 CARR: El Retoño - Ent. Asturias

CLAVE: 01124

RUTA: MEX-070

AÑO: 2015

LUGAR	ESTACION				CLASIFICACION VEHICULAR EN PORCIENTO										COORDENADAS					
	KM	TE	SC	TDPA	M	A	B	C2	C3	T3S2	T3S3	T3S2R4	OTROS	A	B	C	K'	D	LATITUD	LONGITUD
El Retoño	0.00	3	0	746	10.5	73.0	2.0	9.4	3.6	1.1	0.2	0.1	0.1	83.5	2.0	14.5	0.101	0.525	21.841943	-102.163658
Ent. Asturias	8.40	1	0	1413	8.7	76.4	1.2	9.4	2.2	1.5	0.5	0.0	0.1	85.1	1.2	13.7	0.083	0.540	21.860717	-102.219967

5 CARR: Ent. Penitenciaría - Villa Hidalgo

CLAVE: 00120

RUTA: MEX-071

AÑO: 2015

LUGAR	ESTACION				CLASIFICACION VEHICULAR EN PORCIENTO										COORDENADAS					
	KM	TE	SC	TDPA	M	A	B	C2	C3	T3S2	T3S3	T3S2R4	OTROS	A	B	C	K'	D	LATITUD	LONGITUD
T. C. Aguascalientes - Jalpa	0.00	3	1	3372	2.0	75.3	1.5	10.0	3.4	3.7	1.8	1.8	0.5	77.3	1.5	21.2	0.090	0.501	21.878045	-102.369385
T. C. Aguascalientes - Jalpa	0.00	3	2	3390	1.2	74.3	1.5	10.8	3.8	4.2	1.9	1.9	0.4	75.5	1.5	23.0	0.089	0.501	21.878053	-102.369515
T. Izq. El Niágara	9.20	3	0	3681	0.6	83.7	2.0	10.0	0.9	1.6	0.9	0.1	0.2	84.3	2.0	13.7	0.086	0.517	21.803722	-102.392250
El Taray	27.00	3	0	3276	0.5	87.2	1.4	8.3	0.6	1.1	0.6	0.0	0.3	87.7	1.4	10.9	0.114	0.503	21.726500	-102.509000
Lim. Edos. Term. Ags. Ppia. Jal.	29.58																			
Villa Hidalgo	38.00	1	0	3578	1.3	84.9	1.3	9.4	0.7	1.4	0.7	0.1	0.2	86.2	1.3	12.5	0.107	0.502	21.690667	-102.567500

6 CARR: Ent. Rivier - San Marcos

CLAVE: 00285

RUTA: MEX-066

AÑO: 2015

LUGAR	ESTACION				CLASIFICACION VEHICULAR EN PORCIENTO										COORDENADAS					
	KM	TE	SC	TDPA	M	A	B	C2	C3	T3S2	T3S3	T3S2R4	OTROS	A	B	C	K'	D	LATITUD	LONGITUD
T. C. Aguascalientes - Zacatecas	0.00	3	1	7323	1.4	85.4	0.5	7.7	1.9	1.3	1.1	0.3	0.4	86.8	0.5	12.7	0.095	0.539	21.962332	-102.287769
T. C. Aguascalientes - Zacatecas	0.00	3	2	6251	1.4	83.7	0.5	8.8	2.2	1.5	1.2	0.3	0.4	85.1	0.5	14.4	0.091	0.539	21.962548	-102.287746
T. Izq. El Tepetate	10.50	3	0	8910	0.7	81.0	2.0	10.6	1.6	2.8	0.5	0.4	0.4	81.7	2.0	16.3	0.077	0.504	21.999562	-102.193162
T. Der. Jilotepec	23.60	3	0	7012	1.0	80.7	2.1	11.1	1.8	2.5	0.4	0.1	0.3	81.7	2.1	16.2	0.080	0.504	22.055513	-102.098691
Villa Juárez	30.00	3	0	9102	1.7	79.2	1.4	10.5	1.9	3.8	0.8	0.1	0.6	80.9	1.4	17.7	0.067	0.502	22.107691	-102.059180
Ciénega Grande	41.50	1	0	7819	2.4	77.5	2.0	12.4	2.0	2.9	0.4	0.1	0.3	79.9	2.0	18.1	0.069	0.502	22.187047	-102.020514
Ciénega Grande	41.50	3	0	5706	1.8	79.9	1.4	10.1	2.0	3.5	0.6	0.2	0.5	81.7	1.4	16.9	0.078	0.508	22.200579	-102.015054
Lim. Edos. Term. Ags. Ppia. Zac.	45.75																			
San Marcos	56.00	1	0	7919	5.7	77.6	2.5	6.1	1.2	5.1	0.7	0.2	0.9	83.3	2.5	14.2	0.088	0.503	22.276130	-101.957379

7 CARR: León - Aguascalientes

CLAVE: 00167

RUTA: MEX-045

AÑO: 2015

LUGAR	ESTACION				CLASIFICACION VEHICULAR EN PORCIENTO										COORDENADAS					
	KM	TE	SC	TDPA	M	A	B	C2	C3	T3S2	T3S3	T3S2R4	OTROS	A	B	C	K'	D	LATITUD	LONGITUD
León	0.00																			
T. Der. Libramiento de León	11.00	1	1	6695	0.1	91.8	0.5	5.4	1.1	0.4	0.2	0.2	0.3	91.9	0.5	7.6	0.103	0.501	21.170180	-101.732385
T. Der. Libramiento de León	11.00	1	2	6717	0.1	93.3	0.5	3.3	1.1	0.5	0.1	0.6	0.5	93.4	0.5	6.1	0.094	0.501	21.170180	-101.732385

AGUASCALIENTES

7 CARR : León - Aguascalientes

CLAVE: 00167

RUTA: MEX-045

AÑO: 2015

LUGAR	ESTACION				CLASIFICACION VEHICULAR EN PORCIENTO													COORDENADAS		
	KM	TE	SC	TDPA	M	A	B	C2	C3	T3S2	T3S3	T3S2R4	OTROS	A	B	C	K'	D	LATITUD	LONGITUD
T. Der. Libramiento de León	11.00	3	1	8146	0.2	85.3	1.0	5.5	1.5	2.9	1.7	1.5	0.4	85.5	1.0	13.5	0.072	0.501	21.174167	-101.736833
T. Der. Libramiento de León	11.00	3	2	8172	0.2	88.4	0.9	4.9	1.5	2.3	0.6	0.9	0.3	88.6	0.9	10.5	0.070	0.501	21.174167	-101.736833
T. Izq. Centro de León	12.00	3	0	16267	0.1	83.2	2.8	5.4	2.0	3.0	1.5	1.7	0.3	83.3	2.8	13.9	0.071	0.503	21.192726	-101.748600
Lim. Edos. Term. Gto. Ppia. Jal.	17.88																			
X. C. San Luis Potosí - Lagos de Moreno	44.18	1	1	8332	4.0	76.8	1.3	10.5	2.3	3.5	0.9	0.3	0.4	80.8	1.3	17.9	0.080	0.509	21.367389	-101.900472
X. C. San Luis Potosí - Lagos de Moreno	44.18	1	2	8044	4.6	74.6	1.3	11.7	2.6	3.5	1.0	0.3	0.4	79.2	1.3	19.5	0.080	0.509	21.367389	-101.900472
T. Izq. Libramiento Lagos de Moreno	48.70	1	0	8321	4.6	74.6	1.3	11.7	2.6	3.5	1.0	0.3	0.4	79.2	1.3	19.5	0.077	0.509	21.372000	-101.962222
T. Izq. Libramiento Lagos de Moreno	48.70	3	0	8112	5.9	67.5	1.9	10.9	3.5	7.2	2.0	0.5	0.6	73.4	1.9	24.7	0.066	0.506	21.373778	-101.963861
T. Der. El Destierro	80.80	1	0	5391	1.5	68.4	2.4	11.0	4.9	7.6	2.5	0.8	0.9	69.9	2.4	27.7	0.066	0.504	21.499806	-102.194806
Encarnación de Díaz	88.20	1	0	7504	1.3	73.6	1.5	11.2	4.3	5.9	1.6	0.4	0.2	74.9	1.5	23.6	0.069	0.503	21.500750	-102.201222
T. Izq. Libramiento de Encarnación de Díaz	89.18	1	1	1616	7.5	84.3	0.3	7.4	0.2	0.3	0.0	0.0	0.0	91.8	0.3	7.9	0.072	0.507	21.534889	-102.239694
T. Izq. Libramiento de Encarnación de Díaz	89.18	1	2	1572	6.6	84.9	0.3	7.9	0.1	0.2	0.0	0.0	0.0	91.5	0.3	8.2	0.075	0.507	21.534889	-102.239694
T. Izq. Libramiento de Encarnación de Díaz	89.18	3	0	10621	1.7	68.0	3.5	11.9	4.4	7.3	2.4	0.6	0.2	69.7	3.5	26.8	0.066	0.524	21.551111	-102.244028
Lim. Edos. Term. Jal. Ppia. Ags.	103.30																			
T. Izq. Aeropuerto de Aguascalientes	110.15	1	1	9935	0.6	65.6	4.8	7.3	3.4	9.8	2.8	4.8	0.9	66.2	4.8	29.0	0.073	0.506	21.712472	-102.278500
T. Izq. Aeropuerto de Aguascalientes	110.15	1	2	9715	1.0	61.7	5.2	8.7	3.6	10.0	3.3	5.5	1.0	62.7	5.2	32.1	0.068	0.506	21.712472	-102.278500
T. Izq. Aeropuerto de Aguascalientes	111.00	3	1	15881	0.6	74.8	2.8	5.7	3.4	6.7	2.4	2.7	0.9	75.4	2.8	21.8	0.073	0.502	21.728889	-102.276639
T. Izq. Aeropuerto de Aguascalientes	111.00	3	2	15733	0.5	72.0	3.2	6.6	3.6	7.6	2.5	3.1	0.9	72.5	3.2	24.3	0.064	0.502	21.728889	-102.276639
Libramiento Poniente de Aguascalientes	116.50	1	1	15872	0.6	76.7	3.7	6.4	2.4	5.1	1.9	2.5	0.7	77.3	3.7	19.0	0.084	0.502	21.765361	-102.277306
Libramiento Poniente de Aguascalientes	116.50	1	2	15990	0.3	74.7	4.3	6.6	2.7	5.7	2.1	2.8	0.8	75.0	4.3	20.7	0.088	0.502	21.765361	-102.277306
Libramiento Poniente de Aguascalientes	116.50	3	1	15379	0.5	77.3	2.7	6.2	2.8	5.5	2.0	2.4	0.6	77.8	2.7	19.5	0.082	0.502	21.774306	-102.278833
Libramiento Poniente de Aguascalientes	116.50	3	2	15261	0.7	74.7	3.0	6.9	3.2	6.0	2.2	2.7	0.6	75.4	3.0	21.6	0.076	0.502	21.774306	-102.278833
T. Der. Estación Arellano (Central)	118.40	3	1	16030	0.7	77.2	3.7	7.5	2.4	5.0	1.4	1.8	0.3	77.9	3.7	18.4	0.074	0.573	21.802333	-102.283389
T. Der. Estación Arellano (Lateral)	118.40	3	1	7217	3.0	80.2	1.2	8.6	1.6	3.0	0.8	1.0	0.6	83.2	1.2	15.6	0.105	0.573	21.802333	-102.283389
T. Der. Estación Arellano (Lateral)	118.40	3	2	1296	4.2	77.4	1.3	9.0	2.0	3.6	0.5	1.5	0.5	81.6	1.3	17.1	0.093	0.573	21.802333	-102.283389
T. Der. Estación Arellano (Central)	118.40	3	2	15998	1.3	74.4	3.9	8.5	2.5	5.5	1.6	2.0	0.3	75.7	3.9	20.4	0.096	0.573	21.802333	-102.283389
Aguascalientes	129.38	1	1	23498	1.4	81.1	3.2	5.8	2.0	3.6	0.9	1.6	0.4	82.5	3.2	14.3	0.097	0.514	21.823472	-102.287083
Aguascalientes	129.38	1	2	22218	1.8	78.4	3.5	6.9	2.2	4.1	0.9	1.8	0.4	80.2	3.5	16.3	0.104	0.514	21.823472	-102.287083

8 CARR : Libramiento Rincón de Romos

CLAVE: 00167

RUTA: MEX-045

AÑO: 2015

LUGAR	ESTACION				CLASIFICACION VEHICULAR EN PORCIENTO													COORDENADAS		
	KM	TE	SC	TDPA	M	A	B	C2	C3	T3S2	T3S3	T3S2R4	OTROS	A	B	C	K'	D	LATITUD	LONGITUD
T. C. Aguascalientes - Zacatecas	0.00	3	0	12078	0.7	61.7	5.6	8.4	4.1	10.9	2.9	4.7	1.0	62.4	5.6	32.0	0.070	0.505	22.194861	-102.294611
T. C. Aguascalientes - Zacatecas	10.00	1	0	12084	0.5	61.2	5.3	8.1	4.2	11.5	3.4	5.5	0.3	61.7	5.3	33.0	0.067	0.505	22.272139	-102.308139



AGUASCALIENTES

9 CARR: Ojo Caliente - Malpaso

CLAVE: 01123

RUTA: MEX-070

AÑO: 2015

LUGAR	ESTACION				CLASIFICACION VEHICULAR EN PORCIENTO													COORDENADAS		
	KM	TE	SC	TDPA	M	A	B	C2	C3	T3S2	T3S3	T3S2R4	OTROS	A	B	C	K'	D	LATITUD	LONGITUD
T. C. Aguascalientes - Jalpa	0.00	3	0	2814	0.7	87.5	2.3	4.6	0.9	2.8	0.5	0.2	0.5	88.2	2.3	9.5	0.096	0.512	21.880361	-102.670861
Malpaso	3.10	1	0	1963	4.4	87.4	0.1	6.7	0.1	1.2	0.1	0.0	0.0	91.8	0.1	8.1	0.079	0.500	21.861972	-102.669750

10 CARR: Ojuelos - Aguascalientes

CLAVE: 00094

RUTA: MEX-070

AÑO: 2015

LUGAR	ESTACION				CLASIFICACION VEHICULAR EN PORCIENTO													COORDENADAS		
	KM	TE	SC	TDPA	M	A	B	C2	C3	T3S2	T3S3	T3S2R4	OTROS	A	B	C	K'	D	LATITUD	LONGITUD
Ojuelos	0.00	3	0	3824	1.5	70.0	2.8	11.4	2.8	6.6	2.5	1.6	0.8	71.5	2.8	25.7	0.079	0.509	21.877134	-101.605553
Matancillas	6.92	3	0	3597	0.9	71.1	2.7	10.1	3.0	7.6	2.3	1.5	0.8	72.0	2.7	25.3	0.071	0.502	21.881740	-101.658477
Vergel	40.70	3	0	4014	1.4	69.2	2.8	12.6	3.4	7.1	1.8	1.3	0.4	70.6	2.8	26.6	0.068	0.501	21.768754	-101.941371
Lim. Edos. Term. Jal. Ppia. Ags.	57.20																			
T. Der. Palo Alto	60.80	1	0	6013	2.1	74.1	1.6	11.2	2.9	5.5	1.4	0.8	0.4	76.2	1.6	22.2	0.072	0.505	21.818408	-102.092658
San Isidro	61.00	3	0	8411	1.3	76.5	3.5	8.8	2.4	4.8	1.3	0.8	0.6	77.8	3.5	18.7	0.065	0.509	21.822391	-102.104921
El Retoño	68.00	1	0	7968	1.6	78.2	4.5	6.8	2.4	4.4	1.1	0.5	0.5	79.8	4.5	15.7	0.079	0.501	21.838135	-102.152897
T. C. El Retoño - Asturias	78.00	1	1	6827	3.2	84.5	3.5	4.1	1.6	2.1	0.6	0.2	0.2	87.7	3.5	8.8	0.069	0.500	21.859137	-102.216623
T. C. El Retoño - Asturias	78.00	1	2	6829	1.4	84.9	4.1	4.4	1.7	2.4	0.7	0.2	0.2	86.3	4.1	9.6	0.084	0.500	21.859138	-102.216628
T. C. El Retoño - Asturias	78.00	3	1	7938	2.9	83.4	3.7	4.8	1.5	2.1	1.1	0.2	0.3	86.3	3.7	10.0	0.069	0.504	21.861376	-102.225768
T. C. El Retoño - Asturias	78.00	3	2	8066	3.7	81.2	3.9	5.6	1.6	2.3	1.2	0.2	0.3	84.9	3.9	11.2	0.077	0.504	21.861383	-102.225769
Salto del Ojo Caliente (Central)	81.00	1	1	17132	3.5	85.3	2.9	4.5	1.0	1.5	0.9	0.2	0.2	88.8	2.9	8.3	0.071	0.511	21.866340	-102.240832
Salto del Ojo Caliente (Lateral)	81.00	1	1	2405	9.6	84.6	0.2	4.0	0.4	0.6	0.3	0.1	0.2	94.2	0.2	5.6	0.077	0.511	21.866340	-102.240832
Salto del Ojo Caliente (Central)	81.00	1	2	16187	3.4	84.4	3.2	4.8	1.1	1.7	1.0	0.2	0.2	87.8	3.2	9.0	0.069	0.511	21.866334	-102.240799
Salto del Ojo Caliente (Lateral)	81.00	1	2	4206	4.8	89.2	0.2	4.1	0.4	0.5	0.4	0.1	0.3	94.0	0.2	5.8	0.069	0.511	21.866334	-102.240799

11 CARR: Providencia - Luis Moya

CLAVE: 00112

RUTA: MEX-071

AÑO: 2015

LUGAR	ESTACION				CLASIFICACION VEHICULAR EN PORCIENTO													COORDENADAS		
	KM	TE	SC	TDPA	M	A	B	C2	C3	T3S2	T3S3	T3S2R4	OTROS	A	B	C	K'	D	LATITUD	LONGITUD
T. C. Aguascalientes - Zacatecas	0.00	3	0	5252	1.2	79.0	2.5	5.7	2.1	3.5	2.5	3.0	0.5	80.2	2.5	17.3	0.076	0.513	22.060700	-102.273843
T. Izq. Pabellón de Arteaga	12.10	1	0	4981	1.5	76.6	2.0	8.8	1.8	2.8	2.1	3.9	0.5	78.1	2.0	19.9	0.085	0.519	22.144614	-102.251639
T. Der. Villa Juárez	14.90	3	0	5174	2.0	78.5	0.3	9.3	1.6	3.1	1.9	2.9	0.4	80.5	0.3	19.2	0.088	0.510	22.176944	-102.245373
X. C. Rincón de Romos - Ciénega Grande	21.22	3	0	4951	3.2	76.3	2.4	10.0	2.1	3.1	1.2	1.1	0.6	79.5	2.4	18.1	0.071	0.509	22.230912	-102.241408
X. C. La Punta - Mesillas	30.35	3	0	3206	2.9	78.7	0.7	10.2	2.1	2.7	1.3	1.0	0.4	81.6	0.7	17.7	0.082	0.511	22.317944	-102.233750
San Jacinto	34.25	3	0	2411	5.1	74.9	0.7	10.5	1.8	3.7	1.5	1.3	0.5	80.0	0.7	19.3	0.078	0.506	22.353306	-102.232556
Lim. Edos. Term. Ags. Ppia. Zac.	37.50																			
Luis Moya	43.50	1	0	3687	2.1	77.9	0.8	11.3	1.6	3.7	1.2	1.0	0.4	80.0	0.8	19.2	0.081	0.506	22.425389	-102.246500

AGUASCALIENTES

12 CARR: Ramal a Aeropuerto de Aguascalientes

CLAVE: 01116

RUTA: MEX-045

AÑO: 2015

LUGAR	ESTACION				CLASIFICACION VEHICULAR EN PORCIENTO										COORDENADAS					
	KM	TE	SC	TDPA	M	A	B	C2	C3	T3S2	T3S3	T3S2R4	OTROS	A	B	C	K'	D	LATITUD	LONGITUD
T. C. León - Aguascalientes	0.00																			
Aeropuerto	6.10	1	1	1640	1.3	94.8	0.1	3.5	0.1	0.1	0.1	0.0	0.0	96.1	0.1	3.8	0.116	0.501	21.706417	-102.310778
Aeropuerto	6.10	1	2	1631	0.8	95.2	0.1	3.6	0.1	0.1	0.1	0.0	0.0	96.0	0.1	3.9	0.110	0.501	21.706417	-102.310778

13 CARR: Rincón de Romos - Ciénega Grande

CLAVE: 01002

RUTA: MEX-039

AÑO: 2015

LUGAR	ESTACION				CLASIFICACION VEHICULAR EN PORCIENTO										COORDENADAS					
	KM	TE	SC	TDPA	M	A	B	C2	C3	T3S2	T3S3	T3S2R4	OTROS	A	B	C	K'	D	LATITUD	LONGITUD
Rincón de Romos	0.00	3	0	7195	6.3	82.6	0.4	6.4	0.7	2.8	0.4	0.1	0.3	88.9	0.4	10.7	0.078	0.509	22.224194	-102.300250
X. C. Providencia - Luis Moya	8.00	3	0	3648	4.3	82.0	0.3	9.1	1.4	1.8	0.8	0.1	0.2	86.3	0.3	13.4	0.069	0.507	22.227130	-102.238626
Tepezala	15.00	3	0	1631	3.5	81.1	0.4	11.0	2.1	1.1	0.7	0.0	0.1	84.6	0.4	15.0	0.083	0.501	22.217919	-102.160762
Asientos	27.70	3	0	1961	5.2	81.2	0.3	11.1	0.6	1.4	0.1	0.0	0.1	86.4	0.3	13.3	0.127	0.508	22.234231	-102.085888
Ciénega Grande	36.00	1	0	3577	6.5	74.6	1.0	13.7	1.3	2.3	0.4	0.0	0.2	81.1	1.0	17.9	0.087	0.502	22.199893	-102.019296

14 CARR: Aguascalientes - Ent. Cd. de Los Niños

CLAVE: 01130

RUTA: AGS

AÑO: 2015

LUGAR	ESTACION				CLASIFICACION VEHICULAR EN PORCIENTO										COORDENADAS					
	KM	TE	SC	TDPA	M	A	B	C2	C3	T3S2	T3S3	T3S2R4	OTROS	A	B	C	K'	D	LATITUD	LONGITUD
T. C. Aguascalientes - Jalpa	0.00	3	1	9169	2.6	87.9	1.0	1.9	0.9	1.2	2.8	0.8	0.9	90.5	1.0	8.5	0.063	0.514	21.861750	-102.338083
T. C. Aguascalientes - Jalpa	0.00	3	2	9683	2.6	87.0	1.0	2.0	1.1	1.2	3.0	1.0	1.1	89.6	1.0	9.4	0.074	0.514	21.861750	-102.338083
T. C. Ent. Penitenciaria - Villa Hidalgo	8.00	1	0	1040	1.9	90.4	0.2	5.6	0.8	1.0	0.0	0.0	0.1	92.3	0.2	7.5	0.101	0.506	21.837913	-102.375549

15 CARR: Aguascalientes - Jesús María

CLAVE: 01112

RUTA: AGS-095

AÑO: 2015

LUGAR	ESTACION				CLASIFICACION VEHICULAR EN PORCIENTO										COORDENADAS					
	KM	TE	SC	TDPA	M	A	B	C2	C3	T3S2	T3S3	T3S2R4	OTROS	A	B	C	K'	D	LATITUD	LONGITUD
T. C. Aguascalientes - Zacatecas	0.00																			
Pocitos	3.30	3	1	22561	1.7	92.4	0.2	4.6	0.3	0.3	0.4	0.0	0.1	94.1	0.2	5.7	0.078	0.507	21.927939	-102.319161
Pocitos	3.30	3	2	23191	2.1	91.7	0.2	4.9	0.3	0.3	0.4	0.0	0.1	93.8	0.2	6.0	0.076	0.507	21.927689	-102.319231
T. Der. Maravillas	7.00	3	1	11533	3.2	88.5	0.6	3.9	0.9	0.8	0.9	0.6	0.6	91.7	0.6	7.7	0.082	0.517	21.940639	-102.326417
T. Der. Maravillas	7.00	3	2	12365	3.9	87.0	0.6	4.3	0.9	1.0	1.0	0.7	0.6	90.9	0.6	8.5	0.073	0.517	21.940639	-102.326417
Jesús María	8.10	1	1	10886	3.5	86.8	1.2	4.0	1.0	1.1	1.1	0.8	0.5	90.3	1.2	8.5	0.082	0.512	21.951528	-102.334528
Jesús María	8.10	1	2	10364	2.9	86.8	1.2	4.2	1.1	1.2	1.2	0.9	0.5	89.7	1.2	9.1	0.073	0.512	21.951528	-102.334528

AGUASCALIENTES

16 CARR: Aguascalientes - José María Morelos

CLAVE: 01131

RUTA: AGS

AÑO: 2015

LUGAR	ESTACION				CLASIFICACION VEHICULAR EN PORCIENTO														COORDENADAS	
	KM	TE	SC	TDPA	M	A	B	C2	C3	T3S2	T3S3	T3S2R4	OTROS	A	B	C	K'	D	LATITUD	LONGITUD
Las Cumbres (Av. Siglo XXI)	0.00	3	0	4299	3.5	80.7	1.0	8.4	2.5	2.5	0.5	0.7	0.2	84.2	1.0	14.8	0.072	0.536	21.927550	-102.238041
T. Der. San José de La Ordeña	8.00	3	0	3309	2.0	82.2	1.1	9.0	2.7	1.9	0.4	0.5	0.2	84.2	1.1	14.7	0.073	0.529	21.960029	-102.215075
Jose María Morelos	12.60																			

17 CARR: Carboneras - Villa Juárez

CLAVE: 01111

RUTA: AGS-004

AÑO: 2015

LUGAR	ESTACION				CLASIFICACION VEHICULAR EN PORCIENTO														COORDENADAS	
	KM	TE	SC	TDPA	M	A	B	C2	C3	T3S2	T3S3	T3S2R4	OTROS	A	B	C	K'	D	LATITUD	LONGITUD
Carboneras	0.00	3	0	1509	3.8	79.2	0.4	13.2	0.9	1.7	0.4	0.2	0.2	83.0	0.4	16.6	0.091	0.512	22.174675	-102.243448
Clavellinas	14.00	1	0	1218	3.5	83.2	0.3	8.4	1.2	1.7	1.2	0.2	0.3	86.7	0.3	13.0	0.106	0.503	22.138511	-102.145379
Ent. Villa Juárez	23.10	1	0	2754	4.3	78.9	1.0	11.3	1.6	1.9	0.8	0.1	0.1	83.2	1.0	15.8	0.074	0.506	22.103579	-102.065502

18 CARR: Cosío - Santa María de La Paz

CLAVE: 01132

RUTA: AGS

AÑO: 2015

LUGAR	ESTACION				CLASIFICACION VEHICULAR EN PORCIENTO														COORDENADAS	
	KM	TE	SC	TDPA	M	A	B	C2	C3	T3S2	T3S3	T3S2R4	OTROS	A	B	C	K'	D	LATITUD	LONGITUD
T. C. Aguascalientes - Zacatecas	0.00	3	0	913	15.9	73.0	0.5	9.9	0.1	0.6	0.0	0.0	0.0	88.9	0.5	10.6	0.112	0.514	22.372444	-102.296194
Santa María de La Paz	5.60																			

19 CARR: Crucero Ojo de Agua de Crucitas - Santa Rosa

CLAVE: 01140

RUTA: AGS

AÑO: 2015

LUGAR	ESTACION				CLASIFICACION VEHICULAR EN PORCIENTO														COORDENADAS	
	KM	TE	SC	TDPA	M	A	B	C2	C3	T3S2	T3S3	T3S2R4	OTROS	A	B	C	K'	D	LATITUD	LONGITUD
T. C. Ent. La Calavera - Ent. San Pedro	0.00	3	0	635	11.2	78.8	0.5	8.4	0.5	0.5	0.0	0.0	0.1	90.0	0.5	9.5	0.121	0.501	21.939517	-101.978644
Santa Rosa	5.00																			

20 CARR: El Tanque - San José de La Ordeña

CLAVE: 01143

RUTA: AGS

AÑO: 2015

LUGAR	ESTACION				CLASIFICACION VEHICULAR EN PORCIENTO														COORDENADAS	
	KM	TE	SC	TDPA	M	A	B	C2	C3	T3S2	T3S3	T3S2R4	OTROS	A	B	C	K'	D	LATITUD	LONGITUD
T. C. Aguascalientes - José María Morelos	0.00	3	0	1395	6.0	79.1	0.5	11.5	1.6	0.9	0.2	0.0	0.2	85.1	0.5	14.4	0.077	0.511	21.960038	-102.213872
San José de La Ordeña	8.50																			

AGUASCALIENTES

21 CARR: El Taray - T. C.(Ramal Aeropuerto de Aguascalientes)

CLAVE: 01121

RUTA: AGS-002

AÑO: 2015

LUGAR	ESTACION				CLASIFICACION VEHICULAR EN PORCIENTO														COORDENADAS	
	KM	TE	SC	TDPA	M	A	B	C2	C3	T3S2	T3S3	T3S2R4	OTROS	A	B	C	K'	D	LATITUD	LONGITUD
T. C. Ent. Penitenciaria - Villa Hidalgo	0.00	3	0	659	3.8	84.9	0.1	9.6	0.3	0.8	0.4	0.0	0.1	88.7	0.1	11.2	0.100	0.502	21.735111	-102.490917
T. C. Ramal Aeropuerto de Aguascalientes	22.00	1	1	1358	2.2	85.7	0.8	6.0	1.8	1.8	1.1	0.4	0.2	87.9	0.8	11.3	0.099	0.511	21.725667	-102.313556
T. C. Ramal Aeropuerto de Aguascalientes	22.00	1	2	1300	1.9	85.2	0.8	6.4	2.1	1.9	1.0	0.5	0.2	87.1	0.8	12.1	0.105	0.511	21.725667	-102.313556

22 CARR: Ent. Arellano - El Retoño

CLAVE: 01121

RUTA: AGS

AÑO: 2015

LUGAR	ESTACION				CLASIFICACION VEHICULAR EN PORCIENTO														COORDENADAS	
	KM	TE	SC	TDPA	M	A	B	C2	C3	T3S2	T3S3	T3S2R4	OTROS	A	B	C	K'	D	LATITUD	LONGITUD
T. C. León - Aguascalientes	0.00	3	0	6421	5.0	73.0	1.4	7.0	3.5	6.1	1.5	1.2	1.3	78.0	1.4	20.6	0.081	0.510	21.799528	-102.276694
T. Izq. Villa Jesús Terán (Calvillito)	12.20	1	0	1656	8.6	71.1	1.2	8.9	3.7	4.5	0.7	1.1	0.2	79.7	1.2	19.1	0.095	0.500	21.817556	-102.188111
T. Izq. Villa Jesús Terán (Calvillito)	12.20	3	0	1619	6.9	67.5	2.8	7.9	5.7	5.5	1.5	1.7	0.5	74.4	2.8	22.8	0.085	0.506	21.819694	-102.184806
T. C. Ojuelos - Aguascalientes	15.92	1	0	1375	3.7	72.9	2.0	7.8	4.9	4.5	2.1	1.0	1.1	76.6	2.0	21.4	0.087	0.506	21.834083	-102.167083

23 CARR: Ent. Buenavista - Gracias a Dios

CLAVE: 01138

RUTA: AGS

AÑO: 2015

LUGAR	ESTACION				CLASIFICACION VEHICULAR EN PORCIENTO														COORDENADAS	
	KM	TE	SC	TDPA	M	A	B	C2	C3	T3S2	T3S3	T3S2R4	OTROS	A	B	C	K'	D	LATITUD	LONGITUD
T. C. Aguascalientes - Jalpa	0.00	3	0	920	1.1	86.2	0.3	11.4	0.3	0.7	0.0	0.0	0.0	87.3	0.3	12.4	0.103	0.534	21.891028	-102.462333
Gracias a Dios	6.30																			

24 CARR: Ent. El Novillo - Villa Juárez

CLAVE: 01103

RUTA: AGS-005

AÑO: 2015

LUGAR	ESTACION				CLASIFICACION VEHICULAR EN PORCIENTO														COORDENADAS	
	KM	TE	SC	TDPA	M	A	B	C2	C3	T3S2	T3S3	T3S2R4	OTROS	A	B	C	K'	D	LATITUD	LONGITUD
T. C. Ent. La Calavera - Ent. San Pedro	0.00																			
Villa Juárez	12.60	1	0	1876	10.6	74.1	1.6	9.5	2.3	1.3	0.4	0.0	0.2	84.7	1.6	13.7	0.080	0.506	22.093032	-102.060613

25 CARR: Ent. La Calavera - Ent. San Pedro

CLAVE: 01102

RUTA: AGS-043

AÑO: 2015

LUGAR	ESTACION				CLASIFICACION VEHICULAR EN PORCIENTO														COORDENADAS	
	KM	TE	SC	TDPA	M	A	B	C2	C3	T3S2	T3S3	T3S2R4	OTROS	A	B	C	K'	D	LATITUD	LONGITUD
T. C. Ojuelos - Aguascalientes	0.00	3	0	3587	5.9	80.3	1.5	8.1	1.2	2.1	0.4	0.2	0.3	86.2	1.5	12.3	0.074	0.510	21.823227	-102.091573
T. Der. Palo Alto	15.00	1	0	3180	4.9	77.9	0.9	11.5	2.0	2.1	0.4	0.1	0.2	82.8	0.9	16.3	0.082	0.505	21.917055	-101.972240
T. Der. Palo Alto	15.00	3	0	2693	9.2	71.4	1.3	12.3	2.7	2.4	0.4	0.1	0.2	80.6	1.3	18.1	0.090	0.503	21.923940	-101.970793
T. Izq. Ent. El Novillo - Villa Juárez	28.10	1	0	2189	1.9	78.8	3.6	9.0	2.7	2.4	1.2	0.1	0.3	80.7	3.6	15.7	0.077	0.510	22.010229	-101.994637

AGUASCALIENTES

25 CARR: Ent. La Calavera - Ent. San Pedro

CLAVE: 01102

RUTA: AGS-043

AÑO: 2015

LUGAR	ESTACION				CLASIFICACION VEHICULAR EN PORCIENTO										COORDENADAS					
	KM	TE	SC	TDPA	M	A	B	C2	C3	T3S2	T3S3	T3S2R4	OTROS	A	B	C	K'	D	LATITUD	LONGITUD
T. Izq. Ent. El Novillo - Villa Juárez	28.10	3	0	2022	5.4	78.8	3.6	8.2	2.3	1.5	0.2	0.0	0.0	84.2	3.6	12.2	0.102	0.503	22.011903	-101.993566
Pilotos	33.50	3	0	2311	10.1	74.2	1.2	10.3	1.7	1.9	0.4	0.1	0.1	84.3	1.2	14.5	0.096	0.504	22.041149	-101.961345
T. C. Rivier - San Marcos	47.60	1	0	3103	2.3	80.3	1.2	11.8	1.8	1.9	0.4	0.0	0.3	82.6	1.2	16.2	0.076	0.501	22.135570	-102.040168

26 CARR: Ent. La Chirida - San Francisco de Los Romo

CLAVE: 01016

RUTA: AGS

AÑO: 2015

LUGAR	ESTACION				CLASIFICACION VEHICULAR EN PORCIENTO										COORDENADAS					
	KM	TE	SC	TDPA	M	A	B	C2	C3	T3S2	T3S3	T3S2R4	OTROS	A	B	C	K'	D	LATITUD	LONGITUD
T. C. Jesús María - Palomas	0.00																			
San Francisco de Los Romo	1.50	1	0	3365	12.0	69.4	0.9	11.2	2.2	2.7	0.8	0.5	0.3	81.4	0.9	17.7	0.080	0.506	22.067167	-102.284556

27 CARR: Ent. Pabellón de Arteaga - California

CLAVE: 01137

RUTA: AGS

AÑO: 2015

LUGAR	ESTACION				CLASIFICACION VEHICULAR EN PORCIENTO										COORDENADAS					
	KM	TE	SC	TDPA	M	A	B	C2	C3	T3S2	T3S3	T3S2R4	OTROS	A	B	C	K'	D	LATITUD	LONGITUD
T. C. Aguascalientes - Zacatecas	0.00	3	0	6139	1.4	88.1	0.6	6.3	0.5	2.5	0.3	0.1	0.2	89.5	0.6	9.9	0.081	0.573	22.107977	-102.274421
Pabellón de Arteaga	5.60	3	0	2571	5.7	83.4	0.2	7.3	1.2	1.6	0.4	0.1	0.1	89.1	0.2	10.7	0.084	0.517	22.154250	-102.275694
X. C. Rincón de Romos - Cienega Grande	13.30	1	0	2085	6.8	78.2	0.5	9.2	2.4	1.3	0.3	1.2	0.1	85.0	0.5	14.5	0.099	0.524	22.223333	-102.278417
X. C. Rincón de Romos - Cienega Grande	13.30	3	0	1656	12.3	76.0	0.3	6.7	2.6	1.2	0.6	0.1	0.2	88.3	0.3	11.4	0.083	0.508	22.227333	-102.278444
Ejido California	20.50	1	0	842	15.5	75.1	0.1	7.1	0.9	1.0	0.3	0.0	0.0	90.6	0.1	9.3	0.094	0.510	22.279500	-102.257167

28 CARR: Ent. Pabellón de Arteaga - San José de Gracia

CLAVE: 01031

RUTA: AGS-019

AÑO: 2015

LUGAR	ESTACION				CLASIFICACION VEHICULAR EN PORCIENTO										COORDENADAS					
	KM	TE	SC	TDPA	M	A	B	C2	C3	T3S2	T3S3	T3S2R4	OTROS	A	B	C	K'	D	LATITUD	LONGITUD
T. C. Aguascalientes - Zacatecas	0.00	3	1	3065	2.8	86.0	0.7	7.5	1.9	0.5	0.5	0.0	0.1	88.8	0.7	10.5	0.167	0.507	22.146278	-102.297583
T. C. Aguascalientes - Zacatecas	0.00	3	2	3153	3.0	85.0	0.8	7.8	2.1	0.7	0.5	0.0	0.1	88.0	0.8	11.2	0.165	0.507	22.146083	-102.297583
T. Der. La Cieneguita	10.00	1	1	1938	3.4	88.0	0.9	6.9	0.4	0.2	0.2	0.0	0.0	91.4	0.9	7.7	0.051	0.507	22.140222	-102.379556
T. Der. La Cieneguita	10.00	1	2	1884	3.5	86.9	1.1	7.6	0.5	0.2	0.2	0.0	0.0	90.4	1.1	8.5	0.167	0.507	22.140389	-102.379528
San José de Gracia	13.80	1	1	1784	4.3	86.8	1.4	6.7	0.2	0.4	0.2	0.0	0.0	91.1	1.4	7.5	0.053	0.507	22.143611	-102.403167
San José de Gracia	13.80	1	2	1732	4.1	85.7	1.5	8.0	0.2	0.3	0.2	0.0	0.0	89.8	1.5	8.7	0.053	0.507	22.143500	-102.403278

AGUASCALIENTES

29 CARR: Ent. Rincón de Romos - La Boquilla

CLAVE: 01139

RUTA: AGS

AÑO: 2015

LUGAR	ESTACION				CLASIFICACION VEHICULAR EN PORCIENTO														COORDENADAS	
	KM	TE	SC	TDPA	M	A	B	C2	C3	T3S2	T3S3	T3S2R4	OTROS	A	B	C	K'	D	LATITUD	LONGITUD
T. C. Aguascalientes - Zacatecas	0.00	3	0	1800	11.2	74.4	0.3	12.2	0.3	1.4	0.1	0.0	0.1	85.6	0.3	14.1	0.077	0.507	22.243306	-102.317083
La Boquilla	6.90																			

30 CARR: Ent. San Carlos - Ent. El Milagro

CLAVE: 01141

RUTA: AGS-010

AÑO: 2015

LUGAR	ESTACION				CLASIFICACION VEHICULAR EN PORCIENTO														COORDENADAS	
	KM	TE	SC	TDPA	M	A	B	C2	C3	T3S2	T3S3	T3S2R4	OTROS	A	B	C	K'	D	LATITUD	LONGITUD
T. C. Jesús María - Palomas	0.00	3	0	1921	4.7	79.7	0.2	9.2	2.1	1.6	2.4	0.0	0.1	84.4	0.2	15.4	0.123	0.502	22.049722	-102.305611
T. C. (T. C-(Ags. - Zac.)- San José de Gracia)	13.60	1	0	1202	5.4	78.0	0.4	9.1	3.8	1.3	1.7	0.1	0.2	83.4	0.4	16.2	0.095	0.502	22.142333	-102.336028

31 CARR: Ent. San Felipe - Jesús María

CLAVE: 01144

RUTA: AGS

AÑO: 2015

LUGAR	ESTACION				CLASIFICACION VEHICULAR EN PORCIENTO														COORDENADAS	
	KM	TE	SC	TDPA	M	A	B	C2	C3	T3S2	T3S3	T3S2R4	OTROS	A	B	C	K'	D	LATITUD	LONGITUD
T. C. Aguascalientes - Jalpa	0.00	3	0	2653	3.1	76.7	0.4	10.4	3.9	3.4	1.1	0.5	0.5	79.8	0.4	19.8	0.084	0.502	21.898694	-102.370389
Jesús María	12.70	1	0	3912	4.7	76.4	0.8	9.2	2.3	4.0	1.2	0.6	0.8	81.1	0.8	18.1	0.084	0.509	21.950194	-102.357556

32 CARR: Ent. San Isidro - Ent. El Salitre

CLAVE: 01142

RUTA: AGS-016

AÑO: 2015

LUGAR	ESTACION				CLASIFICACION VEHICULAR EN PORCIENTO														COORDENADAS	
	KM	TE	SC	TDPA	M	A	B	C2	C3	T3S2	T3S3	T3S2R4	OTROS	A	B	C	K'	D	LATITUD	LONGITUD
T. C. Aguascalientes - Jalpa	0.00	3	0	1668	0.8	81.9	1.1	14.2	0.8	1.1	0.1	0.0	0.0	82.7	1.1	16.2	0.077	0.507	21.886694	-102.492722
T. C. Ent. Penitenciaria - Villa Hidalgo	20.40	1	0	510	1.8	91.9	0.2	5.1	0.6	0.4	0.0	0.0	0.0	93.7	0.2	6.1	0.098	0.520	21.758306	-102.493056

33 CARR: Est. Coyotes - Ent. San Bartolo

CLAVE: 01134

RUTA: AGS-069

AÑO: 2015

LUGAR	ESTACION				CLASIFICACION VEHICULAR EN PORCIENTO														COORDENADAS	
	KM	TE	SC	TDPA	M	A	B	C2	C3	T3S2	T3S3	T3S2R4	OTROS	A	B	C	K'	D	LATITUD	LONGITUD
T. C. León - Aguascalientes	0.00	3	0	3159	5.6	72.1	0.8	7.5	8.3	2.8	0.6	2.1	0.2	77.7	0.8	21.5	0.075	0.503	21.752056	-102.272833
T. C. San Isidro El Grande - Bajío de San José	13.10																			

AGUASCALIENTES

34 CARR: Fracc. Ojo Caliente - El Conejal

CLAVE: 01129

RUTA: AGS-079

AÑO: 2015

LUGAR	ESTACION				CLASIFICACION VEHICULAR EN PORCIENTO										COORDENADAS					
	KM	TE	SC	TDPA	M	A	B	C2	C3	T3S2	T3S3	T3S2R4	OTROS	A	B	C	K'	D	LATITUD	LONGITUD
Fracc. Ojo Caliente	0.00																			
Las Norias de Ojo Caliente	3.50	1	1	5171	6.0	84.1	0.3	7.7	0.8	0.7	0.3	0.0	0.1	90.1	0.3	9.6	0.088	0.501	21.884136	-102.224992
Las Norias de Ojo Caliente	3.50	1	2	5145	6.3	83.0	0.3	8.5	0.8	0.7	0.3	0.0	0.1	89.3	0.3	10.4	0.081	0.501	21.884309	-102.225024
Las Norias de Ojo Caliente	3.50	3	0	1767	9.5	74.2	0.5	13.2	1.0	1.4	0.1	0.0	0.1	83.7	0.5	15.8	0.087	0.504	21.893981	-102.215548
El Conejal	7.50																			

35 CARR: Jesús María - Palomas

CLAVE: 01018

RUTA: AGS-018

AÑO: 2015

LUGAR	ESTACION				CLASIFICACION VEHICULAR EN PORCIENTO										COORDENADAS					
	KM	TE	SC	TDPA	M	A	B	C2	C3	T3S2	T3S3	T3S2R4	OTROS	A	B	C	K'	D	LATITUD	LONGITUD
Jesús María	0.00	3	1	6511	2.8	86.7	0.2	7.5	1.1	0.9	0.5	0.1	0.2	89.5	0.2	10.3	0.078	0.507	21.979889	-102.337556
Jesús María	0.00	3	2	6702	3.4	85.3	0.2	8.1	1.2	1.0	0.5	0.1	0.2	88.7	0.2	11.1	0.087	0.507	21.979889	-102.337556
Valladolid	7.30	3	0	3898	4.9	82.1	1.0	6.9	1.4	2.5	0.8	0.1	0.3	87.0	1.0	12.0	0.082	0.527	22.026194	-102.314306
Palomas	21.70	1	0	1700	5.2	78.0	0.9	10.6	2.6	1.1	1.5	0.0	0.1	83.2	0.9	15.9	0.083	0.515	22.103962	-102.275835

36 CARR: La Panadera - Palo Alto

CLAVE: 01105

RUTA: AGS-017

AÑO: 2015

LUGAR	ESTACION				CLASIFICACION VEHICULAR EN PORCIENTO										COORDENADAS					
	KM	TE	SC	TDPA	M	A	B	C2	C3	T3S2	T3S3	T3S2R4	OTROS	A	B	C	K'	D	LATITUD	LONGITUD
T. C. Aguascalientes - Jalpa	0.00	3	0	4790	1.9	88.0	0.1	6.3	0.5	2.3	0.4	0.1	0.4	89.9	0.1	10.0	0.085	0.501	21.867778	-102.701417
T. Izq. La Ordeña	8.40	3	0	2451	0.6	84.1	0.4	12.3	0.9	1.2	0.5	0.0	0.0	84.7	0.4	14.9	0.104	0.502	21.924028	-102.700944
La Labor	12.80	3	0	1732	1.7	88.8	0.0	8.2	0.3	0.9	0.0	0.0	0.1	90.5	0.0	9.5	0.133	0.505	21.965139	-102.690750
Palo Alto	23.30	1	0	298	1.5	88.7	0.1	9.3	0.0	0.3	0.1	0.0	0.0	90.2	0.1	9.7	0.094	0.501	22.038528	-102.681222

37 CARR: La Punta - Mesillas

CLAVE: 01104

RUTA: AGS-026

AÑO: 2015

LUGAR	ESTACION				CLASIFICACION VEHICULAR EN PORCIENTO										COORDENADAS					
	KM	TE	SC	TDPA	M	A	B	C2	C3	T3S2	T3S3	T3S2R4	OTROS	A	B	C	K'	D	LATITUD	LONGITUD
T. C. Aguascalientes - Zacatecas	0.00	3	0	1371	5.8	81.3	0.7	7.9	1.4	1.3	0.6	1.0	0.0	87.1	0.7	12.2	0.088	0.506	22.316972	-102.278472
X. C. Providencia - Luis Moya	6.50	3	0	1786	5.5	83.4	1.8	6.7	1.0	1.2	0.2	0.0	0.2	88.9	1.8	9.3	0.088	0.501	22.313639	-102.233028
Mesillas	13.50	1	0	812	7.9	82.6	1.1	7.0	0.7	0.6	0.1	0.0	0.0	90.5	1.1	8.4	0.101	0.517	22.312667	-102.173917

AGUASCALIENTES

38 CARR: La Rinconada - El Terrero del Refugio

CLAVE: 01133

RUTA: AGS-007

AÑO: 2015

LUGAR	ESTACION				CLASIFICACION VEHICULAR EN PORCIENTO														COORDENADAS	
	KM	TE	SC	TDPA	M	A	B	C2	C3	T3S2	T3S3	T3S2R4	OTROS	A	B	C	K'	D	LATITUD	LONGITUD
T. C. Aguascalientes - Jalpa	0.00	3	0	1577	3.4	88.0	0.3	6.0	0.7	1.5	0.1	0.0	0.0	91.4	0.3	8.3	0.094	0.500	21.790523	-102.799538
El Terrero del Refugio	15.00																			

39 CARR: Las Norias de Ojo Caliente - La Luz

CLAVE: 01122

RUTA: AGS-068

AÑO: 2015

LUGAR	ESTACION				CLASIFICACION VEHICULAR EN PORCIENTO														COORDENADAS	
	KM	TE	SC	TDPA	M	A	B	C2	C3	T3S2	T3S3	T3S2R4	OTROS	A	B	C	K'	D	LATITUD	LONGITUD
Las Norias de Ojo Caliente	0.00	3	0	3171	6.2	79.7	2.9	7.6	1.1	1.8	0.5	0.0	0.2	85.9	2.9	11.2	0.102	0.519	21.891520	-102.211774
T. Der. Sandoval	10.50	3	0	1710	3.2	85.4	1.5	7.6	0.8	1.0	0.2	0.1	0.2	88.6	1.5	9.9	0.096	0.506	21.915279	-102.119158
La Luz	27.60	1	0	1323	4.9	82.6	2.0	8.5	0.8	1.0	0.2	0.0	0.0	87.5	2.0	10.5	0.125	0.513	21.998731	-101.999644

40 CARR: Libramiento San Francisco de Los Romo

CLAVE: 01137

RUTA: AGS

AÑO: 2015

LUGAR	ESTACION				CLASIFICACION VEHICULAR EN PORCIENTO														COORDENADAS	
	KM	TE	SC	TDPA	M	A	B	C2	C3	T3S2	T3S3	T3S2R4	OTROS	A	B	C	K'	D	LATITUD	LONGITUD
T. C. Aguascalientes - Zacatecas	0.00	3	1	14093	1.5	80.7	3.7	5.1	1.5	4.0	1.2	2.0	0.3	82.2	3.7	14.1	0.079	0.504	22.049817	-102.280524
T. C. Aguascalientes - Zacatecas	0.00	3	2	14294	0.4	79.7	3.9	5.6	1.7	4.7	1.3	2.4	0.3	80.1	3.9	16.0	0.074	0.504	22.049548	-102.280608
T. C. Aguascalientes - Zacatecas	5.50	1	1	13014	0.5	78.9	2.6	7.4	1.9	5.0	1.3	2.1	0.3	79.4	2.6	18.0	0.091	0.515	22.082530	-102.276796
T. C. Aguascalientes - Zacatecas	5.50	1	2	12245	0.5	77.2	2.9	8.0	2.0	5.4	1.4	2.3	0.3	77.7	2.9	19.4	0.089	0.515	22.082504	-102.276696

41 CARR: Pabellón de Hidalgo - Rincón de Romos

CLAVE: 01136

RUTA: AGS

AÑO: 2015

LUGAR	ESTACION				CLASIFICACION VEHICULAR EN PORCIENTO														COORDENADAS	
	KM	TE	SC	TDPA	M	A	B	C2	C3	T3S2	T3S3	T3S2R4	OTROS	A	B	C	K'	D	LATITUD	LONGITUD
Pabellón de Hidalgo	0.00	3	0	1994	10.2	81.4	0.3	6.1	0.6	1.2	0.1	0.0	0.1	91.6	0.3	8.1	0.095	0.508	22.185194	-102.339889
Rincón de Romos	6.70																			

42 CARR: Pilotos - Los Campos

CLAVE: 00007

RUTA: AGS-030

AÑO: 2015

LUGAR	ESTACION				CLASIFICACION VEHICULAR EN PORCIENTO														COORDENADAS	
	KM	TE	SC	TDPA	M	A	B	C2	C3	T3S2	T3S3	T3S2R4	OTROS	A	B	C	K'	D	LATITUD	LONGITUD
T. C. Ent. La Calavera - Ent. San Pedro	0.00	3	0	2090	5.0	81.7	0.5	11.3	0.4	0.9	0.1	0.0	0.1	86.7	0.5	12.8	0.081	0.502	22.042799	-101.959245
Lim. Edos. Term. Ags. Ppia. Jal.	10.50																			
Los Campos	12.00																			



AGUASCALIENTES

43 CARR: Pocitos - Granja Miravalle

CLAVE: 01109

RUTA: AGS-053

AÑO: 2015

LUGAR	ESTACION				CLASIFICACION VEHICULAR EN PORCIENTO													COORDENADAS		
	KM	TE	SC	TDPA	M	A	B	C2	C3	T3S2	T3S3	T3S2R4	OTROS	A	B	C	K'	D	LATITUD	LONGITUD
T. C. Aguascalientes - Jesús María	0.00																			
Maravillas	1.50	3	0	7847	5.3	79.9	0.8	7.3	0.7	4.5	0.6	0.1	0.8	85.2	0.8	14.0	0.070	0.503	21.952889	-102.322806
Granja Miravalle	5.70	1	0	4292	6.0	78.0	0.8	10.0	1.0	2.7	0.6	0.4	0.5	84.0	0.8	15.2	0.082	0.508	21.981833	-102.315611

44 CARR: Ramal a San Pedro Piedra Gorda

CLAVE: 00553

RUTA: ZAC-AGS

AÑO: 2015

LUGAR	ESTACION				CLASIFICACION VEHICULAR EN PORCIENTO													COORDENADAS		
	KM	TE	SC	TDPA	M	A	B	C2	C3	T3S2	T3S3	T3S2R4	OTROS	A	B	C	K'	D	LATITUD	LONGITUD
T. C. Aguascalientes - Zacatecas	0.00	3	0	1390	2.9	80.5	0.5	13.9	0.7	1.2	0.3	0.0	0.0	83.4	0.5	16.1	0.099	0.507	22.465222	-102.263972
Lim. Edos. Term. Zac. Ppia. Ags.	5.00																			
Lim. Edos. Term. Ags. Ppia. Zac.	8.00																			
San Pedro Piedra Gorda	9.00	1	0	1907	5.8	80.9	1.0	8.9	0.6	2.1	0.5	0.1	0.1	86.7	1.0	12.3	0.090	0.505	22.452917	-102.335389

45 CARR: San Gil - Jarillas

CLAVE: 00527

RUTA: AGS-012-ZAC

AÑO: 2015

LUGAR	ESTACION				CLASIFICACION VEHICULAR EN PORCIENTO													COORDENADAS		
	KM	TE	SC	TDPA	M	A	B	C2	C3	T3S2	T3S3	T3S2R4	OTROS	A	B	C	K'	D	LATITUD	LONGITUD
T. C. Rincón de Romos - Ciénega Grande	0.00	3	0	2031	8.8	71.5	1.2	14.9	1.9	1.3	0.3	0.0	0.1	80.3	1.2	18.5	0.120	0.508	22.215790	-102.022371
Guadalupe de Atlas	5.40	1	0	2173	13.6	68.5	0.9	13.7	1.5	1.4	0.3	0.0	0.1	82.1	0.9	17.0	0.108	0.505	22.264315	-102.027918
Lim. Edos. Term. Ags. Ppia. Zac.	10.00																			
Lim. Edos. Term. Zac. Ppia. Ags.	11.30																			
Jarillas	12.00																			

46 CARR: San Isidro El Grande - Bajío de San José

CLAVE: 00526

RUTA: AGS-036

AÑO: 2015

LUGAR	ESTACION				CLASIFICACION VEHICULAR EN PORCIENTO													COORDENADAS		
	KM	TE	SC	TDPA	M	A	B	C2	C3	T3S2	T3S3	T3S2R4	OTROS	A	B	C	K'	D	LATITUD	LONGITUD
T. C. Ojuelos - Aguascalientes	0.00	3	0	1248	7.1	69.4	2.3	10.0	6.2	2.5	1.0	1.3	0.2	76.5	2.3	21.2	0.123	0.502	21.817164	-102.105431
Ent. San Bartolo	11.50	3	0	1775	3.9	76.4	1.7	9.9	3.7	1.4	3.0	0.0	0.0	80.3	1.7	18.0	0.091	0.516	21.747000	-102.172306
Lim. Edos. Term. Ags. Ppia. Jal.	17.50																			
Bajío de San José	22.50																			

AGUASCALIENTES

47 CARR: San Rafael - Villa García

CLAVE: 00525

RUTA: AGS-ZAC

AÑO: 2015

LUGAR	ESTACION				CLASIFICACION VEHICULAR EN PORCIENTO													COORDENADAS		
	KM	TE	SC	TDPA	M	A	B	C2	C3	T3S2	T3S3	T3S2R4	OTROS	A	B	C	K'	D	LATITUD	LONGITUD
T. C. Ent. La Calavera - Ent. San Pedro	0.00	3	0	2315	7.2	80.3	0.6	10.0	0.6	1.2	0.1	0.0	0.0	87.5	0.6	11.9	0.079	0.501	22.116986	-102.010517
Lim. Edos. Term. Ags. Ppia. Zac.	3.00																			
Villa García	10.00	1	0	3634	10.5	78.5	0.7	7.9	0.1	2.0	0.2	0.0	0.1	89.0	0.7	10.3	0.070	0.507	22.144446	-101.960391

48 CARR: Santa Rosa - Pabellón de Hidalgo

CLAVE: 01135

RUTA: AGS

AÑO: 2015

LUGAR	ESTACION				CLASIFICACION VEHICULAR EN PORCIENTO													COORDENADAS		
	KM	TE	SC	TDPA	M	A	B	C2	C3	T3S2	T3S3	T3S2R4	OTROS	A	B	C	K'	D	LATITUD	LONGITUD
T. C. Aguascalientes - Zacatecas	0.00	3	0	2500	3.1	82.7	0.4	9.3	2.1	1.5	0.6	0.1	0.2	85.8	0.4	13.8	0.112	0.522	22.157472	-102.298306
Pabellón de Hidalgo	5.10																			

49 CARR: T. Caldera - Ent. Ojo de Agua de Los Montes

CLAVE: 01137

RUTA: AGS

AÑO: 2015

LUGAR	ESTACION				CLASIFICACION VEHICULAR EN PORCIENTO													COORDENADAS		
	KM	TE	SC	TDPA	M	A	B	C2	C3	T3S2	T3S3	T3S2R4	OTROS	A	B	C	K'	D	LATITUD	LONGITUD
T. C. Carboneras - Villa Juárez	0.00	3	0	208	6.2	79.4	1.5	10.3	0.6	1.0	1.0	0.0	0.0	85.6	1.5	12.9	0.125	0.515	22.164204	-102.196450
Arroyo Hondo Acceso 1	3.60	1	0	328	6.6	69.8	0.5	8.8	5.1	4.0	4.8	0.0	0.4	76.4	0.5	23.1	0.137	0.529	22.186367	-102.188334
Arroyo Hondo Acceso 2	4.90	3	0	1180	3.2	81.3	0.3	6.9	1.7	1.5	4.4	0.5	0.2	84.5	0.3	15.2	0.086	0.509	22.194287	-102.195460
X. C. Rincón de Romos - Cienega Grande	8.60	1	0	1167	3.4	80.3	0.2	7.9	1.9	1.3	4.4	0.4	0.2	83.7	0.2	16.1	0.084	0.513	22.221332	-102.183900
X. C. Rincón de Romos - Cienega Grande	8.60	3	0	643	7.1	67.6	0.0	10.0	4.7	2.3	7.2	0.7	0.4	74.7	0.0	25.3	0.096	0.502	22.225174	-102.183311
T. C. La Punta - Mesillas	19.00	1	0	666	6.9	83.9	0.6	6.6	0.7	0.8	0.5	0.0	0.0	90.8	0.6	8.6	0.101	0.503	22.310167	-102.199639

50 CARR: Viñedos de California - Adolfo López Mateos

CLAVE: 01137

RUTA: AGS

AÑO: 2015

LUGAR	ESTACION				CLASIFICACION VEHICULAR EN PORCIENTO													COORDENADAS		
	KM	TE	SC	TDPA	M	A	B	C2	C3	T3S2	T3S3	T3S2R4	OTROS	A	B	C	K'	D	LATITUD	LONGITUD
T. C. Providencia - Luis Moya	0.00	3	0	2332	4.7	82.7	0.1	9.7	0.7	1.5	0.5	0.0	0.1	87.4	0.1	12.5	0.087	0.506	22.150349	-102.245563
Adolfo López Mateos	5.00																			

51 CARR: Libramiento Surponiente de Aguascalientes (Cuota)

CLAVE: 00167

RUTA: MEX-A40

AÑO: 2015

LUGAR	ESTACION				CLASIFICACION VEHICULAR EN PORCIENTO													COORDENADAS		
	KM	TE	SC	TDPA	M	A	B	C2	C3	T3S2	T3S3	T3S2R4	OTROS	A	B	C	K'	D	LATITUD	LONGITUD
T. C. León - Aguascalientes	0.00	3	0	4447	1.1	64.8	2.6	8.7	6.5	8.2	3.7	3.8	0.6	65.9	2.6	31.5	0.076	0.504	21.772417	-102.283917
T. C. Aguascalientes - Jalpa	21.00	1	0	978	1.7	70.7	2.5	13.0	4.2	4.7	1.5	1.3	0.4	72.4	2.5	25.1	0.079	0.502	21.886917	-102.401861

AGUASCALIENTES

52 CARR: Guadalupe - Cosío

CLAVE: 00579

RUTA: MEX-ZAC

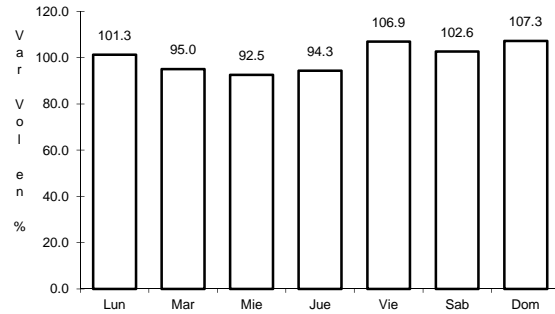
AÑO: 2015

L U G A R	E S T A C I O N				C L A S I F I C A C I O N V E H I C U L A R E N P O R C I E N T O													C O O R D E N A D A S		
	KM	TE	SC	TDPA	M	A	B	C2	C3	T3S2	T3S3	T3S2R4	OTROS	A	B	C	K'	D	LATITUD	LONGITUD
T. C. Aguascalientes - Zacatecas	0.00	3	0	9049	0.5	77.8	6.6	7.1	2.2	2.9	1.3	0.7	0.9	78.3	6.6	15.1	0.086	0.514	22.393000	-102.305972
Lim. Edos. Term. Ags. Ppia. Zac.	6.79																			
T. C. Ent. Cuauhtémoc - Ent. Osiris Cuota	12.96	3	0	1086	0.6	87.6	1.5	8.6	0.6	0.9	0.2	0.0	0.0	88.2	1.5	10.3	0.128	0.504	22.485389	-102.360833
T. C. Libramiento de Guadalupe - Zacatecas (Baja)	58.93	1	1	1708	3.4	81.9	4.8	8.1	1.0	0.5	0.2	0.0	0.1	85.3	4.8	9.9	0.105	0.516	22.735139	-102.495750
T. C. Libramiento de Guadalupe - Zacatecas (Alta)	58.93	1	1	4957	1.8	90.0	0.1	5.4	0.6	1.0	0.8	0.1	0.2	91.8	0.1	8.1	0.106	0.512	22.735083	-102.495889
T. C. Libramiento de Guadalupe - Zacatecas (Alta)	58.93	1	2	5203	1.8	89.6	0.1	5.7	0.6	1.1	0.8	0.1	0.2	91.4	0.1	8.5	0.102	0.512	22.734833	-102.495889
T. C. Libramiento de Guadalupe - Zacatecas (Baja)	58.93	1	2	1599	3.9	80.7	4.8	8.6	1.1	0.5	0.3	0.0	0.1	84.6	4.8	10.6	0.141	0.516	22.734806	-102.496028

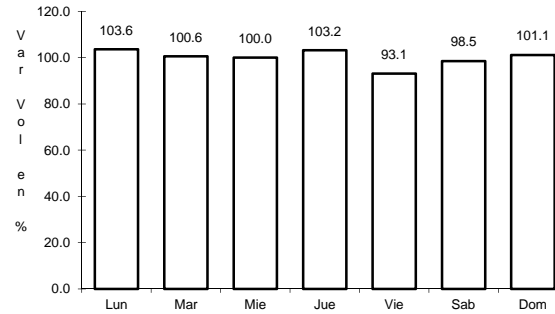
1 CARR: Acceso a Pabellón de Arteaga

CLAVE: 01113

ruta: MEX-045



Km: 1.80                      Tipo: 1                      Sent: 1

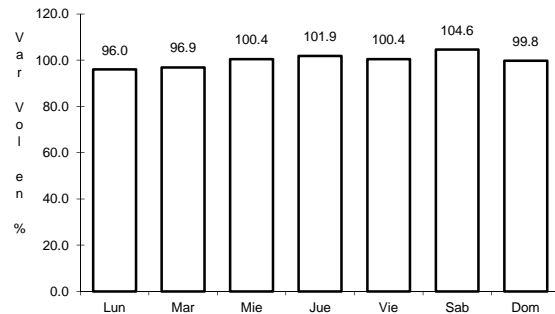


Km: 1.80                      Tipo: 1                      Sent: 2

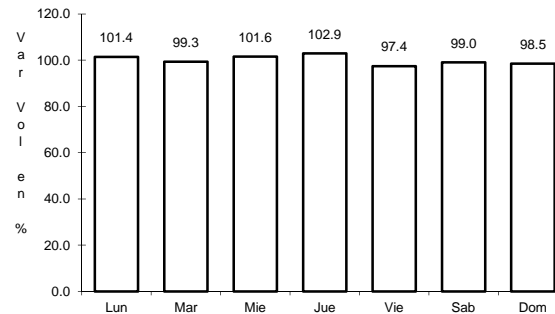
2 CARR: Aguascalientes - Jalpa

CLAVE: 00095

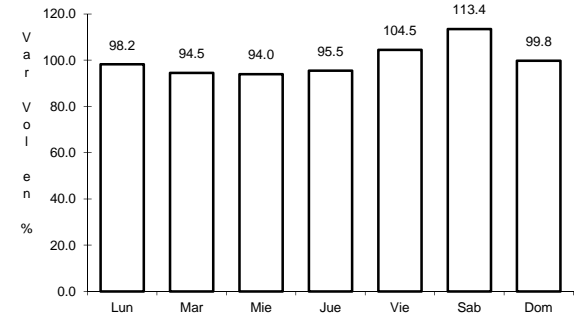
ruta: MEX-070



Km: 0.00                      Tipo: 3                      Sent: 1



Km: 0.00                      Tipo: 3                      Sent: 2

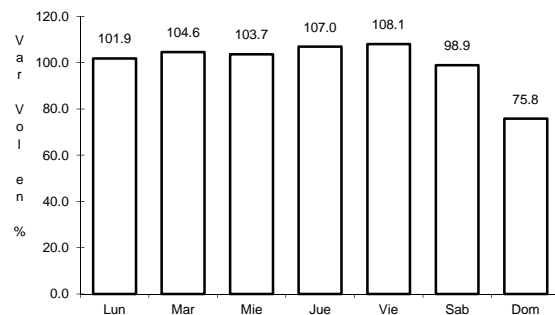


Km: 91.10                      Tipo: 1                      Sent: 0

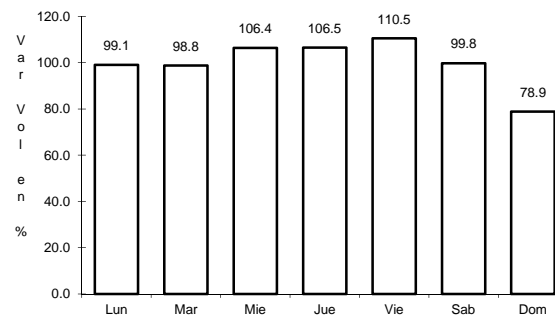
3 CARR: Aguascalientes - Zacatecas

CLAVE: 00524

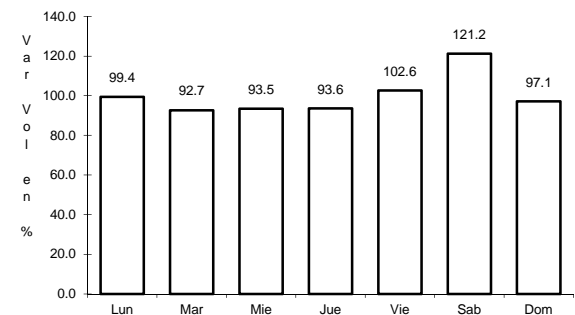
ruta: MEX-045



Km: 6.00                      Tipo: 1                      Sent: 1



Km: 6.00                      Tipo: 1                      Sent: 2

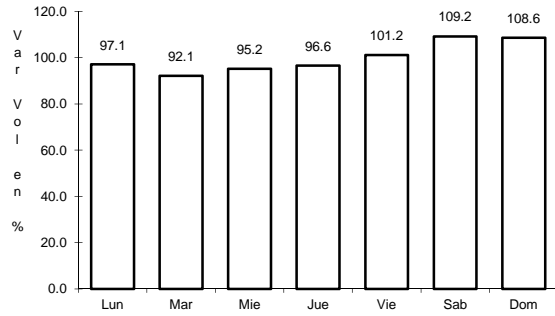


Km: 40.90                      Tipo: 3                      Sent: 0

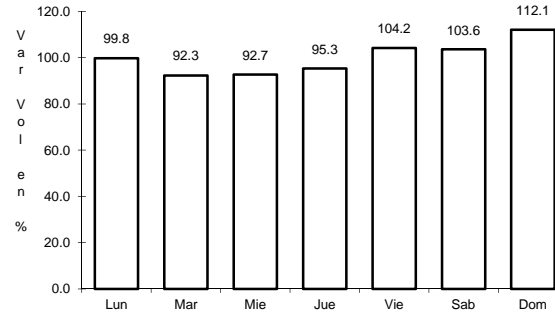
4 CARR: El Retoño - Ent. Asturias

CLAVE: 01124

RUTA: MEX-070



Km: 0.00                      Tipo: 3                      Sent: 0

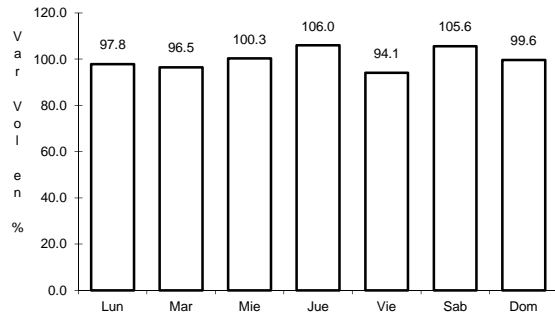


Km: 8.40                      Tipo: 1                      Sent: 0

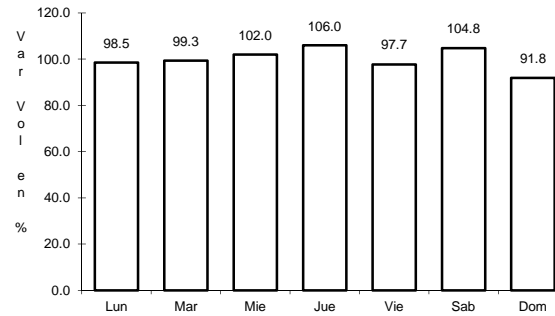
5 CARR: Ent. Penitenciaría - Villa Hidalgo

CLAVE: 00120

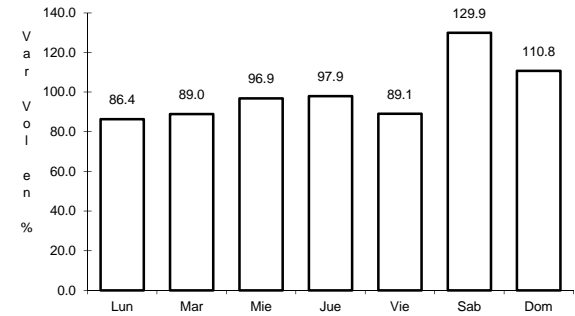
RUTA: MEX-071



Km: 0.00                      Tipo: 3                      Sent: 1



Km: 0.00                      Tipo: 3                      Sent: 2

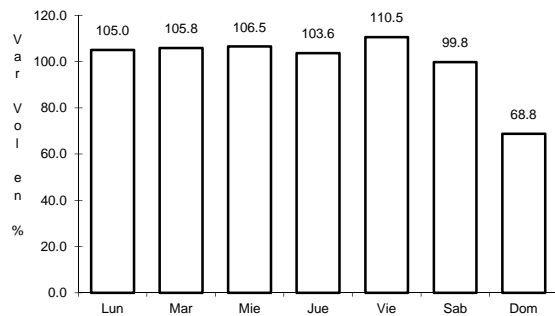


Km: 38.00                      Tipo: 1                      Sent: 0

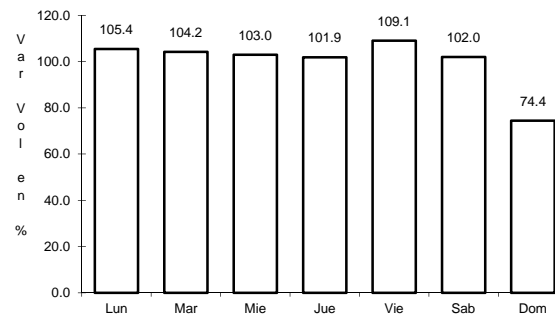
6 CARR: Ent. Rivier - San Marcos

CLAVE: 00285

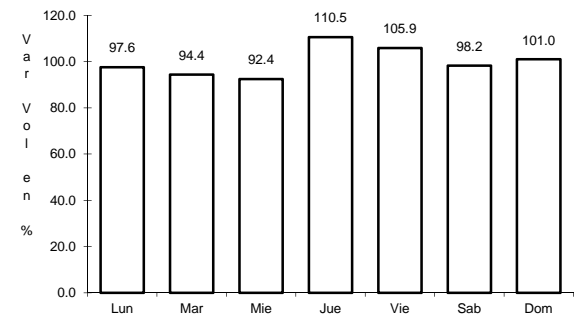
RUTA: MEX-066



Km: 0.00                      Tipo: 3                      Sent: 1



Km: 0.00                      Tipo: 3                      Sent: 2

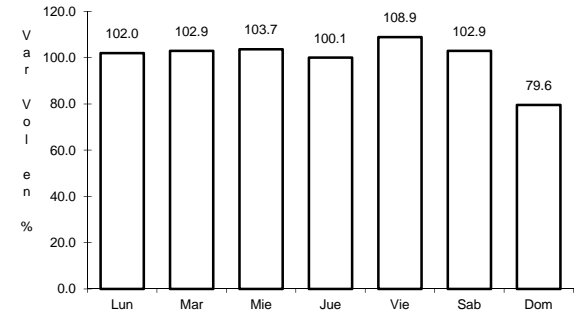
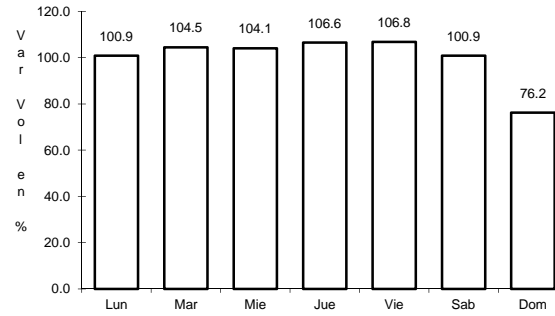
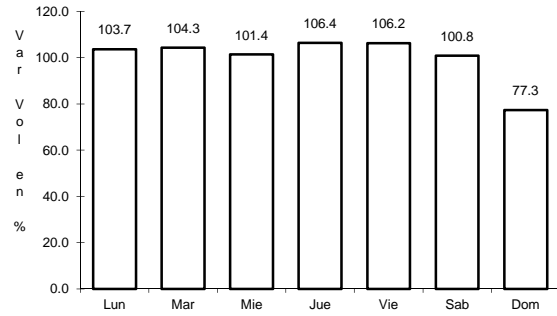


Km: 56.00                      Tipo: 1                      Sent: 0

7 CARR: León - Aguascalientes

CLAVE: 00167

RUTA: MEX-045



Km: 11.00      Tipo: 1      Sent: 1

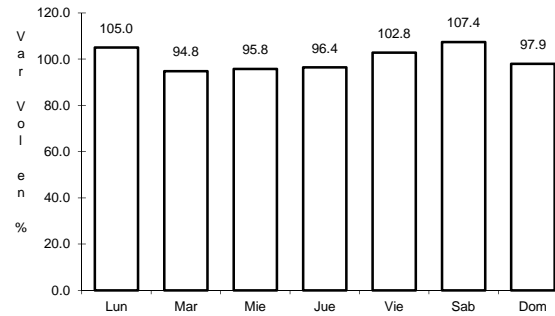
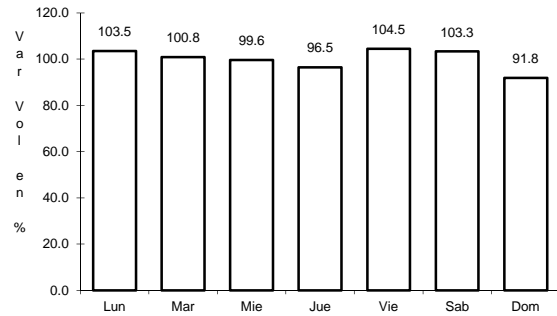
Km: 11.00      Tipo: 1      Sent: 2

Km: 88.20      Tipo: 1      Sent: 0

8 CARR: Libramiento Rincón de Romos

CLAVE: 00167

RUTA: MEX-045



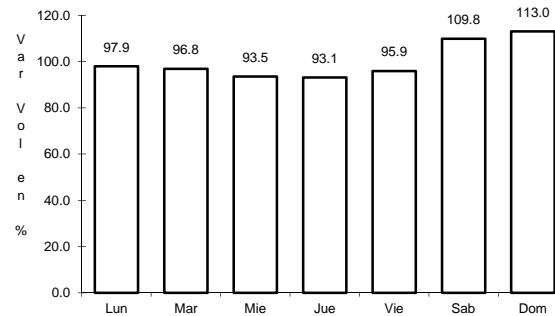
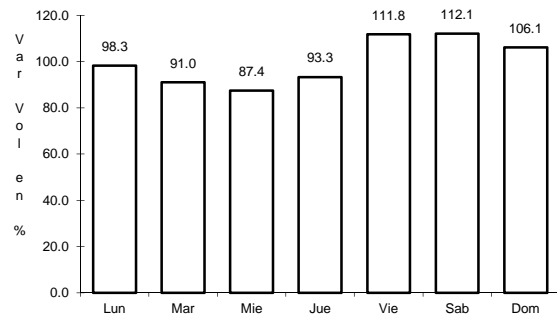
Km: 0.00      Tipo: 3      Sent: 0

Km: 10.00      Tipo: 1      Sent: 0

9 CARR: Ojo Caliente - Malpaso

CLAVE: 01123

RUTA: MEX-070



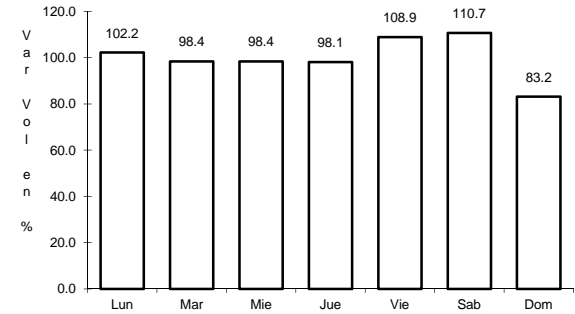
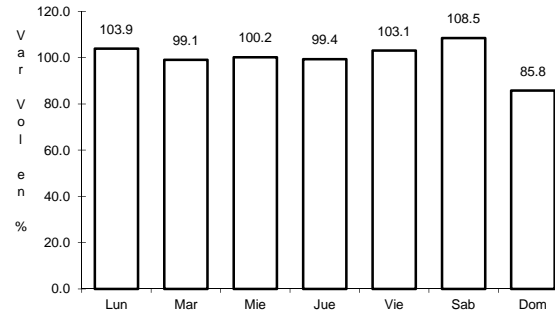
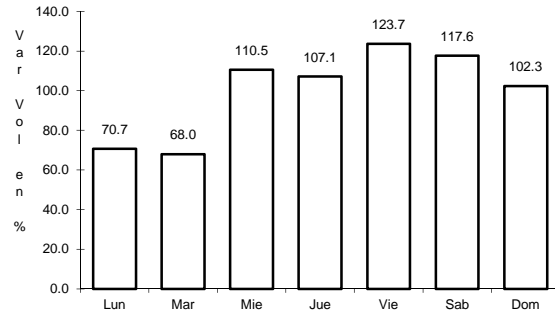
Km: 0.00      Tipo: 3      Sent: 0

Km: 3.10      Tipo: 1      Sent: 0

10 CARR: Ojuelos - Aguascalientes

CLAVE: 00094

ruta: MEX-070



Km: 0.00                      Tipo: 3                      Sent: 0

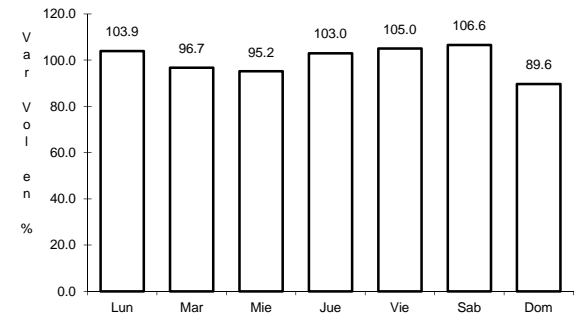
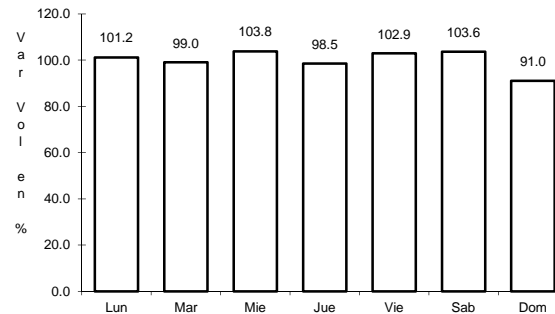
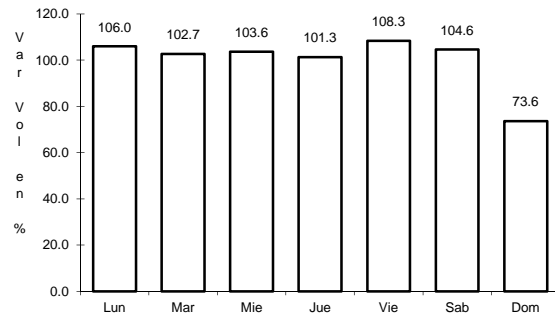
Km: 81.00                      Tipo: 1                      Sent: 1

Km: 81.00                      Tipo: 1                      Sent: 2

11 CARR: Providencia - Luis Moya

CLAVE: 00112

ruta: MEX-071



Km: 0.00                      Tipo: 3                      Sent: 0

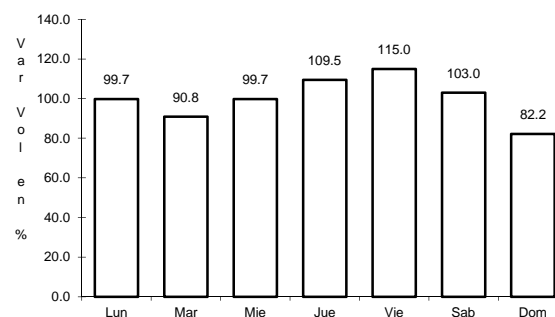
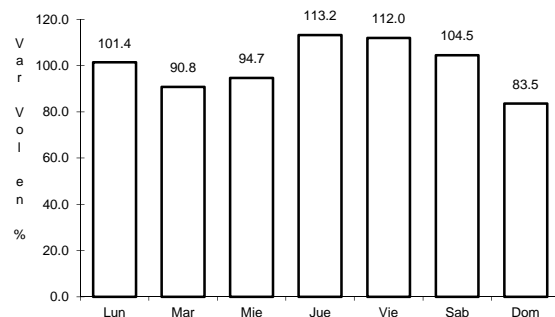
Km: 21.22                      Tipo: 3                      Sent: 0

Km: 43.50                      Tipo: 1                      Sent: 0

12 CARR: Ramal a Aeropuerto de Aguascalientes

CLAVE: 01116

ruta: MEX-045



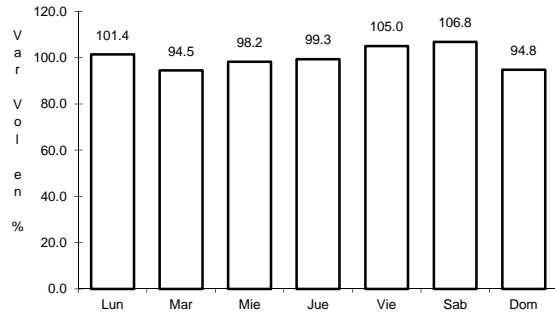
Km: 6.10                      Tipo: 1                      Sent: 1

Km: 6.10                      Tipo: 1                      Sent: 2

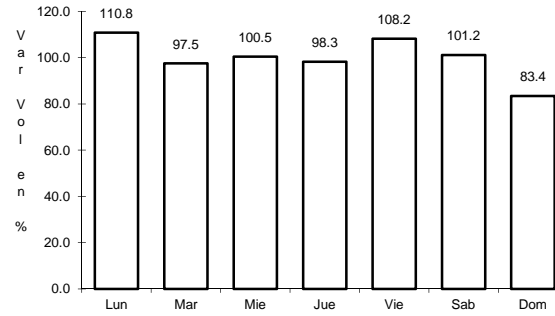
13 CARR: Rincón de Romos - Ciénega Grande

CLAVE: 01002

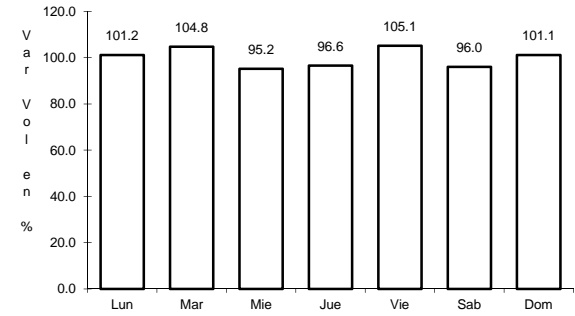
RUTA: MEX-039



Km: 0.00                      Tipo: 3                      Sent: 0



Km: 15.00                      Tipo: 3                      Sent: 0

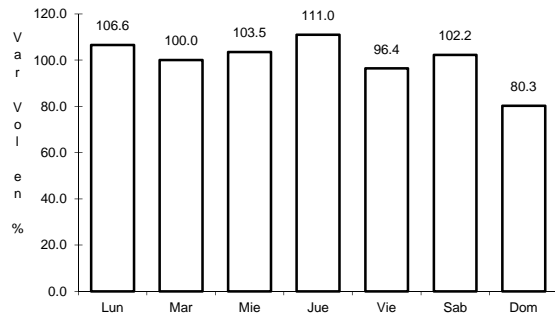


Km: 36.00                      Tipo: 1                      Sent: 0

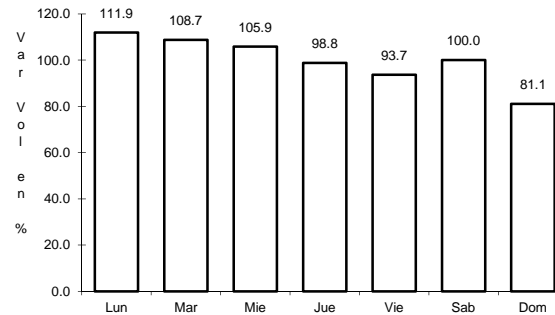
14 CARR: Aguascalientes - Ent. Cd. de Los Niños

CLAVE: 01130

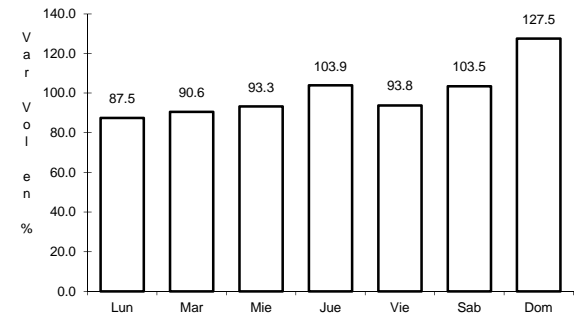
RUTA: AGS



Km: 0.00                      Tipo: 3                      Sent: 1



Km: 0.00                      Tipo: 3                      Sent: 2

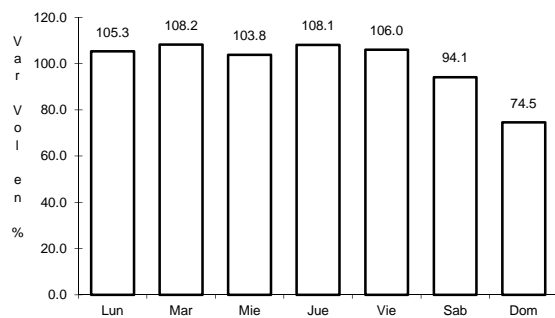


Km: 8.00                      Tipo: 1                      Sent: 0

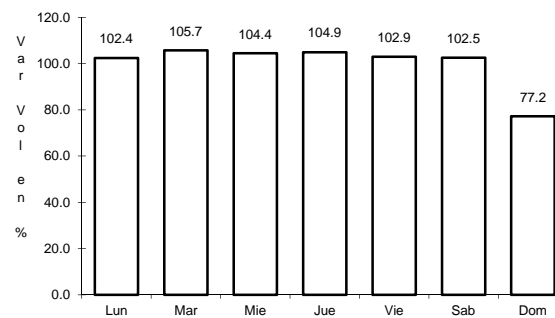
15 CARR: Aguascalientes - Jesús María

CLAVE: 01112

RUTA: AGS-095



Km: 3.30                      Tipo: 3                      Sent: 1



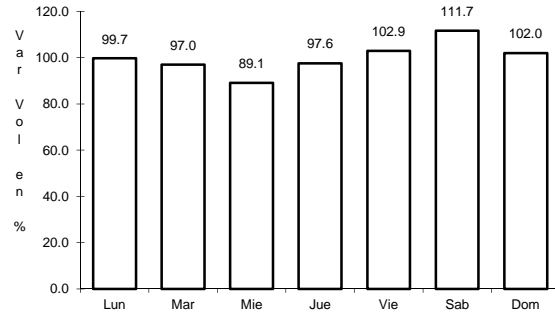
Km: 3.30                      Tipo: 3                      Sent: 2



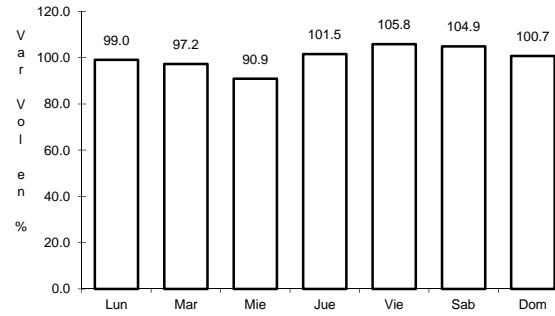
16 CARR: Aguascalientes - José María Morelos

CLAVE: 01131

RUTA: AGS



Km: 0.00                      Tipo: 3                      Sent: 0

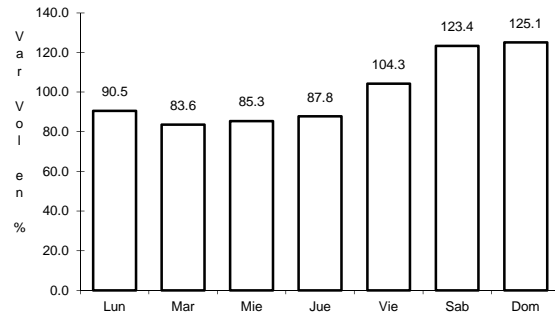


Km: 8.00                      Tipo: 3                      Sent: 0

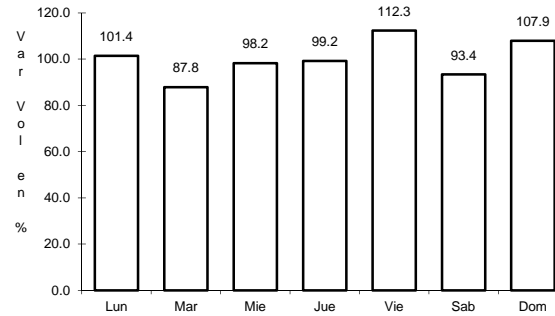
17 CARR: Carboneras - Villa Juárez

CLAVE: 01111

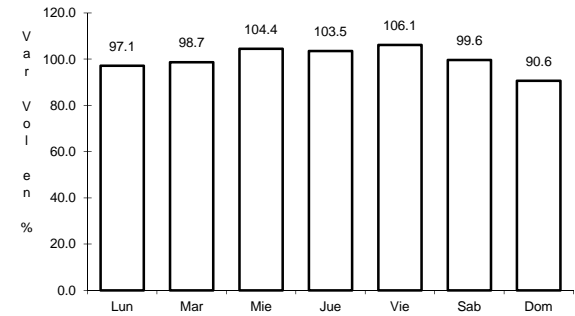
RUTA: AGS-004



Km: 0.00                      Tipo: 3                      Sent: 0



Km: 14.00                      Tipo: 1                      Sent: 0

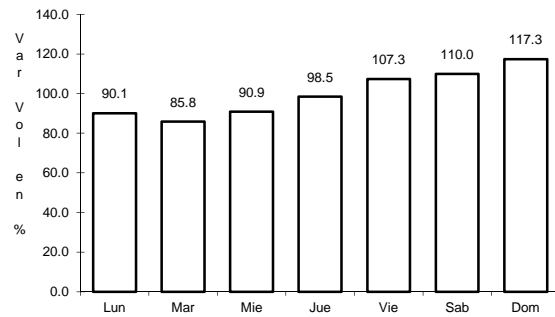


Km: 23.10                      Tipo: 1                      Sent: 0

18 CARR: Cosío - Santa María de La Paz

CLAVE: 01132

RUTA: AGS

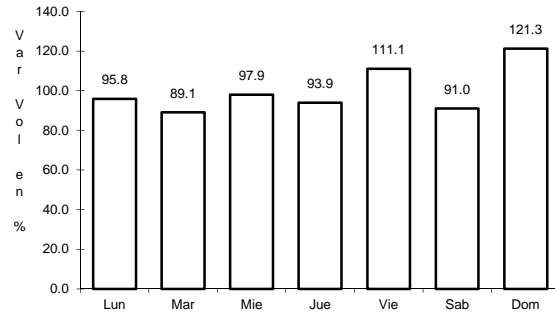


Km: 0.00                      Tipo: 3                      Sent: 0

19 CARR: Crucero Ojo de Agua de Crucitas - Santa Rosa

CLAVE: 01140

RUTA: AGS



Km: 0.00

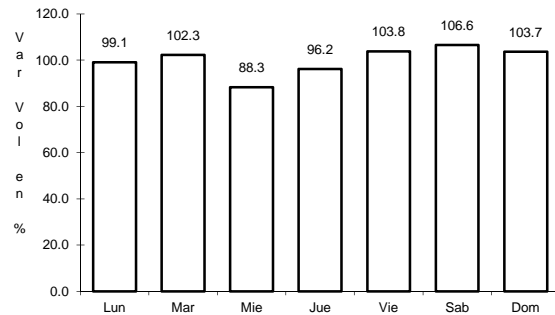
Tipo: 3

Sent: 0

20 CARR: El Tanque - San José de La Ordeña

CLAVE: 01143

RUTA: AGS



Km: 0.00

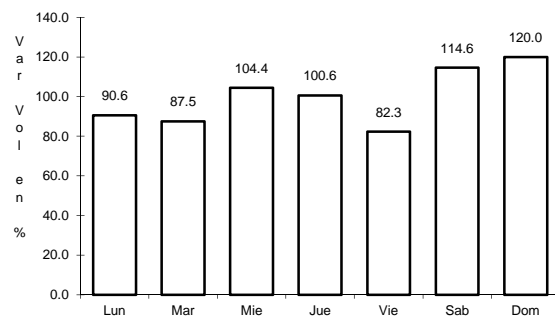
Tipo: 3

Sent: 0

21 CARR: El Taray - T. C.(Ramal Aeropuerto de Aguascalientes)

CLAVE: 01121

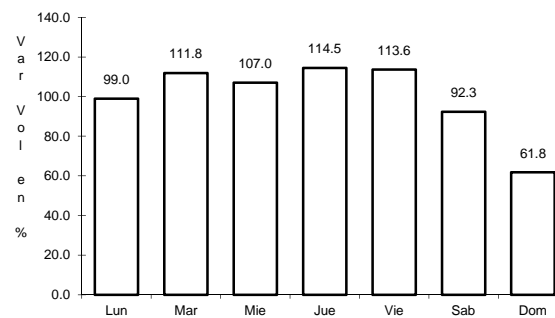
RUTA: AGS-002



Km: 0.00

Tipo: 3

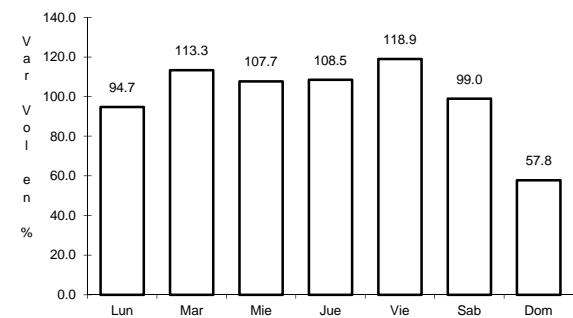
Sent: 0



Km: 22.00

Tipo: 1

Sent: 1



Km: 22.00

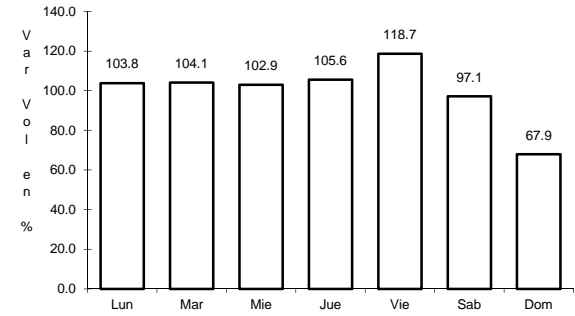
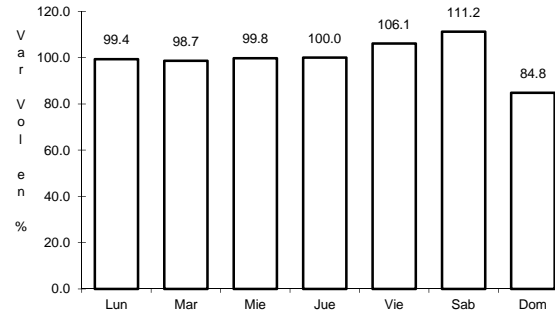
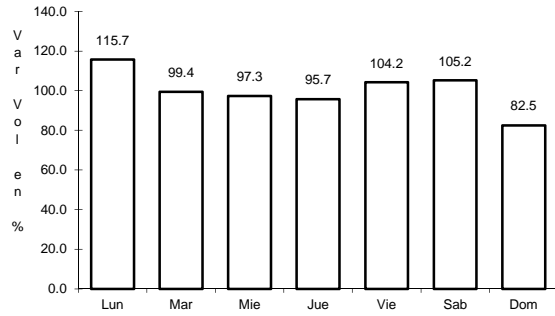
Tipo: 1

Sent: 2

22 CARR: Ent. Arellano - El Retoño

CLAVE: 01121

RUTA: AGS



Km: 0.00                      Tipo: 3                      Sent: 0

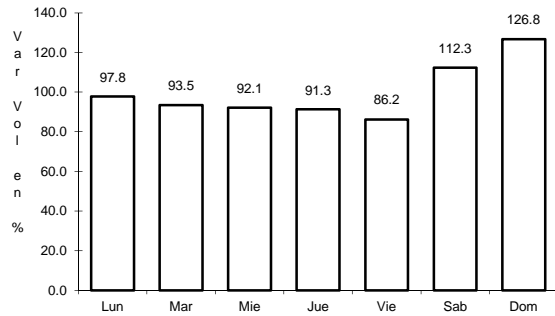
Km: 12.20                      Tipo: 1                      Sent: 0

Km: 15.92                      Tipo: 1                      Sent: 0

23 CARR: Ent. Buenavista - Gracias a Dios

CLAVE: 01138

RUTA: AGS

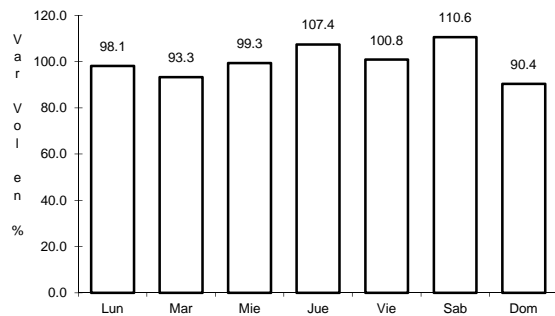


Km: 0.00                      Tipo: 3                      Sent: 0

24 CARR: Ent. El Novillo - Villa Juárez

CLAVE: 01103

RUTA: AGS-005

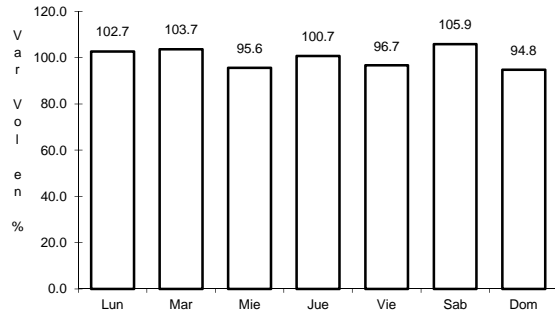


Km: 12.60                      Tipo: 1                      Sent: 0

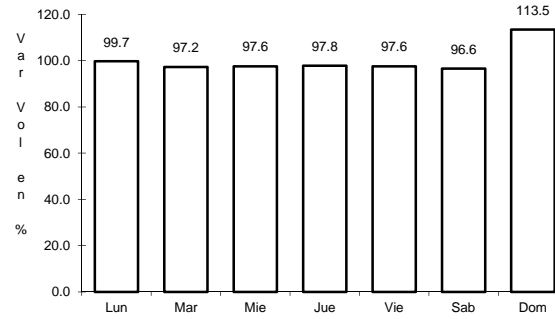
25 CARR: Ent. La Calavera - Ent. San Pedro

CLAVE: 01102

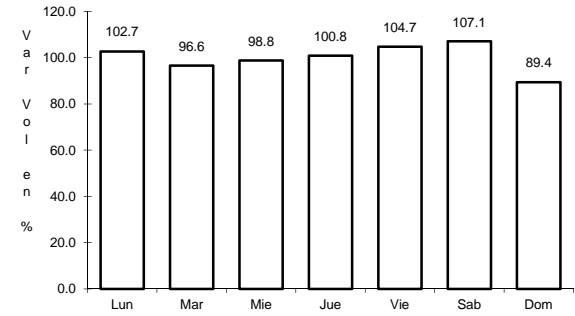
RUTA: AGS-043



Km: 0.00                      Tipo: 3                      Sent: 0



Km: 28.10                      Tipo: 1                      Sent: 0

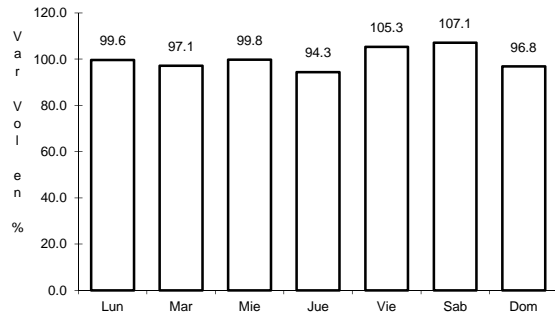


Km: 47.60                      Tipo: 1                      Sent: 0

26 CARR: Ent. La Chirida - San Francisco de Los Romo

CLAVE: 01016

RUTA: AGS

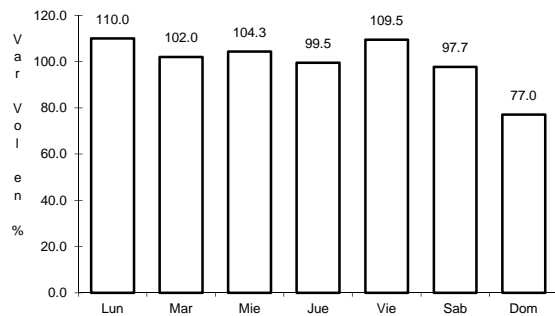


Km: 1.50                      Tipo: 1                      Sent: 0

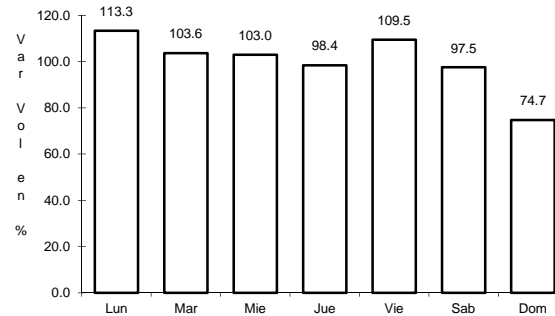
27 CARR: Ent. Paellón de Arteaga - California

CLAVE: 01137

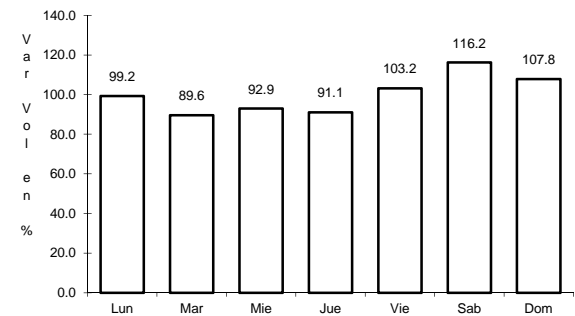
RUTA: AGS



Km: 0.00                      Tipo: 3                      Sent: 0



Km: 13.30                      Tipo: 1                      Sent: 0

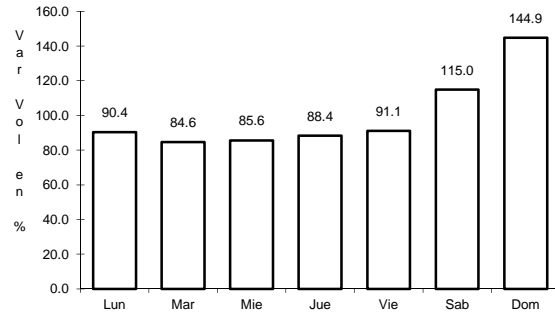


Km: 20.50                      Tipo: 1                      Sent: 0

28 CARR: Ent. Pabellón de Arteaga - San José de Gracia

CLAVE: 01031

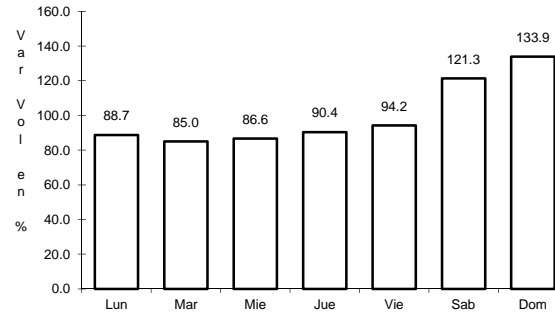
RUTA: AGS-019



Km: 0.00

Tipo: 3

Sent: 1



Km: 0.00

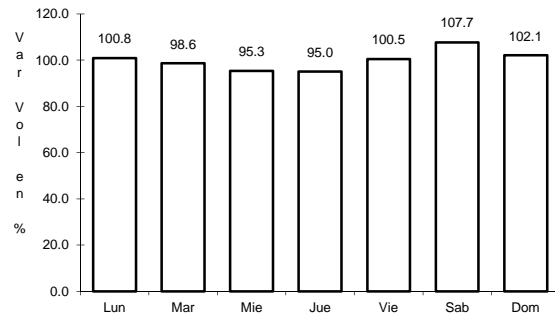
Tipo: 3

Sent: 2

29 CARR: Ent. Rincón de Romos - La Boquilla

CLAVE: 01139

RUTA: AGS



Km: 0.00

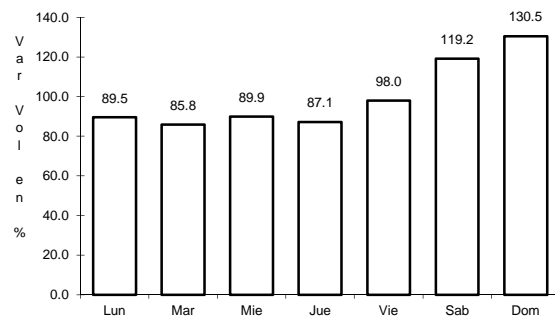
Tipo: 3

Sent: 0

30 CARR: Ent. San Carlos - Ent. El Milagro

CLAVE: 01141

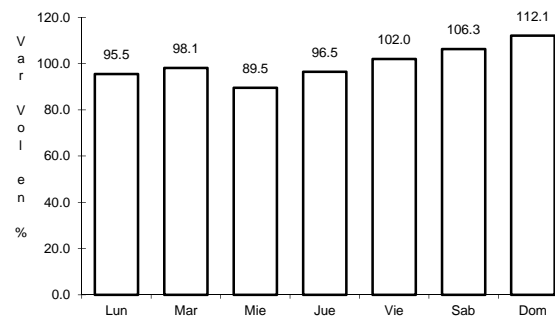
RUTA: AGS-010



Km: 0.00

Tipo: 3

Sent: 0



Km: 13.60

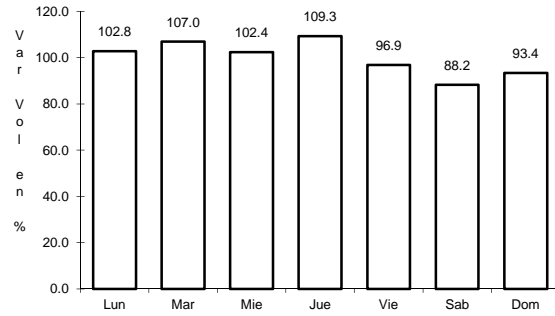
Tipo: 1

Sent: 0

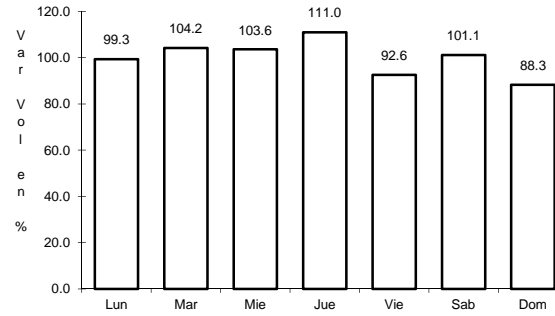
31 CARR: Ent. San Felipe - Jesús María

CLAVE: 01144

RUTA: AGS



Km: 0.00                      Tipo: 3                      Sent: 0

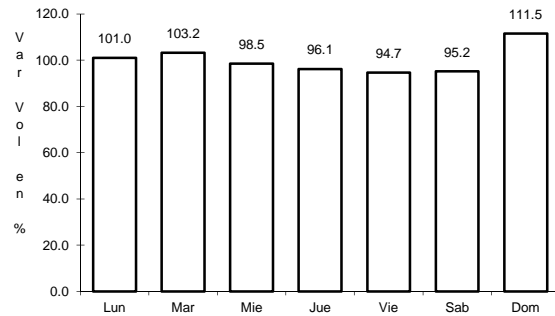


Km: 12.70                      Tipo: 1                      Sent: 0

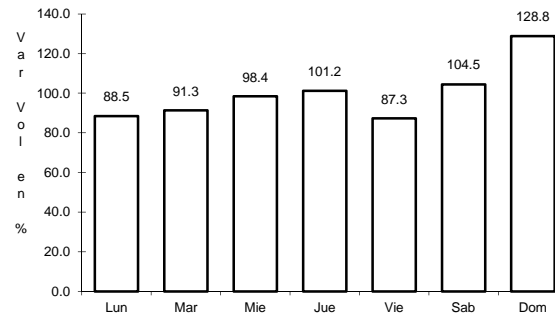
32 CARR: Ent. San Isidro - Ent. El Salitre

CLAVE: 01142

RUTA: AGS-016



Km: 0.00                      Tipo: 3                      Sent: 0

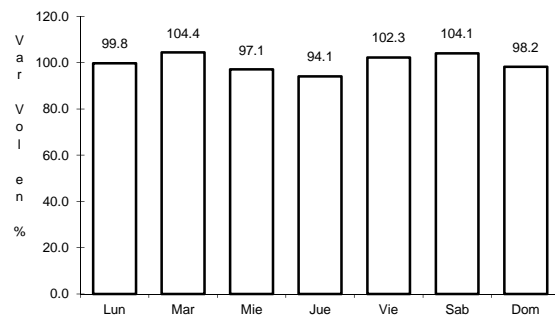


Km: 20.40                      Tipo: 1                      Sent: 0

33 CARR: Est. Coyotes - Ent. San Bartolo

CLAVE: 01134

RUTA: AGS-069

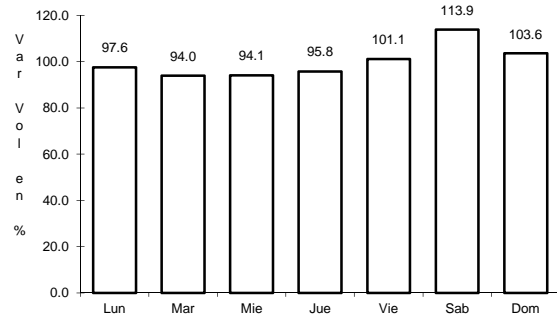


Km: 0.00                      Tipo: 3                      Sent: 0

34 CARR: Fracc. Ojo Caliente - El Conejal

CLAVE: 01129

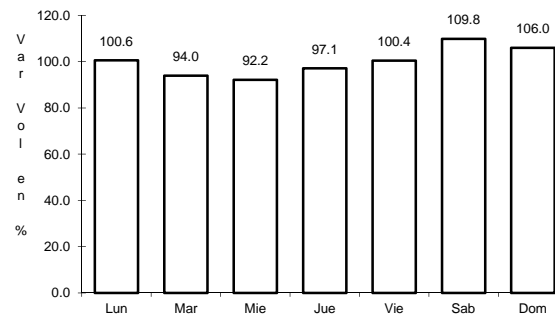
RUTA: AGS-079



Km: 3.50

Tipo: 1

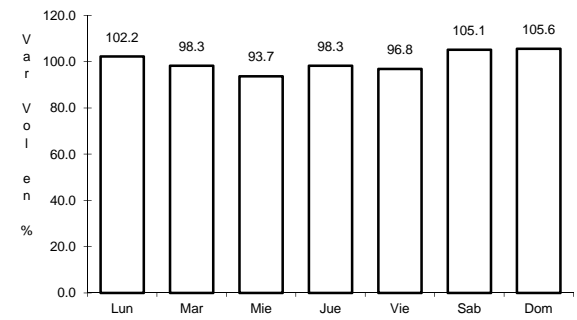
Sent: 1



Km: 3.50

Tipo: 1

Sent: 2



Km: 3.50

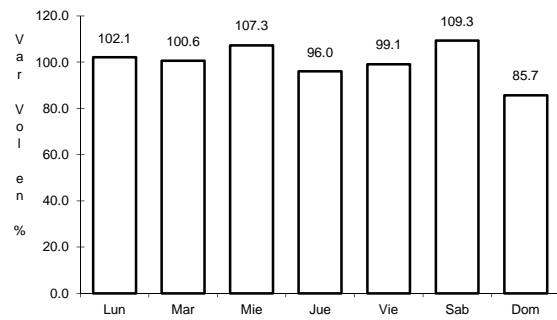
Tipo: 3

Sent: 0

35 CARR: Jesús María - Palomas

CLAVE: 01018

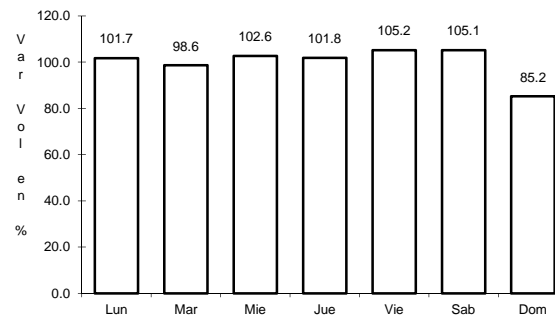
RUTA: AGS-018



Km: 0.00

Tipo: 3

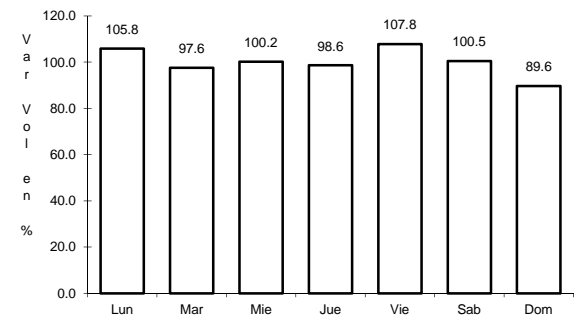
Sent: 1



Km: 0.00

Tipo: 3

Sent: 2



Km: 21.70

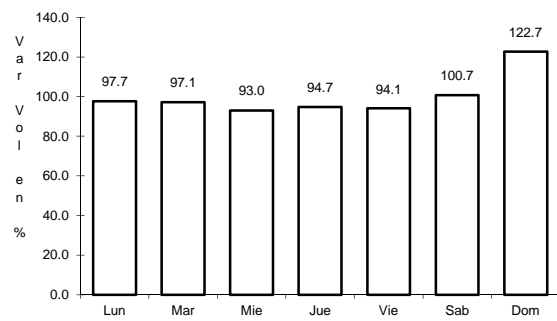
Tipo: 1

Sent: 0

36 CARR: La Panadera - Palo Alto

CLAVE: 01105

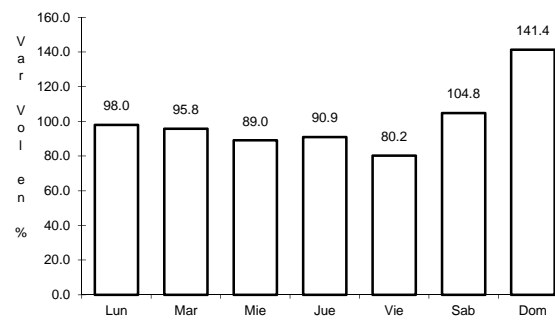
RUTA: AGS-017



Km: 0.00

Tipo: 3

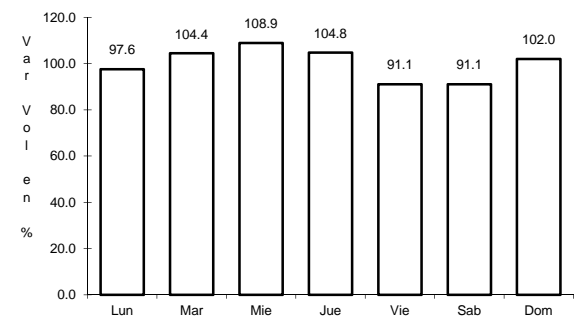
Sent: 0



Km: 12.80

Tipo: 3

Sent: 0



Km: 23.30

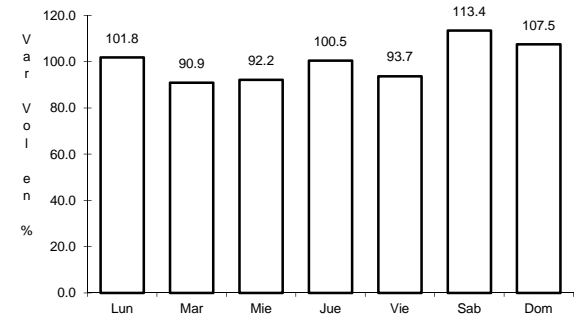
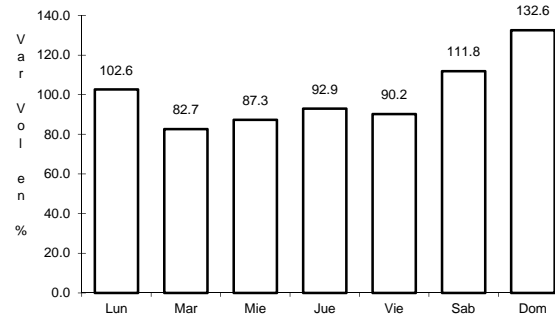
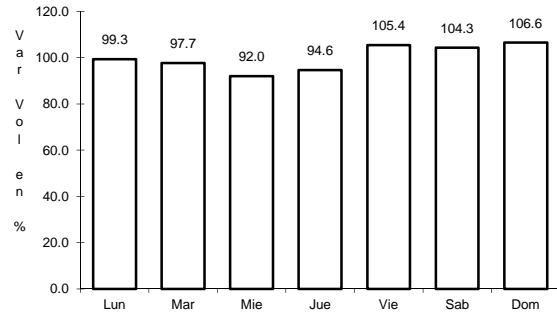
Tipo: 1

Sent: 0

37 CARR: La Punta - Mesillas

CLAVE: 01104

RUTA: AGS-026



Km: 0.00 Tipo: 3 Sent: 0

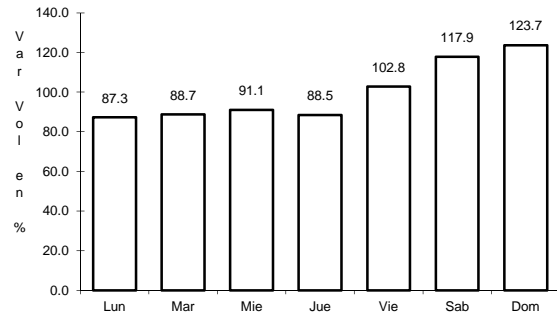
Km: 6.50 Tipo: 3 Sent: 0

Km: 13.50 Tipo: 1 Sent: 0

38 CARR: La Rinconada - El Terrero del Refugio

CLAVE: 01133

RUTA: AGS-007

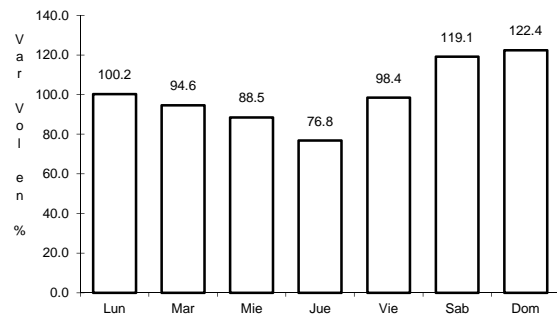


Km: 0.00 Tipo: 3 Sent: 0

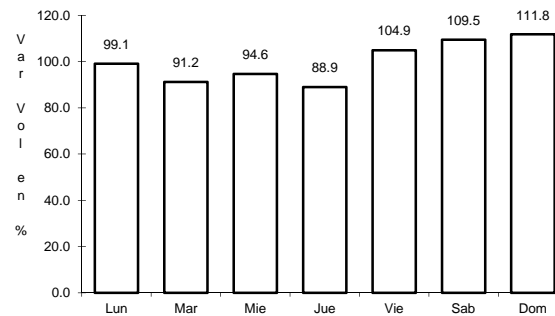
39 CARR: Las Norias de Ojo Caliente - La Luz

CLAVE: 01122

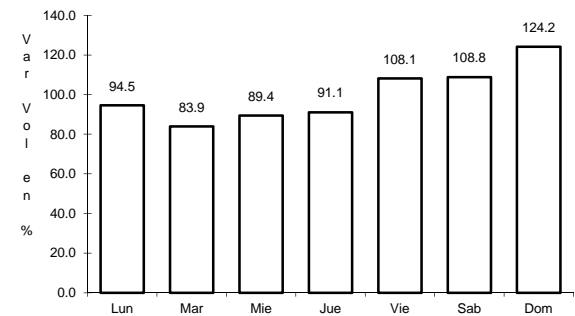
RUTA: AGS-068



Km: 0.00 Tipo: 3 Sent: 0



Km: 10.50 Tipo: 3 Sent: 0



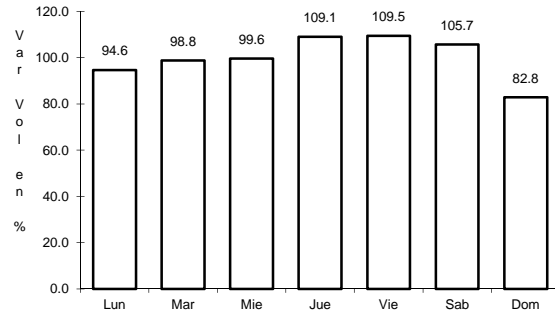
Km: 27.60 Tipo: 1 Sent: 0



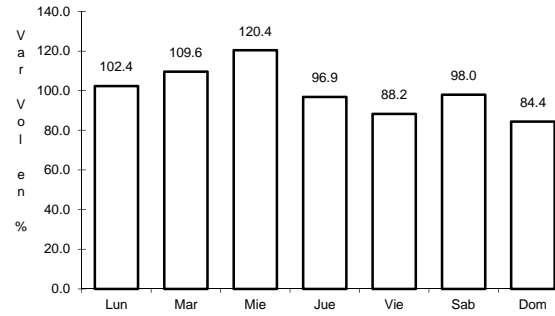
40 CARR: Libramiento San Francisco de Los Romo

CLAVE: 01137

RUTA: AGS



Km: 0.00                      Tipo: 3                      Sent: 1

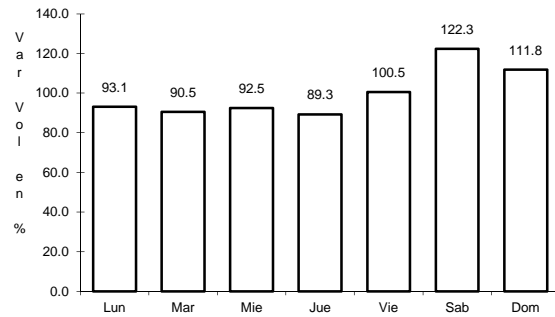


Km: 0.00                      Tipo: 3                      Sent: 2

41 CARR: Pabellón de Hidalgo - Rincón de Romos

CLAVE: 01136

RUTA: AGS

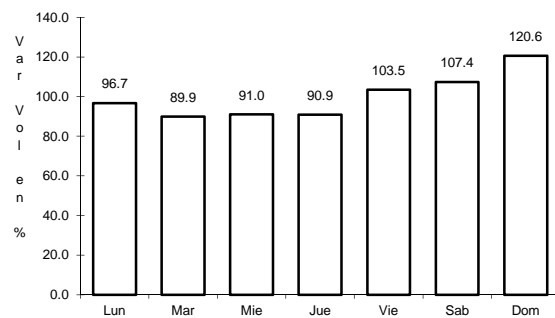


Km: 0.00                      Tipo: 3                      Sent: 0

42 CARR: Pilotos - Los Campos

CLAVE: 00007

RUTA: AGS-030

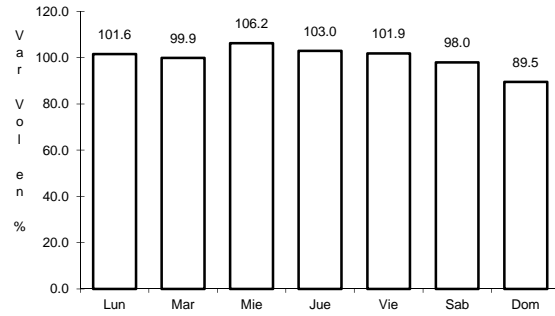


Km: 0.00                      Tipo: 3                      Sent: 0

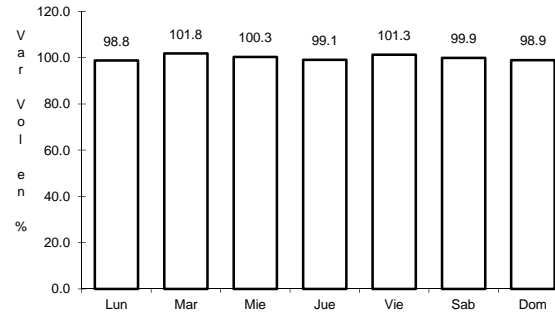
43 CARR: Pocitos - Granja Miravalle

CLAVE: 01109

RUTA: AGS-053



Km: 1.50                      Tipo: 3                      Sent: 0

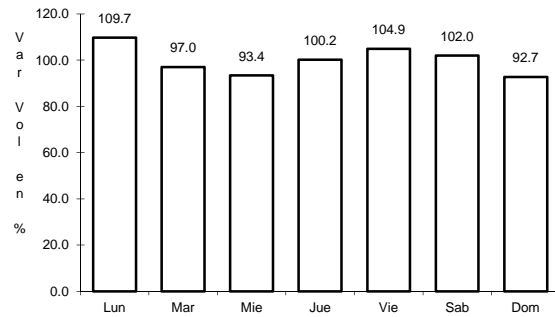


Km: 5.70                      Tipo: 1                      Sent: 0

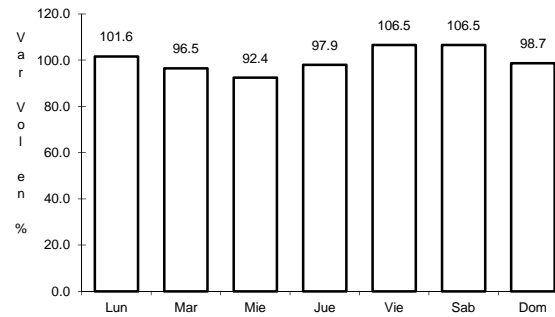
44 CARR: Ramal a San Pedro Piedra Gorda

CLAVE: 00553

RUTA: ZAC-AGS



Km: 0.00                      Tipo: 3                      Sent: 0

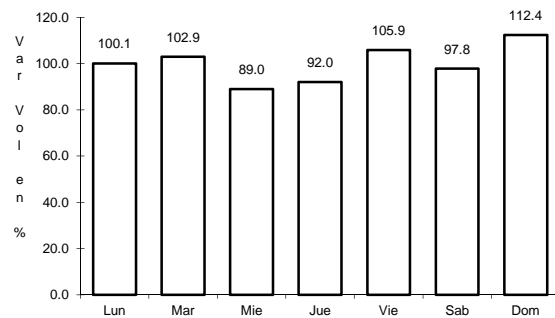


Km: 9.00                      Tipo: 1                      Sent: 0

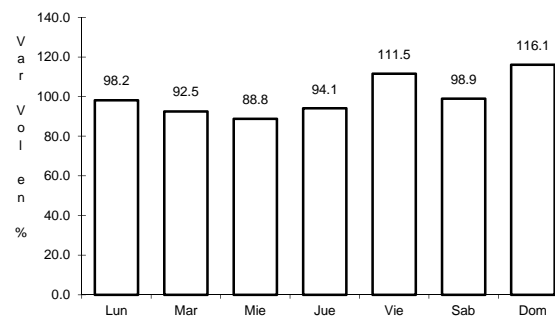
45 CARR: San Gil - Jarillas

CLAVE: 00527

RUTA: AGS-012-ZAC



Km: 0.00                      Tipo: 3                      Sent: 0

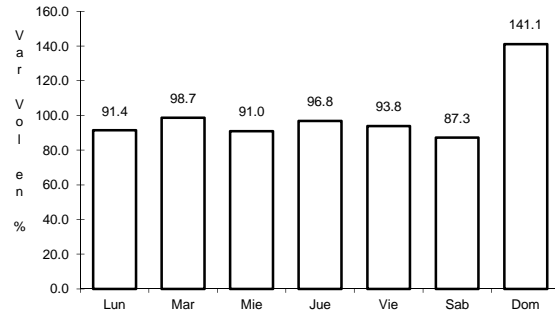


Km: 5.40                      Tipo: 1                      Sent: 0

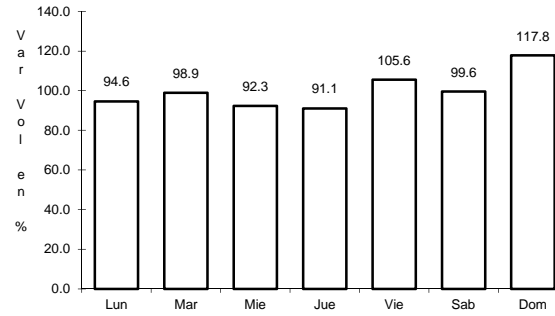
46 CARR: San Isidro El Grande - Bajío de San José

CLAVE: 00526

RUTA: AGS-036



Km: 0.00                      Tipo: 3                      Sent: 0

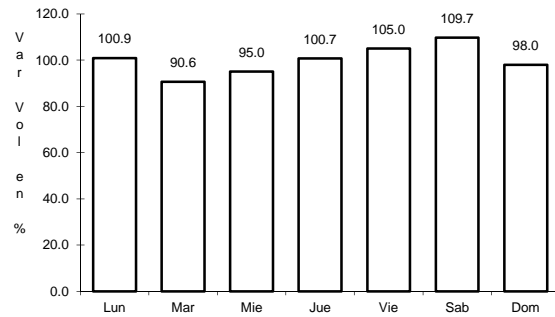


Km: 11.50                      Tipo: 3                      Sent: 0

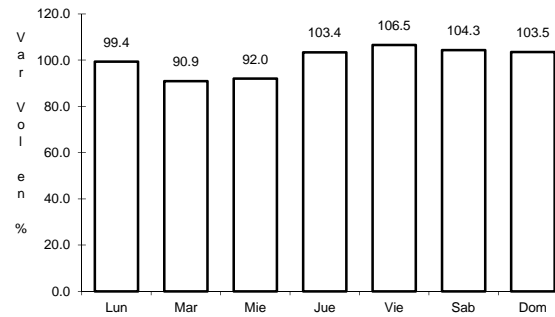
47 CARR: San Rafael - Villa García

CLAVE: 00525

RUTA: AGS-ZAC



Km: 0.00                      Tipo: 3                      Sent: 0

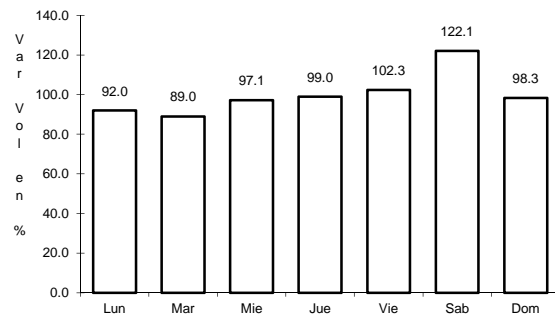


Km: 10.00                      Tipo: 1                      Sent: 0

48 CARR: Santa Rosa - Pabellón de Hidalgo

CLAVE: 01135

RUTA: AGS

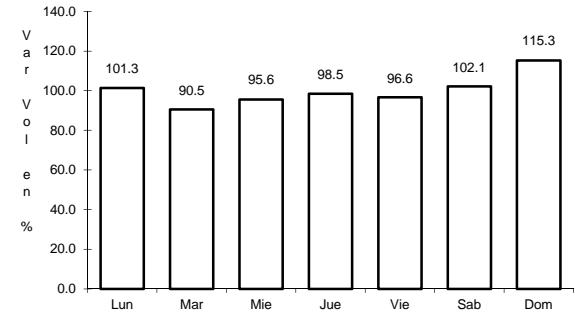
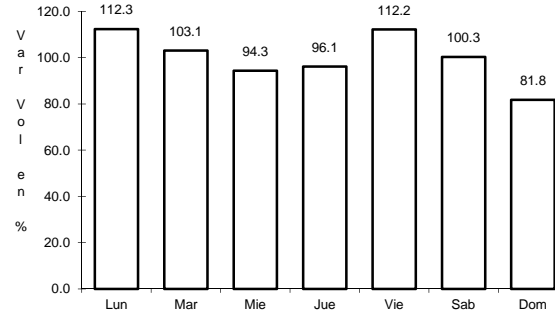
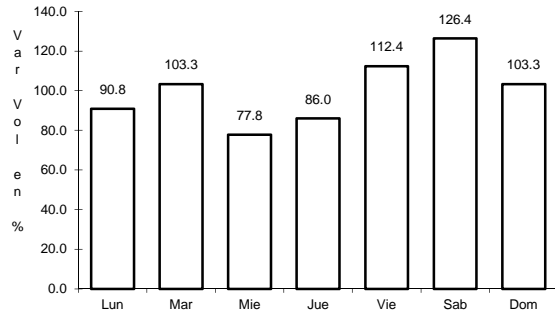


Km: 0.00                      Tipo: 3                      Sent: 0

49 CARR: T. Caldera - Ent. Ojo de Agua de Los Montes

CLAVE: 01137

RUTA: AGS



Km: 0.00                      Tipo: 3                      Sent: 0

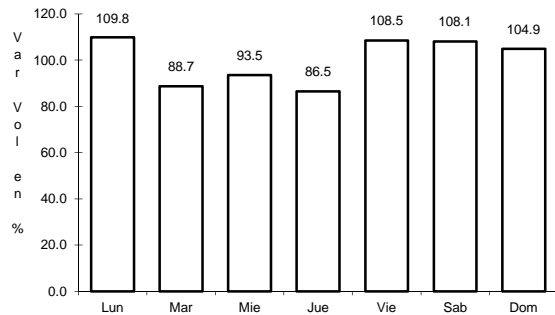
Km: 8.60                      Tipo: 1                      Sent: 0

Km: 19.00                      Tipo: 1                      Sent: 0

50 CARR: Viñedos de California - Adolfo López Mateos

CLAVE: 01137

RUTA: AGS

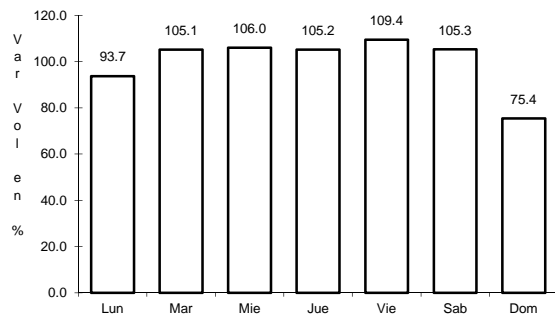


Km: 0.00                      Tipo: 3                      Sent: 0

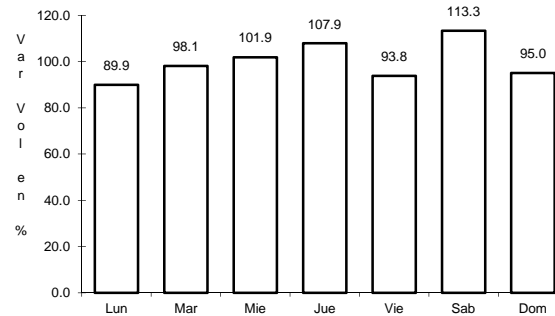
51 CARR: Libramiento Surponiente de Aguascalientes (Cuota)

CLAVE: 00167

RUTA: MEX-A40



Km: 0.00                      Tipo: 3                      Sent: 0

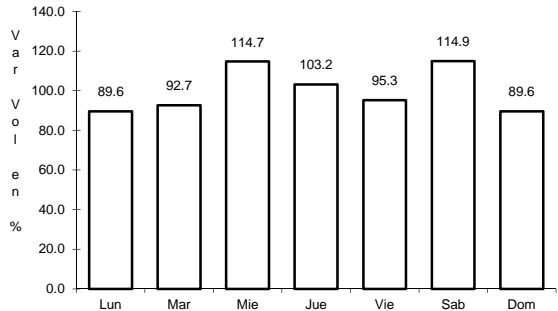


Km: 21.00                      Tipo: 1                      Sent: 0

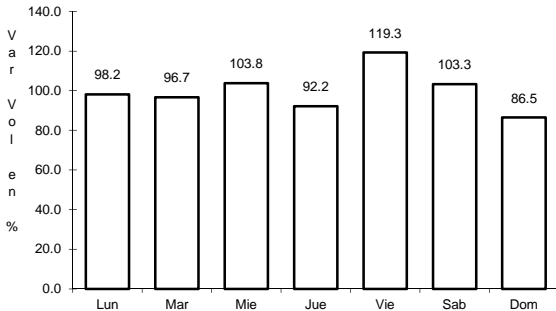
52 CARR: Guadalupe - Cosío

CLAVE: 00579

RUTA: MEX-ZAC



Km: 0.00                      Tipo: 3                      Sent: 0



Km: 12.96                      Tipo: 3                      Sent: 0

