

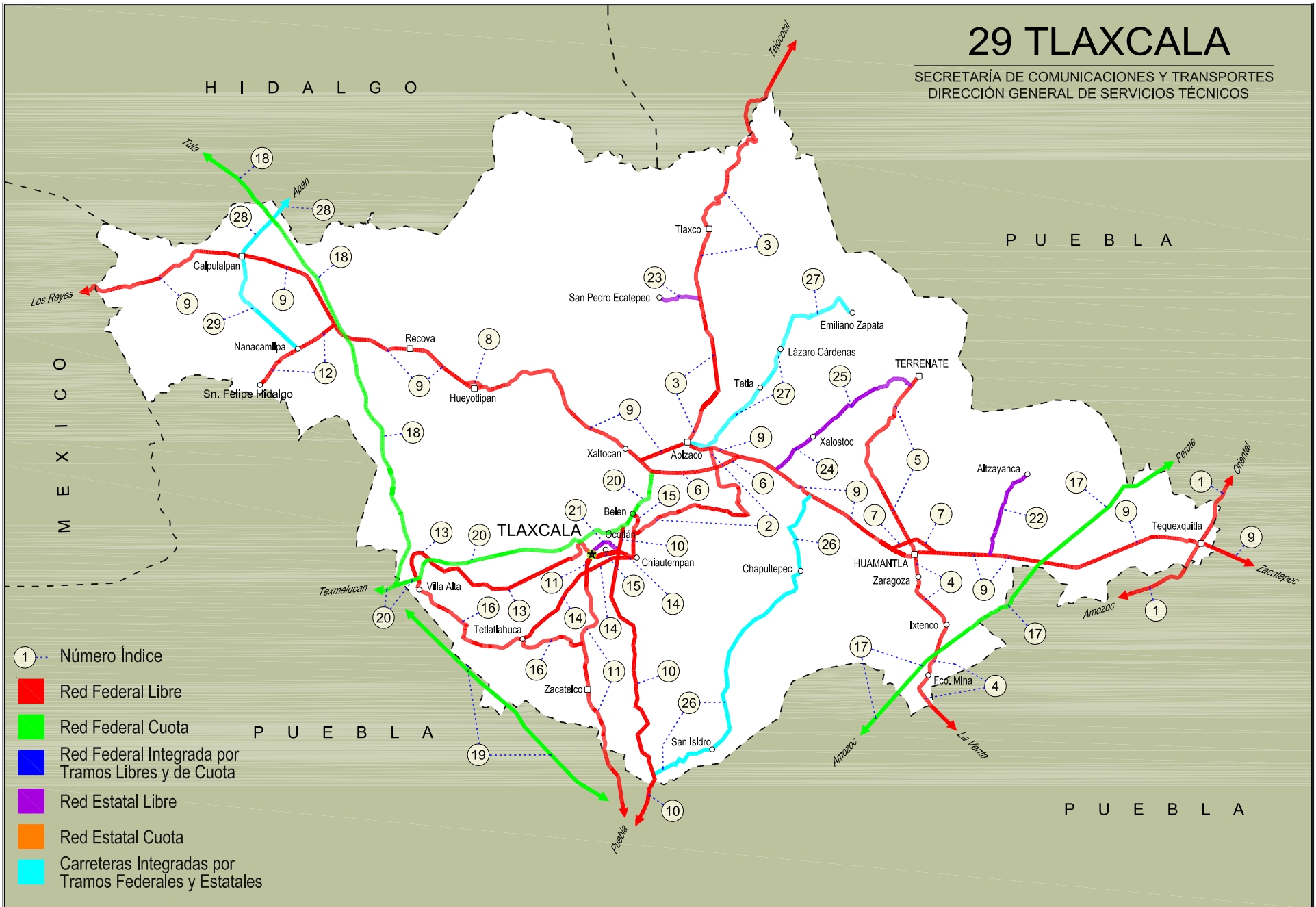


TLAXCALA

NO. INDICE	CARRETERA	RUTA
---RED FEDERAL LIBRE---		
1	Amozoc - Teziutlán	MEX-129
2	Apizaco - San Pablo Apetatitlán	MEX-119
3	Apizaco - Tejocotal	MEX-119
4	Huamantla - La Venta	MEX-136
5	Huamantla - Terrenate	MEX-136
6	Libramiento de Apizaco	MEX-136
7	Libramiento Huamantla	MEX-136
8	Libramiento Hueyotlipan	MEX-136
9	Los Reyes - Zacatepec	MEX-136
10	Puebla - Belem	MEX-121
11	Puebla - Tlaxcala	MEX-119
12	Ramal a San Felipe de Hidalgo	MEX-136
13	San Martín Texmelucan - Tlaxcala	MEX-117
14	Tetlatlahuca - Santa Ana Chiautempan	MEX-119
15	Tlaxcala - Belem	MEX-119
16	Villa Alta - T. C. (Puebla - Tlaxcala)	MEX-119
---RED FEDERAL DE CUOTA---		
17	Amozoc - Perote (Cuota)	MEX-140D
18	Libramiento Norte de la Ciudad de México (Cuota)	MEX-040D
19	México - Puebla (Cuota)	MEX-150D
20	San Martín Texmelucan - Tlaxcala - El Molinito (Cuota)	MEX-117D
---RED ESTATAL LIBRE---		
21	Libramiento de Ocotlán	TLAX
22	Ramal a Altzayanca de Hidalgo	TLAX
23	Ramal a San Pedro Ecatepec	TLAX
24	Ramal a Xalostoc	TLAX
25	Xalostoc - Terrenate	TLAX
---CARRETERAS INTEGRADAS POR TRAMOS FEDERALES Y ESTATALES---		
26	Acocotla - Vicente Guerrero	MEX-TLAX
27	Apizaco - Emiliano Zapata	TLAX-MEX-136
28	Calpulalpan - El Ocote	MEX-HGO
29	Calpulalpan - Nanacamilpa	TLAX-MEX-136

29 TLAXCALA

SECRETARÍA DE COMUNICACIONES Y TRANSPORTES
DIRECCIÓN GENERAL DE SERVICIOS TÉCNICOS



TLAXCALA

1 CARR: Amozoc - Teziutlán

CLAVE: 00210

RUTA: MEX-129

AÑO: 2012

LUGAR	ESTACION				VELOCIDAD AUTOS (km/h)				VELOCIDAD AUTOBUSES (km/h)				VELOCIDAD CAMIONES (km/h)				COORDENADAS	
	KM	TE	SC	TDPA	Promedio	P 85	P 98	δ	Promedio	P 85	P 98	δ	Promedio	P 85	P 98	δ	Latitud	Longitud
Amozoc	0.00																	
X. C. Puebla - Córdoba (Cuota)	1.40	3	0	11568	35.2	42.7	55.1	9.2	35.1	42.9	53.9	8.8	35.8	43.9	53.7	9.1	19.051639	-98.027278
Acajete	12.00	3	0	8656	35.2	42.7	55.0	9.2	35.5	43.5	53.6	9.0	36.1	44.4	53.7	9.2	19.115740	-97.945683
Rafael Lara Grajales	35.50	1	0	4792	86.3	98.7	119.1	13.3	79.8	91.3	102.3	13.6	74.9	90.2	105.7	15.5	19.235395	-97.814762
Rafael Lara Grajales	35.50	3	0	4996	79.2	92.1	113.8	14.3	76.3	88.8	100.4	13.1	73.1	85.5	106.0	13.4	19.232543	-97.784120
Lim. Edos. Term. Pue. Ppia. Tlax.	50.54																	
X. C. Los Reyes - Zacatepec	56.31	1	0	3366	55.1	64.1	82.8	10.5	48.9	55.8	66.9	9.6	44.8	54.2	70.7	11.7	19.316163	-97.654386
Lim. Edos. Term. Tlax. Ppia. Pue.	60.22																	
Oriental	62.62	1	0	3824	76.0	88.9	108.1	13.8	69.3	83.2	107.9	14.6	66.8	79.9	104.3	13.6	19.373724	-97.610081
Oriental	62.62	3	0	6261	75.9	88.9	108.1	13.8	69.9	84.4	111.6	15.2	66.4	78.9	103.2	13.2	19.380780	-97.619646
X. C. Amozoc - Perote (Cuota)	69.00	1	1	3016	61.6	72.7	84.7	12.9	56.3	61.8	71.5	7.4	53.2	68.6	92.1	15.5	19.415302	-97.638011
X. C. Amozoc - Perote (Cuota)	69.00	1	2	2833	69.9	81.3	94.8	12.6	65.8	73.8	84.4	9.9	65.6	77.0	93.8	12.3	19.415302	-97.638011
X. C. Amozoc - Perote (Cuota)	69.00	3	0	7277	81.6	91.3	105.9	11.2	77.6	86.5	94.9	11.1	76.6	86.7	104.2	11.7	19.421762	-97.646110
Libres	76.35	3	0	7602	74.6	92.0	115.0	17.0	74.7	90.9	119.5	16.3	74.1	94.4	130.7	19.7	19.481923	-97.673984
San Miguel Tenexatiloyán	106.70	1	0	3518	60.0	65.0	74.4	8.4	55.6	59.9	64.7	5.5	54.5	61.5	72.9	8.4	19.701291	-97.598724
T. Izq. Zacapoaxtla	114.80	1	0	7059	61.4	69.9	86.2	10.4	59.0	67.3	83.1	9.7	57.1	65.4	86.7	11.2	19.759198	-97.568374
T. Izq. Zacapoaxtla	114.80	3	0	8123	60.0	65.0	74.4	8.4	55.6	60.1	64.9	5.8	55.2	61.4	73.0	7.6	19.764583	-97.565250
Zaragoza	116.80	3	0	7066	50.5	53.8	63.5	6.9	46.8	50.9	54.7	6.0	47.3	52.0	61.3	7.3	19.763649	-97.567788
Teziutlán	157.80	1	0	11317	55.0	61.5	74.5	7.6	53.2	56.9	64.4	6.2	52.9	58.4	72.7	8.3	19.817441	-97.379787

2 CARR: Apizaco - San Pablo Apetatitlán

CLAVE: 29035

RUTA: MEX-119

AÑO: 2012

LUGAR	ESTACION				VELOCIDAD AUTOS (km/h)				VELOCIDAD AUTOBUSES (km/h)				VELOCIDAD CAMIONES (km/h)				COORDENADAS	
	KM	TE	SC	TDPA	Promedio	P 85	P 98	δ	Promedio	P 85	P 98	δ	Promedio	P 85	P 98	δ	Latitud	Longitud
T. C. Los Reyes - Zacatepec	0.00	3	0	6767	56.8	64.1	80.2	9.5	54.3	61.6	78.1	9.0	54.0	62.9	81.5	10.6	19.411037	-98.118837
T. Der. Tecnológico	0.55	3	0	7805	48.5	53.2	64.1	8.2	49.8	53.2	65.8	8.1	48.3	53.0	64.9	9.6	19.404919	-98.117221
Cuaxomulco	9.10	3	0	2325	47.9	54.4	65.8	9.3	45.5	50.7	64.0	6.8	43.3	50.5	63.5	9.0	19.355851	-98.106271
Santa Cruz Tlaxcala	14.50	3	0	5770	60.4	65.9	79.3	8.8	60.2	64.4	74.9	7.8	58.9	64.3	78.9	9.1	19.353530	-98.158259
T. Izq. Contla	18.90	1	0	9228	47.6	52.2	62.9	6.9	48.9	51.7	54.6	5.5	46.2	51.1	64.3	7.5	19.339410	-98.184700
San Pablo Apetatitlán	20.00	1	0	13187	40.8	44.2	61.5	8.0	39.2	46.1	54.8	9.2	40.4	47.3	66.3	9.8	19.335870	-98.190184

TLAXCALA

3 CARR: Apizaco - Tejocotal

CLAVE: 00430

RUTA: MEX-119

AÑO: 2012

LUGAR	ESTACION				VELOCIDAD AUTOS (km/h)				VELOCIDAD AUTOBUSES (km/h)				VELOCIDAD CAMIONES (km/h)				COORDENADAS	
	KM	TE	SC	TDPA	Promedio	P 85	P 98	δ	Promedio	P 85	P 98	δ	Promedio	P 85	P 98	δ	Latitud	Longitud
Apizaco	0.00	3	1	9048	32.8	40.5	51.6	9.3	24.8	30.4	44.3	7.2	22.4	30.2	47.8	9.8	19.428432	-98.135696
Apizaco	0.00	3	2	10215	79.6	90.7	107.2	12.3	76.1	85.1	101.6	11.1	70.4	83.2	101.3	14.0	19.428432	-98.135696
T. Der. Tetla	6.60	3	0	16025	67.2	76.2	107.9	12.4	64.0	71.9	83.7	9.1	63.4	71.4	86.0	9.7	19.469057	-98.111853
T. Izq. Atlangatepec	12.15	1	0	11275	84.0	96.0	114.7	13.0	75.7	89.1	104.7	13.5	72.0	87.8	110.2	16.2	19.510810	-98.117621
Tlaxco	23.91	1	0	8720	56.0	68.4	86.7	13.2	57.4	68.2	136.1	15.0	54.8	66.2	105.9	13.7	19.605147	-98.122945
Tlaxco	23.91	3	0	5629	60.5	73.0	90.9	12.7	60.5	76.8	104.2	15.9	54.4	70.7	104.4	16.3	19.624874	-98.125610
Lim. Edos. Term. Tlax. Ppia. Pue.	34.45																	
T. Der. Tetela de Ocampo	52.20	1	0	6941	65.7	74.5	92.2	10.5	59.7	69.0	82.8	10.9	58.3	67.7	84.3	11.3	19.802278	-98.025711
Zacatlán	71.25	1	0	10613	51.5	54.7	69.9	8.3	48.8	52.8	62.7	7.3	47.4	52.6	64.2	8.5	19.914970	-97.958528
Lim. Edos. Term. Pue. Ppia. Hgo.	110.45																	
T. C. Pachuca - Tuxpam	113.15	1	0	5890	34.5	37.7	44.9	5.2	33.0	34.7	49.9	6.3	36.0	47.2	54.1	9.1	20.124048	-98.128562

4 CARR: Huamantla - La Venta

CLAVE: 29564

RUTA: MEX-136

AÑO: 2012

LUGAR	ESTACION				VELOCIDAD AUTOS (km/h)				VELOCIDAD AUTOBUSES (km/h)				VELOCIDAD CAMIONES (km/h)				COORDENADAS	
	KM	TE	SC	TDPA	Promedio	P 85	P 98	δ	Promedio	P 85	P 98	δ	Promedio	P 85	P 98	δ	Latitud	Longitud
Huamantla	0.00	3	1	4978	66.9	78.4	106.6	12.6	74.5	101.5	140.8	22.2	70.2	85.4	128.5	17.6	19.298014	-97.921007
Huamantla	0.00	3	2	4968	63.6	72.4	85.9	10.4	57.1	64.4	77.7	9.9	54.8	64.0	79.1	10.7	19.298013	-97.921005
Ignacio Zaragoza	2.30	3	0	5383	63.5	72.5	90.4	10.7	57.3	67.1	74.6	10.8	59.4	69.2	84.0	11.3	19.285906	-97.919933
Ixtenco	8.00	1	0	4971	72.8	84.8	114.2	13.7	60.3	63.8	82.7	7.1	68.2	81.0	105.0	13.0	19.261062	-97.899692
Ixtenco	8.00	3	0	3601	68.9	79.8	99.0	12.2	66.7	77.2	87.4	11.0	64.4	76.2	93.9	12.4	19.244046	-97.895658
X. C. Amozoc - Perote (Cuota)	11.40	1	0	4649	76.2	84.9	102.9	10.8	69.3	75.2	87.1	9.2	68.0	77.0	92.2	11.3	19.227961	-97.902167
Zitlaltepec	13.60	1	0	3478	70.6	81.0	94.6	12.0	68.2	78.0	91.2	11.4	64.2	73.8	88.8	11.3	19.215733	-97.907721
Zitlaltepec	13.60	3	0	2473	66.7	80.1	96.8	13.8	58.6	63.8	81.8	7.5	60.5	72.5	91.8	12.5	19.197225	-97.916184
T. C. Amozoc - Teziutlán	17.60	1	0	2462	72.7	84.3	110.8	13.3	60.8	64.5	91.9	8.4	64.3	75.5	100.8	12.2	19.178902	-97.910961

5 CARR: Huamantla - Terrenate

CLAVE: 29036

RUTA: MEX-136

AÑO: 2012

LUGAR	ESTACION				VELOCIDAD AUTOS (km/h)				VELOCIDAD AUTOBUSES (km/h)				VELOCIDAD CAMIONES (km/h)				COORDENADAS	
	KM	TE	SC	TDPA	Promedio	P 85	P 98	δ	Promedio	P 85	P 98	δ	Promedio	P 85	P 98	δ	Latitud	Longitud
Huamantla	0.00	3	0	2372	68.1	77.8	96.2	11.5	61.7	69.4	82.8	9.1	60.3	72.8	91.5	13.3	19.332021	-97.931750
T. Izq. Xicoténcatl	12.50	1	0	1717	61.4	71.0	83.9	11.0	57.6	68.2	81.5	11.7	52.5	65.7	80.9	15.0	19.413181	-97.968844
Terrenate	21.00	1	0	1284	61.1	71.2	88.2	11.6	58.4	65.5	78.0	8.2	57.2	68.6	86.6	12.3	19.463808	-97.930035

TLAXCALA

6 CARR: Libramiento de Apizaco

CLAVE: 29567

RUTA: MEX-136

AÑO: 2012

LUGAR	ESTACION				VELOCIDAD AUTOS (km/h)				VELOCIDAD AUTOBUSES (km/h)				VELOCIDAD CAMIONES (km/h)				COORDENADAS	
	KM	TE	SC	TDPA	Promedio	P 85	P 98	δ	Promedio	P 85	P 98	δ	Promedio	P 85	P 98	δ	Latitud	Longitud
T. C. Los Reyes - Zacatepec	0.00																	
T. Der. Amaxac de Guerrero	8.00	1	1	8466	85.5	101.8	123.2	16.4	78.4	93.8	111.2	16.7	75.9	90.4	108.3	14.9	19.381396	-98.133257
T. Der. Amaxac de Guerrero	8.00	1	2	8738	99.8	117.6	138.3	17.0	90.0	103.2	124.1	14.6	86.4	99.6	122.7	14.0	19.381396	-98.133257
T. Der. Amaxac de Guerrero	8.00	3	1	8694	107.5	123.8	141.2	16.1	97.1	110.0	132.8	14.1	94.4	104.6	127.0	12.4	19.386067	-98.125170
T. Der. Amaxac de Guerrero	8.00	3	2	9063	103.5	120.6	140.2	16.3	92.3	104.1	124.5	13.3	90.8	100.8	121.7	12.1	19.386067	-98.125170
T. C. Los Reyes - Zacatepec	10.40																	

7 CARR: Libramiento Huamantla

CLAVE: 29567

RUTA: MEX-136

AÑO: 2012

LUGAR	ESTACION				VELOCIDAD AUTOS (km/h)				VELOCIDAD AUTOBUSES (km/h)				VELOCIDAD CAMIONES (km/h)				COORDENADAS	
	KM	TE	SC	TDPA	Promedio	P 85	P 98	δ	Promedio	P 85	P 98	δ	Promedio	P 85	P 98	δ	Latitud	Longitud
T. C. Los Reyes - Zacatepec	0.00	3	1	5732	81.3	93.9	112.5	13.6	73.7	84.0	95.4	11.4	68.3	78.7	93.7	11.7	19.324342	-97.932178
T. C. Los Reyes - Zacatepec	0.00	3	2	5914	88.7	107.6	130.7	18.5	82.6	93.8	114.6	13.9	79.8	92.2	110.9	13.9	19.324339	-97.932181
T. C. Los Reyes - Zacatepec	4.60	1	1	5791	80.9	94.8	113.9	15.1	73.2	84.4	99.2	12.2	70.5	80.9	98.8	11.8	19.319836	-97.910846
T. C. Los Reyes - Zacatepec	4.60	1	2	5366	72.7	83.3	99.8	12.3	61.0	70.1	84.6	10.5	53.5	64.4	83.7	12.1	19.319836	-97.910846

8 CARR: Libramiento Hueyotlipan

CLAVE: 29567

RUTA: MEX-136

AÑO: 2012

LUGAR	ESTACION				VELOCIDAD AUTOS (km/h)				VELOCIDAD AUTOBUSES (km/h)				VELOCIDAD CAMIONES (km/h)				COORDENADAS	
	KM	TE	SC	TDPA	Promedio	P 85	P 98	δ	Promedio	P 85	P 98	δ	Promedio	P 85	P 98	δ	Latitud	Longitud
T. C. Los Reyes - Zacatepec	0.00	3	1	5057	92.6	105.9	123.2	14.2	80.7	92.2	106.8	12.7	77.0	88.8	103.6	12.7	19.476066	-98.353871
T. C. Los Reyes - Zacatepec	0.00	3	2	5249	83.6	103.6	123.7	19.7	72.3	88.7	104.9	16.0	71.6	88.0	103.4	15.8	19.476066	-98.353871
T. C. Los Reyes - Zacatepec	2.70	1	1	5080	85.3	100.3	122.2	15.3	74.7	87.6	103.9	13.2	72.6	84.2	100.6	12.8	19.472012	-98.337963
T. C. Los Reyes - Zacatepec	2.70	1	2	5411	84.3	103.9	124.4	19.3	73.1	88.5	107.4	15.0	70.2	83.8	102.3	14.4	19.472012	-98.337963

9 CARR: Los Reyes - Zacatepec

CLAVE: 00052

RUTA: MEX-136

AÑO: 2012

LUGAR	ESTACION				VELOCIDAD AUTOS (km/h)				VELOCIDAD AUTOBUSES (km/h)				VELOCIDAD CAMIONES (km/h)				COORDENADAS	
	KM	TE	SC	TDPA	Promedio	P 85	P 98	δ	Promedio	P 85	P 98	δ	Promedio	P 85	P 98	δ	Latitud	Longitud
T. C. México - Puebla (Libre)	0.00																	
T. Izq. La Magdalena	3.35	3	1	43751	64.2	73.7	92.7	11.0	61.3	70.0	84.0	10.2	57.9	68.7	89.0	12.2	19.378717	-98.941852
T. Izq. La Magdalena	3.35	3	2	45482	57.1	64.3	80.0	9.5	52.6	59.3	72.7	9.0	49.9	58.2	73.5	10.3	19.378992	-98.942016
T. Izq. Chimalhuacán	8.45	1	1	31417	64.5	73.9	93.3	11.1	61.5	70.3	83.9	10.2	56.5	66.7	86.6	11.7	19.413104	-98.920179
T. Izq. Chimalhuacán	8.45	1	2	32680	57.2	64.3	80.1	9.5	52.5	59.3	72.7	9.0	49.0	57.3	72.9	10.4	19.413230	-98.920294
T. C. San Bernardino - Tepexpan	17.00	3	1	17081	63.5	72.7	90.6	10.9	60.9	69.6	82.8	10.2	56.9	66.4	83.8	11.3	19.484223	-98.886125

TLAXCALA

9 CARR: Los Reyes - Zacatepec

CLAVE: 00052

RUTA: MEX-136

AÑO: 2012

LUGAR	ESTACION				VELOCIDAD AUTOS (km/h)				VELOCIDAD AUTOBUSES (km/h)				VELOCIDAD CAMIONES (km/h)				COORDENADAS	
	KM	TE	SC	TDPA	Promedio	P 85	P 98	δ	Promedio	P 85	P 98	δ	Promedio	P 85	P 98	δ	Latitud	Longitud
T. C. San Bernardino - Tepexpan	17.00	3	2	17219	56.7	63.8	78.5	9.2	52.1	59.0	72.7	9.2	49.0	57.6	72.9	10.6	19.484393	-98.886269
Texcoco	23.02	3	1	18097	102.0	122.7	140.6	19.9	89.4	111.6	136.2	21.4	73.7	102.1	131.2	24.5	19.522564	-98.866315
Texcoco	23.02	3	2	17592	83.4	96.4	119.4	14.5	69.1	80.7	95.0	13.1	64.7	80.4	95.2	15.5	19.522913	-98.866260
T. Izq. Tepetlaoxtoc	30.03	1	1	14804	103.2	123.0	140.6	19.1	89.7	112.2	136.7	21.6	71.6	98.3	127.9	23.5	19.546060	-98.826042
T. Izq. Tepetlaoxtoc	30.03	1	2	14594	83.3	96.6	119.2	14.7	69.0	80.6	94.7	13.1	64.1	80.2	94.7	16.0	19.546138	-98.825925
T. Der. Totolapan	42.00	3	1	5676	102.7	122.4	140.3	19.1	85.6	107.8	127.5	20.4	68.7	93.7	122.7	22.3	19.558005	-98.727492
T. Der. Totolapan	42.00	3	2	5809	83.0	96.3	119.3	14.9	68.4	80.0	95.0	13.0	63.5	79.8	94.4	16.2	19.558005	-98.727492
Lim. Edos. Term. Mex. Ppia. Tlax.	43.15																	
Calpulalpan	59.58	3	0	15408	67.1	76.3	107.2	12.4	63.8	71.8	83.6	9.3	63.3	71.4	87.3	9.9	19.588102	-98.550057
T. Der. Nanacamilpa	71.76	3	0	13379	67.3	76.7	110.7	12.6	64.0	71.9	83.7	9.2	63.4	71.5	87.7	10.0	19.525155	-98.479303
X. C. Arco Norte de La Ciudad de México	73.80	3	1	6260	87.4	118.0	140.5	26.8	82.7	121.8	143.1	27.8	80.7	113.8	142.0	25.6	19.513699	-98.455352
X. C. Arco Norte de La Ciudad de México	73.80	3	2	6445	110.1	130.7	143.2	17.9	96.2	109.6	137.6	14.1	94.1	105.0	130.7	13.2	19.513699	-98.455352
Hueyotlipan	88.21	3	1	6507	84.7	94.7	109.6	11.4	73.7	83.1	94.7	10.7	71.1	81.5	93.7	11.8	19.468339	-98.328100
Hueyotlipan	88.21	3	2	6898	88.3	100.8	118.1	13.4	76.1	85.1	101.6	11.0	71.3	82.5	98.2	12.6	19.468339	-98.328100
Xaltocan	108.10	1	1	7853	106.0	122.3	141.0	15.6	97.3	110.2	132.1	13.6	93.4	105.6	124.5	13.6	19.424840	-98.217380
Xaltocan	108.10	1	2	8031	91.4	109.6	131.7	18.1	80.6	96.8	118.5	16.4	76.9	92.7	114.0	15.8	19.424840	-98.217380
Apizaco	117.74	1	1	24302	52.1	59.4	72.0	9.0	48.7	53.9	64.4	8.2	47.2	54.0	65.0	9.2	19.414098	-98.161828
Apizaco	117.74	1	2	23356	65.3	73.0	83.8	9.7	59.5	68.5	81.4	10.7	54.0	67.2	81.0	14.1	19.414101	-98.161822
Apizaco	117.74	3	0	24517	42.4	46.8	54.5	7.3	40.0	44.8	54.1	8.1	38.7	44.5	54.1	8.7	19.412970	-98.134015
T. Der. Cuaxomulco	119.85	3	1	9614	59.8	64.7	75.1	8.4	55.3	60.9	71.9	6.7	53.4	61.2	73.1	9.4	19.410530	-98.109322
T. Der. Cuaxomulco	119.85	3	2	9681	63.7	71.9	84.8	9.7	63.5	71.8	83.8	10.0	59.7	70.2	83.1	12.0	19.410530	-98.109322
T. Izq. Xalostoc	126.67	3	1	9867	93.7	104.8	122.3	12.5	81.8	91.9	102.7	11.7	78.8	89.5	103.3	12.2	19.389799	-98.052676
T. Izq. Xalostoc	126.67	3	2	9679	97.6	135.4	143.7	25.2	91.5	135.7	143.8	24.2	87.4	128.4	143.6	24.2	19.389799	-98.052676
T. Izq. Libramiento de Huamantla	141.70	1	1	9230	86.2	100.1	121.7	14.4	80.6	91.8	104.1	12.3	77.3	88.0	103.9	12.0	19.319543	-97.944050
T. Izq. Libramiento de Huamantla	141.70	1	2	8785	70.9	90.7	112.4	19.2	67.2	81.5	95.7	14.7	64.1	79.4	96.7	15.3	19.319543	-97.944055
Huamantla	143.02	3	1	5370	87.0	100.5	119.9	13.9	78.2	88.8	102.7	11.9	75.3	86.7	104.2	12.2	19.315529	-97.888265
Huamantla	143.02	3	2	5438	82.6	95.9	114.8	14.4	72.6	83.2	94.4	11.9	66.1	79.5	94.3	13.8	19.315529	-97.888265
X. C. Amozoc - Perote (Cuota)	156.76	1	1	5920	86.9	100.5	120.3	14.0	78.1	88.4	101.1	11.6	74.8	85.7	103.7	12.1	19.308251	-97.809838
X. C. Amozoc - Perote (Cuota)	156.76	1	2	5909	81.3	94.6	114.5	14.7	71.7	82.7	94.1	12.2	65.4	78.5	93.8	13.6	19.308251	-97.809840
T. Der. Cuapiaxtla	159.40	1	0	10146	67.6	78.4	105.3	13.0	60.8	67.8	81.9	9.0	57.4	66.0	82.9	10.6	19.303158	-97.778280
X. C. Amozoc - Teziutlán	173.47	1	0	9392	42.5	47.9	63.5	8.6	40.1	44.6	54.0	7.5	35.5	40.1	52.4	6.0	19.327067	-97.652905
X. C. Amozoc - Teziutlán	173.47	3	0	8129	44.3	52.4	74.0	10.4	40.3	46.5	55.1	8.4	37.7	43.4	57.3	8.0	19.321258	-97.643488
Lim. Edos. Term. Tlax. Ppia. Pue.	177.57																	
Zacatepec	187.67	1	0	9182	94.8	136.2	143.8	26.6	92.7	137.5	144.0	29.5	83.9	107.7	142.6	20.9	19.269834	-97.540571

TLAXCALA

10 CARR: Puebla - Belem

CLAVE: 00055

RUTA: MEX-121

AÑO: 2012

LUGAR	ESTACION				VELOCIDAD AUTOS (km/h)				VELOCIDAD AUTOBUSES (km/h)				VELOCIDAD CAMIONES (km/h)				COORDENADAS	
	KM	TE	SC	TDPA	Promedio	P 85	P 98	δ	Promedio	P 85	P 98	δ	Promedio	P 85	P 98	δ	Latitud	Longitud
T. C. Puebla - Tlaxcala	0.00																	
X. C. Puebla - Córdoba (Cuota)	4.00	3	1	24016	61.8	68.1	83.1	9.4	56.4	62.6	74.1	7.3	53.3	55.8	72.3	6.8	19.089200	-98.185486
X. C. Puebla - Córdoba (Cuota)	4.00	3	2	24333	65.2	70.9	83.4	7.8	58.9	64.4	77.4	8.2	55.5	59.9	74.4	6.1	19.089200	-98.185486
Lim. Edos. Term. Pue. Ppia. Tlax.	6.60																	
Lim. Edos. Term. Tlax. Ppia. Pue.	8.40																	
Lim. Edos. Term. Pue. Ppia. Tlax.	9.50																	
T. Izq. Zacatelco	16.70	1	1	14607	61.1	67.2	83.6	9.5	54.1	58.8	73.1	6.8	51.5	55.5	71.6	8.4	19.207398	-98.196250
T. Izq. Zacatelco	16.70	1	2	15068	65.1	71.2	84.2	8.3	59.8	65.2	79.1	8.3	56.5	62.5	75.0	7.6	19.207420	-98.196481
X. C. Tlaxcala - Belem	28.80	1	1	29467	45.6	52.6	78.3	10.6	41.2	51.2	62.2	11.7	39.8	51.5	58.3	13.8	19.315528	-98.204302
X. C. Tlaxcala - Belem	28.80	1	2	29121	58.1	63.7	82.1	9.0	56.4	60.5	72.0	5.7	54.1	58.6	71.9	6.6	19.315740	-98.204460
T. C. San Martín Texmelucan - Ocotoxco (Cuota)	34.90																	

11 CARR: Puebla - Tlaxcala

CLAVE: 00475

RUTA: MEX-119

AÑO: 2012

LUGAR	ESTACION				VELOCIDAD AUTOS (km/h)				VELOCIDAD AUTOBUSES (km/h)				VELOCIDAD CAMIONES (km/h)				COORDENADAS	
	KM	TE	SC	TDPA	Promedio	P 85	P 98	δ	Promedio	P 85	P 98	δ	Promedio	P 85	P 98	δ	Latitud	Longitud
Puebla	0.00																	
X. C. Puebla - Córdoba (Cuota)	5.41	3	1	18144	52.9	58.2	92.1	9.8	43.1	50.5	59.5	8.8	44.2	51.7	62.0	9.2	19.094278	-98.206722
X. C. Puebla - Córdoba (Cuota)	5.41	3	2	18573	52.7	60.5	90.8	11.3	52.8	59.5	71.1	8.6	49.3	56.4	70.6	10.6	19.094278	-98.206722
Lim. Edos. Term. Pue. Ppia. Tlax.	11.83																	
Panzacola	13.14	3	1	11098	52.8	57.9	91.8	9.8	43.9	50.9	56.0	8.4	45.8	52.7	63.3	9.4	19.152234	-98.223634
Panzacola	13.14	3	2	11296	52.9	60.7	92.8	11.3	52.7	58.3	66.1	7.6	46.2	54.6	70.0	11.7	19.152234	-98.223634
San Toribio Xicohtzinco	16.10	3	1	10167	56.2	62.5	100.2	10.0	54.6	58.7	69.6	6.6	52.3	57.2	68.8	8.0	19.186440	-98.237830
San Toribio Xicohtzinco	16.10	3	2	10233	60.4	68.8	103.8	12.1	55.2	60.5	69.7	6.4	53.0	61.5	74.8	10.4	19.186440	-98.237830
Zacatelco	20.78	1	1	9498	48.8	52.3	64.8	8.0	44.2	49.6	54.3	6.6	44.4	50.7	54.9	7.8	19.207734	-98.240569
Zacatelco	20.78	1	2	9876	49.2	53.1	67.5	8.5	47.1	51.0	54.6	6.3	45.7	51.8	60.6	8.1	19.207734	-98.240569
T. Izq. San Martín Texmelucan	22.99	1	1	8994	58.7	71.4	107.0	14.0	53.4	58.9	73.8	8.2	52.0	59.3	82.6	10.9	19.234075	-98.243078
T. Izq. San Martín Texmelucan	22.99	1	2	8732	60.1	64.0	81.3	8.5	52.0	56.1	64.7	8.1	51.2	58.7	72.1	10.6	19.234075	-98.243078
T. Der. Tepeyanco (2º Acceso)	24.97	3	1	8403	65.6	75.7	94.1	12.1	62.2	70.5	82.0	9.7	59.4	70.8	84.5	11.9	19.260904	-98.232512
T. Der. Tepeyanco (2º Acceso)	24.97	3	2	8066	67.9	80.2	106.0	13.8	62.6	71.5	84.6	9.6	61.5	72.3	89.6	11.2	19.260904	-98.232512
T. Der. Ocotlán (Baja)	32.45	1	1	5646	34.5	44.0	54.9	9.5	35.7	49.8	54.5	11.8	34.2	50.1	54.4	13.6	19.302626	-98.241059
T. Der. Ocotlán (Alta)	32.45	1	1	10270	48.7	52.8	65.9	8.5	45.6	50.9	54.5	6.9	46.4	52.6	62.0	9.4	19.302626	-98.241059
T. Der. Ocotlán (Baja)	32.45	1	2	5630	41.1	48.2	61.8	10.1	41.0	49.7	54.3	9.5	43.9	52.0	54.7	11.3	19.302523	-98.241277
T. Der. Ocotlán (Alta)	32.45	1	2	10334	58.5	64.1	84.1	9.3	54.6	59.0	70.4	5.9	54.6	60.4	74.4	7.3	19.302523	-98.241277
Tlaxcala	33.22	1	1	8932	50.2	54.5	74.7	9.6	46.8	53.5	64.7	10.2	44.9	52.9	64.4	12.1	19.310959	-98.240150

TLAXCALA

11 CARR: Puebla - Tlaxcala

CLAVE: 00475

RUTA: MEX-119

AÑO: 2012

LUGAR	ESTACION				VELOCIDAD AUTOS (km/h)				VELOCIDAD AUTOBUSES (km/h)				VELOCIDAD CAMIONES (km/h)				COORDENADAS	
	KM	TE	SC	TDPA	Promedio	P 85	P 98	δ	Promedio	P 85	P 98	δ	Promedio	P 85	P 98	δ	Latitud	Longitud
Tlaxcala	33.22	1	2	8608	46.9	50.8	91.2	8.5	44.8	49.9	59.8	6.4	44.7	51.9	54.8	9.8	19.311121	-98.240230

12 CARR: Ramal a San Felipe de Hidalgo

CLAVE: 29565

RUTA: MEX-136

AÑO: 2012

LUGAR	ESTACION				VELOCIDAD AUTOS (km/h)				VELOCIDAD AUTOBUSES (km/h)				VELOCIDAD CAMIONES (km/h)				COORDENADAS	
	KM	TE	SC	TDPA	Promedio	P 85	P 98	δ	Promedio	P 85	P 98	δ	Promedio	P 85	P 98	δ	Latitud	Longitud
T. C. Los Reyes - Zacatepec	0.00	3	0	2950	48.1	54.5	70.0	9.8	42.9	50.7	63.9	9.4	43.0	51.2	67.1	10.3	19.527523	-98.481854
San Felipe de Hidalgo	10.50	1	0	1686	15.1	20.0	33.9	6.6	15.2	19.7	54.6	12.4	14.8	19.6	54.5	11.1	19.470765	-98.555519

13 CARR: San Martín Texmelucan - Tlaxcala

CLAVE: 00158

RUTA: MEX-117

AÑO: 2012

LUGAR	ESTACION				VELOCIDAD AUTOS (km/h)				VELOCIDAD AUTOBUSES (km/h)				VELOCIDAD CAMIONES (km/h)				COORDENADAS	
	KM	TE	SC	TDPA	Promedio	P 85	P 98	δ	Promedio	P 85	P 98	δ	Promedio	P 85	P 98	δ	Latitud	Longitud
San Martín Texmelucan	0.00	3	1	8374	45.1	50.7	86.3	9.3	41.4	48.8	54.9	8.9	41.5	49.5	59.2	9.3	19.287863	-98.422995
San Martín Texmelucan	0.00	3	2	8593	39.2	48.6	89.1	12.7	36.3	48.1	57.2	11.6	32.2	47.1	54.5	12.6	19.287863	-98.422995
X. C. San Martín Texmelucan - Ocotoxco (Cuota)	1.65	1	0	18293	41.4	44.0	89.0	9.0	39.1	44.1	54.1	8.1	36.5	43.7	54.1	8.5	19.291368	-98.412307
Lim. Edos. Term. Pue. Ppia. Tlax.	2.84																	
T. Der. Tepetitla	3.45	3	0	12645	45.3	48.7	84.8	7.6	41.8	46.0	53.8	6.9	41.9	48.9	54.3	8.3	19.294689	-98.402092
San Diego Xocoyucan	7.21	3	0	6340	66.1	76.5	101.6	12.4	62.8	74.2	92.4	12.1	61.1	72.1	91.9	11.8	19.307833	-98.370635
T. Der. Panotla	19.72	1	0	9372	50.9	54.8	69.0	7.9	47.5	52.1	62.8	7.2	49.2	53.6	73.7	9.0	19.319427	-98.275894
T. Der. Panotla	19.72	3	0	9210	50.6	57.5	72.9	9.6	49.0	53.3	66.6	8.0	48.4	54.3	73.1	9.9	19.319692	-98.268910
Totolac	21.38	1	0	9201	36.5	40.8	49.9	6.0	33.3	37.8	50.9	7.5	35.2	40.0	60.1	7.8	19.322444	-98.260639
Totolac	21.38	3	0	10534	40.0	47.6	70.6	9.9	39.5	49.8	54.4	10.3	39.4	50.4	54.7	11.3	19.329790	-98.250270
Tlaxcala	24.81	1	0	19718	42.9	44.7	90.5	8.6	40.4	46.3	53.8	7.9	39.8	48.8	54.2	9.5	19.325226	-98.242454

14 CARR: Tetlatlahuca - Santa Ana Chiautempan

CLAVE: 00158

RUTA: MEX-119

AÑO: 2012

LUGAR	ESTACION				VELOCIDAD AUTOS (km/h)				VELOCIDAD AUTOBUSES (km/h)				VELOCIDAD CAMIONES (km/h)				COORDENADAS	
	KM	TE	SC	TDPA	Promedio	P 85	P 98	δ	Promedio	P 85	P 98	δ	Promedio	P 85	P 98	δ	Latitud	Longitud
Tetlatlahuca	0.00																	
San Bartolomé Tenango	2.39	1	0	4018	47.4	52.8	94.6	10.1	44.2	51.7	60.0	9.1	45.6	52.3	57.3	9.6	19.247025	-98.296633
San Damián Texoloc	5.50	1	0	4367	47.3	52.8	90.6	9.9	44.2	51.8	60.0	9.3	45.0	52.2	57.6	10.2	19.273313	-98.284596
San Damián Texoloc	5.50	3	0	5513	64.2	72.5	93.4	10.3	60.8	69.0	84.0	9.6	59.0	66.7	83.5	10.2	19.277958	-98.275754
T. Izq. Cuauhtulpan	9.63	1	0	8474	50.3	54.1	84.3	9.4	46.9	51.1	56.6	6.3	49.0	52.8	69.6	8.4	19.288398	-98.251528
T. Izq. Cuauhtulpan	9.63	3	0	10808	64.2	72.6	93.7	10.4	58.2	62.6	76.2	7.1	58.2	64.2	81.8	8.5	19.292025	-98.249699

TLAXCALA

14 CARR: Tetlatlahuca - Santa Ana Chiautempan

CLAVE: 00158

RUTA: MEX-119

AÑO: 2012

LUGAR	ESTACION				VELOCIDAD AUTOS (km/h)				VELOCIDAD AUTOBUSES (km/h)				VELOCIDAD CAMIONES (km/h)				COORDENADAS	
	KM	TE	SC	TDPA	Promedio	P 85	P 98	δ	Promedio	P 85	P 98	δ	Promedio	P 85	P 98	δ	Latitud	Longitud
T. Der. Puebla	9.94	1	0	12839	64.3	72.7	94.0	10.3	56.4	57.0	64.2	3.4	59.4	66.3	83.2	9.6	19.300759	-98.245661
Santa Ana Chiautempan	16.00																	

15 CARR: Tlaxcala - Belem

CLAVE: 29389

RUTA: MEX-119

AÑO: 2012

LUGAR	ESTACION				VELOCIDAD AUTOS (km/h)				VELOCIDAD AUTOBUSES (km/h)				VELOCIDAD CAMIONES (km/h)				COORDENADAS	
	KM	TE	SC	TDPA	Promedio	P 85	P 98	δ	Promedio	P 85	P 98	δ	Promedio	P 85	P 98	δ	Latitud	Longitud
Tlaxcala	0.00																	
T. Der. Ocotlán	3.91	1	1	19097	41.3	49.5	61.9	9.8	43.9	52.0	64.9	10.0	38.0	49.1	62.6	11.6	19.321744	-98.210134
T. Der. Ocotlán	3.91	1	2	19261	50.5	56.7	70.2	8.8	50.4	56.6	73.1	10.7	46.0	53.5	69.9	11.5	19.321744	-98.210134
X. C. Puebla - Belem	4.55	1	1	25385	39.3	43.5	53.6	7.3	37.0	41.4	51.7	6.4	34.3	39.1	50.3	6.4	19.319905	-98.207295
X. C. Puebla - Belem	4.55	1	2	25515	40.8	43.3	52.2	6.1	37.5	41.2	50.5	5.9	36.7	41.3	50.7	6.4	19.319887	-98.207034
Santa Ana Chiautempan	5.82	1	1	9903	30.9	34.1	72.8	10.2	28.5	46.4	53.9	10.9	30.8	50.4	54.4	16.2	19.315530	-98.199861
Santa Ana Chiautempan	5.82	1	2	9914	34.3	37.7	71.7	8.8	37.7	49.6	87.8	12.2	38.6	51.9	54.6	16.0	19.315574	-98.199906
T. Der. Ixcotla	7.19	3	1	9757	47.7	53.7	65.0	8.5	45.2	50.6	62.3	7.8	45.6	52.2	64.9	8.3	19.328155	-98.193967
T. Der. Ixcotla	7.19	3	2	9724	49.6	54.3	64.4	8.3	46.4	51.8	60.7	7.2	46.9	53.5	63.9	9.4	19.328155	-98.193967
Belem	10.06	1	0	7447	51.9	56.9	73.4	9.0	49.4	53.0	62.9	7.1	50.6	54.3	72.0	8.8	19.337676	-98.193346

16 CARR: Villa Alta - T. C. (Puebla - Tlaxcala)

CLAVE: 29566

RUTA: MEX-119

AÑO: 2012

LUGAR	ESTACION				VELOCIDAD AUTOS (km/h)				VELOCIDAD AUTOBUSES (km/h)				VELOCIDAD CAMIONES (km/h)				COORDENADAS	
	KM	TE	SC	TDPA	Promedio	P 85	P 98	δ	Promedio	P 85	P 98	δ	Promedio	P 85	P 98	δ	Latitud	Longitud
T. C. San Martín Texmelucan - Tlaxcala	0.00	3	0	6684	37.6	40.9	86.1	8.5	34.3	39.6	53.9	7.8	35.2	42.9	54.3	8.8	19.293254	-98.405459
Nativitas	10.50	3	0	7920	47.6	52.8	71.3	9.3	45.7	51.7	60.8	7.9	45.4	52.0	63.8	9.2	19.239066	-98.307191
T. C. Puebla - Tlaxcala	22.05	1	0	7972	47.1	51.7	67.6	8.3	45.4	50.8	55.8	6.7	44.8	50.8	61.0	8.0	19.234876	-98.244185

17 CARR: Amozoc - Perote (Cuota)

CLAVE: 00030

RUTA: MEX-140D

AÑO: 2012

LUGAR	ESTACION				VELOCIDAD AUTOS (km/h)				VELOCIDAD AUTOBUSES (km/h)				VELOCIDAD CAMIONES (km/h)				COORDENADAS	
	KM	TE	SC	TDPA	Promedio	P 85	P 98	δ	Promedio	P 85	P 98	δ	Promedio	P 85	P 98	δ	Latitud	Longitud
T. C. Puebla - Córdoba (Cuota)	0.00	3	0	8340	35.1	42.7	55.0	9.2	35.1	43.1	53.3	8.8	36.1	44.6	53.6	9.2	19.068454	-98.065667
Caseta de Cobro Amozoc	0.68	2	0	8073													19.063599	-98.069029
Lim. Edos. Term. Pue. Ppia. Tlax.	20.08																	
X. C. Huamantla - La Venta	25.80	3	0	6656	35.1	42.8	54.8	9.2	35.6	43.7	53.3	8.9	35.6	44.1	53.7	9.1	19.228610	-97.896275
Lim. Edos. Term. Tlax. Ppia. Pue.	30.50																	

TLAXCALA

19 CARR: México - Puebla (Cuota)

CLAVE: 00450

RUTA: MEX-150D

AÑO: 2012

LUGAR	ESTACION				VELOCIDAD AUTOS (km/h)				VELOCIDAD AUTOBUSES (km/h)				VELOCIDAD CAMIONES (km/h)				COORDENADAS	
	KM	TE	SC	TDPA	Promedio	P 85	P 98	δ	Promedio	P 85	P 98	δ	Promedio	P 85	P 98	δ	Latitud	Longitud
Lim. Edos. Term. D. F. Ppia. Mex.	17.71																	
Ent. Morelos	18.00	3	1	56630	85.0	97.1	114.5	13.1	83.9	94.2	111.3	12.6	78.5	93.5	113.7	16.2	19.353200	-98.989213
Ent. Morelos	18.00	3	2	56253	85.3	100.6	122.7	16.0	85.9	101.5	124.1	16.8	70.6	95.8	119.1	25.6	19.353900	-98.989572
Av. Las Torres (Eje 6)	19.27	1	1	60506	84.5	96.4	114.0	13.2	83.0	93.8	110.0	12.9	78.1	93.0	113.7	16.3	19.347177	-98.982897
Av. Las Torres (Eje 6)	19.27	1	2	60609	83.0	99.7	122.1	17.7	83.5	100.8	123.6	18.5	73.2	97.7	121.4	24.8	19.347288	-98.982819
Av. Las Torres (Eje 6)	19.27	3	1	62755	84.5	96.3	114.1	13.1	83.7	94.1	111.6	12.6	80.3	94.5	114.7	15.9	19.341353	-98.977462
Av. Las Torres (Eje 6)	19.27	3	2	59460	82.0	98.3	120.7	17.8	82.4	99.9	123.1	18.9	75.9	99.5	123.1	24.2	19.341243	-98.977095
Eje 10 Sur	22.80	1	1	73804	84.4	96.6	114.3	13.4	83.4	94.0	111.2	12.9	78.8	93.5	114.3	16.1	19.326957	-98.962494
Eje 10 Sur	22.80	1	2	72179	82.3	98.5	121.0	17.6	83.0	100.1	124.1	18.6	77.8	101.0	123.1	24.2	19.328107	-98.963436
Eje 10 Sur	22.80	3	1	66794	84.0	96.0	114.2	13.5	83.3	93.9	111.5	12.9	82.0	97.3	115.3	16.3	19.315225	-98.948595
Eje 10 Sur	22.80	3	2	68097	81.5	98.2	121.0	18.1	81.9	99.4	123.1	19.0	75.5	99.4	122.4	24.4	19.315100	-98.948066
X. C. Santa Bárbara - Izúcar de Matamoros	32.14	1	1	47706	54.2	61.8	74.8	9.1	51.9	56.4	71.9	8.7	51.6	54.9	69.6	8.2	19.292671	-98.887006
X. C. Santa Bárbara - Izúcar de Matamoros	32.14	1	2	46811	62.2	72.4	90.9	11.6	55.6	63.2	80.2	9.0	53.0	59.6	79.0	9.2	19.292671	-98.887006
X. C. Santa Bárbara - Izúcar de Matamoros	32.14	3	1	9672	54.8	62.3	75.2	8.8	51.9	56.2	71.1	8.5	51.8	54.9	69.4	8.0	19.293913	-98.879308
X. C. Santa Bárbara - Izúcar de Matamoros	32.14	3	2	9940	62.2	72.5	91.9	11.7	56.0	63.9	81.7	9.4	53.0	59.4	79.7	9.2	19.293915	-98.879315
Caseta de Cobro San Marcos	33.30	2	1	15026													19.296361	-98.870726
Caseta de Cobro San Marcos	33.30	2	2	15026													19.296361	-98.870726
T. Izq. Río Frío	63.79	3	1	13451	54.1	61.6	74.7	9.0	51.7	55.6	71.4	8.6	51.5	54.6	67.1	7.8	19.351218	-98.665568
T. Izq. Río Frío	63.79	3	2	14250	61.7	72.3	92.3	12.0	56.4	63.9	81.2	9.1	51.7	56.9	76.3	9.4	19.351363	-98.665659
Lim. Edos. Term. Mex. Ppia. Pue.	63.85																	
T. Izq. Tlaxcala	90.61	1	1	31101	114.0	132.4	143.3	17.2	94.7	103.4	129.2	11.2	92.5	107.9	134.0	16.0	19.268795	-98.426636
T. Izq. Tlaxcala	90.61	1	2	30944	105.5	121.9	139.3	16.4	89.0	97.4	118.2	12.7	85.2	98.0	121.1	14.1	19.268795	-98.426636
T. Izq. Tlaxcala	90.61	3	1	24947	92.4	124.4	140.9	31.9	84.8	108.0	130.9	24.6	77.8	102.3	127.2	23.7	19.261877	-98.417232
T. Izq. Tlaxcala	90.61	3	2	24922	79.7	105.3	130.4	23.8	73.8	91.7	111.9	18.5	71.4	86.2	107.2	15.7	19.261877	-98.417232
Caseta de Cobro San Martín Texmelucan	91.00	2	1	21356													19.241098	-98.385680
Caseta de Cobro San Martín Texmelucan	91.00	2	2	21355													19.241098	-98.385680
Lim. Edos. Term. Pue. Ppia. Tlax.	103.00																	
Lim. Edos. Term. Tlax. Ppia. Pue.	107.00																	
T. C. Puebla - Tlaxcala	124.90																	

20 CARR: San Martín Texmelucan - Tlaxcala - El Molinito (Cuota)

CLAVE: 00212

RUTA: MEX-117D

AÑO: 2012

LUGAR	ESTACION				VELOCIDAD AUTOS (km/h)				VELOCIDAD AUTOBUSES (km/h)				VELOCIDAD CAMIONES (km/h)				COORDENADAS	
	KM	TE	SC	TDPA	Promedio	P 85	P 98	δ	Promedio	P 85	P 98	δ	Promedio	P 85	P 98	δ	Latitud	Longitud
T. C. México - Puebla (Cuota)	0.00																	

TLAXCALA

20 CARR: San Martín Texmelucan - Tlaxcala - El Molinito (Cuota)

CLAVE: 00212

RUTA: MEX-117D

AÑO: 2012

LUGAR	ESTACION				VELOCIDAD AUTOS (km/h)				VELOCIDAD AUTOBUSES (km/h)				VELOCIDAD CAMIONES (km/h)				COORDENADAS	
	KM	TE	SC	TDPA	Promedio	P 85	P 98	δ	Promedio	P 85	P 98	δ	Promedio	P 85	P 98	δ	Latitud	Longitud
X. C. San Martín Texmelucan - Tlaxcala	1.80	1	0	8403	64.8	76.4	99.3	12.8	59.9	65.8	82.9	8.4	59.4	72.0	93.0	12.9	19.288935	-98.420970
Lim. Edos. Term. Pue. Ppia. Tlax.	4.05																	
Caseta de Cobro San Martín Texmelucan	5.45	2	1	3247													19.301568	-98.404044
Caseta de Cobro San Martín Texmelucan	5.45	2	2	3247													19.301568	-98.404044
X. C. San Martín Texmelucan - Tlaxcala (Trébol)	24.75	1	1	11755	80.6	91.7	114.5	12.9	76.3	87.1	104.0	12.1	73.9	84.5	100.3	12.4	19.325236	-98.251273
X. C. San Martín Texmelucan - Tlaxcala (Trébol)	24.75	1	2	10907	75.7	84.8	114.1	11.9	72.9	88.0	100.7	13.4	72.5	84.5	101.0	13.1	19.325236	-98.251273
X. C. San Martín Texmelucan - Tlaxcala (Trébol)	24.75	3	1	13122	82.7	96.4	116.3	13.9	70.5	91.2	105.0	17.8	72.0	89.5	106.2	16.6	19.337036	-98.231300
X. C. San Martín Texmelucan - Tlaxcala (Trébol)	24.75	3	2	12456	99.3	111.6	127.9	13.5	94.6	104.0	120.0	11.6	89.0	105.6	123.9	18.0	19.337036	-98.231300
T. Izq. Tizatlán	29.00	3	1	13620	93.8	104.5	122.8	12.0	93.2	102.5	114.0	10.9	91.9	102.1	114.8	11.7	19.337638	-98.214302
T. Izq. Tizatlán	29.00	3	2	12817	103.2	112.2	127.8	10.5	97.6	104.3	115.2	9.6	97.3	104.7	120.7	10.4	19.337638	-98.214302
T. Der. San Pablo Apetatitlán	31.65	3	1	26178	66.4	74.3	88.7	10.1	60.6	68.8	80.4	10.0	56.0	66.3	80.0	11.8	19.347679	-98.194436
T. Der. San Pablo Apetatitlán	31.65	3	2	25070	82.3	104.4	123.2	21.7	79.6	102.0	121.2	21.1	73.5	98.4	119.3	21.5	19.347679	-98.194436
Ocotoxco	35.20	1	1	22453	79.5	90.7	113.1	13.2	73.7	84.5	105.7	13.8	64.3	79.7	100.2	16.6	19.384372	-98.178155
Ocotoxco	35.20	1	2	22978	69.1	114.1	143.4	39.3	82.1	137.4	144.0	35.8	68.0	128.5	143.4	36.8	19.384372	-98.178155

21 CARR: Libramiento de Ocotlán

CLAVE: 29567

RUTA: TLAX

AÑO: 2012

LUGAR	ESTACION				VELOCIDAD AUTOS (km/h)				VELOCIDAD AUTOBUSES (km/h)				VELOCIDAD CAMIONES (km/h)				COORDENADAS	
	KM	TE	SC	TDPA	Promedio	P 85	P 98	δ	Promedio	P 85	P 98	δ	Promedio	P 85	P 98	δ	Latitud	Longitud
T. C. Tlaxcala - Belem	0.00	3	1	13208	40.0	43.0	71.1	8.0	38.5	49.9	54.5	10.1	38.3	46.6	54.2	7.7	19.319591	-98.209551
T. C. Tlaxcala - Belem	0.00	3	2	13140	43.1	47.3	71.4	8.6	42.7	50.6	54.4	9.3	40.6	47.5	54.3	8.4	19.319379	-98.209500
T. C. Tlaxcala - Belem	5.50																	

22 CARR: Ramal a Altzayanca de Hidalgo

CLAVE: 29562

RUTA: TLAX

AÑO: 2012

LUGAR	ESTACION				VELOCIDAD AUTOS (km/h)				VELOCIDAD AUTOBUSES (km/h)				VELOCIDAD CAMIONES (km/h)				COORDENADAS	
	KM	TE	SC	TDPA	Promedio	P 85	P 98	δ	Promedio	P 85	P 98	δ	Promedio	P 85	P 98	δ	Latitud	Longitud
T. C. Los Reyes - Zacatepec	0.00	3	0	2235	70.4	84.4	107.7	14.8	61.6	70.1	86.5	9.0	61.8	72.0	92.3	10.9	19.317520	-97.846551
Xicoténcatl	6.50	3	0	2014	59.5	71.9	89.6	12.5	53.9	65.9	84.0	11.9	54.0	67.0	84.3	12.5	19.357712	-97.831710
Altzayanca de Hidalgo	15.00	1	0	1974	58.3	67.7	82.6	11.0	52.1	58.9	72.1	8.9	52.2	60.1	76.9	10.3	19.423227	-97.803153

TLAXCALA

23 CARR: Ramal a San Pedro Ecatepec

CLAVE: 29561

RUTA: TLAX

AÑO: 2012

LUGAR	ESTACION				VELOCIDAD AUTOS (km/h)				VELOCIDAD AUTOBUSES (km/h)				VELOCIDAD CAMIONES (km/h)				COORDENADAS	
	KM	TE	SC	TDPA	Promedio	P 85	P 98	δ	Promedio	P 85	P 98	δ	Promedio	P 85	P 98	δ	Latitud	Longitud
T. C. Apizaco - Tejocotal	0.00	3	0	1900	39.9	50.4	69.5	11.8	33.4	46.7	56.3	12.7	32.6	46.2	58.5	13.5	19.514498	-98.119370
San Pedro Ecatepec	4.60	1	0	1848	63.8	73.2	88.0	11.0	62.6	68.9	81.1	8.4	61.5	70.1	83.8	10.7	19.516195	-98.145626

24 CARR: Ramal a Xalostoc

CLAVE: 29563

RUTA: TLAX

AÑO: 2012

LUGAR	ESTACION				VELOCIDAD AUTOS (km/h)				VELOCIDAD AUTOBUSES (km/h)				VELOCIDAD CAMIONES (km/h)				COORDENADAS	
	KM	TE	SC	TDPA	Promedio	P 85	P 98	δ	Promedio	P 85	P 98	δ	Promedio	P 85	P 98	δ	Latitud	Longitud
T. C. Los Reyes - Zacatepec	0.00	3	0	8333	66.4	80.0	99.1	13.9	61.9	72.2	89.8	11.2	54.8	64.1	84.0	9.6	19.396305	-98.056578
Xalostoc	2.50	1	0	8253	52.6	59.3	72.2	8.6	50.3	55.4	67.3	8.8	49.4	56.9	73.8	10.7	19.400355	-98.051793

25 CARR: Xalostoc - Terrenate

CLAVE: 29390

RUTA: TLAX

AÑO: 2012

LUGAR	ESTACION				VELOCIDAD AUTOS (km/h)				VELOCIDAD AUTOBUSES (km/h)				VELOCIDAD CAMIONES (km/h)				COORDENADAS	
	KM	TE	SC	TDPA	Promedio	P 85	P 98	δ	Promedio	P 85	P 98	δ	Promedio	P 85	P 98	δ	Latitud	Longitud
Xalostoc	0.00	3	0	3660	52.6	63.7	83.6	12.6	50.5	57.9	74.8	10.3	49.0	61.9	83.3	14.0	19.415964	-98.033843
San Francisco Teometitla	7.10	3	0	1383	74.1	82.4	98.8	9.7	71.6	80.3	92.4	10.2	73.9	83.0	94.5	10.1	19.451170	-97.988150
T. C. Huamantla - Terrenate	17.50	1	0	1318	58.4	65.3	81.8	10.0	56.1	59.4	68.8	5.0	56.0	63.8	78.8	9.7	19.466221	-97.929354

26 CARR: Acocotla - Vicente Guerrero

CLAVE: 29560

RUTA: MEX-TLAX

AÑO: 2012

LUGAR	ESTACION				VELOCIDAD AUTOS (km/h)				VELOCIDAD AUTOBUSES (km/h)				VELOCIDAD CAMIONES (km/h)				COORDENADAS	
	KM	TE	SC	TDPA	Promedio	P 85	P 98	δ	Promedio	P 85	P 98	δ	Promedio	P 85	P 98	δ	Latitud	Longitud
T. C. Los Reyes - Zacatepec	0.00	3	0	1574	39.3	45.8	58.7	8.6	37.9	47.6	54.2	9.5	37.0	47.1	55.0	10.1	19.371324	-98.028576
T. C. Puebla - Belem	37.70	1	0	8088	63.1	69.5	83.0	8.9	57.5	63.2	74.5	7.4	53.7	55.0	72.2	6.1	19.112964	-98.176007

27 CARR: Apizaco - Emiliano Zapata

CLAVE: 29033

RUTA: TLAX-MEX-136

AÑO: 2012

LUGAR	ESTACION				VELOCIDAD AUTOS (km/h)				VELOCIDAD AUTOBUSES (km/h)				VELOCIDAD CAMIONES (km/h)				COORDENADAS	
	KM	TE	SC	TDPA	Promedio	P 85	P 98	δ	Promedio	P 85	P 98	δ	Promedio	P 85	P 98	δ	Latitud	Longitud
Apizaco	0.00	3	0	8303	50.8	57.6	72.9	9.2	47.0	52.8	68.2	8.8	46.9	53.4	73.2	9.8	19.417168	-98.129498
Capula	16.00	1	0	2326	56.1	63.7	79.6	9.7	51.1	57.6	71.3	9.1	49.7	56.6	72.0	10.3	19.531818	-98.040484
Emiliano Zapata	37.00	1	0	1089	44.5	51.2	63.3	8.0	46.5	51.7	54.9	7.7	46.5	52.0	56.6	8.2	19.554765	-97.917500

TLAXCALA

28 CARR: Calpulalpan - El Ocote

CLAVE: 00054

RUTA: MEX-HGO

AÑO: 2012

LUGAR	ESTACION				VELOCIDAD AUTOS (km/h)				VELOCIDAD AUTOBUSES (km/h)				VELOCIDAD CAMIONES (km/h)				COORDENADAS	
	KM	TE	SC	TDPA	Promedio	P 85	P 98	δ	Promedio	P 85	P 98	δ	Promedio	P 85	P 98	δ	Latitud	Longitud
Calpulalpan	0.00	3	0	8624	42.3	46.9	54.6	7.4	39.9	45.0	54.0	8.2	39.8	50.1	54.4	10.9	19.594460	-98.573750
X. C. Arco Norte de La Ciudad de México	4.00	3	0	6882	34.7	38.3	47.2	5.3	34.1	35.9	53.4	6.8	38.7	50.2	54.4	11.1	19.632473	-98.537103
Lim. Edos. Term. Tlax. Ppia. Hgo.	5.00																	
Apan	19.58	3	1	3694	34.3	36.4	44.5	4.7	32.4	34.1	51.5	6.5	34.9	44.4	53.7	7.5	19.727505	-98.469500
Apan	19.58	3	2	3497	34.4	38.5	46.2	5.7	33.4	34.9	48.2	5.8	34.9	43.6	53.6	7.5	19.727461	-98.469472
Tepeapulco	34.92	3	0	3556	34.5	37.9	45.3	5.2	32.9	34.6	50.3	6.2	35.8	46.6	53.9	8.6	19.803506	-98.563537
X. C. Venta de Carpio - Tulancingo	51.18	1	0	2934	34.6	37.9	45.1	5.2	33.0	34.5	51.1	6.2	35.7	46.7	53.9	8.4	19.918279	-98.576255
X. C. Venta de Carpio - Tulancingo	51.18	3	0	1997	34.5	37.8	45.8	5.2	33.6	34.7	52.5	6.2	35.5	46.3	53.9	8.1	19.927552	-98.582753
El Ocote	70.44	1	0	3150	34.4	37.6	45.0	5.2	33.3	34.6	52.3	6.4	34.6	44.0	53.6	7.8	20.047496	-98.617781

29 CARR: Calpulalpan - Nanacamilpa

CLAVE: 29034

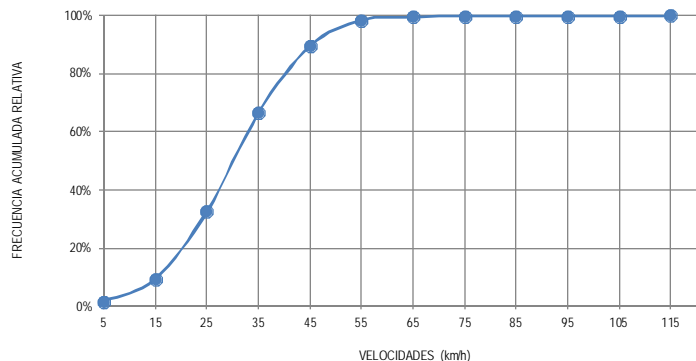
RUTA: TLAX-MEX-136

AÑO: 2012

LUGAR	ESTACION				VELOCIDAD AUTOS (km/h)				VELOCIDAD AUTOBUSES (km/h)				VELOCIDAD CAMIONES (km/h)				COORDENADAS	
	KM	TE	SC	TDPA	Promedio	P 85	P 98	δ	Promedio	P 85	P 98	δ	Promedio	P 85	P 98	δ	Latitud	Longitud
Calpulalpan	0.00	3	0	2184	51.4	61.4	81.3	11.7	49.9	58.6	81.5	12.1	49.7	54.3	77.7	11.0	19.568286	-98.568141
Nanacamilpa	15.50	1	0	1863	50.9	60.7	80.2	11.6	49.2	58.4	83.7	12.8	46.1	54.6	82.0	12.5	19.497451	-98.533197

1 Carr: Amozoc - Teziutlán

CLAVE: 00210

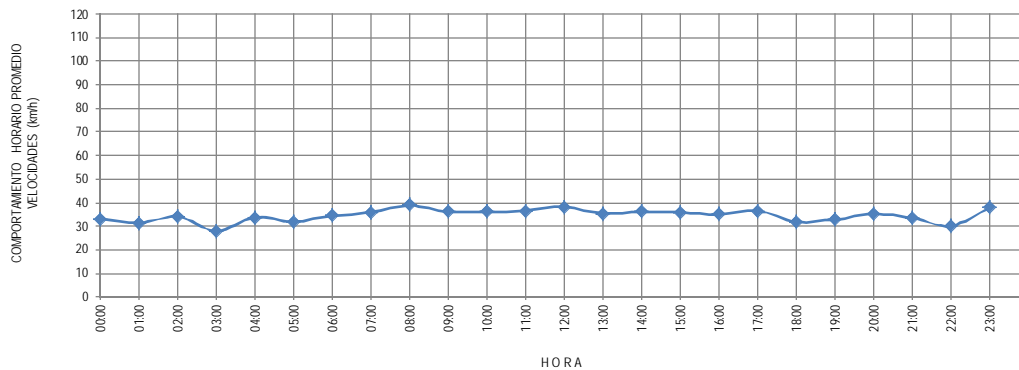


RUTA: MEX-129

KM: 1.400

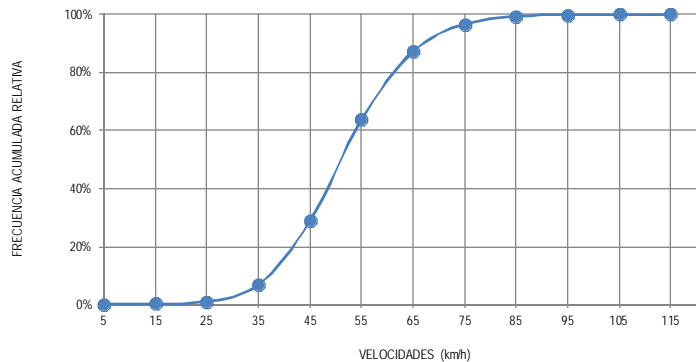
TE: 3

SC: 0



2 Carr: Apizaco - San Pablo Apetahitlán

CLAVE: 29035

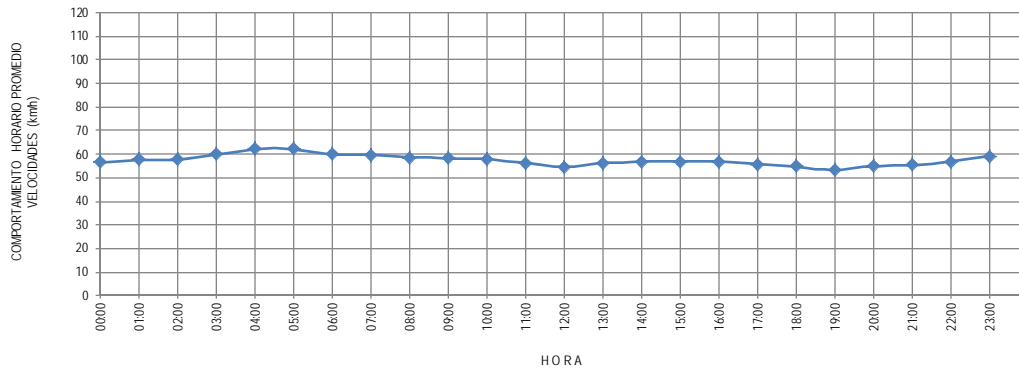


RUTA: MEX-119

KM: 0.000

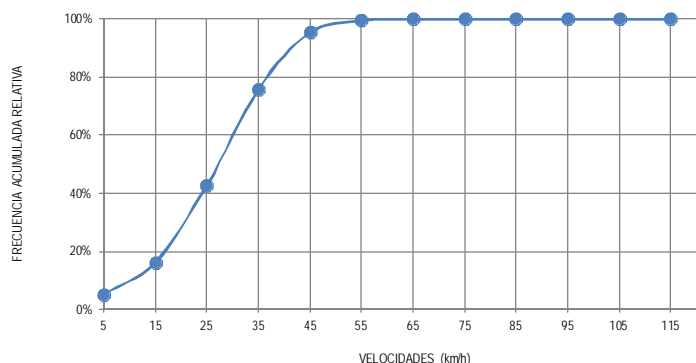
TE: 3

SC: 0



3 Carr: Apizaco - Tejocotal

CLAVE: 00430

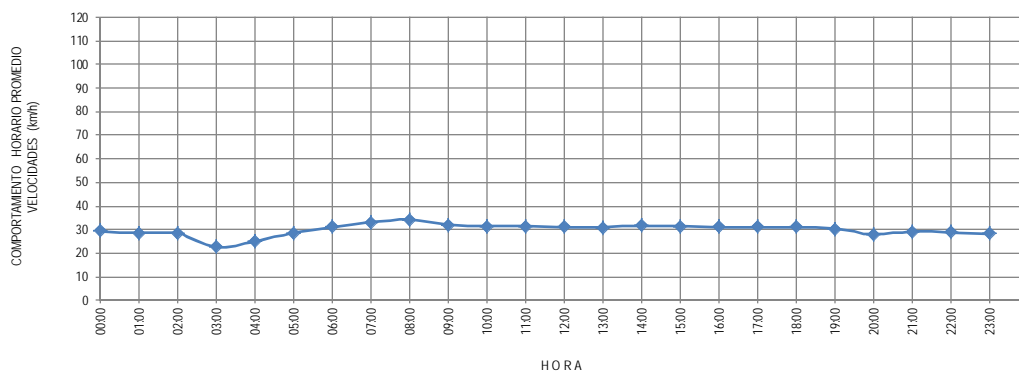


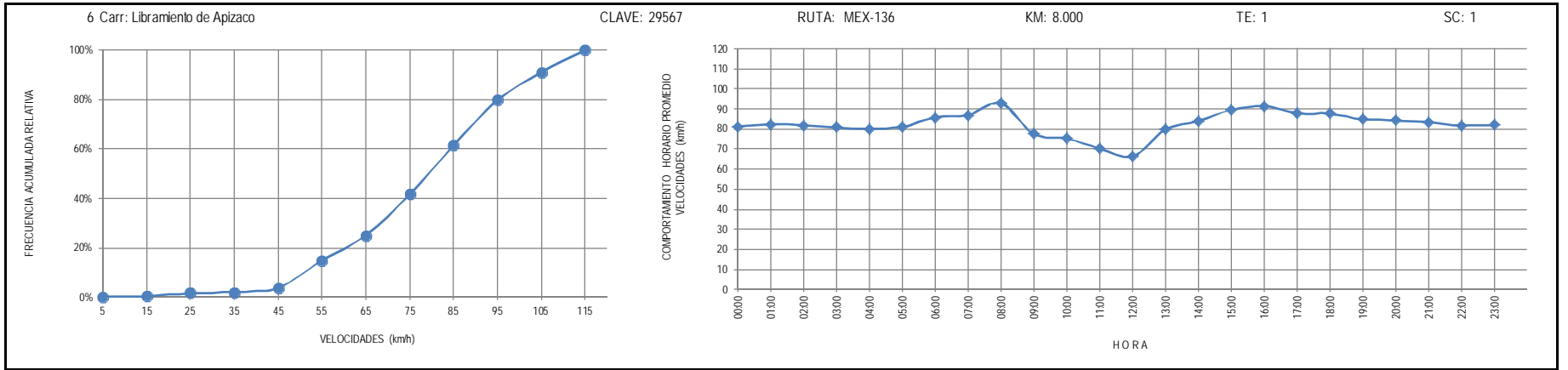
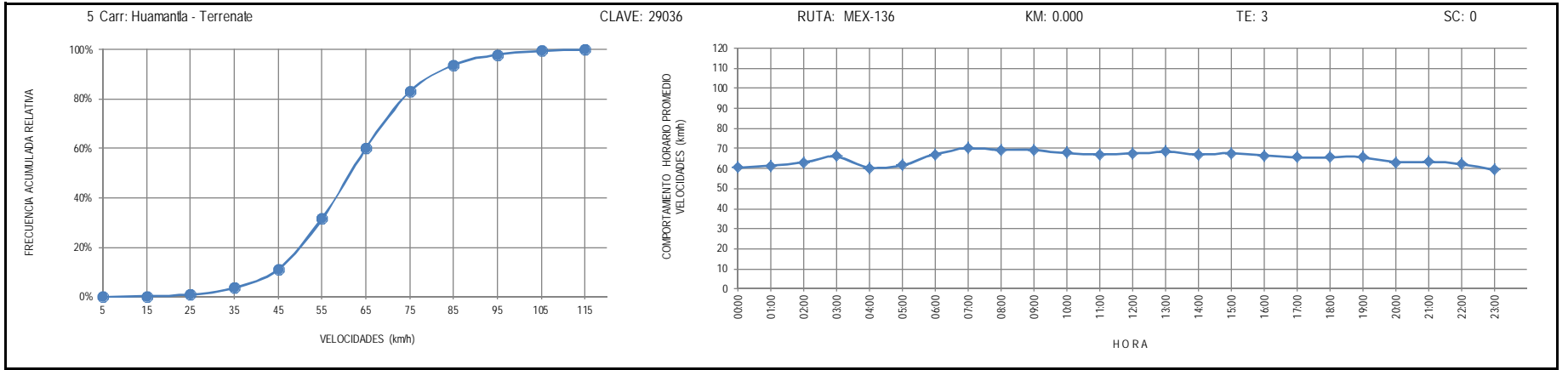
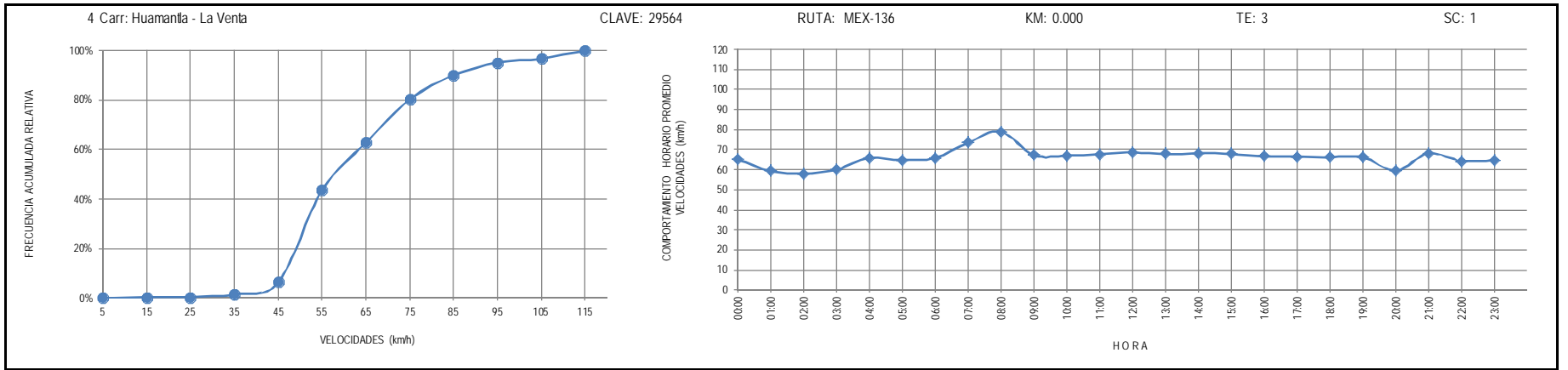
RUTA: MEX-119

KM: 0.000

TE: 3

SC: 1





7 Carr: Libramiento Huamanilla

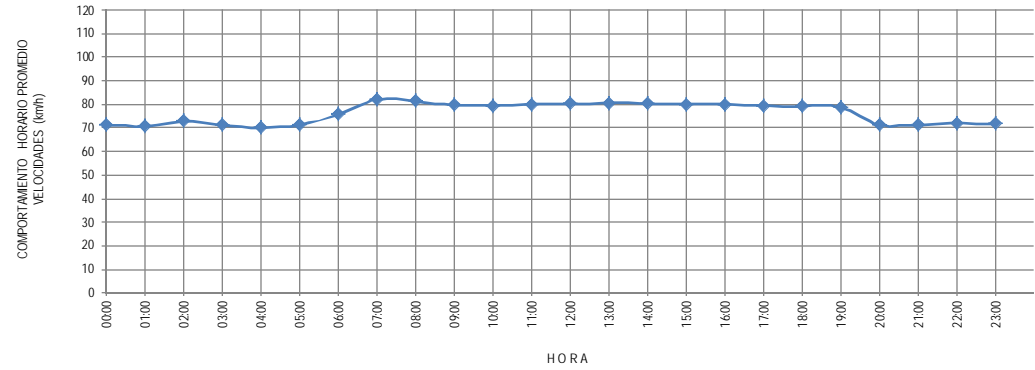
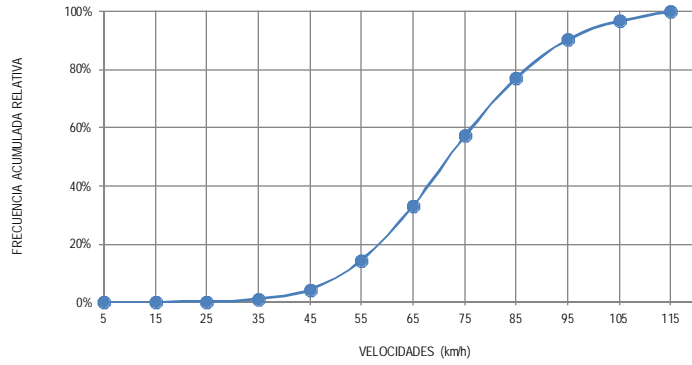
CLAVE: 29567

ruta: MEX-136

KM: 0.000

TE: 3

SC: 1



8 Carr: Libramiento Hueyotlpan

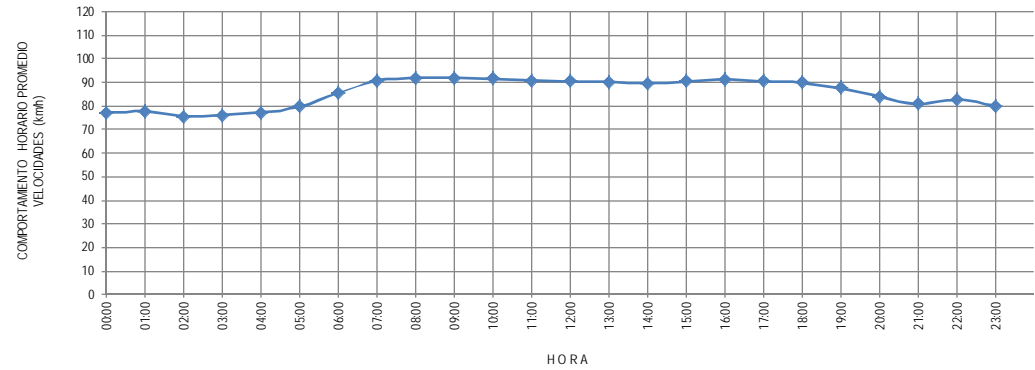
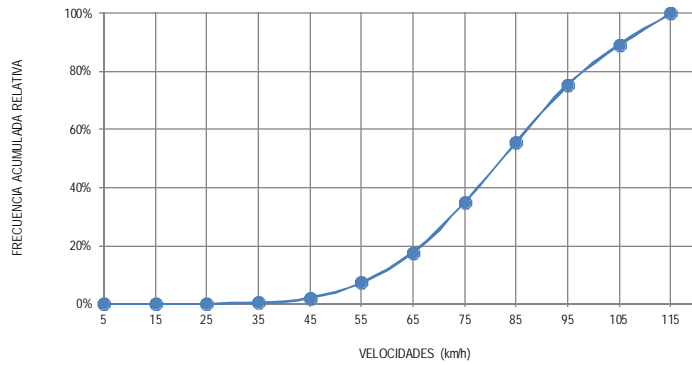
CLAVE: 29567

ruta: MEX-136

KM: 0.000

TE: 3

SC: 1



9 Carr: Los Reyes - Zacalepec

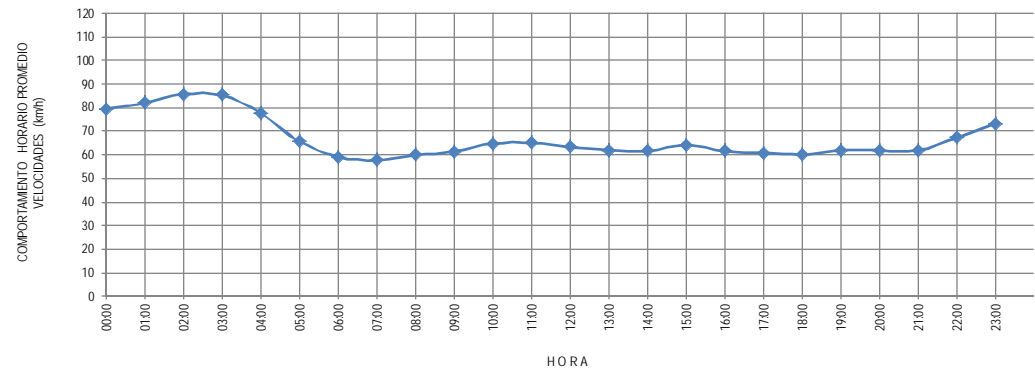
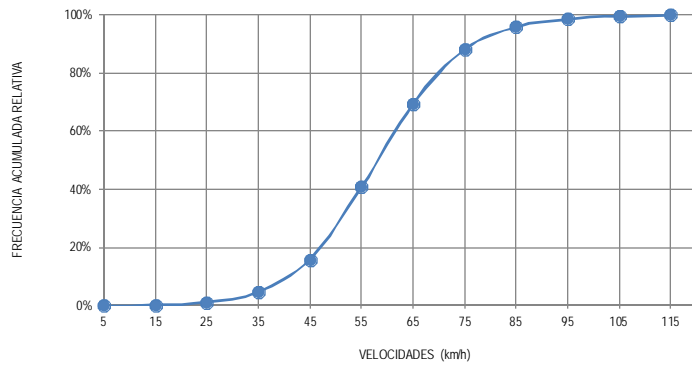
CLAVE: 00052

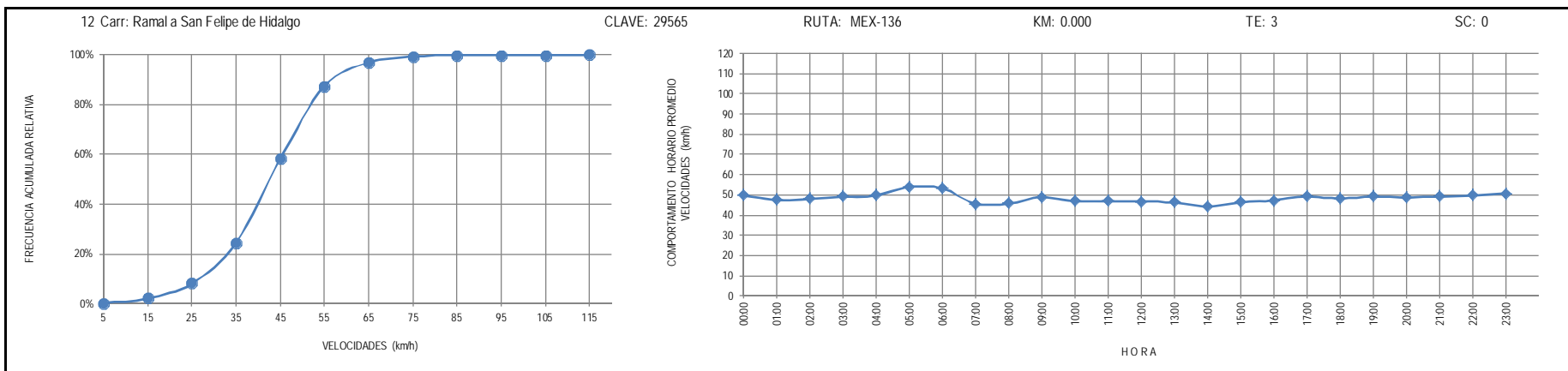
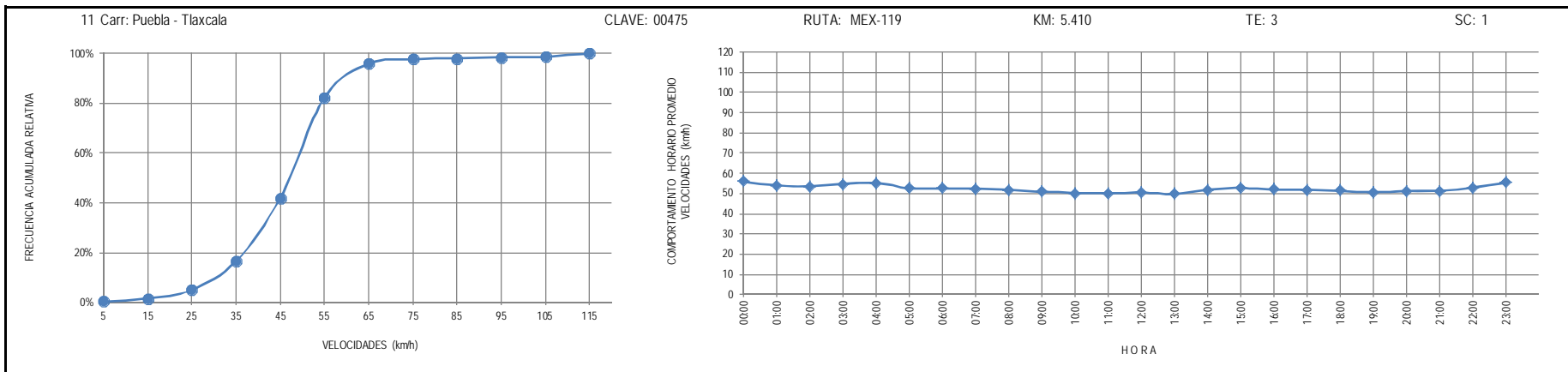
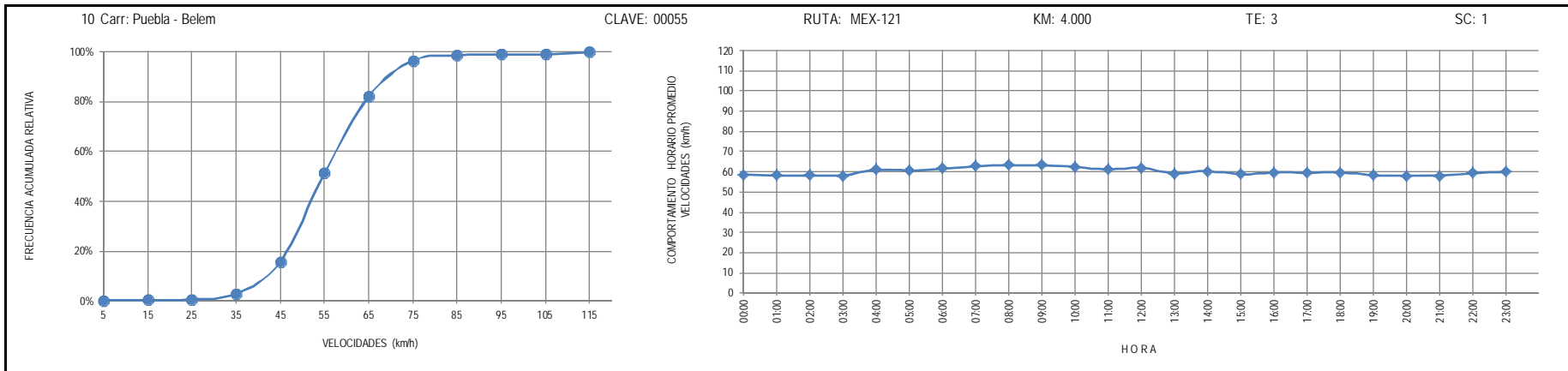
ruta: MEX-136

KM: 3.350

TE: 3

SC: 1





13 Carr: San Martín Texmelucan - Tlaxcala

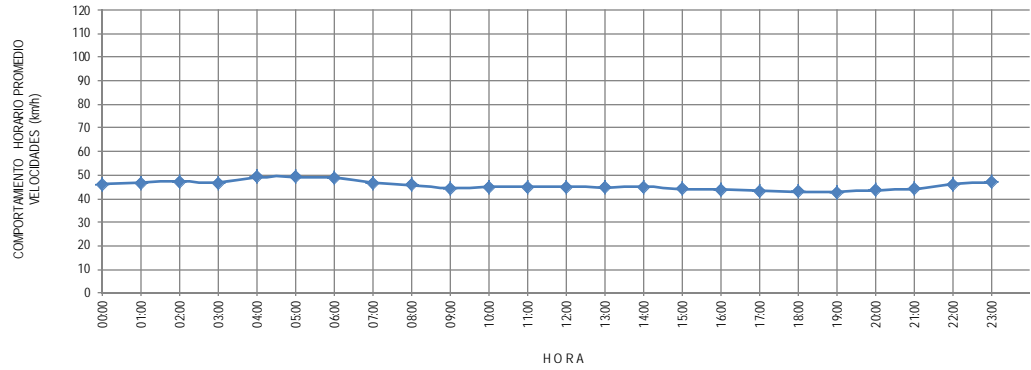
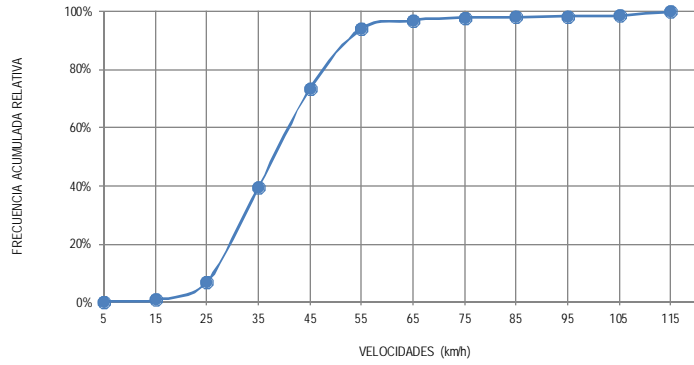
CLAVE: 00158

ruta: MEX-117

KM: 0.000

TE: 3

SC: 1



14 Carr: Tetlatlahuca - Santa Ana Chiautempan

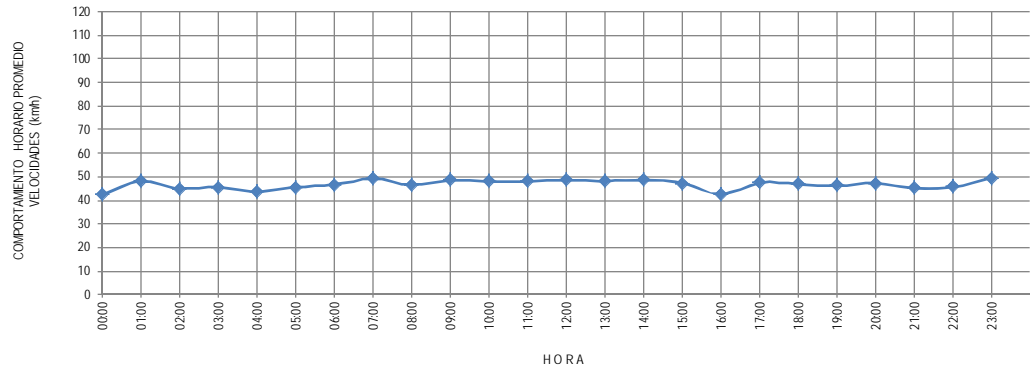
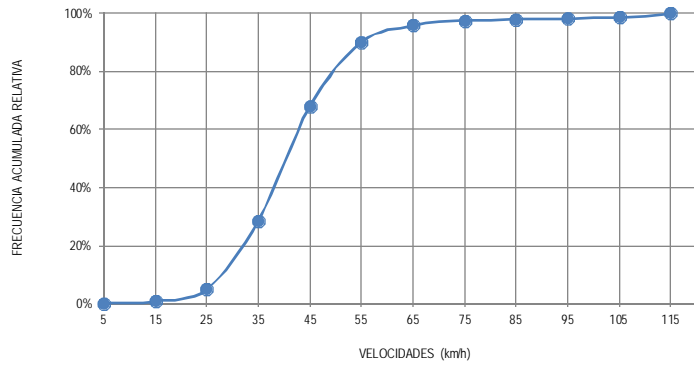
CLAVE: 00158

ruta: MEX-119

KM: 2.390

TE: 1

SC: 0



15 Carr: Tlaxcala - Belem

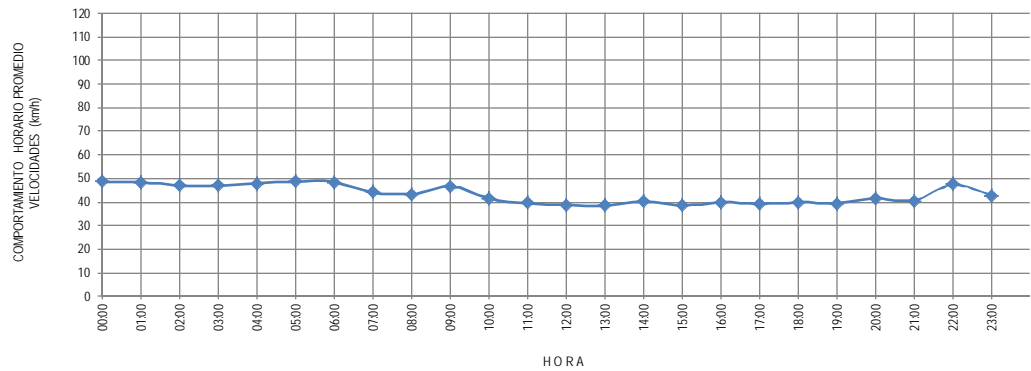
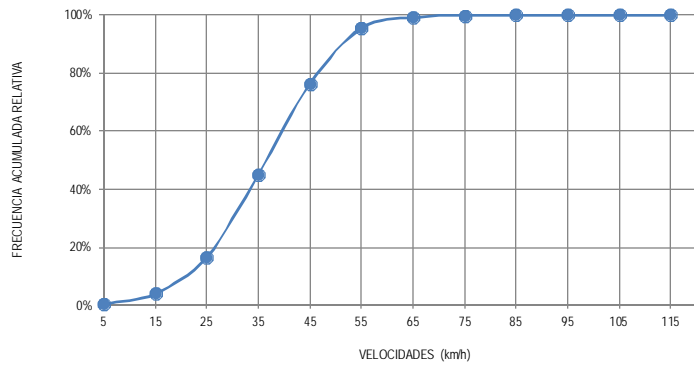
CLAVE: 29389

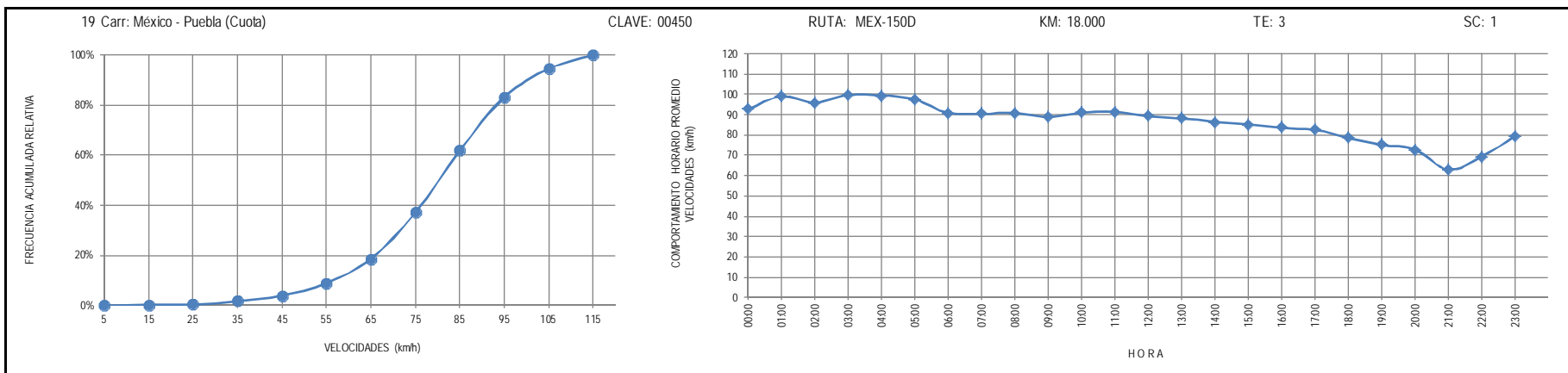
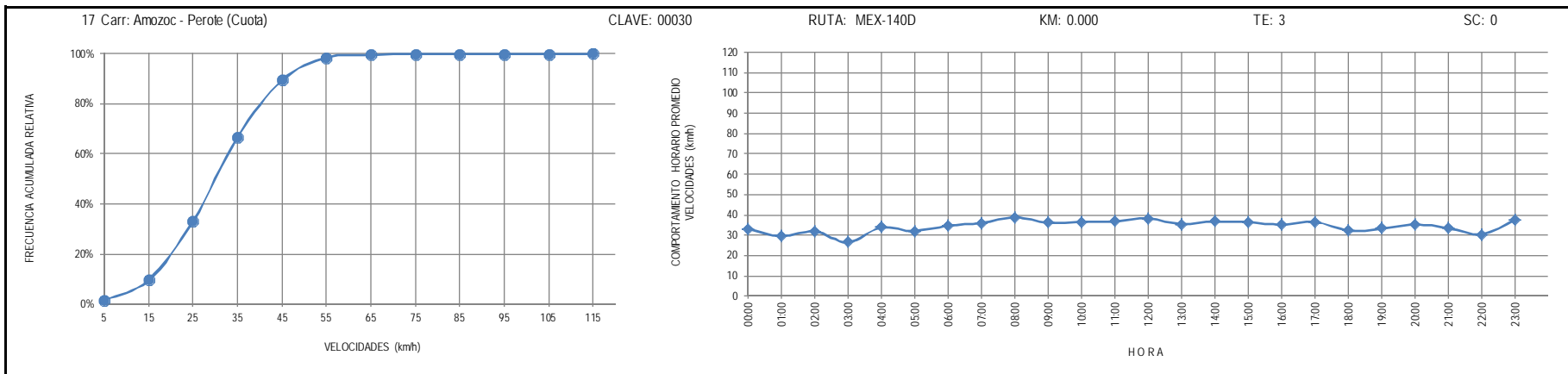
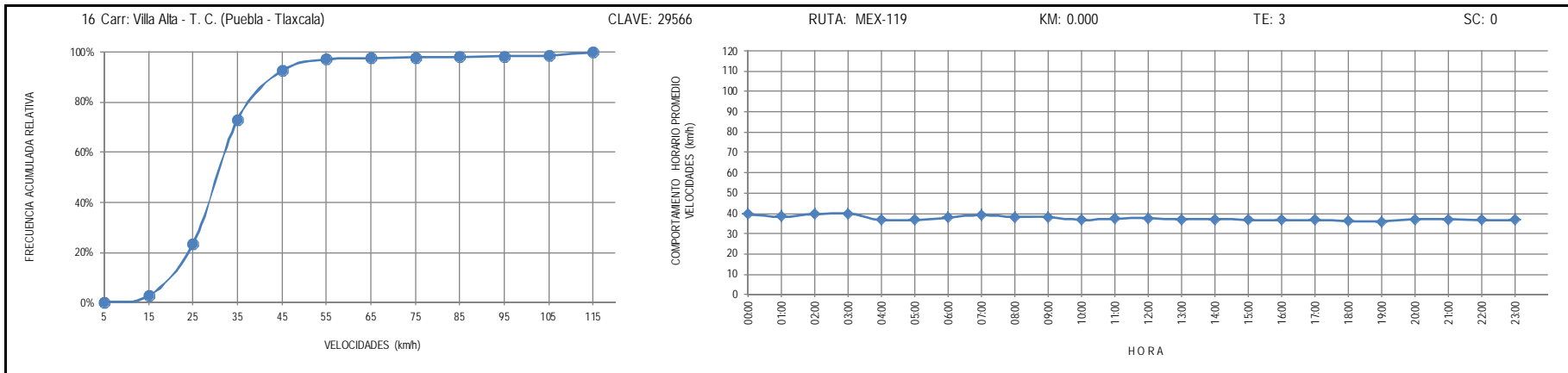
ruta: MEX-119

KM: 3.910

TE: 1

SC: 1





20 Carr: San Martín Texmelucan - Tlaxcala - El Molinito (Cuota)

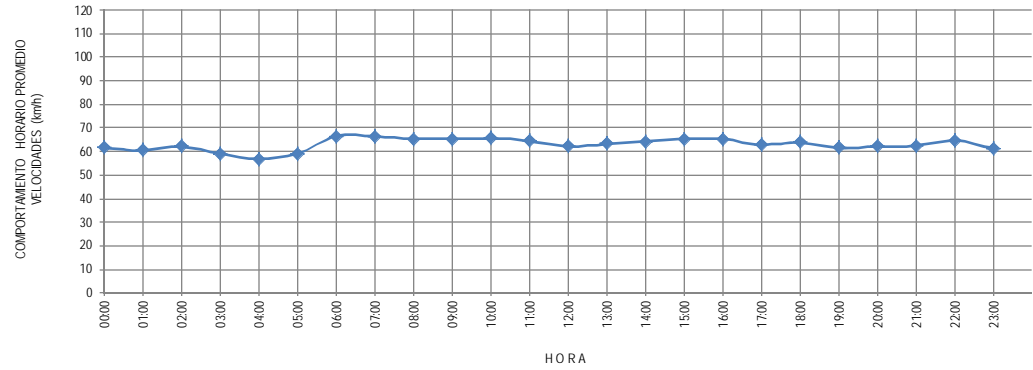
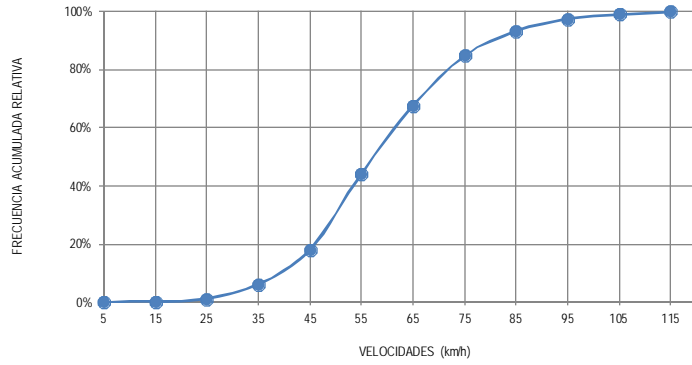
CLAVE: 00212

RUTA: MEX-117D

KM: 1.800

TE: 1

SC: 0



21 Carr: Libramiento de Ocotlán

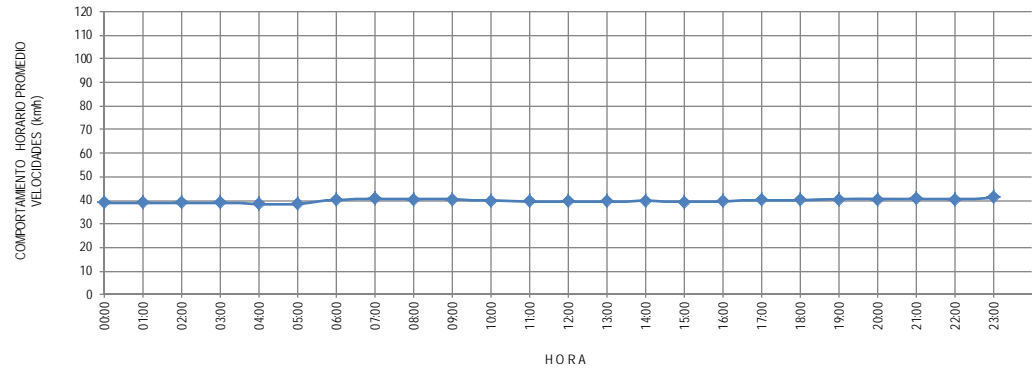
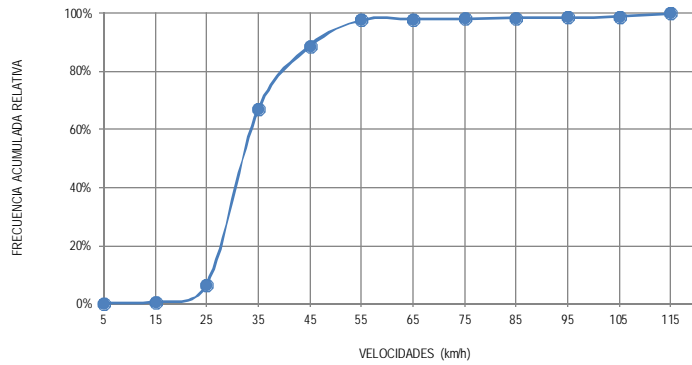
CLAVE: 29567

RUTA: TLAX

KM: 0.000

TE: 3

SC: 1



22 Carr: Ramal a Alzayanca de Hidalgo

CLAVE: 29562

RUTA: TLAX

KM: 0.000

TE: 3

SC: 0

