



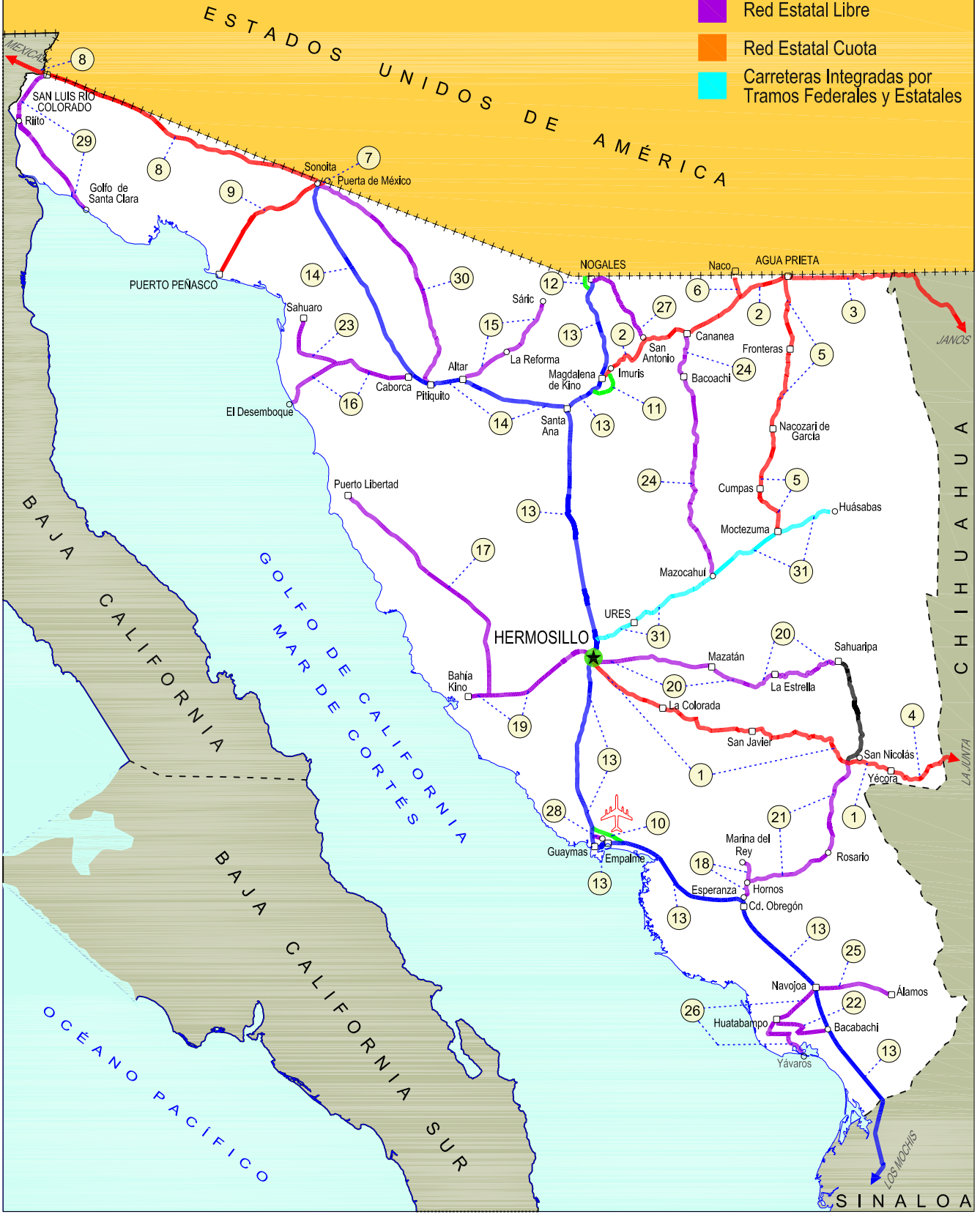
SONORA

| NO. INDICE | CARRETERA | RUTA |
|---|--|--------------|
| ---RED FEDERAL LIBRE--- | | |
| 1 | Hermosillo - Yécora | MEX-016 |
| 2 | Imuris - Agua Prieta | MEX-002 |
| 3 | Janos - Agua Prieta | MEX-002 |
| 4 | La Junta - Yécora | MEX-016 |
| 5 | Moctezuma - Agua Prieta | MEX-017 |
| 6 | Ramal a Naco | MEX-002 |
| 7 | Ramal a Puerta de México | MEX-002 |
| 8 | Sonoita - Mexicali | MEX-002 |
| 9 | Sonoita - Puerto Peñasco | MEX-002 |
| ---RED FEDERAL DE CUOTA--- | | |
| 10 | Libramiento de Empalme (Cuota) | MEX-015D |
| 11 | Libramiento de Magdalena de Kino (Cuota) | MEX-015D |
| 12 | Libramiento de Nogales (Cuota) | MEX-15D |
| ---RED FEDERAL INTEGRADA POR TRAMOS LIBRES Y DE CUOTA--- | | |
| 13 | Est. Don - Nogales (Cuota) | MEX-015D-015 |
| 14 | Santa Ana - Sonoita | MEX-002D-MEX |
| ---RED ESTATAL LIBRE--- | | |
| 15 | Altar - Sáric | SON-064 |
| 16 | Caborca - El Desemboque | SON-037 |
| 17 | Calle 36 Norte - Puerto de La Libertad | SON-029 |
| 18 | Esperanza - Presa Álvaro Obregón | SON-117 |
| 19 | Hermosillo - Bahía Kino | SON-100 |
| 20 | Hermosillo - Sahuaripa | SON-020 |
| 21 | Hornos - San Nicolás | SON-012 |
| 22 | Huatabampo - Bacabachi | SON-176 |
| 23 | La Alameda - El Sahuaro | SON-037 |
| 24 | Mazocahui - Cananea | SON-118 |
| 25 | Navojoa - Álamos | SON-013 |
| 26 | Navojoa - Yavaros | SON-056 |
| 27 | Nogales - San Antonio | SON |
| 28 | Ramal a Aeropuerto de Guaymas | SON |
| 29 | San Luis Río Colorado - Golfo de Santa Clara | SON-040 |
| 30 | Sonoita - Pitiquito | SON |
| ---CARRETERAS INTEGRADAS POR TRAMOS FEDERALES Y ESTATALES--- | | |
| 31 | T. C. (Hermosillo - Nogales) - Huásabas | MEX-014-SON |

26 SONORA

SECRETARÍA DE COMUNICACIONES Y TRANSPORTES
DIRECCIÓN GENERAL DE SERVICIOS TÉCNICOS

- ① --- Número Índice
- Red Federal Libre
- Red Federal Cuota
- Red Federal Integrada por Tramos Libres y de Cuota
- Red Estatal Libre
- Red Estatal Cuota
- Carreteras Integradas por Tramos Federales y Estatales



SONORA

1 CARR: Hermosillo - Yécora

CLAVE: 26251

RUTA: MEX-016

AÑO: 2012

| LUGAR | ESTACION | | | | VELOCIDAD AUTOS (km/h) | | | | VELOCIDAD AUTOBUSES (km/h) | | | | VELOCIDAD CAMIONES (km/h) | | | | COORDENADAS | |
|--------------------------------|----------|----|----|------|------------------------|------|------|------|----------------------------|------|------|------|---------------------------|------|------|------|-------------|-------------|
| | KM | TE | SC | TDPA | Promedio | P 85 | P 98 | δ | Promedio | P 85 | P 98 | δ | Promedio | P 85 | P 98 | δ | Latitud | Longitud |
| T. C. Cd. Obregón - Hermosillo | 0.00 | | | | | | | | | | | | | | | | | |
| T. Izq. Sahuaripa | 4.00 | 3 | 1 | 4946 | 69.0 | 76.8 | 93.7 | 10.3 | 62.6 | 71.1 | 89.4 | 10.0 | 60.1 | 70.1 | 88.2 | 11.5 | 29.005252 | -110.913434 |
| T. Izq. Sahuaripa | 4.00 | 3 | 2 | 5514 | 65.6 | 73.1 | 89.3 | 9.3 | 62.8 | 70.6 | 84.6 | 9.5 | 58.1 | 66.0 | 82.6 | 10.1 | 29.005253 | -110.913434 |
| La Colorada | 47.00 | 3 | 0 | 817 | 58.6 | 70.3 | 90.1 | 12.0 | 56.2 | 62.9 | 83.7 | 8.4 | 50.3 | 62.4 | 83.6 | 13.2 | 28.807567 | -110.576375 |
| Tecoripa | 138.00 | 3 | 0 | 597 | 66.8 | 79.0 | 99.4 | 12.9 | 63.0 | 74.0 | 96.7 | 11.6 | 59.2 | 70.6 | 94.0 | 11.2 | 28.621888 | -109.949269 |
| Yécora | 250.60 | | | | | | | | | | | | | | | | | |

2 CARR: Imuris - Agua Prieta

CLAVE: 26079

RUTA: MEX-002

AÑO: 2012

| LUGAR | ESTACION | | | | VELOCIDAD AUTOS (km/h) | | | | VELOCIDAD AUTOBUSES (km/h) | | | | VELOCIDAD CAMIONES (km/h) | | | | COORDENADAS | |
|-----------------|----------|----|----|------|------------------------|------|-------|------|----------------------------|------|-------|------|---------------------------|------|-------|------|-------------|-------------|
| | KM | TE | SC | TDPA | Promedio | P 85 | P 98 | δ | Promedio | P 85 | P 98 | δ | Promedio | P 85 | P 98 | δ | Latitud | Longitud |
| Imuris | 0.00 | 3 | 0 | 2990 | 72.2 | 81.7 | 100.7 | 11.4 | 69.8 | 79.0 | 97.5 | 11.2 | 69.7 | 77.9 | 96.4 | 10.8 | 30.802991 | -110.826447 |
| T. Der. Cananea | 80.93 | 1 | 0 | 5618 | 72.4 | 81.6 | 99.6 | 11.1 | 70.6 | 79.4 | 95.1 | 10.9 | 70.6 | 79.0 | 100.2 | 11.0 | 30.996786 | -110.288462 |
| T. Der. Cananea | 80.93 | 3 | 0 | 6094 | 78.0 | 88.5 | 105.1 | 11.7 | 74.1 | 85.0 | 94.9 | 11.9 | 73.3 | 83.5 | 102.4 | 11.7 | 30.994735 | -110.256438 |
| Agua Prieta | 164.67 | 1 | 0 | 4252 | 80.2 | 91.5 | 111.5 | 12.7 | 77.0 | 89.6 | 103.7 | 13.5 | 72.1 | 83.2 | 102.6 | 12.5 | 31.311782 | -109.589138 |

3 CARR: Janos - Agua Prieta

CLAVE: 00220

RUTA: MEX-002

AÑO: 2012

| LUGAR | ESTACION | | | | VELOCIDAD AUTOS (km/h) | | | | VELOCIDAD AUTOBUSES (km/h) | | | | VELOCIDAD CAMIONES (km/h) | | | | COORDENADAS | |
|-----------------------------------|----------|----|----|------|------------------------|-------|-------|------|----------------------------|-------|-------|------|---------------------------|------|-------|------|-------------|-------------|
| | KM | TE | SC | TDPA | Promedio | P 85 | P 98 | δ | Promedio | P 85 | P 98 | δ | Promedio | P 85 | P 98 | δ | Latitud | Longitud |
| T. C. Cd. Juárez - Janos | 0.00 | 3 | 0 | 3355 | 76.2 | 90.9 | 110.5 | 14.9 | 73.2 | 86.7 | 101.0 | 13.6 | 68.1 | 79.1 | 98.8 | 12.3 | 30.889936 | -108.214514 |
| Los Mimbres | 56.00 | 3 | 0 | 1631 | 105.7 | 119.5 | 138.9 | 14.2 | 84.7 | 100.2 | 119.4 | 18.8 | 86.5 | 99.3 | 120.7 | 14.1 | 31.272602 | -108.616417 |
| Lim. Edos. Term. Chih. Ppia. Son. | 78.00 | | | | | | | | | | | | | | | | | |
| Agua Prieta | 160.00 | 1 | 0 | 2515 | 71.5 | 89.0 | 112.9 | 17.2 | 67.5 | 83.2 | 101.8 | 14.2 | 64.6 | 77.1 | 98.8 | 12.9 | 31.323105 | -109.506585 |

4 CARR: La Junta - Yécora

CLAVE: 00065

RUTA: MEX-016

AÑO: 2012

| LUGAR | ESTACION | | | | VELOCIDAD AUTOS (km/h) | | | | VELOCIDAD AUTOBUSES (km/h) | | | | VELOCIDAD CAMIONES (km/h) | | | | COORDENADAS | |
|-----------------------------------|----------|----|----|------|------------------------|------|-------|------|----------------------------|------|------|------|---------------------------|------|-------|------|-------------|-------------|
| | KM | TE | SC | TDPA | Promedio | P 85 | P 98 | δ | Promedio | P 85 | P 98 | δ | Promedio | P 85 | P 98 | δ | Latitud | Longitud |
| T. C. Chihuahua - Madera | 0.00 | 3 | 0 | 4128 | 64.6 | 75.2 | 94.4 | 11.9 | 60.6 | 67.1 | 80.2 | 8.0 | 64.1 | 76.4 | 97.4 | 13.4 | 28.473290 | -107.308589 |
| T. Izq. San Juanito | 16.00 | 1 | 0 | 2270 | 54.9 | 64.7 | 85.2 | 10.8 | 51.3 | 54.4 | 74.2 | 8.2 | 50.7 | 64.9 | 84.7 | 14.1 | 28.388667 | -107.439573 |
| T. Izq. San Juanito | 16.00 | 3 | 0 | 1119 | 67.0 | 74.3 | 87.6 | 10.0 | 59.6 | 65.6 | 74.1 | 6.8 | 61.7 | 71.3 | 83.9 | 11.3 | 28.390919 | -107.441843 |
| Tomochi | 70.00 | 3 | 0 | 1040 | 69.7 | 85.8 | 103.7 | 16.3 | 56.7 | 54.4 | 77.5 | 4.0 | 61.3 | 80.1 | 100.5 | 17.0 | 28.392789 | -107.460281 |
| Lim. Edos. Term. Chih. Ppia. Son. | 190.00 | | | | | | | | | | | | | | | | | |
| Yécora | 253.00 | 1 | 0 | 868 | 64.7 | 79.9 | 102.0 | 14.7 | 60.5 | 73.5 | 92.4 | 12.5 | 54.4 | 63.7 | 90.9 | 10.9 | 28.366496 | -108.923052 |

SONORA

5 CARR: Moctezuma - Agua Prieta

CLAVE: 26027

RUTA: MEX-017

AÑO: 2012

| LUGAR | ESTACION | | | | VELOCIDAD AUTOS (km/h) | | | | VELOCIDAD AUTOBUSES (km/h) | | | | VELOCIDAD CAMIONES (km/h) | | | | COORDENADAS | |
|----------------------------|----------|----|----|------|------------------------|------|-------|------|----------------------------|------|------|------|---------------------------|------|-------|------|-------------|-------------|
| | KM | TE | SC | TDPA | Promedio | P 85 | P 98 | δ | Promedio | P 85 | P 98 | δ | Promedio | P 85 | P 98 | δ | Latitud | Longitud |
| Moctezuma | 0.00 | 3 | 0 | 2283 | 66.2 | 78.4 | 96.6 | 12.9 | 60.5 | 65.6 | 85.8 | 8.5 | 63.6 | 75.5 | 96.8 | 12.9 | 29.817927 | -109.677048 |
| Nacozeni de García | 81.00 | 3 | 0 | 1798 | 66.1 | 78.9 | 97.9 | 13.4 | 59.9 | 64.9 | 84.8 | 7.7 | 62.1 | 73.0 | 93.8 | 11.7 | 30.389875 | -109.695413 |
| Turicachi | 111.00 | 1 | 0 | 1940 | 78.7 | 90.6 | 107.6 | 12.7 | 66.7 | 78.0 | 94.5 | 11.7 | 70.7 | 84.0 | 103.6 | 14.4 | 30.660069 | -109.596234 |
| T. C. Imuris - Agua Prieta | 197.60 | 1 | 0 | 3793 | 77.9 | 93.7 | 117.7 | 16.6 | 63.6 | 75.8 | 93.5 | 11.6 | 72.1 | 87.8 | 112.3 | 16.4 | 31.297813 | -109.581854 |

6 CARR: Ramal a Naco

CLAVE: 26579

RUTA: MEX-002

AÑO: 2012

| LUGAR | ESTACION | | | | VELOCIDAD AUTOS (km/h) | | | | VELOCIDAD AUTOBUSES (km/h) | | | | VELOCIDAD CAMIONES (km/h) | | | | COORDENADAS | |
|----------------------------|----------|----|----|------|------------------------|------|------|------|----------------------------|------|------|------|---------------------------|------|-------|------|-------------|-------------|
| | KM | TE | SC | TDPA | Promedio | P 85 | P 98 | δ | Promedio | P 85 | P 98 | δ | Promedio | P 85 | P 98 | δ | Latitud | Longitud |
| T. C. Imuris - Agua Prieta | 0.00 | 3 | 0 | 1316 | 76.9 | 84.6 | 98.7 | 10.1 | 73.0 | 82.2 | 92.6 | 11.4 | 76.4 | 86.7 | 104.1 | 12.1 | 31.209099 | -109.908449 |
| Naco | 14.00 | | | | | | | | | | | | | | | | | |

7 CARR: Ramal a Puerta de México

CLAVE: 26577

RUTA: MEX-002

AÑO: 2012

| LUGAR | ESTACION | | | | VELOCIDAD AUTOS (km/h) | | | | VELOCIDAD AUTOBUSES (km/h) | | | | VELOCIDAD CAMIONES (km/h) | | | | COORDENADAS | |
|--------------------------|----------|----|----|-------|------------------------|------|------|-----|----------------------------|------|------|-----|---------------------------|------|------|-----|-------------|-------------|
| | KM | TE | SC | TDPA | Promedio | P 85 | P 98 | δ | Promedio | P 85 | P 98 | δ | Promedio | P 85 | P 98 | δ | Latitud | Longitud |
| T. C. Sonoita - Mexicali | 0.00 | 3 | 0 | 10644 | 53.4 | 59.5 | 73.1 | 8.1 | 53.7 | 59.0 | 70.5 | 7.2 | 52.6 | 59.0 | 79.3 | 9.7 | 31.867509 | -112.834123 |
| Frontera E.U.A | 3.30 | | | | | | | | | | | | | | | | | |

8 CARR: Sonoita - Mexicali

CLAVE: 00081

RUTA: MEX-002

AÑO: 2012

| LUGAR | ESTACION | | | | VELOCIDAD AUTOS (km/h) | | | | VELOCIDAD AUTOBUSES (km/h) | | | | VELOCIDAD CAMIONES (km/h) | | | | COORDENADAS | |
|----------------------------------|----------|----|----|------|------------------------|-------|-------|------|----------------------------|-------|-------|------|---------------------------|-------|-------|------|-------------|-------------|
| | KM | TE | SC | TDPA | Promedio | P 85 | P 98 | δ | Promedio | P 85 | P 98 | δ | Promedio | P 85 | P 98 | δ | Latitud | Longitud |
| Sonoita | 0.00 | 3 | 0 | 4762 | 50.9 | 60.6 | 81.5 | 11.5 | 50.0 | 58.6 | 84.7 | 11.8 | 45.0 | 53.4 | 75.9 | 10.2 | 31.875673 | -112.851187 |
| Los Vidrios | 58.75 | 3 | 0 | 3046 | 50.9 | 61.1 | 83.3 | 12.0 | 49.3 | 56.8 | 82.1 | 11.4 | 45.2 | 52.8 | 73.8 | 10.0 | 32.037199 | -113.450416 |
| San Luis Río Colorado | 191.80 | 1 | 0 | 3502 | 94.1 | 107.0 | 127.9 | 13.8 | 94.5 | 104.1 | 119.0 | 10.8 | 86.6 | 95.4 | 112.6 | 11.5 | 32.450215 | -114.672121 |
| San Luis Río Colorado | 191.80 | 3 | 1 | 9231 | 53.9 | 65.3 | 89.2 | 12.6 | 59.0 | 71.6 | 124.9 | 15.6 | 48.7 | 56.1 | 83.1 | 11.6 | 32.488497 | -114.797638 |
| San Luis Río Colorado | 191.80 | 3 | 2 | 9065 | 49.5 | 56.9 | 73.2 | 9.9 | 44.7 | 51.9 | 64.7 | 8.3 | 42.1 | 48.7 | 63.3 | 8.9 | 32.488488 | -114.797622 |
| Lim. Edos. Term. Son. Ppia. B.C. | 203.69 | | | | | | | | | | | | | | | | | |
| X. C. Mexicali - Algodones | 206.78 | 1 | 1 | 9682 | 79.7 | 90.9 | 106.3 | 12.6 | 69.7 | 82.5 | 94.5 | 14.0 | 65.9 | 80.3 | 96.9 | 14.9 | 32.497955 | -114.829809 |
| X. C. Mexicali - Algodones | 206.78 | 1 | 2 | 9767 | 99.1 | 111.3 | 129.7 | 13.2 | 88.6 | 104.3 | 114.4 | 18.2 | 91.6 | 104.0 | 124.3 | 13.9 | 32.497952 | -114.829810 |
| X. C. Mexicali - Algodones | 206.78 | 3 | 1 | 8143 | 99.3 | 111.3 | 128.4 | 12.9 | 95.4 | 107.4 | 121.1 | 12.4 | 93.9 | 104.3 | 123.7 | 12.0 | 32.505861 | -114.853571 |
| X. C. Mexicali - Algodones | 206.78 | 3 | 2 | 8284 | 93.2 | 104.9 | 121.9 | 13.3 | 91.1 | 103.2 | 114.7 | 13.8 | 87.3 | 100.8 | 119.3 | 14.0 | 32.505862 | -114.853573 |
| T. Izq. Ejido Hermosillo | 214.80 | 3 | 1 | 6581 | 104.7 | 119.9 | 139.7 | 14.8 | 97.7 | 114.5 | 128.6 | 17.5 | 93.5 | 109.0 | 133.3 | 15.8 | 32.527295 | -114.928408 |
| T. Izq. Ejido Hermosillo | 214.80 | 3 | 2 | 7116 | 105.2 | 119.3 | 139.0 | 14.0 | 98.2 | 112.2 | 131.3 | 14.7 | 94.7 | 106.8 | 131.8 | 12.9 | 32.527295 | -114.928408 |

SONORA

8 CARR: Sonoita - Mexicali

CLAVE: 00081

RUTA: MEX-002

AÑO: 2012

| LUGAR | ESTACION | | | | VELOCIDAD AUTOS (km/h) | | | | VELOCIDAD AUTOBUSES (km/h) | | | | VELOCIDAD CAMIONES (km/h) | | | | COORDENADAS | |
|-----------------------------|----------|----|----|-------|------------------------|-------|-------|------|----------------------------|-------|-------|------|---------------------------|-------|-------|------|-------------|-------------|
| | KM | TE | SC | TDPA | Promedio | P 85 | P 98 | δ | Promedio | P 85 | P 98 | δ | Promedio | P 85 | P 98 | δ | Latitud | Longitud |
| Ejido Monterrey | 228.63 | 3 | 1 | 9498 | 106.5 | 117.4 | 124.0 | 11.6 | 104.7 | 117.0 | 123.9 | 12.5 | 100.5 | 114.2 | 123.5 | 14.0 | 32.552125 | -115.087641 |
| Ejido Monterrey | 228.63 | 3 | 2 | 9100 | 56.0 | 62.1 | 73.8 | 7.8 | 53.9 | 60.4 | 72.5 | 8.0 | 52.1 | 58.2 | 70.4 | 8.6 | 32.552126 | -115.087636 |
| X. C. Mexicali - Algodones | 256.47 | 1 | 1 | 12833 | 90.1 | 99.6 | 114.0 | 11.1 | 86.7 | 97.1 | 111.1 | 11.9 | 83.5 | 94.8 | 113.0 | 12.9 | 32.565566 | -115.326641 |
| X. C. Mexicali - Algodones | 256.47 | 1 | 2 | 12775 | 82.2 | 91.2 | 104.3 | 10.6 | 80.7 | 90.7 | 103.0 | 11.5 | 77.2 | 88.1 | 103.3 | 12.2 | 32.565565 | -115.326639 |
| T. C. Mexicali - San Felipe | 265.12 | | | | | | | | | | | | | | | | | |

9 CARR: Sonoita - Puerto Peñasco

CLAVE: 26232

RUTA: MEX-002

AÑO: 2012

| LUGAR | ESTACION | | | | VELOCIDAD AUTOS (km/h) | | | | VELOCIDAD AUTOBUSES (km/h) | | | | VELOCIDAD CAMIONES (km/h) | | | | COORDENADAS | |
|----------------|----------|----|----|------|------------------------|------|-------|------|----------------------------|------|-------|------|---------------------------|------|-------|------|-------------|-------------|
| | KM | TE | SC | TDPA | Promedio | P 85 | P 98 | δ | Promedio | P 85 | P 98 | δ | Promedio | P 85 | P 98 | δ | Latitud | Longitud |
| Sonoita | 0.00 | 3 | 0 | 1822 | 84.7 | 96.0 | 117.3 | 12.5 | 71.0 | 84.8 | 104.0 | 15.3 | 74.7 | 87.8 | 103.7 | 13.7 | 31.862396 | -112.876898 |
| Puerto Peñasco | 100.40 | | | | | | | | | | | | | | | | | |

10 CARR: Libramiento de Empalme (Cuota)

CLAVE: 26256

RUTA: MEX-015D

AÑO: 2012

| LUGAR | ESTACION | | | | VELOCIDAD AUTOS (km/h) | | | | VELOCIDAD AUTOBUSES (km/h) | | | | VELOCIDAD CAMIONES (km/h) | | | | COORDENADAS | |
|--------------------------------|----------|----|----|------|------------------------|-------|-------|------|----------------------------|-------|-------|------|---------------------------|-------|-------|------|-------------|-------------|
| | KM | TE | SC | TDPA | Promedio | P 85 | P 98 | δ | Promedio | P 85 | P 98 | δ | Promedio | P 85 | P 98 | δ | Latitud | Longitud |
| T. C. Cd. Obregón - Hermosillo | 0.00 | 3 | 1 | 3269 | 104.7 | 127.0 | 142.5 | 22.3 | 104.9 | 129.6 | 143.4 | 18.7 | 90.8 | 117.1 | 142.2 | 22.2 | 27.957670 | -110.755157 |
| T. C. Cd. Obregón - Hermosillo | 0.00 | 3 | 2 | 3370 | 99.6 | 117.7 | 134.6 | 18.9 | 92.3 | 104.9 | 123.9 | 14.9 | 85.9 | 100.3 | 123.7 | 15.5 | 27.957674 | -110.755158 |
| T. C. Cd. Obregón - Hermosillo | 21.50 | 1 | 1 | 2988 | 96.1 | 106.8 | 123.0 | 12.2 | 88.4 | 99.6 | 114.0 | 12.6 | 78.2 | 92.4 | 115.1 | 13.7 | 28.038245 | -110.934151 |
| T. C. Cd. Obregón - Hermosillo | 21.50 | 1 | 2 | 3259 | 99.2 | 110.0 | 123.4 | 12.3 | 90.6 | 100.7 | 114.3 | 11.9 | 84.0 | 95.7 | 114.1 | 12.6 | 28.038265 | -110.934143 |

11 CARR: Libramiento de Magdalena de Kino (Cuota)

CLAVE:

RUTA: MEX-015D

AÑO: 2012

| LUGAR | ESTACION | | | | VELOCIDAD AUTOS (km/h) | | | | VELOCIDAD AUTOBUSES (km/h) | | | | VELOCIDAD CAMIONES (km/h) | | | | COORDENADAS | |
|----------------------------|----------|----|----|------|------------------------|-------|-------|------|----------------------------|-------|-------|------|---------------------------|-------|-------|------|-------------|-------------|
| | KM | TE | SC | TDPA | Promedio | P 85 | P 98 | δ | Promedio | P 85 | P 98 | δ | Promedio | P 85 | P 98 | δ | Latitud | Longitud |
| T. C. Hermosillo - Nogales | 183.43 | 3 | 1 | 3410 | 99.5 | 112.1 | 128.1 | 14.0 | 87.9 | 102.1 | 114.3 | 16.0 | 86.0 | 95.7 | 114.5 | 12.1 | 30.619468 | -110.987501 |
| T. C. Hermosillo - Nogales | 183.43 | 3 | 2 | 3582 | 63.8 | 72.1 | 84.6 | 9.7 | 57.8 | 64.0 | 74.7 | 7.9 | 55.1 | 63.0 | 78.8 | 9.2 | 27.952200 | -110.930805 |
| T. C. Hermosillo - Nogales | 190.00 | 1 | 1 | 3202 | 99.0 | 111.9 | 128.3 | 14.3 | 89.7 | 102.6 | 114.8 | 15.0 | 85.7 | 94.9 | 113.7 | 11.8 | 30.663496 | -110.922691 |
| T. C. Hermosillo - Nogales | 190.00 | 1 | 2 | 3340 | 105.4 | 120.6 | 138.5 | 15.2 | 97.9 | 114.1 | 131.6 | 17.8 | 89.1 | 102.2 | 125.1 | 14.4 | 30.663496 | -110.922691 |

SONORA

12 CARR: Libramiento de Nogales (Cuota)

CLAVE: 26100

RUTA: MEX-15D

AÑO: 2012

| LUGAR | ESTACION | | | | VELOCIDAD AUTOS (km/h) | | | | VELOCIDAD AUTOBUSES (km/h) | | | | VELOCIDAD CAMIONES (km/h) | | | | COORDENADAS | |
|----------------------------|----------|----|----|------|------------------------|-------|-------|------|----------------------------|-------|-------|------|---------------------------|-------|-------|------|-------------|-------------|
| | KM | TE | SC | TDPA | Promedio | P 85 | P 98 | δ | Promedio | P 85 | P 98 | δ | Promedio | P 85 | P 98 | δ | Latitud | Longitud |
| T. C. Hermosillo - Nogales | 0.00 | 3 | 1 | 3016 | 86.2 | 96.3 | 112.3 | 11.8 | 78.4 | 92.6 | 103.9 | 15.2 | 73.8 | 85.3 | 103.1 | 12.7 | 31.235487 | -110.968397 |
| T. C. Hermosillo - Nogales | 0.00 | 3 | 2 | 3024 | 93.3 | 104.9 | 122.8 | 13.1 | 86.4 | 101.8 | 113.8 | 15.7 | 85.3 | 99.2 | 114.4 | 14.2 | 31.235487 | -110.968397 |
| Caseta de Cobro Nogales | 4.50 | 2 | 1 | 1301 | | | | | | | | | | | | | 31.247637 | -110.972542 |
| Caseta de Cobro Nogales | 4.50 | 2 | 2 | 1300 | | | | | | | | | | | | | 31.247637 | -110.972542 |
| Frontera E.U.A. | 12.50 | 1 | 1 | 1486 | 90.1 | 105.7 | 123.2 | 16.3 | 73.0 | 91.5 | 110.6 | 17.4 | 81.5 | 92.7 | 112.2 | 12.9 | 31.288970 | -110.980281 |
| Frontera E.U.A. | 12.50 | 1 | 2 | 1700 | 101.1 | 113.1 | 130.3 | 13.3 | 78.7 | 100.8 | 113.7 | 22.0 | 97.8 | 106.3 | 121.6 | 10.6 | 31.288969 | -110.980280 |

13 CARR: Est. Don - Nogales (Cuota)

CLAVE: 26444

RUTA: MEX-015D-015

AÑO: 2012

| LUGAR | ESTACION | | | | VELOCIDAD AUTOS (km/h) | | | | VELOCIDAD AUTOBUSES (km/h) | | | | VELOCIDAD CAMIONES (km/h) | | | | COORDENADAS | |
|---|----------|----|----|------|------------------------|-------|-------|------|----------------------------|-------|-------|------|---------------------------|-------|-------|------|-------------|-------------|
| | KM | TE | SC | TDPA | Promedio | P 85 | P 98 | δ | Promedio | P 85 | P 98 | δ | Promedio | P 85 | P 98 | δ | Latitud | Longitud |
| T. C. Topolobampo - Choix | 0.00 | 3 | 1 | 7711 | 89.5 | 104.8 | 124.9 | 16.2 | 89.7 | 105.1 | 120.1 | 17.2 | 80.8 | 95.6 | 113.9 | 15.7 | 25.833727 | -108.973391 |
| T. C. Topolobampo - Choix | 0.00 | 3 | 2 | 7966 | 86.0 | 99.9 | 121.7 | 14.9 | 85.5 | 101.3 | 114.7 | 16.2 | 79.8 | 93.0 | 112.1 | 14.8 | 25.833727 | -108.973391 |
| T. Izq. Ahome | 17.13 | 3 | 1 | 7141 | 62.6 | 70.6 | 103.7 | 11.3 | 58.4 | 64.7 | 79.9 | 8.9 | 55.1 | 59.6 | 74.6 | 6.1 | 25.943565 | -109.052746 |
| T. Izq. Ahome | 17.13 | 3 | 2 | 7142 | 62.6 | 70.8 | 104.0 | 11.4 | 58.0 | 63.9 | 78.1 | 8.8 | 56.1 | 61.8 | 75.6 | 7.3 | 25.943565 | -109.052746 |
| T. Izq. Coahuilbampo | 19.00 | 1 | 1 | 6561 | 89.0 | 104.5 | 124.8 | 16.3 | 89.9 | 105.4 | 118.6 | 17.2 | 80.9 | 95.1 | 113.1 | 15.5 | 25.958010 | -109.053637 |
| T. Izq. Coahuilbampo | 19.00 | 1 | 2 | 6429 | 85.6 | 99.6 | 120.3 | 14.8 | 85.3 | 101.0 | 114.2 | 16.2 | 79.6 | 92.5 | 109.5 | 14.4 | 25.958010 | -109.053637 |
| T. Izq. Coahuilbampo | 19.00 | 3 | 1 | 5832 | 62.8 | 70.7 | 104.6 | 11.2 | 58.5 | 64.7 | 79.6 | 8.9 | 54.9 | 58.6 | 73.4 | 5.5 | 25.961649 | -109.052854 |
| T. Izq. Coahuilbampo | 19.00 | 3 | 2 | 5886 | 62.5 | 70.4 | 100.8 | 11.1 | 57.8 | 63.9 | 77.1 | 8.8 | 56.0 | 61.4 | 74.7 | 6.9 | 25.961649 | -109.052854 |
| Poblado Chico | 50.00 | 3 | 1 | 4689 | 89.0 | 104.4 | 124.8 | 16.2 | 89.3 | 104.8 | 117.4 | 17.2 | 81.1 | 96.0 | 113.3 | 15.7 | 26.230304 | -109.053711 |
| Poblado Chico | 50.00 | 3 | 2 | 4743 | 85.7 | 99.7 | 121.0 | 14.9 | 85.1 | 101.0 | 114.5 | 16.3 | 79.8 | 92.7 | 110.3 | 14.4 | 26.230304 | -109.053711 |
| T. Der. El Fuerte | 54.80 | 1 | 1 | 4708 | 89.4 | 104.8 | 125.0 | 16.2 | 89.6 | 104.9 | 118.5 | 17.1 | 81.1 | 95.5 | 113.3 | 15.5 | 26.261753 | -109.045029 |
| T. Der. El Fuerte | 54.80 | 1 | 2 | 4438 | 86.1 | 99.9 | 121.1 | 14.8 | 84.6 | 100.7 | 114.1 | 16.4 | 79.2 | 92.2 | 107.8 | 14.3 | 26.261753 | -109.045029 |
| T. Der. El Fuerte | 54.80 | 3 | 1 | 5732 | 88.5 | 106.1 | 130.4 | 19.0 | 94.5 | 109.2 | 124.8 | 15.5 | 82.2 | 95.3 | 118.8 | 15.3 | 26.275978 | -109.040692 |
| T. Der. El Fuerte | 54.80 | 3 | 2 | 5574 | 96.2 | 111.2 | 131.7 | 14.9 | 95.4 | 106.9 | 122.0 | 12.6 | 90.8 | 100.6 | 118.2 | 11.6 | 26.275978 | -109.040691 |
| Lim. Edos. Term. Sin. Ppia. Son. | 69.80 | | | | | | | | | | | | | | | | | |
| T. Izq. Huatabampo | 128.50 | 1 | 1 | 3114 | 32.7 | 41.6 | 54.9 | 10.9 | 30.5 | 38.0 | 52.8 | 9.6 | 27.0 | 32.6 | 50.1 | 8.3 | 26.836771 | -109.365993 |
| T. Izq. Huatabampo | 128.50 | 1 | 2 | 3017 | 77.2 | 87.5 | 104.5 | 12.0 | 71.8 | 81.7 | 94.1 | 11.2 | 63.0 | 72.2 | 90.0 | 10.8 | 26.836773 | -109.365991 |
| Caseta de Cobro Estacion Don (La Jaula) | 129.90 | 2 | 1 | 2428 | | | | | | | | | | | | | 26.849800 | -109.373287 |
| Caseta de Cobro Estacion Don (La Jaula) | 129.90 | 2 | 2 | 2427 | | | | | | | | | | | | | 26.849800 | -109.373287 |
| Navojoa | 155.00 | 1 | 1 | 6057 | 91.4 | 106.7 | 128.9 | 15.8 | 88.2 | 100.7 | 117.8 | 13.8 | 83.0 | 92.9 | 111.6 | 11.9 | 27.035688 | -109.435758 |
| Navojoa | 155.00 | 1 | 2 | 6350 | 85.5 | 101.9 | 140.6 | 17.1 | 116.0 | 140.9 | 144.5 | 25.2 | 93.5 | 127.3 | 143.3 | 22.9 | 27.035556 | -109.435750 |
| Navojoa | 155.00 | 3 | 1 | 7568 | 68.9 | 81.6 | 97.7 | 13.4 | 70.2 | 81.3 | 94.2 | 12.1 | 61.9 | 73.5 | 93.5 | 12.8 | 27.105102 | -109.447912 |
| Navojoa | 155.00 | 3 | 2 | 7517 | 78.8 | 92.9 | 109.9 | 14.8 | 80.3 | 91.9 | 104.7 | 12.8 | 68.2 | 83.1 | 103.4 | 15.2 | 27.105112 | -109.447919 |
| T. Izq. Villa Juárez | 167.25 | 3 | 1 | 5465 | 100.5 | 116.4 | 135.6 | 16.2 | 96.4 | 111.8 | 123.9 | 15.7 | 88.6 | 100.0 | 120.8 | 13.2 | 27.155761 | -109.507905 |

SONORA

13 CARR: Est. Don - Nogales (Cuota)

CLAVE: 26444

RUTA: MEX-015D-015

AÑO: 2012

| LUGAR | ESTACION | | | | VELOCIDAD AUTOS (km/h) | | | | VELOCIDAD AUTOBUSES (km/h) | | | | VELOCIDAD CAMIONES (km/h) | | | | COORDENADAS | |
|--------------------------------|----------|----|----|-------|------------------------|-------|-------|------|----------------------------|-------|-------|------|---------------------------|-------|-------|------|-------------|-------------|
| | KM | TE | SC | TDPA | Promedio | P 85 | P 98 | δ | Promedio | P 85 | P 98 | δ | Promedio | P 85 | P 98 | δ | Latitud | Longitud |
| T. Izq. Villa Juárez | 167.25 | 3 | 2 | 5465 | 84.8 | 114.5 | 139.8 | 29.1 | 89.4 | 113.6 | 139.3 | 25.7 | 76.6 | 100.3 | 136.7 | 24.0 | 27.155766 | -109.507874 |
| Caseta de Cobro Fundición | 195.80 | 2 | 1 | 3063 | | | | | | | | | | | | | 27.320379 | -109.719785 |
| Caseta de Cobro Fundición | 195.80 | 2 | 2 | 3062 | | | | | | | | | | | | | 27.320379 | -109.719785 |
| T. Der. Fundición | 196.30 | 1 | 1 | 4267 | 89.8 | 100.8 | 115.9 | 12.3 | 84.3 | 94.8 | 108.5 | 11.9 | 70.3 | 81.1 | 102.9 | 12.0 | 27.326596 | -109.727510 |
| T. Der. Fundición | 196.30 | 1 | 2 | 4435 | 83.0 | 99.0 | 114.7 | 16.4 | 79.3 | 94.3 | 110.3 | 16.1 | 73.6 | 86.2 | 104.5 | 13.9 | 27.326595 | -109.727510 |
| Cd. Obregón | 222.70 | | | | | | | | | | | | | | | | | |
| Cd. Obregón | 222.70 | 1 | 1 | 12001 | 88.4 | 99.8 | 130.3 | 13.4 | 91.4 | 106.9 | 142.3 | 17.8 | 80.9 | 93.4 | 137.6 | 15.7 | 27.462402 | -109.902926 |
| Cd. Obregón | 222.70 | 1 | 2 | 12050 | 84.7 | 102.8 | 138.3 | 17.3 | 100.8 | 127.8 | 143.2 | 21.6 | 84.1 | 105.9 | 140.1 | 19.9 | 27.462415 | -109.902922 |
| Esperanza | 230.66 | 1 | 1 | 9516 | 68.6 | 76.8 | 93.2 | 10.4 | 63.4 | 74.4 | 91.8 | 12.5 | 59.4 | 71.3 | 89.0 | 12.6 | 27.563838 | -109.927120 |
| Esperanza | 230.66 | 1 | 2 | 10512 | 68.9 | 78.1 | 92.1 | 10.9 | 66.0 | 74.9 | 90.1 | 11.0 | 61.3 | 71.9 | 86.3 | 11.7 | 27.563839 | -109.927118 |
| Esperanza | 230.66 | 3 | 1 | 4681 | 82.8 | 101.2 | 120.7 | 18.4 | 85.2 | 99.7 | 114.5 | 14.4 | 76.0 | 91.1 | 113.5 | 15.2 | 27.597069 | -109.931975 |
| Esperanza | 230.66 | 3 | 2 | 4794 | 76.3 | 94.9 | 111.7 | 20.4 | 81.1 | 92.7 | 103.7 | 13.3 | 67.1 | 83.4 | 102.8 | 17.3 | 27.597039 | -109.931950 |
| Caseta de Cobro Esperanza | 233.40 | 2 | 1 | 2553 | | | | | | | | | | | | | 27.603715 | -109.939118 |
| Caseta de Cobro Esperanza | 233.40 | 2 | 2 | 2552 | | | | | | | | | | | | | 27.603715 | -109.939118 |
| T. Der. Estación Corral | 236.50 | 1 | 1 | 3755 | 97.1 | 113.6 | 134.3 | 17.0 | 95.4 | 107.8 | 123.4 | 13.1 | 84.7 | 96.8 | 123.5 | 13.2 | 27.616082 | -109.951826 |
| T. Der. Estación Corral | 236.50 | 1 | 2 | 3988 | 100.5 | 114.5 | 133.0 | 15.3 | 96.6 | 108.6 | 121.8 | 12.9 | 89.3 | 101.7 | 121.7 | 13.6 | 27.616083 | -109.951826 |
| T. Der. Estación Corral | 236.50 | 3 | 1 | 3338 | 91.2 | 110.0 | 126.1 | 18.8 | 87.7 | 101.5 | 116.1 | 15.3 | 82.7 | 94.4 | 116.8 | 13.9 | 27.618350 | -109.963617 |
| T. Der. Estación Corral | 236.50 | 3 | 2 | 3846 | 98.7 | 115.1 | 134.6 | 17.2 | 92.3 | 103.7 | 119.0 | 13.3 | 88.0 | 100.3 | 122.7 | 13.3 | 27.618350 | -109.963617 |
| T. Izq. Bécum | 248.16 | 1 | 1 | 2992 | 91.3 | 110.1 | 126.1 | 18.8 | 87.5 | 101.6 | 115.7 | 15.4 | 82.3 | 94.0 | 115.5 | 13.9 | 27.598355 | -110.079104 |
| T. Izq. Bécum | 248.16 | 1 | 2 | 3190 | 98.0 | 115.0 | 135.1 | 17.8 | 91.6 | 103.5 | 117.6 | 13.7 | 87.8 | 99.5 | 122.2 | 13.1 | 27.598355 | -110.079104 |
| T. Izq. Bécum | 248.16 | 3 | 1 | 4695 | 88.2 | 104.1 | 123.0 | 15.8 | 89.7 | 101.2 | 113.8 | 13.4 | 84.4 | 94.5 | 114.9 | 12.5 | 27.597381 | -110.084500 |
| T. Izq. Bécum | 248.16 | 3 | 2 | 5013 | 90.9 | 106.0 | 124.3 | 15.3 | 91.7 | 102.9 | 118.1 | 13.2 | 85.8 | 97.0 | 119.1 | 13.1 | 27.597381 | -110.084500 |
| Vícam | 269.98 | 3 | 1 | 5116 | 72.7 | 83.5 | 96.4 | 12.6 | 67.7 | 74.8 | 90.0 | 10.3 | 59.0 | 70.7 | 91.3 | 11.9 | 27.645798 | -110.303819 |
| Vícam | 269.98 | 3 | 2 | 5338 | 67.0 | 79.1 | 95.5 | 12.9 | 55.0 | 70.4 | 88.6 | 14.7 | 56.2 | 69.8 | 90.2 | 13.8 | 27.645798 | -110.303819 |
| T. Izq. Pótam | 280.10 | 1 | 1 | 4536 | 69.7 | 81.8 | 101.8 | 13.3 | 56.3 | 64.9 | 86.1 | 10.6 | 53.4 | 65.7 | 94.2 | 13.6 | 27.697576 | -110.366275 |
| T. Izq. Pótam | 280.10 | 1 | 2 | 4821 | 77.3 | 90.2 | 105.6 | 13.7 | 68.2 | 79.8 | 98.2 | 12.2 | 64.5 | 78.5 | 99.9 | 13.7 | 27.697576 | -110.366275 |
| T. Izq. Pótam | 280.10 | 3 | 1 | 4333 | 75.2 | 100.1 | 121.2 | 22.5 | 70.3 | 90.0 | 109.7 | 17.6 | 65.7 | 78.1 | 109.3 | 13.0 | 27.704328 | -110.370829 |
| T. Izq. Pótam | 280.10 | 3 | 2 | 4464 | 95.9 | 105.7 | 122.7 | 11.6 | 85.1 | 94.3 | 111.3 | 11.4 | 75.8 | 90.8 | 113.4 | 14.2 | 27.704320 | -110.370834 |
| T. Der. Libramiento de Guaymas | 330.50 | 1 | 1 | 5935 | 64.3 | 81.7 | 100.8 | 17.2 | 64.4 | 81.5 | 100.0 | 17.2 | 62.6 | 78.5 | 96.9 | 15.6 | 27.951294 | -110.740857 |
| T. Der. Libramiento de Guaymas | 330.50 | 1 | 2 | 5996 | 90.6 | 105.0 | 124.3 | 15.7 | 91.3 | 103.5 | 122.8 | 13.4 | 85.5 | 101.0 | 120.9 | 15.7 | 27.951289 | -110.740861 |
| T. Der. Libramiento de Guaymas | 330.50 | 3 | 0 | 5906 | 73.7 | 85.0 | 112.0 | 13.6 | 73.7 | 83.3 | 132.9 | 13.6 | 70.6 | 84.2 | 124.6 | 15.7 | 27.952349 | -110.771598 |
| Empalme | 337.72 | 1 | 0 | 6137 | 79.9 | 91.3 | 109.5 | 12.4 | 80.6 | 92.7 | 108.7 | 13.0 | 76.2 | 87.1 | 107.7 | 12.2 | 27.953073 | -110.797186 |
| Empalme | 337.72 | 3 | 1 | 8211 | 71.0 | 80.3 | 93.4 | 10.8 | 69.4 | 77.5 | 90.5 | 10.0 | 66.5 | 76.7 | 93.3 | 11.5 | 27.955529 | -110.831407 |
| Empalme | 337.72 | 3 | 2 | 8381 | 76.0 | 84.9 | 101.3 | 10.8 | 73.1 | 81.6 | 94.9 | 10.0 | 69.3 | 78.9 | 94.4 | 11.1 | 27.955529 | -110.831407 |
| T. Izq. San Carlos | 355.70 | 1 | 1 | 6989 | 81.0 | 92.4 | 111.0 | 12.2 | 83.2 | 96.0 | 107.9 | 13.3 | 78.2 | 87.6 | 102.5 | 11.0 | 27.983139 | -110.940043 |

SONORA

13 CARR: Est. Don - Nogales (Cuota)

CLAVE: 26444

RUTA: MEX-015D-015

AÑO: 2012

| LUGAR | ESTACION | | | | VELOCIDAD AUTOS (km/h) | | | | VELOCIDAD AUTOBUSES (km/h) | | | | VELOCIDAD CAMIONES (km/h) | | | | COORDENADAS | |
|----------------------------|----------|----|----|-------|------------------------|-------|-------|------|----------------------------|-------|-------|------|---------------------------|-------|-------|------|-------------|-------------|
| | KM | TE | SC | TDPA | Promedio | P 85 | P 98 | δ | Promedio | P 85 | P 98 | δ | Promedio | P 85 | P 98 | δ | Latitud | Longitud |
| T. Izq. San Carlos | 355.70 | 1 | 2 | 6627 | 90.4 | 104.2 | 124.1 | 14.5 | 88.6 | 104.2 | 121.2 | 16.1 | 87.0 | 100.5 | 123.2 | 14.1 | 27.983146 | -110.940058 |
| T. Izq. San Carlos | 355.70 | 3 | 1 | 3241 | 95.4 | 108.1 | 124.3 | 13.4 | 93.8 | 107.9 | 115.2 | 14.8 | 88.4 | 100.3 | 120.6 | 13.1 | 27.993247 | -110.939863 |
| T. Izq. San Carlos | 355.70 | 3 | 2 | 3383 | 99.5 | 114.3 | 133.3 | 15.9 | 94.9 | 110.2 | 123.2 | 15.7 | 89.6 | 103.4 | 127.8 | 14.8 | 27.993245 | -110.939859 |
| T. Izq. Bahía Kino | 394.00 | 1 | 1 | 5245 | 103.1 | 116.8 | 135.1 | 14.5 | 93.9 | 107.5 | 126.2 | 14.0 | 87.1 | 101.5 | 126.7 | 15.3 | 28.315973 | -111.042176 |
| T. Izq. Bahía Kino | 394.00 | 1 | 2 | 5388 | 106.7 | 122.5 | 139.8 | 16.2 | 100.0 | 115.5 | 134.3 | 16.7 | 89.8 | 108.1 | 133.5 | 19.4 | 28.315973 | -111.042176 |
| T. Izq. Bahía Kino | 394.00 | 3 | 1 | 4657 | 99.2 | 112.9 | 130.3 | 14.8 | 93.7 | 106.7 | 121.7 | 13.7 | 85.5 | 101.0 | 123.3 | 16.1 | 28.322140 | -111.042206 |
| T. Izq. Bahía Kino | 394.00 | 3 | 2 | 4795 | 105.1 | 118.0 | 134.4 | 13.3 | 97.0 | 109.1 | 124.2 | 12.8 | 89.9 | 103.6 | 126.6 | 15.0 | 28.322133 | -111.042200 |
| Hermosillo | 473.70 | 1 | 1 | 6185 | 90.8 | 103.7 | 122.0 | 14.5 | 82.7 | 94.4 | 111.9 | 13.3 | 75.3 | 88.9 | 111.4 | 13.3 | 29.004361 | -110.966894 |
| Hermosillo | 473.70 | 1 | 2 | 6320 | 90.5 | 103.5 | 136.9 | 15.3 | 93.0 | 124.2 | 143.3 | 21.9 | 81.1 | 104.0 | 141.1 | 20.5 | 29.004364 | -110.966890 |
| Hermosillo | 473.70 | 3 | 1 | 14788 | 96.3 | 111.7 | 134.8 | 15.4 | 100.9 | 118.3 | 140.8 | 17.0 | 93.0 | 111.5 | 138.6 | 17.5 | 29.113624 | -110.912109 |
| Hermosillo | 473.70 | 3 | 2 | 15002 | 85.5 | 96.0 | 115.7 | 12.2 | 87.3 | 98.7 | 123.4 | 13.1 | 80.5 | 92.8 | 116.2 | 14.3 | 29.113625 | -110.912109 |
| T. Der. Ures | 482.30 | 1 | 1 | 11549 | 86.2 | 97.6 | 117.1 | 12.5 | 85.4 | 98.4 | 118.9 | 13.6 | 79.7 | 92.9 | 112.8 | 14.0 | 29.158323 | -110.909446 |
| T. Der. Ures | 482.30 | 1 | 2 | 12129 | 90.3 | 103.1 | 123.1 | 13.8 | 91.7 | 103.4 | 121.9 | 13.4 | 85.2 | 97.2 | 117.1 | 12.8 | 29.158323 | -110.909446 |
| T. Der. Ures | 482.30 | 3 | 1 | 7391 | 86.1 | 97.4 | 116.9 | 12.4 | 85.3 | 98.6 | 117.6 | 13.7 | 79.7 | 92.8 | 112.7 | 13.9 | 29.178058 | -110.919160 |
| T. Der. Ures | 482.30 | 3 | 2 | 7195 | 91.5 | 103.9 | 123.9 | 13.7 | 91.2 | 103.1 | 121.6 | 13.5 | 85.3 | 97.2 | 117.0 | 12.8 | 29.178086 | -110.919177 |
| Caseta de Cobro Hermosillo | 488.90 | 2 | 1 | 4601 | | | | | | | | | | | | | 29.220739 | -110.930200 |
| Caseta de Cobro Hermosillo | 488.90 | 2 | 2 | 4600 | | | | | | | | | | | | | 29.220739 | -110.930200 |
| T. Der. Pesqueira | 506.09 | 3 | 1 | 5196 | 101.6 | 113.7 | 130.9 | 13.7 | 95.9 | 109.2 | 123.0 | 13.8 | 80.7 | 97.9 | 120.9 | 17.9 | 29.375781 | -110.973290 |
| T. Der. Pesqueira | 506.09 | 3 | 2 | 5614 | 95.1 | 113.5 | 136.5 | 19.4 | 89.2 | 105.4 | 139.6 | 18.7 | 78.8 | 93.2 | 118.0 | 17.2 | 29.375750 | -110.973294 |
| T. Der. Carbó | 542.60 | 1 | 1 | 4459 | 103.5 | 114.7 | 131.8 | 12.6 | 94.4 | 106.2 | 122.9 | 12.0 | 87.0 | 97.1 | 118.7 | 12.0 | 29.683626 | -111.042188 |
| T. Der. Carbó | 542.60 | 1 | 2 | 4722 | 92.0 | 106.3 | 124.1 | 15.7 | 89.3 | 102.0 | 121.9 | 14.1 | 77.2 | 89.7 | 117.9 | 13.8 | 29.683626 | -111.042188 |
| T. Der. Carbó | 542.60 | 3 | 1 | 4805 | 95.6 | 106.2 | 123.2 | 12.1 | 90.9 | 103.4 | 118.6 | 13.5 | 80.3 | 94.3 | 113.3 | 15.3 | 29.691754 | -111.043947 |
| T. Der. Carbó | 542.60 | 3 | 2 | 5399 | 79.3 | 91.9 | 112.9 | 13.3 | 70.5 | 80.6 | 99.3 | 11.4 | 64.7 | 74.2 | 93.9 | 10.7 | 29.691754 | -111.043946 |
| T. Izq. Benjamín Hill | 599.10 | 1 | 1 | 4952 | 99.8 | 118.0 | 136.0 | 19.1 | 93.1 | 111.8 | 134.8 | 19.5 | 84.6 | 101.5 | 128.8 | 17.0 | 30.167965 | -111.097157 |
| T. Izq. Benjamín Hill | 599.10 | 1 | 2 | 5526 | 98.0 | 112.1 | 130.6 | 15.1 | 91.3 | 106.4 | 123.2 | 16.4 | 83.2 | 99.8 | 121.7 | 16.9 | 30.167967 | -111.097155 |
| T. Izq. Benjamín Hill | 599.10 | 3 | 1 | 4845 | 92.2 | 105.3 | 123.6 | 14.8 | 87.3 | 100.9 | 119.5 | 14.5 | 73.7 | 90.5 | 116.5 | 17.6 | 30.176395 | -111.097300 |
| T. Izq. Benjamín Hill | 599.10 | 3 | 2 | 5450 | 97.6 | 113.8 | 133.9 | 16.6 | 86.0 | 104.1 | 123.9 | 17.9 | 80.1 | 98.7 | 123.1 | 18.4 | 30.176395 | -111.097299 |
| Santa Ana | 640.97 | 1 | 1 | 5666 | 98.9 | 113.4 | 131.4 | 15.9 | 95.2 | 107.6 | 123.6 | 12.7 | 85.3 | 98.0 | 124.0 | 13.5 | 30.527624 | -111.114770 |
| Santa Ana | 640.97 | 1 | 2 | 6199 | 91.4 | 103.6 | 125.1 | 14.3 | 90.6 | 104.3 | 140.9 | 15.6 | 78.7 | 90.0 | 127.2 | 13.4 | 30.527631 | -111.114761 |
| Santa Ana | 640.97 | 3 | 1 | 5755 | 70.6 | 78.3 | 100.9 | 10.5 | 66.1 | 73.3 | 91.0 | 9.7 | 58.3 | 70.6 | 89.4 | 12.8 | 30.549202 | -111.109168 |
| Santa Ana | 640.97 | 3 | 2 | 6366 | 80.9 | 97.9 | 112.4 | 18.1 | 75.6 | 92.4 | 104.8 | 17.1 | 73.7 | 89.9 | 106.3 | 15.6 | 30.549197 | -111.109174 |
| Magdalena de Kino | 656.40 | 1 | 1 | 5539 | 91.2 | 104.5 | 122.6 | 14.6 | 90.2 | 103.0 | 117.4 | 14.2 | 85.7 | 97.0 | 115.2 | 13.1 | 30.618625 | -110.995282 |
| Magdalena de Kino | 656.40 | 1 | 2 | 6032 | 85.6 | 93.8 | 109.8 | 10.0 | 83.8 | 92.8 | 104.8 | 10.2 | 79.2 | 87.2 | 103.3 | 10.3 | 30.618599 | -110.995335 |
| Magdalena de Kino | 656.40 | 3 | 1 | 3352 | 78.0 | 92.5 | 114.4 | 14.7 | 79.6 | 94.2 | 113.4 | 15.5 | 72.9 | 86.8 | 111.9 | 14.6 | 30.669381 | -110.910925 |
| Magdalena de Kino | 656.40 | 3 | 2 | 3464 | 77.4 | 88.9 | 107.9 | 12.4 | 78.0 | 89.2 | 108.0 | 12.9 | 75.3 | 84.7 | 109.8 | 11.6 | 30.651312 | -110.942012 |

SONORA

13 CARR: Est. Don - Nogales (Cuota)

CLAVE: 26444

RUTA: MEX-015D-015

AÑO: 2012

| LUGAR | ESTACION | | | | VELOCIDAD AUTOS (km/h) | | | | VELOCIDAD AUTOBUSES (km/h) | | | | VELOCIDAD CAMIONES (km/h) | | | | COORDENADAS | |
|---|----------|----|----|-------|------------------------|-------|-------|------|----------------------------|-------|-------|------|---------------------------|-------|-------|------|-------------|-------------|
| | KM | TE | SC | TDPA | Promedio | P 85 | P 98 | δ | Promedio | P 85 | P 98 | δ | Promedio | P 85 | P 98 | δ | Latitud | Longitud |
| Imuris | 682.70 | 1 | 1 | 6093 | 49.5 | 56.7 | 71.5 | 9.6 | 52.1 | 54.5 | 63.4 | 6.5 | 45.9 | 52.7 | 62.9 | 9.0 | 30.775588 | -110.857356 |
| Imuris | 682.70 | 1 | 2 | 6212 | 49.4 | 56.4 | 71.5 | 9.6 | 52.0 | 54.4 | 63.2 | 6.4 | 46.1 | 52.6 | 62.4 | 9.0 | 30.775588 | -110.857356 |
| T. Der. Agua Prieta | 683.20 | 3 | 1 | 5174 | 82.3 | 103.0 | 125.4 | 20.5 | 82.2 | 106.3 | 127.5 | 23.5 | 77.3 | 97.7 | 123.8 | 20.1 | 30.792558 | -110.850462 |
| T. Der. Agua Prieta | 683.20 | 3 | 2 | 5202 | 92.2 | 104.4 | 122.7 | 13.8 | 91.4 | 103.5 | 114.5 | 13.2 | 82.5 | 94.5 | 114.4 | 14.5 | 30.792568 | -110.850467 |
| T. Izq. Sáric | 729.60 | 1 | 1 | 8024 | 88.3 | 99.3 | 113.6 | 12.0 | 84.4 | 97.2 | 110.8 | 13.8 | 80.2 | 92.6 | 111.6 | 13.0 | 31.176164 | -110.967165 |
| T. Izq. Sáric | 729.60 | 1 | 2 | 8224 | 87.9 | 98.6 | 113.7 | 12.1 | 85.3 | 97.0 | 111.2 | 12.7 | 83.4 | 94.0 | 111.6 | 12.5 | 31.176165 | -110.967164 |
| T. Izq. Sáric | 729.60 | 3 | 1 | 7556 | 92.8 | 104.8 | 123.3 | 13.5 | 89.0 | 104.0 | 120.7 | 15.9 | 82.2 | 99.3 | 120.6 | 17.0 | 31.195536 | -110.973446 |
| T. Izq. Sáric | 729.60 | 3 | 2 | 7970 | 96.5 | 108.3 | 125.7 | 12.7 | 93.8 | 106.7 | 122.7 | 14.0 | 91.9 | 103.4 | 123.5 | 13.4 | 31.195536 | -110.973446 |
| T. Izq. Libramiento de Nogales (Cuota) | 734.70 | 3 | 1 | 8605 | 73.1 | 93.5 | 110.5 | 19.3 | 74.4 | 93.4 | 110.5 | 18.4 | 69.4 | 89.0 | 106.3 | 16.8 | 31.237105 | -110.964312 |
| T. Izq. Libramiento de Nogales (Cuota) | 734.70 | 3 | 2 | 8829 | 82.6 | 90.2 | 103.1 | 9.3 | 73.8 | 82.1 | 97.6 | 9.7 | 73.4 | 83.0 | 99.6 | 11.0 | 31.237103 | -110.964320 |
| T. Izq. Periférico Luis Donaldo Colosio | 740.70 | 1 | 1 | 26244 | 60.3 | 67.4 | 82.9 | 9.4 | 50.6 | 61.7 | 78.4 | 12.0 | 55.4 | 63.9 | 82.2 | 10.0 | 31.274731 | -110.941862 |
| T. Izq. Periférico Luis Donaldo Colosio | 740.70 | 1 | 2 | 27380 | 66.9 | 74.2 | 91.3 | 9.6 | 65.1 | 73.4 | 90.7 | 9.7 | 62.6 | 71.0 | 88.7 | 10.0 | 31.274724 | -110.941870 |
| Nogales | 743.70 | 1 | 1 | 15755 | 73.4 | 80.9 | 94.7 | 9.1 | 72.7 | 81.2 | 94.7 | 10.0 | 68.2 | 79.0 | 94.4 | 12.1 | 31.281496 | -110.939321 |
| Nogales | 743.70 | 1 | 2 | 16292 | 71.6 | 79.8 | 94.6 | 10.0 | 60.5 | 66.7 | 81.3 | 8.9 | 61.5 | 68.8 | 83.8 | 9.4 | 31.281496 | -110.939325 |

14 CARR: Santa Ana - Sonoita

CLAVE: 26080

RUTA: MEX-002D-MEX

AÑO: 2012

| LUGAR | ESTACION | | | | VELOCIDAD AUTOS (km/h) | | | | VELOCIDAD AUTOBUSES (km/h) | | | | VELOCIDAD CAMIONES (km/h) | | | | COORDENADAS | |
|----------------------------|----------|----|----|-------|------------------------|-------|-------|------|----------------------------|-------|-------|------|---------------------------|-------|-------|------|-------------|-------------|
| | KM | TE | SC | TDPA | Promedio | P 85 | P 98 | δ | Promedio | P 85 | P 98 | δ | Promedio | P 85 | P 98 | δ | Latitud | Longitud |
| Santa Ana | 0.00 | 3 | 0 | 7415 | 63.9 | 74.0 | 91.6 | 11.4 | 60.5 | 69.1 | 83.4 | 10.0 | 57.4 | 65.5 | 83.1 | 10.3 | 30.550984 | -111.121550 |
| Altar | 72.80 | 1 | 0 | 9381 | 57.1 | 64.9 | 82.5 | 10.3 | 55.6 | 62.4 | 74.5 | 8.1 | 52.4 | 60.0 | 81.8 | 10.0 | 30.710597 | -111.830416 |
| Altar | 72.80 | 3 | 1 | 3527 | 97.0 | 109.7 | 132.3 | 13.5 | 93.2 | 104.2 | 121.0 | 13.2 | 87.3 | 98.8 | 123.5 | 12.5 | 30.713155 | -111.855294 |
| Altar | 72.80 | 3 | 2 | 3697 | 99.9 | 112.8 | 134.2 | 13.9 | 95.5 | 107.3 | 124.0 | 12.8 | 90.6 | 101.7 | 124.4 | 12.7 | 30.713155 | -111.855294 |
| T. Izq. Estación Pitiquito | 94.28 | 1 | 0 | 6842 | 87.3 | 101.3 | 120.0 | 14.9 | 85.0 | 96.4 | 112.0 | 13.1 | 78.3 | 91.6 | 112.2 | 14.1 | 30.681574 | -112.046286 |
| Caborca | 103.83 | 1 | 0 | 10750 | 75.1 | 84.5 | 103.0 | 11.0 | 73.2 | 82.0 | 94.6 | 10.2 | 69.8 | 79.4 | 99.8 | 11.5 | 30.710246 | -112.127163 |
| Cozón | 180.30 | 1 | 0 | 2748 | 114.4 | 133.0 | 143.4 | 16.4 | 97.6 | 111.8 | 135.8 | 15.3 | 95.4 | 104.6 | 131.5 | 11.4 | 31.293650 | -112.548440 |
| Sonoita | 253.70 | 1 | 0 | 3181 | 93.2 | 112.7 | 140.0 | 17.9 | 83.8 | 100.0 | 136.0 | 17.2 | 77.7 | 92.9 | 126.6 | 16.0 | 31.846288 | -112.859215 |

15 CARR: Altar - Sáric

CLAVE: 26233

RUTA: SON-064

AÑO: 2012

| LUGAR | ESTACION | | | | VELOCIDAD AUTOS (km/h) | | | | VELOCIDAD AUTOBUSES (km/h) | | | | VELOCIDAD CAMIONES (km/h) | | | | COORDENADAS | |
|---------------------------|----------|----|----|------|------------------------|------|------|------|----------------------------|------|-------|------|---------------------------|------|-------|------|-------------|-------------|
| | KM | TE | SC | TDPA | Promedio | P 85 | P 98 | δ | Promedio | P 85 | P 98 | δ | Promedio | P 85 | P 98 | δ | Latitud | Longitud |
| T. C. Santa Ana - Sonoita | 0.00 | 3 | 0 | 1314 | 63.7 | 76.8 | 98.2 | 13.9 | 64.5 | 75.7 | 101.7 | 12.9 | 61.1 | 73.8 | 104.1 | 14.9 | 30.722953 | -111.830625 |
| Sáric | 68.00 | 1 | 0 | 299 | 44.4 | 54.4 | 73.5 | 11.1 | 53.1 | 62.7 | 74.2 | 10.1 | 49.7 | 62.2 | 76.8 | 12.5 | 31.101365 | -111.386123 |

SONORA

16 CARR: Caborca - El Desemboque

CLAVE: 26225

RUTA: SON-037

AÑO: 2012

| LUGAR | ESTACION | | | | VELOCIDAD AUTOS (km/h) | | | | VELOCIDAD AUTOBUSES (km/h) | | | | VELOCIDAD CAMIONES (km/h) | | | | COORDENADAS | |
|-------------------------------------|----------|----|----|------|------------------------|-------|-------|------|----------------------------|-------|-------|------|---------------------------|-------|-------|------|-------------|-------------|
| | KM | TE | SC | TDPA | Promedio | P 85 | P 98 | δ | Promedio | P 85 | P 98 | δ | Promedio | P 85 | P 98 | δ | Latitud | Longitud |
| Caborca | 0.00 | 3 | 0 | 8435 | 59.0 | 65.6 | 82.1 | 9.6 | 58.5 | 66.0 | 82.2 | 9.9 | 56.4 | 64.9 | 85.3 | 11.2 | 30.708498 | -112.182247 |
| T. Der. Productora Nal. de Semillas | 4.20 | 3 | 0 | 5518 | 91.1 | 103.7 | 124.1 | 13.8 | 90.9 | 103.7 | 121.3 | 15.0 | 91.4 | 104.4 | 127.7 | 14.8 | 30.704198 | -112.205338 |
| T. Izq. Ramal El Deseo | 6.90 | 3 | 0 | 4416 | 93.7 | 106.1 | 125.2 | 13.4 | 92.5 | 104.7 | 123.6 | 14.2 | 92.4 | 104.9 | 130.2 | 14.2 | 30.700246 | -112.226275 |
| T. Der. El Sahuaro | 61.20 | 3 | 0 | 1042 | 61.7 | 73.8 | 93.3 | 13.1 | 60.3 | 71.0 | 92.1 | 11.4 | 60.0 | 74.8 | 98.0 | 14.6 | 30.800955 | -112.720407 |
| El Desemboque | 102.30 | | | | | | | | | | | | | | | | | |

17 CARR: Calle 36 Norte - Puerto de La Libertad

CLAVE: 26117

RUTA: SON-029

AÑO: 2012

| LUGAR | ESTACION | | | | VELOCIDAD AUTOS (km/h) | | | | VELOCIDAD AUTOBUSES (km/h) | | | | VELOCIDAD CAMIONES (km/h) | | | | COORDENADAS | |
|-------------------------------|----------|----|----|------|------------------------|------|------|------|----------------------------|------|------|------|---------------------------|------|------|------|-------------|-------------|
| | KM | TE | SC | TDPA | Promedio | P 85 | P 98 | δ | Promedio | P 85 | P 98 | δ | Promedio | P 85 | P 98 | δ | Latitud | Longitud |
| T. C. Hermosillo - Bahía Kino | 0.00 | 3 | 0 | 469 | 53.2 | 63.7 | 81.1 | 11.0 | 49.9 | 55.7 | 74.9 | 11.1 | 44.6 | 54.2 | 86.0 | 13.6 | 28.832550 | -111.714279 |
| Casas Grandes | 45.00 | 3 | 0 | 406 | 53.8 | 64.5 | 81.6 | 11.0 | 51.3 | 54.9 | 76.9 | 10.6 | 50.8 | 54.6 | 78.6 | 10.6 | 29.182529 | -111.713689 |
| Puerto de La Libertad | 156.00 | | | | | | | | | | | | | | | | | |

18 CARR: Esperanza - Presa Álvaro Obregón

CLAVE: 26242

RUTA: SON-117

AÑO: 2012

| LUGAR | ESTACION | | | | VELOCIDAD AUTOS (km/h) | | | | VELOCIDAD AUTOBUSES (km/h) | | | | VELOCIDAD CAMIONES (km/h) | | | | COORDENADAS | |
|----------------------|----------|----|----|------|------------------------|------|------|------|----------------------------|------|------|------|---------------------------|------|------|------|-------------|-------------|
| | KM | TE | SC | TDPA | Promedio | P 85 | P 98 | δ | Promedio | P 85 | P 98 | δ | Promedio | P 85 | P 98 | δ | Latitud | Longitud |
| Esperanza | 0.00 | 3 | 0 | 5187 | 59.5 | 70.0 | 85.9 | 12.1 | 61.5 | 73.8 | 93.6 | 13.4 | 54.1 | 63.0 | 83.9 | 10.6 | 27.585162 | -109.916839 |
| T. Der. Los Hornos | 17.00 | 3 | 0 | 923 | 55.1 | 63.9 | 82.1 | 10.4 | 59.7 | 68.4 | 84.4 | 10.0 | 58.2 | 66.5 | 84.0 | 9.3 | 27.720812 | -109.897526 |
| Presa Álvaro Obregón | 32.00 | | | | | | | | | | | | | | | | | |

19 CARR: Hermosillo - Bahía Kino

CLAVE: 26109

RUTA: SON-100

AÑO: 2012

| LUGAR | ESTACION | | | | VELOCIDAD AUTOS (km/h) | | | | VELOCIDAD AUTOBUSES (km/h) | | | | VELOCIDAD CAMIONES (km/h) | | | | COORDENADAS | |
|---------------------|----------|----|----|-------|------------------------|-------|-------|------|----------------------------|-------|-------|------|---------------------------|-------|-------|------|-------------|-------------|
| | KM | TE | SC | TDPA | Promedio | P 85 | P 98 | δ | Promedio | P 85 | P 98 | δ | Promedio | P 85 | P 98 | δ | Latitud | Longitud |
| Hermosillo | 0.00 | 3 | 1 | 11256 | 71.6 | 80.2 | 93.7 | 10.4 | 74.0 | 82.0 | 94.8 | 9.4 | 69.4 | 78.5 | 93.5 | 10.9 | 29.094776 | -111.026927 |
| Hermosillo | 0.00 | 3 | 2 | 11569 | 61.9 | 70.3 | 84.0 | 10.0 | 63.1 | 71.9 | 86.4 | 10.3 | 58.7 | 67.8 | 83.3 | 10.6 | 29.094777 | -111.026929 |
| T. Der. Aeropuerto | 11.00 | 1 | 1 | 10651 | 66.3 | 75.3 | 94.4 | 11.5 | 67.0 | 77.3 | 94.2 | 11.9 | 63.7 | 74.0 | 92.6 | 11.7 | 29.090195 | -111.045025 |
| T. Der. Aeropuerto | 11.00 | 1 | 2 | 11514 | 61.8 | 70.1 | 90.4 | 10.9 | 60.0 | 68.8 | 81.8 | 10.4 | 57.9 | 65.8 | 81.7 | 10.3 | 29.090194 | -111.045026 |
| T. Der. Aeropuerto | 11.00 | 3 | 1 | 6098 | 67.2 | 79.4 | 93.6 | 13.5 | 71.1 | 80.9 | 93.5 | 11.2 | 67.3 | 76.9 | 93.5 | 11.4 | 29.088104 | -111.053062 |
| T. Der. Aeropuerto | 11.00 | 3 | 2 | 5922 | 62.3 | 74.3 | 90.1 | 14.1 | 66.8 | 75.9 | 89.2 | 10.7 | 60.8 | 72.1 | 88.7 | 12.6 | 29.088139 | -111.053101 |
| T. Izq. Calle 4 Sur | 53.00 | 3 | 0 | 5815 | 91.4 | 103.5 | 121.0 | 13.5 | 89.2 | 102.3 | 119.3 | 14.2 | 86.4 | 100.8 | 120.8 | 15.4 | 28.839400 | -111.395654 |
| El Triunfo | 55.50 | 1 | 0 | 5916 | 93.5 | 106.9 | 127.0 | 14.3 | 91.3 | 104.1 | 122.9 | 14.4 | 90.0 | 104.1 | 126.3 | 15.6 | 28.839816 | -111.458263 |
| T. Der. Calle 36 | 84.40 | 1 | 0 | 2189 | 91.0 | 103.4 | 120.8 | 13.8 | 82.4 | 97.6 | 110.9 | 16.6 | 83.2 | 99.7 | 117.8 | 17.1 | 28.831408 | -111.710872 |

SONORA

19 CARR: Hermosillo - Bahía Kino

CLAVE: 26109

RUTA: SON-100

AÑO: 2012

| LUGAR | ESTACION | | | | VELOCIDAD AUTOS (km/h) | | | | VELOCIDAD AUTOBUSES (km/h) | | | | VELOCIDAD CAMIONES (km/h) | | | | COORDENADAS | |
|------------------|----------|----|----|------|------------------------|-------|-------|------|----------------------------|------|-------|------|---------------------------|-------|-------|------|-------------|-------------|
| | KM | TE | SC | TDPA | Promedio | P 85 | P 98 | δ | Promedio | P 85 | P 98 | δ | Promedio | P 85 | P 98 | δ | Latitud | Longitud |
| T. Der. Calle 36 | 84.40 | 3 | 0 | 1830 | 90.9 | 103.2 | 119.8 | 13.6 | 73.9 | 92.5 | 104.6 | 18.3 | 82.6 | 98.9 | 114.1 | 17.0 | 28.831171 | -111.719354 |
| Bahía Kino | 106.50 | 1 | 0 | 2077 | 87.4 | 101.3 | 121.9 | 14.3 | 83.0 | 98.5 | 116.6 | 15.6 | 86.0 | 101.1 | 123.3 | 15.3 | 28.828511 | -111.924962 |

20 CARR: Hermosillo - Sahuaripa

CLAVE: 26230

RUTA: SON-020

AÑO: 2012

| LUGAR | ESTACION | | | | VELOCIDAD AUTOS (km/h) | | | | VELOCIDAD AUTOBUSES (km/h) | | | | VELOCIDAD CAMIONES (km/h) | | | | COORDENADAS | |
|---------------------------------|----------|----|----|------|------------------------|-------|-------|------|----------------------------|-------|-------|------|---------------------------|------|-------|------|-------------|-------------|
| | KM | TE | SC | TDPA | Promedio | P 85 | P 98 | δ | Promedio | P 85 | P 98 | δ | Promedio | P 85 | P 98 | δ | Latitud | Longitud |
| T. C. Libramiento de Hermosillo | 0.00 | 3 | 1 | 4512 | 94.5 | 109.1 | 129.3 | 14.7 | 91.0 | 105.5 | 124.7 | 15.4 | 74.2 | 95.7 | 122.3 | 20.0 | 29.031409 | -110.935415 |
| T. C. Libramiento de Hermosillo | 0.00 | 3 | 2 | 4395 | 82.2 | 93.7 | 111.3 | 12.8 | 81.2 | 94.7 | 112.7 | 13.7 | 68.2 | 85.2 | 104.2 | 15.5 | 29.031409 | -110.935415 |
| Mazatán | 88.00 | 1 | 0 | 1025 | 76.8 | 91.2 | 109.0 | 14.7 | 66.3 | 81.8 | 103.5 | 14.7 | 72.6 | 87.7 | 104.6 | 15.4 | 29.005226 | -110.149962 |
| Mazatán | 88.00 | 3 | 0 | 873 | 68.1 | 81.8 | 101.2 | 14.4 | 71.6 | 86.4 | 106.5 | 15.4 | 69.3 | 83.4 | 103.5 | 15.4 | 28.996657 | -110.135391 |
| Sahuaripa | 199.00 | | | | | | | | | | | | | | | | | |

21 CARR: Hornos - San Nicolás

CLAVE: 26243

RUTA: SON-012

AÑO: 2012

| LUGAR | ESTACION | | | | VELOCIDAD AUTOS (km/h) | | | | VELOCIDAD AUTOBUSES (km/h) | | | | VELOCIDAD CAMIONES (km/h) | | | | COORDENADAS | |
|-------------|----------|----|----|------|------------------------|------|------|------|----------------------------|------|------|------|---------------------------|------|------|------|-------------|-------------|
| | KM | TE | SC | TDPA | Promedio | P 85 | P 98 | δ | Promedio | P 85 | P 98 | δ | Promedio | P 85 | P 98 | δ | Latitud | Longitud |
| Hornos | 0.00 | 3 | 0 | 1346 | 66.9 | 79.1 | 99.4 | 13.1 | 67.1 | 80.8 | 99.5 | 13.3 | 57.7 | 69.5 | 93.9 | 11.8 | 27.719313 | -109.894955 |
| Rosario | 58.00 | 1 | 0 | 1045 | 66.1 | 80.1 | 99.5 | 14.0 | 61.3 | 71.8 | 93.6 | 11.7 | 52.5 | 62.9 | 87.2 | 11.8 | 27.842200 | -109.385571 |
| San Nicolás | 137.20 | | | | | | | | | | | | | | | | | |

22 CARR: Huatabampo - Bacabachi

CLAVE: 26237

RUTA: SON-176

AÑO: 2012

| LUGAR | ESTACION | | | | VELOCIDAD AUTOS (km/h) | | | | VELOCIDAD AUTOBUSES (km/h) | | | | VELOCIDAD CAMIONES (km/h) | | | | COORDENADAS | |
|--|----------|----|----|------|------------------------|------|------|------|----------------------------|------|------|------|---------------------------|------|------|------|-------------|-------------|
| | KM | TE | SC | TDPA | Promedio | P 85 | P 98 | δ | Promedio | P 85 | P 98 | δ | Promedio | P 85 | P 98 | δ | Latitud | Longitud |
| Huatabampo | 0.00 | 3 | 0 | 2150 | 62.7 | 75.1 | 94.1 | 13.6 | 65.2 | 75.6 | 93.9 | 11.6 | 60.0 | 72.2 | 93.4 | 13.3 | 26.825297 | -109.600466 |
| T. C. Los Mochis - Cd. Obregón (Cuota) | 29.00 | 1 | 0 | 1486 | 61.5 | 72.7 | 92.4 | 12.4 | 56.2 | 66.1 | 84.2 | 10.4 | 51.0 | 60.3 | 82.2 | 11.5 | 26.838796 | -109.369441 |

23 CARR: La Alameda - El Sahuaro

CLAVE: 26234

RUTA: SON-037

AÑO: 2012

| LUGAR | ESTACION | | | | VELOCIDAD AUTOS (km/h) | | | | VELOCIDAD AUTOBUSES (km/h) | | | | VELOCIDAD CAMIONES (km/h) | | | | COORDENADAS | |
|-------------------------------|----------|----|----|------|------------------------|-------|-------|------|----------------------------|------|-------|------|---------------------------|------|-------|------|-------------|-------------|
| | KM | TE | SC | TDPA | Promedio | P 85 | P 98 | δ | Promedio | P 85 | P 98 | δ | Promedio | P 85 | P 98 | δ | Latitud | Longitud |
| T. C. Caborca - El Desemboque | 0.00 | 3 | 0 | 2813 | 66.2 | 79.8 | 99.1 | 13.8 | 62.9 | 74.2 | 91.5 | 12.4 | 58.9 | 70.6 | 92.0 | 11.9 | 30.807753 | -112.720678 |
| Estación El Sahuaro | 47.00 | 1 | 0 | 1976 | 87.4 | 100.0 | 117.8 | 13.4 | 82.6 | 97.1 | 113.1 | 15.9 | 75.4 | 94.0 | 113.7 | 17.3 | 31.042412 | -112.943280 |

SONORA

29 CARR: San Luis Río Colorado - Golfo de Santa Clara

CLAVE: 26226

RUTA: SON-040

AÑO: 2012

| LUGAR | ESTACION | | | | VELOCIDAD AUTOS (km/h) | | | | VELOCIDAD AUTOBUSES (km/h) | | | | VELOCIDAD CAMIONES (km/h) | | | | COORDENADAS | |
|-----------------------|----------|----|----|------|------------------------|-------|-------|------|----------------------------|------|-------|------|---------------------------|------|-------|------|-------------|-------------|
| | KM | TE | SC | TDPA | Promedio | P 85 | P 98 | δ | Promedio | P 85 | P 98 | δ | Promedio | P 85 | P 98 | δ | Latitud | Longitud |
| San Luis Río Colorado | 0.00 | 3 | 1 | 2577 | 85.5 | 96.9 | 114.2 | 12.4 | 80.8 | 94.6 | 110.5 | 15.2 | 83.7 | 97.3 | 114.3 | 14.4 | 32.446315 | -114.840476 |
| San Luis Río Colorado | 0.00 | 3 | 2 | 2499 | 83.9 | 93.9 | 111.3 | 11.6 | 79.6 | 92.6 | 107.3 | 14.5 | 81.3 | 93.6 | 113.2 | 14.1 | 32.446315 | -114.840476 |
| T. Izq. Lagunitas | 25.50 | 3 | 0 | 4970 | 87.9 | 100.2 | 117.9 | 13.4 | 81.3 | 95.9 | 109.3 | 15.9 | 84.6 | 99.3 | 120.8 | 15.6 | 32.316637 | -114.952372 |
| Golfo de Santa Clara | 114.30 | 1 | 0 | 1772 | 86.0 | 97.7 | 114.4 | 12.8 | 76.6 | 92.5 | 109.6 | 15.7 | 77.9 | 93.6 | 114.6 | 15.6 | 31.706334 | -114.523444 |

30 CARR: Sonoita - Pitiquito

CLAVE: 26022

RUTA: SON

AÑO: 2012

| LUGAR | ESTACION | | | | VELOCIDAD AUTOS (km/h) | | | | VELOCIDAD AUTOBUSES (km/h) | | | | VELOCIDAD CAMIONES (km/h) | | | | COORDENADAS | |
|-----------|----------|----|----|------|------------------------|------|------|------|----------------------------|------|------|-----|---------------------------|------|------|------|-------------|-------------|
| | KM | TE | SC | TDPA | Promedio | P 85 | P 98 | δ | Promedio | P 85 | P 98 | δ | Promedio | P 85 | P 98 | δ | Latitud | Longitud |
| Sonoita | 0.00 | 3 | 0 | 1458 | 54.3 | 63.1 | 79.0 | 9.8 | 55.3 | 62.8 | 78.0 | 8.2 | 54.2 | 65.0 | 82.2 | 11.5 | 31.855391 | -112.829202 |
| Pitiquito | 170.00 | 1 | 0 | 536 | 43.4 | 51.9 | 64.3 | 10.0 | 45.5 | 51.5 | 60.7 | 7.8 | 34.2 | 44.4 | 57.6 | 10.7 | 30.722778 | -112.094722 |

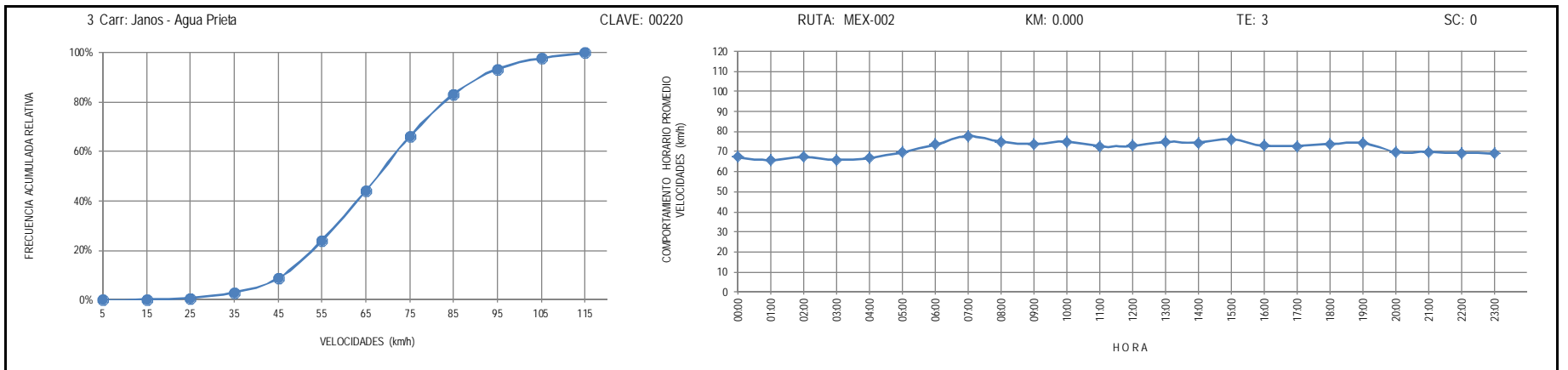
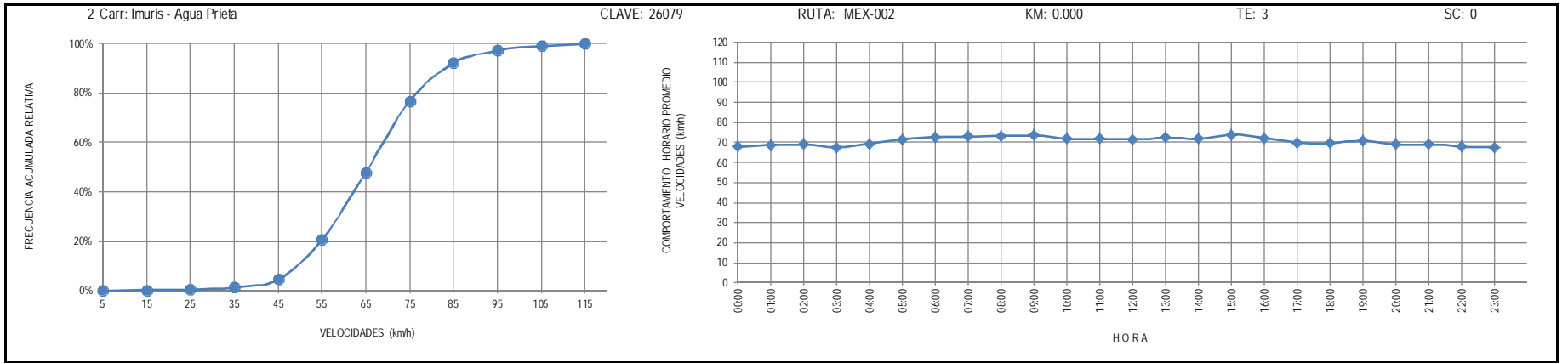
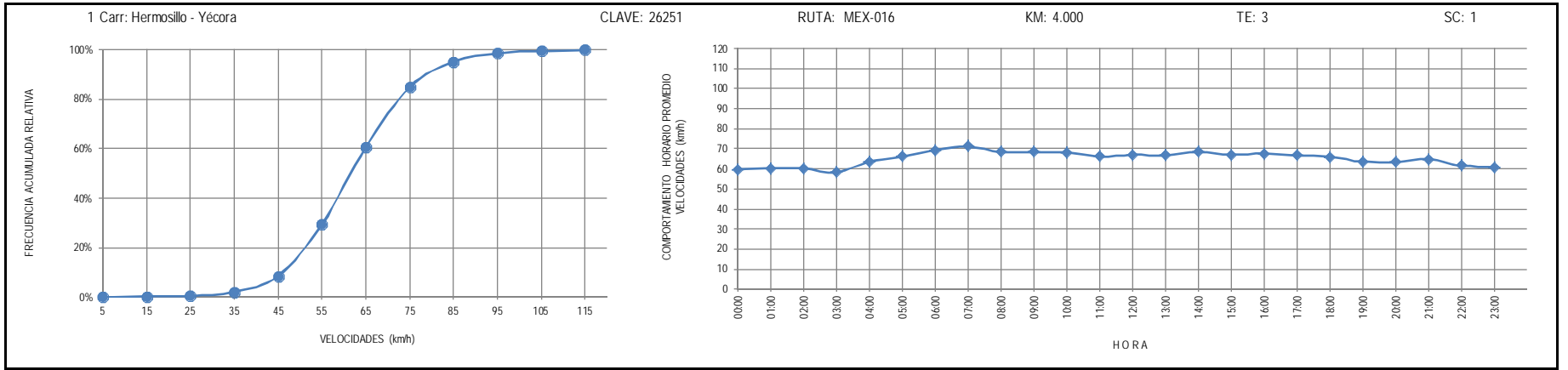
31 CARR: T. C. (Hermosillo - Nogales) - Huásabas

CLAVE: 26231

RUTA: MEX-014-SON

AÑO: 2012

| LUGAR | ESTACION | | | | VELOCIDAD AUTOS (km/h) | | | | VELOCIDAD AUTOBUSES (km/h) | | | | VELOCIDAD CAMIONES (km/h) | | | | COORDENADAS | |
|----------------------------|----------|----|----|------|------------------------|------|-------|------|----------------------------|------|-------|------|---------------------------|------|-------|------|-------------|-------------|
| | KM | TE | SC | TDPA | Promedio | P 85 | P 98 | δ | Promedio | P 85 | P 98 | δ | Promedio | P 85 | P 98 | δ | Latitud | Longitud |
| T. C. Hermosillo - Nogales | 0.00 | 3 | 1 | 6366 | 81.1 | 91.1 | 105.7 | 11.5 | 80.5 | 91.8 | 104.3 | 12.4 | 76.7 | 89.2 | 104.6 | 12.9 | 29.169960 | -110.901777 |
| T. C. Hermosillo - Nogales | 0.00 | 3 | 2 | 6102 | 79.2 | 89.2 | 104.4 | 11.5 | 78.3 | 89.2 | 103.2 | 12.1 | 75.4 | 87.4 | 104.3 | 12.9 | 29.169953 | -110.901783 |
| Ures | 62.00 | 3 | 0 | 2145 | 77.3 | 92.5 | 119.1 | 15.4 | 71.6 | 87.5 | 114.8 | 16.1 | 70.1 | 87.3 | 116.9 | 17.3 | 29.432549 | -110.354086 |
| Mazocahui | 97.50 | 3 | 0 | 1050 | 56.7 | 64.0 | 75.0 | 9.2 | 52.9 | 57.7 | 71.5 | 7.9 | 44.0 | 56.3 | 72.9 | 12.6 | 29.544498 | -110.118373 |
| Moctezuma | 165.00 | 1 | 0 | 1183 | 66.5 | 76.8 | 91.9 | 11.6 | 60.2 | 66.5 | 83.4 | 8.5 | 58.9 | 69.6 | 87.3 | 11.2 | 29.799063 | -109.691227 |
| Moctezuma | 165.00 | 3 | 0 | 1447 | 66.9 | 77.8 | 92.4 | 12.0 | 61.0 | 68.5 | 82.9 | 8.8 | 61.7 | 72.4 | 86.6 | 11.1 | 29.801178 | -109.668349 |
| Huásabas | 212.50 | 1 | 0 | 505 | 67.5 | 78.3 | 92.8 | 12.1 | 60.4 | 67.3 | 80.4 | 8.5 | 61.0 | 69.7 | 83.6 | 9.7 | 29.918233 | -109.307260 |



4 Carr: La Junta - Yécora

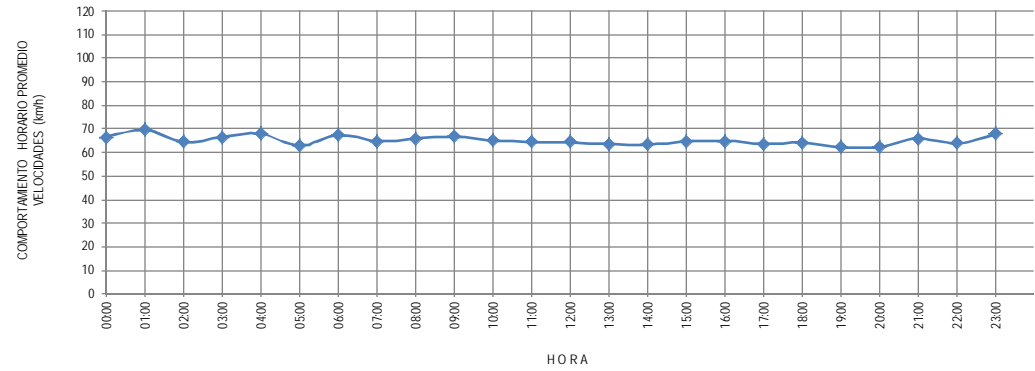
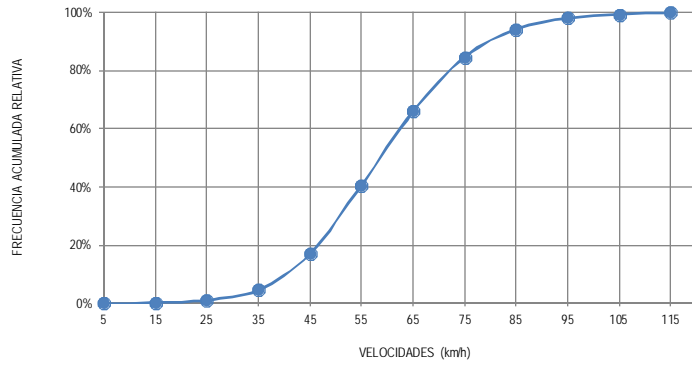
CLAVE: 00065

RUTA: MEX-016

KM: 0.000

TE: 3

SC: 0



5 Carr: Moctezuma - Agua Prieta

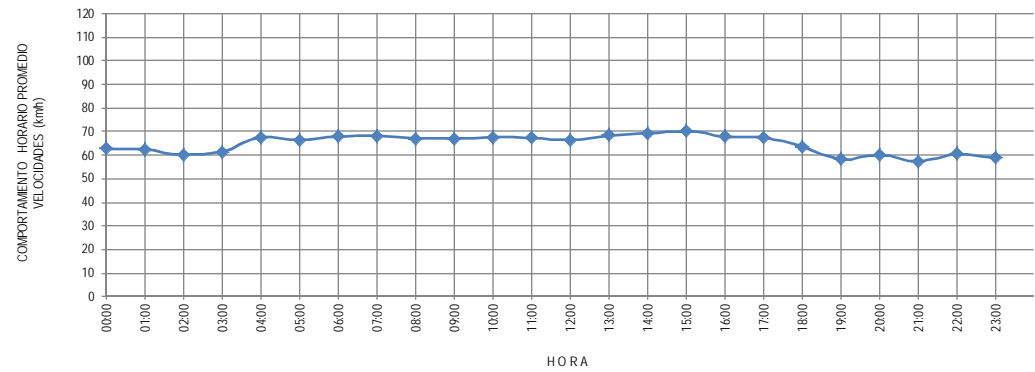
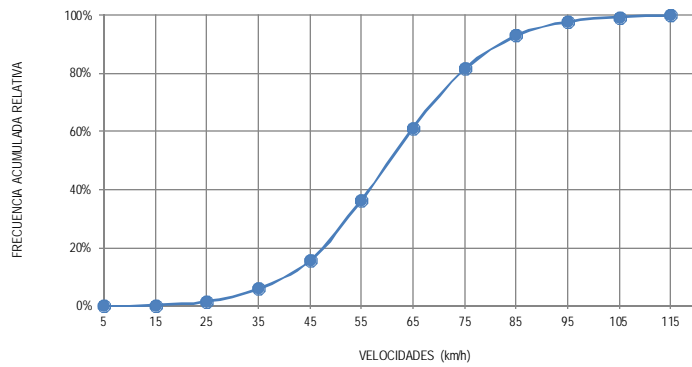
CLAVE: 26027

RUTA: MEX-017

KM: 0.000

TE: 3

SC: 0



6 Carr: Ramal a Naco

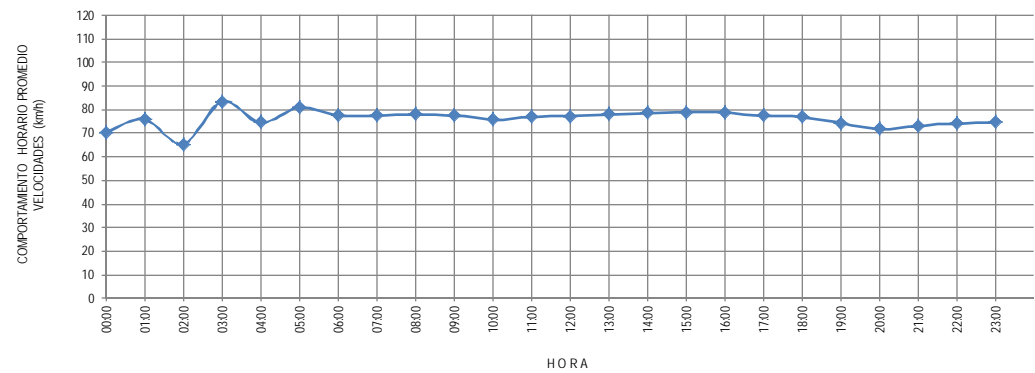
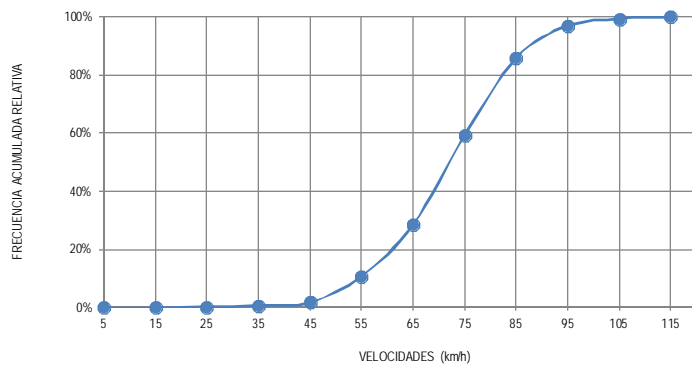
CLAVE: 26579

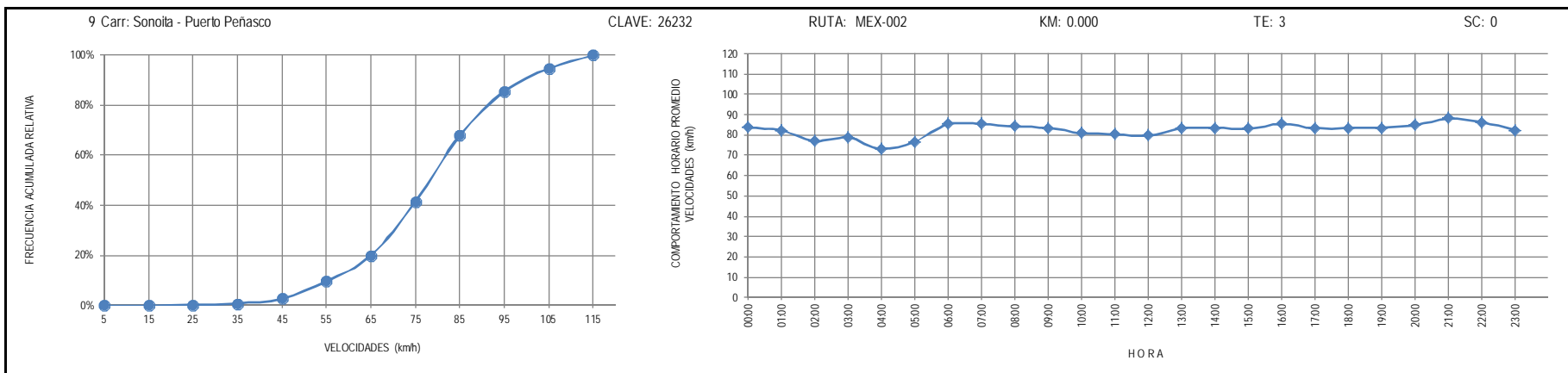
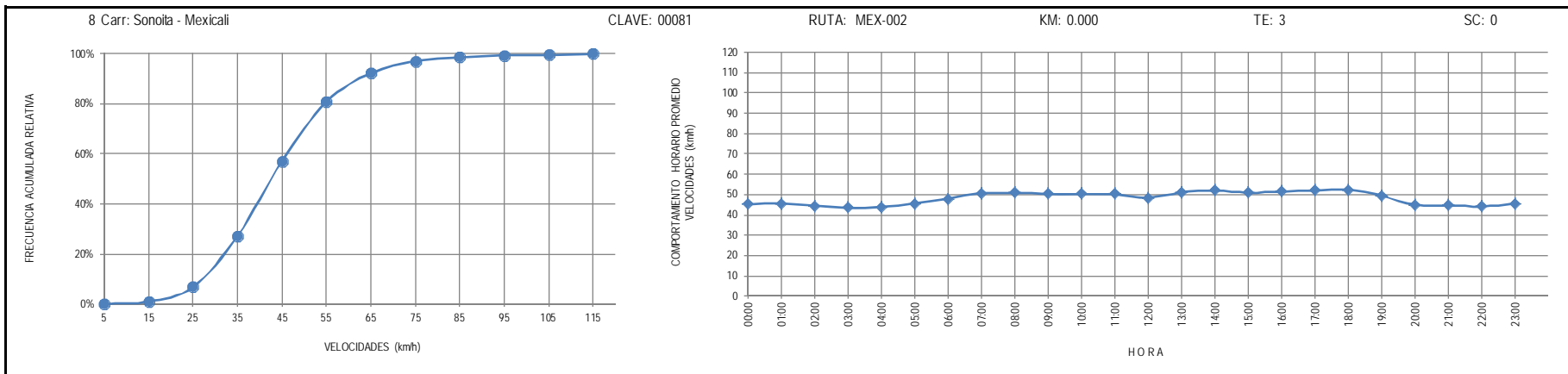
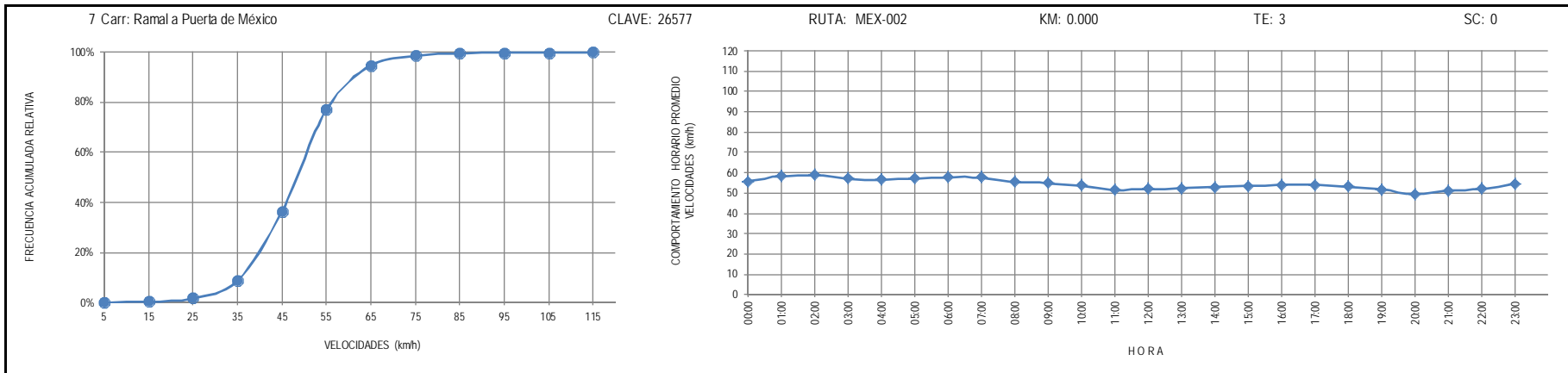
RUTA: MEX-002

KM: 0.000

TE: 3

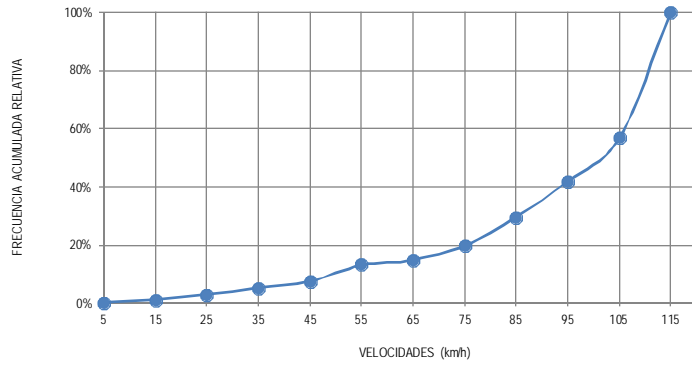
SC: 0





10 Carr: Libramiento de Empalme (Cuota)

CLAVE: 26256

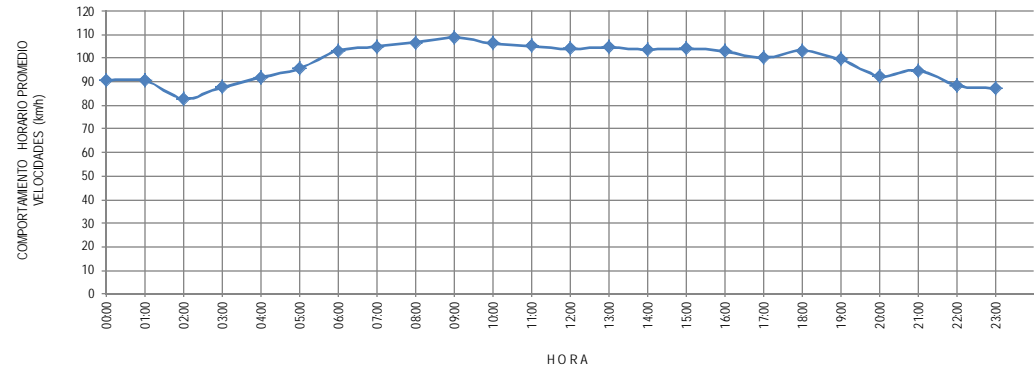


RUTA: MEX-015D

KM: 0.000

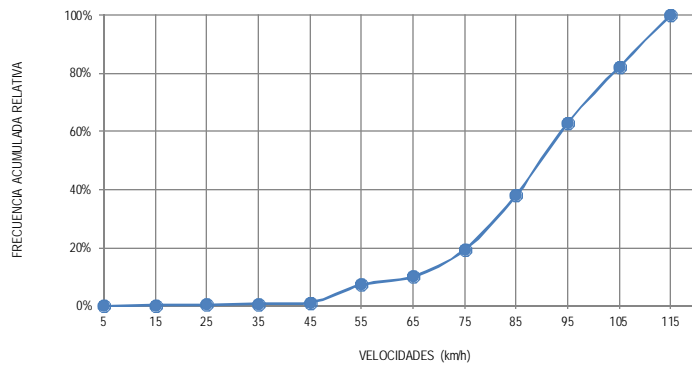
TE: 3

SC: 1



11 Carr: Libramiento de Magdalena de Kino (Cuota)

CLAVE:

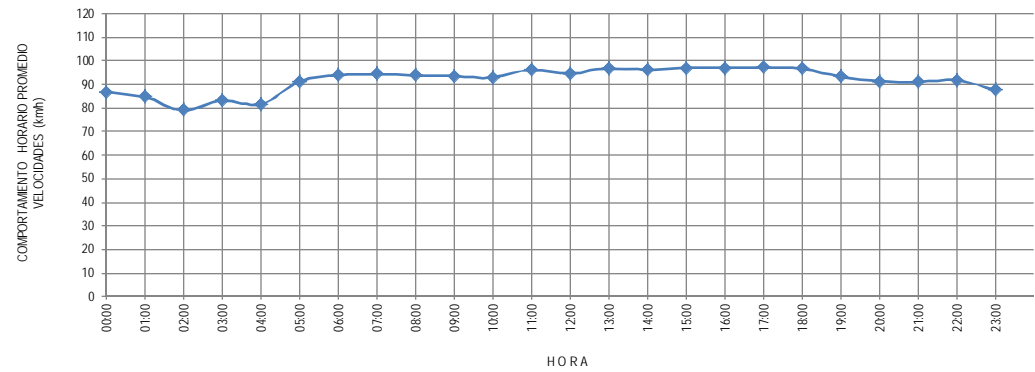


RUTA: MEX-015D

KM: 183.430

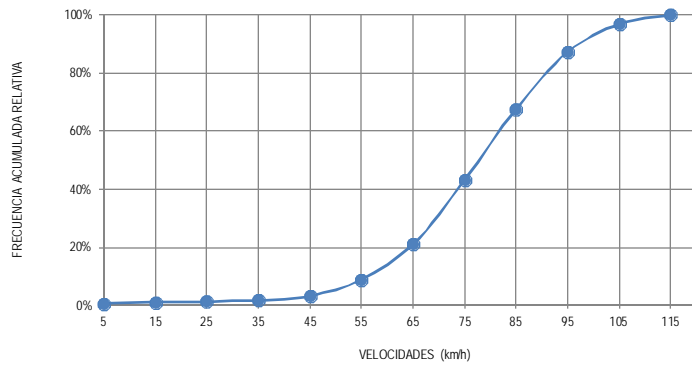
TE: 3

SC: 1



12 Carr: Libramiento de Nogales (Cuota)

CLAVE: 26100

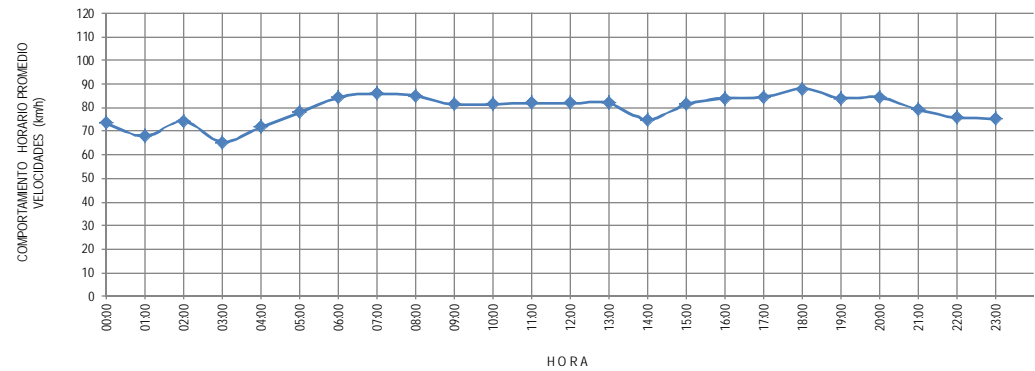


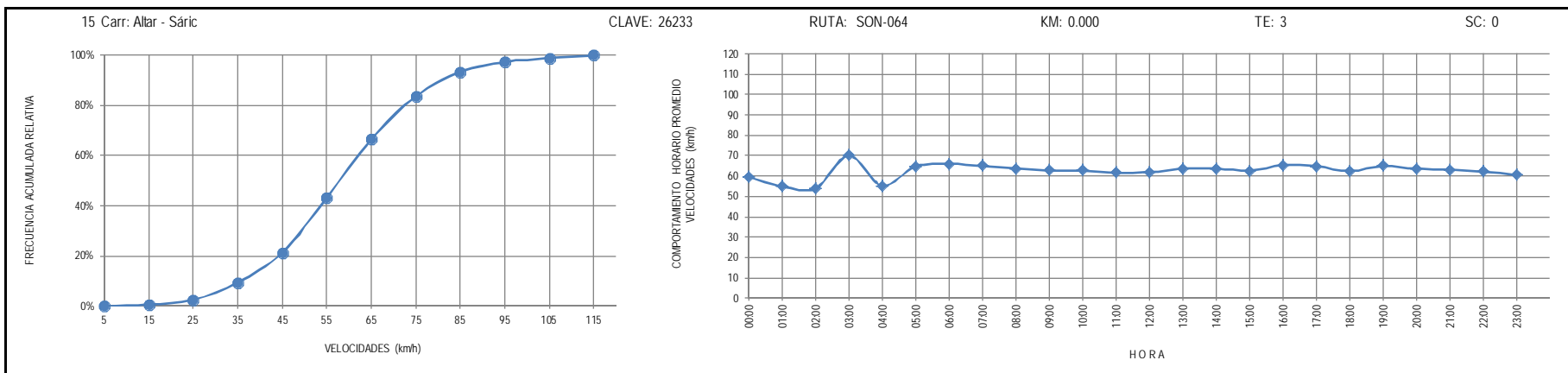
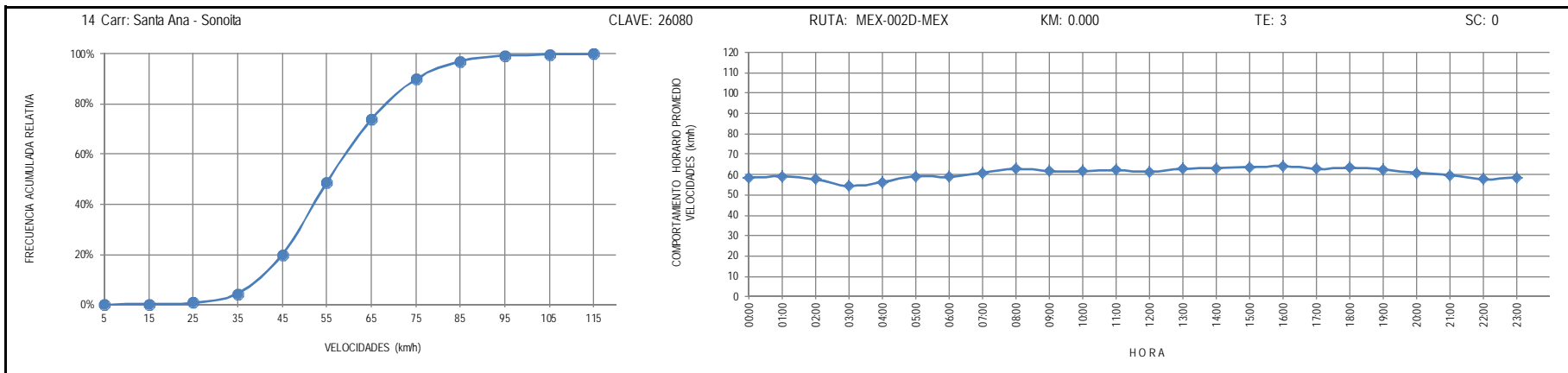
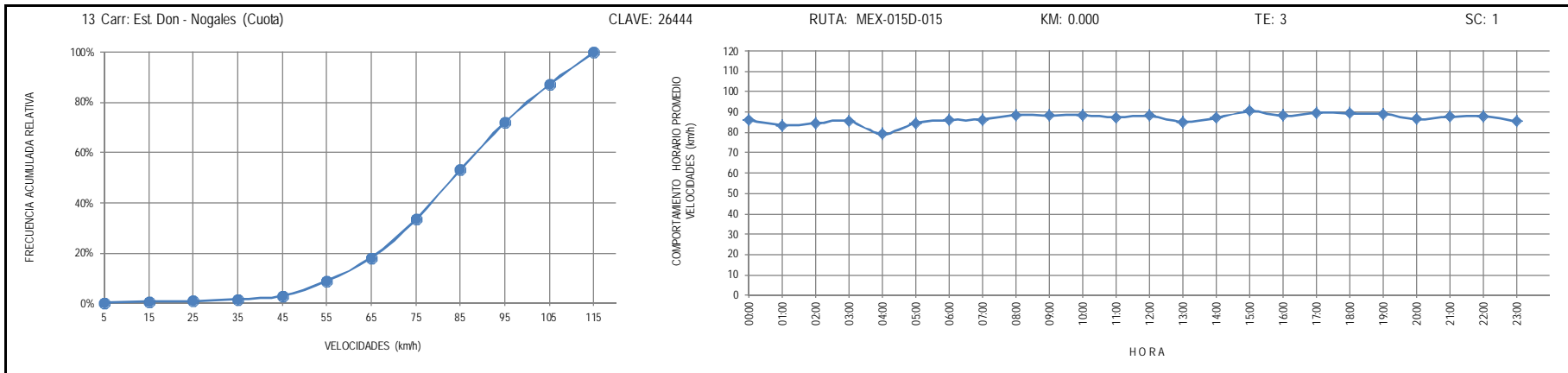
RUTA: MEX-15D

KM: 0.000

TE: 3

SC: 1





16 Carr: Caborca - El Desemboque

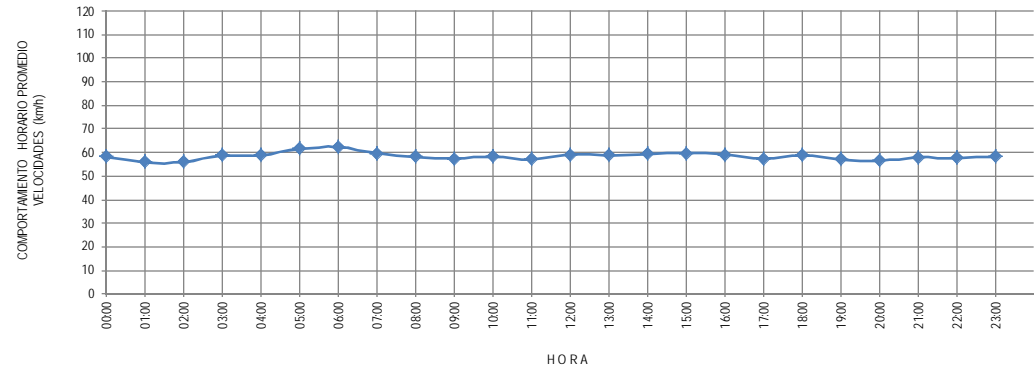
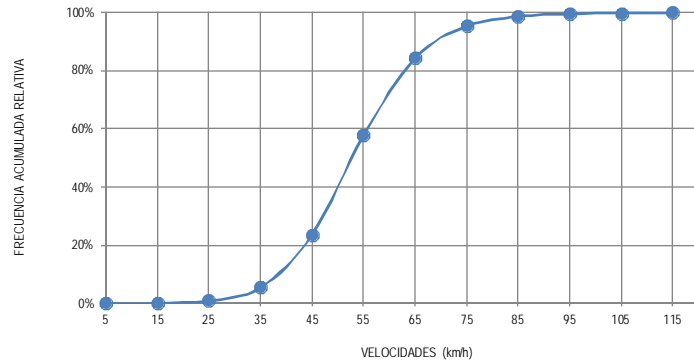
CLAVE: 26225

RUTA: SON-037

KM: 0.000

TE: 3

SC: 0



17 Carr: Calle 36 Norte - Puerto de La Libertad

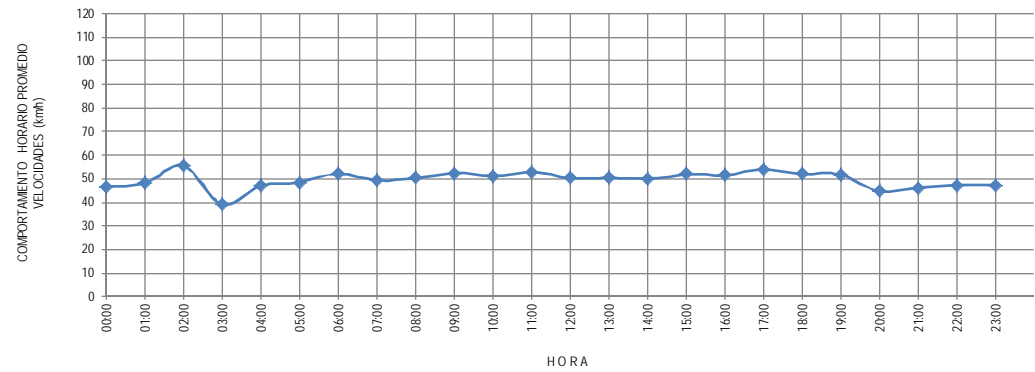
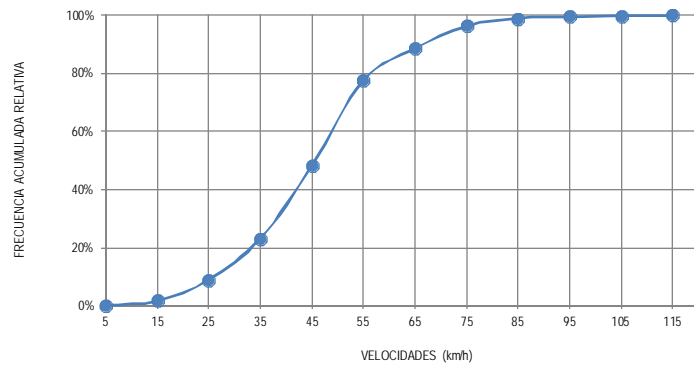
CLAVE: 26117

RUTA: SON-029

KM: 0.000

TE: 3

SC: 0



18 Carr: Esperanza - Presa Álvaro Obregón

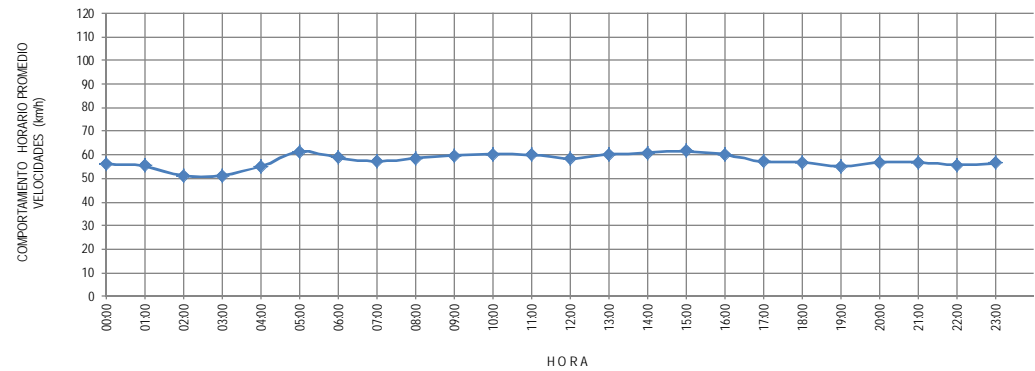
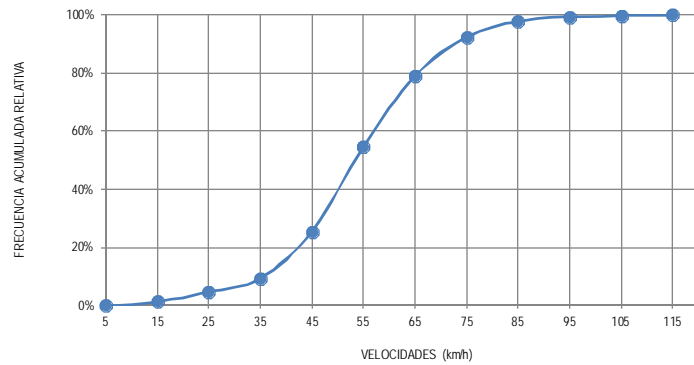
CLAVE: 26242

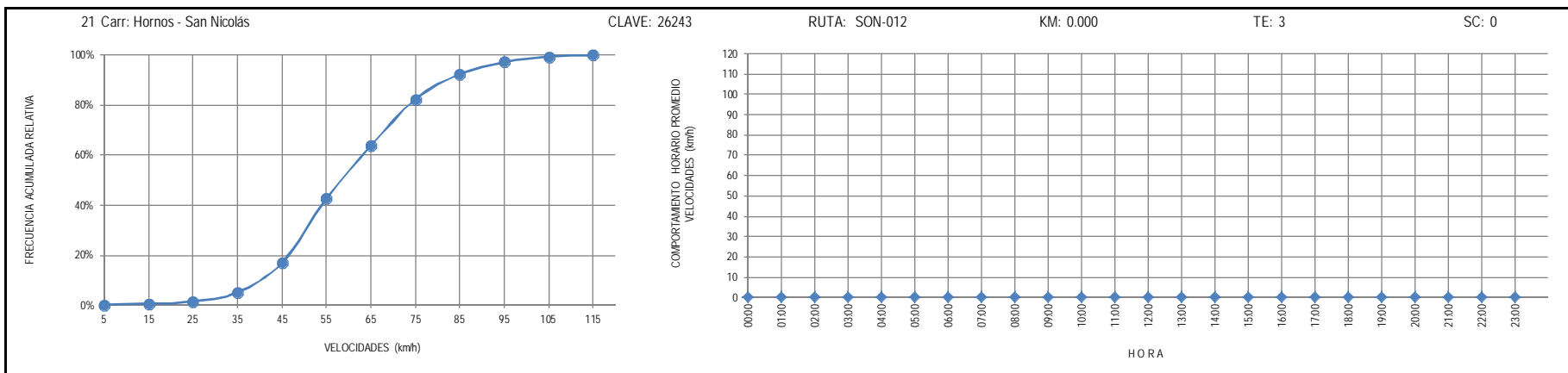
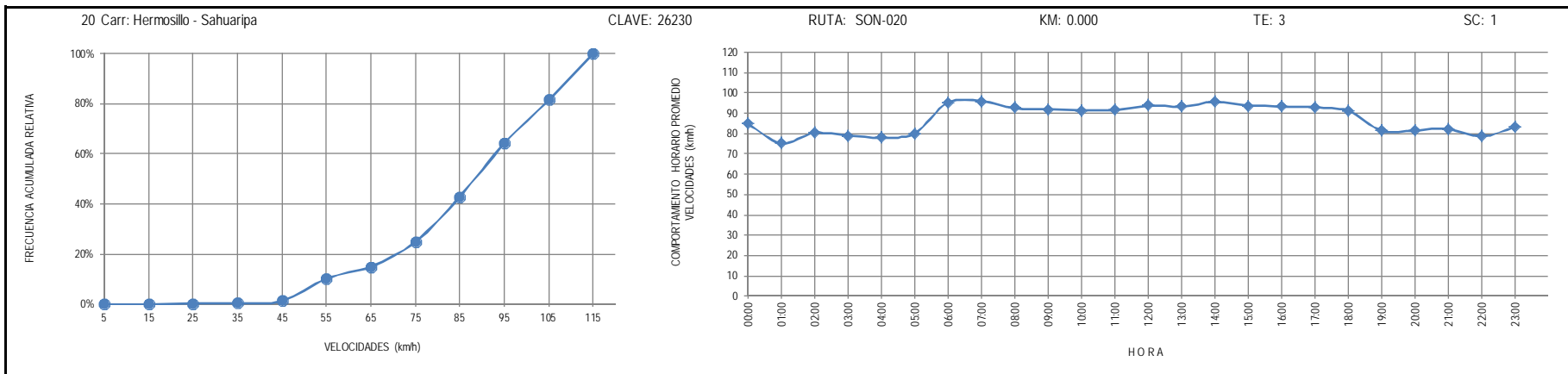
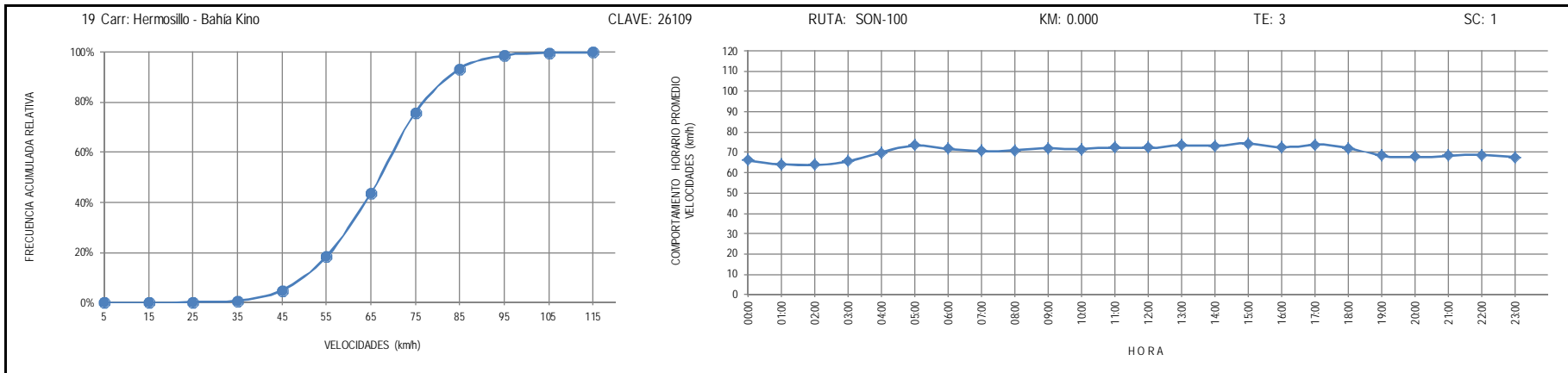
RUTA: SON-117

KM: 0.000

TE: 3

SC: 0





22 Carr: Huatabampo - Bacabachi

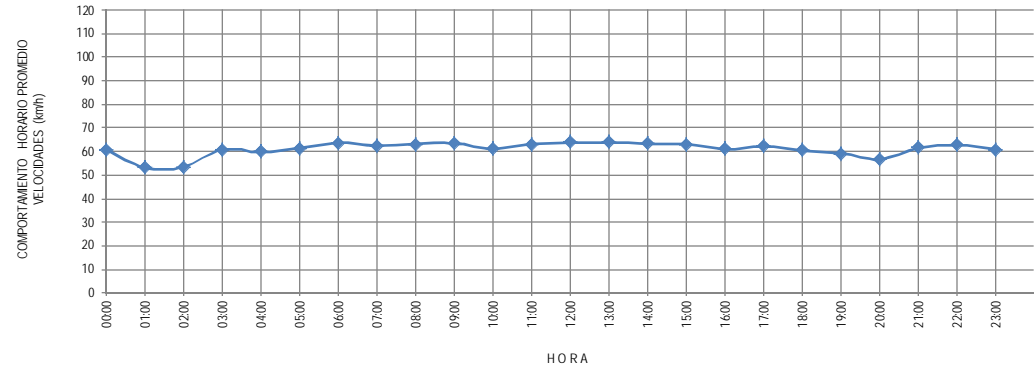
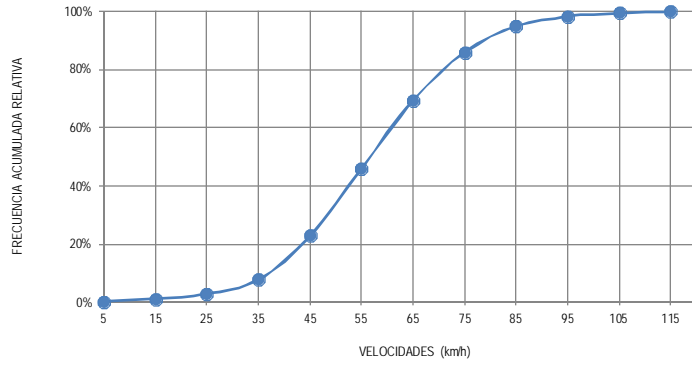
CLAVE: 26237

RUTA: SON-176

KM: 0.000

TE: 3

SC: 0



23 Carr: La Alameda - El Sahuaro

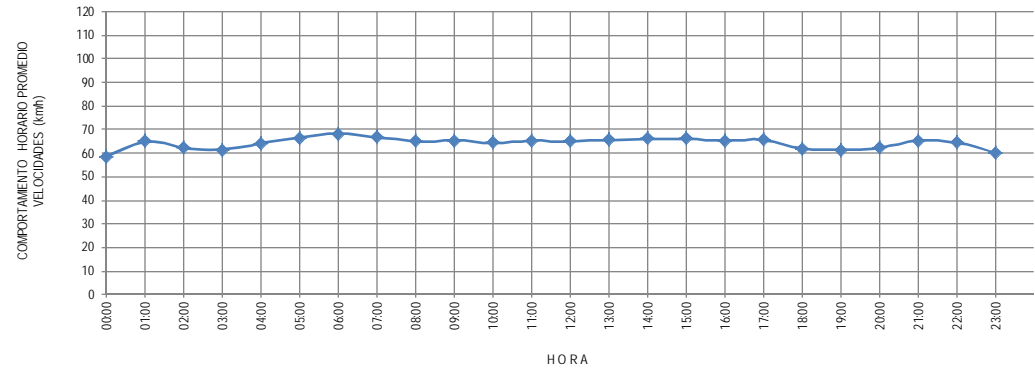
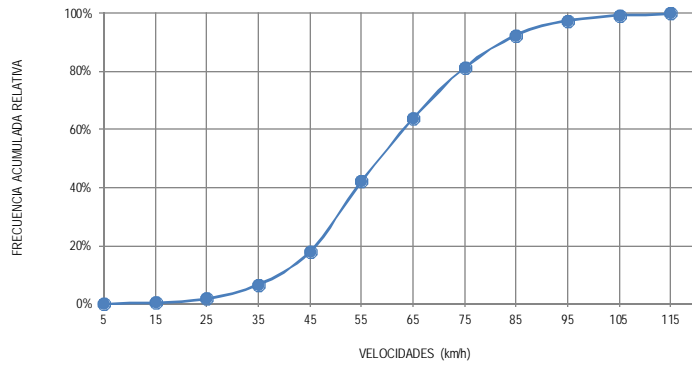
CLAVE: 26234

RUTA: SON-037

KM: 0.000

TE: 3

SC: 0



24 Carr: Mazocahui - Cananea

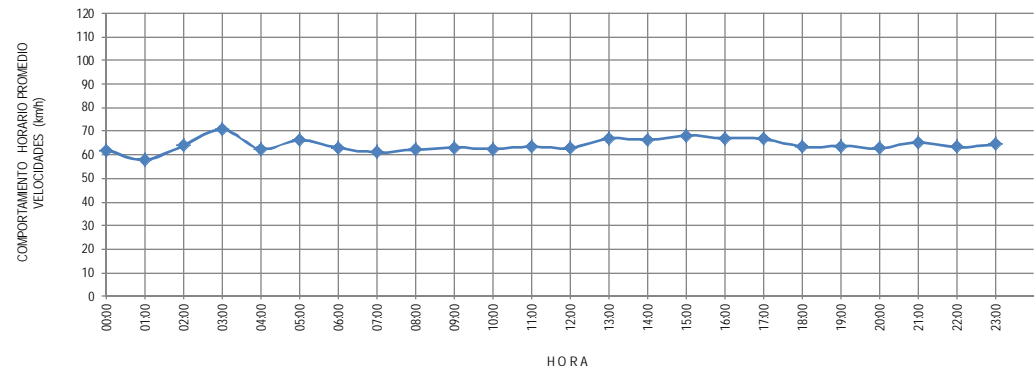
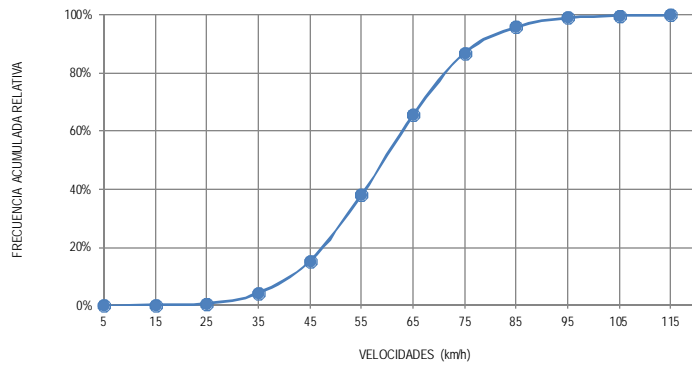
CLAVE: 26118

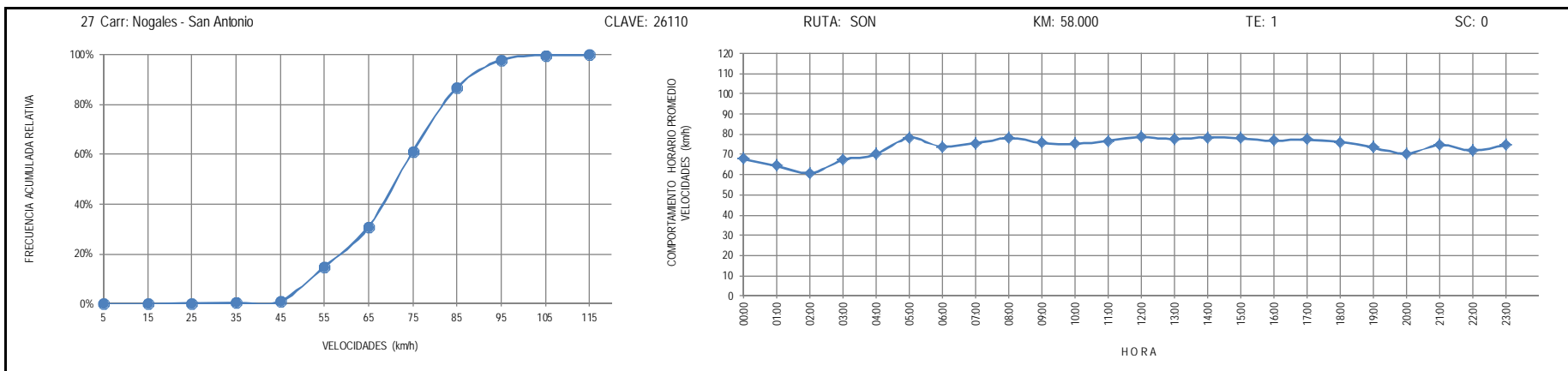
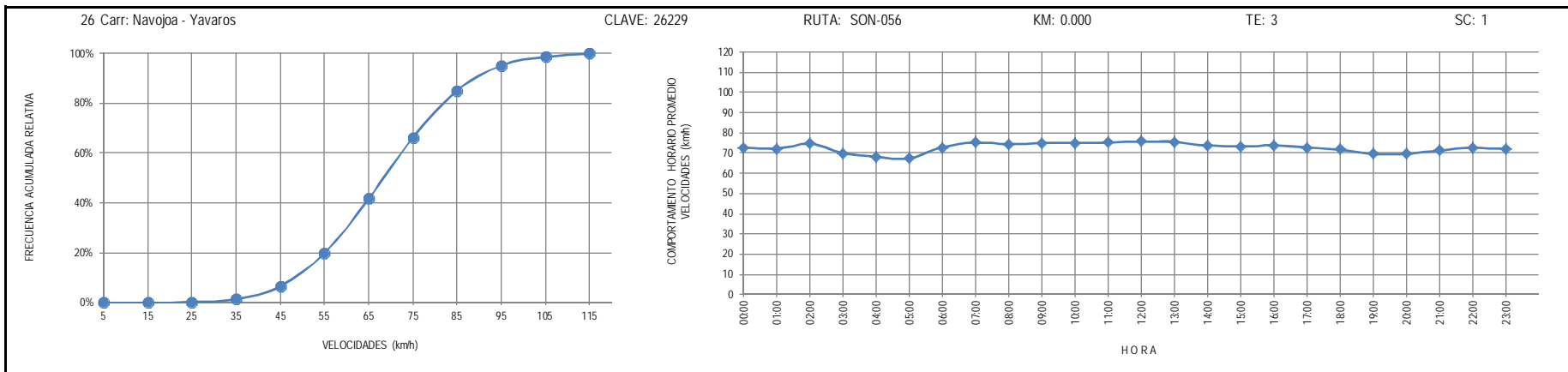
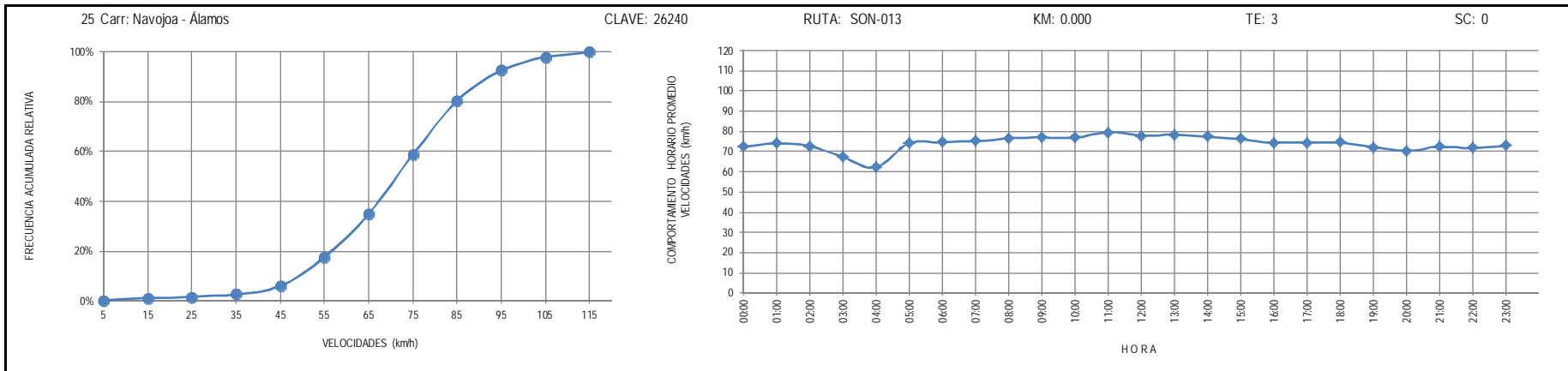
RUTA: SON-118

KM: 0.000

TE: 3

SC: 0





28 Carr: Ramal a Aeropuerto de Guaymas

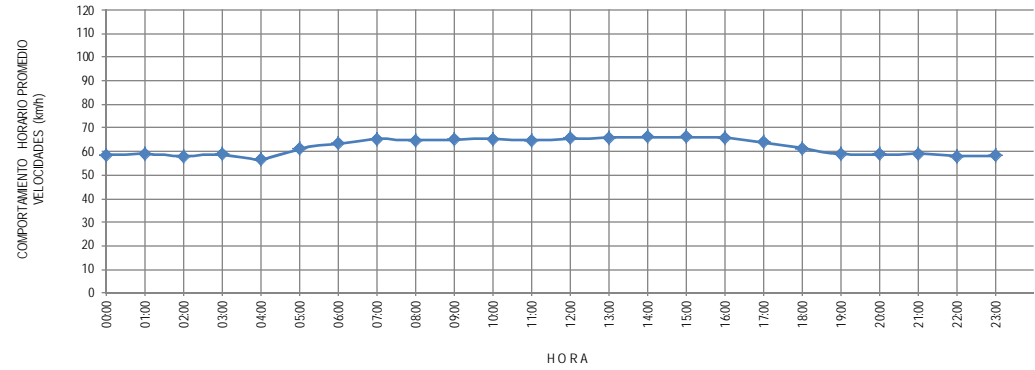
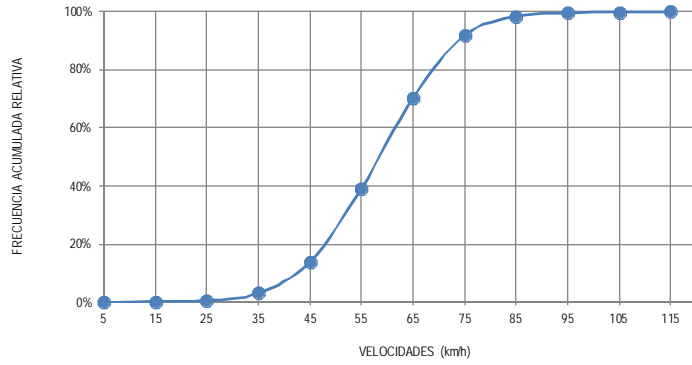
CLAVE: 26568

RUTA: SON

KM: 0.000

TE: 3

SC: 1



29 Carr: San Luis Rio Colorado - Golfo de Santa Clara

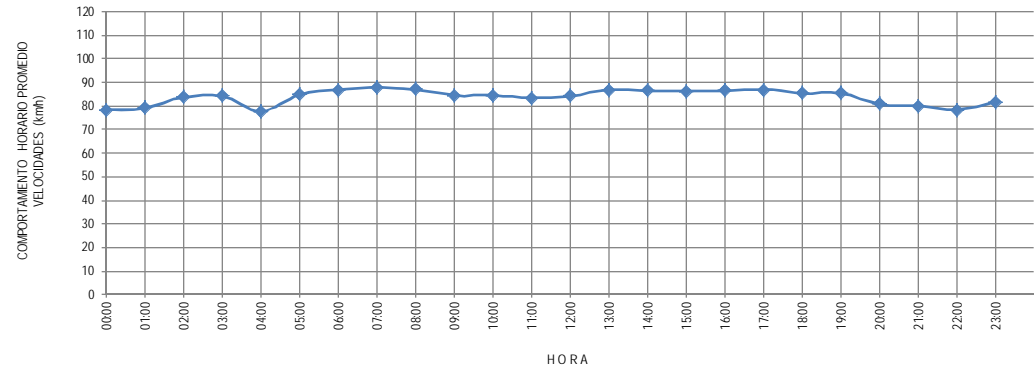
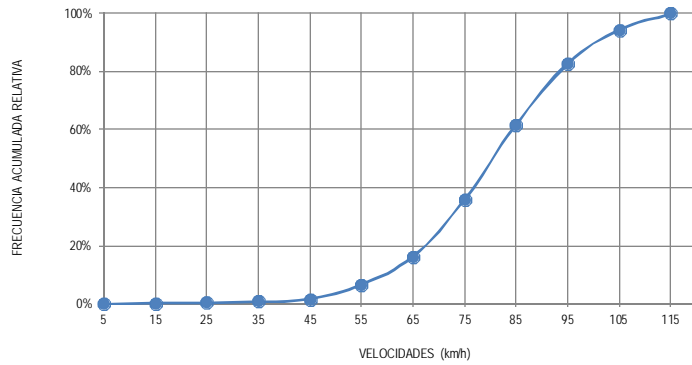
CLAVE: 26226

RUTA: SON-040

KM: 0.000

TE: 3

SC: 1



30 Carr: Sonoita - Pitiquito

CLAVE: 26022

RUTA: SON

KM: 0.000

TE: 3

SC: 0

