

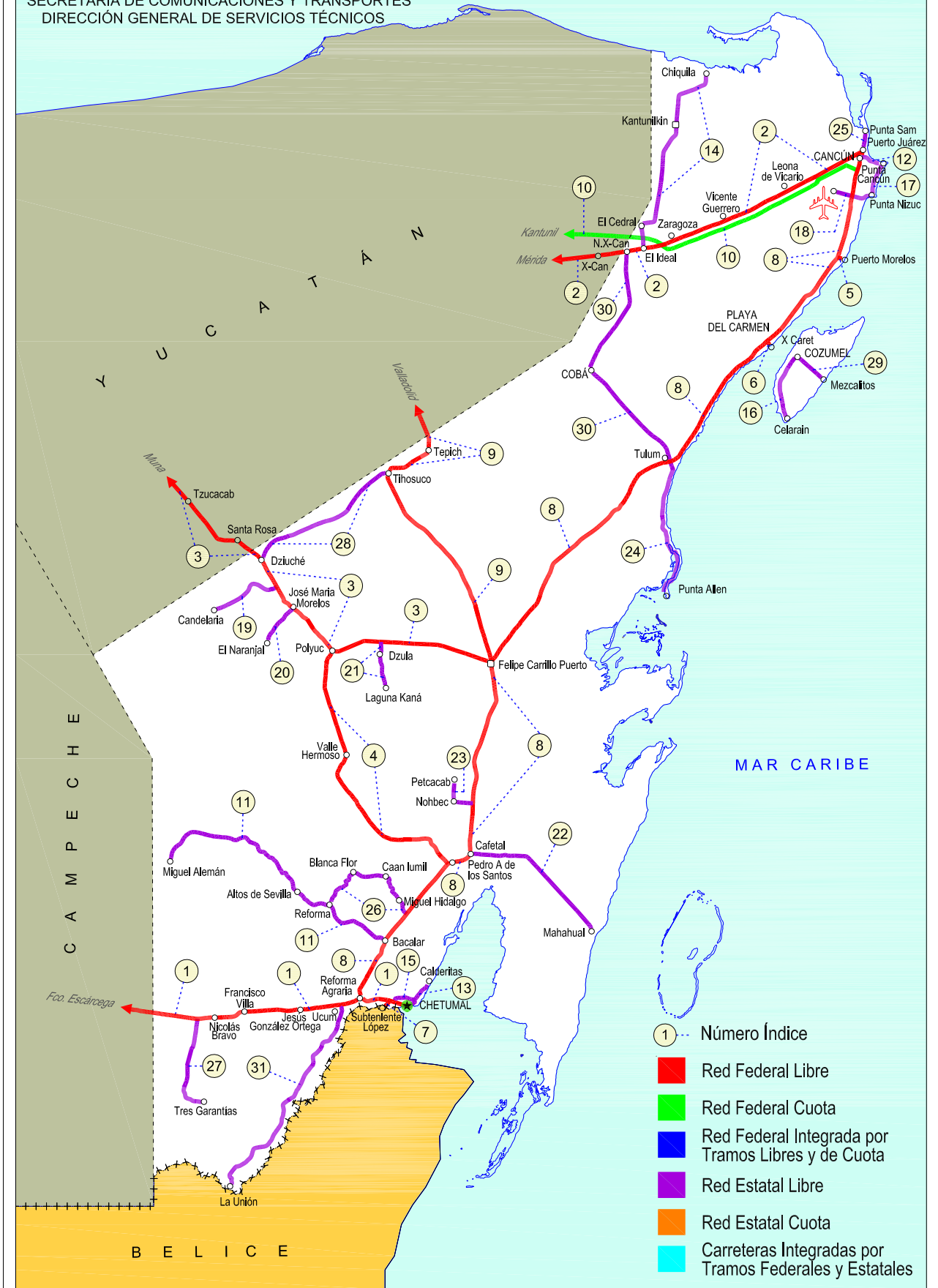


QUINTANA ROO

NO. INDICE	CARRETERA	RUTA
---RED FEDERAL LIBRE---		
1	Francisco Escárcega - Chetumal	MEX-186
2	Mérida - Puerto Juárez	MEX-180
3	Muna - Felipe Carrillo Puerto	MEX-184
4	Polyuc - T. C. (Reforma Agraria - Puerto Juárez)	MEX-293
5	Ramal a Puerto Morelos	MEX
6	Ramal a Punta Piedra	MEX
7	Ramal a Subteniente López	MEX-186
8	Reforma Agraria - Puerto Juárez	MEX-307
9	Valladolid - Felipe Carrillo Puerto	MEX-295
---RED FEDERAL DE CUOTA---		
10	Mérida - Cancún (Cuota)	MEX-180D
---RED ESTATAL LIBRE---		
11	Bacalar - Miguel Alemán	QR
12	Cancún - Punta Cancún	QR
13	Chetumal - Calderitas	QR-004
14	El Ideal - Chiquila	QR-005
15	Libramiento de Chetumal	QR
16	Perimetral Cozumel	QR
17	Punta Nizuc - Cancún	QR
18	Ramal a Aeropuerto Cancún	QR
19	Ramal a Candelaria	QR
20	Ramal a El Naranjal	QR
21	Ramal a Laguna de Kaná	QR
22	Ramal a Mahahual	QR
23	Ramal a Petcacab	QR-018
24	Ramal a Punta Allen	QR-015
25	Ramal a Punta Sam	QR
26	Ramal a Reforma	QR-016
27	Ramal a Tres Garantías	QR
28	Tihosuco - Dziuche	QR
29	Transversal de Cozumel	QR
30	Tulum - Nuevo X-Can	QR
31	Ucum - Unión	QR

23 QUINTANA ROO

SECRETARÍA DE COMUNICACIONES Y TRANSPORTES
DIRECCIÓN GENERAL DE SERVICIOS TÉCNICOS



QUINTANA ROO

1 CARR: Francisco Escárcega - Chetumal

CLAVE: 00093

RUTA: MEX-186

AÑO: 2012

LUGAR	ESTACION				VELOCIDAD AUTOS (km/h)				VELOCIDAD AUTOBUSES (km/h)				VELOCIDAD CAMIONES (km/h)				COORDENADAS	
	KM	TE	SC	TDPA	Promedio	P 85	P 98	δ	Promedio	P 85	P 98	δ	Promedio	P 85	P 98	δ	Latitud	Longitud
Francisco Escárcega	0.00	3	0	2987	67.5	84.7	114.9	16.4	64.5	81.2	107.6	14.9	65.0	84.4	115.6	17.5	18.604159	-90.718698
Adolfo López Mateos	41.50	1	0	2182	67.5	84.8	117.0	16.6	63.3	79.8	106.7	14.7	61.3	79.5	106.6	15.6	18.639535	-90.306074
T. Der. Silvituc	55.70	1	0	2287	82.7	99.0	117.8	16.4	75.5	89.3	110.8	14.8	76.5	89.3	113.9	14.1	18.650974	-90.272694
T. Der. Silvituc	55.70	3	0	1769	100.2	115.3	134.7	15.7	89.8	101.2	134.6	14.0	86.5	97.2	125.9	13.2	18.649506	-90.262121
Conhuás	100.00	1	0	1823	98.4	114.4	134.8	16.6	87.5	99.4	129.6	15.0	86.0	96.8	124.9	13.1	18.540435	-89.918584
Xpujil	155.73	1	0	2573	100.6	115.6	134.8	15.5	89.5	100.5	134.9	14.0	83.9	96.8	126.0	15.4	18.508942	-89.405067
Lim. Edos. Term. Camp. Ppia. Oroo.	179.90																	
Nicolás Bravo	206.01	1	0	2234	85.9	100.3	122.2	14.8	78.7	89.3	119.1	13.5	75.3	85.8	116.9	13.0	18.458406	-88.941216
Nicolás Bravo	206.01	3	0	2866	78.5	94.3	114.6	16.0	73.0	84.9	103.9	14.2	70.8	83.0	109.1	14.1	18.459154	-88.917411
T. Izq. Morocoy	214.90	1	0	2284	92.6	107.7	127.9	15.8	82.9	93.6	115.5	14.4	83.0	92.9	118.3	12.4	18.478751	-88.817149
T. Izq. Morocoy	214.90	3	0	2388	86.3	100.5	122.2	14.6	78.9	89.6	119.6	13.6	74.5	85.5	118.1	13.4	18.478825	-88.814817
T. Der. Unión	247.50	1	0	4507	78.4	94.4	114.9	16.2	73.3	85.3	104.3	14.3	71.1	83.9	109.4	14.5	18.504969	-88.527416
T. Der. Unión	247.50	3	0	6040	40.9	46.2	61.1	8.7	38.2	45.0	54.6	8.6	36.7	43.8	59.8	9.2	18.506002	-88.519374
T. Izq. Fpe. Carrillo Puerto	255.15	1	0	6296	74.7	84.0	100.6	10.9	70.2	80.4	92.7	11.5	68.7	78.8	100.6	12.3	18.526121	-88.469284
T. Der. Subteniente López	268.57	1	1	6565	87.2	99.3	120.5	13.3	87.6	102.2	141.0	17.0	85.5	102.5	138.6	17.8	18.518027	-88.384421
T. Der. Subteniente López	268.57	1	2	6596	82.4	93.0	108.5	12.2	79.5	89.6	101.7	11.7	80.1	91.3	108.7	12.8	18.518030	-88.384426
T. Izq. Av. Insurgentes	270.00	1	1	10225	86.9	99.4	121.0	13.6	86.7	101.0	140.3	16.7	82.3	99.5	137.8	18.4	18.513507	-88.363081
T. Izq. Av. Insurgentes	270.00	1	2	10045	82.3	92.9	108.8	12.2	79.5	89.6	101.6	11.8	78.6	90.6	108.8	13.3	18.513506	-88.363081
T. Izq. Av. Insurgentes	270.00	3	1	5318	86.4	100.0	119.1	14.1	81.9	94.6	110.9	13.9	84.3	99.8	122.6	15.6	18.510344	-88.353188
T. Izq. Av. Insurgentes	270.00	3	2	5083	87.7	101.0	121.2	14.2	82.9	94.8	112.7	13.7	86.4	101.0	126.0	15.4	18.510343	-88.353187
Chetumal	277.36	1	1	7684	69.7	80.5	95.0	12.1	69.8	79.5	95.1	11.6	66.2	80.5	98.8	14.9	18.501608	-88.321063
Chetumal	277.36	1	2	7391	71.9	81.8	97.6	11.3	69.7	78.6	98.1	11.2	68.0	80.0	99.6	13.3	18.501608	-88.321063

2 CARR: Mérida - Puerto Juárez

CLAVE: 00067

RUTA: MEX-180

AÑO: 2012

LUGAR	ESTACION				VELOCIDAD AUTOS (km/h)				VELOCIDAD AUTOBUSES (km/h)				VELOCIDAD CAMIONES (km/h)				COORDENADAS	
	KM	TE	SC	TDPA	Promedio	P 85	P 98	δ	Promedio	P 85	P 98	δ	Promedio	P 85	P 98	δ	Latitud	Longitud
Mérida	0.00																	
X. Periférico de Mérida	5.60	1	1	9241	53.3	61.6	73.5	9.8	50.9	57.5	69.1	9.0	48.6	58.7	71.8	11.4	20.957495	-89.572214
X. Periférico de Mérida	5.60	1	2	9284	53.9	62.2	74.1	9.7	52.8	57.3	69.0	7.3	50.4	62.5	74.3	13.1	20.957600	-89.572175
X. Periférico de Mérida	5.60	3	1	9614	54.1	62.2	73.9	9.5	50.6	59.3	71.9	10.2	49.7	56.9	70.9	10.4	20.954958	-89.566171
X. Periférico de Mérida	5.60	3	2	9752	54.4	62.5	74.2	9.4	52.4	59.5	72.1	9.0	50.5	60.3	73.6	11.6	20.954957	-89.566176
Teya	13.00	1	1	7537	83.8	95.4	111.9	13.2	79.5	89.9	99.2	12.8	75.1	86.1	102.8	12.6	20.937919	-89.536894
Teya	13.00	1	2	7378	93.8	108.7	129.0	15.2	88.4	99.5	114.6	13.6	86.0	101.5	123.9	16.1	20.938148	-89.536824
T. Der. Seyé	28.79	1	1	4712	82.1	94.9	113.7	14.2	86.7	94.8	109.4	11.7	77.0	95.5	111.8	18.0	20.895093	-89.389808

QUINTANA ROO

3 CARR: Muna - Felipe Carrillo Puerto

CLAVE: 00148

RUTA: MEX-184

AÑO: 2012

LUGAR	ESTACION				VELOCIDAD AUTOS (km/h)				VELOCIDAD AUTOBUSES (km/h)				VELOCIDAD CAMIONES (km/h)				COORDENADAS	
	KM	TE	SC	TDPA	Promedio	P 85	P 98	δ	Promedio	P 85	P 98	δ	Promedio	P 85	P 98	δ	Latitud	Longitud
Muna	0.00	3	0	4078	52.8	62.2	80.3	11.0	52.9	58.6	74.4	8.3	51.1	58.8	76.9	10.9	20.478312	-89.698636
Ticul	19.10	1	0	3873	63.7	74.2	93.8	12.3	62.4	71.0	83.6	9.3	60.4	73.0	93.7	13.5	20.403418	-89.567697
Ticul	19.10	3	0	4935	59.7	72.4	91.7	13.9	63.2	71.5	83.9	9.4	60.4	73.6	93.8	14.7	20.373861	-89.518060
Oxkutzcab	40.50	3	0	4657	75.9	91.4	110.2	15.5	65.2	84.7	98.5	14.2	78.1	91.5	110.1	14.8	20.282638	-89.376538
Tekax	53.90	3	0	2834	28.8	37.9	54.4	10.4	41.1	52.1	71.4	15.0	33.2	49.9	54.8	14.9	20.192166	-89.272413
Tzucacab	86.60	1	0	1741	61.7	76.3	101.7	15.4	63.9	74.9	93.6	11.5	67.2	85.6	110.5	15.6	20.078984	-89.062896
Tzucacab	86.60	3	0	1255	56.0	70.6	90.0	15.1	65.3	74.6	88.7	9.6	58.3	72.2	93.6	14.8	20.065346	-89.038467
Santa Rosa	109.60	3	0	2098	92.8	107.8	125.0	15.6	76.9	94.9	121.3	19.5	86.5	100.1	126.1	14.6	19.947496	-88.880399
Lim. Edos. Term. Yuc. Ppia. Q. R.	117.00																	
Dziuche	118.00	1	0	1981	66.1	80.7	102.0	13.8	61.1	76.1	94.1	12.4	58.3	75.4	101.5	15.1	19.905564	-88.819688
Dziuche	118.00	3	0	2489	88.8	103.8	124.8	16.1	79.6	94.4	137.1	18.7	80.1	96.3	128.7	17.0	19.886790	-88.802555
José María Morelos	138.60	1	0	3751	74.0	85.6	103.9	12.4	70.7	82.3	94.1	12.4	70.8	82.0	102.4	12.6	19.764884	-88.725390
José María Morelos	138.60	3	0	2804	66.3	74.2	90.4	10.2	65.7	72.1	83.4	7.8	63.1	71.4	89.6	10.5	19.742110	-88.698561
Polyuc	161.94	1	0	2242	73.9	85.1	104.4	12.5	68.1	81.0	95.5	12.3	64.8	78.5	102.1	13.6	19.611671	-88.571798
Polyuc	161.94	3	0	1323	70.9	83.3	98.5	13.8	68.6	79.8	92.3	12.5	68.5	81.2	96.2	13.9	19.609518	-88.554249
T. Der. Dzulá	178.11	3	0	1336	84.1	103.4	123.7	21.0	70.9	93.2	122.6	22.2	77.4	97.6	121.4	22.0	19.643764	-88.411176
Felipe Carrillo Puerto	216.97	1	0	4835	43.8	52.7	64.9	10.5	47.2	53.9	81.1	10.2	42.7	51.5	67.7	11.2	19.584026	-88.056483

4 CARR: Polyuc - T. C. (Reforma Agraria - Puerto Juárez)

CLAVE: 23014

RUTA: MEX-293

AÑO: 2012

LUGAR	ESTACION				VELOCIDAD AUTOS (km/h)				VELOCIDAD AUTOBUSES (km/h)				VELOCIDAD CAMIONES (km/h)				COORDENADAS	
	KM	TE	SC	TDPA	Promedio	P 85	P 98	δ	Promedio	P 85	P 98	δ	Promedio	P 85	P 98	δ	Latitud	Longitud
Polyuc	0.00	3	0	2355	61.6	71.6	85.2	11.5	59.4	68.3	82.2	9.4	53.7	64.2	82.6	12.4	19.608455	-88.571133
T. Der. Ramonal	24.00	1	0	1309	98.0	114.0	134.8	16.3	83.6	94.8	119.4	16.3	82.7	95.9	131.9	15.4	19.402290	-88.565516
T. Der. Ramonal	24.00	3	0	1366	70.0	80.5	95.8	12.1	64.2	72.6	88.0	10.3	56.9	66.0	85.7	10.3	19.398136	-88.564330
T. Izq. Santa María Poniente	35.00	1	0	1690	70.0	80.4	95.7	12.0	63.8	72.1	87.8	10.0	57.2	67.0	84.4	10.8	19.340753	-88.546960
T. Izq. Santa María Poniente	35.00	3	0	1412	69.8	80.4	95.2	12.1	63.9	71.9	84.9	9.8	55.9	64.8	83.5	10.4	19.340058	-88.546762
Valle Hermoso	50.00	3	0	1336	67.6	79.6	95.0	13.3	64.4	72.6	89.4	10.0	56.0	67.1	84.0	12.3	19.181162	-88.523425
T. Izq. Chacchoben	93.50	1	0	1717	51.6	59.6	73.8	10.0	48.1	53.7	71.9	9.2	42.3	50.6	66.9	10.0	18.979153	-88.215276
T. Izq. Chacchoben	93.50	3	0	1346	56.4	70.0	91.8	14.2	55.7	68.7	87.8	12.0	50.3	64.0	85.6	14.1	18.975210	-88.211758
T. C. Reforma Agraria - Puerto Juárez	99.00	1	0	1471	62.3	72.4	89.6	11.6	59.5	65.6	83.8	9.3	55.2	61.8	82.6	8.1	18.948253	-88.186740

QUINTANA ROO

5 C A R R : Ramal a Puerto Morelos

CLAVE: 23569

RUTA: MEX

AÑO: 2012

L U G A R	E S T A C I O N				VELOCIDAD AUTOS (km/h)				VELOCIDAD AUTOBUSES (km/h)				VELOCIDAD CAMIONES (km/h)				C O O R D E N A D A S	
	KM	TE	SC	TDPA	Promedio	P 85	P 98	δ	Promedio	P 85	P 98	δ	Promedio	P 85	P 98	δ	Latitud	Longitud
T. C. Reforma Agraria - Puerto Juárez Puerto Morelos	0.00	3	0	8079	50.4	64.3	75.0	14.7	47.3	61.4	72.4	14.7	46.2	58.7	70.4	14.2	20.854317	-86.893472
	2.20																	

6 C A R R : Ramal a Punta Piedra

CLAVE: 23575

RUTA: MEX

AÑO: 2012

L U G A R	E S T A C I O N				VELOCIDAD AUTOS (km/h)				VELOCIDAD AUTOBUSES (km/h)				VELOCIDAD CAMIONES (km/h)				C O O R D E N A D A S	
	KM	TE	SC	TDPA	Promedio	P 85	P 98	δ	Promedio	P 85	P 98	δ	Promedio	P 85	P 98	δ	Latitud	Longitud
T. C. Reforma Agraria - Puerto Juárez	0.00	3	1	8194	29.7	36.9	49.8	9.4	27.8	34.9	51.2	9.8	27.6	38.5	53.2	11.0	20.626812	-87.082227
T. C. Reforma Agraria - Puerto Juárez Punta Piedra (Playa del Carmen)	0.00	3	2	7420	36.7	41.8	52.8	7.5	36.0	40.9	54.0	6.9	36.1	42.5	53.7	7.3	20.626811	-87.082235
	1.50																	

7 C A R R : Ramal a Subteniente López

CLAVE: 23567

RUTA: MEX-186

AÑO: 2012

L U G A R	E S T A C I O N				VELOCIDAD AUTOS (km/h)				VELOCIDAD AUTOBUSES (km/h)				VELOCIDAD CAMIONES (km/h)				C O O R D E N A D A S	
	KM	TE	SC	TDPA	Promedio	P 85	P 98	δ	Promedio	P 85	P 98	δ	Promedio	P 85	P 98	δ	Latitud	Longitud
T. C. Francisco Escárcega - Chetumal	0.00	3	1	4549	76.9	88.6	108.2	12.7	71.1	81.0	93.3	11.0	73.9	86.8	111.3	13.9	18.509581	-88.379069
T. C. Francisco Escárcega - Chetumal Subteniente López	0.00	3	2	4284	69.8	81.5	102.2	13.0	67.4	77.5	137.4	13.5	65.5	75.8	126.0	12.5	18.509581	-88.379069
	3.00																	

8 C A R R : Reforma Agraria - Puerto Juárez

CLAVE: 23132

RUTA: MEX-307

AÑO: 2012

L U G A R	E S T A C I O N				VELOCIDAD AUTOS (km/h)				VELOCIDAD AUTOBUSES (km/h)				VELOCIDAD CAMIONES (km/h)				C O O R D E N A D A S	
	KM	TE	SC	TDPA	Promedio	P 85	P 98	δ	Promedio	P 85	P 98	δ	Promedio	P 85	P 98	δ	Latitud	Longitud
T. C. Francisco Escárcega - Chetumal	0.00	3	1	4302	90.7	108.1	129.2	17.5	88.7	104.7	136.9	17.9	82.4	102.7	129.8	19.0	18.535041	-88.467280
T. C. Francisco Escárcega - Chetumal	0.00	3	2	4197	99.5	114.4	134.6	15.7	94.2	109.1	131.8	15.4	86.1	106.0	130.9	19.3	18.535040	-88.467280
Bacalar	19.15	1	1	3713	79.9	89.1	102.5	11.0	73.4	80.6	85.5	9.1	70.5	78.2	84.9	9.7	18.663022	-88.402153
Bacalar	19.15	1	2	3708	93.8	107.5	125.2	14.4	90.4	104.3	124.9	15.2	79.4	97.5	120.5	17.2	18.663022	-88.402153
Bacalar	19.15	3	0	6274	95.1	111.7	132.8	16.3	89.4	104.7	127.0	17.2	82.2	103.5	131.4	20.3	18.694712	-88.388274
T. Izq. Reforma	22.24	3	0	4889	95.2	111.9	132.9	16.4	87.7	103.9	124.4	17.8	77.2	98.3	123.7	19.6	18.707711	-88.384119
T. Izq. Lazáro Cárdenas	56.30	1	0	4302	95.3	111.8	132.9	16.2	86.0	103.2	122.7	18.2	77.0	97.5	123.4	19.3	18.943095	-88.188278
T. Izq. Lazáro Cárdenas	56.30	3	0	3289	94.9	111.5	132.6	16.3	89.4	105.1	129.4	17.5	81.2	102.6	129.1	20.1	18.949449	-88.182052
T. Izq. Chacchoben	70.80	1	0	3158	94.0	111.3	132.6	17.0	82.8	100.7	117.9	18.8	78.0	99.3	124.1	19.7	19.012225	-88.111121
T. Izq. Chacchoben	70.80	3	0	2671	95.9	112.1	133.0	16.2	87.7	104.1	128.1	18.1	78.4	100.0	124.9	19.9	19.034207	-88.110080
T. Izq. Noh-Bec	81.94	1	0	4014	95.9	112.1	132.9	16.1	86.8	103.2	125.4	17.9	80.5	102.4	127.8	20.6	19.134100	-88.105159
T. Izq. Noh-Bec	81.94	3	0	2784	95.6	112.0	132.8	16.2	87.4	103.8	126.6	18.0	79.1	100.7	127.5	20.2	19.137083	-88.105069

QUINTANA ROO

8 CARR: Reforma Agraria - Puerto Juárez

CLAVE: 23132

RUTA: MEX-307

AÑO: 2012

LUGAR	ESTACION				VELOCIDAD AUTOS (km/h)				VELOCIDAD AUTOBUSES (km/h)				VELOCIDAD CAMIONES (km/h)				COORDENADAS	
	KM	TE	SC	TDPA	Promedio	P 85	P 98	δ	Promedio	P 85	P 98	δ	Promedio	P 85	P 98	δ	Latitud	Longitud
Felipe Carrillo Puerto	132.00	1	0	3587	95.7	112.1	133.0	16.2	88.0	104.3	128.5	18.1	81.9	103.4	129.8	20.6	19.557089	-88.043443
Felipe Carrillo Puerto	132.00	3	0	3068	61.9	73.9	91.7	14.0	63.2	74.5	91.5	11.7	58.9	66.0	87.4	8.9	19.603877	-88.028446
Tulum Pueblo	227.00	1	0	3638	66.0	78.5	102.1	13.3	66.6	79.5	102.2	12.7	64.7	78.7	106.8	14.2	20.206333	-87.478006
T. Izq. Cobá	229.19	1	1	8207	35.9	41.3	52.9	6.9	33.1	37.3	49.1	7.0	32.7	41.2	53.4	9.3	20.213600	-87.455016
T. Izq. Cobá	229.19	1	2	7253	45.6	51.3	63.1	7.2	43.6	49.9	63.1	8.4	44.9	51.6	62.3	7.9	20.213587	-87.455070
T. Izq. Cobá	229.19	3	1	6711	60.3	67.8	80.0	9.5	55.6	63.0	74.7	8.4	53.2	63.0	74.7	10.6	20.215602	-87.448623
T. Izq. Cobá	229.19	3	2	6822	55.0	53.5	54.8	0.0	55.0	53.5	54.8	0.0	55.0	53.5	54.8		20.215602	-87.448623
X. C. Tulum - Aeropuerto	231.19	3	1	5984	81.4	90.1	104.0	10.3	76.3	84.6	97.8	10.7	72.6	84.1	99.3	12.7	20.220837	-87.432950
X. C. Tulum - Aeropuerto	231.19	3	2	6346	102.3	114.6	133.1	13.4	95.0	106.9	124.9	12.1	93.9	110.8	130.9	16.2	20.220838	-87.432950
T. Der. Xel-Ha	244.80	1	1	6304	98.4	109.5	126.5	12.4	90.7	99.6	115.0	11.4	88.9	100.7	120.7	13.2	20.313316	-87.368538
T. Der. Xel-Ha	244.80	1	2	5431	66.0	85.4	140.3	18.5	69.3	106.7	141.7	22.5	69.0	102.7	141.2	22.0	20.313305	-87.368542
T. Der. Akumal	254.44	1	1	6981	112.8	132.0	143.3	16.9	112.0	132.4	143.4	17.2	110.2	132.9	143.4	19.6	20.392868	-87.323124
T. Der. Akumal	254.44	1	2	6972	119.6	138.3	144.1	17.4	119.0	138.9	144.2	18.3	117.1	138.7	144.2	20.0	20.392869	-87.323122
Playa del Carmen	289.70	1	1	23221	37.0	42.0	53.3	7.0	34.2	40.9	52.6	8.5	34.2	42.6	53.9	9.2	20.609163	-87.105979
Playa del Carmen	289.70	1	2	23590	64.4	70.0	79.9	6.9	60.0	64.4	73.7	8.1	59.9	64.0	73.5	7.4	20.609165	-87.105976
Playa del Carmen	295.00	3	1	32643	37.1	42.1	53.4	7.1	34.0	40.6	52.1	8.6	33.8	41.3	53.5	8.9	20.661169	-87.058118
Playa del Carmen	295.00	3	2	31061	64.8	70.3	80.3	6.6	60.7	64.8	73.9	7.8	59.8	64.1	73.6	7.5	20.661174	-87.058118
T. Der. Puerto Morelos	321.48	1	1	21525	96.0	113.0	132.1	16.1	95.8	109.5	124.0	14.1	92.4	110.3	124.8	16.8	20.838357	-86.910012
T. Der. Puerto Morelos	321.48	1	2	21466	104.2	130.8	143.2	20.4	107.0	130.0	142.8	21.4	104.8	130.5	142.9	23.7	20.838358	-86.910011
T. Der. Puerto Morelos	321.48	3	1	28777	86.5	94.8	110.4	10.9	82.5	91.5	103.0	10.8	72.3	85.6	101.1	14.5	20.867506	-86.892767
T. Der. Puerto Morelos	321.48	3	2	26812	76.1	82.9	94.4	8.8	69.7	76.0	88.1	8.9	63.8	74.0	85.1	11.0	20.867567	-86.893075
T. Izq. Aeropuerto Cancún	341.50	1	1	22920	86.5	94.7	110.1	10.9	82.3	91.3	102.6	10.8	71.0	85.5	101.2	16.0	21.029394	-86.852708
T. Izq. Aeropuerto Cancún	341.50	1	2	22667	76.1	82.9	94.3	8.8	69.7	76.0	87.7	8.9	62.2	73.9	86.3	12.6	21.029379	-86.852687
T. Izq. Aeropuerto Cancún	341.50	3	1	37620	76.3	84.9	100.0	10.8	73.8	82.6	93.8	10.4	67.7	79.5	93.0	12.5	21.039914	-86.850187
T. Izq. Aeropuerto Cancún	341.50	3	2	37263	48.6	55.3	69.2	10.3	44.3	50.6	63.2	7.9	43.9	51.6	62.9	9.5	21.039927	-86.849987
T. Izq. Alfredo V. Bonfil	348.22	1	1	34960	86.4	97.1	121.1	11.9	89.7	106.0	133.8	16.1	82.7	105.5	136.2	21.9	21.081761	-86.843636
T. Izq. Alfredo V. Bonfil	348.22	1	2	39633	71.3	79.5	93.9	10.1	66.8	73.5	84.3	8.9	62.4	72.5	84.9	12.0	21.081790	-86.843719
Cancún	355.48	1	1	47041	74.3	83.3	101.0	10.3	72.1	81.4	98.2	10.7	66.5	79.6	104.5	14.1	21.107234	-86.839706
Cancún	355.48	1	2	47453	59.1	66.1	82.3	9.6	50.3	58.3	73.4	9.6	51.2	60.3	76.1	10.5	21.107249	-86.839733
T. C. Mérida - Puerto Juárez	357.48																	

QUINTANA ROO

9 CARR: Valladolid - Felipe Carrillo Puerto

CLAVE: 00010

RUTA: MEX-295

AÑO: 2012

LUGAR	ESTACION				VELOCIDAD AUTOS (km/h)				VELOCIDAD AUTOBUSES (km/h)				VELOCIDAD CAMIONES (km/h)				COORDENADAS	
	KM	TE	SC	TDPA	Promedio	P 85	P 98	δ	Promedio	P 85	P 98	δ	Promedio	P 85	P 98	δ	Latitud	Longitud
Valladolid	0.00	3	0	4447	67.8	81.2	102.5	14.1	64.6	77.7	100.4	12.5	62.0	74.7	92.5	11.1	20.669407	-88.206029
Chichimilá	6.90	3	0	2041	59.1	66.9	81.1	9.1	63.1	71.6	108.2	11.2	58.9	65.2	85.1	8.4	20.624295	-88.229837
Tekom	12.05	3	0	1507	68.3	81.0	94.2	14.0	63.7	76.0	84.2	12.9	61.9	76.4	90.4	15.1	20.589528	-88.265472
Tixcacalcupul	19.80	3	0	826	60.6	74.8	94.2	15.4	57.5	67.9	86.5	11.4	57.1	71.3	90.5	14.1	20.524809	-88.271190
Lim. Edos. Term. Yuc. Ppia. O. R.	46.00																	
Tepich	51.40	1	0	690	59.4	72.4	86.7	14.7	63.4	74.4	84.9	10.5	61.9	72.7	85.5	11.6	20.250395	-88.255048
Tihosuco	65.00	1	0	708	55.7	71.9	85.9	17.2	62.0	72.4	84.9	11.5	58.7	70.5	84.1	13.3	20.193418	-88.362611
Tihosuco	65.00	3	0	802	56.4	73.0	91.1	18.0	62.1	73.8	91.4	12.0	61.2	74.7	93.1	14.7	20.190621	-88.386831
T. Izq. San Felipe Berriozábal	99.00	1	0	541	60.1	73.8	91.9	15.7	61.6	76.5	88.0	12.7	61.8	71.6	91.2	11.0	19.962185	-88.241338
T. Izq. San Felipe Berriozábal	99.00	3	0	647	60.5	73.9	92.1	15.5	63.9	79.0	92.1	12.7	63.2	74.5	93.5	12.5	19.961313	-88.240451
Señor	116.50	1	0	951	57.9	73.0	91.0	16.6	64.3	79.7	92.3	12.8	61.8	73.3	91.7	11.9	19.852824	-88.144952
Señor	116.50	3	0	1254	59.4	73.5	91.5	16.0	62.1	75.2	91.7	12.3	62.6	74.1	92.7	11.8	19.828628	-88.129792
Felipe Carrillo Puerto	147.70	1	0	1368	61.0	74.2	92.2	15.2	64.0	77.0	92.2	12.4	61.8	72.5	92.1	11.2	19.603365	-88.053931

10 CARR: Mérida - Cancún (Cuota)

CLAVE: 00071

RUTA: MEX-180D

AÑO: 2012

LUGAR	ESTACION				VELOCIDAD AUTOS (km/h)				VELOCIDAD AUTOBUSES (km/h)				VELOCIDAD CAMIONES (km/h)				COORDENADAS	
	KM	TE	SC	TDPA	Promedio	P 85	P 98	δ	Promedio	P 85	P 98	δ	Promedio	P 85	P 98	δ	Latitud	Longitud
T. C. Mérida - Puerto Juárez	0.00																	
Caseta de Cobro Piste	51.00	1	1	1520	103.1	117.1	135.9	14.3	89.7	99.6	119.6	12.3	82.9	97.8	125.8	14.9	20.730463	-88.589399
Caseta de Cobro Piste	51.00	1	2	1487	97.3	107.6	123.8	11.7	84.5	91.9	109.3	9.6	77.9	91.4	118.8	13.9	20.730466	-88.589402
Caseta de Cobro X-Can	155.00	1	1	925	105.0	118.3	135.7	13.4	96.4	103.9	124.3	13.0	90.7	106.6	128.8	16.3	20.876245	-87.642861
Caseta de Cobro X-Can	155.00	1	2	1021	101.2	112.3	128.4	12.4	89.0	92.9	99.4	8.1	79.6	90.7	105.5	12.7	20.876245	-87.642863
Lim. Edos. Term. Yuc. Ppia. O. R.	160.00																	
T. C. Mérida - Puerto Juárez	292.00	1	1	1136	70.0	83.4	102.9	14.2	66.3	78.4	93.2	12.4	59.6	68.0	90.2	9.2	21.095229	-86.980842
T. C. Mérida - Puerto Juárez	292.00	1	2	1138	61.5	73.7	92.8	13.4	59.9	71.8	87.3	12.6	55.1	59.6	82.3	6.9	21.095233	-86.980844
T. C. Reforma Agraria - Puerto Juárez	308.10	1	0	6980	85.3	101.4	125.5	15.8	86.5	106.7	141.1	19.3	81.3	98.5	135.7	17.2	21.020006	-86.858391

11 CARR: Bacalar - Miguel Alemán

CLAVE: 20030

RUTA: QR

AÑO: 2012

LUGAR	ESTACION				VELOCIDAD AUTOS (km/h)				VELOCIDAD AUTOBUSES (km/h)				VELOCIDAD CAMIONES (km/h)				COORDENADAS	
	KM	TE	SC	TDPA	Promedio	P 85	P 98	δ	Promedio	P 85	P 98	δ	Promedio	P 85	P 98	δ	Latitud	Longitud
T. C. (Reforma Agraria - Puerto Juárez)	0.00																	
Reforma	21.00	3	0	597	53.5	62.8	73.6	11.2	54.5	57.7	71.8	5.6	50.9	56.0	70.3	9.0	18.813599	-88.579497
Altos de Sevilla	31.00	1	0	576	47.5	56.5	71.8	10.9	47.9	53.6	64.4	9.9	45.3	52.9	63.2	11.0	18.848440	-88.674577

QUINTANA ROO

11 CARR: Bacalar - Miguel Alemán

CLAVE: 20030

RUTA: QR

AÑO: 2012

LUGAR	ESTACION				VELOCIDAD AUTOS (km/h)				VELOCIDAD AUTOBUSES (km/h)				VELOCIDAD CAMIONES (km/h)				COORDENADAS	
	KM	TE	SC	TDPA	Promedio	P 85	P 98	δ	Promedio	P 85	P 98	δ	Promedio	P 85	P 98	δ	Latitud	Longitud
Altos de Sevilla	31.00	3	0	572	58.3	69.5	84.6	12.3	57.4	64.5	76.0	7.4	55.2	63.3	83.1	9.2	18.855968	-88.678151
Miguel Alemán	110.00																	

12 CARR: Cancún - Punta Cancún

CLAVE: 23581

RUTA: QR

AÑO: 2012

LUGAR	ESTACION				VELOCIDAD AUTOS (km/h)				VELOCIDAD AUTOBUSES (km/h)				VELOCIDAD CAMIONES (km/h)				COORDENADAS	
	KM	TE	SC	TDPA	Promedio	P 85	P 98	δ	Promedio	P 85	P 98	δ	Promedio	P 85	P 98	δ	Latitud	Longitud
Cancún	0.00	3	1	35196	64.9	69.0	78.0	5.4	63.8	67.7	74.3	5.8	60.4	64.1	73.7	6.8	21.156888	-86.816166
Cancún	0.00	3	2	33454	62.8	70.9	84.6	9.7	65.4	73.2	88.3	9.3	57.0	69.3	84.2	12.9	21.156890	-86.816165
Punta Cancún	8.00	1	1	32120	56.6	62.3	74.0	7.6	53.7	60.8	72.2	8.5	50.8	56.3	69.2	9.4	21.134667	-86.756867
Punta Cancún	8.00	1	2	32168	61.7	71.0	90.1	10.8	62.9	73.3	91.2	11.8	57.0	64.4	88.6	9.7	21.134660	-86.756868

13 CARR: Chetumal - Calderitas

CLAVE: 23004

RUTA: QR-004

AÑO: 2012

LUGAR	ESTACION				VELOCIDAD AUTOS (km/h)				VELOCIDAD AUTOBUSES (km/h)				VELOCIDAD CAMIONES (km/h)				COORDENADAS	
	KM	TE	SC	TDPA	Promedio	P 85	P 98	δ	Promedio	P 85	P 98	δ	Promedio	P 85	P 98	δ	Latitud	Longitud
Chetumal	0.00	3	1	10445	58.2	64.5	78.9	9.4	54.5	62.0	74.9	8.7	52.4	60.9	73.5	10.1	18.536305	-88.275828
Chetumal	0.00	3	2	10703	63.3	73.1	90.6	11.1	63.2	72.9	95.8	11.7	58.7	69.0	89.2	11.8	18.536309	-88.275829
Calderitas	9.00	1	1	2976	53.2	59.5	71.6	8.0	52.3	59.4	72.7	9.0	50.7	58.8	71.3	9.7	18.553702	-88.260925
Calderitas	9.00	1	2	3183	47.6	53.7	64.7	9.0	47.5	53.7	73.1	9.5	43.7	51.3	64.3	9.1	18.553702	-88.260924

14 CARR: El Ideal - Chiquila

CLAVE: 23005

RUTA: QR-005

AÑO: 2012

LUGAR	ESTACION				VELOCIDAD AUTOS (km/h)				VELOCIDAD AUTOBUSES (km/h)				VELOCIDAD CAMIONES (km/h)				COORDENADAS	
	KM	TE	SC	TDPA	Promedio	P 85	P 98	δ	Promedio	P 85	P 98	δ	Promedio	P 85	P 98	δ	Latitud	Longitud
T. C. Mérida - Puerto Juárez	0.00	3	0	1068	51.9	62.3	75.4	11.3	48.1	54.5	70.2	10.0	46.2	54.8	72.2	10.8	20.886137	-87.545854
Kantunilkin	31.20	1	0	1995	83.7	94.5	111.5	12.5	78.2	90.9	104.6	14.1	80.0	93.1	112.8	14.4	21.081417	-87.488746
Kantunilkin	31.20	3	0	1441	66.3	81.2	97.7	15.2	64.2	74.3	102.7	12.2	64.8	80.5	102.2	15.1	21.114655	-87.484792
Chiquila	75.60	1	0	985	81.6	94.1	111.2	14.2	74.8	86.3	110.8	14.2	80.1	92.7	112.9	14.2	21.416364	-87.337924

15 CARR: Libramiento de Chetumal

CLAVE: 23130

RUTA: QR

AÑO: 2012

LUGAR	ESTACION				VELOCIDAD AUTOS (km/h)				VELOCIDAD AUTOBUSES (km/h)				VELOCIDAD CAMIONES (km/h)				COORDENADAS	
	KM	TE	SC	TDPA	Promedio	P 85	P 98	δ	Promedio	P 85	P 98	δ	Promedio	P 85	P 98	δ	Latitud	Longitud
T. C. Francisco Escárcega - Chetumal	0.00	3	1	7549	68.5	75.5	90.0	9.8	64.4	71.5	83.0	8.6	61.3	70.4	83.3	10.6	18.517310	-88.346562

QUINTANA ROO

20 CARR: Ramal a El Naranjal

CLAVE: 23579

RUTA: QR

AÑO: 2012

LUGAR	ESTACION				VELOCIDAD AUTOS (km/h)				VELOCIDAD AUTOBUSES (km/h)				VELOCIDAD CAMIONES (km/h)				COORDENADAS	
	KM	TE	SC	TDPA	Promedio	P 85	P 98	δ	Promedio	P 85	P 98	δ	Promedio	P 85	P 98	δ	Latitud	Longitud
José María Morelos	0.00	3	0	593	60.0	74.3	93.5	15.2	61.3	70.3	74.4	9.4	59.4	71.9	94.0	13.6	19.733309	-88.718554
El Naranjal	16.00																	

21 CARR: Ramal a Laguna de Kaná

CLAVE: 23213

RUTA: QR

AÑO: 2012

LUGAR	ESTACION				VELOCIDAD AUTOS (km/h)				VELOCIDAD AUTOBUSES (km/h)				VELOCIDAD CAMIONES (km/h)				COORDENADAS	
	KM	TE	SC	TDPA	Promedio	P 85	P 98	δ	Promedio	P 85	P 98	δ	Promedio	P 85	P 98	δ	Latitud	Longitud
T. C. Muna - Felipe Carrillo Puerto	0.00	3	0	271	50.4	60.3	75.6	11.8	55.0	53.9	81.8	3.8	52.4	62.8	74.2	11.4	19.642579	-88.411620
Laguna de Kaná	12.20																	

22 CARR: Ramal a Mahahual

CLAVE: 23583

RUTA: QR

AÑO: 2012

LUGAR	ESTACION				VELOCIDAD AUTOS (km/h)				VELOCIDAD AUTOBUSES (km/h)				VELOCIDAD CAMIONES (km/h)				COORDENADAS	
	KM	TE	SC	TDPA	Promedio	P 85	P 98	δ	Promedio	P 85	P 98	δ	Promedio	P 85	P 98	δ	Latitud	Longitud
T. C. Reforma Agraria - Puerto Juárez	0.00	3	0	706	73.1	83.1	101.0	11.6	66.0	75.0	95.0	11.2	61.3	73.0	91.8	11.6	18.980004	-88.109815
Mahahual	60.09																	

23 CARR: Ramal a Petcacab

CLAVE: 23018

RUTA: QR-018

AÑO: 2012

LUGAR	ESTACION				VELOCIDAD AUTOS (km/h)				VELOCIDAD AUTOBUSES (km/h)				VELOCIDAD CAMIONES (km/h)				COORDENADAS	
	KM	TE	SC	TDPA	Promedio	P 85	P 98	δ	Promedio	P 85	P 98	δ	Promedio	P 85	P 98	δ	Latitud	Longitud
T. C. Reforma Agraria - Puerto Juárez	0.00	3	0	660	37.5	42.6	53.0	7.4	40.8	50.8	54.4	10.9	38.0	48.6	54.1	9.9	19.135297	-88.105850
Petcacab	37.00																	

24 CARR: Ramal a Punta Allen

CLAVE: 23015

RUTA: QR-015

AÑO: 2012

LUGAR	ESTACION				VELOCIDAD AUTOS (km/h)				VELOCIDAD AUTOBUSES (km/h)				VELOCIDAD CAMIONES (km/h)				COORDENADAS	
	KM	TE	SC	TDPA	Promedio	P 85	P 98	δ	Promedio	P 85	P 98	δ	Promedio	P 85	P 98	δ	Latitud	Longitud
T. C. Reforma Agraria - Puerto Juárez	0.00	3	0	6746	41.0	45.7	55.0	8.1	39.1	44.2	58.2	8.8	39.4	45.9	62.5	10.1	20.213242	-87.453040
Punta Allen	57.00																	

QUINTANA ROO

30 CARR: Tulum - Nuevo X-Can

CLAVE: 23570

RUTA: QR

AÑO: 2012

LUGAR	ESTACION				VELOCIDAD AUTOS (km/h)				VELOCIDAD AUTOBUSES (km/h)				VELOCIDAD CAMIONES (km/h)				COORDENADAS	
	KM	TE	SC	TDPA	Promedio	P 85	P 98	δ	Promedio	P 85	P 98	δ	Promedio	P 85	P 98	δ	Latitud	Longitud
T. C. Reforma Agraria - Puerto Juárez	0.00	3	0	5295	65.7	78.2	102.6	13.5	65.5	76.3	99.6	11.6	60.0	70.7	97.0	12.2	20.217115	-87.454361
T. Izq. Ruinas Cobá	42.95	1	0	3008	67.0	79.6	103.3	13.5	66.2	78.3	100.7	12.1	60.7	72.0	98.7	12.3	20.505866	-87.716431
T. Izq. Ruinas Cobá	42.95	3	0	503	66.7	79.4	104.0	13.6	65.2	76.3	97.3	11.4	60.1	69.8	94.6	11.3	20.509500	-87.717167
Nuevo X-Can	87.40	1	0	457	65.1	83.0	104.5	17.9	58.6	79.0	97.8	15.0	63.1	80.2	98.9	16.1	20.861799	-87.600747

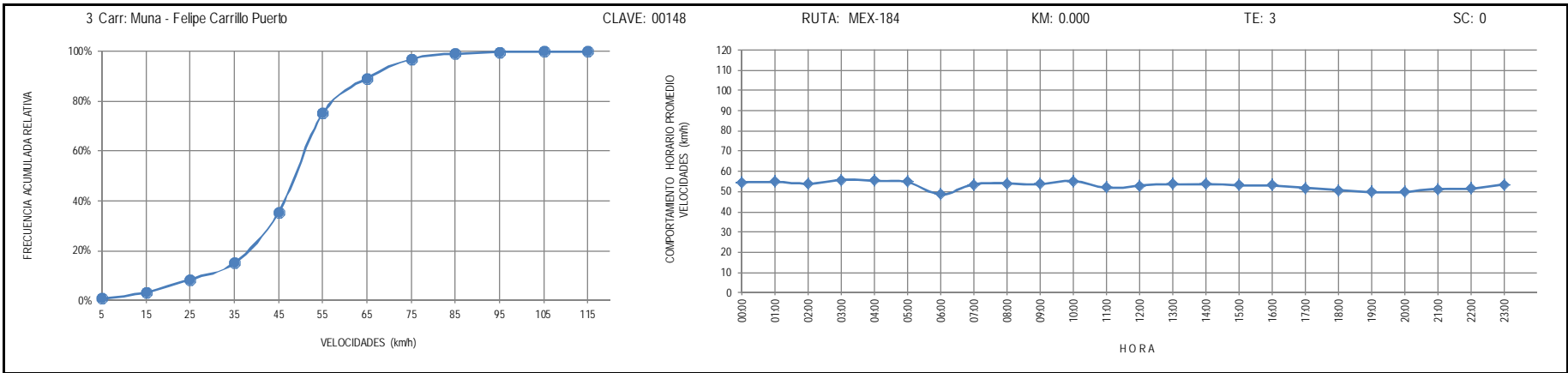
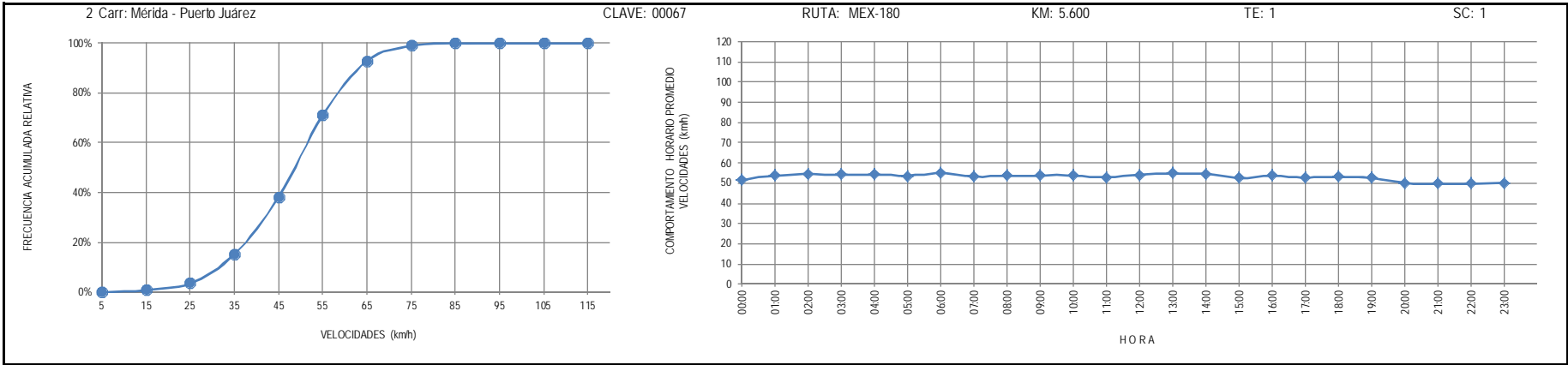
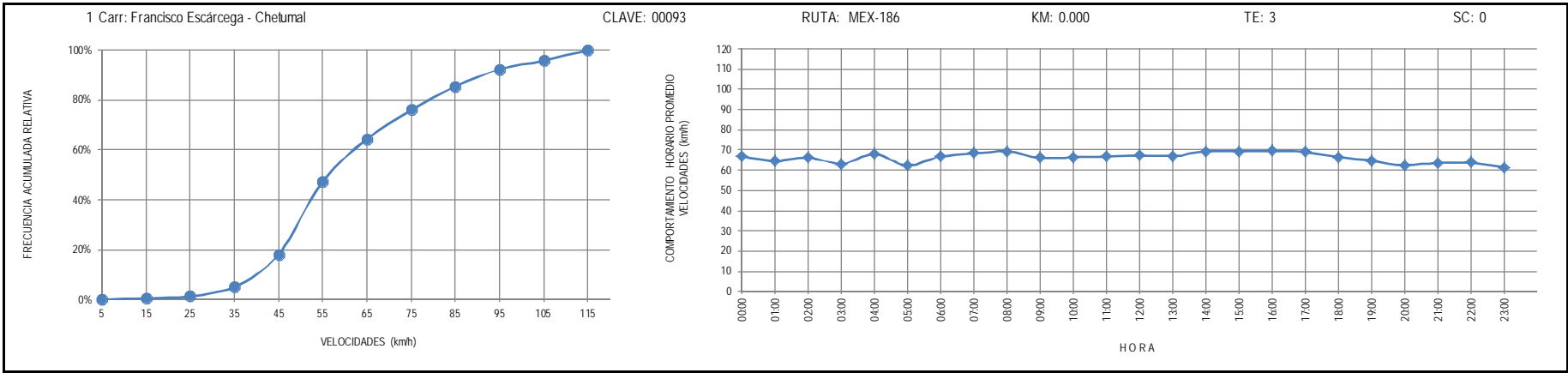
31 CARR: Ucum - Unión

CLAVE: 23571

RUTA: QR

AÑO: 2012

LUGAR	ESTACION				VELOCIDAD AUTOS (km/h)				VELOCIDAD AUTOBUSES (km/h)				VELOCIDAD CAMIONES (km/h)				COORDENADAS	
	KM	TE	SC	TDPA	Promedio	P 85	P 98	δ	Promedio	P 85	P 98	δ	Promedio	P 85	P 98	δ	Latitud	Longitud
Ucum	0.00	3	0	3457	74.3	87.1	111.5	13.9	62.5	79.3	84.2	11.9	71.6	87.9	104.5	15.9	18.495132	-88.520802
T. Der. Ingenio Álvaro Obregón	31.00	1	0	1464	72.7	89.0	111.1	15.8	71.7	92.0	103.4	16.7	68.3	85.8	112.2	16.7	18.250372	-88.649913
T. Der. Ingenio Álvaro Obregón	31.00	3	0	2147	71.2	87.1	108.4	15.6	73.4	96.5	104.6	18.5	71.8	91.0	114.4	18.0	18.245529	-88.652413
T. Der. U. A. Galeras	75.00	1	0	148	56.7	65.0	80.5	9.9	57.4	63.1	73.4	6.6	58.4	69.6	84.1	9.9	17.989284	-88.848706
T. Der. U. A. Galeras	75.00	3	0	203	56.7	63.9	79.8	8.9	58.0	64.0	73.5	6.9	57.1	61.7	82.1	7.0	17.986643	-88.853540
Unión	88.00	1	0	521	38.8	46.9	63.1	10.5	43.8	51.1	54.9	9.1	41.9	51.1	67.4	11.4	17.907348	-88.881744



4 Carr: Polyuc - T. C. (Reforma Agraria - Puerto Juárez)

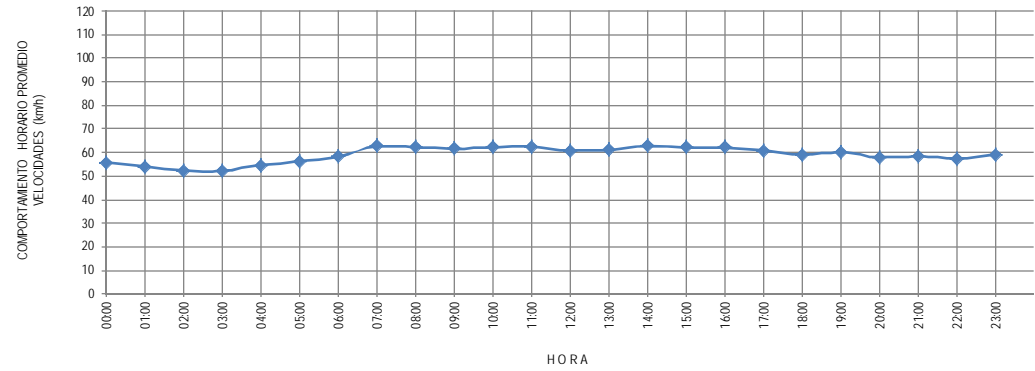
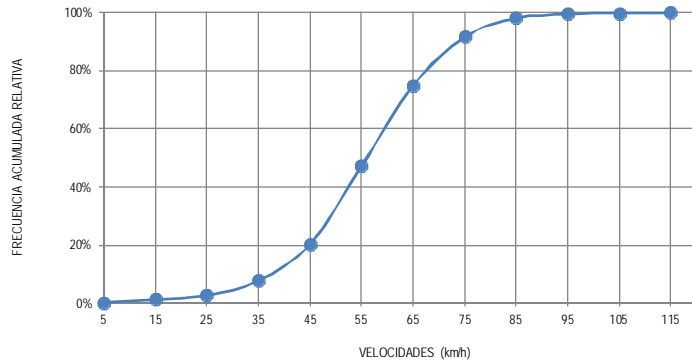
CLAVE: 23014

RUTA: MEX-293

KM: 0.000

TE: 3

SC: 0



5 Carr: Ramal a Puerto Morelos

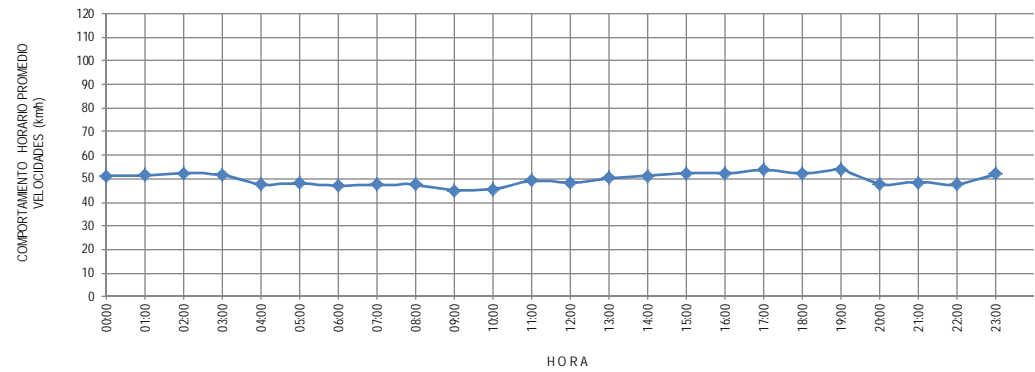
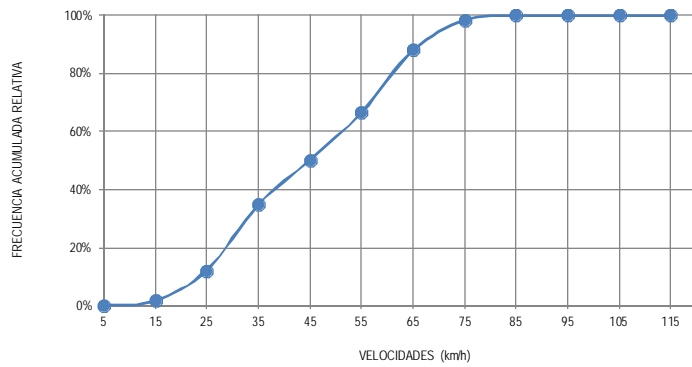
CLAVE: 23569

RUTA: MEX

KM: 0.000

TE: 3

SC: 0



6 Carr: Ramal a Punta Piedra

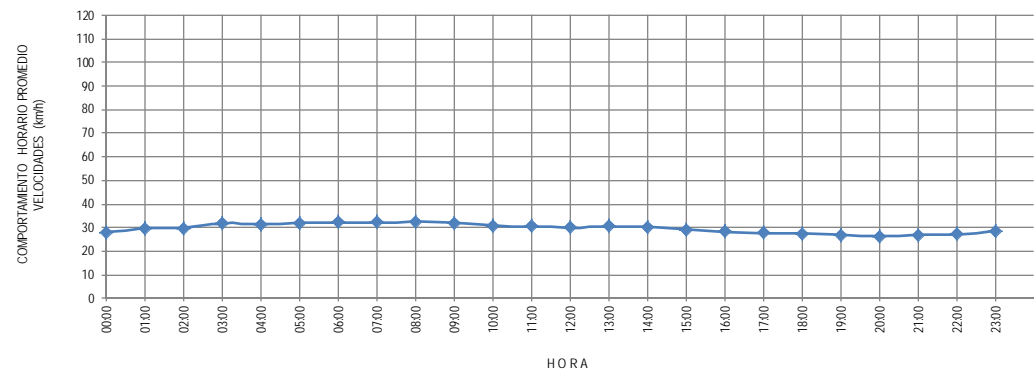
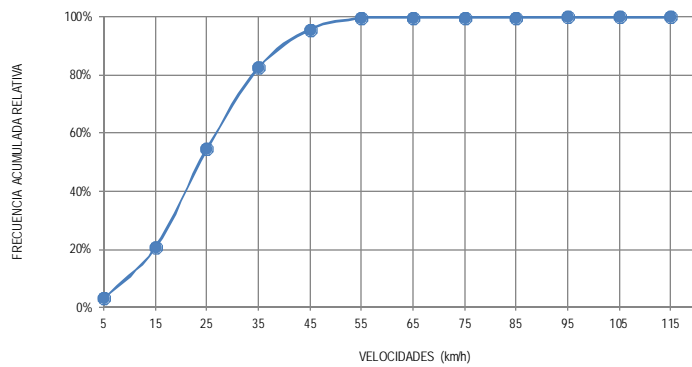
CLAVE: 23575

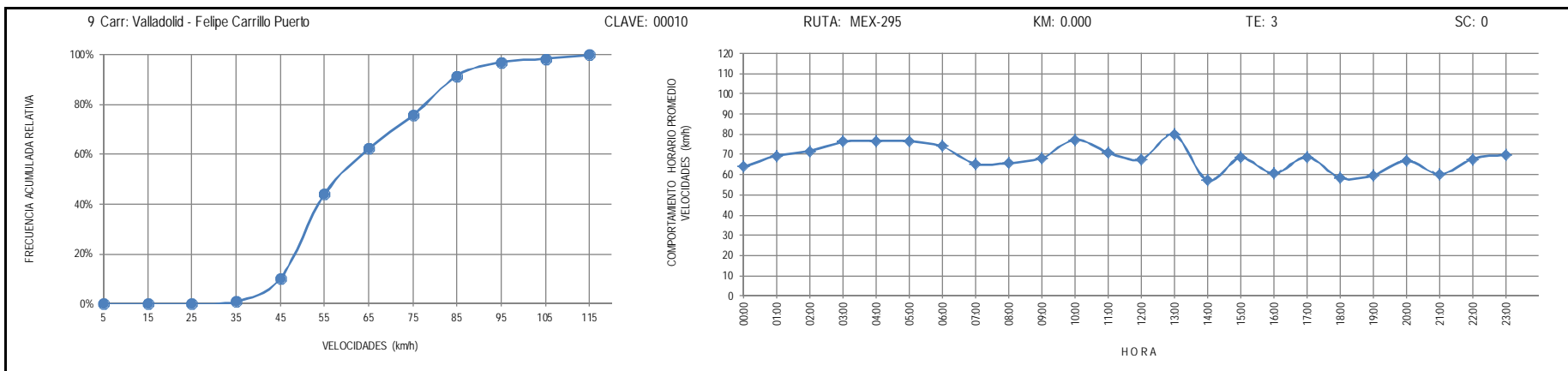
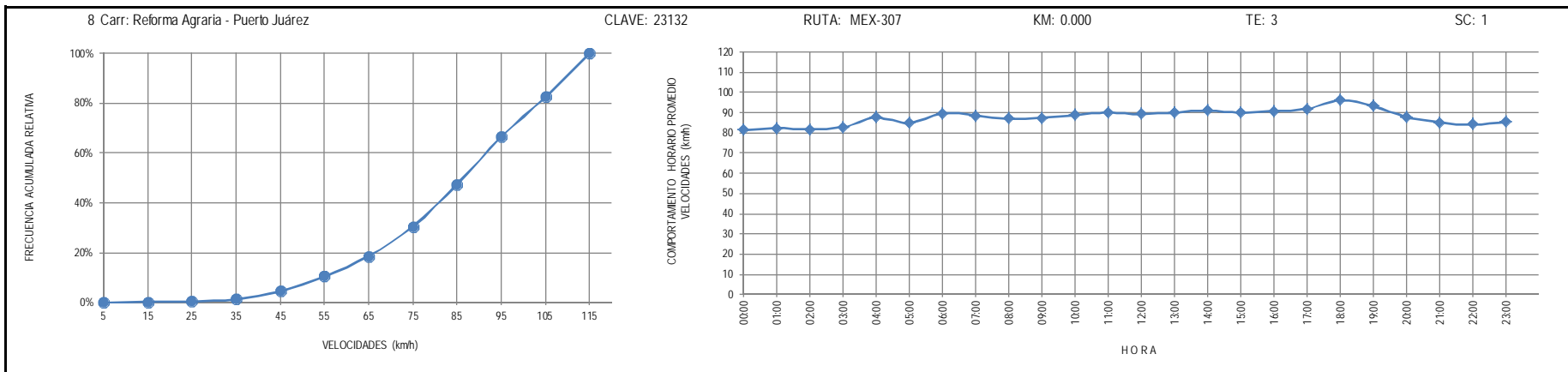
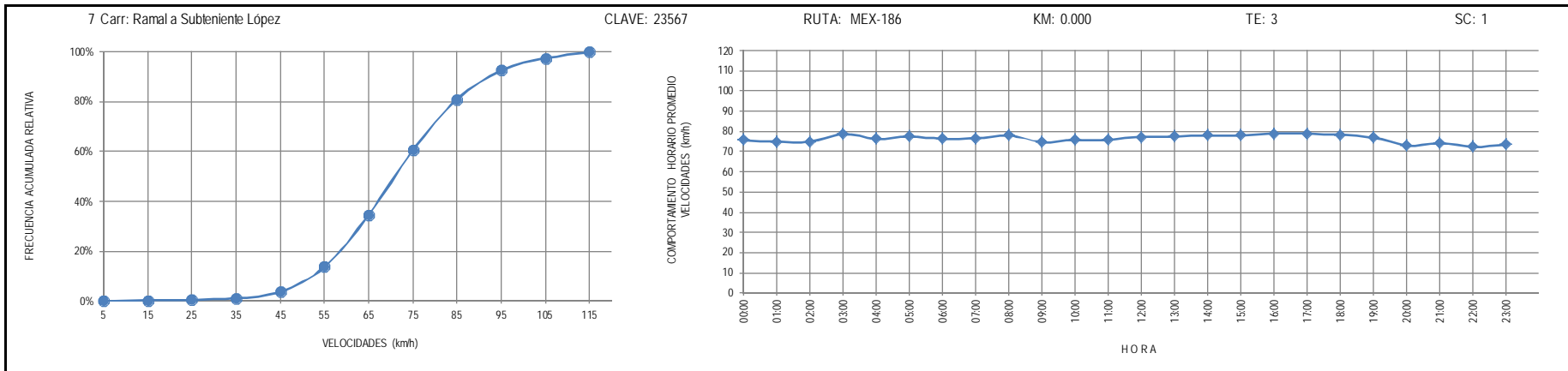
RUTA: MEX

KM: 0.000

TE: 3

SC: 1





10 Carr: Mérida - Cancún (Cuota)

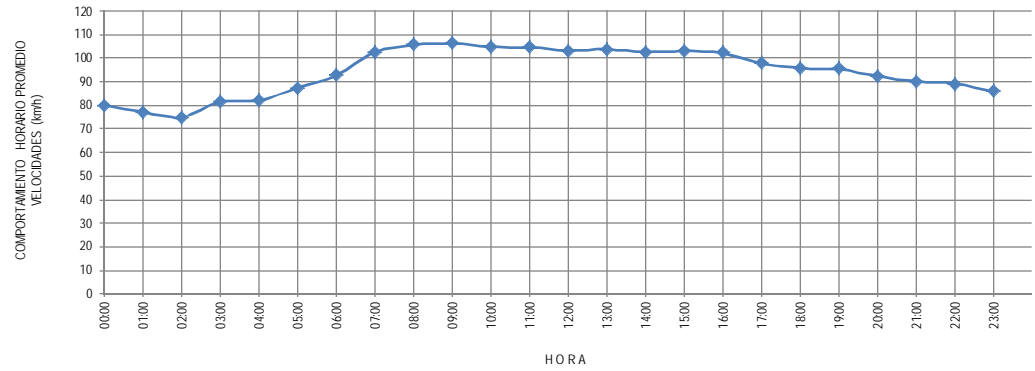
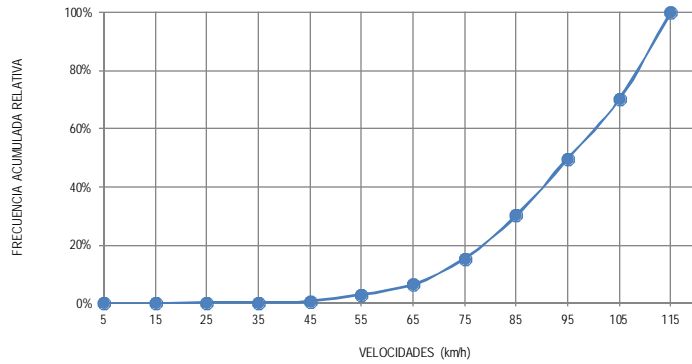
CLAVE: 00071

ruta: MEX-180D

KM: 51.000

TE: 1

SC: 1



11 Carr: Bacalar - Miguel Alemán

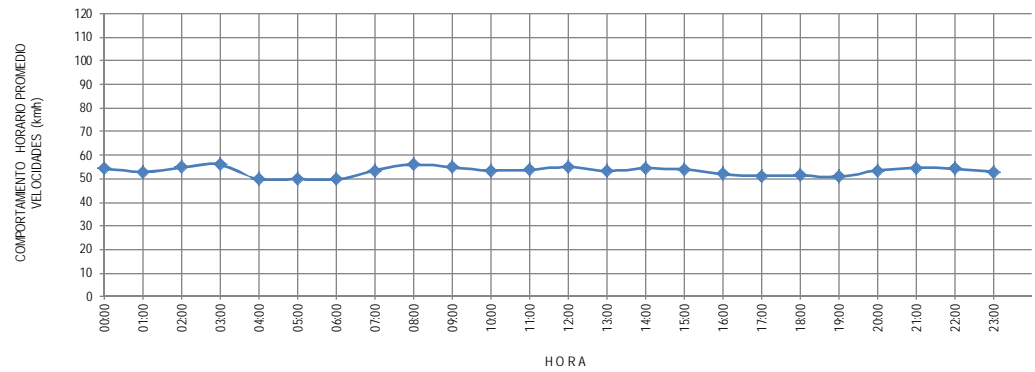
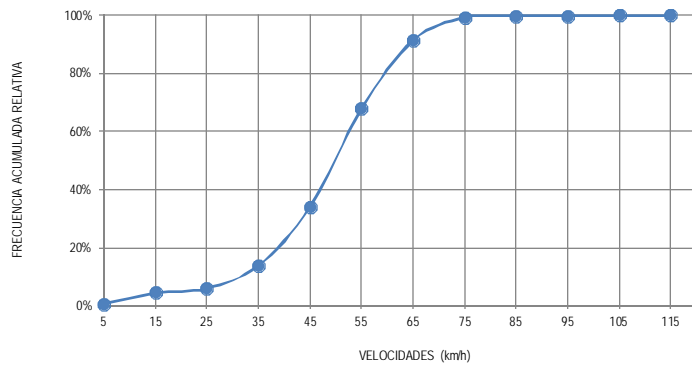
CLAVE: 20030

ruta: QR

KM: 21.000

TE: 3

SC: 0



12 Carr: Cancún - Punta Cancún

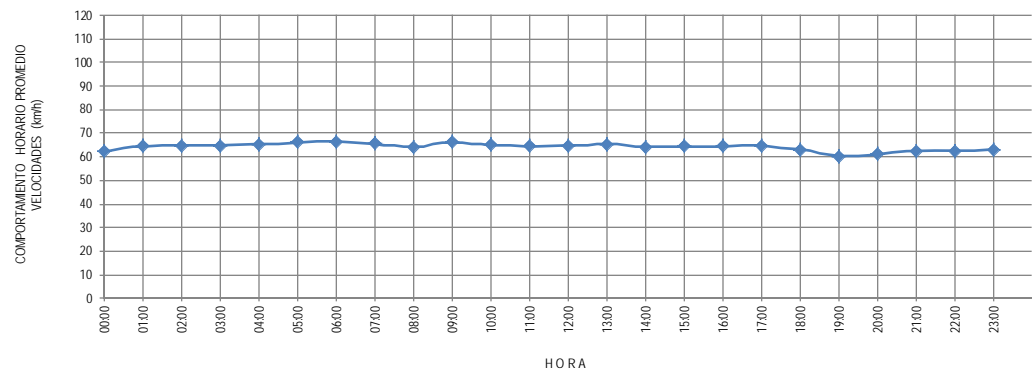
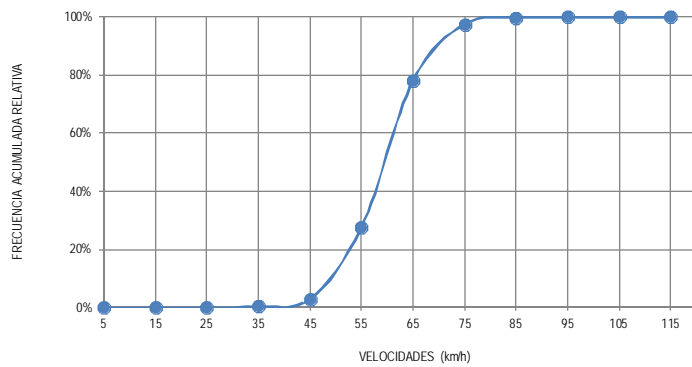
CLAVE: 23581

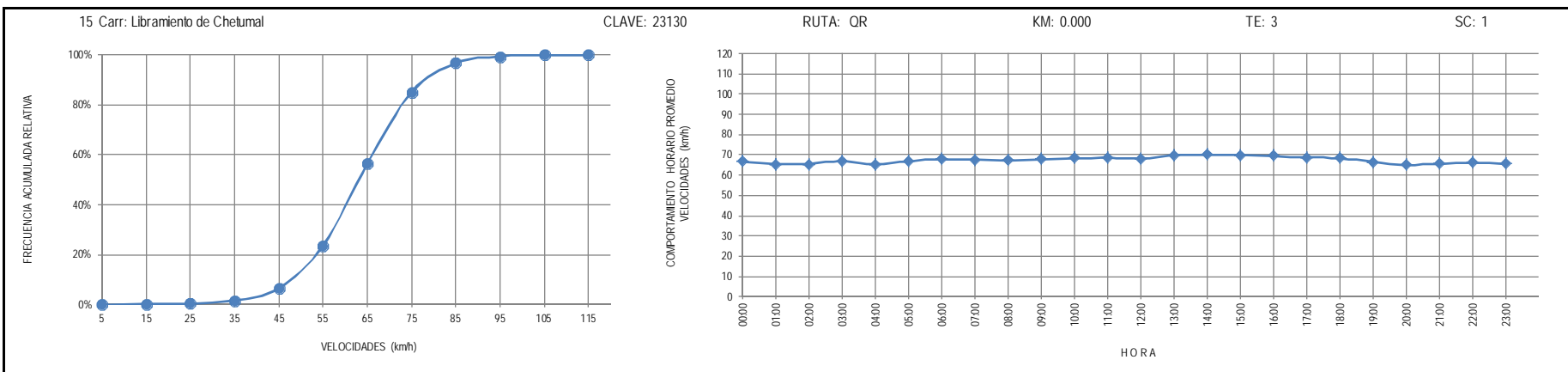
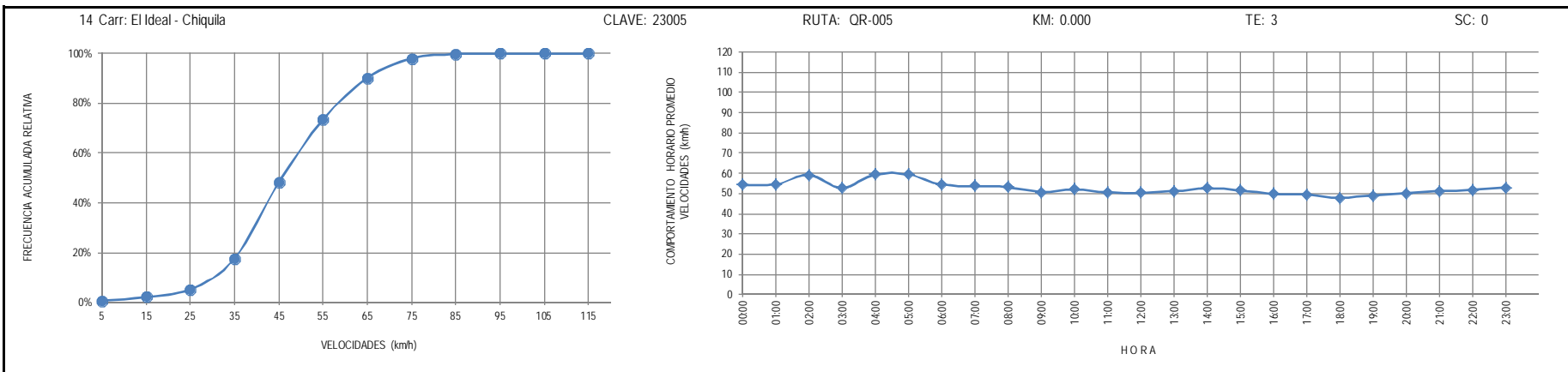
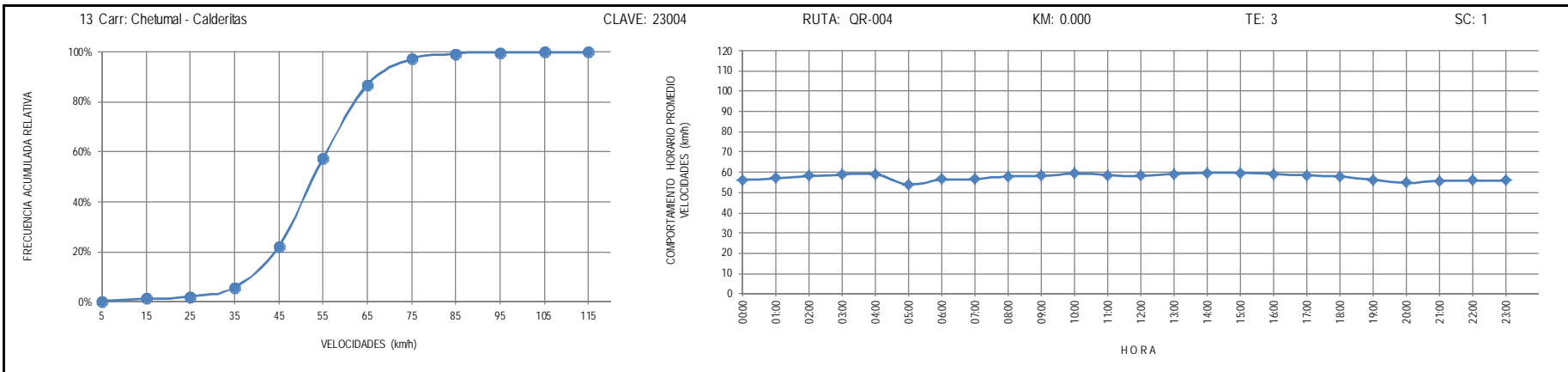
ruta: QR

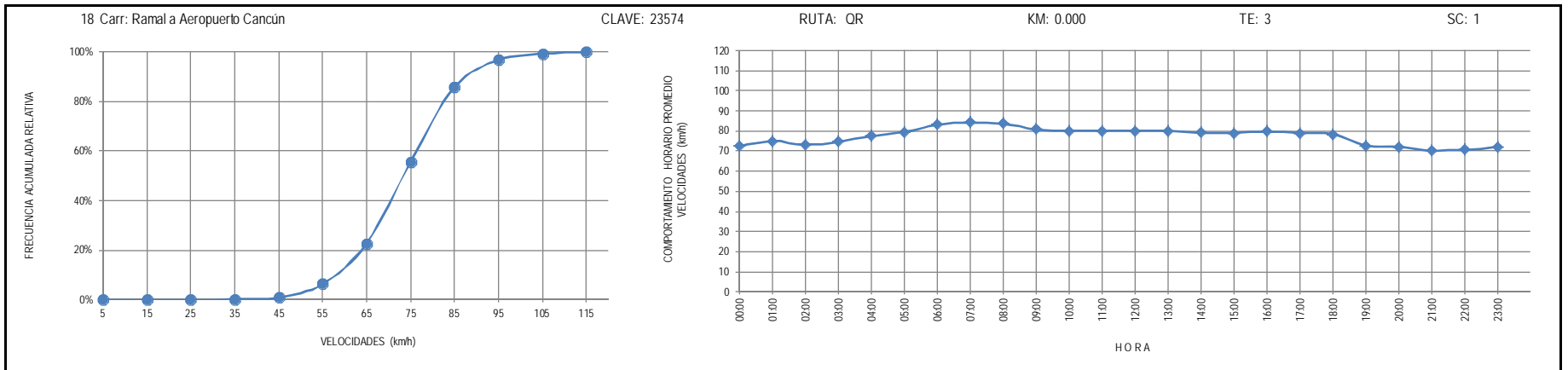
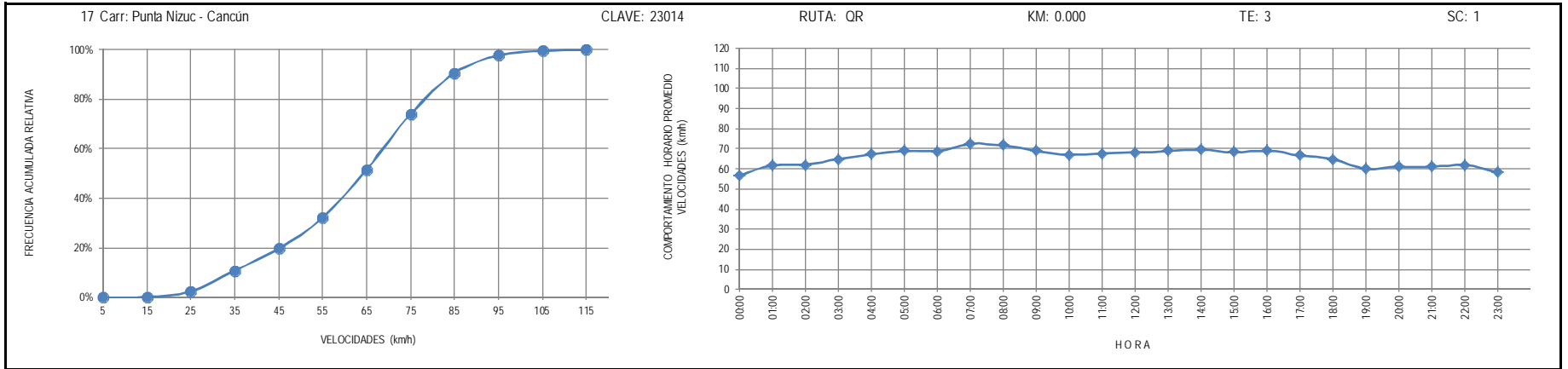
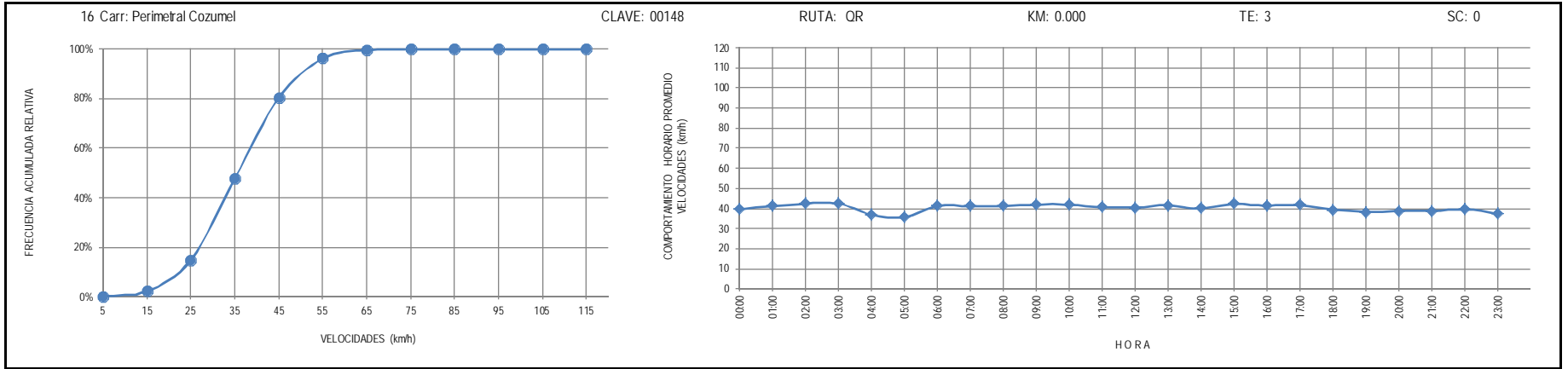
KM: 0.000

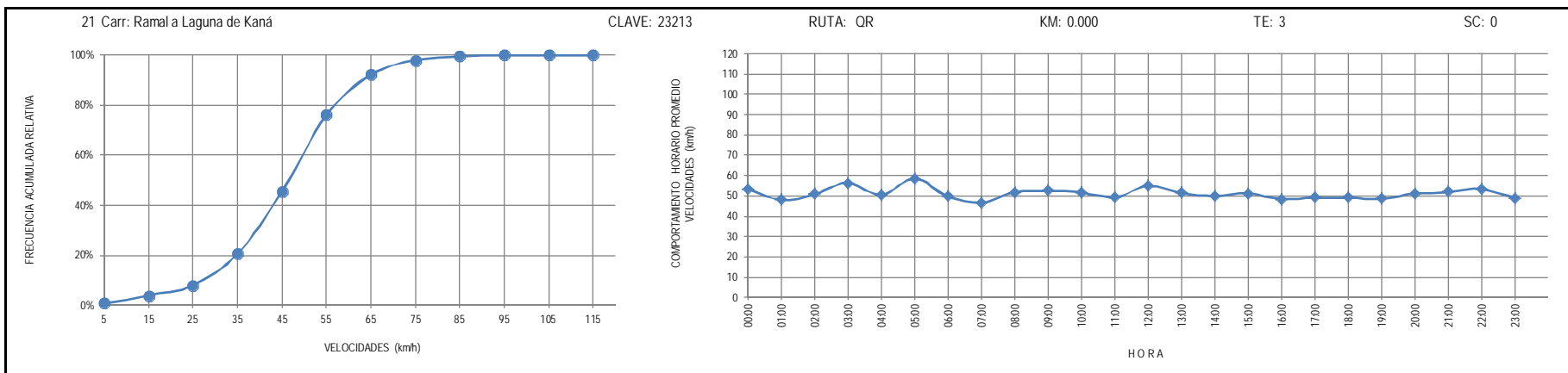
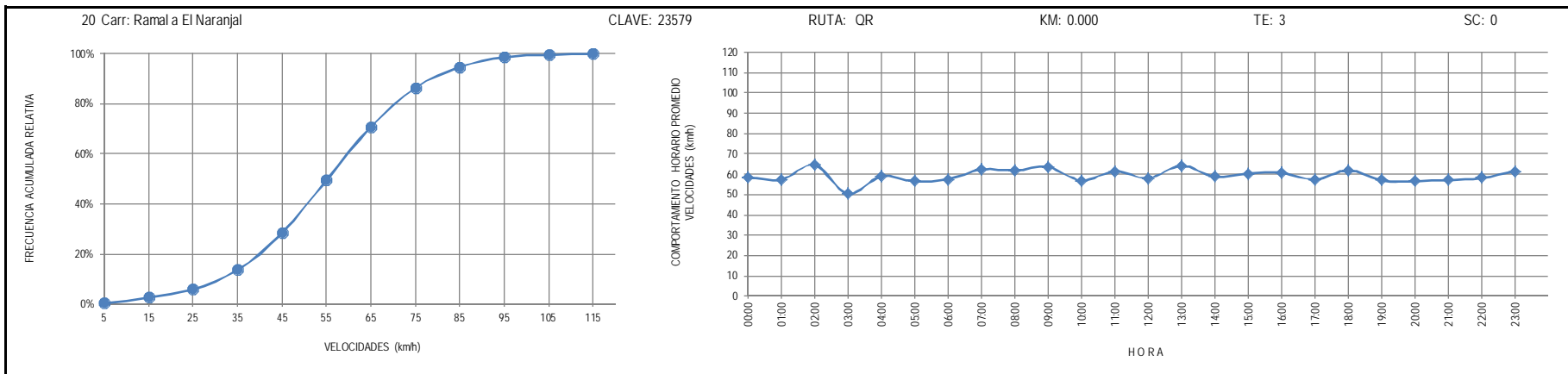
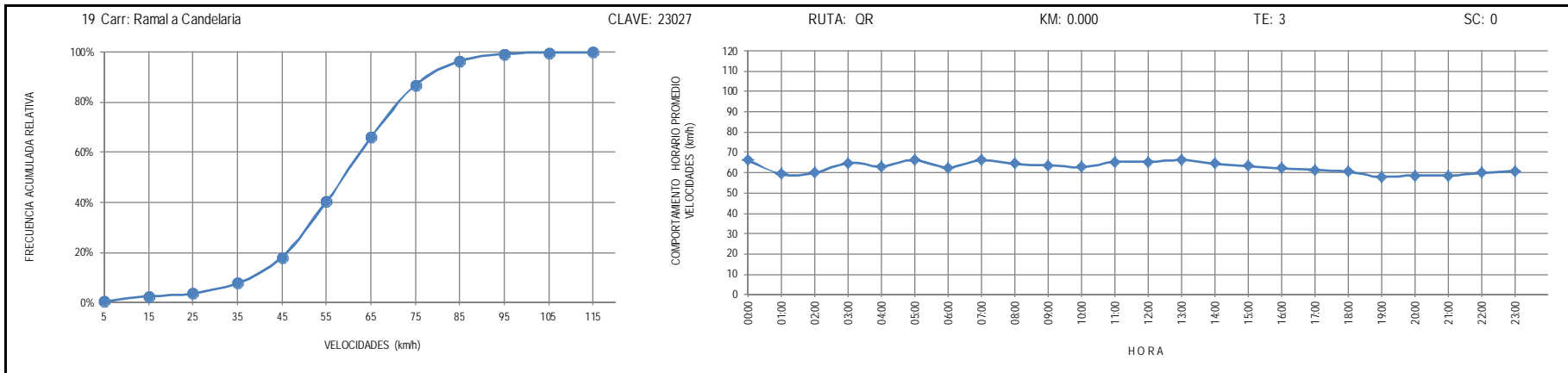
TE: 3

SC: 1









22 Carr: Ramal a Mahahual

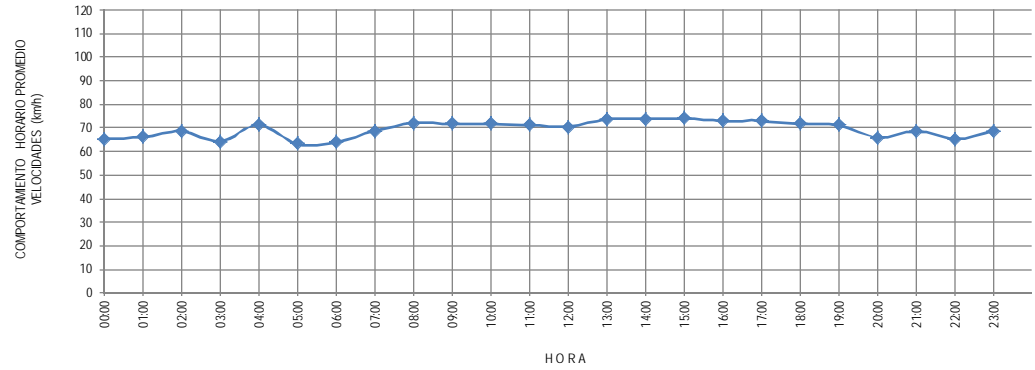
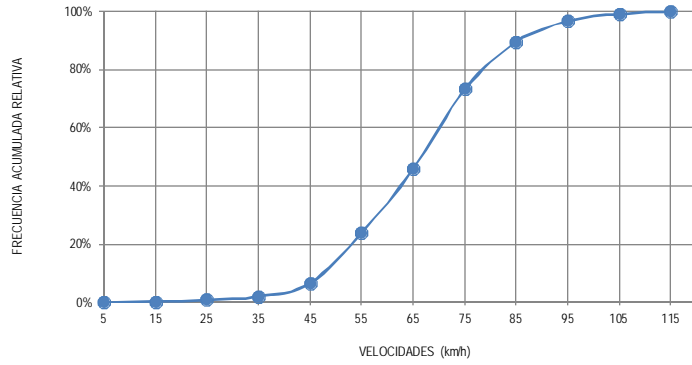
CLAVE: 23583

ruta: QR

KM: 0.000

TE: 3

SC: 0



23 Carr: Ramal a Petcacab

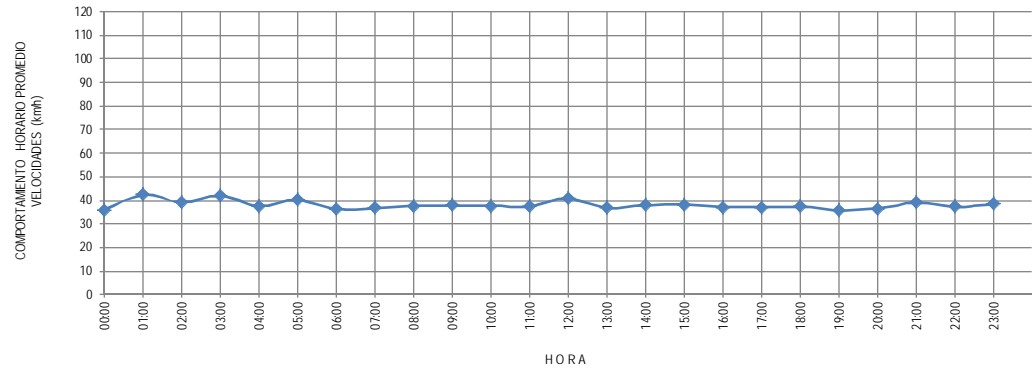
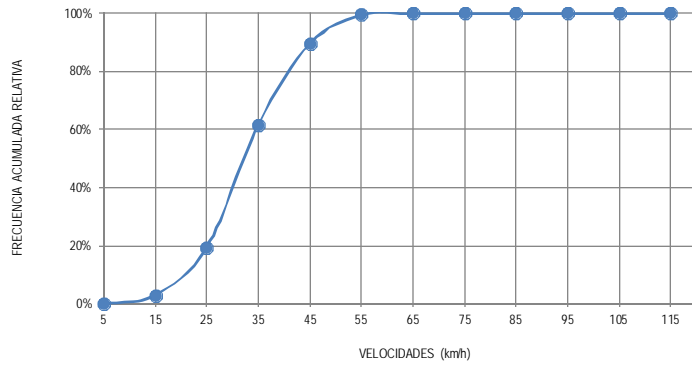
CLAVE: 23018

ruta: QR-018

KM: 0.000

TE: 3

SC: 0



24 Carr: Ramal a Punta Allen

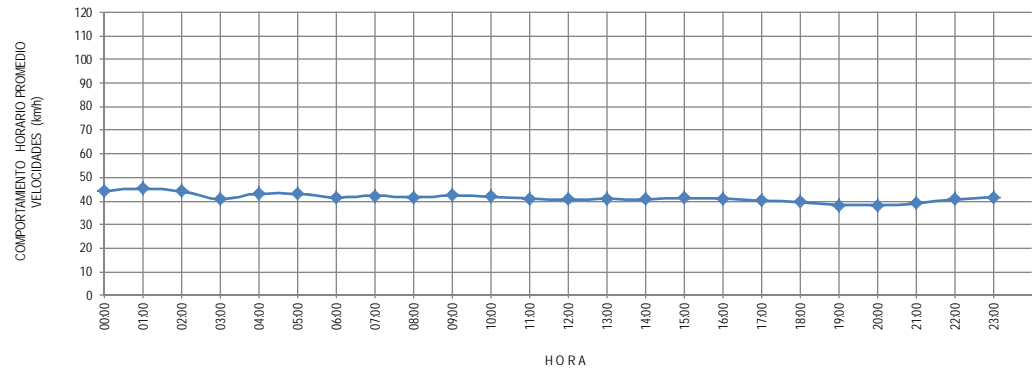
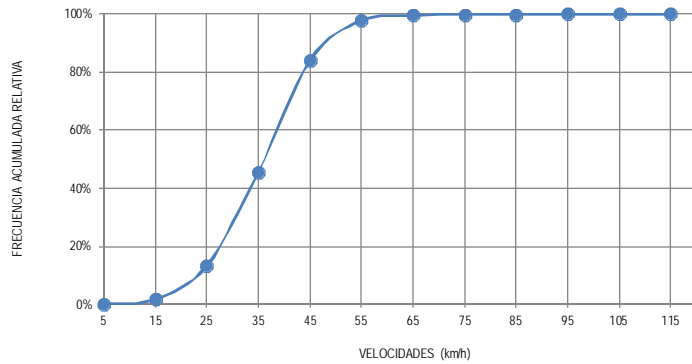
CLAVE: 23015

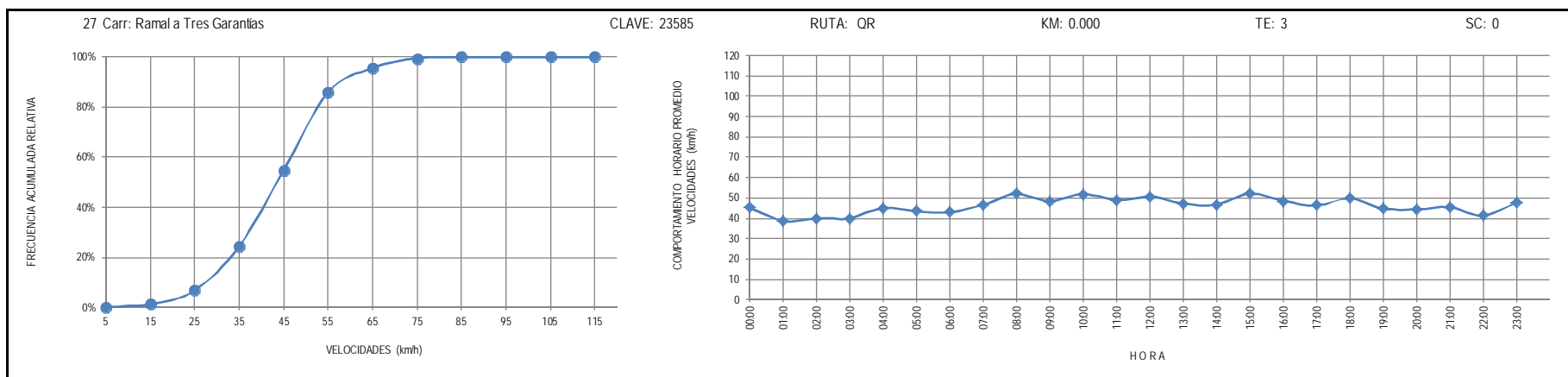
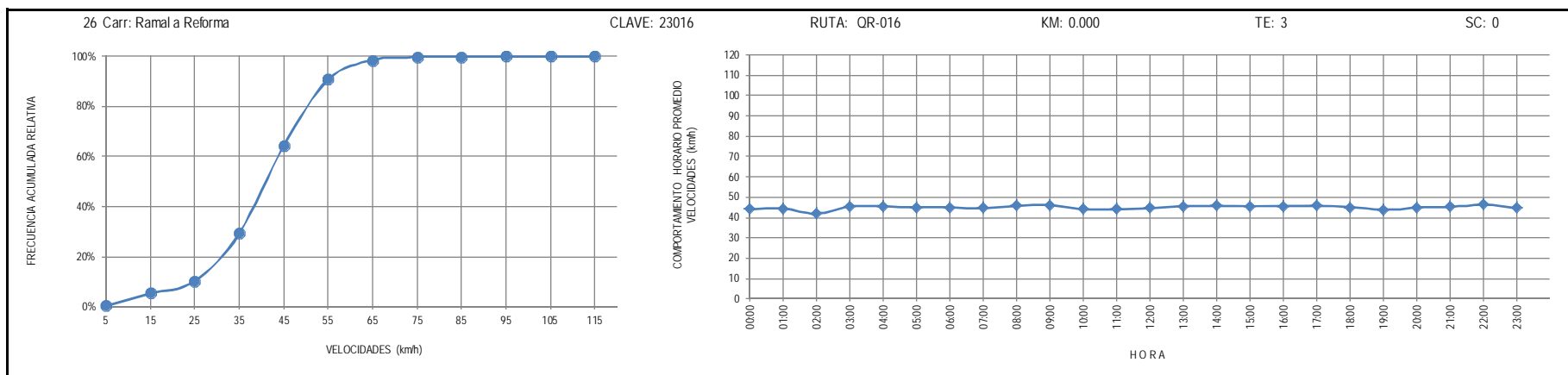
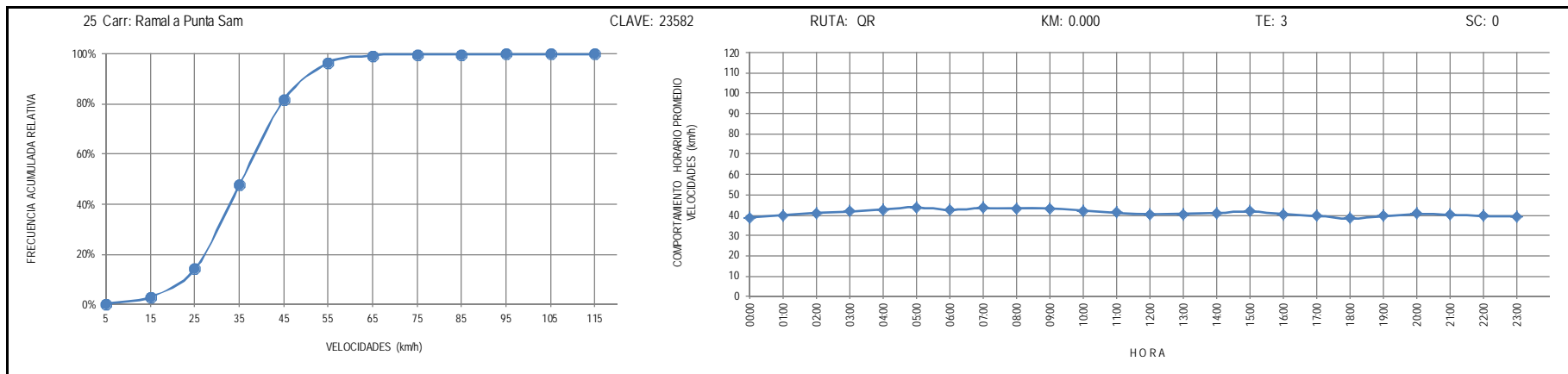
ruta: QR-015

KM: 0.000

TE: 3

SC: 0





28 Carr: Tihosuco - Dziuche

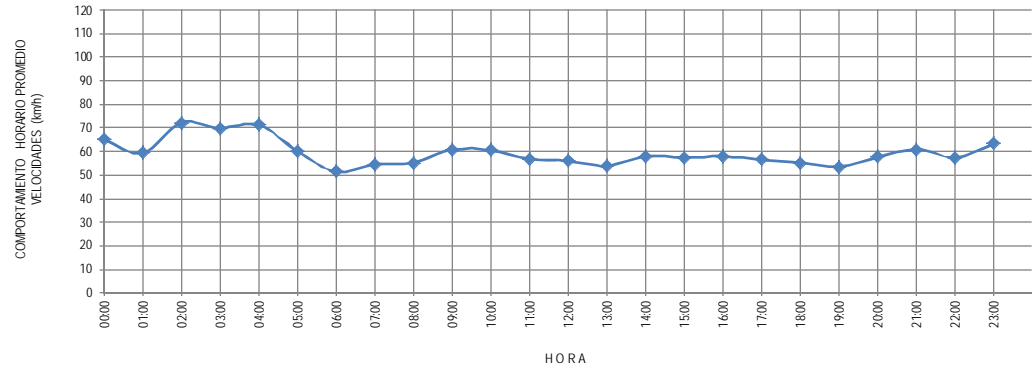
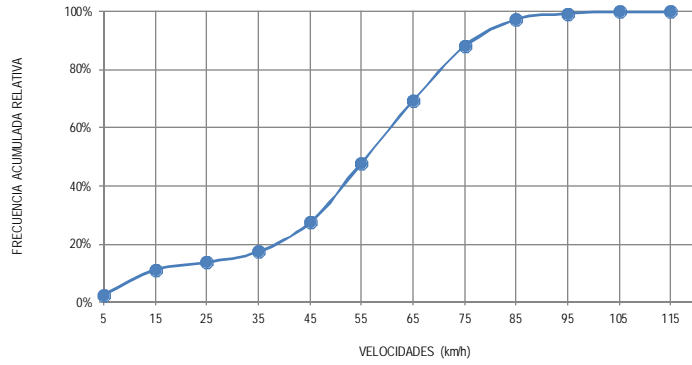
CLAVE: 23576

RUTA: QR

KM: 0.000

TE: 3

SC: 0



29 Carr: Transversal de Cozumel

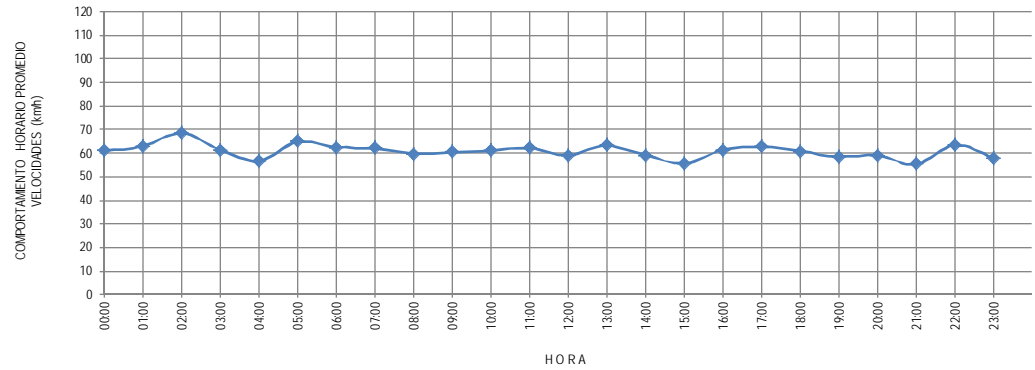
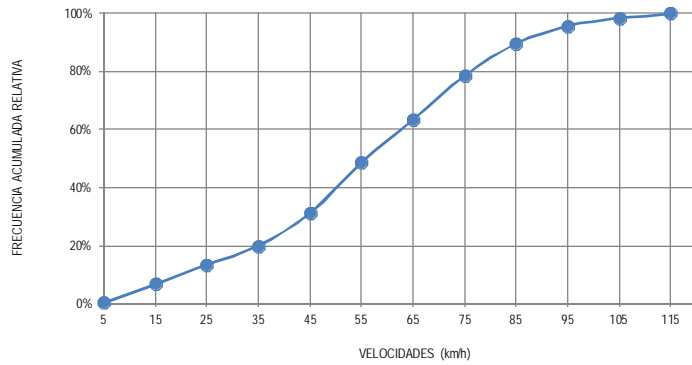
CLAVE: 23576

RUTA: QR

KM: 0.000

TE: 3

SC: 1



30 Carr: Tulum - Nuevo X-Can

CLAVE: 23570

RUTA: QR

KM: 0.000

TE: 3

SC: 0

