



PUEBLA

NO. INDICE	CARRETERA	ruta
---RED FEDERAL LIBRE---		
1	Amozoc - Teziutlán	MEX-129
2	Apizaco - Tejocotal	MEX-119
3	Los Reyes - Zacatepec	MEX-136
4	México - Puebla (Libre)	MEX-190
5	Pachuca - Tuxpam	MEX-130
6	Puebla - Belem	MEX-121
7	Puebla - Huajuapán de León	MEX-190
8	Puebla - Tehuacán	MEX-150
9	Puebla - Tlaxcala	MEX-119
10	Ramal a Nuevo Necaxa	MEX-130
11	San Hipólito - Xalapa	MEX-140
12	San Martín Texmelucan - Tlaxcala	MEX-117
13	San Salvador El Seco - Azumbilla	MEX-144
14	Santa Bárbara - Izúcar de Matamoros	MEX-115-160
15	Tehuacán - Córdoba	MEX-150
16	Tehuacán - Huajuapán de León	MEX-125
17	Teziutlán - Nautla	MEX-129
18	Teziutlán - Perote	MEX-131
19	Zacatepec - Oriental	MEX-136
---RED FEDERAL DE CUOTA---		
20	Acatzingo - Cd. Mendoza (Cuota)	MEX-150D
21	Amozoc - Perote (Cuota)	MEX-140D
22	Cuacnopalan - Oaxaca (Cuota)	MEX-135D
23	Ent. Tulancingo - Venta Grande (Cuota)	MEX-132D
24	Libramiento de San Martín Texmelucan	MEX-057D
25	México - Puebla (Cuota)	MEX-150D
26	Puebla - Acatzingo (Cuota)	MEX-150D
27	San Martín Texmelucan - Tlaxcala - El Molinito (Cuota)	MEX-117D
28	Tejocotal - Nuevo Necaxa (Cuota)	MEX-132D
---RED ESTATAL LIBRE---		
29	Amayuca - Izúcar de Matamoros	MOR-031-PUE
30	Azumbilla - Alcomunga	PUE
31	Cholula - Puebla (Vía Quetzalcóatl)	PUE
32	Cuacnopalan - Santa Catarina Los Reyes	PUE
33	Cuapiaxtla - Acatlán de Osorio	PUE
34	Izúcar de Matamoros - Tepexi de Rodríguez	PUE
35	Ramal a Aeropuerto Hnos. Serdán	PUE
36	Ramal a Jolalpan	MOR-PUE
37	Ramal a Tetela de Ocampo	PUE
38	Ramal a Zihuateutla	PUE
39	Ramal a Zoquiltán	PUE
40	San Juan Ixcaquixtla - Pino Suárez	PUE
41	Tecamachalco - Cañada Morelos	PUE
42	Tecamachalco - Quecholac	PUE
43	Zacatlán - Zapotitlán	PUE
---RED ESTATAL DE CUOTA---		
44	Atlixco - Jantetelco (Cuota)	PUE-D
45	Libres - Teziutlán (Cuota)	PUE-D
46	Puebla - Atlixco (Cuota)	PUE-D
47	Tlaxco - Tejocotal (Cuota)	PUE-D
---CARRETERAS INTEGRADAS POR TRAMOS FEDERALES Y ESTATALES---		
48	Ramal a Tulcingo del Valle	PUE-MEX-093
49	Tehuacán - Huitzo	PUE-MEX-135
50	Teotitlán de Flores Magón - Tuxtepec	OAX-PUE-MEX-182

PUEBLA

1 CARR: Amozoc - Teziutlán

CLAVE: 00210

RUTA: MEX-129

AÑO: 2012

LUGAR	ESTACION				VELOCIDAD AUTOS (km/h)				VELOCIDAD AUTOBUSES (km/h)				VELOCIDAD CAMIONES (km/h)				COORDENADAS	
	KM	TE	SC	TDPA	Promedio	P 85	P 98	δ	Promedio	P 85	P 98	δ	Promedio	P 85	P 98	δ	Latitud	Longitud
Amozoc	0.00																	
X. C. Puebla - Córdoba (Cuota)	1.40	3	0	11568	35.2	42.7	55.1	9.2	35.1	42.9	53.9	8.8	35.8	43.9	53.7	9.1	19.051639	-98.027278
Acajete	12.00	3	0	8656	35.2	42.7	55.0	9.2	35.5	43.5	53.6	9.0	36.1	44.4	53.7	9.2	19.115740	-97.945683
Rafael Lara Grajales	35.50	1	0	4792	86.3	98.7	119.1	13.3	79.8	91.3	102.3	13.6	74.9	90.2	105.7	15.5	19.235395	-97.814762
Rafael Lara Grajales	35.50	3	0	4996	79.2	92.1	113.8	14.3	76.3	88.8	100.4	13.1	73.1	85.5	106.0	13.4	19.232543	-97.784120
Lim. Edos. Term. Pue. Ppia. Tlax.	50.54																	
X. C. Los Reyes - Zacatepec	56.31	1	0	3366	55.1	64.1	82.8	10.5	48.9	55.8	66.9	9.6	44.8	54.2	70.7	11.7	19.316163	-97.654386
Lim. Edos. Term. Tlax. Ppia. Pue.	60.22																	
Oriental	62.62	1	0	3824	76.0	88.9	108.1	13.8	69.3	83.2	107.9	14.6	66.8	79.9	104.3	13.6	19.373724	-97.610081
Oriental	62.62	3	0	6261	75.9	88.9	108.1	13.8	69.9	84.4	111.6	15.2	66.4	78.9	103.2	13.2	19.380780	-97.619646
X. C. Amozoc - Perote (Cuota)	69.00	1	1	3016	61.6	72.7	84.7	12.9	56.3	61.8	71.5	7.4	53.2	68.6	92.1	15.5	19.415302	-97.638011
X. C. Amozoc - Perote (Cuota)	69.00	1	2	2833	69.9	81.3	94.8	12.6	65.8	73.8	84.4	9.9	65.6	77.0	93.8	12.3	19.415302	-97.638011
X. C. Amozoc - Perote (Cuota)	69.00	3	0	7277	81.6	91.3	105.9	11.2	77.6	86.5	94.9	11.1	76.6	86.7	104.2	11.7	19.421762	-97.646110
Libres	76.35	3	0	7602	74.6	92.0	115.0	17.0	74.7	90.9	119.5	16.3	74.1	94.4	130.7	19.7	19.481923	-97.673984
San Miguel Tenextatiloyán	106.70	1	0	3518	60.0	65.0	74.4	8.4	55.6	59.9	64.7	5.5	54.5	61.5	72.9	8.4	19.701291	-97.598724
T. Izq. Zacapoaxtla	114.80	1	0	7059	61.4	69.9	86.2	10.4	59.0	67.3	83.1	9.7	57.1	65.4	86.7	11.2	19.759198	-97.568374
T. Izq. Zacapoaxtla	114.80	3	0	8123	60.0	65.0	74.4	8.4	55.6	60.1	64.9	5.8	55.2	61.4	73.0	7.6	19.764583	-97.565250
Zaragoza	116.80	3	0	7066	50.5	53.8	63.5	6.9	46.8	50.9	54.7	6.0	47.3	52.0	61.3	7.3	19.763649	-97.567788
Teziutlán	157.80	1	0	11317	55.0	61.5	74.5	7.6	53.2	56.9	64.4	6.2	52.9	58.4	72.7	8.3	19.817441	-97.379787

2 CARR: Apizaco - Tejocotal

CLAVE: 00430

RUTA: MEX-119

AÑO: 2012

LUGAR	ESTACION				VELOCIDAD AUTOS (km/h)				VELOCIDAD AUTOBUSES (km/h)				VELOCIDAD CAMIONES (km/h)				COORDENADAS	
	KM	TE	SC	TDPA	Promedio	P 85	P 98	δ	Promedio	P 85	P 98	δ	Promedio	P 85	P 98	δ	Latitud	Longitud
Apizaco	0.00	3	1	9048	32.8	40.5	51.6	9.3	24.8	30.4	44.3	7.2	22.4	30.2	47.8	9.8	19.428432	-98.135696
Apizaco	0.00	3	2	10215	79.6	90.7	107.2	12.3	76.1	85.1	101.6	11.1	70.4	83.2	101.3	14.0	19.428432	-98.135696
T. Der. Tetla	6.60	3	0	16025	67.2	76.2	107.9	12.4	64.0	71.9	83.7	9.1	63.4	71.4	86.0	9.7	19.469057	-98.111853
T. Izq. Atlangatepec	12.15	1	0	11275	84.0	96.0	114.7	13.0	75.7	89.1	104.7	13.5	72.0	87.8	110.2	16.2	19.510810	-98.117621
Tlaxco	23.91	1	0	8720	56.0	68.4	86.7	13.2	57.4	68.2	136.1	15.0	54.8	66.2	105.9	13.7	19.605147	-98.122945
Tlaxco	23.91	3	0	5629	60.5	73.0	90.9	12.7	60.5	76.8	104.2	15.9	54.4	70.7	104.4	16.3	19.624874	-98.125610
Lim. Edos. Term. Tlax. Ppia. Pue.	34.45																	
T. Der. Tetela de Ocampo	52.20	1	0	6941	65.7	74.5	92.2	10.5	59.7	69.0	82.8	10.9	58.3	67.7	84.3	11.3	19.802278	-98.025711
Zacatlán	71.25	1	0	10613	51.5	54.7	69.9	8.3	48.8	52.8	62.7	7.3	47.4	52.6	64.2	8.5	19.914970	-97.958528
Lim. Edos. Term. Pue. Ppia. Hgo.	110.45																	
T. C. Pachuca - Tuxpam	113.15	1	0	5890	34.5	37.7	44.9	5.2	33.0	34.7	49.9	6.3	36.0	47.2	54.1	9.1	20.124048	-98.128562

PUEBLA

3 CARR: Los Reyes - Zacatepec

CLAVE: 00052

RUTA: MEX-136

AÑO: 2012

LUGAR	ESTACION				VELOCIDAD AUTOS (km/h)				VELOCIDAD AUTOBUSES (km/h)				VELOCIDAD CAMIONES (km/h)				COORDENADAS	
	KM	TE	SC	TDPA	Promedio	P 85	P 98	δ	Promedio	P 85	P 98	δ	Promedio	P 85	P 98	δ	Latitud	Longitud
T. C. México - Puebla (Libre)	0.00																	
T. Izq. La Magdalena	3.35	3	1	43751	64.2	73.7	92.7	11.0	61.3	70.0	84.0	10.2	57.9	68.7	89.0	12.2	19.378717	-98.941852
T. Izq. La Magdalena	3.35	3	2	45482	57.1	64.3	80.0	9.5	52.6	59.3	72.7	9.0	49.9	58.2	73.5	10.3	19.378992	-98.942016
T. Izq. Chimalhuacán	8.45	1	1	31417	64.5	73.9	93.3	11.1	61.5	70.3	83.9	10.2	56.5	66.7	86.6	11.7	19.413104	-98.920179
T. Izq. Chimalhuacán	8.45	1	2	32680	57.2	64.3	80.1	9.5	52.5	59.3	72.7	9.0	49.0	57.3	72.9	10.4	19.413230	-98.920294
T. C. San Bernardino - Tepexpan	17.00	3	1	17081	63.5	72.7	90.6	10.9	60.9	69.6	82.8	10.2	56.9	66.4	83.8	11.3	19.484223	-98.886125
T. C. San Bernardino - Tepexpan	17.00	3	2	17219	56.7	63.8	78.5	9.2	52.1	59.0	72.7	9.2	49.0	57.6	72.9	10.6	19.484393	-98.886269
Texcoco	23.02	3	1	18097	102.0	122.7	140.6	19.9	89.4	111.6	136.2	21.4	73.7	102.1	131.2	24.5	19.522564	-98.866315
Texcoco	23.02	3	2	17592	83.4	96.4	119.4	14.5	69.1	80.7	95.0	13.1	64.7	80.4	95.2	15.5	19.522913	-98.866260
T. Izq. Tepetlaoxtoc	30.03	1	1	14804	103.2	123.0	140.6	19.1	89.7	112.2	136.7	21.6	71.6	98.3	127.9	23.5	19.546060	-98.826042
T. Izq. Tepetlaoxtoc	30.03	1	2	14594	83.3	96.6	119.2	14.7	69.0	80.6	94.7	13.1	64.1	80.2	94.7	16.0	19.546138	-98.825925
T. Der. Totolapan	42.00	3	1	5676	102.7	122.4	140.3	19.1	85.6	107.8	127.5	20.4	68.7	93.7	122.7	22.3	19.558005	-98.727492
T. Der. Totolapan	42.00	3	2	5809	83.0	96.3	119.3	14.9	68.4	80.0	95.0	13.0	63.5	79.8	94.4	16.2	19.558005	-98.727492
Lim. Edos. Term. Mex. Ppia. Tlax.	43.15																	
Calpulalpan	59.58	3	0	15408	67.1	76.3	107.2	12.4	63.8	71.8	83.6	9.3	63.3	71.4	87.3	9.9	19.588102	-98.550057
T. Der. Nanacamilpa	71.76	3	0	13379	67.3	76.7	110.7	12.6	64.0	71.9	83.7	9.2	63.4	71.5	87.7	10.0	19.525155	-98.479303
X. C. Arco Norte de La Ciudad de México	73.80	3	1	6260	87.4	118.0	140.5	26.8	82.7	121.8	143.1	27.8	80.7	113.8	142.0	25.6	19.513699	-98.455352
X. C. Arco Norte de La Ciudad de México	73.80	3	2	6445	110.1	130.7	143.2	17.9	96.2	109.6	137.6	14.1	94.1	105.0	130.7	13.2	19.513699	-98.455352
Hueyotlilpan	88.21	3	1	6507	84.7	94.7	109.6	11.4	73.7	83.1	94.7	10.7	71.1	81.5	93.7	11.8	19.468339	-98.328100
Hueyotlilpan	88.21	3	2	6898	88.3	100.8	118.1	13.4	76.1	85.1	101.6	11.0	71.3	82.5	98.2	12.6	19.468339	-98.328100
Xaltocan	108.10	1	1	7853	106.0	122.3	141.0	15.6	97.3	110.2	132.1	13.6	93.4	105.6	124.5	13.6	19.424840	-98.217380
Xaltocan	108.10	1	2	8031	91.4	109.6	131.7	18.1	80.6	96.8	118.5	16.4	76.9	92.7	114.0	15.8	19.424840	-98.217380
Apizaco	117.74	1	1	24302	52.1	59.4	72.0	9.0	48.7	53.9	64.4	8.2	47.2	54.0	65.0	9.2	19.414098	-98.161828
Apizaco	117.74	1	2	23356	65.3	73.0	83.8	9.7	59.5	68.5	81.4	10.7	54.0	67.2	81.0	14.1	19.414101	-98.161822
Apizaco	117.74	3	0	24517	42.4	46.8	54.5	7.3	40.0	44.8	54.1	8.1	38.7	44.5	54.1	8.7	19.412970	-98.134015
T. Der. Cuaxomulco	119.85	3	1	9614	59.8	64.7	75.1	8.4	55.3	60.9	71.9	6.7	53.4	61.2	73.1	9.4	19.410530	-98.109322
T. Der. Cuaxomulco	119.85	3	2	9681	63.7	71.9	84.8	9.7	63.5	71.8	83.8	10.0	59.7	70.2	83.1	12.0	19.410530	-98.109322
T. Izq. Xalostoc	126.67	3	1	9867	93.7	104.8	122.3	12.5	81.8	91.9	102.7	11.7	78.8	89.5	103.3	12.2	19.389799	-98.052676
T. Izq. Xalostoc	126.67	3	2	9679	97.6	135.4	143.7	25.2	91.5	135.7	143.8	24.2	87.4	128.4	143.6	24.2	19.389799	-98.052676
T. Izq. Libramiento de Huamantla	141.70	1	1	9230	86.2	100.1	121.7	14.4	80.6	91.8	104.1	12.3	77.3	88.0	103.9	12.0	19.319543	-97.944050
T. Izq. Libramiento de Huamantla	141.70	1	2	8785	70.9	90.7	112.4	19.2	67.2	81.5	95.7	14.7	64.1	79.4	96.7	15.3	19.319543	-97.944055
Huamantla	143.02	3	1	5370	87.0	100.5	119.9	13.9	78.2	88.8	102.7	11.9	75.3	86.7	104.2	12.2	19.315529	-97.888265
Huamantla	143.02	3	2	5438	82.6	95.9	114.8	14.4	72.6	83.2	94.4	11.9	66.1	79.5	94.3	13.8	19.315529	-97.888265
X. C. Amozoc - Perote (Cuota)	156.76	1	1	5920	86.9	100.5	120.3	14.0	78.1	88.4	101.1	11.6	74.8	85.7	103.7	12.1	19.308251	-97.809838
X. C. Amozoc - Perote (Cuota)	156.76	1	2	5909	81.3	94.6	114.5	14.7	71.7	82.7	94.1	12.2	65.4	78.5	93.8	13.6	19.308251	-97.809840

PUEBLA

3 CARR: Los Reyes - Zacatepec

CLAVE: 00052

RUTA: MEX-136

AÑO: 2012

LUGAR	ESTACION				VELOCIDAD AUTOS (km/h)				VELOCIDAD AUTOBUSES (km/h)				VELOCIDAD CAMIONES (km/h)				COORDENADAS	
	KM	TE	SC	TDPA	Promedio	P 85	P 98	δ	Promedio	P 85	P 98	δ	Promedio	P 85	P 98	δ	Latitud	Longitud
T. Der. Cuapixtla	159.40	1	0	10146	67.6	78.4	105.3	13.0	60.8	67.8	81.9	9.0	57.4	66.0	82.9	10.6	19.303158	-97.778280
X. C. Amozoc - Teziutlán	173.47	1	0	9392	42.5	47.9	63.5	8.6	40.1	44.6	54.0	7.5	35.5	40.1	52.4	6.0	19.327067	-97.652905
X. C. Amozoc - Teziutlán	173.47	3	0	8129	44.3	52.4	74.0	10.4	40.3	46.5	55.1	8.4	37.7	43.4	57.3	8.0	19.321258	-97.643488
Lim. Edos. Term. Tlax. Ppia. Pue.	177.57																	
Zacatepec	187.67	1	0	9182	94.8	136.2	143.8	26.6	92.7	137.5	144.0	29.5	83.9	107.7	142.6	20.9	19.269834	-97.540571

4 CARR: México - Puebla (Libre)

CLAVE: 00449

RUTA: MEX-190

AÑO: 2012

LUGAR	ESTACION				VELOCIDAD AUTOS (km/h)				VELOCIDAD AUTOBUSES (km/h)				VELOCIDAD CAMIONES (km/h)				COORDENADAS	
	KM	TE	SC	TDPA	Promedio	P 85	P 98	δ	Promedio	P 85	P 98	δ	Promedio	P 85	P 98	δ	Latitud	Longitud
México	0.00																	
Lim. Edos. Term. D. F. Ppia. Mex.	18.66																	
T. Der. Chalco	28.85	1	1	38675	49.8	53.3	64.7	7.6	48.2	52.9	62.7	8.2	47.2	52.8	64.6	9.1	19.311154	-98.902078
T. Der. Chalco	28.85	1	2	36793	54.2	54.6	76.7	5.5	54.6	54.5	74.2	4.7	52.6	54.1	77.1	7.2	19.311358	-98.902086
T. Der. Chalco	28.85	3	1	16024	42.6	44.8	54.2	6.1	37.1	41.6	51.7	6.4	37.7	42.0	52.4	6.6	19.312168	-98.897250
T. Der. Chalco	28.85	3	2	14632	52.7	59.8	73.7	8.9	47.3	53.9	65.3	9.2	45.7	53.0	70.4	9.0	19.312168	-98.897250
Ixtapaluca	31.06	3	1	17577	52.5	55.9	64.8	6.8	45.9	51.0	60.0	6.7	47.4	51.8	54.9	6.9	19.315714	-98.875350
Ixtapaluca	31.06	3	2	17050	49.7	53.2	62.4	7.2	44.6	50.8	54.4	7.7	44.4	51.4	54.9	9.0	19.315826	-98.875366
T. Der. C. México - Puebla (Cuota) (Río Frío)	62.06	1	0	3380	58.2	67.7	84.6	11.3	54.0	59.7	74.5	8.0	51.2	58.3	75.4	10.0	19.349331	-98.671068
T. Der. C. México - Puebla (Cuota) (Río Frío)	62.06	3	0	1091	56.9	63.6	74.6	9.0	53.9	60.0	68.1	7.8	51.8	59.3	70.0	9.4	19.352690	-98.662334
Lim. Edos. Term. Mex. Ppia. Pue.	62.98																	
San Martín Texmelucan	70.00	1	0	10521	44.6	50.2	79.6	9.0	40.2	48.7	54.3	9.4	41.5	49.9	55.0	10.4	19.301537	-98.452771
X. C. México - Puebla (Cuota)	74.10	3	0	18762	41.8	44.6	103.0	9.7	36.2	39.4	52.8	5.3	34.3	39.8	53.3	7.0	19.272027	-98.432210
Huejotzingo	88.00	1	1	6050	39.6	41.9	76.2	7.7	35.8	35.0	53.0	4.8	34.7	35.8	51.9	5.0	19.176102	-98.414584
Huejotzingo	88.00	1	2	6113	44.2	49.6	118.1	11.3	38.0	46.4	53.9	7.0	36.0	42.3	53.5	6.6	19.176102	-98.414584
Huejotzingo	88.00	3	1	6286	39.6	41.8	76.1	7.7	36.0	37.0	53.1	5.0	34.3	35.7	52.0	5.5	19.149019	-98.398359
Huejotzingo	88.00	3	2	6252	44.1	49.3	119.2	11.4	38.0	46.2	53.8	7.1	35.6	42.7	53.5	6.8	19.149019	-98.398359
T. Izq. Aeropuerto	92.80	1	1	6439	39.6	41.8	75.2	7.7	35.3	35.2	51.3	4.1	34.2	36.0	52.5	6.0	19.136727	-98.377548
T. Izq. Aeropuerto	92.80	1	2	6406	44.1	49.4	118.5	11.4	37.0	42.2	53.2	6.1	35.5	43.6	53.6	7.1	19.136727	-98.377548
T. Der. Cholula	101.00	1	1	10693	39.6	41.9	74.5	7.7	35.3	35.2	51.2	4.0	33.9	36.2	52.7	6.4	19.076136	-98.321470
T. Der. Cholula	101.00	1	2	10400	44.1	49.4	118.4	11.3	37.0	42.1	53.2	6.1	35.2	43.8	53.7	7.1	19.076136	-98.321470
T. Der. Cholula	101.00	3	1	16975	39.6	41.9	72.6	7.6	35.1	35.0	50.3	3.8	33.9	35.3	52.4	6.2	19.070194	-98.312194
T. Der. Cholula	101.00	3	2	16481	44.0	49.4	118.4	11.4	36.9	41.8	53.4	6.2	35.5	45.0	53.8	7.4	19.070194	-98.312194
Puebla	131.00																	

PUEBLA

6 CARR: Puebla - Belem

CLAVE: 00055

RUTA: MEX-121

AÑO: 2012

LUGAR	ESTACION				VELOCIDAD AUTOS (km/h)				VELOCIDAD AUTOBUSES (km/h)				VELOCIDAD CAMIONES (km/h)				COORDENADAS	
	KM	TE	SC	TDPA	Promedio	P 85	P 98	δ	Promedio	P 85	P 98	δ	Promedio	P 85	P 98	δ	Latitud	Longitud
X. C. Puebla - Córdoba (Cuota)	4.00	3	1	24016	61.8	68.1	83.1	9.4	56.4	62.6	74.1	7.3	53.3	55.8	72.3	6.8	19.089200	-98.185486
X. C. Puebla - Córdoba (Cuota)	4.00	3	2	24333	65.2	70.9	83.4	7.8	58.9	64.4	77.4	8.2	55.5	59.9	74.4	6.1	19.089200	-98.185486
Lim. Edos. Term. Pue. Ppia. Tlax.	6.60																	
Lim. Edos. Term. Tlax. Ppia. Pue.	8.40																	
Lim. Edos. Term. Pue. Ppia. Tlax.	9.50																	
T. Izq. Zacatelco	16.70	1	1	14607	61.1	67.2	83.6	9.5	54.1	58.8	73.1	6.8	51.5	55.5	71.6	8.4	19.207398	-98.196250
T. Izq. Zacatelco	16.70	1	2	15068	65.1	71.2	84.2	8.3	59.8	65.2	79.1	8.3	56.5	62.5	75.0	7.6	19.207420	-98.196481
X. C. Tlaxcala - Belem	28.80	1	1	29467	45.6	52.6	78.3	10.6	41.2	51.2	62.2	11.7	39.8	51.5	58.3	13.8	19.315528	-98.204302
X. C. Tlaxcala - Belem	28.80	1	2	29121	58.1	63.7	82.1	9.0	56.4	60.5	72.0	5.7	54.1	58.6	71.9	6.6	19.315740	-98.204460
T. C. San Martín Texmelucan - Ocofoxco (Cuota)	34.90																	

7 CARR: Puebla - Huajuapán de León

CLAVE: 00049

RUTA: MEX-190

AÑO: 2012

LUGAR	ESTACION				VELOCIDAD AUTOS (km/h)				VELOCIDAD AUTOBUSES (km/h)				VELOCIDAD CAMIONES (km/h)				COORDENADAS	
	KM	TE	SC	TDPA	Promedio	P 85	P 98	δ	Promedio	P 85	P 98	δ	Promedio	P 85	P 98	δ	Latitud	Longitud
Puebla	0.00	3	1	18143	52.8	58.1	92.2	9.8	43.6	50.6	57.4	8.5	45.1	52.3	62.8	9.1	19.033047	-98.263891
Puebla	0.00	3	2	19048	52.7	60.4	91.8	11.3	52.7	58.7	69.2	8.1	47.1	54.9	70.1	11.4	19.033047	-98.263891
Atlixco	29.88	1	0	15259	47.5	52.9	95.8	10.2	42.9	50.7	59.4	9.1	45.9	52.3	57.2	9.6	18.930528	-98.407306
Atlixco	29.88	3	0	11435	37.6	46.3	63.1	10.8	40.7	49.5	54.3	9.8	38.9	48.4	58.7	10.5	18.880250	-98.435917
Tepeojuma	51.90	1	1	4635	48.8	52.8	68.3	8.6	45.8	51.2	55.0	7.1	48.5	52.8	60.3	8.1	18.772167	-98.453917
Tepeojuma	51.90	1	2	4617	58.7	64.3	84.3	9.5	54.8	60.8	73.9	7.2	55.2	59.9	74.7	6.3	18.772167	-98.453917
Izúcar de Matamoros	67.00	1	0	9960	37.4	46.0	63.2	10.8	38.8	48.2	56.5	10.3	37.6	47.3	57.6	10.5	18.631306	-98.469083
T. Der. Cuautla	70.00	3	0	7343	53.2	59.6	81.2	9.5	50.5	54.7	70.6	8.6	51.9	54.9	73.6	8.4	18.579556	-98.450222
Tehuizingo	113.30	1	0	4850	35.2	42.8	55.0	9.2	38.4	47.5	54.0	9.5	37.5	47.5	54.0	10.0	18.338694	-98.283389
Acatlán de Osorio	154.20	1	0	6245	35.2	42.7	55.0	9.2	37.9	46.8	53.9	9.4	37.2	47.0	53.9	9.9	18.187639	-98.055250
Chila	192.30	3	0	2267	52.6	58.6	73.5	8.7	51.2	53.7	63.1	6.5	52.6	54.5	71.3	6.9	17.966583	-97.864250
Lim. Edos. Term. Pue. Ppia. Oax.	200.30																	
T. Izq. Las Palmas	202.10	1	0	2166	71.7	84.7	103.0	14.5	65.3	75.4	84.6	11.1	61.7	75.9	92.9	14.8	17.882204	-97.836529
Huajuapán de León	219.30	1	0	3145	71.2	84.3	102.4	14.5	64.7	75.3	84.9	11.8	59.7	71.9	90.2	12.2	17.836196	-97.790585

8 CARR: Puebla - Tehuacán

CLAVE: 21047

RUTA: MEX-150

AÑO: 2012

LUGAR	ESTACION				VELOCIDAD AUTOS (km/h)				VELOCIDAD AUTOBUSES (km/h)				VELOCIDAD CAMIONES (km/h)				COORDENADAS	
	KM	TE	SC	TDPA	Promedio	P 85	P 98	δ	Promedio	P 85	P 98	δ	Promedio	P 85	P 98	δ	Latitud	Longitud
Puebla	0.00																	

PUEBLA

8 CARR: Puebla - Tehuacán

CLAVE: 21047

RUTA: MEX-150

AÑO: 2012

LUGAR	ESTACION				VELOCIDAD AUTOS (km/h)				VELOCIDAD AUTOBUSES (km/h)				VELOCIDAD CAMIONES (km/h)				COORDENADAS	
	KM	TE	SC	TDPA	Promedio	P 85	P 98	δ	Promedio	P 85	P 98	δ	Promedio	P 85	P 98	δ	Latitud	Longitud
T. Izq. a Enlace Con Aut. Puebla - Córdoba	5.83	3	1	22659	35.0	42.6	54.9	9.1	35.0	42.7	54.5	9.0	35.0	42.8	54.3	9.0	19.046311	-98.107775
T. Izq. a Enlace Con Aut. Puebla - Córdoba	5.83	3	2	23758	35.2	42.7	54.9	9.2	35.2	42.7	54.7	9.1	35.1	42.8	54.3	9.0	19.046311	-98.107775
Chachapa	8.40	3	1	15415	35.1	42.7	54.9	9.1	35.0	42.8	54.2	9.0	35.0	42.8	53.8	8.9	19.046311	-98.107775
Chachapa	8.40	3	2	15451	35.0	42.6	54.8	9.1	34.8	42.6	54.3	9.1	35.0	42.9	53.9	8.9	19.043910	-98.081103
Amozoc	17.86	1	1	13486	35.2	42.7	54.9	9.1	35.6	43.6	53.3	9.0	35.3	43.1	54.0	9.0	19.042124	-98.046165
Amozoc	17.86	1	2	13790	35.2	42.7	54.9	9.2	35.6	43.7	53.7	9.1	35.1	42.9	54.1	9.0	19.042124	-98.046165
Amozoc	17.86	3	1	10350	35.2	42.8	54.9	9.2	35.4	43.2	53.9	8.9	35.0	43.1	53.7	9.0	19.038583	-98.034361
Amozoc	17.86	3	2	10163	35.2	42.7	54.9	9.1	35.2	42.9	53.9	8.8	35.1	43.0	53.7	8.9	19.038583	-98.034361
Tepeaca	35.30	1	1	10826	35.3	42.8	54.9	9.2	35.5	43.4	53.9	9.0	35.2	43.2	53.5	8.9	18.986990	-97.912905
Tepeaca	35.30	1	2	10257	35.2	42.7	54.9	9.1	35.4	43.1	54.0	8.9	35.0	43.0	53.5	8.8	18.986990	-97.912905
Tepeaca	35.30	3	0	17677	35.1	42.7	54.9	9.1	35.1	42.9	53.8	8.7	35.2	43.3	53.6	8.9	18.953356	-97.895131
T. Izq. Acatzingo	41.80	3	0	16712	35.3	42.8	54.8	9.2	35.3	43.1	53.8	8.9	35.3	43.2	53.9	9.0	18.924945	-97.859239
T. Der. San Juan Ixcaquixtla	45.25	1	0	17594	35.2	42.7	54.8	9.1	35.6	43.5	53.3	8.9	35.4	43.4	53.8	9.0	18.919318	-97.833803
T. Der. San Juan Ixcaquixtla	45.25	3	0	17610	35.3	42.8	54.9	9.1	36.1	44.2	53.5	9.1	35.6	43.7	53.8	9.0	18.917901	-97.830485
Tecamachalco	57.40	1	0	19100	35.0	42.6	54.8	9.1	35.3	43.5	53.3	8.9	36.1	45.0	53.9	9.6	18.890036	-97.752554
Tecamachalco	57.40	3	0	11715	35.3	42.8	54.9	9.2	36.0	44.2	53.5	9.1	35.9	44.3	53.9	9.2	18.874369	-97.717471
Tepanco de López	97.40	1	0	6169	75.1	85.9	106.4	12.0	71.7	81.6	95.9	11.5	70.0	81.3	104.5	13.2	18.564677	-97.570196
Tepanco de López	97.40	3	0	6725	76.4	86.4	103.6	11.4	73.6	82.4	92.6	10.3	71.0	81.0	95.5	11.7	18.550390	-97.551284
X. C. Cuacnopalan - Oaxaca (Cuota)	110.60	1	0	8144	40.6	49.4	64.5	10.0	46.5	53.5	81.2	10.8	45.6	53.0	79.3	11.3	18.489344	-97.459870
T. C. Tehuacán - Córdoba	115.70	1	1	7440	57.9	65.8	82.0	10.1	53.8	59.5	70.8	7.3	51.4	59.1	74.3	9.8	18.480142	-97.443862
T. C. Tehuacán - Córdoba	115.70	1	2	7493	68.5	76.7	91.2	10.4	60.4	66.2	77.1	8.7	57.6	68.6	84.0	12.1	18.480144	-97.443865

9 CARR: Puebla - Tlaxcala

CLAVE: 00475

RUTA: MEX-119

AÑO: 2012

LUGAR	ESTACION				VELOCIDAD AUTOS (km/h)				VELOCIDAD AUTOBUSES (km/h)				VELOCIDAD CAMIONES (km/h)				COORDENADAS	
	KM	TE	SC	TDPA	Promedio	P 85	P 98	δ	Promedio	P 85	P 98	δ	Promedio	P 85	P 98	δ	Latitud	Longitud
Puebla	0.00																	
X. C. Puebla - Córdoba (Cuota)	5.41	3	1	18144	52.9	58.2	92.1	9.8	43.1	50.5	59.5	8.8	44.2	51.7	62.0	9.2	19.094278	-98.206722
X. C. Puebla - Córdoba (Cuota)	5.41	3	2	18573	52.7	60.5	90.8	11.3	52.8	59.5	71.1	8.6	49.3	56.4	70.6	10.6	19.094278	-98.206722
Lim. Edos. Term. Pue. Ppia. Tlax.	11.83																	
Panzacola	13.14	3	1	11098	52.8	57.9	91.8	9.8	43.9	50.9	56.0	8.4	45.8	52.7	63.3	9.4	19.152234	-98.223634
Panzacola	13.14	3	2	11296	52.9	60.7	92.8	11.3	52.7	58.3	66.1	7.6	46.2	54.6	70.0	11.7	19.152234	-98.223634
San Toribio Xicohtzinco	16.10	3	1	10167	56.2	62.5	100.2	10.0	54.6	58.7	69.6	6.6	52.3	57.2	68.8	8.0	19.186440	-98.237830
San Toribio Xicohtzinco	16.10	3	2	10233	60.4	68.8	103.8	12.1	55.2	60.5	69.7	6.4	53.0	61.5	74.8	10.4	19.186440	-98.237830
Zacatelco	20.78	1	1	9498	48.8	52.3	64.8	8.0	44.2	49.6	54.3	6.6	44.4	50.7	54.9	7.8	19.207734	-98.240569

PUEBLA

9 CARR: Puebla - Tlaxcala

CLAVE: 00475

RUTA: MEX-119

AÑO: 2012

LUGAR	ESTACION				VELOCIDAD AUTOS (km/h)				VELOCIDAD AUTOBUSES (km/h)				VELOCIDAD CAMIONES (km/h)				COORDENADAS	
	KM	TE	SC	TDPA	Promedio	P 85	P 98	δ	Promedio	P 85	P 98	δ	Promedio	P 85	P 98	δ	Latitud	Longitud
Zacatelco	20.78	1	2	9876	49.2	53.1	67.5	8.5	47.1	51.0	54.6	6.3	45.7	51.8	60.6	8.1	19.207734	-98.240569
T. Izq. San Martín Texmelucan	22.99	1	1	8994	58.7	71.4	107.0	14.0	53.4	58.9	73.8	8.2	52.0	59.3	82.6	10.9	19.234075	-98.243078
T. Izq. San Martín Texmelucan	22.99	1	2	8732	60.1	64.0	81.3	8.5	52.0	56.1	64.7	8.1	51.2	58.7	72.1	10.6	19.234075	-98.243078
T. Der. Tepeyanco (2º Acceso)	24.97	3	1	8403	65.6	75.7	94.1	12.1	62.2	70.5	82.0	9.7	59.4	70.8	84.5	11.9	19.260904	-98.232512
T. Der. Tepeyanco (2º Acceso)	24.97	3	2	8066	67.9	80.2	106.0	13.8	62.6	71.5	84.6	9.6	61.5	72.3	89.6	11.2	19.260904	-98.232512
T. Der. Ocotlán (Baja)	32.45	1	1	5646	34.5	44.0	54.9	9.5	35.7	49.8	54.5	11.8	34.2	50.1	54.4	13.6	19.302626	-98.241059
T. Der. Ocotlán (Alta)	32.45	1	1	10270	48.7	52.8	65.9	8.5	45.6	50.9	54.5	6.9	46.4	52.6	62.0	9.4	19.302626	-98.241059
T. Der. Ocotlán (Baja)	32.45	1	2	5630	41.1	48.2	61.8	10.1	41.0	49.7	54.3	9.5	43.9	52.0	54.7	11.3	19.302523	-98.241277
T. Der. Ocotlán (Alta)	32.45	1	2	10334	58.5	64.1	84.1	9.3	54.6	59.0	70.4	5.9	54.6	60.4	74.4	7.3	19.302523	-98.241277
Tlaxcala	33.22	1	1	8932	50.2	54.5	74.7	9.6	46.8	53.5	64.7	10.2	44.9	52.9	64.4	12.1	19.310959	-98.240150
Tlaxcala	33.22	1	2	8608	46.9	50.8	91.2	8.5	44.8	49.9	59.8	6.4	44.7	51.9	54.8	9.8	19.311121	-98.240230

10 CARR: Ramal a Nuevo Necaxa

CLAVE: 21592

RUTA: MEX-130

AÑO: 2012

LUGAR	ESTACION				VELOCIDAD AUTOS (km/h)				VELOCIDAD AUTOBUSES (km/h)				VELOCIDAD CAMIONES (km/h)				COORDENADAS	
	KM	TE	SC	TDPA	Promedio	P 85	P 98	δ	Promedio	P 85	P 98	δ	Promedio	P 85	P 98	δ	Latitud	Longitud
T. C. Pachuca - Ent. Cañada Rica	0.00																	
Nuevo Necaxa	1.50	1	0	4371	30.3	33.5	48.0	7.6	29.6	34.1	53.1	8.9	29.0	34.4	53.9	9.8	20.219899	-97.999479

11 CARR: San Hipólito - Xalapa

CLAVE: 00486

RUTA: MEX-140

AÑO: 2012

LUGAR	ESTACION				VELOCIDAD AUTOS (km/h)				VELOCIDAD AUTOBUSES (km/h)				VELOCIDAD CAMIONES (km/h)				COORDENADAS	
	KM	TE	SC	TDPA	Promedio	P 85	P 98	δ	Promedio	P 85	P 98	δ	Promedio	P 85	P 98	δ	Latitud	Longitud
T. C. Puebla - Tehuacán	0.00	3	0	8867	35.3	42.8	55.0	9.2	36.2	44.4	53.5	9.1	36.2	44.5	53.8	9.3	18.929333	-97.858478
X. C. Puebla - Córdoba (Cuota)	7.86	3	1	9448	35.2	42.7	54.9	9.1	35.1	42.9	53.8	8.8	35.2	43.3	53.7	9.0	18.977520	-97.804250
X. C. Puebla - Córdoba (Cuota)	7.86	3	2	9367	35.2	42.7	54.9	9.1	35.3	43.2	53.8	8.9	35.3	43.2	53.8	9.0	18.977520	-97.804250
San Salvador El Seco	35.35	1	0	8013	79.8	92.5	119.3	14.2	77.5	86.9	102.1	11.4	75.6	86.0	105.3	12.4	19.126749	-97.654338
Zacatepec	54.20	1	0	7314	69.0	79.9	102.0	12.6	61.2	70.2	84.6	10.3	56.5	67.4	84.9	11.8	19.261067	-97.534020
Zacatepec	54.20	3	1	4222	73.1	85.8	105.7	13.7	66.0	74.6	90.1	10.4	63.8	72.8	91.3	10.7	19.271361	-97.528583
Zacatepec	54.20	3	2	4118	64.1	72.0	84.5	9.7	56.8	62.9	74.8	8.0	49.4	56.4	73.9	9.8	19.271356	-97.528587
Alchichica	80.00	3	1	4205	95.8	115.1	141.2	18.9	86.6	103.8	140.2	18.7	89.8	100.6	135.7	13.3	19.457754	-97.384784
Alchichica	80.00	3	2	3996	99.9	113.4	133.2	14.4	85.7	96.0	112.1	12.3	88.1	98.0	115.0	11.8	19.457754	-97.384783
Lim. Edos. Term. Pue. Ppia. Ver.	83.25																	
San Antonio Limón	89.60	1	0	7597	92.4	104.2	123.4	13.3	80.2	90.3	103.9	11.7	78.2	89.2	108.0	12.4	19.492896	-97.355802
Perote	101.70	1	0	7670	70.1	80.9	96.8	12.0	62.5	71.0	83.5	9.9	62.7	72.4	90.5	11.5	19.555150	-97.256728

PUEBLA

11 C A R R : San Hipólito - Xalapa

CLAVE: 00486

RUTA: MEX-140

AÑO: 2012

L U G A R	E S T A C I O N				VELOCIDAD AUTOS (km/h)				VELOCIDAD AUTOBUSES (km/h)				VELOCIDAD CAMIONES (km/h)				C O O R D E N A D A S	
	KM	TE	SC	TDPA	Promedio	P 85	P 98	δ	Promedio	P 85	P 98	δ	Promedio	P 85	P 98	δ	Latitud	Longitud
Perote	101.70	3	0	9395	59.4	67.5	81.2	10.3	52.2	57.8	69.2	8.2	48.4	56.6	72.4	10.6	19.572179	-97.235361
T. Izq. Villa Aldama	109.50	1	0	6930	73.8	88.3	106.2	14.9	65.7	80.9	93.9	14.7	64.8	79.4	97.3	14.8	19.614561	-97.189934
T. C. Libramiento de Perote (Cuota)	110.70	3	1	6599	74.6	88.2	108.1	14.3	70.0	80.8	92.9	12.2	69.3	81.0	94.7	12.9	19.629034	-97.176446
T. C. Libramiento de Perote (Cuota)	110.70	3	2	6585	69.4	80.9	101.9	12.7	65.9	74.1	86.3	10.0	63.3	72.5	87.6	10.6	19.629034	-97.176447
Banderilla	145.00	1	0	17202	59.5	68.9	83.8	10.8	53.5	60.4	72.5	8.7	49.9	59.1	74.4	11.9	19.590432	-96.959918
T. Izq. Naolinco	146.00	3	1	14683	57.9	63.6	79.0	8.8	54.2	60.6	71.6	7.7	53.4	60.6	72.6	8.7	19.592946	-96.951778
T. Izq. Naolinco	146.00	3	2	14216	55.9	62.3	75.9	8.6	50.0	55.6	68.8	9.1	47.9	54.7	69.3	9.8	19.592947	-96.951779
Xalapa	151.20	1	1	20961	87.7	105.3	142.7	18.5	94.7	137.2	144.0	25.4	89.7	124.8	143.3	23.8	19.570780	-96.928725
Xalapa	151.20	1	2	20164	61.1	71.2	94.7	11.8	52.4	59.8	81.5	9.7	54.5	63.0	88.0	10.4	19.570790	-96.928719

12 C A R R : San Martín Texmelucan - Tlaxcala

CLAVE: 00158

RUTA: MEX-117

AÑO: 2012

L U G A R	E S T A C I O N				VELOCIDAD AUTOS (km/h)				VELOCIDAD AUTOBUSES (km/h)				VELOCIDAD CAMIONES (km/h)				C O O R D E N A D A S	
	KM	TE	SC	TDPA	Promedio	P 85	P 98	δ	Promedio	P 85	P 98	δ	Promedio	P 85	P 98	δ	Latitud	Longitud
San Martín Texmelucan	0.00	3	1	8374	45.1	50.7	86.3	9.3	41.4	48.8	54.9	8.9	41.5	49.5	59.2	9.3	19.287863	-98.422995
San Martín Texmelucan	0.00	3	2	8593	39.2	48.6	89.1	12.7	36.3	48.1	57.2	11.6	32.2	47.1	54.5	12.6	19.287863	-98.422995
X. C. San Martín Texmelucan - Ocotoxco (Cuota)	1.65	1	0	18293	41.4	44.0	89.0	9.0	39.1	44.1	54.1	8.1	36.5	43.7	54.1	8.5	19.291368	-98.412307
Lim. Edos. Term. Pue. Ppia. Tlax.	2.84																	
T. Der. Tepetitla	3.45	3	0	12645	45.3	48.7	84.8	7.6	41.8	46.0	53.8	6.9	41.9	48.9	54.3	8.3	19.294689	-98.402092
San Diego Xocoyucan	7.21	3	0	6340	66.1	76.5	101.6	12.4	62.8	74.2	92.4	12.1	61.1	72.1	91.9	11.8	19.307833	-98.370635
T. Der. Panotla	19.72	1	0	9372	50.9	54.8	69.0	7.9	47.5	52.1	62.8	7.2	49.2	53.6	73.7	9.0	19.319427	-98.275894
T. Der. Panotla	19.72	3	0	9210	50.6	57.5	72.9	9.6	49.0	53.3	66.6	8.0	48.4	54.3	73.1	9.9	19.319692	-98.268910
Totolac	21.38	1	0	9201	36.5	40.8	49.9	6.0	33.3	37.8	50.9	7.5	35.2	40.0	60.1	7.8	19.322444	-98.260639
Totolac	21.38	3	0	10534	40.0	47.6	70.6	9.9	39.5	49.8	54.4	10.3	39.4	50.4	54.7	11.3	19.329790	-98.250270
Tlaxcala	24.81	1	0	19718	42.9	44.7	90.5	8.6	40.4	46.3	53.8	7.9	39.8	48.8	54.2	9.5	19.325226	-98.242454

13 C A R R : San Salvador El Seco - Azumbilla

CLAVE: 21004

RUTA: MEX-144

AÑO: 2012

L U G A R	E S T A C I O N				VELOCIDAD AUTOS (km/h)				VELOCIDAD AUTOBUSES (km/h)				VELOCIDAD CAMIONES (km/h)				C O O R D E N A D A S	
	KM	TE	SC	TDPA	Promedio	P 85	P 98	δ	Promedio	P 85	P 98	δ	Promedio	P 85	P 98	δ	Latitud	Longitud
San Salvador El Seco	0.00	3	0	5271	82.4	98.0	124.1	16.1	77.5	90.2	104.8	14.0	82.8	95.5	121.0	15.1	19.129577	-97.635443
Cd. Serdán	29.00	3	0	5773	82.5	97.9	124.3	16.0	75.9	89.0	102.5	13.9	81.5	94.7	121.1	15.9	18.980404	-97.440898
X. C. Puebla - Córdoba (Cuota)	45.94	3	0	5532	52.0	60.5	74.7	10.1	47.5	53.4	63.7	8.5	45.0	53.0	68.4	9.4	18.868245	-97.389270
T. C. Tehuacán - Córdoba	73.67	1	0	3863	64.8	77.5	94.7	12.7	61.2	72.5	88.3	11.9	61.4	74.2	93.9	13.2	18.647481	-97.391080

PUEBLA

14 C A R R : Santa Bárbara - Izúcar de Matamoros

CLAVE: 00451

RUTA: MEX-115-160

AÑO: 2012

L U G A R	E S T A C I O N				VELOCIDAD AUTOS (km/h)				VELOCIDAD AUTOBUSES (km/h)				VELOCIDAD CAMIONES (km/h)				C O O R D E N A D A S	
	KM	TE	SC	TDPA	Promedio	P 85	P 98	δ	Promedio	P 85	P 98	δ	Promedio	P 85	P 98	δ	Latitud	Longitud
T. C. México - Puebla (Libre)	0.00	3	1	21601	54.8	62.1	75.5	8.3	60.7	72.1	108.2	13.6	57.1	66.1	104.1	11.8	19.310910	-98.896827
T. C. México - Puebla (Libre)	0.00	3	2	21615	44.0	51.2	68.2	8.8	49.5	63.2	84.8	13.7	45.1	55.7	81.4	12.7	19.311091	-98.896788
X. C. México - Puebla (Cuota)	3.61	1	1	19838	68.2	76.7	93.2	10.6	68.5	77.2	92.5	10.5	65.7	75.6	93.2	11.4	19.294613	-98.882131
X. C. México - Puebla (Cuota)	3.61	1	2	22006	59.3	66.1	80.7	9.4	54.3	62.0	76.8	9.1	52.8	60.4	74.7	9.3	19.294607	-98.882133
X. C. México - Puebla (Cuota)	3.61	3	1	38617	68.0	76.4	93.1	10.6	68.1	76.9	92.8	10.6	65.6	75.4	92.9	11.1	19.285596	-98.880455
X. C. México - Puebla (Cuota)	3.61	3	2	38529	59.3	66.3	80.8	9.5	54.1	61.8	77.3	9.2	53.2	60.7	75.0	9.1	19.285590	-98.880247
Chalco	8.00	3	1	28043	69.6	79.4	93.6	11.4	67.7	75.9	89.7	10.4	63.5	72.7	85.4	10.0	19.249901	-98.874788
Chalco	8.00	3	2	29009	61.3	68.7	82.1	8.8	56.6	62.1	73.8	7.1	53.6	59.5	73.1	8.0	19.249901	-98.874785
T. Der. Juchitepec	12.46	3	1	13030	92.5	111.6	133.7	17.8	78.7	97.4	119.4	17.0	82.1	102.6	126.0	18.5	19.239541	-98.854686
T. Der. Juchitepec	12.46	3	2	13393	82.4	99.5	125.8	15.0	72.2	87.1	113.8	14.4	76.4	95.5	120.4	16.3	19.239546	-98.854692
Tlalmanalco	20.51	3	0	7433	58.3	65.8	83.7	9.8	50.0	55.7	74.4	10.7	50.3	62.3	84.1	13.8	19.199133	-98.799367
Amecameca de Juárez	28.00	1	1	22392	40.3	46.0	55.2	8.4	41.6	47.8	58.9	8.5	41.3	50.5	62.5	10.9	19.144211	-98.774505
Amecameca de Juárez	28.00	1	2	21574	41.4	49.5	60.9	10.0	44.7	49.6	55.6	6.0	41.7	50.0	60.9	10.3	19.144211	-98.774505
Amecameca de Juárez	28.00	3	1	10787	65.8	75.5	94.0	12.1	62.0	69.3	86.4	9.0	60.1	69.6	90.0	10.4	19.107855	-98.778263
Amecameca de Juárez	28.00	3	2	11213	69.8	79.3	94.5	11.1	64.3	72.0	82.9	8.9	63.0	72.2	86.7	10.8	19.107855	-98.778263
T. Izq. Ozumba (1º Acceso)	38.81	1	0	16958	57.1	64.7	82.4	9.8	53.2	61.8	76.3	9.7	53.3	62.4	83.7	11.2	19.057839	-98.787070
T. Izq. Ozumba (1º Acceso)	38.81	3	0	13726	43.6	49.0	61.0	7.3	41.8	48.4	59.6	8.6	39.8	47.2	61.9	9.9	19.052761	-98.789780
Tepetitlaxpa	42.29	3	0	11994	48.1	61.4	83.1	16.4	49.7	56.3	126.4	15.9	48.7	54.6	80.4	13.8	19.018222	-98.824485
Lim. Edos. Term. Mex. Ppia. Mor.	51.70																	
T. Der. Atlatlahucan	58.95	1	0	10449	48.5	54.0	65.0	8.5	48.1	53.2	66.2	8.5	50.0	53.1	60.5	7.8	18.934268	-98.884823
T. Izq. Tetela del Volcán	62.99	1	0	15431	52.6	57.8	68.4	7.7	47.2	52.1	62.2	7.2	43.4	51.7	64.1	10.0	18.899252	-98.907577
T. Izq. Libramiento de Cuautla (1º Acceso)	67.00	1	1	12856	56.5	63.4	74.5	9.0	51.8	57.7	69.6	8.2	49.5	57.1	70.6	9.6	18.878166	-98.921423
T. Izq. Libramiento de Cuautla (1º Acceso)	67.00	1	2	12940	62.6	71.5	90.2	10.7	66.0	81.3	102.6	14.3	60.9	81.0	111.1	18.7	18.878166	-98.921423
T. Der. La Pera	68.90	1	1	23736	43.4	49.0	57.5	7.3	41.9	47.7	55.6	7.9	38.9	46.3	56.2	9.2	18.853686	-98.936397
T. Der. La Pera	68.90	1	2	22933	47.4	52.2	63.5	7.0	49.8	57.6	75.7	10.1	46.9	56.6	79.1	11.6	18.853686	-98.936396
T. Izq. Libramiento de Cuautla (2º Acceso)	77.05	3	1	15675	73.0	92.4	110.1	19.8	71.3	87.7	101.9	17.9	60.3	80.8	98.1	16.2	18.784731	-98.904354
T. Izq. Libramiento de Cuautla (2º Acceso)	77.05	3	2	15390	65.9	89.1	107.9	22.9	69.1	84.7	123.1	18.6	57.3	75.6	104.9	18.6	18.784731	-98.904351
T. Der. Tlayecac	85.06	3	1	9649	66.5	73.0	83.5	8.6	55.6	62.3	72.4	8.3	55.8	63.4	74.7	9.2	18.760406	-98.880566
T. Der. Tlayecac	85.06	3	2	9576	72.6	80.0	91.2	9.0	61.1	64.8	75.2	7.9	57.6	64.8	81.8	9.9	18.760406	-98.880566
T. Izq. Amayuca	91.36	3	1	7081	87.4	108.1	131.5	19.1	77.5	92.0	111.2	14.5	77.4	91.1	114.5	14.8	18.715641	-98.790162
T. Izq. Amayuca	91.36	3	2	7320	90.7	109.6	133.5	17.8	80.3	94.3	114.6	15.4	74.6	90.6	116.2	16.1	18.715641	-98.790161
T. C. Atlixco - Jantetelco (Cuota)	94.70	3	1	2510	102.9	119.0	139.5	15.7	89.8	103.1	121.9	15.6	90.8	104.1	128.2	15.3	18.700244	-98.765327
T. C. Atlixco - Jantetelco (Cuota)	94.70	3	2	2631	81.4	91.1	104.6	11.2	71.0	81.0	92.3	11.9	66.6	78.1	90.7	12.2	18.700244	-98.765328
T. Der. Tenango	102.96	3	0	4286	74.9	85.0	102.6	11.6	73.0	83.9	96.9	12.1	66.1	77.8	94.3	13.5	18.665736	-98.730627
Lim. Edos. Term. Mor. Ppia. Pue.	103.23																	

PUEBLA

14 CARR: Santa Bárbara - Izúcar de Matamoros

CLAVE: 00451

RUTA: MEX-115-160

AÑO: 2012

LUGAR	ESTACION				VELOCIDAD AUTOS (km/h)				VELOCIDAD AUTOBUSES (km/h)				VELOCIDAD CAMIONES (km/h)				COORDENADAS	
	KM	TE	SC	TDPA	Promedio	P 85	P 98	δ	Promedio	P 85	P 98	δ	Promedio	P 85	P 98	δ	Latitud	Longitud
X. C. Amayuca - Izúcar de Matamoros	134.99	1	0	7862	35.3	42.8	54.9	9.2	38.9	47.7	54.0	9.4	36.8	46.3	53.9	9.6	18.616056	-98.504361
X. C. Amayuca - Izúcar de Matamoros	134.99	3	1	5917	35.2	42.7	54.9	9.2	35.6	43.6	53.4	9.0	36.2	44.6	53.9	9.3	18.597139	-98.479444
X. C. Amayuca - Izúcar de Matamoros	134.99	3	2	5634	35.1	42.7	54.8	9.1	35.5	43.4	53.3	8.8	36.2	44.6	53.8	9.3	18.597139	-98.479444
T. C. Puebla - Huajuapán de León	138.14																	

15 CARR: Tehuacán - Córdoba

CLAVE: 00534

RUTA: MEX-150

AÑO: 2012

LUGAR	ESTACION				VELOCIDAD AUTOS (km/h)				VELOCIDAD AUTOBUSES (km/h)				VELOCIDAD CAMIONES (km/h)				COORDENADAS	
	KM	TE	SC	TDPA	Promedio	P 85	P 98	δ	Promedio	P 85	P 98	δ	Promedio	P 85	P 98	δ	Latitud	Longitud
Tehuacán	0.00	3	0	12763	50.5	60.3	77.4	10.6	44.4	54.4	72.5	11.1	41.5	51.4	68.8	10.8	18.501067	-97.405413
Chapulco	18.27	3	0	6976	58.6	68.4	84.8	11.3	55.7	64.6	79.5	9.6	52.3	63.4	82.7	12.4	18.629096	-97.402658
T. Izq. Azumbilla	20.51	3	0	2291	64.8	76.4	94.9	12.2	59.7	71.1	84.8	12.0	56.6	69.9	84.7	13.2	18.648200	-97.387503
Lim. Edos. Term. Pue. Ppia. Ver.	26.58																	
Cd. Mendoza	53.31	1	0	9857	55.5	62.7	76.9	8.7	56.5	62.6	74.3	8.5	53.4	60.9	74.8	9.6	18.790314	-97.195952
Cd. Mendoza	53.31	3	1	6931	44.5	50.8	62.8	7.7	46.0	51.3	63.6	8.2	43.7	50.4	62.0	8.3	18.810201	-97.172958
Cd. Mendoza	53.31	3	2	6689	44.5	50.5	61.6	7.3	42.8	44.9	54.4	6.3	42.3	46.2	56.5	7.4	18.810192	-97.172954
Orizaba	63.52	1	1	17885	39.0	43.6	54.3	7.5	36.4	40.4	52.7	6.3	33.9	41.0	53.3	8.3	18.840827	-97.113785
Orizaba	63.52	1	2	17390	41.1	49.5	62.7	10.2	37.0	43.4	54.0	9.1	30.7	43.5	54.0	13.8	18.840828	-97.113784
Orizaba	63.52	3	1	17592	55.8	62.6	75.0	8.5	52.0	60.5	73.2	10.0	51.8	60.0	72.9	9.9	18.859875	-97.065497
Orizaba	63.52	3	2	16566	57.2	63.2	75.0	8.1	54.7	60.2	72.6	6.9	54.3	59.5	71.9	6.9	18.859874	-97.065522
Fortín	80.24	1	0	5764	56.5	62.8	74.5	8.1	54.4	53.4	54.8	1.2	52.5	58.9	72.1	8.7	18.892279	-97.011964
Fortín	80.24	3	1	11786	55.6	62.4	74.7	8.4	52.6	55.6	64.0	6.5	51.2	60.1	73.1	10.3	18.901695	-96.989741
Fortín	80.24	3	2	11561	57.1	63.0	74.6	7.9	54.6	56.0	64.0	4.0	53.7	59.2	72.0	7.5	18.901695	-96.989730
Córdoba	86.76	1	1	13749	52.1	57.9	70.9	8.2	46.8	53.6	64.3	8.9	45.8	52.8	63.7	9.0	18.902587	-96.979598
Córdoba	86.76	1	2	12343	52.2	61.3	73.9	10.6	49.9	59.2	73.6	10.9	47.1	55.4	71.9	11.3	18.902589	-96.979603

16 CARR: Tehuacán - Huajuapán de León

CLAVE: 00211

RUTA: MEX-125

AÑO: 2012

LUGAR	ESTACION				VELOCIDAD AUTOS (km/h)				VELOCIDAD AUTOBUSES (km/h)				VELOCIDAD CAMIONES (km/h)				COORDENADAS	
	KM	TE	SC	TDPA	Promedio	P 85	P 98	δ	Promedio	P 85	P 98	δ	Promedio	P 85	P 98	δ	Latitud	Longitud
Tehuacán	0.00	3	1	3846	51.3	58.1	71.4	9.0	46.2	51.2	62.5	6.8	44.8	51.3	64.6	7.8	18.436880	-97.401362
Tehuacán	0.00	3	2	3837	52.5	58.5	70.2	8.1	50.9	54.8	64.6	7.7	47.5	54.0	65.5	9.3	18.436880	-97.401365
Zapotitlán Salinas	28.00	1	0	2383	65.6	77.1	94.2	12.5	66.0	76.5	100.7	11.7	64.6	76.4	100.7	12.4	18.334194	-97.463854
Lim. Edos. Term. Pue. Ppia. Oax.	55.80																	
Santiago Chazumba	63.02	1	0	1312	48.3	54.4	64.7	9.2	49.8	52.6	54.8	6.3	44.0	51.0	58.7	8.8	18.198523	-97.679622

PUEBLA

16 CARR: Tehuacán - Huajuapán de León

CLAVE: 00211

RUTA: MEX-125

AÑO: 2012

LUGAR	ESTACION				VELOCIDAD AUTOS (km/h)				VELOCIDAD AUTOBUSES (km/h)				VELOCIDAD CAMIONES (km/h)				COORDENADAS	
	KM	TE	SC	TDPA	Promedio	P 85	P 98	δ	Promedio	P 85	P 98	δ	Promedio	P 85	P 98	δ	Latitud	Longitud
Santiago Chazumba	63.02	3	0	1355	48.6	54.4	64.7	9.1	48.2	52.0	54.9	6.8	45.9	51.9	55.7	8.4	18.185935	-97.678879
T. Izq. Santa María Camotlán	103.13	1	0	1527	54.2	64.7	82.0	12.0	52.1	53.8	62.8	5.8	48.4	56.9	72.3	11.3	17.906003	-97.693395
T. C. Huajuapán de León - Oaxaca	119.40	1	0	7830	55.0	59.5	73.9	6.9	52.7	53.4	60.1	4.2	52.7	56.9	72.1	8.1	17.821553	-97.758954

17 CARR: Teziutlán - Nautla

CLAVE: 00144

RUTA: MEX-129

AÑO: 2012

LUGAR	ESTACION				VELOCIDAD AUTOS (km/h)				VELOCIDAD AUTOBUSES (km/h)				VELOCIDAD CAMIONES (km/h)				COORDENADAS	
	KM	TE	SC	TDPA	Promedio	P 85	P 98	δ	Promedio	P 85	P 98	δ	Promedio	P 85	P 98	δ	Latitud	Longitud
Teziutlán	0.00	3	0	6854	50.4	54.8	66.3	8.8	48.9	52.7	60.2	7.1	46.8	52.9	63.4	9.1	19.836161	-97.341389
Lim. Edos. Term. Pue. Ppia. Ver.	17.50																	
Tlapacoyan	33.20	1	0	5476	62.7	72.4	89.3	11.1	59.6	64.6	76.1	8.7	58.0	67.2	84.4	11.5	19.954774	-97.219121
Tlapacoyan	33.20	3	0	10371	62.6	73.2	96.1	12.4	58.7	66.0	76.4	9.0	57.2	65.2	84.6	10.4	19.977177	-97.203287
Martínez de La Torre	58.00	3	0	15017	51.1	59.7	77.8	10.5	49.1	56.2	70.6	9.8	47.7	56.7	73.4	10.8	20.086178	-97.024526
San Rafael	84.40	3	0	8099	64.1	72.4	93.3	10.3	59.4	66.0	82.5	9.6	58.0	63.2	80.3	7.6	20.197224	-96.868187
T. C. Poza Rica - Veracruz	93.20	1	0	5030	78.8	89.6	107.4	12.2	70.9	80.0	92.6	10.6	69.8	80.7	98.9	12.3	20.232765	-96.795379

18 CARR: Teziutlán - Perote

CLAVE: 00209

RUTA: MEX-131

AÑO: 2012

LUGAR	ESTACION				VELOCIDAD AUTOS (km/h)				VELOCIDAD AUTOBUSES (km/h)				VELOCIDAD CAMIONES (km/h)				COORDENADAS	
	KM	TE	SC	TDPA	Promedio	P 85	P 98	δ	Promedio	P 85	P 98	δ	Promedio	P 85	P 98	δ	Latitud	Longitud
Teziutlán	0.00	3	0	9398	43.5	44.2	53.4	4.3	41.0	43.2	51.7	5.8	40.7	43.2	52.9	6.7	19.790341	-97.352369
Lim. Edos. Term. Pue. Ppia. Ver.	11.30																	
Jalacingo	12.50	3	0	6071	54.0	59.6	74.9	7.8	53.7	57.9	72.2	7.0	52.5	57.2	74.1	8.7	19.791716	-97.296996
T. Izq. Atzacán	23.00	3	0	9042	53.0	54.3	71.1	6.0	51.7	53.7	63.6	6.7	50.8	53.7	64.5	8.1	19.778417	-97.250583
T. Izq. Altotonga II	26.90	3	0	7365	61.8	70.9	83.6	10.7	49.3	58.9	71.6	11.4	48.2	59.7	74.2	13.2	19.766021	-97.251450
T. Izq. Villa Aldama	37.60	3	0	5807	73.0	83.5	102.0	12.0	69.5	77.1	88.3	9.9	65.8	74.5	92.1	10.7	19.661506	-97.247105
Perote	49.10	1	0	6077	73.1	83.5	101.5	11.8	69.7	77.2	88.6	9.9	66.2	75.0	93.0	11.2	19.580168	-97.248882

19 CARR: Zacatepec - Oriental

CLAVE: 21189

RUTA: MEX-136

AÑO: 2012

LUGAR	ESTACION				VELOCIDAD AUTOS (km/h)				VELOCIDAD AUTOBUSES (km/h)				VELOCIDAD CAMIONES (km/h)				COORDENADAS	
	KM	TE	SC	TDPA	Promedio	P 85	P 98	δ	Promedio	P 85	P 98	δ	Promedio	P 85	P 98	δ	Latitud	Longitud
Zacatepec	0.00	3	0	2175	82.1	93.6	113.0	13.2	68.8	81.4	104.1	14.3	68.8	81.5	101.1	13.5	19.272084	-97.533587
Oriental	16.00																	

PUEBLA

22 CARR: Cuacnopalan - Oaxaca (Cuota)

CLAVE: 00109

RUTA: MEX-135D

AÑO: 2012

LUGAR	ESTACION				VELOCIDAD AUTOS (km/h)				VELOCIDAD AUTOBUSES (km/h)				VELOCIDAD CAMIONES (km/h)				COORDENADAS	
	KM	TE	SC	TDPA	Promedio	P 85	P 98	δ	Promedio	P 85	P 98	δ	Promedio	P 85	P 98	δ	Latitud	Longitud
T. C. Puebla - Córdoba (Cuota)	0.00	3	0	7972	102.8	119.1	138.2	15.9	88.9	94.9	113.0	10.8	84.9	96.0	121.9	13.0	18.817594	-97.491219
T. Der. Cuacnopalan	1.80	3	0	7699	99.4	124.4	141.7	25.5	91.1	101.4	127.7	13.1	79.7	100.3	130.4	21.9	18.811101	-97.490662
Caseta de Cobro Tehuacán	40.00	2	0	7649													18.487160	-97.456032
T. C. Puebla - Tehuacán	40.00	3	0	7490	85.6	107.5	134.8	19.5	72.7	91.7	110.2	19.0	67.8	91.0	116.6	22.1	18.479187	-97.456183
X. C. Tehuacán - Huajuapán de León	48.00	3	0	10390	83.6	98.8	124.7	15.1	72.9	83.6	101.2	12.6	69.1	82.7	112.3	15.5	18.404678	-97.389224
T. Izq. San Gabriel Chilac	61.00	3	0	9059	83.6	99.1	126.6	15.5	73.5	84.0	101.5	12.4	68.9	82.6	110.0	15.3	18.331698	-97.369292
Caseta de Cobro Miahuatlán	71.42	2	0	4260													18.264654	-97.315569
Lim. Edos. Term. Pue. Ppia. Oax.	83.50																	
Caseta de Cobro Coixtlahuaca	141.30	2	0	3564													17.726231	-97.351913
T. Izq. Asunción Nochistlán	174.90	1	0	4113	90.7	121.7	142.3	23.6	91.3	139.4	144.3	35.0	83.4	131.8	143.5	28.5	17.471102	-97.252085
T. Izq. Asunción Nochistlán	175.50	3	0	5187	102.5	119.2	140.2	16.1	90.3	100.3	116.6	12.5	87.2	100.0	122.7	14.0	17.455330	-97.240789
Caseta de Cobro Huitzo	220.00	2	0	5311													17.274916	-96.915367
T. C. Huajuapán de León - Oaxaca	242.70	1	1	3334	94.1	107.8	127.1	14.1	81.5	90.9	103.0	11.0	77.8	91.4	109.7	14.0	17.147459	-96.783709
T. C. Huajuapán de León - Oaxaca	242.70	1	2	3127	90.9	101.1	114.2	11.8	79.2	90.8	102.2	12.3	80.0	91.0	102.9	12.2	17.147522	-96.783786

23 CARR: Ent. Tulancingo - Venta Grande (Cuota)

CLAVE: 00026

RUTA: MEX-132D

AÑO: 2012

LUGAR	ESTACION				VELOCIDAD AUTOS (km/h)				VELOCIDAD AUTOBUSES (km/h)				VELOCIDAD CAMIONES (km/h)				COORDENADAS	
	KM	TE	SC	TDPA	Promedio	P 85	P 98	δ	Promedio	P 85	P 98	δ	Promedio	P 85	P 98	δ	Latitud	Longitud
T. C. Pachuca - Tuxpam	0.00																	
T. Izq. Acatlán	7.80	1	0	8087	65.6	75.6	94.9	11.2	62.7	75.9	98.9	13.9	58.9	68.5	92.5	11.0	20.104115	-98.409319
T. Izq. Acatlán	7.80	3	0	8874	65.7	75.9	95.0	11.3	62.6	75.6	97.2	13.7	58.9	68.1	91.5	10.6	20.111301	-98.392333
X. C. Pachuca - Tuxpam	21.80	1	0	8104	66.1	76.9	96.1	11.6	62.3	75.3	95.8	13.6	59.1	68.9	92.4	11.0	20.151739	-98.306810
Caseta de Cobro San Alejo (Tejocotal)	21.80	2	0	5808													20.147597	-98.285760
T. C. Tlaxco - Tejocotal (Cuota)	39.60	1	0	6906	66.0	76.6	95.6	11.5	63.2	76.7	99.0	13.9	59.2	69.1	92.5	11.0	20.141671	-98.137886

24 CARR: Libramiento de San Martín Texmelucan

CLAVE: 21014

RUTA: MEX-057D

AÑO: 2012

LUGAR	ESTACION				VELOCIDAD AUTOS (km/h)				VELOCIDAD AUTOBUSES (km/h)				VELOCIDAD CAMIONES (km/h)				COORDENADAS	
	KM	TE	SC	TDPA	Promedio	P 85	P 98	δ	Promedio	P 85	P 98	δ	Promedio	P 85	P 98	δ	Latitud	Longitud
T. C. México - Puebla (Cuota)	135.90	1	1	6604	70.7	80.3	101.2	11.8	62.0	73.9	87.0	12.8	52.2	62.0	79.4	11.1	19.269361	-98.420591
T. C. México - Puebla (Cuota)	135.90	1	2	6932	70.9	88.7	135.9	18.8	91.6	135.7	143.8	31.3	68.1	96.7	140.3	23.0	19.269361	-98.420591
T. C. San Martín Texmelucan - Ocotoxco Cuota	139.80																	

PUEBLA

26 CARR: Puebla - Acatzingo (Cuota)

CLAVE: 00485

RUTA: MEX-150D

AÑO: 2012

LUGAR	ESTACION				VELOCIDAD AUTOS (km/h)				VELOCIDAD AUTOBUSES (km/h)				VELOCIDAD CAMIONES (km/h)				COORDENADAS	
	KM	TE	SC	TDPA	Promedio	P 85	P 98	δ	Promedio	P 85	P 98	δ	Promedio	P 85	P 98	δ	Latitud	Longitud
Puebla	0.00	3	1	30524	48.8	52.9	64.9	8.5	45.6	51.0	55.0	6.9	48.7	53.0	61.0	8.5	19.069668	-98.128364
Puebla	0.00	3	2	31403	59.0	64.6	84.6	9.6	54.9	60.9	74.3	7.1	55.1	59.2	74.9	6.0	19.069668	-98.128374
T. Der. Amozoc (Caseta de Cobro)	21.55	1	1	17686	34.7	42.4	54.8	9.3	34.6	42.4	54.5	9.2	34.0	42.1	54.0	9.4	19.050542	-98.034829
T. Der. Amozoc (Caseta de Cobro)	21.55	1	2	17483	34.7	42.4	54.9	9.3	34.7	42.5	54.7	9.3	33.8	42.0	54.1	9.5	19.050542	-98.034829
Caseta de Cobro Amozoc	21.55	2	1	12538													19.049845	-98.032307
Caseta de Cobro Amozoc	21.55	2	2	12538													19.049845	-98.032307
T. Der. Amozoc (Caseta de Cobro)	21.55	3	1	14645	49.2	53.0	71.0	8.7	45.7	51.1	55.0	7.0	49.7	53.9	64.7	9.1	19.048256	-98.026844
T. Der. Amozoc (Caseta de Cobro)	21.55	3	2	14134	58.9	64.4	84.3	9.4	55.0	61.0	75.8	7.3	55.3	60.1	75.6	6.5	19.048256	-98.026844
T. Izq. Acatzingo	47.10	1	1	24309	49.0	52.9	69.4	8.6	45.5	51.0	55.0	7.0	49.2	53.2	61.5	8.4	19.043910	-98.081103
T. Izq. Acatzingo	47.10	1	2	23619	58.9	64.5	84.8	9.5	55.1	61.1	76.2	7.3	55.0	58.5	74.6	5.8	18.978679	-97.815909

27 CARR: San Martín Texmelucan - Tlaxcala - El Molinito (Cuota)

CLAVE: 00212

RUTA: MEX-117D

AÑO: 2012

LUGAR	ESTACION				VELOCIDAD AUTOS (km/h)				VELOCIDAD AUTOBUSES (km/h)				VELOCIDAD CAMIONES (km/h)				COORDENADAS	
	KM	TE	SC	TDPA	Promedio	P 85	P 98	δ	Promedio	P 85	P 98	δ	Promedio	P 85	P 98	δ	Latitud	Longitud
T. C. México - Puebla (Cuota)	0.00																	
X. C. San Martín Texmelucan - Tlaxcala	1.80	1	0	8403	64.8	76.4	99.3	12.8	59.9	65.8	82.9	8.4	59.4	72.0	93.0	12.9	19.288935	-98.420970
Lim. Edos. Term. Pue. Ppia. Tlax.	4.05																	
Caseta de Cobro San Martín Texmelucan	5.45	2	1	3247													19.301568	-98.404044
Caseta de Cobro San Martín Texmelucan	5.45	2	2	3247													19.301568	-98.404044
X. C. San Martín Texmelucan - Tlaxcala (Trébol)	24.75	1	1	11755	80.6	91.7	114.5	12.9	76.3	87.1	104.0	12.1	73.9	84.5	100.3	12.4	19.325236	-98.251273
X. C. San Martín Texmelucan - Tlaxcala (Trébol)	24.75	1	2	10907	75.7	84.8	114.1	11.9	72.9	88.0	100.7	13.4	72.5	84.5	101.0	13.1	19.325236	-98.251273
X. C. San Martín Texmelucan - Tlaxcala (Trébol)	24.75	3	1	13122	82.7	96.4	116.3	13.9	70.5	91.2	105.0	17.8	72.0	89.5	106.2	16.6	19.337036	-98.231300
X. C. San Martín Texmelucan - Tlaxcala (Trébol)	24.75	3	2	12456	99.3	111.6	127.9	13.5	94.6	104.0	120.0	11.6	89.0	105.6	123.9	18.0	19.337036	-98.231300
T. Izq. Tizatlán	29.00	3	1	13620	93.8	104.5	122.8	12.0	93.2	102.5	114.0	10.9	91.9	102.1	114.8	11.7	19.337638	-98.214302
T. Izq. Tizatlán	29.00	3	2	12817	103.2	112.2	127.8	10.5	97.6	104.3	115.2	9.6	97.3	104.7	120.7	10.4	19.337638	-98.214302
T. Der. San Pablo Apetatitlán	31.65	3	1	26178	66.4	74.3	88.7	10.1	60.6	68.8	80.4	10.0	56.0	66.3	80.0	11.8	19.347679	-98.194436
T. Der. San Pablo Apetatitlán	31.65	3	2	25070	82.3	104.4	123.2	21.7	79.6	102.0	121.2	21.1	73.5	98.4	119.3	21.5	19.347679	-98.194436
Ocotoxco	35.20	1	1	22453	79.5	90.7	113.1	13.2	73.7	84.5	105.7	13.8	64.3	79.7	100.2	16.6	19.384372	-98.178155
Ocotoxco	35.20	1	2	22978	69.1	114.1	143.4	39.3	82.1	137.4	144.0	35.8	68.0	128.5	143.4	36.8	19.384372	-98.178155

PUEBLA

31 CARR: Cholula - Puebla (Vía Quetzalcoatl)

CLAVE: 21203

RUTA: PUE

AÑO: 2012

LUGAR	ESTACION				VELOCIDAD AUTOS (km/h)				VELOCIDAD AUTOBUSES (km/h)				VELOCIDAD CAMIONES (km/h)				COORDENADAS	
	KM	TE	SC	TDPA	Promedio	P 85	P 98	δ	Promedio	P 85	P 98	δ	Promedio	P 85	P 98	δ	Latitud	Longitud
Cholula	0.00	3	1	21351	39.5	41.8	71.9	7.6	35.1	35.0	50.6	3.9	34.1	35.8	52.3	5.9	19.059936	-98.293183
Cholula	0.00	3	2	21787	43.9	49.3	117.6	11.3	37.2	41.8	53.9	6.7	35.6	43.5	53.6	7.1	19.059936	-98.293183
Puebla	12.00	1	1	24539	39.6	41.8	70.5	7.6	35.2	35.2	50.7	4.0	34.9	36.0	51.1	4.5	19.059677	-98.239636
Puebla	12.00	1	2	24174	44.0	49.5	117.2	11.3	37.5	41.6	54.6	7.4	36.1	40.8	53.3	6.1	19.059677	-98.239636

32 CARR: Cuacnopalan - Santa Catarina Los Reyes

CLAVE: 00109

RUTA: PUE

AÑO: 2012

LUGAR	ESTACION				VELOCIDAD AUTOS (km/h)				VELOCIDAD AUTOBUSES (km/h)				VELOCIDAD CAMIONES (km/h)				COORDENADAS	
	KM	TE	SC	TDPA	Promedio	P 85	P 98	δ	Promedio	P 85	P 98	δ	Promedio	P 85	P 98	δ	Latitud	Longitud
Cuacnopalan	0.00	3	0	1624	55.3	63.8	79.6	9.8	53.5	54.8	65.5	5.7	52.5	60.3	78.5	10.7	18.825497	-97.499240
Santa Catarina Los Reyes	13.00	1	0	504	43.7	52.1	68.4	9.8	46.3	52.9	62.3	10.9	41.1	51.4	63.5	11.6	18.882086	-97.441860

33 CARR: Cuapixtla - Acatlán de Osorio

CLAVE: 21014

RUTA: PUE

AÑO: 2012

LUGAR	ESTACION				VELOCIDAD AUTOS (km/h)				VELOCIDAD AUTOBUSES (km/h)				VELOCIDAD CAMIONES (km/h)				COORDENADAS	
	KM	TE	SC	TDPA	Promedio	P 85	P 98	δ	Promedio	P 85	P 98	δ	Promedio	P 85	P 98	δ	Latitud	Longitud
T. C. Puebla - Tehuacán	0.00	3	0	6454	35.3	42.8	54.9	9.2	42.3	50.7	54.4	9.7	36.8	45.8	53.9	9.5	18.917094	-97.833003
Molcaxac	23.18	1	0	4457	35.3	42.9	54.7	9.2	38.6	47.4	54.0	9.3	37.7	47.4	54.1	9.9	18.742690	-97.907723
Tepexi de Rodríguez	45.35	1	0	2710	35.3	42.9	54.5	9.1	38.7	47.1	54.0	9.2	38.3	48.3	54.1	10.2	18.585421	-97.930709
Tepexi de Rodríguez	45.35	3	0	3785	35.4	42.9	54.5	9.1	38.4	46.6	53.9	9.1	38.5	48.1	54.1	9.9	18.573372	-97.928227
San Juan Ixcaquixtla	63.35	1	0	3786	37.4	46.2	62.4	10.7	40.1	49.1	54.3	9.9	42.4	50.9	54.5	10.2	18.469806	-97.842000
Acatlán de Osorio	127.00	1	0	2411	53.1	59.1	74.8	8.8	51.8	53.5	61.0	5.6	52.6	54.4	71.1	6.7	18.236194	-98.032389

34 CARR: Izúcar de Matamoros - Tepexi de Rodríguez

CLAVE: 21014

RUTA: PUE

AÑO: 2012

LUGAR	ESTACION				VELOCIDAD AUTOS (km/h)				VELOCIDAD AUTOBUSES (km/h)				VELOCIDAD CAMIONES (km/h)				COORDENADAS	
	KM	TE	SC	TDPA	Promedio	P 85	P 98	δ	Promedio	P 85	P 98	δ	Promedio	P 85	P 98	δ	Latitud	Longitud
Izúcar de Matamoros	0.00	3	0	2980	37.7	46.6	62.1	10.7	50.5	52.9	54.7	6.5	44.4	51.3	54.5	8.9	18.610361	-98.451194
Zacapala	46.00	1	0	837	35.6	43.9	53.7	9.1	41.2	49.2	54.2	9.3	46.2	52.3	54.6	9.8	18.591825	-98.073503
T. Der. Tepexi de Rodríguez	62.00	1	0	1564	53.1	59.1	74.0	8.4	54.2	53.4	54.8	1.5	52.5	53.9	65.0	5.9	18.635477	-97.927959

PUEBLA

40 CARR: San Juan Ixcaquixtla - Pino Suárez

CLAVE: 00486

RUTA: PUE

AÑO: 2012

LUGAR	ESTACION				VELOCIDAD AUTOS (km/h)				VELOCIDAD AUTOBUSES (km/h)				VELOCIDAD CAMIONES (km/h)				COORDENADAS	
	KM	TE	SC	TDPA	Promedio	P 85	P 98	δ	Promedio	P 85	P 98	δ	Promedio	P 85	P 98	δ	Latitud	Longitud
San Juan Ixcaquixtla	0.00	3	0	1867	46.0	51.9	65.3	7.7	44.4	51.2	54.5	8.6	45.6	52.1	54.9	9.2	18.408417	-97.823472
San Martín Alexcal	13.00	1	0	908	35.2	43.2	53.7	8.9	52.6	53.3	54.8	4.3	44.2	51.7	54.6	10.0	18.399972	-97.742361
San Bartolo Teontepec	42.80	1	0	1434	40.9	45.2	55.1	8.0	36.1	42.9	57.4	8.3	36.3	43.5	54.3	8.8	18.487207	-97.532757
T. C. Puebla - Tehuacán	47.10	1	0	3345	42.1	49.5	61.9	9.2	38.7	46.0	54.8	9.4	37.2	44.5	58.8	9.6	18.514259	-97.501267

41 CARR: Tecamachalco - Cañada Morelos

CLAVE: 21002

RUTA: PUE

AÑO: 2012

LUGAR	ESTACION				VELOCIDAD AUTOS (km/h)				VELOCIDAD AUTOBUSES (km/h)				VELOCIDAD CAMIONES (km/h)				COORDENADAS	
	KM	TE	SC	TDPA	Promedio	P 85	P 98	δ	Promedio	P 85	P 98	δ	Promedio	P 85	P 98	δ	Latitud	Longitud
Tecamachalco	0.00	3	0	11429	35.4	42.8	54.9	9.2	35.7	43.7	53.4	9.0	36.6	45.4	53.9	9.5	18.885501	-97.720077
T. Izq. Quecholac	8.00	1	0	12303	35.4	42.8	54.9	9.2	36.1	44.1	53.5	9.1	35.9	44.2	54.0	9.2	18.902056	-97.705111
T. C. Cuacnopalan - Cd. Serdán	31.30	3	0	2834	53.1	61.4	74.5	9.9	52.3	59.5	72.9	9.7	45.4	52.8	68.9	10.3	18.805005	-97.510607
T. C. San Salvador El Seco - Azumbilla	44.46	1	0	3034	58.8	69.9	90.3	12.0	53.0	64.4	82.3	12.5	46.5	58.3	80.8	12.9	18.742816	-97.423458

42 CARR: Tecamachalco - Quecholac

CLAVE: 21002

RUTA: PUE

AÑO: 2012

LUGAR	ESTACION				VELOCIDAD AUTOS (km/h)				VELOCIDAD AUTOBUSES (km/h)				VELOCIDAD CAMIONES (km/h)				COORDENADAS	
	KM	TE	SC	TDPA	Promedio	P 85	P 98	δ	Promedio	P 85	P 98	δ	Promedio	P 85	P 98	δ	Latitud	Longitud
Tecamachalco	0.00																	
T. C. Puebla - Córdoba (Cuota)	7.80	1	0	11792	35.3	42.8	54.9	9.2	41.1	50.0	54.3	9.7	36.8	45.9	53.8	9.5	18.925308	-97.683042
T. C. Puebla - Córdoba (Cuota)	7.80	3	0	10985	35.4	43.1	54.3	9.1	38.4	46.5	53.9	9.1	39.5	49.0	54.2	10.0	18.933137	-97.685913
Quecholac	11.20																	

43 CARR: Zacatlán - Zapotitlán

CLAVE: 21580

RUTA: PUE

AÑO: 2012

LUGAR	ESTACION				VELOCIDAD AUTOS (km/h)				VELOCIDAD AUTOBUSES (km/h)				VELOCIDAD CAMIONES (km/h)				COORDENADAS	
	KM	TE	SC	TDPA	Promedio	P 85	P 98	δ	Promedio	P 85	P 98	δ	Promedio	P 85	P 98	δ	Latitud	Longitud
T. C. Apizaco - Tejocotal	0.00	3	0	6670	35.9	40.4	53.6	6.2	33.9	37.2	53.4	6.9	33.8	38.9	54.6	8.0	19.941671	-97.963912
Zapotitlán	45.00																	

44 CARR: Atlixco - Jantetelco (Cuota)

CLAVE: 00430

RUTA: PUE-D

AÑO: 2012

LUGAR	ESTACION				VELOCIDAD AUTOS (km/h)				VELOCIDAD AUTOBUSES (km/h)				VELOCIDAD CAMIONES (km/h)				COORDENADAS	
	KM	TE	SC	TDPA	Promedio	P 85	P 98	δ	Promedio	P 85	P 98	δ	Promedio	P 85	P 98	δ	Latitud	Longitud
T. C. Puebla - Izúcar de Matamoros	0.00	3	0	5904	53.3	59.2	81.4	9.3	50.2	54.4	66.7	8.3	52.2	54.7	71.1	7.5	18.942444	-98.399111

PUEBLA

44 CARR: Atlixco - Jantetelco (Cuota)

CLAVE: 00430

RUTA: PUE-D

AÑO: 2012

LUGAR	ESTACION				VELOCIDAD AUTOS (km/h)				VELOCIDAD AUTOBUSES (km/h)				VELOCIDAD CAMIONES (km/h)				COORDENADAS	
	KM	TE	SC	TDPA	Promedio	P 85	P 98	δ	Promedio	P 85	P 98	δ	Promedio	P 85	P 98	δ	Latitud	Longitud
Lim. Edos. Term. Pue. Ppia. Mor.	48.60																	
T. C. Santa Bárbara - Izúcar de Matamoros	54.90	1	0	5626	53.6	59.8	81.4	9.3	50.9	54.6	68.2	8.0	52.4	54.7	72.0	7.5	18.710583	-98.768389

45 CARR: Libres - Teziutlán (Cuota)

CLAVE: 21014

RUTA: PUE-D

AÑO: 2012

LUGAR	ESTACION				VELOCIDAD AUTOS (km/h)				VELOCIDAD AUTOBUSES (km/h)				VELOCIDAD CAMIONES (km/h)				COORDENADAS	
	KM	TE	SC	TDPA	Promedio	P 85	P 98	δ	Promedio	P 85	P 98	δ	Promedio	P 85	P 98	δ	Latitud	Longitud
T. C. Amozoc - Perote (Cuota)	0.00	3	0	2953	99.4	115.1	136.4	17.0	81.0	94.1	105.7	17.2	76.9	99.5	124.8	20.9	19.428190	-97.635522
Ent. Cuyoaco	19.00	3	0	4139	98.5	119.0	139.8	19.5	85.5	99.4	119.4	17.0	83.1	106.8	130.7	20.6	19.598008	-97.611441
T. Izq. Zaragoza	40.00	1	0	4146	85.9	107.9	134.9	20.1	70.6	89.7	111.5	17.1	69.8	94.8	128.4	21.4	19.753231	-97.549259
T. Izq. Zaragoza	40.00	3	0	4018	82.2	101.3	126.2	18.9	71.5	87.2	106.8	16.1	70.9	90.9	118.2	19.2	19.761191	-97.544953
Teziutlán	62.00	1	0	3457	71.3	81.9	100.3	12.1	65.2	72.6	84.9	8.5	64.7	74.9	93.7	11.1	19.824124	-97.379336
Teziutlán	88.00																	

46 CARR: Puebla - Atlixco (Cuota)

CLAVE: 21585

RUTA: PUE-D

AÑO: 2012

LUGAR	ESTACION				VELOCIDAD AUTOS (km/h)				VELOCIDAD AUTOBUSES (km/h)				VELOCIDAD CAMIONES (km/h)				COORDENADAS	
	KM	TE	SC	TDPA	Promedio	P 85	P 98	δ	Promedio	P 85	P 98	δ	Promedio	P 85	P 98	δ	Latitud	Longitud
Puebla	0.00	3	1	16537	48.3	52.6	65.0	8.5	45.5	51.0	55.7	7.0	47.5	52.6	61.9	8.2	19.003472	-98.273806
Puebla	0.00	3	2	16121	58.5	64.0	84.7	9.3	54.8	60.5	73.9	7.0	55.6	61.3	77.4	7.2	19.003472	-98.273806
Atlixco	25.30	1	1	6301	48.3	52.6	65.1	8.5	45.3	50.9	55.9	7.0	47.2	52.3	60.7	7.9	18.922806	-98.404528
Atlixco	25.30	1	2	6083	58.7	64.2	84.1	9.4	54.8	60.5	73.9	7.0	55.7	61.4	77.0	7.2	18.922778	-98.404528

47 CARR: Tlaxco - Tejocotal (Cuota)

CLAVE: 00209

RUTA: PUE-D

AÑO: 2012

LUGAR	ESTACION				VELOCIDAD AUTOS (km/h)				VELOCIDAD AUTOBUSES (km/h)				VELOCIDAD CAMIONES (km/h)				COORDENADAS	
	KM	TE	SC	TDPA	Promedio	P 85	P 98	δ	Promedio	P 85	P 98	δ	Promedio	P 85	P 98	δ	Latitud	Longitud
T. C. Apan - Tlaxco	0.00	3	0	3002	88.0	99.4	114.6	12.7	80.3	89.2	98.7	11.0	70.2	83.2	101.5	13.8	19.608385	-98.156658
T. C. Tejocotal - Tihuatlán (Cuota)	72.00																	

48 CARR: Ramal a Tulcingo del Valle

CLAVE: 21578

RUTA: PUE-MEX-093

AÑO: 2012

LUGAR	ESTACION				VELOCIDAD AUTOS (km/h)				VELOCIDAD AUTOBUSES (km/h)				VELOCIDAD CAMIONES (km/h)				COORDENADAS	
	KM	TE	SC	TDPA	Promedio	P 85	P 98	δ	Promedio	P 85	P 98	δ	Promedio	P 85	P 98	δ	Latitud	Longitud
T. C. Puebla - Huajuapán de León	0.00	3	0	2482	37.6	46.7	62.2	10.8	40.8	49.5	54.3	9.8	43.2	51.2	54.5	10.0	18.246889	-98.221722

PUEBLA

48 CARR: Ramal a Tulcingo del Valle

CLAVE: 21578

RUTA: PUE-MEX-093

AÑO: 2012

LUGAR	ESTACION				VELOCIDAD AUTOS (km/h)				VELOCIDAD AUTOBUSES (km/h)				VELOCIDAD CAMIONES (km/h)				COORDENADAS	
	KM	TE	SC	TDPA	Promedio	P 85	P 98	δ	Promedio	P 85	P 98	δ	Promedio	P 85	P 98	δ	Latitud	Longitud
T. Izq. Piaxtla	7.31	3	0	2268	37.4	46.5	62.1	10.8	43.3	50.2	54.4	8.3	42.9	51.1	54.5	10.2	18.187167	-98.270500
Tecomatlán	21.01	3	0	2412	37.5	46.5	62.0	10.7	40.9	49.6	54.3	9.8	43.7	51.4	54.5	9.8	18.095722	-98.315417
Tulcingo del Valle	43.00	1	0	2493	35.3	43.0	54.4	9.1	38.9	47.6	54.0	9.4	41.5	50.7	54.4	10.6	18.042778	-98.424639

49 CARR: Tehuacán - Huitzo

CLAVE: 00211

RUTA: PUE-MEX-135

AÑO: 2012

LUGAR	ESTACION				VELOCIDAD AUTOS (km/h)				VELOCIDAD AUTOBUSES (km/h)				VELOCIDAD CAMIONES (km/h)				COORDENADAS	
	KM	TE	SC	TDPA	Promedio	P 85	P 98	δ	Promedio	P 85	P 98	δ	Promedio	P 85	P 98	δ	Latitud	Longitud
Tehuacán	0.00	3	0	7245	60.5	68.2	85.3	10.0	61.5	69.6	92.3	11.2	58.4	66.4	89.6	11.1	18.451225	-97.370916
T. Der. San Gabriel Chilac	14.40	1	0	7722	43.1	46.2	54.9	6.4	41.4	44.4	53.6	7.2	39.4	44.1	54.4	8.4	18.404419	-97.329876
San Sebastián Zinacatepec	23.00	3	0	5289	69.6	82.6	102.0	14.0	70.2	81.9	98.4	12.9	67.9	82.0	102.4	15.1	18.325250	-97.229612
Lim. Edos. Term. Pue. Ppia. Oax.	60.90																	
Teotitlán del Camino	63.15	3	0	2338	63.2	70.6	82.5	8.9	56.2	65.1	74.6	11.1	55.9	65.1	78.6	11.2	18.121527	-97.073831
Santa María Tecomavaca	88.34	1	0	1133	56.9	69.8	84.7	14.0	50.7	53.6	62.2	6.9	43.9	53.4	64.6	12.2	17.965416	-97.036487
Santa María Tecomavaca	88.34	3	0	1003	49.0	54.5	64.5	9.0	45.0	52.1	62.8	7.7	42.7	50.6	62.4	9.7	17.949576	-97.022266
T. Izq. Cuicatlán	118.80	1	0	1488	55.9	68.4	85.5	12.6	51.6	57.6	81.5	10.4	50.6	61.6	82.9	12.3	17.793904	-96.960023
T. Izq. Nacaltepec	169.84	1	0	626	60.4	64.4	74.1	7.7	55.8	59.4	65.4	5.0	54.3	61.6	71.3	8.9	17.505998	-96.934028
T. C. Huajuapán de León - Oaxaca	202.70	1	0	6187	42.5	49.3	62.3	9.0	39.0	44.9	54.4	8.7	38.9	46.6	64.5	10.6	17.287076	-96.903529

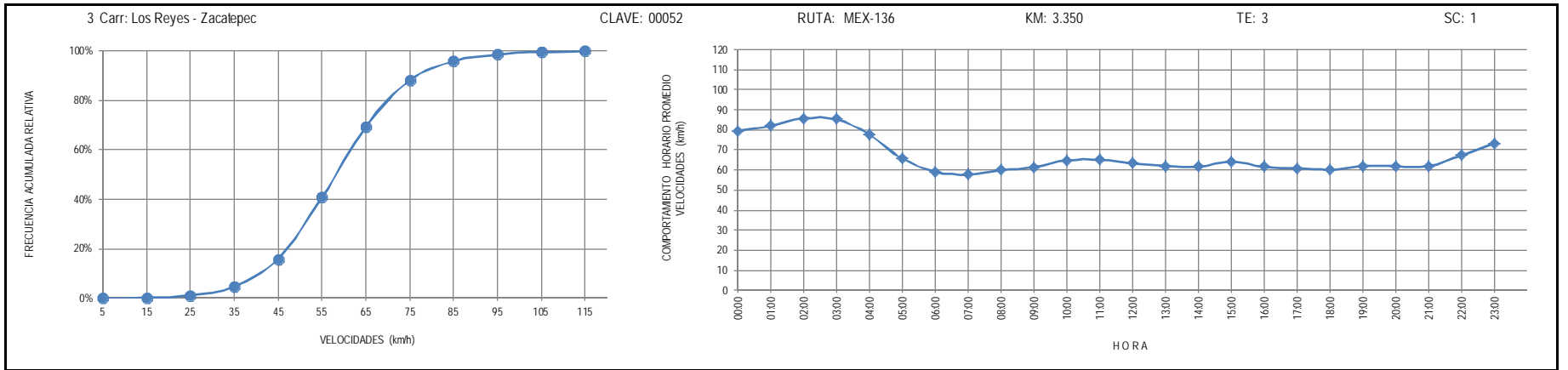
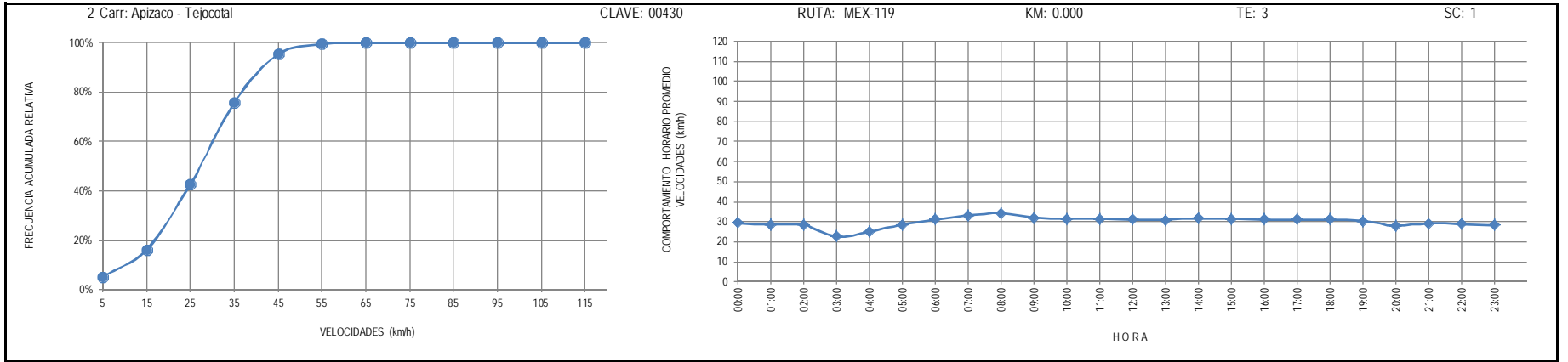
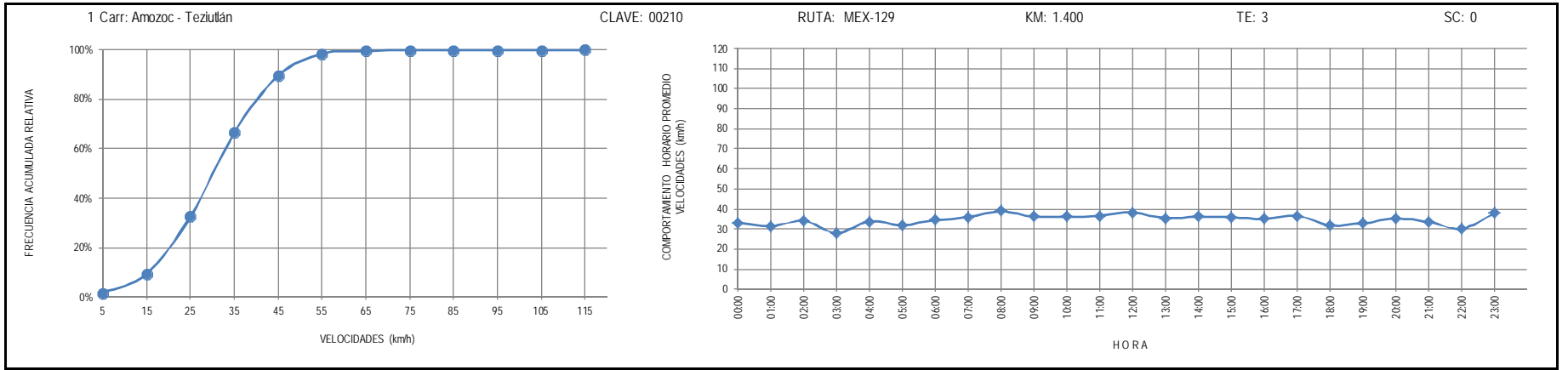
50 CARR: Teotitlán de Flores Magón - Tuxtepec

CLAVE: 00108

RUTA: OAX-PUE-MEX-182

AÑO: 2012

LUGAR	ESTACION				VELOCIDAD AUTOS (km/h)				VELOCIDAD AUTOBUSES (km/h)				VELOCIDAD CAMIONES (km/h)				COORDENADAS	
	KM	TE	SC	TDPA	Promedio	P 85	P 98	δ	Promedio	P 85	P 98	δ	Promedio	P 85	P 98	δ	Latitud	Longitud
Teotitlán del Camino	0.00	3	0	1176	37.2	44.1	54.9	8.6	37.8	50.5	54.4	13.1	40.2	51.1	54.6	12.6	18.141350	-97.062051
Lim. Edos. Term. Oax. Ppia. Pue.	2.00																	
Lim. Edos. Term. Pue. Ppia. Oax.	10.00																	
Huautla	65.00	1	0	1498	37.1	44.0	54.8	8.5	36.0	48.4	54.2	11.3	34.5	45.6	54.5	10.5	18.125845	-96.844575
San Felipe Jalapa de Díaz	140.00	3	0	3636	37.6	45.1	54.9	8.9	35.0	46.5	54.2	10.4	42.0	51.8	54.7	12.9	18.082042	-96.522081
Tuxtepec	185.00	1	0	7204	38.7	48.1	54.9	9.8	35.6	47.6	54.7	11.0	39.2	50.8	54.8	12.5	18.086018	-96.152644



4 Carr: México - Puebla (Libre)

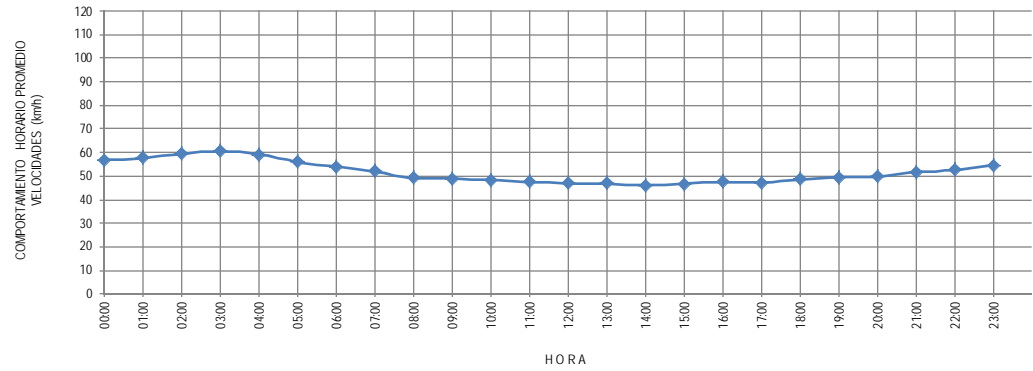
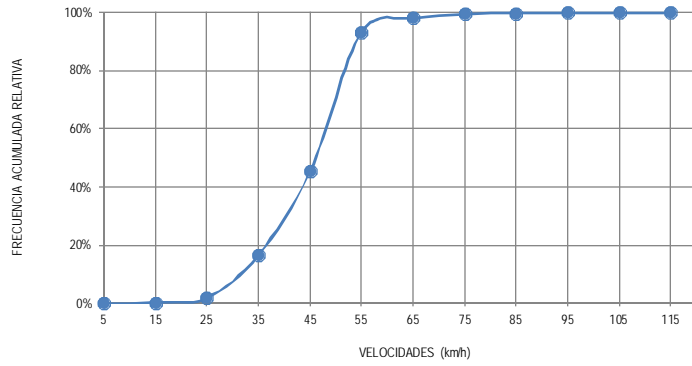
CLAVE: 00449

RUTA: MEX-190

KM: 28.850

TE: 1

SC: 1



5 Carr: Pachuca - Tuxpam

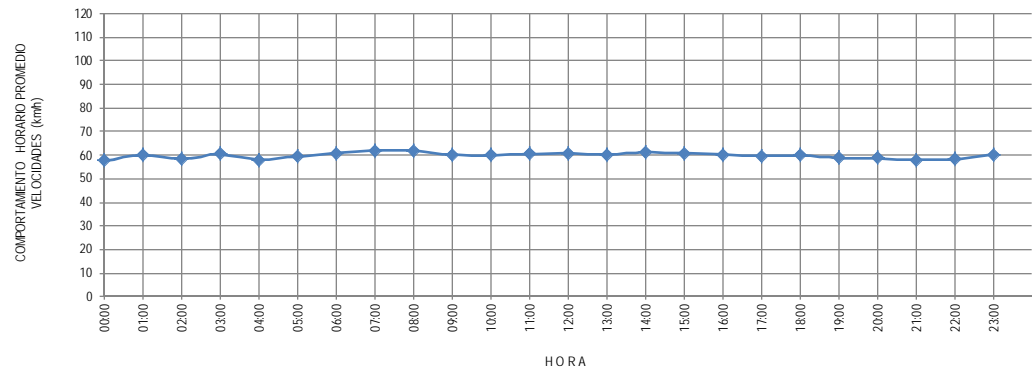
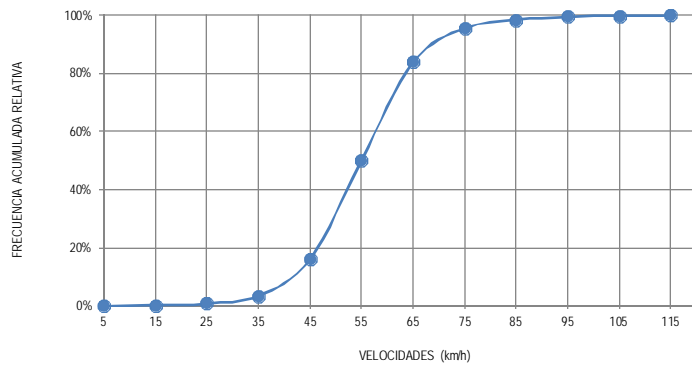
CLAVE: 00608

RUTA: MEX-130

KM: 2.600

TE: 3

SC: 1



6 Carr: Puebla - Belem

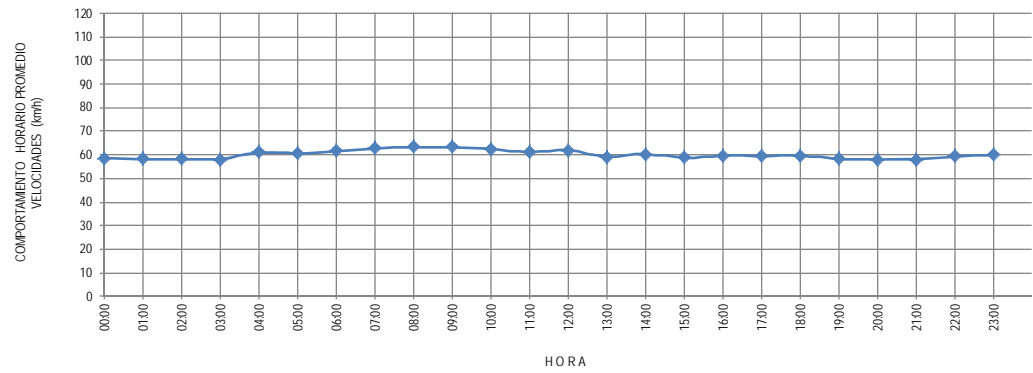
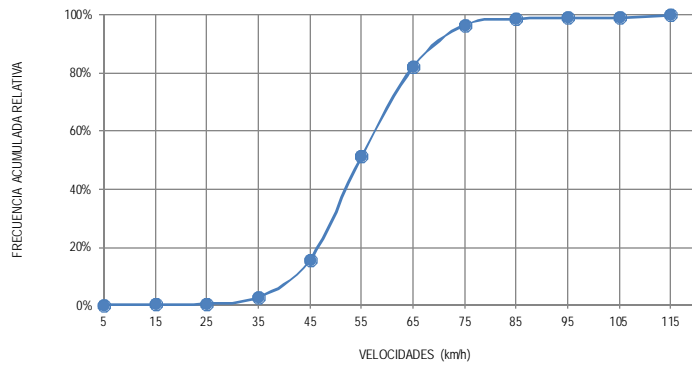
CLAVE: 00055

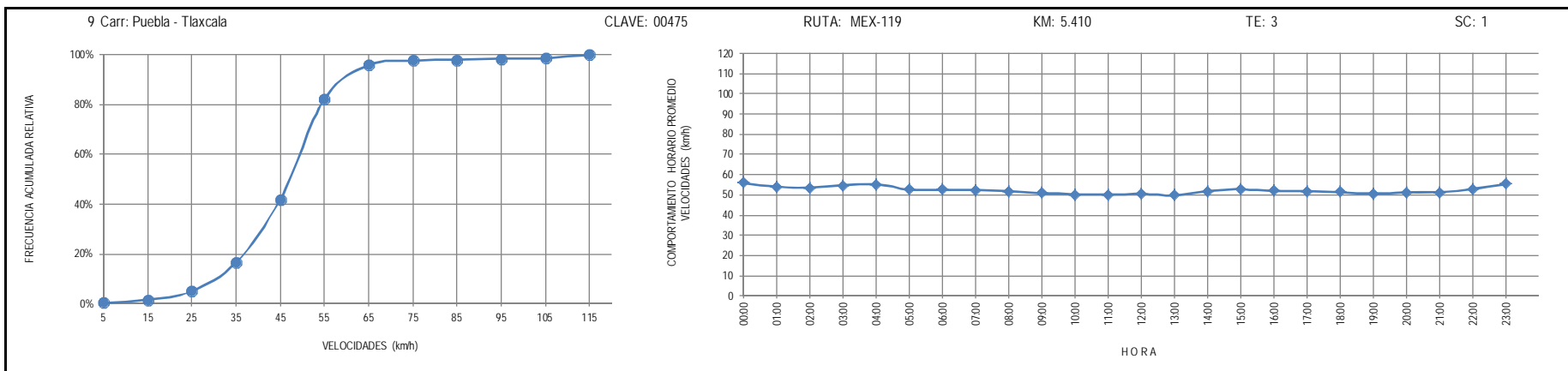
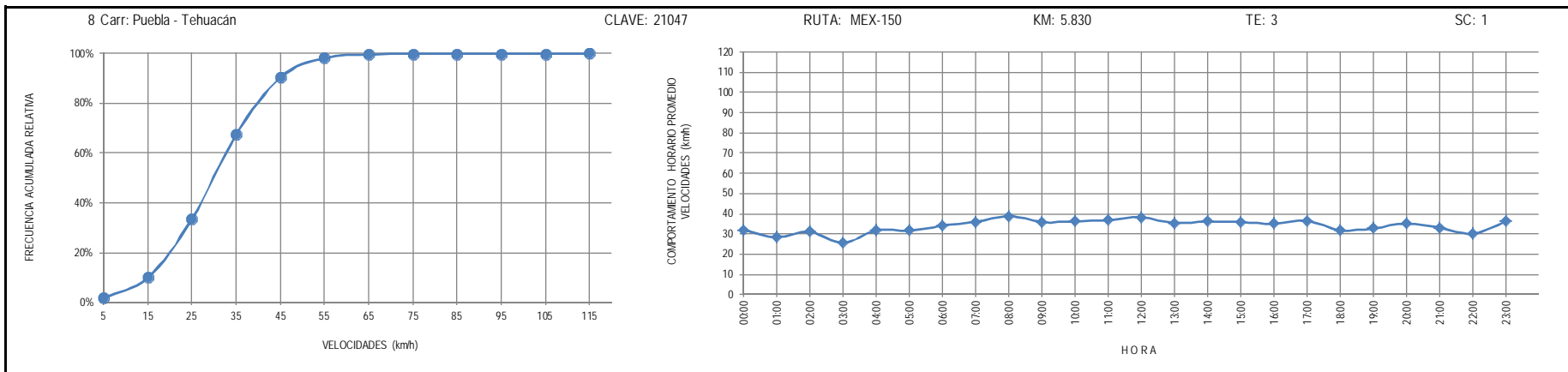
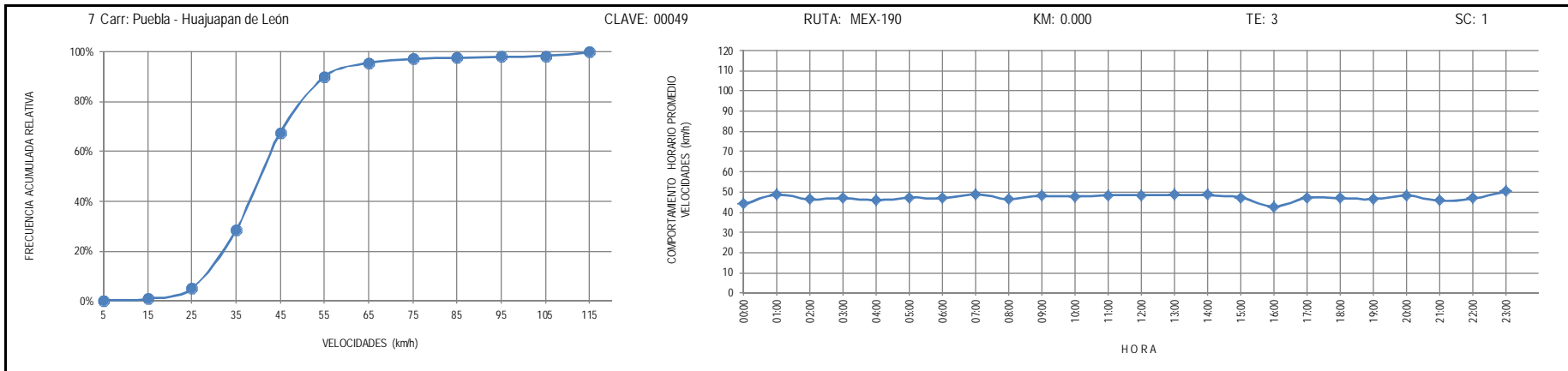
RUTA: MEX-121

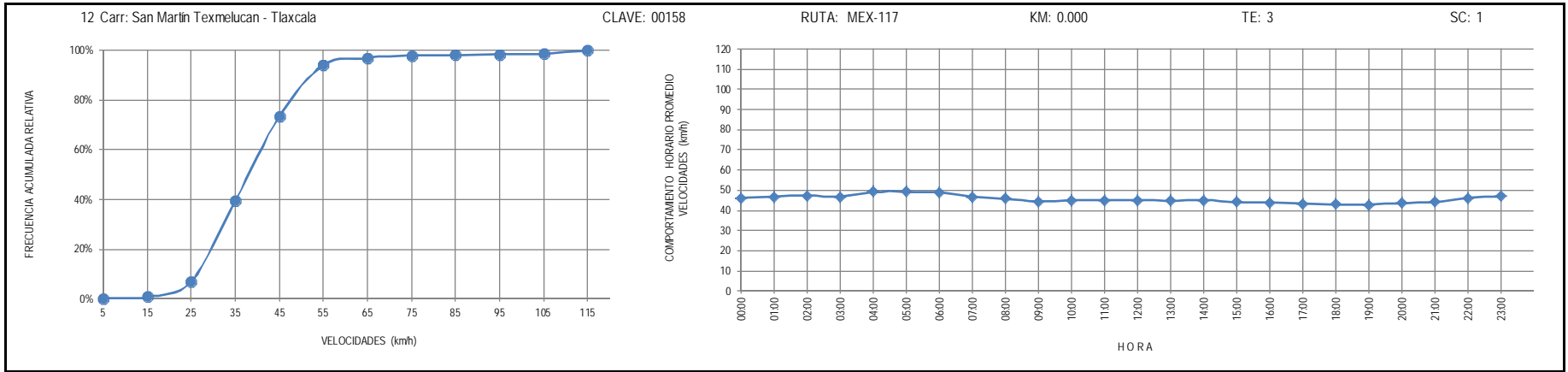
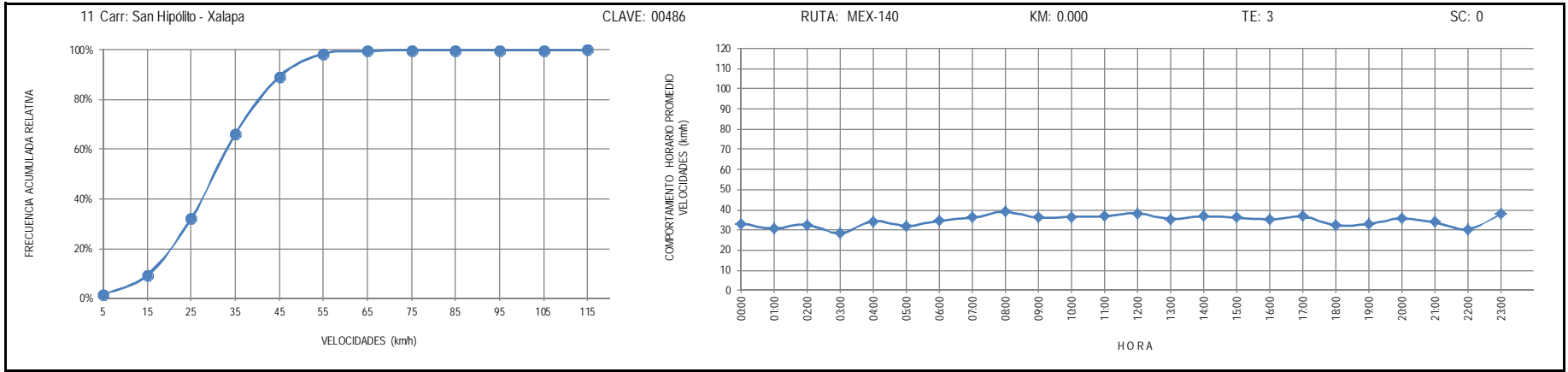
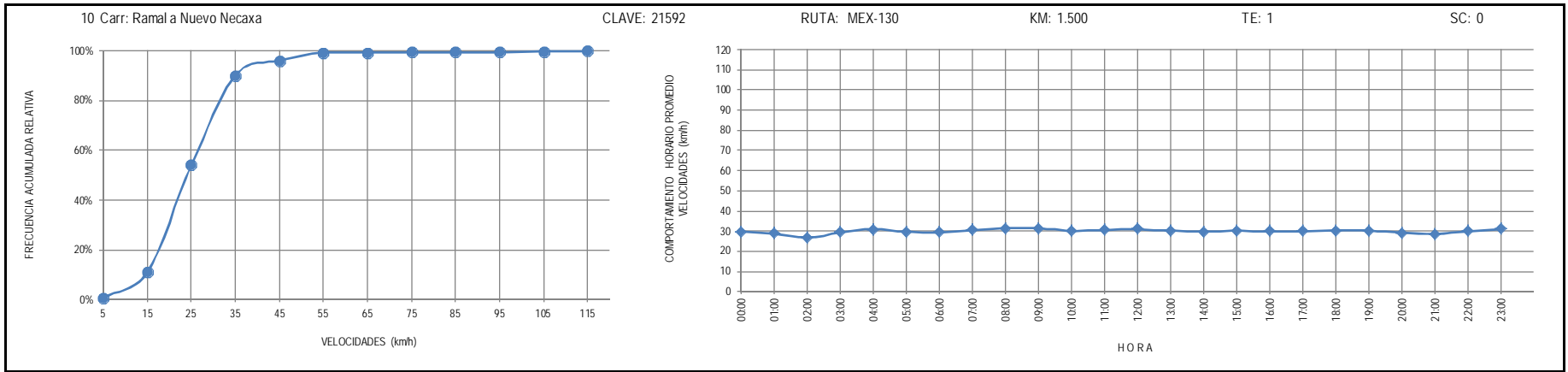
KM: 4.000

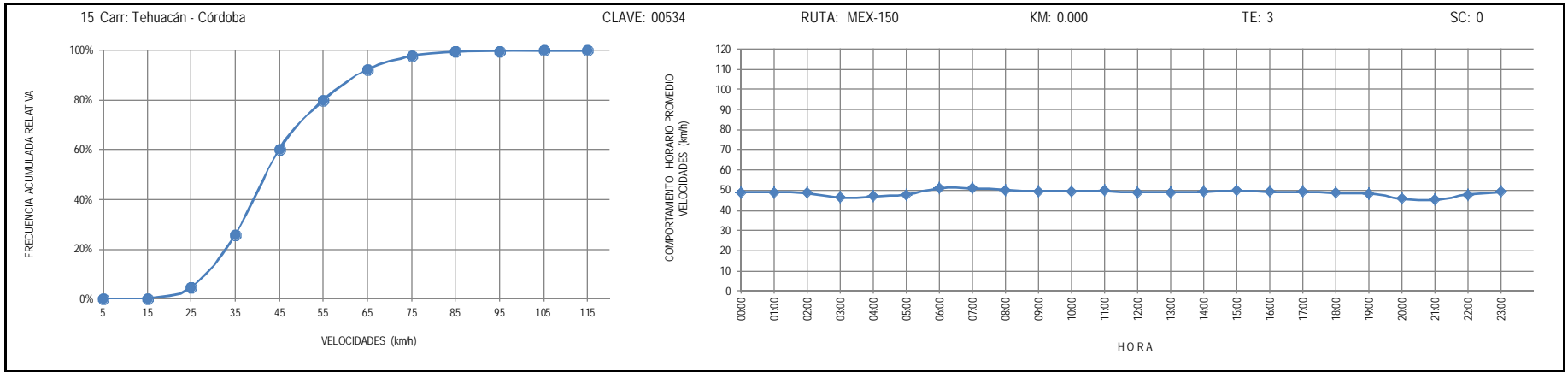
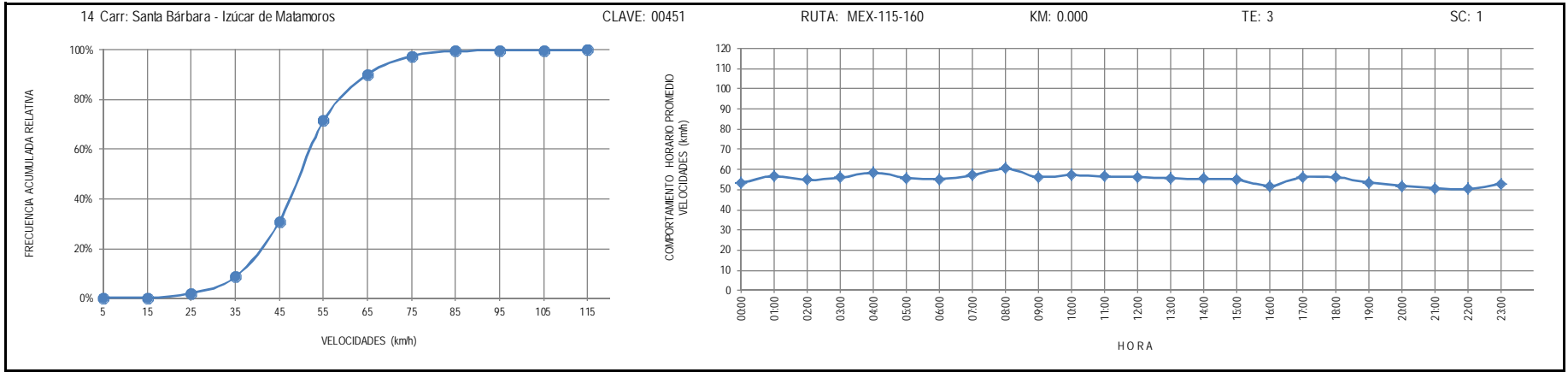
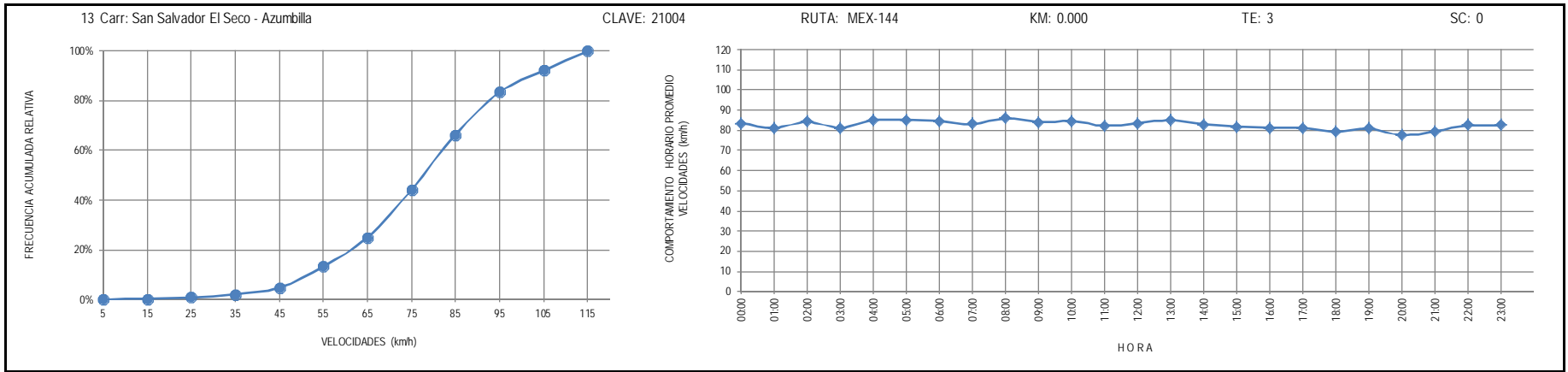
TE: 3

SC: 1









16 Carr: Tehuacán - Huajuapán de León

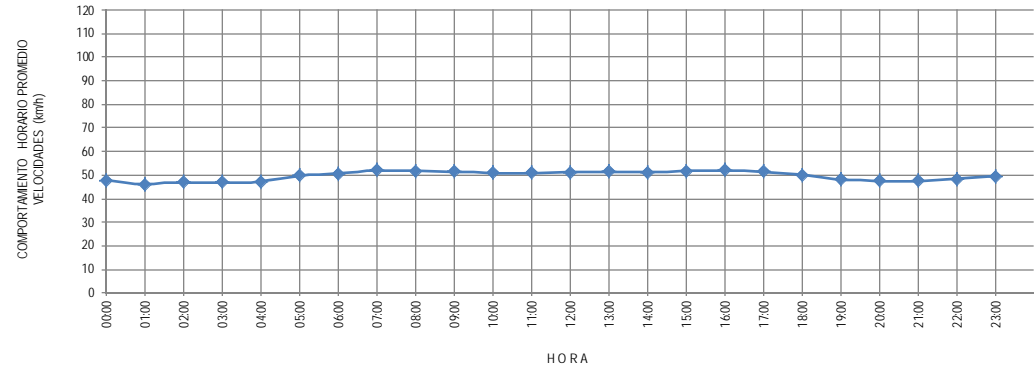
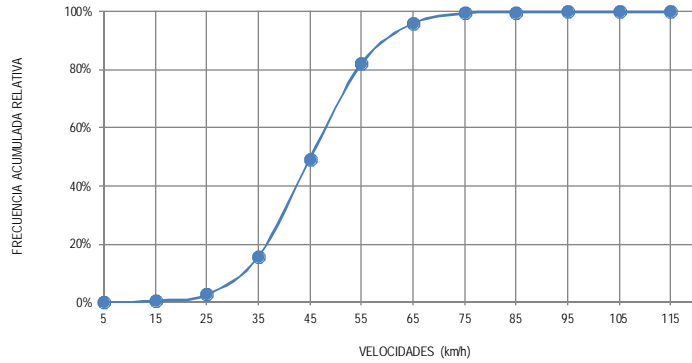
CLAVE: 00211

RUTA: MEX-125

KM: 0.000

TE: 3

SC: 1



17 Carr: Teziutlán - Nautla

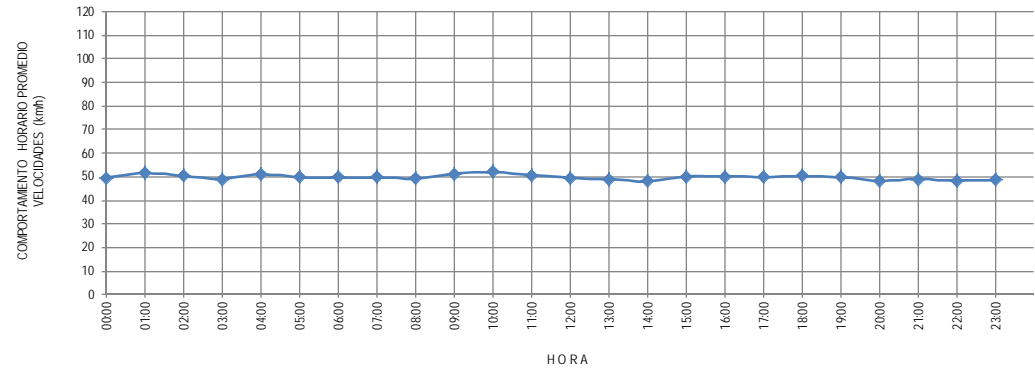
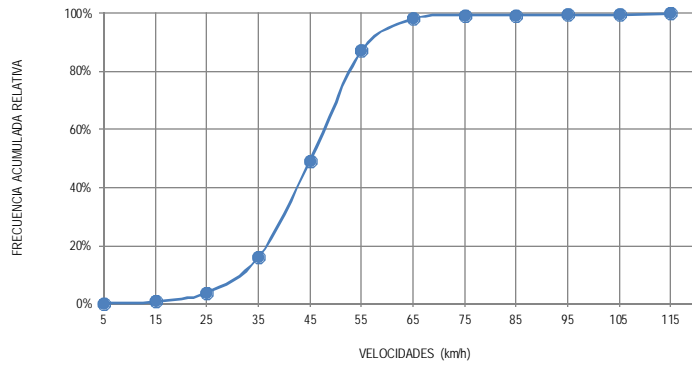
CLAVE: 00144

RUTA: MEX-129

KM: 0.000

TE: 3

SC: 0



18 Carr: Teziutlán - Perote

CLAVE: 00209

RUTA: MEX-131

KM: 0.000

TE: 3

SC: 0

