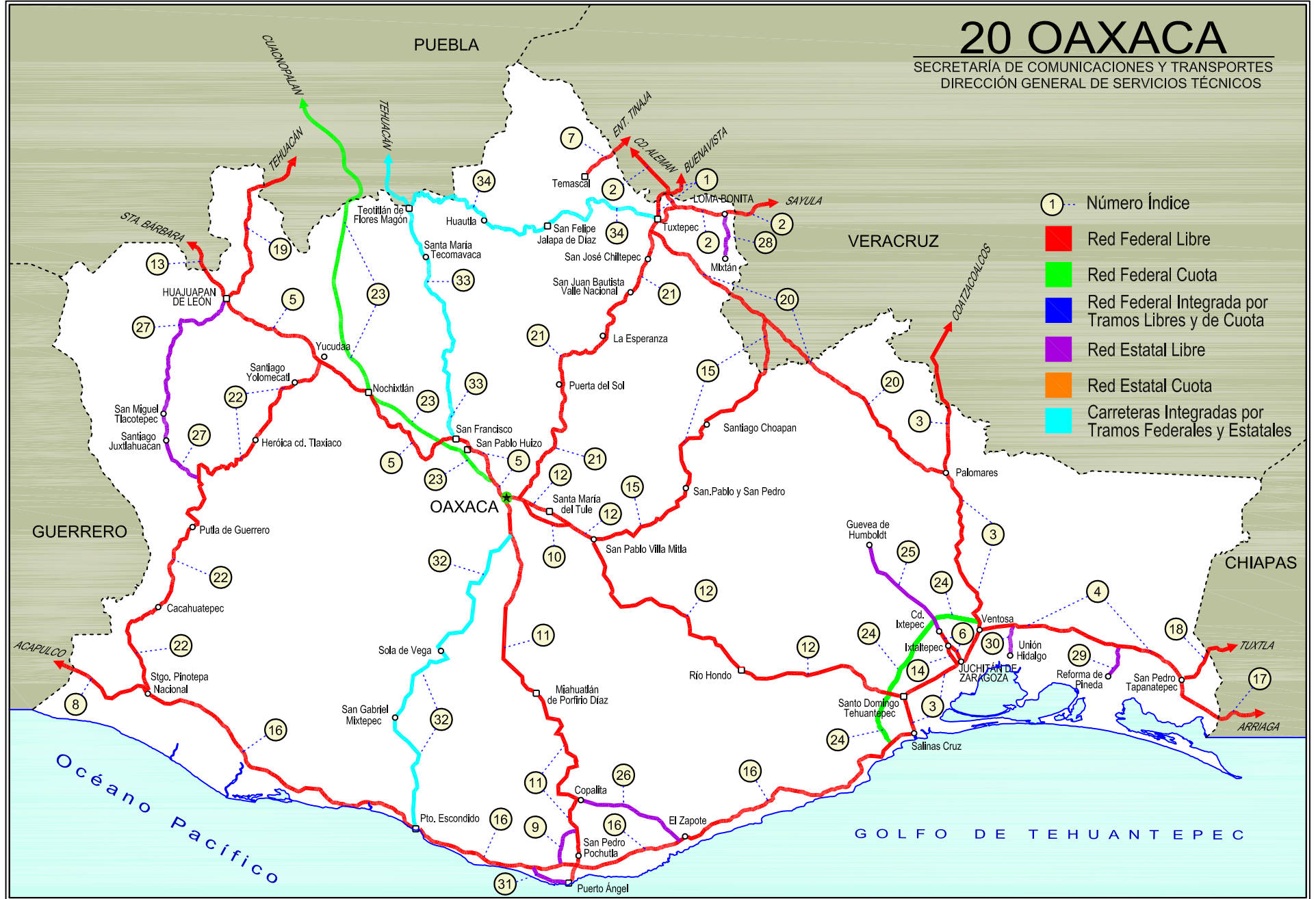


OAXACA

NO. INDICE	CARRETERA	RUTA
---RED FEDERAL LIBRE---		
1	Buenavista - Tuxtepec	MEX-175
2	Cd. Alemán - Sayula	MEX-145
3	Coatzacoalcos - Salina Cruz	MEX-185
4	Ent. La Ventosa - San Pedro Tanapatepec	MEX-190
5	Huajuapán de León - Oaxaca	MEX-190
6	Juchitán - Ixtepec	MEX-185
7	La Granja - Temascal	MEX-145
8	Las Cruces - Pinotepa Nacional	MEX-200
9	Libramiento de Pochutla	MEX-200
10	Libramiento de Santa María del Tule	MEX-190
11	Oaxaca - Puerto Ángel	MEX-175
12	Oaxaca - Tehuantepec	MEX-190
13	Puebla - Huajuapán de León	MEX-190
14	Ramal a Asunción Ixtaltepec	MEX-185
15	San Pablo Villa de Mitla - T. C. (Tuxtepec - Palomares)	MEX-179
16	Santiago Pinotepa Nacional - Salina Cruz	MEX-200
17	Tapanatepec - Talismán	MEX-200
18	Tapanatepec - Tuxtla Gutiérrez	MEX-190
19	Tehuacán - Huajuapán de León	MEX-125
20	Tuxtepec - Ent. Palomares	MEX-147
21	Tuxtepec - T. C. (Oaxaca - Tehuantepec)	MEX-175
22	Yucudaa - Santiago Pinotepa Nacional	MEX-125
---RED FEDERAL DE CUOTA---		
23	Cuacnopalan - Oaxaca (Cuota)	MEX-135D
24	Salina Cruz - La Ventosa (Cuota)	MEX-185D
---RED ESTATAL LIBRE---		
25	Cd. Ixtepec - Guevea de Humboldt	OAX
26	El Zapote - Copalita	OAX
27	Huajuapán de León - El Carrizal	OAX
28	Loma Bonita - Mixtán	OAX
29	Ramal a Reforma de Pineda	OAX
30	Ramal a Unión Hidalgo	OAX
31	San Antonio - Puerto Ángel	OAX
---CARRETERAS INTEGRADAS POR TRAMOS FEDERALES Y ESTATALES---		
32	T. C. (Oaxaca - Puerto Ángel) - Puerto Escondido	MEX-OAX-161
33	Tehuacán - Huitzo	PUE-MEX-135
34	Teotitlán de Flores Magón - Tuxtepec	OAX-PUE-MEX-182

20 OAXACA

SECRETARÍA DE COMUNICACIONES Y TRANSPORTES
DIRECCIÓN GENERAL DE SERVICIOS TÉCNICOS



OAXACA

1 CARR: Buenavista - Tuxtepec

CLAVE: 00624

RUTA: MEX-175

AÑO: 2012

LUGAR	ESTACION				VELOCIDAD AUTOS (km/h)				VELOCIDAD AUTOBUSES (km/h)				VELOCIDAD CAMIONES (km/h)				COORDENADAS	
	KM	TE	SC	TDPA	Promedio	P 85	P 98	δ	Promedio	P 85	P 98	δ	Promedio	P 85	P 98	δ	Latitud	Longitud
T. C. Paso del Toro - Acayucan	0.00	3	0	1531	65.9	73.8	86.7	9.8	57.8	61.1	73.7	5.6	57.9	67.6	82.5	11.7	18.713409	-95.637809
Puente Tlacotalpan	1.55	2	0	1535													18.704596	-95.641294
Tlacotalpan	18.00	1	0	1981	32.8	37.8	49.3	7.5	33.5	43.5	54.9	9.5	30.4	35.0	52.9	9.2	18.612875	-95.648377
Tlacotalpan	18.00	3	0	1953	44.7	54.1	71.2	10.4	46.2	52.2	54.6	9.5	41.5	51.3	68.9	11.3	18.616801	-95.669959
Carlos A. Carrillo	56.00	1	0	3454	63.1	76.9	97.0	14.6	62.2	72.8	92.0	12.0	59.3	70.5	90.3	12.2	18.379030	-95.749169
Cosamaloapan	60.00	1	0	10473	57.8	67.0	84.2	11.2	55.6	63.3	77.9	9.3	54.3	63.4	82.8	11.0	18.365656	-95.776352
Cosamaloapan	60.00	3	0	9757	65.0	78.0	97.7	13.4	63.0	73.1	92.8	11.7	59.4	70.7	91.5	12.4	18.351341	-95.806793
T. C. La Tinaja - Santa Cruz	107.00	1	0	3334	65.3	78.2	97.8	13.3	63.0	73.2	93.6	11.8	59.8	72.5	93.7	14.1	18.168703	-96.088187
T. C. Cd. Alemán - Sayula	108.92	1	0	3884	33.7	37.9	45.9	6.3	30.5	33.8	51.4	7.7	30.1	34.1	52.7	8.7	18.168354	-96.093403
T. C. Cd. Alemán - Sayula	108.92	3	0	6874	34.0	38.3	47.0	6.2	30.6	34.0	51.6	7.8	35.3	49.0	54.4	11.2	18.168756	-96.100330
Lim. Edos. Term. Ver. Ppia. Oax.	115.00																	
Puente Caracol	117.20	2	0	6163													18.133058	-96.136687
Tuxtepec	121.25	1	1	4350	56.8	77.3	103.0	20.1	53.5	66.8	92.8	14.5	50.2	65.9	93.0	17.3	18.113933	-96.134309
Tuxtepec	121.25	1	2	4188	67.7	81.6	99.5	14.9	62.1	72.9	90.4	11.5	59.0	72.2	90.7	13.5	18.113961	-96.134306

2 CARR: Cd. Alemán - Sayula

CLAVE: 00301

RUTA: MEX-145

AÑO: 2012

LUGAR	ESTACION				VELOCIDAD AUTOS (km/h)				VELOCIDAD AUTOBUSES (km/h)				VELOCIDAD CAMIONES (km/h)				COORDENADAS	
	KM	TE	SC	TDPA	Promedio	P 85	P 98	δ	Promedio	P 85	P 98	δ	Promedio	P 85	P 98	δ	Latitud	Longitud
Cd. Alemán	0.00	3	0	5852	72.3	84.1	101.3	13.4	69.0	78.3	92.1	11.0	67.9	77.0	90.5	10.9	18.183774	-96.093591
Lim. Edos. Term. Ver. Ppia. Oax.	1.80																	
Puente Papaloapan	3.50	2	0	3660													18.159461	-96.096585
T. Izq. Loma Bonita	36.70	1	0	5639	50.0	63.7	91.0	15.3	44.7	52.1	62.5	9.3	40.7	50.9	69.3	11.8	18.094874	-95.880893
T. Der. Villa Azueta	41.50	1	0	5437	72.0	83.7	100.9	13.3	68.5	77.2	90.5	10.6	67.4	76.3	90.3	10.8	18.091242	-95.781300
Lim. Edos. Term. Oax. Ppia. Ver.	43.16																	
T. Izq. Tesechoacán	56.70	1	0	3769	72.5	84.2	101.5	13.3	68.7	77.5	91.1	10.7	67.6	76.7	90.3	10.8	18.127877	-95.655649
X. C. Santiago Tuxtla - Playa Vicente	71.40	1	0	5026	71.5	83.6	100.7	13.4	68.6	77.4	91.0	10.6	67.5	76.6	90.1	10.8	18.069111	-95.535324
San Juan Evangelista	118.35	1	0	5070	65.1	75.6	93.0	11.9	58.5	64.8	80.4	9.2	55.8	63.8	81.4	9.8	17.910387	-95.129625
Sayula de Alemán	136.40	1	0	5919	64.8	74.9	92.0	11.6	57.5	63.4	74.8	8.2	55.9	63.7	80.9	9.8	17.887508	-94.964997

3 CARR: Coatzacoalcos - Salina Cruz

CLAVE: 00147

RUTA: MEX-185

AÑO: 2012

LUGAR	ESTACION				VELOCIDAD AUTOS (km/h)				VELOCIDAD AUTOBUSES (km/h)				VELOCIDAD CAMIONES (km/h)				COORDENADAS	
	KM	TE	SC	TDPA	Promedio	P 85	P 98	δ	Promedio	P 85	P 98	δ	Promedio	P 85	P 98	δ	Latitud	Longitud
Coatzacoalcos	0.00	3	1	10922	71.5	80.8	95.9	11.1	68.2	76.6	90.5	10.5	65.1	75.6	91.9	11.8	18.096262	-94.460312

OAXACA

3 CARR: Coatzacoalcos - Salina Cruz

CLAVE: 00147

RUTA: MEX-185

AÑO: 2012

LUGAR	ESTACION				VELOCIDAD AUTOS (km/h)				VELOCIDAD AUTOBUSES (km/h)				VELOCIDAD CAMIONES (km/h)				COORDENADAS	
	KM	TE	SC	TDPA	Promedio	P 85	P 98	δ	Promedio	P 85	P 98	δ	Promedio	P 85	P 98	δ	Latitud	Longitud
Coatzacoalcos	0.00	3	2	10962	72.7	83.2	100.9	12.1	70.8	80.2	93.5	11.0	66.1	77.4	93.9	12.3	18.096262	-94.460311
T. C. Nuevo Teapa - Cosoleacaque	21.00	1	1	12002	56.1	62.1	73.6	7.7	53.8	59.0	68.7	7.0	51.9	59.0	72.5	9.2	18.021946	-94.542525
T. C. Nuevo Teapa - Cosoleacaque	21.00	1	2	11511	61.1	69.5	84.1	10.2	56.0	62.8	74.5	8.6	54.8	62.3	74.6	8.9	18.021946	-94.542525
Minatitlán	21.60	3	1	10065	56.0	62.1	73.6	7.6	53.6	58.9	68.9	7.2	51.3	59.3	73.2	9.9	17.998454	-94.588199
Minatitlán	21.60	3	2	10052	61.2	69.6	84.0	10.2	56.1	62.8	74.6	8.5	54.4	62.3	74.7	9.4	17.998455	-94.588194
Cosoleacaque	31.50	1	0	18131	56.1	63.7	78.0	9.9	55.0	62.8	73.7	9.3	53.3	62.5	74.4	11.0	18.006541	-94.621820
Jáltipan de Morelos	38.60	3	0	9193	71.8	81.9	99.8	11.8	70.5	78.7	89.2	10.1	66.5	74.6	92.2	11.1	17.961606	-94.730443
Acayucan	59.60	1	0	10402	79.2	90.3	109.9	12.4	77.4	87.2	98.3	11.0	75.5	84.4	102.2	10.8	17.953410	-94.877602
Sayula de Alemán	71.00	1	1	7443	92.3	104.8	127.7	14.0	82.5	94.1	112.9	13.0	82.1	94.8	118.9	14.0	17.896549	-94.949713
Sayula de Alemán	71.00	1	2	7017	85.6	97.3	114.0	12.8	80.3	90.9	107.2	12.0	75.3	85.9	107.3	11.7	17.896549	-94.949713
Sayula de Alemán	71.00	3	0	7476	68.8	80.0	98.6	12.6	63.8	73.1	87.2	10.6	62.2	73.7	93.1	13.2	17.871658	-94.969309
Campo Nuevo	94.50	3	0	5480	58.1	68.7	87.3	12.0	53.1	59.3	73.3	8.3	49.2	57.3	78.0	10.7	17.695004	-95.075189
T. Izq. Jesús Carranza	126.80	1	0	4417	69.1	80.4	101.0	12.9	63.7	72.9	86.9	10.6	61.5	73.1	91.8	13.1	17.439328	-95.078191
T. Izq. Jesús Carranza	126.80	3	0	5018	55.0	64.0	81.1	10.8	50.9	58.6	73.4	9.8	43.9	53.3	71.2	10.5	17.432995	-95.076681
Lim. Edos. Term. Ver. Ppia. Oax.	139.90																	
T. Der. Tuxtepec	166.20	1	0	4656	80.3	95.1	118.3	15.9	74.8	92.0	109.9	16.1	61.9	74.7	101.4	12.9	17.144886	-95.063726
T. Der. Tuxtepec	166.20	3	0	5127	80.2	95.0	118.8	15.9	74.1	91.3	109.7	16.2	62.0	74.6	100.3	12.8	17.131426	-95.059637
T. Der. Estación Mogoñe	182.15	1	0	5120	80.1	94.8	118.4	15.8	73.2	90.3	107.4	16.2	62.2	75.4	101.9	13.2	17.013868	-95.009416
T. Der. Matías Romero	196.00	1	0	7896	80.0	94.9	119.5	16.1	75.3	92.8	111.8	16.6	62.9	77.1	103.9	13.9	16.885189	-95.017639
T. Der. Barrio de La Soledad	203.05	1	0	7688	81.0	96.3	120.5	16.1	75.2	92.3	110.9	16.2	63.4	77.9	105.7	14.1	16.817795	-95.033541
T. Der. Barrio de La Soledad	203.05	3	0	5477	62.1	73.3	98.8	13.4	58.6	64.9	78.0	8.9	51.1	59.6	74.4	10.4	16.812298	-95.032505
T. C. La Ventosa - Salina Cruz (Cuota)	236.00	1	0	6026	66.2	83.9	121.9	17.7	63.4	76.8	96.8	13.5	61.3	74.5	103.5	14.3	16.605830	-94.949596
T. C. La Ventosa - Salina Cruz (Cuota)	236.00	3	0	2820	86.6	101.5	129.2	15.0	81.4	93.5	127.5	14.2	79.5	93.1	127.8	15.2	16.580978	-94.944189
T. Izq. San Pedro Tapanatepec (2º Acceso)	241.70	1	0	3836	75.3	87.6	106.5	12.9	69.8	79.5	92.1	11.1	67.2	77.7	97.0	12.0	16.558395	-94.948404
T. Izq. San Pedro Tapanatepec (2º Acceso)	241.70	3	0	6004	70.0	80.6	100.8	12.1	64.8	73.2	91.4	9.7	63.8	73.2	95.2	11.5	16.545204	-94.952172
Juchitán de Zaragoza	255.55	1	0	8034	56.0	70.4	94.1	14.5	53.5	64.6	86.1	12.3	53.0	66.4	101.2	15.1	16.453967	-95.002129
Juchitán de Zaragoza	255.55	3	1	7692	87.4	102.3	124.3	15.9	86.5	101.8	120.1	15.7	71.0	90.5	119.3	18.4	16.437380	-95.032239
Juchitán de Zaragoza	255.55	3	2	8262	71.8	83.1	103.3	13.0	66.3	79.9	95.0	13.5	59.3	70.3	89.2	11.8	16.437380	-95.032239
Santo Domingo Tehuantepec	283.95	1	1	3843	82.9	95.1	121.7	14.1	78.6	89.8	101.6	12.6	78.2	90.8	106.8	13.1	16.347599	-95.208910
Santo Domingo Tehuantepec	283.95	1	2	3882	84.6	99.2	123.0	15.1	80.8	91.4	104.2	12.8	77.8	90.2	111.1	13.9	16.347629	-95.209006
Santo Domingo Tehuantepec	283.95	3	1	9244	87.7	102.3	124.3	15.6	87.8	102.9	123.4	16.0	71.2	90.8	119.2	18.3	16.314159	-95.237166
Santo Domingo Tehuantepec	283.95	3	2	9009	72.3	83.4	104.3	12.9	66.7	80.4	98.4	13.9	59.3	70.3	88.4	11.8	16.314159	-95.237166
Salina Cruz	302.35	1	1	14751	87.6	102.2	124.0	15.5	88.1	103.2	124.2	16.2	71.4	90.6	117.5	18.1	16.230557	-95.211130
Salina Cruz	302.35	1	2	13972	72.2	83.2	103.6	12.7	66.6	80.2	97.6	13.8	59.5	71.2	90.0	12.7	16.230558	-95.211130

OAXACA

4 CARR: Ent. La Ventosa - San Pedro Tanapatepec

CLAVE: 20059

RUTA: MEX-190

AÑO: 2012

LUGAR	ESTACION				VELOCIDAD AUTOS (km/h)				VELOCIDAD AUTOBUSES (km/h)				VELOCIDAD CAMIONES (km/h)				COORDENADAS	
	KM	TE	SC	TDPA	Promedio	P 85	P 98	δ	Promedio	P 85	P 98	δ	Promedio	P 85	P 98	δ	Latitud	Longitud
La Ventosa	0.00	3	0	3773	60.9	77.0	94.5	14.5	55.7	68.2	91.9	12.0	56.3	72.9	101.6	14.6	16.550251	-94.944133
T. C. La Ventosa - Salina Cruz (Cuota)	7.20	3	0	6164	91.4	104.2	126.8	14.1	86.8	98.9	138.4	14.6	82.7	94.3	135.6	14.6	16.571539	-94.884855
T. Izq. Nilttepec	38.01	3	0	3844	77.6	92.7	119.1	15.2	70.7	84.5	107.9	14.0	65.3	73.9	105.7	11.6	16.554508	-94.604502
Santo Domingo Zanatepec	68.25	3	0	4945	46.8	56.5	74.5	11.3	44.0	51.0	69.9	9.8	41.1	49.8	65.3	10.6	16.475915	-94.348743
San Pedro Tapanatepec	91.80	1	0	4125	62.3	73.0	94.0	12.6	57.3	64.2	80.4	8.6	51.7	60.2	79.8	10.3	16.380161	-94.198985

5 CARR: Huajuapán de León - Oaxaca

CLAVE: 20056

RUTA: MEX-190

AÑO: 2012

LUGAR	ESTACION				VELOCIDAD AUTOS (km/h)				VELOCIDAD AUTOBUSES (km/h)				VELOCIDAD CAMIONES (km/h)				COORDENADAS	
	KM	TE	SC	TDPA	Promedio	P 85	P 98	δ	Promedio	P 85	P 98	δ	Promedio	P 85	P 98	δ	Latitud	Longitud
Hujuapán de León	0.00																	
T. Izq. Tehuacán	1.35	1	0	13150	35.7	38.6	63.0	7.1	37.9	47.3	138.2	12.8	30.8	34.1	52.7	8.1	17.812899	-97.766928
T. Izq. Tehuacán	1.35	3	0	8636	55.8	62.8	85.9	10.0	55.2	54.8	64.5	3.2	54.2	60.4	76.7	8.5	17.810731	-97.760166
Tamazulapán	38.61	1	0	3136	61.4	72.6	87.4	12.8	58.5	60.2	84.5	6.0	61.4	72.1	84.5	12.4	17.674787	-97.577125
Tamazulapán	38.61	3	0	3537	61.6	72.7	87.6	12.7	61.3	68.4	77.7	8.1	61.3	71.7	84.1	11.7	17.671478	-97.564173
T. Izq. Santiago Tejupan	49.62	3	0	3041	61.5	72.8	88.4	12.9	62.2	70.1	81.5	9.1	58.9	68.6	82.5	10.1	17.654842	-97.470375
T. Der. Tlaxiaco	61.43	3	0	2935	77.1	95.7	122.3	18.8	64.5	80.1	95.2	15.2	61.8	76.1	94.6	13.9	17.573624	-97.423461
Asunción Nochixtlán	90.40	1	0	6744	64.1	73.4	91.8	11.1	60.4	70.6	84.6	11.4	58.6	70.2	89.5	13.0	17.463925	-97.253979
T. Izq. Tehuacán	161.73	1	0	4407	62.8	77.2	104.8	14.4	62.7	79.9	102.8	14.8	57.7	66.8	98.1	10.3	17.285451	-96.910393
T. Izq. Tehuacán	161.73	3	0	4895	58.8	63.7	74.2	8.5	54.8	58.4	64.7	5.2	53.8	61.3	73.2	9.2	17.284833	-96.900142
T. Der. Tlaltinango	170.29	1	0	6869	76.4	85.0	103.9	11.4	69.9	80.4	97.2	12.0	69.3	81.1	101.8	13.2	17.248352	-96.852285
T. Der. Tlaltinango	170.29	3	0	7069	80.6	92.6	111.6	13.2	75.5	88.0	103.8	12.8	74.8	87.7	108.7	13.6	17.242526	-96.836780
T. Der. Nazareno Etla	179.23	3	1	12652	61.7	70.1	82.9	10.1	48.7	53.9	63.6	8.4	50.1	54.0	63.4	7.8	17.168934	-96.788680
T. Der. Nazareno Etla	179.23	3	2	12494	77.5	82.9	93.4	8.1	76.2	82.4	109.0	9.4	72.4	80.9	102.1	11.3	17.168988	-96.788639
T. Aut. Cuacnopalan - Oaxaca	181.80	3	1	20005	92.6	102.1	119.5	11.1	92.6	102.8	121.8	12.0	85.8	101.2	120.3	16.3	17.143575	-96.778196
T. Aut. Cuacnopalan - Oaxaca	181.80	3	2	19755	81.7	92.6	109.7	12.2	72.7	85.7	102.5	13.5	74.8	89.5	107.3	14.5	17.142813	-96.777648
Oaxaca	190.60	1	1	29533	71.3	81.9	101.6	12.0	73.2	84.6	111.8	13.5	69.7	83.0	111.9	14.9	17.097050	-96.749940
Oaxaca	190.60	1	2	24959	56.6	62.9	74.4	8.3	48.5	53.5	67.0	7.9	50.0	54.9	70.2	8.4	17.096347	-96.749408

6 CARR: Juchitán - Ixttepec

CLAVE: 20359

RUTA: MEX-185

AÑO: 2012

LUGAR	ESTACION				VELOCIDAD AUTOS (km/h)				VELOCIDAD AUTOBUSES (km/h)				VELOCIDAD CAMIONES (km/h)				COORDENADAS	
	KM	TE	SC	TDPA	Promedio	P 85	P 98	δ	Promedio	P 85	P 98	δ	Promedio	P 85	P 98	δ	Latitud	Longitud
Juchitán de Zaragoza	0.00																	
X. C. Coatzacoalcos - Salina Cruz	0.15	3	1	8625	54.5	60.0	73.4	8.0	50.5	52.8	59.1	5.8	50.8	53.5	62.3	6.5	16.449099	-95.025996

OAXACA

6 CARR: Juchitán - Ixtepec

CLAVE: 20359

RUTA: MEX-185

AÑO: 2012

LUGAR	ESTACION				VELOCIDAD AUTOS (km/h)				VELOCIDAD AUTOBUSES (km/h)				VELOCIDAD CAMIONES (km/h)				COORDENADAS	
	KM	TE	SC	TDPA	Promedio	P 85	P 98	δ	Promedio	P 85	P 98	δ	Promedio	P 85	P 98	δ	Latitud	Longitud
X. C. Coatzacoalcos - Salina Cruz	0.15	3	2	8050	59.5	64.9	81.9	9.8	49.4	54.0	64.2	7.6	51.0	55.3	71.8	8.6	16.449098	-95.025996
Asunción Ixtaltepec	7.40	1	1	3428	38.7	46.7	61.6	10.4	28.6	37.7	53.4	9.9	28.0	37.7	54.0	10.4	16.510542	-95.065991
Asunción Ixtaltepec	7.40	1	2	3459	40.4	43.2	52.2	6.3	35.6	36.7	49.0	3.9	34.9	36.8	46.0	4.3	16.510542	-95.065991
Asunción Ixtaltepec	7.40	3	1	2675	42.5	48.5	61.3	8.1	47.5	52.1	63.3	7.3	42.3	49.5	61.9	9.3	16.503895	-95.055184
Asunción Ixtaltepec	7.40	3	2	2782	39.8	44.2	54.3	7.8	37.0	39.6	52.8	5.2	37.0	42.0	57.9	7.6	16.503895	-95.055184
Ixtepec	16.00	1	1	4029	54.7	60.3	73.7	7.9	51.4	52.7	54.7	4.7	49.9	53.3	62.6	6.9	16.538549	-95.080565
Ixtepec	16.00	1	2	3988	59.6	64.9	81.9	9.7	51.0	53.1	59.7	5.7	50.2	58.1	73.5	9.7	16.538549	-95.080565

7 CARR: La Granja - Temascal

CLAVE: 00275

RUTA: MEX-145

AÑO: 2012

LUGAR	ESTACION				VELOCIDAD AUTOS (km/h)				VELOCIDAD AUTOBUSES (km/h)				VELOCIDAD CAMIONES (km/h)				COORDENADAS	
	KM	TE	SC	TDPA	Promedio	P 85	P 98	δ	Promedio	P 85	P 98	δ	Promedio	P 85	P 98	δ	Latitud	Longitud
T. C. La Tinaja - Santa Cruz	0.00	3	0	3478	43.3	51.7	66.4	9.9	44.0	52.1	72.5	10.2	42.9	51.7	64.6	11.0	18.352783	-96.262002
Lim. Edos. Term. Ver. Ppia. Oax.	5.00																	
Temascal	23.00	1	0	2983	53.1	61.5	74.9	10.0	52.8	60.9	86.4	10.7	51.1	59.3	82.1	11.2	18.257746	-96.392388

8 CARR: Las Cruces - Pinotepa Nacional

CLAVE: 00073

RUTA: MEX-200

AÑO: 2012

LUGAR	ESTACION				VELOCIDAD AUTOS (km/h)				VELOCIDAD AUTOBUSES (km/h)				VELOCIDAD CAMIONES (km/h)				COORDENADAS	
	KM	TE	SC	TDPA	Promedio	P 85	P 98	δ	Promedio	P 85	P 98	δ	Promedio	P 85	P 98	δ	Latitud	Longitud
T. C. Chilpancingo - Acapulco	0.00	3	1	17330	54.2	58.3	67.3	5.9	52.3	56.1	66.4	7.1	51.2	55.4	65.0	7.7	16.885501	-99.830429
T. C. Chilpancingo - Acapulco	0.00	3	2	18026	48.6	56.0	69.8	9.8	43.8	51.6	63.9	9.4	45.0	52.2	62.4	9.3	16.885502	-99.830429
T. Der. Puerto Marqués	4.62	1	1	13719	62.6	68.2	81.8	7.9	61.2	66.2	80.7	8.3	60.8	65.7	79.8	8.3	16.867860	-99.811195
T. Der. Puerto Marqués	4.62	1	2	13106	61.2	71.6	86.7	11.8	53.1	62.4	79.5	10.8	49.0	59.3	80.5	11.9	16.867862	-99.811195
T. Der. Puerto Marqués	4.62	3	0	11086	53.1	60.4	113.2	12.1	52.4	56.1	76.6	8.3	49.9	56.5	79.6	11.0	16.857488	-99.806269
X. C. Puerto Marqués - La Venta (Cuota)	11.70	1	1	3725	59.1	63.7	101.3	9.8	51.0	55.1	63.8	7.9	50.1	54.7	65.3	8.7	16.830921	-99.765488
X. C. Puerto Marqués - La Venta (Cuota)	11.70	1	2	3769	64.2	73.3	100.2	11.6	57.8	64.1	74.2	7.4	55.8	64.4	83.0	9.3	16.830921	-99.765488
X. C. Puerto Marqués - La Venta (Cuota)	11.70	3	1	4025	60.9	68.8	98.2	11.5	56.7	64.3	74.2	9.5	54.4	64.0	83.4	10.7	16.830253	-99.753092
X. C. Puerto Marqués - La Venta (Cuota)	11.70	3	2	4036	49.9	52.7	101.2	9.0	41.5	46.4	64.1	8.3	41.5	49.9	54.9	9.8	16.830253	-99.753092
San Marcos	58.90	1	0	6461	53.7	61.3	96.5	10.9	48.9	54.7	75.3	9.7	49.3	53.4	69.4	8.6	16.784581	-99.397729
Nexpa	84.96	3	0	4929	63.6	94.1	133.6	22.9	75.8	133.0	143.6	35.4	70.8	114.4	142.2	29.7	16.781497	-99.201252
T. Izq. Copala (1º Acceso)	117.50	1	0	4610	65.6	75.9	100.8	12.9	60.0	67.3	82.6	9.5	58.6	67.6	86.5	10.9	16.607250	-98.985846
T. Izq. Copala (1º Acceso)	117.50	3	0	5747	65.5	75.7	98.9	12.7	60.2	67.3	82.7	9.4	58.9	68.3	87.1	10.9	16.603388	-98.973776
T. Izq. Ometepec	175.88	1	0	4110	63.1	71.5	93.7	11.1	57.7	64.4	79.2	9.4	56.4	63.7	82.1	9.3	16.655367	-98.503246
Cuajinicuilapa	200.60	3	0	2763	48.6	61.6	89.5	15.6	59.0	70.4	83.2	11.5	53.7	63.9	81.8	10.9	16.465731	-98.400888

OAXACA

8 CARR: Las Cruces - Pinotepa Nacional

CLAVE: 00073

RUTA: MEX-200

AÑO: 2012

LUGAR	ESTACION				VELOCIDAD AUTOS (km/h)				VELOCIDAD AUTOBUSES (km/h)				VELOCIDAD CAMIONES (km/h)				COORDENADAS	
	KM	TE	SC	TDPA	Promedio	P 85	P 98	δ	Promedio	P 85	P 98	δ	Promedio	P 85	P 98	δ	Latitud	Longitud
Lim. Edos. Term. Gro. Ppia. Oax.	207.80																	
T. Izq. San Pedro Orizaba	215.00	3	0	1810	49.2	62.5	91.2	15.9	58.6	69.7	83.0	11.2	55.2	63.3	82.5	9.0	16.442356	-98.341673
T. Izq. Tlaxiaco	245.47	1	0	3158	52.1	65.6	105.5	15.6	50.5	53.8	135.6	12.2	48.4	54.4	88.5	14.0	16.379736	-98.094625
T. Izq. Tlaxiaco	245.47	3	0	6043	50.4	55.4	89.1	10.6	48.8	54.6	63.9	10.0	48.1	53.3	65.2	8.8	16.376734	-98.092067
Pinotepa Nacional	252.50																	

9 CARR: Libramiento de Pochutla

CLAVE:

RUTA: MEX-200

AÑO: 2012

LUGAR	ESTACION				VELOCIDAD AUTOS (km/h)				VELOCIDAD AUTOBUSES (km/h)				VELOCIDAD CAMIONES (km/h)				COORDENADAS	
	KM	TE	SC	TDPA	Promedio	P 85	P 98	δ	Promedio	P 85	P 98	δ	Promedio	P 85	P 98	δ	Latitud	Longitud
T. C. Santiago Pinotepa Nacional - Salina Cruz	0.00	3	0	881	27.6	36.3	50.4	10.9	27.5	45.9	53.8	12.5	22.5	31.8	52.6	11.5	15.733400	-96.480393
Pio Macaya	2.40	1	0	760	58.8	68.1	84.6	11.0	52.7	62.3	81.6	10.9	52.2	63.6	83.0	12.1	15.747989	-96.477403
Pio Macaya	2.40	3	0	660	59.0	68.8	84.8	11.2	52.9	63.5	82.5	11.3	52.7	64.9	83.5	12.3	15.755145	-96.476780
T. C. Oaxaca - Puerto Angel	5.20	1	0	769	50.5	60.1	76.2	10.9	48.5	57.6	73.9	10.3	44.9	54.6	72.9	11.6	15.762211	-96.465783

10 CARR: Libramiento de Santa María del Tule

CLAVE:

RUTA: MEX-190

AÑO: 2012

LUGAR	ESTACION				VELOCIDAD AUTOS (km/h)				VELOCIDAD AUTOBUSES (km/h)				VELOCIDAD CAMIONES (km/h)				COORDENADAS	
	KM	TE	SC	TDPA	Promedio	P 85	P 98	δ	Promedio	P 85	P 98	δ	Promedio	P 85	P 98	δ	Latitud	Longitud
T. C. Oaxaca - Tehuantepec	0.00	3	0	14144	76.8	93.4	119.0	16.3	69.6	85.7	111.3	15.9	69.1	86.7	121.1	17.5	17.052274	-96.657849
T. C. Oaxaca - Tehuantepec	5.80	1	0	15472	79.1	93.3	115.6	15.2	71.2	83.6	107.2	14.4	69.5	84.8	119.9	16.8	17.036913	-96.622608

11 CARR: Oaxaca - Puerto Ángel

CLAVE: 20091

RUTA: MEX-175

AÑO: 2012

LUGAR	ESTACION				VELOCIDAD AUTOS (km/h)				VELOCIDAD AUTOBUSES (km/h)				VELOCIDAD CAMIONES (km/h)				COORDENADAS	
	KM	TE	SC	TDPA	Promedio	P 85	P 98	δ	Promedio	P 85	P 98	δ	Promedio	P 85	P 98	δ	Latitud	Longitud
Oaxaca	0.00	3	1	27745	50.6	54.6	64.6	7.6	45.6	50.8	60.7	6.6	45.8	51.6	62.8	7.4	17.032047	-96.712966
Oaxaca	0.00	3	2	27004	50.6	54.6	64.6	7.6	45.5	50.8	60.8	6.6	45.8	51.6	62.7	7.4	17.032109	-96.712852
T. Der. Aeropuerto	10.46	1	1	22217	64.9	71.3	88.8	8.4	59.3	62.1	71.3	5.4	61.1	67.2	80.7	8.7	17.007274	-96.713003
T. Der. Aeropuerto	10.46	1	2	22633	57.9	68.0	85.6	12.3	53.4	53.5	58.7	3.3	51.3	60.5	74.2	11.3	17.007273	-96.713004
T. Der. Puerto Escondido	19.07	1	1	11854	62.1	67.3	82.5	8.9	51.9	55.0	64.0	6.9	52.5	60.7	73.7	9.8	16.933364	-96.704338
T. Der. Puerto Escondido	19.07	1	2	12404	64.2	71.3	90.1	9.7	56.8	61.9	72.0	6.8	56.5	63.5	78.1	9.6	16.933364	-96.704338
T. Der. Puerto Escondido	19.07	3	0	11948	52.7	64.7	90.7	15.2	50.0	53.2	54.9	7.9	50.9	56.9	73.4	10.5	16.926144	-96.701270
Ocotlán	35.67	3	0	8426	80.2	93.1	116.3	14.3	64.3	78.5	91.6	11.7	76.0	91.0	113.0	15.2	16.764216	-96.677635
Ejutla de Crespo	64.04	1	0	4547	95.4	113.2	140.2	16.9	92.7	112.1	140.3	19.0	91.7	114.0	140.7	20.2	16.606164	-96.738115

OAXACA

11 CARR: Oaxaca - Puerto Ángel

CLAVE: 20091

RUTA: MEX-175

AÑO: 2012

LUGAR	ESTACION				VELOCIDAD AUTOS (km/h)				VELOCIDAD AUTOBUSES (km/h)				VELOCIDAD CAMIONES (km/h)				COORDENADAS	
	KM	TE	SC	TDPA	Promedio	P 85	P 98	δ	Promedio	P 85	P 98	δ	Promedio	P 85	P 98	δ	Latitud	Longitud
Ejutla de Crespo	64.04	3	0	2913	74.4	86.8	108.7	13.6	58.0	55.3	83.3	5.3	65.4	81.2	100.8	14.8	16.515639	-96.736229
Miahuatlán de Porfirio Díaz	100.64	3	0	3130	74.4	86.8	108.7	13.6	58.0	55.3	83.3	5.2	65.4	81.2	100.8	14.8	16.285477	-96.584027
San Miguel Suchixtepec	144.00	1	0	1427	45.3	51.8	62.6	7.8	38.5	44.0	53.2	8.8	41.9	50.4	56.1	10.2	16.100525	-96.470577
Candelaria Loxicha	195.00	1	0	1290	45.7	52.6	64.6	9.0	44.8	52.2	61.6	9.1	42.3	51.2	58.9	10.7	15.931758	-96.486257
San Pedro Pochutla	238.00	1	0	3920	56.4	63.5	86.9	10.2	52.1	53.8	64.2	6.0	52.2	61.0	82.8	11.0	15.764670	-96.463672
Puerto Ángel	245.40	1	0	4475	51.4	53.5	64.7	7.2	51.5	53.1	54.8	5.6	49.1	52.4	59.3	7.0	15.677751	-96.481501

12 CARR: Oaxaca - Tehuantepec

CLAVE: 20057

RUTA: MEX-190

AÑO: 2012

LUGAR	ESTACION				VELOCIDAD AUTOS (km/h)				VELOCIDAD AUTOBUSES (km/h)				VELOCIDAD CAMIONES (km/h)				COORDENADAS	
	KM	TE	SC	TDPA	Promedio	P 85	P 98	δ	Promedio	P 85	P 98	δ	Promedio	P 85	P 98	δ	Latitud	Longitud
Oaxaca	0.00	3	1	18390	67.0	73.8	84.8	9.2	56.9	63.2	78.2	8.4	60.0	67.7	82.6	9.8	17.067806	-96.688164
Oaxaca	0.00	3	2	18711	48.5	53.0	67.5	7.3	42.0	44.5	54.8	6.7	43.4	46.7	54.6	6.2	17.067785	-96.687127
T. Izq. Guelatao	8.69	3	1	15423	79.6	92.3	109.4	13.4	67.9	78.8	109.6	13.0	67.9	80.6	104.9	13.6	17.063852	-96.674963
T. Izq. Guelatao	8.69	3	2	15510	67.2	77.3	90.3	11.5	55.7	64.7	80.6	10.7	57.5	67.9	83.5	10.8	17.064027	-96.674857
Libramiento Santa María el Tule	12.00	1	1	13411	79.0	91.9	109.2	13.5	66.8	76.1	94.5	11.3	68.1	81.2	105.9	13.8	17.061241	-96.666204
Libramiento Santa María el Tule	12.00	1	2	14237	67.2	77.4	90.3	11.5	55.7	65.2	80.8	11.2	57.2	67.0	83.1	10.5	17.061241	-96.666204
Santa María El Tule	13.90	1	1	6147	78.4	91.4	108.5	13.5	66.9	76.5	98.3	11.7	69.2	83.0	111.2	14.8	17.049133	-96.642515
Santa María El Tule	13.90	1	2	6304	67.3	77.4	90.3	11.5	55.7	64.9	81.4	11.1	56.5	67.9	83.5	11.8	17.049329	-96.642528
Santa María El Tule	13.90	3	0	4200	61.8	70.1	82.6	9.9	57.3	62.9	77.4	8.4	57.3	64.4	80.2	9.8	17.043498	-96.629609
Teotitlán del Valle	26.50	1	0	12865	73.3	89.7	108.1	17.2	68.3	81.2	94.8	13.5	67.1	80.9	97.4	14.9	16.996319	-96.527912
T. Izq. Teotitlán del Valle	26.50	3	0	13446	85.0	97.7	116.1	13.7	77.4	90.6	108.7	14.7	77.1	90.7	112.7	14.9	16.993547	-96.523690
T. Der. Tlacolula	33.64	1	0	11415	88.5	103.1	124.1	14.8	82.7	97.9	123.1	15.2	82.9	99.7	127.2	16.5	16.970453	-96.489113
T. Der. Tlacolula	33.64	3	1	4617	72.3	83.3	100.6	12.5	69.7	80.7	94.8	12.2	67.6	80.6	102.4	13.8	16.950849	-96.465587
T. Der. Tlacolula	33.64	3	2	4619	53.6	58.8	64.8	6.9	45.9	48.5	54.8	4.5	48.2	52.5	63.4	7.5	16.950849	-96.465587
T. Izq. Villa de Mitla	42.66	1	0	7034	89.3	101.7	118.7	13.6	81.2	91.8	104.6	12.6	81.4	94.1	114.2	14.5	16.921235	-96.405731
T. Izq. Villa de Mitla	42.66	3	0	4129	71.6	80.7	95.2	10.6	65.2	73.3	86.2	8.8	65.3	74.4	92.3	10.6	16.912419	-96.397764
San Pedro Totolapan	81.00	1	0	2818	49.8	59.5	72.6	11.1	46.9	53.5	64.2	9.5	41.9	53.0	67.1	12.5	16.672289	-96.306675
T. Izq. Nejapa de Madero	127.00	1	0	1299	54.6	63.8	80.2	10.3	47.3	53.9	64.7	9.2	44.2	53.7	71.9	11.2	16.621844	-96.038367
La Reforma	184.62	1	0	1954	60.2	68.0	79.0	9.8	53.5	56.9	65.9	6.2	47.3	55.2	71.0	10.8	16.399572	-95.767365
La Reforma	184.62	3	0	1973	61.0	69.2	81.1	10.0	54.2	57.6	64.8	5.4	48.1	58.3	73.1	12.0	16.398489	-95.760883
T. Der. Magdalena Tequisistlán	206.66	1	0	2898	56.8	64.4	76.7	9.8	53.0	56.4	69.6	6.7	51.3	58.0	72.4	9.1	16.415503	-95.600977
T. Izq. Jalapa de Márquez	224.60	3	0	3760	75.8	90.1	108.1	14.9	69.3	79.6	92.5	11.7	72.3	83.7	102.8	13.2	16.430483	-95.428993
Tehuantepec	250.60	1	0	6086	68.1	80.1	99.0	13.3	63.8	72.7	84.2	10.6	62.1	72.9	88.5	12.5	16.329235	-95.263312

OAXACA

13 CARR: Puebla - Huajuapán de León

CLAVE: 00049

RUTA: MEX-190

AÑO: 2012

LUGAR	ESTACION				VELOCIDAD AUTOS (km/h)				VELOCIDAD AUTOBUSES (km/h)				VELOCIDAD CAMIONES (km/h)				COORDENADAS	
	KM	TE	SC	TDPA	Promedio	P 85	P 98	δ	Promedio	P 85	P 98	δ	Promedio	P 85	P 98	δ	Latitud	Longitud
Puebla	0.00	3	1	18143	52.8	58.1	92.2	9.8	43.6	50.6	57.4	8.5	45.1	52.3	62.8	9.1	19.033047	-98.263891
Puebla	0.00	3	2	19048	52.7	60.4	91.8	11.3	52.7	58.7	69.2	8.1	47.1	54.9	70.1	11.4	19.033047	-98.263891
Atlixco	29.88	1	0	15259	47.5	52.9	95.8	10.2	42.9	50.7	59.4	9.1	45.9	52.3	57.2	9.6	18.930528	-98.407306
Atlixco	29.88	3	0	11435	37.6	46.3	63.1	10.8	40.7	49.5	54.3	9.8	38.9	48.4	58.7	10.5	18.880250	-98.435917
Tepeojuma	51.90	1	1	4635	48.8	52.8	68.3	8.6	45.8	51.2	55.0	7.1	48.5	52.8	60.3	8.1	18.772167	-98.453917
Tepeojuma	51.90	1	2	4617	58.7	64.3	84.3	9.5	54.8	60.8	73.9	7.2	55.2	59.9	74.7	6.3	18.772167	-98.453917
Izúcar de Matamoros	67.00	1	0	9960	37.4	46.0	63.2	10.8	38.8	48.2	56.5	10.3	37.6	47.3	57.6	10.5	18.631306	-98.469083
T. Der. Cuautla	70.00	3	0	7343	53.2	59.6	81.2	9.5	50.5	54.7	70.6	8.6	51.9	54.9	73.6	8.4	18.579556	-98.450222
Tehuizingo	113.30	1	0	4850	35.2	42.8	55.0	9.2	38.4	47.5	54.0	9.5	37.5	47.5	54.0	10.0	18.338694	-98.283389
Acatlán de Osorio	154.20	1	0	6245	35.2	42.7	55.0	9.2	37.9	46.8	53.9	9.4	37.2	47.0	53.9	9.9	18.187639	-98.055250
Chila	192.30	3	0	2267	52.6	58.6	73.5	8.7	51.2	53.7	63.1	6.5	52.6	54.5	71.3	6.9	17.966583	-97.864250
Lim. Edos. Term. Pue. Ppia. Oax.	200.30																	
T. Izq. Las Palmas	202.10	1	0	2166	71.7	84.7	103.0	14.5	65.3	75.4	84.6	11.1	61.7	75.9	92.9	14.8	17.882204	-97.836529
Huajuapán de León	219.30	1	0	3145	71.2	84.3	102.4	14.5	64.7	75.3	84.9	11.8	59.7	71.9	90.2	12.2	17.836196	-97.790585

14 CARR: Ramal a Asunción Ixtaltepec

CLAVE: 20624

RUTA: MEX-185

AÑO: 2012

LUGAR	ESTACION				VELOCIDAD AUTOS (km/h)				VELOCIDAD AUTOBUSES (km/h)				VELOCIDAD CAMIONES (km/h)				COORDENADAS	
	KM	TE	SC	TDPA	Promedio	P 85	P 98	δ	Promedio	P 85	P 98	δ	Promedio	P 85	P 98	δ	Latitud	Longitud
T. C. Coatzacoalcos - Salina Cruz	0.00	3	0	5574	35.1	40.7	54.0	7.8	38.7	51.0	54.5	12.3	35.8	49.1	54.5	11.3	16.438733	-95.034979
Asunción Ixtaltepec	9.70	1	0	3564	35.4	40.4	54.3	7.7	36.8	50.1	54.3	11.2	32.6	42.0	54.0	9.9	16.499155	-95.064695

15 CARR: San Pablo Villa de Mitla - T. C. (Tuxtepec - Palomares)

CLAVE: 00106

RUTA: MEX-179

AÑO: 2012

LUGAR	ESTACION				VELOCIDAD AUTOS (km/h)				VELOCIDAD AUTOBUSES (km/h)				VELOCIDAD CAMIONES (km/h)				COORDENADAS	
	KM	TE	SC	TDPA	Promedio	P 85	P 98	δ	Promedio	P 85	P 98	δ	Promedio	P 85	P 98	δ	Latitud	Longitud
T. C. Oaxaca - Tehuantepec	0.00	3	0	2835	66.4	78.3	92.5	12.7	63.8	72.5	84.1	10.0	63.6	74.5	90.7	12.8	16.917755	-96.385658
San Pedro y San Pablo Ayutla	55.00	1	0	1470	47.7	52.3	63.3	8.3	48.5	53.0	72.7	9.0	46.8	54.4	107.2	13.4	17.020890	-96.082435
T. Der. Zacatepec	90.00	1	0	1597	45.1	51.0	60.9	7.1	43.0	50.9	56.1	9.6	48.0	52.7	54.9	9.0	17.148337	-96.035299
Lim. Edos. Term. Oax. Ppia. Ver.	217.70																	
T. C. Tuxtepec - Ent. Palomares	238.70	1	0	1678	59.8	72.2	94.7	13.9	64.4	77.5	137.7	16.6	64.6	82.8	136.9	18.0	17.701110	-95.734847

OAXACA

16 C A R R : Santiago Pinotepa Nacional - Salina Cruz

CLAVE: 20074

RUTA: MEX-200

AÑO: 2012

L U G A R	E S T A C I O N				VELOCIDAD AUTOS (km/h)				VELOCIDAD AUTOBUSES (km/h)				VELOCIDAD CAMIONES (km/h)				C O O R D E N A D A S	
	KM	TE	SC	TDPA	Promedio	P 85	P 98	δ	Promedio	P 85	P 98	δ	Promedio	P 85	P 98	δ	Latitud	Longitud
Santiago Pinotepa Nacional	0.00	3	0	3875	54.4	66.8	99.4	13.6	51.2	60.5	73.6	11.0	49.7	54.7	74.6	10.5	16.333359	-98.033933
San Andrés Huaxpaltepec	18.07	3	0	2879	54.6	67.2	106.9	14.2	51.2	60.3	73.8	10.9	51.1	57.7	74.7	10.2	16.325073	-97.907378
San José del Progreso	59.51	1	0	7502	54.5	66.8	101.4	13.8	51.5	60.8	74.6	11.0	51.3	55.0	74.5	9.6	16.099284	-97.701396
T. Izq. Tututepec	65.85	3	0	4581	51.6	56.2	71.1	8.5	48.9	52.8	61.7	7.1	47.9	53.6	65.0	8.6	16.080597	-97.637269
T. Izq. Bajos de Chila	131.94	1	0	3324	46.1	58.5	131.7	17.9	69.2	114.9	142.9	34.7	55.0	86.2	137.4	22.8	15.918058	-97.127730
T. Izq. Aeropuerto	137.40	1	0	7096	70.3	82.0	106.9	13.4	62.3	71.7	83.9	9.6	64.3	76.9	97.3	12.5	15.873151	-97.094964
Puerto Escondido	141.54	1	1	2881	64.9	72.1	92.7	9.4	58.0	62.5	73.7	6.7	59.1	65.7	83.6	9.4	15.868398	-97.082379
Puerto Escondido	141.54	1	2	2983	71.4	84.4	104.0	14.1	62.7	75.8	94.4	12.1	65.9	80.9	104.3	15.0	15.868406	-97.082423
Puerto Escondido	141.54	3	1	2724	53.0	64.4	82.3	13.1	50.2	55.2	136.1	12.2	48.6	58.3	79.9	12.6	15.854073	-97.053898
Puerto Escondido	141.54	3	2	2590	44.9	54.3	87.8	12.5	50.2	53.5	103.7	12.2	52.6	75.6	134.6	21.4	15.854075	-97.053932
T. Der. Mazunte	198.87	1	0	4068	62.8	75.3	93.9	12.6	56.4	70.2	85.1	12.1	57.7	73.4	97.7	14.8	15.716343	-96.585141
T. Der. Mazunte	198.87	3	0	5051	47.0	54.0	65.3	9.2	43.9	50.5	60.8	8.1	42.5	50.5	64.8	10.2	15.716590	-96.582104
T. Izq. Sta. María Tonameca	202.93	3	0	5061	48.4	53.4	66.0	7.9	42.9	49.1	59.0	7.7	43.7	50.6	64.2	9.0	15.730161	-96.537176
T. Libramiento de Pochutla	209.15	1	0	4913	66.2	73.2	84.2	9.0	65.4	72.2	82.4	8.2	63.2	71.4	83.9	10.0	15.731859	-96.484942
X. C. Oaxaca - Puerto Ángel	209.95	1	0	5617	49.9	53.2	82.3	9.3	51.3	53.3	58.8	6.0	52.3	53.3	54.9	4.8	15.730671	-96.475887
X. C. Oaxaca - Puerto Ángel	209.95	3	0	4489	43.6	47.7	91.8	9.2	38.6	43.3	53.9	7.6	40.1	49.4	57.2	10.6	15.729235	-96.471608
T. Der. Cuatunanco	226.00	1	0	2845	78.3	87.4	103.5	11.0	71.6	78.9	91.9	9.3	70.7	79.6	96.4	11.1	15.733226	-96.350729
T. Der. Cuatunanco	226.00	3	0	2559	48.4	57.4	72.2	10.5	41.2	49.1	58.3	9.1	40.6	50.2	64.8	11.2	15.735333	-96.344838
T. C. El Zapote - Copalita	236.00	1	0	3704	60.0	65.7	82.5	7.8	56.8	59.1	70.0	4.5	56.9	59.2	73.6	5.2	15.761123	-96.274608
T. C. El Zapote - Copalita	236.00	3	0	5677	74.1	82.6	103.2	10.9	64.8	69.8	80.6	6.1	65.2	71.9	85.4	7.9	15.764083	-96.268093
T. Izq. Aeropuerto	237.68	3	0	2788	60.0	65.9	83.0	7.9	56.8	58.9	69.8	4.4	56.9	59.3	73.7	5.4	15.768514	-96.256702
T. Der. Santa Cruz Huatulco	250.00	1	0	6819	52.9	61.1	89.3	11.4	52.4	55.0	63.8	6.6	50.7	59.2	72.1	10.7	15.781667	-96.160556
T. Der. Santa Cruz Huatulco	250.00	3	0	1528	60.4	74.5	96.7	14.0	51.2	53.1	68.0	6.2	53.3	62.9	93.6	11.7	15.783320	-96.155755
T. Der. Tangelunda	263.00	1	0	1331	69.1	75.2	85.5	9.0	63.1	68.0	74.5	6.7	61.8	67.9	81.4	8.4	15.815241	-96.069185
T. C. La Ventosa - Salina Cruz (Cuota)	380.00	1	0	2605	69.6	76.5	87.7	9.3	63.8	69.3	76.8	7.0	59.9	64.8	79.3	7.6	16.148413	-95.287136
T. C. La Ventosa - Salina Cruz (Cuota)	380.00	3	0	2439	91.0	114.2	140.8	19.5	79.7	101.9	132.8	19.7	80.1	104.7	139.8	21.0	16.154498	-95.279731
Salina Cruz	394.00																	

17 C A R R : Tapanatepec - Talismán

CLAVE: 00075

RUTA: MEX-200

AÑO: 2012

L U G A R	E S T A C I O N				VELOCIDAD AUTOS (km/h)				VELOCIDAD AUTOBUSES (km/h)				VELOCIDAD CAMIONES (km/h)				C O O R D E N A D A S	
	KM	TE	SC	TDPA	Promedio	P 85	P 98	δ	Promedio	P 85	P 98	δ	Promedio	P 85	P 98	δ	Latitud	Longitud
Tapanatepec	0.00	3	0	4736	85.2	138.2	144.1	35.3	82.7	138.3	144.1	34.9	69.1	95.2	142.0	22.3	16.346259	-94.190734
Lim. Edos. Term. Oax. Ppia. Chis.	25.90																	
T. Der. Emiliano Zapata	26.20	1	0	3324	83.3	96.2	113.6	13.9	78.1	88.5	101.6	11.9	73.5	82.9	101.0	10.9	16.217020	-94.051565

OAXACA

17 CARR: Tapanatepec - Talismán

CLAVE: 00075

RUTA: MEX-200

AÑO: 2012

LUGAR	ESTACION				VELOCIDAD AUTOS (km/h)				VELOCIDAD AUTOBUSES (km/h)				VELOCIDAD CAMIONES (km/h)				COORDENADAS	
	KM	TE	SC	TDPA	Promedio	P 85	P 98	δ	Promedio	P 85	P 98	δ	Promedio	P 85	P 98	δ	Latitud	Longitud
T. Der. Emiliano Zapata	26.20	3	0	3915	72.0	84.5	103.4	14.2	67.8	76.7	105.6	12.0	61.5	72.9	98.4	13.1	16.214711	-94.040720
Arriaga	45.00	1	0	5079	79.7	93.0	112.6	14.3	77.1	87.5	109.6	12.8	76.4	85.8	109.7	12.1	16.221842	-93.936615
Arriaga	45.00	3	1	3949	93.5	115.2	138.3	18.9	85.0	98.4	116.5	14.3	83.9	97.5	129.7	14.9	16.237868	-93.883100
Arriaga	45.00	3	2	4159	99.2	118.9	140.2	18.2	92.6	103.6	138.0	13.9	88.5	101.2	136.8	15.3	16.238870	-93.883380
X. C. Arriaga- Ocozocoautla (Cuota)	47.00	3	1	4460	86.4	102.1	122.8	15.9	86.8	99.4	117.4	13.9	82.9	100.7	123.6	17.2	16.233410	-93.877142
X. C. Arriaga- Ocozocoautla (Cuota)	47.00	3	2	4308	58.7	63.5	73.3	8.1	56.7	61.8	66.9	7.9	55.2	60.9	65.0	7.3	16.232769	-93.876455
T. Der. Libramiento de Arriaga	49.50	1	1	3852	92.2	106.5	124.9	14.8	82.7	92.8	107.6	12.8	81.2	94.0	122.0	15.0	16.222177	-93.866894
T. Der. Libramiento de Arriaga	49.50	1	2	3558	93.2	106.9	126.0	14.1	82.6	92.3	107.3	12.3	80.5	93.7	121.6	15.4	16.222036	-93.866879
T. Der. Libramiento de Arriaga	49.50	3	1	4149	75.2	88.8	108.2	13.7	65.6	76.0	83.8	11.0	55.7	71.4	87.5	14.9	16.209126	-93.856076
T. Der. Libramiento de Arriaga	49.50	3	2	4185	76.8	91.2	117.0	15.2	65.9	77.4	84.0	11.7	59.1	75.0	91.8	15.5	16.209071	-93.855988
Tonalá	68.80	1	1	4716	38.7	46.5	61.8	10.3	28.7	37.4	53.8	9.9	39.7	52.0	54.9	15.3	16.108839	-93.782093
Tonalá	68.80	1	2	4686	40.5	43.3	52.2	6.3	35.8	37.4	50.3	4.2	44.1	51.8	54.6	10.4	16.107719	-93.780282
T. Der. Puerto Arista	73.00	1	1	2770	74.8	88.3	108.0	13.7	68.1	78.8	88.1	12.2	58.7	73.9	88.1	15.4	16.060034	-93.741819
T. Der. Puerto Arista	73.00	1	2	2669	76.6	91.2	116.1	15.3	68.6	79.6	89.1	12.4	60.1	75.4	90.1	15.3	16.059545	-93.741268
T. Der. Puerto Arista	73.00	3	1	2837	94.2	115.6	138.3	18.7	84.1	97.7	112.8	14.6	85.1	95.0	123.5	12.8	16.055442	-93.733829
T. Der. Puerto Arista	73.00	3	2	2790	101.0	119.9	140.6	17.5	90.8	102.3	138.0	15.0	89.3	98.8	131.8	12.7	16.055443	-93.733829
T. Der. Tres Picos	100.40	1	1	2617	101.5	122.6	141.7	19.4	89.3	107.2	138.1	21.0	87.2	112.8	140.5	21.8	15.918947	-93.549178
T. Der. Tres Picos	100.40	1	2	2791	103.0	134.9	143.7	24.2	114.1	140.9	144.5	26.5	102.8	138.2	144.1	26.5	15.919386	-93.549114
T. Der. Tres Picos	100.40	3	1	2447	74.7	88.3	108.0	13.8	67.7	78.6	88.5	12.3	57.8	73.6	87.8	15.5	15.907028	-93.525436
T. Der. Tres Picos	100.40	3	2	2374	76.3	90.8	114.6	15.1	68.7	79.4	88.0	12.1	58.5	74.1	88.4	15.1	15.907211	-93.525490
T. Der. Los Patos	114.75	1	1	2174	94.5	115.7	138.4	18.6	83.2	97.0	109.2	15.0	84.1	95.2	123.1	13.6	15.838609	-93.435994
T. Der. Los Patos	114.75	1	2	2088	101.3	120.3	140.7	17.5	90.7	102.6	137.7	15.1	88.6	99.4	132.3	13.6	15.839900	-93.436188
T. Der. Los Patos	114.75	3	1	2161	94.2	115.3	138.2	18.6	84.5	98.1	116.3	14.6	83.3	94.9	122.8	14.2	15.826421	-93.427058
T. Der. Los Patos	114.75	3	2	2064	101.6	120.5	140.8	17.4	92.2	103.6	138.4	14.4	88.5	99.2	132.6	13.7	15.826422	-93.427060
T. Der. San Isidro	125.00	1	1	2453	74.9	88.5	108.3	13.7	67.8	78.6	86.8	12.2	57.7	73.3	88.8	15.4	15.779555	-93.364461
T. Der. San Isidro	125.00	1	2	2390	75.7	90.7	114.5	15.3	67.7	79.1	88.3	12.4	58.8	74.4	90.1	15.3	15.781579	-93.364626
T. Der. San Isidro	125.00	3	1	4497	75.0	88.5	108.0	13.7	68.1	78.9	88.1	12.1	55.6	71.3	86.8	14.7	15.777709	-93.357979
T. Der. San Isidro	125.00	3	2	4141	76.3	91.1	117.8	15.4	69.0	79.9	89.4	12.4	57.8	73.0	88.5	14.3	15.777825	-93.357951
Pijijapan	144.45	1	1	3366	70.7	82.5	104.7	13.6	67.3	78.7	93.2	11.9	63.2	75.5	94.1	11.9	15.701131	-93.216642
Pijijapan	144.45	1	2	3282	65.2	73.9	93.0	10.8	60.2	67.2	80.6	9.2	58.2	63.6	80.1	7.9	15.702318	-93.216383
T. Der. Mapastepec	188.85	3	1	3118	71.0	82.7	104.2	13.4	66.7	77.7	92.4	11.4	63.3	75.5	93.7	11.8	15.454305	-92.879916
T. Der. Mapastepec	188.85	3	2	3203	65.5	74.0	93.2	10.8	60.5	67.5	79.6	9.1	58.1	63.6	80.1	8.0	15.454890	-92.879992
T. Der. Estación Soconusco	213.30	1	1	3657	71.3	82.8	104.6	13.4	68.0	79.1	94.2	11.9	64.5	76.4	93.4	11.9	15.341360	-92.715405
T. Der. Estación Soconusco	213.30	1	2	3450	65.5	74.0	92.5	10.7	60.3	67.9	80.6	9.5	58.6	64.7	80.4	8.6	15.352479	-92.697218
T. Der. Estación Soconusco	213.30	3	1	3487	71.1	82.6	104.2	13.4	66.5	76.9	90.9	10.9	63.4	75.3	93.3	11.8	15.337408	-92.710537

OAXACA

17 CARR: Tapanatepec - Talismán

CLAVE: 00075

RUTA: MEX-200

AÑO: 2012

LUGAR	ESTACION				VELOCIDAD AUTOS (km/h)				VELOCIDAD AUTOBUSES (km/h)				VELOCIDAD CAMIONES (km/h)				COORDENADAS	
	KM	TE	SC	TDPA	Promedio	P 85	P 98	δ	Promedio	P 85	P 98	δ	Promedio	P 85	P 98	δ	Latitud	Longitud
T. Der. Estación Soconusco	213.30	3	2	3440	65.5	74.1	93.3	11.0	60.5	67.2	80.2	9.0	58.3	64.1	79.4	8.2	15.348851	-92.690230
Huixtla	250.50	1	1	3696	66.5	75.9	92.3	11.1	60.9	68.9	80.3	9.5	56.1	66.2	84.4	11.5	15.159435	-92.511240
Huixtla	250.50	1	2	3513	63.1	70.6	81.5	9.1	55.4	62.0	77.6	8.0	50.4	60.6	77.9	11.1	15.159435	-92.511240
Huixtla	250.50	3	1	6571	66.2	75.6	92.3	11.1	61.0	68.4	79.2	8.9	55.4	64.8	84.2	11.0	15.133963	-92.445872
Huixtla	250.50	3	2	7055	62.5	70.3	81.3	9.4	54.7	60.6	73.6	7.2	51.4	60.8	76.9	10.6	15.133963	-92.445874
T. Izq. Hamburgo	262.70	3	1	5400	71.2	82.6	103.9	13.2	67.7	79.2	95.3	12.4	64.1	76.2	93.9	11.9	15.105153	-92.431176
T. Izq. Hamburgo	262.70	3	2	5289	65.8	74.0	92.3	10.6	60.1	67.3	80.6	9.4	58.8	64.9	81.5	8.9	15.105153	-92.431177
T. Izq. Huehuetán	273.70	1	1	5418	71.4	82.7	103.9	13.1	67.6	78.7	93.0	11.7	64.5	76.5	93.9	12.0	15.015516	-92.402717
T. Izq. Huehuetán	273.70	1	2	5295	65.7	74.0	92.2	10.6	60.2	67.4	80.6	9.3	59.3	66.0	82.0	9.2	15.015516	-92.402718
Tapachula	292.25	1	1	8217	71.5	82.8	104.2	13.2	66.2	75.6	86.9	10.1	64.6	77.2	94.5	12.3	14.910124	-92.333133
Tapachula	292.25	1	2	8784	66.0	74.1	92.6	10.6	59.9	66.2	80.0	8.8	59.4	66.0	82.2	9.3	14.910125	-92.333131
T. Der. Cd. Hidalgo	302.75	1	1	8455	71.3	82.6	103.7	13.1	61.4	68.9	81.8	8.1	65.3	77.7	94.0	12.4	14.913288	-92.195306
T. Der. Cd. Hidalgo	302.75	1	2	8305	66.4	74.5	93.4	10.8	59.2	63.3	78.7	6.7	59.9	67.2	82.3	9.5	14.913289	-92.195308
Tuxtla Chico	307.00	1	0	9335	68.5	78.8	100.0	12.2	57.4	59.1	73.1	4.6	63.7	74.1	92.6	11.9	14.930471	-92.165395
Talismán	310.77	1	0	3012	66.1	76.7	93.6	11.9	56.8	56.1	65.7	3.2	61.1	68.9	84.8	9.3	14.960534	-92.151205

18 CARR: Tapanatepec - Tuxtla Gutiérrez

CLAVE: 00060

RUTA: MEX-190

AÑO: 2012

LUGAR	ESTACION				VELOCIDAD AUTOS (km/h)				VELOCIDAD AUTOBUSES (km/h)				VELOCIDAD CAMIONES (km/h)				COORDENADAS	
	KM	TE	SC	TDPA	Promedio	P 85	P 98	δ	Promedio	P 85	P 98	δ	Promedio	P 85	P 98	δ	Latitud	Longitud
Tapanatepec	0.00	3	0	3098	41.8	49.9	67.4	10.0	38.1	46.8	55.7	9.5	33.4	41.3	54.5	9.2	16.371064	-94.184784
Lim. Edos. Term. Oax. Ppia. Chis.	17.90																	
Rizo de Oro	26.60	1	0	1582	69.6	79.1	91.1	10.9	63.1	70.2	83.4	8.5	57.6	65.1	81.1	9.7	16.472949	-94.088674
T. Der. Arriaga	56.80	1	0	2100	70.1	79.5	91.6	10.8	63.4	70.9	84.4	8.7	59.1	66.3	82.9	8.7	16.570409	-93.847566
T. Der. Arriaga	56.80	3	0	3947	83.9	94.0	114.1	11.8	78.9	90.3	109.4	12.6	77.7	89.7	107.9	13.1	16.573380	-93.842882
T. Der. Jiquipilas	82.00	1	0	7148	83.8	94.1	114.3	12.0	78.9	90.4	109.0	12.7	76.8	89.5	111.4	13.7	16.688028	-93.666737
T. Der. Jiquipilas	82.00	3	0	5086	84.0	94.2	114.1	11.9	79.0	90.4	108.3	12.7	75.4	88.6	111.2	13.9	16.688335	-93.665606
Ocozocoautla	123.29	1	0	3783	84.1	94.3	114.5	11.9	78.7	90.4	109.3	12.8	74.1	87.2	108.1	14.0	16.772282	-93.391548
Ocozocoautla	123.29	3	0	4911	83.7	94.0	114.2	12.0	79.3	90.9	110.2	12.9	78.7	91.1	113.7	13.9	16.757820	-93.362434
T. Izq. Aeropuerto	132.70	1	0	4785	84.1	94.2	114.3	11.9	79.1	90.7	109.8	12.9	79.1	91.6	113.5	13.8	16.753132	-93.339964
T. Izq. Berriozábal (1º Acceso)	136.40	1	1	7466	80.4	89.1	105.8	10.8	74.8	81.8	94.7	8.4	69.3	79.5	92.7	11.5	16.767621	-93.294324
T. Izq. Berriozábal (1º Acceso)	136.40	1	2	7816	87.6	99.2	120.7	12.9	84.6	94.9	114.8	13.2	77.1	92.7	113.8	16.7	16.767621	-93.294325
T. Izq. Berriozábal (1º Acceso)	136.40	3	1	8286	80.2	89.0	105.2	10.8	74.6	81.8	94.7	8.6	70.3	80.3	93.4	11.5	16.769007	-93.279584
T. Izq. Berriozábal (1º Acceso)	136.40	3	2	8439	87.5	99.1	120.5	12.9	84.4	95.0	115.0	13.5	78.7	93.5	115.1	16.4	16.769007	-93.279584
T. Izq. San Fernando	151.70	1	1	12316	49.1	52.9	62.7	6.9	44.9	49.2	58.5	5.5	42.5	49.1	61.4	8.5	16.770303	-93.196832

OAXACA

18 CARR: Tapanatepec - Tuxtla Gutiérrez

CLAVE: 00060

RUTA: MEX-190

AÑO: 2012

LUGAR	ESTACION				VELOCIDAD AUTOS (km/h)				VELOCIDAD AUTOBUSES (km/h)				VELOCIDAD CAMIONES (km/h)				COORDENADAS	
	KM	TE	SC	TDPA	Promedio	P 85	P 98	δ	Promedio	P 85	P 98	δ	Promedio	P 85	P 98	δ	Latitud	Longitud
T. Izq. San Fernando	151.70	1	2	11911	43.6	53.1	68.6	10.9	42.5	53.0	67.3	11.8	37.5	50.8	68.0	13.5	16.770303	-93.196833
Tuxtla Gutiérrez	159.00	1	1	11104	48.5	54.4	64.8	9.1	44.3	51.3	62.1	8.5	42.6	51.3	63.1	10.4	16.766265	-93.190978
Tuxtla Gutiérrez	159.00	1	2	10614	52.1	60.2	73.3	9.7	50.1	57.0	70.8	9.5	47.0	55.0	71.4	10.8	16.766265	-93.190981

19 CARR: Tehuacán - Huajuapán de León

CLAVE: 00211

RUTA: MEX-125

AÑO: 2012

LUGAR	ESTACION				VELOCIDAD AUTOS (km/h)				VELOCIDAD AUTOBUSES (km/h)				VELOCIDAD CAMIONES (km/h)				COORDENADAS	
	KM	TE	SC	TDPA	Promedio	P 85	P 98	δ	Promedio	P 85	P 98	δ	Promedio	P 85	P 98	δ	Latitud	Longitud
Tehuacán	0.00	3	1	3846	51.3	58.1	71.4	9.0	46.2	51.2	62.5	6.8	44.8	51.3	64.6	7.8	18.436880	-97.401362
Tehuacán	0.00	3	2	3837	52.5	58.5	70.2	8.1	50.9	54.8	64.6	7.7	47.5	54.0	65.5	9.3	18.436880	-97.401365
Zapotitlán Salinas	28.00	1	0	2383	65.6	77.1	94.2	12.5	66.0	76.5	100.7	11.7	64.6	76.4	100.7	12.4	18.334194	-97.463854
Lim. Edos. Term. Pue. Ppia. Oax.	55.80																	
Santiago Chazumba	63.02	1	0	1312	48.3	54.4	64.7	9.2	49.8	52.6	54.8	6.3	44.0	51.0	58.7	8.8	18.198523	-97.679622
Santiago Chazumba	63.02	3	0	1355	48.6	54.4	64.7	9.1	48.2	52.0	54.9	6.8	45.9	51.9	55.7	8.4	18.185935	-97.678879
T. Izq. Santa María Camotlán	103.13	1	0	1527	54.2	64.7	82.0	12.0	52.1	53.8	62.8	5.8	48.4	56.9	72.3	11.3	17.906003	-97.693395
T. C. Huajuapán de León - Oaxaca	119.40	1	0	7830	55.0	59.5	73.9	6.9	52.7	53.4	60.1	4.2	52.7	56.9	72.1	8.1	17.821553	-97.758954

20 CARR: Tuxtepec - Ent. Palomares

CLAVE: 00180

RUTA: MEX-147

AÑO: 2012

LUGAR	ESTACION				VELOCIDAD AUTOS (km/h)				VELOCIDAD AUTOBUSES (km/h)				VELOCIDAD CAMIONES (km/h)				COORDENADAS	
	KM	TE	SC	TDPA	Promedio	P 85	P 98	δ	Promedio	P 85	P 98	δ	Promedio	P 85	P 98	δ	Latitud	Longitud
T. C. Tuxtepec - Oaxaca	0.00	3	0	4120	60.7	70.6	103.3	13.0	58.8	68.0	110.2	13.3	54.1	62.1	90.3	10.5	18.037869	-96.160793
X. C. El Rodeo - Reforma	15.20	3	0	2427	61.2	71.4	111.2	13.5	58.3	65.0	102.0	11.1	54.8	62.4	88.8	9.7	17.950237	-96.070106
Lim. Edos. Term. Oax. Ppia. Ver.	40.00																	
X. C. Playa Vicente - El Tomate	48.16	1	0	2003	55.2	65.5	82.2	12.3	53.8	61.1	73.2	8.9	53.0	59.6	73.9	9.1	17.783695	-95.832953
X. C. Playa Vicente - El Tomate	48.16	3	0	2634	55.1	65.0	81.4	12.1	53.9	60.2	71.3	7.9	51.3	61.6	74.3	12.1	17.783165	-95.830351
T. Der. Xochiapa	65.00	3	0	1568	54.9	65.1	82.2	12.3	54.3	60.0	71.0	7.2	51.9	57.8	74.1	9.6	17.702990	-95.733163
T. Izq. San Juan Evangelista	81.20	1	0	1304	55.2	65.0	80.6	11.8	54.7	58.6	66.8	5.4	52.6	59.1	72.8	9.1	17.616404	-95.636729
Lim. Edos. Term. Ver. Ppia. Oax.	87.00																	
María Lombardo de Caso	110.50	1	0	2450	69.9	83.8	107.6	14.9	57.9	55.9	89.2	6.3	62.3	74.6	95.3	12.8	17.452156	-95.432675
T. C. Coatzacoalcos - Salina Cruz	175.00	1	0	1853	70.3	84.6	109.2	15.4	64.0	81.4	97.8	15.2	62.4	75.3	103.4	12.9	17.138853	-95.065744

OAXACA

21 CARR: Tuxtepec - T. C. (Oaxaca - Tehuantepec)

CLAVE: 20090

RUTA: MEX-175

AÑO: 2012

LUGAR	ESTACION				VELOCIDAD AUTOS (km/h)				VELOCIDAD AUTOBUSES (km/h)				VELOCIDAD CAMIONES (km/h)				COORDENADAS	
	KM	TE	SC	TDPA	Promedio	P 85	P 98	δ	Promedio	P 85	P 98	δ	Promedio	P 85	P 98	δ	Latitud	Longitud
Tuxtepec	0.00	3	1	6915	53.1	56.9	64.7	6.5	48.2	52.9	62.6	8.2	52.7	53.5	60.2	4.5	18.058221	-96.150787
Tuxtepec	0.00	3	2	5893	51.4	54.1	63.2	6.6	47.6	52.2	54.9	7.6	52.2	53.2	54.9	4.7	18.058224	-96.150788
T. Izq. Palomares	5.75	3	0	5510	54.3	57.8	64.8	5.4	47.5	52.6	63.8	7.6	50.3	53.5	63.4	7.6	18.034466	-96.164811
San José Chiltepec	17.93	3	0	3195	52.6	54.7	64.0	6.1	48.0	52.6	61.1	7.8	51.8	53.3	58.6	5.3	17.943930	-96.173042
Valle Nacional	47.07	1	0	2831	52.8	55.0	64.3	6.2	47.9	52.6	60.9	7.9	52.2	53.3	57.2	4.8	17.780947	-96.291144
Valle Nacional	47.07	3	0	1927	52.9	54.6	63.8	5.7	47.8	52.4	60.4	7.7	52.3	53.3	55.0	4.6	17.767401	-96.310905
La Esperanza	79.85	3	0	443	51.4	54.6	63.9	7.1	45.6	51.9	60.8	8.1	46.0	51.6	60.0	7.3	17.624671	-96.366427
Puerta del Sol	125.00	3	0	542	51.9	54.9	64.0	6.9	45.5	51.5	60.4	7.5	51.4	53.1	55.0	5.5	17.527168	-96.510884
T. Der. Ixtepeji	181.39	3	0	1934	54.3	58.0	64.8	5.6	47.6	52.5	62.8	7.4	46.5	52.6	64.0	8.4	17.237633	-96.565023
T. Izq. Yuvila	193.67	1	0	2103	50.7	53.7	63.4	6.8	45.4	51.5	62.0	7.5	44.6	51.2	63.1	9.2	17.176170	-96.605412
T. C. Oaxaca - Tehuantepec	212.70	1	1	5146	53.2	56.6	64.6	6.3	48.6	53.1	63.0	8.1	52.1	53.5	61.8	5.3	17.067659	-96.676962
T. C. Oaxaca - Tehuantepec	212.70	1	2	4850	51.3	54.1	63.3	6.7	47.4	52.2	54.9	7.7	51.3	53.1	54.9	5.5	17.067744	-96.676951

22 CARR: Yucudaa - Santiago Pinotepa Nacional

CLAVE: 20030

RUTA: MEX-125

AÑO: 2012

LUGAR	ESTACION				VELOCIDAD AUTOS (km/h)				VELOCIDAD AUTOBUSES (km/h)				VELOCIDAD CAMIONES (km/h)				COORDENADAS	
	KM	TE	SC	TDPA	Promedio	P 85	P 98	δ	Promedio	P 85	P 98	δ	Promedio	P 85	P 98	δ	Latitud	Longitud
T. C. Huajuapán de León - Oaxaca	0.00	3	0	2408	62.5	73.6	92.1	12.8	60.2	69.9	83.0	10.1	55.2	71.2	84.6	15.3	17.567166	-97.426048
Yolomécatl	24.40	3	0	2497	50.5	55.1	70.3	8.8	49.3	53.1	62.1	7.2	45.2	52.3	63.4	8.9	17.464547	-97.573348
Tlaxiaco	57.00	3	0	3211	43.4	55.3	77.3	12.9	45.0	52.7	54.8	13.2	45.2	54.1	74.9	13.9	17.234928	-97.700978
T. Der. Santiago Juxcatlán	104.00	1	0	1089	29.0	32.8	49.4	7.2	29.2	46.3	53.8	10.6	29.4	46.9	53.9	11.2	17.152574	-97.890389
Putla de Guerrero	145.00	1	0	2241	52.8	60.4	74.2	9.4	47.7	52.8	62.4	7.8	46.9	53.7	64.6	9.1	17.038193	-97.915755
Cacahuatpec	229.00	1	0	1531	48.2	53.9	68.4	8.9	46.3	51.8	54.6	8.2	45.0	52.5	62.3	10.3	16.622744	-98.148592
T. C. Las Cruces - Pinotepa Nacional	268.00	1	0	3363	49.1	54.3	73.8	9.9	55.2	63.5	111.3	12.4	52.2	62.1	99.1	13.1	16.381444	-98.091200

23 CARR: Cuacnopalan - Oaxaca (Cuota)

CLAVE: 00109

RUTA: MEX-135D

AÑO: 2012

LUGAR	ESTACION				VELOCIDAD AUTOS (km/h)				VELOCIDAD AUTOBUSES (km/h)				VELOCIDAD CAMIONES (km/h)				COORDENADAS	
	KM	TE	SC	TDPA	Promedio	P 85	P 98	δ	Promedio	P 85	P 98	δ	Promedio	P 85	P 98	δ	Latitud	Longitud
T. C. Puebla - Córdoba (Cuota)	0.00	3	0	7972	102.8	119.1	138.2	15.9	88.9	94.9	113.0	10.8	84.9	96.0	121.9	13.0	18.817594	-97.491219
T. Der. Cuacnopalan	1.80	3	0	7699	99.4	124.4	141.7	25.5	91.1	101.4	127.7	13.1	79.7	100.3	130.4	21.9	18.811101	-97.490662
Caseta de Cobro Tehuacán	40.00	2	0	7649													18.487160	-97.456032
T. C. Puebla - Tehuacán	40.00	3	0	7490	85.6	107.5	134.8	19.5	72.7	91.7	110.2	19.0	67.8	91.0	116.6	22.1	18.479187	-97.456183
X. C. Tehuacán - Huajuapán de León	48.00	3	0	10390	83.6	98.8	124.7	15.1	72.9	83.6	101.2	12.6	69.1	82.7	112.3	15.5	18.404678	-97.389224
T. Izq. San Gabriel Chilac	61.00	3	0	9059	83.6	99.1	126.6	15.5	73.5	84.0	101.5	12.4	68.9	82.6	110.0	15.3	18.331698	-97.369292

OAXACA

23 CARR: Cuacnopalan - Oaxaca (Cuota)

CLAVE: 00109

RUTA: MEX-135D

AÑO: 2012

LUGAR	ESTACION				VELOCIDAD AUTOS (km/h)				VELOCIDAD AUTOBUSES (km/h)				VELOCIDAD CAMIONES (km/h)				COORDENADAS	
	KM	TE	SC	TDPA	Promedio	P 85	P 98	δ	Promedio	P 85	P 98	δ	Promedio	P 85	P 98	δ	Latitud	Longitud
Caseta de Cobro Miahuatlán	71.42	2	0	4260													18.264654	-97.315569
Lim. Edos. Term. Pue. Ppia. Oax.	83.50																	
Caseta de Cobro Coixtlahuaca	141.30	2	0	3564													17.726231	-97.351913
T. Izq. Asunción Nochistlán	174.90	1	0	4113	90.7	121.7	142.3	23.6	91.3	139.4	144.3	35.0	83.4	131.8	143.5	28.5	17.471102	-97.252085
T. Izq. Asunción Nochistlán	175.50	3	0	5187	102.5	119.2	140.2	16.1	90.3	100.3	116.6	12.5	87.2	100.0	122.7	14.0	17.455330	-97.240789
Caseta de Cobro Huitzo	220.00	2	0	5311													17.274916	-96.915367
T. C. Huajuapán de León - Oaxaca	242.70	1	1	3334	94.1	107.8	127.1	14.1	81.5	90.9	103.0	11.0	77.8	91.4	109.7	14.0	17.147459	-96.783709
T. C. Huajuapán de León - Oaxaca	242.70	1	2	3127	90.9	101.1	114.2	11.8	79.2	90.8	102.2	12.3	80.0	91.0	102.9	12.2	17.147522	-96.783786

24 CARR: Salina Cruz - La Ventosa (Cuota)

CLAVE: 00275

RUTA: MEX-185D

AÑO: 2012

LUGAR	ESTACION				VELOCIDAD AUTOS (km/h)				VELOCIDAD AUTOBUSES (km/h)				VELOCIDAD CAMIONES (km/h)				COORDENADAS	
	KM	TE	SC	TDPA	Promedio	P 85	P 98	δ	Promedio	P 85	P 98	δ	Promedio	P 85	P 98	δ	Latitud	Longitud
T. C. Santiago Pinotepa Nacional - Salina Cruz	0.00																	
Caseta de Cobro Tehuantepec	1.89	2	0	702													16.162108	-95.289212
X. C. Oaxaca - Tehuantepec	23.19	1	0	1101	88.5	105.1	136.0	17.0	70.5	85.7	127.7	16.4	70.2	85.0	110.5	15.5	16.329000	-95.279630
X. C. Oaxaca - Tehuantepec	23.19	3	0	1983	88.5	105.1	136.0	17.1	70.6	85.7	127.7	16.4	70.2	85.0	110.5	15.5	16.337944	-95.277223
Caseta de Cobro Ixtepec	47.49	2	0	937													16.561158	-95.135619
T. C. Coatzacoalcos - Salina Cruz	75.39	1	0	1722	88.8	105.8	135.7	17.1	68.0	81.7	123.9	15.2	64.1	78.1	111.8	13.0	16.586792	-94.954892

25 CARR: Cd. Ixtepec - Guevea de Humboldt

CLAVE: 00301

RUTA: OAX

AÑO: 2012

LUGAR	ESTACION				VELOCIDAD AUTOS (km/h)				VELOCIDAD AUTOBUSES (km/h)				VELOCIDAD CAMIONES (km/h)				COORDENADAS	
	KM	TE	SC	TDPA	Promedio	P 85	P 98	δ	Promedio	P 85	P 98	δ	Promedio	P 85	P 98	δ	Latitud	Longitud
Ciudad Ixtepec	0.00																	
T. C. La Ventosa - Salina Cruz (Cuota)	4.00	1	1	1954	59.2	66.4	83.0	10.6	54.6	54.5	69.7	3.6	52.0	56.3	70.7	7.9	16.560497	-95.126375
T. C. La Ventosa - Salina Cruz (Cuota)	4.00	1	2	1789	76.9	91.5	113.1	15.6	70.4	90.2	95.4	18.8	69.7	84.1	101.8	14.8	16.560497	-95.126375
T. C. La Ventosa - Salina Cruz (Cuota)	4.00	3	0	1731	68.0	83.4	108.3	15.5	54.2	53.4	54.8	1.4	60.9	74.1	94.7	13.6	16.564107	-95.141118
Guevea de Humboldt	57.05																	

26 CARR: El Zapote - Copalita

CLAVE: 00109

RUTA: OAX

AÑO: 2012

LUGAR	ESTACION				VELOCIDAD AUTOS (km/h)				VELOCIDAD AUTOBUSES (km/h)				VELOCIDAD CAMIONES (km/h)				COORDENADAS	
	KM	TE	SC	TDPA	Promedio	P 85	P 98	δ	Promedio	P 85	P 98	δ	Promedio	P 85	P 98	δ	Latitud	Longitud
T. C. Santiago Pinotepa Nacional - Salina Cruz	0.00	3	0	3092	69.1	83.5	107.9	14.6	64.2	74.6	91.8	11.0	63.3	80.1	101.2	16.0	15.763975	-96.272677

OAXACA

30 CARR: Ramal a Unión Hidalgo

CLAVE: 20044

RUTA: OAX

AÑO: 2012

LUGAR	ESTACION				VELOCIDAD AUTOS (km/h)				VELOCIDAD AUTOBUSES (km/h)				VELOCIDAD CAMIONES (km/h)				COORDENADAS	
	KM	TE	SC	TDPA	Promedio	P 85	P 98	δ	Promedio	P 85	P 98	δ	Promedio	P 85	P 98	δ	Latitud	Longitud
T. C. La Ventosa - San Pedro Tapanatepec	0.00	3	1	1246	29.2	32.8	44.0	7.1	26.2	26.5	33.9	3.1	28.8	33.0	52.0	7.8	16.574008	-94.816327
T. C. La Ventosa - San Pedro Tapanatepec	0.00	3	2	1229	31.3	36.7	54.6	9.2	31.0	48.8	62.0	12.5	34.1	46.3	61.8	11.2	16.574009	-94.816327
Unión Hidalgo	12.00	1	0	1125	54.2	70.4	88.4	15.9	53.0	69.6	81.7	14.3	56.5	69.3	83.7	13.2	16.488197	-94.832443

31 CARR: San Antonio - Puerto Angel

CLAVE:

RUTA: OAX

AÑO: 2012

LUGAR	ESTACION				VELOCIDAD AUTOS (km/h)				VELOCIDAD AUTOBUSES (km/h)				VELOCIDAD CAMIONES (km/h)				COORDENADAS	
	KM	TE	SC	TDPA	Promedio	P 85	P 98	δ	Promedio	P 85	P 98	δ	Promedio	P 85	P 98	δ	Latitud	Longitud
T. C. Santiago Pinotepa Nacional - Salina Cruz	0.00	3	0	1670	58.8	64.0	112.4	10.6	68.5	92.8	143.0	22.5	61.8	71.4	132.1	14.0	15.713862	-96.582335
Mazunte	7.30	1	0	1518	45.0	50.3	59.9	6.3	40.3	48.7	54.4	9.0	40.7	47.6	55.0	8.9	15.669164	-96.557772
Mazunte	7.30	3	0	1055	40.0	47.7	61.9	9.9	44.9	52.4	63.2	10.6	47.3	53.7	88.2	12.5	15.666881	-96.540553
Puerto Angel	15.90																	

32 CARR: T. C. (Oaxaca - Puerto Ángel) - Puerto Escondido

CLAVE: 20009

RUTA: MEX-OAX-161

AÑO: 2012

LUGAR	ESTACION				VELOCIDAD AUTOS (km/h)				VELOCIDAD AUTOBUSES (km/h)				VELOCIDAD CAMIONES (km/h)				COORDENADAS	
	KM	TE	SC	TDPA	Promedio	P 85	P 98	δ	Promedio	P 85	P 98	δ	Promedio	P 85	P 98	δ	Latitud	Longitud
T. C. Oaxaca - Puerto Ángel	0.00	3	1	7445	79.5	88.5	101.2	10.6	68.0	74.0	83.6	9.0	68.3	76.4	90.8	10.8	16.925865	-96.706543
T. C. Oaxaca - Puerto Ángel	0.00	3	2	7295	78.8	90.6	105.5	12.8	69.7	80.6	94.4	12.2	67.4	80.6	96.7	14.0	16.925865	-96.706543
T. Izq. San Pablo Huixtepec	16.80	1	0	6913	61.9	70.0	88.5	10.4	56.2	63.5	80.1	8.7	56.1	64.2	83.5	10.2	16.833094	-96.788575
T. Izq. San Pablo Huixtepec	16.80	3	0	5636	70.4	84.1	108.9	14.2	66.1	79.2	94.1	11.6	66.8	82.8	108.7	14.6	16.828088	-96.788846
T. Der. El Trapiche	30.00	1	0	3288	55.6	66.2	81.3	12.0	52.8	60.2	72.4	8.8	49.7	61.4	78.3	12.8	16.761426	-96.856401
T. Der. El Trapiche	30.00	3	0	3540	54.3	60.5	73.4	8.2	48.7	53.5	64.5	8.0	47.8	54.1	69.4	9.0	16.760421	-96.859100
T. Der. Cofradía San Pedro	53.00	3	0	1308	44.1	50.9	62.7	8.2	38.1	48.4	57.2	11.1	37.1	49.2	57.3	12.6	16.600378	-96.890778
Sola de Vega	78.40	3	0	1154	43.2	49.6	57.2	8.3	45.9	52.2	60.5	8.7	46.3	52.7	58.9	10.5	16.509123	-96.984214
T. Der. Yalotepec	134.50	1	0	979	42.5	50.7	63.4	9.2	43.3	52.3	56.0	12.1	45.5	52.9	60.6	11.5	16.256305	-97.151698
San Gabriel Mixtepec	208.00	1	0	1250	27.6	32.8	51.0	7.7	26.2	27.8	51.4	5.8	26.4	33.1	53.5	9.3	16.093434	-97.075414
Puerto Escondido	248.00	1	0	3980	57.5	66.6	84.6	11.4	51.3	59.1	73.3	10.0	51.2	60.5	77.8	11.3	15.892665	-97.077092

33 CARR: Tehuacán - Huitzo

CLAVE: 00211

RUTA: PUE-MEX-135

AÑO: 2012

LUGAR	ESTACION				VELOCIDAD AUTOS (km/h)				VELOCIDAD AUTOBUSES (km/h)				VELOCIDAD CAMIONES (km/h)				COORDENADAS	
	KM	TE	SC	TDPA	Promedio	P 85	P 98	δ	Promedio	P 85	P 98	δ	Promedio	P 85	P 98	δ	Latitud	Longitud
Tehuacán	0.00	3	0	7245	60.5	68.2	85.3	10.0	61.5	69.6	92.3	11.2	58.4	66.4	89.6	11.1	18.451225	-97.370916
T. Der. San Gabriel Chilac	14.40	1	0	7722	43.1	46.2	54.9	6.4	41.4	44.4	53.6	7.2	39.4	44.1	54.4	8.4	18.404419	-97.329876

OAXACA

33 CARR: Tehuacán - Huitzo

CLAVE: 00211

RUTA: PUE-MEX-135

AÑO: 2012

LUGAR	ESTACION			VELOCIDAD AUTOS (km/h)				VELOCIDAD AUTOBUSES (km/h)				VELOCIDAD CAMIONES (km/h)				COORDENADAS		
	KM	TE	SC	TDPA	Promedio	P 85	P 98	δ	Promedio	P 85	P 98	δ	Promedio	P 85	P 98	δ	Latitud	Longitud
San Sebastián Zinacatepec	23.00	3	0	5289	69.6	82.6	102.0	14.0	70.2	81.9	98.4	12.9	67.9	82.0	102.4	15.1	18.325250	-97.229612
Lim. Edos. Term. Pue. Ppia. Oax.	60.90																	
Teotitlán del Camino	63.15	3	0	2338	63.2	70.6	82.5	8.9	56.2	65.1	74.6	11.1	55.9	65.1	78.6	11.2	18.121527	-97.073831
Santa María Tecomavaca	88.34	1	0	1133	56.9	69.8	84.7	14.0	50.7	53.6	62.2	6.9	43.9	53.4	64.6	12.2	17.965416	-97.036487
Santa María Tecomavaca	88.34	3	0	1003	49.0	54.5	64.5	9.0	45.0	52.1	62.8	7.7	42.7	50.6	62.4	9.7	17.949576	-97.022266
T. Izq. Cuicatlán	118.80	1	0	1488	55.9	68.4	85.5	12.6	51.6	57.6	81.5	10.4	50.6	61.6	82.9	12.3	17.793904	-96.960023
T. Izq. Nacaltepec	169.84	1	0	626	60.4	64.4	74.1	7.7	55.8	59.4	65.4	5.0	54.3	61.6	71.3	8.9	17.505998	-96.934028
T. C. Huajuapán de León - Oaxaca	202.70	1	0	6187	42.5	49.3	62.3	9.0	39.0	44.9	54.4	8.7	38.9	46.6	64.5	10.6	17.287076	-96.903529

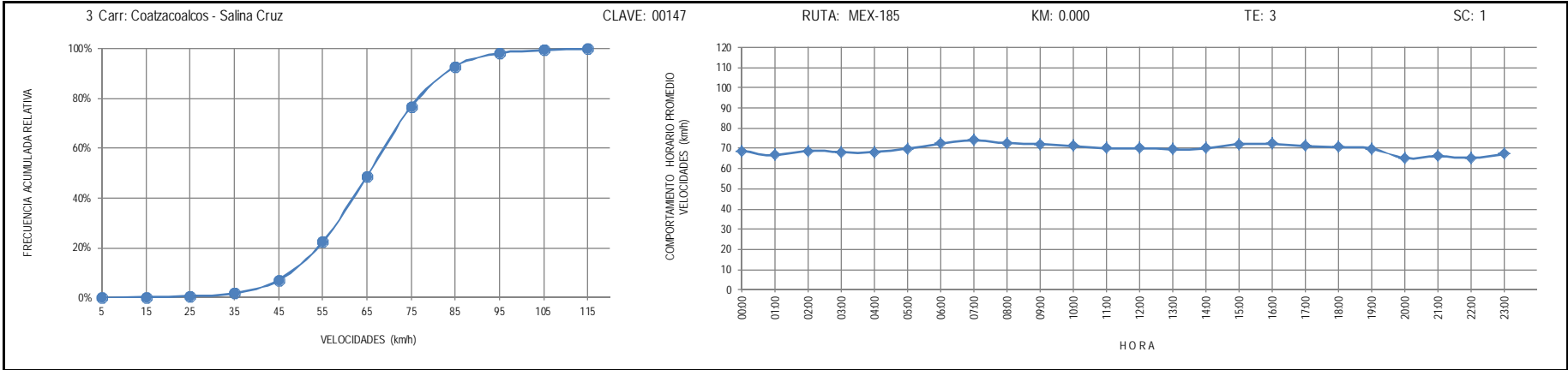
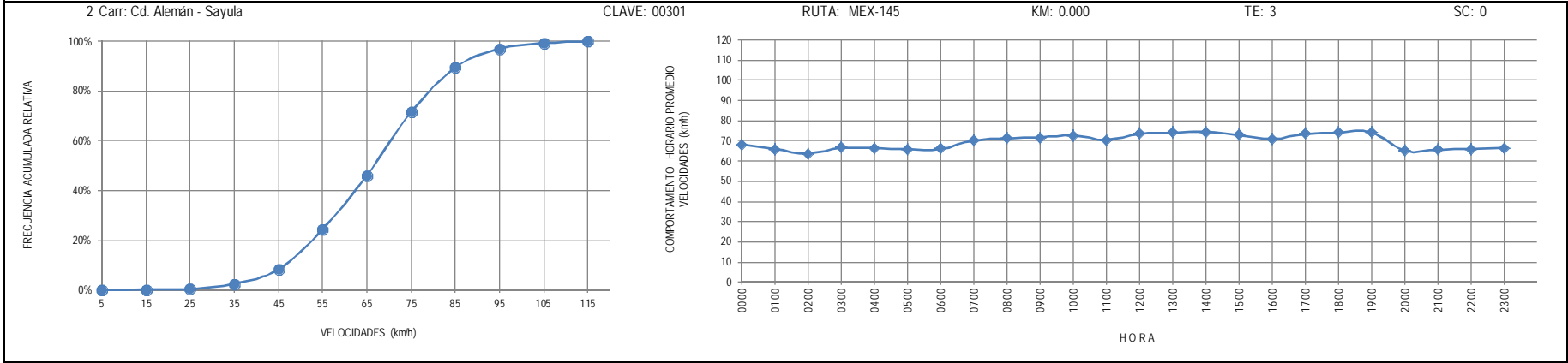
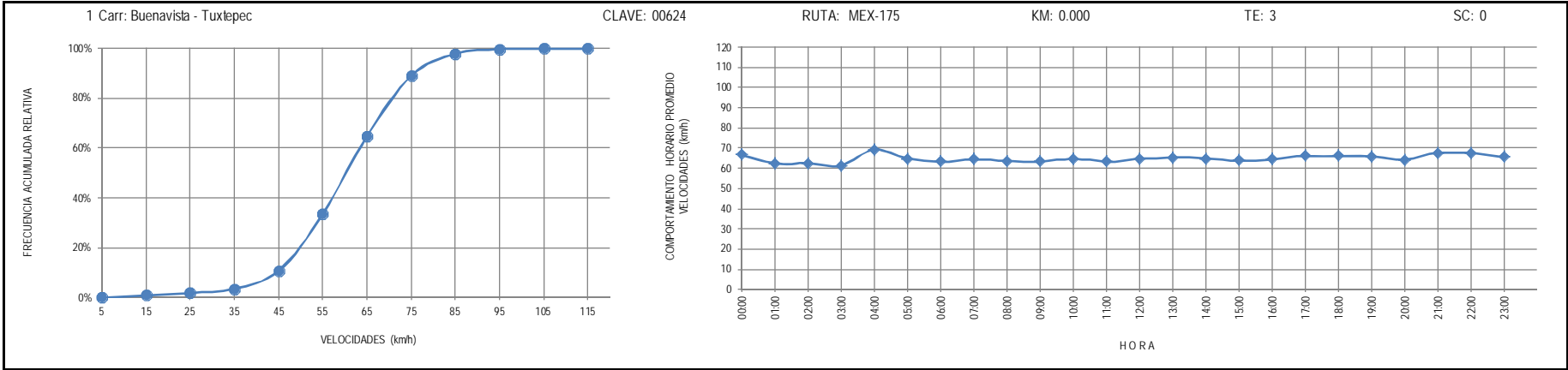
34 CARR: Teotitlán de Flores Magón - Tuxtepec

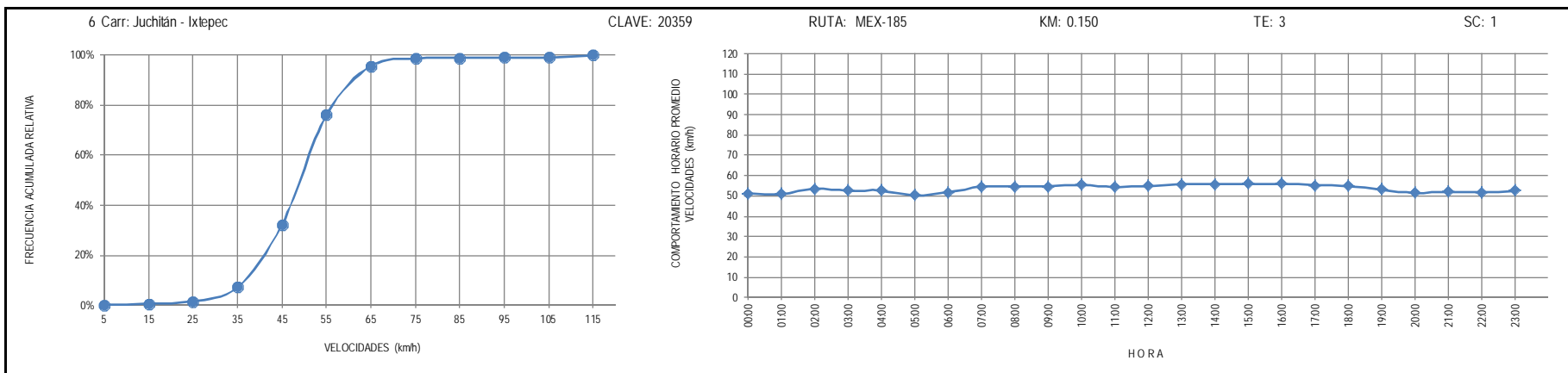
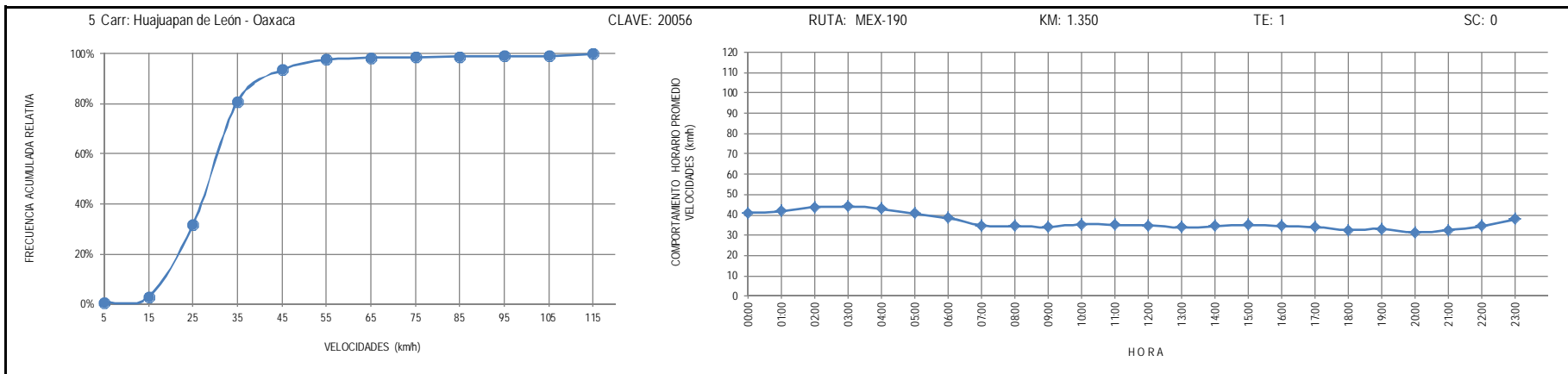
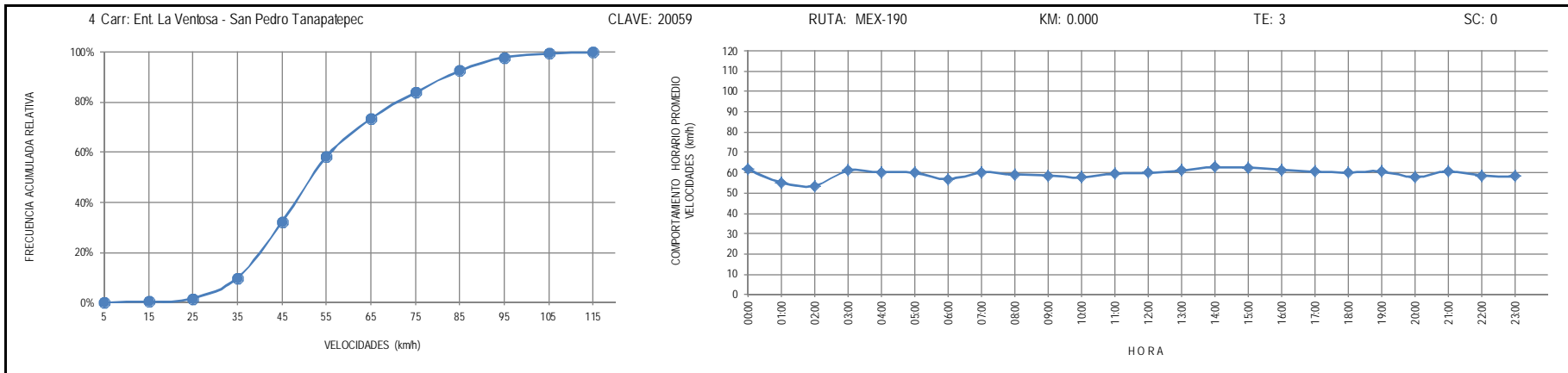
CLAVE: 00108

RUTA: OAX-PUE-MEX-182

AÑO: 2012

LUGAR	ESTACION			VELOCIDAD AUTOS (km/h)				VELOCIDAD AUTOBUSES (km/h)				VELOCIDAD CAMIONES (km/h)				COORDENADAS		
	KM	TE	SC	TDPA	Promedio	P 85	P 98	δ	Promedio	P 85	P 98	δ	Promedio	P 85	P 98	δ	Latitud	Longitud
Teotitlán del Camino	0.00	3	0	1176	37.2	44.1	54.9	8.6	37.8	50.5	54.4	13.1	40.2	51.1	54.6	12.6	18.141350	-97.062051
Lim. Edos. Term. Oax. Ppia. Pue.	2.00																	
Lim. Edos. Term. Pue. Ppia. Oax.	10.00																	
Huautla	65.00	1	0	1498	37.1	44.0	54.8	8.5	36.0	48.4	54.2	11.3	34.5	45.6	54.5	10.5	18.125845	-96.844575
San Felipe Jalapa de Díaz	140.00	3	0	3636	37.6	45.1	54.9	8.9	35.0	46.5	54.2	10.4	42.0	51.8	54.7	12.9	18.082042	-96.522081
Tuxtepec	185.00	1	0	7204	38.7	48.1	54.9	9.8	35.6	47.6	54.7	11.0	39.2	50.8	54.8	12.5	18.086018	-96.152644





7 Carr: La Granja - Temascal

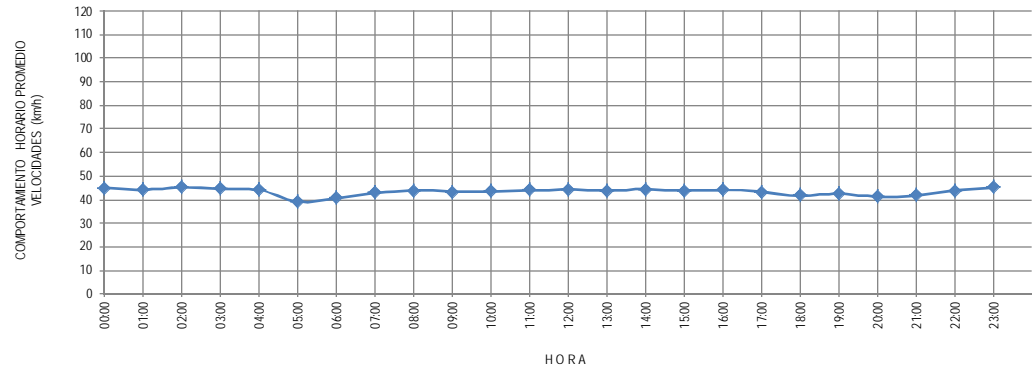
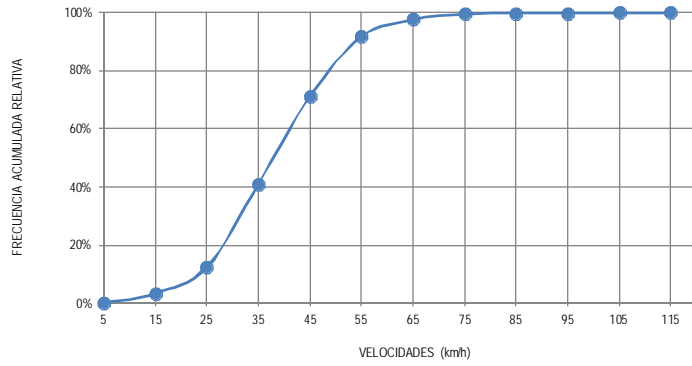
CLAVE: 00275

RUTA: MEX-145

KM: 0.000

TE: 3

SC: 0



8 Carr: Las Cruces - Pinolepa Nacional

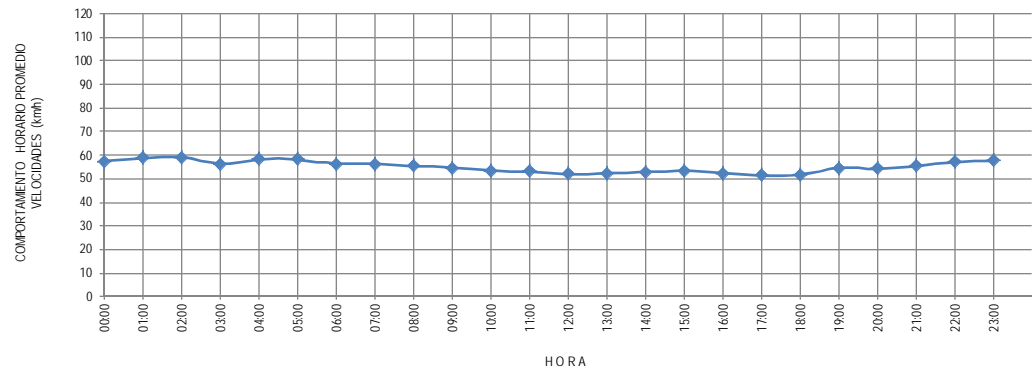
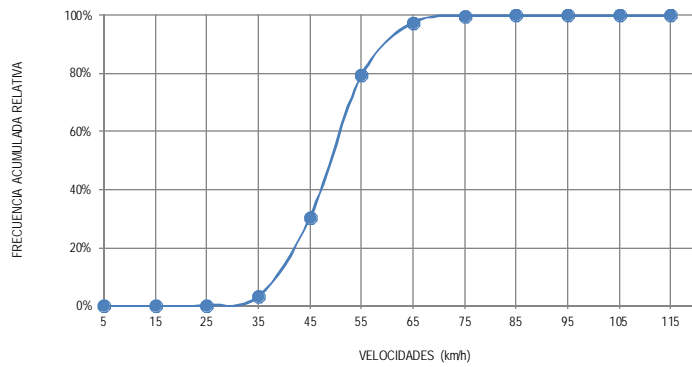
CLAVE: 00073

RUTA: MEX-200

KM: 0.000

TE: 3

SC: 1



9 Carr: Libramiento de Pochuala

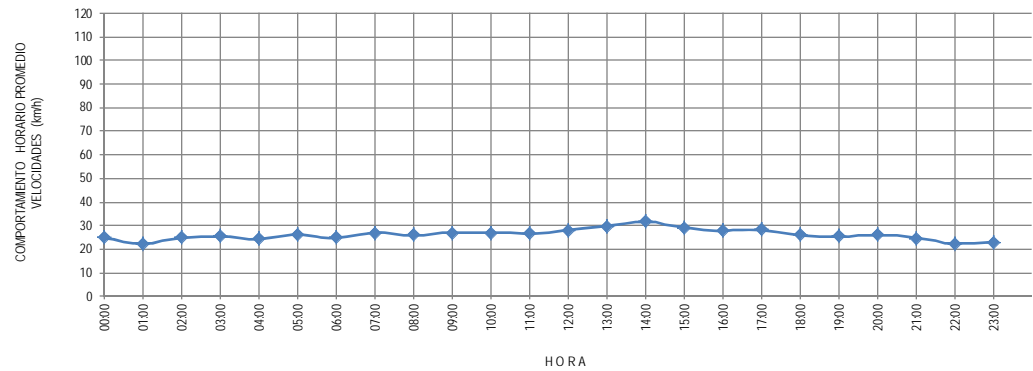
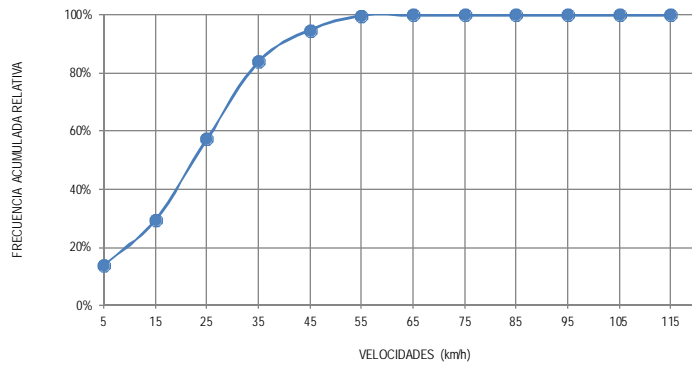
CLAVE:

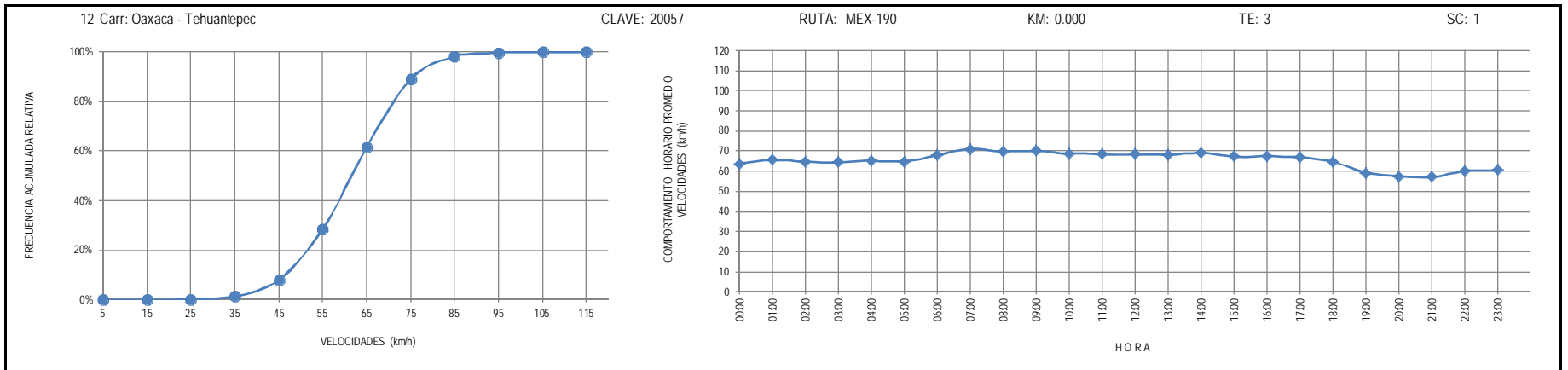
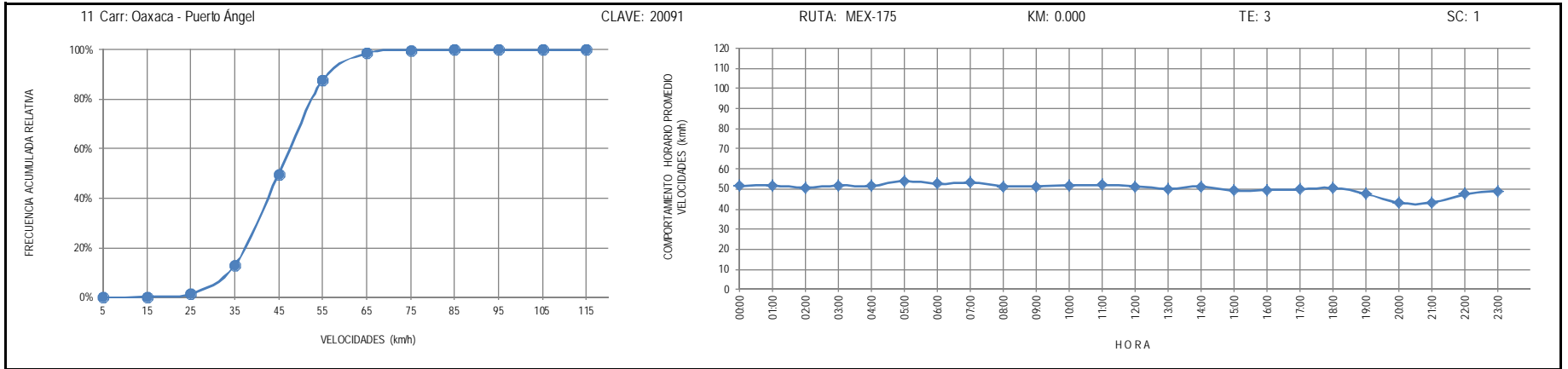
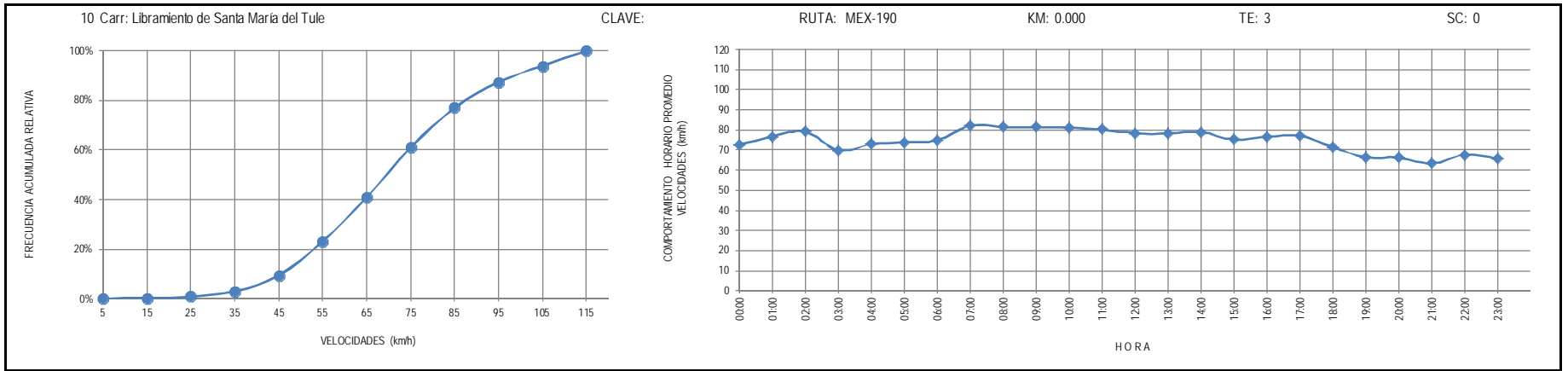
RUTA: MEX-200

KM: 0.000

TE: 3

SC: 0





13 Carr: Puebla - Huajuapán de León

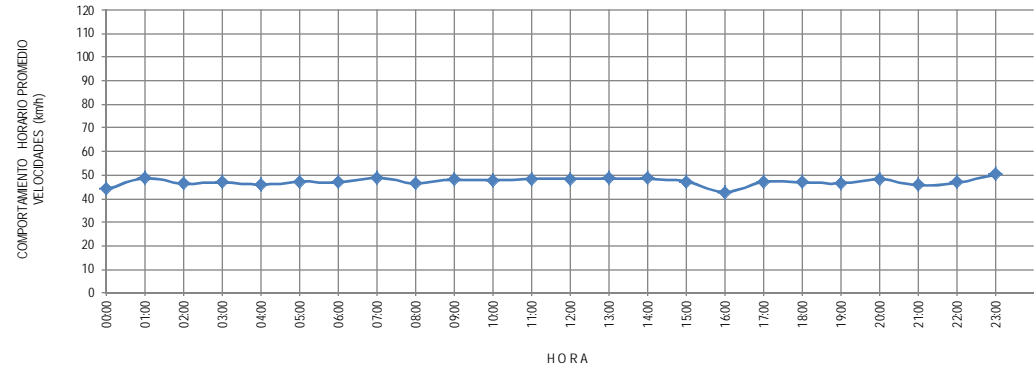
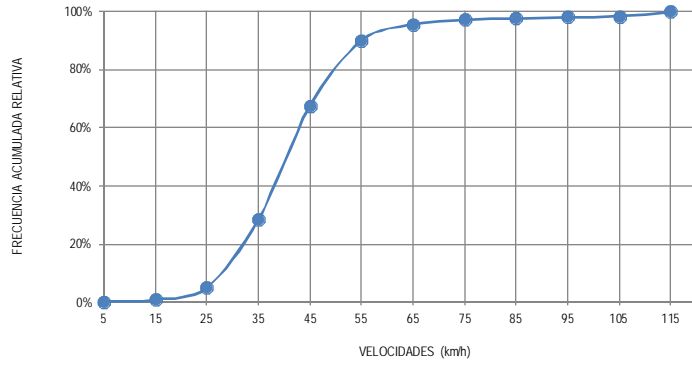
CLAVE: 00049

RUTA: MEX-190

KM: 0.000

TE: 3

SC: 1



14 Carr: Ramal a Asunción Ixtaltepec

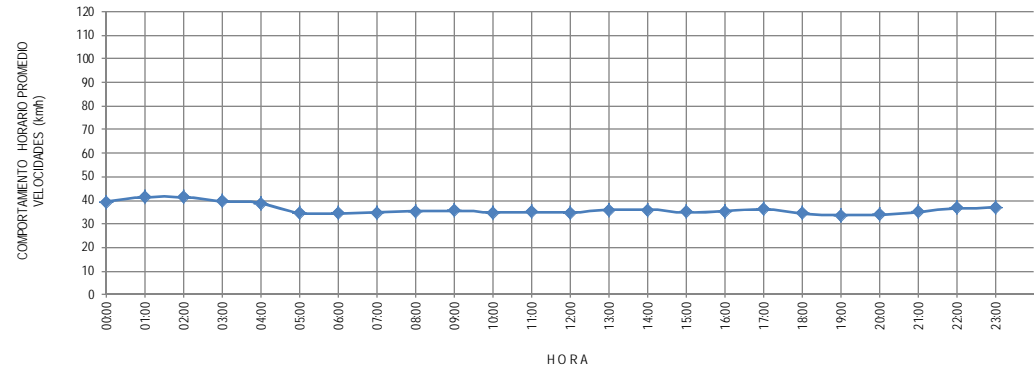
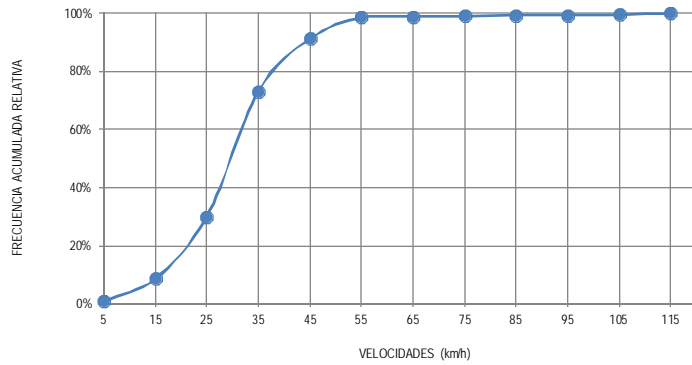
CLAVE: 20624

RUTA: MEX-185

KM: 0.000

TE: 3

SC: 0



15 Carr: San Pablo Villa de Mila - T. C. (Tuxtpec - Palomares)

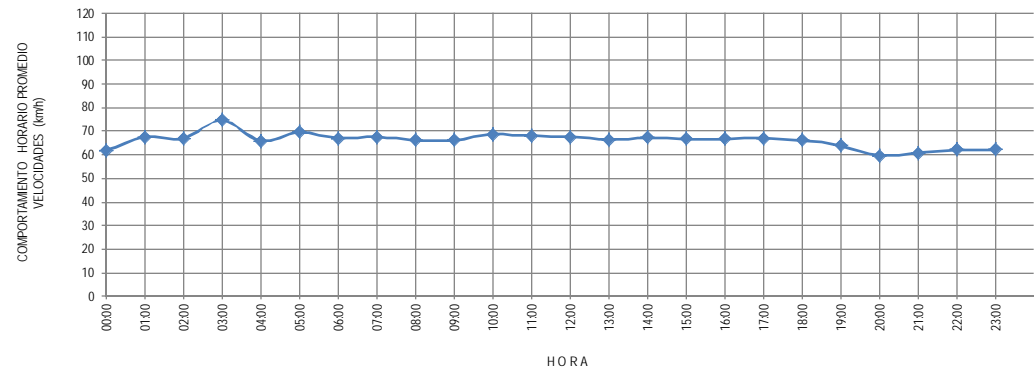
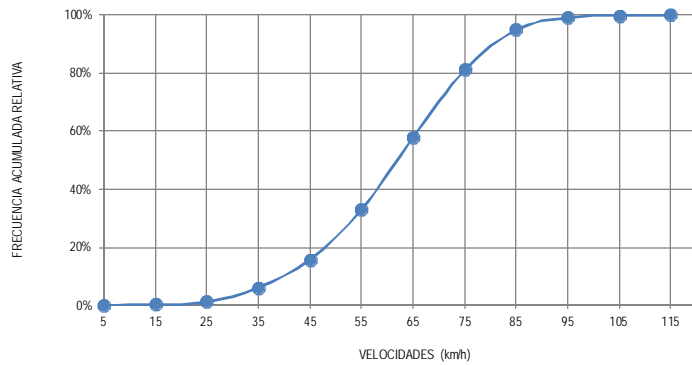
CLAVE: 00106

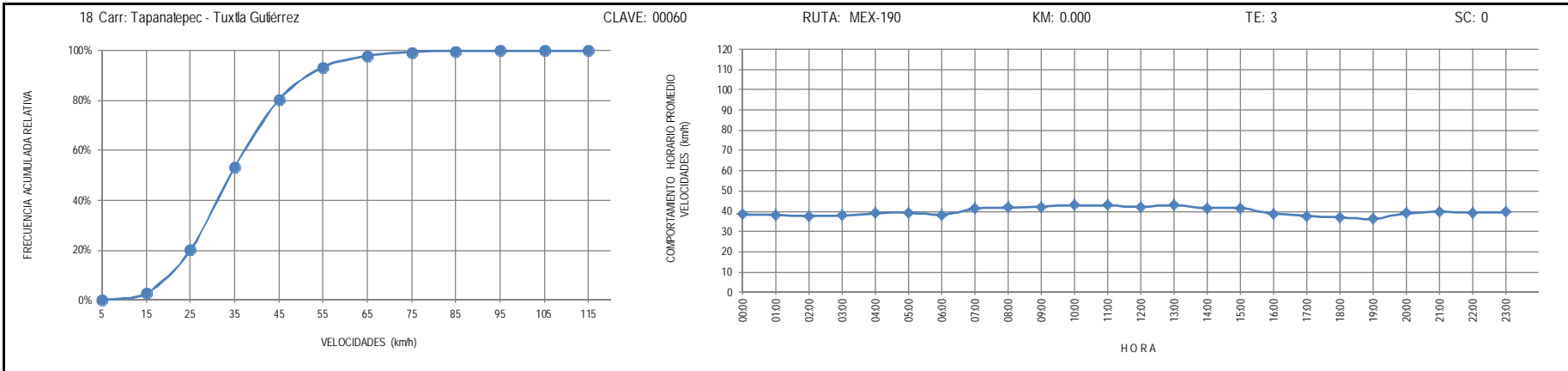
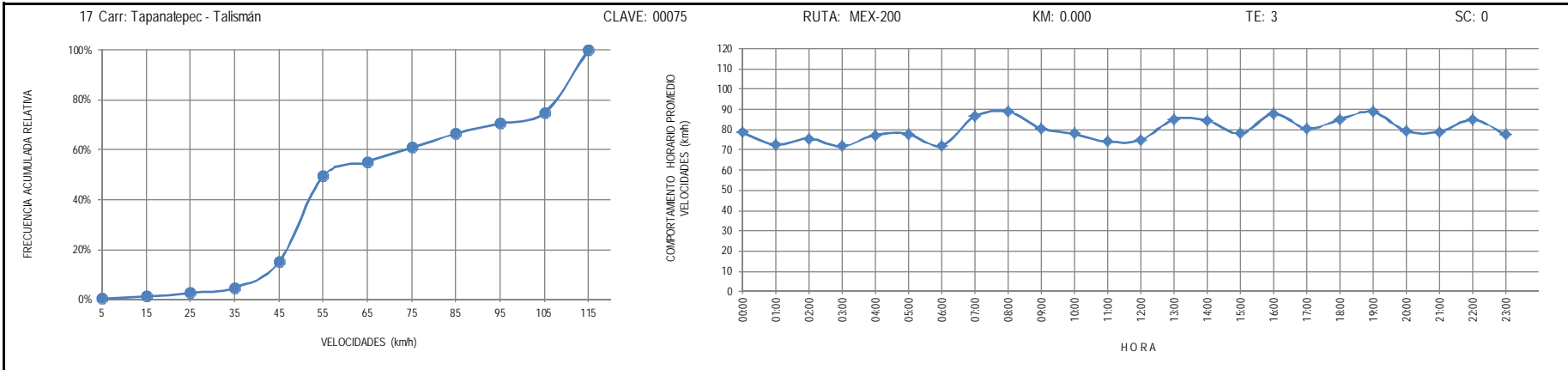
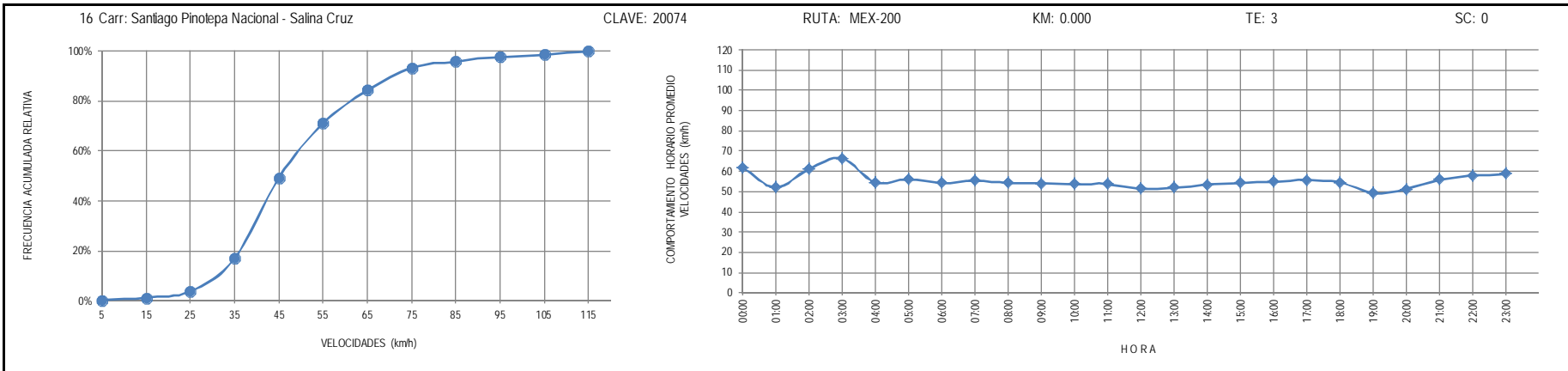
RUTA: MEX-179

KM: 0.000

TE: 3

SC: 0





19 Carr: Tehuacán - Huajuapán de León

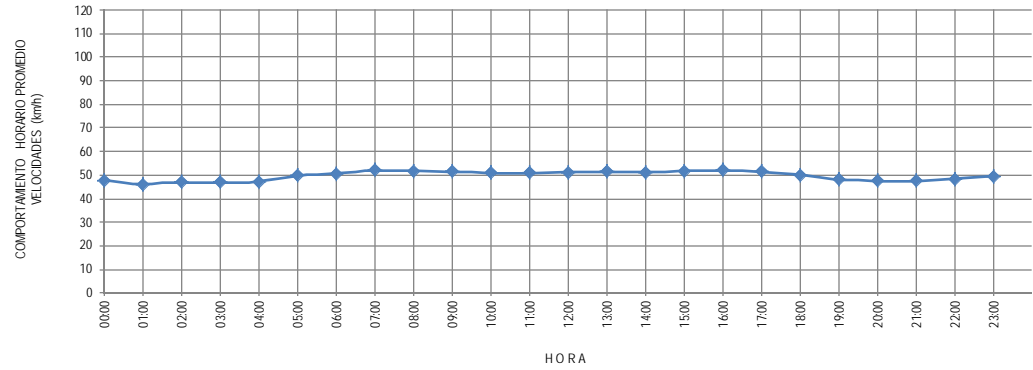
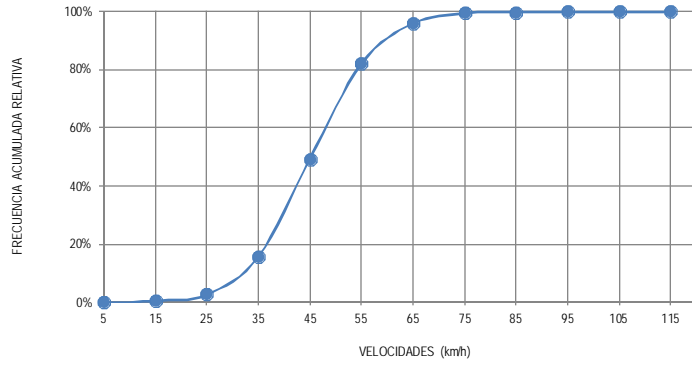
CLAVE: 00211

RUTA: MEX-125

KM: 0.000

TE: 3

SC: 1



20 Carr: Tuxtpec - Ent. Palomares

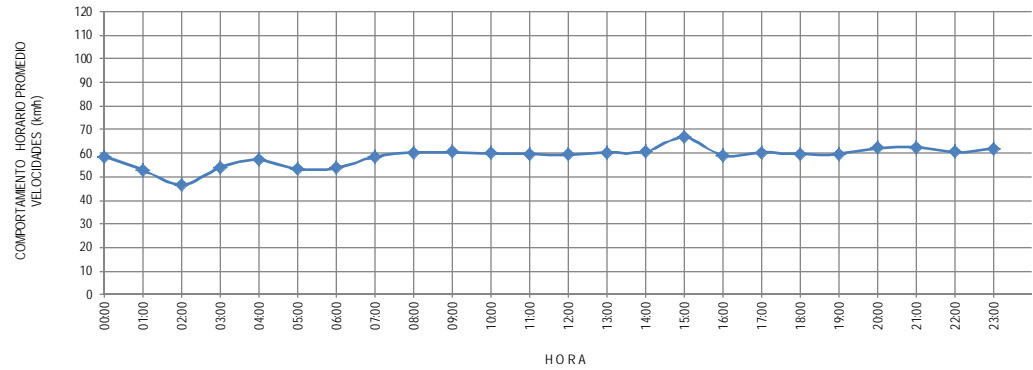
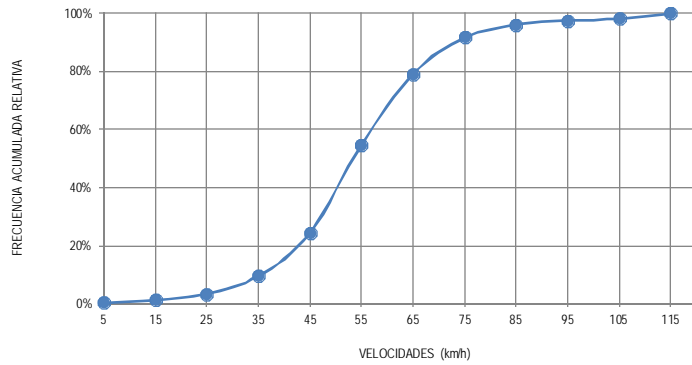
CLAVE: 00180

RUTA: MEX-147

KM: 0.000

TE: 3

SC: 0



21 Carr: Tuxtpec - T. C. (Oaxaca - Tehuantepec)

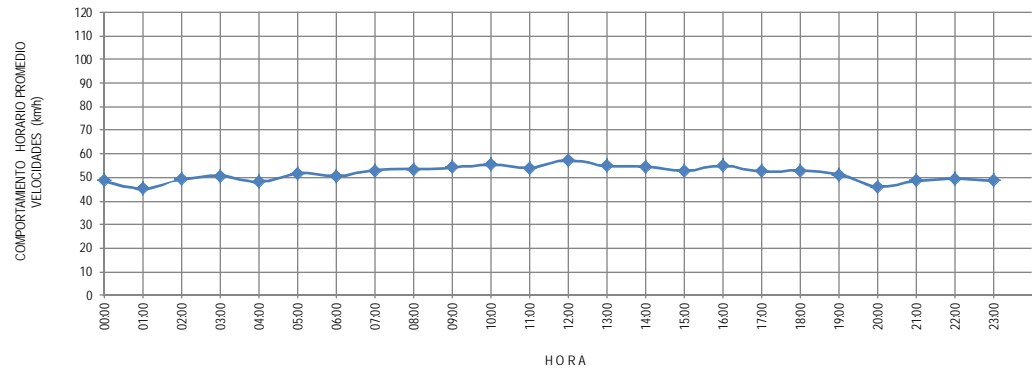
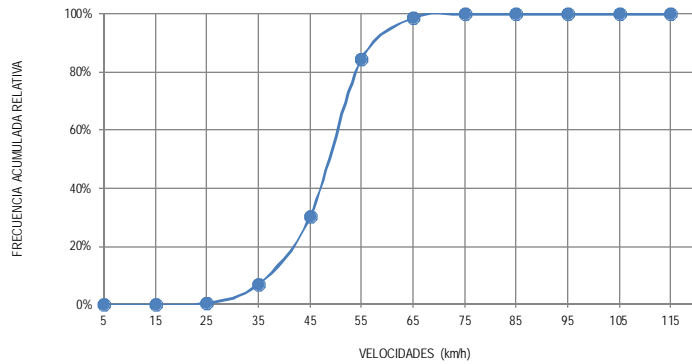
CLAVE: 20090

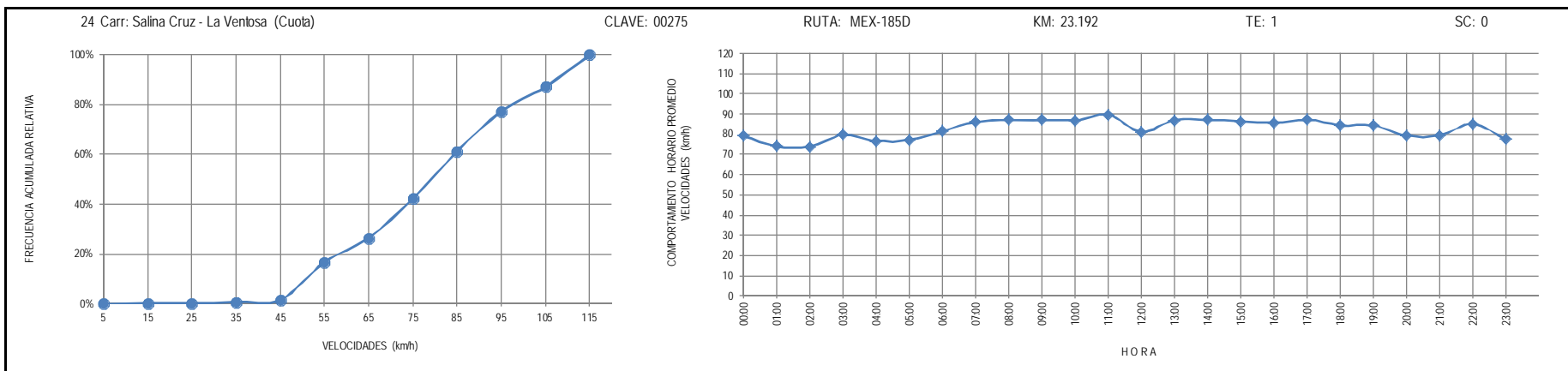
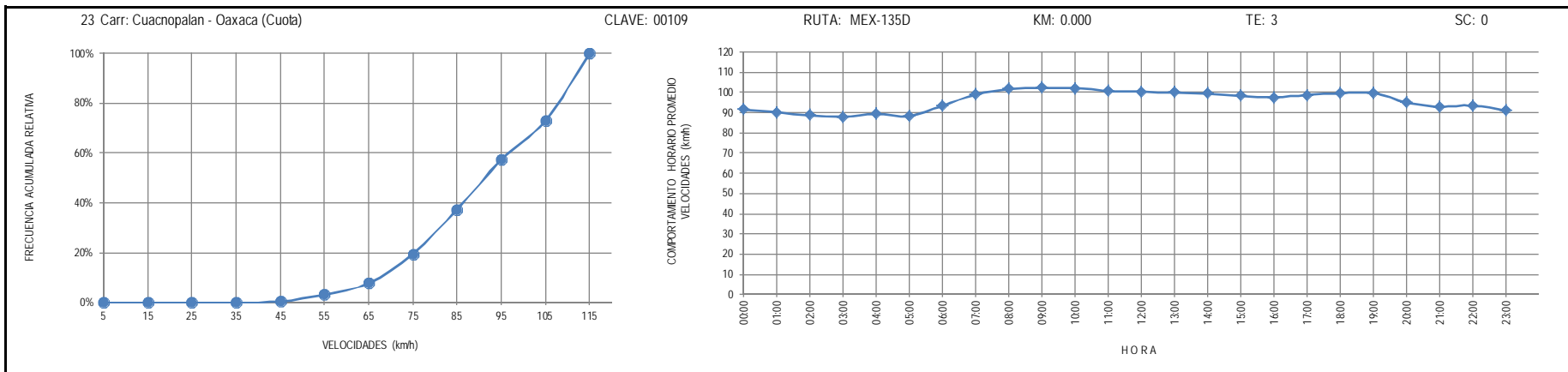
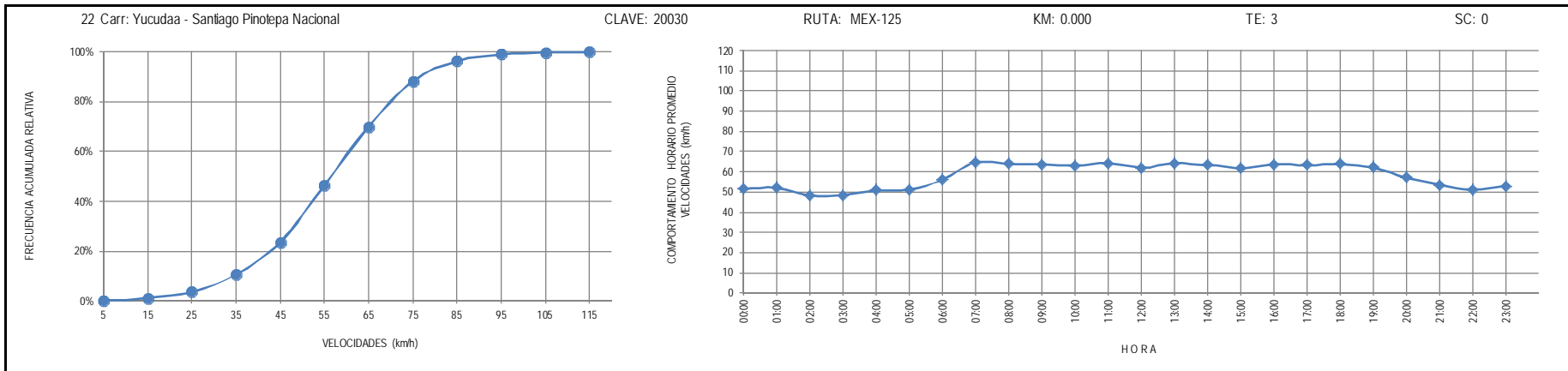
RUTA: MEX-175

KM: 0.000

TE: 3

SC: 1





25 Carr: Cd. Ixtepec - Guevea de Humboldt

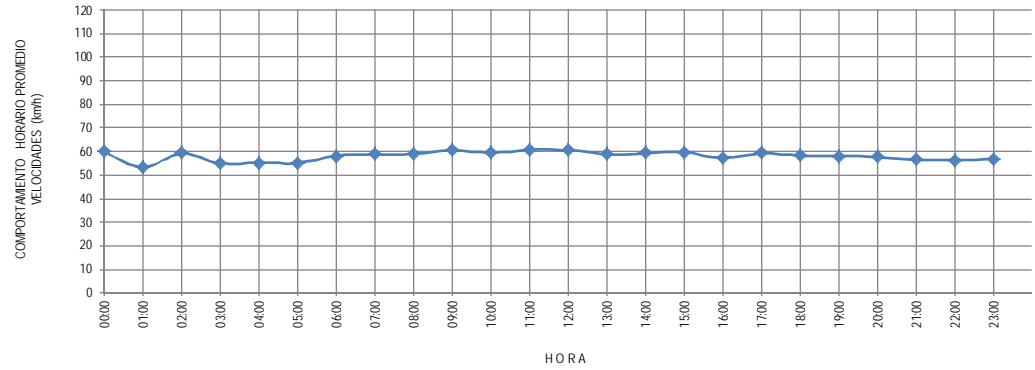
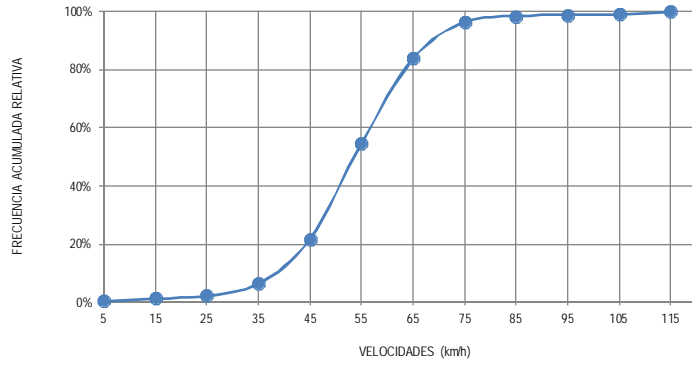
CLAVE: 00301

RUTA: OAX

KM: 4.000

TE: 1

SC: 1



26 Carr: El Zapote - Copallita

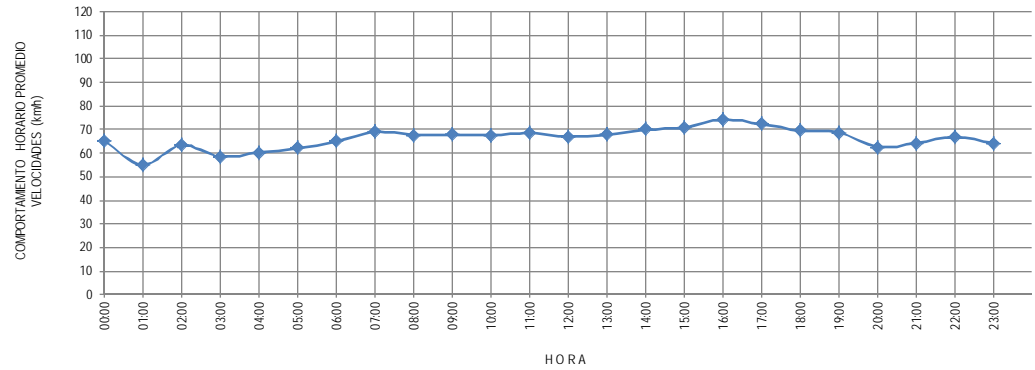
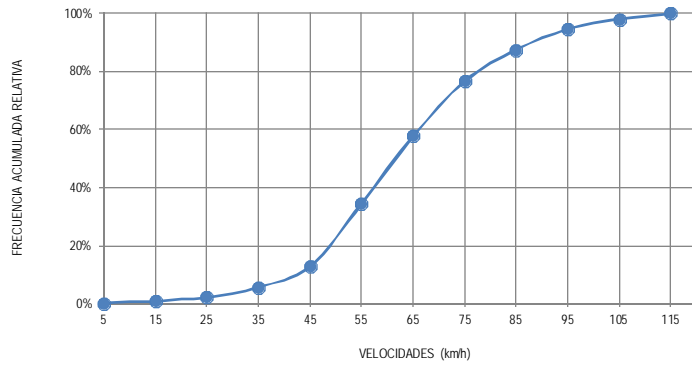
CLAVE: 00109

RUTA: OAX

KM: 0.000

TE: 3

SC: 0



27 Carr: Huajuapán de León - El Carrizal

CLAVE: 00109

RUTA: OAX

KM: 0.000

TE: 3

SC: 0

