

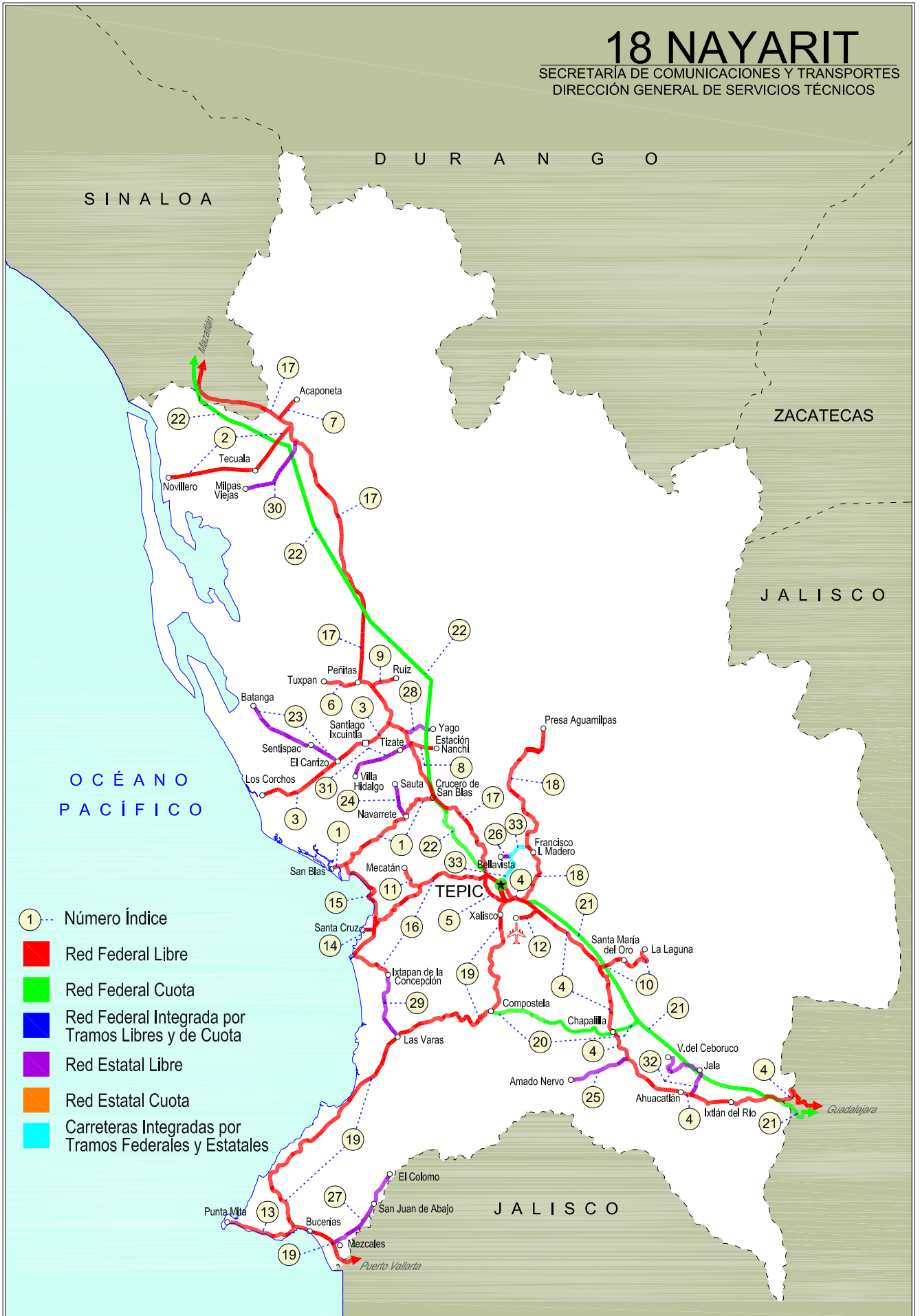


NAYARIT

NO. INDICE	CARRETERA	RUTA
---RED FEDERAL LIBRE---		
1	Crucero de San Blas - San Blas	MEX-015
2	Ent. Acaponeta - El Novillero	MEX-015
3	Ent. Santiago Ixcuintla - Playa Los Corchos	MEX-015
4	Guadalajara - Tepic	MEX-015
5	Libramiento de Tepic	MEX-015
6	Peñitas - Tuxpan	MEX-015
7	Ramal a Acaponeta	MEX-015
8	Ramal a Estación Nanchi	MEX-015
9	Ramal a Estación Ruíz	MEX-015
10	Ramal a La Laguna de Santa María	MEX-015
11	Ramal a Mecatán	MEX-015
12	Ramal a Nuevo Aeropuerto de Tepic	MEX-015
13	Ramal a Punta Mita	MEX-200
14	Ramal a Santa Cruz	MEX-015
15	Santa Cruz - San Blas	MEX-015
16	Tepic - Ixtapan de La Concepción	MEX-015
17	Tepic - Mazatlán	MEX-015
18	Tepic - Presa Aguamilpa	MEX-015
19	Tepic - Puerto Vallarta	MEX-200
---RED FEDERAL DE CUOTA---		
20	Chapalilla - Compostela (Cuota)	MEX-068D
21	Guadalajara - Tepic (Cuota)	MEX-057D
22	Tepic - Villa Unión (cuota)	MEX-015D
---RED ESTATAL LIBRE---		
23	El Carrizo - La Batanga	NAY-078
24	Navarrete - Sauta	NAY-013
25	Ramal a Amado Nervo	NAY
26	Ramal a Bellavista	NAY-059
27	Ramal a El Colomo	NAY
28	Ramal a Estación Yago	NAY
29	Ramal a Ixtapan de La Concepción	NAY
30	Ramal a Milpas Viejas	NAY
31	Ramal a Villa Hidalgo	NAY
32	Ramal a Volcán del Ceboruco	NAY
---CARRETERAS INTEGRADAS POR TRAMOS FEDERALES Y ESTATALES---		
33	Tepic - Francisco I. Madero	NAY-MEX

18 NAYARIT

SECRETARÍA DE COMUNICACIONES Y TRANSPORTES
DIRECCIÓN GENERAL DE SERVICIOS TÉCNICOS



NAYARIT

1 CARR: Crucero de San Blas - San Blas

CLAVE: 18229

RUTA: MEX-015

AÑO: 2012

LUGAR	ESTACION				VELOCIDAD AUTOS (km/h)				VELOCIDAD AUTOBUSES (km/h)				VELOCIDAD CAMIONES (km/h)				COORDENADAS	
	KM	TE	SC	TDPA	Promedio	P 85	P 98	δ	Promedio	P 85	P 98	δ	Promedio	P 85	P 98	δ	Latitud	Longitud
T. C. Tepic - Mazatlán	0.00	3	0	1917	71.0	80.6	94.4	11.1	61.1	69.4	81.6	9.1	63.3	74.4	90.4	12.7	21.691492	-105.054997
Navarrete	11.00	3	0	2388	69.6	79.0	93.7	11.3	64.7	71.0	81.5	7.6	64.0	74.9	94.6	12.8	21.647108	-105.122415
San Blas	36.00	1	0	3630	54.5	62.1	78.6	9.1	50.4	53.3	63.1	6.8	51.6	55.6	74.4	8.8	21.544562	-105.270522

2 CARR: Ent. Acaponeta - El Novillero

CLAVE: 18023

RUTA: MEX-015

AÑO: 2012

LUGAR	ESTACION				VELOCIDAD AUTOS (km/h)				VELOCIDAD AUTOBUSES (km/h)				VELOCIDAD CAMIONES (km/h)				COORDENADAS	
	KM	TE	SC	TDPA	Promedio	P 85	P 98	δ	Promedio	P 85	P 98	δ	Promedio	P 85	P 98	δ	Latitud	Longitud
T. C. Tepic - Mazatlán	0.00	3	0	4973	63.1	70.2	82.0	8.7	61.4	64.9	74.1	7.2	58.9	65.7	79.2	9.7	22.486415	-105.385973
Tecuala	13.00	1	0	4873	75.5	91.7	119.2	15.5	74.6	92.1	109.9	15.4	79.3	100.0	135.0	19.0	22.413819	-105.448573
Tecuala	13.00	3	0	3806	67.3	77.1	93.4	11.3	68.7	74.9	83.7	8.6	69.0	79.3	96.8	12.1	22.399192	-105.472605
El Novillero	36.00	1	0	1593	74.1	89.3	107.9	15.6	80.3	91.9	101.8	13.7	78.2	92.7	115.8	15.9	22.382868	-105.657122

3 CARR: Ent. Santiago Ixcuintla - Playa Los Corchos

CLAVE: 18016

RUTA: MEX-015

AÑO: 2012

LUGAR	ESTACION				VELOCIDAD AUTOS (km/h)				VELOCIDAD AUTOBUSES (km/h)				VELOCIDAD CAMIONES (km/h)				COORDENADAS	
	KM	TE	SC	TDPA	Promedio	P 85	P 98	δ	Promedio	P 85	P 98	δ	Promedio	P 85	P 98	δ	Latitud	Longitud
T. C. Tepic - Mazatlán	0.00	3	1	2564	82.3	91.1	106.3	10.5	77.0	84.5	94.7	9.8	76.0	87.5	105.7	11.8	21.851401	-105.156019
T. C. Tepic - Mazatlán	0.00	3	2	2565	80.4	89.0	104.3	10.4	74.6	83.2	94.6	9.9	71.1	81.0	98.7	11.5	21.851401	-105.156017
Santiago Ixcuintla	8.00	1	1	3962	61.4	70.5	87.0	10.8	60.0	67.7	82.4	9.9	57.1	67.8	91.3	12.4	21.815938	-105.192415
Santiago Ixcuintla	8.00	1	2	3738	60.4	70.9	86.6	11.9	58.1	67.4	83.2	11.1	58.1	70.1	91.7	13.3	21.815938	-105.192418
Santiago Ixcuintla	8.00	3	0	6317	74.1	84.0	102.3	11.3	70.9	83.3	101.4	13.2	69.9	81.8	102.9	13.1	21.806348	-105.230456
T. Der. Mexcallitán	17.00	1	0	4514	56.5	65.8	83.7	10.9	52.6	62.0	80.8	11.5	54.0	61.6	83.8	9.6	21.776323	-105.267056
T. Der. Mexcallitán	17.00	3	0	2950	59.6	67.9	95.3	9.9	58.4	63.1	82.7	6.9	58.9	63.3	92.1	8.1	21.770710	-105.274727
Playa Los Corchos	39.00	1	0	1947	65.6	73.4	85.9	9.7	63.4	73.8	88.5	10.8	62.4	72.9	88.1	11.0	21.697396	-105.449213

4 CARR: Guadalajara - Tepic

CLAVE: 00031

RUTA: MEX-015

AÑO: 2012

LUGAR	ESTACION				VELOCIDAD AUTOS (km/h)				VELOCIDAD AUTOBUSES (km/h)				VELOCIDAD CAMIONES (km/h)				COORDENADAS	
	KM	TE	SC	TDPA	Promedio	P 85	P 98	δ	Promedio	P 85	P 98	δ	Promedio	P 85	P 98	δ	Latitud	Longitud
Guadalajara	0.00																	
T. Der. Base Aérea No. 2	8.30	3	1	24909	58.6	65.0	77.1	9.6	54.6	60.4	70.8	7.4	50.9	58.4	70.1	10.0	20.712554	-103.469272
T. Der. Base Aérea No. 2	8.30	3	2	23702	63.8	71.9	83.8	9.6	59.2	67.6	83.2	10.2	55.5	64.6	81.8	10.5	20.712553	-103.469272
T. Izq. La Primavera	20.50	1	1	18596	82.8	95.6	114.9	13.9	83.2	93.2	104.5	11.8	74.3	86.2	102.7	12.5	20.727892	-103.550723
T. Izq. La Primavera	20.50	1	2	16939	75.4	86.0	103.3	11.6	79.6	88.6	99.4	10.8	73.0	82.2	95.9	11.0	20.727894	-103.550725

NAYARIT

4 CARR: Guadalajara - Tepic

CLAVE: 00031

RUTA: MEX-015

AÑO: 2012

LUGAR	ESTACION				VELOCIDAD AUTOS (km/h)				VELOCIDAD AUTOBUSES (km/h)				VELOCIDAD CAMIONES (km/h)				COORDENADAS	
	KM	TE	SC	TDPA	Promedio	P 85	P 98	δ	Promedio	P 85	P 98	δ	Promedio	P 85	P 98	δ	Latitud	Longitud
El Arenal	36.20	1	1	6730	43.6	49.3	61.9	7.8	42.1	46.1	54.0	6.9	41.7	50.5	54.6	10.3	20.773639	-103.686500
El Arenal	36.20	1	2	6439	39.8	44.8	60.6	8.9	39.0	44.7	54.4	8.6	40.4	50.9	54.8	11.8	20.773639	-103.686500
Tequila	57.50	3	0	7801	52.1	59.4	71.3	9.1	50.1	54.6	67.9	8.6	51.0	54.1	68.7	8.1	20.901374	-103.835571
Magdalena	76.80	3	0	6655	52.0	59.4	71.4	9.3	49.6	54.2	65.1	8.4	50.9	54.2	69.4	8.3	20.921328	-103.995505
Lim. Edos. Term. Jal. Ppia. Nay.	123.09																	
Ixtlán del Río	138.84	1	0	9746	70.7	83.3	109.7	13.6	68.1	81.5	100.9	13.2	67.0	81.5	114.5	14.9	21.033645	-104.348287
Ixtlán del Río	138.84	3	0	9638	70.5	82.9	108.5	13.4	67.9	81.1	99.1	12.9	68.4	83.0	116.4	15.1	21.037159	-104.394593
Ahuacatlán	152.00	1	0	9184	56.6	62.9	75.9	8.3	52.1	58.5	70.0	8.3	52.6	57.4	69.9	7.6	21.055602	-104.478333
Ahuacatlán	152.00	3	0	6187	56.2	62.7	75.9	8.3	51.7	58.1	70.3	8.6	53.0	54.9	72.0	6.9	21.058421	-104.489409
T. Izq. Amado Nervo	167.32	1	0	5720	56.5	62.9	76.4	8.4	52.0	58.3	70.3	8.4	53.1	54.7	71.8	6.7	21.126617	-104.598881
T. Izq. Compostela	175.50	1	0	6483	56.3	62.8	76.6	8.4	52.0	58.2	70.3	8.3	53.3	54.9	72.4	6.7	21.178705	-104.630280
T. Izq. Compostela	175.50	3	0	4469	56.3	62.9	77.7	8.6	51.8	57.4	69.7	8.2	53.0	54.9	71.6	6.9	21.201824	-104.647300
T. Der. Santa María del Oro	196.00	1	0	4907	56.6	62.9	75.9	8.3	52.1	58.5	70.0	8.3	52.6	57.4	69.9	7.6	21.316252	-104.667049
T. Der. Santa María del Oro	196.00	3	0	3940	56.3	62.8	75.6	8.3	51.8	56.3	68.3	7.8	53.1	54.7	71.6	6.6	21.329876	-104.672296
T. Izq. Aeropuerto de Tepic	215.68	1	0	11482	53.0	62.5	77.4	11.1	47.8	54.7	65.4	10.2	44.3	54.6	71.7	11.8	21.447665	-104.812642
San Cayetano	215.90	3	0	12163	64.0	75.2	95.9	13.0	62.8	71.8	87.8	10.1	62.5	72.9	92.0	11.8	21.455069	-104.821553
T. Izq. Libramiento de Tepic	219.10	1	1	15004	54.1	68.4	89.1	14.6	56.1	67.4	91.7	11.9	52.6	59.6	81.4	10.3	21.467585	-104.839959
T. Izq. Libramiento de Tepic	219.10	1	2	15376	68.1	80.0	94.7	12.9	64.6	77.7	90.7	13.2	59.7	72.5	89.1	13.9	21.467592	-104.839940
T. Izq. Libramiento de Tepic	219.10	3	1	12745	51.4	57.7	71.7	8.8	48.2	54.0	65.2	8.5	43.0	50.7	64.4	9.3	21.470271	-104.847545
T. Izq. Libramiento de Tepic	219.10	3	2	12756	51.7	59.6	73.4	9.6	49.6	56.0	70.2	9.2	44.5	52.6	68.3	9.4	21.470270	-104.847543
Tepic	224.80	1	1	16697	43.9	51.2	64.2	8.7	35.6	41.6	52.6	7.4	34.5	40.9	52.5	7.7	21.471460	-104.850712
Tepic	224.80	1	2	16226	44.2	50.0	61.4	7.2	39.6	44.5	53.9	7.8	38.2	44.5	54.5	8.7	21.471454	-104.850699

5 CARR: Libramiento de Tepic

CLAVE: 18232

RUTA: MEX-015

AÑO: 2012

LUGAR	ESTACION				VELOCIDAD AUTOS (km/h)				VELOCIDAD AUTOBUSES (km/h)				VELOCIDAD CAMIONES (km/h)				COORDENADAS	
	KM	TE	SC	TDPA	Promedio	P 85	P 98	δ	Promedio	P 85	P 98	δ	Promedio	P 85	P 98	δ	Latitud	Longitud
T. C. Guadalajara - Tepic	0.00																	
X. C. Tepic - Puerto Vallarta	5.00	1	1	24768	68.8	79.3	93.6	11.7	64.6	74.6	88.9	11.1	60.5	71.0	88.5	11.3	21.469077	-104.886356
X. C. Tepic - Puerto Vallarta	5.00	1	2	22475	63.1	68.7	81.4	7.7	56.8	63.1	73.8	8.4	55.4	62.2	73.8	8.4	21.469077	-104.886356
T. C. Tepic - Mazatlán	18.80	1	1	13066	53.4	64.8	81.6	12.2	42.4	47.2	65.8	8.1	48.2	56.9	79.6	11.8	21.514836	-104.924808
T. C. Tepic - Mazatlán	18.80	1	2	12017	68.6	79.6	92.9	13.4	59.3	73.3	87.8	16.1	56.7	70.5	84.8	14.7	21.514836	-104.924807

NAYARIT

6 CARR: Peñitas - Tuxpan

CLAVE: 18019

RUTA: MEX-015

AÑO: 2012

LUGAR	ESTACION				VELOCIDAD AUTOS (km/h)				VELOCIDAD AUTOBUSES (km/h)				VELOCIDAD CAMIONES (km/h)				COORDENADAS	
	KM	TE	SC	TDPA	Promedio	P 85	P 98	δ	Promedio	P 85	P 98	δ	Promedio	P 85	P 98	δ	Latitud	Longitud
Peñitas	0.00	3	0	5761	57.5	66.3	83.4	10.7	54.3	62.3	79.1	9.3	54.0	63.5	84.4	11.3	21.941849	-105.228415
Tuxpan	9.00	1	0	6642	44.9	53.0	71.9	9.4	44.6	55.4	73.4	11.8	44.2	54.6	76.7	11.9	21.942559	-105.278184

7 CARR: Ramal a Acaponeta

CLAVE: 18038

RUTA: MEX-015

AÑO: 2012

LUGAR	ESTACION				VELOCIDAD AUTOS (km/h)				VELOCIDAD AUTOBUSES (km/h)				VELOCIDAD CAMIONES (km/h)				COORDENADAS	
	KM	TE	SC	TDPA	Promedio	P 85	P 98	δ	Promedio	P 85	P 98	δ	Promedio	P 85	P 98	δ	Latitud	Longitud
T. C. Tepic - Mazatlán	0.00	3	1	6143	56.1	62.3	73.5	7.9	53.9	57.8	64.4	5.9	53.7	60.6	73.0	8.4	22.489651	-105.381153
T. C. Tepic - Mazatlán	0.00	3	2	6205	59.9	68.0	81.9	10.2	57.9	63.7	73.4	8.0	57.3	65.5	79.8	10.4	22.489650	-105.381153
Acaponeta	3.00																	

8 CARR: Ramal a Estación Nanchi

CLAVE: 18068

RUTA: MEX-015

AÑO: 2012

LUGAR	ESTACION				VELOCIDAD AUTOS (km/h)				VELOCIDAD AUTOBUSES (km/h)				VELOCIDAD CAMIONES (km/h)				COORDENADAS	
	KM	TE	SC	TDPA	Promedio	P 85	P 98	δ	Promedio	P 85	P 98	δ	Promedio	P 85	P 98	δ	Latitud	Longitud
T. C. Tepic - Mazatlán	0.00	3	0	1032	57.1	71.5	90.3	14.9	57.1	68.2	92.0	12.0	57.9	70.3	96.8	13.1	21.810297	-105.098229
Estación Nanchi	5.00																	

9 CARR: Ramal a Estación Ruíz

CLAVE: 18026

RUTA: MEX-015

AÑO: 2012

LUGAR	ESTACION				VELOCIDAD AUTOS (km/h)				VELOCIDAD AUTOBUSES (km/h)				VELOCIDAD CAMIONES (km/h)				COORDENADAS	
	KM	TE	SC	TDPA	Promedio	P 85	P 98	δ	Promedio	P 85	P 98	δ	Promedio	P 85	P 98	δ	Latitud	Longitud
T. C. Tepic - Mazatlán	0.00	3	0	3894	73.3	82.7	98.1	10.6	69.4	78.4	94.7	10.5	69.5	81.0	100.2	12.5	21.935056	-105.190139
Estación Ruíz	5.50	1	0	4917	58.5	65.6	81.1	9.9	56.7	63.9	79.7	9.2	55.1	63.7	82.8	10.5	21.943318	-105.160179

10 CARR: Ramal a La Laguna de Santa María

CLAVE: 18005

RUTA: MEX-015

AÑO: 2012

LUGAR	ESTACION				VELOCIDAD AUTOS (km/h)				VELOCIDAD AUTOBUSES (km/h)				VELOCIDAD CAMIONES (km/h)				COORDENADAS	
	KM	TE	SC	TDPA	Promedio	P 85	P 98	δ	Promedio	P 85	P 98	δ	Promedio	P 85	P 98	δ	Latitud	Longitud
T. C. Guadalajara - Tepic	0.00	3	0	2681	79.9	96.5	123.2	16.2	58.8	64.7	93.2	8.3	64.3	81.8	110.6	15.8	21.326858	-104.668775
Santa María del Oro	11.50	1	1	1951	76.7	92.0	121.6	15.1	57.8	55.9	88.3	6.3	64.5	83.9	110.8	17.2	21.326275	-104.595380
Santa María del Oro	11.50	1	2	1960	82.7	100.2	124.4	16.8	57.7	55.9	89.6	6.6	68.3	88.8	113.6	18.8	21.326274	-104.595379
Laguna de Santa María	20.00	1	0	749	39.7	44.4	53.8	7.5	31.0	32.5	34.7	4.8	40.6	49.6	54.3	9.6	21.360537	-104.570553

NAYARIT

11 CARR: Ramal a Mecatán

CLAVE: 18010

RUTA: MEX-015

AÑO: 2012

LUGAR	ESTACION				VELOCIDAD AUTOS (km/h)				VELOCIDAD AUTOBUSES (km/h)				VELOCIDAD CAMIONES (km/h)				COORDENADAS	
	KM	TE	SC	TDPA	Promedio	P 85	P 98	δ	Promedio	P 85	P 98	δ	Promedio	P 85	P 98	δ	Latitud	Longitud
T. C. (Tepic - Mazatlán) - Ixtapan de La Concepción Mecatán	0.00	3	0	850	41.9	48.2	60.1	8.4	40.6	45.2	54.1	7.9	39.8	48.1	54.8	9.4	21.500262	-105.084918
	9.00																	

12 CARR: Ramal a Nuevo Aeropuerto de Tepic

CLAVE: 18012

RUTA: MEX-015

AÑO: 2012

LUGAR	ESTACION				VELOCIDAD AUTOS (km/h)				VELOCIDAD AUTOBUSES (km/h)				VELOCIDAD CAMIONES (km/h)				COORDENADAS	
	KM	TE	SC	TDPA	Promedio	P 85	P 98	δ	Promedio	P 85	P 98	δ	Promedio	P 85	P 98	δ	Latitud	Longitud
T. C. Guadalajara - Tepic Aeropuerto de Tepic	0.00	3	0	3770	67.3	77.1	95.8	11.5	57.4	58.1	70.3	3.9	62.5	71.7	89.1	10.8	21.445764	-104.818897
	5.00																	

13 CARR: Ramal a Punta Mita

CLAVE: 18020

RUTA: MEX-200

AÑO: 2012

LUGAR	ESTACION				VELOCIDAD AUTOS (km/h)				VELOCIDAD AUTOBUSES (km/h)				VELOCIDAD CAMIONES (km/h)				COORDENADAS	
	KM	TE	SC	TDPA	Promedio	P 85	P 98	δ	Promedio	P 85	P 98	δ	Promedio	P 85	P 98	δ	Latitud	Longitud
T. C. Tepic - Puerto Vallarta San Ignacio Punta Mita	0.00	3	0	8455	75.2	86.8	104.4	12.2	72.5	83.0	94.6	11.5	69.5	82.5	102.6	14.1	20.759618	-105.374894
	9.00	3	0	3391	83.3	94.5	113.6	12.7	74.3	84.9	100.2	12.4	79.5	91.9	111.8	13.5	20.760064	-105.475214
	18.00																	

14 CARR: Ramal a Santa Cruz

CLAVE: 18030

RUTA: MEX-015

AÑO: 2012

LUGAR	ESTACION				VELOCIDAD AUTOS (km/h)				VELOCIDAD AUTOBUSES (km/h)				VELOCIDAD CAMIONES (km/h)				COORDENADAS	
	KM	TE	SC	TDPA	Promedio	P 85	P 98	δ	Promedio	P 85	P 98	δ	Promedio	P 85	P 98	δ	Latitud	Longitud
T. C. Tepic - Ixtapan de La Concepción Santa Cruz	0.00																	
	1.30	1	0	2156	51.3	59.2	71.3	9.9	53.6	53.9	62.2	3.7	49.9	54.9	71.2	9.3	21.433368	-105.190671

15 CARR: Santa Cruz - San Blas

CLAVE: 18230

RUTA: MEX-015

AÑO: 2012

LUGAR	ESTACION				VELOCIDAD AUTOS (km/h)				VELOCIDAD AUTOBUSES (km/h)				VELOCIDAD CAMIONES (km/h)				COORDENADAS	
	KM	TE	SC	TDPA	Promedio	P 85	P 98	δ	Promedio	P 85	P 98	δ	Promedio	P 85	P 98	δ	Latitud	Longitud
Santa Cruz Playa Los Cocos Aticama T. C. Crucero San Blas - San Blas	0.00	3	0	2664	51.8	59.5	71.4	9.5	45.8	53.8	65.2	9.2	49.6	54.5	69.7	9.2	21.433641	-105.187932
	3.90	1	0	2233	56.8	64.7	80.2	10.3	55.1	55.0	64.9	3.4	53.6	62.7	83.2	11.1	21.461998	-105.187737
	5.00	3	0	2618	48.0	54.2	67.7	9.1	51.1	53.1	56.3	5.8	46.0	52.9	65.4	9.5	21.489260	-105.189708
	17.00	1	0	2656	56.9	64.8	80.3	10.4	55.3	64.1	87.4	10.3	53.2	55.4	78.0	8.2	21.550241	-105.254154

NAYARIT

16 CARR: Tepic - Ixtapan de La Concepción

CLAVE: 18028

RUTA: MEX-015

AÑO: 2012

LUGAR	ESTACION				VELOCIDAD AUTOS (km/h)				VELOCIDAD AUTOBUSES (km/h)				VELOCIDAD CAMIONES (km/h)				COORDENADAS	
	KM	TE	SC	TDPA	Promedio	P 85	P 98	δ	Promedio	P 85	P 98	δ	Promedio	P 85	P 98	δ	Latitud	Longitud
T. C. Tepic - Mazatlán	0.00	3	0	11723	45.8	51.6	65.2	9.4	46.3	52.3	54.6	9.6	43.7	51.8	54.7	10.8	21.519212	-104.936953
T. Der. Mecatán	19.00	1	0	1897	41.8	48.1	59.6	8.3	48.6	52.3	54.6	7.0	40.2	49.5	54.5	10.1	21.500828	-105.081862
T. Der. Mecatán	19.00	3	0	2055	75.4	86.9	103.9	12.1	73.6	84.4	93.6	10.9	70.6	83.0	100.4	13.5	21.496254	-105.082991
Jalcocotán	27.00	1	0	2328	41.9	48.2	59.8	8.3	47.1	52.0	54.6	7.9	39.7	48.3	54.6	9.6	21.483429	-105.090802
T. Der. Santa Cruz	50.00	3	0	2068	51.7	59.4	71.4	9.5	47.0	54.5	64.6	9.2	49.7	54.6	69.8	9.1	21.426456	-105.184591
Ixtapan de La Concepción	77.42	1	0	1359	52.1	59.5	71.2	9.2	47.6	53.8	64.5	9.1	49.7	54.0	67.1	8.6	21.309786	-105.153638

17 CARR: Tepic - Mazatlán

CLAVE: 00500

RUTA: MEX-015

AÑO: 2012

LUGAR	ESTACION				VELOCIDAD AUTOS (km/h)				VELOCIDAD AUTOBUSES (km/h)				VELOCIDAD CAMIONES (km/h)				COORDENADAS	
	KM	TE	SC	TDPA	Promedio	P 85	P 98	δ	Promedio	P 85	P 98	δ	Promedio	P 85	P 98	δ	Latitud	Longitud
Tepic (Alta)	0.00	3	1	9477	56.8	53.9	111.7	4.8	55.0	53.5	54.8	0.0	55.0	53.5	54.8		21.512238	-104.906554
Tepic (Baja)	0.00	3	1	9433	35.6	42.4	54.7	8.2	32.4	40.8	52.9	9.5	27.9	36.2	51.4	10.0	21.512222	-104.906550
Tepic (Alta)	0.00	3	2	9420	52.8	62.4	79.6	11.0	53.4	61.8	77.1	9.9	50.1	54.9	73.4	8.8	21.512230	-104.906549
Tepic (Baja)	0.00	3	2	9693	37.5	42.3	53.5	7.1	33.5	37.4	52.1	6.9	31.8	34.9	50.9	7.5	21.512219	-104.906550
T. Izq. Libramiento de Tepic	2.56	1	1	14710	53.4	64.8	81.6	12.1	44.1	49.7	54.3	6.7	44.7	53.5	74.9	9.9	21.520181	-104.919113
T. Izq. Libramiento de Tepic	2.56	1	2	15703	41.5	67.2	83.6	23.5	26.7	50.1	54.4	17.6	28.3	56.4	79.1	19.8	21.520177	-104.919119
T. Izq. Aut. Tepic - Ent. San Blas (Cuota)	3.70	3	0	7948	63.6	76.2	90.8	14.4	56.3	70.1	82.8	13.7	52.0	68.7	84.0	16.7	21.536439	-104.932474
Los Otates	19.80	3	0	3881	61.1	70.6	84.6	11.5	55.8	57.3	83.9	6.3	51.3	62.8	136.2	18.0	21.636417	-104.969727
T. Izq. Jumatán	28.52	1	0	4296	78.5	87.7	103.8	10.8	72.2	83.3	103.1	12.5	67.7	80.3	99.9	14.0	21.669778	-105.023780
T. Izq. Jumatán	28.52	3	1	6324	71.3	76.4	85.6	8.2	63.4	69.4	80.4	7.6	58.2	68.3	81.1	11.5	21.668134	-105.029964
T. Izq. Jumatán	28.52	3	2	6250	86.8	94.2	109.6	9.7	82.4	91.1	109.6	10.8	79.4	88.0	110.6	11.3	21.668134	-105.029967
T. Izq. San Blas	33.54	1	1	6606	94.8	102.5	114.5	9.1	91.4	98.4	121.7	10.4	85.6	94.9	112.5	11.7	21.682477	-105.045313
T. Izq. San Blas	33.54	1	2	6597	87.3	94.5	110.5	9.8	83.0	91.5	110.8	10.6	79.3	87.5	106.7	10.8	21.682472	-105.045313
T. Izq. San Blas	33.54	3	1	6947	98.8	113.2	134.0	14.8	88.4	102.1	122.2	14.9	79.7	97.3	114.2	17.6	21.701096	-105.053586
T. Izq. San Blas	33.54	3	2	6874	89.9	101.7	122.0	13.1	80.2	91.1	106.5	12.9	72.5	85.9	118.6	15.4	21.701096	-105.053583
T. Izq. Villa Hidalgo	48.12	1	0	6385	64.8	77.4	104.3	13.1	61.1	71.8	92.3	10.8	60.1	68.8	90.9	9.9	21.806635	-105.102588
T. Izq. Villa Hidalgo	48.12	3	0	5921	60.8	70.8	102.1	11.1	62.2	72.2	104.3	11.8	60.9	69.9	102.4	10.8	21.808570	-105.103357
T. Izq. Santiago Ixcuintla	56.42	1	0	6874	77.4	87.3	104.5	11.3	74.3	84.7	99.7	11.7	73.3	82.9	97.6	11.2	21.853736	-105.152127
T. Izq. Santiago Ixcuintla	56.42	3	0	6113	55.4	53.6	55.0	0.8	55.4	53.6	55.0	0.7	55.3	53.6	54.9	0.6	21.859791	-105.155812
T. Izq. Tuxpan	70.60	1	0	7372	63.4	72.5	86.5	10.5	57.8	65.2	79.7	9.5	52.3	61.9	77.3	10.8	21.944202	-105.216010
T. Izq. Tuxpan	70.60	3	0	7873	68.7	83.4	101.3	15.9	72.7	83.4	98.5	12.2	69.4	79.0	93.4	11.3	21.956702	-105.221624
T. Der. Rosa morada	90.70	3	0	4604	65.6	81.1	102.2	14.9	55.2	70.0	86.6	13.7	54.4	70.8	90.6	15.4	22.119673	-105.217762
Tierra Generosa	110.40	1	0	3300	84.5	96.9	114.6	13.2	74.8	83.9	98.4	10.6	70.1	82.0	98.6	12.8	22.293523	-105.272954
T. Der. Acaponeta	136.52	1	0	6259	74.9	84.2	101.7	10.7	72.9	81.7	93.5	10.1	70.3	79.3	93.7	10.9	22.478978	-105.385603

NAYARIT

17 CARR: Tepic - Mazatlán

CLAVE: 00500

RUTA: MEX-015

AÑO: 2012

LUGAR	ESTACION				VELOCIDAD AUTOS (km/h)				VELOCIDAD AUTOBUSES (km/h)				VELOCIDAD CAMIONES (km/h)				COORDENADAS	
	KM	TE	SC	TDPA	Promedio	P 85	P 98	δ	Promedio	P 85	P 98	δ	Promedio	P 85	P 98	δ	Latitud	Longitud
T. Der. Acajoneta	136.52	3	0	4547	53.2	53.5	54.9	3.8	54.8	53.5	54.9	0.5	54.3	53.5	54.9	1.6	22.496239	-105.384639
Lim. Edos. Term. Nay. Ppia. Sin.	144.60																	
Escuinapa de Hidalgo	200.00	1	0	8307	57.5	68.7	84.7	12.2	55.1	63.6	74.9	9.5	55.3	63.4	80.8	9.9	22.833522	-105.763841
Escuinapa de Hidalgo	200.00	3	0	5667	67.4	84.7	122.2	17.5	79.9	120.7	143.1	28.6	66.4	92.2	140.2	21.9	22.841189	-105.790651
Rosario	221.71	1	0	6853	57.2	68.0	84.1	11.9	55.0	63.5	75.7	9.6	55.1	63.5	79.6	10.0	22.996954	-105.851450
Rosario	221.71	3	0	4780	66.5	84.6	123.9	18.0	68.2	90.2	143.0	21.7	69.8	103.9	141.5	25.6	23.003813	-105.869840
T. Der. Durango	267.99	1	0	6843	70.7	84.7	102.7	14.6	64.3	75.6	90.3	10.8	64.4	74.1	92.8	10.5	23.189386	-106.203747
T. Der. Durango	267.99	3	1	8184	37.5	44.3	56.5	9.2	34.8	41.3	53.0	7.7	31.5	37.3	51.8	8.4	23.189307	-106.211928
T. Der. Durango	267.99	3	2	8339	46.6	59.3	101.3	15.0	44.0	54.2	107.5	15.4	38.5	46.7	84.1	12.2	23.189308	-106.211927
Villa Unión	269.52	3	1	8351	57.5	63.2	74.7	8.2	53.2	59.9	70.1	8.3	49.7	56.1	69.9	9.0	23.190349	-106.222032
Villa Unión	269.52	3	2	8411	66.9	81.1	103.7	14.4	65.2	79.9	101.3	14.3	60.2	76.5	104.0	16.1	23.190352	-106.222036
T. Der. Libramiento de Mazatlán	288.87	1	1	10797	81.1	87.5	102.4	9.0	79.4	84.2	94.8	8.3	76.7	83.2	94.9	8.9	23.226309	-106.384031
T. Der. Libramiento de Mazatlán	288.87	1	2	10820	74.8	85.3	104.7	11.8	71.0	81.2	97.6	11.4	69.7	80.1	99.0	11.8	23.226308	-106.384034
Mazatlán	292.00																	

18 CARR: Tepic - Presa Aguamilpa

CLAVE: 18029

RUTA: MEX-015

AÑO: 2012

LUGAR	ESTACION				VELOCIDAD AUTOS (km/h)				VELOCIDAD AUTOBUSES (km/h)				VELOCIDAD CAMIONES (km/h)				COORDENADAS	
	KM	TE	SC	TDPA	Promedio	P 85	P 98	δ	Promedio	P 85	P 98	δ	Promedio	P 85	P 98	δ	Latitud	Longitud
T. C. Guadalajara - Tepic	0.00	3	1	9600	57.9	54.1	127.5	7.5	55.0	53.5	54.8	0.0	55.0	53.5	54.8		21.479046	-104.846042
T. C. Guadalajara - Tepic	0.00	3	2	9626	36.4	41.2	53.3	6.6	36.8	46.6	54.1	8.1	33.5	38.3	51.3	7.0	21.479046	-104.846043
X. C. Tepic - Fco. I. Madero	17.50	3	0	1346	62.1	72.9	89.9	12.3	54.2	60.4	76.1	7.9	51.4	60.6	74.6	10.6	21.587916	-104.847820
Presa Aguamilpa	54.00	1	0	1214	55.8	60.9	71.7	6.6	55.5	57.0	66.8	4.0	55.1	53.8	59.8	0.8	21.825420	-104.828417

19 CARR: Tepic - Puerto Vallarta

CLAVE: 00068

RUTA: MEX-200

AÑO: 2012

LUGAR	ESTACION				VELOCIDAD AUTOS (km/h)				VELOCIDAD AUTOBUSES (km/h)				VELOCIDAD CAMIONES (km/h)				COORDENADAS	
	KM	TE	SC	TDPA	Promedio	P 85	P 98	δ	Promedio	P 85	P 98	δ	Promedio	P 85	P 98	δ	Latitud	Longitud
Tepic	0.00	3	1	19584	50.8	54.9	70.5	8.1	45.1	52.5	69.5	8.7	45.6	52.1	62.0	8.8	21.489655	-104.894807
Tepic	0.00	3	2	21178	46.3	59.6	73.7	13.6	41.1	56.6	78.2	17.3	39.2	53.4	71.8	15.6	21.489683	-104.894800
Limite de Zona Urbana Tepic	1.80	3	1	15120	55.9	63.9	79.8	9.8	48.0	55.5	74.2	10.7	50.4	59.9	74.5	11.1	21.474055	-104.889803
Limite de Zona Urbana Tepic	1.80	3	2	14990	57.1	64.6	81.7	10.0	53.3	60.3	73.6	8.6	55.0	63.1	79.1	9.5	21.474059	-104.889800
X. C. Libramiento de Tepic (Baja)	3.90	3	1	5112	63.4	71.9	84.5	9.9	60.1	64.7	76.1	7.9	60.0	66.8	83.6	9.5	21.465347	-104.889239
X. C. Libramiento de Tepic (Alta)	3.90	3	1	11480	69.6	81.0	98.9	12.5	68.3	76.5	91.2	10.4	63.4	71.7	89.0	10.2	21.465351	-104.889159
X. C. Libramiento de Tepic (Baja)	3.90	3	2	4729	60.4	69.9	83.4	10.9	58.3	62.2	71.5	6.3	57.6	64.9	79.8	9.9	21.465431	-104.888918

NAYARIT

19 C A R R : Tepic - Puerto Vallarta

CLAVE: 00068

RUTA: MEX-200

AÑO : 2012

L U G A R	E S T A C I O N				VELOCIDAD AUTOS (km/h)				VELOCIDAD AUTOBUSES (km/h)				VELOCIDAD CAMIONES (km/h)				C O O R D E N A D A S	
	KM	TE	SC	TDPA	Promedio	P 85	P 98	δ	Promedio	P 85	P 98	δ	Promedio	P 85	P 98	δ	Latitud	Longitud
X. C. Libramiento de Tepic (Alta)	3.90	3	2	13051	69.5	80.0	93.8	11.8	65.5	72.5	83.6	9.0	58.8	69.4	87.0	11.4	21.465441	-104.888923
Jalisco	7.15	3	0	12060	63.0	71.5	84.3	10.0	58.5	62.5	72.7	6.5	58.8	65.8	82.3	9.7	21.435430	-104.899788
T. Izq. Emiliano Zapata	18.40	3	0	5277	51.7	59.3	71.3	9.6	49.7	53.1	61.4	7.1	50.4	54.0	69.1	8.6	21.360977	-104.918623
T. Izq. Compostela (1° Acceso)	35.80	1	0	5292	75.6	87.3	104.7	12.3	70.2	80.3	92.5	11.2	69.9	83.1	103.2	14.3	21.256163	-104.901514
T. Izq. Compostela (1° Acceso)	35.80	3	0	3809	75.5	87.2	104.8	12.4	64.3	73.7	86.7	10.2	68.2	81.4	99.9	13.9	21.248424	-104.903111
Las Varas	71.30	1	0	9588	74.0	86.1	112.2	13.1	70.3	84.2	104.1	13.6	70.0	84.9	120.8	15.6	21.186730	-105.124158
Las Varas	71.30	3	0	11204	74.3	86.5	112.6	13.1	71.4	86.0	108.1	14.3	70.5	86.4	121.3	15.9	21.172364	-105.147290
T. Der. Rincón de Guayabitos	94.50	1	1	7891	77.6	91.3	116.2	14.2	72.8	88.8	105.9	14.9	74.1	91.7	124.5	17.0	21.027299	-105.260693
T. Der. Rincón de Guayabitos	94.50	1	2	8068	70.6	81.1	105.7	12.1	67.9	79.2	103.3	12.0	69.3	83.7	119.6	14.8	21.027304	-105.260693
T. Der. Rincón de Guayabitos	94.50	3	0	8965	74.3	86.7	112.9	13.3	71.8	86.9	110.9	14.6	70.5	86.5	120.6	15.9	21.008592	105.271789
T. Der. Sayulita	122.91	1	0	8905	75.4	86.9	104.5	12.2	74.1	84.8	99.6	11.7	67.5	81.1	100.8	14.2	20.864137	-105.425827
T. Der. Sayulita	122.91	3	0	8456	75.5	87.0	104.5	12.2	74.2	84.9	100.0	11.7	68.3	81.7	101.8	14.2	20.860320	-105.424886
T. Der. Cruz de Juanacaxtle	137.30	3	1	7488	69.0	81.8	99.8	14.0	71.6	85.0	108.0	14.9	68.1	82.5	104.1	14.8	20.764323	-105.364652
T. Der. Cruz de Juanacaxtle	137.30	3	2	7335	73.8	91.0	111.1	17.2	76.5	93.2	118.0	17.4	72.0	90.7	114.8	18.3	20.764323	-105.364652
Bucerías	140.81	3	1	8742	69.0	81.8	99.8	14.0	71.7	85.9	109.6	15.3	68.7	83.1	104.3	14.9	20.749132	-105.318660
Bucerías	140.81	3	2	8582	73.8	91.0	111.1	17.2	76.0	93.1	115.5	17.6	72.8	91.2	115.4	18.2	20.749131	-105.318663
Lim. Edos. Term. Nay. Ppia. Jal.	152.60																	
T. Der. Aeropuerto Díaz Ordáz	158.37	1	1	23579	43.7	49.3	61.1	7.6	41.2	44.5	54.4	7.3	40.4	50.5	54.6	11.3	20.681599	-105.242977
T. Der. Aeropuerto Díaz Ordáz	158.37	1	2	22866	40.1	45.2	60.4	8.9	39.2	44.2	58.0	8.7	40.2	51.2	54.7	12.7	20.681599	-105.242977
T. Der. Aeropuerto Díaz Ordáz (Alta)	158.37	3	1	13225	43.7	49.3	61.3	7.7	41.2	44.6	53.6	6.9	39.6	50.3	54.6	11.6	20.670443	-105.249257
T. Der. Aeropuerto Díaz Ordáz (Baja)	158.37	3	1	9064	43.8	49.3	61.4	7.6	41.2	44.3	54.3	7.2	40.1	46.8	54.7	9.0	20.670417	-105.249331
T. Der. Aeropuerto Díaz Ordáz (Baja)	158.37	3	2	8914	39.9	45.0	60.4	8.9	38.8	43.9	57.8	8.7	39.0	48.7	54.9	10.6	20.670531	-105.249151
T. Der. Aeropuerto Díaz Ordáz (Alta)	158.37	3	2	13189	40.0	45.1	60.4	8.9	38.8	44.3	54.4	8.5	39.2	51.1	54.7	13.2	20.670466	-105.249189
Puerto Vallarta	166.88																	

20 C A R R : Chapalilla - Compostela (Cuota)

CLAVE: 18004

RUTA: MEX-068D

AÑO : 2012

L U G A R	E S T A C I O N				VELOCIDAD AUTOS (km/h)				VELOCIDAD AUTOBUSES (km/h)				VELOCIDAD CAMIONES (km/h)				C O O R D E N A D A S	
	KM	TE	SC	TDPA	Promedio	P 85	P 98	δ	Promedio	P 85	P 98	δ	Promedio	P 85	P 98	δ	Latitud	Longitud
T. C. Guadalajara - Tepic	0.00	3	0	5530	69.7	80.4	95.2	12.0	66.9	73.8	86.2	9.6	62.7	72.4	89.0	11.2	21.190477	-104.643166
Caseta de Cobro Compostela	31.50	2	0	4487													21.229440	-104.887437
T. Der. Compostela	36.50	1	0	5461	79.2	91.8	111.4	13.4	80.1	90.4	101.8	11.7	74.2	84.2	100.7	11.7	21.228316	-104.898781
T. C. Tepic - Puerto Vallarta	38.00	1	0	5330	78.9	91.6	111.3	13.4	80.3	90.5	101.8	11.6	74.4	84.4	101.0	11.7	21.231526	-104.920576

NAYARIT

21 CARR: Guadalajara - Tepic (Cuota)

CLAVE: 00033

RUTA: MEX-057D

AÑO: 2012

LUGAR	ESTACION				VELOCIDAD AUTOS (km/h)				VELOCIDAD AUTOBUSES (km/h)				VELOCIDAD CAMIONES (km/h)				COORDENADAS	
	KM	TE	SC	TDPA	Promedio	P 85	P 98	δ	Promedio	P 85	P 98	δ	Promedio	P 85	P 98	δ	Latitud	Longitud
T. C. Guadalajara - Tepic (Libre)	0.00	3	1	5222	71.8	78.8	92.5	9.1	67.6	74.6	85.9	9.6	63.0	71.7	89.0	10.1	20.738404	-103.582243
T. C. Guadalajara - Tepic (Libre)	0.00	3	2	5718	70.4	75.4	92.0	8.7	69.3	75.3	94.7	9.6	64.5	72.1	92.0	9.4	20.738404	-103.582244
Caseta de Cobro Arenal	10.96	2	1	5169													20.778732	-103.662440
Caseta de Cobro Arenal	10.96	2	2	5168													20.778732	-103.662440
T. Der. Magdalena	45.00	1	1	4407	90.7	104.7	124.9	15.7	84.2	98.3	117.2	15.3	74.5	92.1	113.2	17.8	20.898096	-103.955058
T. Der. Magdalena	45.00	1	2	4765	87.8	100.4	118.5	13.5	82.4	94.9	112.4	14.4	73.2	88.7	110.4	15.6	20.898027	-103.955058
T. Der. Magdalena	45.00	3	1	4915	90.6	104.6	124.7	15.7	84.4	98.5	117.8	15.2	74.6	92.3	113.0	17.7	20.903047	-103.989290
T. Der. Magdalena	45.00	3	2	5079	87.7	100.4	118.5	13.6	82.2	94.8	113.0	14.6	73.3	88.6	110.6	15.5	20.903047	-103.989290
Caseta de Cobro Plan de Barrancas	69.34	2	1	5251													21.005394	-104.144086
Caseta de Cobro Plan de Barrancas	69.34	2	2	5250													21.005394	-104.144086
Lim. Edos. Term. Jal. Ppia. Nay.	84.60																	
Caseta de Cobro Santa Ma. del Oro	145.32	2	1	2994													21.328309	-104.664328
Caseta de Cobro Santa Ma. del Oro	145.32	2	2	2993													21.328309	-104.664328
Caseta de Cobro Santa Ma. del Oro	145.32	3	1	4178	69.4	80.7	98.6	12.5	69.2	77.7	92.7	10.6	64.6	72.8	89.8	9.8	21.329752	-104.665259
Caseta de Cobro Santa Ma. del Oro	145.32	3	2	4001	69.5	80.0	93.9	11.8	66.0	73.0	84.9	9.5	58.2	67.1	83.9	10.0	21.329752	-104.665259
T. C. Guadalajara - Tepic (Libre)	168.62																	

22 CARR: Tepic - Villa Unión (cuota)

CLAVE: 00500

RUTA: MEX-015D

AÑO: 2012

LUGAR	ESTACION				VELOCIDAD AUTOS (km/h)				VELOCIDAD AUTOBUSES (km/h)				VELOCIDAD CAMIONES (km/h)				COORDENADAS	
	KM	TE	SC	TDPA	Promedio	P 85	P 98	δ	Promedio	P 85	P 98	δ	Promedio	P 85	P 98	δ	Latitud	Longitud
Tepic	0.00																	
Caseta de Cobro El Pichón	4.70	1	1	4957	85.3	98.0	114.5	13.3	68.0	81.1	103.8	14.3	57.6	79.8	107.4	20.4	21.562996	-104.974159
Caseta de Cobro El Pichón	4.70	1	2	4810	104.7	117.4	134.9	13.1	95.3	104.9	124.5	12.0	86.1	104.1	127.2	18.4	21.562995	-104.974158
Caseta de Cobro El Pichón	4.70	2	1	4702													21.571682	-104.987528
Caseta de Cobro El Pichón	4.70	2	2	4702													21.571682	-104.987528
T. C. Tepic - Mazatlán	21.00	1	1	4729	98.9	112.2	131.8	14.2	91.1	100.5	118.1	11.5	86.2	98.2	120.6	13.2	21.648014	-105.024511
T. C. Tepic - Mazatlán	21.00	1	2	4714	116.5	129.4	142.6	12.8	108.0	117.6	135.5	11.3	106.0	118.6	137.3	13.6	21.648012	-105.024514
T. C. Tepic - Mazatlán	24.50	3	0	3992	57.5	67.1	86.9	11.1	52.7	64.6	91.6	13.9	52.6	57.3	87.8	10.1	21.714687	-105.060554
Est. Ruiz	54.90	1	0	3099	96.0	109.5	128.3	13.9	85.8	94.7	112.3	11.5	78.0	89.7	112.1	12.6	21.947889	-105.112714
Est. Ruiz	54.90	3	0	3328	109.5	127.0	142.1	17.7	98.6	107.3	132.5	11.8	92.7	102.6	128.7	12.0	21.961031	-105.122907
Rosa morada	73.50	1	0	3269	113.4	131.7	143.2	16.6	99.5	110.5	136.0	13.2	94.6	104.8	133.6	12.9	22.084070	-105.210220
Rosa morada	73.50	3	0	2839	107.1	138.4	144.1	26.2	99.6	138.0	144.1	28.4	94.3	135.7	143.8	29.1	22.092460	-105.220849
Acaponeta	120.20	1	0	2578	96.5	109.7	129.0	14.0	87.2	96.7	111.7	11.9	79.6	90.6	110.0	12.5	22.447583	-105.418599
Caseta de Cobro Acaponeta	120.20	2	0	226													22.454352	-105.419106

NAYARIT

22 CARR: Tepic - Villa Unión (cuota)

CLAVE: 00500

RUTA: MEX-015D

AÑO: 2012

LUGAR	ESTACION				VELOCIDAD AUTOS (km/h)				VELOCIDAD AUTOBUSES (km/h)				VELOCIDAD CAMIONES (km/h)				COORDENADAS	
	KM	TE	SC	TDPA	Promedio	P 85	P 98	δ	Promedio	P 85	P 98	δ	Promedio	P 85	P 98	δ	Latitud	Longitud
Acaponeta	120.20	3	0	2436	67.3	87.2	118.9	16.6	62.6	74.1	103.0	11.3	59.0	61.4	93.0	7.6	22.456876	-105.428460
Lim. Edos. Term. Nay. Ppia. Sin.	132.80																	
Escuinapa de Hidalgo	208.60	1	1	1651	117.2	137.6	144.0	18.9	101.6	113.0	139.0	14.0	99.4	108.6	137.7	12.3	22.853037	-105.748645
Escuinapa de Hidalgo	208.60	1	2	1622	98.7	111.7	124.8	14.5	87.2	92.4	102.6	7.6	86.3	91.8	102.1	7.3	22.853036	-105.748651
Escuinapa de Hidalgo	208.60	3	0	3250	101.7	115.9	134.6	15.4	90.2	96.2	111.6	10.2	82.9	90.7	104.1	9.6	22.859557	-105.755065
Rosario	220.68	1	0	3000	77.4	101.3	127.5	23.8	75.6	91.7	110.5	16.3	66.1	83.5	104.6	16.7	22.979589	-105.871915
Caseta de Cobro Rosario	220.68	2	0	3473													22.984689	-105.877932
Rosario	220.68	3	0	3455	104.2	120.4	139.7	15.6	93.3	103.0	122.0	12.0	83.7	97.8	121.6	15.0	22.991092	-105.885510
Villa Unión	240.90	1	0	3246	94.6	119.4	141.1	22.5	92.7	109.3	136.5	17.6	86.0	100.9	129.3	16.2	23.185990	-106.174228

23 CARR: El Carrizo - La Batanga

CLAVE: 18107

RUTA: NAY-078

AÑO: 2012

LUGAR	ESTACION				VELOCIDAD AUTOS (km/h)				VELOCIDAD AUTOBUSES (km/h)				VELOCIDAD CAMIONES (km/h)				COORDENADAS	
	KM	TE	SC	TDPA	Promedio	P 85	P 98	δ	Promedio	P 85	P 98	δ	Promedio	P 85	P 98	δ	Latitud	Longitud
T. C. Ent. Santiago Ixcuintla - Playa Los Corchos	0.00	3	0	2575	49.9	53.9	63.8	8.9	53.1	54.1	73.4	5.8	52.9	54.0	69.0	5.7	21.772508	-105.274248
Sentispac	9.00	1	0	1635	62.9	71.7	83.1	10.4	62.1	70.5	80.5	9.6	60.2	70.9	83.6	12.3	21.809438	-105.338363
La Batanga	25.00	1	0	1466	67.2	79.4	102.4	12.9	65.3	83.9	111.7	14.9	60.6	59.0	104.8	9.6	21.882459	-105.459009

24 CARR: Navarrete - Sauta

CLAVE: 18013

RUTA: NAY-013

AÑO: 2012

LUGAR	ESTACION				VELOCIDAD AUTOS (km/h)				VELOCIDAD AUTOBUSES (km/h)				VELOCIDAD CAMIONES (km/h)				COORDENADAS	
	KM	TE	SC	TDPA	Promedio	P 85	P 98	δ	Promedio	P 85	P 98	δ	Promedio	P 85	P 98	δ	Latitud	Longitud
T. C. Crucero San Blas - San Blas	0.00	3	0	2517	56.8	69.5	87.1	13.4	55.5	63.2	82.1	9.2	53.9	64.4	83.2	12.0	21.653222	-105.118047
Sauta	7.00	1	0	2122	51.9	56.3	73.8	8.8	50.2	54.2	68.2	8.7	49.5	54.4	69.6	9.6	21.714889	-105.138388

25 CARR: Ramal a Amado Nervo

CLAVE: 18011

RUTA: NAY

AÑO: 2012

LUGAR	ESTACION				VELOCIDAD AUTOS (km/h)				VELOCIDAD AUTOBUSES (km/h)				VELOCIDAD CAMIONES (km/h)				COORDENADAS	
	KM	TE	SC	TDPA	Promedio	P 85	P 98	δ	Promedio	P 85	P 98	δ	Promedio	P 85	P 98	δ	Latitud	Longitud
T. C. Guadalajara - Tepic	0.00	3	0	1063	54.9	60.5	69.7	6.7	55.0	54.1	62.2	1.4	53.5	59.5	65.9	7.7	21.128107	-104.610926
Amado Nervo	15.00																	

NAYARIT

31 CARR: Ramal a Villa Hidalgo

CLAVE: 18031

RUTA: NAY

AÑO: 2012

LUGAR	ESTACION				VELOCIDAD AUTOS (km/h)				VELOCIDAD AUTOBUSES (km/h)				VELOCIDAD CAMIONES (km/h)				COORDENADAS	
	KM	TE	SC	TDPA	Promedio	P 85	P 98	δ	Promedio	P 85	P 98	δ	Promedio	P 85	P 98	δ	Latitud	Longitud
T. C. Tepic - Mazatlán	0.00	3	0	2500	73.9	83.8	114.9	12.8	72.1	80.3	139.8	14.4	71.4	85.1	135.1	16.3	21.805493	-105.108389
Villa Hidalgo	16.00	1	0	3103	52.0	58.8	72.3	8.9	48.6	53.0	63.6	7.8	46.3	53.9	71.3	10.3	21.754571	-105.227851

32 CARR: Ramal a Volcán del Ceboruco

CLAVE: 18003

RUTA: NAY

AÑO: 2012

LUGAR	ESTACION				VELOCIDAD AUTOS (km/h)				VELOCIDAD AUTOBUSES (km/h)				VELOCIDAD CAMIONES (km/h)				COORDENADAS	
	KM	TE	SC	TDPA	Promedio	P 85	P 98	δ	Promedio	P 85	P 98	δ	Promedio	P 85	P 98	δ	Latitud	Longitud
T. C. Guadalajara - Tepic	0.00	3	0	3976	56.4	62.8	76.2	8.4	52.0	58.5	70.2	8.5	53.0	54.9	71.7	7.0	21.051603	-104.459721
Volcán Ceboruco	25.00																	

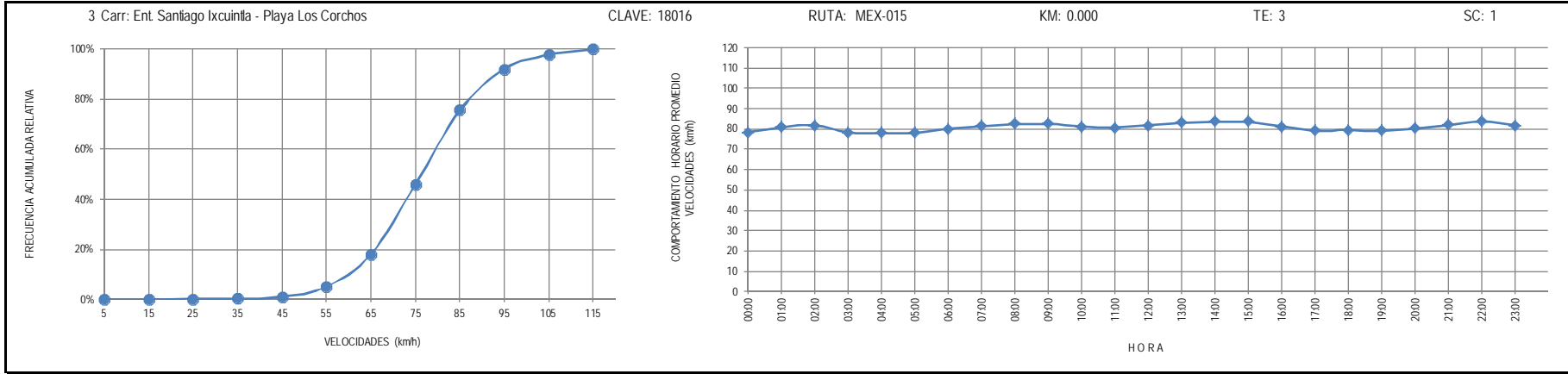
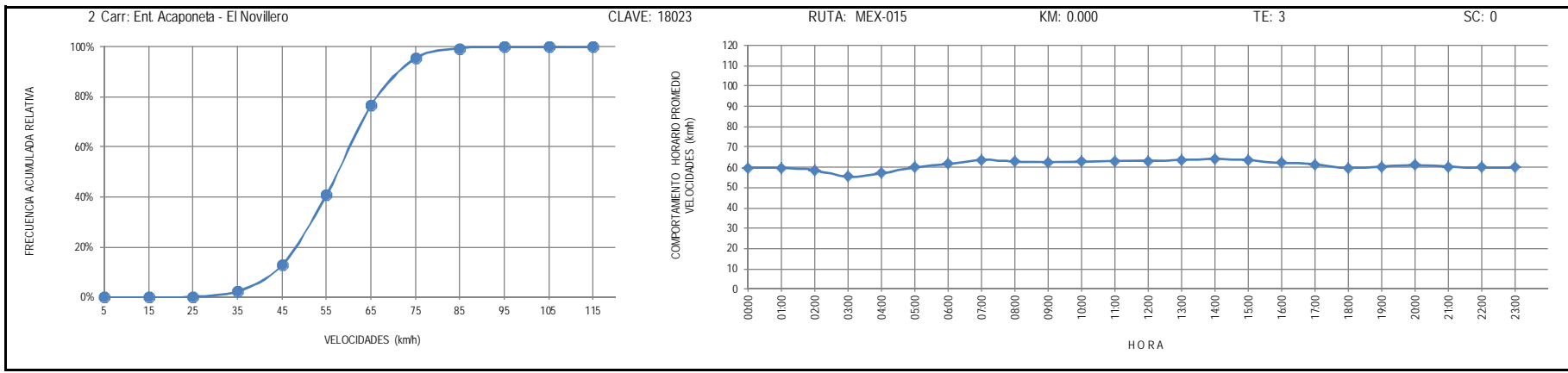
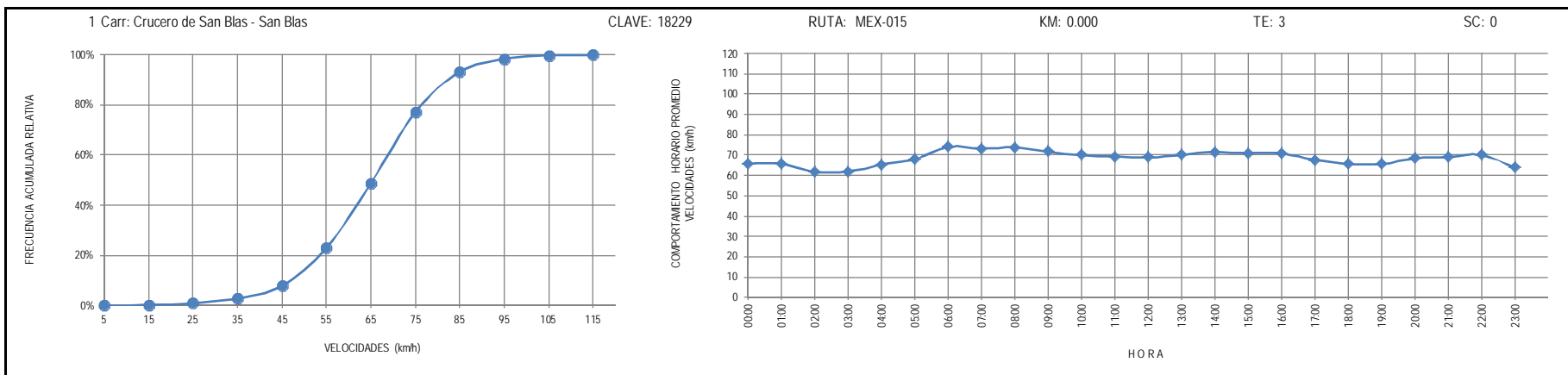
33 CARR: Tepic - Francisco I. Madero

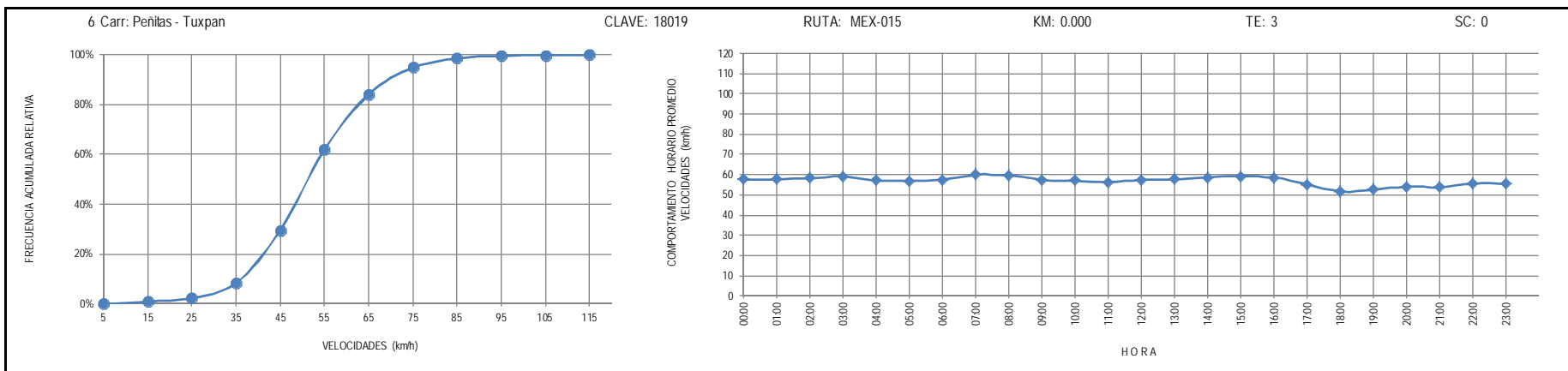
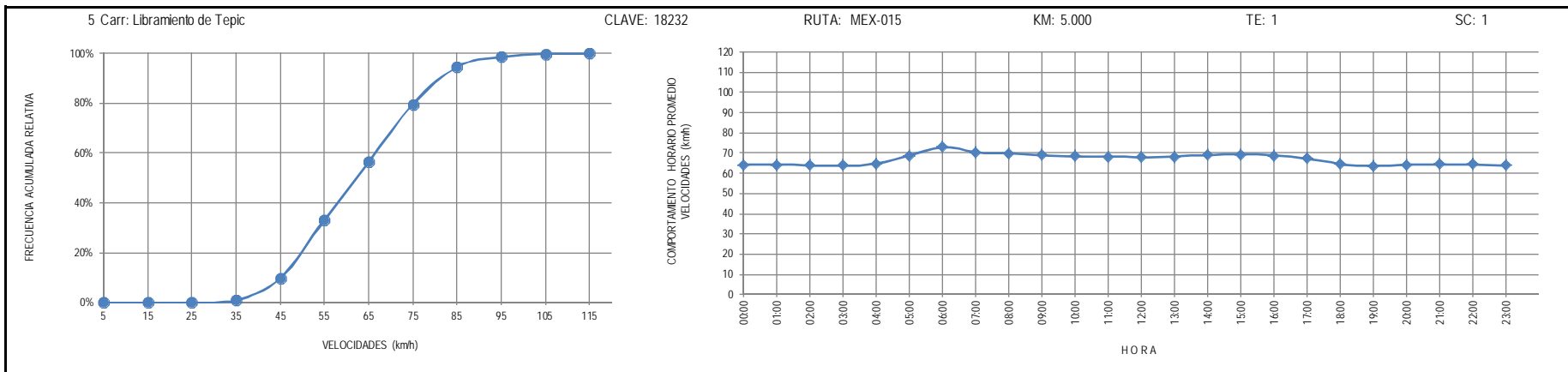
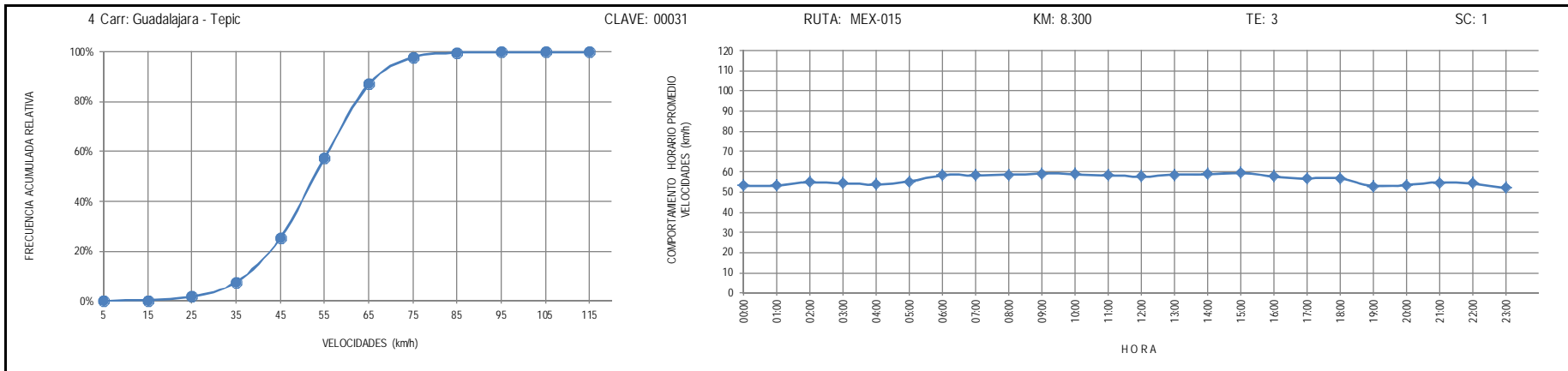
CLAVE: 18009

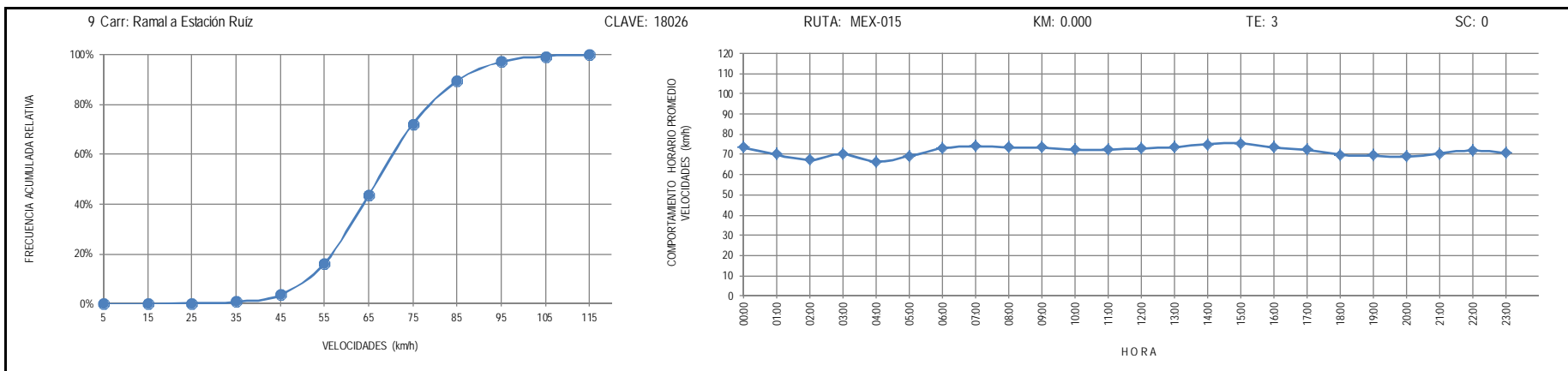
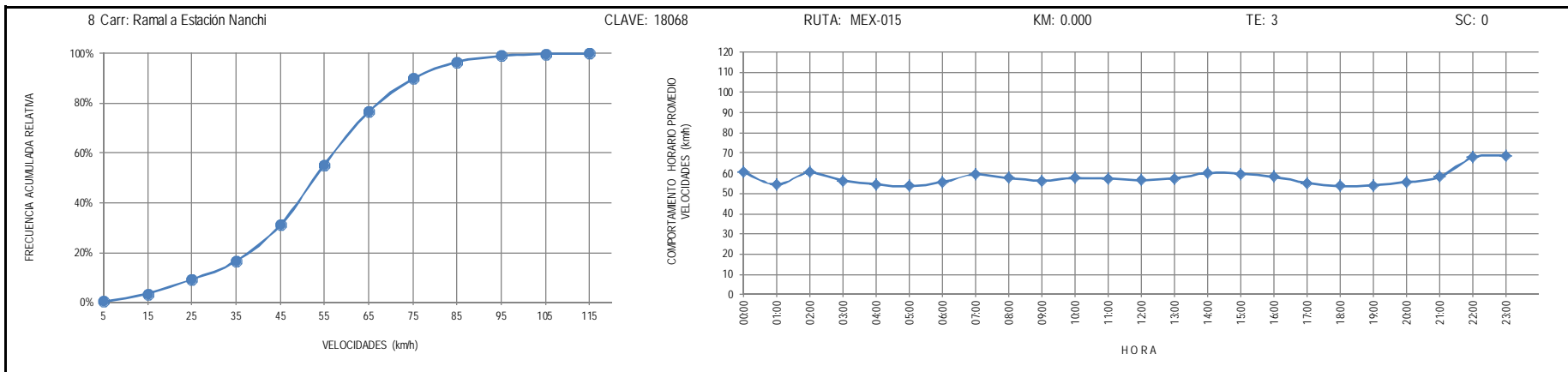
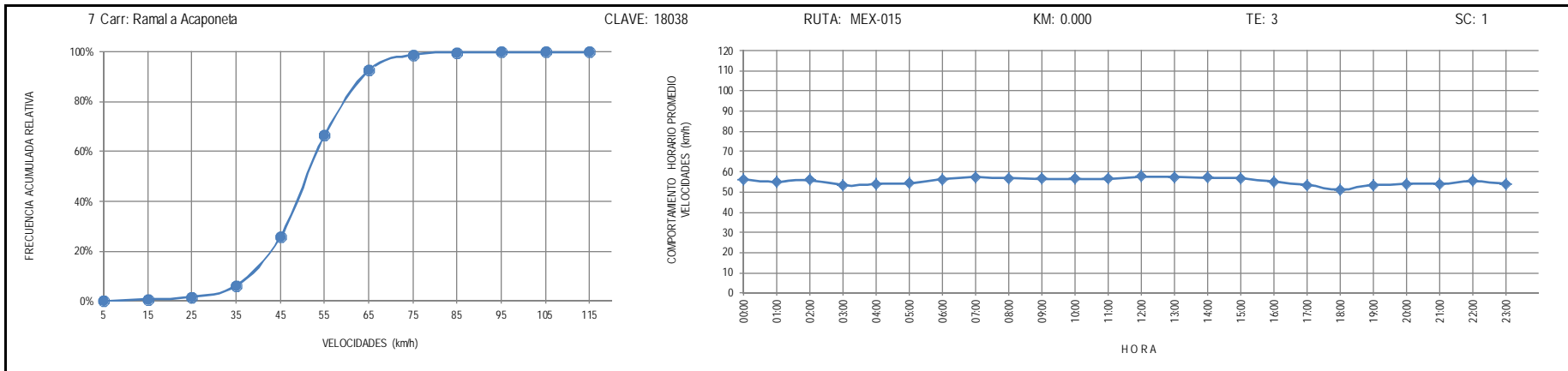
RUTA: NAY-MEX

AÑO: 2012

LUGAR	ESTACION				VELOCIDAD AUTOS (km/h)				VELOCIDAD AUTOBUSES (km/h)				VELOCIDAD CAMIONES (km/h)				COORDENADAS	
	KM	TE	SC	TDPA	Promedio	P 85	P 98	δ	Promedio	P 85	P 98	δ	Promedio	P 85	P 98	δ	Latitud	Longitud
Tepic	0.00	3	0	5316	56.4	66.1	82.0	11.5	58.3	62.2	87.8	7.4	55.0	63.5	77.9	10.9	21.544131	-104.864444
Bellavista	9.00	3	0	4117	56.6	60.9	68.5	6.1	53.1	53.9	62.4	4.3	53.8	56.6	65.5	6.2	21.565083	-104.874334
Francisco I. Madero	16.00																	

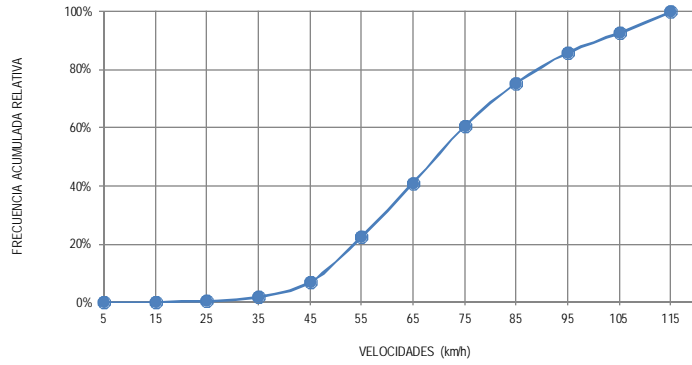






10 Carr: Ramal a La Laguna de Santa María

CLAVE: 18005

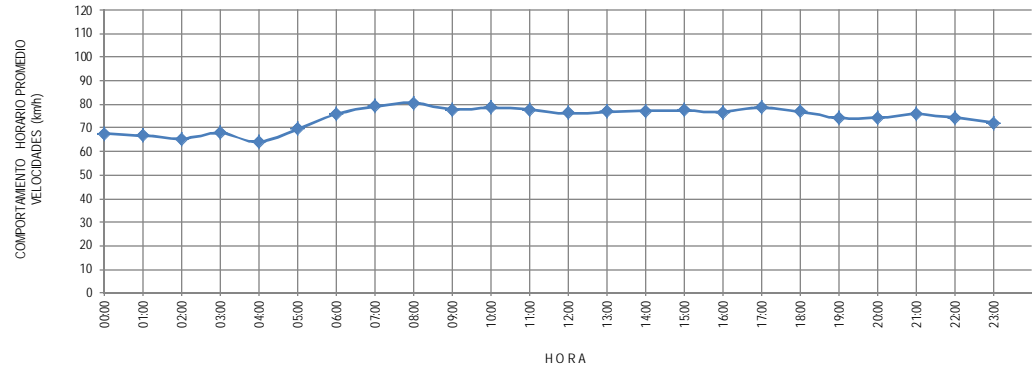


RUTA: MEX-015

KM: 0.000

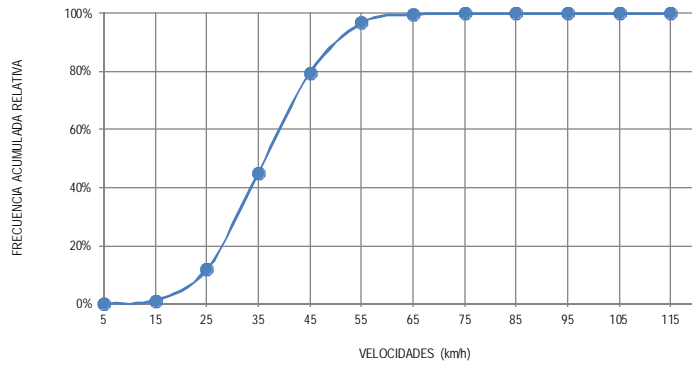
TE: 3

SC: 0



11 Carr: Ramal a Mecatán

CLAVE: 18010

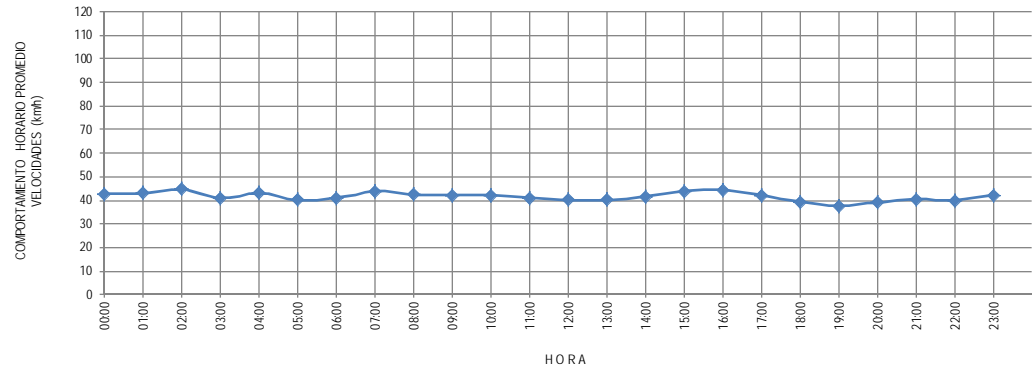


RUTA: MEX-015

KM: 0.000

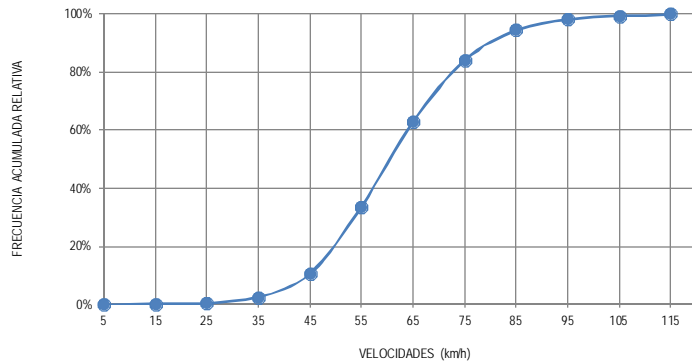
TE: 3

SC: 0



12 Carr: Ramal a Nuevo Aeropuerto de Tepic

CLAVE: 18012

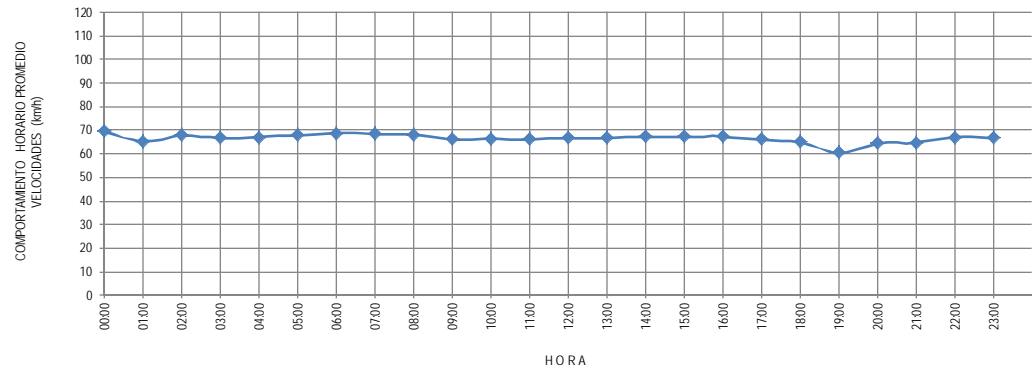


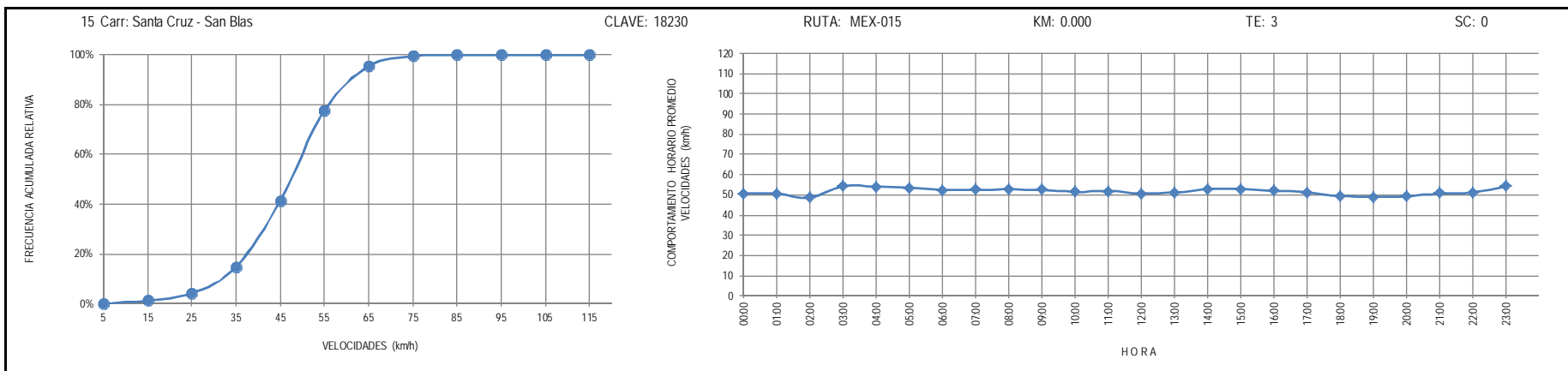
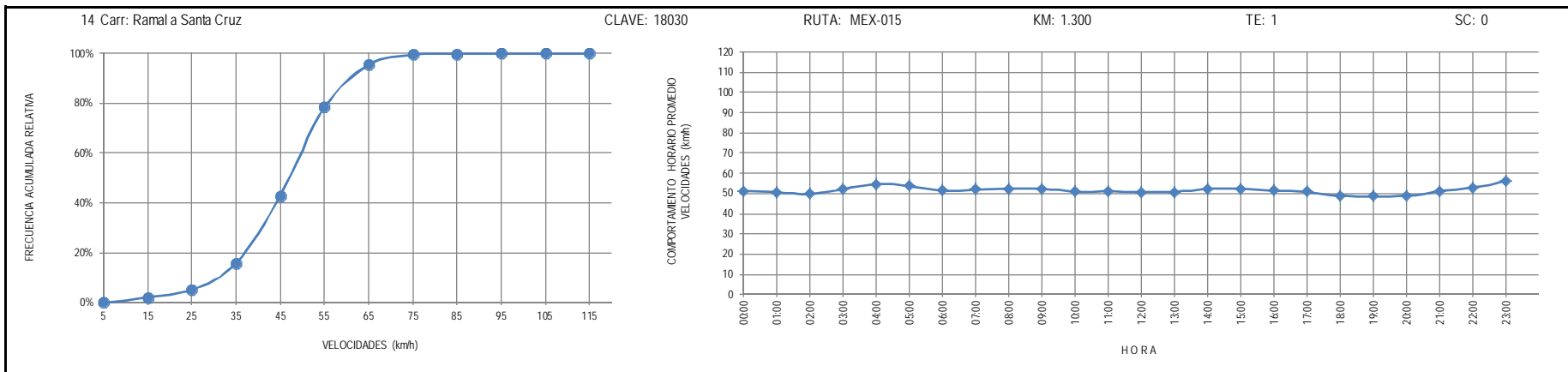
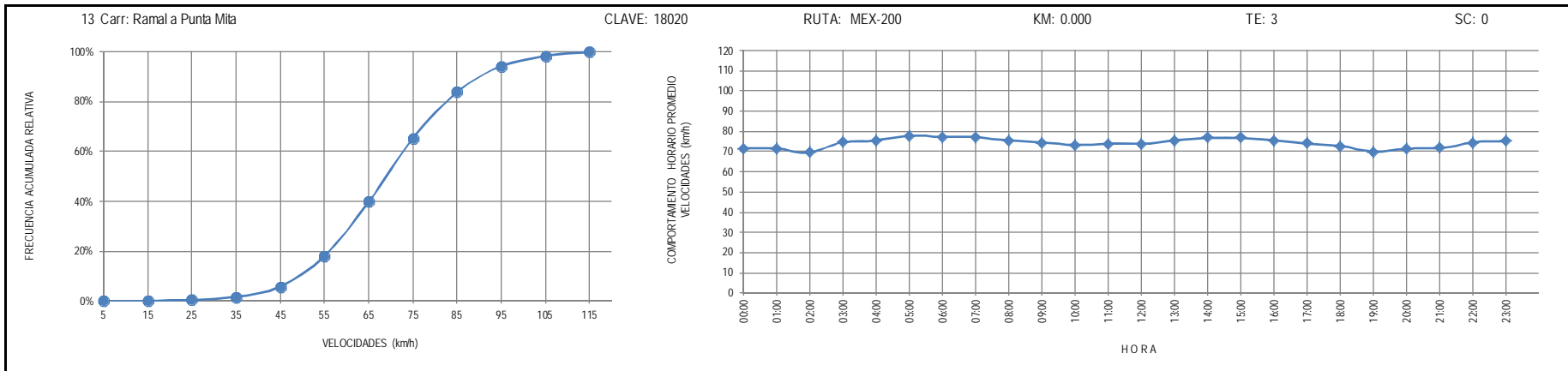
RUTA: MEX-015

KM: 0.000

TE: 3

SC: 0





16 Carr: Tepic - Ixtapan de La Concepción

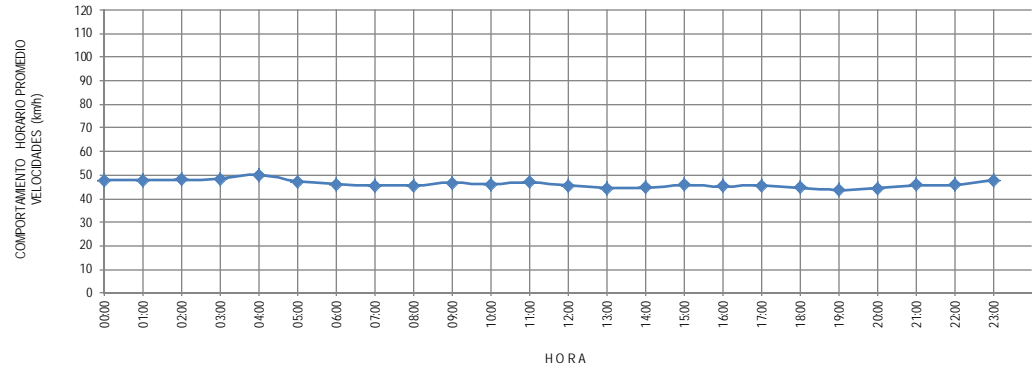
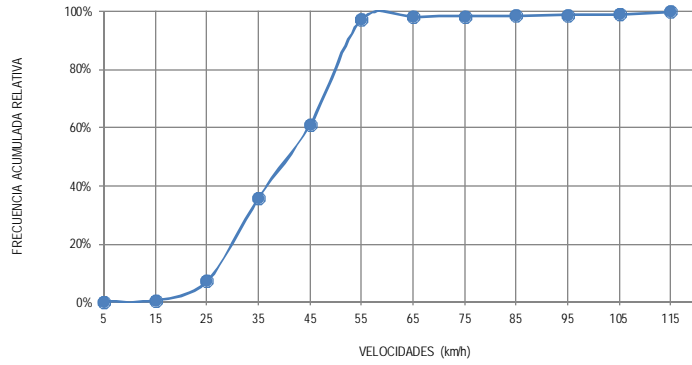
CLAVE: 18028

RUTA: MEX-015

KM: 0.000

TE: 3

SC: 0



17 Carr: Tepic - Mazatlán

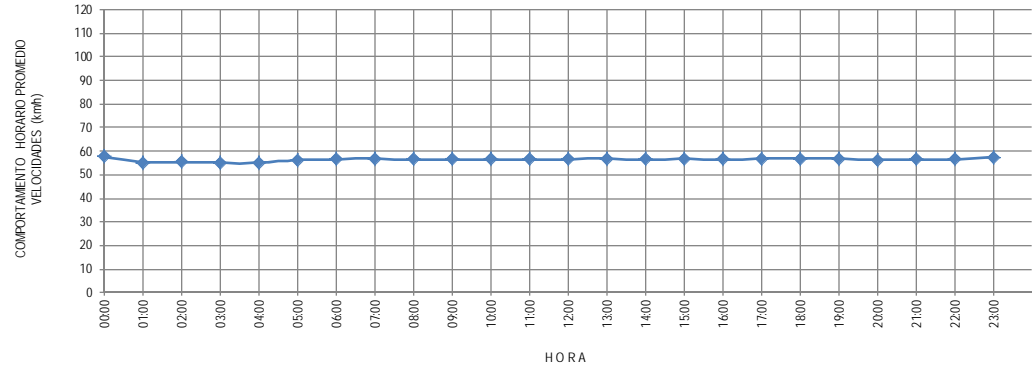
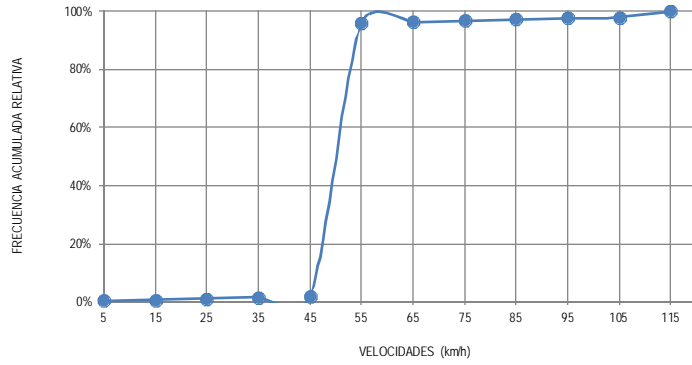
CLAVE: 00500

RUTA: MEX-015

KM: 0.000

TE: 3

SC: 1



18 Carr: Tepic - Presa Aguamiipa

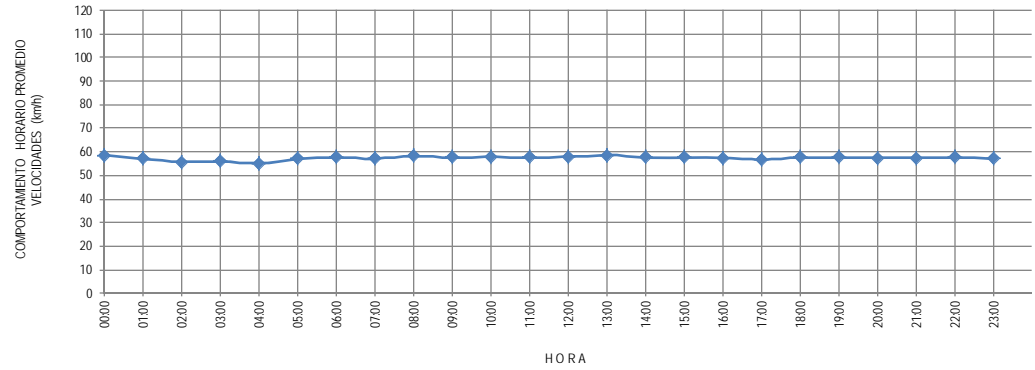
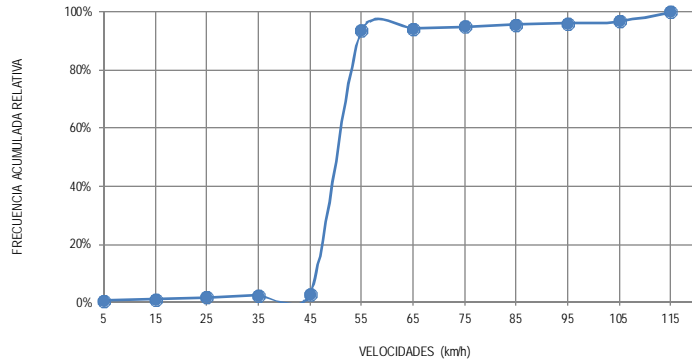
CLAVE: 18029

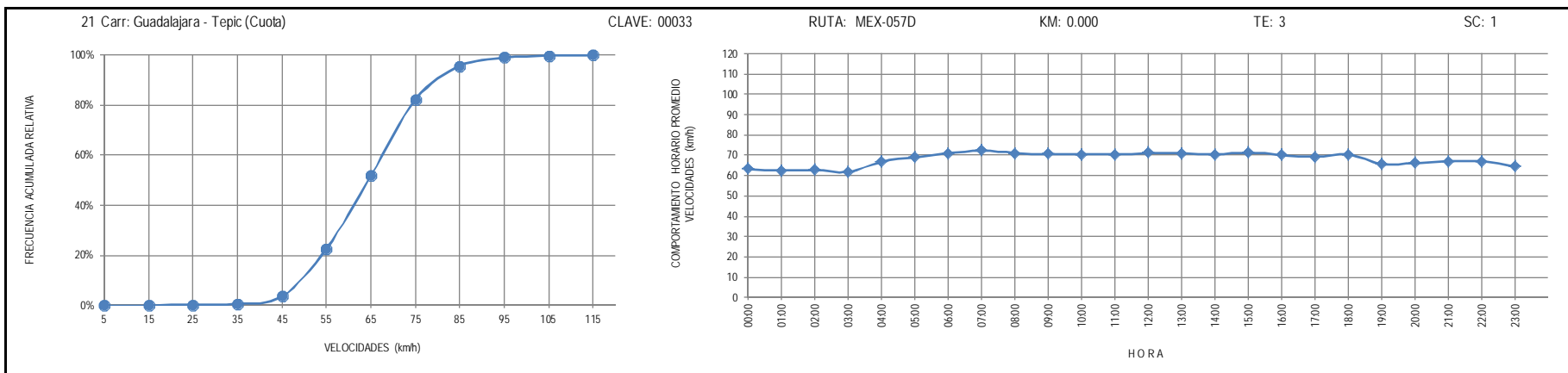
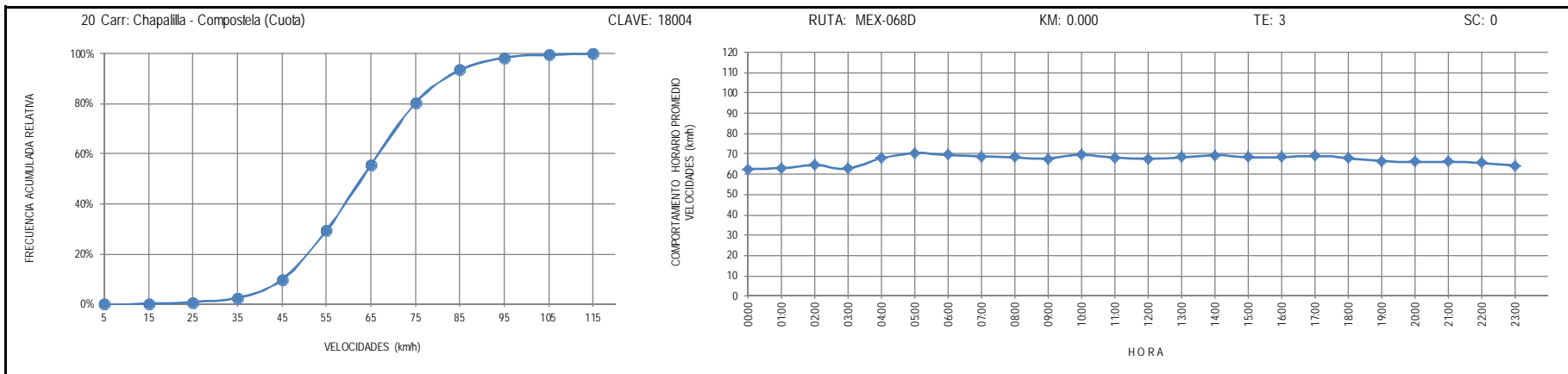
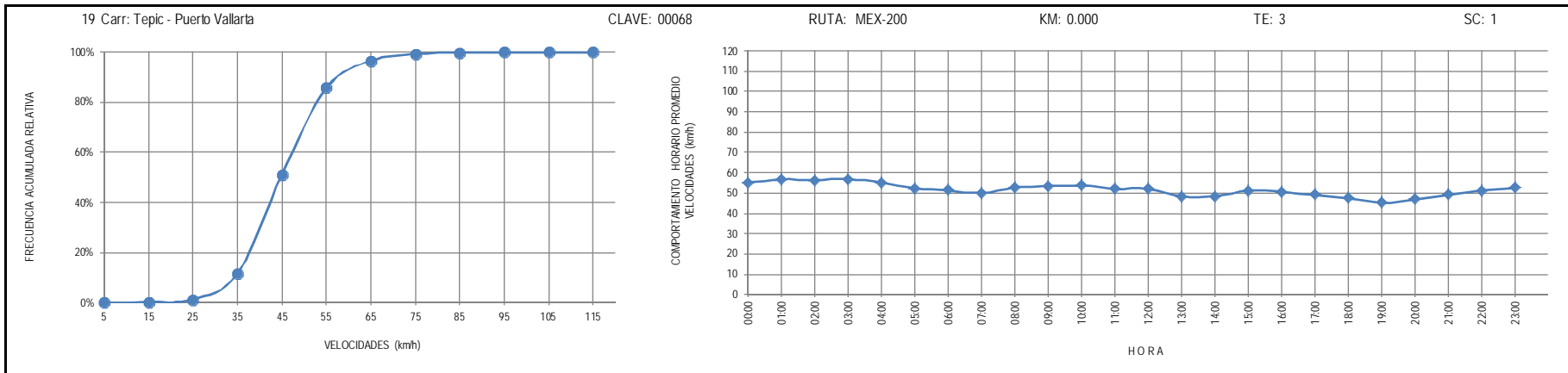
RUTA: MEX-015

KM: 0.000

TE: 3

SC: 1





22 Carr: Tepic - Villa Unión (cuota)

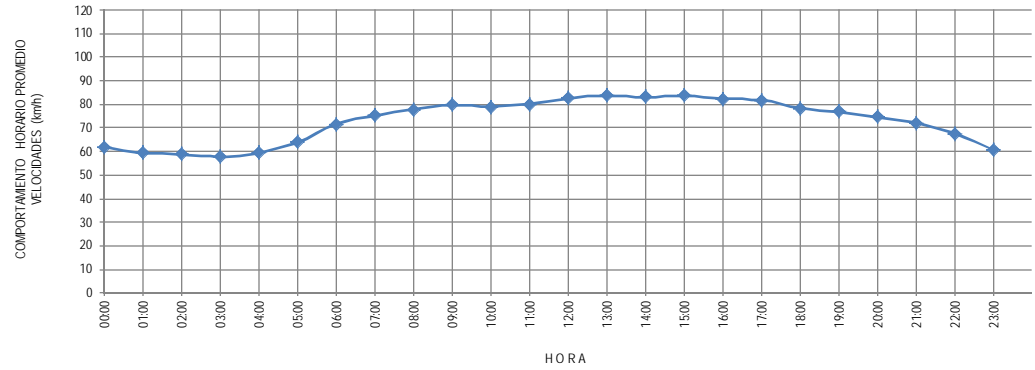
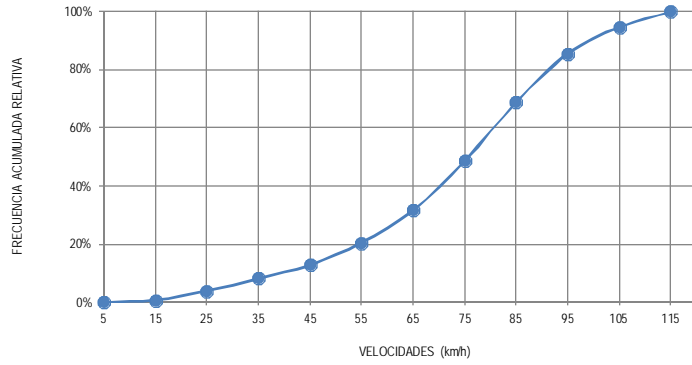
CLAVE: 00500

RUTA: MEX-015D

KM: 4.700

TE: 1

SC: 1



23 Carr: El Carrizo - La Batanga

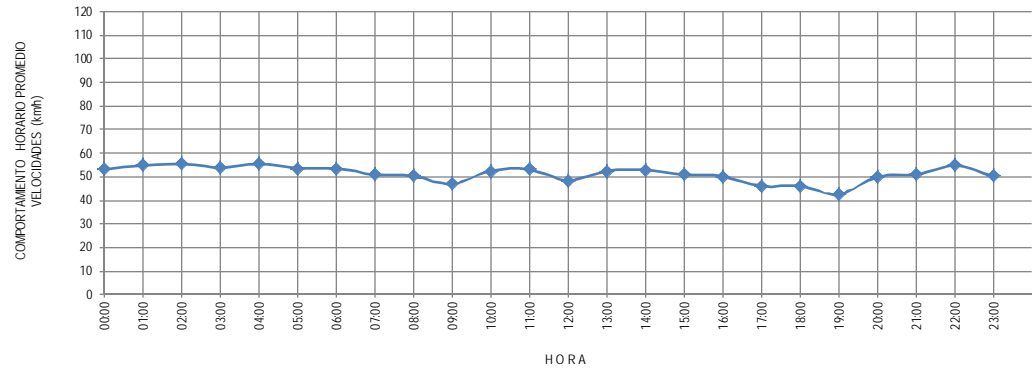
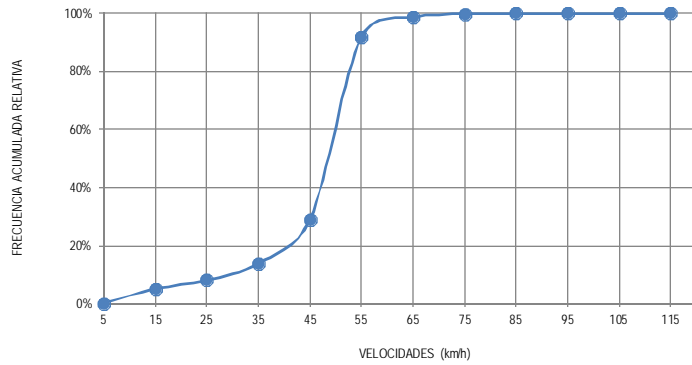
CLAVE: 18107

RUTA: NAY-078

KM: 0.000

TE: 3

SC: 0



24 Carr: Navarrete - Sauta

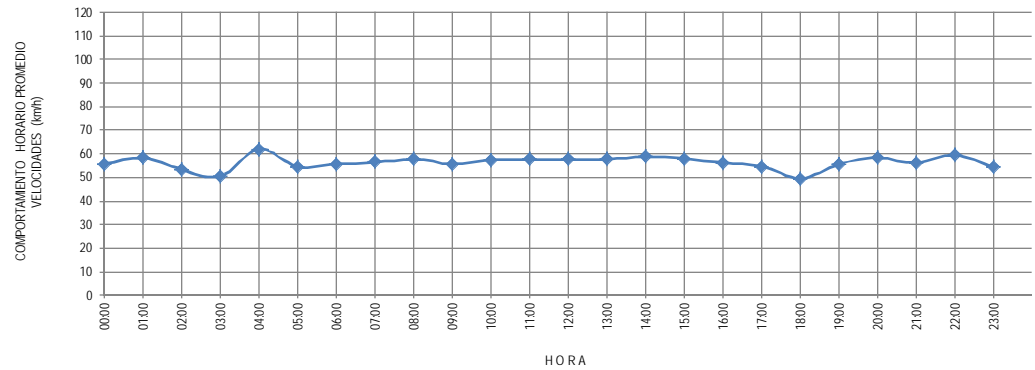
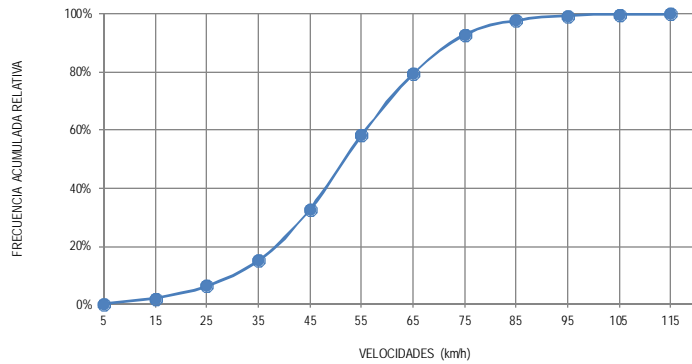
CLAVE: 18013

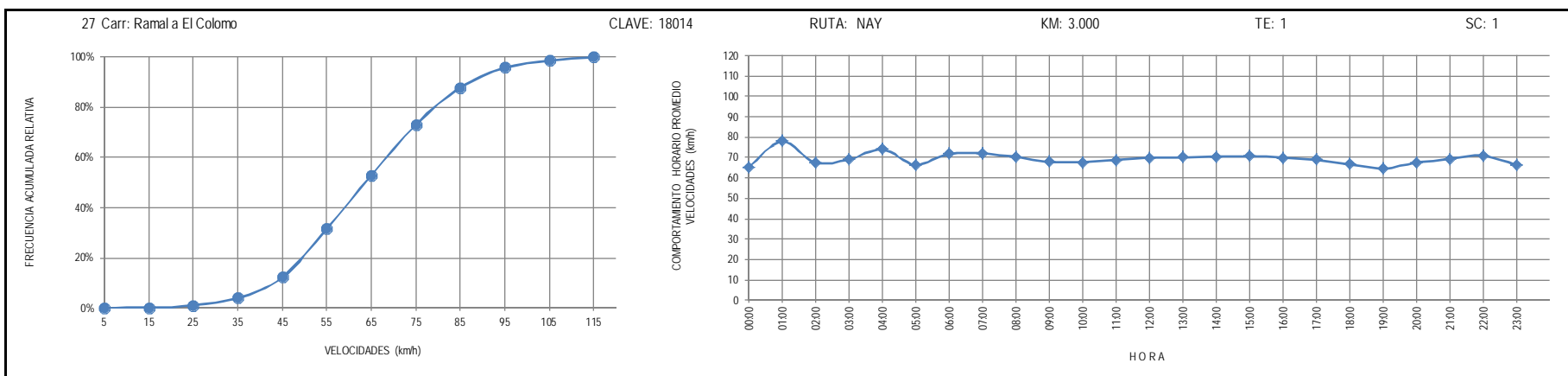
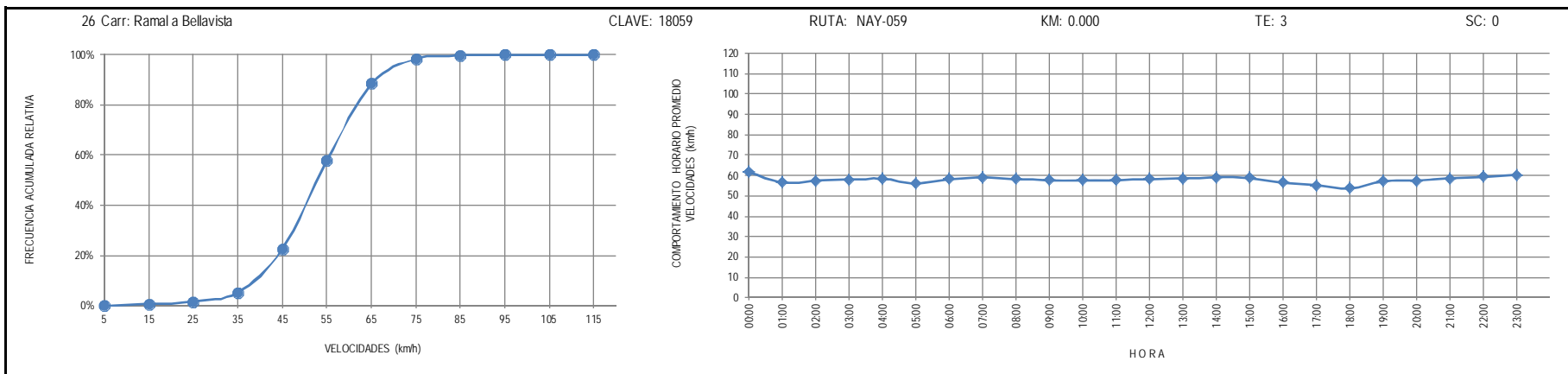
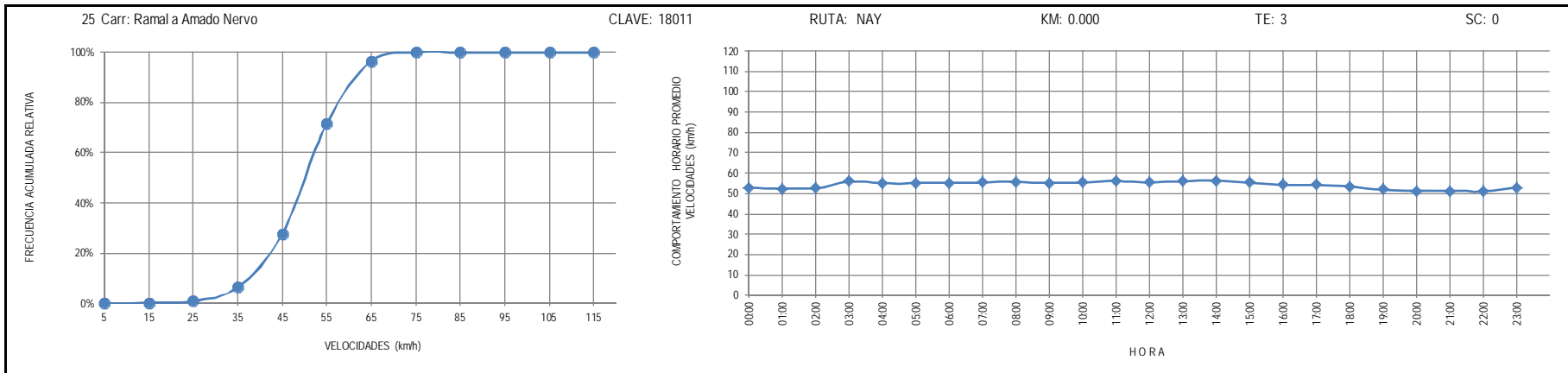
RUTA: NAY-013

KM: 0.000

TE: 3

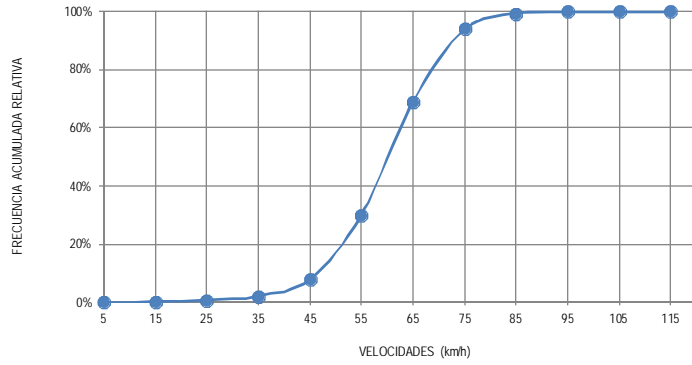
SC: 0





28 Carr: Ramal a Estación Yago

CLAVE: 18224

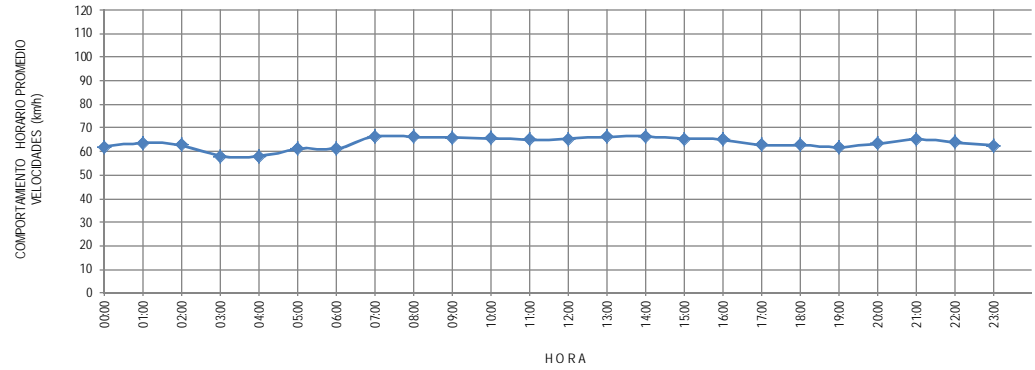


RUTA: NAY

KM: 0.000

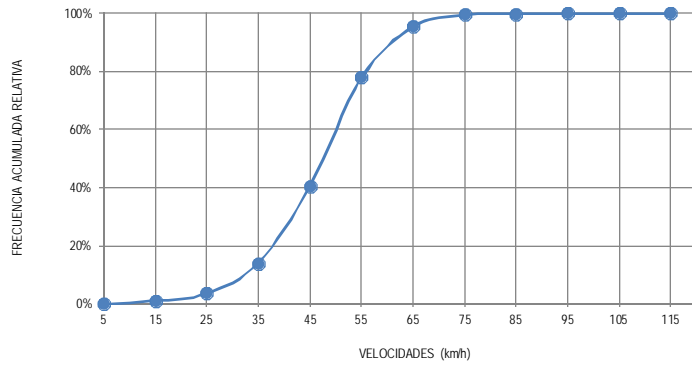
TE: 3

SC: 0



29 Carr: Ramal a Ixtapan de La Concepción

CLAVE: 18233

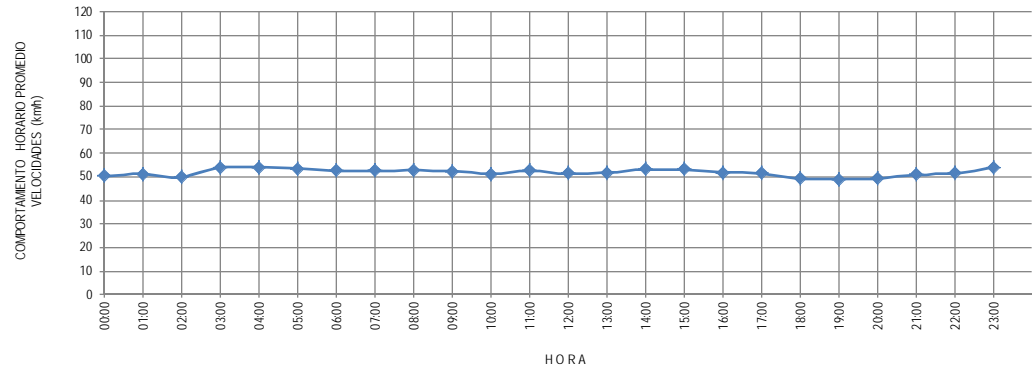


RUTA: NAY

KM: 0.000

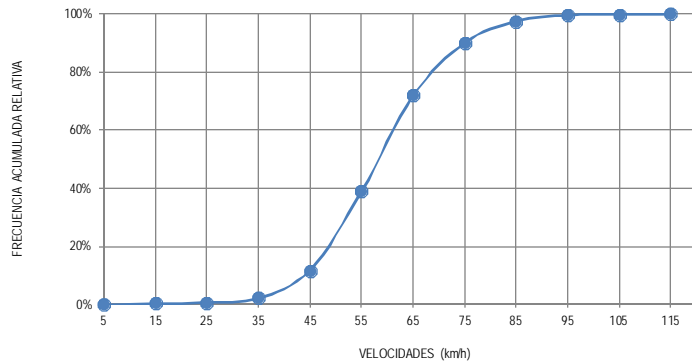
TE: 3

SC: 0



30 Carr: Ramal a Milpas Viejas

CLAVE: 18007



RUTA: NAY

KM: 0.000

TE: 3

SC: 0

