

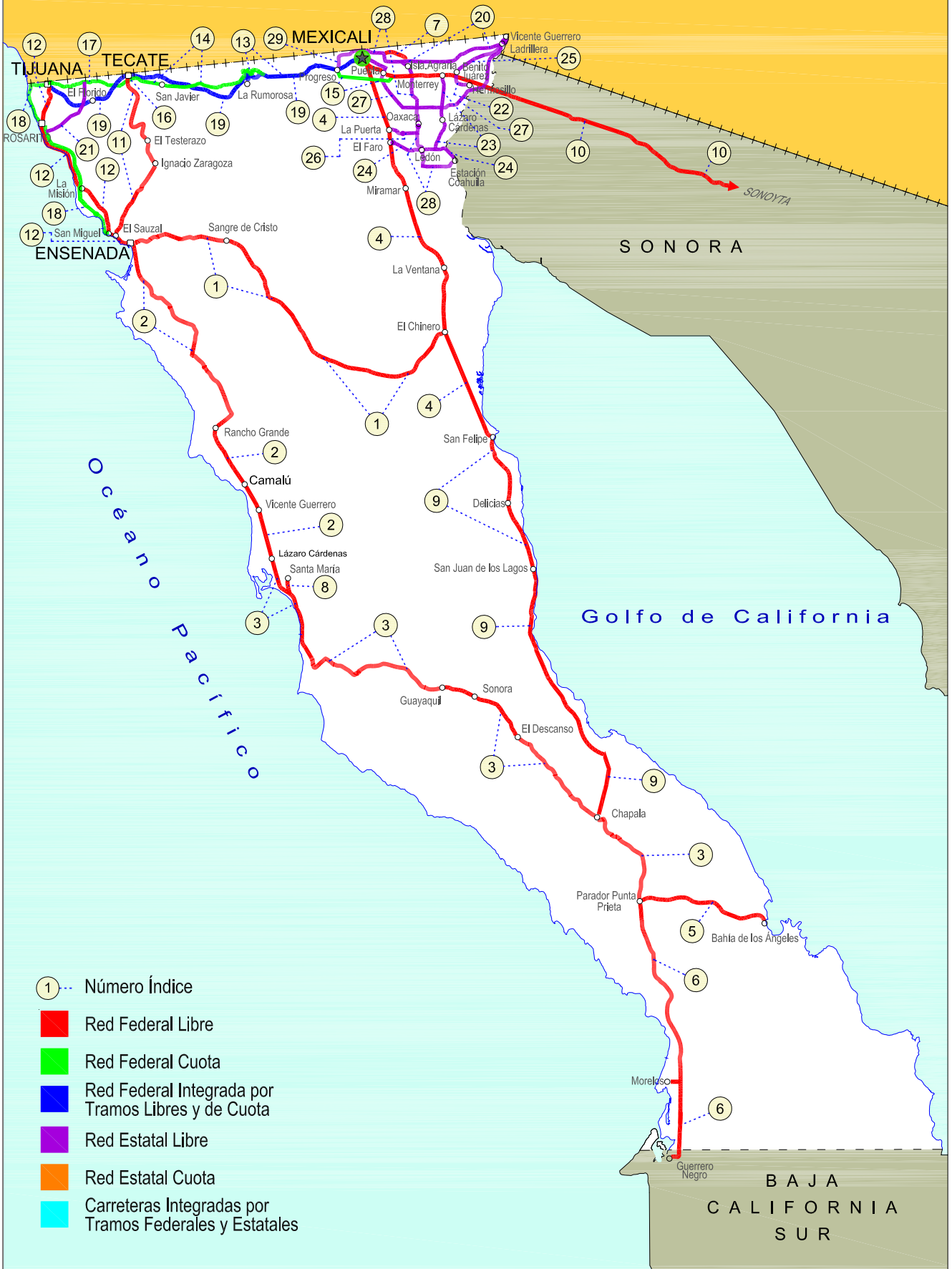
BAJA CALIFORNIA

NO. INDICE	CARRETERA	RUTA
---RED FEDERAL LIBRE---		
1	Ensenada - El Chinero	MEX-003
2	Ensenada - Lázaro Cárdenas	MEX-001
3	Ent. Punta Prieta - Bahía de Los Ángeles	MEX-001
4	Ent. Punta Prieta - Guerrero Negro	MEX-001
5	Lázaro Cárdenas - Ent. Punta Prieta	MEX-001
6	Mexicali - San Felipe	MEX-005
7	Ramal a Aeropuerto de Mexicali	MEX-002
8	Ramal a Santa María	MEX-001
9	San Felipe - Chapala	MEX-005
10	Sonoita - Mexicali	MEX-002
11	Tecate - El Sauzal	MEX-003
12	Tijuana - Ensenada (Libre)	MEX-001
---RED FEDERAL DE CUOTA---		
13	El Centinela - La Rumorosa (Cuota)	MEX-002D
14	La Rumorosa - Tecate (Cuota)	MEX-002D
15	Libramiento de Mexicali (Cuota)	MEX-002D
16	Libramiento de Tecate (Cuota)	MEX-002D
17	Tecate - Tijuana (Cuota)	MEX-002D
18	Tijuana - Ensenada (Cuota)	MEX-001D
---RED FEDERAL INTEGRADA POR TRAMOS LIBRES Y DE CUOTA---		
19	Mexicali - Tijuana	MEX-002D-MEX
---RED ESTATAL LIBRE---		
20	Algodones - Ent. Islas Agrarias Grupo B	BC-008
21	Corredor Tijuana 2000	BC
22	Ejido Benito Juárez - Ejido Chiapas	BC-061
23	Ejido Monterrey - Mazón	BC-003
24	El Faro - Estación Coahuila	BC-004
25	Ent. Santa Rosa - Ent. Pachuca	BC-006
26	La Puerta - T. C. (Mexicali - Estación Coahuila)	BC-010
27	Mexicali - Algodones	BC-002
28	Mexicali - Estación Coahuila	BC-001
29	Mexicali - Progreso	BC-005

02 BAJA CALIFORNIA

SECRETARÍA DE COMUNICACIONES Y TRANSPORTES
DIRECCIÓN GENERAL DE SERVICIOS TÉCNICOS

ESTADOS UNIDOS DE NORTE AMÉRICA



BAJA CALIFORNIA

1 CARR: Ensenada - El Chinero

CLAVE: 02009

RUTA: MEX-003

AÑO: 2012

LUGAR	ESTACION				VELOCIDAD AUTOS (km/h)				VELOCIDAD AUTOBUSES (km/h)				VELOCIDAD CAMIONES (km/h)				COORDENADAS	
	KM	TE	SC	TDPA	Promedio	P 85	P 98	δ	Promedio	P 85	P 98	δ	Promedio	P 85	P 98	δ	Latitud	Longitud
Ensenada	0.00	3	0	5687	57.6	70.8	92.0	13.9	49.7	65.7	86.7	16.7	48.7	66.4	94.7	18.7	31.869453	-116.543560
Ojos Negros	38.50	1	0	1929	70.3	82.3	98.7	13.6	61.2	72.2	87.2	10.3	62.0	77.1	97.9	15.4	31.888875	-116.280488
San Salvador	60.50	1	0	835	98.1	109.8	126.3	12.9	83.6	106.7	122.1	23.4	81.9	102.3	124.0	20.1	31.835881	-116.063514
Héroes de La Independencia	93.00	3	0	969	91.9	104.2	121.9	13.8	89.2	104.5	124.3	17.6	78.8	95.8	118.9	17.7	31.601605	-115.874465
Leyes de Reforma	103.00	3	0	912	91.6	108.6	129.8	17.0	87.8	112.0	138.6	23.0	76.5	95.7	123.7	18.8	31.530275	-115.816970
Lazáro Cárdenas	122.00	3	0	918	74.6	83.3	95.4	10.2	73.0	85.4	93.7	13.8	65.2	78.8	93.0	13.0	31.396031	-115.705649
Francisco R. Serrano	137.50	3	0	727	96.2	113.0	132.2	17.0	90.6	109.7	132.7	21.7	80.1	102.0	126.7	20.6	31.337070	-115.571205
El Chinero	196.00	1	0	551	96.6	112.2	132.2	15.9	94.1	110.7	124.1	18.4	72.2	97.2	123.9	21.8	31.419705	-115.068087

2 CARR: Ensenada - Lazáro Cárdenas

CLAVE: 02098

RUTA: MEX-001

AÑO: 2012

LUGAR	ESTACION				VELOCIDAD AUTOS (km/h)				VELOCIDAD AUTOBUSES (km/h)				VELOCIDAD CAMIONES (km/h)				COORDENADAS	
	KM	TE	SC	TDPA	Promedio	P 85	P 98	δ	Promedio	P 85	P 98	δ	Promedio	P 85	P 98	δ	Latitud	Longitud
Ensenada	0.00	3	1	25284	68.9	77.1	93.2	10.3	61.7	68.8	80.9	8.8	60.4	69.3	84.5	10.6	31.800931	-116.594647
Ensenada	0.00	3	2	25326	71.3	78.3	93.5	9.2	68.5	74.5	84.2	8.5	69.1	75.3	92.6	9.4	31.800927	-116.594657
T. Der. Aeropuerto	13.50	3	1	11790	62.2	75.0	94.0	15.5	62.0	73.3	94.1	12.0	58.3	70.0	90.6	12.9	31.800665	-116.594886
T. Der. Aeropuerto	13.50	3	2	12432	68.0	89.2	141.6	22.0	79.5	136.5	143.9	30.4	69.9	108.8	143.0	26.7	31.800665	-116.594886
T. Der. La Bufadora	21.16	1	1	12443	71.7	80.6	94.6	10.5	67.1	74.6	84.9	9.7	69.0	78.9	96.6	11.7	31.737567	-116.582173
T. Der. La Bufadora	21.16	1	2	11371	73.4	82.4	96.5	10.4	68.6	77.3	84.6	10.1	68.8	80.5	96.6	12.9	31.737570	-116.582172
T. Der. La Bufadora	21.16	3	0	12846	53.8	60.6	74.2	8.5	50.7	54.0	63.4	7.0	50.1	55.4	71.5	8.9	31.702815	-116.557981
Santo Tomás	52.00	1	0	4670	91.8	107.4	129.0	16.6	72.9	96.3	106.3	19.9	86.6	104.0	127.8	18.3	31.584999	-116.420561
Misión San Vicente	90.00	1	0	3853	71.4	78.6	91.8	9.2	66.0	72.2	81.9	7.9	67.2	73.8	86.7	9.0	31.331771	-116.251991
El Salado	104.50	1	0	3502	76.5	88.0	103.3	12.5	66.9	76.5	92.8	11.1	66.3	76.8	98.2	12.0	31.239030	-116.171179
Punta Colonet	128.00	1	0	5557	71.0	80.2	93.8	10.7	65.7	73.4	85.9	9.2	66.6	74.5	92.1	10.0	31.077351	-116.207921
Punta Colonet	128.00	3	0	4850	80.9	90.9	104.5	11.4	76.1	86.3	101.2	11.3	79.1	88.1	104.1	10.9	31.054275	-116.209234
Camalú	159.00	1	0	5333	77.8	91.1	112.0	14.0	68.0	82.6	113.8	15.4	69.3	86.3	113.9	17.7	30.850195	-116.070266
Colonia Vicente Guerrero (Lazáro Cárdenas)	172.40	3	0	11618	71.1	81.4	100.6	12.1	65.4	75.0	91.5	11.2	67.8	79.0	100.8	12.8	30.702758	-115.985389
San Quintín	193.00	1	0	13262	82.9	93.1	114.8	11.9	77.8	89.1	120.4	13.5	81.4	92.6	115.1	12.9	30.593584	-115.951860
San Quintín	193.00	3	0	18132	62.9	70.3	85.3	9.4	60.4	65.5	78.2	8.1	61.0	68.2	82.7	9.4	30.554208	-115.939846
Lazáro Cárdenas	196.00																	

BAJA CALIFORNIA

3 CARR: Ent. Punta Prieta - Bahía de Los Ángeles

CLAVE: 02322

RUTA: MEX-001

AÑO: 2012

LUGAR	ESTACION				VELOCIDAD AUTOS (km/h)				VELOCIDAD AUTOBUSES (km/h)				VELOCIDAD CAMIONES (km/h)				COORDENADAS	
	KM	TE	SC	TDPA	Promedio	P 85	P 98	δ	Promedio	P 85	P 98	δ	Promedio	P 85	P 98	δ	Latitud	Longitud
Parador Punta Prieta	0.00	3	0	122	82.3	94.7	117.4	14.1	93.0	102.5	104.7	14.4	77.6	97.3	118.7	17.3	29.045555	-114.148634
Bahía de Los Ángeles	68.00	1	0	194	76.0	91.4	112.6	15.5	75.0	92.0	94.6	20.0	73.7	91.5	111.7	17.1	28.964447	-113.568257

4 CARR: Ent. Punta Prieta - Guerrero Negro

CLAVE: 00321

RUTA: MEX-001

AÑO: 2012

LUGAR	ESTACION				VELOCIDAD AUTOS (km/h)				VELOCIDAD AUTOBUSES (km/h)				VELOCIDAD CAMIONES (km/h)				COORDENADAS	
	KM	TE	SC	TDPA	Promedio	P 85	P 98	δ	Promedio	P 85	P 98	δ	Promedio	P 85	P 98	δ	Latitud	Longitud
Parador Punta Prieta	0.00	3	0	872	85.0	103.9	126.3	18.9	79.2	99.8	116.4	20.9	79.2	96.5	114.9	17.8	29.042808	-114.152497
Rosarito	50.60	3	0	972	80.5	93.9	112.4	14.7	70.9	88.8	111.7	15.8	69.7	85.1	107.7	15.1	28.630056	-114.023444
Tanatán	70.10	3	0	867	91.5	104.8	124.2	14.5	87.0	104.2	123.3	18.2	84.2	96.1	114.1	13.3	28.454743	-113.995837
Tampico	105.00	1	0	1144	107.9	123.5	141.5	15.7	87.8	113.2	140.1	26.1	99.5	112.2	136.4	14.0	28.216232	-114.000232
Lim. Edos. Term. B.C. Ppia. B.C.S. (Paralelo 28)	128.56																	
Ent. Guerrero Negro	130.00	1	0	2036	75.4	89.0	107.5	13.5	72.7	84.9	106.0	14.7	77.7	89.1	104.6	12.5	27.971701	-114.013689

5 CARR: Lázaro Cárdenas - Ent. Punta Prieta

CLAVE: 02319

RUTA: MEX-001

AÑO: 2012

LUGAR	ESTACION				VELOCIDAD AUTOS (km/h)				VELOCIDAD AUTOBUSES (km/h)				VELOCIDAD CAMIONES (km/h)				COORDENADAS	
	KM	TE	SC	TDPA	Promedio	P 85	P 98	δ	Promedio	P 85	P 98	δ	Promedio	P 85	P 98	δ	Latitud	Longitud
Lázaro Cárdenas	0.00	3	0	12326	47.7	53.1	69.5	8.8	45.0	51.8	62.3	8.5	45.1	52.2	64.3	9.1	30.518822	-115.928801
Rosario de Arriba	53.70	1	0	1392	77.4	87.4	102.5	11.6	65.0	79.3	93.3	12.7	61.4	80.4	98.3	18.2	30.066068	-115.731235
Rosario de Arriba	53.70	3	0	2556	77.6	87.8	102.8	11.7	63.1	75.8	90.6	11.3	62.4	81.0	98.7	17.9	30.073703	-115.706137
T. Der. Emiliano Zapata	80.00	3	0	885	87.5	100.3	118.3	13.8	78.1	93.5	118.2	17.7	71.5	86.7	107.8	15.3	30.028949	-115.538750
San Agustín	140.00	1	0	864	88.4	101.8	121.1	14.5	76.4	93.8	115.4	17.2	75.9	92.1	111.9	17.3	29.922046	-114.979945
San Agustín	140.00	3	0	1430	86.7	105.0	129.8	19.3	78.0	102.8	123.7	22.4	77.6	95.8	118.3	18.7	29.921581	-114.974599
San Luis	173.00	1	0	1443	78.3	95.7	114.0	17.6	72.5	92.0	111.4	17.4	72.2	87.4	110.1	15.0	29.734673	-114.726026
Rancho Chapala	222.80	1	0	813	87.7	100.6	119.6	14.3	77.2	93.0	126.0	16.9	67.9	82.6	101.2	14.0	29.386879	-114.383696
Parador Punta Prieta	275.66	1	0	822	50.6	55.7	67.5	8.3	47.7	52.5	63.5	7.4	46.7	52.7	66.3	8.6	29.049019	-114.153398

6 CARR: Mexicali - San Felipe

CLAVE: 02096

RUTA: MEX-005

AÑO: 2012

LUGAR	ESTACION				VELOCIDAD AUTOS (km/h)				VELOCIDAD AUTOBUSES (km/h)				VELOCIDAD CAMIONES (km/h)				COORDENADAS	
	KM	TE	SC	TDPA	Promedio	P 85	P 98	δ	Promedio	P 85	P 98	δ	Promedio	P 85	P 98	δ	Latitud	Longitud
Mexicali	0.00	3	1	9066	84.1	94.6	112.7	12.3	67.2	82.9	104.9	15.5	83.5	95.0	136.6	14.4	32.510509	-115.400880
Mexicali	0.00	3	2	9140	95.9	106.1	123.0	12.0	74.5	96.6	105.0	20.9	89.9	103.3	122.2	15.0	32.510508	-115.400879
La Puerta	32.00	1	1	3610	93.1	106.1	124.4	14.4	86.0	101.9	113.1	17.8	84.2	99.7	115.7	15.5	32.340830	-115.331752

BAJA CALIFORNIA

6 CARR: Mexicali - San Felipe

CLAVE: 02096

RUTA: MEX-005

AÑO: 2012

LUGAR	ESTACION				VELOCIDAD AUTOS (km/h)				VELOCIDAD AUTOBUSES (km/h)				VELOCIDAD CAMIONES (km/h)				COORDENADAS	
	KM	TE	SC	TDPA	Promedio	P 85	P 98	δ	Promedio	P 85	P 98	δ	Promedio	P 85	P 98	δ	Latitud	Longitud
La Puerta	32.00	1	2	3598	88.1	103.1	124.2	16.0	80.8	100.1	116.8	19.7	79.9	99.3	122.7	18.7	32.340831	-115.331752
T. Izq. Estación Coahuila	39.00	1	1	3016	94.4	105.0	123.1	12.1	82.7	98.9	110.7	17.5	86.8	100.1	119.4	14.0	32.276617	-115.322085
T. Izq. Estación Coahuila	39.00	1	2	3040	84.7	96.5	116.2	12.0	75.0	90.7	107.7	15.8	74.8	93.4	117.2	17.9	32.276577	-115.322086
T. Izq. Estación Coahuila	39.00	3	0	5107	94.1	106.5	125.4	13.2	67.8	86.7	104.3	16.7	81.7	96.0	118.9	15.6	32.266495	-115.321515
El Chinero	141.00	1	0	1755	95.6	109.7	126.9	14.1	80.8	100.5	119.2	20.0	85.1	104.8	131.4	19.4	31.441914	-115.053849
El Chinero	141.00	3	0	1662	85.4	95.6	112.4	11.5	66.8	83.5	98.0	14.8	73.7	90.0	110.4	16.1	31.426149	-115.046456
San Felipe	189.60	1	1	3067	86.6	99.9	120.0	13.8	59.3	54.6	102.4	7.6	86.4	102.3	122.3	16.2	31.046716	-114.870762
San Felipe	189.60	1	2	3059	85.2	96.0	114.3	12.1	60.4	55.0	93.9	9.2	87.1	99.0	114.6	13.3	31.046716	-114.870762

7 CARR: Ramal a Aeropuerto de Mexicali

CLAVE: 02321

RUTA: MEX-002

AÑO: 2012

LUGAR	ESTACION				VELOCIDAD AUTOS (km/h)				VELOCIDAD AUTOBUSES (km/h)				VELOCIDAD CAMIONES (km/h)				COORDENADAS	
	KM	TE	SC	TDPA	Promedio	P 85	P 98	δ	Promedio	P 85	P 98	δ	Promedio	P 85	P 98	δ	Latitud	Longitud
T. C. Mexicali - Estación Coahuila	0.00	3	0	10357	56.7	63.9	80.4	9.5	54.7	53.9	62.1	1.7	52.6	60.2	74.7	9.5	32.651869	-115.346490
Aeropuerto	10.00	1	0	4725	76.7	84.5	102.4	10.1	73.0	83.7	94.6	11.6	74.7	83.9	102.4	11.2	32.628498	-115.253130
T. C. Algodones - Islas Agrarias Grupo B	12.10																	

8 CARR: Ramal a Santa María

CLAVE: 02506

RUTA: MEX-001

AÑO: 2012

LUGAR	ESTACION				VELOCIDAD AUTOS (km/h)				VELOCIDAD AUTOBUSES (km/h)				VELOCIDAD CAMIONES (km/h)				COORDENADAS	
	KM	TE	SC	TDPA	Promedio	P 85	P 98	δ	Promedio	P 85	P 98	δ	Promedio	P 85	P 98	δ	Latitud	Longitud
T. C. Lazáro Cárdenas - Punta Prieta	0.00	3	0	2513	60.3	77.0	103.0	15.5	54.6	58.5	86.3	8.3	56.9	67.3	94.5	11.2	30.392280	-115.870598
T. C. Lazáro Cárdenas - Parador Punta Prieta	9.50																	

9 CARR: San Felipe - Chapala

CLAVE: 02503

RUTA: MEX-005

AÑO: 2012

LUGAR	ESTACION				VELOCIDAD AUTOS (km/h)				VELOCIDAD AUTOBUSES (km/h)				VELOCIDAD CAMIONES (km/h)				COORDENADAS	
	KM	TE	SC	TDPA	Promedio	P 85	P 98	δ	Promedio	P 85	P 98	δ	Promedio	P 85	P 98	δ	Latitud	Longitud
San Felipe	0.00	3	1	735	58.4	67.7	84.8	11.5	56.7	56.1	70.2	3.5	60.0	71.2	91.1	12.5	30.997840	-114.836305
San Felipe	0.00	3	2	774	56.4	64.3	79.9	10.0	54.7	57.7	73.5	5.7	54.4	63.4	77.5	10.1	30.997841	-114.836305
Playa Curbina	75.46	3	0	705	70.8	86.7	103.8	15.9	65.5	83.0	116.2	14.3	71.7	89.5	104.5	16.2	30.363362	-114.643104
T. C. Lazáro Cárdenas - Parador Punta Prieta	213.00																	

BAJA CALIFORNIA

10 CARR: Sonoita - Mexicali

CLAVE: 00081

RUTA: MEX-002

AÑO: 2012

LUGAR	ESTACION				VELOCIDAD AUTOS (km/h)				VELOCIDAD AUTOBUSES (km/h)				VELOCIDAD CAMIONES (km/h)				COORDENADAS	
	KM	TE	SC	TDPA	Promedio	P 85	P 98	δ	Promedio	P 85	P 98	δ	Promedio	P 85	P 98	δ	Latitud	Longitud
Sonoita	0.00	3	0	4762	50.9	60.6	81.5	11.5	50.0	58.6	84.7	11.8	45.0	53.4	75.9	10.2	31.875673	-112.851187
Los Vidrios	58.75	3	0	3046	50.9	61.1	83.3	12.0	49.3	56.8	82.1	11.4	45.2	52.8	73.8	10.0	32.037199	-113.450416
San Luis Río Colorado	191.80	1	0	3502	94.1	107.0	127.9	13.8	94.5	104.1	119.0	10.8	86.6	95.4	112.6	11.5	32.450215	-114.672121
San Luis Río Colorado	191.80	3	1	9231	53.9	65.3	89.2	12.6	59.0	71.6	124.9	15.6	48.7	56.1	83.1	11.6	32.488497	-114.797638
San Luis Río Colorado	191.80	3	2	9065	49.5	56.9	73.2	9.9	44.7	51.9	64.7	8.3	42.1	48.7	63.3	8.9	32.488488	-114.797622
Lim. Edos. Term. Son. Ppia. B.C.	203.69																	
X. C. Mexicali - Algodones	206.78	1	1	9682	79.7	90.9	106.3	12.6	69.7	82.5	94.5	14.0	65.9	80.3	96.9	14.9	32.497955	-114.829809
X. C. Mexicali - Algodones	206.78	1	2	9767	99.1	111.3	129.7	13.2	88.6	104.3	114.4	18.2	91.6	104.0	124.3	13.9	32.497952	-114.829810
X. C. Mexicali - Algodones	206.78	3	1	8143	99.3	111.3	128.4	12.9	95.4	107.4	121.1	12.4	93.9	104.3	123.7	12.0	32.505861	-114.853571
X. C. Mexicali - Algodones	206.78	3	2	8284	93.2	104.9	121.9	13.3	91.1	103.2	114.7	13.8	87.3	100.8	119.3	14.0	32.505862	-114.853573
T. Izq. Ejido Hermosillo	214.80	3	1	6581	104.7	119.9	139.7	14.8	97.7	114.5	128.6	17.5	93.5	109.0	133.3	15.8	32.527295	-114.928408
T. Izq. Ejido Hermosillo	214.80	3	2	7116	105.2	119.3	139.0	14.0	98.2	112.2	131.3	14.7	94.7	106.8	131.8	12.9	32.527295	-114.928408
Ejido Monterrey	228.63	3	1	9498	106.5	117.4	124.0	11.6	104.7	117.0	123.9	12.5	100.5	114.2	123.5	14.0	32.552125	-115.087641
Ejido Monterrey	228.63	3	2	9100	56.0	62.1	73.8	7.8	53.9	60.4	72.5	8.0	52.1	58.2	70.4	8.6	32.552126	-115.087636
X. C. Mexicali - Algodones	256.47	1	1	12833	90.1	99.6	114.0	11.1	86.7	97.1	111.1	11.9	83.5	94.8	113.0	12.9	32.565566	-115.326641
X. C. Mexicali - Algodones	256.47	1	2	12775	82.2	91.2	104.3	10.6	80.7	90.7	103.0	11.5	77.2	88.1	103.3	12.2	32.565565	-115.326639
T. C. Mexicali - San Felipe	265.12																	

11 CARR: Tecate - El Sauzal

CLAVE: 02097

RUTA: MEX-003

AÑO: 2012

LUGAR	ESTACION				VELOCIDAD AUTOS (km/h)				VELOCIDAD AUTOBUSES (km/h)				VELOCIDAD CAMIONES (km/h)				COORDENADAS	
	KM	TE	SC	TDPA	Promedio	P 85	P 98	δ	Promedio	P 85	P 98	δ	Promedio	P 85	P 98	δ	Latitud	Longitud
Tecate	0.00	3	0	8003	70.0	80.6	93.9	12.2	66.8	74.4	84.0	9.6	60.6	72.5	86.2	12.9	32.541014	-116.627069
T. Der. Valle de Las Palmas	27.80	1	0	3344	94.2	109.2	130.9	14.8	70.2	92.5	104.4	18.9	87.5	100.4	119.0	14.7	32.377299	-116.614373
El Tezterazo	48.80	3	0	2283	94.5	106.6	123.6	13.1	82.8	100.4	113.3	18.6	87.7	101.3	119.7	14.7	32.288598	-116.530149
T. Izq. San Marcos	63.50	1	0	2022	83.7	95.8	112.5	13.3	77.6	92.0	104.6	15.4	74.2	90.5	110.0	16.1	32.196567	-116.488876
El Porvenir Guadalupe	74.80	3	0	3922	77.0	85.8	102.8	10.8	73.7	83.3	99.9	11.0	72.4	82.7	101.4	11.8	32.096190	-116.561568
Las Palmas	85.00	1	0	3673	101.7	113.9	134.6	13.3	93.3	110.1	131.5	16.9	88.8	106.2	129.9	18.4	32.042879	-116.600992
San Antonio de Las Minas	93.90	1	1	2785	90.0	103.2	122.6	14.5	87.8	101.6	114.7	14.4	83.3	99.6	120.5	16.4	31.986033	-116.645880
San Antonio de Las Minas	93.90	1	2	2926	87.3	101.7	122.5	14.9	87.0	102.8	124.1	16.7	83.1	101.0	125.9	18.0	31.986039	-116.645877
El Sauzal	104.53	1	1	4363	88.0	98.0	114.7	11.6	84.4	95.2	110.8	12.4	78.4	93.3	111.1	15.4	31.911735	-116.692414
El Sauzal	104.53	1	2	4495	91.2	101.1	115.9	11.5	88.7	99.9	116.4	12.7	81.5	95.7	114.0	15.4	31.911735	-116.692414

BAJA CALIFORNIA

12 CARR: Tijuana - Ensenada (Libre)

CLAVE: 02099

RUTA: MEX-001

AÑO: 2012

LUGAR	ESTACION				VELOCIDAD AUTOS (km/h)				VELOCIDAD AUTOBUSES (km/h)				VELOCIDAD CAMIONES (km/h)				COORDENADAS	
	KM	TE	SC	TDPA	Promedio	P 85	P 98	δ	Promedio	P 85	P 98	δ	Promedio	P 85	P 98	δ	Latitud	Longitud
Tijuana	0.00																	
X. C. Tijuana - San Miguel (Cuota)	22.00	1	1	21411	69.5	76.6	93.0	9.8	66.3	73.2	83.4	8.4	65.2	72.7	90.4	9.0	32.382024	-117.057471
X. C. Tijuana - San Miguel (Cuota)	22.00	1	2	22045	60.5	68.6	82.5	10.0	58.0	63.9	73.7	7.9	55.6	63.6	79.3	9.6	32.382033	-117.057477
Rosarito	25.94	1	1	11090	47.5	52.6	64.9	7.2	50.1	52.1	54.6	5.1	46.5	51.6	63.9	7.0	32.371215	-117.060748
Rosarito	25.94	1	2	11206	43.9	52.7	65.1	10.2	52.8	53.3	54.8	3.8	39.8	49.2	63.2	11.2	32.371221	-117.060746
Rosarito	25.94	3	1	6864	74.5	83.6	100.7	10.5	64.1	72.2	82.4	9.1	70.7	80.8	98.6	11.7	32.291539	-117.037022
Rosarito	25.94	3	2	6700	78.6	86.8	102.8	10.4	68.2	79.2	84.7	11.9	73.9	83.7	101.8	11.3	32.291539	-117.037022
T. Izq. Autopista	46.12	1	1	5298	77.4	83.8	94.7	8.9	75.0	82.1	92.3	8.6	69.5	80.3	91.9	11.9	32.230390	-116.921922
T. Izq. Autopista	46.12	1	2	5399	79.4	88.2	102.8	10.5	74.6	84.3	95.2	11.7	69.9	81.2	93.8	12.4	32.230390	-116.921922
Población Plaza Santa María	56.98	1	0	1357	78.2	84.8	99.9	9.7	75.5	87.8	100.8	12.9	73.9	82.4	93.7	10.1	32.144332	-116.892143
La Misión	64.98	1	0	2614	67.9	76.8	92.4	11.3	66.3	74.9	87.5	10.4	63.6	74.3	88.2	12.2	32.098747	-116.876540
T. Izq. Colonia Guadalupe	82.90	1	0	1784	51.1	56.8	71.6	8.7	47.5	53.5	64.8	8.6	45.0	52.4	63.8	9.4	31.992482	-116.747875
Ent. San Miguel	95.80	1	0	1755	69.4	76.5	89.6	9.9	63.5	70.0	79.5	7.8	62.1	69.6	81.0	9.2	31.913593	-116.731206
El Sauzal	102.00	3	1	18508	82.3	89.9	102.5	9.2	78.6	85.4	98.9	10.0	75.0	84.6	99.8	11.6	31.881035	-116.683502
El Sauzal	102.00	3	2	18433	67.9	81.7	99.6	14.9	66.9	75.0	104.9	13.0	62.5	71.1	96.0	10.8	31.881035	-116.683504
Ensenada	110.00																	

13 CARR: El Centinela - La Rumorosa (Cuota)

CLAVE: 02011

RUTA: MEX-002D

AÑO: 2012

LUGAR	ESTACION				VELOCIDAD AUTOS (km/h)				VELOCIDAD AUTOBUSES (km/h)				VELOCIDAD CAMIONES (km/h)				COORDENADAS	
	KM	TE	SC	TDPA	Promedio	P 85	P 98	δ	Promedio	P 85	P 98	δ	Promedio	P 85	P 98	δ	Latitud	Longitud
Ent. El Centinela	20.30																	
Laguna Salada	25.00	1	1	4948	61.0	70.5	87.3	11.1	55.4	63.4	78.3	8.8	50.4	55.0	73.1	9.7	32.577251	-115.736042
Laguna Salada	25.00	1	2	5236	60.2	67.6	92.4	8.8	59.2	65.2	89.9	8.4	58.3	62.0	84.6	7.0	32.577333	-115.735921
La Rumorosa	67.60	1	1	2349	61.2	70.5	87.0	11.0	55.6	61.5	73.8	7.0	50.1	55.0	73.6	10.0	32.543239	-116.047974
La Rumorosa	67.60	1	2	2375	59.0	62.6	89.6	7.4	57.5	59.2	79.8	5.5	58.2	62.3	84.3	7.1	32.543231	-116.047983

14 CARR: La Rumorosa - Tecate (Cuota)

CLAVE: 02011

RUTA: MEX-002D

AÑO: 2012

LUGAR	ESTACION				VELOCIDAD AUTOS (km/h)				VELOCIDAD AUTOBUSES (km/h)				VELOCIDAD CAMIONES (km/h)				COORDENADAS	
	KM	TE	SC	TDPA	Promedio	P 85	P 98	δ	Promedio	P 85	P 98	δ	Promedio	P 85	P 98	δ	Latitud	Longitud
La Rumorosa	0.00	3	1	3469	103.8	113.8	130.0	11.6	96.1	103.6	117.1	9.9	87.2	99.8	119.6	13.9	32.549914	-116.065378
La Rumorosa	0.00	3	2	3277	105.7	119.3	137.4	13.7	93.9	104.2	124.6	12.4	83.0	99.3	123.2	16.2	32.549914	-116.065375
Caseta de Cobro El Hongo	30.56	2	1	2857													32.521903	-116.319783
Caseta de Cobro El Hongo	30.56	2	2	2856													32.521903	-116.319783

BAJA CALIFORNIA

18 CARR: Tijuana - Ensenada (Cuota)

CLAVE: 02100

RUTA: MEX-001D

AÑO: 2012

LUGAR	ESTACION				VELOCIDAD AUTOS (km/h)				VELOCIDAD AUTOBUSES (km/h)				VELOCIDAD CAMIONES (km/h)				COORDENADAS	
	KM	TE	SC	TDPA	Promedio	P 85	P 98	δ	Promedio	P 85	P 98	δ	Promedio	P 85	P 98	δ	Latitud	Longitud
Tijuana	0.00																	
T. Der. Playas de Tijuana	7.50	3	1	5627	92.8	103.1	120.5	11.5	89.8	101.9	114.8	12.9	89.6	103.1	119.9	14.2	32.529048	-117.108201
T. Der. Playas de Tijuana	7.50	3	2	5469	86.2	99.2	116.4	12.9	82.6	94.6	110.4	13.3	83.1	97.8	114.9	14.7	32.529048	-117.108200
Caseta de Cobro Playas de Tijuana	9.70	2	1	4894													32.514031	-117.109509
Caseta de Cobro Playas de Tijuana	9.70	2	2	4894													32.514031	-117.109509
X. C. Tijuana - Ensenada	29.50	1	1	6648	92.9	103.1	120.3	11.4	89.0	101.4	113.5	13.0	90.2	103.2	120.1	13.8	32.381606	-117.057620
X. C. Tijuana - Ensenada	29.50	1	2	6804	86.1	99.1	116.5	12.9	81.2	93.7	107.6	13.7	82.9	97.4	115.3	14.6	32.381605	-117.057620
X. C. Tijuana - Ensenada	29.50	3	1	6058	92.8	103.1	120.7	11.4	91.4	102.8	119.1	12.4	90.3	102.7	122.1	13.3	32.369566	-117.057661
X. C. Tijuana - Ensenada	29.50	3	2	6510	85.9	98.9	116.4	12.9	83.7	95.5	112.9	13.2	83.0	97.1	116.2	14.2	32.369566	-117.057663
Caseta de Cobro Rosarito	35.43	2	1	4738													32.311054	-117.044308
Caseta de Cobro Rosarito	35.43	2	2	4737													32.311054	-117.044308
T. Der. La Misión	66.44	3	1	5565	114.8	130.7	142.9	14.9	107.7	125.8	142.0	17.3	109.5	126.6	142.2	16.1	32.115907	-116.884330
T. Der. La Misión	66.44	3	2	5610	111.3	123.0	139.1	12.9	102.5	116.3	132.0	15.0	104.0	117.7	136.1	14.1	32.115907	-116.884330
Caseta de Cobro Ensenada	98.60	2	1	5442													31.903093	-116.732720
Caseta de Cobro Ensenada	98.60	2	2	5441													31.903093	-116.732720
T. C. Tijuana - Ensenada (Libre)	99.00																	

19 CARR: Mexicali - Tijuana

CLAVE: 02082

RUTA: MEX-002D-MEX

AÑO: 2012

LUGAR	ESTACION				VELOCIDAD AUTOS (km/h)				VELOCIDAD AUTOBUSES (km/h)				VELOCIDAD CAMIONES (km/h)				COORDENADAS	
	KM	TE	SC	TDPA	Promedio	P 85	P 98	δ	Promedio	P 85	P 98	δ	Promedio	P 85	P 98	δ	Latitud	Longitud
Mexicali	0.00																	
Colonia Progreso	7.80	3	1	6170	61.1	70.7	88.1	11.3	55.4	63.5	76.9	8.9	51.4	55.9	73.4	9.1	32.585659	-115.597115
Colonia Progreso	7.80	3	2	6241	59.8	66.1	91.4	8.3	59.6	66.0	90.5	8.6	58.1	61.0	84.5	6.7	32.585660	-115.597115
Laguna Salada	25.00	1	1	4948	61.0	70.5	87.3	11.1	55.4	63.4	78.3	8.8	50.4	55.0	73.1	9.7	32.577251	-115.736042
Laguna Salada	25.00	1	2	5236	60.2	67.6	92.4	8.8	59.2	65.2	89.9	8.4	58.3	62.0	84.6	7.0	32.577333	-115.735921
La Rumorosa	67.60	1	1	2349	61.2	70.5	87.0	11.0	55.6	61.5	73.8	7.0	50.1	55.0	73.6	10.0	32.543239	-116.047974
La Rumorosa	67.60	1	2	2375	59.0	62.6	89.6	7.4	57.5	59.2	79.8	5.5	58.2	62.3	84.3	7.1	32.543231	-116.047983
T. Der. Estación de Microondas	69.62	3	0	3177	99.9	115.1	137.6	15.3	79.8	98.4	119.7	19.5	87.6	100.4	122.8	14.2	32.509855	-116.091497
Agua Hechicera	87.00	1	0	3117	98.3	112.3	132.3	14.4	82.8	101.9	118.8	19.5	92.1	103.6	122.1	13.6	32.497103	-116.222538
El Encinal	112.15	1	0	4681	94.8	107.4	129.7	13.2	81.8	103.7	135.2	21.0	87.8	106.8	136.8	18.7	32.558006	-116.439454
Tecate	132.00	1	1	6209	56.6	64.7	81.8	10.4	55.7	63.1	74.1	8.5	52.0	62.1	80.5	11.4	32.564152	-116.580749
Tecate	132.00	1	2	6226	55.8	62.0	73.7	7.7	53.7	58.7	68.2	7.0	51.7	58.1	70.3	8.8	32.564156	-116.580754
Tecate	132.00	3	1	10268	58.3	61.9	70.0	6.2	53.9	58.9	68.2	6.7	49.8	57.5	69.6	9.5	32.553958	-116.663581
Tecate	132.00	3	2	10034	72.7	82.5	97.4	11.3	69.6	78.8	92.3	10.8	65.5	74.5	90.8	10.4	32.553958	-116.663583

BAJA CALIFORNIA

19 CARR: Mexicali - Tijuana

CLAVE: 02082

RUTA: MEX-002D-MEX

AÑO: 2012

LUGAR	ESTACION				VELOCIDAD AUTOS (km/h)				VELOCIDAD AUTOBUSES (km/h)				VELOCIDAD CAMIONES (km/h)				COORDENADAS	
	KM	TE	SC	TDPA	Promedio	P 85	P 98	δ	Promedio	P 85	P 98	δ	Promedio	P 85	P 98	δ	Latitud	Longitud
Presa Abelardo L. Rodríguez Tijuana	165.00	3	0	6718	48.9	53.5	63.5	8.7	47.3	53.1	62.9	8.8	49.1	53.6	63.3	9.2	32.452184	-116.910503
	182.60																	

20 CARR: Algodones - Ent. Islas Agrarias Grupo B

CLAVE: 02006

RUTA: BC-008

AÑO: 2012

LUGAR	ESTACION				VELOCIDAD AUTOS (km/h)				VELOCIDAD AUTOBUSES (km/h)				VELOCIDAD CAMIONES (km/h)				COORDENADAS	
	KM	TE	SC	TDPA	Promedio	P 85	P 98	δ	Promedio	P 85	P 98	δ	Promedio	P 85	P 98	δ	Latitud	Longitud
Algodones	0.00	3	0	3852	88.4	100.1	120.0	12.8	85.9	96.8	106.0	11.7	83.8	98.5	119.4	15.4	32.704337	-114.741318
T. Izq. Cd. Morelos	14.00	1	0	3627	88.5	100.1	120.2	12.8	73.1	87.8	100.8	17.2	84.4	99.0	121.7	15.0	32.666073	-114.848114
Mérida	20.30	3	0	2026	81.3	94.3	114.4	13.9	81.0	101.9	113.3	17.8	78.2	94.4	114.6	16.4	32.664493	-114.924924
T. Izq. Ejido Lazáro Cárdenas	31.50	1	0	2701	90.3	103.7	122.3	15.0	89.1	101.5	126.8	15.1	87.7	102.9	122.6	16.3	32.638747	-114.987521
Islas Agrarias Grupo B	55.50	1	0	3969	82.6	93.5	112.1	12.4	80.5	94.3	114.0	16.6	82.0	94.5	114.4	14.7	32.615292	-115.265920

21 CARR: Corredor Tijuana 2000

CLAVE: 02006

RUTA: BC

AÑO: 2012

LUGAR	ESTACION				VELOCIDAD AUTOS (km/h)				VELOCIDAD AUTOBUSES (km/h)				VELOCIDAD CAMIONES (km/h)				COORDENADAS	
	KM	TE	SC	TDPA	Promedio	P 85	P 98	δ	Promedio	P 85	P 98	δ	Promedio	P 85	P 98	δ	Latitud	Longitud
T. C. Mexicali - Tijuana (Cuota)	0.00	3	1	12618	67.4	74.0	85.4	9.1	60.1	69.8	85.0	10.3	61.6	71.4	87.7	11.0	32.539271	-116.856413
T. C. Mexicali - Tijuana (Cuota)	0.00	3	2	13330	80.3	87.8	101.2	9.6	74.1	82.1	93.1	9.1	72.2	82.0	95.6	11.2	32.539271	-116.856413
T. C. Mexicali - Tijuana	11.00	1	1	4784	67.4	74.1	85.7	9.2	59.8	69.1	83.9	9.9	59.5	68.8	83.8	10.4	32.460092	-116.841073
T. C. Mexicali - Tijuana	11.00	1	2	4587	78.4	86.7	100.7	10.5	73.3	81.3	92.5	9.4	68.4	78.1	92.3	11.0	32.460095	-116.841072
T. C. Tijuana - San Miguel (Cuota)	40.00	1	1	3187	91.6	102.2	118.4	12.1	75.0	89.3	102.0	14.7	71.7	90.0	110.9	18.2	32.288525	-117.022160
T. C. Tijuana - San Miguel (Cuota)	40.00	1	2	3036	77.7	87.9	103.2	11.4	64.9	79.9	92.1	13.6	58.6	78.9	100.2	17.9	32.288534	-117.022163

22 CARR: Ejido Benito Juárez - Ejido Chiapas

CLAVE: 02501

RUTA: BC-061

AÑO: 2012

LUGAR	ESTACION				VELOCIDAD AUTOS (km/h)				VELOCIDAD AUTOBUSES (km/h)				VELOCIDAD CAMIONES (km/h)				COORDENADAS	
	KM	TE	SC	TDPA	Promedio	P 85	P 98	δ	Promedio	P 85	P 98	δ	Promedio	P 85	P 98	δ	Latitud	Longitud
Ejido Benito Juárez	0.00	3	0	3068	50.1	60.9	82.0	11.9	48.1	53.3	74.2	9.3	47.3	58.6	82.3	12.3	32.559423	-114.992993
Ejido México	7.00	1	0	1328	65.1	76.8	92.9	12.9	62.6	73.1	87.5	11.7	60.9	74.1	90.8	15.5	32.519673	-114.979544
Ejido Chiapas	10.56	1	0	1270	41.5	50.6	63.6	10.6	43.6	52.1	61.2	11.1	39.4	49.4	64.4	11.3	32.499812	-114.965155

BAJA CALIFORNIA

23 CARR: Ejido Monterrey - Mazón

CLAVE: 02004

RUTA: BC-003

AÑO: 2012

LUGAR	ESTACION				VELOCIDAD AUTOS (km/h)				VELOCIDAD AUTOBUSES (km/h)				VELOCIDAD CAMIONES (km/h)				COORDENADAS	
	KM	TE	SC	TDPA	Promedio	P 85	P 98	δ	Promedio	P 85	P 98	δ	Promedio	P 85	P 98	δ	Latitud	Longitud
T. C. Sonoita - Mexicali	0.00	3	0	6677	59.0	65.9	80.6	9.6	57.6	63.6	74.0	8.0	56.1	64.2	81.5	10.3	32.549252	-115.074842
X. C. Mexicali - Algodones	15.16	1	0	5303	62.3	69.9	83.4	9.3	59.9	66.1	76.6	8.7	58.2	68.1	84.4	11.7	32.420310	-115.067303
X. C. Mexicali - Algodones	15.16	3	0	7968	70.7	80.6	96.6	11.5	67.7	76.5	90.2	10.6	67.3	78.0	96.8	12.5	32.414132	-115.066959
Guadalupe Victoria	30.47	1	0	9528	60.8	71.1	88.6	12.1	63.1	72.4	101.6	11.6	61.5	71.5	98.6	12.0	32.295065	-115.088821
Mazón	35.00	1	0	7301	81.5	92.2	113.3	12.4	81.0	93.0	111.3	13.1	79.4	92.8	114.9	14.7	32.246901	-115.110978

24 CARR: El Faro - Estación Coahuila

CLAVE: 02013

RUTA: BC-004

AÑO: 2012

LUGAR	ESTACION				VELOCIDAD AUTOS (km/h)				VELOCIDAD AUTOBUSES (km/h)				VELOCIDAD CAMIONES (km/h)				COORDENADAS	
	KM	TE	SC	TDPA	Promedio	P 85	P 98	δ	Promedio	P 85	P 98	δ	Promedio	P 85	P 98	δ	Latitud	Longitud
T. C. Mexicali - San Felipe	0.00	3	0	4266	75.3	89.8	112.7	14.7	71.9	85.5	103.5	14.3	64.1	79.7	102.9	15.2	32.273493	-115.310645
X. C. Mexicali - Estación Coahuila	16.30	1	0	4979	74.7	88.9	111.5	14.6	74.2	89.5	110.4	15.3	65.6	82.5	106.4	16.8	32.239600	-115.177353
X. C. Mexicali - Estación Coahuila	16.30	3	0	7953	64.5	73.8	91.0	10.8	64.0	73.3	87.9	10.8	59.9	71.3	89.8	12.7	32.239357	-115.157605
T. Izq. Carr. Ejido Monterrey - Mazón	26.70	3	0	6127	37.7	42.6	53.7	7.5	36.9	42.8	53.3	7.3	32.7	38.5	53.2	8.4	32.239424	-115.102081
Francisco Murguía	30.00	3	0	4558	70.2	81.2	100.7	12.4	67.0	77.1	90.8	11.1	63.5	74.6	94.0	12.3	32.243859	-115.056849
Estación Coahuila	34.50	1	0	6342	69.7	80.7	99.4	12.3	68.4	79.8	94.5	12.4	65.0	77.7	99.8	13.3	32.208009	-115.012618

25 CARR: Ent. Santa Rosa - Ent. Pachuca

CLAVE: 02015

RUTA: BC-006

AÑO: 2012

LUGAR	ESTACION				VELOCIDAD AUTOS (km/h)				VELOCIDAD AUTOBUSES (km/h)				VELOCIDAD CAMIONES (km/h)				COORDENADAS	
	KM	TE	SC	TDPA	Promedio	P 85	P 98	δ	Promedio	P 85	P 98	δ	Promedio	P 85	P 98	δ	Latitud	Longitud
T. C. Sonoita - Mexicali	0.00	3	0	7176	64.2	73.9	89.6	11.3	56.0	63.0	76.7	8.3	60.3	71.5	89.4	12.7	32.558585	-115.020395
Paredones	10.90	3	0	6574	51.0	57.8	72.2	9.1	52.5	53.1	54.9	4.0	50.2	57.1	73.8	10.1	32.609423	-114.923832
Cd. Morelos	18.00	3	0	8295	51.9	61.4	79.1	11.0	55.1	62.1	84.9	8.3	54.8	67.2	96.2	13.2	32.637123	-114.845999
T. C. Mexicali - Algodones	23.22																	

26 CARR: La Puerta - T. C. (Mexicali - Estación Coahuila)

CLAVE: 02502

RUTA: BC-010

AÑO: 2012

LUGAR	ESTACION				VELOCIDAD AUTOS (km/h)				VELOCIDAD AUTOBUSES (km/h)				VELOCIDAD CAMIONES (km/h)				COORDENADAS	
	KM	TE	SC	TDPA	Promedio	P 85	P 98	δ	Promedio	P 85	P 98	δ	Promedio	P 85	P 98	δ	Latitud	Longitud
T. C. Mexicali - San Felipe	0.00																	
Zakamoto	4.60	1	0	2564	81.9	91.6	106.8	11.2	76.8	91.0	104.4	14.4	77.7	90.4	110.5	13.5	32.325651	-115.288593
Nayarit	9.00	3	0	2838	82.2	91.8	107.5	11.2	73.7	89.0	103.2	14.8	70.6	86.7	104.4	15.6	32.313163	-115.236437
T. C. Mexicali - Estación Coahuila	15.00																	

BAJA CALIFORNIA

27 CARR: Mexicali - Algodones

CLAVE: 02012

RUTA: BC-002

AÑO: 2012

LUGAR	ESTACION				VELOCIDAD AUTOS (km/h)				VELOCIDAD AUTOBUSES (km/h)				VELOCIDAD CAMIONES (km/h)				COORDENADAS	
	KM	TE	SC	TDPA	Promedio	P 85	P 98	δ	Promedio	P 85	P 98	δ	Promedio	P 85	P 98	δ	Latitud	Longitud
T. C. Mexicali - San Felipe	0.00																	
Ejido Puebla	12.00	3	0	9770	57.2	63.6	74.9	9.0	56.0	63.7	75.2	9.2	53.7	58.8	73.4	7.5	32.556193	-115.360301
T. C. Geotérmica - Estación Delta	31.50	1	0	6055	81.2	89.8	104.2	10.3	76.0	84.3	100.1	10.4	76.0	85.3	104.1	11.7	32.424148	-115.261523
X. C. Mexicali - Estación Coahuila	37.70	1	0	4632	63.8	71.7	84.6	9.3	58.8	63.8	76.3	7.6	59.8	70.2	85.3	11.8	32.419097	-115.196844
X. C. Mexicali - Estación Coahuila	37.70	3	0	7174	45.3	52.0	64.5	8.0	45.3	51.0	61.5	7.0	44.0	51.1	68.9	9.3	32.419194	-115.190903
X. C. Ejido Monterrey - Mazón	49.65	1	0	5280	65.7	74.1	90.7	10.0	62.9	72.4	85.2	10.5	60.5	71.8	90.8	12.5	32.418547	-115.070041
X. C. Ejido Monterrey - Mazón	49.65	3	0	2428	59.6	67.5	81.4	10.0	58.4	65.3	77.4	8.9	55.0	66.8	82.2	12.3	32.418501	-115.065458
T. Izq. Tres de Marzo	60.50	1	0	1262	59.7	67.7	81.9	10.2	57.2	60.4	73.6	5.4	55.9	65.3	81.3	10.5	32.468194	-114.944806
X. C. Sonoita - Mexicali	72.00	1	0	1135	56.8	63.4	74.8	9.1	54.9	59.3	72.1	5.7	51.7	63.2	77.1	12.3	32.501671	-114.847579
X. C. Sonoita - Mexicali	72.00	3	0	3672	75.6	84.0	99.8	10.1	67.6	80.4	94.9	13.0	72.9	84.3	103.9	13.6	32.505850	-114.843197
Pachuca	83.00	1	0	3509	56.4	64.3	84.3	10.4	54.1	55.3	74.9	6.6	54.3	65.2	88.0	11.8	32.604162	-114.829559
Algodones	94.46	1	0	2869	51.8	60.2	75.1	10.0	52.1	57.0	72.5	8.3	51.1	60.2	79.1	10.9	32.702912	-114.731129

28 CARR: Mexicali - Estación Coahuila

CLAVE: 02016

RUTA: BC-001

AÑO: 2012

LUGAR	ESTACION				VELOCIDAD AUTOS (km/h)				VELOCIDAD AUTOBUSES (km/h)				VELOCIDAD CAMIONES (km/h)				COORDENADAS	
	KM	TE	SC	TDPA	Promedio	P 85	P 98	δ	Promedio	P 85	P 98	δ	Promedio	P 85	P 98	δ	Latitud	Longitud
Mexicali	0.00	3	1	12726	63.3	73.0	87.4	11.4	60.6	71.3	84.7	11.9	56.5	67.6	84.1	12.2	32.652817	-115.371888
Mexicali	0.00	3	2	13253	73.0	80.2	93.4	8.9	71.5	79.4	93.0	9.7	67.9	75.0	91.7	10.0	32.652817	-115.371888
T. Izq. Aeropuerto	11.30	1	1	9740	70.1	76.3	92.3	9.5	69.1	74.7	85.0	8.6	67.9	74.6	90.9	9.8	32.652967	-115.358339
T. Izq. Aeropuerto	11.30	1	2	9420	64.0	73.3	89.0	10.7	62.5	70.7	82.9	8.9	60.4	68.7	84.6	9.4	32.652967	-115.358339
Islas Agrarias Grupo a	14.10	1	0	11186	58.8	64.8	81.2	9.4	57.6	63.8	75.7	8.4	56.8	64.3	82.4	10.1	32.613974	-115.344295
X. C. Sonoita - Mexicali	30.79	1	0	4693	72.8	81.9	95.3	10.7	70.1	81.7	93.8	12.8	66.3	78.7	93.7	13.2	32.555391	-115.214913
X. C. Sonoita - Mexicali	30.79	3	0	6184	72.8	81.9	96.1	10.7	70.8	82.2	94.4	12.9	65.8	78.9	94.3	13.2	32.549600	-115.214995
Ejido Nuevo León	46.83	1	0	5296	66.1	74.1	89.2	10.0	58.9	62.3	77.1	6.1	61.6	72.3	86.6	12.2	32.421320	-115.192413
Ejido Nuevo León	46.83	3	0	6073	46.7	53.7	73.0	9.8	51.6	53.1	54.9	5.2	41.7	51.3	72.6	12.1	32.406726	-115.194869
T. Der. La Puerta	60.26	1	0	5879	59.8	73.1	94.5	14.2	56.3	64.0	83.7	9.6	57.3	65.4	94.1	10.6	32.313980	-115.189649
X. C. El Faro - Estación Coahuila	71.30	1	0	1975	62.2	72.8	91.5	12.2	57.3	60.1	78.7	5.7	56.2	68.5	87.7	12.6	32.242742	-115.167434
T. Der. Leona Vicario	80.50	1	0	554	59.6	73.1	94.5	14.5	60.9	70.3	92.0	10.6	53.5	65.0	85.6	12.4	32.214746	-115.167477
Estación Coahuila	96.65	1	0	1214	72.0	87.5	104.5	16.1	69.1	89.4	104.4	17.6	70.0	90.7	108.9	20.0	32.184904	-115.013708

BAJA CALIFORNIA

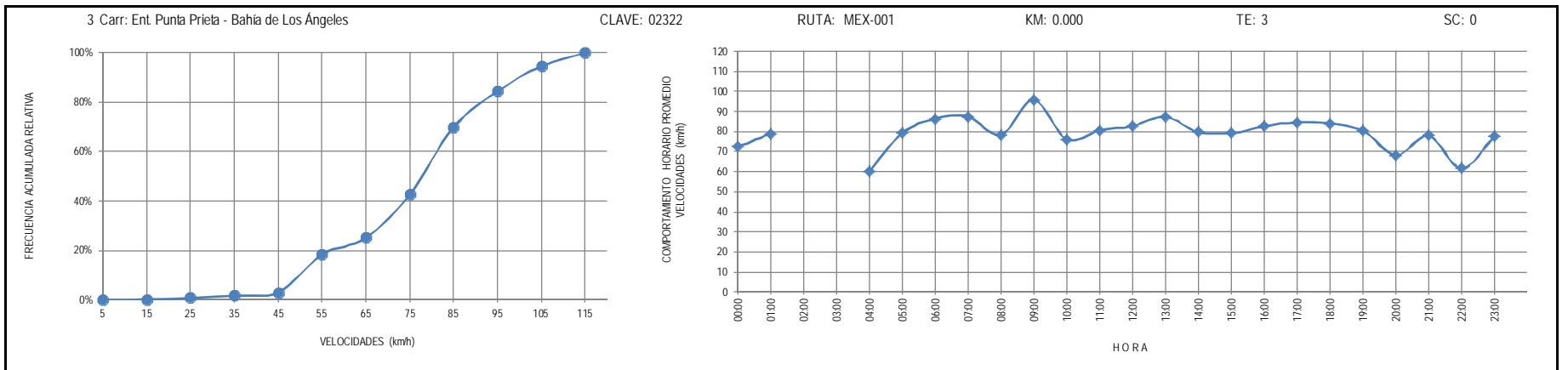
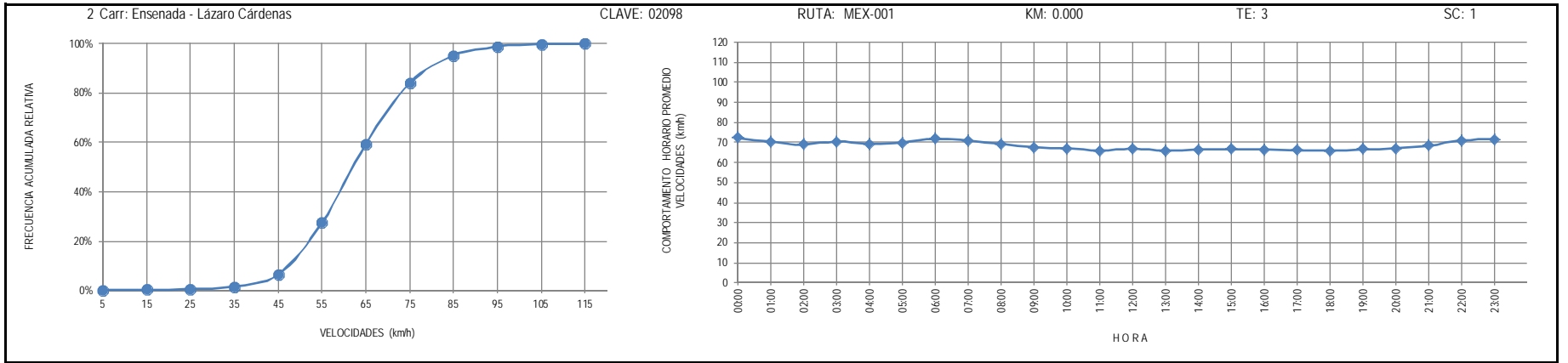
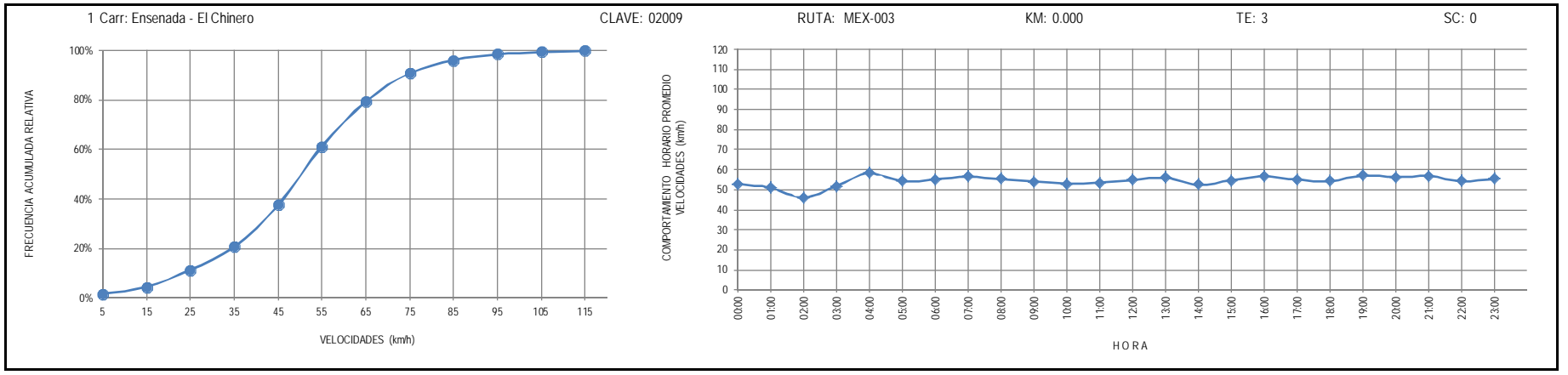
29 CARR: Mexicali - Progreso

CLAVE: 02507

RUTA: BC-005

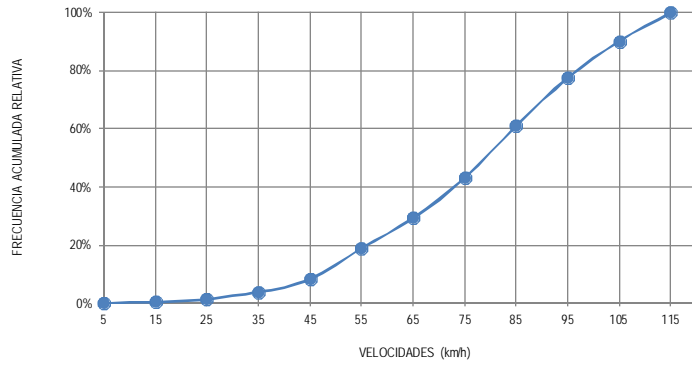
AÑO: 2012

LUGAR	ESTACION			VELOCIDAD AUTOS (km/h)				VELOCIDAD AUTOBUSES (km/h)				VELOCIDAD CAMIONES (km/h)				COORDENADAS	
	KM	TE	SC TDPA	Promedio	P 85	P 98	δ	Promedio	P 85	P 98	δ	Promedio	P 85	P 98	δ	Latitud	Longitud
T. C. Mexicali - Tijuana	0.00																
Progreso	15.30	1	0 3291	56.9	63.0	76.8	8.3	54.4	60.1	72.8	7.1	53.8	61.8	79.9	9.8	32.596256	-115.575435



4 Carr: Ent. Punta Prieta - Guerrero Negro

CLAVE: 00321

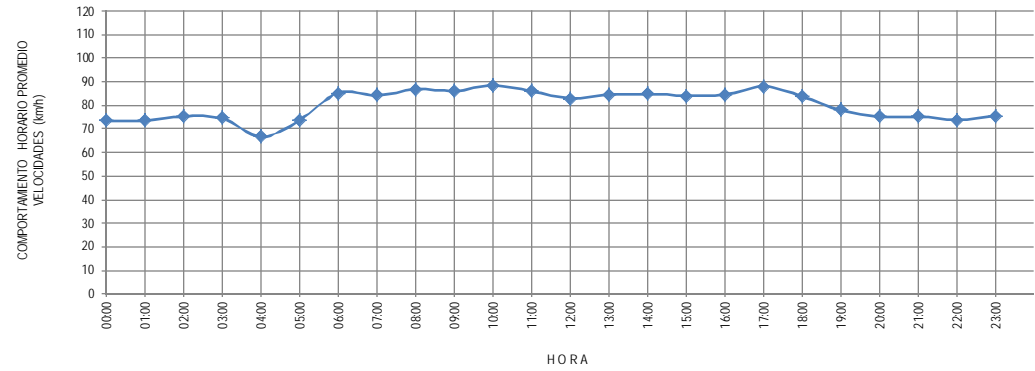


RUTA: MEX-001

KM: 0.000

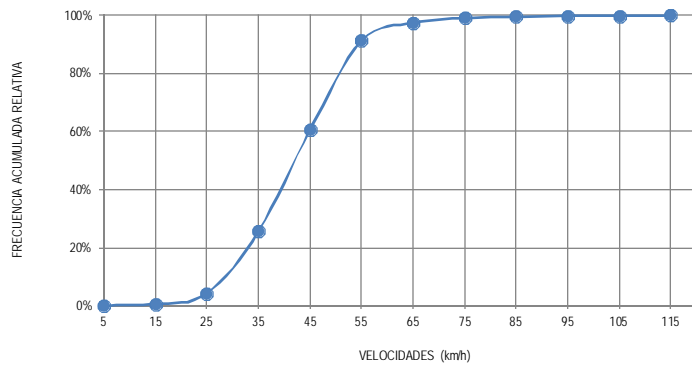
TE: 3

SC: 0



5 Carr: Lázaro Cárdenas - Ent. Punta Prieta

CLAVE: 02319

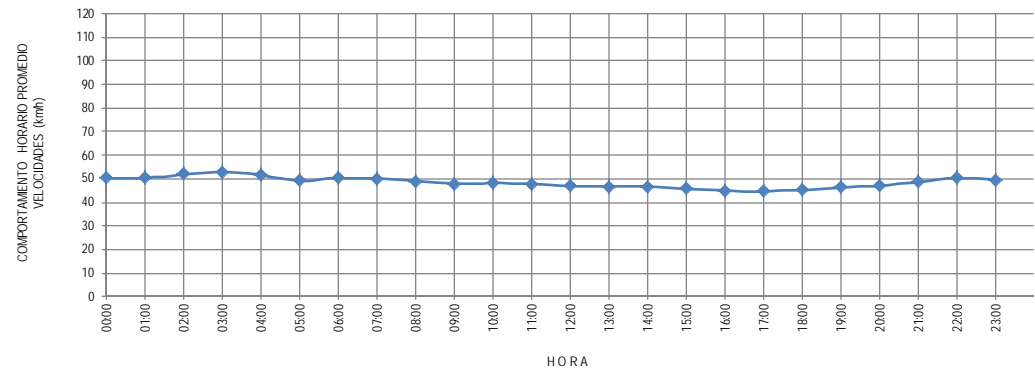


RUTA: MEX-001

KM: 0.000

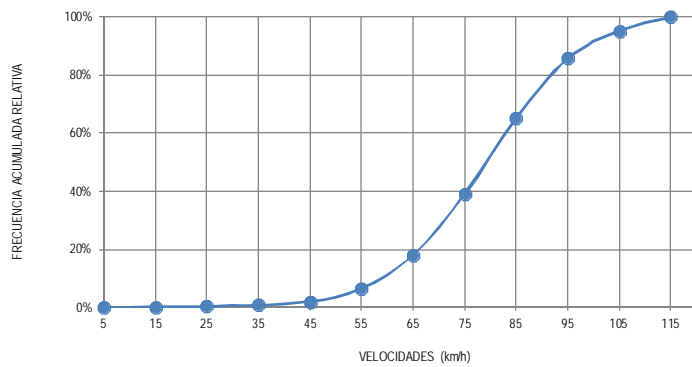
TE: 3

SC: 0



6 Carr: Mexicali - San Felipe

CLAVE: 02096

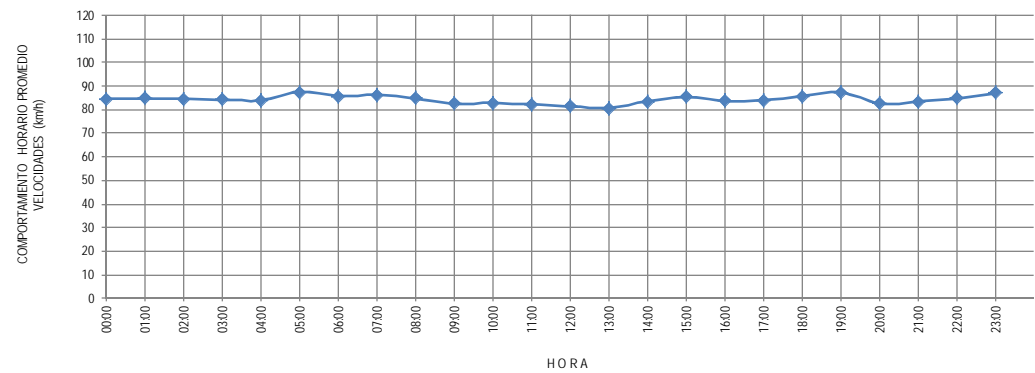


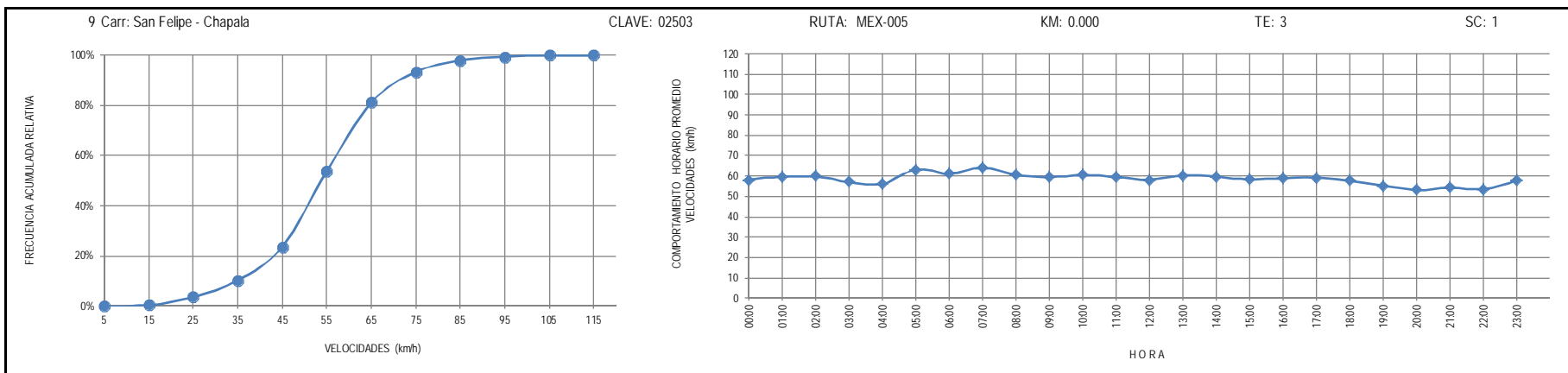
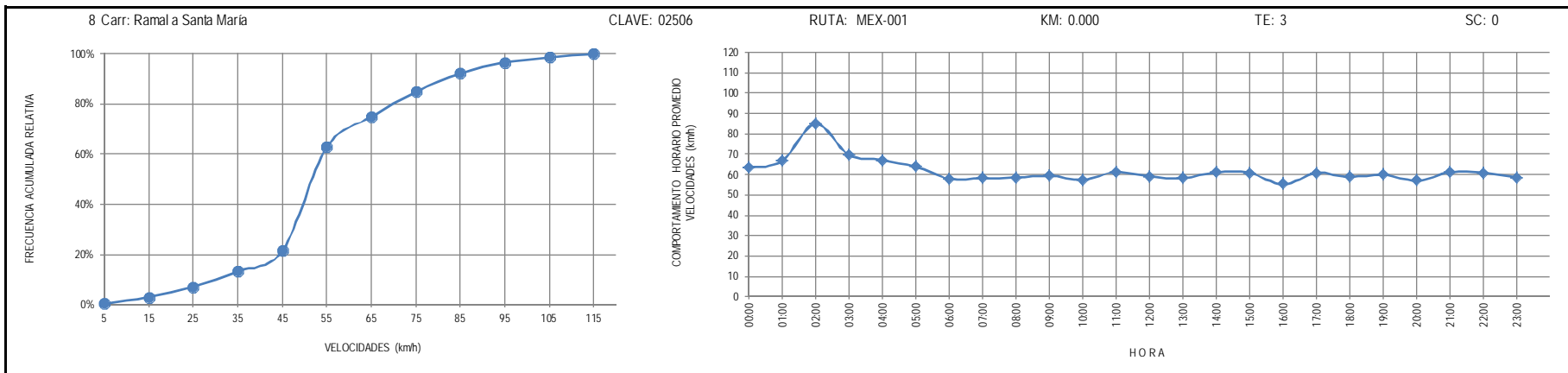
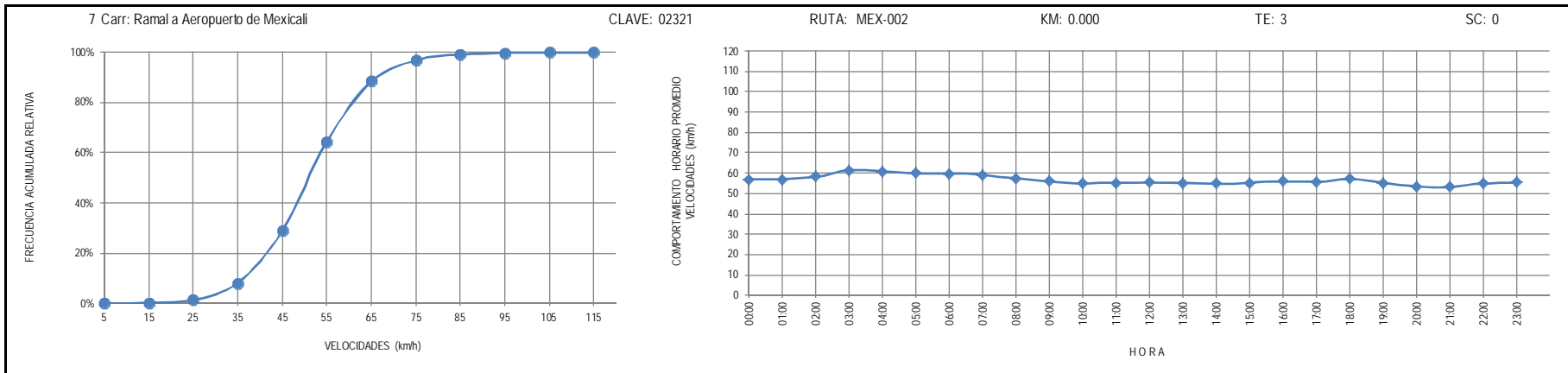
RUTA: MEX-005

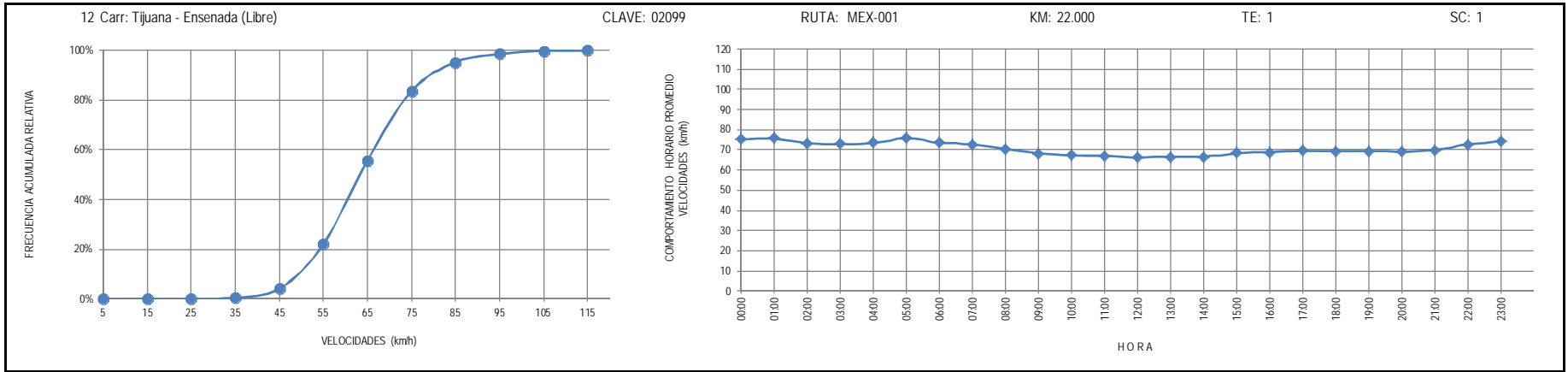
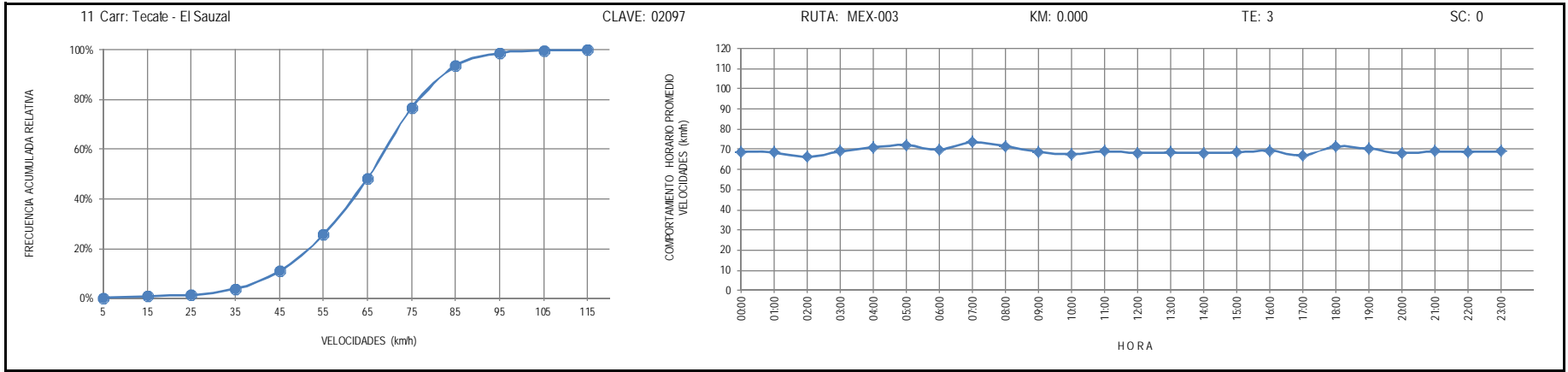
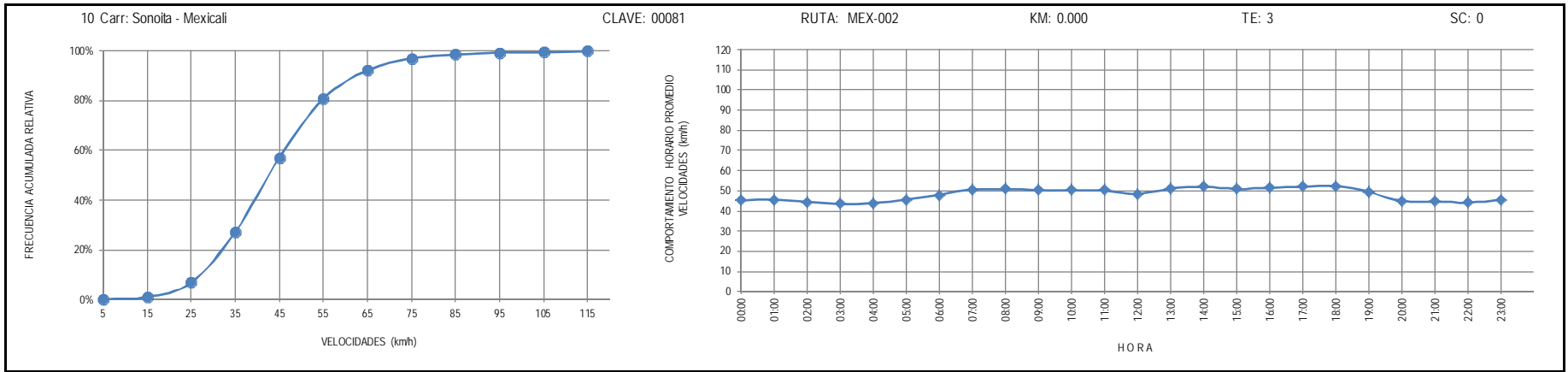
KM: 0.000

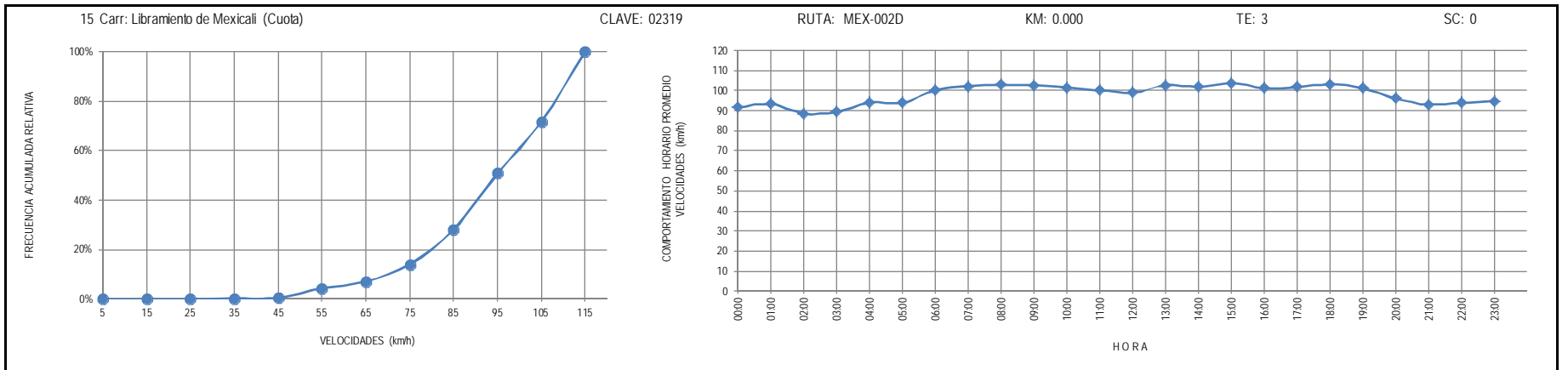
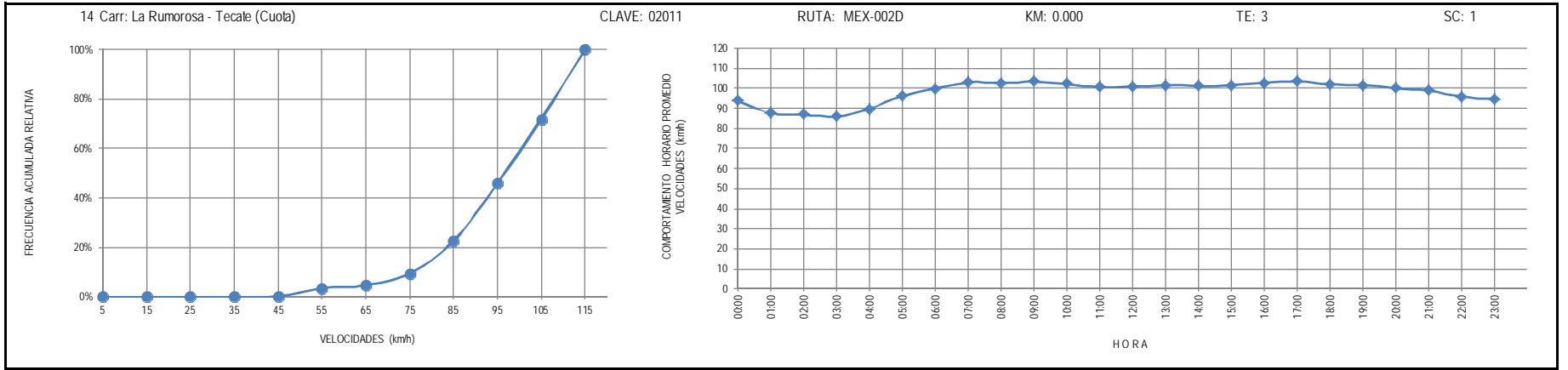
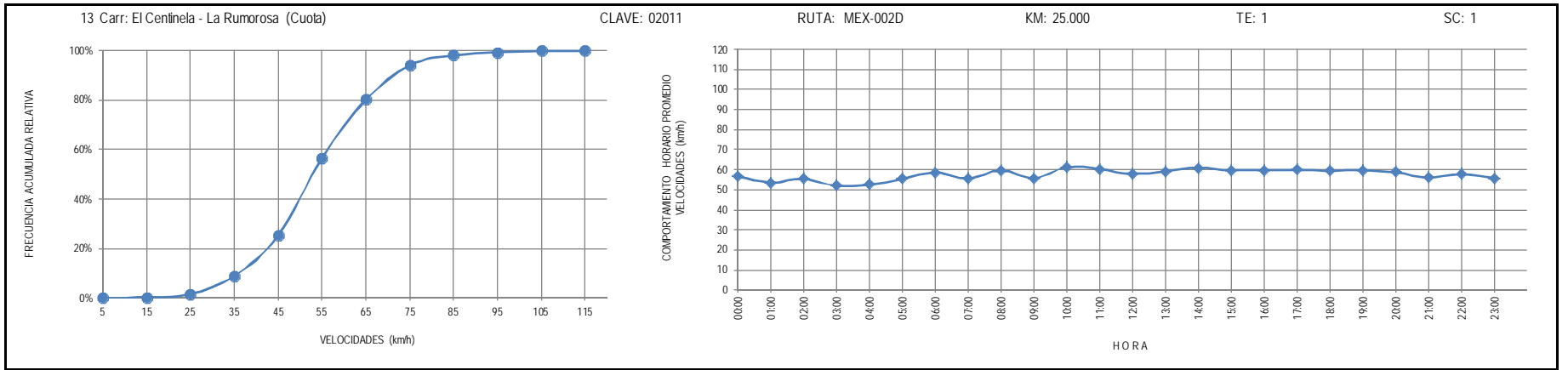
TE: 3

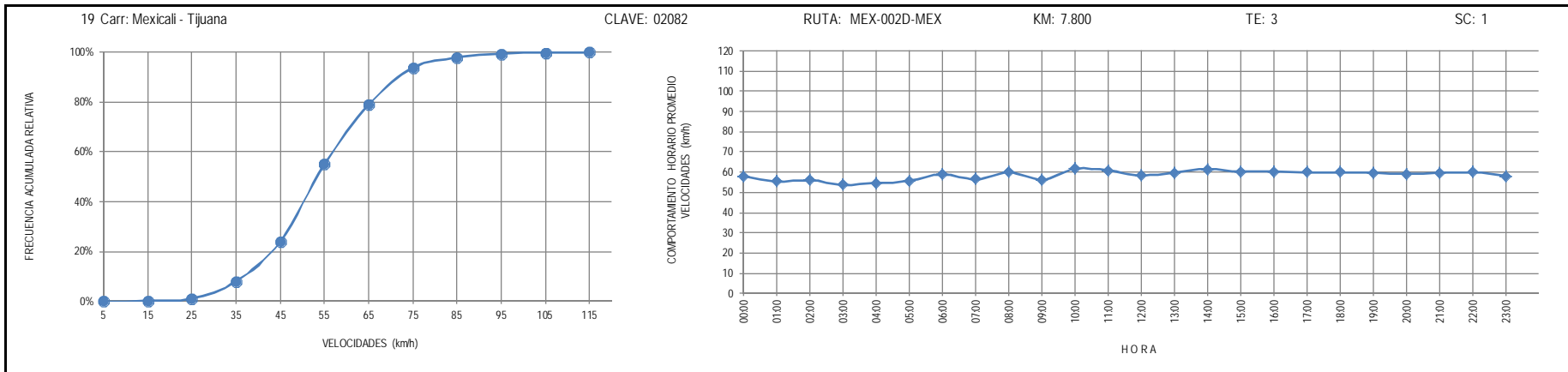
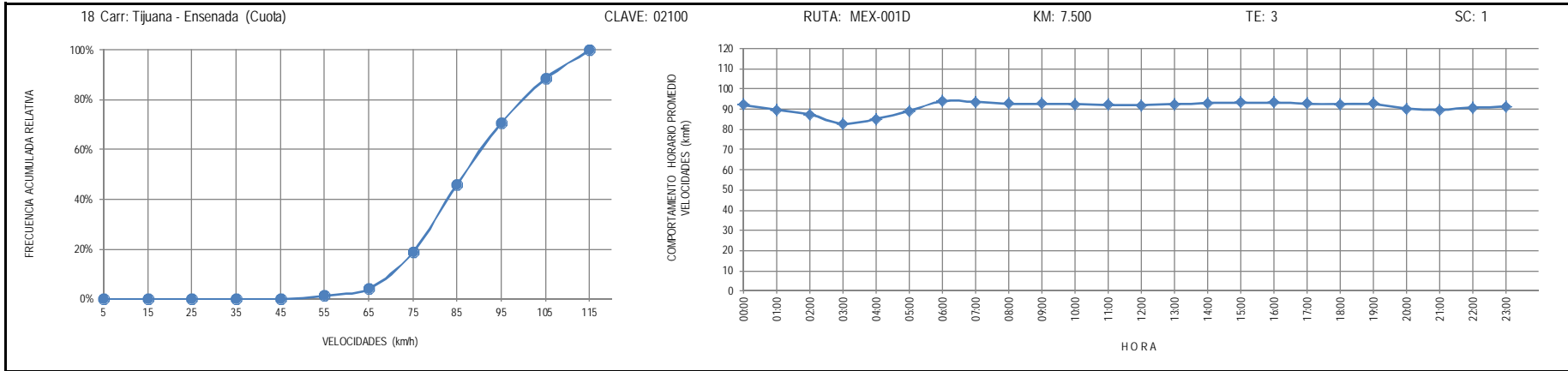
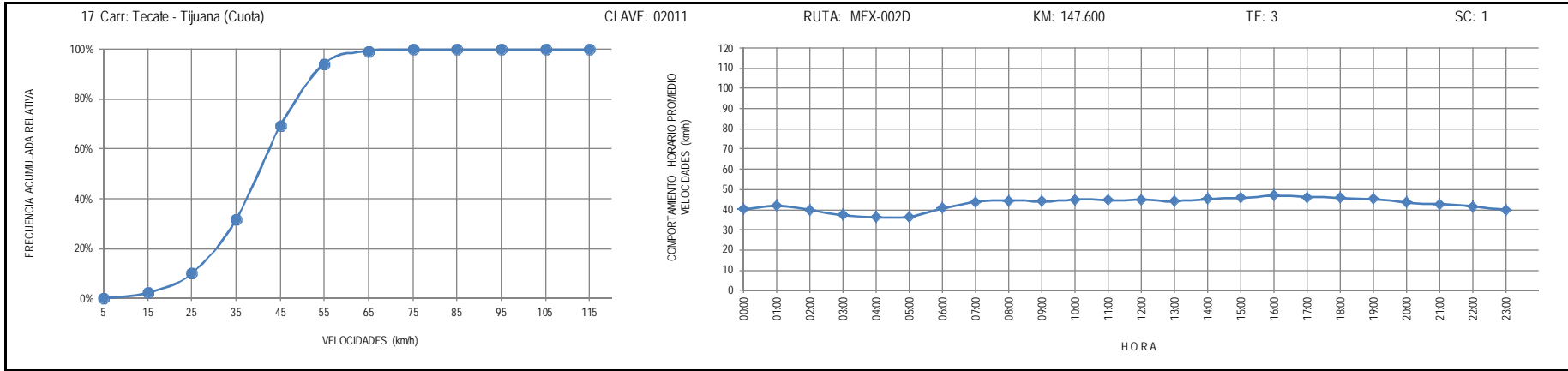
SC: 1

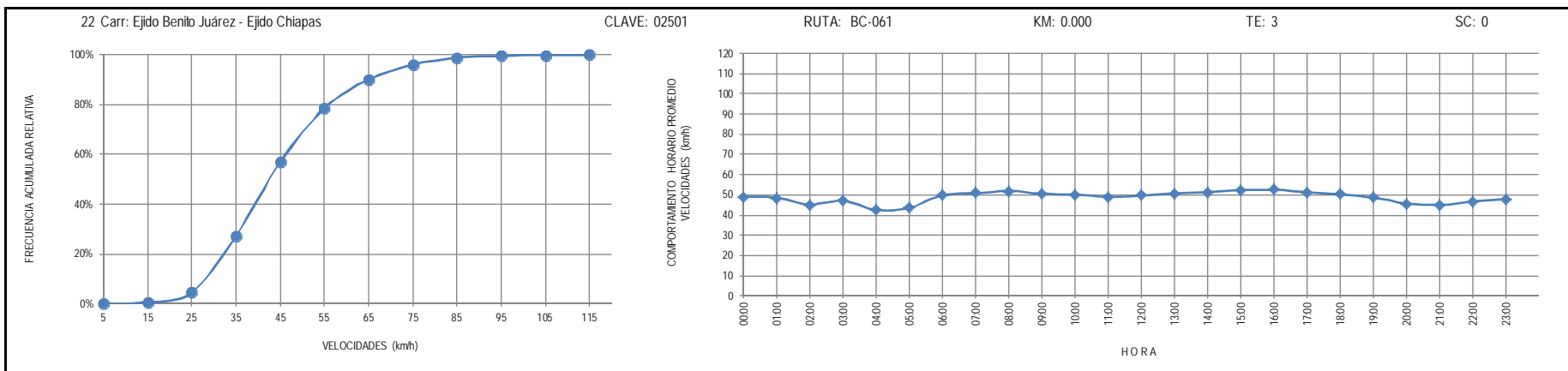
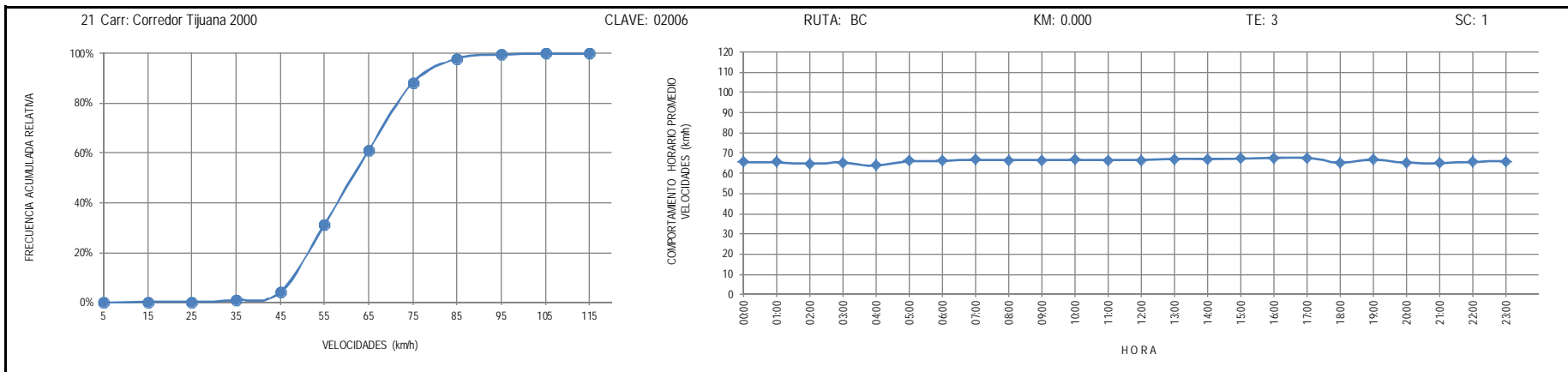
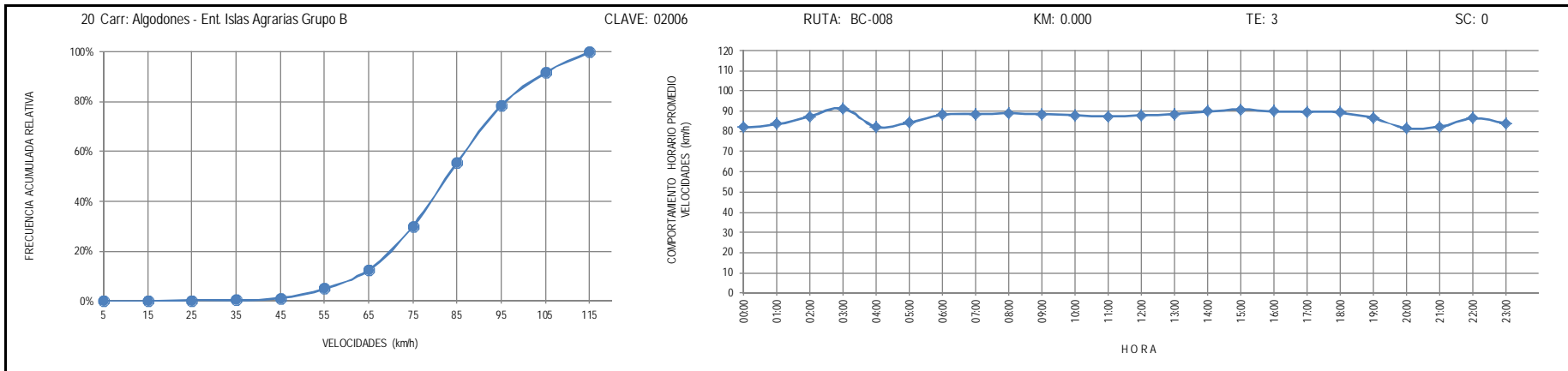


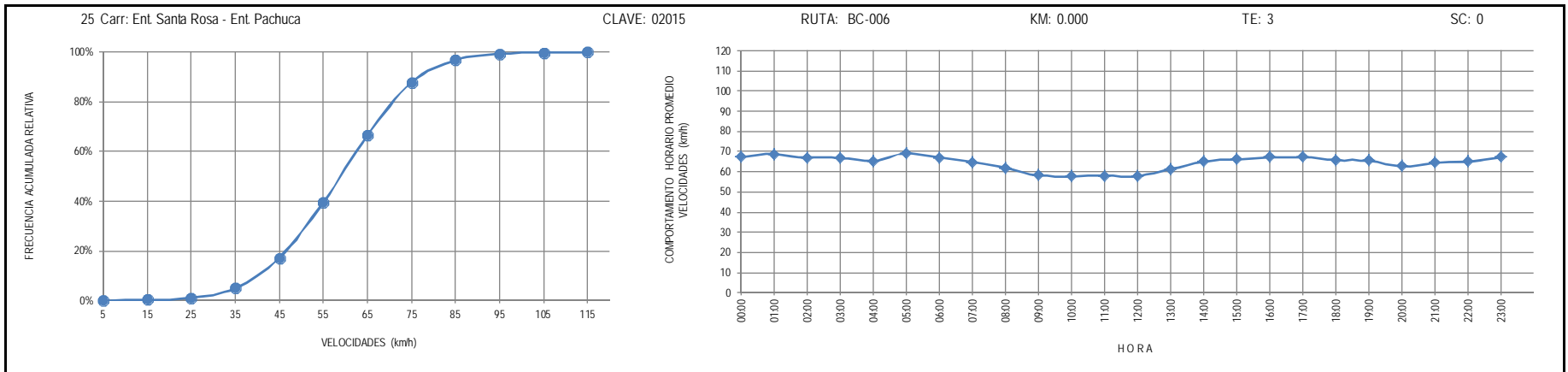
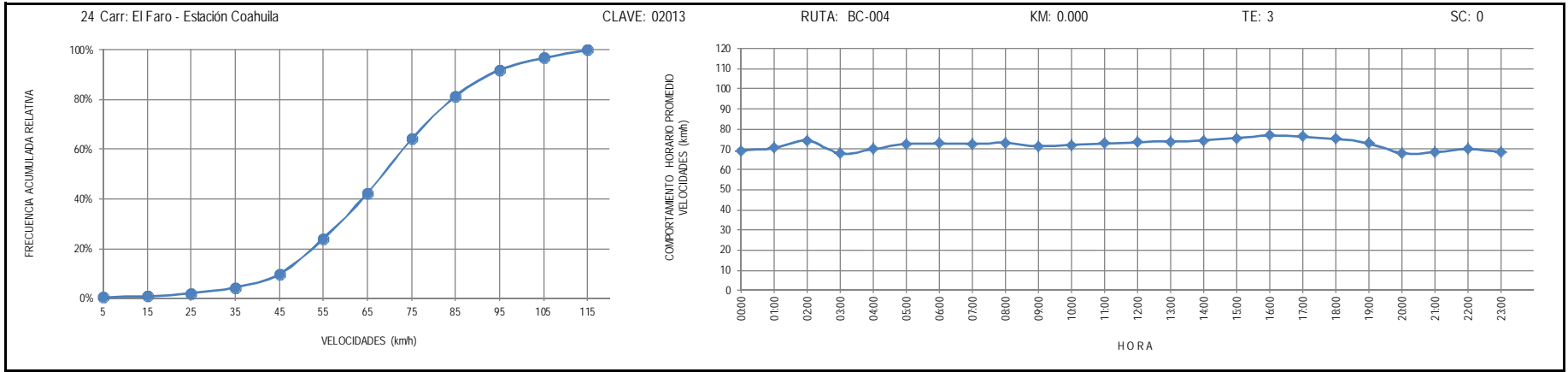
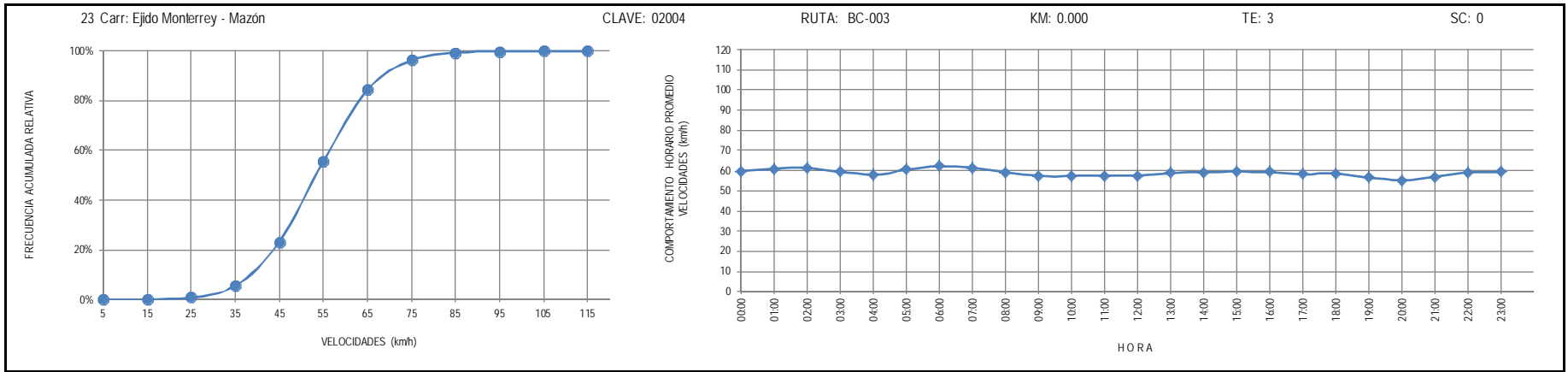


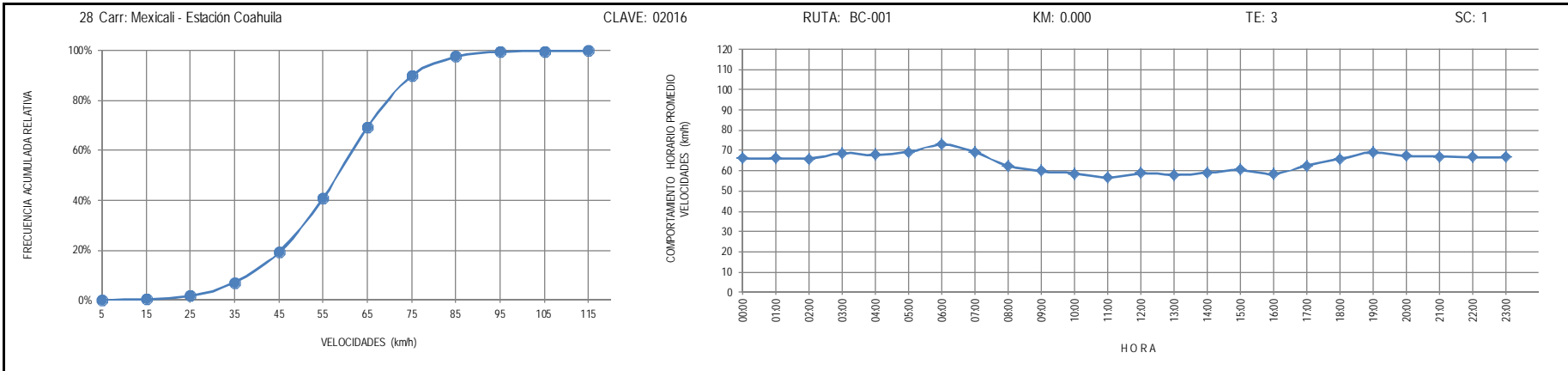
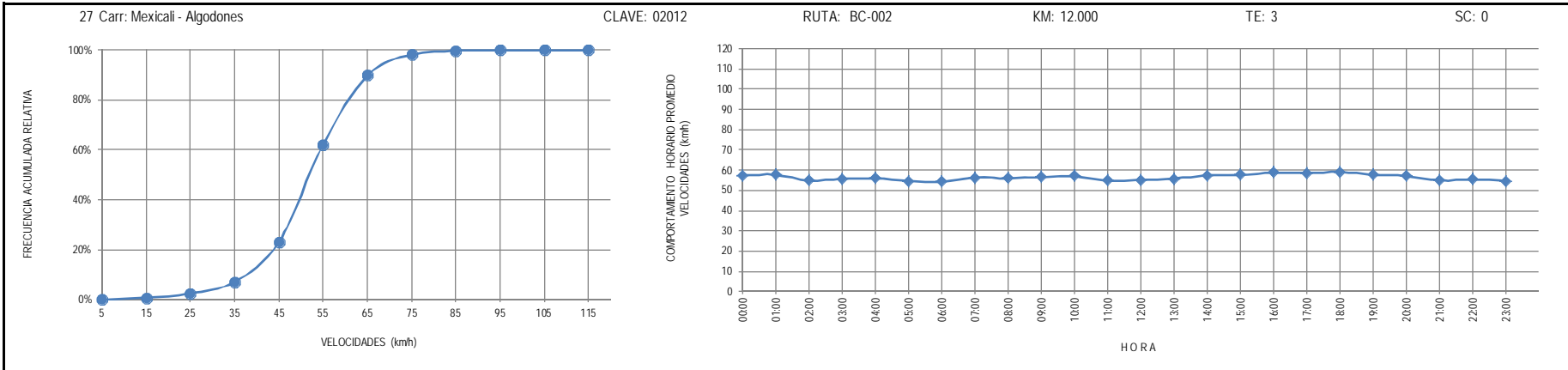
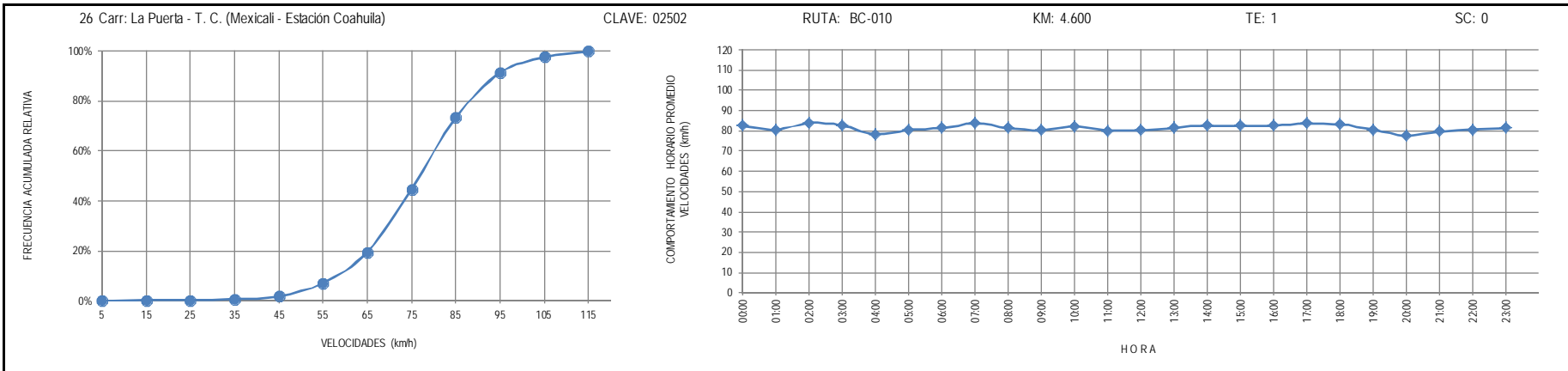






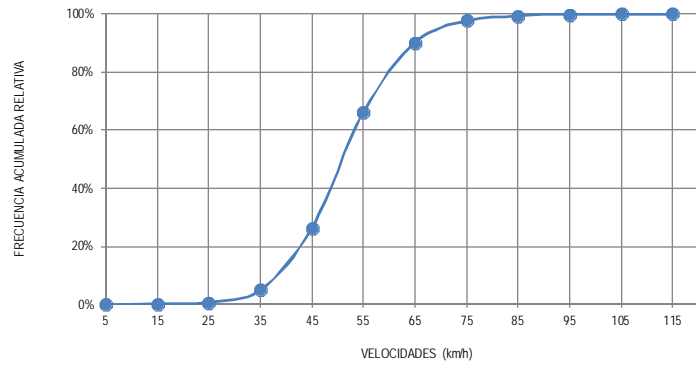






29 Carr: Mexicali - Progreso

CLAVE: 02507



RUTA: BC-005

KM: 15.300

TE: 1

SC: 0

