

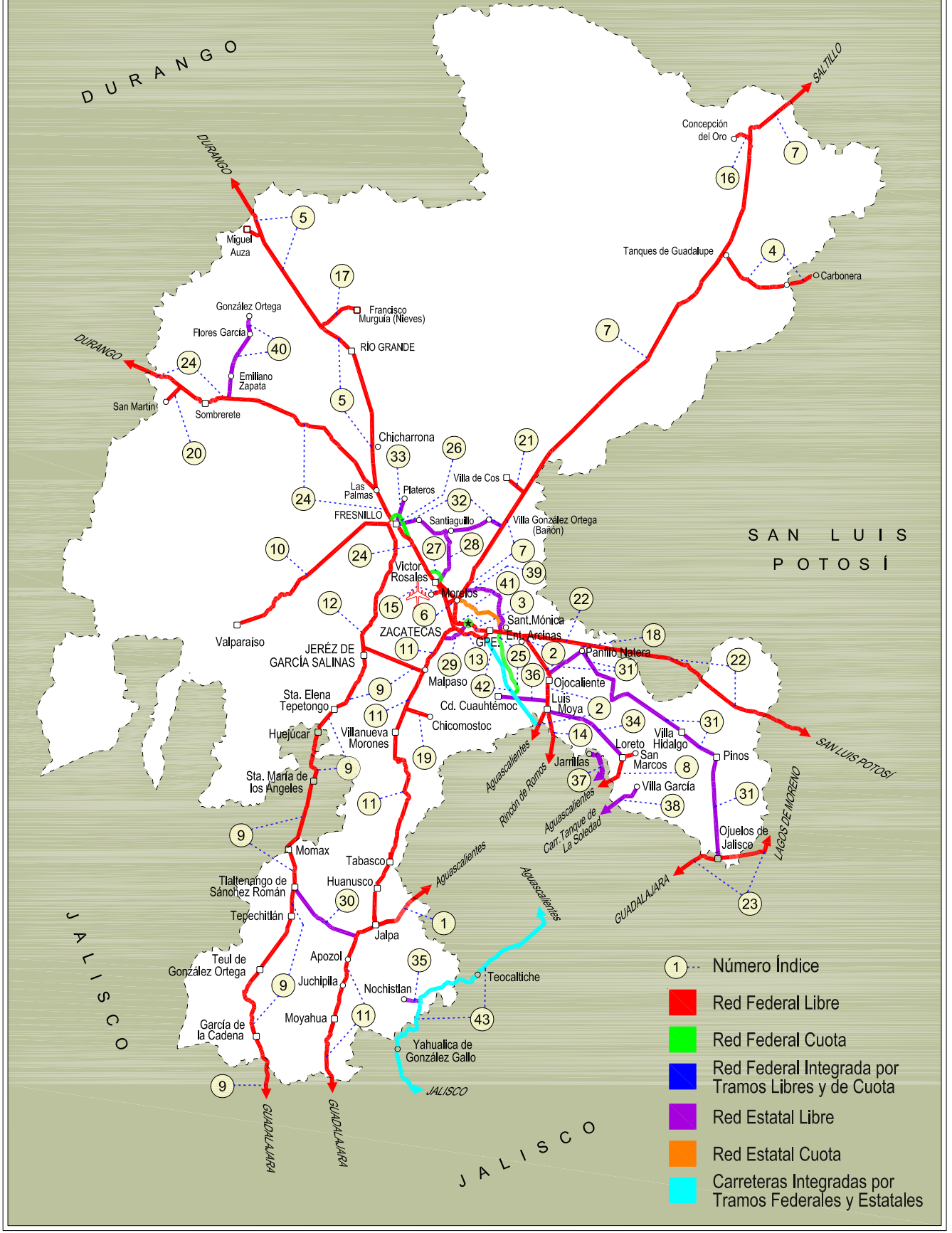
ZACATECAS

NO. INDICE	CARRETERA	ruta
---RED FEDERAL LIBRE---		
1	Aguascalientes - Jalpa	MEX-070
2	Aguascalientes - Zacatecas	MEX-045
3	Bld. Guadalupe - Zacatecas - La Escondida	MEX-045
4	Carbonera - T. C. (Ent. Morelos - Saltillo)	MEX-062
5	Ent. La Chicharrona - Cuencamé	MEX-049
6	Ent. Morelos - Ent. Noria de Gringos	MEX-045
7	Ent. Morelos - Saltillo	MEX-054
8	Ent. Rivier - San Marcos	MEX-066
9	Ent. Tesistán - Ent. Malpaso	MEX-023
10	Fresnillo - Valparaíso	MEX-044
11	Guadalajara - Zacatecas	MEX-054
12	Jerez - Fresnillo	MEX-023
13	Libramiento de Guadalupe - Zacatecas	MEX-045
14	Providencia - Luis Moya	MEX-071
15	Ramal a Aeropuerto Zacatecas	MEX-045
16	Ramal a Concepción del Oro	MEX-054
17	Ramal a Francisco Murguía (Nieves)	MEX-049
18	Ramal a Gral. Pánfilo Natera	MEX-049
19	Ramal a Ruinas de Chicomostoc	MEX-045
20	Ramal a San Martín	MEX-045
21	Ramal a Villa de Cos	MEX-054
22	San Luis Potosí - Ent. Arcinas	MEX-049
23	San Luis Potosí - Lagos de Moreno	MEX-070-080
24	Zacatecas - Durango	MEX-045
---RED FEDERAL DE CUOTA---		
25	Cuahtémoc - Osiris (Cuota)	MEX-045D
26	Libramiento de Fresnillo (Cuota)	MEX-045D
27	Libramiento de Víctor Rosales (Cuota)	MEX-045D
---RED ESTATAL LIBRE---		
28	Calera de Víctor Rosales - Santiaguillo	ZAC-016
29	Cieneguillas - Zacatecas	ZAC
30	Corral de Piedras - Tlaltenango	ZAC
31	Ent. Ojo Caliente - Ent. Ojuelos de Jalisco	ZAC
32	Fresnillo - Ent. Bañón	ZAC
33	Fresnillo - Plateros	ZAC-022
34	Ramal a Loreto	ZAC
35	Ramal a Nochistlán	ZAC
36	Ramal a San Pedro Piedra Gorda	ZAC-AGS
37	San Gil - Jarillas	AGS-012-ZAC
38	San Rafael - Villa García	AGS-ZAC
39	Santa Mónica - Pozo de Gamboa	ZAC
40	Sombrerete - González Ortega	ZAC
---RED ESTATAL DE CUOTA---		
41	Libramiento Noreste de Zacatecas (Cuota)	ZAC-D
---CARRETERAS INTEGRADAS POR TRAMOS FEDERALES Y ESTATALES---		
42	Guadalupe - Cosío	MEX-ZAC
43	Tepatitlán - Jaralillo	MEX-JAL-ZAC

32 ZACATECAS

SECRETARÍA DE COMUNICACIONES Y TRANSPORTES
DIRECCIÓN GENERAL DE SERVICIOS TÉCNICOS

COAHUILA



ZACATECAS

1 CARR: Aguascalientes - Jalpa

CLAVE: 00095

RUTA: MEX-070

AÑO: 2012

LUGAR	ESTACION				CLASIFICACION VEHICULAR EN PORCIENTO										COORDENADAS					
	KM	TE	SC	TDPA	M	A	B	C2	C3	T3S2	T3S3	T3S2R4	OTROS	A	B	C	K'	D	LATITUD	LONGITUD
Aguascalientes	0.00	3	1	8569	1.5	86.4	3.9	5.5	1.3	0.7	0.4	0.1	0.2	87.9	3.9	8.2	0.094	0.501	21.875723	-102.341039
Aguascalientes	0.00	3	2	8596	1.3	85.5	4.3	6.0	1.5	0.8	0.4	0.1	0.1	86.8	4.3	8.9	0.093	0.501	21.875542	-102.341121
T. Der. Jesús María	7.30	1	1	8103	0.6	85.7	4.0	5.2	1.5	1.2	0.9	0.3	0.6	86.3	4.0	9.7	0.085	0.504	21.881143	-102.361779
T. Der. Jesús María	7.30	1	2	8227	0.9	84.3	4.1	5.7	1.6	1.4	1.0	0.3	0.7	85.2	4.1	10.7	0.086	0.504	21.881227	-102.361502
T. Izq. Villa Hidalgo	7.80	3	1	5729	0.2	88.1	3.8	5.7	1.0	0.7	0.3	0.1	0.1	88.3	3.8	7.9	0.126	0.501	21.884304	-102.373134
T. Izq. Villa Hidalgo	7.80	3	2	5697	0.2	87.2	3.7	6.7	1.0	0.7	0.3	0.1	0.1	87.4	3.7	8.9	0.100	0.501	21.884092	-102.373150
Libramiento Poniente de Aguascalientes	11.00	1	1	5468	0.3	87.3	4.1	5.5	1.2	0.8	0.4	0.1	0.3	87.6	4.1	8.3	0.083	0.501	21.889813	-102.394554
Libramiento Poniente de Aguascalientes	11.00	1	2	5449	0.3	86.6	4.3	5.8	1.3	0.9	0.4	0.1	0.3	86.9	4.3	8.8	0.080	0.501	21.890010	-102.394493
Libramiento Poniente de Aguascalientes	11.00	3	1	4897	0.4	86.1	4.1	5.5	1.4	1.4	0.5	0.1	0.5	86.5	4.1	9.4	0.081	0.501	21.892416	-102.403349
Libramiento Poniente de Aguascalientes	11.00	3	2	4917	0.3	85.1	4.2	6.1	1.6	1.6	0.5	0.1	0.5	85.4	4.2	10.4	0.086	0.501	21.892191	-102.403391
T. Der. Gracias a Dios	20.00	3	0	7049	0.2	87.5	2.1	6.5	1.4	1.5	0.4	0.1	0.3	87.7	2.1	10.2	0.090	0.504	21.887235	-102.464389
T. Izq. Malpaso	45.10	1	0	6096	0.3	88.1	2.5	5.3	1.2	1.4	0.5	0.1	0.6	88.4	2.5	9.1	0.083	0.522	21.882000	-102.658977
T. Der. Presa La Codorniz	49.30	3	1	8306	0.2	89.9	2.2	5.1	0.6	1.0	0.6	0.1	0.3	90.1	2.2	7.7	0.085	0.500	21.863697	-102.692508
T. Der. Presa La Codorniz	49.30	3	2	8307	0.6	89.3	2.0	5.4	0.6	1.1	0.6	0.1	0.3	89.9	2.0	8.1	0.086	0.500	21.863587	-102.692416
Calvillo	52.30	3	1	4728	0.4	89.4	1.6	5.6	1.1	1.0	0.5	0.1	0.3	89.8	1.6	8.6	0.086	0.502	21.839145	-102.739990
Calvillo	52.30	3	2	4775	0.3	88.7	1.8	6.1	1.2	1.0	0.5	0.1	0.3	89.0	1.8	9.2	0.088	0.502	21.839118	-102.739852
T. Der. Jaltiche de Abajo	63.80	3	0	5140	0.5	87.1	1.5	5.6	2.2	2.2	0.6	0.1	0.2	87.6	1.5	10.9	0.111	0.529	21.773342	-102.803515
Lim. Edos. Term. Ags. Ppia. Zac.	65.66																			
T. C. Guadalajara - Zacatecas	91.10	1	0	4108	0.3	86.2	2.1	5.1	2.3	2.6	0.8	0.1	0.5	86.5	2.1	11.4	0.095	0.509	21.649225	-102.969529

2 CARR: Aguascalientes - Zacatecas

CLAVE: 00524

RUTA: MEX-045

AÑO: 2012

LUGAR	ESTACION				CLASIFICACION VEHICULAR EN PORCIENTO										COORDENADAS					
	KM	TE	SC	TDPA	M	A	B	C2	C3	T3S2	T3S3	T3S2R4	OTROS	A	B	C	K'	D	LATITUD	LONGITUD
Aguascalientes	0.00																			
T. Izq. Pocitos	6.00	1	1	16451	0.7	91.0	1.9	2.8	1.3	0.9	1.1	0.1	0.2	91.7	1.9	6.4	0.078	0.503	21.903802	-102.292349
T. Izq. Pocitos	6.00	1	2	16653	0.8	90.4	2.1	3.0	1.3	0.9	1.2	0.1	0.2	91.2	2.1	6.7	0.078	0.503	21.904106	-102.292608
T. Der. Loreto	9.83	3	1	19013	0.9	84.1	2.2	4.4	1.7	3.3	1.5	1.2	0.7	85.0	2.2	12.8	0.085	0.512	21.973522	-102.289232
T. Der. Loreto	9.83	3	2	19940	0.8	83.1	2.3	4.8	1.8	3.5	1.6	1.2	0.9	83.9	2.3	13.8	0.083	0.512	21.973573	-102.289604
Santa Fé	16.00	1	1	20039	0.7	81.3	3.3	6.1	2.3	3.4	1.3	1.4	0.2	82.0	3.3	14.7	0.098	0.502	22.017022	-102.285738
Santa Fé	16.00	1	2	20180	0.7	78.9	3.7	6.7	2.7	4.0	1.5	1.6	0.2	79.6	3.7	16.7	0.083	0.502	22.017437	-102.285995
Santa Fé	16.00	3	1	21645	0.4	80.6	3.1	6.8	2.4	3.7	1.3	1.5	0.2	81.0	3.1	15.9	0.098	0.511	22.026288	-102.283469
Santa Fé	16.00	3	2	22621	0.5	78.2	3.4	7.9	2.7	4.0	1.4	1.7	0.2	78.7	3.4	17.9	0.085	0.511	22.026421	-102.283687
La Concepción	18.00	3	1	17647	0.4	80.1	3.8	6.0	2.4	3.8	1.5	1.7	0.3	80.5	3.8	15.7	0.090	0.525	22.034870	-102.281352
La Concepción	18.00	3	2	19544	0.5	78.9	3.5	6.6	2.6	4.3	1.5	1.8	0.3	79.4	3.5	17.1	0.085	0.525	22.035108	-102.281569

ZACATECAS

2 CARR: Aguascalientes - Zacatecas

CLAVE: 00524

RUTA: MEX-045

AÑO: 2012

LUGAR	ESTACION				CLASIFICACION VEHICULAR EN PORCIENTO														COORDENADAS	
	KM	TE	SC	TDPA	M	A	B	C2	C3	T3S2	T3S3	T3S2R4	OTROS	A	B	C	K'	D	LATITUD	LONGITUD
San Francisco de Los Romo	22.73	1	1	5060	1.4	90.8	2.7	3.2	0.6	0.8	0.4	0.0	0.1	92.2	2.7	5.1	0.091	0.528	22.072005	-102.273989
San Francisco de Los Romo	22.73	1	2	5654	1.2	89.8	3.2	3.6	0.8	0.9	0.4	0.0	0.1	91.0	3.2	5.8	0.078	0.528	22.070179	-102.274638
T. Der. Estación Pabellón	31.00	1	1	11342	0.5	77.7	4.8	6.3	2.3	4.4	1.5	2.1	0.4	78.2	4.8	17.0	0.088	0.513	22.137520	-102.288864
T. Der. Estación Pabellón	31.00	1	2	11933	0.6	76.1	5.1	6.9	2.3	4.7	1.6	2.3	0.4	76.7	5.1	18.2	0.093	0.513	22.137412	-102.289053
T. Der. Estación Pabellón	31.00	3	1	9893	0.8	75.6	5.7	6.9	2.2	4.8	1.5	2.1	0.4	76.4	5.7	17.9	0.084	0.503	22.152322	-102.295202
T. Der. Estación Pabellón	31.00	3	2	10026	0.7	73.3	6.1	7.8	2.4	5.3	1.6	2.4	0.4	74.0	6.1	19.9	0.082	0.503	22.152258	-102.295438
Rincón de Romos	40.90	3	0	5390	1.2	88.3	3.5	4.6	0.6	0.9	0.2	0.0	0.7	89.5	3.5	7.0	0.081	0.503	22.236872	-102.317874
La Punta	51.00	1	1	6075	0.4	73.1	3.9	7.8	2.1	6.3	2.3	3.6	0.5	73.5	3.9	22.6	0.092	0.500	22.314436	-102.296498
La Punta	51.00	1	2	6064	0.5	71.8	4.4	8.0	2.5	6.2	2.4	3.6	0.6	72.3	4.4	23.3	0.092	0.500	22.314459	-102.296684
Cosío	56.00	3	1	5443	0.7	75.7	4.4	6.5	1.6	5.4	2.4	2.5	0.8	76.4	4.4	19.2	0.097	0.505	22.377078	-102.299736
Cosío	56.00	3	2	5562	0.6	74.8	4.8	6.1	1.8	5.7	2.5	2.8	0.9	75.4	4.8	19.8	0.100	0.505	22.371751	-102.298358
Lim. Edos. Term. Ags. Ppia. Zac.	62.67																			
Luis Moya	65.80	3	0	5965	0.8	78.2	4.9	7.1	1.7	4.4	1.6	0.7	0.6	79.0	4.9	16.1	0.095	0.502	22.450466	-102.255430
T. Der. San Luis Potosí	100.00	1	0	9941	0.6	78.7	4.8	6.5	1.7	4.5	1.9	1.0	0.3	79.3	4.8	15.9	0.100	0.500	22.707794	-102.322453
T. Der. San Luis Potosí	100.00	3	1	5954	0.5	71.2	5.6	7.1	2.0	7.0	2.3	3.6	0.7	71.7	5.6	22.7	0.097	0.500	22.732593	-102.339716
T. Der. San Luis Potosí	100.00	3	2	5965	0.4	70.2	6.3	7.6	2.3	6.9	2.4	3.1	0.8	70.6	6.3	23.1	0.092	0.500	22.732563	-102.339792
T. Izq. Aguascalientes (Cuota)	113.50	1	1	9429	0.4	74.9	4.8	6.9	2.4	5.3	1.9	3.2	0.2	75.3	4.8	19.9	0.106	0.503	22.751323	-102.447683
T. Izq. Aguascalientes (Cuota)	113.50	1	2	9550	0.4	71.2	5.4	8.1	2.8	6.2	2.2	3.5	0.2	71.6	5.4	23.0	0.105	0.503	22.751137	-102.450371
T. Izq. Libramiento de Guadalupe y Zacatecas	118.20	1	1	16892	0.3	81.0	5.4	6.1	1.8	2.8	1.2	1.2	0.2	81.3	5.4	13.3	0.085	0.507	22.750774	-102.488342
T. Izq. Libramiento de Guadalupe y Zacatecas	118.20	1	2	17375	0.3	81.9	4.9	6.3	1.7	2.6	1.1	1.0	0.2	82.2	4.9	12.9	0.098	0.507	22.750604	-102.492518
Zacatecas	126.84																			

3 CARR: Blvd. Guadalupe - Zacatecas - La Escondida

CLAVE: 00544

RUTA: MEX-045

AÑO: 2012

LUGAR	ESTACION				CLASIFICACION VEHICULAR EN PORCIENTO														COORDENADAS	
	KM	TE	SC	TDPA	M	A	B	C2	C3	T3S2	T3S3	T3S2R4	OTROS	A	B	C	K'	D	LATITUD	LONGITUD
T. Izq. Lib. Guadalupe - Zacatecas (Alta)	0.00	3	1	20996	0.9	91.1	2.2	3.0	0.6	0.9	0.7	0.1	0.5	92.0	2.2	5.8	0.105	0.506	22.752673	-102.501137
T. Izq. Lib. Guadalupe - Zacatecas (Baja)	0.00	3	1	1022	2.4	88.1	1.3	6.4	0.4	0.7	0.4	0.2	0.1	90.5	1.3	8.2	0.104	0.521	22.752547	-102.500729
T. Izq. Lib. Guadalupe - Zacatecas (Baja)	0.00	3	2	1112	2.9	87.3	1.4	6.5	0.5	0.6	0.4	0.3	0.1	90.2	1.4	8.4	0.103	0.521	22.752547	-102.500729
T. Izq. Lib. Guadalupe - Zacatecas (Alta)	0.00	3	2	20529	0.5	90.5	2.4	3.5	0.6	1.1	0.8	0.1	0.5	91.0	2.4	6.6	0.080	0.506	22.752953	-102.502638
X. Av. Universidad	7.70	1	1	45791	0.6	94.8	0.6	2.3	0.1	0.4	1.0	0.1	0.1	95.4	0.6	4.0	0.079	0.514	22.765498	-102.560039
X. Av. Universidad	7.70	1	2	43220	0.7	94.2	0.6	2.6	0.1	0.4	1.2	0.1	0.1	94.9	0.6	4.5	0.077	0.514	22.765409	-102.560077
T. C. Zacatecas - Durango	14.50	1	1	17498	0.5	90.0	2.2	7.1	0.2	0.0	0.0	0.0	0.0	90.5	2.2	7.3	0.109	0.517	22.775959	-102.619529
T. C. Zacatecas - Durango	14.50	1	2	16324	0.3	89.4	2.5	7.6	0.2	0.0	0.0	0.0	0.0	89.7	2.5	7.8	0.098	0.517	22.775845	-102.619333

ZACATECAS

4 CARR : Carbonera - T. C. (Ent. Morelos - Saltillo)

CLAVE: 00218

RUTA: MEX-062

AÑO : 2012

LUGAR	ESTACION				CLASIFICACION VEHICULAR EN PORCIENTO										COORDENADAS					
	KM	TE	SC	TDPA	M	A	B	C2	C3	T3S2	T3S3	T3S2R4	OTROS	A	B	C	K'	D	LATITUD	LONGITUD
Carbonera	0.00	3	0	2378	9.7	72.8	5.3	7.8	1.3	2.1	0.5	0.2	0.3	82.5	5.3	12.2	0.102	0.525	23.698184	-100.620214
Cedral	18.00	1	0	3617	9.5	69.0	6.0	12.3	0.8	1.8	0.3	0.1	0.2	78.5	6.0	15.5	0.102	0.505	23.828276	-100.736263
Cedral	18.00	3	0	2830	5.6	73.6	5.2	11.9	0.8	2.3	0.3	0.1	0.2	79.2	5.2	15.6	0.088	0.505	23.813770	-100.714142
Lim. Edos. Term. S. L. P. Ppia. Zac.	79.20																			
T. C. Ent. Morelos - Saltillo	112.00	1	0	1025	2.7	62.0	6.0	23.4	3.1	2.5	0.2	0.1	0.0	64.7	6.0	29.3	0.094	0.513	24.157574	-101.494107

5 CARR : Ent. La Chicharrona - Cuencamé

CLAVE: 00152

RUTA: MEX-049

AÑO : 2012

LUGAR	ESTACION				CLASIFICACION VEHICULAR EN PORCIENTO										COORDENADAS					
	KM	TE	SC	TDPA	M	A	B	C2	C3	T3S2	T3S3	T3S2R4	OTROS	A	B	C	K'	D	LATITUD	LONGITUD
Ent. La Chicharrona	0.00	3	1	4035	0.3	65.4	4.3	6.8	2.3	12.3	3.1	4.9	0.6	65.7	4.3	30.0	0.085	0.508	23.304723	-102.958781
Ent. La Chicharrona	0.00	3	2	4168	0.2	61.7	4.7	7.7	2.7	13.5	3.6	5.3	0.6	61.9	4.7	33.4	0.104	0.508	23.304519	-102.958853
T. Der. Cañitas de Felipe Pescador	25.86	1	1	3446	0.3	61.8	5.2	8.8	2.2	13.6	3.0	4.2	0.9	62.1	5.2	32.7	0.089	0.506	23.526347	-102.959525
T. Der. Cañitas de Felipe Pescador	25.86	1	2	3531	0.4	57.6	6.1	10.2	2.6	14.2	3.3	4.7	0.9	58.0	6.1	35.9	0.083	0.506	23.526341	-102.959638
Río Grande	60.00	1	0	5562	1.0	60.7	4.8	9.3	2.4	12.5	3.6	4.8	0.9	61.7	4.8	33.5	0.073	0.504	23.793420	-103.016751
Río Grande	60.00	3	0	7684	0.5	52.8	6.4	11.2	2.4	15.7	4.0	6.3	0.7	53.3	6.4	40.3	0.081	0.510	23.871624	-103.085550
T. Der. Nieves	78.00	3	0	5095	0.3	47.5	7.4	8.5	3.1	19.5	4.9	8.0	0.8	47.8	7.4	44.8	0.074	0.507	23.925261	-103.161164
X. C. Juan Aldama - Miguel Auza	124.50	1	0	5768	0.4	49.8	6.8	11.4	2.8	17.1	4.2	6.5	1.0	50.2	6.8	43.0	0.075	0.504	24.265861	-103.397573
X. C. Juan Aldama - Miguel Auza	124.50	3	0	7237	0.4	46.2	7.4	10.2	2.7	19.7	4.8	7.6	1.0	46.6	7.4	46.0	0.078	0.512	24.286997	-103.406355
Lim. Edos. Term. Zac. Ppia. Dgo.	134.30																			
T. Der. Santa Clara	144.00	1	0	4691	0.3	48.2	7.5	8.2	4.1	19.1	4.3	7.8	0.5	48.5	7.5	44.0	0.072	0.524	24.432950	-103.484370
T. Der. Santa Clara	144.00	3	0	4344	0.5	45.4	8.9	7.3	3.4	20.4	4.9	8.6	0.6	45.9	8.9	45.2	0.080	0.530	24.443108	-103.491049
Cuencamé	199.10	1	0	4490	0.4	45.3	8.2	9.8	3.2	20.5	4.2	8.0	0.4	45.7	8.2	46.1	0.074	0.525	24.833052	-103.686356

6 CARR : Ent. Morelos - Ent. Noria de Gringos

CLAVE: 00544

RUTA: MEX-045

AÑO : 2012

LUGAR	ESTACION				CLASIFICACION VEHICULAR EN PORCIENTO										COORDENADAS					
	KM	TE	SC	TDPA	M	A	B	C2	C3	T3S2	T3S3	T3S2R4	OTROS	A	B	C	K'	D	LATITUD	LONGITUD
Ent. Morelos	0.00																			
T. Der. Lib. Noreste de Zacatecas	0.50	1	1	3048	0.6	78.4	3.8	9.1	1.8	3.0	1.6	1.1	0.6	79.0	3.8	17.2	0.082	0.505	22.861563	-102.627139
T. Der. Lib. Noreste de Zacatecas	0.50	1	2	2987	1.5	75.5	4.2	9.7	2.0	3.2	2.0	1.1	0.8	77.0	4.2	18.8	0.085	0.505	22.862110	-102.627351
T. Der. Lib. Noreste de Zacatecas	0.50	3	0	5593	0.4	74.2	3.5	10.2	1.8	6.8	1.9	0.7	0.5	74.6	3.5	21.9	0.082	0.530	22.859264	-102.634004
Ent. Noria de Gringos	2.20																			

ZACATECAS

7 CARR: Ent. Morelos - Saltillo

CLAVE: 00149

RUTA: MEX-054

AÑO: 2012

LUGAR	ESTACION				CLASIFICACION VEHICULAR EN PORCIENTO														COORDENADAS	
	KM	TE	SC	TDPA	M	A	B	C2	C3	T3S2	T3S3	T3S2R4	OTROS	A	B	C	K'	D	LATITUD	LONGITUD
T. C. Zacatecas - Durango	0.00	3	1	2824	0.2	77.0	5.1	8.2	1.6	3.8	1.4	2.1	0.6	77.2	5.1	17.7	0.080	0.504	22.868965	-102.619534
T. C. Zacatecas - Durango	0.00	3	2	2865	0.2	74.7	5.9	9.3	1.7	3.9	1.4	2.1	0.8	74.9	5.9	19.2	0.083	0.504	22.869011	-102.619607
T. Der. Sta. Mónica	11.00	1	1	2725	0.3	72.5	5.7	8.1	1.7	7.4	1.5	2.2	0.6	72.8	5.7	21.5	0.080	0.515	22.937487	-102.570130
T. Der. Sta. Mónica	11.00	1	2	2889	0.2	70.0	6.2	8.5	1.9	8.5	1.7	2.5	0.5	70.2	6.2	23.6	0.089	0.515	22.937536	-102.570206
T. Der. Sta. Mónica	11.00	3	1	2232	0.3	67.1	5.1	9.3	2.4	8.7	3.1	3.3	0.7	67.4	5.1	27.5	0.082	0.520	22.950453	-102.559123
T. Der. Sta. Mónica	11.00	3	2	2414	0.2	64.3	5.5	10.1	2.3	9.9	3.5	3.6	0.6	64.5	5.5	30.0	0.094	0.520	22.950514	-102.559205
T. Izq. Villa de Cos	53.90	1	1	2754	0.6	63.4	6.7	10.8	2.4	8.5	2.0	4.8	0.8	64.0	6.7	29.3	0.083	0.505	23.263208	-102.334466
T. Izq. Villa de Cos	53.90	1	2	2696	0.4	59.2	7.1	12.6	2.6	9.8	2.3	5.2	0.8	59.6	7.1	33.3	0.084	0.505	23.263208	-102.334466
T. Izq. Villa de Cos	53.90	3	1	2274	0.5	54.9	8.0	11.8	3.2	13.9	3.2	3.9	0.6	55.4	8.0	36.6	0.086	0.515	23.276816	-102.324585
T. Izq. Villa de Cos	53.90	3	2	2418	0.4	50.1	9.3	12.8	3.3	15.4	3.7	4.4	0.6	50.5	9.3	40.2	0.087	0.515	23.276816	-102.324585
Sierra Vieja	85.50	3	1	1535	1.7	46.8	10.0	13.3	3.1	16.5	2.6	5.2	0.8	48.5	10.0	41.5	0.073	0.502	23.504918	-102.122382
Sierra Vieja	85.50	3	2	1523	1.0	43.5	10.3	13.8	3.7	18.0	3.1	5.7	0.9	44.5	10.3	45.2	0.080	0.502	23.504918	-102.122382
T. Der. Majoma	144.50	3	1	1391	0.9	43.0	9.9	12.1	2.8	20.1	3.8	6.4	1.0	43.9	9.9	46.2	0.076	0.514	23.878018	-101.735541
T. Der. Majoma	144.50	3	2	1470	0.8	37.9	10.7	13.8	3.1	21.5	4.3	7.0	0.9	38.7	10.7	50.6	0.096	0.514	23.878018	-101.735541
T. Der. San Tiburcio	185.25	1	1	1375	0.4	44.4	8.9	11.5	2.9	21.5	3.3	6.1	1.0	44.8	8.9	46.3	0.081	0.515	24.157435	-101.495745
T. Der. San Tiburcio	185.25	1	2	1461	0.3	40.3	9.6	12.5	3.4	22.7	3.6	6.8	0.8	40.6	9.6	49.8	0.103	0.515	24.157435	-101.495745
T. Der. San Tiburcio	185.25	3	1	1707	0.6	50.4	7.4	17.5	2.7	13.4	2.6	4.6	0.8	51.0	7.4	41.6	0.078	0.524	24.159157	-101.494492
T. Der. San Tiburcio	185.25	3	2	1708	5.3	40.8	8.1	19.8	2.8	15.2	2.6	4.6	0.8	46.1	8.1	45.8	0.089	0.524	24.159157	-101.494492
T. Izq. Concepción del Oro	240.00	1	1	2327	0.9	55.3	5.7	17.8	3.0	10.6	2.1	4.0	0.6	56.2	5.7	38.1	0.082	0.516	24.611856	-101.369693
T. Izq. Concepción del Oro	240.00	1	2	2258	5.7	45.8	6.4	20.2	3.5	11.4	2.4	4.1	0.5	51.5	6.4	42.1	0.091	0.516	24.611856	-101.369693
T. Izq. Concepción del Oro	240.00	3	1	2275	0.5	60.6	5.8	12.2	3.5	11.9	1.8	3.2	0.5	61.1	5.8	33.1	0.085	0.509	24.627441	-101.375668
T. Izq. Concepción del Oro	240.00	3	2	2359	0.5	55.4	5.9	14.2	4.0	13.8	2.1	3.5	0.6	55.9	5.9	38.2	0.081	0.509	24.627441	-101.375668
Lim. Edos. Term. Zac. Ppia. Coah.	266.50																			
Agua Nueva	322.00	1	0	4673	2.4	77.9	5.9	6.0	2.3	3.3	0.9	0.4	0.9	80.3	5.9	13.8	0.077	0.502	25.180345	-101.094519
T. Der. La Trinidad	333.00	3	0	10474	0.4	79.7	6.4	6.0	2.1	3.0	1.2	0.3	0.9	80.1	6.4	13.5	0.092	0.507	25.291531	-101.084562
X. C. Libramiento de Saltillo	348.00	1	1	13331	0.9	83.8	5.9	5.8	0.9	1.9	0.5	0.1	0.2	84.7	5.9	9.4	0.090	0.510	25.368315	-101.015152
X. C. Libramiento de Saltillo	348.00	1	2	13509	1.1	82.3	6.4	6.2	1.1	2.1	0.5	0.1	0.2	83.4	6.4	10.2	0.095	0.510	25.368332	-101.015409
Saltillo	354.00	1	1	11572	1.5	84.5	6.0	5.7	0.3	1.2	0.6	0.1	0.1	86.0	6.0	8.0	0.109	0.522	25.388461	-101.005883
Saltillo	354.00	1	2	12625	1.3	83.0	6.8	6.3	0.3	1.4	0.7	0.1	0.1	84.3	6.8	8.9	0.080	0.522	25.388514	-101.006095

8 CARR: Ent. Rivier - San Marcos

CLAVE: 00285

RUTA: MEX-066

AÑO: 2012

LUGAR	ESTACION				CLASIFICACION VEHICULAR EN PORCIENTO														COORDENADAS	
	KM	TE	SC	TDPA	M	A	B	C2	C3	T3S2	T3S3	T3S2R4	OTROS	A	B	C	K'	D	LATITUD	LONGITUD
T. C. Aguascalientes - Zacatecas	0.00	3	1	5071	1.5	86.2	3.3	5.3	1.6	0.9	0.7	0.2	0.3	87.7	3.3	9.0	0.121	0.519	21.961833	-102.283318

ZACATECAS

8 CARR: Ent. Rivier - San Marcos

CLAVE: 00285

RUTA: MEX-066

AÑO: 2012

LUGAR	ESTACION				CLASIFICACION VEHICULAR EN PORCIENTO										COORDENADAS					
	KM	TE	SC	TDPA	M	A	B	C2	C3	T3S2	T3S3	T3S2R4	OTROS	A	B	C	K'	D	LATITUD	LONGITUD
T. C. Aguascalientes - Zacatecas	0.00	3	2	4707	2.0	84.2	3.8	6.0	1.7	1.1	0.7	0.2	0.3	86.2	3.8	10.0	0.132	0.519	21.961833	-102.283318
T. Izq. El Tepetate	10.50	3	0	7515	0.5	83.8	4.7	5.3	1.6	3.0	0.4	0.4	0.3	84.3	4.7	11.0	0.088	0.501	21.999843	-102.193721
T. Der. Jilotepec	23.60	3	0	6741	0.6	83.2	5.1	6.4	1.4	2.3	0.6	0.1	0.3	83.8	5.1	11.1	0.077	0.509	22.056088	-102.098392
Villa Juárez	30.00	3	0	8602	0.8	83.3	5.1	4.8	1.1	3.9	0.4	0.1	0.5	84.1	5.1	10.8	0.089	0.501	22.100368	-102.063968
Ciénega Grande	41.50	1	0	6758	1.4	82.3	5.9	5.4	1.3	2.8	0.5	0.1	0.3	83.7	5.9	10.4	0.082	0.501	22.187082	-102.020473
Ciénega Grande	41.50	3	0	5847	0.9	82.9	5.7	5.8	1.3	2.7	0.3	0.1	0.3	83.8	5.7	10.5	0.089	0.500	22.200292	-102.015254
Lim. Edos. Term. Ags. Ppia. Zac.	45.75																			
San Marcos	56.00	1	0	7262	3.1	83.3	3.3	4.1	0.5	4.4	0.5	0.1	0.7	86.4	3.3	10.3	0.088	0.501	22.277338	-101.954902

9 CARR: Ent. Tesistán - Ent. Malpaso

CLAVE: 00584

RUTA: MEX-023

AÑO: 2012

LUGAR	ESTACION				CLASIFICACION VEHICULAR EN PORCIENTO										COORDENADAS					
	KM	TE	SC	TDPA	M	A	B	C2	C3	T3S2	T3S3	T3S2R4	OTROS	A	B	C	K'	D	LATITUD	LONGITUD
T. C. Guadalajara - Tesistán	0.00	3	0	16557	0.4	78.4	2.4	7.0	1.3	7.5	1.5	0.5	1.0	78.8	2.4	18.8	0.069	0.509	20.787045	-103.461512
Lim. Edos. Term. Jal. Ppia. Zac.	42.00																			
García de La Cadena	54.00	1	0	1661	0.1	79.4	3.6	8.2	4.2	2.5	1.6	0.1	0.3	79.5	3.6	16.9	0.089	0.504	21.192784	-103.464462
Tlaltenango de Sánchez Román	147.50	3	0	4105	1.1	84.5	1.6	7.4	1.7	2.9	0.5	0.1	0.2	85.6	1.6	12.8	0.093	0.506	21.801042	-103.298821
Momax	165.00	3	0	4190	1.2	83.9	2.4	7.2	1.8	2.1	1.1	0.1	0.2	85.1	2.4	12.5	0.098	0.512	21.932202	-103.309859
Lim. Edos. Term. Zac. Ppia. Jal.	171.80																			
Colotlán	175.00	1	0	3072	0.6	84.7	2.6	7.6	1.3	1.9	0.9	0.1	0.3	85.3	2.6	12.1	0.111	0.506	22.093442	-103.271323
Lim. Edos. Term. Jal. Ppia. Zac.	209.90																			
Lim. Edos. Term. Zac. Ppia. Jal.	214.80																			
Lim. Edos. Term. Jal. Ppia. Zac.	223.95																			
Tepetongo	235.00	3	0	2965	1.2	83.2	2.8	7.5	1.3	2.3	1.2	0.1	0.4	84.4	2.8	12.8	0.097	0.506	22.464388	-103.144255
Jerez de García Salinas	249.00	1	0	5525	1.3	84.2	2.1	6.3	1.1	3.1	1.0	0.4	0.5	85.5	2.1	12.4	0.083	0.501	22.610929	-103.011269
T. C. Guadalajara - Zacatecas	275.00	1	0	5455	0.9	84.9	2.1	6.0	1.2	3.5	0.9	0.1	0.4	85.8	2.1	12.1	0.102	0.501	22.616637	-102.760112

10 CARR: Fresnillo - Valparaíso

CLAVE: 32547

RUTA: MEX-044

AÑO: 2012

LUGAR	ESTACION				CLASIFICACION VEHICULAR EN PORCIENTO										COORDENADAS					
	KM	TE	SC	TDPA	M	A	B	C2	C3	T3S2	T3S3	T3S2R4	OTROS	A	B	C	K'	D	LATITUD	LONGITUD
Fresnillo	0.00	3	0	7065	2.9	76.0	3.6	9.7	1.7	3.7	1.7	0.2	0.5	78.9	3.6	17.5	0.086	0.505	23.173938	-102.917023
T. Izq. Guanajuato	24.50	1	0	2513	0.3	80.5	3.7	9.8	2.5	1.8	1.0	0.2	0.2	80.8	3.7	15.5	0.099	0.509	23.098086	-103.090642
T. Izq. Sombrerettillo	45.00	3	0	1659	0.2	80.6	3.3	10.2	2.0	2.0	1.3	0.2	0.2	80.8	3.3	15.9	0.120	0.516	22.995783	-103.215410
T. Izq. San José de Llanetas	55.00	3	0	1261	0.3	78.2	5.6	11.0	1.5	1.8	1.2	0.2	0.2	78.5	5.6	15.9	0.102	0.501	22.926488	-103.293804

ZACATECAS

10 CARR: Fresnillo - Valparaíso

CLAVE: 32547

RUTA: MEX-044

AÑO: 2012

LUGAR	ESTACION				CLASIFICACION VEHICULAR EN PORCIENTO														COORDENADAS	
	KM	TE	SC	TDPA	M	A	B	C2	C3	T3S2	T3S3	T3S2R4	OTROS	A	B	C	K'	D	LATITUD	LONGITUD
T. Izq. Lobatos	71.00	3	0	1978	0.3	83.1	2.4	8.9	2.1	1.8	0.8	0.3	0.3	83.4	2.4	14.2	0.100	0.508	22.837363	-103.409497
Valparaíso	90.00	1	0	2733	0.5	78.7	4.3	8.4	4.4	2.0	1.1	0.1	0.5	79.2	4.3	16.5	0.108	0.504	22.796287	-103.525237

11 CARR: Guadalajara - Zacatecas

CLAVE: 00150

RUTA: MEX-054

AÑO: 2012

LUGAR	ESTACION				CLASIFICACION VEHICULAR EN PORCIENTO														COORDENADAS	
	KM	TE	SC	TDPA	M	A	B	C2	C3	T3S2	T3S3	T3S2R4	OTROS	A	B	C	K'	D	LATITUD	LONGITUD
Guadalajara	0.00																			
X. Periférico de Guadalajara	6.19	3	1	9766	2.4	84.2	0.8	8.3	0.6	1.3	1.4	0.3	0.7	86.6	0.8	12.6	0.069	0.531	20.755656	-103.343091
X. Periférico de Guadalajara	6.19	3	2	9955	2.1	83.0	0.8	9.6	0.6	1.3	1.6	0.3	0.7	85.1	0.8	14.1	0.072	0.531	20.755656	-103.343091
T. Der. Ixtlahuacán del Río	49.46	3	0	4274	1.0	81.8	1.1	11.0	1.5	2.3	0.7	0.1	0.5	82.8	1.1	16.1	0.083	0.501	20.871168	-103.236729
Lim. Edos. Term. Jal. Ppia. Zac.	76.49																			
T. Izq. Moyahua	106.43	1	0	3167	0.6	68.6	4.3	13.9	3.8	5.8	1.9	0.2	0.9	69.2	4.3	26.5	0.085	0.505	21.256466	-103.157417
Apozol	129.28	1	0	4535	1.2	82.2	1.7	8.1	1.5	3.6	0.9	0.2	0.6	83.4	1.7	14.9	0.088	0.502	21.445538	-103.095751
Jalpa	159.39	1	0	1338	0.5	78.4	2.7	10.3	2.3	3.8	1.2	0.1	0.7	78.9	2.7	18.4	0.097	0.508	21.617496	-103.003729
Tabasco	189.40	1	0	1525	0.5	78.6	1.9	9.7	2.6	4.3	1.3	0.3	0.8	79.1	1.9	19.0	0.105	0.507	21.842968	-102.933873
Tabasco	189.40	3	0	3285	0.6	80.1	3.2	9.0	1.8	3.6	1.1	0.1	0.5	80.7	3.2	16.1	0.098	0.503	21.883804	-102.908241
Villanueva	255.70	3	0	4045	0.3	84.8	2.3	6.6	1.5	2.9	0.9	0.0	0.7	85.1	2.3	12.6	0.095	0.504	22.378167	-102.880591
T. Izq. Jerez de García Salinas	289.13	1	0	3802	0.6	80.0	3.2	9.2	2.1	3.3	1.1	0.1	0.4	80.6	3.2	16.2	0.095	0.500	22.615181	-102.756775
T. Izq. Jerez de García Salinas	289.13	3	1	4023	0.2	85.9	2.4	7.1	1.4	1.7	0.8	0.1	0.4	86.1	2.4	11.5	0.115	0.500	22.621890	-102.753010
T. Izq. Jerez de García Salinas	289.13	3	2	4022	0.3	84.6	2.6	7.7	1.6	1.9	0.9	0.1	0.3	84.9	2.6	12.5	0.108	0.500	22.621931	-102.753086
T. C. Zacatecas - Durango	311.83	1	1	7654	0.4	86.4	2.0	7.7	0.9	1.3	0.9	0.1	0.3	86.8	2.0	11.2	0.102	0.507	22.771846	-102.630740
T. C. Zacatecas - Durango	311.83	1	2	7435	0.3	85.4	2.1	8.6	0.9	1.4	0.9	0.1	0.3	85.7	2.1	12.2	0.121	0.507	22.771641	-102.630647

12 CARR: Jerez - Fresnillo

CLAVE: 32542

RUTA: MEX-023

AÑO: 2012

LUGAR	ESTACION				CLASIFICACION VEHICULAR EN PORCIENTO														COORDENADAS	
	KM	TE	SC	TDPA	M	A	B	C2	C3	T3S2	T3S3	T3S2R4	OTROS	A	B	C	K'	D	LATITUD	LONGITUD
Jerez	0.00	3	0	2513	1.4	86.0	2.1	5.0	1.4	2.0	1.2	0.4	0.5	87.4	2.1	10.5	0.098	0.509	22.682123	-103.016472
T. C. Ent. Fresnillo - Valparaíso	60.00	1	0	3111	3.2	78.3	4.1	7.2	2.8	2.8	1.2	0.1	0.3	81.5	4.1	14.4	0.097	0.510	23.162041	-102.884620

ZACATECAS

13 CARR: Libramiento de Guadalupe - Zacatecas

CLAVE: 32582

RUTA: MEX-045

AÑO: 2012

LUGAR	ESTACION				CLASIFICACION VEHICULAR EN PORCIENTO													COORDENADAS		
	KM	TE	SC	TDPA	M	A	B	C2	C3	T3S2	T3S3	T3S2R4	OTROS	A	B	C	K'	D	LATITUD	LONGITUD
T. C. Aguascalientes - Zacatecas (Alta)	0.00	3	1	7602	0.6	80.0	2.9	6.1	2.1	4.5	1.7	1.6	0.5	80.6	2.9	16.5	0.083	0.530	22.741407	-102.502835
T. C. Aguascalientes - Zacatecas (Baja)	0.00	3	1	4650	1.6	85.1	2.4	8.4	0.9	0.8	0.5	0.1	0.2	86.7	2.4	10.9	0.082	0.505	22.741494	-102.502890
T. C. Aguascalientes - Zacatecas (Baja)	0.00	3	2	4745	1.6	83.3	2.7	9.6	1.0	1.0	0.5	0.1	0.2	84.9	2.7	12.4	0.097	0.505	22.741090	-102.502822
T. C. Aguascalientes - Zacatecas (Alta)	0.00	3	2	6731	0.7	77.1	3.3	7.4	2.3	5.0	1.9	1.7	0.6	77.8	3.3	18.9	0.079	0.530	22.741286	-102.502783
X. C. Cieneguillas - Zacatecas	13.00	3	1	6279	0.3	80.1	3.0	5.6	1.8	4.9	1.9	1.7	0.7	80.4	3.0	16.6	0.115	0.523	22.757119	-102.597946
X. C. Cieneguillas - Zacatecas	13.00	3	2	6530	0.4	78.2	3.2	6.4	2.1	5.2	2.1	1.7	0.7	78.6	3.2	18.2	0.103	0.523	22.756935	-102.597962
T. C. Zacatecas - Durango	17.50	1	1	6956	0.6	79.7	3.1	6.5	1.6	4.5	1.9	1.4	0.7	80.3	3.1	16.6	0.119	0.538	22.773025	-102.617944
T. C. Zacatecas - Durango	17.50	1	2	7294	0.6	78.4	3.2	7.2	1.8	4.8	1.9	1.4	0.7	79.0	3.2	17.8	0.100	0.538	22.772871	-102.618043

14 CARR: Providencia - Luis Moya

CLAVE: 00112

RUTA: MEX-071

AÑO: 2012

LUGAR	ESTACION				CLASIFICACION VEHICULAR EN PORCIENTO													COORDENADAS		
	KM	TE	SC	TDPA	M	A	B	C2	C3	T3S2	T3S3	T3S2R4	OTROS	A	B	C	K'	D	LATITUD	LONGITUD
T. C. Aguascalientes - Zacatecas	0.00	3	0	4908	0.8	77.4	3.4	5.2	2.7	3.7	2.7	3.5	0.6	78.2	3.4	18.4	0.080	0.501	22.060701	-102.273816
T. Izq. Pabellón de Arteaga	12.10	1	0	4297	0.7	78.4	3.4	5.1	3.0	2.6	2.6	3.8	0.4	79.1	3.4	17.5	0.084	0.521	22.145367	-102.250756
T. Der. Villa Juárez	14.90	3	0	4986	0.9	78.9	3.7	5.2	2.5	3.0	2.3	3.0	0.5	79.8	3.7	16.5	0.083	0.510	22.180444	-102.245147
X. C. Rincón de Romos - Ciénega Grande	21.22	3	0	4739	1.0	82.0	0.7	9.6	2.3	2.5	0.8	0.8	0.3	83.0	0.7	16.3	0.085	0.513	22.230959	-102.241414
X. C. La Punta - Mesillas	30.35	3	0	3074	1.3	81.7	0.3	9.5	2.5	2.4	1.3	0.7	0.3	83.0	0.3	16.7	0.086	0.517	22.318008	-102.233755
San Jacinto	34.25	3	0	2405	3.0	78.0	0.5	9.8	3.0	2.5	1.6	1.1	0.5	81.0	0.5	18.5	0.086	0.525	22.353273	-102.232671
Lim. Edos. Term. Ags. Ppia. Zac.	37.50																			
Luis Moya	43.50	1	0	3809	1.3	82.0	0.7	9.6	1.5	2.9	1.0	0.6	0.4	83.3	0.7	16.0	0.096	0.516	22.427305	-102.246792

15 CARR: Ramal a Aeropuerto Zacatecas

CLAVE: 32546

RUTA: MEX-045

AÑO: 2012

LUGAR	ESTACION				CLASIFICACION VEHICULAR EN PORCIENTO													COORDENADAS		
	KM	TE	SC	TDPA	M	A	B	C2	C3	T3S2	T3S3	T3S2R4	OTROS	A	B	C	K'	D	LATITUD	LONGITUD
T. C. Zacatecas - Durango	0.00	3	1	853	1.7	88.2	1.9	6.2	1.1	0.7	0.1	0.1	0.0	89.9	1.9	8.2	0.122	0.508	22.909972	-102.674005
T. C. Zacatecas - Durango	0.00	3	2	880	1.2	87.7	2.2	6.9	1.1	0.7	0.1	0.1	0.0	88.9	2.2	8.9	0.143	0.508	22.909900	-102.673855
Aeropuerto	1.95																			

16 CARR: Ramal a Concepción del Oro

CLAVE: 32565

RUTA: MEX-054

AÑO: 2012

LUGAR	ESTACION				CLASIFICACION VEHICULAR EN PORCIENTO													COORDENADAS		
	KM	TE	SC	TDPA	M	A	B	C2	C3	T3S2	T3S3	T3S2R4	OTROS	A	B	C	K'	D	LATITUD	LONGITUD
T. C. Ent. Morelos - Saltillo	0.00	3	0	4725	4.2	79.1	1.4	10.4	0.8	3.0	0.4	0.1	0.6	83.3	1.4	15.3	0.083	0.517	24.621934	-101.391682

ZACATECAS

21 CARR: Ramal a Villa de Cos

CLAVE: 32564

RUTA: MEX-054

AÑO: 2012

LUGAR	ESTACION				CLASIFICACION VEHICULAR EN PORCIENTO													COORDENADAS		
	KM	TE	SC	TDPA	M	A	B	C2	C3	T3S2	T3S3	T3S2R4	OTROS	A	B	C	K'	D	LATITUD	LONGITUD
T. C. Ent. Morelos - Saltillo	0.00	3	1	1881	0.9	82.4	5.4	9.9	0.8	0.3	0.2	0.0	0.1	83.3	5.4	11.3	0.157	0.526	23.272858	-102.332410
T. C. Ent. Morelos - Saltillo	0.00	3	2	1869	0.6	81.8	6.0	10.0	1.0	0.3	0.2	0.0	0.1	82.4	6.0	11.6	0.161	0.526	23.272858	-102.332410
Villa de Cos	3.30	1	1	2778	1.4	85.4	4.5	6.4	0.4	1.0	0.5	0.1	0.3	86.8	4.5	8.7	0.121	0.512	23.285984	-102.341075
Villa de Cos	3.30	1	2	2646	1.0	84.4	5.0	7.3	0.4	1.1	0.5	0.1	0.2	85.4	5.0	9.6	0.137	0.512	23.285984	-102.341075

22 CARR: San Luis Potosí - Ent. Arcinas

CLAVE: 00134

RUTA: MEX-049

AÑO: 2012

LUGAR	ESTACION				CLASIFICACION VEHICULAR EN PORCIENTO													COORDENADAS		
	KM	TE	SC	TDPA	M	A	B	C2	C3	T3S2	T3S3	T3S2R4	OTROS	A	B	C	K'	D	LATITUD	LONGITUD
T. C. San Luis Potosí - Matehuala	0.00																			
T. Izq. Periférico de San Luis Potosí	9.35	3	1	8217	4.8	75.0	3.3	7.0	1.2	4.5	1.6	2.0	0.6	79.8	3.3	16.9	0.088	0.503	22.203405	-101.026352
T. Izq. Periférico de San Luis Potosí	9.35	3	2	8302	5.2	71.6	3.1	9.1	1.4	4.9	1.8	2.2	0.7	76.8	3.1	20.1	0.080	0.503	22.203406	-101.026350
Mexquitic	22.50	1	1	5526	1.9	72.3	3.6	8.7	2.0	6.3	2.0	2.6	0.6	74.2	3.6	22.2	0.091	0.504	22.249743	-101.105743
Mexquitic	22.50	1	2	5613	2.0	69.7	3.8	9.7	2.1	7.0	2.2	3.0	0.5	71.7	3.8	24.5	0.091	0.504	22.249745	-101.105742
T. Der. Charcas	30.90	1	1	4773	3.7	66.3	5.2	11.1	1.2	5.2	2.3	4.4	0.6	70.0	5.2	24.8	0.089	0.543	22.310051	-101.158518
T. Der. Charcas	30.90	1	2	4411	3.6	62.0	6.2	12.4	1.2	5.9	2.7	5.1	0.9	65.6	6.2	28.2	0.090	0.543	22.310049	-101.158522
Lim. Edos. Term. S. L. P. Ppia. Zac.	55.13																			
Lim. Edos. Term. Zac. Ppia. S. L. P.	89.30																			
T. Der. Salinas	99.00	1	1	2942	3.4	62.0	5.5	11.5	2.8	4.5	3.4	5.9	1.0	65.4	5.5	29.1	0.074	0.508	22.602311	-101.704274
T. Der. Salinas	99.00	1	2	3035	3.1	61.0	5.2	12.7	3.0	4.9	3.6	5.6	0.9	64.1	5.2	30.7	0.084	0.508	22.602311	-101.704274
T. Der. Salinas	99.00	3	1	2621	0.9	66.8	5.1	10.2	3.0	6.1	4.1	2.9	0.9	67.7	5.1	27.2	0.078	0.516	22.619271	-101.737134
T. Der. Salinas	99.00	3	2	2710	1.4	65.0	5.6	10.3	3.2	6.3	4.0	3.3	0.9	66.4	5.6	28.0	0.082	0.516	22.619266	-101.737132
Lim. Edos. Term. S. L. P. Ppia. Zac.	122.47																			
T. Izq. Pánfilo Natera	139.00	1	1	3099	0.9	63.9	5.2	4.9	3.0	10.6	3.9	6.7	0.9	64.8	5.2	30.0	0.075	0.501	22.678943	-102.097590
T. Izq. Pánfilo Natera	139.00	1	2	3084	1.1	61.2	5.6	5.5	3.4	11.6	4.0	6.5	1.1	62.3	5.6	32.1	0.075	0.501	22.678842	-102.097641
Ent. Arcinas	162.98	1	1	3142	0.6	65.1	5.4	5.4	2.9	10.2	3.2	6.4	0.8	65.7	5.4	28.9	0.084	0.501	22.719476	-102.322500
Ent. Arcinas	162.98	1	2	3152	0.7	63.8	5.5	5.6	3.1	10.2	3.3	6.8	1.0	64.5	5.5	30.0	0.077	0.501	22.719206	-102.322529

23 CARR: San Luis Potosí - Lagos de Moreno

CLAVE: 00133

RUTA: MEX-070-080

AÑO: 2012

LUGAR	ESTACION				CLASIFICACION VEHICULAR EN PORCIENTO													COORDENADAS		
	KM	TE	SC	TDPA	M	A	B	C2	C3	T3S2	T3S3	T3S2R4	OTROS	A	B	C	K'	D	LATITUD	LONGITUD
San Luis Potosí	0.00	3	1	17085	1.1	87.6	1.5	3.1	3.2	1.9	1.1	0.2	0.3	88.7	1.5	9.8	0.083	0.506	22.133363	-101.031880
San Luis Potosí	0.00	3	2	16672	1.2	86.4	1.5	3.4	3.4	2.3	1.3	0.2	0.3	87.6	1.5	10.9	0.079	0.506	22.133370	-101.031889
X. Periférico de San Luis Potosí	8.41	3	0	8221	1.3	77.8	3.2	4.0	2.2	6.3	3.1	1.1	1.0	79.1	3.2	17.7	0.081	0.530	22.128694	-101.038973

ZACATECAS

23 CARR : San Luis Potosí - Lagos de Moreno

CLAVE: 00133

RUTA: MEX-070-080

AÑO : 2012

LUGAR	ESTACION				CLASIFICACION VEHICULAR EN PORCIENTO													COORDENADAS		
	KM	TE	SC	TDPA	M	A	B	C2	C3	T3S2	T3S3	T3S2R4	OTROS	A	B	C	K'	D	LATITUD	LONGITUD
El Tepetate	41.90	1	0	4386	0.6	65.5	3.6	11.9	4.2	9.2	2.8	1.1	1.1	66.1	3.6	30.3	0.080	0.502	22.022632	-101.228674
El Tepetate	41.90	3	0	3772	0.5	64.7	3.7	11.8	4.2	9.8	3.3	1.2	0.8	65.2	3.7	31.1	0.086	0.504	22.006881	-101.250597
Villa de Arriaga	61.90	3	0	2065	0.6	60.2	3.5	14.5	3.3	10.3	3.4	3.2	1.0	60.8	3.5	35.7	0.076	0.550	21.896868	-101.409547
Lim. Edos. Term. S. L. P. Ppia. Zac.	70.23																			
Lim. Edos. Term. Zac. Ppia. Jal.	82.94																			
Ojuelos de Jalisco	83.20	1	0	7283	0.7	60.8	3.7	9.0	2.9	13.0	3.1	5.6	1.2	61.5	3.7	34.8	0.078	0.507	21.875752	-101.570655
Ojuelos de Jalisco	83.20	3	0	5017	0.8	55.0	3.4	10.4	3.8	14.4	4.3	6.7	1.2	55.8	3.4	40.8	0.077	0.510	21.854336	-101.593926
X. C. León - Aguascalientes	146.90	1	0	6916	0.8	57.5	3.5	9.9	3.9	13.9	3.2	6.3	1.0	58.3	3.5	38.2	0.079	0.541	21.375713	-101.894350
Lagos de Moreno	150.00																			

24 CARR : Zacatecas - Durango

CLAVE: 00544

RUTA: MEX-045

AÑO : 2012

LUGAR	ESTACION				CLASIFICACION VEHICULAR EN PORCIENTO													COORDENADAS		
	KM	TE	SC	TDPA	M	A	B	C2	C3	T3S2	T3S3	T3S2R4	OTROS	A	B	C	K'	D	LATITUD	LONGITUD
Zacatecas	0.00																			
T. Izq. Guadalajara	6.40	3	1	11636	0.5	83.5	2.6	5.5	1.1	3.4	1.5	1.1	0.8	84.0	2.6	13.4	0.098	0.505	22.783703	-102.626896
T. Izq. Guadalajara	6.40	3	2	11889	0.3	81.9	3.0	6.5	1.2	3.6	1.6	1.1	0.8	82.2	3.0	14.8	0.088	0.505	22.783764	-102.627096
T. Der. Saltillo (T. Morelos)	15.00	3	1	10288	0.3	74.4	5.4	6.4	1.8	5.8	1.9	3.2	0.8	74.7	5.4	19.9	0.091	0.501	22.864373	-102.649355
T. Der. Saltillo (T. Morelos)	15.00	3	2	10259	0.4	76.0	5.2	5.8	1.7	5.4	1.9	2.8	0.8	76.4	5.2	18.4	0.077	0.501	22.865963	-102.628812
Víctor Rosales	28.00	1	1	10266	0.5	78.5	2.3	6.1	1.6	5.6	1.8	2.8	0.8	79.0	2.3	18.7	0.082	0.502	22.931503	-102.686818
Víctor Rosales	28.00	1	2	10178	0.3	76.0	2.6	7.0	1.8	6.0	2.1	3.2	1.0	76.3	2.6	21.1	0.088	0.502	22.930028	-102.685737
T. Der. Facultad de Veterinaria	32.30	1	1	6146	0.2	72.3	4.4	7.5	2.1	7.4	2.2	3.0	0.9	72.5	4.4	23.1	0.084	0.525	22.971723	-102.719698
T. Der. Facultad de Veterinaria	32.30	1	2	5562	0.2	69.7	4.7	8.4	2.4	8.3	2.4	3.0	0.9	69.9	4.7	25.4	0.086	0.525	22.971646	-102.719799
Gral. Enrique Estrada	34.60	3	1	8535	0.4	73.5	5.4	7.1	2.0	6.5	2.1	2.2	0.8	73.9	5.4	20.7	0.080	0.502	23.012455	-102.751784
Gral. Enrique Estrada	34.60	3	2	8597	0.4	71.8	5.9	7.4	2.1	6.8	2.4	2.4	0.8	72.2	5.9	21.9	0.084	0.502	23.012144	-102.752025
Fresnillo	58.50	1	1	7447	1.1	76.2	4.9	7.7	1.6	5.1	1.5	1.5	0.4	77.3	4.9	17.8	0.087	0.506	23.162869	-102.853690
Fresnillo	58.50	1	2	7284	1.0	73.7	5.4	8.6	1.8	5.7	1.6	1.8	0.4	74.7	5.4	19.9	0.087	0.506	23.162490	-102.853720
Ent. La Chicharrona	74.30	1	1	7207	0.4	64.8	6.1	11.6	2.3	8.1	3.0	2.9	0.8	65.2	6.1	28.7	0.088	0.501	23.287650	-102.950988
Ent. La Chicharrona	74.30	1	2	7234	0.6	59.6	6.7	13.8	2.4	9.5	3.2	3.4	0.8	60.2	6.7	33.1	0.085	0.501	23.287357	-102.951284
Ent. La Chicharrona	74.30	3	0	5430	0.3	73.3	3.5	11.0	3.0	4.5	3.2	0.8	0.4	73.6	3.5	22.9	0.086	0.503	23.307553	-102.964621
T. Der. Sain Alto	121.00	3	0	3355	0.2	67.5	5.3	13.6	3.0	5.3	3.5	1.1	0.5	67.7	5.3	27.0	0.086	0.503	23.581620	-103.274217
T. Izq. Sombrerete (2º Acceso)	161.50	3	0	4548	0.7	70.6	5.0	12.0	3.2	4.9	2.5	0.7	0.4	71.3	5.0	23.7	0.085	0.502	23.644912	-103.648669
Lim. Edos. Term. Zac. Ppia. Dgo.	190.08																			
X. C. Súchil - Villa Unión	206.98	1	0	2532	0.5	65.0	6.7	13.3	3.3	5.5	3.9	1.4	0.4	65.5	6.7	27.8	0.094	0.507	23.750056	-103.963366
X. C. Súchil - Villa Unión	206.98	3	0	4353	0.8	69.9	5.0	14.8	2.1	4.1	2.2	0.7	0.4	70.7	5.0	24.3	0.088	0.507	23.744292	-104.000448

ZACATECAS

24 CARR : Zacatecas - Durango

CLAVE: 00544

RUTA: MEX-045

AÑO : 2012

LUGAR	ESTACION				CLASIFICACION VEHICULAR EN PORCIENTO														COORDENADAS	
	KM	TE	SC	TDPA	M	A	B	C2	C3	T3S2	T3S3	T3S2R4	OTROS	A	B	C	K'	D	LATITUD	LONGITUD
T. Izq. Graceros	210.00	1	0	4120	0.6	73.8	4.2	10.7	2.6	4.1	2.6	0.9	0.5	74.4	4.2	21.4	0.088	0.508	23.748049	-104.036685
Amado Nervo	231.51	1	0	3573	0.6	68.0	5.7	13.2	3.1	5.0	2.9	1.1	0.4	68.6	5.7	25.7	0.096	0.507	23.842102	-104.186985
Amado Nervo	231.51	3	0	4687	0.4	73.6	4.8	11.6	2.2	4.0	2.2	0.7	0.5	74.0	4.8	21.2	0.095	0.503	23.844277	-104.194533
Nombre de Dios	236.80	1	0	4211	1.6	76.0	3.7	14.5	0.8	2.3	0.6	0.2	0.3	77.6	3.7	18.7	0.101	0.508	23.843401	-104.231769
Nombre de Dios	236.80	3	0	4763	1.1	81.2	2.1	11.4	0.8	2.4	0.6	0.2	0.2	82.3	2.1	15.6	0.105	0.507	23.851380	-104.248976
T. Der. Constancia	240.60	3	0	4310	0.3	72.7	4.2	11.0	2.9	4.6	2.7	1.0	0.6	73.0	4.2	22.8	0.089	0.504	23.872109	-104.269029
T. Der. Tuitán	250.80	3	0	4391	0.3	71.5	4.9	11.7	2.5	4.6	2.8	1.1	0.6	71.8	4.9	23.3	0.091	0.502	23.923368	-104.337284
T. Der. Independencia y Libertad	261.70	1	0	4855	0.3	73.9	4.3	9.8	3.2	4.4	2.7	1.0	0.4	74.2	4.3	21.5	0.087	0.502	23.991090	-104.371982
T. Der. Independencia y Libertad	261.70	3	1	2457	0.3	73.6	3.7	12.3	2.9	3.6	2.4	0.8	0.4	73.9	3.7	22.4	0.107	0.501	24.002058	-104.380956
T. Der. Independencia y Libertad	261.70	3	2	2451	0.3	71.0	4.3	13.5	3.3	3.9	2.4	0.9	0.4	71.3	4.3	24.4	0.102	0.501	24.002058	-104.380956
T. Izq. Parras de La Fuente	276.60	1	1	3993	0.6	78.1	3.0	10.1	2.3	2.9	2.1	0.6	0.3	78.7	3.0	18.3	0.104	0.539	24.019034	-104.506476
T. Izq. Parras de La Fuente	276.60	1	2	3417	0.3	76.6	3.2	10.8	2.5	3.2	2.4	0.6	0.4	76.9	3.2	19.9	0.114	0.539	24.019036	-104.506482
T. Izq. Parras de La Fuente	276.60	3	1	3256	0.5	80.3	2.6	12.1	1.7	1.8	0.6	0.2	0.2	80.8	2.6	16.6	0.114	0.505	24.023412	-104.547709
T. Izq. Parras de La Fuente	276.60	3	2	3192	0.6	78.0	3.0	13.7	1.8	1.9	0.6	0.2	0.2	78.6	3.0	18.4	0.116	0.505	24.023410	-104.547714
Durango	287.30	1	1	6909	1.5	83.3	1.5	10.4	1.2	1.3	0.5	0.1	0.2	84.8	1.5	13.7	0.097	0.505	24.027618	-104.587271
Durango	287.30	1	2	6778	1.3	81.6	1.7	11.8	1.3	1.5	0.5	0.1	0.2	82.9	1.7	15.4	0.101	0.505	24.027619	-104.587271

25 CARR : Cuauhtémoc - Osiris (Cuota)

CLAVE: 32558

RUTA: MEX-045D

AÑO : 2012

LUGAR	ESTACION				CLASIFICACION VEHICULAR EN PORCIENTO														COORDENADAS	
	KM	TE	SC	TDPA	M	A	B	C2	C3	T3S2	T3S3	T3S2R4	OTROS	A	B	C	K'	D	LATITUD	LONGITUD
T. C. Cosío - Guadalupe	0.00	3	0	6095	0.4	58.1	6.4	6.6	4.4	11.9	4.4	6.8	1.0	58.5	6.4	35.1	0.065	0.506	22.486809	-102.357517
Caseta de Cobro Zacatecas	27.70	2	0	6807	0.0	58.9	7.3	5.0	4.5	12.5	3.2	1.5	7.1	58.9	7.3	33.8	0.067	0.500	22.703546	-102.449278
T. C. Aguascalientes - Zacatecas	32.00	1	0	6437	0.6	57.6	6.8	5.5	5.7	12.1	3.5	7.4	0.8	58.2	6.8	35.0	0.069	0.501	22.746455	-102.453902

26 CARR : Libramiento de Fresnillo (Cuota)

CLAVE: 32581

RUTA: MEX-045D

AÑO : 2012

LUGAR	ESTACION				CLASIFICACION VEHICULAR EN PORCIENTO														COORDENADAS	
	KM	TE	SC	TDPA	M	A	B	C2	C3	T3S2	T3S3	T3S2R4	OTROS	A	B	C	K'	D	LATITUD	LONGITUD
T. C. Zacatecas - Durango	0.00	3	1	2095	0.3	60.4	6.0	8.2	2.6	12.5	2.9	6.1	1.0	60.7	6.0	33.3	0.083	0.511	23.122174	-102.807895
T. C. Zacatecas - Durango	0.00	3	2	2192	0.2	54.9	6.9	9.3	2.8	14.7	3.2	7.0	1.0	55.1	6.9	38.0	0.083	0.511	23.121783	-102.808060
Caseta de Cobro Morfin Chávez	8.00	2	1	2282	0.1	55.5	5.1	4.7	4.6	16.2	3.9	8.9	1.0	55.6	5.1	39.3	0.088	0.500	23.177939	-102.828511
Caseta de Cobro Morfin Chávez	8.00	2	2	2281	0.1	55.5	5.1	4.7	4.6	16.2	3.9	8.9	1.0	55.6	5.1	39.3	0.088	0.500	23.177939	-102.828511
T. Der. Plateros	11.90	1	1	2211	0.3	56.0	6.3	8.9	2.5	14.8	3.4	7.0	0.8	56.3	6.3	37.4	0.085	0.509	23.207321	-102.847303
T. Der. Plateros	11.90	1	2	2288	0.2	52.9	6.6	9.4	2.8	16.0	3.7	7.5	0.9	53.1	6.6	40.3	0.096	0.509	23.207181	-102.847368

ZACATECAS

30 CARR: Corral de Piedras - Tlaltenango

CLAVE: 32579

ruta: ZAC

AÑO: 2012

LUGAR	ESTACION				CLASIFICACION VEHICULAR EN PORCIENTO										COORDENADAS					
	KM	TE	SC	TDPA	M	A	B	C2	C3	T3S2	T3S3	T3S2R4	OTROS	A	B	C	K'	D	LATITUD	LONGITUD
T. C. Guadalajara - Zacatecas	0.00	3	0	534	1.0	83.8	2.6	9.3	2.2	1.0	0.1	0.0	0.0	84.8	2.6	12.6	0.141	0.501	21.619220	-103.048200
Tlaltenango	57.10	1	0	1164	5.4	85.3	1.7	5.4	0.7	1.2	0.3	0.0	0.0	90.7	1.7	7.6	0.095	0.505	21.767358	-103.280610

31 CARR: Ent. Ojo Caliente - Ent. Ojuelos de Jalisco

CLAVE: 00126

ruta: ZAC

AÑO: 2012

LUGAR	ESTACION				CLASIFICACION VEHICULAR EN PORCIENTO										COORDENADAS					
	KM	TE	SC	TDPA	M	A	B	C2	C3	T3S2	T3S3	T3S2R4	OTROS	A	B	C	K'	D	LATITUD	LONGITUD
T. C. Aguascalientes - Zacatecas	0.00	3	0	2698	0.9	84.0	4.2	7.5	0.6	1.8	0.6	0.1	0.3	84.9	4.2	10.9	0.119	0.501	22.601120	-102.246955
Gral. Pánfilo Natera	16.00	3	0	1830	1.2	84.4	4.3	7.3	0.8	1.4	0.4	0.1	0.1	85.6	4.3	10.1	0.102	0.509	22.656535	-102.105936
Lim. Edos. Term. Zac. Ppia. Jal.	134.00																			
T. C. San Luis Potosí - Lagos de Moreno	137.00																			

32 CARR: Fresnillo - Ent. Bañón

CLAVE: 32070

ruta: ZAC

AÑO: 2012

LUGAR	ESTACION				CLASIFICACION VEHICULAR EN PORCIENTO										COORDENADAS					
	KM	TE	SC	TDPA	M	A	B	C2	C3	T3S2	T3S3	T3S2R4	OTROS	A	B	C	K'	D	LATITUD	LONGITUD
T. C. Zacatecas - Durango	0.00																			
X. Lib. Fresnillo (Cuota)	2.40	3	1	4235	3.3	88.5	0.8	4.9	0.7	1.0	0.6	0.1	0.1	91.8	0.8	7.4	0.082	0.508	23.178140	-102.822240
X. Lib. Fresnillo (Cuota)	2.40	3	2	4382	2.5	88.5	0.9	5.6	0.6	1.0	0.7	0.1	0.1	91.0	0.9	8.1	0.083	0.508	23.178332	-102.822333
T. Der. Víctor Rosales	23.80	1	0	2107	3.7	76.3	5.4	8.2	1.2	3.3	1.3	0.4	0.2	80.0	5.4	14.6	0.096	0.508	23.143884	-102.655957
T. Der. Víctor Rosales	23.80	3	0	1754	3.8	73.4	4.9	8.2	1.7	3.9	1.8	1.2	1.1	77.2	4.9	17.9	0.120	0.515	23.143992	-102.652110
González Ortega Bañón	45.80	1	0	1512	1.5	81.5	3.7	6.6	1.6	2.3	1.8	0.5	0.5	83.0	3.7	13.3	0.088	0.507	23.174907	-102.486747
T. C. Ent. Morelos - Saltillo	49.00	1	0	2121	2.3	77.4	4.6	10.5	1.6	2.3	1.0	0.2	0.1	79.7	4.6	15.7	0.093	0.504	23.161720	-102.434959

33 CARR: Fresnillo - Plateros

CLAVE: 32022

ruta: ZAC-022

AÑO: 2012

LUGAR	ESTACION				CLASIFICACION VEHICULAR EN PORCIENTO										COORDENADAS					
	KM	TE	SC	TDPA	M	A	B	C2	C3	T3S2	T3S3	T3S2R4	OTROS	A	B	C	K'	D	LATITUD	LONGITUD
Fresnillo	0.00	3	1	4138	5.1	84.2	4.1	4.7	0.6	0.8	0.4	0.0	0.1	89.3	4.1	6.6	0.093	0.500	23.202988	-102.855632
Fresnillo	0.00	3	2	4139	5.4	82.9	4.7	5.1	0.6	0.8	0.4	0.0	0.1	88.3	4.7	7.0	0.093	0.500	23.203018	-102.855757
Plateros	4.90																			

ZACATECAS

38 CARR: San Rafael - Villa García

CLAVE: 00525

RUTA: AGS-ZAC

AÑO: 2012

LUGAR	ESTACION				CLASIFICACION VEHICULAR EN PORCIENTO										COORDENADAS					
	KM	TE	SC	TDPA	M	A	B	C2	C3	T3S2	T3S3	T3S2R4	OTROS	A	B	C	K'	D	LATITUD	LONGITUD
T. C. Ent. La Calavera - Ent. San Pedro	0.00	3	0	2790	3.0	86.6	3.5	4.5	0.7	1.4	0.2	0.0	0.1	89.6	3.5	6.9	0.098	0.505	22.116580	-102.011190
Lim. Edos. Term. Ags. Ppia. Zac.	3.00																			
Villa García	10.00	1	0	4150	6.8	82.1	3.4	4.0	1.1	2.0	0.3	0.0	0.3	88.9	3.4	7.7	0.100	0.504	22.145831	-101.959548

39 CARR: Santa Mónica - Pozo de Gamboa

CLAVE: 32568

RUTA: ZAC

AÑO: 2012

LUGAR	ESTACION				CLASIFICACION VEHICULAR EN PORCIENTO										COORDENADAS					
	KM	TE	SC	TDPA	M	A	B	C2	C3	T3S2	T3S3	T3S2R4	OTROS	A	B	C	K'	D	LATITUD	LONGITUD
T. C. Aguascalientes - Zacatecas	0.00	3	0	6068	0.7	84.5	2.3	5.5	1.2	3.7	1.1	0.5	0.5	85.2	2.3	12.5	0.086	0.508	22.759889	-102.422476
Tacoaleche	7.60	3	0	3568	1.2	79.7	2.3	5.7	3.5	3.9	2.1	1.0	0.6	80.9	2.3	16.8	0.080	0.517	22.830366	-102.398454
Pozo de Gamboa	34.50																			

40 CARR: Sombrerete - González Ortega

CLAVE: 32568

RUTA: ZAC

AÑO: 2012

LUGAR	ESTACION				CLASIFICACION VEHICULAR EN PORCIENTO										COORDENADAS					
	KM	TE	SC	TDPA	M	A	B	C2	C3	T3S2	T3S3	T3S2R4	OTROS	A	B	C	K'	D	LATITUD	LONGITUD
T. C. Zacatecas - Durango	0.00	3	0	847	0.8	75.6	4.7	13.8	0.8	1.9	1.7	0.3	0.4	76.4	4.7	18.9	0.125	0.503	23.657493	-103.543765
González Ortega	38.70	1	0	906	1.8	73.2	5.7	14.7	0.5	1.6	1.7	0.3	0.5	75.0	5.7	19.3	0.119	0.502	23.946906	-103.462228

41 CARR: Libramiento Noreste de Zacatecas (Cuota)

CLAVE: 32582

RUTA: ZAC-D

AÑO: 2012

LUGAR	ESTACION				CLASIFICACION VEHICULAR EN PORCIENTO										COORDENADAS					
	KM	TE	SC	TDPA	M	A	B	C2	C3	T3S2	T3S3	T3S2R4	OTROS	A	B	C	K'	D	LATITUD	LONGITUD
T. C. Aguascalientes - Zacatecas	0.00	3	0	4694	0.2	39.5	7.7	9.6	5.8	19.7	4.4	12.5	0.6	39.7	7.7	52.6	0.068	0.517	22.756034	-102.458703
T. C. Ent. Morelos - Saltillo	21.00	1	0	3284	0.3	42.4	8.1	10.0	3.9	15.3	4.6	14.4	1.0	42.7	8.1	49.2	0.069	0.516	22.853021	-102.618554

42 CARR: Guadalupe - Cosío

CLAVE: 32579

RUTA: MEX-ZAC

AÑO: 2012

LUGAR	ESTACION				CLASIFICACION VEHICULAR EN PORCIENTO										COORDENADAS					
	KM	TE	SC	TDPA	M	A	B	C2	C3	T3S2	T3S3	T3S2R4	OTROS	A	B	C	K'	D	LATITUD	LONGITUD
T. C. Aguascalientes - Zacatecas	0.00	3	0	7449	0.7	80.4	6.0	7.3	1.7	2.1	0.9	0.5	0.4	81.1	6.0	12.9	0.098	0.501	22.393223	-102.306056
Lim. Edos. Term. Ags. Ppia. Zac.	6.79																			
T. C. Ent. Cuauhtémoc - Ent. Osiris Cuota	12.96	3	0	1245	0.7	85.2	4.9	6.5	0.9	1.3	0.3	0.2	0.0	85.9	4.9	9.2	0.102	0.508	22.485333	-102.360882
T. C. Libramiento de Guadalupe - Zacatecas (Baja)	58.93	1	1	1144	2.6	81.9	5.8	7.3	1.1	0.6	0.4	0.1	0.2	84.5	5.8	9.7	0.127	0.537	22.734627	-102.495615
T. C. Libramiento de Guadalupe - Zacatecas (Alta)	58.93	1	1	4073	0.7	91.0	2.1	3.6	0.9	0.7	0.6	0.2	0.2	91.7	2.1	6.2	0.100	0.522	22.734600	-102.495793

ZACATECAS

42 CARR: Guadalupe - Cosío

CLAVE: 32579

RUTA: MEX-ZAC

AÑO: 2012

LUGAR	ESTACION				CLASIFICACION VEHICULAR EN PORCIENTO										COORDENADAS					
	KM	TE	SC	TDPA	M	A	B	C2	C3	T3S2	T3S3	T3S2R4	OTROS	A	B	C	K'	D	LATITUD	LONGITUD
T. C. Libramiento de Guadalupe - Zacatecas (Alta)	58.93	1	2	3732	0.9	90.1	2.4	3.9	1.0	0.7	0.6	0.2	0.2	91.0	2.4	6.6	0.100	0.522	22.734337	-102.495774
T. C. Libramiento de Guadalupe - Zacatecas (Baja)	58.93	1	2	1324	2.1	80.4	6.7	8.4	1.2	0.6	0.3	0.1	0.2	82.5	6.7	10.8	0.096	0.537	22.734305	-102.495940

43 CARR: Tepatitlán - Jaralillo

CLAVE: 00146

RUTA: MEX-JAL-ZAC

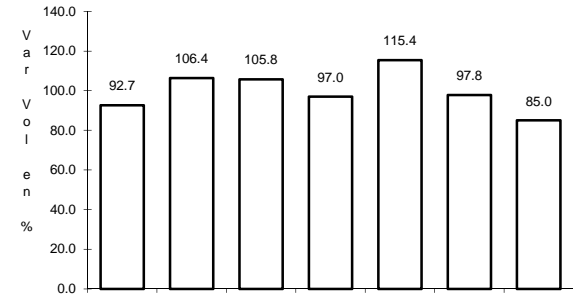
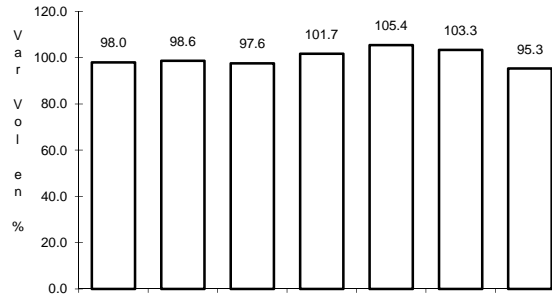
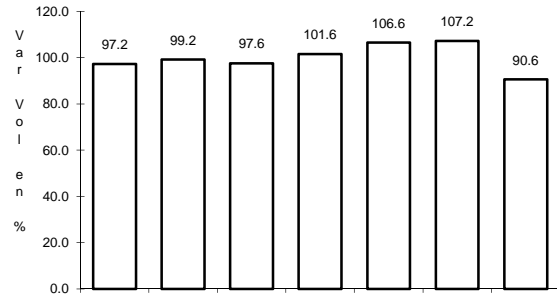
AÑO: 2012

LUGAR	ESTACION				CLASIFICACION VEHICULAR EN PORCIENTO										COORDENADAS					
	KM	TE	SC	TDPA	M	A	B	C2	C3	T3S2	T3S3	T3S2R4	OTROS	A	B	C	K'	D	LATITUD	LONGITUD
T. C. Lagos de Moreno - Zapotlanejo	0.00	3	0	6432	1.0	79.2	1.7	11.1	2.9	1.6	1.4	0.7	0.4	80.2	1.7	18.1	0.087	0.518	20.795320	-102.791727
T. Izq. Mezcala	22.40	3	0	1360	0.4	81.0	0.8	13.3	2.3	1.1	0.7	0.2	0.2	81.4	0.8	17.8	0.100	0.501	20.962778	-102.816448
Yahualica de González Gallo	57.40	3	1	1507	2.6	87.2	0.5	7.7	1.0	0.5	0.2	0.1	0.2	89.8	0.5	9.7	0.105	0.514	21.202852	-102.886038
Yahualica de González Gallo	57.40	3	2	1426	1.0	88.4	0.5	7.9	1.1	0.4	0.3	0.1	0.3	89.4	0.5	10.1	0.110	0.514	21.202870	-102.886038
T. Der. Mexxicacán	72.45	3	0	2143	0.6	86.1	0.3	8.4	2.2	1.4	0.2	0.5	0.3	86.7	0.3	13.0	0.115	0.508	21.253742	-102.802672
Lim. Edos. Term. Jal. Ppia. Zac.	83.50																			
Lim. Edos. Term. Zac. Ppia. Jal.	106.00																			
Teocaltiche	111.00	1	0	3173	0.5	88.9	0.3	5.4	1.0	1.9	1.1	0.2	0.7	89.4	0.3	10.3	0.089	0.501	21.425750	-102.589855
Teocaltiche	111.00	3	0	3287	0.5	89.0	0.3	5.6	1.1	2.1	0.8	0.1	0.5	89.5	0.3	10.2	0.092	0.520	21.455203	-102.555760
T. C. León - Aguascalientes	157.00	1	0	2532	0.6	81.9	0.7	9.8	2.7	2.6	1.2	0.1	0.4	82.5	0.7	16.8	0.094	0.509	21.643396	-102.278399

1 CARR: Aguascalientes - Jalpa

CLAVE: 00095

RUTA: MEX-070



Km: 0.00 Tipo: 3 Sent: 1

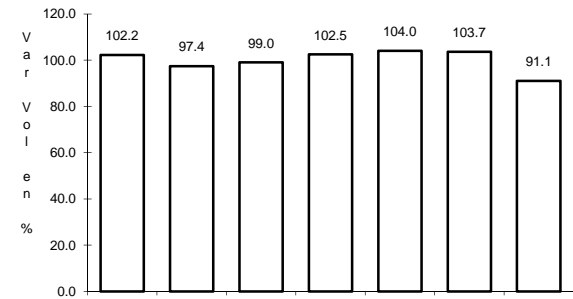
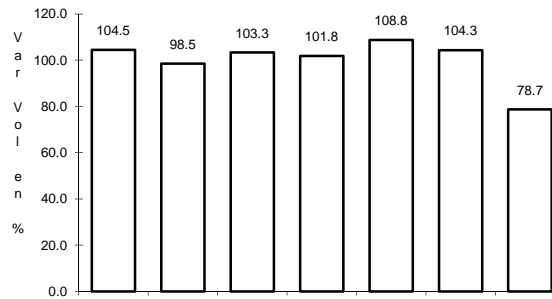
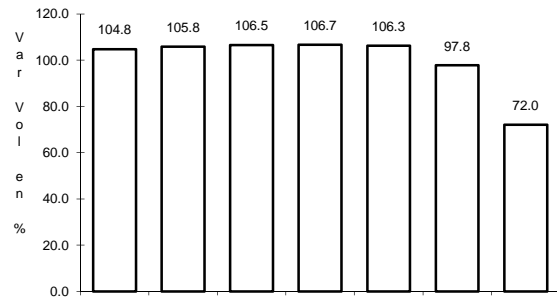
Km: 0.00 Tipo: 3 Sent: 2

Km: 91.10 Tipo: 1 Sent: 0

2 CARR: Aguascalientes - Zacatecas

CLAVE: 00524

RUTA: MEX-045



Km: 6.00 Tipo: 1 Sent: 1

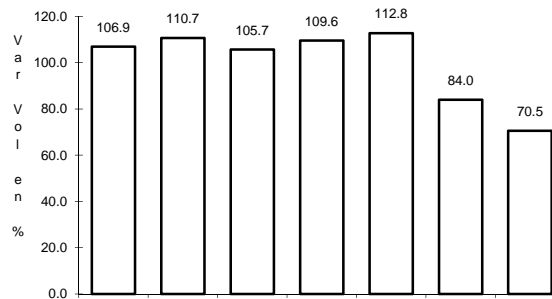
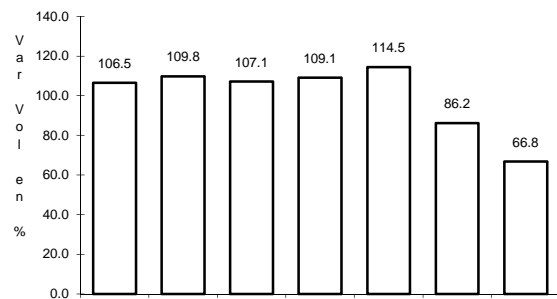
Km: 6.00 Tipo: 1 Sent: 2

Km: 40.90 Tipo: 3 Sent: 0

3 CARR: Blvd. Guadalupe - Zacatecas - La Escondida

CLAVE: 00544

RUTA: MEX-045



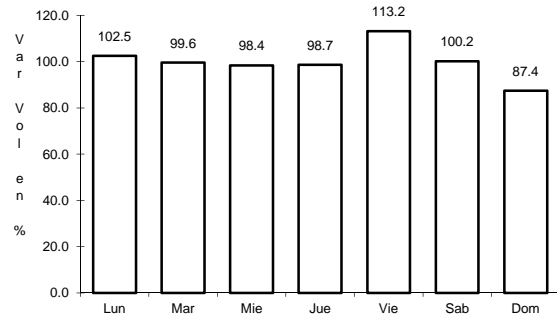
Km: 14.50 Tipo: 1 Sent: 1

Km: 14.50 Tipo: 1 Sent: 2

4 CARR: Carbonera - T. C. (Ent. Morelos - Saltillo)

CLAVE: 00218

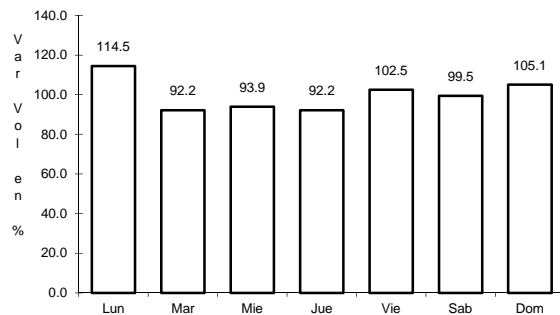
RUTA: MEX-062



Km: 0.00

Tipo: 3

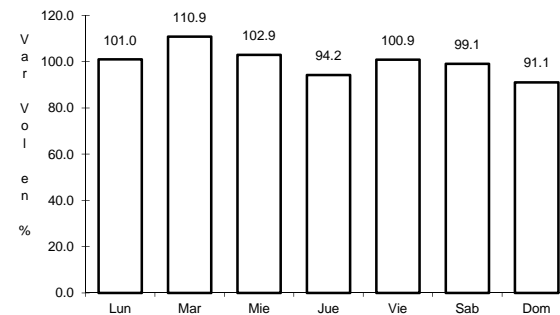
Sent: 0



Km: 18.00

Tipo: 1

Sent: 0



Km: 112.00

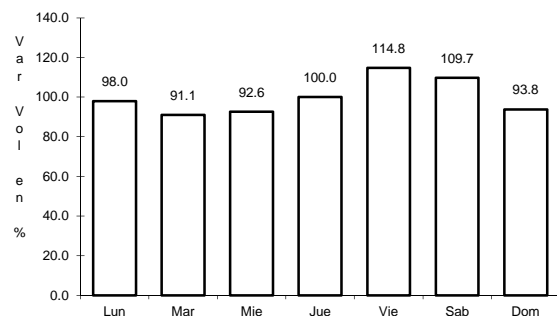
Tipo: 1

Sent: 0

5 CARR: Ent. La Chicharrona - Cuencamé

CLAVE: 00152

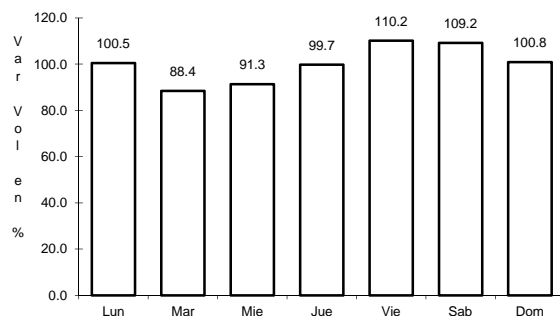
RUTA: MEX-049



Km: 0.00

Tipo: 3

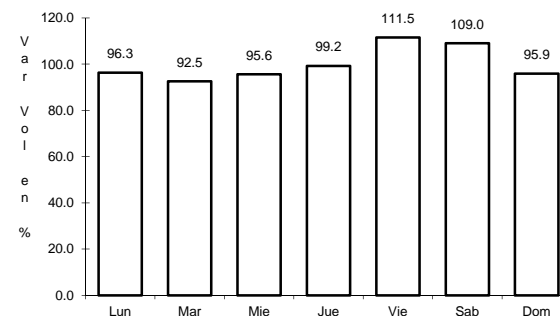
Sent: 1



Km: 0.00

Tipo: 3

Sent: 2



Km: 124.50

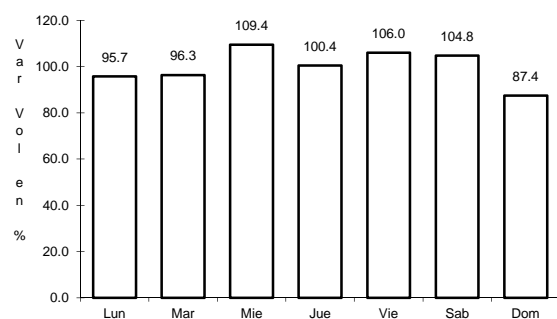
Tipo: 1

Sent: 0

6 CARR: Ent. Morelos - Ent. Noria de Gringos

CLAVE: 00544

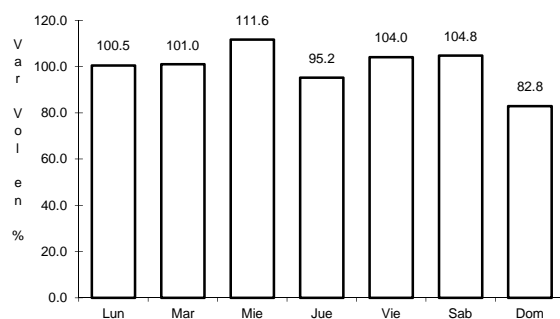
RUTA: MEX-045



Km: 0.50

Tipo: 1

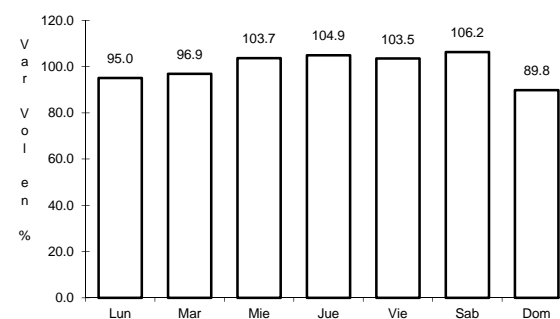
Sent: 1



Km: 0.50

Tipo: 1

Sent: 2



Km: 0.50

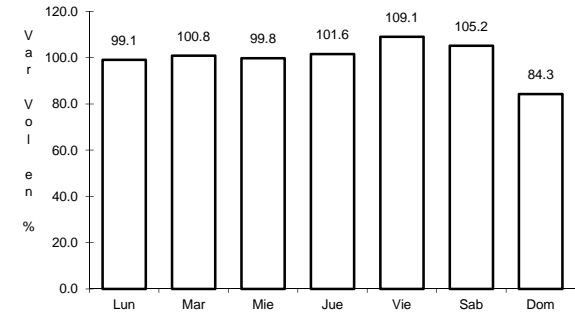
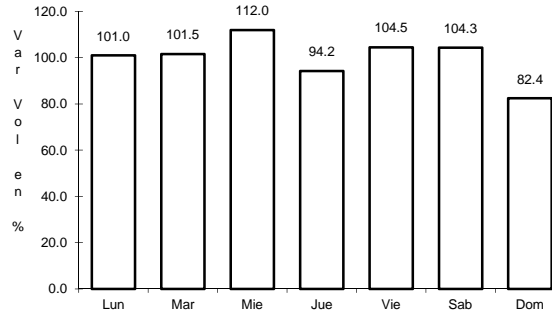
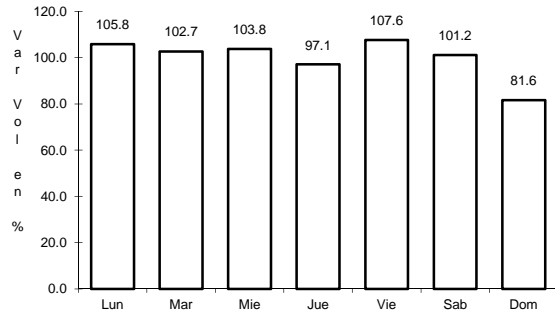
Tipo: 3

Sent: 0

7 CARR: Ent. Morelos - Saltillo

CLAVE: 00149

RUTA: MEX-054



Km: 0.00 Tipo: 3 Sent: 1

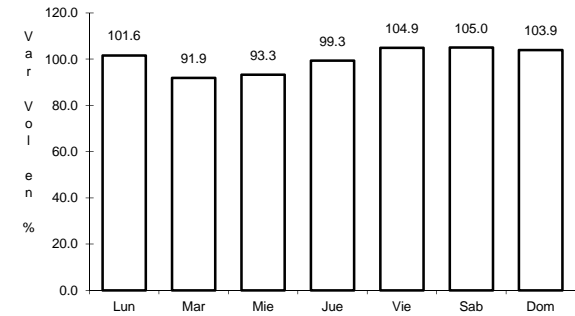
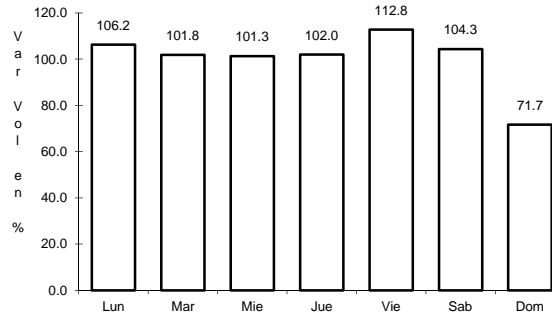
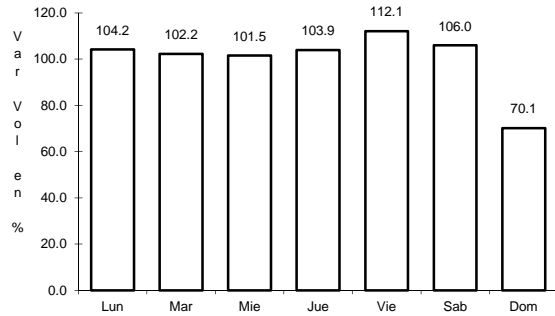
Km: 0.00 Tipo: 3 Sent: 2

Km: 333.00 Tipo: 3 Sent: 0

8 CARR: Ent. Rivier - San Marcos

CLAVE: 00285

RUTA: MEX-066



Km: 0.00 Tipo: 3 Sent: 1

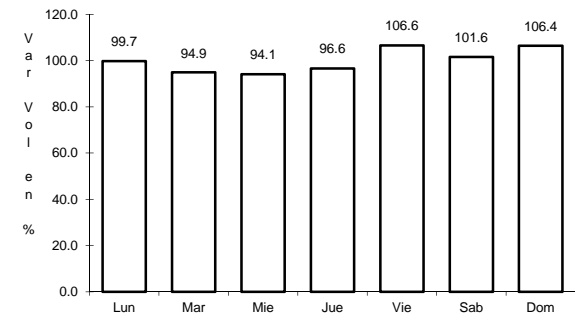
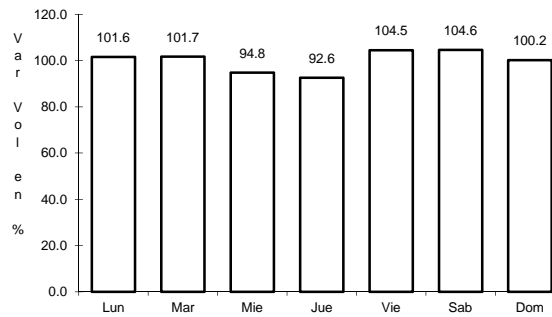
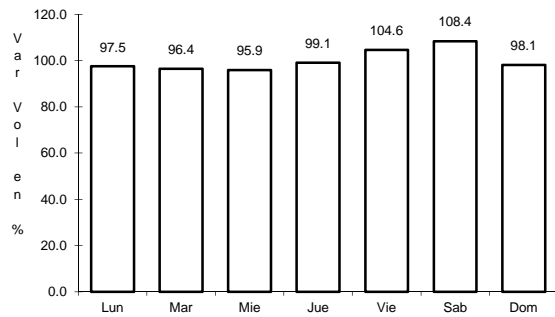
Km: 0.00 Tipo: 3 Sent: 2

Km: 56.00 Tipo: 1 Sent: 0

9 CARR: Ent. Tesistán - Ent. Malpaso

CLAVE: 00584

RUTA: MEX-023



Km: 0.00 Tipo: 3 Sent: 0

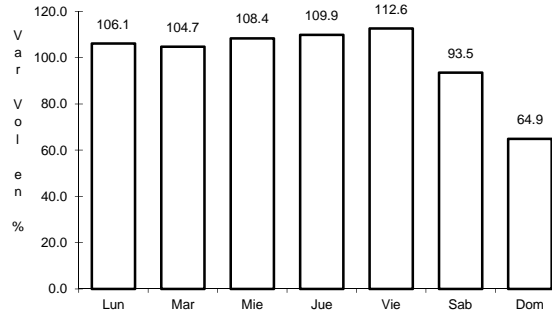
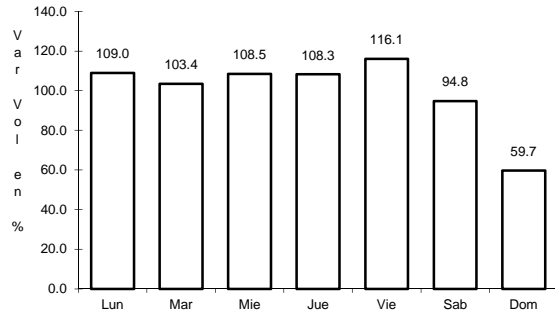
Km: 147.50 Tipo: 3 Sent: 0

Km: 275.00 Tipo: 1 Sent: 0

13 CARR: Libramiento de Guadalupe - Zacatecas

CLAVE: 32582

ruta: MEX-045



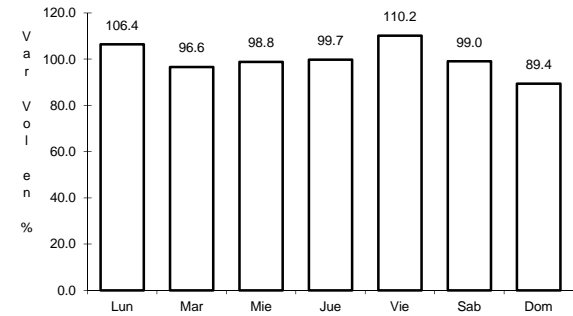
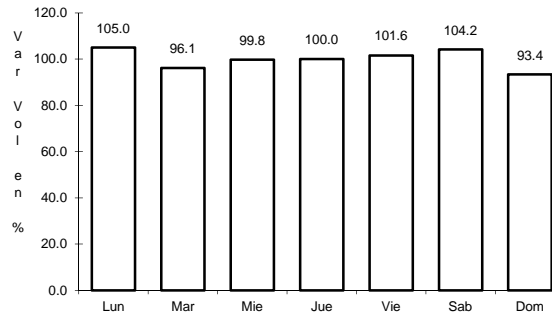
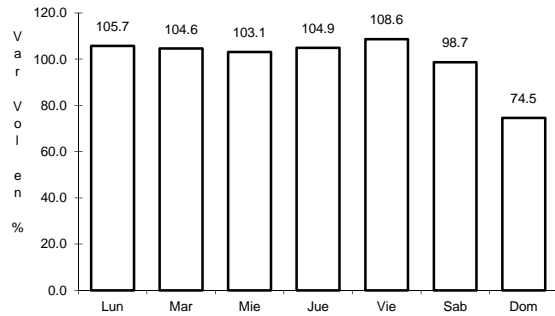
Km: 17.50 Tipo: 1 Sent: 1

Km: 17.50 Tipo: 1 Sent: 2

14 CARR: Providencia - Luis Moya

CLAVE: 00112

ruta: MEX-071



Km: 0.00 Tipo: 3 Sent: 0

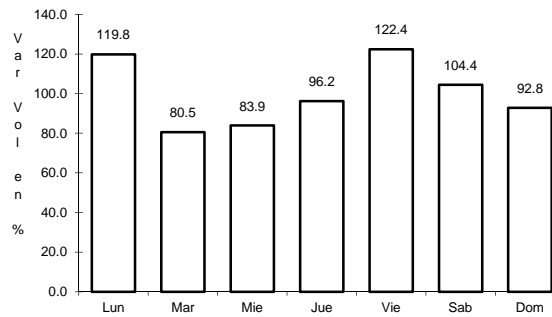
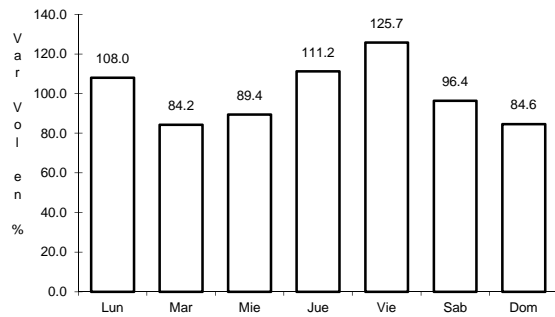
Km: 21.22 Tipo: 3 Sent: 0

Km: 43.50 Tipo: 1 Sent: 0

15 CARR: Ramal a Aeropuerto Zacatecas

CLAVE: 32546

ruta: MEX-045



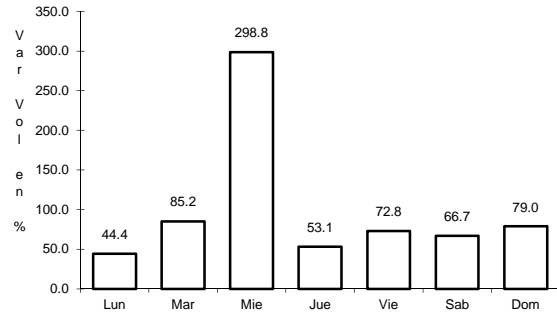
Km: 0.00 Tipo: 3 Sent: 1

Km: 0.00 Tipo: 3 Sent: 2

19 CARR: Ramal a Ruinas de Chicomostoc

CLAVE: 00544

RUTA: MEX-045

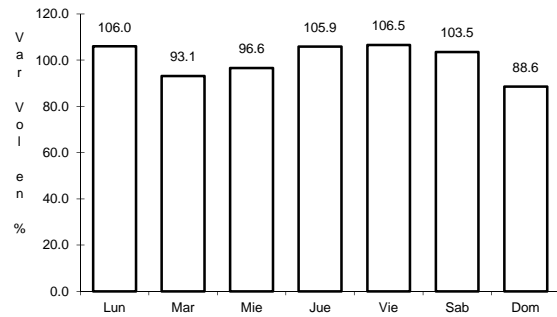


Km: 0.00 Tipo: 3 Sent: 0

20 CARR: Ramal a San Martín

CLAVE: 00544

RUTA: MEX-045

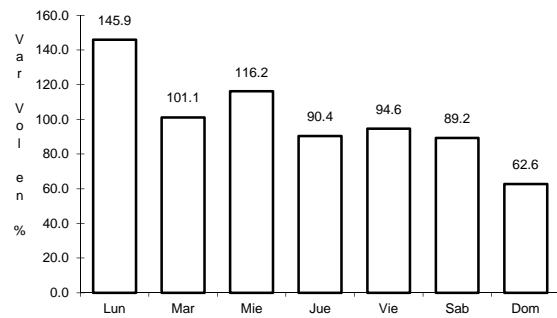


Km: 0.00 Tipo: 3 Sent: 0

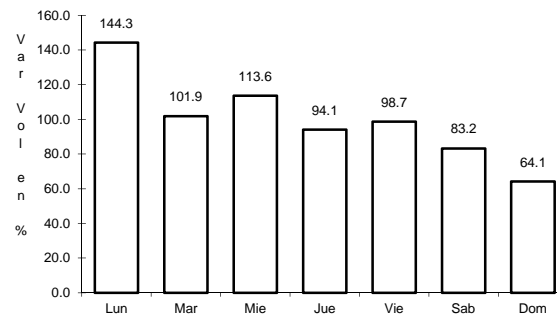
21 CARR: Ramal a Villa de Cos

CLAVE: 32564

RUTA: MEX-054



Km: 0.00 Tipo: 3 Sent: 1

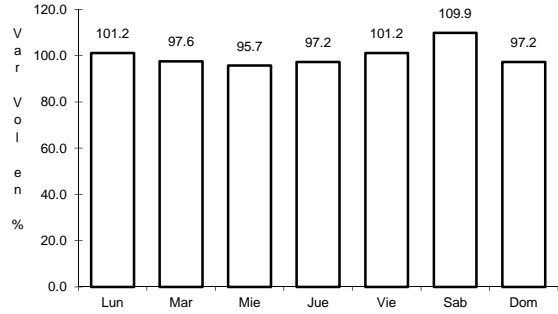


Km: 0.00 Tipo: 3 Sent: 2

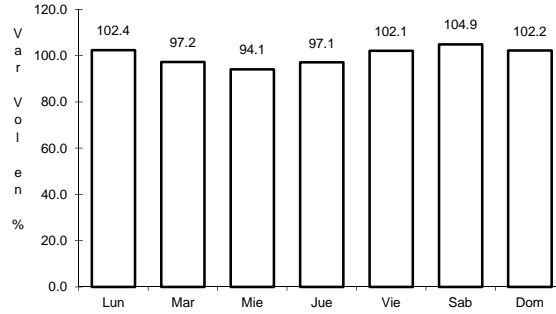
22 CARR: San Luis Potosí - Ent. Arcinas

CLAVE: 00134

RUTA: MEX-049



Km: 9.35 Tipo: 3 Sent: 1

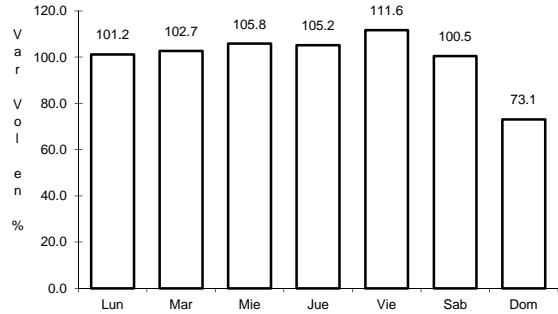


Km: 9.35 Tipo: 3 Sent: 2

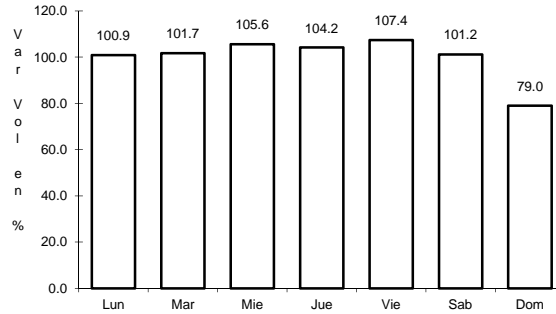
23 CARR: San Luis Potosí - Lagos de Moreno

CLAVE: 00133

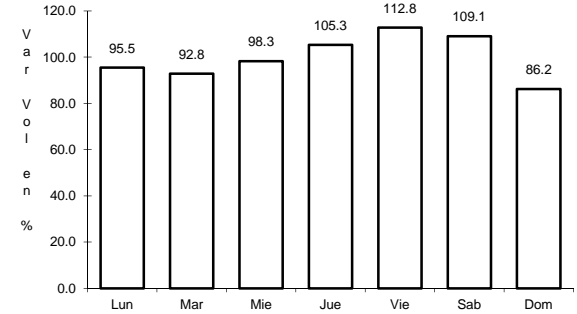
RUTA: MEX-070-080



Km: 0.00 Tipo: 3 Sent: 1



Km: 0.00 Tipo: 3 Sent: 2

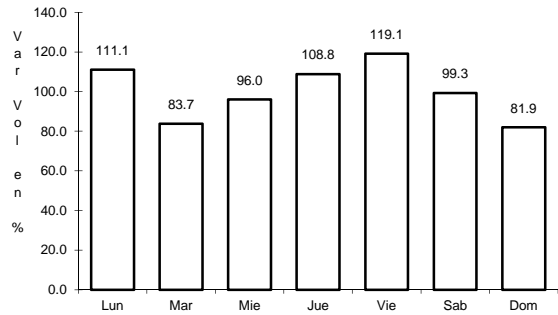


Km: 146.90 Tipo: 1 Sent: 0

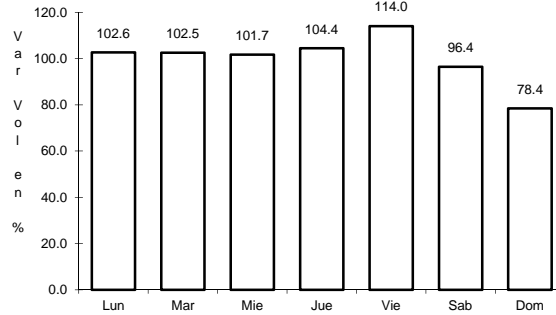
24 CARR: Zacatecas - Durango

CLAVE: 00544

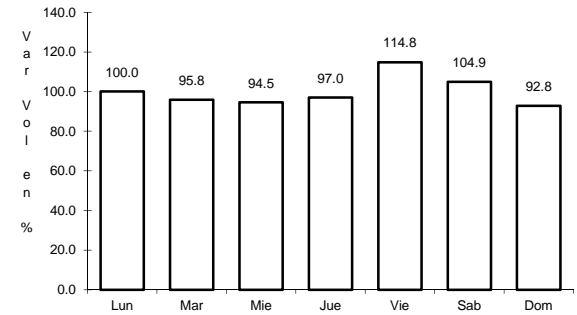
RUTA: MEX-045



Km: 6.40 Tipo: 3 Sent: 1



Km: 6.40 Tipo: 3 Sent: 2

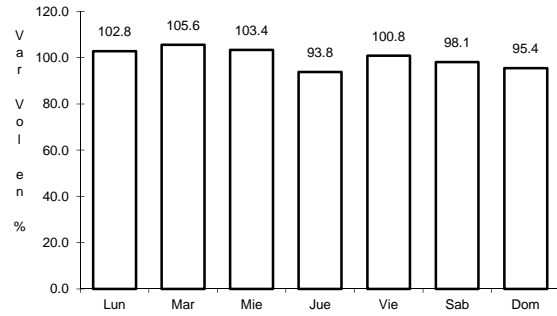


Km: 121.00 Tipo: 3 Sent: 0

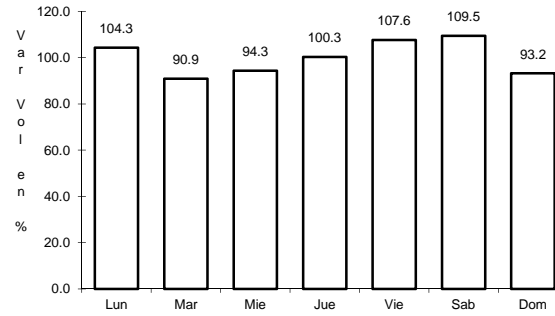
25 CARR: Cuauhtémoc - Osiris (Cuota)

CLAVE: 32558

RUTA: MEX-045D



Km: 0.00 Tipo: 3 Sent: 0

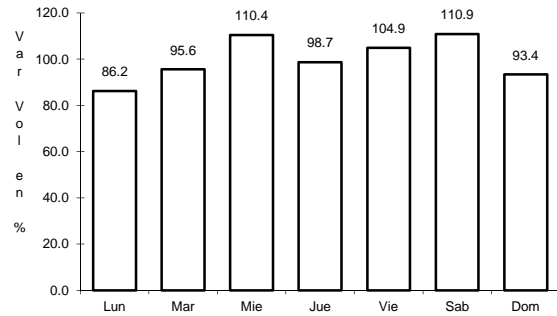


Km: 32.00 Tipo: 1 Sent: 0

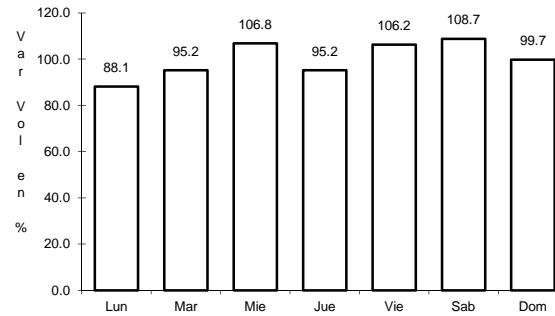
26 CARR: Libramiento de Fresnillo (Cuota)

CLAVE: 32581

RUTA: MEX-045D



Km: 0.00 Tipo: 3 Sent: 1

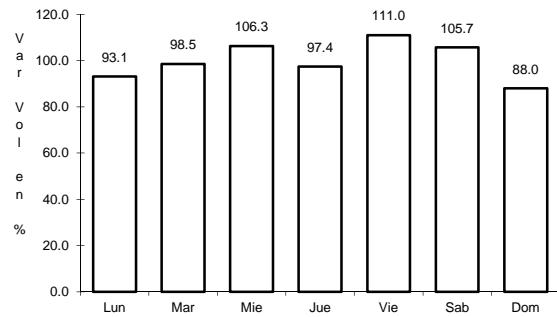


Km: 0.00 Tipo: 3 Sent: 2

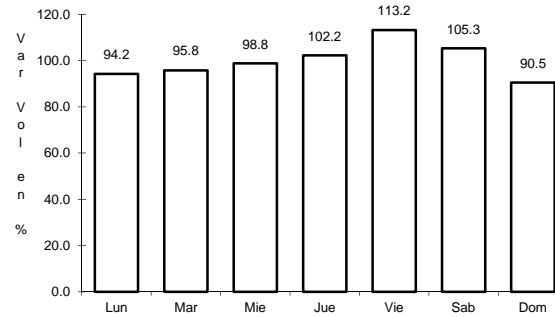
27 CARR: Libramiento de Víctor Rosales (Cuota)

CLAVE: 32015

RUTA: MEX-045D



Km: 12.20 Tipo: 1 Sent: 1

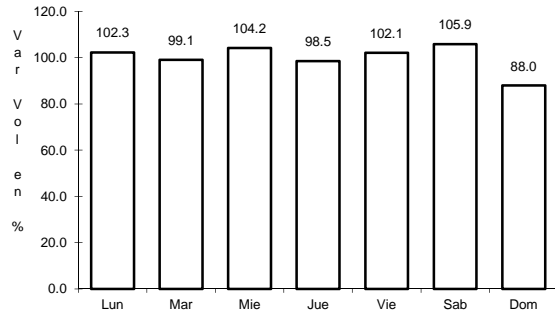


Km: 12.20 Tipo: 1 Sent: 2

28 CARR: Calera de Víctor Rosales - Santiaguillo

CLAVE: 32016

RUTA: ZAC-016

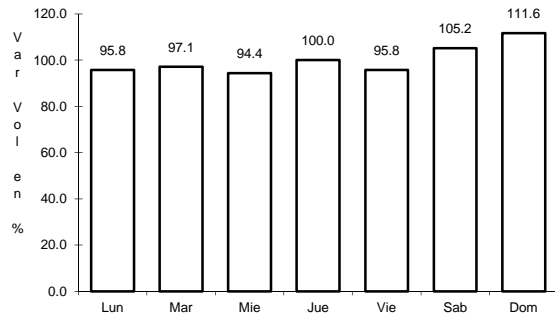


Km: 0.00 Tipo: 3 Sent: 0

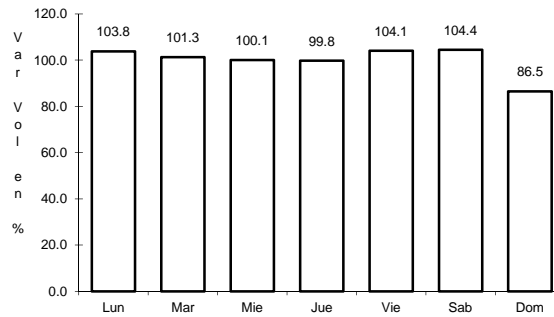
29 CARR: Cieneguillas - Zacatecas

CLAVE: 32579

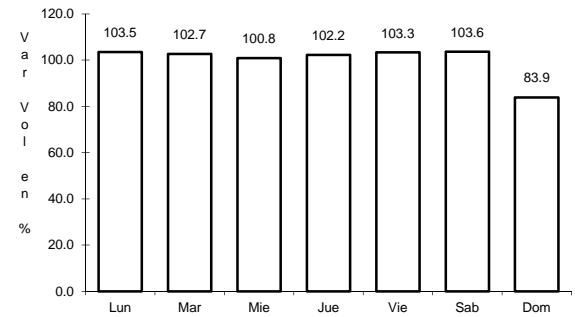
RUTA: ZAC



Km: 0.00 Tipo: 3 Sent: 0



Km: 7.70 Tipo: 3 Sent: 1

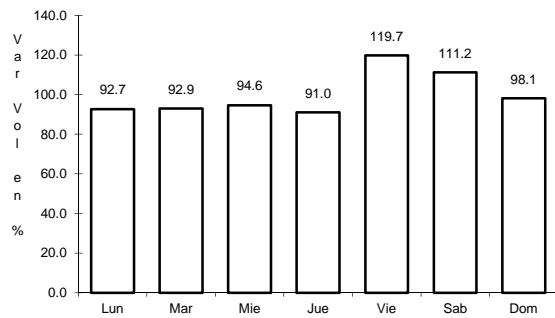


Km: 7.70 Tipo: 3 Sent: 2

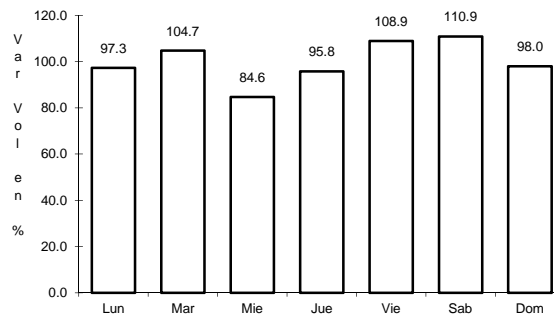
30 CARR: Corral de Piedras - Tlaltenango

CLAVE: 32579

RUTA: ZAC



Km: 0.00 Tipo: 3 Sent: 0

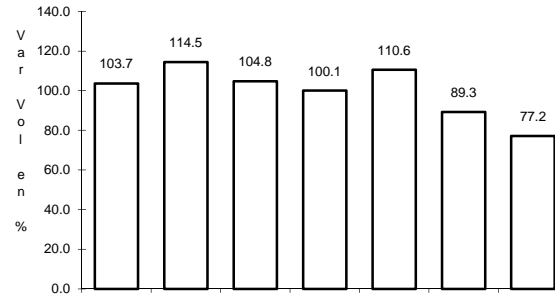
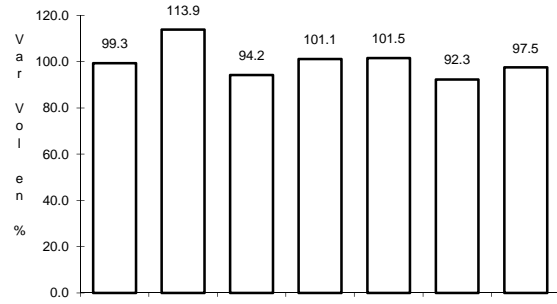


Km: 57.10 Tipo: 1 Sent: 0

31 CARR: Ent. Ojo Caliente - Ent. Ojuelos de Jalisco

CLAVE: 00126

RUTA: ZAC



Km: 0.00

Tipo: 3

Sent: 0

Km: 16.00

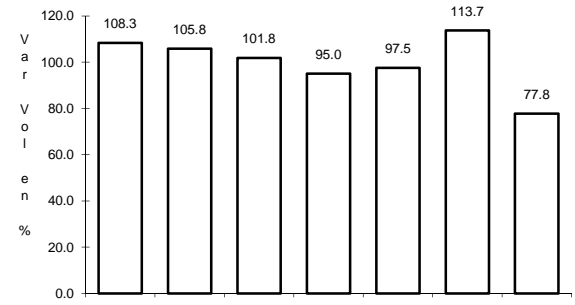
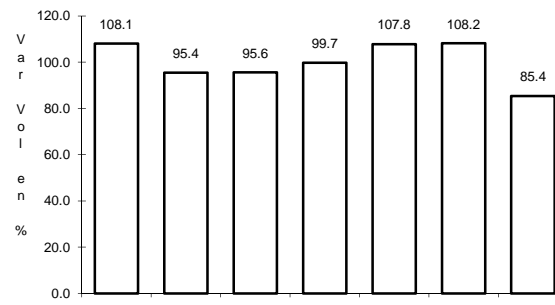
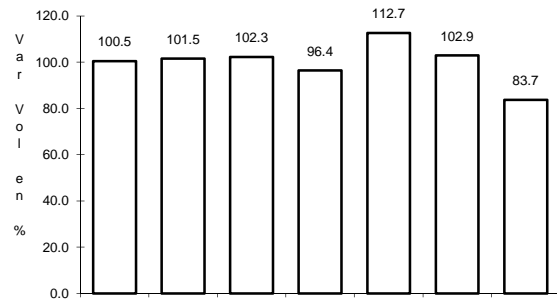
Tipo: 3

Sent: 0

32 CARR: Fresnillo - Ent. Bañón

CLAVE: 32070

RUTA: ZAC



Km: 2.40

Tipo: 3

Sent: 1

Km: 2.40

Tipo: 3

Sent: 2

Km: 49.00

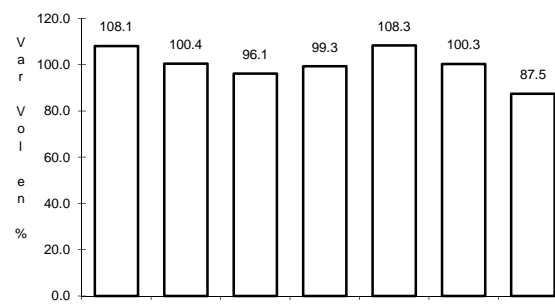
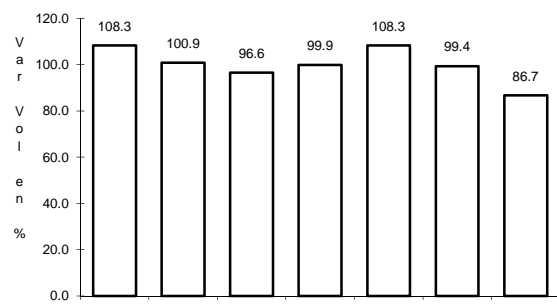
Tipo: 1

Sent: 0

33 CARR: Fresnillo - Plateros

CLAVE: 32022

RUTA: ZAC-022



Km: 0.00

Tipo: 3

Sent: 1

Km: 0.00

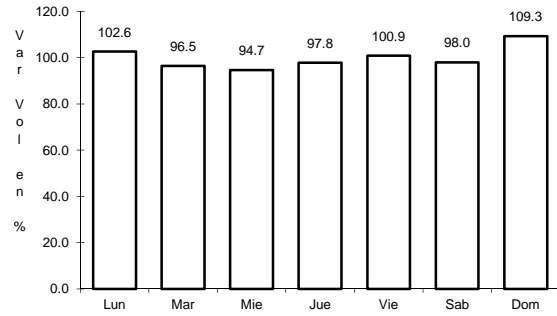
Tipo: 3

Sent: 2

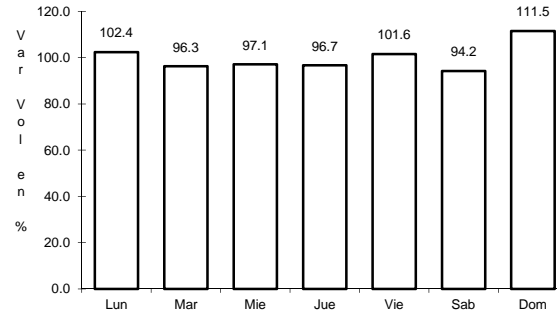
37 CARR: San Gil - Jarillas

CLAVE: 00527

RUTA: AGS-012-ZAC



Km: 0.00 Tipo: 3 Sent: 0

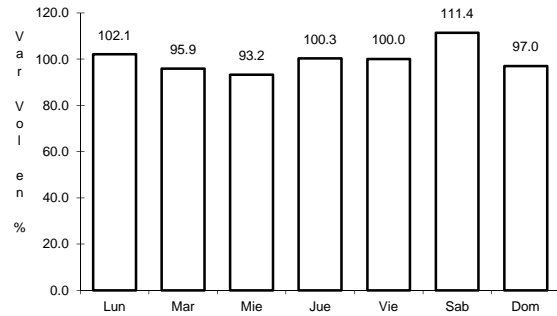


Km: 5.40 Tipo: 1 Sent: 0

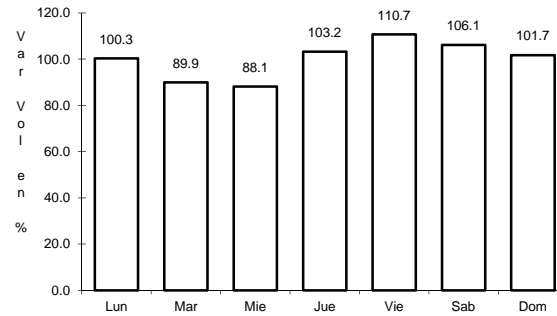
38 CARR: San Rafael - Villa García

CLAVE: 00525

RUTA: AGS-ZAC



Km: 0.00 Tipo: 3 Sent: 0

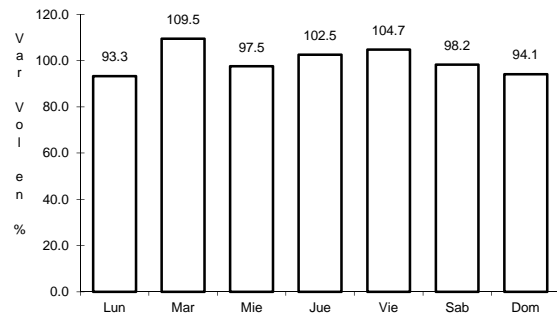


Km: 10.00 Tipo: 1 Sent: 0

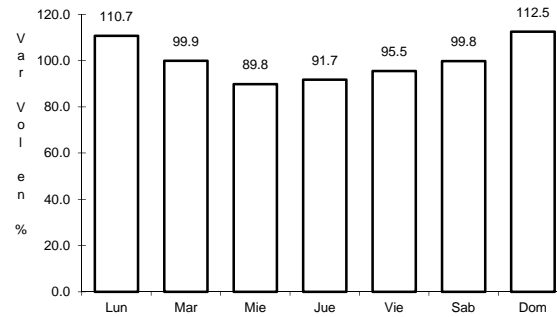
39 CARR: Santa Mónica - Pozo de Gamboa

CLAVE: 32568

RUTA: ZAC

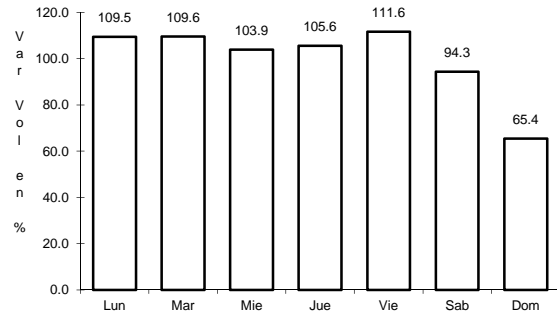


Km: 0.00 Tipo: 3 Sent: 0



Km: 7.60 Tipo: 3 Sent: 0

43 CARR: Tepatlán - Jaralillo

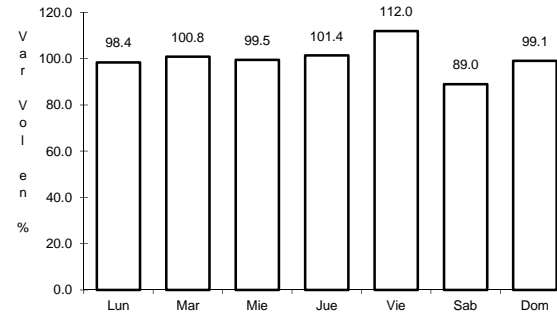


Km: 0.00

Tipo: 3

Sent: 0

CLAVE: 00146

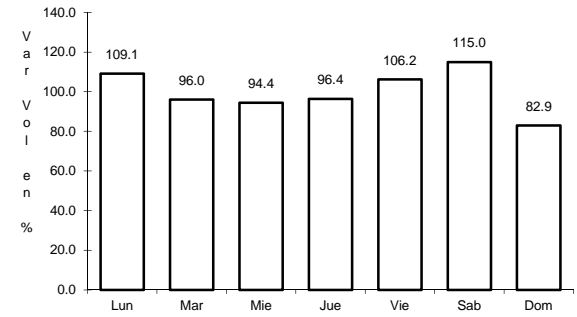


Km: 72.45

Tipo: 3

Sent: 0

RUTA: MEX-JAL-ZAC



Km: 157.00

Tipo: 1

Sent: 0