

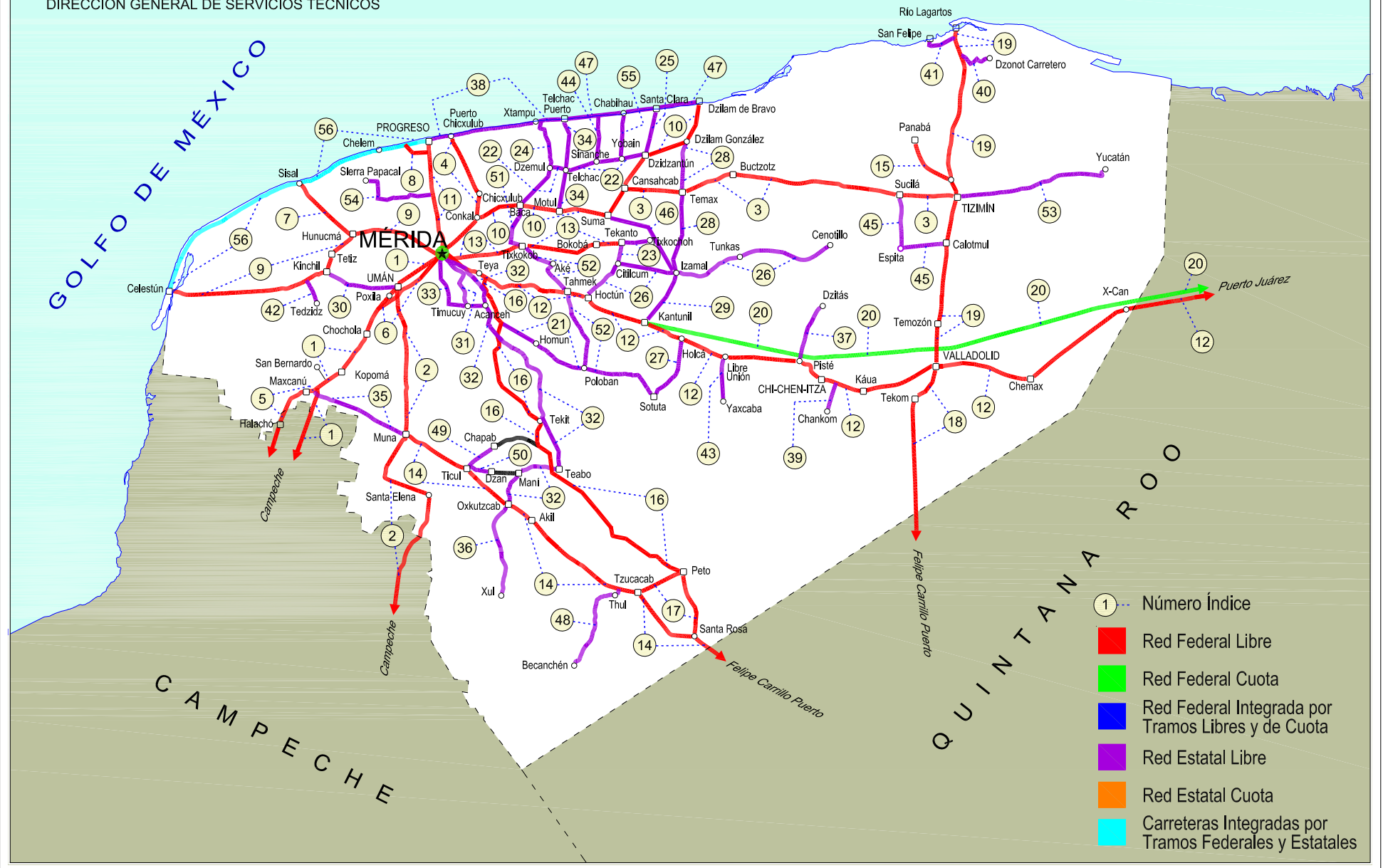


YUCATAN

NO. INDICE	CARRETERA	ROUTA
---RED FEDERAL LIBRE---		
1	Campeche - Mérida	MEX-180
2	Campeche - Umán	MEX-261
3	Cansahcab - Tizimín	MEX-176
4	Conkal - Puerto Chicxulub	MEX-176
5	Dzitbalché - Ent. San Bernardo	MEX-180
6	Ent. Poxilá - Mérida	MEX-180
7	Hunucmá - Sisal	MEX-281
8	Libramiento de Progreso	MEX-261
9	Mérida - Celestún	MEX-281
10	Mérida - Dzilam de Bravo	MEX-176
11	Mérida - Progreso	MEX-261
12	Mérida - Puerto Juárez	MEX-180
13	Mérida - Tekanto	MEX-180
14	Muna - Felipe Carrillo Puerto	MEX-184
15	Ramal a Panabá	MEX-295
16	Teya -Peto	MEX-184
17	Tzucacab - Santa Rosa	MEX
18	Valladolid - Felipe Carrillo Puerto	MEX-295
19	Valladolid - Río Lagartos	MEX-295
---RED FEDERAL DE CUOTA---		
20	Mérida - Cancún (Cuota)	MEX-180D
---RED ESTATAL LIBRE---		
21	Acanceh - Estación Polabán	YUC
22	Baca - Dzidzantún	YUC
23	Citilcum - Tixkochoh	YUC
24	Dzemul - Xtampú	YUC
25	Dzidzantún - Santa Clara	YUC
26	Hoctún - Cenotillo	YUC-011
27	Holcá - Sotuta	YUC
28	Izamal - Dzilam González	YUC
29	Kantunil - Izamal	YUC
30	Kinchil - Umán	YUC
31	Mérida - Acanceh	YUC
32	Mérida - Oxkutzcab	YUC-018
33	Mérida - Timucuy	YUC
34	Motul - Puerto Telchac	YUC-172
35	Muna - Maxcanú	YUC
36	Oxkutzcab - Xul	YUC-031
37	Piste - Dzitás	YUC-013
38	Progreso - Telchac Puerto	YUC-027
39	Ramal a Chankom	YUC
40	Ramal a Dzonot Carretero	YUC
41	Ramal a San Felipe	YUC
42	Ramal a Tedzidz	YUC
43	Ramal a Yaxcabá	YUC-289
44	Sinanché - Xitibcanul	YUC
45	Sucilá - Calotmul	YUC
46	Suma - Izamal	YUC-081
47	Telchac Puerto - Dzilam de Bravo	YUC
48	Thul - Becanchén	YUC-281
49	Ticul - Chapab	YUC
50	Ticul - Dzan	YUC
51	Tixkokob - Baca	YUC
52	Tixkokob - Sotuta	YUC
53	Tizimín - Yucatán	YUC
54	Yaxché - Sierra Papacal	YUC
55	Yobaín - Chabihau	YUC
---CARRETERAS INTEGRADAS POR TRAMOS FEDERALES Y ESTATALES---		
56	Progreso - Celestún	MEX-YUC

31 YUCATÁN

SECRETARÍA DE COMUNICACIONES Y TRANSPORTES
DIRECCIÓN GENERAL DE SERVICIOS TÉCNICOS



YUCATAN

1 CARR: Campeche - Mérida

CLAVE: 00066

RUTA: MEX-180

AÑO: 2012

LUGAR	ESTACION				CLASIFICACION VEHICULAR EN PORCIENTO														COORDENADAS	
	KM	TE	SC	TDPA	M	A	B	C2	C3	T3S2	T3S3	T3S2R4	OTROS	A	B	C	K'	D	LATITUD	LONGITUD
Campeche	0.00	3	1	4182	4.1	86.4	3.3	4.9	0.4	0.5	0.2	0.1	0.1	90.5	3.3	6.2	0.108	0.503	19.874291	-90.492784
Campeche	0.00	3	2	4233	3.9	85.7	3.8	5.2	0.4	0.5	0.3	0.1	0.1	89.6	3.8	6.6	0.084	0.503	19.874291	-90.492784
T. Der. Libramiento de Campeche	7.00	3	0	9593	2.9	74.6	4.1	5.1	1.7	6.6	1.4	3.1	0.5	77.5	4.1	18.4	0.072	0.502	19.892837	-90.461528
Tenabo	40.00	1	1	6943	1.7	77.1	3.4	6.9	1.7	4.1	1.2	3.5	0.4	78.8	3.4	17.8	0.097	0.501	20.024786	-90.247006
Tenabo	40.00	1	2	6914	1.7	76.0	3.6	7.5	1.8	4.6	1.2	3.2	0.4	77.7	3.6	18.7	0.084	0.501	20.024786	-90.247006
T. Der. Libramiento de Pomuch (2º Acceso)	50.00	3	0	8064	1.8	73.0	4.7	7.3	1.5	6.4	1.1	3.8	0.4	74.8	4.7	20.5	0.074	0.506	20.151085	-90.161792
Lim. Edos. Term. Camp. Ppia. Yuc.	96.96																			
Kopomá	124.29	3	1	3832	0.8	80.6	2.2	5.4	2.4	4.4	1.2	2.5	0.5	81.4	2.2	16.4	0.088	0.518	20.662998	-89.890293
Kopomá	124.29	3	2	4123	0.6	79.9	2.5	5.0	2.5	4.6	1.4	2.9	0.6	80.5	2.5	17.0	0.093	0.518	20.663089	-89.890450
T. Der. Libramiento de Chocholá (1º Acceso)	137.89	1	1	2151	0.4	77.9	3.0	6.6	2.9	4.3	1.2	3.2	0.5	78.3	3.0	18.7	0.081	0.509	20.733320	-89.839445
T. Der. Libramiento de Chocholá (1º Acceso)	137.89	1	2	2074	0.7	75.3	3.4	7.1	3.4	4.6	1.3	3.6	0.6	76.0	3.4	20.6	0.089	0.509	20.733401	-89.839610
T. Izq. Umán	146.99	3	1	3775	0.6	78.9	2.9	5.9	2.4	4.0	1.4	3.3	0.6	79.5	2.9	17.6	0.081	0.513	20.797826	-89.809595
T. Izq. Umán	146.99	3	2	3587	0.7	76.9	3.4	6.2	2.6	4.5	1.3	3.6	0.8	77.6	3.4	19.0	0.097	0.513	20.797826	-89.809595
X. C. Campeche - Umán	160.49	1	1	3808	0.5	74.3	3.8	6.8	3.6	4.7	1.3	4.1	0.9	74.8	3.8	21.4	0.081	0.511	20.835960	-89.755325
X. C. Campeche - Umán	160.49	1	2	3638	0.6	73.4	3.6	6.7	4.0	4.9	1.4	4.5	0.9	74.0	3.6	22.4	0.078	0.511	20.836162	-89.755651
T. C. Periférico de Mérida	171.21																			

2 CARR: Campeche - Umán

CLAVE: 00164

RUTA: MEX-261

AÑO: 2012

LUGAR	ESTACION				CLASIFICACION VEHICULAR EN PORCIENTO														COORDENADAS	
	KM	TE	SC	TDPA	M	A	B	C2	C3	T3S2	T3S3	T3S2R4	OTROS	A	B	C	K'	D	LATITUD	LONGITUD
Campeche	0.00																			
X. C. Libramiento de Campeche	7.00	1	0	4759	6.5	82.2	2.2	4.2	0.7	3.2	0.4	0.2	0.4	88.7	2.2	9.1	0.081	0.524	19.849927	-90.476428
X. C. Libramiento de Campeche	7.00	3	0	2075	5.6	79.7	4.6	5.8	0.7	2.4	0.7	0.1	0.4	85.3	4.6	10.1	0.083	0.503	19.849853	-90.466572
T. Izq. Tenabo	30.88	1	0	1241	4.8	80.7	4.6	6.4	1.1	1.5	0.6	0.1	0.2	85.5	4.6	9.9	0.095	0.505	19.804973	-90.279646
T. Izq. Tenabo	30.88	3	0	1427	6.0	77.2	4.6	7.8	1.8	1.6	0.6	0.3	0.1	83.2	4.6	12.2	0.086	0.505	19.804414	-90.269477
T. Der. Edzna	44.51	1	0	1271	7.1	79.8	3.7	5.4	1.5	1.6	0.5	0.2	0.2	86.9	3.7	9.4	0.083	0.504	19.743868	-90.176732
T. Der. Edzna	44.51	3	0	1191	7.9	78.1	3.1	6.9	1.6	1.5	0.6	0.3	0.0	86.0	3.1	10.9	0.107	0.530	19.745166	-90.170992
Hopelchén	84.88	1	0	1554	5.4	79.3	1.6	8.7	1.9	1.7	1.1	0.2	0.1	84.7	1.6	13.7	0.081	0.505	19.752655	-89.854471
Bolonchén de Rejón	117.88	3	0	901	7.7	75.0	1.5	8.4	3.8	1.6	1.6	0.3	0.1	82.7	1.5	15.8	0.100	0.556	20.012161	-89.734121
Lim. Edos. Term. Camp. Ppia. Yuc.	126.88																			
T. Der. Sayil	140.88	1	0	645	3.0	75.7	2.2	10.9	3.9	2.4	1.4	0.4	0.1	78.7	2.2	19.1	0.093	0.512	20.208944	-89.668836
Santa Elena	158.88	1	0	1007	15.0	68.4	2.7	8.9	1.7	1.6	1.2	0.5	0.0	83.4	2.7	13.9	0.099	0.506	20.319901	-89.643420
T. Izq. Ruinas de Uxmal	172.48	1	0	646	14.0	67.7	2.7	9.6	2.0	2.1	1.3	0.6	0.0	81.7	2.7	15.6	0.125	0.516	20.363295	-89.768809
Muna	187.43	1	0	1113	12.6	71.9	1.6	9.6	1.8	1.4	0.6	0.4	0.1	84.5	1.6	13.9	0.113	0.536	20.460854	-89.725072

YUCATAN

6 CARR: Ent. Poxilá - Mérida

CLAVE: 31003

ruta: MEX-180

AÑO: 2012

LUGAR	ESTACION				CLASIFICACION VEHICULAR EN PORCIENTO														COORDENADAS		
	KM	TE	SC	TDPA	M	A	B	C2	C3	T3S2	T3S3	T3S2R4	OTROS	A	B	C	K'	D	LATITUD	LONGITUD	
T. C. Campeche - Mérida	0.00																				
Umán	9.46	1	0	2287	5.8	75.2	2.4	6.7	3.4	3.9	1.0	0.6	1.0	81.0	2.4	16.6	0.078	0.509	20.866517	-89.757824	
X. Periférico de Mérida	16.37	1	1	11679	4.4	82.9	3.2	3.5	1.0	2.4	1.3	0.7	0.6	87.3	3.2	9.5	0.080	0.504	20.921548	-89.694512	
X. Periférico de Mérida	16.37	1	2	11886	5.3	79.9	3.8	4.2	1.1	2.8	1.4	0.9	0.6	85.2	3.8	11.0	0.089	0.504	20.921548	-89.694512	
Mérida	25.70	1	1	17145	2.3	83.5	4.1	5.0	1.8	1.3	1.1	0.8	0.1	85.8	4.1	10.1	0.097	0.523	20.927163	-89.683696	
Mérida	25.70	1	2	15668	3.6	80.0	4.9	5.9	1.9	1.5	1.3	0.8	0.1	83.6	4.9	11.5	0.079	0.523	20.927375	-89.683824	

7 CARR: Hunucmá - Sisal

CLAVE: 31021

ruta: MEX-281

AÑO: 2012

LUGAR	ESTACION				CLASIFICACION VEHICULAR EN PORCIENTO														COORDENADAS	
	KM	TE	SC	TDPA	M	A	B	C2	C3	T3S2	T3S3	T3S2R4	OTROS	A	B	C	K'	D	LATITUD	LONGITUD
Hunucmá	0.00	3	0	1168	6.8	82.2	3.4	4.7	1.1	1.4	0.1	0.2	0.1	89.0	3.4	7.6	0.124	0.502	21.029981	-89.896154
Sisal	23.20	1	0	775	6.8	83.0	3.5	4.6	0.7	1.1	0.2	0.0	0.1	89.8	3.5	6.7	0.140	0.504	21.161476	-90.030221

8 CARR: Libramiento de Progreso

CLAVE: 31631

ruta: MEX-261

AÑO: 2012

LUGAR	ESTACION				CLASIFICACION VEHICULAR EN PORCIENTO														COORDENADAS	
	KM	TE	SC	TDPA	M	A	B	C2	C3	T3S2	T3S3	T3S2R4	OTROS	A	B	C	K'	D	LATITUD	LONGITUD
T. C. Mérida - Progreso	0.00	3	0	1260	3.1	89.0	2.4	3.2	0.9	1.1	0.3	0.0	0.0	92.1	2.4	5.5	0.074	0.501	21.258122	-89.665234
Yucalpetén	6.50	1	0	1124	4.0	87.5	2.6	3.5	0.9	1.0	0.1	0.1	0.3	91.5	2.6	5.9	0.079	0.502	21.271339	-89.712211

9 CARR: Mérida - Celestún

CLAVE: 31025

ruta: MEX-281

AÑO: 2012

LUGAR	ESTACION				CLASIFICACION VEHICULAR EN PORCIENTO														COORDENADAS	
	KM	TE	SC	TDPA	M	A	B	C2	C3	T3S2	T3S3	T3S2R4	OTROS	A	B	C	K'	D	LATITUD	LONGITUD
Mérida	0.00	3	1	14717	3.2	82.2	4.2	4.4	0.4	1.5	3.0	0.4	0.7	85.4	4.2	10.4	0.064	0.518	20.987072	-89.659334
Mérida	0.00	3	2	15807	3.8	80.4	4.5	4.9	0.4	1.6	3.3	0.4	0.7	84.2	4.5	11.3	0.071	0.518	20.986880	-89.659432
X. Periférico de Mérida	5.10	1	1	25776	2.0	84.5	3.1	5.0	1.4	1.4	1.5	1.0	0.1	86.5	3.1	10.4	0.069	0.533	20.993615	-89.670162
X. Periférico de Mérida	5.10	1	2	22544	3.7	81.2	3.5	5.6	1.6	1.5	1.6	1.2	0.1	84.9	3.5	11.6	0.078	0.533	20.993546	-89.670216
X. Periférico de Mérida	5.10	3	1	16080	4.2	88.1	2.2	2.2	0.3	1.0	1.6	0.1	0.3	92.3	2.2	5.5	0.075	0.515	20.997904	-89.676888
X. Periférico de Mérida	5.10	3	2	17051	4.6	87.2	2.2	2.4	0.3	1.1	1.8	0.1	0.3	91.8	2.2	6.0	0.076	0.515	20.997811	-89.676986
Hunucmá	26.00	1	0	4033	15.5	68.8	5.1	6.8	1.6	1.5	0.3	0.1	0.3	84.3	5.1	10.6	0.104	0.501	21.028847	-89.845980
Hunucmá	26.00	3	0	1695	19.5	66.5	4.2	6.7	0.7	1.9	0.2	0.2	0.1	86.0	4.2	9.8	0.103	0.505	21.001706	-89.887604
Kinchil	40.00	3	0	1045	10.5	75.0	2.7	8.6	1.3	1.5	0.2	0.1	0.1	85.5	2.7	11.8	0.103	0.505	20.911439	-89.964213
T. Izq. San Mateo	67.00	1	0	865	1.7	79.2	6.4	10.0	1.7	0.8	0.2	0.0	0.0	80.9	6.4	12.7	0.122	0.515	20.859803	-90.187938

YUCATAN

9 CARR : Mérida - Celestún

CLAVE: 31025

RUTA: MEX-281

AÑO : 2012

LUGAR	ESTACION				CLASIFICACION VEHICULAR EN PORCIENTO														COORDENADAS	
	KM	TE	SC	TDPA	M	A	B	C2	C3	T3S2	T3S3	T3S2R4	OTROS	A	B	C	K'	D	LATITUD	LONGITUD
Celestún	89.00	1	0	909	11.4	73.2	3.9	8.0	1.6	1.3	0.3	0.2	0.1	84.6	3.9	11.5	0.118	0.501	20.857468	-90.380353

10 CARR : Mérida - Dzilam de Bravo

CLAVE: 31001

RUTA: MEX-176

AÑO : 2012

LUGAR	ESTACION				CLASIFICACION VEHICULAR EN PORCIENTO														COORDENADAS	
	KM	TE	SC	TDPA	M	A	B	C2	C3	T3S2	T3S3	T3S2R4	OTROS	A	B	C	K'	D	LATITUD	LONGITUD
Mérida	0.00																			
X. Periférico de Mérida	5.90	1	1	6876	3.3	84.4	3.1	4.4	0.5	2.6	1.0	0.3	0.4	87.7	3.1	9.2	0.078	0.511	21.020092	-89.567856
X. Periférico de Mérida	5.90	1	2	7187	3.7	82.2	3.4	5.3	0.5	3.0	1.2	0.3	0.4	85.9	3.4	10.7	0.081	0.511	21.020180	-89.567958
X. Periférico de Mérida	5.90	3	1	9817	4.0	85.8	2.4	4.3	1.1	1.2	0.7	0.3	0.2	89.8	2.4	7.8	0.091	0.501	21.036258	-89.552003
X. Periférico de Mérida	5.90	3	2	9865	4.0	84.6	2.7	4.9	1.3	1.3	0.7	0.3	0.2	88.6	2.7	8.7	0.104	0.501	21.036390	-89.552151
Conkal	18.00	1	1	7456	4.2	86.9	2.3	3.2	1.2	1.1	0.5	0.4	0.2	91.1	2.3	6.6	0.097	0.507	21.050608	-89.538261
Conkal	18.00	1	2	7655	4.2	86.4	2.6	3.2	1.2	1.3	0.5	0.4	0.2	90.6	2.6	6.8	0.103	0.507	21.050445	-89.538177
Baca	34.40	1	0	1407	37.4	53.0	3.2	3.5	0.7	1.4	0.3	0.4	0.1	90.4	3.2	6.4	0.098	0.501	21.109048	-89.409313
Motul	44.00	1	1	2887	6.9	81.9	2.5	3.3	2.3	2.0	0.5	0.4	0.2	88.8	2.5	8.7	0.113	0.506	21.097557	-89.312498
Motul	44.00	1	2	2818	7.6	80.2	2.6	3.8	2.5	2.2	0.5	0.4	0.2	87.8	2.6	9.6	0.110	0.506	21.097804	-89.312523
Motul	44.00	3	0	4047	2.2	83.2	2.8	3.4	2.6	2.4	0.8	2.0	0.6	85.4	2.8	11.8	0.078	0.523	21.115640	-89.271036
Cansahcab	68.00	3	0	1399	13.5	76.9	0.5	6.8	1.1	0.9	0.2	0.0	0.1	90.4	0.5	9.1	0.098	0.504	21.165472	-89.100750
Dzidzantún	80.00	1	0	1447	13.6	77.3	0.5	6.4	1.2	0.8	0.2	0.0	0.0	90.9	0.5	8.6	0.084	0.501	21.235486	-89.051573
Dzilam de Bravo	105.00	1	0	1092	3.7	86.3	2.5	3.9	0.5	1.7	1.2	0.0	0.2	90.0	2.5	7.5	0.102	0.513	21.390218	-88.891950

11 CARR : Mérida - Progreso

CLAVE: 31091

RUTA: MEX-261

AÑO : 2012

LUGAR	ESTACION				CLASIFICACION VEHICULAR EN PORCIENTO														COORDENADAS	
	KM	TE	SC	TDPA	M	A	B	C2	C3	T3S2	T3S3	T3S2R4	OTROS	A	B	C	K'	D	LATITUD	LONGITUD
T. C. Mérida - Dzilam de Bravo	0.00																			
Periférico Mérida	5.40	1	1	16503	1.6	93.1	0.1	2.4	0.3	0.6	1.6	0.1	0.2	94.7	0.1	5.2	0.078	0.522	21.043723	-89.629218
Periférico Mérida	5.40	1	2	15108	1.2	92.8	0.1	2.9	0.3	0.6	1.8	0.1	0.2	94.0	0.1	5.9	0.085	0.522	21.044297	-89.629199
T. Izq. Dzityá	10.40	1	1	17539	2.1	87.4	4.3	2.9	0.5	1.3	0.8	0.3	0.4	89.5	4.3	6.2	0.092	0.505	21.052142	-89.630759
T. Izq. Dzityá	10.40	1	2	17207	1.8	86.4	5.0	3.2	0.5	1.4	1.0	0.3	0.4	88.2	5.0	6.8	0.089	0.505	21.052141	-89.631039
T. Izq. Dzityá	10.40	3	1	14297	2.1	86.7	3.2	3.8	1.7	1.1	0.9	0.4	0.1	88.8	3.2	8.0	0.099	0.509	21.068439	-89.633288
T. Izq. Dzityá	10.40	3	2	13773	1.9	85.5	3.8	4.2	2.0	1.1	1.0	0.4	0.1	87.4	3.8	8.8	0.118	0.509	21.069713	-89.634100
Progreso	35.04	1	1	6770	1.7	81.7	3.7	3.7	1.7	3.7	1.4	1.5	0.9	83.4	3.7	12.9	0.069	0.506	21.270210	-89.660877
Progreso	35.04	1	2	6602	1.6	80.1	4.4	3.8	1.8	4.3	1.4	1.7	0.9	81.7	4.4	13.9	0.076	0.506	21.266634	-89.661167

YUCATAN

12 CARR : Mérida - Puerto Juárez

CLAVE: 00067

RUTA: MEX-180

AÑO : 2012

LUGAR	ESTACION				CLASIFICACION VEHICULAR EN PORCIENTO														COORDENADAS		
	KM	TE	SC	TDPA	M	A	B	C2	C3	T3S2	T3S3	T3S2R4	OTROS	A	B	C	K'	D	LATITUD	LONGITUD	
Mérida	0.00																				
X. Periférico de Mérida	5.60	1	1	9241	3.4	88.5	1.8	3.8	0.3	1.2	0.6	0.1	0.3	91.9	1.8	6.3	0.077	0.501	20.957495	-89.572214	
X. Periférico de Mérida	5.60	1	2	9284	3.2	88.0	1.9	4.0	0.3	1.4	0.8	0.1	0.3	91.2	1.9	6.9	0.075	0.501	20.957600	-89.572175	
X. Periférico de Mérida	5.60	3	1	9614	2.8	82.2	1.9	6.3	1.5	2.0	1.1	1.7	0.5	85.0	1.9	13.1	0.079	0.504	20.954958	-89.566171	
X. Periférico de Mérida	5.60	3	2	9752	3.5	80.3	2.2	6.5	1.8	2.1	1.3	1.8	0.5	83.8	2.2	14.0	0.091	0.504	20.954957	-89.566176	
Teya	13.00	1	1	7537	2.2	81.5	2.4	7.0	2.0	2.1	0.7	1.8	0.3	83.7	2.4	13.9	0.090	0.505	20.937919	-89.536894	
Teya	13.00	1	2	7378	1.7	80.7	2.7	7.3	2.3	2.3	0.7	2.0	0.3	82.4	2.7	14.9	0.096	0.505	20.938148	-89.536824	
T. Der. Seyé	28.79	1	1	4712	1.5	80.7	3.1	8.4	1.4	1.8	0.7	2.1	0.3	82.2	3.1	14.7	0.087	0.501	20.895093	-89.389808	
T. Der. Seyé	28.79	1	2	4735	1.5	78.8	3.6	8.7	1.6	2.2	0.8	2.4	0.4	80.3	3.6	16.1	0.082	0.501	20.895092	-89.389824	
T. Der. Seyé	28.79	3	1	4596	0.8	82.4	3.8	6.7	1.5	1.9	0.7	1.9	0.3	83.2	3.8	13.0	0.086	0.525	20.891954	-89.371227	
T. Der. Seyé	28.79	3	2	4161	0.7	80.8	4.2	7.2	1.7	2.2	0.7	2.2	0.3	81.5	4.2	14.3	0.095	0.525	20.891954	-89.371228	
Tahmek	42.00	1	1	4212	1.2	78.5	4.2	8.6	2.7	1.7	0.6	2.3	0.2	79.7	4.2	16.1	0.088	0.508	20.875719	-89.271485	
Tahmek	42.00	1	2	4349	1.0	76.3	4.8	9.4	3.1	2.0	0.7	2.5	0.2	77.3	4.8	17.9	0.087	0.508	20.875718	-89.271485	
T. Izq. Hoctún (1º Acceso)	46.65	1	0	2072	5.6	72.8	3.5	9.9	2.7	2.9	1.5	1.0	0.1	78.4	3.5	18.1	0.075	0.519	20.868071	-89.217096	
T. Izq. Hoctún (2º Acceso)	48.62	1	0	1036	6.6	74.4	1.6	8.9	2.8	2.9	0.8	1.9	0.1	81.0	1.6	17.4	0.113	0.510	20.859139	-89.204473	
T. Izq. Hoctún (2º Acceso)	48.62	3	0	1800	5.6	75.0	2.5	9.2	2.7	2.3	0.6	2.0	0.1	80.6	2.5	16.9	0.087	0.535	20.853835	-89.195563	
Kantunil	67.28	3	0	2588	2.5	79.5	3.6	8.4	2.9	2.1	0.5	0.2	0.3	82.0	3.6	14.4	0.082	0.516	20.791961	-89.020664	
Libre Unión	92.91	1	0	2442	1.3	81.9	3.0	7.7	3.3	2.0	0.5	0.2	0.1	83.2	3.0	13.8	0.089	0.518	20.708877	-88.818880	
Libre Unión	92.91	3	0	2393	1.4	79.2	3.7	9.0	3.1	2.3	0.7	0.3	0.3	80.6	3.7	15.7	0.093	0.519	20.706871	-88.802545	
Piste	116.30	3	0	5096	6.4	77.4	3.0	6.9	1.0	3.9	0.6	0.3	0.5	83.8	3.0	13.2	0.099	0.523	20.691557	-88.580376	
1er. Acceso a Zona Arqueológica de Chichen-Itzá	117.90	3	0	4623	5.9	78.3	3.5	7.4	1.3	2.6	0.5	0.3	0.2	84.2	3.5	12.3	0.088	0.503	20.688452	-88.571705	
2do. Acceso a Zona Arqueológica de Chichen-Itzá	121.10	3	0	4367	4.8	79.5	3.2	8.1	1.2	2.2	0.5	0.2	0.3	84.3	3.2	12.5	0.095	0.535	20.669890	-88.558274	
T. Der. Chankom	127.00	1	0	3423	2.1	82.0	3.2	8.1	1.8	2.0	0.4	0.3	0.1	84.1	3.2	12.7	0.086	0.504	20.642608	-88.489993	
T. Der. Chankom	127.00	3	0	3424	2.0	80.6	3.3	9.4	1.8	2.1	0.4	0.2	0.2	82.6	3.3	14.1	0.083	0.502	20.641569	-88.486920	
Valladolid	160.68	1	0	4554	4.4	79.9	3.5	6.9	1.8	2.3	0.3	0.7	0.2	84.3	3.5	12.2	0.081	0.501	20.674517	-88.246736	
Valladolid	160.68	3	0	4557	3.0	80.0	3.1	6.9	1.9	3.4	0.7	0.6	0.4	83.0	3.1	13.9	0.089	0.508	20.696422	-88.153803	
T. Der. Coba	187.80	1	0	4521	2.1	82.4	3.1	6.7	1.6	2.5	0.6	0.6	0.4	84.5	3.1	12.4	0.093	0.511	20.659301	-87.960014	
T. Der. Chemax	189.79	3	0	2828	3.6	81.3	3.4	6.1	2.2	2.3	0.6	0.3	0.2	84.9	3.4	11.7	0.095	0.515	20.664171	-87.925723	
X-Can	225.00	3	0	2303	1.5	78.0	5.0	6.3	3.9	3.0	0.8	0.8	0.7	79.5	5.0	15.5	0.072	0.502	20.860757	-87.655212	
Lim. Edos. Term. Yuc. Ppia. Q. R.	230.40																				
Nuevo X-Can	231.90	3	0	2948	1.4	84.1	4.0	5.5	1.7	2.1	0.5	0.3	0.4	85.5	4.0	10.5	0.083	0.500	20.871549	-87.591260	
Zaragoza	239.00	1	0	3558	1.8	83.2	3.9	5.8	1.7	2.5	0.5	0.2	0.4	85.0	3.9	11.1	0.080	0.503	20.881229	-87.534373	
Vicente Guerrero	261.00	1	0	2645	1.5	84.1	4.4	5.0	1.5	2.8	0.3	0.3	0.1	85.6	4.4	10.0	0.097	0.502	20.940897	-87.331907	
Leona Vicario	275.50	1	0	4036	1.6	80.2	4.6	6.3	2.3	3.2	0.6	0.4	0.8	81.8	4.6	13.6	0.078	0.509	20.982132	-87.219912	
Leona Vicario	275.50	3	0	5229	2.7	82.2	3.8	5.5	1.4	3.3	0.5	0.3	0.3	84.9	3.8	11.3	0.073	0.508	20.993770	-87.188119	

YUCATAN

12 CARR: Mérida - Puerto Juárez

CLAVE: 00067

RUTA: MEX-180

AÑO: 2012

LUGAR	ESTACION				CLASIFICACION VEHICULAR EN PORCIENTO														COORDENADAS	
	KM	TE	SC	TDPA	M	A	B	C2	C3	T3S2	T3S3	T3S2R4	OTROS	A	B	C	K'	D	LATITUD	LONGITUD
T. Der. Alfredo V. Bonfil	310.00	1	1	15084	3.9	84.4	1.5	4.6	0.8	1.4	2.6	0.3	0.5	88.3	1.5	10.2	0.066	0.509	21.139262	-86.897218
T. Der. Alfredo V. Bonfil	310.00	1	2	15639	3.4	84.0	1.6	4.9	0.8	1.5	2.8	0.3	0.7	87.4	1.6	11.0	0.068	0.509	21.139233	-86.897225
Puerto Juárez	321.41																			

13 CARR: Mérida - Tekanto

CLAVE: 31587

RUTA: MEX-180

AÑO: 2012

LUGAR	ESTACION				CLASIFICACION VEHICULAR EN PORCIENTO														COORDENADAS	
	KM	TE	SC	TDPA	M	A	B	C2	C3	T3S2	T3S3	T3S2R4	OTROS	A	B	C	K'	D	LATITUD	LONGITUD
T. C. Mérida - Puerto Juárez	0.00																			
X. Periférico de Mérida	5.70	1	0	9493	10.5	74.1	1.8	5.5	0.3	6.0	0.7	0.2	0.9	84.6	1.8	13.6	0.070	0.535	20.961437	-89.569555
T. Der. Tixpéhual	13.25	1	0	5174	7.9	78.2	5.6	3.6	1.7	2.0	0.4	0.2	0.4	86.1	5.6	8.3	0.083	0.511	20.976640	-89.462184
T. Der. Tixpéhual	13.25	3	0	3566	7.0	80.1	6.4	3.1	1.7	1.4	0.1	0.1	0.1	87.1	6.4	6.5	0.089	0.534	20.981800	-89.454775
Tixkokob	21.00	1	0	3463	5.5	81.6	5.7	3.2	1.5	1.7	0.4	0.2	0.2	87.1	5.7	7.2	0.084	0.503	21.001784	-89.422588
Tixkokob	21.00	3	0	2392	21.5	63.2	6.6	3.9	1.7	2.0	0.6	0.1	0.4	84.7	6.6	8.7	0.086	0.549	21.001158	-89.382049
Cacalchén	38.00	1	0	1325	16.8	68.9	6.9	4.3	2.0	1.0	0.1	0.0	0.0	85.7	6.9	7.4	0.090	0.503	20.985211	-89.242469
Tekanto	51.00	1	0	911	32.5	53.3	7.5	3.8	1.2	1.7	0.0	0.0	0.0	85.8	7.5	6.7	0.093	0.505	21.010228	-89.120983

14 CARR: Muna - Felipe Carrillo Puerto

CLAVE: 00148

RUTA: MEX-184

AÑO: 2012

LUGAR	ESTACION				CLASIFICACION VEHICULAR EN PORCIENTO														COORDENADAS	
	KM	TE	SC	TDPA	M	A	B	C2	C3	T3S2	T3S3	T3S2R4	OTROS	A	B	C	K'	D	LATITUD	LONGITUD
Muna	0.00	3	0	4078	7.7	80.0	1.0	5.5	1.2	2.7	0.9	0.5	0.5	87.7	1.0	11.3	0.075	0.501	20.478312	-89.698636
Ticul	19.10	1	0	3873	6.2	77.8	1.3	8.9	1.6	2.2	0.9	0.6	0.5	84.0	1.3	14.7	0.075	0.504	20.403418	-89.567697
Ticul	19.10	3	0	4935	13.3	72.9	1.0	8.2	0.4	3.3	0.4	0.1	0.4	86.2	1.0	12.8	0.095	0.504	20.373861	-89.518060
Oxkutzcab	40.50	3	0	4657	14.9	71.9	0.8	8.9	1.0	1.6	0.4	0.2	0.3	86.8	0.8	12.4	0.081	0.506	20.282638	-89.376538
Tekax	53.90	3	0	2834	18.0	67.4	1.0	6.5	1.0	3.4	1.5	0.5	0.7	85.4	1.0	13.6	0.106	0.501	20.192166	-89.272413
Tzucacab	86.60	1	0	1741	13.7	69.9	3.5	10.7	1.1	1.0	0.1	0.0	0.0	83.6	3.5	12.9	0.097	0.507	20.078984	-89.062896
Tzucacab	86.60	3	0	1255	24.6	67.0	0.8	5.4	1.2	0.9	0.1	0.0	0.0	91.6	0.8	7.6	0.082	0.504	20.065346	-89.038467
Santa Rosa	109.60	3	0	2098	1.4	82.2	2.2	7.6	1.4	2.2	1.1	1.4	0.5	83.6	2.2	14.2	0.077	0.534	19.947496	-88.880399
Lim. Edos. Term. Yuc. Ppia. Q. R.	117.00																			
Dziuche	118.00	1	0	1981	2.3	78.9	2.6	8.5	2.2	2.0	1.1	2.3	0.1	81.2	2.6	16.2	0.090	0.518	19.905564	-88.819688
Dziuche	118.00	3	0	2489	1.7	81.2	2.2	7.8	2.3	1.8	1.1	1.7	0.2	82.9	2.2	14.9	0.082	0.510	19.886790	-88.802555
José María Morelos	138.60	1	0	3751	3.6	81.6	1.5	7.0	2.2	1.8	1.1	0.9	0.3	85.2	1.5	13.3	0.079	0.511	19.764884	-88.725390
José María Morelos	138.60	3	0	2804	4.9	79.4	2.0	7.4	1.5	2.0	1.1	1.5	0.2	84.3	2.0	13.7	0.085	0.515	19.742110	-88.698561
Polyuc	161.94	1	0	2242	2.0	81.2	2.6	7.5	2.1	1.9	0.7	1.9	0.1	83.2	2.6	14.2	0.076	0.505	19.611671	-88.571798

YUCATAN

14 CARR: Muna - Felipe Carrillo Puerto

CLAVE: 00148

RUTA: MEX-184

AÑO: 2012

LUGAR	ESTACION				CLASIFICACION VEHICULAR EN PORCIENTO										COORDENADAS					
	KM	TE	SC	TDPA	M	A	B	C2	C3	T3S2	T3S3	T3S2R4	OTROS	A	B	C	K'	D	LATITUD	LONGITUD
Polyuc	161.94	3	0	1323	5.4	79.9	3.7	8.0	1.2	1.0	0.3	0.5	0.0	85.3	3.7	11.0	0.082	0.510	19.609518	-88.554249
T. Der. Dzúlá	178.11	3	0	1336	3.7	81.8	1.6	9.4	1.4	1.0	0.4	0.6	0.1	85.5	1.6	12.9	0.082	0.508	19.643764	-88.411176
Felipe Carrillo Puerto	216.97	1	0	4835	16.2	68.2	4.6	3.8	2.7	3.3	0.5	0.3	0.4	84.4	4.6	11.0	0.076	0.511	19.584026	-88.056483

15 CARR: Ramal a Panabá

CLAVE: 31609

RUTA: MEX-295

AÑO: 2012

LUGAR	ESTACION				CLASIFICACION VEHICULAR EN PORCIENTO										COORDENADAS					
	KM	TE	SC	TDPA	M	A	B	C2	C3	T3S2	T3S3	T3S2R4	OTROS	A	B	C	K'	D	LATITUD	LONGITUD
T. C. Valladolid - Río Lagartos	0.00	3	0	1147	18.5	73.2	2.8	3.6	0.7	1.0	0.2	0.0	0.0	91.7	2.8	5.5	0.100	0.502	21.194270	-88.170379
Panabá	18.00	1	0	1063	18.4	74.1	1.5	4.3	0.6	0.8	0.1	0.0	0.2	92.5	1.5	6.0	0.097	0.508	21.284406	-88.268586

16 CARR: Teya -Peto

CLAVE: 31042

RUTA: MEX-184

AÑO: 2012

LUGAR	ESTACION				CLASIFICACION VEHICULAR EN PORCIENTO										COORDENADAS					
	KM	TE	SC	TDPA	M	A	B	C2	C3	T3S2	T3S3	T3S2R4	OTROS	A	B	C	K'	D	LATITUD	LONGITUD
T. C. Mérida - Puerto Juárez	0.00																			
San Antonio Tehuizt	3.80	3	0	6723	2.9	80.8	2.3	7.5	1.2	3.1	0.8	1.0	0.4	83.7	2.3	14.0	0.083	0.502	20.886349	-89.506271
T. Izq. Acanceh	13.70	1	0	6248	2.2	78.1	2.8	7.4	2.7	3.3	1.1	1.7	0.7	80.3	2.8	16.9	0.077	0.511	20.814583	-89.472354
T. Der. Zona Arq. de Mayapan	37.65	1	0	3826	1.6	79.2	2.7	7.2	3.3	2.9	1.1	1.8	0.2	80.8	2.7	16.5	0.083	0.501	20.635440	-89.460175
T. Izq. Teabo	69.05	1	1	1846	2.6	81.2	1.5	5.1	3.2	2.5	1.4	2.2	0.3	83.8	1.5	14.7	0.076	0.512	20.408626	-89.307128
T. Izq. Teabo	69.05	1	2	1760	2.3	80.2	1.8	5.1	3.7	2.6	1.4	2.6	0.3	82.5	1.8	15.7	0.089	0.512	20.408662	-89.307031
T. Izq. Tixmehuac	97.10	1	0	1872	1.2	76.5	2.7	8.9	3.7	2.3	1.6	2.8	0.3	77.7	2.7	19.6	0.082	0.517	20.229825	-89.129369
Peto	120.70	1	0	2447	2.8	78.8	2.2	7.3	3.0	2.1	1.3	2.4	0.1	81.6	2.2	16.2	0.077	0.504	20.124478	-88.950726

17 CARR: Tzucacab - Santa Rosa

CLAVE: 31017

RUTA: MEX

AÑO: 2012

LUGAR	ESTACION				CLASIFICACION VEHICULAR EN PORCIENTO										COORDENADAS					
	KM	TE	SC	TDPA	M	A	B	C2	C3	T3S2	T3S3	T3S2R4	OTROS	A	B	C	K'	D	LATITUD	LONGITUD
Tzucacab	0.00	3	0	1323	3.3	77.1	3.2	9.0	3.0	2.0	1.3	0.6	0.5	80.4	3.2	16.4	0.088	0.500	20.073640	-89.035945
Peto	16.00	3	0	1927	4.2	75.6	2.5	9.7	2.3	1.8	1.2	2.6	0.1	79.8	2.5	17.7	0.079	0.508	20.081456	-88.911221
Santa Rosa	34.50	1	0	1607	2.4	77.4	3.3	8.4	2.4	1.7	1.3	3.0	0.1	79.8	3.3	16.9	0.082	0.510	19.963699	-88.881537

YUCATAN

18 CARR: Valladolid - Felipe Carrillo Puerto

CLAVE: 00010

RUTA: MEX-295

AÑO: 2012

LUGAR	ESTACION				CLASIFICACION VEHICULAR EN PORCIENTO													COORDENADAS		
	KM	TE	SC	TDPA	M	A	B	C2	C3	T3S2	T3S3	T3S2R4	OTROS	A	B	C	K'	D	LATITUD	LONGITUD
Valladolid	0.00	3	0	4447	5.3	86.4	0.5	4.2	0.4	2.2	0.5	0.1	0.4	91.7	0.5	7.8	0.084	0.537	20.669407	-88.206029
Chichimilá	6.90	3	0	2041	0.9	91.3	0.5	4.0	1.2	1.0	0.4	0.2	0.5	92.2	0.5	7.3	0.083	0.517	20.624295	-88.229837
Tekom	12.05	3	0	1507	8.9	83.7	1.4	3.8	1.3	0.6	0.1	0.1	0.1	92.6	1.4	6.0	0.103	0.505	20.589528	-88.265472
Tixcacalcupul	19.80	3	0	826	8.8	79.2	2.7	6.0	1.5	1.1	0.2	0.4	0.1	88.0	2.7	9.3	0.098	0.501	20.524809	-88.271190
Lim. Edos. Term. Yuc. Ppia. Q. R.	46.00																			
Tepich	51.40	1	0	690	8.5	79.9	2.5	6.5	0.9	1.2	0.1	0.4	0.0	88.4	2.5	9.1	0.106	0.507	20.250395	-88.255048
Tihosuco	65.00	1	0	708	11.3	76.9	2.8	6.9	0.5	1.2	0.1	0.3	0.0	88.2	2.8	9.0	0.106	0.512	20.193418	-88.362611
Tihosuco	65.00	3	0	802	13.7	75.8	2.8	5.6	0.6	0.9	0.3	0.2	0.1	89.5	2.8	7.7	0.098	0.506	20.190621	-88.386831
T. Izq. San Felipe Berriozábal	99.00	1	0	541	6.2	85.1	0.9	5.8	0.6	0.8	0.1	0.5	0.0	91.3	0.9	7.8	0.110	0.503	19.962185	-88.241338
T. Izq. San Felipe Berriozábal	99.00	3	0	647	5.3	85.0	1.1	6.8	0.6	0.8	0.0	0.4	0.0	90.3	1.1	8.6	0.112	0.504	19.961313	-88.240451
Señor	116.50	1	0	951	12.4	77.7	0.9	6.5	0.4	1.3	0.3	0.4	0.1	90.1	0.9	9.0	0.091	0.500	19.852824	-88.144952
Señor	116.50	3	0	1254	7.5	81.7	0.9	8.2	0.4	0.8	0.2	0.3	0.0	89.2	0.9	9.9	0.092	0.505	19.828628	-88.129792
Felipe Carrillo Puerto	147.70	1	0	1368	4.2	80.4	3.9	8.5	1.7	0.8	0.3	0.2	0.0	84.6	3.9	11.5	0.091	0.534	19.603365	-88.053931

19 CARR: Valladolid - Río Lagartos

CLAVE: 31035

RUTA: MEX-295

AÑO: 2012

LUGAR	ESTACION				CLASIFICACION VEHICULAR EN PORCIENTO													COORDENADAS		
	KM	TE	SC	TDPA	M	A	B	C2	C3	T3S2	T3S3	T3S2R4	OTROS	A	B	C	K'	D	LATITUD	LONGITUD
Valladolid	0.00	3	1	3785	5.1	86.2	1.5	4.2	0.8	1.0	0.4	0.7	0.1	91.3	1.5	7.2	0.091	0.504	20.728323	-88.203013
Valladolid	0.00	3	2	3731	6.8	83.9	1.8	4.4	0.8	1.0	0.4	0.8	0.1	90.7	1.8	7.5	0.075	0.504	20.728329	-88.203008
Temozón	12.70	3	0	2595	11.3	78.5	1.0	4.5	0.8	2.5	0.5	0.6	0.3	89.8	1.0	9.2	0.080	0.507	20.816496	-88.196184
Tizimin	51.80	1	0	2646	5.5	84.4	1.3	4.7	1.2	1.8	0.4	0.6	0.1	89.9	1.3	8.8	0.082	0.501	21.092463	-88.161426
Tizimin	51.80	3	0	2472	6.3	77.9	4.6	7.2	0.7	1.9	0.7	0.6	0.1	84.2	4.6	11.2	0.085	0.508	21.187768	-88.166294
T. Der. Dzonot Carretero	79.90	1	0	1124	5.1	78.7	4.5	5.2	1.1	1.7	1.2	1.6	0.9	83.8	4.5	11.7	0.087	0.510	21.380097	-88.142741
Río Lagartos	103.90																			

20 CARR: Mérida - Cancún (Cuota)

CLAVE: 00071

RUTA: MEX-180D

AÑO: 2012

LUGAR	ESTACION				CLASIFICACION VEHICULAR EN PORCIENTO													COORDENADAS		
	KM	TE	SC	TDPA	M	A	B	C2	C3	T3S2	T3S3	T3S2R4	OTROS	A	B	C	K'	D	LATITUD	LONGITUD
T. C. Mérida - Puerto Juárez	0.00																			
Caseta de Cobro Piste	51.00	1	1	1520	0.1	81.3	4.6	4.9	0.7	2.5	0.7	5.1	0.1	81.4	4.6	14.0	0.118	0.505	20.730463	-88.589399
Caseta de Cobro Piste	51.00	1	2	1487	0.1	80.0	4.8	5.2	0.6	2.7	0.7	5.8	0.1	80.1	4.8	15.1	0.153	0.505	20.730466	-88.589402
Caseta de Cobro X-Can	155.00	1	1	925	0.5	76.8	6.3	6.5	0.6	2.3	0.7	6.1	0.2	77.3	6.3	16.4	0.125	0.525	20.876245	-87.642861
Caseta de Cobro X-Can	155.00	1	2	1021	0.4	74.8	7.0	7.2	0.5	2.6	0.6	6.7	0.2	75.2	7.0	17.8	0.130	0.525	20.876245	-87.642863

YUCATAN

20 CARR: Mérida - Cancún (Cuota)

CLAVE: 00071

RUTA: MEX-180D

AÑO: 2012

LUGAR	ESTACION				CLASIFICACION VEHICULAR EN PORCIENTO													COORDENADAS		
	KM	TE	SC	TDPA	M	A	B	C2	C3	T3S2	T3S3	T3S2R4	OTROS	A	B	C	K'	D	LATITUD	LONGITUD
Lim. Edos. Term. Yuc. Ppia. Q. R.	160.00																			
T. C. Mérida - Puerto Juárez	292.00	1	1	1136	0.3	76.7	5.8	6.4	1.0	2.7	0.6	6.4	0.1	77.0	5.8	17.2	0.145	0.500	21.095229	-86.980842
T. C. Mérida - Puerto Juárez	292.00	1	2	1138	0.2	74.6	6.4	6.9	1.2	2.8	0.8	6.9	0.2	74.8	6.4	18.8	0.135	0.500	21.095233	-86.980844
T. C. Reforma Agraria - Puerto Juárez	308.10	1	0	6980	0.3	81.3	7.2	4.1	1.4	2.9	0.9	1.5	0.4	81.6	7.2	11.2	0.087	0.511	21.020006	-86.858391

21 CARR: Acanceh - Estación Polabán

CLAVE: 31615

RUTA: YUC

AÑO: 2012

LUGAR	ESTACION				CLASIFICACION VEHICULAR EN PORCIENTO													COORDENADAS		
	KM	TE	SC	TDPA	M	A	B	C2	C3	T3S2	T3S3	T3S2R4	OTROS	A	B	C	K'	D	LATITUD	LONGITUD
Acanceh	0.00	3	0	1435	15.1	70.1	2.6	8.9	1.3	1.5	0.3	0.1	0.1	85.2	2.6	12.2	0.093	0.509	20.808750	-89.439855
Homún	20.00	3	0	579	27.8	59.8	1.1	9.8	0.6	0.8	0.1	0.0	0.0	87.6	1.1	11.3	0.113	0.500	20.735353	-89.269945
Estación Polabán	24.40	1	0	457	24.7	61.6	1.3	11.3	0.6	0.4	0.1	0.0	0.0	86.3	1.3	12.4	0.107	0.501	20.726840	-89.225488

22 CARR: Baca - Dzidzantún

CLAVE: 31591

RUTA: YUC

AÑO: 2012

LUGAR	ESTACION				CLASIFICACION VEHICULAR EN PORCIENTO													COORDENADAS		
	KM	TE	SC	TDPA	M	A	B	C2	C3	T3S2	T3S3	T3S2R4	OTROS	A	B	C	K'	D	LATITUD	LONGITUD
Baca	0.00	3	0	1721	33.1	55.2	4.1	4.1	1.4	1.7	0.2	0.2	0.0	88.3	4.1	7.6	0.097	0.502	21.123368	-89.393196
Dzemul	15.00	1	0	1003	30.0	60.2	3.0	3.2	0.8	1.9	0.7	0.0	0.2	90.2	3.0	6.8	0.089	0.505	21.206554	-89.320185
Dzemul	15.00	3	0	1430	47.5	44.1	2.5	3.4	0.4	2.0	0.1	0.0	0.0	91.6	2.5	5.9	0.088	0.501	21.208707	-89.296031
Pueblo Telchac	19.10	1	0	1675	40.3	45.9	5.9	3.6	0.7	1.3	0.8	0.4	1.1	86.2	5.9	7.9	0.074	0.500	21.205406	-89.280817
Sinanché	29.10	3	0	549	33.5	54.3	0.5	9.8	1.3	0.5	0.1	0.0	0.0	87.8	0.5	11.7	0.099	0.507	21.225577	-89.177622
Dzidzantún	43.00	1	0	778	15.6	76.9	0.2	6.3	0.8	0.2	0.0	0.0	0.0	92.5	0.2	7.3	0.106	0.507	21.244731	-89.055280

23 CARR: Citilcum - Tixkochoh

CLAVE: 31064

RUTA: YUC

AÑO: 2012

LUGAR	ESTACION				CLASIFICACION VEHICULAR EN PORCIENTO													COORDENADAS		
	KM	TE	SC	TDPA	M	A	B	C2	C3	T3S2	T3S3	T3S2R4	OTROS	A	B	C	K'	D	LATITUD	LONGITUD
Citilcum	0.00	3	0	862	34.9	53.2	0.8	9.3	1.1	0.7	0.0	0.0	0.0	88.1	0.8	11.1	0.130	0.530	20.960421	-89.114947
Tekanto	7.00	1	0	562	22.3	67.4	0.8	7.2	1.6	0.3	0.1	0.0	0.3	89.7	0.8	9.5	0.096	0.526	21.000992	-89.105210
Tixkochoh	10.00	1	0	468	59.9	34.2	0.1	3.6	0.0	1.8	0.3	0.0	0.1	94.1	0.1	5.8	0.136	0.500	21.013889	-89.088657

YUCATAN

24 CARR : Dzemul - Xtampú

CLAVE: 31608

RUTA: YUC

AÑO: 2012

LUGAR	ESTACION				CLASIFICACION VEHICULAR EN PORCIENTO													COORDENADAS		
	KM	TE	SC	TDPA	M	A	B	C2	C3	T3S2	T3S3	T3S2R4	OTROS	A	B	C	K'	D	LATITUD	LONGITUD
Dzemul	0.00	3	0	363	9.9	78.6	1.6	6.1	1.7	2.1	0.0	0.0	0.0	88.5	1.6	9.9	0.086	0.503	21.212885	-89.321354
Xtampú	10.00	1	0	402	16.6	70.0	3.6	6.2	1.6	1.7	0.1	0.1	0.1	86.6	3.6	9.8	0.172	0.506	21.331521	-89.348713

25 CARR : Dzidzantún - Santa Clara

CLAVE: 31592

RUTA: YUC

AÑO: 2012

LUGAR	ESTACION				CLASIFICACION VEHICULAR EN PORCIENTO													COORDENADAS		
	KM	TE	SC	TDPA	M	A	B	C2	C3	T3S2	T3S3	T3S2R4	OTROS	A	B	C	K'	D	LATITUD	LONGITUD
Dzidzantún	0.00	3	0	746	39.1	56.6	0.2	3.2	0.1	0.7	0.1	0.0	0.0	95.7	0.2	4.1	0.125	0.500	21.262619	-89.040385
Santa Clara	14.00	1	0	262	24.9	71.1	0.2	2.8	0.2	0.6	0.2	0.0	0.0	96.0	0.2	3.8	0.140	0.508	21.371172	-89.014395

26 CARR : Hoctún - Cenotillo

CLAVE: 31011

RUTA: YUC-011

AÑO: 2012

LUGAR	ESTACION				CLASIFICACION VEHICULAR EN PORCIENTO													COORDENADAS		
	KM	TE	SC	TDPA	M	A	B	C2	C3	T3S2	T3S3	T3S2R4	OTROS	A	B	C	K'	D	LATITUD	LONGITUD
Hoctún	0.00	3	0	2011	19.1	71.3	0.5	7.2	0.8	1.0	0.1	0.0	0.0	90.4	0.5	9.1	0.075	0.506	20.884045	-89.184053
Citilcum	13.20	3	0	1426	19.3	70.3	0.6	7.9	0.9	0.9	0.1	0.0	0.0	89.6	0.6	9.8	0.087	0.546	20.950707	-89.109606
Izamal	24.00	3	0	1792	23.9	65.4	0.8	7.4	1.0	1.3	0.1	0.0	0.1	89.3	0.8	9.9	0.095	0.508	20.934000	-89.000295
Tunkás	55.20	3	0	500	20.3	68.2	1.8	7.7	1.1	0.9	0.0	0.0	0.0	88.5	1.8	9.7	0.098	0.507	20.916522	-88.734743
Cenotillo	70.90	1	0	460	21.8	66.8	1.8	7.7	1.0	0.8	0.1	0.0	0.0	88.6	1.8	9.6	0.104	0.507	20.963467	-88.624308

27 CARR : Holcá - Sotuta

CLAVE: 31626

RUTA: YUC

AÑO: 2012

LUGAR	ESTACION				CLASIFICACION VEHICULAR EN PORCIENTO													COORDENADAS		
	KM	TE	SC	TDPA	M	A	B	C2	C3	T3S2	T3S3	T3S2R4	OTROS	A	B	C	K'	D	LATITUD	LONGITUD
T. C. Mérida - Puerto Juárez	0.00	3	0	593	6.8	76.3	1.5	12.0	2.0	0.9	0.2	0.3	0.0	83.1	1.5	15.4	0.090	0.512	20.750563	-88.930477
Tibolón	10.00	3	0	623	5.4	78.0	1.5	11.2	1.8	1.9	0.1	0.1	0.0	83.4	1.5	15.1	0.098	0.502	20.659501	-88.950111
Sotuta	20.00	1	0	655	5.6	78.0	1.6	11.5	1.9	1.0	0.1	0.1	0.2	83.6	1.6	14.8	0.088	0.507	20.607227	-89.002324

28 CARR : Izamal - Dzilam González

CLAVE: 31605

RUTA: YUC

AÑO: 2012

LUGAR	ESTACION				CLASIFICACION VEHICULAR EN PORCIENTO													COORDENADAS		
	KM	TE	SC	TDPA	M	A	B	C2	C3	T3S2	T3S3	T3S2R4	OTROS	A	B	C	K'	D	LATITUD	LONGITUD
Izamal	0.00	3	0	1206	31.0	60.8	1.2	5.2	0.3	1.4	0.0	0.0	0.1	91.8	1.2	7.0	0.082	0.514	20.943999	-89.007302
Temax	30.00	1	0	696	20.8	70.0	1.2	5.9	0.6	1.5	0.0	0.0	0.0	90.8	1.2	8.0	0.108	0.519	21.129208	-88.938986
Dzilam González	43.00	1	0	655	35.6	58.3	0.5	4.1	0.4	0.9	0.0	0.1	0.1	93.9	0.5	5.6	0.129	0.540	21.270289	-88.931515

YUCATAN

29 CARR: Kantunil - Izamal

CLAVE: 31012

RUTA: YUC

AÑO: 2012

LUGAR	ESTACION				CLASIFICACION VEHICULAR EN PORCIENTO													COORDENADAS		
	KM	TE	SC	TDPA	M	A	B	C2	C3	T3S2	T3S3	T3S2R4	OTROS	A	B	C	K'	D	LATITUD	LONGITUD
Kantunil	0.00	3	0	812	10.6	84.7	0.8	2.0	0.6	0.8	0.4	0.0	0.1	95.3	0.8	3.9	0.114	0.532	20.807873	-89.028681
Izamal	17.80	1	0	1664	19.9	67.7	1.6	9.3	0.4	1.0	0.1	0.0	0.0	87.6	1.6	10.8	0.105	0.512	20.920231	-89.013191

30 CARR: Kinchil - Umán

CLAVE: 31009

RUTA: YUC

AÑO: 2012

LUGAR	ESTACION				CLASIFICACION VEHICULAR EN PORCIENTO													COORDENADAS		
	KM	TE	SC	TDPA	M	A	B	C2	C3	T3S2	T3S3	T3S2R4	OTROS	A	B	C	K'	D	LATITUD	LONGITUD
Kinchil	0.00	3	0	1503	22.6	60.6	5.8	5.3	3.6	1.6	0.3	0.1	0.1	83.2	5.8	11.0	0.103	0.527	20.911046	-89.937244
Umán	26.00																			

31 CARR: Mérida - Acanceh

CLAVE: 31023

RUTA: YUC

AÑO: 2012

LUGAR	ESTACION				CLASIFICACION VEHICULAR EN PORCIENTO													COORDENADAS		
	KM	TE	SC	TDPA	M	A	B	C2	C3	T3S2	T3S3	T3S2R4	OTROS	A	B	C	K'	D	LATITUD	LONGITUD
Mérida	0.00	3	0	6593	16.1	67.5	1.3	6.3	2.3	4.4	1.0	0.5	0.6	83.6	1.3	15.1	0.071	0.507	20.934989	-89.579649
T. Der. Uxec Tamán	11.00	1	0	2487	10.0	75.7	1.3	10.6	0.6	1.0	0.5	0.2	0.1	85.7	1.3	13.0	0.095	0.517	20.874805	-89.528665
T. Der. Uxec Tamán	11.00	3	0	1811	8.0	81.7	1.3	7.6	0.6	0.3	0.2	0.1	0.2	89.7	1.3	9.0	0.088	0.503	20.862672	-89.532027
Timucuy	20.00	3	0	889	23.0	67.6	0.5	6.7	0.9	1.1	0.1	0.0	0.1	90.6	0.5	8.9	0.092	0.529	20.812317	-89.505077
Acanceh	26.00	1	0	946	25.8	64.8	0.6	6.4	0.9	1.4	0.0	0.0	0.1	90.6	0.6	8.8	0.090	0.528	20.812546	-89.473791

32 CARR: Mérida - Oxkutzcab

CLAVE: 31018

RUTA: YUC-018

AÑO: 2012

LUGAR	ESTACION				CLASIFICACION VEHICULAR EN PORCIENTO													COORDENADAS		
	KM	TE	SC	TDPA	M	A	B	C2	C3	T3S2	T3S3	T3S2R4	OTROS	A	B	C	K'	D	LATITUD	LONGITUD
Mérida	0.00	3	1	8020	9.6	77.6	1.3	8.9	0.2	0.8	1.2	0.1	0.3	87.2	1.3	11.5	0.073	0.513	20.944713	-89.582303
Mérida	0.00	3	2	8437	12.1	74.3	1.5	9.2	0.2	1.0	1.3	0.1	0.3	86.4	1.5	12.1	0.076	0.513	20.944875	-89.582215
Kanasín	5.97	1	1	8778	1.3	84.9	1.2	9.0	0.5	1.9	0.7	0.1	0.4	86.2	1.2	12.6	0.078	0.504	20.940705	-89.570734
Kanasín	5.97	1	2	8650	1.2	84.2	1.3	9.4	0.5	2.1	0.8	0.1	0.4	85.4	1.3	13.3	0.074	0.504	20.940597	-89.570797
Acanceh	20.39	1	0	6141	1.3	78.5	1.0	10.5	2.1	3.5	1.0	1.2	0.9	79.8	1.0	19.2	0.087	0.505	20.823555	-89.466494
Acanceh	20.39	3	0	5462	4.2	77.8	1.4	9.2	2.3	2.7	0.9	1.2	0.3	82.0	1.4	16.6	0.090	0.504	20.793768	-89.459012
Tecoh	29.30	1	0	5322	5.2	78.2	1.2	8.1	2.1	2.8	0.9	1.1	0.4	83.4	1.2	15.4	0.088	0.505	20.764296	-89.468462
Tekit	61.70	1	0	4445	1.6	78.6	2.3	6.8	3.2	3.2	1.7	2.1	0.5	80.2	2.3	17.5	0.079	0.508	20.543589	-89.337899
Maní	98.20	1	0	1377	5.8	81.7	1.0	6.6	2.0	1.7	0.5	0.6	0.1	87.5	1.0	11.5	0.081	0.503	20.399327	-89.361139
Maní	98.20	3	0	1221	23.0	69.1	0.1	6.5	0.3	1.0	0.0	0.0	0.0	92.1	0.1	7.8	0.088	0.515	20.371776	-89.398979
Oxkutzcab	109.30	1	0	1499	19.2	71.1	0.3	7.3	0.6	1.2	0.2	0.0	0.1	90.3	0.3	9.4	0.083	0.510	20.325889	-89.415100

YUCATAN

33 CARR: Mérida - Timucuy

CLAVE: 31024

RUTA: YUC

AÑO: 2012

LUGAR	ESTACION				CLASIFICACION VEHICULAR EN PORCIENTO													COORDENADAS		
	KM	TE	SC	TDPA	M	A	B	C2	C3	T3S2	T3S3	T3S2R4	OTROS	A	B	C	K'	D	LATITUD	LONGITUD
Mérida	0.00	3	0	4433	13.4	70.3	1.1	12.1	0.5	2.1	0.3	0.0	0.2	83.7	1.1	15.2	0.080	0.513	20.900924	-89.599835
Tekik de Regil	15.10	1	0	1249	4.9	79.7	2.7	9.7	1.3	1.2	0.4	0.0	0.1	84.6	2.7	12.7	0.091	0.527	20.822797	-89.559617
Tekik de Regil	15.10	3	0	999	12.0	71.4	0.9	14.4	0.6	0.6	0.1	0.0	0.0	83.4	0.9	15.7	0.089	0.510	20.815655	-89.553742
Timucuy	18.65	1	0	1064	11.8	74.9	1.2	10.5	0.4	0.7	0.3	0.0	0.2	86.7	1.2	12.1	0.086	0.505	20.812668	-89.525670

34 CARR: Motul - Puerto Telchac

CLAVE: 31006

RUTA: YUC-172

AÑO: 2012

LUGAR	ESTACION				CLASIFICACION VEHICULAR EN PORCIENTO													COORDENADAS		
	KM	TE	SC	TDPA	M	A	B	C2	C3	T3S2	T3S3	T3S2R4	OTROS	A	B	C	K'	D	LATITUD	LONGITUD
Motul	0.00	3	0	2678	14.5	69.5	7.3	5.2	1.7	1.4	0.2	0.1	0.1	84.0	7.3	8.7	0.114	0.502	21.159162	-89.276750
Pueblo Telchac	12.00	3	0	1312	21.0	69.3	3.4	4.2	0.5	1.2	0.2	0.1	0.1	90.3	3.4	6.3	0.142	0.509	21.215972	-89.271409
Puerto Telchac	28.00																			

35 CARR: Muna - Maxcanú

CLAVE: 31053

RUTA: YUC

AÑO: 2012

LUGAR	ESTACION				CLASIFICACION VEHICULAR EN PORCIENTO													COORDENADAS		
	KM	TE	SC	TDPA	M	A	B	C2	C3	T3S2	T3S3	T3S2R4	OTROS	A	B	C	K'	D	LATITUD	LONGITUD
Muna	0.00	3	0	894	14.2	68.1	1.7	7.9	2.0	4.4	1.1	0.3	0.3	82.3	1.7	16.0	0.092	0.536	20.490425	-89.734848
Opichén	17.00	3	0	937	15.7	66.1	1.1	12.7	1.4	1.9	0.8	0.1	0.2	81.8	1.1	17.1	0.094	0.516	20.554691	-89.869016
T. C. Campeche - Mérida	31.00	1	0	928	13.1	72.4	2.8	6.1	2.4	1.9	0.7	0.2	0.4	85.5	2.8	11.7	0.098	0.512	20.582982	-89.969866

36 CARR: Oxkutzcab - Xul

CLAVE: 31051

RUTA: YUC-031

AÑO: 2012

LUGAR	ESTACION				CLASIFICACION VEHICULAR EN PORCIENTO													COORDENADAS		
	KM	TE	SC	TDPA	M	A	B	C2	C3	T3S2	T3S3	T3S2R4	OTROS	A	B	C	K'	D	LATITUD	LONGITUD
Oxkutzcab	0.00	3	0	1774	18.1	68.6	0.3	11.2	0.2	1.2	0.3	0.0	0.1	86.7	0.3	13.0	0.110	0.524	20.286888	-89.424587
Emiliano Zapata	10.00	3	0	857	37.3	55.4	0.2	5.7	0.3	0.6	0.3	0.0	0.2	92.7	0.2	7.1	0.107	0.511	20.220524	-89.464132
Xul	25.00	1	0	535	28.9	63.1	0.5	5.1	1.4	0.6	0.3	0.0	0.1	92.0	0.5	7.5	0.113	0.508	20.110706	-89.456723

37 CARR: Piste - Dzitás

CLAVE: 31013

RUTA: YUC-013

AÑO: 2012

LUGAR	ESTACION				CLASIFICACION VEHICULAR EN PORCIENTO													COORDENADAS		
	KM	TE	SC	TDPA	M	A	B	C2	C3	T3S2	T3S3	T3S2R4	OTROS	A	B	C	K'	D	LATITUD	LONGITUD
Piste	0.00	3	0	1343	20.9	66.1	3.1	7.2	0.4	1.5	0.4	0.3	0.1	87.0	3.1	9.9	0.113	0.519	20.708722	-88.585927
Dzitás	18.00	1	0	754	19.9	72.4	0.4	5.1	1.3	0.8	0.1	0.0	0.0	92.3	0.4	7.3	0.118	0.504	20.839425	-88.534654

YUCATAN

38 CARR: Progreso - Telchac Puerto

CLAVE: 31616

RUTA: YUC-027

AÑO: 2012

LUGAR	ESTACION				CLASIFICACION VEHICULAR EN PORCIENTO														COORDENADAS	
	KM	TE	SC	TDPA	M	A	B	C2	C3	T3S2	T3S3	T3S2R4	OTROS	A	B	C	K'	D	LATITUD	LONGITUD
Progreso	0.00	3	1	1972	7.6	81.6	1.2	1.4	2.5	2.4	1.5	0.8	1.0	89.2	1.2	9.6	0.090	0.502	21.276127	-89.657779
Progreso	0.00	3	2	1956	4.6	83.5	1.3	1.6	2.8	2.6	1.7	0.8	1.1	88.1	1.3	10.6	0.071	0.502	21.276271	-89.657820
Chicxulub Puerto	6.00	1	1	953	6.7	82.9	2.4	2.5	3.0	0.8	0.6	0.5	0.6	89.6	2.4	8.0	0.090	0.508	21.288023	-89.605141
Chicxulub Puerto	6.00	1	2	983	3.7	84.6	2.7	3.1	3.2	0.9	0.7	0.5	0.6	88.3	2.7	9.0	0.089	0.508	21.288025	-89.605142
Chicxulub Puerto	6.00	3	0	2256	5.4	80.5	3.4	4.9	2.2	1.3	0.8	0.4	1.1	85.9	3.4	10.7	0.109	0.512	21.296161	-89.579399
Xtampú	20.00	1	0	535	4.3	86.3	3.2	4.2	0.6	1.2	0.1	0.0	0.1	90.6	3.2	6.2	0.135	0.547	21.332712	-89.351779
Xtampú	20.00	3	0	544	3.5	80.4	4.5	4.9	3.7	1.9	1.1	0.0	0.0	83.9	4.5	11.6	0.144	0.511	21.333740	-89.344624
Telchac Puerto	33.00	1	0	784	5.1	80.3	4.1	4.2	3.2	1.7	1.1	0.1	0.2	85.4	4.1	10.5	0.126	0.509	21.340275	-89.289152

39 CARR: Ramal a Chankom

CLAVE: 31049

RUTA: YUC

AÑO: 2012

LUGAR	ESTACION				CLASIFICACION VEHICULAR EN PORCIENTO														COORDENADAS	
	KM	TE	SC	TDPA	M	A	B	C2	C3	T3S2	T3S3	T3S2R4	OTROS	A	B	C	K'	D	LATITUD	LONGITUD
T. C. Mérida - Puerto Juárez	0.00	3	0	301	8.9	84.9	0.8	5.1	0.1	0.2	0.0	0.0	0.0	93.8	0.8	5.4	0.110	0.509	20.640363	-88.489106
Chankom	9.00	1	0	308	6.6	87.7	0.7	4.0	0.1	0.9	0.0	0.0	0.0	94.3	0.7	5.0	0.105	0.504	20.582500	-88.507944

40 CARR: Ramal a Dzonot Carretero

CLAVE: 31614

RUTA: YUC

AÑO: 2012

LUGAR	ESTACION				CLASIFICACION VEHICULAR EN PORCIENTO														COORDENADAS	
	KM	TE	SC	TDPA	M	A	B	C2	C3	T3S2	T3S3	T3S2R4	OTROS	A	B	C	K'	D	LATITUD	LONGITUD
T. C. Valladolid - Río Lagartos	0.00	3	0	411	40.2	50.9	2.4	5.1	0.5	0.8	0.1	0.0	0.0	91.1	2.4	6.5	0.126	0.512	21.380373	-88.142058
Dzonot Carretero	35.00																			

41 CARR: Ramal a San Felipe

CLAVE: 31628

RUTA: YUC

AÑO: 2012

LUGAR	ESTACION				CLASIFICACION VEHICULAR EN PORCIENTO														COORDENADAS	
	KM	TE	SC	TDPA	M	A	B	C2	C3	T3S2	T3S3	T3S2R4	OTROS	A	B	C	K'	D	LATITUD	LONGITUD
T. C. Valladolid - Río Lagartos	0.00	3	0	430	15.6	60.7	5.3	6.0	11.1	0.7	0.3	0.3	0.0	76.3	5.3	18.4	0.110	0.506	21.572278	-88.161591
San Felipe	7.20	1	0	408	15.9	60.1	4.7	6.2	11.9	0.7	0.2	0.3	0.0	76.0	4.7	19.3	0.128	0.508	21.553372	-88.233761

42 CARR: Ramal a Tedzidz

CLAVE: 31600

RUTA: YUC

AÑO: 2012

LUGAR	ESTACION				CLASIFICACION VEHICULAR EN PORCIENTO														COORDENADAS	
	KM	TE	SC	TDPA	M	A	B	C2	C3	T3S2	T3S3	T3S2R4	OTROS	A	B	C	K'	D	LATITUD	LONGITUD
T. C. Mérida - Celestún	0.00																			

YUCATAN

42 CARR: Ramal a Tedzidz

CLAVE: 31600

RUTA: YUC

AÑO: 2012

LUGAR	ESTACION				CLASIFICACION VEHICULAR EN PORCIENTO														COORDENADAS	
	KM	TE	SC	TDPA	M	A	B	C2	C3	T3S2	T3S3	T3S2R4	OTROS	A	B	C	K'	D	LATITUD	LONGITUD
Tedzidz	6.00	1	0	148	21.3	74.8	1.2	2.7	0.0	0.0	0.0	0.0	0.0	96.1	1.2	2.7	0.152	0.543	20.843213	-89.975027

43 CARR: Ramal a Yaxcabá

CLAVE: 31111

RUTA: YUC-289

AÑO: 2012

LUGAR	ESTACION				CLASIFICACION VEHICULAR EN PORCIENTO														COORDENADAS	
	KM	TE	SC	TDPA	M	A	B	C2	C3	T3S2	T3S3	T3S2R4	OTROS	A	B	C	K'	D	LATITUD	LONGITUD
T. C. Mérida - Puerto Juárez	0.00	3	0	493	15.7	73.9	1.0	7.3	1.6	0.4	0.1	0.0	0.0	89.6	1.0	9.4	0.119	0.515	20.689380	-88.812805
Yaxcabá	18.00	1	0	553	19.2	73.3	1.0	5.4	0.8	0.2	0.1	0.0	0.0	92.5	1.0	6.5	0.112	0.514	20.561058	-88.825056

44 CARR: Sinanché - Xitibcanul

CLAVE: 31619

RUTA: YUC

AÑO: 2012

LUGAR	ESTACION				CLASIFICACION VEHICULAR EN PORCIENTO														COORDENADAS	
	KM	TE	SC	TDPA	M	A	B	C2	C3	T3S2	T3S3	T3S2R4	OTROS	A	B	C	K'	D	LATITUD	LONGITUD
Sinanché	0.00	3	0	501	15.1	77.9	0.1	5.4	0.1	0.5	0.8	0.0	0.1	93.0	0.1	6.9	0.111	0.540	21.235533	-89.184279
Xitibcanul	7.00	1	0	366	15.3	77.7	0.6	5.9	0.5	0.0	0.0	0.0	0.0	93.0	0.6	6.4	0.095	0.503	21.349819	-89.172272

45 CARR: Sucilá - Calotmul

CLAVE: 31617

RUTA: YUC

AÑO: 2012

LUGAR	ESTACION				CLASIFICACION VEHICULAR EN PORCIENTO														COORDENADAS		
	KM	TE	SC	TDPA	M	A	B	C2	C3	T3S2	T3S3	T3S2R4	OTROS	A	B	C	K'	D	LATITUD	LONGITUD	
Sucilá	0.00																				
X. C. Cansahcab - Tizimin	2.00	3	0	711	16.4	72.2	3.8	6.2	0.7	0.6	0.1	0.0	0.0	88.6	3.8	7.6	0.101	0.504	21.148508	-88.316503	
Calotmul	30.20	1	0	733	15.5	72.1	3.7	8.2	0.1	0.3	0.1	0.0	0.0	87.6	3.7	8.7	0.109	0.513	21.017755	-88.186275	

46 CARR: Suma - Izamal

CLAVE: 31081

RUTA: YUC-081

AÑO: 2012

LUGAR	ESTACION				CLASIFICACION VEHICULAR EN PORCIENTO														COORDENADAS	
	KM	TE	SC	TDPA	M	A	B	C2	C3	T3S2	T3S3	T3S2R4	OTROS	A	B	C	K'	D	LATITUD	LONGITUD
Suma	0.00	3	0	539	23.1	65.4	0.7	8.8	1.2	0.4	0.3	0.0	0.1	88.5	0.7	10.8	0.112	0.503	21.083346	-89.140335
Izamal	22.00	1	0	778	24.7	62.1	0.1	10.8	0.2	1.2	0.0	0.0	0.9	86.8	0.1	13.1	0.104	0.512	20.948676	-89.020383

YUCATAN

47 CARR: Telchac Puerto - Dzilam de Bravo

CLAVE: 31042

RUTA: YUC

AÑO: 2012

LUGAR	ESTACION				CLASIFICACION VEHICULAR EN PORCIENTO										COORDENADAS					
	KM	TE	SC	TDPA	M	A	B	C2	C3	T3S2	T3S3	T3S2R4	OTROS	A	B	C	K'	D	LATITUD	LONGITUD
Telchac Puerto	0.00	3	0	686	11.7	81.4	1.8	3.9	0.3	0.7	0.1	0.0	0.1	93.1	1.8	5.1	0.088	0.510	21.342878	-89.252260
T. Der. Sinanché	8.00	1	0	531	12.7	77.1	2.5	6.3	0.4	0.7	0.2	0.0	0.1	89.8	2.5	7.7	0.100	0.510	21.351656	-89.184685
T. Der. Sinanché	8.00	3	0	493	15.7	78.7	2.4	1.3	0.3	0.7	0.1	0.0	0.8	94.4	2.4	3.2	0.139	0.516	21.352116	-89.161492
Chabihau	15.00	1	0	324	14.7	78.4	0.3	5.5	0.5	0.4	0.2	0.0	0.0	93.1	0.3	6.6	0.172	0.518	21.355210	-89.129640
Chabihau	15.00	3	0	219	10.2	82.8	1.4	4.1	0.7	0.5	0.2	0.0	0.1	93.0	1.4	5.6	0.226	0.517	21.358071	-89.106285
Santa Clara	26.00	1	0	195	14.4	79.0	1.1	3.9	0.8	0.7	0.0	0.0	0.1	93.4	1.1	5.5	0.215	0.505	21.372288	-89.020708
Santa Clara	26.00	3	0	193	16.2	78.3	1.1	3.3	1.0	0.1	0.0	0.0	0.0	94.5	1.1	4.4	0.222	0.505	21.374350	-89.001345
Dzilam de Bravo	39.00	1	0	233	11.2	83.8	0.0	4.4	0.0	0.6	0.0	0.0	0.0	95.0	0.0	5.0	0.102	0.509	21.388408	-88.908641

48 CARR: Thul - Becanchén

CLAVE: 31104

RUTA: YUC-281

AÑO: 2012

LUGAR	ESTACION				CLASIFICACION VEHICULAR EN PORCIENTO										COORDENADAS						
	KM	TE	SC	TDPA	M	A	B	C2	C3	T3S2	T3S3	T3S2R4	OTROS	A	B	C	K'	D	LATITUD	LONGITUD	
T. C. Muna - Felipe Carrillo Puerto	0.00	3	0	155	23.5	59.0	7.4	7.0	1.6	1.5	0.0	0.0	0.0	82.5	7.4	10.1	0.135	0.501	20.087103	-89.099254	
Becanchén	32.00																				

49 CARR: Ticul - Chapab

CLAVE: 31623

RUTA: YUC

AÑO: 2012

LUGAR	ESTACION				CLASIFICACION VEHICULAR EN PORCIENTO										COORDENADAS					
	KM	TE	SC	TDPA	M	A	B	C2	C3	T3S2	T3S3	T3S2R4	OTROS	A	B	C	K'	D	LATITUD	LONGITUD
Ticul	0.00	3	0	1305	28.4	62.5	1.7	6.2	0.3	0.7	0.1	0.0	0.1	90.9	1.7	7.4	0.089	0.503	20.409662	-89.524858
Chapab	8.00	1	0	1277	31.0	63.0	0.9	3.7	0.3	0.8	0.1	0.0	0.2	94.0	0.9	5.1	0.085	0.512	20.452198	-89.463703

50 CARR: Ticul - Dzan

CLAVE: 31621

RUTA: YUC

AÑO: 2012

LUGAR	ESTACION				CLASIFICACION VEHICULAR EN PORCIENTO										COORDENADAS						
	KM	TE	SC	TDPA	M	A	B	C2	C3	T3S2	T3S3	T3S2R4	OTROS	A	B	C	K'	D	LATITUD	LONGITUD	
Ticul	0.00																				
T. Izq. Libramiento de Ticul	2.50	3	0	2637	40.2	54.5	0.4	2.9	0.2	1.5	0.2	0.0	0.1	94.7	0.4	4.9	0.090	0.503	20.395025	-89.514330	
Dzan	7.00	1	0	2560	30.9	62.1	0.5	3.8	0.2	2.1	0.3	0.0	0.1	93.0	0.5	6.5	0.087	0.501	20.390212	-89.478959	

YUCATAN

51 CARR: Tixkokob - Baca

CLAVE: 31010

RUTA: YUC

AÑO: 2012

LUGAR	ESTACION				CLASIFICACION VEHICULAR EN PORCIENTO													COORDENADAS		
	KM	TE	SC	TDPA	M	A	B	C2	C3	T3S2	T3S3	T3S2R4	OTROS	A	B	C	K'	D	LATITUD	LONGITUD
Tixkokob	0.00	3	0	2710	47.3	43.2	2.5	4.1	1.4	0.5	0.4	0.2	0.4	90.5	2.5	7.0	0.079	0.505	21.007517	-89.417914
Baca	15.00	1	0	1885	57.2	32.9	2.3	4.0	1.8	1.3	0.2	0.1	0.2	90.1	2.3	7.6	0.090	0.503	21.097346	-89.398111

52 CARR: Tixkokob - Sotuta

CLAVE: 31106

RUTA: YUC

AÑO: 2012

LUGAR	ESTACION				CLASIFICACION VEHICULAR EN PORCIENTO													COORDENADAS		
	KM	TE	SC	TDPA	M	A	B	C2	C3	T3S2	T3S3	T3S2R4	OTROS	A	B	C	K'	D	LATITUD	LONGITUD
Tixkokob	0.00	3	0	1742	17.3	71.0	1.3	8.4	0.4	1.4	0.1	0.0	0.1	88.3	1.3	10.4	0.093	0.502	20.997161	-89.379614
Tahmek	24.00	3	0	1003	16.5	71.8	1.3	8.2	0.6	1.3	0.3	0.0	0.0	88.3	1.3	10.4	0.091	0.514	20.863371	-89.255415
Hocabá	31.00	3	0	345	18.5	56.1	2.3	19.7	3.1	0.2	0.1	0.0	0.0	74.6	2.3	23.1	0.101	0.524	20.807812	-89.238585
Huhí	43.00	1	0	434	20.5	63.0	2.1	12.8	0.8	0.8	0.0	0.0	0.0	83.5	2.1	14.4	0.111	0.501	20.724325	-89.173035
Sotuta	65.00	1	0	412	18.0	69.1	1.3	9.7	1.3	0.5	0.1	0.0	0.0	87.1	1.3	11.6	0.111	0.541	20.603088	-89.020990

53 CARR: Tizimín - Yucatán

CLAVE: 31588

RUTA: YUC

AÑO: 2012

LUGAR	ESTACION				CLASIFICACION VEHICULAR EN PORCIENTO													COORDENADAS		
	KM	TE	SC	TDPA	M	A	B	C2	C3	T3S2	T3S3	T3S2R4	OTROS	A	B	C	K'	D	LATITUD	LONGITUD
Tizimín	0.00	3	0	4280	13.3	71.2	3.6	7.6	1.4	2.2	0.6	0.0	0.1	84.5	3.6	11.9	0.123	0.501	21.149444	-88.111341
T. Der. Buenaventura	30.00	3	0	1791	8.1	76.5	4.5	7.2	1.8	1.4	0.2	0.2	0.1	84.6	4.5	10.9	0.091	0.504	21.180304	-87.921323
Yucatán	46.50	1	0	1755	12.4	72.8	3.8	7.4	1.8	1.4	0.2	0.2	0.0	85.2	3.8	11.0	0.093	0.504	21.202987	-87.730274

54 CARR: Yaxché - Sierra Papacal

CLAVE: 31620

RUTA: YUC

AÑO: 2012

LUGAR	ESTACION				CLASIFICACION VEHICULAR EN PORCIENTO													COORDENADAS		
	KM	TE	SC	TDPA	M	A	B	C2	C3	T3S2	T3S3	T3S2R4	OTROS	A	B	C	K'	D	LATITUD	LONGITUD
T. C. Mérida - Progreso	0.00	3	0	2926	15.9	70.6	2.2	7.5	1.5	1.8	0.3	0.0	0.2	86.5	2.2	11.3	0.082	0.504	21.105178	-89.642358
Sierra Papacal	12.00	1	0	805	13.1	70.9	2.9	7.7	4.0	1.3	0.0	0.0	0.1	84.0	2.9	13.1	0.122	0.522	21.122375	-89.722233

55 CARR: Yobain - Chabihau

CLAVE: 31610

RUTA: YUC

AÑO: 2012

LUGAR	ESTACION				CLASIFICACION VEHICULAR EN PORCIENTO													COORDENADAS		
	KM	TE	SC	TDPA	M	A	B	C2	C3	T3S2	T3S3	T3S2R4	OTROS	A	B	C	K'	D	LATITUD	LONGITUD
T. C. Baca - Dzidzantún	0.00	3	0	496	42.2	53.3	0.3	3.4	0.4	0.4	0.0	0.0	0.0	95.5	0.3	4.2	0.115	0.506	21.240697	-89.116738
Chabihau	12.00	1	0	142	26.6	63.7	1.3	7.7	0.1	0.5	0.1	0.0	0.0	90.3	1.3	8.4	0.144	0.513	21.354281	-89.117248

YUCATAN

56 CARR: Progreso - Celestún

CLAVE: 31040

RUTA: MEX-YUC

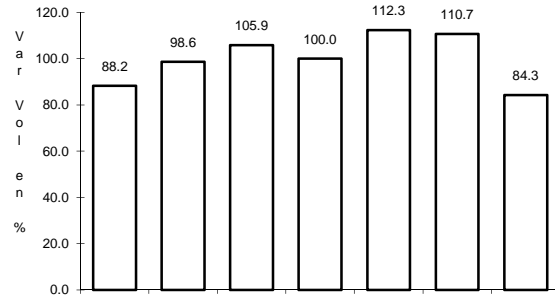
AÑO: 2012

LUGAR	ESTACION				CLASIFICACION VEHICULAR EN PORCIENTO														COORDENADAS	
	KM	TE	SC	TDPA	M	A	B	C2	C3	T3S2	T3S3	T3S2R4	OTROS	A	B	C	K'	D	LATITUD	LONGITUD
T. C. Mérida - Progreso	0.00	3	1	2361	11.7	80.4	2.1	2.7	0.5	1.0	0.3	0.2	1.1	92.1	2.1	5.8	0.092	0.508	21.275185	-89.692763
T. C. Mérida - Progreso	0.00	3	2	2290	11.4	80.3	2.3	2.8	0.5	1.0	0.3	0.2	1.2	91.7	2.3	6.0	0.097	0.508	21.275183	-89.692761
Yucalpetén	6.00	3	0	2437	6.4	78.7	3.5	6.2	0.9	2.0	0.7	0.5	1.1	85.1	3.5	11.4	0.084	0.507	21.276081	-89.716767
Celestún	80.00																			

1 CARR: Campeche - Mérida

CLAVE: 00066

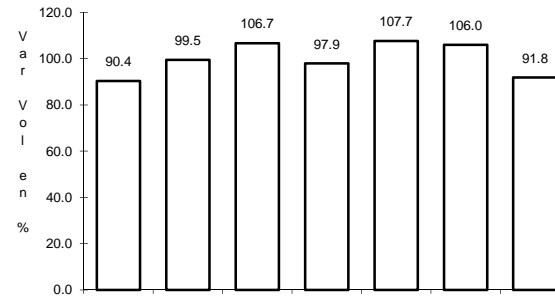
RUTA: MEX-180



Km: 0.00

Tipo: 3

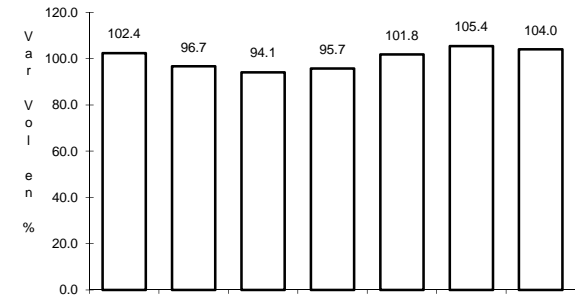
Sent: 1



Km: 0.00

Tipo: 3

Sent: 2



Km: 50.00

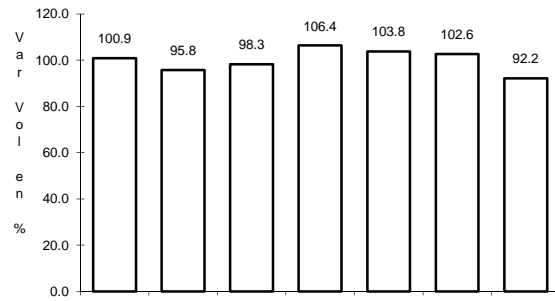
Tipo: 3

Sent: 0

2 CARR: Campeche - Umán

CLAVE: 00164

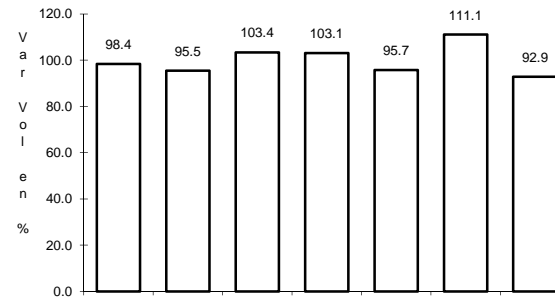
RUTA: MEX-261



Km: 7.00

Tipo: 1

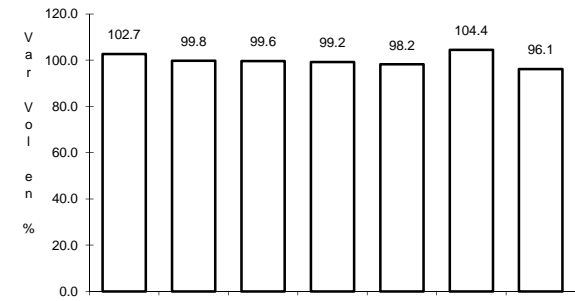
Sent: 0



Km: 117.88

Tipo: 3

Sent: 0



Km: 230.83

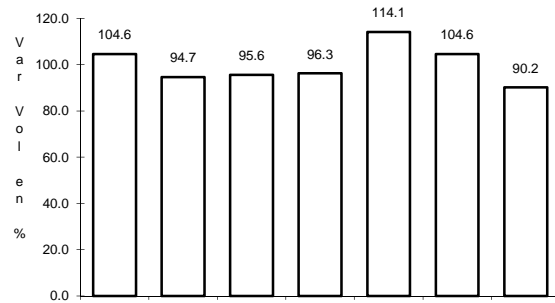
Tipo: 1

Sent: 0

3 CARR: Cansahcab - Tizimín

CLAVE: 31014

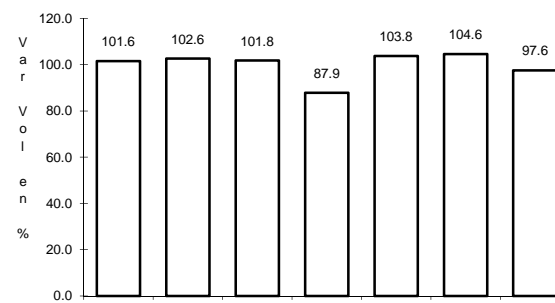
RUTA: MEX-176



Km: 0.00

Tipo: 3

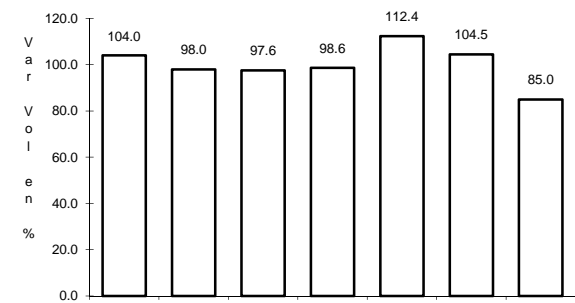
Sent: 0



Km: 32.92

Tipo: 3

Sent: 0



Km: 99.14

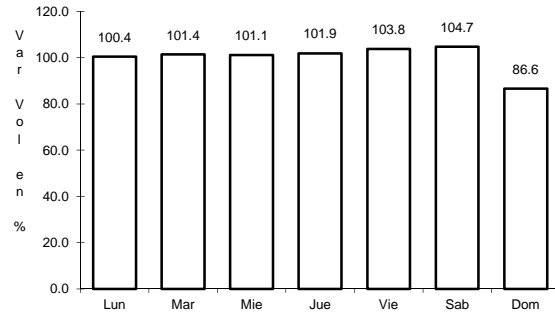
Tipo: 1

Sent: 0

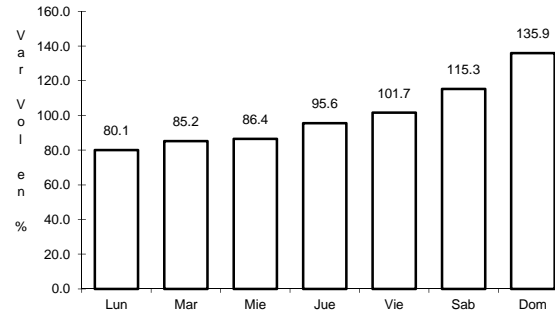
4 CARR: Conkal - Puerto Chicxulub

CLAVE: 31004

RUTA: MEX-176



Km: 0.00 Tipo: 3 Sent: 0

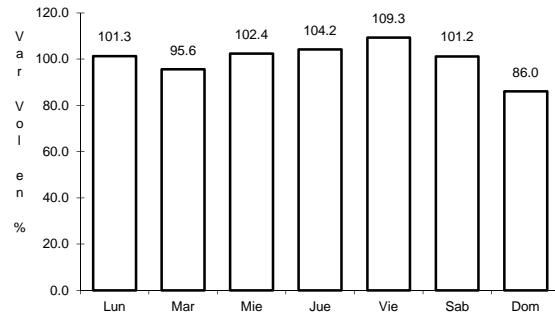


Km: 27.00 Tipo: 1 Sent: 0

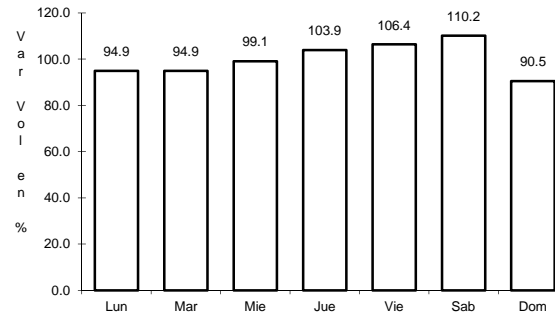
5 CARR: Dzitbalché - Ent. San Bernardo

CLAVE: 00162

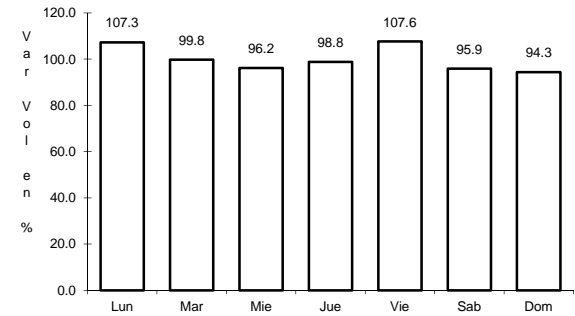
RUTA: MEX-180



Km: 12.33 Tipo: 1 Sent: 0



Km: 21.08 Tipo: 1 Sent: 0

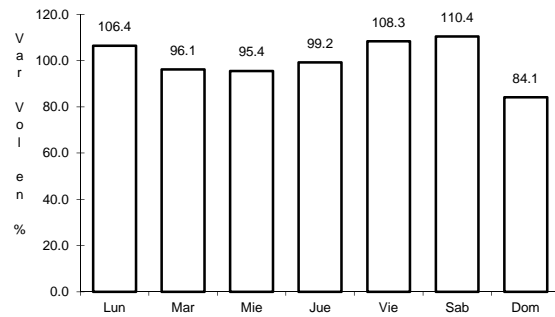


Km: 40.36 Tipo: 3 Sent: 0

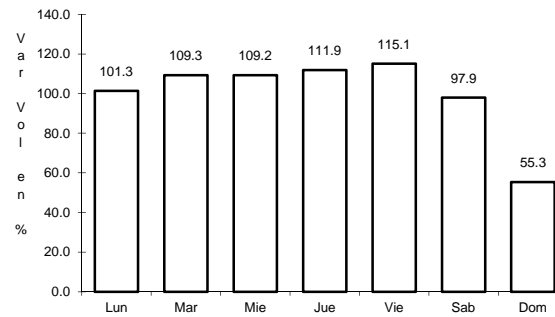
6 CARR: Ent. Poxilá - Mérida

CLAVE: 31003

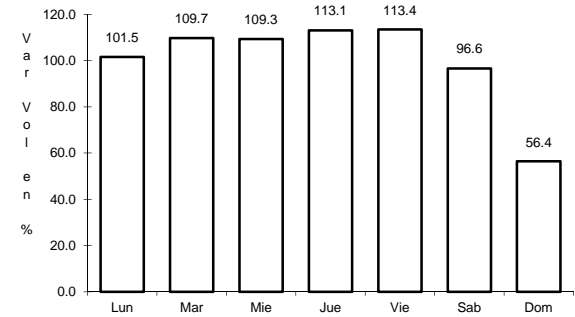
RUTA: MEX-180



Km: 9.46 Tipo: 1 Sent: 0



Km: 25.70 Tipo: 1 Sent: 1

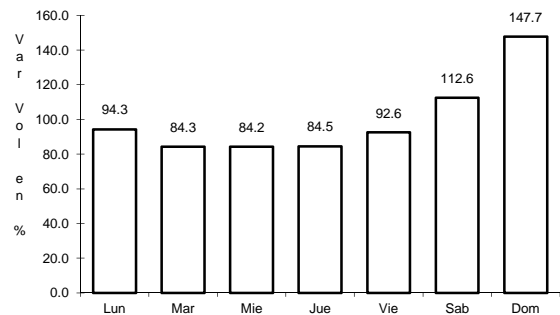


Km: 25.70 Tipo: 1 Sent: 2

7 CARR: Hunucmá - Sisal

CLAVE: 31021

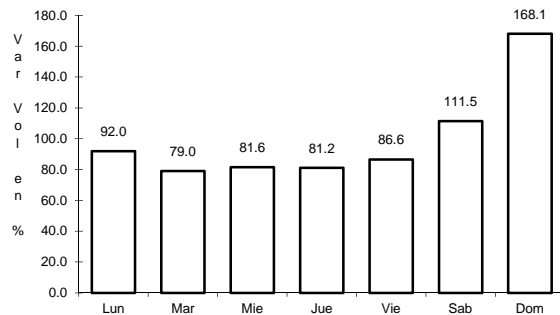
RUTA: MEX-281



Km: 0.00

Tipo: 3

Sent: 0



Km: 23.20

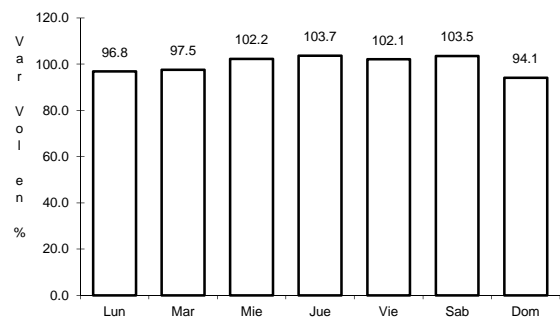
Tipo: 1

Sent: 0

8 CARR: Libramiento de Progreso

CLAVE: 31631

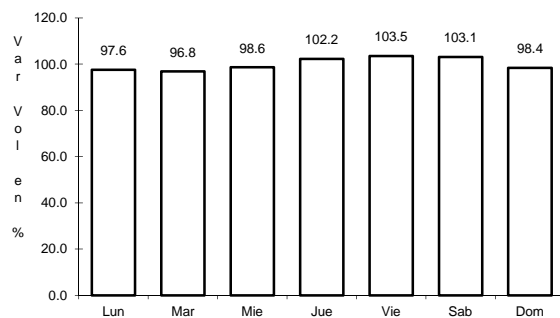
RUTA: MEX-261



Km: 0.00

Tipo: 3

Sent: 0



Km: 6.50

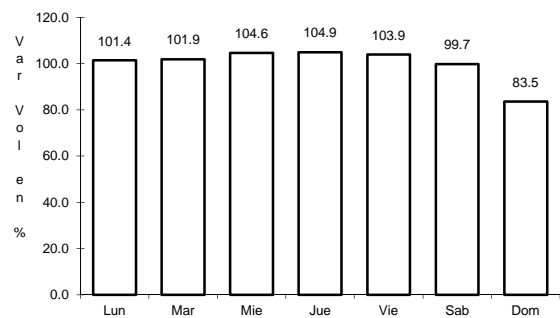
Tipo: 1

Sent: 0

9 CARR: Mérida - Celestún

CLAVE: 31025

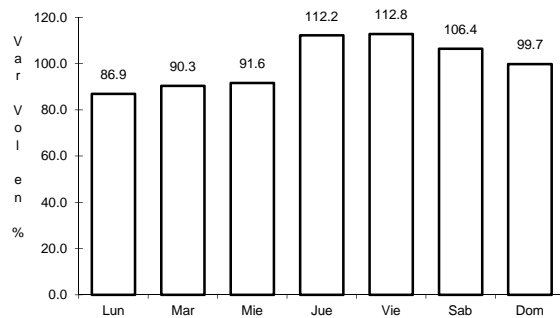
RUTA: MEX-281



Km: 0.00

Tipo: 3

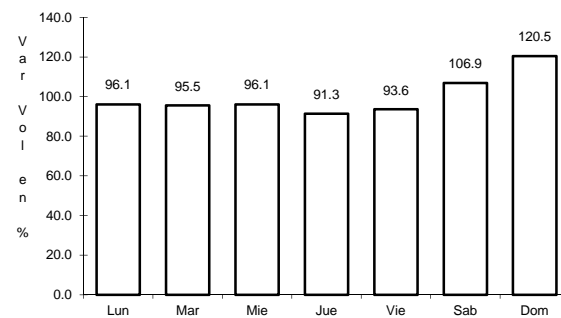
Sent: 1



Km: 0.00

Tipo: 3

Sent: 2



Km: 40.00

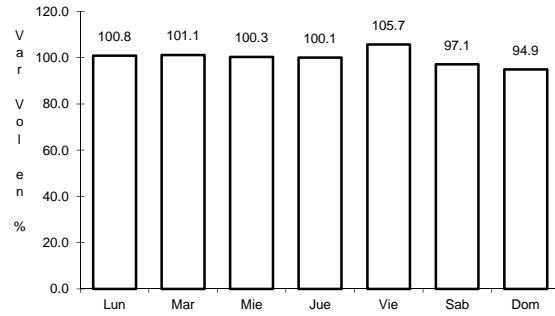
Tipo: 3

Sent: 0

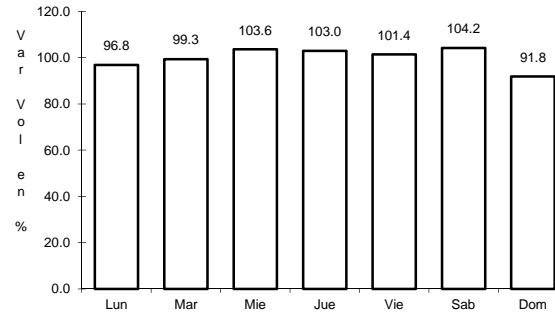
10 CARR: Mérida - Dzilam de Bravo

CLAVE: 31001

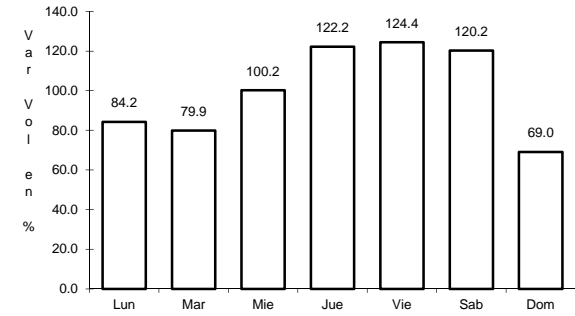
RUTA: MEX-176



Km: 5.90 Tipo: 1 Sent: 1



Km: 5.90 Tipo: 1 Sent: 2

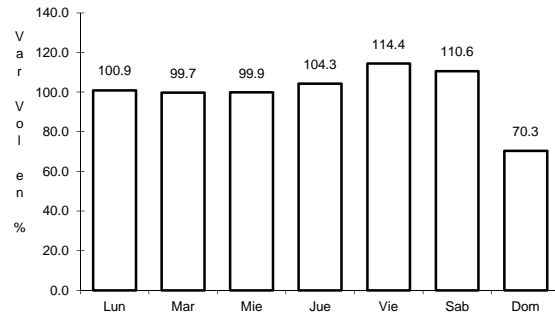


Km: 105.00 Tipo: 1 Sent: 0

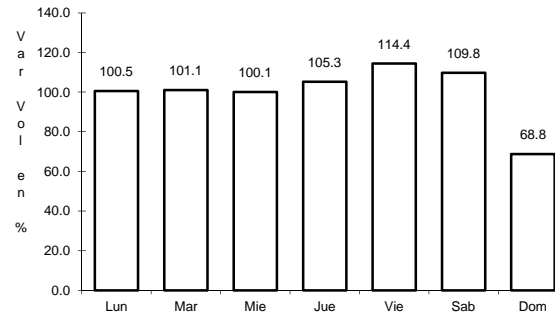
11 CARR: Mérida - Progreso

CLAVE: 31091

RUTA: MEX-261



Km: 5.40 Tipo: 1 Sent: 1

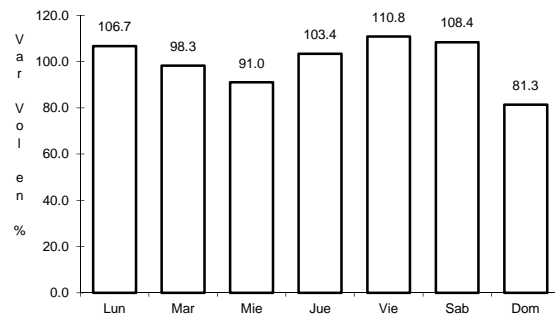


Km: 5.40 Tipo: 1 Sent: 2

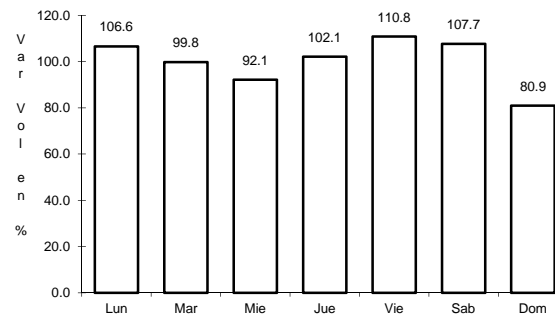
12 CARR: Mérida - Puerto Juárez

CLAVE: 00067

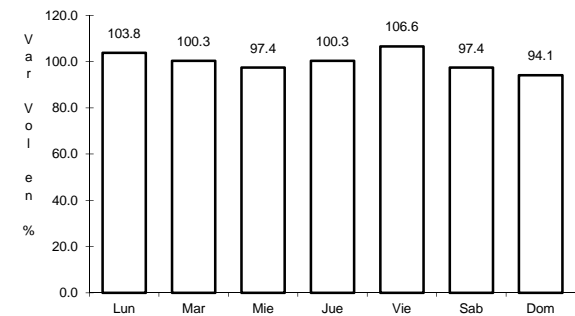
RUTA: MEX-180



Km: 5.60 Tipo: 1 Sent: 1



Km: 5.60 Tipo: 1 Sent: 2

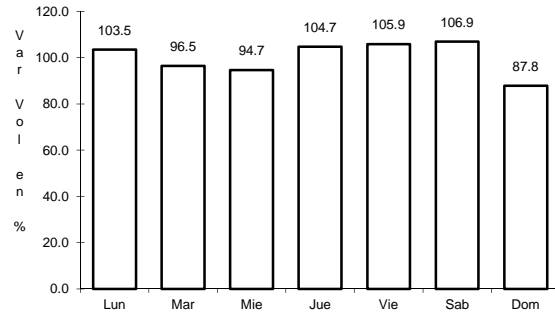


Km: 160.68 Tipo: 1 Sent: 0

13 CARR: Mérida - Tekanto

CLAVE: 31587

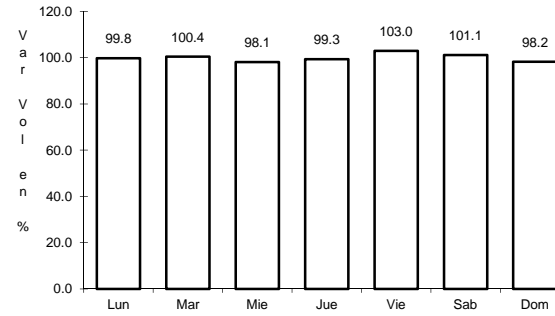
RUTA: MEX-180



Km: 5.70

Tipo: 1

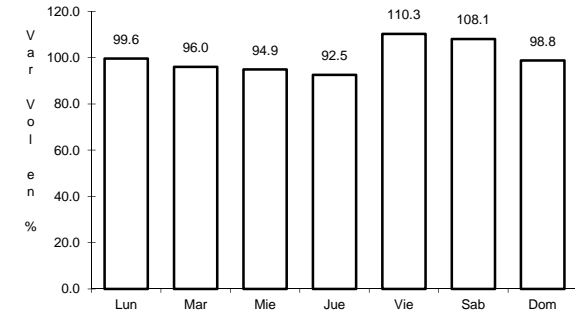
Sent: 0



Km: 21.00

Tipo: 1

Sent: 0



Km: 51.00

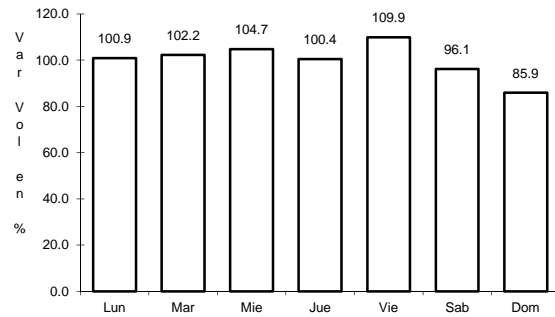
Tipo: 1

Sent: 0

14 CARR: Muna - Felipe Carrillo Puerto

CLAVE: 00148

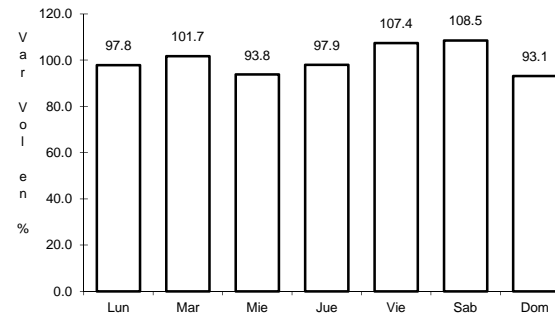
RUTA: MEX-184



Km: 0.00

Tipo: 3

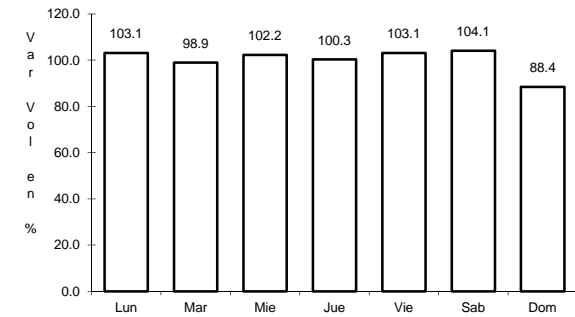
Sent: 0



Km: 109.60

Tipo: 3

Sent: 0



Km: 216.97

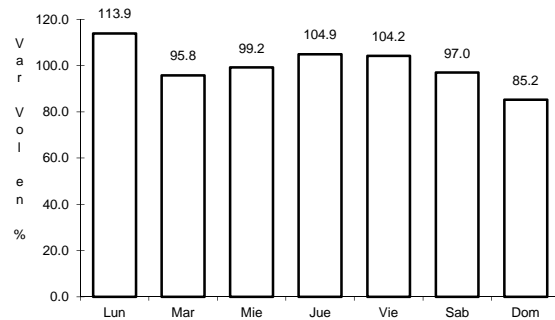
Tipo: 1

Sent: 0

15 CARR: Ramal a Panabá

CLAVE: 31609

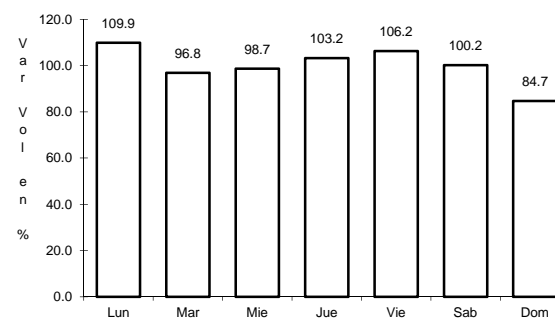
RUTA: MEX-295



Km: 0.00

Tipo: 3

Sent: 0



Km: 18.00

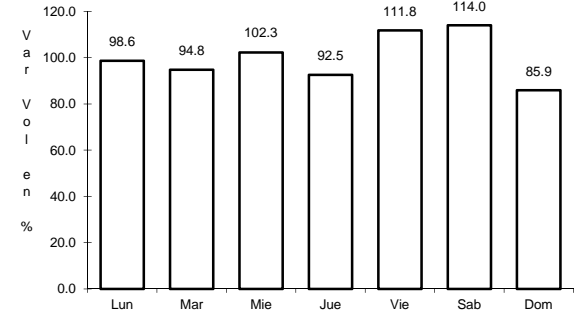
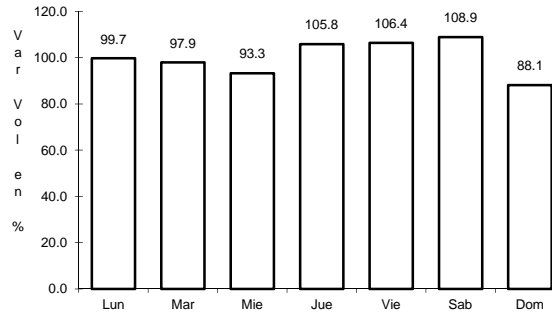
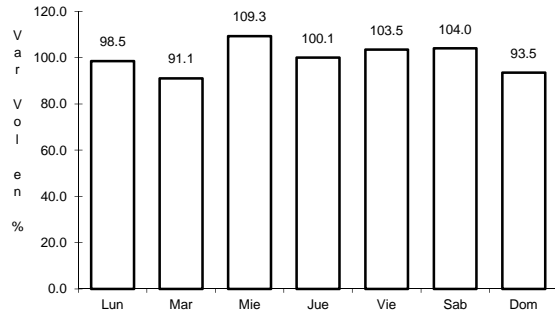
Tipo: 1

Sent: 0

16 CARR: Teya -Peto

CLAVE: 31042

RUTA: MEX-184



Km: 3.80 Tipo: 3 Sent: 0

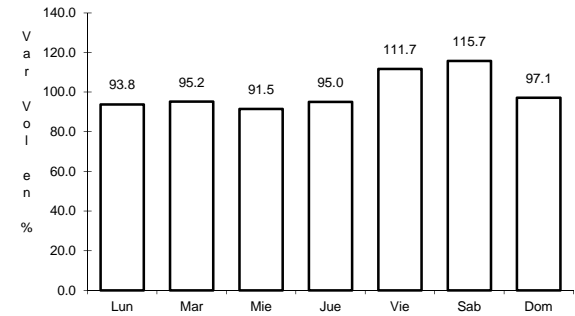
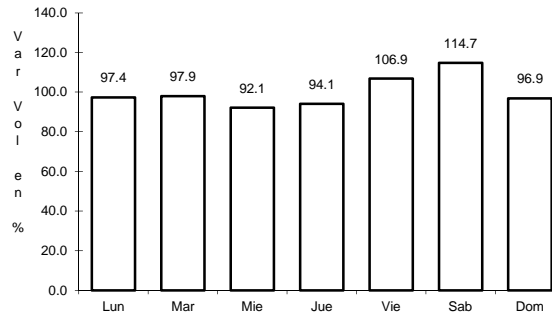
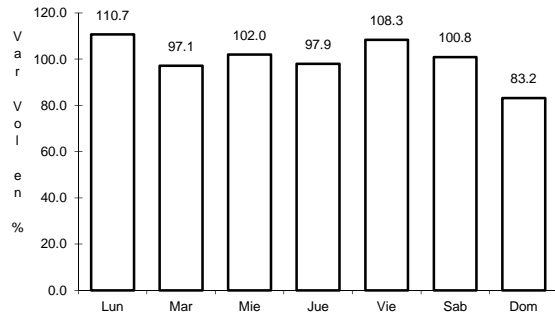
Km: 97.10 Tipo: 1 Sent: 0

Km: 120.70 Tipo: 1 Sent: 0

17 CARR: Tzacab - Santa Rosa

CLAVE: 31017

RUTA: MEX



Km: 0.00 Tipo: 3 Sent: 0

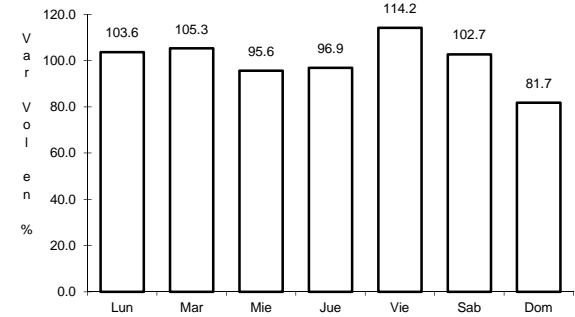
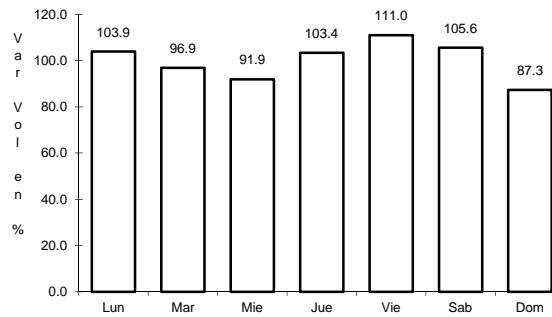
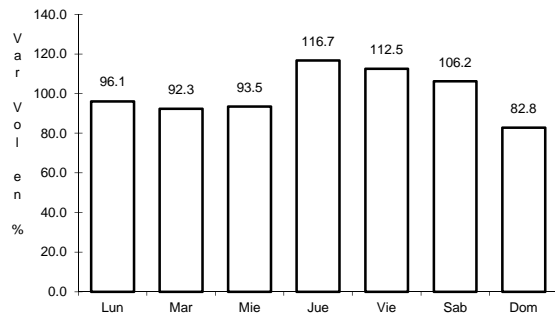
Km: 16.00 Tipo: 3 Sent: 0

Km: 34.50 Tipo: 1 Sent: 0

18 CARR: Valladolid - Felipe Carrillo Puerto

CLAVE: 00010

RUTA: MEX-295



Km: 0.00 Tipo: 3 Sent: 0

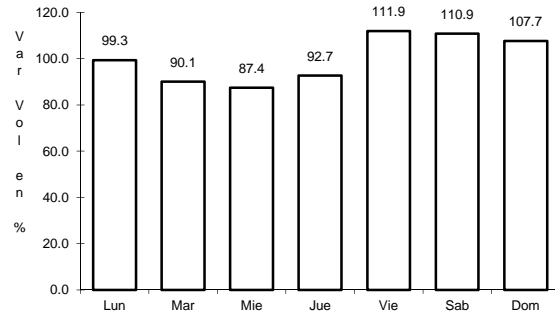
Km: 99.00 Tipo: 1 Sent: 0

Km: 147.70 Tipo: 1 Sent: 0

19 CARR: Valladolid - Río Lagartos

CLAVE: 31035

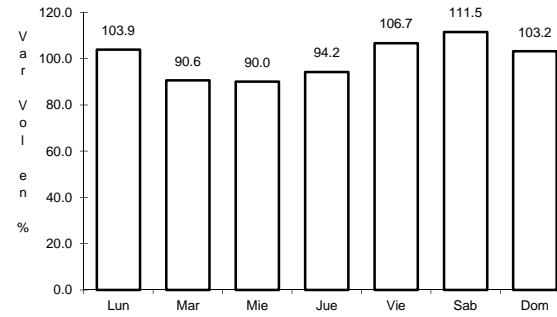
RUTA: MEX-295



Km: 0.00

Tipo: 3

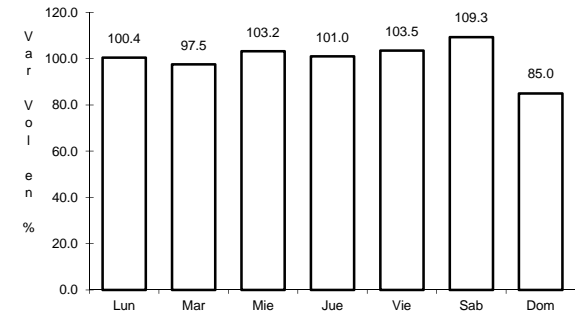
Sent: 1



Km: 0.00

Tipo: 3

Sent: 2



Km: 79.90

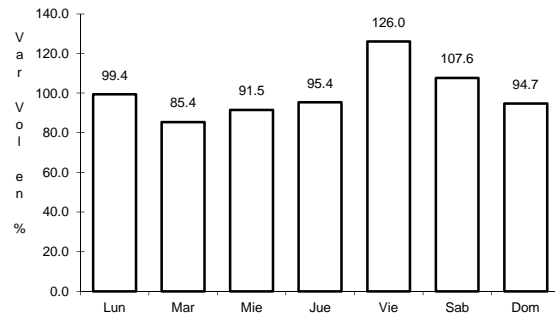
Tipo: 1

Sent: 0

20 CARR: Mérida - Cancún (Cuota)

CLAVE: 00071

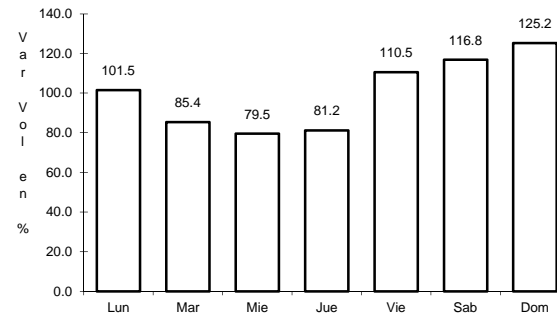
RUTA: MEX-180D



Km: 51.00

Tipo: 1

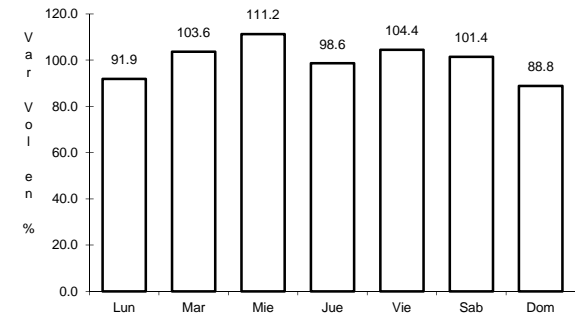
Sent: 1



Km: 51.00

Tipo: 1

Sent: 2



Km: 308.10

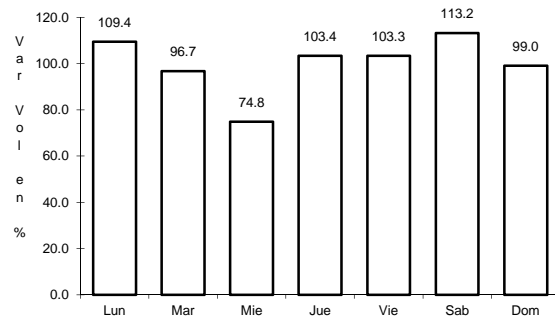
Tipo: 1

Sent: 0

21 CARR: Acanceh - Estación Polabán

CLAVE: 31615

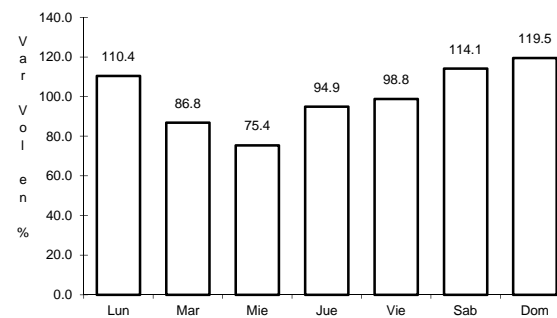
RUTA: YUC



Km: 0.00

Tipo: 3

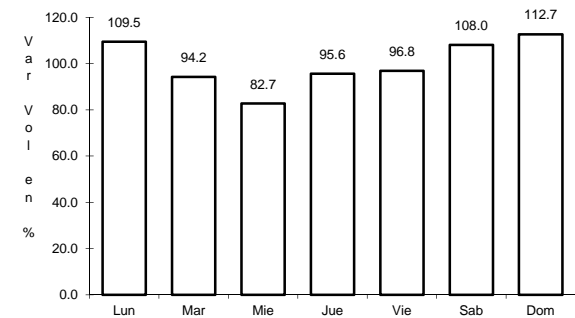
Sent: 0



Km: 20.00

Tipo: 3

Sent: 0



Km: 24.40

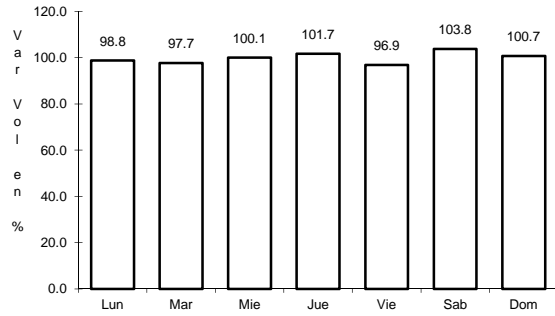
Tipo: 1

Sent: 0

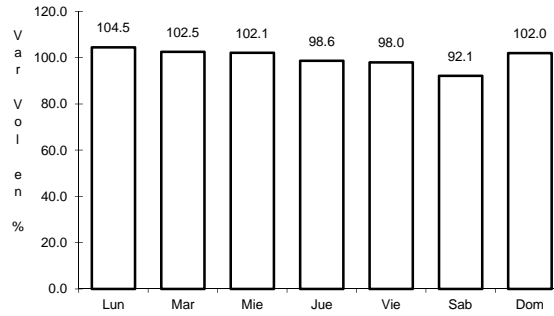
22 CARR: Baca - Dzidzantún

CLAVE: 31591

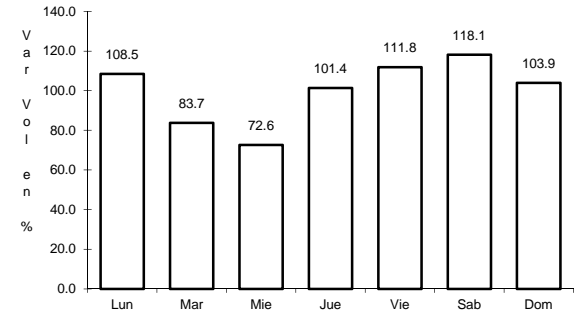
RUTA: YUC



Km: 0.00 Tipo: 3 Sent: 0



Km: 19.10 Tipo: 1 Sent: 0

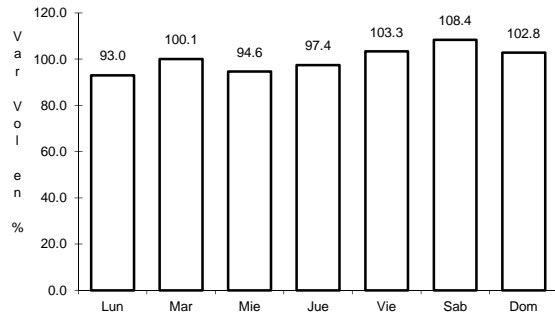


Km: 43.00 Tipo: 1 Sent: 0

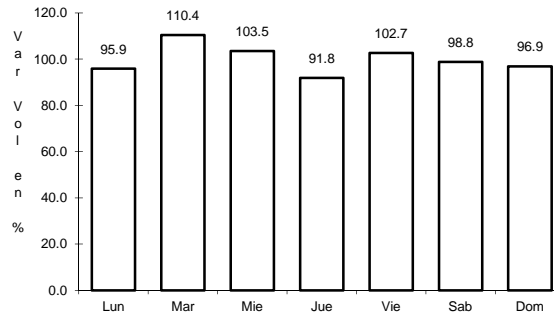
23 CARR: Citilcum - Tixkochoh

CLAVE: 31064

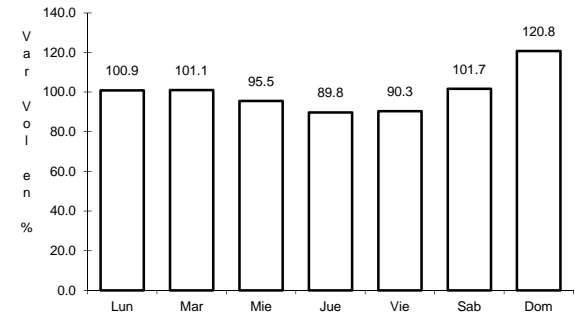
RUTA: YUC



Km: 0.00 Tipo: 3 Sent: 0



Km: 7.00 Tipo: 1 Sent: 0

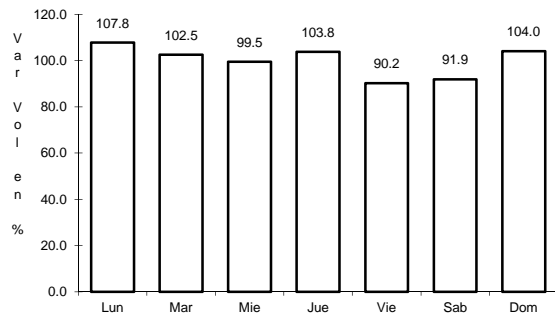


Km: 10.00 Tipo: 1 Sent: 0

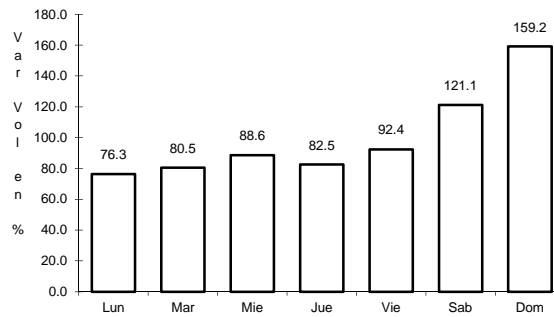
24 CARR: Dzemul - Xtampú

CLAVE: 31608

RUTA: YUC



Km: 0.00 Tipo: 3 Sent: 0

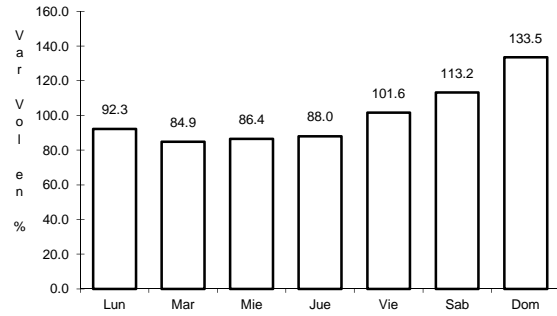


Km: 10.00 Tipo: 1 Sent: 0

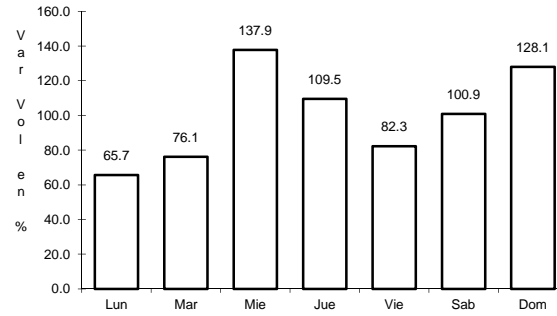
25 CARR: Dzidzantún - Santa Clara

CLAVE: 31592

RUTA: YUC



Km: 0.00 Tipo: 3 Sent: 0

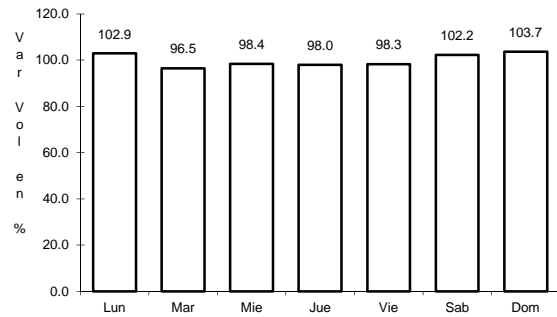


Km: 14.00 Tipo: 1 Sent: 0

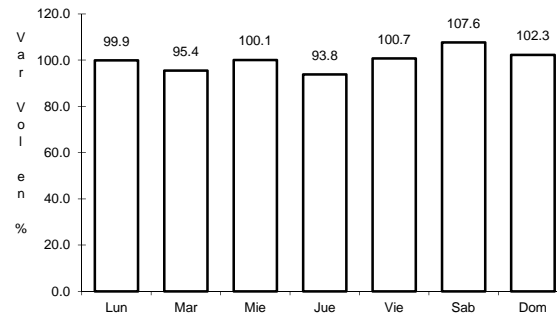
26 CARR: Hochtún - Cenotillo

CLAVE: 31011

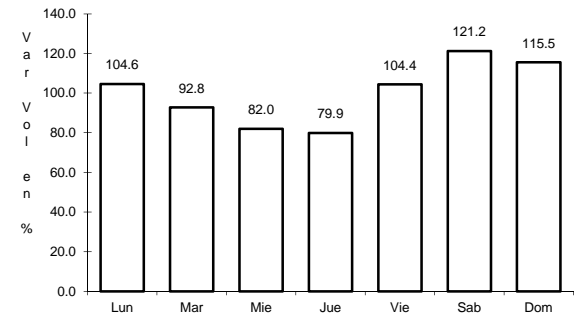
RUTA: YUC-011



Km: 0.00 Tipo: 3 Sent: 0



Km: 24.00 Tipo: 3 Sent: 0

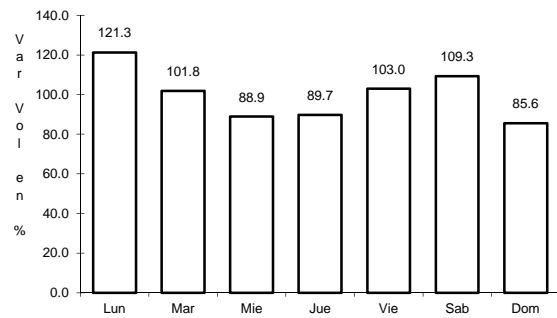


Km: 70.90 Tipo: 1 Sent: 0

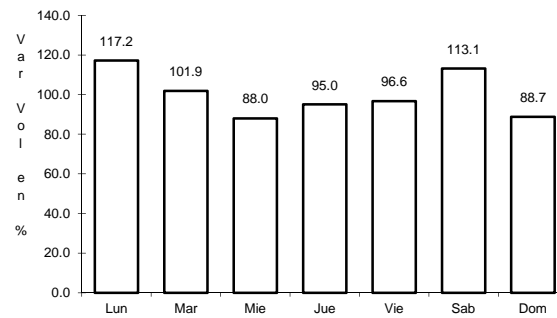
27 CARR: Holcá - Sotuta

CLAVE: 31626

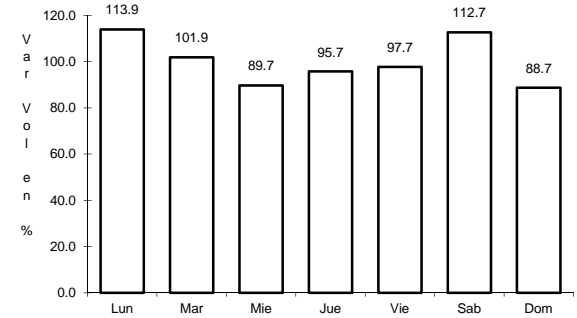
RUTA: YUC



Km: 0.00 Tipo: 3 Sent: 0



Km: 10.00 Tipo: 3 Sent: 0

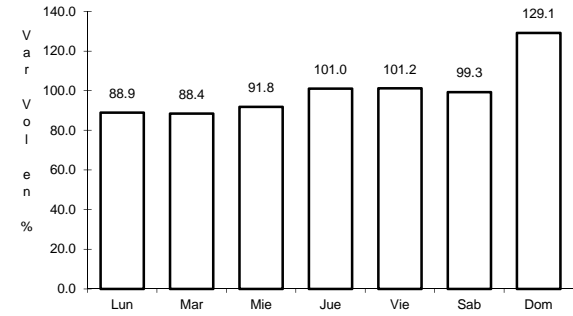
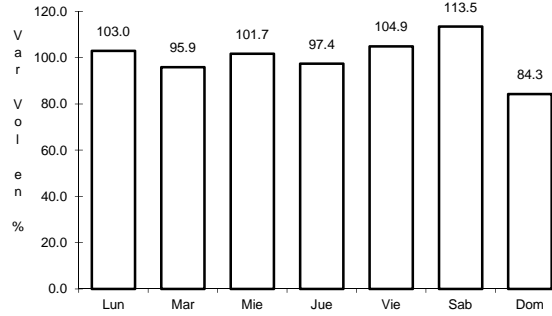
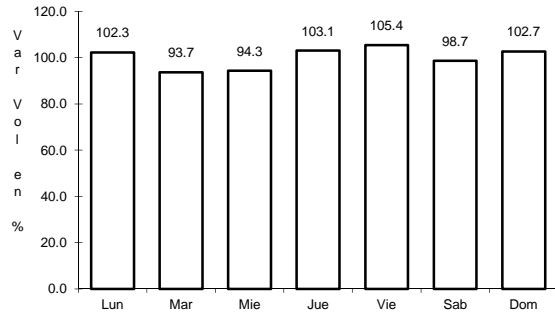


Km: 20.00 Tipo: 1 Sent: 0

28 CARR: Izamal - Dzilam González

CLAVE: 31605

RUTA: YUC



Km: 0.00

Tipo: 3

Sent: 0

Km: 30.00

Tipo: 1

Sent: 0

Km: 43.00

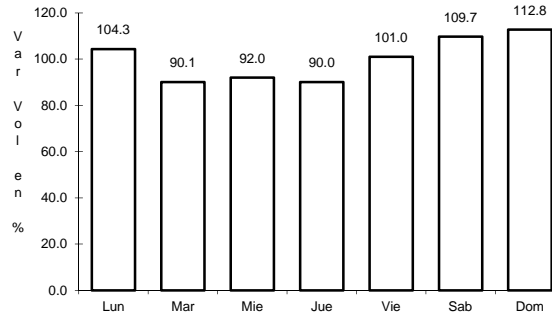
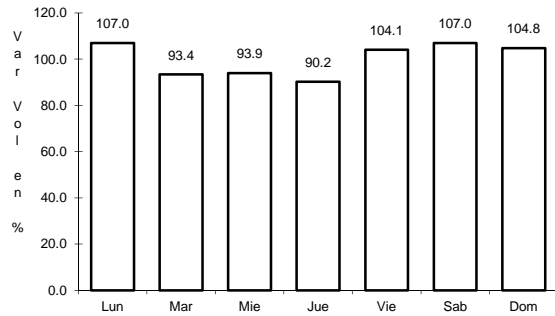
Tipo: 1

Sent: 0

29 CARR: Kantunil - Izamal

CLAVE: 31012

RUTA: YUC



Km: 0.00

Tipo: 3

Sent: 0

Km: 17.80

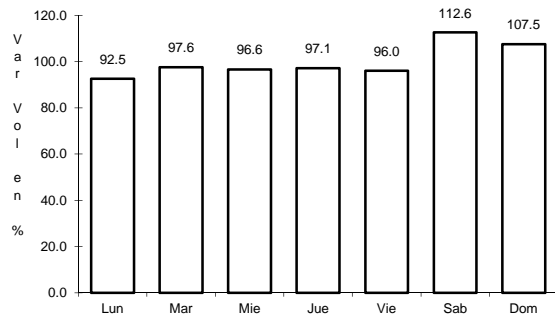
Tipo: 1

Sent: 0

30 CARR: Kinchil - Umán

CLAVE: 31009

RUTA: YUC



Km: 0.00

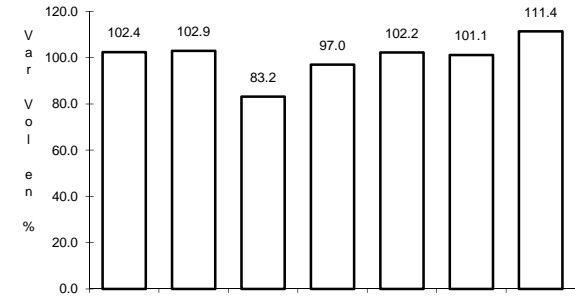
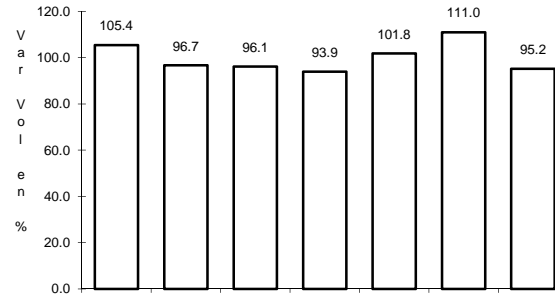
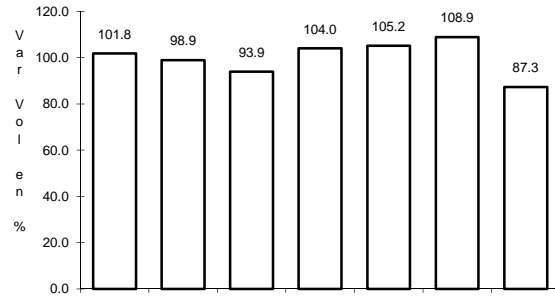
Tipo: 3

Sent: 0

31 CARR: Mérida - Acanceh

CLAVE: 31023

RUTA: YUC



Km: 0.00

Tipo: 3

Sent: 0

Km: 11.00

Tipo: 3

Sent: 0

Km: 26.00

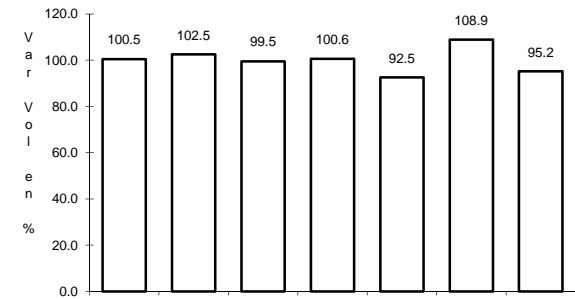
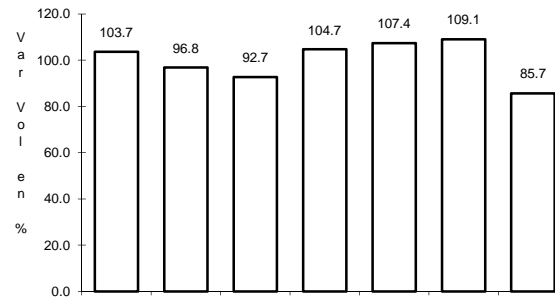
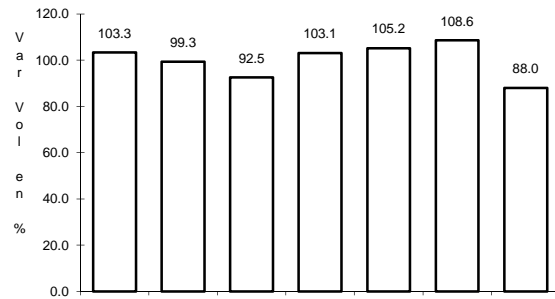
Tipo: 1

Sent: 0

32 CARR: Mérida - Oxkutzcab

CLAVE: 31018

RUTA: YUC-018



Km: 0.00

Tipo: 3

Sent: 1

Km: 0.00

Tipo: 3

Sent: 2

Km: 109.30

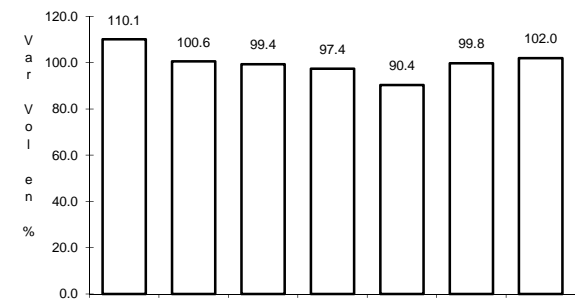
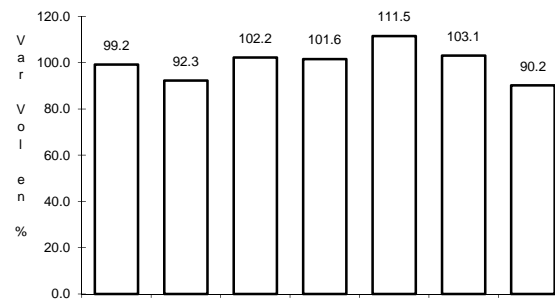
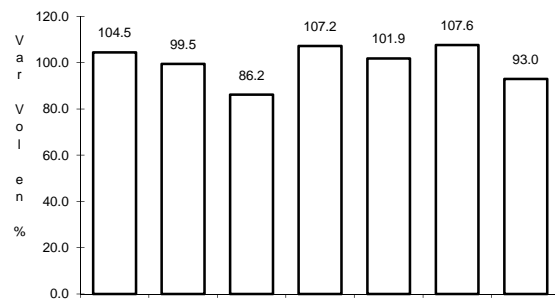
Tipo: 1

Sent: 0

33 CARR: Mérida - Timucuy

CLAVE: 31024

RUTA: YUC



Km: 0.00

Tipo: 3

Sent: 0

Km: 15.10

Tipo: 1

Sent: 0

Km: 18.65

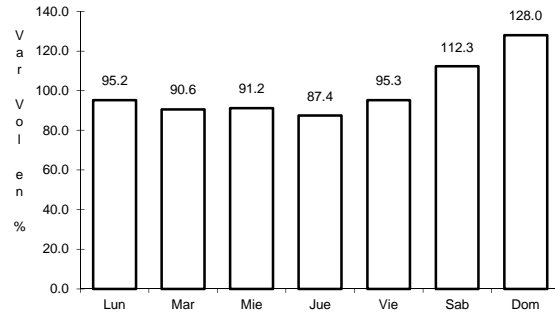
Tipo: 1

Sent: 0

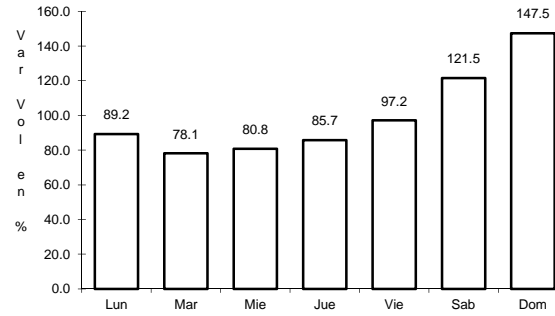
34 CARR: Motul - Puerto Telchac

CLAVE: 31006

RUTA: YUC-172



Km: 0.00 Tipo: 3 Sent: 0

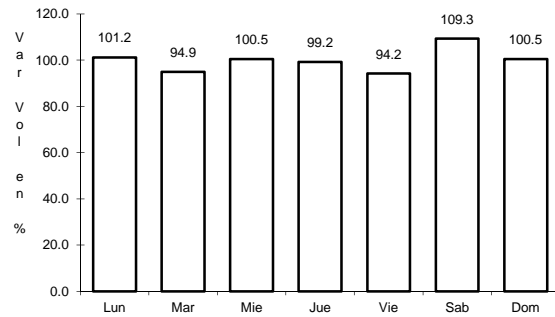


Km: 12.00 Tipo: 3 Sent: 0

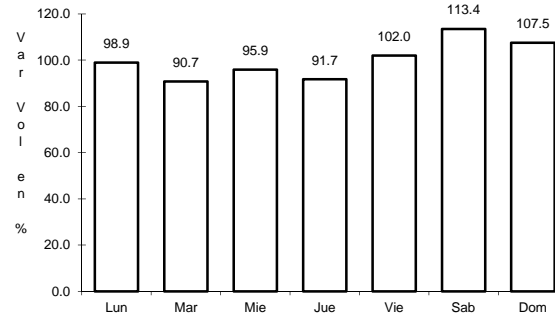
35 CARR: Muna - Maxcanú

CLAVE: 31053

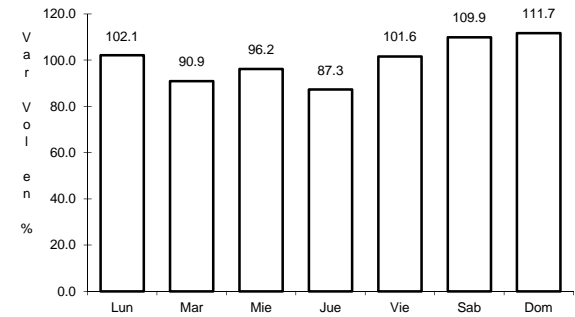
RUTA: YUC



Km: 0.00 Tipo: 3 Sent: 0



Km: 17.00 Tipo: 3 Sent: 0

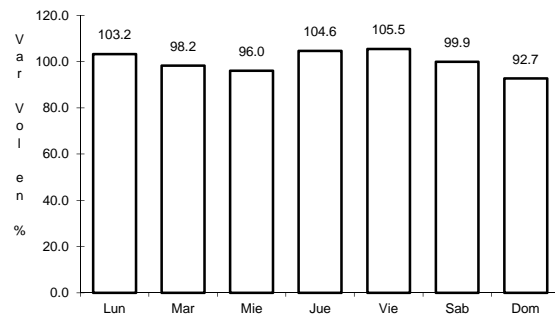


Km: 31.00 Tipo: 1 Sent: 0

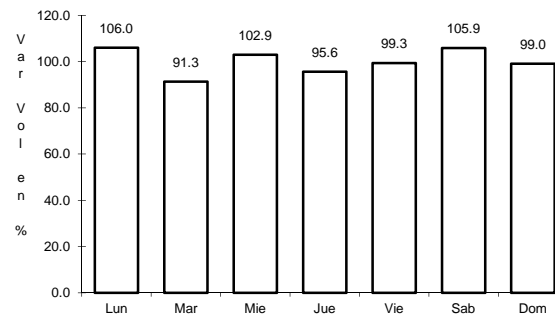
36 CARR: Oxkutzcab - Xul

CLAVE: 31051

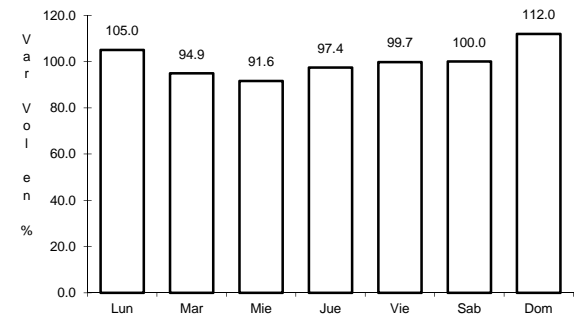
RUTA: YUC-031



Km: 0.00 Tipo: 3 Sent: 0



Km: 10.00 Tipo: 3 Sent: 0

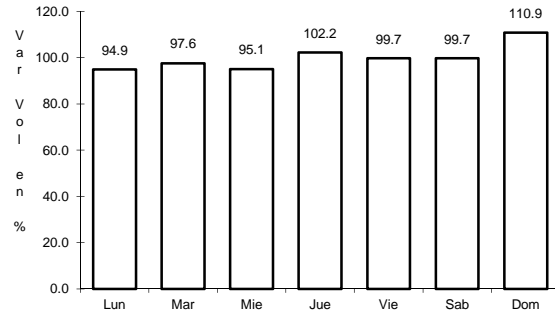


Km: 25.00 Tipo: 1 Sent: 0

37 CARR: Piste - Dzitás

CLAVE: 31013

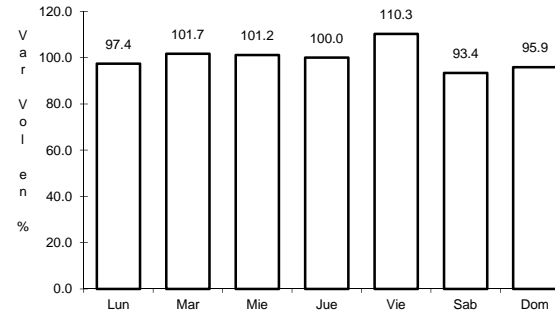
RUTA: YUC-013



Km: 0.00

Tipo: 3

Sent: 0



Km: 18.00

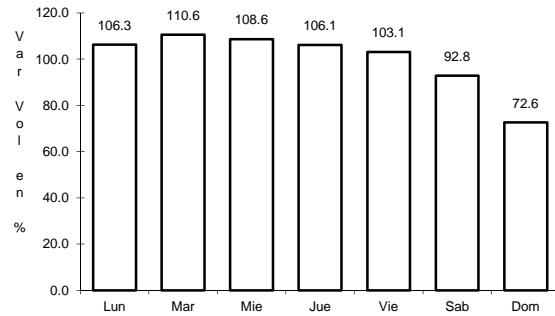
Tipo: 1

Sent: 0

38 CARR: Progreso - Telchac Puerto

CLAVE: 31616

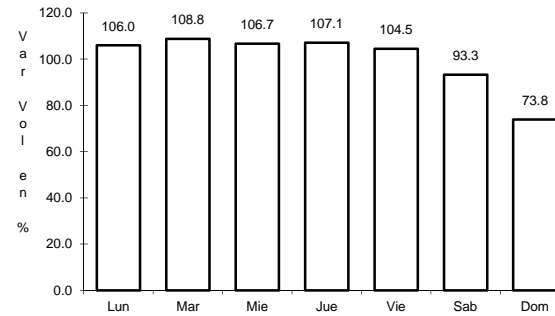
RUTA: YUC-027



Km: 0.00

Tipo: 3

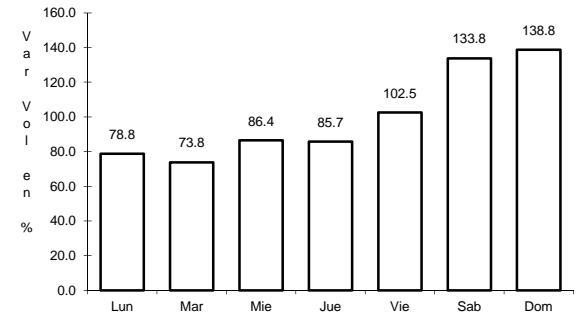
Sent: 1



Km: 0.00

Tipo: 3

Sent: 2



Km: 33.00

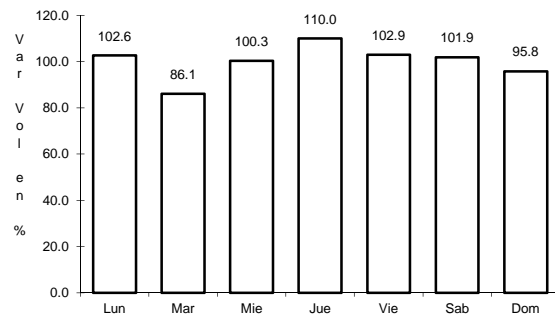
Tipo: 1

Sent: 0

39 CARR: Ramal a Chankom

CLAVE: 31049

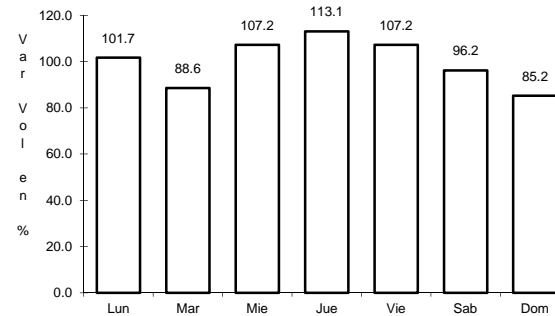
RUTA: YUC



Km: 0.00

Tipo: 3

Sent: 0



Km: 9.00

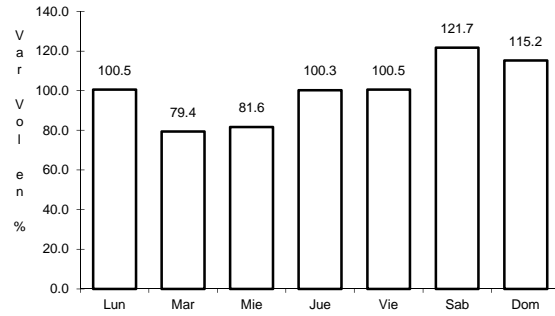
Tipo: 1

Sent: 0

40 CARR: Ramal a Dzonot Carretero

CLAVE: 31614

RUTA: YUC



Km: 0.00

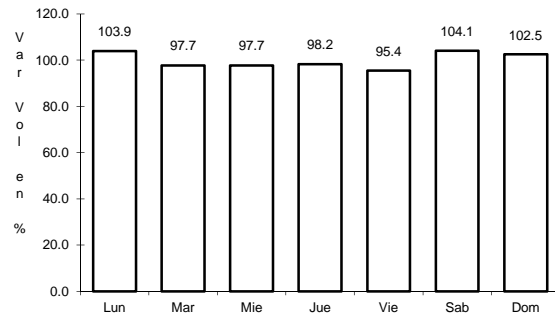
Tipo: 3

Sent: 0

41 CARR: Ramal a San Felipe

CLAVE: 31628

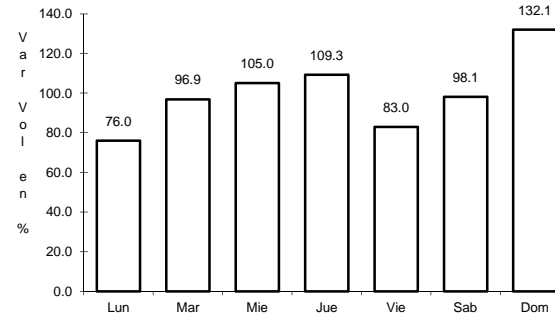
RUTA: YUC



Km: 0.00

Tipo: 3

Sent: 0



Km: 7.20

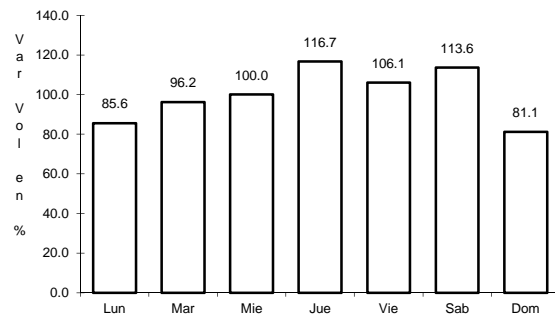
Tipo: 1

Sent: 0

42 CARR: Ramal a Tedzidz

CLAVE: 31600

RUTA: YUC



Km: 6.00

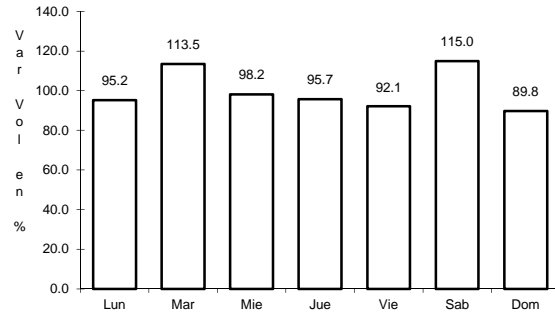
Tipo: 1

Sent: 0

43 CARR: Ramal a Yaxcabá

CLAVE: 31111

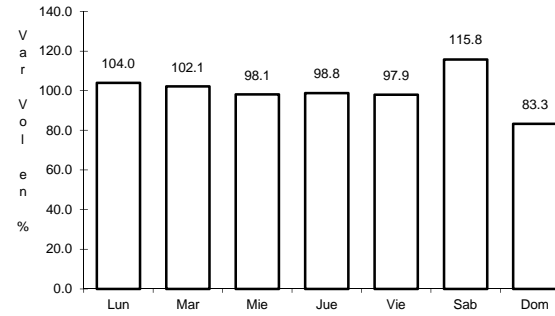
RUTA: YUC-289



Km: 0.00

Tipo: 3

Sent: 0



Km: 18.00

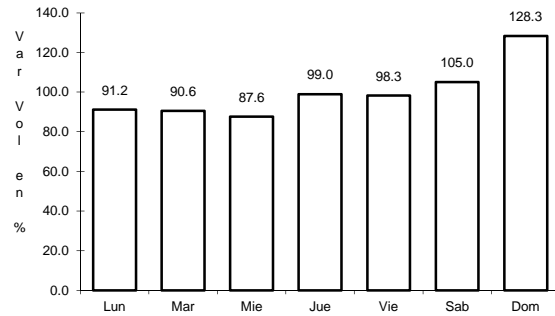
Tipo: 1

Sent: 0

44 CARR: Sinanché - Xitibcanul

CLAVE: 31619

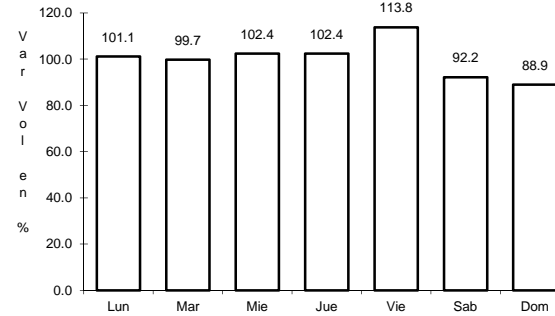
RUTA: YUC



Km: 0.00

Tipo: 3

Sent: 0



Km: 7.00

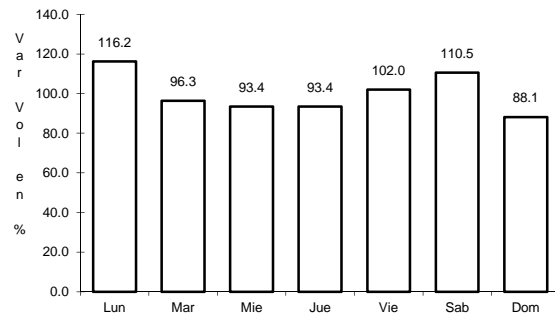
Tipo: 1

Sent: 0

45 CARR: Sucilá - Calotmul

CLAVE: 31617

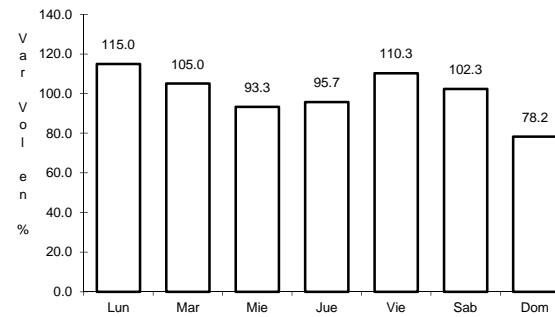
RUTA: YUC



Km: 2.00

Tipo: 3

Sent: 0



Km: 30.20

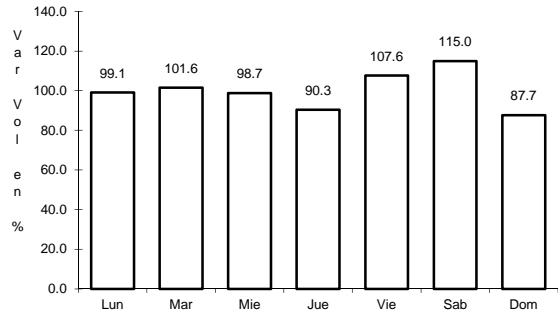
Tipo: 1

Sent: 0

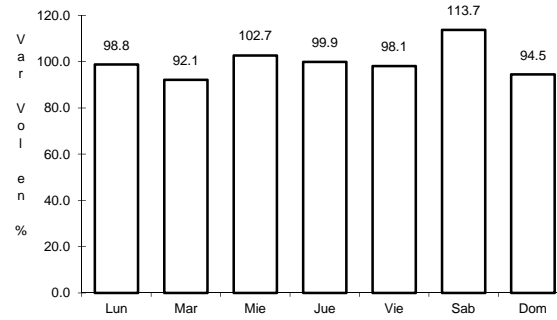
46 CARR: Suma - Izamal

CLAVE: 31081

RUTA: YUC-081



Km: 0.00 Tipo: 3 Sent: 0

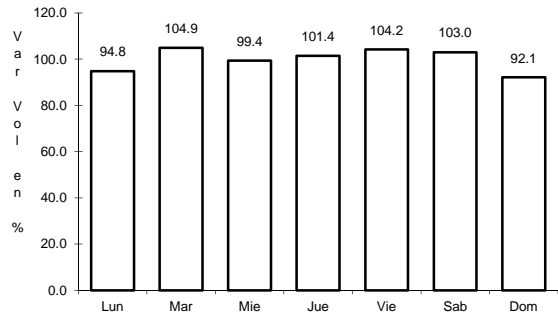


Km: 22.00 Tipo: 1 Sent: 0

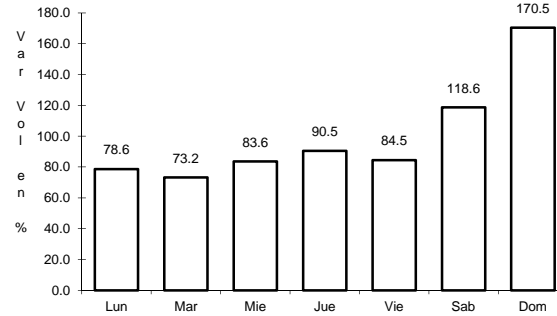
47 CARR: Telchac Puerto - Dzilam de Bravo

CLAVE: 31042

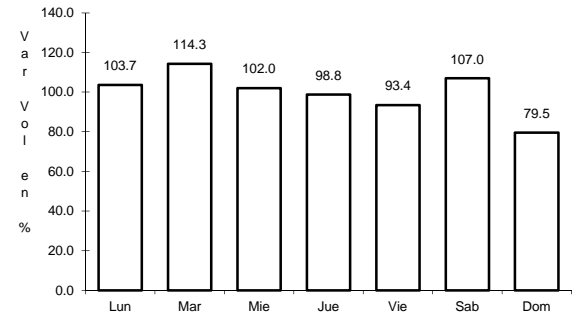
RUTA: YUC



Km: 0.00 Tipo: 3 Sent: 0



Km: 26.00 Tipo: 1 Sent: 0

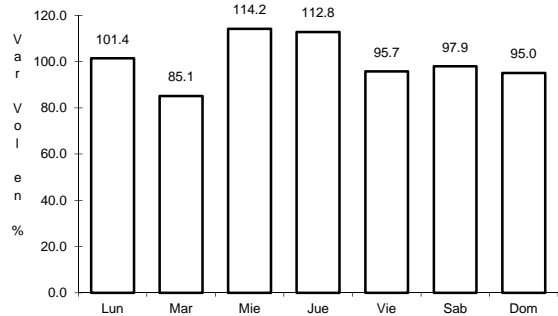


Km: 39.00 Tipo: 1 Sent: 0

48 CARR: Thul - Becanchén

CLAVE: 31104

RUTA: YUC-281

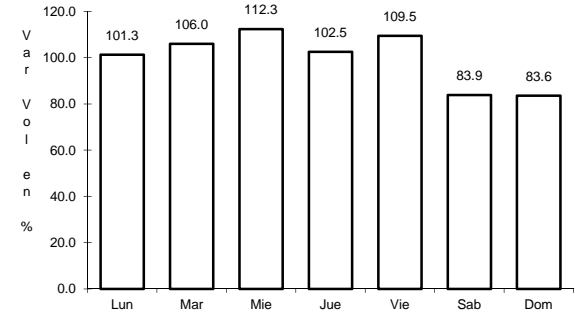
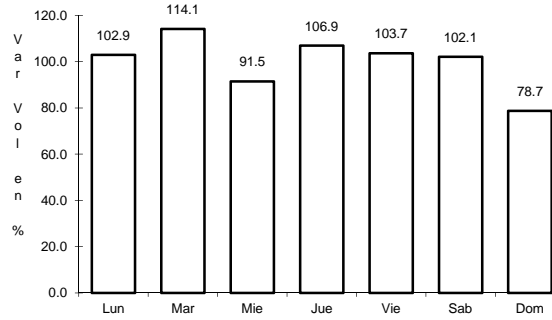
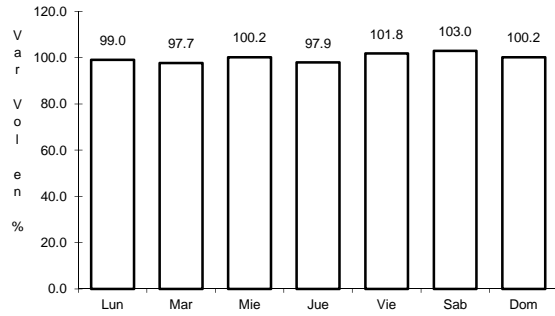


Km: 0.00 Tipo: 3 Sent: 0

52 CARR: Tixkokob - Sotuta

CLAVE: 31106

RUTA: YUC



Km: 0.00 Tipo: 3 Sent: 0

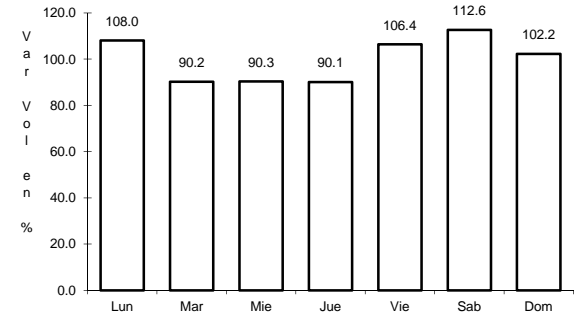
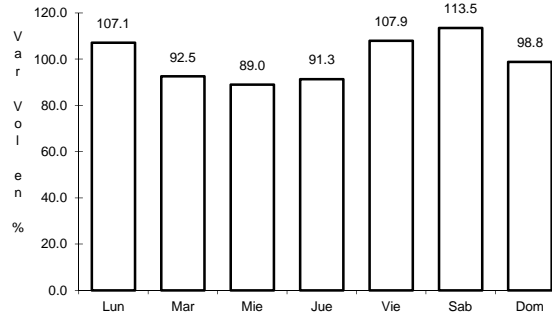
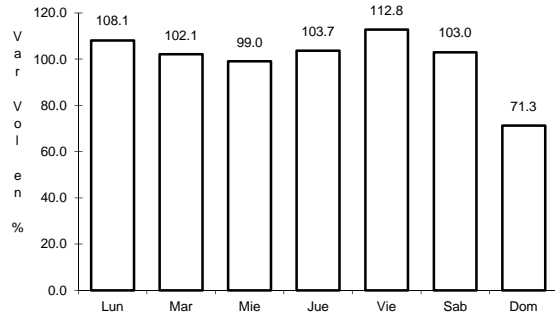
Km: 31.00 Tipo: 3 Sent: 0

Km: 65.00 Tipo: 1 Sent: 0

53 CARR: Tizimín - Yucatán

CLAVE: 31588

RUTA: YUC



Km: 0.00 Tipo: 3 Sent: 0

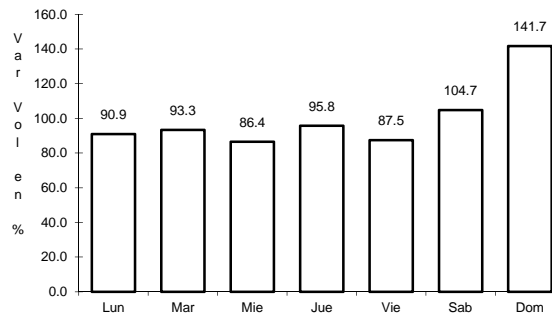
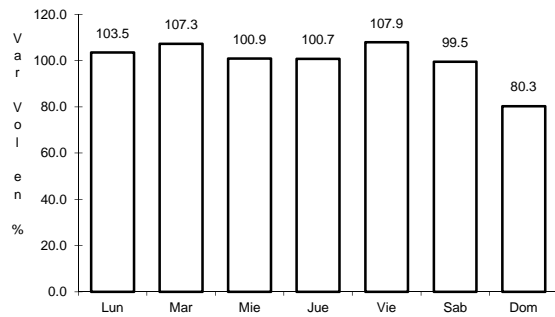
Km: 30.00 Tipo: 3 Sent: 0

Km: 46.50 Tipo: 1 Sent: 0

54 CARR: Yaxché - Sierra Papacal

CLAVE: 31620

RUTA: YUC



Km: 0.00 Tipo: 3 Sent: 0

Km: 12.00 Tipo: 1 Sent: 0

