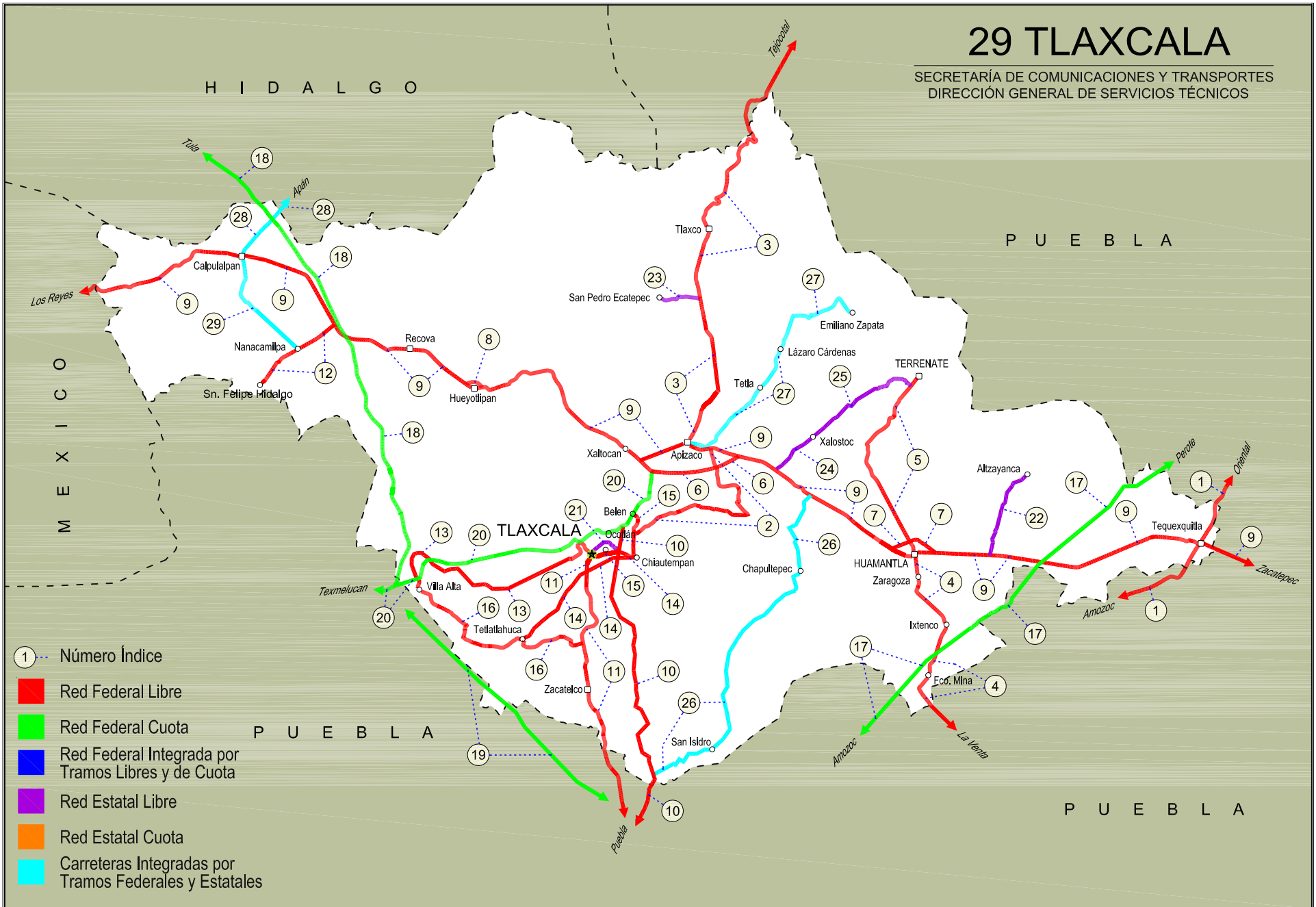


TLAXCALA

NO. INDICE	CARRETERA	RUTA
---RED FEDERAL LIBRE---		
1	Amozoc - Teziutlán	MEX-129
2	Apizaco - San Pablo Apetatitlán	MEX-119
3	Apizaco - Tejocotal	MEX-119
4	Huamantla - La Venta	MEX-136
5	Huamantla - Terrenate	MEX-136
6	Libramiento de Apizaco	MEX-136
7	Libramiento Huamantla	MEX-136
8	Libramiento Hueyotlipan	MEX-136
9	Los Reyes - Zacatepec	MEX-136
10	Puebla - Belem	MEX-121
11	Puebla - Tlaxcala	MEX-119
12	Ramal a San Felipe de Hidalgo	MEX-136
13	San Martín Texmelucan - Tlaxcala	MEX-117
14	Tetlatlahuca - Santa Ana Chiautempan	MEX-119
15	Tlaxcala - Belem	MEX-119
16	Villa Alta - T. C. (Puebla - Tlaxcala)	MEX-119
---RED FEDERAL DE CUOTA---		
17	Amozoc - Perote (Cuota)	MEX-140D
18	Libramiento Norte de la Ciudad de México (Cuota)	MEX-040D
19	México - Puebla (Cuota)	MEX-150D
20	San Martín Texmelucan - Tlaxcala - El Molinito (Cuota)	MEX-117D
---RED ESTATAL LIBRE---		
21	Libramiento de Ocotlán	TLAX
22	Ramal a Alzayanca de Hidalgo	TLAX
23	Ramal a San Pedro Ecatepec	TLAX
24	Ramal a Xalostoc	TLAX
25	Xalostoc - Terrenate	TLAX
---CARRETERAS INTEGRADAS POR TRAMOS FEDERALES Y ESTATALES---		
26	Acocotla - Vicente Guerrero	MEX-TLAX
27	Apizaco - Emiliano Zapata	TLAX-MEX-136
28	Calpulalpan - El Ocote	MEX-HGO
29	Calpulalpan - Nanacamilpa	TLAX-MEX-136

# 29 TLAXCALA

SECRETARÍA DE COMUNICACIONES Y TRANSPORTES  
DIRECCIÓN GENERAL DE SERVICIOS TÉCNICOS



TLAXCALA

1 CARR: Amozoc - Teziutlán

CLAVE: 00210

RUTA: MEX-129

AÑO: 2012

LUGAR	ESTACION				CLASIFICACION VEHICULAR EN PORCIENTO										COORDENADAS					
	KM	TE	SC	TDPA	M	A	B	C2	C3	T3S2	T3S3	T3S2R4	OTROS	A	B	C	K'	D	LATITUD	LONGITUD
Amozoc	0.00																			
X. C. Puebla - Córdoba (Cuota)	1.40	3	0	11568	0.5	71.5	9.9	7.0	3.3	3.3	2.9	0.9	0.7	72.0	9.9	18.1	0.084	0.501	19.051639	-98.027278
Acajete	12.00	3	0	8656	0.4	72.9	8.9	7.2	3.4	3.4	2.4	0.5	0.9	73.3	8.9	17.8	0.077	0.502	19.115740	-97.945683
Rafael Lara Grajales	35.50	1	0	4792	0.5	72.6	7.6	8.1	3.9	3.6	2.4	0.6	0.7	73.1	7.6	19.3	0.079	0.501	19.235395	-97.814762
Rafael Lara Grajales	35.50	3	0	4996	0.6	72.4	8.7	8.3	3.7	3.4	1.8	0.5	0.6	73.0	8.7	18.3	0.075	0.508	19.232543	-97.784120
Lim. Edos. Term. Pue. Ppia. Tlax.	50.54																			
X. C. Los Reyes - Zacatepec	56.31	1	0	3366	0.4	71.1	9.5	8.4	4.3	3.1	1.6	0.9	0.7	71.5	9.5	19.0	0.080	0.503	19.316163	-97.654386
Lim. Edos. Term. Tlax. Ppia. Pue.	60.22																			
Oriental	62.62	1	0	3824	0.3	73.1	10.6	8.6	2.3	2.6	1.3	0.6	0.6	73.4	10.6	16.0	0.079	0.505	19.373724	-97.610081
Oriental	62.62	3	0	6261	0.4	73.3	9.8	8.7	2.4	2.8	1.4	0.5	0.7	73.7	9.8	16.5	0.079	0.507	19.380780	-97.619646
X. C. Amozoc - Perote (Cuota)	69.00	1	1	3016	0.6	76.1	7.6	9.2	1.6	2.9	1.1	0.3	0.6	76.7	7.6	15.7	0.087	0.516	19.415302	-97.638011
X. C. Amozoc - Perote (Cuota)	69.00	1	2	2833	0.4	75.6	7.4	9.8	1.6	3.0	1.1	0.3	0.8	76.0	7.4	16.6	0.098	0.516	19.415302	-97.638011
X. C. Amozoc - Perote (Cuota)	69.00	3	0	7277	0.5	77.1	6.6	8.9	1.9	3.1	1.0	0.5	0.4	77.6	6.6	15.8	0.080	0.504	19.421762	-97.646110
Libres	76.35	3	0	7602	0.3	78.5	6.4	8.4	1.2	3.2	0.9	0.4	0.7	78.8	6.4	14.8	0.080	0.505	19.481923	-97.673984
San Miguel Tenextatiloyán	106.70	1	0	3518	0.5	79.1	5.6	8.8	1.2	2.9	0.9	0.4	0.6	79.6	5.6	14.8	0.089	0.513	19.701291	-97.598724
T. Izq. Zacapoaxtla	114.80	1	0	7059	0.7	80.9	5.4	7.3	1.1	3.1	0.7	0.2	0.6	81.6	5.4	13.0	0.078	0.503	19.759198	-97.568374
T. Izq. Zacapoaxtla	114.80	3	0	8123	0.6	80.7	6.3	6.9	0.8	2.9	0.9	0.2	0.7	81.3	6.3	12.4	0.075	0.507	19.764583	-97.565250
Zaragoza	116.80	3	0	7066	0.5	79.9	6.7	8.6	0.4	2.7	0.8	0.1	0.3	80.4	6.7	12.9	0.084	0.501	19.763649	-97.567788
Teziutlán	157.80	1	0	11317	0.4	79.9	6.5	8.9	0.3	2.3	0.6	0.2	0.9	80.3	6.5	13.2	0.077	0.505	19.817441	-97.379787

2 CARR: Apizaco - San Pablo Apetatitlán

CLAVE: 29035

RUTA: MEX-119

AÑO: 2012

LUGAR	ESTACION				CLASIFICACION VEHICULAR EN PORCIENTO										COORDENADAS					
	KM	TE	SC	TDPA	M	A	B	C2	C3	T3S2	T3S3	T3S2R4	OTROS	A	B	C	K'	D	LATITUD	LONGITUD
T. C. Los Reyes - Zacatepec	0.00	3	0	6767	0.6	90.4	2.3	3.0	0.3	2.9	0.2	0.1	0.2	91.0	2.3	6.7	0.101	0.522	19.411037	-98.118837
T. Der. Tecnológico	0.55	3	0	7805	2.5	87.2	0.9	2.6	0.5	4.4	0.7	0.4	0.8	89.7	0.9	9.4	0.073	0.515	19.404919	-98.117221
Cuaxomulco	9.10	3	0	2325	6.7	85.9	2.2	3.4	0.1	1.6	0.0	0.0	0.1	92.6	2.2	5.2	0.084	0.517	19.355851	-98.106271
Santa Cruz Tlaxcala	14.50	3	0	5770	4.0	85.5	2.4	5.0	0.2	2.4	0.2	0.0	0.3	89.5	2.4	8.1	0.082	0.504	19.353530	-98.158259
T. Izq. Contla	18.90	1	0	9228	3.6	84.5	0.3	5.5	0.1	4.6	0.4	0.1	0.9	88.1	0.3	11.6	0.070	0.502	19.339410	-98.184700
San Pablo Apetatitlán	20.00	1	0	13187	3.1	81.8	2.0	3.2	0.5	6.7	1.3	0.7	0.7	84.9	2.0	13.1	0.070	0.502	19.335870	-98.190184

## TLAXCALA

3 CARR: Apizaco - Tejocotal

CLAVE: 00430

RUTA: MEX-119

AÑO: 2012

LUGAR	ESTACION				CLASIFICACION VEHICULAR EN PORCIENTO													COORDENADAS		
	KM	TE	SC	TDPA	M	A	B	C2	C3	T3S2	T3S3	T3S2R4	OTROS	A	B	C	K'	D	LATITUD	LONGITUD
Apizaco	0.00	3	1	9048	1.3	85.3	4.8	3.9	1.0	1.8	1.1	0.4	0.4	86.6	4.8	8.6	0.090	0.530	19.428432	-98.135696
Apizaco	0.00	3	2	10215	0.9	83.9	5.4	4.4	1.1	2.2	1.3	0.4	0.4	84.8	5.4	9.8	0.084	0.530	19.428432	-98.135696
T. Der. Tetla	6.60	3	0	16025	0.4	85.9	4.9	4.3	0.9	2.1	0.8	0.4	0.3	86.3	4.9	8.8	0.079	0.534	19.469057	-98.111853
T. Izq. Atlangatepec	12.15	1	0	11275	0.4	78.2	5.3	6.4	1.7	5.1	1.8	0.5	0.6	78.6	5.3	16.1	0.081	0.503	19.510810	-98.117621
Tlaxco	23.91	1	0	8720	1.2	78.8	4.9	6.5	1.3	4.7	1.4	0.6	0.6	80.0	4.9	15.1	0.084	0.500	19.605147	-98.122945
Tlaxco	23.91	3	0	5629	1.6	78.5	5.1	6.4	1.4	3.8	1.9	0.6	0.7	80.1	5.1	14.8	0.082	0.506	19.624874	-98.125610
Lim. Edos. Term. Tlax. Ppia. Pue.	34.45																			
T. Der. Tetela de Ocampo	52.20	1	0	6941	1.3	78.4	5.2	6.4	1.9	3.9	1.8	0.5	0.6	79.7	5.2	15.1	0.083	0.503	19.802278	-98.025711
Zacatlán	71.25	1	0	10613	2.6	77.2	5.2	6.4	1.0	4.7	1.6	0.7	0.6	79.8	5.2	15.0	0.075	0.501	19.914970	-97.958528
Lim. Edos. Term. Pue. Ppia. Hgo.	110.45																			
T. C. Pachuca - Tuxpam	113.15	1	0	5890	0.5	76.6	6.1	7.3	1.5	5.1	1.2	0.7	1.0	77.1	6.1	16.8	0.120	0.505	20.124048	-98.128562

4 CARR: Huamantla - La Venta

CLAVE: 29564

RUTA: MEX-136

AÑO: 2012

LUGAR	ESTACION				CLASIFICACION VEHICULAR EN PORCIENTO													COORDENADAS		
	KM	TE	SC	TDPA	M	A	B	C2	C3	T3S2	T3S3	T3S2R4	OTROS	A	B	C	K'	D	LATITUD	LONGITUD
Huamantla	0.00	3	1	4978	1.4	87.2	5.3	3.9	0.7	0.6	0.6	0.1	0.2	88.6	5.3	6.1	0.079	0.501	19.298014	-97.921007
Huamantla	0.00	3	2	4968	1.4	86.0	5.9	4.4	0.7	0.7	0.6	0.1	0.2	87.4	5.9	6.7	0.084	0.501	19.298013	-97.921005
Ignacio Zaragoza	2.30	3	0	5383	1.6	82.7	0.2	10.5	0.8	2.7	0.8	0.2	0.5	84.3	0.2	15.5	0.073	0.500	19.285906	-97.919933
Ixtenco	8.00	1	0	4971	1.6	82.3	0.9	11.3	0.8	2.3	0.4	0.1	0.3	83.9	0.9	15.2	0.074	0.502	19.261062	-97.899692
Ixtenco	8.00	3	0	3601	1.9	80.5	0.3	13.2	1.0	2.2	0.4	0.1	0.4	82.4	0.3	17.3	0.081	0.505	19.244046	-97.895658
X. C. Amozoc - Perote (Cuota)	11.40	1	0	4649	1.6	83.6	3.6	5.5	1.5	2.0	1.2	0.1	0.9	85.2	3.6	11.2	0.075	0.507	19.227961	-97.902167
Zitlaltepec	13.60	1	0	3478	2.1	81.3	5.9	5.0	1.3	2.1	1.3	0.4	0.6	83.4	5.9	10.7	0.077	0.502	19.215733	-97.907721
Zitlaltepec	13.60	3	0	2473	2.0	82.0	5.7	4.9	1.2	2.1	1.2	0.4	0.5	84.0	5.7	10.3	0.078	0.527	19.197225	-97.916184
T. C. Amozoc - Teziutlán	17.60	1	0	2462	1.0	82.7	2.0	8.5	1.3	2.4	1.4	0.4	0.3	83.7	2.0	14.3	0.076	0.531	19.178902	-97.910961

5 CARR: Huamantla - Terrenate

CLAVE: 29036

RUTA: MEX-136

AÑO: 2012

LUGAR	ESTACION				CLASIFICACION VEHICULAR EN PORCIENTO													COORDENADAS		
	KM	TE	SC	TDPA	M	A	B	C2	C3	T3S2	T3S3	T3S2R4	OTROS	A	B	C	K'	D	LATITUD	LONGITUD
Huamantla	0.00	3	0	2372	2.6	80.1	2.7	6.1	2.6	2.6	2.4	0.7	0.2	82.7	2.7	14.6	0.088	0.502	19.332021	-97.931750
T. Izq. Xicoténcatl	12.50	1	0	1717	1.5	80.2	3.5	6.9	2.4	2.4	2.0	1.0	0.1	81.7	3.5	14.8	0.104	0.511	19.413181	-97.968844
Terrenate	21.00	1	0	1284	1.8	85.7	3.4	7.0	0.6	1.3	0.2	0.0	0.0	87.5	3.4	9.1	0.161	0.506	19.463808	-97.930035

TLAXCALA

6 CARR: Libramiento de Apizaco

CLAVE: 29567

RUTA: MEX-136

AÑO: 2012

LUGAR	ESTACION				CLASIFICACION VEHICULAR EN PORCIENTO													COORDENADAS			
	KM	TE	SC	TDPA	M	A	B	C2	C3	T3S2	T3S3	T3S2R4	OTROS	A	B	C	K'	D	LATITUD	LONGITUD	
T. C. Los Reyes - Zacatepec	0.00																				
T. Der. Amaxac de Guerrero	8.00	1	1	8466	0.3	75.9	3.4	6.0	2.5	6.5	2.5	2.4	0.5	76.2	3.4	20.4	0.078	0.521	19.381396	-98.133257	
T. Der. Amaxac de Guerrero	8.00	1	2	8738	0.7	73.1	3.7	6.7	2.7	7.3	2.7	2.4	0.7	73.8	3.7	22.5	0.076	0.521	19.381396	-98.133257	
T. Der. Amaxac de Guerrero	8.00	3	1	8694	0.6	73.0	3.5	6.3	3.0	7.7	2.8	2.3	0.8	73.6	3.5	22.9	0.081	0.523	19.386067	-98.125170	
T. Der. Amaxac de Guerrero	8.00	3	2	9063	0.7	70.7	4.1	6.5	3.2	8.2	3.1	2.7	0.8	71.4	4.1	24.5	0.074	0.523	19.386067	-98.125170	
T. C. Los Reyes - Zacatepec	10.40																				

7 CARR: Libramiento Huamantla

CLAVE: 29567

RUTA: MEX-136

AÑO: 2012

LUGAR	ESTACION				CLASIFICACION VEHICULAR EN PORCIENTO													COORDENADAS		
	KM	TE	SC	TDPA	M	A	B	C2	C3	T3S2	T3S3	T3S2R4	OTROS	A	B	C	K'	D	LATITUD	LONGITUD
T. C. Los Reyes - Zacatepec	0.00	3	1	5732	0.5	68.9	4.6	6.5	4.1	7.1	3.8	3.7	0.8	69.4	4.6	26.0	0.077	0.508	19.324342	-97.932178
T. C. Los Reyes - Zacatepec	0.00	3	2	5914	0.4	65.6	4.9	7.6	4.8	8.0	4.0	3.8	0.9	66.0	4.9	29.1	0.078	0.508	19.324339	-97.932181
T. C. Los Reyes - Zacatepec	4.60	1	1	5791	0.7	65.2	3.3	8.9	3.9	9.7	3.9	3.5	0.9	65.9	3.3	30.8	0.072	0.519	19.319836	-97.910846
T. C. Los Reyes - Zacatepec	4.60	1	2	5366	0.6	62.0	3.7	9.4	4.5	10.2	4.6	4.0	1.0	62.6	3.7	33.7	0.079	0.519	19.319836	-97.910846

8 CARR: Libramiento Hueyotlipan

CLAVE: 29567

RUTA: MEX-136

AÑO: 2012

LUGAR	ESTACION				CLASIFICACION VEHICULAR EN PORCIENTO													COORDENADAS		
	KM	TE	SC	TDPA	M	A	B	C2	C3	T3S2	T3S3	T3S2R4	OTROS	A	B	C	K'	D	LATITUD	LONGITUD
T. C. Los Reyes - Zacatepec	0.00	3	1	5057	0.6	63.3	5.0	4.4	4.2	14.0	4.0	3.8	0.7	63.9	5.0	31.1	0.068	0.509	19.476066	-98.353871
T. C. Los Reyes - Zacatepec	0.00	3	2	5249	0.5	58.4	5.3	4.8	4.9	16.4	4.6	4.3	0.8	58.9	5.3	35.8	0.085	0.509	19.476066	-98.353871
T. C. Los Reyes - Zacatepec	2.70	1	1	5080	0.5	64.4	4.5	4.4	4.4	13.5	4.3	3.2	0.8	64.9	4.5	30.6	0.070	0.516	19.472012	-98.337963
T. C. Los Reyes - Zacatepec	2.70	1	2	5411	0.6	60.3	5.2	4.7	4.7	15.2	4.7	3.8	0.8	60.9	5.2	33.9	0.084	0.516	19.472012	-98.337963

9 CARR: Los Reyes - Zacatepec

CLAVE: 00052

RUTA: MEX-136

AÑO: 2012

LUGAR	ESTACION				CLASIFICACION VEHICULAR EN PORCIENTO													COORDENADAS			
	KM	TE	SC	TDPA	M	A	B	C2	C3	T3S2	T3S3	T3S2R4	OTROS	A	B	C	K'	D	LATITUD	LONGITUD	
T. C. México - Puebla (Libre)	0.00																				
T. Izq. La Magdalena	3.35	3	1	43751	1.8	86.7	0.4	5.3	0.9	1.6	2.3	0.4	0.6	88.5	0.4	11.1	0.061	0.510	19.378717	-98.941852	
T. Izq. La Magdalena	3.35	3	2	45482	1.2	86.0	0.4	6.2	0.9	1.9	2.3	0.4	0.7	87.2	0.4	12.4	0.068	0.510	19.378992	-98.942016	
T. Izq. Chimalhuacán	8.45	1	1	31417	1.5	86.0	0.6	3.8	1.2	2.4	2.9	0.8	0.8	87.5	0.6	11.9	0.068	0.510	19.413104	-98.920179	
T. Izq. Chimalhuacán	8.45	1	2	32680	1.1	84.9	0.6	4.5	1.4	2.6	3.2	0.8	0.9	86.0	0.6	13.4	0.063	0.510	19.413230	-98.920294	
T. C. San Bernardino - Tepexpan	17.00	3	1	17081	1.5	76.0	1.6	9.1	2.2	6.7	1.4	1.1	0.4	77.5	1.6	20.9	0.077	0.502	19.484223	-98.886125	

## TLAXCALA

9 CARR : Los Reyes - Zacatepec

CLAVE: 00052

RUTA: MEX-136

AÑO : 2012

LUGAR	ESTACION				CLASIFICACION VEHICULAR EN PORCIENTO														COORDENADAS	
	KM	TE	SC	TDPA	M	A	B	C2	C3	T3S2	T3S3	T3S2R4	OTROS	A	B	C	K'	D	LATITUD	LONGITUD
T. C. San Bernardino - Tepexpan	17.00	3	2	17219	1.5	74.3	1.7	9.9	2.6	6.9	1.5	1.2	0.4	75.8	1.7	22.5	0.078	0.502	19.484393	-98.886269
Texcoco	23.02	3	1	18097	4.9	70.2	4.5	6.3	3.7	5.7	2.1	1.8	0.8	75.1	4.5	20.4	0.078	0.507	19.522564	-98.866315
Texcoco	23.02	3	2	17592	0.9	71.6	4.9	7.1	3.8	6.5	2.4	1.8	1.0	72.5	4.9	22.6	0.066	0.507	19.522913	-98.866260
T. Izq. Tepetlaoxtoc	30.03	1	1	14804	1.4	66.1	3.8	6.3	5.3	12.4	2.3	2.1	0.3	67.5	3.8	28.7	0.078	0.504	19.546060	-98.826042
T. Izq. Tepetlaoxtoc	30.03	1	2	14594	1.4	63.4	4.1	6.8	5.9	12.9	2.7	2.5	0.3	64.8	4.1	31.1	0.076	0.504	19.546138	-98.825925
T. Der. Totolapan	42.00	3	1	5676	1.7	66.1	3.1	4.3	5.3	13.4	2.7	2.4	1.0	67.8	3.1	29.1	0.084	0.506	19.558005	-98.727492
T. Der. Totolapan	42.00	3	2	5809	1.2	64.3	3.7	4.6	6.0	14.0	2.8	2.5	0.9	65.5	3.7	30.8	0.064	0.506	19.558005	-98.727492
Lim. Edos. Term. Mex. Ppia. Tlax.	43.15																			
Calpulalpan	59.58	3	0	15408	0.6	65.6	4.1	6.2	3.1	13.6	3.3	2.7	0.8	66.2	4.1	29.7	0.065	0.501	19.588102	-98.550057
T. Der. Nanacamilpa	71.76	3	0	13379	1.0	61.5	5.0	7.1	3.9	14.3	3.2	3.3	0.7	62.5	5.0	32.5	0.070	0.539	19.525155	-98.479303
X. C. Arco Norte de La Ciudad de México	73.80	3	1	6260	3.1	61.5	4.8	6.2	3.5	13.1	3.8	3.2	0.8	64.6	4.8	30.6	0.079	0.507	19.513699	-98.455352
X. C. Arco Norte de La Ciudad de México	73.80	3	2	6445	0.5	61.2	5.4	7.1	3.7	13.6	3.9	3.7	0.9	61.7	5.4	32.9	0.083	0.507	19.513699	-98.455352
Hueyotlipan	88.21	3	1	6507	0.4	63.3	6.1	6.0	4.1	12.6	3.5	3.2	0.8	63.7	6.1	30.2	0.071	0.515	19.468339	-98.328100
Hueyotlipan	88.21	3	2	6898	0.4	60.0	7.0	6.2	4.7	13.6	3.7	3.6	0.8	60.4	7.0	32.6	0.081	0.515	19.468339	-98.328100
Xaltocan	108.10	1	1	7853	0.9	66.2	6.5	6.3	2.7	11.0	3.0	2.7	0.7	67.1	6.5	26.4	0.069	0.506	19.424840	-98.217380
Xaltocan	108.10	1	2	8031	0.8	63.6	6.6	6.6	2.9	12.2	3.4	3.0	0.9	64.4	6.6	29.0	0.077	0.506	19.424840	-98.217380
Apizaco	117.74	1	1	24302	0.7	87.3	3.9	5.5	0.6	1.0	0.7	0.2	0.1	88.0	3.9	8.1	0.074	0.510	19.414098	-98.161828
Apizaco	117.74	1	2	23356	0.5	86.2	4.4	6.2	0.7	1.0	0.7	0.2	0.1	86.7	4.4	8.9	0.081	0.510	19.414101	-98.161822
Apizaco	117.74	3	0	24517	0.8	85.9	4.5	6.9	0.4	0.5	0.7	0.1	0.2	86.7	4.5	8.8	0.079	0.548	19.412970	-98.134015
T. Der. Cuaxomulco	119.85	3	1	9614	1.3	84.4	4.4	6.7	0.5	1.0	0.9	0.5	0.3	85.7	4.4	9.9	0.076	0.502	19.410530	-98.109322
T. Der. Cuaxomulco	119.85	3	2	9681	1.5	83.7	4.8	6.7	0.5	1.1	0.9	0.5	0.3	85.2	4.8	10.0	0.078	0.502	19.410530	-98.109322
T. Izq. Xalostoc	126.67	3	1	9867	0.4	78.6	1.6	5.6	2.3	6.2	2.4	2.1	0.8	79.0	1.6	19.4	0.074	0.505	19.389799	-98.052676
T. Izq. Xalostoc	126.67	3	2	9679	0.6	76.5	1.6	6.7	2.5	6.4	2.6	2.1	1.0	77.1	1.6	21.3	0.070	0.505	19.389799	-98.052676
T. Izq. Libramiento de Huamantla	141.70	1	1	9230	0.7	74.0	2.5	8.6	2.2	6.0	3.0	2.1	0.9	74.7	2.5	22.8	0.070	0.512	19.319543	-97.944050
T. Izq. Libramiento de Huamantla	141.70	1	2	8785	10.0	62.1	2.5	9.3	2.5	7.0	3.3	2.3	1.0	72.1	2.5	25.4	0.070	0.512	19.319543	-97.944055
Huamantla	143.02	3	1	5370	0.4	72.4	2.6	9.5	3.4	4.5	3.5	2.9	0.8	72.8	2.6	24.6	0.070	0.503	19.315529	-97.888265
Huamantla	143.02	3	2	5438	0.6	70.4	2.9	9.9	3.8	4.9	3.6	2.9	1.0	71.0	2.9	26.1	0.082	0.503	19.315529	-97.888265
X. C. Amozoc - Perote (Cuota)	156.76	1	1	5920	0.5	64.0	2.9	9.7	4.6	8.9	4.7	3.7	1.0	64.5	2.9	32.6	0.066	0.523	19.308251	-97.809838
X. C. Amozoc - Perote (Cuota)	156.76	1	2	5909	0.9	60.4	3.1	10.7	4.8	9.9	5.0	4.2	1.0	61.3	3.1	35.6	0.068	0.523	19.308251	-97.809840
T. Der. Cuapiaxtla	159.40	1	0	10146	0.9	58.9	2.7	10.6	4.6	12.8	5.2	3.4	0.9	59.8	2.7	37.5	0.065	0.504	19.303158	-97.778280
X. C. Amozoc - Teziutlán	173.47	1	0	9392	1.1	62.0	2.3	7.8	5.0	12.3	4.5	4.1	0.9	63.1	2.3	34.6	0.070	0.516	19.327067	-97.652905
X. C. Amozoc - Teziutlán	173.47	3	0	8129	2.2	49.6	3.1	8.0	7.6	15.6	7.2	5.8	0.9	51.8	3.1	45.1	0.061	0.507	19.321258	-97.643488
Lim. Edos. Term. Tlax. Ppia. Pue.	177.57																			
Zacatepec	187.67	1	0	9182	3.1	61.4	2.5	7.8	4.2	10.7	5.9	3.5	0.9	64.5	2.5	33.0	0.060	0.533	19.269834	-97.540571

TLAXCALA

10 CARR: Puebla - Belem

CLAVE: 00055

RUTA: MEX-121

AÑO: 2012

LUGAR	ESTACION				CLASIFICACION VEHICULAR EN PORCIENTO										COORDENADAS					
	KM	TE	SC	TDPA	M	A	B	C2	C3	T3S2	T3S3	T3S2R4	OTROS	A	B	C	K'	D	LATITUD	LONGITUD
T. C. Puebla - Tlaxcala	0.00																			
X. C. Puebla - Córdoba (Cuota)	4.00	3	1	24016	1.0	81.7	4.7	5.4	1.5	3.2	1.5	0.4	0.6	82.7	4.7	12.6	0.070	0.503	19.089200	-98.185486
X. C. Puebla - Córdoba (Cuota)	4.00	3	2	24333	0.3	81.0	5.0	6.0	1.6	3.4	1.7	0.4	0.6	81.3	5.0	13.7	0.065	0.503	19.089200	-98.185486
Lim. Edos. Term. Pue. Ppia. Tlax.	6.60																			
Lim. Edos. Term. Tlax. Ppia. Pue.	8.40																			
Lim. Edos. Term. Pue. Ppia. Tlax.	9.50																			
T. Izq. Zacatelco	16.70	1	1	14607	0.9	81.9	4.7	6.0	1.4	2.8	1.1	0.6	0.6	82.8	4.7	12.5	0.084	0.508	19.207398	-98.196250
T. Izq. Zacatelco	16.70	1	2	15068	0.9	80.2	4.9	7.0	1.5	3.0	1.2	0.7	0.6	81.1	4.9	14.0	0.086	0.508	19.207420	-98.196481
X. C. Tlaxcala - Belem	28.80	1	1	29467	1.3	86.8	2.0	3.5	1.1	2.2	1.6	0.7	0.8	88.1	2.0	9.9	0.081	0.512	19.315528	-98.204302
X. C. Tlaxcala - Belem	28.80	1	2	29121	1.6	85.2	2.2	3.8	1.3	2.5	1.7	0.8	0.9	86.8	2.2	11.0	0.081	0.512	19.315740	-98.204460
T. C. San Martín Texmelucan - Ocotoxco (Cuota)	34.90																			

11 CARR: Puebla - Tlaxcala

CLAVE: 00475

RUTA: MEX-119

AÑO: 2012

LUGAR	ESTACION				CLASIFICACION VEHICULAR EN PORCIENTO										COORDENADAS					
	KM	TE	SC	TDPA	M	A	B	C2	C3	T3S2	T3S3	T3S2R4	OTROS	A	B	C	K'	D	LATITUD	LONGITUD
Puebla	0.00																			
X. C. Puebla - Córdoba (Cuota)	5.41	3	1	18144	1.5	84.1	4.2	5.4	1.4	1.5	1.3	0.2	0.4	85.6	4.2	10.2	0.071	0.518	19.094278	-98.206722
X. C. Puebla - Córdoba (Cuota)	5.41	3	2	18573	2.7	81.0	4.9	6.2	1.5	1.7	1.4	0.2	0.4	83.7	4.9	11.4	0.092	0.518	19.094278	-98.206722
Lim. Edos. Term. Pue. Ppia. Tlax.	11.83																			
Panzacola	13.14	3	1	11098	2.0	87.5	1.2	2.9	0.8	2.3	2.1	0.5	0.7	89.5	1.2	9.3	0.074	0.505	19.152234	-98.223634
Panzacola	13.14	3	2	11296	1.6	86.9	1.3	3.3	0.8	2.4	2.3	0.5	0.9	88.5	1.3	10.2	0.077	0.505	19.152234	-98.223634
San Toribio Xicohtzinco	16.10	3	1	10167	2.0	89.5	1.4	2.9	0.6	1.4	1.2	0.4	0.6	91.5	1.4	7.1	0.086	0.501	19.186440	-98.237830
San Toribio Xicohtzinco	16.10	3	2	10233	2.3	88.2	1.5	3.4	0.6	1.6	1.3	0.4	0.7	90.5	1.5	8.0	0.072	0.501	19.186440	-98.237830
Zacatelco	20.78	1	1	9498	2.3	89.3	1.4	3.1	0.5	1.2	1.2	0.3	0.7	91.6	1.4	7.0	0.073	0.510	19.207734	-98.240569
Zacatelco	20.78	1	2	9876	2.6	88.3	1.4	3.6	0.5	1.3	1.3	0.2	0.8	90.9	1.4	7.7	0.077	0.510	19.207734	-98.240569
T. Izq. San Martín Texmelucan	22.99	1	1	8994	1.4	89.9	1.3	3.4	0.5	1.3	1.2	0.3	0.7	91.3	1.3	7.4	0.079	0.507	19.234075	-98.243078
T. Izq. San Martín Texmelucan	22.99	1	2	8732	1.3	89.8	1.4	3.6	0.5	1.3	1.1	0.3	0.7	91.1	1.4	7.5	0.082	0.507	19.234075	-98.243078
T. Der. Tepeyanco (2º Acceso)	24.97	3	1	8403	1.7	90.3	1.4	3.2	0.4	1.3	0.8	0.3	0.6	92.0	1.4	6.6	0.090	0.510	19.260904	-98.232512
T. Der. Tepeyanco (2º Acceso)	24.97	3	2	8066	1.7	89.8	1.5	3.4	0.4	1.3	1.1	0.2	0.6	91.5	1.5	7.0	0.084	0.510	19.260904	-98.232512
T. Der. Ocotlán (Alta)	32.45	1	1	10270	1.9	89.2	1.1	2.8	0.6	1.6	1.6	0.6	0.6	91.1	1.1	7.8	0.070	0.500	19.302626	-98.241059
T. Der. Ocotlán (Baja)	32.45	1	1	5646	2.1	87.4	1.3	4.4	0.7	1.4	1.5	0.6	0.6	89.5	1.3	9.2	0.079	0.502	19.302626	-98.241059
T. Der. Ocotlán (Alta)	32.45	1	2	10334	1.9	87.0	1.3	3.3	0.7	2.0	2.3	0.6	0.9	88.9	1.3	9.8	0.072	0.500	19.302523	-98.241277
T. Der. Ocotlán (Baja)	32.45	1	2	5630	2.5	85.7	1.4	4.8	0.8	1.7	1.8	0.6	0.7	88.2	1.4	10.4	0.079	0.502	19.302523	-98.241277
Tlaxcala	33.22	1	1	8932	2.0	90.5	1.4	1.8	0.6	1.0	1.6	0.5	0.6	92.5	1.4	6.1	0.074	0.510	19.310959	-98.240150



## TLAXCALA

11 CARR : Puebla - Tlaxcala

CLAVE: 00475

RUTA: MEX-119

AÑO : 2012

LUGAR	ESTACION				CLASIFICACION VEHICULAR EN PORCIENTO														COORDENADAS	
	KM	TE	SC	TDPA	M	A	B	C2	C3	T3S2	T3S3	T3S2R4	OTROS	A	B	C	K'	D	LATITUD	LONGITUD
Tlaxcala	33.22	1	2	8608	1.6	89.6	1.5	2.1	0.6	1.2	2.0	0.6	0.8	91.2	1.5	7.3	0.078	0.510	19.311121	-98.240230

12 CARR : Ramal a San Felipe de Hidalgo

CLAVE: 29565

RUTA: MEX-136

AÑO : 2012

LUGAR	ESTACION				CLASIFICACION VEHICULAR EN PORCIENTO														COORDENADAS	
	KM	TE	SC	TDPA	M	A	B	C2	C3	T3S2	T3S3	T3S2R4	OTROS	A	B	C	K'	D	LATITUD	LONGITUD
T. C. Los Reyes - Zacatepec	0.00	3	0	2950	1.3	84.6	5.4	4.5	0.8	2.6	0.3	0.2	0.3	85.9	5.4	8.7	0.084	0.518	19.527523	-98.481854
San Felipe de Hidalgo	10.50	1	0	1686	4.2	83.8	5.3	4.7	0.2	1.6	0.1	0.0	0.1	88.0	5.3	6.7	0.098	0.507	19.470765	-98.555519

13 CARR : San Martín Texmelucan - Tlaxcala

CLAVE: 00158

RUTA: MEX-117

AÑO : 2012

LUGAR	ESTACION				CLASIFICACION VEHICULAR EN PORCIENTO														COORDENADAS	
	KM	TE	SC	TDPA	M	A	B	C2	C3	T3S2	T3S3	T3S2R4	OTROS	A	B	C	K'	D	LATITUD	LONGITUD
San Martín Texmelucan	0.00	3	1	8374	5.0	83.3	2.2	4.1	0.6	1.8	1.9	0.5	0.6	88.3	2.2	9.5	0.081	0.506	19.287863	-98.422995
San Martín Texmelucan	0.00	3	2	8593	5.4	81.3	2.4	4.8	0.6	2.2	2.1	0.5	0.7	86.7	2.4	10.9	0.076	0.506	19.287863	-98.422995
X. C. San Martín Texmelucan - Ocotoxco (Cuota)	1.65	1	0	18293	5.2	82.8	3.7	5.1	0.7	0.8	1.2	0.4	0.1	88.0	3.7	8.3	0.073	0.501	19.291368	-98.412307
Lim. Edos. Term. Pue. Ppia. Tlax.	2.84																			
T. Der. Tepetitla	3.45	3	0	12645	4.1	88.7	1.5	3.1	0.8	0.8	0.8	0.1	0.1	92.8	1.5	5.7	0.077	0.503	19.294689	-98.402092
San Diego Xocoyucan	7.21	3	0	6340	4.2	87.3	1.4	2.1	0.5	2.8	0.9	0.4	0.4	91.5	1.4	7.1	0.076	0.531	19.307833	-98.370635
T. Der. Panotla	19.72	1	0	9372	2.2	89.0	0.8	1.9	0.2	4.8	0.3	0.1	0.7	91.2	0.8	8.0	0.087	0.509	19.319427	-98.275894
T. Der. Panotla	19.72	3	0	9210	2.7	86.6	1.3	3.0	0.2	4.9	0.4	0.2	0.7	89.3	1.3	9.4	0.082	0.507	19.319692	-98.268910
Totolac	21.38	1	0	9201	2.7	84.1	1.7	3.9	0.2	6.1	0.6	0.3	0.4	86.8	1.7	11.5	0.077	0.508	19.322444	-98.260639
Totolac	21.38	3	0	10534	2.5	84.1	1.3	2.1	0.5	4.5	4.0	0.5	0.5	86.6	1.3	12.1	0.079	0.505	19.329790	-98.250270
Tlaxcala	24.81	1	0	19718	1.8	92.5	0.9	2.4	0.3	0.5	1.5	0.0	0.1	94.3	0.9	4.8	0.072	0.504	19.325226	-98.242454

14 CARR : Tetlatlahuca - Santa Ana Chiautempan

CLAVE: 00158

RUTA: MEX-119

AÑO : 2012

LUGAR	ESTACION				CLASIFICACION VEHICULAR EN PORCIENTO														COORDENADAS	
	KM	TE	SC	TDPA	M	A	B	C2	C3	T3S2	T3S3	T3S2R4	OTROS	A	B	C	K'	D	LATITUD	LONGITUD
Tetlatlahuca	0.00																			
San Bartolomé Tenango	2.39	1	0	4018	2.2	86.0	2.3	4.6	0.6	2.3	1.2	0.5	0.3	88.2	2.3	9.5	0.079	0.501	19.247025	-98.296633
San Damián Texoloc	5.50	1	0	4367	2.3	82.7	2.7	5.0	1.2	2.7	2.0	0.9	0.5	85.0	2.7	12.3	0.073	0.502	19.273313	-98.284596
San Damián Texoloc	5.50	3	0	5513	1.4	89.0	0.2	4.6	0.6	2.6	0.6	0.2	0.8	90.4	0.2	9.4	0.079	0.504	19.277958	-98.275754
T. Izq. Cuauhtelulpan	9.63	1	0	8474	2.1	83.9	1.7	3.2	0.8	5.8	1.4	0.6	0.5	86.0	1.7	12.3	0.079	0.502	19.288398	-98.251528
T. Izq. Cuauhtelulpan	9.63	3	0	10808	1.5	82.7	0.6	3.0	0.7	7.3	2.0	1.0	1.2	84.2	0.6	15.2	0.069	0.502	19.292025	-98.249699

TLAXCALA

14 CARR: Tetlatlahuca - Santa Ana Chiautempan

CLAVE: 00158

RUTA: MEX-119

AÑO: 2012

LUGAR	ESTACION				CLASIFICACION VEHICULAR EN PORCIENTO													COORDENADAS		
	KM	TE	SC	TDPA	M	A	B	C2	C3	T3S2	T3S3	T3S2R4	OTROS	A	B	C	K'	D	LATITUD	LONGITUD
T. Der. Puebla	9.94	1	0	12839	0.9	84.2	0.2	3.0	0.2	7.6	1.8	1.0	1.1	85.1	0.2	14.7	0.073	0.503	19.300759	-98.245661
Santa Ana Chiautempan	16.00																			

15 CARR: Tlaxcala - Belem

CLAVE: 29389

RUTA: MEX-119

AÑO: 2012

LUGAR	ESTACION				CLASIFICACION VEHICULAR EN PORCIENTO													COORDENADAS		
	KM	TE	SC	TDPA	M	A	B	C2	C3	T3S2	T3S3	T3S2R4	OTROS	A	B	C	K'	D	LATITUD	LONGITUD
Tlaxcala	0.00																			
T. Der. Ocotlán	3.91	1	1	19097	1.5	94.9	0.6	1.3	0.1	0.3	1.3	0.0	0.0	96.4	0.6	3.0	0.078	0.510	19.321744	-98.210134
T. Der. Ocotlán	3.91	1	2	19261	2.1	93.9	0.7	1.4	0.1	0.3	1.5	0.0	0.0	96.0	0.7	3.3	0.079	0.510	19.321744	-98.210134
X. C. Puebla - Belem	4.55	1	1	25385	1.3	94.3	1.1	1.8	0.1	0.2	1.1	0.0	0.1	95.6	1.1	3.3	0.074	0.523	19.319905	-98.207295
X. C. Puebla - Belem	4.55	1	2	25515	1.3	93.7	1.2	2.2	0.1	0.2	1.2	0.0	0.1	95.0	1.2	3.8	0.087	0.523	19.319887	-98.207034
Santa Ana Chiautempan	5.82	1	1	9903	2.3	88.7	1.6	1.7	0.7	1.4	2.1	0.7	0.8	91.0	1.6	7.4	0.071	0.500	19.315530	-98.199861
Santa Ana Chiautempan	5.82	1	2	9914	3.1	87.2	1.7	1.9	0.7	1.4	2.4	0.8	0.8	90.3	1.7	8.0	0.084	0.500	19.315574	-98.199906
T. Der. Ixcotla	7.19	3	1	9757	2.5	92.5	0.7	1.3	0.1	1.0	1.5	0.1	0.3	95.0	0.7	4.3	0.080	0.513	19.328155	-98.193967
T. Der. Ixcotla	7.19	3	2	9724	2.2	92.2	0.9	1.5	0.1	1.1	1.6	0.1	0.3	94.4	0.9	4.7	0.078	0.513	19.328155	-98.193967
Belem	10.06	1	0	7447	2.1	88.6	1.5	2.4	0.5	3.7	0.6	0.3	0.3	90.7	1.5	7.8	0.076	0.536	19.337676	-98.193346

16 CARR: Villa Alta - T. C. (Puebla - Tlaxcala)

CLAVE: 29566

RUTA: MEX-119

AÑO: 2012

LUGAR	ESTACION				CLASIFICACION VEHICULAR EN PORCIENTO													COORDENADAS		
	KM	TE	SC	TDPA	M	A	B	C2	C3	T3S2	T3S3	T3S2R4	OTROS	A	B	C	K'	D	LATITUD	LONGITUD
T. C. San Martín Texmelucan - Tlaxcala	0.00	3	0	6684	5.7	78.8	3.3	4.9	0.3	5.3	0.8	0.3	0.6	84.5	3.3	12.2	0.075	0.500	19.293254	-98.405459
Nativitas	10.50	3	0	7920	3.4	79.3	3.4	5.5	0.5	5.2	1.3	0.5	0.9	82.7	3.4	13.9	0.074	0.501	19.239066	-98.307191
T. C. Puebla - Tlaxcala	22.05	1	0	7972	1.9	81.5	3.3	5.7	0.5	5.0	0.9	0.3	0.9	83.4	3.3	13.3	0.073	0.500	19.234876	-98.244185

17 CARR: Amozoc - Perote (Cuota)

CLAVE: 00030

RUTA: MEX-140D

AÑO: 2012

LUGAR	ESTACION				CLASIFICACION VEHICULAR EN PORCIENTO													COORDENADAS		
	KM	TE	SC	TDPA	M	A	B	C2	C3	T3S2	T3S3	T3S2R4	OTROS	A	B	C	K'	D	LATITUD	LONGITUD
T. C. Puebla - Córdoba (Cuota)	0.00	3	0	8340	0.2	78.6	6.2	6.4	3.6	2.3	0.9	1.2	0.6	78.8	6.2	15.0	0.081	0.502	19.068454	-98.065667
Caseta de Cobro Amozoc	0.68	2	0	8073	0.1	82.3	6.0	3.7	2.5	2.0	0.8	2.4	0.2	82.4	6.0	11.6	0.085	0.500	19.063599	-98.069029
Lim. Edos. Term. Pue. Ppia. Tlax.	20.08																			
X. C. Huamantla - La Venta	25.80	3	0	6656	0.2	78.5	6.5	6.5	3.7	1.8	1.2	1.2	0.4	78.7	6.5	14.8	0.066	0.501	19.228610	-97.896275
Lim. Edos. Term. Tlax. Ppia. Pue.	30.50																			



TLAXCALA

19 CARR: México - Puebla (Cuota)

CLAVE: 00450

RUTA: MEX-150D

AÑO: 2012

LUGAR	ESTACION				CLASIFICACION VEHICULAR EN PORCIENTO													COORDENADAS		
	KM	TE	SC	TDPA	M	A	B	C2	C3	T3S2	T3S3	T3S2R4	OTROS	A	B	C	K'	D	LATITUD	LONGITUD
Lim. Edos. Term. D. F. Ppia. Mex.	17.71																			
Ent. Morelos	18.00	3	1	56630	0.9	83.2	4.1	4.1	0.9	2.8	3.2	0.4	0.4	84.1	4.1	11.8	0.063	0.502	19.353200	-98.989213
Ent. Morelos	18.00	3	2	56253	1.5	81.2	4.3	4.5	0.9	3.3	3.5	0.4	0.4	82.7	4.3	13.0	0.062	0.502	19.353900	-98.989572
Av. Las Torres (Eje 6)	19.27	1	1	60506	1.0	88.0	1.8	2.9	0.9	1.9	1.9	0.8	0.8	89.0	1.8	9.2	0.066	0.500	19.347177	-98.982897
Av. Las Torres (Eje 6)	19.27	1	2	60609	1.0	86.8	1.9	3.3	1.0	2.1	2.1	0.8	1.0	87.8	1.9	10.3	0.058	0.500	19.347288	-98.982819
Av. Las Torres (Eje 6)	19.27	3	1	62755	0.8	86.1	2.6	4.7	1.0	1.7	1.8	0.6	0.7	86.9	2.6	10.5	0.064	0.513	19.341353	-98.977462
Av. Las Torres (Eje 6)	19.27	3	2	59460	0.8	84.6	2.7	5.1	1.2	2.1	2.0	0.6	0.9	85.4	2.7	11.9	0.061	0.513	19.341243	-98.977095
Eje 10 Sur	22.80	1	1	73804	1.2	82.4	2.7	6.4	1.0	2.4	2.3	0.8	0.8	83.6	2.7	13.7	0.069	0.506	19.326957	-98.962494
Eje 10 Sur	22.80	1	2	72179	0.7	81.3	3.1	6.7	1.1	2.8	2.5	0.8	1.0	82.0	3.1	14.9	0.060	0.506	19.328107	-98.963436
Eje 10 Sur	22.80	3	1	66794	1.3	82.8	1.9	6.3	1.1	2.5	2.3	1.0	0.8	84.1	1.9	14.0	0.066	0.505	19.315225	-98.948595
Eje 10 Sur	22.80	3	2	68097	0.9	81.7	2.0	7.0	1.1	2.8	2.6	1.0	0.9	82.6	2.0	15.4	0.065	0.505	19.315100	-98.948066
X. C. Santa Bárbara - Izúcar de Matamoros	32.14	1	1	47706	1.4	82.3	3.7	6.5	2.1	2.0	0.3	0.8	0.9	83.7	3.7	12.6	0.063	0.505	19.292671	-98.887006
X. C. Santa Bárbara - Izúcar de Matamoros	32.14	1	2	46811	1.5	80.8	4.1	6.9	2.4	2.2	0.3	0.9	0.9	82.3	4.1	13.6	0.061	0.505	19.292671	-98.887006
X. C. Santa Bárbara - Izúcar de Matamoros	32.14	3	1	9672	1.3	79.7	3.8	6.8	1.4	3.2	1.3	1.7	0.8	81.0	3.8	15.2	0.077	0.531	19.293913	-98.879308
X. C. Santa Bárbara - Izúcar de Matamoros	32.14	3	2	9940	1.4	78.3	4.2	7.4	1.5	3.3	1.3	1.7	0.9	79.7	4.2	16.1	0.064	0.531	19.293915	-98.879315
Caseta de Cobro San Marcos	33.30	2	1	15026	0.1	74.2	7.9	6.9	3.8	5.2	0.3	1.3	0.3	74.3	7.9	17.8	0.068	0.500	19.296361	-98.870726
Caseta de Cobro San Marcos	33.30	2	2	15026	0.1	74.2	7.9	6.9	3.8	5.2	0.3	1.3	0.3	74.3	7.9	17.8	0.068	0.500	19.296361	-98.870726
T. Izq. Río Frío	63.79	3	1	13451	0.6	78.4	3.6	6.7	2.8	3.8	1.6	1.6	0.9	79.0	3.6	17.4	0.061	0.514	19.351218	-98.665568
T. Izq. Río Frío	63.79	3	2	14250	0.5	76.8	4.0	7.0	3.3	4.2	1.6	1.7	0.9	77.3	4.0	18.7	0.091	0.514	19.351363	-98.665659
Lim. Edos. Term. Mex. Ppia. Pue.	63.85																			
T. Izq. Tlaxcala	90.61	1	1	31101	1.6	72.2	8.6	7.4	2.7	4.4	1.0	1.4	0.7	73.8	8.6	17.6	0.088	0.517	19.268795	-98.426636
T. Izq. Tlaxcala	90.61	1	2	30944	1.1	70.1	9.1	8.9	2.8	4.7	1.1	1.4	0.8	71.2	9.1	19.7	0.076	0.517	19.268795	-98.426636
T. Izq. Tlaxcala	90.61	3	1	24947	1.6	69.2	5.7	7.5	3.0	7.3	1.9	3.1	0.7	70.8	5.7	23.5	0.069	0.512	19.261877	-98.417232
T. Izq. Tlaxcala	90.61	3	2	24922	1.1	66.6	5.9	8.7	3.3	8.2	2.1	3.3	0.8	67.7	5.9	26.4	0.074	0.512	19.261877	-98.417232
Caseta de Cobro San Martín Texmelucan	91.00	2	1	21356	0.1	70.8	8.1	5.1	4.2	7.3	0.9	3.1	0.4	70.9	8.1	21.0	0.068	0.500	19.241098	-98.385680
Caseta de Cobro San Martín Texmelucan	91.00	2	2	21355	0.1	70.8	8.1	5.1	4.2	7.3	0.9	3.1	0.4	70.9	8.1	21.0	0.068	0.500	19.241098	-98.385680
Lim. Edos. Term. Pue. Ppia. Tlax.	103.00																			
Lim. Edos. Term. Tlax. Ppia. Pue.	107.00																			
T. C. Puebla - Tlaxcala	124.90																			

20 CARR: San Martin Texmelucan - Tlaxcala - El Molinito (Cuota)

CLAVE: 00212

RUTA: MEX-117D

AÑO: 2012

LUGAR	ESTACION				CLASIFICACION VEHICULAR EN PORCIENTO													COORDENADAS		
	KM	TE	SC	TDPA	M	A	B	C2	C3	T3S2	T3S3	T3S2R4	OTROS	A	B	C	K'	D	LATITUD	LONGITUD
T. C. México - Puebla (Cuota)	0.00																			

## TLAXCALA

20 CARR: San Martín Texmelucan - Tlaxcala - El Molinito (Cuota)

CLAVE: 00212

RUTA: MEX-117D

AÑO: 2012

LUGAR	ESTACION				CLASIFICACION VEHICULAR EN PORCIENTO													COORDENADAS		
	KM	TE	SC	TDPA	M	A	B	C2	C3	T3S2	T3S3	T3S2R4	OTROS	A	B	C	K'	D	LATITUD	LONGITUD
X. C. San Martín Texmelucan - Tlaxcala	1.80	1	0	8403	0.1	81.0	3.3	8.9	1.2	3.4	0.8	0.8	0.5	81.1	3.3	15.6	0.091	0.504	19.288935	-98.420970
Lim. Edos. Term. Pue. Ppia. Tlax.	4.05																			
Caseta de Cobro San Martín Texmelucan	5.45	2	1	3247	0.0	76.5	14.9	3.2	1.5	1.9	0.7	1.2	0.1	76.5	14.9	8.6	0.088	0.500	19.301568	-98.404044
Caseta de Cobro San Martín Texmelucan	5.45	2	2	3247	0.0	76.5	14.9	3.2	1.5	1.9	0.7	1.2	0.1	76.5	14.9	8.6	0.088	0.500	19.301568	-98.404044
X. C. San Martín Texmelucan - Tlaxcala (Trébol)	24.75	1	1	11755	1.1	89.1	2.4	4.6	0.6	0.9	0.6	0.6	0.1	90.2	2.4	7.4	0.106	0.519	19.325236	-98.251273
X. C. San Martín Texmelucan - Tlaxcala (Trébol)	24.75	1	2	10907	1.0	88.6	2.5	4.8	0.7	1.1	0.6	0.6	0.1	89.6	2.5	7.9	0.083	0.519	19.325236	-98.251273
X. C. San Martín Texmelucan - Tlaxcala (Trébol)	24.75	3	1	13122	0.6	86.9	2.6	7.0	0.7	0.9	0.7	0.5	0.1	87.5	2.6	9.9	0.117	0.513	19.337036	-98.231300
X. C. San Martín Texmelucan - Tlaxcala (Trébol)	24.75	3	2	12456	1.1	85.0	3.0	7.8	0.7	1.0	0.7	0.6	0.1	86.1	3.0	10.9	0.080	0.513	19.337036	-98.231300
T. Izq. Tizatán	29.00	3	1	13620	0.4	85.2	3.2	9.1	0.6	0.8	0.4	0.3	0.0	85.6	3.2	11.2	0.080	0.515	19.337638	-98.214302
T. Izq. Tizatán	29.00	3	2	12817	0.2	83.6	3.6	10.4	0.7	0.8	0.4	0.3	0.0	83.8	3.6	12.6	0.109	0.515	19.337638	-98.214302
T. Der. San Pablo Apetatitlán	31.65	3	1	26178	0.3	88.0	3.2	4.6	0.8	1.6	1.0	0.3	0.2	88.3	3.2	8.5	0.077	0.511	19.347679	-98.194436
T. Der. San Pablo Apetatitlán	31.65	3	2	25070	0.4	86.5	3.6	5.2	0.9	1.7	1.2	0.3	0.2	86.9	3.6	9.5	0.079	0.511	19.347679	-98.194436
Ocotoxco	35.20	1	1	22453	0.4	84.3	4.3	4.8	0.9	2.1	1.9	0.5	0.8	84.7	4.3	11.0	0.075	0.507	19.384372	-98.178155
Ocotoxco	35.20	1	2	22978	0.5	82.9	4.4	5.4	1.0	2.3	2.0	0.7	0.8	83.4	4.4	12.2	0.070	0.507	19.384372	-98.178155

21 CARR: Libramiento de Ocotlán

CLAVE: 29567

RUTA: TLAX

AÑO: 2012

LUGAR	ESTACION				CLASIFICACION VEHICULAR EN PORCIENTO													COORDENADAS		
	KM	TE	SC	TDPA	M	A	B	C2	C3	T3S2	T3S3	T3S2R4	OTROS	A	B	C	K'	D	LATITUD	LONGITUD
T. C. Tlaxcala - Belem	0.00	3	1	13208	1.4	89.9	0.3	1.0	0.3	1.6	4.0	0.6	0.9	91.3	0.3	8.4	0.081	0.501	19.319591	-98.209551
T. C. Tlaxcala - Belem	0.00	3	2	13140	1.5	89.0	0.3	1.1	0.3	1.6	4.7	0.6	0.9	90.5	0.3	9.2	0.082	0.501	19.319379	-98.209500
T. C. Tlaxcala - Belem	5.50																			

22 CARR: Ramal a Altzayanca de Hidalgo

CLAVE: 29562

RUTA: TLAX

AÑO: 2012

LUGAR	ESTACION				CLASIFICACION VEHICULAR EN PORCIENTO													COORDENADAS		
	KM	TE	SC	TDPA	M	A	B	C2	C3	T3S2	T3S3	T3S2R4	OTROS	A	B	C	K'	D	LATITUD	LONGITUD
T. C. Los Reyes - Zacatepec	0.00	3	0	2235	2.5	82.1	3.5	6.0	1.6	1.8	1.0	0.5	1.0	84.6	3.5	11.9	0.083	0.506	19.317520	-97.846551
Xicoténcatl	6.50	3	0	2014	2.2	82.4	6.5	7.1	0.4	1.2	0.1	0.0	0.1	84.6	6.5	8.9	0.084	0.514	19.357712	-97.831710
Altzayanca de Hidalgo	15.00	1	0	1974	5.1	76.6	7.1	6.7	1.1	2.2	1.1	0.0	0.1	81.7	7.1	11.2	0.081	0.504	19.423227	-97.803153

TLAXCALA

23 CARR: Ramal a San Pedro Ecatepec

CLAVE: 29561

RUTA: TLAX

AÑO: 2012

LUGAR	ESTACION				CLASIFICACION VEHICULAR EN PORCIENTO										COORDENADAS					
	KM	TE	SC	TDPA	M	A	B	C2	C3	T3S2	T3S3	T3S2R4	OTROS	A	B	C	K'	D	LATITUD	LONGITUD
T. C. Apizaco - Tejocotal	0.00	3	0	1900	0.7	86.9	4.8	5.5	0.5	1.2	0.2	0.0	0.2	87.6	4.8	7.6	0.085	0.502	19.514498	-98.119370
San Pedro Ecatepec	4.60	1	0	1848	1.3	85.5	4.9	6.2	0.6	1.2	0.2	0.0	0.1	86.8	4.9	8.3	0.082	0.502	19.516195	-98.145626

24 CARR: Ramal a Xalostoc

CLAVE: 29563

RUTA: TLAX

AÑO: 2012

LUGAR	ESTACION				CLASIFICACION VEHICULAR EN PORCIENTO										COORDENADAS					
	KM	TE	SC	TDPA	M	A	B	C2	C3	T3S2	T3S3	T3S2R4	OTROS	A	B	C	K'	D	LATITUD	LONGITUD
T. C. Los Reyes - Zacatepec	0.00	3	0	8333	1.1	88.6	1.2	1.9	0.4	5.1	0.5	0.2	1.0	89.7	1.2	9.1	0.076	0.506	19.396305	-98.056578
Xalostoc	2.50	1	0	8253	1.5	87.2	2.1	2.9	0.3	4.7	0.5	0.1	0.7	88.7	2.1	9.2	0.077	0.512	19.400355	-98.051793

25 CARR: Xalostoc - Terrenate

CLAVE: 29390

RUTA: TLAX

AÑO: 2012

LUGAR	ESTACION				CLASIFICACION VEHICULAR EN PORCIENTO										COORDENADAS					
	KM	TE	SC	TDPA	M	A	B	C2	C3	T3S2	T3S3	T3S2R4	OTROS	A	B	C	K'	D	LATITUD	LONGITUD
Xalostoc	0.00	3	0	3660	1.6	83.8	3.5	8.2	0.7	1.9	0.2	0.0	0.1	85.4	3.5	11.1	0.098	0.501	19.415964	-98.033843
San Francisco Teometitla	7.10	3	0	1383	1.5	85.1	3.4	8.5	0.6	0.8	0.1	0.0	0.0	86.6	3.4	10.0	0.091	0.504	19.451170	-97.988150
T. C. Huamantla - Terrenate	17.50	1	0	1318	2.2	85.9	2.9	7.3	0.7	0.8	0.1	0.0	0.1	88.1	2.9	9.0	0.087	0.507	19.466221	-97.929354

26 CARR: Acocotla - Vicente Guerrero

CLAVE: 29560

RUTA: MEX-TLAX

AÑO: 2012

LUGAR	ESTACION				CLASIFICACION VEHICULAR EN PORCIENTO										COORDENADAS					
	KM	TE	SC	TDPA	M	A	B	C2	C3	T3S2	T3S3	T3S2R4	OTROS	A	B	C	K'	D	LATITUD	LONGITUD
T. C. Los Reyes - Zacatepec	0.00	3	0	1574	1.9	90.2	2.3	2.9	0.7	1.6	0.3	0.0	0.1	92.1	2.3	5.6	0.091	0.504	19.371324	-98.028576
T. C. Puebla - Belem	37.70	1	0	8088	2.7	78.6	4.8	4.8	0.4	6.2	1.1	0.6	0.8	81.3	4.8	13.9	0.072	0.506	19.112964	-98.176007

27 CARR: Apizaco - Emiliano Zapata

CLAVE: 29033

RUTA: TLAX-MEX-136

AÑO: 2012

LUGAR	ESTACION				CLASIFICACION VEHICULAR EN PORCIENTO										COORDENADAS					
	KM	TE	SC	TDPA	M	A	B	C2	C3	T3S2	T3S3	T3S2R4	OTROS	A	B	C	K'	D	LATITUD	LONGITUD
Apizaco	0.00	3	0	8303	3.7	82.2	5.0	3.3	0.2	4.0	0.6	0.2	0.8	85.9	5.0	9.1	0.073	0.517	19.417168	-98.129498
Capula	16.00	1	0	2326	1.7	86.6	4.2	3.5	1.8	1.6	0.3	0.1	0.2	88.3	4.2	7.5	0.080	0.505	19.531818	-98.040484
Emiliano Zapata	37.00	1	0	1089	2.4	88.3	4.2	3.4	0.3	1.2	0.0	0.0	0.2	90.7	4.2	5.1	0.097	0.507	19.554765	-97.917500

## TLAXCALA

28 CARR: Calpulalpan - El Ocote

CLAVE: 00054

RUTA: MEX-HGO

AÑO: 2012

LUGAR	ESTACION				CLASIFICACION VEHICULAR EN PORCIENTO													COORDENADAS		
	KM	TE	SC	TDPA	M	A	B	C2	C3	T3S2	T3S3	T3S2R4	OTROS	A	B	C	K'	D	LATITUD	LONGITUD
Calpulalpan	0.00	3	0	8624	1.3	82.0	3.0	4.8	2.3	2.5	1.4	1.9	0.8	83.3	3.0	13.7	0.073	0.504	19.594460	-98.573750
X. C. Arco Norte de La Ciudad de México	4.00	3	0	6882	0.9	84.4	2.0	5.5	2.8	2.2	0.4	0.9	0.9	85.3	2.0	12.7	0.064	0.503	19.632473	-98.537103
Lim. Edos. Term. Tlax. Ppia. Hgo.	5.00																			
Apan	19.58	3	1	3694	0.9	88.2	2.7	3.3	2.5	1.4	0.6	0.1	0.3	89.1	2.7	8.2	0.091	0.514	19.727505	-98.469500
Apan	19.58	3	2	3497	0.9	87.8	3.0	3.8	2.4	1.1	0.6	0.1	0.3	88.7	3.0	8.3	0.092	0.514	19.727461	-98.469472
Tepeapulco	34.92	3	0	3556	0.8	81.9	4.1	6.7	2.3	2.5	0.8	0.4	0.5	82.7	4.1	13.2	0.099	0.525	19.803506	-98.563537
X. C. Venta de Carpio - Tulancingo	51.18	1	0	2934	0.8	82.3	5.4	6.0	2.1	2.4	0.5	0.2	0.3	83.1	5.4	11.5	0.121	0.503	19.918279	-98.576255
X. C. Venta de Carpio - Tulancingo	51.18	3	0	1997	0.9	84.7	5.6	4.9	1.1	2.0	0.6	0.0	0.2	85.6	5.6	8.8	0.122	0.509	19.927552	-98.582753
El Ocote	70.44	1	0	3150	0.8	88.0	4.1	4.1	0.6	1.7	0.5	0.0	0.2	88.8	4.1	7.1	0.094	0.500	20.047496	-98.617781

29 CARR: Calpulalpan - Nanacamilpa

CLAVE: 29034

RUTA: TLAX-MEX-136

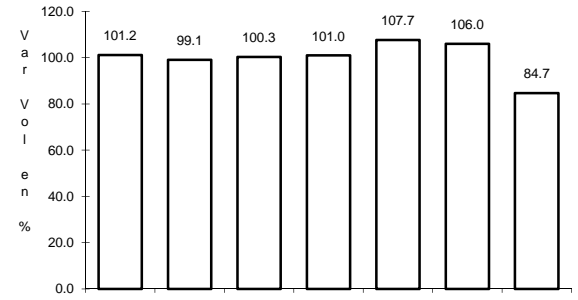
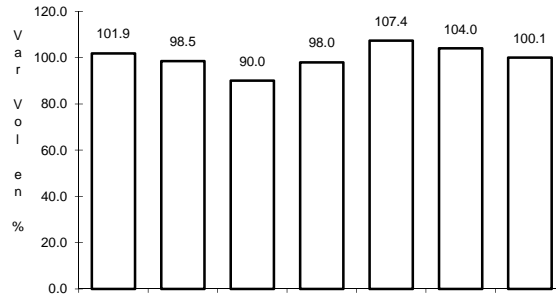
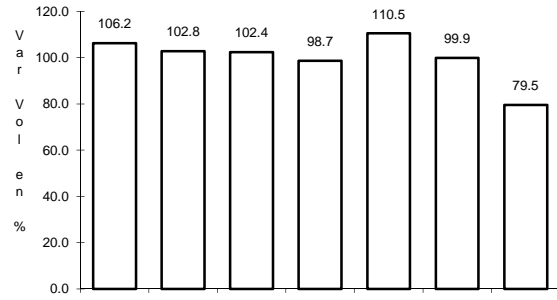
AÑO: 2012

LUGAR	ESTACION				CLASIFICACION VEHICULAR EN PORCIENTO													COORDENADAS		
	KM	TE	SC	TDPA	M	A	B	C2	C3	T3S2	T3S3	T3S2R4	OTROS	A	B	C	K'	D	LATITUD	LONGITUD
Calpulalpan	0.00	3	0	2184	3.5	86.8	4.2	3.2	0.5	1.3	0.2	0.0	0.3	90.3	4.2	5.5	0.086	0.503	19.568286	-98.568141
Nanacamilpa	15.50	1	0	1863	6.5	84.0	4.0	3.5	0.3	1.4	0.2	0.0	0.1	90.5	4.0	5.5	0.167	0.543	19.497451	-98.533197

1 CARR: Amozoc - Teziutlán

CLAVE: 00210

RUTA: MEX-129



Km: 1.40                      Tipo: 3                      Sent: 0

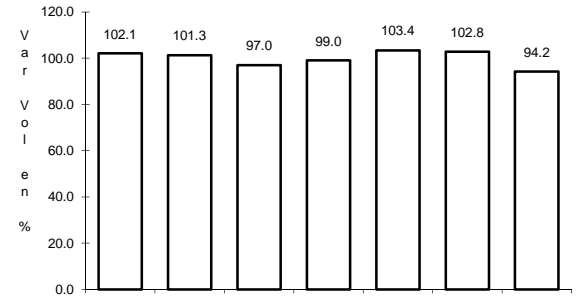
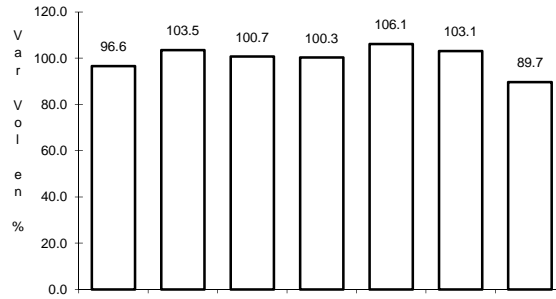
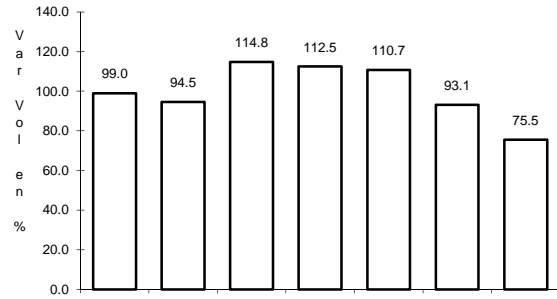
Km: 76.35                      Tipo: 3                      Sent: 0

Km: 157.80                      Tipo: 1                      Sent: 0

2 CARR: Apizaco - San Pablo Apetatitlán

CLAVE: 29035

RUTA: MEX-119



Km: 0.00                      Tipo: 3                      Sent: 0

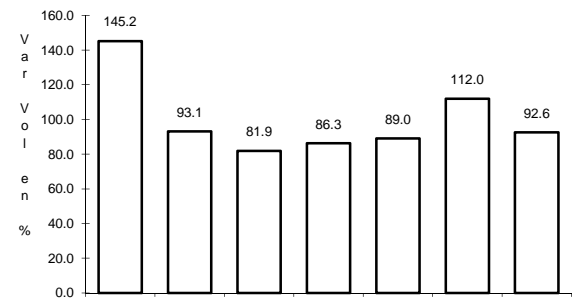
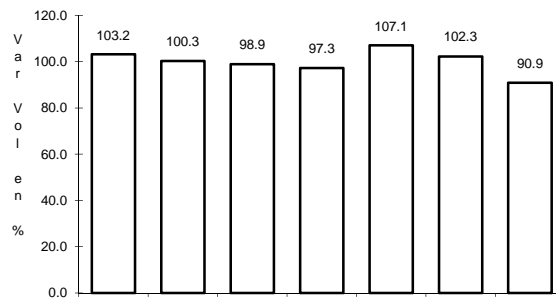
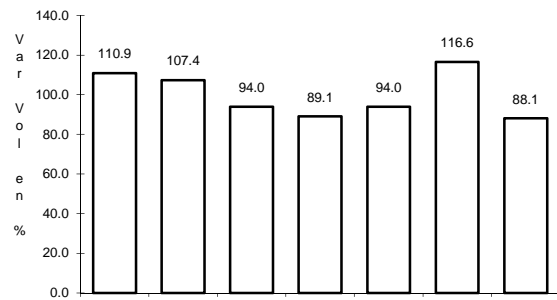
Km: 14.50                      Tipo: 3                      Sent: 0

Km: 20.00                      Tipo: 1                      Sent: 0

3 CARR: Apizaco - Tejocotal

CLAVE: 00430

RUTA: MEX-119



Km: 0.00                      Tipo: 3                      Sent: 1

Km: 0.00                      Tipo: 3                      Sent: 2

Km: 113.15                      Tipo: 1                      Sent: 0

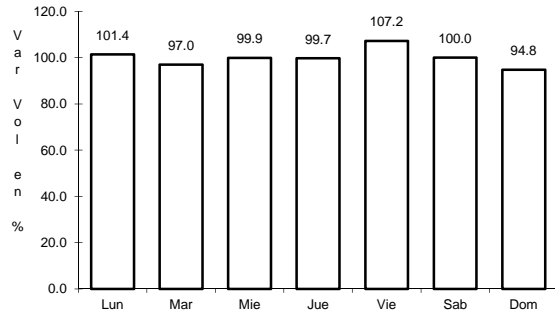




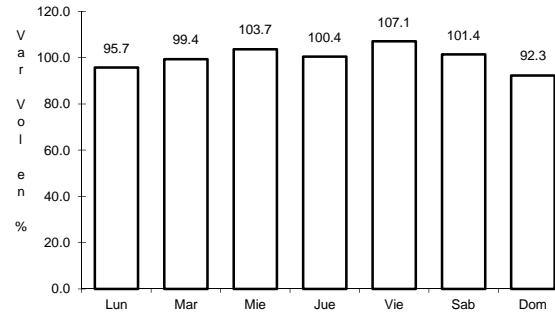
7 CARR: Libramiento Huamantla

CLAVE: 29567

RUTA: MEX-136



Km: 0.00      Tipo: 3      Sent: 1

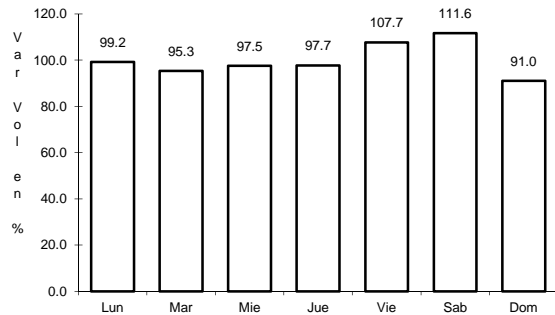


Km: 0.00      Tipo: 3      Sent: 2

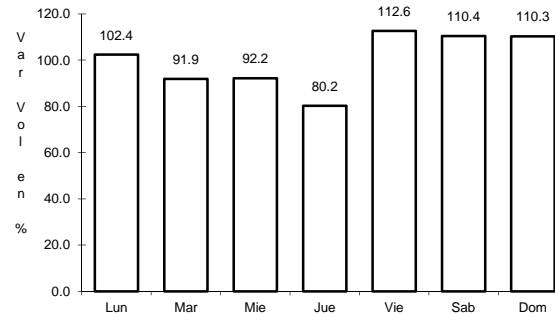
8 CARR: Libramiento Hueyotlipan

CLAVE: 29567

RUTA: MEX-136



Km: 0.00      Tipo: 3      Sent: 1

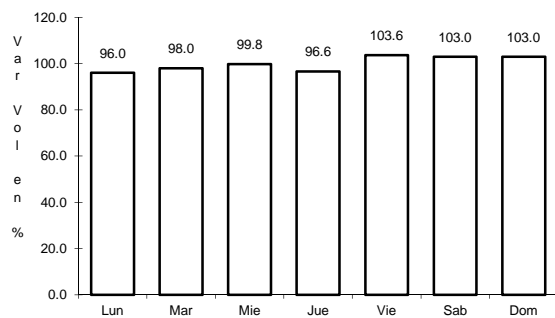


Km: 0.00      Tipo: 3      Sent: 2

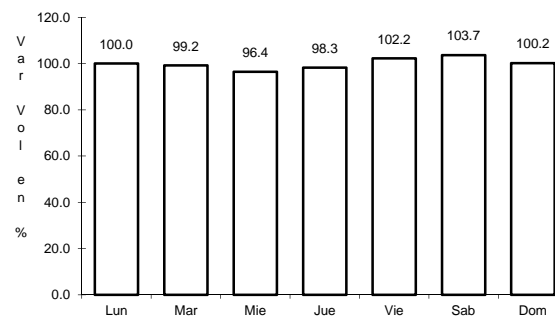
9 CARR: Los Reyes - Zacatepec

CLAVE: 00052

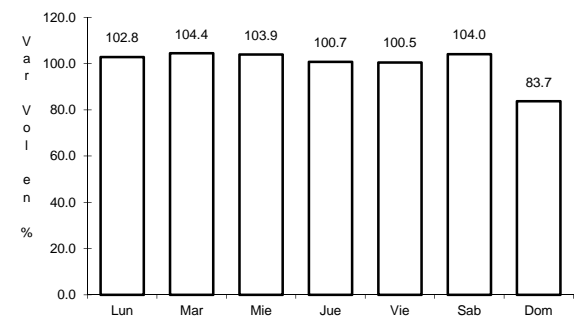
RUTA: MEX-136



Km: 3.35      Tipo: 3      Sent: 1



Km: 3.35      Tipo: 3      Sent: 2



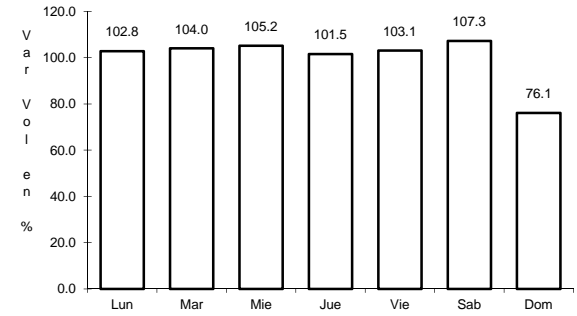
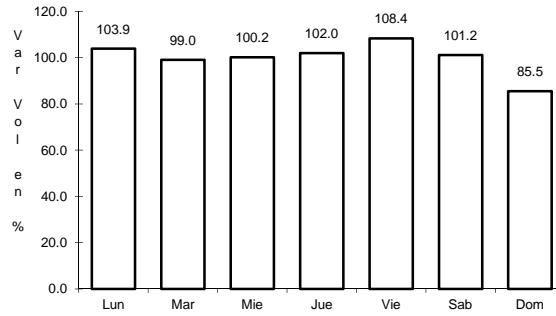
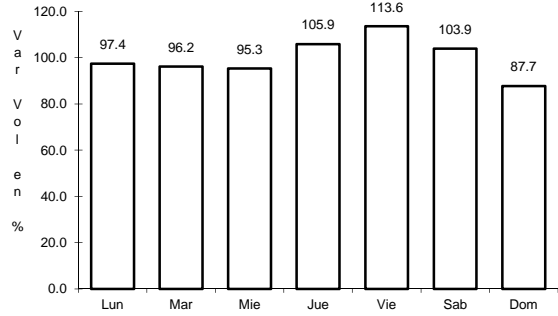
Km: 187.67      Tipo: 1      Sent: 0



13 CARR: San Martín Texmelucan - Tlaxcala

CLAVE: 00158

RUTA: MEX-117



Km: 0.00      Tipo: 3      Sent: 1

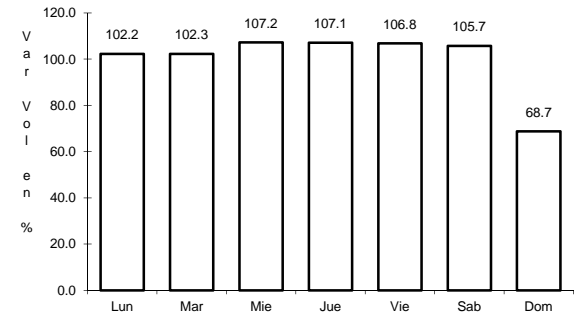
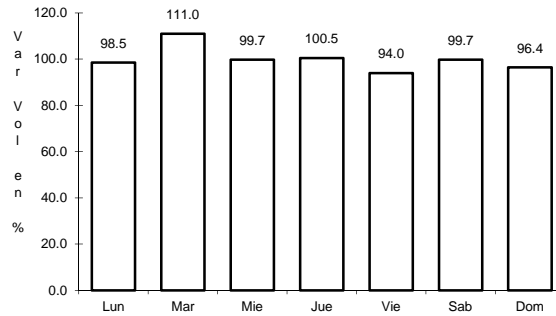
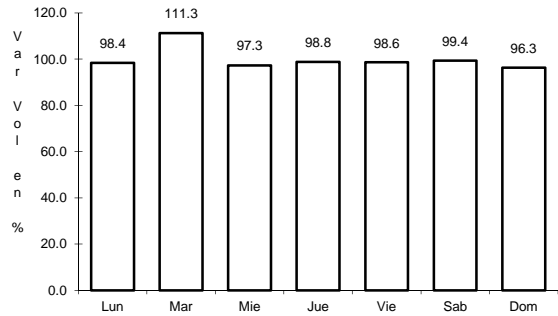
Km: 0.00      Tipo: 3      Sent: 2

Km: 24.81      Tipo: 1      Sent: 0

14 CARR: Tetlatlahuca - Santa Ana Chiautempan

CLAVE: 00158

RUTA: MEX-119



Km: 2.39      Tipo: 1      Sent: 0

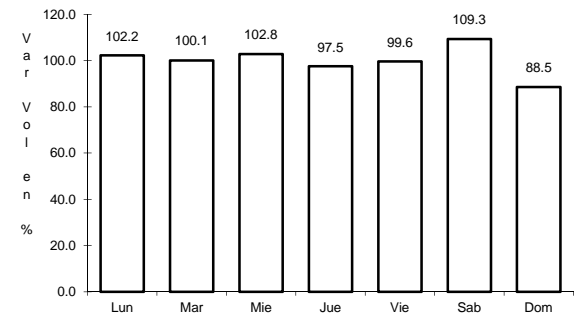
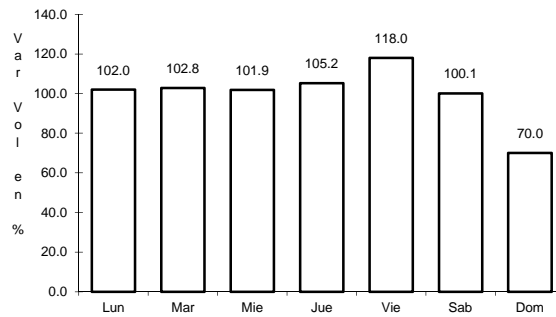
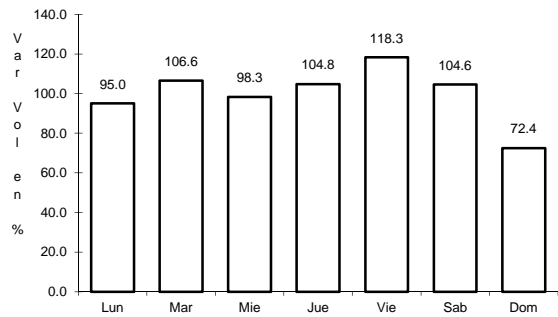
Km: 5.50      Tipo: 1      Sent: 0

Km: 9.94      Tipo: 1      Sent: 0

15 CARR: Tlaxcala - Belem

CLAVE: 29389

RUTA: MEX-119



Km: 3.91      Tipo: 1      Sent: 1

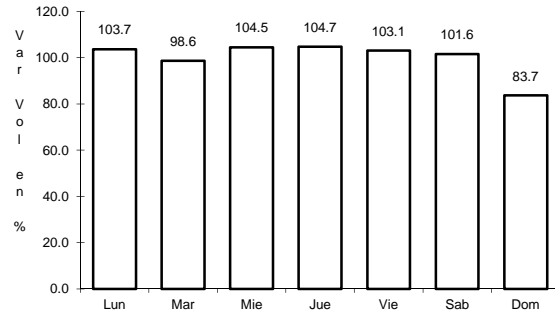
Km: 3.91      Tipo: 1      Sent: 2

Km: 10.06      Tipo: 1      Sent: 0

## 16 CARR: Villa Alta - T. C. (Puebla - Tlaxcala)

CLAVE: 29566

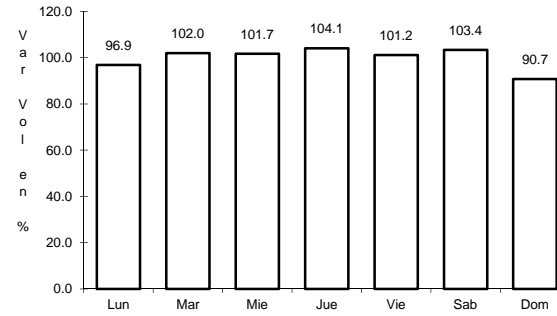
RUTA: MEX-119



Km: 0.00

Tipo: 3

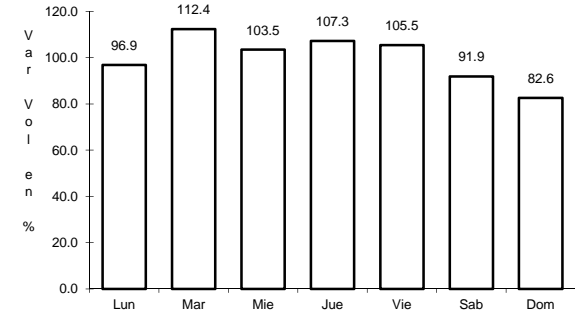
Sent: 0



Km: 10.50

Tipo: 3

Sent: 0



Km: 22.05

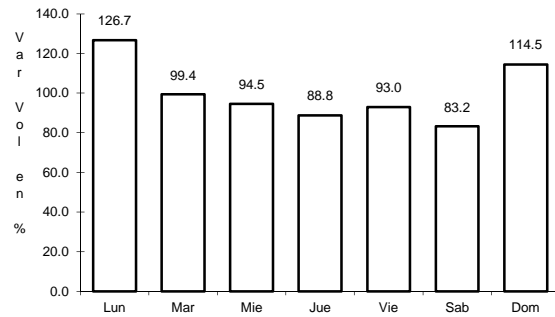
Tipo: 1

Sent: 0

## 17 CARR: Amozoc - Perote (Cuota)

CLAVE: 00030

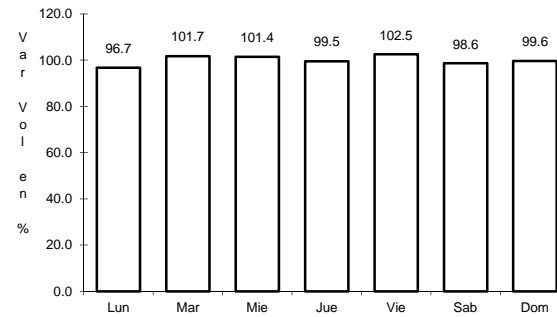
RUTA: MEX-140D



Km: 0.00

Tipo: 3

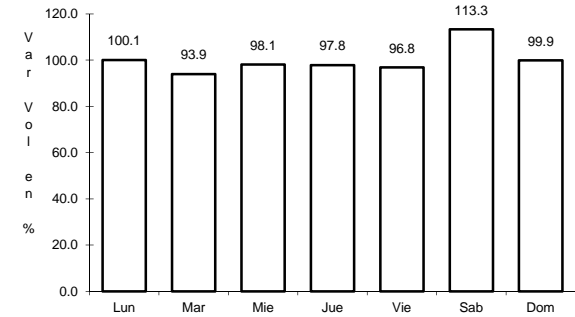
Sent: 0



Km: 25.80

Tipo: 3

Sent: 0



Km: 62.70

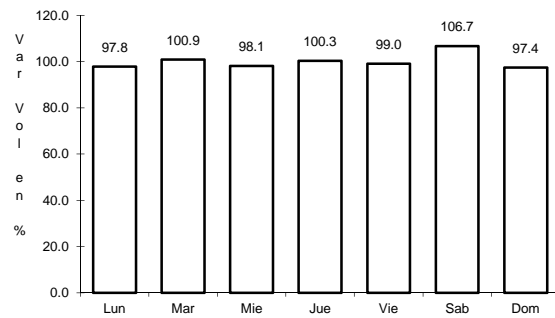
Tipo: 3

Sent: 0

## 19 CARR: México - Puebla (Cuota)

CLAVE: 00450

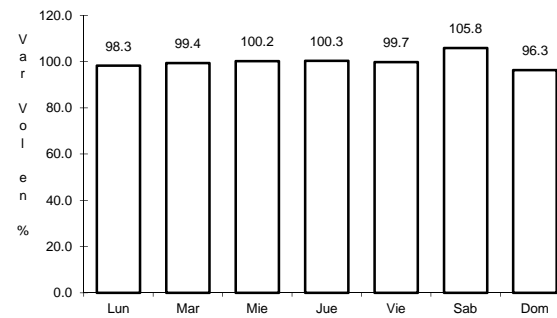
RUTA: MEX-150D



Km: 18.00

Tipo: 3

Sent: 1



Km: 18.00

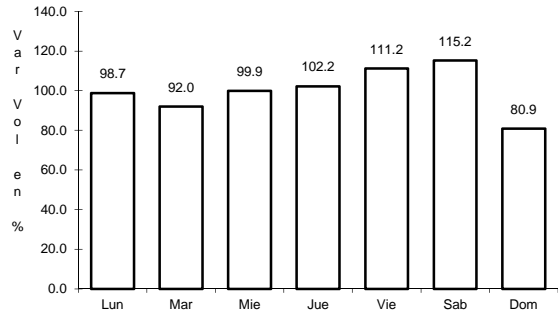
Tipo: 3

Sent: 2

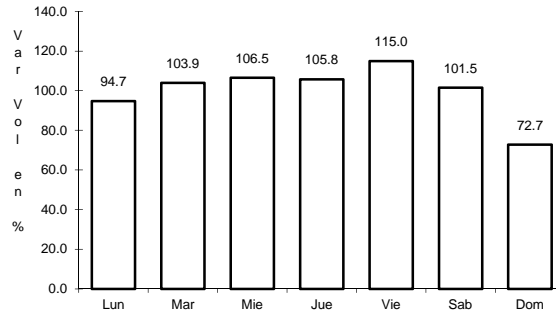
20 CARR: San Martin Texmelucan - Tlaxcala - El Molinito (Cuota)

CLAVE: 00212

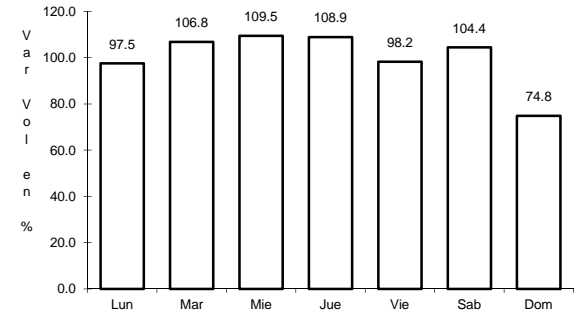
RUTA: MEX-117D



Km: 1.80                      Tipo: 1                      Sent: 0



Km: 35.20                      Tipo: 1                      Sent: 1

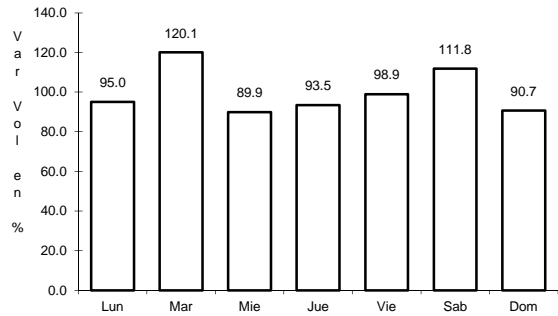


Km: 35.20                      Tipo: 1                      Sent: 2

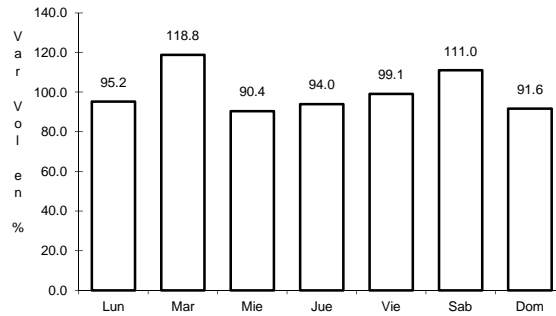
21 CARR: Libramiento de Ocotlán

CLAVE: 29567

RUTA: TLAX



Km: 0.00                      Tipo: 3                      Sent: 1

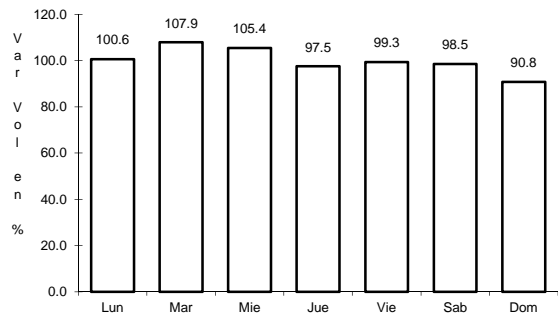


Km: 0.00                      Tipo: 3                      Sent: 2

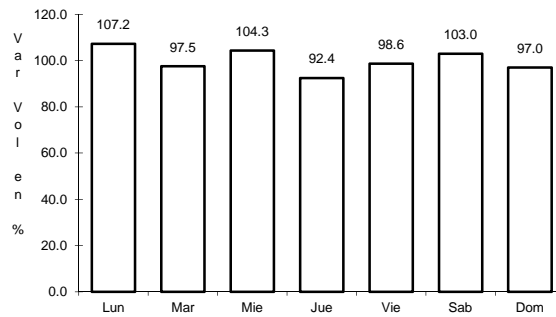
22 CARR: Ramal a Altzayanca de Hidalgo

CLAVE: 29562

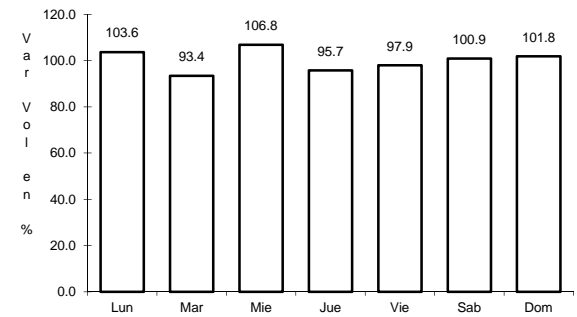
RUTA: TLAX



Km: 0.00                      Tipo: 3                      Sent: 0



Km: 6.50                      Tipo: 3                      Sent: 0

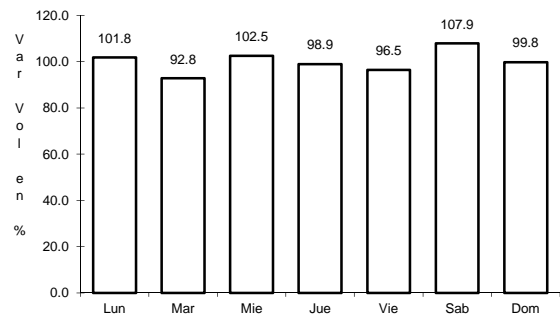


Km: 15.00                      Tipo: 1                      Sent: 0

## 23 CARR: Ramal a San Pedro Ecatepec

CLAVE: 29561

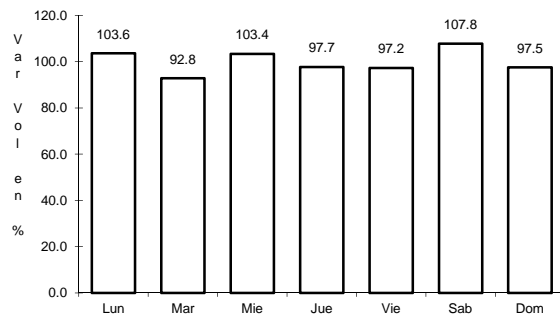
RUTA: TLAX



Km: 0.00

Tipo: 3

Sent: 0



Km: 4.60

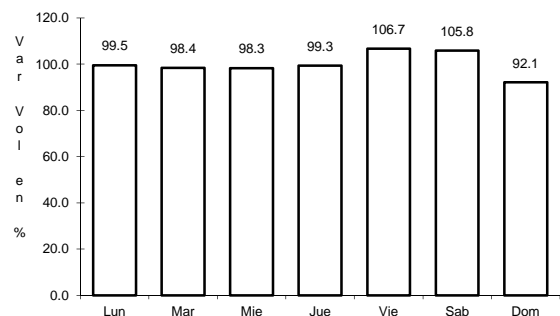
Tipo: 1

Sent: 0

## 24 CARR: Ramal a Xalostoc

CLAVE: 29563

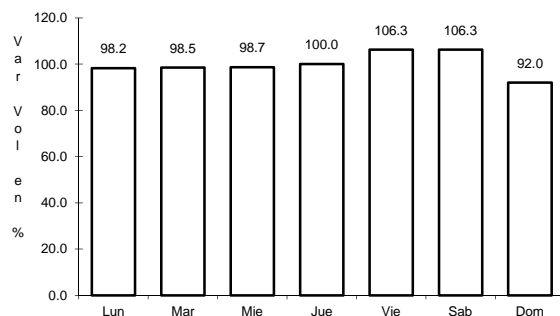
RUTA: TLAX



Km: 0.00

Tipo: 3

Sent: 0



Km: 2.50

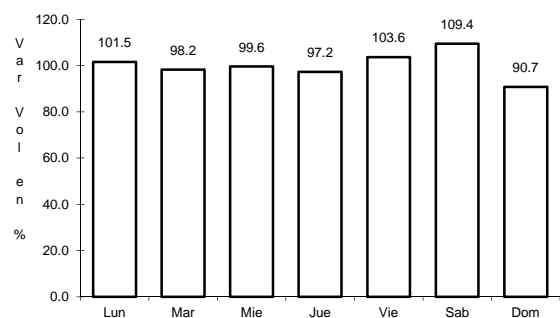
Tipo: 1

Sent: 0

## 25 CARR: Xalostoc - Terrenate

CLAVE: 29390

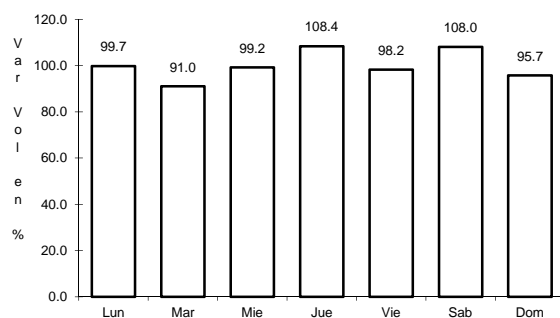
RUTA: TLAX



Km: 0.00

Tipo: 3

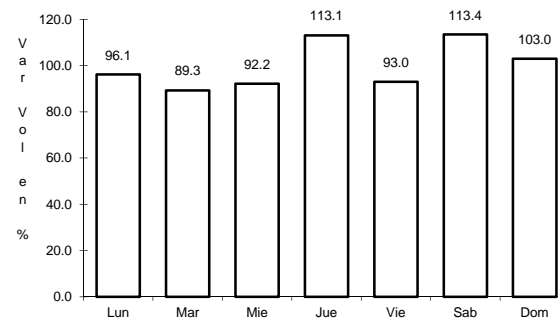
Sent: 0



Km: 7.10

Tipo: 3

Sent: 0



Km: 17.50

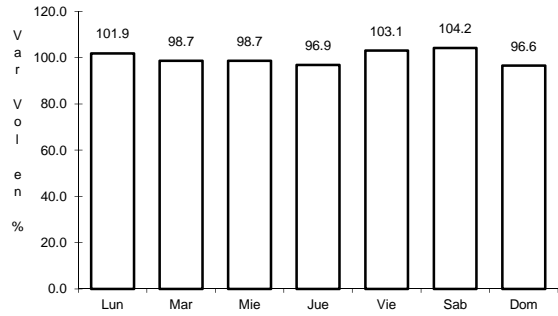
Tipo: 1

Sent: 0

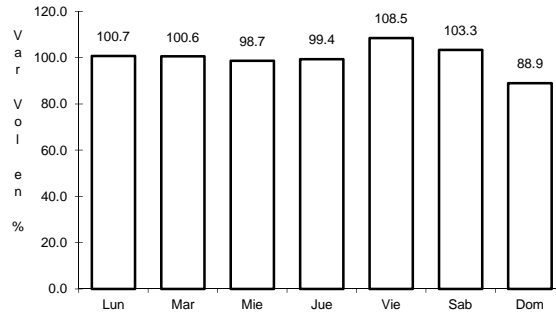
26 CARR: Acocotla - Vicente Guerrero

CLAVE: 29560

RUTA: MEX-TLAX



Km: 0.00                      Tipo: 3                      Sent: 0

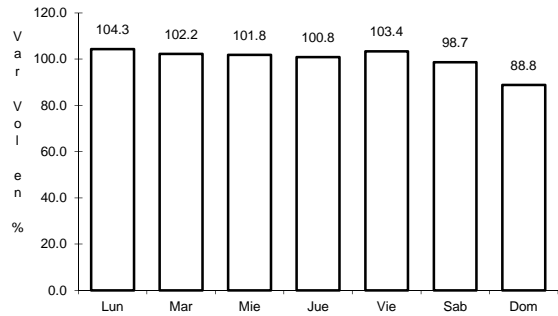


Km: 37.70                      Tipo: 1                      Sent: 0

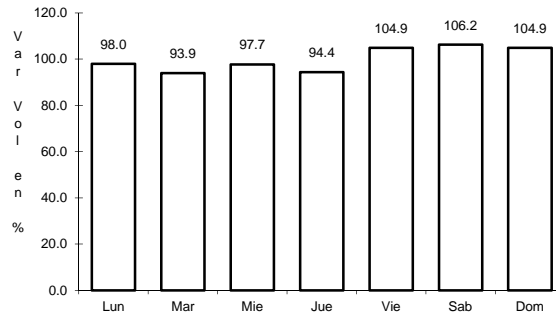
27 CARR: Apizaco - Emiliano Zapata

CLAVE: 29033

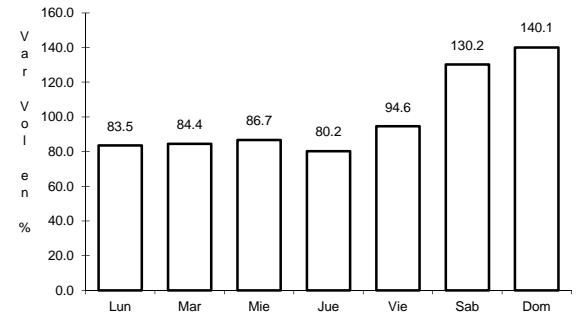
RUTA: TLAX-MEX-136



Km: 0.00                      Tipo: 3                      Sent: 0



Km: 16.00                      Tipo: 1                      Sent: 0

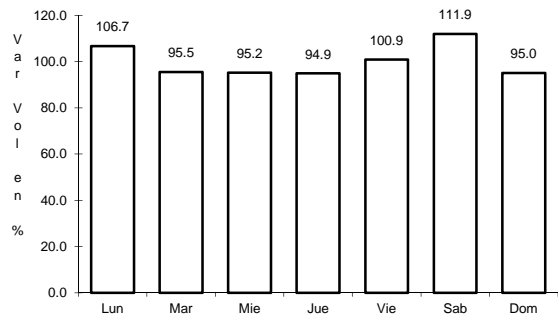


Km: 37.00                      Tipo: 1                      Sent: 0

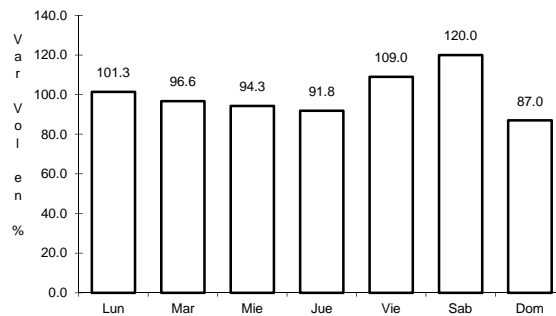
28 CARR: Calpulpan - El Ocote

CLAVE: 00054

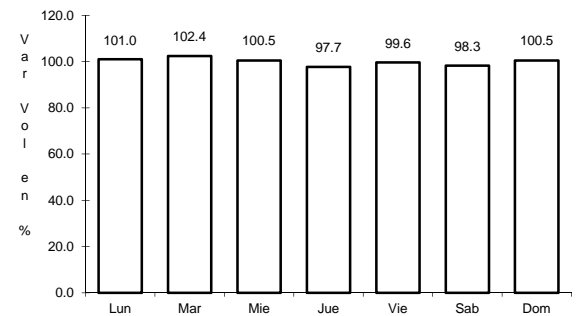
RUTA: MEX-HGO



Km: 0.00                      Tipo: 3                      Sent: 0



Km: 34.92                      Tipo: 3                      Sent: 0



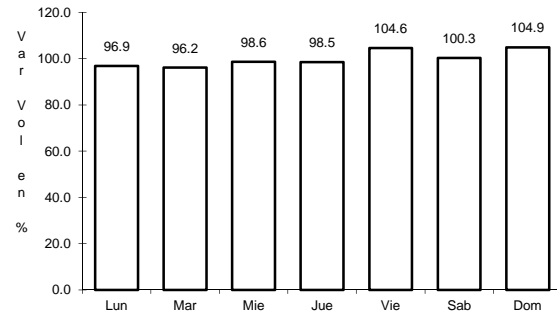
Km: 70.44                      Tipo: 1                      Sent: 0



29 CARR: Calpulalpan - Nanacamilpa

CLAVE: 29034

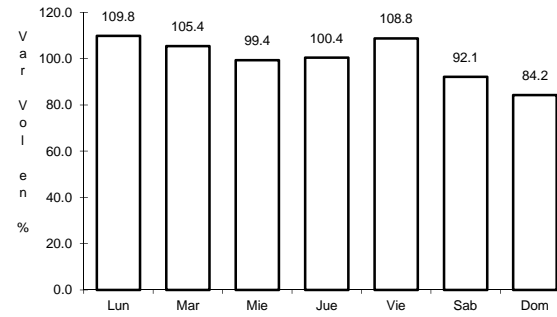
RUTA: TLAX-MEX-136



Km: 0.00

Tipo: 3

Sent: 0



Km: 15.50

Tipo: 1

Sent: 0