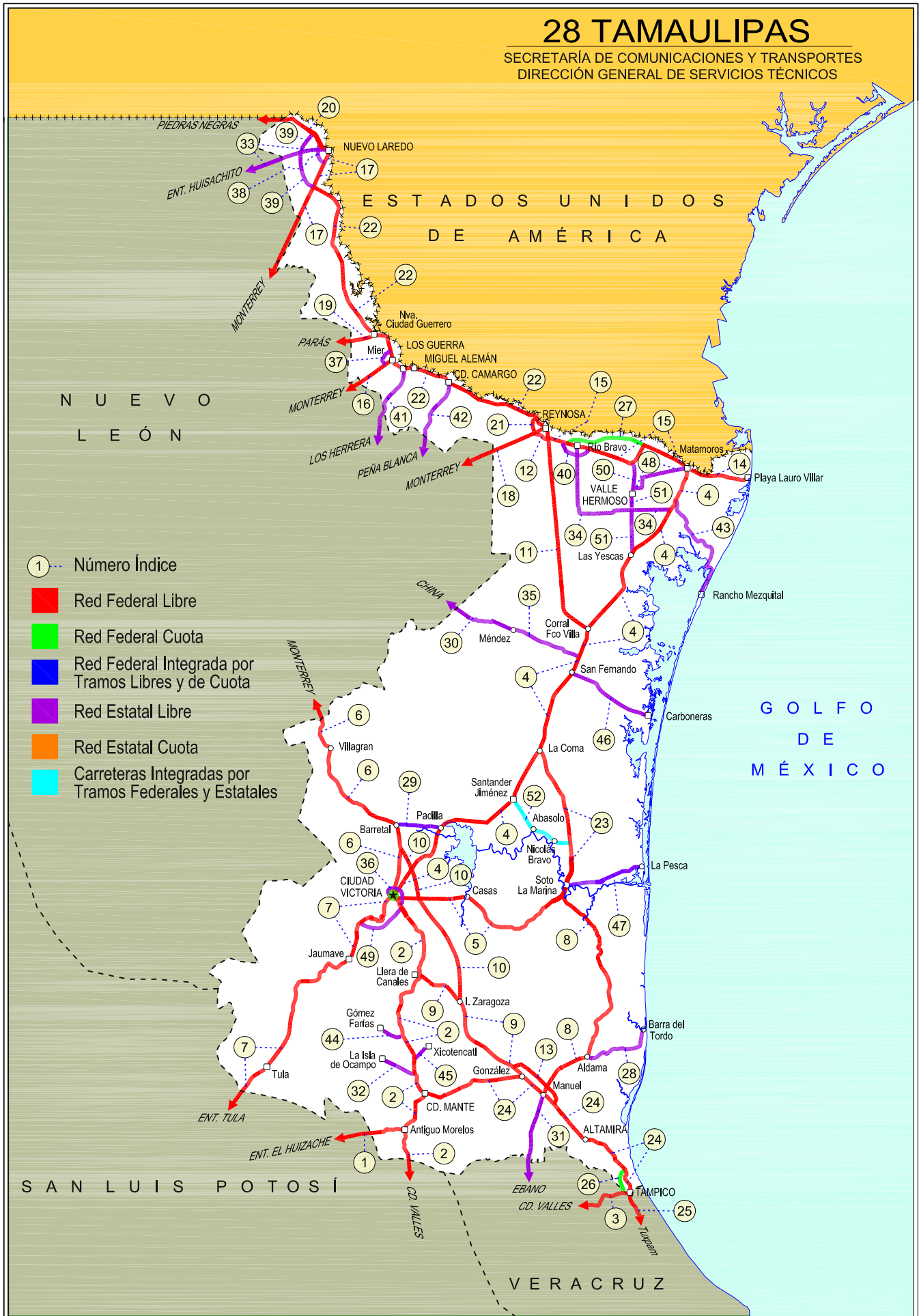


# TAMAULIPAS

NO. INDICE	CARRETERA	ruta
---RED FEDERAL LIBRE---		
1	Antiguo Morelos - Ent. El Huizache	MEX-080
2	Cd. Valles - Cd. Victoria	MEX-085
3	Cd. Valles - Tampico	MEX-070
4	Cd. Victoria - Matamoros	MEX-101-180
5	Cd. Victoria - Soto La Marina	MEX-070
6	Ciudad Victoria - Monterrey	MEX-085
7	Ent. Tula - Cd. Victoria	MEX-101
8	Estación Manuel - T. C. (Cd. Victoria - Soto La Marina)	MEX-180
9	González - Llera de Canales	MEX-081
10	Ignacio Zaragoza - T. C. (Ciudad Victoria - Monterrey)	MEX-083
11	Las Urracas - T. C. (Matamoros - Reynosa)	MEX-097
12	Libramiento de Reynosa	MEX-040
13	Libramiento Estación Manuel - González	MEX-085
14	Matamoros - Playa Lauro Villar	MEX-002
15	Matamoros - Reynosa	MEX-002
16	Monterrey - Mier	MEX-054
17	Monterrey - Nuevo Laredo (Libre)	MEX-085
18	Monterrey - Reynosa (Libre)	MEX-040
19	Paras - Nueva Ciudad Guerrero	MEX-030
20	Piedras Negras - Nuevo Laredo	MEX-002
21	Ramal de Acceso a Puente Anzaldúas	MEX
22	Reynosa - Nuevo Laredo	MEX-002
23	Soto La Marina - La Coma	MEX-180
24	Tampico - Cd. Mante	MEX-080
25	Túxpam - Tampico	MEX-180
---RED FEDERAL DE CUOTA---		
26	Libramiento Poniente de Tampico (Cuota)	MEX-070D
27	Matamoros - Reynosa (Cuota)	MEX-002D
---RED ESTATAL LIBRE---		
28	Aldama - Barra El Tordo	TAM
29	Barretal - Nueva Villa de Padilla	TAM-001
30	China - Méndez	NL-TAM
31	Ébano - Estación Manuel	SLP-TAM
32	El Limón - Ocampo	TAM-019
33	Ent. Huisachito - Nuevo Laredo	NL-001-TAM
34	Ent. Las Blancas - Río Bravo	TAM-003
35	La Joya - Méndez	TAM
36	Libramiento de Cd. Victoria	TAM
37	Libramiento de Mier	TAMPS
38	Libramiento de Nuevo Laredo	TAM
39	Libramiento de Nuevo Laredo II	TAM
40	Libramiento de Río Bravo	TAM
41	Los Guerra - Los Herrerias	TAM-NL
42	Peña Blanca - Cd. Camargo	NL-TAM
43	Potrero Nuevo - Rancho El Mezquital	TAM
44	Ramal a Gómez Farías	TAM-020
45	Ramal a Xicoténcatl	TAM
46	San Fernando - Carboneras	TAM
47	Soto La Marina - La Pesca	TAM-070
48	T. C. (Valle Hermoso - Empalme) - Matamoros	TAM-005
49	T. C. Libramiento Cd. Victoria - San Antonio	TAM-126
50	Valle Hermoso - Empalme	TAM-004
51	Valle Hermoso - Las Yescas	TAM
---CARRETERAS INTEGRADAS POR TRAMOS FEDERALES Y ESTATALES---		
52	Santander Jiménez - Ent. El Ojito	MEX-107-TAM

# 28 TAMAUULIPAS

SECRETARÍA DE COMUNICACIONES Y TRANSPORTES  
DIRECCIÓN GENERAL DE SERVICIOS TÉCNICOS



TAMAULIPAS

1 CARR: Antigua Morelos - Ent. El Huizache

CLAVE: 00136

RUTA: MEX-080

AÑO: 2012

LUGAR	ESTACION				CLASIFICACION VEHICULAR EN PORCIENTO										COORDENADAS					
	KM	TE	SC	TDPA	M	A	B	C2	C3	T3S2	T3S3	T3S2R4	OTROS	A	B	C	K'	D	LATITUD	LONGITUD
Antigua Morelos	0.00	3	0	2323	5.2	78.3	1.4	9.6	2.2	2.0	1.0	0.2	0.1	83.5	1.4	15.1	0.091	0.500	22.554852	-99.098740
Nuevo Morelos	19.28	1	0	1214	3.7	76.0	2.2	9.7	3.5	3.0	1.0	0.5	0.4	79.7	2.2	18.1	0.095	0.501	22.540347	-99.213987
Lim. Edos. Term. Tamps. Ppia. S. L. P.	25.00																			
El Naranjo	32.00	1	0	4424	3.4	79.4	1.6	8.4	1.8	3.9	1.0	0.2	0.3	82.8	1.6	15.6	0.135	0.509	22.526890	-99.316692
El Naranjo	32.00	3	0	1773	4.6	77.0	2.7	8.7	3.2	2.5	0.9	0.2	0.2	81.6	2.7	15.7	0.092	0.501	22.518770	-99.336880
Cd. del Maiz	86.00	3	0	3223	0.7	83.3	3.6	7.2	1.5	2.7	0.8	0.2	0.0	84.0	3.6	12.4	0.098	0.502	22.412517	-99.619980
T. Der. Tula	141.21	3	0	2738	2.7	73.9	3.8	6.8	5.4	4.4	1.0	1.0	1.0	76.6	3.8	19.6	0.074	0.504	22.738837	-99.980627
T. C. San Luis Potosí - Matehuala (Ent. El Huizache)	198.83	1	0	2977	5.0	72.2	2.5	6.0	5.0	4.8	1.9	1.6	1.0	77.2	2.5	20.3	0.075	0.518	22.930973	-100.448095

2 CARR: Cd. Valles - Cd. Victoria

CLAVE: 00509

RUTA: MEX-085

AÑO: 2012

LUGAR	ESTACION				CLASIFICACION VEHICULAR EN PORCIENTO										COORDENADAS					
	KM	TE	SC	TDPA	M	A	B	C2	C3	T3S2	T3S3	T3S2R4	OTROS	A	B	C	K'	D	LATITUD	LONGITUD
Cd. Valles	0.00	3	0	6564	1.6	73.8	3.4	11.5	2.3	3.6	1.4	1.8	0.6	75.4	3.4	21.2	0.082	0.509	22.004752	-99.007118
Lim. Edos. Term. S. L. P. Ppia. Tamps.	50.40																			
Antigua Morelos	66.90	1	0	2677	4.2	73.0	3.4	9.5	2.4	3.3	1.4	2.4	0.4	77.2	3.4	19.4	0.078	0.503	22.547951	-99.078183
Antigua Morelos	66.90	3	0	3525	3.5	74.8	3.0	9.2	2.2	3.4	1.6	1.4	0.9	78.3	3.0	18.7	0.090	0.518	22.560105	-99.078003
Cd. Mante	98.00	1	0	6164	4.2	75.3	2.9	6.4	3.4	4.2	1.3	1.7	0.6	79.5	2.9	17.6	0.091	0.504	22.711669	-98.989436
T. Izq. Ocampo	110.00	3	0	3333	7.4	75.8	1.8	11.2	1.6	1.7	0.3	0.1	0.1	83.2	1.8	15.0	0.082	0.502	22.838736	-99.024308
T. Izq. Gómez Farías	132.84	3	0	1744	4.7	78.4	4.3	8.1	2.4	1.3	0.6	0.1	0.1	83.1	4.3	12.6	0.101	0.503	23.030353	-99.093854
T. Izq. Llera de Canales	170.00	3	0	4089	0.8	86.1	3.1	5.9	1.0	2.4	0.3	0.1	0.3	86.9	3.1	10.0	0.088	0.501	23.310163	-99.018604
T. Der. González	172.50	3	0	2374	0.9	82.2	5.1	6.2	1.9	1.8	0.9	0.2	0.8	83.1	5.1	11.8	0.100	0.517	23.321745	-98.998067
Cd. Victoria	232.00	1	0	2240	1.3	83.6	3.8	7.2	1.3	1.6	1.1	0.0	0.1	84.9	3.8	11.3	0.112	0.510	23.659700	-99.096354

3 CARR: Cd. Valles - Tampico

CLAVE: 00138

RUTA: MEX-070

AÑO: 2012

LUGAR	ESTACION				CLASIFICACION VEHICULAR EN PORCIENTO										COORDENADAS					
	KM	TE	SC	TDPA	M	A	B	C2	C3	T3S2	T3S3	T3S2R4	OTROS	A	B	C	K'	D	LATITUD	LONGITUD
Cd. Valles	0.00	3	0	9121	1.9	67.7	5.6	9.3	5.9	5.3	2.4	0.9	1.0	69.6	5.6	24.8	0.091	0.501	21.975960	-98.963459
T. Der. Santa Elena	15.25	3	0	6398	1.0	69.1	3.4	10.3	6.4	5.1	2.7	1.5	0.5	70.1	3.4	26.5	0.085	0.521	21.959420	-98.881262
Tamuín	29.60	1	0	5900	1.1	70.6	3.3	8.6	5.0	6.2	2.5	1.8	0.9	71.7	3.3	25.0	0.082	0.501	21.995186	-98.779955
Ébano	79.00	1	0	4718	1.6	63.4	4.7	11.5	3.7	7.1	3.7	3.6	0.7	65.0	4.7	30.3	0.091	0.505	22.204272	-98.405593
Ébano	79.00	3	0	4986	1.5	66.2	3.7	12.0	2.4	7.6	2.6	3.2	0.8	67.7	3.7	28.6	0.090	0.502	22.211589	-98.360326
Lim. Edos. Term. S. L. P. Ppia. Ver.	83.57																			
T. Der. Pánuco	103.00	1	0	5877	3.0	67.0	1.9	10.6	5.6	5.9	3.2	1.8	1.0	70.0	1.9	28.1	0.078	0.501	22.154965	-98.156448

## TAMAULIPAS

3 CARR : Cd. Valles - Tampico

CLAVE: 00138

RUTA: MEX-070

AÑO: 2012

LUGAR	ESTACION				CLASIFICACION VEHICULAR EN PORCIENTO													COORDENADAS		
	KM	TE	SC	TDPA	M	A	B	C2	C3	T3S2	T3S3	T3S2R4	OTROS	A	B	C	K'	D	LATITUD	LONGITUD
T. Der. Pánuco	103.00	3	0	6463	0.4	60.7	3.3	13.8	9.5	6.0	3.1	2.4	0.8	61.1	3.3	35.6	0.084	0.503	22.159439	-98.147968
T. C. Anáhuac - El Prieto	128.40	1	1	4031	0.7	72.3	2.5	12.0	3.7	3.7	2.3	2.1	0.7	73.0	2.5	24.5	0.096	0.506	22.214590	-97.948222
T. C. Anáhuac - El Prieto	128.40	1	2	4124	0.5	68.8	2.8	14.1	4.2	4.0	2.6	2.2	0.8	69.3	2.8	27.9	0.092	0.506	22.214826	-97.948274
T. C. Anáhuac - El Prieto	128.40	3	1	5918	1.2	67.9	2.9	10.7	3.2	6.3	3.4	3.7	0.7	69.1	2.9	28.0	0.088	0.509	22.216351	-97.940680
T. C. Anáhuac - El Prieto	128.40	3	2	6143	0.7	64.8	3.2	12.2	3.5	7.1	3.7	4.0	0.8	65.5	3.2	31.3	0.086	0.509	22.216666	-97.940765
Lim. Edos. Term. Ver. Ppia. Tamps.	133.81																			
Tampico	138.00	1	1	8014	1.0	78.1	2.2	7.0	1.9	4.7	2.4	2.2	0.5	79.1	2.2	18.7	0.088	0.512	22.227024	-97.893827
Tampico	138.00	1	2	8411	1.3	75.8	2.4	7.5	2.0	5.1	2.8	2.5	0.6	77.1	2.4	20.5	0.081	0.512	22.227066	-97.893845

4 CARR : Cd. Victoria - Matamoros

CLAVE: 28139

RUTA: MEX-101-180

AÑO: 2012

LUGAR	ESTACION				CLASIFICACION VEHICULAR EN PORCIENTO													COORDENADAS		
	KM	TE	SC	TDPA	M	A	B	C2	C3	T3S2	T3S3	T3S2R4	OTROS	A	B	C	K'	D	LATITUD	LONGITUD
Cd. Victoria	0.00																			
X. C. Libramiento de Cd. Victoria	5.00	3	1	6174	2.1	86.0	1.4	5.4	0.8	2.4	0.9	0.7	0.3	88.1	1.4	10.5	0.105	0.510	23.767235	-99.112057
X. C. Libramiento de Cd. Victoria	5.00	3	2	6415	2.0	84.8	1.6	5.9	1.0	2.6	1.0	0.8	0.3	86.8	1.6	11.6	0.126	0.510	23.767328	-99.112221
T. Izq. Barretal	46.50	1	0	5530	0.9	61.6	4.2	6.6	2.1	15.1	3.4	5.2	0.9	62.5	4.2	33.3	0.102	0.516	24.037584	-98.905139
T. Der. Las Juntas	80.05	1	0	4404	0.6	51.6	6.0	7.9	3.7	18.8	3.8	6.6	1.0	52.2	6.0	41.8	0.089	0.504	24.111540	-98.605188
Santander Jiménez	97.00	3	0	4156	0.8	54.1	5.3	7.6	3.0	17.7	4.1	6.4	1.0	54.9	5.3	39.8	0.101	0.502	24.237731	-98.476659
T. Der. Soto La Marina	129.00	3	1	2492	0.5	54.2	7.4	7.0	3.3	16.8	3.9	6.1	0.8	54.7	7.4	37.9	0.097	0.502	24.474954	-98.339707
T. Der. Soto La Marina	129.00	3	2	2470	0.9	50.6	7.7	7.8	3.7	17.6	4.3	6.5	0.9	51.5	7.7	40.8	0.096	0.502	24.474667	-98.339946
San Fernando	175.00	3	0	4909	0.7	54.2	7.0	7.5	3.5	16.1	4.1	6.0	0.9	54.9	7.0	38.1	0.094	0.511	24.863232	-98.139763
T. Izq. Reynosa	202.00	1	0	7460	0.7	60.1	5.0	8.1	2.3	13.5	4.5	4.9	0.9	60.8	5.0	34.2	0.108	0.504	25.058401	-98.070193
Santa Teresa	233.00	1	0	3353	0.2	61.1	5.3	10.7	2.1	9.3	4.1	6.3	0.9	61.3	5.3	33.4	0.111	0.528	25.273795	-97.863113
T. Izq. Valle Hermoso	254.50	1	0	3789	0.3	60.8	6.6	10.4	2.8	8.6	4.1	5.5	0.9	61.1	6.6	32.3	0.110	0.512	25.443175	-97.820514
T. Izq. Jarita	286.00	3	1	2190	0.4	73.2	4.3	9.4	1.9	5.8	1.8	2.5	0.7	73.6	4.3	22.1	0.092	0.528	25.679502	-97.590980
T. Izq. Jarita	286.00	3	2	2453	0.5	70.4	4.5	10.2	2.0	6.6	2.1	2.9	0.8	70.9	4.5	24.6	0.114	0.528	25.679502	-97.590980
Matamoros	312.00	1	1	7555	0.9	73.3	3.5	9.2	1.0	7.3	1.6	2.4	0.8	74.2	3.5	22.3	0.078	0.502	25.786154	-97.530850
Matamoros	312.00	1	2	7623	0.8	73.2	3.7	8.6	1.2	7.7	1.7	2.2	0.9	74.0	3.7	22.3	0.087	0.502	25.786182	-97.530951

5 CARR : Cd. Victoria - Soto La Marina

CLAVE: 28009

RUTA: MEX-070

AÑO: 2012

LUGAR	ESTACION				CLASIFICACION VEHICULAR EN PORCIENTO													COORDENADAS		
	KM	TE	SC	TDPA	M	A	B	C2	C3	T3S2	T3S3	T3S2R4	OTROS	A	B	C	K'	D	LATITUD	LONGITUD
Cd. Victoria	0.00	3	1	11427	2.3	76.0	4.2	7.6	2.6	2.1	2.4	2.7	0.1	78.3	4.2	17.5	0.154	0.517	23.718919	-99.090876

TAMAULIPAS

5 CARR : Cd. Victoria - Soto La Marina

CLAVE: 28009

RUTA: MEX-070

AÑO : 2012

LUGAR	ESTACION				CLASIFICACION VEHICULAR EN PORCIENTO														COORDENADAS	
	KM	TE	SC	TDPA	M	A	B	C2	C3	T3S2	T3S3	T3S2R4	OTROS	A	B	C	K'	D	LATITUD	LONGITUD
Cd. Victoria	0.00	3	2	10667	2.2	74.0	4.5	8.5	2.7	2.4	2.5	3.1	0.1	76.2	4.5	19.3	0.118	0.517	23.719182	-99.090841
Soto La Marina	116.80	1	0	3385	0.7	72.5	3.7	14.3	1.8	4.7	1.3	0.6	0.4	73.2	3.7	23.1	0.097	0.517	23.758844	-98.207151

6 CARR : Ciudad Victoria - Monterrey

CLAVE: 00462

RUTA: MEX-085

AÑO : 2012

LUGAR	ESTACION				CLASIFICACION VEHICULAR EN PORCIENTO														COORDENADAS	
	KM	TE	SC	TDPA	M	A	B	C2	C3	T3S2	T3S3	T3S2R4	OTROS	A	B	C	K'	D	LATITUD	LONGITUD
Cd. Victoria	0.00	3	1	8130	1.4	72.1	4.3	3.4	3.0	6.4	4.6	4.0	0.8	73.5	4.3	22.2	0.100	0.506	23.776718	-99.136883
Cd. Victoria	0.00	3	2	7923	1.5	68.9	4.8	4.2	3.2	6.9	5.4	4.2	0.9	70.4	4.8	24.8	0.083	0.506	23.776758	-99.137059
T. Der. Güemez	19.60	3	0	6639	0.6	69.1	3.8	8.2	2.6	5.0	5.7	4.8	0.2	69.7	3.8	26.5	0.094	0.510	23.917663	-99.111919
T. Izq. Santa Engracia	27.35	3	0	6821	0.3	64.4	3.3	9.3	2.8	8.5	3.2	7.3	0.9	64.7	3.3	32.0	0.077	0.505	23.990595	-99.111161
Barretal	39.00	3	0	6620	0.4	63.7	4.1	8.0	3.0	8.5	3.4	8.0	0.9	64.1	4.1	31.8	0.081	0.519	24.090453	-99.136747
T. Izq. Hidalgo y La Mesa	77.50	1	0	5510	0.4	60.3	4.0	7.9	2.9	10.2	3.5	9.8	1.0	60.7	4.0	35.3	0.085	0.501	24.244675	-99.425801
Villagrán	106.00	1	0	5011	0.5	53.2	5.3	10.6	3.7	10.9	4.4	10.3	1.1	53.7	5.3	41.0	0.084	0.507	24.464009	-99.496306
T. Izq. Villa Mainero	118.00	3	0	5386	0.7	55.2	5.0	9.7	3.9	10.3	3.9	10.5	0.8	55.9	5.0	39.1	0.090	0.507	24.572274	-99.547000
Lim. Edos. Term. Tamps. Ppia. N. L.	126.20																			
Linares	154.00	1	0	6905	0.8	56.9	3.7	12.5	2.9	10.4	3.3	8.7	0.8	57.7	3.7	38.6	0.077	0.504	24.838143	-99.560259
La Laja	171.00	3	1	5097	0.5	64.7	4.3	9.9	3.1	7.3	2.9	6.6	0.7	65.2	4.3	30.5	0.108	0.510	24.921758	-99.688276
La Laja	171.00	3	2	4891	0.4	61.0	4.5	10.7	3.6	8.7	2.9	7.4	0.8	61.4	4.5	34.1	0.097	0.510	24.921727	-99.688357
Montemorelos	205.00	3	1	7874	0.6	80.6	3.5	4.0	1.8	4.4	1.8	2.6	0.7	81.2	3.5	15.3	0.089	0.509	25.195516	-99.889636
Montemorelos	205.00	3	2	8358	1.1	78.4	3.7	4.2	2.0	5.1	2.0	2.8	0.7	79.5	3.7	16.8	0.106	0.509	25.195406	-99.889583
Allende	227.45	3	1	11219	0.7	79.8	4.8	5.9	2.2	2.5	1.7	2.0	0.4	80.5	4.8	14.7	0.088	0.500	25.291359	-100.045859
Allende	227.45	3	2	11193	0.8	77.6	5.4	6.5	2.4	2.7	2.1	2.1	0.4	78.4	5.4	16.2	0.104	0.500	25.291167	-100.045766
El Cercado	249.00	1	1	18670	0.8	81.5	4.2	6.3	1.6	2.9	0.9	1.5	0.3	82.3	4.2	13.5	0.079	0.511	25.397354	-100.126295
El Cercado	249.00	1	2	19496	0.8	79.4	4.9	7.0	1.7	3.2	1.0	1.7	0.3	80.2	4.9	14.9	0.089	0.511	25.397214	-100.126367
T. Der. Las Huertas	257.00	3	1	20283	0.8	84.0	4.0	4.5	1.4	2.3	1.3	1.3	0.4	84.8	4.0	11.2	0.094	0.501	25.467213	-100.173531
T. Der. Las Huertas	257.00	3	2	20334	0.7	82.5	4.5	5.1	1.5	2.7	1.3	1.3	0.4	83.2	4.5	12.3	0.120	0.501	25.467173	-100.173748
T. Izq. el Barro	266.00	3	1	23614	0.7	84.4	3.5	4.2	2.0	2.1	1.3	1.2	0.6	85.1	3.5	11.4	0.087	0.504	25.530549	-100.212733
T. Izq. el Barro	266.00	3	2	23957	0.7	82.8	4.0	4.7	2.3	2.2	1.4	1.2	0.7	83.5	4.0	12.5	0.118	0.504	25.530249	-100.212948
La Estanzuela	274.82	3	1	45337	1.2	82.5	3.1	4.8	1.9	3.0	1.2	1.6	0.7	83.7	3.1	13.2	0.109	0.503	25.589441	-100.259096
La Estanzuela	274.82	3	2	45810	1.2	81.2	3.2	5.0	2.3	3.3	1.2	1.8	0.8	82.4	3.2	14.4	0.073	0.503	25.589437	-100.259296
Monterrey (Alta)	287.00	1	1	37346	0.4	84.6	3.1	4.3	0.6	2.8	2.5	1.0	0.7	85.0	3.1	11.9	0.067	0.507	25.601981	-100.266226
Monterrey (Baja)	287.00	1	1	23914	1.8	83.4	3.6	4.3	0.9	2.2	1.9	1.0	0.9	85.2	3.6	11.2	0.078	0.502	25.602041	-100.266102
Monterrey (Baja)	287.00	1	2	23748	1.3	82.5	3.9	4.6	1.1	2.4	2.0	1.2	1.0	83.8	3.9	12.3	0.065	0.502	25.601378	-100.266182
Monterrey (Alta)	287.00	1	2	36262	0.5	82.3	3.6	4.8	0.6	3.4	2.8	1.2	0.8	82.8	3.6	13.6	0.069	0.507	25.601418	-100.266104

## TAMAULIPAS

7 CARR: Ent. Tula - Cd. Victoria

CLAVE: 00179

RUTA: MEX-101

AÑO: 2012

LUGAR	ESTACION				CLASIFICACION VEHICULAR EN PORCIENTO										COORDENADAS					
	KM	TE	SC	TDPA	M	A	B	C2	C3	T3S2	T3S3	T3S2R4	OTROS	A	B	C	K'	D	LATITUD	LONGITUD
T. C. Antiguo Morelos - El Huizache	0.00	3	0	2837	2.5	80.7	3.2	4.0	2.9	3.0	1.2	1.5	1.0	83.2	3.2	13.6	0.072	0.523	22.738034	-99.967947
Lim. Edos. Term. S. L. P. Ppia. Tamps.	2.40																			
T. Der. Tula (1° Acceso)	38.00	1	0	4174	1.8	44.8	4.0	10.4	2.9	16.8	5.8	12.3	1.2	46.6	4.0	49.4	0.081	0.502	22.983034	-99.736000
T. Der. Tula (2° Acceso)	41.95	3	0	3410	1.0	46.2	4.0	10.8	2.7	16.0	5.0	13.1	1.2	47.2	4.0	48.8	0.077	0.514	23.019628	-99.715137
Jaumave	112.68	1	0	4522	0.7	52.6	3.1	7.3	2.2	16.1	4.9	12.1	1.0	53.3	3.1	43.6	0.068	0.509	23.400273	-99.402078
Jaumave	112.68	3	0	4646	1.5	49.8	3.7	8.0	2.5	13.7	5.7	14.1	1.0	51.3	3.7	45.0	0.082	0.500	23.418728	-99.373746
Cd. Victoria	180.00	1	1	6552	9.9	80.7	1.0	4.2	0.3	1.6	1.3	0.9	0.1	90.6	1.0	8.4	0.117	0.503	23.710617	-99.176357
Cd. Victoria	180.00	1	2	6487	7.5	82.4	1.1	4.6	0.2	1.7	1.3	1.1	0.1	89.9	1.1	9.0	0.081	0.503	23.710693	-99.176434

8 CARR: Estación Manuel - T. C. (Cd. Victoria - Soto La Marina)

CLAVE: 28294

RUTA: MEX-180

AÑO: 2012

LUGAR	ESTACION				CLASIFICACION VEHICULAR EN PORCIENTO										COORDENADAS					
	KM	TE	SC	TDPA	M	A	B	C2	C3	T3S2	T3S3	T3S2R4	OTROS	A	B	C	K'	D	LATITUD	LONGITUD
Estación Manuel	0.00	3	0	2206	1.0	68.6	5.3	12.1	2.6	5.8	2.8	1.2	0.6	69.6	5.3	25.1	0.083	0.540	22.762584	-98.309992
T. Der. Aldama	36.00	3	0	3924	2.7	73.0	3.3	12.2	1.4	4.8	1.4	0.7	0.5	75.7	3.3	21.0	0.091	0.520	22.941878	-98.075913
Esperanza	69.00	3	0	1982	1.0	66.4	6.5	13.5	1.9	6.7	2.4	1.2	0.4	67.4	6.5	26.1	0.093	0.530	23.182089	-97.952790
San José de Las Rusias	116.25	3	0	1578	1.1	56.2	7.7	19.9	2.8	6.5	3.7	1.5	0.6	57.3	7.7	35.0	0.106	0.502	23.582403	-98.061693
Estación Manuel - T. C. (Cd. Victoria - S. La Marina)	145.00	1	0	1897	0.5	63.9	6.5	16.0	2.7	6.8	2.2	1.0	0.4	64.4	6.5	29.1	0.096	0.531	23.726649	-98.218440

9 CARR: González - Llera de Canales

CLAVE: 28578

RUTA: MEX-081

AÑO: 2012

LUGAR	ESTACION				CLASIFICACION VEHICULAR EN PORCIENTO										COORDENADAS					
	KM	TE	SC	TDPA	M	A	B	C2	C3	T3S2	T3S3	T3S2R4	OTROS	A	B	C	K'	D	LATITUD	LONGITUD
González	0.00	3	0	3924	1.1	66.2	2.7	3.3	2.6	10.7	7.3	5.1	1.0	67.3	2.7	30.0	0.090	0.512	22.855536	-98.467625
Estación Ignacio Zaragoza	58.50	1	0	4939	1.7	69.0	2.6	3.4	2.3	10.2	5.2	4.6	1.0	70.7	2.6	26.7	0.069	0.502	23.183308	-98.771677
T. C. Cd. Valles - Cd. Victoria	89.00	1	0	1942	1.2	85.5	4.5	5.9	0.4	1.5	0.1	0.7	0.2	86.7	4.5	8.8	0.108	0.505	23.316447	-98.993091

10 CARR: Ignacio Zaragoza - T. C. (Ciudad Victoria - Monterrey)

CLAVE: 28625

RUTA: MEX-083

AÑO: 2012

LUGAR	ESTACION				CLASIFICACION VEHICULAR EN PORCIENTO										COORDENADAS					
	KM	TE	SC	TDPA	M	A	B	C2	C3	T3S2	T3S3	T3S2R4	OTROS	A	B	C	K'	D	LATITUD	LONGITUD
T. C. González - Llera de Canales	0.00	3	0	3040	0.9	50.9	2.4	4.3	4.0	14.3	5.8	16.6	0.8	51.8	2.4	45.8	0.073	0.547	23.206981	-98.786798
T. C. Ciudad Victoria - Monterrey	94.30	1	0	2726	0.9	43.6	4.3	4.2	5.6	15.6	6.4	18.5	0.9	44.5	4.3	51.2	0.062	0.510	23.955356	-99.100030

TAMAULIPAS

11 CARR: Las Urracas - T. C. (Matamoras - Reynosa)

CLAVE: 28029

RUTA: MEX-097

AÑO: 2012

LUGAR	ESTACION				CLASIFICACION VEHICULAR EN PORCIENTO										COORDENADAS					
	KM	TE	SC	TDPA	M	A	B	C2	C3	T3S2	T3S3	T3S2R4	OTROS	A	B	C	K'	D	LATITUD	LONGITUD
T. C. Cd. Victoria - Matamoras	0.00	3	0	3097	0.4	61.0	5.4	10.9	4.0	7.6	5.6	3.9	1.2	61.4	5.4	33.2	0.116	0.501	25.075991	-98.074759
La Nutria	41.00	1	0	3040	0.6	60.2	4.3	9.8	3.4	10.3	5.9	4.4	1.1	60.8	4.3	34.9	0.099	0.505	25.381492	-98.218513
Santo Domingo	91.50	1	0	3838	0.6	58.7	3.8	13.0	1.8	14.9	3.8	2.5	0.9	59.3	3.8	36.9	0.087	0.567	25.826164	-98.259297
T. C. Matamoras - Reynosa	113.25	1	1	3629	4.6	63.5	2.9	15.8	2.9	5.6	2.7	1.1	0.9	68.1	2.9	29.0	0.113	0.505	25.976107	-98.273486
T. C. Matamoras - Reynosa	113.25	1	2	3699	2.0	62.8	3.2	17.8	2.9	6.1	3.1	1.1	1.0	64.8	3.2	32.0	0.097	0.505	25.976107	-98.273486

12 CARR: Libramiento de Reynosa

CLAVE: 28008

RUTA: MEX-040

AÑO: 2012

LUGAR	ESTACION				CLASIFICACION VEHICULAR EN PORCIENTO										COORDENADAS					
	KM	TE	SC	TDPA	M	A	B	C2	C3	T3S2	T3S3	T3S2R4	OTROS	A	B	C	K'	D	LATITUD	LONGITUD
T. C. Matamoras - Reynosa	0.00	3	1	22748	0.5	84.4	1.9	3.7	1.3	4.7	1.8	0.8	0.9	84.9	1.9	13.2	0.081	0.522	26.043289	-98.296236
T. C. Matamoras - Reynosa	0.00	3	2	22944	0.6	82.5	2.1	4.2	1.5	5.1	2.1	0.9	1.0	83.1	2.1	14.8	0.084	0.522	26.042982	-98.296423
T. C. Monterrey - Reynosa	10.00	1	1	22445	0.6	83.5	1.3	7.0	1.2	3.0	1.8	0.8	0.8	84.1	1.3	14.6	0.086	0.526	26.048736	-98.350972
T. C. Monterrey - Reynosa	10.00	1	2	22233	0.5	81.9	1.4	7.8	1.3	3.5	1.9	0.8	0.9	82.4	1.4	16.2	0.089	0.526	26.048590	-98.350946

13 CARR: Libramiento Estación Manuel - González

CLAVE: 28002

RUTA: MEX-085

AÑO: 2012

LUGAR	ESTACION				CLASIFICACION VEHICULAR EN PORCIENTO										COORDENADAS					
	KM	TE	SC	TDPA	M	A	B	C2	C3	T3S2	T3S3	T3S2R4	OTROS	A	B	C	K'	D	LATITUD	LONGITUD
T. C. Tampico - Cd. Mante	0.00	3	0	3058	0.7	52.9	3.7	8.5	4.1	12.9	6.2	10.0	1.0	53.6	3.7	42.7	0.079	0.542	22.713592	-98.288215
T. C. Tampico - Cd. Mante	24.80	1	0	3711	1.0	49.5	4.8	8.2	2.7	10.6	6.4	15.7	1.1	50.5	4.8	44.7	0.075	0.503	22.845101	-98.437766

14 CARR: Matamoras - Playa Lauro Villar

CLAVE: 28078

RUTA: MEX-002

AÑO: 2012

LUGAR	ESTACION				CLASIFICACION VEHICULAR EN PORCIENTO										COORDENADAS					
	KM	TE	SC	TDPA	M	A	B	C2	C3	T3S2	T3S3	T3S2R4	OTROS	A	B	C	K'	D	LATITUD	LONGITUD
Matamoras	0.00	3	1	6060	0.8	86.4	2.2	4.2	0.8	2.0	2.3	0.5	0.8	87.2	2.2	10.6	0.112	0.501	25.839093	-97.445953
Matamoras	0.00	3	2	6092	1.0	84.4	2.5	4.9	0.8	2.3	2.7	0.5	0.9	85.4	2.5	12.1	0.097	0.501	25.839188	-97.445906
Playa Lauro Villar	37.00																			

15 CARR: Matamoras - Reynosa

CLAVE: 28077

RUTA: MEX-002

AÑO: 2012

LUGAR	ESTACION				CLASIFICACION VEHICULAR EN PORCIENTO										COORDENADAS					
	KM	TE	SC	TDPA	M	A	B	C2	C3	T3S2	T3S3	T3S2R4	OTROS	A	B	C	K'	D	LATITUD	LONGITUD
Matamoras	0.00	3	0	10168	0.5	83.3	1.5	5.7	2.8	3.2	1.2	0.9	0.9	83.8	1.5	14.7	0.108	0.512	25.918537	-97.575671



## TAMAULIPAS

15 CARR: Matamoros - Reynosa

CLAVE: 28077

RUTA: MEX-002

AÑO: 2012

LUGAR	ESTACION				CLASIFICACION VEHICULAR EN PORCIENTO													COORDENADAS		
	KM	TE	SC	TDPA	M	A	B	C2	C3	T3S2	T3S3	T3S2R4	OTROS	A	B	C	K'	D	LATITUD	LONGITUD
Empalme	38.00	1	0	5880	2.0	80.2	0.9	8.4	1.2	3.4	1.4	1.4	1.1	82.2	0.9	16.9	0.089	0.503	25.921144	-97.786208
T. Der. Nuevo Progreso	57.00	1	0	4885	0.2	73.7	1.7	10.7	2.0	6.5	2.2	2.3	0.7	73.9	1.7	24.4	0.082	0.511	25.948920	-97.967349
Río Bravo	67.00	1	0	8227	0.2	75.5	1.4	14.7	1.6	3.9	1.2	1.3	0.2	75.7	1.4	22.9	0.084	0.512	25.970662	-98.040703
Río Bravo	67.00	3	1	9966	0.8	78.8	2.2	9.8	1.5	3.3	1.7	1.0	0.9	79.6	2.2	18.2	0.105	0.503	25.998622	-98.139658
Río Bravo	67.00	3	2	9837	0.7	76.9	2.4	10.9	1.6	3.4	1.8	1.2	1.1	77.6	2.4	20.0	0.110	0.503	25.998495	-98.139708
T. Izq. Aeropuerto	85.65	3	1	30691	1.0	81.0	1.8	7.3	1.4	3.8	2.1	0.6	1.0	82.0	1.8	16.2	0.122	0.511	26.020671	-98.230106
T. Izq. Aeropuerto	85.65	3	2	29334	0.5	78.9	2.1	8.7	1.5	4.2	2.3	0.8	1.0	79.4	2.1	18.5	0.127	0.511	26.020374	-98.230397
Reynosa	98.00	1	1	33521	0.5	85.7	1.3	5.8	0.9	2.5	1.9	0.5	0.9	86.2	1.3	12.5	0.085	0.503	26.034885	-98.271642
Reynosa	98.00	1	2	33925	0.6	83.6	1.4	6.6	1.0	2.9	2.3	0.5	1.1	84.2	1.4	14.4	0.080	0.503	26.034701	-98.271164

16 CARR: Monterrey - Mier

CLAVE: 00127

RUTA: MEX-054

AÑO: 2012

LUGAR	ESTACION				CLASIFICACION VEHICULAR EN PORCIENTO													COORDENADAS		
	KM	TE	SC	TDPA	M	A	B	C2	C3	T3S2	T3S3	T3S2R4	OTROS	A	B	C	K'	D	LATITUD	LONGITUD
Monterrey	0.00																			
Apodaca	19.12	1	1	49650	0.4	87.5	2.5	2.9	0.8	2.6	2.2	0.6	0.5	87.9	2.5	9.6	0.073	0.501	25.749277	-100.200643
Apodaca	19.12	1	2	49540	0.8	85.5	2.9	3.0	0.9	3.0	2.6	0.7	0.6	86.3	2.9	10.8	0.075	0.501	25.749222	-100.200897
X. C. Libramiento Noroeste de Monterrey	21.30	3	1	34195	0.8	82.5	2.8	5.7	2.1	3.3	1.2	0.8	0.8	83.3	2.8	13.9	0.101	0.510	25.784861	-100.159139
X. C. Libramiento Noroeste de Monterrey	21.30	3	2	32844	1.1	80.5	3.0	6.3	2.2	3.7	1.4	1.0	0.8	81.6	3.0	15.4	0.080	0.510	25.784993	-100.159325
X. C. Zacatecas - Pesquería	28.15	1	1	8708	1.0	79.3	4.3	7.5	2.9	2.4	1.5	0.7	0.4	80.3	4.3	15.4	0.078	0.503	25.799633	-100.101366
X. C. Zacatecas - Pesquería	28.15	1	2	8591	1.0	78.1	4.5	7.7	3.3	2.6	1.6	0.8	0.4	79.1	4.5	16.4	0.087	0.503	25.799633	-100.101366
X. C. Zacatecas - Pesquería	28.15	3	0	6162	1.0	78.7	2.0	7.1	3.0	4.2	1.7	1.4	0.9	79.7	2.0	18.3	0.081	0.511	25.806829	-100.092927
X. C. Hacienda Guadalupe - Higuera	38.10	1	0	4230	1.3	74.9	2.1	7.9	3.5	3.7	1.9	4.0	0.7	76.2	2.1	21.7	0.080	0.500	25.854333	-100.025506
X. C. Hacienda Guadalupe - Higuera	38.10	3	0	3990	0.6	74.5	4.7	8.0	2.1	3.5	1.0	5.3	0.3	75.1	4.7	20.2	0.088	0.510	25.854864	-100.017784
Dr. González	47.60	1	0	3075	0.8	75.3	3.3	10.2	1.8	3.2	1.2	3.6	0.6	76.1	3.3	20.6	0.091	0.507	25.850866	-99.967676
Dr. González	47.60	3	0	1773	0.4	75.4	3.2	7.3	2.2	3.9	1.7	5.1	0.8	75.8	3.2	21.0	0.087	0.501	25.867227	-99.933950
T. Der. Empalme Los Ramones	74.10	1	0	1478	3.7	72.4	2.6	3.9	0.5	3.9	2.2	9.6	1.2	76.1	2.6	21.3	0.095	0.511	25.924872	-99.720564
Cerralvo	95.95	1	0	2231	0.1	65.7	5.2	12.9	1.6	3.1	2.1	8.4	0.9	65.8	5.2	29.0	0.102	0.506	26.069198	-99.626136
Gral. Treviño	115.80	3	0	2550	0.1	57.8	2.1	8.0	0.8	6.9	3.6	20.4	0.3	57.9	2.1	40.0	0.112	0.500	26.230886	-99.472481
Lim. Edos. Term. N. L. Ppia. Tamps.	131.80																			
Mier	156.21	1	0	2247	0.3	54.3	0.9	5.8	4.6	8.1	4.0	21.8	0.2	54.6	0.9	44.5	0.099	0.502	26.426111	-99.165014

TAMAULIPAS

17 CARR: Monterrey - Nuevo Laredo (Libre)

CLAVE: 00463

RUTA: MEX-085

AÑO: 2012

LUGAR	ESTACION				CLASIFICACION VEHICULAR EN PORCIENTO													COORDENADAS		
	KM	TE	SC	TDPA	M	A	B	C2	C3	T3S2	T3S3	T3S2R4	OTROS	A	B	C	K'	D	LATITUD	LONGITUD
Monterrey	0.00																			
T. Izq. Gral. Escobedo	12.10	3	1	27483	1.7	79.5	3.0	9.1	1.5	2.9	1.1	0.4	0.8	81.2	3.0	15.8	0.080	0.507	25.794440	-100.279747
T. Izq. Gral. Escobedo	12.10	3	2	28194	1.7	78.0	3.6	9.9	1.7	2.9	1.1	0.3	0.8	79.7	3.6	16.7	0.104	0.507	25.794147	-100.280077
X. C. Libramiento Noroeste de Monterrey	16.00	1	1	23914	0.9	78.1	3.3	8.3	1.6	4.0	2.4	0.6	0.8	79.0	3.3	17.7	0.081	0.509	25.824352	-100.262232
X. C. Libramiento Noroeste de Monterrey	16.00	1	2	25379	0.9	76.8	3.3	9.0	1.8	4.1	2.5	0.7	0.9	77.7	3.3	19.0	0.081	0.509	25.824207	-100.262531
X. C. Libramiento Noroeste de Monterrey	16.00	3	1	33614	0.7	72.9	2.4	7.4	2.4	8.6	3.0	1.8	0.8	73.6	2.4	24.0	0.086	0.506	25.835890	-100.254140
X. C. Libramiento Noroeste de Monterrey	16.00	3	2	32867	0.8	70.1	2.7	8.1	2.5	9.6	3.5	1.9	0.8	70.9	2.7	26.4	0.090	0.506	25.835888	-100.254278
X. C. Santa Rosa - Salinas Victoria	20.19	3	1	26057	0.9	65.1	2.2	9.2	3.3	14.6	2.6	1.4	0.7	66.0	2.2	31.8	0.090	0.505	25.861524	-100.236217
X. C. Santa Rosa - Salinas Victoria	20.19	3	2	26593	0.8	62.5	2.4	9.8	3.5	16.0	2.8	1.4	0.8	63.3	2.4	34.3	0.075	0.505	25.861877	-100.236210
Ciénega de Flores	32.00	1	0	15650	1.6	65.6	4.3	9.3	3.6	12.6	1.7	0.4	0.9	67.2	4.3	28.5	0.083	0.523	25.942310	-100.178585
T. Der. Agualeguas	78.23	3	0	4933	0.8	49.3	4.4	9.7	3.5	27.4	2.6	1.4	0.9	50.1	4.4	45.5	0.073	0.508	26.331763	-100.110354
Sabinas Hidalgo	98.90	3	0	4651	0.9	52.4	3.3	11.2	3.8	25.0	1.5	0.9	1.0	53.3	3.3	43.4	0.103	0.507	26.533064	-100.150494
Vallecillos	124.40	3	0	3787	2.8	45.6	4.0	15.4	4.6	22.5	2.5	1.6	1.0	48.4	4.0	47.6	0.080	0.536	26.663181	-99.980553
T. Izq. Anáhuac	156.80	1	0	3636	1.9	53.5	3.9	11.3	3.8	20.6	2.9	1.1	1.0	55.4	3.9	40.7	0.071	0.534	26.874327	-99.832615
T. Izq. Anáhuac	156.80	3	1	6783	1.3	51.2	4.0	7.9	2.9	29.4	1.5	1.0	0.8	52.5	4.0	43.5	0.092	0.531	26.900970	-99.811847
T. Izq. Anáhuac	156.80	3	2	6913	2.2	46.3	4.6	8.7	3.1	31.5	1.6	1.1	0.9	48.5	4.6	46.9	0.108	0.531	26.900748	-99.811500
Lim. Edos. Term. N. L. Ppia. Tamps.	184.56																			
T. Der. Mier	205.90	1	1	7836	1.6	53.3	4.6	8.8	3.6	22.5	2.8	1.9	0.9	54.9	4.6	40.5	0.104	0.519	27.292439	-99.602991
T. Der. Mier	205.90	1	2	7618	5.1	47.0	4.9	9.5	3.7	23.8	2.9	2.1	1.0	52.1	4.9	43.0	0.067	0.519	27.292943	-99.602846
T. Der. Mier	205.90	3	1	5922	1.0	60.4	3.1	5.9	4.7	21.5	1.4	1.1	0.9	61.4	3.1	35.5	0.101	0.512	27.308002	-99.594743
T. Der. Mier	205.90	3	2	5583	0.6	58.2	3.6	6.2	5.2	22.5	1.6	1.1	1.0	58.8	3.6	37.6	0.087	0.512	27.308005	-99.594742
Nuevo Laredo	228.00	1	1	9929	0.7	68.1	2.4	7.7	4.0	14.4	1.2	0.6	0.9	68.8	2.4	28.8	0.082	0.509	27.380336	-99.556108
Nuevo Laredo	228.00	1	2	10312	0.5	64.8	2.6	8.8	4.5	16.0	1.3	0.6	0.9	65.3	2.6	32.1	0.073	0.509	27.380322	-99.556111

18 CARR: Monterrey - Reynosa (Libre)

CLAVE: 00088

RUTA: MEX-040

AÑO: 2012

LUGAR	ESTACION				CLASIFICACION VEHICULAR EN PORCIENTO													COORDENADAS		
	KM	TE	SC	TDPA	M	A	B	C2	C3	T3S2	T3S3	T3S2R4	OTROS	A	B	C	K'	D	LATITUD	LONGITUD
T. C. Monterrey - Mier	0.00																			
Villa Juárez	19.10	1	1	10780	0.3	87.6	3.2	4.2	0.6	1.0	2.1	0.4	0.6	87.9	3.2	8.9	0.078	0.542	25.651792	-100.106391
Villa Juárez	19.10	1	2	10128	0.4	86.0	3.7	4.7	0.6	1.1	2.5	0.4	0.6	86.4	3.7	9.9	0.072	0.542	25.651586	-100.106691
Villa Juárez	19.10	3	1	12737	0.5	83.8	3.2	4.4	1.5	3.0	1.8	1.1	0.7	84.3	3.2	12.5	0.085	0.500	25.630323	-100.074840
Villa Juárez	19.10	3	2	12743	0.6	81.7	3.8	4.8	1.6	3.5	2.0	1.3	0.7	82.3	3.8	13.9	0.083	0.500	25.630437	-100.074650
Puente Cadereyta	30.50	2	1	2112	0.0	58.5	0.4	7.8	4.6	16.2	4.0	3.2	5.3	58.5	0.4	41.1	0.091	0.500	25.601076	-100.005752
Puente Cadereyta	30.50	2	2	2112	0.0	58.5	0.4	7.8	4.6	16.2	4.0	3.2	5.3	58.5	0.4	41.1	0.091	0.500	25.601076	-100.005752

## TAMAULIPAS

18 CARR: Monterrey - Reynosa (Libre)

CLAVE: 00088

RUTA: MEX-040

AÑO: 2012

LUGAR	ESTACION				CLASIFICACION VEHICULAR EN PORCIENTO													COORDENADAS		
	KM	TE	SC	TDPA	M	A	B	C2	C3	T3S2	T3S3	T3S2R4	OTROS	A	B	C	K'	D	LATITUD	LONGITUD
Refinería de Cadereyta	33.00	3	0	5475	0.4	64.0	3.3	15.3	2.8	8.3	3.1	2.1	0.7	64.4	3.3	32.3	0.086	0.517	25.594091	-99.920571
T. Izq. Los Ramones	68.78	3	0	2676	0.1	52.1	3.5	18.2	4.1	15.1	3.9	2.4	0.6	52.2	3.5	44.3	0.093	0.534	25.620653	-99.625651
Gral. Bravo	125.00	1	0	4419	0.1	61.1	2.5	16.4	2.8	10.7	3.5	2.3	0.6	61.2	2.5	36.3	0.083	0.516	25.778947	-99.187859
Lim. Edos. Term. N. L. Ppia. Tamps.	192.00																			
T. Izq. Díaz Ordáz	192.55	1	1	4356	0.3	71.8	2.8	9.2	3.4	6.1	3.6	1.7	1.1	72.1	2.8	25.1	0.123	0.509	25.967498	-98.593968
T. Izq. Díaz Ordáz	192.55	1	2	4356	0.3	70.8	2.9	9.4	3.8	6.4	3.5	1.9	1.0	71.1	2.9	26.0	0.115	0.509	25.968036	-98.594022
Reynosa	225.00	1	1	17635	0.2	77.3	2.4	9.1	1.7	5.6	2.3	1.3	0.1	77.5	2.4	20.1	0.083	0.514	26.042214	-98.401821
Reynosa	225.00	1	2	17529	0.3	74.6	2.9	10.1	1.8	6.2	2.5	1.5	0.1	74.9	2.9	22.2	0.103	0.514	26.042563	-98.401943

19 CARR: Paras - Nueva Ciudad Guerrero

CLAVE: 00476

RUTA: MEX-030

AÑO: 2012

LUGAR	ESTACION				CLASIFICACION VEHICULAR EN PORCIENTO													COORDENADAS		
	KM	TE	SC	TDPA	M	A	B	C2	C3	T3S2	T3S3	T3S2R4	OTROS	A	B	C	K'	D	LATITUD	LONGITUD
Paras	0.00	3	0	231	2.1	75.1	0.8	20.8	0.0	0.0	0.9	0.0	0.3	77.2	0.8	22.0	0.117	0.508	26.501888	-99.516283
Lim. Edos. Term. N. L. Ppia. Tamps.	13.10																			
T. C. Reynosa - (T. C. Monterrey - Nuevo Laredo)	32.00	1	0	193	0.1	66.0	1.7	26.7	0.8	2.3	1.2	1.2	0.0	66.1	1.7	32.2	0.199	0.506	26.555780	-99.243903

20 CARR: Piedras Negras - Nuevo Laredo

CLAVE: 00503

RUTA: MEX-002

AÑO: 2012

LUGAR	ESTACION				CLASIFICACION VEHICULAR EN PORCIENTO													COORDENADAS		
	KM	TE	SC	TDPA	M	A	B	C2	C3	T3S2	T3S3	T3S2R4	OTROS	A	B	C	K'	D	LATITUD	LONGITUD
T. C. Monclova - Piedras Negras	0.00	3	1	3618	2.3	65.7	1.3	21.0	3.0	4.9	0.7	0.8	0.3	68.0	1.3	30.7	0.090	0.509	28.636706	-100.550085
T. C. Monclova - Piedras Negras	0.00	3	2	3756	1.2	64.2	1.4	22.2	3.3	5.5	0.8	1.0	0.4	65.4	1.4	33.2	0.095	0.509	28.636715	-100.550073
El Saucito	16.90	3	0	1270	1.8	64.2	2.3	17.0	2.6	6.5	1.8	2.8	1.0	66.0	2.3	31.7	0.097	0.504	28.502029	-100.467334
Guerrero	42.00	3	0	871	0.3	53.0	4.5	19.5	4.0	11.1	0.9	6.2	0.5	53.3	4.5	42.2	0.102	0.508	28.307355	-100.364292
Lim. Edos. Term. Coah. Ppia. N. L.	124.40																			
T. C. Monclova - Colombia	134.00	3	0	2568	0.7	72.6	2.2	10.6	3.1	8.3	0.6	1.7	0.2	73.3	2.2	24.5	0.098	0.506	27.687564	-99.776320
Lim. Edos. Term. N. L. Ppia. Tamps.	138.20																			
T. Der. Libramiento de Nuevo Laredo	157.70	1	1	3961	0.4	46.5	2.4	5.4	10.9	31.5	1.2	1.1	0.6	46.9	2.4	50.7	0.109	0.515	27.571852	-99.599476
T. Der. Libramiento de Nuevo Laredo	157.70	1	2	4208	1.1	38.6	2.5	5.9	11.3	37.5	1.3	1.2	0.6	39.7	2.5	57.8	0.105	0.515	27.571949	-99.599494
Nuevo Laredo	175.00	1	1	8103	2.6	60.8	2.2	27.8	0.1	2.3	1.4	0.8	2.0	63.4	2.2	34.4	0.107	0.580	27.543858	-99.576308
Nuevo Laredo	175.00	1	2	8153	1.8	51.6	2.7	22.6	5.2	11.6	1.6	0.8	2.1	53.4	2.7	43.9	0.114	0.580	27.543486	-99.576025

TAMAULIPAS

21 CARR: Ramal de Acceso a Puente Anzaldúas

CLAVE: 28619

RUTA: MEX

AÑO: 2012

LUGAR	ESTACION				CLASIFICACION VEHICULAR EN PORCIENTO														COORDENADAS	
	KM	TE	SC	TDPA	M	A	B	C2	C3	T3S2	T3S3	T3S2R4	OTROS	A	B	C	K'	D	LATITUD	LONGITUD
T. C. Monterrey - Reynosa	0.00	3	1	5139	0.3	81.9	2.0	10.1	1.0	2.0	1.1	1.2	0.4	82.2	2.0	15.8	0.105	0.520	26.060332	-98.372618
T. C. Monterrey - Reynosa	0.00	3	2	4736	0.2	79.7	2.2	11.5	1.1	2.4	1.2	1.3	0.4	79.9	2.2	17.9	0.140	0.520	26.060411	-98.372505
Puente Anzaldúas	6.20																			

22 CARR: Reynosa - Nuevo Laredo

CLAVE: 28076

RUTA: MEX-002

AÑO: 2012

LUGAR	ESTACION				CLASIFICACION VEHICULAR EN PORCIENTO														COORDENADAS	
	KM	TE	SC	TDPA	M	A	B	C2	C3	T3S2	T3S3	T3S2R4	OTROS	A	B	C	K'	D	LATITUD	LONGITUD
Reynosa	0.00	3	1	3059	0.4	55.3	4.2	13.0	2.5	18.0	4.5	1.5	0.6	55.7	4.2	40.1	0.227	0.517	26.150264	-98.355525
Reynosa	0.00	3	2	3276	0.2	54.0	4.4	12.7	2.8	19.2	4.1	1.7	0.9	54.2	4.4	41.4	0.139	0.517	26.149931	-98.355212
X. C. Los Dos Estados - Gustavo Díaz Ordáz	35.68	3	0	4984	0.2	75.0	2.1	13.2	1.0	3.6	1.4	3.2	0.3	75.2	2.1	22.7	0.080	0.507	26.213031	-98.596606
Cd. Camargo	63.40	3	0	3268	0.6	67.4	2.5	17.4	1.2	3.3	2.0	5.1	0.5	68.0	2.5	29.5	0.099	0.508	26.325791	-98.846366
Los Guerra	92.77	3	0	2480	0.2	68.6	2.4	12.1	1.3	4.4	2.6	8.2	0.2	68.8	2.4	28.8	0.094	0.502	26.393247	-99.102656
Mier	102.35	3	0	3141	0.6	60.5	2.3	19.7	3.4	6.6	4.4	2.0	0.5	61.1	2.3	36.6	0.163	0.514	26.451751	-99.153038
T. Der. Nueva Cd. Guerrero (2º Acceso)	122.67	3	0	2999	0.2	55.4	1.9	26.8	2.7	7.5	3.2	2.2	0.1	55.6	1.9	42.5	0.139	0.513	26.558101	-99.245048
T. C. Monterrey - Nuevo Laredo	221.08	1	0	2684	0.5	57.5	1.2	26.0	2.9	6.2	3.4	2.1	0.2	58.0	1.2	40.8	0.105	0.514	27.298919	-99.589445

23 CARR: Soto La Marina - La Coma

CLAVE: 28052

RUTA: MEX-180

AÑO: 2012

LUGAR	ESTACION				CLASIFICACION VEHICULAR EN PORCIENTO														COORDENADAS	
	KM	TE	SC	TDPA	M	A	B	C2	C3	T3S2	T3S3	T3S2R4	OTROS	A	B	C	K'	D	LATITUD	LONGITUD
Soto La Marina	0.00	3	0	3117	0.9	73.3	7.5	8.9	1.5	5.0	1.7	0.8	0.4	74.2	7.5	18.3	0.103	0.522	23.783337	-98.196658
La Coma	86.00	1	0	1175	0.4	57.6	10.2	10.6	2.6	11.9	4.1	2.0	0.6	58.0	10.2	31.8	0.144	0.567	24.464360	-98.339049

24 CARR: Tampico - Cd. Mante

CLAVE: 28163

RUTA: MEX-080

AÑO: 2012

LUGAR	ESTACION				CLASIFICACION VEHICULAR EN PORCIENTO														COORDENADAS	
	KM	TE	SC	TDPA	M	A	B	C2	C3	T3S2	T3S3	T3S2R4	OTROS	A	B	C	K'	D	LATITUD	LONGITUD
Tampico	0.00																			
T. Der. Cyanaquim	14.79	1	1	26149	1.3	85.0	1.6	4.4	1.2	2.1	2.8	0.9	0.7	86.3	1.6	12.1	0.082	0.505	22.349717	-97.880584
T. Der. Cyanaquim	14.79	1	2	26689	1.2	83.9	1.7	4.5	1.3	2.5	3.2	1.0	0.7	85.1	1.7	13.2	0.081	0.505	22.349527	-97.880662
Altamira	24.00	1	1	20958	1.4	84.1	2.7	5.8	0.8	2.1	1.6	1.1	0.4	85.5	2.7	11.8	0.087	0.504	22.386115	-97.918178
Altamira	24.00	1	2	20644	1.1	82.8	3.1	6.4	0.9	2.3	1.8	1.2	0.4	83.9	3.1	13.0	0.071	0.504	22.386092	-97.918349
Altamira	24.00	3	1	8495	1.2	75.0	3.6	9.2	1.9	4.3	1.9	2.2	0.7	76.2	3.6	20.2	0.091	0.510	22.421432	-97.944294
Altamira	24.00	3	2	8854	1.2	73.5	3.8	9.7	1.9	4.8	2.0	2.4	0.7	74.7	3.8	21.5	0.082	0.510	22.421374	-97.944413

## TAMAULIPAS

24 CARR: Tampico - Cd. Mante

CLAVE: 28163

RUTA: MEX-080

AÑO: 2012

LUGAR	ESTACION				CLASIFICACION VEHICULAR EN PORCIENTO														COORDENADAS	
	KM	TE	SC	TDPA	M	A	B	C2	C3	T3S2	T3S3	T3S2R4	OTROS	A	B	C	K'	D	LATITUD	LONGITUD
T. Der. Lomas del Real	33.00	3	1	6287	0.6	69.8	2.5	7.9	2.4	7.3	2.8	6.0	0.7	70.4	2.5	27.1	0.081	0.507	22.473615	-97.995689
T. Der. Lomas del Real	33.00	3	2	6461	0.5	66.1	2.8	9.1	2.6	8.2	3.1	6.8	0.8	66.6	2.8	30.6	0.085	0.507	22.473070	-97.994759
Cuauhtémoc	55.80	3	1	3857	0.7	54.3	4.2	7.9	3.2	12.0	4.6	12.2	0.9	55.0	4.2	40.8	0.090	0.501	22.561538	-98.157558
Cuauhtémoc	55.80	3	2	3874	0.3	49.4	4.7	9.5	3.5	13.1	5.0	13.5	1.0	49.7	4.7	45.6	0.086	0.501	22.561384	-98.157713
Estación Manuel	78.12	1	1	1229	1.1	73.9	5.0	7.2	2.5	5.0	1.4	3.4	0.5	75.0	5.0	20.0	0.081	0.502	22.699042	-98.280485
Estación Manuel	78.12	1	2	1238	1.1	72.8	5.9	7.7	2.8	4.3	1.4	3.5	0.5	73.9	5.9	20.2	0.082	0.502	22.699042	-98.280485
González	96.00	3	0	2302	0.8	72.7	4.2	7.1	4.0	3.4	2.6	4.6	0.6	73.5	4.2	22.3	0.097	0.505	22.821603	-98.451460
Magiscatzín	122.50	3	0	2168	1.9	66.0	2.1	12.8	5.5	5.1	2.4	3.7	0.5	67.9	2.1	30.0	0.091	0.502	22.802306	-98.710686
Faja de Oro	143.00	3	0	2844	2.4	69.5	2.7	9.6	4.1	3.7	2.6	5.0	0.4	71.9	2.7	25.4	0.092	0.504	22.722528	-98.874083
T. C. Cd. Valles - Cd. Victoria	155.00	1	0	3310	5.3	73.4	2.9	5.6	3.5	3.1	2.5	3.3	0.4	78.7	2.9	18.4	0.095	0.512	22.725084	-98.954214

25 CARR: Túpam - Tampico

CLAVE: 00529

RUTA: MEX-180

AÑO: 2012

LUGAR	ESTACION				CLASIFICACION VEHICULAR EN PORCIENTO														COORDENADAS	
	KM	TE	SC	TDPA	M	A	B	C2	C3	T3S2	T3S3	T3S2R4	OTROS	A	B	C	K'	D	LATITUD	LONGITUD
Túpam	0.00	3	0	6213	3.2	73.3	7.3	10.5	2.2	2.4	0.5	0.3	0.3	76.5	7.3	16.2	0.081	0.502	20.954982	-97.459276
T. Izq. La Lajuela	28.70	1	0	5129	2.1	69.6	6.8	12.4	2.9	2.0	1.8	1.3	1.1	71.7	6.8	21.5	0.080	0.503	21.045952	-97.611050
T. Izq. Tempoal de Sánchez	45.20	1	0	5813	2.3	73.1	5.2	10.0	2.6	3.5	1.6	1.4	0.3	75.4	5.2	19.4	0.084	0.501	21.088809	-97.730645
Cerro Azul	56.66	1	0	9407	2.6	67.0	4.9	8.6	2.4	7.0	3.5	3.0	1.0	69.6	4.9	25.5	0.088	0.516	21.175530	-97.752504
T. Izq. Naranjos	78.60	1	0	9315	1.7	65.6	5.3	9.3	2.5	7.8	3.5	3.3	1.0	67.3	5.3	27.4	0.072	0.508	21.336587	-97.691282
T. Izq. Naranjos	78.60	3	0	10539	3.1	65.4	5.6	8.3	2.6	8.5	2.6	2.8	1.1	68.5	5.6	25.9	0.076	0.508	21.364960	-97.685416
T. Der. Ozuluama	124.42	1	0	5952	1.5	59.1	5.5	10.9	3.3	9.6	4.1	5.1	0.9	60.6	5.5	33.9	0.073	0.501	21.669190	-97.859683
T. Der. Ozuluama	124.42	3	0	5408	1.7	50.1	7.5	12.2	4.1	12.2	4.7	6.4	1.1	51.8	7.5	40.7	0.066	0.512	21.686504	-97.851106
Tampico Alto	177.80	1	0	5653	1.2	56.3	6.6	11.0	3.4	10.1	4.6	5.7	1.1	57.5	6.6	35.9	0.072	0.523	22.104713	-97.803286
Tampico Alto	177.80	3	0	7174	0.8	63.4	5.3	9.2	2.6	9.6	3.5	4.8	0.8	64.2	5.3	30.5	0.081	0.522	22.117365	-97.804535
Villa Cuauhtémoc	186.85	1	0	7798	2.3	68.7	4.6	6.0	2.6	7.1	3.3	4.5	0.9	71.0	4.6	24.4	0.078	0.514	22.167633	-97.829612
Villa Cuauhtémoc	186.85	3	0	5518	2.6	70.0	4.5	4.4	2.2	9.7	2.7	3.1	0.8	72.6	4.5	22.9	0.068	0.503	22.201878	-97.842000
Lim. Edos. Term. Ver. Ppia. Tamps. (Rio Pánuco)	189.82																			

26 CARR: Libramiento Poniente de Tampico (Cuota)

CLAVE: 28051

RUTA: MEX-070D

AÑO: 2012

LUGAR	ESTACION				CLASIFICACION VEHICULAR EN PORCIENTO														COORDENADAS	
	KM	TE	SC	TDPA	M	A	B	C2	C3	T3S2	T3S3	T3S2R4	OTROS	A	B	C	K'	D	LATITUD	LONGITUD
T. C. Tampico - Cd. Mante	0.00	3	0	13028	0.9	71.6	2.7	8.1	2.9	7.5	2.7	2.8	0.8	72.5	2.7	24.8	0.071	0.509	22.337466	-97.877283
Caseta de Cobro Tampico	5.10	2	0	4499	0.1	44.7	0.5	9.4	8.9	17.4	7.0	10.8	1.2	44.8	0.5	54.7	0.074	0.500	22.275285	-97.893448

TAMAULIPAS

26 CARR: Libramiento Poniente de Tampico (Cuota)

CLAVE: 28051

RUTA: MEX-070D

AÑO: 2012

LUGAR	ESTACION				CLASIFICACION VEHICULAR EN PORCIENTO														COORDENADAS	
	KM	TE	SC	TDPA	M	A	B	C2	C3	T3S2	T3S3	T3S2R4	OTROS	A	B	C	K'	D	LATITUD	LONGITUD
T. C. Cd. Valles - Tampico	12.00	1	0	6341	0.8	59.7	2.0	9.3	4.6	11.7	4.9	6.3	0.7	60.5	2.0	37.5	0.077	0.512	22.233525	-97.891179

27 CARR: Matamoros - Reynosa (Cuota)

CLAVE: 28079

RUTA: MEX-002D

AÑO: 2012

LUGAR	ESTACION				CLASIFICACION VEHICULAR EN PORCIENTO														COORDENADAS	
	KM	TE	SC	TDPA	M	A	B	C2	C3	T3S2	T3S3	T3S2R4	OTROS	A	B	C	K'	D	LATITUD	LONGITUD
T. C. Matamoros - Reynosa	0.00	3	1	1719	0.2	74.6	3.6	10.0	2.6	6.0	1.0	1.6	0.4	74.8	3.6	21.6	0.102	0.505	25.997104	-97.753151
T. C. Matamoros - Reynosa	0.00	3	2	1685	0.3	71.3	3.8	11.7	2.8	7.0	1.0	1.7	0.4	71.6	3.8	24.6	0.092	0.505	25.997236	-97.754093
Caseta de Cobro Nuevo Progreso	29.39	2	1	1411	0.2	75.5	3.6	5.3	3.6	7.9	0.9	2.5	0.5	75.7	3.6	20.7	0.101	0.500	26.036288	-97.954444
Caseta de Cobro Nuevo Progreso	29.39	2	2	1411	0.2	75.5	3.6	5.3	3.6	7.9	0.9	2.5	0.5	75.7	3.6	20.7	0.101	0.500	26.036288	-97.954444
T. C. Matamoros - Reynosa	42.00																			
T. C. Matamoros - Reynosa	44.60	1	1	2336	0.5	78.5	3.0	8.2	1.9	4.1	1.4	2.0	0.4	79.0	3.0	18.0	0.105	0.541	26.007613	-98.160256
T. C. Matamoros - Reynosa	44.60	1	2	2747	0.7	76.4	3.2	9.3	2.0	4.4	1.5	2.1	0.4	77.1	3.2	19.7	0.104	0.541	26.007401	-98.160302

28 CARR: Aldama - Barra El Tordo

CLAVE: 28620

RUTA: TAM

AÑO: 2012

LUGAR	ESTACION				CLASIFICACION VEHICULAR EN PORCIENTO														COORDENADAS	
	KM	TE	SC	TDPA	M	A	B	C2	C3	T3S2	T3S3	T3S2R4	OTROS	A	B	C	K'	D	LATITUD	LONGITUD
Aldama	0.00	3	0	2096	2.6	80.9	3.3	10.1	0.8	1.5	0.6	0.0	0.2	83.5	3.3	13.2	0.105	0.504	22.915492	-98.063358
Barra El Tordo	20.00																			

29 CARR: Barretal - Nueva Villa de Padilla

CLAVE: 28001

RUTA: TAM-001

AÑO: 2012

LUGAR	ESTACION				CLASIFICACION VEHICULAR EN PORCIENTO														COORDENADAS	
	KM	TE	SC	TDPA	M	A	B	C2	C3	T3S2	T3S3	T3S2R4	OTROS	A	B	C	K'	D	LATITUD	LONGITUD
Barretal	0.00	3	0	4039	0.5	79.1	2.5	8.0	0.3	4.6	3.4	0.7	0.9	79.6	2.5	17.9	0.111	0.506	24.083634	-99.113014
Nueva Villa de Padilla	24.50	1	0	1694	3.4	82.2	2.7	6.3	1.2	2.6	0.7	0.6	0.3	85.6	2.7	11.7	0.099	0.516	24.053157	-98.914592

30 CARR: China - Méndez

CLAVE: 00191

RUTA: NL-TAM

AÑO: 2012

LUGAR	ESTACION				CLASIFICACION VEHICULAR EN PORCIENTO														COORDENADAS	
	KM	TE	SC	TDPA	M	A	B	C2	C3	T3S2	T3S3	T3S2R4	OTROS	A	B	C	K'	D	LATITUD	LONGITUD
China	0.00	3	0	1830	0.4	68.7	4.3	19.8	1.5	2.3	2.4	0.3	0.3	69.1	4.3	26.6	0.091	0.506	25.700099	-99.225582
Lim. Edos. Term. N. L. Ppia. Tamps.	75.00																			
Méndez	100.00																			



TAMAULIPAS

36 CARR: Libramiento de Cd. Victoria

CLAVE: 28282

RUTA: TAM

AÑO: 2012

LUGAR	ESTACION				CLASIFICACION VEHICULAR EN PORCIENTO										COORDENADAS					
	KM	TE	SC	TDPA	M	A	B	C2	C3	T3S2	T3S3	T3S2R4	OTROS	A	B	C	K'	D	LATITUD	LONGITUD
X. C. Ent. Tula - Cd. Victoria	0.00	3	1	11544	4.6	81.3	2.0	4.0	0.9	3.1	3.0	0.2	0.9	85.9	2.0	12.1	0.086	0.516	23.712880	-99.176272
X. C. Ent. Tula - Cd. Victoria	0.00	3	2	12299	3.0	81.9	2.2	4.4	1.0	3.2	3.2	0.2	0.9	84.9	2.2	12.9	0.092	0.516	23.712965	-99.176082
X. C. Cd. Victoria - Matamoros	13.40	1	1	8122	1.8	88.2	0.8	5.0	1.1	1.4	1.0	0.4	0.3	90.0	0.8	9.2	0.109	0.506	23.766855	-99.118670
X. C. Cd. Victoria - Matamoros	13.40	1	2	7940	1.7	87.0	0.8	5.9	1.3	1.4	1.2	0.4	0.3	88.7	0.8	10.5	0.094	0.506	23.767002	-99.118579
X. C. Cd. Victoria - Matamoros	13.40	3	1	8014	1.8	84.7	0.5	5.5	1.5	2.9	1.6	0.9	0.6	86.5	0.5	13.0	0.133	0.541	23.763269	-99.111755
X. C. Cd. Victoria - Matamoros	13.40	3	2	7813	1.6	83.3	0.5	6.5	1.6	3.1	1.8	1.0	0.6	84.9	0.5	14.6	0.112	0.541	23.763138	-99.111154
X. C. Cd. Victoria - Soto La Marina	19.70	1	1	7235	1.1	85.6	0.4	6.6	1.0	2.3	1.9	0.5	0.6	86.7	0.4	12.9	0.097	0.514	23.722253	-99.093609
X. C. Cd. Victoria - Soto La Marina	19.70	1	2	6851	1.0	84.9	0.6	6.3	1.1	2.4	2.0	0.9	0.8	85.9	0.6	13.5	0.088	0.514	23.722273	-99.093412
T. C. Cd. Valles - Cd. Victoria	25.90	1	1	12541	3.6	69.1	2.6	6.8	3.1	6.8	3.0	4.1	0.9	72.7	2.6	24.7	0.085	0.503	23.675817	-99.098713
T. C. Cd. Valles - Cd. Victoria	25.90	1	2	12390	4.0	65.9	2.9	7.3	3.5	7.4	3.6	4.4	1.0	69.9	2.9	27.2	0.087	0.503	23.675806	-99.098485

37 CARR: Libramiento de Mier

CLAVE: 28282

RUTA: TAMPS

AÑO: 2012

LUGAR	ESTACION				CLASIFICACION VEHICULAR EN PORCIENTO										COORDENADAS					
	KM	TE	SC	TDPA	M	A	B	C2	C3	T3S2	T3S3	T3S2R4	OTROS	A	B	C	K'	D	LATITUD	LONGITUD
T. C. Monterrey - Mier	0.00	3	0	508	0.4	45.2	5.8	42.1	0.8	2.3	1.3	2.0	0.1	45.6	5.8	48.6	0.082	0.502	26.428174	-99.163482
T. C. Reynosa - Nuevo Laredo	2.70																			

38 CARR: Libramiento de Nuevo Laredo

CLAVE: 28030

RUTA: TAM

AÑO: 2012

LUGAR	ESTACION				CLASIFICACION VEHICULAR EN PORCIENTO										COORDENADAS					
	KM	TE	SC	TDPA	M	A	B	C2	C3	T3S2	T3S3	T3S2R4	OTROS	A	B	C	K'	D	LATITUD	LONGITUD
T. C. Monterrey - Nuevo Laredo	0.00	3	1	13607	1.3	69.0	4.6	6.3	7.2	9.5	0.9	0.4	0.8	70.3	4.6	25.1	0.079	0.519	27.425888	-99.534968
T. C. Monterrey - Nuevo Laredo	0.00	3	2	14008	0.9	65.5	5.4	7.6	7.6	10.6	1.1	0.4	0.9	66.4	5.4	28.2	0.073	0.519	27.425971	-99.534979
T. C. Piedras Negras - Nuevo Laredo	18.00	1	1	12676	1.5	64.6	2.2	9.8	8.1	12.3	0.6	0.4	0.5	66.1	2.2	31.7	0.134	0.513	27.530782	-99.582640
T. C. Piedras Negras - Nuevo Laredo	18.00	1	2	12058	1.2	62.2	2.6	10.5	8.4	13.4	0.8	0.4	0.5	63.4	2.6	34.0	0.126	0.513	27.530741	-99.582780

39 CARR: Libramiento de Nuevo Laredo II

CLAVE: 28626

RUTA: TAM

AÑO: 2012

LUGAR	ESTACION				CLASIFICACION VEHICULAR EN PORCIENTO										COORDENADAS					
	KM	TE	SC	TDPA	M	A	B	C2	C3	T3S2	T3S3	T3S2R4	OTROS	A	B	C	K'	D	LATITUD	LONGITUD
T. C. Monterrey - Nuevo Laredo	0.00	3	0	6001	3.0	15.2	2.8	7.8	13.8	50.3	3.5	2.5	1.1	18.2	2.8	79.0	0.075	0.510	27.308874	-99.608454
T. C. Piedras Negras - Nuevo Laredo	32.20	1	1	3763	3.0	26.3	2.1	5.5	11.8	45.5	2.7	2.0	1.1	29.3	2.1	68.6	0.095	0.503	27.559194	-99.602135
T. C. Piedras Negras - Nuevo Laredo	32.20	1	2	3860	2.9	24.2	2.0	5.7	10.8	48.1	3.0	2.3	1.0	27.1	2.0	70.9	0.086	0.503	27.559194	-99.602135



## TAMAULIPAS

40 CARR: Libramiento de Río Bravo

CLAVE: 28002

RUTA: TAM

AÑO: 2012

LUGAR	ESTACION				CLASIFICACION VEHICULAR EN PORCIENTO														COORDENADAS	
	KM	TE	SC	TDPA	M	A	B	C2	C3	T3S2	T3S3	T3S2R4	OTROS	A	B	C	K'	D	LATITUD	LONGITUD
T. C. Matamoros - Reynosa (1° Acceso)	0.00	3	1	2739	0.5	72.7	4.2	10.1	2.7	5.4	2.1	1.5	0.8	73.2	4.2	22.6	0.096	0.529	25.971684	-98.051151
T. C. Matamoros - Reynosa (1° Acceso)	0.00	3	2	3082	0.2	69.9	4.9	11.3	2.9	6.0	2.3	1.7	0.8	70.1	4.9	25.0	0.098	0.529	25.971594	-98.051162
T. C. Matamoros - Reynosa (2° Acceso)	13.10	1	1	9744	0.3	77.8	2.8	9.2	1.9	3.9	1.8	1.8	0.5	78.1	2.8	19.1	0.106	0.510	25.992137	-98.128570
T. C. Matamoros - Reynosa (2° Acceso)	13.10	1	2	10137	0.5	75.6	3.1	9.7	2.0	4.2	2.2	2.0	0.7	76.1	3.1	20.8	0.103	0.510	25.992048	-98.128662

41 CARR: Los Guerra - Los Herreras

CLAVE: 19031

RUTA: TAM-NL

AÑO: 2012

LUGAR	ESTACION				CLASIFICACION VEHICULAR EN PORCIENTO														COORDENADAS		
	KM	TE	SC	TDPA	M	A	B	C2	C3	T3S2	T3S3	T3S2R4	OTROS	A	B	C	K'	D	LATITUD	LONGITUD	
Los Guerra	0.00																				
Los Herrera	73.00	1	0	473	0.3	80.8	0.3	12.2	2.7	0.8	1.0	1.9	0.0	81.1	0.3	18.6	0.112	0.512	25.902581	-99.393536	

42 CARR: Peña Blanca - Cd. Camargo

CLAVE: 00102

RUTA: NL-TAM

AÑO: 2012

LUGAR	ESTACION				CLASIFICACION VEHICULAR EN PORCIENTO														COORDENADAS		
	KM	TE	SC	TDPA	M	A	B	C2	C3	T3S2	T3S3	T3S2R4	OTROS	A	B	C	K'	D	LATITUD	LONGITUD	
T. C. Monterrey - Reynosa	0.00	3	0	1092	0.1	61.9	2.0	18.2	3.1	6.5	7.0	0.8	0.4	62.0	2.0	36.0	0.136	0.509	25.836720	-99.008492	
Lim. Edos. Term. N. L. Ppia. Tamps.	30.00																				
Cd. Camargo	65.00	1	0	1717	0.8	70.2	3.0	20.2	1.3	3.0	0.8	0.5	0.2	71.0	3.0	26.0	0.087	0.511	26.304245	-98.834824	

43 CARR: Potrero Nuevo - Rancho El Mezquital

CLAVE: 28615

RUTA: TAM

AÑO: 2012

LUGAR	ESTACION				CLASIFICACION VEHICULAR EN PORCIENTO														COORDENADAS		
	KM	TE	SC	TDPA	M	A	B	C2	C3	T3S2	T3S3	T3S2R4	OTROS	A	B	C	K'	D	LATITUD	LONGITUD	
T. C. Cd. Victoria - Matamoros	0.00	3	0	818	0.2	85.8	2.0	8.3	1.9	1.7	0.1	0.0	0.0	86.0	2.0	12.0	0.111	0.521	25.713172	-97.570729	
Puerto El Mezquital	66.00																				

44 CARR: Ramal a Gómez Farías

CLAVE: 28020

RUTA: TAM-020

AÑO: 2012

LUGAR	ESTACION				CLASIFICACION VEHICULAR EN PORCIENTO														COORDENADAS	
	KM	TE	SC	TDPA	M	A	B	C2	C3	T3S2	T3S3	T3S2R4	OTROS	A	B	C	K'	D	LATITUD	LONGITUD
T. C. Cd. Valles - Cd. Victoria	0.00	3	0	899	11.7	74.8	3.1	8.7	0.7	0.8	0.1	0.0	0.1	86.5	3.1	10.4	0.100	0.500	23.024323	-99.093669
Gómez Farías	11.00	1	0	619	16.3	71.5	2.8	8.2	0.5	0.4	0.3	0.0	0.0	87.8	2.8	9.4	0.106	0.503	23.034426	-99.150026

TAMAULIPAS

45 CARR: Ramal a Xicoténcatl

CLAVE: 28619

RUTA: TAM

AÑO: 2012

LUGAR	ESTACION				CLASIFICACION VEHICULAR EN PORCIENTO														COORDENADAS	
	KM	TE	SC	TDPA	M	A	B	C2	C3	T3S2	T3S3	T3S2R4	OTROS	A	B	C	K'	D	LATITUD	LONGITUD
T. C. Cd. Valles - Cd. Victoria	0.00	3	0	1161	6.7	77.5	2.9	7.5	2.0	2.6	0.6	0.2	0.0	84.2	2.9	12.9	0.089	0.531	22.934228	-99.024823
Xicoténcatl	13.00	1	0	1317	12.5	76.7	1.4	6.6	0.8	1.5	0.2	0.1	0.2	89.2	1.4	9.4	0.114	0.501	22.982649	-98.950440

46 CARR: San Fernando - Carboneras

CLAVE: 28618

RUTA: TAM

AÑO: 2012

LUGAR	ESTACION				CLASIFICACION VEHICULAR EN PORCIENTO														COORDENADAS	
	KM	TE	SC	TDPA	M	A	B	C2	C3	T3S2	T3S3	T3S2R4	OTROS	A	B	C	K'	D	LATITUD	LONGITUD
San Fernando	0.00	3	0	3058	1.4	81.0	2.4	9.1	1.1	2.3	1.4	0.7	0.6	82.4	2.4	15.2	0.092	0.513	24.834717	-98.113691
Carboneras	57.00																			

47 CARR: Soto La Marina - La Pesca

CLAVE: 28049

RUTA: TAM-070

AÑO: 2012

LUGAR	ESTACION				CLASIFICACION VEHICULAR EN PORCIENTO														COORDENADAS	
	KM	TE	SC	TDPA	M	A	B	C2	C3	T3S2	T3S3	T3S2R4	OTROS	A	B	C	K'	D	LATITUD	LONGITUD
T. C. Soto La Marina - La Coma	0.00	3	0	1567	1.0	83.1	3.2	10.2	0.8	1.2	0.3	0.1	0.1	84.1	3.2	12.7	0.097	0.503	23.778835	-98.188470
La Pesca	50.00																			

48 CARR: T. C. (Valle Hermoso - Empalme) - Matamoros

CLAVE: 28005

RUTA: TAM-005

AÑO: 2012

LUGAR	ESTACION				CLASIFICACION VEHICULAR EN PORCIENTO														COORDENADAS	
	KM	TE	SC	TDPA	M	A	B	C2	C3	T3S2	T3S3	T3S2R4	OTROS	A	B	C	K'	D	LATITUD	LONGITUD
T. C. Valle Hermoso - Empalme	0.00	3	0	3781	0.6	85.2	1.3	6.3	1.2	3.4	1.1	0.4	0.5	85.8	1.3	12.9	0.088	0.502	25.775189	-97.793043
Anáhuac	2.00	3	0	1357	0.6	84.4	1.7	7.7	2.0	2.1	1.1	0.2	0.2	85.0	1.7	13.3	0.087	0.504	25.775083	-97.765461
Matamoros	33.90	1	1	9258	1.5	87.8	2.7	3.5	0.9	1.2	1.2	0.6	0.6	89.3	2.7	8.0	0.091	0.504	25.864633	-97.575182
Matamoros	33.90	1	2	9096	1.5	86.6	3.0	4.2	1.0	1.3	1.2	0.6	0.6	88.1	3.0	8.9	0.075	0.504	25.864821	-97.575296

49 CARR: T. C. Libramiento Cd. Victoria - San Antonio

CLAVE:

RUTA: TAM-126

AÑO: 2012

LUGAR	ESTACION				CLASIFICACION VEHICULAR EN PORCIENTO														COORDENADAS	
	KM	TE	SC	TDPA	M	A	B	C2	C3	T3S2	T3S3	T3S2R4	OTROS	A	B	C	K'	D	LATITUD	LONGITUD
T. C. Libramiento Cd. Victoria	0.00	3	0	3796	0.9	56.4	3.0	7.2	2.2	12.7	6.5	10.1	1.0	57.3	3.0	39.7	0.076	0.507	23.661358	-99.111061
San Antonio	37.50	1	0	3494	0.9	52.6	4.1	6.0	2.6	15.3	5.2	12.3	1.0	53.5	4.1	42.4	0.079	0.500	23.588420	-99.323128

## TAMAULIPAS

50 CARR: Valle Hermoso - Empalme

CLAVE: 28004

RUTA: TAM-004

AÑO: 2012

LUGAR	ESTACION				CLASIFICACION VEHICULAR EN PORCIENTO														COORDENADAS	
	KM	TE	SC	TDPA	M	A	B	C2	C3	T3S2	T3S3	T3S2R4	OTROS	A	B	C	K'	D	LATITUD	LONGITUD
Valle Hermoso	0.00	3	0	5663	0.7	81.4	0.9	8.8	1.5	4.0	1.6	0.5	0.6	82.1	0.9	17.0	0.091	0.504	25.704243	-97.815937
Empalme	28.38	1	0	3325	0.3	77.1	2.5	11.6	2.1	3.8	1.3	0.9	0.4	77.4	2.5	20.1	0.097	0.507	25.874080	-97.795759

51 CARR: Valle Hermoso - Las Yescas

CLAVE: 28614

RUTA: TAM

AÑO: 2012

LUGAR	ESTACION				CLASIFICACION VEHICULAR EN PORCIENTO														COORDENADAS	
	KM	TE	SC	TDPA	M	A	B	C2	C3	T3S2	T3S3	T3S2R4	OTROS	A	B	C	K'	D	LATITUD	LONGITUD
Valle Hermoso	0.00	3	0	3017	0.6	82.0	0.5	5.5	2.9	4.2	2.6	1.2	0.5	82.6	0.5	16.9	0.172	0.505	25.614639	-97.816130
T. C. Cd. Victoria - Matamoros	26.00	1	0	1227	0.2	72.8	3.1	10.6	3.8	3.2	3.6	2.5	0.2	73.0	3.1	23.9	0.099	0.509	25.468223	-97.816316

52 CARR: Santander Jiménez - Ent. El Ojito

CLAVE: 28579

RUTA: MEX-107-TAM

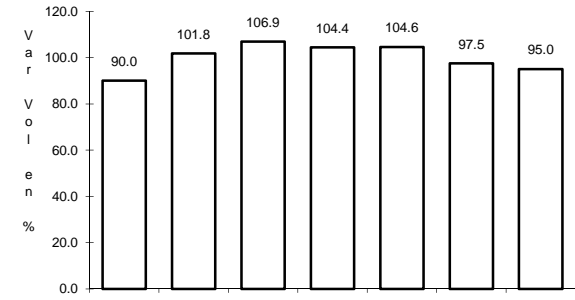
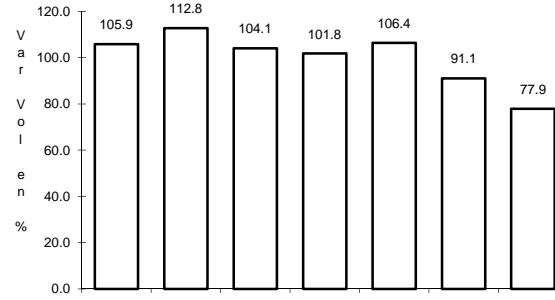
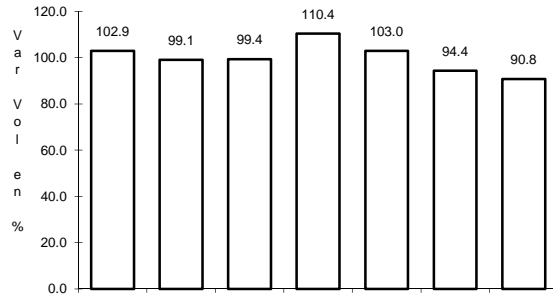
AÑO: 2012

LUGAR	ESTACION				CLASIFICACION VEHICULAR EN PORCIENTO														COORDENADAS	
	KM	TE	SC	TDPA	M	A	B	C2	C3	T3S2	T3S3	T3S2R4	OTROS	A	B	C	K'	D	LATITUD	LONGITUD
T. C. Cd. Victoria - Matamoros	0.00	3	0	1666	0.4	79.0	1.9	12.9	1.7	2.1	0.7	1.1	0.2	79.4	1.9	18.7	0.106	0.502	24.209156	-98.482467
Abasolo	20.00	1	0	3034	1.6	82.1	1.2	8.4	1.7	2.9	0.8	0.5	0.8	83.7	1.2	15.1	0.144	0.502	24.067576	-98.384778
T. C. Soto La Marina - La Coma	58.00	1	0	447	1.4	77.9	4.3	9.2	3.1	2.1	1.2	0.7	0.1	79.3	4.3	16.4	0.172	0.501	23.941738	-98.167514

1 CARR: Antiguo Morelos - Ent. El Huizache

CLAVE: 00136

RUTA: MEX-080



Km: 0.00

Tipo: 3

Sent: 0

Km: 86.00

Tipo: 3

Sent: 0

Km: 198.83

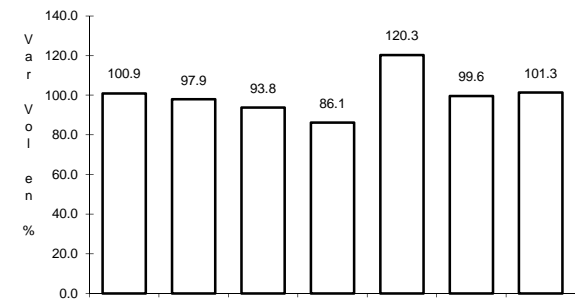
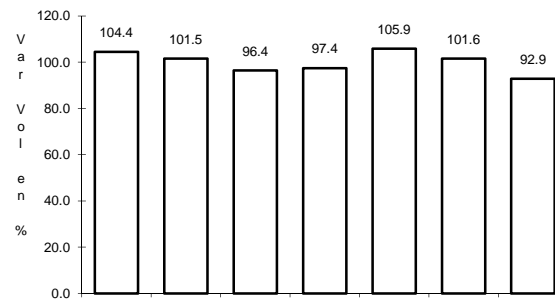
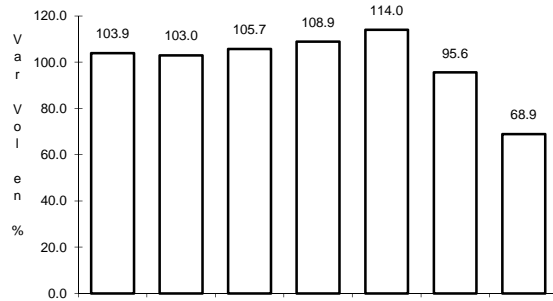
Tipo: 1

Sent: 0

2 CARR: Cd. Valles - Cd. Victoria

CLAVE: 00509

RUTA: MEX-085



Km: 0.00

Tipo: 3

Sent: 0

Km: 110.00

Tipo: 3

Sent: 0

Km: 232.00

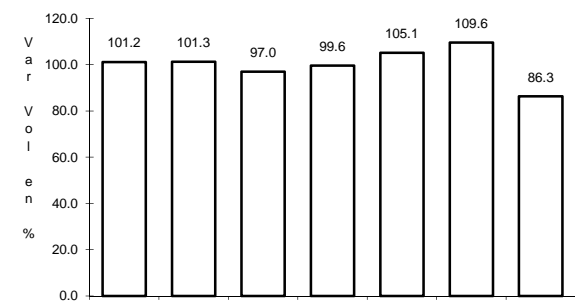
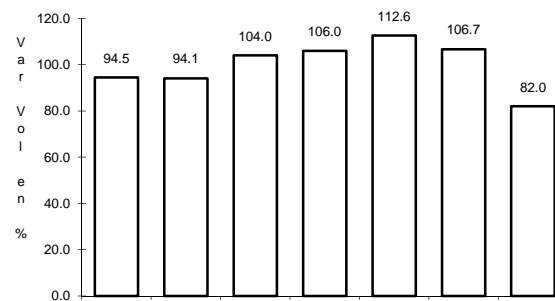
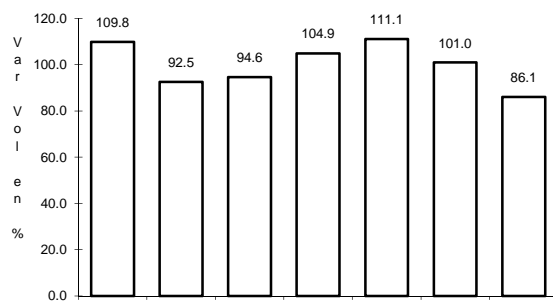
Tipo: 1

Sent: 0

3 CARR: Cd. Valles - Tampico

CLAVE: 00138

RUTA: MEX-070



Km: 0.00

Tipo: 3

Sent: 0

Km: 138.00

Tipo: 1

Sent: 1

Km: 138.00

Tipo: 1

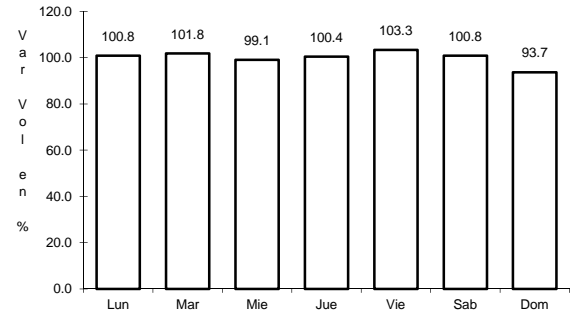
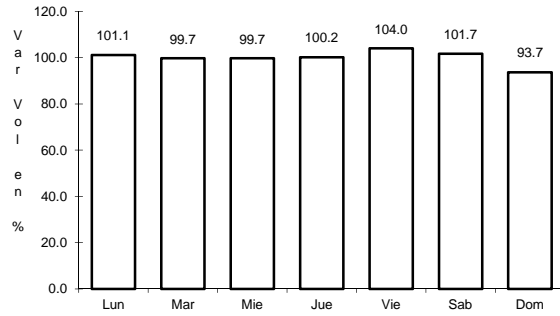
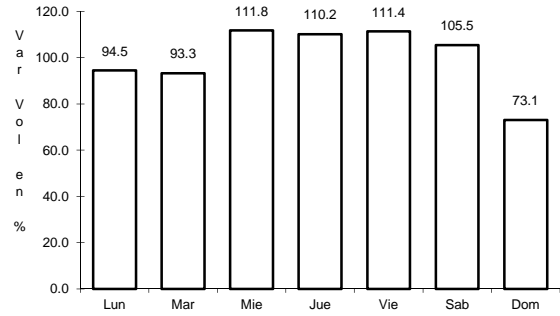
Sent: 2



7 CARR: Ent. Tula - Cd. Victoria

CLAVE: 00179

RUTA: MEX-101



Km: 0.00                      Tipo: 3                      Sent: 0

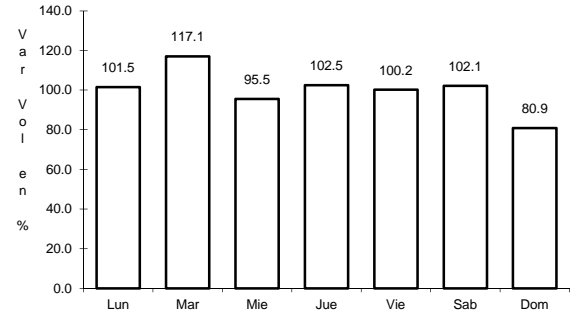
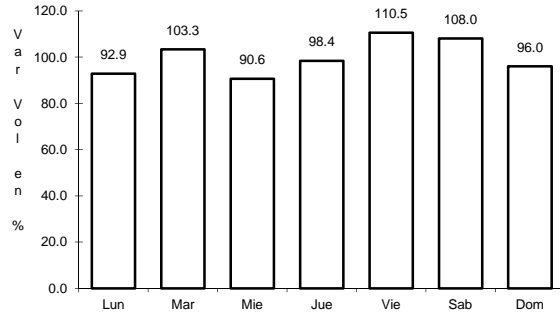
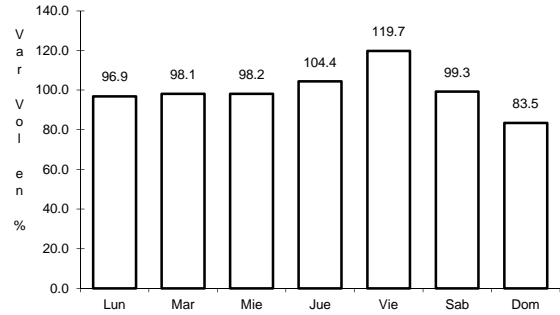
Km: 180.00                      Tipo: 1                      Sent: 1

Km: 180.00                      Tipo: 1                      Sent: 2

8 CARR: Estación Manuel - T. C. (Cd. Victoria - Soto La Marina)

CLAVE: 28294

RUTA: MEX-180



Km: 0.00                      Tipo: 3                      Sent: 0

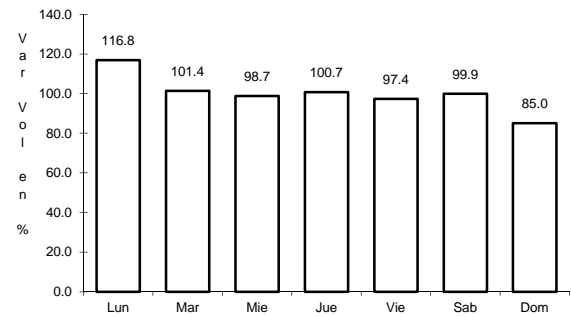
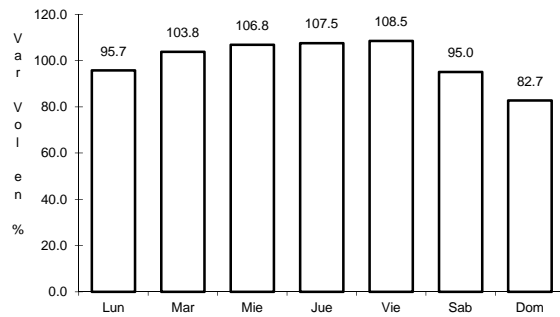
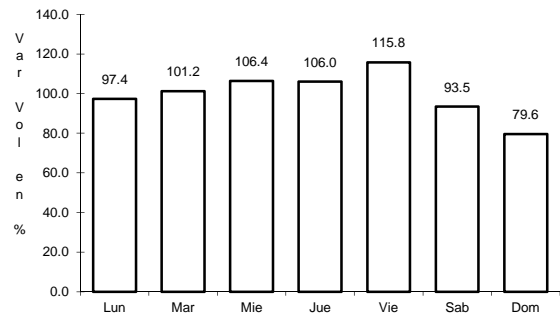
Km: 69.00                      Tipo: 3                      Sent: 0

Km: 145.00                      Tipo: 1                      Sent: 0

9 CARR: González - Llera de Canales

CLAVE: 28578

RUTA: MEX-081



Km: 0.00                      Tipo: 3                      Sent: 0

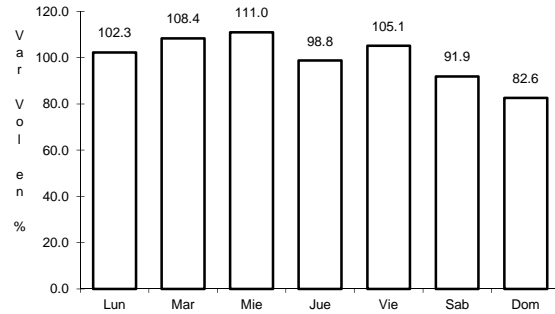
Km: 58.50                      Tipo: 1                      Sent: 0

Km: 89.00                      Tipo: 1                      Sent: 0

10 CARR: Ignacio Zaragoza - T. C. (Ciudad Victoria - Monterrey)

CLAVE: 28625

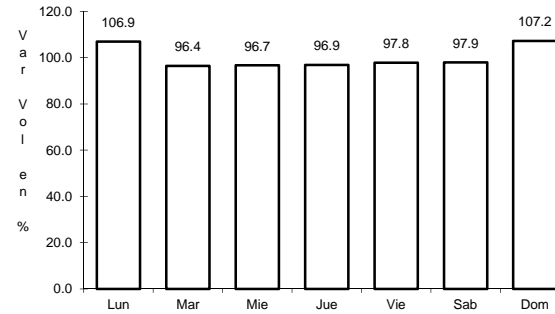
RUTA: MEX-083



Km: 0.00

Tipo: 3

Sent: 0



Km: 94.30

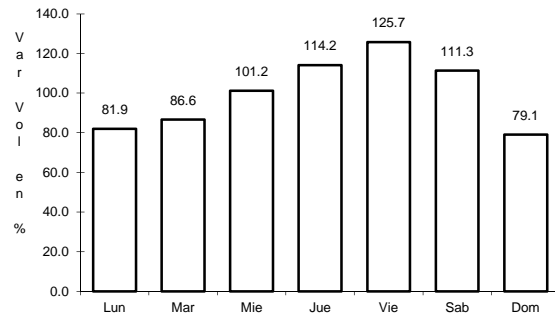
Tipo: 1

Sent: 0

11 CARR: Las Urracas - T. C. (Matamoros - Reynosa)

CLAVE: 28029

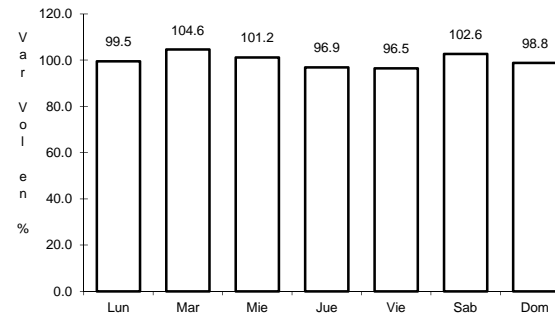
RUTA: MEX-097



Km: 0.00

Tipo: 3

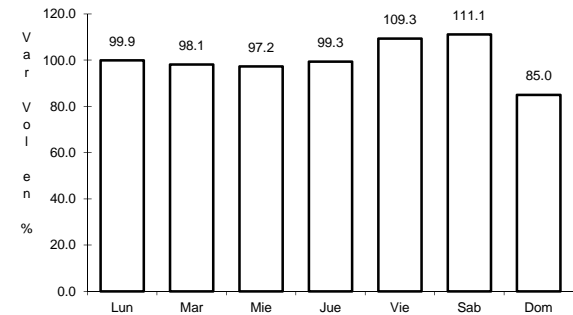
Sent: 0



Km: 113.25

Tipo: 1

Sent: 1



Km: 113.25

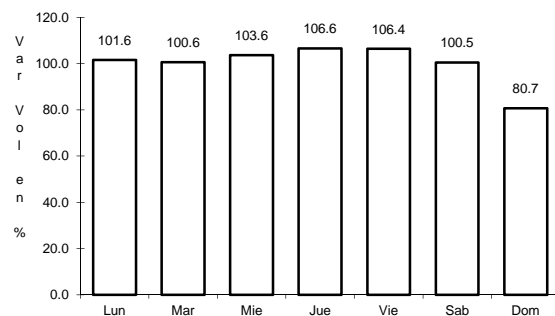
Tipo: 1

Sent: 2

12 CARR: Libramiento de Reynosa

CLAVE: 28008

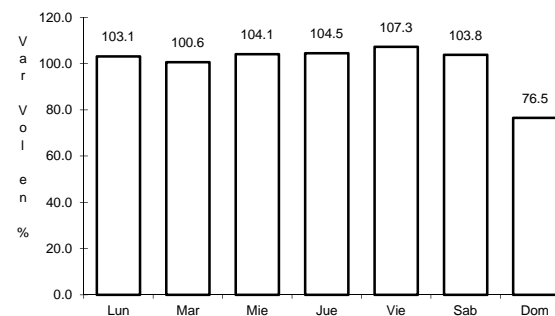
RUTA: MEX-040



Km: 0.00

Tipo: 3

Sent: 1



Km: 0.00

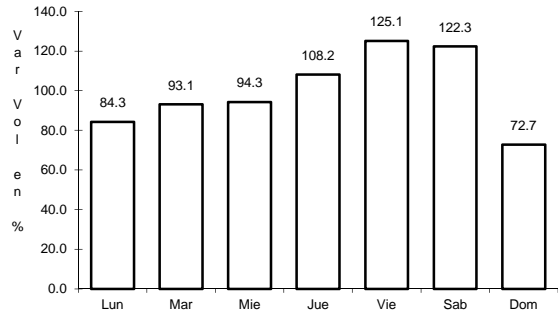
Tipo: 3

Sent: 2

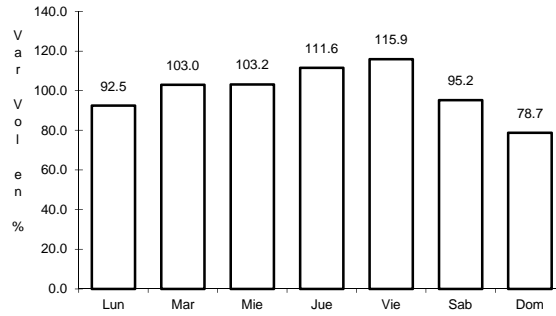
13 CARR: Libramiento Estación Manuel - González

CLAVE: 28002

RUTA: MEX-085



Km: 0.00                      Tipo: 3                      Sent: 0

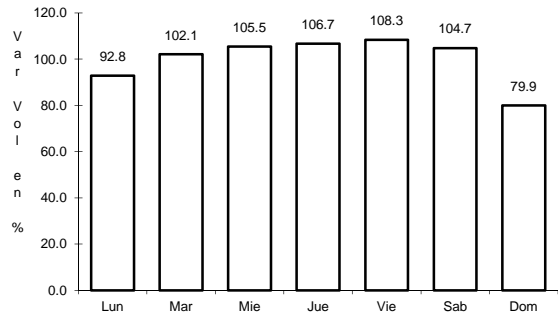


Km: 24.80                      Tipo: 1                      Sent: 0

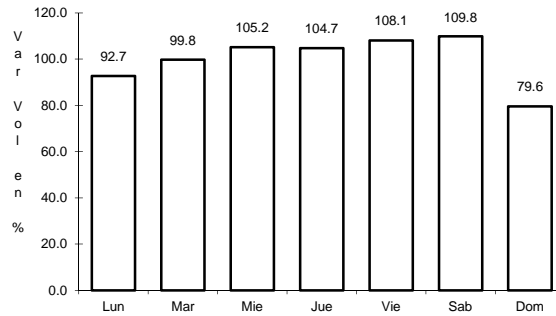
14 CARR: Matamoras - Playa Lauro Villar

CLAVE: 28078

RUTA: MEX-002



Km: 0.00                      Tipo: 3                      Sent: 1

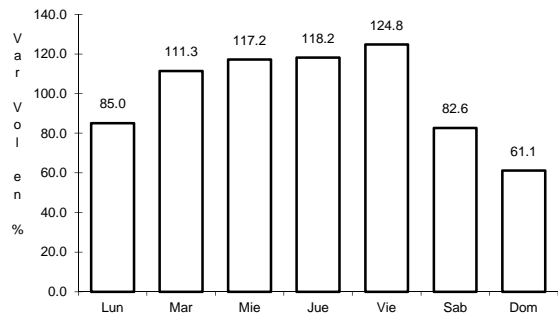


Km: 0.00                      Tipo: 3                      Sent: 2

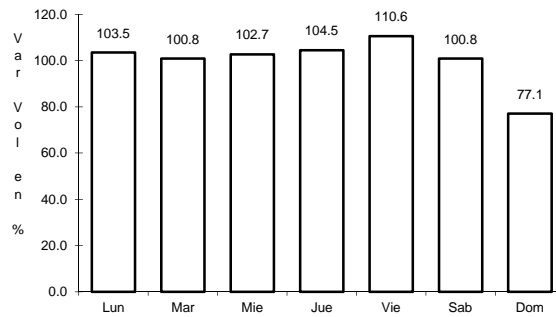
15 CARR: Matamoras - Reynosa

CLAVE: 28077

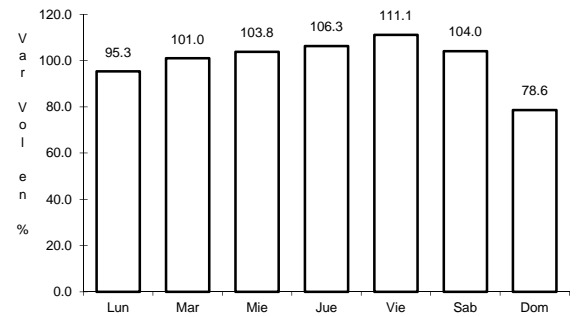
RUTA: MEX-002



Km: 0.00                      Tipo: 3                      Sent: 0



Km: 98.00                      Tipo: 1                      Sent: 1



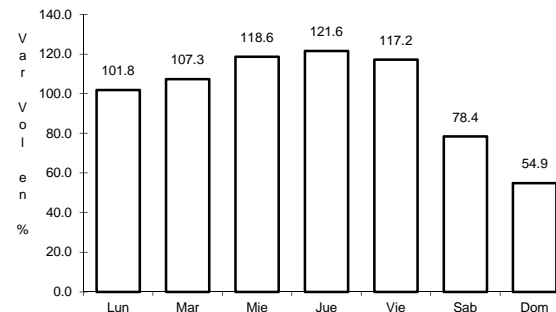
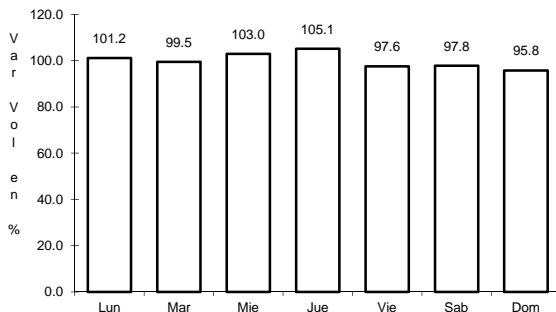
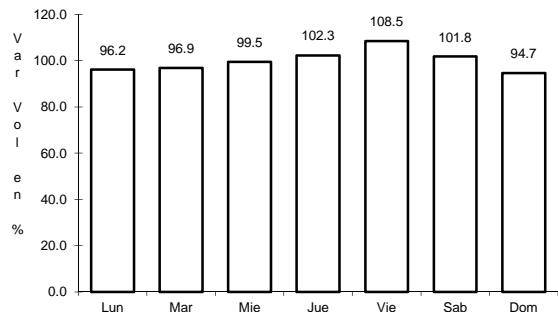
Km: 98.00                      Tipo: 1                      Sent: 2



16 CARR: Monterrey - Mier

CLAVE: 00127

RUTA: MEX-054



Km: 19.12      Tipo: 1      Sent: 1

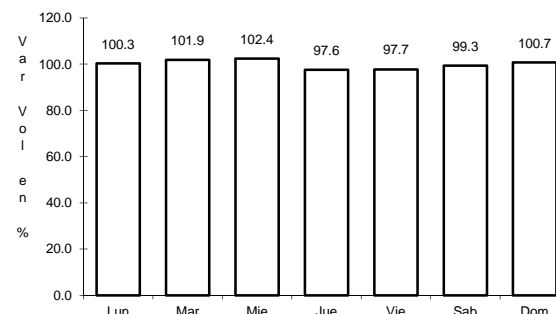
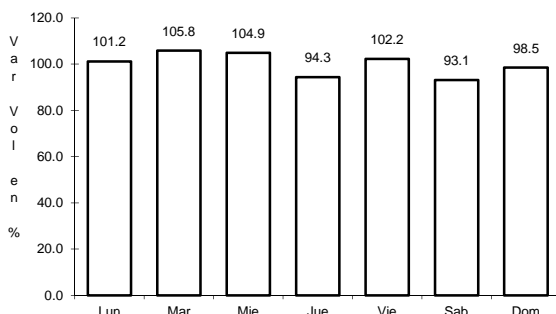
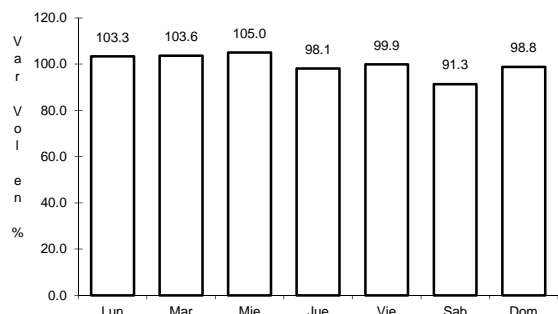
Km: 19.12      Tipo: 1      Sent: 2

Km: 156.21      Tipo: 1      Sent: 0

17 CARR: Monterrey - Nuevo Laredo (Libre)

CLAVE: 00463

RUTA: MEX-085



Km: 12.10      Tipo: 3      Sent: 1

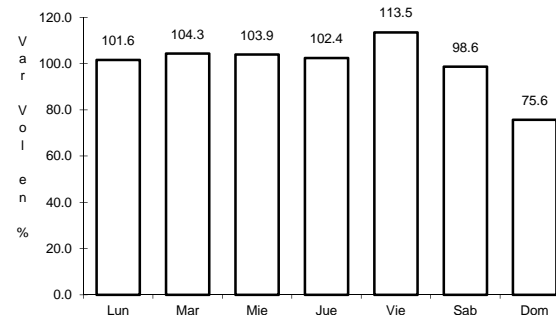
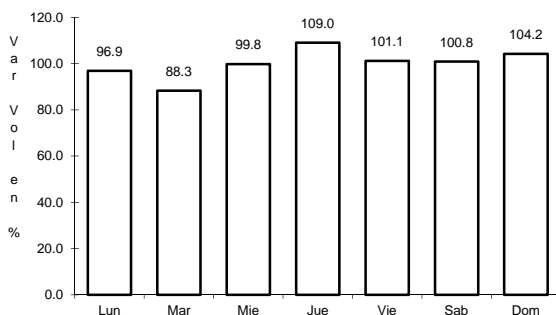
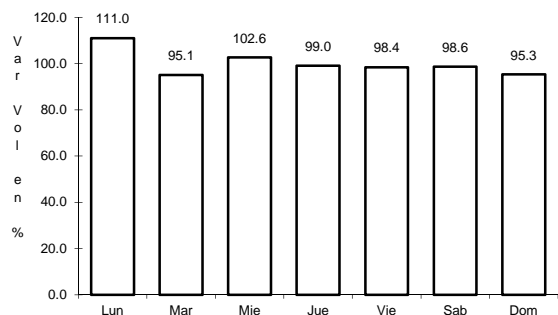
Km: 12.10      Tipo: 3      Sent: 2

Km: 124.40      Tipo: 3      Sent: 0

18 CARR: Monterrey - Reynosa (Libre)

CLAVE: 00088

RUTA: MEX-040



Km: 19.10      Tipo: 1      Sent: 1

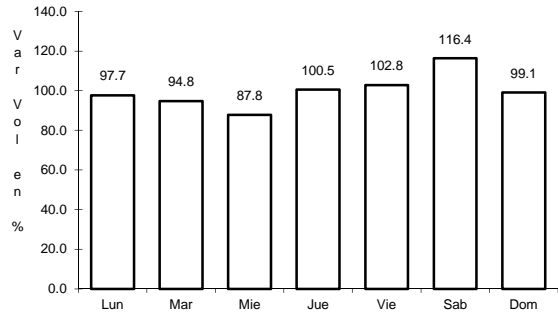
Km: 19.10      Tipo: 1      Sent: 2

Km: 125.00      Tipo: 1      Sent: 0

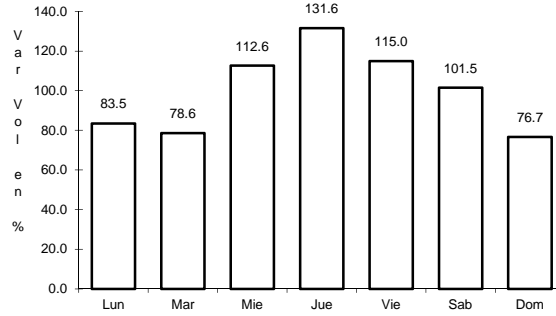
19 CARR: Paras - Nueva Ciudad Guerrero

CLAVE: 00476

RUTA: MEX-030



Km: 0.00      Tipo: 3      Sent: 0

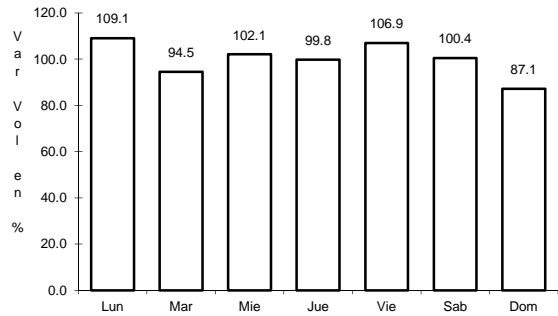


Km: 32.00      Tipo: 1      Sent: 0

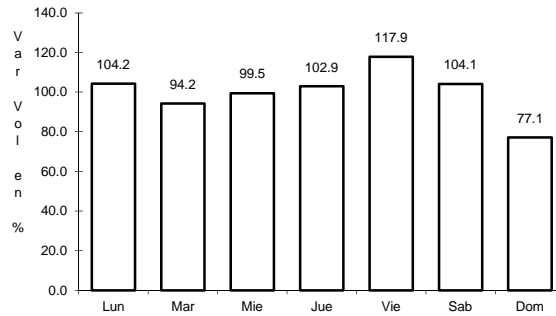
20 CARR: Piedras Negras - Nuevo Laredo

CLAVE: 00503

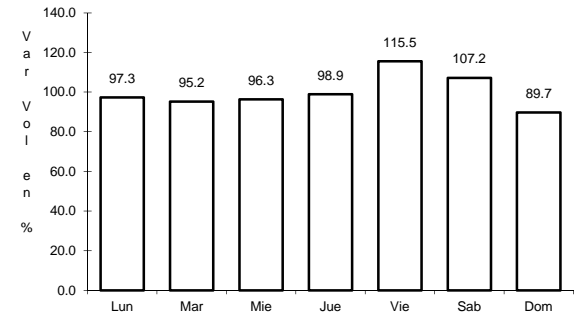
RUTA: MEX-002



Km: 0.00      Tipo: 3      Sent: 1



Km: 0.00      Tipo: 3      Sent: 2

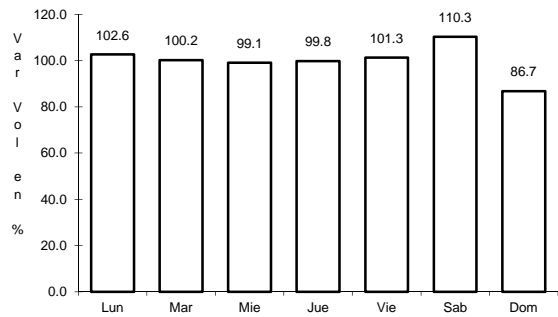


Km: 134.00      Tipo: 3      Sent: 0

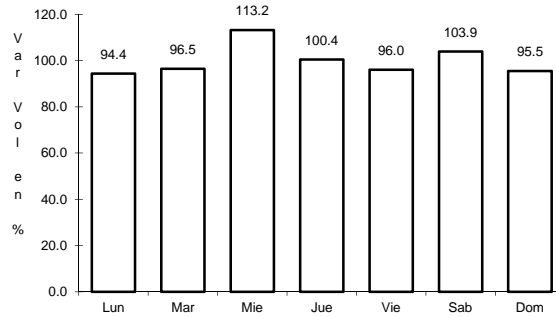
21 CARR: Ramal de Acceso a Puente Anzaldúas

CLAVE: 28619

RUTA: MEX



Km: 0.00      Tipo: 3      Sent: 1

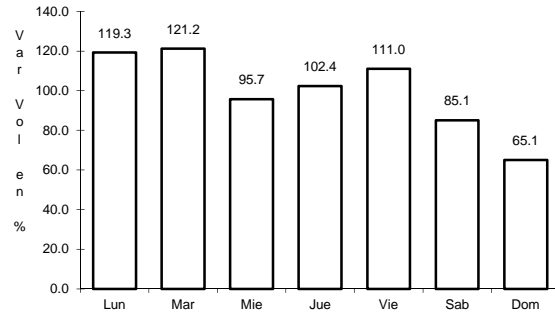


Km: 0.00      Tipo: 3      Sent: 2

## 22 CARR: Reynosa - Nuevo Laredo

CLAVE: 28076

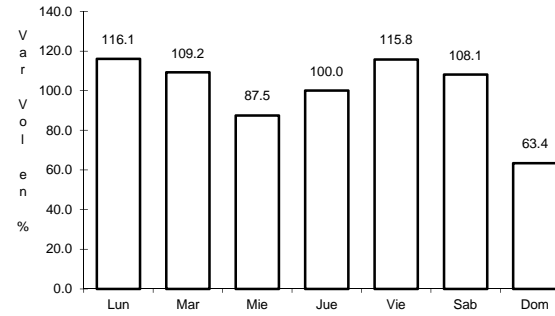
RUTA: MEX-002



Km: 0.00

Tipo: 3

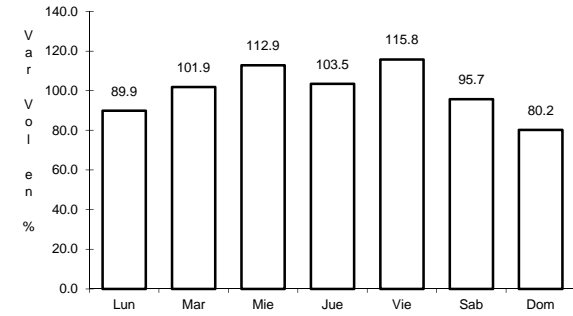
Sent: 1



Km: 0.00

Tipo: 3

Sent: 2



Km: 221.08

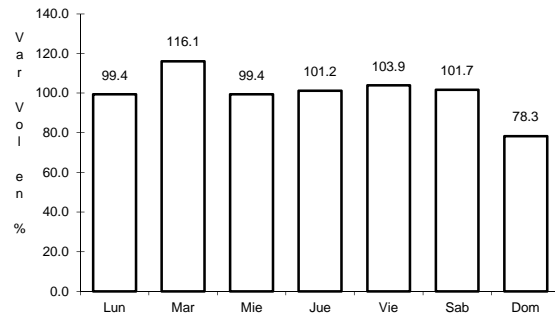
Tipo: 1

Sent: 0

## 23 CARR: Soto La Marina - La Coma

CLAVE: 28052

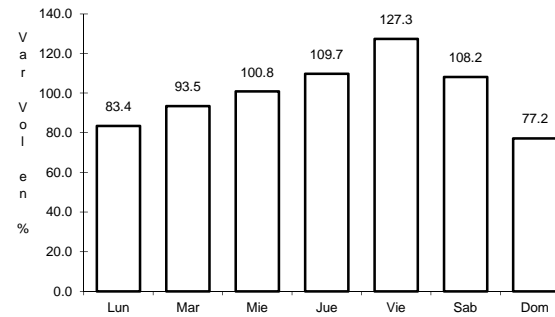
RUTA: MEX-180



Km: 0.00

Tipo: 3

Sent: 0



Km: 86.00

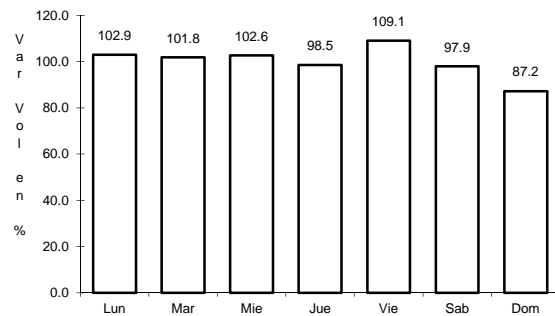
Tipo: 1

Sent: 0

## 24 CARR: Tampico - Cd. Mante

CLAVE: 28163

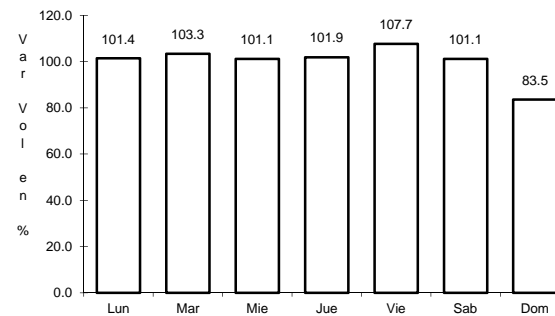
RUTA: MEX-080



Km: 14.79

Tipo: 1

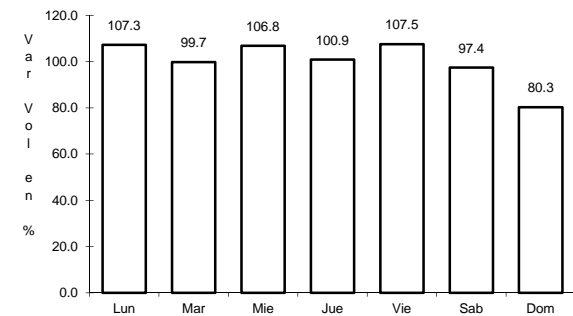
Sent: 1



Km: 14.79

Tipo: 1

Sent: 2



Km: 155.00

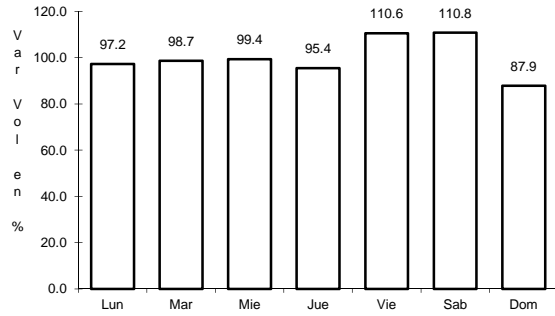
Tipo: 1

Sent: 0

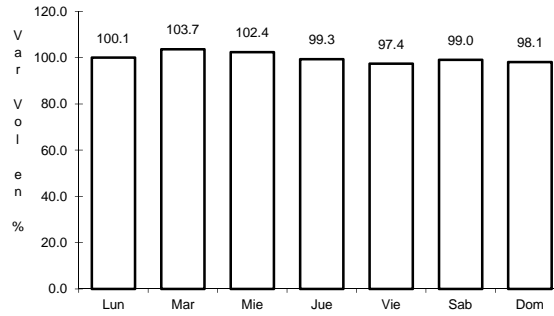
25 CARR: Túxpam - Tampico

CLAVE: 00529

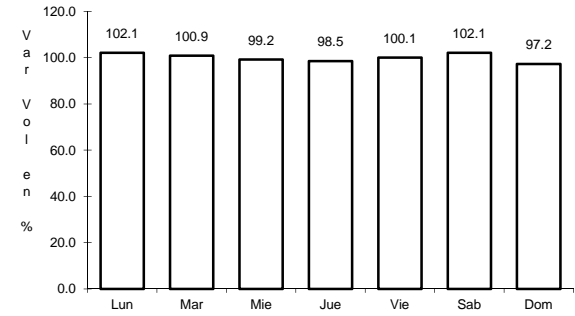
RUTA: MEX-180



Km: 0.00                      Tipo: 3                      Sent: 0



Km: 78.60                      Tipo: 1                      Sent: 0

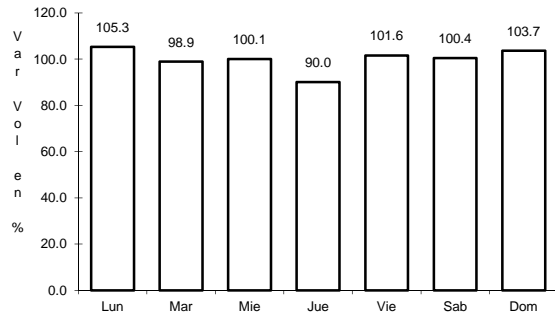


Km: 186.85                      Tipo: 3                      Sent: 0

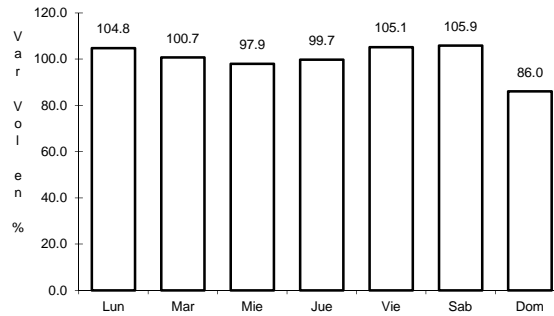
26 CARR: Libramiento Poniente de Tampico (Cuota)

CLAVE: 28051

RUTA: MEX-070D



Km: 0.00                      Tipo: 3                      Sent: 0

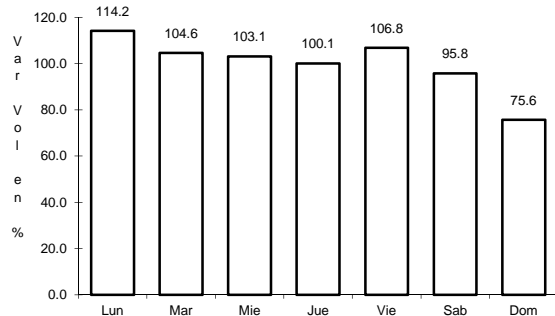


Km: 12.00                      Tipo: 1                      Sent: 0

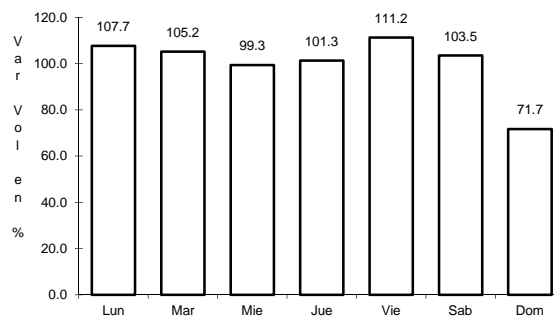
27 CARR: Matamoros - Reynosa (Cuota)

CLAVE: 28079

RUTA: MEX-002D



Km: 0.00                      Tipo: 3                      Sent: 1

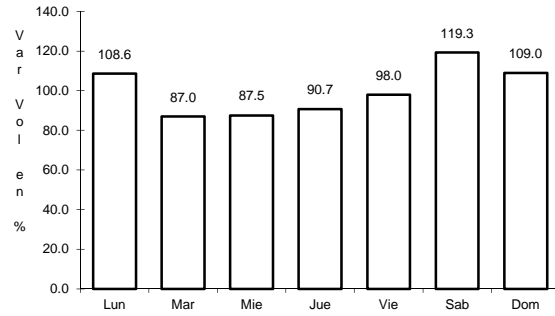


Km: 0.00                      Tipo: 3                      Sent: 2

28 CARR: Aldama - Barra El Tordo

CLAVE: 28620

RUTA: TAM



Km: 0.00

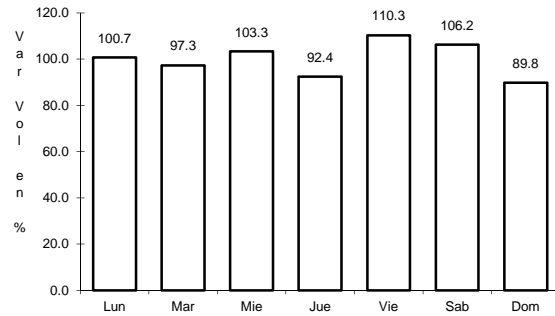
Tipo: 3

Sent: 0

29 CARR: Barretal - Nueva Villa de Padilla

CLAVE: 28001

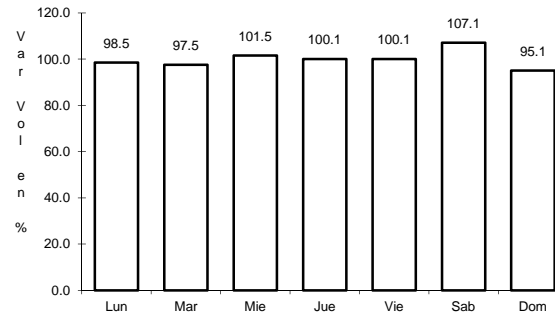
RUTA: TAM-001



Km: 0.00

Tipo: 3

Sent: 0



Km: 24.50

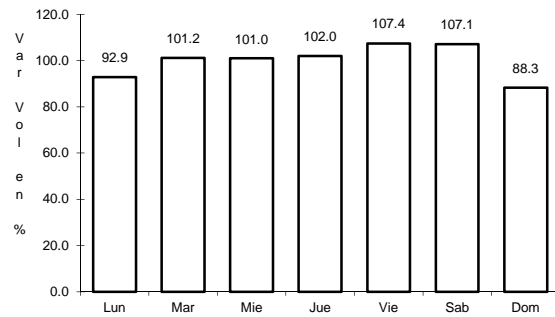
Tipo: 1

Sent: 0

30 CARR: China - Méndez

CLAVE: 00191

RUTA: NL-TAM



Km: 0.00

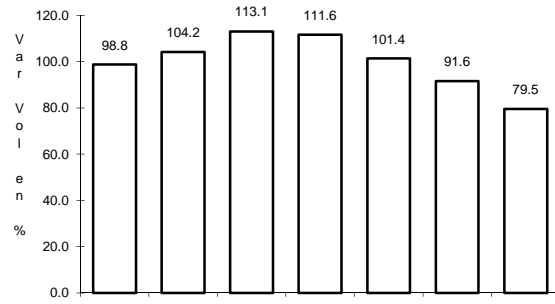
Tipo: 3

Sent: 0

31 CARR: Ébano - Estación Manuel

CLAVE: 24624

RUTA: SLP-TAM



Km: 0.00

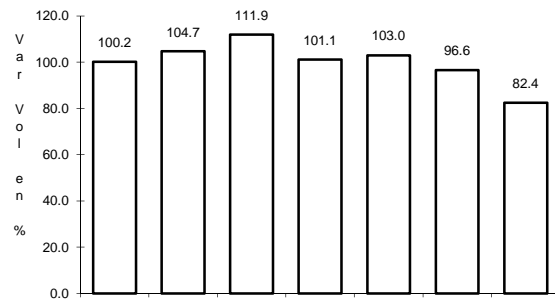
Tipo: 3

Sent: 0

32 CARR: El Limón - Ocampo

CLAVE: 28019

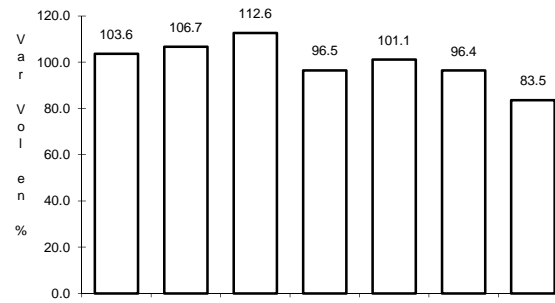
RUTA: TAM-019



Km: 0.00

Tipo: 3

Sent: 0



Km: 43.00

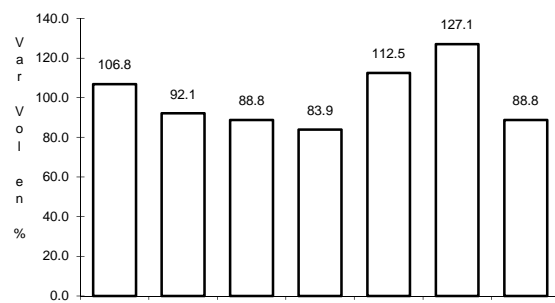
Tipo: 1

Sent: 0

33 CARR: Ent. Huisachito - Nuevo Laredo

CLAVE: 00074

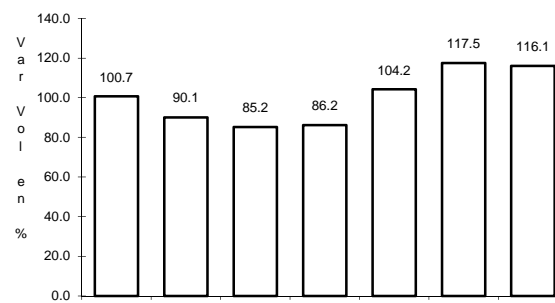
RUTA: NL-001-TAM



Km: 0.00

Tipo: 3

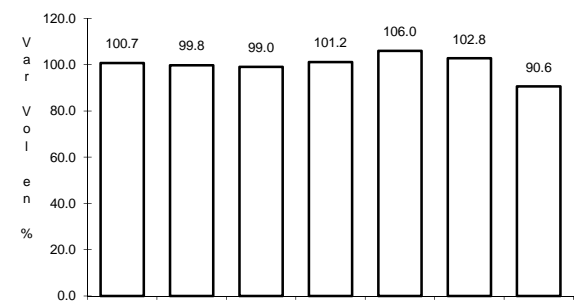
Sent: 0



Km: 47.00

Tipo: 1

Sent: 0



Km: 51.00

Tipo: 1

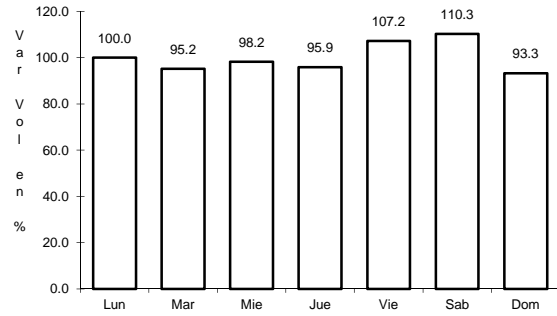
Sent: 0



37 CARR: Libramiento de Mier

CLAVE: 28282

RUTA: TAMPS



Km: 0.00

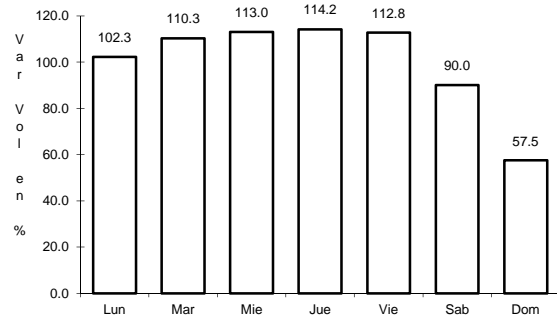
Tipo: 3

Sent: 0

38 CARR: Libramiento de Nuevo Laredo

CLAVE: 28030

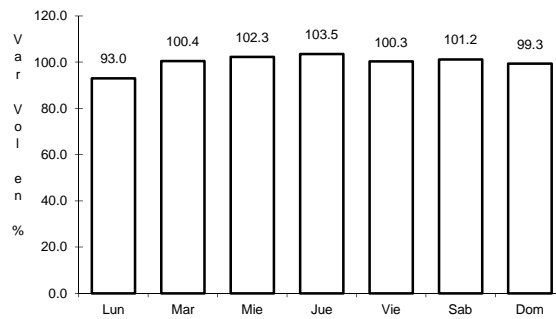
RUTA: TAM



Km: 0.00

Tipo: 3

Sent: 1



Km: 0.00

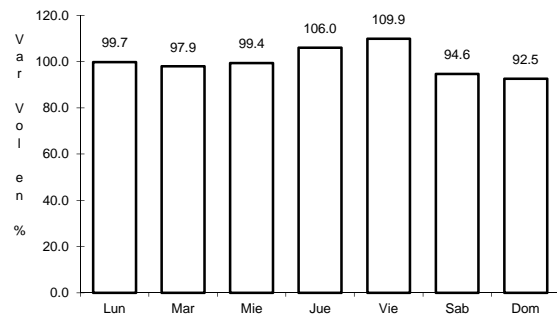
Tipo: 3

Sent: 2

39 CARR: Libramiento de Nuevo Laredo II

CLAVE: 28626

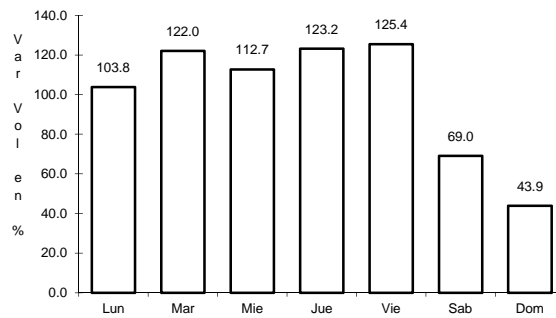
RUTA: TAM



Km: 0.00

Tipo: 3

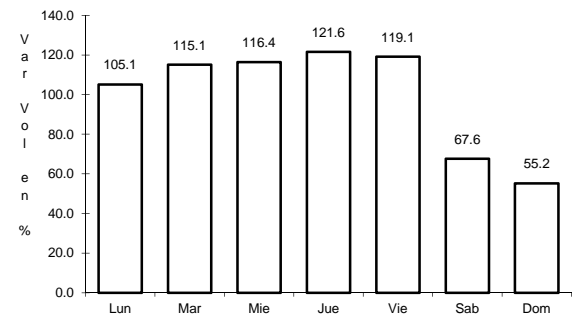
Sent: 0



Km: 32.20

Tipo: 1

Sent: 1



Km: 32.20

Tipo: 1

Sent: 2

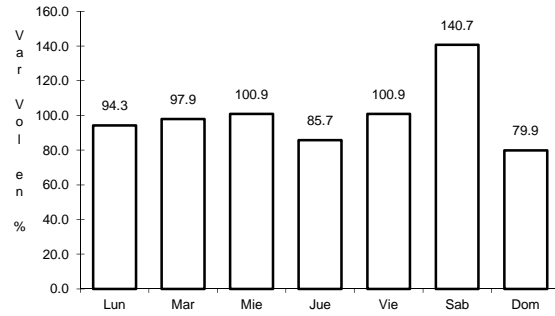




43 CARR: Potrero Nuevo - Rancho El Mezquital

CLAVE: 28615

RUTA: TAM



Km: 0.00

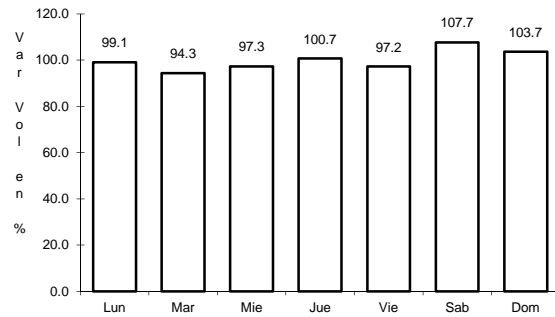
Tipo: 3

Sent: 0

44 CARR: Ramal a Gómez Farías

CLAVE: 28020

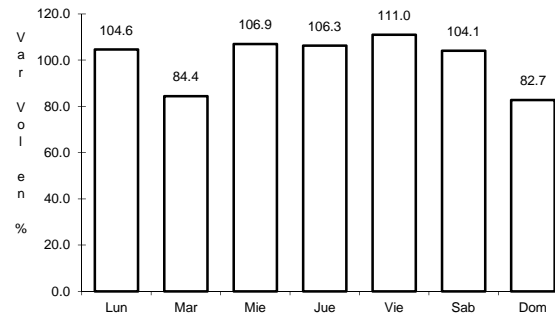
RUTA: TAM-020



Km: 0.00

Tipo: 3

Sent: 0



Km: 11.00

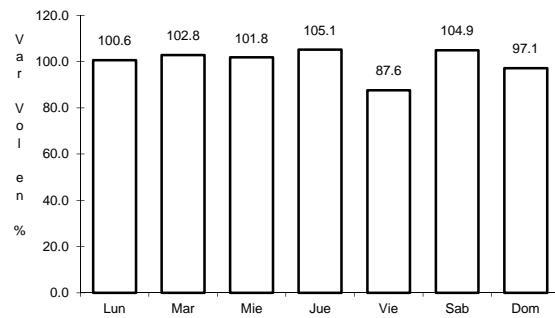
Tipo: 1

Sent: 0

45 CARR: Ramal a Xicoténcatl

CLAVE: 28619

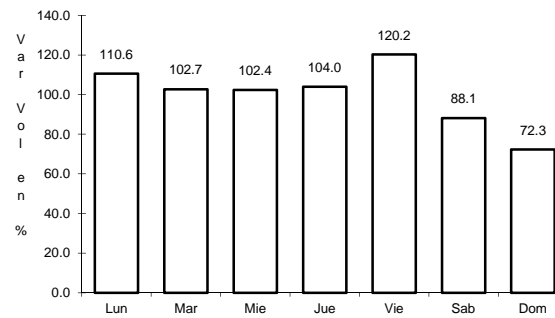
RUTA: TAM



Km: 0.00

Tipo: 3

Sent: 0



Km: 13.00

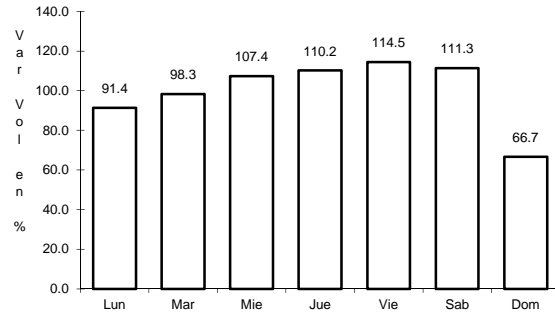
Tipo: 1

Sent: 0

46 CARR: San Fernando - Carboneras

CLAVE: 28618

RUTA: TAM

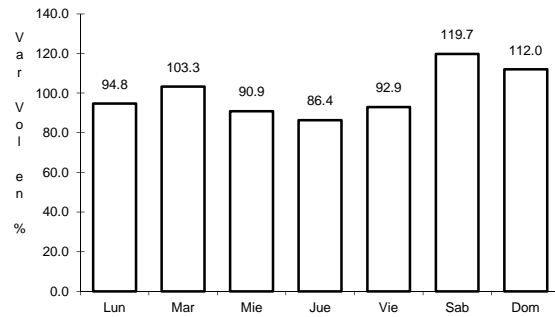


Km: 0.00      Tipo: 3      Sent: 0

47 CARR: Soto La Marina - La Pesca

CLAVE: 28049

RUTA: TAM-070

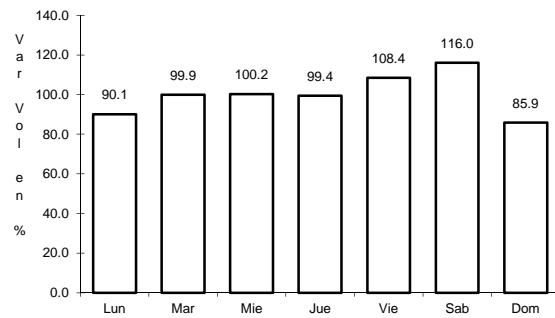


Km: 0.00      Tipo: 3      Sent: 0

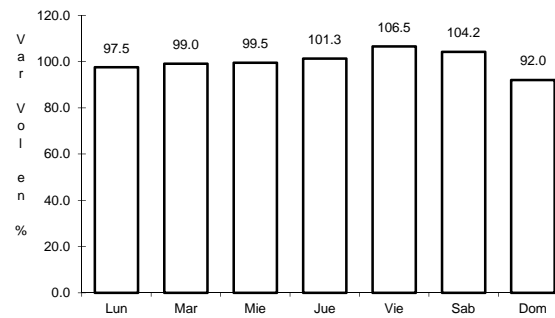
48 CARR: T. C. (Valle Hermoso - Empalme) - Matamoros

CLAVE: 28005

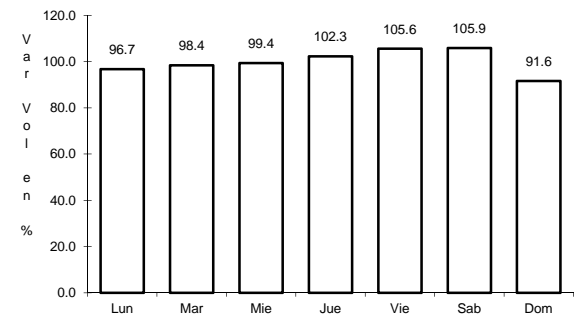
RUTA: TAM-005



Km: 0.00      Tipo: 3      Sent: 0



Km: 33.90      Tipo: 1      Sent: 1

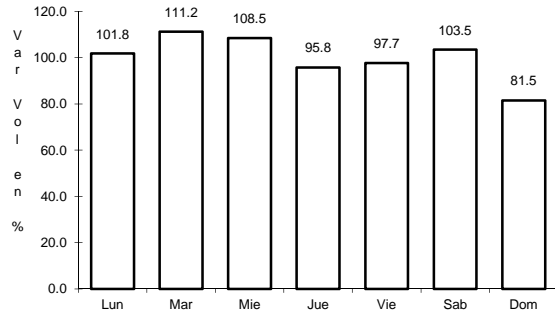


Km: 33.90      Tipo: 1      Sent: 2

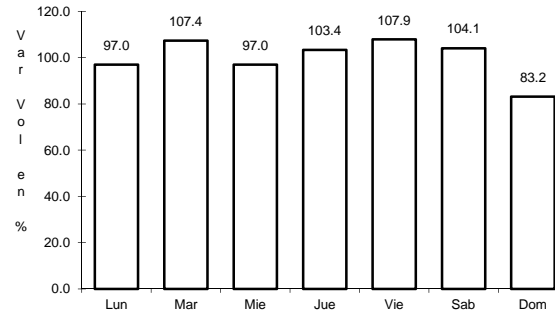
49 CARR: T. C. Libramiento Cd. Victoria - San Antonio

CLAVE:

RUTA: TAM-126



Km: 0.00                      Tipo: 3                      Sent: 0

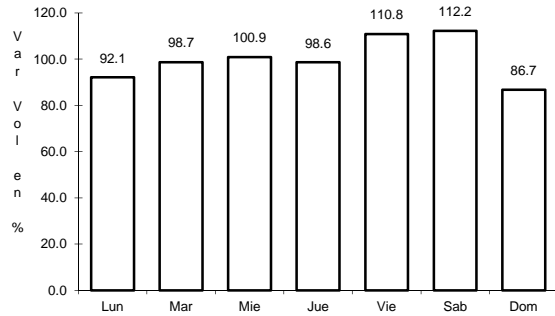


Km: 37.50                      Tipo: 1                      Sent: 0

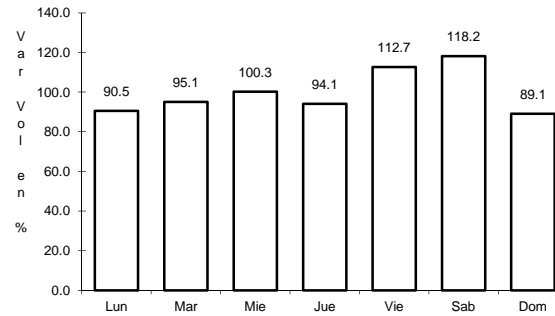
50 CARR: Valle Hermoso - Empalme

CLAVE: 28004

RUTA: TAM-004



Km: 0.00                      Tipo: 3                      Sent: 0

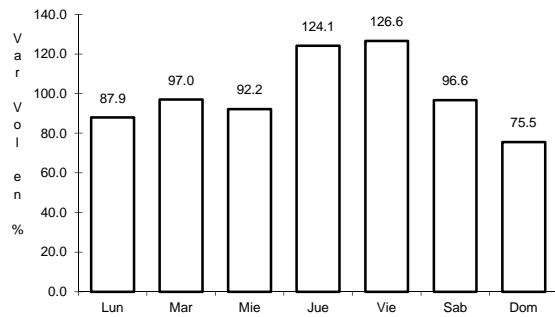


Km: 28.38                      Tipo: 1                      Sent: 0

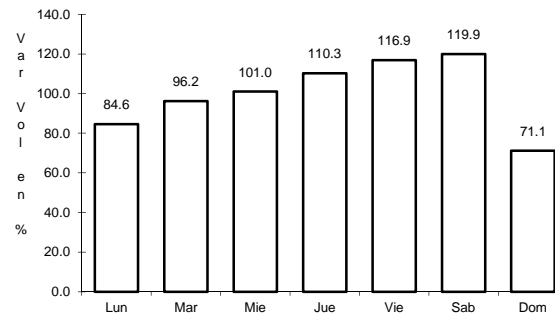
51 CARR: Valle Hermoso - Las Yescas

CLAVE: 28614

RUTA: TAM

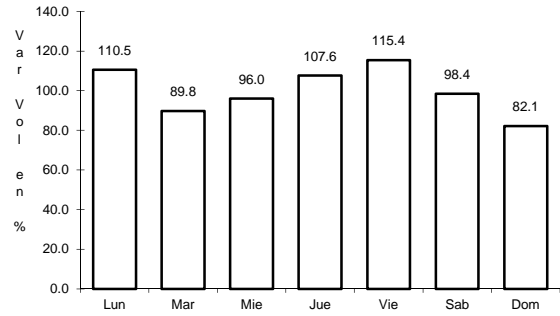


Km: 0.00                      Tipo: 3                      Sent: 0



Km: 26.00                      Tipo: 1                      Sent: 0

52 CARR: Santander Jiménez - Ent. El Ojito

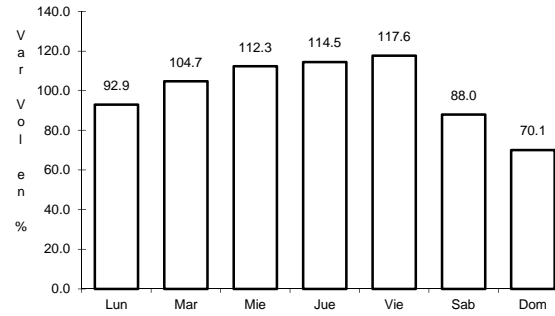


Km: 0.00

Tipo: 3

Sent: 0

CLAVE: 28579

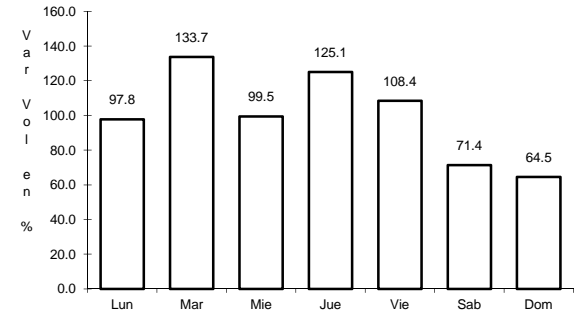


Km: 20.00

Tipo: 1

Sent: 0

RUTA: MEX-107-TAM



Km: 58.00

Tipo: 1

Sent: 0