

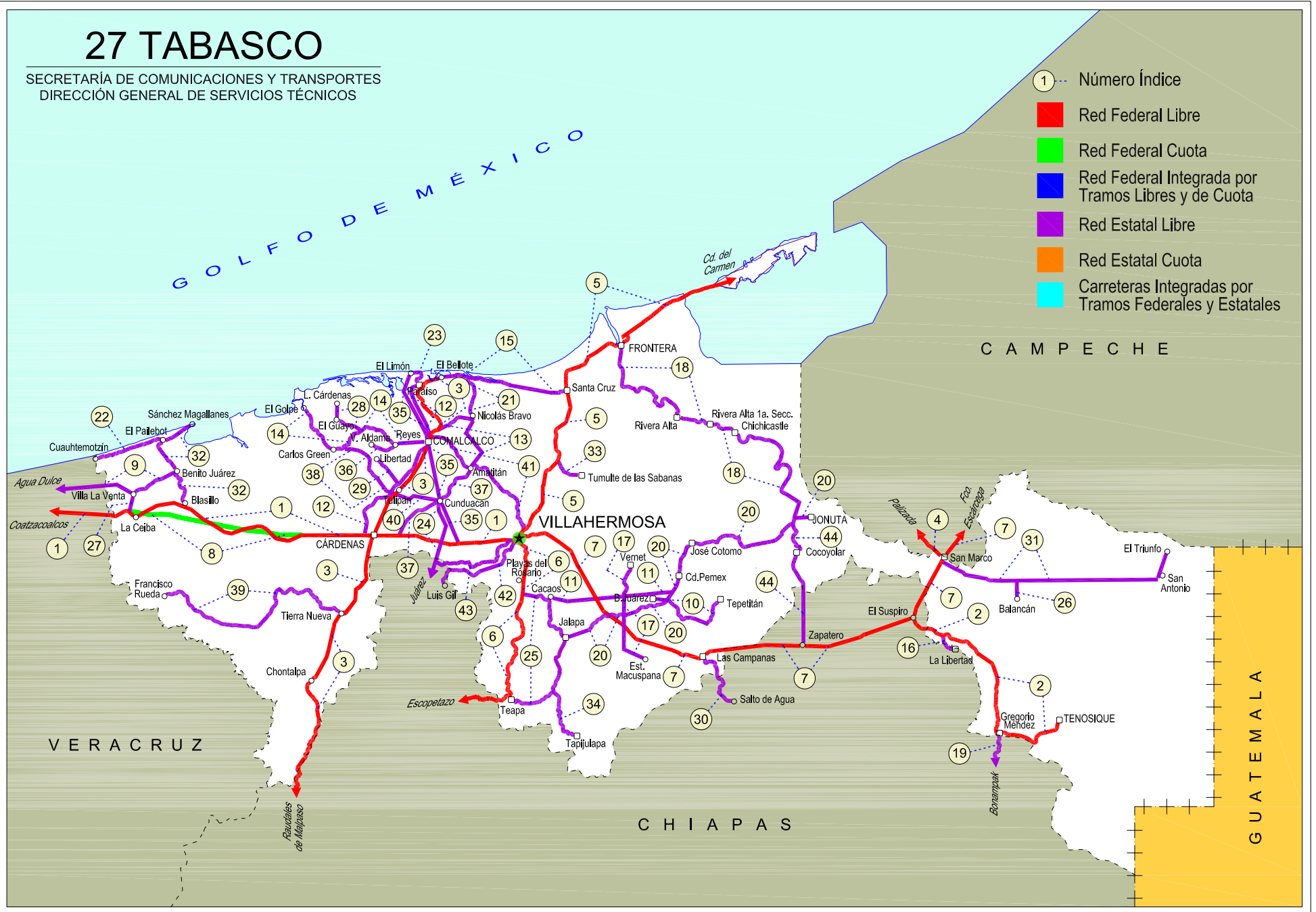
TABASCO

NO. INDICE	CARRETERA	ruta
---RED FEDERAL LIBRE---		
1	Coatzacoalcos - Villahermosa	MEX-180
2	El Suspiro - Tenosique	MEX-203
3	Malpaso - El Bellote	MEX-187
4	San Marco - Palizada	MEX-186
5	Villahermosa - Cd. del Carmen	MEX-180
6	Villahermosa - Escopetazo	MEX-195
7	Villahermosa - Francisco Escárcega	MEX-186
---RED FEDERAL DE CUOTA---		
8	Ent. Agua Dulce - Cárdenas (Cuota)	MEX-184D
---RED ESTATAL LIBRE---		
9	Benito Juárez - Agua Dulce	TAB-VER
10	Benito Juárez - Tepetitán	TAB
11	Cacaos - La Granja	TAB
12	Cárdenas - Paraíso	TAB
13	Chichicapa - Ent. La Libertad	TAB
14	Comalcalco - El Golpe	TAB
15	El Bellote - Santa Cruz	TAB
16	Ent. Emiliano Zapata - La Libertad	CHIS-TAB
17	Estación Macuspana - Vernet	TAB-041
18	Frontera - T. C. (Jalapa - Jonuta)	TAB
19	Gregorio Méndez Magaña - Reforma de Ocampo	CHIS
20	Jalapa - Jonuta	TAB
21	Nicolás Bravo - T. C. (El Bellote - Santa Cruz)	TAB
22	Pailebot - Cuauhtemotzin	TAB
23	Paraíso - El Limón	TAB
24	Paso de Cunduacán - Estación Juárez	TAB-CHIS
25	Playas del Rosario - Teapa	TAB-001
26	Ramal a Balancan	TAB
27	Ramal a La Venta	TAB
28	Ramal a Lázaro Cárdenas	TAB
29	Ramal a Libertad	TAB
30	Ramal a Salto del Agua	TAB-CHIS
31	Ramal a San Antonio	TAB
32	Ramal a Sánchez Magallanes	TAB
33	Ramal a Tamulte de Las Sabanas	TAB
34	Ramal a Tapijulapa	TAB
35	Reforma - Dos Bocas	TAB
36	Reyes Hernández - Villa Aldama	TAB
37	Samaria - Amatitán	TAB
38	T. C. (Cárdenas - Paraíso) - Carlos Green	TAB
39	Tierra Nueva - Francisco Rueda	TAB
40	Tulipán - Cunduacán	TAB
41	Villahermosa - Comalcalco	TAB
42	Villahermosa - Luis Gil Pérez	TAB
43	Villahermosa - T. C. (P. de Cunduacán - Estación Juárez)	TAB
44	Zapatero - T. C. (Jalapa - Jonuta)	CHIS-TAB

27 TABASCO

SECRETARÍA DE COMUNICACIONES Y TRANSPORTES
DIRECCIÓN GENERAL DE SERVICIOS TÉCNICOS

- ① --- Número Índice
- Red Federal Libre
- Red Federal Cuota
- Red Federal Integrada por Tramos Libres y de Cuota
- Red Estatal Libre
- Red Estatal Cuota
- Carreteras Integradas por Tramos Federales y Estatales



TABASCO

1 CARR : Coatzacoalcos - Villahermosa

CLAVE: 00528

RUTA: MEX-180

AÑO : 2012

LUGAR	ESTACION				CLASIFICACION VEHICULAR EN PORCIENTO														COORDENADAS		
	KM	TE	SC	TDPA	M	A	B	C2	C3	T3S2	T3S3	T3S2R4	OTROS	A	B	C	K'	D	LATITUD	LONGITUD	
Coatzacoalcos	0.00																				
Caseta de Cobro Pte. Coatzacoalcos	3.00	1	0	16246	1.3	80.8	5.3	4.1	2.5	2.3	1.8	0.9	1.0	82.1	5.3	12.6	0.072	0.502	18.116310	-94.412903	
X. C. Pajaritos - Nanchital	6.53	1	0	20895	1.0	81.9	5.2	5.6	1.6	1.2	1.6	1.7	0.2	82.9	5.2	11.9	0.094	0.513	18.103148	-94.397388	
X. C. Pajaritos - Nanchital	6.53	3	0	12805	1.7	80.2	4.9	5.1	3.3	1.5	1.5	1.4	0.4	81.9	4.9	13.2	0.100	0.504	18.093998	-94.376010	
T. Der. Puente Antonio Dovalí Jaimes	14.60	1	0	10744	2.1	80.1	5.4	4.7	2.9	1.3	1.4	1.7	0.4	82.2	5.4	12.4	0.082	0.536	18.076029	-94.323558	
T. Der. Puente Antonio Dovalí Jaimes	14.60	3	1	7519	1.2	81.8	4.2	4.8	2.5	1.8	1.8	1.1	0.8	83.0	4.2	12.8	0.071	0.500	18.071758	-94.313054	
T. Der. Puente Antonio Dovalí Jaimes	14.60	3	2	7529	1.6	79.8	4.6	5.1	2.7	2.0	2.0	1.3	0.9	81.4	4.6	14.0	0.079	0.500	18.071747	-94.313051	
T. Der. Las Choapas	36.00	3	1	6916	2.0	78.6	5.9	4.9	2.7	1.8	2.3	1.0	0.8	80.6	5.9	13.5	0.076	0.503	18.051951	-94.120995	
T. Der. Las Choapas	36.00	3	2	7009	2.5	77.1	6.0	5.1	2.8	2.0	2.5	1.1	0.9	79.6	6.0	14.4	0.078	0.503	18.052544	-94.121018	
Lim. Edos. Term. Ver. Ppia. Tab.	41.48																				
T. Izq. Villa La Venta	47.26	3	0	3604	3.2	74.8	7.4	6.5	3.0	0.8	2.3	1.2	0.8	78.0	7.4	14.6	0.084	0.503	18.058718	-94.033285	
T. Izq. Campo Magallanes	65.20	1	0	3471	2.8	60.0	5.0	6.8	5.4	15.4	2.7	1.3	0.6	62.8	5.0	32.2	0.075	0.529	18.074035	-93.878699	
T. Izq. Campo Magallanes	65.20	3	0	4975	2.3	61.0	6.4	7.0	4.1	13.5	3.8	1.2	0.7	63.3	6.4	30.3	0.073	0.524	18.073398	-93.876779	
Pico de Oro	88.50	1	0	5292	2.0	68.0	3.6	7.1	2.8	11.2	3.6	0.9	0.8	70.0	3.6	26.4	0.079	0.512	18.018374	-93.683977	
Pico de Oro	88.50	3	0	5104	2.9	66.0	4.3	6.8	4.0	9.8	3.5	1.7	1.0	68.9	4.3	26.8	0.078	0.515	18.019883	-93.673236	
Cárdenas	122.10	1	1	13711	3.3	75.4	3.6	5.7	3.5	2.9	2.2	2.5	0.9	78.7	3.6	17.7	0.074	0.514	17.999050	-93.400884	
Cárdenas	122.10	1	2	14505	3.3	73.4	3.8	6.4	3.7	3.1	2.3	2.9	1.1	76.7	3.8	19.5	0.069	0.514	17.999335	-93.400912	
Cárdenas	122.10	3	1	18150	2.4	78.4	5.0	4.8	2.0	2.3	2.0	2.1	1.0	80.8	5.0	14.2	0.077	0.505	17.999037	-93.361755	
Cárdenas	122.10	3	2	18503	3.0	76.0	5.6	5.3	2.0	2.7	2.2	2.2	1.0	79.0	5.6	15.4	0.085	0.505	17.999270	-93.361025	
T. Izq. Samaria	132.50	3	1	15411	1.9	74.2	5.6	8.6	2.3	2.3	1.9	2.3	0.9	76.1	5.6	18.3	0.072	0.502	17.994854	-93.272670	
T. Izq. Samaria	132.50	3	2	15272	1.6	72.2	6.3	9.1	2.5	2.6	2.2	2.5	1.0	73.8	6.3	19.9	0.078	0.502	18.000285	-93.272963	
Cucuyulapa	134.80	1	1	14329	1.9	76.5	4.1	5.7	2.4	3.0	2.3	3.2	0.9	78.4	4.1	17.5	0.073	0.508	17.998956	-93.259066	
Cucuyulapa	134.80	1	2	13867	1.8	74.3	4.7	6.1	2.6	3.2	2.6	3.6	1.1	76.1	4.7	19.2	0.074	0.508	17.999194	-93.259930	
T. Der. La Reforma	148.80	1	1	15227	2.1	77.4	4.3	6.2	2.2	2.7	1.8	2.4	0.9	79.5	4.3	16.2	0.090	0.533	17.974096	-93.137904	
T. Der. La Reforma	148.80	1	2	17405	1.2	75.7	4.8	6.8	2.4	3.3	2.2	2.5	1.1	76.9	4.8	18.3	0.083	0.533	17.974417	-93.138590	
T. Der. La Reforma	148.80	3	1	26395	0.9	79.8	4.1	5.0	1.9	3.8	2.3	1.2	1.0	80.7	4.1	15.2	0.077	0.507	17.973765	-93.122175	
T. Der. La Reforma	148.80	3	2	27164	0.8	78.3	4.7	5.4	2.0	3.9	2.5	1.4	1.0	79.1	4.7	16.2	0.082	0.507	17.974049	-93.122671	
Villahermosa	171.15	1	1	34437	1.5	80.0	1.7	6.5	1.7	3.1	2.9	1.6	1.0	81.5	1.7	16.8	0.087	0.502	17.988332	-92.974476	
Villahermosa	171.15	1	2	34216	1.3	78.5	2.0	6.9	2.0	3.3	3.2	1.8	1.0	79.8	2.0	18.2	0.076	0.502	17.988340	-92.974463	

2 CARR : El Suspiro - Tenosique

CLAVE: 00276

RUTA: MEX-203

AÑO : 2012

LUGAR	ESTACION				CLASIFICACION VEHICULAR EN PORCIENTO														COORDENADAS	
	KM	TE	SC	TDPA	M	A	B	C2	C3	T3S2	T3S3	T3S2R4	OTROS	A	B	C	K'	D	LATITUD	LONGITUD
Ent. El Suspiro	0.00	3	0	5016	1.3	82.4	1.1	9.2	1.1	3.0	1.0	0.4	0.5	83.7	1.1	15.2	0.083	0.507	17.749636	-91.813582

TABASCO

2 CARR: El Suspiro - Tenosique

CLAVE: 00276

RUTA: MEX-203

AÑO: 2012

LUGAR	ESTACION				CLASIFICACION VEHICULAR EN PORCIENTO										COORDENADAS					
	KM	TE	SC	TDPA	M	A	B	C2	C3	T3S2	T3S3	T3S2R4	OTROS	A	B	C	K'	D	LATITUD	LONGITUD
Lim. Edos. Term. Chis. Ppia. Tab.	8.00																			
Emiliano Zapata	8.61	3	0	5306	3.0	85.4	0.8	5.8	1.1	2.8	0.5	0.2	0.4	88.4	0.8	10.8	0.079	0.500	17.728286	-91.759166
T. Der. La Libertad	12.10	3	0	3259	2.2	82.3	2.6	8.1	1.8	2.1	0.5	0.2	0.2	84.5	2.6	12.9	0.081	0.502	17.723542	-91.743875
T. Izq. Balancán	32.60	1	0	2950	1.7	80.4	2.2	11.0	1.6	2.1	0.5	0.2	0.3	82.1	2.2	15.7	0.087	0.501	17.634537	-91.602363
T. Izq. Balancán	32.60	3	0	2340	1.6	82.9	4.2	6.0	1.9	2.0	0.7	0.2	0.5	84.5	4.2	11.3	0.081	0.501	17.631620	-91.601223
Estación Zapata	53.00	1	0	2246	1.9	81.0	4.4	7.4	2.0	2.3	0.7	0.1	0.2	82.9	4.4	12.7	0.081	0.502	17.459300	-91.597982
Estación Zapata	53.00	3	0	2734	3.4	81.1	4.7	6.1	1.1	2.2	0.8	0.2	0.4	84.5	4.7	10.8	0.085	0.505	17.456407	-91.594811
Tenosique	75.30																			

3 CARR: Malpaso - El Bellote

CLAVE: 00137

RUTA: MEX-187

AÑO: 2012

LUGAR	ESTACION				CLASIFICACION VEHICULAR EN PORCIENTO										COORDENADAS					
	KM	TE	SC	TDPA	M	A	B	C2	C3	T3S2	T3S3	T3S2R4	OTROS	A	B	C	K'	D	LATITUD	LONGITUD
Presa Malpaso	0.00																			
Lim. Edos. Term. Chis. Ppia. Tab.	43.99																			
Lim. Edos. Term. Tab. Ppia. Chis.	44.59																			
Lim. Edos. Term. Chis. Ppia. Tab.	45.26																			
Lim. Edos. Term. Tab. Ppia. Chis.	45.63																			
Lim. Edos. Term. Chis. Ppia. Tab.	55.04																			
Macabil (La Estrella)	70.12	1	0	3009	4.2	79.7	0.9	9.0	2.3	2.3	1.1	0.3	0.2	83.9	0.9	15.2	0.085	0.502	17.615608	-93.507957
Estación Chontalpa	75.69	1	0	4637	11.5	72.7	1.1	8.9	1.4	3.1	0.8	0.2	0.3	84.2	1.1	14.7	0.083	0.504	17.656673	-93.484142
Estación Chontalpa	75.69	3	0	5393	8.0	73.3	2.0	9.9	1.2	3.5	0.9	0.6	0.6	81.3	2.0	16.7	0.075	0.523	17.673508	-93.476646
T. Izq. Francisco Rueda	90.49	1	0	5477	9.5	76.7	2.4	4.6	1.2	3.2	1.2	0.5	0.7	86.2	2.4	11.4	0.080	0.502	17.786723	-93.439795
T. Izq. Francisco Rueda	90.49	3	0	6624	8.9	76.9	1.0	6.2	1.5	2.9	1.0	0.6	1.0	85.8	1.0	13.2	0.074	0.501	17.791151	-93.436914
Huimanguillo	98.03	1	1	4064	0.3	84.1	1.0	6.8	1.5	4.6	0.7	0.2	0.8	84.4	1.0	14.6	0.077	0.539	17.820214	-93.400697
Huimanguillo	98.03	1	2	4274	0.7	82.5	1.2	7.4	1.6	4.7	0.9	0.1	0.9	83.2	1.2	15.6	0.074	0.539	17.820214	-93.400697
Huimanguillo	98.03	3	1	5570	9.1	70.6	1.4	11.4	1.2	4.3	0.9	0.3	0.8	79.7	1.4	18.9	0.085	0.516	17.839285	-93.397773
Huimanguillo	98.03	3	2	5932	1.0	77.6	1.4	12.0	1.4	4.5	1.0	0.3	0.8	78.6	1.4	20.0	0.087	0.516	17.839285	-93.397773
Cárdenas	117.56	1	0	6383	6.2	79.7	1.3	7.2	1.2	2.1	1.0	0.4	0.9	85.9	1.3	12.8	0.072	0.500	17.948395	-93.361589
Cárdenas	117.56	3	0	14856	7.5	81.2	2.6	5.8	0.5	1.2	0.8	0.2	0.2	88.7	2.6	8.7	0.069	0.509	18.014569	-93.369159
Tulipán	134.70	3	0	9739	7.1	74.3	4.4	6.4	0.8	5.1	0.8	0.5	0.6	81.4	4.4	14.2	0.072	0.510	18.123092	-93.293553
T. Der. Cunduacán	141.70	1	0	6863	5.2	76.3	4.0	7.5	0.9	3.9	0.9	0.7	0.6	81.5	4.0	14.5	0.074	0.503	18.139891	-93.271789
T. Der. Cunduacán	141.70	3	0	6277	4.4	76.8	5.1	6.4	0.8	4.1	1.1	0.6	0.7	81.2	5.1	13.7	0.072	0.512	18.142738	-93.269608
T. Der. Jalpa	153.50	1	0	10153	4.9	75.8	1.5	9.1	1.6	5.1	1.1	0.3	0.6	80.7	1.5	17.8	0.076	0.501	18.243160	-93.211164
T. Der. Jalpa	153.50	3	1	5251	6.1	78.6	3.6	7.0	0.8	1.8	1.2	0.4	0.5	84.7	3.6	11.7	0.073	0.506	18.247653	-93.212991

TABASCO

3 CARR: Malpaso - El Bellote

CLAVE: 00137

RUTA: MEX-187

AÑO: 2012

LUGAR	ESTACION				CLASIFICACION VEHICULAR EN PORCIENTO														COORDENADAS	
	KM	TE	SC	TDPA	M	A	B	C2	C3	T3S2	T3S3	T3S2R4	OTROS	A	B	C	K'	D	LATITUD	LONGITUD
T. Der. Jalpa	153.50	3	2	5120	6.5	77.0	4.0	7.6	0.8	1.9	1.2	0.4	0.6	83.5	4.0	12.5	0.070	0.506	18.247653	-93.212991
Paraíso	176.85	1	1	10675	1.5	87.7	3.7	3.8	0.6	1.3	0.6	0.5	0.3	89.2	3.7	7.1	0.095	0.513	18.373242	-93.220448
Paraíso	176.85	1	2	11230	4.4	83.6	4.0	4.4	0.7	1.4	0.7	0.5	0.3	88.0	4.0	8.0	0.087	0.513	18.373241	-93.220448
Paraíso	176.85	3	1	8148	1.9	90.4	2.5	3.9	0.2	0.6	0.4	0.0	0.1	92.3	2.5	5.2	0.100	0.509	18.407661	-93.199746
Paraíso	176.85	3	2	7852	3.3	88.0	2.8	4.6	0.2	0.6	0.4	0.0	0.1	91.3	2.8	5.9	0.091	0.509	18.407661	-93.199745
Ceiba	182.00	3	0	6681	4.9	77.3	4.6	8.1	0.3	3.6	0.5	0.1	0.6	82.2	4.6	13.2	0.114	0.510	18.417317	-93.171404
El Bellote	185.47																			

4 CARR: San Marco - Palizada

CLAVE: 00490

RUTA: MEX-186

AÑO: 2012

LUGAR	ESTACION				CLASIFICACION VEHICULAR EN PORCIENTO														COORDENADAS	
	KM	TE	SC	TDPA	M	A	B	C2	C3	T3S2	T3S3	T3S2R4	OTROS	A	B	C	K'	D	LATITUD	LONGITUD
T. C. Villahermosa - Francisco Escárcega	0.00	3	0	628	2.5	74.7	6.7	6.6	6.1	1.8	0.9	0.7	0.0	77.2	6.7	16.1	0.091	0.502	17.942479	-91.735188
Lim. Edos. Term. Tab. Ppia. Camp.	1.50																			
T. Izq. Jonuta	46.20	1	0	604	3.2	74.2	2.7	7.1	7.9	1.4	1.1	2.4	0.0	77.4	2.7	19.9	0.101	0.500	18.126042	-92.106765
T. Izq. Jonuta	46.20	3	0	782	3.3	77.8	2.7	7.7	4.9	1.5	0.6	1.5	0.0	81.1	2.7	16.2	0.096	0.500	18.131669	-92.113558
Palizada	68.00																			

5 CARR: Villahermosa - Cd. del Carmen

CLAVE: 00064

RUTA: MEX-180

AÑO: 2012

LUGAR	ESTACION				CLASIFICACION VEHICULAR EN PORCIENTO														COORDENADAS	
	KM	TE	SC	TDPA	M	A	B	C2	C3	T3S2	T3S3	T3S2R4	OTROS	A	B	C	K'	D	LATITUD	LONGITUD
Villahermosa	0.00																			
T. Izq. Cd. Industrial	4.30	3	1	24341	1.7	89.0	1.5	3.0	1.2	1.5	0.8	0.8	0.5	90.7	1.5	7.8	0.068	0.520	18.037988	-92.901583
T. Izq. Cd. Industrial	4.30	3	2	22493	1.8	88.0	1.6	3.3	1.3	1.7	1.0	0.8	0.5	89.8	1.6	8.6	0.074	0.520	18.037987	-92.901594
Macultepec	18.60	1	1	9382	1.1	88.0	1.8	3.6	1.4	1.4	0.8	1.4	0.5	89.1	1.8	9.1	0.071	0.506	18.142962	-92.864260
Macultepec	18.60	1	2	9161	1.5	85.9	2.1	4.2	1.6	1.6	0.9	1.6	0.6	87.4	2.1	10.5	0.072	0.506	18.142959	-92.864261
Macultepec	18.60	3	1	7204	0.8	86.4	1.7	4.1	1.2	3.6	0.8	1.2	0.2	87.2	1.7	11.1	0.088	0.508	18.167246	-92.858511
Macultepec	18.60	3	2	7426	0.8	85.6	1.9	4.4	1.3	3.7	0.9	1.2	0.2	86.4	1.9	11.7	0.075	0.508	18.167246	-92.858509
El Espino	33.20	1	0	7972	0.5	79.5	1.7	6.0	2.5	4.5	1.4	2.9	1.0	80.0	1.7	18.3	0.074	0.514	18.238981	-92.829620
El Espino	33.20	3	0	9143	0.6	80.0	1.4	6.7	2.1	3.5	1.8	2.9	1.0	80.6	1.4	18.0	0.067	0.501	18.254526	-92.832050
T. Izq. El Bellote	49.67	3	0	8049	0.9	79.3	1.2	5.7	3.8	4.1	1.2	3.1	0.7	80.2	1.2	18.6	0.073	0.520	18.399266	-92.798928
Frontera	74.59	1	0	8506	2.1	79.4	1.4	5.9	2.4	4.2	1.1	2.7	0.8	81.5	1.4	17.1	0.074	0.504	18.513577	-92.662834
Frontera	74.59	3	0	5802	1.6	79.2	1.6	5.5	2.1	4.1	1.8	3.2	0.9	80.8	1.6	17.6	0.084	0.501	18.540512	-92.634828
T. Izq. Escolleras	78.00	3	0	5288	1.2	78.3	1.4	6.8	2.5	4.1	1.2	3.8	0.7	79.5	1.4	19.1	0.079	0.520	18.561521	-92.602602

TABASCO

5 CARR: Villahermosa - Cd. del Carmen

CLAVE: 00064

RUTA: MEX-180

AÑO: 2012

LUGAR	ESTACION				CLASIFICACION VEHICULAR EN PORCIENTO														COORDENADAS	
	KM	TE	SC	TDPA	M	A	B	C2	C3	T3S2	T3S3	T3S2R4	OTROS	A	B	C	K'	D	LATITUD	LONGITUD
Puente San Pedro	96.50	3	0	4707	0.8	80.6	1.5	6.3	2.4	4.1	1.1	2.5	0.7	81.4	1.5	17.1	0.092	0.510	18.641240	-92.463838
Lim. Edos. Term. Tab. Ppia. Camp.	99.75																			
Nuevo Campechito	100.00	3	0	4500	1.3	61.0	6.0	11.8	3.8	6.7	2.5	5.8	1.1	62.3	6.0	31.7	0.081	0.503	18.642548	-92.456790
Nuevo Progreso	116.57	1	0	4365	1.2	61.3	6.7	11.8	3.1	6.9	2.0	5.9	1.1	62.5	6.7	30.8	0.077	0.503	18.626613	-92.327295
Puente Zacatal	162.41	2	0	5144	0.4	71.0	7.0	5.6	3.4	5.4	1.1	5.6	0.5	71.4	7.0	21.6	0.077	0.500	18.641877	-92.460302
Zacatal	163.17	1	0	4560	1.0	62.3	6.9	10.7	2.6	7.5	2.4	5.8	0.8	63.3	6.9	29.8	0.076	0.502	18.619487	-91.882554
Cd. del Carmen	167.50																			

6 CARR: Villahermosa - Escopetazo

CLAVE: 00104

RUTA: MEX-195

AÑO: 2012

LUGAR	ESTACION				CLASIFICACION VEHICULAR EN PORCIENTO														COORDENADAS	
	KM	TE	SC	TDPA	M	A	B	C2	C3	T3S2	T3S3	T3S2R4	OTROS	A	B	C	K'	D	LATITUD	LONGITUD
Villahermosa	0.00	3	1	17690	1.4	83.3	3.2	1.5	0.3	2.4	6.6	0.5	0.8	84.7	3.2	12.1	0.080	0.507	17.950149	-92.914787
Villahermosa	0.00	3	2	18179	1.0	82.7	3.3	1.6	0.3	2.8	6.9	0.5	0.9	83.7	3.3	13.0	0.082	0.507	17.950151	-92.914788
Parrilla	10.00	1	1	6853	0.8	91.8	2.5	4.1	0.1	0.2	0.3	0.1	0.1	92.6	2.5	4.9	0.105	0.521	17.913849	-92.923343
Parrilla	10.00	1	2	7452	0.8	91.4	2.6	4.4	0.1	0.2	0.3	0.1	0.1	92.2	2.6	5.2	0.085	0.521	17.913849	-92.923343
Parrilla	10.00	3	1	7418	1.0	90.0	2.2	4.1	0.3	0.8	0.8	0.2	0.6	91.0	2.2	6.8	0.073	0.501	17.894492	-92.923588
Parrilla	10.00	3	2	7395	0.9	89.0	2.7	4.4	0.3	0.9	0.9	0.2	0.7	89.9	2.7	7.4	0.073	0.501	17.894607	-92.923584
T. Izq. Subte. García	20.00	3	0	11372	3.2	72.0	2.8	8.1	3.2	5.9	3.6	0.5	0.7	75.2	2.8	22.0	0.071	0.506	17.824931	-92.929264
La Arena	44.00	1	0	5238	2.6	78.4	2.6	6.6	3.3	3.2	2.0	0.4	0.9	81.0	2.6	16.4	0.075	0.500	17.652980	-92.960701
T. Izq. Teapa	54.80	1	0	11046	4.1	71.9	3.2	9.3	3.5	4.6	2.0	0.5	0.9	76.0	3.2	20.8	0.073	0.527	17.571240	-92.956498
T. Izq. Teapa	54.80	3	0	5109	2.3	80.2	3.4	5.9	1.1	4.7	1.0	0.5	0.9	82.5	3.4	14.1	0.070	0.512	17.568855	-92.956939
Lim. Edos. Term. Tab. Ppia. Chis.	61.42																			
Pichucalco	76.00	1	0	3557	2.1	85.3	2.5	7.2	0.7	1.6	0.5	0.0	0.1	87.4	2.5	10.1	0.079	0.520	17.542093	-93.080855
Pichucalco	76.00	3	0	2886	2.3	85.7	2.3	6.3	0.6	2.2	0.3	0.1	0.2	88.0	2.3	9.7	0.076	0.501	17.499267	-93.104545
Solusuchiapa	112.00	1	0	2264	2.0	84.0	1.8	7.3	1.8	1.9	0.9	0.1	0.2	86.0	1.8	12.2	0.070	0.503	17.428377	-93.037996
Solusuchiapa	112.00	3	0	1496	2.2	84.5	1.6	7.3	1.6	1.9	0.7	0.0	0.2	86.7	1.6	11.7	0.090	0.501	17.418599	-93.027647
Rayón	146.00	1	0	1963	1.7	87.7	1.3	6.1	0.7	1.6	0.5	0.0	0.4	89.4	1.3	9.3	0.081	0.501	17.206558	-93.011852
Jitotol	197.79	1	0	1853	1.8	87.9	1.2	6.1	0.9	1.5	0.4	0.1	0.1	89.7	1.2	9.1	0.079	0.504	17.073932	-92.864938
Bochil	211.00	1	0	3609	1.3	87.1	1.3	6.5	0.5	2.1	0.7	0.1	0.4	88.4	1.3	10.3	0.084	0.502	16.989582	-92.880489
Ixtapa	247.00	1	0	3585	1.6	86.2	1.0	5.5	1.1	3.3	0.8	0.1	0.4	87.8	1.0	11.2	0.092	0.503	16.807667	-92.909700
Escopetazo	259.00	1	0	3467	1.2	87.7	1.0	5.6	1.4	1.5	1.0	0.0	0.6	88.9	1.0	10.1	0.099	0.503	16.757158	-92.936623

TABASCO

7 CARR : Villahermosa - Francisco Escárcega

CLAVE: 00092

ruta: MEX-186

AÑO : 2012

LUGAR	ESTACION				CLASIFICACION VEHICULAR EN PORCIENTO														COORDENADAS	
	KM	TE	SC	TDPA	M	A	B	C2	C3	T3S2	T3S3	T3S2R4	OTROS	A	B	C	K'	D	LATITUD	LONGITUD
Villahermosa	0.00	3	1	13176	1.3	81.5	1.9	9.4	1.6	2.4	0.9	0.9	0.1	82.8	1.9	15.3	0.078	0.502	18.001208	-92.890671
Villahermosa	0.00	3	2	13281	1.5	79.9	2.1	9.9	1.8	2.7	1.0	1.0	0.1	81.4	2.1	16.5	0.077	0.502	18.001208	-92.890671
T. Izq. Aeropuerto (Baja)	12.00	1	1	1233	14.4	76.2	0.4	4.0	1.4	2.2	0.6	0.5	0.3	90.6	0.4	9.0	0.090	0.517	17.983715	-92.827977
T. Izq. Aeropuerto (Alta)	12.00	1	1	12145	1.0	85.4	1.3	5.1	1.4	3.0	1.4	0.8	0.6	86.4	1.3	12.3	0.076	0.506	17.983784	-92.827903
T. Izq. Aeropuerto (Alta)	12.00	1	2	11835	1.0	83.9	1.4	5.4	1.6	3.5	1.6	0.9	0.7	84.9	1.4	13.7	0.084	0.506	17.983845	-92.827811
T. Izq. Aeropuerto (Baja)	12.00	1	2	1150	11.2	78.8	0.4	4.4	1.5	2.2	0.7	0.5	0.3	90.0	0.4	9.6	0.086	0.517	17.984015	-92.827747
Puente Grijalva	17.60	2	1	7629	0.0	80.4	4.4	4.6	3.4	4.1	1.2	0.4	1.5	80.4	4.4	15.2	0.079	0.500	17.947556	-92.785240
Puente Grijalva	17.60	2	2	7629	0.0	80.4	4.4	4.6	3.4	4.1	1.2	0.4	1.5	80.4	4.4	15.2	0.079	0.500	17.947556	-92.785240
X. C. Cacaos - La Granja	32.46	1	1	7803	0.8	79.7	2.1	7.5	2.0	4.4	1.7	1.2	0.6	80.5	2.1	17.4	0.078	0.502	17.828590	-92.717350
X. C. Cacaos - La Granja	32.46	1	2	7732	0.8	78.0	2.1	8.5	2.2	4.6	1.8	1.3	0.7	78.8	2.1	19.1	0.084	0.502	17.828578	-92.717334
X. C. Cacaos - La Granja	32.46	3	1	5513	0.7	77.6	2.7	7.8	2.6	4.8	1.5	1.7	0.6	78.3	2.7	19.0	0.078	0.501	17.820890	-92.712863
X. C. Cacaos - La Granja	32.46	3	2	5537	0.8	75.8	2.7	8.5	3.1	5.1	1.6	1.8	0.6	76.6	2.7	20.7	0.088	0.501	17.820890	-92.712863
X. C. Jalapa - Jonuta	40.00	3	1	6737	0.8	76.2	2.8	9.2	2.7	4.8	1.4	1.6	0.5	77.0	2.8	20.2	0.075	0.501	17.776372	-92.675438
X. C. Jalapa - Jonuta	40.00	3	2	6768	0.7	74.7	2.9	9.7	2.7	5.5	1.5	1.8	0.5	75.4	2.9	21.7	0.078	0.501	17.776369	-92.675440
T. Izq. Macuspana	46.20	1	1	5524	1.2	74.2	2.0	13.0	1.6	4.5	1.4	1.6	0.5	75.4	2.0	22.6	0.081	0.506	17.743997	-92.633907
T. Izq. Macuspana	46.20	1	2	5658	1.5	71.5	2.3	14.1	2.0	4.7	1.6	1.8	0.5	73.0	2.3	24.7	0.088	0.506	17.743893	-92.633935
T. Izq. Macuspana	46.20	3	1	4587	1.4	73.9	3.5	7.8	3.6	5.1	1.9	2.2	0.6	75.3	3.5	21.2	0.074	0.508	17.735962	-92.623584
T. Izq. Macuspana	46.20	3	2	4445	1.7	71.2	3.7	8.0	4.2	6.0	2.1	2.4	0.7	72.9	3.7	23.4	0.082	0.508	17.735739	-92.623537
X. C. Estación Macuspana - Vernet	54.30	1	0	8027	1.7	74.0	3.5	7.6	2.7	6.2	1.7	1.7	0.9	75.7	3.5	20.8	0.076	0.508	17.708928	-92.571094
T. Der. Chivalito (Est. Pino Suárez)	70.00	1	0	7021	1.6	73.9	1.6	7.1	3.0	7.0	2.0	3.0	0.8	75.5	1.6	22.9	0.076	0.500	17.669113	-92.441763
T. Der. Chivalito (Est. Pino Suárez)	70.00	3	1	3309	1.2	77.9	1.4	6.0	3.4	5.3	1.9	2.1	0.8	79.1	1.4	19.5	0.076	0.519	17.666100	-92.432251
T. Der. Chivalito (Est. Pino Suárez)	70.00	3	2	3573	1.1	76.0	1.6	6.3	3.6	6.0	2.2	2.4	0.8	77.1	1.6	21.3	0.101	0.519	17.666166	-92.432246
T. Der. Estación Zopo	71.00	1	0	6131	1.0	75.6	1.1	7.0	2.5	6.3	2.3	3.5	0.7	76.6	1.1	22.3	0.085	0.503	17.672267	-92.415225
T. Der. Estación Zopo	71.00	3	1	3268	1.0	78.8	1.4	6.5	1.8	5.2	1.8	2.9	0.6	79.8	1.4	18.8	0.075	0.505	17.675476	-92.410187
T. Der. Estación Zopo	71.00	3	2	3327	1.2	76.2	1.7	7.1	1.9	6.0	2.0	3.3	0.6	77.4	1.7	20.9	0.082	0.505	17.675521	-92.410347
Lim. Edos. Term. Tab. Ppia. Chis.	76.90																			
T. Izq. Bonanza	88.00	1	0	5906	1.6	62.8	4.0	13.1	2.9	9.2	2.4	3.2	0.8	64.4	4.0	31.6	0.072	0.500	17.698665	-92.264189
T. Izq. Jonuta	101.00	1	0	5799	1.7	61.6	2.9	19.4	1.9	6.5	1.9	3.3	0.8	63.3	2.9	33.8	0.078	0.502	17.697872	-92.136904
T. Izq. Jonuta	101.00	3	0	5696	0.7	68.9	4.0	8.8	2.8	9.2	1.8	3.0	0.8	69.6	4.0	26.4	0.081	0.509	17.697714	-92.128941
X. C. Catazajá - Palenque	114.00	1	0	5377	0.8	67.2	3.9	9.3	3.4	9.0	2.2	3.2	1.0	68.0	3.9	28.1	0.077	0.528	17.710254	-92.016420
X. C. Catazajá - Palenque	114.00	3	0	5486	0.7	65.0	5.0	11.2	3.2	8.2	2.1	3.7	0.9	65.7	5.0	29.3	0.082	0.507	17.712378	-92.010208
T. Der. Emiliano Zapata	134.70	1	0	6855	0.5	70.0	1.4	9.3	3.2	9.4	2.0	3.5	0.7	70.5	1.4	28.1	0.073	0.503	17.771550	-91.834994
T. Der. Emiliano Zapata	134.70	3	0	4495	1.1	69.7	1.0	8.0	4.2	8.3	2.6	4.1	1.0	70.8	1.0	28.2	0.073	0.512	17.778577	-91.823817
Lim. Edos. Term. Chis. Ppia. Tab.	140.70																			
Puente Usumacinta	145.20	2	0	3449	0.0	63.2	4.5	6.3	5.4	12.7	1.9	1.3	4.7	63.2	4.5	32.3	0.079	0.500	17.859876	-91.783607

TABASCO

7 CARR: Villahermosa - Francisco Escárcega

CLAVE: 00092

RUTA: MEX-186

AÑO: 2012

LUGAR	ESTACION				CLASIFICACION VEHICULAR EN PORCIENTO													COORDENADAS		
	KM	TE	SC	TDPA	M	A	B	C2	C3	T3S2	T3S3	T3S2R4	OTROS	A	B	C	K'	D	LATITUD	LONGITUD
T. Izq. Palizada	154.05	1	0	2680	1.6	61.8	5.7	8.2	3.3	10.6	2.7	4.9	1.2	63.4	5.7	30.9	0.077	0.509	17.939462	-91.735977
T. Izq. Palizada	154.05	3	0	2587	0.7	63.9	4.4	9.1	4.4	9.9	2.9	3.9	0.8	64.6	4.4	31.0	0.074	0.516	17.948868	-91.727775
Lim. Edos. Term. Tab. Ppia. Camp.	154.60																			
T. Der. Candelaria	233.40	1	0	2897	1.3	63.7	3.7	9.5	4.0	10.1	2.3	4.6	0.8	65.0	3.7	31.3	0.069	0.522	18.371204	-91.203010
T. Der. Felipe Ángeles	253.00	1	0	3246	0.8	64.5	2.8	10.2	5.7	8.2	2.4	4.7	0.7	65.3	2.8	31.9	0.068	0.503	18.504354	-91.106132
T. Izq. Sabancuy	274.10	1	0	3659	5.9	57.4	4.6	8.9	4.4	8.7	3.2	5.8	1.1	63.3	4.6	32.1	0.072	0.501	18.629563	-90.987582
Francisco Escárcega	297.04	1	0	6579	2.5	70.0	3.9	9.7	2.1	7.0	1.6	2.4	0.8	72.5	3.9	23.6	0.071	0.517	18.609222	-90.767402

8 CARR: Ent. Agua Dulce - Cárdenas (Cuota)

CLAVE: 00010

RUTA: MEX-184D

AÑO: 2012

LUGAR	ESTACION				CLASIFICACION VEHICULAR EN PORCIENTO													COORDENADAS		
	KM	TE	SC	TDPA	M	A	B	C2	C3	T3S2	T3S3	T3S2R4	OTROS	A	B	C	K'	D	LATITUD	LONGITUD
Ent. La Ceiba	45.00																			
T. C. Coatzacoalcos - Villahermosa	69.50	1	1	5684	0.1	64.6	5.1	6.0	3.1	10.2	3.4	6.7	0.8	64.7	5.1	30.2	0.069	0.519	18.031655	-93.819260
T. C. Coatzacoalcos - Villahermosa	69.50	1	2	6139	0.1	62.8	4.1	6.6	3.3	10.9	3.7	7.6	0.9	62.9	4.1	33.0	0.087	0.519	18.031656	-93.819257
Caseta de Cobro La Venta	69.50	2	1	3703	0.1	59.7	5.7	4.7	4.3	12.0	2.4	10.2	0.9	59.8	5.7	34.5	0.081	0.500	18.029934	-93.813103
Caseta de Cobro La Venta	69.50	2	2	3702	0.1	59.7	5.7	4.7	4.3	12.0	2.4	10.2	0.9	59.8	5.7	34.5	0.081	0.500	18.029934	-93.813103
T. C. Coatzacoalcos - Villahermosa	69.50	3	1	6963	0.0	65.0	4.2	8.2	3.5	8.1	3.2	7.2	0.6	65.0	4.2	30.8	0.089	0.506	18.029750	-93.808917
T. C. Coatzacoalcos - Villahermosa	69.50	3	2	6800	0.1	66.0	4.4	7.7	3.8	7.7	3.4	6.3	0.6	66.1	4.4	29.5	0.080	0.506	18.029646	-93.808951
Ent. Chontalpa	99.11																			

9 CARR: Benito Juárez - Agua Dulce

CLAVE: 00202

RUTA: TAB-VER

AÑO: 2012

LUGAR	ESTACION				CLASIFICACION VEHICULAR EN PORCIENTO													COORDENADAS		
	KM	TE	SC	TDPA	M	A	B	C2	C3	T3S2	T3S3	T3S2R4	OTROS	A	B	C	K'	D	LATITUD	LONGITUD
Benito Juárez	0.00	3	0	1356	4.2	82.5	0.8	7.3	1.4	2.2	0.9	0.2	0.5	86.7	0.8	12.5	0.082	0.514	18.166848	-93.919142
La Venta	18.00	1	0	1712	9.9	80.3	0.6	7.1	0.7	1.1	0.2	0.0	0.1	90.2	0.6	9.2	0.086	0.507	18.114159	-94.036331
Lim. Edos. Term. Tab. Ppia. Ver.	26.00																			

10 CARR: Benito Juárez - Tepetitán

CLAVE: 27204

RUTA: TAB

AÑO: 2012

LUGAR	ESTACION				CLASIFICACION VEHICULAR EN PORCIENTO													COORDENADAS		
	KM	TE	SC	TDPA	M	A	B	C2	C3	T3S2	T3S3	T3S2R4	OTROS	A	B	C	K'	D	LATITUD	LONGITUD
Benito Juárez	0.00																			
X. C. Jalapa - Jonuta	1.50	3	0	3746	8.7	82.0	0.3	4.3	0.5	1.9	0.9	0.4	1.0	90.7	0.3	9.0	0.075	0.514	17.824552	-92.513767

TABASCO

10 CARR: Benito Juárez - Tepetitán

CLAVE: 27204

RUTA: TAB

AÑO: 2012

LUGAR	ESTACION				CLASIFICACION VEHICULAR EN PORCIENTO										COORDENADAS					
	KM	TE	SC	TDPA	M	A	B	C2	C3	T3S2	T3S3	T3S2R4	OTROS	A	B	C	K'	D	LATITUD	LONGITUD
Límbano Blandín	18.50	1	0	964	15.7	76.4	0.6	5.8	0.6	0.9	0.0	0.0	0.0	92.1	0.6	7.3	0.107	0.506	17.755203	-92.415683
Límbano Blandín	18.50	3	0	1329	17.3	73.6	0.3	5.3	1.0	1.4	0.8	0.0	0.3	90.9	0.3	8.8	0.111	0.532	17.761462	-92.404372
Tepetitán	20.00	1	0	1833	20.8	70.0	0.3	7.2	0.4	0.9	0.2	0.0	0.2	90.8	0.3	8.9	0.086	0.505	17.814832	-92.376630

11 CARR: Cacaos - La Granja

CLAVE: 27002

RUTA: TAB

AÑO: 2012

LUGAR	ESTACION				CLASIFICACION VEHICULAR EN PORCIENTO										COORDENADAS					
	KM	TE	SC	TDPA	M	A	B	C2	C3	T3S2	T3S3	T3S2R4	OTROS	A	B	C	K'	D	LATITUD	LONGITUD
Cacaos	0.00	3	0	2014	2.0	85.7	2.0	5.3	1.1	2.4	1.0	0.1	0.4	87.7	2.0	10.3	0.077	0.513	17.828872	-92.854912
X. C. Villahermosa - Francisco Escárcega	16.00	3	0	4090	2.8	83.7	2.5	5.6	1.5	1.9	1.1	0.4	0.5	86.5	2.5	11.0	0.104	0.501	17.828269	-92.712239
T. C. Jalapa - Jonuta	39.00	1	0	5892	3.3	86.8	0.4	5.2	0.5	2.7	0.6	0.1	0.4	90.1	0.4	9.5	0.075	0.500	17.845984	-92.502073

12 CARR: Cárdenas - Paraíso

CLAVE: 27117

RUTA: TAB

AÑO: 2012

LUGAR	ESTACION				CLASIFICACION VEHICULAR EN PORCIENTO										COORDENADAS					
	KM	TE	SC	TDPA	M	A	B	C2	C3	T3S2	T3S3	T3S2R4	OTROS	A	B	C	K'	D	LATITUD	LONGITUD
T. C. Coatzacoalcos - Villahermosa	0.00	3	0	7428	12.2	72.7	0.2	6.3	0.4	5.6	1.2	0.4	1.0	84.9	0.2	14.9	0.072	0.510	18.004668	-93.384117
T. Izq. El Golpe	22.00	1	0	1752	11.0	72.4	3.7	8.4	0.7	2.1	1.0	0.2	0.5	83.4	3.7	12.9	0.103	0.519	18.112595	-93.307602
T. Izq. El Golpe	22.00	3	0	2507	15.5	75.9	0.8	3.7	0.6	2.6	0.4	0.1	0.4	91.4	0.8	7.8	0.080	0.529	18.114666	-93.305177
Comalcalco	37.00	3	0	5290	3.2	85.5	4.0	4.0	0.1	2.4	0.4	0.1	0.3	88.7	4.0	7.3	0.087	0.525	18.293227	-93.214787
Paraíso	52.00	1	0	4992	12.4	73.7	3.3	4.2	0.8	2.5	2.2	0.3	0.6	86.1	3.3	10.6	0.087	0.515	18.376064	-93.232362

13 CARR: Chichicapa - Ent. La Libertad

CLAVE: 27100

RUTA: TAB

AÑO: 2012

LUGAR	ESTACION				CLASIFICACION VEHICULAR EN PORCIENTO										COORDENADAS					
	KM	TE	SC	TDPA	M	A	B	C2	C3	T3S2	T3S3	T3S2R4	OTROS	A	B	C	K'	D	LATITUD	LONGITUD
Chichicapa	0.00	3	0	2650	2.7	86.0	0.9	7.0	0.5	2.3	0.3	0.0	0.3	88.7	0.9	10.4	0.084	0.512	18.272383	-93.183248
Nicolás Bravo	10.00	3	0	3332	17.4	70.9	0.4	6.8	0.2	2.9	0.6	0.2	0.6	88.3	0.4	11.3	0.079	0.506	18.292818	-93.158281
Ent. La Libertad	18.00	1	0	3232	15.8	74.6	0.7	5.3	0.3	2.5	0.4	0.0	0.4	90.4	0.7	8.9	0.091	0.505	18.318750	-93.171646

14 CARR: Comalcalco - El Golpe

CLAVE: 27102

RUTA: TAB

AÑO: 2012

LUGAR	ESTACION				CLASIFICACION VEHICULAR EN PORCIENTO										COORDENADAS					
	KM	TE	SC	TDPA	M	A	B	C2	C3	T3S2	T3S3	T3S2R4	OTROS	A	B	C	K'	D	LATITUD	LONGITUD
Comalcalco	0.00	3	0	17468	14.4	74.5	3.5	3.4	0.7	1.5	1.3	0.2	0.5	88.9	3.5	7.6	0.069	0.507	18.253825	-93.233251

TABASCO

14 CARR: Comalcalco - El Golpe

CLAVE: 27102

RUTA: TAB

AÑO: 2012

LUGAR	ESTACION				CLASIFICACION VEHICULAR EN PORCIENTO										COORDENADAS					
	KM	TE	SC	TDPA	M	A	B	C2	C3	T3S2	T3S3	T3S2R4	OTROS	A	B	C	K'	D	LATITUD	LONGITUD
Tecolutilla	15.00	1	0	4877	5.5	83.2	0.6	7.4	0.3	2.1	0.4	0.1	0.4	88.7	0.6	10.7	0.073	0.502	18.272238	-93.315431
Tecolutilla	15.00	3	0	4879	4.6	73.9	1.2	14.6	0.1	3.4	1.4	0.3	0.5	78.5	1.2	20.3	0.076	0.507	18.286288	-93.343748
T. Der. Lazáro Cárdenas	20.00	3	0	1693	6.9	80.5	2.7	4.5	0.6	2.9	1.2	0.2	0.5	87.4	2.7	9.9	0.092	0.513	18.281571	-93.382242
Carlos Green	33.00	3	0	7711	11.0	72.9	1.6	10.8	0.2	2.2	0.8	0.1	0.4	83.9	1.6	14.5	0.090	0.504	18.232291	-93.457005
El Golpe	51.60	1	0	657	10.1	83.5	0.8	5.0	0.0	0.5	0.1	0.0	0.0	93.6	0.8	5.6	0.128	0.510	18.333501	-93.535493

15 CARR: El Bellote - Santa Cruz

CLAVE: 27105

RUTA: TAB

AÑO: 2012

LUGAR	ESTACION				CLASIFICACION VEHICULAR EN PORCIENTO										COORDENADAS					
	KM	TE	SC	TDPA	M	A	B	C2	C3	T3S2	T3S3	T3S2R4	OTROS	A	B	C	K'	D	LATITUD	LONGITUD
Bellote	0.00	3	0	5122	5.9	82.9	3.3	3.0	0.2	3.2	0.7	0.2	0.6	88.8	3.3	7.9	0.104	0.507	18.426523	-93.123272
T. Der. Chichicapa	8.00	3	0	3099	5.7	81.1	3.4	5.7	0.4	2.8	0.5	0.1	0.3	86.8	3.4	9.8	0.090	0.502	18.425404	-93.073965
Ignacio Allende	35.00	1	0	3641	5.4	80.2	2.9	5.5	0.7	3.6	0.6	0.4	0.7	85.6	2.9	11.5	0.073	0.503	18.384442	-92.855097
Ignacio Allende	35.00	3	0	3217	4.8	83.0	3.4	5.6	0.4	1.9	0.4	0.1	0.4	87.8	3.4	8.8	0.079	0.503	18.382698	-92.832308
Santa Cruz	40.00	1	0	3154	5.2	83.0	0.5	5.9	0.8	2.9	0.9	0.2	0.6	88.2	0.5	11.3	0.079	0.518	18.387628	-92.803021

16 CARR: Ent. Emiliano Zapata - La Libertad

CLAVE: 00062

RUTA: CHIS-TAB

AÑO: 2012

LUGAR	ESTACION				CLASIFICACION VEHICULAR EN PORCIENTO										COORDENADAS					
	KM	TE	SC	TDPA	M	A	B	C2	C3	T3S2	T3S3	T3S2R4	OTROS	A	B	C	K'	D	LATITUD	LONGITUD
T. C. El Suspiro - Tenosique	0.00	3	0	1936	4.0	86.9	2.1	4.0	1.6	1.1	0.2	0.0	0.1	90.9	2.1	7.0	0.091	0.504	17.722114	-91.744701
Lim. Edos. Term. Tab. Ppia. Chis.	8.00																			
La Libertad	10.00	1	0	1729	3.9	85.5	2.9	4.2	2.1	1.1	0.3	0.0	0.0	89.4	2.9	7.7	0.083	0.508	17.689767	-91.727018

17 CARR: Estación Macuspana - Vernet

CLAVE: 27091

RUTA: TAB-041

AÑO: 2012

LUGAR	ESTACION				CLASIFICACION VEHICULAR EN PORCIENTO										COORDENADAS					
	KM	TE	SC	TDPA	M	A	B	C2	C3	T3S2	T3S3	T3S2R4	OTROS	A	B	C	K'	D	LATITUD	LONGITUD
Estación Macuspana	0.00																			
X. C. Villahermosa - Francisco Escárcega	11.00	1	0	1913	3.1	78.5	3.8	4.5	5.5	2.0	1.8	0.3	0.5	81.6	3.8	14.6	0.097	0.512	17.706116	-92.569497
X. C. Villahermosa - Francisco Escárcega	11.00	3	0	1463	3.9	81.0	6.3	5.5	0.9	1.1	0.0	0.7	0.6	84.9	6.3	8.8	0.096	0.518	17.710830	-92.568775
Belem	20.50	1	1	4351	1.6	90.1	2.4	3.0	0.4	1.4	0.5	0.2	0.4	91.7	2.4	5.9	0.082	0.507	17.775102	-92.607129
Belem	20.50	1	2	4228	10.8	80.0	2.6	3.4	0.5	1.6	0.5	0.2	0.4	90.8	2.6	6.6	0.076	0.507	17.775023	-92.607208
Belem	20.50	3	0	3021	6.3	82.0	0.6	5.7	1.0	2.4	0.9	0.4	0.7	88.3	0.6	11.1	0.078	0.515	17.799580	-92.605211
X. C. Cacaos - La Granja	25.50	3	0	1297	10.0	81.6	0.2	6.2	0.6	1.2	0.1	0.0	0.1	91.6	0.2	8.2	0.085	0.503	17.840775	-92.607314

TABASCO

17 CARR: Estación Macuspana - Vernet

CLAVE: 27091

RUTA: TAB-041

AÑO: 2012

LUGAR	ESTACION				CLASIFICACION VEHICULAR EN PORCIENTO														COORDENADAS	
	KM	TE	SC	TDPA	M	A	B	C2	C3	T3S2	T3S3	T3S2R4	OTROS	A	B	C	K'	D	LATITUD	LONGITUD
Vernet	32.50	1	0	1022	10.0	87.1	0.2	2.3	0.1	0.3	0.0	0.0	0.0	97.1	0.2	2.7	0.109	0.502	17.914677	-92.598172

18 CARR: Frontera - T. C. (Jalapa - Jonuta)

CLAVE: 27081

RUTA: TAB

AÑO: 2012

LUGAR	ESTACION				CLASIFICACION VEHICULAR EN PORCIENTO														COORDENADAS	
	KM	TE	SC	TDPA	M	A	B	C2	C3	T3S2	T3S3	T3S2R4	OTROS	A	B	C	K'	D	LATITUD	LONGITUD
Frontera	0.00																			
X. C. Villahermosa - Cd. del Carmen	1.00	3	0	1082	9.4	80.2	5.2	3.3	0.1	1.3	0.5	0.0	0.0	89.6	5.2	5.2	0.083	0.502	18.505250	-92.650700
T. C. Jalapa - Jonuta	123.00	1	0	552	4.0	85.4	4.7	3.2	0.9	0.6	0.4	0.4	0.4	89.4	4.7	5.9	0.134	0.536	18.101913	-92.169495

19 CARR: Gregorio Méndez Magaña - Reforma de Ocampo

CLAVE: 00103

RUTA: CHIS

AÑO: 2012

LUGAR	ESTACION				CLASIFICACION VEHICULAR EN PORCIENTO														COORDENADAS	
	KM	TE	SC	TDPA	M	A	B	C2	C3	T3S2	T3S3	T3S2R4	OTROS	A	B	C	K'	D	LATITUD	LONGITUD
Gregorio Méndez Magaña	0.00	3	0	856	13.4	71.4	3.4	5.8	4.5	1.1	0.4	0.0	0.0	84.8	3.4	11.8	0.093	0.503	17.450179	-91.596780
Lim. Edos. Term. Tab. Ppia. Chis.	3.00																			
T. C. Benemérito de Las Américas - Palenque	21.00	1	0	2007	6.5	84.5	1.7	4.6	0.9	1.4	0.3	0.0	0.1	91.0	1.7	7.3	0.095	0.503	17.323727	-91.692349
Reforma de Ocampo	22.00																			

20 CARR: Jalapa - Jonuta

CLAVE: 27107

RUTA: TAB

AÑO: 2012

LUGAR	ESTACION				CLASIFICACION VEHICULAR EN PORCIENTO														COORDENADAS	
	KM	TE	SC	TDPA	M	A	B	C2	C3	T3S2	T3S3	T3S2R4	OTROS	A	B	C	K'	D	LATITUD	LONGITUD
Jalapa	0.00	3	0	2885	13.4	69.3	6.5	5.0	0.7	3.4	1.4	0.0	0.3	82.7	6.5	10.8	0.082	0.501	17.721973	-92.805570
X. C. Villahermosa - Francisco Escárcega	15.00	1	0	2105	11.4	77.9	0.5	6.1	1.1	2.1	0.4	0.1	0.4	89.3	0.5	10.2	0.078	0.501	17.781449	-92.683086
X. C. Villahermosa - Francisco Escárcega	15.00	3	0	1059	15.4	73.3	2.7	5.5	1.4	1.1	0.4	0.0	0.2	88.7	2.7	8.6	0.088	0.501	17.781792	-92.680328
Belem	24.00	1	0	1441	12.1	77.1	1.6	5.4	1.1	1.5	0.6	0.1	0.5	89.2	1.6	9.2	0.092	0.511	17.781185	-92.616628
T. Izq. Cacaos	39.00	1	0	3741	4.6	83.2	1.8	5.1	0.7	2.9	0.8	0.1	0.8	87.8	1.8	10.4	0.085	0.505	17.844052	-92.501920
Cd. PEMEX	43.00	1	1	6306	4.6	90.0	0.3	3.0	0.2	0.8	0.8	0.1	0.2	94.6	0.3	5.1	0.103	0.510	17.879315	-92.484742
Cd. PEMEX	43.00	1	2	6066	3.2	90.9	0.3	3.2	0.2	1.0	0.9	0.1	0.2	94.1	0.3	5.6	0.087	0.510	17.879315	-92.484740
Cd. PEMEX	43.00	3	0	3891	4.8	80.8	2.2	6.2	1.4	2.1	1.3	0.6	0.6	85.6	2.2	12.2	0.082	0.500	17.897626	-92.482857
Jonuta	97.50	1	0	2210	4.7	84.8	1.4	4.5	1.6	1.6	0.7	0.1	0.6	89.5	1.4	9.1	0.088	0.513	18.101836	-92.158646

TABASCO

21 CARR: Nicolás Bravo - T. C. (El Bellote - Santa Cruz)

CLAVE: 27010

RUTA: TAB

AÑO: 2012

LUGAR	ESTACION				CLASIFICACION VEHICULAR EN PORCIENTO													COORDENADAS		
	KM	TE	SC	TDPA	M	A	B	C2	C3	T3S2	T3S3	T3S2R4	OTROS	A	B	C	K'	D	LATITUD	LONGITUD
Nicolás Bravo	0.00	3	0	1717	7.1	83.9	0.2	6.1	0.6	1.6	0.3	0.0	0.2	91.0	0.2	8.8	0.110	0.501	18.298928	-93.132072
T. C. Bellote - Santa Cruz	22.00	1	0	919	8.0	84.3	0.4	4.5	0.2	1.9	0.1	0.0	0.6	92.3	0.4	7.3	0.097	0.504	18.425250	-93.076058

22 CARR: Pailebot - Cuauhtemotzin

CLAVE: 27112

RUTA: TAB

AÑO: 2012

LUGAR	ESTACION				CLASIFICACION VEHICULAR EN PORCIENTO													COORDENADAS		
	KM	TE	SC	TDPA	M	A	B	C2	C3	T3S2	T3S3	T3S2R4	OTROS	A	B	C	K'	D	LATITUD	LONGITUD
Pailebot	0.00	3	0	656	24.7	64.9	1.8	5.3	2.0	0.8	0.5	0.0	0.0	89.6	1.8	8.6	0.133	0.519	18.257378	-93.953454
Cuauhtemotzin	23.00	1	0	569	26.6	65.4	1.1	4.0	1.6	0.5	0.6	0.1	0.1	92.0	1.1	6.9	0.110	0.523	18.205143	-94.124763

23 CARR: Paraiso - El Limón

CLAVE: 27108

RUTA: TAB

AÑO: 2012

LUGAR	ESTACION				CLASIFICACION VEHICULAR EN PORCIENTO													COORDENADAS		
	KM	TE	SC	TDPA	M	A	B	C2	C3	T3S2	T3S3	T3S2R4	OTROS	A	B	C	K'	D	LATITUD	LONGITUD
Paraiso	0.00	3	0	8574	9.4	74.1	4.0	3.6	1.5	4.4	1.5	0.8	0.7	83.5	4.0	12.5	0.079	0.521	18.395976	-93.220667
Limón	6.00	1	0	9296	6.7	73.3	4.3	4.3	1.7	5.8	1.9	1.4	0.6	80.0	4.3	15.7	0.080	0.514	18.402802	-93.216595

24 CARR: Paso de Cunduacán - Estación Juárez

CLAVE: 00588

RUTA: TAB-CHIS

AÑO: 2012

LUGAR	ESTACION				CLASIFICACION VEHICULAR EN PORCIENTO													COORDENADAS		
	KM	TE	SC	TDPA	M	A	B	C2	C3	T3S2	T3S3	T3S2R4	OTROS	A	B	C	K'	D	LATITUD	LONGITUD
Paso de Cunduacán	0.00	3	0	4786	3.8	68.9	6.5	9.8	2.7	3.4	2.7	1.1	1.1	72.7	6.5	20.8	0.075	0.501	17.966203	-93.134815
Lim. Edos. Term. Tab. Ppia. Chis.	9.00																			
Santa Teresa 2° Secc.	18.00	3	0	2516	3.8	75.3	6.6	9.1	1.6	2.4	0.6	0.1	0.5	79.1	6.6	14.3	0.082	0.500	17.767320	-93.169270
Estación Juárez	57.80	1	0	3039	4.5	71.9	10.7	8.5	1.1	2.1	0.6	0.1	0.5	76.4	10.7	12.9	0.080	0.500	17.618621	-93.167971

25 CARR: Playas del Rosario - Teapa

CLAVE: 27203

RUTA: TAB-001

AÑO: 2012

LUGAR	ESTACION				CLASIFICACION VEHICULAR EN PORCIENTO													COORDENADAS		
	KM	TE	SC	TDPA	M	A	B	C2	C3	T3S2	T3S3	T3S2R4	OTROS	A	B	C	K'	D	LATITUD	LONGITUD
T. C. Villahermosa - Escopetazo	0.00	3	1	4122	2.9	84.9	5.9	4.2	0.9	0.7	0.4	0.0	0.1	87.8	5.9	6.3	0.091	0.502	17.840397	-92.925405
T. C. Villahermosa - Escopetazo	0.00	3	2	4162	2.8	83.4	6.9	4.7	0.9	0.8	0.4	0.0	0.1	86.2	6.9	6.9	0.095	0.502	17.840382	-92.925422
Revolución Mexicana	1.20	3	0	7395	2.0	81.9	6.5	4.5	0.5	2.6	1.2	0.2	0.6	83.9	6.5	9.6	0.081	0.508	17.836977	-92.912893
Cacaos	7.00	1	0	4973	3.9	82.5	3.6	3.9	1.9	2.6	1.0	0.2	0.4	86.4	3.6	10.0	0.074	0.514	17.826603	-92.860774
Cacaos	7.00	3	0	4040	3.3	83.6	3.3	6.3	0.7	2.1	0.5	0.0	0.2	86.9	3.3	9.8	0.077	0.505	17.825445	-92.854452

TABASCO

25 CARR: Playas del Rosario - Teapa

CLAVE: 27203

RUTA: TAB-001

AÑO: 2012

LUGAR	ESTACION				CLASIFICACION VEHICULAR EN PORCIENTO										COORDENADAS					
	KM	TE	SC	TDPA	M	A	B	C2	C3	T3S2	T3S3	T3S2R4	OTROS	A	B	C	K'	D	LATITUD	LONGITUD
Jalapa	23.00	1	0	4811	3.5	86.8	1.8	2.5	0.6	2.8	0.9	0.4	0.7	90.3	1.8	7.9	0.074	0.507	17.730611	-92.815799
Jalapa	23.00	3	0	3637	8.3	81.4	2.3	3.8	0.9	2.2	0.7	0.0	0.4	89.7	2.3	8.0	0.075	0.504	17.710059	-92.807339
T. Izq. Tacotalpa	39.00	1	0	3214	7.5	79.1	3.7	3.7	1.6	2.2	0.9	0.6	0.7	86.6	3.7	9.7	0.070	0.524	17.594230	-92.833133
T. Izq. Tacotalpa	39.00	3	0	3025	5.5	76.0	2.3	7.5	1.4	3.8	1.9	0.7	0.9	81.5	2.3	16.2	0.082	0.505	17.592421	-92.834585
Teapa	54.00	1	0	1700	5.1	83.3	4.6	4.8	0.4	1.5	0.1	0.0	0.2	88.4	4.6	7.0	0.089	0.523	17.551162	-92.944398

26 CARR: Ramal a Balancán

CLAVE: 27078

RUTA: TAB

AÑO: 2012

LUGAR	ESTACION				CLASIFICACION VEHICULAR EN PORCIENTO										COORDENADAS					
	KM	TE	SC	TDPA	M	A	B	C2	C3	T3S2	T3S3	T3S2R4	OTROS	A	B	C	K'	D	LATITUD	LONGITUD
T. C. El Suspiro - Tenosique	0.00	3	0	1616	1.8	83.6	3.7	7.9	1.2	1.3	0.3	0.1	0.1	85.4	3.7	10.9	0.089	0.501	17.632858	-91.600587
Balancán	24.00	1	0	2815	4.8	82.4	0.6	7.6	1.9	2.1	0.3	0.1	0.2	87.2	0.6	12.2	0.088	0.500	17.830007	-91.531196

27 CARR: Ramal a La Venta

CLAVE: 27078

RUTA: TAB

AÑO: 2012

LUGAR	ESTACION				CLASIFICACION VEHICULAR EN PORCIENTO										COORDENADAS					
	KM	TE	SC	TDPA	M	A	B	C2	C3	T3S2	T3S3	T3S2R4	OTROS	A	B	C	K'	D	LATITUD	LONGITUD
T. C. Coatzacoalcos - Villahermosa	0.00	3	0	4496	5.3	81.8	2.8	8.0	0.7	0.8	0.5	0.0	0.1	87.1	2.8	10.1	0.083	0.530	18.064483	-94.042281
La Venta	4.25																			

28 CARR: Ramal a Lázaro Cárdenas

CLAVE: 27208

RUTA: TAB

AÑO: 2012

LUGAR	ESTACION				CLASIFICACION VEHICULAR EN PORCIENTO										COORDENADAS					
	KM	TE	SC	TDPA	M	A	B	C2	C3	T3S2	T3S3	T3S2R4	OTROS	A	B	C	K'	D	LATITUD	LONGITUD
T. C. Comalcalco - El Golpe	0.00	3	0	1939	28.2	61.9	2.0	3.5	0.1	2.7	1.1	0.1	0.4	90.1	2.0	7.9	0.096	0.510	18.286924	-93.384871
Lázaro Cárdenas	14.00	1	0	1702	10.6	81.4	2.4	3.7	0.0	1.1	0.6	0.0	0.2	92.0	2.4	5.6	0.089	0.502	18.318805	-93.435578

29 CARR: Ramal a Libertad

CLAVE: 27205

RUTA: TAB

AÑO: 2012

LUGAR	ESTACION				CLASIFICACION VEHICULAR EN PORCIENTO										COORDENADAS					
	KM	TE	SC	TDPA	M	A	B	C2	C3	T3S2	T3S3	T3S2R4	OTROS	A	B	C	K'	D	LATITUD	LONGITUD
T. C. Cárdenas - Paraíso	0.00	3	0	3623	13.2	75.6	3.4	4.7	0.4	2.2	0.2	0.0	0.3	88.8	3.4	7.8	0.087	0.500	18.114715	-93.307435
Libertad	10.00	1	0	3034	27.3	64.8	1.3	3.6	0.4	2.0	0.4	0.0	0.2	92.1	1.3	6.6	0.090	0.502	18.176540	-93.361953

TABASCO

30 CARR: Ramal a Salto del Agua

CLAVE: 00069

RUTA: TAB-CHIS

AÑO: 2012

LUGAR	ESTACION				CLASIFICACION VEHICULAR EN PORCIENTO													COORDENADAS		
	KM	TE	SC	TDPA	M	A	B	C2	C3	T3S2	T3S3	T3S2R4	OTROS	A	B	C	K'	D	LATITUD	LONGITUD
T. C. Villahermosa - Francisco Escárcega	0.00	3	0	1083	5.6	82.3	4.0	3.3	1.6	1.7	0.3	0.8	0.4	87.9	4.0	8.1	0.095	0.507	17.664193	-92.435775
Lim. Edos. Term. Tab. Ppia. Chis.	12.00																			
Salto del Agua	17.00	1	0	1261	7.6	82.7	2.5	3.9	1.3	1.4	0.3	0.0	0.3	90.3	2.5	7.2	0.085	0.507	17.559145	-92.353860

31 CARR: Ramal a San Antonio

CLAVE: 27003

RUTA: TAB

AÑO: 2012

LUGAR	ESTACION				CLASIFICACION VEHICULAR EN PORCIENTO													COORDENADAS		
	KM	TE	SC	TDPA	M	A	B	C2	C3	T3S2	T3S3	T3S2R4	OTROS	A	B	C	K'	D	LATITUD	LONGITUD
T. C. Villahermosa - Francisco Escárcega	0.00	3	0	658	3.9	80.9	0.5	5.0	4.6	3.3	1.3	0.4	0.1	84.8	0.5	14.7	0.092	0.503	17.928437	-91.743004
T. Der. Balancán	24.00	1	0	1046	5.6	82.9	2.5	2.8	2.7	2.6	0.7	0.0	0.2	88.5	2.5	9.0	0.099	0.500	17.871983	-91.533101
T. Der. Balancán	24.00	3	0	2184	2.4	79.3	4.0	10.4	1.1	2.0	0.7	0.0	0.1	81.7	4.0	14.3	0.090	0.502	17.872003	-91.523439
El Triunfo	72.00																			

32 CARR: Ramal a Sánchez Magallanes

CLAVE: 27016

RUTA: TAB

AÑO: 2012

LUGAR	ESTACION				CLASIFICACION VEHICULAR EN PORCIENTO													COORDENADAS		
	KM	TE	SC	TDPA	M	A	B	C2	C3	T3S2	T3S3	T3S2R4	OTROS	A	B	C	K'	D	LATITUD	LONGITUD
T. C. Coatzacoalcos - Villahermosa	0.00	3	0	1654	4.7	73.9	2.6	11.5	2.9	2.0	1.2	0.5	0.7	78.6	2.6	18.8	0.088	0.505	18.074814	-93.877955
Campo Magallanes	13.00	1	0	1301	4.1	73.7	3.5	11.1	2.5	2.8	1.8	0.2	0.3	77.8	3.5	18.7	0.090	0.503	18.162052	-93.907248
Campo Magallanes	13.00	3	0	1703	7.7	71.6	2.2	11.2	2.2	1.9	1.9	0.2	1.1	79.3	2.2	18.5	0.110	0.512	18.186720	-93.916547
Sánchez Magallanes	33.00	1	0	1732	7.5	72.0	2.0	11.5	2.8	1.1	1.5	0.5	1.1	79.5	2.0	18.5	0.094	0.501	18.288869	-93.872057

33 CARR: Ramal a Tamulte de Las Sabanas

CLAVE: 27080

RUTA: TAB

AÑO: 2012

LUGAR	ESTACION				CLASIFICACION VEHICULAR EN PORCIENTO													COORDENADAS		
	KM	TE	SC	TDPA	M	A	B	C2	C3	T3S2	T3S3	T3S2R4	OTROS	A	B	C	K'	D	LATITUD	LONGITUD
T. C. Villahermosa - Cd. del Carmen	0.00	3	0	2565	2.7	89.0	3.0	2.4	0.5	2.0	0.3	0.0	0.1	91.7	3.0	5.3	0.077	0.502	18.199990	-92.823950
Tamulte de Las Sabanas	7.00																			

34 CARR: Ramal a Tapijulapa

CLAVE: 27200

RUTA: TAB

AÑO: 2012

LUGAR	ESTACION				CLASIFICACION VEHICULAR EN PORCIENTO													COORDENADAS		
	KM	TE	SC	TDPA	M	A	B	C2	C3	T3S2	T3S3	T3S2R4	OTROS	A	B	C	K'	D	LATITUD	LONGITUD
T. C. Playas del Rosario - Teapa	0.00	3	0	3388	9.6	73.9	5.1	7.0	0.9	2.7	0.5	0.1	0.2	83.5	5.1	11.4	0.078	0.500	17.576223	-92.837164
Tapijulapa	20.00	1	0	2207	6.5	76.7	6.3	8.1	0.7	1.4	0.2	0.0	0.1	83.2	6.3	10.5	0.106	0.508	17.457791	-92.784475

TABASCO

35 CARR: Reforma - Dos Bocas

CLAVE: 27200

RUTA: TAB

AÑO: 2012

LUGAR	ESTACION				CLASIFICACION VEHICULAR EN PORCIENTO										COORDENADAS					
	KM	TE	SC	TDPA	M	A	B	C2	C3	T3S2	T3S3	T3S2R4	OTROS	A	B	C	K'	D	LATITUD	LONGITUD
Reforma	0.00	3	1	10700	2.6	81.0	3.7	6.5	1.2	2.3	1.2	0.5	1.0	83.6	3.7	12.7	0.107	0.502	17.978252	-93.127778
Reforma	0.00	3	2	10634	2.0	79.9	4.2	7.0	1.4	2.6	1.4	0.5	1.0	81.9	4.2	13.9	0.114	0.502	17.978251	-93.127777
Dos Bocas	53.00	1	1	2805	3.5	79.0	2.1	9.7	2.1	1.7	1.2	0.3	0.4	82.5	2.1	15.4	0.202	0.505	18.430766	-93.199058
Dos Bocas	53.00	1	2	2751	2.7	78.2	2.5	10.5	2.4	1.9	1.2	0.3	0.3	80.9	2.5	16.6	0.194	0.505	18.430766	-93.199058

36 CARR: Reyes Hernández - Villa Aldama

CLAVE: 27119

RUTA: TAB

AÑO: 2012

LUGAR	ESTACION				CLASIFICACION VEHICULAR EN PORCIENTO										COORDENADAS					
	KM	TE	SC	TDPA	M	A	B	C2	C3	T3S2	T3S3	T3S2R4	OTROS	A	B	C	K'	D	LATITUD	LONGITUD
Reyes Hernández	0.00	3	0	8380	11.2	72.1	3.8	5.5	0.5	4.6	1.0	0.3	1.0	83.3	3.8	12.9	0.068	0.501	18.243332	-93.256905
T. C. (Cárdenas - Paraiso) - Carlos Green	9.00	1	0	3835	6.7	82.2	2.9	4.2	0.4	2.3	0.6	0.2	0.5	88.9	2.9	8.2	0.093	0.508	18.239826	-93.343311

37 CARR: Samaria - Amatitán

CLAVE: 27114

RUTA: TAB

AÑO: 2012

LUGAR	ESTACION				CLASIFICACION VEHICULAR EN PORCIENTO										COORDENADAS					
	KM	TE	SC	TDPA	M	A	B	C2	C3	T3S2	T3S3	T3S2R4	OTROS	A	B	C	K'	D	LATITUD	LONGITUD
T. C. Coatzacoalcos - Villahermosa	0.00	3	0	3059	5.3	82.7	2.5	6.2	0.8	1.9	0.4	0.1	0.1	88.0	2.5	9.5	0.096	0.506	18.001609	-93.274250
Cunduacán	17.00	1	0	8345	12.8	77.1	1.3	3.2	0.3	4.0	0.5	0.1	0.7	89.9	1.3	8.8	0.078	0.505	18.054636	-93.190824
Cunduacán	17.00	3	0	2988	6.7	86.9	1.1	2.3	0.1	2.3	0.4	0.0	0.2	93.6	1.1	5.3	0.078	0.528	18.079941	-93.170111
Amatitán	31.40	1	0	4609	15.4	73.0	0.3	5.5	0.6	3.3	0.9	0.4	0.6	88.4	0.3	11.3	0.069	0.509	18.171215	-93.087582

38 CARR: T. C. (Cárdenas - Paraiso) - Carlos Green

CLAVE: 27111

RUTA: TAB

AÑO: 2012

LUGAR	ESTACION				CLASIFICACION VEHICULAR EN PORCIENTO										COORDENADAS					
	KM	TE	SC	TDPA	M	A	B	C2	C3	T3S2	T3S3	T3S2R4	OTROS	A	B	C	K'	D	LATITUD	LONGITUD
T. C. Cárdenas - Paraiso	0.00	3	0	719	8.3	87.6	0.3	2.9	0.2	0.5	0.1	0.0	0.1	95.9	0.3	3.8	0.111	0.503	18.109067	-93.322032
T. Der. Reyes Hernández	21.50	3	0	1174	11.3	85.1	0.2	1.9	0.1	1.2	0.1	0.0	0.1	96.4	0.2	3.4	0.117	0.506	18.178623	-93.382744
Carlos Green	30.70	1	0	1602	8.2	82.9	1.8	3.3	0.2	2.3	0.7	0.1	0.5	91.1	1.8	7.1	0.087	0.501	18.233405	-93.445951

39 CARR: Tierra Nueva - Francisco Rueda

CLAVE: 27110

RUTA: TAB

AÑO: 2012

LUGAR	ESTACION				CLASIFICACION VEHICULAR EN PORCIENTO										COORDENADAS					
	KM	TE	SC	TDPA	M	A	B	C2	C3	T3S2	T3S3	T3S2R4	OTROS	A	B	C	K'	D	LATITUD	LONGITUD
Tierra Nueva	0.00	3	0	1769	23.6	64.7	0.3	6.6	1.2	2.7	0.7	0.1	0.1	88.3	0.3	11.4	0.082	0.503	17.800009	-93.452988
Ocuapan	14.00	3	0	968	22.5	61.5	0.3	8.5	3.0	2.2	1.6	0.4	0.0	84.0	0.3	15.7	0.135	0.505	17.828438	-93.504986

TABASCO

39 CARR: Tierra Nueva - Francisco Rueda

CLAVE: 27110

RUTA: TAB

AÑO: 2012

LUGAR	ESTACION				CLASIFICACION VEHICULAR EN PORCIENTO													COORDENADAS		
	KM	TE	SC	TDPA	M	A	B	C2	C3	T3S2	T3S3	T3S2R4	OTROS	A	B	C	K'	D	LATITUD	LONGITUD
T. Izq. Encomendadero	31.00	1	0	742	29.5	56.9	1.2	9.0	1.6	1.4	0.3	0.1	0.0	86.4	1.2	12.4	0.122	0.513	17.794356	-93.627347
T. Izq. Encomendadero	31.00	3	0	808	15.6	65.3	1.9	9.2	4.2	1.9	0.9	0.5	0.5	80.9	1.9	17.2	0.108	0.500	17.792446	-93.628877
Francisco Rueda	71.00	1	0	855	30.8	58.7	1.0	5.6	1.3	1.2	0.3	0.7	0.4	89.5	1.0	9.5	0.137	0.503	17.835760	-93.926753

40 CARR: Tulipán - Cunduacán

CLAVE: 27115

RUTA: TAB

AÑO: 2012

LUGAR	ESTACION				CLASIFICACION VEHICULAR EN PORCIENTO													COORDENADAS		
	KM	TE	SC	TDPA	M	A	B	C2	C3	T3S2	T3S3	T3S2R4	OTROS	A	B	C	K'	D	LATITUD	LONGITUD
T. C. Malpaso - Bellote	0.00	3	0	5783	18.0	74.0	0.2	2.5	0.1	3.0	1.2	0.2	0.8	92.0	0.2	7.8	0.088	0.528	18.112079	-93.289125
T. Der. Mote	14.00	1	0	3839	11.2	80.5	1.3	3.0	0.5	2.1	0.5	0.4	0.5	91.7	1.3	7.0	0.078	0.502	18.060685	-93.213206
Cunduacán	15.00	1	0	4717	15.5	76.4	1.8	2.3	0.2	2.9	0.5	0.0	0.4	91.9	1.8	6.3	0.081	0.506	18.056766	-93.199768

41 CARR: Villahermosa - Comalcalco

CLAVE: 27021

RUTA: TAB

AÑO: 2012

LUGAR	ESTACION				CLASIFICACION VEHICULAR EN PORCIENTO													COORDENADAS		
	KM	TE	SC	TDPA	M	A	B	C2	C3	T3S2	T3S3	T3S2R4	OTROS	A	B	C	K'	D	LATITUD	LONGITUD
T. C. Villahermosa - Cd. del Carmen	0.00	3	1	9425	1.8	86.1	2.5	5.1	0.5	0.8	2.4	0.3	0.5	87.9	2.5	9.6	0.079	0.504	18.031889	-92.929444
T. C. Villahermosa - Cd. del Carmen	0.00	3	2	9258	2.2	84.5	2.6	5.7	0.5	1.0	2.7	0.3	0.5	86.7	2.6	10.7	0.082	0.504	18.033285	-92.929392
Saloya	13.00	1	0	14428	3.6	88.8	1.2	3.4	1.3	0.7	0.7	0.1	0.2	92.4	1.2	6.4	0.075	0.512	18.096065	-92.942528
Saloya	13.00	3	0	11432	2.1	84.5	1.9	3.1	1.8	4.2	1.3	0.4	0.7	86.6	1.9	11.5	0.074	0.505	18.100315	-92.948782
Nacajuca	21.00	1	0	9823	4.3	82.1	0.9	4.7	0.7	5.1	1.0	0.4	0.8	86.4	0.9	12.7	0.065	0.511	18.154396	-93.011074
Nacajuca	21.00	3	1	5322	10.0	83.6	0.2	4.9	0.2	0.7	0.3	0.0	0.1	93.6	0.2	6.2	0.079	0.503	18.177980	-93.027991
Nacajuca	21.00	3	2	5378	10.1	83.0	0.2	5.3	0.2	0.8	0.3	0.0	0.1	93.1	0.2	6.7	0.070	0.503	18.177980	-93.027986
Jalpa de Méndez	27.00	3	0	6444	10.2	79.6	0.6	3.5	0.4	4.1	0.6	0.2	0.8	89.8	0.6	9.6	0.076	0.500	18.179406	-93.084779
Cupilco	40.00	1	0	4341	11.8	79.8	0.2	4.3	0.2	2.4	0.8	0.1	0.4	91.6	0.2	8.2	0.081	0.528	18.236112	-93.125462
Cupilco	40.00	3	0	4668	10.5	79.5	0.1	5.1	0.2	3.1	0.7	0.2	0.6	90.0	0.1	9.9	0.078	0.511	18.244982	-93.129484
Chichicapa	46.50	1	0	4610	2.6	84.1	2.1	8.0	0.1	2.1	0.6	0.0	0.4	86.7	2.1	11.2	0.078	0.507	18.262203	-93.174133
T. C. Malpaso - Bellote	50.70	1	0	10874	4.7	76.5	0.3	6.9	0.8	7.8	1.3	0.9	0.8	81.2	0.3	18.5	0.066	0.515	18.247269	-93.211999

42 CARR: Villahermosa - Luis Gil Pérez

CLAVE: 27206

RUTA: TAB

AÑO: 2012

LUGAR	ESTACION				CLASIFICACION VEHICULAR EN PORCIENTO													COORDENADAS		
	KM	TE	SC	TDPA	M	A	B	C2	C3	T3S2	T3S3	T3S2R4	OTROS	A	B	C	K'	D	LATITUD	LONGITUD
Villahermosa	0.00	3	0	8074	4.7	81.7	0.1	4.2	0.3	6.5	1.1	0.3	1.1	86.4	0.1	13.5	0.069	0.507	17.947085	-92.978684
Luis Gil Pérez	22.00	1	0	4031	16.2	72.8	0.3	4.6	0.2	2.9	1.9	0.2	0.9	89.0	0.3	10.7	0.086	0.503	17.887079	-93.069849

TABASCO

43 CARR: Villahermosa - T. C. (P. de Cunduacán - Estación Juárez)

CLAVE: 27106

RUTA: TAB

AÑO: 2012

LUGAR	ESTACION				CLASIFICACION VEHICULAR EN PORCIENTO													COORDENADAS		
	KM	TE	SC	TDPA	M	A	B	C2	C3	T3S2	T3S3	T3S2R4	OTROS	A	B	C	K'	D	LATITUD	LONGITUD
Villahermosa	0.00	3	0	15342	2.7	88.3	0.3	3.7	0.7	1.5	1.5	0.3	1.0	91.0	0.3	8.7	0.076	0.503	17.962311	-92.979741
San Joaquín	4.00	3	0	6623	2.6	88.1	0.4	7.6	0.3	0.4	0.5	0.0	0.1	90.7	0.4	8.9	0.103	0.534	17.929153	-92.984340
T. Izq. Luis Gil Pérez	19.00	3	0	4429	9.1	79.6	0.2	5.5	0.4	3.2	1.1	0.2	0.7	88.7	0.2	11.1	0.118	0.510	17.894731	-93.064833
T. C. Paso de Cunduacán - Estación Juárez	25.20	1	0	4965	7.6	80.1	1.6	4.8	0.5	2.7	1.4	0.3	1.0	87.7	1.6	10.7	0.110	0.509	17.908614	-93.127507

44 CARR: Zapatero - T. C. (Jalapa - Jonuta)

CLAVE: 00061

RUTA: CHIS-TAB

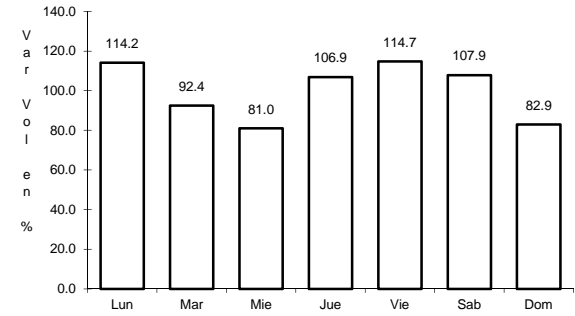
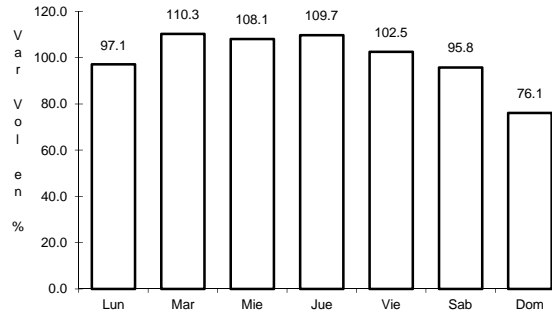
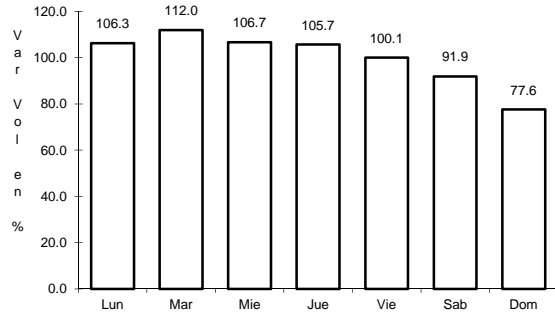
AÑO: 2012

LUGAR	ESTACION				CLASIFICACION VEHICULAR EN PORCIENTO													COORDENADAS		
	KM	TE	SC	TDPA	M	A	B	C2	C3	T3S2	T3S3	T3S2R4	OTROS	A	B	C	K'	D	LATITUD	LONGITUD
T. C. Villahermosa - Francisco Escárcega	0.00	3	0	1736	3.6	87.8	0.2	2.7	2.4	1.8	0.5	0.3	0.7	91.4	0.2	8.4	0.095	0.501	17.699073	-92.131887
Lim. Edos. Term. Chis. Ppia. Tab.	16.00																			
T. C. Jalapa - Jonuta	41.00	1	0	1215	4.6	87.7	0.2	3.7	2.0	1.3	0.3	0.1	0.1	92.3	0.2	7.5	0.096	0.500	18.030749	-92.157774

4 CARR: San Marco - Palizada

CLAVE: 00490

RUTA: MEX-186



Km: 0.00 Tipo: 3 Sent: 0

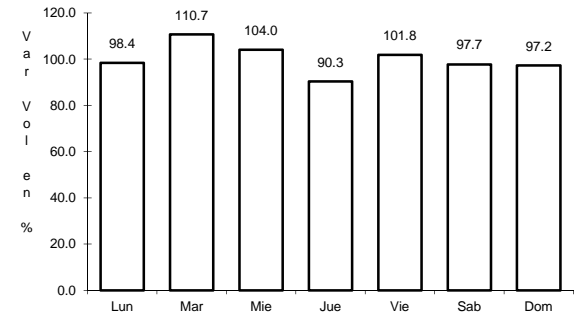
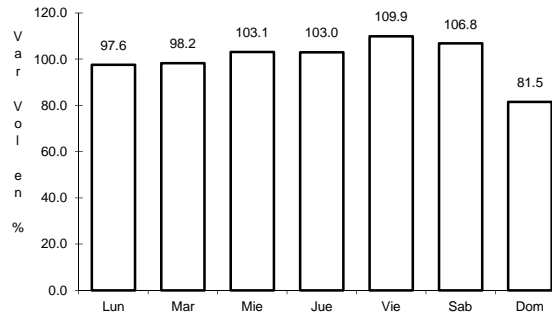
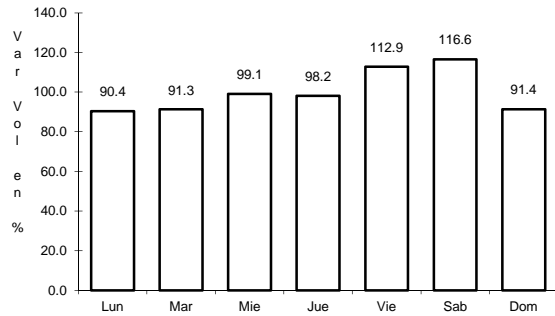
Km: 46.20 Tipo: 1 Sent: 0

Km: 46.20 Tipo: 3 Sent: 0

5 CARR: Villahermosa - Cd. del Carmen

CLAVE: 00064

RUTA: MEX-180



Km: 4.30 Tipo: 3 Sent: 1

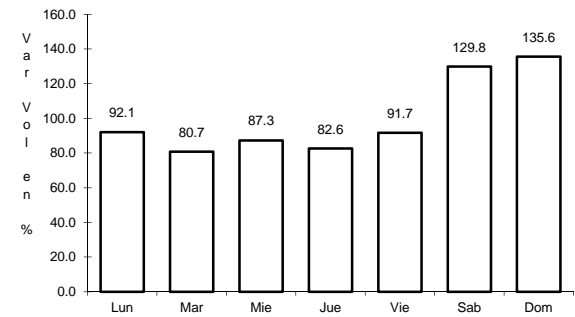
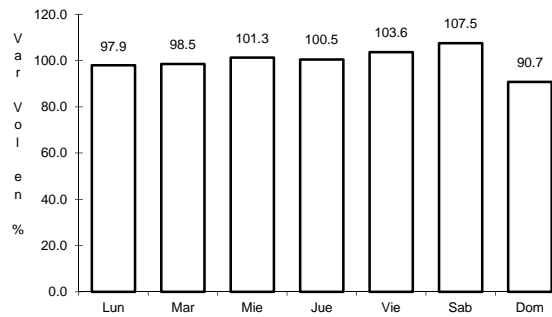
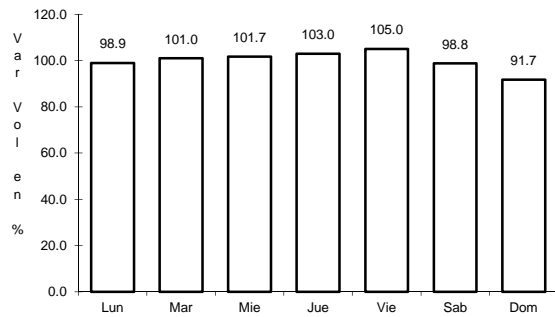
Km: 4.30 Tipo: 3 Sent: 2

Km: 163.17 Tipo: 1 Sent: 0

6 CARR: Villahermosa - Escopetazo

CLAVE: 00104

RUTA: MEX-195



Km: 0.00 Tipo: 3 Sent: 1

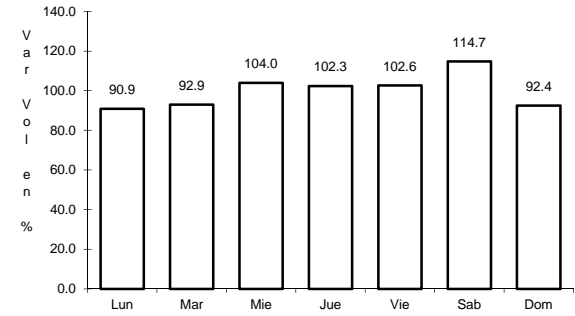
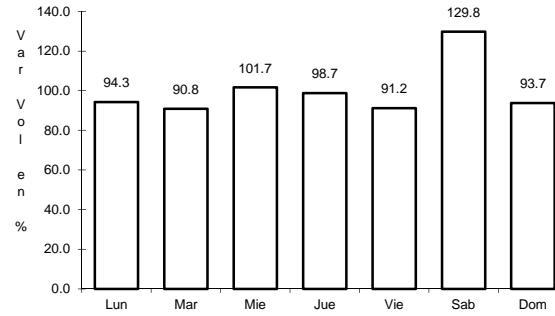
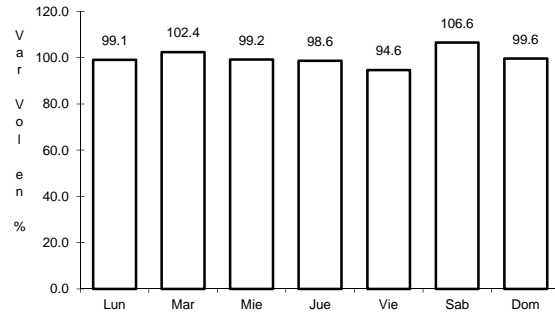
Km: 0.00 Tipo: 3 Sent: 2

Km: 259.00 Tipo: 1 Sent: 0

10 CARR: Benito Juárez - Tepetitán

CLAVE: 27204

RUTA: TAB



Km: 1.50 Tipo: 3 Sent: 0

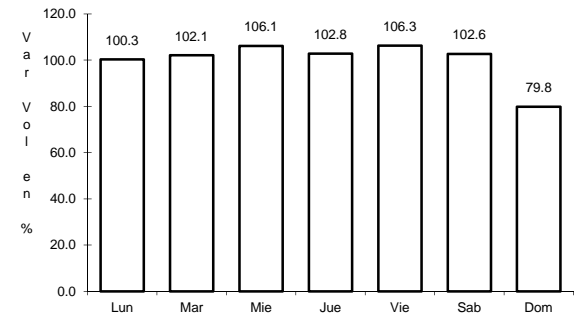
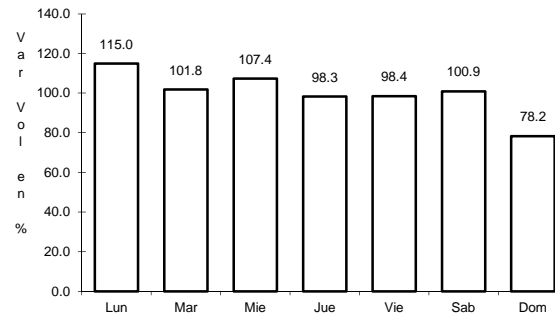
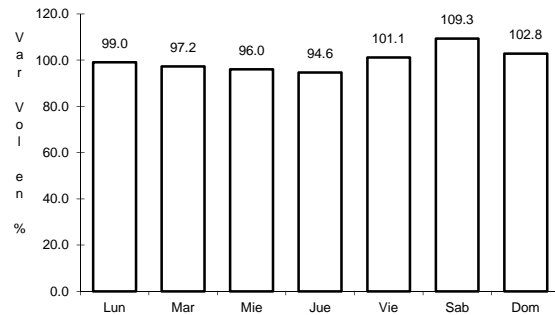
Km: 18.50 Tipo: 1 Sent: 0

Km: 20.00 Tipo: 1 Sent: 0

11 CARR: Cacaos - La Granja

CLAVE: 27002

RUTA: TAB



Km: 0.00 Tipo: 3 Sent: 0

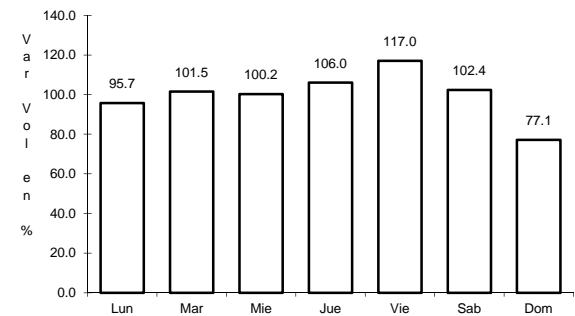
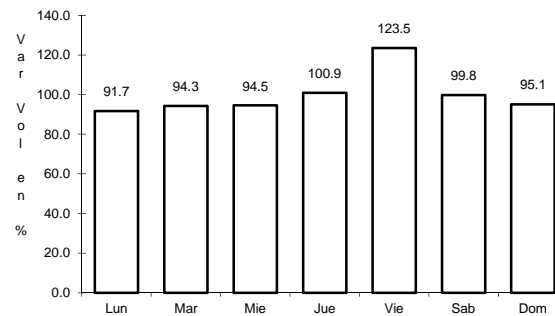
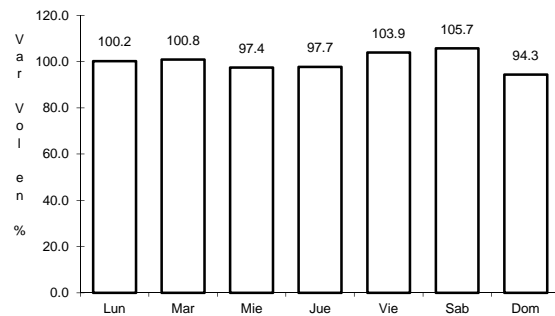
Km: 16.00 Tipo: 3 Sent: 0

Km: 39.00 Tipo: 1 Sent: 0

12 CARR: Cárdenas - Paraíso

CLAVE: 27117

RUTA: TAB



Km: 0.00 Tipo: 3 Sent: 0

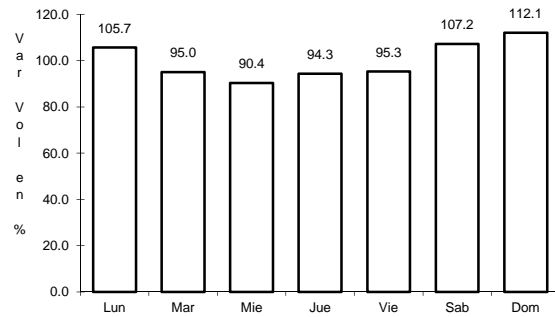
Km: 22.00 Tipo: 1 Sent: 0

Km: 52.00 Tipo: 1 Sent: 0

13 CARR: Chichicapa - Ent. La Libertad

CLAVE: 27100

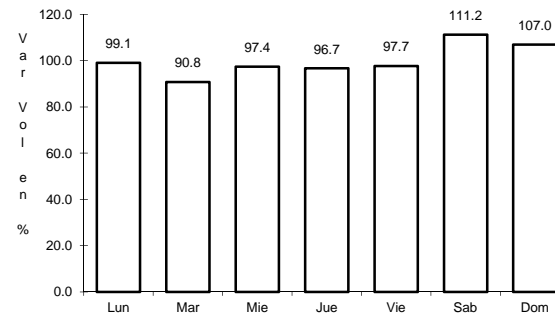
RUTA: TAB



Km: 0.00

Tipo: 3

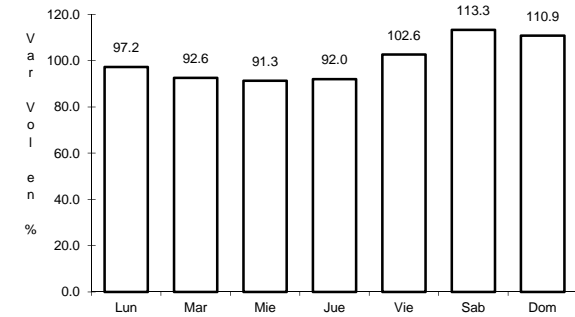
Sent: 0



Km: 10.00

Tipo: 3

Sent: 0



Km: 18.00

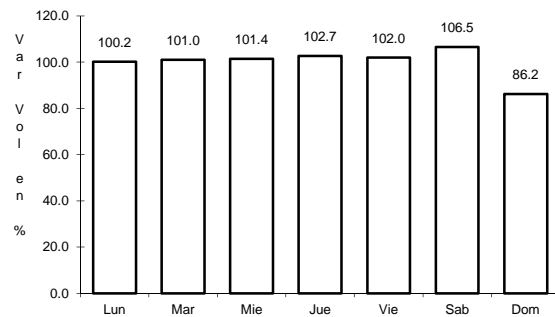
Tipo: 1

Sent: 0

14 CARR: Comalcalco - El Golpe

CLAVE: 27102

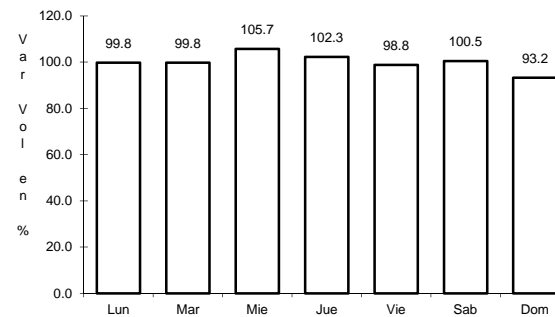
RUTA: TAB



Km: 0.00

Tipo: 3

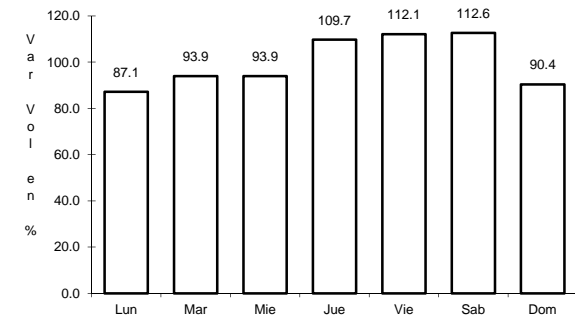
Sent: 0



Km: 15.00

Tipo: 1

Sent: 0



Km: 51.60

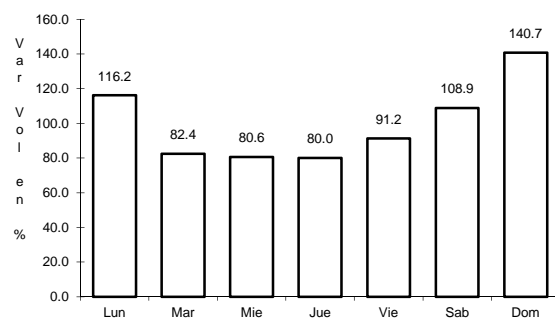
Tipo: 1

Sent: 0

15 CARR: El Bellote - Santa Cruz

CLAVE: 27105

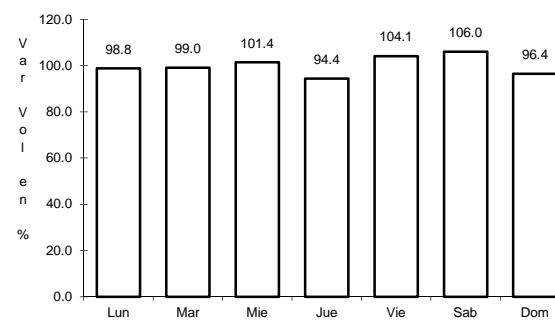
RUTA: TAB



Km: 0.00

Tipo: 3

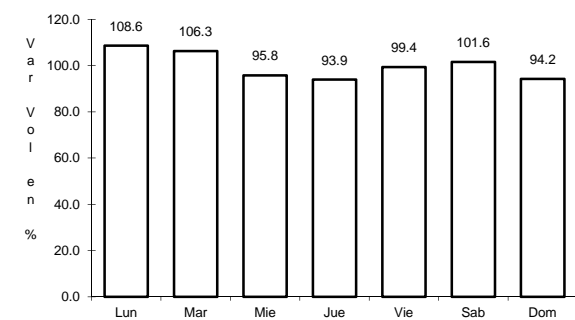
Sent: 0



Km: 35.00

Tipo: 1

Sent: 0



Km: 40.00

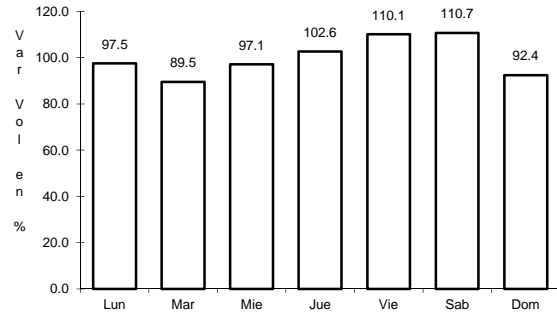
Tipo: 1

Sent: 0

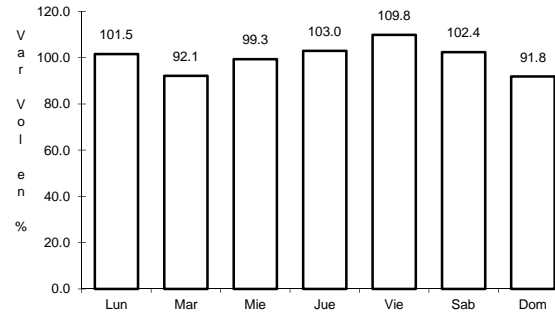
16 CARR: Ent. Emiliano Zapata - La Libertad

CLAVE: 00062

ruta: CHIS-TAB



Km: 0.00 Tipo: 3 Sent: 0

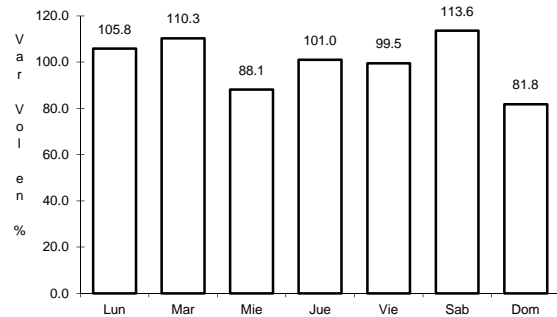


Km: 10.00 Tipo: 1 Sent: 0

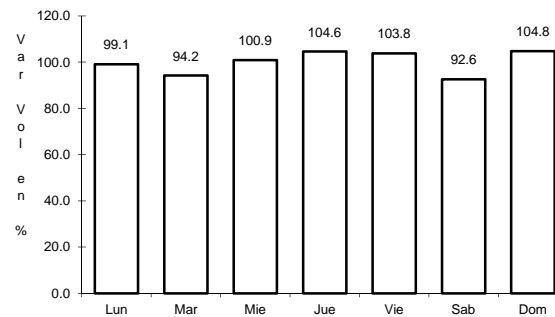
17 CARR: Estación Macuspana - Vernet

CLAVE: 27091

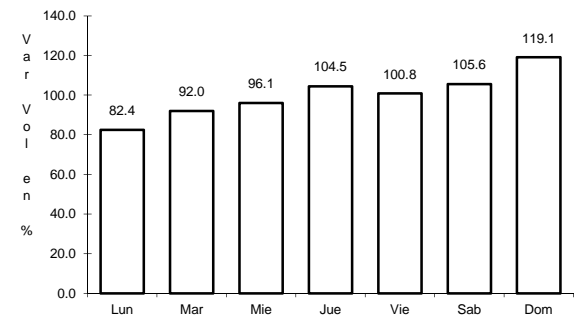
ruta: TAB-041



Km: 11.00 Tipo: 1 Sent: 0



Km: 20.50 Tipo: 3 Sent: 0

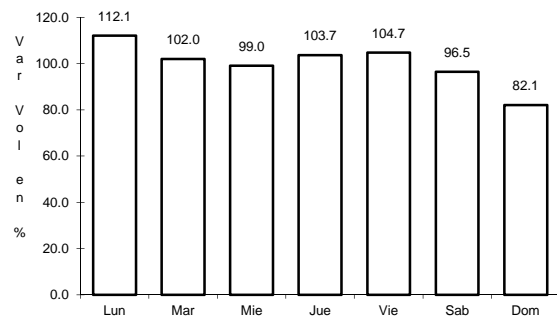


Km: 32.50 Tipo: 1 Sent: 0

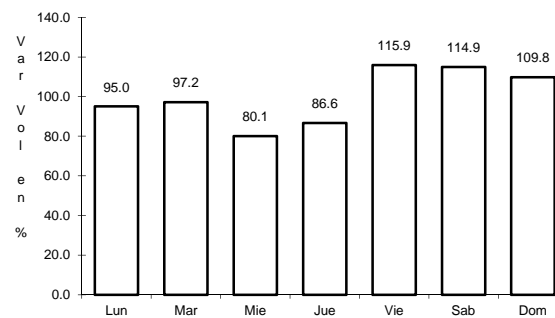
18 CARR: Frontera - T. C. (Jalapa - Jonuta)

CLAVE: 27081

ruta: TAB



Km: 1.00 Tipo: 3 Sent: 0

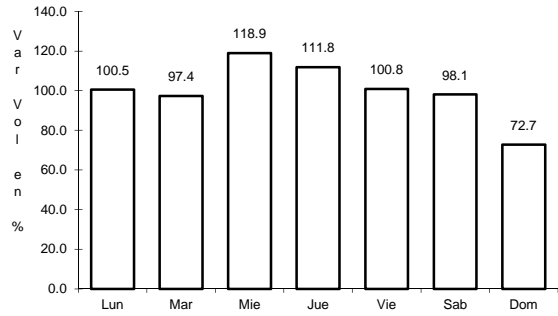


Km: 123.00 Tipo: 1 Sent: 0

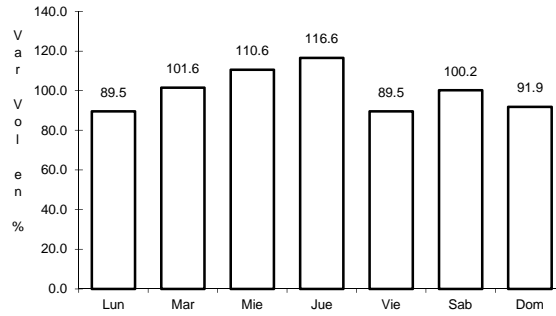
22 CARR: Pailebot - Cuauhtemotzin

CLAVE: 27112

RUTA: TAB



Km: 0.00 Tipo: 3 Sent: 0

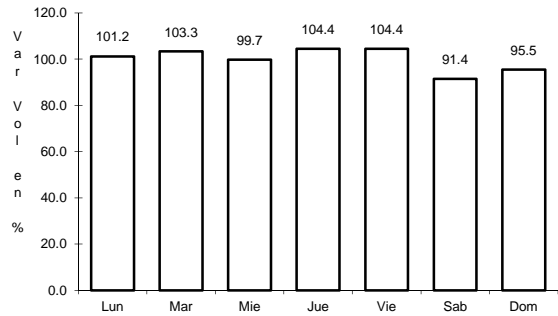


Km: 23.00 Tipo: 1 Sent: 0

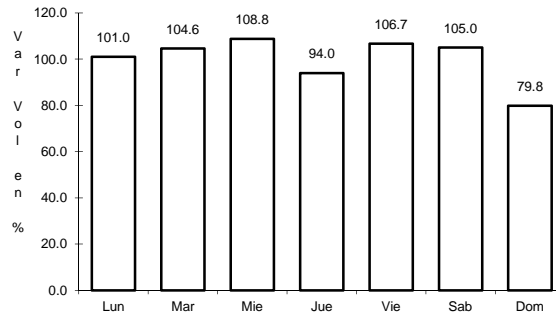
23 CARR: Paraíso - El Limón

CLAVE: 27108

RUTA: TAB



Km: 0.00 Tipo: 3 Sent: 0

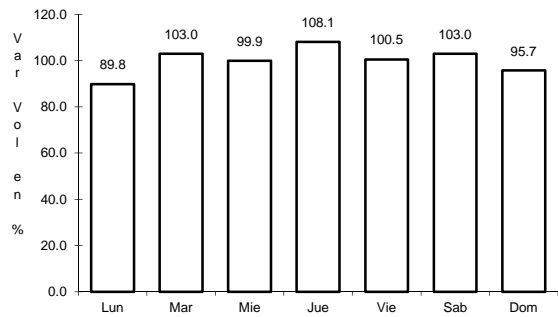


Km: 6.00 Tipo: 1 Sent: 0

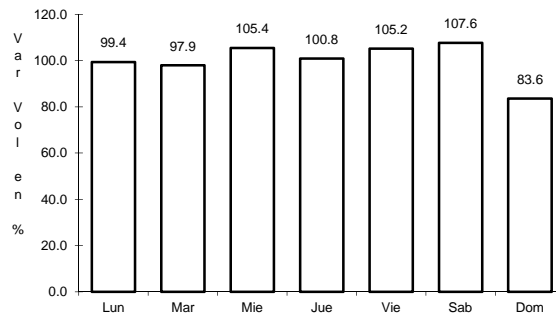
24 CARR: Paso de Cunduacán - Estación Juárez

CLAVE: 00588

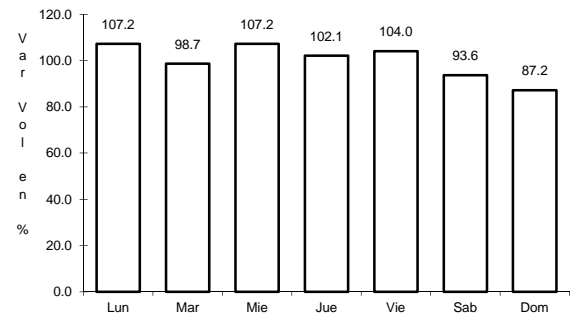
RUTA: TAB-CHIS



Km: 0.00 Tipo: 3 Sent: 0



Km: 18.00 Tipo: 3 Sent: 0

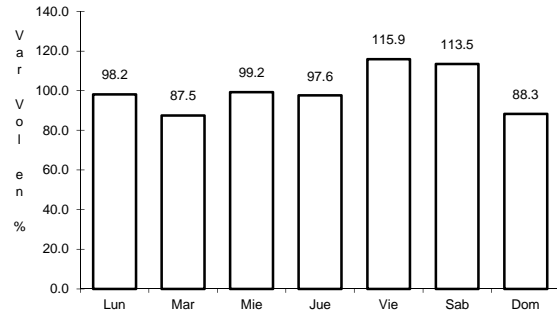


Km: 57.80 Tipo: 1 Sent: 0

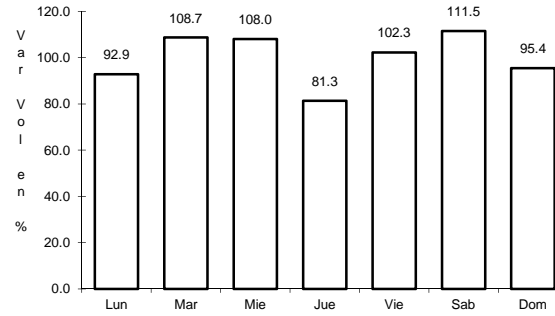
28 CARR: Ramal a Lázaro Cárdenas

CLAVE: 27208

RUTA: TAB



Km: 0.00 Tipo: 3 Sent: 0

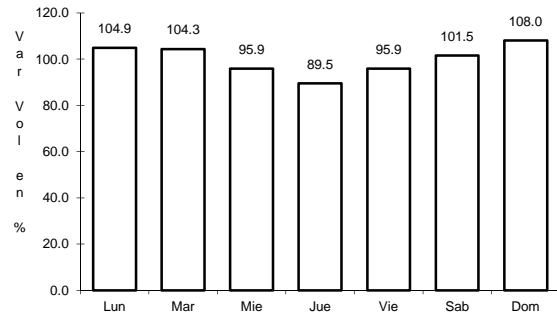


Km: 14.00 Tipo: 1 Sent: 0

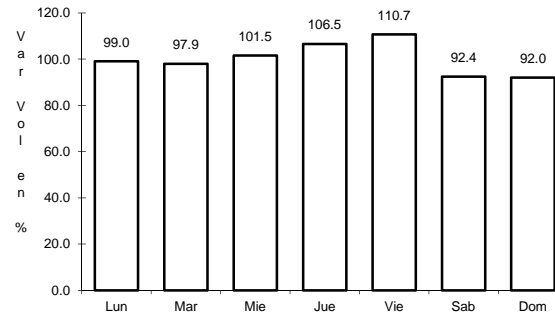
29 CARR: Ramal a Libertad

CLAVE: 27205

RUTA: TAB



Km: 0.00 Tipo: 3 Sent: 0

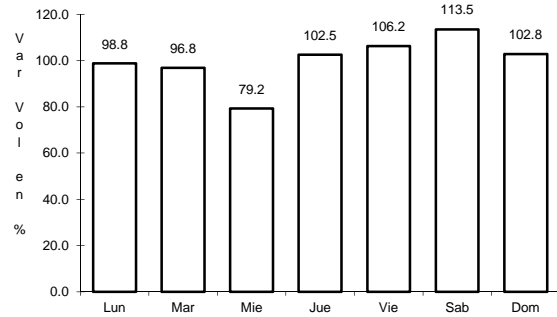


Km: 10.00 Tipo: 1 Sent: 0

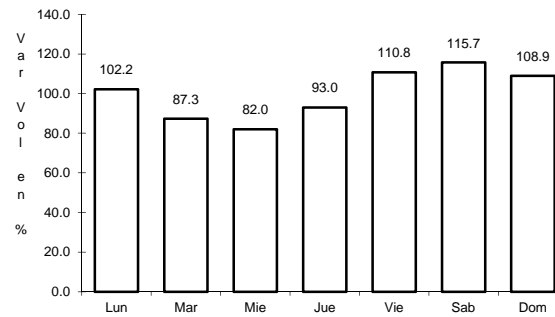
30 CARR: Ramal a Salto del Agua

CLAVE: 00069

RUTA: TAB-CHIS



Km: 0.00 Tipo: 3 Sent: 0

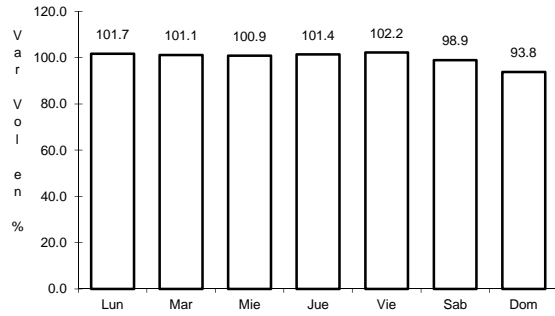


Km: 17.00 Tipo: 1 Sent: 0

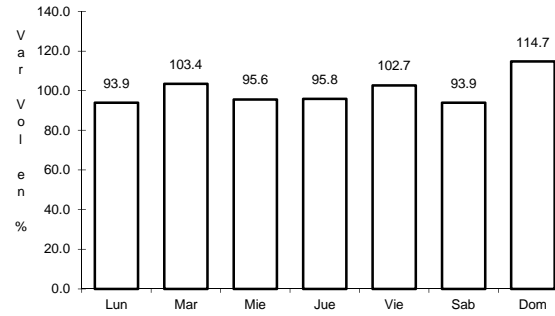
34 CARR: Ramal a Tapijulapa

CLAVE: 27200

RUTA: TAB



Km: 0.00 Tipo: 3 Sent: 0

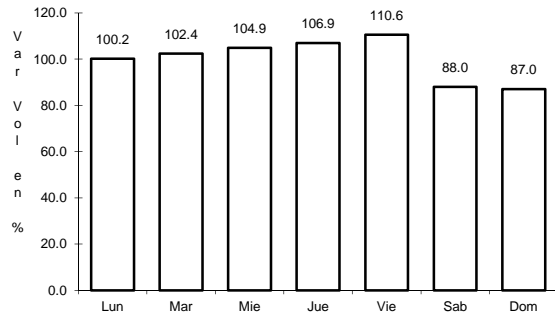


Km: 20.00 Tipo: 1 Sent: 0

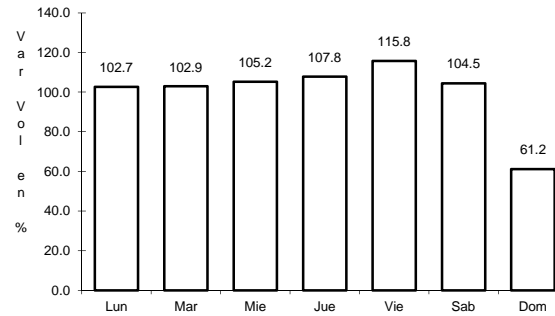
35 CARR: Reforma - Dos Bocas

CLAVE: 27200

RUTA: TAB



Km: 0.00 Tipo: 3 Sent: 1

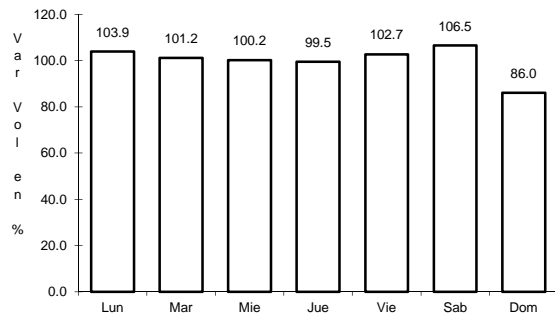


Km: 0.00 Tipo: 3 Sent: 2

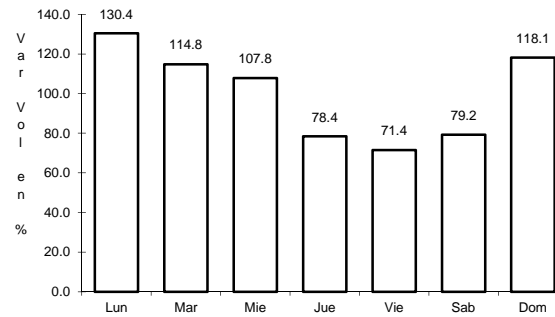
36 CARR: Reyes Hernández - Villa Aldama

CLAVE: 27119

RUTA: TAB



Km: 0.00 Tipo: 3 Sent: 0

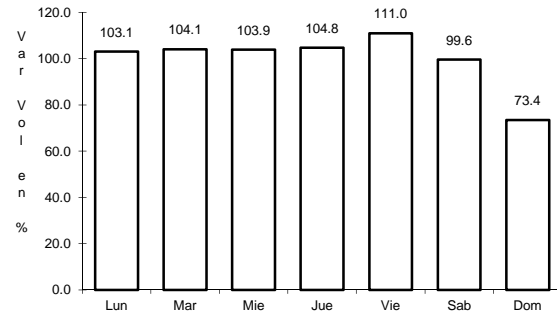


Km: 9.00 Tipo: 1 Sent: 0

37 CARR: Samaria - Amatitán

CLAVE: 27114

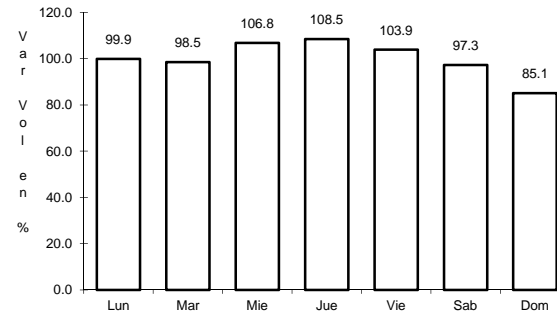
RUTA: TAB



Km: 0.00

Tipo: 3

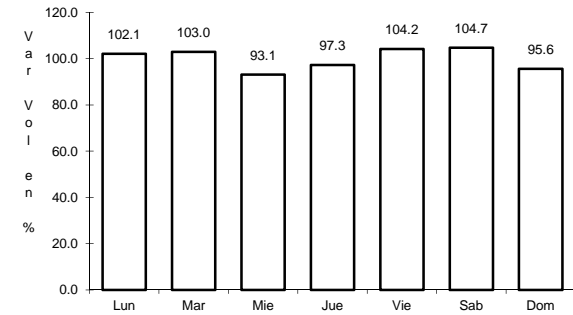
Sent: 0



Km: 17.00

Tipo: 1

Sent: 0



Km: 31.40

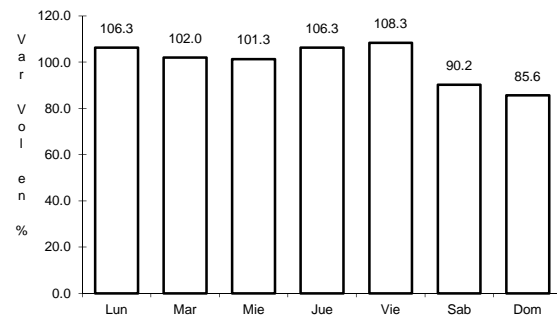
Tipo: 1

Sent: 0

38 CARR: T. C. (Cárdenas - Paraíso) - Carlos Green

CLAVE: 27111

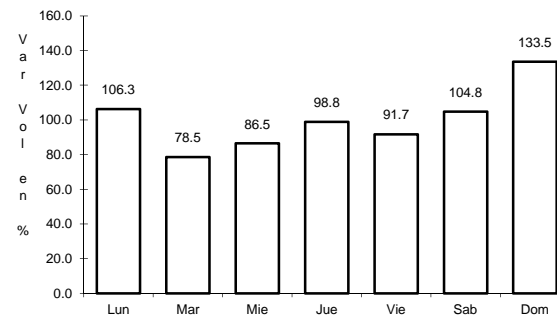
RUTA: TAB



Km: 0.00

Tipo: 3

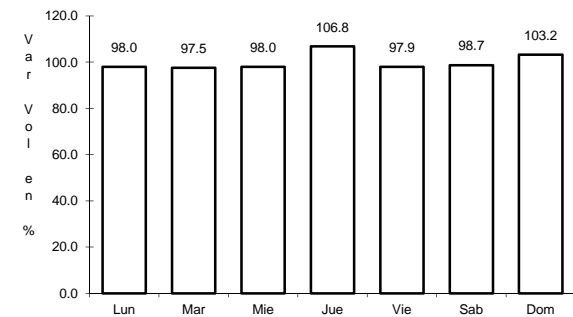
Sent: 0



Km: 21.50

Tipo: 3

Sent: 0



Km: 30.70

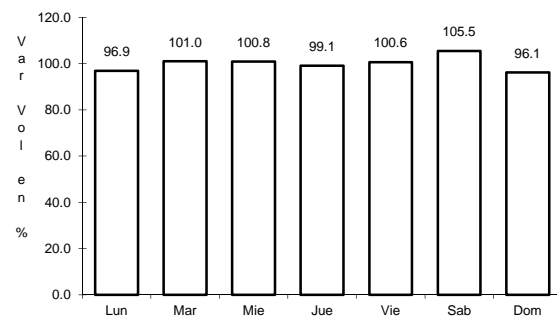
Tipo: 1

Sent: 0

39 CARR: Tierra Nueva - Francisco Rueda

CLAVE: 27110

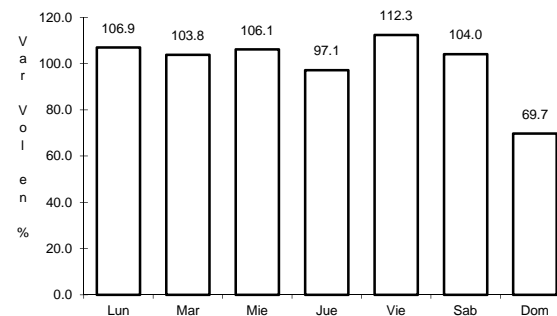
RUTA: TAB



Km: 0.00

Tipo: 3

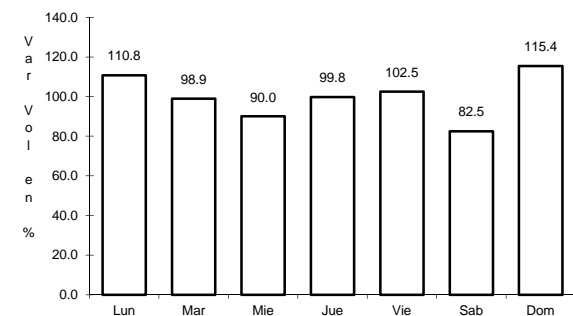
Sent: 0



Km: 31.00

Tipo: 1

Sent: 0



Km: 71.00

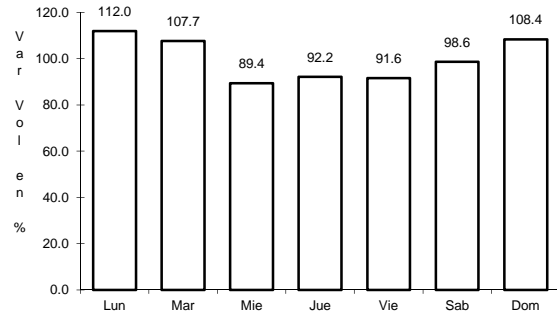
Tipo: 1

Sent: 0

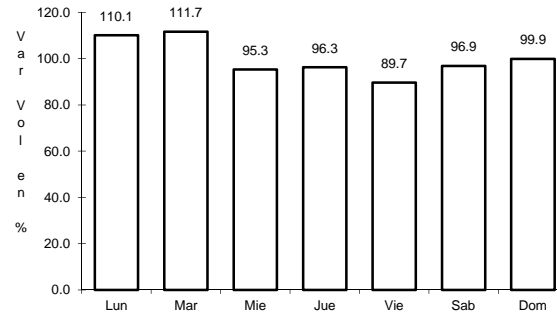
40 CARR: Tulipán - Conduacán

CLAVE: 27115

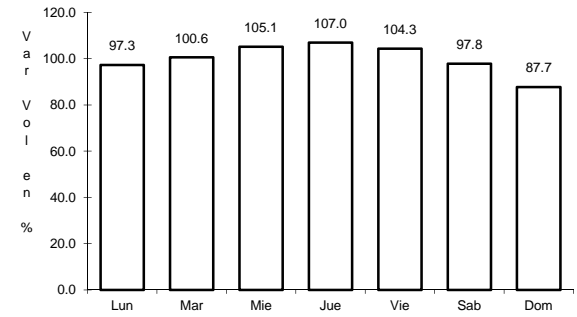
RUTA: TAB



Km: 0.00 Tipo: 3 Sent: 0



Km: 14.00 Tipo: 1 Sent: 0

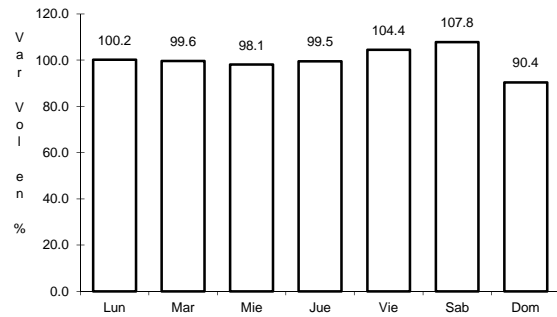


Km: 15.00 Tipo: 1 Sent: 0

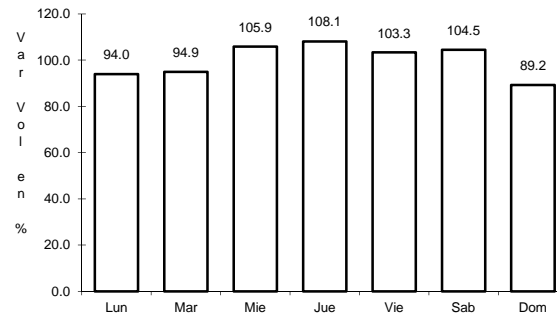
41 CARR: Villahermosa - Comalcalco

CLAVE: 27021

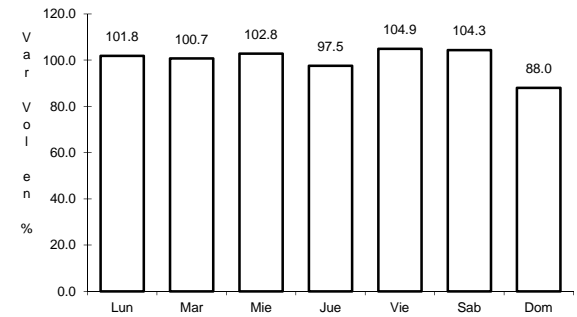
RUTA: TAB



Km: 0.00 Tipo: 3 Sent: 1



Km: 0.00 Tipo: 3 Sent: 2

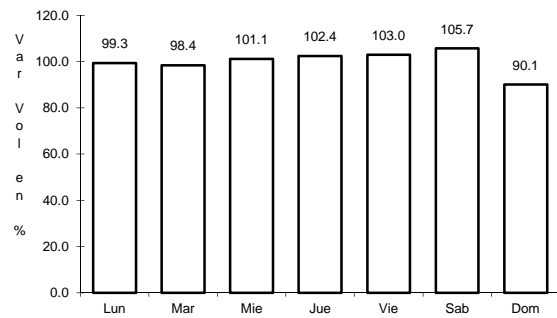


Km: 50.70 Tipo: 1 Sent: 0

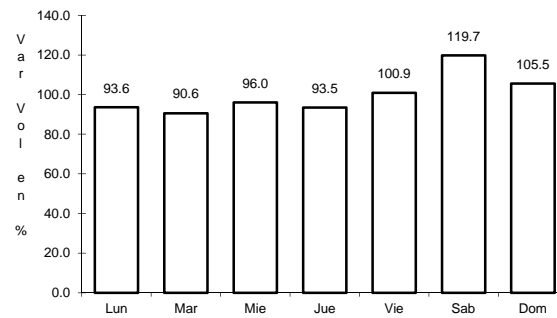
42 CARR: Villahermosa - Luis Gil Pérez

CLAVE: 27206

RUTA: TAB



Km: 0.00 Tipo: 3 Sent: 0



Km: 22.00 Tipo: 1 Sent: 0

