

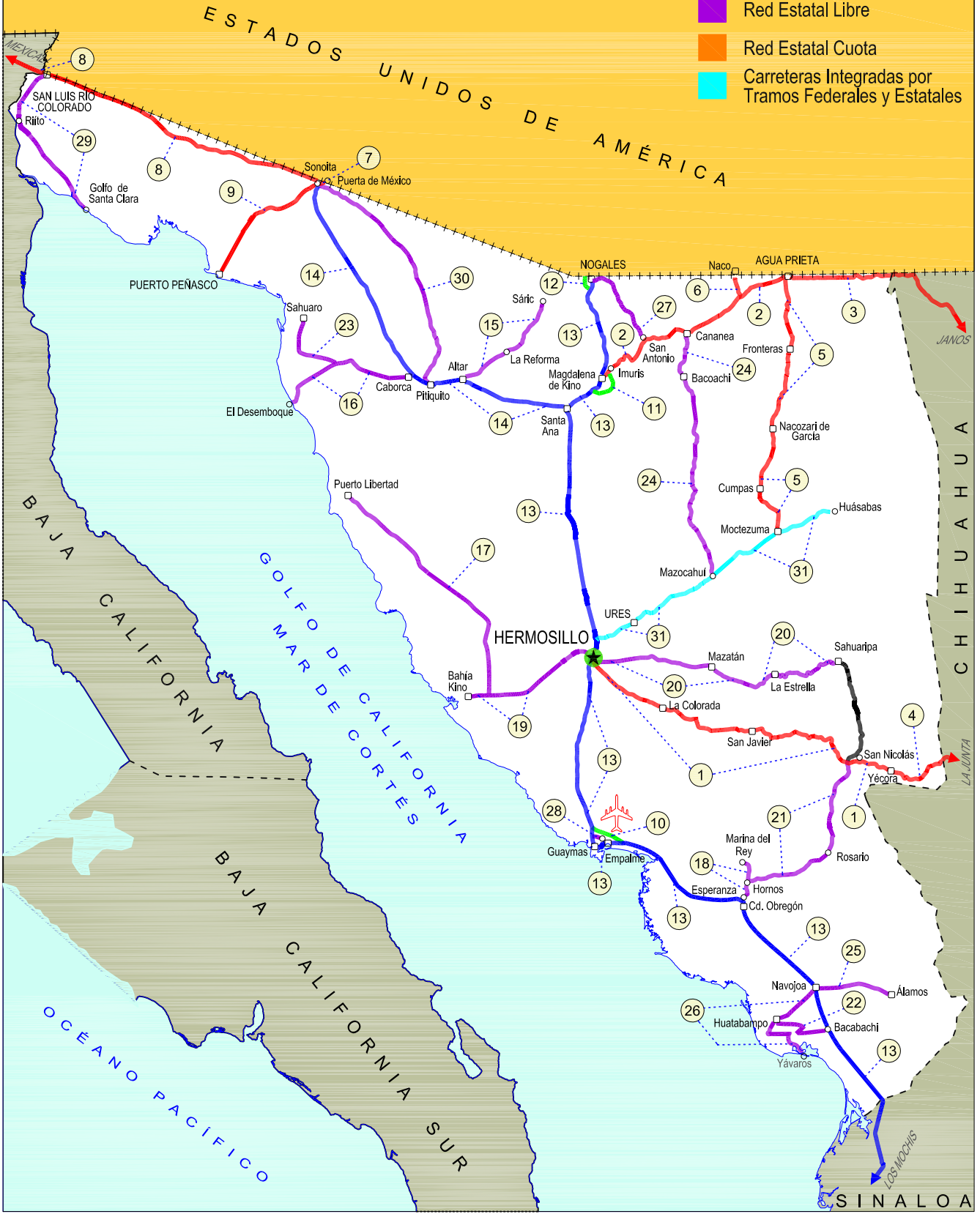
SONORA

| NO. INDICE | CARRETERA | RUTA |
|--|--|--------------|
| ---RED FEDERAL LIBRE--- | | |
| 1 | Hermosillo - Yécora | MEX-016 |
| 2 | Imuris - Agua Prieta | MEX-002 |
| 3 | Janos - Agua Prieta | MEX-002 |
| 4 | La Junta - Yécora | MEX-016 |
| 5 | Moctezuma - Agua Prieta | MEX-017 |
| 6 | Ramal a Naco | MEX-002 |
| 7 | Ramal a Puerta de México | MEX-002 |
| 8 | Sonoita - Mexicali | MEX-002 |
| 9 | Sonoita - Puerto Peñasco | MEX-002 |
| ---RED FEDERAL DE CUOTA--- | | |
| 10 | Libramiento de Empalme (Cuota) | MEX-015D |
| 11 | Libramiento de Magdalena de Kino (Cuota) | MEX-015D |
| 12 | Libramiento de Nogales (Cuota) | MEX-15D |
| ---RED FEDERAL INTEGRADA POR TRAMOS LIBRES Y DE CUOTA--- | | |
| 13 | Est. Don - Nogales (Cuota) | MEX-015D-015 |
| 14 | Santa Ana - Sonoita | MEX-002D-MEX |
| ---RED ESTATAL LIBRE--- | | |
| 15 | Altar - Sáric | SON-064 |
| 16 | Caborca - El Desemboque | SON-037 |
| 17 | Calle 36 Norte - Puerto de La Libertad | SON-029 |
| 18 | Esperanza - Presa Álvaro Obregón | SON-117 |
| 19 | Hermosillo - Bahía Kino | SON-100 |
| 20 | Hermosillo - Sahuaripa | SON-020 |
| 21 | Hornos - San Nicolás | SON-012 |
| 22 | Huatabampo - Bacabachi | SON-176 |
| 23 | La Alameda - El Sahuaro | SON-037 |
| 24 | Mazocahui - Cananea | SON-118 |
| 25 | Navojoa - Álamos | SON-013 |
| 26 | Navojoa - Yavaros | SON-056 |
| 27 | Nogales - San Antonio | SON |
| 28 | Ramal a Aeropuerto de Guaymas | SON |
| 29 | San Luis Río Colorado - Golfo de Santa Clara | SON-040 |
| 30 | Sonoita - Pitiquito | SON |
| ---CARRETERAS INTEGRADAS POR TRAMOS FEDERALES Y ESTATALES--- | | |
| 31 | T. C. (Hermosillo - Nogales) - Huásabas | MEX-014-SON |

26 SONORA

SECRETARÍA DE COMUNICACIONES Y TRANSPORTES
DIRECCIÓN GENERAL DE SERVICIOS TÉCNICOS

- ① --- Número Índice
- Red Federal Libre
- Red Federal Cuota
- Red Federal Integrada por Tramos Libres y de Cuota
- Red Estatal Libre
- Red Estatal Cuota
- Carreteras Integradas por Tramos Federales y Estatales



SONORA

1 CARR : Hermosillo - Yécora

CLAVE: 26251

RUTA: MEX-016

AÑO : 2012

| LUGAR | ESTACION | | | | CLASIFICACION VEHICULAR EN PORCIENTO | | | | | | | | | | | | | COORDENADAS | | |
|--------------------------------|----------|----|----|------|--------------------------------------|------|-----|------|-----|------|------|--------|-------|------|-----|------|-------|-------------|-----------|-------------|
| | KM | TE | SC | TDPA | M | A | B | C2 | C3 | T3S2 | T3S3 | T3S2R4 | OTROS | A | B | C | K' | D | LATITUD | LONGITUD |
| T. C. Cd. Obregón - Hermosillo | 0.00 | | | | | | | | | | | | | | | | | | | |
| T. Izq. Sahuaripa | 4.00 | 3 | 1 | 4946 | 1.4 | 75.8 | 3.5 | 8.5 | 3.2 | 3.5 | 2.4 | 0.9 | 0.8 | 77.2 | 3.5 | 19.3 | 0.123 | 0.527 | 29.005252 | -110.913434 |
| T. Izq. Sahuaripa | 4.00 | 3 | 2 | 5514 | 1.9 | 72.8 | 4.1 | 8.9 | 3.4 | 4.2 | 2.7 | 1.0 | 1.0 | 74.7 | 4.1 | 21.2 | 0.106 | 0.527 | 29.005253 | -110.913434 |
| La Colorada | 47.00 | 3 | 0 | 817 | 0.4 | 70.8 | 4.2 | 10.6 | 4.4 | 5.9 | 2.3 | 1.1 | 0.3 | 71.2 | 4.2 | 24.6 | 0.135 | 0.503 | 28.807567 | -110.576375 |
| Tecoripa | 138.00 | 3 | 0 | 597 | 0.7 | 66.9 | 7.2 | 10.1 | 5.5 | 6.4 | 2.5 | 0.7 | 0.0 | 67.6 | 7.2 | 25.2 | 0.091 | 0.522 | 28.621888 | -109.949269 |
| Yécora | 250.60 | | | | | | | | | | | | | | | | | | | |

2 CARR : Imuris - Agua Prieta

CLAVE: 26079

RUTA: MEX-002

AÑO : 2012

| LUGAR | ESTACION | | | | CLASIFICACION VEHICULAR EN PORCIENTO | | | | | | | | | | | | | COORDENADAS | | |
|-----------------|----------|----|----|------|--------------------------------------|------|-----|------|-----|------|------|--------|-------|------|-----|------|-------|-------------|-----------|-------------|
| | KM | TE | SC | TDPA | M | A | B | C2 | C3 | T3S2 | T3S3 | T3S2R4 | OTROS | A | B | C | K' | D | LATITUD | LONGITUD |
| Imuris | 0.00 | 3 | 0 | 2990 | 0.6 | 53.6 | 3.8 | 8.0 | 1.7 | 20.1 | 5.4 | 5.9 | 0.9 | 54.2 | 3.8 | 42.0 | 0.084 | 0.514 | 30.802991 | -110.826447 |
| T. Der. Cananea | 80.93 | 1 | 0 | 5618 | 0.5 | 64.3 | 2.5 | 8.7 | 2.1 | 13.5 | 3.9 | 3.5 | 1.0 | 64.8 | 2.5 | 32.7 | 0.094 | 0.505 | 30.996786 | -110.288462 |
| T. Der. Cananea | 80.93 | 3 | 0 | 6094 | 0.2 | 67.2 | 2.6 | 7.6 | 4.6 | 12.0 | 2.2 | 3.0 | 0.6 | 67.4 | 2.6 | 30.0 | 0.077 | 0.504 | 30.994735 | -110.256438 |
| Agua Prieta | 164.67 | 1 | 0 | 4252 | 0.6 | 60.4 | 3.0 | 11.7 | 2.1 | 13.1 | 4.8 | 3.4 | 0.9 | 61.0 | 3.0 | 36.0 | 0.073 | 0.504 | 31.311782 | -109.589138 |

3 CARR : Janos - Agua Prieta

CLAVE: 00220

RUTA: MEX-002

AÑO : 2012

| LUGAR | ESTACION | | | | CLASIFICACION VEHICULAR EN PORCIENTO | | | | | | | | | | | | | COORDENADAS | | |
|-----------------------------------|----------|----|----|------|--------------------------------------|------|-----|-----|-----|------|------|--------|-------|------|-----|------|-------|-------------|-----------|-------------|
| | KM | TE | SC | TDPA | M | A | B | C2 | C3 | T3S2 | T3S3 | T3S2R4 | OTROS | A | B | C | K' | D | LATITUD | LONGITUD |
| T. C. Cd. Juárez - Janos | 0.00 | 3 | 0 | 3355 | 0.9 | 56.0 | 3.6 | 7.1 | 1.3 | 20.7 | 3.8 | 5.6 | 1.0 | 56.9 | 3.6 | 39.5 | 0.085 | 0.501 | 30.889936 | -108.214514 |
| Los Mimbres | 56.00 | 3 | 0 | 1631 | 0.8 | 53.1 | 2.7 | 8.1 | 2.8 | 20.3 | 3.7 | 7.4 | 1.1 | 53.9 | 2.7 | 43.4 | 0.116 | 0.511 | 31.272602 | -108.616417 |
| Lim. Edos. Term. Chih. Ppia. Son. | 78.00 | | | | | | | | | | | | | | | | | | | |
| Agua Prieta | 160.00 | 1 | 0 | 2515 | 1.1 | 50.3 | 3.4 | 7.7 | 2.3 | 21.9 | 4.7 | 7.6 | 1.0 | 51.4 | 3.4 | 45.2 | 0.075 | 0.505 | 31.323105 | -109.506585 |

4 CARR : La Junta - Yécora

CLAVE: 00065

RUTA: MEX-016

AÑO : 2012

| LUGAR | ESTACION | | | | CLASIFICACION VEHICULAR EN PORCIENTO | | | | | | | | | | | | | COORDENADAS | | |
|-----------------------------------|----------|----|----|------|--------------------------------------|------|------|------|-----|------|------|--------|-------|------|------|------|-------|-------------|-----------|-------------|
| | KM | TE | SC | TDPA | M | A | B | C2 | C3 | T3S2 | T3S3 | T3S2R4 | OTROS | A | B | C | K' | D | LATITUD | LONGITUD |
| T. C. Chihuahua - Madera | 0.00 | 3 | 0 | 4128 | 0.4 | 75.1 | 1.6 | 16.4 | 1.4 | 3.5 | 1.1 | 0.1 | 0.4 | 75.5 | 1.6 | 22.9 | 0.084 | 0.503 | 28.473290 | -107.308589 |
| T. Izq. San Juanito | 16.00 | 1 | 0 | 2270 | 0.2 | 68.7 | 2.9 | 17.3 | 2.8 | 5.1 | 2.0 | 0.4 | 0.6 | 68.9 | 2.9 | 28.2 | 0.092 | 0.506 | 28.388667 | -107.439573 |
| T. Izq. San Juanito | 16.00 | 3 | 0 | 1119 | 0.2 | 63.7 | 2.2 | 20.4 | 3.2 | 6.6 | 2.7 | 0.4 | 0.6 | 63.9 | 2.2 | 33.9 | 0.088 | 0.514 | 28.390919 | -107.441843 |
| Tomochi | 70.00 | 3 | 0 | 1040 | 0.3 | 61.2 | 2.9 | 21.9 | 3.5 | 6.4 | 2.7 | 0.7 | 0.4 | 61.5 | 2.9 | 35.6 | 0.088 | 0.501 | 28.392789 | -107.460281 |
| Lim. Edos. Term. Chih. Ppia. Son. | 190.00 | | | | | | | | | | | | | | | | | | | |
| Yécora | 253.00 | 1 | 0 | 868 | 1.1 | 58.5 | 11.2 | 10.1 | 3.6 | 9.5 | 4.9 | 0.0 | 1.1 | 59.6 | 11.2 | 29.2 | 0.106 | 0.510 | 28.366496 | -108.923052 |

SONORA

5 CARR: Moctezuma - Agua Prieta

CLAVE: 26027

RUTA: MEX-017

AÑO: 2012

| LUGAR | ESTACION | | | | CLASIFICACION VEHICULAR EN PORCIENTO | | | | | | | | | | | | | COORDENADAS | | |
|----------------------------|----------|----|----|------|--------------------------------------|------|-----|------|-----|------|------|--------|-------|------|-----|------|-------|-------------|-----------|-------------|
| | KM | TE | SC | TDPA | M | A | B | C2 | C3 | T3S2 | T3S3 | T3S2R4 | OTROS | A | B | C | K' | D | LATITUD | LONGITUD |
| Moctezuma | 0.00 | 3 | 0 | 2283 | 0.5 | 82.9 | 1.4 | 8.0 | 1.1 | 2.8 | 1.1 | 1.6 | 0.6 | 83.4 | 1.4 | 15.2 | 0.090 | 0.532 | 29.817927 | -109.677048 |
| Nacozeni de García | 81.00 | 3 | 0 | 1798 | 0.3 | 79.9 | 1.3 | 10.0 | 1.4 | 3.7 | 1.0 | 1.7 | 0.7 | 80.2 | 1.3 | 18.5 | 0.083 | 0.532 | 30.389875 | -109.695413 |
| Turicachi | 111.00 | 1 | 0 | 1940 | 0.3 | 77.0 | 1.4 | 10.4 | 1.5 | 4.8 | 2.2 | 1.7 | 0.7 | 77.3 | 1.4 | 21.3 | 0.086 | 0.515 | 30.660069 | -109.596234 |
| T. C. Imuris - Agua Prieta | 197.60 | 1 | 0 | 3793 | 0.7 | 74.0 | 1.3 | 13.6 | 3.1 | 3.8 | 1.6 | 1.4 | 0.5 | 74.7 | 1.3 | 24.0 | 0.105 | 0.501 | 31.297813 | -109.581854 |

6 CARR: Ramal a Naco

CLAVE: 26579

RUTA: MEX-002

AÑO: 2012

| LUGAR | ESTACION | | | | CLASIFICACION VEHICULAR EN PORCIENTO | | | | | | | | | | | | | COORDENADAS | | |
|----------------------------|----------|----|----|------|--------------------------------------|------|-----|-----|-----|------|------|--------|-------|------|-----|------|-------|-------------|-----------|-------------|
| | KM | TE | SC | TDPA | M | A | B | C2 | C3 | T3S2 | T3S3 | T3S2R4 | OTROS | A | B | C | K' | D | LATITUD | LONGITUD |
| T. C. Imuris - Agua Prieta | 0.00 | 3 | 0 | 1316 | 0.2 | 83.6 | 4.2 | 8.6 | 1.7 | 1.5 | 0.2 | 0.0 | 0.0 | 83.8 | 4.2 | 12.0 | 0.099 | 0.504 | 31.209099 | -109.908449 |
| Naco | 14.00 | | | | | | | | | | | | | | | | | | | |

7 CARR: Ramal a Puerta de México

CLAVE: 26577

RUTA: MEX-002

AÑO: 2012

| LUGAR | ESTACION | | | | CLASIFICACION VEHICULAR EN PORCIENTO | | | | | | | | | | | | | COORDENADAS | | |
|--------------------------|----------|----|----|-------|--------------------------------------|------|-----|-----|-----|------|------|--------|-------|------|-----|-----|-------|-------------|-----------|-------------|
| | KM | TE | SC | TDPA | M | A | B | C2 | C3 | T3S2 | T3S3 | T3S2R4 | OTROS | A | B | C | K' | D | LATITUD | LONGITUD |
| T. C. Sonoita - Mexicali | 0.00 | 3 | 0 | 10644 | 0.5 | 88.4 | 2.0 | 4.0 | 0.3 | 3.5 | 0.4 | 0.1 | 0.8 | 88.9 | 2.0 | 9.1 | 0.072 | 0.505 | 31.867509 | -112.834123 |
| Frontera E.U.A | 3.30 | | | | | | | | | | | | | | | | | | | |

8 CARR: Sonoita - Mexicali

CLAVE: 00081

RUTA: MEX-002

AÑO: 2012

| LUGAR | ESTACION | | | | CLASIFICACION VEHICULAR EN PORCIENTO | | | | | | | | | | | | | COORDENADAS | | |
|----------------------------------|----------|----|----|------|--------------------------------------|------|-----|-----|-----|------|------|--------|-------|------|-----|------|-------|-------------|-----------|-------------|
| | KM | TE | SC | TDPA | M | A | B | C2 | C3 | T3S2 | T3S3 | T3S2R4 | OTROS | A | B | C | K' | D | LATITUD | LONGITUD |
| Sonoita | 0.00 | 3 | 0 | 4762 | 1.3 | 62.6 | 5.1 | 7.3 | 2.1 | 14.7 | 2.8 | 3.1 | 1.0 | 63.9 | 5.1 | 31.0 | 0.067 | 0.535 | 31.875673 | -112.851187 |
| Los Vidrios | 58.75 | 3 | 0 | 3046 | 1.5 | 47.4 | 6.4 | 6.9 | 5.7 | 22.4 | 4.4 | 4.3 | 1.0 | 48.9 | 6.4 | 44.7 | 0.058 | 0.504 | 32.037199 | -113.450416 |
| San Luis Río Colorado | 191.80 | 1 | 0 | 3502 | 0.5 | 46.5 | 7.7 | 6.4 | 4.1 | 25.1 | 3.5 | 5.1 | 1.1 | 47.0 | 7.7 | 45.3 | 0.077 | 0.509 | 32.450215 | -114.672121 |
| San Luis Río Colorado | 191.80 | 3 | 1 | 9231 | 1.1 | 55.5 | 5.5 | 5.9 | 3.4 | 20.0 | 3.2 | 4.5 | 0.9 | 56.6 | 5.5 | 37.9 | 0.085 | 0.505 | 32.488497 | -114.797638 |
| San Luis Río Colorado | 191.80 | 3 | 2 | 9065 | 0.9 | 50.5 | 5.9 | 6.9 | 3.8 | 22.7 | 3.5 | 4.9 | 0.9 | 51.4 | 5.9 | 42.7 | 0.075 | 0.505 | 32.488488 | -114.797622 |
| Lim. Edos. Term. Son. Ppia. B.C. | 203.69 | | | | | | | | | | | | | | | | | | | |
| X. C. Mexicali - Algodones | 206.78 | 1 | 1 | 9682 | 0.9 | 81.8 | 3.4 | 5.0 | 1.2 | 4.5 | 1.2 | 1.1 | 0.9 | 82.7 | 3.4 | 13.9 | 0.073 | 0.502 | 32.497955 | -114.829809 |
| X. C. Mexicali - Algodones | 206.78 | 1 | 2 | 9767 | 0.8 | 80.6 | 3.6 | 5.4 | 1.0 | 5.0 | 1.4 | 1.2 | 1.0 | 81.4 | 3.6 | 15.0 | 0.076 | 0.502 | 32.497952 | -114.829810 |
| X. C. Mexicali - Algodones | 206.78 | 3 | 1 | 8143 | 0.3 | 81.5 | 2.2 | 6.9 | 0.7 | 5.9 | 0.9 | 1.2 | 0.4 | 81.8 | 2.2 | 16.0 | 0.076 | 0.520 | 32.505861 | -114.853571 |
| X. C. Mexicali - Algodones | 206.78 | 3 | 2 | 8284 | 0.3 | 79.2 | 2.4 | 8.0 | 0.8 | 6.6 | 1.0 | 1.3 | 0.4 | 79.5 | 2.4 | 18.1 | 0.080 | 0.520 | 32.505862 | -114.853573 |
| T. Izq. Ejido Hermosillo | 214.80 | 3 | 1 | 6581 | 0.3 | 80.2 | 2.5 | 5.4 | 1.8 | 7.1 | 0.9 | 1.3 | 0.5 | 80.5 | 2.5 | 17.0 | 0.083 | 0.520 | 32.527295 | -114.928408 |
| T. Izq. Ejido Hermosillo | 214.80 | 3 | 2 | 7116 | 0.2 | 78.2 | 3.0 | 6.2 | 1.7 | 7.7 | 1.0 | 1.5 | 0.5 | 78.4 | 3.0 | 18.6 | 0.085 | 0.520 | 32.527295 | -114.928408 |

SONORA

8 CARR : Sonoita - Mexicali

CLAVE: 00081

RUTA: MEX-002

AÑO: 2012

| LUGAR | ESTACION | | | | CLASIFICACION VEHICULAR EN PORCIENTO | | | | | | | | | | | | | | COORDENADAS | |
|-----------------------------|----------|----|----|-------|--------------------------------------|------|-----|------|-----|------|------|--------|-------|------|-----|------|-------|-------|-------------|-------------|
| | KM | TE | SC | TDPA | M | A | B | C2 | C3 | T3S2 | T3S3 | T3S2R4 | OTROS | A | B | C | K' | D | LATITUD | LONGITUD |
| Ejido Monterrey | 228.63 | 3 | 1 | 9498 | 0.4 | 74.7 | 4.0 | 11.9 | 0.9 | 5.2 | 1.3 | 1.0 | 0.6 | 75.1 | 4.0 | 20.9 | 0.078 | 0.511 | 32.552125 | -115.087641 |
| Ejido Monterrey | 228.63 | 3 | 2 | 9100 | 0.4 | 71.0 | 4.2 | 13.9 | 1.0 | 6.2 | 1.4 | 1.2 | 0.7 | 71.4 | 4.2 | 24.4 | 0.086 | 0.511 | 32.552126 | -115.087636 |
| X. C. Mexicali - Algodones | 256.47 | 1 | 1 | 12833 | 0.4 | 81.4 | 2.5 | 8.5 | 0.8 | 2.8 | 2.6 | 0.5 | 0.5 | 81.8 | 2.5 | 15.7 | 0.076 | 0.501 | 32.565566 | -115.326641 |
| X. C. Mexicali - Algodones | 256.47 | 1 | 2 | 12775 | 0.3 | 79.9 | 2.6 | 9.5 | 0.8 | 3.1 | 2.8 | 0.5 | 0.5 | 80.2 | 2.6 | 17.2 | 0.079 | 0.501 | 32.565565 | -115.326639 |
| T. C. Mexicali - San Felipe | 265.12 | | | | | | | | | | | | | | | | | | | |

9 CARR : Sonoita - Puerto Peñasco

CLAVE: 26232

RUTA: MEX-002

AÑO: 2012

| LUGAR | ESTACION | | | | CLASIFICACION VEHICULAR EN PORCIENTO | | | | | | | | | | | | | | COORDENADAS | |
|----------------|----------|----|----|------|--------------------------------------|------|-----|-----|-----|------|------|--------|-------|------|-----|-----|-------|-------|-------------|-------------|
| | KM | TE | SC | TDPA | M | A | B | C2 | C3 | T3S2 | T3S3 | T3S2R4 | OTROS | A | B | C | K' | D | LATITUD | LONGITUD |
| Sonoita | 0.00 | 3 | 0 | 1822 | 0.3 | 90.4 | 1.5 | 3.7 | 1.3 | 1.5 | 0.9 | 0.2 | 0.2 | 90.7 | 1.5 | 7.8 | 0.146 | 0.508 | 31.862396 | -112.876898 |
| Puerto Peñasco | 100.40 | | | | | | | | | | | | | | | | | | | |

10 CARR : Libramiento de Empalme (Cuota)

CLAVE: 26256

RUTA: MEX-015D

AÑO: 2012

| LUGAR | ESTACION | | | | CLASIFICACION VEHICULAR EN PORCIENTO | | | | | | | | | | | | | | COORDENADAS | |
|--------------------------------|----------|----|----|------|--------------------------------------|------|-----|------|-----|------|------|--------|-------|------|-----|------|-------|-------|-------------|-------------|
| | KM | TE | SC | TDPA | M | A | B | C2 | C3 | T3S2 | T3S3 | T3S2R4 | OTROS | A | B | C | K' | D | LATITUD | LONGITUD |
| T. C. Cd. Obregón - Hermosillo | 0.00 | 3 | 1 | 3269 | 0.8 | 63.7 | 6.3 | 8.9 | 3.0 | 9.2 | 2.1 | 5.1 | 0.9 | 64.5 | 6.3 | 29.2 | 0.070 | 0.531 | 27.957670 | -110.755157 |
| T. C. Cd. Obregón - Hermosillo | 0.00 | 3 | 2 | 3370 | 0.5 | 59.7 | 7.1 | 10.2 | 3.1 | 10.7 | 2.4 | 5.3 | 1.0 | 60.2 | 7.1 | 32.7 | 0.082 | 0.531 | 27.957674 | -110.755158 |
| T. C. Cd. Obregón - Hermosillo | 21.50 | 1 | 1 | 2988 | 0.8 | 60.6 | 6.4 | 9.8 | 3.1 | 9.7 | 2.8 | 5.8 | 1.0 | 61.4 | 6.4 | 32.2 | 0.083 | 0.522 | 28.038245 | -110.934151 |
| T. C. Cd. Obregón - Hermosillo | 21.50 | 1 | 2 | 3259 | 0.6 | 57.4 | 6.9 | 10.9 | 3.2 | 10.2 | 3.1 | 6.6 | 1.1 | 58.0 | 6.9 | 35.1 | 0.094 | 0.522 | 28.038265 | -110.934143 |

11 CARR : Libramiento de Magdalena de Kino (Cuota)

CLAVE:

RUTA: MEX-015D

AÑO: 2012

| LUGAR | ESTACION | | | | CLASIFICACION VEHICULAR EN PORCIENTO | | | | | | | | | | | | | | COORDENADAS | |
|----------------------------|----------|----|----|------|--------------------------------------|------|-----|------|-----|------|------|--------|-------|------|-----|------|-------|-------|-------------|-------------|
| | KM | TE | SC | TDPA | M | A | B | C2 | C3 | T3S2 | T3S3 | T3S2R4 | OTROS | A | B | C | K' | D | LATITUD | LONGITUD |
| T. C. Hermosillo - Nogales | 183.43 | 3 | 1 | 3410 | 0.6 | 54.4 | 3.0 | 10.8 | 1.4 | 20.8 | 2.5 | 5.6 | 0.9 | 55.0 | 3.0 | 42.0 | 0.080 | 0.502 | 30.619468 | -110.987501 |
| T. C. Hermosillo - Nogales | 183.43 | 3 | 2 | 3582 | 2.2 | 84.7 | 0.8 | 3.8 | 2.2 | 3.3 | 1.6 | 0.9 | 0.5 | 86.9 | 0.8 | 12.3 | 0.092 | 0.514 | 27.952200 | -110.930805 |
| T. C. Hermosillo - Nogales | 190.00 | 1 | 1 | 3202 | 0.6 | 50.0 | 3.4 | 9.9 | 1.7 | 24.0 | 3.2 | 6.0 | 1.2 | 50.6 | 3.4 | 46.0 | 0.070 | 0.511 | 30.663496 | -110.922691 |
| T. C. Hermosillo - Nogales | 190.00 | 1 | 2 | 3340 | 0.5 | 46.4 | 3.8 | 10.1 | 1.7 | 25.5 | 3.8 | 7.0 | 1.2 | 46.9 | 3.8 | 49.3 | 0.079 | 0.511 | 30.663496 | -110.922691 |

SONORA

12 CARR: Libramiento de Nogales (Cuota)

CLAVE: 26100

RUTA: MEX-15D

AÑO: 2012

| LUGAR | ESTACION | | | | CLASIFICACION VEHICULAR EN PORCIENTO | | | | | | | | | | | | | COORDENADAS | | |
|----------------------------|----------|----|----|------|--------------------------------------|------|-----|------|-----|------|------|--------|-------|------|-----|------|-------|-------------|-----------|-------------|
| | KM | TE | SC | TDPA | M | A | B | C2 | C3 | T3S2 | T3S3 | T3S2R4 | OTROS | A | B | C | K' | D | LATITUD | LONGITUD |
| T. C. Hermosillo - Nogales | 0.00 | 3 | 1 | 3016 | 0.0 | 42.0 | 0.0 | 7.6 | 5.2 | 42.6 | 1.2 | 0.8 | 0.6 | 42.0 | 0.0 | 58.0 | 0.148 | 0.523 | 31.235487 | -110.968397 |
| T. C. Hermosillo - Nogales | 0.00 | 3 | 2 | 3024 | 0.0 | 42.0 | 0.0 | 8.9 | 5.9 | 40.4 | 1.3 | 0.7 | 0.8 | 42.0 | 0.0 | 58.0 | 0.165 | 0.523 | 31.235487 | -110.968397 |
| Caseta de Cobro Nogales | 4.50 | 2 | 1 | 1301 | 0.0 | 64.6 | 0.0 | 2.3 | 0.2 | 32.3 | 0.4 | 0.0 | 0.2 | 64.6 | 0.0 | 35.4 | 0.184 | 0.500 | 31.247637 | -110.972542 |
| Caseta de Cobro Nogales | 4.50 | 2 | 2 | 1300 | 0.0 | 64.6 | 0.0 | 2.3 | 0.2 | 32.3 | 0.4 | 0.0 | 0.2 | 64.6 | 0.0 | 35.4 | 0.184 | 0.500 | 31.247637 | -110.972542 |
| Frontera E.U.A. | 12.50 | 1 | 1 | 1486 | 0.0 | 36.3 | 0.0 | 10.1 | 2.0 | 49.5 | 1.1 | 0.3 | 0.7 | 36.3 | 0.0 | 63.7 | 0.143 | 0.533 | 31.288970 | -110.980281 |
| Frontera E.U.A. | 12.50 | 1 | 2 | 1700 | 0.0 | 33.8 | 0.0 | 10.9 | 2.1 | 50.9 | 1.3 | 0.4 | 0.6 | 33.8 | 0.0 | 66.2 | 0.280 | 0.533 | 31.288969 | -110.980280 |

13 CARR: Est. Don - Nogales (Cuota)

CLAVE: 26444

RUTA: MEX-015D-015

AÑO: 2012

| LUGAR | ESTACION | | | | CLASIFICACION VEHICULAR EN PORCIENTO | | | | | | | | | | | | | COORDENADAS | | |
|---|----------|----|----|------|--------------------------------------|------|-----|-----|-----|------|------|--------|-------|------|-----|------|-------|-------------|-----------|-------------|
| | KM | TE | SC | TDPA | M | A | B | C2 | C3 | T3S2 | T3S3 | T3S2R4 | OTROS | A | B | C | K' | D | LATITUD | LONGITUD |
| T. C. Topolobampo - Choix | 0.00 | 3 | 1 | 7711 | 0.5 | 74.4 | 4.1 | 3.7 | 2.9 | 9.3 | 1.6 | 2.8 | 0.7 | 74.9 | 4.1 | 21.0 | 0.098 | 0.508 | 25.833727 | -108.973391 |
| T. C. Topolobampo - Choix | 0.00 | 3 | 2 | 7966 | 0.6 | 71.7 | 4.6 | 4.5 | 3.1 | 9.8 | 1.9 | 3.1 | 0.7 | 72.3 | 4.6 | 23.1 | 0.077 | 0.508 | 25.833727 | -108.973391 |
| T. Izq. Ahome | 17.13 | 3 | 1 | 7141 | 0.6 | 75.0 | 4.0 | 3.7 | 1.9 | 8.9 | 2.3 | 2.9 | 0.7 | 75.6 | 4.0 | 20.4 | 0.080 | 0.523 | 25.943565 | -109.052746 |
| T. Izq. Ahome | 17.13 | 3 | 2 | 7142 | 0.8 | 73.0 | 4.2 | 4.2 | 2.1 | 9.0 | 2.5 | 3.4 | 0.8 | 73.8 | 4.2 | 22.0 | 0.087 | 0.523 | 25.943565 | -109.052746 |
| T. Izq. Coahuilbampo | 19.00 | 1 | 1 | 6561 | 0.4 | 72.0 | 5.1 | 3.9 | 2.4 | 8.3 | 2.4 | 4.6 | 0.9 | 72.4 | 5.1 | 22.5 | 0.078 | 0.505 | 25.958010 | -109.053637 |
| T. Izq. Coahuilbampo | 19.00 | 1 | 2 | 6429 | 0.3 | 68.2 | 5.7 | 4.5 | 2.9 | 10.0 | 2.7 | 4.8 | 0.9 | 68.5 | 5.7 | 25.8 | 0.086 | 0.505 | 25.958010 | -109.053637 |
| T. Izq. Coahuilbampo | 19.00 | 3 | 1 | 5832 | 0.5 | 70.8 | 5.0 | 3.8 | 2.9 | 8.5 | 2.6 | 5.1 | 0.8 | 71.3 | 5.0 | 23.7 | 0.091 | 0.502 | 25.961649 | -109.052854 |
| T. Izq. Coahuilbampo | 19.00 | 3 | 2 | 5886 | 0.6 | 67.2 | 5.4 | 4.2 | 2.9 | 10.0 | 2.9 | 5.9 | 0.9 | 67.8 | 5.4 | 26.8 | 0.087 | 0.502 | 25.961649 | -109.052854 |
| Poblado Chico | 50.00 | 3 | 1 | 4689 | 0.4 | 72.2 | 4.8 | 4.0 | 1.6 | 8.3 | 3.8 | 4.0 | 0.9 | 72.6 | 4.8 | 22.6 | 0.085 | 0.503 | 26.230304 | -109.053711 |
| Poblado Chico | 50.00 | 3 | 2 | 4743 | 0.6 | 69.0 | 5.2 | 4.6 | 1.8 | 9.5 | 3.9 | 4.5 | 0.9 | 69.6 | 5.2 | 25.2 | 0.086 | 0.503 | 26.230304 | -109.053711 |
| T. Der. El Fuerte | 54.80 | 1 | 1 | 4708 | 0.7 | 71.2 | 5.5 | 4.0 | 1.8 | 8.6 | 3.0 | 4.5 | 0.7 | 71.9 | 5.5 | 22.6 | 0.091 | 0.515 | 26.261753 | -109.045029 |
| T. Der. El Fuerte | 54.80 | 1 | 2 | 4438 | 0.7 | 69.3 | 5.7 | 4.1 | 2.0 | 9.1 | 3.4 | 4.9 | 0.8 | 70.0 | 5.7 | 24.3 | 0.090 | 0.515 | 26.261753 | -109.045029 |
| T. Der. El Fuerte | 54.80 | 3 | 1 | 5732 | 0.8 | 71.1 | 5.1 | 4.2 | 2.3 | 9.5 | 2.3 | 4.0 | 0.7 | 71.9 | 5.1 | 23.0 | 0.078 | 0.519 | 26.275978 | -109.040692 |
| T. Der. El Fuerte | 54.80 | 3 | 2 | 5574 | 0.9 | 69.1 | 5.4 | 4.4 | 2.6 | 10.1 | 2.3 | 4.3 | 0.9 | 70.0 | 5.4 | 24.6 | 0.080 | 0.519 | 26.275978 | -109.040691 |
| Lim. Edos. Term. Sin. Ppia. Son. | 69.80 | | | | | | | | | | | | | | | | | | | |
| T. Izq. Huatabampo | 128.50 | 1 | 1 | 3114 | 0.7 | 68.0 | 5.3 | 4.1 | 4.0 | 9.0 | 3.0 | 5.1 | 0.8 | 68.7 | 5.3 | 26.0 | 0.081 | 0.508 | 26.836771 | -109.365993 |
| T. Izq. Huatabampo | 128.50 | 1 | 2 | 3017 | 0.9 | 63.2 | 5.9 | 4.8 | 4.8 | 10.4 | 3.2 | 5.8 | 1.0 | 64.1 | 5.9 | 30.0 | 0.086 | 0.508 | 26.836773 | -109.365991 |
| Caseta de Cobro Estacion Don (La Jaula) | 129.90 | 2 | 1 | 2428 | 0.1 | 44.8 | 9.4 | 3.9 | 4.2 | 25.0 | 2.6 | 9.0 | 1.0 | 44.9 | 9.4 | 45.7 | 0.086 | 0.500 | 26.849800 | -109.373287 |
| Caseta de Cobro Estacion Don (La Jaula) | 129.90 | 2 | 2 | 2427 | 0.1 | 44.8 | 9.4 | 3.9 | 4.2 | 25.0 | 2.6 | 9.0 | 1.0 | 44.9 | 9.4 | 45.7 | 0.086 | 0.500 | 26.849800 | -109.373287 |
| Navojoa | 155.00 | 1 | 1 | 6057 | 0.8 | 73.0 | 4.1 | 4.6 | 2.3 | 8.6 | 2.0 | 3.8 | 0.8 | 73.8 | 4.1 | 22.1 | 0.095 | 0.536 | 27.035688 | -109.435758 |
| Navojoa | 155.00 | 1 | 2 | 6350 | 0.4 | 70.4 | 5.2 | 4.9 | 2.3 | 9.8 | 2.4 | 3.7 | 0.9 | 70.8 | 5.2 | 24.0 | 0.125 | 0.536 | 27.035556 | -109.435750 |
| Navojoa | 155.00 | 3 | 1 | 7568 | 0.6 | 74.8 | 4.8 | 3.9 | 1.5 | 7.5 | 2.2 | 3.9 | 0.8 | 75.4 | 4.8 | 19.8 | 0.085 | 0.502 | 27.105102 | -109.447912 |
| Navojoa | 155.00 | 3 | 2 | 7517 | 0.8 | 73.0 | 5.1 | 4.5 | 1.5 | 8.4 | 2.3 | 3.6 | 0.8 | 73.8 | 5.1 | 21.1 | 0.086 | 0.502 | 27.105112 | -109.447919 |
| T. Izq. Villa Juárez | 167.25 | 3 | 1 | 5465 | 0.7 | 72.3 | 4.5 | 4.4 | 2.5 | 9.1 | 2.3 | 3.5 | 0.7 | 73.0 | 4.5 | 22.5 | 0.083 | 0.524 | 27.155761 | -109.507905 |

SONORA

13 CARR: Est. Don - Nogales (Cuota)

CLAVE: 26444

RUTA: MEX-015D-015

AÑO: 2012

| LUGAR | ESTACION | | | | CLASIFICACION VEHICULAR EN PORCIENTO | | | | | | | | | | | | | | COORDENADAS | |
|--------------------------------|----------|----|----|-------|--------------------------------------|------|------|-----|-----|------|------|--------|-------|------|------|------|-------|-------|-------------|-------------|
| | KM | TE | SC | TDPA | M | A | B | C2 | C3 | T3S2 | T3S3 | T3S2R4 | OTROS | A | B | C | K' | D | LATITUD | LONGITUD |
| T. Izq. Villa Juárez | 167.25 | 3 | 2 | 5465 | 0.9 | 70.0 | 4.9 | 4.7 | 2.5 | 10.0 | 2.4 | 3.8 | 0.8 | 70.9 | 4.9 | 24.2 | 0.081 | 0.524 | 27.155766 | -109.507874 |
| Caseta de Cobro Fundición | 195.80 | 2 | 1 | 3063 | 0.1 | 53.2 | 8.3 | 4.2 | 3.4 | 20.3 | 1.9 | 7.8 | 0.8 | 53.3 | 8.3 | 38.4 | 0.086 | 0.500 | 27.320379 | -109.719785 |
| Caseta de Cobro Fundición | 195.80 | 2 | 2 | 3062 | 0.1 | 53.2 | 8.3 | 4.2 | 3.4 | 20.3 | 1.9 | 7.8 | 0.8 | 53.3 | 8.3 | 38.4 | 0.086 | 0.500 | 27.320379 | -109.719785 |
| T. Der. Fundición | 196.30 | 1 | 1 | 4267 | 0.4 | 70.0 | 4.9 | 4.6 | 3.1 | 9.2 | 2.3 | 4.6 | 0.9 | 70.4 | 4.9 | 24.7 | 0.084 | 0.510 | 27.326596 | -109.727510 |
| T. Der. Fundición | 196.30 | 1 | 2 | 4435 | 0.6 | 66.5 | 5.8 | 5.2 | 3.2 | 10.2 | 2.6 | 4.9 | 1.0 | 67.1 | 5.8 | 27.1 | 0.079 | 0.510 | 27.326595 | -109.727510 |
| Cd. Obregón | 222.70 | | | | | | | | | | | | | | | | | | | |
| Cd. Obregón | 222.70 | 1 | 1 | 12001 | 0.9 | 71.9 | 4.5 | 4.7 | 2.5 | 8.6 | 2.1 | 4.1 | 0.7 | 72.8 | 4.5 | 22.7 | 0.078 | 0.501 | 27.462402 | -109.902926 |
| Cd. Obregón | 222.70 | 1 | 2 | 12050 | 0.8 | 70.0 | 5.0 | 5.1 | 2.5 | 9.3 | 2.3 | 4.3 | 0.7 | 70.8 | 5.0 | 24.2 | 0.087 | 0.501 | 27.462415 | -109.902922 |
| Esperanza | 230.66 | 1 | 1 | 9516 | 1.0 | 66.1 | 6.8 | 9.4 | 1.5 | 6.3 | 3.3 | 4.7 | 0.9 | 67.1 | 6.8 | 26.1 | 0.076 | 0.525 | 27.563838 | -109.927120 |
| Esperanza | 230.66 | 1 | 2 | 10512 | 1.0 | 65.8 | 6.4 | 8.5 | 1.7 | 7.1 | 3.8 | 4.8 | 0.9 | 66.8 | 6.4 | 26.8 | 0.072 | 0.525 | 27.563839 | -109.927118 |
| Esperanza | 230.66 | 3 | 1 | 4681 | 1.0 | 61.6 | 7.8 | 9.9 | 4.4 | 7.0 | 3.2 | 4.2 | 0.9 | 62.6 | 7.8 | 29.6 | 0.067 | 0.507 | 27.597069 | -109.931975 |
| Esperanza | 230.66 | 3 | 2 | 4794 | 1.2 | 60.5 | 8.8 | 8.9 | 4.4 | 7.6 | 3.5 | 4.3 | 0.8 | 61.7 | 8.8 | 29.5 | 0.073 | 0.507 | 27.597039 | -109.931950 |
| Caseta de Cobro Esperanza | 233.40 | 2 | 1 | 2553 | 0.1 | 45.8 | 10.7 | 3.8 | 3.6 | 23.7 | 2.3 | 9.2 | 0.8 | 45.9 | 10.7 | 43.4 | 0.086 | 0.500 | 27.603715 | -109.939118 |
| Caseta de Cobro Esperanza | 233.40 | 2 | 2 | 2552 | 0.1 | 45.8 | 10.7 | 3.8 | 3.6 | 23.7 | 2.3 | 9.2 | 0.8 | 45.9 | 10.7 | 43.4 | 0.086 | 0.500 | 27.603715 | -109.939118 |
| T. Der. Estación Corral | 236.50 | 1 | 1 | 3755 | 0.4 | 61.0 | 8.5 | 9.7 | 3.4 | 8.7 | 2.6 | 4.9 | 0.8 | 61.4 | 8.5 | 30.1 | 0.076 | 0.515 | 27.616082 | -109.951826 |
| T. Der. Estación Corral | 236.50 | 1 | 2 | 3988 | 0.5 | 59.5 | 9.9 | 8.7 | 3.8 | 9.5 | 3.1 | 4.1 | 0.9 | 60.0 | 9.9 | 30.1 | 0.067 | 0.515 | 27.616083 | -109.951826 |
| T. Der. Estación Corral | 236.50 | 3 | 1 | 3338 | 0.5 | 60.0 | 8.5 | 8.9 | 3.2 | 10.8 | 2.6 | 4.6 | 0.9 | 60.5 | 8.5 | 31.0 | 0.079 | 0.535 | 27.618350 | -109.963617 |
| T. Der. Estación Corral | 236.50 | 3 | 2 | 3846 | 0.7 | 56.7 | 9.5 | 8.7 | 3.7 | 11.5 | 3.1 | 5.1 | 1.0 | 57.4 | 9.5 | 33.1 | 0.089 | 0.535 | 27.618350 | -109.963617 |
| T. Izq. Bécum | 248.16 | 1 | 1 | 2992 | 0.6 | 59.9 | 7.8 | 8.5 | 3.1 | 11.4 | 2.5 | 5.3 | 0.9 | 60.5 | 7.8 | 31.7 | 0.075 | 0.516 | 27.598355 | -110.079104 |
| T. Izq. Bécum | 248.16 | 1 | 2 | 3190 | 0.4 | 59.0 | 6.4 | 9.5 | 3.3 | 11.9 | 2.8 | 5.7 | 1.0 | 59.4 | 6.4 | 34.2 | 0.089 | 0.516 | 27.598355 | -110.079104 |
| T. Izq. Bécum | 248.16 | 3 | 1 | 4695 | 0.5 | 63.0 | 6.3 | 8.9 | 2.6 | 10.3 | 2.7 | 5.1 | 0.6 | 63.5 | 6.3 | 30.2 | 0.077 | 0.516 | 27.597381 | -110.084500 |
| T. Izq. Bécum | 248.16 | 3 | 2 | 5013 | 0.6 | 62.0 | 6.5 | 8.7 | 2.7 | 11.0 | 2.5 | 5.3 | 0.7 | 62.6 | 6.5 | 30.9 | 0.091 | 0.516 | 27.597381 | -110.084500 |
| Vícam | 269.98 | 3 | 1 | 5116 | 0.6 | 66.1 | 6.1 | 8.3 | 2.0 | 9.8 | 2.0 | 4.2 | 0.9 | 66.7 | 6.1 | 27.2 | 0.079 | 0.511 | 27.645798 | -110.303819 |
| Vícam | 269.98 | 3 | 2 | 5338 | 0.8 | 62.2 | 6.7 | 9.7 | 2.3 | 10.8 | 2.2 | 4.4 | 0.9 | 63.0 | 6.7 | 30.3 | 0.083 | 0.511 | 27.645798 | -110.303819 |
| T. Izq. Pótam | 280.10 | 1 | 1 | 4536 | 0.5 | 67.2 | 6.1 | 8.8 | 2.2 | 7.9 | 2.0 | 4.4 | 0.9 | 67.7 | 6.1 | 26.2 | 0.082 | 0.515 | 27.697576 | -110.366275 |
| T. Izq. Pótam | 280.10 | 1 | 2 | 4821 | 0.7 | 64.0 | 6.9 | 9.9 | 2.5 | 8.2 | 2.2 | 4.6 | 1.0 | 64.7 | 6.9 | 28.4 | 0.088 | 0.515 | 27.697576 | -110.366275 |
| T. Izq. Pótam | 280.10 | 3 | 1 | 4333 | 0.6 | 63.0 | 7.5 | 8.8 | 2.9 | 9.3 | 3.0 | 4.1 | 0.8 | 63.6 | 7.5 | 28.9 | 0.074 | 0.507 | 27.704328 | -110.370829 |
| T. Izq. Pótam | 280.10 | 3 | 2 | 4464 | 0.7 | 62.3 | 6.3 | 9.1 | 3.2 | 9.8 | 3.2 | 4.5 | 0.9 | 63.0 | 6.3 | 30.7 | 0.077 | 0.507 | 27.704320 | -110.370834 |
| T. Der. Libramiento de Guaymas | 330.50 | 1 | 1 | 5935 | 0.5 | 66.6 | 5.2 | 9.3 | 2.1 | 8.7 | 2.5 | 4.3 | 0.8 | 67.1 | 5.2 | 27.7 | 0.082 | 0.503 | 27.951294 | -110.740857 |
| T. Der. Libramiento de Guaymas | 330.50 | 1 | 2 | 5996 | 0.6 | 65.3 | 5.2 | 9.8 | 2.3 | 9.0 | 2.8 | 4.2 | 0.8 | 65.9 | 5.2 | 28.9 | 0.089 | 0.503 | 27.951289 | -110.740861 |
| T. Der. Libramiento de Guaymas | 330.50 | 3 | 0 | 5906 | 0.4 | 74.0 | 5.6 | 9.2 | 1.9 | 6.2 | 1.2 | 0.6 | 0.9 | 74.4 | 5.6 | 20.0 | 0.082 | 0.504 | 27.952349 | -110.771598 |
| Empalme | 337.72 | 1 | 0 | 6137 | 0.6 | 74.7 | 5.7 | 8.7 | 1.8 | 6.5 | 1.0 | 0.7 | 0.3 | 75.3 | 5.7 | 19.0 | 0.083 | 0.511 | 27.953073 | -110.797186 |
| Empalme | 337.72 | 3 | 1 | 8211 | 0.7 | 79.6 | 4.3 | 6.5 | 2.3 | 5.0 | 1.0 | 0.2 | 0.4 | 80.3 | 4.3 | 15.4 | 0.091 | 0.505 | 27.955529 | -110.831407 |
| Empalme | 337.72 | 3 | 2 | 8381 | 0.6 | 78.3 | 4.8 | 7.2 | 2.1 | 5.3 | 1.1 | 0.2 | 0.4 | 78.9 | 4.8 | 16.3 | 0.077 | 0.505 | 27.955529 | -110.831407 |
| T. Izq. San Carlos | 355.70 | 1 | 1 | 6989 | 0.4 | 77.9 | 4.3 | 8.4 | 1.3 | 5.4 | 1.2 | 0.8 | 0.3 | 78.3 | 4.3 | 17.4 | 0.080 | 0.511 | 27.983139 | -110.940043 |

SONORA

13 CARR: Est. Don - Nogales (Cuota)

CLAVE: 26444

RUTA: MEX-015D-015

AÑO: 2012

| LUGAR | ESTACION | | | | CLASIFICACION VEHICULAR EN PORCIENTO | | | | | | | | | | | | | | COORDENADAS | |
|----------------------------|----------|----|----|-------|--------------------------------------|------|-----|------|-----|------|------|--------|-------|------|-----|------|-------|-------|-------------|-------------|
| | KM | TE | SC | TDPA | M | A | B | C2 | C3 | T3S2 | T3S3 | T3S2R4 | OTROS | A | B | C | K' | D | LATITUD | LONGITUD |
| T. Izq. San Carlos | 355.70 | 1 | 2 | 6627 | 0.6 | 75.5 | 4.5 | 9.2 | 1.4 | 6.3 | 1.3 | 0.9 | 0.3 | 76.1 | 4.5 | 19.4 | 0.096 | 0.511 | 27.983146 | -110.940058 |
| T. Izq. San Carlos | 355.70 | 3 | 1 | 3241 | 0.8 | 73.7 | 5.2 | 7.6 | 2.3 | 6.5 | 2.1 | 1.4 | 0.4 | 74.5 | 5.2 | 20.3 | 0.130 | 0.511 | 27.993247 | -110.939863 |
| T. Izq. San Carlos | 355.70 | 3 | 2 | 3383 | 0.9 | 72.3 | 5.1 | 7.5 | 2.5 | 7.6 | 2.2 | 1.5 | 0.4 | 73.2 | 5.1 | 21.7 | 0.112 | 0.511 | 27.993245 | -110.939859 |
| T. Izq. Bahía Kino | 394.00 | 1 | 1 | 5245 | 0.6 | 67.2 | 5.3 | 6.8 | 2.1 | 10.3 | 2.5 | 4.2 | 1.0 | 67.8 | 5.3 | 26.9 | 0.116 | 0.507 | 28.315973 | -111.042176 |
| T. Izq. Bahía Kino | 394.00 | 1 | 2 | 5388 | 0.5 | 66.0 | 5.3 | 6.9 | 2.2 | 11.0 | 2.7 | 4.4 | 1.0 | 66.5 | 5.3 | 28.2 | 0.094 | 0.507 | 28.315973 | -111.042176 |
| T. Izq. Bahía Kino | 394.00 | 3 | 1 | 4657 | 0.4 | 69.4 | 5.5 | 5.6 | 2.0 | 10.1 | 2.0 | 4.3 | 0.7 | 69.8 | 5.5 | 24.7 | 0.118 | 0.507 | 28.322140 | -111.042206 |
| T. Izq. Bahía Kino | 394.00 | 3 | 2 | 4795 | 0.5 | 68.0 | 5.8 | 5.4 | 2.1 | 10.2 | 2.2 | 5.0 | 0.8 | 68.5 | 5.8 | 25.7 | 0.095 | 0.507 | 28.322133 | -111.042200 |
| Hermosillo | 473.70 | 1 | 1 | 6185 | 0.7 | 68.5 | 5.7 | 4.6 | 2.4 | 11.5 | 2.3 | 3.5 | 0.8 | 69.2 | 5.7 | 25.1 | 0.116 | 0.518 | 29.004361 | -110.966894 |
| Hermosillo | 473.70 | 1 | 2 | 6320 | 0.9 | 68.6 | 5.3 | 5.6 | 2.7 | 9.6 | 2.6 | 3.7 | 1.0 | 69.5 | 5.3 | 25.2 | 0.096 | 0.518 | 29.004364 | -110.966890 |
| Hermosillo | 473.70 | 3 | 1 | 14788 | 0.5 | 73.0 | 4.7 | 9.7 | 1.6 | 6.7 | 1.6 | 1.4 | 0.8 | 73.5 | 4.7 | 21.8 | 0.088 | 0.504 | 29.113624 | -110.912109 |
| Hermosillo | 473.70 | 3 | 2 | 15002 | 0.6 | 70.2 | 5.1 | 10.9 | 1.8 | 7.3 | 1.7 | 1.5 | 0.9 | 70.8 | 5.1 | 24.1 | 0.081 | 0.504 | 29.113625 | -110.912109 |
| T. Der. Ures | 482.30 | 1 | 1 | 11549 | 0.8 | 68.9 | 5.3 | 10.2 | 2.1 | 8.3 | 1.6 | 2.0 | 0.8 | 69.7 | 5.3 | 25.0 | 0.086 | 0.512 | 29.158323 | -110.909446 |
| T. Der. Ures | 482.30 | 1 | 2 | 12129 | 0.7 | 67.5 | 5.0 | 10.7 | 2.1 | 9.2 | 1.7 | 2.1 | 1.0 | 68.2 | 5.0 | 26.8 | 0.081 | 0.512 | 29.158323 | -110.909446 |
| T. Der. Ures | 482.30 | 3 | 1 | 7391 | 0.6 | 69.7 | 5.6 | 9.8 | 1.7 | 8.5 | 1.5 | 2.0 | 0.6 | 70.3 | 5.6 | 24.1 | 0.084 | 0.507 | 29.178058 | -110.919160 |
| T. Der. Ures | 482.30 | 3 | 2 | 7195 | 0.7 | 66.7 | 6.1 | 10.9 | 2.0 | 9.2 | 1.6 | 2.1 | 0.7 | 67.4 | 6.1 | 26.5 | 0.088 | 0.507 | 29.178086 | -110.919177 |
| Caseta de Cobro Hermosillo | 488.90 | 2 | 1 | 4601 | 0.1 | 64.9 | 5.8 | 3.3 | 1.9 | 15.7 | 1.8 | 5.9 | 0.6 | 65.0 | 5.8 | 29.2 | 0.086 | 0.500 | 29.220739 | -110.930200 |
| Caseta de Cobro Hermosillo | 488.90 | 2 | 2 | 4600 | 0.1 | 64.9 | 5.8 | 3.3 | 1.9 | 15.7 | 1.8 | 5.9 | 0.6 | 65.0 | 5.8 | 29.2 | 0.086 | 0.500 | 29.220739 | -110.930200 |
| T. Der. Pesqueira | 506.09 | 3 | 1 | 5196 | 0.4 | 58.0 | 5.0 | 9.5 | 1.6 | 18.7 | 2.5 | 3.8 | 0.5 | 58.4 | 5.0 | 36.6 | 0.074 | 0.519 | 29.375781 | -110.973290 |
| T. Der. Pesqueira | 506.09 | 3 | 2 | 5614 | 0.3 | 53.8 | 5.7 | 10.3 | 1.6 | 20.8 | 2.6 | 4.3 | 0.6 | 54.1 | 5.7 | 40.2 | 0.094 | 0.519 | 29.375750 | -110.973294 |
| T. Der. Carbó | 542.60 | 1 | 1 | 4459 | 0.4 | 59.0 | 4.8 | 8.1 | 1.8 | 18.7 | 2.6 | 4.0 | 0.6 | 59.4 | 4.8 | 35.8 | 0.076 | 0.514 | 29.683626 | -111.042188 |
| T. Der. Carbó | 542.60 | 1 | 2 | 4722 | 0.5 | 52.7 | 5.3 | 9.5 | 1.9 | 21.7 | 2.9 | 4.8 | 0.7 | 53.2 | 5.3 | 41.5 | 0.085 | 0.514 | 29.683626 | -111.042188 |
| T. Der. Carbó | 542.60 | 3 | 1 | 4805 | 0.4 | 56.6 | 4.9 | 8.6 | 1.6 | 20.4 | 2.5 | 4.2 | 0.8 | 57.0 | 4.9 | 38.1 | 0.074 | 0.529 | 29.691754 | -111.043947 |
| T. Der. Carbó | 542.60 | 3 | 2 | 5399 | 0.3 | 54.2 | 5.2 | 9.4 | 1.7 | 20.8 | 2.8 | 4.7 | 0.9 | 54.5 | 5.2 | 40.3 | 0.103 | 0.529 | 29.691754 | -111.043946 |
| T. Izq. Benjamín Hill | 599.10 | 1 | 1 | 4952 | 0.9 | 56.0 | 5.3 | 10.5 | 2.1 | 17.7 | 2.9 | 3.8 | 0.8 | 56.9 | 5.3 | 37.8 | 0.078 | 0.527 | 30.167965 | -111.097157 |
| T. Izq. Benjamín Hill | 599.10 | 1 | 2 | 5526 | 0.7 | 52.0 | 5.8 | 11.8 | 2.1 | 19.5 | 3.2 | 4.0 | 0.9 | 52.7 | 5.8 | 41.5 | 0.105 | 0.527 | 30.167967 | -111.097155 |
| T. Izq. Benjamín Hill | 599.10 | 3 | 1 | 4845 | 0.5 | 57.3 | 4.7 | 11.0 | 1.8 | 17.4 | 2.5 | 4.1 | 0.7 | 57.8 | 4.7 | 37.5 | 0.082 | 0.529 | 30.176395 | -111.097300 |
| T. Izq. Benjamín Hill | 599.10 | 3 | 2 | 5450 | 0.6 | 53.7 | 5.2 | 11.0 | 2.0 | 19.5 | 2.7 | 4.6 | 0.7 | 54.3 | 5.2 | 40.5 | 0.108 | 0.529 | 30.176395 | -111.097299 |
| Santa Ana | 640.97 | 1 | 1 | 5666 | 0.5 | 65.8 | 4.2 | 7.7 | 1.3 | 14.7 | 2.1 | 3.1 | 0.6 | 66.3 | 4.2 | 29.5 | 0.077 | 0.522 | 30.527624 | -111.114770 |
| Santa Ana | 640.97 | 1 | 2 | 6199 | 0.4 | 61.9 | 4.5 | 8.7 | 1.4 | 16.6 | 2.2 | 3.6 | 0.7 | 62.3 | 4.5 | 33.2 | 0.099 | 0.522 | 30.527631 | -111.114761 |
| Santa Ana | 640.97 | 3 | 1 | 5755 | 1.0 | 69.6 | 2.6 | 10.1 | 1.2 | 10.7 | 1.3 | 2.8 | 0.7 | 70.6 | 2.6 | 26.8 | 0.071 | 0.525 | 30.549202 | -111.109168 |
| Santa Ana | 640.97 | 3 | 2 | 6366 | 0.9 | 68.0 | 2.8 | 11.2 | 1.4 | 10.7 | 1.5 | 2.6 | 0.9 | 68.9 | 2.8 | 28.3 | 0.103 | 0.525 | 30.549197 | -111.109174 |
| Magdalena de Kino | 656.40 | 1 | 1 | 5539 | 0.7 | 65.1 | 3.0 | 10.2 | 1.0 | 14.3 | 1.9 | 3.2 | 0.6 | 65.8 | 3.0 | 31.2 | 0.072 | 0.521 | 30.618625 | -110.995282 |
| Magdalena de Kino | 656.40 | 1 | 2 | 6032 | 0.4 | 62.7 | 3.2 | 10.6 | 1.1 | 16.0 | 2.1 | 3.3 | 0.6 | 63.1 | 3.2 | 33.7 | 0.107 | 0.521 | 30.618599 | -110.995335 |
| Magdalena de Kino | 656.40 | 3 | 1 | 3352 | 0.5 | 77.0 | 4.9 | 9.8 | 0.7 | 5.8 | 0.4 | 0.5 | 0.4 | 77.5 | 4.9 | 17.6 | 0.078 | 0.508 | 30.669381 | -110.910925 |
| Magdalena de Kino | 656.40 | 3 | 2 | 3464 | 0.6 | 74.9 | 5.6 | 10.5 | 0.9 | 6.1 | 0.5 | 0.5 | 0.4 | 75.5 | 5.6 | 18.9 | 0.097 | 0.508 | 30.651312 | -110.942012 |

SONORA

13 CARR: Est. Don - Nogales (Cuota)

CLAVE: 26444

RUTA: MEX-015D-015

AÑO: 2012

| LUGAR | ESTACION | | | | CLASIFICACION VEHICULAR EN PORCIENTO | | | | | | | | | | | | | COORDENADAS | | |
|--|----------|----|----|-------|--------------------------------------|------|-----|------|-----|------|------|--------|-------|------|-----|------|-------|-------------|-----------|-------------|
| | KM | TE | SC | TDPA | M | A | B | C2 | C3 | T3S2 | T3S3 | T3S2R4 | OTROS | A | B | C | K' | D | LATITUD | LONGITUD |
| Imuris | 682.70 | 1 | 1 | 6093 | 0.8 | 70.0 | 3.2 | 9.0 | 0.9 | 10.5 | 2.6 | 2.2 | 0.8 | 70.8 | 3.2 | 26.0 | 0.076 | 0.505 | 30.775588 | -110.857356 |
| Imuris | 682.70 | 1 | 2 | 6212 | 0.7 | 67.7 | 3.5 | 10.4 | 1.1 | 10.7 | 2.6 | 2.5 | 0.8 | 68.4 | 3.5 | 28.1 | 0.076 | 0.505 | 30.775588 | -110.857356 |
| T. Der. Agua Prieta | 683.20 | 3 | 1 | 5174 | 0.8 | 76.1 | 3.3 | 5.9 | 1.0 | 8.7 | 1.6 | 1.9 | 0.7 | 76.9 | 3.3 | 19.8 | 0.082 | 0.513 | 30.792558 | -110.850462 |
| T. Der. Agua Prieta | 683.20 | 3 | 2 | 5202 | 0.9 | 73.4 | 3.6 | 6.7 | 1.0 | 9.8 | 1.8 | 2.0 | 0.8 | 74.3 | 3.6 | 22.1 | 0.094 | 0.513 | 30.792568 | -110.850467 |
| T. Izq. Sáric | 729.60 | 1 | 1 | 8024 | 0.5 | 78.2 | 3.3 | 6.8 | 1.6 | 7.0 | 0.9 | 1.0 | 0.7 | 78.7 | 3.3 | 18.0 | 0.082 | 0.506 | 31.176164 | -110.967165 |
| T. Izq. Sáric | 729.60 | 1 | 2 | 8224 | 0.4 | 75.6 | 3.8 | 7.8 | 1.8 | 7.9 | 0.9 | 1.1 | 0.7 | 76.0 | 3.8 | 20.2 | 0.100 | 0.506 | 31.176165 | -110.967164 |
| T. Izq. Sáric | 729.60 | 3 | 1 | 7556 | 0.5 | 74.8 | 4.2 | 8.4 | 2.7 | 7.2 | 0.8 | 0.6 | 0.8 | 75.3 | 4.2 | 20.5 | 0.075 | 0.513 | 31.195536 | -110.973446 |
| T. Izq. Sáric | 729.60 | 3 | 2 | 7970 | 0.5 | 72.3 | 4.8 | 9.4 | 2.8 | 7.7 | 1.0 | 0.7 | 0.8 | 72.8 | 4.8 | 22.4 | 0.092 | 0.513 | 31.195536 | -110.973446 |
| T. Izq. Libramiento de Nogales (Cuota) | 734.70 | 3 | 1 | 8605 | 0.5 | 81.7 | 3.9 | 6.3 | 2.6 | 4.5 | 0.2 | 0.2 | 0.1 | 82.2 | 3.9 | 13.9 | 0.084 | 0.506 | 31.237105 | -110.964312 |
| T. Izq. Libramiento de Nogales (Cuota) | 734.70 | 3 | 2 | 8829 | 0.5 | 79.4 | 4.6 | 6.9 | 2.8 | 5.3 | 0.2 | 0.2 | 0.1 | 79.9 | 4.6 | 15.5 | 0.092 | 0.506 | 31.237103 | -110.964320 |
| T. Izq. Periférico Luis Donald Colosio | 740.70 | 1 | 1 | 26244 | 0.7 | 86.6 | 2.1 | 5.3 | 0.7 | 1.6 | 2.1 | 0.3 | 0.6 | 87.3 | 2.1 | 10.6 | 0.077 | 0.511 | 31.274731 | -110.941862 |
| T. Izq. Periférico Luis Donald Colosio | 740.70 | 1 | 2 | 27380 | 0.6 | 85.5 | 2.5 | 5.8 | 0.7 | 1.8 | 2.1 | 0.3 | 0.7 | 86.1 | 2.5 | 11.4 | 0.069 | 0.511 | 31.274724 | -110.941870 |
| Nogales | 743.70 | 1 | 1 | 15755 | 0.7 | 87.9 | 3.1 | 6.1 | 0.5 | 0.8 | 0.6 | 0.1 | 0.2 | 88.6 | 3.1 | 8.3 | 0.089 | 0.508 | 31.281496 | -110.939321 |
| Nogales | 743.70 | 1 | 2 | 16292 | 0.7 | 87.0 | 3.4 | 6.5 | 0.6 | 0.9 | 0.6 | 0.1 | 0.2 | 87.7 | 3.4 | 8.9 | 0.074 | 0.508 | 31.281496 | -110.939325 |

14 CARR: Santa Ana - Sonoita

CLAVE: 26080

RUTA: MEX-002D-MEX

AÑO: 2012

| LUGAR | ESTACION | | | | CLASIFICACION VEHICULAR EN PORCIENTO | | | | | | | | | | | | | COORDENADAS | | |
|----------------------------|----------|----|----|-------|--------------------------------------|------|-----|------|-----|------|------|--------|-------|------|-----|------|-------|-------------|-----------|-------------|
| | KM | TE | SC | TDPA | M | A | B | C2 | C3 | T3S2 | T3S3 | T3S2R4 | OTROS | A | B | C | K' | D | LATITUD | LONGITUD |
| Santa Ana | 0.00 | 3 | 0 | 7415 | 0.5 | 60.9 | 5.2 | 10.8 | 1.5 | 14.7 | 2.6 | 2.9 | 0.9 | 61.4 | 5.2 | 33.4 | 0.074 | 0.515 | 30.550984 | -111.121550 |
| Altar | 72.80 | 1 | 0 | 9381 | 0.5 | 66.4 | 4.3 | 9.6 | 1.1 | 13.3 | 1.7 | 2.5 | 0.6 | 66.9 | 4.3 | 28.8 | 0.065 | 0.505 | 30.710597 | -111.830416 |
| Altar | 72.80 | 3 | 1 | 3527 | 0.3 | 60.9 | 5.1 | 10.6 | 1.7 | 15.5 | 2.1 | 3.0 | 0.8 | 61.2 | 5.1 | 33.7 | 0.077 | 0.512 | 30.713155 | -111.855294 |
| Altar | 72.80 | 3 | 2 | 3697 | 0.3 | 55.8 | 5.7 | 12.2 | 1.6 | 17.9 | 2.4 | 3.2 | 0.9 | 56.1 | 5.7 | 38.2 | 0.073 | 0.512 | 30.713155 | -111.855294 |
| T. Izq. Estación Pitiquito | 94.28 | 1 | 0 | 6842 | 0.6 | 57.8 | 5.4 | 11.8 | 1.6 | 16.3 | 2.4 | 3.1 | 1.0 | 58.4 | 5.4 | 36.2 | 0.072 | 0.513 | 30.681574 | -112.046286 |
| Caborca | 103.83 | 1 | 0 | 10750 | 0.3 | 70.2 | 3.8 | 8.9 | 1.1 | 11.3 | 1.7 | 2.1 | 0.6 | 70.5 | 3.8 | 25.7 | 0.071 | 0.504 | 30.710246 | -112.127163 |
| Cozón | 180.30 | 1 | 0 | 2748 | 0.6 | 55.2 | 6.4 | 7.9 | 2.4 | 17.4 | 3.8 | 5.7 | 0.6 | 55.8 | 6.4 | 37.8 | 0.076 | 0.518 | 31.293650 | -112.548440 |
| Sonoita | 253.70 | 1 | 0 | 3181 | 0.7 | 57.0 | 4.5 | 7.8 | 4.0 | 16.3 | 3.8 | 4.9 | 1.0 | 57.7 | 4.5 | 37.8 | 0.060 | 0.519 | 31.846288 | -112.859215 |

15 CARR: Altar - Sáric

CLAVE: 26233

RUTA: SON-064

AÑO: 2012

| LUGAR | ESTACION | | | | CLASIFICACION VEHICULAR EN PORCIENTO | | | | | | | | | | | | | COORDENADAS | | |
|---------------------------|----------|----|----|------|--------------------------------------|------|-----|-----|-----|------|------|--------|-------|------|-----|------|-------|-------------|-----------|-------------|
| | KM | TE | SC | TDPA | M | A | B | C2 | C3 | T3S2 | T3S3 | T3S2R4 | OTROS | A | B | C | K' | D | LATITUD | LONGITUD |
| T. C. Santa Ana - Sonoita | 0.00 | 3 | 0 | 1314 | 0.3 | 81.5 | 4.3 | 7.3 | 1.9 | 4.0 | 0.3 | 0.2 | 0.2 | 81.8 | 4.3 | 13.9 | 0.110 | 0.507 | 30.722953 | -111.830625 |
| Sáric | 68.00 | 1 | 0 | 299 | 2.4 | 84.6 | 5.3 | 7.3 | 0.0 | 0.4 | 0.0 | 0.0 | 0.0 | 87.0 | 5.3 | 7.7 | 0.165 | 0.507 | 31.101365 | -111.386123 |

SONORA

16 CARR: Caborca - El Desemboque

CLAVE: 26225

RUTA: SON-037

AÑO: 2012

| LUGAR | ESTACION | | | | CLASIFICACION VEHICULAR EN PORCIENTO | | | | | | | | | | | | | COORDENADAS | | |
|-------------------------------------|----------|----|----|------|--------------------------------------|------|-----|------|-----|------|------|--------|-------|------|-----|------|-------|-------------|-----------|-------------|
| | KM | TE | SC | TDPA | M | A | B | C2 | C3 | T3S2 | T3S3 | T3S2R4 | OTROS | A | B | C | K' | D | LATITUD | LONGITUD |
| Caborca | 0.00 | 3 | 0 | 8435 | 0.4 | 74.5 | 5.1 | 10.0 | 1.6 | 6.2 | 0.8 | 0.6 | 0.8 | 74.9 | 5.1 | 20.0 | 0.075 | 0.504 | 30.708498 | -112.182247 |
| T. Der. Productora Nal. de Semillas | 4.20 | 3 | 0 | 5518 | 0.2 | 70.7 | 3.9 | 15.3 | 1.3 | 6.6 | 0.8 | 0.8 | 0.4 | 70.9 | 3.9 | 25.2 | 0.075 | 0.508 | 30.704198 | -112.205338 |
| T. Izq. Ramal El Deseo | 6.90 | 3 | 0 | 4416 | 0.2 | 68.7 | 6.0 | 15.7 | 1.3 | 5.9 | 0.9 | 0.9 | 0.4 | 68.9 | 6.0 | 25.1 | 0.077 | 0.502 | 30.700246 | -112.226275 |
| T. Der. El Sahuaro | 61.20 | 3 | 0 | 1042 | 0.3 | 78.5 | 5.2 | 10.5 | 1.4 | 3.2 | 0.3 | 0.5 | 0.1 | 78.8 | 5.2 | 16.0 | 0.122 | 0.501 | 30.800955 | -112.720407 |
| El Desemboque | 102.30 | | | | | | | | | | | | | | | | | | | |

17 CARR: Calle 36 Norte - Puerto de La Libertad

CLAVE: 26117

RUTA: SON-029

AÑO: 2012

| LUGAR | ESTACION | | | | CLASIFICACION VEHICULAR EN PORCIENTO | | | | | | | | | | | | | COORDENADAS | | |
|-------------------------------|----------|----|----|------|--------------------------------------|------|-----|------|-----|------|------|--------|-------|------|-----|------|-------|-------------|-----------|-------------|
| | KM | TE | SC | TDPA | M | A | B | C2 | C3 | T3S2 | T3S3 | T3S2R4 | OTROS | A | B | C | K' | D | LATITUD | LONGITUD |
| T. C. Hermosillo - Bahía Kino | 0.00 | 3 | 0 | 469 | 0.7 | 68.4 | 3.3 | 10.1 | 4.3 | 10.2 | 1.1 | 1.1 | 0.8 | 69.1 | 3.3 | 27.6 | 0.094 | 0.538 | 28.832550 | -111.714279 |
| Casas Grandes | 45.00 | 3 | 0 | 406 | 0.8 | 67.7 | 4.8 | 10.2 | 3.5 | 7.4 | 3.4 | 1.3 | 0.9 | 68.5 | 4.8 | 26.7 | 0.103 | 0.501 | 29.182529 | -111.713689 |
| Puerto de La Libertad | 156.00 | | | | | | | | | | | | | | | | | | | |

18 CARR: Esperanza - Presa Álvaro Obregón

CLAVE: 26242

RUTA: SON-117

AÑO: 2012

| LUGAR | ESTACION | | | | CLASIFICACION VEHICULAR EN PORCIENTO | | | | | | | | | | | | | COORDENADAS | | |
|----------------------|----------|----|----|------|--------------------------------------|------|-----|-----|-----|------|------|--------|-------|------|-----|------|-------|-------------|-----------|-------------|
| | KM | TE | SC | TDPA | M | A | B | C2 | C3 | T3S2 | T3S3 | T3S2R4 | OTROS | A | B | C | K' | D | LATITUD | LONGITUD |
| Esperanza | 0.00 | 3 | 0 | 5187 | 1.5 | 74.1 | 6.2 | 4.4 | 2.1 | 4.4 | 6.0 | 0.3 | 1.0 | 75.6 | 6.2 | 18.2 | 0.130 | 0.508 | 27.585162 | -109.916839 |
| T. Der. Los Hornos | 17.00 | 3 | 0 | 923 | 2.8 | 80.0 | 7.2 | 7.1 | 1.6 | 1.0 | 0.3 | 0.0 | 0.0 | 82.8 | 7.2 | 10.0 | 0.123 | 0.505 | 27.720812 | -109.897526 |
| Presa Álvaro Obregón | 32.00 | | | | | | | | | | | | | | | | | | | |

19 CARR: Hermosillo - Bahía Kino

CLAVE: 26109

RUTA: SON-100

AÑO: 2012

| LUGAR | ESTACION | | | | CLASIFICACION VEHICULAR EN PORCIENTO | | | | | | | | | | | | | COORDENADAS | | |
|---------------------|----------|----|----|-------|--------------------------------------|------|-----|------|-----|------|------|--------|-------|------|-----|------|-------|-------------|-----------|-------------|
| | KM | TE | SC | TDPA | M | A | B | C2 | C3 | T3S2 | T3S3 | T3S2R4 | OTROS | A | B | C | K' | D | LATITUD | LONGITUD |
| Hermosillo | 0.00 | 3 | 1 | 11256 | 1.2 | 85.5 | 3.4 | 5.3 | 1.7 | 0.9 | 0.8 | 0.5 | 0.7 | 86.7 | 3.4 | 9.9 | 0.082 | 0.507 | 29.094776 | -111.026927 |
| Hermosillo | 0.00 | 3 | 2 | 11569 | 1.2 | 83.9 | 3.8 | 6.0 | 1.9 | 1.1 | 0.9 | 0.5 | 0.7 | 85.1 | 3.8 | 11.1 | 0.086 | 0.507 | 29.094777 | -111.026929 |
| T. Der. Aeropuerto | 11.00 | 1 | 1 | 10651 | 0.9 | 84.4 | 2.9 | 7.7 | 0.8 | 1.2 | 0.8 | 0.6 | 0.7 | 85.3 | 2.9 | 11.8 | 0.094 | 0.507 | 29.090195 | -111.045025 |
| T. Der. Aeropuerto | 11.00 | 1 | 2 | 11514 | 1.1 | 83.5 | 3.1 | 8.0 | 0.9 | 1.2 | 0.9 | 0.6 | 0.7 | 84.6 | 3.1 | 12.3 | 0.112 | 0.507 | 29.090194 | -111.045026 |
| T. Der. Aeropuerto | 11.00 | 3 | 1 | 6098 | 0.6 | 82.0 | 3.5 | 6.8 | 2.8 | 2.1 | 0.9 | 0.5 | 0.8 | 82.6 | 3.5 | 13.9 | 0.121 | 0.507 | 29.088104 | -111.053062 |
| T. Der. Aeropuerto | 11.00 | 3 | 2 | 5922 | 0.6 | 80.3 | 3.7 | 7.3 | 3.2 | 2.3 | 1.0 | 0.6 | 1.0 | 80.9 | 3.7 | 15.4 | 0.131 | 0.507 | 29.088139 | -111.053101 |
| T. Izq. Calle 4 Sur | 53.00 | 3 | 0 | 5815 | 0.4 | 74.8 | 5.5 | 10.4 | 2.1 | 5.0 | 1.2 | 0.1 | 0.5 | 75.2 | 5.5 | 19.3 | 0.104 | 0.502 | 28.839400 | -111.395654 |
| El Triunfo | 55.50 | 1 | 0 | 5916 | 0.6 | 75.3 | 5.4 | 10.4 | 2.7 | 4.0 | 1.0 | 0.2 | 0.4 | 75.9 | 5.4 | 18.7 | 0.099 | 0.504 | 28.839816 | -111.458263 |
| T. Der. Calle 36 | 84.40 | 1 | 0 | 2189 | 0.5 | 72.6 | 5.1 | 11.8 | 2.9 | 4.2 | 1.8 | 0.0 | 1.1 | 73.1 | 5.1 | 21.8 | 0.084 | 0.523 | 28.831408 | -111.710872 |

SONORA

19 CARR: Hermosillo - Bahía Kino

CLAVE: 26109

RUTA: SON-100

AÑO: 2012

| LUGAR | ESTACION | | | | CLASIFICACION VEHICULAR EN PORCIENTO | | | | | | | | | | COORDENADAS | | | | | |
|------------------|----------|----|----|------|--------------------------------------|------|-----|------|-----|------|------|--------|-------|------|-------------|------|-------|-------|-----------|-------------|
| | KM | TE | SC | TDPA | M | A | B | C2 | C3 | T3S2 | T3S3 | T3S2R4 | OTROS | A | B | C | K' | D | LATITUD | LONGITUD |
| T. Der. Calle 36 | 84.40 | 3 | 0 | 1830 | 0.2 | 81.8 | 4.0 | 10.4 | 1.2 | 1.4 | 0.8 | 0.0 | 0.2 | 82.0 | 4.0 | 14.0 | 0.102 | 0.517 | 28.831171 | -111.719354 |
| Bahía Kino | 106.50 | 1 | 0 | 2077 | 0.2 | 83.0 | 4.7 | 9.8 | 0.9 | 1.2 | 0.1 | 0.0 | 0.1 | 83.2 | 4.7 | 12.1 | 0.219 | 0.500 | 28.828511 | -111.924962 |

20 CARR: Hermosillo - Sahuaripa

CLAVE: 26230

RUTA: SON-020

AÑO: 2012

| LUGAR | ESTACION | | | | CLASIFICACION VEHICULAR EN PORCIENTO | | | | | | | | | | COORDENADAS | | | | | |
|---------------------------------|----------|----|----|------|--------------------------------------|------|-----|------|-----|------|------|--------|-------|------|-------------|------|-------|-------|-----------|-------------|
| | KM | TE | SC | TDPA | M | A | B | C2 | C3 | T3S2 | T3S3 | T3S2R4 | OTROS | A | B | C | K' | D | LATITUD | LONGITUD |
| T. C. Libramiento de Hermosillo | 0.00 | 3 | 1 | 4512 | 1.2 | 84.5 | 2.5 | 4.4 | 1.9 | 2.5 | 1.6 | 0.9 | 0.5 | 85.7 | 2.5 | 11.8 | 0.144 | 0.507 | 29.031409 | -110.935415 |
| T. C. Libramiento de Hermosillo | 0.00 | 3 | 2 | 4395 | 0.9 | 83.8 | 2.7 | 4.6 | 2.1 | 2.6 | 1.9 | 0.9 | 0.5 | 84.7 | 2.7 | 12.6 | 0.106 | 0.507 | 29.031409 | -110.935415 |
| Mazatán | 88.00 | 1 | 0 | 1025 | 0.2 | 80.5 | 3.0 | 8.8 | 4.2 | 2.2 | 1.1 | 0.0 | 0.0 | 80.7 | 3.0 | 16.3 | 0.090 | 0.510 | 29.005226 | -110.149962 |
| Mazatán | 88.00 | 3 | 0 | 873 | 0.1 | 76.8 | 1.6 | 11.9 | 4.6 | 3.8 | 1.1 | 0.0 | 0.1 | 76.9 | 1.6 | 21.5 | 0.108 | 0.505 | 28.996657 | -110.135391 |
| Sahuaripa | 199.00 | | | | | | | | | | | | | | | | | | | |

21 CARR: Hornos - San Nicolás

CLAVE: 26243

RUTA: SON-012

AÑO: 2012

| LUGAR | ESTACION | | | | CLASIFICACION VEHICULAR EN PORCIENTO | | | | | | | | | | COORDENADAS | | | | | |
|-------------|----------|----|----|------|--------------------------------------|------|-----|-----|-----|------|------|--------|-------|------|-------------|------|-------|-------|-----------|-------------|
| | KM | TE | SC | TDPA | M | A | B | C2 | C3 | T3S2 | T3S3 | T3S2R4 | OTROS | A | B | C | K' | D | LATITUD | LONGITUD |
| Hornos | 0.00 | 3 | 0 | 1346 | 1.7 | 67.9 | 6.5 | 7.7 | 2.2 | 5.4 | 7.5 | 0.5 | 0.6 | 69.6 | 6.5 | 23.9 | 0.088 | 0.505 | 27.719313 | -109.894955 |
| Rosario | 58.00 | 1 | 0 | 1045 | 2.5 | 61.3 | 7.4 | 8.1 | 2.8 | 5.8 | 10.6 | 0.7 | 0.8 | 63.8 | 7.4 | 28.8 | 0.079 | 0.500 | 27.842200 | -109.385571 |
| San Nicolás | 137.20 | | | | | | | | | | | | | | | | | | | |

22 CARR: Huatabampo - Bacabachi

CLAVE: 26237

RUTA: SON-176

AÑO: 2012

| LUGAR | ESTACION | | | | CLASIFICACION VEHICULAR EN PORCIENTO | | | | | | | | | | COORDENADAS | | | | | |
|--|----------|----|----|------|--------------------------------------|------|-----|-----|-----|------|------|--------|-------|------|-------------|------|-------|-------|-----------|-------------|
| | KM | TE | SC | TDPA | M | A | B | C2 | C3 | T3S2 | T3S3 | T3S2R4 | OTROS | A | B | C | K' | D | LATITUD | LONGITUD |
| Huatabampo | 0.00 | 3 | 0 | 2150 | 7.0 | 56.1 | 7.3 | 9.6 | 8.6 | 8.2 | 2.2 | 0.7 | 0.3 | 63.1 | 7.3 | 29.6 | 0.084 | 0.514 | 26.825297 | -109.600466 |
| T. C. Los Mochis - Cd. Obregón (Cuota) | 29.00 | 1 | 0 | 1486 | 2.5 | 61.8 | 6.6 | 8.0 | 7.0 | 9.3 | 3.3 | 1.1 | 0.4 | 64.3 | 6.6 | 29.1 | 0.073 | 0.523 | 26.838796 | -109.369441 |

23 CARR: La Alameda - El Sahuaro

CLAVE: 26234

RUTA: SON-037

AÑO: 2012

| LUGAR | ESTACION | | | | CLASIFICACION VEHICULAR EN PORCIENTO | | | | | | | | | | COORDENADAS | | | | | |
|-------------------------------|----------|----|----|------|--------------------------------------|------|-----|------|-----|------|------|--------|-------|------|-------------|------|-------|-------|-----------|-------------|
| | KM | TE | SC | TDPA | M | A | B | C2 | C3 | T3S2 | T3S3 | T3S2R4 | OTROS | A | B | C | K' | D | LATITUD | LONGITUD |
| T. C. Caborca - El Desemboque | 0.00 | 3 | 0 | 2813 | 0.8 | 75.8 | 4.8 | 10.2 | 1.0 | 5.6 | 0.8 | 0.7 | 0.3 | 76.6 | 4.8 | 18.6 | 0.081 | 0.522 | 30.807753 | -112.720678 |
| Estación El Sahuaro | 47.00 | 1 | 0 | 1976 | 0.2 | 66.2 | 5.2 | 13.3 | 3.2 | 8.2 | 1.8 | 1.2 | 0.7 | 66.4 | 5.2 | 28.4 | 0.084 | 0.512 | 31.042412 | -112.943280 |

SONORA

29 CARR: San Luis Río Colorado - Golfo de Santa Clara

CLAVE: 26226

RUTA: SON-040

AÑO: 2012

| LUGAR | ESTACION | | | | CLASIFICACION VEHICULAR EN PORCIENTO | | | | | | | | | | COORDENADAS | | | | | |
|-----------------------|----------|----|----|------|--------------------------------------|------|-----|-----|-----|------|------|--------|-------|------|-------------|------|-------|-------|-----------|-------------|
| | KM | TE | SC | TDPA | M | A | B | C2 | C3 | T3S2 | T3S3 | T3S2R4 | OTROS | A | B | C | K' | D | LATITUD | LONGITUD |
| San Luis Río Colorado | 0.00 | 3 | 1 | 2577 | 0.4 | 85.6 | 2.6 | 6.4 | 0.6 | 3.4 | 0.5 | 0.1 | 0.4 | 86.0 | 2.6 | 11.4 | 0.079 | 0.508 | 32.446315 | -114.840476 |
| San Luis Río Colorado | 0.00 | 3 | 2 | 2499 | 0.3 | 84.3 | 2.8 | 7.1 | 0.6 | 3.9 | 0.5 | 0.2 | 0.3 | 84.6 | 2.8 | 12.6 | 0.083 | 0.508 | 32.446315 | -114.840476 |
| T. Izq. Lagunitas | 25.50 | 3 | 0 | 4970 | 0.3 | 83.1 | 3.0 | 7.3 | 1.9 | 3.2 | 0.7 | 0.2 | 0.3 | 83.4 | 3.0 | 13.6 | 0.083 | 0.505 | 32.316637 | -114.952372 |
| Golfo de Santa Clara | 114.30 | 1 | 0 | 1772 | 0.2 | 83.1 | 3.0 | 6.4 | 3.4 | 0.9 | 1.5 | 1.0 | 0.5 | 83.3 | 3.0 | 13.7 | 0.109 | 0.518 | 31.706334 | -114.523444 |

30 CARR: Sonoita - Pitiquito

CLAVE: 26022

RUTA: SON

AÑO: 2012

| LUGAR | ESTACION | | | | CLASIFICACION VEHICULAR EN PORCIENTO | | | | | | | | | | COORDENADAS | | | | | |
|-----------|----------|----|----|------|--------------------------------------|------|-----|------|-----|------|------|--------|-------|------|-------------|------|-------|-------|-----------|-------------|
| | KM | TE | SC | TDPA | M | A | B | C2 | C3 | T3S2 | T3S3 | T3S2R4 | OTROS | A | B | C | K' | D | LATITUD | LONGITUD |
| Sonoita | 0.00 | 3 | 0 | 1458 | 0.2 | 87.5 | 4.1 | 6.3 | 0.3 | 1.3 | 0.2 | 0.0 | 0.1 | 87.7 | 4.1 | 8.2 | 0.091 | 0.503 | 31.855391 | -112.829202 |
| Pitiquito | 170.00 | 1 | 0 | 536 | 1.8 | 51.4 | 4.7 | 16.1 | 1.9 | 19.5 | 1.2 | 2.8 | 0.6 | 53.2 | 4.7 | 42.1 | 0.108 | 0.503 | 30.722778 | -112.094722 |

31 CARR: T. C. (Hermosillo - Nogales) - Huásabas

CLAVE: 26231

RUTA: MEX-014-SON

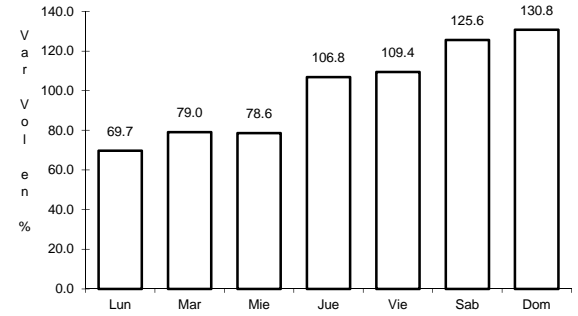
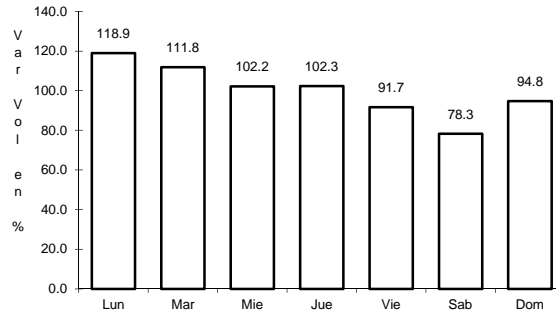
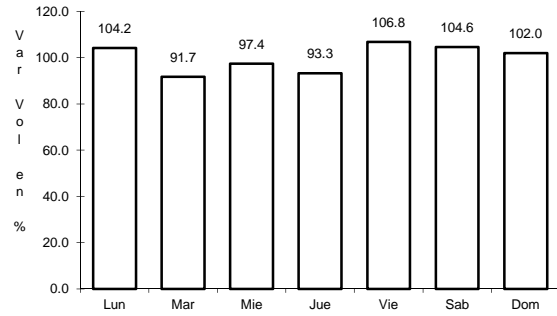
AÑO: 2012

| LUGAR | ESTACION | | | | CLASIFICACION VEHICULAR EN PORCIENTO | | | | | | | | | | COORDENADAS | | | | | |
|----------------------------|----------|----|----|------|--------------------------------------|------|-----|------|-----|------|------|--------|-------|------|-------------|------|-------|-------|-----------|-------------|
| | KM | TE | SC | TDPA | M | A | B | C2 | C3 | T3S2 | T3S3 | T3S2R4 | OTROS | A | B | C | K' | D | LATITUD | LONGITUD |
| T. C. Hermosillo - Nogales | 0.00 | 3 | 1 | 6366 | 0.5 | 80.7 | 4.1 | 8.8 | 1.7 | 2.7 | 0.7 | 0.5 | 0.3 | 81.2 | 4.1 | 14.7 | 0.110 | 0.511 | 29.169960 | -110.901777 |
| T. C. Hermosillo - Nogales | 0.00 | 3 | 2 | 6102 | 0.6 | 78.3 | 4.6 | 9.9 | 1.8 | 3.2 | 0.8 | 0.5 | 0.3 | 78.9 | 4.6 | 16.5 | 0.104 | 0.511 | 29.169953 | -110.901783 |
| Ures | 62.00 | 3 | 0 | 2145 | 0.5 | 76.4 | 3.8 | 7.5 | 2.3 | 4.8 | 2.5 | 1.5 | 0.7 | 76.9 | 3.8 | 19.3 | 0.109 | 0.524 | 29.432549 | -110.354086 |
| Mazocahui | 97.50 | 3 | 0 | 1050 | 0.1 | 66.3 | 2.2 | 10.1 | 4.7 | 6.7 | 2.4 | 7.1 | 0.4 | 66.4 | 2.2 | 31.4 | 0.103 | 0.515 | 29.544498 | -110.118373 |
| Moctezuma | 165.00 | 1 | 0 | 1183 | 0.3 | 76.9 | 2.0 | 10.4 | 2.2 | 2.8 | 2.2 | 2.6 | 0.6 | 77.2 | 2.0 | 20.8 | 0.087 | 0.559 | 29.799063 | -109.691227 |
| Moctezuma | 165.00 | 3 | 0 | 1447 | 0.7 | 82.3 | 3.0 | 9.9 | 1.7 | 2.2 | 0.2 | 0.0 | 0.0 | 83.0 | 3.0 | 14.0 | 0.087 | 0.502 | 29.801178 | -109.668349 |
| Huásabas | 212.50 | 1 | 0 | 505 | 0.2 | 78.9 | 3.0 | 12.4 | 2.7 | 2.4 | 0.4 | 0.0 | 0.0 | 79.1 | 3.0 | 17.9 | 0.107 | 0.511 | 29.918233 | -109.307260 |

4 CARR: La Junta - Yécora

CLAVE: 00065

RUTA: MEX-016



Km: 0.00 Tipo: 3 Sent: 0

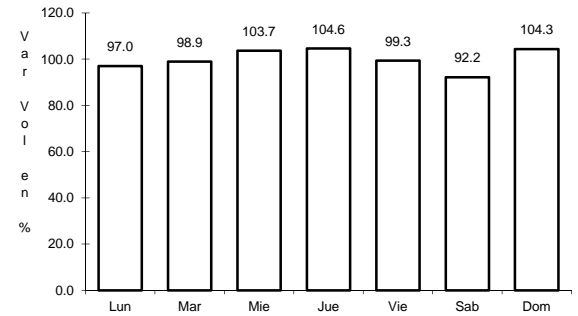
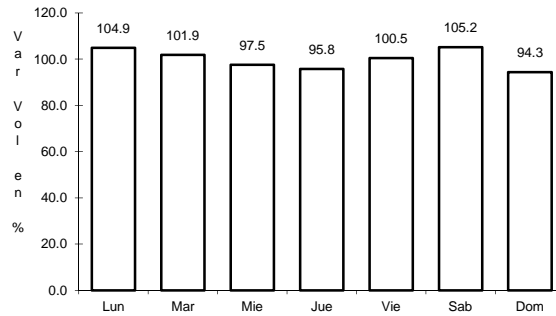
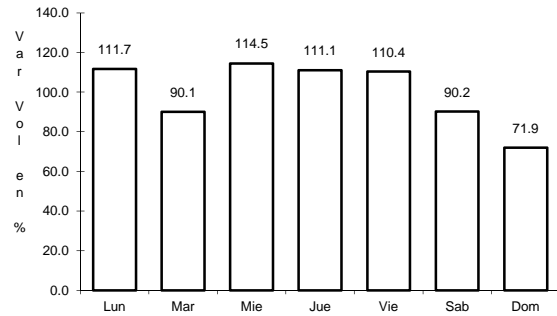
Km: 70.00 Tipo: 3 Sent: 0

Km: 253.00 Tipo: 1 Sent: 0

5 CARR: Moctezuma - Agua Prieta

CLAVE: 26027

RUTA: MEX-017



Km: 0.00 Tipo: 3 Sent: 0

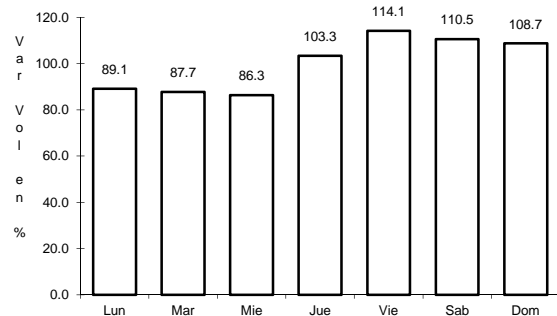
Km: 81.00 Tipo: 3 Sent: 0

Km: 197.60 Tipo: 1 Sent: 0

6 CARR: Ramal a Naco

CLAVE: 26579

RUTA: MEX-002

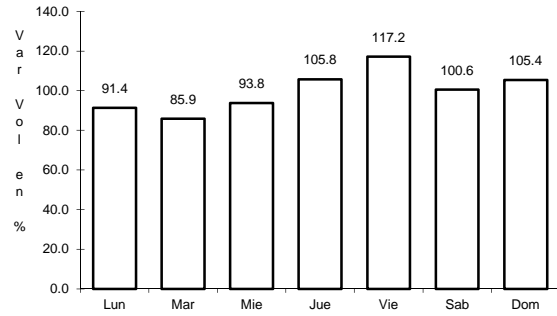


Km: 0.00 Tipo: 3 Sent: 0

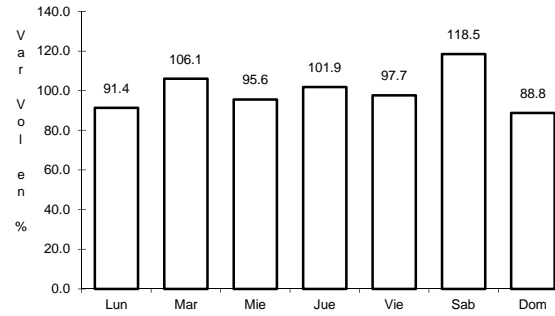
10 CARR: Libramiento de Empalme (Cuota)

CLAVE: 26256

RUTA: MEX-015D



Km: 0.00 Tipo: 3 Sent: 1

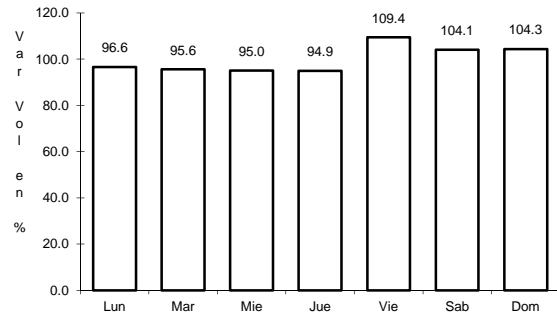


Km: 0.00 Tipo: 3 Sent: 2

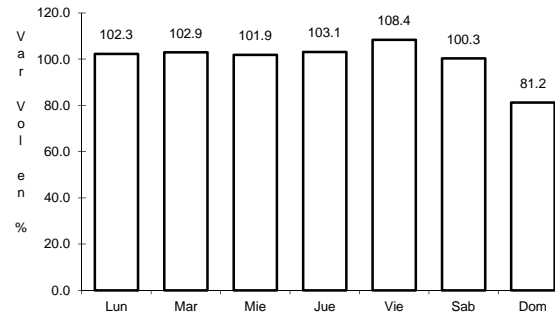
11 CARR: Libramiento de Magdalena de Kino (Cuota)

CLAVE:

RUTA: MEX-015D



Km: 183.43 Tipo: 3 Sent: 1

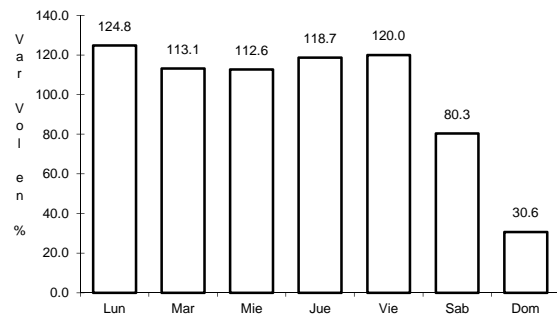


Km: 183.43 Tipo: 3 Sent: 2

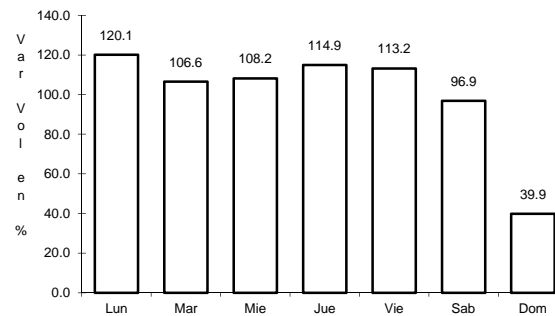
12 CARR: Libramiento de Nogales (Cuota)

CLAVE: 26100

RUTA: MEX-15D



Km: 0.00 Tipo: 3 Sent: 1

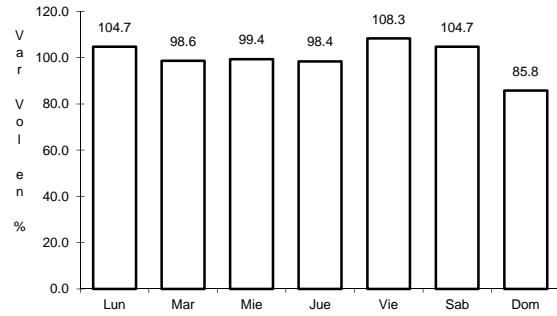


Km: 0.00 Tipo: 3 Sent: 2

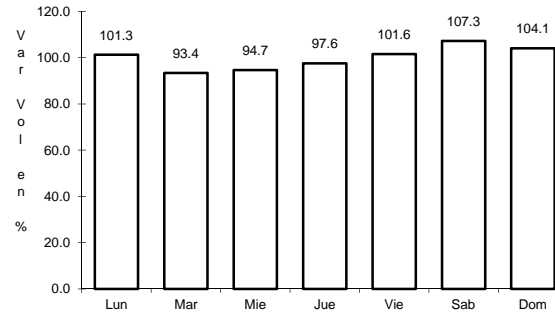
16 CARR: Caborca - El Desemboque

CLAVE: 26225

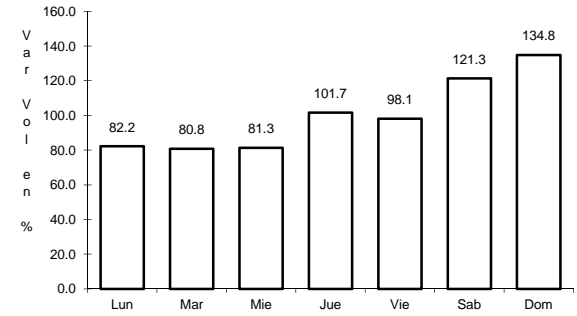
RUTA: SON-037



Km: 0.00 Tipo: 3 Sent: 0



Km: 6.90 Tipo: 3 Sent: 0

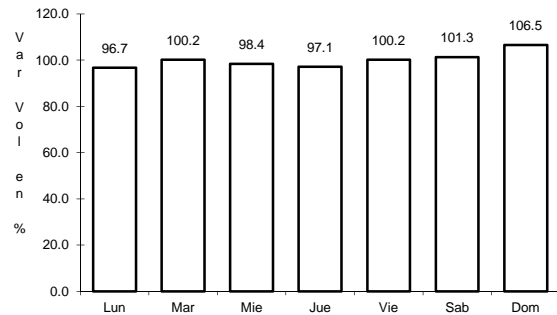


Km: 61.20 Tipo: 3 Sent: 0

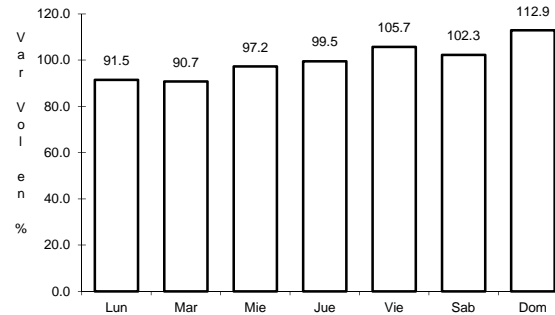
17 CARR: Calle 36 Norte - Puerto de La Libertad

CLAVE: 26117

RUTA: SON-029



Km: 0.00 Tipo: 3 Sent: 0

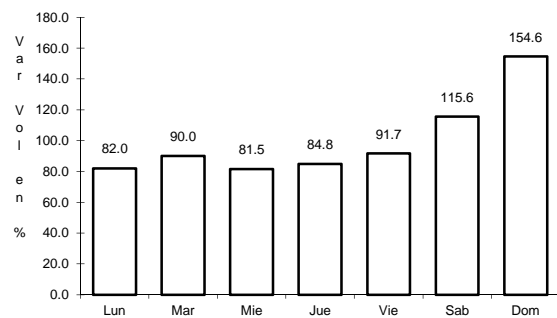


Km: 45.00 Tipo: 3 Sent: 0

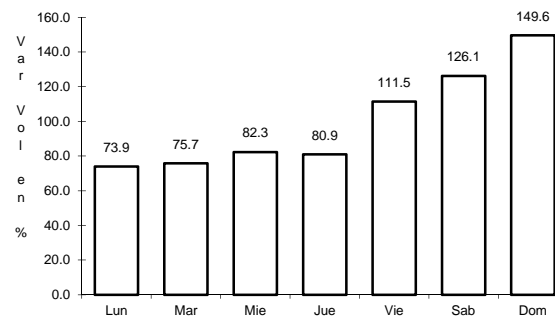
18 CARR: Esperanza - Presa Álvaro Obregón

CLAVE: 26242

RUTA: SON-117



Km: 0.00 Tipo: 3 Sent: 0

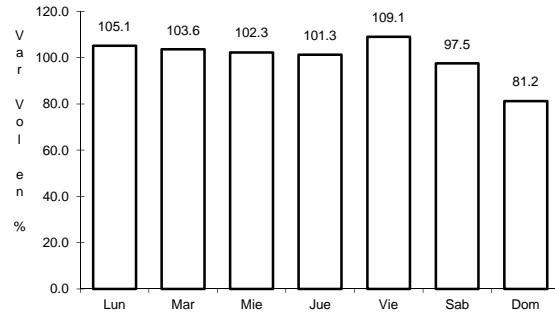


Km: 17.00 Tipo: 3 Sent: 0

19 CARR: Hermosillo - Bahía Kino

CLAVE: 26109

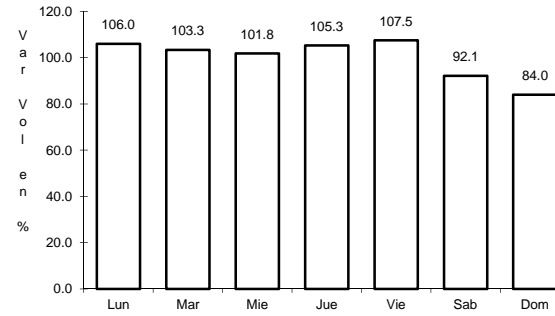
RUTA: SON-100



Km: 0.00

Tipo: 3

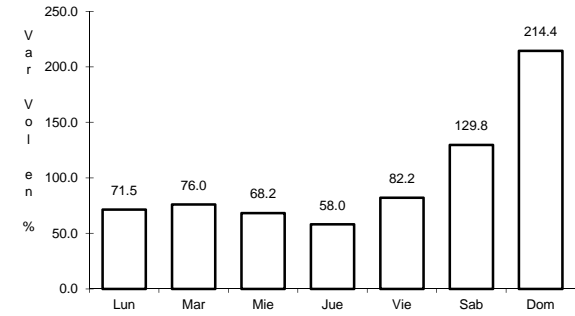
Sent: 1



Km: 0.00

Tipo: 3

Sent: 2



Km: 106.50

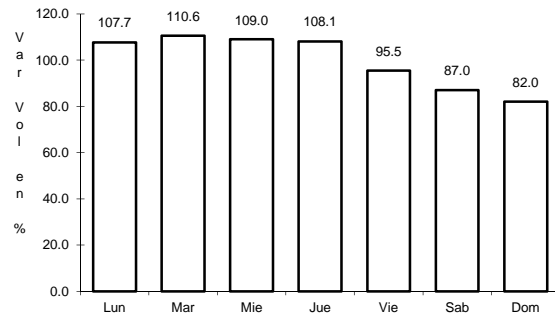
Tipo: 1

Sent: 0

20 CARR: Hermosillo - Sahuaripa

CLAVE: 26230

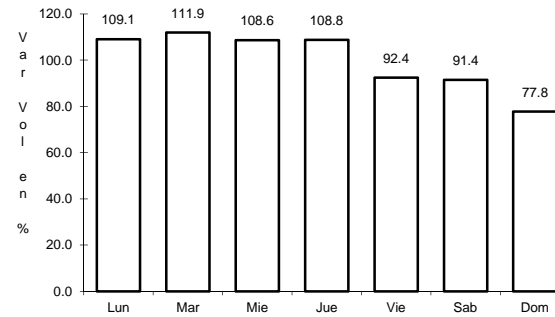
RUTA: SON-020



Km: 0.00

Tipo: 3

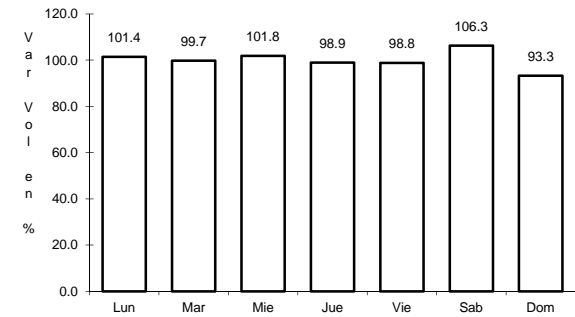
Sent: 1



Km: 0.00

Tipo: 3

Sent: 2



Km: 88.00

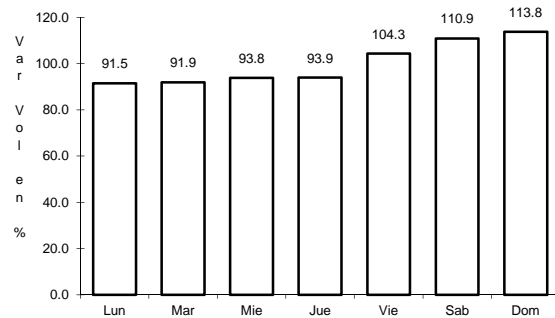
Tipo: 3

Sent: 0

21 CARR: Hornos - San Nicolás

CLAVE: 26243

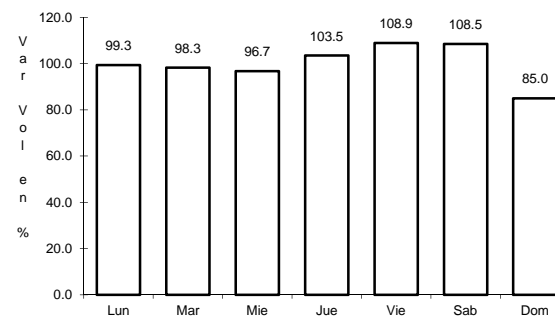
RUTA: SON-012



Km: 0.00

Tipo: 3

Sent: 0



Km: 58.00

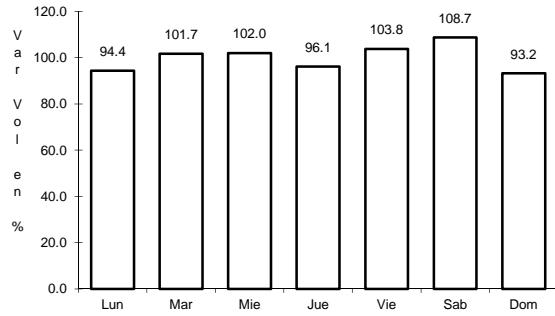
Tipo: 1

Sent: 0

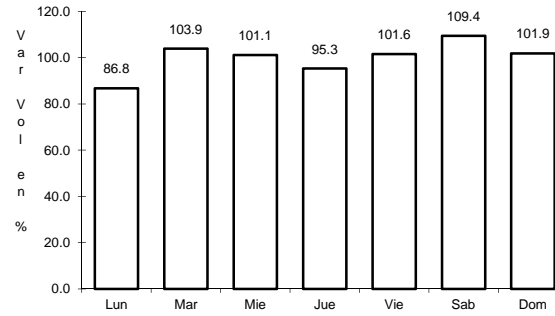
22 CARR: Huatabampo - Bacabachi

CLAVE: 26237

RUTA: SON-176



Km: 0.00 Tipo: 3 Sent: 0

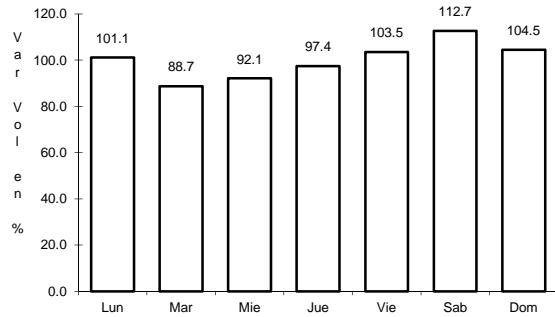


Km: 29.00 Tipo: 1 Sent: 0

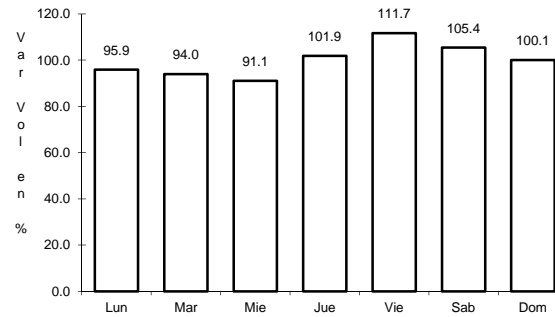
23 CARR: La Alameda - El Sahuaro

CLAVE: 26234

RUTA: SON-037



Km: 0.00 Tipo: 3 Sent: 0

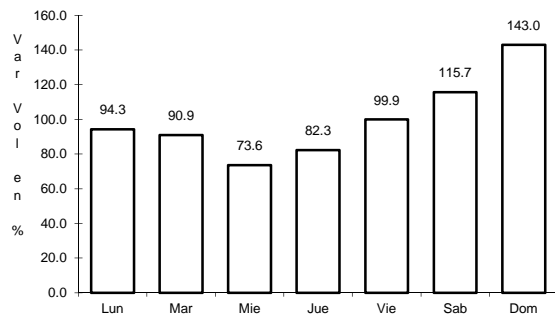


Km: 47.00 Tipo: 1 Sent: 0

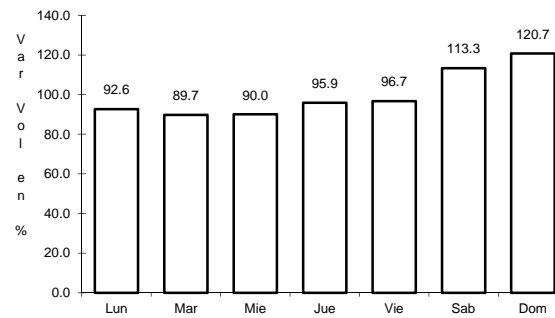
24 CARR: Mazocahui - Cananea

CLAVE: 26118

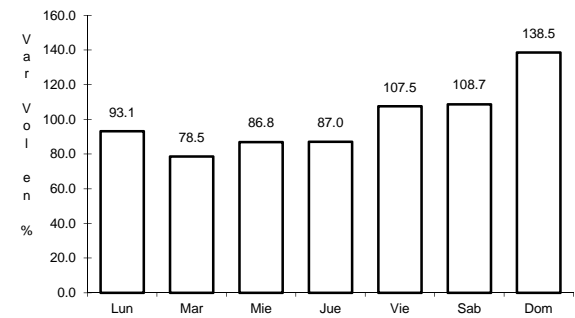
RUTA: SON-118



Km: 0.00 Tipo: 3 Sent: 0



Km: 98.00 Tipo: 1 Sent: 0

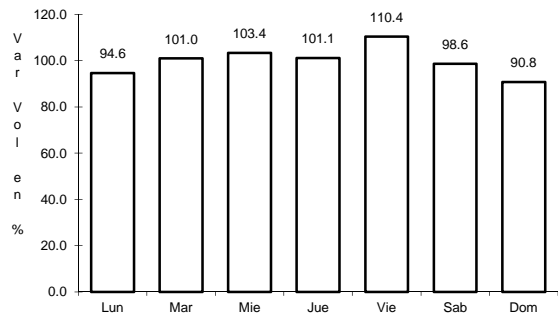


Km: 204.00 Tipo: 1 Sent: 0

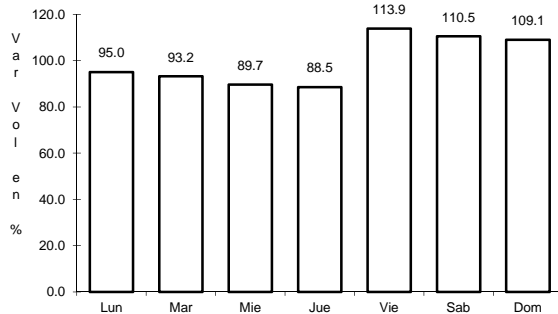
25 CARR: Navojoa - Álamos

CLAVE: 26240

ruta: SON-013



Km: 0.00 Tipo: 3 Sent: 0

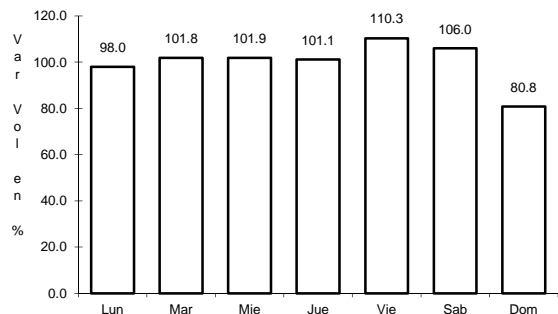


Km: 52.80 Tipo: 1 Sent: 0

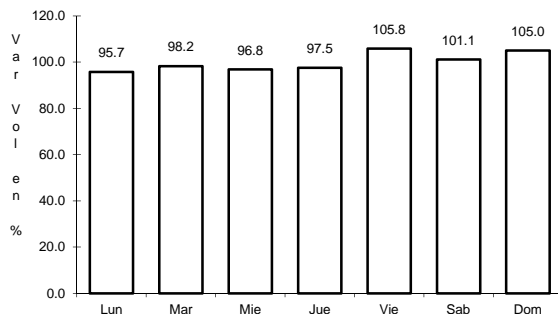
26 CARR: Navojoa - Yavaros

CLAVE: 26229

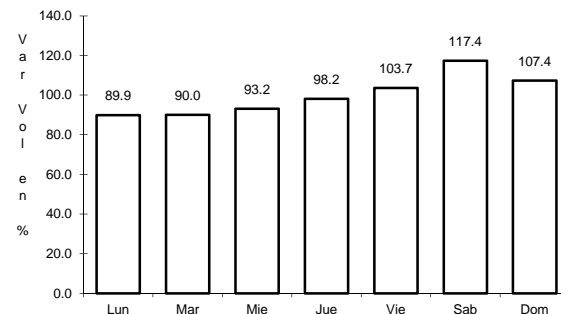
ruta: SON-056



Km: 0.00 Tipo: 3 Sent: 1



Km: 0.00 Tipo: 3 Sent: 2

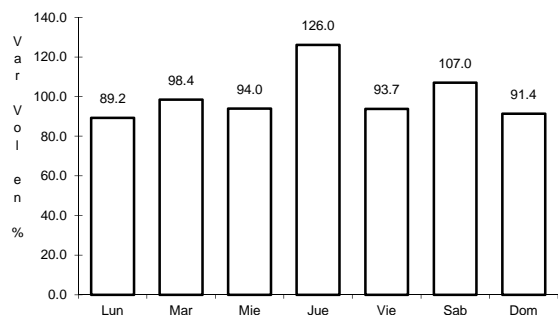


Km: 55.00 Tipo: 1 Sent: 0

27 CARR: Nogales - San Antonio

CLAVE: 26110

ruta: SON

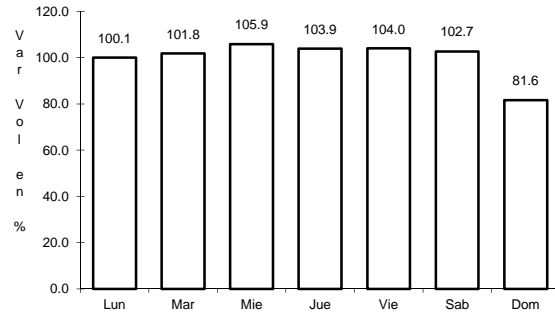


Km: 58.00 Tipo: 1 Sent: 0

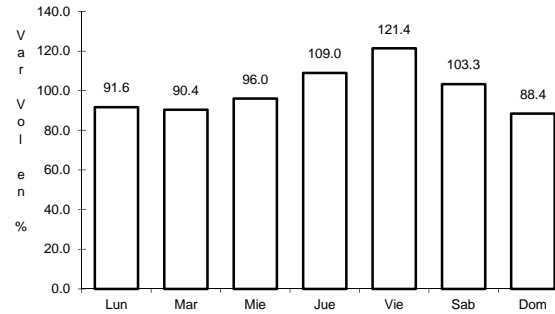
28 CARR: Ramal a Aeropuerto de Guaymas

CLAVE: 26568

RUTA: SON



Km: 0.00 Tipo: 3 Sent: 1

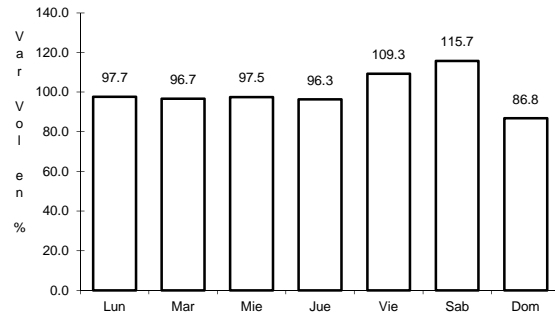


Km: 0.00 Tipo: 3 Sent: 2

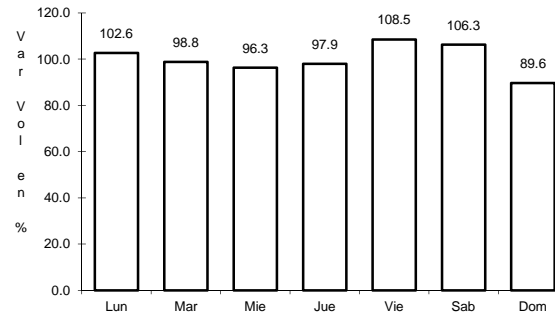
29 CARR: San Luis Río Colorado - Golfo de Santa Clara

CLAVE: 26226

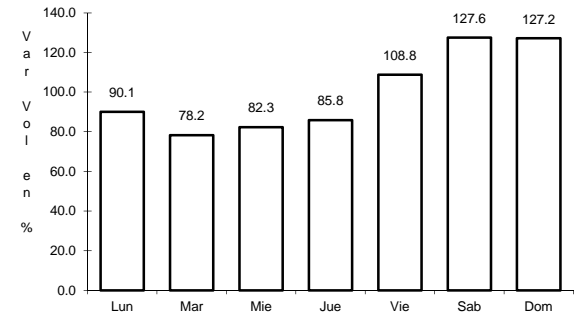
RUTA: SON-040



Km: 0.00 Tipo: 3 Sent: 1



Km: 0.00 Tipo: 3 Sent: 2

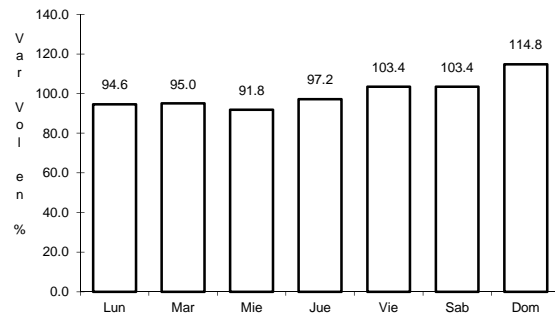


Km: 114.30 Tipo: 1 Sent: 0

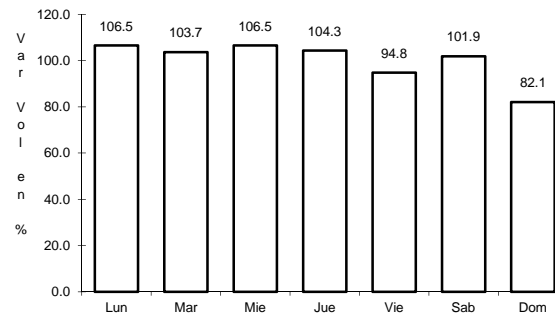
30 CARR: Sonoita - Pitiquito

CLAVE: 26022

RUTA: SON



Km: 0.00 Tipo: 3 Sent: 0



Km: 170.00 Tipo: 1 Sent: 0

