



SINALOA

NO. INDICE	CARRETERA	ROUTA
---RED FEDERAL LIBRE---		
1	Culiacán - Los Mochis	MEX-015
2	Durango - Villa Unión	MEX-040
3	Libramiento de Mazatlán	MEX
4	Libramiento Sur de Culiacán	MEX-015
5	Mazatlán - Culiacán	MEX-015
6	Pericos - Los Naranjos	MEX-024
7	Tepic - Mazatlán	MEX-015
---RED FEDERAL DE CUOTA---		
8	Durango - Mazatlán (Cuota)	MEX-040D
9	Mazatlán - Culiacán (Cuota)	MEX-015D
10	Tepic - Villa Unión (cuota)	MEX-015D
---RED FEDERAL INTEGRADA POR TRAMOS LIBRES Y DE CUOTA---		
11	Est. Don - Nogales (Cuota)	MEX-015D-015
---RED ESTATAL LIBRE---		
12	Carrizal - Campo Aníbal	SIN-019
13	Culiacán - Altata	SIN-030
14	Culiacán - El Dorado	SIN-005
15	El Limoncito - Cinco Hermanos	SIN-016
16	El Salado - El Dorado	SIN-010
17	Escuinapa de Hidalgo - Teacapan	SIN-001
18	Estación Dimas - San Ignacio	SIN-006
19	Guamuchil - Mocerito	SIN-021
20	Guasave - Sinaloa de Leyva	SIN-023
21	Navolato - El Castillo	SIN-004
22	Pozole - Cofradía	SIN-080
23	Ramal a Chametla	SIN-002
24	Ramal a Cosalá	SIN-008
25	Ramal a El Quelite	SIN-060
26	Ramal a Estación Bamoá	SIN-022
27	Ramal a La Cruz	SIN
28	Ramal a La Noria	SIN
29	Ramal a La Reforma	SIN-004
30	Rosario - Caimanero	SIN-003
31	San Pedro - Campo Aníbal	SIN
32	Topolobampo - Choix	SIN-023
33	Villa Unión - El Walamo	SIN-081
34	Villa Unión - Siqueiros	SIN-063
---RED ESTATAL DE CUOTA---		
35	Culiacán - Las Brisas (Cuota)	SIN-001D

25 SINALOA

SECRETARÍA DE COMUNICACIONES Y TRANSPORTES
DIRECCIÓN GENERAL DE SERVICIOS TÉCNICOS



SINALOA

1 CARR : Culiacán - Los Mochis

CLAVE: 25502

RUTA: MEX-015

AÑO : 2012

LUGAR	ESTACION				CLASIFICACION VEHICULAR EN PORCIENTO										COORDENADAS					
	KM	TE	SC	TDPA	M	A	B	C2	C3	T3S2	T3S3	T3S2R4	OTROS	A	B	C	K'	D	LATITUD	LONGITUD
Culiacán	0.00																			
T. Der. Los Monzones	4.00	1	1	8962	0.7	81.0	3.0	6.0	2.1	4.4	1.5	0.7	0.6	81.7	3.0	15.3	0.084	0.503	24.834294	-107.433047
T. Der. Los Monzones	4.00	1	2	8863	0.8	78.6	3.3	7.1	2.3	4.8	1.7	0.8	0.6	79.4	3.3	17.3	0.079	0.503	24.834218	-107.432944
Caseta de Cobro Puente Culiacán	22.00	2	1	3298	0.0	76.9	5.5	4.6	2.8	7.7	1.2	0.4	0.9	76.9	5.5	17.6	0.084	0.500	24.811495	-107.410223
Caseta de Cobro Puente Culiacán	22.00	2	2	3297	0.0	76.9	5.5	4.6	2.8	7.7	1.2	0.4	0.9	76.9	5.5	17.6	0.084	0.500	24.811495	-107.410223
T. Der. Presa López Mateos	27.20	3	0	7554	0.7	73.7	3.8	7.5	2.0	8.9	1.4	1.2	0.8	74.4	3.8	21.8	0.087	0.524	24.993060	-107.567889
X. C. Pericos - Los Naranjos	43.60	3	0	7896	0.6	69.5	5.6	7.9	2.3	9.8	2.2	1.3	0.8	70.1	5.6	24.3	0.090	0.514	25.094088	-107.696782
Guamuchil	104.70	1	0	7975	1.7	72.1	3.4	8.4	2.4	8.9	1.5	0.9	0.7	73.8	3.4	22.8	0.085	0.503	25.428707	-108.058704
Guamuchil	104.70	3	1	7909	1.8	69.1	4.3	8.5	3.4	6.8	3.2	1.8	1.1	70.9	4.3	24.8	0.080	0.502	25.466766	-108.089376
Guamuchil	104.70	3	2	7849	1.6	68.3	4.5	9.3	3.8	6.0	3.5	1.8	1.2	69.9	4.5	25.6	0.077	0.502	25.466766	-108.089376
T. Izq. Aut. Culiacán - Las Brisas	121.20	1	0	7034	1.1	67.7	6.2	8.5	4.1	7.8	2.3	1.9	0.4	68.8	6.2	25.0	0.078	0.518	25.489863	-108.223831
T. Izq. Aut. Culiacán - Las Brisas	121.20	3	1	6517	0.9	64.9	5.7	9.1	3.4	9.8	2.0	3.3	0.9	65.8	5.7	28.5	0.082	0.500	25.488186	-108.240525
T. Izq. Aut. Culiacán - Las Brisas	121.20	3	2	6503	0.8	63.4	6.6	9.5	3.8	8.9	2.2	3.7	1.1	64.2	6.6	29.2	0.094	0.500	25.488186	-108.240527
T. Der. Estación Bamoa	133.17	3	1	6824	1.0	69.3	4.7	7.8	2.5	9.0	2.7	2.7	0.3	70.3	4.7	25.0	0.086	0.502	25.518293	-108.359573
T. Der. Estación Bamoa	133.17	3	2	6871	1.1	67.5	5.1	8.1	2.8	9.3	2.9	2.9	0.3	68.6	5.1	26.3	0.082	0.502	25.518293	-108.359575
Caseta de Cobro Puente Sinaloa	136.00	2	1	4756	0.0	61.1	6.8	5.0	4.8	14.8	2.1	1.4	4.0	61.1	6.8	32.1	0.084	0.500	25.577762	-108.455850
Caseta de Cobro Puente Sinaloa	136.00	2	2	4756	0.0	61.1	6.8	5.0	4.8	14.8	2.1	1.4	4.0	61.1	6.8	32.1	0.084	0.500	25.577762	-108.455850
Guasave	146.28	3	1	10956	1.4	74.0	3.6	8.4	2.1	6.0	1.5	2.0	1.0	75.4	3.6	21.0	0.082	0.506	25.590590	-108.493936
Guasave	146.28	3	2	11243	1.1	72.0	4.1	8.8	2.2	6.8	1.7	2.2	1.1	73.1	4.1	22.8	0.077	0.506	25.590589	-108.493936
T. Izq. Los Mochis (1° Acceso)	201.97	1	1	11027	1.1	77.1	5.6	3.9	2.1	5.8	1.8	1.8	0.8	78.2	5.6	16.2	0.088	0.502	25.799075	-108.936756
T. Izq. Los Mochis (1° Acceso)	201.97	1	2	10932	0.6	75.8	5.8	4.4	2.1	6.7	1.9	1.9	0.8	76.4	5.8	17.8	0.083	0.502	25.799075	-108.936756
T. Izq. Los Mochis (1° Acceso)	201.97	3	1	10333	0.7	75.1	5.1	4.0	2.7	7.9	1.8	1.9	0.8	75.8	5.1	19.1	0.089	0.509	25.802172	-108.949090
T. Izq. Los Mochis (1° Acceso)	201.97	3	2	9987	0.7	72.7	6.0	4.3	2.9	8.4	2.0	2.2	0.8	73.4	6.0	20.6	0.082	0.509	25.802172	-108.949090
T. C. Topolobampo - Choix	205.21																			

2 CARR : Durango - Villa Unión

CLAVE: 00083

RUTA: MEX-040

AÑO : 2012

LUGAR	ESTACION				CLASIFICACION VEHICULAR EN PORCIENTO										COORDENADAS					
	KM	TE	SC	TDPA	M	A	B	C2	C3	T3S2	T3S3	T3S2R4	OTROS	A	B	C	K'	D	LATITUD	LONGITUD
Durango	0.00	3	0	2312	0.1	64.0	4.2	10.7	6.2	9.4	4.1	0.4	0.9	64.1	4.2	31.7	0.097	0.502	23.995093	-104.733330
T. Der. Pino	22.86	3	0	1887	0.2	61.2	6.0	11.0	7.4	8.2	5.1	0.2	0.7	61.4	6.0	32.6	0.104	0.501	23.967460	-104.819799
T. Izq. Estación Navíos	58.42	3	0	1585	0.6	59.4	5.0	10.7	6.7	11.8	4.5	0.3	1.0	60.0	5.0	35.0	0.082	0.504	23.892110	-105.059465
Llano Grande	77.23	1	0	1760	0.4	61.0	4.4	10.9	6.5	11.2	4.5	0.3	0.8	61.4	4.4	34.2	0.089	0.500	23.866680	-105.199377
El Salto	99.76	3	0	2184	0.8	67.4	3.1	10.1	4.0	10.9	3.1	0.1	0.5	68.2	3.1	28.7	0.101	0.509	23.784290	-105.375677
La Ciudad	145.50	1	0	1381	0.5	55.6	4.0	10.3	5.5	18.3	4.6	0.3	0.9	56.1	4.0	39.9	0.076	0.512	23.731667	-105.667068

SINALOA

2 CARR: Durango - Villa Unión

CLAVE: 00083

RUTA: MEX-040

AÑO: 2012

LUGAR	ESTACION				CLASIFICACION VEHICULAR EN PORCIENTO														COORDENADAS	
	KM	TE	SC	TDPA	M	A	B	C2	C3	T3S2	T3S3	T3S2R4	OTROS	A	B	C	K'	D	LATITUD	LONGITUD
La Ciudad	145.50	3	0	1264	0.6	50.0	5.4	9.9	6.9	20.9	5.5	0.2	0.6	50.6	5.4	44.0	0.071	0.529	23.721805	-105.696180
Lim. Edos. Term. Dgo. Ppia. Sin.	198.50																			
T. C. Tepic - Mazatlán	294.40	1	0	3940	0.5	65.1	5.1	11.9	2.8	11.9	2.1	0.3	0.3	65.6	5.1	29.3	0.091	0.504	23.201908	-106.202537

3 CARR: Libramiento de Mazatlán

CLAVE: 25604

RUTA: MEX

AÑO: 2012

LUGAR	ESTACION				CLASIFICACION VEHICULAR EN PORCIENTO														COORDENADAS	
	KM	TE	SC	TDPA	M	A	B	C2	C3	T3S2	T3S3	T3S2R4	OTROS	A	B	C	K'	D	LATITUD	LONGITUD
T. C. Tepic - Mazatlán	0.00	3	1	20122	5.0	79.5	1.4	7.1	1.3	3.1	1.5	0.7	0.4	84.5	1.4	14.1	0.077	0.518	23.234252	-106.389592
T. C. Tepic - Mazatlán	0.00	3	2	21584	5.1	77.8	1.5	8.0	1.5	3.4	1.6	0.7	0.4	82.9	1.5	15.6	0.072	0.518	23.234255	-106.389595
T. C. Mazatlán - Culiacán	5.40	1	1	18010	4.5	78.0	1.8	7.3	1.5	4.0	1.6	0.7	0.6	82.5	1.8	15.7	0.079	0.533	23.260777	-106.410337
T. C. Mazatlán - Culiacán	5.40	1	2	17351	3.9	76.2	2.1	8.6	1.6	4.5	1.7	0.8	0.6	80.1	2.1	17.8	0.076	0.533	23.260777	-106.410342

4 CARR: Libramiento Sur de Culiacán

CLAVE: 25500

RUTA: MEX-015

AÑO: 2012

LUGAR	ESTACION				CLASIFICACION VEHICULAR EN PORCIENTO														COORDENADAS	
	KM	TE	SC	TDPA	M	A	B	C2	C3	T3S2	T3S3	T3S2R4	OTROS	A	B	C	K'	D	LATITUD	LONGITUD
T. C. Mazatlán - Culiacán	0.00	3	1	11719	1.3	83.0	2.9	4.9	2.0	3.4	1.4	0.4	0.7	84.3	2.9	12.8	0.078	0.526	24.752203	-107.363716
T. C. Mazatlán - Culiacán	0.00	3	2	10556	2.3	80.9	3.2	5.3	2.2	3.6	1.4	0.4	0.7	83.2	3.2	13.6	0.078	0.526	24.751575	-107.365038
T. C. Culiacán - El Dorado	8.90	1	1	11674	1.0	82.9	2.5	2.8	2.9	4.7	1.7	0.6	0.9	83.9	2.5	13.6	0.088	0.511	24.743040	-107.442692
T. C. Culiacán - El Dorado	8.90	1	2	11180	1.2	81.2	2.9	3.1	3.2	4.9	1.9	0.6	1.0	82.4	2.9	14.7	0.086	0.511	24.743038	-107.442685

5 CARR: Mazatlán - Culiacán

CLAVE: 25501

RUTA: MEX-015

AÑO: 2012

LUGAR	ESTACION				CLASIFICACION VEHICULAR EN PORCIENTO														COORDENADAS	
	KM	TE	SC	TDPA	M	A	B	C2	C3	T3S2	T3S3	T3S2R4	OTROS	A	B	C	K'	D	LATITUD	LONGITUD
Mazatlán	0.00																			
T. Der. Libramiento de Mazatlán	6.40	1	1	14408	3.4	82.8	1.4	9.4	0.7	1.2	0.9	0.1	0.1	86.2	1.4	12.4	0.086	0.502	23.260470	-106.417935
T. Der. Libramiento de Mazatlán	6.40	1	2	14530	3.7	81.1	1.6	10.3	0.7	1.4	1.0	0.1	0.1	84.8	1.6	13.6	0.106	0.502	23.260469	-106.417936
T. Der. La Noria	10.92	1	0	5171	1.4	78.1	2.6	5.5	2.3	7.5	1.9	0.4	0.3	79.5	2.6	17.9	0.092	0.511	23.344365	-106.414307
T. Der. La Noria	10.92	3	0	4264	2.1	76.2	2.6	5.1	2.7	7.6	2.8	0.4	0.5	78.3	2.6	19.1	0.085	0.504	23.354434	-106.414231
T. Izq. Playa Los Cerritos	11.08	3	0	3872	2.2	67.2	2.6	9.8	4.1	8.9	4.0	0.6	0.6	69.4	2.6	28.0	0.089	0.502	23.362364	-106.420040
T. Der. El Quelite	33.00	1	0	3428	1.4	63.9	2.6	10.3	4.5	11.4	4.3	0.7	0.9	65.3	2.6	32.1	0.085	0.505	23.530809	-106.503342
T. Der. El Quelite	33.00	3	0	2756	1.1	61.0	4.2	7.5	6.1	14.6	4.2	0.5	0.8	62.1	4.2	33.7	0.076	0.506	23.532524	-106.504838
X. C. Estación Dimas - San Ignacio	66.77	1	0	2800	1.3	58.0	4.3	9.1	4.6	15.5	5.9	0.6	0.7	59.3	4.3	36.4	0.077	0.504	23.786052	-106.609468

SINALOA

5 CARR: Mazatlán - Culiacán

CLAVE: 25501

RUTA: MEX-015

AÑO: 2012

LUGAR	ESTACION				CLASIFICACION VEHICULAR EN PORCIENTO													COORDENADAS		
	KM	TE	SC	TDPA	M	A	B	C2	C3	T3S2	T3S3	T3S2R4	OTROS	A	B	C	K'	D	LATITUD	LONGITUD
X. C. Estación Dimas - San Ignacio	66.77	3	0	3231	1.4	56.2	4.9	10.7	4.0	16.9	4.6	0.5	0.8	57.6	4.9	37.5	0.074	0.511	23.795289	-106.612521
T. Izq. Estación Dimas	73.96	3	0	3161	0.9	53.9	5.5	8.7	6.0	17.9	5.1	1.0	1.0	54.8	5.5	39.7	0.082	0.508	23.840524	-106.614068
T. Der. Elota	91.92	3	0	2748	1.4	54.0	5.6	8.0	5.7	17.5	6.1	0.8	0.9	55.4	5.6	39.0	0.079	0.508	23.964531	-106.722832
T. Izq. La Cruz	105.21	3	0	3544	1.7	60.3	5.3	7.4	4.3	16.5	3.4	0.5	0.6	62.0	5.3	32.7	0.080	0.521	24.058098	-106.798745
El Salado	175.24	1	0	4950	1.0	63.7	5.2	7.0	4.3	14.0	3.4	0.6	0.8	64.7	5.2	30.1	0.083	0.518	24.496279	-107.151246
El Salado	175.24	3	0	6880	0.6	69.6	4.1	7.6	3.3	10.5	3.0	0.4	0.9	70.2	4.1	25.7	0.081	0.516	24.514623	-107.166656
T. Izq. Libramiento de Culiacán	210.40	1	1	7021	0.6	71.5	4.2	7.9	3.5	6.4	3.4	1.6	0.9	72.1	4.2	23.7	0.088	0.517	24.746969	-107.353648
T. Izq. Libramiento de Culiacán	210.40	1	2	7518	0.8	68.7	4.9	8.6	3.8	6.6	3.7	1.9	1.0	69.5	4.9	25.6	0.093	0.517	24.746983	-107.353643
Culiacán	215.30																			

6 CARR: Pericos - Los Naranjos

CLAVE: 25598

RUTA: MEX-024

AÑO: 2012

LUGAR	ESTACION				CLASIFICACION VEHICULAR EN PORCIENTO													COORDENADAS		
	KM	TE	SC	TDPA	M	A	B	C2	C3	T3S2	T3S3	T3S2R4	OTROS	A	B	C	K'	D	LATITUD	LONGITUD
Pericos	0.00	3	0	2641	2.8	75.5	5.2	10.5	2.2	1.7	0.6	0.8	0.7	78.3	5.2	16.5	0.087	0.523	25.095492	-107.683868
Badiraguato	37.50	1	0	2037	3.6	76.9	4.8	12.2	1.0	1.3	0.1	0.0	0.1	80.5	4.8	14.7	0.097	0.508	25.347818	-107.559156
Naranjos	66.00																			

7 CARR: Tepic - Mazatlán

CLAVE: 00500

RUTA: MEX-015

AÑO: 2012

LUGAR	ESTACION				CLASIFICACION VEHICULAR EN PORCIENTO													COORDENADAS		
	KM	TE	SC	TDPA	M	A	B	C2	C3	T3S2	T3S3	T3S2R4	OTROS	A	B	C	K'	D	LATITUD	LONGITUD
Tepic (Baja)	0.00	3	1	9433	4.2	84.4	3.2	4.2	0.2	0.9	2.1	0.3	0.5	88.6	3.2	8.2	0.100	0.520	21.512222	-104.906550
Tepic (Alta)	0.00	3	1	9477	2.3	84.0	2.5	3.0	0.7	2.1	3.9	0.8	0.7	86.3	2.5	11.2	0.074	0.502	21.512238	-104.906554
Tepic (Baja)	0.00	3	2	9693	4.8	83.1	3.5	4.4	0.2	1.0	2.2	0.3	0.5	87.9	3.5	8.6	0.069	0.520	21.512219	-104.906550
Tepic (Alta)	0.00	3	2	9420	2.2	82.6	3.0	3.4	0.8	2.1	4.3	0.9	0.7	84.8	3.0	12.2	0.068	0.502	21.512230	-104.906549
T. Izq. Libramiento de Tepic	2.56	1	1	14710	3.1	88.0	0.3	6.4	0.3	0.7	0.8	0.1	0.3	91.1	0.3	8.6	0.076	0.516	21.520181	-104.919113
T. Izq. Libramiento de Tepic	2.56	1	2	15703	3.2	86.8	0.3	7.2	0.3	0.8	1.0	0.1	0.3	90.0	0.3	9.7	0.076	0.516	21.520177	-104.919119
T. Izq. Aut. Tepic - Ent. San Blas (Cuota)	3.70	3	0	7948	0.5	71.6	1.9	7.3	5.6	8.3	2.9	0.7	1.2	72.1	1.9	26.0	0.081	0.544	21.536439	-104.932474
Los Otates	19.80	3	0	3881	0.7	80.0	1.2	2.1	5.6	6.5	2.8	0.7	0.4	80.7	1.2	18.1	0.086	0.526	21.636417	-104.969727
T. Izq. Jumatán	28.52	1	0	4296	0.9	67.2	2.9	6.8	7.1	8.1	5.0	1.0	1.0	68.1	2.9	29.0	0.082	0.526	21.669778	-105.023780
T. Izq. Jumatán	28.52	3	1	6324	0.9	69.5	3.2	7.9	4.6	8.7	2.8	1.4	1.0	70.4	3.2	26.4	0.099	0.503	21.668134	-105.029964
T. Izq. Jumatán	28.52	3	2	6250	0.9	66.2	3.5	8.7	4.8	9.9	3.2	1.6	1.2	67.1	3.5	29.4	0.089	0.503	21.668134	-105.029967
T. Izq. San Blas	33.54	1	1	6606	0.6	77.5	3.2	5.0	3.1	6.7	1.8	1.5	0.6	78.1	3.2	18.7	0.101	0.500	21.682477	-105.045313
T. Izq. San Blas	33.54	1	2	6597	0.6	75.6	3.6	5.3	3.6	6.9	2.0	1.7	0.7	76.2	3.6	20.2	0.090	0.500	21.682472	-105.045313

SINALOA

8 CARR: Durango - Mazatlán (Cuota)

CLAVE: 00083

RUTA: MEX-040D

AÑO: 2012

LUGAR	ESTACION				CLASIFICACION VEHICULAR EN PORCIENTO													COORDENADAS		
	KM	TE	SC	TDPA	M	A	B	C2	C3	T3S2	T3S3	T3S2R4	OTROS	A	B	C	K'	D	LATITUD	LONGITUD
Concordia	188.35	3	0	942	0.4	80.5	0.7	9.1	4.0	4.1	0.9	0.2	0.1	80.9	0.7	18.4	0.117	0.528	23.255045	-106.053712
Villa Unión	208.35	1	0	890	0.3	79.0	1.0	10.8	3.6	4.0	0.9	0.3	0.1	79.3	1.0	19.7	0.136	0.519	23.198537	-106.169877

9 CARR: Mazatlán - Culiacán (Cuota)

CLAVE: 25045

RUTA: MEX-015D

AÑO: 2012

LUGAR	ESTACION				CLASIFICACION VEHICULAR EN PORCIENTO													COORDENADAS		
	KM	TE	SC	TDPA	M	A	B	C2	C3	T3S2	T3S3	T3S2R4	OTROS	A	B	C	K'	D	LATITUD	LONGITUD
Ent. Venadillo	0.00	3	1	2940	0.3	54.7	7.5	10.1	2.7	15.8	3.0	5.0	0.9	55.0	7.5	37.5	0.079	0.514	23.298201	-106.415051
Ent. Venadillo	0.00	3	2	3109	0.4	51.0	9.0	10.4	3.1	16.6	3.2	5.5	0.8	51.4	9.0	39.6	0.086	0.514	23.298202	-106.415050
Caseta de Cobro Mármol	25.15	3	1	2595	0.6	51.2	9.1	10.1	2.7	16.6	3.1	5.7	0.9	51.8	9.1	39.1	0.085	0.504	23.476773	-106.576228
Caseta de Cobro Mármol	25.15	3	2	2633	0.3	47.0	9.7	11.7	3.0	17.6	3.5	6.1	1.1	47.3	9.7	43.0	0.091	0.504	23.476769	-106.576230
Caseta de Cobro Costa Rica	187.80	3	1	3139	0.4	55.1	9.5	4.6	2.7	16.6	3.1	7.2	0.8	55.5	9.5	35.0	0.102	0.501	24.576958	-107.435750
Caseta de Cobro Costa Rica	187.80	3	2	3154	0.5	49.9	10.0	4.9	3.0	19.2	3.5	8.1	0.9	50.4	10.0	39.6	0.088	0.501	24.576956	-107.435752
T. C. Culiacán - El Dorado	190.26																			

10 CARR: Tepic - Villa Unión (cuota)

CLAVE: 00500

RUTA: MEX-015D

AÑO: 2012

LUGAR	ESTACION				CLASIFICACION VEHICULAR EN PORCIENTO													COORDENADAS		
	KM	TE	SC	TDPA	M	A	B	C2	C3	T3S2	T3S3	T3S2R4	OTROS	A	B	C	K'	D	LATITUD	LONGITUD
Tepic	0.00																			
Caseta de Cobro El Pichón	4.70	1	1	4957	0.2	70.0	6.3	8.7	2.7	7.0	1.5	2.7	0.9	70.2	6.3	23.5	0.098	0.508	21.562996	-104.974159
Caseta de Cobro El Pichón	4.70	1	2	4810	0.3	66.2	7.2	9.8	3.0	7.9	1.6	3.1	0.9	66.5	7.2	26.3	0.098	0.508	21.562995	-104.974158
Caseta de Cobro El Pichón	4.70	2	1	4702	0.2	70.9	7.9	3.9	3.9	7.8	1.3	3.5	0.6	71.1	7.9	21.0	0.098	0.500	21.571682	-104.987528
Caseta de Cobro El Pichón	4.70	2	2	4702	0.2	70.9	7.9	3.9	3.9	7.8	1.3	3.5	0.6	71.1	7.9	21.0	0.098	0.500	21.571682	-104.987528
T. C. Tepic - Mazatlán	21.00	1	1	4729	0.4	66.4	7.4	9.5	2.7	8.1	1.4	3.3	0.8	66.8	7.4	25.8	0.093	0.513	21.648014	-105.024511
T. C. Tepic - Mazatlán	21.00	1	2	4714	0.6	62.7	8.4	10.4	3.1	8.7	1.6	3.6	0.9	63.3	8.4	28.3	0.102	0.513	21.648012	-105.024514
T. C. Tepic - Mazatlán	24.50	3	0	3992	0.4	55.4	9.2	9.6	4.9	11.3	3.3	5.1	0.8	55.8	9.2	35.0	0.101	0.502	21.714687	-105.060554
Est. Ruíz	54.90	1	0	3099	0.3	46.7	10.3	10.5	5.4	15.1	3.4	7.5	0.8	47.0	10.3	42.7	0.067	0.501	21.947889	-105.112714
Est. Ruíz	54.90	3	0	3328	0.4	45.5	11.9	9.5	6.6	14.0	3.5	7.6	1.0	45.9	11.9	42.2	0.071	0.508	21.961031	-105.122907
Rosa morada	73.50	1	0	3269	0.3	43.4	11.4	9.6	5.3	17.0	3.7	8.4	0.9	43.7	11.4	44.9	0.071	0.506	22.084070	-105.210220
Rosa morada	73.50	3	0	2839	0.4	49.5	10.9	7.7	3.8	16.0	3.1	7.7	0.9	49.9	10.9	39.2	0.068	0.529	22.092460	-105.220849
Acaponeta	120.20	1	0	2578	0.3	43.4	13.6	8.9	5.0	16.2	2.6	9.0	1.0	43.7	13.6	42.7	0.076	0.503	22.447583	-105.418599
Caseta de Cobro Acaponeta	120.20	2	0	226	0.4	55.1	13.1	5.4	8.3	8.9	3.0	5.2	0.6	55.5	13.1	31.4	0.081	0.500	22.454352	-105.419106
Acaponeta	120.20	3	0	2436	0.4	42.2	14.6	7.9	4.8	16.6	4.0	8.6	0.9	42.6	14.6	42.8	0.081	0.506	22.456876	-105.428460
Lim. Edos. Term. Nay. Ppia. Sin.	132.80																			

SINALOA

10 CARR : Tepic - Villa Unión (cuota)

CLAVE: 00500

RUTA: MEX-015D

AÑO : 2012

LUGAR	ESTACION				CLASIFICACION VEHICULAR EN PORCIENTO														COORDENADAS	
	KM	TE	SC	TDPA	M	A	B	C2	C3	T3S2	T3S3	T3S2R4	OTROS	A	B	C	K'	D	LATITUD	LONGITUD
Escuinapa de Hidalgo	208.60	1	1	1651	0.3	44.9	8.1	8.2	4.6	21.2	3.1	8.9	0.7	45.2	8.1	46.7	0.078	0.504	22.853037	-105.748645
Escuinapa de Hidalgo	208.60	1	2	1622	0.4	39.2	8.7	8.5	5.0	24.2	3.3	9.9	0.8	39.6	8.7	51.7	0.073	0.504	22.853036	-105.748651
Escuinapa de Hidalgo	208.60	3	0	3250	0.6	42.3	10.6	6.0	4.0	22.4	3.0	10.2	0.9	42.9	10.6	46.5	0.078	0.508	22.859557	-105.755065
Rosario	220.68	1	0	3000	0.6	49.2	9.2	6.6	3.3	19.1	3.0	8.1	0.9	49.8	9.2	41.0	0.073	0.511	22.979589	-105.871915
Caseta de Cobro Rosario	220.68	2	0	3473	0.3	42.8	11.3	3.8	5.0	22.7	3.0	10.1	1.0	43.1	11.3	45.6	0.081	0.500	22.984689	-105.877932
Rosario	220.68	3	0	3455	0.5	46.3	10.1	9.2	2.7	19.2	3.0	8.2	0.8	46.8	10.1	43.1	0.071	0.503	22.991092	-105.885510
Villa Unión	240.90	1	0	3246	0.6	46.4	10.3	9.0	3.5	18.3	3.2	7.7	1.0	47.0	10.3	42.7	0.077	0.508	23.185990	-106.174228

11 CARR : Est. Don - Nogales (Cuota)

CLAVE: 26444

RUTA: MEX-015D-015

AÑO : 2012

LUGAR	ESTACION				CLASIFICACION VEHICULAR EN PORCIENTO														COORDENADAS	
	KM	TE	SC	TDPA	M	A	B	C2	C3	T3S2	T3S3	T3S2R4	OTROS	A	B	C	K'	D	LATITUD	LONGITUD
T. C. Topolobampo - Choix	0.00	3	1	7711	0.5	74.4	4.1	3.7	2.9	9.3	1.6	2.8	0.7	74.9	4.1	21.0	0.098	0.508	25.833727	-108.973391
T. C. Topolobampo - Choix	0.00	3	2	7966	0.6	71.7	4.6	4.5	3.1	9.8	1.9	3.1	0.7	72.3	4.6	23.1	0.077	0.508	25.833727	-108.973391
T. Izq. Ahome	17.13	3	1	7141	0.6	75.0	4.0	3.7	1.9	8.9	2.3	2.9	0.7	75.6	4.0	20.4	0.080	0.523	25.943565	-109.052746
T. Izq. Ahome	17.13	3	2	7142	0.8	73.0	4.2	4.2	2.1	9.0	2.5	3.4	0.8	73.8	4.2	22.0	0.087	0.523	25.943565	-109.052746
T. Izq. Coahuilbampo	19.00	1	1	6561	0.4	72.0	5.1	3.9	2.4	8.3	2.4	4.6	0.9	72.4	5.1	22.5	0.078	0.505	25.958010	-109.053637
T. Izq. Coahuilbampo	19.00	1	2	6429	0.3	68.2	5.7	4.5	2.9	10.0	2.7	4.8	0.9	68.5	5.7	25.8	0.086	0.505	25.958010	-109.053637
T. Izq. Coahuilbampo	19.00	3	1	5832	0.5	70.8	5.0	3.8	2.9	8.5	2.6	5.1	0.8	71.3	5.0	23.7	0.091	0.502	25.961649	-109.052854
T. Izq. Coahuilbampo	19.00	3	2	5886	0.6	67.2	5.4	4.2	2.9	10.0	2.9	5.9	0.9	67.8	5.4	26.8	0.087	0.502	25.961649	-109.052854
Poblado Chico	50.00	3	1	4689	0.4	72.2	4.8	4.0	1.6	8.3	3.8	4.0	0.9	72.6	4.8	22.6	0.085	0.503	26.230304	-109.053711
Poblado Chico	50.00	3	2	4743	0.6	69.0	5.2	4.6	1.8	9.5	3.9	4.5	0.9	69.6	5.2	25.2	0.086	0.503	26.230304	-109.053711
T. Der. El Fuerte	54.80	1	1	4708	0.7	71.2	5.5	4.0	1.8	8.6	3.0	4.5	0.7	71.9	5.5	22.6	0.091	0.515	26.261753	-109.045029
T. Der. El Fuerte	54.80	1	2	4438	0.7	69.3	5.7	4.1	2.0	9.1	3.4	4.9	0.8	70.0	5.7	24.3	0.090	0.515	26.261753	-109.045029
T. Der. El Fuerte	54.80	3	1	5732	0.8	71.1	5.1	4.2	2.3	9.5	2.3	4.0	0.7	71.9	5.1	23.0	0.078	0.519	26.275978	-109.040692
T. Der. El Fuerte	54.80	3	2	5574	0.9	69.1	5.4	4.4	2.6	10.1	2.3	4.3	0.9	70.0	5.4	24.6	0.080	0.519	26.275978	-109.040691
Lim. Edos. Term. Sin. Ppia. Son.	69.80																			
T. Izq. Huatabampo	128.50	1	1	3114	0.7	68.0	5.3	4.1	4.0	9.0	3.0	5.1	0.8	68.7	5.3	26.0	0.081	0.508	26.836771	-109.365993
T. Izq. Huatabampo	128.50	1	2	3017	0.9	63.2	5.9	4.8	4.8	10.4	3.2	5.8	1.0	64.1	5.9	30.0	0.086	0.508	26.836773	-109.365991
Caseta de Cobro Estacion Don (La Jaula)	129.90	2	1	2428	0.1	44.8	9.4	3.9	4.2	25.0	2.6	9.0	1.0	44.9	9.4	45.7	0.086	0.500	26.849800	-109.373287
Caseta de Cobro Estacion Don (La Jaula)	129.90	2	2	2427	0.1	44.8	9.4	3.9	4.2	25.0	2.6	9.0	1.0	44.9	9.4	45.7	0.086	0.500	26.849800	-109.373287
Navojoa	155.00	1	1	6057	0.8	73.0	4.1	4.6	2.3	8.6	2.0	3.8	0.8	73.8	4.1	22.1	0.095	0.536	27.035688	-109.435758
Navojoa	155.00	1	2	6350	0.4	70.4	5.2	4.9	2.3	9.8	2.4	3.7	0.9	70.8	5.2	24.0	0.125	0.536	27.035556	-109.435750
Navojoa	155.00	3	1	7568	0.6	74.8	4.8	3.9	1.5	7.5	2.2	3.9	0.8	75.4	4.8	19.8	0.085	0.502	27.105102	-109.447912
Navojoa	155.00	3	2	7517	0.8	73.0	5.1	4.5	1.5	8.4	2.3	3.6	0.8	73.8	5.1	21.1	0.086	0.502	27.105112	-109.447919

SINALOA

11 CARR: Est. Don - Nogales (Cuota)

CLAVE: 26444

RUTA: MEX-015D-015

AÑO: 2012

LUGAR	ESTACION				CLASIFICACION VEHICULAR EN PORCIENTO														COORDENADAS	
	KM	TE	SC	TDPA	M	A	B	C2	C3	T3S2	T3S3	T3S2R4	OTROS	A	B	C	K'	D	LATITUD	LONGITUD
T. Izq. Villa Juárez	167.25	3	1	5465	0.7	72.3	4.5	4.4	2.5	9.1	2.3	3.5	0.7	73.0	4.5	22.5	0.083	0.524	27.155761	-109.507905
T. Izq. Villa Juárez	167.25	3	2	5465	0.9	70.0	4.9	4.7	2.5	10.0	2.4	3.8	0.8	70.9	4.9	24.2	0.081	0.524	27.155766	-109.507874
Caseta de Cobro Fundición	195.80	2	1	3063	0.1	53.2	8.3	4.2	3.4	20.3	1.9	7.8	0.8	53.3	8.3	38.4	0.086	0.500	27.320379	-109.719785
Caseta de Cobro Fundición	195.80	2	2	3062	0.1	53.2	8.3	4.2	3.4	20.3	1.9	7.8	0.8	53.3	8.3	38.4	0.086	0.500	27.320379	-109.719785
T. Der. Fundición	196.30	1	1	4267	0.4	70.0	4.9	4.6	3.1	9.2	2.3	4.6	0.9	70.4	4.9	24.7	0.084	0.510	27.326596	-109.727510
T. Der. Fundición	196.30	1	2	4435	0.6	66.5	5.8	5.2	3.2	10.2	2.6	4.9	1.0	67.1	5.8	27.1	0.079	0.510	27.326595	-109.727510
Cd. Obregón	222.70																			
Cd. Obregón	222.70	1	1	12001	0.9	71.9	4.5	4.7	2.5	8.6	2.1	4.1	0.7	72.8	4.5	22.7	0.078	0.501	27.462402	-109.902926
Cd. Obregón	222.70	1	2	12050	0.8	70.0	5.0	5.1	2.5	9.3	2.3	4.3	0.7	70.8	5.0	24.2	0.087	0.501	27.462415	-109.902922
Esperanza	230.66	1	1	9516	1.0	66.1	6.8	9.4	1.5	6.3	3.3	4.7	0.9	67.1	6.8	26.1	0.076	0.525	27.563838	-109.927120
Esperanza	230.66	1	2	10512	1.0	65.8	6.4	8.5	1.7	7.1	3.8	4.8	0.9	66.8	6.4	26.8	0.072	0.525	27.563839	-109.927118
Esperanza	230.66	3	1	4681	1.0	61.6	7.8	9.9	4.4	7.0	3.2	4.2	0.9	62.6	7.8	29.6	0.067	0.507	27.597069	-109.931975
Esperanza	230.66	3	2	4794	1.2	60.5	8.8	8.9	4.4	7.6	3.5	4.3	0.8	61.7	8.8	29.5	0.073	0.507	27.597039	-109.931950
Caseta de Cobro Esperanza	233.40	2	1	2553	0.1	45.8	10.7	3.8	3.6	23.7	2.3	9.2	0.8	45.9	10.7	43.4	0.086	0.500	27.603715	-109.939118
Caseta de Cobro Esperanza	233.40	2	2	2552	0.1	45.8	10.7	3.8	3.6	23.7	2.3	9.2	0.8	45.9	10.7	43.4	0.086	0.500	27.603715	-109.939118
T. Der. Estación Corral	236.50	1	1	3755	0.4	61.0	8.5	9.7	3.4	8.7	2.6	4.9	0.8	61.4	8.5	30.1	0.076	0.515	27.616082	-109.951826
T. Der. Estación Corral	236.50	1	2	3988	0.5	59.5	9.9	8.7	3.8	9.5	3.1	4.1	0.9	60.0	9.9	30.1	0.067	0.515	27.616083	-109.951826
T. Der. Estación Corral	236.50	3	1	3338	0.5	60.0	8.5	8.9	3.2	10.8	2.6	4.6	0.9	60.5	8.5	31.0	0.079	0.535	27.618350	-109.963617
T. Der. Estación Corral	236.50	3	2	3846	0.7	56.7	9.5	8.7	3.7	11.5	3.1	5.1	1.0	57.4	9.5	33.1	0.089	0.535	27.618350	-109.963617
T. Izq. BÁCUM	248.16	1	1	2992	0.6	59.9	7.8	8.5	3.1	11.4	2.5	5.3	0.9	60.5	7.8	31.7	0.075	0.516	27.598355	-110.079104
T. Izq. BÁCUM	248.16	1	2	3190	0.4	59.0	6.4	9.5	3.3	11.9	2.8	5.7	1.0	59.4	6.4	34.2	0.089	0.516	27.598355	-110.079104
T. Izq. BÁCUM	248.16	3	1	4695	0.5	63.0	6.3	8.9	2.6	10.3	2.7	5.1	0.6	63.5	6.3	30.2	0.077	0.516	27.597381	-110.084500
T. Izq. BÁCUM	248.16	3	2	5013	0.6	62.0	6.5	8.7	2.7	11.0	2.5	5.3	0.7	62.6	6.5	30.9	0.091	0.516	27.597381	-110.084500
VÍCAM	269.98	3	1	5116	0.6	66.1	6.1	8.3	2.0	9.8	2.0	4.2	0.9	66.7	6.1	27.2	0.079	0.511	27.645798	-110.303819
VÍCAM	269.98	3	2	5338	0.8	62.2	6.7	9.7	2.3	10.8	2.2	4.4	0.9	63.0	6.7	30.3	0.083	0.511	27.645798	-110.303819
T. Izq. PÓTAM	280.10	1	1	4536	0.5	67.2	6.1	8.8	2.2	7.9	2.0	4.4	0.9	67.7	6.1	26.2	0.082	0.515	27.697576	-110.366275
T. Izq. PÓTAM	280.10	1	2	4821	0.7	64.0	6.9	9.9	2.5	8.2	2.2	4.6	1.0	64.7	6.9	28.4	0.088	0.515	27.697576	-110.366275
T. Izq. PÓTAM	280.10	3	1	4333	0.6	63.0	7.5	8.8	2.9	9.3	3.0	4.1	0.8	63.6	7.5	28.9	0.074	0.507	27.704328	-110.370829
T. Izq. PÓTAM	280.10	3	2	4464	0.7	62.3	6.3	9.1	3.2	9.8	3.2	4.5	0.9	63.0	6.3	30.7	0.077	0.507	27.704320	-110.370834
T. Der. Libramiento de Guaymas	330.50	1	1	5935	0.5	66.6	5.2	9.3	2.1	8.7	2.5	4.3	0.8	67.1	5.2	27.7	0.082	0.503	27.951294	-110.740857
T. Der. Libramiento de Guaymas	330.50	1	2	5996	0.6	65.3	5.2	9.8	2.3	9.0	2.8	4.2	0.8	65.9	5.2	28.9	0.089	0.503	27.951289	-110.740861
T. Der. Libramiento de Guaymas	330.50	3	0	5906	0.4	74.0	5.6	9.2	1.9	6.2	1.2	0.6	0.9	74.4	5.6	20.0	0.082	0.504	27.952349	-110.771598
Empalme	337.72	1	0	6137	0.6	74.7	5.7	8.7	1.8	6.5	1.0	0.7	0.3	75.3	5.7	19.0	0.083	0.511	27.953073	-110.797186
Empalme	337.72	3	1	8211	0.7	79.6	4.3	6.5	2.3	5.0	1.0	0.2	0.4	80.3	4.3	15.4	0.091	0.505	27.955529	-110.831407
Empalme	337.72	3	2	8381	0.6	78.3	4.8	7.2	2.1	5.3	1.1	0.2	0.4	78.9	4.8	16.3	0.077	0.505	27.955529	-110.831407

SINALOA

11 CARR: Est. Don - Nogales (Cuota)

CLAVE: 26444

RUTA: MEX-015D-015

AÑO: 2012

LUGAR	ESTACION				CLASIFICACION VEHICULAR EN PORCIENTO														COORDENADAS	
	KM	TE	SC	TDPA	M	A	B	C2	C3	T3S2	T3S3	T3S2R4	OTROS	A	B	C	K'	D	LATITUD	LONGITUD
T. Izq. San Carlos	355.70	1	1	6989	0.4	77.9	4.3	8.4	1.3	5.4	1.2	0.8	0.3	78.3	4.3	17.4	0.080	0.511	27.983139	-110.940043
T. Izq. San Carlos	355.70	1	2	6627	0.6	75.5	4.5	9.2	1.4	6.3	1.3	0.9	0.3	76.1	4.5	19.4	0.096	0.511	27.983146	-110.940058
T. Izq. San Carlos	355.70	3	1	3241	0.8	73.7	5.2	7.6	2.3	6.5	2.1	1.4	0.4	74.5	5.2	20.3	0.130	0.511	27.993247	-110.939863
T. Izq. San Carlos	355.70	3	2	3383	0.9	72.3	5.1	7.5	2.5	7.6	2.2	1.5	0.4	73.2	5.1	21.7	0.112	0.511	27.993245	-110.939859
T. Izq. Bahía Kino	394.00	1	1	5245	0.6	67.2	5.3	6.8	2.1	10.3	2.5	4.2	1.0	67.8	5.3	26.9	0.116	0.507	28.315973	-111.042176
T. Izq. Bahía Kino	394.00	1	2	5388	0.5	66.0	5.3	6.9	2.2	11.0	2.7	4.4	1.0	66.5	5.3	28.2	0.094	0.507	28.315973	-111.042176
T. Izq. Bahía Kino	394.00	3	1	4657	0.4	69.4	5.5	5.6	2.0	10.1	2.0	4.3	0.7	69.8	5.5	24.7	0.118	0.507	28.322140	-111.042206
T. Izq. Bahía Kino	394.00	3	2	4795	0.5	68.0	5.8	5.4	2.1	10.2	2.2	5.0	0.8	68.5	5.8	25.7	0.095	0.507	28.322133	-111.042200
Hermosillo	473.70	1	1	6185	0.7	68.5	5.7	4.6	2.4	11.5	2.3	3.5	0.8	69.2	5.7	25.1	0.116	0.518	29.004361	-110.966894
Hermosillo	473.70	1	2	6320	0.9	68.6	5.3	5.6	2.7	9.6	2.6	3.7	1.0	69.5	5.3	25.2	0.096	0.518	29.004364	-110.966890
Hermosillo	473.70	3	1	14788	0.5	73.0	4.7	9.7	1.6	6.7	1.6	1.4	0.8	73.5	4.7	21.8	0.088	0.504	29.113624	-110.912109
Hermosillo	473.70	3	2	15002	0.6	70.2	5.1	10.9	1.8	7.3	1.7	1.5	0.9	70.8	5.1	24.1	0.081	0.504	29.113625	-110.912109
T. Der. Ures	482.30	1	1	11549	0.8	68.9	5.3	10.2	2.1	8.3	1.6	2.0	0.8	69.7	5.3	25.0	0.086	0.512	29.158323	-110.909446
T. Der. Ures	482.30	1	2	12129	0.7	67.5	5.0	10.7	2.1	9.2	1.7	2.1	1.0	68.2	5.0	26.8	0.081	0.512	29.158323	-110.909446
T. Der. Ures	482.30	3	1	7391	0.6	69.7	5.6	9.8	1.7	8.5	1.5	2.0	0.6	70.3	5.6	24.1	0.084	0.507	29.178058	-110.919160
T. Der. Ures	482.30	3	2	7195	0.7	66.7	6.1	10.9	2.0	9.2	1.6	2.1	0.7	67.4	6.1	26.5	0.088	0.507	29.178086	-110.919177
Caseta de Cobro Hermosillo	488.90	2	1	4601	0.1	64.9	5.8	3.3	1.9	15.7	1.8	5.9	0.6	65.0	5.8	29.2	0.086	0.500	29.220739	-110.930200
Caseta de Cobro Hermosillo	488.90	2	2	4600	0.1	64.9	5.8	3.3	1.9	15.7	1.8	5.9	0.6	65.0	5.8	29.2	0.086	0.500	29.220739	-110.930200
T. Der. Pesqueira	506.09	3	1	5196	0.4	58.0	5.0	9.5	1.6	18.7	2.5	3.8	0.5	58.4	5.0	36.6	0.074	0.519	29.375781	-110.973290
T. Der. Pesqueira	506.09	3	2	5614	0.3	53.8	5.7	10.3	1.6	20.8	2.6	4.3	0.6	54.1	5.7	40.2	0.094	0.519	29.375750	-110.973294
T. Der. Carbó	542.60	1	1	4459	0.4	59.0	4.8	8.1	1.8	18.7	2.6	4.0	0.6	59.4	4.8	35.8	0.076	0.514	29.683626	-111.042188
T. Der. Carbó	542.60	1	2	4722	0.5	52.7	5.3	9.5	1.9	21.7	2.9	4.8	0.7	53.2	5.3	41.5	0.085	0.514	29.683626	-111.042188
T. Der. Carbó	542.60	3	1	4805	0.4	56.6	4.9	8.6	1.6	20.4	2.5	4.2	0.8	57.0	4.9	38.1	0.074	0.529	29.691754	-111.043947
T. Der. Carbó	542.60	3	2	5399	0.3	54.2	5.2	9.4	1.7	20.8	2.8	4.7	0.9	54.5	5.2	40.3	0.103	0.529	29.691754	-111.043946
T. Izq. Benjamín Hill	599.10	1	1	4952	0.9	56.0	5.3	10.5	2.1	17.7	2.9	3.8	0.8	56.9	5.3	37.8	0.078	0.527	30.167965	-111.097157
T. Izq. Benjamín Hill	599.10	1	2	5526	0.7	52.0	5.8	11.8	2.1	19.5	3.2	4.0	0.9	52.7	5.8	41.5	0.105	0.527	30.167967	-111.097155
T. Izq. Benjamín Hill	599.10	3	1	4845	0.5	57.3	4.7	11.0	1.8	17.4	2.5	4.1	0.7	57.8	4.7	37.5	0.082	0.529	30.176395	-111.097300
T. Izq. Benjamín Hill	599.10	3	2	5450	0.6	53.7	5.2	11.0	2.0	19.5	2.7	4.6	0.7	54.3	5.2	40.5	0.108	0.529	30.176395	-111.097299
Santa Ana	640.97	1	1	5666	0.5	65.8	4.2	7.7	1.3	14.7	2.1	3.1	0.6	66.3	4.2	29.5	0.077	0.522	30.527624	-111.114770
Santa Ana	640.97	1	2	6199	0.4	61.9	4.5	8.7	1.4	16.6	2.2	3.6	0.7	62.3	4.5	33.2	0.099	0.522	30.527631	-111.114761
Santa Ana	640.97	3	1	5755	1.0	69.6	2.6	10.1	1.2	10.7	1.3	2.8	0.7	70.6	2.6	26.8	0.071	0.525	30.549202	-111.109168
Santa Ana	640.97	3	2	6366	0.9	68.0	2.8	11.2	1.4	10.7	1.5	2.6	0.9	68.9	2.8	28.3	0.103	0.525	30.549197	-111.109174
Magdalena de Kino	656.40	1	1	5539	0.7	65.1	3.0	10.2	1.0	14.3	1.9	3.2	0.6	65.8	3.0	31.2	0.072	0.521	30.618625	-110.995282
Magdalena de Kino	656.40	1	2	6032	0.4	62.7	3.2	10.6	1.1	16.0	2.1	3.3	0.6	63.1	3.2	33.7	0.107	0.521	30.618599	-110.995335
Magdalena de Kino	656.40	3	1	3352	0.5	77.0	4.9	9.8	0.7	5.8	0.4	0.5	0.4	77.5	4.9	17.6	0.078	0.508	30.669381	-110.910925

SINALOA

11 CARR: Est. Don - Nogales (Cuota)

CLAVE: 26444

RUTA: MEX-015D-015

AÑO: 2012

LUGAR	ESTACION				CLASIFICACION VEHICULAR EN PORCIENTO														COORDENADAS	
	KM	TE	SC	TDPA	M	A	B	C2	C3	T3S2	T3S3	T3S2R4	OTROS	A	B	C	K'	D	LATITUD	LONGITUD
Magdalena de Kino	656.40	3	2	3464	0.6	74.9	5.6	10.5	0.9	6.1	0.5	0.5	0.4	75.5	5.6	18.9	0.097	0.508	30.651312	-110.942012
Imuris	682.70	1	1	6093	0.8	70.0	3.2	9.0	0.9	10.5	2.6	2.2	0.8	70.8	3.2	26.0	0.076	0.505	30.775588	-110.857356
Imuris	682.70	1	2	6212	0.7	67.7	3.5	10.4	1.1	10.7	2.6	2.5	0.8	68.4	3.5	28.1	0.076	0.505	30.775588	-110.857356
T. Der. Agua Prieta	683.20	3	1	5174	0.8	76.1	3.3	5.9	1.0	8.7	1.6	1.9	0.7	76.9	3.3	19.8	0.082	0.513	30.792558	-110.850462
T. Der. Agua Prieta	683.20	3	2	5202	0.9	73.4	3.6	6.7	1.0	9.8	1.8	2.0	0.8	74.3	3.6	22.1	0.094	0.513	30.792568	-110.850467
T. Izq. Sáric	729.60	1	1	8024	0.5	78.2	3.3	6.8	1.6	7.0	0.9	1.0	0.7	78.7	3.3	18.0	0.082	0.506	31.176164	-110.967165
T. Izq. Sáric	729.60	1	2	8224	0.4	75.6	3.8	7.8	1.8	7.9	0.9	1.1	0.7	76.0	3.8	20.2	0.100	0.506	31.176165	-110.967164
T. Izq. Sáric	729.60	3	1	7556	0.5	74.8	4.2	8.4	2.7	7.2	0.8	0.6	0.8	75.3	4.2	20.5	0.075	0.513	31.195536	-110.973446
T. Izq. Sáric	729.60	3	2	7970	0.5	72.3	4.8	9.4	2.8	7.7	1.0	0.7	0.8	72.8	4.8	22.4	0.092	0.513	31.195536	-110.973446
T. Izq. Libramiento de Nogales (Cuota)	734.70	3	1	8605	0.5	81.7	3.9	6.3	2.6	4.5	0.2	0.2	0.1	82.2	3.9	13.9	0.084	0.506	31.237105	-110.964312
T. Izq. Libramiento de Nogales (Cuota)	734.70	3	2	8829	0.5	79.4	4.6	6.9	2.8	5.3	0.2	0.2	0.1	79.9	4.6	15.5	0.092	0.506	31.237103	-110.964320
T. Izq. Periférico Luis Donald Colosio	740.70	1	1	26244	0.7	86.6	2.1	5.3	0.7	1.6	2.1	0.3	0.6	87.3	2.1	10.6	0.077	0.511	31.274731	-110.941862
T. Izq. Periférico Luis Donald Colosio	740.70	1	2	27380	0.6	85.5	2.5	5.8	0.7	1.8	2.1	0.3	0.7	86.1	2.5	11.4	0.069	0.511	31.274724	-110.941870
Nogales	743.70	1	1	15755	0.7	87.9	3.1	6.1	0.5	0.8	0.6	0.1	0.2	88.6	3.1	8.3	0.089	0.508	31.281496	-110.939321
Nogales	743.70	1	2	16292	0.7	87.0	3.4	6.5	0.6	0.9	0.6	0.1	0.2	87.7	3.4	8.9	0.074	0.508	31.281496	-110.939325

12 CARR: Carrizal - Campo Anibal

CLAVE: 25585

RUTA: SIN-019

AÑO: 2012

LUGAR	ESTACION				CLASIFICACION VEHICULAR EN PORCIENTO														COORDENADAS	
	KM	TE	SC	TDPA	M	A	B	C2	C3	T3S2	T3S3	T3S2R4	OTROS	A	B	C	K'	D	LATITUD	LONGITUD
T. C. Mazatlán - Culiacán	0.00	3	0	1837	5.3	81.0	1.7	6.8	1.9	2.1	0.4	0.5	0.3	86.3	1.7	12.0	0.098	0.507	24.635943	-107.273248
X. C. Culiacán - El Dorado	29.20	1	0	9035	2.5	85.0	1.6	6.8	2.0	0.9	0.5	0.2	0.5	87.5	1.6	10.9	0.078	0.525	24.590284	-107.441271
X. C. Culiacán - El Dorado	29.20	3	0	1775	3.5	78.6	1.6	6.1	5.5	3.1	1.1	0.3	0.2	82.1	1.6	16.3	0.101	0.501	24.599380	-107.464278
T. C. San Pedro - Campo Anibal	32.00	1	0	7749	2.1	81.8	1.8	6.0	3.7	2.9	1.0	0.4	0.3	83.9	1.8	14.3	0.082	0.506	24.590268	-107.541783

13 CARR: Culiacán - Altata

CLAVE: 25013

RUTA: SIN-030

AÑO: 2012

LUGAR	ESTACION				CLASIFICACION VEHICULAR EN PORCIENTO														COORDENADAS	
	KM	TE	SC	TDPA	M	A	B	C2	C3	T3S2	T3S3	T3S2R4	OTROS	A	B	C	K'	D	LATITUD	LONGITUD
Culiacán	0.00																			
T. Izq. El Dorado	6.20	1	1	25639	1.1	89.3	1.8	4.2	0.5	0.9	1.6	0.2	0.4	90.4	1.8	7.8	0.079	0.517	24.778512	-107.440974
T. Izq. El Dorado	6.20	1	2	27419	1.3	88.8	1.9	4.2	0.5	0.9	1.8	0.2	0.4	90.1	1.9	8.0	0.074	0.517	24.778512	-107.440975
T. Izq. El Dorado	6.20	3	1	30716	1.2	88.1	1.4	5.0	1.2	1.6	0.9	0.3	0.3	89.3	1.4	9.3	0.076	0.523	24.775453	-107.450794
T. Izq. El Dorado	6.20	3	2	33647	0.8	88.0	1.4	5.2	1.3	1.7	1.0	0.3	0.3	88.8	1.4	9.8	0.096	0.523	24.775460	-107.450797
T. Izq. Aeropuerto	8.70	3	1	25029	0.7	90.2	1.8	5.2	0.8	0.7	0.4	0.1	0.1	90.9	1.8	7.3	0.087	0.501	24.775227	-107.470010

SINALOA

13 CARR : Culiacán - Altata

CLAVE: 25013

RUTA: SIN-030

AÑO : 2012

LUGAR	ESTACION				CLASIFICACION VEHICULAR EN PORCIENTO										COORDENADAS					
	KM	TE	SC	TDPA	M	A	B	C2	C3	T3S2	T3S3	T3S2R4	OTROS	A	B	C	K'	D	LATITUD	LONGITUD
T. Izq. Aeropuerto	8.70	3	2	25109	0.6	88.8	2.0	6.1	1.0	0.9	0.4	0.1	0.1	89.4	2.0	8.6	0.087	0.501	24.775239	-107.469869
Navolato	32.40	1	1	8218	1.3	88.0	2.6	5.0	1.2	0.9	0.6	0.2	0.2	89.3	2.6	8.1	0.128	0.502	24.756574	-107.683182
Navolato	32.40	1	2	8142	1.4	86.3	2.9	6.0	1.3	1.0	0.7	0.2	0.2	87.7	2.9	9.4	0.141	0.502	24.756567	-107.683181
Navolato	32.40	3	1	5982	3.8	81.8	4.8	4.5	1.6	1.5	0.9	0.4	0.7	85.6	4.8	9.6	0.084	0.504	24.757064	-107.733536
Navolato	32.40	3	2	5888	3.7	81.2	5.1	4.9	1.7	1.5	0.9	0.4	0.6	84.9	5.1	10.0	0.111	0.504	24.757065	-107.733532
T. Der. 5 Hermanos	38.20	3	1	2949	1.0	87.9	4.1	5.0	0.8	0.7	0.3	0.1	0.1	88.9	4.1	7.0	0.192	0.511	24.755708	-107.739422
T. Der. 5 Hermanos	38.20	3	2	2817	1.1	86.7	4.5	5.5	0.9	0.8	0.3	0.1	0.1	87.8	4.5	7.7	0.188	0.511	24.755708	-107.739422
Altata	67.00	1	1	1707	3.5	89.0	1.5	4.7	0.6	0.4	0.2	0.0	0.1	92.5	1.5	6.0	0.201	0.514	24.640289	-107.928292
Altata	67.00	1	2	1614	3.6	88.7	1.6	4.9	0.5	0.4	0.2	0.0	0.1	92.3	1.6	6.1	0.200	0.514	24.640286	-107.928293

14 CARR : Culiacán - El Dorado

CLAVE: 25044

RUTA: SIN-005

AÑO : 2012

LUGAR	ESTACION				CLASIFICACION VEHICULAR EN PORCIENTO										COORDENADAS					
	KM	TE	SC	TDPA	M	A	B	C2	C3	T3S2	T3S3	T3S2R4	OTROS	A	B	C	K'	D	LATITUD	LONGITUD
T. C. Culiacán - Altata	0.00	3	1	20563	1.0	84.0	2.8	5.9	1.9	2.6	1.1	0.4	0.3	85.0	2.8	12.2	0.076	0.538	24.773732	-107.445842
T. C. Culiacán - Altata	0.00	3	2	19584	0.9	82.7	3.2	6.2	2.1	3.1	1.1	0.4	0.3	83.6	3.2	13.2	0.079	0.538	24.773730	-107.445838
T. C. Libramiento Sur de Culiacán	3.60	3	1	17155	1.2	81.2	3.5	5.3	1.8	4.0	1.3	1.1	0.6	82.4	3.5	14.1	0.089	0.501	24.741046	-107.453932
T. C. Libramiento Sur de Culiacán	3.60	3	2	17223	1.7	79.2	3.8	5.6	2.0	4.3	1.5	1.3	0.6	80.9	3.8	15.3	0.085	0.501	24.741046	-107.453936
X. C. Carrizal - Campo Aníbal	21.35	1	1	7869	0.3	77.8	3.1	6.6	2.2	5.6	1.3	2.4	0.7	78.1	3.1	18.8	0.082	0.502	24.602521	-107.444344
X. C. Carrizal - Campo Aníbal	21.35	1	2	7930	2.8	72.1	3.6	8.0	2.6	6.1	1.5	2.6	0.7	74.9	3.6	21.5	0.100	0.502	24.602521	-107.444344
X. C. Carrizal - Campo Aníbal	21.35	3	0	6184	2.9	72.7	3.6	8.3	2.8	5.1	1.1	2.7	0.8	75.6	3.6	20.8	0.085	0.548	24.583145	-107.444496
El Dorado	55.00	1	1	4202	3.6	83.5	3.8	5.0	2.2	1.0	0.5	0.1	0.3	87.1	3.8	9.1	0.086	0.501	24.336731	-107.370595
El Dorado	55.00	1	2	4214	4.2	81.5	4.1	5.7	2.5	1.1	0.5	0.1	0.3	85.7	4.1	10.2	0.085	0.501	24.336725	-107.370593

15 CARR : El Limoncito - Cinco Hermanos

CLAVE: 25016

RUTA: SIN-016

AÑO : 2012

LUGAR	ESTACION				CLASIFICACION VEHICULAR EN PORCIENTO										COORDENADAS					
	KM	TE	SC	TDPA	M	A	B	C2	C3	T3S2	T3S3	T3S2R4	OTROS	A	B	C	K'	D	LATITUD	LONGITUD
T. C. Culiacán - Altata	0.00	3	0	2691	6.4	77.1	4.2	7.4	1.7	2.1	0.6	0.4	0.1	83.5	4.2	12.3	0.093	0.505	24.759464	-107.740638
Cinco Hermanos	16.00	1	0	941	7.1	78.0	5.7	7.9	0.9	0.3	0.0	0.0	0.1	85.1	5.7	9.2	0.085	0.502	24.808588	-107.855707

SINALOA

16 CARR: El Salado - El Dorado

CLAVE: 25010

RUTA: SIN-010

AÑO: 2012

LUGAR	ESTACION				CLASIFICACION VEHICULAR EN PORCIENTO										COORDENADAS					
	KM	TE	SC	TDPA	M	A	B	C2	C3	T3S2	T3S3	T3S2R4	OTROS	A	B	C	K'	D	LATITUD	LONGITUD
T. C. Mazatlán - Culiacán	0.00	3	0	2483	2.5	83.3	4.5	6.0	1.5	1.6	0.4	0.1	0.1	85.8	4.5	9.7	0.087	0.509	24.505143	-107.167857
El Dorado	31.00	1	0	3623	6.5	78.5	3.6	5.2	3.4	2.1	0.4	0.0	0.3	85.0	3.6	11.4	0.086	0.527	24.330062	-107.349695

17 CARR: Escuinapa de Hidalgo - Teacapan

CLAVE: 25001

RUTA: SIN-001

AÑO: 2012

LUGAR	ESTACION				CLASIFICACION VEHICULAR EN PORCIENTO										COORDENADAS					
	KM	TE	SC	TDPA	M	A	B	C2	C3	T3S2	T3S3	T3S2R4	OTROS	A	B	C	K'	D	LATITUD	LONGITUD
Escuinapa de Hidalgo	0.00	3	0	5574	2.7	85.7	1.7	4.5	0.9	2.2	1.1	0.5	0.7	88.4	1.7	9.9	0.098	0.507	22.819161	-105.790743
Teacapan	41.00	1	0	2214	9.8	79.0	1.3	7.1	0.6	1.3	0.4	0.1	0.4	88.8	1.3	9.9	0.082	0.503	22.551417	-105.742278

18 CARR: Estación Dimas - San Ignacio

CLAVE: 25007

RUTA: SIN-006

AÑO: 2012

LUGAR	ESTACION				CLASIFICACION VEHICULAR EN PORCIENTO										COORDENADAS					
	KM	TE	SC	TDPA	M	A	B	C2	C3	T3S2	T3S3	T3S2R4	OTROS	A	B	C	K'	D	LATITUD	LONGITUD
Dimas	0.00																			
X. C. Mazatlán - Culiacán	23.15	1	0	914	2.7	84.7	3.1	5.2	2.3	1.3	0.0	0.3	0.4	87.4	3.1	9.5	0.088	0.501	23.839157	-106.615061
X. C. Mazatlán - Culiacán	23.15	3	0	1891	2.6	80.5	6.5	7.7	1.1	1.4	0.1	0.0	0.1	83.1	6.5	10.4	0.095	0.512	23.790851	-106.609221
San Ignacio	56.00	1	0	1234	3.1	82.1	5.5	7.0	1.3	0.8	0.1	0.0	0.1	85.2	5.5	9.3	0.101	0.501	23.927144	-106.430137

19 CARR: Guamuchil - Mocorito

CLAVE: 25021

RUTA: SIN-021

AÑO: 2012

LUGAR	ESTACION				CLASIFICACION VEHICULAR EN PORCIENTO										COORDENADAS					
	KM	TE	SC	TDPA	M	A	B	C2	C3	T3S2	T3S3	T3S2R4	OTROS	A	B	C	K'	D	LATITUD	LONGITUD
Guamuchil	0.00	3	0	5101	3.0	80.7	2.6	7.9	1.6	3.3	0.4	0.1	0.4	83.7	2.6	13.7	0.088	0.504	25.458184	-108.056651
Mocorito	17.00	1	0	5668	8.5	76.6	2.6	7.2	1.6	2.5	0.5	0.1	0.4	85.1	2.6	12.3	0.092	0.507	25.471671	-107.945225

20 CARR: Guasave - Sinaloa de Leyva

CLAVE: 25023

RUTA: SIN-023

AÑO: 2012

LUGAR	ESTACION				CLASIFICACION VEHICULAR EN PORCIENTO										COORDENADAS					
	KM	TE	SC	TDPA	M	A	B	C2	C3	T3S2	T3S3	T3S2R4	OTROS	A	B	C	K'	D	LATITUD	LONGITUD
Guasave	0.00																			
X. C. Culiacán - Los Mochis	1.15	3	1	4132	3.9	67.8	4.3	8.1	3.7	5.6	3.5	1.9	1.2	71.7	4.3	24.0	0.090	0.502	25.603105	-108.448835
X. C. Culiacán - Los Mochis	1.15	3	2	4105	3.4	66.6	4.8	8.3	3.9	6.2	3.8	1.9	1.1	70.0	4.8	25.2	0.101	0.502	25.603102	-108.448830
Sinaloa de Leyva	74.50	1	1	1459	4.6	67.5	4.1	8.2	3.6	5.7	3.4	1.7	1.2	72.1	4.1	23.8	0.128	0.508	25.829728	-108.233970
Sinaloa de Leyva	74.50	1	2	1414	4.2	66.0	4.5	8.7	3.9	5.9	3.7	1.9	1.2	70.2	4.5	25.3	0.123	0.508	25.829727	-108.233966

SINALOA

21 CARR: Navolato - El Castillo

CLAVE: 25004

RUTA: SIN-004

AÑO: 2012

LUGAR	ESTACION				CLASIFICACION VEHICULAR EN PORCIENTO														COORDENADAS	
	KM	TE	SC	TDPA	M	A	B	C2	C3	T3S2	T3S3	T3S2R4	OTROS	A	B	C	K'	D	LATITUD	LONGITUD
Navolato	0.00	3	0	4809	1.6	91.3	3.9	2.0	0.2	0.4	0.3	0.1	0.2	92.9	3.9	3.2	0.087	0.575	24.739248	-107.685505
El Castillo	29.00	1	0	1417	7.4	84.5	4.1	2.1	1.0	0.6	0.1	0.0	0.2	91.9	4.1	4.0	0.105	0.509	24.551616	-107.701004

22 CARR: Pozole - Cofradía

CLAVE: 25080

RUTA: SIN-080

AÑO: 2012

LUGAR	ESTACION				CLASIFICACION VEHICULAR EN PORCIENTO														COORDENADAS	
	KM	TE	SC	TDPA	M	A	B	C2	C3	T3S2	T3S3	T3S2R4	OTROS	A	B	C	K'	D	LATITUD	LONGITUD
T. C. Tepic - Mazatlán	0.00	3	0	2968	4.5	70.1	3.7	11.0	6.2	2.0	2.1	0.1	0.3	74.6	3.7	21.7	0.089	0.503	23.194795	-106.260014
Cofradía	9.10	1	0	829	6.3	77.9	2.0	11.0	0.8	0.9	0.7	0.0	0.4	84.2	2.0	13.8	0.111	0.520	23.324686	-106.255756

23 CARR: Ramal a Chametla

CLAVE: 25002

RUTA: SIN-002

AÑO: 2012

LUGAR	ESTACION				CLASIFICACION VEHICULAR EN PORCIENTO														COORDENADAS	
	KM	TE	SC	TDPA	M	A	B	C2	C3	T3S2	T3S3	T3S2R4	OTROS	A	B	C	K'	D	LATITUD	LONGITUD
T. C. Tepic - Mazatlán	0.00	3	0	2254	4.1	80.9	1.3	8.3	2.2	2.5	0.4	0.0	0.3	85.0	1.3	13.7	0.086	0.510	22.933340	-105.832811
Chametla	15.00	1	0	1327	8.1	80.8	1.0	6.3	1.0	2.3	0.3	0.0	0.2	88.9	1.0	10.1	0.099	0.505	22.882974	-105.952051

24 CARR: Ramal a Cosalá

CLAVE: 25008

RUTA: SIN-008

AÑO: 2012

LUGAR	ESTACION				CLASIFICACION VEHICULAR EN PORCIENTO														COORDENADAS	
	KM	TE	SC	TDPA	M	A	B	C2	C3	T3S2	T3S3	T3S2R4	OTROS	A	B	C	K'	D	LATITUD	LONGITUD
T. C. Mazatlán - Culiacán	0.00	3	0	1254	2.5	79.5	5.7	7.9	1.8	1.8	0.5	0.2	0.1	82.0	5.7	12.3	0.094	0.502	24.068835	-106.803210
Cosalá	53.00	1	0	1223	2.7	80.5	6.1	6.7	1.6	1.5	0.3	0.3	0.3	83.2	6.1	10.7	0.088	0.502	24.407111	-106.710611

25 CARR: Ramal a El Quelite

CLAVE: 25060

RUTA: SIN-060

AÑO: 2012

LUGAR	ESTACION				CLASIFICACION VEHICULAR EN PORCIENTO														COORDENADAS	
	KM	TE	SC	TDPA	M	A	B	C2	C3	T3S2	T3S3	T3S2R4	OTROS	A	B	C	K'	D	LATITUD	LONGITUD
T. C. Mazatlán - Culiacán	0.00	3	0	1148	2.1	82.3	3.4	9.5	1.2	0.9	0.3	0.1	0.2	84.4	3.4	12.2	0.096	0.504	23.531856	-106.502628
El Quelite	6.00	1	0	1061	2.5	80.8	3.4	9.7	1.7	1.1	0.5	0.0	0.3	83.3	3.4	13.3	0.078	0.503	23.552350	-106.471359

SINALOA

26 CARR: Ramal a Estación Bamoa

CLAVE: 25022

RUTA: SIN-022

AÑO: 2012

LUGAR	ESTACION				CLASIFICACION VEHICULAR EN PORCIENTO														COORDENADAS	
	KM	TE	SC	TDPA	M	A	B	C2	C3	T3S2	T3S3	T3S2R4	OTROS	A	B	C	K'	D	LATITUD	LONGITUD
T. C. Culiacán - Los Mochis	0.00	3	0	3290	2.8	82.8	2.0	5.9	2.6	2.6	0.8	0.2	0.3	85.6	2.0	12.4	0.085	0.512	25.517756	-108.356634
Estación Bamoa	22.50	1	0	1630	8.4	76.3	2.8	7.0	3.0	1.5	0.7	0.1	0.2	84.7	2.8	12.5	0.092	0.508	25.693072	-108.312047

27 CARR: Ramal a La Cruz

CLAVE: 25043

RUTA: SIN

AÑO: 2012

LUGAR	ESTACION				CLASIFICACION VEHICULAR EN PORCIENTO														COORDENADAS	
	KM	TE	SC	TDPA	M	A	B	C2	C3	T3S2	T3S3	T3S2R4	OTROS	A	B	C	K'	D	LATITUD	LONGITUD
T. C. Mazatlán - Culiacán	0.00	3	0	2278	4.6	73.8	8.1	9.0	1.2	2.3	0.4	0.2	0.4	78.4	8.1	13.5	0.090	0.514	24.053804	-106.797298
La Cruz	18.00	1	0	3380	4.2	75.6	5.5	6.7	4.0	2.4	0.9	0.3	0.4	79.8	5.5	14.7	0.087	0.505	23.938410	-106.874956

28 CARR: Ramal a La Noria

CLAVE: 25592

RUTA: SIN

AÑO: 2012

LUGAR	ESTACION				CLASIFICACION VEHICULAR EN PORCIENTO														COORDENADAS	
	KM	TE	SC	TDPA	M	A	B	C2	C3	T3S2	T3S3	T3S2R4	OTROS	A	B	C	K'	D	LATITUD	LONGITUD
T. C. Mazatlán - Culiacán	0.00	3	0	1046	3.9	82.6	2.6	7.8	1.4	1.3	0.2	0.0	0.2	86.5	2.6	10.9	0.097	0.508	23.349837	-106.412688
La Noria	25.50	1	0	408	9.5	75.8	2.9	9.4	2.1	0.2	0.1	0.0	0.0	85.3	2.9	11.8	0.129	0.511	23.502097	-106.320521

29 CARR: Ramal a La Reforma

CLAVE: 25041

RUTA: SIN-004

AÑO: 2012

LUGAR	ESTACION				CLASIFICACION VEHICULAR EN PORCIENTO														COORDENADAS	
	KM	TE	SC	TDPA	M	A	B	C2	C3	T3S2	T3S3	T3S2R4	OTROS	A	B	C	K'	D	LATITUD	LONGITUD
T. C. Culiacán - Los Mochis	0.00	3	0	8498	2.5	81.4	3.4	6.5	1.5	3.5	0.5	0.2	0.5	83.9	3.4	12.7	0.091	0.503	25.445423	-108.086084
T. Der. La Angostura	14.00	3	0	2828	2.5	82.7	2.4	6.7	1.9	2.5	0.6	0.2	0.5	85.2	2.4	12.4	0.099	0.510	25.350672	-108.149749
La Reforma	60.00	1	0	3607	2.5	79.3	2.4	7.0	1.7	5.7	0.6	0.3	0.5	81.8	2.4	15.8	0.112	0.504	25.086794	-108.048168

30 CARR: Rosario - Caimanero

CLAVE: 25003

RUTA: SIN-003

AÑO: 2012

LUGAR	ESTACION				CLASIFICACION VEHICULAR EN PORCIENTO														COORDENADAS	
	KM	TE	SC	TDPA	M	A	B	C2	C3	T3S2	T3S3	T3S2R4	OTROS	A	B	C	K'	D	LATITUD	LONGITUD
Rosario	0.00	3	0	2836	6.7	74.4	1.6	11.7	2.1	2.7	0.5	0.1	0.2	81.1	1.6	17.3	0.086	0.506	22.983902	-105.874560
Caimanero	30.00	1	0	770	7.5	74.6	3.6	12.7	1.0	0.5	0.1	0.0	0.0	82.1	3.6	14.3	0.146	0.505	22.880313	-106.068660

SINALOA

31 CARR: San Pedro - Campo Anibal

CLAVE: 25600

RUTA: SIN

AÑO: 2012

LUGAR	ESTACION				CLASIFICACION VEHICULAR EN PORCIENTO													COORDENADAS		
	KM	TE	SC	TDPA	M	A	B	C2	C3	T3S2	T3S3	T3S2R4	OTROS	A	B	C	K'	D	LATITUD	LONGITUD
T. C. Culiacán - Altata	0.00	3	0	4533	2.2	78.3	3.2	6.6	3.3	3.1	1.4	1.0	0.9	80.5	3.2	16.3	0.076	0.520	24.765493	-107.546563
Campo Aníbal	24.50	1	0	2172	6.6	63.8	8.2	9.9	5.3	4.1	1.0	0.5	0.6	70.4	8.2	21.4	0.089	0.501	24.591546	-107.543320
Los Puentes	26.50																			

32 CARR: Topolobampo - Choix

CLAVE: 25032

RUTA: SIN-023

AÑO: 2012

LUGAR	ESTACION				CLASIFICACION VEHICULAR EN PORCIENTO													COORDENADAS		
	KM	TE	SC	TDPA	M	A	B	C2	C3	T3S2	T3S3	T3S2R4	OTROS	A	B	C	K'	D	LATITUD	LONGITUD
Topolobampo	0.00	3	1	3167	1.5	80.5	4.6	5.6	2.8	2.6	1.0	0.7	0.7	82.0	4.6	13.4	0.099	0.520	25.612010	-109.057407
Topolobampo	0.00	3	2	3416	1.2	79.2	5.0	6.2	3.1	2.7	1.2	0.7	0.7	80.4	5.0	14.6	0.084	0.520	25.612010	-109.057407
Los Mochis	24.00	1	1	9556	2.2	82.5	4.3	5.6	1.7	1.5	1.3	0.4	0.5	84.7	4.3	11.0	0.098	0.506	25.758888	-108.998665
Los Mochis	24.00	1	2	9332	2.2	81.1	4.8	5.9	1.9	1.8	1.4	0.4	0.5	83.3	4.8	11.9	0.092	0.506	25.758888	-108.998665
X. C. Los Mochis - Cd. Obregón (Cuota)	29.00	1	1	9762	1.2	83.3	4.6	6.0	0.9	1.8	1.3	0.3	0.6	84.5	4.6	10.9	0.095	0.507	25.822544	-108.972200
X. C. Los Mochis - Cd. Obregón (Cuota)	29.00	1	2	10013	1.3	82.5	4.8	6.4	1.0	1.9	1.2	0.3	0.6	83.8	4.8	11.4	0.085	0.507	25.822544	-108.972200
X. C. Los Mochis - Cd. Obregón (Cuota)	29.00	3	1	7518	1.3	85.3	3.9	4.8	2.0	1.5	0.8	0.1	0.3	86.6	3.9	9.5	0.099	0.503	25.835194	-108.966968
X. C. Los Mochis - Cd. Obregón (Cuota)	29.00	3	2	7589	1.3	83.3	4.7	5.8	2.3	1.4	0.8	0.1	0.3	84.6	4.7	10.7	0.083	0.503	25.835194	-108.966968
San Blas	65.00	1	1	3646	2.5	78.2	4.8	6.0	2.6	2.2	2.3	0.8	0.6	80.7	4.8	14.5	0.086	0.503	26.074729	-108.756078
San Blas	65.00	1	2	3683	2.1	76.2	5.3	6.5	3.0	3.0	2.3	0.9	0.7	78.3	5.3	16.4	0.086	0.503	26.074729	-108.756078
San Blas	65.00	3	1	2088	1.9	79.8	4.1	5.0	2.5	2.7	2.4	0.7	0.9	81.7	4.1	14.2	0.086	0.503	26.091187	-108.755833
San Blas	65.00	3	2	2109	1.7	78.5	4.2	5.5	2.8	3.1	2.4	0.7	1.1	80.2	4.2	15.6	0.088	0.503	26.091187	-108.755833
El Fuerte	107.70	1	1	2321	2.0	79.9	4.3	4.8	2.2	3.2	2.0	0.8	0.8	81.9	4.3	13.8	0.087	0.503	26.398876	-108.623774
El Fuerte	107.70	1	2	2346	2.5	78.0	4.2	5.3	2.3	3.6	2.2	1.0	0.9	80.5	4.2	15.3	0.081	0.503	26.398876	-108.623774
El Fuerte	107.70	3	0	2219	1.4	82.2	5.0	5.8	1.6	2.5	1.0	0.1	0.4	83.6	5.0	11.4	0.104	0.504	26.421556	-108.607095
Choix	159.00	1	0	2270	1.3	85.0	4.2	5.1	1.3	2.0	0.8	0.0	0.3	86.3	4.2	9.5	0.102	0.511	26.695374	-108.332847

33 CARR: Villa Unión - El Walamo

CLAVE: 25081

RUTA: SIN-081

AÑO: 2012

LUGAR	ESTACION				CLASIFICACION VEHICULAR EN PORCIENTO													COORDENADAS		
	KM	TE	SC	TDPA	M	A	B	C2	C3	T3S2	T3S3	T3S2R4	OTROS	A	B	C	K'	D	LATITUD	LONGITUD
Villa Unión	0.00	3	0	2792	9.6	71.2	1.0	13.4	2.0	2.3	0.3	0.0	0.2	80.8	1.0	18.2	0.089	0.502	23.179420	-106.220239
El Walamo	7.00	1	0	2577	11.9	69.4	1.0	12.7	1.9	2.6	0.3	0.0	0.2	81.3	1.0	17.7	0.096	0.500	23.144366	-106.237114

SINALOA

34 CARR: Villa Unión - Siqueiros

CLAVE: 25063

RUTA: SIN-063

AÑO: 2012

LUGAR	ESTACION				CLASIFICACION VEHICULAR EN PORCIENTO										COORDENADAS					
	KM	TE	SC	TDPA	M	A	B	C2	C3	T3S2	T3S3	T3S2R4	OTROS	A	B	C	K'	D	LATITUD	LONGITUD
Villa Unión	0.00	3	0	2637	3.3	87.8	1.1	3.3	0.4	1.5	0.9	0.8	0.9	91.1	1.1	7.8	0.078	0.513	23.196761	-106.212714
Siqueiros	11.00	1	0	751	5.2	84.0	2.8	5.3	1.5	0.7	0.5	0.0	0.0	89.2	2.8	8.0	0.105	0.548	23.334025	-106.238490

35 CARR: Culiacán - Las Brisas (Cuota)

CLAVE: 25503

RUTA: SIN-001D

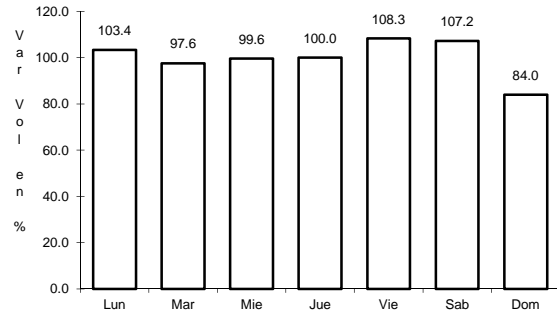
AÑO: 2012

LUGAR	ESTACION				CLASIFICACION VEHICULAR EN PORCIENTO										COORDENADAS					
	KM	TE	SC	TDPA	M	A	B	C2	C3	T3S2	T3S3	T3S2R4	OTROS	A	B	C	K'	D	LATITUD	LONGITUD
T. C. Culiacán - El Dorado	0.00																			
Caseta de Cobro Culiacán	1.50	3	1	2559	0.8	57.6	6.6	9.3	3.8	11.9	2.7	6.4	0.9	58.4	6.6	35.0	0.090	0.501	24.749900	-107.470098
Caseta de Cobro Culiacán	1.50	3	2	2545	0.7	52.6	7.8	10.9	3.9	13.1	3.1	6.9	1.0	53.3	7.8	38.9	0.083	0.501	24.749899	-107.470119
X. C. Culiacán - Altata	14.70	3	1	2949	0.8	54.3	7.0	12.4	3.7	12.9	2.3	6.1	0.5	55.1	7.0	37.9	0.105	0.502	24.772345	-107.582748
X. C. Culiacán - Altata	14.70	3	2	2975	0.7	50.8	7.7	13.7	4.1	13.6	2.6	6.2	0.6	51.5	7.7	40.8	0.086	0.502	24.772331	-107.582746
X. C. Ramal a La Reforma	110.00	1	1	2790	0.8	72.0	4.2	8.1	3.5	5.3	3.3	1.7	1.1	72.8	4.2	23.0	0.123	0.507	25.390442	-108.125178
X. C. Ramal a La Reforma	110.00	1	2	2873	0.6	69.7	4.6	8.9	3.8	5.8	3.6	1.9	1.1	70.3	4.6	25.1	0.091	0.507	25.390442	-108.125175
T. C. Culiacán - Los Mochis	125.70	1	1	2936	0.7	72.3	4.1	7.9	3.5	5.2	3.4	1.8	1.1	73.0	4.1	22.9	0.118	0.508	25.484773	-108.228857
T. C. Culiacán - Los Mochis	125.70	1	2	2842	0.6	70.1	4.6	8.4	3.8	5.9	3.6	1.8	1.2	70.7	4.6	24.7	0.094	0.508	25.484775	-108.228863

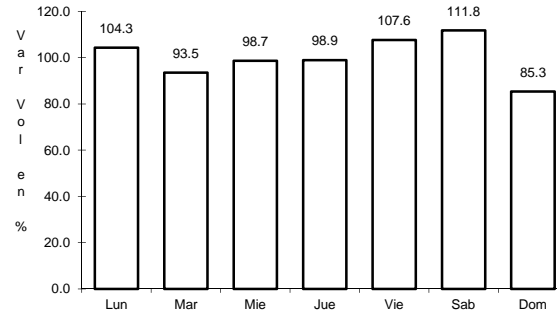
4 CARR: Libramiento Sur de Culiacán

CLAVE: 25500

RUTA: MEX-015



Km: 0.00 Tipo: 3 Sent: 1

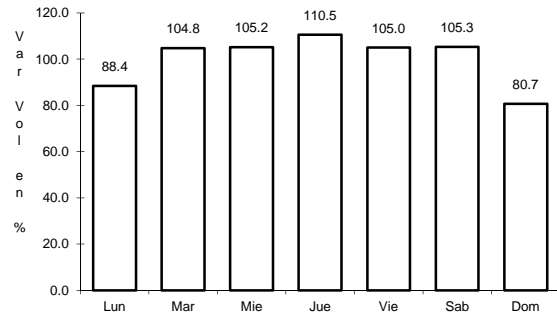


Km: 0.00 Tipo: 3 Sent: 2

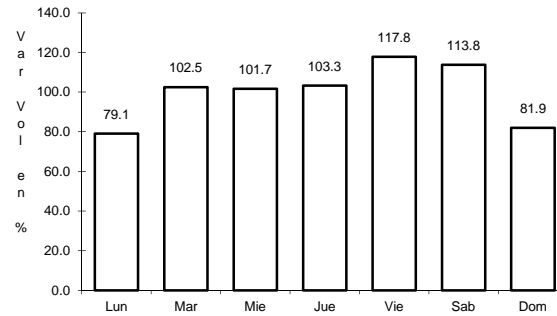
5 CARR: Mazatlán - Culiacán

CLAVE: 25501

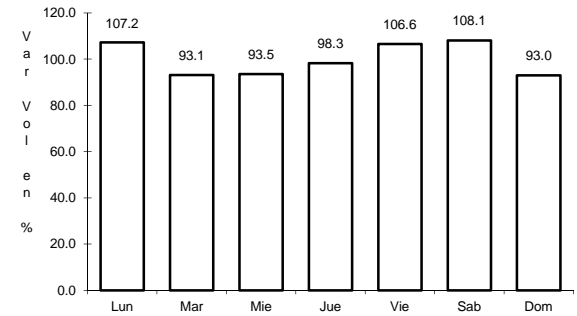
RUTA: MEX-015



Km: 6.40 Tipo: 1 Sent: 1



Km: 6.40 Tipo: 1 Sent: 2

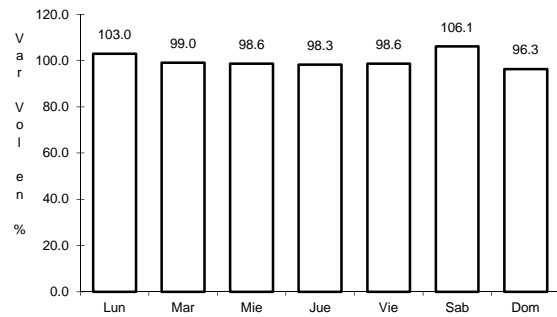


Km: 105.21 Tipo: 3 Sent: 0

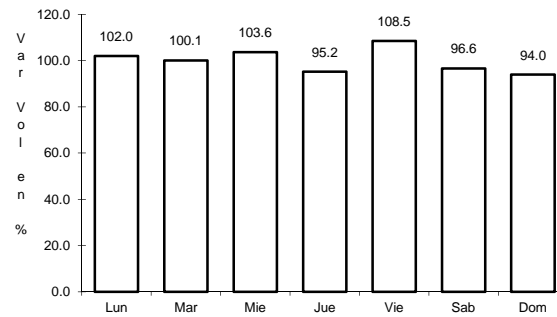
6 CARR: Pericos - Los Naranjos

CLAVE: 25598

RUTA: MEX-024



Km: 0.00 Tipo: 3 Sent: 0

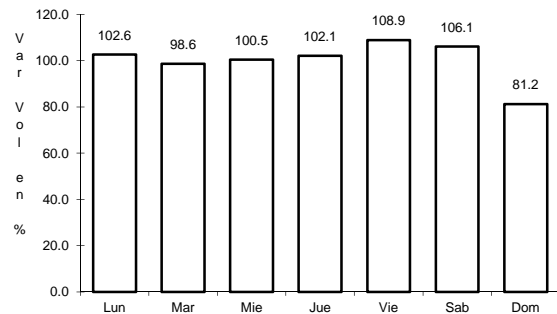


Km: 37.50 Tipo: 1 Sent: 0

7 CARR: Tepic - Mazatlán

CLAVE: 00500

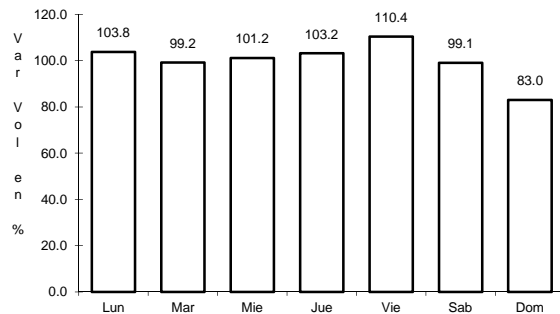
RUTA: MEX-015



Km: 2.56

Tipo: 1

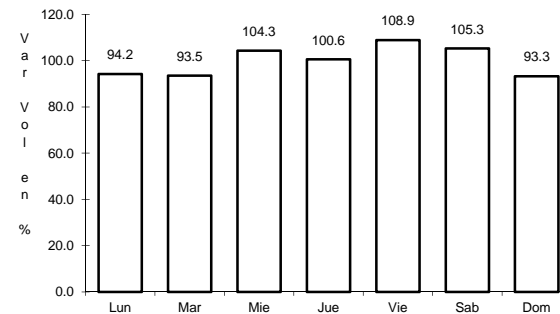
Sent: 1



Km: 2.56

Tipo: 1

Sent: 2



Km: 136.52

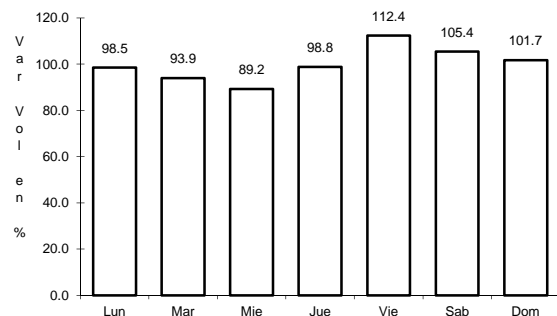
Tipo: 1

Sent: 0

8 CARR: Durango - Mazatlán (Cuota)

CLAVE: 00083

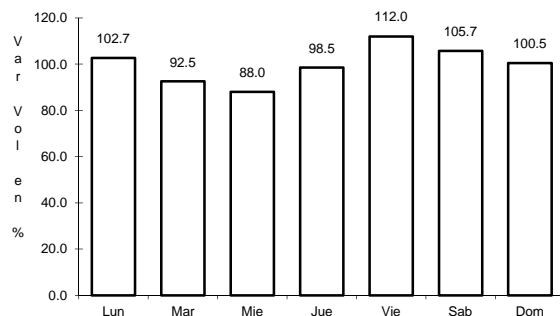
RUTA: MEX-040D



Km: 0.00

Tipo: 3

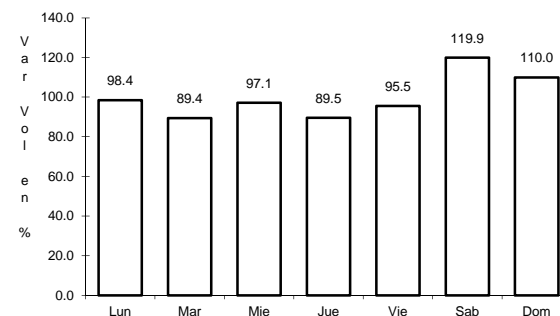
Sent: 0



Km: 22.85

Tipo: 1

Sent: 0



Km: 208.35

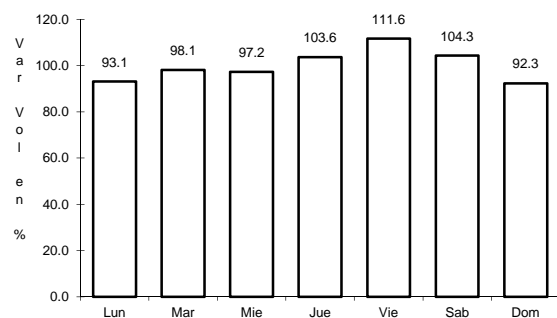
Tipo: 1

Sent: 0

9 CARR: Mazatlán - Culiacán (Cuota)

CLAVE: 25045

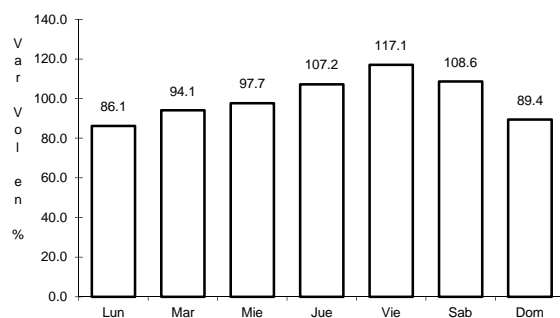
RUTA: MEX-015D



Km: 0.00

Tipo: 3

Sent: 1



Km: 0.00

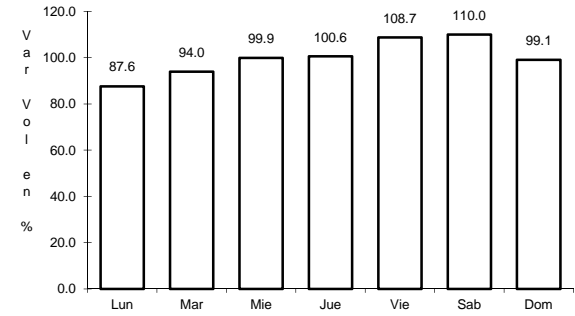
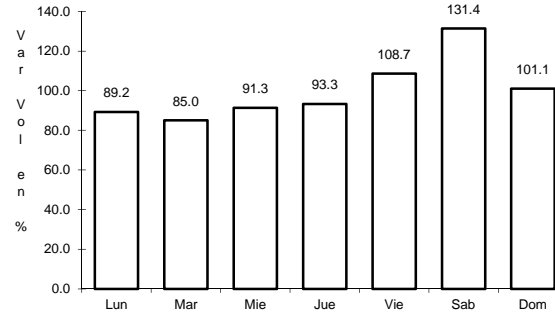
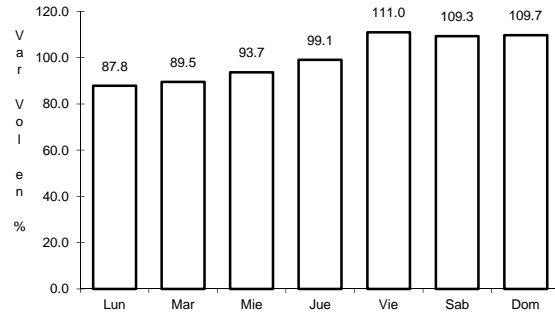
Tipo: 3

Sent: 2

10 CARR: Tepic - Villa Unión (cuota)

CLAVE: 00500

RUTA: MEX-015D



Km: 4.70

Tipo: 1

Sent: 1

Km: 4.70

Tipo: 1

Sent: 2

Km: 240.90

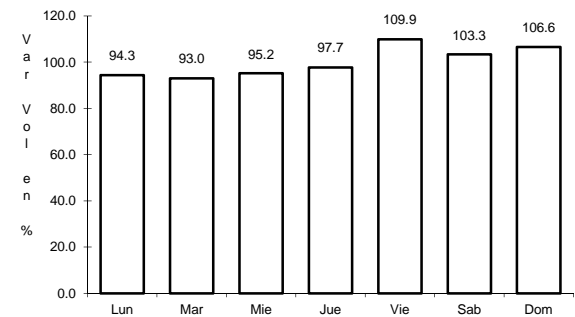
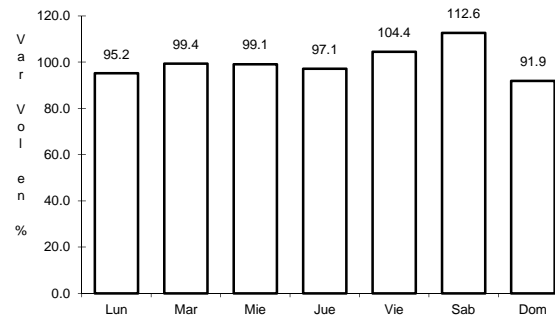
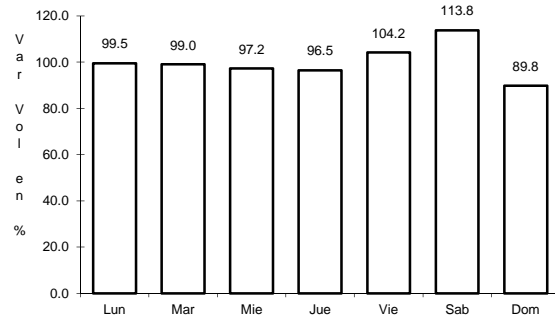
Tipo: 1

Sent: 0

11 CARR: Est. Don - Nogales (Cuota)

CLAVE: 26444

RUTA: MEX-015D-015



Km: 0.00

Tipo: 3

Sent: 1

Km: 0.00

Tipo: 3

Sent: 2

Km: 337.72

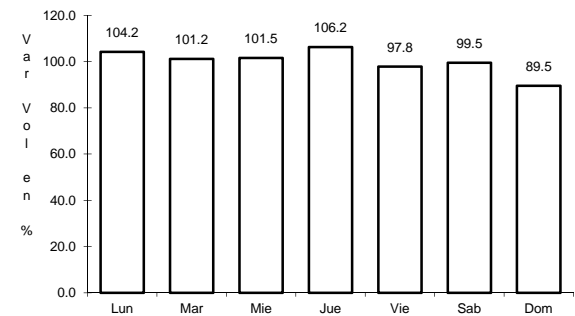
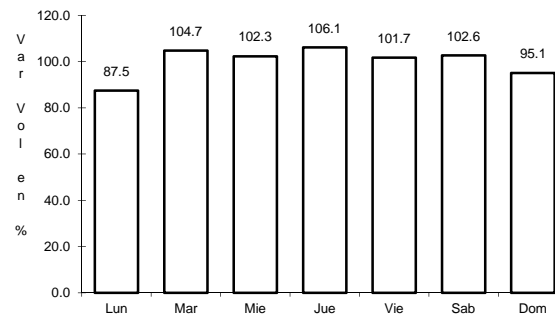
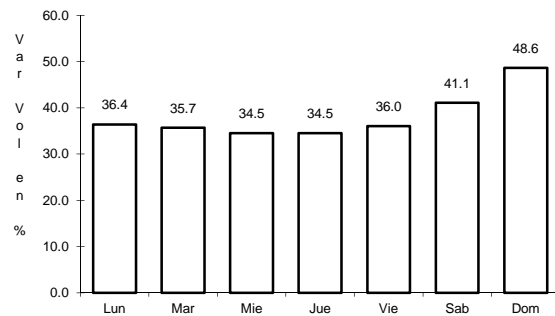
Tipo: 1

Sent: 0

12 CARR: Carrizal - Campo Aníbal

CLAVE: 25585

RUTA: SIN-019



Km: 0.00

Tipo: 3

Sent: 0

Km: 29.20

Tipo: 1

Sent: 0

Km: 32.00

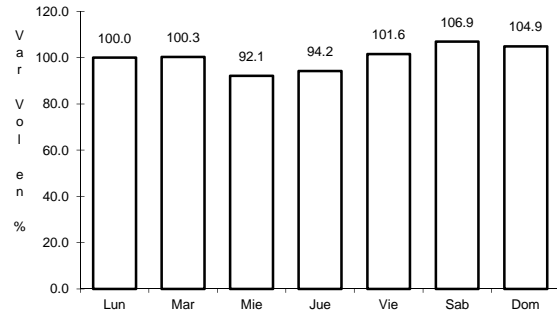
Tipo: 1

Sent: 0

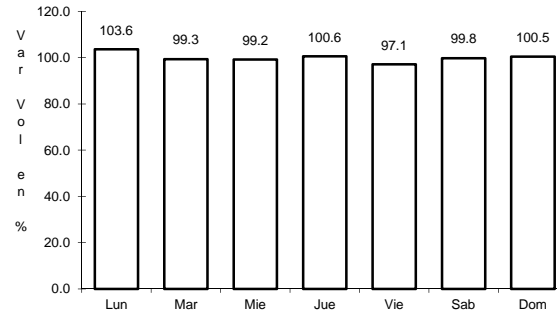
16 CARR: El Salado - El Dorado

CLAVE: 25010

RUTA: SIN-010



Km: 0.00 Tipo: 3 Sent: 0

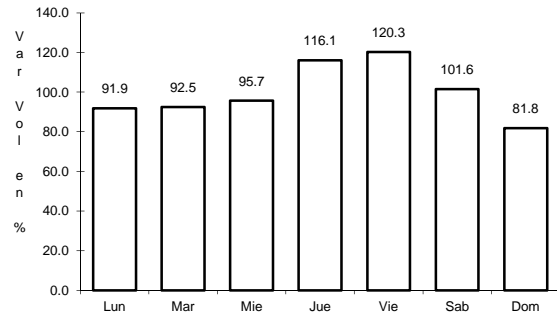


Km: 31.00 Tipo: 1 Sent: 0

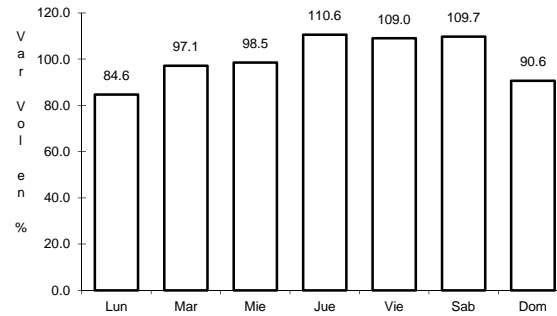
17 CARR: Escuinapa de Hidalgo - Teacapan

CLAVE: 25001

RUTA: SIN-001



Km: 0.00 Tipo: 3 Sent: 0

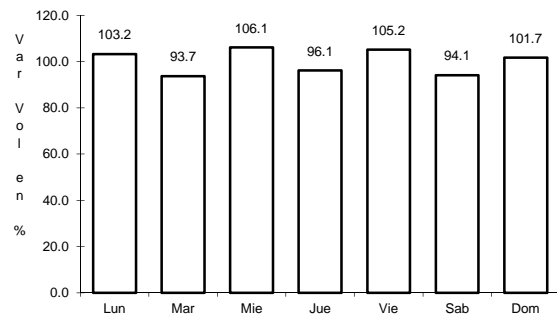


Km: 41.00 Tipo: 1 Sent: 0

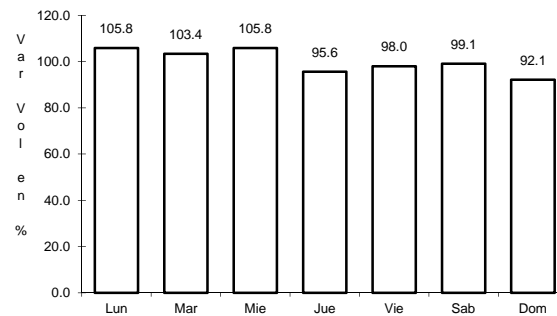
18 CARR: Estación Dimas - San Ignacio

CLAVE: 25007

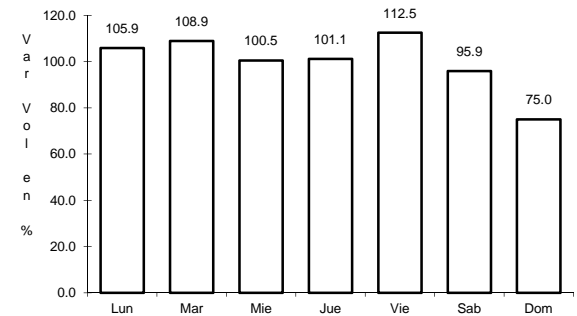
RUTA: SIN-006



Km: 23.15 Tipo: 1 Sent: 0



Km: 23.15 Tipo: 3 Sent: 0

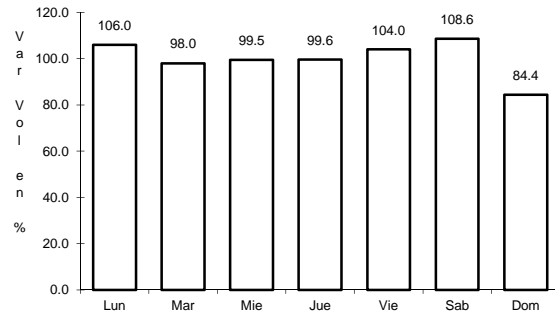


Km: 56.00 Tipo: 1 Sent: 0

19 CARR: Guamuchil - Mocorito

CLAVE: 25021

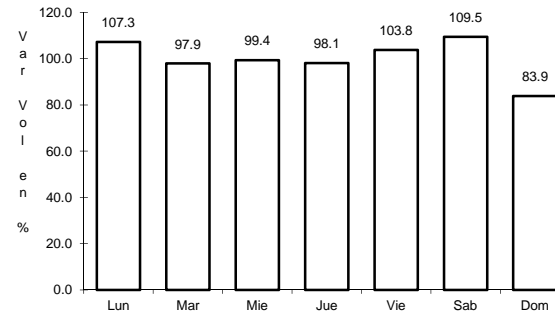
RUTA: SIN-021



Km: 0.00

Tipo: 3

Sent: 0



Km: 17.00

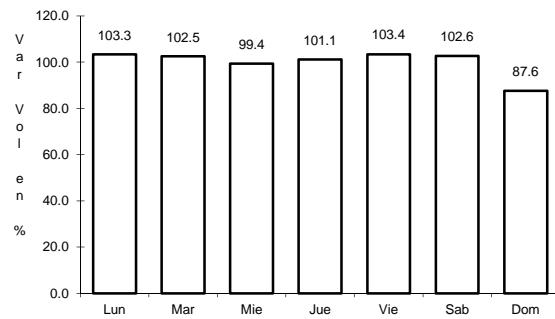
Tipo: 1

Sent: 0

20 CARR: Guasave - Sinaloa de Leyva

CLAVE: 25023

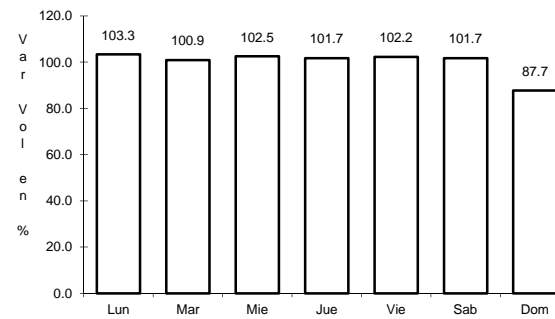
RUTA: SIN-023



Km: 1.15

Tipo: 3

Sent: 1



Km: 1.15

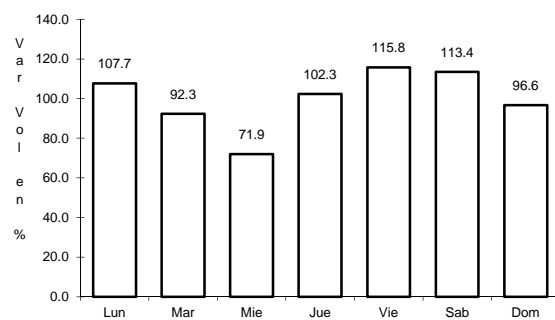
Tipo: 3

Sent: 2

21 CARR: Navolato - El Castillo

CLAVE: 25004

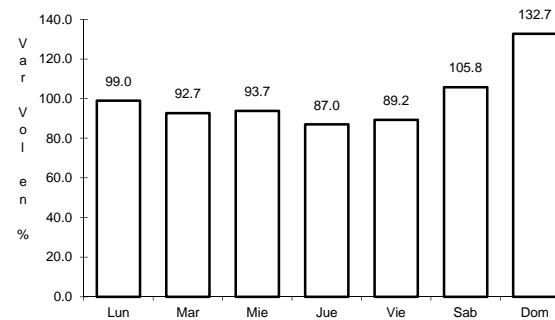
RUTA: SIN-004



Km: 0.00

Tipo: 3

Sent: 0



Km: 29.00

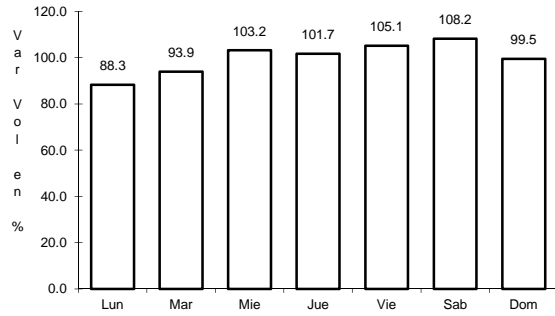
Tipo: 1

Sent: 0

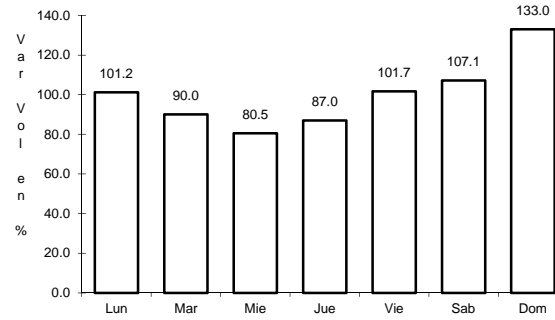
22 CARR: Pozole - Cofradía

CLAVE: 25080

RUTA: SIN-080



Km: 0.00 Tipo: 3 Sent: 0

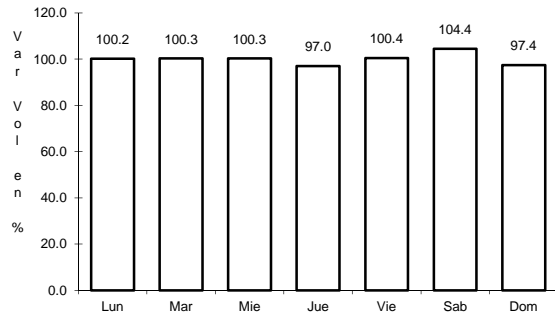


Km: 9.10 Tipo: 1 Sent: 0

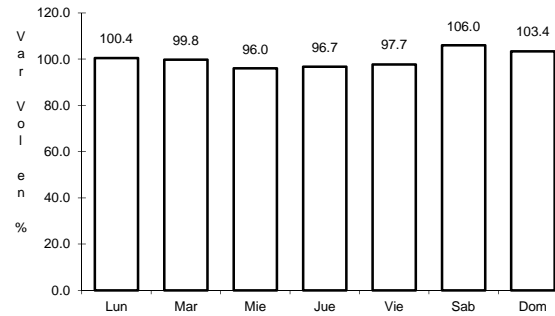
23 CARR: Ramal a Chametla

CLAVE: 25002

RUTA: SIN-002



Km: 0.00 Tipo: 3 Sent: 0

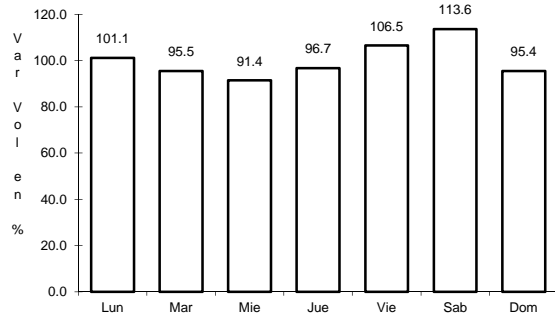


Km: 15.00 Tipo: 1 Sent: 0

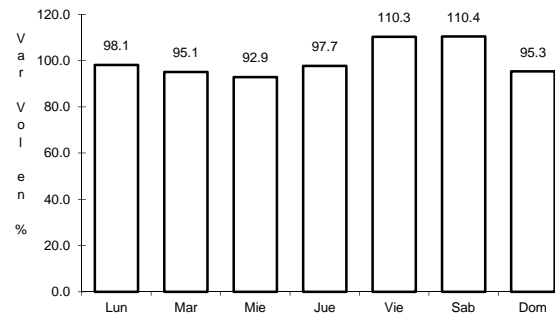
24 CARR: Ramal a Cosalá

CLAVE: 25008

RUTA: SIN-008



Km: 0.00 Tipo: 3 Sent: 0

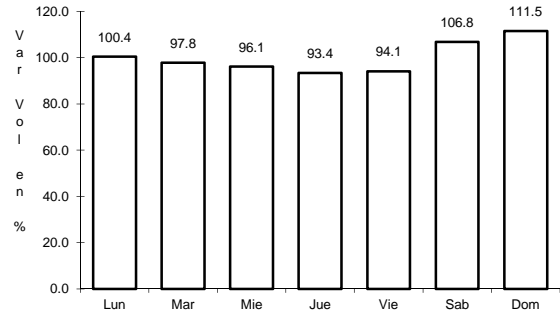


Km: 53.00 Tipo: 1 Sent: 0

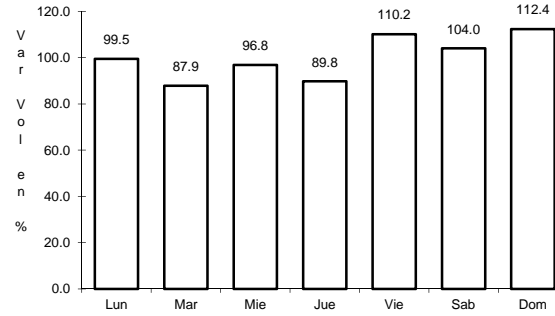
28 CARR: Ramal a La Noria

CLAVE: 25592

RUTA: SIN



Km: 0.00 Tipo: 3 Sent: 0

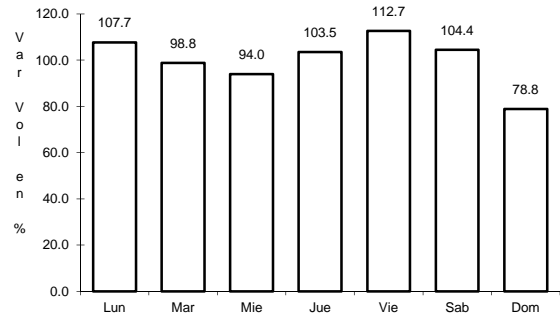


Km: 25.50 Tipo: 1 Sent: 0

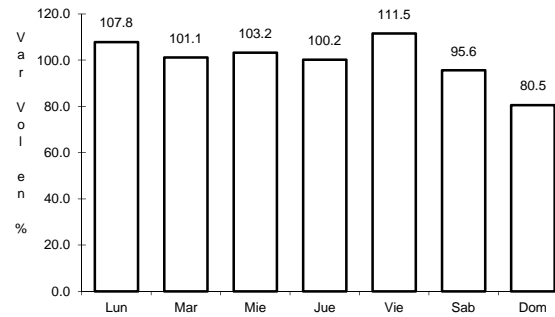
29 CARR: Ramal a La Reforma

CLAVE: 25041

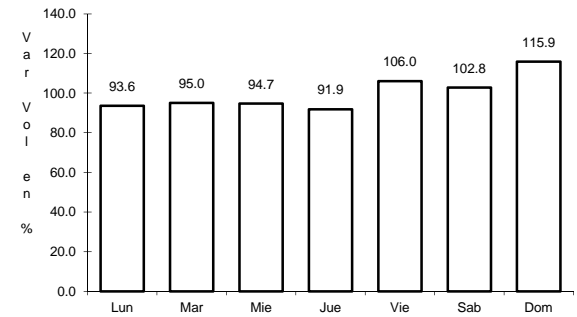
RUTA: SIN-004



Km: 0.00 Tipo: 3 Sent: 0



Km: 14.00 Tipo: 3 Sent: 0

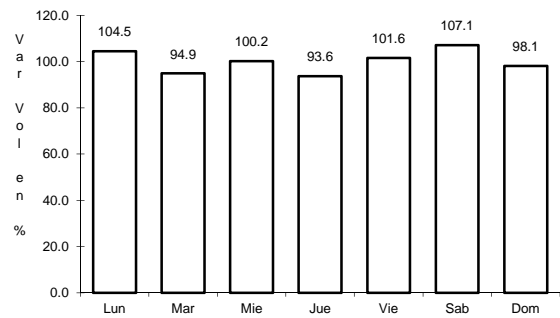


Km: 60.00 Tipo: 1 Sent: 0

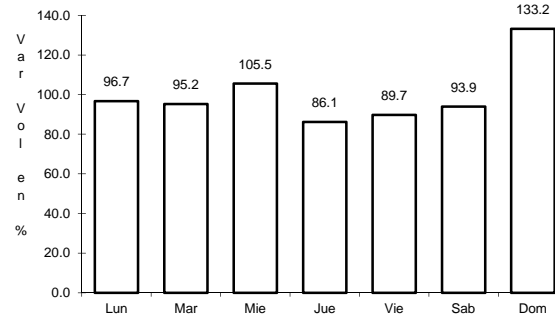
30 CARR: Rosario - Caimanero

CLAVE: 25003

RUTA: SIN-003



Km: 0.00 Tipo: 3 Sent: 0

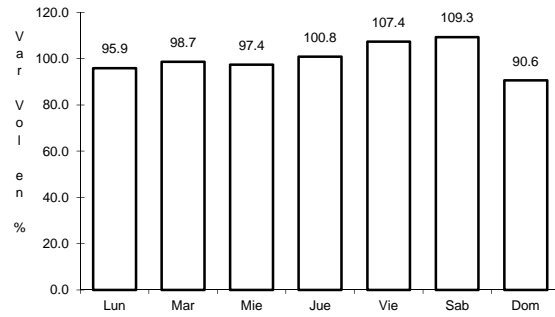


Km: 30.00 Tipo: 1 Sent: 0

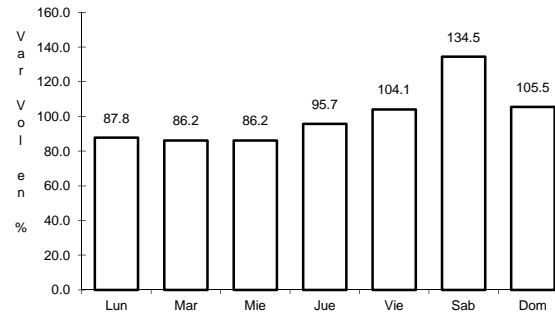
34 CARR: Villa Unión - Siqueiros

CLAVE: 25063

RUTA: SIN-063



Km: 0.00 Tipo: 3 Sent: 0

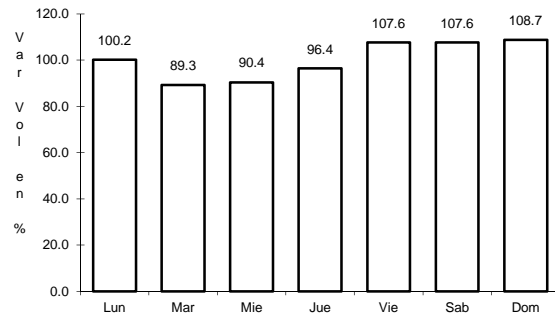


Km: 11.00 Tipo: 1 Sent: 0

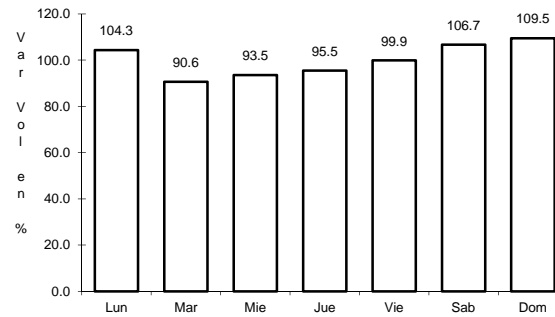
35 CARR: Culiacán - Las Brisas (Cuota)

CLAVE: 25503

RUTA: SIN-001D



Km: 1.50 Tipo: 3 Sent: 1



Km: 1.50 Tipo: 3 Sent: 2