

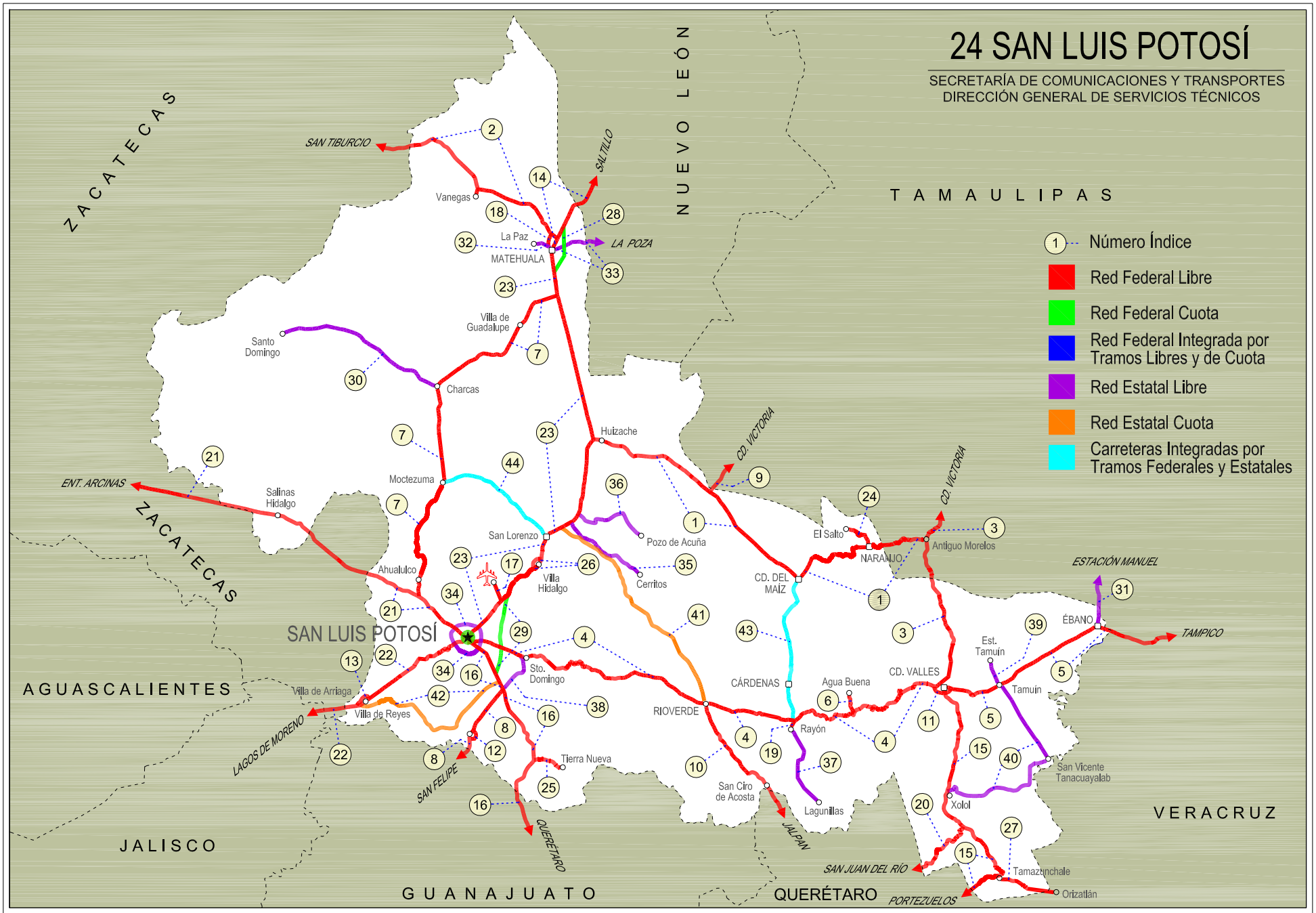


SAN LUIS POTOSI

NO. INDICE	CARRETERA	ruta
---RED FEDERAL LIBRE---		
1	Antiguo Morelos - Ent. El Huizache	MEX-080
2	Carbonera - T. C. (Ent. Morelos - Saltillo)	MEX-062
3	Cd. Valles - Cd. Victoria	MEX-085
4	Cd. Valles - San Luis Potosí	MEX-070
5	Cd. Valles - Tampico	MEX-070
6	El Clarín - Agua Buena	MEX-070
7	Ent. Ahualulco - Ent. La Bonita	MEX-063
8	Ent. de Zaragoza - San Felipe	MEX-037
9	Ent. Tula - Cd. Victoria	MEX-101
10	Jalpan de Serra - Rioverde	MEX-069
11	Libramiento de Cd. Valles	MEX-070
12	Libramiento de Villa de Reyes	MEX-037
13	Libramiento Villa de Arriaga	MEX-080
14	Matehuala - Ent. Puerto México	MEX-057
15	Portezuelo - Cd. Valles	MEX-085
16	Querétaro - San Luis Potosí	MEX-057
17	Ramal a Aeropuerto de S. L. P.	MEX-057
18	Ramal a Ojo de Agua	MEX-062
19	Ramal a Rayón	MEX-070
20	San Juan del Río - Xilitla	MEX-120
21	San Luis Potosí - Ent. Arcinas	MEX-049
22	San Luis Potosí - Lagos de Moreno	MEX-070-080
23	San Luis Potosí - Matehuala	MEX-057
24	T. C. (Ent. El Huizache- Ant. Morelos)-El Salto	MEX-080
25	T. C. (Qro - S.L.P.) - Tierra Nueva	MEX-057
26	T. C. (S.L.P. - Matehuala) - Villa Hidalgo	MEX-057
27	Tamazunchale - San Felipe Orizatlán	MEX-085
---RED FEDERAL DE CUOTA---		
28	Libramiento de Matehuala (Cuota)	MEX-057D
29	Libramiento Oriente de San Luis Potosí (Cuota)	MEX-057D
---RED ESTATAL LIBRE---		
30	Charcas - Villa Santo Domingo	SLP-017
31	Ébano - Estación Manuel	SLP-TAM
32	Matehuala - La Paz	SLP-020
33	Matehuala - La Poza	SLP-029
34	Periférico de San Luis Potosí	SLP-032
35	Ramal a Cerritos	SLP-007
36	Ramal a Pozo de Acuña	SLP-009
37	Rayón - Lagunillas	SLP-011
38	Santo Domingo - Cerro Gordo	SLP-022
39	Tamuín - Estación F.F.C.C. Tamuín	SLP-040
40	Tamuín - Xolol	SLP-014
---RED ESTATAL DE CUOTA---		
41	Cerritos - Rioverde (Cuota)	SLP-D
42	San Luis Potosí - Villa de Arriaga (Cuota)	SLP-D
---CARRETERAS INTEGRADAS POR TRAMOS FEDERALES Y ESTATALES---		
43	Rayón - Cd. del Maíz	MEX-070-SLP-005
44	San Lorenzo - Moctezuma	MEX-063-SLP-012

24 SAN LUIS POTOSÍ

SECRETARÍA DE COMUNICACIONES Y TRANSPORTES
DIRECCIÓN GENERAL DE SERVICIOS TÉCNICOS



SAN LUIS POTOSI

1 CARR: Antiguo Morelos - Ent. El Huizache

CLAVE: 00136

RUTA: MEX-080

AÑO: 2012

LUGAR	ESTACION				CLASIFICACION VEHICULAR EN PORCIENTO										COORDENADAS					
	KM	TE	SC	TDPA	M	A	B	C2	C3	T3S2	T3S3	T3S2R4	OTROS	A	B	C	K'	D	LATITUD	LONGITUD
Antiguo Morelos	0.00	3	0	2323	5.2	78.3	1.4	9.6	2.2	2.0	1.0	0.2	0.1	83.5	1.4	15.1	0.091	0.500	22.554852	-99.098740
Nuevo Morelos	19.28	1	0	1214	3.7	76.0	2.2	9.7	3.5	3.0	1.0	0.5	0.4	79.7	2.2	18.1	0.095	0.501	22.540347	-99.213987
Lim. Edos. Term. Tamps. Ppia. S. L. P.	25.00																			
El Naranjo	32.00	1	0	4424	3.4	79.4	1.6	8.4	1.8	3.9	1.0	0.2	0.3	82.8	1.6	15.6	0.135	0.509	22.526890	-99.316692
El Naranjo	32.00	3	0	1773	4.6	77.0	2.7	8.7	3.2	2.5	0.9	0.2	0.2	81.6	2.7	15.7	0.092	0.501	22.518770	-99.336880
Cd. del Maiz	86.00	3	0	3223	0.7	83.3	3.6	7.2	1.5	2.7	0.8	0.2	0.0	84.0	3.6	12.4	0.098	0.502	22.412517	-99.619980
T. Der. Tula	141.21	3	0	2738	2.7	73.9	3.8	6.8	5.4	4.4	1.0	1.0	1.0	76.6	3.8	19.6	0.074	0.504	22.738837	-99.980627
T. C. San Luis Potosí - Matehuala (Ent. El Huizache)	198.83	1	0	2977	5.0	72.2	2.5	6.0	5.0	4.8	1.9	1.6	1.0	77.2	2.5	20.3	0.075	0.518	22.930973	-100.448095

2 CARR: Carbonera - T. C. (Ent. Morelos - Saltillo)

CLAVE: 00218

RUTA: MEX-062

AÑO: 2012

LUGAR	ESTACION				CLASIFICACION VEHICULAR EN PORCIENTO										COORDENADAS					
	KM	TE	SC	TDPA	M	A	B	C2	C3	T3S2	T3S3	T3S2R4	OTROS	A	B	C	K'	D	LATITUD	LONGITUD
Carbonera	0.00	3	0	2378	9.7	72.8	5.3	7.8	1.3	2.1	0.5	0.2	0.3	82.5	5.3	12.2	0.102	0.525	23.698184	-100.620214
Cedral	18.00	1	0	3617	9.5	69.0	6.0	12.3	0.8	1.8	0.3	0.1	0.2	78.5	6.0	15.5	0.102	0.505	23.828276	-100.736263
Cedral	18.00	3	0	2830	5.6	73.6	5.2	11.9	0.8	2.3	0.3	0.1	0.2	79.2	5.2	15.6	0.088	0.505	23.813770	-100.714142
Lim. Edos. Term. S. L. P. Ppia. Zac.	79.20																			
T. C. Ent. Morelos - Saltillo	112.00	1	0	1025	2.7	62.0	6.0	23.4	3.1	2.5	0.2	0.1	0.0	64.7	6.0	29.3	0.094	0.513	24.157574	-101.494107

3 CARR: Cd. Valles - Cd. Victoria

CLAVE: 00509

RUTA: MEX-085

AÑO: 2012

LUGAR	ESTACION				CLASIFICACION VEHICULAR EN PORCIENTO										COORDENADAS					
	KM	TE	SC	TDPA	M	A	B	C2	C3	T3S2	T3S3	T3S2R4	OTROS	A	B	C	K'	D	LATITUD	LONGITUD
Cd. Valles	0.00	3	0	6564	1.6	73.8	3.4	11.5	2.3	3.6	1.4	1.8	0.6	75.4	3.4	21.2	0.082	0.509	22.004752	-99.007118
Lim. Edos. Term. S. L. P. Ppia. Tamps.	50.40																			
Antiguo Morelos	66.90	1	0	2677	4.2	73.0	3.4	9.5	2.4	3.3	1.4	2.4	0.4	77.2	3.4	19.4	0.078	0.503	22.547951	-99.078183
Antiguo Morelos	66.90	3	0	3525	3.5	74.8	3.0	9.2	2.2	3.4	1.6	1.4	0.9	78.3	3.0	18.7	0.090	0.518	22.560105	-99.078003
Cd. Mante	98.00	1	0	6164	4.2	75.3	2.9	6.4	3.4	4.2	1.3	1.7	0.6	79.5	2.9	17.6	0.091	0.504	22.711669	-98.989436
T. Izq. Ocampo	110.00	3	0	3333	7.4	75.8	1.8	11.2	1.6	1.7	0.3	0.1	0.1	83.2	1.8	15.0	0.082	0.502	22.838736	-99.024308
T. Izq. Gómez Farías	132.84	3	0	1744	4.7	78.4	4.3	8.1	2.4	1.3	0.6	0.1	0.1	83.1	4.3	12.6	0.101	0.503	23.030353	-99.093854
T. Izq. Llera de Canales	170.00	3	0	4089	0.8	86.1	3.1	5.9	1.0	2.4	0.3	0.1	0.3	86.9	3.1	10.0	0.088	0.501	23.310163	-99.018604
T. Der. González	172.50	3	0	2374	0.9	82.2	5.1	6.2	1.9	1.8	0.9	0.2	0.8	83.1	5.1	11.8	0.100	0.517	23.321745	-98.998067
Cd. Victoria	232.00	1	0	2240	1.3	83.6	3.8	7.2	1.3	1.6	1.1	0.0	0.1	84.9	3.8	11.3	0.112	0.510	23.659700	-99.096354

SAN LUIS POTOSI

5 CARR: Cd. Valles - Tampico

CLAVE: 00138

RUTA: MEX-070

AÑO: 2012

LUGAR	ESTACION				CLASIFICACION VEHICULAR EN PORCIENTO										COORDENADAS					
	KM	TE	SC	TDPA	M	A	B	C2	C3	T3S2	T3S3	T3S2R4	OTROS	A	B	C	K'	D	LATITUD	LONGITUD
Tampico	138.00	1	1	8014	1.0	78.1	2.2	7.0	1.9	4.7	2.4	2.2	0.5	79.1	2.2	18.7	0.088	0.512	22.227024	-97.893827
Tampico	138.00	1	2	8411	1.3	75.8	2.4	7.5	2.0	5.1	2.8	2.5	0.6	77.1	2.4	20.5	0.081	0.512	22.227066	-97.893845

6 CARR: El Clarín - Agua Buena

CLAVE: 24283

RUTA: MEX-070

AÑO: 2012

LUGAR	ESTACION				CLASIFICACION VEHICULAR EN PORCIENTO										COORDENADAS					
	KM	TE	SC	TDPA	M	A	B	C2	C3	T3S2	T3S3	T3S2R4	OTROS	A	B	C	K'	D	LATITUD	LONGITUD
T. C. Cd. Valles - San Luis Potosí	0.00	3	0	1388	1.5	77.1	3.6	14.0	2.0	1.2	0.4	0.0	0.2	78.6	3.6	17.8	0.093	0.501	21.884828	-99.380152
Agua Buena	11.23	1	0	4075	1.2	80.5	3.4	9.3	2.1	1.3	1.2	0.8	0.2	81.7	3.4	14.9	0.072	0.505	21.951023	-99.391601

7 CARR: Ent. Ahualulco - Ent. La Bonita

CLAVE: 24258

RUTA: MEX-063

AÑO: 2012

LUGAR	ESTACION				CLASIFICACION VEHICULAR EN PORCIENTO										COORDENADAS					
	KM	TE	SC	TDPA	M	A	B	C2	C3	T3S2	T3S3	T3S2R4	OTROS	A	B	C	K'	D	LATITUD	LONGITUD
T. C. San Luis Potosí - Ent. Arcinas	0.00	3	0	3791	1.6	78.5	6.5	8.6	0.9	2.0	0.6	0.7	0.6	80.1	6.5	13.4	0.100	0.502	22.320537	-101.165174
Ahualulco	11.00	3	0	3300	1.9	81.2	6.7	7.0	0.5	2.0	0.3	0.2	0.2	83.1	6.7	10.2	0.094	0.500	22.408180	-101.160389
Moctezuma	59.00	1	0	1825	4.7	72.5	5.8	13.2	2.1	0.8	0.7	0.0	0.2	77.2	5.8	17.0	0.088	0.503	22.758789	-101.064282
Charcas	100.00	1	0	2115	6.0	77.6	3.5	9.6	0.9	1.2	0.6	0.5	0.1	83.6	3.5	12.9	0.086	0.501	23.112560	-101.103940
Charcas	100.00	3	0	1295	5.4	68.6	3.2	17.7	3.1	1.7	0.3	0.0	0.0	74.0	3.2	22.8	0.099	0.507	23.129787	-101.100852
T. C. San Luis Potosí - Matehuala	169.90	1	0	1197	5.0	68.8	3.2	18.2	3.5	1.1	0.2	0.0	0.0	73.8	3.2	23.0	0.105	0.511	23.481358	-100.623003

8 CARR: Ent. de Zaragoza - San Felipe

CLAVE: 00240

RUTA: MEX-037

AÑO: 2012

LUGAR	ESTACION				CLASIFICACION VEHICULAR EN PORCIENTO										COORDENADAS					
	KM	TE	SC	TDPA	M	A	B	C2	C3	T3S2	T3S3	T3S2R4	OTROS	A	B	C	K'	D	LATITUD	LONGITUD
T. C. Querétaro - San Luis Potosí	0.00	3	0	8221	1.1	58.1	7.5	12.0	2.9	13.1	2.8	1.7	0.8	59.2	7.5	33.3	0.075	0.513	21.966448	-100.818387
Lim. Edos. Term. S. L. P. Ppia. Gto.	32.00																			
San Felipe	72.00	1	0	5314	2.6	55.3	3.5	9.6	3.3	20.2	2.6	2.0	0.9	57.9	3.5	38.6	0.070	0.509	21.481375	-101.153360

9 CARR: Ent. Tula - Cd. Victoria

CLAVE: 00179

RUTA: MEX-101

AÑO: 2012

LUGAR	ESTACION				CLASIFICACION VEHICULAR EN PORCIENTO										COORDENADAS					
	KM	TE	SC	TDPA	M	A	B	C2	C3	T3S2	T3S3	T3S2R4	OTROS	A	B	C	K'	D	LATITUD	LONGITUD
T. C. Antigua Morelos - El Huizache	0.00	3	0	2837	2.5	80.7	3.2	4.0	2.9	3.0	1.2	1.5	1.0	83.2	3.2	13.6	0.072	0.523	22.738034	-99.967947
Lim. Edos. Term. S. L. P. Ppia. Tamps.	2.40																			

SAN LUIS POTOSI

13 CARR: Libramiento Villa de Arriaga

CLAVE: 24009

RUTA: MEX-080

AÑO: 2012

LUGAR	ESTACION				CLASIFICACION VEHICULAR EN PORCIENTO														COORDENADAS	
	KM	TE	SC	TDPA	M	A	B	C2	C3	T3S2	T3S3	T3S2R4	OTROS	A	B	C	K'	D	LATITUD	LONGITUD
T. C. San Luis Potosí - Lagos de Moreno	0.00	3	0	2734	0.4	58.0	3.6	9.1	6.8	13.0	5.7	2.3	1.1	58.4	3.6	38.0	0.080	0.514	21.924141	-101.371814
T. C. San Luis Potosí - Lagos de Moreno	5.00																			

14 CARR: Matehuala - Ent. Puerto México

CLAVE: 00405

RUTA: MEX-057

AÑO: 2012

LUGAR	ESTACION				CLASIFICACION VEHICULAR EN PORCIENTO														COORDENADAS	
	KM	TE	SC	TDPA	M	A	B	C2	C3	T3S2	T3S3	T3S2R4	OTROS	A	B	C	K'	D	LATITUD	LONGITUD
Matehuala	0.00	3	1	6608	2.5	68.0	2.4	9.3	1.5	11.0	2.8	1.8	0.7	70.5	2.4	27.1	0.099	0.516	23.679670	-100.626631
Matehuala	0.00	3	2	6826	2.3	64.5	2.7	10.5	1.6	12.5	3.1	1.9	0.9	66.8	2.7	30.5	0.077	0.516	23.679670	-100.626631
T. Izq. Cedral	8.47	1	1	4295	6.5	51.5	3.9	12.1	3.2	16.4	3.6	2.1	0.7	58.0	3.9	38.1	0.085	0.515	23.694470	-100.619723
T. Izq. Cedral	8.47	1	2	4569	2.3	51.1	4.3	12.6	3.3	19.4	4.0	2.2	0.8	53.4	4.3	42.3	0.065	0.515	23.694470	-100.619723
T. Izq. Cedral	8.47	3	1	4012	1.6	43.2	3.9	11.6	1.9	28.1	5.9	3.1	0.7	44.8	3.9	51.3	0.094	0.521	23.700137	-100.616836
T. Izq. Cedral	8.47	3	2	3855	1.5	38.6	4.4	13.3	2.0	29.6	6.2	3.6	0.8	40.1	4.4	55.5	0.066	0.521	23.700111	-100.616723
Lim. Edos. Term. S. L. P. Ppia. N. L.	24.64																			
Santa Ana	59.65	1	1	6809	0.5	34.0	3.9	8.7	3.6	37.9	4.5	5.9	1.0	34.5	3.9	61.6	0.065	0.504	24.064415	-100.392577
Santa Ana	59.65	1	2	6914	2.0	28.8	4.2	9.7	3.8	38.8	4.9	6.8	1.0	30.8	4.2	65.0	0.067	0.504	24.064415	-100.392577
T. Der. Linares	128.99	3	1	6895	9.8	28.6	6.0	10.4	4.6	29.8	4.3	5.4	1.1	38.4	6.0	55.6	0.071	0.507	24.684320	-100.300877
T. Der. Linares	128.99	3	2	6711	1.6	29.6	6.4	11.8	5.2	34.1	4.5	5.7	1.1	31.2	6.4	62.4	0.079	0.507	24.686787	-100.301761
San Rafael	177.18	1	1	6930	2.7	47.3	4.3	12.6	2.2	23.1	3.1	3.5	1.2	50.0	4.3	45.7	0.081	0.518	25.019838	-100.541266
San Rafael	177.18	1	2	7437	3.7	43.5	5.0	13.0	2.4	24.3	3.4	3.6	1.1	47.2	5.0	47.8	0.081	0.518	25.019838	-100.541266
Ent. Puerto México	205.97																			

15 CARR: Portezuelo - Cd. Valles

CLAVE: 00023

RUTA: MEX-085

AÑO: 2012

LUGAR	ESTACION				CLASIFICACION VEHICULAR EN PORCIENTO														COORDENADAS	
	KM	TE	SC	TDPA	M	A	B	C2	C3	T3S2	T3S3	T3S2R4	OTROS	A	B	C	K'	D	LATITUD	LONGITUD
Portezuelo	0.00	3	0	5635	0.8	82.8	4.1	7.1	1.1	2.8	0.8	0.2	0.3	83.6	4.1	12.3	0.084	0.513	20.488366	-99.298560
T. Der. Tasquillo (2º Acceso)	10.50	1	0	3919	1.0	86.9	2.5	5.9	0.9	1.3	1.1	0.1	0.3	87.9	2.5	9.6	0.099	0.504	20.543996	-99.319204
T. Izq. Zimapán (1º Acceso)	32.00	1	0	4739	1.1	83.9	3.0	7.2	0.9	2.5	0.8	0.1	0.5	85.0	3.0	12.0	0.077	0.502	20.702913	-99.334503
T. Izq. Zimapán (1º Acceso)	32.00	3	0	1929	0.8	87.0	2.9	5.0	1.5	1.7	0.8	0.1	0.2	87.8	2.9	9.3	0.084	0.526	20.705840	-99.336089
La Estancia	41.00	3	0	1645	0.4	78.3	3.7	13.1	1.9	1.8	0.5	0.0	0.3	78.7	3.7	17.6	0.078	0.505	20.777574	-99.310267
Trancas	51.00	3	0	1507	0.3	77.8	3.9	13.0	1.9	1.9	1.0	0.0	0.2	78.1	3.9	18.0	0.101	0.501	20.799562	-99.265773
Jacala	98.60	3	0	2048	0.4	81.7	3.0	11.5	1.5	1.3	0.5	0.0	0.1	82.1	3.0	14.9	0.093	0.512	20.999617	-99.182301
Zacate Grande	143.10	1	0	1191	0.7	76.0	4.1	14.8	2.7	1.1	0.5	0.0	0.1	76.7	4.1	19.2	0.094	0.500	21.111392	-99.002063
T. Izq. Pisaflores	154.00	3	0	1832	1.5	82.2	4.5	8.1	1.7	1.4	0.3	0.0	0.3	83.7	4.5	11.8	0.081	0.504	21.153694	-98.945115

SAN LUIS POTOSI

15 CARR: Portezuelo - Cd. Valles

CLAVE: 00023

RUTA: MEX-085

AÑO: 2012

LUGAR	ESTACION				CLASIFICACION VEHICULAR EN PORCIENTO													COORDENADAS		
	KM	TE	SC	TDPA	M	A	B	C2	C3	T3S2	T3S3	T3S2R4	OTROS	A	B	C	K'	D	LATITUD	LONGITUD
Lim. Edos. Term. Hgo. Ppia. S. L. P.	168.63																			
Tamazunchale	192.80	1	0	4585	2.7	76.0	4.5	12.1	1.2	2.5	0.5	0.1	0.4	78.7	4.5	16.8	0.082	0.512	21.262316	-98.800408
T. Izq. Xilitla	228.75	1	0	4529	2.5	75.0	4.3	11.3	2.4	3.1	0.9	0.1	0.4	77.5	4.3	18.2	0.089	0.524	21.443376	-98.925751
T. Izq. Xilitla	228.75	3	0	4393	2.3	74.7	4.7	11.1	3.0	2.8	1.0	0.1	0.3	77.0	4.7	18.3	0.088	0.505	21.447381	-98.930034
T. Izq. Aquismón	252.50	1	0	5318	2.1	70.5	3.8	11.3	6.8	3.4	1.4	0.2	0.5	72.6	3.8	23.6	0.084	0.505	21.621480	-98.987503
Agua Hedionda	265.00	1	0	4769	1.2	71.6	4.5	13.3	4.5	2.9	1.3	0.2	0.5	72.8	4.5	22.7	0.090	0.505	21.726238	-98.963718
Cd. Valles	300.00	1	0	9521	1.6	75.3	4.2	8.0	3.8	4.6	1.3	0.3	0.9	76.9	4.2	18.9	0.085	0.528	21.958311	-98.999040

16 CARR: Querétaro - San Luis Potosí

CLAVE: 00165

RUTA: MEX-057

AÑO: 2012

LUGAR	ESTACION				CLASIFICACION VEHICULAR EN PORCIENTO													COORDENADAS		
	KM	TE	SC	TDPA	M	A	B	C2	C3	T3S2	T3S3	T3S2R4	OTROS	A	B	C	K'	D	LATITUD	LONGITUD
Querétaro	0.00																			
T. Der. Libramiento de Querétaro	6.28	3	1	38181	0.5	90.0	1.0	3.7	0.7	1.7	1.2	0.3	0.9	90.5	1.0	8.5	0.081	0.501	20.632705	-100.426815
T. Der. Libramiento de Querétaro	6.28	3	2	38359	0.6	89.2	1.0	4.2	0.8	1.7	1.3	0.3	0.9	89.8	1.0	9.2	0.080	0.501	20.632731	-100.426821
T. Izq. Juriquilla	15.63	3	1	26199	0.4	88.5	0.9	6.6	1.1	1.8	0.4	0.2	0.1	88.9	0.9	10.2	0.118	0.541	20.704009	-100.437053
T. Izq. Juriquilla	15.63	3	2	28048	0.4	87.5	1.1	6.9	1.3	2.1	0.4	0.2	0.1	87.9	1.1	11.0	0.098	0.541	20.703878	-100.437121
T. Izq. San Miguel de Allende	28.53	1	1	21037	0.5	83.1	1.5	7.7	1.4	3.7	0.8	1.0	0.3	83.6	1.5	14.9	0.138	0.504	20.809464	-100.448739
T. Izq. San Miguel de Allende	28.53	1	2	21369	0.3	80.7	1.7	8.9	1.6	4.4	0.9	1.2	0.3	81.0	1.7	17.3	0.105	0.504	20.809413	-100.448771
T. Izq. San Miguel de Allende	28.53	3	1	17862	1.2	60.2	2.8	12.2	3.2	13.2	3.2	3.1	0.9	61.4	2.8	35.8	0.074	0.504	20.827445	-100.444255
T. Izq. San Miguel de Allende	28.53	3	2	17599	1.3	55.1	3.1	14.1	3.7	14.8	3.3	3.5	1.1	56.4	3.1	40.5	0.077	0.504	20.827444	-100.444249
Lim. Edos. Term. Qro. Ppia. Gto.	36.70																			
X. C. San José Iturbide - El Arenal	46.83	1	1	15128	1.3	63.2	3.7	4.4	2.6	16.3	3.3	4.4	0.8	64.5	3.7	31.8	0.063	0.527	20.959627	-100.425611
X. C. San José Iturbide - El Arenal	46.83	1	2	14915	1.6	59.0	3.8	5.0	2.9	18.1	3.8	4.9	0.9	60.6	3.8	35.6	0.090	0.527	20.959626	-100.425616
X. C. Ent. San Miguel de Allende - Dr. Mora	61.93	1	1	13448	1.7	61.4	6.0	7.5	3.2	12.4	4.4	2.5	0.9	63.1	6.0	30.9	0.079	0.504	21.077059	-100.512405
X. C. Ent. San Miguel de Allende - Dr. Mora	61.93	1	2	13675	1.8	56.9	6.6	8.3	3.5	14.3	4.7	3.0	0.9	58.7	6.6	34.7	0.075	0.504	21.077261	-100.513132
X. C. San Luis de La Paz - Guanajuato	86.68	1	1	11769	0.9	67.3	4.3	5.3	2.7	13.3	3.2	2.3	0.7	68.2	4.3	27.5	0.067	0.509	21.282011	-100.591692
X. C. San Luis de La Paz - Guanajuato	86.68	1	2	11357	0.8	64.8	4.6	5.7	2.8	14.4	3.6	2.5	0.8	65.6	4.6	29.8	0.081	0.509	21.281824	-100.591960
T. Izq. San Diego de La Unión	119.07	3	1	8941	3.2	63.3	3.8	5.4	4.0	12.8	4.4	2.3	0.8	66.5	3.8	29.7	0.068	0.514	21.541733	-100.747618
T. Izq. San Diego de La Unión	119.07	3	2	9444	3.2	58.9	4.6	6.0	4.8	14.2	4.8	2.7	0.8	62.1	4.6	33.3	0.069	0.514	21.541755	-100.747950
Lim. Edos. Term. Gto. Ppia. S. L. P.	124.74																			
T. Izq. Santa María del Río	155.88	3	1	10285	2.1	53.8	6.6	6.4	3.9	17.6	4.2	4.5	0.9	55.9	6.6	37.5	0.053	0.502	21.821680	-100.728011
T. Izq. Santa María del Río	155.88	3	2	10383	1.9	52.0	6.8	7.1	3.3	18.6	4.4	4.9	1.0	53.9	6.8	39.3	0.067	0.502	21.822193	-100.729430
T. Izq. Villa de Reyes	176.35	1	1	14862	1.3	59.0	4.4	8.6	2.3	17.1	3.0	3.5	0.8	60.3	4.4	35.3	0.067	0.516	21.966773	-100.814905
T. Izq. Villa de Reyes	176.35	1	2	15863	1.6	53.0	5.1	10.2	2.4	19.5	3.4	4.0	0.8	54.6	5.1	40.3	0.069	0.516	21.966773	-100.814904

SAN LUIS POTOSI

16 CARR: Querétaro - San Luis Potosi

CLAVE: 00165

RUTA: MEX-057

AÑO: 2012

LUGAR	ESTACION				CLASIFICACION VEHICULAR EN PORCIENTO													COORDENADAS		
	KM	TE	SC	TDPA	M	A	B	C2	C3	T3S2	T3S3	T3S2R4	OTROS	A	B	C	K'	D	LATITUD	LONGITUD
T. Izq. Villa de Reyes	176.35	3	1	15669	0.9	54.1	4.3	11.1	2.9	19.5	2.6	3.8	0.8	55.0	4.3	40.7	0.063	0.542	21.973969	-100.818828
T. Izq. Villa de Reyes	176.35	3	2	15556	1.0	50.2	4.9	11.6	3.2	21.1	3.0	4.1	0.9	51.2	4.9	43.9	0.076	0.542	21.973971	-100.818828
X. C. Libramiento de San Luis Potosi	184.80	1	1	17029	1.6	57.3	6.4	9.6	3.0	13.9	3.4	4.0	0.8	58.9	6.4	34.7	0.066	0.529	22.026378	-100.846955
X. C. Libramiento de San Luis Potosi	184.80	1	2	19103	1.4	53.3	6.7	10.0	3.4	16.1	3.8	4.4	0.9	54.7	6.7	38.6	0.081	0.529	22.026378	-100.846956
X. Periférico de San Luis Potosi	197.50	1	1	28054	0.5	92.9	1.2	2.2	0.2	1.5	1.0	0.1	0.4	93.4	1.2	5.4	0.119	0.505	22.122161	-100.913160
X. Periférico de San Luis Potosi	197.50	1	2	28625	0.3	92.4	1.3	2.5	0.2	1.8	1.0	0.1	0.4	92.7	1.3	6.0	0.115	0.505	22.122162	-100.913161
San Luis Potosi	201.66																			

17 CARR: Ramal a Aeropuerto de S. L. P.

CLAVE: 24206

RUTA: MEX-057

AÑO: 2012

LUGAR	ESTACION				CLASIFICACION VEHICULAR EN PORCIENTO													COORDENADAS		
	KM	TE	SC	TDPA	M	A	B	C2	C3	T3S2	T3S3	T3S2R4	OTROS	A	B	C	K'	D	LATITUD	LONGITUD
T. C. San Luis Potosi - Matehuala	0.00	3	0	4318	3.3	78.0	6.5	6.7	1.9	2.2	0.5	0.7	0.2	81.3	6.5	12.2	0.086	0.511	22.222792	-100.913204
Aeropuerto de S. L. P.	6.00																			

18 CARR: Ramal a Ojo de Agua

CLAVE: 24023

RUTA: MEX-062

AÑO: 2012

LUGAR	ESTACION				CLASIFICACION VEHICULAR EN PORCIENTO													COORDENADAS		
	KM	TE	SC	TDPA	M	A	B	C2	C3	T3S2	T3S3	T3S2R4	OTROS	A	B	C	K'	D	LATITUD	LONGITUD
T. C. Ent. Carbonera - Ent. San Tiburcio	0.00	3	0	2644	6.1	82.7	2.3	6.3	0.6	1.5	0.2	0.1	0.2	88.8	2.3	8.9	0.091	0.548	23.718599	-100.650693
T. C. Ent. Carbonera - Ent. San Tiburcio	6.23																			

19 CARR: Ramal a Rayón

CLAVE: 24626

RUTA: MEX-070

AÑO: 2012

LUGAR	ESTACION				CLASIFICACION VEHICULAR EN PORCIENTO													COORDENADAS		
	KM	TE	SC	TDPA	M	A	B	C2	C3	T3S2	T3S3	T3S2R4	OTROS	A	B	C	K'	D	LATITUD	LONGITUD
T. C. (Cd. Valles - San Luis Potosi)	0.00																			
Rayón	1.50	1	0	4021	1.9	80.7	1.2	12.1	0.4	2.9	0.4	0.1	0.3	82.6	1.2	16.2	0.097	0.502	21.848855	-99.628916

20 CARR: San Juan del Río - Xilitla

CLAVE: 00183

RUTA: MEX-120

AÑO: 2012

LUGAR	ESTACION				CLASIFICACION VEHICULAR EN PORCIENTO													COORDENADAS		
	KM	TE	SC	TDPA	M	A	B	C2	C3	T3S2	T3S3	T3S2R4	OTROS	A	B	C	K'	D	LATITUD	LONGITUD
San Juan del Río	0.00																			
T. Der. Libramiento de San Juan del Río	5.20	3	1	9185	0.8	87.5	2.5	4.8	1.1	1.7	1.0	0.3	0.3	88.3	2.5	9.2	0.089	0.503	20.427500	-99.973922

SAN LUIS POTOSI

20 C A R R : San Juan del Río - Xilitla

CLAVE: 00183

RUTA: MEX-120

AÑO: 2012

L U G A R	E S T A C I O N				C L A S I F I C A C I O N V E H I C U L A R E N P O R C I E N T O										C O O R D E N A D A S					
	KM	TE	SC	TDPA	M	A	B	C2	C3	T3S2	T3S3	T3S2R4	OTROS	A	B	C	K'	D	LATITUD	LONGITUD
T. Der. Libramiento de San Juan del Río	5.20	3	2	9060	0.7	86.2	2.8	5.6	1.1	1.9	1.1	0.3	0.3	86.9	2.8	10.3	0.088	0.503	20.427470	-99.973943
T. Der. Tequisquiapan	19.80	1	1	7256	0.6	84.7	2.6	8.4	1.1	1.5	0.7	0.2	0.2	85.3	2.6	12.1	0.109	0.505	20.511862	-99.907711
T. Der. Tequisquiapan	19.80	1	2	7121	0.7	83.0	2.8	9.5	1.2	1.7	0.7	0.2	0.2	83.7	2.8	13.5	0.117	0.505	20.511850	-99.907701
T. Der. Tequisquiapan	19.80	3	1	7323	0.7	85.1	2.5	7.8	1.6	1.3	0.6	0.2	0.2	85.8	2.5	11.7	0.100	0.500	20.540516	-99.901387
T. Der. Tequisquiapan	19.80	3	2	7313	0.8	83.9	2.6	8.5	1.7	1.4	0.7	0.2	0.2	84.7	2.6	12.7	0.097	0.500	20.540554	-99.901421
Ezequiel Montes	36.50	1	1	5510	1.0	83.8	2.3	6.7	2.8	2.1	0.8	0.3	0.2	84.8	2.3	12.9	0.102	0.503	20.644152	-99.905818
Ezequiel Montes	36.50	1	2	5453	0.9	82.1	2.7	7.4	3.0	2.4	1.0	0.3	0.2	83.0	2.7	14.3	0.110	0.503	20.644138	-99.905827
Ezequiel Montes	36.50	3	0	9848	0.9	78.2	2.5	11.1	1.5	4.1	0.8	0.2	0.7	79.1	2.5	18.4	0.090	0.503	20.677068	-99.891121
Cadereyta	47.90	3	0	8782	1.3	82.5	1.7	5.6	1.8	3.6	1.6	0.9	1.0	83.8	1.7	14.5	0.090	0.506	20.701863	-99.805447
Vizarrón de Montes	73.50	3	0	3116	0.7	73.0	2.9	13.0	5.2	2.8	1.9	0.2	0.3	73.7	2.9	23.4	0.095	0.507	20.843205	-99.715327
T. Der. San Joaquín	79.50	3	0	1258	0.5	77.9	3.0	14.0	2.8	1.3	0.5	0.0	0.0	78.4	3.0	18.6	0.091	0.509	20.885622	-99.707508
T. Izq. Higuierillas	89.10	3	0	1723	0.7	78.0	2.7	13.2	3.3	1.4	0.6	0.0	0.1	78.7	2.7	18.6	0.096	0.501	20.947405	-99.748143
T. Izq. Peñamiller	103.00	3	0	1188	0.8	77.6	3.4	14.1	1.8	1.6	0.5	0.0	0.2	78.4	3.4	18.2	0.101	0.506	21.039041	-99.739398
Pinal de Amoles	140.00	3	0	1560	0.6	86.2	2.0	8.2	0.9	1.4	0.6	0.0	0.1	86.8	2.0	11.2	0.092	0.504	21.137624	-99.620592
Jalpan de Serra	179.30	3	0	5097	0.8	90.2	1.3	3.1	0.5	3.1	0.4	0.1	0.5	91.0	1.3	7.7	0.085	0.503	21.209547	-99.454295
Landa de Matamoros	201.60	3	0	2510	0.5	84.5	1.9	10.6	0.7	1.4	0.3	0.0	0.1	85.0	1.9	13.1	0.098	0.500	21.187031	-99.311235
El Lobo	236.40	3	0	1072	2.4	81.6	2.5	5.1	2.6	2.7	1.1	0.9	1.1	84.0	2.5	13.5	0.091	0.500	21.291618	-99.114699
Lim. Edos. Term. Qro. Ppia. S. L. P.	238.33																			
Xilitla	266.40	1	0	2461	3.7	73.9	5.9	13.7	0.9	1.4	0.4	0.0	0.1	77.6	5.9	16.5	0.102	0.504	21.379280	-99.000813
T. C. Portezuelo - Cd. Valles	276.98	1	0	2522	3.1	78.1	4.0	10.9	1.7	1.6	0.5	0.0	0.1	81.2	4.0	14.8	0.099	0.503	21.442391	-98.929951

21 C A R R : San Luis Potosí - Ent. Arcinas

CLAVE: 00134

RUTA: MEX-049

AÑO: 2012

L U G A R	E S T A C I O N				C L A S I F I C A C I O N V E H I C U L A R E N P O R C I E N T O										C O O R D E N A D A S					
	KM	TE	SC	TDPA	M	A	B	C2	C3	T3S2	T3S3	T3S2R4	OTROS	A	B	C	K'	D	LATITUD	LONGITUD
T. C. San Luis Potosí - Matehuala	0.00																			
T. Izq. Periférico de San Luis Potosí	9.35	3	1	8217	4.8	75.0	3.3	7.0	1.2	4.5	1.6	2.0	0.6	79.8	3.3	16.9	0.088	0.503	22.203405	-101.026352
T. Izq. Periférico de San Luis Potosí	9.35	3	2	8302	5.2	71.6	3.1	9.1	1.4	4.9	1.8	2.2	0.7	76.8	3.1	20.1	0.080	0.503	22.203406	-101.026350
Mexquitic	22.50	1	1	5526	1.9	72.3	3.6	8.7	2.0	6.3	2.0	2.6	0.6	74.2	3.6	22.2	0.091	0.504	22.249743	-101.105743
Mexquitic	22.50	1	2	5613	2.0	69.7	3.8	9.7	2.1	7.0	2.2	3.0	0.5	71.7	3.8	24.5	0.091	0.504	22.249745	-101.105742
T. Der. Charcas	30.90	1	1	4773	3.7	66.3	5.2	11.1	1.2	5.2	2.3	4.4	0.6	70.0	5.2	24.8	0.089	0.543	22.310051	-101.158518
T. Der. Charcas	30.90	1	2	4411	3.6	62.0	6.2	12.4	1.2	5.9	2.7	5.1	0.9	65.6	6.2	28.2	0.090	0.543	22.310049	-101.158522
Lim. Edos. Term. S. L. P. Ppia. Zac.	55.13																			
Lim. Edos. Term. Zac. Ppia. S. L. P.	89.30																			
T. Der. Salinas	99.00	1	1	2942	3.4	62.0	5.5	11.5	2.8	4.5	3.4	5.9	1.0	65.4	5.5	29.1	0.074	0.508	22.602311	-101.704274

SAN LUIS POTOSI

21 CARR : San Luis Potosí - Ent. Arcinas

CLAVE: 00134

RUTA: MEX-049

AÑO : 2012

LUGAR	ESTACION				CLASIFICACION VEHICULAR EN PORCIENTO													COORDENADAS		
	KM	TE	SC	TDPA	M	A	B	C2	C3	T3S2	T3S3	T3S2R4	OTROS	A	B	C	K'	D	LATITUD	LONGITUD
T. Der. Salinas	99.00	1	2	3035	3.1	61.0	5.2	12.7	3.0	4.9	3.6	5.6	0.9	64.1	5.2	30.7	0.084	0.508	22.602311	-101.704274
T. Der. Salinas	99.00	3	1	2621	0.9	66.8	5.1	10.2	3.0	6.1	4.1	2.9	0.9	67.7	5.1	27.2	0.078	0.516	22.619271	-101.737134
T. Der. Salinas	99.00	3	2	2710	1.4	65.0	5.6	10.3	3.2	6.3	4.0	3.3	0.9	66.4	5.6	28.0	0.082	0.516	22.619266	-101.737132
Lim. Edos. Term. S. L. P. Ppia. Zac.	122.47																			
T. Izq. Pánfilo Natera	139.00	1	1	3099	0.9	63.9	5.2	4.9	3.0	10.6	3.9	6.7	0.9	64.8	5.2	30.0	0.075	0.501	22.678943	-102.097590
T. Izq. Pánfilo Natera	139.00	1	2	3084	1.1	61.2	5.6	5.5	3.4	11.6	4.0	6.5	1.1	62.3	5.6	32.1	0.075	0.501	22.678842	-102.097641
Ent. Arcinas	162.98	1	1	3142	0.6	65.1	5.4	5.4	2.9	10.2	3.2	6.4	0.8	65.7	5.4	28.9	0.084	0.501	22.719476	-102.322500
Ent. Arcinas	162.98	1	2	3152	0.7	63.8	5.5	5.6	3.1	10.2	3.3	6.8	1.0	64.5	5.5	30.0	0.077	0.501	22.719206	-102.322529

22 CARR : San Luis Potosí - Lagos de Moreno

CLAVE: 00133

RUTA: MEX-070-080

AÑO : 2012

LUGAR	ESTACION				CLASIFICACION VEHICULAR EN PORCIENTO													COORDENADAS		
	KM	TE	SC	TDPA	M	A	B	C2	C3	T3S2	T3S3	T3S2R4	OTROS	A	B	C	K'	D	LATITUD	LONGITUD
San Luis Potosí	0.00	3	1	17085	1.1	87.6	1.5	3.1	3.2	1.9	1.1	0.2	0.3	88.7	1.5	9.8	0.083	0.506	22.133363	-101.031880
San Luis Potosí	0.00	3	2	16672	1.2	86.4	1.5	3.4	3.4	2.3	1.3	0.2	0.3	87.6	1.5	10.9	0.079	0.506	22.133370	-101.031889
X. Periférico de San Luis Potosí	8.41	3	0	8221	1.3	77.8	3.2	4.0	2.2	6.3	3.1	1.1	1.0	79.1	3.2	17.7	0.081	0.530	22.128694	-101.038973
El Tepetate	41.90	1	0	4386	0.6	65.5	3.6	11.9	4.2	9.2	2.8	1.1	1.1	66.1	3.6	30.3	0.080	0.502	22.022632	-101.228674
El Tepetate	41.90	3	0	3772	0.5	64.7	3.7	11.8	4.2	9.8	3.3	1.2	0.8	65.2	3.7	31.1	0.086	0.504	22.006881	-101.250597
Villa de Arriaga	61.90	3	0	2065	0.6	60.2	3.5	14.5	3.3	10.3	3.4	3.2	1.0	60.8	3.5	35.7	0.076	0.550	21.896868	-101.409547
Lim. Edos. Term. S. L. P. Ppia. Zac.	70.23																			
Lim. Edos. Term. Zac. Ppia. Jal.	82.94																			
Ojuelos de Jalisco	83.20	1	0	7283	0.7	60.8	3.7	9.0	2.9	13.0	3.1	5.6	1.2	61.5	3.7	34.8	0.078	0.507	21.875752	-101.570655
Ojuelos de Jalisco	83.20	3	0	5017	0.8	55.0	3.4	10.4	3.8	14.4	4.3	6.7	1.2	55.8	3.4	40.8	0.077	0.510	21.854336	-101.593926
X. C. León - Aguascalientes	146.90	1	0	6916	0.8	57.5	3.5	9.9	3.9	13.9	3.2	6.3	1.0	58.3	3.5	38.2	0.079	0.541	21.375713	-101.894350
Lagos de Moreno	150.00																			

23 CARR : San Luis Potosí - Matehuala

CLAVE: 24508

RUTA: MEX-057

AÑO : 2012

LUGAR	ESTACION				CLASIFICACION VEHICULAR EN PORCIENTO													COORDENADAS		
	KM	TE	SC	TDPA	M	A	B	C2	C3	T3S2	T3S3	T3S2R4	OTROS	A	B	C	K'	D	LATITUD	LONGITUD
San Luis Potosí	0.00																			
X. Periférico de San Luis Potosí	7.36	3	1	11133	1.0	72.5	4.4	7.6	2.8	6.7	2.4	1.6	1.0	73.5	4.4	22.1	0.086	0.502	22.207733	-100.919666
X. Periférico de San Luis Potosí	7.36	3	2	11065	1.2	69.5	4.8	8.6	2.9	7.5	2.6	1.8	1.1	70.7	4.8	24.5	0.079	0.502	22.207732	-100.919666
Ventura (X. Nuevo Libramiento de Slp.)	33.20	3	1	12068	1.9	54.6	5.7	8.6	2.8	16.7	4.8	4.3	0.6	56.5	5.7	37.8	0.067	0.512	22.332645	-100.798740
Ventura (X. Nuevo Libramiento de Slp.)	33.20	3	2	11485	2.2	47.9	6.6	9.7	3.1	19.5	5.6	4.8	0.6	50.1	6.6	43.3	0.062	0.512	22.366063	-100.789072

SAN LUIS POTOSI

23 CARR: San Luis Potosí - Matehuala

CLAVE: 24508

RUTA: MEX-057

AÑO: 2012

LUGAR	ESTACION				CLASIFICACION VEHICULAR EN PORCIENTO														COORDENADAS	
	KM	TE	SC	TDPA	M	A	B	C2	C3	T3S2	T3S3	T3S2R4	OTROS	A	B	C	K'	D	LATITUD	LONGITUD
T. Der. Villa Hidalgo	45.94	1	1	10717	1.3	77.9	2.6	3.9	1.3	8.9	1.7	1.6	0.8	79.2	2.6	18.2	0.057	0.509	22.420092	-100.717410
T. Der. Villa Hidalgo	45.94	1	2	11111	0.8	76.7	3.0	4.3	1.3	9.5	2.0	1.6	0.8	77.5	3.0	19.5	0.071	0.509	22.420092	-100.717410
T. Izq. Villa Arista	61.35	1	1	10263	1.8	42.5	5.9	8.9	3.6	25.5	5.0	6.1	0.7	44.3	5.9	49.8	0.057	0.512	22.566143	-100.641351
T. Izq. Villa Arista	61.35	1	2	9778	1.7	35.7	6.3	10.1	3.9	29.4	5.4	6.8	0.7	37.4	6.3	56.3	0.056	0.512	22.566143	-100.641351
T. Der. Guadalcázar	75.70	1	1	7574	1.3	41.3	4.5	8.7	3.3	28.4	4.9	6.6	1.0	42.6	4.5	52.9	0.055	0.508	22.641273	-100.517730
T. Der. Guadalcázar	75.70	1	2	7336	2.1	33.8	5.4	9.5	3.7	32.4	5.3	6.7	1.1	35.9	5.4	58.7	0.055	0.508	22.641273	-100.517730
T. Der. Guadalcázar	75.70	3	1	7719	2.4	38.7	4.7	8.7	3.3	30.6	4.8	6.2	0.6	41.1	4.7	54.2	0.063	0.511	22.645556	-100.515639
T. Der. Guadalcázar	75.70	3	2	8059	1.5	35.8	5.1	9.3	3.9	31.1	5.5	7.2	0.6	37.3	5.1	57.6	0.052	0.511	22.645525	-100.515585
T. Der. Cd. del Maíz	109.62	3	1	7091	2.2	49.6	6.1	7.2	2.9	22.1	3.9	5.6	0.4	51.8	6.1	42.1	0.068	0.507	22.937534	-100.460489
T. Der. Cd. del Maíz	109.62	3	2	6885	1.6	43.0	6.5	8.1	3.3	26.4	4.5	6.2	0.4	44.6	6.5	48.9	0.067	0.507	22.937534	-100.460489
La Bonita	171.40	1	1	7115	2.0	48.0	6.1	8.3	2.6	22.9	3.9	5.4	0.8	50.0	6.1	43.9	0.077	0.516	23.477897	-100.613065
La Bonita	171.40	1	2	6995	1.5	42.6	6.8	8.9	3.0	25.4	4.5	6.3	1.0	44.1	6.8	49.1	0.076	0.516	23.477897	-100.613065
Matehuala	187.39	1	1	7835	7.1	36.1	5.5	11.4	4.0	26.7	3.4	4.9	0.9	43.2	5.5	51.3	0.069	0.511	23.583520	-100.633089
Matehuala	187.39	1	2	7884	3.7	33.0	5.9	11.7	4.4	31.3	4.1	4.9	1.0	36.7	5.9	57.4	0.065	0.511	23.583520	-100.633089

24 CARR: T. C. (Ent. El Huizache- Ant. Morelos)-El Salto

CLAVE: 24204

RUTA: MEX-080

AÑO: 2012

LUGAR	ESTACION				CLASIFICACION VEHICULAR EN PORCIENTO														COORDENADAS	
	KM	TE	SC	TDPA	M	A	B	C2	C3	T3S2	T3S3	T3S2R4	OTROS	A	B	C	K'	D	LATITUD	LONGITUD
T. C. El Huizache - Ant. Morelos	0.00	3	0	2593	2.0	76.9	1.1	6.8	7.5	2.0	3.0	0.3	0.4	78.9	1.1	20.0	0.084	0.516	22.539699	-99.311702
Salto del Agua	12.00																			

25 CARR: T. C. (Qro - S.L.P.) - Tierra Nueva

CLAVE: 24203

RUTA: MEX-057

AÑO: 2012

LUGAR	ESTACION				CLASIFICACION VEHICULAR EN PORCIENTO														COORDENADAS	
	KM	TE	SC	TDPA	M	A	B	C2	C3	T3S2	T3S3	T3S2R4	OTROS	A	B	C	K'	D	LATITUD	LONGITUD
T. C. Querétaro - San Luis Potosí	0.00	3	0	1973	0.8	90.5	1.2	1.2	2.2	1.4	0.7	1.0	1.0	91.3	1.2	7.5	0.100	0.515	21.693840	-100.684811
Tierra Nueva	13.10																			

26 CARR: T. C. (S.L.P. - Matehuala) - Villa Hidalgo

CLAVE: 24619

RUTA: MEX-057

AÑO: 2012

LUGAR	ESTACION				CLASIFICACION VEHICULAR EN PORCIENTO														COORDENADAS	
	KM	TE	SC	TDPA	M	A	B	C2	C3	T3S2	T3S3	T3S2R4	OTROS	A	B	C	K'	D	LATITUD	LONGITUD
Paso por Villa Hidalgo	0.00	3	0	1965	0.6	74.0	8.0	8.6	1.7	4.5	1.7	0.6	0.3	74.6	8.0	17.4	0.106	0.502	22.431287	-100.703595
Paso por Villa Hidalgo	10.20	1	0	1619	2.1	73.5	9.0	7.1	2.2	3.3	1.5	0.9	0.4	75.6	9.0	15.4	0.106	0.538	22.496964	-100.665646

SAN LUIS POTOSI

27 CARR: Tamazunchale - San Felipe Orizatlán

CLAVE: 00609

RUTA: MEX-085

AÑO: 2012

LUGAR	ESTACION				CLASIFICACION VEHICULAR EN PORCIENTO													COORDENADAS		
	KM	TE	SC	TDPA	M	A	B	C2	C3	T3S2	T3S3	T3S2R4	OTROS	A	B	C	K'	D	LATITUD	LONGITUD
T. C. Portezuelo - Cd. Valles	0.00	3	0	8714	5.7	76.5	2.5	7.7	0.8	5.0	1.3	0.3	0.2	82.2	2.5	15.3	0.081	0.502	21.251056	-98.763597
Lim. Edos. Term. S. L. P. Ppia. Hgo.	18.50																			
San Felipe Orizatlán	27.10	1	0	2211	8.2	77.7	2.5	6.7	2.2	2.0	0.5	0.0	0.2	85.9	2.5	11.6	0.087	0.504	21.169798	-98.617107

28 CARR: Libramiento de Matehuala (Cuota)

CLAVE: 24205

RUTA: MEX-057D

AÑO: 2012

LUGAR	ESTACION				CLASIFICACION VEHICULAR EN PORCIENTO													COORDENADAS		
	KM	TE	SC	TDPA	M	A	B	C2	C3	T3S2	T3S3	T3S2R4	OTROS	A	B	C	K'	D	LATITUD	LONGITUD
T. C. San Luis Potosí - Matehuala	0.00	3	1	4435	0.1	39.0	4.9	6.7	2.9	33.8	5.4	6.5	0.7	39.1	4.9	56.0	0.070	0.511	23.594475	-100.629878
T. C. San Luis Potosí - Matehuala	0.00	3	2	4246	0.2	31.7	5.6	7.3	3.3	38.6	6.0	6.6	0.7	31.9	5.6	62.5	0.069	0.511	23.594475	-100.629878
Caseta de Cobro Matehuala	7.00	2	1	4415	0.0	31.2	3.4	5.9	4.3	43.2	3.1	7.9	1.0	31.2	3.4	65.4	0.073	0.500	23.664155	-100.607286
Caseta de Cobro Matehuala	7.00	2	2	4415	0.0	31.2	3.4	5.9	4.3	43.2	3.1	7.9	1.0	31.2	3.4	65.4	0.073	0.500	23.664155	-100.607286
T. C. Matehuala - Ent. Puerto México	14.20	1	1	3954	0.2	41.9	4.6	6.0	2.7	33.8	3.5	6.6	0.7	42.1	4.6	53.3	0.085	0.504	23.694351	-100.611901
T. C. Matehuala - Ent. Puerto México	14.20	1	2	4013	0.1	33.3	5.4	7.2	3.1	38.7	3.8	7.7	0.7	33.4	5.4	61.2	0.067	0.504	23.694351	-100.611901

29 CARR: Libramiento Oriente de San Luis Potosí (Cuota)

CLAVE: 24009

RUTA: MEX-057D

AÑO: 2012

LUGAR	ESTACION				CLASIFICACION VEHICULAR EN PORCIENTO													COORDENADAS		
	KM	TE	SC	TDPA	M	A	B	C2	C3	T3S2	T3S3	T3S2R4	OTROS	A	B	C	K'	D	LATITUD	LONGITUD
T. C. Querétaro - San Luis Potosí	0.00																			
X. C. Cd. Valles - San Luis Potosí	11.20	1	1	5116	0.2	31.4	4.3	6.4	3.3	39.4	6.0	8.2	0.8	31.6	4.3	64.1	0.070	0.503	22.127430	-100.824909
X. C. Cd. Valles - San Luis Potosí	11.20	1	2	5059	0.3	27.0	4.5	7.6	3.6	40.2	6.7	9.2	0.9	27.3	4.5	68.2	0.065	0.503	22.127427	-100.824915
Caseta de Cobro San Nicolás de Los Jassos	11.22	2	1	5599	0.0	26.1	3.0	5.7	4.6	44.9	4.7	9.8	1.2	26.1	3.0	70.9	0.067	0.500	22.129766	-100.825103
Caseta de Cobro San Nicolás de Los Jassos	11.22	2	2	5598	0.0	26.1	3.0	5.7	4.6	44.9	4.7	9.8	1.2	26.1	3.0	70.9	0.067	0.500	22.129766	-100.825103
T. C. San Luis Potosí - Matehuala	33.76	1	1	5449	0.4	41.1	3.7	5.6	3.2	33.6	4.6	6.9	0.9	41.5	3.7	54.8	0.069	0.509	22.316343	-100.804438
T. C. San Luis Potosí - Matehuala	33.76	1	2	5280	0.5	33.6	3.9	6.5	3.2	38.6	4.8	7.9	1.0	34.1	3.9	62.0	0.062	0.509	22.316344	-100.804450

30 CARR: Charcas - Villa Santo Domingo

CLAVE: 24624

RUTA: SLP-017

AÑO: 2012

LUGAR	ESTACION				CLASIFICACION VEHICULAR EN PORCIENTO													COORDENADAS		
	KM	TE	SC	TDPA	M	A	B	C2	C3	T3S2	T3S3	T3S2R4	OTROS	A	B	C	K'	D	LATITUD	LONGITUD
Charcas	0.00	3	0	1193	29.1	53.6	3.8	9.7	2.1	1.1	0.5	0.1	0.0	82.7	3.8	13.5	0.091	0.504	23.138173	-101.131514
Villa Santo Domingo	75.00																			

SAN LUIS POTOSI

35 CARR: Ramal a Cerritos

CLAVE: 24615

RUTA: SLP-007

AÑO: 2012

LUGAR	ESTACION				CLASIFICACION VEHICULAR EN PORCIENTO														COORDENADAS	
	KM	TE	SC	TDPA	M	A	B	C2	C3	T3S2	T3S3	T3S2R4	OTROS	A	B	C	K'	D	LATITUD	LONGITUD
T. C. San Luis Potosí - Matehuala	0.00	3	0	623	0.8	61.0	8.6	12.6	2.7	7.1	7.2	0.0	0.0	61.8	8.6	29.6	0.090	0.501	22.612138	-100.546994
Cerritos	37.00																			

36 CARR: Ramal a Pozo de Acuña

CLAVE: 24626

RUTA: SLP-009

AÑO: 2012

LUGAR	ESTACION				CLASIFICACION VEHICULAR EN PORCIENTO														COORDENADAS	
	KM	TE	SC	TDPA	M	A	B	C2	C3	T3S2	T3S3	T3S2R4	OTROS	A	B	C	K'	D	LATITUD	LONGITUD
T. C. San Luis Potosí - Matehuala	0.00	3	0	483	1.5	73.3	6.6	15.2	1.6	1.8	0.0	0.0	0.0	74.8	6.6	18.6	0.113	0.516	22.641829	-100.515454
Pozo de Acuña	37.90																			

37 CARR: Rayón - Lagunillas

CLAVE: 24008

RUTA: SLP-011

AÑO: 2012

LUGAR	ESTACION				CLASIFICACION VEHICULAR EN PORCIENTO														COORDENADAS	
	KM	TE	SC	TDPA	M	A	B	C2	C3	T3S2	T3S3	T3S2R4	OTROS	A	B	C	K'	D	LATITUD	LONGITUD
Rayón	0.00	3	0	3110	2.0	82.7	2.3	10.0	1.4	1.3	0.3	0.0	0.0	84.7	2.3	13.0	0.104	0.504	21.843393	-99.624879
Lagunillas	36.00																			

38 CARR: Santo Domingo - Cerro Gordo

CLAVE: 24614

RUTA: SLP-022

AÑO: 2012

LUGAR	ESTACION				CLASIFICACION VEHICULAR EN PORCIENTO														COORDENADAS	
	KM	TE	SC	TDPA	M	A	B	C2	C3	T3S2	T3S3	T3S2R4	OTROS	A	B	C	K'	D	LATITUD	LONGITUD
T. C. Cd. Valles - San Luis Potosí	0.00	3	0	2973	1.1	72.2	1.2	12.9	3.0	5.1	3.3	0.4	0.8	73.3	1.2	25.5	0.084	0.506	22.091818	-100.742680
T. C. Querétaro - San Luis Potosí	19.00	1	0	2296	0.9	72.1	1.3	14.7	2.5	4.1	2.8	0.7	0.9	73.0	1.3	25.7	0.083	0.504	21.976988	-100.816351

39 CARR: Tamuín - Estación F.F.C.C. Tamuín

CLAVE: 24022

RUTA: SLP-040

AÑO: 2012

LUGAR	ESTACION				CLASIFICACION VEHICULAR EN PORCIENTO														COORDENADAS	
	KM	TE	SC	TDPA	M	A	B	C2	C3	T3S2	T3S3	T3S2R4	OTROS	A	B	C	K'	D	LATITUD	LONGITUD
Tamuín	0.00	3	0	5204	3.4	79.3	3.7	5.7	1.1	4.9	0.7	0.3	0.9	82.7	3.7	13.6	0.090	0.508	22.012526	-98.783800
Estación F.F.C.C. Tamuín	10.00	1	0	1229	4.6	75.7	5.3	5.7	1.4	3.3	1.4	1.8	0.8	80.3	5.3	14.4	0.103	0.503	22.072971	-98.809763

SAN LUIS POTOSI

40 CARR: Tamuín - Xolol

CLAVE: 24027

RUTA: SLP-014

AÑO: 2012

LUGAR	ESTACION				CLASIFICACION VEHICULAR EN PORCIENTO														COORDENADAS	
	KM	TE	SC	TDPA	M	A	B	C2	C3	T3S2	T3S3	T3S2R4	OTROS	A	B	C	K'	D	LATITUD	LONGITUD
Tamuín	0.00	3	0	3679	3.8	72.8	3.7	7.6	3.1	4.8	2.8	1.0	0.4	76.6	3.7	19.7	0.081	0.511	21.999009	-98.762931
San Vicente Tancuayalab	37.62																			
Xolol	97.00																			

41 CARR: Cerritos - Rioverde (Cuota)

CLAVE: 00138

RUTA: SLP-D

AÑO: 2012

LUGAR	ESTACION				CLASIFICACION VEHICULAR EN PORCIENTO														COORDENADAS	
	KM	TE	SC	TDPA	M	A	B	C2	C3	T3S2	T3S3	T3S2R4	OTROS	A	B	C	K'	D	LATITUD	LONGITUD
Cerritos	0.00	3	0	1767	0.1	59.9	8.3	10.4	2.5	6.8	6.4	4.5	1.1	60.0	8.3	31.7	0.094	0.522	22.588067	-100.585894
Villa Juárez	58.00	3	0	3453	0.2	61.0	8.2	12.3	3.2	7.6	3.3	3.6	0.6	61.2	8.2	30.6	0.076	0.514	22.321755	-100.287474
Río Verde	103.00	1	0	3665	0.1	68.1	8.1	12.0	2.2	5.0	2.0	1.8	0.7	68.2	8.1	23.7	0.089	0.507	21.929297	-99.957330

42 CARR: San Luis Potosí - Villa de Arriaga (Cuota)

CLAVE: 24209

RUTA: SLP-D

AÑO: 2012

LUGAR	ESTACION				CLASIFICACION VEHICULAR EN PORCIENTO														COORDENADAS	
	KM	TE	SC	TDPA	M	A	B	C2	C3	T3S2	T3S3	T3S2R4	OTROS	A	B	C	K'	D	LATITUD	LONGITUD
T. C. Querétaro - San Luis Potosí	0.00	3	0	6007	0.2	46.5	6.1	8.2	5.0	18.0	2.7	12.5	0.8	46.7	6.1	47.2	0.089	0.503	22.011498	-100.845079
Villa de Arriaga	77.00	1	0	2619	0.3	30.6	6.2	5.6	3.4	29.7	4.6	18.5	1.1	30.9	6.2	62.9	0.073	0.516	21.895849	-101.396165

43 CARR: Rayón - Cd. del Maíz

CLAVE: 24206

RUTA: MEX-070-SLP-005

AÑO: 2012

LUGAR	ESTACION				CLASIFICACION VEHICULAR EN PORCIENTO														COORDENADAS	
	KM	TE	SC	TDPA	M	A	B	C2	C3	T3S2	T3S3	T3S2R4	OTROS	A	B	C	K'	D	LATITUD	LONGITUD
T. C. (Cd. Valles - San Luis Potosí)	0.00																			
Cárdenas	15.80	1	0	2939	1.5	83.0	1.5	10.9	0.8	1.7	0.5	0.0	0.1	84.5	1.5	14.0	0.094	0.500	21.984027	-99.647659
Cd. del Maíz	55.70	1	0	2649	1.9	76.7	2.4	17.0	0.8	0.9	0.3	0.0	0.0	78.6	2.4	19.0	0.114	0.504	22.393973	-99.611845

44 CARR: San Lorenzo - Moctezuma

CLAVE: 24016

RUTA: MEX-063-SLP-012

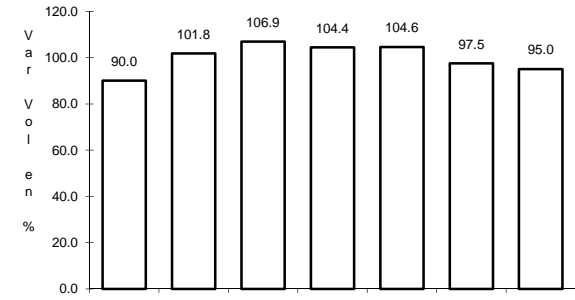
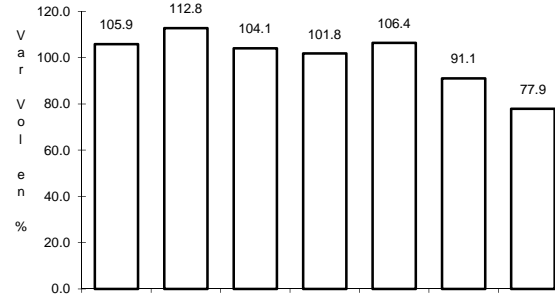
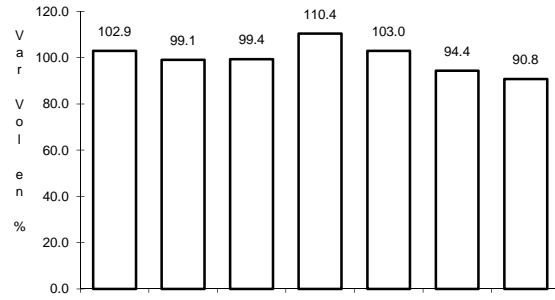
AÑO: 2012

LUGAR	ESTACION				CLASIFICACION VEHICULAR EN PORCIENTO														COORDENADAS	
	KM	TE	SC	TDPA	M	A	B	C2	C3	T3S2	T3S3	T3S2R4	OTROS	A	B	C	K'	D	LATITUD	LONGITUD
T. C. San Luis Potosí - Matehuala	0.00	3	0	1201	1.1	67.9	6.4	15.5	3.6	2.6	1.6	1.0	0.3	69.0	6.4	24.6	0.098	0.528	22.569225	-100.640021
Moctezuma	54.00	1	0	1476	1.2	77.9	4.3	12.1	1.5	1.4	0.8	0.6	0.2	79.1	4.3	16.6	0.084	0.501	22.736958	-101.083981

1 CARR: Antiguo Morelos - Ent. El Huizache

CLAVE: 00136

RUTA: MEX-080



Km: 0.00 Tipo: 3 Sent: 0

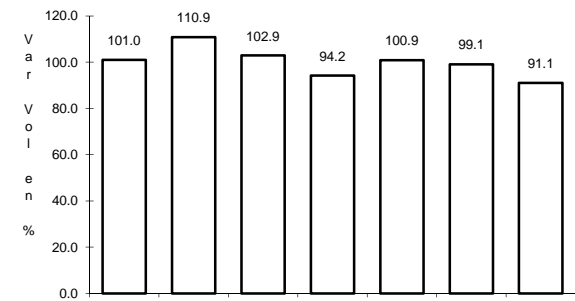
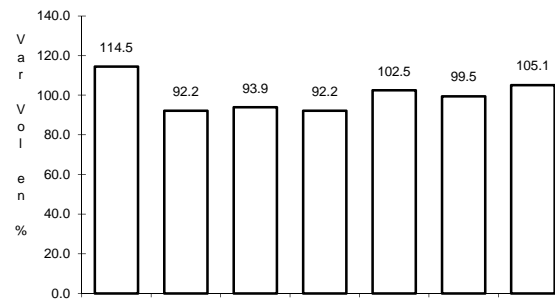
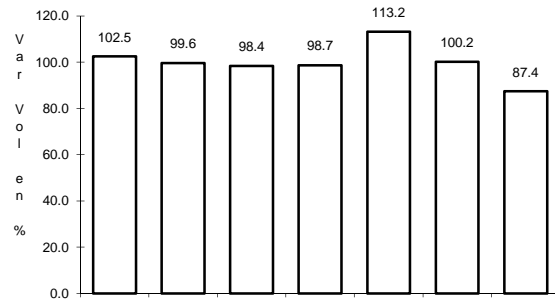
Km: 86.00 Tipo: 3 Sent: 0

Km: 198.83 Tipo: 1 Sent: 0

2 CARR: Carbonera - T. C. (Ent. Morelos - Saltillo)

CLAVE: 00218

RUTA: MEX-062



Km: 0.00 Tipo: 3 Sent: 0

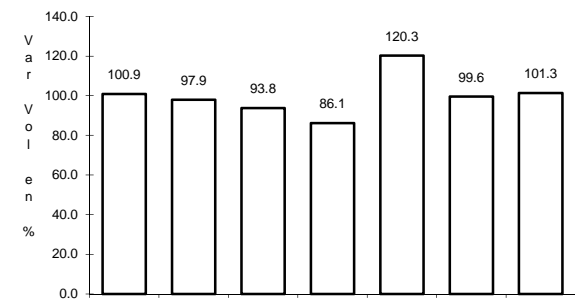
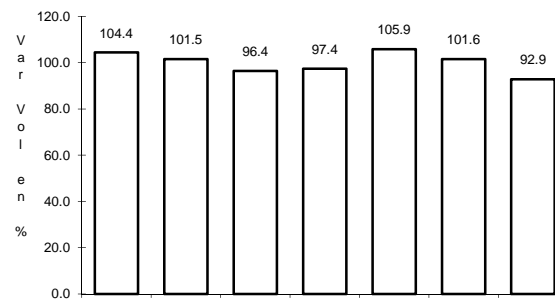
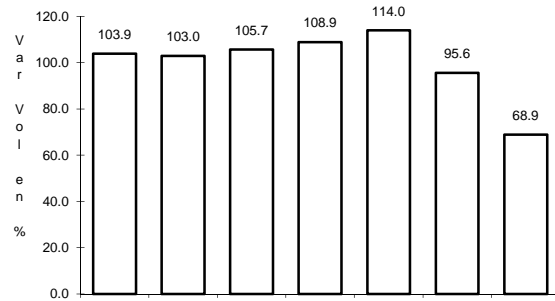
Km: 18.00 Tipo: 1 Sent: 0

Km: 112.00 Tipo: 1 Sent: 0

3 CARR: Cd. Valles - Cd. Victoria

CLAVE: 00509

RUTA: MEX-085



Km: 0.00 Tipo: 3 Sent: 0

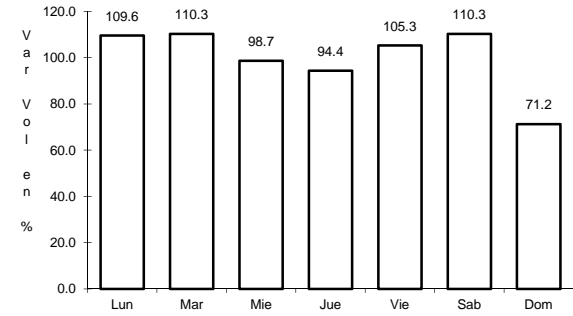
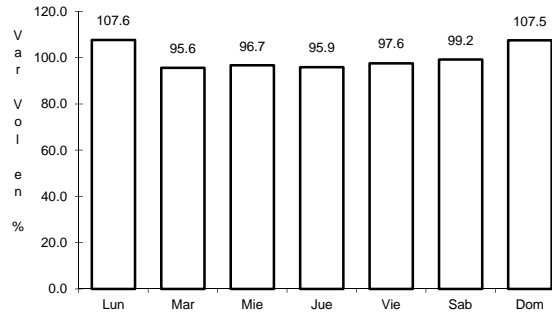
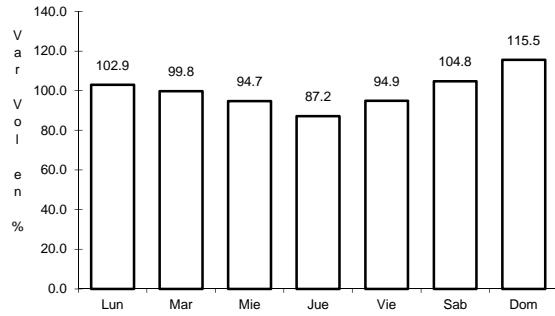
Km: 110.00 Tipo: 3 Sent: 0

Km: 232.00 Tipo: 1 Sent: 0

7 CARR: Ent. Ahualulco - Ent. La Bonita

CLAVE: 24258

RUTA: MEX-063



Km: 0.00 Tipo: 3 Sent: 0

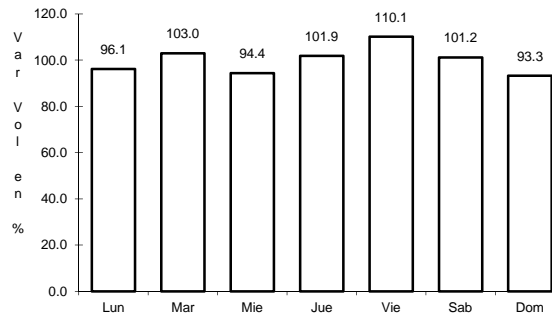
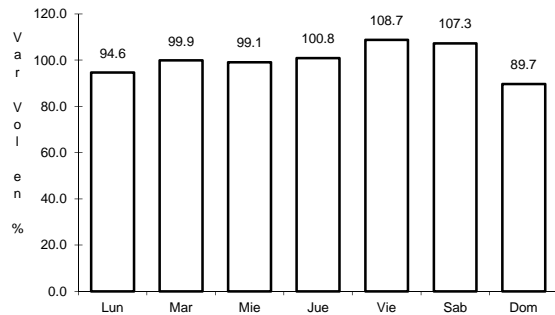
Km: 59.00 Tipo: 1 Sent: 0

Km: 169.90 Tipo: 1 Sent: 0

8 CARR: Ent. de Zaragoza - San Felipe

CLAVE: 00240

RUTA: MEX-037



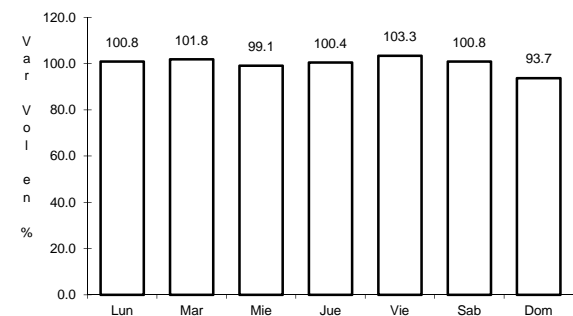
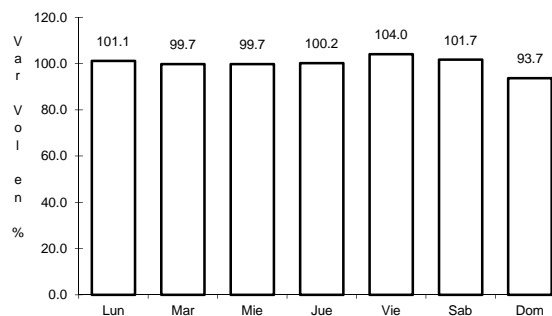
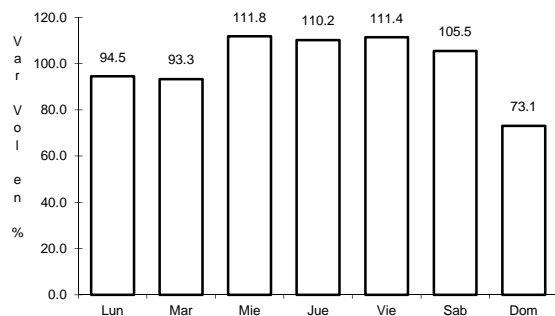
Km: 0.00 Tipo: 3 Sent: 0

Km: 72.00 Tipo: 1 Sent: 0

9 CARR: Ent. Tula - Cd. Victoria

CLAVE: 00179

RUTA: MEX-101



Km: 0.00 Tipo: 3 Sent: 0

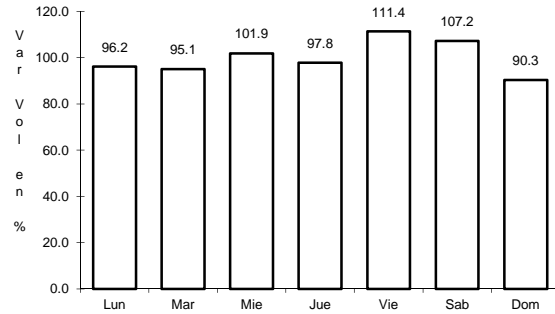
Km: 180.00 Tipo: 1 Sent: 1

Km: 180.00 Tipo: 1 Sent: 2

13 CARR: Libramiento Villa de Arriaga

CLAVE: 24009

RUTA: MEX-080



Km: 0.00

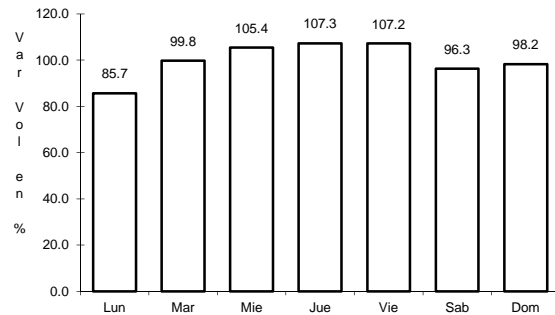
Tipo: 3

Sent: 0

14 CARR: Matehuala - Ent. Puerto México

CLAVE: 00405

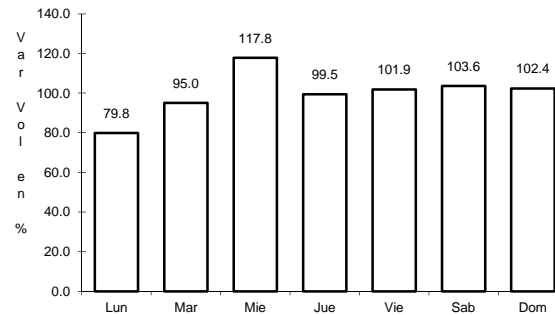
RUTA: MEX-057



Km: 0.00

Tipo: 3

Sent: 1



Km: 0.00

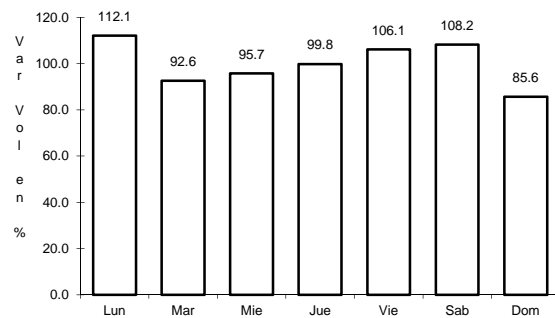
Tipo: 3

Sent: 2

15 CARR: Portezuelo - Cd. Valles

CLAVE: 00023

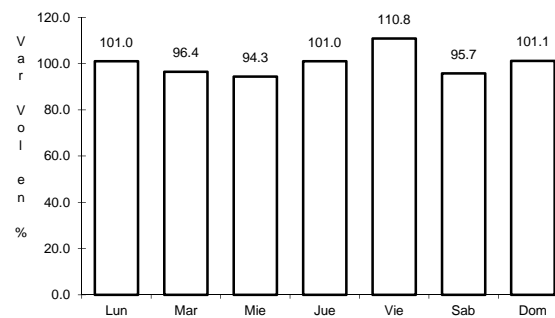
RUTA: MEX-085



Km: 0.00

Tipo: 3

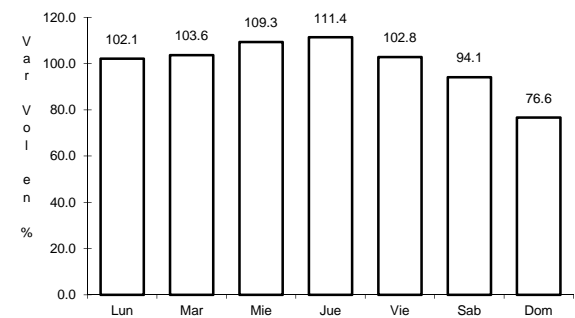
Sent: 0



Km: 154.00

Tipo: 3

Sent: 0



Km: 300.00

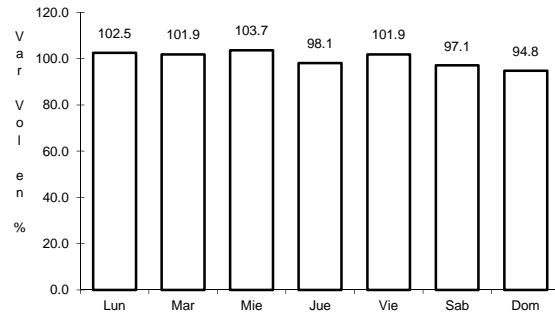
Tipo: 1

Sent: 0

16 CARR: Querétaro - San Luis Potosí

CLAVE: 00165

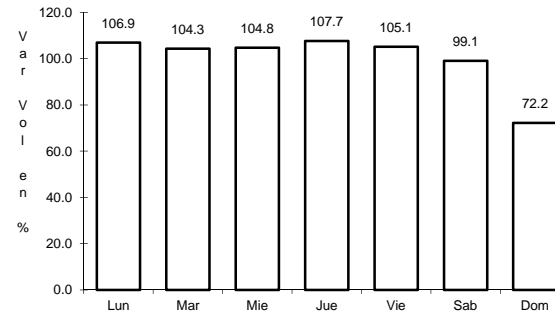
RUTA: MEX-057



Km: 6.28

Tipo: 3

Sent: 1



Km: 6.28

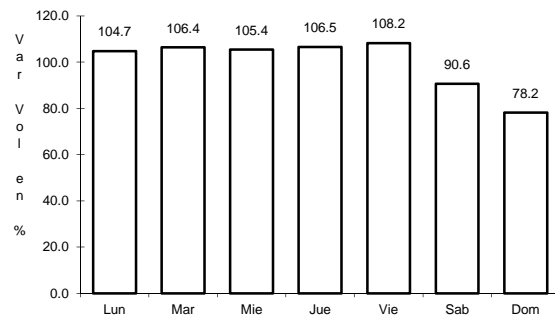
Tipo: 3

Sent: 2

17 CARR: Ramal a Aeropuerto de S. L. P.

CLAVE: 24206

RUTA: MEX-057



Km: 0.00

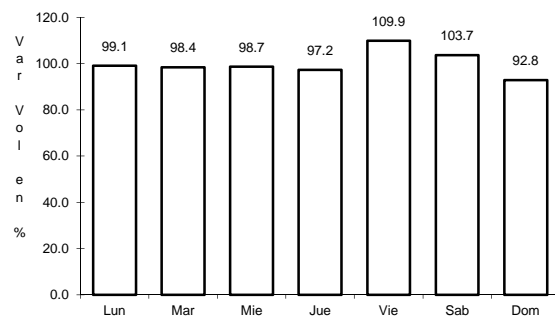
Tipo: 3

Sent: 0

18 CARR: Ramal a Ojo de Agua

CLAVE: 24023

RUTA: MEX-062



Km: 0.00

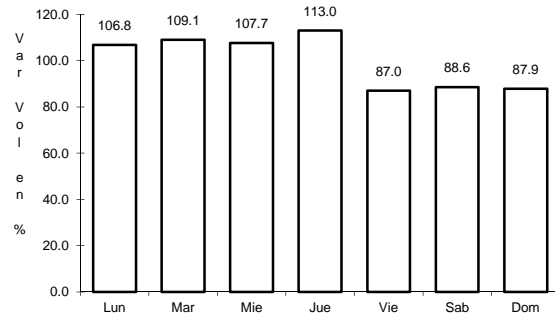
Tipo: 3

Sent: 0

19 CARR: Ramal a Rayón

CLAVE: 24626

ruta: MEX-070



Km: 1.50

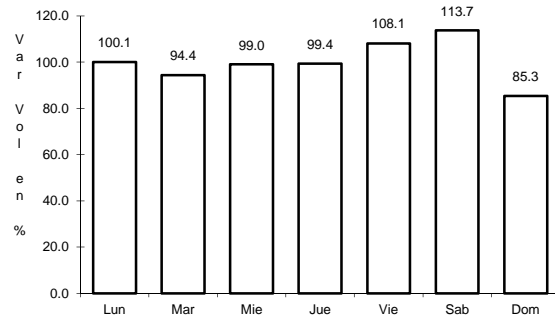
Tipo: 1

Sent: 0

20 CARR: San Juan del Río - Xilitla

CLAVE: 00183

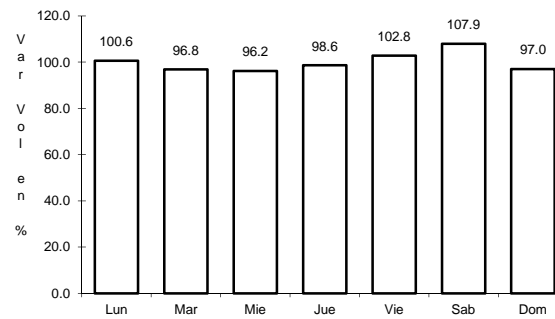
ruta: MEX-120



Km: 5.20

Tipo: 3

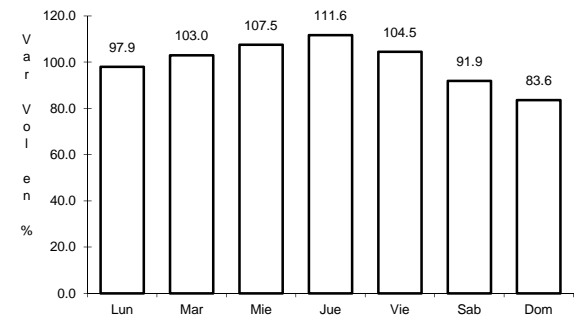
Sent: 1



Km: 5.20

Tipo: 3

Sent: 2



Km: 276.98

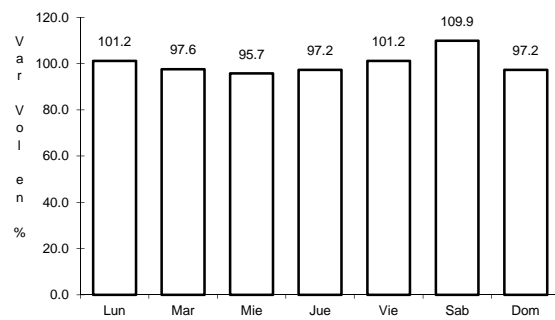
Tipo: 1

Sent: 0

21 CARR: San Luis Potosí - Ent. Arcinas

CLAVE: 00134

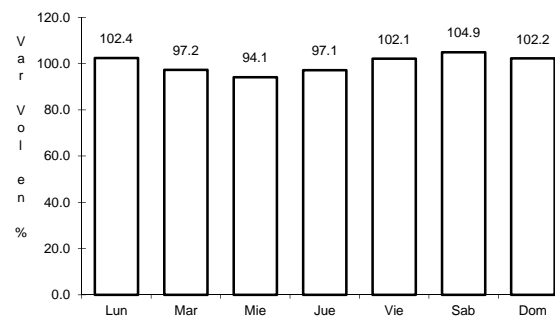
ruta: MEX-049



Km: 9.35

Tipo: 3

Sent: 1



Km: 9.35

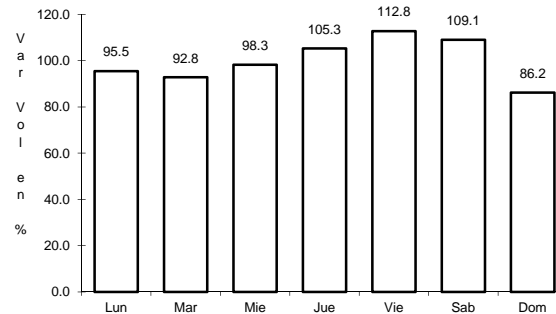
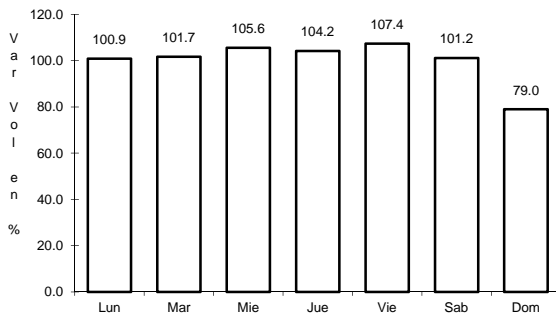
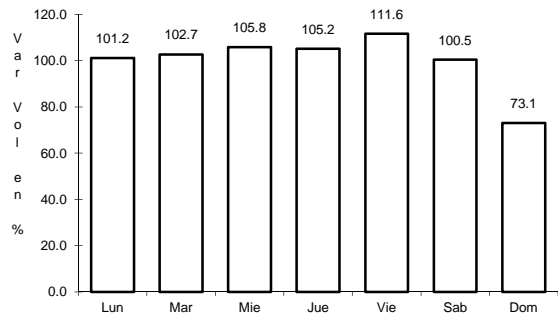
Tipo: 3

Sent: 2

22 CARR: San Luis Potosí - Lagos de Moreno

CLAVE: 00133

RUTA: MEX-070-080



Km: 0.00 Tipo: 3 Sent: 1

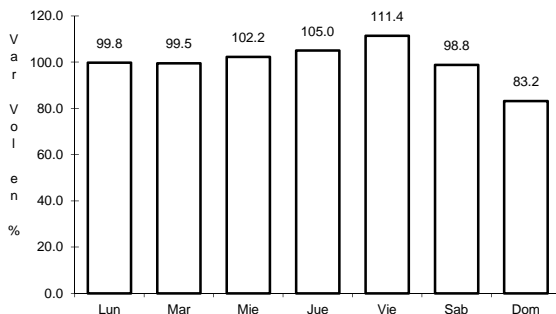
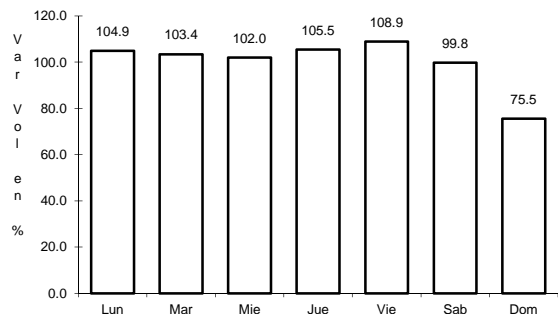
Km: 0.00 Tipo: 3 Sent: 2

Km: 146.90 Tipo: 1 Sent: 0

23 CARR: San Luis Potosí - Matehuala

CLAVE: 24508

RUTA: MEX-057



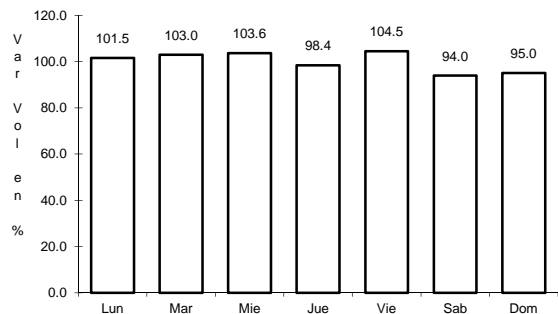
Km: 7.36 Tipo: 3 Sent: 1

Km: 7.36 Tipo: 3 Sent: 2

24 CARR: T. C. (Ent. El Huizache- Ant. Morelos)-El Salto

CLAVE: 24204

RUTA: MEX-080

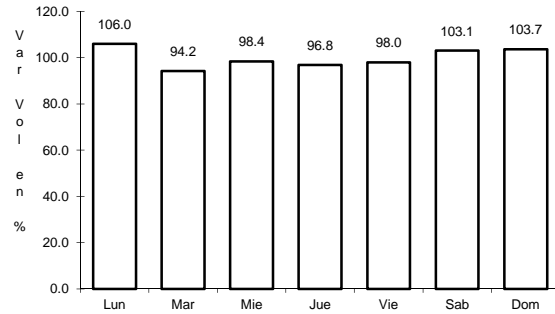


Km: 0.00 Tipo: 3 Sent: 0

25 CARR: T. C. (Qro - S.L.P.) - Tierra Nueva

CLAVE: 24203

RUTA: MEX-057

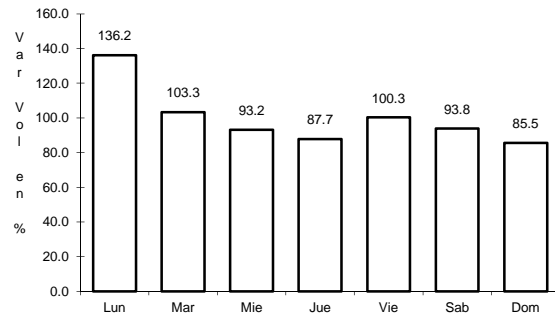


Km: 0.00 Tipo: 3 Sent: 0

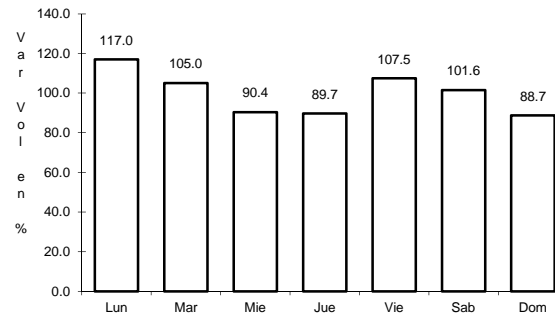
26 CARR: T. C. (S.L.P. - Matehuala) - Villa Hidalgo

CLAVE: 24619

RUTA: MEX-057



Km: 0.00 Tipo: 3 Sent: 0

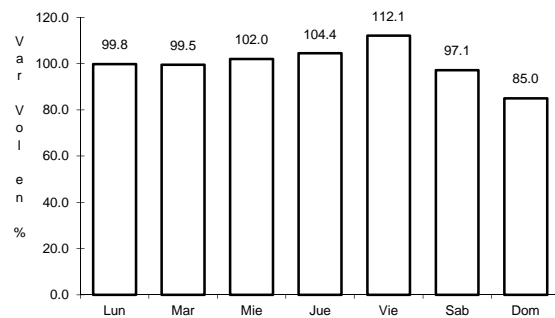


Km: 10.20 Tipo: 1 Sent: 0

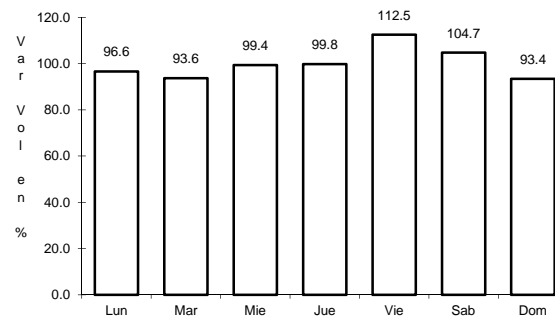
27 CARR: Tamazunchale - San Felipe Orizatlán

CLAVE: 00609

RUTA: MEX-085



Km: 0.00 Tipo: 3 Sent: 0

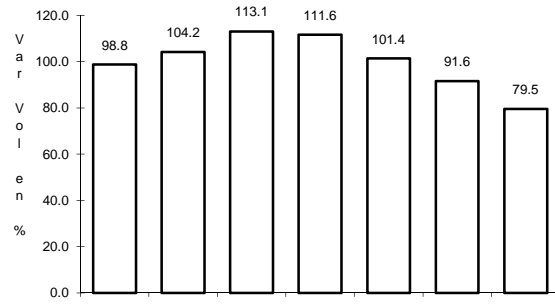


Km: 27.10 Tipo: 1 Sent: 0

31 CARR: Ébano - Estación Manuel

CLAVE: 24624

RUTA: SLP-TAM



Km: 0.00

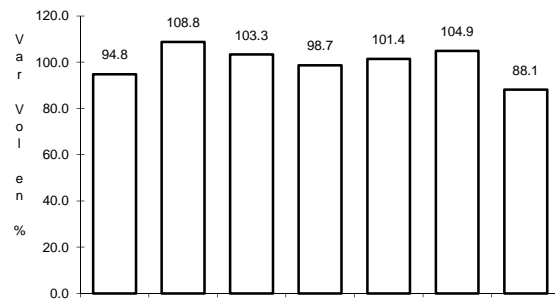
Tipo: 3

Sent: 0

32 CARR: Matchuala - La Paz

CLAVE: 24621

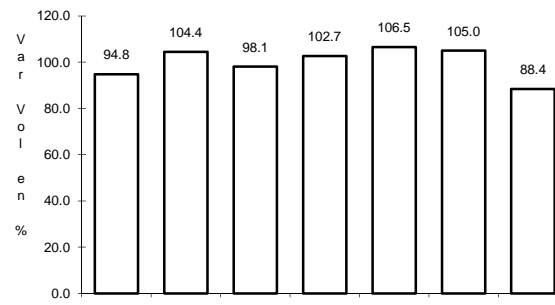
RUTA: SLP-020



Km: 0.00

Tipo: 3

Sent: 1



Km: 0.00

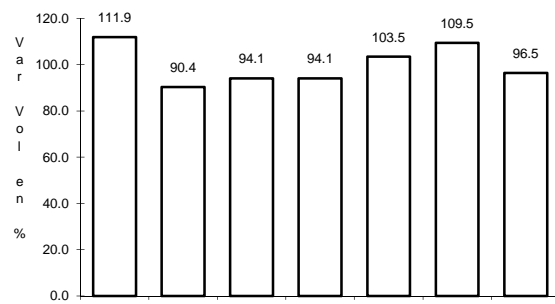
Tipo: 3

Sent: 2

33 CARR: Matchuala - La Poza

CLAVE: 00086

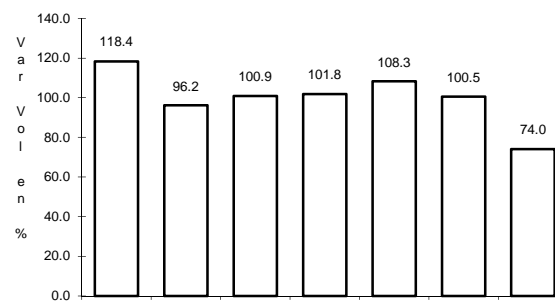
RUTA: SLP-029



Km: 0.00

Tipo: 3

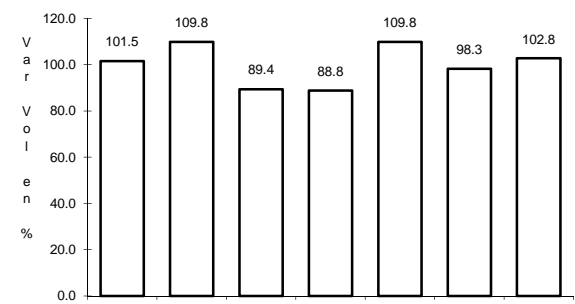
Sent: 0



Km: 49.00

Tipo: 1

Sent: 0



Km: 131.00

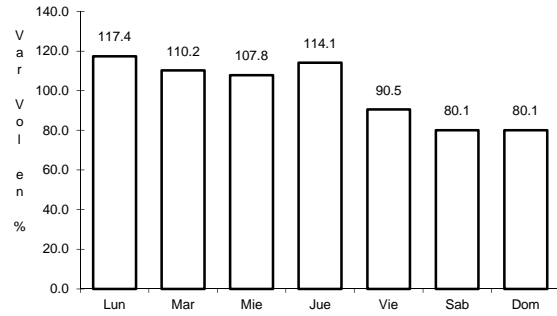
Tipo: 1

Sent: 0

37 CARR: Rayón - Lagunillas

CLAVE: 24008

RUTA: SLP-011



Km: 0.00

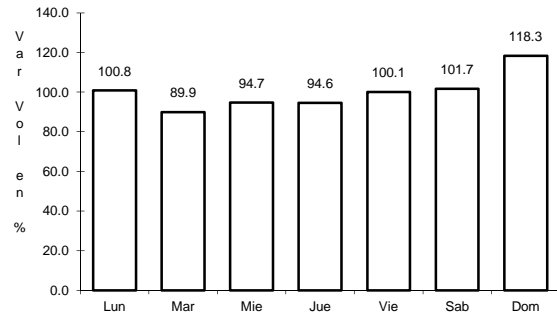
Tipo: 3

Sent: 0

38 CARR: Santo Domingo - Cerro Gordo

CLAVE: 24614

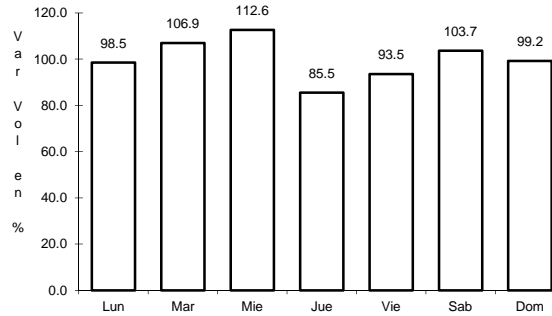
RUTA: SLP-022



Km: 0.00

Tipo: 3

Sent: 0



Km: 19.00

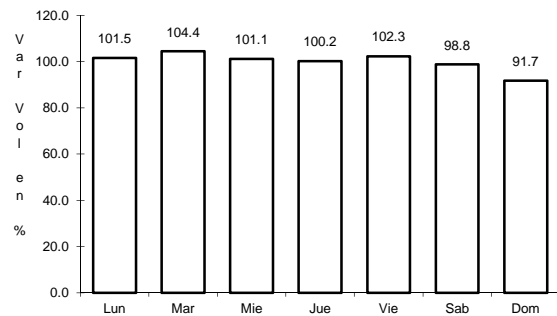
Tipo: 1

Sent: 0

39 CARR: Tamuín - Estación F.F.C.C. Tamuín

CLAVE: 24022

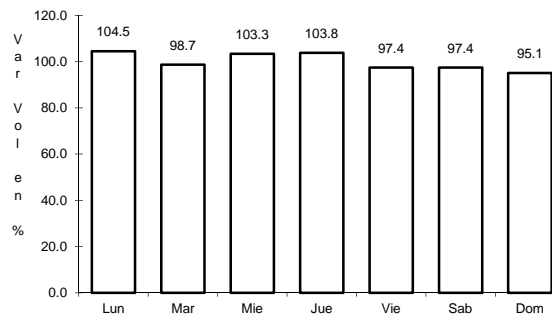
RUTA: SLP-040



Km: 0.00

Tipo: 3

Sent: 0



Km: 10.00

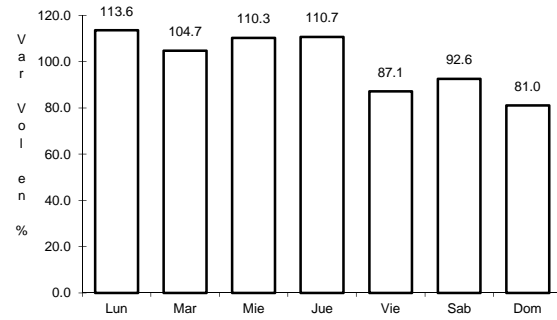
Tipo: 1

Sent: 0

43 CARR: Rayón - Cd. del Maíz

CLAVE: 24206

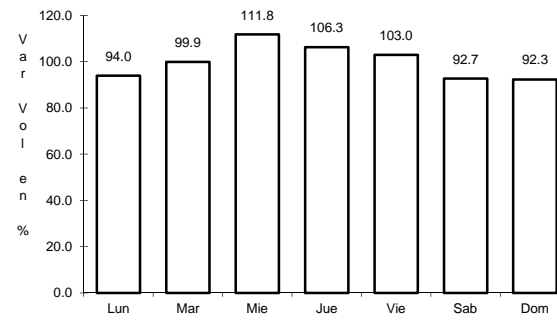
RUTA: MEX-070-SLP-005



Km: 15.80

Tipo: 1

Sent: 0



Km: 55.70

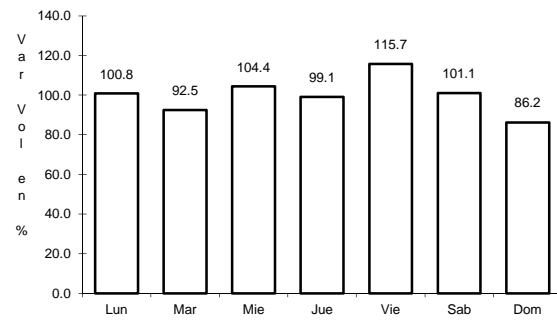
Tipo: 1

Sent: 0

44 CARR: San Lorenzo - Moctezuma

CLAVE: 24016

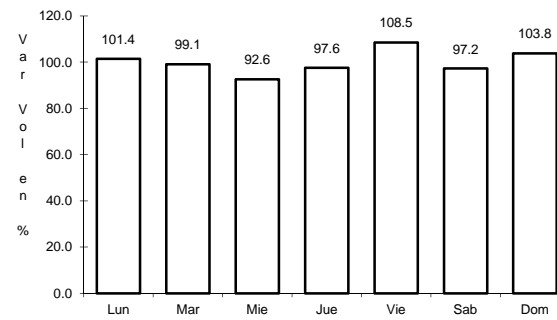
RUTA: MEX-063-SLP-012



Km: 0.00

Tipo: 3

Sent: 0



Km: 54.00

Tipo: 1

Sent: 0