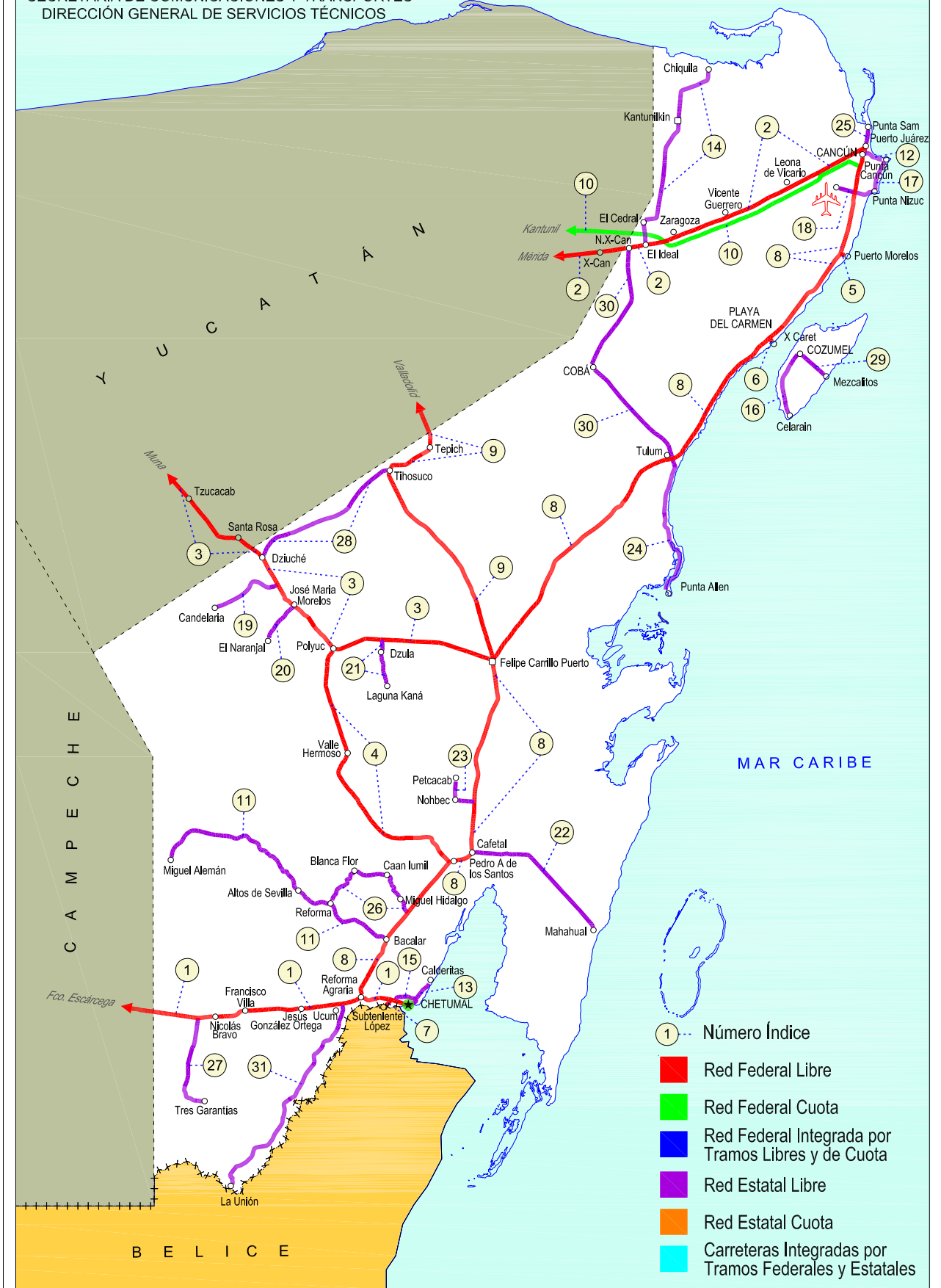


QUINTANA ROO

NO. INDICE	CARRETERA	RUTA
---RED FEDERAL LIBRE---		
1	Francisco Escárcega - Chetumal	MEX-186
2	Mérida - Puerto Juárez	MEX-180
3	Muna - Felipe Carrillo Puerto	MEX-184
4	Polyuc - T. C. (Reforma Agraria - Puerto Juárez)	MEX-293
5	Ramal a Puerto Morelos	MEX
6	Ramal a Punta Piedra	MEX
7	Ramal a Subteniente López	MEX-186
8	Reforma Agraria - Puerto Juárez	MEX-307
9	Valladolid - Felipe Carrillo Puerto	MEX-295
---RED FEDERAL DE CUOTA---		
10	Mérida - Cancún (Cuota)	MEX-180D
---RED ESTATAL LIBRE---		
11	Bacalar - Miguel Alemán	QR
12	Cancún - Punta Cancún	QR
13	Chetumal - Calderitas	QR-004
14	El Ideal - Chiquila	QR-005
15	Libramiento de Chetumal	QR
16	Perimetral Cozumel	QR
17	Punta Nizuc - Cancún	QR
18	Ramal a Aeropuerto Cancún	QR
19	Ramal a Candelaria	QR
20	Ramal a El Naranjal	QR
21	Ramal a Laguna de Kaná	QR
22	Ramal a Mahahual	QR
23	Ramal a Petcacab	QR-018
24	Ramal a Punta Allen	QR-015
25	Ramal a Punta Sam	QR
26	Ramal a Reforma	QR-016
27	Ramal a Tres Garantías	QR
28	Tihosuco - Dziuche	QR
29	Transversal de Cozumel	QR
30	Tulum - Nuevo X-Can	QR
31	Ucum - Unión	QR

23 QUINTANA ROO

SECRETARÍA DE COMUNICACIONES Y TRANSPORTES
DIRECCIÓN GENERAL DE SERVICIOS TÉCNICOS



QUINTANA ROO

1 CARR: Francisco Escárcega - Chetumal

CLAVE: 00093

RUTA: MEX-186

AÑO: 2012

LUGAR	ESTACION				CLASIFICACION VEHICULAR EN PORCIENTO										COORDENADAS					
	KM	TE	SC	TDPA	M	A	B	C2	C3	T3S2	T3S3	T3S2R4	OTROS	A	B	C	K'	D	LATITUD	LONGITUD
Francisco Escárcega	0.00	3	0	2987	2.7	75.1	4.1	5.6	2.2	5.2	1.3	2.7	1.1	77.8	4.1	18.1	0.069	0.504	18.604159	-90.718698
Adolfo López Mateos	41.50	1	0	2182	2.4	71.0	5.9	6.9	2.0	6.0	1.7	3.4	0.7	73.4	5.9	20.7	0.081	0.506	18.639535	-90.306074
T. Der. Silvituc	55.70	1	0	2287	2.8	75.3	3.5	7.5	1.2	4.5	1.6	2.4	1.2	78.1	3.5	18.4	0.075	0.566	18.650974	-90.272694
T. Der. Silvituc	55.70	3	0	1769	1.8	66.6	7.1	8.5	1.9	7.7	1.8	3.9	0.7	68.4	7.1	24.5	0.075	0.539	18.649506	-90.262121
Conhuás	100.00	1	0	1823	1.6	65.6	7.5	8.5	2.0	8.3	1.6	4.3	0.6	67.2	7.5	25.3	0.078	0.544	18.540435	-89.918584
Xpujil	155.73	1	0	2573	1.1	75.5	4.8	6.9	1.5	5.6	1.2	2.6	0.8	76.6	4.8	18.6	0.079	0.538	18.508942	-89.405067
Lim. Edos. Term. Camp. Ppia. Qroo.	179.90																			
Nicolás Bravo	206.01	1	0	2234	1.7	71.5	5.4	7.7	2.3	6.4	1.4	3.0	0.6	73.2	5.4	21.4	0.080	0.532	18.458406	-88.941216
Nicolás Bravo	206.01	3	0	2866	1.5	73.3	4.5	8.2	1.9	5.7	1.7	2.5	0.7	74.8	4.5	20.7	0.078	0.510	18.459154	-88.917411
T. Izq. Morocoy	214.90	1	0	2284	1.1	73.6	5.0	7.5	1.9	6.4	1.1	2.9	0.5	74.7	5.0	20.3	0.077	0.529	18.478751	-88.817149
T. Izq. Morocoy	214.90	3	0	2388	0.9	74.0	5.0	7.7	1.9	6.0	1.2	2.8	0.5	74.9	5.0	20.1	0.076	0.518	18.478825	-88.814817
T. Der. Unión	247.50	1	0	4507	2.3	76.9	3.1	7.6	1.2	5.5	1.2	1.7	0.5	79.2	3.1	17.7	0.077	0.526	18.504969	-88.527416
T. Der. Unión	247.50	3	0	6040	3.3	76.5	2.4	7.3	1.0	6.2	1.1	1.2	1.0	79.8	2.4	17.8	0.076	0.518	18.506002	-88.519374
T. Izq. Fpe. Carrillo Puerto	255.15	1	0	6296	1.7	81.6	2.6	4.6	2.1	4.7	1.0	1.2	0.5	83.3	2.6	14.1	0.079	0.504	18.526121	-88.469284
T. Der. Subteniente López	268.57	1	1	6565	1.5	87.3	1.5	6.4	0.8	1.1	0.7	0.3	0.4	88.8	1.5	9.7	0.106	0.501	18.518027	-88.384421
T. Der. Subteniente López	268.57	1	2	6596	1.8	85.8	1.6	7.3	0.8	1.2	0.8	0.3	0.4	87.6	1.6	10.8	0.098	0.501	18.518030	-88.384426
T. Izq. Av. Insurgentes	270.00	1	1	10225	2.4	88.0	2.3	3.9	0.7	1.0	1.0	0.2	0.5	90.4	2.3	7.3	0.092	0.504	18.513507	-88.363081
T. Izq. Av. Insurgentes	270.00	1	2	10045	2.1	87.3	2.6	4.4	0.7	1.2	1.0	0.2	0.5	89.4	2.6	8.0	0.088	0.504	18.513506	-88.363081
T. Izq. Av. Insurgentes	270.00	3	1	5318	2.0	88.0	2.3	5.5	0.6	0.8	0.3	0.2	0.3	90.0	2.3	7.7	0.077	0.511	18.510344	-88.353188
T. Izq. Av. Insurgentes	270.00	3	2	5083	2.4	87.2	2.4	5.6	0.8	0.8	0.3	0.2	0.3	89.6	2.4	8.0	0.091	0.511	18.510343	-88.353187
Chetumal	277.36	1	1	7684	3.3	88.2	2.5	3.2	0.5	1.7	0.4	0.1	0.1	91.5	2.5	6.0	0.085	0.510	18.501608	-88.321063
Chetumal	277.36	1	2	7391	3.3	86.6	3.7	3.6	0.5	1.7	0.4	0.1	0.1	89.9	3.7	6.4	0.089	0.510	18.501608	-88.321063

2 CARR: Mérida - Puerto Juárez

CLAVE: 00067

RUTA: MEX-180

AÑO: 2012

LUGAR	ESTACION				CLASIFICACION VEHICULAR EN PORCIENTO										COORDENADAS					
	KM	TE	SC	TDPA	M	A	B	C2	C3	T3S2	T3S3	T3S2R4	OTROS	A	B	C	K'	D	LATITUD	LONGITUD
Mérida	0.00																			
X. Periférico de Mérida	5.60	1	1	9241	3.4	88.5	1.8	3.8	0.3	1.2	0.6	0.1	0.3	91.9	1.8	6.3	0.077	0.501	20.957495	-89.572214
X. Periférico de Mérida	5.60	1	2	9284	3.2	88.0	1.9	4.0	0.3	1.4	0.8	0.1	0.3	91.2	1.9	6.9	0.075	0.501	20.957600	-89.572175
X. Periférico de Mérida	5.60	3	1	9614	2.8	82.2	1.9	6.3	1.5	2.0	1.1	1.7	0.5	85.0	1.9	13.1	0.079	0.504	20.954958	-89.566171
X. Periférico de Mérida	5.60	3	2	9752	3.5	80.3	2.2	6.5	1.8	2.1	1.3	1.8	0.5	83.8	2.2	14.0	0.091	0.504	20.954957	-89.566176
Teya	13.00	1	1	7537	2.2	81.5	2.4	7.0	2.0	2.1	0.7	1.8	0.3	83.7	2.4	13.9	0.090	0.505	20.937919	-89.536894
Teya	13.00	1	2	7378	1.7	80.7	2.7	7.3	2.3	2.3	0.7	2.0	0.3	82.4	2.7	14.9	0.096	0.505	20.938148	-89.536824
T. Der. Seyé	28.79	1	1	4712	1.5	80.7	3.1	8.4	1.4	1.8	0.7	2.1	0.3	82.2	3.1	14.7	0.087	0.501	20.895093	-89.389808

QUINTANA ROO

3 CARR: Muna - Felipe Carrillo Puerto

CLAVE: 00148

RUTA: MEX-184

AÑO: 2012

LUGAR	ESTACION				CLASIFICACION VEHICULAR EN PORCIENTO										COORDENADAS					
	KM	TE	SC	TDPA	M	A	B	C2	C3	T3S2	T3S3	T3S2R4	OTROS	A	B	C	K'	D	LATITUD	LONGITUD
Muna	0.00	3	0	4078	7.7	80.0	1.0	5.5	1.2	2.7	0.9	0.5	0.5	87.7	1.0	11.3	0.075	0.501	20.478312	-89.698636
Ticul	19.10	1	0	3873	6.2	77.8	1.3	8.9	1.6	2.2	0.9	0.6	0.5	84.0	1.3	14.7	0.075	0.504	20.403418	-89.567697
Ticul	19.10	3	0	4935	13.3	72.9	1.0	8.2	0.4	3.3	0.4	0.1	0.4	86.2	1.0	12.8	0.095	0.504	20.373861	-89.518060
Oxkutzcab	40.50	3	0	4657	14.9	71.9	0.8	8.9	1.0	1.6	0.4	0.2	0.3	86.8	0.8	12.4	0.081	0.506	20.282638	-89.376538
Tekax	53.90	3	0	2834	18.0	67.4	1.0	6.5	1.0	3.4	1.5	0.5	0.7	85.4	1.0	13.6	0.106	0.501	20.192166	-89.272413
Tzucacab	86.60	1	0	1741	13.7	69.9	3.5	10.7	1.1	1.0	0.1	0.0	0.0	83.6	3.5	12.9	0.097	0.507	20.078984	-89.062896
Tzucacab	86.60	3	0	1255	24.6	67.0	0.8	5.4	1.2	0.9	0.1	0.0	0.0	91.6	0.8	7.6	0.082	0.504	20.065346	-89.038467
Santa Rosa	109.60	3	0	2098	1.4	82.2	2.2	7.6	1.4	2.2	1.1	1.4	0.5	83.6	2.2	14.2	0.077	0.534	19.947496	-88.880399
Lim. Edos. Term. Yuc. Ppia. Q. R.	117.00																			
Dziuche	118.00	1	0	1981	2.3	78.9	2.6	8.5	2.2	2.0	1.1	2.3	0.1	81.2	2.6	16.2	0.090	0.518	19.905564	-88.819688
Dziuche	118.00	3	0	2489	1.7	81.2	2.2	7.8	2.3	1.8	1.1	1.7	0.2	82.9	2.2	14.9	0.082	0.510	19.886790	-88.802555
José María Morelos	138.60	1	0	3751	3.6	81.6	1.5	7.0	2.2	1.8	1.1	0.9	0.3	85.2	1.5	13.3	0.079	0.511	19.764884	-88.725390
José María Morelos	138.60	3	0	2804	4.9	79.4	2.0	7.4	1.5	2.0	1.1	1.5	0.2	84.3	2.0	13.7	0.085	0.515	19.742110	-88.698561
Polyuc	161.94	1	0	2242	2.0	81.2	2.6	7.5	2.1	1.9	0.7	1.9	0.1	83.2	2.6	14.2	0.076	0.505	19.611671	-88.571798
Polyuc	161.94	3	0	1323	5.4	79.9	3.7	8.0	1.2	1.0	0.3	0.5	0.0	85.3	3.7	11.0	0.082	0.510	19.609518	-88.554249
T. Der. Dzulá	178.11	3	0	1336	3.7	81.8	1.6	9.4	1.4	1.0	0.4	0.6	0.1	85.5	1.6	12.9	0.082	0.508	19.643764	-88.411176
Felipe Carrillo Puerto	216.97	1	0	4835	16.2	68.2	4.6	3.8	2.7	3.3	0.5	0.3	0.4	84.4	4.6	11.0	0.076	0.511	19.584026	-88.056483

4 CARR: Polyuc - T. C. (Reforma Agraria - Puerto Juárez)

CLAVE: 23014

RUTA: MEX-293

AÑO: 2012

LUGAR	ESTACION				CLASIFICACION VEHICULAR EN PORCIENTO										COORDENADAS					
	KM	TE	SC	TDPA	M	A	B	C2	C3	T3S2	T3S3	T3S2R4	OTROS	A	B	C	K'	D	LATITUD	LONGITUD
Polyuc	0.00	3	0	2355	8.9	77.5	2.0	5.4	1.6	2.2	0.7	1.6	0.1	86.4	2.0	11.6	0.078	0.500	19.608455	-88.571133
T. Der. Ramonal	24.00	1	0	1309	2.0	80.4	3.2	6.3	2.3	2.0	1.0	2.8	0.0	82.4	3.2	14.4	0.089	0.501	19.402290	-88.565516
T. Der. Ramonal	24.00	3	0	1366	2.1	77.3	5.2	6.9	2.3	1.8	1.2	3.1	0.1	79.4	5.2	15.4	0.091	0.500	19.398136	-88.564330
T. Izq. Santa María Poniente	35.00	1	0	1690	2.1	77.3	5.2	6.9	2.3	1.8	1.2	3.1	0.1	79.4	5.2	15.4	0.091	0.500	19.340753	-88.546960
T. Izq. Santa María Poniente	35.00	3	0	1412	2.8	78.7	3.1	6.4	2.4	2.1	1.1	3.3	0.1	81.5	3.1	15.4	0.092	0.504	19.340058	-88.546762
Valle Hermoso	50.00	3	0	1336	8.7	67.5	5.8	7.7	3.1	2.7	1.3	3.0	0.2	76.2	5.8	18.0	0.090	0.507	19.181162	-88.523425
T. Izq. Chacchoben	93.50	1	0	1717	7.8	73.1	4.9	6.0	2.3	2.1	1.3	2.4	0.1	80.9	4.9	14.2	0.084	0.501	18.979153	-88.215276
T. Izq. Chacchoben	93.50	3	0	1346	6.8	73.4	4.7	5.4	2.4	1.9	2.0	3.3	0.1	80.2	4.7	15.1	0.085	0.501	18.975210	-88.211758
T. C. Reforma Agraria - Puerto Juárez	99.00	1	0	1471	3.3	80.1	3.1	6.5	1.6	2.1	0.9	2.4	0.0	83.4	3.1	13.5	0.091	0.511	18.948253	-88.186740

QUINTANA ROO

5 CARR: Ramal a Puerto Morelos

CLAVE: 23569

RUTA: MEX

AÑO: 2012

LUGAR	ESTACION				CLASIFICACION VEHICULAR EN PORCIENTO													COORDENADAS		
	KM	TE	SC	TDPA	M	A	B	C2	C3	T3S2	T3S3	T3S2R4	OTROS	A	B	C	K'	D	LATITUD	LONGITUD
T. C. Reforma Agraria - Puerto Juárez	0.00	3	0	8079	2.2	80.6	5.8	5.5	0.8	3.3	0.8	0.4	0.6	82.8	5.8	11.4	0.081	0.515	20.854317	-86.893472
Puerto Morelos	2.20																			

6 CARR: Ramal a Punta Piedra

CLAVE: 23575

RUTA: MEX

AÑO: 2012

LUGAR	ESTACION				CLASIFICACION VEHICULAR EN PORCIENTO													COORDENADAS		
	KM	TE	SC	TDPA	M	A	B	C2	C3	T3S2	T3S3	T3S2R4	OTROS	A	B	C	K'	D	LATITUD	LONGITUD
T. C. Reforma Agraria - Puerto Juárez	0.00	3	1	8194	5.2	80.9	4.3	3.6	0.2	1.3	3.0	0.6	0.9	86.1	4.3	9.6	0.064	0.548	20.626812	-87.082227
T. C. Reforma Agraria - Puerto Juárez	0.00	3	2	7420	5.3	79.3	4.8	4.0	0.2	1.4	3.4	0.6	1.0	84.6	4.8	10.6	0.071	0.548	20.626811	-87.082235
Punta Piedra (Playa del Carmen)	1.50																			

7 CARR: Ramal a Subteniente López

CLAVE: 23567

RUTA: MEX-186

AÑO: 2012

LUGAR	ESTACION				CLASIFICACION VEHICULAR EN PORCIENTO													COORDENADAS		
	KM	TE	SC	TDPA	M	A	B	C2	C3	T3S2	T3S3	T3S2R4	OTROS	A	B	C	K'	D	LATITUD	LONGITUD
T. C. Francisco Escárcega - Chetumal	0.00	3	1	4549	3.0	87.6	1.3	5.9	0.9	0.9	0.3	0.0	0.1	90.6	1.3	8.1	0.087	0.515	18.509581	-88.379069
T. C. Francisco Escárcega - Chetumal	0.00	3	2	4284	3.4	86.8	1.3	6.3	0.9	0.9	0.3	0.0	0.1	90.2	1.3	8.5	0.081	0.515	18.509581	-88.379069
Subteniente López	3.00																			

8 CARR: Reforma Agraria - Puerto Juárez

CLAVE: 23132

RUTA: MEX-307

AÑO: 2012

LUGAR	ESTACION				CLASIFICACION VEHICULAR EN PORCIENTO													COORDENADAS		
	KM	TE	SC	TDPA	M	A	B	C2	C3	T3S2	T3S3	T3S2R4	OTROS	A	B	C	K'	D	LATITUD	LONGITUD
T. C. Francisco Escárcega - Chetumal	0.00	3	1	4302	2.2	84.1	4.2	4.4	1.7	1.7	0.7	0.7	0.3	86.3	4.2	9.5	0.101	0.506	18.535041	-88.467280
T. C. Francisco Escárcega - Chetumal	0.00	3	2	4197	1.7	83.3	4.7	5.0	1.8	1.8	0.7	0.8	0.2	85.0	4.7	10.3	0.089	0.506	18.535040	-88.467280
Bacalar	19.15	1	1	3713	1.9	82.1	4.6	4.2	1.8	3.8	0.4	1.0	0.2	84.0	4.6	11.4	0.100	0.500	18.663022	-88.402153
Bacalar	19.15	1	2	3708	1.8	80.2	5.3	4.7	2.1	4.1	0.4	1.2	0.2	82.0	5.3	12.7	0.084	0.500	18.663022	-88.402153
Bacalar	19.15	3	0	6274	1.3	79.5	3.2	6.9	1.0	4.7	1.0	1.6	0.8	80.8	3.2	16.0	0.079	0.521	18.694712	-88.388274
T. Izq. Reforma	22.24	3	0	4889	2.3	79.5	4.3	4.6	1.8	4.0	0.9	2.2	0.4	81.8	4.3	13.9	0.089	0.515	18.707711	-88.384119
T. Izq. Lazáro Cárdenas	56.30	1	0	4302	0.7	82.7	3.9	4.4	2.2	2.6	1.1	1.8	0.6	83.4	3.9	12.7	0.091	0.534	18.943095	-88.188278
T. Izq. Lazáro Cárdenas	56.30	3	0	3289	1.2	77.1	5.7	6.6	1.8	4.0	1.4	1.3	0.9	78.3	5.7	16.0	0.078	0.524	18.949449	-88.182052
T. Izq. Chacchoben	70.80	1	0	3158	1.5	76.6	4.2	6.4	1.4	5.1	1.3	2.7	0.8	78.1	4.2	17.7	0.080	0.507	19.012225	-88.111121
T. Izq. Chacchoben	70.80	3	0	2671	1.2	76.7	5.4	6.0	2.0	4.5	0.8	2.9	0.5	77.9	5.4	16.7	0.084	0.518	19.034207	-88.110080
T. Izq. Noh-Bec	81.94	1	0	4014	1.1	79.4	4.1	7.1	1.1	3.9	1.1	1.7	0.5	80.5	4.1	15.4	0.084	0.510	19.134100	-88.105159
T. Izq. Noh-Bec	81.94	3	0	2784	1.0	78.0	5.4	6.1	1.9	4.4	0.8	1.9	0.5	79.0	5.4	15.6	0.084	0.508	19.137083	-88.105069

QUINTANA ROO

8 CARR: Reforma Agraria - Puerto Juárez

CLAVE: 23132

RUTA: MEX-307

AÑO: 2012

LUGAR	ESTACION				CLASIFICACION VEHICULAR EN PORCIENTO														COORDENADAS	
	KM	TE	SC	TDPA	M	A	B	C2	C3	T3S2	T3S3	T3S2R4	OTROS	A	B	C	K'	D	LATITUD	LONGITUD
Felipe Carrillo Puerto	132.00	1	0	3587	1.1	78.9	5.1	7.1	1.1	4.1	0.7	1.4	0.5	80.0	5.1	14.9	0.078	0.511	19.557089	-88.043443
Felipe Carrillo Puerto	132.00	3	0	3068	0.9	76.4	4.1	10.0	1.4	4.1	0.7	1.9	0.5	77.3	4.1	18.6	0.087	0.500	19.603877	-88.028446
Tulum Pueblo	227.00	1	0	3638	2.5	77.4	4.7	7.5	1.1	4.5	0.7	1.3	0.3	79.9	4.7	15.4	0.085	0.513	20.206333	-87.478006
T. Izq. Cobá	229.19	1	1	8207	2.3	82.8	4.1	6.8	0.5	1.9	0.8	0.6	0.2	85.1	4.1	10.8	0.071	0.531	20.213600	-87.455016
T. Izq. Cobá	229.19	1	2	7253	2.7	80.9	4.4	7.4	0.7	2.2	0.8	0.7	0.2	83.6	4.4	12.0	0.070	0.531	20.213587	-87.455070
T. Izq. Cobá	229.19	3	1	6711	2.4	81.5	4.0	6.3	1.0	2.4	0.7	0.9	0.8	83.9	4.0	12.1	0.083	0.504	20.215602	-87.448623
T. Izq. Cobá	229.19	3	2	6822	2.6	78.5	4.7	7.5	1.2	2.7	0.8	1.1	0.9	81.1	4.7	14.2	0.073	0.504	20.215602	-87.448623
X. C. Tulum - Aeropuerto	231.19	3	1	5984	0.3	83.2	6.5	5.8	1.0	1.6	0.6	0.7	0.3	83.5	6.5	10.0	0.101	0.515	20.220837	-87.432950
X. C. Tulum - Aeropuerto	231.19	3	2	6346	0.5	81.2	7.2	6.6	1.0	1.8	0.6	0.7	0.4	81.7	7.2	11.1	0.088	0.515	20.220838	-87.432950
T. Der. Xel-Ha	244.80	1	1	6304	0.3	82.3	6.0	5.9	1.1	2.1	0.8	1.0	0.5	82.6	6.0	11.4	0.097	0.538	20.313316	-87.368538
T. Der. Xel-Ha	244.80	1	2	5431	0.4	79.0	6.8	7.2	1.2	2.5	0.9	1.1	0.9	79.4	6.8	13.8	0.101	0.538	20.313305	-87.368542
T. Der. Akumal	254.44	1	1	6981	0.6	81.7	6.7	8.0	0.7	1.3	0.3	0.5	0.2	82.3	6.7	11.0	0.110	0.500	20.392868	-87.323124
T. Der. Akumal	254.44	1	2	6972	0.8	79.9	7.3	8.9	0.7	1.4	0.3	0.5	0.2	80.7	7.3	12.0	0.102	0.500	20.392869	-87.323122
Playa del Carmen	289.70	1	1	23221	2.4	83.5	6.5	5.4	0.9	0.7	0.2	0.3	0.1	85.9	6.5	7.6	0.126	0.506	20.609163	-87.105979
Playa del Carmen	289.70	1	2	23590	2.3	82.1	7.6	5.8	0.9	0.7	0.2	0.3	0.1	84.4	7.6	8.0	0.106	0.506	20.609165	-87.105976
Playa del Carmen	295.00	3	1	32643	2.6	81.1	7.1	6.3	0.7	0.7	0.7	0.4	0.4	83.7	7.1	9.2	0.074	0.512	20.661169	-87.058118
Playa del Carmen	295.00	3	2	31061	2.7	79.4	7.9	6.8	0.8	0.8	0.8	0.4	0.4	82.1	7.9	10.0	0.073	0.512	20.661174	-87.058118
T. Der. Puerto Morelos	321.48	1	1	21525	0.5	85.2	6.7	6.1	0.6	0.4	0.2	0.2	0.1	85.7	6.7	7.6	0.087	0.501	20.838357	-86.910012
T. Der. Puerto Morelos	321.48	1	2	21466	0.2	83.9	7.7	6.6	0.6	0.4	0.2	0.2	0.2	84.1	7.7	8.2	0.085	0.501	20.838358	-86.910011
T. Der. Puerto Morelos	321.48	3	1	28777	0.3	88.7	5.1	2.2	1.5	0.5	0.5	0.3	0.9	89.0	5.1	5.9	0.092	0.518	20.867506	-86.892767
T. Der. Puerto Morelos	321.48	3	2	26812	0.4	87.5	5.7	2.5	1.6	0.5	0.5	0.3	1.0	87.9	5.7	6.4	0.080	0.518	20.867567	-86.893075
T. Izq. Aeropuerto Cancún	341.50	1	1	22920	0.5	84.5	4.0	4.7	0.5	1.5	3.0	1.3	0.0	85.0	4.0	11.0	0.089	0.503	21.029394	-86.852708
T. Izq. Aeropuerto Cancún	341.50	1	2	22667	0.5	82.7	4.7	5.4	0.5	1.6	3.3	1.3	0.0	83.2	4.7	12.1	0.090	0.503	21.029379	-86.852687
T. Izq. Aeropuerto Cancún	341.50	3	1	37620	1.1	85.7	5.6	2.8	1.1	0.7	2.9	0.1	0.0	86.8	5.6	7.6	0.081	0.502	21.039914	-86.850187
T. Izq. Aeropuerto Cancún	341.50	3	2	37263	1.5	85.0	6.0	3.1	1.2	0.7	2.4	0.1	0.0	86.5	6.0	7.5	0.078	0.502	21.039927	-86.849987
T. Izq. Alfredo V. Bonfil	348.22	1	1	34960	1.4	83.4	1.6	7.2	0.8	1.8	2.4	0.5	0.9	84.8	1.6	13.6	0.080	0.531	21.081761	-86.843636
T. Izq. Alfredo V. Bonfil	348.22	1	2	39633	1.0	82.4	1.9	7.8	0.8	2.0	2.6	0.5	1.0	83.4	1.9	14.7	0.090	0.531	21.081790	-86.843719
Cancún	355.48	1	1	47041	1.2	87.1	2.7	4.2	0.2	1.3	2.4	0.6	0.3	88.3	2.7	9.0	0.112	0.513	21.107234	-86.839706
Cancún	355.48	1	2	47453	1.1	85.7	2.8	5.2	0.2	1.5	2.6	0.6	0.3	86.8	2.8	10.4	0.096	0.513	21.107249	-86.839733
T. C. Mérida - Puerto Juárez	357.48																			

QUINTANA ROO

9 CARR: Valladolid - Felipe Carrillo Puerto

CLAVE: 00010

RUTA: MEX-295

AÑO: 2012

LUGAR	ESTACION				CLASIFICACION VEHICULAR EN PORCIENTO										COORDENADAS					
	KM	TE	SC	TDPA	M	A	B	C2	C3	T3S2	T3S3	T3S2R4	OTROS	A	B	C	K'	D	LATITUD	LONGITUD
Valladolid	0.00	3	0	4447	5.3	86.4	0.5	4.2	0.4	2.2	0.5	0.1	0.4	91.7	0.5	7.8	0.084	0.537	20.669407	-88.206029
Chichimilá	6.90	3	0	2041	0.9	91.3	0.5	4.0	1.2	1.0	0.4	0.2	0.5	92.2	0.5	7.3	0.083	0.517	20.624295	-88.229837
Tekom	12.05	3	0	1507	8.9	83.7	1.4	3.8	1.3	0.6	0.1	0.1	0.1	92.6	1.4	6.0	0.103	0.505	20.589528	-88.265472
Tixcacalcupul	19.80	3	0	826	8.8	79.2	2.7	6.0	1.5	1.1	0.2	0.4	0.1	88.0	2.7	9.3	0.098	0.501	20.524809	-88.271190
Lim. Edos. Term. Yuc. Ppia. Q. R.	46.00																			
Tepich	51.40	1	0	690	8.5	79.9	2.5	6.5	0.9	1.2	0.1	0.4	0.0	88.4	2.5	9.1	0.106	0.507	20.250395	-88.255048
Tihosuco	65.00	1	0	708	11.3	76.9	2.8	6.9	0.5	1.2	0.1	0.3	0.0	88.2	2.8	9.0	0.106	0.512	20.193418	-88.362611
Tihosuco	65.00	3	0	802	13.7	75.8	2.8	5.6	0.6	0.9	0.3	0.2	0.1	89.5	2.8	7.7	0.098	0.506	20.190621	-88.386831
T. Izq. San Felipe Berriozábal	99.00	1	0	541	6.2	85.1	0.9	5.8	0.6	0.8	0.1	0.5	0.0	91.3	0.9	7.8	0.110	0.503	19.962185	-88.241338
T. Izq. San Felipe Berriozábal	99.00	3	0	647	5.3	85.0	1.1	6.8	0.6	0.8	0.0	0.4	0.0	90.3	1.1	8.6	0.112	0.504	19.961313	-88.240451
Señor	116.50	1	0	951	12.4	77.7	0.9	6.5	0.4	1.3	0.3	0.4	0.1	90.1	0.9	9.0	0.091	0.500	19.852824	-88.144952
Señor	116.50	3	0	1254	7.5	81.7	0.9	8.2	0.4	0.8	0.2	0.3	0.0	89.2	0.9	9.9	0.092	0.505	19.828628	-88.129792
Felipe Carrillo Puerto	147.70	1	0	1368	4.2	80.4	3.9	8.5	1.7	0.8	0.3	0.2	0.0	84.6	3.9	11.5	0.091	0.534	19.603365	-88.053931

10 CARR: Mérida - Cancún (Cuota)

CLAVE: 00071

RUTA: MEX-180D

AÑO: 2012

LUGAR	ESTACION				CLASIFICACION VEHICULAR EN PORCIENTO										COORDENADAS					
	KM	TE	SC	TDPA	M	A	B	C2	C3	T3S2	T3S3	T3S2R4	OTROS	A	B	C	K'	D	LATITUD	LONGITUD
T. C. Mérida - Puerto Juárez	0.00																			
Caseta de Cobro Piste	51.00	1	1	1520	0.1	81.3	4.6	4.9	0.7	2.5	0.7	5.1	0.1	81.4	4.6	14.0	0.118	0.505	20.730463	-88.589399
Caseta de Cobro Piste	51.00	1	2	1487	0.1	80.0	4.8	5.2	0.6	2.7	0.7	5.8	0.1	80.1	4.8	15.1	0.153	0.505	20.730466	-88.589402
Caseta de Cobro X-Can	155.00	1	1	925	0.5	76.8	6.3	6.5	0.6	2.3	0.7	6.1	0.2	77.3	6.3	16.4	0.125	0.525	20.876245	-87.642861
Caseta de Cobro X-Can	155.00	1	2	1021	0.4	74.8	7.0	7.2	0.5	2.6	0.6	6.7	0.2	75.2	7.0	17.8	0.130	0.525	20.876245	-87.642863
Lim. Edos. Term. Yuc. Ppia. Q. R.	160.00																			
T. C. Mérida - Puerto Juárez	292.00	1	1	1136	0.3	76.7	5.8	6.4	1.0	2.7	0.6	6.4	0.1	77.0	5.8	17.2	0.145	0.500	21.095229	-86.980842
T. C. Mérida - Puerto Juárez	292.00	1	2	1138	0.2	74.6	6.4	6.9	1.2	2.8	0.8	6.9	0.2	74.8	6.4	18.8	0.135	0.500	21.095233	-86.980844
T. C. Reforma Agraria - Puerto Juárez	308.10	1	0	6980	0.3	81.3	7.2	4.1	1.4	2.9	0.9	1.5	0.4	81.6	7.2	11.2	0.087	0.511	21.020006	-86.858391

11 CARR: Bacalar - Miguel Alemán

CLAVE: 20030

RUTA: QR

AÑO: 2012

LUGAR	ESTACION				CLASIFICACION VEHICULAR EN PORCIENTO										COORDENADAS					
	KM	TE	SC	TDPA	M	A	B	C2	C3	T3S2	T3S3	T3S2R4	OTROS	A	B	C	K'	D	LATITUD	LONGITUD
T. C. (Reforma Agraria - Puerto Juárez)	0.00																			
Reforma	21.00	3	0	597	14.0	69.4	5.2	6.3	3.2	1.5	0.3	0.0	0.1	83.4	5.2	11.4	0.116	0.513	18.813599	-88.579497
Altos de Sevilla	31.00	1	0	576	10.7	74.6	4.6	4.5	3.4	2.1	0.1	0.0	0.0	85.3	4.6	10.1	0.128	0.504	18.848440	-88.674577

QUINTANA ROO

11 CARR: Bacalar - Miguel Alemán

CLAVE: 20030

RUTA: QR

AÑO: 2012

LUGAR	ESTACION				CLASIFICACION VEHICULAR EN PORCIENTO														COORDENADAS	
	KM	TE	SC	TDPA	M	A	B	C2	C3	T3S2	T3S3	T3S2R4	OTROS	A	B	C	K'	D	LATITUD	LONGITUD
Altos de Sevilla	31.00	3	0	572	15.6	72.2	3.6	5.5	2.2	0.8	0.1	0.0	0.0	87.8	3.6	8.6	0.122	0.506	18.855968	-88.678151
Miguel Alemán	110.00																			

12 CARR: Cancún - Punta Cancún

CLAVE: 23581

RUTA: QR

AÑO: 2012

LUGAR	ESTACION				CLASIFICACION VEHICULAR EN PORCIENTO														COORDENADAS	
	KM	TE	SC	TDPA	M	A	B	C2	C3	T3S2	T3S3	T3S2R4	OTROS	A	B	C	K'	D	LATITUD	LONGITUD
Cancún	0.00	3	1	35196	2.2	83.3	3.6	5.0	1.0	1.6	1.9	0.6	0.8	85.5	3.6	10.9	0.095	0.513	21.156888	-86.816166
Cancún	0.00	3	2	33454	2.2	81.3	4.1	5.8	1.1	1.9	2.0	0.6	1.0	83.5	4.1	12.4	0.077	0.513	21.156890	-86.816165
Punta Cancún	8.00	1	1	32120	2.4	85.6	3.6	3.7	0.2	1.1	2.7	0.2	0.5	88.0	3.6	8.4	0.085	0.523	21.134667	-86.756867
Punta Cancún	8.00	1	2	32168	2.3	84.2	4.1	4.2	0.2	1.2	3.1	0.2	0.5	86.5	4.1	9.4	0.094	0.523	21.134660	-86.756868

13 CARR: Chetumal - Calderitas

CLAVE: 23004

RUTA: QR-004

AÑO: 2012

LUGAR	ESTACION				CLASIFICACION VEHICULAR EN PORCIENTO														COORDENADAS	
	KM	TE	SC	TDPA	M	A	B	C2	C3	T3S2	T3S3	T3S2R4	OTROS	A	B	C	K'	D	LATITUD	LONGITUD
Chetumal	0.00	3	1	10445	9.0	82.0	2.9	2.4	2.1	0.8	0.6	0.0	0.2	91.0	2.9	6.1	0.076	0.506	18.536305	-88.275828
Chetumal	0.00	3	2	10703	8.3	81.7	3.3	2.6	2.3	0.8	0.8	0.0	0.2	90.0	3.3	6.7	0.074	0.506	18.536309	-88.275829
Calderitas	9.00	1	1	2976	8.6	83.0	3.0	2.4	2.3	0.5	0.1	0.0	0.1	91.6	3.0	5.4	0.109	0.517	18.553702	-88.260925
Calderitas	9.00	1	2	3183	9.5	81.2	3.4	2.7	2.5	0.5	0.1	0.0	0.1	90.7	3.4	5.9	0.084	0.517	18.553702	-88.260924

14 CARR: El Ideal - Chiquila

CLAVE: 23005

RUTA: QR-005

AÑO: 2012

LUGAR	ESTACION				CLASIFICACION VEHICULAR EN PORCIENTO														COORDENADAS	
	KM	TE	SC	TDPA	M	A	B	C2	C3	T3S2	T3S3	T3S2R4	OTROS	A	B	C	K'	D	LATITUD	LONGITUD
T. C. Mérida - Puerto Juárez	0.00	3	0	1068	4.4	86.6	1.5	4.5	1.8	1.0	0.0	0.0	0.2	91.0	1.5	7.5	0.094	0.508	20.886137	-87.545854
Kantunilkin	31.20	1	0	1995	2.6	86.7	2.7	5.2	1.3	1.2	0.1	0.2	0.0	89.3	2.7	8.0	0.085	0.516	21.081417	-87.488746
Kantunilkin	31.20	3	0	1441	8.2	82.0	2.5	5.2	0.9	1.0	0.1	0.0	0.1	90.2	2.5	7.3	0.116	0.500	21.114655	-87.484792
Chiquila	75.60	1	0	985	8.4	82.5	2.3	4.9	0.9	1.0	0.0	0.0	0.0	90.9	2.3	6.8	0.101	0.509	21.416364	-87.337924

15 CARR: Libramiento de Chetumal

CLAVE: 23130

RUTA: QR

AÑO: 2012

LUGAR	ESTACION				CLASIFICACION VEHICULAR EN PORCIENTO														COORDENADAS	
	KM	TE	SC	TDPA	M	A	B	C2	C3	T3S2	T3S3	T3S2R4	OTROS	A	B	C	K'	D	LATITUD	LONGITUD
T. C. Francisco Escárcega - Chetumal	0.00	3	1	7549	3.6	87.4	2.7	3.3	0.7	0.9	0.9	0.2	0.3	91.0	2.7	6.3	0.084	0.526	18.517310	-88.346562

QUINTANA ROO

20 CARR: Ramal a El Naranjal

CLAVE: 23579

RUTA: QR

AÑO: 2012

LUGAR	ESTACION				CLASIFICACION VEHICULAR EN PORCIENTO														COORDENADAS	
	KM	TE	SC	TDPA	M	A	B	C2	C3	T3S2	T3S3	T3S2R4	OTROS	A	B	C	K'	D	LATITUD	LONGITUD
José María Morelos	0.00	3	0	593	19.1	73.8	0.4	4.4	1.5	0.5	0.3	0.0	0.0	92.9	0.4	6.7	0.099	0.505	19.733309	-88.718554
El Naranjal	16.00																			

21 CARR: Ramal a Laguna de Kaná

CLAVE: 23213

RUTA: QR

AÑO: 2012

LUGAR	ESTACION				CLASIFICACION VEHICULAR EN PORCIENTO														COORDENADAS	
	KM	TE	SC	TDPA	M	A	B	C2	C3	T3S2	T3S3	T3S2R4	OTROS	A	B	C	K'	D	LATITUD	LONGITUD
T. C. Muna - Felipe Carrillo Puerto	0.00	3	0	271	20.6	70.7	0.7	6.9	1.0	0.0	0.1	0.0	0.0	91.3	0.7	8.0	0.118	0.502	19.642579	-88.411620
Laguna de Kaná	12.20																			

22 CARR: Ramal a Mahahual

CLAVE: 23583

RUTA: QR

AÑO: 2012

LUGAR	ESTACION				CLASIFICACION VEHICULAR EN PORCIENTO														COORDENADAS	
	KM	TE	SC	TDPA	M	A	B	C2	C3	T3S2	T3S3	T3S2R4	OTROS	A	B	C	K'	D	LATITUD	LONGITUD
T. C. Reforma Agraria - Puerto Juárez	0.00	3	0	706	2.7	78.2	7.7	3.8	2.5	2.7	1.1	1.1	0.2	80.9	7.7	11.4	0.118	0.502	18.980004	-88.109815
Mahahual	60.09																			

23 CARR: Ramal a Petcacab

CLAVE: 23018

RUTA: QR-018

AÑO: 2012

LUGAR	ESTACION				CLASIFICACION VEHICULAR EN PORCIENTO														COORDENADAS	
	KM	TE	SC	TDPA	M	A	B	C2	C3	T3S2	T3S3	T3S2R4	OTROS	A	B	C	K'	D	LATITUD	LONGITUD
T. C. Reforma Agraria - Puerto Juárez	0.00	3	0	660	15.1	71.2	4.6	5.1	1.5	1.0	0.3	1.2	0.0	86.3	4.6	9.1	0.090	0.501	19.135297	-88.105850
Petcacab	37.00																			

24 CARR: Ramal a Punta Allen

CLAVE: 23015

RUTA: QR-015

AÑO: 2012

LUGAR	ESTACION				CLASIFICACION VEHICULAR EN PORCIENTO														COORDENADAS	
	KM	TE	SC	TDPA	M	A	B	C2	C3	T3S2	T3S3	T3S2R4	OTROS	A	B	C	K'	D	LATITUD	LONGITUD
T. C. Reforma Agraria - Puerto Juárez	0.00	3	0	6746	4.5	84.1	2.6	2.2	0.3	4.8	0.6	0.3	0.6	88.6	2.6	8.8	0.082	0.508	20.213242	-87.453040
Punta Allen	57.00																			

QUINTANA ROO

30 CARR: Tulum - Nuevo X-Can

CLAVE: 23570

RUTA: QR

AÑO: 2012

LUGAR	ESTACION				CLASIFICACION VEHICULAR EN PORCIENTO														COORDENADAS	
	KM	TE	SC	TDPA	M	A	B	C2	C3	T3S2	T3S3	T3S2R4	OTROS	A	B	C	K'	D	LATITUD	LONGITUD
T. C. Reforma Agraria - Puerto Juárez	0.00	3	0	5295	3.7	79.6	3.1	2.7	2.3	4.8	1.5	1.7	0.6	83.3	3.1	13.6	0.081	0.507	20.217115	-87.454361
T. Izq. Ruinas Cobá	42.95	1	0	3008	0.8	86.3	4.1	2.7	0.9	2.8	0.8	0.8	0.8	87.1	4.1	8.8	0.112	0.535	20.505866	-87.716431
T. Izq. Ruinas Cobá	42.95	3	0	503	1.5	84.1	4.7	2.6	1.0	2.4	1.6	1.4	0.7	85.6	4.7	9.7	0.088	0.502	20.509500	-87.717167
Nuevo X-Can	87.40	1	0	457	9.0	84.1	1.2	4.7	0.1	0.7	0.2	0.0	0.0	93.1	1.2	5.7	0.101	0.509	20.861799	-87.600747

31 CARR: Ucum - Unión

CLAVE: 23571

RUTA: QR

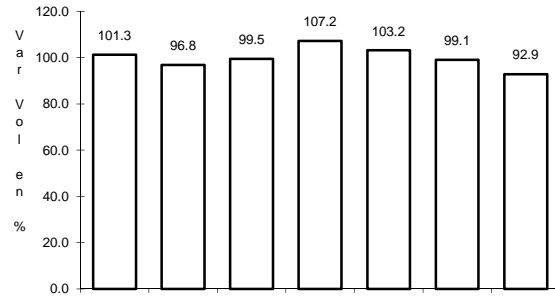
AÑO: 2012

LUGAR	ESTACION				CLASIFICACION VEHICULAR EN PORCIENTO														COORDENADAS	
	KM	TE	SC	TDPA	M	A	B	C2	C3	T3S2	T3S3	T3S2R4	OTROS	A	B	C	K'	D	LATITUD	LONGITUD
Ucum	0.00	3	0	3457	4.9	84.9	0.4	5.9	1.1	1.7	0.3	0.4	0.4	89.8	0.4	9.8	0.087	0.506	18.495132	-88.520802
T. Der. Ingenio Álvaro Obregón	31.00	1	0	1464	4.3	84.3	0.3	7.2	1.4	0.9	0.4	1.0	0.2	88.6	0.3	11.1	0.097	0.520	18.250372	-88.649913
T. Der. Ingenio Álvaro Obregón	31.00	3	0	2147	7.1	83.2	0.6	6.8	1.0	1.0	0.1	0.1	0.1	90.3	0.6	9.1	0.093	0.500	18.245529	-88.652413
T. Der. U. A. Galeras	75.00	1	0	148	7.1	73.3	3.2	13.9	2.1	0.4	0.0	0.0	0.0	80.4	3.2	16.4	0.203	0.530	17.989284	-88.848706
T. Der. U. A. Galeras	75.00	3	0	203	11.4	69.2	2.5	15.3	1.5	0.1	0.0	0.0	0.0	80.6	2.5	16.9	0.134	0.504	17.986643	-88.853540
Unión	88.00	1	0	521	33.4	57.2	2.5	5.9	0.5	0.5	0.0	0.0	0.0	90.6	2.5	6.9	0.106	0.522	17.907348	-88.881744

1 CARR: Francisco Escárcega - Chetumal

CLAVE: 00093

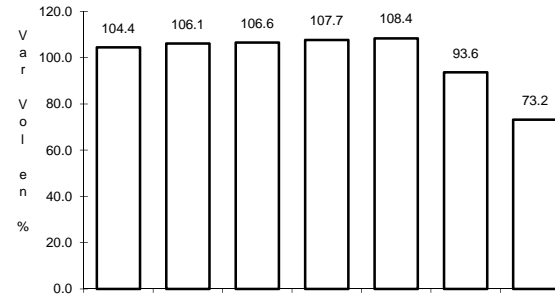
RUTA: MEX-186



Km: 0.00

Tipo: 3

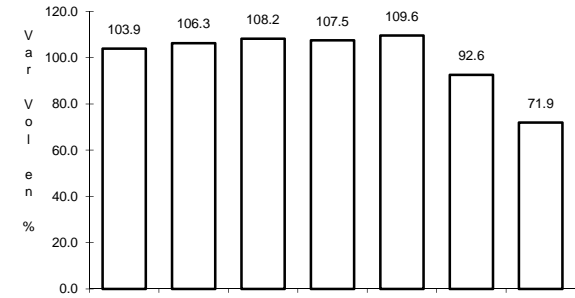
Sent: 0



Km: 277.36

Tipo: 1

Sent: 1



Km: 277.36

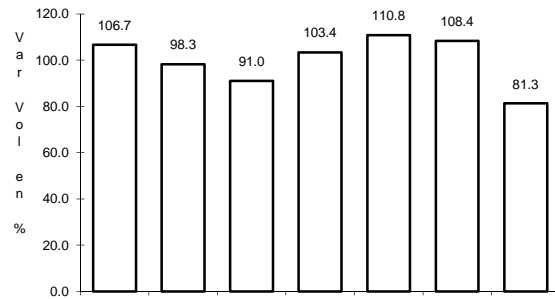
Tipo: 1

Sent: 2

2 CARR: Mérida - Puerto Juárez

CLAVE: 00067

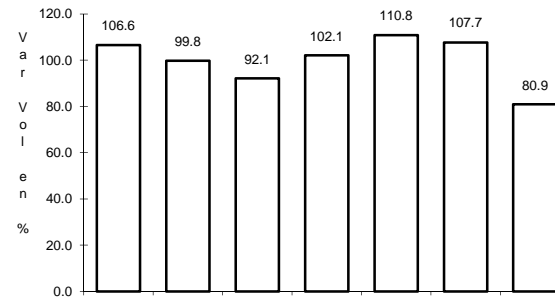
RUTA: MEX-180



Km: 5.60

Tipo: 1

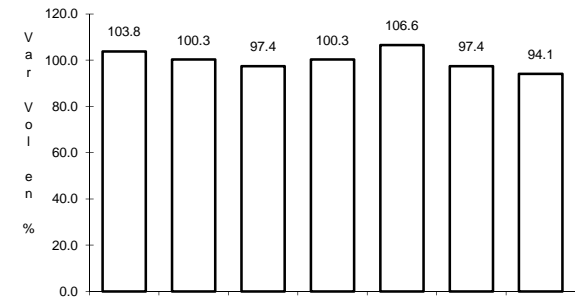
Sent: 1



Km: 5.60

Tipo: 1

Sent: 2



Km: 160.68

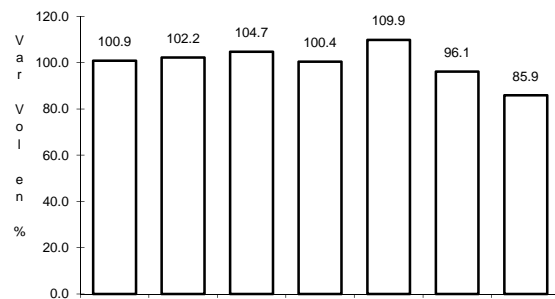
Tipo: 1

Sent: 0

3 CARR: Muna - Felipe Carrillo Puerto

CLAVE: 00148

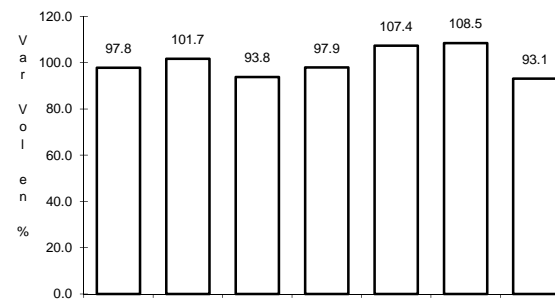
RUTA: MEX-184



Km: 0.00

Tipo: 3

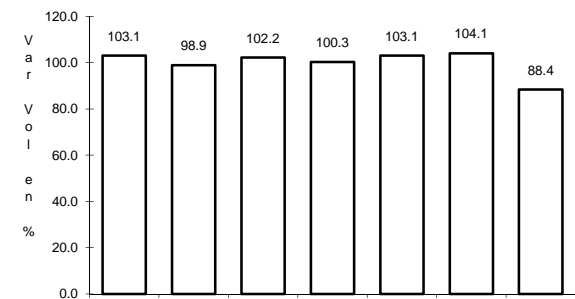
Sent: 0



Km: 109.60

Tipo: 3

Sent: 0



Km: 216.97

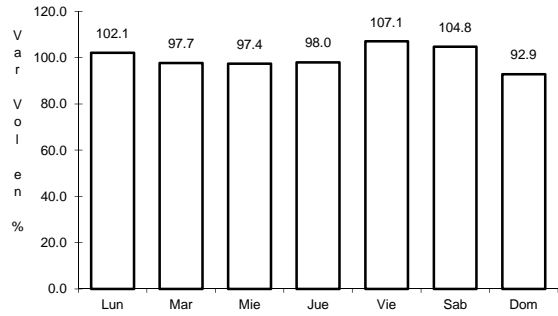
Tipo: 1

Sent: 0

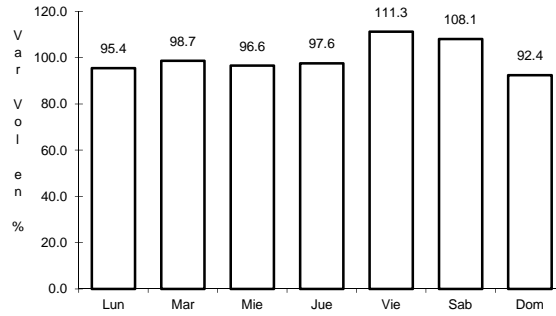
4 CARR: Polyuc - T. C. (Reforma Agraria - Puerto Juárez)

CLAVE: 23014

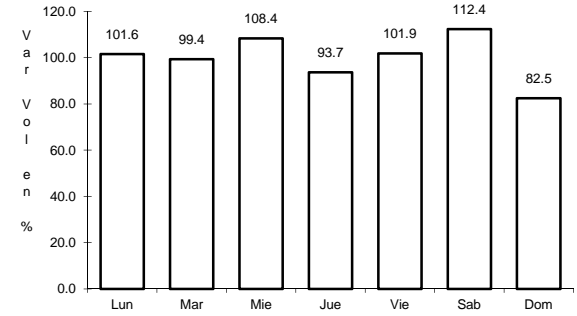
RUTA: MEX-293



Km: 0.00 Tipo: 3 Sent: 0



Km: 50.00 Tipo: 3 Sent: 0

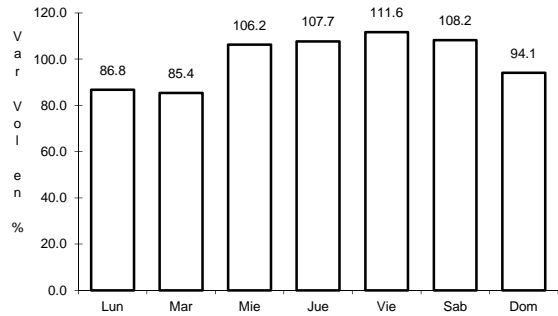


Km: 99.00 Tipo: 1 Sent: 0

5 CARR: Ramal a Puerto Morelos

CLAVE: 23569

RUTA: MEX

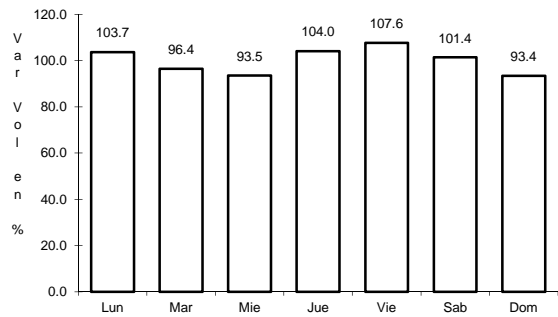


Km: 0.00 Tipo: 3 Sent: 0

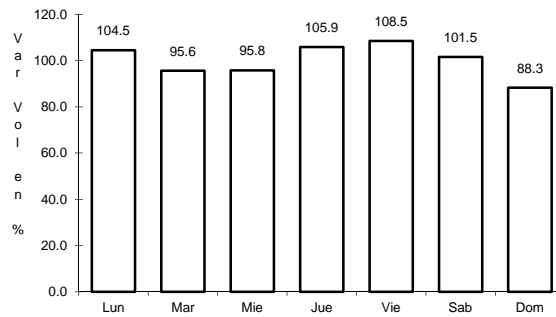
6 CARR: Ramal a Punta Piedra

CLAVE: 23575

RUTA: MEX



Km: 0.00 Tipo: 3 Sent: 1

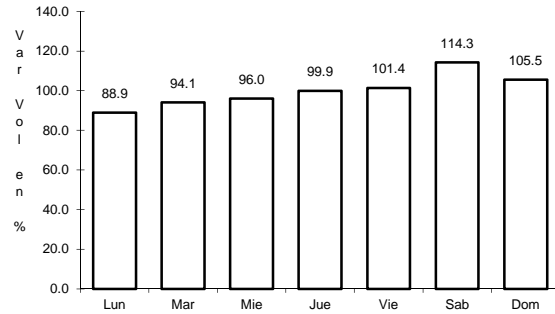


Km: 0.00 Tipo: 3 Sent: 2

7 CARR: Ramal a Subteniente López

CLAVE: 23567

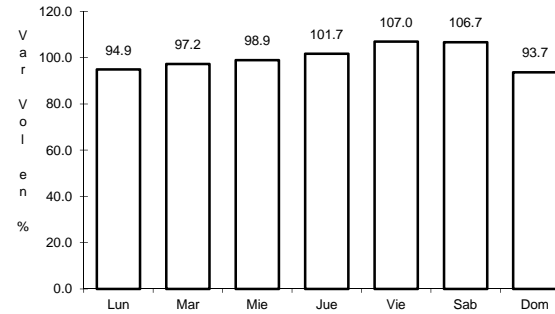
RUTA: MEX-186



Km: 0.00

Tipo: 3

Sent: 1



Km: 0.00

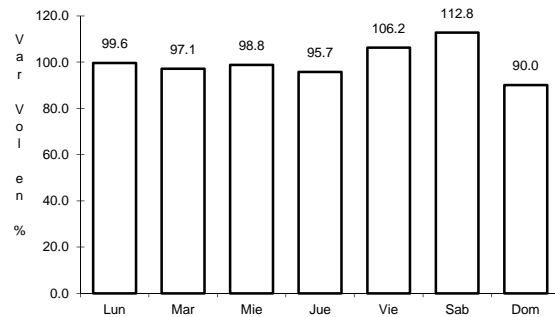
Tipo: 3

Sent: 2

8 CARR: Reforma Agraria - Puerto Juárez

CLAVE: 23132

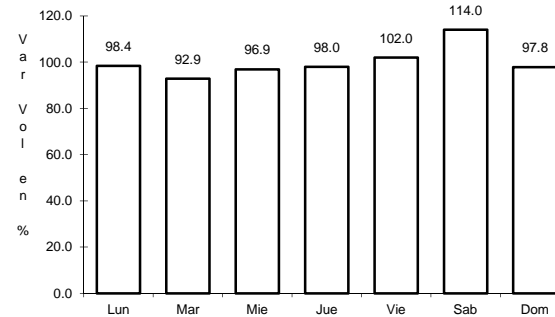
RUTA: MEX-307



Km: 0.00

Tipo: 3

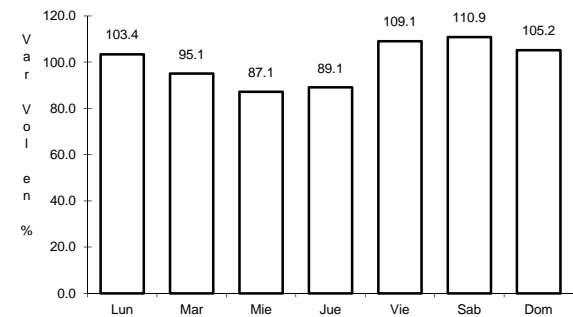
Sent: 1



Km: 0.00

Tipo: 3

Sent: 2



Km: 132.00

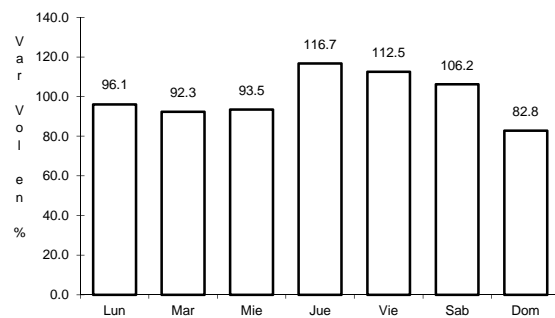
Tipo: 3

Sent: 0

9 CARR: Valladolid - Felipe Carrillo Puerto

CLAVE: 00010

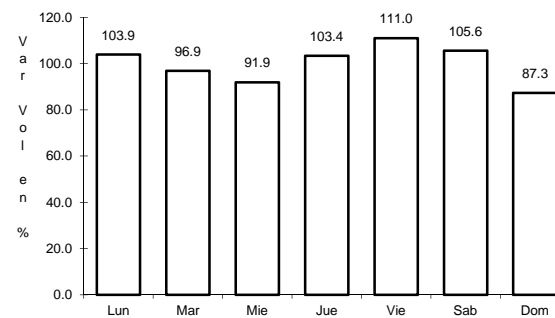
RUTA: MEX-295



Km: 0.00

Tipo: 3

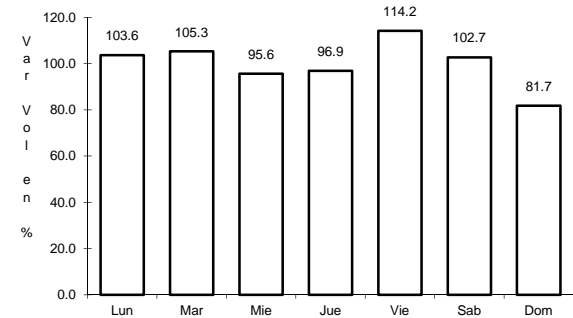
Sent: 0



Km: 99.00

Tipo: 1

Sent: 0



Km: 147.70

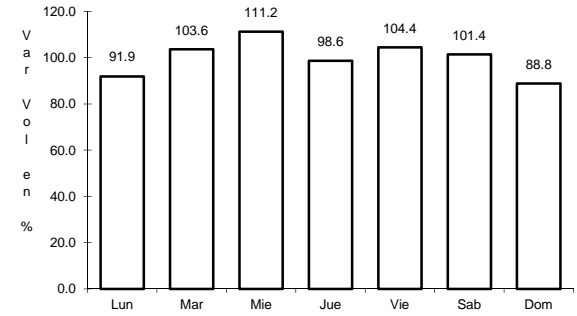
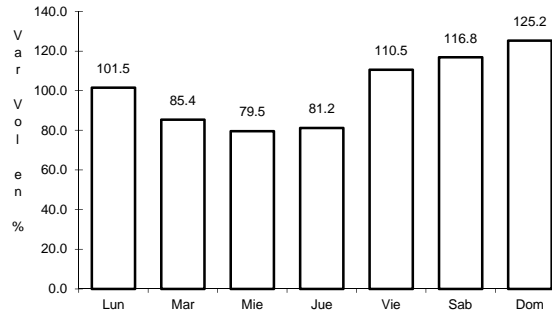
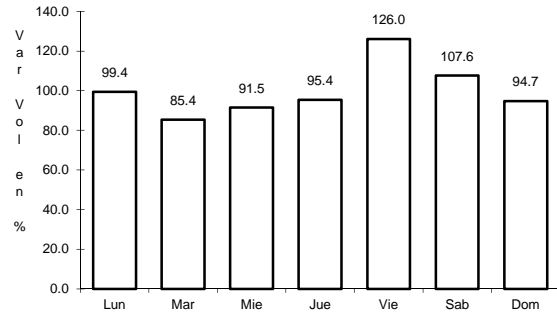
Tipo: 1

Sent: 0

10 CARR: Mérida - Cancún (Cuota)

CLAVE: 00071

RUTA: MEX-180D



Km: 51.00 Tipo: 1 Sent: 1

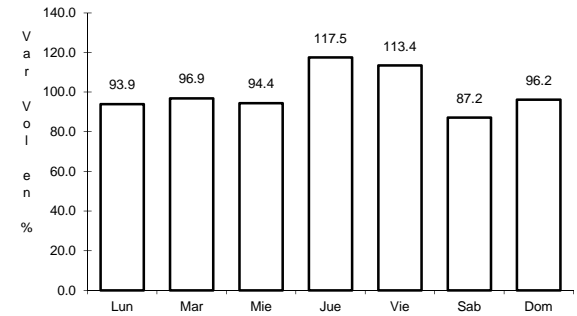
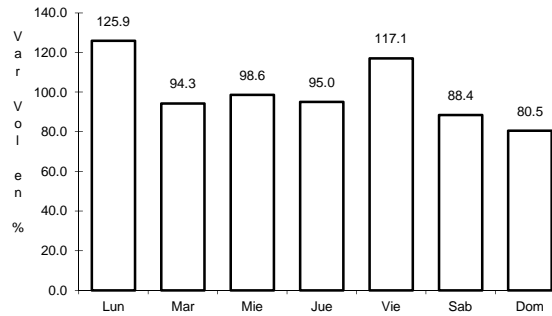
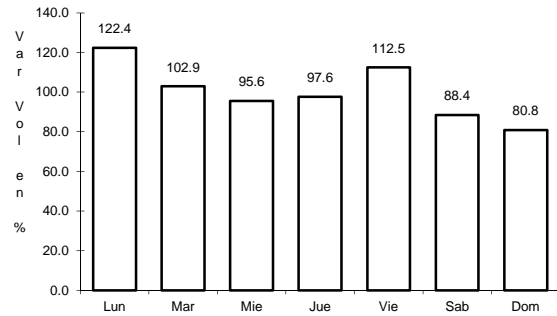
Km: 51.00 Tipo: 1 Sent: 2

Km: 308.10 Tipo: 1 Sent: 0

11 CARR: Bacalar - Miguel Alemán

CLAVE: 20030

RUTA: QR



Km: 21.00 Tipo: 3 Sent: 0

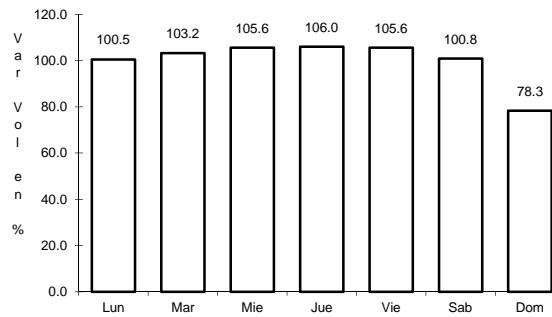
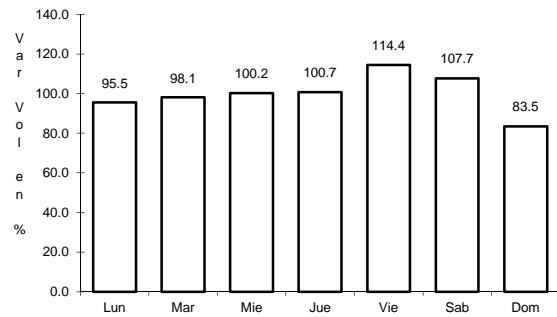
Km: 31.00 Tipo: 1 Sent: 0

Km: 31.00 Tipo: 3 Sent: 0

12 CARR: Cancún - Punta Cancún

CLAVE: 23581

RUTA: QR



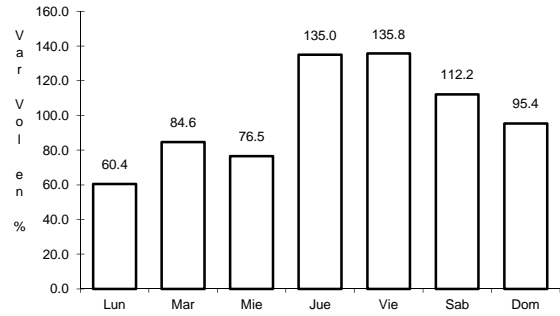
Km: 0.00 Tipo: 3 Sent: 1

Km: 0.00 Tipo: 3 Sent: 2

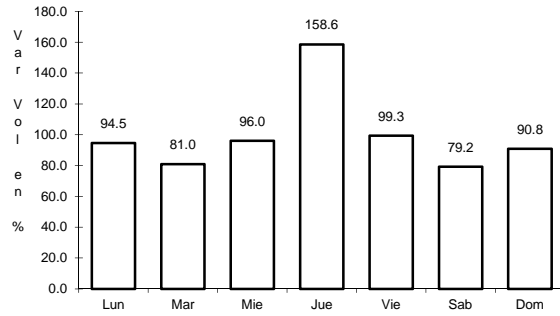
16 CARR: Perimetral Cozumel

CLAVE: 00148

RUTA: QR



Km: 0.00 Tipo: 3 Sent: 0

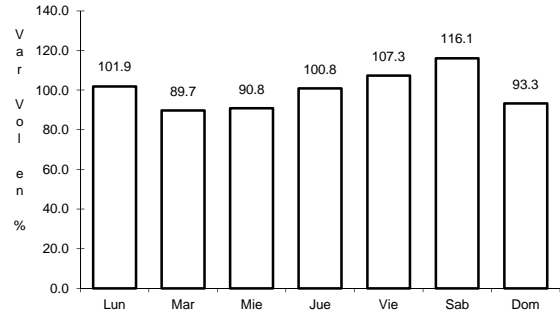


Km: 25.00 Tipo: 1 Sent: 0

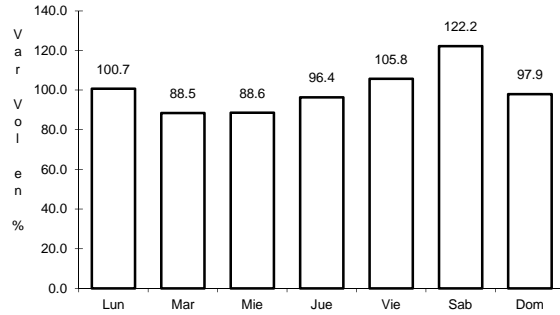
17 CARR: Punta Nizuc - Cancún

CLAVE: 23014

RUTA: QR



Km: 0.00 Tipo: 3 Sent: 1

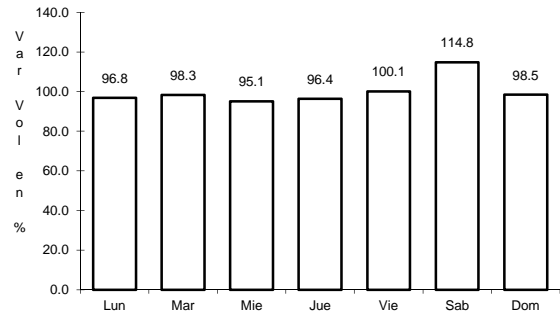


Km: 0.00 Tipo: 3 Sent: 2

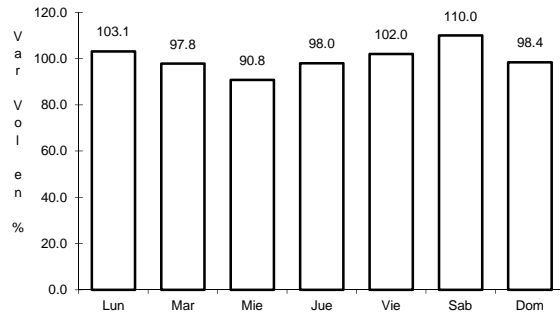
18 CARR: Ramal a Aeropuerto Cancún

CLAVE: 23574

RUTA: QR



Km: 0.00 Tipo: 3 Sent: 1

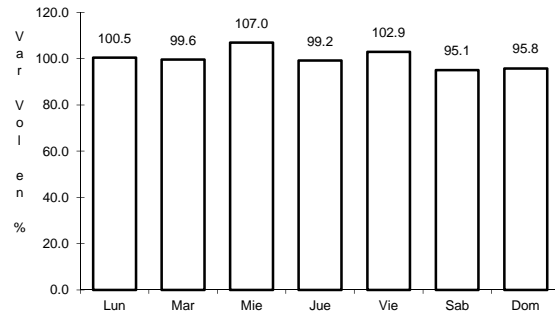


Km: 0.00 Tipo: 3 Sent: 2

19 CARR: Ramal a Candelaria

CLAVE: 23027

RUTA: QR



Km: 0.00

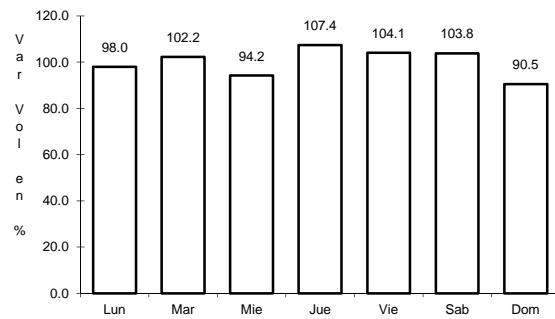
Tipo: 3

Sent: 0

20 CARR: Ramal a El Naranjal

CLAVE: 23579

RUTA: QR



Km: 0.00

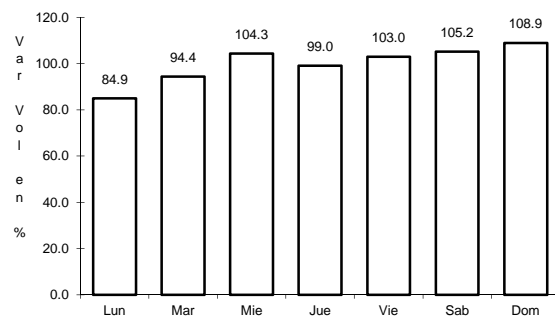
Tipo: 3

Sent: 0

21 CARR: Ramal a Laguna de Kaná

CLAVE: 23213

RUTA: QR



Km: 0.00

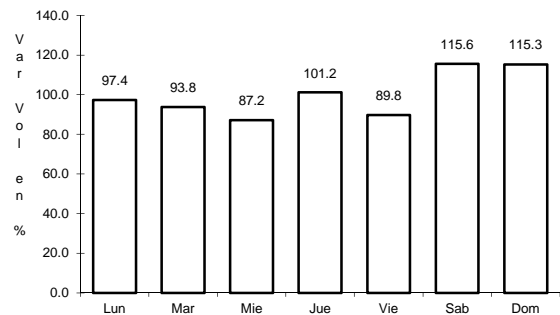
Tipo: 3

Sent: 0

22 CARR: Ramal a Mahahual

CLAVE: 23583

RUTA: QR



Km: 0.00

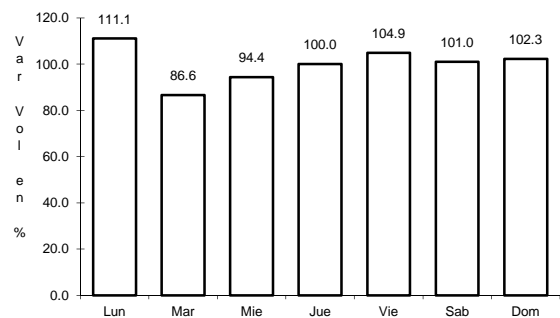
Tipo: 3

Sent: 0

23 CARR: Ramal a Petcacab

CLAVE: 23018

RUTA: QR-018



Km: 0.00

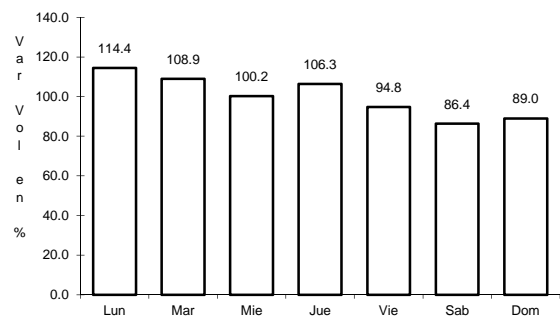
Tipo: 3

Sent: 0

24 CARR: Ramal a Punta Allen

CLAVE: 23015

RUTA: QR-015



Km: 0.00

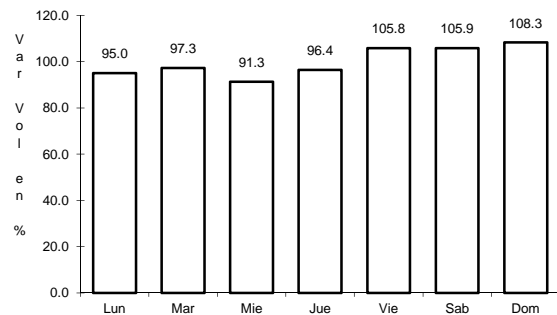
Tipo: 3

Sent: 0

25 CARR: Ramal a Punta Sam

CLAVE: 23582

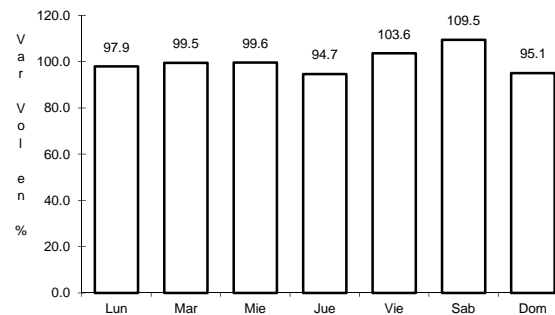
RUTA: QR



Km: 0.00

Tipo: 3

Sent: 0



Km: 5.00

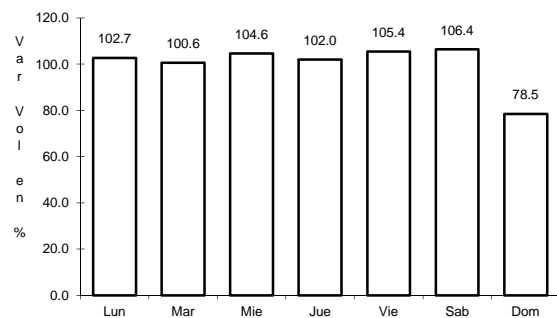
Tipo: 1

Sent: 0

26 CARR: Ramal a Reforma

CLAVE: 23016

RUTA: QR-016



Km: 0.00

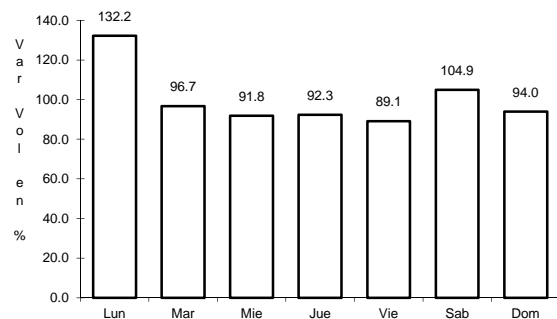
Tipo: 3

Sent: 0

27 CARR: Ramal a Tres Garantías

CLAVE: 23585

RUTA: QR



Km: 0.00

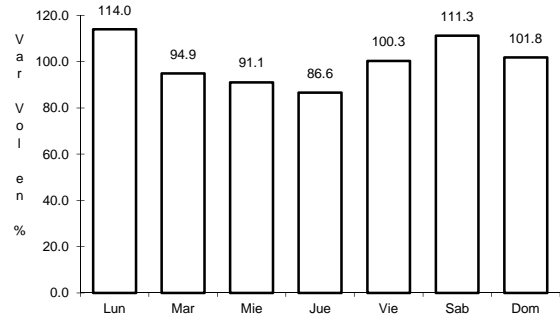
Tipo: 3

Sent: 0

28 CARR: Tihosuco - Dziuche

CLAVE: 23576

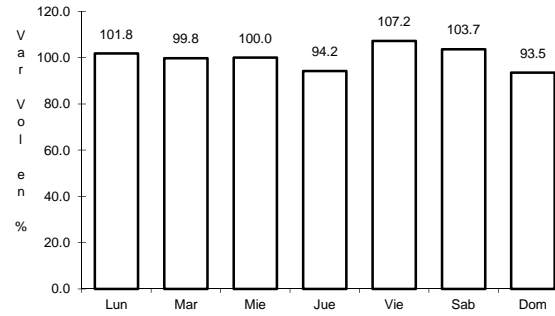
RUTA: QR



Km: 0.00

Tipo: 3

Sent: 0



Km: 60.50

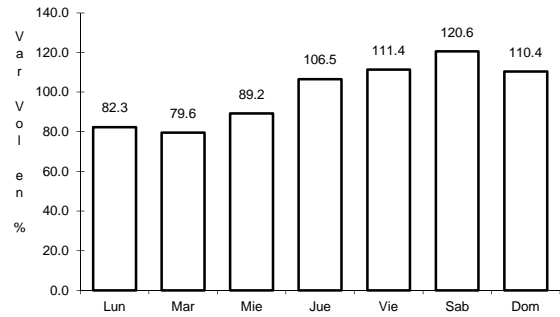
Tipo: 1

Sent: 0

29 CARR: Transversal de Cozumel

CLAVE: 23576

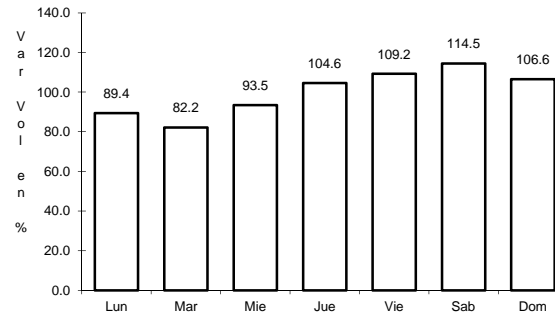
RUTA: QR



Km: 0.00

Tipo: 3

Sent: 1



Km: 0.00

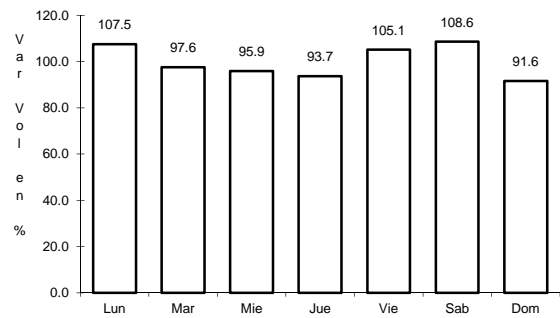
Tipo: 3

Sent: 2

30 CARR: Tulum - Nuevo X-Can

CLAVE: 23570

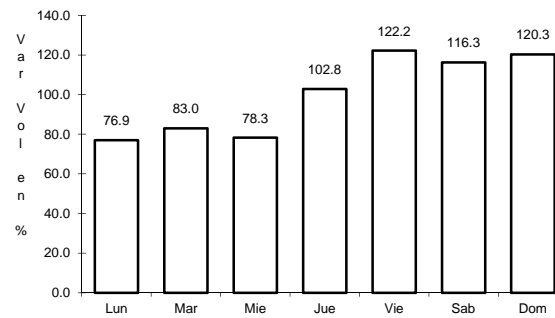
RUTA: QR



Km: 0.00

Tipo: 3

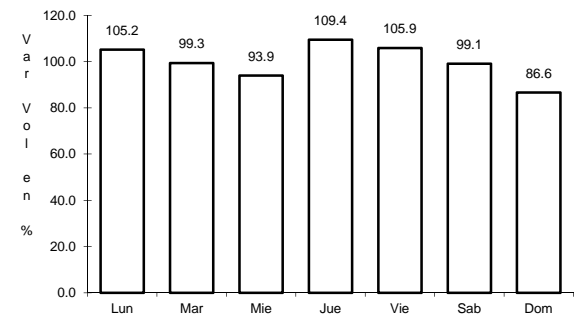
Sent: 0



Km: 42.95

Tipo: 1

Sent: 0

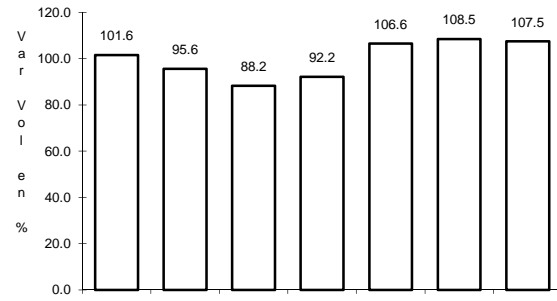


Km: 87.40

Tipo: 1

Sent: 0

31 CARR: Ucum - Unión

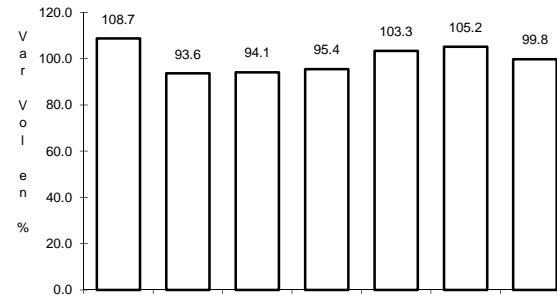


Km: 0.00

Tipo: 3

Sent: 0

CLAVE: 23571

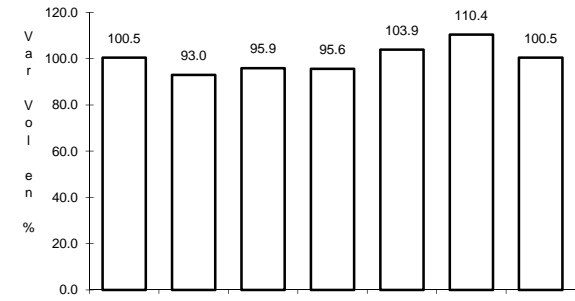


Km: 31.00

Tipo: 3

Sent: 0

RUTA: QR



Km: 88.00

Tipo: 1

Sent: 0