

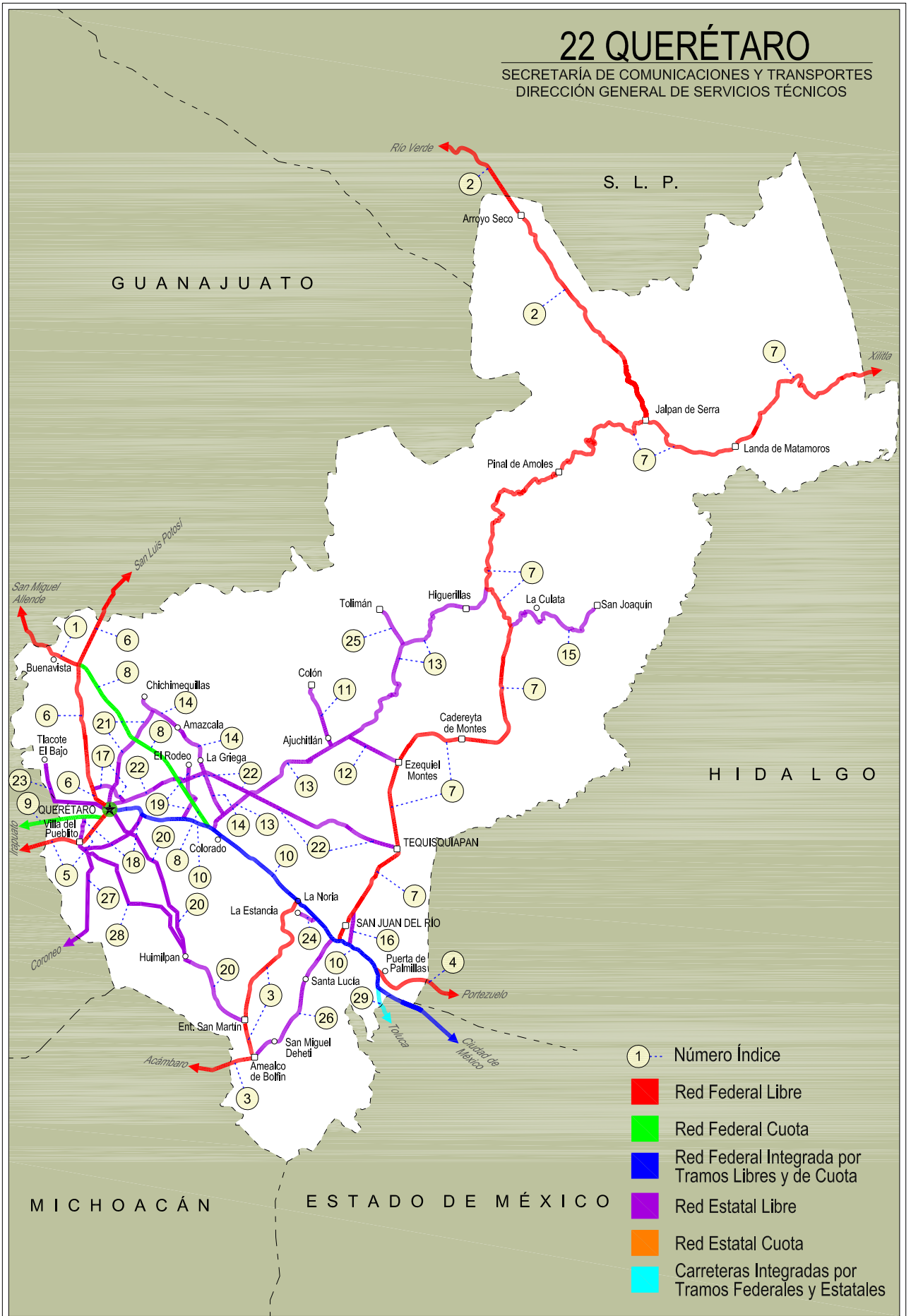


QUERETARO

NO. INDICE	CARRETERA	ruta
---RED FEDERAL LIBRE---		
1	Ent. Buenavista - San Miguel de Allende	MEX-057
2	Jalpan de Serra - Rioverde	MEX-069
3	La Noria - Acámbaro	MEX-120
4	Portezuelo - Palmillas	MEX-045
5	Querétaro - Irapuato (Libre)	MEX-045
6	Querétaro - San Luis Potosí	MEX-057
7	San Juan del Río - Xilitla	MEX-120
---RED FEDERAL DE CUOTA---		
8	Libramiento Nororiente de Querétaro (Cuota)	MEX-057D
9	Querétaro - Irapuato (Cuota)	MEX-045D
---RED FEDERAL INTEGRADA POR TRAMOS LIBRES Y DE CUOTA---		
10	México - Querétaro (Cuota)	MEX-057-MEX-057D
---RED ESTATAL LIBRE---		
11	Ajuchitlán - Colón	QRO-005
12	Ajuchitlán - Ezequiel Montes	QRO-005
13	El Colorado - Higuierillas	QRO-004
14	Hacienda Paraiso - Chichimequillas	QRO-001
15	La Culata - San Joaquín	QRO-021
16	Libramiento de San Juan del Río	QRO
17	Libramiento Norte de Querétaro	QRO
18	Libramiento Surponiente de Querétaro	QRO
19	Peña Colorada - El Rodeo	QRO
20	Querétaro - Ent. San Martín	QRO
21	Querétaro - Estación Chichimequillas	QRO
22	Querétaro - Tequisquiapan	QRO
23	Querétaro - Tlacote El Bajo	QRO
24	Ramal a La Estancia	QRO
25	Ramal a Tolimán	QRO
26	San Juan del Río - Amealco	QRO
27	T. C. (Villa del Pueblito - Huimilpan) - Coroneo	QRO-GTO
28	Villa del Pueblito - Huimilpan	QRO
---CARRETERAS INTEGRADAS POR TRAMOS FEDERALES Y ESTATALES---		
29	Toluca - Palmillas	EM(D)-MEX-055

22 QUERÉTARO

SECRETARÍA DE COMUNICACIONES Y TRANSPORTES
DIRECCIÓN GENERAL DE SERVICIOS TÉCNICOS



QUERETARO

1 CARR: Ent. Buenavista - San Miguel de Allende

CLAVE: 00111

RUTA: MEX-057

AÑO: 2012

LUGAR	ESTACION				CLASIFICACION VEHICULAR EN PORCIENTO													COORDENADAS		
	KM	TE	SC	TDPA	M	A	B	C2	C3	T3S2	T3S3	T3S2R4	OTROS	A	B	C	K'	D	LATITUD	LONGITUD
T. C. Querétaro - San Luis Potosí	0.00	3	0	9893	0.6	79.3	3.9	5.9	2.9	4.2	1.3	0.9	1.0	79.9	3.9	16.2	0.089	0.514	20.823968	-100.461399
Lim. Edos. Term. Qro. Ppia. Gto.	7.91																			
T. Izq. Guadalupe	12.00	1	0	5206	0.8	82.1	4.2	3.9	1.7	3.9	1.1	1.5	0.8	82.9	4.2	12.9	0.084	0.512	20.881243	-100.554254
San Miguel de Allende	35.11	1	0	8851	2.5	79.7	5.7	6.4	1.1	3.2	0.8	0.2	0.4	82.2	5.7	12.1	0.096	0.508	20.902327	-100.709756

2 CARR: Jalpan de Serra - Rioverde

CLAVE: 00265

RUTA: MEX-069

AÑO: 2012

LUGAR	ESTACION				CLASIFICACION VEHICULAR EN PORCIENTO													COORDENADAS		
	KM	TE	SC	TDPA	M	A	B	C2	C3	T3S2	T3S3	T3S2R4	OTROS	A	B	C	K'	D	LATITUD	LONGITUD
Jalpan de Serra	0.00	3	0	4846	0.8	85.3	3.3	6.3	0.6	2.8	0.4	0.1	0.4	86.1	3.3	10.6	0.078	0.501	21.236918	-99.480339
T. Izq. Conca	35.01	1	0	1966	1.4	83.5	1.9	9.5	1.0	1.7	0.5	0.1	0.4	84.9	1.9	13.2	0.083	0.502	21.449020	-99.630515
Arroyo Seco	48.60	1	0	1305	1.2	83.7	2.1	10.5	0.9	1.3	0.2	0.0	0.1	84.9	2.1	13.0	0.102	0.500	21.540550	-99.686700
Lim. Edos. Term. Qro. Ppia. S. L. P.	52.27																			
San Ciro de Acosta	69.42	1	0	2006	3.7	75.2	3.2	15.0	0.7	1.6	0.4	0.0	0.2	78.9	3.2	17.9	0.099	0.505	21.648850	-99.809533
San Ciro de Acosta	69.42	3	0	3173	2.5	82.9	1.9	8.7	0.7	2.4	0.7	0.1	0.1	85.4	1.9	12.7	0.106	0.501	21.666224	-99.830811
Rioverde	105.43	1	0	5952	3.5	83.8	1.2	7.8	0.7	2.4	0.4	0.0	0.2	87.3	1.2	11.5	0.090	0.501	21.875982	-99.973801

3 CARR: La Noria - Acámbaro

CLAVE: 00131

RUTA: MEX-120

AÑO: 2012

LUGAR	ESTACION				CLASIFICACION VEHICULAR EN PORCIENTO													COORDENADAS		
	KM	TE	SC	TDPA	M	A	B	C2	C3	T3S2	T3S3	T3S2R4	OTROS	A	B	C	K'	D	LATITUD	LONGITUD
La Noria	0.00	3	0	5550	0.8	83.6	2.8	6.3	1.0	3.6	0.9	0.4	0.6	84.4	2.8	12.8	0.094	0.500	20.439602	-100.073442
Amealco	34.66	1	0	4004	0.3	82.5	1.8	9.8	1.1	2.8	0.9	0.5	0.3	82.8	1.8	15.4	0.089	0.500	20.199193	-100.150012
Amealco	34.66	3	0	4275	0.9	85.1	0.5	6.2	1.5	3.0	1.3	0.8	0.7	86.0	0.5	13.5	0.097	0.512	20.187048	-100.155114
Lim. Edos. Term. Qro. Ppia. Mich.	39.15																			
Lim. Edos. Term. Mich. Ppia. Gto.	55.90																			
Coroneo	59.35	3	0	1775	0.7	85.8	2.5	6.4	1.2	1.9	1.2	0.2	0.1	86.5	2.5	11.0	0.090	0.524	20.194999	-100.376201
Jerécuaro	79.70	3	0	4494	1.2	83.3	1.5	10.7	0.8	1.5	0.8	0.1	0.1	84.5	1.5	14.0	0.101	0.501	20.143639	-100.536587
Acámbaro	111.12	1	0	7041	3.3	79.3	0.6	11.0	0.7	3.7	0.7	0.2	0.5	82.6	0.6	16.8	0.088	0.504	20.046352	-100.707055

4 CARR: Portezuelo - Palmillas

CLAVE: 00194

RUTA: MEX-045

AÑO: 2012

LUGAR	ESTACION				CLASIFICACION VEHICULAR EN PORCIENTO													COORDENADAS		
	KM	TE	SC	TDPA	M	A	B	C2	C3	T3S2	T3S3	T3S2R4	OTROS	A	B	C	K'	D	LATITUD	LONGITUD
Portezuelo	0.00	3	1	4494	1.2	70.9	6.1	7.2	2.6	7.0	2.8	1.5	0.7	72.1	6.1	21.8	0.098	0.503	20.486529	-99.302459

QUERETARO

4 CARR: Portezuelo - Palmillas

CLAVE: 00194

RUTA: MEX-045

AÑO: 2012

LUGAR	ESTACION				CLASIFICACION VEHICULAR EN PORCIENTO														COORDENADAS	
	KM	TE	SC	TDPA	M	A	B	C2	C3	T3S2	T3S3	T3S2R4	OTROS	A	B	C	K'	D	LATITUD	LONGITUD
Portezuelo	0.00	3	2	4445	1.2	68.1	6.5	8.0	3.1	7.5	3.2	1.6	0.8	69.3	6.5	24.2	0.091	0.503	20.486529	-99.302459
Jonacapa	29.41	3	0	8125	0.5	64.4	6.3	7.0	3.9	10.2	4.0	2.7	1.0	64.9	6.3	28.8	0.074	0.504	20.435556	-99.536441
Huichapan	45.10	1	0	8818	0.3	71.1	3.5	5.4	3.1	8.9	3.0	3.9	0.8	71.4	3.5	25.1	0.076	0.501	20.391708	-99.639419
T. Izq. Nopala	56.15	1	0	4290	0.4	66.7	6.7	6.9	2.7	9.1	3.7	3.0	0.8	67.1	6.7	26.2	0.077	0.503	20.318720	-99.712696
Lim. Edos. Term. Hgo. Ppia. Qro.	71.40																			
Palmillas	80.00	1	0	8523	0.4	69.8	4.5	6.8	3.7	7.5	3.4	3.0	0.9	70.2	4.5	25.3	0.070	0.515	20.326454	-99.932053

5 CARR: Querétaro - Irapuato (Libre)

CLAVE: 00154

RUTA: MEX-045

AÑO: 2012

LUGAR	ESTACION				CLASIFICACION VEHICULAR EN PORCIENTO														COORDENADAS	
	KM	TE	SC	TDPA	M	A	B	C2	C3	T3S2	T3S3	T3S2R4	OTROS	A	B	C	K'	D	LATITUD	LONGITUD
Querétaro Poniente	0.00	3	1	48903	0.5	92.3	0.1	2.7	0.3	1.2	2.1	0.3	0.5	92.8	0.1	7.1	0.074	0.505	20.554136	-100.421264
Querétaro Poniente	0.00	3	2	47050	0.5	91.4	0.1	2.9	0.3	1.4	2.4	0.3	0.7	91.9	0.1	8.0	0.085	0.505	20.553544	-100.421401
T. Der. Villa del Pueblito	6.67	3	1	12878	0.5	71.3	4.5	8.1	3.7	6.2	3.1	1.7	0.9	71.8	4.5	23.7	0.093	0.503	20.534852	-100.453503
T. Der. Villa del Pueblito	6.67	3	2	12723	0.5	70.7	4.7	8.7	3.9	6.0	3.5	1.8	0.2	71.2	4.7	24.1	0.106	0.503	20.533876	-100.450443
Los Ángeles	12.60	3	1	15074	0.4	77.5	1.8	3.3	3.8	8.5	2.5	1.2	1.0	77.9	1.8	20.3	0.077	0.501	20.533366	-100.501840
Los Ángeles	12.60	3	2	15150	0.5	75.7	1.9	3.4	4.3	9.1	2.9	1.2	1.0	76.2	1.9	21.9	0.068	0.501	20.533329	-100.501439
Lim. Edos. Term. Qro. Ppia. Gto.	13.49																			
T. Izq. Apaseo El Alto	28.37	3	1	14408	0.9	72.7	2.7	7.4	3.3	8.0	2.6	1.4	1.0	73.6	2.7	23.7	0.071	0.501	20.470084	-100.638567
T. Izq. Apaseo El Alto	28.37	3	2	14451	0.5	71.8	3.1	7.5	3.5	8.4	2.9	1.5	0.8	72.3	3.1	24.6	0.071	0.501	20.470083	-100.638563
T. Der. Apaseo El Grande	40.11	3	1	15166	0.7	75.9	1.8	7.6	2.6	6.3	2.6	1.5	1.0	76.6	1.8	21.6	0.071	0.510	20.534274	-100.708693
T. Der. Apaseo El Grande	40.11	3	2	15805	6.5	67.2	2.1	8.5	2.9	6.9	3.0	1.8	1.1	73.7	2.1	24.2	0.069	0.510	20.534292	-100.708665
T. Izq. Libramiento de Celaya Ote.	49.90	1	1	16863	1.2	76.7	1.8	5.7	3.5	6.4	2.2	1.6	0.9	77.9	1.8	20.3	0.068	0.503	20.518629	-100.757825
T. Izq. Libramiento de Celaya Ote.	49.90	1	2	17079	0.9	74.9	2.1	6.0	4.0	7.0	2.3	1.8	1.0	75.8	2.1	22.1	0.069	0.503	20.518627	-100.757820
T. Izq. Libramiento de Celaya Pte.	55.61	3	1	22469	0.5	81.9	1.2	4.3	2.4	5.7	2.3	0.9	0.8	82.4	1.2	16.4	0.074	0.518	20.516514	-100.880152
T. Izq. Libramiento de Celaya Pte.	55.61	3	2	20937	0.6	79.7	1.3	4.9	2.8	6.0	2.7	1.0	1.0	80.3	1.3	18.4	0.076	0.518	20.516516	-100.880152
T. Izq. Cortazar	67.50	3	1	20611	7.3	70.6	1.1	7.8	3.8	5.7	1.7	1.2	0.8	77.9	1.1	21.0	0.063	0.505	20.510627	-100.962514
T. Izq. Cortazar	67.50	3	2	20226	6.9	68.5	1.2	8.0	4.4	6.8	1.8	1.4	1.0	75.4	1.2	23.4	0.065	0.505	20.510631	-100.962511
T. Izq. Libramiento de Salamanca	93.80	1	1	18499	1.5	70.4	8.1	9.3	1.6	4.7	2.4	1.3	0.7	71.9	8.1	20.0	0.070	0.539	20.556665	-101.160162
T. Izq. Libramiento de Salamanca	93.80	1	2	18193	5.9	64.4	8.7	9.7	1.6	4.9	2.6	1.4	0.8	70.3	8.7	21.0	0.090	0.539	20.556667	-101.160159
Irapuato	113.70	1	1	15157	1.7	86.4	1.7	7.6	1.0	0.9	0.3	0.3	0.1	88.1	1.7	10.2	0.091	0.517	20.661123	-101.308601
Irapuato	113.70	1	2	16232	2.3	85.3	1.8	7.8	1.1	1.0	0.3	0.3	0.1	87.6	1.8	10.6	0.081	0.517	20.661122	-101.308604

QUERETARO

6 CARR : Querétaro - San Luis Potosí

CLAVE: 00165

RUTA: MEX-057

AÑO : 2012

LUGAR	ESTACION				CLASIFICACION VEHICULAR EN PORCIENTO										COORDENADAS						
	KM	TE	SC	TDPA	M	A	B	C2	C3	T3S2	T3S3	T3S2R4	OTROS	A	B	C	K'	D	LATITUD	LONGITUD	
Querétaro	0.00																				
T. Der. Libramiento de Querétaro	6.28	3	1	38181	0.5	90.0	1.0	3.7	0.7	1.7	1.2	0.3	0.9	90.5	1.0	8.5	0.081	0.501	20.632705	-100.426815	
T. Der. Libramiento de Querétaro	6.28	3	2	38359	0.6	89.2	1.0	4.2	0.8	1.7	1.3	0.3	0.9	89.8	1.0	9.2	0.080	0.501	20.632731	-100.426821	
T. Izq. Juriquilla	15.63	3	1	26199	0.4	88.5	0.9	6.6	1.1	1.8	0.4	0.2	0.1	88.9	0.9	10.2	0.118	0.541	20.704009	-100.437053	
T. Izq. Juriquilla	15.63	3	2	28048	0.4	87.5	1.1	6.9	1.3	2.1	0.4	0.2	0.1	87.9	1.1	11.0	0.098	0.541	20.703878	-100.437121	
T. Izq. San Miguel de Allende	28.53	1	1	21037	0.5	83.1	1.5	7.7	1.4	3.7	0.8	1.0	0.3	83.6	1.5	14.9	0.138	0.504	20.809464	-100.448739	
T. Izq. San Miguel de Allende	28.53	1	2	21369	0.3	80.7	1.7	8.9	1.6	4.4	0.9	1.2	0.3	81.0	1.7	17.3	0.105	0.504	20.809413	-100.448771	
T. Izq. San Miguel de Allende	28.53	3	1	17862	1.2	60.2	2.8	12.2	3.2	13.2	3.2	3.1	0.9	61.4	2.8	35.8	0.074	0.504	20.827445	-100.444255	
T. Izq. San Miguel de Allende	28.53	3	2	17599	1.3	55.1	3.1	14.1	3.7	14.8	3.3	3.5	1.1	56.4	3.1	40.5	0.077	0.504	20.827444	-100.444249	
Lim. Edos. Term. Qro. Ppia. Gto.	36.70																				
X. C. San José Iturbide - El Arenal	46.83	1	1	15128	1.3	63.2	3.7	4.4	2.6	16.3	3.3	4.4	0.8	64.5	3.7	31.8	0.063	0.527	20.959627	-100.425611	
X. C. San José Iturbide - El Arenal	46.83	1	2	14915	1.6	59.0	3.8	5.0	2.9	18.1	3.8	4.9	0.9	60.6	3.8	35.6	0.090	0.527	20.959626	-100.425616	
X. C. Ent. San Miguel de Allende - Dr. Mora	61.93	1	1	13448	1.7	61.4	6.0	7.5	3.2	12.4	4.4	2.5	0.9	63.1	6.0	30.9	0.079	0.504	21.077059	-100.512405	
X. C. Ent. San Miguel de Allende - Dr. Mora	61.93	1	2	13675	1.8	56.9	6.6	8.3	3.5	14.3	4.7	3.0	0.9	58.7	6.6	34.7	0.075	0.504	21.077261	-100.513132	
X. C. San Luis de La Paz - Guanajuato	86.68	1	1	11769	0.9	67.3	4.3	5.3	2.7	13.3	3.2	2.3	0.7	68.2	4.3	27.5	0.067	0.509	21.282011	-100.591692	
X. C. San Luis de La Paz - Guanajuato	86.68	1	2	11357	0.8	64.8	4.6	5.7	2.8	14.4	3.6	2.5	0.8	65.6	4.6	29.8	0.081	0.509	21.281824	-100.591960	
T. Izq. San Diego de La Unión	119.07	3	1	8941	3.2	63.3	3.8	5.4	4.0	12.8	4.4	2.3	0.8	66.5	3.8	29.7	0.068	0.514	21.541733	-100.747618	
T. Izq. San Diego de La Unión	119.07	3	2	9444	3.2	58.9	4.6	6.0	4.8	14.2	4.8	2.7	0.8	62.1	4.6	33.3	0.069	0.514	21.541755	-100.747950	
Lim. Edos. Term. Gto. Ppia. S. L. P.	124.74																				
T. Izq. Santa María del Río	155.88	3	1	10285	2.1	53.8	6.6	6.4	3.9	17.6	4.2	4.5	0.9	55.9	6.6	37.5	0.053	0.502	21.821680	-100.728011	
T. Izq. Santa María del Río	155.88	3	2	10383	1.9	52.0	6.8	7.1	3.3	18.6	4.4	4.9	1.0	53.9	6.8	39.3	0.067	0.502	21.822193	-100.729430	
T. Izq. Villa de Reyes	176.35	1	1	14862	1.3	59.0	4.4	8.6	2.3	17.1	3.0	3.5	0.8	60.3	4.4	35.3	0.067	0.516	21.966773	-100.814905	
T. Izq. Villa de Reyes	176.35	1	2	15863	1.6	53.0	5.1	10.2	2.4	19.5	3.4	4.0	0.8	54.6	5.1	40.3	0.069	0.516	21.966773	-100.814904	
T. Izq. Villa de Reyes	176.35	3	1	15669	0.9	54.1	4.3	11.1	2.9	19.5	2.6	3.8	0.8	55.0	4.3	40.7	0.063	0.542	21.973969	-100.818828	
T. Izq. Villa de Reyes	176.35	3	2	15556	1.0	50.2	4.9	11.6	3.2	21.1	3.0	4.1	0.9	51.2	4.9	43.9	0.076	0.542	21.973971	-100.818828	
X. C. Libramiento de San Luis Potosí	184.80	1	1	17029	1.6	57.3	6.4	9.6	3.0	13.9	3.4	4.0	0.8	58.9	6.4	34.7	0.066	0.529	22.026378	-100.846955	
X. C. Libramiento de San Luis Potosí	184.80	1	2	19103	1.4	53.3	6.7	10.0	3.4	16.1	3.8	4.4	0.9	54.7	6.7	38.6	0.081	0.529	22.026378	-100.846956	
X. Periférico de San Luis Potosí	197.50	1	1	28054	0.5	92.9	1.2	2.2	0.2	1.5	1.0	0.1	0.4	93.4	1.2	5.4	0.119	0.505	22.122161	-100.913160	
X. Periférico de San Luis Potosí	197.50	1	2	28625	0.3	92.4	1.3	2.5	0.2	1.8	1.0	0.1	0.4	92.7	1.3	6.0	0.115	0.505	22.122162	-100.913161	
San Luis Potosí	201.66																				

QUERETARO

7 CARR : San Juan del Río - Xilitla

CLAVE: 00183

RUTA: MEX-120

AÑO : 2012

LUGAR	ESTACION				CLASIFICACION VEHICULAR EN PORCIENTO													COORDENADAS			
	KM	TE	SC	TDPA	M	A	B	C2	C3	T3S2	T3S3	T3S2R4	OTROS	A	B	C	K'	D	LATITUD	LONGITUD	
San Juan del Río	0.00																				
T. Der. Libramiento de San Juan del Río	5.20	3	1	9185	0.8	87.5	2.5	4.8	1.1	1.7	1.0	0.3	0.3	88.3	2.5	9.2	0.089	0.503	20.427500	-99.973922	
T. Der. Libramiento de San Juan del Río	5.20	3	2	9060	0.7	86.2	2.8	5.6	1.1	1.9	1.1	0.3	0.3	86.9	2.8	10.3	0.088	0.503	20.427470	-99.973943	
T. Der. Tequisquiapan	19.80	1	1	7256	0.6	84.7	2.6	8.4	1.1	1.5	0.7	0.2	0.2	85.3	2.6	12.1	0.109	0.505	20.511862	-99.907711	
T. Der. Tequisquiapan	19.80	1	2	7121	0.7	83.0	2.8	9.5	1.2	1.7	0.7	0.2	0.2	83.7	2.8	13.5	0.117	0.505	20.511850	-99.907701	
T. Der. Tequisquiapan	19.80	3	1	7323	0.7	85.1	2.5	7.8	1.6	1.3	0.6	0.2	0.2	85.8	2.5	11.7	0.100	0.500	20.540516	-99.901387	
T. Der. Tequisquiapan	19.80	3	2	7313	0.8	83.9	2.6	8.5	1.7	1.4	0.7	0.2	0.2	84.7	2.6	12.7	0.097	0.500	20.540554	-99.901421	
Ezequiel Montes	36.50	1	1	5510	1.0	83.8	2.3	6.7	2.8	2.1	0.8	0.3	0.2	84.8	2.3	12.9	0.102	0.503	20.644152	-99.905818	
Ezequiel Montes	36.50	1	2	5453	0.9	82.1	2.7	7.4	3.0	2.4	1.0	0.3	0.2	83.0	2.7	14.3	0.110	0.503	20.644138	-99.905827	
Ezequiel Montes	36.50	3	0	9848	0.9	78.2	2.5	11.1	1.5	4.1	0.8	0.2	0.7	79.1	2.5	18.4	0.090	0.503	20.677068	-99.891121	
Cadereyta	47.90	3	0	8782	1.3	82.5	1.7	5.6	1.8	3.6	1.6	0.9	1.0	83.8	1.7	14.5	0.090	0.506	20.701863	-99.805447	
Vizarrón de Montes	73.50	3	0	3116	0.7	73.0	2.9	13.0	5.2	2.8	1.9	0.2	0.3	73.7	2.9	23.4	0.095	0.507	20.843205	-99.715327	
T. Der. San Joaquín	79.50	3	0	1258	0.5	77.9	3.0	14.0	2.8	1.3	0.5	0.0	0.0	78.4	3.0	18.6	0.091	0.509	20.885622	-99.707508	
T. Izq. Higuerrillas	89.10	3	0	1723	0.7	78.0	2.7	13.2	3.3	1.4	0.6	0.0	0.1	78.7	2.7	18.6	0.096	0.501	20.947405	-99.748143	
T. Izq. Peñamiller	103.00	3	0	1188	0.8	77.6	3.4	14.1	1.8	1.6	0.5	0.0	0.2	78.4	3.4	18.2	0.101	0.506	21.039041	-99.739398	
Pinal de Amoles	140.00	3	0	1560	0.6	86.2	2.0	8.2	0.9	1.4	0.6	0.0	0.1	86.8	2.0	11.2	0.092	0.504	21.137624	-99.620592	
Jalpan de Serra	179.30	3	0	5097	0.8	90.2	1.3	3.1	0.5	3.1	0.4	0.1	0.5	91.0	1.3	7.7	0.085	0.503	21.209547	-99.454295	
Landa de Matamoros	201.60	3	0	2510	0.5	84.5	1.9	10.6	0.7	1.4	0.3	0.0	0.1	85.0	1.9	13.1	0.098	0.500	21.187031	-99.311235	
El Lobo	236.40	3	0	1072	2.4	81.6	2.5	5.1	2.6	2.7	1.1	0.9	1.1	84.0	2.5	13.5	0.091	0.500	21.291618	-99.114699	
Lim. Edos. Term. Qro. Ppia. S. L. P.	238.33																				
Xilitla	266.40	1	0	2461	3.7	73.9	5.9	13.7	0.9	1.4	0.4	0.0	0.1	77.6	5.9	16.5	0.102	0.504	21.379280	-99.000813	
T. C. Portezuelo - Cd. Valles	276.98	1	0	2522	3.1	78.1	4.0	10.9	1.7	1.6	0.5	0.0	0.1	81.2	4.0	14.8	0.099	0.503	21.442391	-98.929951	

8 CARR : Libramiento Nororiente de Querétaro (Cuota)

CLAVE: 22266

RUTA: MEX-057D

AÑO : 2012

LUGAR	ESTACION				CLASIFICACION VEHICULAR EN PORCIENTO													COORDENADAS		
	KM	TE	SC	TDPA	M	A	B	C2	C3	T3S2	T3S3	T3S2R4	OTROS	A	B	C	K'	D	LATITUD	LONGITUD
T. C. México - Querétaro	0.00	3	1	6760	0.3	44.5	2.2	4.7	4.6	34.4	5.2	3.6	0.5	44.8	2.2	53.0	0.067	0.516	20.567116	-100.232679
T. C. México - Querétaro	0.00	3	2	7259	0.2	44.4	2.0	5.1	4.4	34.1	5.5	3.8	0.5	44.6	2.0	53.4	0.063	0.516	20.568065	-100.233313
Caseta de Cobro Chichimequillas	20.32	2	1	6271	0.1	36.8	3.3	6.6	5.8	35.1	3.8	7.6	0.9	36.9	3.3	59.8	0.066	0.500	20.705575	-100.343908
Caseta de Cobro Chichimequillas	20.32	2	2	6270	0.1	36.8	3.3	6.6	5.8	35.1	3.8	7.6	0.9	36.9	3.3	59.8	0.066	0.500	20.705575	-100.343908
T. C. Querétaro - San Luis Potosí	37.50	1	1	7185	0.1	46.2	2.2	5.7	4.1	31.5	5.2	4.1	0.9	46.3	2.2	51.5	0.064	0.524	20.815236	-100.445201
T. C. Querétaro - San Luis Potosí	37.50	1	2	6524	0.3	45.2	2.3	5.9	4.6	30.1	6.3	4.4	0.9	45.5	2.3	52.2	0.070	0.524	20.815231	-100.445217

QUERETARO

9 CARR: Querétaro - Irapuato (Cuota)

CLAVE: 00423

RUTA: MEX-045D

AÑO: 2012

LUGAR	ESTACION				CLASIFICACION VEHICULAR EN PORCIENTO										COORDENADAS					
	KM	TE	SC	TDPA	M	A	B	C2	C3	T3S2	T3S3	T3S2R4	OTROS	A	B	C	K'	D	LATITUD	LONGITUD
Querétaro	0.00	3	1	17432	0.2	72.0	4.1	6.2	3.4	6.5	3.1	3.7	0.8	72.2	4.1	23.7	0.070	0.536	20.576506	-100.420489
Querétaro	0.00	3	2	16604	0.1	70.0	5.0	6.5	3.9	6.2	3.5	3.9	0.9	70.1	5.0	24.9	0.090	0.536	20.576511	-100.420493
Caseta de Cobro Querétaro	7.00	2	1	9609	0.0	67.3	4.6	6.4	5.5	9.8	1.2	4.6	0.6	67.3	4.6	28.1	0.079	0.500	20.572188	-100.472977
Caseta de Cobro Querétaro	7.00	2	2	9608	0.0	67.3	4.6	6.4	5.5	9.8	1.2	4.6	0.6	67.3	4.6	28.1	0.079	0.500	20.572188	-100.472977
Lim. Edos. Term. Oro. Ppia. Gto.	8.97																			
X. C. Celaya - Dolores Hidalgo	44.10	1	1	15494	0.1	69.8	5.1	6.5	4.5	5.7	3.6	4.1	0.6	69.9	5.1	25.0	0.083	0.508	20.557416	-100.815571
X. C. Celaya - Dolores Hidalgo	44.10	1	2	14994	0.1	68.1	5.3	6.9	4.8	6.2	3.6	4.3	0.7	68.2	5.3	26.5	0.081	0.508	20.557410	-100.815587
T. Izq. Salamanca	81.54	1	1	11339	0.1	61.6	6.8	7.2	5.4	10.1	3.4	4.6	0.8	61.7	6.8	31.5	0.075	0.517	20.596684	-101.173034
T. Izq. Salamanca	81.54	1	2	12135	0.2	61.7	6.2	7.6	5.3	10.7	3.2	4.2	0.9	61.9	6.2	31.9	0.070	0.517	20.596683	-101.173033
T. Izq. Salamanca	81.54	3	1	12074	0.1	63.8	6.5	7.3	4.7	10.2	2.2	4.5	0.7	63.9	6.5	29.6	0.081	0.511	20.599671	-101.187670
T. Izq. Salamanca	81.54	3	2	12631	0.3	63.2	6.9	7.1	4.1	10.4	2.3	4.9	0.8	63.5	6.9	29.6	0.076	0.511	20.599670	-101.187671
Caseta de Cobro Salamanca	83.25	2	1	8575	0.1	65.9	5.5	4.9	5.5	11.2	1.1	5.3	0.5	66.0	5.5	28.5	0.079	0.500	20.598618	-101.180922
Caseta de Cobro Salamanca	83.25	2	2	8575	0.1	65.9	5.5	4.9	5.5	11.2	1.1	5.3	0.5	66.0	5.5	28.5	0.079	0.500	20.598618	-101.180922
T. Der. Libramiento de Irapuato	96.30	1	1	11522	0.3	64.9	5.8	7.6	4.8	10.0	1.3	4.7	0.6	65.2	5.8	29.0	0.079	0.508	20.651044	-101.283870
T. Der. Libramiento de Irapuato	96.30	1	2	11916	0.2	64.3	6.4	7.0	4.3	11.4	1.4	4.4	0.6	64.5	6.4	29.1	0.085	0.508	20.651046	-101.283875
T. Der. Libramiento de Irapuato	96.30	3	1	14885	0.3	77.0	3.5	4.0	4.6	6.0	1.7	2.1	0.8	77.3	3.5	19.2	0.083	0.502	20.654589	-101.295398
T. Der. Libramiento de Irapuato	96.30	3	2	15015	0.5	75.6	3.8	4.2	4.2	7.1	1.4	2.3	0.9	76.1	3.8	20.1	0.079	0.502	20.654474	-101.293675
T. C. Irapuato - Zapotlanejo	104.70																			

10 CARR: México - Querétaro (Cuota)

CLAVE: 00411

RUTA: MEX-057-MEX-057D

AÑO: 2012

LUGAR	ESTACION				CLASIFICACION VEHICULAR EN PORCIENTO										COORDENADAS					
	KM	TE	SC	TDPA	M	A	B	C2	C3	T3S2	T3S3	T3S2R4	OTROS	A	B	C	K'	D	LATITUD	LONGITUD
México	0.00																			
Lim. Edos. Term. D. F. Ppia. Mex.	11.30																			
Caseta de Cobro Tepetzotlán	43.01	2	1	25120	0.1	68.1	6.0	7.0	4.4	10.7	0.9	2.4	0.4	68.2	6.0	25.8	0.077	0.500	19.715358	-99.207587
Caseta de Cobro Tepetzotlán	43.01	2	2	25120	0.1	68.1	6.0	7.0	4.4	10.7	0.9	2.4	0.4	68.2	6.0	25.8	0.077	0.500	19.715358	-99.207587
Ent. Jorobas	56.18	1	1	23649	0.7	69.8	5.0	8.3	2.6	9.2	1.8	2.1	0.5	70.5	5.0	24.5	0.087	0.505	19.810332	-99.238285
Ent. Jorobas	56.18	1	2	23153	0.9	65.4	6.0	9.1	2.9	10.9	2.0	2.3	0.5	66.3	6.0	27.7	0.099	0.505	19.810332	-99.238285
Ent. Jorobas	56.18	3	1	26009	0.7	79.1	3.8	4.7	1.9	5.9	1.4	1.5	1.0	79.8	3.8	16.4	0.084	0.502	19.828321	-99.256350
Ent. Jorobas	56.18	3	2	25841	0.8	76.3	4.3	5.3	2.2	6.9	1.6	1.6	1.0	77.1	4.3	18.6	0.113	0.502	19.828322	-99.256350
Lim. Edos. Term. Mex. Ppia. Hgo.	59.85																			
T. Der. Tepeji del Río	69.36	1	1	26352	0.8	69.1	5.6	7.8	2.4	9.2	2.2	2.2	0.7	69.9	5.6	24.5	0.079	0.505	19.875006	-99.336647
T. Der. Tepeji del Río	69.36	1	2	26893	0.6	66.2	6.2	8.3	2.8	10.4	2.2	2.5	0.8	66.8	6.2	27.0	0.090	0.505	19.871246	-99.338734
T. Der. Tepeji del Río	69.36	3	1	24170	0.6	64.0	7.1	6.8	3.6	11.9	2.8	2.7	0.5	64.6	7.1	28.3	0.072	0.508	19.908041	-99.352534

QUERETARO

11 CARR: Ajuchitlán - Colón

CLAVE: 22010

RUTA: QRO-005

AÑO: 2012

LUGAR	ESTACION				CLASIFICACION VEHICULAR EN PORCIENTO														COORDENADAS	
	KM	TE	SC	TDPA	M	A	B	C2	C3	T3S2	T3S3	T3S2R4	OTROS	A	B	C	K'	D	LATITUD	LONGITUD
T. C. El Colorado - Higuierillas	0.00	3	0	6713	0.9	87.7	2.1	4.5	0.8	3.1	0.4	0.1	0.4	88.6	2.1	9.3	0.092	0.510	20.693030	-100.016048
Colón	14.00	1	0	7056	1.5	86.7	2.5	4.7	0.8	1.8	0.8	0.5	0.7	88.2	2.5	9.3	0.090	0.502	20.767713	-100.047993

12 CARR: Ajuchitlán - Ezequiel Montes

CLAVE: 22005

RUTA: QRO-005

AÑO: 2012

LUGAR	ESTACION				CLASIFICACION VEHICULAR EN PORCIENTO														COORDENADAS	
	KM	TE	SC	TDPA	M	A	B	C2	C3	T3S2	T3S3	T3S2R4	OTROS	A	B	C	K'	D	LATITUD	LONGITUD
T. C. El Colorado - Higuierillas	0.00	3	1	5501	0.3	71.1	4.0	19.9	1.5	1.6	1.2	0.3	0.1	71.4	4.0	24.6	0.100	0.502	20.703146	-99.976962
T. C. El Colorado - Higuierillas	0.00	3	2	5466	0.4	68.1	4.5	21.9	1.7	1.8	1.2	0.3	0.1	68.5	4.5	27.0	0.096	0.502	20.703093	-99.976962
Ezequiel Montes	10.60	1	0	9492	0.5	71.2	3.7	17.0	1.2	4.9	0.8	0.2	0.5	71.7	3.7	24.6	0.092	0.503	20.669887	-99.909082

13 CARR: El Colorado - Higuierillas

CLAVE: 22004

RUTA: QRO-004

AÑO: 2012

LUGAR	ESTACION				CLASIFICACION VEHICULAR EN PORCIENTO														COORDENADAS	
	KM	TE	SC	TDPA	M	A	B	C2	C3	T3S2	T3S3	T3S2R4	OTROS	A	B	C	K'	D	LATITUD	LONGITUD
T. C. México - Querétaro (Cuota)	0.00	3	1	13572	0.5	85.6	1.9	6.5	1.5	1.6	1.0	0.8	0.6	86.1	1.9	12.0	0.121	0.513	20.564912	-100.218492
T. C. México - Querétaro (Cuota)	0.00	3	2	14320	1.7	82.9	2.0	7.3	1.6	1.7	1.2	0.9	0.7	84.6	2.0	13.4	0.112	0.513	20.564949	-100.218532
T. Izq. Chichimequillas	3.80	3	1	9939	0.6	84.2	2.1	5.4	1.1	2.8	1.8	1.1	0.9	84.8	2.1	13.1	0.082	0.502	20.592183	-100.183555
T. Izq. Chichimequillas	3.80	3	2	10017	1.5	81.0	2.4	6.4	1.2	3.1	2.1	1.2	1.1	82.5	2.4	15.1	0.079	0.502	20.592273	-100.183477
X. C. Querétaro - Tequisquiapan	9.10	3	1	3260	0.6	83.4	1.9	7.8	2.0	1.9	1.4	0.5	0.5	84.0	1.9	14.1	0.144	0.500	20.616123	-100.147042
X. C. Querétaro - Tequisquiapan	9.10	3	2	3258	0.6	81.5	2.2	8.6	2.2	2.2	1.5	0.5	0.7	82.1	2.2	15.7	0.124	0.500	20.616581	-100.147672
T. Der. Ezequiel Montes	31.90	1	1	5357	0.5	87.8	1.9	4.8	1.1	1.8	1.5	0.4	0.2	88.3	1.9	9.8	0.111	0.507	20.704089	-99.989774
T. Der. Ezequiel Montes	31.90	1	2	5205	0.5	86.9	2.1	5.3	1.2	1.8	1.6	0.4	0.2	87.4	2.1	10.5	0.100	0.507	20.704130	-99.989688
T. Der. Ezequiel Montes	31.90	3	1	2868	0.4	87.4	2.5	5.7	1.9	0.9	1.0	0.1	0.1	87.8	2.5	9.7	0.116	0.507	20.708495	-99.981475
T. Der. Ezequiel Montes	31.90	3	2	2945	0.7	85.8	2.7	6.4	2.2	1.0	1.0	0.1	0.1	86.5	2.7	10.8	0.141	0.507	20.708453	-99.981525
T. Izq. San Pablo Tolimán	57.00	3	0	1040	2.5	83.4	2.1	9.1	1.3	1.2	0.3	0.0	0.1	85.9	2.1	12.0	0.124	0.511	20.855528	-99.892141
T. C. San Juan del Río - Xilitla	81.90	1	0	1088	1.5	81.1	3.5	11.4	0.8	1.4	0.3	0.0	0.0	82.6	3.5	13.9	0.117	0.505	20.942512	-99.750000

14 CARR: Hacienda Paraiso - Chichimequillas

CLAVE: 22001

RUTA: QRO-001

AÑO: 2012

LUGAR	ESTACION				CLASIFICACION VEHICULAR EN PORCIENTO														COORDENADAS	
	KM	TE	SC	TDPA	M	A	B	C2	C3	T3S2	T3S3	T3S2R4	OTROS	A	B	C	K'	D	LATITUD	LONGITUD
Hacienda Paraiso	0.00	3	0	7517	0.8	70.7	2.4	9.0	4.9	8.1	2.1	1.5	0.5	71.5	2.4	26.1	0.078	0.514	20.581327	-100.199894
T. Der. Navajas	7.90	3	0	5299	0.9	80.8	1.6	7.8	1.2	5.3	1.0	0.4	1.0	81.7	1.6	16.7	0.115	0.504	20.645451	-100.232152
La Griega	10.35	3	0	5291	1.7	76.9	2.4	12.1	1.0	3.8	1.3	0.3	0.5	78.6	2.4	19.0	0.091	0.513	20.676109	-100.239926

QUERETARO

14 CARR: Hacienda Paraiso - Chichimequillas

CLAVE: 22001

RUTA: QRO-001

AÑO: 2012

LUGAR	ESTACION				CLASIFICACION VEHICULAR EN PORCIENTO														COORDENADAS	
	KM	TE	SC	TDPA	M	A	B	C2	C3	T3S2	T3S3	T3S2R4	OTROS	A	B	C	K'	D	LATITUD	LONGITUD
Amazcala	15.45	3	0	5477	0.7	75.5	4.5	10.6	2.8	3.9	1.3	0.3	0.4	76.2	4.5	19.3	0.095	0.502	20.711404	-100.269327
Chichimequillas	26.61																			

15 CARR: La Culata - San Joaquín

CLAVE: 22021

RUTA: QRO-021

AÑO: 2012

LUGAR	ESTACION				CLASIFICACION VEHICULAR EN PORCIENTO														COORDENADAS	
	KM	TE	SC	TDPA	M	A	B	C2	C3	T3S2	T3S3	T3S2R4	OTROS	A	B	C	K'	D	LATITUD	LONGITUD
La Culata	0.00	3	0	1216	0.7	81.7	2.8	6.8	1.6	2.4	2.4	0.7	0.9	82.4	2.8	14.8	0.088	0.502	20.885293	-99.705832
San Joaquín	31.80	1	0	2276	0.8	84.5	1.3	10.2	0.2	2.2	0.4	0.0	0.4	85.3	1.3	13.4	0.092	0.500	20.907069	-99.571092

16 CARR: Libramiento de San Juan del Río

CLAVE: 22266

RUTA: QRO

AÑO: 2012

LUGAR	ESTACION				CLASIFICACION VEHICULAR EN PORCIENTO														COORDENADAS	
	KM	TE	SC	TDPA	M	A	B	C2	C3	T3S2	T3S3	T3S2R4	OTROS	A	B	C	K'	D	LATITUD	LONGITUD
T. C. México - Querétaro (Después del F.F.C.C.)	0.00	3	1	10005	0.3	89.9	1.8	1.9	1.3	2.5	1.2	0.6	0.5	90.2	1.8	8.0	0.094	0.502	20.378000	-99.986021
T. C. México - Querétaro (Después del F.F.C.C.)	0.00	3	2	10075	0.3	88.9	1.9	2.3	1.5	2.7	1.3	0.6	0.5	89.2	1.9	8.9	0.092	0.502	20.378023	-99.986043
T. C. San Juan del Río - Xilitla	5.05	1	1	8801	0.8	87.5	2.1	6.3	1.1	1.0	0.5	0.4	0.3	88.3	2.1	9.6	0.082	0.521	20.415020	-99.980980
T. C. San Juan del Río - Xilitla	5.05	1	2	8610	1.2	86.2	2.2	7.0	1.1	1.1	0.5	0.4	0.3	87.4	2.2	10.4	0.094	0.521	20.415030	-99.980968

17 CARR: Libramiento Norte de Querétaro

CLAVE: 22500

RUTA: QRO

AÑO: 2012

LUGAR	ESTACION				CLASIFICACION VEHICULAR EN PORCIENTO														COORDENADAS	
	KM	TE	SC	TDPA	M	A	B	C2	C3	T3S2	T3S3	T3S2R4	OTROS	A	B	C	K'	D	LATITUD	LONGITUD
T. C. Querétaro - San Luis Potosí	0.00	3	1	36529	0.7	93.3	0.1	0.7	0.1	0.9	3.3	0.3	0.6	94.0	0.1	5.9	0.074	0.533	20.620946	-100.414979
T. C. Querétaro - San Luis Potosí	0.00	3	2	35551	0.9	92.6	0.1	0.7	0.1	1.1	3.6	0.3	0.6	93.5	0.1	6.4	0.069	0.533	20.620958	-100.414981
T. C. México - Querétaro	8.00	1	1	37719	0.6	89.0	1.0	3.5	1.0	1.7	1.9	0.7	0.6	89.6	1.0	9.4	0.068	0.509	20.584331	-100.362353
T. C. México - Querétaro	8.00	1	2	36366	1.0	87.7	1.2	3.8	1.1	1.9	2.0	0.7	0.6	88.7	1.2	10.1	0.078	0.509	20.584370	-100.362359

18 CARR: Libramiento Surponiente de Querétaro

CLAVE: 22500

RUTA: QRO

AÑO: 2012

LUGAR	ESTACION				CLASIFICACION VEHICULAR EN PORCIENTO														COORDENADAS	
	KM	TE	SC	TDPA	M	A	B	C2	C3	T3S2	T3S3	T3S2R4	OTROS	A	B	C	K'	D	LATITUD	LONGITUD
T. C. México - Querétaro	0.00	3	1	16599	0.4	91.8	2.0	3.7	0.5	0.6	0.8	0.1	0.1	92.2	2.0	5.8	0.093	0.571	20.566921	-100.357531
T. C. México - Querétaro	0.00	3	2	16642	0.5	90.6	2.3	4.3	0.5	0.7	0.9	0.1	0.1	91.1	2.3	6.6	0.133	0.571	20.566751	-100.356852
X. C. Querétaro - Ent. San Martín	4.00	3	1	16509	0.4	95.4	0.1	1.3	0.6	0.8	1.2	0.0	0.2	95.8	0.1	4.1	0.096	0.521	20.550726	-100.373038

QUERETARO

18 CARR: Libramiento Surponiente de Querétaro

CLAVE: 22500

RUTA: QRO

AÑO: 2012

LUGAR	ESTACION				CLASIFICACION VEHICULAR EN PORCIENTO														COORDENADAS	
	KM	TE	SC	TDPA	M	A	B	C2	C3	T3S2	T3S3	T3S2R4	OTROS	A	B	C	K'	D	LATITUD	LONGITUD
X. C. Querétaro - Ent. San Martín	4.00	3	2	15194	0.8	94.7	0.1	1.4	0.6	1.0	1.2	0.0	0.2	95.5	0.1	4.4	0.137	0.521	20.550761	-100.373003
T. Der. a Candiles	7.40	1	1	15621	0.7	87.0	3.4	5.4	1.0	1.2	0.7	0.1	0.5	87.7	3.4	8.9	0.097	0.518	20.537621	-100.393447
T. Der. a Candiles	7.40	1	2	14541	0.6	87.0	3.4	5.6	1.1	1.1	0.7	0.1	0.4	87.6	3.4	9.0	0.188	0.518	20.537636	-100.393470
T. Izq. a Santa Barbara (1° acceso)	8.20	1	1	7835	0.7	87.6	3.3	5.0	1.2	1.0	0.6	0.1	0.5	88.3	3.3	8.4	0.111	0.530	20.532012	-100.402782
T. Izq. a Santa Barbara (1° acceso)	8.20	1	2	6947	0.9	86.5	3.8	5.2	1.3	1.1	0.6	0.1	0.5	87.4	3.8	8.8	0.124	0.530	20.531995	-100.402810
T. Izq. a Santa Barbara (2° acceso)	10.50	3	1	8807	0.6	88.4	3.6	4.0	1.2	1.0	0.7	0.1	0.4	89.0	3.6	7.4	0.118	0.534	20.525338	-100.425321
T. Izq. a Santa Barbara (2° acceso)	10.50	3	2	7689	0.8	87.1	3.7	4.7	1.4	1.1	0.6	0.1	0.5	87.9	3.7	8.4	0.130	0.534	20.525245	-100.425404
T. Izq. a La Negreta	13.40	3	1	7743	0.4	90.1	3.0	3.8	0.9	0.7	0.6	0.1	0.4	90.5	3.0	6.5	0.091	0.510	20.530510	-100.448636
T. Izq. a La Negreta	13.40	3	2	8091	1.8	87.3	3.3	4.5	0.9	1.0	0.6	0.1	0.5	89.1	3.3	7.6	0.093	0.510	20.530510	-100.448636
T. C. Villa del Pueblito - Huimilpan	14.39	3	1	3957	2.8	81.2	4.4	5.0	1.5	1.8	1.6	0.8	0.9	84.0	4.4	11.6	0.070	0.529	20.529933	-100.445850
T. C. Villa del Pueblito - Huimilpan	14.39	3	2	4451	1.8	80.3	5.3	5.5	1.6	2.0	1.8	0.7	1.0	82.1	5.3	12.6	0.112	0.529	20.529919	-100.445829
Querétaro - Irapuato	18.30	1	1	2457	1.0	77.8	3.9	4.8	3.1	5.1	1.5	2.3	0.5	78.8	3.9	17.3	0.094	0.517	20.534027	-100.479639
Querétaro - Irapuato	18.30	1	2	2627	0.8	77.2	4.0	5.3	3.2	5.2	1.6	2.2	0.5	78.0	4.0	18.0	0.119	0.517	20.534031	-100.479647
T. C. Querétaro - Irapuato (Cuota)	21.90	1	1	8698	1.1	82.1	2.9	3.2	2.3	3.8	2.0	1.8	0.8	83.2	2.9	13.9	0.105	0.506	20.561918	-100.483079
T. C. Querétaro - Irapuato (Cuota)	21.90	1	2	8498	1.0	79.9	3.1	3.6	2.6	4.5	2.3	2.1	0.9	80.9	3.1	16.0	0.104	0.506	20.562005	-100.482931
T. C- Querétaro - Irapuato (Cuota)	21.90	3	1	8843	1.2	76.6	3.8	5.4	3.0	5.1	1.5	2.6	0.8	77.8	3.8	18.4	0.087	0.515	20.578914	-100.483905
T. C- Querétaro - Irapuato (Cuota)	21.90	3	2	8322	1.3	74.6	4.3	5.5	3.6	5.6	1.5	2.8	0.8	75.9	4.3	19.8	0.093	0.515	20.578914	-100.483905
T. Der. a Las Adjuntas	24.30	3	1	6476	1.0	81.8	2.9	3.8	2.0	3.8	1.9	2.0	0.8	82.8	2.9	14.3	0.083	0.507	20.597534	-100.490177
T. Der. a Las Adjuntas	24.30	3	2	6650	1.2	80.2	3.2	4.1	2.1	4.1	2.1	2.1	0.9	81.4	3.2	15.4	0.078	0.507	20.597557	-100.490254
T. Der. a Tlacote el Bajo	31.00	1	1	4747	1.0	81.9	4.1	5.1	1.4	2.7	1.5	1.5	0.8	82.9	4.1	13.0	0.098	0.506	20.646071	-100.501495
T. Der. a Tlacote el Bajo	31.00	1	2	4656	3.1	77.7	4.5	5.5	1.8	3.1	1.6	1.8	0.9	80.8	4.5	14.7	0.098	0.506	20.646046	-100.501293
T. Der. a Tlacote el Bajo	31.00	3	1	4007	3.7	77.7	2.7	3.7	2.6	4.6	1.7	2.7	0.6	81.4	2.7	15.9	0.096	0.510	20.651240	-100.504978
T. Der. a Tlacote el Bajo	31.00	3	2	3893	1.3	77.2	3.2	4.3	2.8	5.2	2.0	3.1	0.9	78.5	3.2	18.3	0.106	0.510	20.651253	-100.504977
Obrajuelos (El Zapote)	33.00	3	1	3869	0.7	73.4	2.9	4.3	3.8	7.7	2.3	4.1	0.8	74.1	2.9	23.0	0.101	0.506	20.660138	-100.518001
Obrajuelos (El Zapote)	33.00	3	2	3778	0.7	71.3	3.1	4.6	4.2	8.6	2.5	4.3	0.7	72.0	3.1	24.9	0.093	0.506	20.660148	-100.518014
Santo Niño de Praga	34.50	3	1	4332	1.3	70.9	4.7	5.5	3.6	7.1	2.4	3.7	0.8	72.2	4.7	23.1	0.093	0.504	20.670280	-100.508094
Santo Niño de Praga	34.50	3	2	4257	1.1	68.1	4.8	6.1	4.0	8.1	2.7	4.2	0.9	69.2	4.8	26.0	0.091	0.504	20.670208	-100.508151
X. C. juriquilla - Mompani	37.30	3	1	2996	0.7	75.0	3.4	4.8	2.4	7.1	2.6	3.3	0.7	75.7	3.4	20.9	0.134	0.500	20.691026	-100.496056
X. C. juriquilla - Mompani	37.30	3	2	2994	0.7	73.4	3.6	5.1	2.6	7.4	2.7	3.8	0.7	74.1	3.6	22.3	0.115	0.500	20.691026	-100.496056
T. Der. a El Nabo	39.60	3	1	3195	0.8	76.6	3.1	4.4	2.8	5.7	2.1	3.6	0.9	77.4	3.1	19.5	0.100	0.528	20.703044	-100.479211
T. Der. a El Nabo	39.60	3	2	2853	0.8	73.9	3.4	5.1	3.0	6.5	2.5	3.9	0.9	74.7	3.4	21.9	0.120	0.528	20.703009	-100.479224
Pie de Gallo	47.40	1	1	4182	0.7	77.2	3.6	4.7	2.6	5.5	1.7	3.3	0.7	77.9	3.6	18.5	0.110	0.516	20.747685	-100.457933
Pie de Gallo	47.40	1	2	3917	0.3	74.9	3.8	5.0	3.1	6.8	1.9	3.5	0.7	75.2	3.8	21.0	0.093	0.516	20.747676	-100.457953
Pie de Gallo	47.40	3	1	3702	1.5	77.3	3.8	3.9	2.5	5.3	2.0	3.0	0.7	78.8	3.8	17.4	0.091	0.505	20.755361	-100.452412
Pie de Gallo	47.40	3	2	3604	0.8	76.6	4.3	4.3	2.7	5.2	2.0	3.2	0.9	77.4	4.3	18.3	0.079	0.505	20.755349	-100.452415

QUERETARO

19 CARR: Peña Colorada - El Rodeo

CLAVE: 22002

RUTA: QRO

AÑO: 2012

LUGAR	ESTACION				CLASIFICACION VEHICULAR EN PORCIENTO														COORDENADAS	
	KM	TE	SC	TDPA	M	A	B	C2	C3	T3S2	T3S3	T3S2R4	OTROS	A	B	C	K'	D	LATITUD	LONGITUD
T. C. México - Querétaro	0.00	3	0	9460	1.4	80.9	2.7	6.1	2.0	4.4	1.3	0.8	0.4	82.3	2.7	15.0	0.075	0.503	20.582764	-100.251907
X. C. Querétaro - Tequisquiapan	9.00	1	0	7870	1.2	78.1	2.1	8.8	2.6	5.1	1.0	0.3	0.8	79.3	2.1	18.6	0.081	0.503	20.633850	-100.260198
El Rodeo	11.00	1	0	1193	3.6	79.0	3.3	10.8	0.8	1.9	0.4	0.0	0.2	82.6	3.3	14.1	0.088	0.515	20.661688	-100.258743

20 CARR: Querétaro - Ent. San Martín

CLAVE: 22067

RUTA: QRO

AÑO: 2012

LUGAR	ESTACION				CLASIFICACION VEHICULAR EN PORCIENTO														COORDENADAS	
	KM	TE	SC	TDPA	M	A	B	C2	C3	T3S2	T3S3	T3S2R4	OTROS	A	B	C	K'	D	LATITUD	LONGITUD
T. C. México - Querétaro	0.00	3	1	11088	0.5	92.8	1.1	2.7	0.5	0.8	1.2	0.1	0.3	93.3	1.1	5.6	0.086	0.506	20.558892	-100.366470
T. C. México - Querétaro	0.00	3	2	11377	0.4	92.6	1.1	2.8	0.5	0.9	1.3	0.1	0.3	93.0	1.1	5.9	0.085	0.506	20.558504	-100.366717
Lagunillas	18.70	1	0	3634	0.8	83.7	0.8	12.2	0.9	1.4	0.1	0.0	0.1	84.5	0.8	14.7	0.093	0.519	20.469842	-100.303545
T. Der. Huimilpan	32.70	1	0	2829	1.2	77.3	1.0	16.7	0.9	2.3	0.5	0.0	0.1	78.5	1.0	20.5	0.115	0.508	20.390997	-100.267871
Ent. San Martín	53.00	1	0	1453	0.5	87.3	0.1	10.0	0.8	0.9	0.3	0.0	0.1	87.8	0.1	12.1	0.106	0.512	20.278257	-100.157937

21 CARR: Querétaro - Estación Chichimequillas

CLAVE: 22270

RUTA: QRO

AÑO: 2012

LUGAR	ESTACION				CLASIFICACION VEHICULAR EN PORCIENTO														COORDENADAS	
	KM	TE	SC	TDPA	M	A	B	C2	C3	T3S2	T3S3	T3S2R4	OTROS	A	B	C	K'	D	LATITUD	LONGITUD
T. C. Libramiento de Querétaro	0.00	3	1	12763	1.6	90.5	1.1	5.5	0.3	0.3	0.6	0.0	0.1	92.1	1.1	6.8	0.085	0.505	20.625674	-100.387283
T. C. Libramiento de Querétaro	0.00	3	2	12502	1.4	90.0	1.3	5.9	0.3	0.3	0.7	0.0	0.1	91.4	1.3	7.3	0.074	0.505	20.625674	-100.387284
X. C. Hacienda Paraíso - Chichimequillas	18.00	1	0	5374	0.7	85.7	1.3	7.1	0.9	3.2	0.4	0.2	0.5	86.4	1.3	12.3	0.098	0.500	20.751300	-100.322134
Estación Chichimequillas	19.20																			

22 CARR: Querétaro - Tequisquiapan

CLAVE: 22502

RUTA: QRO

AÑO: 2012

LUGAR	ESTACION				CLASIFICACION VEHICULAR EN PORCIENTO														COORDENADAS	
	KM	TE	SC	TDPA	M	A	B	C2	C3	T3S2	T3S3	T3S2R4	OTROS	A	B	C	K'	D	LATITUD	LONGITUD
Querétaro	0.00	3	0	11412	1.5	83.4	1.1	6.9	0.8	4.4	0.7	0.2	1.0	84.9	1.1	14.0	0.072	0.505	20.600597	-100.362570
X. C. Peña Colorada - El Rodeo	14.00	1	0	7527	1.4	80.9	1.1	8.2	1.7	4.5	1.0	0.3	0.9	82.3	1.1	16.6	0.079	0.501	20.636172	-100.261387
T. Izq. La Griega	16.60	3	0	4021	1.1	75.8	2.7	13.5	2.4	2.8	1.1	0.2	0.4	76.9	2.7	20.4	0.099	0.521	20.643684	-100.228574
X. C. El Colorado - Higuierillas	25.70	1	1	3691	0.9	80.8	1.4	10.7	2.7	1.5	1.0	0.5	0.5	81.7	1.4	16.9	0.127	0.500	20.615538	-100.160927
X. C. El Colorado - Higuierillas	25.70	1	2	3687	0.8	80.2	1.5	11.1	2.7	1.7	1.1	0.4	0.5	81.0	1.5	17.5	0.116	0.500	20.615533	-100.160916
X. C. San Juan del Río - Xilitla	56.90	1	0	6782	1.4	83.2	3.3	6.4	0.8	3.6	0.5	0.3	0.5	84.6	3.3	12.1	0.088	0.531	20.528731	-99.908018
Tequisquiapan	57.40	1	0	6373	1.9	85.1	2.2	4.6	0.3	4.9	0.5	0.1	0.4	87.0	2.2	10.8	0.077	0.505	20.533852	-99.897672

QUERETARO

23 CARR: Querétaro - Tlacote El Bajo

CLAVE: 22069

RUTA: QRO

AÑO: 2012

LUGAR	ESTACION				CLASIFICACION VEHICULAR EN PORCIENTO														COORDENADAS	
	KM	TE	SC	TDPA	M	A	B	C2	C3	T3S2	T3S3	T3S2R4	OTROS	A	B	C	K'	D	LATITUD	LONGITUD
Querétaro	0.00	3	0	16722	1.4	79.9	3.1	6.2	1.2	5.7	1.2	0.4	0.9	81.3	3.1	15.6	0.076	0.519	20.589866	-100.434187
Tlacote El Bajo	18.00																			

24 CARR: Ramal a La Estancia

CLAVE: 22504

RUTA: QRO

AÑO: 2012

LUGAR	ESTACION				CLASIFICACION VEHICULAR EN PORCIENTO														COORDENADAS	
	KM	TE	SC	TDPA	M	A	B	C2	C3	T3S2	T3S3	T3S2R4	OTROS	A	B	C	K'	D	LATITUD	LONGITUD
T. C. México - Querétaro (Cuota)	0.00	3	0	4028	1.8	87.4	1.8	3.8	0.6	3.5	0.5	0.1	0.5	89.2	1.8	9.0	0.087	0.506	20.425526	-100.061728
La Estancia	3.00																			

25 CARR: Ramal a Tolimán

CLAVE: 22265

RUTA: QRO

AÑO: 2012

LUGAR	ESTACION				CLASIFICACION VEHICULAR EN PORCIENTO														COORDENADAS	
	KM	TE	SC	TDPA	M	A	B	C2	C3	T3S2	T3S3	T3S2R4	OTROS	A	B	C	K'	D	LATITUD	LONGITUD
T. C. El Colorado - Higuerrillas	0.00	3	0	2775	3.8	79.6	3.2	10.5	0.5	1.9	0.3	0.0	0.2	83.4	3.2	13.4	0.084	0.533	20.857159	-99.894231
Tolimán	7.00	1	0	2759	2.8	84.1	2.5	7.4	0.4	2.0	0.3	0.1	0.4	86.9	2.5	10.6	0.079	0.503	20.899285	-99.919234

26 CARR: San Juan del Río - Amealco

CLAVE: 22011

RUTA: QRO

AÑO: 2012

LUGAR	ESTACION				CLASIFICACION VEHICULAR EN PORCIENTO														COORDENADAS	
	KM	TE	SC	TDPA	M	A	B	C2	C3	T3S2	T3S3	T3S2R4	OTROS	A	B	C	K'	D	LATITUD	LONGITUD
T. C. México - Querétaro	0.00	3	0	8176	1.3	81.7	4.5	6.2	0.8	4.1	0.7	0.1	0.6	83.0	4.5	12.5	0.094	0.501	20.376292	-100.016323
Amealco	28.00	1	0	3987	0.5	88.3	1.0	7.3	0.4	1.7	0.5	0.1	0.2	88.8	1.0	10.2	0.084	0.502	20.196596	-100.137943

27 CARR: T. C. (Villa del Pueblito - Huimilpan) - Coroneo

CLAVE: 00155

RUTA: QRO-GTO

AÑO: 2012

LUGAR	ESTACION				CLASIFICACION VEHICULAR EN PORCIENTO														COORDENADAS	
	KM	TE	SC	TDPA	M	A	B	C2	C3	T3S2	T3S3	T3S2R4	OTROS	A	B	C	K'	D	LATITUD	LONGITUD
T. C. Villa del Pueblito - Huimilpan	0.00	3	0	5016	0.5	69.8	4.5	10.3	3.6	5.8	3.4	1.9	0.2	70.3	4.5	25.2	0.094	0.517	20.517031	-100.430131
Lim. Edos. Term. Qro. Ppia. Gto.	20.00																			
Coroneo	45.20	1	0	3290	1.1	83.3	0.2	12.9	0.6	1.7	0.1	0.0	0.1	84.4	0.2	15.4	0.132	0.505	20.213409	-100.366501

QUERETARO

28 CARR: Villa del Pueblito - Huimilpan

CLAVE: 22503

RUTA: QRO

AÑO: 2012

LUGAR	ESTACION				CLASIFICACION VEHICULAR EN PORCIENTO										COORDENADAS					
	KM	TE	SC	TDPA	M	A	B	C2	C3	T3S2	T3S3	T3S2R4	OTROS	A	B	C	K'	D	LATITUD	LONGITUD
T. C. Querétaro - Irapuato (Libre)	0.00	3	1	13150	0.9	91.0	1.0	2.2	0.9	1.6	1.6	0.3	0.5	91.9	1.0	7.1	0.078	0.535	20.530248	-100.441265
T. C. Querétaro - Irapuato (Libre)	0.00	3	2	13636	0.7	90.2	1.2	2.3	1.1	1.9	1.8	0.3	0.5	90.9	1.2	7.9	0.084	0.535	20.530066	-100.441249
Huimilpan	27.00	1	0	2316	1.3	87.3	0.2	9.7	0.2	1.2	0.0	0.0	0.1	88.6	0.2	11.2	0.143	0.500	20.381100	-100.280183

29 CARR: Toluca - Palmillas

CLAVE: 00496

RUTA: EM(D)-MEX-055

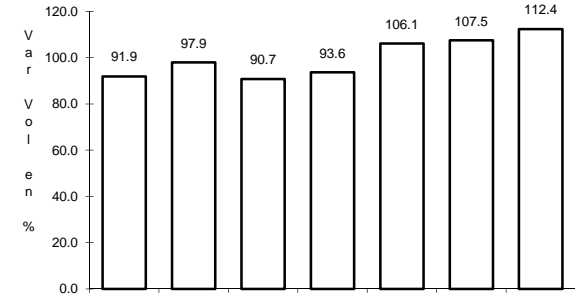
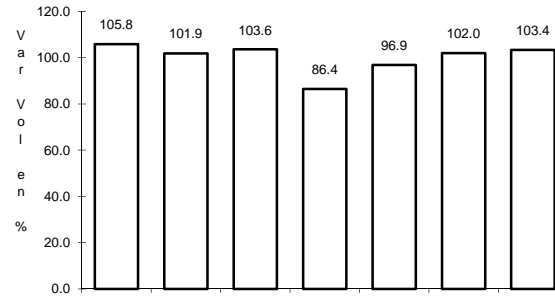
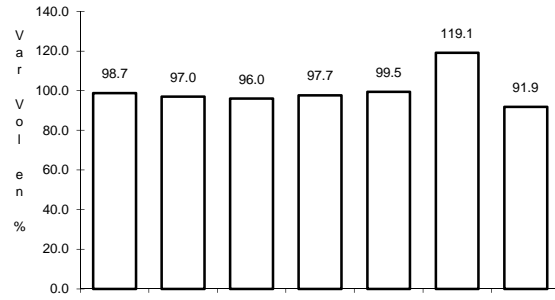
AÑO: 2012

LUGAR	ESTACION				CLASIFICACION VEHICULAR EN PORCIENTO										COORDENADAS					
	KM	TE	SC	TDPA	M	A	B	C2	C3	T3S2	T3S3	T3S2R4	OTROS	A	B	C	K'	D	LATITUD	LONGITUD
Toluca	0.00																			
T. Izq. Calixtlahuaca de Rayón (Alta)	7.21	3	1	22702	0.7	92.4	0.5	3.7	0.5	0.8	0.6	0.4	0.4	93.1	0.5	6.4	0.074	0.509	19.340664	-99.671026
T. Izq. Calixtlahuaca de Rayón (Baja)	7.21	3	1	8613	2.2	71.8	3.0	11.0	3.8	3.8	1.9	1.5	1.0	74.0	3.0	23.0	0.067	0.506	19.340759	-99.670131
T. Izq. Calixtlahuaca de Rayón (Alta)	7.21	3	2	21942	0.7	91.8	0.6	4.1	0.6	0.8	0.6	0.4	0.4	92.5	0.6	6.9	0.087	0.509	19.340181	-99.671084
T. Izq. Calixtlahuaca de Rayón (Baja)	7.21	3	2	8820	1.7	69.6	3.6	12.0	4.3	4.1	2.1	1.6	1.0	71.3	3.6	25.1	0.066	0.506	19.340181	-99.671082
X. C. Lib. Nororient de Toluca (Cuota)	14.21	1	1	25383	0.7	80.4	3.2	7.6	1.5	3.5	1.9	0.5	0.7	81.1	3.2	15.7	0.072	0.512	19.384912	-99.706090
X. C. Lib. Nororient de Toluca (Cuota)	14.21	1	2	24196	0.5	78.6	3.4	8.5	1.5	4.0	2.2	0.5	0.8	79.1	3.4	17.5	0.086	0.512	19.384856	-99.706235
El Dorado	16.00	1	1	22654	0.4	81.9	4.7	5.2	2.0	3.5	1.2	0.8	0.3	82.3	4.7	13.0	0.083	0.512	19.402508	-99.713566
El Dorado	16.00	1	2	21590	0.9	79.1	5.4	5.8	2.1	4.2	1.4	0.8	0.3	80.0	5.4	14.6	0.083	0.512	19.402503	-99.713570
Ixtlahuaca de Rayón	35.58	3	1	17790	1.1	74.5	5.3	11.1	1.4	3.3	1.7	0.7	0.9	75.6	5.3	19.1	0.083	0.511	19.584238	-99.764952
Ixtlahuaca de Rayón	35.58	3	2	18620	0.2	73.3	5.6	12.1	1.6	3.8	1.8	0.7	0.9	73.5	5.6	20.9	0.086	0.511	19.584100	-99.769471
Pastejé	45.20	1	1	14206	0.4	80.3	4.3	5.7	1.7	4.5	1.5	0.7	0.9	80.7	4.3	15.0	0.086	0.500	19.656891	-99.792579
Pastejé	45.20	1	2	14205	0.4	78.3	4.7	6.3	1.9	4.9	1.6	0.9	1.0	78.7	4.7	16.6	0.092	0.500	19.653917	-99.791014
Atlacomulco	65.00	1	1	14901	0.6	77.5	2.7	6.7	2.8	5.9	1.8	1.1	0.9	78.1	2.7	19.2	0.071	0.508	19.783083	-99.864800
Atlacomulco	65.00	1	2	14441	0.7	74.9	2.8	7.7	3.1	6.5	2.0	1.3	1.0	75.6	2.8	21.6	0.073	0.508	19.782114	-99.864816
Atlacomulco	65.00	3	1	9186	2.1	74.7	5.0	5.3	2.4	6.4	2.1	1.4	0.6	76.8	5.0	18.2	0.074	0.510	19.822176	-99.870846
Atlacomulco	65.00	3	2	9573	0.8	74.3	5.6	5.3	2.5	7.1	2.4	1.4	0.6	75.1	5.6	19.3	0.089	0.510	19.822198	-99.870839
Acambay	85.64	3	0	9178	2.6	70.2	2.6	8.4	3.6	7.7	2.8	1.1	1.0	72.8	2.6	24.6	0.080	0.538	19.964488	-99.852385
T. Der. Aculco de Espinoza	104.43	3	0	7488	0.4	68.8	2.8	7.2	3.3	12.6	2.4	1.5	1.0	69.2	2.8	28.0	0.071	0.511	20.087793	-99.863524
T. Der. Polotitlán	122.73	1	1	3908	0.8	68.8	3.7	8.0	4.9	10.0	2.0	1.2	0.6	69.6	3.7	26.7	0.071	0.507	20.224628	-99.898230
T. Der. Polotitlán	122.73	1	2	4024	0.4	65.3	4.0	8.9	5.7	11.6	2.3	1.3	0.5	65.7	4.0	30.3	0.096	0.507	20.224635	-99.898251
Lim. Edos. Term. Mex. Ppia. Qro.	128.10																			
T. C. México - Querétaro	131.52	1	1	5662	0.5	69.5	3.4	8.6	3.3	11.3	1.9	0.7	0.8	70.0	3.4	26.6	0.071	0.504	20.289972	-99.932548
T. C. México - Querétaro	131.52	1	2	5566	0.6	67.2	3.6	9.5	3.8	11.4	2.2	0.9	0.8	67.8	3.6	28.6	0.079	0.504	20.289962	-99.932550

1 CARR: Ent. Buenavista - San Miguel de Allende

CLAVE: 00111

RUTA: MEX-057



Km: 0.00 Tipo: 3 Sent: 0

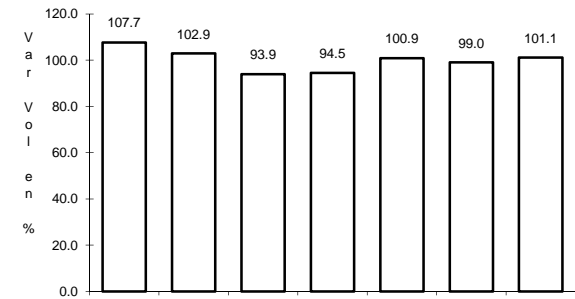
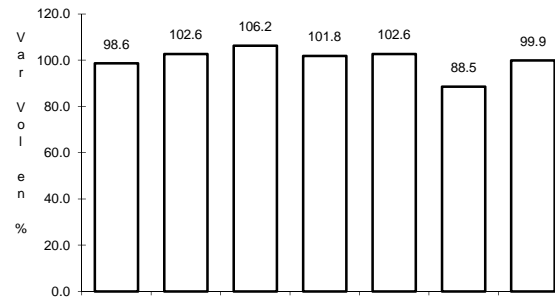
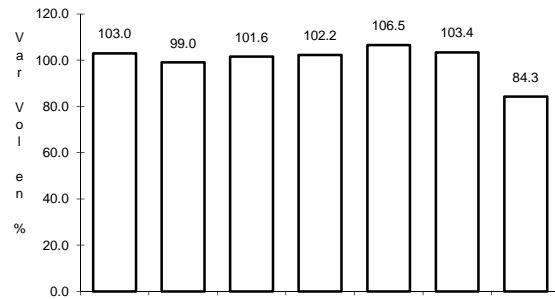
Km: 12.00 Tipo: 1 Sent: 0

Km: 35.11 Tipo: 1 Sent: 0

2 CARR: Jalpan de Serra - Rioverde

CLAVE: 00265

RUTA: MEX-069



Km: 0.00 Tipo: 3 Sent: 0

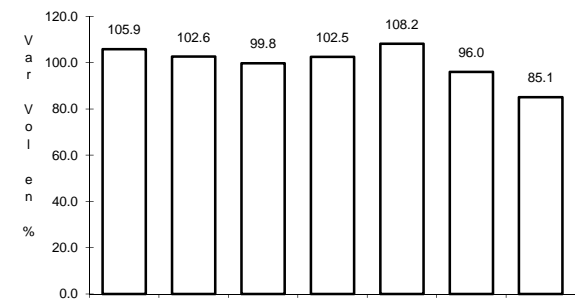
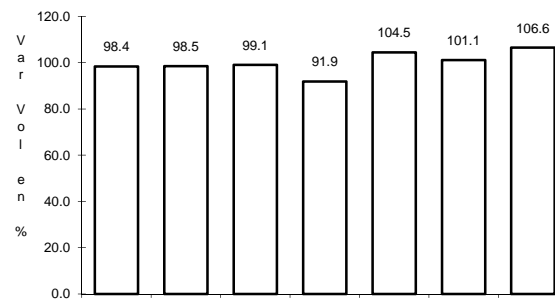
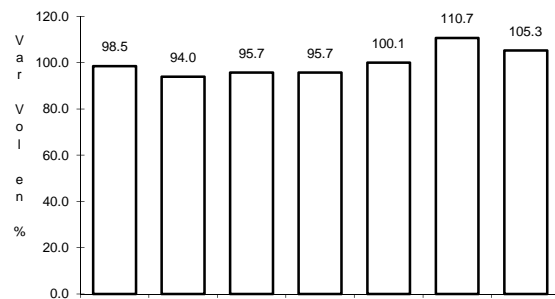
Km: 48.60 Tipo: 1 Sent: 0

Km: 105.43 Tipo: 1 Sent: 0

3 CARR: La Noria - Acámbaro

CLAVE: 00131

RUTA: MEX-120



Km: 0.00 Tipo: 3 Sent: 0

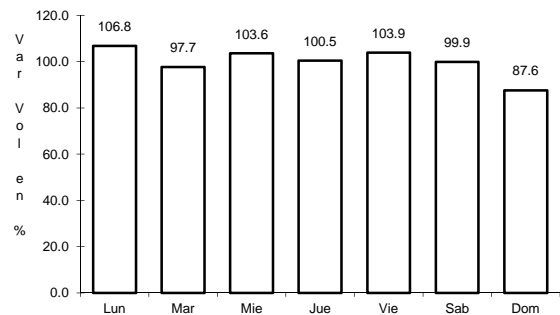
Km: 59.35 Tipo: 3 Sent: 0

Km: 111.12 Tipo: 1 Sent: 0

4 CARR: Portezuelo - Palmillas

CLAVE: 00194

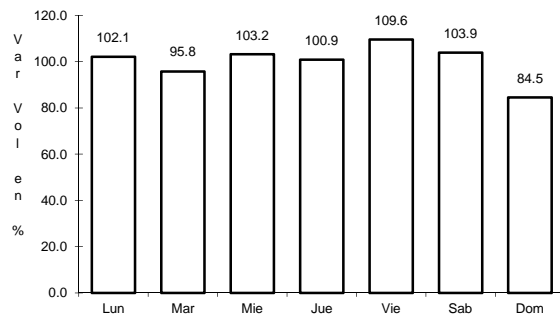
RUTA: MEX-045



Km: 0.00

Tipo: 3

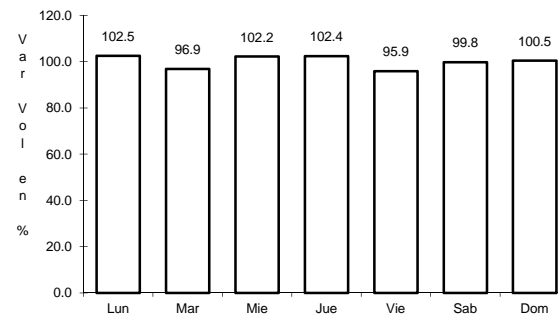
Sent: 1



Km: 0.00

Tipo: 3

Sent: 2



Km: 80.00

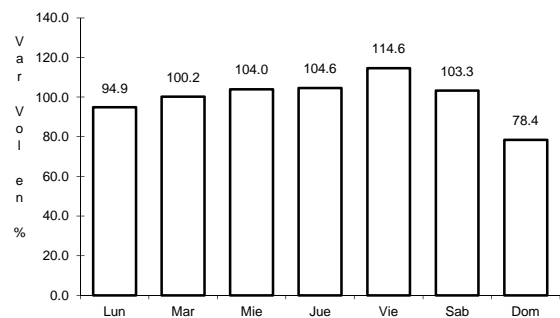
Tipo: 1

Sent: 0

5 CARR: Querétaro - Irapuato (Libre)

CLAVE: 00154

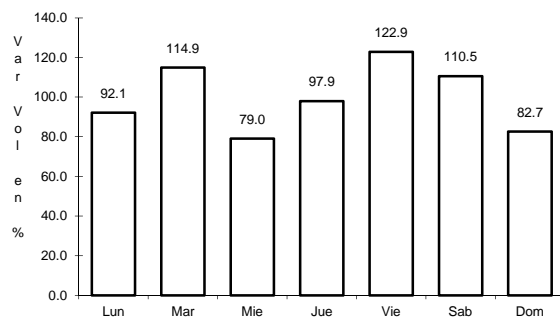
RUTA: MEX-045



Km: 0.00

Tipo: 3

Sent: 1



Km: 0.00

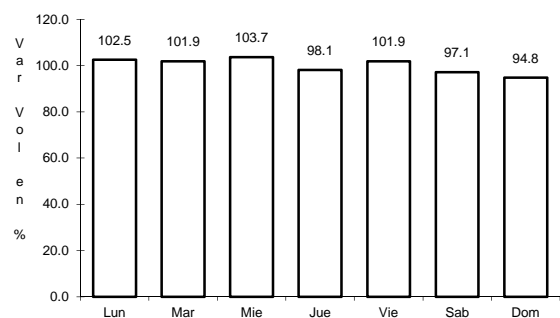
Tipo: 3

Sent: 2

6 CARR: Querétaro - San Luis Potosí

CLAVE: 00165

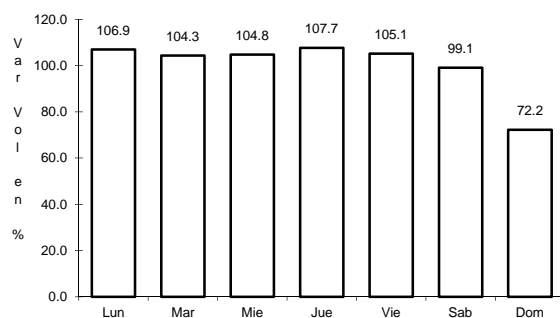
RUTA: MEX-057



Km: 6.28

Tipo: 3

Sent: 1



Km: 6.28

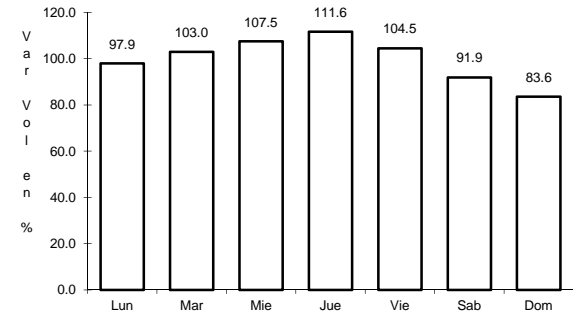
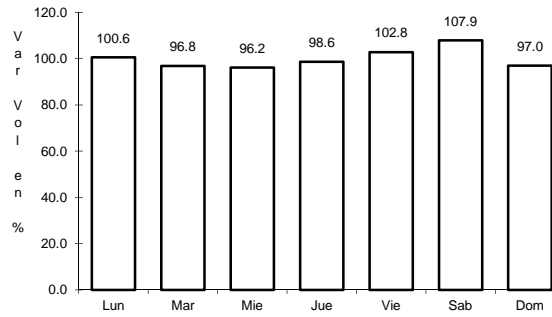
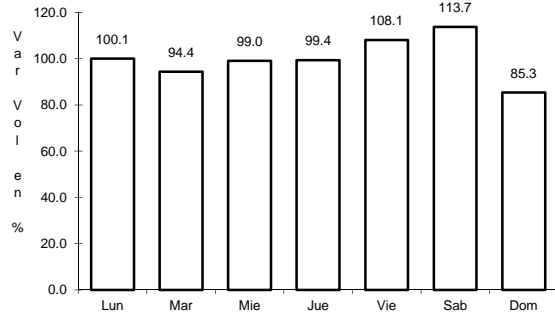
Tipo: 3

Sent: 2

7 CARR: San Juan del Río - Xilitla

CLAVE: 00183

RUTA: MEX-120



Km: 5.20 Tipo: 3 Sent: 1

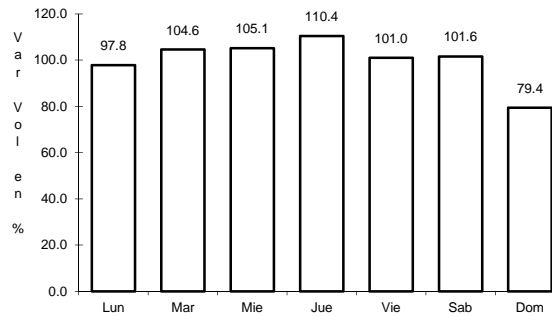
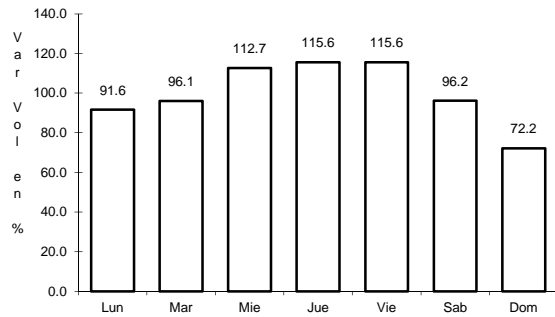
Km: 5.20 Tipo: 3 Sent: 2

Km: 276.98 Tipo: 1 Sent: 0

8 CARR: Libramiento Nororiente de Querétaro (Cuota)

CLAVE: 22266

RUTA: MEX-057D



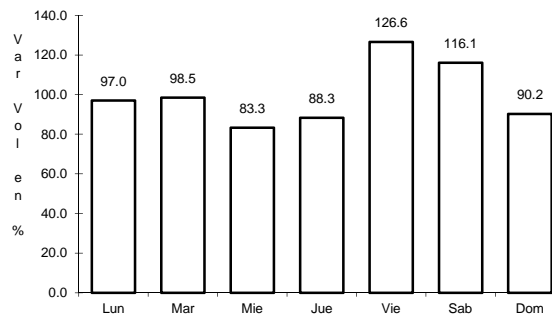
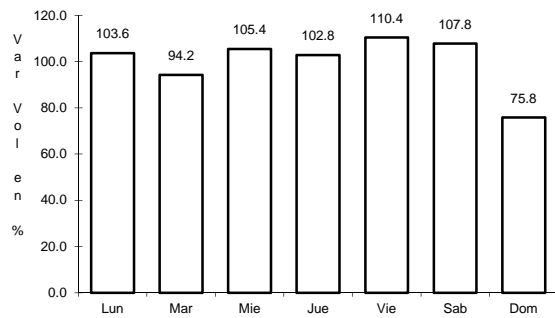
Km: 0.00 Tipo: 3 Sent: 1

Km: 0.00 Tipo: 3 Sent: 2

9 CARR: Querétaro - Irapuato (Cuota)

CLAVE: 00423

RUTA: MEX-045D



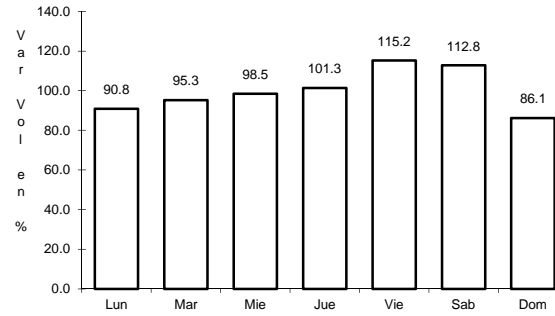
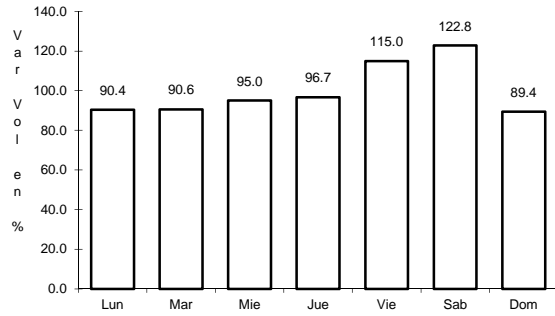
Km: 0.00 Tipo: 3 Sent: 1

Km: 0.00 Tipo: 3 Sent: 2

10 CARR: México - Querétaro (Cuota)

CLAVE: 00411

RUTA: MEX-057-MEX-057D



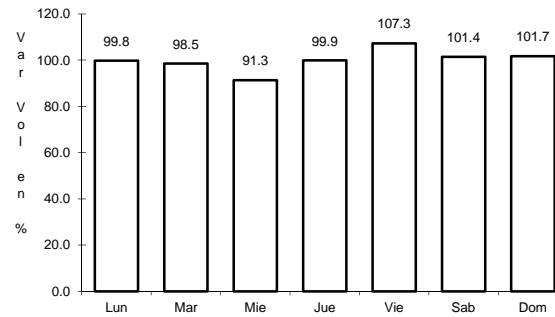
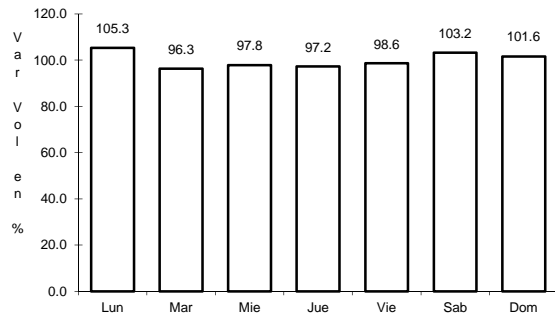
Km: 56.18 Tipo: 1 Sent: 1

Km: 56.18 Tipo: 1 Sent: 2

11 CARR: Ajuchitlán - Colón

CLAVE: 22010

RUTA: QRO-005



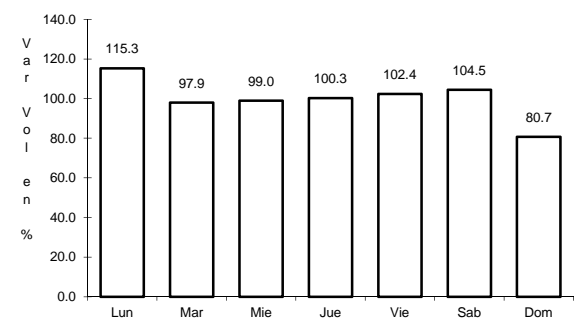
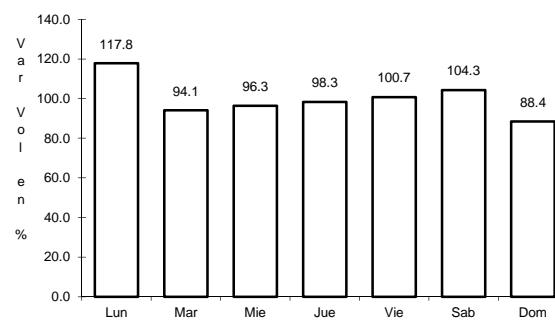
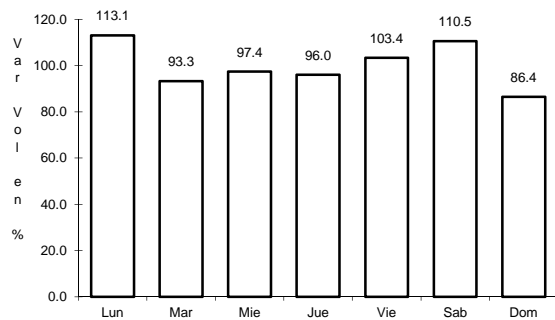
Km: 0.00 Tipo: 3 Sent: 0

Km: 14.00 Tipo: 1 Sent: 0

12 CARR: Ajuchitlán - Ezequiel Montes

CLAVE: 22005

RUTA: QRO-005



Km: 0.00 Tipo: 3 Sent: 1

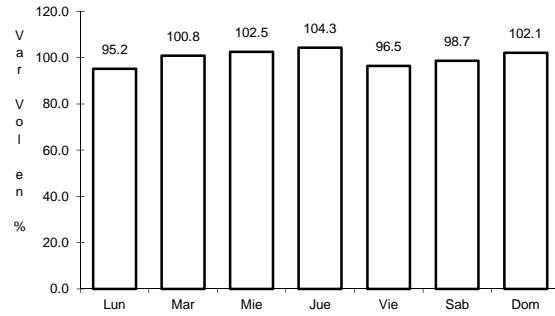
Km: 0.00 Tipo: 3 Sent: 2

Km: 10.60 Tipo: 1 Sent: 0

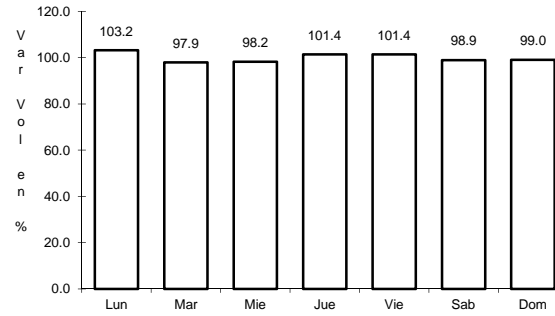
13 CARR: El Colorado - Higuierillas

CLAVE: 22004

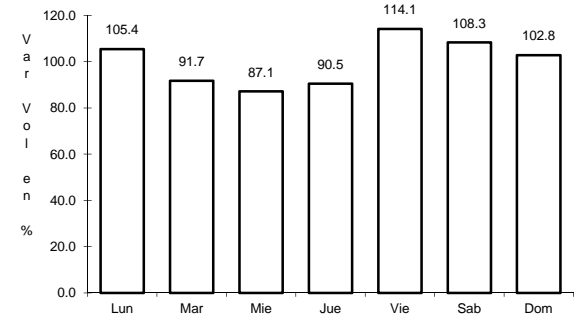
RUTA: QRO-004



Km: 0.00 Tipo: 3 Sent: 1



Km: 0.00 Tipo: 3 Sent: 2

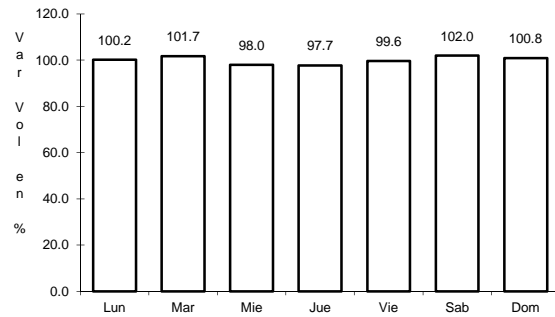


Km: 81.90 Tipo: 1 Sent: 0

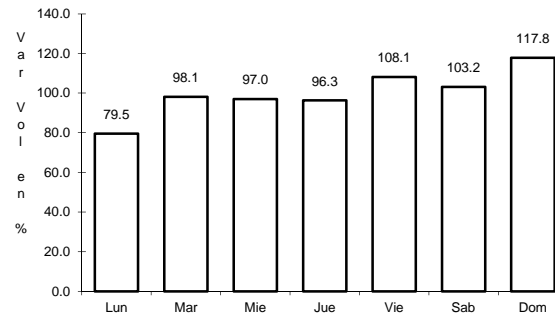
14 CARR: Hacienda Paraíso - Chichimequillas

CLAVE: 22001

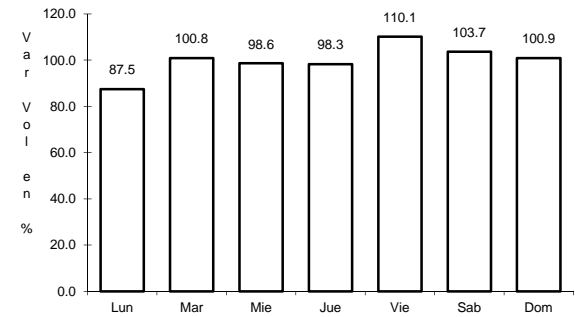
RUTA: QRO-001



Km: 0.00 Tipo: 3 Sent: 0



Km: 7.90 Tipo: 3 Sent: 0

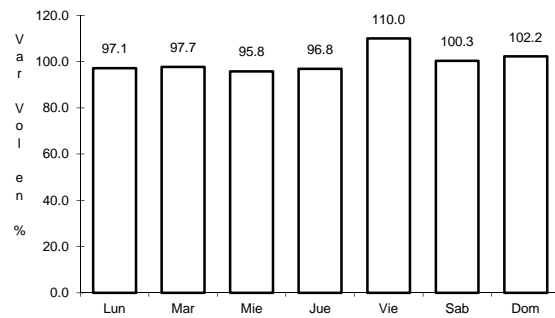


Km: 15.45 Tipo: 3 Sent: 0

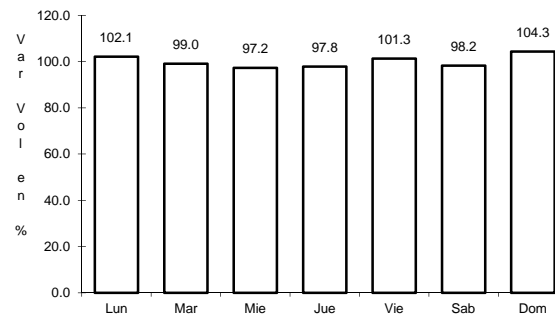
15 CARR: La Culata - San Joaquín

CLAVE: 22021

RUTA: QRO-021



Km: 0.00 Tipo: 3 Sent: 0

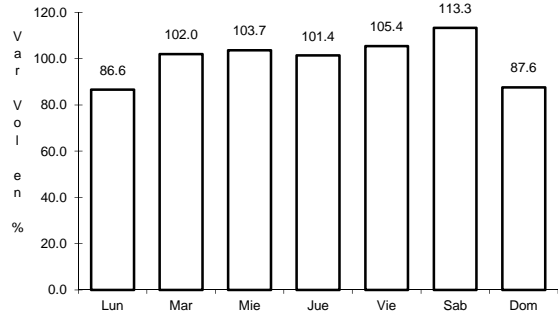


Km: 31.80 Tipo: 1 Sent: 0

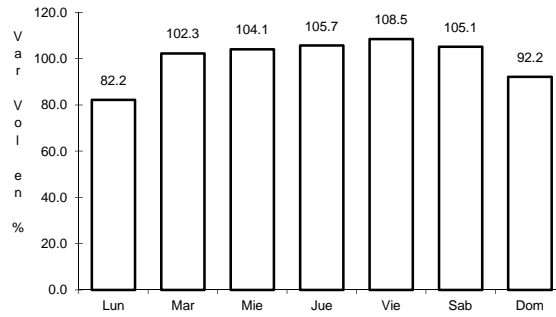
19 CARR: Peña Colorada - El Rodeo

CLAVE: 22002

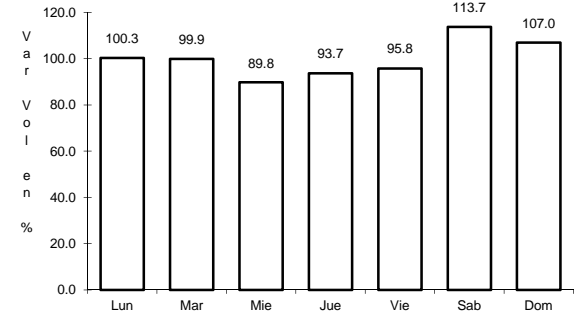
RUTA: QRO



Km: 0.00 Tipo: 3 Sent: 0



Km: 9.00 Tipo: 1 Sent: 0

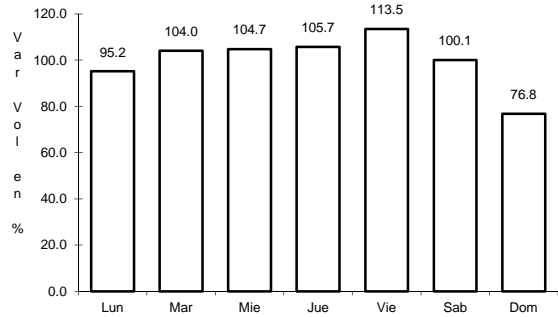


Km: 11.00 Tipo: 1 Sent: 0

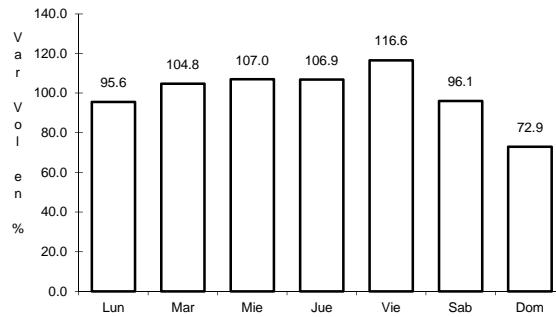
20 CARR: Querétaro - Ent. San Martín

CLAVE: 22067

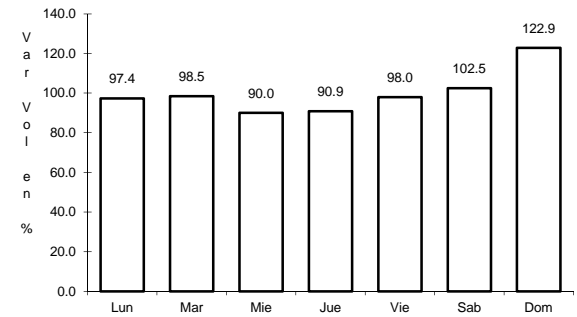
RUTA: QRO



Km: 0.00 Tipo: 3 Sent: 1



Km: 0.00 Tipo: 3 Sent: 2

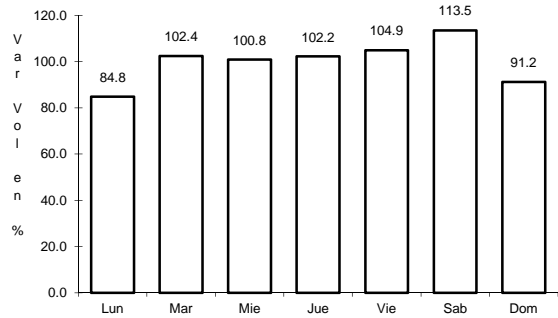


Km: 53.00 Tipo: 1 Sent: 0

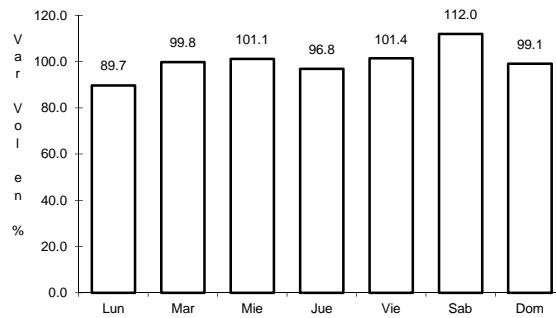
21 CARR: Querétaro - Estación Chichimequillas

CLAVE: 22270

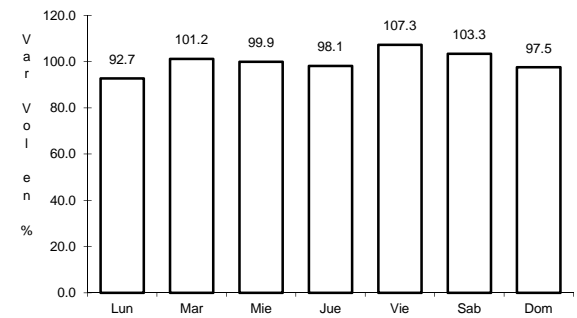
RUTA: QRO



Km: 0.00 Tipo: 3 Sent: 1



Km: 0.00 Tipo: 3 Sent: 2

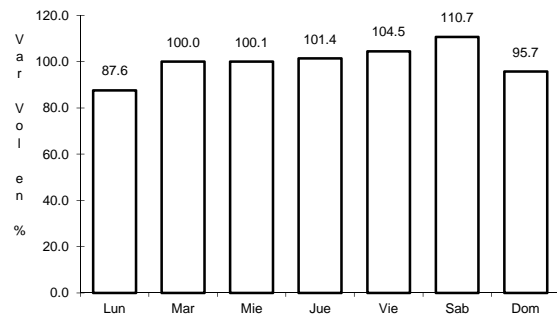


Km: 18.00 Tipo: 1 Sent: 0

22 CARR: Querétaro - Tequisquiapan

CLAVE: 22502

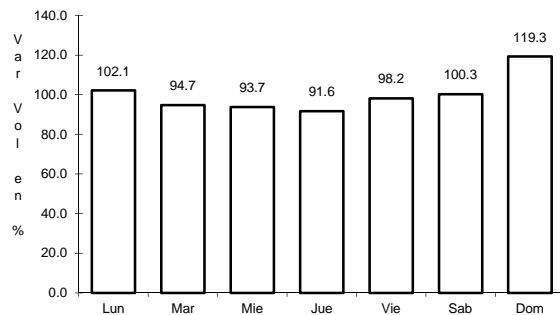
RUTA: QRO



Km: 0.00

Tipo: 3

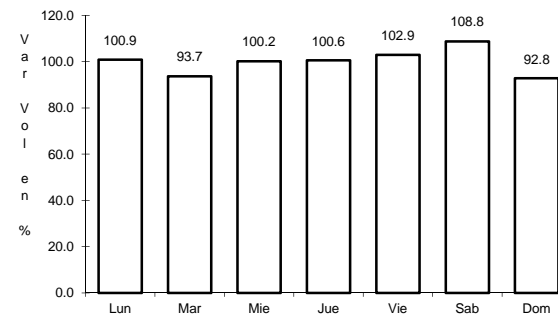
Sent: 0



Km: 16.60

Tipo: 3

Sent: 0



Km: 57.40

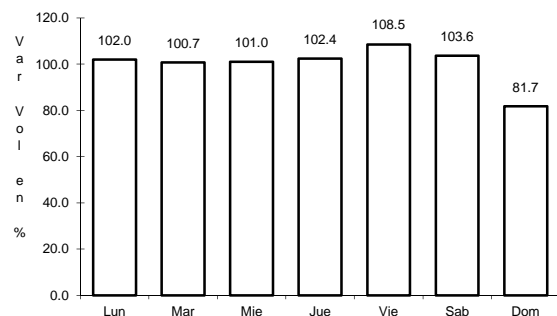
Tipo: 1

Sent: 0

23 CARR: Querétaro - Tlacote El Bajo

CLAVE: 22069

RUTA: QRO



Km: 0.00

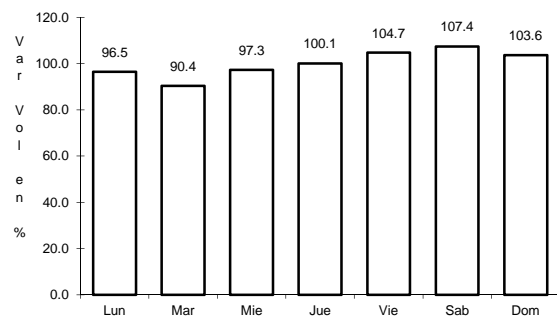
Tipo: 3

Sent: 0

24 CARR: Ramal a La Estancia

CLAVE: 22504

RUTA: QRO



Km: 0.00

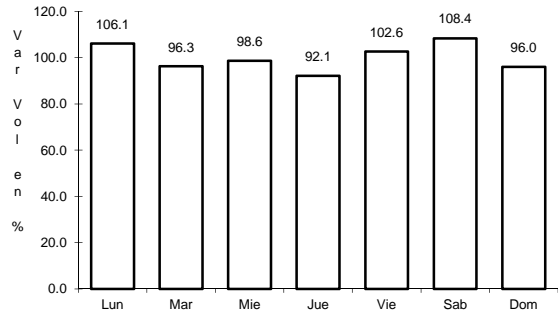
Tipo: 3

Sent: 0

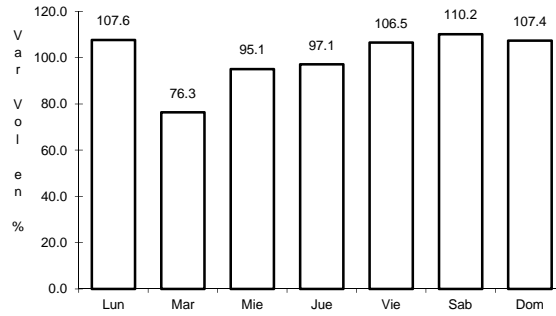
25 CARR: Ramal a Tolimán

CLAVE: 22265

RUTA: QRO



Km: 0.00 Tipo: 3 Sent: 0

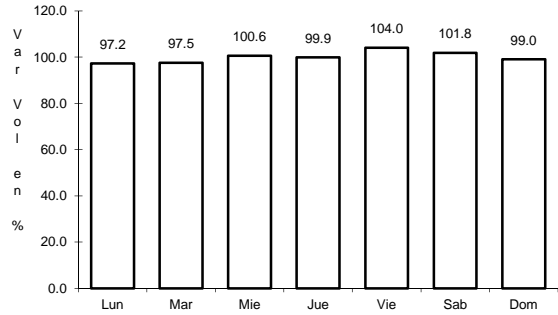


Km: 7.00 Tipo: 1 Sent: 0

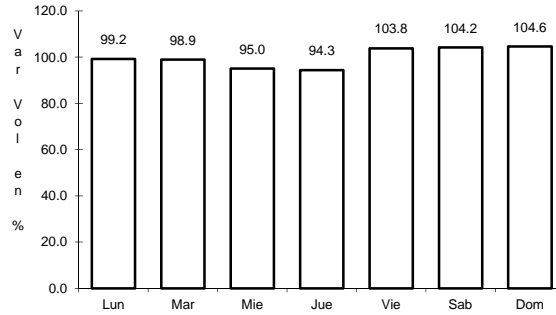
26 CARR: San Juan del Río - Amealco

CLAVE: 22011

RUTA: QRO



Km: 0.00 Tipo: 3 Sent: 0

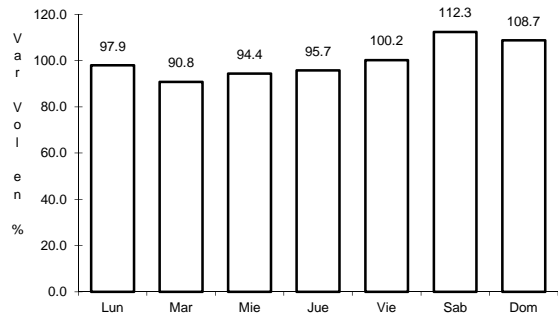


Km: 28.00 Tipo: 1 Sent: 0

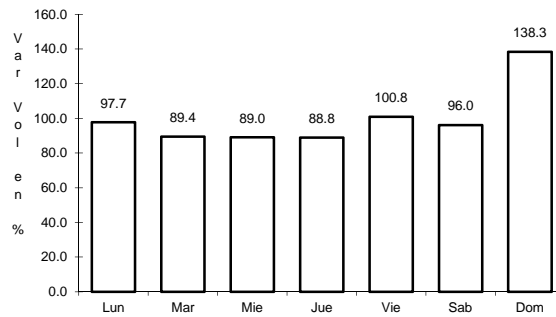
27 CARR: T. C. (Villa del Pueblito - Huimilpan) - Coroneo

CLAVE: 00155

RUTA: QRO-GTO



Km: 0.00 Tipo: 3 Sent: 0



Km: 45.20 Tipo: 1 Sent: 0

