

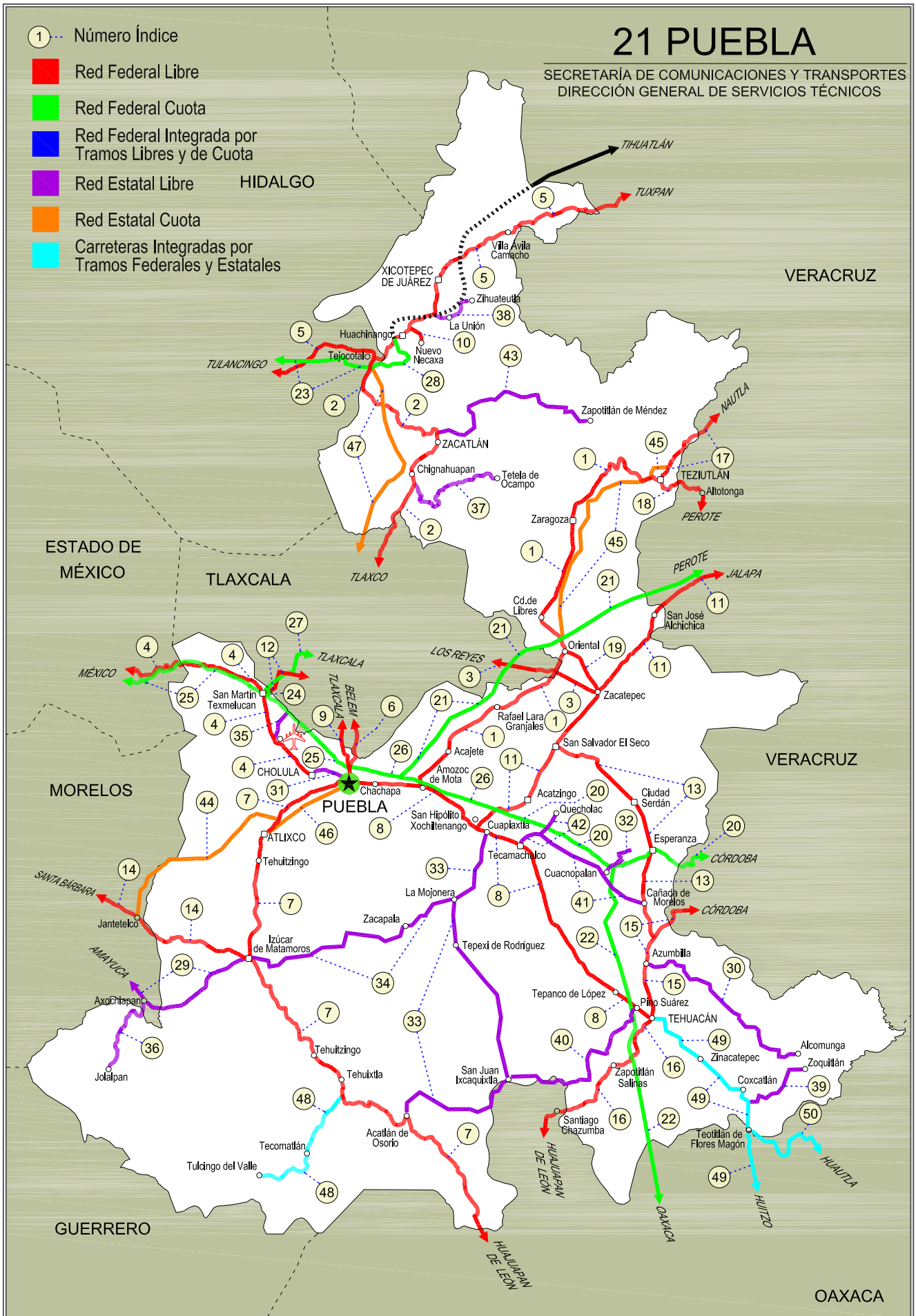
PUEBLA

NO. INDICE	CARRETERA	ruta
---RED FEDERAL LIBRE---		
1	Amozoc - Teziutlán	MEX-129
2	Apizaco - Tejocotal	MEX-119
3	Los Reyes - Zacatepec	MEX-136
4	México - Puebla (Libre)	MEX-190
5	Pachuca - Tuxpam	MEX-130
6	Puebla - Belem	MEX-121
7	Puebla - Huajuapán de León	MEX-190
8	Puebla - Tehuacán	MEX-150
9	Puebla - Tlaxcala	MEX-119
10	Ramal a Nuevo Necaxa	MEX-130
11	San Hipólito - Xalapa	MEX-140
12	San Martín Texmelucan - Tlaxcala	MEX-117
13	San Salvador El Seco - Azumbilla	MEX-144
14	Santa Bárbara - Izúcar de Matamoros	MEX-115-160
15	Tehuacán - Córdoba	MEX-150
16	Tehuacán - Huajuapán de León	MEX-125
17	Teziutlán - Nautla	MEX-129
18	Teziutlán - Perote	MEX-131
19	Zacatepec - Oriental	MEX-136
---RED FEDERAL DE CUOTA---		
20	Acatzingo - Cd. Mendoza (Cuota)	MEX-150D
21	Amozoc - Perote (Cuota)	MEX-140D
22	Cuacnopalan - Oaxaca (Cuota)	MEX-135D
23	Ent. Tulancingo - Venta Grande (Cuota)	MEX-132D
24	Libramiento de San Martín Texmelucan	MEX-057D
25	México - Puebla (Cuota)	MEX-150D
26	Puebla - Acatzingo (Cuota)	MEX-150D
27	San Martín Texmelucan - Tlaxcala - El Molinito (Cuota)	MEX-117D
28	Tejocotal - Nuevo Necaxa (Cuota)	MEX-132D
---RED ESTATAL LIBRE---		
29	Amayuca - Izúcar de Matamoros	MOR-031-PUE
30	Azumbilla - Alcomunga	PUE
31	Cholula - Puebla (Vía Quetzalcóatl)	PUE
32	Cuacnopalan - Santa Catarina Los Reyes	PUE
33	Cuapiaxtla - Acatlán de Osorio	PUE
34	Izúcar de Matamoros - Tepexi de Rodríguez	PUE
35	Ramal a Aeropuerto Hnos. Serdán	PUE
36	Ramal a Jolalpan	MOR-PUE
37	Ramal a Tetela de Ocampo	PUE
38	Ramal a Zihuateutla	PUE
39	Ramal a Zoquitlán	PUE
40	San Juan Ixcaquixtla - Pino Suárez	PUE
41	Tecamachalco - Cañada Morelos	PUE
42	Tecamachalco - Quecholac	PUE
43	Zacatlán - Zapotitlán	PUE
---RED ESTATAL DE CUOTA---		
44	Atlixco - Jantetelco (Cuota)	PUE-D
45	Libres - Teziutlán (Cuota)	PUE-D
46	Puebla - Atlixco (Cuota)	PUE-D
47	Tlaxco - Tejocotal (Cuota)	PUE-D
---CARRETERAS INTEGRADAS POR TRAMOS FEDERALES Y ESTATALES---		
48	Ramal a Tulcingo del Valle	PUE-MEX-093
49	Tehuacán - Huitzo	PUE-MEX-135
50	Teotitlán de Flores Magón - Tuxtepec	OAX-PUE-MEX-182

- ① --- Número Índice
- Red Federal Libre
- Red Federal Cuota
- Red Federal Integrada por Tramos Libres y de Cuota
- Red Estatal Libre
- Red Estatal Cuota
- Carreteras Integradas por Tramos Federales y Estatales

# 21 PUEBLA

SECRETARÍA DE COMUNICACIONES Y TRANSPORTES  
DIRECCIÓN GENERAL DE SERVICIOS TÉCNICOS



PUEBLA

1 CARR: Amozoc - Teziutlán

CLAVE: 00210

RUTA: MEX-129

AÑO: 2012

LUGAR	ESTACION				CLASIFICACION VEHICULAR EN PORCIENTO										COORDENADAS					
	KM	TE	SC	TDPA	M	A	B	C2	C3	T3S2	T3S3	T3S2R4	OTROS	A	B	C	K'	D	LATITUD	LONGITUD
Amozoc	0.00																			
X. C. Puebla - Córdoba (Cuota)	1.40	3	0	11568	0.5	71.5	9.9	7.0	3.3	3.3	2.9	0.9	0.7	72.0	9.9	18.1	0.084	0.501	19.051639	-98.027278
Acajete	12.00	3	0	8656	0.4	72.9	8.9	7.2	3.4	3.4	2.4	0.5	0.9	73.3	8.9	17.8	0.077	0.502	19.115740	-97.945683
Rafael Lara Grajales	35.50	1	0	4792	0.5	72.6	7.6	8.1	3.9	3.6	2.4	0.6	0.7	73.1	7.6	19.3	0.079	0.501	19.235395	-97.814762
Rafael Lara Grajales	35.50	3	0	4996	0.6	72.4	8.7	8.3	3.7	3.4	1.8	0.5	0.6	73.0	8.7	18.3	0.075	0.508	19.232543	-97.784120
Lim. Edos. Term. Pue. Ppia. Tlax.	50.54																			
X. C. Los Reyes - Zacatepec	56.31	1	0	3366	0.4	71.1	9.5	8.4	4.3	3.1	1.6	0.9	0.7	71.5	9.5	19.0	0.080	0.503	19.316163	-97.654386
Lim. Edos. Term. Tlax. Ppia. Pue.	60.22																			
Oriental	62.62	1	0	3824	0.3	73.1	10.6	8.6	2.3	2.6	1.3	0.6	0.6	73.4	10.6	16.0	0.079	0.505	19.373724	-97.610081
Oriental	62.62	3	0	6261	0.4	73.3	9.8	8.7	2.4	2.8	1.4	0.5	0.7	73.7	9.8	16.5	0.079	0.507	19.380780	-97.619646
X. C. Amozoc - Perote (Cuota)	69.00	1	1	3016	0.6	76.1	7.6	9.2	1.6	2.9	1.1	0.3	0.6	76.7	7.6	15.7	0.087	0.516	19.415302	-97.638011
X. C. Amozoc - Perote (Cuota)	69.00	1	2	2833	0.4	75.6	7.4	9.8	1.6	3.0	1.1	0.3	0.8	76.0	7.4	16.6	0.098	0.516	19.415302	-97.638011
X. C. Amozoc - Perote (Cuota)	69.00	3	0	7277	0.5	77.1	6.6	8.9	1.9	3.1	1.0	0.5	0.4	77.6	6.6	15.8	0.080	0.504	19.421762	-97.646110
Libres	76.35	3	0	7602	0.3	78.5	6.4	8.4	1.2	3.2	0.9	0.4	0.7	78.8	6.4	14.8	0.080	0.505	19.481923	-97.673984
San Miguel Tenextatiloyán	106.70	1	0	3518	0.5	79.1	5.6	8.8	1.2	2.9	0.9	0.4	0.6	79.6	5.6	14.8	0.089	0.513	19.701291	-97.598724
T. Izq. Zacapoaxtla	114.80	1	0	7059	0.7	80.9	5.4	7.3	1.1	3.1	0.7	0.2	0.6	81.6	5.4	13.0	0.078	0.503	19.759198	-97.568374
T. Izq. Zacapoaxtla	114.80	3	0	8123	0.6	80.7	6.3	6.9	0.8	2.9	0.9	0.2	0.7	81.3	6.3	12.4	0.075	0.507	19.764583	-97.565250
Zaragoza	116.80	3	0	7066	0.5	79.9	6.7	8.6	0.4	2.7	0.8	0.1	0.3	80.4	6.7	12.9	0.084	0.501	19.763649	-97.567788
Teziutlán	157.80	1	0	11317	0.4	79.9	6.5	8.9	0.3	2.3	0.6	0.2	0.9	80.3	6.5	13.2	0.077	0.505	19.817441	-97.379787

2 CARR: Apizaco - Tejocotal

CLAVE: 00430

RUTA: MEX-119

AÑO: 2012

LUGAR	ESTACION				CLASIFICACION VEHICULAR EN PORCIENTO										COORDENADAS					
	KM	TE	SC	TDPA	M	A	B	C2	C3	T3S2	T3S3	T3S2R4	OTROS	A	B	C	K'	D	LATITUD	LONGITUD
Apizaco	0.00	3	1	9048	1.3	85.3	4.8	3.9	1.0	1.8	1.1	0.4	0.4	86.6	4.8	8.6	0.090	0.530	19.428432	-98.135696
Apizaco	0.00	3	2	10215	0.9	83.9	5.4	4.4	1.1	2.2	1.3	0.4	0.4	84.8	5.4	9.8	0.084	0.530	19.428432	-98.135696
T. Der. Tetla	6.60	3	0	16025	0.4	85.9	4.9	4.3	0.9	2.1	0.8	0.4	0.3	86.3	4.9	8.8	0.079	0.534	19.469057	-98.111853
T. Izq. Atlangatepec	12.15	1	0	11275	0.4	78.2	5.3	6.4	1.7	5.1	1.8	0.5	0.6	78.6	5.3	16.1	0.081	0.503	19.510810	-98.117621
Tlaxco	23.91	1	0	8720	1.2	78.8	4.9	6.5	1.3	4.7	1.4	0.6	0.6	80.0	4.9	15.1	0.084	0.500	19.605147	-98.122945
Tlaxco	23.91	3	0	5629	1.6	78.5	5.1	6.4	1.4	3.8	1.9	0.6	0.7	80.1	5.1	14.8	0.082	0.506	19.624874	-98.125610
Lim. Edos. Term. Tlax. Ppia. Pue.	34.45																			
T. Der. Tetela de Ocampo	52.20	1	0	6941	1.3	78.4	5.2	6.4	1.9	3.9	1.8	0.5	0.6	79.7	5.2	15.1	0.083	0.503	19.802278	-98.025711
Zacatlán	71.25	1	0	10613	2.6	77.2	5.2	6.4	1.0	4.7	1.6	0.7	0.6	79.8	5.2	15.0	0.075	0.501	19.914970	-97.958528
Lim. Edos. Term. Pue. Ppia. Hgo.	110.45																			
T. C. Pachuca - Tuxpam	113.15	1	0	5890	0.5	76.6	6.1	7.3	1.5	5.1	1.2	0.7	1.0	77.1	6.1	16.8	0.120	0.505	20.124048	-98.128562

## PUEBLA

3 CARR : Los Reyes - Zacatepec

CLAVE: 00052

RUTA: MEX-136

AÑO: 2012

LUGAR	ESTACION				CLASIFICACION VEHICULAR EN PORCIENTO													COORDENADAS		
	KM	TE	SC	TDPA	M	A	B	C2	C3	T3S2	T3S3	T3S2R4	OTROS	A	B	C	K'	D	LATITUD	LONGITUD
T. C. México - Puebla (Libre)	0.00																			
T. Izq. La Magdalena	3.35	3	1	43751	1.8	86.7	0.4	5.3	0.9	1.6	2.3	0.4	0.6	88.5	0.4	11.1	0.061	0.510	19.378717	-98.941852
T. Izq. La Magdalena	3.35	3	2	45482	1.2	86.0	0.4	6.2	0.9	1.9	2.3	0.4	0.7	87.2	0.4	12.4	0.068	0.510	19.378992	-98.942016
T. Izq. Chimalhuacán	8.45	1	1	31417	1.5	86.0	0.6	3.8	1.2	2.4	2.9	0.8	0.8	87.5	0.6	11.9	0.068	0.510	19.413104	-98.920179
T. Izq. Chimalhuacán	8.45	1	2	32680	1.1	84.9	0.6	4.5	1.4	2.6	3.2	0.8	0.9	86.0	0.6	13.4	0.063	0.510	19.413230	-98.920294
T. C. San Bernardino - Tepexpan	17.00	3	1	17081	1.5	76.0	1.6	9.1	2.2	6.7	1.4	1.1	0.4	77.5	1.6	20.9	0.077	0.502	19.484223	-98.886125
T. C. San Bernardino - Tepexpan	17.00	3	2	17219	1.5	74.3	1.7	9.9	2.6	6.9	1.5	1.2	0.4	75.8	1.7	22.5	0.078	0.502	19.484393	-98.886269
Texcoco	23.02	3	1	18097	4.9	70.2	4.5	6.3	3.7	5.7	2.1	1.8	0.8	75.1	4.5	20.4	0.078	0.507	19.522564	-98.866315
Texcoco	23.02	3	2	17592	0.9	71.6	4.9	7.1	3.8	6.5	2.4	1.8	1.0	72.5	4.9	22.6	0.066	0.507	19.522913	-98.866260
T. Izq. Tepetlaoxtoc	30.03	1	1	14804	1.4	66.1	3.8	6.3	5.3	12.4	2.3	2.1	0.3	67.5	3.8	28.7	0.078	0.504	19.546060	-98.826042
T. Izq. Tepetlaoxtoc	30.03	1	2	14594	1.4	63.4	4.1	6.8	5.9	12.9	2.7	2.5	0.3	64.8	4.1	31.1	0.076	0.504	19.546138	-98.825925
T. Der. Totolapan	42.00	3	1	5676	1.7	66.1	3.1	4.3	5.3	13.4	2.7	2.4	1.0	67.8	3.1	29.1	0.084	0.506	19.558005	-98.727492
T. Der. Totolapan	42.00	3	2	5809	1.2	64.3	3.7	4.6	6.0	14.0	2.8	2.5	0.9	65.5	3.7	30.8	0.064	0.506	19.558005	-98.727492
Lim. Edos. Term. Mex. Ppia. Tlax.	43.15																			
Calpulalpan	59.58	3	0	15408	0.6	65.6	4.1	6.2	3.1	13.6	3.3	2.7	0.8	66.2	4.1	29.7	0.065	0.501	19.588102	-98.550057
T. Der. Nanacamilpa	71.76	3	0	13379	1.0	61.5	5.0	7.1	3.9	14.3	3.2	3.3	0.7	62.5	5.0	32.5	0.070	0.539	19.525155	-98.479303
X. C. Arco Norte de La Ciudad de México	73.80	3	1	6260	3.1	61.5	4.8	6.2	3.5	13.1	3.8	3.2	0.8	64.6	4.8	30.6	0.079	0.507	19.513699	-98.455352
X. C. Arco Norte de La Ciudad de México	73.80	3	2	6445	0.5	61.2	5.4	7.1	3.7	13.6	3.9	3.7	0.9	61.7	5.4	32.9	0.083	0.507	19.513699	-98.455352
Hueyotlilpan	88.21	3	1	6507	0.4	63.3	6.1	6.0	4.1	12.6	3.5	3.2	0.8	63.7	6.1	30.2	0.071	0.515	19.468339	-98.328100
Hueyotlilpan	88.21	3	2	6898	0.4	60.0	7.0	6.2	4.7	13.6	3.7	3.6	0.8	60.4	7.0	32.6	0.081	0.515	19.468339	-98.328100
Xaltocan	108.10	1	1	7853	0.9	66.2	6.5	6.3	2.7	11.0	3.0	2.7	0.7	67.1	6.5	26.4	0.069	0.506	19.424840	-98.217380
Xaltocan	108.10	1	2	8031	0.8	63.6	6.6	6.6	2.9	12.2	3.4	3.0	0.9	64.4	6.6	29.0	0.077	0.506	19.424840	-98.217380
Apizaco	117.74	1	1	24302	0.7	87.3	3.9	5.5	0.6	1.0	0.7	0.2	0.1	88.0	3.9	8.1	0.074	0.510	19.414098	-98.161828
Apizaco	117.74	1	2	23356	0.5	86.2	4.4	6.2	0.7	1.0	0.7	0.2	0.1	86.7	4.4	8.9	0.081	0.510	19.414101	-98.161822
Apizaco	117.74	3	0	24517	0.8	85.9	4.5	6.9	0.4	0.5	0.7	0.1	0.2	86.7	4.5	8.8	0.079	0.548	19.412970	-98.134015
T. Der. Cuaxomulco	119.85	3	1	9614	1.3	84.4	4.4	6.7	0.5	1.0	0.9	0.5	0.3	85.7	4.4	9.9	0.076	0.502	19.410530	-98.109322
T. Der. Cuaxomulco	119.85	3	2	9681	1.5	83.7	4.8	6.7	0.5	1.1	0.9	0.5	0.3	85.2	4.8	10.0	0.078	0.502	19.410530	-98.109322
T. Izq. Xalostoc	126.67	3	1	9867	0.4	78.6	1.6	5.6	2.3	6.2	2.4	2.1	0.8	79.0	1.6	19.4	0.074	0.505	19.389799	-98.052676
T. Izq. Xalostoc	126.67	3	2	9679	0.6	76.5	1.6	6.7	2.5	6.4	2.6	2.1	1.0	77.1	1.6	21.3	0.070	0.505	19.389799	-98.052676
T. Izq. Libramiento de Huamantla	141.70	1	1	9230	0.7	74.0	2.5	8.6	2.2	6.0	3.0	2.1	0.9	74.7	2.5	22.8	0.070	0.512	19.319543	-97.944050
T. Izq. Libramiento de Huamantla	141.70	1	2	8785	10.0	62.1	2.5	9.3	2.5	7.0	3.3	2.3	1.0	72.1	2.5	25.4	0.070	0.512	19.319543	-97.944055
Huamantla	143.02	3	1	5370	0.4	72.4	2.6	9.5	3.4	4.5	3.5	2.9	0.8	72.8	2.6	24.6	0.070	0.503	19.315529	-97.888265
Huamantla	143.02	3	2	5438	0.6	70.4	2.9	9.9	3.8	4.9	3.6	2.9	1.0	71.0	2.9	26.1	0.082	0.503	19.315529	-97.888265
X. C. Amozoc - Perote (Cuota)	156.76	1	1	5920	0.5	64.0	2.9	9.7	4.6	8.9	4.7	3.7	1.0	64.5	2.9	32.6	0.066	0.523	19.308251	-97.809838
X. C. Amozoc - Perote (Cuota)	156.76	1	2	5909	0.9	60.4	3.1	10.7	4.8	9.9	5.0	4.2	1.0	61.3	3.1	35.6	0.068	0.523	19.308251	-97.809840

PUEBLA

3 CARR : Los Reyes - Zacatepec

CLAVE: 00052

RUTA: MEX-136

AÑO : 2012

LUGAR	ESTACION				CLASIFICACION VEHICULAR EN PORCIENTO														COORDENADAS	
	KM	TE	SC	TDPA	M	A	B	C2	C3	T3S2	T3S3	T3S2R4	OTROS	A	B	C	K'	D	LATITUD	LONGITUD
T. Der. Cuapiaxtla	159.40	1	0	10146	0.9	58.9	2.7	10.6	4.6	12.8	5.2	3.4	0.9	59.8	2.7	37.5	0.065	0.504	19.303158	-97.778280
X. C. Amozoc - Teziutlán	173.47	1	0	9392	1.1	62.0	2.3	7.8	5.0	12.3	4.5	4.1	0.9	63.1	2.3	34.6	0.070	0.516	19.327067	-97.652905
X. C. Amozoc - Teziutlán	173.47	3	0	8129	2.2	49.6	3.1	8.0	7.6	15.6	7.2	5.8	0.9	51.8	3.1	45.1	0.061	0.507	19.321258	-97.643488
Lim. Edos. Term. Tlax. Ppia. Pue.	177.57																			
Zacatepec	187.67	1	0	9182	3.1	61.4	2.5	7.8	4.2	10.7	5.9	3.5	0.9	64.5	2.5	33.0	0.060	0.533	19.269834	-97.540571

4 CARR : México - Puebla (Libre)

CLAVE: 00449

RUTA: MEX-190

AÑO : 2012

LUGAR	ESTACION				CLASIFICACION VEHICULAR EN PORCIENTO														COORDENADAS	
	KM	TE	SC	TDPA	M	A	B	C2	C3	T3S2	T3S3	T3S2R4	OTROS	A	B	C	K'	D	LATITUD	LONGITUD
México	0.00																			
Lim. Edos. Term. D. F. Ppia. Mex.	18.66																			
T. Der. Chalco	28.85	1	1	38675	1.9	86.7	0.6	4.8	1.3	1.7	2.1	0.3	0.6	88.6	0.6	10.8	0.065	0.512	19.311154	-98.902078
T. Der. Chalco	28.85	1	2	36793	1.0	86.5	0.6	5.1	1.4	2.0	2.4	0.3	0.7	87.5	0.6	11.9	0.062	0.512	19.311358	-98.902086
T. Der. Chalco	28.85	3	1	16024	1.5	89.1	0.7	2.9	0.9	1.7	2.5	0.2	0.5	90.6	0.7	8.7	0.064	0.523	19.312168	-98.897250
T. Der. Chalco	28.85	3	2	14632	1.9	87.6	0.8	3.1	1.1	1.9	2.8	0.2	0.6	89.5	0.8	9.7	0.065	0.523	19.312168	-98.897250
Ixtapaluca	31.06	3	1	17577	1.6	89.3	0.5	2.2	1.2	1.8	2.4	0.4	0.6	90.9	0.5	8.6	0.073	0.508	19.315714	-98.875350
Ixtapaluca	31.06	3	2	17050	1.2	88.7	0.5	2.5	1.3	1.8	2.9	0.4	0.7	89.9	0.5	9.6	0.075	0.508	19.315826	-98.875366
T. Der. C. México - Puebla (Cuota) (Río Frío)	62.06	1	0	3380	0.8	73.9	6.2	9.1	3.2	4.0	1.6	0.4	0.8	74.7	6.2	19.1	0.080	0.537	19.349331	-98.671068
T. Der. C. México - Puebla (Cuota) (Río Frío)	62.06	3	0	1091	1.0	71.3	6.2	12.4	3.6	4.8	0.2	0.4	0.1	72.3	6.2	21.5	0.112	0.532	19.352690	-98.662334
Lim. Edos. Term. Mex. Ppia. Pue.	62.98																			
San Martín Texmelucan	70.00	1	0	10521	6.8	68.0	6.0	8.3	1.0	7.1	1.3	0.7	0.8	74.8	6.0	19.2	0.075	0.504	19.301537	-98.452771
X. C. México - Puebla (Cuota)	74.10	3	0	18762	3.6	79.8	4.2	5.7	1.3	2.5	1.6	0.6	0.7	83.4	4.2	12.4	0.072	0.506	19.272027	-98.432210
Huejotzingo	88.00	1	1	6050	2.0	83.0	1.2	10.0	1.3	1.6	0.5	0.1	0.3	85.0	1.2	13.8	0.080	0.503	19.176102	-98.414584
Huejotzingo	88.00	1	2	6113	2.3	81.6	1.2	10.7	1.5	1.7	0.6	0.1	0.3	83.9	1.2	14.9	0.081	0.503	19.176102	-98.414584
Huejotzingo	88.00	3	1	6286	1.3	82.6	1.3	9.6	1.8	2.1	0.9	0.1	0.3	83.9	1.3	14.8	0.082	0.501	19.149019	-98.398359
Huejotzingo	88.00	3	2	6252	2.7	79.8	1.5	10.4	2.0	2.3	0.9	0.1	0.3	82.5	1.5	16.0	0.079	0.501	19.149019	-98.398359
T. Izq. Aeropuerto	92.80	1	1	6439	1.4	82.0	5.0	6.6	1.9	2.3	0.5	0.1	0.2	83.4	5.0	11.6	0.082	0.501	19.136727	-98.377548
T. Izq. Aeropuerto	92.80	1	2	6406	1.7	79.7	5.6	7.5	2.1	2.5	0.5	0.1	0.3	81.4	5.6	13.0	0.083	0.501	19.136727	-98.377548
T. Der. Cholula	101.00	1	1	10693	1.0	90.7	2.5	2.7	1.0	1.0	0.7	0.1	0.3	91.7	2.5	5.8	0.078	0.507	19.076136	-98.321470
T. Der. Cholula	101.00	1	2	10400	1.0	89.6	2.6	3.2	1.2	1.2	0.8	0.1	0.3	90.6	2.6	6.8	0.072	0.507	19.076136	-98.321470
T. Der. Cholula	101.00	3	1	16975	1.4	90.3	2.1	2.9	0.9	1.1	0.9	0.1	0.3	91.7	2.1	6.2	0.081	0.507	19.070194	-98.312194
T. Der. Cholula	101.00	3	2	16481	0.9	90.4	2.3	2.9	0.9	1.2	1.0	0.1	0.3	91.3	2.3	6.4	0.073	0.507	19.070194	-98.312194
Puebla	131.00																			



PUEBLA

6 CARR: Puebla - Belem

CLAVE: 00055

RUTA: MEX-121

AÑO: 2012

LUGAR	ESTACION				CLASIFICACION VEHICULAR EN PORCIENTO														COORDENADAS	
	KM	TE	SC	TDPA	M	A	B	C2	C3	T3S2	T3S3	T3S2R4	OTROS	A	B	C	K'	D	LATITUD	LONGITUD
X. C. Puebla - Córdoba (Cuota)	4.00	3	1	24016	1.0	81.7	4.7	5.4	1.5	3.2	1.5	0.4	0.6	82.7	4.7	12.6	0.070	0.503	19.089200	-98.185486
X. C. Puebla - Córdoba (Cuota)	4.00	3	2	24333	0.3	81.0	5.0	6.0	1.6	3.4	1.7	0.4	0.6	81.3	5.0	13.7	0.065	0.503	19.089200	-98.185486
Lim. Edos. Term. Pue. Ppia. Tlax.	6.60																			
Lim. Edos. Term. Tlax. Ppia. Pue.	8.40																			
Lim. Edos. Term. Pue. Ppia. Tlax.	9.50																			
T. Izq. Zacatelco	16.70	1	1	14607	0.9	81.9	4.7	6.0	1.4	2.8	1.1	0.6	0.6	82.8	4.7	12.5	0.084	0.508	19.207398	-98.196250
T. Izq. Zacatelco	16.70	1	2	15068	0.9	80.2	4.9	7.0	1.5	3.0	1.2	0.7	0.6	81.1	4.9	14.0	0.086	0.508	19.207420	-98.196481
X. C. Tlaxcala - Belem	28.80	1	1	29467	1.3	86.8	2.0	3.5	1.1	2.2	1.6	0.7	0.8	88.1	2.0	9.9	0.081	0.512	19.315528	-98.204302
X. C. Tlaxcala - Belem	28.80	1	2	29121	1.6	85.2	2.2	3.8	1.3	2.5	1.7	0.8	0.9	86.8	2.2	11.0	0.081	0.512	19.315740	-98.204460
T. C. San Martín Texmelucan - Ocotoxco (Cuota)	34.90																			

7 CARR: Puebla - Huajuapán de León

CLAVE: 00049

RUTA: MEX-190

AÑO: 2012

LUGAR	ESTACION				CLASIFICACION VEHICULAR EN PORCIENTO														COORDENADAS	
	KM	TE	SC	TDPA	M	A	B	C2	C3	T3S2	T3S3	T3S2R4	OTROS	A	B	C	K'	D	LATITUD	LONGITUD
Puebla	0.00	3	1	18143	1.3	92.2	1.2	2.2	0.3	1.0	1.4	0.1	0.3	93.5	1.2	5.3	0.071	0.512	19.033047	-98.263891
Puebla	0.00	3	2	19048	1.0	92.0	1.3	2.4	0.3	1.1	1.5	0.1	0.3	93.0	1.3	5.7	0.076	0.512	19.033047	-98.263891
Atlixco	29.88	1	0	15259	3.4	85.3	1.7	5.9	1.1	0.9	0.8	0.8	0.1	88.7	1.7	9.6	0.080	0.507	18.930528	-98.407306
Atlixco	29.88	3	0	11435	5.2	85.5	1.2	6.6	0.2	0.6	0.5	0.1	0.1	90.7	1.2	8.1	0.085	0.518	18.880250	-98.435917
Tepeojuma	51.90	1	1	4635	1.1	79.2	6.2	6.8	1.7	1.9	1.3	1.4	0.4	80.3	6.2	13.5	0.127	0.501	18.772167	-98.453917
Tepeojuma	51.90	1	2	4617	1.1	76.1	7.4	8.1	2.0	2.1	1.4	1.4	0.4	77.2	7.4	15.4	0.089	0.501	18.772167	-98.453917
Izúcar de Matamoros	67.00	1	0	9960	1.6	76.7	3.2	8.4	1.7	4.4	1.8	1.4	0.8	78.3	3.2	18.5	0.085	0.510	18.631306	-98.469083
T. Der. Cuautla	70.00	3	0	7343	5.5	75.7	4.1	6.0	1.7	3.4	1.6	1.1	0.9	81.2	4.1	14.7	0.071	0.524	18.579556	-98.450222
Tehuiztingo	113.30	1	0	4850	1.3	80.8	3.4	7.4	1.4	3.4	1.0	0.5	0.8	82.1	3.4	14.5	0.080	0.505	18.338694	-98.283389
Acatlán de Osorio	154.20	1	0	6245	1.9	83.6	2.9	5.8	0.7	3.6	0.5	0.4	0.6	85.5	2.9	11.6	0.077	0.508	18.187639	-98.055250
Chila	192.30	3	0	2267	1.8	70.1	4.6	8.3	3.7	5.2	3.8	1.7	0.8	71.9	4.6	23.5	0.085	0.506	17.966583	-97.864250
Lim. Edos. Term. Pue. Ppia. Oax.	200.30																			
T. Izq. Las Palmas	202.10	1	0	2166	0.0	79.7	4.0	10.6	2.0	1.9	1.1	0.5	0.2	79.7	4.0	16.3	0.085	0.508	17.882204	-97.836529
Huajuapán de León	219.30	1	0	3145	1.6	75.2	4.5	8.2	2.4	4.7	1.4	1.8	0.2	76.8	4.5	18.7	0.078	0.507	17.836196	-97.790585

8 CARR: Puebla - Tehuacán

CLAVE: 21047

RUTA: MEX-150

AÑO: 2012

LUGAR	ESTACION				CLASIFICACION VEHICULAR EN PORCIENTO														COORDENADAS	
	KM	TE	SC	TDPA	M	A	B	C2	C3	T3S2	T3S3	T3S2R4	OTROS	A	B	C	K'	D	LATITUD	LONGITUD
Puebla	0.00																			



## PUEBLA

8 CARR: Puebla - Tehuacán

CLAVE: 21047

RUTA: MEX-150

AÑO: 2012

LUGAR	ESTACION				CLASIFICACION VEHICULAR EN PORCIENTO										COORDENADAS					
	KM	TE	SC	TDPA	M	A	B	C2	C3	T3S2	T3S3	T3S2R4	OTROS	A	B	C	K'	D	LATITUD	LONGITUD
T. Izq. a Enlace Con Aut. Puebla - Córdoba	5.83	3	1	22659	1.6	82.4	4.4	5.0	1.5	2.1	2.0	0.2	0.8	84.0	4.4	11.6	0.072	0.513	19.046311	-98.107775
T. Izq. a Enlace Con Aut. Puebla - Córdoba	5.83	3	2	23758	1.1	81.5	4.9	5.6	1.8	2.2	2.1	0.2	0.6	82.6	4.9	12.5	0.081	0.513	19.046311	-98.107775
Chachapa	8.40	3	1	15415	1.1	81.8	5.0	5.4	2.5	1.5	1.3	0.5	0.9	82.9	5.0	12.1	0.080	0.500	19.046311	-98.107775
Chachapa	8.40	3	2	15451	2.4	79.2	5.5	5.7	2.6	1.7	1.4	0.5	1.0	81.6	5.5	12.9	0.072	0.500	19.043910	-98.081103
Amozoc	17.86	1	1	13486	1.1	80.5	1.9	9.4	1.2	2.1	2.4	0.5	0.9	81.6	1.9	16.5	0.071	0.530	19.042124	-98.046165
Amozoc	17.86	1	2	13790	0.9	78.2	2.1	10.9	1.4	2.4	2.7	0.5	0.9	79.1	2.1	18.8	0.074	0.530	19.042124	-98.046165
Amozoc	17.86	3	1	10350	0.9	80.2	3.7	7.7	1.8	3.0	1.5	0.4	0.8	81.1	3.7	15.2	0.076	0.505	19.038583	-98.034361
Amozoc	17.86	3	2	10163	1.2	77.7	4.4	8.4	2.2	3.1	1.8	0.4	0.8	78.9	4.4	16.7	0.076	0.505	19.038583	-98.034361
Tepeaca	35.30	1	1	10826	0.7	82.7	3.7	5.5	2.0	2.5	1.6	0.5	0.8	83.4	3.7	12.9	0.075	0.513	18.986990	-97.912905
Tepeaca	35.30	1	2	10257	0.8	80.6	4.4	6.0	2.3	2.9	1.8	0.5	0.7	81.4	4.4	14.2	0.078	0.513	18.986990	-97.912905
Tepeaca	35.30	3	0	17677	1.3	78.8	4.0	7.0	2.2	2.7	2.4	0.7	0.9	80.1	4.0	15.9	0.077	0.520	18.953356	-97.895131
T. Izq. Acatzingo	41.80	3	0	16712	1.0	76.2	4.9	11.2	3.2	1.8	1.2	0.2	0.3	77.2	4.9	17.9	0.073	0.501	18.924945	-97.859239
T. Der. San Juan Ixcaquixtla	45.25	1	0	17594	0.9	82.0	2.7	8.3	3.6	1.5	0.8	0.2	0.0	82.9	2.7	14.4	0.078	0.514	18.919318	-97.833803
T. Der. San Juan Ixcaquixtla	45.25	3	0	17610	1.4	84.2	2.1	6.0	3.2	1.5	1.0	0.4	0.2	85.6	2.1	12.3	0.074	0.514	18.917901	-97.830485
Tecamachalco	57.40	1	0	19100	2.4	86.7	2.2	4.5	2.8	0.6	0.4	0.2	0.2	89.1	2.2	8.7	0.073	0.503	18.890036	-97.752554
Tecamachalco	57.40	3	0	11715	1.5	82.9	3.0	7.6	2.1	1.4	0.9	0.4	0.2	84.4	3.0	12.6	0.072	0.501	18.874369	-97.717471
Tepanco de López	97.40	1	0	6169	2.2	67.5	4.9	17.0	2.4	3.6	1.3	0.5	0.6	69.7	4.9	25.4	0.079	0.505	18.564677	-97.570196
Tepanco de López	97.40	3	0	6725	2.2	77.0	2.0	10.4	2.7	3.6	1.2	0.3	0.6	79.2	2.0	18.8	0.077	0.504	18.550390	-97.551284
X. C. Cuacnopalan - Oaxaca (Cuota)	110.60	1	0	8144	3.4	81.5	1.3	9.5	1.8	1.5	0.8	0.1	0.1	84.9	1.3	13.8	0.076	0.514	18.489344	-97.459870
T. C. Tehuacán - Córdoba	115.70	1	1	7440	2.5	81.6	1.8	8.2	1.7	2.0	1.2	0.5	0.5	84.1	1.8	14.1	0.081	0.502	18.480142	-97.443862
T. C. Tehuacán - Córdoba	115.70	1	2	7493	2.7	79.2	2.2	9.7	1.7	2.2	1.3	0.5	0.5	81.9	2.2	15.9	0.075	0.502	18.480144	-97.443865

9 CARR: Puebla - Tlaxcala

CLAVE: 00475

RUTA: MEX-119

AÑO: 2012

LUGAR	ESTACION				CLASIFICACION VEHICULAR EN PORCIENTO										COORDENADAS					
	KM	TE	SC	TDPA	M	A	B	C2	C3	T3S2	T3S3	T3S2R4	OTROS	A	B	C	K'	D	LATITUD	LONGITUD
Puebla	0.00																			
X. C. Puebla - Córdoba (Cuota)	5.41	3	1	18144	1.5	84.1	4.2	5.4	1.4	1.5	1.3	0.2	0.4	85.6	4.2	10.2	0.071	0.518	19.094278	-98.206722
X. C. Puebla - Córdoba (Cuota)	5.41	3	2	18573	2.7	81.0	4.9	6.2	1.5	1.7	1.4	0.2	0.4	83.7	4.9	11.4	0.092	0.518	19.094278	-98.206722
Lim. Edos. Term. Pue. Ppia. Tlax.	11.83																			
Panzacola	13.14	3	1	11098	2.0	87.5	1.2	2.9	0.8	2.3	2.1	0.5	0.7	89.5	1.2	9.3	0.074	0.505	19.152234	-98.223634
Panzacola	13.14	3	2	11296	1.6	86.9	1.3	3.3	0.8	2.4	2.3	0.5	0.9	88.5	1.3	10.2	0.077	0.505	19.152234	-98.223634
San Toribio Xicohtzinco	16.10	3	1	10167	2.0	89.5	1.4	2.9	0.6	1.4	1.2	0.4	0.6	91.5	1.4	7.1	0.086	0.501	19.186440	-98.237830
San Toribio Xicohtzinco	16.10	3	2	10233	2.3	88.2	1.5	3.4	0.6	1.6	1.3	0.4	0.7	90.5	1.5	8.0	0.072	0.501	19.186440	-98.237830
Zacatelco	20.78	1	1	9498	2.3	89.3	1.4	3.1	0.5	1.2	1.2	0.3	0.7	91.6	1.4	7.0	0.073	0.510	19.207734	-98.240569

PUEBLA

9 CARR: Puebla - Tlaxcala

CLAVE: 00475

RUTA: MEX-119

AÑO: 2012

LUGAR	ESTACION				CLASIFICACION VEHICULAR EN PORCIENTO													COORDENADAS		
	KM	TE	SC	TDPA	M	A	B	C2	C3	T3S2	T3S3	T3S2R4	OTROS	A	B	C	K'	D	LATITUD	LONGITUD
Zacatelco	20.78	1	2	9876	2.6	88.3	1.4	3.6	0.5	1.3	1.3	0.2	0.8	90.9	1.4	7.7	0.077	0.510	19.207734	-98.240569
T. Izq. San Martín Texmelucan	22.99	1	1	8994	1.4	89.9	1.3	3.4	0.5	1.3	1.2	0.3	0.7	91.3	1.3	7.4	0.079	0.507	19.234075	-98.243078
T. Izq. San Martín Texmelucan	22.99	1	2	8732	1.3	89.8	1.4	3.6	0.5	1.3	1.1	0.3	0.7	91.1	1.4	7.5	0.082	0.507	19.234075	-98.243078
T. Der. Tepeyanco (2º Acceso)	24.97	3	1	8403	1.7	90.3	1.4	3.2	0.4	1.3	0.8	0.3	0.6	92.0	1.4	6.6	0.090	0.510	19.260904	-98.232512
T. Der. Tepeyanco (2º Acceso)	24.97	3	2	8066	1.7	89.8	1.5	3.4	0.4	1.3	1.1	0.2	0.6	91.5	1.5	7.0	0.084	0.510	19.260904	-98.232512
T. Der. Ocotlán (Baja)	32.45	1	1	5646	2.1	87.4	1.3	4.4	0.7	1.4	1.5	0.6	0.6	89.5	1.3	9.2	0.079	0.502	19.302626	-98.241059
T. Der. Ocotlán (Alta)	32.45	1	1	10270	1.9	89.2	1.1	2.8	0.6	1.6	1.6	0.6	0.6	91.1	1.1	7.8	0.070	0.500	19.302626	-98.241059
T. Der. Ocotlán (Baja)	32.45	1	2	5630	2.5	85.7	1.4	4.8	0.8	1.7	1.8	0.6	0.7	88.2	1.4	10.4	0.079	0.502	19.302523	-98.241277
T. Der. Ocotlán (Alta)	32.45	1	2	10334	1.9	87.0	1.3	3.3	0.7	2.0	2.3	0.6	0.9	88.9	1.3	9.8	0.072	0.500	19.302523	-98.241277
Tlaxcala	33.22	1	1	8932	2.0	90.5	1.4	1.8	0.6	1.0	1.6	0.5	0.6	92.5	1.4	6.1	0.074	0.510	19.310959	-98.240150
Tlaxcala	33.22	1	2	8608	1.6	89.6	1.5	2.1	0.6	1.2	2.0	0.6	0.8	91.2	1.5	7.3	0.078	0.510	19.311121	-98.240230

10 CARR: Ramal a Nuevo Necaxa

CLAVE: 21592

RUTA: MEX-130

AÑO: 2012

LUGAR	ESTACION				CLASIFICACION VEHICULAR EN PORCIENTO													COORDENADAS		
	KM	TE	SC	TDPA	M	A	B	C2	C3	T3S2	T3S3	T3S2R4	OTROS	A	B	C	K'	D	LATITUD	LONGITUD
T. C. Pachuca - Ent. Cañada Rica	0.00																			
Nuevo Necaxa	1.50	1	0	4371	2.6	83.4	4.1	4.8	1.1	2.6	0.7	0.1	0.6	86.0	4.1	9.9	0.089	0.520	20.219899	-97.999479

11 CARR: San Hipólito - Xalapa

CLAVE: 00486

RUTA: MEX-140

AÑO: 2012

LUGAR	ESTACION				CLASIFICACION VEHICULAR EN PORCIENTO													COORDENADAS		
	KM	TE	SC	TDPA	M	A	B	C2	C3	T3S2	T3S3	T3S2R4	OTROS	A	B	C	K'	D	LATITUD	LONGITUD
T. C. Puebla - Tehuacán	0.00	3	0	8867	0.6	77.6	4.3	9.2	3.6	2.3	1.4	0.4	0.6	78.2	4.3	17.5	0.078	0.518	18.929333	-97.858478
X. C. Puebla - Córdoba (Cuota)	7.86	3	1	9448	1.1	81.8	3.3	7.4	2.3	1.7	1.6	0.5	0.3	82.9	3.3	13.8	0.077	0.502	18.977520	-97.804250
X. C. Puebla - Córdoba (Cuota)	7.86	3	2	9367	1.0	79.6	3.8	8.5	2.7	1.8	1.8	0.5	0.3	80.6	3.8	15.6	0.085	0.502	18.977520	-97.804250
San Salvador El Seco	35.35	1	0	8013	1.0	70.4	5.3	7.3	4.3	5.1	3.2	2.4	1.0	71.4	5.3	23.3	0.065	0.500	19.126749	-97.654338
Zacatepec	54.20	1	0	7314	0.8	63.0	7.1	5.8	4.7	6.6	7.9	3.1	1.0	63.8	7.1	29.1	0.071	0.508	19.261067	-97.534020
Zacatepec	54.20	3	1	4222	1.2	65.1	6.1	5.4	3.3	5.4	7.8	4.7	1.0	66.3	6.1	27.6	0.067	0.506	19.271361	-97.528583
Zacatepec	54.20	3	2	4118	1.1	62.7	6.6	5.9	3.7	5.7	8.1	5.3	0.9	63.8	6.6	29.6	0.071	0.506	19.271356	-97.528587
Alchichica	80.00	3	1	4205	0.7	59.5	3.2	11.2	6.1	8.6	5.3	4.6	0.8	60.2	3.2	36.6	0.088	0.513	19.457754	-97.384784
Alchichica	80.00	3	2	3996	0.6	55.5	3.6	12.3	6.7	9.5	5.9	5.1	0.8	56.1	3.6	40.3	0.069	0.513	19.457754	-97.384783
Lim. Edos. Term. Pue. Ppia. Ver.	83.25																			
San Antonio Limón	89.60	1	0	7597	0.5	56.3	3.8	11.8	6.6	9.8	5.3	5.0	0.9	56.8	3.8	39.4	0.073	0.509	19.492896	-97.355802
Perote	101.70	1	0	7670	1.4	77.8	2.4	5.3	2.9	5.6	2.6	1.2	0.8	79.2	2.4	18.4	0.077	0.505	19.555150	-97.256728

## PUEBLA

11 CARR: San Hipólito - Xalapa

CLAVE: 00486

RUTA: MEX-140

AÑO: 2012

LUGAR	ESTACION				CLASIFICACION VEHICULAR EN PORCIENTO														COORDENADAS	
	KM	TE	SC	TDPA	M	A	B	C2	C3	T3S2	T3S3	T3S2R4	OTROS	A	B	C	K'	D	LATITUD	LONGITUD
Perote	101.70	3	0	9395	1.3	81.0	2.1	5.3	2.8	3.7	2.4	1.1	0.3	82.3	2.1	15.6	0.080	0.504	19.572179	-97.235361
T. Izq. Villa Aldama	109.50	1	0	6930	0.9	75.7	4.0	8.1	4.0	3.6	2.3	1.0	0.4	76.6	4.0	19.4	0.078	0.509	19.614561	-97.189934
T. C. Libramiento de Perote (Cuota)	110.70	3	1	6599	0.7	75.3	3.0	7.8	3.6	4.3	2.1	2.7	0.5	76.0	3.0	21.0	0.076	0.501	19.629034	-97.176446
T. C. Libramiento de Perote (Cuota)	110.70	3	2	6585	0.6	72.7	3.0	8.7	4.3	4.9	2.3	2.9	0.6	73.3	3.0	23.7	0.099	0.501	19.629034	-97.176447
Banderilla	145.00	1	0	17202	0.8	77.5	2.1	8.1	2.5	3.8	2.2	2.3	0.7	78.3	2.1	19.6	0.077	0.515	19.590432	-96.959918
T. Izq. Naolinco	146.00	3	1	14683	1.2	79.2	4.5	7.3	2.1	2.2	1.1	2.2	0.2	80.4	4.5	15.1	0.072	0.508	19.592946	-96.951778
T. Izq. Naolinco	146.00	3	2	14216	1.3	77.5	4.4	8.3	2.3	2.4	1.3	2.3	0.2	78.8	4.4	16.8	0.077	0.508	19.592947	-96.951779
Xalapa	151.20	1	1	20961	1.4	80.1	4.0	9.3	1.1	1.7	1.3	0.7	0.4	81.5	4.0	14.5	0.072	0.510	19.570780	-96.928725
Xalapa	151.20	1	2	20164	1.3	78.5	4.4	10.3	1.2	1.9	1.3	0.7	0.4	79.8	4.4	15.8	0.068	0.510	19.570790	-96.928719

12 CARR: San Martín Texmelucan - Tlaxcala

CLAVE: 00158

RUTA: MEX-117

AÑO: 2012

LUGAR	ESTACION				CLASIFICACION VEHICULAR EN PORCIENTO														COORDENADAS	
	KM	TE	SC	TDPA	M	A	B	C2	C3	T3S2	T3S3	T3S2R4	OTROS	A	B	C	K'	D	LATITUD	LONGITUD
San Martín Texmelucan	0.00	3	1	8374	5.0	83.3	2.2	4.1	0.6	1.8	1.9	0.5	0.6	88.3	2.2	9.5	0.081	0.506	19.287863	-98.422995
San Martín Texmelucan	0.00	3	2	8593	5.4	81.3	2.4	4.8	0.6	2.2	2.1	0.5	0.7	86.7	2.4	10.9	0.076	0.506	19.287863	-98.422995
X. C. San Martín Texmelucan - Ocotoxco (Cuota)	1.65	1	0	18293	5.2	82.8	3.7	5.1	0.7	0.8	1.2	0.4	0.1	88.0	3.7	8.3	0.073	0.501	19.291368	-98.412307
Lim. Edos. Term. Pue. Ppia. Tlax.	2.84																			
T. Der. Tepetitla	3.45	3	0	12645	4.1	88.7	1.5	3.1	0.8	0.8	0.8	0.1	0.1	92.8	1.5	5.7	0.077	0.503	19.294689	-98.402092
San Diego Xocoyucan	7.21	3	0	6340	4.2	87.3	1.4	2.1	0.5	2.8	0.9	0.4	0.4	91.5	1.4	7.1	0.076	0.531	19.307833	-98.370635
T. Der. Panotla	19.72	1	0	9372	2.2	89.0	0.8	1.9	0.2	4.8	0.3	0.1	0.7	91.2	0.8	8.0	0.087	0.509	19.319427	-98.275894
T. Der. Panotla	19.72	3	0	9210	2.7	86.6	1.3	3.0	0.2	4.9	0.4	0.2	0.7	89.3	1.3	9.4	0.082	0.507	19.319692	-98.268910
Totolac	21.38	1	0	9201	2.7	84.1	1.7	3.9	0.2	6.1	0.6	0.3	0.4	86.8	1.7	11.5	0.077	0.508	19.322444	-98.260639
Totolac	21.38	3	0	10534	2.5	84.1	1.3	2.1	0.5	4.5	4.0	0.5	0.5	86.6	1.3	12.1	0.079	0.505	19.329790	-98.250270
Tlaxcala	24.81	1	0	19718	1.8	92.5	0.9	2.4	0.3	0.5	1.5	0.0	0.1	94.3	0.9	4.8	0.072	0.504	19.325226	-98.242454

13 CARR: San Salvador El Seco - Azumbilla

CLAVE: 21004

RUTA: MEX-144

AÑO: 2012

LUGAR	ESTACION				CLASIFICACION VEHICULAR EN PORCIENTO														COORDENADAS	
	KM	TE	SC	TDPA	M	A	B	C2	C3	T3S2	T3S3	T3S2R4	OTROS	A	B	C	K'	D	LATITUD	LONGITUD
San Salvador El Seco	0.00	3	0	5271	3.0	62.2	4.1	8.9	2.6	13.0	2.9	2.3	1.0	65.2	4.1	30.7	0.066	0.500	19.129577	-97.635443
Cd. Serdán	29.00	3	0	5773	1.3	61.1	2.6	10.4	5.7	12.6	3.2	2.2	0.9	62.4	2.6	35.0	0.069	0.504	18.980404	-97.440898
X. C. Puebla - Córdoba (Cuota)	45.94	3	0	5532	2.2	69.0	3.1	10.2	3.6	7.9	1.9	1.3	0.8	71.2	3.1	25.7	0.072	0.511	18.868245	-97.389270
T. C. Tehuacán - Córdoba	73.67	1	0	3863	1.6	61.8	4.5	19.3	3.5	5.9	2.1	0.7	0.6	63.4	4.5	32.1	0.084	0.516	18.647481	-97.391080

PUEBLA

14 C A R R : Santa Bárbara - Izúcar de Matamoros

CLAVE: 00451

RUTA: MEX-115-160

AÑO : 2012

L U G A R	E S T A C I O N				C L A S I F I C A C I O N V E H I C U L A R E N P O R C I E N T O										C O O R D E N A D A S					
	KM	TE	SC	TDPA	M	A	B	C2	C3	T3S2	T3S3	T3S2R4	OTROS	A	B	C	K'	D	LATITUD	LONGITUD
T. C. México - Puebla (Libre)	0.00	3	1	21601	5.5	90.0	0.6	2.2	0.6	0.5	0.4	0.1	0.1	95.5	0.6	3.9	0.076	0.500	19.310910	-98.896827
T. C. México - Puebla (Libre)	0.00	3	2	21615	1.4	93.8	0.6	2.5	0.6	0.5	0.4	0.1	0.1	95.2	0.6	4.2	0.075	0.500	19.311091	-98.896788
X. C. México - Puebla (Cuota)	3.61	1	1	19838	1.6	91.7	1.9	3.1	0.7	0.5	0.3	0.1	0.1	93.3	1.9	4.8	0.074	0.526	19.294613	-98.882131
X. C. México - Puebla (Cuota)	3.61	1	2	22006	1.3	91.3	2.2	3.3	0.8	0.6	0.3	0.1	0.1	92.6	2.2	5.2	0.074	0.526	19.294607	-98.882133
X. C. México - Puebla (Cuota)	3.61	3	1	38617	1.1	86.3	1.2	7.9	0.8	1.2	0.8	0.5	0.2	87.4	1.2	11.4	0.074	0.501	19.285596	-98.880455
X. C. México - Puebla (Cuota)	3.61	3	2	38529	1.7	84.7	1.2	8.6	0.9	1.4	0.8	0.5	0.2	86.4	1.2	12.4	0.071	0.501	19.285590	-98.880247
Chalco	8.00	3	1	28043	1.9	90.2	1.4	2.1	1.4	1.8	0.6	0.3	0.3	92.1	1.4	6.5	0.071	0.508	19.249901	-98.874788
Chalco	8.00	3	2	29009	1.2	90.2	1.7	2.3	1.5	1.9	0.6	0.3	0.3	91.4	1.7	6.9	0.079	0.508	19.249901	-98.874785
T. Der. Juchitepec	12.46	3	1	13030	0.9	88.0	1.0	5.2	1.6	1.6	0.9	0.4	0.4	88.9	1.0	10.1	0.079	0.507	19.239541	-98.854686
T. Der. Juchitepec	12.46	3	2	13393	0.7	87.3	1.2	5.7	1.6	1.7	1.0	0.4	0.4	88.0	1.2	10.8	0.089	0.507	19.239546	-98.854692
Tlalmanalco	20.51	3	0	7433	1.4	93.0	0.8	3.2	0.6	0.4	0.3	0.1	0.2	94.4	0.8	4.8	0.081	0.520	19.199133	-98.799367
Amecameca de Juárez	28.00	1	1	22392	1.2	91.7	1.3	3.9	0.2	0.8	0.7	0.1	0.1	92.9	1.3	5.8	0.081	0.509	19.144211	-98.774505
Amecameca de Juárez	28.00	1	2	21574	2.1	90.4	1.4	4.1	0.2	0.9	0.7	0.1	0.1	92.5	1.4	6.1	0.078	0.509	19.144211	-98.774505
Amecameca de Juárez	28.00	3	1	10787	1.1	85.3	1.3	7.5	1.6	1.5	0.9	0.4	0.4	86.4	1.3	12.3	0.084	0.510	19.107855	-98.778263
Amecameca de Juárez	28.00	3	2	11213	0.9	83.2	1.4	9.1	1.8	1.7	1.1	0.4	0.4	84.1	1.4	14.5	0.089	0.510	19.107855	-98.778263
T. Izq. Ozumba (1º Acceso)	38.81	1	0	16958	0.6	79.1	3.3	5.6	1.4	7.1	1.5	0.7	0.7	79.7	3.3	17.0	0.071	0.505	19.057839	-98.787070
T. Izq. Ozumba (1º Acceso)	38.81	3	0	13726	0.8	77.8	3.1	5.7	1.7	7.2	1.8	1.0	0.9	78.6	3.1	18.3	0.069	0.520	19.052761	-98.789780
Tepetlixpa	42.29	3	0	11994	0.6	85.4	0.8	5.8	2.8	2.3	1.1	0.8	0.4	86.0	0.8	13.2	0.077	0.504	19.018222	-98.824485
Lim. Edos. Term. Mex. Ppia. Mor.	51.70																			
T. Der. Atlatlahucan	58.95	1	0	10449	0.7	78.1	3.5	5.6	3.1	5.5	1.5	1.1	0.9	78.8	3.5	17.7	0.077	0.506	18.934268	-98.884823
T. Izq. Tetela del Volcán	62.99	1	0	15431	1.5	88.5	1.9	3.2	1.0	1.4	1.4	0.6	0.5	90.0	1.9	8.1	0.081	0.539	18.899252	-98.907577
T. Izq. Libramiento de Cuautla (1º Acceso)	67.00	1	1	12856	1.8	88.7	1.7	4.8	0.8	1.1	0.6	0.4	0.1	90.5	1.7	7.8	0.085	0.522	18.878166	-98.921423
T. Izq. Libramiento de Cuautla (1º Acceso)	67.00	1	2	12940	2.0	87.2	2.0	5.4	1.0	1.3	0.6	0.4	0.1	89.2	2.0	8.8	0.100	0.522	18.878166	-98.921423
T. Der. La Pera	68.90	1	1	23736	1.8	89.1	1.7	4.6	0.5	0.9	1.0	0.3	0.1	90.9	1.7	7.4	0.072	0.532	18.853686	-98.936397
T. Der. La Pera	68.90	1	2	22933	1.5	88.2	1.9	5.3	0.7	1.0	1.0	0.3	0.1	89.7	1.9	8.4	0.073	0.532	18.853686	-98.936396
T. Izq. Libramiento de Cuautla (2º Acceso)	77.05	3	1	15675	0.1	84.1	3.7	3.8	1.6	2.1	2.6	1.8	0.2	84.2	3.7	12.1	0.079	0.505	18.784731	-98.904354
T. Izq. Libramiento de Cuautla (2º Acceso)	77.05	3	2	15390	0.1	82.5	3.9	4.3	1.8	2.5	2.7	2.0	0.2	82.6	3.9	13.5	0.082	0.505	18.784731	-98.904351
T. Der. Tlayecac	85.06	3	1	9649	1.2	81.5	3.3	4.1	2.2	3.7	2.1	1.4	0.5	82.7	3.3	14.0	0.081	0.502	18.760406	-98.880566
T. Der. Tlayecac	85.06	3	2	9576	1.2	79.9	3.6	4.5	2.3	4.1	2.3	1.6	0.5	81.1	3.6	15.3	0.080	0.502	18.760406	-98.880566
T. Izq. Amayuca	91.36	3	1	7081	0.9	79.0	3.6	3.9	3.1	4.2	3.3	1.5	0.5	79.9	3.6	16.5	0.102	0.508	18.715641	-98.790162
T. Izq. Amayuca	91.36	3	2	7320	0.8	77.3	3.7	4.4	3.5	4.5	3.6	1.7	0.5	78.1	3.7	18.2	0.085	0.508	18.715641	-98.790161
T. C. Atlixco - Jantetelco (Cuota)	94.70	3	1	2510	0.7	80.6	3.6	5.4	2.8	2.9	2.1	1.3	0.6	81.3	3.6	15.1	0.090	0.512	18.700244	-98.765327
T. C. Atlixco - Jantetelco (Cuota)	94.70	3	2	2631	0.7	79.1	3.7	6.0	2.9	3.3	2.1	1.6	0.6	79.8	3.7	16.5	0.095	0.512	18.700244	-98.765328
T. Der. Tenango	102.96	3	0	4286	1.0	76.3	4.1	3.9	3.8	4.4	2.8	2.9	0.8	77.3	4.1	18.6	0.081	0.524	18.665736	-98.730627
Lim. Edos. Term. Mor. Ppia. Pue.	103.23																			

## PUEBLA

14 CARR: Santa Bárbara - Izúcar de Matamoros

CLAVE: 00451

RUTA: MEX-115-160

AÑO: 2012

LUGAR	ESTACION				CLASIFICACION VEHICULAR EN PORCIENTO													COORDENADAS		
	KM	TE	SC	TDPA	M	A	B	C2	C3	T3S2	T3S3	T3S2R4	OTROS	A	B	C	K'	D	LATITUD	LONGITUD
X. C. Amayuca - Izúcar de Matamoros	134.99	1	0	7862	4.6	77.2	2.1	3.0	2.7	4.8	2.0	2.9	0.7	81.8	2.1	16.1	0.085	0.506	18.616056	-98.504361
X. C. Amayuca - Izúcar de Matamoros	134.99	3	1	5917	8.0	79.7	2.8	5.2	1.5	1.3	0.9	0.2	0.4	87.7	2.8	9.5	0.110	0.538	18.597139	-98.479444
X. C. Amayuca - Izúcar de Matamoros	134.99	3	2	5634	8.0	78.9	3.2	5.4	1.5	1.4	1.0	0.2	0.4	86.9	3.2	9.9	0.094	0.538	18.597139	-98.479444
T. C. Puebla - Huajuapán de León	138.14																			

15 CARR: Tehuacán - Córdoba

CLAVE: 00534

RUTA: MEX-150

AÑO: 2012

LUGAR	ESTACION				CLASIFICACION VEHICULAR EN PORCIENTO													COORDENADAS		
	KM	TE	SC	TDPA	M	A	B	C2	C3	T3S2	T3S3	T3S2R4	OTROS	A	B	C	K'	D	LATITUD	LONGITUD
Tehuacán	0.00	3	0	12763	2.8	77.3	5.7	7.5	2.3	2.1	1.5	0.4	0.4	80.1	5.7	14.2	0.081	0.505	18.501067	-97.405413
Chapulco	18.27	3	0	6976	2.8	74.9	2.9	9.2	2.4	4.8	1.7	0.5	0.8	77.7	2.9	19.4	0.080	0.506	18.629096	-97.402658
T. Izq. Azumbilla	20.51	3	0	2291	3.8	72.6	7.1	8.7	2.2	4.1	1.1	0.1	0.3	76.4	7.1	16.5	0.103	0.527	18.648200	-97.387503
Lim. Edos. Term. Pue. Ppia. Ver.	26.58																			
Cd. Mendoza	53.31	1	0	9857	3.6	72.3	7.9	7.3	0.9	4.8	2.5	0.1	0.6	75.9	7.9	16.2	0.081	0.505	18.790314	-97.195952
Cd. Mendoza	53.31	3	1	6931	5.3	75.8	7.8	9.3	0.1	0.8	0.7	0.0	0.2	81.1	7.8	11.1	0.098	0.535	18.810201	-97.172958
Cd. Mendoza	53.31	3	2	6689	5.0	75.2	8.0	9.8	0.1	0.9	0.8	0.0	0.2	80.2	8.0	11.8	0.073	0.535	18.810192	-97.172954
Orizaba	63.52	1	1	17885	3.8	85.4	3.0	3.3	0.2	2.2	1.8	0.1	0.2	89.2	3.0	7.8	0.067	0.531	18.840827	-97.113785
Orizaba	63.52	1	2	17390	2.7	85.2	3.4	3.7	0.2	2.5	2.0	0.1	0.2	87.9	3.4	8.7	0.067	0.531	18.840828	-97.113784
Orizaba	63.52	3	1	17592	2.7	79.4	3.4	10.8	1.0	0.9	0.8	0.4	0.6	82.1	3.4	14.5	0.070	0.515	18.859875	-97.065497
Orizaba	63.52	3	2	16566	3.5	75.8	3.7	12.9	1.2	1.0	0.9	0.4	0.6	79.3	3.7	17.0	0.075	0.515	18.859874	-97.065522
Fortín	80.24	1	0	5764	5.7	79.6	0.5	7.0	1.7	3.2	1.1	0.3	0.9	85.3	0.5	14.2	0.079	0.508	18.892279	-97.011964
Fortín	80.24	3	1	11786	3.4	87.2	0.3	5.4	0.6	1.1	1.4	0.2	0.4	90.6	0.3	9.1	0.074	0.505	18.901695	-96.989741
Fortín	80.24	3	2	11561	3.2	86.0	0.3	6.4	0.7	1.2	1.6	0.2	0.4	89.2	0.3	10.5	0.076	0.505	18.901695	-96.989730
Córdoba	86.76	1	1	13749	2.0	83.9	5.6	4.3	1.8	1.4	0.5	0.3	0.2	85.9	5.6	8.5	0.092	0.527	18.902587	-96.979598
Córdoba	86.76	1	2	12343	4.2	80.6	6.0	4.8	1.9	1.5	0.5	0.3	0.2	84.8	6.0	9.2	0.074	0.527	18.902589	-96.979603

16 CARR: Tehuacán - Huajuapán de León

CLAVE: 00211

RUTA: MEX-125

AÑO: 2012

LUGAR	ESTACION				CLASIFICACION VEHICULAR EN PORCIENTO													COORDENADAS		
	KM	TE	SC	TDPA	M	A	B	C2	C3	T3S2	T3S3	T3S2R4	OTROS	A	B	C	K'	D	LATITUD	LONGITUD
Tehuacán	0.00	3	1	3846	7.4	77.6	4.5	5.4	1.5	1.5	1.4	0.2	0.5	85.0	4.5	10.5	0.070	0.532	18.436880	-97.401362
Tehuacán	0.00	3	2	3837	5.8	77.9	5.0	5.7	1.6	1.7	1.6	0.2	0.5	83.7	5.0	11.3	0.078	0.532	18.436880	-97.401365
Zapotitlán Salinas	28.00	1	0	2383	3.9	75.0	6.7	8.1	2.4	2.1	1.2	0.3	0.3	78.9	6.7	14.4	0.086	0.503	18.334194	-97.463854
Lim. Edos. Term. Pue. Ppia. Oax.	55.80																			
Santiago Chazumba	63.02	1	0	1312	1.1	78.2	2.1	9.6	2.6	3.4	1.6	1.0	0.4	79.3	2.1	18.6	0.093	0.519	18.198523	-97.679622

PUEBLA

16 CARR: Tehuacán - Huajuapán de León

CLAVE: 00211

RUTA: MEX-125

AÑO: 2012

LUGAR	ESTACION				CLASIFICACION VEHICULAR EN PORCIENTO													COORDENADAS		
	KM	TE	SC	TDPA	M	A	B	C2	C3	T3S2	T3S3	T3S2R4	OTROS	A	B	C	K'	D	LATITUD	LONGITUD
Santiago Chazumba	63.02	3	0	1355	1.7	79.5	3.6	6.9	2.4	3.2	1.5	1.1	0.1	81.2	3.6	15.2	0.094	0.504	18.185935	-97.678879
T. Izq. Santa María Camotlán	103.13	1	0	1527	1.7	79.4	1.8	8.9	2.5	3.2	1.4	0.9	0.2	81.1	1.8	17.1	0.095	0.514	17.906003	-97.693395
T. C. Huajuapán de León - Oaxaca	119.40	1	0	7830	3.5	79.1	1.6	5.7	2.6	4.6	1.9	0.5	0.5	82.6	1.6	15.8	0.077	0.503	17.821553	-97.758954

17 CARR: Teziutlán - Nautla

CLAVE: 00144

RUTA: MEX-129

AÑO: 2012

LUGAR	ESTACION				CLASIFICACION VEHICULAR EN PORCIENTO													COORDENADAS		
	KM	TE	SC	TDPA	M	A	B	C2	C3	T3S2	T3S3	T3S2R4	OTROS	A	B	C	K'	D	LATITUD	LONGITUD
Teziutlán	0.00	3	0	6854	1.0	81.1	4.7	8.5	0.9	2.1	0.9	0.1	0.7	82.1	4.7	13.2	0.084	0.510	19.836161	-97.341389
Lim. Edos. Term. Pue. Ppia. Ver.	17.50																			
Tlapacoyan	33.20	1	0	5476	4.1	80.7	2.7	8.5	0.7	2.5	0.5	0.0	0.3	84.8	2.7	12.5	0.078	0.508	19.954774	-97.219121
Tlapacoyan	33.20	3	0	10371	2.7	76.9	2.3	9.1	2.0	4.7	1.2	0.2	0.9	79.6	2.3	18.1	0.076	0.501	19.977177	-97.203287
Martínez de La Torre	58.00	3	0	15017	2.6	82.0	3.1	8.1	1.8	1.1	1.0	0.2	0.1	84.6	3.1	12.3	0.081	0.511	20.086178	-97.024526
San Rafael	84.40	3	0	8099	1.8	77.7	2.7	6.7	2.7	4.6	1.8	1.0	1.0	79.5	2.7	17.8	0.081	0.514	20.197224	-96.868187
T. C. Poza Rica - Veracruz	93.20	1	0	5030	1.0	75.7	3.2	9.0	3.9	4.3	1.6	0.8	0.5	76.7	3.2	20.1	0.095	0.500	20.232765	-96.795379

18 CARR: Teziutlán - Perote

CLAVE: 00209

RUTA: MEX-131

AÑO: 2012

LUGAR	ESTACION				CLASIFICACION VEHICULAR EN PORCIENTO													COORDENADAS		
	KM	TE	SC	TDPA	M	A	B	C2	C3	T3S2	T3S3	T3S2R4	OTROS	A	B	C	K'	D	LATITUD	LONGITUD
Teziutlán	0.00	3	0	9398	1.0	82.9	2.6	6.7	0.9	3.5	1.5	0.3	0.6	83.9	2.6	13.5	0.077	0.514	19.790341	-97.352369
Lim. Edos. Term. Pue. Ppia. Ver.	11.30																			
Jalacingo	12.50	3	0	6071	3.3	77.4	5.6	6.2	2.4	3.1	1.1	0.3	0.6	80.7	5.6	13.7	0.086	0.502	19.791716	-97.296996
T. Izq. Atzalan	23.00	3	0	9042	1.4	76.6	2.9	7.5	3.6	5.1	1.6	0.4	0.9	78.0	2.9	19.1	0.070	0.501	19.778417	-97.250583
T. Izq. Altotonga II	26.90	3	0	7365	0.7	77.1	2.3	7.7	5.2	4.2	1.7	0.3	0.8	77.8	2.3	19.9	0.077	0.516	19.766021	-97.251450
T. Izq. Villa Aldama	37.60	3	0	5807	1.3	76.1	4.9	6.1	4.8	3.9	1.7	0.4	0.8	77.4	4.9	17.7	0.075	0.515	19.661506	-97.247105
Perote	49.10	1	0	6077	1.5	76.9	4.7	6.9	3.9	3.5	1.3	1.0	0.3	78.4	4.7	16.9	0.080	0.504	19.580168	-97.248882

19 CARR: Zacatepec - Oriental

CLAVE: 21189

RUTA: MEX-136

AÑO: 2012

LUGAR	ESTACION				CLASIFICACION VEHICULAR EN PORCIENTO													COORDENADAS		
	KM	TE	SC	TDPA	M	A	B	C2	C3	T3S2	T3S3	T3S2R4	OTROS	A	B	C	K'	D	LATITUD	LONGITUD
Zacatepec	0.00	3	0	2175	0.4	79.3	3.5	4.8	3.9	3.7	3.5	0.4	0.5	79.7	3.5	16.8	0.089	0.511	19.272084	-97.533587
Oriental	16.00																			



PUEBLA

22 CARR: Cuacnopalan - Oaxaca (Cuota)

CLAVE: 00109

RUTA: MEX-135D

AÑO: 2012

LUGAR	ESTACION				CLASIFICACION VEHICULAR EN PORCIENTO													COORDENADAS		
	KM	TE	SC	TDPA	M	A	B	C2	C3	T3S2	T3S3	T3S2R4	OTROS	A	B	C	K'	D	LATITUD	LONGITUD
T. C. Puebla - Córdoba (Cuota)	0.00	3	0	7972	0.2	67.8	6.4	10.9	3.4	6.5	1.5	2.6	0.7	68.0	6.4	25.6	0.079	0.511	18.817594	-97.491219
T. Der. Cuacnopalan	1.80	3	0	7699	0.2	68.6	7.9	9.3	3.6	5.0	1.7	3.1	0.6	68.8	7.9	23.3	0.072	0.510	18.811101	-97.490662
Caseta de Cobro Tehuacán	40.00	2	0	7649	0.2	73.5	7.4	5.8	4.7	4.3	0.8	2.8	0.5	73.7	7.4	18.9	0.083	0.500	18.487160	-97.456032
T. C. Puebla - Tehuacán	40.00	3	0	7490	0.4	64.6	8.4	11.1	4.3	6.0	1.4	3.5	0.3	65.0	8.4	26.6	0.074	0.504	18.479187	-97.456183
X. C. Tehuacán - Huajuapán de León	48.00	3	0	10390	0.3	65.7	7.4	9.8	5.0	6.2	1.8	2.8	1.0	66.0	7.4	26.6	0.079	0.514	18.404678	-97.389224
T. Izq. San Gabriel Chilac	61.00	3	0	9059	0.4	64.2	8.2	9.2	5.7	6.6	1.5	3.3	0.9	64.6	8.2	27.2	0.082	0.502	18.331698	-97.369292
Caseta de Cobro Miahuatlán	71.42	2	0	4260	0.2	67.6	8.9	6.5	6.9	5.1	1.2	3.1	0.5	67.8	8.9	23.3	0.083	0.500	18.264654	-97.315569
Lim. Edos. Term. Pue. Ppia. Oax.	83.50																			
Caseta de Cobro Coixtlahuaca	141.30	2	0	3564	0.2	66.3	9.1	6.4	7.2	5.6	1.1	3.6	0.5	66.5	9.1	24.4	0.083	0.500	17.726231	-97.351913
T. Izq. Asunción Nochistlán	174.90	1	0	4113	0.2	71.1	5.6	8.6	4.5	5.0	1.3	3.1	0.6	71.3	5.6	23.1	0.088	0.530	17.471102	-97.252085
T. Izq. Asunción Nochistlán	175.50	3	0	5187	0.3	69.3	6.1	8.9	4.4	5.8	1.4	2.9	0.9	69.6	6.1	24.3	0.079	0.506	17.455330	-97.240789
Caseta de Cobro Huitzo	220.00	2	0	5311	0.2	76.7	6.8	5.1	4.6	3.5	0.7	2.0	0.4	76.9	6.8	16.3	0.083	0.500	17.274916	-96.915367
T. C. Huajuapán de León - Oaxaca	242.70	1	1	3334	0.1	74.8	5.0	9.8	3.3	3.4	1.1	2.0	0.5	74.9	5.0	20.1	0.087	0.516	17.147459	-96.783709
T. C. Huajuapán de León - Oaxaca	242.70	1	2	3127	0.1	71.0	5.7	11.8	3.6	3.8	1.3	2.1	0.6	71.1	5.7	23.2	0.106	0.516	17.147522	-96.783786

23 CARR: Ent. Tulancingo - Venta Grande (Cuota)

CLAVE: 00026

RUTA: MEX-132D

AÑO: 2012

LUGAR	ESTACION				CLASIFICACION VEHICULAR EN PORCIENTO													COORDENADAS		
	KM	TE	SC	TDPA	M	A	B	C2	C3	T3S2	T3S3	T3S2R4	OTROS	A	B	C	K'	D	LATITUD	LONGITUD
T. C. Pachuca - Tuxpam	0.00																			
T. Izq. Acatlán	7.80	1	0	8087	0.4	75.3	7.2	5.3	3.1	4.8	1.8	1.2	0.9	75.7	7.2	17.1	0.112	0.501	20.104115	-98.409319
T. Izq. Acatlán	7.80	3	0	8874	0.5	79.8	5.2	4.0	3.0	4.2	1.4	1.0	0.9	80.3	5.2	14.5	0.122	0.508	20.111301	-98.392333
X. C. Pachuca - Tuxpam	21.80	1	0	8104	0.5	79.7	3.9	5.4	2.9	3.9	1.8	1.2	0.7	80.2	3.9	15.9	0.091	0.525	20.151739	-98.306810
Caseta de Cobro San Alejo (Tejocotal)	21.80	2	0	5808	0.1	73.7	6.7	5.1	4.8	5.2	2.1	2.0	0.3	73.8	6.7	19.5	0.115	0.500	20.147597	-98.285760
T. C. Tlaxco - Tejocotal (Cuota)	39.60	1	0	6906	0.4	72.3	7.7	6.8	3.8	5.3	1.8	1.1	0.8	72.7	7.7	19.6	0.134	0.535	20.141671	-98.137886

24 CARR: Libramiento de San Martín Texmelucan

CLAVE: 21014

RUTA: MEX-057D

AÑO: 2012

LUGAR	ESTACION				CLASIFICACION VEHICULAR EN PORCIENTO													COORDENADAS		
	KM	TE	SC	TDPA	M	A	B	C2	C3	T3S2	T3S3	T3S2R4	OTROS	A	B	C	K'	D	LATITUD	LONGITUD
T. C. México - Puebla (Cuota)	135.90	1	1	6604	1.3	64.5	5.2	6.4	3.7	9.3	3.2	5.5	0.9	65.8	5.2	29.0	0.077	0.512	19.269361	-98.420591
T. C. México - Puebla (Cuota)	135.90	1	2	6932	1.6	60.3	6.1	7.6	4.0	10.2	3.5	5.6	1.1	61.9	6.1	32.0	0.067	0.512	19.269361	-98.420591
T. C. San Martín Texmelucan - Ocotoxco Cuota	139.80																			





PUEBLA

26 CARR: Puebla - Acatzingo (Cuota)

CLAVE: 00485

RUTA: MEX-150D

AÑO: 2012

LUGAR	ESTACION				CLASIFICACION VEHICULAR EN PORCIENTO														COORDENADAS	
	KM	TE	SC	TDPA	M	A	B	C2	C3	T3S2	T3S3	T3S2R4	OTROS	A	B	C	K'	D	LATITUD	LONGITUD
Puebla	0.00	3	1	30524	0.4	76.4	6.6	6.6	2.4	3.2	2.0	1.6	0.8	76.8	6.6	16.6	0.071	0.522	19.069668	-98.128364
Puebla	0.00	3	2	31403	0.3	76.4	6.3	6.1	2.7	3.6	2.0	1.7	0.9	76.7	6.3	17.0	0.071	0.522	19.069668	-98.128374
T. Der. Amozoc (Caseta de Cobro)	21.55	1	1	17686	0.5	75.9	5.6	6.5	3.1	3.7	1.8	2.1	0.8	76.4	5.6	18.0	0.073	0.503	19.050542	-98.034829
T. Der. Amozoc (Caseta de Cobro)	21.55	1	2	17483	0.4	73.5	6.1	7.3	3.7	3.9	1.9	2.2	1.0	73.9	6.1	20.0	0.065	0.503	19.050542	-98.034829
Caseta de Cobro Amozoc	21.55	2	1	12538	0.1	66.6	7.6	5.2	5.3	7.1	1.4	5.8	0.9	66.7	7.6	25.7	0.065	0.500	19.049845	-98.032307
Caseta de Cobro Amozoc	21.55	2	2	12538	0.1	66.6	7.6	5.2	5.3	7.1	1.4	5.8	0.9	66.7	7.6	25.7	0.069	0.500	19.049845	-98.032307
T. Der. Amozoc (Caseta de Cobro)	21.55	3	1	14645	0.4	54.4	4.4	6.0	3.0	25.9	1.6	3.5	0.8	54.8	4.4	40.8	0.069	0.517	19.048256	-98.026844
T. Der. Amozoc (Caseta de Cobro)	21.55	3	2	14134	0.6	48.7	4.9	6.4	3.3	29.7	1.8	3.7	0.9	49.3	4.9	45.8	0.063	0.517	19.048256	-98.026844
T. Izq. Acatzingo	47.10	1	1	24309	0.5	72.5	6.4	6.1	2.8	5.6	2.0	3.3	0.8	73.0	6.4	20.6	0.074	0.507	19.043910	-98.081103
T. Izq. Acatzingo	47.10	1	2	23619	0.4	70.4	7.0	6.7	3.0	5.8	2.2	3.5	1.0	70.8	7.0	22.2	0.075	0.507	18.978679	-97.815909

27 CARR: San Martin Texmelucan - Tlaxcala - El Molinito (Cuota)

CLAVE: 00212

RUTA: MEX-117D

AÑO: 2012

LUGAR	ESTACION				CLASIFICACION VEHICULAR EN PORCIENTO														COORDENADAS	
	KM	TE	SC	TDPA	M	A	B	C2	C3	T3S2	T3S3	T3S2R4	OTROS	A	B	C	K'	D	LATITUD	LONGITUD
T. C. México - Puebla (Cuota)	0.00																			
X. C. San Martín Texmelucan - Tlaxcala	1.80	1	0	8403	0.1	81.0	3.3	8.9	1.2	3.4	0.8	0.8	0.5	81.1	3.3	15.6	0.091	0.504	19.288935	-98.420970
Lim. Edos. Term. Pue. Ppia. Tlax.	4.05																			
Caseta de Cobro San Martín Texmelucan	5.45	2	1	3247	0.0	76.5	14.9	3.2	1.5	1.9	0.7	1.2	0.1	76.5	14.9	8.6	0.088	0.500	19.301568	-98.404044
Caseta de Cobro San Martín Texmelucan	5.45	2	2	3247	0.0	76.5	14.9	3.2	1.5	1.9	0.7	1.2	0.1	76.5	14.9	8.6	0.088	0.500	19.301568	-98.404044
X. C. San Martín Texmelucan - Tlaxcala (Trébol)	24.75	1	1	11755	1.1	89.1	2.4	4.6	0.6	0.9	0.6	0.6	0.1	90.2	2.4	7.4	0.106	0.519	19.325236	-98.251273
X. C. San Martín Texmelucan - Tlaxcala (Trébol)	24.75	1	2	10907	1.0	88.6	2.5	4.8	0.7	1.1	0.6	0.6	0.1	89.6	2.5	7.9	0.083	0.519	19.325236	-98.251273
X. C. San Martín Texmelucan - Tlaxcala (Trébol)	24.75	3	1	13122	0.6	86.9	2.6	7.0	0.7	0.9	0.7	0.5	0.1	87.5	2.6	9.9	0.117	0.513	19.337036	-98.231300
X. C. San Martín Texmelucan - Tlaxcala (Trébol)	24.75	3	2	12456	1.1	85.0	3.0	7.8	0.7	1.0	0.7	0.6	0.1	86.1	3.0	10.9	0.080	0.513	19.337036	-98.231300
T. Izq. Tizatlán	29.00	3	1	13620	0.4	85.2	3.2	9.1	0.6	0.8	0.4	0.3	0.0	85.6	3.2	11.2	0.080	0.515	19.337638	-98.214302
T. Izq. Tizatlán	29.00	3	2	12817	0.2	83.6	3.6	10.4	0.7	0.8	0.4	0.3	0.0	83.8	3.6	12.6	0.109	0.515	19.337638	-98.214302
T. Der. San Pablo Apetatitlán	31.65	3	1	26178	0.3	88.0	3.2	4.6	0.8	1.6	1.0	0.3	0.2	88.3	3.2	8.5	0.077	0.511	19.347679	-98.194436
T. Der. San Pablo Apetatitlán	31.65	3	2	25070	0.4	86.5	3.6	5.2	0.9	1.7	1.2	0.3	0.2	86.9	3.6	9.5	0.079	0.511	19.347679	-98.194436
Ocotoxco	35.20	1	1	22453	0.4	84.3	4.3	4.8	0.9	2.1	1.9	0.5	0.8	84.7	4.3	11.0	0.075	0.507	19.384372	-98.178155
Ocotoxco	35.20	1	2	22978	0.5	82.9	4.4	5.4	1.0	2.3	2.0	0.7	0.8	83.4	4.4	12.2	0.070	0.507	19.384372	-98.178155



PUEBLA

31 CARR: Cholula - Puebla (Vía Quetzalcóatl)

CLAVE: 21203

RUTA: PUE

AÑO: 2012

LUGAR	ESTACION				CLASIFICACION VEHICULAR EN PORCIENTO										COORDENADAS					
	KM	TE	SC	TDPA	M	A	B	C2	C3	T3S2	T3S3	T3S2R4	OTROS	A	B	C	K'	D	LATITUD	LONGITUD
Cholula	0.00	3	1	21351	1.1	94.1	1.4	1.9	0.2	0.4	0.7	0.1	0.1	95.2	1.4	3.4	0.081	0.505	19.059936	-98.293183
Cholula	0.00	3	2	21787	0.7	93.8	1.6	2.3	0.2	0.4	0.8	0.1	0.1	94.5	1.6	3.9	0.077	0.505	19.059936	-98.293183
Puebla	12.00	1	1	24539	0.6	92.2	3.4	3.1	0.1	0.2	0.3	0.0	0.1	92.8	3.4	3.8	0.093	0.504	19.059677	-98.239636
Puebla	12.00	1	2	24174	0.9	91.2	3.8	3.4	0.1	0.2	0.3	0.0	0.1	92.1	3.8	4.1	0.089	0.504	19.059677	-98.239636

32 CARR: Cuacnopalan - Santa Catarina Los Reyes

CLAVE: 00109

RUTA: PUE

AÑO: 2012

LUGAR	ESTACION				CLASIFICACION VEHICULAR EN PORCIENTO										COORDENADAS					
	KM	TE	SC	TDPA	M	A	B	C2	C3	T3S2	T3S3	T3S2R4	OTROS	A	B	C	K'	D	LATITUD	LONGITUD
Cuacnopalan	0.00	3	0	1624	3.1	78.2	1.5	10.2	2.5	2.9	1.2	0.2	0.2	81.3	1.5	17.2	0.090	0.507	18.825497	-97.499240
Santa Catarina Los Reyes	13.00	1	0	504	1.4	87.1	2.5	7.2	0.9	0.8	0.1	0.0	0.0	88.5	2.5	9.0	0.130	0.501	18.882086	-97.441860

33 CARR: Cuapiaxtla - Acatlán de Osorio

CLAVE: 21014

RUTA: PUE

AÑO: 2012

LUGAR	ESTACION				CLASIFICACION VEHICULAR EN PORCIENTO										COORDENADAS					
	KM	TE	SC	TDPA	M	A	B	C2	C3	T3S2	T3S3	T3S2R4	OTROS	A	B	C	K'	D	LATITUD	LONGITUD
T. C. Puebla - Tehuacán	0.00	3	0	6454	2.2	80.1	1.1	9.4	2.1	3.5	1.0	0.2	0.4	82.3	1.1	16.6	0.079	0.512	18.917094	-97.833003
Molcaxac	23.18	1	0	4457	1.4	79.0	4.0	9.5	2.0	2.5	0.9	0.2	0.5	80.4	4.0	15.6	0.078	0.504	18.742690	-97.907723
Tepexi de Rodríguez	45.35	1	0	2710	0.5	82.1	4.1	10.3	1.0	1.4	0.3	0.0	0.3	82.6	4.1	13.3	0.116	0.522	18.585421	-97.930709
Tepexi de Rodríguez	45.35	3	0	3785	1.3	82.7	3.8	8.0	1.0	2.1	0.6	0.1	0.4	84.0	3.8	12.2	0.085	0.514	18.573372	-97.928227
San Juan Ixcaquixtla	63.35	1	0	3786	1.4	83.2	5.2	5.7	0.9	2.4	0.5	0.2	0.5	84.6	5.2	10.2	0.085	0.500	18.469806	-97.842000
Acatlán de Osorio	127.00	1	0	2411	5.5	79.8	5.1	5.5	0.6	2.0	0.2	0.5	0.8	85.3	5.1	9.6	0.084	0.500	18.236194	-98.032389

34 CARR: Izúcar de Matamoros - Tepexi de Rodríguez

CLAVE: 21014

RUTA: PUE

AÑO: 2012

LUGAR	ESTACION				CLASIFICACION VEHICULAR EN PORCIENTO										COORDENADAS					
	KM	TE	SC	TDPA	M	A	B	C2	C3	T3S2	T3S3	T3S2R4	OTROS	A	B	C	K'	D	LATITUD	LONGITUD
Izúcar de Matamoros	0.00	3	0	2980	8.9	83.4	1.1	1.5	0.8	2.3	0.4	0.6	1.0	92.3	1.1	6.6	0.088	0.504	18.610361	-98.451194
Zacapala	46.00	1	0	837	2.3	88.7	1.1	2.0	3.8	1.0	0.2	0.1	0.8	91.0	1.1	7.9	0.127	0.503	18.591825	-98.073503
T. Der. Tepexi de Rodríguez	62.00	1	0	1564	0.9	92.5	0.1	2.0	2.7	1.0	0.2	0.1	0.5	93.4	0.1	6.5	0.097	0.502	18.635477	-97.927959



PUEBLA

40 CARR: San Juan Ixcaquixtla - Pino Suárez

CLAVE: 00486

RUTA: PUE

AÑO: 2012

LUGAR	ESTACION				CLASIFICACION VEHICULAR EN PORCIENTO														COORDENADAS	
	KM	TE	SC	TDPA	M	A	B	C2	C3	T3S2	T3S3	T3S2R4	OTROS	A	B	C	K'	D	LATITUD	LONGITUD
San Juan Ixcaquixtla	0.00	3	0	1867	2.2	83.4	3.2	7.5	2.1	1.4	0.0	0.0	0.2	85.6	3.2	11.2	0.085	0.511	18.408417	-97.823472
San Martín Atexcal	13.00	1	0	908	1.6	84.8	3.5	7.6	1.0	1.4	0.0	0.0	0.1	86.4	3.5	10.1	0.104	0.512	18.399972	-97.742361
San Bartolo Teontepec	42.80	1	0	1434	8.1	77.3	0.4	10.7	1.4	1.9	0.2	0.0	0.0	85.4	0.4	14.2	0.085	0.520	18.487207	-97.532757
T. C. Puebla - Tehuacán	47.10	1	0	3345	4.9	78.1	4.3	7.4	1.1	3.2	0.5	0.1	0.4	83.0	4.3	12.7	0.087	0.500	18.514259	-97.501267

41 CARR: Tecamachalco - Cañada Morelos

CLAVE: 21002

RUTA: PUE

AÑO: 2012

LUGAR	ESTACION				CLASIFICACION VEHICULAR EN PORCIENTO														COORDENADAS	
	KM	TE	SC	TDPA	M	A	B	C2	C3	T3S2	T3S3	T3S2R4	OTROS	A	B	C	K'	D	LATITUD	LONGITUD
Tecamachalco	0.00	3	0	11429	1.1	84.5	3.7	5.4	1.9	1.5	1.2	0.3	0.4	85.6	3.7	10.7	0.080	0.506	18.885501	-97.720077
T. Izq. Quecholac	8.00	1	0	12303	1.1	82.5	3.1	8.9	1.9	1.0	1.0	0.4	0.1	83.6	3.1	13.3	0.080	0.502	18.902056	-97.705111
T. C. Cuacnopalan - Cd. Serdán	31.30	3	0	2834	1.5	73.2	6.0	4.3	2.6	8.5	1.8	1.5	0.6	74.7	6.0	19.3	0.083	0.508	18.805005	-97.510607
T. C. San Salvador El Seco - Azumbilla	44.46	1	0	3034	2.1	74.2	4.2	6.3	2.0	7.8	1.5	1.3	0.6	76.3	4.2	19.5	0.083	0.506	18.742816	-97.423458

42 CARR: Tecamachalco - Quecholac

CLAVE: 21002

RUTA: PUE

AÑO: 2012

LUGAR	ESTACION				CLASIFICACION VEHICULAR EN PORCIENTO														COORDENADAS	
	KM	TE	SC	TDPA	M	A	B	C2	C3	T3S2	T3S3	T3S2R4	OTROS	A	B	C	K'	D	LATITUD	LONGITUD
Tecamachalco	0.00																			
T. C. Puebla - Córdoba (Cuota)	7.80	1	0	11792	1.9	79.4	1.0	3.6	4.6	2.3	2.2	4.4	0.6	81.3	1.0	17.7	0.076	0.540	18.925308	-97.683042
T. C. Puebla - Córdoba (Cuota)	7.80	3	0	10985	2.1	79.7	4.9	8.2	1.1	2.4	0.6	0.3	0.7	81.8	4.9	13.3	0.081	0.501	18.933137	-97.685913
Quecholac	11.20																			

43 CARR: Zacatlán - Zapotitlán

CLAVE: 21580

RUTA: PUE

AÑO: 2012

LUGAR	ESTACION				CLASIFICACION VEHICULAR EN PORCIENTO														COORDENADAS	
	KM	TE	SC	TDPA	M	A	B	C2	C3	T3S2	T3S3	T3S2R4	OTROS	A	B	C	K'	D	LATITUD	LONGITUD
T. C. Apizaco - Tejocotal	0.00	3	0	6670	2.0	77.1	6.2	4.4	1.1	6.3	1.6	0.5	0.8	79.1	6.2	14.7	0.074	0.512	19.941671	-97.963912
Zapotitlán	45.00																			

44 CARR: Atlixco - Jantetelco (Cuota)

CLAVE: 00430

RUTA: PUE-D

AÑO: 2012

LUGAR	ESTACION				CLASIFICACION VEHICULAR EN PORCIENTO														COORDENADAS	
	KM	TE	SC	TDPA	M	A	B	C2	C3	T3S2	T3S3	T3S2R4	OTROS	A	B	C	K'	D	LATITUD	LONGITUD
T. C. Puebla - Izúcar de Matamoros	0.00	3	0	5904	0.7	83.5	3.5	4.6	2.7	2.6	0.9	0.7	0.8	84.2	3.5	12.3	0.103	0.500	18.942444	-98.399111

## PUEBLA

44 CARR: Atlixco - Jantetelco (Cuota)

CLAVE: 00430

RUTA: PUE-D

AÑO: 2012

LUGAR	ESTACION				CLASIFICACION VEHICULAR EN PORCIENTO													COORDENADAS		
	KM	TE	SC	TDPA	M	A	B	C2	C3	T3S2	T3S3	T3S2R4	OTROS	A	B	C	K'	D	LATITUD	LONGITUD
Lim. Edos. Term. Pue. Ppia. Mor.	48.60																			
T. C. Santa Bárbara - Izúcar de Matamoros	54.90	1	0	5626	0.7	81.4	3.8	5.8	2.8	2.8	1.0	0.9	0.8	82.1	3.8	14.1	0.110	0.502	18.710583	-98.768389

45 CARR: Libres - Teziutlán (Cuota)

CLAVE: 21014

RUTA: PUE-D

AÑO: 2012

LUGAR	ESTACION				CLASIFICACION VEHICULAR EN PORCIENTO													COORDENADAS		
	KM	TE	SC	TDPA	M	A	B	C2	C3	T3S2	T3S3	T3S2R4	OTROS	A	B	C	K'	D	LATITUD	LONGITUD
T. C. Amozoc - Perote (Cuota)	0.00	3	0	2953	0.5	80.5	6.1	6.8	1.9	1.8	0.7	1.0	0.7	81.0	6.1	12.9	0.092	0.520	19.428190	-97.635522
Ent. Cuyoaco	19.00	3	0	4139	0.3	81.2	5.0	7.7	2.1	1.8	0.8	0.7	0.4	81.5	5.0	13.5	0.084	0.512	19.598008	-97.611441
T. Izq. Zaragoza	40.00	1	0	4146	0.4	81.3	4.4	7.8	1.9	2.1	0.8	0.8	0.5	81.7	4.4	13.9	0.082	0.507	19.753231	-97.549259
T. Izq. Zaragoza	40.00	3	0	4018	0.4	79.9	4.3	10.2	1.5	1.8	0.8	0.7	0.4	80.3	4.3	15.4	0.081	0.512	19.761191	-97.544953
Teziutlán	62.00	1	0	3457	0.7	81.5	3.8	8.5	1.3	2.4	0.7	0.5	0.6	82.2	3.8	14.0	0.076	0.509	19.824124	-97.379336
Teziutlán	88.00																			

46 CARR: Puebla - Atlixco (Cuota)

CLAVE: 21585

RUTA: PUE-D

AÑO: 2012

LUGAR	ESTACION				CLASIFICACION VEHICULAR EN PORCIENTO													COORDENADAS		
	KM	TE	SC	TDPA	M	A	B	C2	C3	T3S2	T3S3	T3S2R4	OTROS	A	B	C	K'	D	LATITUD	LONGITUD
Puebla	0.00	3	1	16537	0.4	88.1	2.8	5.8	0.6	1.0	0.5	0.4	0.4	88.5	2.8	8.7	0.119	0.506	19.003472	-98.273806
Puebla	0.00	3	2	16121	0.4	87.2	3.0	6.4	0.6	1.0	0.6	0.4	0.4	87.6	3.0	9.4	0.126	0.506	19.003472	-98.273806
Atlixco	25.30	1	1	6301	0.4	89.0	3.3	5.4	0.6	0.8	0.2	0.2	0.1	89.4	3.3	7.3	0.118	0.509	18.922806	-98.404528
Atlixco	25.30	1	2	6083	0.8	87.6	3.8	5.9	0.6	0.8	0.2	0.2	0.1	88.4	3.8	7.8	0.110	0.509	18.922778	-98.404528

47 CARR: Tlaxco - Tejocotal (Cuota)

CLAVE: 00209

RUTA: PUE-D

AÑO: 2012

LUGAR	ESTACION				CLASIFICACION VEHICULAR EN PORCIENTO													COORDENADAS		
	KM	TE	SC	TDPA	M	A	B	C2	C3	T3S2	T3S3	T3S2R4	OTROS	A	B	C	K'	D	LATITUD	LONGITUD
T. C. Apan - Tlaxco	0.00	3	0	3002	0.4	74.3	8.6	7.2	2.8	2.8	2.1	0.7	1.1	74.7	8.6	16.7	0.074	0.501	19.608385	-98.156658
T. C. Tejocotal - Tihuatlán (Cuota)	72.00																			

48 CARR: Ramal a Tulcingo del Valle

CLAVE: 21578

RUTA: PUE-MEX-093

AÑO: 2012

LUGAR	ESTACION				CLASIFICACION VEHICULAR EN PORCIENTO													COORDENADAS		
	KM	TE	SC	TDPA	M	A	B	C2	C3	T3S2	T3S3	T3S2R4	OTROS	A	B	C	K'	D	LATITUD	LONGITUD
T. C. Puebla - Huajuapán de León	0.00	3	0	2482	0.8	82.2	5.1	5.4	2.0	2.4	1.4	0.3	0.4	83.0	5.1	11.9	0.084	0.504	18.246889	-98.221722

PUEBLA

48 CARR: Ramal a Tulcingo del Valle

CLAVE: 21578

RUTA: PUE-MEX-093

AÑO: 2012

LUGAR	ESTACION				CLASIFICACION VEHICULAR EN PORCIENTO														COORDENADAS	
	KM	TE	SC	TDPA	M	A	B	C2	C3	T3S2	T3S3	T3S2R4	OTROS	A	B	C	K'	D	LATITUD	LONGITUD
T. Izq. Piaxtla	7.31	3	0	2268	1.6	81.6	2.8	5.1	2.9	2.6	1.6	0.9	0.9	83.2	2.8	14.0	0.086	0.504	18.187167	-98.270500
Tecomatlán	21.01	3	0	2412	1.5	82.6	4.8	5.0	1.7	2.2	1.5	0.4	0.3	84.1	4.8	11.1	0.082	0.500	18.095722	-98.315417
Tulcingo del Valle	43.00	1	0	2493	2.0	81.4	4.0	5.7	1.6	2.8	1.3	0.4	0.8	83.4	4.0	12.6	0.083	0.504	18.042778	-98.424639

49 CARR: Tehuacán - Huitzo

CLAVE: 00211

RUTA: PUE-MEX-135

AÑO: 2012

LUGAR	ESTACION				CLASIFICACION VEHICULAR EN PORCIENTO														COORDENADAS	
	KM	TE	SC	TDPA	M	A	B	C2	C3	T3S2	T3S3	T3S2R4	OTROS	A	B	C	K'	D	LATITUD	LONGITUD
Tehuacán	0.00	3	0	7245	4.5	82.1	4.3	4.1	0.7	3.0	0.5	0.2	0.6	86.6	4.3	9.1	0.072	0.525	18.451225	-97.370916
T. Der. San Gabriel Chilac	14.40	1	0	7722	5.8	79.7	3.3	4.3	0.9	3.9	1.0	0.3	0.8	85.5	3.3	11.2	0.077	0.518	18.404419	-97.329876
San Sebastián Zinacatepec	23.00	3	0	5289	5.3	77.8	5.2	7.0	1.1	2.4	0.7	0.1	0.4	83.1	5.2	11.7	0.080	0.503	18.325250	-97.229612
Lim. Edos. Term. Pue. Ppia. Oax.	60.90																			
Teotitlán del Camino	63.15	3	0	2338	5.0	85.7	0.4	6.9	0.4	1.3	0.1	0.0	0.2	90.7	0.4	8.9	0.082	0.501	18.121527	-97.073831
Santa María Tecomavaca	88.34	1	0	1133	2.7	82.6	0.2	10.6	1.9	0.5	0.3	0.2	1.0	85.3	0.2	14.5	0.086	0.501	17.965416	-97.036487
Santa María Tecomavaca	88.34	3	0	1003	4.0	85.3	0.7	7.5	1.2	1.0	0.3	0.0	0.0	89.3	0.7	10.0	0.092	0.501	17.949576	-97.022266
T. Izq. Cuicatlán	118.80	1	0	1488	3.9	79.4	3.7	10.1	1.6	1.2	0.1	0.0	0.0	83.3	3.7	13.0	0.095	0.535	17.793904	-96.960023
T. Izq. Nacaltepec	169.84	1	0	626	3.9	84.1	0.8	7.7	1.6	1.1	0.4	0.4	0.0	88.0	0.8	11.2	0.123	0.501	17.505998	-96.934028
T. C. Huajuapán de León - Oaxaca	202.70	1	0	6187	2.3	86.7	1.9	3.3	1.1	3.3	0.6	0.1	0.7	89.0	1.9	9.1	0.075	0.534	17.287076	-96.903529

50 CARR: Teotitlán de Flores Magón - Tuxtepec

CLAVE: 00108

RUTA: OAX-PUE-MEX-182

AÑO: 2012

LUGAR	ESTACION				CLASIFICACION VEHICULAR EN PORCIENTO														COORDENADAS	
	KM	TE	SC	TDPA	M	A	B	C2	C3	T3S2	T3S3	T3S2R4	OTROS	A	B	C	K'	D	LATITUD	LONGITUD
Teotitlán del Camino	0.00	3	0	1176	0.6	82.6	3.7	9.3	2.0	1.2	0.5	0.0	0.1	83.2	3.7	13.1	0.098	0.502	18.141350	-97.062051
Lim. Edos. Term. Oax. Ppia. Pue.	2.00																			
Lim. Edos. Term. Pue. Ppia. Oax.	10.00																			
Huautla	65.00	1	0	1498	1.1	84.2	3.6	8.0	0.8	1.5	0.5	0.0	0.3	85.3	3.6	11.1	0.108	0.504	18.125845	-96.844575
San Felipe Jalapa de Díaz	140.00	3	0	3636	4.4	84.2	3.1	3.4	2.3	2.0	0.4	0.0	0.2	88.6	3.1	8.3	0.089	0.510	18.082042	-96.522081
Tuxtepec	185.00	1	0	7204	1.5	84.2	2.9	5.9	0.3	4.0	0.4	0.1	0.7	85.7	2.9	11.4	0.077	0.502	18.086018	-96.152644

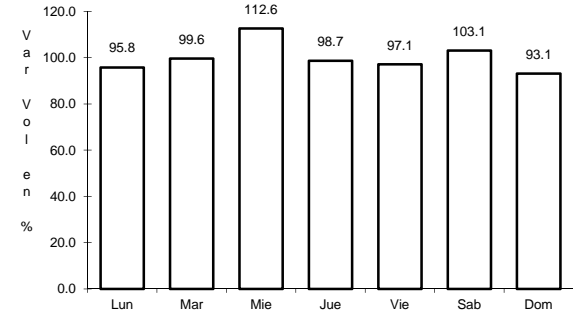
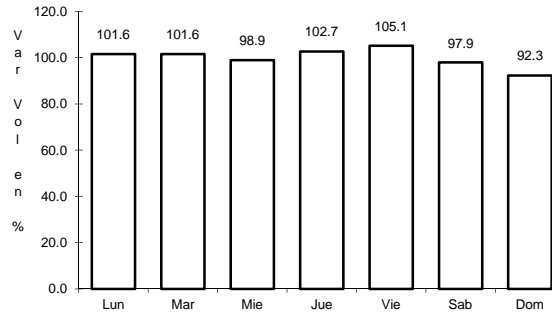
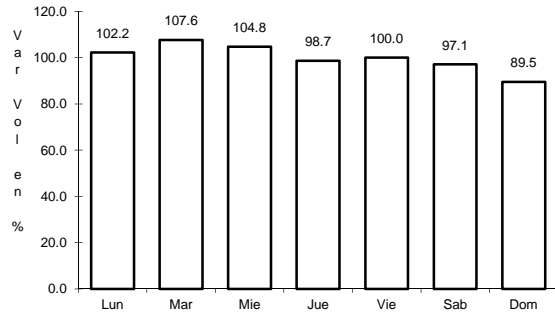




4 CARR: México - Puebla (Libre)

CLAVE: 00449

RUTA: MEX-190



Km: 28.85

Tipo: 1

Sent: 1

Km: 28.85

Tipo: 1

Sent: 2

Km: 62.06

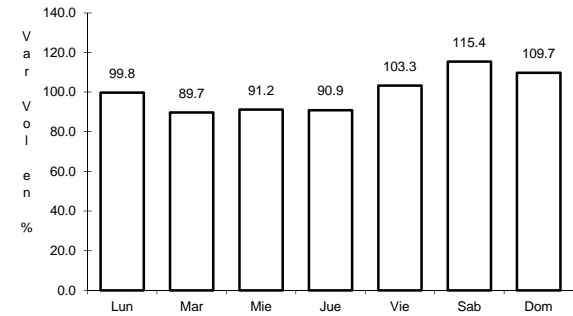
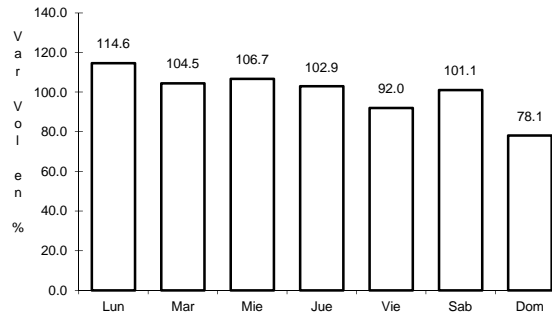
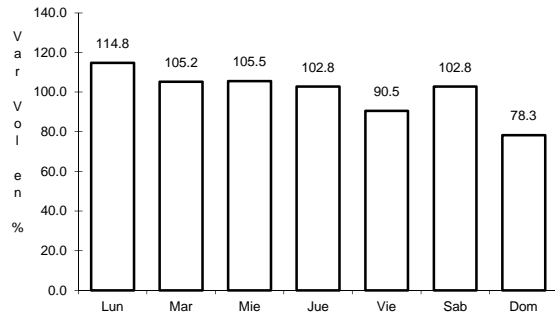
Tipo: 1

Sent: 0

5 CARR: Pachuca - Tuxpam

CLAVE: 00608

RUTA: MEX-130



Km: 2.60

Tipo: 3

Sent: 1

Km: 2.60

Tipo: 3

Sent: 2

Km: 141.75

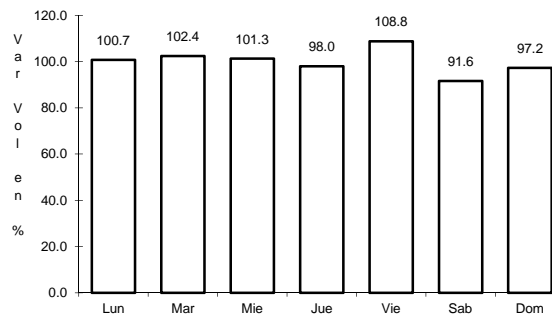
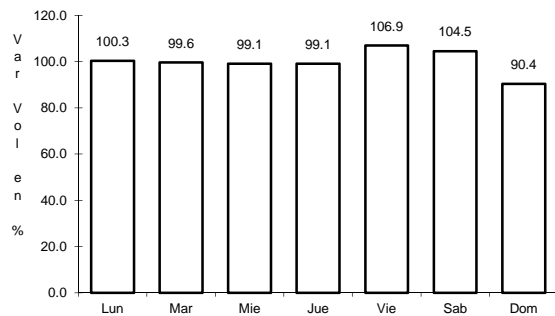
Tipo: 1

Sent: 0

6 CARR: Puebla - Belem

CLAVE: 00055

RUTA: MEX-121



Km: 4.00

Tipo: 3

Sent: 1

Km: 4.00

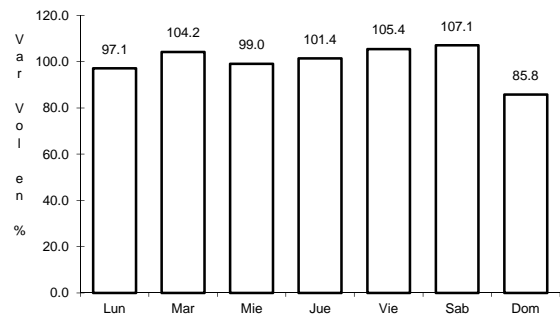
Tipo: 3

Sent: 2

## 7 CARR: Puebla - Huajuapán de León

CLAVE: 00049

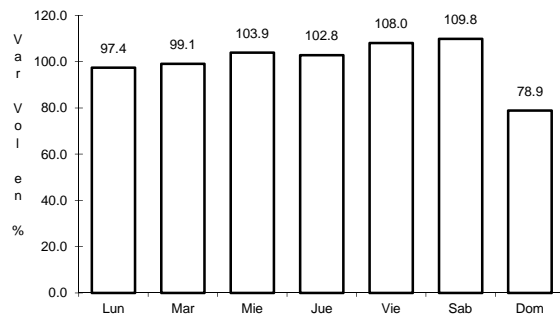
RUTA: MEX-190



Km: 0.00

Tipo: 3

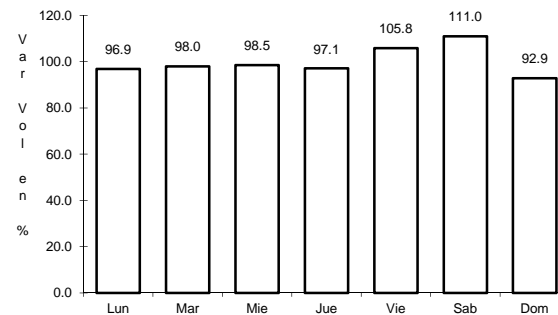
Sent: 1



Km: 0.00

Tipo: 3

Sent: 2



Km: 219.30

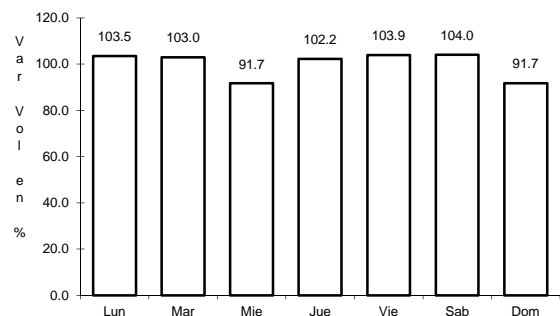
Tipo: 1

Sent: 0

## 8 CARR: Puebla - Tehuacán

CLAVE: 21047

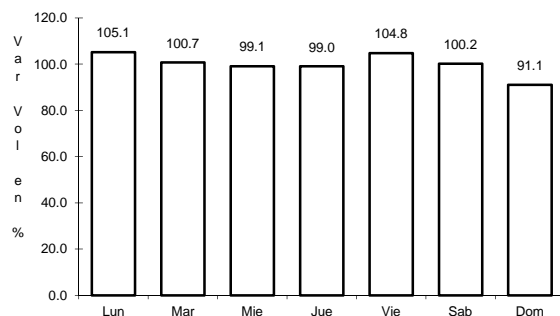
RUTA: MEX-150



Km: 5.83

Tipo: 3

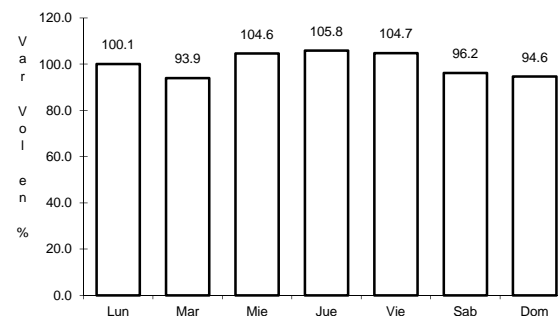
Sent: 1



Km: 5.83

Tipo: 3

Sent: 2



Km: 57.40

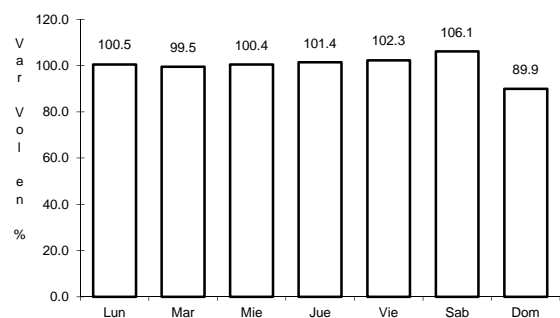
Tipo: 1

Sent: 0

## 9 CARR: Puebla - Tlaxcala

CLAVE: 00475

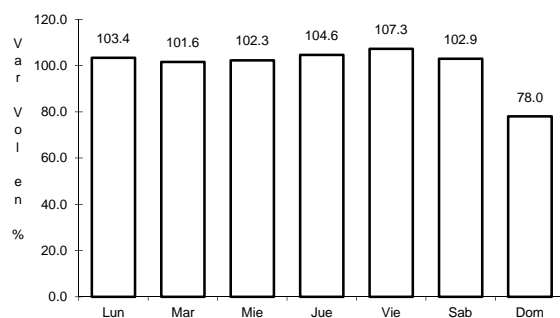
RUTA: MEX-119



Km: 5.41

Tipo: 3

Sent: 1



Km: 5.41

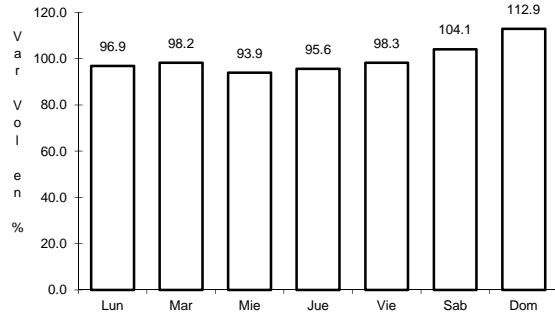
Tipo: 3

Sent: 2

10 CARR: Ramal a Nuevo Necaxa

CLAVE: 21592

ruta: MEX-130

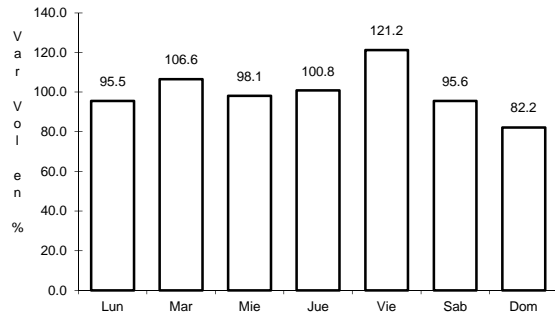


Km: 1.50      Tipo: 1      Sent: 0

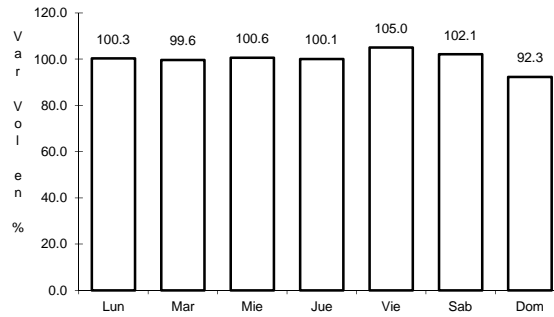
11 CARR: San Hipólito - Xalapa

CLAVE: 00486

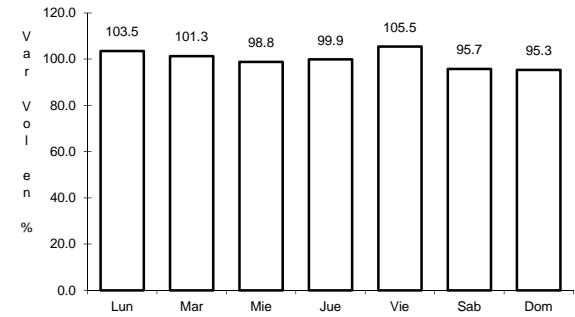
ruta: MEX-140



Km: 0.00      Tipo: 3      Sent: 0



Km: 151.20      Tipo: 1      Sent: 1

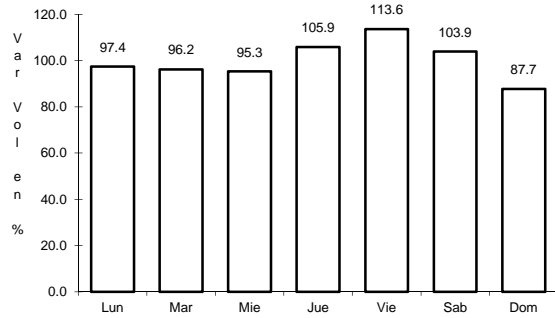


Km: 151.20      Tipo: 1      Sent: 2

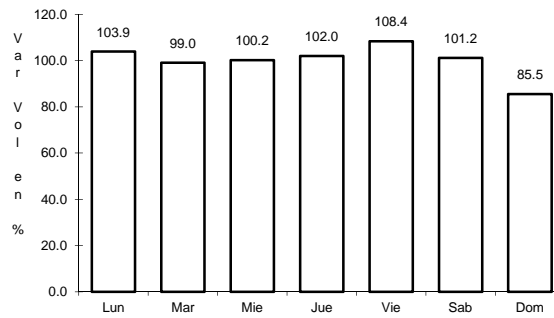
12 CARR: San Martín Texmelucan - Tlaxcala

CLAVE: 00158

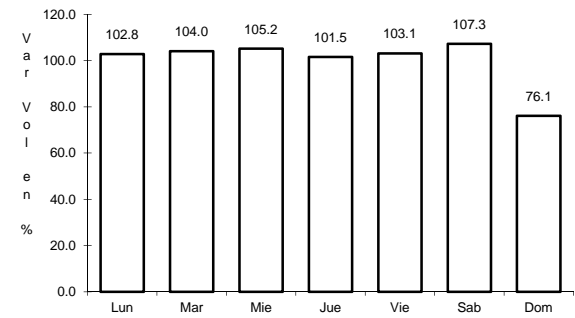
ruta: MEX-117



Km: 0.00      Tipo: 3      Sent: 1



Km: 0.00      Tipo: 3      Sent: 2

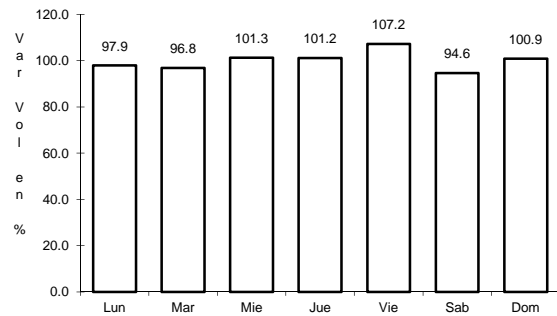


Km: 24.81      Tipo: 1      Sent: 0

## 13 CARR: San Salvador El Seco - Azumbilla

CLAVE: 21004

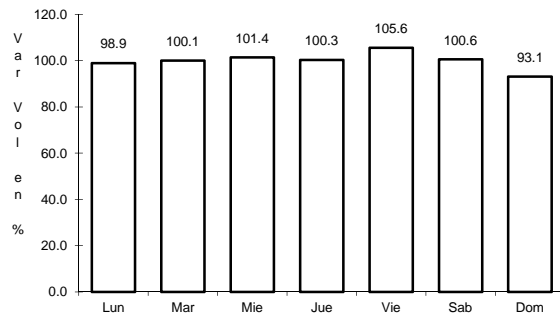
RUTA: MEX-144



Km: 0.00

Tipo: 3

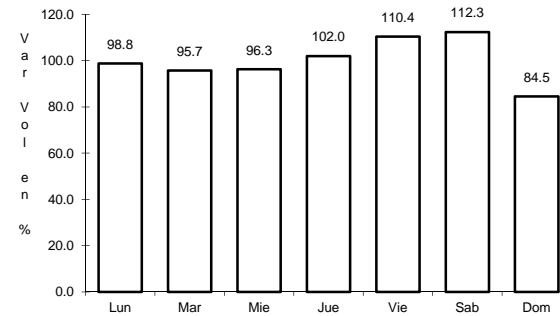
Sent: 0



Km: 45.94

Tipo: 3

Sent: 0



Km: 73.67

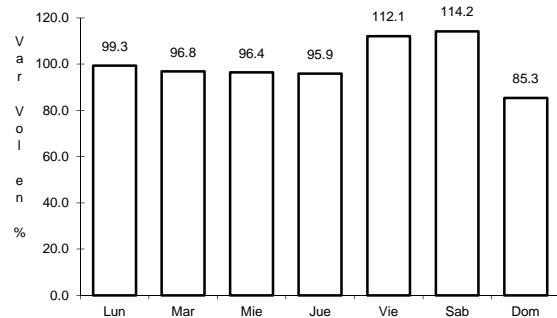
Tipo: 1

Sent: 0

## 14 CARR: Santa Bárbara - Izúcar de Matamoros

CLAVE: 00451

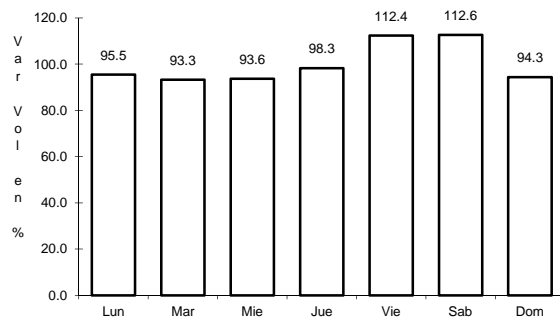
RUTA: MEX-115-160



Km: 0.00

Tipo: 3

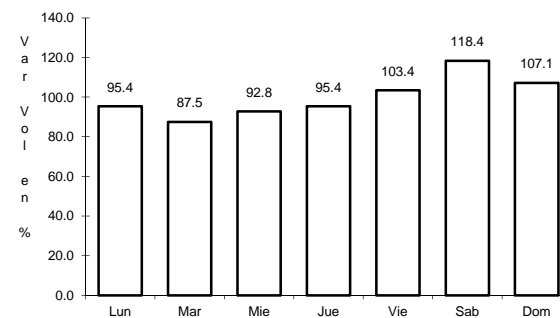
Sent: 1



Km: 0.00

Tipo: 3

Sent: 2



Km: 62.99

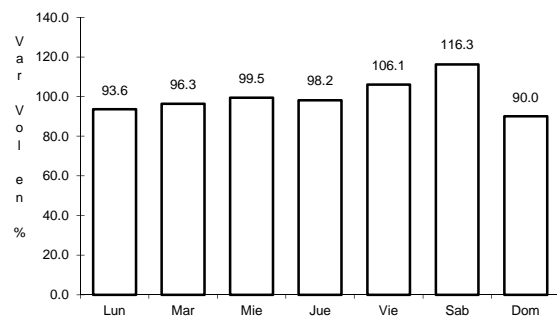
Tipo: 1

Sent: 0

## 15 CARR: Tehuacán - Córdoba

CLAVE: 00534

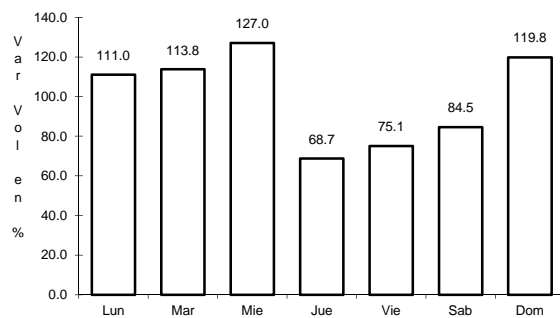
RUTA: MEX-150



Km: 0.00

Tipo: 3

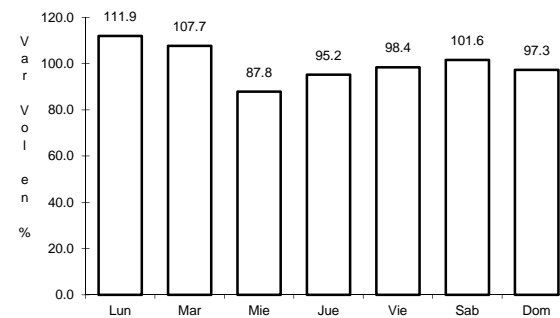
Sent: 0



Km: 86.76

Tipo: 1

Sent: 1



Km: 86.76

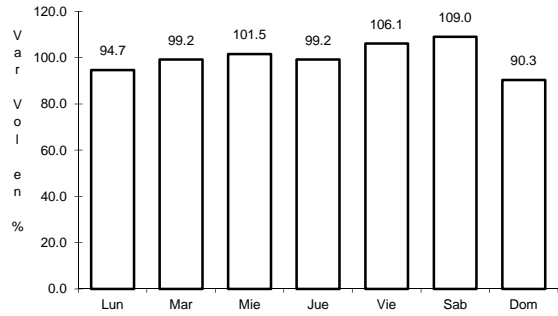
Tipo: 1

Sent: 2

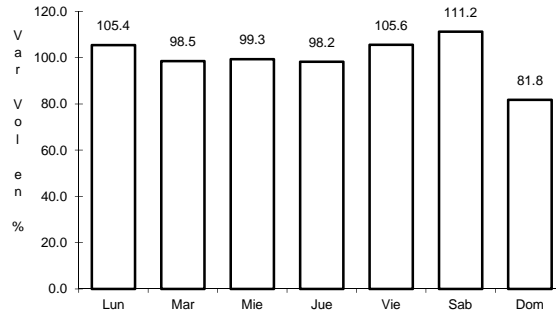
16 CARR: Tehuacán - Huajuapán de León

CLAVE: 00211

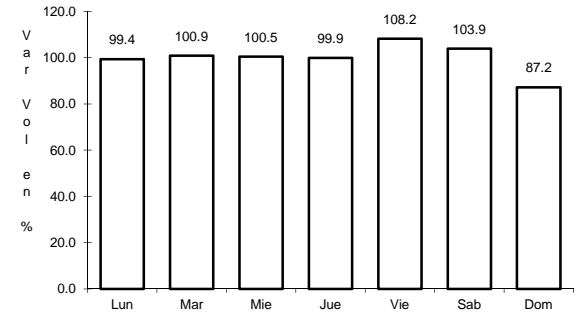
ruta: MEX-125



Km: 0.00                      Tipo: 3                      Sent: 1



Km: 0.00                      Tipo: 3                      Sent: 2

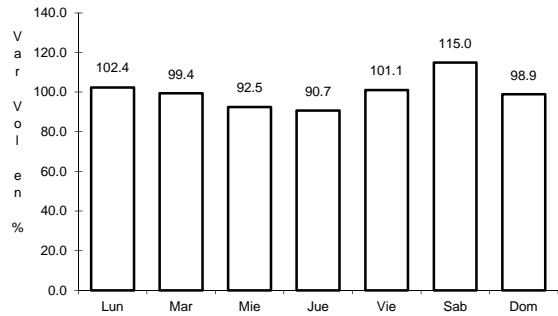


Km: 119.40                      Tipo: 1                      Sent: 0

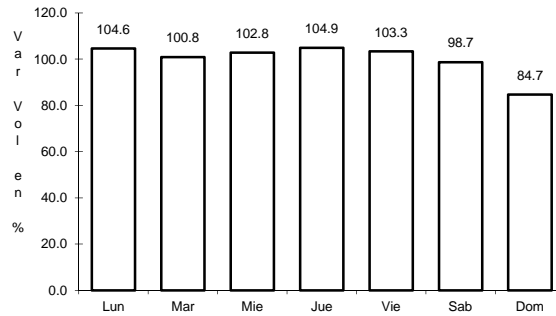
17 CARR: Teziutlán - Nautla

CLAVE: 00144

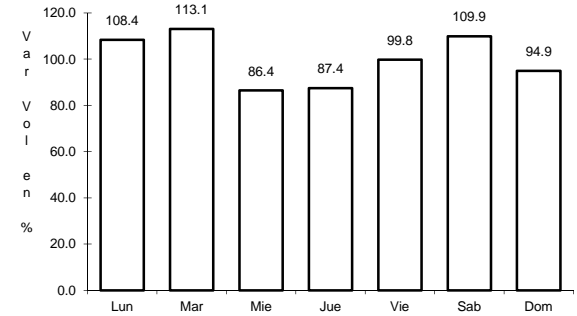
ruta: MEX-129



Km: 0.00                      Tipo: 3                      Sent: 0



Km: 58.00                      Tipo: 3                      Sent: 0

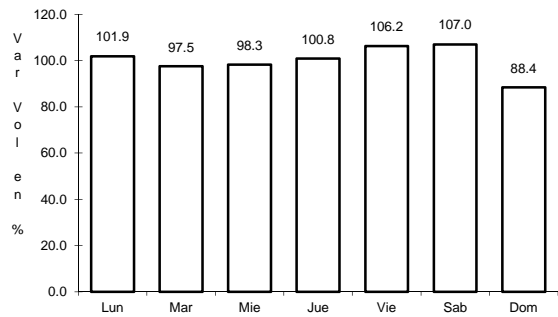


Km: 93.20                      Tipo: 1                      Sent: 0

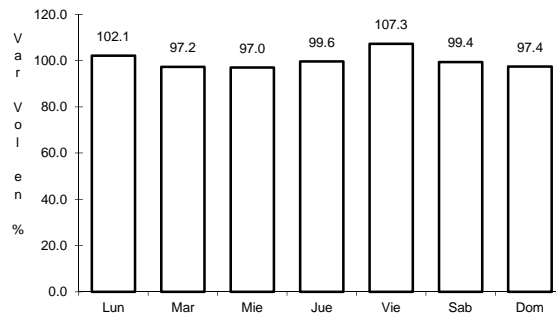
18 CARR: Teziutlán - Perote

CLAVE: 00209

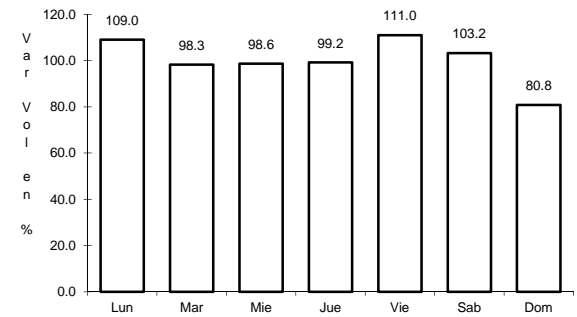
ruta: MEX-131



Km: 0.00                      Tipo: 3                      Sent: 0



Km: 26.90                      Tipo: 3                      Sent: 0

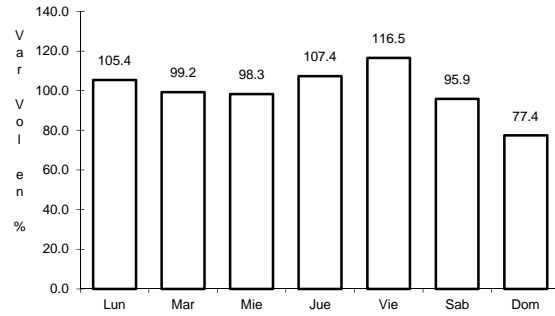


Km: 49.10                      Tipo: 1                      Sent: 0

19 CARR: Zacatepec - Oriental

CLAVE: 21189

RUTA: MEX-136



Km: 0.00

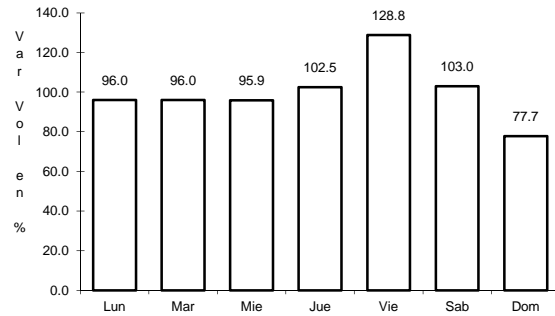
Tipo: 3

Sent: 0

20 CARR: Acatzingo - Cd. Mendoza (Cuota)

CLAVE: 00485

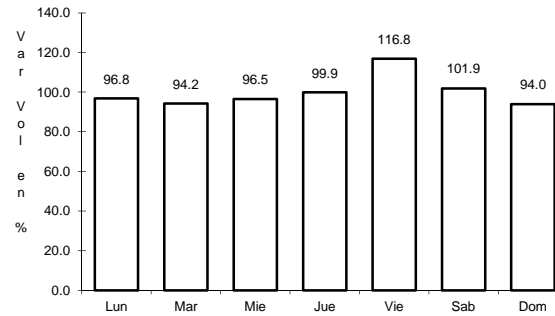
RUTA: MEX-150D



Km: 47.10

Tipo: 3

Sent: 1



Km: 47.10

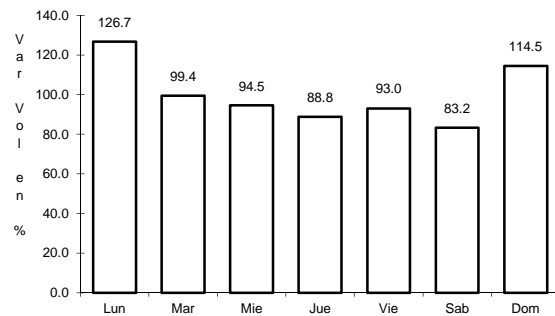
Tipo: 3

Sent: 2

21 CARR: Amozoc - Perote (Cuota)

CLAVE: 00030

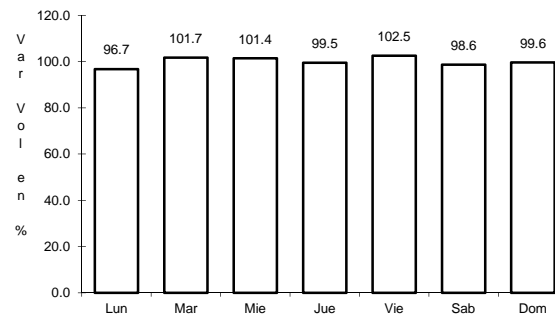
RUTA: MEX-140D



Km: 0.00

Tipo: 3

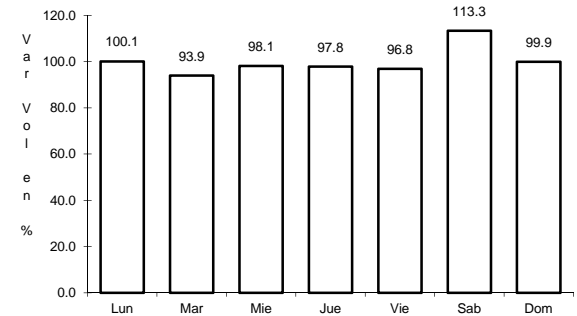
Sent: 0



Km: 25.80

Tipo: 3

Sent: 0



Km: 62.70

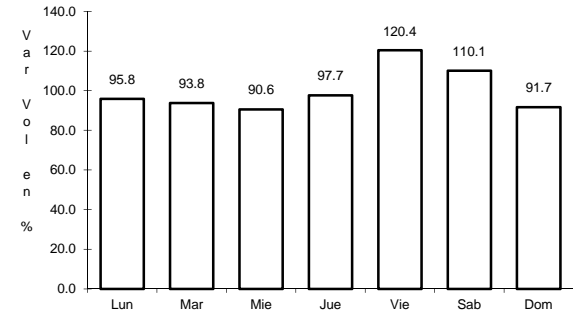
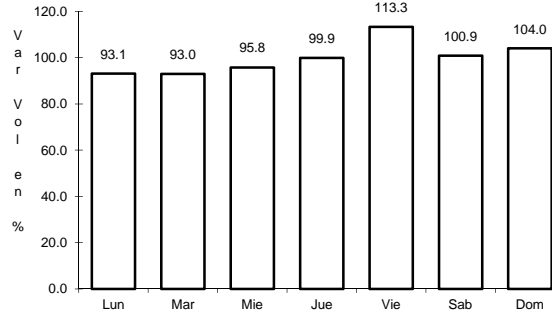
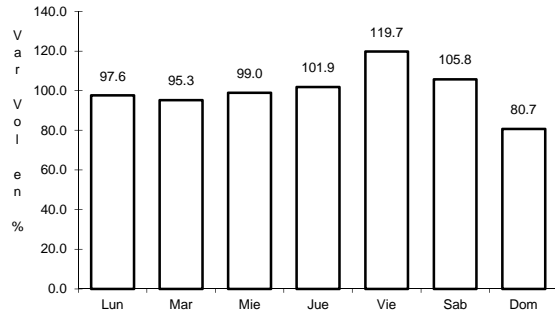
Tipo: 3

Sent: 0

22 CARR: Cuacnopalan - Oaxaca (Cuota)

CLAVE: 00109

RUTA: MEX-135D



Km: 0.00      Tipo: 3      Sent: 0

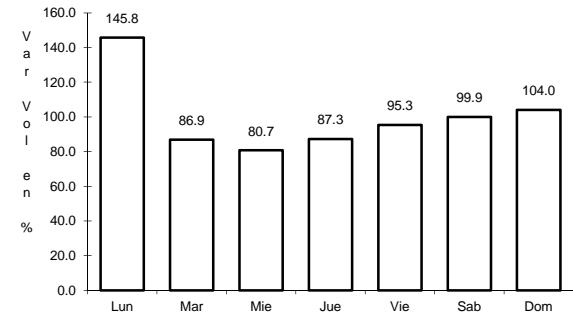
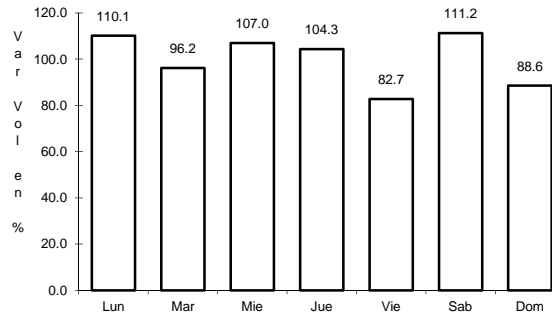
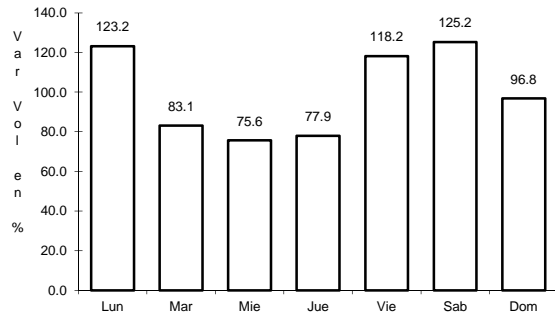
Km: 242.70      Tipo: 1      Sent: 1

Km: 242.70      Tipo: 1      Sent: 2

23 CARR: Ent. Tulancingo - Venta Grande (Cuota)

CLAVE: 00026

RUTA: MEX-132D



Km: 7.80      Tipo: 1      Sent: 0

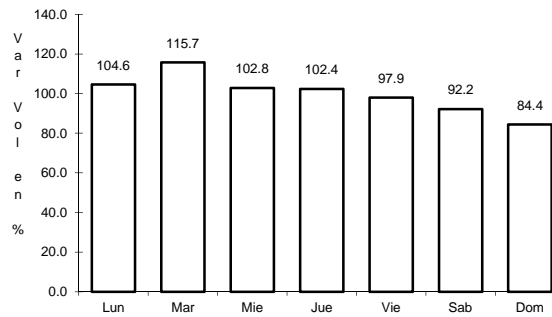
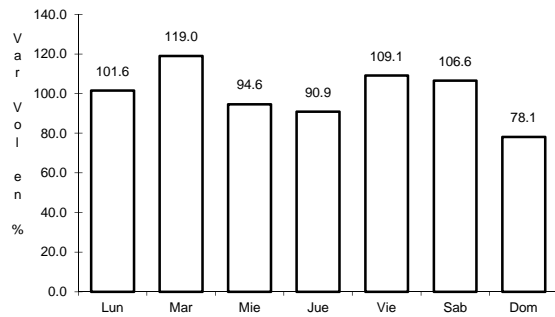
Km: 21.80      Tipo: 1      Sent: 0

Km: 39.60      Tipo: 1      Sent: 0

24 CARR: Libramiento de San Martín Texmelucan

CLAVE: 21014

RUTA: MEX-057D



Km: 135.90      Tipo: 1      Sent: 1

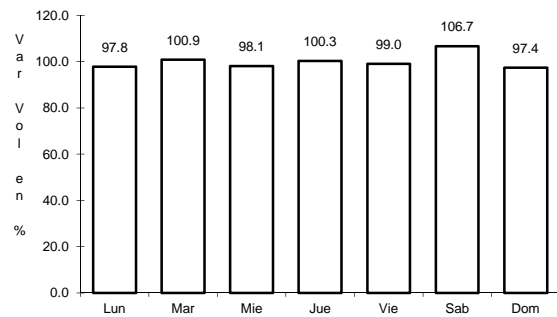
Km: 135.90      Tipo: 1      Sent: 2



25 CARR: México - Puebla (Cuota)

CLAVE: 00450

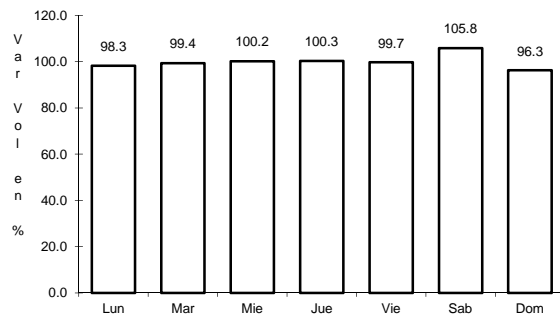
RUTA: MEX-150D



Km: 18.00

Tipo: 3

Sent: 1



Km: 18.00

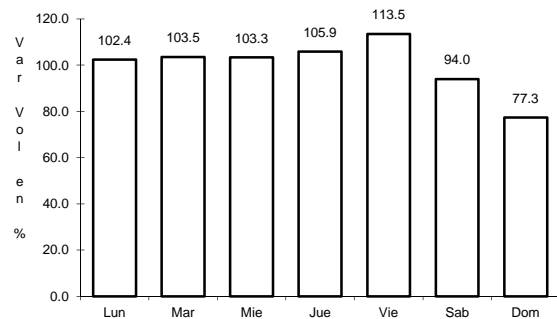
Tipo: 3

Sent: 2

26 CARR: Puebla - Acatzingo (Cuota)

CLAVE: 00485

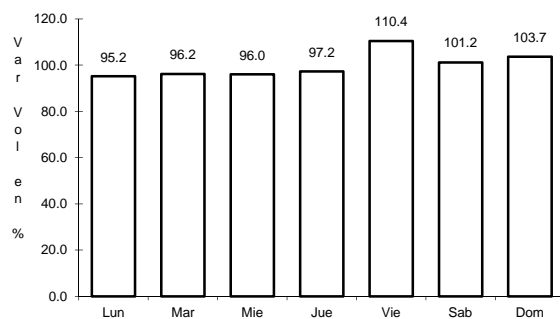
RUTA: MEX-150D



Km: 0.00

Tipo: 3

Sent: 1



Km: 0.00

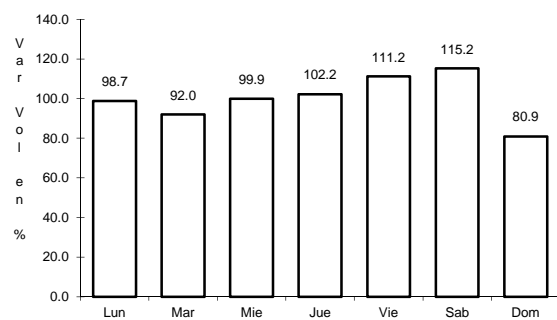
Tipo: 3

Sent: 2

27 CARR: San Martin Texmelucan - Tlaxcala - El Molinito (Cuota)

CLAVE: 00212

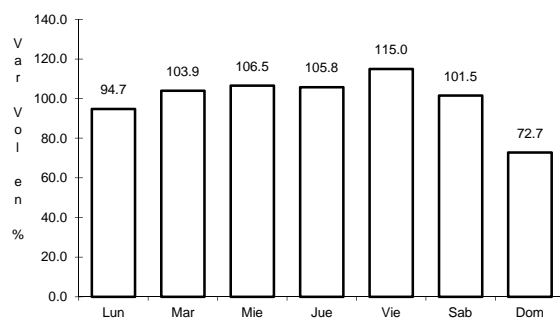
RUTA: MEX-117D



Km: 1.80

Tipo: 1

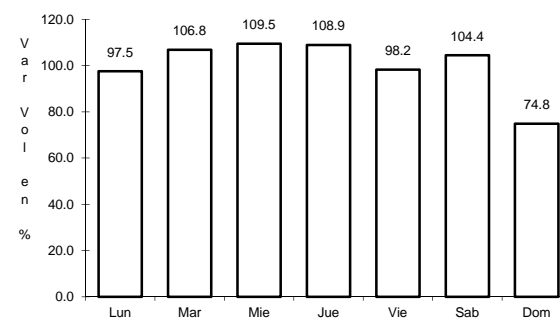
Sent: 0



Km: 35.20

Tipo: 1

Sent: 1



Km: 35.20

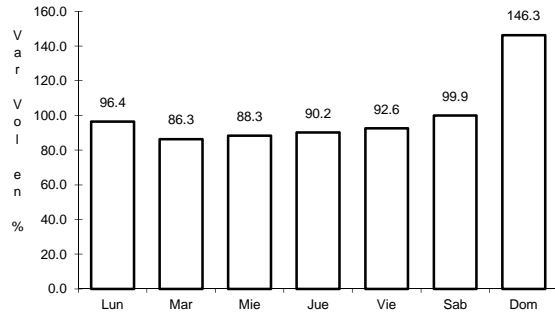
Tipo: 1

Sent: 2

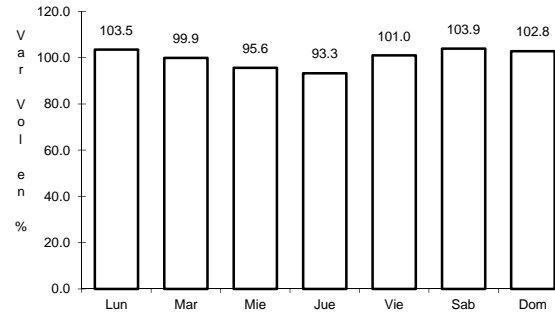
28 CARR: Tejocotal - Nuevo Necaxa (Cuota)

CLAVE: 00211

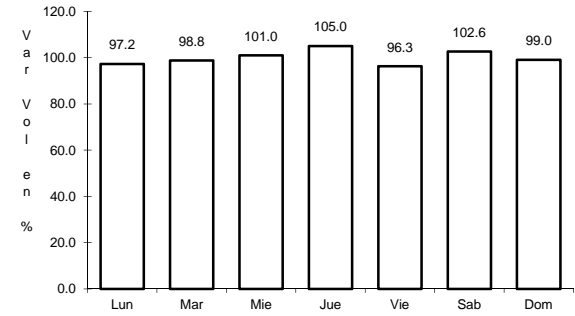
RUTA: MEX-132D



Km: 0.00                      Tipo: 3                      Sent: 0



Km: 17.00                      Tipo: 1                      Sent: 1

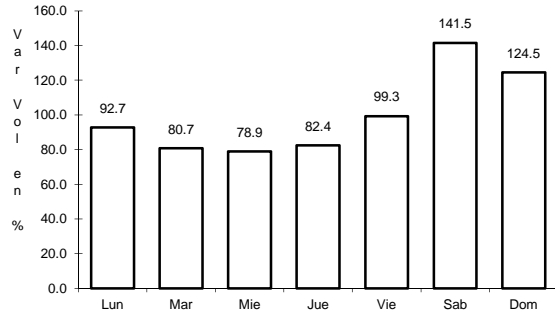


Km: 17.00                      Tipo: 1                      Sent: 2

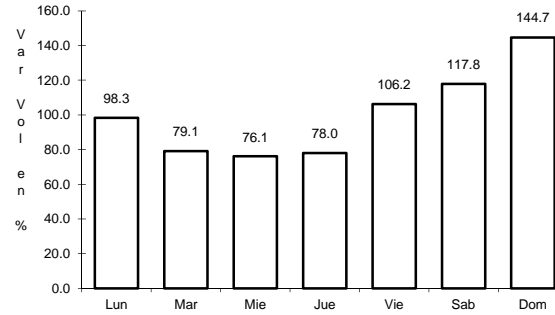
29 CARR: Amayuca - Izúcar de Matamoros

CLAVE: 00030

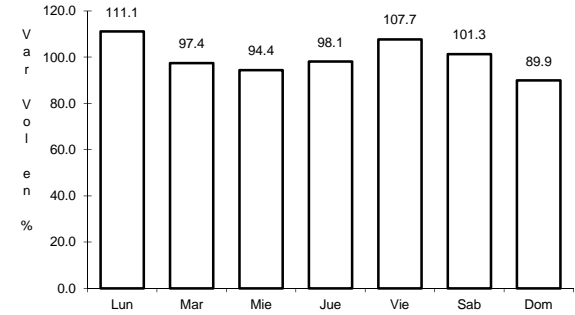
RUTA: MOR-031-PUE



Km: 0.66                      Tipo: 3                      Sent: 1



Km: 0.66                      Tipo: 3                      Sent: 2

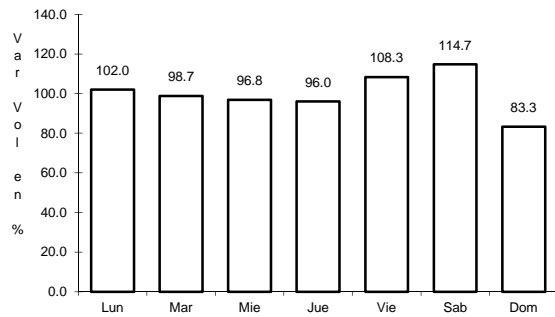


Km: 38.40                      Tipo: 3                      Sent: 0

30 CARR: Azumbilla - Alcomunga

CLAVE: 21001

RUTA: PUE



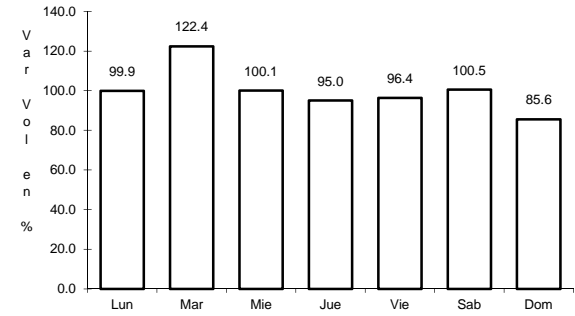
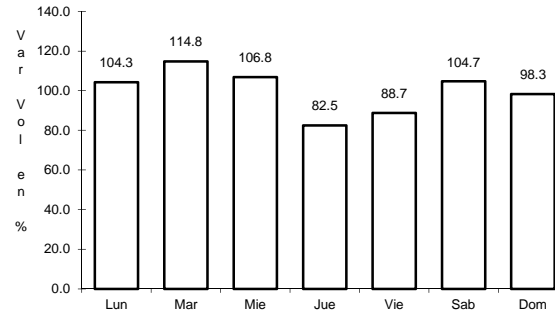
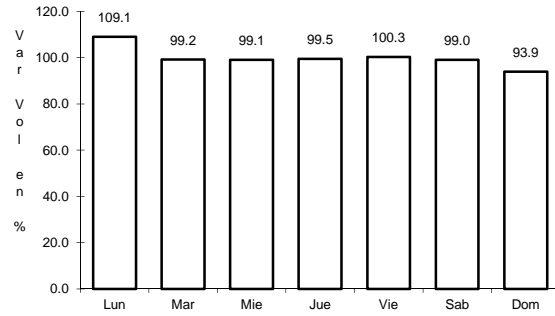
Km: 0.00                      Tipo: 3                      Sent: 0



34 CARR: Izúcar de Matamoros - Tepexi de Rodríguez

CLAVE: 21014

RUTA: PUE



Km: 0.00                      Tipo: 3                      Sent: 0

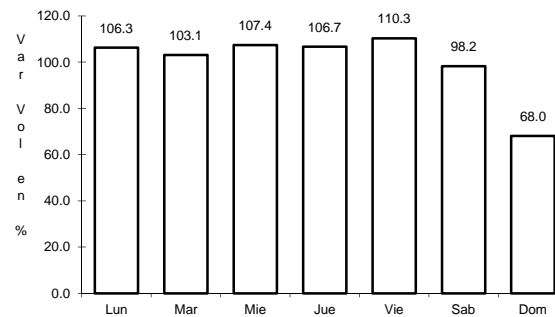
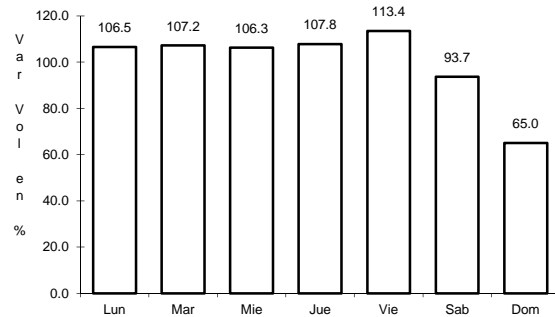
Km: 46.00                      Tipo: 1                      Sent: 0

Km: 62.00                      Tipo: 1                      Sent: 0

35 CARR: Ramal a Aeropuerto Hnos. Serdán

CLAVE: 21591

RUTA: PUE



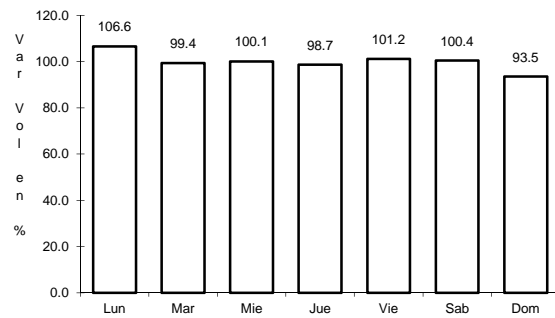
Km: 0.00                      Tipo: 3                      Sent: 0

Km: 9.00                      Tipo: 1                      Sent: 0

36 CARR: Ramal a Jolalpan

CLAVE: 00143

RUTA: MOR-PUE

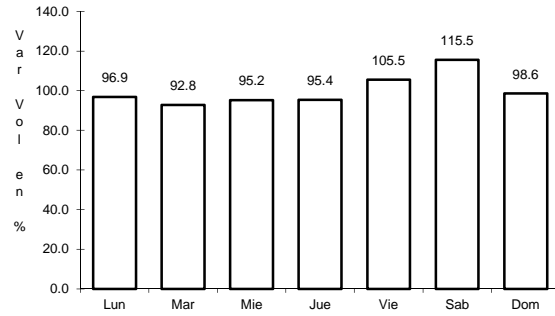


Km: 0.00                      Tipo: 3                      Sent: 0

37 CARR: Ramal a Tetela de Ocampo

CLAVE: 21587

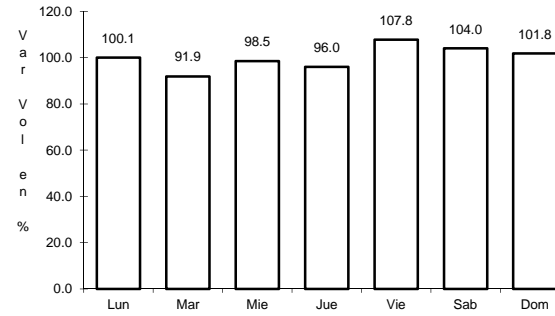
RUTA: PUE



Km: 0.00

Tipo: 3

Sent: 0



Km: 45.00

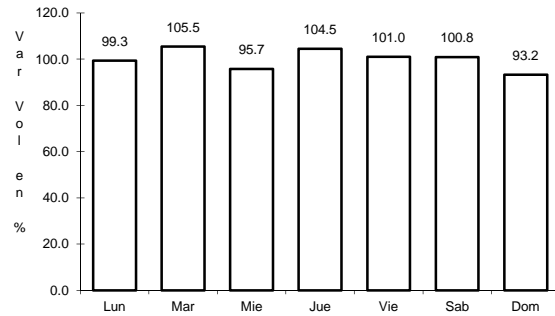
Tipo: 1

Sent: 0

38 CARR: Ramal a Zihuateutla

CLAVE: 21590

RUTA: PUE



Km: 0.00

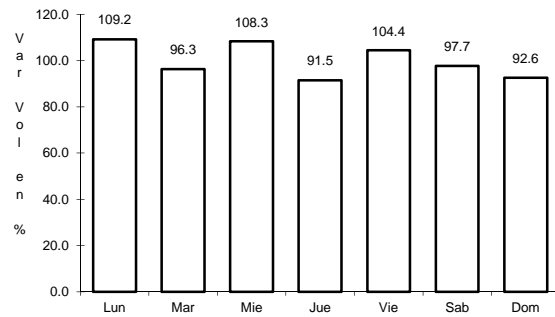
Tipo: 3

Sent: 0

39 CARR: Ramal a Zoquitlán

CLAVE: 21003

RUTA: PUE



Km: 0.00

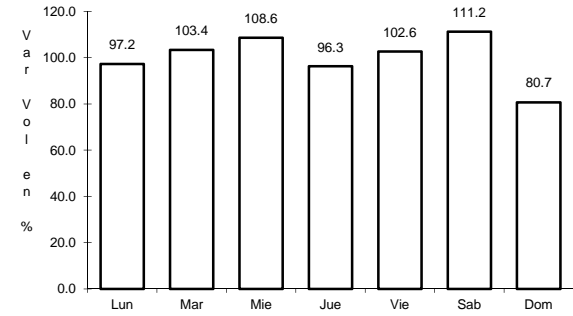
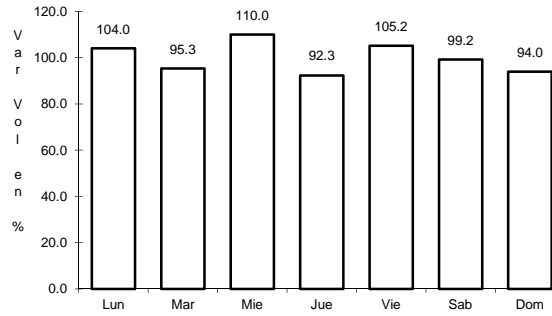
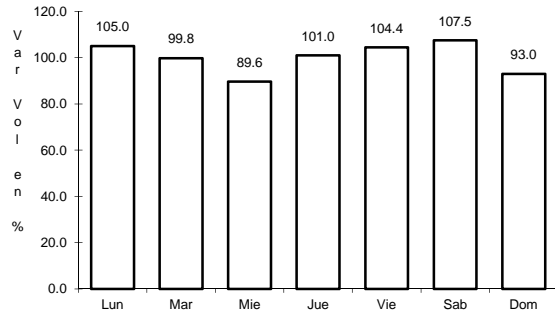
Tipo: 3

Sent: 0

40 CARR: San Juan Ixcaquixtla - Pino Suárez

CLAVE: 00486

RUTA: PUE



Km: 0.00      Tipo: 3      Sent: 0

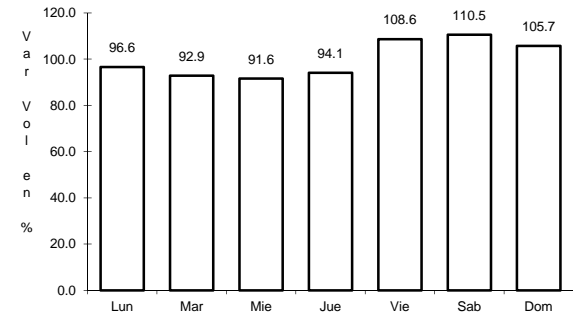
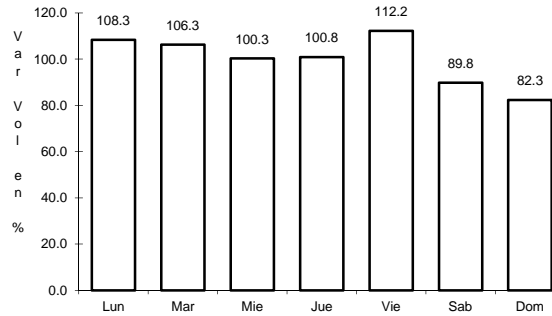
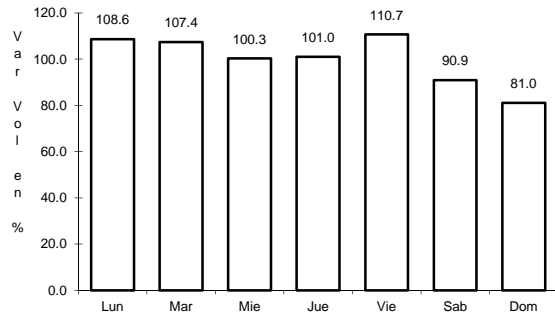
Km: 42.80      Tipo: 1      Sent: 0

Km: 47.10      Tipo: 1      Sent: 0

41 CARR: Tecamachalco - Cañada Morelos

CLAVE: 21002

RUTA: PUE



Km: 0.00      Tipo: 3      Sent: 0

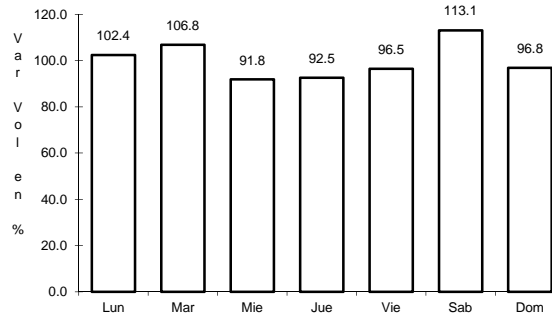
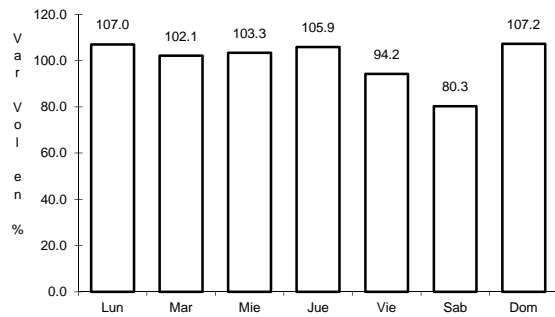
Km: 8.00      Tipo: 1      Sent: 0

Km: 44.46      Tipo: 1      Sent: 0

42 CARR: Tecamachalco - Quecholac

CLAVE: 21002

RUTA: PUE



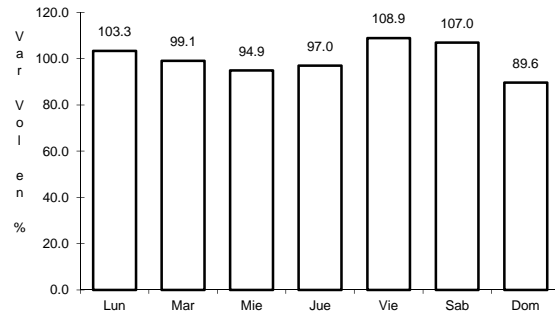
Km: 7.80      Tipo: 1      Sent: 0

Km: 7.80      Tipo: 3      Sent: 0

43 CARR: Zacatlán - Zapotitlán

CLAVE: 21580

RUTA: PUE



Km: 0.00

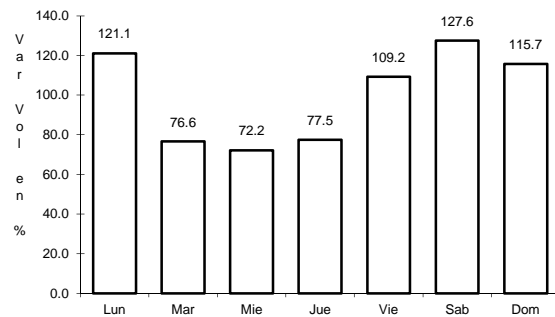
Tipo: 3

Sent: 0

44 CARR: Atlixco - Jantetelco (Cuota)

CLAVE: 00430

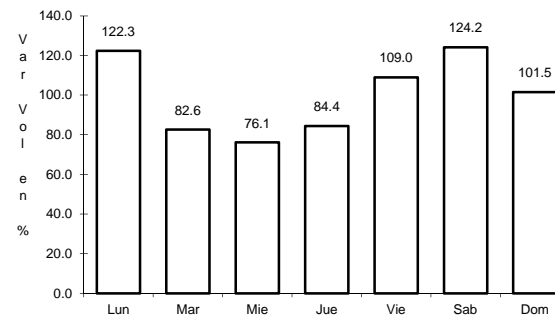
RUTA: PUE-D



Km: 0.00

Tipo: 3

Sent: 0



Km: 54.90

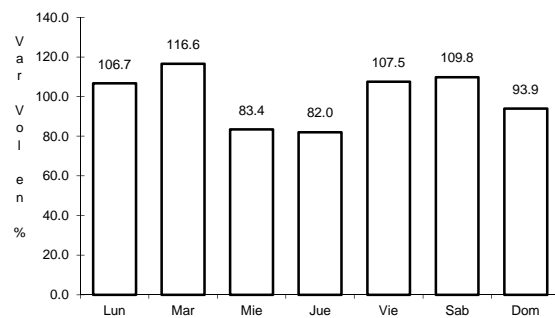
Tipo: 1

Sent: 0

45 CARR: Libres - Teziutlán (Cuota)

CLAVE: 21014

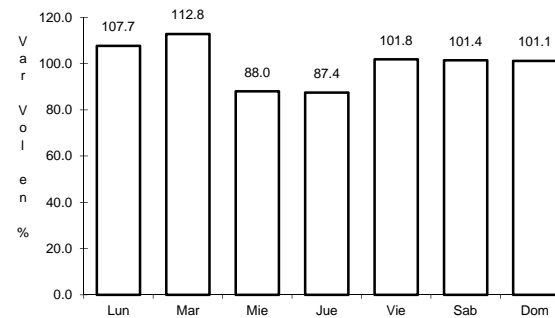
RUTA: PUE-D



Km: 0.00

Tipo: 3

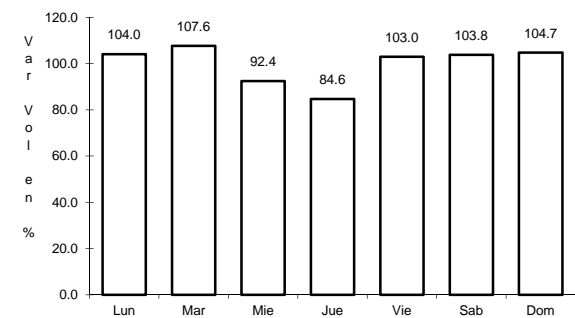
Sent: 0



Km: 40.00

Tipo: 1

Sent: 0



Km: 62.00

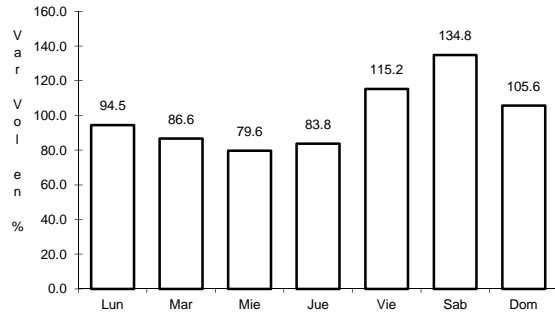
Tipo: 1

Sent: 0

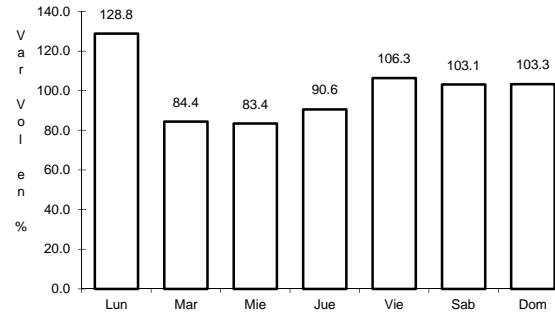
46 CARR: Puebla - Atlixco (Cuota)

CLAVE: 21585

RUTA: PUE-D



Km: 0.00                      Tipo: 3                      Sent: 1

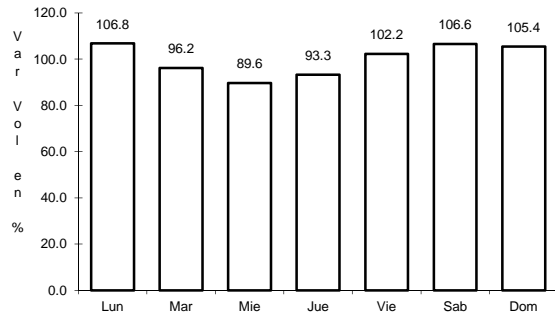


Km: 0.00                      Tipo: 3                      Sent: 2

47 CARR: Tlaxco - Tejocotal (Cuota)

CLAVE: 00209

RUTA: PUE-D

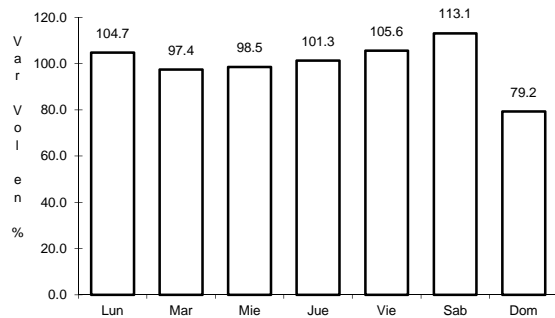


Km: 0.00                      Tipo: 3                      Sent: 0

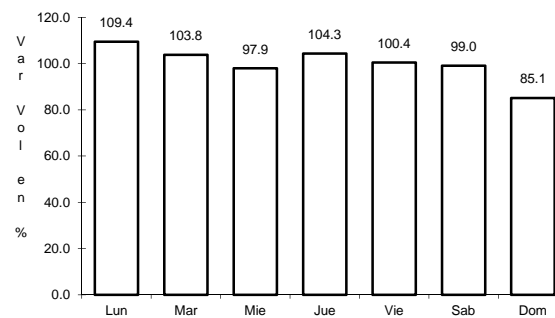
48 CARR: Ramal a Tulcingo del Valle

CLAVE: 21578

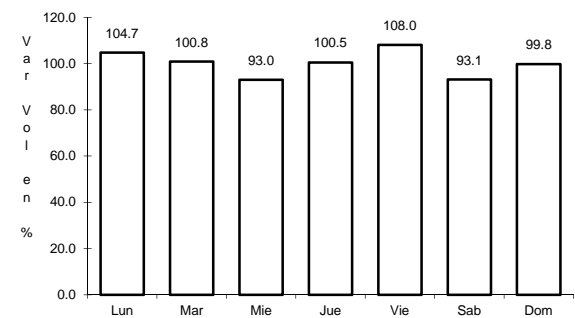
RUTA: PUE-MEX-093



Km: 0.00                      Tipo: 3                      Sent: 0



Km: 21.01                      Tipo: 3                      Sent: 0



Km: 43.00                      Tipo: 1                      Sent: 0



