



OAXACA

NO. INDICE	CARRETERA	RUTA
---RED FEDERAL LIBRE---		
1	Buenavista - Tuxtepec	MEX-175
2	Cd. Alemán - Sayula	MEX-145
3	Coatzacoalcos - Salina Cruz	MEX-185
4	Ent. La Ventosa - San Pedro Tanapatepec	MEX-190
5	Huajuapán de León - Oaxaca	MEX-190
6	Juchitán - Ixtepec	MEX-185
7	La Granja - Temascal	MEX-145
8	Las Cruces - Pinotepa Nacional	MEX-200
9	Libramiento de Pochutla	MEX-200
10	Libramiento de Santa María del Tule	MEX-190
11	Oaxaca - Puerto Ángel	MEX-175
12	Oaxaca - Tehuantepec	MEX-190
13	Puebla - Huajuapán de León	MEX-190
14	Ramal a Asunción Ixtaltepec	MEX-185
15	San Pablo Villa de Mitla - T. C. (Tuxtepec - Palomares)	MEX-179
16	Santiago Pinotepa Nacional - Salina Cruz	MEX-200
17	Tapanatepec - Talismán	MEX-200
18	Tapanatepec - Tuxtla Gutiérrez	MEX-190
19	Tehuacán - Huajuapán de León	MEX-125
20	Tuxtepec - Ent. Palomares	MEX-147
21	Tuxtepec - T. C. (Oaxaca - Tehuantepec)	MEX-175
22	Yucudaa - Santiago Pinotepa Nacional	MEX-125
---RED FEDERAL DE CUOTA---		
23	Cuacnopalan - Oaxaca (Cuota)	MEX-135D
24	Salina Cruz - La Ventosa (Cuota)	MEX-185D
---RED ESTATAL LIBRE---		
25	Cd. Ixtepec - Guevea de Humboldt	OAX
26	El Zapote - Copalita	OAX
27	Huajuapán de León - El Carrizal	OAX
28	Loma Bonita - Mixtán	OAX
29	Ramal a Reforma de Pineda	OAX
30	Ramal a Unión Hidalgo	OAX
31	San Antonio - Puerto Ángel	OAX
---CARRETERAS INTEGRADAS POR TRAMOS FEDERALES Y ESTATALES---		
32	T. C. (Oaxaca - Puerto Ángel) - Puerto Escondido	MEX-OAX-161
33	Tehuacán - Huitzo	PUE-MEX-135
34	Teotitlán de Flores Magón - Tuxtepec	OAX-PUE-MEX-182

20 OAXACA

SECRETARÍA DE COMUNICACIONES Y TRANSPORTES
DIRECCIÓN GENERAL DE SERVICIOS TÉCNICOS



OAXACA

1 CARR: Buenavista - Tuxtepec

CLAVE: 00624

RUTA: MEX-175

AÑO: 2012

LUGAR	ESTACION				CLASIFICACION VEHICULAR EN PORCIENTO										COORDENADAS					
	KM	TE	SC	TDPA	M	A	B	C2	C3	T3S2	T3S3	T3S2R4	OTROS	A	B	C	K'	D	LATITUD	LONGITUD
T. C. Paso del Toro - Acayucan	0.00	3	0	1531	6.8	83.7	5.2	1.3	1.0	1.5	0.2	0.1	0.2	90.5	5.2	4.3	0.093	0.517	18.713409	-95.637809
Puente Tlacotalpan	1.55	2	0	1535	0.0	77.0	4.9	6.4	10.0	1.2	0.3	0.1	0.1	77.0	4.9	18.1	0.085	0.500	18.704596	-95.641294
Tlacotalpan	18.00	1	0	1981	6.8	77.0	5.5	6.2	0.8	2.6	0.5	0.1	0.5	83.8	5.5	10.7	0.092	0.516	18.612875	-95.648377
Tlacotalpan	18.00	3	0	1953	7.6	75.9	6.8	5.8	0.8	2.5	0.4	0.1	0.1	83.5	6.8	9.7	0.093	0.502	18.616801	-95.669959
Carlos A. Carrillo	56.00	1	0	3454	6.5	75.0	7.3	5.9	1.1	3.0	0.5	0.2	0.5	81.5	7.3	11.2	0.089	0.502	18.379030	-95.749169
Cosamaloapan	60.00	1	0	10473	4.2	79.0	7.3	6.1	0.5	1.3	0.3	0.3	1.0	83.2	7.3	9.5	0.075	0.501	18.365656	-95.776352
Cosamaloapan	60.00	3	0	9757	7.3	73.4	7.2	6.3	1.3	3.3	0.5	0.3	0.4	80.7	7.2	12.1	0.087	0.508	18.351341	-95.806793
T. C. La Tinaja - Santa Cruz	107.00	1	0	3334	5.1	74.7	7.6	6.5	1.3	3.4	0.6	0.6	0.2	79.8	7.6	12.6	0.082	0.506	18.168703	-96.088187
T. C. Cd. Alemán - Sayula	108.92	1	0	3884	4.5	75.2	7.3	6.9	1.1	3.6	0.5	0.5	0.4	79.7	7.3	13.0	0.084	0.526	18.168354	-96.093403
T. C. Cd. Alemán - Sayula	108.92	3	0	6874	1.9	76.3	7.1	6.8	1.4	3.5	0.5	1.5	1.0	78.2	7.1	14.7	0.090	0.506	18.168756	-96.100330
Lim. Edos. Term. Ver. Ppia. Oax.	115.00																			
Puente Caracol	117.20	2	0	6163	0.0	76.3	8.4	5.3	3.8	2.4	0.5	0.4	2.9	76.3	8.4	15.3	0.085	0.500	18.133058	-96.136687
Tuxtepec	121.25	1	1	4350	5.6	73.2	7.0	6.4	1.7	2.2	0.8	2.5	0.6	78.8	7.0	14.2	0.075	0.509	18.113933	-96.134309
Tuxtepec	121.25	1	2	4188	5.2	72.3	7.3	6.8	1.9	2.4	0.8	2.7	0.6	77.5	7.3	15.2	0.078	0.509	18.113961	-96.134306

2 CARR: Cd. Alemán - Sayula

CLAVE: 00301

RUTA: MEX-145

AÑO: 2012

LUGAR	ESTACION				CLASIFICACION VEHICULAR EN PORCIENTO										COORDENADAS					
	KM	TE	SC	TDPA	M	A	B	C2	C3	T3S2	T3S3	T3S2R4	OTROS	A	B	C	K'	D	LATITUD	LONGITUD
Cd. Alemán	0.00	3	0	5852	2.7	63.9	5.8	8.8	4.0	8.1	3.0	3.0	0.7	66.6	5.8	27.6	0.073	0.502	18.183774	-96.093591
Lim. Edos. Term. Ver. Ppia. Oax.	1.80																			
Puente Papaloapan	3.50	2	0	3660	0.0	46.4	4.1	11.1	14.2	17.9	2.2	1.2	2.9	46.4	4.1	49.5	0.076	0.500	18.159461	-96.096585
T. Izq. Loma Bonita	36.70	1	0	5639	2.3	63.0	4.6	8.6	4.3	10.1	3.5	2.7	0.9	65.3	4.6	30.1	0.073	0.538	18.094874	-95.880893
T. Der. Villa Azueta	41.50	1	0	5437	2.1	65.8	4.2	6.2	4.5	8.8	4.2	3.3	0.9	67.9	4.2	27.9	0.096	0.513	18.091242	-95.781300
Lim. Edos. Term. Oax. Ppia. Ver.	43.16																			
T. Izq. Tesechoacán	56.70	1	0	3769	1.6	64.3	6.7	5.9	4.5	9.0	3.6	3.6	0.8	65.9	6.7	27.4	0.075	0.529	18.127877	-95.655649
X. C. Santiago Tuxtla - Playa Vicente	71.40	1	0	5026	1.7	67.4	6.6	5.3	4.1	8.0	3.4	2.5	1.0	69.1	6.6	24.3	0.076	0.524	18.069111	-95.535324
San Juan Evangelista	118.35	1	0	5070	1.2	61.6	5.3	7.9	6.2	10.9	2.7	3.2	1.0	62.8	5.3	31.9	0.068	0.533	17.910387	-95.129625
Sayula de Alemán	136.40	1	0	5919	1.2	63.4	4.5	8.6	5.1	10.8	2.8	2.7	0.9	64.6	4.5	30.9	0.068	0.528	17.887508	-94.964997

3 CARR: Coatzacoalcos - Salina Cruz

CLAVE: 00147

RUTA: MEX-185

AÑO: 2012

LUGAR	ESTACION				CLASIFICACION VEHICULAR EN PORCIENTO										COORDENADAS					
	KM	TE	SC	TDPA	M	A	B	C2	C3	T3S2	T3S3	T3S2R4	OTROS	A	B	C	K'	D	LATITUD	LONGITUD
Coatzacoalcos	0.00	3	1	10922	1.1	76.4	5.2	4.4	1.4	6.6	2.6	1.8	0.5	77.5	5.2	17.3	0.083	0.501	18.096262	-94.460312

OAXACA

3 CARR : Coatzacoalcos - Salina Cruz

CLAVE: 00147

RUTA: MEX-185

AÑO: 2012

LUGAR	ESTACION				CLASIFICACION VEHICULAR EN PORCIENTO														COORDENADAS	
	KM	TE	SC	TDPA	M	A	B	C2	C3	T3S2	T3S3	T3S2R4	OTROS	A	B	C	K'	D	LATITUD	LONGITUD
Coatzacoalcos	0.00	3	2	10962	1.0	74.0	5.8	4.5	1.7	7.4	3.0	2.1	0.5	75.0	5.8	19.2	0.088	0.501	18.096262	-94.460311
T. C. Nuevo Teapa - Cosoleacaque	21.00	1	1	12002	1.7	78.5	6.4	4.8	1.2	4.1	1.5	1.1	0.7	80.2	6.4	13.4	0.075	0.510	18.021946	-94.542525
T. C. Nuevo Teapa - Cosoleacaque	21.00	1	2	11511	1.8	76.6	6.6	5.6	1.3	4.3	1.8	1.3	0.7	78.4	6.6	15.0	0.066	0.510	18.021946	-94.542525
Minatitlán	21.60	3	1	10065	1.8	75.1	5.8	5.0	1.5	6.9	1.9	1.4	0.6	76.9	5.8	17.3	0.070	0.541	17.998454	-94.588199
Minatitlán	21.60	3	2	10052	1.5	72.3	6.4	5.6	1.6	8.1	2.3	1.6	0.6	73.8	6.4	19.8	0.062	0.541	17.998455	-94.588194
Cosoleacaque	31.50	1	0	18131	2.4	79.1	4.6	7.8	1.5	2.3	1.3	0.6	0.4	81.5	4.6	13.9	0.062	0.511	18.006541	-94.621820
Jáltipan de Morelos	38.60	3	0	9193	1.7	71.1	5.5	8.3	2.5	6.4	2.0	1.7	0.8	72.8	5.5	21.7	0.066	0.514	17.961606	-94.730443
Acayucan	59.60	1	0	10402	2.0	72.7	3.1	10.1	2.2	6.1	1.6	1.4	0.8	74.7	3.1	22.2	0.070	0.511	17.953410	-94.877602
Sayula de Alemán	71.00	1	1	7443	2.3	73.8	3.2	8.3	2.2	5.4	1.8	2.4	0.6	76.1	3.2	20.7	0.075	0.515	17.896549	-94.949713
Sayula de Alemán	71.00	1	2	7017	2.5	71.4	3.4	9.0	2.6	5.9	2.0	2.5	0.7	73.9	3.4	22.7	0.075	0.515	17.896549	-94.949713
Sayula de Alemán	71.00	3	0	7476	1.6	71.5	3.4	7.5	2.1	6.5	2.6	3.8	1.0	73.1	3.4	23.5	0.076	0.506	17.871658	-94.969309
Campo Nuevo	94.50	3	0	5480	1.3	69.5	3.9	6.9	2.3	8.5	2.7	4.1	0.8	70.8	3.9	25.3	0.071	0.511	17.695004	-95.075189
T. Izq. Jesús Carranza	126.80	1	0	4417	1.5	66.4	4.4	7.5	2.8	8.9	3.1	4.6	0.8	67.9	4.4	27.7	0.069	0.521	17.439328	-95.078191
T. Izq. Jesús Carranza	126.80	3	0	5018	1.4	65.4	5.7	6.8	2.7	8.5	3.1	5.5	0.9	66.8	5.7	27.5	0.073	0.514	17.432995	-95.076681
Lim. Edos. Term. Ver. Ppia. Oax.	139.90																			
T. Der. Tuxtepec	166.20	1	0	4656	1.6	65.2	5.0	6.6	3.0	9.6	3.3	4.6	1.1	66.8	5.0	28.2	0.072	0.514	17.144886	-95.063726
T. Der. Tuxtepec	166.20	3	0	5127	1.7	70.0	4.5	5.3	2.7	6.2	3.1	5.6	0.9	71.7	4.5	23.8	0.072	0.502	17.131426	-95.059637
T. Der. Estación Mogoñe	182.15	1	0	5120	1.2	68.7	4.0	6.0	2.5	8.4	2.9	5.4	0.9	69.9	4.0	26.1	0.075	0.507	17.013868	-95.009416
T. Der. Matías Romero	196.00	1	0	7896	1.6	72.8	4.6	5.6	1.5	7.2	2.6	3.1	1.0	74.4	4.6	21.0	0.073	0.505	16.885189	-95.017639
T. Der. Barrio de La Soledad	203.05	1	0	7688	1.8	72.2	3.6	5.8	1.9	6.8	3.1	3.8	1.0	74.0	3.6	22.4	0.070	0.556	16.817795	-95.033541
T. Der. Barrio de La Soledad	203.05	3	0	5477	1.6	65.4	3.9	8.1	2.8	8.2	3.7	5.7	0.6	67.0	3.9	29.1	0.069	0.514	16.812298	-95.032505
T. C. La Ventosa - Salina Cruz (Cuota)	236.00	1	0	6026	1.1	63.6	4.8	6.9	3.9	8.3	4.5	5.9	1.0	64.7	4.8	30.5	0.073	0.522	16.605830	-94.949596
T. C. La Ventosa - Salina Cruz (Cuota)	236.00	3	0	2820	1.0	65.5	4.3	8.0	4.9	9.0	2.1	4.7	0.5	66.5	4.3	29.2	0.081	0.507	16.580978	-94.944189
T. Izq. San Pedro Tapanatepec (2° Acceso)	241.70	1	0	3836	1.1	68.2	5.0	11.1	4.4	3.5	2.0	4.2	0.5	69.3	5.0	25.7	0.092	0.506	16.558395	-94.948404
T. Izq. San Pedro Tapanatepec (2° Acceso)	241.70	3	0	6004	1.1	75.0	5.4	6.1	3.0	5.2	1.6	2.0	0.6	76.1	5.4	18.5	0.081	0.518	16.545204	-94.952172
Juchitán de Zaragoza	255.55	1	0	8034	1.6	74.4	4.5	8.8	1.5	4.3	1.3	3.0	0.6	76.0	4.5	19.5	0.077	0.513	16.453967	-95.002129
Juchitán de Zaragoza	255.55	3	1	7692	1.8	75.7	4.2	6.2	1.2	5.7	1.0	3.6	0.6	77.5	4.2	18.3	0.086	0.518	16.437380	-95.032239
Juchitán de Zaragoza	255.55	3	2	8262	1.6	73.0	5.0	6.9	1.2	6.5	1.1	4.1	0.6	74.6	5.0	20.4	0.070	0.518	16.437380	-95.032239
Santo Domingo Tehuantepec	283.95	1	1	3843	1.7	73.0	3.7	10.0	1.7	4.5	0.9	4.3	0.2	74.7	3.7	21.6	0.082	0.503	16.347599	-95.208910
Santo Domingo Tehuantepec	283.95	1	2	3882	1.4	72.0	3.4	11.1	1.8	4.6	1.0	4.5	0.2	73.4	3.4	23.2	0.083	0.503	16.347629	-95.209006
Santo Domingo Tehuantepec	283.95	3	1	9244	1.8	71.2	5.2	7.5	2.8	4.5	2.4	4.2	0.4	73.0	5.2	21.8	0.091	0.506	16.314159	-95.237166
Santo Domingo Tehuantepec	283.95	3	2	9009	1.6	68.4	6.0	8.1	3.1	5.3	2.8	4.3	0.4	70.0	6.0	24.0	0.088	0.506	16.314159	-95.237166
Salina Cruz	302.35	1	1	14751	1.7	74.0	5.6	6.6	0.9	4.7	2.2	4.2	0.1	75.7	5.6	18.7	0.117	0.514	16.230557	-95.211130
Salina Cruz	302.35	1	2	13972	1.5	71.2	6.6	7.6	1.1	5.2	2.4	4.3	0.1	72.7	6.6	20.7	0.085	0.514	16.230558	-95.211130

OAXACA

4 CARR : Ent. La Ventosa - San Pedro Tanapatepec

CLAVE: 20059

RUTA: MEX-190

AÑO : 2012

LUGAR	ESTACION				CLASIFICACION VEHICULAR EN PORCIENTO													COORDENADAS		
	KM	TE	SC	TDPA	M	A	B	C2	C3	T3S2	T3S3	T3S2R4	OTROS	A	B	C	K'	D	LATITUD	LONGITUD
La Ventosa	0.00	3	0	3773	0.7	79.2	5.5	8.1	2.7	2.7	0.5	0.4	0.2	79.9	5.5	14.6	0.093	0.522	16.550251	-94.944133
T. C. La Ventosa - Salina Cruz (Cuota)	7.20	3	0	6164	0.8	76.1	4.5	6.8	2.9	4.4	2.3	1.6	0.6	76.9	4.5	18.6	0.085	0.527	16.571539	-94.884855
T. Izq. Nilttepec	38.01	3	0	3844	0.6	65.5	6.0	6.7	2.5	9.6	2.6	6.0	0.5	66.1	6.0	27.9	0.076	0.531	16.554508	-94.604502
Santo Domingo Zanatepec	68.25	3	0	4945	1.5	69.5	2.9	7.4	2.0	8.1	2.7	5.0	0.9	71.0	2.9	26.1	0.069	0.510	16.475915	-94.348743
San Pedro Tapanatepec	91.80	1	0	4125	1.6	65.8	4.3	8.0	2.4	8.8	2.8	5.3	1.0	67.4	4.3	28.3	0.077	0.502	16.380161	-94.198985

5 CARR : Huajuapán de León - Oaxaca

CLAVE: 20056

RUTA: MEX-190

AÑO : 2012

LUGAR	ESTACION				CLASIFICACION VEHICULAR EN PORCIENTO													COORDENADAS		
	KM	TE	SC	TDPA	M	A	B	C2	C3	T3S2	T3S3	T3S2R4	OTROS	A	B	C	K'	D	LATITUD	LONGITUD
Huajuapán de León	0.00																			
T. Izq. Tehuacán	1.35	1	0	13150	3.2	82.0	3.0	5.1	0.8	4.0	0.7	0.2	1.0	85.2	3.0	11.8	0.065	0.538	17.812899	-97.766928
T. Izq. Tehuacán	1.35	3	0	8636	2.9	82.3	3.5	5.0	0.6	3.9	0.6	0.3	0.9	85.2	3.5	11.3	0.072	0.542	17.810731	-97.760166
Tamazulapán	38.61	1	0	3136	0.9	82.7	1.1	10.9	1.1	2.2	0.5	0.3	0.3	83.6	1.1	15.3	0.083	0.503	17.674787	-97.577125
Tamazulapán	38.61	3	0	3537	0.7	84.6	1.7	8.7	1.1	2.3	0.4	0.3	0.2	85.3	1.7	13.0	0.098	0.501	17.671478	-97.564173
T. Izq. Santiago Tejupan	49.62	3	0	3041	1.0	84.1	3.0	5.4	2.3	2.3	0.8	0.8	0.3	85.1	3.0	11.9	0.082	0.524	17.654842	-97.470375
T. Der. Tlaxiaco	61.43	3	0	2935	0.9	82.1	2.9	7.5	2.2	2.5	0.7	0.8	0.4	83.0	2.9	14.1	0.077	0.507	17.573624	-97.423461
Asunción Nochixtlán	90.40	1	0	6744	1.6	83.5	4.5	4.9	0.9	3.4	0.6	0.2	0.4	85.1	4.5	10.4	0.081	0.500	17.463925	-97.253979
T. Izq. Tehuacán	161.73	1	0	4407	2.2	84.3	4.1	4.5	0.8	2.6	0.6	0.5	0.4	86.5	4.1	9.4	0.091	0.507	17.285451	-96.910393
T. Izq. Tehuacán	161.73	3	0	4895	3.1	87.5	1.3	3.5	0.7	2.7	0.6	0.1	0.5	90.6	1.3	8.1	0.082	0.504	17.284833	-96.900142
T. Der. Tlaltinango	170.29	1	0	6869	2.5	86.0	3.0	4.2	0.8	2.7	0.4	0.1	0.3	88.5	3.0	8.5	0.085	0.505	17.248352	-96.852285
T. Der. Tlaltinango	170.29	3	0	7069	2.4	85.6	3.0	4.9	0.7	2.7	0.4	0.1	0.2	88.0	3.0	9.0	0.086	0.505	17.242526	-96.836780
T. Der. Nazareno Etla	179.23	3	1	12652	1.5	90.1	2.1	4.9	0.6	0.3	0.3	0.1	0.1	91.6	2.1	6.3	0.080	0.503	17.168934	-96.788680
T. Der. Nazareno Etla	179.23	3	2	12494	2.3	88.4	2.5	5.4	0.6	0.3	0.3	0.1	0.1	90.7	2.5	6.8	0.089	0.503	17.168988	-96.788639
T. Aut. Cuacnopalan - Oaxaca	181.80	3	1	20005	1.7	85.1	3.5	7.5	0.6	0.7	0.4	0.3	0.2	86.8	3.5	9.7	0.096	0.503	17.143575	-96.778196
T. Aut. Cuacnopalan - Oaxaca	181.80	3	2	19755	1.5	84.5	3.5	8.1	0.7	0.8	0.4	0.3	0.2	86.0	3.5	10.5	0.077	0.503	17.142813	-96.777648
Oaxaca	190.60	1	1	29533	2.0	80.2	5.7	6.5	0.6	1.3	2.6	0.4	0.7	82.2	5.7	12.1	0.082	0.542	17.097050	-96.749940
Oaxaca	190.60	1	2	24959	2.5	77.9	6.4	7.1	0.7	1.5	2.8	0.4	0.7	80.4	6.4	13.2	0.073	0.542	17.096347	-96.749408

6 CARR : Juchitán - Ixtepec

CLAVE: 20359

RUTA: MEX-185

AÑO : 2012

LUGAR	ESTACION				CLASIFICACION VEHICULAR EN PORCIENTO													COORDENADAS		
	KM	TE	SC	TDPA	M	A	B	C2	C3	T3S2	T3S3	T3S2R4	OTROS	A	B	C	K'	D	LATITUD	LONGITUD
Juchitán de Zaragoza	0.00																			
X. C. Coatzacoalcos - Salina Cruz	0.15	3	1	8625	6.7	84.7	0.8	5.3	0.4	0.9	0.7	0.1	0.4	91.4	0.8	7.8	0.081	0.517	16.449099	-95.025996

OAXACA

6 CARR : Juchitán - Ixtepec

CLAVE: 20359

RUTA: MEX-185

AÑO: 2012

LUGAR	ESTACION				CLASIFICACION VEHICULAR EN PORCIENTO													COORDENADAS		
	KM	TE	SC	TDPA	M	A	B	C2	C3	T3S2	T3S3	T3S2R4	OTROS	A	B	C	K'	D	LATITUD	LONGITUD
X. C. Coatzacoalcos - Salina Cruz	0.15	3	2	8050	7.2	83.6	1.0	5.5	0.4	1.0	0.8	0.1	0.4	90.8	1.0	8.2	0.081	0.517	16.449098	-95.025996
Asunción Ixtaltepec	7.40	1	1	3428	5.7	83.3	4.1	4.9	0.8	0.6	0.4	0.1	0.1	89.0	4.1	6.9	0.100	0.502	16.510542	-95.065991
Asunción Ixtaltepec	7.40	1	2	3459	4.6	83.2	4.9	5.2	0.9	0.6	0.4	0.1	0.1	87.8	4.9	7.3	0.091	0.502	16.510542	-95.065991
Asunción Ixtaltepec	7.40	3	1	2675	6.8	77.9	4.2	4.8	0.5	4.5	0.6	0.1	0.6	84.7	4.2	11.1	0.082	0.510	16.503895	-95.055184
Asunción Ixtaltepec	7.40	3	2	2782	6.1	77.0	4.4	5.3	0.5	5.3	0.7	0.1	0.6	83.1	4.4	12.5	0.080	0.510	16.503895	-95.055184
Ixtepec	16.00	1	1	4029	6.6	85.0	0.5	6.7	0.4	0.4	0.2	0.1	0.1	91.6	0.5	7.9	0.081	0.503	16.538549	-95.080565
Ixtepec	16.00	1	2	3988	5.5	85.1	0.5	7.6	0.4	0.5	0.2	0.1	0.1	90.6	0.5	8.9	0.078	0.503	16.538549	-95.080565

7 CARR : La Granja - Temascal

CLAVE: 00275

RUTA: MEX-145

AÑO: 2012

LUGAR	ESTACION				CLASIFICACION VEHICULAR EN PORCIENTO													COORDENADAS		
	KM	TE	SC	TDPA	M	A	B	C2	C3	T3S2	T3S3	T3S2R4	OTROS	A	B	C	K'	D	LATITUD	LONGITUD
T. C. La Tinaja - Santa Cruz	0.00	3	0	3478	14.7	69.3	5.5	5.5	1.6	2.6	0.4	0.1	0.3	84.0	5.5	10.5	0.087	0.501	18.352783	-96.262002
Lim. Edos. Term. Ver. Ppia. Oax.	5.00																			
Temascal	23.00	1	0	2983	14.9	72.2	4.5	4.4	1.0	2.2	0.4	0.1	0.3	87.1	4.5	8.4	0.100	0.502	18.257746	-96.392388

8 CARR : Las Cruces - Pinotepa Nacional

CLAVE: 00073

RUTA: MEX-200

AÑO: 2012

LUGAR	ESTACION				CLASIFICACION VEHICULAR EN PORCIENTO													COORDENADAS		
	KM	TE	SC	TDPA	M	A	B	C2	C3	T3S2	T3S3	T3S2R4	OTROS	A	B	C	K'	D	LATITUD	LONGITUD
T. C. Chilpancingo - Acapulco	0.00	3	1	17330	2.3	87.3	2.4	5.9	0.6	0.5	0.7	0.2	0.1	89.6	2.4	8.0	0.071	0.510	16.885501	-99.830429
T. C. Chilpancingo - Acapulco	0.00	3	2	18026	2.2	85.9	2.8	6.9	0.6	0.5	0.8	0.2	0.1	88.1	2.8	9.1	0.071	0.510	16.885502	-99.830429
T. Der. Puerto Marqués	4.62	1	1	13719	2.9	83.6	2.9	8.6	0.8	0.6	0.4	0.2	0.0	86.5	2.9	10.6	0.084	0.511	16.867860	-99.811195
T. Der. Puerto Marqués	4.62	1	2	13106	3.2	82.7	2.8	9.3	0.8	0.6	0.4	0.2	0.0	85.9	2.8	11.3	0.074	0.511	16.867862	-99.811195
T. Der. Puerto Marqués	4.62	3	0	11086	2.9	85.0	1.9	6.5	1.0	1.0	0.8	0.5	0.4	87.9	1.9	10.2	0.077	0.509	16.857488	-99.806269
X. C. Puerto Marqués - La Venta (Cuota)	11.70	1	1	3725	3.6	87.7	1.7	3.9	1.3	0.9	0.5	0.3	0.1	91.3	1.7	7.0	0.079	0.503	16.830921	-99.765488
X. C. Puerto Marqués - La Venta (Cuota)	11.70	1	2	3769	3.8	87.2	1.8	4.2	1.3	0.9	0.5	0.2	0.1	91.0	1.8	7.2	0.079	0.503	16.830921	-99.765488
X. C. Puerto Marqués - La Venta (Cuota)	11.70	3	1	4025	3.2	88.7	1.8	3.1	1.2	1.0	0.6	0.2	0.2	91.9	1.8	6.3	0.082	0.501	16.830253	-99.753092
X. C. Puerto Marqués - La Venta (Cuota)	11.70	3	2	4036	3.1	87.9	2.0	3.3	1.4	1.1	0.8	0.2	0.2	91.0	2.0	7.0	0.079	0.501	16.830253	-99.753092
San Marcos	58.90	1	0	6461	1.2	83.7	2.3	5.3	1.9	3.6	1.0	0.5	0.5	84.9	2.3	12.8	0.081	0.508	16.784581	-99.397729
Nexpa	84.96	3	0	4929	1.6	79.0	2.7	7.3	2.1	3.9	1.6	1.0	0.8	80.6	2.7	16.7	0.079	0.506	16.781497	-99.201252
T. Izq. Copala (1º Acceso)	117.50	1	0	4610	1.0	82.3	2.7	6.0	2.7	3.4	1.0	0.5	0.4	83.3	2.7	14.0	0.081	0.514	16.607250	-98.985846
T. Izq. Copala (1º Acceso)	117.50	3	0	5747	1.2	82.5	2.4	6.4	1.7	4.0	0.9	0.3	0.6	83.7	2.4	13.9	0.080	0.513	16.603388	-98.973776
T. Izq. Ometepec	175.88	1	0	4110	1.7	82.6	2.8	5.6	2.4	3.2	0.8	0.5	0.4	84.3	2.8	12.9	0.079	0.520	16.655367	-98.503246
Cuajinicuilapa	200.60	3	0	2763	1.5	82.6	2.9	5.9	2.5	2.7	0.8	0.6	0.5	84.1	2.9	13.0	0.100	0.514	16.465731	-98.400888

OAXACA

8 CARR: Las Cruces - Pinotepa Nacional

CLAVE: 00073

RUTA: MEX-200

AÑO: 2012

LUGAR	ESTACION				CLASIFICACION VEHICULAR EN PORCIENTO													COORDENADAS		
	KM	TE	SC	TDPA	M	A	B	C2	C3	T3S2	T3S3	T3S2R4	OTROS	A	B	C	K'	D	LATITUD	LONGITUD
Lim. Edos. Term. Gro. Ppia. Oax.	207.80																			
T. Izq. San Pedro Orizaba	215.00	3	0	1810	1.7	80.7	2.4	7.4	3.3	2.5	1.0	0.7	0.3	82.4	2.4	15.2	0.081	0.512	16.442356	-98.341673
T. Izq. Tlaxiaco	245.47	1	0	3158	1.5	86.0	1.5	2.7	3.0	3.2	1.1	0.2	0.8	87.5	1.5	11.0	0.081	0.509	16.379736	-98.094625
T. Izq. Tlaxiaco	245.47	3	0	6043	1.1	87.4	1.3	2.6	1.8	3.6	0.9	0.5	0.8	88.5	1.3	10.2	0.077	0.502	16.376734	-98.092067
Pinotepa Nacional	252.50																			

9 CARR: Libramiento de Pochutla

CLAVE:

RUTA: MEX-200

AÑO: 2012

LUGAR	ESTACION				CLASIFICACION VEHICULAR EN PORCIENTO													COORDENADAS		
	KM	TE	SC	TDPA	M	A	B	C2	C3	T3S2	T3S3	T3S2R4	OTROS	A	B	C	K'	D	LATITUD	LONGITUD
T. C. Santiago Pinotepa Nacional - Salina Cruz	0.00	3	0	881	10.0	73.6	5.8	6.6	1.9	1.4	0.6	0.0	0.1	83.6	5.8	10.6	0.092	0.502	15.733400	-96.480393
Pio Macaya	2.40	1	0	760	7.5	74.0	5.0	7.8	3.1	1.9	0.7	0.0	0.0	81.5	5.0	13.5	0.107	0.510	15.747989	-96.477403
Pio Macaya	2.40	3	0	660	10.3	72.8	4.5	7.5	2.8	1.5	0.6	0.0	0.0	83.1	4.5	12.4	0.091	0.515	15.755145	-96.476780
T. C. Oaxaca - Puerto Angel	5.20	1	0	769	6.1	78.8	1.2	10.0	2.0	1.2	0.6	0.0	0.1	84.9	1.2	13.9	0.087	0.513	15.762211	-96.465783

10 CARR: Libramiento de Santa María del Tule

CLAVE:

RUTA: MEX-190

AÑO: 2012

LUGAR	ESTACION				CLASIFICACION VEHICULAR EN PORCIENTO													COORDENADAS		
	KM	TE	SC	TDPA	M	A	B	C2	C3	T3S2	T3S3	T3S2R4	OTROS	A	B	C	K'	D	LATITUD	LONGITUD
T. C. Oaxaca - Tehuantepec	0.00	3	0	14144	0.7	84.1	2.6	4.7	1.4	4.2	0.9	0.6	0.8	84.8	2.6	12.6	0.076	0.532	17.052274	-96.657849
T. C. Oaxaca - Tehuantepec	5.80	1	0	15472	0.9	84.7	2.6	4.0	1.4	3.7	1.2	0.6	0.9	85.6	2.6	11.8	0.074	0.501	17.036913	-96.622608

11 CARR: Oaxaca - Puerto Ángel

CLAVE: 20091

RUTA: MEX-175

AÑO: 2012

LUGAR	ESTACION				CLASIFICACION VEHICULAR EN PORCIENTO													COORDENADAS		
	KM	TE	SC	TDPA	M	A	B	C2	C3	T3S2	T3S3	T3S2R4	OTROS	A	B	C	K'	D	LATITUD	LONGITUD
Oaxaca	0.00	3	1	27745	2.4	83.5	1.5	4.1	0.7	4.4	1.9	0.7	0.8	85.9	1.5	12.6	0.068	0.507	17.032047	-96.712966
Oaxaca	0.00	3	2	27004	2.5	81.9	1.8	4.7	0.7	4.6	2.2	0.7	0.9	84.4	1.8	13.8	0.073	0.507	17.032109	-96.712852
T. Der. Aeropuerto	10.46	1	1	22217	2.0	91.4	0.2	4.7	0.3	0.3	0.6	0.1	0.4	93.4	0.2	6.4	0.091	0.505	17.007274	-96.713003
T. Der. Aeropuerto	10.46	1	2	22633	1.9	90.7	0.2	5.5	0.3	0.3	0.6	0.1	0.4	92.6	0.2	7.2	0.081	0.505	17.007273	-96.713004
T. Der. Puerto Escondido	19.07	1	1	11854	2.0	86.5	0.7	7.4	0.7	1.2	0.6	0.3	0.6	88.5	0.7	10.8	0.092	0.511	16.933364	-96.704338
T. Der. Puerto Escondido	19.07	1	2	12404	1.1	86.0	0.7	8.6	0.8	1.3	0.4	0.3	0.8	87.1	0.7	12.2	0.087	0.511	16.933364	-96.704338
T. Der. Puerto Escondido	19.07	3	0	11948	2.0	84.8	0.3	8.1	0.8	2.2	0.7	0.3	0.8	86.8	0.3	12.9	0.071	0.506	16.926144	-96.701270
Ocotlán	35.67	3	0	8426	2.1	82.8	0.6	9.3	1.0	2.4	0.8	0.3	0.7	84.9	0.6	14.5	0.091	0.506	16.764216	-96.677635
Ejutla de Crespo	64.04	1	0	4547	1.1	81.3	3.3	9.2	1.7	2.0	0.7	0.2	0.5	82.4	3.3	14.3	0.086	0.563	16.606164	-96.738115

OAXACA

11 CARR : Oaxaca - Puerto Ángel

CLAVE: 20091

RUTA: MEX-175

AÑO : 2012

LUGAR	ESTACION				CLASIFICACION VEHICULAR EN PORCIENTO										COORDENADAS					
	KM	TE	SC	TDPA	M	A	B	C2	C3	T3S2	T3S3	T3S2R4	OTROS	A	B	C	K'	D	LATITUD	LONGITUD
Ejutla de Crespo	64.04	3	0	2913	1.9	78.2	3.5	9.5	2.7	2.6	0.7	0.3	0.6	80.1	3.5	16.4	0.092	0.596	16.515639	-96.736229
Miahuatlán de Porfirio Díaz	100.64	3	0	3130	2.7	83.1	0.8	9.3	1.7	1.4	0.4	0.1	0.5	85.8	0.8	13.4	0.078	0.509	16.285477	-96.584027
San Miguel Suchixtepec	144.00	1	0	1427	1.5	85.2	0.9	8.7	1.9	1.1	0.5	0.0	0.2	86.7	0.9	12.4	0.078	0.510	16.100525	-96.470577
Candelaria Loxicha	195.00	1	0	1290	1.7	86.1	1.1	8.3	1.4	1.0	0.2	0.0	0.2	87.8	1.1	11.1	0.078	0.504	15.931758	-96.486257
San Pedro Pochutla	238.00	1	0	3920	2.7	86.9	0.7	5.8	0.5	2.0	0.8	0.1	0.5	89.6	0.7	9.7	0.070	0.506	15.764670	-96.463672
Puerto Ángel	245.40	1	0	4475	3.6	88.7	0.9	3.8	0.4	1.5	0.6	0.1	0.4	92.3	0.9	6.8	0.089	0.511	15.677751	-96.481501

12 CARR : Oaxaca - Tehuantepec

CLAVE: 20057

RUTA: MEX-190

AÑO : 2012

LUGAR	ESTACION				CLASIFICACION VEHICULAR EN PORCIENTO										COORDENADAS					
	KM	TE	SC	TDPA	M	A	B	C2	C3	T3S2	T3S3	T3S2R4	OTROS	A	B	C	K'	D	LATITUD	LONGITUD
Oaxaca	0.00	3	1	18390	1.0	90.4	2.2	3.0	0.2	0.6	2.2	0.1	0.3	91.4	2.2	6.4	0.083	0.504	17.067806	-96.688164
Oaxaca	0.00	3	2	18711	1.1	89.1	2.4	3.6	0.2	0.7	2.5	0.1	0.3	90.2	2.4	7.4	0.086	0.504	17.067785	-96.687127
T. Izq. Guelatao	8.69	3	1	15423	0.9	88.6	2.1	3.3	0.4	1.2	2.7	0.2	0.6	89.5	2.1	8.4	0.097	0.501	17.063852	-96.674963
T. Izq. Guelatao	8.69	3	2	15510	1.0	87.3	2.4	3.9	0.4	1.3	2.9	0.2	0.6	88.3	2.4	9.3	0.080	0.501	17.064027	-96.674857
Libramiento Santa María el Tule	12.00	1	1	13411	1.4	90.0	1.1	4.0	0.5	0.9	1.5	0.2	0.4	91.4	1.1	7.5	0.082	0.515	17.061241	-96.666204
Libramiento Santa María el Tule	12.00	1	2	14237	1.4	88.9	1.1	4.7	0.5	1.0	1.8	0.2	0.4	90.3	1.1	8.6	0.077	0.515	17.061241	-96.666204
Santa María El Tule	13.90	1	1	6147	2.9	90.4	2.4	2.7	0.3	0.6	0.6	0.0	0.1	93.3	2.4	4.3	0.084	0.506	17.049133	-96.642515
Santa María El Tule	13.90	1	2	6304	2.7	90.0	2.6	3.0	0.3	0.7	0.6	0.0	0.1	92.7	2.6	4.7	0.086	0.506	17.049329	-96.642528
Santa María El Tule	13.90	3	0	4200	2.8	86.5	2.0	4.3	0.5	2.8	0.3	0.3	0.5	89.3	2.0	8.7	0.075	0.501	17.043498	-96.629609
Teotitlán del Valle	26.50	1	0	12865	1.3	90.0	2.4	3.1	1.4	0.5	0.6	0.2	0.5	91.3	2.4	6.3	0.081	0.511	16.996319	-96.527912
T. Izq. Teotitlán del Valle	26.50	3	0	13446	1.4	89.3	3.1	3.9	0.9	0.5	0.5	0.3	0.1	90.7	3.1	6.2	0.083	0.501	16.993547	-96.523690
T. Der. Tlacolula	33.64	1	0	11415	1.1	84.0	3.4	5.5	0.8	3.6	0.7	0.3	0.6	85.1	3.4	11.5	0.081	0.504	16.970453	-96.489113
T. Der. Tlacolula	33.64	3	1	4617	1.3	84.3	3.3	5.4	0.8	3.4	0.6	0.3	0.6	85.6	3.3	11.1	0.090	0.500	16.950849	-96.465587
T. Der. Tlacolula	33.64	3	2	4619	1.4	83.1	3.5	5.8	0.8	3.8	0.7	0.3	0.6	84.5	3.5	12.0	0.090	0.500	16.950849	-96.465587
T. Izq. Villa de Mitla	42.66	1	0	7034	1.0	82.6	2.7	8.1	1.0	2.9	0.8	0.5	0.4	83.6	2.7	13.7	0.089	0.505	16.921235	-96.405731
T. Izq. Villa de Mitla	42.66	3	0	4129	1.0	80.9	3.0	9.0	1.1	2.7	1.3	0.7	0.3	81.9	3.0	15.1	0.086	0.506	16.912419	-96.397764
San Pedro Totolapan	81.00	1	0	2818	1.4	77.2	4.3	9.2	1.7	2.6	2.1	1.0	0.5	78.6	4.3	17.1	0.093	0.512	16.672289	-96.306675
T. Izq. Nejapa de Madero	127.00	1	0	1299	1.7	76.2	5.0	9.4	1.8	2.4	2.0	1.1	0.4	77.9	5.0	17.1	0.090	0.511	16.621844	-96.038367
La Reforma	184.62	1	0	1954	1.3	75.3	5.0	7.7	2.7	2.4	1.8	3.7	0.1	76.6	5.0	18.4	0.086	0.506	16.399572	-95.767365
La Reforma	184.62	3	0	1973	1.2	78.4	3.3	7.2	2.6	2.4	1.7	3.0	0.2	79.6	3.3	17.1	0.082	0.504	16.398489	-95.760883
T. Der. Magdalena Tequisistlán	206.66	1	0	2898	1.2	79.6	4.0	7.4	1.7	1.9	1.3	2.6	0.3	80.8	4.0	15.2	0.070	0.517	16.415503	-95.600977
T. Izq. Jalapa de Márquez	224.60	3	0	3760	1.4	80.5	3.1	7.7	1.4	2.0	0.9	2.7	0.3	81.9	3.1	15.0	0.074	0.516	16.430483	-95.428993
Tehuantepec	250.60	1	0	6086	1.3	81.9	3.5	6.4	1.5	1.6	1.0	2.5	0.3	83.2	3.5	13.3	0.079	0.502	16.329235	-95.263312

OAXACA

13 CARR: Puebla - Huajuapán de León

CLAVE: 00049

RUTA: MEX-190

AÑO: 2012

LUGAR	ESTACION				CLASIFICACION VEHICULAR EN PORCIENTO													COORDENADAS		
	KM	TE	SC	TDPA	M	A	B	C2	C3	T3S2	T3S3	T3S2R4	OTROS	A	B	C	K'	D	LATITUD	LONGITUD
Puebla	0.00	3	1	18143	1.3	92.2	1.2	2.2	0.3	1.0	1.4	0.1	0.3	93.5	1.2	5.3	0.071	0.512	19.033047	-98.263891
Puebla	0.00	3	2	19048	1.0	92.0	1.3	2.4	0.3	1.1	1.5	0.1	0.3	93.0	1.3	5.7	0.076	0.512	19.033047	-98.263891
Atlixco	29.88	1	0	15259	3.4	85.3	1.7	5.9	1.1	0.9	0.8	0.8	0.1	88.7	1.7	9.6	0.080	0.507	18.930528	-98.407306
Atlixco	29.88	3	0	11435	5.2	85.5	1.2	6.6	0.2	0.6	0.5	0.1	0.1	90.7	1.2	8.1	0.085	0.518	18.880250	-98.435917
Tepeojuma	51.90	1	1	4635	1.1	79.2	6.2	6.8	1.7	1.9	1.3	1.4	0.4	80.3	6.2	13.5	0.127	0.501	18.772167	-98.453917
Tepeojuma	51.90	1	2	4617	1.1	76.1	7.4	8.1	2.0	2.1	1.4	1.4	0.4	77.2	7.4	15.4	0.089	0.501	18.772167	-98.453917
Izúcar de Matamoros	67.00	1	0	9960	1.6	76.7	3.2	8.4	1.7	4.4	1.8	1.4	0.8	78.3	3.2	18.5	0.085	0.510	18.631306	-98.469083
T. Der. Cuautla	70.00	3	0	7343	5.5	75.7	4.1	6.0	1.7	3.4	1.6	1.1	0.9	81.2	4.1	14.7	0.071	0.524	18.579556	-98.450222
Tehuizingo	113.30	1	0	4850	1.3	80.8	3.4	7.4	1.4	3.4	1.0	0.5	0.8	82.1	3.4	14.5	0.080	0.505	18.338694	-98.283389
Acatlán de Osorio	154.20	1	0	6245	1.9	83.6	2.9	5.8	0.7	3.6	0.5	0.4	0.6	85.5	2.9	11.6	0.077	0.508	18.187639	-98.055250
Chila	192.30	3	0	2267	1.8	70.1	4.6	8.3	3.7	5.2	3.8	1.7	0.8	71.9	4.6	23.5	0.085	0.506	17.966583	-97.864250
Lim. Edos. Term. Pue. Ppia. Oax.	200.30																			
T. Izq. Las Palmas	202.10	1	0	2166	0.0	79.7	4.0	10.6	2.0	1.9	1.1	0.5	0.2	79.7	4.0	16.3	0.085	0.508	17.882204	-97.836529
Huajuapán de León	219.30	1	0	3145	1.6	75.2	4.5	8.2	2.4	4.7	1.4	1.8	0.2	76.8	4.5	18.7	0.078	0.507	17.836196	-97.790585

14 CARR: Ramal a Asunción Ixtaltepec

CLAVE: 20624

RUTA: MEX-185

AÑO: 2012

LUGAR	ESTACION				CLASIFICACION VEHICULAR EN PORCIENTO													COORDENADAS		
	KM	TE	SC	TDPA	M	A	B	C2	C3	T3S2	T3S3	T3S2R4	OTROS	A	B	C	K'	D	LATITUD	LONGITUD
T. C. Coatzacoalcos - Salina Cruz	0.00	3	0	5574	7.8	79.0	1.6	5.7	0.8	3.1	1.0	0.4	0.6	86.8	1.6	11.6	0.103	0.523	16.438733	-95.034979
Asunción Ixtaltepec	9.70	1	0	3564	7.7	79.6	1.2	6.0	0.8	3.2	0.6	0.3	0.6	87.3	1.2	11.5	0.081	0.508	16.499155	-95.064695

15 CARR: San Pablo Villa de Mitla - T. C. (Tuxtepec - Palomares)

CLAVE: 00106

RUTA: MEX-179

AÑO: 2012

LUGAR	ESTACION				CLASIFICACION VEHICULAR EN PORCIENTO													COORDENADAS		
	KM	TE	SC	TDPA	M	A	B	C2	C3	T3S2	T3S3	T3S2R4	OTROS	A	B	C	K'	D	LATITUD	LONGITUD
T. C. Oaxaca - Tehuantepec	0.00	3	0	2835	3.0	84.8	4.3	5.5	0.4	1.8	0.1	0.0	0.1	87.8	4.3	7.9	0.097	0.506	16.917755	-96.385658
San Pedro y San Pablo Ayutla	55.00	1	0	1470	0.5	91.4	1.8	3.9	0.7	1.0	0.5	0.0	0.2	91.9	1.8	6.3	0.085	0.515	17.020890	-96.082435
T. Der. Zacatepec	90.00	1	0	1597	1.5	84.5	4.4	5.0	1.3	1.6	0.7	0.3	0.7	86.0	4.4	9.6	0.093	0.512	17.148337	-96.035299
Lim. Edos. Term. Oax. Ppia. Ver.	217.70																			
T. C. Tuxtepec - Ent. Palomares	238.70	1	0	1678	5.8	79.8	6.3	5.9	0.7	1.1	0.2	0.0	0.2	85.6	6.3	8.1	0.111	0.508	17.701110	-95.734847

OAXACA

16 CARR: Santiago Pinotepa Nacional - Salina Cruz

CLAVE: 20074

RUTA: MEX-200

AÑO: 2012

LUGAR	ESTACION				CLASIFICACION VEHICULAR EN PORCIENTO													COORDENADAS		
	KM	TE	SC	TDPA	M	A	B	C2	C3	T3S2	T3S3	T3S2R4	OTROS	A	B	C	K'	D	LATITUD	LONGITUD
Santiago Pinotepa Nacional	0.00	3	0	3875	5.0	84.5	1.3	2.3	1.9	2.9	1.1	0.6	0.4	89.5	1.3	9.2	0.077	0.505	16.333359	-98.033933
San Andrés Huaxpaltepec	18.07	3	0	2879	5.2	80.4	2.5	6.3	1.5	2.6	0.9	0.2	0.4	85.6	2.5	11.9	0.086	0.512	16.325073	-97.907378
San José del Progreso	59.51	1	0	7502	4.2	84.5	2.0	3.7	1.7	1.7	1.0	0.6	0.6	88.7	2.0	9.3	0.080	0.502	16.099284	-97.701396
T. Izq. Tututepec	65.85	3	0	4581	2.5	80.4	1.1	10.3	1.1	3.1	0.7	0.4	0.4	82.9	1.1	16.0	0.083	0.512	16.080597	-97.637269
T. Izq. Bajos de Chila	131.94	1	0	3324	2.4	79.1	6.0	5.8	1.4	2.6	1.0	0.7	1.0	81.5	6.0	12.5	0.087	0.541	15.918058	-97.127730
T. Izq. Aeropuerto	137.40	1	0	7096	4.3	81.8	1.2	5.2	1.2	3.6	1.2	0.6	0.9	86.1	1.2	12.7	0.075	0.511	15.873151	-97.094964
Puerto Escondido	141.54	1	1	2881	4.7	81.6	0.9	6.8	0.9	2.5	1.3	0.5	0.8	86.3	0.9	12.8	0.080	0.535	15.868398	-97.082379
Puerto Escondido	141.54	1	2	2983	4.8	81.4	1.1	6.8	0.9	2.6	1.2	0.7	0.5	86.2	1.1	12.7	0.069	0.535	15.868406	-97.082423
Puerto Escondido	141.54	3	1	2724	4.4	80.3	2.3	6.1	1.2	3.2	1.0	0.6	0.9	84.7	2.3	13.0	0.084	0.536	15.854073	-97.053898
Puerto Escondido	141.54	3	2	2590	7.2	76.2	2.6	6.8	1.1	3.5	1.1	0.6	0.9	83.4	2.6	14.0	0.077	0.536	15.854075	-97.053932
T. Der. Mazunte	198.87	1	0	4068	4.6	79.0	2.8	8.2	1.0	3.0	0.7	0.4	0.3	83.6	2.8	13.6	0.081	0.507	15.716343	-96.585141
T. Der. Mazunte	198.87	3	0	5051	5.2	79.0	3.8	5.4	0.7	4.0	0.8	0.4	0.7	84.2	3.8	12.0	0.074	0.508	15.716590	-96.582104
T. Izq. Sta. María Tonameca	202.93	3	0	5061	4.2	80.2	3.8	5.1	0.7	4.3	0.8	0.3	0.6	84.4	3.8	11.8	0.075	0.507	15.730161	-96.537176
T. Libramiento de Pochutla	209.15	1	0	4913	4.2	81.5	3.1	5.9	0.8	3.1	0.7	0.3	0.4	85.7	3.1	11.2	0.074	0.504	15.731859	-96.484942
X. C. Oaxaca - Puerto Ángel	209.95	1	0	5617	4.9	80.3	1.5	6.8	0.7	3.8	0.9	0.4	0.7	85.2	1.5	13.3	0.078	0.501	15.730671	-96.475887
X. C. Oaxaca - Puerto Ángel	209.95	3	0	4489	7.9	64.1	4.6	8.3	3.6	5.8	3.3	1.8	0.6	72.0	4.6	23.4	0.098	0.503	15.729235	-96.471608
T. Der. Cuatunanco	226.00	1	0	2845	2.6	78.0	5.4	7.6	1.2	2.8	1.3	0.6	0.5	80.6	5.4	14.0	0.079	0.507	15.733226	-96.350729
T. Der. Cuatunanco	226.00	3	0	2559	2.9	78.8	4.8	7.4	1.2	2.9	1.2	0.5	0.3	81.7	4.8	13.5	0.075	0.515	15.735333	-96.344838
T. C. El Zapote - Copalita	236.00	1	0	3704	4.1	81.9	2.8	5.6	1.1	2.8	0.9	0.4	0.4	86.0	2.8	11.2	0.073	0.504	15.761123	-96.274608
T. C. El Zapote - Copalita	236.00	3	0	5677	3.3	79.5	2.7	11.4	0.6	1.0	0.7	0.4	0.4	82.8	2.7	14.5	0.078	0.513	15.764083	-96.268093
T. Izq. Aeropuerto	237.68	3	0	2788	4.1	82.1	2.7	5.4	1.0	2.8	0.9	0.5	0.5	86.2	2.7	11.1	0.073	0.506	15.768514	-96.256702
T. Der. Santa Cruz Huatulco	250.00	1	0	6819	2.8	85.4	1.4	7.7	0.6	1.0	0.6	0.2	0.3	88.2	1.4	10.4	0.095	0.501	15.781667	-96.160556
T. Der. Santa Cruz Huatulco	250.00	3	0	1528	2.4	78.8	2.2	4.5	3.8	4.3	2.4	0.9	0.7	81.2	2.2	16.6	0.096	0.534	15.783320	-96.155755
T. Der. Tangolunda	263.00	1	0	1331	4.4	71.8	4.5	8.1	2.2	5.4	2.1	1.2	0.3	76.2	4.5	19.3	0.242	0.537	15.815241	-96.069185
T. C. La Ventosa - Salina Cruz (Cuota)	380.00	1	0	2605	1.4	81.4	3.8	5.4	1.8	3.0	1.5	1.1	0.6	82.8	3.8	13.4	0.084	0.564	16.148413	-95.287136
T. C. La Ventosa - Salina Cruz (Cuota)	380.00	3	0	2439	2.0	81.2	4.8	6.3	2.0	2.2	1.1	0.3	0.1	83.2	4.8	12.0	0.089	0.541	16.154498	-95.279731
Salina Cruz	394.00																			

17 CARR: Tapanatepec - Talismán

CLAVE: 00075

RUTA: MEX-200

AÑO: 2012

LUGAR	ESTACION				CLASIFICACION VEHICULAR EN PORCIENTO													COORDENADAS		
	KM	TE	SC	TDPA	M	A	B	C2	C3	T3S2	T3S3	T3S2R4	OTROS	A	B	C	K'	D	LATITUD	LONGITUD
Tapanatepec	0.00	3	0	4736	2.0	69.1	3.0	4.4	2.6	9.0	3.8	5.2	0.9	71.1	3.0	25.9	0.072	0.503	16.346259	-94.190734
Lim. Edos. Term. Oax. Ppia. Chis.	25.90																			
T. Der. Emiliano Zapata	26.20	1	0	3324	1.8	67.0	3.6	7.0	2.8	9.7	2.0	5.7	0.4	68.8	3.6	27.6	0.074	0.500	16.217020	-94.051565

OAXACA

17 CARR : Tapanatepec - Talismán

CLAVE: 00075

RUTA: MEX-200

AÑO: 2012

LUGAR	ESTACION				CLASIFICACION VEHICULAR EN PORCIENTO														COORDENADAS	
	KM	TE	SC	TDPA	M	A	B	C2	C3	T3S2	T3S3	T3S2R4	OTROS	A	B	C	K'	D	LATITUD	LONGITUD
T. Der. Emiliano Zapata	26.20	3	0	3915	1.4	69.4	3.5	7.5	2.2	9.0	1.8	4.6	0.6	70.8	3.5	25.7	0.075	0.534	16.214711	-94.040720
Arriaga	45.00	1	0	5079	3.0	75.2	2.2	5.7	1.7	6.8	1.5	3.2	0.7	78.2	2.2	19.6	0.080	0.525	16.221842	-93.936615
Arriaga	45.00	3	1	3949	4.6	79.2	3.9	5.7	0.9	3.0	1.1	1.3	0.3	83.8	3.9	12.3	0.079	0.513	16.237868	-93.883100
Arriaga	45.00	3	2	4159	6.8	75.3	4.2	6.3	1.0	3.6	1.0	1.5	0.3	82.1	4.2	13.7	0.081	0.513	16.238870	-93.883380
X. C. Arriaga- Ocozocoautla (Cuota)	47.00	3	1	4460	3.9	77.7	3.6	9.8	1.1	1.7	0.5	1.5	0.2	81.6	3.6	14.8	0.094	0.509	16.233410	-93.877142
X. C. Arriaga- Ocozocoautla (Cuota)	47.00	3	2	4308	4.6	76.0	3.9	10.1	1.3	1.8	0.5	1.6	0.2	80.6	3.9	15.5	0.090	0.509	16.232769	-93.876455
T. Der. Libramiento de Arriaga	49.50	1	1	3852	3.1	83.2	2.2	6.3	1.0	1.7	0.6	1.6	0.3	86.3	2.2	11.5	0.101	0.520	16.222177	-93.866894
T. Der. Libramiento de Arriaga	49.50	1	2	3558	0.1	84.9	2.2	6.9	1.2	2.0	0.7	1.8	0.2	85.0	2.2	12.8	0.080	0.520	16.222036	-93.866879
T. Der. Libramiento de Arriaga	49.50	3	1	4149	3.5	79.9	0.6	3.6	2.9	4.4	1.3	3.0	0.8	83.4	0.6	16.0	0.082	0.502	16.209126	-93.856076
T. Der. Libramiento de Arriaga	49.50	3	2	4185	0.1	81.9	0.7	4.0	3.2	4.5	1.4	3.2	1.0	82.0	0.7	17.3	0.074	0.502	16.209071	-93.855988
Tonalá	68.80	1	1	4716	2.9	79.3	3.4	4.9	1.5	4.0	1.3	2.3	0.4	82.2	3.4	14.4	0.085	0.502	16.108839	-93.782093
Tonalá	68.80	1	2	4686	3.5	76.8	3.9	5.3	1.7	4.5	1.4	2.5	0.4	80.3	3.9	15.8	0.073	0.502	16.107719	-93.780282
T. Der. Puerto Arista	73.00	1	1	2770	2.5	66.9	4.8	11.3	1.9	6.8	1.5	4.0	0.3	69.4	4.8	25.8	0.110	0.509	16.060034	-93.741819
T. Der. Puerto Arista	73.00	1	2	2669	2.3	64.9	4.9	12.2	2.2	7.4	1.6	4.1	0.4	67.2	4.9	27.9	0.087	0.509	16.059545	-93.741268
T. Der. Puerto Arista	73.00	3	1	2837	2.3	74.6	3.7	5.4	1.8	6.4	1.6	3.9	0.3	76.9	3.7	19.4	0.076	0.504	16.055442	-93.733829
T. Der. Puerto Arista	73.00	3	2	2790	2.5	72.1	4.1	6.0	2.0	7.1	1.7	4.2	0.3	74.6	4.1	21.3	0.080	0.504	16.055443	-93.733829
T. Der. Tres Picos	100.40	1	1	2617	2.1	68.4	4.2	11.8	1.5	5.6	2.4	3.2	0.8	70.5	4.2	25.3	0.070	0.516	15.918947	-93.549178
T. Der. Tres Picos	100.40	1	2	2791	3.2	63.4	4.9	13.1	1.7	6.3	2.7	3.6	1.1	66.6	4.9	28.5	0.087	0.516	15.919386	-93.549114
T. Der. Tres Picos	100.40	3	1	2447	2.7	68.7	4.2	9.6	2.0	6.9	1.3	4.3	0.3	71.4	4.2	24.4	0.075	0.508	15.907028	-93.525436
T. Der. Tres Picos	100.40	3	2	2374	2.3	66.0	5.1	10.0	2.3	8.0	1.4	4.5	0.4	68.3	5.1	26.6	0.081	0.508	15.907211	-93.525490
T. Der. Los Patos	114.75	1	1	2174	1.8	68.4	3.9	8.2	2.4	8.2	1.9	4.7	0.5	70.2	3.9	25.9	0.077	0.510	15.838609	-93.435994
T. Der. Los Patos	114.75	1	2	2088	2.2	66.0	4.3	9.1	2.7	8.4	1.9	5.0	0.4	68.2	4.3	27.5	0.084	0.510	15.839900	-93.436188
T. Der. Los Patos	114.75	3	1	2161	1.8	64.9	6.0	8.6	2.6	8.3	2.3	4.5	1.0	66.7	6.0	27.3	0.072	0.512	15.826421	-93.427058
T. Der. Los Patos	114.75	3	2	2064	1.5	62.4	6.6	9.3	2.9	8.6	2.4	5.2	1.1	63.9	6.6	29.5	0.081	0.512	15.826422	-93.427060
T. Der. San Isidro	125.00	1	1	2453	2.3	68.3	4.4	9.4	1.9	7.2	1.8	4.3	0.4	70.6	4.4	25.0	0.078	0.507	15.779555	-93.364461
T. Der. San Isidro	125.00	1	2	2390	2.3	65.7	5.0	10.0	2.1	8.1	1.9	4.4	0.5	68.0	5.0	27.0	0.077	0.507	15.781579	-93.364626
T. Der. San Isidro	125.00	3	1	4497	2.8	71.3	3.6	6.4	2.7	6.7	1.8	3.8	0.9	74.1	3.6	22.3	0.071	0.521	15.777709	-93.357979
T. Der. San Isidro	125.00	3	2	4141	2.4	69.0	3.8	7.5	3.0	7.4	2.0	3.9	1.0	71.4	3.8	24.8	0.079	0.521	15.777825	-93.357951
Pijijiapan	144.45	1	1	3366	6.2	73.5	3.4	5.8	1.4	4.8	1.6	2.9	0.4	79.7	3.4	16.9	0.073	0.506	15.701131	-93.216642
Pijijiapan	144.45	1	2	3282	5.3	72.8	3.7	6.4	1.5	5.3	1.7	2.8	0.5	78.1	3.7	18.2	0.092	0.506	15.702318	-93.216383
T. Der. Mapastepec	188.85	3	1	3118	4.8	74.8	2.5	6.3	1.5	5.2	1.5	3.0	0.4	79.6	2.5	17.9	0.073	0.507	15.454305	-92.879916
T. Der. Mapastepec	188.85	3	2	3203	4.7	72.9	2.6	6.9	1.8	5.6	1.6	3.5	0.4	77.6	2.6	19.8	0.087	0.507	15.454890	-92.879992
T. Der. Estación Soconusco	213.30	1	1	3657	4.5	71.7	3.7	7.1	1.8	5.6	1.8	3.2	0.6	76.2	3.7	20.1	0.080	0.515	15.341360	-92.715405
T. Der. Estación Soconusco	213.30	1	2	3450	4.3	71.8	3.8	7.0	1.8	5.9	1.7	3.1	0.6	76.1	3.8	20.1	0.082	0.515	15.352479	-92.697218
T. Der. Estación Soconusco	213.30	3	1	3487	4.2	74.5	2.2	7.2	2.0	5.3	1.5	2.8	0.3	78.7	2.2	19.1	0.074	0.503	15.337408	-92.710537

OAXACA

17 CARR: Tapanatepec - Talismán

CLAVE: 00075

RUTA: MEX-200

AÑO: 2012

LUGAR	ESTACION				CLASIFICACION VEHICULAR EN PORCIENTO													COORDENADAS		
	KM	TE	SC	TDPA	M	A	B	C2	C3	T3S2	T3S3	T3S2R4	OTROS	A	B	C	K'	D	LATITUD	LONGITUD
T. Der. Estación Soconusco	213.30	3	2	3440	5.3	70.9	2.4	8.6	2.2	5.5	1.5	3.2	0.4	76.2	2.4	21.4	0.086	0.503	15.348851	-92.690230
Huixtla	250.50	1	1	3696	2.8	79.1	2.0	6.7	1.8	4.0	1.1	2.1	0.4	81.9	2.0	16.1	0.093	0.513	15.159435	-92.511240
Huixtla	250.50	1	2	3513	2.7	77.2	2.2	7.2	1.9	4.7	1.3	2.4	0.4	79.9	2.2	17.9	0.090	0.513	15.159435	-92.511240
Huixtla	250.50	3	1	6571	6.3	82.7	0.9	3.5	1.2	2.6	1.1	1.2	0.5	89.0	0.9	10.1	0.079	0.518	15.133963	-92.445872
Huixtla	250.50	3	2	7055	5.3	83.0	0.9	3.9	1.3	2.6	1.2	1.3	0.5	88.3	0.9	10.8	0.075	0.518	15.133963	-92.445874
T. Izq. Hamburgo	262.70	3	1	5400	3.4	81.6	3.2	4.7	1.1	3.3	0.8	1.6	0.3	85.0	3.2	11.8	0.087	0.505	15.105153	-92.431176
T. Izq. Hamburgo	262.70	3	2	5289	3.2	80.4	3.6	5.3	1.2	3.4	0.9	1.7	0.3	83.6	3.6	12.8	0.088	0.505	15.105153	-92.431177
T. Izq. Huehuetán	273.70	1	1	5418	1.8	83.1	1.7	6.4	1.2	3.1	0.9	1.5	0.3	84.9	1.7	13.4	0.083	0.506	15.015516	-92.402717
T. Izq. Huehuetán	273.70	1	2	5295	3.8	79.5	2.0	7.2	1.3	3.4	1.0	1.5	0.3	83.3	2.0	14.7	0.082	0.506	15.015516	-92.402718
Tapachula	292.25	1	1	8217	1.8	85.4	0.7	5.9	1.2	2.6	0.9	1.0	0.5	87.2	0.7	12.1	0.076	0.517	14.910124	-92.333133
Tapachula	292.25	1	2	8784	2.2	83.6	0.7	6.6	1.4	2.9	0.9	1.2	0.5	85.8	0.7	13.5	0.074	0.517	14.910125	-92.333131
T. Der. Cd. Hidalgo	302.75	1	1	8455	1.6	88.8	0.3	5.0	0.6	2.1	0.5	0.6	0.5	90.4	0.3	9.3	0.081	0.504	14.913288	-92.195306
T. Der. Cd. Hidalgo	302.75	1	2	8305	1.2	88.4	0.3	5.5	0.6	2.3	0.5	0.7	0.5	89.6	0.3	10.1	0.075	0.504	14.913289	-92.195308
Tuxtla Chico	307.00	1	0	9335	2.3	88.0	0.4	4.1	0.3	3.7	0.4	0.1	0.7	90.3	0.4	9.3	0.077	0.507	14.930471	-92.165395
Talismán	310.77	1	0	3012	16.1	74.3	1.3	3.4	0.6	2.1	0.9	0.3	1.0	90.4	1.3	8.3	0.079	0.512	14.960534	-92.151205

18 CARR: Tapanatepec - Tuxtla Gutiérrez

CLAVE: 00060

RUTA: MEX-190

AÑO: 2012

LUGAR	ESTACION				CLASIFICACION VEHICULAR EN PORCIENTO													COORDENADAS		
	KM	TE	SC	TDPA	M	A	B	C2	C3	T3S2	T3S3	T3S2R4	OTROS	A	B	C	K'	D	LATITUD	LONGITUD
Tapanatepec	0.00	3	0	3098	1.9	77.8	3.8	4.4	3.1	4.1	2.6	1.3	1.0	79.7	3.8	16.5	0.076	0.522	16.371064	-94.184784
Lim. Edos. Term. Oax. Ppia. Chis.	17.90																			
Rizo de Oro	26.60	1	0	1582	1.1	73.9	4.4	4.4	3.4	2.8	5.7	3.9	0.4	75.0	4.4	20.6	0.083	0.501	16.472949	-94.088674
T. Der. Arriaga	56.80	1	0	2100	2.4	79.1	4.1	6.8	2.2	1.9	2.0	1.1	0.4	81.5	4.1	14.4	0.093	0.501	16.570409	-93.847566
T. Der. Arriaga	56.80	3	0	3947	1.9	79.2	5.2	5.2	2.6	2.4	1.4	1.8	0.3	81.1	5.2	13.7	0.093	0.504	16.573380	-93.842882
T. Der. Jiquipilas	82.00	1	0	7148	2.3	80.7	3.3	7.1	1.3	3.4	0.9	0.5	0.5	83.0	3.3	13.7	0.076	0.505	16.688028	-93.666737
T. Der. Jiquipilas	82.00	3	0	5086	1.6	79.5	4.1	7.1	2.9	2.6	1.2	0.7	0.3	81.1	4.1	14.8	0.081	0.515	16.688335	-93.665606
Ocozocoautla	123.29	1	0	3783	2.9	78.2	5.6	5.5	2.6	2.6	1.5	0.9	0.2	81.1	5.6	13.3	0.085	0.513	16.772282	-93.391548
Ocozocoautla	123.29	3	0	4911	3.4	81.3	5.7	6.1	0.2	2.2	0.5	0.1	0.5	84.7	5.7	9.6	0.079	0.523	16.757820	-93.362434
T. Izq. Aeropuerto	132.70	1	0	4785	2.3	83.2	5.3	5.9	0.3	2.1	0.4	0.1	0.4	85.5	5.3	9.2	0.078	0.538	16.753132	-93.339964
T. Izq. Berriozábal (1º Acceso)	136.40	1	1	7466	0.9	79.3	5.1	5.8	1.9	2.7	1.2	2.5	0.6	80.2	5.1	14.7	0.090	0.511	16.767621	-93.294324
T. Izq. Berriozábal (1º Acceso)	136.40	1	2	7816	1.0	77.1	5.8	6.6	2.0	2.9	1.4	2.6	0.6	78.1	5.8	16.1	0.084	0.511	16.767621	-93.294325
T. Izq. Berriozábal (1º Acceso)	136.40	3	1	8286	1.2	80.9	2.1	7.7	1.7	2.6	1.2	2.0	0.6	82.1	2.1	15.8	0.078	0.528	16.769007	-93.279584
T. Izq. Berriozábal (1º Acceso)	136.40	3	2	8439	1.2	79.0	2.3	8.7	1.9	2.8	1.4	2.0	0.7	80.2	2.3	17.5	0.082	0.528	16.769007	-93.279584
T. Izq. San Fernando	151.70	1	1	12316	1.0	84.1	4.2	5.1	0.9	1.5	1.5	1.0	0.7	85.1	4.2	10.7	0.087	0.508	16.770303	-93.196832

OAXACA

18 CARR: Tapanatepec - Tuxtla Gutiérrez

CLAVE: 00060

RUTA: MEX-190

AÑO: 2012

LUGAR	ESTACION				CLASIFICACION VEHICULAR EN PORCIENTO										COORDENADAS					
	KM	TE	SC	TDPA	M	A	B	C2	C3	T3S2	T3S3	T3S2R4	OTROS	A	B	C	K'	D	LATITUD	LONGITUD
T. Izq. San Fernando	151.70	1	2	11911	1.0	82.6	5.0	5.2	0.9	1.8	1.8	1.0	0.7	83.6	5.0	11.4	0.084	0.508	16.770303	-93.196833
Tuxtla Gutiérrez	159.00	1	1	11104	1.1	85.0	4.4	5.0	1.1	1.6	1.1	0.3	0.4	86.1	4.4	9.5	0.073	0.511	16.766265	-93.190978
Tuxtla Gutiérrez	159.00	1	2	10614	1.3	83.7	4.8	5.5	1.2	1.7	1.1	0.3	0.4	85.0	4.8	10.2	0.083	0.511	16.766265	-93.190981

19 CARR: Tehuacán - Huajuapán de León

CLAVE: 00211

RUTA: MEX-125

AÑO: 2012

LUGAR	ESTACION				CLASIFICACION VEHICULAR EN PORCIENTO										COORDENADAS					
	KM	TE	SC	TDPA	M	A	B	C2	C3	T3S2	T3S3	T3S2R4	OTROS	A	B	C	K'	D	LATITUD	LONGITUD
Tehuacán	0.00	3	1	3846	7.4	77.6	4.5	5.4	1.5	1.5	1.4	0.2	0.5	85.0	4.5	10.5	0.070	0.532	18.436880	-97.401362
Tehuacán	0.00	3	2	3837	5.8	77.9	5.0	5.7	1.6	1.7	1.6	0.2	0.5	83.7	5.0	11.3	0.078	0.532	18.436880	-97.401365
Zapotitlán Salinas	28.00	1	0	2383	3.9	75.0	6.7	8.1	2.4	2.1	1.2	0.3	0.3	78.9	6.7	14.4	0.086	0.503	18.334194	-97.463854
Lim. Edos. Term. Pue. Ppia. Oax.	55.80																			
Santiago Chazumba	63.02	1	0	1312	1.1	78.2	2.1	9.6	2.6	3.4	1.6	1.0	0.4	79.3	2.1	18.6	0.093	0.519	18.198523	-97.679622
Santiago Chazumba	63.02	3	0	1355	1.7	79.5	3.6	6.9	2.4	3.2	1.5	1.1	0.1	81.2	3.6	15.2	0.094	0.504	18.185935	-97.678879
T. Izq. Santa María Camotlán	103.13	1	0	1527	1.7	79.4	1.8	8.9	2.5	3.2	1.4	0.9	0.2	81.1	1.8	17.1	0.095	0.514	17.906003	-97.693395
T. C. Huajuapán de León - Oaxaca	119.40	1	0	7830	3.5	79.1	1.6	5.7	2.6	4.6	1.9	0.5	0.5	82.6	1.6	15.8	0.077	0.503	17.821553	-97.758954

20 CARR: Tuxtepec - Ent. Palomares

CLAVE: 00180

RUTA: MEX-147

AÑO: 2012

LUGAR	ESTACION				CLASIFICACION VEHICULAR EN PORCIENTO										COORDENADAS					
	KM	TE	SC	TDPA	M	A	B	C2	C3	T3S2	T3S3	T3S2R4	OTROS	A	B	C	K'	D	LATITUD	LONGITUD
T. C. Tuxtepec - Oaxaca	0.00	3	0	4120	4.4	74.1	8.1	6.1	2.4	3.3	0.8	0.3	0.5	78.5	8.1	13.4	0.071	0.513	18.037869	-96.160793
X. C. El Rodeo - Reforma	15.20	3	0	2427	4.1	75.1	6.2	7.4	1.8	3.4	1.1	0.2	0.7	79.2	6.2	14.6	0.081	0.500	17.950237	-96.070106
Lim. Edos. Term. Oax. Ppia. Ver.	40.00																			
X. C. Playa Vicente - El Tomate	48.16	1	0	2003	2.3	74.3	8.1	7.2	2.6	3.4	1.5	0.2	0.4	76.6	8.1	15.3	0.087	0.512	17.783695	-95.832953
X. C. Playa Vicente - El Tomate	48.16	3	0	2634	2.0	81.8	3.7	5.7	1.9	3.9	0.8	0.1	0.1	83.8	3.7	12.5	0.088	0.508	17.783165	-95.830351
T. Der. Xochiapa	65.00	3	0	1568	3.9	76.2	4.2	5.2	2.8	3.4	1.9	1.3	1.1	80.1	4.2	15.7	0.093	0.520	17.702990	-95.733163
T. Izq. San Juan Evangelista	81.20	1	0	1304	1.8	76.9	3.9	8.4	2.3	3.4	1.7	0.9	0.7	78.7	3.9	17.4	0.096	0.513	17.616404	-95.636729
Lim. Edos. Term. Ver. Ppia. Oax.	87.00																			
María Lombardo de Caso	110.50	1	0	2450	4.6	85.6	1.0	3.5	1.0	3.1	0.6	0.2	0.4	90.2	1.0	8.8	0.076	0.544	17.452156	-95.432675
T. C. Coatzacoalcos - Salina Cruz	175.00	1	0	1853	5.5	83.7	0.5	5.3	0.8	2.8	0.7	0.2	0.5	89.2	0.5	10.3	0.098	0.512	17.138853	-95.065744

OAXACA

21 CARR: Tuxtepec - T. C. (Oaxaca - Tehuantepec)

CLAVE: 20090

RUTA: MEX-175

AÑO: 2012

LUGAR	ESTACION				CLASIFICACION VEHICULAR EN PORCIENTO													COORDENADAS		
	KM	TE	SC	TDPA	M	A	B	C2	C3	T3S2	T3S3	T3S2R4	OTROS	A	B	C	K'	D	LATITUD	LONGITUD
Tuxtepec	0.00	3	1	6915	2.5	79.2	3.3	7.5	1.9	1.9	1.6	1.3	0.8	81.7	3.3	15.0	0.076	0.540	18.058221	-96.150787
Tuxtepec	0.00	3	2	5893	0.6	78.5	3.7	8.6	2.3	2.2	1.7	1.5	0.9	79.1	3.7	17.2	0.089	0.540	18.058224	-96.150788
T. Izq. Palomares	5.75	3	0	5510	4.5	80.1	8.8	3.0	0.2	2.8	0.2	0.1	0.3	84.6	8.8	6.6	0.092	0.512	18.034466	-96.164811
San José Chiltepec	17.93	3	0	3195	10.4	77.0	4.5	5.4	0.4	1.9	0.2	0.0	0.2	87.4	4.5	8.1	0.076	0.505	17.943930	-96.173042
Valle Nacional	47.07	1	0	2831	5.9	80.4	2.4	5.9	2.0	1.8	0.7	0.6	0.3	86.3	2.4	11.3	0.119	0.502	17.780947	-96.291144
Valle Nacional	47.07	3	0	1927	14.4	64.4	3.3	8.6	2.6	4.0	1.3	1.2	0.2	78.8	3.3	17.9	0.080	0.511	17.767401	-96.310905
La Esperanza	79.85	3	0	443	0.4	81.3	4.9	9.5	3.1	0.8	0.0	0.0	0.0	81.7	4.9	13.4	0.114	0.508	17.624671	-96.366427
Puerta del Sol	125.00	3	0	542	0.4	82.5	3.4	9.3	2.4	1.1	0.9	0.0	0.0	82.9	3.4	13.7	0.124	0.523	17.527168	-96.510884
T. Der. Ixtepeji	181.39	3	0	1934	0.7	84.5	4.9	6.2	1.7	1.5	0.3	0.0	0.2	85.2	4.9	9.9	0.105	0.505	17.237633	-96.565023
T. Izq. Yuvila	193.67	1	0	2103	0.8	77.2	8.1	9.3	1.5	1.2	1.6	0.1	0.2	78.0	8.1	13.9	0.097	0.507	17.176170	-96.605412
T. C. Oaxaca - Tehuantepec	212.70	1	1	5146	2.9	82.1	4.1	7.6	1.3	1.1	0.7	0.1	0.1	85.0	4.1	10.9	0.083	0.515	17.067659	-96.676962
T. C. Oaxaca - Tehuantepec	212.70	1	2	4850	3.7	80.0	4.8	7.9	1.5	1.2	0.7	0.1	0.1	83.7	4.8	11.5	0.099	0.515	17.067744	-96.676951

22 CARR: Yucudaa - Santiago Pinotepa Nacional

CLAVE: 20030

RUTA: MEX-125

AÑO: 2012

LUGAR	ESTACION				CLASIFICACION VEHICULAR EN PORCIENTO													COORDENADAS		
	KM	TE	SC	TDPA	M	A	B	C2	C3	T3S2	T3S3	T3S2R4	OTROS	A	B	C	K'	D	LATITUD	LONGITUD
T. C. Huajuapán de León - Oaxaca	0.00	3	0	2408	0.5	77.3	3.6	11.7	2.1	2.6	1.4	0.4	0.4	77.8	3.6	18.6	0.076	0.504	17.567166	-97.426048
Yolomécatl	24.40	3	0	2497	0.7	81.2	3.1	7.2	1.9	3.4	1.4	0.6	0.5	81.9	3.1	15.0	0.081	0.500	17.464547	-97.573348
Tlaxiaco	57.00	3	0	3211	1.2	82.4	1.0	8.1	1.6	3.0	1.2	0.4	1.1	83.6	1.0	15.4	0.076	0.503	17.234928	-97.700978
T. Der. Santiago Juxcatlán	104.00	1	0	1089	0.7	78.2	3.5	10.7	3.3	2.3	0.9	0.0	0.4	78.9	3.5	17.6	0.095	0.506	17.152574	-97.890389
Putla de Guerrero	145.00	1	0	2241	3.2	82.1	3.0	6.7	1.7	2.1	0.7	0.1	0.4	85.3	3.0	11.7	0.084	0.501	17.038193	-97.915755
Cacahuatpec	229.00	1	0	1531	3.4	85.3	1.7	5.4	1.5	2.1	0.4	0.0	0.2	88.7	1.7	9.6	0.105	0.504	16.622744	-98.148592
T. C. Las Cruces - Pinotepa Nacional	268.00	1	0	3363	2.7	84.7	2.9	6.1	0.7	1.9	0.5	0.1	0.4	87.4	2.9	9.7	0.077	0.505	16.381444	-98.091200

23 CARR: Cuacnopalan - Oaxaca (Cuota)

CLAVE: 00109

RUTA: MEX-135D

AÑO: 2012

LUGAR	ESTACION				CLASIFICACION VEHICULAR EN PORCIENTO													COORDENADAS		
	KM	TE	SC	TDPA	M	A	B	C2	C3	T3S2	T3S3	T3S2R4	OTROS	A	B	C	K'	D	LATITUD	LONGITUD
T. C. Puebla - Córdoba (Cuota)	0.00	3	0	7972	0.2	67.8	6.4	10.9	3.4	6.5	1.5	2.6	0.7	68.0	6.4	25.6	0.079	0.511	18.817594	-97.491219
T. Der. Cuacnopalan	1.80	3	0	7699	0.2	68.6	7.9	9.3	3.6	5.0	1.7	3.1	0.6	68.8	7.9	23.3	0.072	0.510	18.811101	-97.490662
Caseta de Cobro Tehuacán	40.00	2	0	7649	0.2	73.5	7.4	5.8	4.7	4.3	0.8	2.8	0.5	73.7	7.4	18.9	0.083	0.500	18.487160	-97.456032
T. C. Puebla - Tehuacán	40.00	3	0	7490	0.4	64.6	8.4	11.1	4.3	6.0	1.4	3.5	0.3	65.0	8.4	26.6	0.074	0.504	18.479187	-97.456183
X. C. Tehuacán - Huajuapán de León	48.00	3	0	10390	0.3	65.7	7.4	9.8	5.0	6.2	1.8	2.8	1.0	66.0	7.4	26.6	0.079	0.514	18.404678	-97.389224
T. Izq. San Gabriel Chilac	61.00	3	0	9059	0.4	64.2	8.2	9.2	5.7	6.6	1.5	3.3	0.9	64.6	8.2	27.2	0.082	0.502	18.331698	-97.369292

OAXACA

23 CARR: Cuacnopalan - Oaxaca (Cuota)

CLAVE: 00109

RUTA: MEX-135D

AÑO: 2012

LUGAR	ESTACION				CLASIFICACION VEHICULAR EN PORCIENTO														COORDENADAS	
	KM	TE	SC	TDPA	M	A	B	C2	C3	T3S2	T3S3	T3S2R4	OTROS	A	B	C	K'	D	LATITUD	LONGITUD
Caseta de Cobro Miahuatlán	71.42	2	0	4260	0.2	67.6	8.9	6.5	6.9	5.1	1.2	3.1	0.5	67.8	8.9	23.3	0.083	0.500	18.264654	-97.315569
Lim. Edos. Term. Pue. Ppia. Oax.	83.50																			
Caseta de Cobro Coixtlahuaca	141.30	2	0	3564	0.2	66.3	9.1	6.4	7.2	5.6	1.1	3.6	0.5	66.5	9.1	24.4	0.083	0.500	17.726231	-97.351913
T. Izq. Asunción Nochistlán	174.90	1	0	4113	0.2	71.1	5.6	8.6	4.5	5.0	1.3	3.1	0.6	71.3	5.6	23.1	0.088	0.530	17.471102	-97.252085
T. Izq. Asunción Nochistlán	175.50	3	0	5187	0.3	69.3	6.1	8.9	4.4	5.8	1.4	2.9	0.9	69.6	6.1	24.3	0.079	0.506	17.455330	-97.240789
Caseta de Cobro Huitzo	220.00	2	0	5311	0.2	76.7	6.8	5.1	4.6	3.5	0.7	2.0	0.4	76.9	6.8	16.3	0.083	0.500	17.274916	-96.915367
T. C. Huajuapán de León - Oaxaca	242.70	1	1	3334	0.1	74.8	5.0	9.8	3.3	3.4	1.1	2.0	0.5	74.9	5.0	20.1	0.087	0.516	17.147459	-96.783709
T. C. Huajuapán de León - Oaxaca	242.70	1	2	3127	0.1	71.0	5.7	11.8	3.6	3.8	1.3	2.1	0.6	71.1	5.7	23.2	0.106	0.516	17.147522	-96.783786

24 CARR: Salina Cruz - La Ventosa (Cuota)

CLAVE: 00275

RUTA: MEX-185D

AÑO: 2012

LUGAR	ESTACION				CLASIFICACION VEHICULAR EN PORCIENTO														COORDENADAS	
	KM	TE	SC	TDPA	M	A	B	C2	C3	T3S2	T3S3	T3S2R4	OTROS	A	B	C	K'	D	LATITUD	LONGITUD
T. C. Santiago Pinotepa Nacional - Salina Cruz	0.00																			
Caseta de Cobro Tehuantepec	1.89	2	0	702	0.7	82.2	3.6	4.2	2.5	3.4	1.2	1.9	0.3	82.9	3.6	13.5	0.082	0.500	16.162108	-95.289212
X. C. Oaxaca - Tehuantepec	23.19	1	0	1101	1.8	78.0	4.9	5.4	2.7	3.7	1.3	2.0	0.2	79.8	4.9	15.3	0.078	0.505	16.329000	-95.279630
X. C. Oaxaca - Tehuantepec	23.19	3	0	1983	2.0	74.4	3.8	6.4	2.4	3.2	1.9	5.6	0.3	76.4	3.8	19.8	0.086	0.558	16.337944	-95.277223
Caseta de Cobro Ixtepec	47.49	2	0	937	0.3	59.2	2.4	3.7	6.5	6.1	4.5	16.5	0.8	59.5	2.4	38.1	0.082	0.500	16.561158	-95.135619
T. C. Coatzacoalcos - Salina Cruz	75.39	1	0	1722	0.7	75.0	3.1	5.5	4.2	4.4	4.1	2.2	0.8	75.7	3.1	21.2	0.082	0.513	16.586792	-94.954892

25 CARR: Cd. Ixtepec - Guevea de Humboldt

CLAVE: 00301

RUTA: OAX

AÑO: 2012

LUGAR	ESTACION				CLASIFICACION VEHICULAR EN PORCIENTO														COORDENADAS	
	KM	TE	SC	TDPA	M	A	B	C2	C3	T3S2	T3S3	T3S2R4	OTROS	A	B	C	K'	D	LATITUD	LONGITUD
Ciudad Ixtepec	0.00																			
T. C. La Ventosa - Salina Cruz (Cuota)	4.00	1	1	1954	5.7	88.0	0.4	4.3	0.6	0.6	0.2	0.1	0.1	93.7	0.4	5.9	0.102	0.522	16.560497	-95.126375
T. C. La Ventosa - Salina Cruz (Cuota)	4.00	1	2	1789	5.5	87.6	0.4	5.1	0.5	0.5	0.2	0.1	0.1	93.1	0.4	6.5	0.091	0.522	16.560497	-95.126375
T. C. La Ventosa - Salina Cruz (Cuota)	4.00	3	0	1731	6.6	85.8	0.1	6.1	0.3	1.0	0.1	0.0	0.0	92.4	0.1	7.5	0.085	0.503	16.564107	-95.141118
Guevea de Humboldt	57.05																			

26 CARR: El Zapote - Copalita

CLAVE: 00109

RUTA: OAX

AÑO: 2012

LUGAR	ESTACION				CLASIFICACION VEHICULAR EN PORCIENTO														COORDENADAS	
	KM	TE	SC	TDPA	M	A	B	C2	C3	T3S2	T3S3	T3S2R4	OTROS	A	B	C	K'	D	LATITUD	LONGITUD
T. C. Santiago Pinotepa Nacional - Salina Cruz	0.00	3	0	3092	4.1	80.8	1.3	10.8	0.4	1.7	0.4	0.1	0.4	84.9	1.3	13.8	0.075	0.508	15.763975	-96.272677

OAXACA

30 CARR: Ramal a Unión Hidalgo

CLAVE: 20044

RUTA: OAX

AÑO: 2012

LUGAR	ESTACION				CLASIFICACION VEHICULAR EN PORCIENTO													COORDENADAS		
	KM	TE	SC	TDPA	M	A	B	C2	C3	T3S2	T3S3	T3S2R4	OTROS	A	B	C	K'	D	LATITUD	LONGITUD
T. C. La Ventosa - San Pedro Tapanatepec	0.00	3	1	1246	5.5	86.9	0.2	6.5	0.4	0.3	0.2	0.0	0.0	92.4	0.2	7.4	0.112	0.528	16.574008	-94.816327
T. C. La Ventosa - San Pedro Tapanatepec	0.00	3	2	1229	9.8	81.7	0.2	7.2	0.5	0.4	0.2	0.0	0.0	91.5	0.2	8.3	0.104	0.528	16.574009	-94.816327
Unión Hidalgo	12.00	1	0	1125	8.7	83.1	0.5	6.3	0.6	0.5	0.2	0.1	0.0	91.8	0.5	7.7	0.092	0.502	16.488197	-94.832443

31 CARR: San Antonio - Puerto Angel

CLAVE:

RUTA: OAX

AÑO: 2012

LUGAR	ESTACION				CLASIFICACION VEHICULAR EN PORCIENTO													COORDENADAS		
	KM	TE	SC	TDPA	M	A	B	C2	C3	T3S2	T3S3	T3S2R4	OTROS	A	B	C	K'	D	LATITUD	LONGITUD
T. C. Santiago Pinotepa Nacional - Salina Cruz	0.00	3	0	1670	8.3	84.7	1.4	3.5	0.1	1.5	0.3	0.1	0.1	93.0	1.4	5.6	0.111	0.501	15.713862	-96.582335
Mazunte	7.30	1	0	1518	8.5	84.4	1.5	3.4	0.1	1.4	0.4	0.1	0.2	92.9	1.5	5.6	0.112	0.501	15.669164	-96.557772
Mazunte	7.30	3	0	1055	8.2	84.4	1.4	3.5	0.3	1.1	0.4	0.5	0.2	92.6	1.4	6.0	0.108	0.547	15.666881	-96.540553
Puerto Angel	15.90																			

32 CARR: T. C. (Oaxaca - Puerto Ángel) - Puerto Escondido

CLAVE: 20009

RUTA: MEX-OAX-161

AÑO: 2012

LUGAR	ESTACION				CLASIFICACION VEHICULAR EN PORCIENTO													COORDENADAS		
	KM	TE	SC	TDPA	M	A	B	C2	C3	T3S2	T3S3	T3S2R4	OTROS	A	B	C	K'	D	LATITUD	LONGITUD
T. C. Oaxaca - Puerto Ángel	0.00	3	1	7445	1.9	87.1	3.6	4.6	0.8	0.8	0.6	0.2	0.4	89.0	3.6	7.4	0.128	0.505	16.925865	-96.706543
T. C. Oaxaca - Puerto Ángel	0.00	3	2	7295	1.8	86.5	3.7	5.0	0.9	0.8	0.7	0.2	0.4	88.3	3.7	8.0	0.104	0.505	16.925865	-96.706543
T. Izq. San Pablo Huixtepec	16.80	1	0	6913	2.6	80.4	3.8	8.3	0.9	3.0	0.4	0.1	0.5	83.0	3.8	13.2	0.079	0.502	16.833094	-96.788575
T. Izq. San Pablo Huixtepec	16.80	3	0	5636	2.3	82.3	3.9	6.5	1.2	2.9	0.4	0.1	0.4	84.6	3.9	11.5	0.081	0.555	16.828088	-96.788846
T. Der. El Trapiche	30.00	1	0	3288	2.3	78.0	4.1	8.3	2.7	3.4	0.8	0.0	0.4	80.3	4.1	15.6	0.082	0.516	16.761426	-96.856401
T. Der. El Trapiche	30.00	3	0	3540	2.6	78.0	5.3	8.4	2.0	2.6	0.6	0.1	0.4	80.6	5.3	14.1	0.076	0.516	16.760421	-96.859100
T. Der. Cofradía San Pedro	53.00	3	0	1308	1.5	80.6	4.4	8.9	1.9	1.8	0.6	0.1	0.2	82.1	4.4	13.5	0.098	0.510	16.600378	-96.890778
Sola de Vega	78.40	3	0	1154	1.1	80.6	4.3	8.1	2.9	1.5	0.9	0.1	0.5	81.7	4.3	14.0	0.073	0.579	16.509123	-96.984214
T. Der. Yalotepec	134.50	1	0	979	0.9	83.0	3.6	7.7	1.7	2.1	0.7	0.0	0.3	83.9	3.6	12.5	0.078	0.586	16.256305	-97.151698
San Gabriel Mixtepec	208.00	1	0	1250	1.3	81.6	3.1	10.5	0.9	1.8	0.6	0.0	0.2	82.9	3.1	14.0	0.090	0.501	16.093434	-97.075414
Puerto Escondido	248.00	1	0	3980	1.9	82.5	3.7	8.9	0.7	1.7	0.3	0.0	0.3	84.4	3.7	11.9	0.076	0.500	15.892665	-97.077092

33 CARR: Tehuacán - Huitzo

CLAVE: 00211

RUTA: PUE-MEX-135

AÑO: 2012

LUGAR	ESTACION				CLASIFICACION VEHICULAR EN PORCIENTO													COORDENADAS		
	KM	TE	SC	TDPA	M	A	B	C2	C3	T3S2	T3S3	T3S2R4	OTROS	A	B	C	K'	D	LATITUD	LONGITUD
Tehuacán	0.00	3	0	7245	4.5	82.1	4.3	4.1	0.7	3.0	0.5	0.2	0.6	86.6	4.3	9.1	0.072	0.525	18.451225	-97.370916
T. Der. San Gabriel Chilac	14.40	1	0	7722	5.8	79.7	3.3	4.3	0.9	3.9	1.0	0.3	0.8	85.5	3.3	11.2	0.077	0.518	18.404419	-97.329876

OAXACA

33 CARR: Tehuacán - Huitzo

CLAVE: 00211

RUTA: PUE-MEX-135

AÑO: 2012

LUGAR	ESTACION				CLASIFICACION VEHICULAR EN PORCIENTO										COORDENADAS					
	KM	TE	SC	TDPA	M	A	B	C2	C3	T3S2	T3S3	T3S2R4	OTROS	A	B	C	K'	D	LATITUD	LONGITUD
San Sebastián Zinacatepec	23.00	3	0	5289	5.3	77.8	5.2	7.0	1.1	2.4	0.7	0.1	0.4	83.1	5.2	11.7	0.080	0.503	18.325250	-97.229612
Lim. Edos. Term. Pue. Ppia. Oax.	60.90																			
Teotitlán del Camino	63.15	3	0	2338	5.0	85.7	0.4	6.9	0.4	1.3	0.1	0.0	0.2	90.7	0.4	8.9	0.082	0.501	18.121527	-97.073831
Santa María Tecomavaca	88.34	1	0	1133	2.7	82.6	0.2	10.6	1.9	0.5	0.3	0.2	1.0	85.3	0.2	14.5	0.086	0.501	17.965416	-97.036487
Santa María Tecomavaca	88.34	3	0	1003	4.0	85.3	0.7	7.5	1.2	1.0	0.3	0.0	0.0	89.3	0.7	10.0	0.092	0.501	17.949576	-97.022266
T. Izq. Cuicatlán	118.80	1	0	1488	3.9	79.4	3.7	10.1	1.6	1.2	0.1	0.0	0.0	83.3	3.7	13.0	0.095	0.535	17.793904	-96.960023
T. Izq. Nacaltepec	169.84	1	0	626	3.9	84.1	0.8	7.7	1.6	1.1	0.4	0.4	0.0	88.0	0.8	11.2	0.123	0.501	17.505998	-96.934028
T. C. Huajuapán de León - Oaxaca	202.70	1	0	6187	2.3	86.7	1.9	3.3	1.1	3.3	0.6	0.1	0.7	89.0	1.9	9.1	0.075	0.534	17.287076	-96.903529

34 CARR: Teotitlán de Flores Magón - Tuxtepec

CLAVE: 00108

RUTA: OAX-PUE-MEX-182

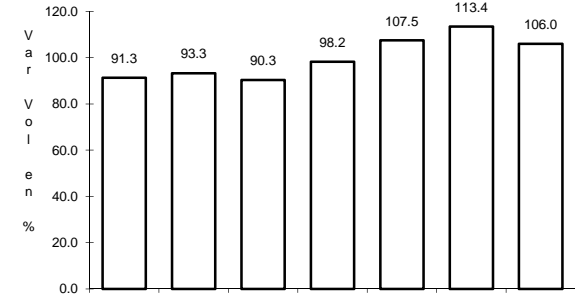
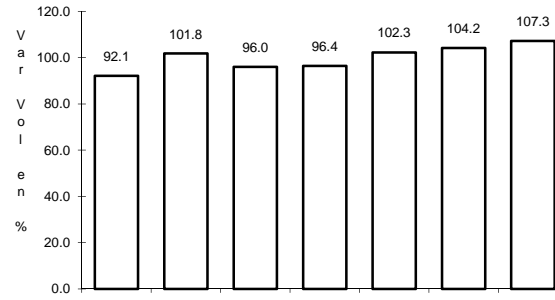
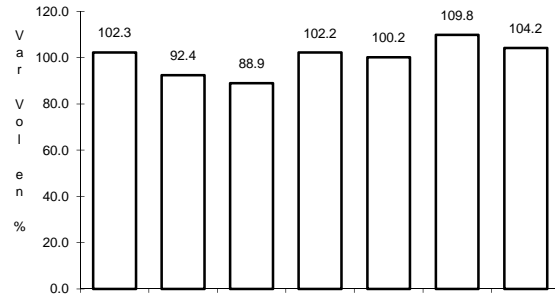
AÑO: 2012

LUGAR	ESTACION				CLASIFICACION VEHICULAR EN PORCIENTO										COORDENADAS					
	KM	TE	SC	TDPA	M	A	B	C2	C3	T3S2	T3S3	T3S2R4	OTROS	A	B	C	K'	D	LATITUD	LONGITUD
Teotitlán del Camino	0.00	3	0	1176	0.6	82.6	3.7	9.3	2.0	1.2	0.5	0.0	0.1	83.2	3.7	13.1	0.098	0.502	18.141350	-97.062051
Lim. Edos. Term. Oax. Ppia. Pue.	2.00																			
Lim. Edos. Term. Pue. Ppia. Oax.	10.00																			
Huautla	65.00	1	0	1498	1.1	84.2	3.6	8.0	0.8	1.5	0.5	0.0	0.3	85.3	3.6	11.1	0.108	0.504	18.125845	-96.844575
San Felipe Jalapa de Díaz	140.00	3	0	3636	4.4	84.2	3.1	3.4	2.3	2.0	0.4	0.0	0.2	88.6	3.1	8.3	0.089	0.510	18.082042	-96.522081
Tuxtepec	185.00	1	0	7204	1.5	84.2	2.9	5.9	0.3	4.0	0.4	0.1	0.7	85.7	2.9	11.4	0.077	0.502	18.086018	-96.152644

1 CARR: Buenavista - Tuxtepec

CLAVE: 00624

RUTA: MEX-175



Km: 0.00 Tipo: 3 Sent: 0

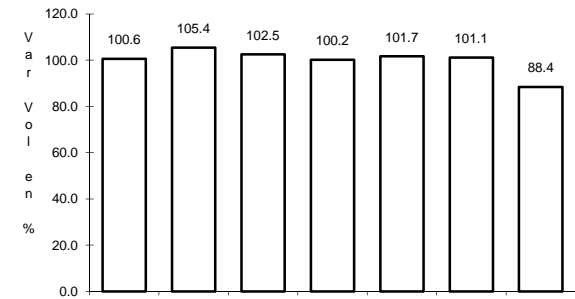
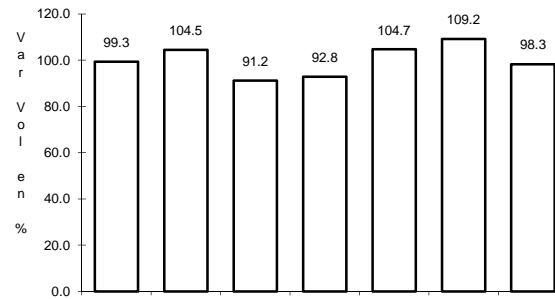
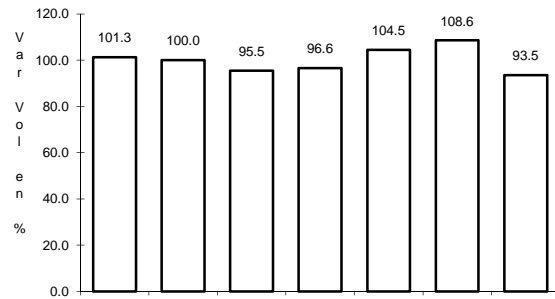
Km: 121.25 Tipo: 1 Sent: 1

Km: 121.25 Tipo: 1 Sent: 2

2 CARR: Cd. Alemán - Sayula

CLAVE: 00301

RUTA: MEX-145



Km: 0.00 Tipo: 3 Sent: 0

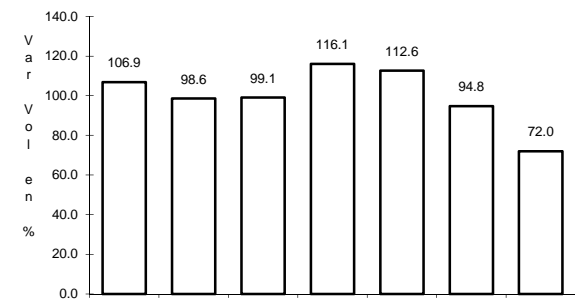
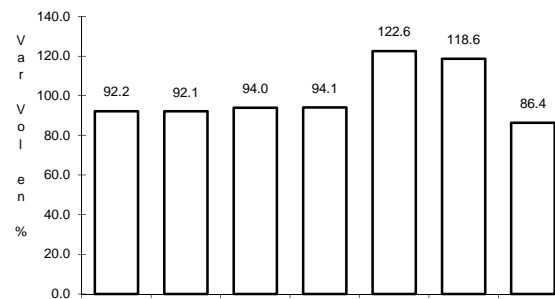
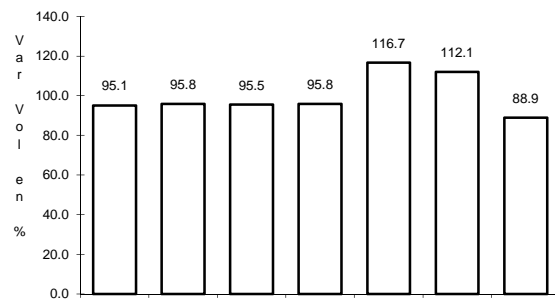
Km: 71.40 Tipo: 1 Sent: 0

Km: 136.40 Tipo: 1 Sent: 0

3 CARR: Coatzacoalcos - Salina Cruz

CLAVE: 00147

RUTA: MEX-185



Km: 0.00 Tipo: 3 Sent: 1

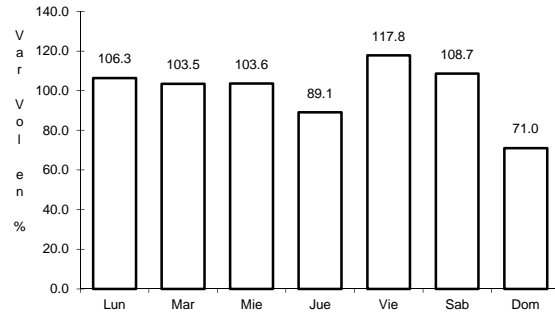
Km: 0.00 Tipo: 3 Sent: 2

Km: 241.70 Tipo: 1 Sent: 0

4 CARR: Ent. La Ventosa - San Pedro Tanapatepec

CLAVE: 20059

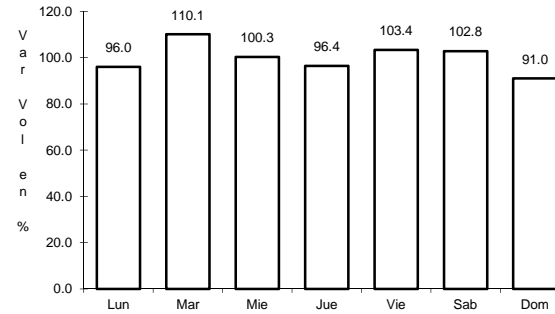
RUTA: MEX-190



Km: 0.00

Tipo: 3

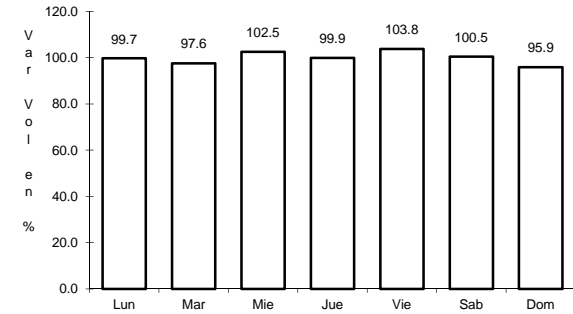
Sent: 0



Km: 38.01

Tipo: 3

Sent: 0



Km: 91.80

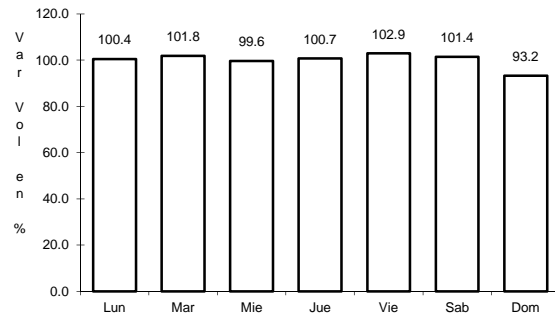
Tipo: 1

Sent: 0

5 CARR: Huajuapán de León - Oaxaca

CLAVE: 20056

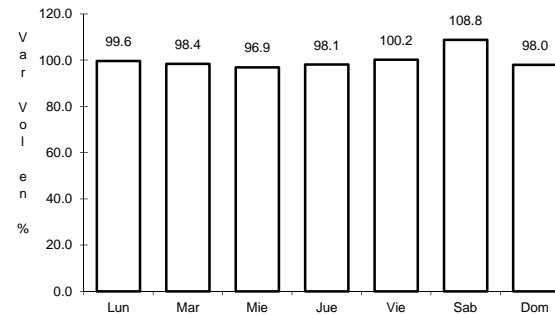
RUTA: MEX-190



Km: 1.35

Tipo: 1

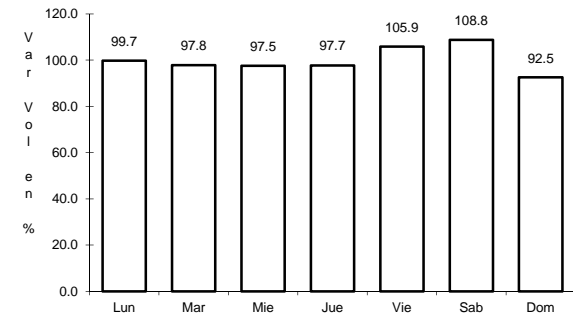
Sent: 0



Km: 190.60

Tipo: 1

Sent: 1



Km: 190.60

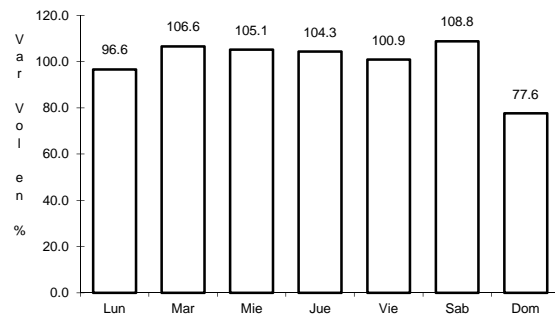
Tipo: 1

Sent: 2

6 CARR: Juchitán - Ixtepe

CLAVE: 20359

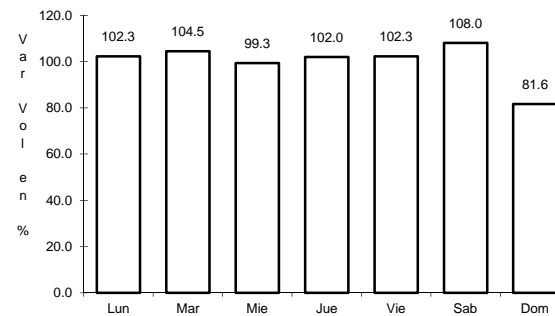
RUTA: MEX-185



Km: 0.15

Tipo: 3

Sent: 1



Km: 0.15

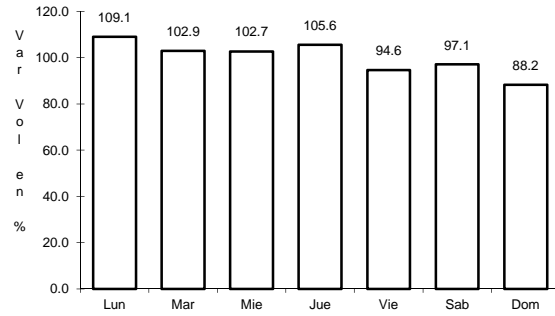
Tipo: 3

Sent: 2

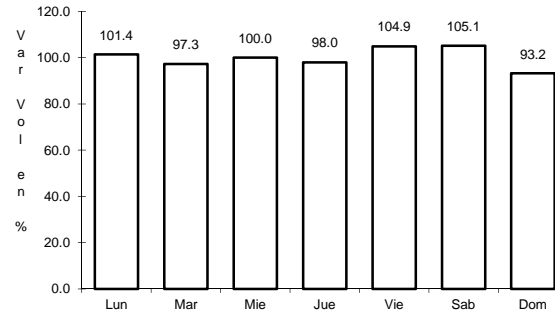
7 CARR: La Granja - Temascal

CLAVE: 00275

RUTA: MEX-145



Km: 0.00 Tipo: 3 Sent: 0

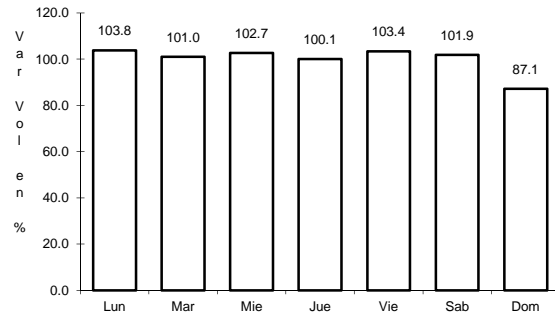


Km: 23.00 Tipo: 1 Sent: 0

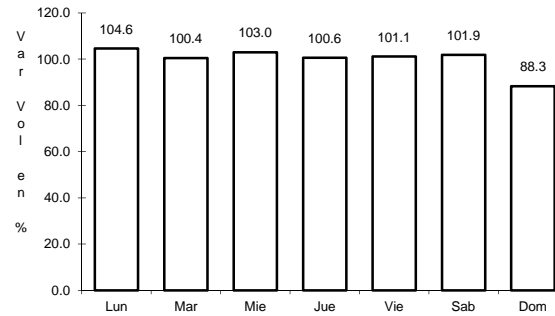
8 CARR: Las Cruces - Pinotepa Nacional

CLAVE: 00073

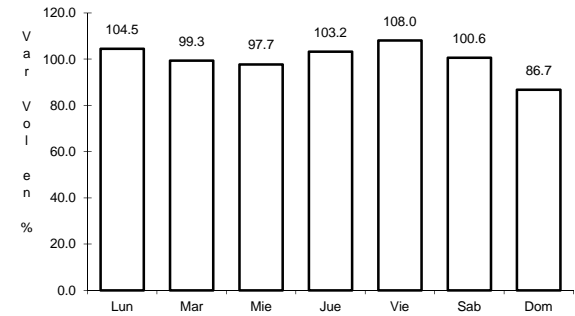
RUTA: MEX-200



Km: 0.00 Tipo: 3 Sent: 1



Km: 0.00 Tipo: 3 Sent: 2

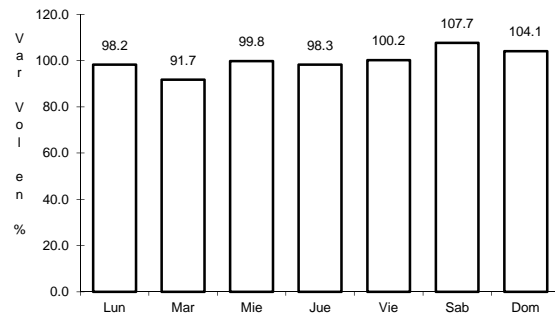


Km: 245.47 Tipo: 3 Sent: 0

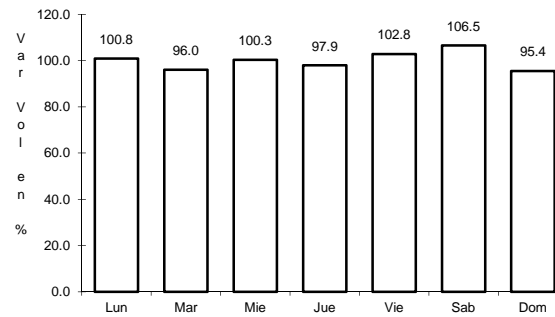
9 CARR: Libramiento de Pochutla

CLAVE:

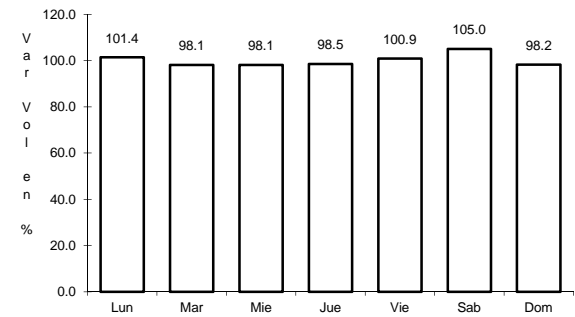
RUTA: MEX-200



Km: 0.00 Tipo: 3 Sent: 0



Km: 2.40 Tipo: 1 Sent: 0

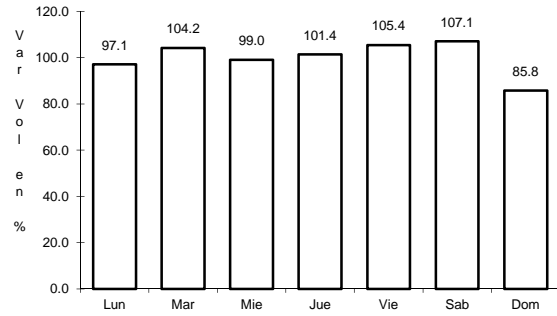


Km: 5.20 Tipo: 1 Sent: 0

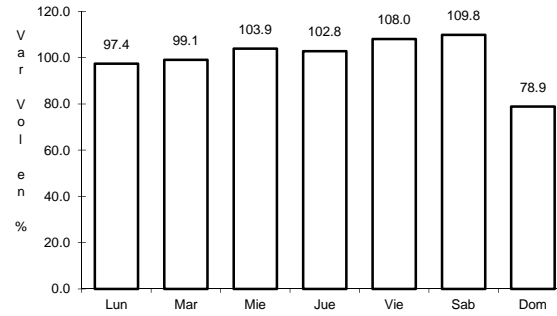
13 CARR: Puebla - Huajuapán de León

CLAVE: 00049

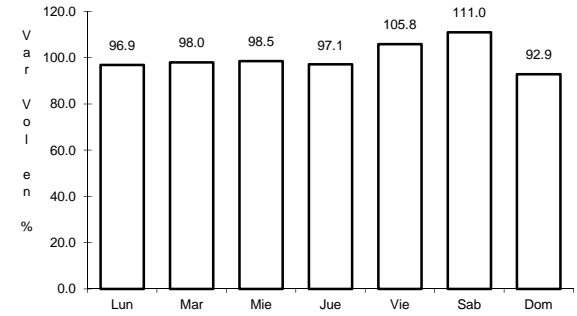
RUTA: MEX-190



Km: 0.00 Tipo: 3 Sent: 1



Km: 0.00 Tipo: 3 Sent: 2

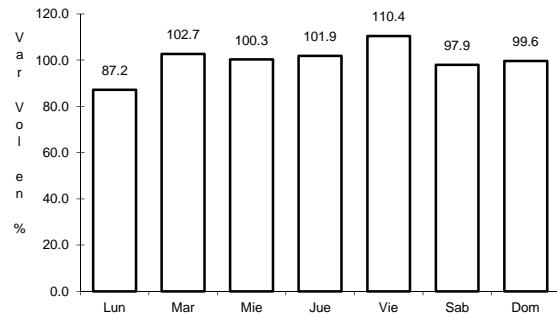


Km: 219.30 Tipo: 1 Sent: 0

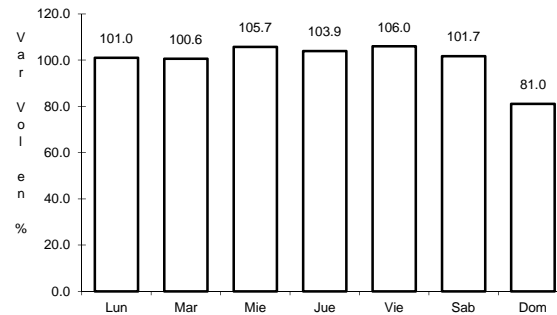
14 CARR: Ramal a Asunción Ixtaltepec

CLAVE: 20624

RUTA: MEX-185



Km: 0.00 Tipo: 3 Sent: 0

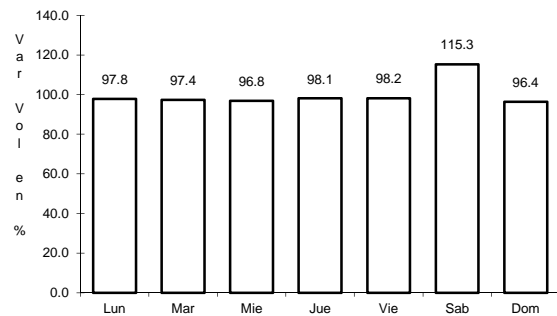


Km: 9.70 Tipo: 1 Sent: 0

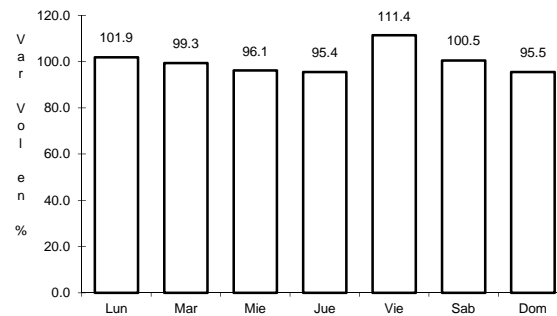
15 CARR: San Pablo Villa de Mitla - T. C. (Tuxtpec - Palomares)

CLAVE: 00106

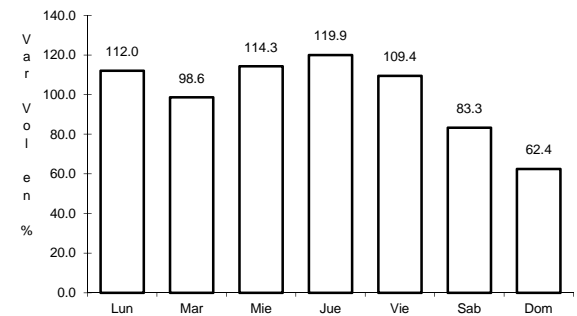
RUTA: MEX-179



Km: 0.00 Tipo: 3 Sent: 0



Km: 90.00 Tipo: 1 Sent: 0

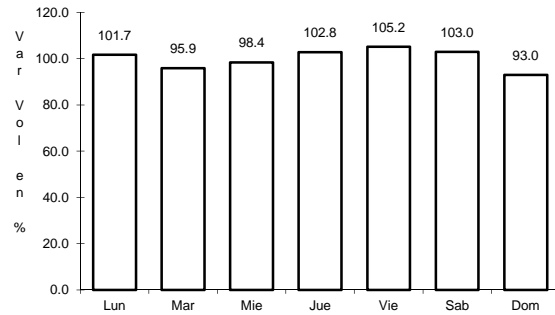


Km: 238.70 Tipo: 1 Sent: 0

16 CARR: Santiago Pinotepa Nacional - Salina Cruz

CLAVE: 20074

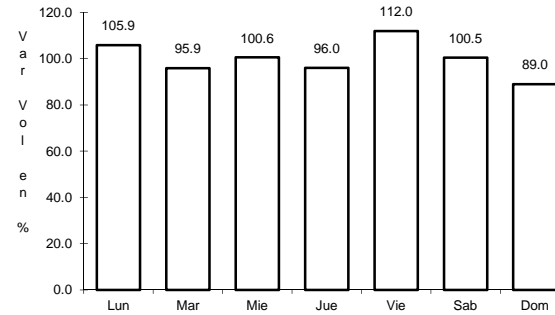
RUTA: MEX-200



Km: 0.00

Tipo: 3

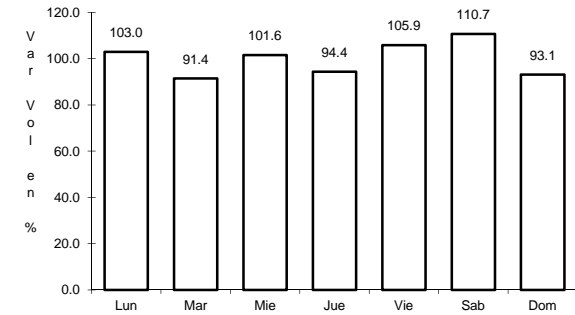
Sent: 0



Km: 209.95

Tipo: 1

Sent: 0



Km: 380.00

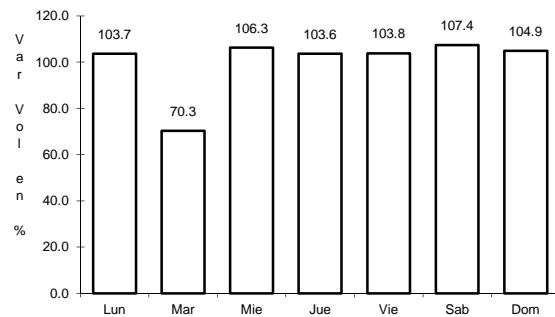
Tipo: 3

Sent: 0

17 CARR: Tapanatepec - Talismán

CLAVE: 00075

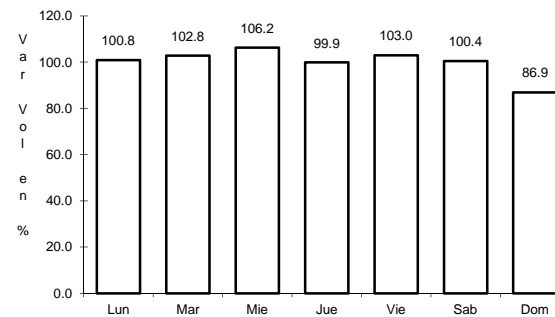
RUTA: MEX-200



Km: 0.00

Tipo: 3

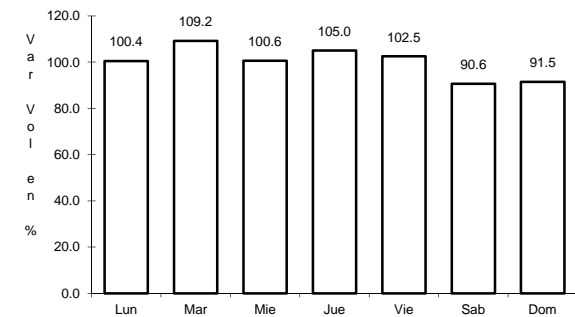
Sent: 0



Km: 45.00

Tipo: 1

Sent: 0



Km: 310.77

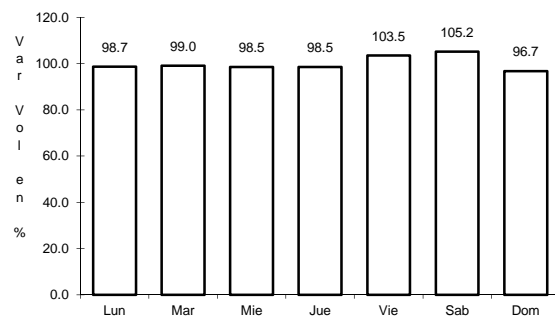
Tipo: 1

Sent: 0

18 CARR: Tapanatepec - Tuxtla Gutiérrez

CLAVE: 00060

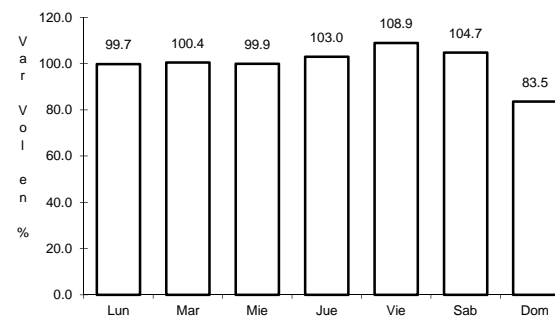
RUTA: MEX-190



Km: 0.00

Tipo: 3

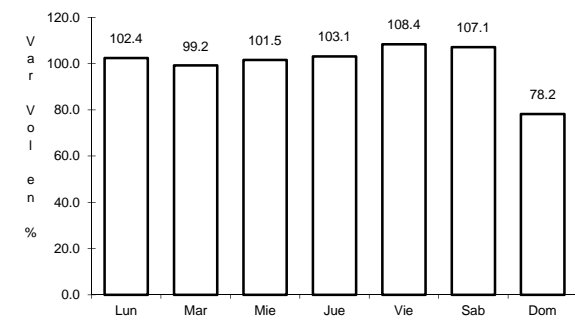
Sent: 0



Km: 159.00

Tipo: 1

Sent: 1



Km: 159.00

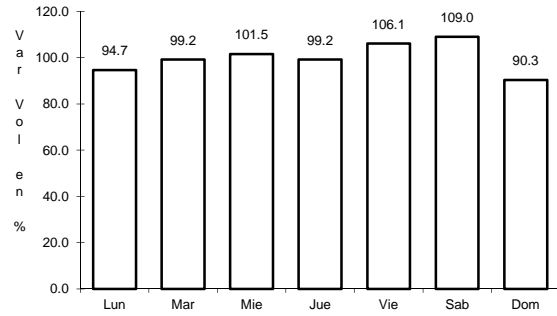
Tipo: 1

Sent: 2

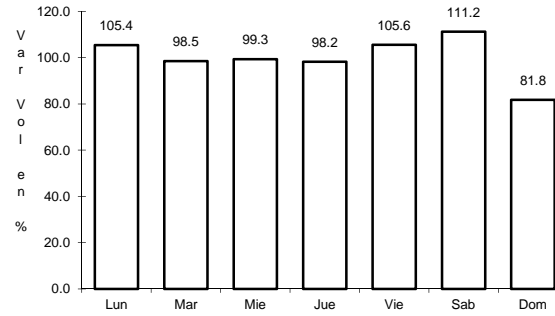
19 CARR: Tehuacán - Huajuapán de León

CLAVE: 00211

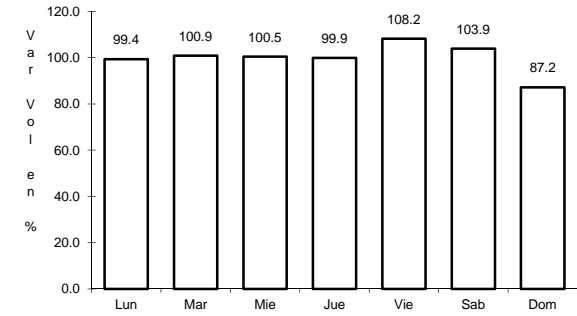
RUTA: MEX-125



Km: 0.00 Tipo: 3 Sent: 1



Km: 0.00 Tipo: 3 Sent: 2

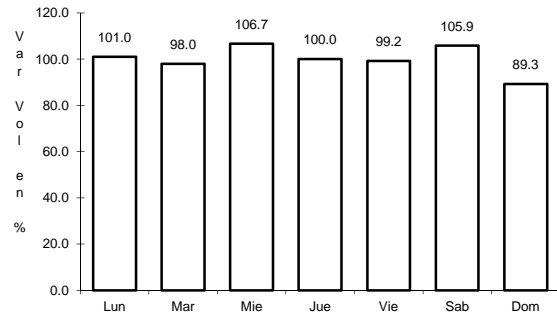


Km: 119.40 Tipo: 1 Sent: 0

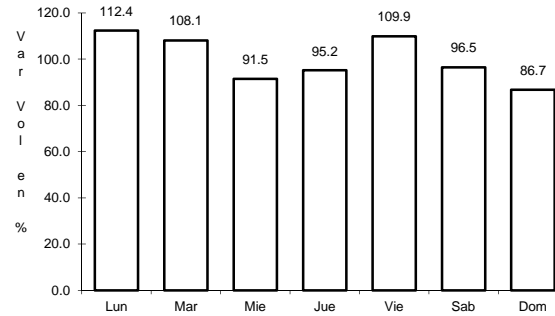
20 CARR: Tuxtepec - Ent. Palomares

CLAVE: 00180

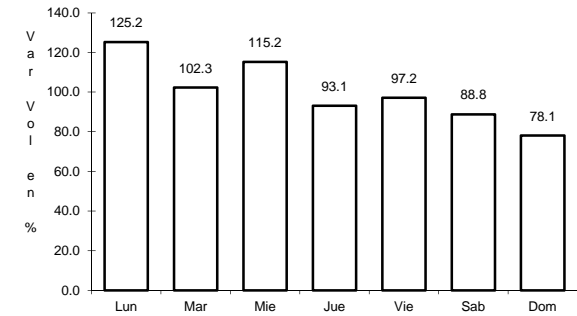
RUTA: MEX-147



Km: 0.00 Tipo: 3 Sent: 0



Km: 81.20 Tipo: 1 Sent: 0

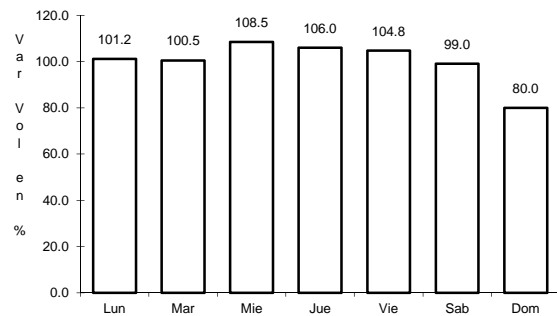


Km: 175.00 Tipo: 1 Sent: 0

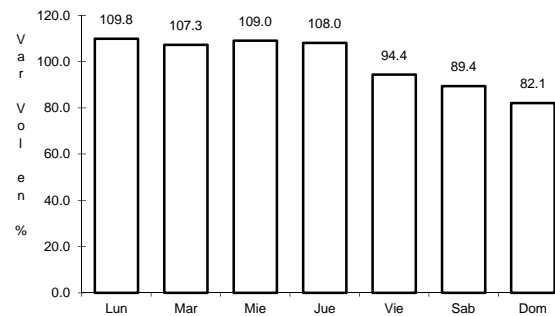
21 CARR: Tuxtepec - T. C. (Oaxaca - Tehuantepec)

CLAVE: 20090

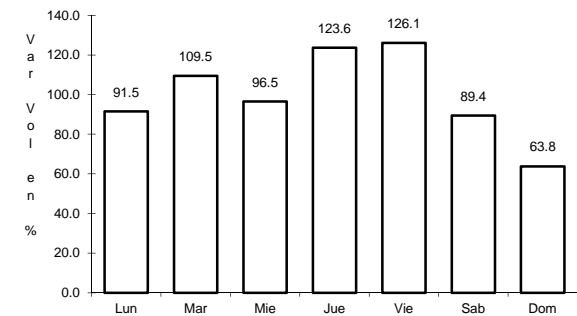
RUTA: MEX-175



Km: 0.00 Tipo: 3 Sent: 1



Km: 0.00 Tipo: 3 Sent: 2

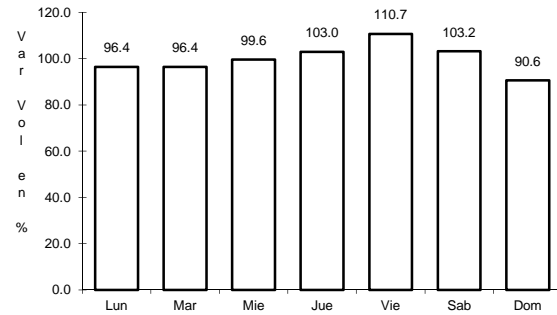


Km: 125.00 Tipo: 3 Sent: 0

22 CARR: Yucudaa - Santiago Pinotepa Nacional

CLAVE: 20030

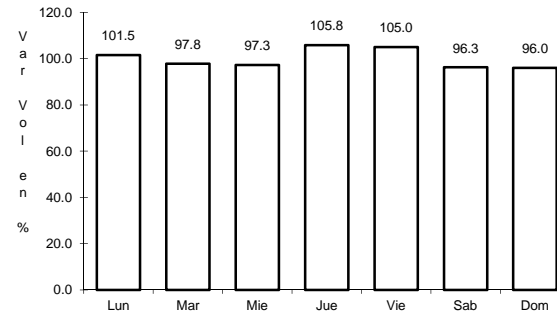
RUTA: MEX-125



Km: 0.00

Tipo: 3

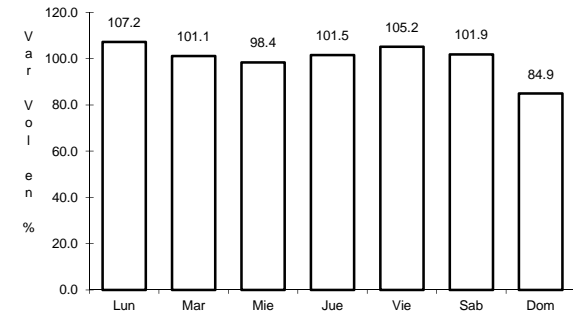
Sent: 0



Km: 104.00

Tipo: 1

Sent: 0



Km: 268.00

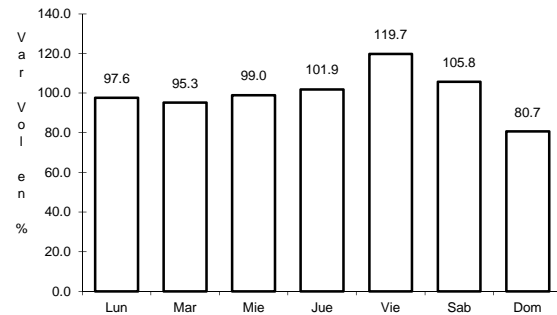
Tipo: 1

Sent: 0

23 CARR: Cuacnopalan - Oaxaca (Cuota)

CLAVE: 00109

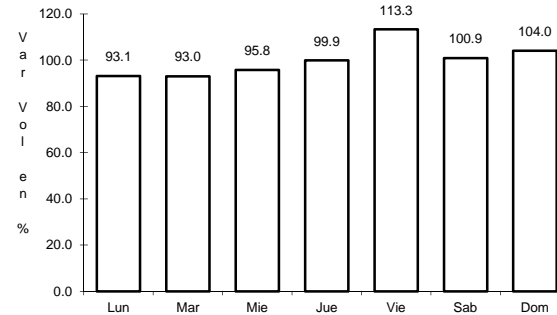
RUTA: MEX-135D



Km: 0.00

Tipo: 3

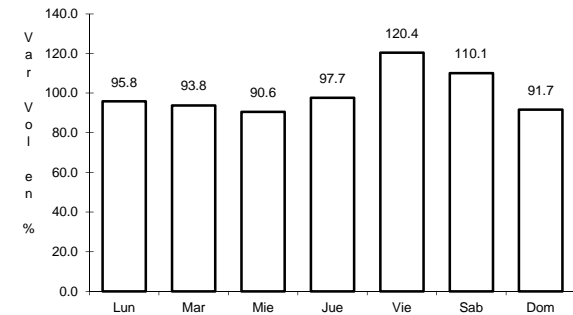
Sent: 0



Km: 242.70

Tipo: 1

Sent: 1



Km: 242.70

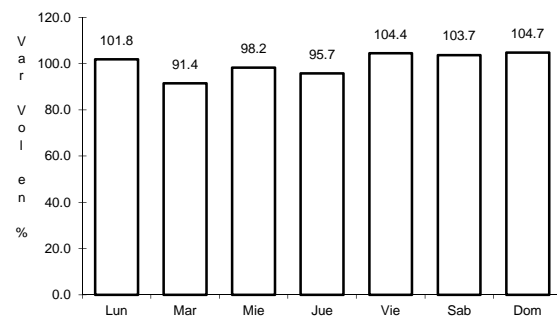
Tipo: 1

Sent: 2

24 CARR: Salina Cruz - La Ventosa (Cuota)

CLAVE: 00275

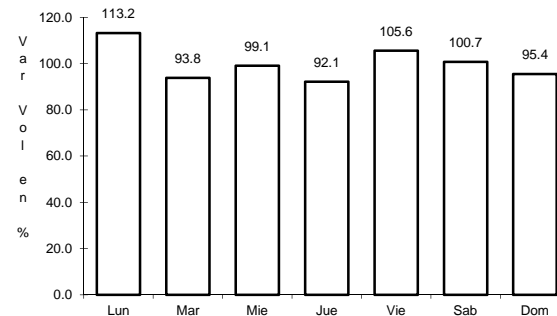
RUTA: MEX-185D



Km: 23.19

Tipo: 1

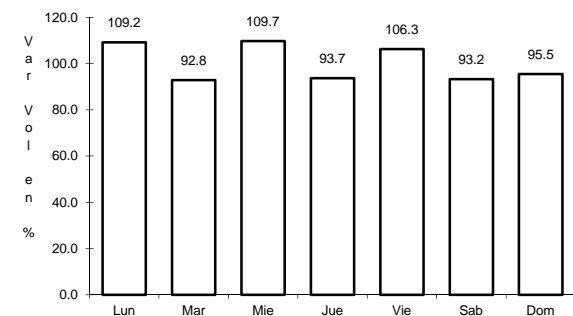
Sent: 0



Km: 23.19

Tipo: 3

Sent: 0



Km: 75.39

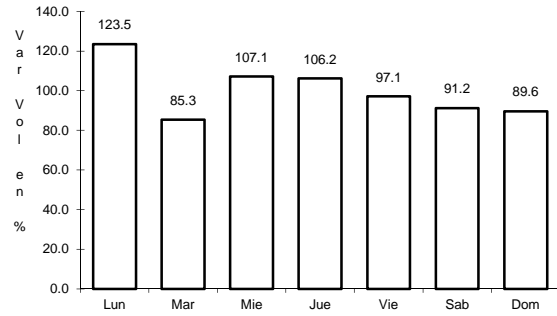
Tipo: 1

Sent: 0

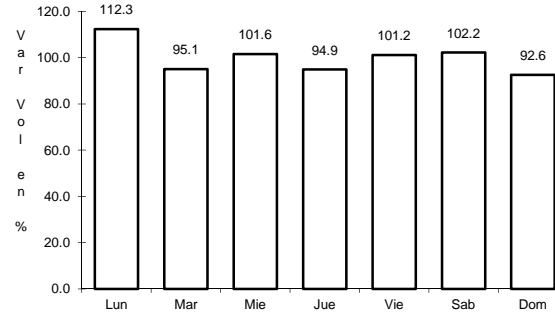
25 CARR: Cd. Ixtepec - Guevea de Humboldt

CLAVE: 00301

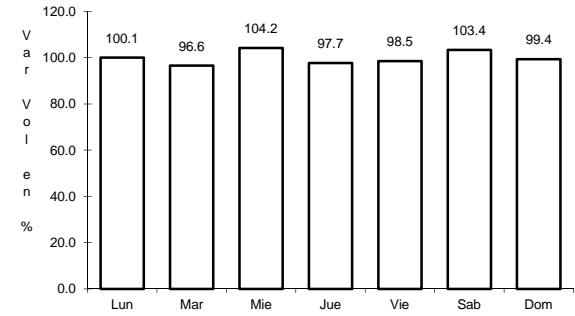
RUTA: OAX



Km: 4.00 Tipo: 1 Sent: 1



Km: 4.00 Tipo: 1 Sent: 2

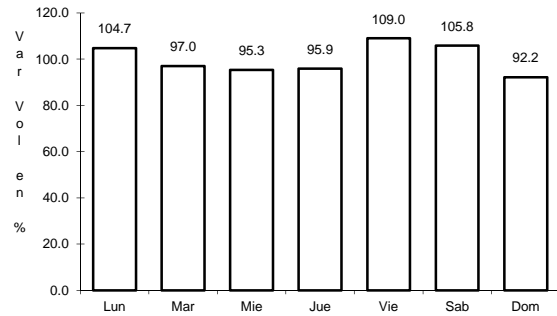


Km: 4.00 Tipo: 3 Sent: 0

26 CARR: El Zapote - Copalita

CLAVE: 00109

RUTA: OAX

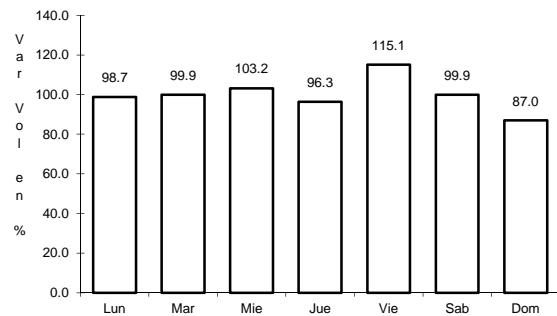


Km: 0.00 Tipo: 3 Sent: 0

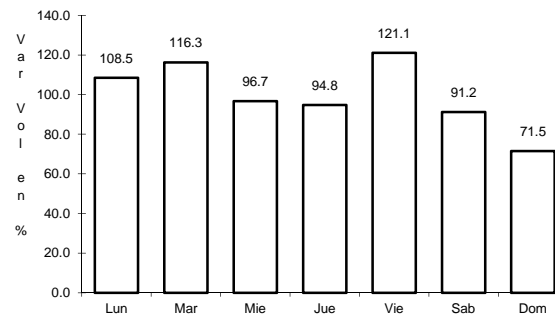
27 CARR: Huajuapán de León - El Carrizal

CLAVE: 00109

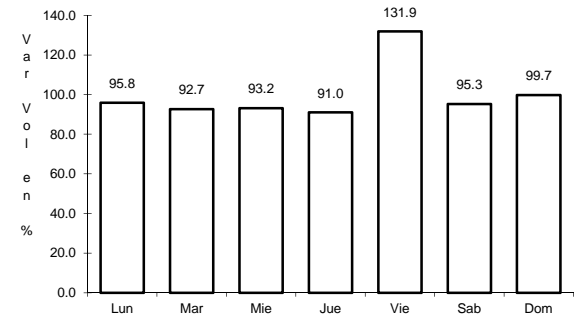
RUTA: OAX



Km: 0.00 Tipo: 3 Sent: 0



Km: 83.60 Tipo: 1 Sent: 0

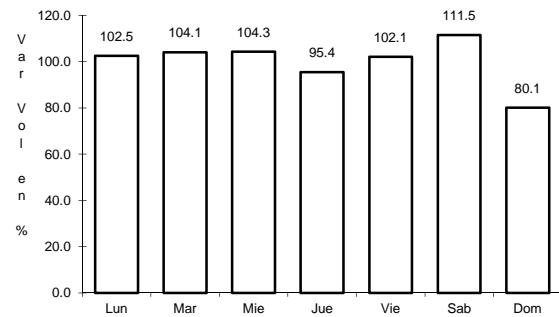


Km: 130.00 Tipo: 1 Sent: 0

28 CARR: Loma Bonita - Mixtán

CLAVE: 20043

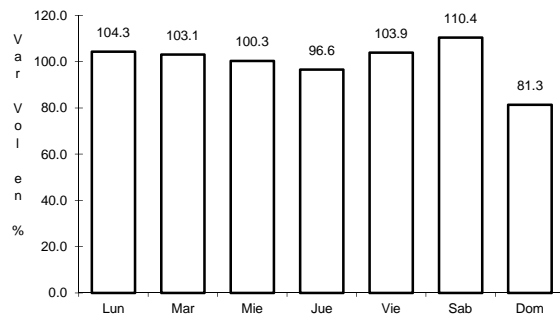
RUTA: OAX



Km: 1.00

Tipo: 1

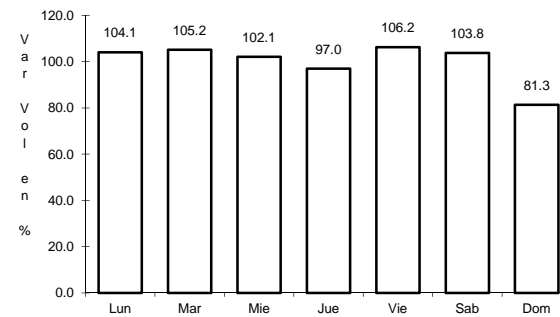
Sent: 1



Km: 1.00

Tipo: 1

Sent: 2



Km: 12.00

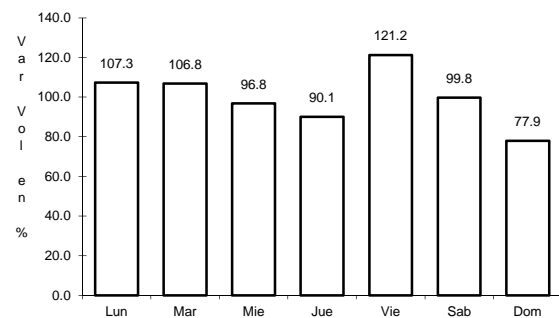
Tipo: 3

Sent: 0

29 CARR: Ramal a Reforma de Pineda

CLAVE: 20010

RUTA: OAX



Km: 0.00

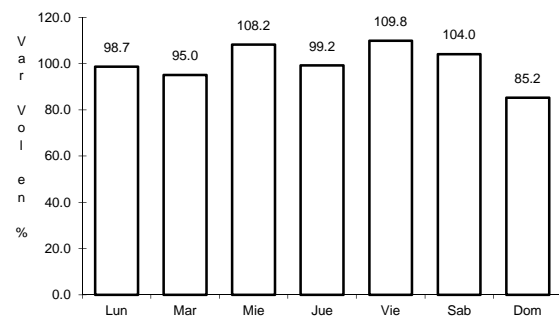
Tipo: 3

Sent: 0

30 CARR: Ramal a Unión Hidalgo

CLAVE: 20044

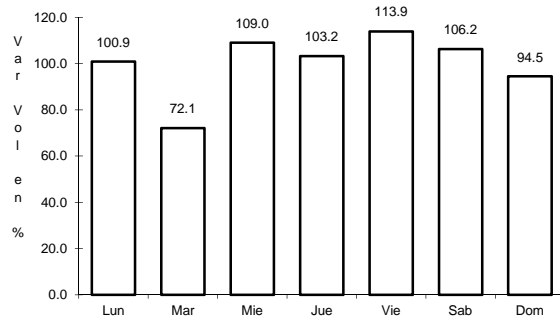
RUTA: OAX



Km: 0.00

Tipo: 3

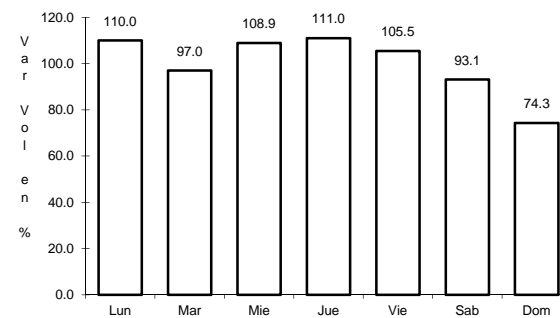
Sent: 1



Km: 0.00

Tipo: 3

Sent: 2



Km: 12.00

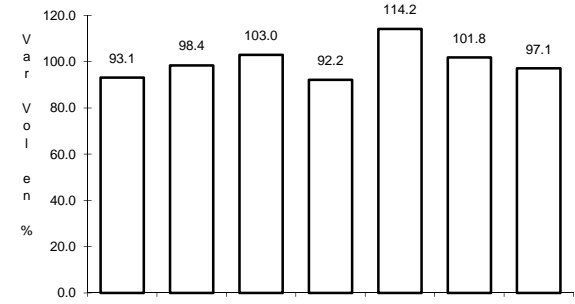
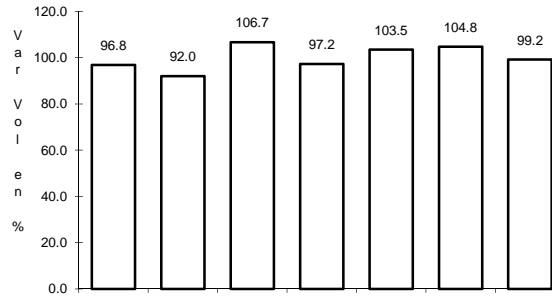
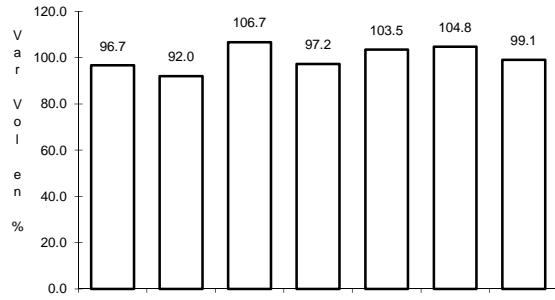
Tipo: 1

Sent: 0

31 CARR: San Antonio - Puerto Angel

CLAVE:

RUTA: OAX



Km: 0.00 Tipo: 3 Sent: 0

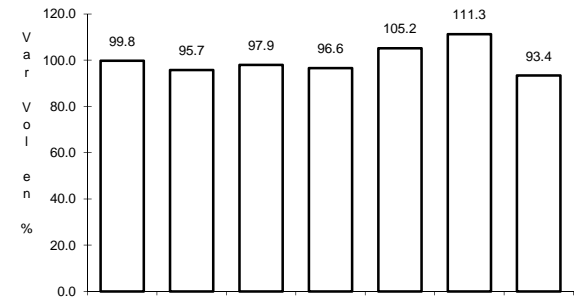
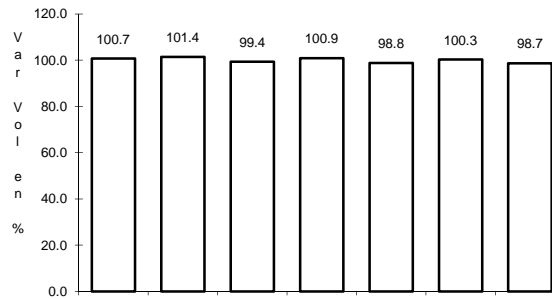
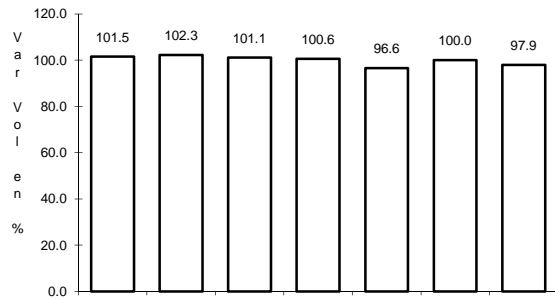
Km: 7.30 Tipo: 1 Sent: 0

Km: 7.30 Tipo: 3 Sent: 0

32 CARR: T. C. (Oaxaca - Puerto Ángel) - Puerto Escondido

CLAVE: 20009

RUTA: MEX-OAX-161



Km: 0.00 Tipo: 3 Sent: 1

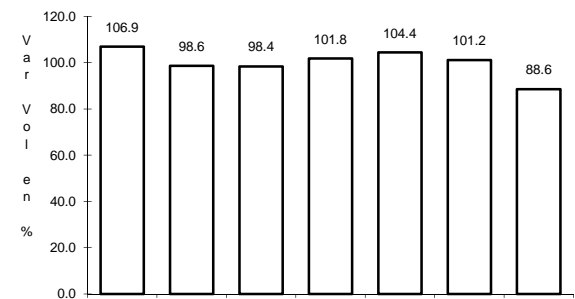
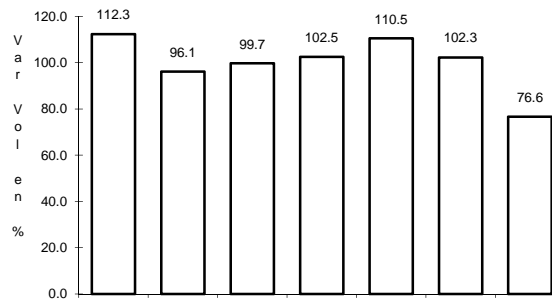
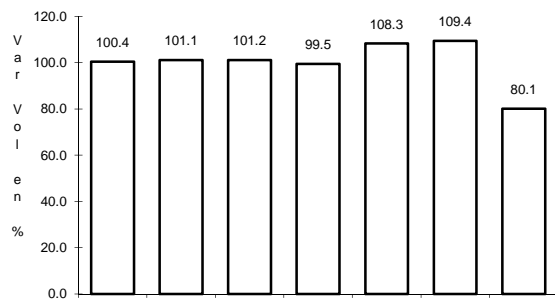
Km: 0.00 Tipo: 3 Sent: 2

Km: 248.00 Tipo: 1 Sent: 0

33 CARR: Tehuacán - Huitzo

CLAVE: 00211

RUTA: PUE-MEX-135

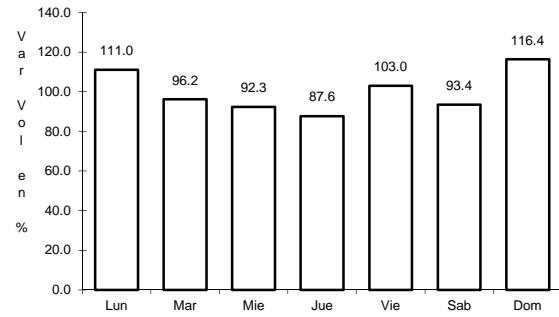


Km: 0.00 Tipo: 3 Sent: 0

Km: 118.80 Tipo: 1 Sent: 0

Km: 202.70 Tipo: 1 Sent: 0

34 CARR: Teotitlán de Flores Magón - Tuxtepec

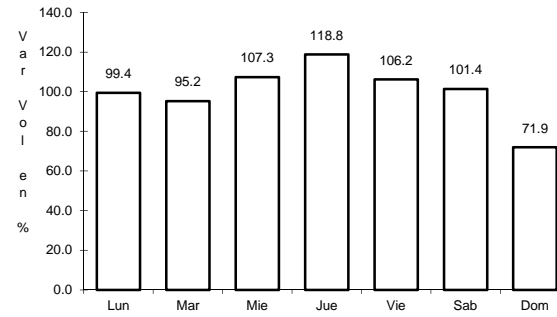


Km: 0.00

Tipo: 3

Sent: 0

CLAVE: 00108

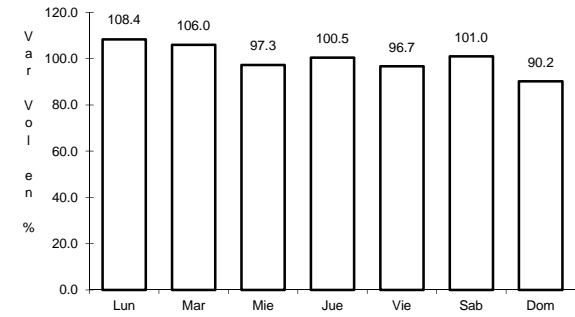


Km: 65.00

Tipo: 1

Sent: 0

RUTA: OAX-PUE-MEX-182



Km: 185.00

Tipo: 1

Sent: 0