

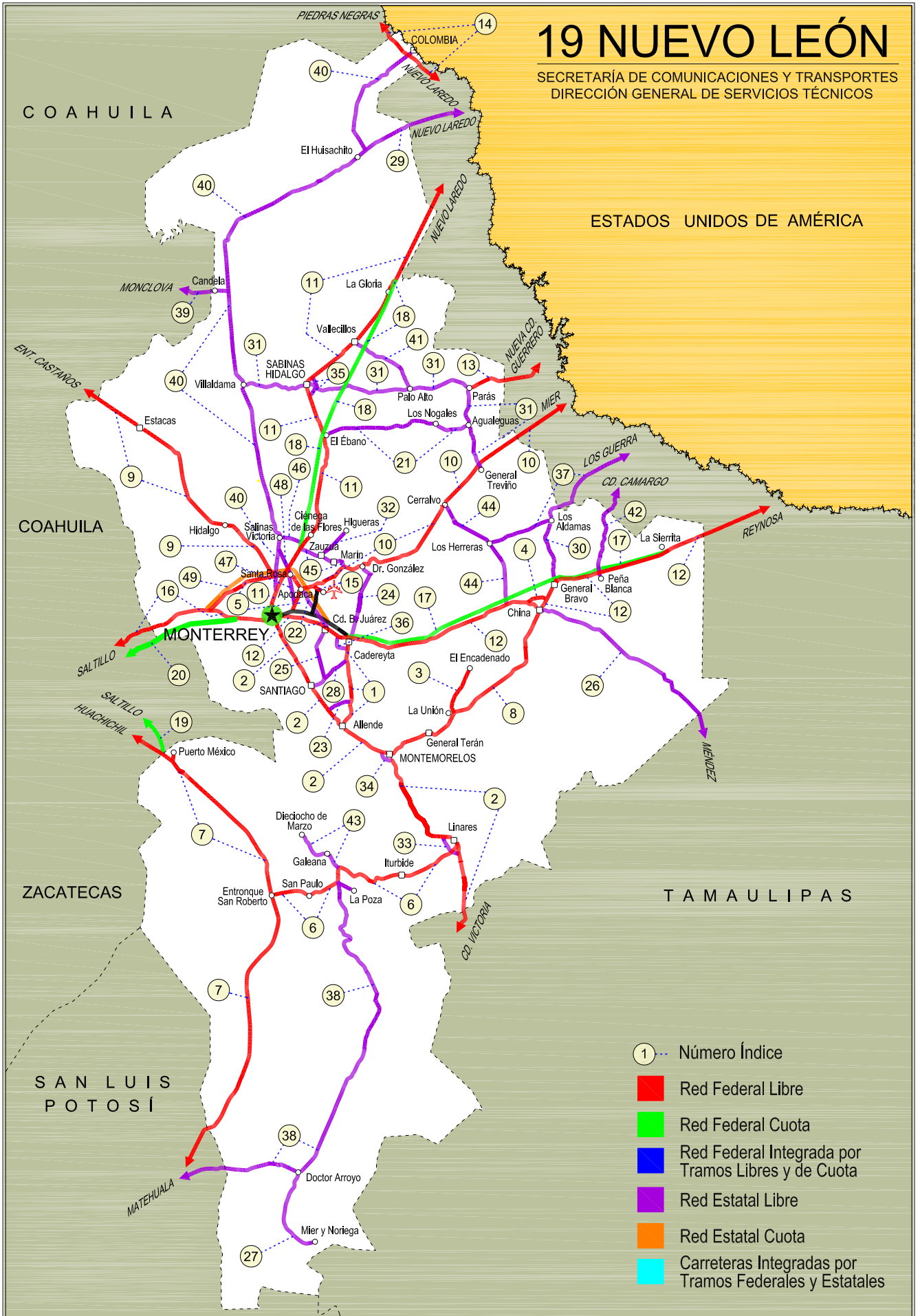


NUEVO LEON

NO. INDICE	CARRETERA	ruta
---RED FEDERAL LIBRE---		
1	Cadereyta de Jiménez - Allende	MEX-009
2	Ciudad Victoria - Monterrey	MEX-085
3	La Unión - El Encadenado	MEX
4	Libramiento de China	MEX-040
5	Libramiento Noroeste de Monterrey	MEX-040
6	Linares - Ent. San Roberto	MEX-058
7	Matehuala - Ent. Puerto México	MEX-057
8	Montemorelos - China	MEX-035
9	Monterrey - Castaños	MEX-053
10	Monterrey - Mier	MEX-054
11	Monterrey - Nuevo Laredo (Libre)	MEX-085
12	Monterrey - Reynosa (Libre)	MEX-040
13	Paras - Nueva Ciudad Guerrero	MEX-030
14	Piedras Negras - Nuevo Laredo	MEX-002
15	Ramal a Aeropuerto Mariano Escobedo	MEX-054
16	Saltillo - Monterrey	MEX-040
---RED FEDERAL DE CUOTA---		
17	Cadereyta - Reynosa (Cuota)	MEX-040D
18	Monterrey - Nuevo Laredo (Cuota)	MEX-085D
19	Puerto México - La Carbonera (Cuota)	MEX-057D
20	Saltillo - Monterrey (Cuota)	MEX-040D
---RED ESTATAL LIBRE---		
21	Aguaqueguas - El Ébano	NL-023
22	Apodaca - Villa Juárez	NL
23	Atongo - Lazarillos	NL
24	Cadereyta de Jiménez - Doctor González	NL
25	Cd. Benito Juárez - Villa de Santiago	NL
26	China - Méndez	NL-TAM
27	Doctor Arroyo - Mier y Noriega	NL-088
28	Ent. Hacienda del Cielo - T. Der. Cadereyta	NL
29	Ent. Huisachito - Nuevo Laredo	NL-001-TAM
30	Gral. Bravo - Los Aldamas	NL-030
31	Gral. Treviño - Villaldama	NL-003
32	Hacienda Guadalupe - Higuera	NL-006
33	Libramiento de Linares	NL
34	Libramiento de Montemorelos	NL
35	Libramiento de Sabinas Hidalgo	NL
36	Libramiento Poniente de Cadereyta	NL
37	Los Guerra - Los Herreras	TAM-NL
38	Matehuala - La Poza	SLP-029
39	Monclova - Estación Candela	COA-030-NL
40	Monterrey - Colombia	NL-001
41	Palo Alto - Vallecillos	NL
42	Peña Blanca - Cd. Camargo	NL-TAM
43	Ramal a 18 de Marzo	NL
44	Ramal a Cerralvo	NL-013
45	Ramal a Marín	NL
46	Salinas Victoria - Ciénega de Flores	NL
47	Santa Rosa - Mezquital	NL
48	Santa Rosa - Salinas Victoria	NL
---RED ESTATAL DE CUOTA---		
49	Anillo Periférico de Monterrey (Cuota)	NL-D

19 NUEVO LEÓN

SECRETARÍA DE COMUNICACIONES Y TRANSPORTES
DIRECCIÓN GENERAL DE SERVICIOS TÉCNICOS



- 1 --- Número Índice
- Red Federal Libre
- Red Federal Cuota
- Red Federal Integrada por Tramos Libres y de Cuota
- Red Estatal Libre
- Red Estatal Cuota
- Carreteras Integradas por Tramos Federales y Estatales

NUEVO LEON

1 CARR: Cadereyta de Jiménez - Allende

CLAVE: 19009

RUTA: MEX-009

AÑO: 2012

LUGAR	ESTACION				CLASIFICACION VEHICULAR EN PORCIENTO														COORDENADAS	
	KM	TE	SC	TDPA	M	A	B	C2	C3	T3S2	T3S3	T3S2R4	OTROS	A	B	C	K'	D	LATITUD	LONGITUD
Cadereyta de Jiménez	0.00	3	1	3526	1.8	79.8	5.6	10.0	1.0	1.1	0.3	0.1	0.3	81.6	5.6	12.8	0.121	0.505	25.561523	-100.005536
Cadereyta de Jiménez	0.00	3	2	3598	1.5	78.4	6.0	11.3	1.0	1.2	0.3	0.1	0.2	79.9	6.0	14.1	0.102	0.505	25.561422	-100.005343
T. der. Huajuquito	7.30	3	0	4946	1.2	65.3	4.2	11.1	4.5	6.2	2.7	4.2	0.6	66.5	4.2	29.3	0.085	0.506	25.366491	-99.986473
T. Izq. Atongo	26.80	1	0	4300	1.4	67.8	2.5	10.4	4.0	6.7	2.5	4.0	0.7	69.2	2.5	28.3	0.087	0.513	25.349082	-99.990082
Allende	37.00	1	1	5416	1.4	68.4	5.4	9.7	4.1	6.5	1.9	1.9	0.7	69.8	5.4	24.8	0.096	0.501	25.291988	-100.013633
Allende	37.00	1	2	5430	0.8	67.2	5.9	9.6	4.6	7.0	2.2	1.9	0.8	68.0	5.9	26.1	0.087	0.501	25.291988	-100.013633

2 CARR: Ciudad Victoria - Monterrey

CLAVE: 00462

RUTA: MEX-085

AÑO: 2012

LUGAR	ESTACION				CLASIFICACION VEHICULAR EN PORCIENTO														COORDENADAS	
	KM	TE	SC	TDPA	M	A	B	C2	C3	T3S2	T3S3	T3S2R4	OTROS	A	B	C	K'	D	LATITUD	LONGITUD
Cd. Victoria	0.00	3	1	8130	1.4	72.1	4.3	3.4	3.0	6.4	4.6	4.0	0.8	73.5	4.3	22.2	0.100	0.506	23.776718	-99.136883
Cd. Victoria	0.00	3	2	7923	1.5	68.9	4.8	4.2	3.2	6.9	5.4	4.2	0.9	70.4	4.8	24.8	0.083	0.506	23.776758	-99.137059
T. Der. Güemez	19.60	3	0	6639	0.6	69.1	3.8	8.2	2.6	5.0	5.7	4.8	0.2	69.7	3.8	26.5	0.094	0.510	23.917663	-99.111919
T. Izq. Santa Engracia	27.35	3	0	6821	0.3	64.4	3.3	9.3	2.8	8.5	3.2	7.3	0.9	64.7	3.3	32.0	0.077	0.505	23.990595	-99.111161
Barretal	39.00	3	0	6620	0.4	63.7	4.1	8.0	3.0	8.5	3.4	8.0	0.9	64.1	4.1	31.8	0.081	0.519	24.090453	-99.136747
T. Izq. Hidalgo y La Mesa	77.50	1	0	5510	0.4	60.3	4.0	7.9	2.9	10.2	3.5	9.8	1.0	60.7	4.0	35.3	0.085	0.501	24.244675	-99.425801
Villagrán	106.00	1	0	5011	0.5	53.2	5.3	10.6	3.7	10.9	4.4	10.3	1.1	53.7	5.3	41.0	0.084	0.507	24.464009	-99.496306
T. Izq. Villa Mainero	118.00	3	0	5386	0.7	55.2	5.0	9.7	3.9	10.3	3.9	10.5	0.8	55.9	5.0	39.1	0.090	0.507	24.572274	-99.547000
Lim. Edos. Term. Tamps. Ppia. N. L.	126.20																			
Linares	154.00	1	0	6905	0.8	56.9	3.7	12.5	2.9	10.4	3.3	8.7	0.8	57.7	3.7	38.6	0.077	0.504	24.838143	-99.560259
La Laja	171.00	3	1	5097	0.5	64.7	4.3	9.9	3.1	7.3	2.9	6.6	0.7	65.2	4.3	30.5	0.108	0.510	24.921758	-99.688276
La Laja	171.00	3	2	4891	0.4	61.0	4.5	10.7	3.6	8.7	2.9	7.4	0.8	61.4	4.5	34.1	0.097	0.510	24.921727	-99.688357
Montemorelos	205.00	3	1	7874	0.6	80.6	3.5	4.0	1.8	4.4	1.8	2.6	0.7	81.2	3.5	15.3	0.089	0.509	25.195516	-99.889636
Montemorelos	205.00	3	2	8358	1.1	78.4	3.7	4.2	2.0	5.1	2.0	2.8	0.7	79.5	3.7	16.8	0.106	0.509	25.195406	-99.889583
Allende	227.45	3	1	11219	0.7	79.8	4.8	5.9	2.2	2.5	1.7	2.0	0.4	80.5	4.8	14.7	0.088	0.500	25.291359	-100.045859
Allende	227.45	3	2	11193	0.8	77.6	5.4	6.5	2.4	2.7	2.1	2.1	0.4	78.4	5.4	16.2	0.104	0.500	25.291167	-100.045766
El Cercado	249.00	1	1	18670	0.8	81.5	4.2	6.3	1.6	2.9	0.9	1.5	0.3	82.3	4.2	13.5	0.079	0.511	25.397354	-100.126295
El Cercado	249.00	1	2	19496	0.8	79.4	4.9	7.0	1.7	3.2	1.0	1.7	0.3	80.2	4.9	14.9	0.089	0.511	25.397214	-100.126367
T. Der. Las Huertas	257.00	3	1	20283	0.8	84.0	4.0	4.5	1.4	2.3	1.3	1.3	0.4	84.8	4.0	11.2	0.094	0.501	25.467213	-100.173531
T. Der. Las Huertas	257.00	3	2	20334	0.7	82.5	4.5	5.1	1.5	2.7	1.3	1.3	0.4	83.2	4.5	12.3	0.120	0.501	25.467173	-100.173748
T. Izq. el Barro	266.00	3	1	23614	0.7	84.4	3.5	4.2	2.0	2.1	1.3	1.2	0.6	85.1	3.5	11.4	0.087	0.504	25.530549	-100.212733
T. Izq. el Barro	266.00	3	2	23957	0.7	82.8	4.0	4.7	2.3	2.2	1.4	1.2	0.7	83.5	4.0	12.5	0.118	0.504	25.530249	-100.212948
La Estanzuela	274.82	3	1	45337	1.2	82.5	3.1	4.8	1.9	3.0	1.2	1.6	0.7	83.7	3.1	13.2	0.109	0.503	25.589441	-100.259096
La Estanzuela	274.82	3	2	45810	1.2	81.2	3.2	5.0	2.3	3.3	1.2	1.8	0.8	82.4	3.2	14.4	0.073	0.503	25.589437	-100.259296

NUEVO LEON

2 CARR: Ciudad Victoria - Monterrey

CLAVE: 00462

RUTA: MEX-085

AÑO: 2012

LUGAR	ESTACION				CLASIFICACION VEHICULAR EN PORCIENTO										COORDENADAS					
	KM	TE	SC	TDPA	M	A	B	C2	C3	T3S2	T3S3	T3S2R4	OTROS	A	B	C	K'	D	LATITUD	LONGITUD
Monterrey (Baja)	287.00	1	1	23914	1.8	83.4	3.6	4.3	0.9	2.2	1.9	1.0	0.9	85.2	3.6	11.2	0.078	0.502	25.602041	-100.266102
Monterrey (Alta)	287.00	1	1	37346	0.4	84.6	3.1	4.3	0.6	2.8	2.5	1.0	0.7	85.0	3.1	11.9	0.067	0.507	25.601981	-100.266226
Monterrey (Alta)	287.00	1	2	36262	0.5	82.3	3.6	4.8	0.6	3.4	2.8	1.2	0.8	82.8	3.6	13.6	0.069	0.507	25.601418	-100.266104
Monterrey (Baja)	287.00	1	2	23748	1.3	82.5	3.9	4.6	1.1	2.4	2.0	1.2	1.0	83.8	3.9	12.3	0.065	0.502	25.601378	-100.266182

3 CARR: La Unión - El Encadenado

CLAVE:

RUTA: MEX

AÑO: 2012

LUGAR	ESTACION				CLASIFICACION VEHICULAR EN PORCIENTO										COORDENADAS					
	KM	TE	SC	TDPA	M	A	B	C2	C3	T3S2	T3S3	T3S2R4	OTROS	A	B	C	K'	D	LATITUD	LONGITUD
La Unión	0.00	3	0	749	9.3	74.5	3.9	10.8	0.7	0.7	0.1	0.0	0.0	83.8	3.9	12.3	0.114	0.516	25.338714	-99.580875
El Encadenado	10.00	1	0	221	6.0	66.4	2.4	24.8	0.3	0.1	0.0	0.0	0.0	72.4	2.4	25.2	0.208	0.524	25.404031	-99.538846

4 CARR: Libramiento de China

CLAVE:

RUTA: MEX-040

AÑO: 2012

LUGAR	ESTACION				CLASIFICACION VEHICULAR EN PORCIENTO										COORDENADAS					
	KM	TE	SC	TDPA	M	A	B	C2	C3	T3S2	T3S3	T3S2R4	OTROS	A	B	C	K'	D	LATITUD	LONGITUD
T. C. Monterrey - Reynosa (Poniente)	0.00																			
T. C. Monterrey - Reynosa (Oriente)	2.41	1	0	2147	0.1	48.1	5.1	14.6	5.4	16.6	5.1	4.5	0.5	48.2	5.1	46.7	0.084	0.514	25.710421	-99.231345

5 CARR: Libramiento Noroeste de Monterrey

CLAVE: 19085

RUTA: MEX-040

AÑO: 2012

LUGAR	ESTACION				CLASIFICACION VEHICULAR EN PORCIENTO										COORDENADAS					
	KM	TE	SC	TDPA	M	A	B	C2	C3	T3S2	T3S3	T3S2R4	OTROS	A	B	C	K'	D	LATITUD	LONGITUD
T. C. Saltillo - Monterrey	0.00	3	1	8121	1.7	41.8	3.7	8.8	3.3	32.0	4.2	4.0	0.5	43.5	3.7	52.8	0.077	0.520	25.702964	-100.555403
T. C. Saltillo - Monterrey	0.00	3	2	8805	0.9	34.2	4.1	10.7	3.7	36.5	4.8	4.4	0.7	35.1	4.1	60.8	0.073	0.520	25.702989	-100.555459
X. C. Monterrey - Castaños	31.00	1	1	21098	0.6	67.9	3.3	5.7	2.4	12.5	4.7	2.2	0.7	68.5	3.3	28.2	0.082	0.514	25.822981	-100.313673
X. C. Monterrey - Castaños	31.00	1	2	22271	0.9	67.0	3.3	6.1	2.6	12.0	4.8	2.5	0.8	67.9	3.3	28.8	0.094	0.514	25.822926	-100.313450
Apodaca	41.50	1	1	15653	0.6	84.8	3.0	5.5	1.9	1.3	2.1	0.2	0.6	85.4	3.0	11.6	0.089	0.543	25.791842	-100.196984
Apodaca	41.50	1	2	15179	0.6	83.0	3.4	6.1	2.0	1.5	2.5	0.2	0.7	83.6	3.4	13.0	0.100	0.543	25.791739	-100.197057
T. C. Monterrey - Reynosa	48.00	1	1	26033	1.0	89.4	2.3	2.9	0.9	1.2	1.6	0.3	0.4	90.4	2.3	7.3	0.089	0.512	25.671645	-100.169661
T. C. Monterrey - Reynosa	48.00	1	2	25914	1.0	88.3	2.5	3.2	1.1	1.4	1.8	0.3	0.4	89.3	2.5	8.2	0.080	0.512	25.671532	-100.169613

NUEVO LEON

6 CARR : Linares - Ent. San Roberto

CLAVE: 19031

RUTA: MEX-058

AÑO : 2012

LUGAR	ESTACION				CLASIFICACION VEHICULAR EN PORCIENTO													COORDENADAS		
	KM	TE	SC	TDPA	M	A	B	C2	C3	T3S2	T3S3	T3S2R4	OTROS	A	B	C	K'	D	LATITUD	LONGITUD
Linares	0.00	3	1	4538	3.3	66.8	4.1	6.2	3.6	8.9	2.1	5.0	0.0	70.1	4.1	25.8	0.114	0.516	24.841047	-99.574572
Linares	0.00	3	2	4255	2.9	63.8	4.4	6.7	4.3	9.6	2.4	5.9	0.0	66.7	4.4	28.9	0.089	0.516	24.841124	-99.574388
Iturbide	44.00	1	0	1149	0.3	77.0	7.0	4.1	5.0	3.5	1.2	1.6	0.3	77.3	7.0	15.7	0.116	0.501	24.732467	-99.886050
T. Izq. Doctor Arroyo	66.00	1	0	2359	0.4	78.1	7.9	4.1	2.9	3.9	0.7	1.7	0.3	78.5	7.9	13.6	0.113	0.504	24.727101	-100.039000
T. C. Matehuala - Ent. Huachichil	98.00	1	0	1131	0.5	78.1	7.2	4.4	3.3	3.2	1.2	1.8	0.3	78.6	7.2	14.2	0.109	0.502	24.675810	-100.295355

7 CARR : Matehuala - Ent. Puerto México

CLAVE: 00405

RUTA: MEX-057

AÑO : 2012

LUGAR	ESTACION				CLASIFICACION VEHICULAR EN PORCIENTO													COORDENADAS		
	KM	TE	SC	TDPA	M	A	B	C2	C3	T3S2	T3S3	T3S2R4	OTROS	A	B	C	K'	D	LATITUD	LONGITUD
Matehuala	0.00	3	1	6608	2.5	68.0	2.4	9.3	1.5	11.0	2.8	1.8	0.7	70.5	2.4	27.1	0.099	0.516	23.679670	-100.626631
Matehuala	0.00	3	2	6826	2.3	64.5	2.7	10.5	1.6	12.5	3.1	1.9	0.9	66.8	2.7	30.5	0.077	0.516	23.679670	-100.626631
T. Izq. Cedral	8.47	1	1	4295	6.5	51.5	3.9	12.1	3.2	16.4	3.6	2.1	0.7	58.0	3.9	38.1	0.085	0.515	23.694470	-100.619723
T. Izq. Cedral	8.47	1	2	4569	2.3	51.1	4.3	12.6	3.3	19.4	4.0	2.2	0.8	53.4	4.3	42.3	0.065	0.515	23.694470	-100.619723
T. Izq. Cedral	8.47	3	1	4012	1.6	43.2	3.9	11.6	1.9	28.1	5.9	3.1	0.7	44.8	3.9	51.3	0.094	0.521	23.700137	-100.616836
T. Izq. Cedral	8.47	3	2	3855	1.5	38.6	4.4	13.3	2.0	29.6	6.2	3.6	0.8	40.1	4.4	55.5	0.066	0.521	23.700111	-100.616723
Lim. Edos. Term. S. L. P. Ppia. N. L.	24.64																			
Santa Ana	59.65	1	1	6809	0.5	34.0	3.9	8.7	3.6	37.9	4.5	5.9	1.0	34.5	3.9	61.6	0.065	0.504	24.064415	-100.392577
Santa Ana	59.65	1	2	6914	2.0	28.8	4.2	9.7	3.8	38.8	4.9	6.8	1.0	30.8	4.2	65.0	0.067	0.504	24.064415	-100.392577
T. Der. Linares	128.99	3	1	6895	9.8	28.6	6.0	10.4	4.6	29.8	4.3	5.4	1.1	38.4	6.0	55.6	0.071	0.507	24.684320	-100.300877
T. Der. Linares	128.99	3	2	6711	1.6	29.6	6.4	11.8	5.2	34.1	4.5	5.7	1.1	31.2	6.4	62.4	0.079	0.507	24.686787	-100.301761
San Rafael	177.18	1	1	6930	2.7	47.3	4.3	12.6	2.2	23.1	3.1	3.5	1.2	50.0	4.3	45.7	0.081	0.518	25.019838	-100.541266
San Rafael	177.18	1	2	7437	3.7	43.5	5.0	13.0	2.4	24.3	3.4	3.6	1.1	47.2	5.0	47.8	0.081	0.518	25.019838	-100.541266
Ent. Puerto México	205.97																			

8 CARR : Montemorelos - China

CLAVE: 19280

RUTA: MEX-035

AÑO : 2012

LUGAR	ESTACION				CLASIFICACION VEHICULAR EN PORCIENTO													COORDENADAS		
	KM	TE	SC	TDPA	M	A	B	C2	C3	T3S2	T3S3	T3S2R4	OTROS	A	B	C	K'	D	LATITUD	LONGITUD
Montemorelos	0.00	3	0	7201	1.0	78.0	6.3	5.4	2.7	3.8	1.2	0.8	0.8	79.0	6.3	14.7	0.083	0.512	25.201651	-99.806577
Gral. Terán	17.60	3	0	3778	2.9	75.5	6.2	5.3	3.3	3.1	2.3	0.4	1.0	78.4	6.2	15.4	0.092	0.502	25.250525	-99.655282
China	93.00	1	0	1344	0.2	73.4	6.4	6.3	1.9	6.2	1.8	3.0	0.8	73.6	6.4	20.0	0.098	0.511	25.687860	-99.244164

NUEVO LEON

9 CARR : Monterrey - Castaños

CLAVE: 00128

RUTA: MEX-053

AÑO : 2012

LUGAR	ESTACION				CLASIFICACION VEHICULAR EN PORCIENTO													COORDENADAS		
	KM	TE	SC	TDPA	M	A	B	C2	C3	T3S2	T3S3	T3S2R4	OTROS	A	B	C	K'	D	LATITUD	LONGITUD
T. C. Monterrey - Nuevo Laredo	0.00	3	0	14411	2.5	74.2	5.0	5.9	5.2	3.5	1.7	1.2	0.8	76.7	5.0	18.3	0.076	0.500	25.808331	-100.282381
X. C. Libramiento Noroeste de Monterrey	3.46	3	1	10222	5.4	67.8	4.1	7.1	5.8	4.4	3.2	1.4	0.8	73.2	4.1	22.7	0.096	0.505	25.832066	-100.307918
X. C. Libramiento Noroeste de Monterrey	3.46	3	2	10033	5.7	64.0	4.5	8.2	6.4	5.0	3.7	1.6	0.9	69.7	4.5	25.8	0.091	0.505	25.831987	-100.308056
T. Der. Villa del Carmen	13.80	1	1	6774	0.4	76.7	3.8	6.5	2.6	4.9	2.8	1.7	0.6	77.1	3.8	19.1	0.090	0.506	25.896356	-100.352010
T. Der. Villa del Carmen	13.80	1	2	6615	0.5	74.8	4.1	7.0	2.8	5.2	3.1	1.9	0.6	75.3	4.1	20.6	0.096	0.506	25.896356	-100.352010
T. Izq. Hidalgo	24.78	1	0	12874	0.8	75.3	3.2	7.4	2.1	5.2	2.7	2.1	1.2	76.1	3.2	20.7	0.084	0.549	25.953746	-100.422679
T. Izq. Hidalgo	24.78	3	0	8483	0.7	67.7	4.1	9.0	2.6	8.5	4.0	2.5	0.9	68.4	4.1	27.5	0.072	0.503	25.990828	-100.457488
T. Izq. Mina	34.75	1	0	7136	1.1	67.2	4.4	7.9	3.0	8.7	4.4	2.5	0.8	68.3	4.4	27.3	0.070	0.510	26.000739	-100.515547
T. Izq. Espinazo	91.90	1	0	3377	5.0	58.9	3.8	9.5	1.6	8.8	5.7	5.9	0.8	63.9	3.8	32.3	0.092	0.523	26.362470	-100.878330
T. Izq. Espinazo	91.90	3	0	3246	1.0	67.5	4.1	6.0	3.3	8.3	4.6	4.1	1.1	68.5	4.1	27.4	0.076	0.514	26.365698	-100.883665
Lim. Edos. Term. N. L. Ppia. Coah.	115.90																			
T. C. Saltillo - Monclova	155.90	1	1	2191	4.4	74.1	2.1	3.3	2.0	5.1	5.3	3.0	0.7	78.5	2.1	19.4	0.113	0.501	26.693472	-101.383820
T. C. Saltillo - Monclova	155.90	1	2	2179	3.3	74.0	2.3	3.6	2.1	5.3	5.6	3.2	0.6	77.3	2.3	20.4	0.088	0.501	26.692913	-101.383565

10 CARR : Monterrey - Mier

CLAVE: 00127

RUTA: MEX-054

AÑO : 2012

LUGAR	ESTACION				CLASIFICACION VEHICULAR EN PORCIENTO													COORDENADAS		
	KM	TE	SC	TDPA	M	A	B	C2	C3	T3S2	T3S3	T3S2R4	OTROS	A	B	C	K'	D	LATITUD	LONGITUD
Monterrey	0.00																			
Apodaca	19.12	1	1	49650	0.4	87.5	2.5	2.9	0.8	2.6	2.2	0.6	0.5	87.9	2.5	9.6	0.073	0.501	25.749277	-100.200643
Apodaca	19.12	1	2	49540	0.8	85.5	2.9	3.0	0.9	3.0	2.6	0.7	0.6	86.3	2.9	10.8	0.075	0.501	25.749222	-100.200897
X. C. Libramiento Noroeste de Monterrey	21.30	3	1	34195	0.8	82.5	2.8	5.7	2.1	3.3	1.2	0.8	0.8	83.3	2.8	13.9	0.101	0.510	25.784861	-100.159139
X. C. Libramiento Noroeste de Monterrey	21.30	3	2	32844	1.1	80.5	3.0	6.3	2.2	3.7	1.4	1.0	0.8	81.6	3.0	15.4	0.080	0.510	25.784993	-100.159325
X. C. Zacatecas - Pesquería	28.15	1	1	8708	1.0	79.3	4.3	7.5	2.9	2.4	1.5	0.7	0.4	80.3	4.3	15.4	0.078	0.503	25.799633	-100.101366
X. C. Zacatecas - Pesquería	28.15	1	2	8591	1.0	78.1	4.5	7.7	3.3	2.6	1.6	0.8	0.4	79.1	4.5	16.4	0.087	0.503	25.799633	-100.101366
X. C. Zacatecas - Pesquería	28.15	3	0	6162	1.0	78.7	2.0	7.1	3.0	4.2	1.7	1.4	0.9	79.7	2.0	18.3	0.081	0.511	25.806829	-100.092927
X. C. Hacienda Guadalupe - Higuera	38.10	1	0	4230	1.3	74.9	2.1	7.9	3.5	3.7	1.9	4.0	0.7	76.2	2.1	21.7	0.080	0.500	25.854333	-100.025506
X. C. Hacienda Guadalupe - Higuera	38.10	3	0	3990	0.6	74.5	4.7	8.0	2.1	3.5	1.0	5.3	0.3	75.1	4.7	20.2	0.088	0.510	25.854864	-100.017784
Dr. González	47.60	1	0	3075	0.8	75.3	3.3	10.2	1.8	3.2	1.2	3.6	0.6	76.1	3.3	20.6	0.091	0.507	25.850866	-99.967676
Dr. González	47.60	3	0	1773	0.4	75.4	3.2	7.3	2.2	3.9	1.7	5.1	0.8	75.8	3.2	21.0	0.087	0.501	25.867227	-99.933950
T. Der. Empalme Los Ramones	74.10	1	0	1478	3.7	72.4	2.6	3.9	0.5	3.9	2.2	9.6	1.2	76.1	2.6	21.3	0.095	0.511	25.924872	-99.720564
Cerralvo	95.95	1	0	2231	0.1	65.7	5.2	12.9	1.6	3.1	2.1	8.4	0.9	65.8	5.2	29.0	0.102	0.506	26.069198	-99.626136
Gral. Treviño	115.80	3	0	2550	0.1	57.8	2.1	8.0	0.8	6.9	3.6	20.4	0.3	57.9	2.1	40.0	0.112	0.500	26.230886	-99.472481
Lim. Edos. Term. N. L. Ppia. Tamps.	131.80																			
Mier	156.21	1	0	2247	0.3	54.3	0.9	5.8	4.6	8.1	4.0	21.8	0.2	54.6	0.9	44.5	0.099	0.502	26.426111	-99.165014

NUEVO LEON

11 CARR: Monterrey - Nuevo Laredo (Libre)

CLAVE: 00463

RUTA: MEX-085

AÑO: 2012

LUGAR	ESTACION				CLASIFICACION VEHICULAR EN PORCIENTO										COORDENADAS					
	KM	TE	SC	TDPA	M	A	B	C2	C3	T3S2	T3S3	T3S2R4	OTROS	A	B	C	K'	D	LATITUD	LONGITUD
Monterrey	0.00																			
T. Izq. Gral. Escobedo	12.10	3	1	27483	1.7	79.5	3.0	9.1	1.5	2.9	1.1	0.4	0.8	81.2	3.0	15.8	0.080	0.507	25.794440	-100.279747
T. Izq. Gral. Escobedo	12.10	3	2	28194	1.7	78.0	3.6	9.9	1.7	2.9	1.1	0.3	0.8	79.7	3.6	16.7	0.104	0.507	25.794147	-100.280077
X. C. Libramiento Noroeste de Monterrey	16.00	1	1	23914	0.9	78.1	3.3	8.3	1.6	4.0	2.4	0.6	0.8	79.0	3.3	17.7	0.081	0.509	25.824352	-100.262232
X. C. Libramiento Noroeste de Monterrey	16.00	1	2	25379	0.9	76.8	3.3	9.0	1.8	4.1	2.5	0.7	0.9	77.7	3.3	19.0	0.081	0.509	25.824207	-100.262531
X. C. Libramiento Noroeste de Monterrey	16.00	3	1	33614	0.7	72.9	2.4	7.4	2.4	8.6	3.0	1.8	0.8	73.6	2.4	24.0	0.086	0.506	25.835890	-100.254140
X. C. Libramiento Noroeste de Monterrey	16.00	3	2	32867	0.8	70.1	2.7	8.1	2.5	9.6	3.5	1.9	0.8	70.9	2.7	26.4	0.090	0.506	25.835888	-100.254278
X. C. Santa Rosa - Salinas Victoria	20.19	3	1	26057	0.9	65.1	2.2	9.2	3.3	14.6	2.6	1.4	0.7	66.0	2.2	31.8	0.090	0.505	25.861524	-100.236217
X. C. Santa Rosa - Salinas Victoria	20.19	3	2	26593	0.8	62.5	2.4	9.8	3.5	16.0	2.8	1.4	0.8	63.3	2.4	34.3	0.075	0.505	25.861877	-100.236210
Ciénega de Flores	32.00	1	0	15650	1.6	65.6	4.3	9.3	3.6	12.6	1.7	0.4	0.9	67.2	4.3	28.5	0.083	0.523	25.942310	-100.178585
T. Der. Agualeguas	78.23	3	0	4933	0.8	49.3	4.4	9.7	3.5	27.4	2.6	1.4	0.9	50.1	4.4	45.5	0.073	0.508	26.331763	-100.110354
Sabinas Hidalgo	98.90	3	0	4651	0.9	52.4	3.3	11.2	3.8	25.0	1.5	0.9	1.0	53.3	3.3	43.4	0.103	0.507	26.533064	-100.150494
Vallecillos	124.40	3	0	3787	2.8	45.6	4.0	15.4	4.6	22.5	2.5	1.6	1.0	48.4	4.0	47.6	0.080	0.536	26.663181	-99.980553
T. Izq. Anáhuac	156.80	1	0	3636	1.9	53.5	3.9	11.3	3.8	20.6	2.9	1.1	1.0	55.4	3.9	40.7	0.071	0.534	26.874327	-99.832615
T. Izq. Anáhuac	156.80	3	1	6783	1.3	51.2	4.0	7.9	2.9	29.4	1.5	1.0	0.8	52.5	4.0	43.5	0.092	0.531	26.900970	-99.811847
T. Izq. Anáhuac	156.80	3	2	6913	2.2	46.3	4.6	8.7	3.1	31.5	1.6	1.1	0.9	48.5	4.6	46.9	0.108	0.531	26.900748	-99.811500
Lim. Edos. Term. N. L. Ppia. Tamps.	184.56																			
T. Der. Mier	205.90	1	1	7836	1.6	53.3	4.6	8.8	3.6	22.5	2.8	1.9	0.9	54.9	4.6	40.5	0.104	0.519	27.292439	-99.602991
T. Der. Mier	205.90	1	2	7618	5.1	47.0	4.9	9.5	3.7	23.8	2.9	2.1	1.0	52.1	4.9	43.0	0.067	0.519	27.292943	-99.602846
T. Der. Mier	205.90	3	1	5922	1.0	60.4	3.1	5.9	4.7	21.5	1.4	1.1	0.9	61.4	3.1	35.5	0.101	0.512	27.308002	-99.594743
T. Der. Mier	205.90	3	2	5583	0.6	58.2	3.6	6.2	5.2	22.5	1.6	1.1	1.0	58.8	3.6	37.6	0.087	0.512	27.308005	-99.594742
Nuevo Laredo	228.00	1	1	9929	0.7	68.1	2.4	7.7	4.0	14.4	1.2	0.6	0.9	68.8	2.4	28.8	0.082	0.509	27.380336	-99.556108
Nuevo Laredo	228.00	1	2	10312	0.5	64.8	2.6	8.8	4.5	16.0	1.3	0.6	0.9	65.3	2.6	32.1	0.073	0.509	27.380322	-99.556111

12 CARR: Monterrey - Reynosa (Libre)

CLAVE: 00088

RUTA: MEX-040

AÑO: 2012

LUGAR	ESTACION				CLASIFICACION VEHICULAR EN PORCIENTO										COORDENADAS					
	KM	TE	SC	TDPA	M	A	B	C2	C3	T3S2	T3S3	T3S2R4	OTROS	A	B	C	K'	D	LATITUD	LONGITUD
T. C. Monterrey - Mier	0.00																			
Villa Juárez	19.10	1	1	10780	0.3	87.6	3.2	4.2	0.6	1.0	2.1	0.4	0.6	87.9	3.2	8.9	0.078	0.542	25.651792	-100.106391
Villa Juárez	19.10	1	2	10128	0.4	86.0	3.7	4.7	0.6	1.1	2.5	0.4	0.6	86.4	3.7	9.9	0.072	0.542	25.651586	-100.106691
Villa Juárez	19.10	3	1	12737	0.5	83.8	3.2	4.4	1.5	3.0	1.8	1.1	0.7	84.3	3.2	12.5	0.085	0.500	25.630323	-100.074840
Villa Juárez	19.10	3	2	12743	0.6	81.7	3.8	4.8	1.6	3.5	2.0	1.3	0.7	82.3	3.8	13.9	0.083	0.500	25.630437	-100.074650
Puente Cadereyta	30.50	2	1	2112	0.0	58.5	0.4	7.8	4.6	16.2	4.0	3.2	5.3	58.5	0.4	41.1	0.091	0.500	25.601076	-100.005752
Puente Cadereyta	30.50	2	2	2112	0.0	58.5	0.4	7.8	4.6	16.2	4.0	3.2	5.3	58.5	0.4	41.1	0.091	0.500	25.601076	-100.005752

NUEVO LEON

12 CARR: Monterrey - Reynosa (Libre)

CLAVE: 00088

RUTA: MEX-040

AÑO: 2012

LUGAR	ESTACION				CLASIFICACION VEHICULAR EN PORCIENTO													COORDENADAS		
	KM	TE	SC	TDPA	M	A	B	C2	C3	T3S2	T3S3	T3S2R4	OTROS	A	B	C	K'	D	LATITUD	LONGITUD
Refinería de Cadereyta	33.00	3	0	5475	0.4	64.0	3.3	15.3	2.8	8.3	3.1	2.1	0.7	64.4	3.3	32.3	0.086	0.517	25.594091	-99.920571
T. Izq. Los Ramones	68.78	3	0	2676	0.1	52.1	3.5	18.2	4.1	15.1	3.9	2.4	0.6	52.2	3.5	44.3	0.093	0.534	25.620653	-99.625651
Gral. Bravo	125.00	1	0	4419	0.1	61.1	2.5	16.4	2.8	10.7	3.5	2.3	0.6	61.2	2.5	36.3	0.083	0.516	25.778947	-99.187859
Lim. Edos. Term. N. L. Ppia. Tamps.	192.00																			
T. Izq. Díaz Ordáz	192.55	1	1	4356	0.3	71.8	2.8	9.2	3.4	6.1	3.6	1.7	1.1	72.1	2.8	25.1	0.123	0.509	25.967498	-98.593968
T. Izq. Díaz Ordáz	192.55	1	2	4356	0.3	70.8	2.9	9.4	3.8	6.4	3.5	1.9	1.0	71.1	2.9	26.0	0.115	0.509	25.968036	-98.594022
Reynosa	225.00	1	1	17635	0.2	77.3	2.4	9.1	1.7	5.6	2.3	1.3	0.1	77.5	2.4	20.1	0.083	0.514	26.042214	-98.401821
Reynosa	225.00	1	2	17529	0.3	74.6	2.9	10.1	1.8	6.2	2.5	1.5	0.1	74.9	2.9	22.2	0.103	0.514	26.042563	-98.401943

13 CARR: Paras - Nueva Ciudad Guerrero

CLAVE: 00476

RUTA: MEX-030

AÑO: 2012

LUGAR	ESTACION				CLASIFICACION VEHICULAR EN PORCIENTO													COORDENADAS		
	KM	TE	SC	TDPA	M	A	B	C2	C3	T3S2	T3S3	T3S2R4	OTROS	A	B	C	K'	D	LATITUD	LONGITUD
Paras	0.00	3	0	231	2.1	75.1	0.8	20.8	0.0	0.0	0.9	0.0	0.3	77.2	0.8	22.0	0.117	0.508	26.501888	-99.516283
Lim. Edos. Term. N. L. Ppia. Tamps.	13.10																			
T. C. Reynosa - (T. C. Monterrey - Nuevo Laredo)	32.00	1	0	193	0.1	66.0	1.7	26.7	0.8	2.3	1.2	1.2	0.0	66.1	1.7	32.2	0.199	0.506	26.555780	-99.243903

14 CARR: Piedras Negras - Nuevo Laredo

CLAVE: 00503

RUTA: MEX-002

AÑO: 2012

LUGAR	ESTACION				CLASIFICACION VEHICULAR EN PORCIENTO													COORDENADAS		
	KM	TE	SC	TDPA	M	A	B	C2	C3	T3S2	T3S3	T3S2R4	OTROS	A	B	C	K'	D	LATITUD	LONGITUD
T. C. Monclova - Piedras Negras	0.00	3	1	3618	2.3	65.7	1.3	21.0	3.0	4.9	0.7	0.8	0.3	68.0	1.3	30.7	0.090	0.509	28.636706	-100.550085
T. C. Monclova - Piedras Negras	0.00	3	2	3756	1.2	64.2	1.4	22.2	3.3	5.5	0.8	1.0	0.4	65.4	1.4	33.2	0.095	0.509	28.636715	-100.550073
El Saucito	16.90	3	0	1270	1.8	64.2	2.3	17.0	2.6	6.5	1.8	2.8	1.0	66.0	2.3	31.7	0.097	0.504	28.502029	-100.467334
Guerrero	42.00	3	0	871	0.3	53.0	4.5	19.5	4.0	11.1	0.9	6.2	0.5	53.3	4.5	42.2	0.102	0.508	28.307355	-100.364292
Lim. Edos. Term. Coah. Ppia. N. L.	124.40																			
T. C. Monclova - Colombia	134.00	3	0	2568	0.7	72.6	2.2	10.6	3.1	8.3	0.6	1.7	0.2	73.3	2.2	24.5	0.098	0.506	27.687564	-99.776320
Lim. Edos. Term. N. L. Ppia. Tamps.	138.20																			
T. Der. Libramiento de Nuevo Laredo	157.70	1	1	3961	0.4	46.5	2.4	5.4	10.9	31.5	1.2	1.1	0.6	46.9	2.4	50.7	0.109	0.515	27.571852	-99.599476
T. Der. Libramiento de Nuevo Laredo	157.70	1	2	4208	1.1	38.6	2.5	5.9	11.3	37.5	1.3	1.2	0.6	39.7	2.5	57.8	0.105	0.515	27.571949	-99.599494
Nuevo Laredo	175.00	1	1	8103	2.6	60.8	2.2	27.8	0.1	2.3	1.4	0.8	2.0	63.4	2.2	34.4	0.107	0.580	27.543858	-99.576308
Nuevo Laredo	175.00	1	2	8153	1.8	51.6	2.7	22.6	5.2	11.6	1.6	0.8	2.1	53.4	2.7	43.9	0.114	0.580	27.543486	-99.576025

NUEVO LEON

15 CARR: Ramal a Aeropuerto Mariano Escobedo

CLAVE: 19510

RUTA: MEX-054

AÑO: 2012

LUGAR	ESTACION				CLASIFICACION VEHICULAR EN PORCIENTO														COORDENADAS	
	KM	TE	SC	TDPA	M	A	B	C2	C3	T3S2	T3S3	T3S2R4	OTROS	A	B	C	K'	D	LATITUD	LONGITUD
T. C. Monterrey - Cd. Mier	0.00	3	1	15775	0.3	86.1	2.4	4.5	1.7	3.3	0.5	1.0	0.2	86.4	2.4	11.2	0.080	0.505	25.787969	-100.137992
T. C. Monterrey - Cd. Mier Aeropuerto	0.00 2.40	3	2	15437	0.5	84.9	2.4	4.8	1.9	3.7	0.5	1.1	0.2	85.4	2.4	12.2	0.075	0.505	25.788129	-100.138061

16 CARR: Saltillo - Monterrey

CLAVE: 00087

RUTA: MEX-040

AÑO: 2012

LUGAR	ESTACION				CLASIFICACION VEHICULAR EN PORCIENTO														COORDENADAS	
	KM	TE	SC	TDPA	M	A	B	C2	C3	T3S2	T3S3	T3S2R4	OTROS	A	B	C	K'	D	LATITUD	LONGITUD
T. C. Saltillo - Arteaga	0.00																			
T. Izq. Zincamex	4.25	3	1	35479	0.6	86.9	3.4	4.2	0.9	1.2	1.7	0.3	0.8	87.5	3.4	9.1	0.097	0.514	25.481019	-100.973093
T. Izq. Zincamex	4.25	3	2	33539	0.7	85.8	3.6	4.7	1.0	1.3	1.8	0.3	0.8	86.5	3.6	9.9	0.097	0.514	25.481126	-100.973232
Ramos Arizpe	11.30	1	1	24928	0.7	86.9	2.8	5.9	0.8	1.3	1.0	0.3	0.3	87.6	2.8	9.6	0.092	0.507	25.516160	-100.957599
Ramos Arizpe	11.30	1	2	24278	1.4	84.8	3.2	6.3	1.0	1.5	1.2	0.3	0.3	86.2	3.2	10.6	0.084	0.507	25.516160	-100.957599
T. Der. Aeropuerto	13.00	3	1	21326	3.4	74.9	4.6	8.1	3.1	3.0	1.5	0.6	0.8	78.3	4.6	17.1	0.114	0.505	25.554431	-100.928008
T. Der. Aeropuerto	13.00	3	2	21762	1.0	74.5	5.3	9.0	3.5	3.3	1.8	0.8	0.8	75.5	5.3	19.2	0.108	0.505	25.554431	-100.928008
T. Der. Libramiento J.L.P.	16.00	3	1	16482	0.5	74.6	5.1	9.4	2.4	6.3	0.9	0.7	0.1	75.1	5.1	19.8	0.147	0.518	25.565399	-100.914682
T. Der. Libramiento J.L.P.	16.00	3	2	17694	0.3	71.2	5.7	11.0	2.7	7.2	1.0	0.8	0.1	71.5	5.7	22.8	0.126	0.518	25.565399	-100.914682
Ojo Caliente	26.30	1	1	13946	2.4	54.5	4.3	9.4	2.4	21.1	2.8	2.5	0.6	56.9	4.3	38.8	0.067	0.515	25.610680	-100.844097
Ojo Caliente	26.30	1	2	13115	0.3	53.9	4.5	10.3	2.8	21.7	3.1	2.8	0.6	54.2	4.5	41.3	0.072	0.515	25.613159	-100.845113
Lim. Edos. Term. Coah. Ppia. N. L.	33.00																			
T. Izq. Libramiento Noroeste de Monterrey	54.00	1	1	14778	0.4	51.5	3.4	9.2	2.7	24.4	4.0	3.5	0.9	51.9	3.4	44.7	0.073	0.530	25.698783	-100.562730
T. Izq. Libramiento Noroeste de Monterrey	54.00	1	2	15135	2.0	44.7	4.1	9.9	3.0	27.0	4.2	4.2	0.9	46.7	4.1	49.2	0.064	0.530	25.698298	-100.562922
T. Der. Santa Catarina (1º Acceso)	62.46	1	1	23384	1.0	80.2	3.5	8.2	1.4	3.0	1.3	0.8	0.6	81.2	3.5	15.3	0.086	0.506	25.687060	-100.493817
T. Der. Santa Catarina (1º Acceso)	62.46	1	2	23966	0.6	77.6	4.1	9.6	1.6	3.5	1.4	1.0	0.6	78.2	4.1	17.7	0.077	0.506	25.686857	-100.493732
Ppia. Monterrey	79.20	1	1	40731	0.7	77.4	5.7	7.5	1.2	2.4	3.7	0.7	0.7	78.1	5.7	16.2	0.068	0.510	25.674637	-100.424913
Ppia. Monterrey	79.20	1	2	42314	0.4	75.1	6.2	8.4	1.4	2.7	4.2	0.8	0.8	75.5	6.2	18.3	0.077	0.510	25.674473	-100.424900

17 CARR: Cadereyta - Reynosa (Cuota)

CLAVE: 19002

RUTA: MEX-040D

AÑO: 2012

LUGAR	ESTACION				CLASIFICACION VEHICULAR EN PORCIENTO														COORDENADAS	
	KM	TE	SC	TDPA	M	A	B	C2	C3	T3S2	T3S3	T3S2R4	OTROS	A	B	C	K'	D	LATITUD	LONGITUD
Cadereyta de Jiménez	0.00																			
Caseta de Cobro General Bravo	124.00	2	1	2198	0.1	68.4	6.7	2.5	0.9	14.6	1.3	4.9	0.6	68.5	6.7	24.8	0.096	0.500	25.813443	-99.169427
Caseta de Cobro General Bravo	124.00	2	2	2197	0.1	68.4	6.7	2.5	0.9	14.6	1.3	4.9	0.6	68.5	6.7	24.8	0.096	0.500	25.813443	-99.169427
T. C. Monterrey - Reynosa (Libre)	132.02																			

NUEVO LEON

18 CARR: Monterrey - Nuevo Laredo (Cuota)

CLAVE: 19086

RUTA: MEX-085D

AÑO: 2012

LUGAR	ESTACION				CLASIFICACION VEHICULAR EN PORCIENTO										COORDENADAS					
	KM	TE	SC	TDPA	M	A	B	C2	C3	T3S2	T3S3	T3S2R4	OTROS	A	B	C	K'	D	LATITUD	LONGITUD
T. C. Monterrey - Nuevo Laredo	0.00	3	1	12448	0.1	58.0	6.2	8.3	4.2	17.6	2.6	2.3	0.7	58.1	6.2	35.7	0.102	0.506	25.892313	-100.222066
T. C. Monterrey - Nuevo Laredo	0.00	3	2	12735	0.2	53.8	6.7	9.4	4.9	19.1	2.7	2.5	0.7	54.0	6.7	39.3	0.058	0.506	25.892331	-100.222457
Caseta de Cobro Sabinas	74.00	2	1	5246	0.1	38.2	6.1	1.4	0.8	50.7	0.6	1.4	0.7	38.3	6.1	55.6	0.091	0.500	26.512101	-100.007191
Caseta de Cobro Sabinas	74.00	2	2	5246	0.1	38.2	6.1	1.4	0.8	50.7	0.6	1.4	0.7	38.3	6.1	55.6	0.091	0.500	26.512101	-100.007191
T. C. Monterrey - Nuevo Laredo (Libre)	120.50	1	1	4939	0.1	50.8	4.0	4.4	1.7	34.1	1.7	2.3	0.9	50.9	4.0	45.1	0.114	0.514	26.880454	-99.821957
T. C. Monterrey - Nuevo Laredo (Libre)	120.50	1	2	4953	0.3	46.3	4.7	5.1	1.9	36.6	1.7	2.4	1.0	46.6	4.7	48.7	0.089	0.514	26.880329	-99.822289

19 CARR: Puerto México - La Carbonera (Cuota)

CLAVE: 00115

RUTA: MEX-057D

AÑO: 2012

LUGAR	ESTACION				CLASIFICACION VEHICULAR EN PORCIENTO										COORDENADAS					
	KM	TE	SC	TDPA	M	A	B	C2	C3	T3S2	T3S3	T3S2R4	OTROS	A	B	C	K'	D	LATITUD	LONGITUD
Ent. Puerto México	202.00																			
Caseta de Cobro Los Chorros	203.64	2	1	5234	0.0	34.4	6.1	3.9	2.4	41.4	3.9	6.9	1.0	34.4	6.1	59.5	0.076	0.500	25.186795	-100.732080
Caseta de Cobro Los Chorros	203.64	2	2	5233	0.0	34.4	6.1	3.9	2.4	41.4	3.9	6.9	1.0	34.4	6.1	59.5	0.076	0.500	25.186795	-100.732080
Lim. Edos. Term. N. L. Ppia. Coah.	204.07																			
Lim. Edos. Term. Coah. Ppia. N. L.	204.50																			
Lim. Edos. Term. N. L. Ppia. Coah.	205.76																			
T. Der. San Antonio de Las Alazanas	224.94	1	1	6711	0.1	33.2	5.4	6.8	4.4	39.5	4.3	5.5	0.8	33.3	5.4	61.3	0.078	0.515	25.343524	-100.794665
T. Der. San Antonio de Las Alazanas	224.94	1	2	6779	0.1	35.1	5.8	7.4	4.9	36.7	3.9	5.1	1.0	35.2	5.8	59.0	0.072	0.515	25.343522	-100.794707
T. Der. San Antonio de Las Alazanas	224.94	3	1	7536	0.1	33.5	6.2	7.1	4.5	38.6	4.2	5.2	0.6	33.6	6.2	60.2	0.082	0.502	25.351830	-100.794379
T. Der. San Antonio de Las Alazanas	224.94	3	2	7609	0.1	30.2	6.6	7.7	4.8	39.8	4.4	5.8	0.6	30.3	6.6	63.1	0.070	0.502	25.351840	-100.794476
Los Lirios	226.94	3	1	8546	0.0	32.5	5.5	8.9	3.4	40.3	3.7	5.0	0.7	32.5	5.5	62.0	0.075	0.504	25.392639	-100.796663
Los Lirios	226.94	3	2	8674	0.0	31.0	5.4	8.2	3.4	41.9	3.8	5.4	0.9	31.0	5.4	63.6	0.080	0.504	25.392635	-100.796553
Ent. La Carbonera	239.06																			

20 CARR: Saltillo - Monterrey (Cuota)

CLAVE: 00087

RUTA: MEX-040D

AÑO: 2012

LUGAR	ESTACION				CLASIFICACION VEHICULAR EN PORCIENTO										COORDENADAS					
	KM	TE	SC	TDPA	M	A	B	C2	C3	T3S2	T3S3	T3S2R4	OTROS	A	B	C	K'	D	LATITUD	LONGITUD
Ojo Caliente	46.21	3	1	2150	0.1	42.3	5.1	5.7	2.8	29.9	5.1	8.3	0.7	42.4	5.1	52.5	0.084	0.546	25.617809	-100.905908
Ojo Caliente	46.21	3	2	2324	0.0	37.7	5.5	6.4	3.0	32.1	5.3	9.2	0.8	37.7	5.5	56.8	0.072	0.546	25.617722	-100.905812
T. Izq. Anillo Periférico de Monterrey (Cuota)	82.00	1	1	5695	0.1	72.0	4.2	4.6	1.1	11.8	1.6	3.8	0.8	72.1	4.2	23.7	0.091	0.535	25.698292	-100.602033
T. Izq. Anillo Periférico de Monterrey (Cuota)	82.00	1	2	4946	0.1	69.1	4.8	5.2	1.1	13.2	1.7	4.0	0.8	69.2	4.8	26.0	0.086	0.535	25.698141	-100.602025
T. Izq. Anillo Periférico de Monterrey (Cuota)	82.00	3	1	2560	0.2	80.3	6.4	12.7	0.2	0.2	0.0	0.0	0.0	80.5	6.4	13.1	0.104	0.523	25.690774	-100.557941
T. Izq. Anillo Periférico de Monterrey (Cuota)	82.00	3	2	2530	0.2	77.1	7.2	15.1	0.2	0.2	0.0	0.0	0.0	77.3	7.2	15.5	0.114	0.523	25.690679	-100.557966

NUEVO LEON

20 CARR : Saltillo - Monterrey (Cuota)

CLAVE: 00087

RUTA: MEX-040D

AÑO : 2012

LUGAR	ESTACION				CLASIFICACION VEHICULAR EN PORCIENTO													COORDENADAS		
	KM	TE	SC	TDPA	M	A	B	C2	C3	T3S2	T3S3	T3S2R4	OTROS	A	B	C	K'	D	LATITUD	LONGITUD
Morones Prieto	96.10																			

21 CARR : Agualeguas - El Ébano

CLAVE: 19004

RUTA: NL-023

AÑO : 2012

LUGAR	ESTACION				CLASIFICACION VEHICULAR EN PORCIENTO													COORDENADAS		
	KM	TE	SC	TDPA	M	A	B	C2	C3	T3S2	T3S3	T3S2R4	OTROS	A	B	C	K'	D	LATITUD	LONGITUD
Agualeguas	0.00	3	0	432	1.7	69.5	4.5	20.8	1.5	0.4	0.1	1.5	0.0	71.2	4.5	24.3	0.124	0.512	26.307219	-99.549731
T. C. Monterrey - Nuevo Laredo	54.00	1	0	1313	0.1	52.7	4.7	8.0	3.8	22.6	3.8	3.5	0.8	52.8	4.7	42.5	0.085	0.511	26.330677	-100.106801

22 CARR : Apodaca - Villa Juárez

CLAVE: 00087

RUTA: NL

AÑO : 2012

LUGAR	ESTACION				CLASIFICACION VEHICULAR EN PORCIENTO													COORDENADAS		
	KM	TE	SC	TDPA	M	A	B	C2	C3	T3S2	T3S3	T3S2R4	OTROS	A	B	C	K'	D	LATITUD	LONGITUD
T. C. Monterrey - Cd. Mier	0.00	3	0	18167	0.9	77.9	5.2	10.3	1.7	2.2	1.0	0.4	0.4	78.8	5.2	16.0	0.082	0.536	25.771189	-100.178542
T. Der. Santa Mónica	5.00	1	1	12892	0.6	83.1	3.0	6.3	1.1	2.2	2.4	0.5	0.8	83.7	3.0	13.3	0.077	0.544	25.743792	-100.160299
T. Der. Santa Mónica	5.00	1	2	15405	0.9	81.1	3.2	7.2	1.3	2.4	2.5	0.5	0.9	82.0	3.2	14.8	0.091	0.544	25.743791	-100.160306
T. Der. Santa Mónica	5.00	3	1	12212	1.0	82.7	2.1	6.0	1.4	2.7	2.5	0.7	0.9	83.7	2.1	14.2	0.079	0.504	25.739059	-100.156515
T. Der. Santa Mónica	5.00	3	2	12428	1.2	81.4	2.5	6.4	1.6	2.8	2.5	0.7	0.9	82.6	2.5	14.9	0.090	0.504	25.739059	-100.156515
T. Izq. Aeropuerto	8.60	1	0	15109	1.3	77.7	4.3	8.8	2.1	3.4	1.2	0.9	0.3	79.0	4.3	16.7	0.085	0.504	25.721872	-100.139294
T. Izq. Aeropuerto	8.60	3	0	15658	0.9	75.5	3.3	8.9	3.3	5.1	1.1	1.6	0.3	76.4	3.3	20.3	0.091	0.503	25.711431	-100.135578
T. Der. Dulces Nombres	10.40	1	0	15184	1.1	73.9	4.4	9.1	3.3	5.1	1.3	1.4	0.4	75.0	4.4	20.6	0.084	0.533	25.703114	-100.132679
T. Der. Dulces Nombres	10.40	3	0	22654	0.9	75.8	3.1	8.2	3.1	5.1	1.9	1.4	0.5	76.7	3.1	20.2	0.083	0.500	25.698838	-100.129428
Villa Juárez	16.00	1	1	9786	1.7	75.5	5.1	9.3	1.4	3.3	1.8	1.2	0.7	77.2	5.1	17.7	0.086	0.502	25.656957	-100.079567
Villa Juárez	16.00	1	2	9700	1.3	72.6	5.9	10.8	1.6	3.8	1.9	1.2	0.9	73.9	5.9	20.2	0.078	0.502	25.656913	-100.079481

23 CARR : Atongo - Lazarillos

CLAVE:

RUTA: NL

AÑO : 2012

LUGAR	ESTACION				CLASIFICACION VEHICULAR EN PORCIENTO													COORDENADAS		
	KM	TE	SC	TDPA	M	A	B	C2	C3	T3S2	T3S3	T3S2R4	OTROS	A	B	C	K'	D	LATITUD	LONGITUD
Atongo	0.00	3	0	438	5.1	80.4	1.5	8.5	2.4	1.5	0.6	0.0	0.0	85.5	1.5	13.0	0.100	0.509	25.349955	-99.992577
Lazarillo	7.78	1	0	1844	2.3	82.3	3.1	9.0	1.8	1.2	0.2	0.0	0.1	84.6	3.1	12.3	0.122	0.501	25.311596	-100.042095

NUEVO LEON

24 CARR: Cadereyta de Jiménez - Doctor González

CLAVE: 19473

RUTA: NL

AÑO: 2012

LUGAR	ESTACION				CLASIFICACION VEHICULAR EN PORCIENTO										COORDENADAS					
	KM	TE	SC	TDPA	M	A	B	C2	C3	T3S2	T3S3	T3S2R4	OTROS	A	B	C	K'	D	LATITUD	LONGITUD
T. C. Monterrey - Reynosa	0.00	3	0	669	1.6	39.4	7.1	18.7	6.7	10.5	5.6	9.4	1.0	41.0	7.1	51.9	0.136	0.504	25.597383	-99.939226
X. C. Pesquería - Santa María Floreña	18.00	3	0	605	0.6	56.7	1.2	9.7	6.7	9.0	6.3	9.7	0.1	57.3	1.2	41.5	0.168	0.508	25.749433	-99.913847
Doctor González	30.00	1	0	527	1.5	55.4	1.2	10.7	6.6	9.2	5.7	9.2	0.5	56.9	1.2	41.9	0.130	0.501	25.857251	-99.936587

25 CARR: Cd. Benito Juárez - Villa de Santiago

CLAVE: 00087

RUTA: NL

AÑO: 2012

LUGAR	ESTACION				CLASIFICACION VEHICULAR EN PORCIENTO										COORDENADAS					
	KM	TE	SC	TDPA	M	A	B	C2	C3	T3S2	T3S3	T3S2R4	OTROS	A	B	C	K'	D	LATITUD	LONGITUD
Cd. Benito Juárez	0.00	3	0	16436	1.4	91.6	1.2	2.7	1.1	0.7	0.9	0.2	0.2	93.0	1.2	5.8	0.078	0.504	25.631593	-100.099246
Arboledas de San Roque	4.70	3	0	3018	0.3	85.8	3.1	7.3	1.2	1.5	0.4	0.1	0.3	86.1	3.1	10.8	0.147	0.513	25.592758	-100.121202
T. Izq. Cadereyta de Jiménez	23.00	3	0	1252	1.2	81.0	6.5	6.2	2.4	1.2	1.1	0.2	0.2	82.2	6.5	11.3	0.116	0.500	25.534820	-100.115737
T. C. Cd. Victoria - Monterrey	39.00	1	0	4298	0.7	78.0	6.3	6.3	2.0	3.3	1.4	1.4	0.6	78.7	6.3	15.0	0.093	0.503	25.455796	-100.158853

26 CARR: China - Méndez

CLAVE: 00191

RUTA: NL-TAM

AÑO: 2012

LUGAR	ESTACION				CLASIFICACION VEHICULAR EN PORCIENTO										COORDENADAS					
	KM	TE	SC	TDPA	M	A	B	C2	C3	T3S2	T3S3	T3S2R4	OTROS	A	B	C	K'	D	LATITUD	LONGITUD
China	0.00	3	0	1830	0.4	68.7	4.3	19.8	1.5	2.3	2.4	0.3	0.3	69.1	4.3	26.6	0.091	0.506	25.700099	-99.225582
Lim. Edos. Term. N. L. Ppia. Tamps.	75.00																			
Méndez	100.00																			

27 CARR: Doctor Arroyo - Mier y Noriega

CLAVE: 19088

RUTA: NL-088

AÑO: 2012

LUGAR	ESTACION				CLASIFICACION VEHICULAR EN PORCIENTO										COORDENADAS					
	KM	TE	SC	TDPA	M	A	B	C2	C3	T3S2	T3S3	T3S2R4	OTROS	A	B	C	K'	D	LATITUD	LONGITUD
Doctor Arroyo	0.00	3	0	1677	3.4	69.7	4.2	20.3	1.1	1.0	0.1	0.1	0.1	73.1	4.2	22.7	0.107	0.502	23.645565	-100.194285
Mier y Noriega	31.00																			

28 CARR: Ent. Hacienda del Cielo - T. Der. Cadereyta

CLAVE:

RUTA: NL

AÑO: 2012

LUGAR	ESTACION				CLASIFICACION VEHICULAR EN PORCIENTO										COORDENADAS					
	KM	TE	SC	TDPA	M	A	B	C2	C3	T3S2	T3S3	T3S2R4	OTROS	A	B	C	K'	D	LATITUD	LONGITUD
Hacienda del Cielo	0.00	3	0	1304	3.8	81.7	2.2	8.2	1.2	1.4	1.0	0.3	0.2	85.5	2.2	12.3	0.127	0.500	25.523000	-100.011753
T. Der. Benito Juárez	11.50	1	0	970	2.8	83.5	2.1	7.5	1.1	1.4	1.2	0.1	0.3	86.3	2.1	11.6	0.137	0.506	25.467167	-100.095500

NUEVO LEON

29 CARR: Ent. Huisachito - Nuevo Laredo

CLAVE: 00074

RUTA: NL-001-TAM

AÑO: 2012

LUGAR	ESTACION				CLASIFICACION VEHICULAR EN PORCIENTO														COORDENADAS	
	KM	TE	SC	TDPA	M	A	B	C2	C3	T3S2	T3S3	T3S2R4	OTROS	A	B	C	K'	D	LATITUD	LONGITUD
T. C. Monterrey - Colombia	0.00	3	0	849	0.1	72.8	3.6	10.3	3.0	6.1	2.3	1.6	0.2	72.9	3.6	23.5	0.124	0.512	27.354027	-99.949920
Lim. Edos. Term. N. L. Ppia. Tamps.	19.00																			
X. C. Libramiento de Nuevo Laredo	47.00	1	0	2019	0.9	73.7	2.8	11.1	3.9	4.4	2.1	0.9	0.2	74.6	2.8	22.6	0.117	0.510	27.478253	-99.634502
Nuevo Laredo	51.00	1	0	8917	1.5	82.8	2.0	7.2	1.5	3.6	0.7	0.1	0.6	84.3	2.0	13.7	0.076	0.517	27.486288	-99.584829

30 CARR: Gral. Bravo - Los Aldamas

CLAVE: 19030

RUTA: NL-030

AÑO: 2012

LUGAR	ESTACION				CLASIFICACION VEHICULAR EN PORCIENTO														COORDENADAS	
	KM	TE	SC	TDPA	M	A	B	C2	C3	T3S2	T3S3	T3S2R4	OTROS	A	B	C	K'	D	LATITUD	LONGITUD
Gral. Bravo	0.00	3	0	973	0.0	78.3	1.2	14.8	1.5	2.0	1.9	0.1	0.2	78.3	1.2	20.5	0.096	0.502	25.817027	-99.171963
Los Aldamas	31.00																			

31 CARR: Gral. Treviño - Villaldama

CLAVE: 19003

RUTA: NL-003

AÑO: 2012

LUGAR	ESTACION				CLASIFICACION VEHICULAR EN PORCIENTO														COORDENADAS	
	KM	TE	SC	TDPA	M	A	B	C2	C3	T3S2	T3S3	T3S2R4	OTROS	A	B	C	K'	D	LATITUD	LONGITUD
Gral. Treviño	0.00	3	0	544	0.1	80.8	1.2	10.6	1.7	0.6	0.9	4.1	0.0	80.9	1.2	17.9	0.116	0.500	26.241166	-99.491281
Agualeguas	13.00	3	0	706	1.1	81.4	1.7	9.0	0.7	1.8	0.7	3.6	0.0	82.5	1.7	15.8	0.114	0.514	26.321446	-99.537400
Paras	34.00	3	0	377	1.1	81.3	0.6	14.2	0.6	1.9	0.2	0.0	0.1	82.4	0.6	17.0	0.145	0.552	26.505093	-99.531713
El Álamo	62.00	1	0	549	0.5	82.4	0.7	13.5	1.1	1.2	0.4	0.1	0.1	82.9	0.7	16.4	0.109	0.507	26.490577	-99.771263
Villaldama	134.00	1	0	1886	0.6	79.2	1.4	16.4	0.8	1.2	0.3	0.0	0.1	79.8	1.4	18.8	0.101	0.514	26.502792	-100.414534

32 CARR: Hacienda Guadalupe - Higuera

CLAVE: 19006

RUTA: NL-006

AÑO: 2012

LUGAR	ESTACION				CLASIFICACION VEHICULAR EN PORCIENTO														COORDENADAS	
	KM	TE	SC	TDPA	M	A	B	C2	C3	T3S2	T3S3	T3S2R4	OTROS	A	B	C	K'	D	LATITUD	LONGITUD
Hacienda Guadalupe	0.00																			
Marín	3.00	1	1	1693	2.0	81.0	0.6	9.0	2.5	2.8	0.6	1.3	0.2	83.0	0.6	16.4	0.089	0.512	25.859289	-100.023851
Marín	3.00	1	2	1778	2.0	79.3	0.6	10.3	2.6	2.9	0.5	1.5	0.3	81.3	0.6	18.1	0.089	0.512	25.859202	-100.023991
Higuera	15.00																			

NUEVO LEON

33 CARR: Libramiento de Linares

CLAVE: 19506

RUTA: NL

AÑO: 2012

LUGAR	ESTACION				CLASIFICACION VEHICULAR EN PORCIENTO														COORDENADAS	
	KM	TE	SC	TDPA	M	A	B	C2	C3	T3S2	T3S3	T3S2R4	OTROS	A	B	C	K'	D	LATITUD	LONGITUD
T. C. Cd. Victoria - Monterrey (1° Acceso)	0.00	3	0	10452	2.4	65.0	2.2	10.6	2.5	8.5	2.2	5.7	0.9	67.4	2.2	30.4	0.082	0.507	24.844453	-99.565108
T. C. Linares - Ent. San Roberto	2.00	3	0	9884	1.4	63.4	3.3	11.6	2.5	8.3	2.5	6.1	0.9	64.8	3.3	31.9	0.075	0.517	24.852613	-99.575516
T. C. Cd. Victoria - Monterrey (2° Acceso)	6.50																			

34 CARR: Libramiento de Montemorelos

CLAVE: 19492

RUTA: NL

AÑO: 2012

LUGAR	ESTACION				CLASIFICACION VEHICULAR EN PORCIENTO														COORDENADAS	
	KM	TE	SC	TDPA	M	A	B	C2	C3	T3S2	T3S3	T3S2R4	OTROS	A	B	C	K'	D	LATITUD	LONGITUD
T. C. Cd. Victoria - Monterrey (1° Acceso)	0.00	3	1	4420	0.3	70.6	5.0	4.1	2.3	6.8	4.8	5.4	0.7	70.9	5.0	24.1	0.114	0.516	25.129209	-99.812793
T. C. Cd. Victoria - Monterrey (1° Acceso)	0.00	3	2	4149	0.3	66.8	5.5	4.7	2.7	7.7	5.6	5.7	1.0	67.1	5.5	27.4	0.094	0.516	25.129137	-99.812915
T. C. Cd. Victoria - Monterrey (2° Acceso)	3.70																			

35 CARR: Libramiento de Sabinas Hidalgo

CLAVE: 19492

RUTA: NL

AÑO: 2012

LUGAR	ESTACION				CLASIFICACION VEHICULAR EN PORCIENTO														COORDENADAS	
	KM	TE	SC	TDPA	M	A	B	C2	C3	T3S2	T3S3	T3S2R4	OTROS	A	B	C	K'	D	LATITUD	LONGITUD
T. C. Monterrey - Nuevo Laredo	0.00	3	0	3282	4.3	26.6	8.3	10.4	6.7	39.2	2.8	1.6	0.1	30.9	8.3	60.8	0.059	0.503	26.464587	-100.162293
T. C. Monterrey - Nuevo Laredo	9.20	1	0	3371	4.5	27.1	8.7	9.8	6.8	37.0	3.7	2.0	0.4	31.6	8.7	59.7	0.055	0.508	26.526755	-100.152928

36 CARR: Libramiento Poniente de Cadereyta

CLAVE: 19085

RUTA: NL

AÑO: 2012

LUGAR	ESTACION				CLASIFICACION VEHICULAR EN PORCIENTO														COORDENADAS	
	KM	TE	SC	TDPA	M	A	B	C2	C3	T3S2	T3S3	T3S2R4	OTROS	A	B	C	K'	D	LATITUD	LONGITUD
T. C. Monterrey - Reynosa (Libre)	0.00	3	0	11397	1.9	69.1	4.6	8.3	3.9	5.8	3.3	1.9	1.2	71.0	4.6	24.4	0.098	0.518	25.594231	-100.027934
T. C. Cadereyta - Allende	6.00																			

37 CARR: Los Guerra - Los Herreras

CLAVE: 19031

RUTA: TAM-NL

AÑO: 2012

LUGAR	ESTACION				CLASIFICACION VEHICULAR EN PORCIENTO														COORDENADAS	
	KM	TE	SC	TDPA	M	A	B	C2	C3	T3S2	T3S3	T3S2R4	OTROS	A	B	C	K'	D	LATITUD	LONGITUD
Los Guerra	0.00																			
Los Herrera	73.00	1	0	473	0.3	80.8	0.3	12.2	2.7	0.8	1.0	1.9	0.0	81.1	0.3	18.6	0.112	0.512	25.902581	-99.393536

NUEVO LEON

38 CARR: Matehuala - La Poza

CLAVE: 00086

RUTA: SLP-029

AÑO: 2012

LUGAR	ESTACION				CLASIFICACION VEHICULAR EN PORCIENTO														COORDENADAS		
	KM	TE	SC	TDPA	M	A	B	C2	C3	T3S2	T3S3	T3S2R4	OTROS	A	B	C	K'	D	LATITUD	LONGITUD	
Matehuala	0.00	3	0	3268	2.4	74.1	3.0	16.8	1.6	1.4	0.3	0.1	0.3	76.5	3.0	20.5	0.083	0.513	23.665693	-100.602458	
Lim. Edos. Term. S. L. P. Ppia. N. L.	19.70																				
Doctor Arroyo	49.00	1	0	2912	2.3	75.8	1.7	16.0	1.2	2.3	0.3	0.1	0.3	78.1	1.7	20.2	0.095	0.501	23.681322	-100.197921	
La Ascención	131.00	1	0	721	0.5	77.1	3.9	13.8	1.1	0.8	0.3	1.3	1.2	77.6	3.9	18.5	0.104	0.508	24.321117	-99.905767	

39 CARR: Monclova - Estación Candela

CLAVE: 00501

RUTA: COA-030-NL

AÑO: 2012

LUGAR	ESTACION				CLASIFICACION VEHICULAR EN PORCIENTO														COORDENADAS		
	KM	TE	SC	TDPA	M	A	B	C2	C3	T3S2	T3S3	T3S2R4	OTROS	A	B	C	K'	D	LATITUD	LONGITUD	
T. C. Monclova - Piedras Negras	0.00																				
T. Izq. Libramiento de Monclova	5.10	1	1	1411	2.3	89.0	1.3	3.7	1.2	1.9	0.3	0.0	0.3	91.3	1.3	7.4	0.112	0.507	26.936813	-101.381600	
T. Izq. Libramiento de Monclova	5.10	1	2	1371	0.9	89.4	1.5	4.1	1.2	2.2	0.3	0.0	0.4	90.3	1.5	8.2	0.125	0.507	26.936813	-101.381600	
Lim. Edos. Term. Coah. Ppia. N. L.	118.00																				
T. C. Monterrey - Colombia	125.50	1	0	359	0.1	65.8	3.0	17.2	2.4	8.8	1.4	0.9	0.4	65.9	3.0	31.1	0.125	0.508	26.838184	-100.494916	

40 CARR: Monterrey - Colombia

CLAVE: 19001

RUTA: NL-001

AÑO: 2012

LUGAR	ESTACION				CLASIFICACION VEHICULAR EN PORCIENTO														COORDENADAS	
	KM	TE	SC	TDPA	M	A	B	C2	C3	T3S2	T3S3	T3S2R4	OTROS	A	B	C	K'	D	LATITUD	LONGITUD
T. C. Monterrey - Nuevo Laredo	0.00	3	1	20360	0.7	84.5	3.3	4.9	1.4	2.1	1.9	0.6	0.6	85.2	3.3	11.5	0.075	0.519	25.775442	-100.292163
T. C. Monterrey - Nuevo Laredo	0.00	3	2	21960	0.6	82.1	3.8	5.9	1.5	2.5	2.3	0.7	0.6	82.7	3.8	13.5	0.089	0.519	25.775442	-100.292163
X. C. Libramiento Noroeste de Monterrey	7.30	3	1	6858	0.7	77.6	3.4	4.3	4.8	5.0	2.2	1.1	0.9	78.3	3.4	18.3	0.101	0.513	25.834827	-100.295570
X. C. Libramiento Noroeste de Monterrey	7.30	3	2	7219	1.2	75.4	3.7	5.0	5.1	5.2	2.3	1.1	1.0	76.6	3.7	19.7	0.093	0.513	25.834827	-100.295570
T. Izq. Salinas Victoria (1° Acceso)	20.50	3	0	7350	1.3	64.2	7.4	9.5	4.8	6.1	2.9	3.1	0.7	65.5	7.4	27.1	0.079	0.516	25.955867	-100.279691
Villa Aldama	86.50	3	0	2101	0.6	69.5	2.5	14.9	1.7	3.7	2.4	4.0	0.7	70.1	2.5	27.4	0.086	0.505	26.507403	-100.433216
T. Izq. Bustamante	92.25	3	0	890	0.2	65.6	2.0	13.9	2.5	4.2	4.4	6.7	0.5	65.8	2.0	32.2	0.105	0.501	26.550647	-100.459607
T. Izq. Candela	124.04	1	0	879	0.0	62.9	7.6	11.3	2.6	4.5	3.5	6.8	0.8	62.9	7.6	29.5	0.091	0.546	26.835730	-100.492811
Lampazos de Naranja	164.00	1	0	1363	0.5	64.9	7.6	8.5	2.2	4.9	3.6	6.8	1.0	65.4	7.6	27.0	0.097	0.504	27.009419	-100.510350
Anáhuac	195.00	1	0	1255	0.5	64.9	2.3	15.5	2.2	5.9	2.6	5.8	0.3	65.4	2.3	32.3	0.086	0.507	27.223016	-100.156349
Huizache	212.70	3	0	1430	0.1	60.2	10.0	13.7	3.1	4.2	2.4	5.8	0.5	60.3	10.0	29.7	0.087	0.520	27.341044	-99.966998
Colombia	263.00	1	0	1197	0.2	70.8	1.2	4.3	0.9	1.9	2.3	17.8	0.6	71.0	1.2	27.8	0.127	0.520	27.686217	-99.784939

NUEVO LEON

46 CARR: Salinas Victoria - Ciénega de Flores

CLAVE: 19007

RUTA: NL

AÑO: 2012

LUGAR	ESTACION				CLASIFICACION VEHICULAR EN PORCIENTO														COORDENADAS	
	KM	TE	SC	TDPA	M	A	B	C2	C3	T3S2	T3S3	T3S2R4	OTROS	A	B	C	K'	D	LATITUD	LONGITUD
Salinas Victoria	0.00	3	0	3870	2.8	65.7	6.6	8.6	4.7	6.5	2.3	2.0	0.8	68.5	6.6	24.9	0.077	0.515	25.952396	-100.272373
T. C. Monterrey - Nuevo Laredo (Cuota)	6.00	1	0	4406	1.2	63.1	6.9	8.5	7.5	7.5	2.3	2.0	1.0	64.3	6.9	28.8	0.077	0.507	25.944040	-100.232208
Ciénega de Flores	10.00																			

47 CARR: Santa Rosa - Mezquital

CLAVE: 00087

RUTA: NL

AÑO: 2012

LUGAR	ESTACION				CLASIFICACION VEHICULAR EN PORCIENTO														COORDENADAS	
	KM	TE	SC	TDPA	M	A	B	C2	C3	T3S2	T3S3	T3S2R4	OTROS	A	B	C	K'	D	LATITUD	LONGITUD
X. C. Libramiento Noroeste de Monterrey	0.00	3	1	9426	1.7	67.8	2.1	7.7	4.8	11.1	2.9	1.4	0.5	69.5	2.1	28.4	0.089	0.510	25.816262	-100.222120
X. C. Libramiento Noroeste de Monterrey	0.00	3	2	9064	1.6	67.7	2.2	7.9	4.4	11.4	2.5	1.6	0.7	69.3	2.2	28.5	0.091	0.510	25.816331	-100.221877
Mezquital	9.00																			

48 CARR: Santa Rosa - Salinas Victoria

CLAVE: 19037

RUTA: NL

AÑO: 2012

LUGAR	ESTACION				CLASIFICACION VEHICULAR EN PORCIENTO														COORDENADAS	
	KM	TE	SC	TDPA	M	A	B	C2	C3	T3S2	T3S3	T3S2R4	OTROS	A	B	C	K'	D	LATITUD	LONGITUD
Ent. Salinas Victoria	0.00	3	0	12521	1.8	75.3	4.1	6.7	4.4	3.5	2.7	0.7	0.8	77.1	4.1	18.8	0.067	0.501	25.855371	-100.244010
Salinas Victoria	13.85	1	1	3397	2.8	78.0	6.4	7.5	1.6	1.4	1.2	0.5	0.6	80.8	6.4	12.8	0.084	0.503	25.954127	-100.290569
Salinas Victoria	13.85	1	2	3350	2.9	75.8	7.1	8.5	1.8	1.5	1.3	0.5	0.6	78.7	7.1	14.2	0.087	0.503	25.954123	-100.290566

49 CARR: Anillo Periférico de Monterrey (Cuota)

CLAVE: 19004

RUTA: NL-D

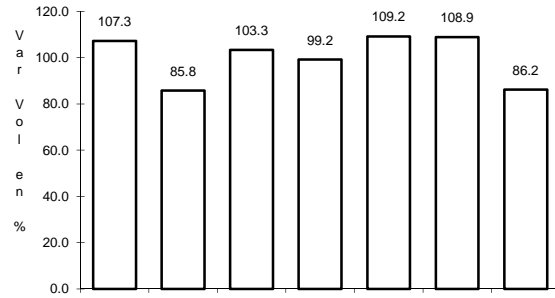
AÑO: 2012

LUGAR	ESTACION				CLASIFICACION VEHICULAR EN PORCIENTO														COORDENADAS	
	KM	TE	SC	TDPA	M	A	B	C2	C3	T3S2	T3S3	T3S2R4	OTROS	A	B	C	K'	D	LATITUD	LONGITUD
T. C. Saltillo - Monterrey	0.00	3	1	2235	0.1	53.5	6.3	13.0	2.2	18.8	1.9	3.6	0.6	53.6	6.3	40.1	0.087	0.515	25.705269	-100.562313
T. C. Saltillo - Monterrey	0.00	3	2	2373	0.1	52.9	6.1	13.3	2.1	19.1	2.0	3.8	0.6	53.0	6.1	40.9	0.085	0.515	25.705604	-100.562459
T. C. Monterrey - Cadereyta	66.80																			

1 CARR: Cadereyta de Jiménez - Allende

CLAVE: 19009

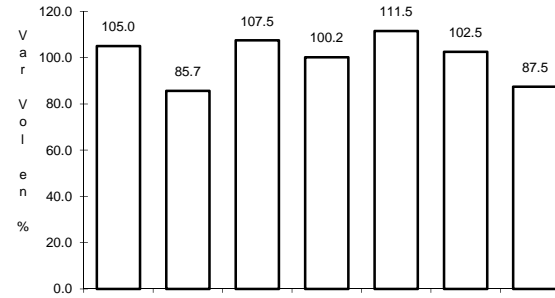
RUTA: MEX-009



Km: 0.00

Tipo: 3

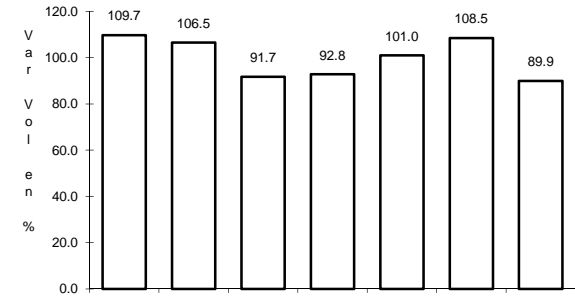
Sent: 1



Km: 0.00

Tipo: 3

Sent: 2



Km: 26.80

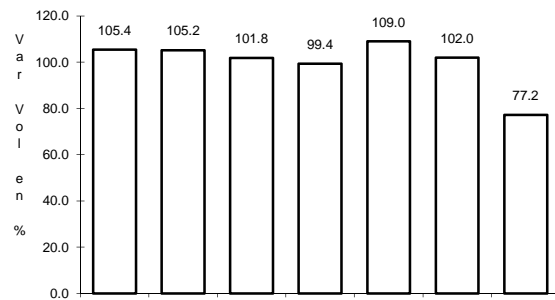
Tipo: 1

Sent: 0

2 CARR: Ciudad Victoria - Monterrey

CLAVE: 00462

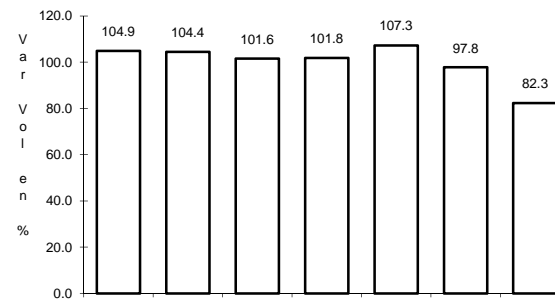
RUTA: MEX-085



Km: 0.00

Tipo: 3

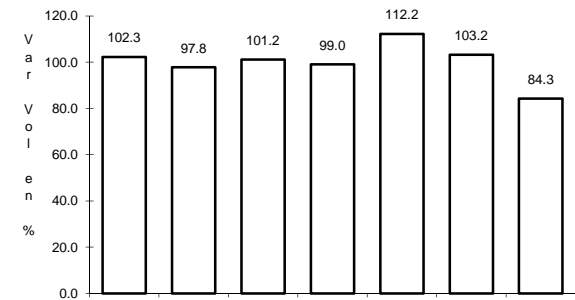
Sent: 1



Km: 0.00

Tipo: 3

Sent: 2



Km: 154.00

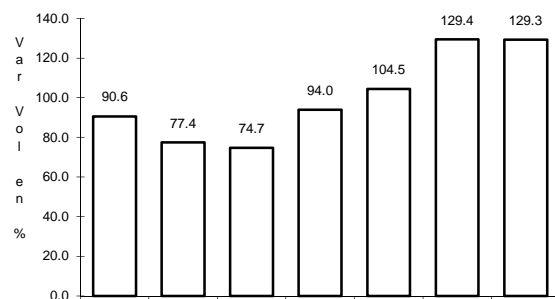
Tipo: 1

Sent: 0

3 CARR: La Unión - El Encadenado

CLAVE:

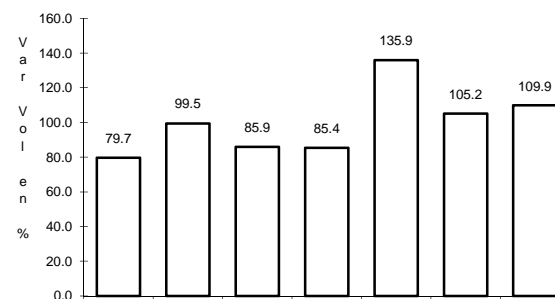
RUTA: MEX



Km: 0.00

Tipo: 3

Sent: 0



Km: 10.00

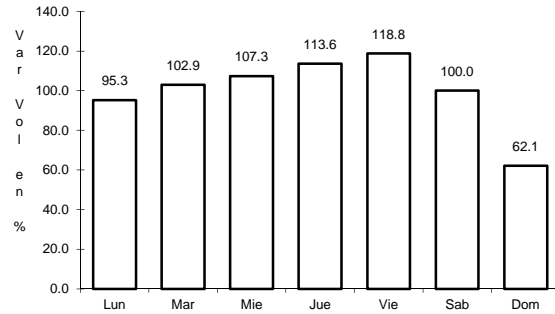
Tipo: 1

Sent: 0

4 CARR: Libramiento de China

CLAVE:

RUTA: MEX-040



Km: 2.41

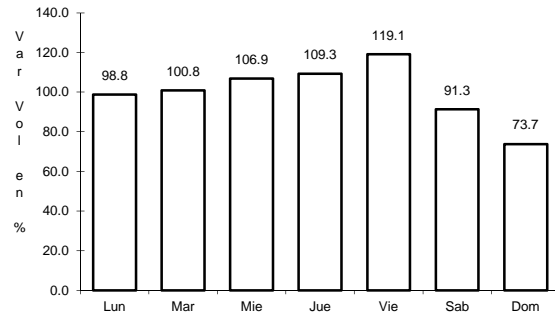
Tipo: 1

Sent: 0

5 CARR: Libramiento Noroeste de Monterrey

CLAVE: 19085

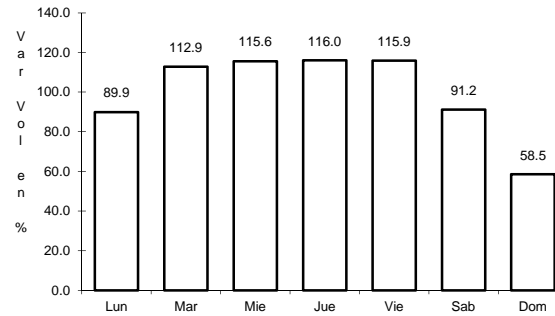
RUTA: MEX-040



Km: 0.00

Tipo: 3

Sent: 1



Km: 0.00

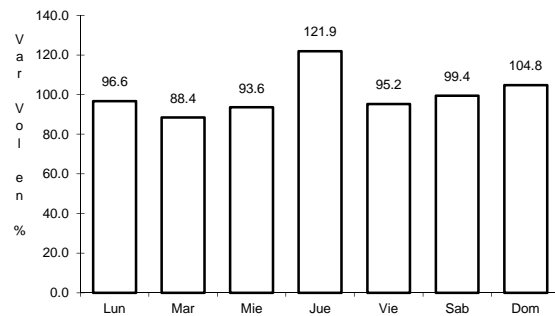
Tipo: 3

Sent: 2

6 CARR: Linares - Ent. San Roberto

CLAVE: 19031

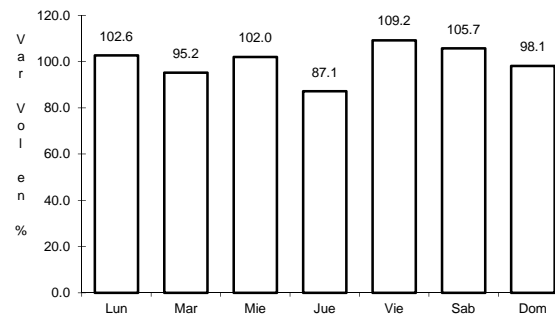
RUTA: MEX-058



Km: 0.00

Tipo: 3

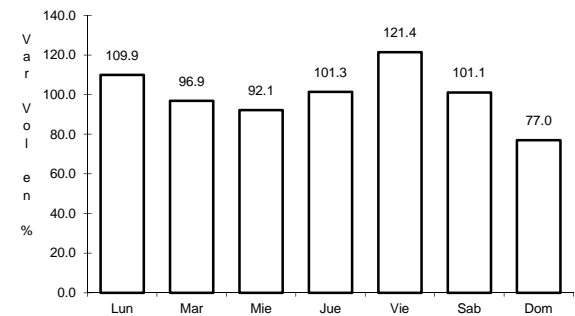
Sent: 1



Km: 0.00

Tipo: 3

Sent: 2



Km: 98.00

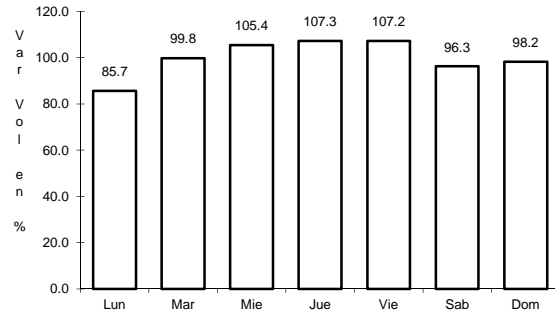
Tipo: 1

Sent: 0

7 CARR: Matehuala - Ent. Puerto México

CLAVE: 00405

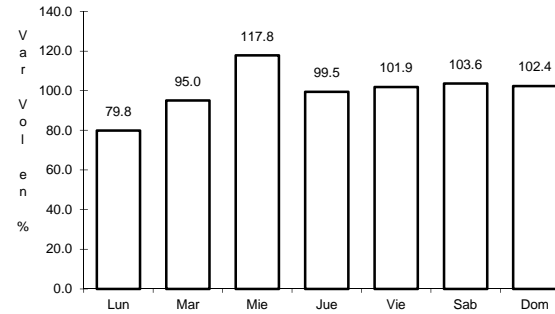
RUTA: MEX-057



Km: 0.00

Tipo: 3

Sent: 1



Km: 0.00

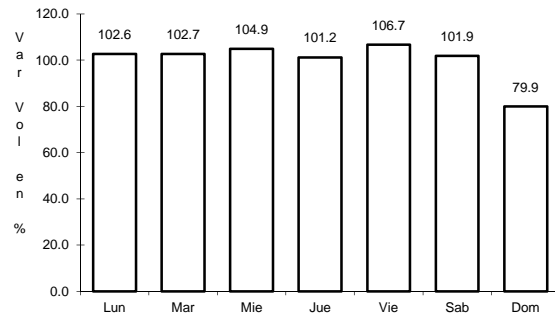
Tipo: 3

Sent: 2

8 CARR: Montemorelos - China

CLAVE: 19280

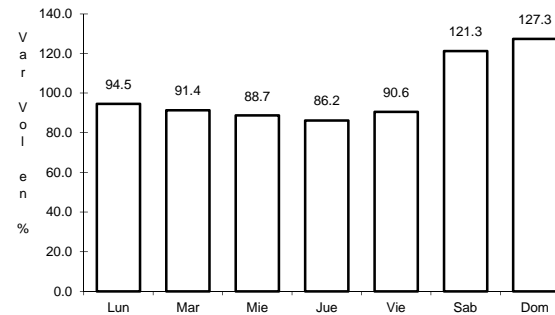
RUTA: MEX-035



Km: 0.00

Tipo: 3

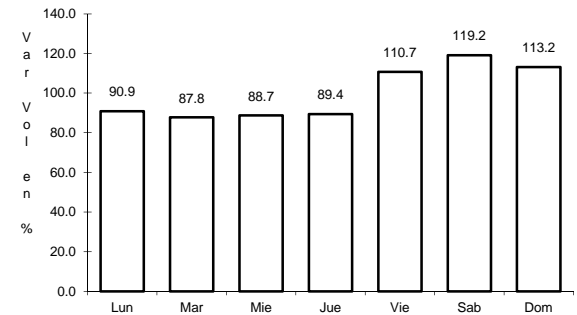
Sent: 0



Km: 17.60

Tipo: 3

Sent: 0



Km: 93.00

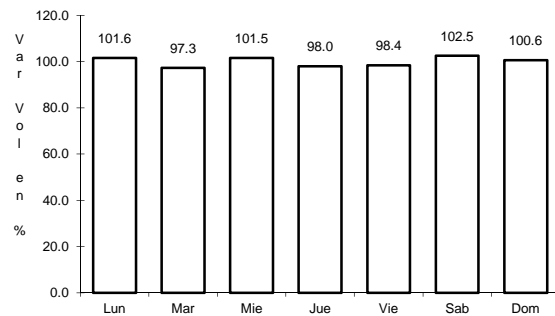
Tipo: 1

Sent: 0

9 CARR: Monterrey - Castaños

CLAVE: 00128

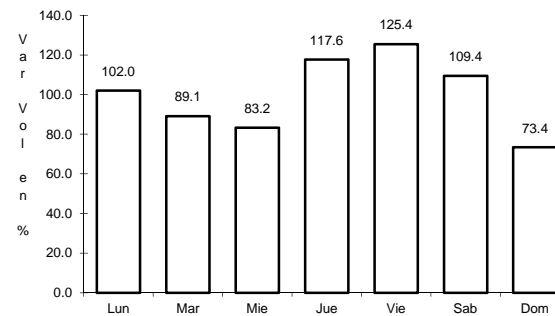
RUTA: MEX-053



Km: 0.00

Tipo: 3

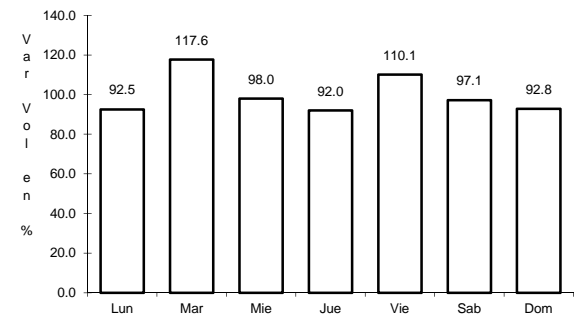
Sent: 0



Km: 155.90

Tipo: 1

Sent: 1



Km: 155.90

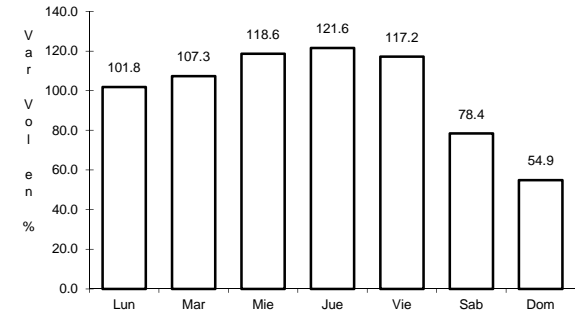
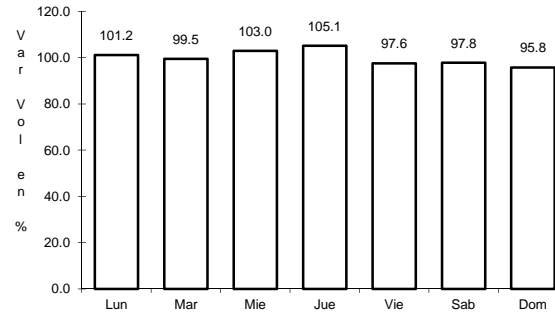
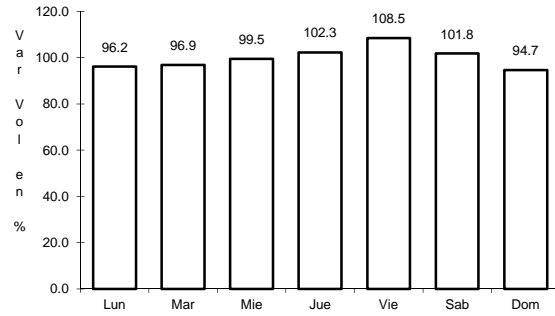
Tipo: 1

Sent: 2

10 CARR: Monterrey - Mier

CLAVE: 00127

RUTA: MEX-054



Km: 19.12 Tipo: 1 Sent: 1

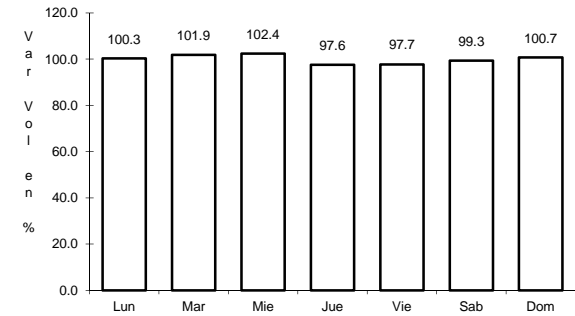
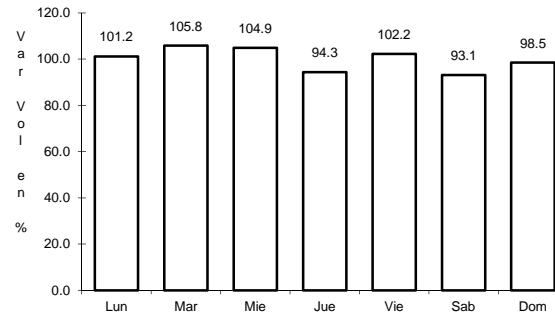
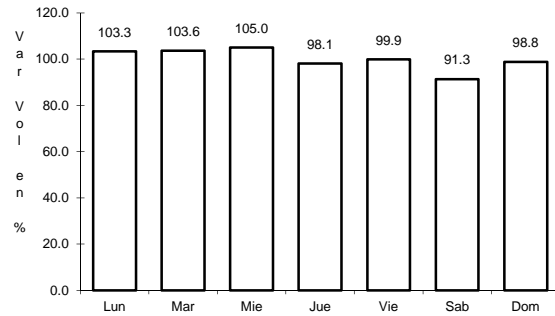
Km: 19.12 Tipo: 1 Sent: 2

Km: 156.21 Tipo: 1 Sent: 0

11 CARR: Monterrey - Nuevo Laredo (Libre)

CLAVE: 00463

RUTA: MEX-085



Km: 12.10 Tipo: 3 Sent: 1

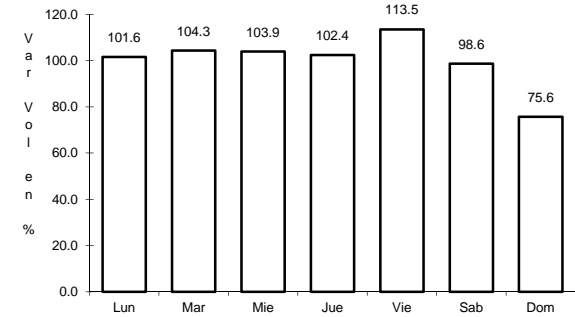
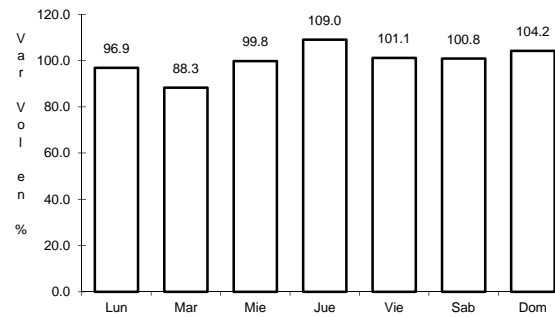
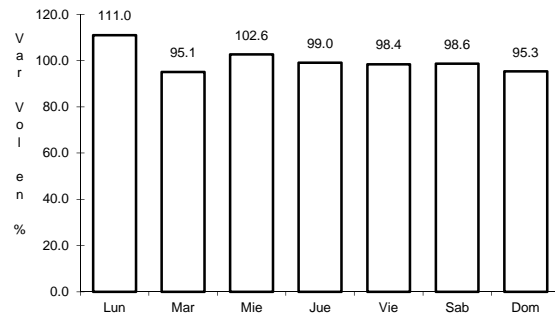
Km: 12.10 Tipo: 3 Sent: 2

Km: 124.40 Tipo: 3 Sent: 0

12 CARR: Monterrey - Reynosa (Libre)

CLAVE: 00088

RUTA: MEX-040



Km: 19.10 Tipo: 1 Sent: 1

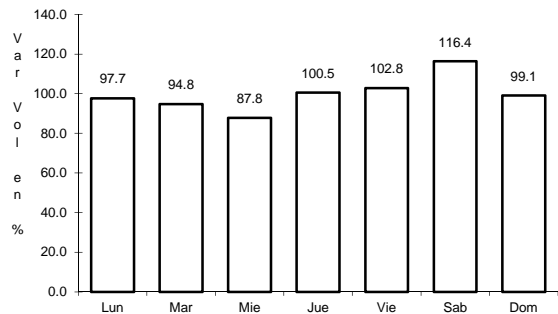
Km: 19.10 Tipo: 1 Sent: 2

Km: 125.00 Tipo: 1 Sent: 0

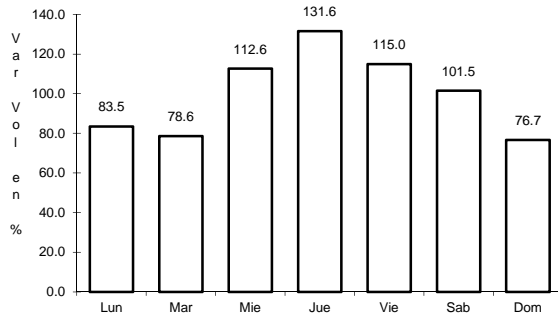
13 CARR: Paras - Nueva Ciudad Guerrero

CLAVE: 00476

ruta: MEX-030



Km: 0.00 Tipo: 3 Sent: 0

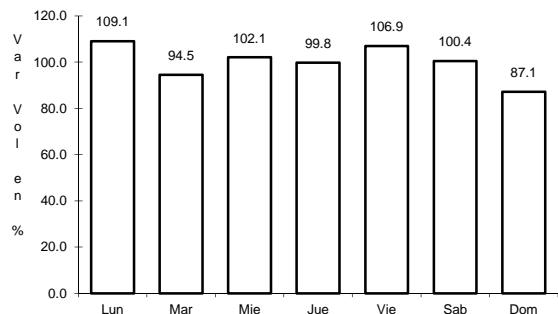


Km: 32.00 Tipo: 1 Sent: 0

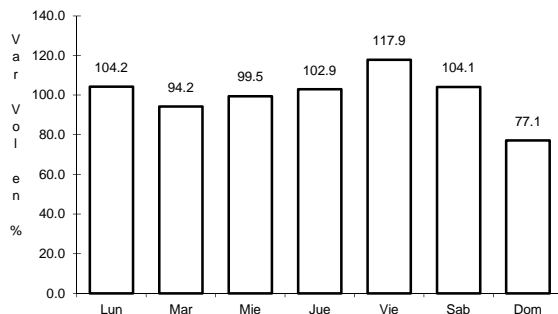
14 CARR: Piedras Negras - Nuevo Laredo

CLAVE: 00503

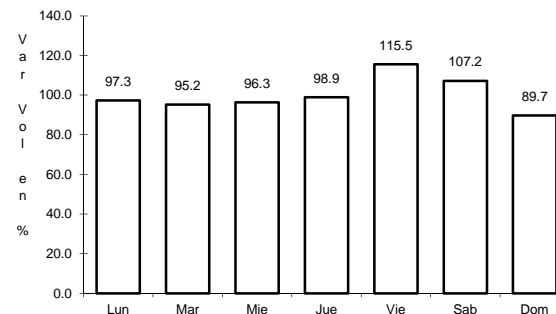
ruta: MEX-002



Km: 0.00 Tipo: 3 Sent: 1



Km: 0.00 Tipo: 3 Sent: 2

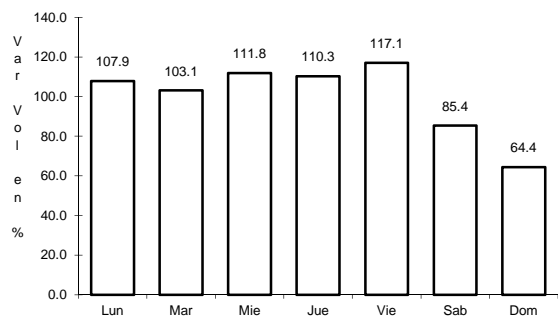


Km: 134.00 Tipo: 3 Sent: 0

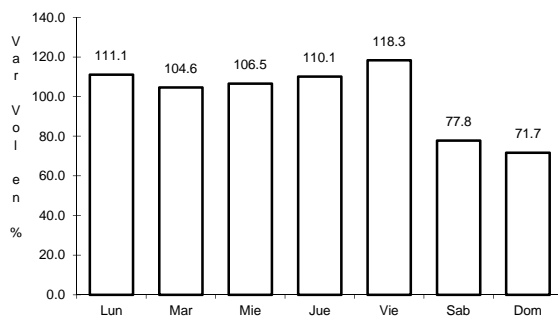
15 CARR: Ramal a Aeropuerto Mariano Escobedo

CLAVE: 19510

ruta: MEX-054



Km: 0.00 Tipo: 3 Sent: 1

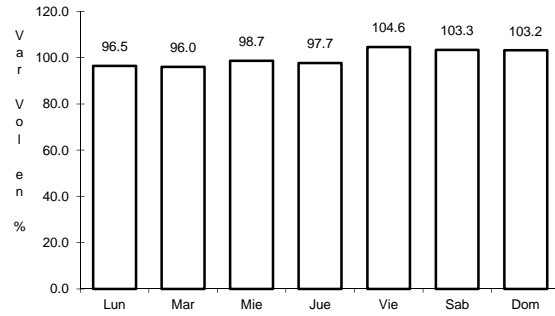


Km: 0.00 Tipo: 3 Sent: 2

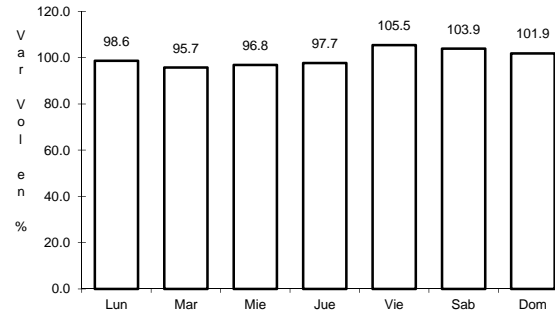
16 CARR: Saltillo - Monterrey

CLAVE: 00087

RUTA: MEX-040



Km: 4.25 Tipo: 3 Sent: 1

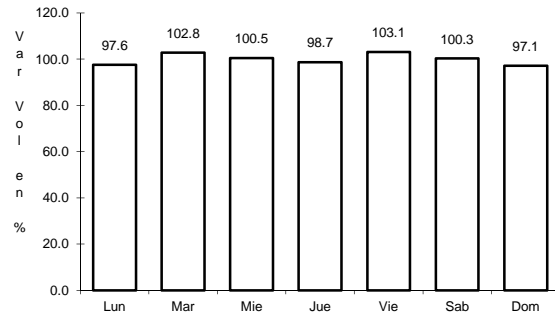


Km: 4.25 Tipo: 3 Sent: 2

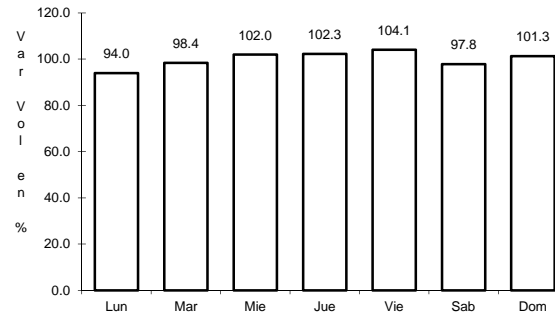
18 CARR: Monterrey - Nuevo Laredo (Cuota)

CLAVE: 19086

RUTA: MEX-085D



Km: 0.00 Tipo: 3 Sent: 1

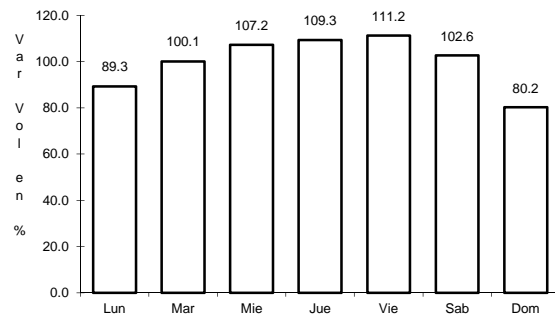


Km: 0.00 Tipo: 3 Sent: 2

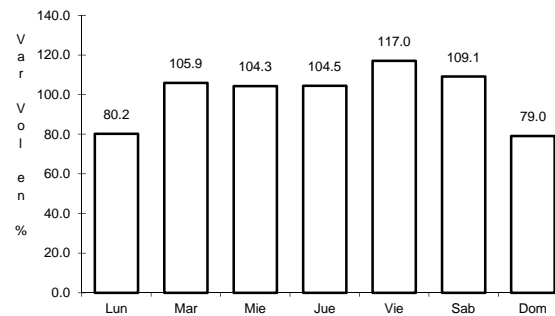
19 CARR: Puerto México - La Carbonera (Cuota)

CLAVE: 00115

RUTA: MEX-057D



Km: 224.94 Tipo: 1 Sent: 1

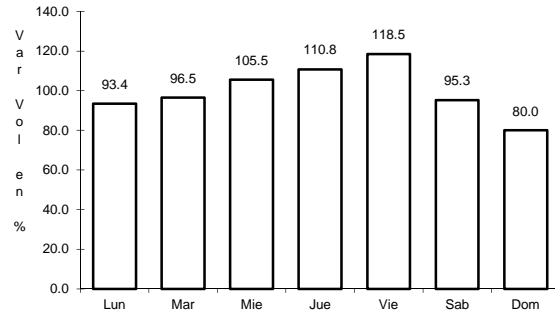


Km: 224.94 Tipo: 1 Sent: 2

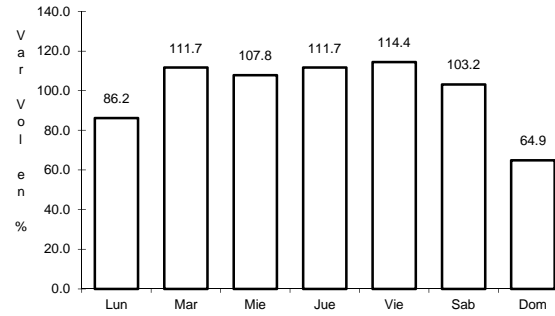
20 CARR: Saltillo - Monterrey (Cuota)

CLAVE: 00087

RUTA: MEX-040D



Km: 46.21 Tipo: 3 Sent: 1

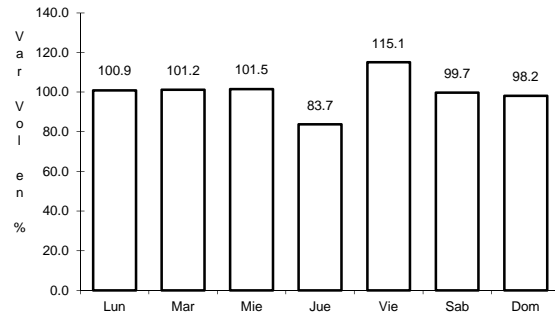


Km: 46.21 Tipo: 3 Sent: 2

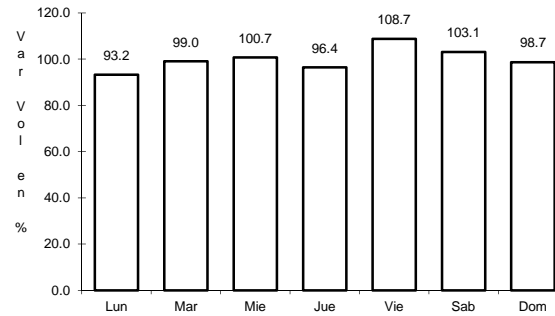
21 CARR: Aguileguas - El Ébano

CLAVE: 19004

RUTA: NL-023



Km: 0.00 Tipo: 3 Sent: 0

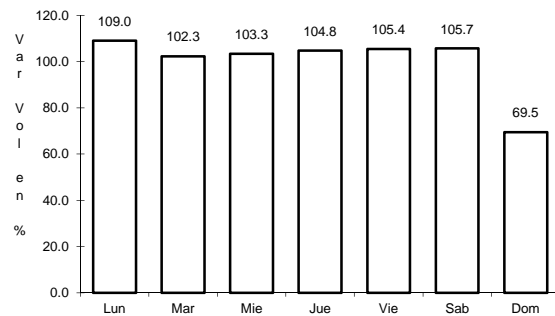


Km: 54.00 Tipo: 1 Sent: 0

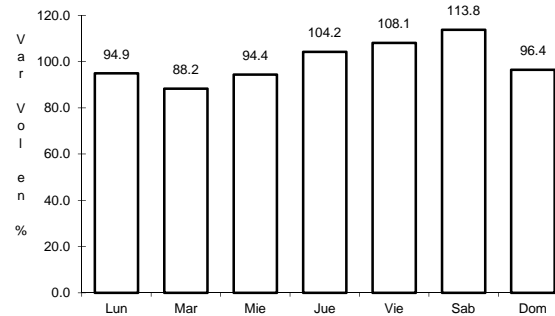
22 CARR: Apodaca - Villa Juárez

CLAVE: 00087

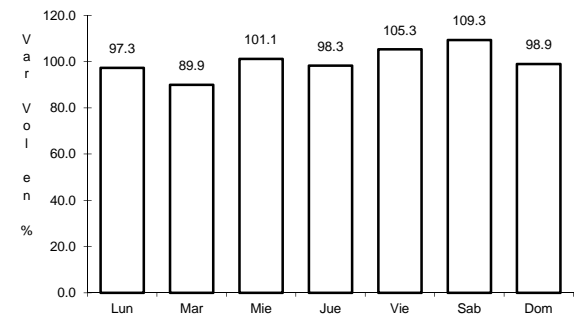
RUTA: NL



Km: 0.00 Tipo: 3 Sent: 0



Km: 16.00 Tipo: 1 Sent: 1

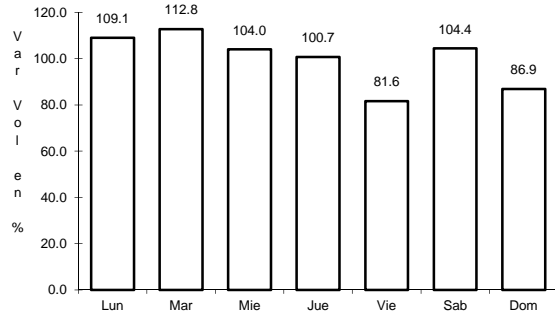


Km: 16.00 Tipo: 1 Sent: 2

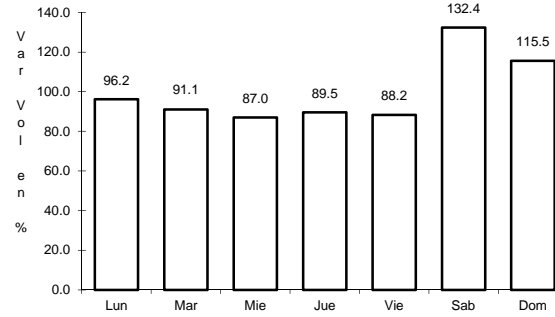
23 CARR: Atongo - Lazarillos

CLAVE:

RUTA: NL



Km: 0.00 Tipo: 3 Sent: 0

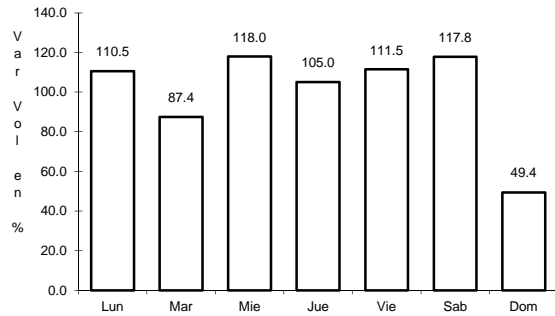


Km: 7.78 Tipo: 1 Sent: 0

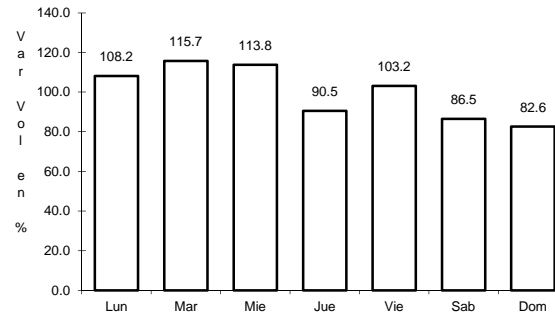
24 CARR: Cadereyta de Jiménez - Doctor González

CLAVE: 19473

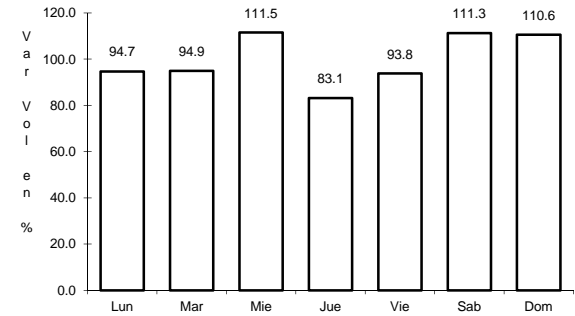
RUTA: NL



Km: 0.00 Tipo: 3 Sent: 0



Km: 18.00 Tipo: 3 Sent: 0

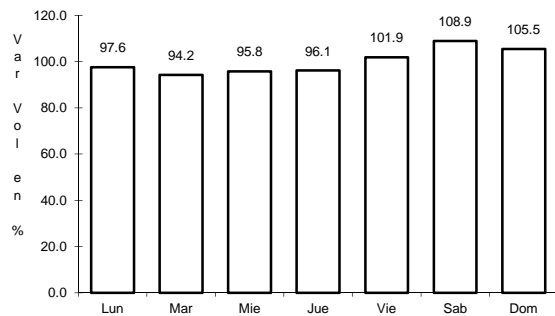


Km: 30.00 Tipo: 1 Sent: 0

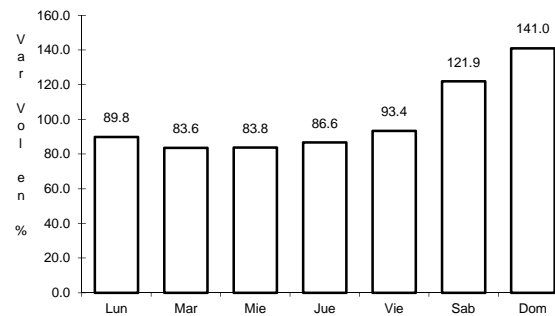
25 CARR: Cd. Benito Juárez - Villa de Santiago

CLAVE: 00087

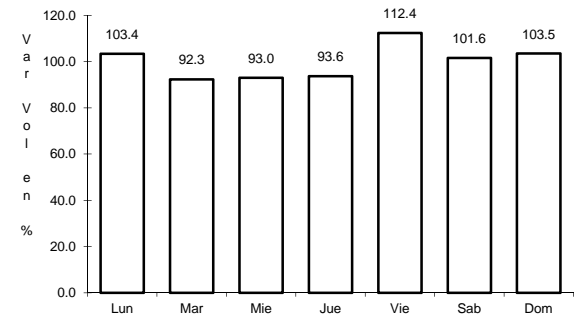
RUTA: NL



Km: 0.00 Tipo: 3 Sent: 0



Km: 23.00 Tipo: 3 Sent: 0

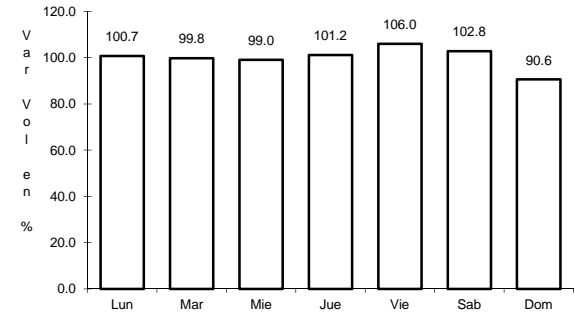
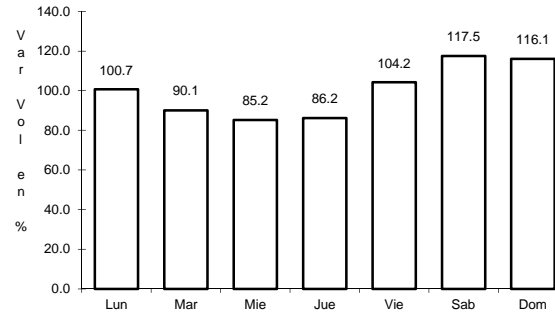
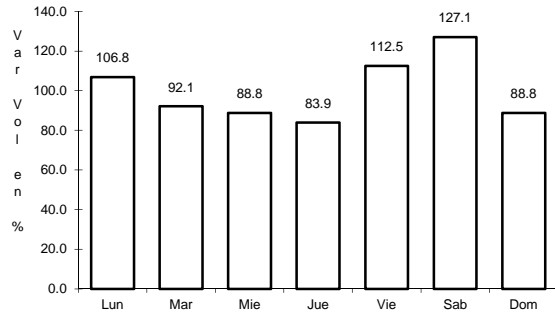


Km: 39.00 Tipo: 1 Sent: 0

29 CARR: Ent. Huisachito - Nuevo Laredo

CLAVE: 00074

RUTA: NL-001-TAM



Km: 0.00 Tipo: 3 Sent: 0

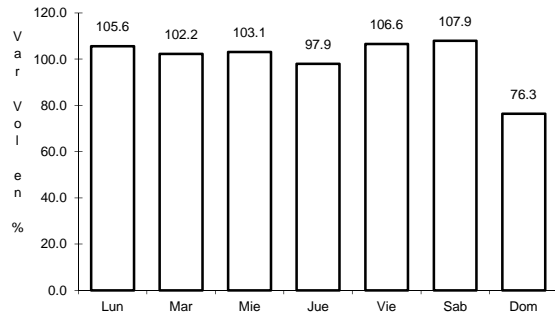
Km: 47.00 Tipo: 1 Sent: 0

Km: 51.00 Tipo: 1 Sent: 0

30 CARR: Gral. Bravo - Los Aldamas

CLAVE: 19030

RUTA: NL-030

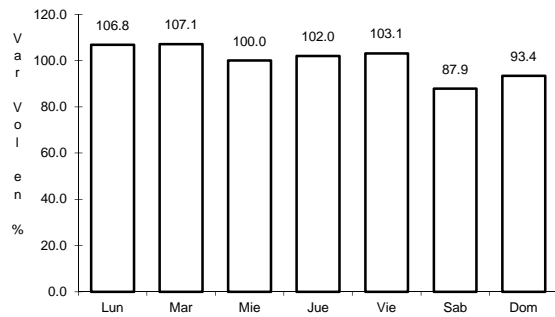


Km: 0.00 Tipo: 3 Sent: 0

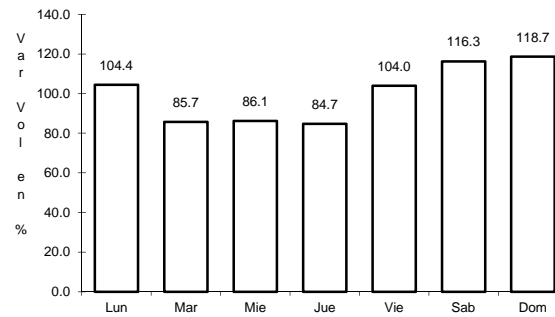
31 CARR: Gral. Treviño - Villaldama

CLAVE: 19003

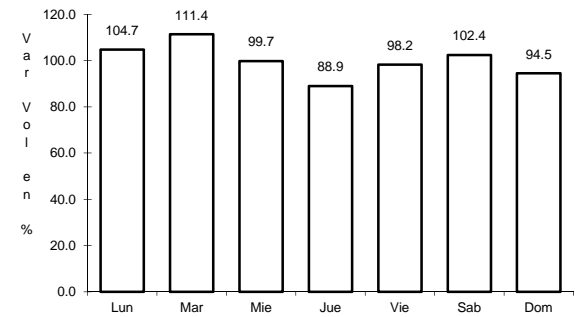
RUTA: NL-003



Km: 0.00 Tipo: 3 Sent: 0



Km: 62.00 Tipo: 1 Sent: 0

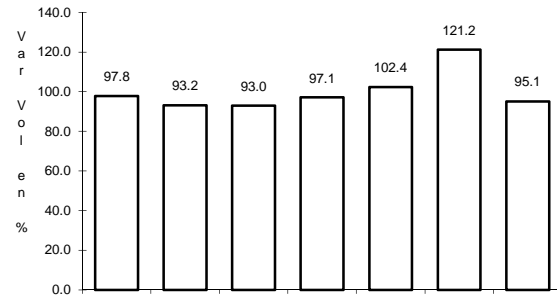


Km: 134.00 Tipo: 1 Sent: 0

32 CARR: Hacienda Guadalupe - Higueras

CLAVE: 19006

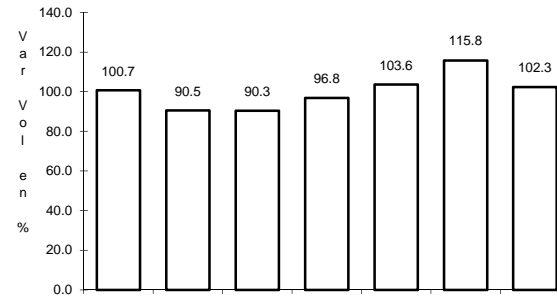
RUTA: NL-006



Km: 3.00

Tipo: 1

Sent: 1



Km: 3.00

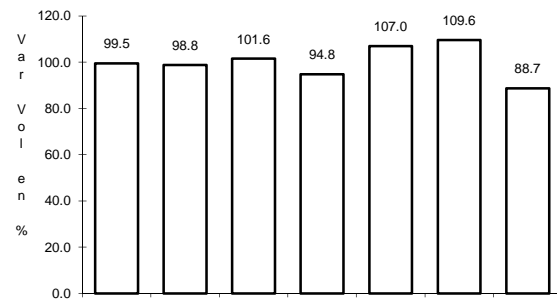
Tipo: 1

Sent: 2

33 CARR: Libramiento de Linares

CLAVE: 19506

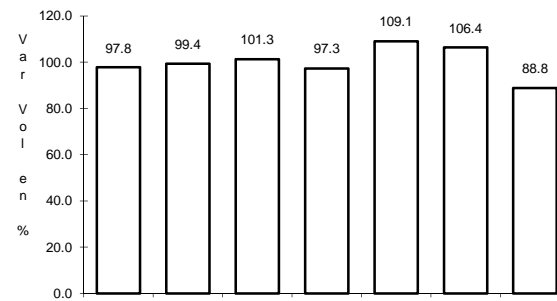
RUTA: NL



Km: 0.00

Tipo: 3

Sent: 0



Km: 2.00

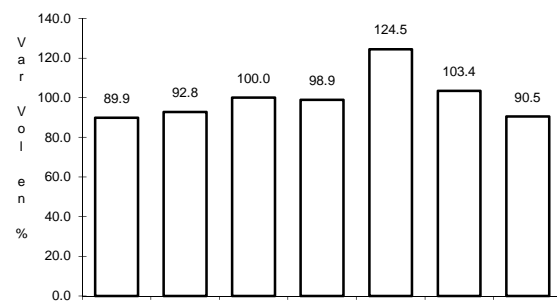
Tipo: 3

Sent: 0

34 CARR: Libramiento de Montemorelos

CLAVE: 19492

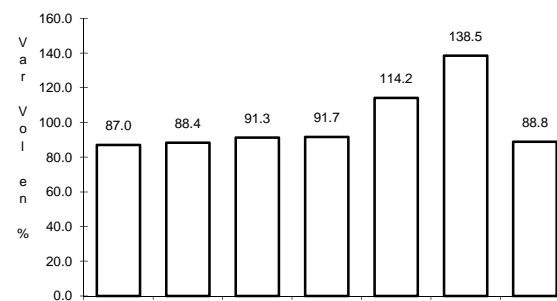
RUTA: NL



Km: 0.00

Tipo: 3

Sent: 1



Km: 0.00

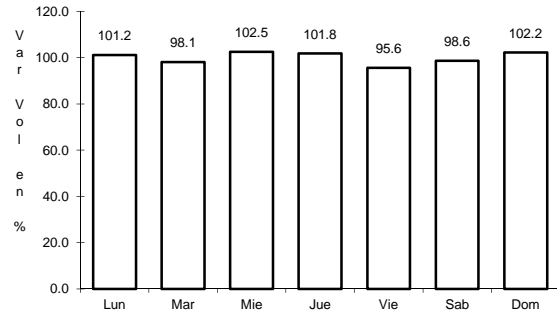
Tipo: 3

Sent: 2

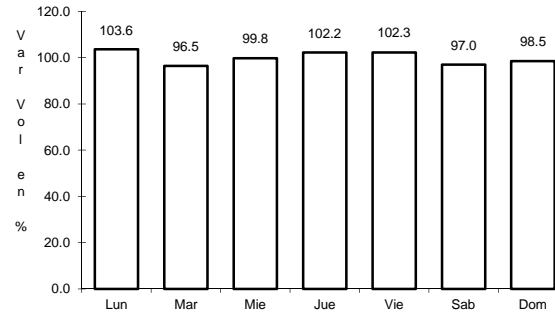
35 CARR: Libramiento de Sabinas Hidalgo

CLAVE: 19492

RUTA: NL



Km: 0.00 Tipo: 3 Sent: 0

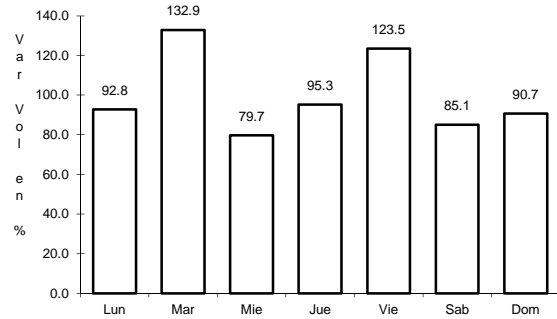


Km: 9.20 Tipo: 1 Sent: 0

36 CARR: Libramiento Poniente de Cadereyta

CLAVE: 19085

RUTA: NL

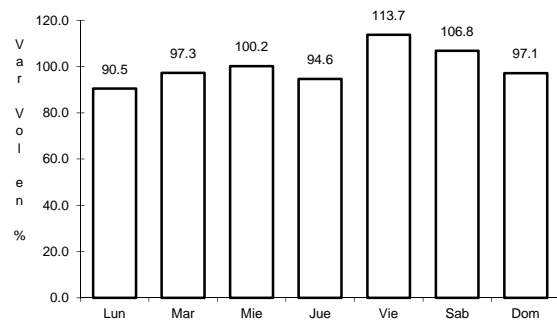


Km: 0.00 Tipo: 3 Sent: 0

37 CARR: Los Guerra - Los Herreras

CLAVE: 19031

RUTA: TAM-NL

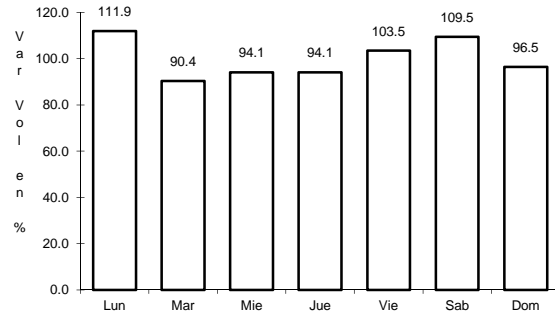


Km: 73.00 Tipo: 1 Sent: 0

38 CARR: Matehuala - La Poza

CLAVE: 00086

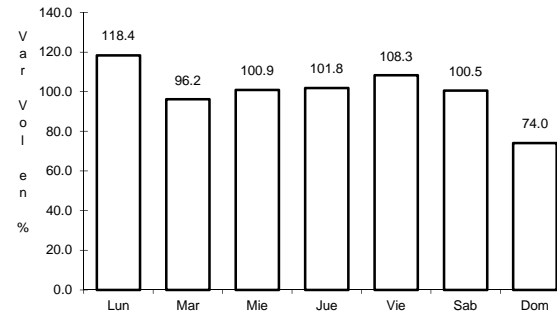
RUTA: SLP-029



Km: 0.00

Tipo: 3

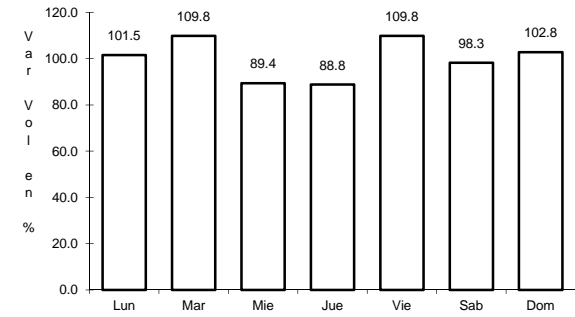
Sent: 0



Km: 49.00

Tipo: 1

Sent: 0



Km: 131.00

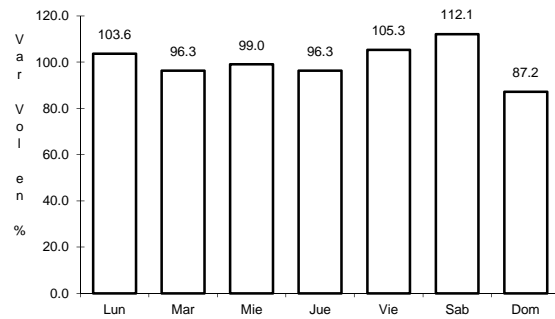
Tipo: 1

Sent: 0

39 CARR: Monclova - Estación Candela

CLAVE: 00501

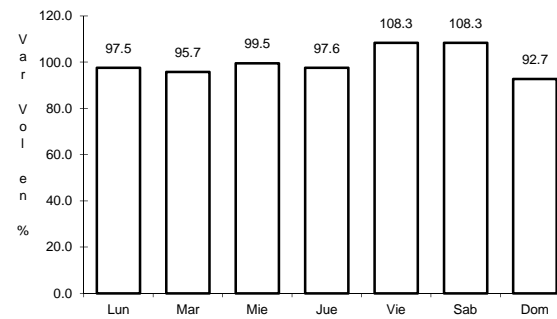
RUTA: COA-030-NL



Km: 5.10

Tipo: 1

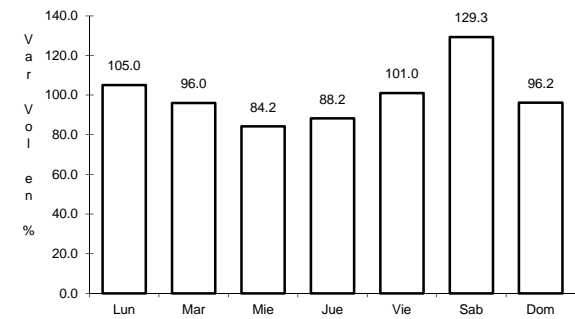
Sent: 1



Km: 5.10

Tipo: 1

Sent: 2



Km: 125.50

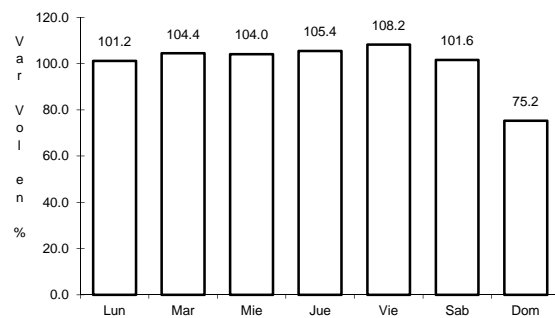
Tipo: 1

Sent: 0

40 CARR: Monterrey - Colombia

CLAVE: 19001

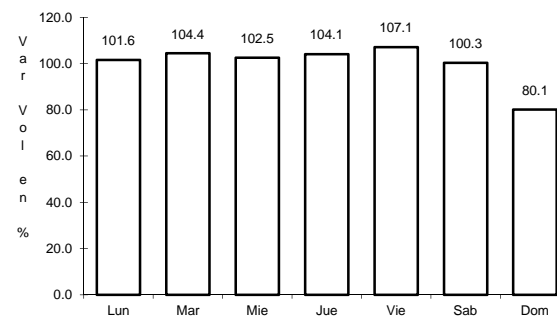
RUTA: NL-001



Km: 0.00

Tipo: 3

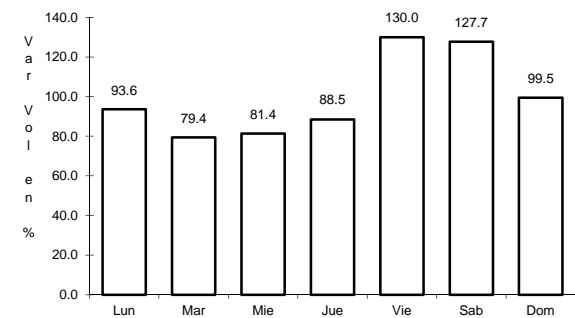
Sent: 1



Km: 0.00

Tipo: 3

Sent: 2



Km: 263.00

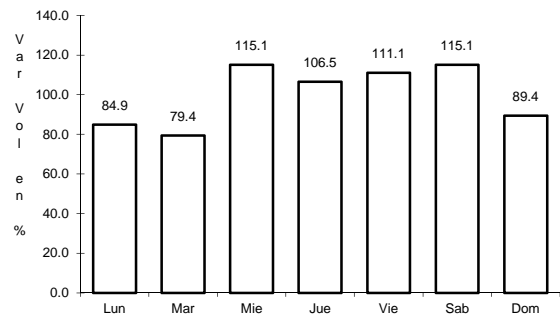
Tipo: 1

Sent: 0

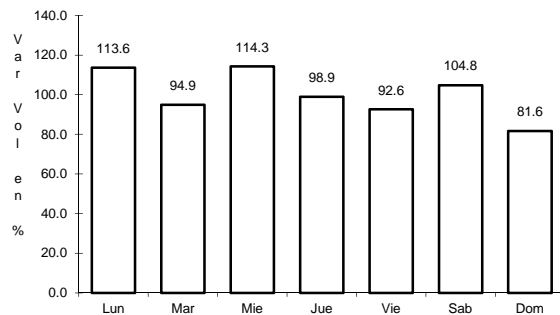
41 CARR: Palo Alto - Vallecillos

CLAVE: 19036

RUTA: NL



Km: 0.00 Tipo: 3 Sent: 0

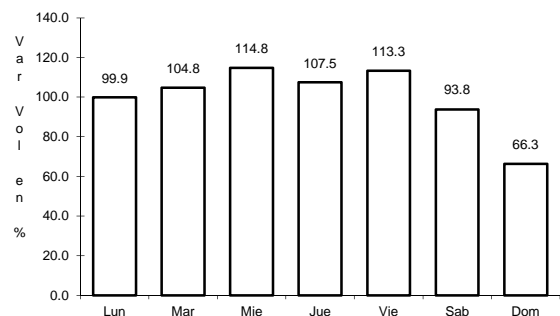


Km: 43.00 Tipo: 1 Sent: 0

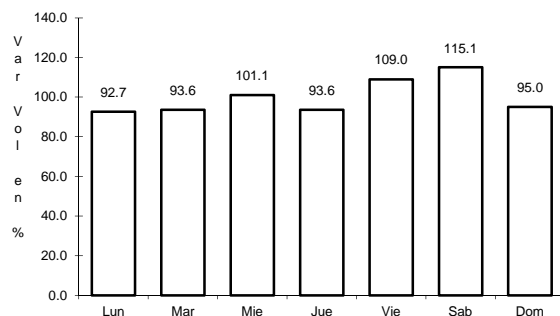
42 CARR: Peña Blanca - Cd. Camargo

CLAVE: 00102

RUTA: NL-TAM



Km: 0.00 Tipo: 3 Sent: 0

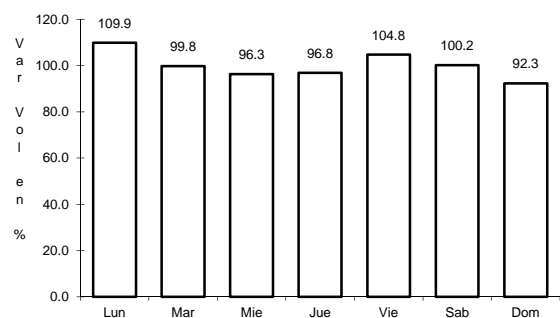


Km: 65.00 Tipo: 1 Sent: 0

43 CARR: Ramal a 18 de Marzo

CLAVE: 19475

RUTA: NL

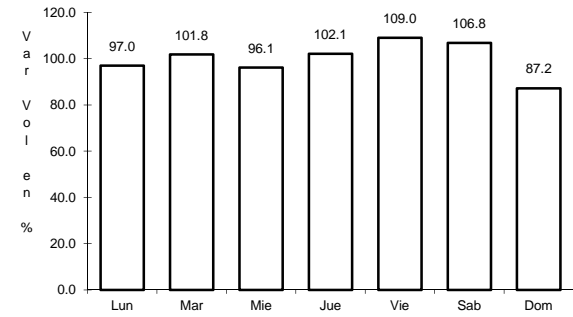
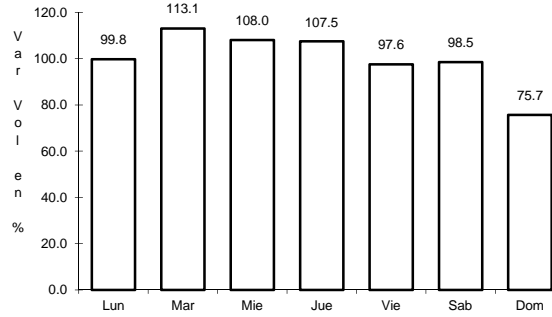
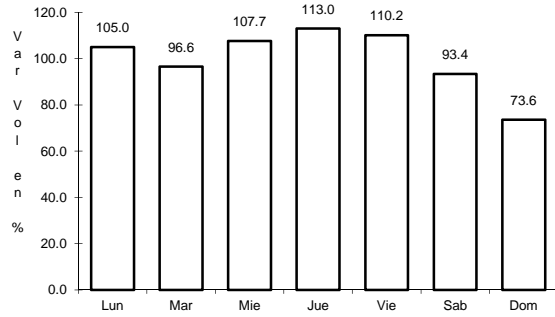


Km: 0.00 Tipo: 3 Sent: 0

44 CARR: Ramal a Cerralvo

CLAVE: 19013

RUTA: NL-013



Km: 0.00 Tipo: 3 Sent: 0

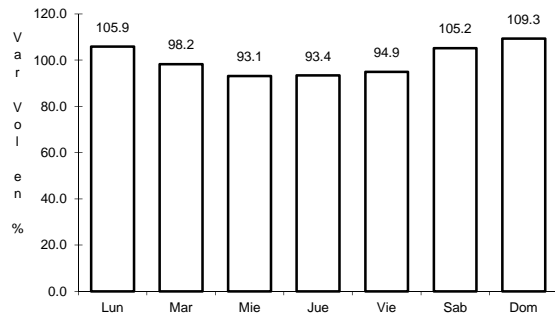
Km: 21.00 Tipo: 3 Sent: 0

Km: 58.00 Tipo: 1 Sent: 0

45 CARR: Ramal a Marín

CLAVE: 19007

RUTA: NL

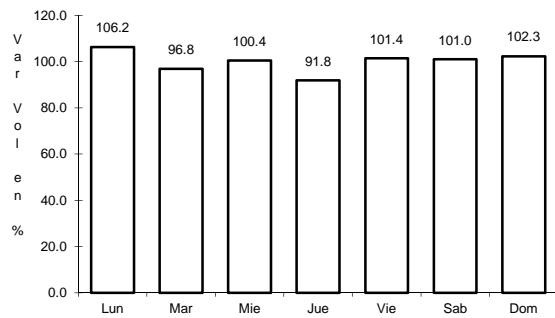


Km: 0.00 Tipo: 3 Sent: 0

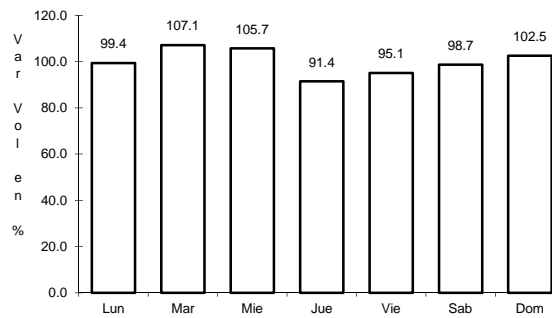
46 CARR: Salinas Victoria - Ciénega de Flores

CLAVE: 19007

RUTA: NL



Km: 0.00 Tipo: 3 Sent: 0

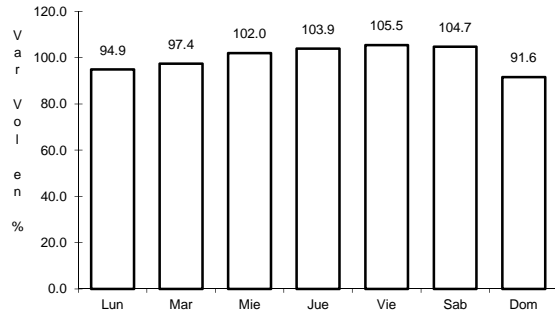


Km: 6.00 Tipo: 1 Sent: 0

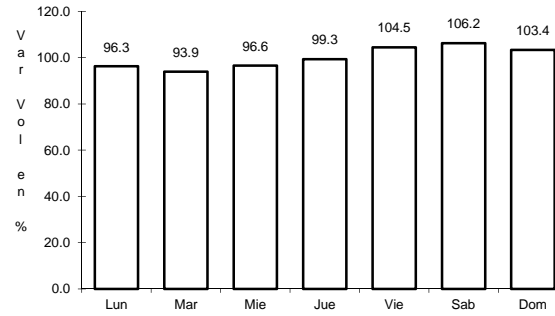
47 CARR: Santa Rosa - Mezquital

CLAVE: 00087

RUTA: NL



Km: 0.00 Tipo: 3 Sent: 1

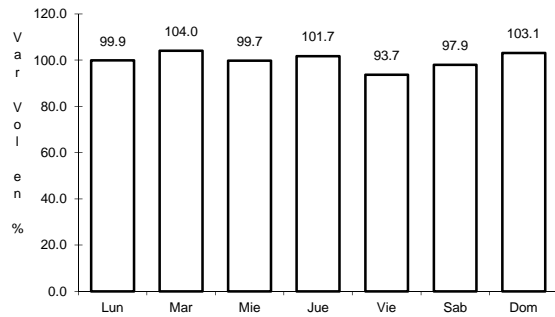


Km: 0.00 Tipo: 3 Sent: 2

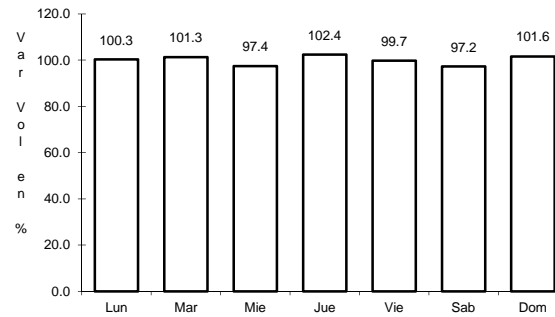
48 CARR: Santa Rosa - Salinas Victoria

CLAVE: 19037

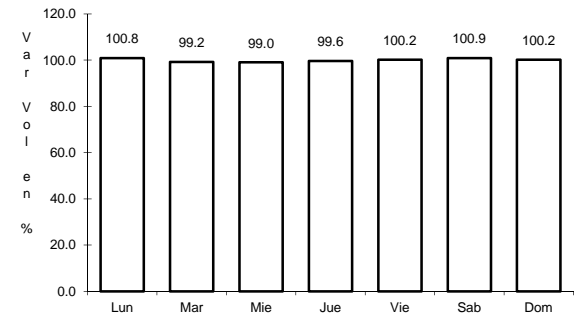
RUTA: NL



Km: 0.00 Tipo: 3 Sent: 0



Km: 13.85 Tipo: 1 Sent: 1

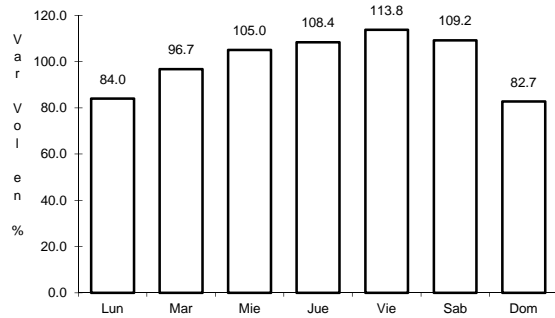


Km: 13.85 Tipo: 1 Sent: 2

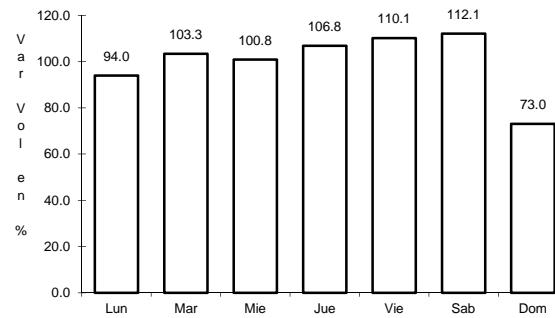
49 CARR: Anillo Periférico de Monterrey (Cuota)

CLAVE: 19004

RUTA: NL-D



Km: 0.00 Tipo: 3 Sent: 1



Km: 0.00 Tipo: 3 Sent: 2