

NAYARIT

NO. INDICE	CARRETERA	RUTA
---RED FEDERAL LIBRE---		
1	Crucero de San Blas - San Blas	MEX-015
2	Ent. Acaponeta - El Novillero	MEX-015
3	Ent. Santiago Ixcuintla - Playa Los Corchos	MEX-015
4	Guadalajara - Tepic	MEX-015
5	Libramiento de Tepic	MEX-015
6	Peñitas - Tuxpan	MEX-015
7	Ramal a Acaponeta	MEX-015
8	Ramal a Estación Nanchi	MEX-015
9	Ramal a Estación Ruíz	MEX-015
10	Ramal a La Laguna de Santa María	MEX-015
11	Ramal a Mecatán	MEX-015
12	Ramal a Nuevo Aeropuerto de Tepic	MEX-015
13	Ramal a Punta Mita	MEX-200
14	Ramal a Santa Cruz	MEX-015
15	Santa Cruz - San Blas	MEX-015
16	Tepic - Ixtapan de La Concepción	MEX-015
17	Tepic - Mazatlán	MEX-015
18	Tepic - Presa Aguamilpa	MEX-015
19	Tepic - Puerto Vallarta	MEX-200
---RED FEDERAL DE CUOTA---		
20	Chapalilla - Compostela (Cuota)	MEX-068D
21	Guadalajara - Tepic (Cuota)	MEX-057D
22	Tepic - Villa Unión (cuota)	MEX-015D
---RED ESTATAL LIBRE---		
23	El Carrizo - La Batanga	NAY-078
24	Navarrete - Sauta	NAY-013
25	Ramal a Amado Nervo	NAY
26	Ramal a Bellavista	NAY-059
27	Ramal a El Colomo	NAY
28	Ramal a Estación Yago	NAY
29	Ramal a Ixtapan de La Concepción	NAY
30	Ramal a Milpas Viejas	NAY
31	Ramal a Villa Hidalgo	NAY
32	Ramal a Volcán del Ceboruco	NAY
---CARRETERAS INTEGRADAS POR TRAMOS FEDERALES Y ESTATALES---		
33	Tepic - Francisco I. Madero	NAY-MEX

# 18 NAYARIT

SECRETARÍA DE COMUNICACIONES Y TRANSPORTES  
DIRECCIÓN GENERAL DE SERVICIOS TÉCNICOS



- ① --- Número Índice
- Red Federal Libre
- Red Federal Cuota
- Red Federal Integrada por Tramos Libres y de Cuota
- Red Estatal Libre
- Red Estatal Cuota
- Carreteras Integradas por Tramos Federales y Estatales

NAYARIT

1 CARR: Crucero de San Blas - San Blas

CLAVE: 18229

RUTA: MEX-015

AÑO: 2012

LUGAR	ESTACION				CLASIFICACION VEHICULAR EN PORCIENTO										COORDENADAS					
	KM	TE	SC	TDPA	M	A	B	C2	C3	T3S2	T3S3	T3S2R4	OTROS	A	B	C	K'	D	LATITUD	LONGITUD
T. C. Tepic - Mazatlán	0.00	3	0	1917	2.3	82.2	1.8	8.4	1.9	1.7	0.7	0.2	0.8	84.5	1.8	13.7	0.107	0.504	21.691492	-105.054997
Navarrete	11.00	3	0	2388	8.0	79.6	1.5	6.2	1.3	1.8	0.6	0.2	0.8	87.6	1.5	10.9	0.108	0.506	21.647108	-105.122415
San Blas	36.00	1	0	3630	7.4	77.1	1.8	6.7	1.7	2.5	1.2	0.6	1.0	84.5	1.8	13.7	0.076	0.504	21.544562	-105.270522

2 CARR: Ent. Acaponeta - El Novillero

CLAVE: 18023

RUTA: MEX-015

AÑO: 2012

LUGAR	ESTACION				CLASIFICACION VEHICULAR EN PORCIENTO										COORDENADAS					
	KM	TE	SC	TDPA	M	A	B	C2	C3	T3S2	T3S3	T3S2R4	OTROS	A	B	C	K'	D	LATITUD	LONGITUD
T. C. Tepic - Mazatlán	0.00	3	0	4973	2.3	76.5	2.4	10.5	3.7	3.0	0.8	0.4	0.4	78.8	2.4	18.8	0.093	0.515	22.486415	-105.385973
Tecuala	13.00	1	0	4873	5.7	77.3	2.3	11.3	1.2	1.8	0.2	0.0	0.2	83.0	2.3	14.7	0.089	0.517	22.413819	-105.448573
Tecuala	13.00	3	0	3806	8.2	79.9	0.1	8.8	0.4	2.2	0.2	0.0	0.2	88.1	0.1	11.8	0.095	0.502	22.399192	-105.472605
El Novillero	36.00	1	0	1593	8.2	79.9	0.2	9.6	0.6	1.2	0.2	0.0	0.1	88.1	0.2	11.7	0.110	0.502	22.382868	-105.657122

3 CARR: Ent. Santiago Ixcuintla - Playa Los Corchos

CLAVE: 18016

RUTA: MEX-015

AÑO: 2012

LUGAR	ESTACION				CLASIFICACION VEHICULAR EN PORCIENTO										COORDENADAS					
	KM	TE	SC	TDPA	M	A	B	C2	C3	T3S2	T3S3	T3S2R4	OTROS	A	B	C	K'	D	LATITUD	LONGITUD
T. C. Tepic - Mazatlán	0.00	3	1	2564	1.4	84.6	3.3	6.2	2.5	1.1	0.5	0.2	0.2	86.0	3.3	10.7	0.098	0.500	21.851401	-105.156019
T. C. Tepic - Mazatlán	0.00	3	2	2565	0.6	84.4	3.4	6.8	2.8	1.2	0.5	0.2	0.1	85.0	3.4	11.6	0.093	0.500	21.851401	-105.156017
Santiago Ixcuintla	8.00	1	1	3962	7.6	80.4	3.4	4.9	1.9	1.0	0.5	0.1	0.2	88.0	3.4	8.6	0.097	0.515	21.815938	-105.192415
Santiago Ixcuintla	8.00	1	2	3738	4.3	82.4	3.9	5.6	2.0	1.0	0.5	0.1	0.2	86.7	3.9	9.4	0.092	0.515	21.815938	-105.192418
Santiago Ixcuintla	8.00	3	0	6317	4.0	77.1	5.2	7.7	1.7	3.0	0.7	0.1	0.5	81.1	5.2	13.7	0.086	0.503	21.806348	-105.230456
T. Der. Mexcaltitán	17.00	1	0	4514	3.6	81.6	2.7	4.9	2.2	3.4	0.8	0.2	0.6	85.2	2.7	12.1	0.087	0.503	21.776323	-105.267056
T. Der. Mexcaltitán	17.00	3	0	2950	3.5	83.5	1.3	3.0	3.8	2.1	0.5	1.4	0.9	87.0	1.3	11.7	0.094	0.500	21.770710	-105.274727
Playa Los Corchos	39.00	1	0	1947	7.1	83.3	3.1	4.2	1.1	0.8	0.2	0.0	0.2	90.4	3.1	6.5	0.201	0.503	21.697396	-105.449213

4 CARR: Guadalajara - Tepic

CLAVE: 00031

RUTA: MEX-015

AÑO: 2012

LUGAR	ESTACION				CLASIFICACION VEHICULAR EN PORCIENTO										COORDENADAS					
	KM	TE	SC	TDPA	M	A	B	C2	C3	T3S2	T3S3	T3S2R4	OTROS	A	B	C	K'	D	LATITUD	LONGITUD
Guadalajara	0.00																			
T. Der. Base Aérea No. 2	8.30	3	1	24909	0.8	80.6	2.3	7.5	2.2	4.1	1.2	1.0	0.3	81.4	2.3	16.3	0.086	0.512	20.712554	-103.469272
T. Der. Base Aérea No. 2	8.30	3	2	23702	0.8	78.6	2.5	8.2	2.6	4.7	1.3	1.0	0.3	79.4	2.5	18.1	0.086	0.512	20.712553	-103.469272
T. Izq. La Primavera	20.50	1	1	18596	0.6	80.5	1.1	6.6	2.2	4.0	2.4	1.7	0.9	81.1	1.1	17.8	0.080	0.523	20.727892	-103.550723
T. Izq. La Primavera	20.50	1	2	16939	1.0	78.2	1.2	7.0	2.5	4.4	2.6	2.0	1.1	79.2	1.2	19.6	0.071	0.523	20.727894	-103.550725

## NAYARIT

4 CARR : Guadalajara - Tepic

CLAVE: 00031

RUTA: MEX-015

AÑO : 2012

LUGAR	ESTACION				CLASIFICACION VEHICULAR EN PORCIENTO										COORDENADAS					
	KM	TE	SC	TDPA	M	A	B	C2	C3	T3S2	T3S3	T3S2R4	OTROS	A	B	C	K'	D	LATITUD	LONGITUD
El Arenal	36.20	1	1	6730	1.0	77.1	1.4	9.5	2.9	4.5	2.3	0.4	0.9	78.1	1.4	20.5	0.073	0.511	20.773639	-103.686500
El Arenal	36.20	1	2	6439	1.0	74.6	1.6	10.5	3.4	5.0	2.4	0.4	1.1	75.6	1.6	22.8	0.085	0.511	20.773639	-103.686500
Tequila	57.50	3	0	7801	0.9	69.4	2.2	12.9	5.0	5.7	2.4	0.5	1.0	70.3	2.2	27.5	0.077	0.520	20.901374	-103.835571
Magdalena	76.80	3	0	6655	1.0	74.3	1.7	12.2	2.4	5.7	1.8	0.4	0.5	75.3	1.7	23.0	0.081	0.503	20.921328	-103.995505
Lim. Edos. Term. Jal. Ppia. Nay.	123.09																			
Ixtlán del Río	138.84	1	0	9746	2.7	66.9	2.4	11.4	4.6	6.6	3.9	0.5	1.0	69.6	2.4	28.0	0.075	0.500	21.033645	-104.348287
Ixtlán del Río	138.84	3	0	9638	2.9	71.6	2.2	11.8	2.2	6.0	1.8	0.5	1.0	74.5	2.2	23.3	0.078	0.501	21.037159	-104.394593
Ahuacatlán	152.00	1	0	9184	1.6	63.4	2.9	10.6	5.7	10.0	3.6	1.1	1.1	65.0	2.9	32.1	0.070	0.503	21.055602	-104.478333
Ahuacatlán	152.00	3	0	6187	1.4	63.3	2.1	9.8	6.7	11.1	3.6	1.0	1.0	64.7	2.1	33.2	0.074	0.506	21.058421	-104.489409
T. Izq. Amado Nervo	167.32	1	0	5720	0.9	61.1	2.5	9.7	8.7	11.0	4.2	1.0	0.9	62.0	2.5	35.5	0.070	0.514	21.126617	-104.598881
T. Izq. Compostela	175.50	1	0	6483	0.8	60.6	2.9	10.9	8.3	11.8	3.7	0.6	0.4	61.4	2.9	35.7	0.073	0.503	21.178705	-104.630280
T. Izq. Compostela	175.50	3	0	4469	1.2	67.1	4.0	9.0	3.4	10.2	3.6	0.9	0.6	68.3	4.0	27.7	0.067	0.501	21.201824	-104.647300
T. Der. Santa María del Oro	196.00	1	0	4907	0.9	58.6	2.8	7.9	9.9	13.5	4.3	1.0	1.1	59.5	2.8	37.7	0.077	0.514	21.316252	-104.667049
T. Der. Santa María del Oro	196.00	3	0	3940	1.6	56.7	3.0	9.6	6.4	13.0	6.5	2.0	1.2	58.3	3.0	38.7	0.068	0.505	21.329876	-104.672296
T. Izq. Aeropuerto de Tepic	215.68	1	0	11482	1.7	75.0	1.6	7.0	7.2	4.3	2.2	0.4	0.6	76.7	1.6	21.7	0.071	0.547	21.447665	-104.812642
San Cayetano	215.90	3	0	12163	1.7	77.9	1.7	6.8	4.3	4.2	1.8	0.7	0.9	79.6	1.7	18.7	0.073	0.503	21.455069	-104.821553
T. Izq. Libramiento de Tepic	219.10	1	1	15004	1.7	78.0	2.9	7.2	4.4	3.1	1.4	0.7	0.6	79.7	2.9	17.4	0.072	0.506	21.467585	-104.839959
T. Izq. Libramiento de Tepic	219.10	1	2	15376	1.7	75.9	3.1	7.9	5.1	3.3	1.6	0.8	0.6	77.6	3.1	19.3	0.090	0.506	21.467592	-104.839940
T. Izq. Libramiento de Tepic	219.10	3	1	12745	1.9	83.9	1.6	6.9	2.9	1.3	0.9	0.4	0.2	85.8	1.6	12.6	0.075	0.526	21.470271	-104.847545
T. Izq. Libramiento de Tepic	219.10	3	2	12756	1.8	82.9	1.9	7.2	3.2	1.5	0.9	0.4	0.2	84.7	1.9	13.4	0.082	0.526	21.470270	-104.847543
Tepic	224.80	1	1	16697	2.3	82.4	1.5	8.1	2.1	1.2	1.5	0.5	0.4	84.7	1.5	13.8	0.073	0.507	21.471460	-104.850712
Tepic	224.80	1	2	16226	2.6	80.5	1.7	9.3	2.1	1.3	1.6	0.5	0.4	83.1	1.7	15.2	0.082	0.507	21.471454	-104.850699

5 CARR : Libramiento de Tepic

CLAVE: 18232

RUTA: MEX-015

AÑO : 2012

LUGAR	ESTACION				CLASIFICACION VEHICULAR EN PORCIENTO										COORDENADAS					
	KM	TE	SC	TDPA	M	A	B	C2	C3	T3S2	T3S3	T3S2R4	OTROS	A	B	C	K'	D	LATITUD	LONGITUD
T. C. Guadalajara - Tepic	0.00																			
X. C. Tepic - Puerto Vallarta	5.00	1	1	24768	1.9	84.2	1.0	4.8	2.9	3.1	1.1	0.8	0.2	86.1	1.0	12.9	0.098	0.524	21.469077	-104.886356
X. C. Tepic - Puerto Vallarta	5.00	1	2	22475	1.9	82.6	1.1	5.3	3.4	3.5	1.2	0.8	0.2	84.5	1.1	14.4	0.076	0.524	21.469077	-104.886356
T. C. Tepic - Mazatlán	18.80	1	1	13066	1.6	78.3	2.8	5.8	3.2	5.0	1.4	1.2	0.7	79.9	2.8	17.3	0.082	0.521	21.514836	-104.924808
T. C. Tepic - Mazatlán	18.80	1	2	12017	1.9	75.6	3.1	6.9	3.6	5.3	1.5	1.3	0.8	77.5	3.1	19.4	0.084	0.521	21.514836	-104.924807

NAYARIT

6 CARR: Peñitas - Tuxpan

CLAVE: 18019

RUTA: MEX-015

AÑO: 2012

LUGAR	ESTACION				CLASIFICACION VEHICULAR EN PORCIENTO										COORDENADAS					
	KM	TE	SC	TDPA	M	A	B	C2	C3	T3S2	T3S3	T3S2R4	OTROS	A	B	C	K'	D	LATITUD	LONGITUD
Peñitas	0.00	3	0	5761	6.1	78.9	4.0	5.2	1.2	3.4	0.6	0.1	0.5	85.0	4.0	11.0	0.091	0.503	21.941849	-105.228415
Tuxpan	9.00	1	0	6642	6.3	72.3	7.0	7.4	0.5	4.6	0.7	0.2	1.0	78.6	7.0	14.4	0.086	0.504	21.942559	-105.278184

7 CARR: Ramal a Acaponeta

CLAVE: 18038

RUTA: MEX-015

AÑO: 2012

LUGAR	ESTACION				CLASIFICACION VEHICULAR EN PORCIENTO										COORDENADAS					
	KM	TE	SC	TDPA	M	A	B	C2	C3	T3S2	T3S3	T3S2R4	OTROS	A	B	C	K'	D	LATITUD	LONGITUD
T. C. Tepic - Mazatlán	0.00	3	1	6143	3.8	82.6	1.0	10.5	0.7	0.7	0.4	0.1	0.2	86.4	1.0	12.6	0.085	0.502	22.489651	-105.381153
T. C. Tepic - Mazatlán	0.00	3	2	6205	4.1	81.2	1.1	11.5	0.7	0.7	0.4	0.1	0.2	85.3	1.1	13.6	0.083	0.502	22.489650	-105.381153
Acaponeta	3.00																			

8 CARR: Ramal a Estación Nanchi

CLAVE: 18068

RUTA: MEX-015

AÑO: 2012

LUGAR	ESTACION				CLASIFICACION VEHICULAR EN PORCIENTO										COORDENADAS					
	KM	TE	SC	TDPA	M	A	B	C2	C3	T3S2	T3S3	T3S2R4	OTROS	A	B	C	K'	D	LATITUD	LONGITUD
T. C. Tepic - Mazatlán	0.00	3	0	1032	10.4	76.9	3.5	5.3	2.3	1.6	0.0	0.0	0.0	87.3	3.5	9.2	0.086	0.515	21.810297	-105.098229
Estación Nanchi	5.00																			

9 CARR: Ramal a Estación Ruíz

CLAVE: 18026

RUTA: MEX-015

AÑO: 2012

LUGAR	ESTACION				CLASIFICACION VEHICULAR EN PORCIENTO										COORDENADAS					
	KM	TE	SC	TDPA	M	A	B	C2	C3	T3S2	T3S3	T3S2R4	OTROS	A	B	C	K'	D	LATITUD	LONGITUD
T. C. Tepic - Mazatlán	0.00	3	0	3894	2.0	81.9	5.0	7.0	1.0	2.5	0.4	0.0	0.2	83.9	5.0	11.1	0.095	0.501	21.935056	-105.190139
Estación Ruíz	5.50	1	0	4917	4.7	82.6	3.5	5.4	0.8	2.5	0.3	0.0	0.2	87.3	3.5	9.2	0.092	0.519	21.943318	-105.160179

10 CARR: Ramal a La Laguna de Santa María

CLAVE: 18005

RUTA: MEX-015

AÑO: 2012

LUGAR	ESTACION				CLASIFICACION VEHICULAR EN PORCIENTO										COORDENADAS					
	KM	TE	SC	TDPA	M	A	B	C2	C3	T3S2	T3S3	T3S2R4	OTROS	A	B	C	K'	D	LATITUD	LONGITUD
T. C. Guadalajara - Tepic	0.00	3	0	2681	0.8	85.5	1.6	8.1	0.7	2.3	0.7	0.0	0.3	86.3	1.6	12.1	0.085	0.501	21.326858	-104.668775
Santa María del Oro	11.50	1	1	1951	3.6	89.3	0.9	5.0	0.6	0.4	0.2	0.0	0.0	92.9	0.9	6.2	0.125	0.501	21.326275	-104.595380
Santa María del Oro	11.50	1	2	1960	2.8	89.2	1.0	5.6	0.7	0.5	0.2	0.0	0.0	92.0	1.0	7.0	0.141	0.501	21.326274	-104.595379
Laguna de Santa María	20.00	1	0	749	4.7	87.0	0.1	6.3	0.6	1.1	0.1	0.0	0.1	91.7	0.1	8.2	0.244	0.502	21.360537	-104.570553

## NAYARIT

11 CARR: Ramal a Mecatán

CLAVE: 18010

RUTA: MEX-015

AÑO: 2012

LUGAR	ESTACION				CLASIFICACION VEHICULAR EN PORCIENTO														COORDENADAS	
	KM	TE	SC	TDPA	M	A	B	C2	C3	T3S2	T3S3	T3S2R4	OTROS	A	B	C	K'	D	LATITUD	LONGITUD
T. C. (Tepic - Mazatlán) - Ixtapan de La Concepción	0.00	3	0	850	3.2	82.7	0.2	11.2	1.4	1.1	0.1	0.0	0.1	85.9	0.2	13.9	0.092	0.511	21.500262	-105.084918
Mecatán	9.00																			

12 CARR: Ramal a Nuevo Aeropuerto de Tepic

CLAVE: 18012

RUTA: MEX-015

AÑO: 2012

LUGAR	ESTACION				CLASIFICACION VEHICULAR EN PORCIENTO														COORDENADAS	
	KM	TE	SC	TDPA	M	A	B	C2	C3	T3S2	T3S3	T3S2R4	OTROS	A	B	C	K'	D	LATITUD	LONGITUD
T. C. Guadalajara - Tepic	0.00	3	0	3770	3.3	78.8	0.6	10.7	3.8	2.3	0.4	0.0	0.1	82.1	0.6	17.3	0.094	0.515	21.445764	-104.818897
Aeropuerto de Tepic	5.00																			

13 CARR: Ramal a Punta Mita

CLAVE: 18020

RUTA: MEX-200

AÑO: 2012

LUGAR	ESTACION				CLASIFICACION VEHICULAR EN PORCIENTO														COORDENADAS	
	KM	TE	SC	TDPA	M	A	B	C2	C3	T3S2	T3S3	T3S2R4	OTROS	A	B	C	K'	D	LATITUD	LONGITUD
T. C. Tepic - Puerto Vallarta	0.00	3	0	8455	2.2	80.5	1.2	9.4	1.0	4.7	0.3	0.1	0.6	82.7	1.2	16.1	0.079	0.502	20.759618	-105.374894
San Ignacio	9.00	3	0	3391	1.6	80.1	2.4	13.4	0.7	1.4	0.3	0.0	0.1	81.7	2.4	15.9	0.096	0.512	20.760064	-105.475214
Punta Mita	18.00																			

14 CARR: Ramal a Santa Cruz

CLAVE: 18030

RUTA: MEX-015

AÑO: 2012

LUGAR	ESTACION				CLASIFICACION VEHICULAR EN PORCIENTO														COORDENADAS	
	KM	TE	SC	TDPA	M	A	B	C2	C3	T3S2	T3S3	T3S2R4	OTROS	A	B	C	K'	D	LATITUD	LONGITUD
T. C. Tepic - Ixtapan de La Concepción	0.00																			
Santa Cruz	1.30	1	0	2156	8.4	79.0	0.1	10.6	0.3	1.5	0.0	0.0	0.1	87.4	0.1	12.5	0.113	0.503	21.433368	-105.190671

15 CARR: Santa Cruz - San Blas

CLAVE: 18230

RUTA: MEX-015

AÑO: 2012

LUGAR	ESTACION				CLASIFICACION VEHICULAR EN PORCIENTO														COORDENADAS	
	KM	TE	SC	TDPA	M	A	B	C2	C3	T3S2	T3S3	T3S2R4	OTROS	A	B	C	K'	D	LATITUD	LONGITUD
Santa Cruz	0.00	3	0	2664	5.5	82.9	0.3	8.2	1.0	1.6	0.3	0.0	0.2	88.4	0.3	11.3	0.120	0.511	21.433641	-105.187932
Playa Los Cocos	3.90	1	0	2233	7.6	77.1	1.0	8.9	1.2	2.5	0.8	0.2	0.7	84.7	1.0	14.3	0.101	0.507	21.461998	-105.187737
Aticama	5.00	3	0	2618	7.3	76.6	1.0	9.4	1.7	2.4	0.7	0.2	0.7	83.9	1.0	15.1	0.094	0.501	21.489260	-105.189708
T. C. Crucero San Blas - San Blas	17.00	1	0	2656	7.8	75.7	1.2	9.1	1.8	2.5	0.8	0.9	0.2	83.5	1.2	15.3	0.094	0.503	21.550241	-105.254154

NAYARIT

16 CARR : Tepic - Ixtapan de La Concepción

CLAVE: 18028

RUTA: MEX-015

AÑO : 2012

LUGAR	ESTACION				CLASIFICACION VEHICULAR EN PORCIENTO														COORDENADAS	
	KM	TE	SC	TDPA	M	A	B	C2	C3	T3S2	T3S3	T3S2R4	OTROS	A	B	C	K'	D	LATITUD	LONGITUD
T. C. Tepic - Mazatlán	0.00	3	0	11723	3.1	85.7	0.4	6.3	1.0	1.1	1.0	0.5	0.9	88.8	0.4	10.8	0.095	0.516	21.519212	-104.936953
T. Der. Mecatán	19.00	1	0	1897	1.9	87.4	1.1	5.9	1.1	1.4	0.7	0.1	0.4	89.3	1.1	9.6	0.095	0.539	21.500828	-105.081862
T. Der. Mecatán	19.00	3	0	2055	3.3	85.7	0.9	6.6	1.0	1.4	0.4	0.5	0.2	89.0	0.9	10.1	0.106	0.505	21.496254	-105.082991
Jalcocotán	27.00	1	0	2328	3.3	84.9	0.1	8.0	0.9	1.7	0.6	0.1	0.4	88.2	0.1	11.7	0.098	0.506	21.483429	-105.090802
T. Der. Santa Cruz	50.00	3	0	2068	3.0	85.2	0.5	7.9	0.8	1.4	0.4	0.7	0.1	88.2	0.5	11.3	0.100	0.504	21.426456	-105.184591
Ixtapan de La Concepción	77.42	1	0	1359	3.2	83.6	0.8	9.1	1.3	1.2	0.5	0.0	0.3	86.8	0.8	12.4	0.115	0.505	21.309786	-105.153638

17 CARR : Tepic - Mazatlán

CLAVE: 00500

RUTA: MEX-015

AÑO : 2012

LUGAR	ESTACION				CLASIFICACION VEHICULAR EN PORCIENTO														COORDENADAS	
	KM	TE	SC	TDPA	M	A	B	C2	C3	T3S2	T3S3	T3S2R4	OTROS	A	B	C	K'	D	LATITUD	LONGITUD
Tepic (Baja)	0.00	3	1	9433	4.2	84.4	3.2	4.2	0.2	0.9	2.1	0.3	0.5	88.6	3.2	8.2	0.100	0.520	21.512222	-104.906550
Tepic (Alta)	0.00	3	1	9477	2.3	84.0	2.5	3.0	0.7	2.1	3.9	0.8	0.7	86.3	2.5	11.2	0.074	0.502	21.512238	-104.906554
Tepic (Alta)	0.00	3	2	9420	2.2	82.6	3.0	3.4	0.8	2.1	4.3	0.9	0.7	84.8	3.0	12.2	0.068	0.502	21.512230	-104.906549
Tepic (Baja)	0.00	3	2	9693	4.8	83.1	3.5	4.4	0.2	1.0	2.2	0.3	0.5	87.9	3.5	8.6	0.069	0.520	21.512219	-104.906550
T. Izq. Libramiento de Tepic	2.56	1	1	14710	3.1	88.0	0.3	6.4	0.3	0.7	0.8	0.1	0.3	91.1	0.3	8.6	0.076	0.516	21.520181	-104.919113
T. Izq. Libramiento de Tepic	2.56	1	2	15703	3.2	86.8	0.3	7.2	0.3	0.8	1.0	0.1	0.3	90.0	0.3	9.7	0.076	0.516	21.520177	-104.919119
T. Izq. Aut. Tepic - Ent. San Blas (Cuota)	3.70	3	0	7948	0.5	71.6	1.9	7.3	5.6	8.3	2.9	0.7	1.2	72.1	1.9	26.0	0.081	0.544	21.536439	-104.932474
Los Otates	19.80	3	0	3881	0.7	80.0	1.2	2.1	5.6	6.5	2.8	0.7	0.4	80.7	1.2	18.1	0.086	0.526	21.636417	-104.969727
T. Izq. Jumatán	28.52	1	0	4296	0.9	67.2	2.9	6.8	7.1	8.1	5.0	1.0	1.0	68.1	2.9	29.0	0.082	0.526	21.669778	-105.023780
T. Izq. Jumatán	28.52	3	1	6324	0.9	69.5	3.2	7.9	4.6	8.7	2.8	1.4	1.0	70.4	3.2	26.4	0.099	0.503	21.668134	-105.029964
T. Izq. Jumatán	28.52	3	2	6250	0.9	66.2	3.5	8.7	4.8	9.9	3.2	1.6	1.2	67.1	3.5	29.4	0.089	0.503	21.668134	-105.029967
T. Izq. San Blas	33.54	1	1	6606	0.6	77.5	3.2	5.0	3.1	6.7	1.8	1.5	0.6	78.1	3.2	18.7	0.101	0.500	21.682477	-105.045313
T. Izq. San Blas	33.54	1	2	6597	0.6	75.6	3.6	5.3	3.6	6.9	2.0	1.7	0.7	76.2	3.6	20.2	0.090	0.500	21.682472	-105.045313
T. Izq. San Blas	33.54	3	1	6947	0.5	71.0	3.9	6.5	4.0	8.4	2.3	2.3	1.1	71.5	3.9	24.6	0.084	0.510	21.701096	-105.053586
T. Izq. San Blas	33.54	3	2	6874	0.7	67.5	4.4	7.3	4.6	9.3	2.6	2.4	1.2	68.2	4.4	27.4	0.084	0.510	21.701096	-105.053583
T. Izq. Villa Hidalgo	48.12	1	0	6385	0.6	67.0	5.0	8.0	5.9	9.1	2.7	1.0	0.7	67.6	5.0	27.4	0.077	0.506	21.806635	-105.102588
T. Izq. Villa Hidalgo	48.12	3	0	5921	0.7	67.5	4.9	7.8	5.0	9.7	3.0	1.3	0.1	68.2	4.9	26.9	0.087	0.520	21.808570	-105.103357
T. Izq. Santiago Ixcuintla	56.42	1	0	6874	0.8	66.8	6.5	8.6	4.7	8.6	2.8	0.7	0.5	67.6	6.5	25.9	0.081	0.503	21.853736	-105.152127
T. Izq. Santiago Ixcuintla	56.42	3	0	6113	0.6	74.2	4.7	5.7	3.8	7.9	1.4	0.8	0.9	74.8	4.7	20.5	0.070	0.534	21.859791	-105.155812
T. Izq. Tuxpan	70.60	1	0	7372	1.4	68.6	5.9	7.9	4.0	8.6	2.2	0.7	0.7	70.0	5.9	24.1	0.075	0.504	21.944202	-105.216010
T. Izq. Tuxpan	70.60	3	0	7873	1.3	68.3	5.5	7.1	4.7	9.6	2.6	0.6	0.3	69.6	5.5	24.9	0.075	0.510	21.956702	-105.221624
T. Der. Rosa morada	90.70	3	0	4604	1.5	56.1	5.3	9.4	5.6	15.7	4.0	1.3	1.1	57.6	5.3	37.1	0.070	0.503	22.119673	-105.217762
Tierra Generosa	110.40	1	0	3300	1.2	53.2	7.4	9.4	6.6	14.0	5.3	2.0	0.9	54.4	7.4	38.2	0.066	0.507	22.293523	-105.272954
T. Der. Acaponeta	136.52	1	0	6259	1.7	59.6	3.5	9.0	5.6	15.6	3.0	1.2	0.8	61.3	3.5	35.2	0.073	0.505	22.478978	-105.385603



## NAYARIT

17 CARR : Tepic - Mazatlán

CLAVE: 00500

RUTA: MEX-015

AÑO: 2012

LUGAR	ESTACION				CLASIFICACION VEHICULAR EN PORCIENTO													COORDENADAS		
	KM	TE	SC	TDPA	M	A	B	C2	C3	T3S2	T3S3	T3S2R4	OTROS	A	B	C	K'	D	LATITUD	LONGITUD
T. Der. Acaponeta	136.52	3	0	4547	1.4	57.3	4.1	9.2	3.5	17.6	4.2	1.6	1.1	58.7	4.1	37.2	0.090	0.502	22.496239	-105.384639
Lim. Edos. Term. Nay. Ppia. Sin.	144.60																			
Escuinapa de Hidalgo	200.00	1	0	8307	1.2	72.0	3.1	7.3	2.3	10.6	2.5	0.5	0.5	73.2	3.1	23.7	0.077	0.505	22.833522	-105.763841
Escuinapa de Hidalgo	200.00	3	0	5667	1.6	67.1	4.0	9.6	3.7	10.4	2.7	0.4	0.5	68.7	4.0	27.3	0.079	0.502	22.841189	-105.790651
Rosario	221.71	1	0	6853	1.4	69.5	3.5	8.5	3.3	10.1	2.5	0.4	0.8	70.9	3.5	25.6	0.075	0.514	22.996954	-105.851450
Rosario	221.71	3	0	4780	1.3	70.0	2.3	9.1	3.4	8.4	3.8	0.6	1.1	71.3	2.3	26.4	0.089	0.507	23.003813	-105.869840
T. Der. Durango	267.99	1	0	6843	1.1	68.9	2.9	8.3	4.7	9.4	3.1	0.5	1.1	70.0	2.9	27.1	0.085	0.503	23.189386	-106.203747
T. Der. Durango	267.99	3	1	8184	3.5	70.0	3.2	6.0	2.5	9.2	2.7	1.8	1.1	73.5	3.2	23.3	0.080	0.531	23.189307	-106.211928
T. Der. Durango	267.99	3	2	8339	3.9	66.6	4.0	6.6	2.7	9.8	3.2	2.1	1.1	70.5	4.0	25.5	0.088	0.531	23.189308	-106.211927
Villa Unión	269.52	3	1	8351	3.6	70.3	4.6	8.0	2.1	6.8	2.0	1.6	1.0	73.9	4.6	21.5	0.090	0.515	23.190349	-106.222032
Villa Unión	269.52	3	2	8411	3.4	68.3	4.7	8.7	2.4	7.5	2.2	1.8	1.0	71.7	4.7	23.6	0.082	0.515	23.190352	-106.222036
T. Der. Libramiento de Mazatlán	288.87	1	1	10797	4.3	76.5	2.4	9.0	1.7	4.0	1.1	0.8	0.2	80.8	2.4	16.8	0.073	0.501	23.226309	-106.384031
T. Der. Libramiento de Mazatlán Mazatlán	288.87 292.00	1 2	2	10820	4.5	77.0	2.2	7.9	1.9	4.2	1.2	0.9	0.2	81.5	2.2	16.3	0.076	0.501	23.226308	-106.384034

18 CARR : Tepic - Presa Aguamilpa

CLAVE: 18029

RUTA: MEX-015

AÑO: 2012

LUGAR	ESTACION				CLASIFICACION VEHICULAR EN PORCIENTO													COORDENADAS		
	KM	TE	SC	TDPA	M	A	B	C2	C3	T3S2	T3S3	T3S2R4	OTROS	A	B	C	K'	D	LATITUD	LONGITUD
T. C. Guadalajara - Tepic	0.00	3	1	9600	4.9	81.7	0.7	6.9	3.2	1.2	0.8	0.2	0.4	86.6	0.7	12.7	0.073	0.501	21.479046	-104.846042
T. C. Guadalajara - Tepic	0.00	3	2	9626	4.1	81.7	0.7	7.0	3.6	1.3	0.9	0.3	0.4	85.8	0.7	13.5	0.076	0.501	21.479046	-104.846043
X. C. Tepic - Fco. I. Madero	17.50	3	0	1346	4.3	81.0	0.7	6.8	3.7	1.5	0.7	0.7	0.6	85.3	0.7	14.0	0.087	0.505	21.587916	-104.847820
Presa Aguamilpa	54.00	1	0	1214	2.7	78.5	1.4	8.0	3.9	2.3	2.4	0.3	0.5	81.2	1.4	17.4	0.084	0.504	21.825420	-104.828417

19 CARR : Tepic - Puerto Vallarta

CLAVE: 00068

RUTA: MEX-200

AÑO: 2012

LUGAR	ESTACION				CLASIFICACION VEHICULAR EN PORCIENTO													COORDENADAS		
	KM	TE	SC	TDPA	M	A	B	C2	C3	T3S2	T3S3	T3S2R4	OTROS	A	B	C	K'	D	LATITUD	LONGITUD
Tepic	0.00	3	1	19584	2.5	90.6	1.1	2.2	0.2	0.7	1.9	0.2	0.6	93.1	1.1	5.8	0.083	0.546	21.489655	-104.894807
Tepic	0.00	3	2	21178	2.8	89.2	1.2	2.6	0.2	0.9	2.2	0.2	0.7	92.0	1.2	6.8	0.075	0.546	21.489683	-104.894800
Limite de Zona Urbana Tepic	1.80	3	1	15120	2.4	87.0	2.2	2.9	0.4	1.1	2.8	0.4	0.8	89.4	2.2	8.4	0.076	0.502	21.474055	-104.889803
Limite de Zona Urbana Tepic	1.80	3	2	14990	2.3	85.9	2.3	3.3	0.4	1.2	3.3	0.4	0.9	88.2	2.3	9.5	0.084	0.502	21.474059	-104.889800
X. C. Libramiento de Tepic (Alta)	3.90	3	1	11480	0.3	95.1	0.0	1.3	0.0	0.6	2.4	0.1	0.2	95.4	0.0	4.6	0.077	0.518	21.465351	-104.889159
X. C. Libramiento de Tepic (Baja)	3.90	3	1	5112	6.1	74.6	0.7	12.6	3.4	1.2	1.1	0.1	0.2	80.7	0.7	18.6	0.075	0.518	21.465347	-104.889239
X. C. Libramiento de Tepic (Alta)	3.90	3	2	13051	0.4	94.6	0.0	1.4	0.0	0.7	2.6	0.1	0.2	95.0	0.0	5.0	0.088	0.518	21.465441	-104.888923

NAYARIT

19 CARR : Tepic - Puerto Vallarta

CLAVE: 00068

RUTA: MEX-200

AÑO : 2012

LUGAR	ESTACION				CLASIFICACION VEHICULAR EN PORCIENTO														COORDENADAS	
	KM	TE	SC	TDPA	M	A	B	C2	C3	T3S2	T3S3	T3S2R4	OTROS	A	B	C	K'	D	LATITUD	LONGITUD
X. C. Libramiento de Tepic (Baja)	3.90	3	2	4729	14.5	63.3	0.7	14.7	3.9	1.3	1.3	0.1	0.2	77.8	0.7	21.5	0.105	0.518	21.465431	-104.888918
Jalisco	7.15	3	0	12060	1.6	85.2	0.6	8.9	2.6	0.5	0.5	0.0	0.1	86.8	0.6	12.6	0.093	0.504	21.435430	-104.899788
T. Izq. Emiliano Zapata	18.40	3	0	5277	6.3	79.3	1.0	6.8	1.6	2.3	1.6	0.3	0.8	85.6	1.0	13.4	0.085	0.501	21.360977	-104.918623
T. Izq. Compostela (1° Acceso)	35.80	1	0	5292	0.7	81.8	1.6	10.3	1.6	2.6	0.9	0.1	0.4	82.5	1.6	15.9	0.090	0.504	21.256163	-104.901514
T. Izq. Compostela (1° Acceso)	35.80	3	0	3809	1.7	83.2	1.3	7.9	1.6	2.4	1.2	0.1	0.6	84.9	1.3	13.8	0.100	0.527	21.248424	-104.903111
Las Varas	71.30	1	0	9588	1.2	82.5	2.3	8.2	1.6	2.2	1.1	0.7	0.2	83.7	2.3	14.0	0.093	0.505	21.186730	-105.124158
Las Varas	71.30	3	0	11204	1.2	84.0	2.5	7.4	1.2	1.7	1.2	0.5	0.3	85.2	2.5	12.3	0.096	0.511	21.172364	-105.147290
T. Der. Rincón de Guayabitos	94.50	1	1	7891	0.1	88.6	1.3	7.0	0.5	1.2	0.8	0.3	0.2	88.7	1.3	10.0	0.081	0.505	21.027299	-105.260693
T. Der. Rincón de Guayabitos	94.50	1	2	8068	2.1	85.6	1.4	7.7	0.5	1.3	0.9	0.3	0.2	87.7	1.4	10.9	0.085	0.505	21.027304	-105.260693
T. Der. Rincón de Guayabitos	94.50	3	0	8965	1.8	80.9	3.8	8.2	1.5	2.0	1.1	0.6	0.1	82.7	3.8	13.5	0.089	0.532	21.008592	105.271789
T. Der. Sayulita	122.91	1	0	8905	1.2	80.5	3.4	6.9	2.1	3.0	2.0	0.5	0.4	81.7	3.4	14.9	0.082	0.500	20.864137	-105.425827
T. Der. Sayulita	122.91	3	0	8456	0.7	79.9	3.7	8.1	1.5	3.4	1.3	0.7	0.7	80.6	3.7	15.7	0.090	0.504	20.860320	-105.424886
T. Der. Cruz de Juanacastle	137.30	3	1	7488	3.4	67.6	2.8	19.8	1.2	2.3	1.8	1.0	0.1	71.0	2.8	26.2	0.080	0.505	20.764323	-105.364652
T. Der. Cruz de Juanacastle	137.30	3	2	7335	1.6	66.3	3.2	22.0	1.4	2.4	1.8	1.2	0.1	67.9	3.2	28.9	0.076	0.505	20.764323	-105.364652
Bucerías	140.81	3	1	8742	3.7	72.5	1.7	16.9	0.8	1.6	1.0	0.8	1.0	76.2	1.7	22.1	0.082	0.505	20.749132	-105.318660
Bucerías	140.81	3	2	8582	1.8	71.2	1.9	19.6	0.9	1.7	1.1	0.8	1.0	73.0	1.9	25.1	0.073	0.505	20.749131	-105.318663
Lim. Edos. Term. Nay. Ppia. Jal.	152.60																			
T. Der. Aeropuerto Díaz Ordáz	158.37	1	1	23579	1.3	86.6	1.2	2.7	1.3	2.5	2.4	1.0	1.0	87.9	1.2	10.9	0.072	0.508	20.681599	-105.242977
T. Der. Aeropuerto Díaz Ordáz	158.37	1	2	22866	1.3	85.5	1.4	3.0	1.3	2.6	2.6	1.2	1.1	86.8	1.4	11.8	0.067	0.508	20.681599	-105.242977
T. Der. Aeropuerto Díaz Ordáz (Alta)	158.37	3	1	13225	1.6	86.4	0.9	2.5	0.8	2.1	3.8	0.9	1.0	88.0	0.9	11.1	0.074	0.501	20.670443	-105.249257
T. Der. Aeropuerto Díaz Ordáz (Baja)	158.37	3	1	9064	1.6	79.7	3.3	11.0	0.6	1.2	1.8	0.2	0.6	81.3	3.3	15.4	0.094	0.530	20.670417	-105.249331
T. Der. Aeropuerto Díaz Ordáz (Alta)	158.37	3	2	13189	1.9	85.1	1.0	2.7	0.8	2.3	4.2	1.0	1.0	87.0	1.0	12.0	0.073	0.501	20.670466	-105.249189
T. Der. Aeropuerto Díaz Ordáz (Baja)	158.37	3	2	8914	2.1	77.8	3.8	11.2	0.8	1.3	2.2	0.2	0.6	79.9	3.8	16.3	0.082	0.530	20.670531	-105.249151
Puerto Vallarta	166.88																			

20 CARR : Chapalilla - Compostela (Cuota)

CLAVE: 18004

RUTA: MEX-068D

AÑO : 2012

LUGAR	ESTACION				CLASIFICACION VEHICULAR EN PORCIENTO														COORDENADAS	
	KM	TE	SC	TDPA	M	A	B	C2	C3	T3S2	T3S3	T3S2R4	OTROS	A	B	C	K'	D	LATITUD	LONGITUD
T. C. Guadalajara - Tepic	0.00	3	0	5530	0.5	71.6	6.2	9.6	3.7	4.7	1.8	1.4	0.5	72.1	6.2	21.7	0.124	0.503	21.190477	-104.643166
Caseta de Cobro Compostela	31.50	2	0	4487	0.0	78.0	8.7	4.1	3.4	3.3	0.9	0.2	1.4	78.0	8.7	13.3	0.114	0.500	21.229440	-104.887437
T. Der. Compostela	36.50	1	0	5461	0.7	72.2	6.6	9.0	3.5	4.5	1.6	1.3	0.6	72.9	6.6	20.5	0.107	0.519	21.228316	-104.898781
T. C. Tepic - Puerto Vallarta	38.00	1	0	5330	0.6	72.3	6.0	9.4	3.6	4.8	1.5	1.4	0.4	72.9	6.0	21.1	0.111	0.505	21.231526	-104.920576

## NAYARIT

21 CARR : Guadalajara - Tepic (Cuota)

CLAVE: 00033

RUTA: MEX-057D

AÑO : 2012

LUGAR	ESTACION				CLASIFICACION VEHICULAR EN PORCIENTO													COORDENADAS		
	KM	TE	SC	TDPA	M	A	B	C2	C3	T3S2	T3S3	T3S2R4	OTROS	A	B	C	K'	D	LATITUD	LONGITUD
T. C. Guadalajara - Tepic (Libre)	0.00	3	1	5222	0.3	68.9	7.8	9.3	2.2	4.9	2.1	3.4	1.1	69.2	7.8	23.0	0.086	0.523	20.738404	-103.582243
T. C. Guadalajara - Tepic (Libre)	0.00	3	2	5718	0.3	67.2	8.6	9.5	2.4	5.2	2.2	3.5	1.1	67.5	8.6	23.9	0.087	0.523	20.738404	-103.582244
Caseta de Cobro Arenal	10.96	2	1	5169	0.1	64.5	12.7	2.6	3.7	10.2	1.8	3.9	0.5	64.6	12.7	22.7	0.092	0.500	20.778732	-103.662440
Caseta de Cobro Arenal	10.96	2	2	5168	0.1	64.5	12.7	2.6	3.7	10.2	1.8	3.9	0.5	64.6	12.7	22.7	0.092	0.500	20.778732	-103.662440
T. Der. Magdalena	45.00	1	1	4407	0.3	57.9	10.1	8.6	4.5	11.6	2.2	3.9	0.9	58.2	10.1	31.7	0.082	0.520	20.898096	-103.955058
T. Der. Magdalena	45.00	1	2	4765	0.5	53.0	11.6	9.3	5.1	12.5	2.5	4.5	1.0	53.5	11.6	34.9	0.106	0.520	20.898027	-103.955058
T. Der. Magdalena	45.00	3	1	4915	0.4	55.6	9.7	8.3	6.0	12.6	2.8	3.6	1.0	56.0	9.7	34.3	0.081	0.508	20.903047	-103.989290
T. Der. Magdalena	45.00	3	2	5079	0.6	50.1	10.8	9.5	6.3	14.4	3.3	4.0	1.0	50.7	10.8	38.5	0.089	0.508	20.903047	-103.989290
Caseta de Cobro Plan de Barrancas	69.34	2	1	5251	0.2	59.9	12.2	3.1	5.5	12.4	2.4	3.7	0.6	60.1	12.2	27.7	0.092	0.500	21.005394	-104.144086
Caseta de Cobro Plan de Barrancas	69.34	2	2	5250	0.2	59.9	12.2	3.1	5.5	12.4	2.4	3.7	0.6	60.1	12.2	27.7	0.092	0.500	21.005394	-104.144086
Lim. Edos. Term. Jal. Ppia. Nay.	84.60																			
Caseta de Cobro Santa Ma. del Oro	145.32	2	1	2994	0.2	57.5	13.7	2.9	3.9	13.3	1.9	5.9	0.7	57.7	13.7	28.6	0.092	0.500	21.328309	-104.664328
Caseta de Cobro Santa Ma. del Oro	145.32	2	2	2993	0.2	57.5	13.7	2.9	3.9	13.3	1.9	5.9	0.7	57.7	13.7	28.6	0.092	0.500	21.328309	-104.664328
Caseta de Cobro Santa Ma. del Oro	145.32	3	1	4178	0.8	57.3	10.0	8.8	4.0	11.5	2.0	4.8	0.8	58.1	10.0	31.9	0.111	0.501	21.329752	-104.665259
Caseta de Cobro Santa Ma. del Oro	145.32	3	2	4001	0.7	53.7	11.1	9.0	4.5	12.4	2.3	5.4	0.9	54.4	11.1	34.5	0.090	0.501	21.329752	-104.665259
T. C. Guadalajara - Tepic (Libre)	168.62																			

22 CARR : Tepic - Villa Unión (cuota)

CLAVE: 00500

RUTA: MEX-015D

AÑO : 2012

LUGAR	ESTACION				CLASIFICACION VEHICULAR EN PORCIENTO													COORDENADAS		
	KM	TE	SC	TDPA	M	A	B	C2	C3	T3S2	T3S3	T3S2R4	OTROS	A	B	C	K'	D	LATITUD	LONGITUD
Tepic	0.00																			
Caseta de Cobro El Pichón	4.70	1	1	4957	0.2	70.0	6.3	8.7	2.7	7.0	1.5	2.7	0.9	70.2	6.3	23.5	0.098	0.508	21.562996	-104.974159
Caseta de Cobro El Pichón	4.70	1	2	4810	0.3	66.2	7.2	9.8	3.0	7.9	1.6	3.1	0.9	66.5	7.2	26.3	0.098	0.508	21.562995	-104.974158
Caseta de Cobro El Pichón	4.70	2	1	4702	0.2	70.9	7.9	3.9	3.9	7.8	1.3	3.5	0.6	71.1	7.9	21.0	0.098	0.500	21.571682	-104.987528
Caseta de Cobro El Pichón	4.70	2	2	4702	0.2	70.9	7.9	3.9	3.9	7.8	1.3	3.5	0.6	71.1	7.9	21.0	0.098	0.500	21.571682	-104.987528
T. C. Tepic - Mazatlán	21.00	1	1	4729	0.4	66.4	7.4	9.5	2.7	8.1	1.4	3.3	0.8	66.8	7.4	25.8	0.093	0.513	21.648014	-105.024511
T. C. Tepic - Mazatlán	21.00	1	2	4714	0.6	62.7	8.4	10.4	3.1	8.7	1.6	3.6	0.9	63.3	8.4	28.3	0.102	0.513	21.648012	-105.024514
T. C. Tepic - Mazatlán	24.50	3	0	3992	0.4	55.4	9.2	9.6	4.9	11.3	3.3	5.1	0.8	55.8	9.2	35.0	0.101	0.502	21.714687	-105.060554
Est. Ruíz	54.90	1	0	3099	0.3	46.7	10.3	10.5	5.4	15.1	3.4	7.5	0.8	47.0	10.3	42.7	0.067	0.501	21.947889	-105.112714
Est. Ruíz	54.90	3	0	3328	0.4	45.5	11.9	9.5	6.6	14.0	3.5	7.6	1.0	45.9	11.9	42.2	0.071	0.508	21.961031	-105.122907
Rosa morada	73.50	1	0	3269	0.3	43.4	11.4	9.6	5.3	17.0	3.7	8.4	0.9	43.7	11.4	44.9	0.071	0.506	22.084070	-105.210220
Rosa morada	73.50	3	0	2839	0.4	49.5	10.9	7.7	3.8	16.0	3.1	7.7	0.9	49.9	10.9	39.2	0.068	0.529	22.092460	-105.220849
Acaponeta	120.20	1	0	2578	0.3	43.4	13.6	8.9	5.0	16.2	2.6	9.0	1.0	43.7	13.6	42.7	0.076	0.503	22.447583	-105.418599
Caseta de Cobro Acaponeta	120.20	2	0	226	0.4	55.1	13.1	5.4	8.3	8.9	3.0	5.2	0.6	55.5	13.1	31.4	0.081	0.500	22.454352	-105.419106

NAYARIT

22 CARR: Tepic - Villa Unión (cuota)

CLAVE: 00500

RUTA: MEX-015D

AÑO: 2012

LUGAR	ESTACION				CLASIFICACION VEHICULAR EN PORCIENTO														COORDENADAS	
	KM	TE	SC	TDPA	M	A	B	C2	C3	T3S2	T3S3	T3S2R4	OTROS	A	B	C	K'	D	LATITUD	LONGITUD
Acaponeta	120.20	3	0	2436	0.4	42.2	14.6	7.9	4.8	16.6	4.0	8.6	0.9	42.6	14.6	42.8	0.081	0.506	22.456876	-105.428460
Lim. Edos. Term. Nay. Ppia. Sin.	132.80																			
Escuinapa de Hidalgo	208.60	1	1	1651	0.3	44.9	8.1	8.2	4.6	21.2	3.1	8.9	0.7	45.2	8.1	46.7	0.078	0.504	22.853037	-105.748645
Escuinapa de Hidalgo	208.60	1	2	1622	0.4	39.2	8.7	8.5	5.0	24.2	3.3	9.9	0.8	39.6	8.7	51.7	0.073	0.504	22.853036	-105.748651
Escuinapa de Hidalgo	208.60	3	0	3250	0.6	42.3	10.6	6.0	4.0	22.4	3.0	10.2	0.9	42.9	10.6	46.5	0.078	0.508	22.859557	-105.755065
Rosario	220.68	1	0	3000	0.6	49.2	9.2	6.6	3.3	19.1	3.0	8.1	0.9	49.8	9.2	41.0	0.073	0.511	22.979589	-105.871915
Caseta de Cobro Rosario	220.68	2	0	3473	0.3	42.8	11.3	3.8	5.0	22.7	3.0	10.1	1.0	43.1	11.3	45.6	0.081	0.500	22.984689	-105.877932
Rosario	220.68	3	0	3455	0.5	46.3	10.1	9.2	2.7	19.2	3.0	8.2	0.8	46.8	10.1	43.1	0.071	0.503	22.991092	-105.885510
Villa Unión	240.90	1	0	3246	0.6	46.4	10.3	9.0	3.5	18.3	3.2	7.7	1.0	47.0	10.3	42.7	0.077	0.508	23.185990	-106.174228

23 CARR: El Carrizo - La Batanga

CLAVE: 18107

RUTA: NAY-078

AÑO: 2012

LUGAR	ESTACION				CLASIFICACION VEHICULAR EN PORCIENTO														COORDENADAS	
	KM	TE	SC	TDPA	M	A	B	C2	C3	T3S2	T3S3	T3S2R4	OTROS	A	B	C	K'	D	LATITUD	LONGITUD
T. C. Ent. Santiago Ixcuintla - Playa Los Corchos	0.00	3	0	2575	1.1	85.2	3.0	6.7	1.7	0.7	0.6	0.3	0.7	86.3	3.0	10.7	0.081	0.507	21.772508	-105.274248
Sentispac	9.00	1	0	1635	9.5	79.5	3.3	4.9	1.1	1.2	0.4	0.0	0.1	89.0	3.3	7.7	0.087	0.501	21.809438	-105.338363
La Batanga	25.00	1	0	1466	10.0	76.6	3.5	5.3	1.3	1.7	0.8	0.2	0.6	86.6	3.5	9.9	0.088	0.501	21.882459	-105.459009

24 CARR: Navarrete - Sauta

CLAVE: 18013

RUTA: NAY-013

AÑO: 2012

LUGAR	ESTACION				CLASIFICACION VEHICULAR EN PORCIENTO														COORDENADAS	
	KM	TE	SC	TDPA	M	A	B	C2	C3	T3S2	T3S3	T3S2R4	OTROS	A	B	C	K'	D	LATITUD	LONGITUD
T. C. Crucero San Blas - San Blas	0.00	3	0	2517	14.2	76.3	2.3	4.2	1.5	1.2	0.2	0.0	0.1	90.5	2.3	7.2	0.096	0.505	21.653222	-105.118047
Sauta	7.00	1	0	2122	14.5	74.6	2.1	5.7	1.2	1.6	0.2	0.0	0.1	89.1	2.1	8.8	0.105	0.504	21.714889	-105.138388

25 CARR: Ramal a Amado Nervo

CLAVE: 18011

RUTA: NAY

AÑO: 2012

LUGAR	ESTACION				CLASIFICACION VEHICULAR EN PORCIENTO														COORDENADAS	
	KM	TE	SC	TDPA	M	A	B	C2	C3	T3S2	T3S3	T3S2R4	OTROS	A	B	C	K'	D	LATITUD	LONGITUD
T. C. Guadalajara - Tepic	0.00	3	0	1063	3.1	81.7	0.2	13.4	0.7	0.7	0.2	0.0	0.0	84.8	0.2	15.0	0.100	0.502	21.128107	-104.610926
Amado Nervo	15.00																			



NAYARIT

31 CARR: Ramal a Villa Hidalgo

CLAVE: 18031

RUTA: NAY

AÑO: 2012

LUGAR	ESTACION				CLASIFICACION VEHICULAR EN PORCIENTO														COORDENADAS	
	KM	TE	SC	TDPA	M	A	B	C2	C3	T3S2	T3S3	T3S2R4	OTROS	A	B	C	K'	D	LATITUD	LONGITUD
T. C. Tepic - Mazatlán	0.00	3	0	2500	4.9	73.3	3.1	8.5	4.8	3.2	1.4	0.5	0.3	78.2	3.1	18.7	0.080	0.502	21.805493	-105.108389
Villa Hidalgo	16.00	1	0	3103	8.0	75.6	1.8	6.9	2.1	3.8	1.0	0.2	0.6	83.6	1.8	14.6	0.082	0.501	21.754571	-105.227851

32 CARR: Ramal a Volcán del Ceboruco

CLAVE: 18003

RUTA: NAY

AÑO: 2012

LUGAR	ESTACION				CLASIFICACION VEHICULAR EN PORCIENTO														COORDENADAS	
	KM	TE	SC	TDPA	M	A	B	C2	C3	T3S2	T3S3	T3S2R4	OTROS	A	B	C	K'	D	LATITUD	LONGITUD
T. C. Guadalajara - Tepic	0.00	3	0	3976	0.9	62.1	3.0	10.7	7.8	10.8	2.9	0.9	0.9	63.0	3.0	34.0	0.078	0.509	21.051603	-104.459721
Volcán Ceboruco	25.00																			

33 CARR: Tepic - Francisco I. Madero

CLAVE: 18009

RUTA: NAY-MEX

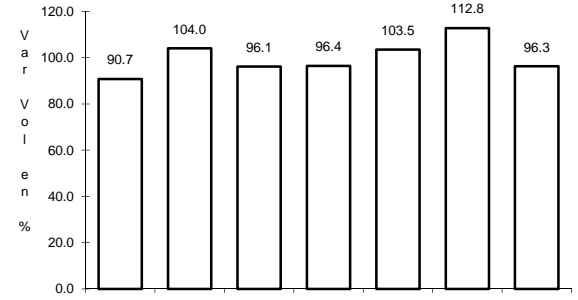
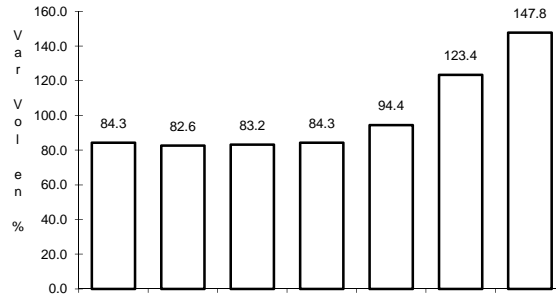
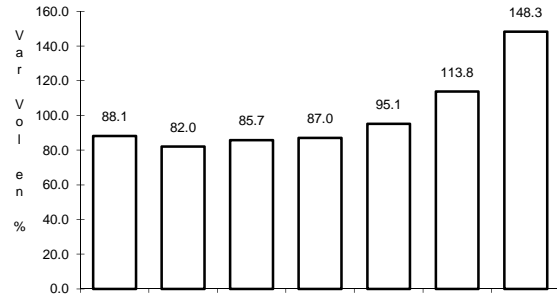
AÑO: 2012

LUGAR	ESTACION				CLASIFICACION VEHICULAR EN PORCIENTO														COORDENADAS	
	KM	TE	SC	TDPA	M	A	B	C2	C3	T3S2	T3S3	T3S2R4	OTROS	A	B	C	K'	D	LATITUD	LONGITUD
Tepic	0.00	3	0	5316	3.4	85.8	0.1	7.2	0.2	2.6	0.3	0.0	0.4	89.2	0.1	10.7	0.087	0.513	21.544131	-104.864444
Bellavista	9.00	3	0	4117	2.4	86.0	0.1	7.5	0.9	2.1	0.5	0.1	0.4	88.4	0.1	11.5	0.081	0.503	21.565083	-104.874334
Francisco I. Madero	16.00																			

1 CARR: Crucero de San Blas - San Blas

CLAVE: 18229

RUTA: MEX-015



Km: 0.00 Tipo: 3 Sent: 0

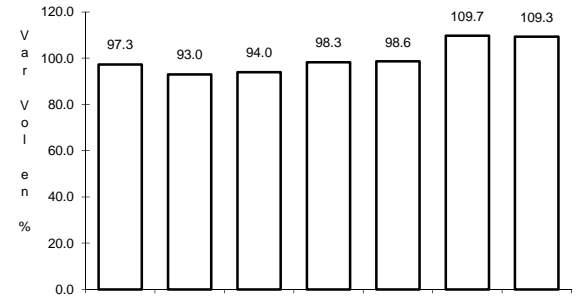
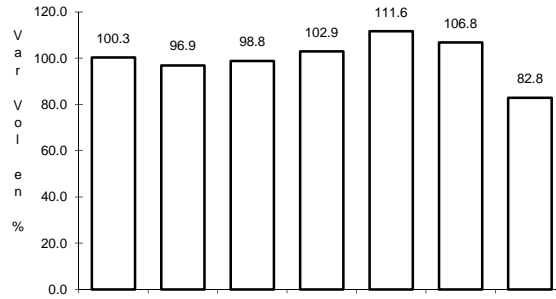
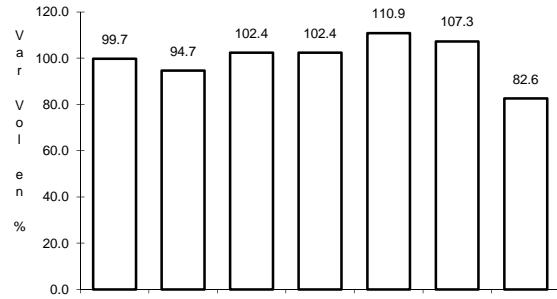
Km: 11.00 Tipo: 3 Sent: 0

Km: 36.00 Tipo: 1 Sent: 0

2 CARR: Ent. Acaponeta - El Novillero

CLAVE: 18023

RUTA: MEX-015



Km: 0.00 Tipo: 3 Sent: 0

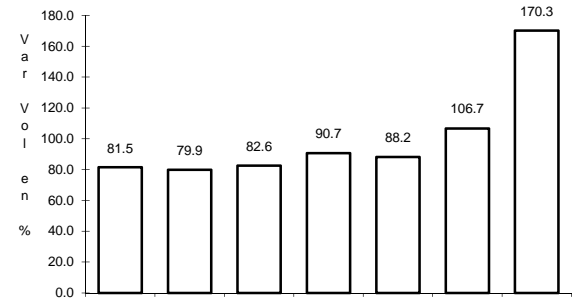
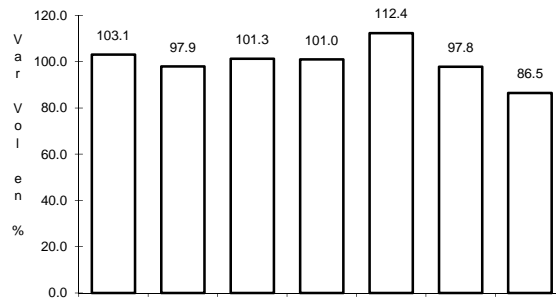
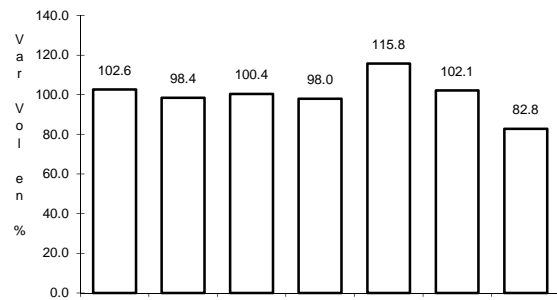
Km: 13.00 Tipo: 1 Sent: 0

Km: 36.00 Tipo: 1 Sent: 0

3 CARR: Ent. Santiago Ixcuintla - Playa Los Corchos

CLAVE: 18016

RUTA: MEX-015



Km: 0.00 Tipo: 3 Sent: 1

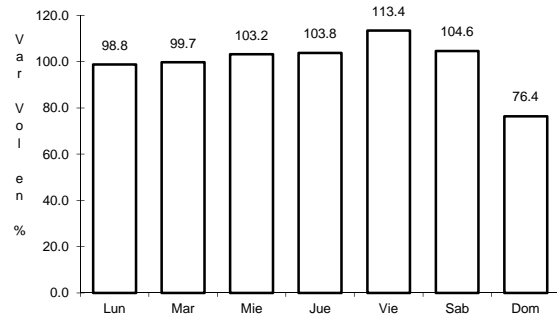
Km: 0.00 Tipo: 3 Sent: 2

Km: 39.00 Tipo: 1 Sent: 0

4 CARR: Guadalajara - Tepic

CLAVE: 00031

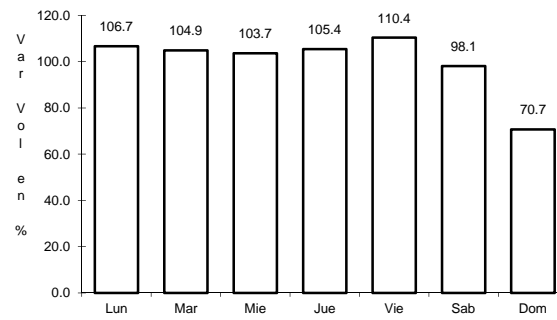
RUTA: MEX-015



Km: 8.30

Tipo: 3

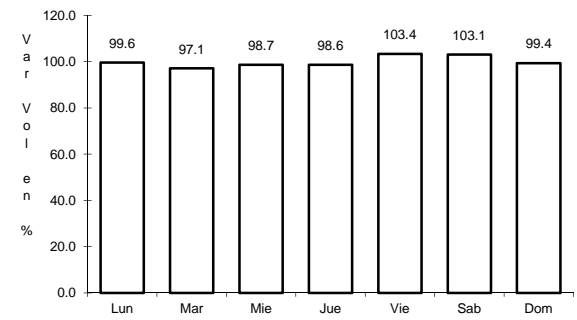
Sent: 1



Km: 8.30

Tipo: 3

Sent: 2



Km: 138.84

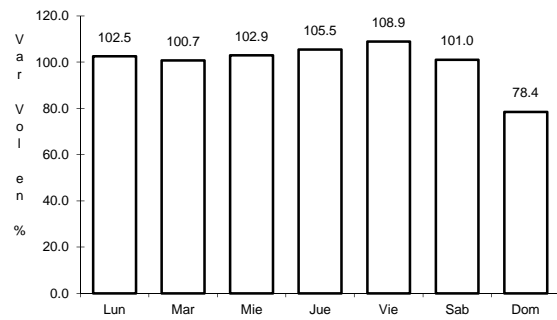
Tipo: 1

Sent: 0

5 CARR: Libramiento de Tepic

CLAVE: 18232

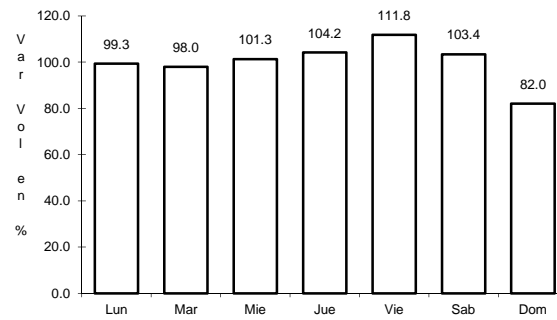
RUTA: MEX-015



Km: 5.00

Tipo: 1

Sent: 1



Km: 5.00

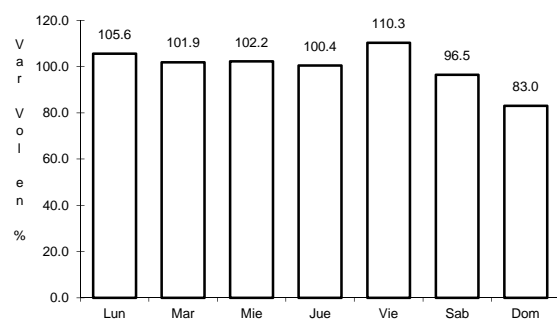
Tipo: 1

Sent: 2

6 CARR: Peñitas - Tuxpan

CLAVE: 18019

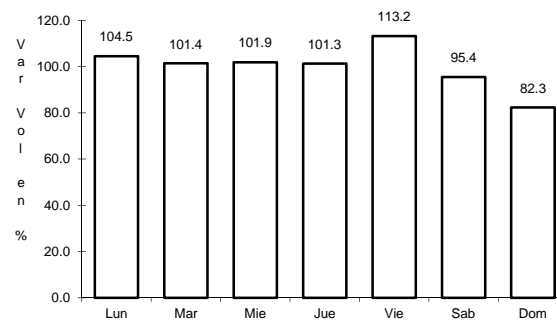
RUTA: MEX-015



Km: 0.00

Tipo: 3

Sent: 0



Km: 9.00

Tipo: 1

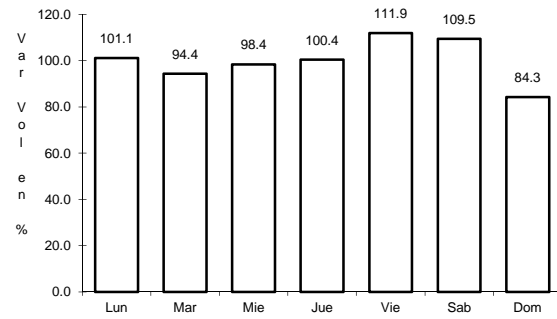
Sent: 0



## 7 CARR: Ramal a Acaponeta

CLAVE: 18038

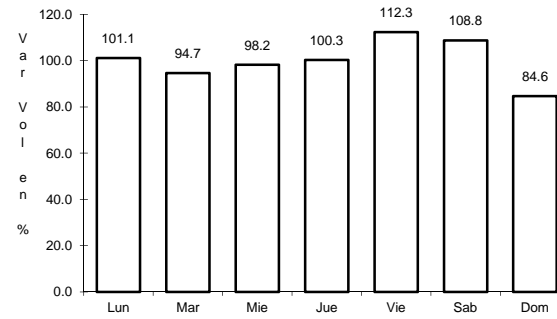
RUTA: MEX-015



Km: 0.00

Tipo: 3

Sent: 1



Km: 0.00

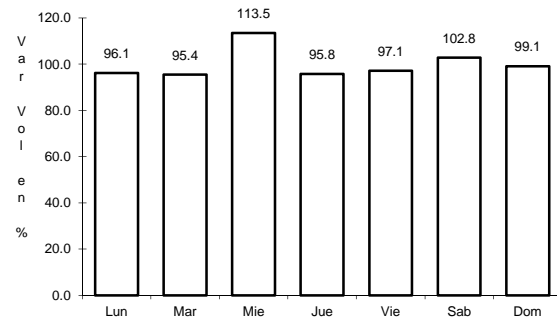
Tipo: 3

Sent: 2

## 8 CARR: Ramal a Estación Nanchi

CLAVE: 18068

RUTA: MEX-015



Km: 0.00

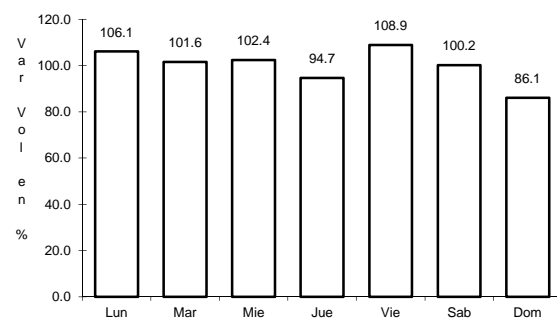
Tipo: 3

Sent: 0

## 9 CARR: Ramal a Estación Ruíz

CLAVE: 18026

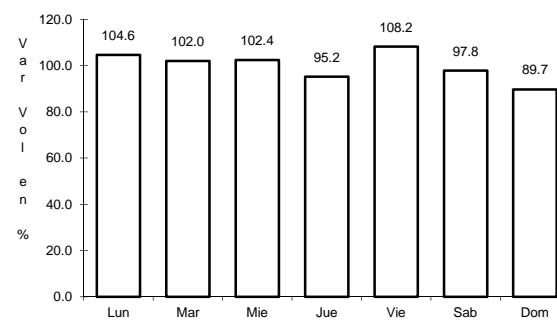
RUTA: MEX-015



Km: 0.00

Tipo: 3

Sent: 0



Km: 5.50

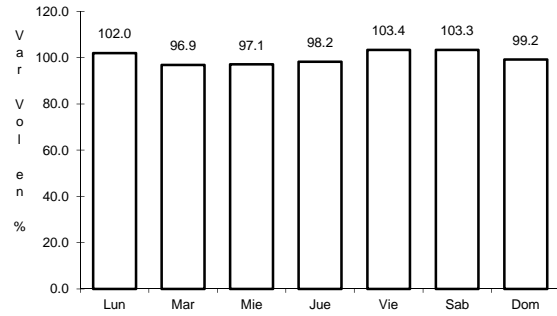
Tipo: 1

Sent: 0

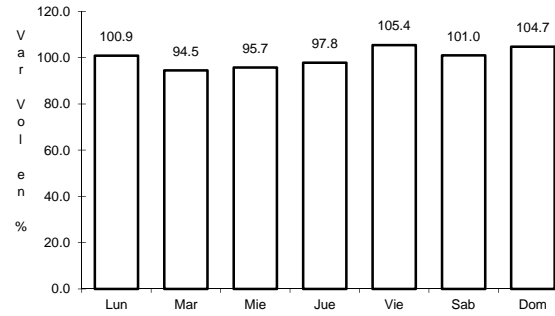
10 CARR: Ramal a La Laguna de Santa María

CLAVE: 18005

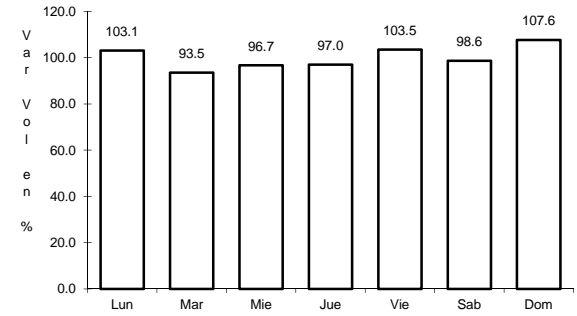
RUTA: MEX-015



Km: 0.00                      Tipo: 3                      Sent: 0



Km: 11.50                      Tipo: 1                      Sent: 1

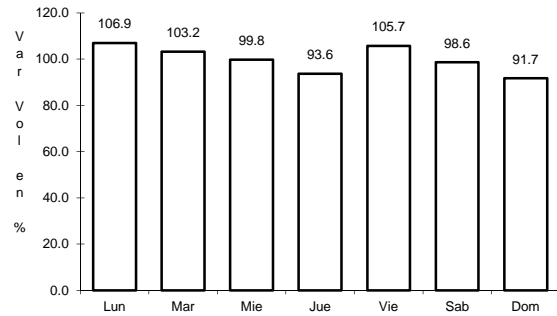


Km: 11.50                      Tipo: 1                      Sent: 2

11 CARR: Ramal a Mecatán

CLAVE: 18010

RUTA: MEX-015

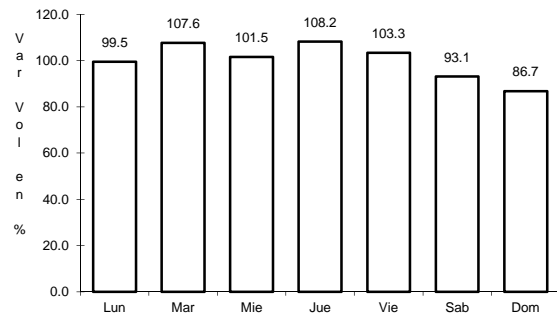


Km: 0.00                      Tipo: 3                      Sent: 0

12 CARR: Ramal a Nuevo Aeropuerto de Tepic

CLAVE: 18012

RUTA: MEX-015



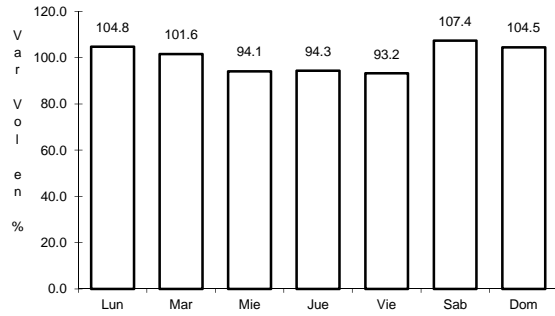
Km: 0.00                      Tipo: 3                      Sent: 0



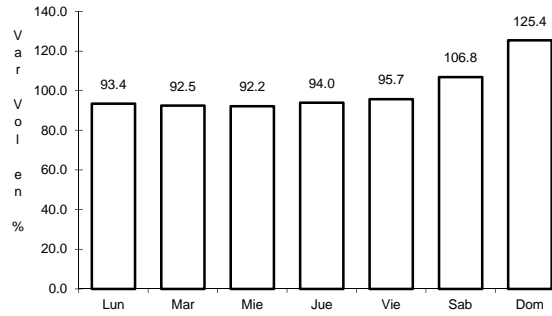
16 CARR: Tepic - Ixtapan de La Concepción

CLAVE: 18028

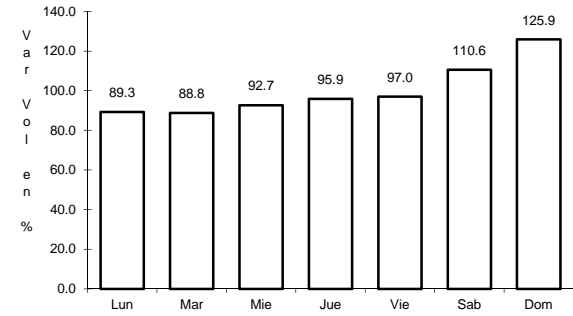
RUTA: MEX-015



Km: 0.00                      Tipo: 3                      Sent: 0



Km: 27.00                      Tipo: 1                      Sent: 0

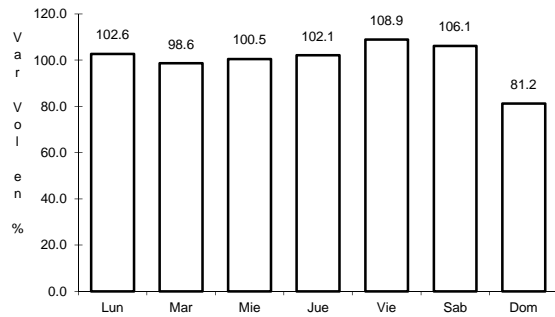


Km: 77.42                      Tipo: 1                      Sent: 0

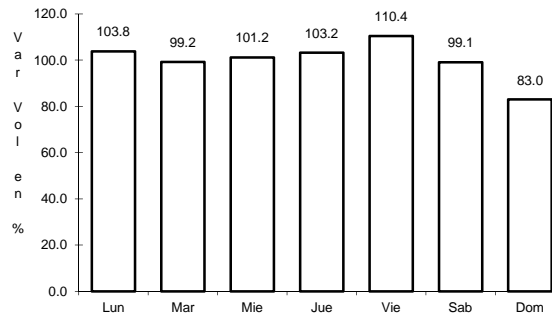
17 CARR: Tepic - Mazatlán

CLAVE: 00500

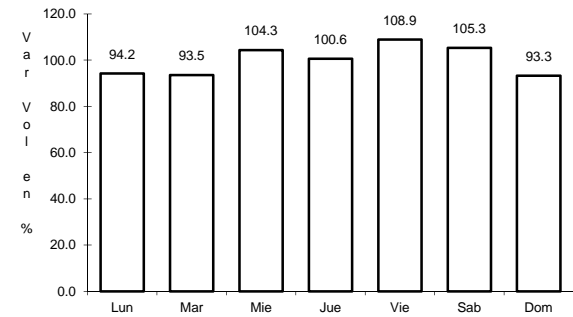
RUTA: MEX-015



Km: 2.56                      Tipo: 1                      Sent: 1



Km: 2.56                      Tipo: 1                      Sent: 2

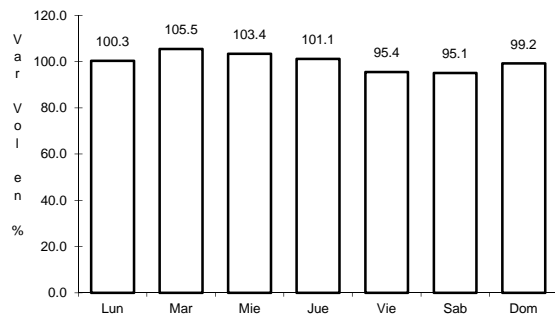


Km: 136.52                      Tipo: 1                      Sent: 0

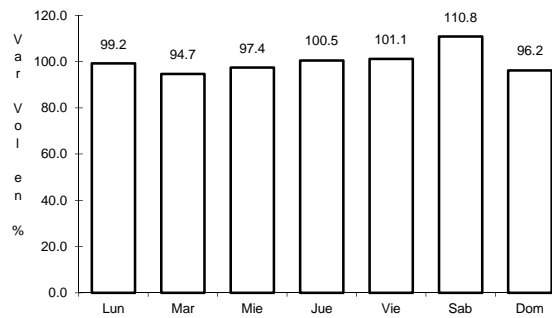
18 CARR: Tepic - Presa Aguamilpa

CLAVE: 18029

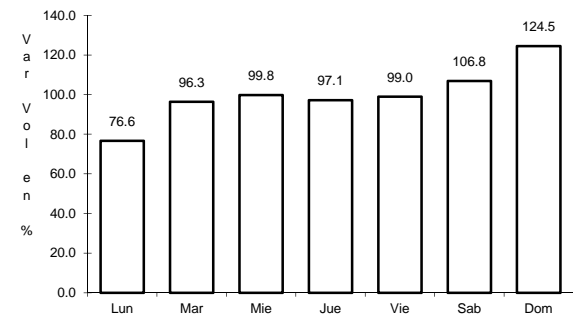
RUTA: MEX-015



Km: 0.00                      Tipo: 3                      Sent: 1



Km: 0.00                      Tipo: 3                      Sent: 2

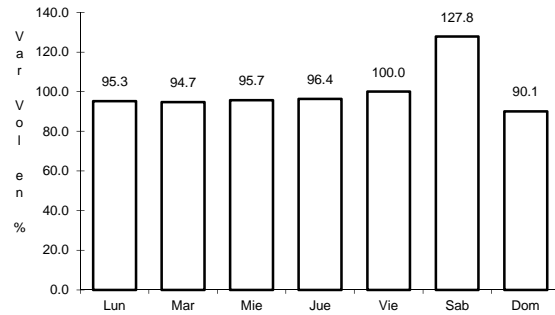


Km: 54.00                      Tipo: 1                      Sent: 0

## 19 CARR: Tepic - Puerto Vallarta

CLAVE: 00068

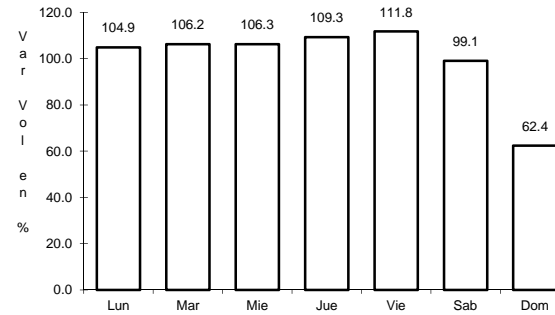
RUTA: MEX-200



Km: 0.00

Tipo: 3

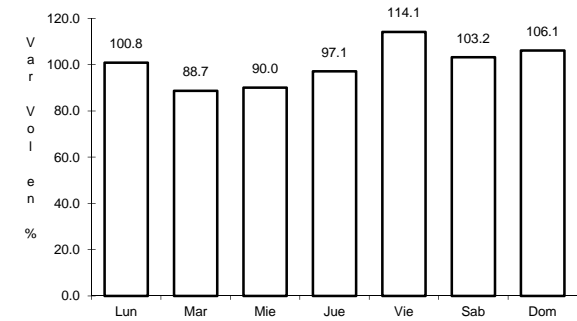
Sent: 1



Km: 0.00

Tipo: 3

Sent: 2



Km: 71.30

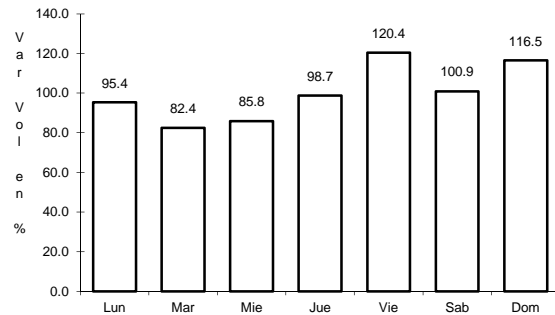
Tipo: 1

Sent: 0

## 20 CARR: Chapalilla - Compostela (Cuota)

CLAVE: 18004

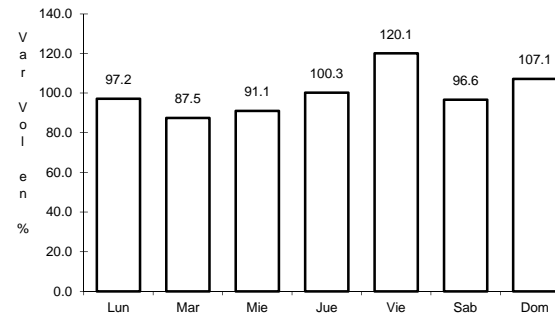
RUTA: MEX-068D



Km: 0.00

Tipo: 3

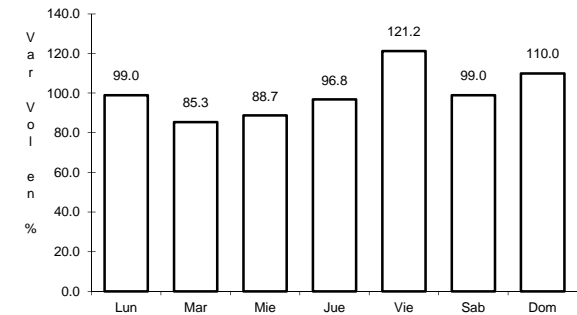
Sent: 0



Km: 36.50

Tipo: 1

Sent: 0



Km: 38.00

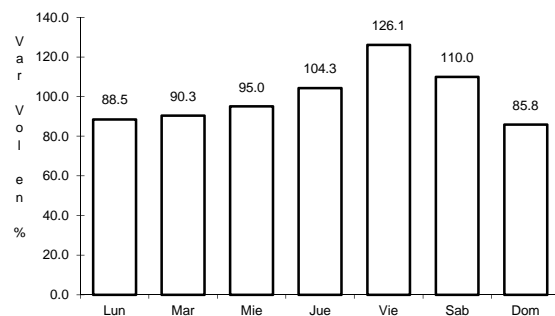
Tipo: 1

Sent: 0

## 21 CARR: Guadalajara - Tepic (Cuota)

CLAVE: 00033

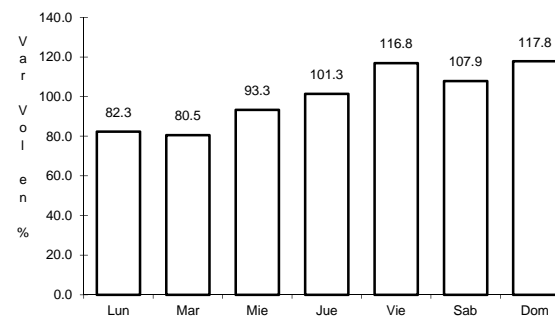
RUTA: MEX-057D



Km: 0.00

Tipo: 3

Sent: 1



Km: 0.00

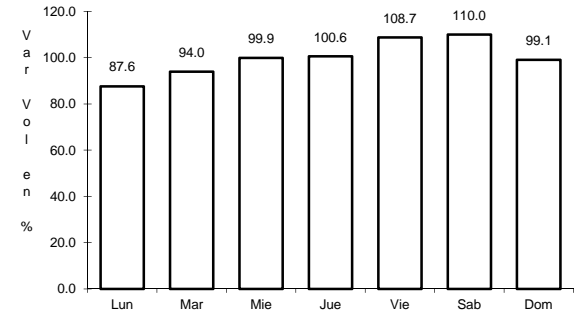
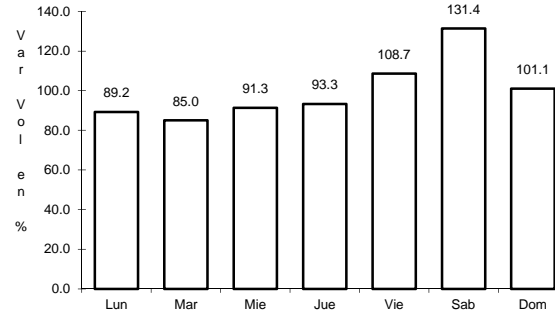
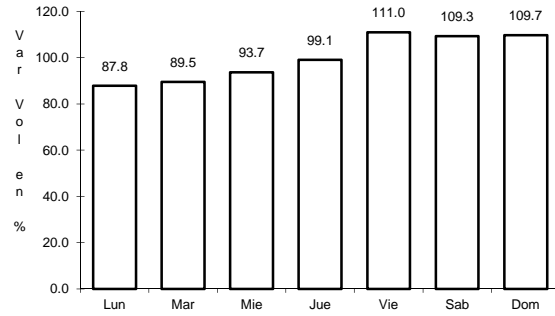
Tipo: 3

Sent: 2

22 CARR: Tepic - Villa Unión (cuota)

CLAVE: 00500

ruta: MEX-015D



Km: 4.70      Tipo: 1      Sent: 1

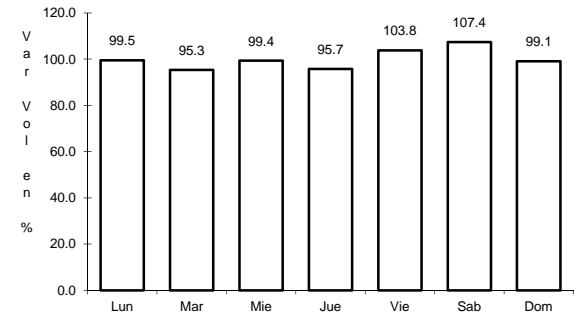
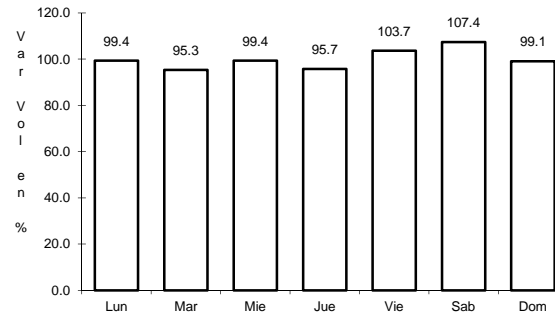
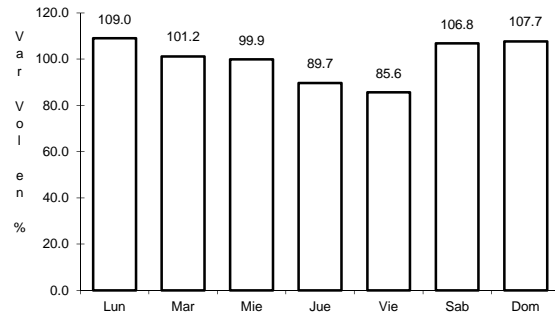
Km: 4.70      Tipo: 1      Sent: 2

Km: 240.90      Tipo: 1      Sent: 0

23 CARR: El Carrizo - La Batanga

CLAVE: 18107

ruta: NAY-078



Km: 0.00      Tipo: 3      Sent: 0

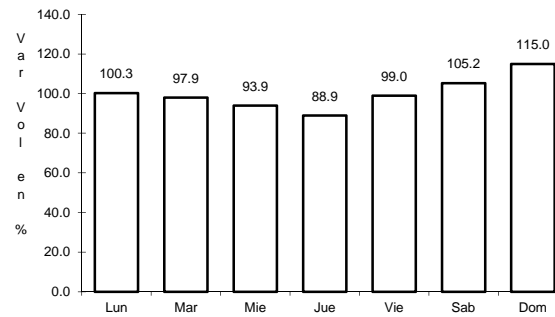
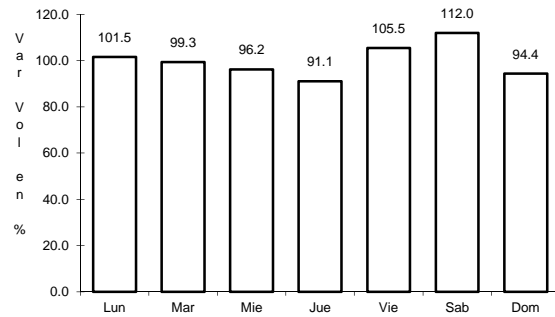
Km: 9.00      Tipo: 1      Sent: 0

Km: 25.00      Tipo: 1      Sent: 0

24 CARR: Navarrete - Sauta

CLAVE: 18013

ruta: NAY-013



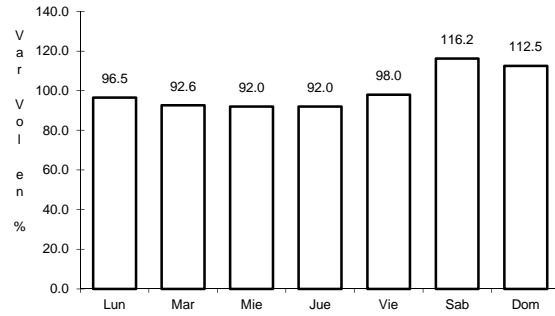
Km: 0.00      Tipo: 3      Sent: 0

Km: 7.00      Tipo: 1      Sent: 0

25 CARR: Ramal a Amado Nervo

CLAVE: 18011

RUTA: NAY



Km: 0.00

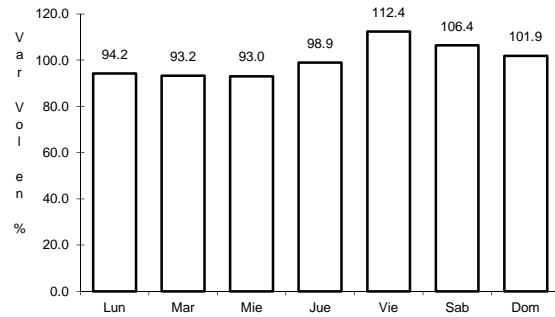
Tipo: 3

Sent: 0

26 CARR: Ramal a Bellavista

CLAVE: 18059

RUTA: NAY-059



Km: 0.00

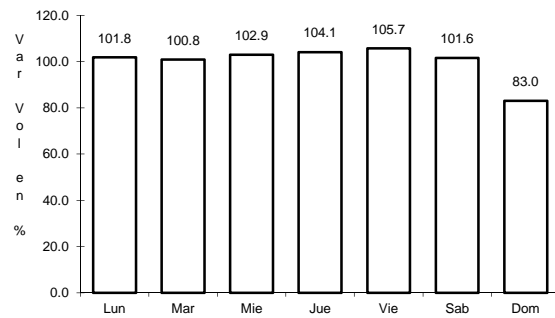
Tipo: 3

Sent: 0

27 CARR: Ramal a El Colomo

CLAVE: 18014

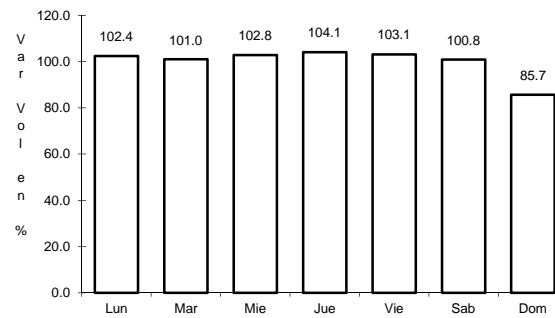
RUTA: NAY



Km: 3.00

Tipo: 1

Sent: 1



Km: 3.00

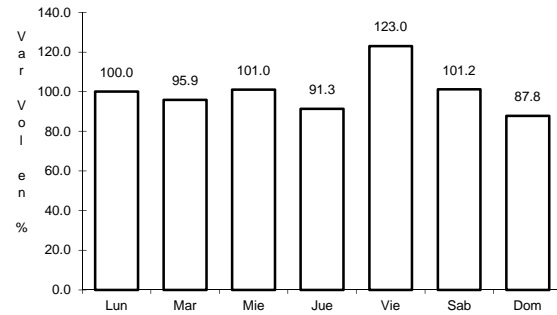
Tipo: 1

Sent: 2

28 CARR: Ramal a Estación Yago

CLAVE: 18224

RUTA: NAY



Km: 0.00

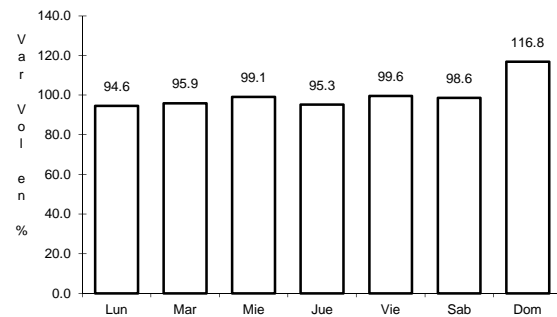
Tipo: 3

Sent: 0

29 CARR: Ramal a Ixtapán de La Concepción

CLAVE: 18233

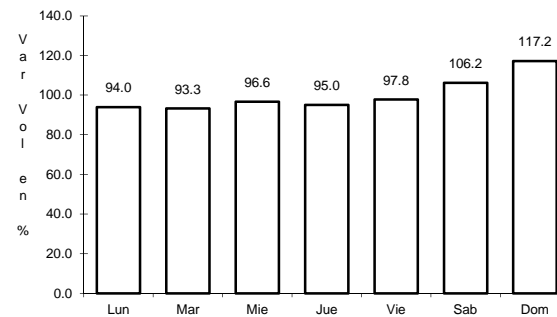
RUTA: NAY



Km: 0.00

Tipo: 3

Sent: 0



Km: 20.00

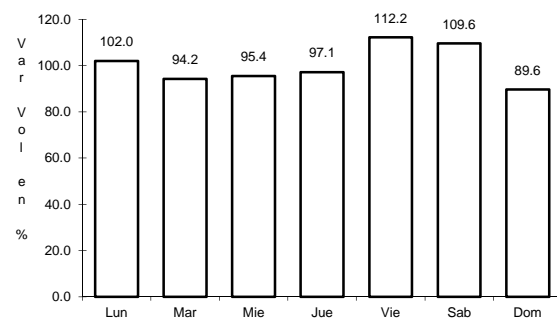
Tipo: 1

Sent: 0

30 CARR: Ramal a Milpas Viejas

CLAVE: 18007

RUTA: NAY



Km: 0.00

Tipo: 3

Sent: 0



