

HIDALGO

NO. INDICE	CARRETERA	RUTA
---RED FEDERAL LIBRE---		
1	Álamo - Huejutla de Reyes	MEX-127
2	Apizaco - Tejocotal	MEX-119
3	Ent. Colonia - Portezuelo	MEX-085
4	Ent. Jorobas - Tula	MEX-087
5	México - Pachuca (Libre)	MEX-085
6	Pachuca - Cd. Sahagún	MEX
7	Pachuca - Tempoal	MEX-105
8	Pachuca - Tuxpam	MEX-130
9	Portezuelo - Cd. Valles	MEX-085
10	Portezuelo - Palmillas	MEX-045
11	Tamazunchale - San Felipe Orizatlán	MEX-085
12	Venta de Carpio - T. C. (Pachuca - Tuxpam)	MEX-132
---RED FEDERAL DE CUOTA---		
13	Ent. Tulancingo - Venta Grande (Cuota)	MEX-132D
14	Libramiento Norte de la Ciudad de México (Cuota)	MEX-040D
15	México - Pachuca (Cuota)	MEX-085D
16	Tejocotal - Nuevo Necaxa (Cuota)	MEX-132D
---RED FEDERAL INTEGRADA POR TRAMOS LIBRES Y DE CUOTA---		
17	México - Querétaro (Cuota)	MEX-057-MEX-057D
---RED ESTATAL LIBRE---		
18	Actopan - Progreso	HGO
19	El Saucillo - Amealco	HGO-103
20	Ent. Emiliano Zapata - Cd. Sahagún	HGO
21	Ent. Tepeji del Río - Tlahuelilpan	HGO-017
22	Ent. Tolman - Cd. Sahagún	EM-009-HGO
23	Francisco I. Madero - Tula de Allende	HGO
24	Huichapan - Tecozautla	HGO-030
25	Jilotepec - Maravillas	EM-HGO
26	Libramiento de Atotonilco El Grande	HGO
27	Lolotla - Atlapexco	HGO
28	Los Reyes - El Tephé	EM-HGO
29	Otumba - Tizayuca	EM-HGO
30	Ramal a El Chico	HGO
31	Ramal a Pachuca	HGO
32	San Alejo - Huayacocotla	HGO-051-VER-113
33	San Felipe Orizatlán - Huejutla de Reyes	HGO
34	Santo Domingo - T. C. (México - Querétaro)	EM-011-HGO
35	T. C. (Los Reyes - El Tephé) - Tizayuca	EM-HGO
36	Tepeji del Río - T.C. (México - Querétaro)	HGO
37	Tlahuelilpan - San Agustín Tlaxiaca	HGO
---CARRETERAS INTEGRADAS POR TRAMOS FEDERALES Y ESTATALES---		
38	Calpulalpan - El Ocote	MEX-HGO

HIDALGO

1 CARR: Álamo - Huejutla de Reyes

CLAVE: 00116

RUTA: MEX-127

AÑO: 2012

LUGAR	ESTACION				CLASIFICACION VEHICULAR EN PORCIENTO														COORDENADAS	
	KM	TE	SC	TDPA	M	A	B	C2	C3	T3S2	T3S3	T3S2R4	OTROS	A	B	C	K'	D	LATITUD	LONGITUD
T. C. Tihuatlán - Potrero del Llano	0.00	3	0	3251	1.5	88.9	0.4	3.4	1.2	2.9	1.0	0.1	0.6	90.4	0.4	9.2	0.083	0.503	20.942473	-97.707395
Benito Juárez	73.00	1	0	1521	0.9	86.5	0.1	3.7	0.3	6.2	1.5	0.2	0.6	87.4	0.1	12.5	0.114	0.511	20.882227	-98.198294
T. Der. Chicontepec de Tejada	78.00	3	0	900	2.9	87.4	0.5	6.6	0.9	1.0	0.7	0.0	0.0	90.3	0.5	9.2	0.093	0.545	20.924375	-98.222485
Lim. Edos. Term. Ver. Ppia. Hgo.	78.70																			
T. C. Pachuca - Tempoal (Huejutla de Reyes)	110.00																			

2 CARR: Apizaco - Tejocotal

CLAVE: 00430

RUTA: MEX-119

AÑO: 2012

LUGAR	ESTACION				CLASIFICACION VEHICULAR EN PORCIENTO														COORDENADAS	
	KM	TE	SC	TDPA	M	A	B	C2	C3	T3S2	T3S3	T3S2R4	OTROS	A	B	C	K'	D	LATITUD	LONGITUD
Apizaco	0.00	3	1	9048	1.3	85.3	4.8	3.9	1.0	1.8	1.1	0.4	0.4	86.6	4.8	8.6	0.090	0.530	19.428432	-98.135696
Apizaco	0.00	3	2	10215	0.9	83.9	5.4	4.4	1.1	2.2	1.3	0.4	0.4	84.8	5.4	9.8	0.084	0.530	19.428432	-98.135696
T. Der. Tetla	6.60	3	0	16025	0.4	85.9	4.9	4.3	0.9	2.1	0.8	0.4	0.3	86.3	4.9	8.8	0.079	0.534	19.469057	-98.111853
T. Izq. Atlangatepec	12.15	1	0	11275	0.4	78.2	5.3	6.4	1.7	5.1	1.8	0.5	0.6	78.6	5.3	16.1	0.081	0.503	19.510810	-98.117621
Tlaxco	23.91	1	0	8720	1.2	78.8	4.9	6.5	1.3	4.7	1.4	0.6	0.6	80.0	4.9	15.1	0.084	0.500	19.605147	-98.122945
Tlaxco	23.91	3	0	5629	1.6	78.5	5.1	6.4	1.4	3.8	1.9	0.6	0.7	80.1	5.1	14.8	0.082	0.506	19.624874	-98.125610
Lim. Edos. Term. Tlax. Ppia. Pue.	34.45																			
T. Der. Tetela de Ocampo	52.20	1	0	6941	1.3	78.4	5.2	6.4	1.9	3.9	1.8	0.5	0.6	79.7	5.2	15.1	0.083	0.503	19.802278	-98.025711
Zacatlán	71.25	1	0	10613	2.6	77.2	5.2	6.4	1.0	4.7	1.6	0.7	0.6	79.8	5.2	15.0	0.075	0.501	19.914970	-97.958528
Lim. Edos. Term. Pue. Ppia. Hgo.	110.45																			
T. C. Pachuca - Tuxpam	113.15	1	0	5890	0.5	76.6	6.1	7.3	1.5	5.1	1.2	0.7	1.0	77.1	6.1	16.8	0.120	0.505	20.124048	-98.128562

3 CARR: Ent. Colonia - Portezuelo

CLAVE: 13257

RUTA: MEX-085

AÑO: 2012

LUGAR	ESTACION				CLASIFICACION VEHICULAR EN PORCIENTO														COORDENADAS	
	KM	TE	SC	TDPA	M	A	B	C2	C3	T3S2	T3S3	T3S2R4	OTROS	A	B	C	K'	D	LATITUD	LONGITUD
Ent. Colonia	0.00	3	1	21844	0.6	89.9	2.4	2.8	0.9	1.7	1.0	0.3	0.4	90.5	2.4	7.1	0.086	0.508	20.061356	-98.787099
Ent. Colonia	0.00	3	2	22514	0.7	89.2	2.6	3.1	1.0	1.7	1.0	0.3	0.4	89.9	2.6	7.5	0.083	0.508	20.061361	-98.787107
T. Der. Pachuca	8.34	3	1	16440	0.3	88.1	3.6	4.3	0.9	1.6	0.6	0.3	0.3	88.4	3.6	8.0	0.095	0.516	20.125179	-98.834592
T. Der. Pachuca	8.34	3	2	17498	0.5	86.9	3.9	4.6	1.1	1.8	0.6	0.3	0.3	87.4	3.9	8.7	0.099	0.516	20.125217	-98.834602
Actopan	34.13	1	1	12770	0.5	85.3	2.6	7.8	0.9	1.8	0.7	0.3	0.1	85.8	2.6	11.6	0.105	0.517	20.249956	-98.932469
Actopan	34.13	1	2	13273	0.6	83.9	2.9	8.3	1.1	1.9	0.9	0.3	0.1	84.5	2.9	12.6	0.106	0.517	20.249957	-98.932471
Actopan	34.13	3	1	9494	1.0	81.7	1.8	7.8	1.1	3.6	1.9	0.5	0.6	82.7	1.8	15.5	0.082	0.503	20.284504	-98.967529
Actopan	34.13	3	2	9371	1.0	79.8	2.0	8.5	1.3	4.1	2.2	0.5	0.6	80.8	2.0	17.2	0.119	0.503	20.284504	-98.967528
T. Izq. Tula	68.20	1	1	6755	0.8	80.8	1.8	8.8	1.5	4.0	1.4	0.5	0.4	81.6	1.8	16.6	0.122	0.502	20.439424	-99.164223

HIDALGO

3 CARR: Ent. Colonia - Portezuelo

CLAVE: 13257

RUTA: MEX-085

AÑO: 2012

LUGAR	ESTACION				CLASIFICACION VEHICULAR EN PORCIENTO										COORDENADAS					
	KM	TE	SC	TDPA	M	A	B	C2	C3	T3S2	T3S3	T3S2R4	OTROS	A	B	C	K'	D	LATITUD	LONGITUD
T. Izq. Tula	68.20	1	2	6803	0.7	79.2	1.9	9.6	1.7	4.6	1.4	0.5	0.4	79.9	1.9	18.2	0.091	0.502	20.439424	-99.164224
Ixmiquilpan	75.20	1	1	10267	1.6	82.6	1.8	7.8	1.1	2.5	1.5	0.5	0.6	84.2	1.8	14.0	0.092	0.501	20.466011	-99.198702
Ixmiquilpan	75.20	1	2	10307	1.7	80.6	2.0	8.7	1.1	3.0	1.7	0.5	0.7	82.3	2.0	15.7	0.076	0.501	20.466011	-99.198702
Ixmiquilpan	75.20	3	1	7340	1.5	82.0	1.7	7.1	1.5	3.7	1.5	0.5	0.5	83.5	1.7	14.8	0.078	0.500	20.479338	-99.247737
Ixmiquilpan	75.20	3	2	7353	1.3	80.1	1.8	8.1	1.8	4.2	1.6	0.6	0.5	81.4	1.8	16.8	0.079	0.500	20.479338	-99.247737
Portezuelo	82.00																			

4 CARR: Ent. Jorobas - Tula

CLAVE: 00159

RUTA: MEX-087

AÑO: 2012

LUGAR	ESTACION				CLASIFICACION VEHICULAR EN PORCIENTO										COORDENADAS					
	KM	TE	SC	TDPA	M	A	B	C2	C3	T3S2	T3S3	T3S2R4	OTROS	A	B	C	K'	D	LATITUD	LONGITUD
T. C. México - Querétaro (Cuota)	0.00	3	1	9091	0.2	81.1	2.5	7.4	0.7	3.6	2.2	1.6	0.7	81.3	2.5	16.2	0.083	0.505	19.834882	-99.243240
T. C. México - Querétaro (Cuota)	0.00	3	2	9278	0.3	79.0	2.6	8.5	0.7	4.0	2.3	1.7	0.9	79.3	2.6	18.1	0.074	0.505	19.834881	-99.243239
Lim. Edos. Term. Mex. Ppia. Hgo.	5.90																			
T. Der. Atotonilco	21.50	1	1	5336	0.3	82.1	3.5	4.6	2.6	3.3	2.2	0.9	0.5	82.4	3.5	14.1	0.102	0.517	19.962543	-99.244656
T. Der. Atotonilco	21.50	1	2	4976	0.4	80.0	3.8	5.0	3.1	3.8	2.5	0.9	0.5	80.4	3.8	15.8	0.101	0.517	19.962543	-99.244656
Tula de Allende	37.70	1	1	11213	0.1	86.3	2.5	3.2	1.5	3.1	1.7	0.9	0.7	86.4	2.5	11.1	0.094	0.507	20.054661	-99.305776
Tula de Allende	37.70	1	2	10915	0.1	85.0	2.7	3.5	1.6	3.5	2.0	0.9	0.7	85.1	2.7	12.2	0.076	0.507	20.054660	-99.305777

5 CARR: México - Pachuca (Libre)

CLAVE: 00431

RUTA: MEX-085

AÑO: 2012

LUGAR	ESTACION				CLASIFICACION VEHICULAR EN PORCIENTO										COORDENADAS					
	KM	TE	SC	TDPA	M	A	B	C2	C3	T3S2	T3S3	T3S2R4	OTROS	A	B	C	K'	D	LATITUD	LONGITUD
México	0.00																			
Lim. Edos. Term. D. F. Ppia. Mex.	9.89																			
T. Der. Pirámides	26.93	1	0	24497	1.8	79.9	2.0	5.0	1.0	4.1	3.4	1.8	1.0	81.7	2.0	16.3	0.059	0.501	19.613699	-99.016522
Venta de Carpio	27.00	3	1	24055	1.7	86.6	0.6	3.7	1.3	1.4	3.3	0.7	0.7	88.3	0.6	11.1	0.059	0.503	19.626979	-99.002613
Venta de Carpio	27.00	3	2	23783	1.5	85.0	0.8	4.4	1.4	1.6	3.7	0.9	0.7	86.5	0.8	12.7	0.062	0.503	19.626987	-99.002749
T. Der. Autopista México - Tecámac (Cuota)	37.52	1	1	21935	1.3	85.4	0.6	4.2	1.2	2.0	4.0	0.6	0.7	86.7	0.6	12.7	0.062	0.512	19.701265	-98.979789
T. Der. Autopista México - Tecámac (Cuota)	37.52	1	2	20706	1.1	84.7	0.7	4.5	1.2	2.2	4.3	0.6	0.7	85.8	0.7	13.5	0.064	0.512	19.701265	-98.979789
T. Izq. Zumpango	44.68	1	0	28849	1.4	86.4	1.3	4.8	1.3	1.3	1.8	0.9	0.8	87.8	1.3	10.9	0.076	0.504	19.763771	-98.973455
T. Izq. Zumpango	44.68	3	0	18805	2.0	86.7	1.4	5.4	1.7	1.6	0.8	0.3	0.1	88.7	1.4	9.9	0.074	0.503	19.771930	-98.973089
Lim. Edos. Term. Mex. Ppia. Hgo.	49.30																			
Tizayuca	52.50	3	0	15895	1.9	84.7	1.5	3.6	1.4	2.9	1.9	1.3	0.8	86.6	1.5	11.9	0.071	0.513	19.859553	-98.966984
T. C. México - Tizayuca (Cuota)	61.00	3	1	20892	0.5	81.0	5.4	6.0	2.1	2.8	1.3	0.4	0.5	81.5	5.4	13.1	0.088	0.512	19.894149	-98.932589

HIDALGO

5 CARR: México - Pachuca (Libre)

CLAVE: 00431

RUTA: MEX-085

AÑO: 2012

LUGAR	ESTACION				CLASIFICACION VEHICULAR EN PORCIENTO													COORDENADAS		
	KM	TE	SC	TDPA	M	A	B	C2	C3	T3S2	T3S3	T3S2R4	OTROS	A	B	C	K'	D	LATITUD	LONGITUD
T. C. México - Tizayuca (Cuota)	61.00	3	2	19931	1.1	78.7	5.9	6.5	2.1	3.0	1.4	0.3	1.0	79.8	5.9	14.3	0.076	0.512	19.894149	-98.932590
X. C. Arco Norte de La Ciudad de México	64.20	1	1	17425	0.4	81.0	5.3	6.3	1.8	2.8	1.3	0.4	0.7	81.4	5.3	13.3	0.089	0.510	19.923818	-98.900435
X. C. Arco Norte de La Ciudad de México	64.20	1	2	16702	0.6	79.8	5.7	6.7	1.9	2.9	1.5	0.4	0.5	80.4	5.7	13.9	0.075	0.510	19.923818	-98.900435
X. C. Arco Norte de La Ciudad de México	64.20	3	1	18042	0.4	83.0	4.8	6.0	1.5	2.2	1.2	0.3	0.6	83.4	4.8	11.8	0.087	0.512	19.930734	-98.891515
X. C. Arco Norte de La Ciudad de México	64.20	3	2	17224	0.4	81.7	5.3	6.3	1.7	2.3	1.4	0.3	0.6	82.1	5.3	12.6	0.075	0.512	19.930734	-98.891515
Ent. Colonia	83.97	1	1	28349	0.4	85.9	5.2	5.3	0.6	1.3	0.9	0.2	0.2	86.3	5.2	8.5	0.087	0.506	20.052690	-98.788675
Ent. Colonia	83.97	1	2	29041	0.4	84.7	5.2	6.1	0.6	1.4	1.1	0.2	0.3	85.1	5.2	9.7	0.072	0.506	20.052690	-98.788675
X. C. Libramiento de Pachuca	86.50	1	1	30036	0.6	84.5	4.7	5.3	0.3	2.0	1.2	0.5	0.9	85.1	4.7	10.2	0.070	0.513	20.097715	-98.765964
X. C. Libramiento de Pachuca	86.50	1	2	31684	0.6	82.9	5.3	5.8	0.3	2.3	1.3	0.5	1.0	83.5	5.3	11.2	0.086	0.513	20.097711	-98.765963
Pachuca	94.00																			

6 CARR: Pachuca - Cd. Sahagún

CLAVE: 13088

RUTA: MEX

AÑO: 2012

LUGAR	ESTACION				CLASIFICACION VEHICULAR EN PORCIENTO													COORDENADAS		
	KM	TE	SC	TDPA	M	A	B	C2	C3	T3S2	T3S3	T3S2R4	OTROS	A	B	C	K'	D	LATITUD	LONGITUD
Pachuca	0.00	3	1	17087	1.1	90.2	1.6	1.8	0.7	1.8	1.9	0.3	0.6	91.3	1.6	7.1	0.086	0.508	20.071237	-98.744730
Pachuca	0.00	3	2	17675	0.5	89.7	1.8	2.2	0.7	2.2	2.0	0.3	0.6	90.2	1.8	8.0	0.089	0.508	20.071866	-98.744521
T. Der. Palma Gorda	11.00	1	1	9743	0.7	84.9	2.5	5.0	1.2	2.6	1.8	0.6	0.7	85.6	2.5	11.9	0.086	0.502	20.042940	-98.734358
T. Der. Palma Gorda	11.00	1	2	9824	1.0	83.0	2.7	5.6	1.4	3.0	2.0	0.6	0.7	84.0	2.7	13.3	0.123	0.502	20.042880	-98.734362
X. C. Venta de Carpio - Tulancingo	29.40	1	1	7625	0.2	82.2	3.7	5.1	2.4	3.6	1.6	0.6	0.6	82.4	3.7	13.9	0.079	0.504	19.884614	-98.666351
X. C. Venta de Carpio - Tulancingo	29.40	1	2	7751	0.4	80.5	4.2	5.6	2.5	3.9	1.7	0.6	0.6	80.9	4.2	14.9	0.096	0.504	19.884613	-98.666336
X. C. Venta de Carpio - Tulancingo	29.40	3	1	6332	0.3	81.7	2.8	5.2	2.6	4.5	1.8	0.6	0.5	82.0	2.8	15.2	0.105	0.527	19.864021	-98.658720
X. C. Venta de Carpio - Tulancingo	29.40	3	2	7049	0.2	80.1	3.3	5.8	2.6	5.1	1.9	0.6	0.4	80.3	3.3	16.4	0.084	0.527	19.864023	-98.658723
Cd. Sahagún	44.70																			

7 CARR: Pachuca - Tempoal

CLAVE: 00113

RUTA: MEX-105

AÑO: 2012

LUGAR	ESTACION				CLASIFICACION VEHICULAR EN PORCIENTO													COORDENADAS		
	KM	TE	SC	TDPA	M	A	B	C2	C3	T3S2	T3S3	T3S2R4	OTROS	A	B	C	K'	D	LATITUD	LONGITUD
Pachuca	0.00	3	0	6235	1.5	89.8	0.8	1.5	0.1	4.3	0.8	0.2	1.0	91.3	0.8	7.9	0.078	0.531	20.130583	-98.716234
T. Der. Omitlán de Juárez (1º Acceso)	18.20	1	0	7619	0.2	88.1	0.9	3.9	0.9	3.0	1.6	0.4	1.0	88.3	0.9	10.8	0.082	0.514	20.162509	-98.654341
Atotonilco El Grande	33.85	3	0	8235	0.3	86.6	0.9	4.9	1.3	4.3	0.9	0.2	0.6	86.9	0.9	12.2	0.084	0.505	20.300168	-98.680238
T. Izq. Metztlán	63.70	1	0	4608	0.4	93.3	1.5	1.9	0.9	0.9	0.8	0.1	0.2	93.7	1.5	4.8	0.095	0.504	20.467879	-98.680030
T. Izq. Metztlán	63.70	3	0	4915	0.5	84.2	3.0	4.6	1.7	3.2	1.5	0.8	0.5	84.7	3.0	12.3	0.079	0.506	20.470059	-98.668058
Metzquitlán	75.00	1	0	4746	0.5	83.6	2.6	7.2	1.6	2.5	1.3	0.3	0.4	84.1	2.6	13.3	0.099	0.505	20.526025	-98.650128

HIDALGO

7 CARR: Pachuca - Tempoal

CLAVE: 00113

RUTA: MEX-105

AÑO: 2012

LUGAR	ESTACION				CLASIFICACION VEHICULAR EN PORCIENTO													COORDENADAS		
	KM	TE	SC	TDPA	M	A	B	C2	C3	T3S2	T3S3	T3S2R4	OTROS	A	B	C	K'	D	LATITUD	LONGITUD
T. Izq. Zacualtipán	96.50	1	0	5326	0.7	85.6	2.1	6.4	0.8	2.9	0.8	0.2	0.5	86.3	2.1	11.6	0.098	0.505	20.646569	-98.639750
T. Izq. Zacualtipán	96.50	3	0	3706	0.7	87.4	2.3	3.1	1.1	3.1	1.2	0.5	0.6	88.1	2.3	9.6	0.101	0.516	20.663450	-98.671078
X. C. Molango - Xochicoatlán	129.80	1	0	3298	0.5	82.6	3.0	7.7	1.5	2.6	1.2	0.4	0.5	83.1	3.0	13.9	0.106	0.505	20.787161	-98.721445
X. C. Molango - Xochicoatlán	129.80	3	0	3343	0.3	84.8	3.8	5.0	1.6	2.3	1.2	0.5	0.5	85.1	3.8	11.1	0.104	0.512	20.792878	-98.725459
T. Izq. Tepehuacán de Guerrero	157.70	1	0	2330	0.5	83.1	2.2	5.3	1.3	3.1	2.2	1.2	1.1	83.6	2.2	14.2	0.086	0.537	20.965521	-98.681226
Tehuettán	199.20	1	0	2309	0.8	83.7	3.0	5.7	1.3	2.8	1.3	0.7	0.7	84.5	3.0	12.5	0.083	0.513	21.057746	-98.514440
T. Izq. Huejutla (1° Acceso)	214.60	1	0	8970	1.2	80.9	2.0	7.4	0.9	5.4	0.9	0.3	1.0	82.1	2.0	15.9	0.082	0.516	21.125120	-98.409654
T. Izq. Huejutla (1° Acceso)	214.60	3	0	7913	1.3	83.1	2.0	5.7	0.9	5.0	1.0	0.3	0.7	84.4	2.0	13.6	0.082	0.502	21.156102	-98.412801
Lim. Edos. Term. Hgo. Ppia. Ver.	217.20																			
T. C. Alazán - Canoas	260.68	1	0	1906	0.5	74.0	3.4	10.2	2.7	3.2	3.5	2.3	0.2	74.5	3.4	22.1	0.082	0.506	21.491732	-98.357719

8 CARR: Pachuca - Tuxpam

CLAVE: 00608

RUTA: MEX-130

AÑO: 2012

LUGAR	ESTACION				CLASIFICACION VEHICULAR EN PORCIENTO													COORDENADAS		
	KM	TE	SC	TDPA	M	A	B	C2	C3	T3S2	T3S3	T3S2R4	OTROS	A	B	C	K'	D	LATITUD	LONGITUD
Pachuca	0.00																			
X. C. Libramiento de Pachuca	2.60	3	1	15960	0.6	92.8	0.8	2.9	1.2	0.8	0.7	0.1	0.1	93.4	0.8	5.8	0.077	0.506	20.087506	-98.713367
X. C. Libramiento de Pachuca	2.60	3	2	15598	0.5	92.4	0.9	3.2	1.3	0.8	0.7	0.1	0.1	92.9	0.9	6.2	0.088	0.506	20.087524	-98.713353
T. Izq. Pachuquilla (1° Acceso)	7.00	1	1	11673	0.4	92.3	1.7	1.8	0.7	1.6	1.0	0.2	0.3	92.7	1.7	5.6	0.090	0.518	20.078355	-98.710390
T. Izq. Pachuquilla (1° Acceso)	7.00	1	2	12542	0.4	91.1	2.0	2.1	0.9	1.9	1.1	0.2	0.3	91.5	2.0	6.5	0.090	0.518	20.077421	-98.709226
T. Izq. Pachuquilla (2° Acceso)	10.50	1	1	8381	0.2	91.0	1.8	4.0	0.9	1.0	0.6	0.2	0.3	91.2	1.8	7.0	0.095	0.507	20.067223	-98.668632
T. Izq. Pachuquilla (2° Acceso)	10.50	1	2	8140	0.3	90.1	2.1	4.3	1.0	1.1	0.6	0.2	0.3	90.4	2.1	7.5	0.101	0.507	20.067194	-98.668536
T. Der. Cd. Sahagún	16.59	1	1	6848	0.3	86.4	2.4	6.5	1.3	1.3	0.8	0.4	0.6	86.7	2.4	10.9	0.110	0.584	20.052940	-98.623392
T. Der. Cd. Sahagún	16.59	1	2	6824	0.4	84.7	2.7	7.3	1.5	1.4	0.9	0.4	0.7	85.1	2.7	12.2	0.091	0.584	20.052940	-98.623392
T. C. Venta de Carpio - Tulancingo	36.45	1	1	6925	0.5	85.6	5.8	3.5	1.4	1.3	1.1	0.3	0.5	86.1	5.8	8.1	0.089	0.513	20.056224	-98.462867
T. C. Venta de Carpio - Tulancingo	36.45	1	2	6563	0.6	84.2	6.4	4.0	1.5	1.4	1.1	0.3	0.5	84.8	6.4	8.8	0.086	0.513	20.056394	-98.461222
T. C. Venta de Carpio - Tulancingo	36.45	3	1	13035	0.5	85.6	6.0	3.4	1.3	1.4	1.0	0.3	0.5	86.1	6.0	7.9	0.089	0.513	20.063179	-98.438886
T. C. Venta de Carpio - Tulancingo	36.45	3	2	12353	0.6	83.9	6.6	3.9	1.4	1.6	1.2	0.3	0.5	84.5	6.6	8.9	0.087	0.513	20.063179	-98.438886
T. Izq. Libramiento de Tulancingo	53.70	3	0	14053	0.6	83.1	6.7	4.0	1.6	1.6	1.3	0.5	0.6	83.7	6.7	9.6	0.079	0.501	20.152241	-98.284660
T. Izq. Huayacocotla	66.42	3	0	9843	0.4	80.9	6.8	6.8	1.0	2.1	1.2	0.3	0.5	81.3	6.8	11.9	0.077	0.508	20.155320	-98.282784
Lim. Edos. Term. Hgo. Ppia. Pue.	83.18																			
T. Der. Huauchinango (1° Acceso)	94.00	1	0	12440	1.2	79.8	7.6	6.5	1.5	1.2	1.3	0.4	0.5	81.0	7.6	11.4	0.078	0.513	20.168985	-98.074233
T. Der. Huauchinango (2° Acceso)	100.00	3	0	8680	1.5	75.0	7.3	6.4	2.2	3.4	2.4	0.9	0.9	76.5	7.3	16.2	0.075	0.515	20.193685	-98.035994
Villa Ávila Camacho	141.75	1	0	6426	1.4	69.6	7.4	6.3	3.4	5.6	3.6	1.7	1.0	71.0	7.4	21.6	0.073	0.506	20.382982	-97.884287
Villa Ávila Camacho	141.75	3	0	8167	1.4	68.7	7.0	6.5	4.1	6.6	3.2	1.6	0.9	70.1	7.0	22.9	0.076	0.515	20.393900	-97.873875

HIDALGO

8 CARR: Pachuca - Tuxpam

CLAVE: 00608

RUTA: MEX-130

AÑO: 2012

LUGAR	ESTACION				CLASIFICACION VEHICULAR EN PORCIENTO													COORDENADAS		
	KM	TE	SC	TDPA	M	A	B	C2	C3	T3S2	T3S3	T3S2R4	OTROS	A	B	C	K'	D	LATITUD	LONGITUD
Piedras Negras	158.70	1	0	6704	1.4	66.7	7.2	6.5	4.6	6.9	4.3	1.4	1.0	68.1	7.2	24.7	0.067	0.509	20.438694	-97.763556
T. Izq. Venustiano Carranza	174.10	3	0	8159	1.2	67.3	7.0	6.4	6.0	5.3	4.4	1.5	0.9	68.5	7.0	24.5	0.078	0.517	20.476903	-97.645754
Lim. Edos. Term. Pue. Ppia. Ver.	180.00																			
T. Der. Poza Rica	197.00	1	0	24714	0.8	70.0	4.2	11.3	3.8	4.8	2.5	1.7	0.9	70.8	4.2	25.0	0.066	0.502	20.520315	-97.492536
T. Der. Poza Rica	197.00	3	0	26293	0.8	75.4	2.7	12.8	2.4	2.8	2.3	0.6	0.2	76.2	2.7	21.1	0.071	0.513	20.561234	-97.477114
Tihuatlán	217.00	1	0	10967	0.9	68.3	1.2	12.7	3.2	7.5	2.8	2.4	1.0	69.2	1.2	29.6	0.070	0.503	20.698392	-97.527524
Tihuatlán	217.00	3	0	2635	3.6	76.5	1.4	15.0	0.8	1.7	0.4	0.2	0.4	80.1	1.4	18.5	0.078	0.517	20.732537	-97.525391
Tuxpam	247.00	1	1	4984	2.4	79.3	3.1	8.2	1.9	2.4	2.1	0.4	0.2	81.7	3.1	15.2	0.079	0.502	20.940719	-97.404716
Tuxpam	247.00	1	2	4953	2.3	77.0	3.4	9.6	2.2	2.7	2.2	0.4	0.2	79.3	3.4	17.3	0.076	0.502	20.940719	-97.404716

9 CARR: Portezuelo - Cd. Valles

CLAVE: 00023

RUTA: MEX-085

AÑO: 2012

LUGAR	ESTACION				CLASIFICACION VEHICULAR EN PORCIENTO													COORDENADAS		
	KM	TE	SC	TDPA	M	A	B	C2	C3	T3S2	T3S3	T3S2R4	OTROS	A	B	C	K'	D	LATITUD	LONGITUD
Portezuelo	0.00	3	0	5635	0.8	82.8	4.1	7.1	1.1	2.8	0.8	0.2	0.3	83.6	4.1	12.3	0.084	0.513	20.488366	-99.298560
T. Der. Tasquillo (2° Acceso)	10.50	1	0	3919	1.0	86.9	2.5	5.9	0.9	1.3	1.1	0.1	0.3	87.9	2.5	9.6	0.099	0.504	20.543996	-99.319204
T. Izq. Zimapán (1° Acceso)	32.00	1	0	4739	1.1	83.9	3.0	7.2	0.9	2.5	0.8	0.1	0.5	85.0	3.0	12.0	0.077	0.502	20.702913	-99.334503
T. Izq. Zimapán (1° Acceso)	32.00	3	0	1929	0.8	87.0	2.9	5.0	1.5	1.7	0.8	0.1	0.2	87.8	2.9	9.3	0.084	0.526	20.705840	-99.336089
La Estancia	41.00	3	0	1645	0.4	78.3	3.7	13.1	1.9	1.8	0.5	0.0	0.3	78.7	3.7	17.6	0.078	0.505	20.777574	-99.310267
Trancas	51.00	3	0	1507	0.3	77.8	3.9	13.0	1.9	1.9	1.0	0.0	0.2	78.1	3.9	18.0	0.101	0.501	20.799562	-99.265773
Jacala	98.60	3	0	2048	0.4	81.7	3.0	11.5	1.5	1.3	0.5	0.0	0.1	82.1	3.0	14.9	0.093	0.512	20.999617	-99.182301
Zacate Grande	143.10	1	0	1191	0.7	76.0	4.1	14.8	2.7	1.1	0.5	0.0	0.1	76.7	4.1	19.2	0.094	0.500	21.111392	-99.002063
T. Izq. Pisaflores	154.00	3	0	1832	1.5	82.2	4.5	8.1	1.7	1.4	0.3	0.0	0.3	83.7	4.5	11.8	0.081	0.504	21.153694	-98.945115
Lim. Edos. Term. Hgo. Ppia. S. L. P.	168.63																			
Tamazunchale	192.80	1	0	4585	2.7	76.0	4.5	12.1	1.2	2.5	0.5	0.1	0.4	78.7	4.5	16.8	0.082	0.512	21.262316	-98.800408
T. Izq. Xilitla	228.75	1	0	4529	2.5	75.0	4.3	11.3	2.4	3.1	0.9	0.1	0.4	77.5	4.3	18.2	0.089	0.524	21.443376	-98.925751
T. Izq. Xilitla	228.75	3	0	4393	2.3	74.7	4.7	11.1	3.0	2.8	1.0	0.1	0.3	77.0	4.7	18.3	0.088	0.505	21.447381	-98.930034
T. Izq. Aquismón	252.50	1	0	5318	2.1	70.5	3.8	11.3	6.8	3.4	1.4	0.2	0.5	72.6	3.8	23.6	0.084	0.505	21.621480	-98.987503
Agua Hedionda	265.00	1	0	4769	1.2	71.6	4.5	13.3	4.5	2.9	1.3	0.2	0.5	72.8	4.5	22.7	0.090	0.505	21.726238	-98.963718
Cd. Valles	300.00	1	0	9521	1.6	75.3	4.2	8.0	3.8	4.6	1.3	0.3	0.9	76.9	4.2	18.9	0.085	0.528	21.958311	-98.999040

HIDALGO

10 CARR: Portezuelo - Palmillas

CLAVE: 00194

RUTA: MEX-045

AÑO: 2012

LUGAR	ESTACION				CLASIFICACION VEHICULAR EN PORCIENTO														COORDENADAS	
	KM	TE	SC	TDPA	M	A	B	C2	C3	T3S2	T3S3	T3S2R4	OTROS	A	B	C	K'	D	LATITUD	LONGITUD
Portezuelo	0.00	3	1	4494	1.2	70.9	6.1	7.2	2.6	7.0	2.8	1.5	0.7	72.1	6.1	21.8	0.098	0.503	20.486529	-99.302459
Portezuelo	0.00	3	2	4445	1.2	68.1	6.5	8.0	3.1	7.5	3.2	1.6	0.8	69.3	6.5	24.2	0.091	0.503	20.486529	-99.302459
Jonacapa	29.41	3	0	8125	0.5	64.4	6.3	7.0	3.9	10.2	4.0	2.7	1.0	64.9	6.3	28.8	0.074	0.504	20.435556	-99.536441
Huichapan	45.10	1	0	8818	0.3	71.1	3.5	5.4	3.1	8.9	3.0	3.9	0.8	71.4	3.5	25.1	0.076	0.501	20.391708	-99.639419
T. Izq. Nopala	56.15	1	0	4290	0.4	66.7	6.7	6.9	2.7	9.1	3.7	3.0	0.8	67.1	6.7	26.2	0.077	0.503	20.318720	-99.712696
Lim. Edos. Term. Hgo. Ppia. Qro.	71.40																			
Palmillas	80.00	1	0	8523	0.4	69.8	4.5	6.8	3.7	7.5	3.4	3.0	0.9	70.2	4.5	25.3	0.070	0.515	20.326454	-99.932053

11 CARR: Tamazunchale - San Felipe Orizatlán

CLAVE: 00609

RUTA: MEX-085

AÑO: 2012

LUGAR	ESTACION				CLASIFICACION VEHICULAR EN PORCIENTO														COORDENADAS	
	KM	TE	SC	TDPA	M	A	B	C2	C3	T3S2	T3S3	T3S2R4	OTROS	A	B	C	K'	D	LATITUD	LONGITUD
T. C. Portezuelo - Cd. Valles	0.00	3	0	8714	5.7	76.5	2.5	7.7	0.8	5.0	1.3	0.3	0.2	82.2	2.5	15.3	0.081	0.502	21.251056	-98.763597
Lim. Edos. Term. S. L. P. Ppia. Hgo.	18.50																			
San Felipe Orizatlán	27.10	1	0	2211	8.2	77.7	2.5	6.7	2.2	2.0	0.5	0.0	0.2	85.9	2.5	11.6	0.087	0.504	21.169798	-98.617107

12 CARR: Venta de Carpio - T. C. (Pachuca - Tuxpam)

CLAVE: 00455

RUTA: MEX-132

AÑO: 2012

LUGAR	ESTACION				CLASIFICACION VEHICULAR EN PORCIENTO														COORDENADAS	
	KM	TE	SC	TDPA	M	A	B	C2	C3	T3S2	T3S3	T3S2R4	OTROS	A	B	C	K'	D	LATITUD	LONGITUD
T. C. México - Pachuca (Libre)	0.00																			
T. Der. Texcoco	6.42	3	1	11045	1.3	84.1	3.3	5.1	1.5	2.5	1.3	0.4	0.5	85.4	3.3	11.3	0.073	0.508	19.610555	-98.945513
T. Der. Texcoco	6.42	3	2	11381	0.9	83.4	3.5	5.4	1.6	2.8	1.4	0.4	0.6	84.3	3.5	12.2	0.074	0.508	19.610554	-98.945508
Tepexpan	7.57	3	1	9881	2.5	83.9	2.7	3.0	1.8	2.9	1.4	1.0	0.8	86.4	2.7	10.9	0.070	0.501	19.623666	-98.934146
Tepexpan	7.57	3	2	9933	2.0	82.9	2.9	3.5	2.0	3.2	1.6	1.1	0.8	84.9	2.9	12.2	0.069	0.501	19.623666	-98.934146
Acolman	12.42	1	0	9575	1.5	82.3	2.5	5.5	1.2	3.4	1.4	1.2	1.0	83.8	2.5	13.7	0.070	0.514	19.632759	-98.917604
Teotihuacán	20.70	3	0	15650	1.6	82.3	2.1	5.9	1.9	2.4	1.7	1.0	1.1	83.9	2.1	14.0	0.073	0.502	19.681495	-98.863167
T. Der. Otumba	31.79	1	0	13059	0.6	84.5	3.2	5.7	1.1	3.0	0.7	0.2	1.0	85.1	3.2	11.7	0.074	0.514	19.717702	-98.803050
T. Der. Otumba	31.79	3	0	7694	1.0	81.2	3.3	7.9	1.8	3.1	1.0	0.3	0.4	82.2	3.3	14.5	0.082	0.546	19.719101	-98.797846
X. C. Tizayuca - Otumba	37.85	1	1	9846	0.2	84.4	2.4	5.1	1.9	3.4	0.9	0.9	0.8	84.6	2.4	13.0	0.079	0.511	19.747942	-98.760142
X. C. Tizayuca - Otumba	37.85	1	2	9810	0.2	83.5	2.7	5.1	1.9	3.8	1.1	0.9	0.8	83.7	2.7	13.6	0.072	0.511	19.748351	-98.760042
X. C. Tizayuca - Otumba	37.85	3	1	7940	1.2	78.9	4.3	7.0	2.3	3.0	1.1	1.3	0.9	80.1	4.3	15.6	0.093	0.511	19.757185	-98.751960
X. C. Tizayuca - Otumba	37.85	3	2	8446	1.0	76.9	4.9	7.6	2.7	3.6	1.1	1.3	0.9	77.9	4.9	17.2	0.090	0.511	19.756767	-98.752469
X. C. Arco Norte de La Ciudad de México	48.00	1	1	7790	0.9	81.3	4.1	4.7	2.9	2.1	1.8	1.6	0.6	82.2	4.1	13.7	0.071	0.512	19.821194	-98.710752
X. C. Arco Norte de La Ciudad de México	48.00	1	2	7436	0.4	79.8	4.7	5.4	3.1	2.4	1.9	1.7	0.6	80.2	4.7	15.1	0.082	0.512	19.821162	-98.710772

HIDALGO

12 CARR: Venta de Carpio - T. C. (Pachuca - Tuxpam)

CLAVE: 00455

RUTA: MEX-132

AÑO: 2012

LUGAR	ESTACION				CLASIFICACION VEHICULAR EN PORCIENTO													COORDENADAS		
	KM	TE	SC	TDPA	M	A	B	C2	C3	T3S2	T3S3	T3S2R4	OTROS	A	B	C	K'	D	LATITUD	LONGITUD
X. C. Arco Norte de La Ciudad de México	48.00	3	1	7836	1.1	79.0	4.2	5.4	3.9	2.3	1.6	1.8	0.7	80.1	4.2	15.7	0.077	0.513	19.838953	-98.694333
X. C. Arco Norte de La Ciudad de México	48.00	3	2	7839	5.4	77.8	2.2	6.4	2.1	2.7	1.7	1.0	0.7	83.2	2.2	14.6	0.079	0.513	19.838952	-98.694336
Lim. Edos. Term. Mex. Ppia. Hgo.	51.00																			
X. C. Pachuca - Cd. Sahagún	54.00	3	1	7572	0.1	73.0	6.5	8.7	3.0	4.4	2.0	1.6	0.7	73.1	6.5	20.4	0.103	0.516	19.881549	-98.658678
X. C. Pachuca - Cd. Sahagún	54.00	3	2	7454	0.2	70.8	6.9	9.6	3.4	4.5	2.2	1.7	0.7	71.0	6.9	22.1	0.088	0.516	19.881543	-98.658689
X. C. Calpulalpan - El Ocote	64.17	1	1	7098	0.4	81.7	5.0	4.5	2.8	2.8	1.4	0.7	0.7	82.1	5.0	12.9	0.110	0.503	19.918394	-98.585638
X. C. Calpulalpan - El Ocote	64.17	1	2	7016	0.4	79.3	5.7	5.4	3.2	3.0	1.6	0.7	0.7	79.7	5.7	14.6	0.140	0.503	19.918394	-98.585611
X. C. Calpulalpan - El Ocote	64.17	3	1	7820	0.9	80.3	4.0	5.4	3.2	3.2	1.6	0.9	0.5	81.2	4.0	14.8	0.116	0.509	19.926593	-98.574573
X. C. Calpulalpan - El Ocote	64.17	3	2	8120	0.4	78.1	4.2	6.4	3.7	3.8	1.8	0.9	0.7	78.5	4.2	17.3	0.144	0.509	19.926674	-98.574483
T. C. Pachuca - Tuxpam	84.08	1	1	9580	0.6	81.7	3.2	6.0	2.7	3.0	1.5	0.7	0.6	82.3	3.2	14.5	0.105	0.506	20.047667	-98.465018
T. C. Pachuca - Tuxpam	84.08	1	2	9342	0.8	80.3	3.3	6.4	2.9	3.1	1.8	0.8	0.6	81.1	3.3	15.6	0.133	0.506	20.047625	-98.465057

13 CARR: Ent. Tulancingo - Venta Grande (Cuota)

CLAVE: 00026

RUTA: MEX-132D

AÑO: 2012

LUGAR	ESTACION				CLASIFICACION VEHICULAR EN PORCIENTO													COORDENADAS		
	KM	TE	SC	TDPA	M	A	B	C2	C3	T3S2	T3S3	T3S2R4	OTROS	A	B	C	K'	D	LATITUD	LONGITUD
T. C. Pachuca - Tuxpam	0.00																			
T. Izq. Acatlán	7.80	1	0	8087	0.4	75.3	7.2	5.3	3.1	4.8	1.8	1.2	0.9	75.7	7.2	17.1	0.112	0.501	20.104115	-98.409319
T. Izq. Acatlán	7.80	3	0	8874	0.5	79.8	5.2	4.0	3.0	4.2	1.4	1.0	0.9	80.3	5.2	14.5	0.122	0.508	20.111301	-98.392333
X. C. Pachuca - Tuxpam	21.80	1	0	8104	0.5	79.7	3.9	5.4	2.9	3.9	1.8	1.2	0.7	80.2	3.9	15.9	0.091	0.525	20.151739	-98.306810
Caseta de Cobro San Alejo (Tejocotal)	21.80	2	0	5808	0.1	73.7	6.7	5.1	4.8	5.2	2.1	2.0	0.3	73.8	6.7	19.5	0.115	0.500	20.147597	-98.285760
T. C. Tlaxco - Tejocotal (Cuota)	39.60	1	0	6906	0.4	72.3	7.7	6.8	3.8	5.3	1.8	1.1	0.8	72.7	7.7	19.6	0.134	0.535	20.141671	-98.137886

14 CARR: Libramiento Norte de la Ciudad de México (Cuota)

CLAVE:

RUTA: MEX-040D

AÑO: 2012

LUGAR	ESTACION				CLASIFICACION VEHICULAR EN PORCIENTO													COORDENADAS		
	KM	TE	SC	TDPA	M	A	B	C2	C3	T3S2	T3S3	T3S2R4	OTROS	A	B	C	K'	D	LATITUD	LONGITUD
T. C. Toluca - Palmillas	0.00																			
X. C. México - Querétaro (Cuota)	54.00																			
Caseta de Cobro Querétaro	55.00	2	1	5848	0.1	54.3	4.8	4.7	6.0	17.4	3.7	6.7	2.3	54.4	4.8	40.8	0.067	0.500	19.998390	-99.489809
Caseta de Cobro Querétaro	55.00	2	2	5847	0.1	54.3	4.8	4.7	6.0	17.4	3.7	6.7	2.3	54.4	4.8	40.8	0.067	0.500	19.998390	-99.489809
Lim. Edos. Term. Mex. Ppia. Hgo.	60.72																			
Lim. Edos. Term. Hgo. Ppia. Mex.	95.75																			
Lim. Edos. Term. Mex. Ppia. Hgo.	115.89																			
Lim. Edos. Term. Hgo. Ppia. Mex.	143.98																			

HIDALGO

17 CARR : México - Querétaro (Cuota)

CLAVE: 00411

RUTA: MEX-057-MEX-057D

AÑO : 2012

LUGAR	ESTACION				CLASIFICACION VEHICULAR EN PORCIENTO													COORDENADAS		
	KM	TE	SC	TDPA	M	A	B	C2	C3	T3S2	T3S3	T3S2R4	OTROS	A	B	C	K'	D	LATITUD	LONGITUD
México	0.00																			
Lim. Edos. Term. D. F. Ppia. Mex.	11.30																			
Caseta de Cobro Tepetzotlán	43.01	2	1	25120	0.1	68.1	6.0	7.0	4.4	10.7	0.9	2.4	0.4	68.2	6.0	25.8	0.077	0.500	19.715358	-99.207587
Caseta de Cobro Tepetzotlán	43.01	2	2	25120	0.1	68.1	6.0	7.0	4.4	10.7	0.9	2.4	0.4	68.2	6.0	25.8	0.077	0.500	19.715358	-99.207587
Ent. Jorobas	56.18	1	1	23649	0.7	69.8	5.0	8.3	2.6	9.2	1.8	2.1	0.5	70.5	5.0	24.5	0.087	0.505	19.810332	-99.238285
Ent. Jorobas	56.18	1	2	23153	0.9	65.4	6.0	9.1	2.9	10.9	2.0	2.3	0.5	66.3	6.0	27.7	0.099	0.505	19.810332	-99.238285
Ent. Jorobas	56.18	3	1	26009	0.7	79.1	3.8	4.7	1.9	5.9	1.4	1.5	1.0	79.8	3.8	16.4	0.084	0.502	19.828321	-99.256350
Ent. Jorobas	56.18	3	2	25841	0.8	76.3	4.3	5.3	2.2	6.9	1.6	1.6	1.0	77.1	4.3	18.6	0.113	0.502	19.828322	-99.256350
Lim. Edos. Term. Mex. Ppia. Hgo.	59.85																			
T. Der. Tepeji del Río	69.36	1	1	26352	0.8	69.1	5.6	7.8	2.4	9.2	2.2	2.2	0.7	69.9	5.6	24.5	0.079	0.505	19.875006	-99.336647
T. Der. Tepeji del Río	69.36	1	2	26893	0.6	66.2	6.2	8.3	2.8	10.4	2.2	2.5	0.8	66.8	6.2	27.0	0.090	0.505	19.871246	-99.338734
T. Der. Tepeji del Río	69.36	3	1	24170	0.6	64.0	7.1	6.8	3.6	11.9	2.8	2.7	0.5	64.6	7.1	28.3	0.072	0.508	19.908041	-99.352534
T. Der. Tepeji del Río	69.36	3	2	25004	0.4	60.9	7.9	7.4	4.0	12.8	3.3	2.8	0.5	61.3	7.9	30.8	0.101	0.508	19.908041	-99.352534
T. Izq. Jilotepec	83.75	1	1	20595	0.8	65.5	6.8	7.5	3.2	11.3	1.5	2.7	0.7	66.3	6.8	26.9	0.091	0.521	19.974998	-99.435909
T. Izq. Jilotepec	83.75	1	2	22432	0.6	61.8	7.6	8.3	3.3	13.0	1.7	2.8	0.9	62.4	7.6	30.0	0.116	0.521	19.975213	-99.437025
T. Izq. Jilotepec	83.75	3	1	24425	1.6	75.5	3.8	7.0	2.7	4.3	2.0	2.3	0.8	77.1	3.8	19.1	0.072	0.523	19.987090	-99.448827
T. Izq. Jilotepec	83.75	3	2	24493	1.4	74.2	4.0	7.1	3.1	4.6	2.3	2.5	0.8	75.6	4.0	20.4	0.064	0.523	19.986814	-99.449027
Lim. Edos. Term. Hgo. Ppia. Mex.	86.00																			
X. C. Jilotepec - Maravillas	107.00	1	1	21764	1.4	66.4	4.2	6.8	3.2	11.1	2.9	3.1	0.9	67.8	4.2	28.0	0.070	0.504	20.082498	-99.625571
X. C. Jilotepec - Maravillas	107.00	1	2	21430	1.3	62.6	4.5	7.9	3.4	12.6	3.2	3.5	1.0	63.9	4.5	31.6	0.066	0.504	20.082473	-99.625609
X. C. Jilotepec - Maravillas	107.00	3	1	21905	1.6	63.0	5.5	7.6	3.4	11.8	3.1	3.1	0.9	64.6	5.5	29.9	0.073	0.523	20.083211	-99.631376
X. C. Jilotepec - Maravillas	107.00	3	2	21020	1.8	58.0	6.7	8.2	3.9	13.7	3.2	3.6	0.9	59.8	6.7	33.5	0.062	0.523	20.082506	-99.633397
T. Izq. Aculco	125.00	1	1	23721	1.2	73.1	5.4	9.2	1.4	3.3	2.7	3.1	0.6	74.3	5.4	20.3	0.062	0.501	20.095296	-99.690372
T. Izq. Aculco	125.00	1	2	23660	1.3	72.2	5.6	8.9	1.6	3.7	3.0	3.1	0.6	73.5	5.6	20.9	0.065	0.501	20.095078	-99.690686
T. Izq. Aculco	125.00	3	1	22865	1.2	58.0	7.0	8.1	5.0	11.8	3.5	4.7	0.7	59.2	7.0	33.8	0.062	0.500	20.110082	-99.707318
T. Izq. Aculco	125.00	3	2	22886	1.4	54.2	7.1	9.2	5.5	12.8	4.0	5.1	0.7	55.6	7.1	37.3	0.063	0.500	20.109429	-99.706474
Lim. Edos. Term. Mex. Ppia. Qro.	145.50																			
Caseta de Cobro Palmillas	145.80	2	1	21813	0.1	56.7	3.6	7.2	7.2	18.1	1.7	4.7	0.7	56.8	3.6	39.6	0.077	0.500	20.296103	-99.928994
Caseta de Cobro Palmillas	145.80	2	2	21813	0.1	56.7	3.6	7.2	7.2	18.1	1.7	4.7	0.7	56.8	3.6	39.6	0.077	0.500	20.296103	-99.928994
T. Izq. Toluca	148.50	1	1	19378	1.2	65.1	5.7	5.6	3.7	12.3	2.9	2.6	0.9	66.3	5.7	28.0	0.075	0.510	20.290613	-99.918781
T. Izq. Toluca	148.50	1	2	20170	1.0	61.5	6.3	6.6	4.2	13.5	3.2	2.7	1.0	62.5	6.3	31.2	0.076	0.510	20.290245	-99.919140
T. Izq. Toluca	148.50	3	1	26614	1.3	62.9	5.9	7.6	4.3	10.5	3.2	3.6	0.7	64.2	5.9	29.9	0.067	0.505	20.307607	-99.934151
T. Izq. Toluca	148.50	3	2	26092	1.2	60.0	6.0	8.7	4.7	11.5	3.4	3.8	0.7	61.2	6.0	32.8	0.062	0.505	20.306878	-99.935062
T. Der. Poniente San Juan del Río	164.10	3	1	18696	1.3	75.3	3.5	6.0	2.9	5.4	2.7	2.2	0.7	76.6	3.5	19.9	0.077	0.503	20.374166	-99.994876
T. Der. Poniente San Juan del Río	164.10	3	2	18896	1.4	72.8	3.9	6.9	3.1	5.5	3.2	2.5	0.7	74.2	3.9	21.9	0.061	0.503	20.373663	-99.994771

HIDALGO

17 CARR: México - Querétaro (Cuota)

CLAVE: 00411

RUTA: MEX-057-MEX-057D

AÑO: 2012

LUGAR	ESTACION				CLASIFICACION VEHICULAR EN PORCIENTO													COORDENADAS		
	KM	TE	SC	TDPA	M	A	B	C2	C3	T3S2	T3S3	T3S2R4	OTROS	A	B	C	K'	D	LATITUD	LONGITUD
T. Izq. Acámbaro	170.45	3	1	34508	0.8	65.5	6.4	9.9	3.0	8.5	2.7	2.3	0.9	66.3	6.4	27.3	0.064	0.500	20.444677	-100.075336
T. Izq. Acámbaro	170.45	3	2	34530	0.8	62.4	6.7	10.8	3.5	9.1	3.0	2.7	1.0	63.2	6.7	30.1	0.069	0.500	20.449057	-100.081331
T. Der. Libramiento de Querétaro a San Luis Potosí	207.00	1	1	40340	0.8	76.0	2.8	10.2	1.3	4.0	2.6	1.4	0.9	76.8	2.8	20.4	0.078	0.500	20.578031	-100.340086
T. Der. Libramiento de Querétaro a San Luis Potosí	207.00	1	2	40305	0.7	73.8	3.2	11.2	1.3	4.4	2.9	1.5	1.0	74.5	3.2	22.3	0.076	0.500	20.582372	-100.343510
T. Der. Libramiento de Querétaro a San Luis Potosí	207.00	3	1	45965	0.6	68.7	6.2	14.9	1.9	4.5	2.0	1.1	0.1	69.3	6.2	24.5	0.074	0.512	20.578879	-100.377917
T. Der. Libramiento de Querétaro a San Luis Potosí	207.00	3	2	43765	0.7	68.0	7.1	13.4	2.2	5.1	2.2	1.2	0.1	68.7	7.1	24.2	0.080	0.512	20.578247	-100.379342
Querétaro	211.60																			

18 CARR: Actopan - Progreso

CLAVE: 13038

RUTA: HGO

AÑO: 2012

LUGAR	ESTACION				CLASIFICACION VEHICULAR EN PORCIENTO													COORDENADAS		
	KM	TE	SC	TDPA	M	A	B	C2	C3	T3S2	T3S3	T3S2R4	OTROS	A	B	C	K'	D	LATITUD	LONGITUD
Actopan	0.00	3	1	8967	1.5	90.5	1.4	4.2	0.7	0.9	0.6	0.1	0.1	92.0	1.4	6.6	0.087	0.501	20.265244	-98.957666
Actopan	0.00	3	2	9013	1.2	89.7	1.6	4.8	0.8	1.1	0.6	0.1	0.1	90.9	1.6	7.5	0.108	0.501	20.265245	-98.957667
Progreso	23.90	1	1	6622	2.1	88.8	1.7	4.6	1.0	0.8	0.7	0.1	0.2	90.9	1.7	7.4	0.104	0.501	20.245312	-99.176083
Progreso	23.90	1	2	6595	2.5	87.4	1.9	5.2	1.1	0.9	0.7	0.1	0.2	89.9	1.9	8.2	0.089	0.501	20.245312	-99.176083

19 CARR: El Saucillo - Amealco

CLAVE: 13103

RUTA: HGO-103

AÑO: 2012

LUGAR	ESTACION				CLASIFICACION VEHICULAR EN PORCIENTO													COORDENADAS		
	KM	TE	SC	TDPA	M	A	B	C2	C3	T3S2	T3S3	T3S2R4	OTROS	A	B	C	K'	D	LATITUD	LONGITUD
T. C. Portezuelo - Palmillas	0.00	3	0	3274	0.5	78.3	6.0	6.8	1.6	3.6	1.8	0.7	0.7	78.8	6.0	15.2	0.089	0.503	20.313332	-99.715580
Nopala	11.00	1	1	1666	0.7	82.8	6.0	4.0	1.6	2.2	1.6	0.3	0.8	83.5	6.0	10.5	0.099	0.503	20.254513	-99.654954
Nopala	11.00	1	2	1643	0.8	81.6	6.2	4.3	1.7	2.5	1.7	0.4	0.8	82.4	6.2	11.4	0.094	0.503	20.254534	-99.654905
Nopala	11.00	3	0	8104	1.4	84.0	4.0	5.1	0.9	2.6	1.2	0.3	0.5	85.4	4.0	10.6	0.091	0.502	20.247143	-99.643017
Amealco	21.40	1	0	1875	1.5	84.5	4.0	3.2	1.5	2.1	1.7	0.7	0.8	86.0	4.0	10.0	0.095	0.514	20.239320	-99.557082

20 CARR: Ent. Emiliano Zapata - Cd. Sahagún

CLAVE: 13255

RUTA: HGO

AÑO: 2012

LUGAR	ESTACION				CLASIFICACION VEHICULAR EN PORCIENTO													COORDENADAS		
	KM	TE	SC	TDPA	M	A	B	C2	C3	T3S2	T3S3	T3S2R4	OTROS	A	B	C	K'	D	LATITUD	LONGITUD
T. C. Calpulalpan - El Ocote	0.00																			
Emiliano Zapata	2.70	1	1	3909	0.7	79.3	2.3	6.2	2.8	4.8	2.4	0.9	0.6	80.0	2.3	17.7	0.087	0.506	19.638984	-98.535032
Emiliano Zapata	2.70	1	2	3813	2.1	75.4	2.7	7.0	3.0	5.3	2.7	1.2	0.6	77.5	2.7	19.8	0.075	0.506	19.638984	-98.535032
T. Izq. Otumba	14.00	1	1	4385	0.8	80.6	1.9	4.8	3.0	5.5	2.0	0.9	0.5	81.4	1.9	16.7	0.077	0.515	19.743427	-98.583960

HIDALGO

20 CARR: Ent. Emiliano Zapata - Cd. Sahagún

CLAVE: 13255

RUTA: HGO

AÑO: 2012

LUGAR	ESTACION				CLASIFICACION VEHICULAR EN PORCIENTO														COORDENADAS	
	KM	TE	SC	TDPA	M	A	B	C2	C3	T3S2	T3S3	T3S2R4	OTROS	A	B	C	K'	D	LATITUD	LONGITUD
T. Izq. Otumba	14.00	1	2	4657	0.6	79.4	2.0	5.3	3.1	6.0	2.1	1.0	0.5	80.0	2.0	18.0	0.089	0.515	19.743419	-98.583954
Cd. Sahagún	17.98	1	1	5454	0.8	83.9	2.2	4.1	1.3	3.7	2.1	0.8	1.1	84.7	2.2	13.1	0.083	0.517	19.764910	-98.586567
Cd. Sahagún	17.98	1	2	5829	2.3	80.8	2.3	4.0	2.4	3.9	2.5	0.8	1.0	83.1	2.3	14.6	0.087	0.517	19.764910	-98.586566

21 CARR: Ent. Tepeji del Río - Tlahuelilpan

CLAVE: 13017

RUTA: HGO-017

AÑO: 2012

LUGAR	ESTACION				CLASIFICACION VEHICULAR EN PORCIENTO														COORDENADAS	
	KM	TE	SC	TDPA	M	A	B	C2	C3	T3S2	T3S3	T3S2R4	OTROS	A	B	C	K'	D	LATITUD	LONGITUD
T. C. México - Querétaro (Cuota)	0.00																			
T. Izq. Tepeji del Río	3.00	3	1	5871	0.6	86.0	1.3	7.1	0.7	1.4	1.5	0.9	0.5	86.6	1.3	12.1	0.082	0.519	19.940374	-99.339227
T. Izq. Tepeji del Río	3.00	3	2	5858	0.7	85.0	1.4	7.6	0.9	1.4	1.6	0.9	0.5	85.7	1.4	12.9	0.079	0.519	19.940374	-99.339227
Tula de Allende	18.00	1	0	11634	0.3	89.8	2.2	3.3	1.7	1.4	0.6	0.4	0.3	90.1	2.2	7.7	0.071	0.527	20.048054	-99.340324
X. C. Arco Norte de La Ciudad de México	19.40	1	1	7401	1.0	85.3	3.8	3.9	1.6	1.8	1.5	0.7	0.4	86.3	3.8	9.9	0.089	0.520	20.095329	-99.289594
X. C. Arco Norte de La Ciudad de México	19.40	1	2	7514	1.2	83.3	4.3	4.6	1.8	1.9	1.7	0.8	0.4	84.5	4.3	11.2	0.073	0.520	20.095329	-99.289594
Tlahuelilpan de Ocampo	32.00	1	1	6801	1.3	86.4	3.9	3.9	1.3	1.2	1.0	0.5	0.5	87.7	3.9	8.4	0.095	0.525	20.126661	-99.245026
Tlahuelilpan de Ocampo	32.00	1	2	6758	1.3	84.8	4.5	4.4	1.4	1.4	1.2	0.5	0.5	86.1	4.5	9.4	0.077	0.525	20.126662	-99.245025

22 CARR: Ent. Tolman - Cd. Sahagún

CLAVE: 00119

RUTA: EM-009-HGO

AÑO: 2012

LUGAR	ESTACION				CLASIFICACION VEHICULAR EN PORCIENTO														COORDENADAS	
	KM	TE	SC	TDPA	M	A	B	C2	C3	T3S2	T3S3	T3S2R4	OTROS	A	B	C	K'	D	LATITUD	LONGITUD
T. C. Venta de Carpio - Tulancingo	0.00	3	0	12918	0.6	84.8	1.9	6.7	1.9	2.7	0.8	0.2	0.4	85.4	1.9	12.7	0.072	0.501	19.714061	-98.790177
Otumba	5.00	3	0	5535	0.8	82.7	2.7	7.7	1.6	3.4	0.7	0.1	0.3	83.5	2.7	13.8	0.084	0.505	19.710331	-98.743322
T. Der. Jaltepec	21.00	3	0	3517	0.7	81.7	3.1	7.5	2.2	2.9	1.3	0.4	0.2	82.4	3.1	14.5	0.074	0.500	19.749557	-98.653367
Lim. Edos. Term. Mex. Ppia. Hgo.	25.00																			
Cd. Sahagún	32.00	1	0	4617	0.8	79.3	6.5	5.4	1.6	4.1	1.1	0.6	0.6	80.1	6.5	13.4	0.086	0.501	19.752419	-98.603606

23 CARR: Francisco I. Madero - Tula de Allende

CLAVE: 13043

RUTA: HGO

AÑO: 2012

LUGAR	ESTACION				CLASIFICACION VEHICULAR EN PORCIENTO														COORDENADAS	
	KM	TE	SC	TDPA	M	A	B	C2	C3	T3S2	T3S3	T3S2R4	OTROS	A	B	C	K'	D	LATITUD	LONGITUD
T. C. Portezuelo - Palmillas	0.00	3	0	3774	1.4	81.1	6.2	4.3	0.7	3.8	1.0	0.5	1.0	82.5	6.2	11.3	0.092	0.500	20.446752	-99.362711
Gral. Pedro María Anaya	38.20	1	0	3729	1.3	83.8	4.0	3.2	1.1	4.0	1.5	0.6	0.5	85.1	4.0	10.9	0.081	0.531	20.158406	-99.360884
T. C. (México - Querétaro) - Tlahuelilpan de Ocampo	52.70	1	0	6088	1.3	82.0	4.9	3.9	1.2	4.6	1.0	0.4	0.7	83.3	4.9	11.8	0.089	0.515	20.068546	-99.331220

HIDALGO

28 CARR: Los Reyes - El Tephé

CLAVE: 00021

RUTA: EM-HGO

AÑO: 2012

LUGAR	ESTACION				CLASIFICACION VEHICULAR EN PORCIENTO														COORDENADAS	
	KM	TE	SC	TDPA	M	A	B	C2	C3	T3S2	T3S3	T3S2R4	OTROS	A	B	C	K'	D	LATITUD	LONGITUD
Los Reyes	1.35	3	1	7266	1.9	76.6	8.2	8.6	0.8	1.7	1.0	0.3	0.9	78.5	8.2	13.3	0.071	0.513	19.769816	-98.996718
Los Reyes	1.35	3	2	7667	1.7	74.6	8.6	9.7	1.0	2.0	1.2	0.3	0.9	76.3	8.6	15.1	0.082	0.513	19.769816	-98.996719
Zumpango	15.35	1	1	10058	3.2	85.4	3.7	3.4	1.1	1.4	1.3	0.2	0.3	88.6	3.7	7.7	0.080	0.505	19.791211	-99.068938
Zumpango	15.35	1	2	9855	3.3	83.8	4.3	3.9	1.3	1.5	1.4	0.2	0.3	87.1	4.3	8.6	0.081	0.505	19.791211	-99.068938
Zumpango	15.35	3	0	16201	1.8	82.4	4.7	5.1	1.7	1.2	1.6	0.7	0.8	84.2	4.7	11.1	0.076	0.505	19.821421	-99.115375
Tequixquiac	29.00	1	0	7717	2.2	77.2	5.9	6.6	2.2	2.6	1.9	0.7	0.7	79.4	5.9	14.7	0.074	0.518	19.898905	-99.142490
Apaxco	39.00	3	1	3647	2.8	85.0	3.8	4.6	0.9	0.9	1.0	0.4	0.6	87.8	3.8	8.4	0.084	0.531	19.984781	-99.180127
Apaxco	39.00	3	2	4132	2.2	84.2	4.3	5.2	1.1	1.0	1.0	0.3	0.7	86.4	4.3	9.3	0.080	0.531	19.984782	-99.180127
Lim. Edos. Term. Mex. Ppia. Hgo.	40.00																			
T. Izq. Atotonilco (1° Acceso)	42.00	1	0	5918	2.7	78.0	5.3	6.1	2.9	2.2	1.6	0.6	0.6	80.7	5.3	14.0	0.079	0.501	19.999865	-99.188693
X. C. Arco Norte de La Ciudad de México	50.00	3	1	5782	1.6	84.1	6.0	3.7	0.9	1.4	1.2	0.6	0.5	85.7	6.0	8.3	0.086	0.521	20.069648	-99.220523
X. C. Arco Norte de La Ciudad de México	50.00	3	2	5658	1.3	83.2	6.4	4.2	1.0	1.4	1.3	0.7	0.5	84.5	6.4	9.1	0.076	0.521	20.069648	-99.220523
Tlaxcoapan	52.00	3	0	8329	2.2	78.4	6.5	8.1	0.9	2.5	0.5	0.4	0.5	80.6	6.5	12.9	0.088	0.511	20.106446	-99.221889
Tlahuelilpan de Ocampo	60.00	3	1	8409	1.4	82.5	5.4	5.6	1.2	1.5	1.4	0.5	0.5	83.9	5.4	10.7	0.083	0.529	20.150053	-99.234086
Tlahuelilpan de Ocampo	60.00	3	2	7494	1.4	81.2	6.0	6.0	1.2	1.7	1.5	0.5	0.5	82.6	6.0	11.4	0.084	0.529	20.150053	-99.234085
Progreso	72.00	1	1	9386	2.9	84.1	3.9	4.7	0.5	1.1	2.0	0.3	0.5	87.0	3.9	9.1	0.073	0.534	20.239499	-99.192934
Progreso	72.00	1	2	9793	2.9	83.0	4.4	4.9	0.5	1.3	2.2	0.3	0.5	85.9	4.4	9.7	0.079	0.534	20.239499	-99.192935
El Tephé	97.00	1	0	6788	1.5	81.1	5.5	6.2	0.8	3.2	0.9	0.5	0.3	82.6	5.5	11.9	0.086	0.500	20.437508	-99.172859

29 CARR: Otumba - Tizayuca

CLAVE: 00012

RUTA: EM-HGO

AÑO: 2012

LUGAR	ESTACION				CLASIFICACION VEHICULAR EN PORCIENTO														COORDENADAS	
	KM	TE	SC	TDPA	M	A	B	C2	C3	T3S2	T3S3	T3S2R4	OTROS	A	B	C	K'	D	LATITUD	LONGITUD
Otumba	0.00	3	0	6139	1.7	86.1	1.2	3.8	1.2	3.4	1.3	0.6	0.7	87.8	1.2	11.0	0.107	0.512	19.709290	-98.757783
X. C. Venta de Carpio - Tulancingo	6.00	3	0	4058	0.7	89.6	1.4	2.9	1.5	2.4	0.9	0.2	0.4	90.3	1.4	8.3	0.106	0.517	19.755596	-98.756656
Temascalapa	26.50	3	0	6531	2.5	81.6	2.1	4.3	2.5	3.3	1.8	0.9	1.0	84.1	2.1	13.8	0.083	0.506	19.830177	-98.913361
Lim. Edos. Term. Mex. Ppia. Hgo.	29.00																			
Tizayuca	37.10	1	1	8574	1.6	88.6	1.9	3.1	1.1	1.7	1.3	0.2	0.5	90.2	1.9	7.9	0.083	0.504	19.837712	-98.959824
Tizayuca	37.10	1	2	8698	1.8	87.4	2.3	3.4	1.2	1.9	1.3	0.2	0.5	89.2	2.3	8.5	0.084	0.504	19.837712	-98.959823

30 CARR: Ramal a El Chico

CLAVE: 13256

RUTA: HGO

AÑO: 2012

LUGAR	ESTACION				CLASIFICACION VEHICULAR EN PORCIENTO														COORDENADAS	
	KM	TE	SC	TDPA	M	A	B	C2	C3	T3S2	T3S3	T3S2R4	OTROS	A	B	C	K'	D	LATITUD	LONGITUD
T. C. Pachuca - Tempoal	0.00	3	0	2428	1.3	91.4	1.0	1.1	0.2	2.8	0.9	0.3	1.0	92.7	1.0	6.3	0.097	0.505	20.138929	-98.724988

HIDALGO

30 CARR: Ramal a El Chico

CLAVE: 13256

RUTA: HGO

AÑO: 2012

LUGAR	ESTACION				CLASIFICACION VEHICULAR EN PORCIENTO														COORDENADAS	
	KM	TE	SC	TDPA	M	A	B	C2	C3	T3S2	T3S3	T3S2R4	OTROS	A	B	C	K'	D	LATITUD	LONGITUD
Mineral El Chico	21.00	1	0	1054	0.6	91.6	2.3	3.6	0.4	1.0	0.2	0.0	0.3	92.2	2.3	5.5	0.123	0.504	20.210506	-98.726188

31 CARR: Ramal a Pachuca

CLAVE: 13254

RUTA: HGO

AÑO: 2012

LUGAR	ESTACION				CLASIFICACION VEHICULAR EN PORCIENTO														COORDENADAS	
	KM	TE	SC	TDPA	M	A	B	C2	C3	T3S2	T3S3	T3S2R4	OTROS	A	B	C	K'	D	LATITUD	LONGITUD
T. C. Colonia - Portezuelo	0.00	3	1	11432	0.3	89.1	3.5	3.9	0.8	1.0	0.9	0.1	0.4	89.4	3.5	7.1	0.106	0.507	20.119959	-98.822843
T. C. Colonia - Portezuelo	0.00	3	2	11137	0.4	87.8	3.7	4.6	1.0	1.1	0.9	0.1	0.4	88.2	3.7	8.1	0.095	0.507	20.119959	-98.822844
Pachuca	10.00																			

32 CARR: San Alejo - Huayacocotla

CLAVE: 00132

RUTA: HGO-051-VER-113

AÑO: 2012

LUGAR	ESTACION				CLASIFICACION VEHICULAR EN PORCIENTO														COORDENADAS	
	KM	TE	SC	TDPA	M	A	B	C2	C3	T3S2	T3S3	T3S2R4	OTROS	A	B	C	K'	D	LATITUD	LONGITUD
T. C. Pachuca - Tuxpam	0.00	3	0	4864	1.5	76.6	4.7	6.2	3.1	3.4	2.3	1.3	0.9	78.1	4.7	17.2	0.076	0.504	20.154198	-98.286325
Metepec	11.80	3	0	3682	1.3	79.2	6.4	7.9	1.1	2.4	0.8	0.5	0.4	80.5	6.4	13.1	0.083	0.510	20.243561	-98.331213
Agua Blanca	29.48	3	0	2768	1.4	81.5	5.4	5.9	1.0	3.1	0.8	0.4	0.5	82.9	5.4	11.7	0.107	0.502	20.353691	-98.360943
Lim. Edos. Term. Hgo. Ppia. Ver.	36.48																			
Huayacocotla	66.00	1	0	1774	1.3	83.4	5.7	5.1	1.3	1.4	1.2	0.2	0.4	84.7	5.7	9.6	0.098	0.506	20.528466	-98.493963

33 CARR: San Felipe Orizatlán - Huejutla de Reyes

CLAVE: 13258

RUTA: HGO

AÑO: 2012

LUGAR	ESTACION				CLASIFICACION VEHICULAR EN PORCIENTO														COORDENADAS	
	KM	TE	SC	TDPA	M	A	B	C2	C3	T3S2	T3S3	T3S2R4	OTROS	A	B	C	K'	D	LATITUD	LONGITUD
San Felipe Orizatlán	0.00	3	0	3758	4.9	83.3	2.2	4.5	1.4	2.7	0.5	0.1	0.4	88.2	2.2	9.6	0.091	0.514	21.171808	-98.591568
Huejutla de Reyes	25.00	1	0	3227	4.2	85.8	2.7	4.7	0.0	2.4	0.1	0.0	0.1	90.0	2.7	7.3	0.096	0.506	21.125774	-98.465785

34 CARR: Santo Domingo - T. C. (México - Querétaro)

CLAVE: 00433

RUTA: EM-011-HGO

AÑO: 2012

LUGAR	ESTACION				CLASIFICACION VEHICULAR EN PORCIENTO														COORDENADAS	
	KM	TE	SC	TDPA	M	A	B	C2	C3	T3S2	T3S3	T3S2R4	OTROS	A	B	C	K'	D	LATITUD	LONGITUD
T. C. Toluca - Palmillas	0.00	3	0	6743	0.2	84.0	2.8	4.9	1.0	4.3	1.5	0.6	0.7	84.2	2.8	13.0	0.079	0.524	19.621680	-99.775706
X. C. Los Reyes - Ixtlahuaca	6.11	3	0	6148	0.3	81.0	3.0	7.4	1.1	4.2	1.8	0.7	0.5	81.3	3.0	15.7	0.081	0.523	19.655801	-99.728061
X. C. Villa del Carbón - Atlacomulco	23.94	3	0	5219	0.4	75.0	3.1	8.7	2.3	5.7	2.8	0.9	1.1	75.4	3.1	21.5	0.078	0.515	19.786642	-99.702174
T. Der. Chapa de Mota	42.70	1	0	8292	0.6	79.7	2.0	8.6	1.0	5.3	1.3	0.6	0.9	80.3	2.0	17.7	0.080	0.504	19.925942	-99.582753

HIDALGO

34 CARR: Santo Domingo - T. C. (México - Querétaro)

CLAVE: 00433

RUTA: EM-011-HGO

AÑO: 2012

LUGAR	ESTACION				CLASIFICACION VEHICULAR EN PORCIENTO										COORDENADAS					
	KM	TE	SC	TDPA	M	A	B	C2	C3	T3S2	T3S3	T3S2R4	OTROS	A	B	C	K'	D	LATITUD	LONGITUD
Lim. Edos. Term. Mex. Ppia. Hgo.	63.34																			
T. C. México - Querétaro (Cuota)	65.84	1	1	4121	0.7	82.8	1.7	7.4	1.6	3.2	1.3	0.6	0.7	83.5	1.7	14.8	0.101	0.509	19.978667	-99.441646
T. C. México - Querétaro (Cuota)	65.84	1	2	3973	0.7	81.2	1.9	8.0	1.8	3.5	1.5	0.6	0.8	81.9	1.9	16.2	0.090	0.509	19.978732	-99.441640

35 CARR: T. C. (Los Reyes - El Tephé) - Tizayuca

CLAVE: 00014

RUTA: EM-HGO

AÑO: 2012

LUGAR	ESTACION				CLASIFICACION VEHICULAR EN PORCIENTO										COORDENADAS					
	KM	TE	SC	TDPA	M	A	B	C2	C3	T3S2	T3S3	T3S2R4	OTROS	A	B	C	K'	D	LATITUD	LONGITUD
T. C. Los Reyes - El Tephé	0.00	3	0	4035	3.3	84.3	3.5	2.3	1.4	3.1	0.7	0.5	0.9	87.6	3.5	8.9	0.075	0.531	19.784379	-99.025627
Lim. Edos. Term. Mex. Ppia. Hgo.	6.50																			
Tizayuca	8.00	1	0	7866	5.1	78.5	2.5	4.7	0.6	6.6	1.0	0.4	0.6	83.6	2.5	13.9	0.074	0.506	19.826041	-98.990455

36 CARR: Tepeji del Río - T.C. (México - Querétaro)

CLAVE: 13104

RUTA: HGO

AÑO: 2012

LUGAR	ESTACION				CLASIFICACION VEHICULAR EN PORCIENTO										COORDENADAS					
	KM	TE	SC	TDPA	M	A	B	C2	C3	T3S2	T3S3	T3S2R4	OTROS	A	B	C	K'	D	LATITUD	LONGITUD
T. C. Ent. Tepeji del Río - Tlahuelilpan de Ocampo	0.00	3	0	5729	1.0	77.0	3.0	9.1	1.2	4.7	1.6	1.4	1.0	78.0	3.0	19.0	0.118	0.522	19.943256	-99.341181
T. C. México - Querétaro	12.40	1	0	3898	0.7	74.4	5.8	6.5	3.2	4.5	2.6	1.5	0.8	75.1	5.8	19.1	0.093	0.512	19.975904	-99.435038

37 CARR: Tlahuelilpan - San Agustín Tlaxiaca

CLAVE: 13435

RUTA: HGO

AÑO: 2012

LUGAR	ESTACION				CLASIFICACION VEHICULAR EN PORCIENTO										COORDENADAS					
	KM	TE	SC	TDPA	M	A	B	C2	C3	T3S2	T3S3	T3S2R4	OTROS	A	B	C	K'	D	LATITUD	LONGITUD
Tlahuelilpan	0.00	3	0	2328	3.7	87.7	2.8	2.1	0.5	1.9	0.5	0.3	0.5	91.4	2.8	5.8	0.096	0.510	20.137019	-99.225947
Ignacio Zaragoza	25.50	3	0	3028	0.7	86.5	3.6	5.5	0.7	1.6	0.6	0.3	0.5	87.2	3.6	9.2	0.088	0.513	20.130551	-98.994644
T. C. (La Colonia - Portezuelo)	48.00	1	0	5292	0.7	89.3	2.4	3.5	0.5	2.6	0.4	0.1	0.5	90.0	2.4	7.6	0.087	0.508	20.120613	-98.906297

38 CARR: Calpulalpan - El Ocote

CLAVE: 00054

RUTA: MEX-HGO

AÑO: 2012

LUGAR	ESTACION				CLASIFICACION VEHICULAR EN PORCIENTO										COORDENADAS					
	KM	TE	SC	TDPA	M	A	B	C2	C3	T3S2	T3S3	T3S2R4	OTROS	A	B	C	K'	D	LATITUD	LONGITUD
Calpulalpan	0.00	3	0	8624	1.3	82.0	3.0	4.8	2.3	2.5	1.4	1.9	0.8	83.3	3.0	13.7	0.073	0.504	19.594460	-98.573750
X. C. Arco Norte de La Ciudad de México	4.00	3	0	6882	0.9	84.4	2.0	5.5	2.8	2.2	0.4	0.9	0.9	85.3	2.0	12.7	0.064	0.503	19.632473	-98.537103
Lim. Edos. Term. Tlax. Ppia. Hgo.	5.00																			
Apan	19.58	3	1	3694	0.9	88.2	2.7	3.3	2.5	1.4	0.6	0.1	0.3	89.1	2.7	8.2	0.091	0.514	19.727505	-98.469500

HIDALGO

38 CARR: Calpulalpan - El Ocote

CLAVE: 00054

RUTA: MEX-HGO

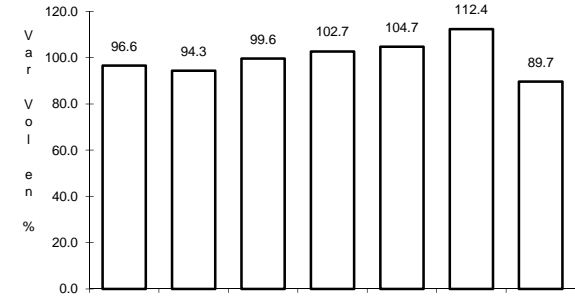
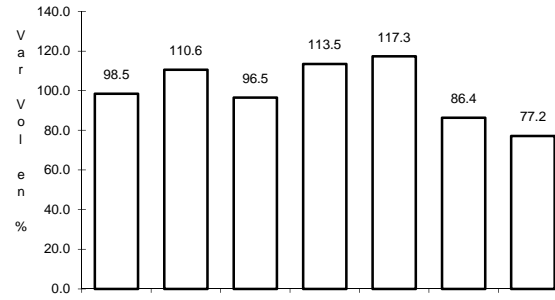
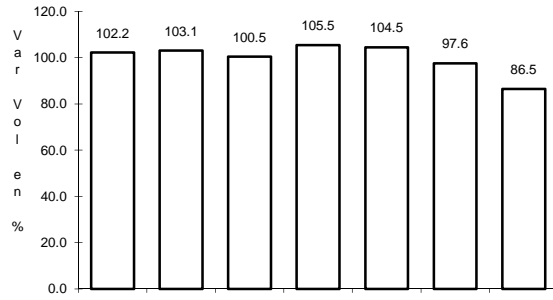
AÑO: 2012

L U G A R	E S T A C I O N				C L A S I F I C A C I O N V E H I C U L A R E N P O R C I E N T O													C O O R D E N A D A S		
	KM	TE	SC	TDPA	M	A	B	C2	C3	T3S2	T3S3	T3S2R4	OTROS	A	B	C	K'	D	LATITUD	LONGITUD
Apan	19.58	3	2	3497	0.9	87.8	3.0	3.8	2.4	1.1	0.6	0.1	0.3	88.7	3.0	8.3	0.092	0.514	19.727461	-98.469472
Tepeapulco	34.92	3	0	3556	0.8	81.9	4.1	6.7	2.3	2.5	0.8	0.4	0.5	82.7	4.1	13.2	0.099	0.525	19.803506	-98.563537
X. C. Venta de Carpio - Tulancingo	51.18	1	0	2934	0.8	82.3	5.4	6.0	2.1	2.4	0.5	0.2	0.3	83.1	5.4	11.5	0.121	0.503	19.918279	-98.576255
X. C. Venta de Carpio - Tulancingo	51.18	3	0	1997	0.9	84.7	5.6	4.9	1.1	2.0	0.6	0.0	0.2	85.6	5.6	8.8	0.122	0.509	19.927552	-98.582753
El Ocote	70.44	1	0	3150	0.8	88.0	4.1	4.1	0.6	1.7	0.5	0.0	0.2	88.8	4.1	7.1	0.094	0.500	20.047496	-98.617781

1 CARR: Álamo - Huejutla de Reyes

CLAVE: 00116

RUTA: MEX-127



Km: 0.00 Tipo: 3 Sent: 0

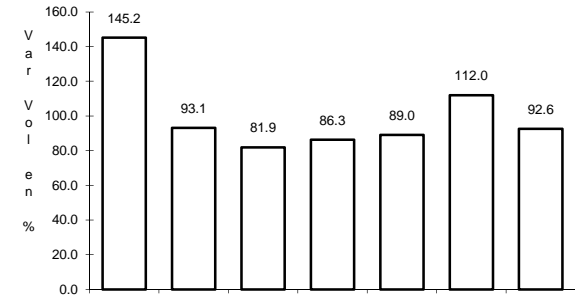
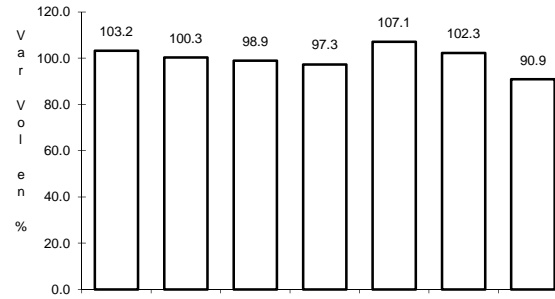
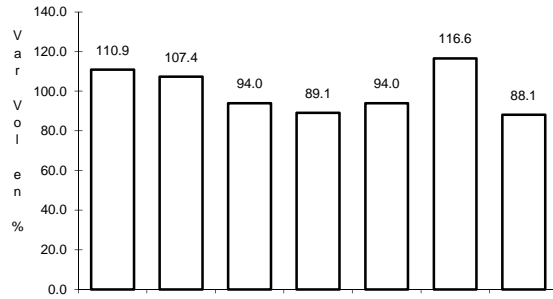
Km: 73.00 Tipo: 1 Sent: 0

Km: 78.00 Tipo: 3 Sent: 0

2 CARR: Apizaco - Tejocotal

CLAVE: 00430

RUTA: MEX-119



Km: 0.00 Tipo: 3 Sent: 1

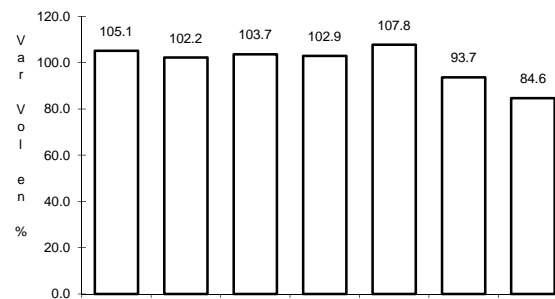
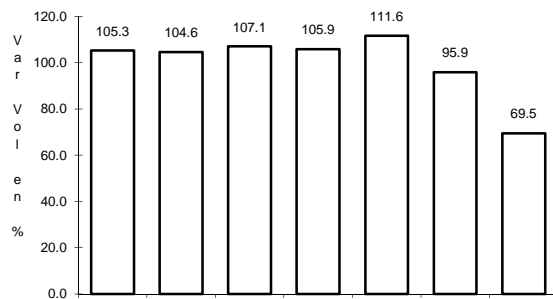
Km: 0.00 Tipo: 3 Sent: 2

Km: 113.15 Tipo: 1 Sent: 0

3 CARR: Ent. Colonia - Portezuelo

CLAVE: 13257

RUTA: MEX-085



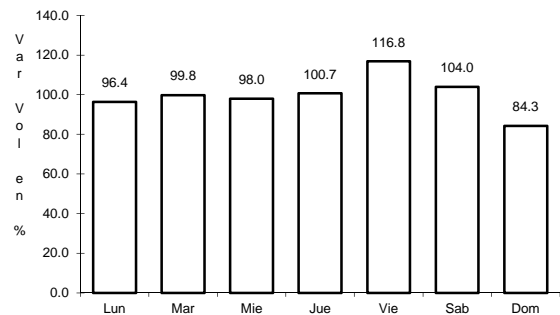
Km: 0.00 Tipo: 3 Sent: 1

Km: 0.00 Tipo: 3 Sent: 2

4 CARR: Ent. Jorobas - Tula

CLAVE: 00159

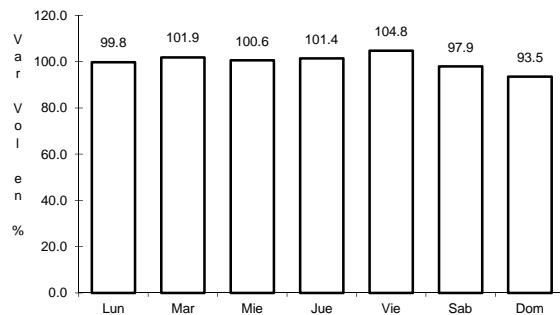
RUTA: MEX-087



Km: 0.00

Tipo: 3

Sent: 1



Km: 0.00

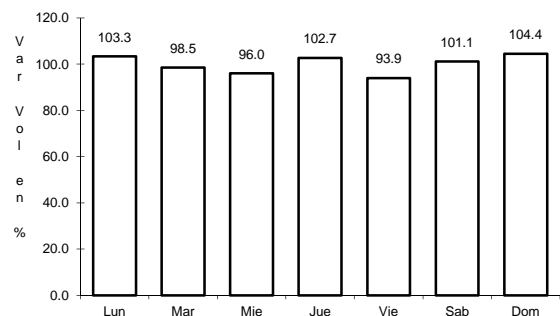
Tipo: 3

Sent: 2

5 CARR: México - Pachuca (Libre)

CLAVE: 00431

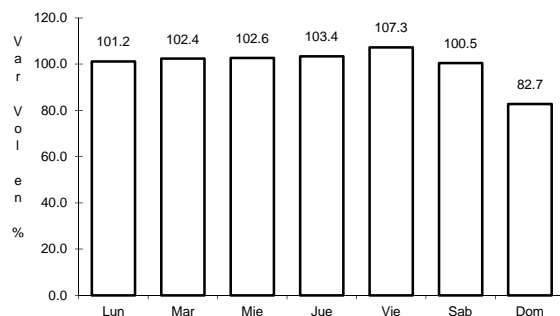
RUTA: MEX-085



Km: 26.93

Tipo: 1

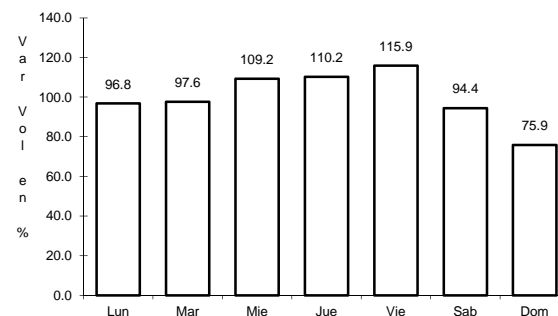
Sent: 0



Km: 86.50

Tipo: 1

Sent: 1



Km: 86.50

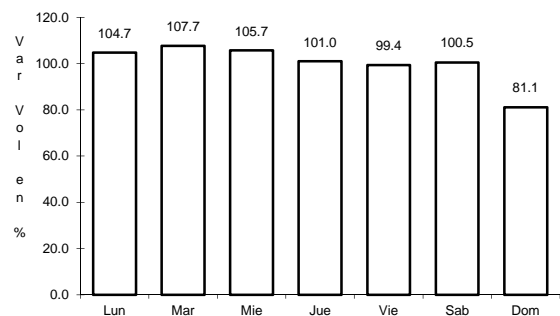
Tipo: 1

Sent: 2

6 CARR: Pachuca - Cd. Sahagún

CLAVE: 13088

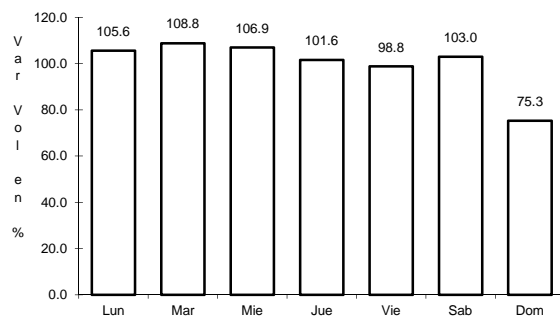
RUTA: MEX



Km: 0.00

Tipo: 3

Sent: 1



Km: 0.00

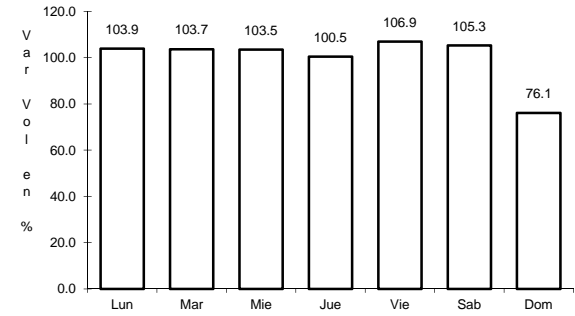
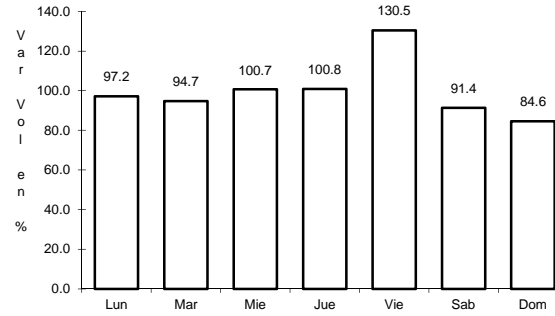
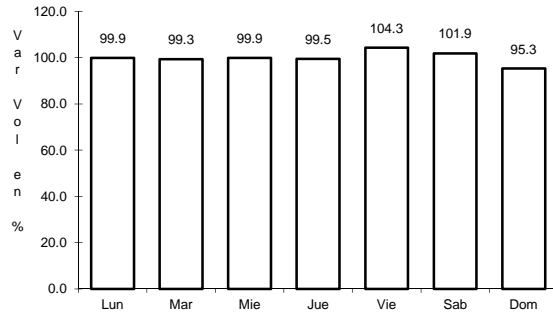
Tipo: 3

Sent: 2

7 CARR: Pachuca - Tempoal

CLAVE: 00113

RUTA: MEX-105



Km: 0.00 Tipo: 3 Sent: 0

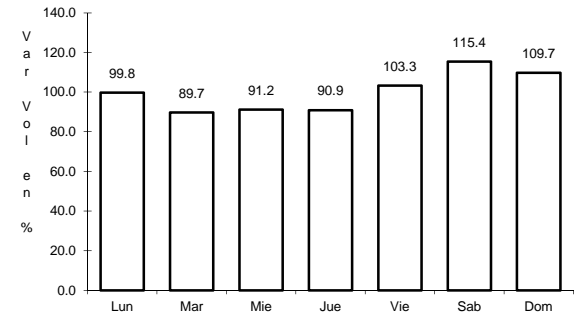
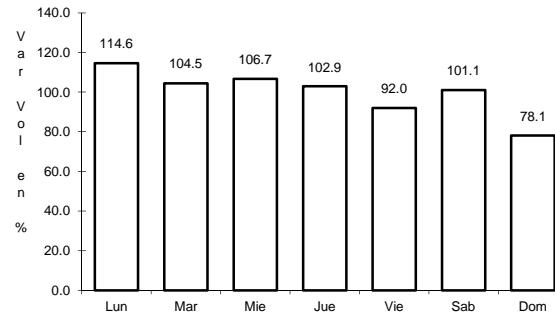
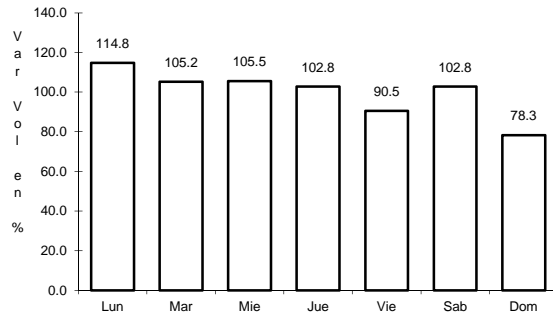
Km: 129.80 Tipo: 1 Sent: 0

Km: 260.68 Tipo: 1 Sent: 0

8 CARR: Pachuca - Tuxpam

CLAVE: 00608

RUTA: MEX-130



Km: 2.60 Tipo: 3 Sent: 1

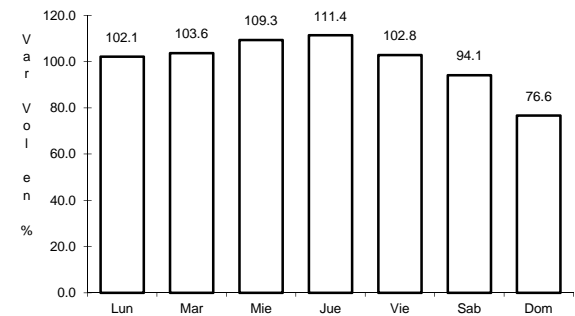
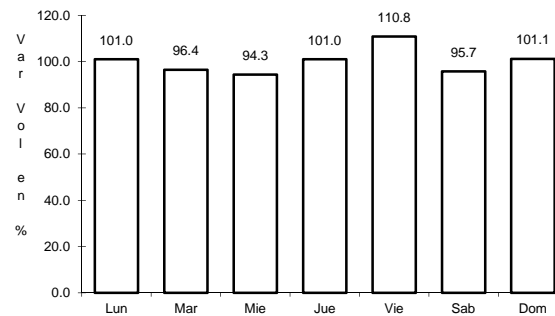
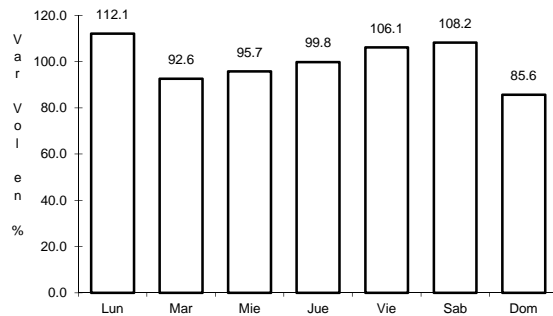
Km: 2.60 Tipo: 3 Sent: 2

Km: 141.75 Tipo: 1 Sent: 0

9 CARR: Portezuelo - Cd. Valles

CLAVE: 00023

RUTA: MEX-085



Km: 0.00 Tipo: 3 Sent: 0

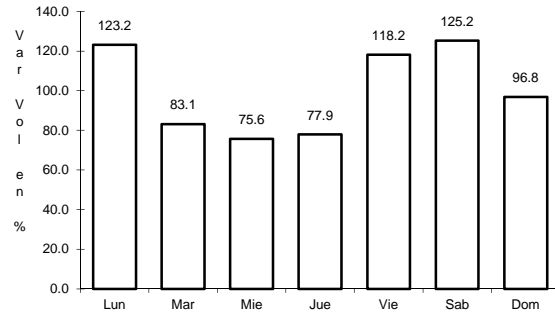
Km: 154.00 Tipo: 3 Sent: 0

Km: 300.00 Tipo: 1 Sent: 0

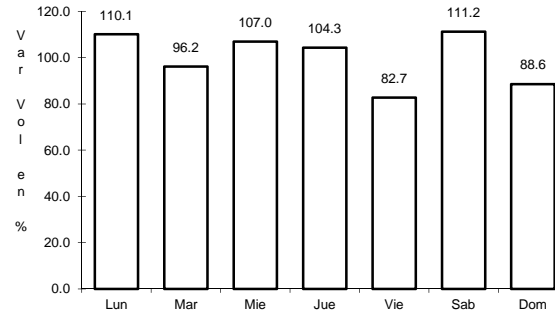
13 CARR: Ent. Tulancingo - Venta Grande (Cuota)

CLAVE: 00026

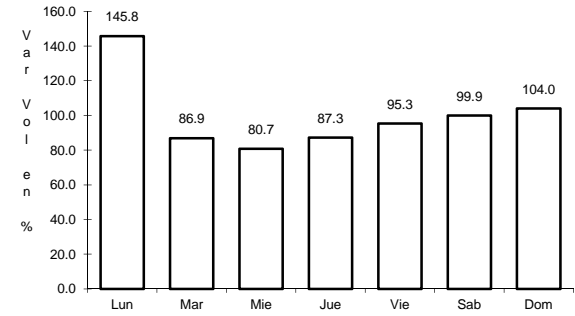
RUTA: MEX-132D



Km: 7.80 Tipo: 1 Sent: 0



Km: 21.80 Tipo: 1 Sent: 0

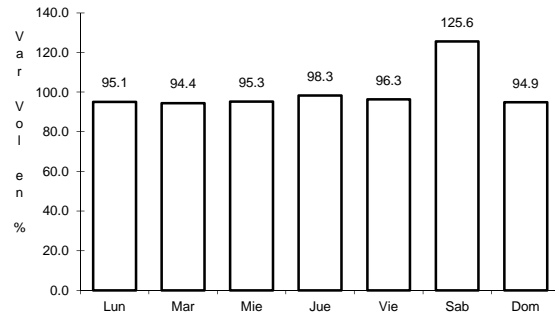


Km: 39.60 Tipo: 1 Sent: 0

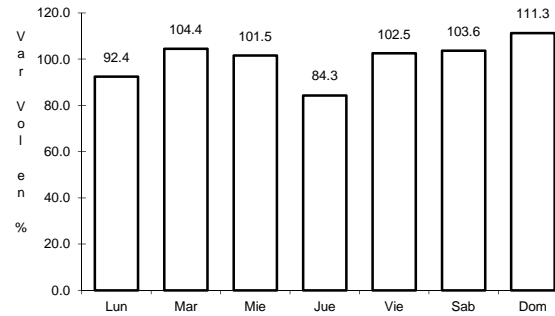
15 CARR: México - Pachuca (Cuota)

CLAVE: 00432

RUTA: MEX-085D



Km: 25.00 Tipo: 3 Sent: 1

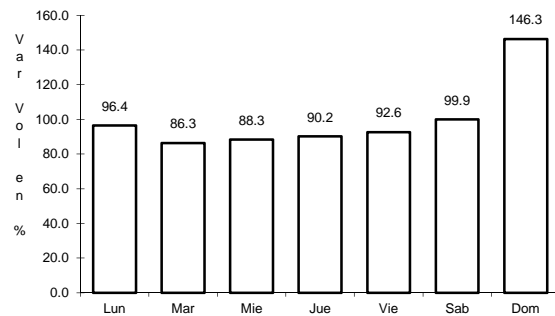


Km: 25.00 Tipo: 3 Sent: 2

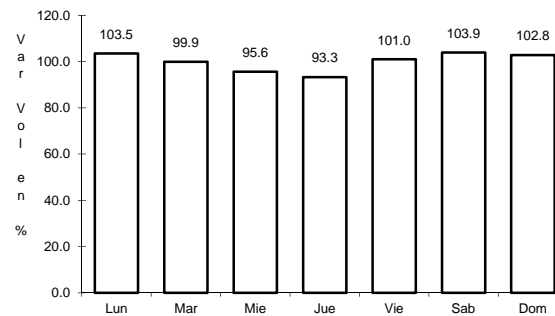
16 CARR: Tejocotal - Nuevo Necaxa (Cuota)

CLAVE: 00211

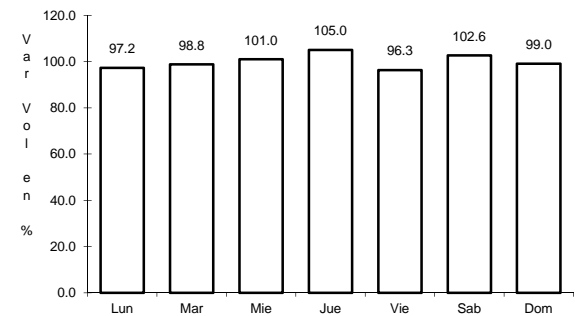
RUTA: MEX-132D



Km: 0.00 Tipo: 3 Sent: 0



Km: 17.00 Tipo: 1 Sent: 1

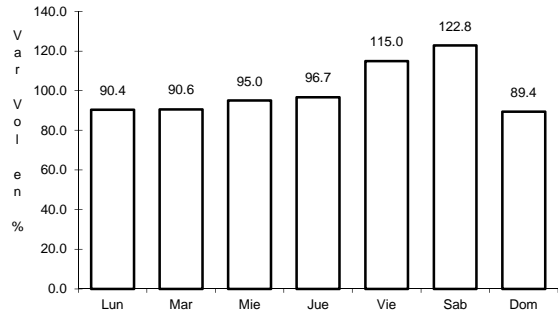


Km: 17.00 Tipo: 1 Sent: 2

17 CARR: México - Querétaro (Cuota)

CLAVE: 00411

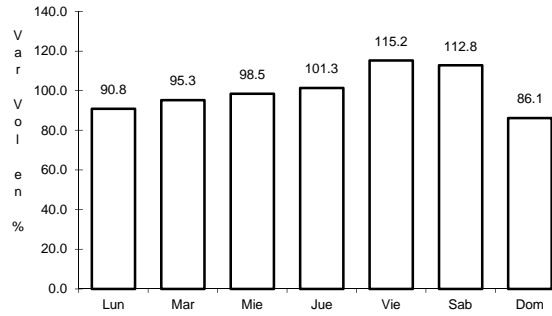
RUTA: MEX-057-MEX-057D



Km: 56.18

Tipo: 1

Sent: 1



Km: 56.18

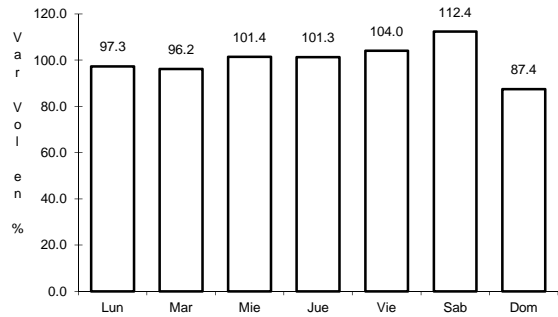
Tipo: 1

Sent: 2

18 CARR: Actopan - Progreso

CLAVE: 13038

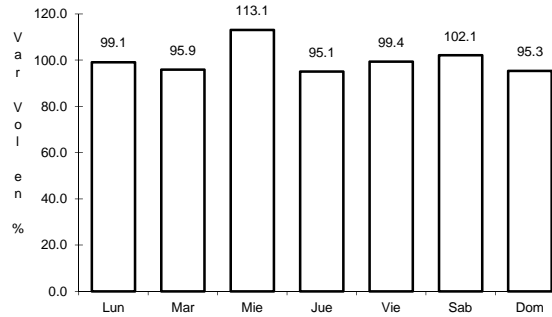
RUTA: HGO



Km: 0.00

Tipo: 3

Sent: 1



Km: 0.00

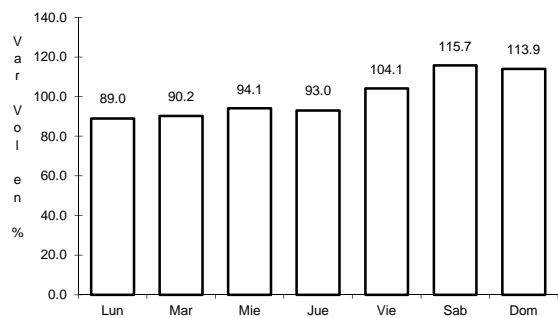
Tipo: 3

Sent: 2

19 CARR: El Saucillo - Amealco

CLAVE: 13103

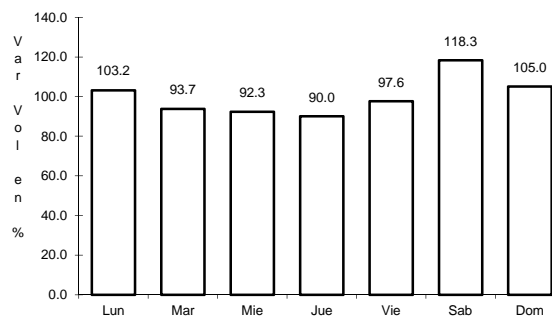
RUTA: HGO-103



Km: 0.00

Tipo: 3

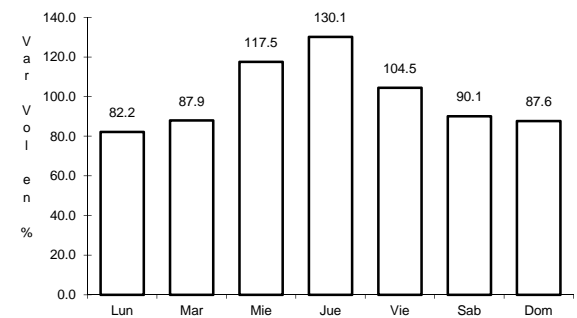
Sent: 0



Km: 11.00

Tipo: 3

Sent: 0



Km: 21.40

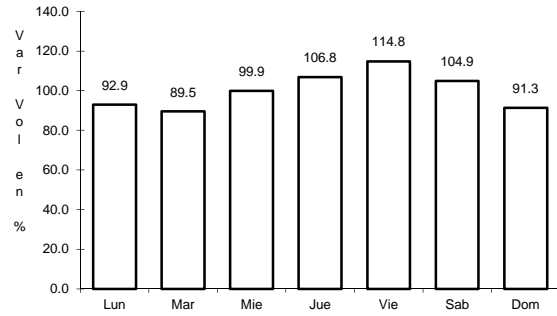
Tipo: 1

Sent: 0

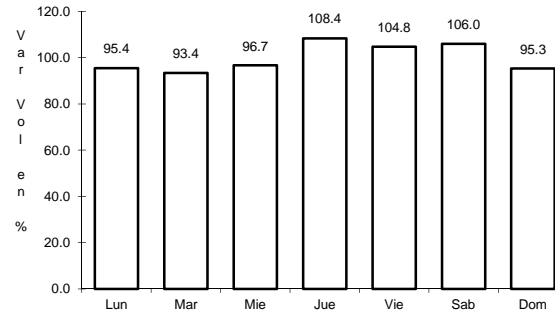
20 CARR: Ent. Emiliano Zapata - Cd. Sahagún

CLAVE: 13255

ruta: HGO



Km: 2.70 Tipo: 1 Sent: 1

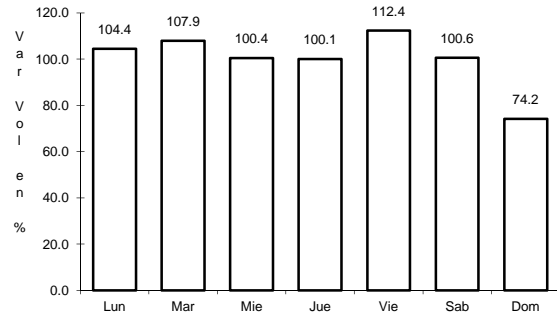


Km: 2.70 Tipo: 1 Sent: 2

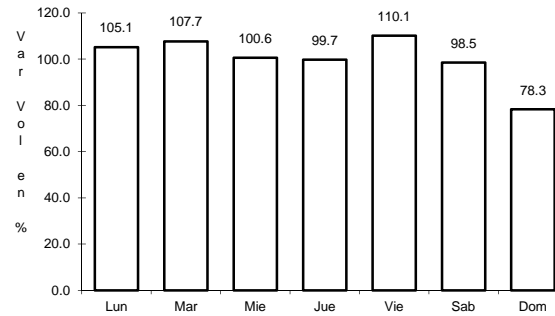
21 CARR: Ent. Tepeji del Río - Tlahuelilpan

CLAVE: 13017

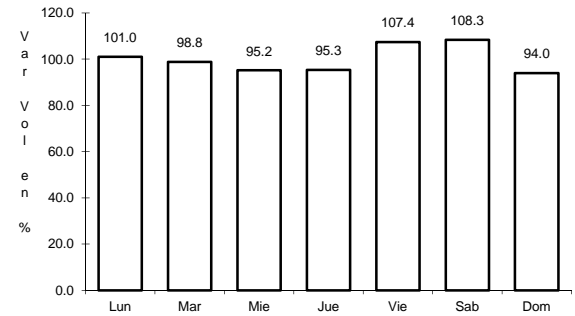
ruta: HGO-017



Km: 3.00 Tipo: 3 Sent: 1



Km: 3.00 Tipo: 3 Sent: 2

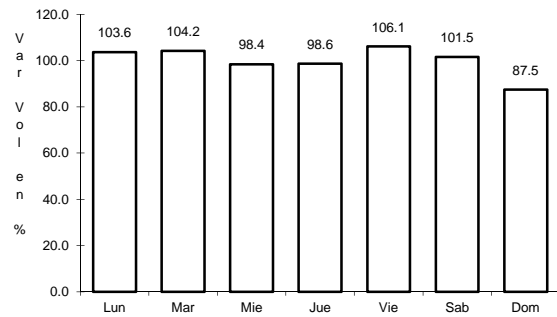


Km: 18.00 Tipo: 1 Sent: 0

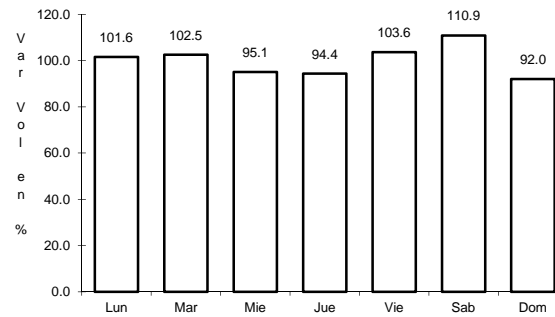
22 CARR: Ent. Tolman - Cd. Sahagún

CLAVE: 00119

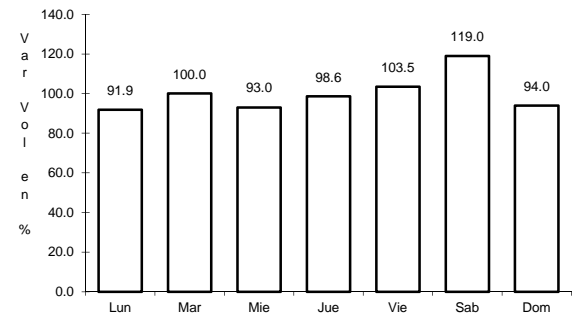
ruta: EM-009-HGO



Km: 0.00 Tipo: 3 Sent: 0



Km: 21.00 Tipo: 3 Sent: 0

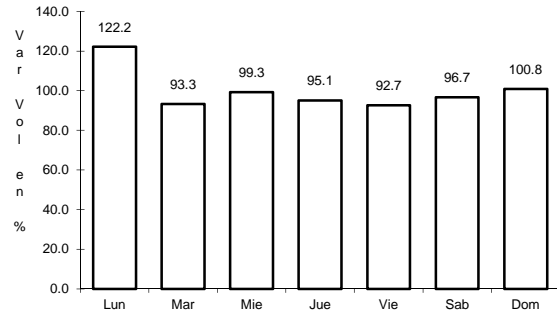


Km: 32.00 Tipo: 1 Sent: 0

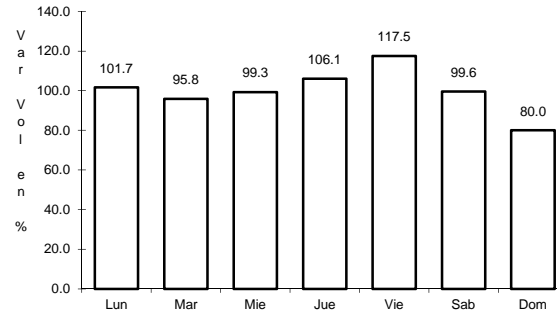
26 CARR: Libramiento de Atotonilco El Grande

CLAVE: 13238

RUTA: HGO



Km: 0.00 Tipo: 3 Sent: 0

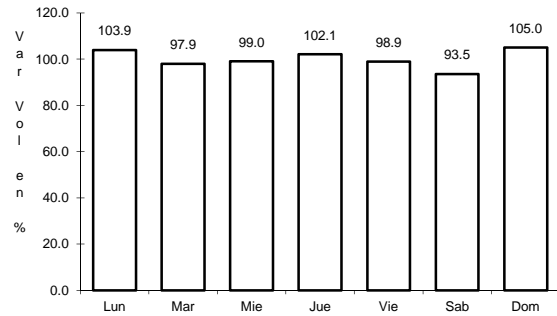


Km: 6.30 Tipo: 1 Sent: 0

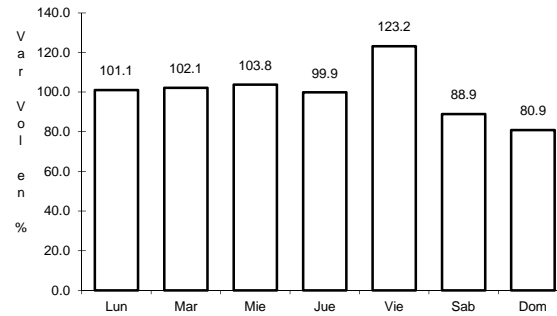
27 CARR: Lolotla - Atlapexco

CLAVE: 13238

RUTA: HGO



Km: 0.00 Tipo: 3 Sent: 0

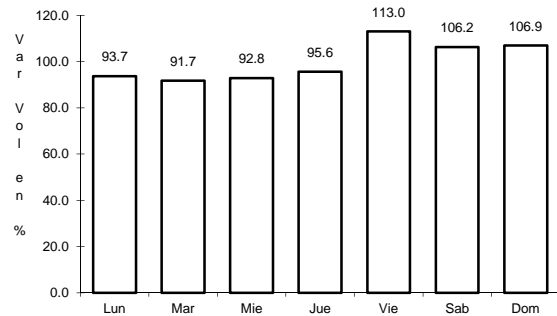


Km: 68.00 Tipo: 1 Sent: 0

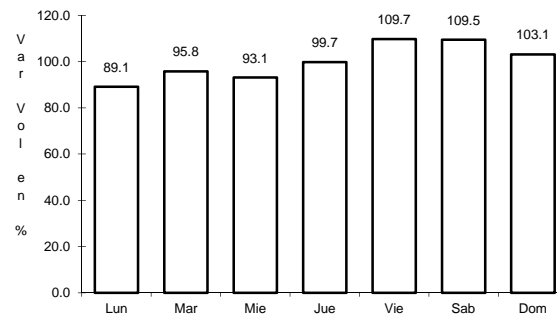
28 CARR: Los Reyes - El Tephé

CLAVE: 00021

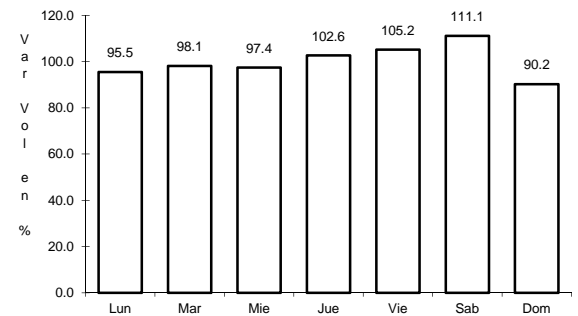
RUTA: EM-HGO



Km: 1.35 Tipo: 3 Sent: 1



Km: 1.35 Tipo: 3 Sent: 2

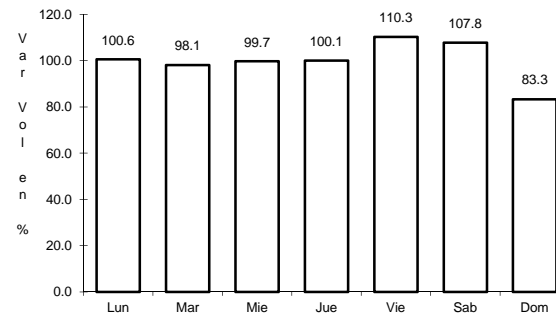
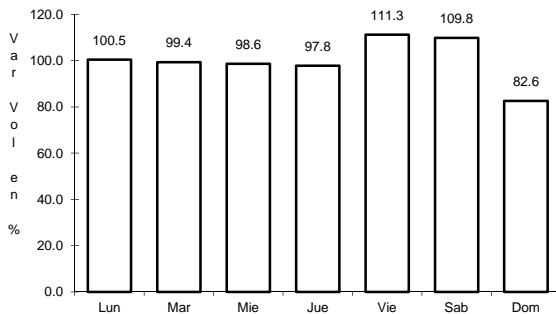
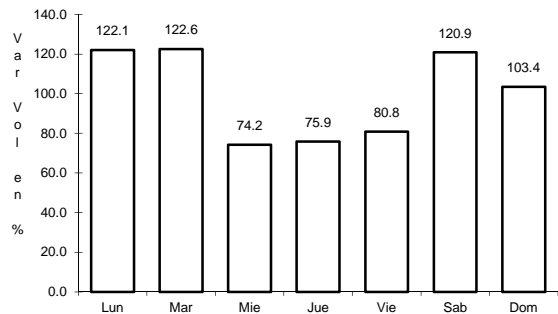


Km: 42.00 Tipo: 1 Sent: 0

29 CARR: Otumba - Tizayuca

CLAVE: 00012

RUTA: EM-HGO



Km: 0.00 Tipo: 3 Sent: 0

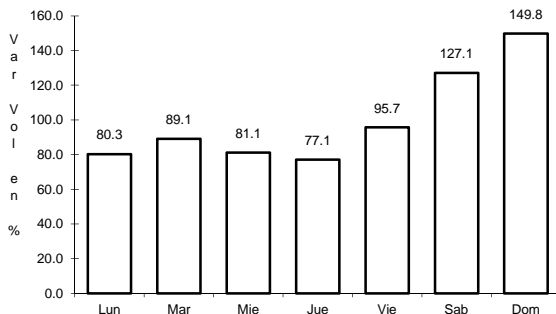
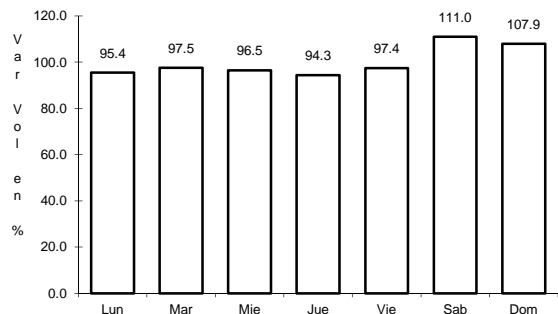
Km: 37.10 Tipo: 1 Sent: 1

Km: 37.10 Tipo: 1 Sent: 2

30 CARR: Ramal a El Chico

CLAVE: 13256

RUTA: HGO



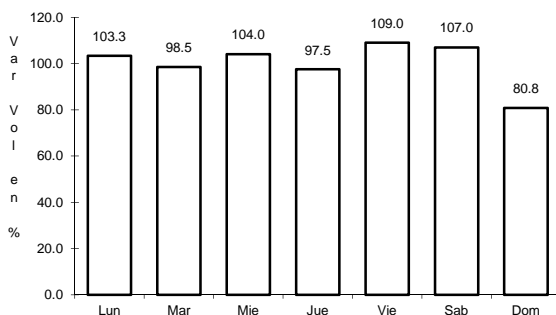
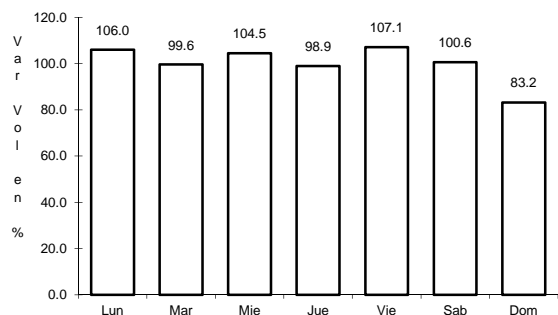
Km: 0.00 Tipo: 3 Sent: 0

Km: 21.00 Tipo: 1 Sent: 0

31 CARR: Ramal a Pachuca

CLAVE: 13254

RUTA: HGO



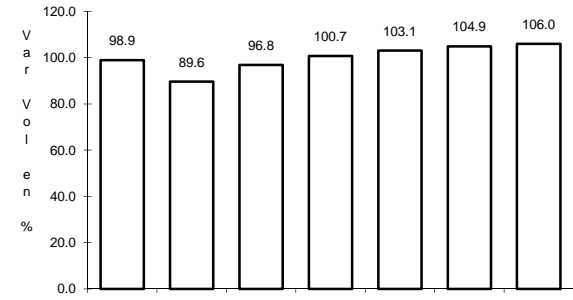
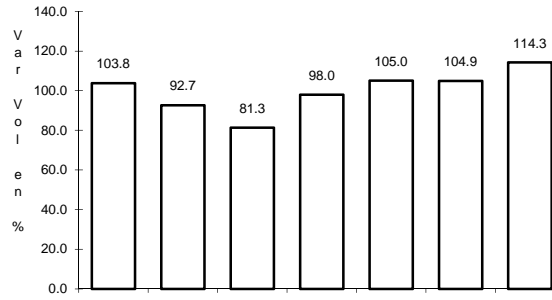
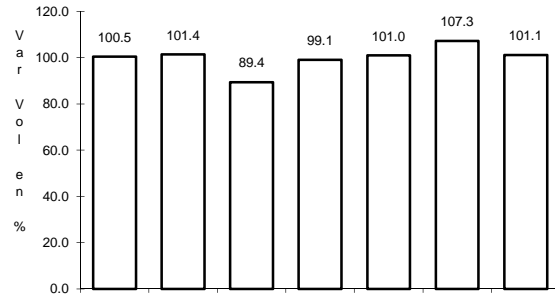
Km: 0.00 Tipo: 3 Sent: 1

Km: 0.00 Tipo: 3 Sent: 2

32 CARR: San Alejo - Huayacocotla

CLAVE: 00132

RUTA: HGO-051-VER-113



Km: 0.00 Tipo: 3 Sent: 0

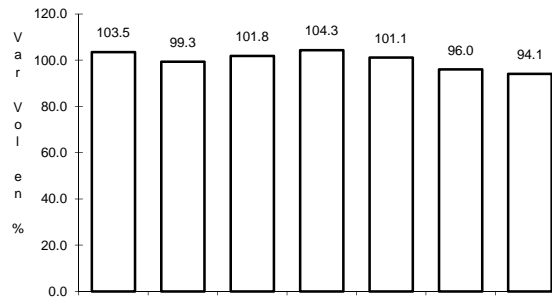
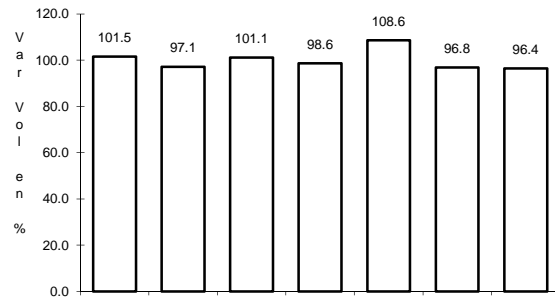
Km: 29.48 Tipo: 3 Sent: 0

Km: 66.00 Tipo: 1 Sent: 0

33 CARR: San Felipe Orizatlán - Huejutla de Reyes

CLAVE: 13258

RUTA: HGO



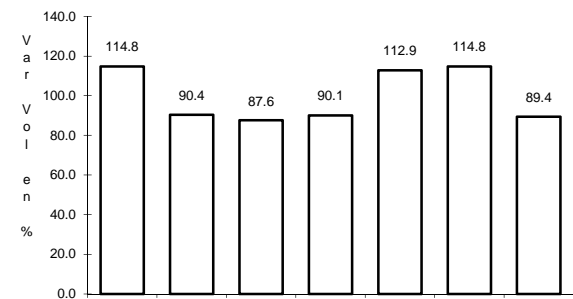
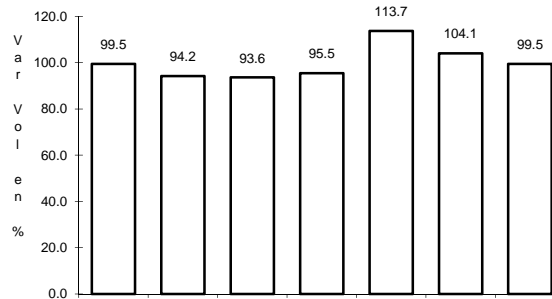
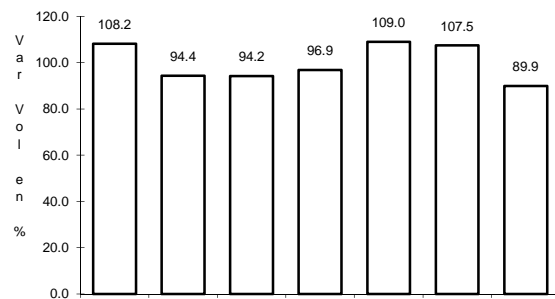
Km: 0.00 Tipo: 3 Sent: 0

Km: 25.00 Tipo: 1 Sent: 0

34 CARR: Santo Domingo - T. C. (México - Querétaro)

CLAVE: 00433

RUTA: EM-011-HGO

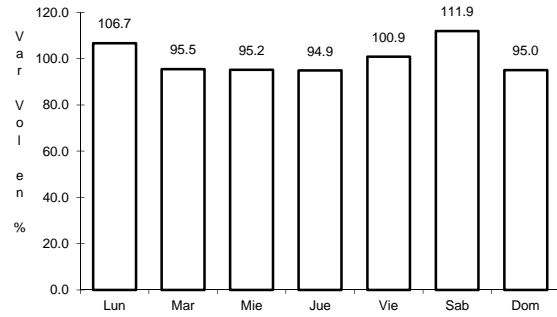


Km: 0.00 Tipo: 3 Sent: 0

Km: 65.84 Tipo: 1 Sent: 1

Km: 65.84 Tipo: 1 Sent: 2

38 CARR: Calpulalpan - El Ocote

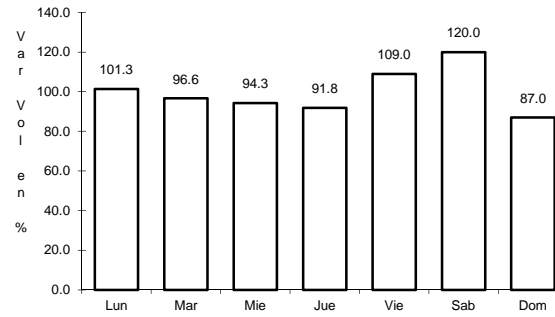


Km: 0.00

Tipo: 3

Sent: 0

CLAVE: 00054

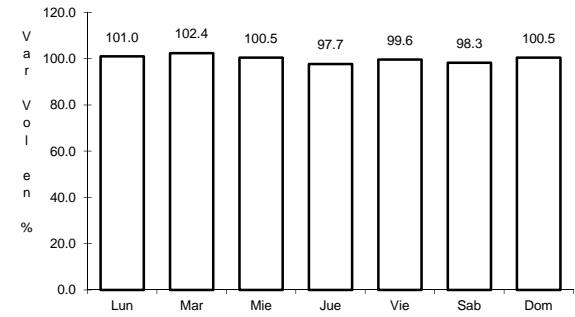


Km: 34.92

Tipo: 3

Sent: 0

RUTA: MEX-HGO



Km: 70.44

Tipo: 1

Sent: 0