

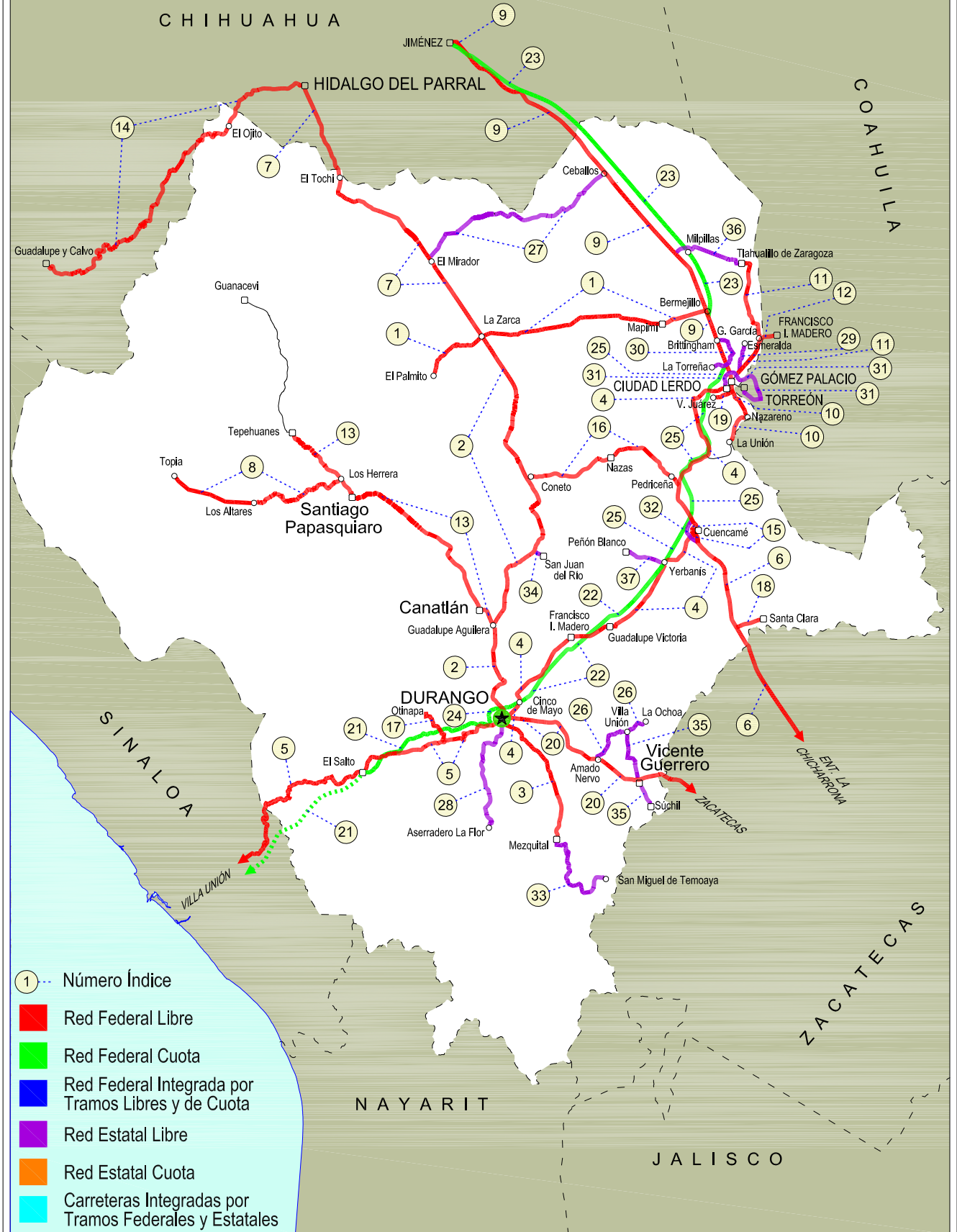


DURANGO

NO. INDICE	CARRETERA	RUTA
---RED FEDERAL LIBRE---		
1	Bermejillo - El Palmito	MEX-030
2	Durango - Ent. La Zarca	MEX-045
3	Durango - Mezquital	MEX-023
4	Durango - Torreón	MEX-040
5	Durango - Villa Unión	MEX-040
6	Ent. La Chicharrona - Cuencamé	MEX-049
7	Ent. La Zarca - Hidalgo del Parral	MEX-045
8	Ent. Los Herrera - Topia	MEX-036
9	Gómez Palacio - Jiménez	MEX-049
10	Gómez Palacio - La Unión	MEX-040
11	Gómez Palacio - Tlahualillo	MEX-040
12	Gregorio García - Francisco I. Madero	MEX-040
13	Guadalupe Aguilera - Tepehuanes	MEX-023
14	Hidalgo del Parral - Guadalupe y Calvo	MEX-024
15	Libramiento Cuencamé	MEX
16	Pedriceña - Ent. Rodeo	MEX-034
17	Ramal a Otinapa	MEX
18	Ramal a Santa Clara	MEX-049
19	Ramal a Villa Juárez	MEX-040
20	Zacatecas - Durango	MEX-045
---RED FEDERAL DE CUOTA---		
21	Durango - Mazatlán (Cuota)	MEX-040D
22	Durango - Yerbanís (Cuota)	MEX-040D
23	Gómez Palacio - Corralitos (Cuota)	MEX-049D
24	Libramiento de Durango (Cuota)	MEX-040D
25	Yerbanís - Gómez Palicio (Cuota)	MEX-040D
---RED ESTATAL LIBRE---		
26	Amado Nervo - La Ochoa	DGO-542
27	Ceballos - El Mirador	DGO-044
28	Durango - Aserradero La Flor	DGO-115
29	Jabonoso - Esmeralda	DGO-363
30	La Torreña - Brittingham	DGO-325
31	Libramiento de Torreón	COA
32	Libramiento Exterior Cuencamé	DGO
33	Mezquital - San Miguel de Temoaya	DGO
34	Ramal a San Juan del Río	DGO-290
35	Súchil - Villa Unión	DGO-241
36	Tlahualillo de Zaragoza - T.C. Gómez Palacio - Jiménez	DGO
37	Yerbanís - Peñón Blanco	DGO-316

# 10 DURANGO

SECRETARÍA DE COMUNICACIONES Y TRANSPORTES  
DIRECCIÓN GENERAL DE SERVICIOS TÉCNICOS



DURANGO

1 CARR: Bermejillo - El Palmito

CLAVE: 10105

RUTA: MEX-030

AÑO: 2012

LUGAR	ESTACION				CLASIFICACION VEHICULAR EN PORCIENTO														COORDENADAS	
	KM	TE	SC	TDPA	M	A	B	C2	C3	T3S2	T3S3	T3S2R4	OTROS	A	B	C	K'	D	LATITUD	LONGITUD
Bermejillo	0.00	3	0	2299	0.7	68.3	0.9	13.2	8.0	6.3	1.6	0.6	0.4	69.0	0.9	30.1	0.095	0.500	25.892256	-103.632225
Santo Domingo	86.00	1	0	481	0.3	69.7	1.9	10.9	5.0	5.9	3.1	3.2	0.0	70.0	1.9	28.1	0.098	0.513	25.814541	-104.440296
Santo Domingo	86.00	3	0	448	0.1	65.9	2.0	14.3	5.9	5.5	2.8	3.5	0.0	66.0	2.0	32.0	0.113	0.518	25.812968	-104.449196
Ent. La Zarca	120.00	1	0	530	0.6	72.4	2.9	12.9	3.9	4.4	2.2	0.7	0.0	73.0	2.9	24.1	0.089	0.513	25.783446	-104.761389
Ent. La Zarca	120.00	3	0	308	0.7	74.5	1.7	18.3	0.0	2.9	1.9	0.0	0.0	75.2	1.7	23.1	0.079	0.505	25.782132	-104.764861
El Palmito	160.00	1	0	209	0.5	76.8	2.2	18.4	1.3	0.6	0.2	0.0	0.0	77.3	2.2	20.5	0.122	0.503	25.615461	-105.003137

2 CARR: Durango - Ent. La Zarca

CLAVE: 10016

RUTA: MEX-045

AÑO: 2012

LUGAR	ESTACION				CLASIFICACION VEHICULAR EN PORCIENTO														COORDENADAS	
	KM	TE	SC	TDPA	M	A	B	C2	C3	T3S2	T3S3	T3S2R4	OTROS	A	B	C	K'	D	LATITUD	LONGITUD
Durango	0.00	3	1	12882	1.7	86.6	2.4	4.8	0.6	1.2	1.9	0.2	0.6	88.3	2.4	9.3	0.077	0.523	24.041407	-104.657938
Durango	0.00	3	2	13514	1.7	85.4	2.5	5.5	0.8	1.3	2.0	0.2	0.6	87.1	2.5	10.4	0.076	0.523	24.041411	-104.657946
Caseta Fiscal Zona Industrial	5.30	1	1	7954	1.3	82.2	2.7	8.3	2.1	2.0	0.9	0.2	0.3	83.5	2.7	13.8	0.097	0.509	24.047821	-104.658184
Caseta Fiscal Zona Industrial	5.30	1	2	7862	1.7	79.9	3.1	9.2	2.3	2.2	1.1	0.2	0.3	81.6	3.1	15.3	0.100	0.509	24.047821	-104.658184
Caseta Fiscal Zona Industrial	5.30	3	1	6529	1.1	80.2	2.3	9.6	2.4	2.3	1.4	0.2	0.5	81.3	2.3	16.4	0.100	0.506	24.059035	-104.656165
Caseta Fiscal Zona Industrial	5.30	3	2	6368	1.7	77.9	2.4	10.4	2.6	2.7	1.6	0.2	0.5	79.6	2.4	18.0	0.135	0.506	24.059140	-104.656290
X. Periférico de Durango	6.20	3	1	5975	0.5	77.3	3.7	11.2	3.0	2.4	1.6	0.1	0.2	77.8	3.7	18.5	0.104	0.503	24.079726	-104.668356
X. Periférico de Durango	6.20	3	2	6054	0.5	75.9	4.2	11.4	3.5	2.6	1.6	0.1	0.2	76.4	4.2	19.4	0.130	0.503	24.079721	-104.668357
T. Der. San José del Molino	28.00	1	0	4677	3.3	71.0	3.9	12.1	1.9	4.1	2.4	0.3	1.0	74.3	3.9	21.8	0.092	0.543	24.208335	-104.664907
T. Izq. Canatlán	55.25	1	0	5305	0.5	78.9	3.3	7.9	1.5	5.2	1.7	0.2	0.8	79.4	3.3	17.3	0.095	0.500	24.438550	-104.699075
T. Izq. Canatlán	55.25	3	0	2157	0.6	77.6	4.3	10.7	1.6	3.4	1.3	0.1	0.4	78.2	4.3	17.5	0.094	0.501	24.441981	-104.699165
T. Der. San Juan del Río	105.81	1	0	2338	0.5	78.1	4.6	11.7	0.9	3.0	0.9	0.1	0.2	78.6	4.6	16.8	0.093	0.511	24.796754	-104.500974
T. Der. San Juan del Río	105.81	3	0	1743	0.3	74.9	5.3	13.8	0.9	3.3	1.2	0.2	0.1	75.2	5.3	19.5	0.097	0.517	24.799705	-104.498935
T. Der. Nazas	155.50	3	0	2165	0.9	78.5	2.1	13.2	0.8	2.6	1.4	0.3	0.2	79.4	2.1	18.5	0.103	0.526	25.129458	-104.539207
T. Der. Rodeo	160.70	1	0	2488	0.8	77.8	1.7	15.4	0.6	2.6	0.9	0.1	0.1	78.6	1.7	19.7	0.097	0.523	25.158911	-104.551111
T. Izq. Abasolo	178.00	3	0	1019	1.1	74.3	3.5	13.4	1.5	4.0	1.8	0.3	0.1	75.4	3.5	21.1	0.103	0.543	25.310166	-104.639932
Ent. La Zarca	239.50	1	0	1651	0.4	71.8	4.7	13.2	2.2	4.5	2.6	0.4	0.2	72.2	4.7	23.1	0.102	0.548	25.780552	-104.761841

3 CARR: Durango - Mezquital

CLAVE: 10423

RUTA: MEX-023

AÑO: 2012

LUGAR	ESTACION				CLASIFICACION VEHICULAR EN PORCIENTO														COORDENADAS	
	KM	TE	SC	TDPA	M	A	B	C2	C3	T3S2	T3S3	T3S2R4	OTROS	A	B	C	K'	D	LATITUD	LONGITUD
Durango	0.00	3	1	4963	2.7	80.9	2.3	11.5	1.2	0.8	0.4	0.0	0.2	83.6	2.3	14.1	0.115	0.516	23.993265	-104.629559
Durango	0.00	3	2	4982	2.7	79.2	2.5	12.6	1.4	1.0	0.4	0.0	0.2	81.9	2.5	15.6	0.110	0.516	23.993262	-104.629560

## DURANGO

3 CARR : Durango - Mezquital

CLAVE: 10423

RUTA: MEX-023

AÑO : 2012

LUGAR	ESTACION				CLASIFICACION VEHICULAR EN PORCIENTO										COORDENADAS					
	KM	TE	SC	TDPA	M	A	B	C2	C3	T3S2	T3S3	T3S2R4	OTROS	A	B	C	K'	D	LATITUD	LONGITUD
Gabino Santillán	8.00	3	1	2859	1.2	81.2	3.5	9.4	3.0	0.8	0.8	0.0	0.1	82.4	3.5	14.1	0.133	0.501	23.968355	-104.576274
Gabino Santillán	8.00	3	2	2855	1.7	78.1	3.5	11.2	3.5	0.9	0.9	0.0	0.2	79.8	3.5	16.7	0.105	0.501	23.968355	-104.576274
T. Izq. Monte Morelos	13.00	3	0	4717	1.3	77.6	3.4	10.5	3.4	3.0	0.5	0.1	0.2	78.9	3.4	17.7	0.091	0.503	23.966084	-104.573974
Mezquital	82.00	1	1	832	2.9	71.9	4.8	18.8	0.8	0.4	0.2	0.0	0.2	74.8	4.8	20.4	0.115	0.526	23.492705	-104.384058
Mezquital	82.00	1	2	824	1.4	72.2	4.8	20.3	0.6	0.4	0.2	0.0	0.1	73.6	4.8	21.6	0.117	0.526	23.492705	-104.384059

4 CARR : Durango - Torreón

CLAVE: 10085

RUTA: MEX-040

AÑO : 2012

LUGAR	ESTACION				CLASIFICACION VEHICULAR EN PORCIENTO										COORDENADAS					
	KM	TE	SC	TDPA	M	A	B	C2	C3	T3S2	T3S3	T3S2R4	OTROS	A	B	C	K'	D	LATITUD	LONGITUD
Durango	0.00	3	1	10569	0.9	83.0	2.0	10.0	1.1	1.4	1.1	0.2	0.3	83.9	2.0	14.1	0.099	0.527	24.077739	-104.590291
Durango	0.00	3	2	10145	0.9	81.7	2.0	10.9	1.2	1.5	1.3	0.2	0.3	82.6	2.0	15.4	0.081	0.527	24.077740	-104.590288
T. Der. Cd. de Los Niños	7.70	3	1	5710	1.0	84.2	1.6	9.3	1.1	1.4	0.8	0.2	0.4	85.2	1.6	13.2	0.098	0.511	24.082510	-104.586210
T. Der. Cd. de Los Niños	7.70	3	2	5999	1.0	83.1	1.9	9.8	1.2	1.6	0.9	0.2	0.3	84.1	1.9	14.0	0.091	0.511	24.082520	-104.586210
X. Periférico de Durango	9.00	1	1	6972	1.4	83.8	1.5	8.5	1.0	2.2	1.0	0.2	0.4	85.2	1.5	13.3	0.087	0.510	24.088458	-104.580860
X. Periférico de Durango	9.00	1	2	6712	1.2	83.2	1.6	8.6	1.2	2.5	1.1	0.2	0.4	84.4	1.6	14.0	0.094	0.510	24.088456	-104.580858
T. Der. Aeropuerto	9.42	3	1	4957	1.1	80.6	0.9	9.4	1.5	3.6	1.9	0.4	0.6	81.7	0.9	17.4	0.098	0.503	24.098714	-104.576230
T. Der. Aeropuerto	9.42	3	2	4891	1.3	78.5	1.0	10.1	1.6	4.2	2.2	0.4	0.7	79.8	1.0	19.2	0.109	0.503	24.098713	-104.576232
La Calera	10.85	3	0	6665	0.7	72.8	1.7	11.8	2.8	5.3	3.1	0.9	0.9	73.5	1.7	24.8	0.084	0.510	24.111408	-104.571885
Abraham González	27.10	3	0	3560	0.3	65.0	2.1	13.6	2.5	10.9	4.0	1.0	0.6	65.3	2.1	32.6	0.098	0.501	24.200788	-104.525729
Francisco I. Madero	56.30	1	0	3966	0.3	66.0	4.9	10.0	2.5	10.6	3.9	1.2	0.6	66.3	4.9	28.8	0.086	0.508	24.393029	-104.330145
Francisco I. Madero	56.30	3	0	3916	0.4	66.6	3.9	9.9	2.6	11.0	3.9	1.1	0.6	67.0	3.9	29.1	0.085	0.504	24.405199	-104.303299
Guadalupe Victoria	77.50	1	0	4678	0.6	70.1	4.6	8.8	2.1	9.0	3.1	1.0	0.7	70.7	4.6	24.7	0.093	0.506	24.446861	-104.138052
Guadalupe Victoria	77.50	3	0	5711	0.6	70.5	4.3	11.1	1.8	7.6	2.6	0.9	0.6	71.1	4.3	24.6	0.083	0.502	24.449560	-104.109955
T. Der. Ignacio Allende	90.13	1	0	4645	0.3	64.9	3.8	12.6	2.6	10.4	3.6	1.3	0.5	65.2	3.8	31.0	0.088	0.506	24.497481	-104.024000
T. Der. Ignacio Allende	90.13	3	0	2907	0.9	57.0	5.1	12.4	3.7	13.1	4.9	2.2	0.7	57.9	5.1	37.0	0.076	0.500	24.499490	-104.020026
T. Izq. Peñón Blanco	120.90	1	0	2230	0.7	46.3	4.8	15.8	4.8	17.6	6.8	2.7	0.5	47.0	4.8	48.2	0.085	0.509	24.732348	-103.843880
T. Izq. Peñón Blanco	120.90	3	0	2028	0.5	51.8	3.0	13.2	4.4	17.1	6.8	2.3	0.9	52.3	3.0	44.7	0.084	0.505	24.741830	-103.838399
Cuencamé	144.30	1	0	2120	0.3	54.4	2.4	11.7	4.8	17.5	6.2	2.1	0.6	54.7	2.4	42.9	0.086	0.511	24.850324	-103.715948
Cuencamé	144.30	3	0	6168	0.4	50.0	5.7	10.1	4.8	18.0	5.1	5.6	0.3	50.4	5.7	43.9	0.069	0.520	24.909556	-103.704633
T. Izq. Nazas	171.61	1	0	4589	0.7	45.3	2.9	10.3	8.0	20.1	7.8	4.0	0.9	46.0	2.9	51.1	0.066	0.518	25.085060	-103.771379
T. Izq. Nazas	171.61	3	0	5321	1.3	72.9	4.5	7.9	2.9	6.1	1.9	2.1	0.4	74.2	4.5	21.3	0.072	0.506	25.091026	-103.769901
T. Der. Villa Juárez	194.40	3	0	4245	0.7	48.5	6.5	11.0	7.6	14.6	7.2	3.1	0.8	49.2	6.5	44.3	0.077	0.501	25.225963	-103.628302
León Guzmán	229.58	3	0	8753	1.7	72.5	4.5	7.9	2.9	6.1	1.9	2.1	0.4	74.2	4.5	21.3	0.074	0.503	25.510198	-103.648989
Cd. Lerdo	244.80	1	1	5598	1.6	66.7	5.4	6.5	3.2	10.6	2.9	2.3	0.8	68.3	5.4	26.3	0.096	0.503	25.511911	-103.541116

DURANGO

4 CARR: Durango - Torreón

CLAVE: 10085

RUTA: MEX-040

AÑO: 2012

LUGAR	ESTACION				CLASIFICACION VEHICULAR EN PORCIENTO										COORDENADAS					
	KM	TE	SC	TDPA	M	A	B	C2	C3	T3S2	T3S3	T3S2R4	OTROS	A	B	C	K'	D	LATITUD	LONGITUD
Cd. Lerdo	244.80	1	2	5524	1.3	63.2	5.7	7.2	3.8	12.3	3.3	2.4	0.8	64.5	5.7	29.8	0.097	0.503	25.511911	-103.541116
T. Izq. Gómez Palacio	248.90	3	1	29832	2.2	89.8	1.7	4.6	0.1	0.2	1.3	0.0	0.1	92.0	1.7	6.3	0.088	0.537	25.552025	-103.487025
T. Izq. Gómez Palacio	248.90	3	2	30074	2.1	89.2	1.9	5.0	0.1	0.2	1.4	0.0	0.1	91.3	1.9	6.8	0.087	0.537	25.552025	-103.487022
Lim. Edos. Term. Dgo. Ppia. Coah.	251.00																			
Torreón	255.80	1	1	17969	1.8	88.7	1.1	3.5	0.1	1.1	2.9	0.2	0.6	90.5	1.1	8.4	0.075	0.525	25.548262	-103.471805
Torreón	255.80	1	2	17839	2.0	87.6	1.2	4.0	0.1	1.3	3.0	0.2	0.6	89.6	1.2	9.2	0.079	0.525	25.548273	-103.471822

5 CARR: Durango - Villa Unión

CLAVE: 00083

RUTA: MEX-040

AÑO: 2012

LUGAR	ESTACION				CLASIFICACION VEHICULAR EN PORCIENTO										COORDENADAS					
	KM	TE	SC	TDPA	M	A	B	C2	C3	T3S2	T3S3	T3S2R4	OTROS	A	B	C	K'	D	LATITUD	LONGITUD
Durango	0.00	3	0	2312	0.1	64.0	4.2	10.7	6.2	9.4	4.1	0.4	0.9	64.1	4.2	31.7	0.097	0.502	23.995093	-104.733330
T. Der. Pino	22.86	3	0	1887	0.2	61.2	6.0	11.0	7.4	8.2	5.1	0.2	0.7	61.4	6.0	32.6	0.104	0.501	23.967460	-104.819799
T. Izq. Estación Navios	58.42	3	0	1585	0.6	59.4	5.0	10.7	6.7	11.8	4.5	0.3	1.0	60.0	5.0	35.0	0.082	0.504	23.892110	-105.059465
Llano Grande	77.23	1	0	1760	0.4	61.0	4.4	10.9	6.5	11.2	4.5	0.3	0.8	61.4	4.4	34.2	0.089	0.500	23.866680	-105.199377
El Salto	99.76	3	0	2184	0.8	67.4	3.1	10.1	4.0	10.9	3.1	0.1	0.5	68.2	3.1	28.7	0.101	0.509	23.784290	-105.375677
La Ciudad	145.50	1	0	1381	0.5	55.6	4.0	10.3	5.5	18.3	4.6	0.3	0.9	56.1	4.0	39.9	0.076	0.512	23.731667	-105.667068
La Ciudad	145.50	3	0	1264	0.6	50.0	5.4	9.9	6.9	20.9	5.5	0.2	0.6	50.6	5.4	44.0	0.071	0.529	23.721805	-105.696180
Lim. Edos. Term. Dgo. Ppia. Sin.	198.50																			
T. C. Tepic - Mazatlán	294.40	1	0	3940	0.5	65.1	5.1	11.9	2.8	11.9	2.1	0.3	0.3	65.6	5.1	29.3	0.091	0.504	23.201908	-106.202537

6 CARR: Ent. La Chicharrona - Cuencamé

CLAVE: 00152

RUTA: MEX-049

AÑO: 2012

LUGAR	ESTACION				CLASIFICACION VEHICULAR EN PORCIENTO										COORDENADAS					
	KM	TE	SC	TDPA	M	A	B	C2	C3	T3S2	T3S3	T3S2R4	OTROS	A	B	C	K'	D	LATITUD	LONGITUD
Ent. La Chicharrona	0.00	3	1	4035	0.3	65.4	4.3	6.8	2.3	12.3	3.1	4.9	0.6	65.7	4.3	30.0	0.085	0.508	23.304723	-102.958781
Ent. La Chicharrona	0.00	3	2	4168	0.2	61.7	4.7	7.7	2.7	13.5	3.6	5.3	0.6	61.9	4.7	33.4	0.104	0.508	23.304519	-102.958853
T. Der. Cañitas de Felipe Pescador	25.86	1	1	3446	0.3	61.8	5.2	8.8	2.2	13.6	3.0	4.2	0.9	62.1	5.2	32.7	0.089	0.506	23.526347	-102.959525
T. Der. Cañitas de Felipe Pescador	25.86	1	2	3531	0.4	57.6	6.1	10.2	2.6	14.2	3.3	4.7	0.9	58.0	6.1	35.9	0.083	0.506	23.526341	-102.959638
Río Grande	60.00	1	0	5562	1.0	60.7	4.8	9.3	2.4	12.5	3.6	4.8	0.9	61.7	4.8	33.5	0.073	0.504	23.793420	-103.016751
Río Grande	60.00	3	0	7684	0.5	52.8	6.4	11.2	2.4	15.7	4.0	6.3	0.7	53.3	6.4	40.3	0.081	0.510	23.871624	-103.085550
T. Der. Nieves	78.00	3	0	5095	0.3	47.5	7.4	8.5	3.1	19.5	4.9	8.0	0.8	47.8	7.4	44.8	0.074	0.507	23.925261	-103.161164
X. C. Juan Aldama - Miguel Auza	124.50	1	0	5768	0.4	49.8	6.8	11.4	2.8	17.1	4.2	6.5	1.0	50.2	6.8	43.0	0.075	0.504	24.265861	-103.397573
X. C. Juan Aldama - Miguel Auza	124.50	3	0	7237	0.4	46.2	7.4	10.2	2.7	19.7	4.8	7.6	1.0	46.6	7.4	46.0	0.078	0.512	24.286997	-103.406355
Lim. Edos. Term. Zac. Ppia. Dgo.	134.30																			

## DURANGO

6 CARR: Ent. La Chicharrona - Cuencamé

CLAVE: 00152

RUTA: MEX-049

AÑO: 2012

LUGAR	ESTACION				CLASIFICACION VEHICULAR EN PORCIENTO													COORDENADAS		
	KM	TE	SC	TDPA	M	A	B	C2	C3	T3S2	T3S3	T3S2R4	OTROS	A	B	C	K'	D	LATITUD	LONGITUD
T. Der. Santa Clara	144.00	1	0	4691	0.3	48.2	7.5	8.2	4.1	19.1	4.3	7.8	0.5	48.5	7.5	44.0	0.072	0.524	24.432950	-103.484370
T. Der. Santa Clara	144.00	3	0	4344	0.5	45.4	8.9	7.3	3.4	20.4	4.9	8.6	0.6	45.9	8.9	45.2	0.080	0.530	24.443108	-103.491049
Cuencamé	199.10	1	0	4490	0.4	45.3	8.2	9.8	3.2	20.5	4.2	8.0	0.4	45.7	8.2	46.1	0.074	0.525	24.833052	-103.686356

7 CARR: Ent. La Zarca - Hidalgo del Parral

CLAVE: 00488

RUTA: MEX-045

AÑO: 2012

LUGAR	ESTACION				CLASIFICACION VEHICULAR EN PORCIENTO													COORDENADAS		
	KM	TE	SC	TDPA	M	A	B	C2	C3	T3S2	T3S3	T3S2R4	OTROS	A	B	C	K'	D	LATITUD	LONGITUD
Ent. La Zarca	0.00	3	0	779	0.5	68.4	6.1	12.3	2.6	5.7	3.3	0.4	0.7	68.9	6.1	25.0	0.101	0.558	25.785118	-104.765161
T. Der. Ceballos	47.85	1	0	958	2.0	73.9	3.8	10.4	1.5	4.9	3.0	0.2	0.3	75.9	3.8	20.3	0.129	0.504	26.139860	-105.028628
T. Der. Ceballos	47.85	3	0	1192	0.5	73.6	3.4	12.6	2.1	4.5	2.4	0.2	0.7	74.1	3.4	22.5	0.101	0.543	26.142152	-105.030321
T. Izq. Canutillo	92.35	3	0	1069	0.4	71.5	4.0	12.4	3.1	5.0	2.6	0.3	0.7	71.9	4.0	24.1	0.100	0.545	26.389215	-105.352084
Las Nieves	97.60	3	0	2584	0.6	77.9	2.5	11.5	1.6	3.4	1.8	0.2	0.5	78.5	2.5	19.0	0.102	0.537	26.400324	-105.404422
T. Izq. Ocampo	109.22	3	0	1209	0.3	69.8	4.0	13.8	2.8	4.8	3.0	0.7	0.8	70.1	4.0	25.9	0.089	0.543	26.445662	-105.494650
Lim. Edos. Term. Dgo. Ppia. Chih.	122.89																			
Matamoros	148.00	1	0	1193	0.3	70.0	4.1	16.1	1.7	4.9	2.5	0.1	0.3	70.3	4.1	25.6	0.109	0.503	26.751416	-105.581032
Hidalgo del Parral	171.00	1	0	3050	1.0	78.2	2.5	13.3	1.2	2.6	0.9	0.0	0.3	79.2	2.5	18.3	0.091	0.501	26.917732	-105.640240

8 CARR: Ent. Los Herrera - Topia

CLAVE: 10090

RUTA: MEX-036

AÑO: 2012

LUGAR	ESTACION				CLASIFICACION VEHICULAR EN PORCIENTO													COORDENADAS		
	KM	TE	SC	TDPA	M	A	B	C2	C3	T3S2	T3S3	T3S2R4	OTROS	A	B	C	K'	D	LATITUD	LONGITUD
T. C. Guadalupe Aguilera - Tepehuanes	0.00	3	0	602	0.1	58.5	8.4	14.1	5.2	8.5	4.6	0.0	0.6	58.6	8.4	33.0	0.103	0.516	25.121852	-105.481298
Los Altares	80.00	1	0	553	0.0	47.6	9.4	20.8	6.9	7.9	6.4	0.2	0.8	47.6	9.4	43.0	0.132	0.510	25.017373	-105.897014
Topia	229.00																			

9 CARR: Gómez Palacio - Jiménez

CLAVE: 00006

RUTA: MEX-049

AÑO: 2012

LUGAR	ESTACION				CLASIFICACION VEHICULAR EN PORCIENTO													COORDENADAS		
	KM	TE	SC	TDPA	M	A	B	C2	C3	T3S2	T3S3	T3S2R4	OTROS	A	B	C	K'	D	LATITUD	LONGITUD
Gómez Palacio	0.00	3	1	13169	1.2	74.4	4.3	7.7	2.7	5.6	1.7	2.0	0.4	75.6	4.3	20.1	0.086	0.505	25.599184	-103.506753
Gómez Palacio	0.00	3	2	13436	1.4	71.7	4.7	8.1	3.0	6.5	2.1	2.1	0.4	73.1	4.7	22.2	0.080	0.505	25.599186	-103.506753
X. C. La Torreña - Brittingham	10.96	1	1	9139	1.9	71.6	3.4	5.5	3.2	9.1	2.6	2.0	0.7	73.5	3.4	23.1	0.097	0.509	25.640314	-103.523754
X. C. La Torreña - Brittingham	10.96	1	2	8826	1.7	68.7	4.0	6.2	3.4	10.3	2.9	2.0	0.8	70.4	4.0	25.6	0.084	0.509	25.640313	-103.523755
T. Izq. Dinamita	26.27	1	1	5374	1.2	59.6	4.3	8.2	4.0	14.4	3.5	4.0	0.8	60.8	4.3	34.9	0.093	0.505	25.756327	-103.569911

DURANGO

9 CARR: Gómez Palacio - Jiménez

CLAVE: 00006

RUTA: MEX-049

AÑO: 2012

LUGAR	ESTACION				CLASIFICACION VEHICULAR EN PORCIENTO														COORDENADAS	
	KM	TE	SC	TDPA	M	A	B	C2	C3	T3S2	T3S3	T3S2R4	OTROS	A	B	C	K'	D	LATITUD	LONGITUD
T. Izq. Dinamita	26.27	1	2	5266	1.3	56.9	4.9	9.0	4.0	15.1	3.7	4.2	0.9	58.2	4.9	36.9	0.079	0.505	25.756320	-103.569906
Bermejillo	39.30	1	0	7609	0.9	58.6	4.2	9.2	5.2	14.9	3.0	3.2	0.8	59.5	4.2	36.3	0.074	0.503	25.875338	-103.616821
T. Izq. Ent. La Zarca	40.89	3	0	3643	0.6	42.0	6.2	8.5	5.2	26.0	7.0	3.6	0.9	42.6	6.2	51.2	0.071	0.513	25.904869	-103.628946
Yermo	107.95	1	0	2659	0.9	36.9	8.0	5.7	4.3	29.5	8.6	4.9	1.2	37.8	8.0	54.2	0.061	0.503	26.384726	-103.999880
Yermo	107.95	3	0	2844	0.8	44.0	4.2	5.6	4.4	28.4	7.0	4.4	1.2	44.8	4.2	51.0	0.068	0.501	26.399510	-104.013780
Ceballos	127.20	1	0	2745	0.7	39.1	8.3	6.0	4.3	27.6	8.3	4.6	1.1	39.8	8.3	51.9	0.070	0.500	26.518602	-104.122195
Ceballos	127.20	3	0	2400	0.9	39.0	5.0	5.7	4.3	29.0	8.1	6.9	1.1	39.9	5.0	55.1	0.072	0.506	26.537462	-104.139652
Lim. Edos. Term. Dgo. Ppia. Chih.	146.15																			
Estación Escalón	160.89	3	0	2210	0.6	35.0	7.6	6.1	6.6	29.0	9.6	4.3	1.2	35.6	7.6	56.8	0.065	0.514	26.754475	-104.339718
Jiménez	223.00	1	1	1157	0.4	41.2	7.5	6.0	3.3	30.9	6.8	3.3	0.6	41.6	7.5	50.9	0.068	0.520	27.096539	-104.860667
Jiménez	223.00	1	2	1174	0.5	36.9	8.3	6.2	4.0	31.7	7.7	4.0	0.7	37.4	8.3	54.3	0.078	0.520	27.096326	-104.860349

10 CARR: Gómez Palacio - La Unión

CLAVE: 10009

RUTA: MEX-040

AÑO: 2012

LUGAR	ESTACION				CLASIFICACION VEHICULAR EN PORCIENTO														COORDENADAS	
	KM	TE	SC	TDPA	M	A	B	C2	C3	T3S2	T3S3	T3S2R4	OTROS	A	B	C	K'	D	LATITUD	LONGITUD
Gómez Palacio	0.00	3	0	6419	3.6	70.6	4.5	7.9	2.9	6.1	1.9	2.1	0.4	74.2	4.5	21.3	0.083	0.547	25.532478	-103.496099
X. C. Torreón - Villa Juárez	4.30	3	0	5414	8.0	74.3	4.3	6.0	2.6	3.6	0.6	0.1	0.5	82.3	4.3	13.4	0.084	0.503	25.235565	-104.100281
Nazareno	20.90	1	0	2307	2.5	78.5	5.8	7.7	2.4	1.8	0.6	0.3	0.4	81.0	5.8	13.2	0.092	0.503	25.405455	-103.423675
Nazareno	20.90	3	0	1904	5.6	73.0	6.5	9.7	2.4	1.9	0.7	0.1	0.1	78.6	6.5	14.9	0.098	0.505	25.395401	-103.434811
La Unión	42.20	1	0	560	5.9	76.1	1.4	9.9	3.5	1.8	1.1	0.2	0.1	82.0	1.4	16.6	0.121	0.520	25.295127	-103.508095

11 CARR: Gómez Palacio - Tlahualillo

CLAVE: 10005

RUTA: MEX-040

AÑO: 2012

LUGAR	ESTACION				CLASIFICACION VEHICULAR EN PORCIENTO														COORDENADAS	
	KM	TE	SC	TDPA	M	A	B	C2	C3	T3S2	T3S3	T3S2R4	OTROS	A	B	C	K'	D	LATITUD	LONGITUD
T. C. Gómez Palacio - Jiménez	0.00																			
T. Izq. Esmeralda	5.60	1	0	11517	4.6	77.6	1.7	6.8	3.2	3.0	1.3	1.2	0.6	82.2	1.7	16.1	0.080	0.515	25.610765	-103.461460
T. Izq. Esmeralda	5.60	3	0	7636	3.8	76.8	2.2	8.9	2.6	2.9	1.1	1.1	0.6	80.6	2.2	17.2	0.083	0.516	25.613658	-103.458067
Gregorio García	26.00	3	0	4533	2.6	76.1	2.0	10.5	2.6	3.4	0.8	1.4	0.6	78.7	2.0	19.3	0.090	0.507	25.752599	-103.349090
T. Izq. Esmeralda	31.44	1	0	5551	3.2	78.8	0.5	8.1	1.7	4.5	1.1	1.2	0.9	82.0	0.5	17.5	0.089	0.505	25.757627	-103.352522
San Francisco	48.90	1	0	2268	3.9	72.8	2.0	10.9	7.2	2.2	0.6	0.2	0.2	76.7	2.0	21.3	0.088	0.511	25.931810	-103.417638
San Francisco	48.90	3	0	1696	5.8	71.8	0.1	9.3	9.4	2.0	0.6	0.5	0.5	77.6	0.1	22.3	0.098	0.505	25.943854	-103.420901
Tlahualillo	72.90	1	0	2353	3.0	79.5	0.6	12.0	2.4	1.9	0.4	0.1	0.1	82.5	0.6	16.9	0.089	0.501	26.109664	-103.423722





DURANGO

15 CARR: Libramiento Cuencamé

CLAVE: 10006

RUTA: MEX

AÑO: 2012

LUGAR	ESTACION				CLASIFICACION VEHICULAR EN PORCIENTO														COORDENADAS	
	KM	TE	SC	TDPA	M	A	B	C2	C3	T3S2	T3S3	T3S2R4	OTROS	A	B	C	K'	D	LATITUD	LONGITUD
T. C. La Chicharrona - Cuencamé	0.00	3	1	959	1.8	74.8	2.3	11.8	2.7	3.0	2.4	1.1	0.1	76.6	2.3	21.1	0.115	0.507	24.863888	-103.699669
T. C. La Chicharrona - Cuencamé	0.00	3	2	985	0.9	74.2	2.5	12.7	2.7	3.4	2.5	0.9	0.2	75.1	2.5	22.4	0.083	0.507	24.863887	-103.699670
T. C. Durango - Torreón	2.60	1	1	679	2.1	75.4	2.3	7.8	3.7	4.9	2.1	1.4	0.3	77.5	2.3	20.2	0.110	0.536	24.880570	-103.700520
T. C. Durango - Torreón	2.60	1	2	602	1.8	73.6	2.7	8.5	4.0	5.1	2.2	1.7	0.4	75.4	2.7	21.9	0.112	0.536	24.880571	-103.700519

16 CARR: Pedriceña - Ent. Rodeo

CLAVE: 10002

RUTA: MEX-034

AÑO: 2012

LUGAR	ESTACION				CLASIFICACION VEHICULAR EN PORCIENTO														COORDENADAS	
	KM	TE	SC	TDPA	M	A	B	C2	C3	T3S2	T3S3	T3S2R4	OTROS	A	B	C	K'	D	LATITUD	LONGITUD
T. C. Cuencamé - Torreón	0.00	3	0	2248	0.8	73.4	0.5	18.6	1.8	2.6	1.6	0.5	0.2	74.2	0.5	25.3	0.092	0.509	25.091157	-103.772742
Nazas	45.00	1	0	2021	1.0	76.9	1.2	16.8	1.4	1.7	0.7	0.1	0.2	77.9	1.2	20.9	0.101	0.507	25.235565	-104.100281
Nazas	45.00	3	0	1068	0.7	80.7	1.3	11.7	2.1	1.9	1.3	0.1	0.2	81.4	1.3	17.3	0.104	0.504	25.217229	-104.126357
T. C. (Durango - Ent. La Zarca)-Ent. Rodeo	98.00	1	0	942	0.6	78.6	1.5	14.7	1.4	1.9	1.2	0.1	0.0	79.2	1.5	19.3	0.126	0.512	25.129310	-104.537278

17 CARR: Ramal a Otinapa

CLAVE: 10002

RUTA: MEX

AÑO: 2012

LUGAR	ESTACION				CLASIFICACION VEHICULAR EN PORCIENTO														COORDENADAS	
	KM	TE	SC	TDPA	M	A	B	C2	C3	T3S2	T3S3	T3S2R4	OTROS	A	B	C	K'	D	LATITUD	LONGITUD
T. C. Durango - Villa Unión	0.00	3	0	192	0.9	71.0	4.0	12.3	5.8	4.0	1.8	0.2	0.0	71.9	4.0	24.1	0.240	0.522	23.925986	-104.940397
Otinapa	19.65																			

18 CARR: Ramal a Santa Clara

CLAVE: 10287

RUTA: MEX-049

AÑO: 2012

LUGAR	ESTACION				CLASIFICACION VEHICULAR EN PORCIENTO														COORDENADAS	
	KM	TE	SC	TDPA	M	A	B	C2	C3	T3S2	T3S3	T3S2R4	OTROS	A	B	C	K'	D	LATITUD	LONGITUD
T. C. Ent. La Chicharrona - Cuencamé	0.00	3	0	674	0.1	75.2	1.2	20.5	1.6	0.4	1.0	0.0	0.0	75.3	1.2	23.5	0.126	0.504	24.440331	-103.486291
Santa Clara	14.00																			

19 CARR: Ramal a Villa Juárez

CLAVE: 10287

RUTA: MEX-040

AÑO: 2012

LUGAR	ESTACION				CLASIFICACION VEHICULAR EN PORCIENTO														COORDENADAS	
	KM	TE	SC	TDPA	M	A	B	C2	C3	T3S2	T3S3	T3S2R4	OTROS	A	B	C	K'	D	LATITUD	LONGITUD
T. C. Gómez Palacio - La Unión	0.00	3	0	3768	6.1	84.0	3.1	4.0	1.2	0.4	0.4	0.1	0.7	90.1	3.1	6.8	0.107	0.501	25.517446	-103.495318
Villa Juárez	13.00																			

## DURANGO

20 CARR : Zacatecas - Durango

CLAVE: 00544

RUTA: MEX-045

AÑO: 2012

LUGAR	ESTACION				CLASIFICACION VEHICULAR EN PORCIENTO												COORDENADAS				
	KM	TE	SC	TDPA	M	A	B	C2	C3	T3S2	T3S3	T3S2R4	OTROS	A	B	C	K'	D	LATITUD	LONGITUD	
Zacatecas	0.00																				
T. Izq. Guadalajara	6.40	3	1	11636	0.5	83.5	2.6	5.5	1.1	3.4	1.5	1.1	0.8	84.0	2.6	13.4	0.098	0.505	22.783703	-102.626896	
T. Izq. Guadalajara	6.40	3	2	11889	0.3	81.9	3.0	6.5	1.2	3.6	1.6	1.1	0.8	82.2	3.0	14.8	0.088	0.505	22.783764	-102.627096	
T. Der. Saltillo (T. Morelos)	15.00	3	1	10288	0.3	74.4	5.4	6.4	1.8	5.8	1.9	3.2	0.8	74.7	5.4	19.9	0.091	0.501	22.864373	-102.649355	
T. Der. Saltillo (T. Morelos)	15.00	3	2	10259	0.4	76.0	5.2	5.8	1.7	5.4	1.9	2.8	0.8	76.4	5.2	18.4	0.077	0.501	22.865963	-102.628812	
Víctor Rosales	28.00	1	1	10266	0.5	78.5	2.3	6.1	1.6	5.6	1.8	2.8	0.8	79.0	2.3	18.7	0.082	0.502	22.931503	-102.686818	
Víctor Rosales	28.00	1	2	10178	0.3	76.0	2.6	7.0	1.8	6.0	2.1	3.2	1.0	76.3	2.6	21.1	0.088	0.502	22.930028	-102.685737	
T. Der. Facultad de Veterinaria	32.30	1	1	6146	0.2	72.3	4.4	7.5	2.1	7.4	2.2	3.0	0.9	72.5	4.4	23.1	0.084	0.525	22.971723	-102.719698	
T. Der. Facultad de Veterinaria	32.30	1	2	5562	0.2	69.7	4.7	8.4	2.4	8.3	2.4	3.0	0.9	69.9	4.7	25.4	0.086	0.525	22.971646	-102.719799	
Gral. Enrique Estrada	34.60	3	1	8535	0.4	73.5	5.4	7.1	2.0	6.5	2.1	2.2	0.8	73.9	5.4	20.7	0.080	0.502	23.012455	-102.751784	
Gral. Enrique Estrada	34.60	3	2	8597	0.4	71.8	5.9	7.4	2.1	6.8	2.4	2.4	0.8	72.2	5.9	21.9	0.084	0.502	23.012144	-102.752025	
Fresnillo	58.50	1	1	7447	1.1	76.2	4.9	7.7	1.6	5.1	1.5	1.5	0.4	77.3	4.9	17.8	0.087	0.506	23.162869	-102.853690	
Fresnillo	58.50	1	2	7284	1.0	73.7	5.4	8.6	1.8	5.7	1.6	1.8	0.4	74.7	5.4	19.9	0.087	0.506	23.162490	-102.853720	
Ent. La Chicharrona	74.30	1	1	7207	0.4	64.8	6.1	11.6	2.3	8.1	3.0	2.9	0.8	65.2	6.1	28.7	0.088	0.501	23.287650	-102.950988	
Ent. La Chicharrona	74.30	1	2	7234	0.6	59.6	6.7	13.8	2.4	9.5	3.2	3.4	0.8	60.2	6.7	33.1	0.085	0.501	23.287357	-102.951284	
Ent. La Chicharrona	74.30	3	0	5430	0.3	73.3	3.5	11.0	3.0	4.5	3.2	0.8	0.4	73.6	3.5	22.9	0.086	0.503	23.307553	-102.964621	
T. Der. Saín Alto	121.00	3	0	3355	0.2	67.5	5.3	13.6	3.0	5.3	3.5	1.1	0.5	67.7	5.3	27.0	0.086	0.503	23.581620	-103.274217	
T. Izq. Sombrerete (2º Acceso)	161.50	3	0	4548	0.7	70.6	5.0	12.0	3.2	4.9	2.5	0.7	0.4	71.3	5.0	23.7	0.085	0.502	23.644912	-103.648669	
Lim. Edos. Term. Zac. Ppia. Dgo.	190.08																				
X. C. SÚchil - Villa Unión	206.98	1	0	2532	0.5	65.0	6.7	13.3	3.3	5.5	3.9	1.4	0.4	65.5	6.7	27.8	0.094	0.507	23.750056	-103.963366	
X. C. SÚchil - Villa Unión	206.98	3	0	4353	0.8	69.9	5.0	14.8	2.1	4.1	2.2	0.7	0.4	70.7	5.0	24.3	0.088	0.507	23.744292	-104.000448	
T. Izq. Graceros	210.00	1	0	4120	0.6	73.8	4.2	10.7	2.6	4.1	2.6	0.9	0.5	74.4	4.2	21.4	0.088	0.508	23.748049	-104.036685	
Amado Nervo	231.51	1	0	3573	0.6	68.0	5.7	13.2	3.1	5.0	2.9	1.1	0.4	68.6	5.7	25.7	0.096	0.507	23.842102	-104.186985	
Amado Nervo	231.51	3	0	4687	0.4	73.6	4.8	11.6	2.2	4.0	2.2	0.7	0.5	74.0	4.8	21.2	0.095	0.503	23.844277	-104.194533	
Nombre de Dios	236.80	1	0	4211	1.6	76.0	3.7	14.5	0.8	2.3	0.6	0.2	0.3	77.6	3.7	18.7	0.101	0.508	23.843401	-104.231769	
Nombre de Dios	236.80	3	0	4763	1.1	81.2	2.1	11.4	0.8	2.4	0.6	0.2	0.2	82.3	2.1	15.6	0.105	0.507	23.851380	-104.248976	
T. Der. Constanacia	240.60	3	0	4310	0.3	72.7	4.2	11.0	2.9	4.6	2.7	1.0	0.6	73.0	4.2	22.8	0.089	0.504	23.872109	-104.269029	
T. Der. Tuitán	250.80	3	0	4391	0.3	71.5	4.9	11.7	2.5	4.6	2.8	1.1	0.6	71.8	4.9	23.3	0.091	0.502	23.923368	-104.337284	
T. Der. Independencia y Libertad	261.70	1	0	4855	0.3	73.9	4.3	9.8	3.2	4.4	2.7	1.0	0.4	74.2	4.3	21.5	0.087	0.502	23.991090	-104.371982	
T. Der. Independencia y Libertad	261.70	3	1	2457	0.3	73.6	3.7	12.3	2.9	3.6	2.4	0.8	0.4	73.9	3.7	22.4	0.107	0.501	24.002058	-104.380956	
T. Der. Independencia y Libertad	261.70	3	2	2451	0.3	71.0	4.3	13.5	3.3	3.9	2.4	0.9	0.4	71.3	4.3	24.4	0.102	0.501	24.002058	-104.380956	
T. Izq. Parras de La Fuente	276.60	1	1	3993	0.6	78.1	3.0	10.1	2.3	2.9	2.1	0.6	0.3	78.7	3.0	18.3	0.104	0.539	24.019034	-104.506476	
T. Izq. Parras de La Fuente	276.60	1	2	3417	0.3	76.6	3.2	10.8	2.5	3.2	2.4	0.6	0.4	76.9	3.2	19.9	0.114	0.539	24.019036	-104.506482	
T. Izq. Parras de La Fuente	276.60	3	1	3256	0.5	80.3	2.6	12.1	1.7	1.8	0.6	0.2	0.2	80.8	2.6	16.6	0.114	0.505	24.023412	-104.547709	
T. Izq. Parras de La Fuente	276.60	3	2	3192	0.6	78.0	3.0	13.7	1.8	1.9	0.6	0.2	0.2	78.6	3.0	18.4	0.116	0.505	24.023410	-104.547714	

DURANGO

20 CARR: Zacatecas - Durango

CLAVE: 00544

RUTA: MEX-045

AÑO: 2012

LUGAR	ESTACION				CLASIFICACION VEHICULAR EN PORCIENTO													COORDENADAS		
	KM	TE	SC	TDPA	M	A	B	C2	C3	T3S2	T3S3	T3S2R4	OTROS	A	B	C	K'	D	LATITUD	LONGITUD
Durango	287.30	1	1	6909	1.5	83.3	1.5	10.4	1.2	1.3	0.5	0.1	0.2	84.8	1.5	13.7	0.097	0.505	24.027618	-104.587271
Durango	287.30	1	2	6778	1.3	81.6	1.7	11.8	1.3	1.5	0.5	0.1	0.2	82.9	1.7	15.4	0.101	0.505	24.027619	-104.587271

21 CARR: Durango - Mazatlán (Cuota)

CLAVE: 00083

RUTA: MEX-040D

AÑO: 2012

LUGAR	ESTACION				CLASIFICACION VEHICULAR EN PORCIENTO													COORDENADAS		
	KM	TE	SC	TDPA	M	A	B	C2	C3	T3S2	T3S3	T3S2R4	OTROS	A	B	C	K'	D	LATITUD	LONGITUD
Libramiento de Durango	0.00	3	0	1737	0.6	65.9	3.8	13.0	3.7	9.4	2.0	1.2	0.4	66.5	3.8	29.7	0.084	0.512	24.003056	-104.741167
Caseta de Cobro Durango	20.00	2	0	1756	0.7	77.4	3.4	4.1	4.1	7.6	1.6	0.8	0.3	78.1	3.4	18.5	0.108	0.500	24.006442	-104.730541
Ent. Otinapa	22.85	1	0	1691	0.5	68.3	3.8	12.2	3.3	8.6	1.7	1.1	0.5	68.8	3.8	27.4	0.093	0.512	23.982131	-104.945603
Caseta de Cobro Llano Grande	77.40	2	0	1499	0.8	73.9	4.2	4.1	4.5	9.2	2.0	0.9	0.4	74.7	4.2	21.1	0.108	0.500	23.868855	-105.205733
Lim. Edos. Term. Dgo. Ppia. Sin.	135.75																			
Concordia	188.35	3	0	942	0.4	80.5	0.7	9.1	4.0	4.1	0.9	0.2	0.1	80.9	0.7	18.4	0.117	0.528	23.255045	-106.053712
Villa Unión	208.35	1	0	890	0.3	79.0	1.0	10.8	3.6	4.0	0.9	0.3	0.1	79.3	1.0	19.7	0.136	0.519	23.198537	-106.169877

22 CARR: Durango - Yerbanis (Cuota)

CLAVE: 10003

RUTA: MEX-040D

AÑO: 2012

LUGAR	ESTACION				CLASIFICACION VEHICULAR EN PORCIENTO													COORDENADAS		
	KM	TE	SC	TDPA	M	A	B	C2	C3	T3S2	T3S3	T3S2R4	OTROS	A	B	C	K'	D	LATITUD	LONGITUD
T. C. Durango - Torreón	0.00																			
T. Der. Aeropuerto	5.31	1	1	2048	0.2	78.3	4.2	10.2	1.7	3.4	0.8	1.0	0.2	78.5	4.2	17.3	0.113	0.501	24.125395	-104.539597
T. Der. Aeropuerto	5.31	1	2	2039	0.3	76.1	4.8	11.3	1.7	3.7	0.8	1.0	0.3	76.4	4.8	18.8	0.121	0.501	24.125394	-104.539597
Caseta de Cobro Durango	5.50	2	1	847	0.0	69.4	10.3	4.1	3.3	8.5	1.5	2.5	0.4	69.4	10.3	20.3	0.117	0.500	24.131744	-104.534063
Caseta de Cobro Durango	5.50	2	2	846	0.0	69.4	10.3	4.1	3.3	8.5	1.5	2.5	0.4	69.4	10.3	20.3	0.117	0.500	24.131744	-104.534063
Caseta de Cobro Yerbanis	112.19	2	1	641	0.0	65.1	11.6	4.9	3.4	9.7	1.6	3.1	0.6	65.1	11.6	23.3	0.117	0.500	24.730279	-103.862552
Caseta de Cobro Yerbanis	112.19	2	2	641	0.0	65.1	11.6	4.9	3.4	9.7	1.6	3.1	0.6	65.1	11.6	23.3	0.117	0.500	24.730279	-103.862552
Ent. Yerbanis	118.00																			

23 CARR: Gómez Palacio - Corralitos (Cuota)

CLAVE: 00016

RUTA: MEX-049D

AÑO: 2012

LUGAR	ESTACION				CLASIFICACION VEHICULAR EN PORCIENTO													COORDENADAS		
	KM	TE	SC	TDPA	M	A	B	C2	C3	T3S2	T3S3	T3S2R4	OTROS	A	B	C	K'	D	LATITUD	LONGITUD
T. C. Gómez Palacio - Jiménez (Libre)	0.00																			
T. Izq. Bermejillo	2.21	1	1	1539	0.9	51.4	9.5	6.7	2.7	17.0	3.8	7.3	0.7	52.3	9.5	38.2	0.080	0.503	25.880679	-103.611775
T. Izq. Bermejillo	2.21	1	2	1562	0.6	46.7	10.9	7.6	3.0	18.2	4.1	8.0	0.9	47.3	10.9	41.8	0.074	0.503	25.880679	-103.611775

## DURANGO

23 CARR : Gómez Palacio - Corralitos (Cuota)

CLAVE: 00016

RUTA: MEX-049D

AÑO : 2012

LUGAR	ESTACION				CLASIFICACION VEHICULAR EN PORCIENTO														COORDENADAS	
	KM	TE	SC	TDPA	M	A	B	C2	C3	T3S2	T3S3	T3S2R4	OTROS	A	B	C	K'	D	LATITUD	LONGITUD
T. Izq. Bermejillo	2.21	3	1	1435	0.4	42.8	6.9	8.1	2.5	23.6	5.0	9.7	1.0	43.2	6.9	49.9	0.075	0.525	25.897719	-103.612165
T. Izq. Bermejillo	2.21	3	2	1589	0.4	37.6	7.9	9.4	2.6	25.4	5.5	10.0	1.2	38.0	7.9	54.1	0.084	0.525	25.897705	-103.612156
Caseta de Cobro Bermejillo	5.00	2	1	1297	0.0	38.2	16.1	2.5	1.6	24.2	5.1	10.5	1.8	38.2	16.1	45.7	0.079	0.500	25.923654	-103.622041
Caseta de Cobro Bermejillo	5.00	2	2	1297	0.0	38.2	16.1	2.5	1.6	24.2	5.1	10.5	1.8	38.2	16.1	45.7	0.079	0.500	25.923654	-103.622041
Caseta de Cobro Ceballos	89.00	2	1	1284	0.1	37.6	16.3	2.4	1.5	24.4	5.2	10.6	1.9	37.7	16.3	46.0	0.079	0.500	26.586790	-104.057602
Caseta de Cobro Ceballos	89.00	2	2	1284	0.1	37.6	16.3	2.4	1.5	24.4	5.2	10.6	1.9	37.7	16.3	46.0	0.079	0.500	26.586790	-104.057602
Lim. Edos. Term. Dgo. Ppia. Chih.	112.00																			
T. C. Libramiento Jiménez	150.59																			
T. C. Gómez Palacio - Jiménez (Libre)	194.00	1	1	1461	0.5	37.5	11.0	9.8	2.6	23.7	5.7	8.1	1.1	38.0	11.0	51.0	0.078	0.520	27.090179	-104.853203
T. C. Gómez Palacio - Jiménez (Libre)	194.00	1	2	1487	0.6	32.2	11.7	9.7	2.7	27.5	5.9	8.6	1.1	32.8	11.7	55.5	0.082	0.520	27.090191	-104.853226

24 CARR : Libramiento de Durango (Cuota)

CLAVE: 10006

RUTA: MEX-040D

AÑO : 2012

LUGAR	ESTACION				CLASIFICACION VEHICULAR EN PORCIENTO														COORDENADAS	
	KM	TE	SC	TDPA	M	A	B	C2	C3	T3S2	T3S3	T3S2R4	OTROS	A	B	C	K'	D	LATITUD	LONGITUD
T. C. Durango - Torreón	0.00	3	0	2662	0.7	60.5	3.6	9.1	7.0	12.5	5.0	1.1	0.5	61.2	3.6	35.2	0.087	0.529	24.092803	-104.586815
T. C. Durango - Villa Unión (Cuota)	21.60	1	0	1413	0.8	53.0	3.8	12.4	6.7	16.5	4.8	1.2	0.8	53.8	3.8	42.4	0.078	0.535	24.015524	-104.727041

25 CARR : Yerbanís - Gómez Palicio (Cuota)

CLAVE: 10003

RUTA: MEX-040D

AÑO : 2012

LUGAR	ESTACION				CLASIFICACION VEHICULAR EN PORCIENTO														COORDENADAS	
	KM	TE	SC	TDPA	M	A	B	C2	C3	T3S2	T3S3	T3S2R4	OTROS	A	B	C	K'	D	LATITUD	LONGITUD
Ent. Yerbanís	118.00																			
Caseta de Cobro Cuencamé	143.22	2	1	644	0.0	64.9	13.0	4.6	3.3	8.9	1.8	3.0	0.5	64.9	13.0	22.1	0.089	0.500	24.981673	-103.735239
Caseta de Cobro Cuencamé	143.22	2	2	644	0.0	64.9	13.0	4.6	3.3	8.9	1.8	3.0	0.5	64.9	13.0	22.1	0.089	0.500	24.981673	-103.735239
X. C. Cuencamé - Torreón	180.00	1	1	1710	0.4	54.1	11.5	7.7	2.2	11.1	4.0	8.4	0.6	54.5	11.5	34.0	0.125	0.526	25.128887	-103.753043
X. C. Cuencamé - Torreón	180.00	1	2	1696	0.3	49.8	11.6	8.6	2.7	12.5	4.4	9.3	0.8	50.1	11.6	38.3	0.085	0.526	25.128887	-103.753043
X. C. Cuencamé - Torreón	180.00	3	1	1746	0.5	52.6	13.0	8.9	2.7	10.4	3.3	7.6	1.0	53.1	13.0	33.9	0.092	0.507	25.145606	-103.753858
X. C. Cuencamé - Torreón	180.00	3	2	1867	0.5	49.3	13.5	9.5	2.9	11.5	3.7	7.9	1.2	49.8	13.5	36.7	0.080	0.507	25.145607	-103.753856
Caseta de Cobro León Guzmán	212.71	1	1	1975	0.3	62.0	10.2	5.8	2.0	9.2	3.8	5.9	0.8	62.3	10.2	27.5	0.075	0.502	25.518501	-103.639851
Caseta de Cobro León Guzmán	212.71	1	2	1960	0.4	56.6	11.5	6.5	2.1	10.7	4.2	7.0	1.0	57.0	11.5	31.5	0.091	0.502	25.518502	-103.639858
Caseta de Cobro León Guzmán	212.71	2	1	1189	0.0	47.4	16.3	4.3	4.1	14.1	3.4	9.6	0.8	47.4	16.3	36.3	0.089	0.500	25.520712	-103.639620
Caseta de Cobro León Guzmán	212.71	2	2	1188	0.0	47.4	16.3	4.3	4.1	14.1	3.4	9.6	0.8	47.4	16.3	36.3	0.089	0.500	25.520712	-103.639620
Caseta de Cobro León Guzmán	212.71	3	1	1654	0.5	49.7	10.9	6.2	3.0	17.4	4.1	7.1	1.1	50.2	10.9	38.9	0.080	0.502	25.524149	-103.638968
Caseta de Cobro León Guzmán	212.71	3	2	1670	0.5	46.9	10.1	7.4	3.1	18.0	4.4	8.4	1.2	47.4	10.1	42.5	0.084	0.502	25.524157	-103.638970

DURANGO

25 CARR: Yerbanis - Gómez Palicio (Cuota)

CLAVE: 10003

RUTA: MEX-040D

AÑO: 2012

LUGAR	ESTACION				CLASIFICACION VEHICULAR EN PORCIENTO													COORDENADAS		
	KM	TE	SC	TDPA	M	A	B	C2	C3	T3S2	T3S3	T3S2R4	OTROS	A	B	C	K'	D	LATITUD	LONGITUD
T. C. Gómez Palacio - Jiménez	220.00																			

26 CARR: Amado Nervo - La Ochoa

CLAVE: 10012

RUTA: DGO-542

AÑO: 2012

LUGAR	ESTACION				CLASIFICACION VEHICULAR EN PORCIENTO													COORDENADAS		
	KM	TE	SC	TDPA	M	A	B	C2	C3	T3S2	T3S3	T3S2R4	OTROS	A	B	C	K'	D	LATITUD	LONGITUD
Amado Nervo	0.00	3	0	1751	1.8	81.8	2.9	8.3	2.6	1.7	0.5	0.2	0.2	83.6	2.9	13.5	0.096	0.501	23.853486	-104.172720
Villa Unión	25.00	1	0	2969	3.9	83.2	3.3	6.8	0.4	1.9	0.3	0.1	0.1	87.1	3.3	9.6	0.099	0.532	23.962935	-104.050735
La Ochoa	42.00	1	0	318	1.6	82.3	4.4	11.0	0.1	0.6	0.0	0.0	0.0	83.9	4.4	11.7	0.139	0.511	24.019971	-103.926277

27 CARR: Ceballos - El Mirador

CLAVE: 10417

RUTA: DGO-044

AÑO: 2012

LUGAR	ESTACION				CLASIFICACION VEHICULAR EN PORCIENTO													COORDENADAS		
	KM	TE	SC	TDPA	M	A	B	C2	C3	T3S2	T3S3	T3S2R4	OTROS	A	B	C	K'	D	LATITUD	LONGITUD
Ceballos	0.00	3	0	842	0.3	75.1	0.6	19.0	2.9	1.8	0.3	0.0	0.0	75.4	0.6	24.0	0.110	0.503	26.502778	-104.183444
T. C. Ent. La Zarca - Hidalgo del Parral	113.50	1	0	589	0.0	85.2	0.6	13.9	0.2	0.0	0.1	0.0	0.0	85.2	0.6	14.2	0.120	0.501	26.141570	-105.028698

28 CARR: Durango - Aserradero La Flor

CLAVE: 10422

RUTA: DGO-115

AÑO: 2012

LUGAR	ESTACION				CLASIFICACION VEHICULAR EN PORCIENTO													COORDENADAS		
	KM	TE	SC	TDPA	M	A	B	C2	C3	T3S2	T3S3	T3S2R4	OTROS	A	B	C	K'	D	LATITUD	LONGITUD
Durango	0.00	3	1	6942	1.9	90.5	0.1	4.7	0.4	0.9	1.1	0.1	0.3	92.4	0.1	7.5	0.088	0.522	23.986955	-104.664162
Durango	0.00	3	2	7190	1.9	89.7	0.1	5.3	0.4	1.0	1.2	0.1	0.3	91.6	0.1	8.3	0.085	0.522	23.986954	-104.664161
T. Der. Presa Guadalupe Victoria	4.00	3	1	4316	5.0	85.6	0.3	6.6	0.7	0.8	0.7	0.1	0.2	90.6	0.3	9.1	0.106	0.508	23.979353	-104.664396
T. Der. Presa Guadalupe Victoria	4.00	3	2	4458	4.2	85.5	0.3	7.4	0.7	0.9	0.7	0.1	0.2	89.7	0.3	10.0	0.106	0.508	23.979353	-104.664395
Aserradero La Flor	39.00	1	0	94	0.5	96.3	0.0	1.7	1.5	0.0	0.0	0.0	0.0	96.8	0.0	3.2	0.112	0.503	23.780225	-104.764548

29 CARR: Jabonoso - Esmeralda

CLAVE: 10004

RUTA: DGO-363

AÑO: 2012

LUGAR	ESTACION				CLASIFICACION VEHICULAR EN PORCIENTO													COORDENADAS		
	KM	TE	SC	TDPA	M	A	B	C2	C3	T3S2	T3S3	T3S2R4	OTROS	A	B	C	K'	D	LATITUD	LONGITUD
Jabonoso	0.00	3	0	5227	7.4	68.4	0.8	8.7	4.0	5.8	2.1	1.7	1.1	75.8	0.8	23.4	0.077	0.502	25.632330	-103.457103
T. Izq. Chimal	10.00	3	0	3815	11.7	72.1	0.4	7.0	3.2	3.5	0.8	0.8	0.5	83.8	0.4	15.8	0.084	0.505	25.696623	-103.442711
Esmeralda	16.30	1	0	3040	9.2	72.7	0.5	6.0	5.0	3.6	1.0	0.9	1.1	81.9	0.5	17.6	0.083	0.510	25.738866	-103.431601

## DURANGO

30 CARR: La Torreña - Brittingham

CLAVE: 10010

RUTA: DGO-325

AÑO: 2012

LUGAR	ESTACION				CLASIFICACION VEHICULAR EN PORCIENTO													COORDENADAS		
	KM	TE	SC	TDPA	M	A	B	C2	C3	T3S2	T3S3	T3S2R4	OTROS	A	B	C	K'	D	LATITUD	LONGITUD
La Torreña	0.00	3	0	2882	10.8	68.2	1.9	5.0	5.9	4.1	1.6	1.6	0.9	79.0	1.9	19.1	0.085	0.506	25.638019	-103.581598
X. C. Gómez Palacio - Jiménez	7.00	1	0	3837	6.4	68.7	2.5	10.7	4.1	4.1	1.7	1.3	0.5	75.1	2.5	22.4	0.081	0.501	25.638887	-103.534466
X. C. Gómez Palacio - Jiménez	7.00	3	0	2440	4.9	69.2	4.5	7.7	3.0	6.1	2.0	2.1	0.5	74.1	4.5	21.4	0.080	0.501	25.641259	-103.520228
Chimal	16.00	1	0	1998	11.2	60.5	4.1	7.4	9.5	3.9	1.6	1.2	0.6	71.7	4.1	24.2	0.087	0.507	25.691321	-103.489897
Chimal	16.00	3	0	1342	13.8	62.8	3.5	7.4	7.0	3.5	1.1	0.8	0.1	76.6	3.5	19.9	0.093	0.508	25.695265	-103.489343
Brittingham	33.00	1	0	1293	7.2	73.3	1.3	6.9	4.2	4.1	1.5	0.9	0.6	80.5	1.3	18.2	0.115	0.502	25.774556	-103.572536

31 CARR: Libramiento de Torreón

CLAVE: 05516

RUTA: COA

AÑO: 2012

LUGAR	ESTACION				CLASIFICACION VEHICULAR EN PORCIENTO													COORDENADAS		
	KM	TE	SC	TDPA	M	A	B	C2	C3	T3S2	T3S3	T3S2R4	OTROS	A	B	C	K'	D	LATITUD	LONGITUD
X. C. Saltillo - Torreón	0.00	3	1	22669	1.1	83.4	2.3	3.2	0.9	3.5	4.0	1.0	0.6	84.5	2.3	13.2	0.080	0.519	25.540674	-103.370436
X. C. Saltillo - Torreón	0.00	3	2	23198	0.7	82.7	2.4	3.5	1.0	3.8	4.1	1.2	0.6	83.4	2.4	14.2	0.074	0.519	25.540674	-103.370436
T. C. La Cuchilla - Torreón (Baja)	7.30	1	1	10362	1.1	86.8	1.9	2.9	0.7	2.5	2.9	0.6	0.6	87.9	1.9	10.2	0.077	0.513	25.582543	-103.402867
T. C. La Cuchilla - Torreón (Alta)	7.30	1	1	6001	1.0	79.6	3.2	4.1	2.1	5.8	2.2	1.4	0.6	80.6	3.2	16.2	0.079	0.505	25.582561	-103.402859
T. C. La Cuchilla - Torreón (Baja)	7.30	1	2	9848	1.0	85.6	2.0	3.4	0.8	2.8	3.2	0.6	0.6	86.6	2.0	11.4	0.079	0.513	25.582552	-103.402850
T. C. La Cuchilla - Torreón (Alta)	7.30	1	2	5877	0.9	77.0	3.6	4.9	2.2	6.7	2.5	1.6	0.6	77.9	3.6	18.5	0.087	0.505	25.582575	-103.402850
Lim. Edos. Term. Coah. Ppia. Dgo.	11.80																			
T. C. Durango - Torreón	28.60																			

32 CARR: Libramiento Exterior Cuencamé

CLAVE: 10006

RUTA: DGO

AÑO: 2012

LUGAR	ESTACION				CLASIFICACION VEHICULAR EN PORCIENTO													COORDENADAS		
	KM	TE	SC	TDPA	M	A	B	C2	C3	T3S2	T3S3	T3S2R4	OTROS	A	B	C	K'	D	LATITUD	LONGITUD
Ent. La Chicharrona - Cuencamé	0.00	3	0	3839	0.4	42.5	8.4	6.6	4.1	22.0	5.6	9.6	0.8	42.9	8.4	48.7	0.070	0.514	24.843782	-103.695316
T. C. Durango - Torreón	8.40																			

33 CARR: Mezquital - San Miguel de Temoaya

CLAVE: 10006

RUTA: DGO

AÑO: 2012

LUGAR	ESTACION				CLASIFICACION VEHICULAR EN PORCIENTO													COORDENADAS		
	KM	TE	SC	TDPA	M	A	B	C2	C3	T3S2	T3S3	T3S2R4	OTROS	A	B	C	K'	D	LATITUD	LONGITUD
T. C. Durango - Mezquital	0.00	3	0	474	1.8	80.9	2.0	9.7	3.3	1.8	0.5	0.0	0.0	82.7	2.0	15.3	0.106	0.501	23.496998	-104.387876
San Miguel de Temoaya	48.00	1	0	299	0.5	81.1	2.3	9.7	4.1	1.9	0.4	0.0	0.0	81.6	2.3	16.1	0.188	0.534	23.304213	-104.507746

DURANGO

34 CARR: Ramal a San Juan del Río

CLAVE: 10001

RUTA: DGO-290

AÑO: 2012

LUGAR	ESTACION				CLASIFICACION VEHICULAR EN PORCIENTO													COORDENADAS		
	KM	TE	SC	TDPA	M	A	B	C2	C3	T3S2	T3S3	T3S2R4	OTROS	A	B	C	K'	D	LATITUD	LONGITUD
T. C. Durango - Ent. La Zarca	0.00	3	0	2251	0.4	83.4	4.0	9.2	0.4	2.0	0.4	0.1	0.1	83.8	4.0	12.2	0.103	0.505	24.797231	-104.498083
San Juan del Río	5.00	1	1	1316	0.5	81.7	4.5	12.4	0.1	0.4	0.3	0.0	0.1	82.2	4.5	13.3	0.110	0.509	24.786333	-104.474663
San Juan del Río	5.00	1	2	1366	0.5	80.7	4.9	13.0	0.1	0.5	0.2	0.0	0.1	81.2	4.9	13.9	0.122	0.509	24.786333	-104.474663

35 CARR: Súchil - Villa Unión

CLAVE: 10419

RUTA: DGO-241

AÑO: 2012

LUGAR	ESTACION				CLASIFICACION VEHICULAR EN PORCIENTO													COORDENADAS		
	KM	TE	SC	TDPA	M	A	B	C2	C3	T3S2	T3S3	T3S2R4	OTROS	A	B	C	K'	D	LATITUD	LONGITUD
Súchil	0.00	3	1	961	1.0	87.5	3.3	6.3	1.0	0.5	0.3	0.0	0.1	88.5	3.3	8.2	0.130	0.502	23.630060	-103.924486
Súchil	0.00	3	2	970	1.0	86.0	3.6	7.4	1.1	0.4	0.4	0.0	0.1	87.0	3.6	9.4	0.123	0.502	23.630068	-103.924492
Vicente Guerrero	13.40	1	0	1581	1.2	80.3	6.3	9.7	1.2	1.0	0.3	0.0	0.0	81.5	6.3	12.2	0.112	0.503	23.711540	-103.970263
X. C. Zacatecas - Durango	14.50	1	1	3700	2.1	84.1	3.1	8.9	0.5	0.7	0.5	0.0	0.1	86.2	3.1	10.7	0.099	0.519	23.741828	-103.985041
X. C. Zacatecas - Durango	14.50	1	2	3988	2.0	83.6	3.5	9.0	0.5	0.8	0.5	0.0	0.1	85.6	3.5	10.9	0.090	0.519	23.741810	-103.985057
X. C. Zacatecas - Durango	14.50	3	0	2025	2.5	83.1	3.7	8.1	0.9	1.4	0.2	0.0	0.1	85.6	3.7	10.7	0.104	0.505	23.746996	-103.987686
Villa Unión	41.40	1	0	1513	3.0	82.9	3.6	8.3	0.6	1.1	0.3	0.1	0.1	85.9	3.6	10.5	0.119	0.508	23.958896	-104.049525

36 CARR: Tlahualillo de Zaragoza - T.C. Gómez Palacio - Jiménez

CLAVE: 10419

RUTA: DGO

AÑO: 2012

LUGAR	ESTACION				CLASIFICACION VEHICULAR EN PORCIENTO													COORDENADAS		
	KM	TE	SC	TDPA	M	A	B	C2	C3	T3S2	T3S3	T3S2R4	OTROS	A	B	C	K'	D	LATITUD	LONGITUD
Tlahualillo de Zaragoza	0.00	3	0	962	6.5	78.3	1.4	6.8	3.0	3.1	0.5	0.1	0.3	84.8	1.4	13.8	0.101	0.502	26.121512	-103.453908
T. C. Gómez Palacio - Jiménez	37.00	1	0	737	6.0	68.8	1.6	11.1	3.5	7.7	0.3	0.3	0.7	74.8	1.6	23.6	0.104	0.507	26.156397	-103.775758

37 CARR: Yerbanís - Peñón Blanco

CLAVE: 10032

RUTA: DGO-316

AÑO: 2012

LUGAR	ESTACION				CLASIFICACION VEHICULAR EN PORCIENTO													COORDENADAS		
	KM	TE	SC	TDPA	M	A	B	C2	C3	T3S2	T3S3	T3S2R4	OTROS	A	B	C	K'	D	LATITUD	LONGITUD
Yerbanís	0.00	3	0	867	0.2	79.3	2.6	13.2	0.7	2.5	1.1	0.2	0.2	79.5	2.6	17.9	0.099	0.505	24.736177	-103.845713
Peñón Blanco	22.00	1	0	988	1.3	79.0	3.3	14.0	0.8	1.3	0.2	0.0	0.1	80.3	3.3	16.4	0.101	0.504	24.785123	-104.016299

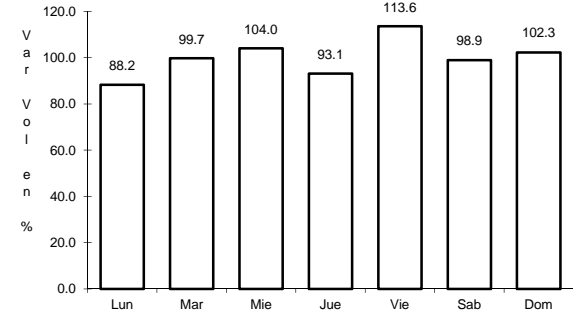
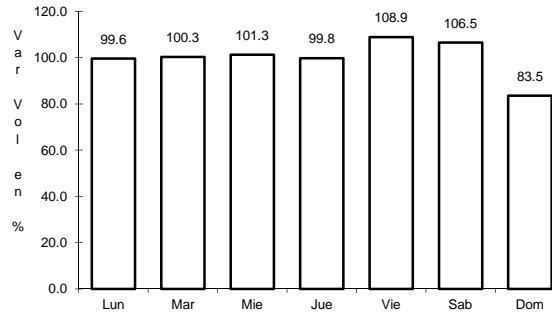
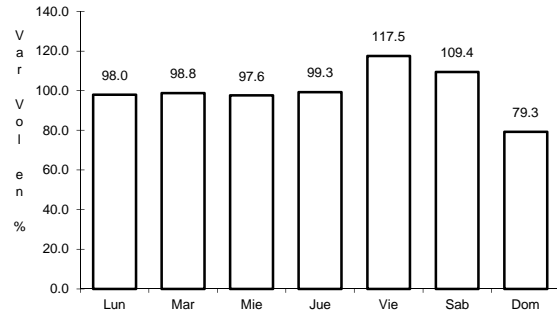




4 CARR: Durango - Torreón

CLAVE: 10085

RUTA: MEX-040



Km: 0.00                      Tipo: 3                      Sent: 1

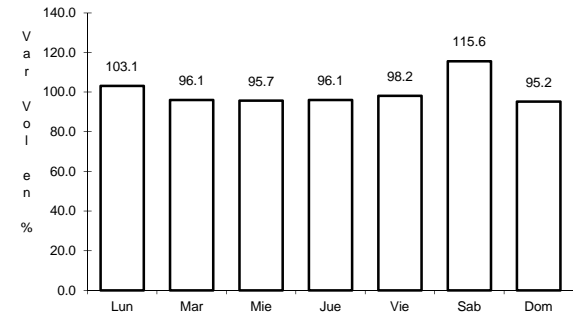
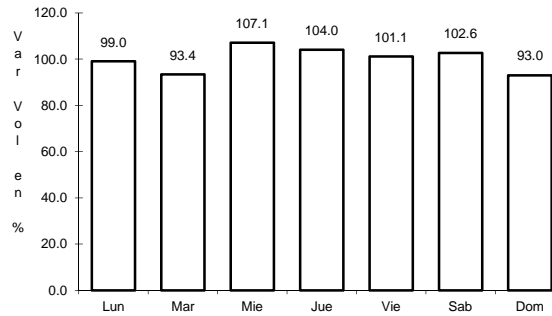
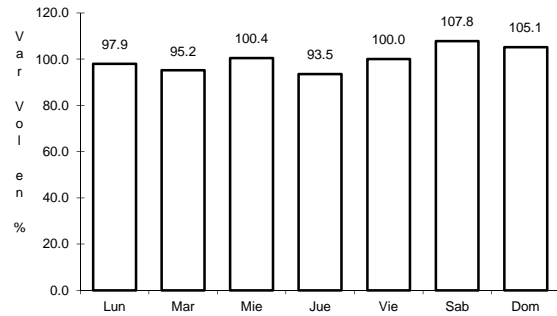
Km: 0.00                      Tipo: 3                      Sent: 2

Km: 120.90                      Tipo: 1                      Sent: 0

5 CARR: Durango - Villa Unión

CLAVE: 00083

RUTA: MEX-040



Km: 0.00                      Tipo: 3                      Sent: 0

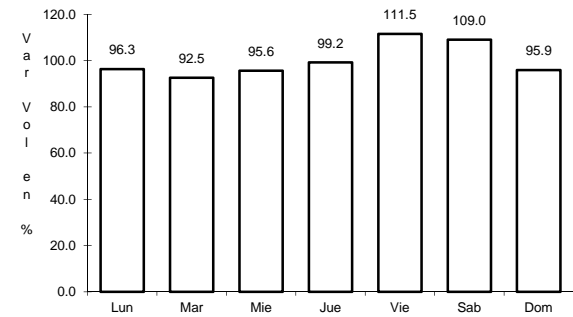
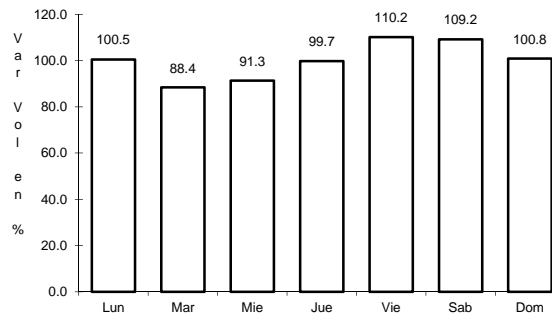
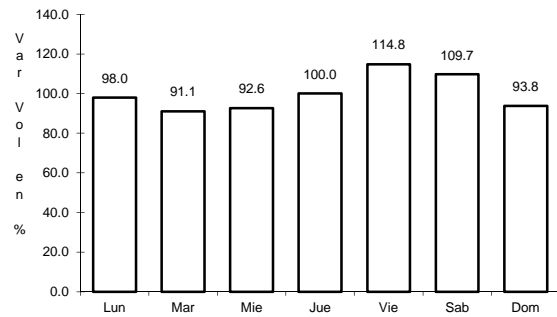
Km: 145.50                      Tipo: 1                      Sent: 0

Km: 294.40                      Tipo: 1                      Sent: 0

6 CARR: Ent. La Chicharrona - Cuencamé

CLAVE: 00152

RUTA: MEX-049



Km: 0.00                      Tipo: 3                      Sent: 1

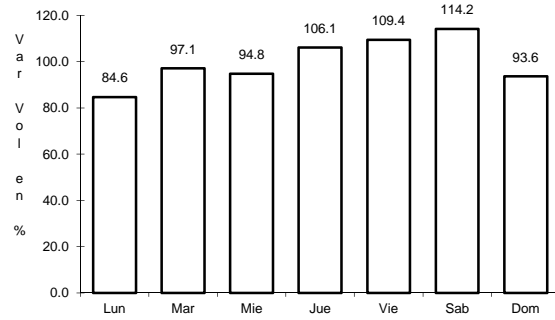
Km: 0.00                      Tipo: 3                      Sent: 2

Km: 124.50                      Tipo: 1                      Sent: 0

## 7 CARR: Ent. La Zarca - Hidalgo del Parral

CLAVE: 00488

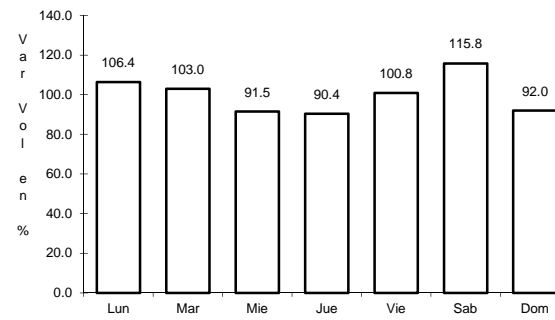
RUTA: MEX-045



Km: 0.00

Tipo: 3

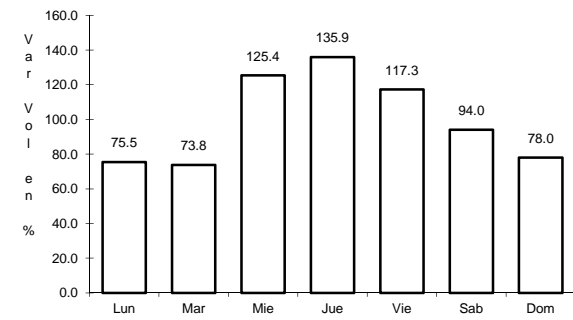
Sent: 0



Km: 92.35

Tipo: 3

Sent: 0



Km: 171.00

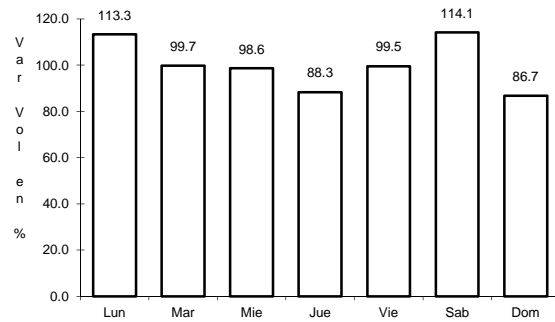
Tipo: 1

Sent: 0

## 8 CARR: Ent. Los Herrera - Topia

CLAVE: 10090

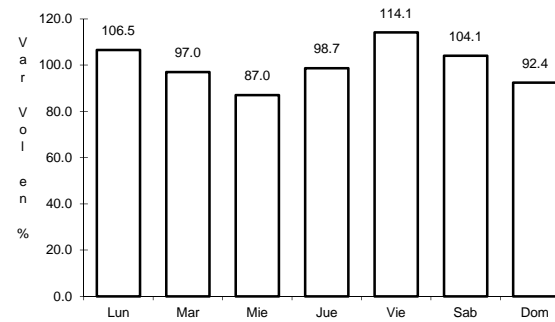
RUTA: MEX-036



Km: 0.00

Tipo: 3

Sent: 0



Km: 80.00

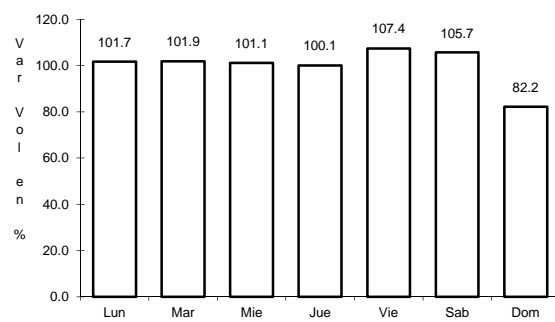
Tipo: 1

Sent: 0

## 9 CARR: Gómez Palacio - Jiménez

CLAVE: 00006

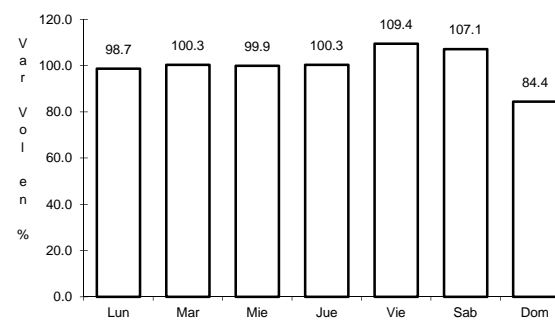
RUTA: MEX-049



Km: 0.00

Tipo: 3

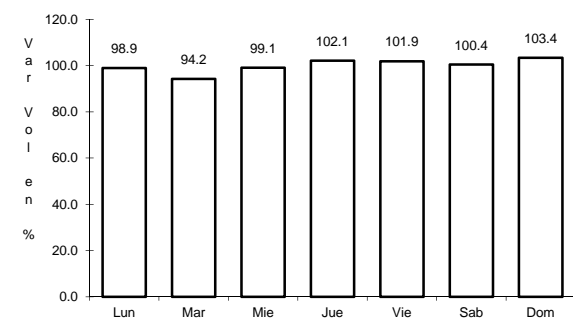
Sent: 1



Km: 0.00

Tipo: 3

Sent: 2



Km: 107.95

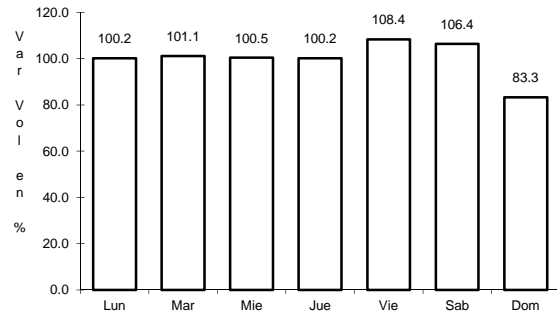
Tipo: 1

Sent: 0

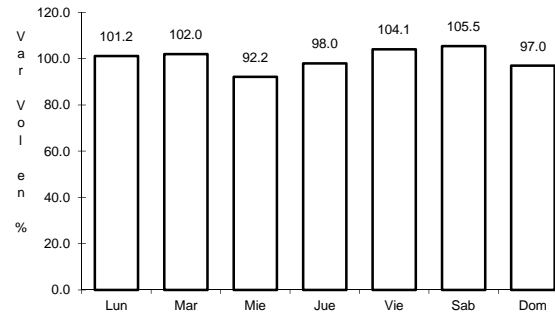
10 CARR: Gómez Palacio - La Unión

CLAVE: 10009

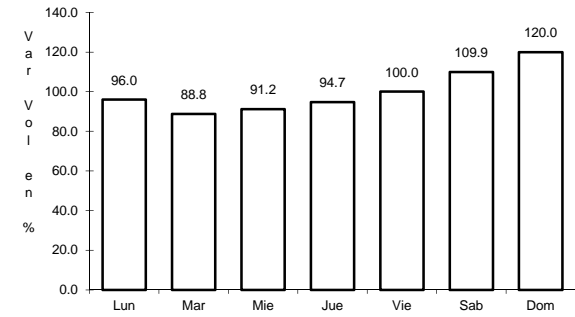
RUTA: MEX-040



Km: 0.00                      Tipo: 3                      Sent: 0



Km: 20.90                      Tipo: 1                      Sent: 0

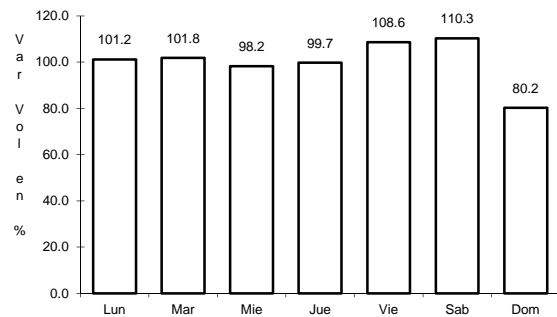


Km: 42.20                      Tipo: 1                      Sent: 0

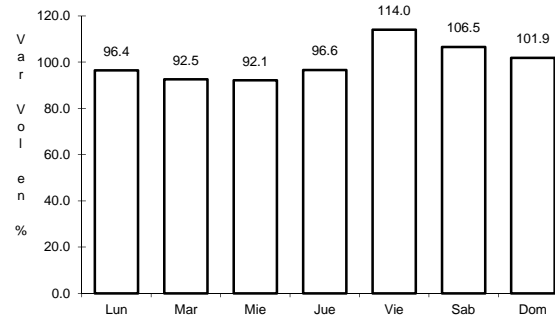
11 CARR: Gómez Palacio - Tlahualillo

CLAVE: 10005

RUTA: MEX-040



Km: 5.60                      Tipo: 1                      Sent: 0

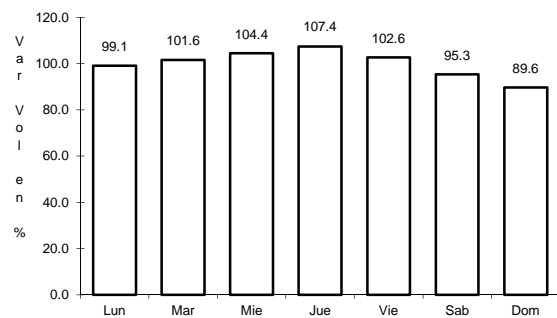


Km: 72.90                      Tipo: 1                      Sent: 0

12 CARR: Gregorio García - Francisco I. Madero

CLAVE: 00110

RUTA: MEX-040

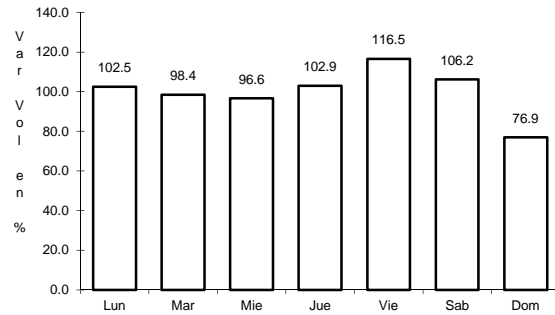


Km: 9.60                      Tipo: 1                      Sent: 0

## 13 CARR: Guadalupe Aguilera - Tepehuanes

CLAVE: 10220

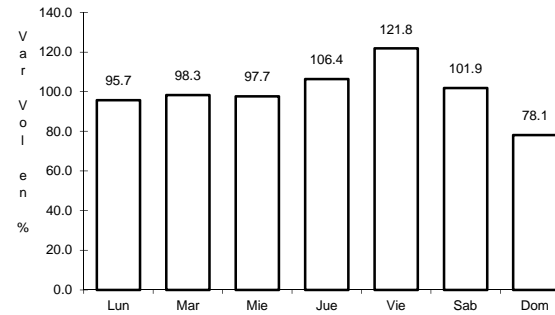
RUTA: MEX-023



Km: 0.00

Tipo: 3

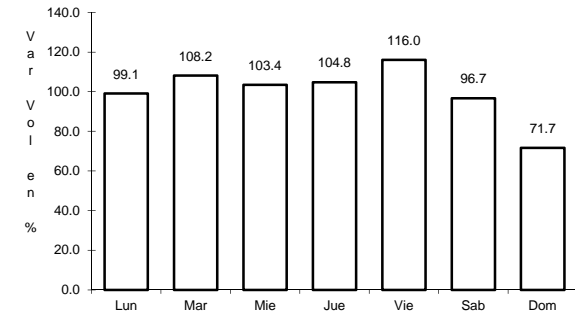
Sent: 1



Km: 0.00

Tipo: 3

Sent: 2



Km: 169.00

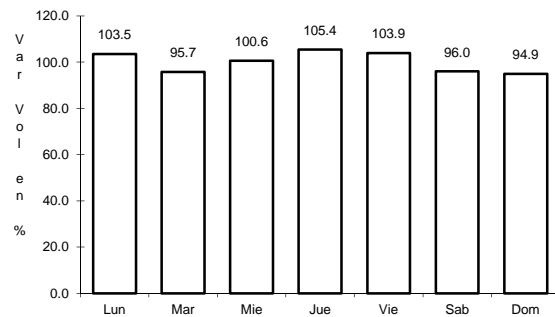
Tipo: 1

Sent: 0

## 14 CARR: Hidalgo del Parral - Guadalupe y Calvo

CLAVE: 00802

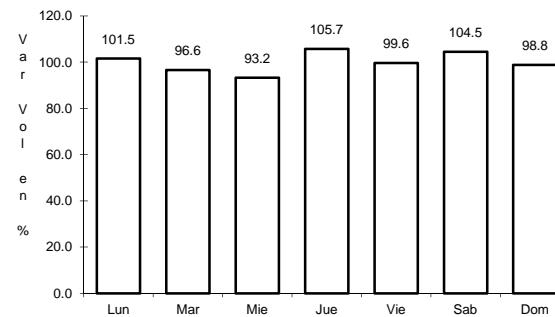
RUTA: MEX-024



Km: 0.00

Tipo: 3

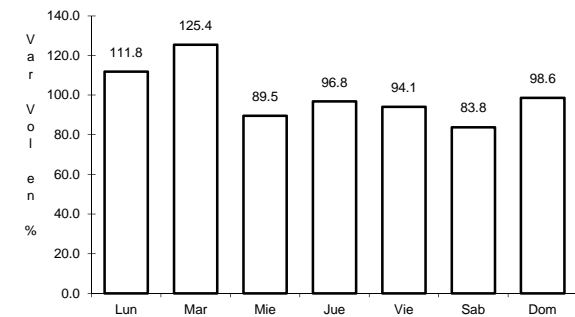
Sent: 0



Km: 110.00

Tipo: 1

Sent: 0



Km: 212.00

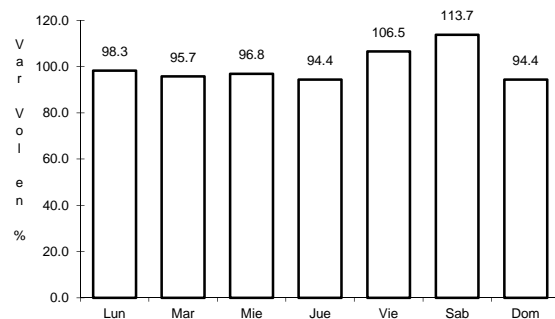
Tipo: 1

Sent: 0

## 15 CARR: Libramiento Cuencamé

CLAVE: 10006

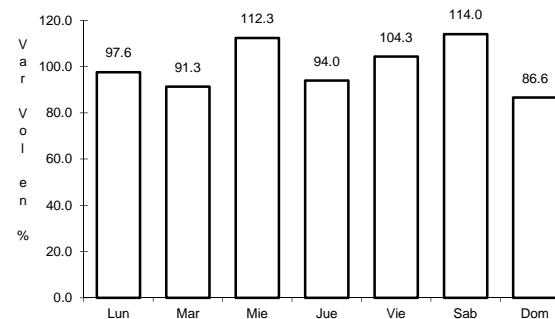
RUTA: MEX



Km: 0.00

Tipo: 3

Sent: 1



Km: 0.00

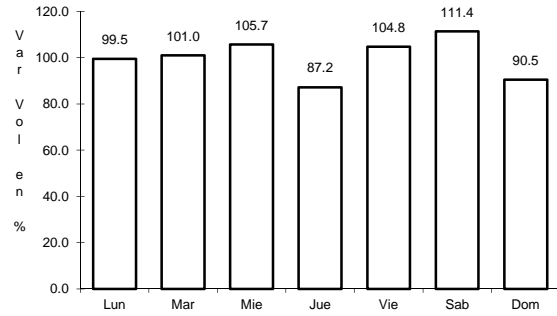
Tipo: 3

Sent: 2

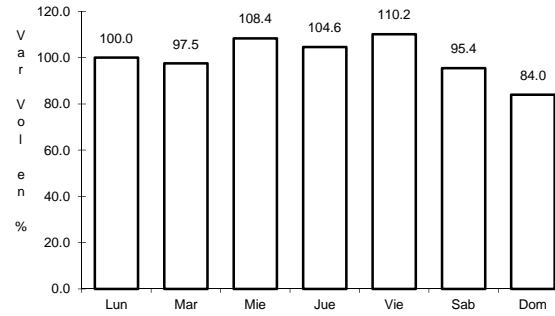
16 CARR: Pedriceña - Ent. Rodeo

CLAVE: 10002

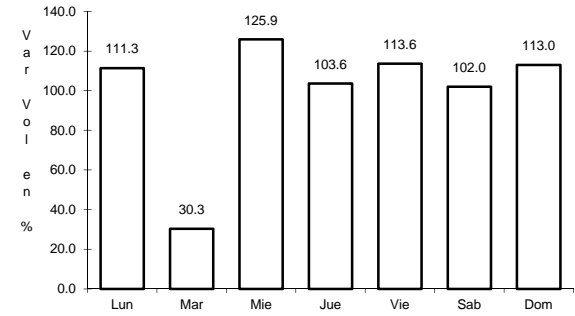
ruta: MEX-034



Km: 0.00                      Tipo: 3                      Sent: 0



Km: 45.00                      Tipo: 1                      Sent: 0

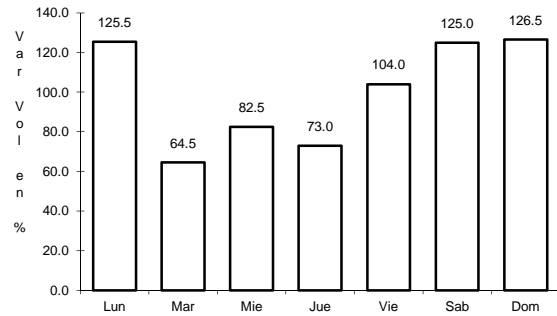


Km: 98.00                      Tipo: 1                      Sent: 0

17 CARR: Ramal a Otinapa

CLAVE: 10002

ruta: MEX

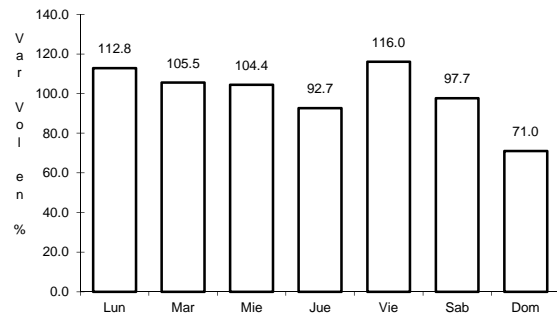


Km: 0.00                      Tipo: 3                      Sent: 0

18 CARR: Ramal a Santa Clara

CLAVE: 10287

ruta: MEX-049

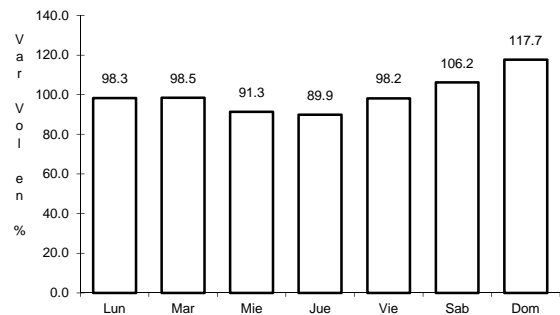


Km: 0.00                      Tipo: 3                      Sent: 0

19 CARR: Ramal a Villa Juárez

CLAVE: 10287

RUTA: MEX-040



Km: 0.00

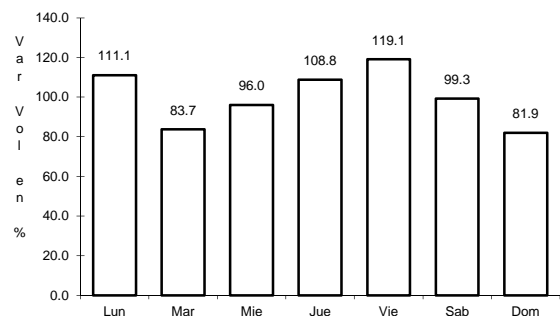
Tipo: 3

Sent: 0

20 CARR: Zacatecas - Durango

CLAVE: 00544

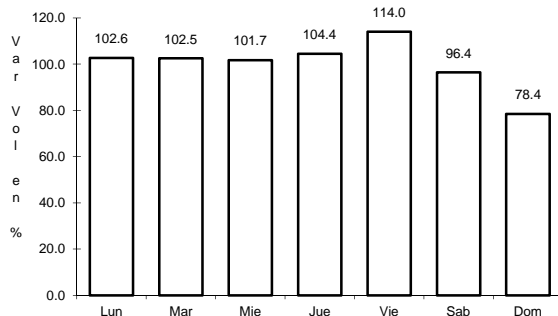
RUTA: MEX-045



Km: 6.40

Tipo: 3

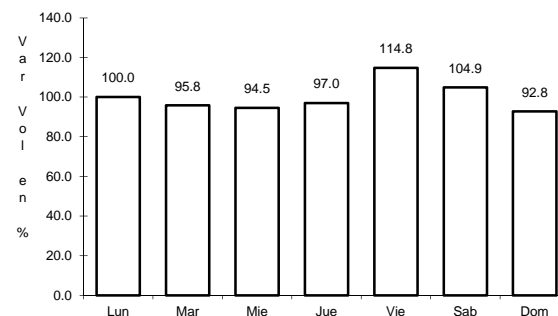
Sent: 1



Km: 6.40

Tipo: 3

Sent: 2



Km: 121.00

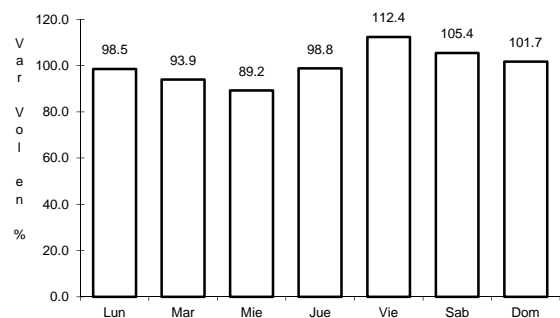
Tipo: 3

Sent: 0

21 CARR: Durango - Mazatlán (Cuota)

CLAVE: 00083

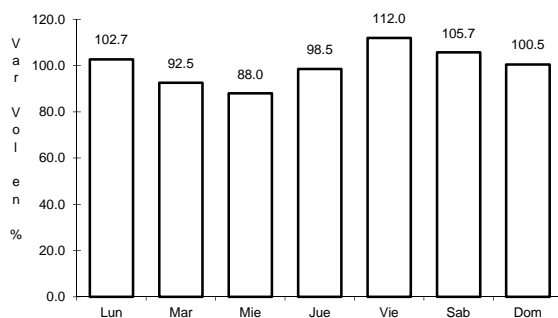
RUTA: MEX-040D



Km: 0.00

Tipo: 3

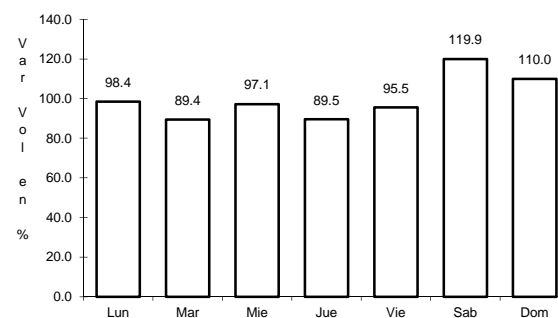
Sent: 0



Km: 22.85

Tipo: 1

Sent: 0



Km: 208.35

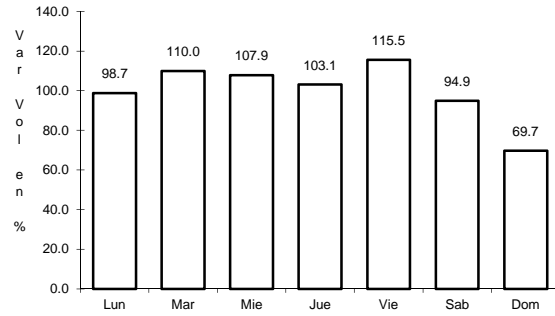
Tipo: 1

Sent: 0

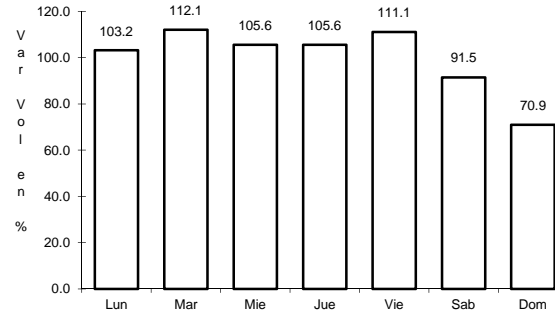
22 CARR: Durango - Yerbanís (Cuota)

CLAVE: 10003

RUTA: MEX-040D



Km: 5.31      Tipo: 1      Sent: 1

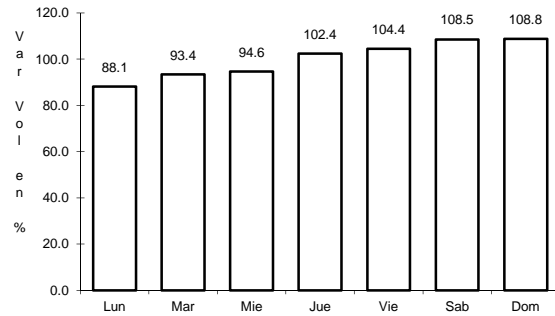


Km: 5.31      Tipo: 1      Sent: 2

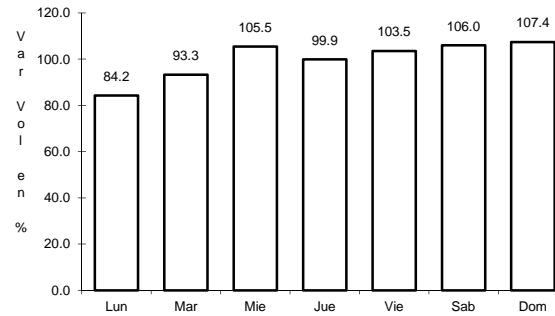
23 CARR: Gómez Palacio - Corralitos (Cuota)

CLAVE: 00016

RUTA: MEX-049D



Km: 2.21      Tipo: 1      Sent: 1

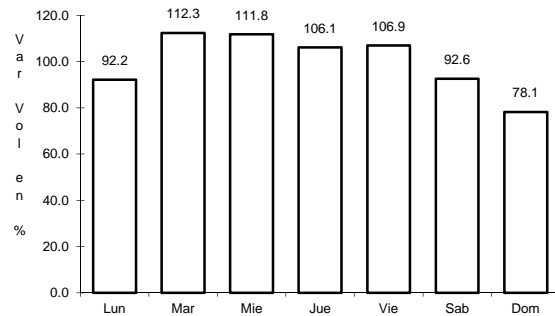


Km: 2.21      Tipo: 1      Sent: 2

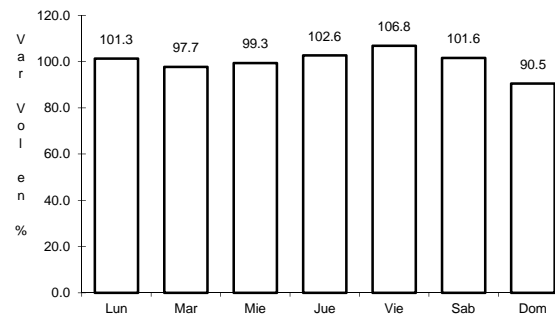
24 CARR: Libramiento de Durango (Cuota)

CLAVE: 10006

RUTA: MEX-040D



Km: 0.00      Tipo: 3      Sent: 0



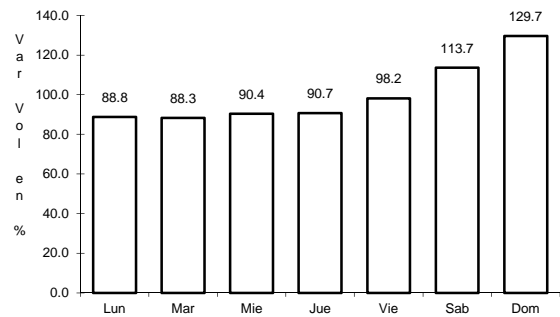
Km: 21.60      Tipo: 1      Sent: 0



## 25 CARR: Yerbanís - Gómez Palicio (Cuota)

CLAVE: 10003

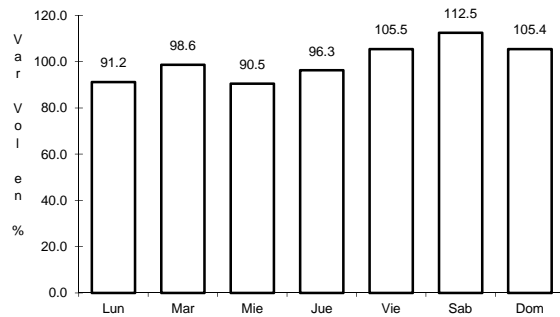
RUTA: MEX-040D



Km: 180.00

Tipo: 1

Sent: 1



Km: 180.00

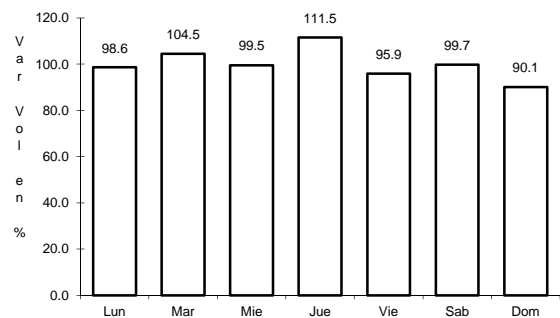
Tipo: 1

Sent: 2

## 26 CARR: Amado Nervo - La Ochoa

CLAVE: 10012

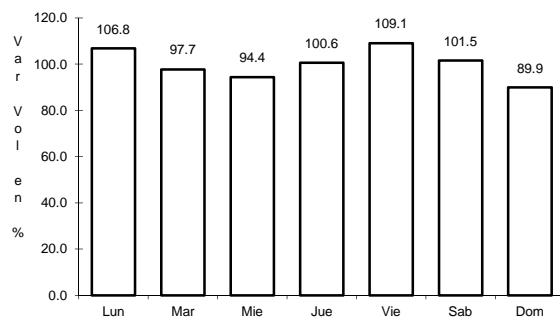
RUTA: DGO-542



Km: 0.00

Tipo: 3

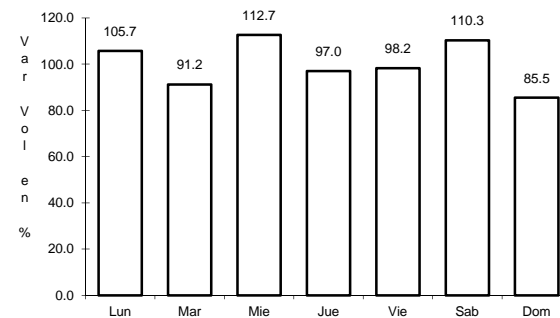
Sent: 0



Km: 25.00

Tipo: 1

Sent: 0



Km: 42.00

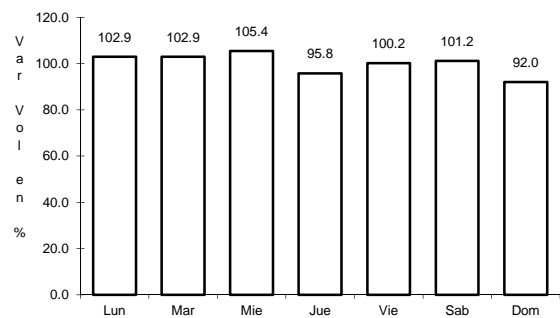
Tipo: 1

Sent: 0

## 27 CARR: Ceballos - El Mirador

CLAVE: 10417

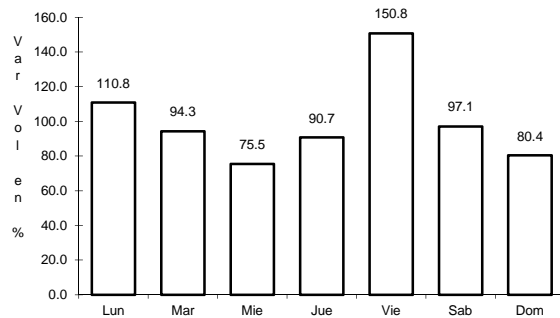
RUTA: DGO-044



Km: 0.00

Tipo: 3

Sent: 0



Km: 113.50

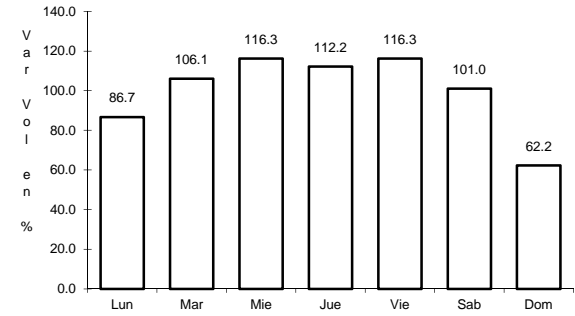
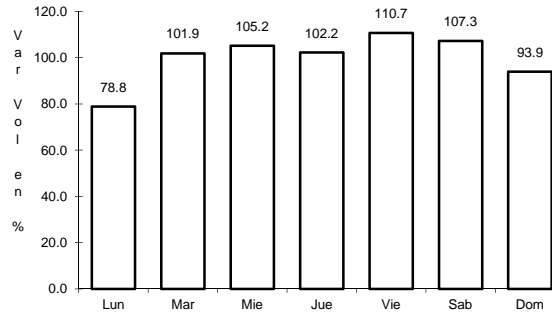
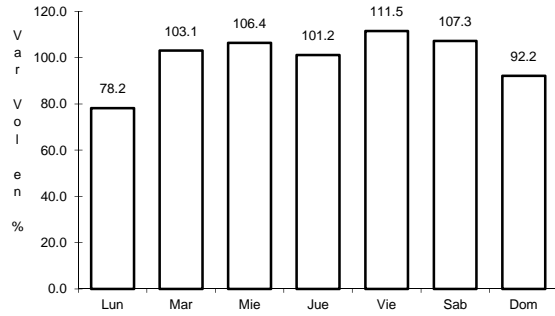
Tipo: 1

Sent: 0

28 CARR: Durango - Aserradero La Flor

CLAVE: 10422

RUTA: DGO-115



Km: 0.00                      Tipo: 3                      Sent: 1

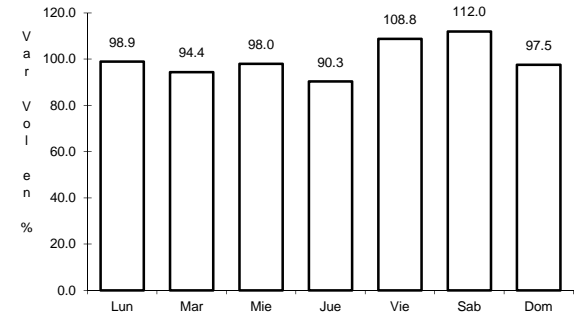
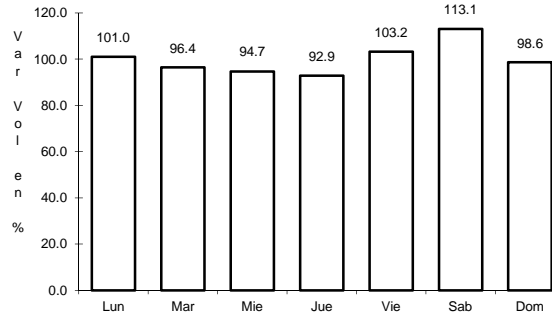
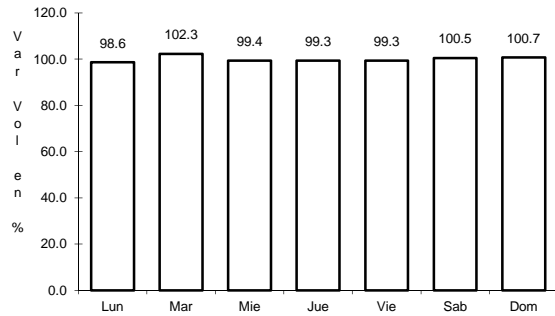
Km: 0.00                      Tipo: 3                      Sent: 2

Km: 39.00                      Tipo: 1                      Sent: 0

29 CARR: Jabonoso - Esmeralda

CLAVE: 10004

RUTA: DGO-363



Km: 0.00                      Tipo: 3                      Sent: 0

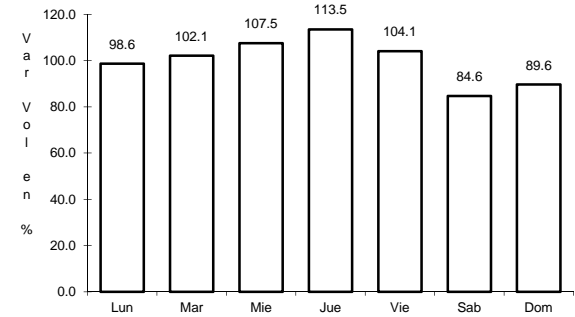
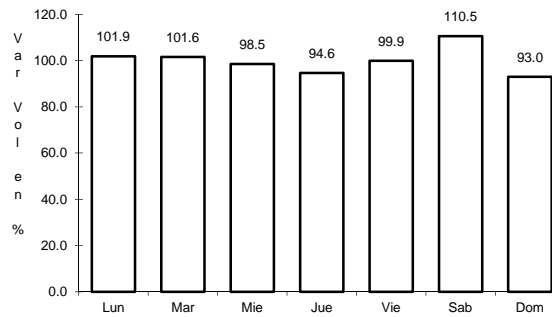
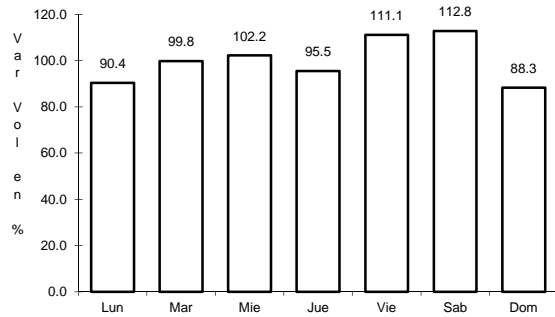
Km: 10.00                      Tipo: 3                      Sent: 0

Km: 16.30                      Tipo: 1                      Sent: 0

30 CARR: La Torreña - Brittingham

CLAVE: 10010

RUTA: DGO-325



Km: 0.00                      Tipo: 3                      Sent: 0

Km: 16.00                      Tipo: 1                      Sent: 0

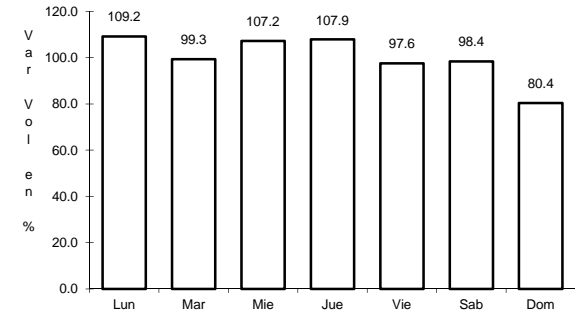
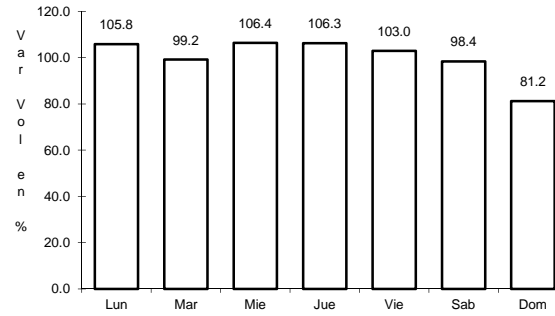
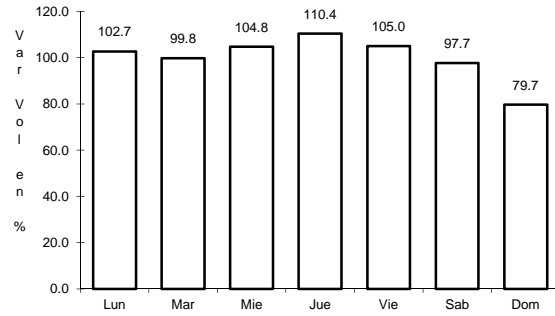
Km: 33.00                      Tipo: 1                      Sent: 0



34 CARR: Ramal a San Juan del Río

CLAVE: 10001

RUTA: DGO-290



Km: 0.00                      Tipo: 3                      Sent: 0

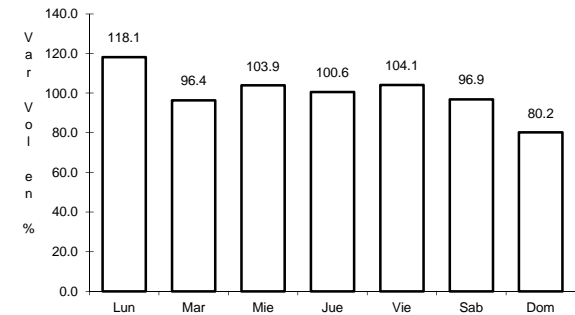
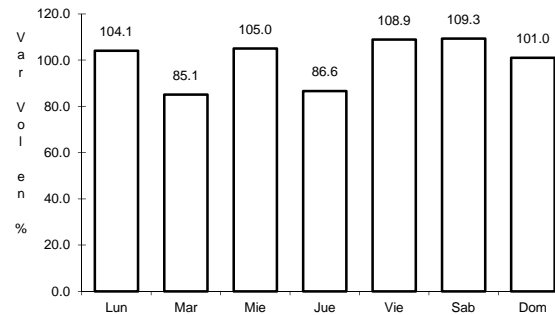
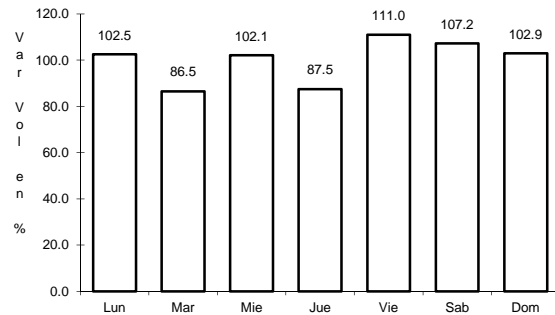
Km: 5.00                      Tipo: 1                      Sent: 1

Km: 5.00                      Tipo: 1                      Sent: 2

35 CARR: Súchil - Villa Unión

CLAVE: 10419

RUTA: DGO-241



Km: 0.00                      Tipo: 3                      Sent: 1

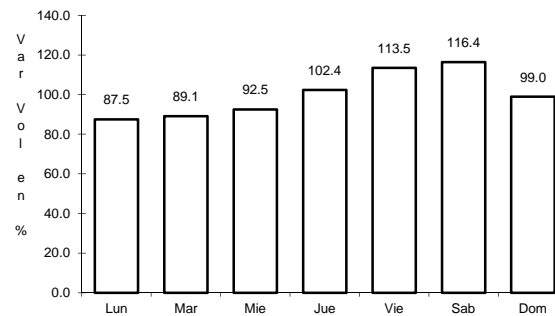
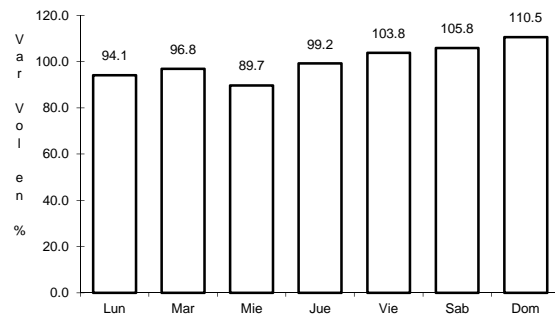
Km: 0.00                      Tipo: 3                      Sent: 2

Km: 41.40                      Tipo: 1                      Sent: 0

36 CARR: Tlahualillo de Zaragoza - T.C. Gómez Palacio - Jiménez

CLAVE: 10419

RUTA: DGO



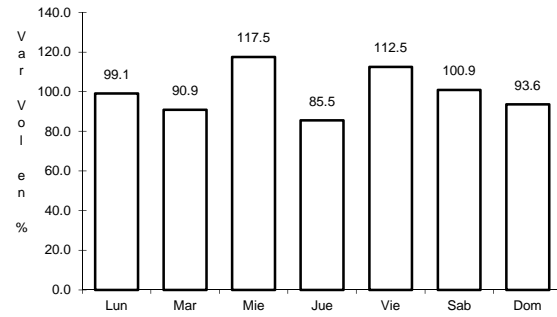
Km: 0.00                      Tipo: 3                      Sent: 0

Km: 37.00                      Tipo: 1                      Sent: 0

37 CARR: Yerbanís - Peñón Blanco

CLAVE: 10032

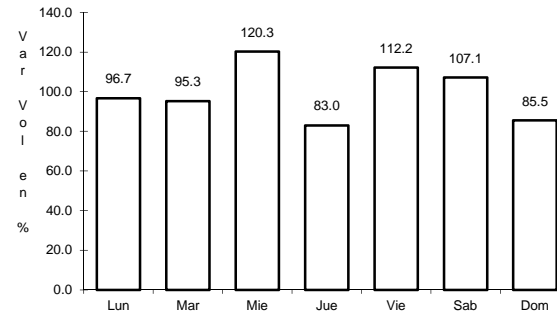
RUTA: DGO-316



Km: 0.00

Tipo: 3

Sent: 0



Km: 22.00

Tipo: 1

Sent: 0