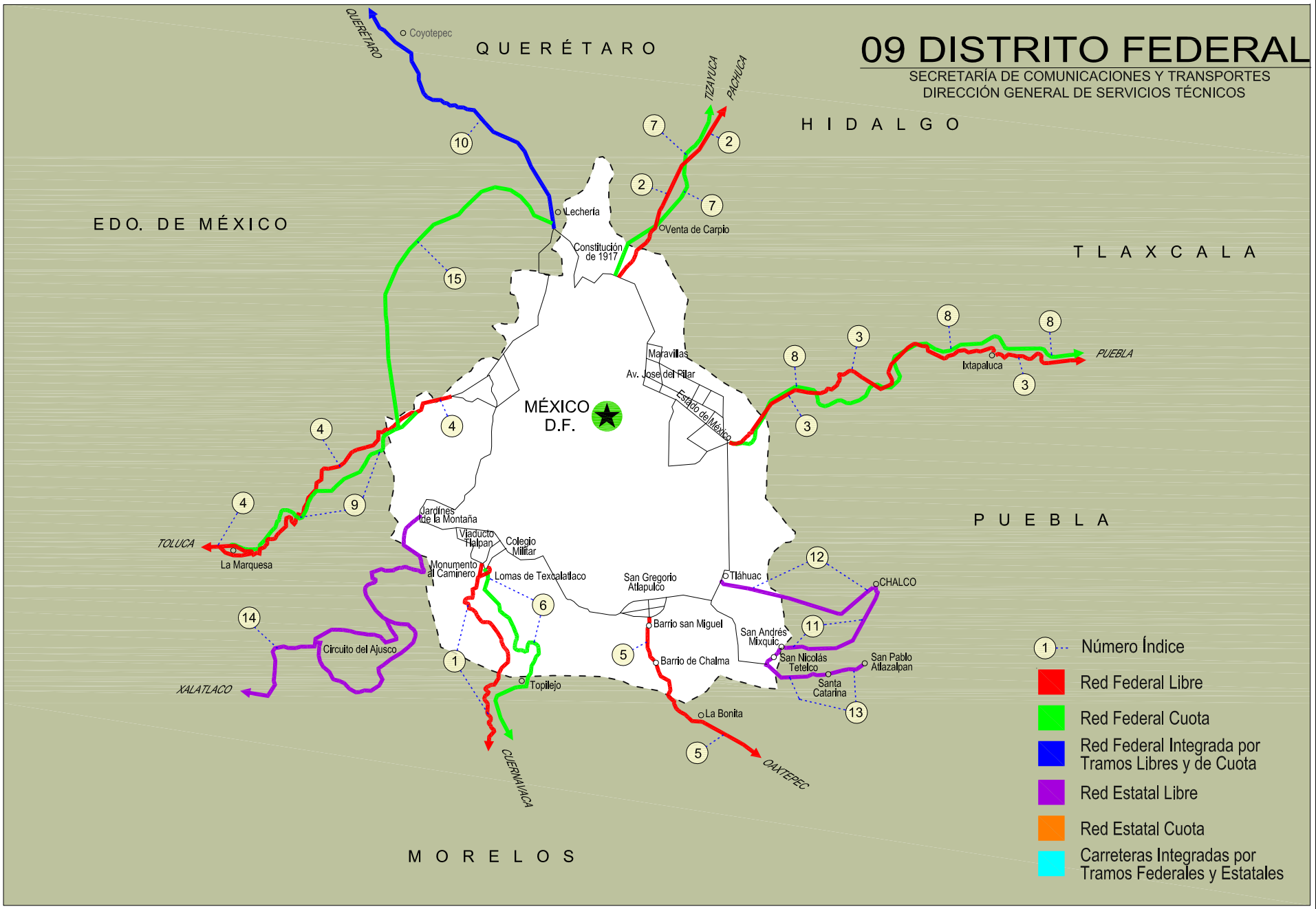


DISTRITO FEDERAL

NO. INDICE	CARRETERA	RUTA
---RED FEDERAL LIBRE---		
1	México - Cuernavaca (Libre)	MEX-095
2	México - Pachuca (Libre)	MEX-085
3	México - Puebla (Libre)	MEX-190
4	México - Toluca	MEX-015
5	San Gregorio - Oaxtepec	MEX-113
---RED FEDERAL DE CUOTA---		
6	México - Cuernavaca (Cuota)	MEX-095D
7	México - Pachuca (Cuota)	MEX-085D
8	México - Puebla (Cuota)	MEX-150D
9	México - Toluca (Cuota)	MEX-134D
---RED FEDERAL INTEGRADA POR TRAMOS LIBRES Y DE CUOTA---		
10	México - Querétaro (Cuota)	MEX-057-MEX-057D
---RED ESTATAL LIBRE---		
11	Chalco - Mixquic	EM-DF
12	Chalco - Tláhuac	EM-DF
13	T. C. (México - Mixquic) - San Pablo Atlazalpan	EM-106-DF
14	Xalatlaco - El Ajusco	EM-DF
---RED ESTATAL DE CUOTA---		
15	La Venta - Chamapa (Cuota)	EM-D

09 DISTRITO FEDERAL

SECRETARÍA DE COMUNICACIONES Y TRANSPORTES
DIRECCIÓN GENERAL DE SERVICIOS TÉCNICOS



- ① --- Número Índice
- Red Federal Libre
- Red Federal Cuota
- Red Federal Integrada por Tramos Libres y de Cuota
- Red Estatal Libre
- Red Estatal Cuota
- Carreteras Integradas por Tramos Federales y Estatales

DISTRITO FEDERAL

1 CARR: México - Cuernavaca (Libre)

CLAVE: 00040

RUTA: MEX-095

AÑO: 2012

LUGAR	ESTACION				CLASIFICACION VEHICULAR EN PORCIENTO										COORDENADAS					
	KM	TE	SC	TDPA	M	A	B	C2	C3	T3S2	T3S3	T3S2R4	OTROS	A	B	C	K'	D	LATITUD	LONGITUD
México	0.00																			
T. Izq. San Miguel Topilejo	28.78	1	1	8637	1.0	89.7	3.7	3.5	0.8	0.6	0.5	0.0	0.2	90.7	3.7	5.6	0.098	0.503	19.212871	-99.154000
T. Izq. San Miguel Topilejo	28.78	1	2	8735	1.2	88.3	4.2	3.9	1.0	0.6	0.6	0.0	0.2	89.5	4.2	6.3	0.093	0.503	19.212871	-99.154000
T. Izq. San Miguel Topilejo	28.78	3	0	17309	1.2	83.7	3.8	3.9	0.8	0.4	6.0	0.0	0.2	84.9	3.8	11.3	0.088	0.502	19.208939	-99.156051
Lim. Edos. Term. D. F. Ppia. Mor.	45.44																			
T. Der. Zempoala	51.40	3	0	6769	1.5	87.0	4.5	3.0	1.8	0.7	0.8	0.0	0.7	88.5	4.5	7.0	0.101	0.503	19.045834	-99.237450
T. Izq. Coajomulco	57.12	3	0	6342	1.2	85.0	3.1	7.1	1.8	0.5	0.7	0.0	0.6	86.2	3.1	10.7	0.108	0.506	19.026940	-99.209632
T. Der. Huitzilac	64.20	3	0	13069	1.0	88.2	5.5	2.4	0.6	0.3	1.4	0.0	0.6	89.2	5.5	5.3	0.087	0.502	19.000701	-99.257771
T. Izq. Tepoztlán	71.36	3	1	14395	1.8	92.0	1.4	3.1	0.6	0.2	0.8	0.0	0.1	93.8	1.4	4.8	0.082	0.509	18.960593	-99.246178
T. Izq. Tepoztlán	71.36	3	2	13883	1.8	91.2	1.6	3.5	0.6	0.2	1.0	0.0	0.1	93.0	1.6	5.4	0.074	0.509	18.960593	-99.246177
Cuernavaca	75.42																			

2 CARR: México - Pachuca (Libre)

CLAVE: 00431

RUTA: MEX-085

AÑO: 2012

LUGAR	ESTACION				CLASIFICACION VEHICULAR EN PORCIENTO										COORDENADAS					
	KM	TE	SC	TDPA	M	A	B	C2	C3	T3S2	T3S3	T3S2R4	OTROS	A	B	C	K'	D	LATITUD	LONGITUD
México	0.00																			
Lim. Edos. Term. D. F. Ppia. Mex.	9.89																			
T. Der. Pirámides	26.93	1	0	24497	1.8	79.9	2.0	5.0	1.0	4.1	3.4	1.8	1.0	81.7	2.0	16.3	0.059	0.501	19.613699	-99.016522
Venta de Carpio	27.00	3	1	24055	1.7	86.6	0.6	3.7	1.3	1.4	3.3	0.7	0.7	88.3	0.6	11.1	0.059	0.503	19.626979	-99.002613
Venta de Carpio	27.00	3	2	23783	1.5	85.0	0.8	4.4	1.4	1.6	3.7	0.9	0.7	86.5	0.8	12.7	0.062	0.503	19.626987	-99.002749
T. Der. Autopista México - Tecámac (Cuota)	37.52	1	1	21935	1.3	85.4	0.6	4.2	1.2	2.0	4.0	0.6	0.7	86.7	0.6	12.7	0.062	0.512	19.701265	-98.979789
T. Der. Autopista México - Tecámac (Cuota)	37.52	1	2	20706	1.1	84.7	0.7	4.5	1.2	2.2	4.3	0.6	0.7	85.8	0.7	13.5	0.064	0.512	19.701265	-98.979789
T. Izq. Zumpango	44.68	1	0	28849	1.4	86.4	1.3	4.8	1.3	1.3	1.8	0.9	0.8	87.8	1.3	10.9	0.076	0.504	19.763771	-98.973455
T. Izq. Zumpango	44.68	3	0	18805	2.0	86.7	1.4	5.4	1.7	1.6	0.8	0.3	0.1	88.7	1.4	9.9	0.074	0.503	19.771930	-98.973089
Lim. Edos. Term. Mex. Ppia. Hgo.	49.30																			
Tizayuca	52.50	3	0	15895	1.9	84.7	1.5	3.6	1.4	2.9	1.9	1.3	0.8	86.6	1.5	11.9	0.071	0.513	19.859553	-98.966984
T. C. México - Tizayuca (Cuota)	61.00	3	1	20892	0.5	81.0	5.4	6.0	2.1	2.8	1.3	0.4	0.5	81.5	5.4	13.1	0.088	0.512	19.894149	-98.932589
T. C. México - Tizayuca (Cuota)	61.00	3	2	19931	1.1	78.7	5.9	6.5	2.1	3.0	1.4	0.3	1.0	79.8	5.9	14.3	0.076	0.512	19.894149	-98.932590
X. C. Arco Norte de La Ciudad de México	64.20	1	1	17425	0.4	81.0	5.3	6.3	1.8	2.8	1.3	0.4	0.7	81.4	5.3	13.3	0.089	0.510	19.923818	-98.900435
X. C. Arco Norte de La Ciudad de México	64.20	1	2	16702	0.6	79.8	5.7	6.7	1.9	2.9	1.5	0.4	0.5	80.4	5.7	13.9	0.075	0.510	19.923818	-98.900435
X. C. Arco Norte de La Ciudad de México	64.20	3	1	18042	0.4	83.0	4.8	6.0	1.5	2.2	1.2	0.3	0.6	83.4	4.8	11.8	0.087	0.512	19.930734	-98.891515
X. C. Arco Norte de La Ciudad de México	64.20	3	2	17224	0.4	81.7	5.3	6.3	1.7	2.3	1.4	0.3	0.6	82.1	5.3	12.6	0.075	0.512	19.930734	-98.891515
Ent. Colonia	83.97	1	1	28349	0.4	85.9	5.2	5.3	0.6	1.3	0.9	0.2	0.2	86.3	5.2	8.5	0.087	0.506	20.052690	-98.788675
Ent. Colonia	83.97	1	2	29041	0.4	84.7	5.2	6.1	0.6	1.4	1.1	0.2	0.3	85.1	5.2	9.7	0.072	0.506	20.052690	-98.788675

DISTRITO FEDERAL

4 CARR: México - Toluca

CLAVE: 00447

RUTA: MEX-015

AÑO: 2012

LUGAR	ESTACION				CLASIFICACION VEHICULAR EN PORCIENTO										COORDENADAS					
	KM	TE	SC	TDPA	M	A	B	C2	C3	T3S2	T3S3	T3S2R4	OTROS	A	B	C	K'	D	LATITUD	LONGITUD
México	0.00																			
Ent. Constituyentes y Reforma	12.84	3	1	24983	1.4	82.9	2.7	5.3	1.8	2.6	1.8	1.0	0.5	84.3	2.7	13.0	0.069	0.505	19.383143	-99.251604
Ent. Constituyentes y Reforma	12.84	3	2	25491	1.8	81.2	3.0	5.4	2.0	2.9	2.0	1.2	0.5	83.0	3.0	14.0	0.066	0.505	19.383145	-99.251605
T. Der. Cuajimalpa (1° Acceso)	20.56	1	1	26804	1.3	85.8	2.7	5.6	1.6	1.5	0.9	0.5	0.1	87.1	2.7	10.2	0.066	0.550	19.364795	-99.276354
T. Der. Cuajimalpa (1° Acceso)	20.56	1	2	26327	1.6	84.0	3.1	6.3	1.8	1.7	0.9	0.5	0.1	85.6	3.1	11.3	0.078	0.550	19.364793	-99.276356
T. Izq. Desierto de Los Leones	23.96	1	1	31380	1.3	80.3	2.2	8.4	1.3	3.1	1.7	0.9	0.8	81.6	2.2	16.2	0.078	0.503	19.339047	-99.311145
T. Izq. Desierto de Los Leones	23.96	1	2	31785	0.8	77.8	2.5	10.0	1.4	3.5	2.0	1.0	1.0	78.6	2.5	18.9	0.077	0.503	19.339049	-99.311147
Lim. Edos. Term. D. F. Ppia. Mex.	33.44																			
T. Der. Huixquilucan	33.98	1	1	26833	1.2	84.9	1.6	6.7	1.9	2.9	0.5	0.2	0.1	86.1	1.6	12.3	0.088	0.505	19.298065	-99.363665
T. Der. Huixquilucan	33.98	1	2	26321	0.7	84.4	1.4	7.3	2.1	3.3	0.5	0.2	0.1	85.1	1.4	13.5	0.090	0.505	19.298067	-99.363668
X. C. Amomulco - Stgo. Tianguistenco	47.26	1	1	39731	0.5	82.8	3.1	4.9	0.8	2.9	3.6	0.9	0.5	83.3	3.1	13.6	0.065	0.506	19.282393	-99.479651
X. C. Amomulco - Stgo. Tianguistenco	47.26	1	2	38814	0.9	80.8	3.4	5.4	0.9	3.1	4.0	1.0	0.5	81.7	3.4	14.9	0.071	0.506	19.282041	-99.479647
T. Der. Lerma - Izq. San Pedro Tultepec	51.71	1	1	62638	0.6	70.7	6.2	15.2	0.8	4.0	1.5	0.5	0.5	71.3	6.2	22.5	0.068	0.511	19.284219	-99.501616
T. Der. Lerma - Izq. San Pedro Tultepec	51.71	1	2	62992	0.5	68.4	7.2	16.3	0.8	4.1	1.7	0.5	0.5	68.9	7.2	23.9	0.094	0.511	19.280368	-99.502211
T. Izq. San Mateo Atenco (Alta)	52.00	3	1	65633	0.2	99.5	0.1	0.1	0.0	0.0	0.0	0.0	0.1	99.7	0.1	0.2	0.074	0.508	19.285980	-99.535486
T. Izq. San Mateo Atenco (Baja)	52.00	3	1	14884	2.2	55.3	12.5	16.2	3.3	6.6	1.3	1.9	0.7	57.5	12.5	30.0	0.095	0.517	19.285975	-99.535484
T. Izq. San Mateo Atenco (Alta)	52.00	3	2	67706	0.6	99.1	0.1	0.1	0.0	0.0	0.0	0.0	0.1	99.7	0.1	0.2	0.076	0.508	19.285618	-99.537483
T. Izq. San Mateo Atenco (Baja)	52.00	3	2	15918	1.5	52.0	13.5	17.3	3.6	7.5	1.5	2.2	0.9	53.5	13.5	33.0	0.070	0.517	19.285617	-99.537475
X. C. Libramiento de Toluca (Baja)	62.20	1	1	13465	1.3	62.6	16.5	9.8	2.5	1.5	3.9	1.0	0.9	63.9	16.5	19.6	0.069	0.521	19.288180	-99.620753
X. C. Libramiento de Toluca (Alta)	62.20	1	1	63500	0.3	99.6	0.1	0.0	0.0	0.0	0.0	0.0	0.0	99.9	0.1	0.0	0.070	0.505	19.288182	-99.620752
X. C. Libramiento de Toluca (Alta)	62.20	1	2	62197	0.6	99.3	0.1	0.0	0.0	0.0	0.0	0.0	0.0	99.9	0.1	0.0	0.076	0.505	19.287777	-99.621628
X. C. Libramiento de Toluca (Baja)	62.20	1	2	14655	0.6	59.8	18.8	10.4	2.6	1.6	4.0	1.1	1.1	60.4	18.8	20.8	0.066	0.521	19.287773	-99.621637
Toluca	66.00																			

5 CARR: San Gregorio - Oaxtepec

CLAVE: 00901

RUTA: MEX-113

AÑO: 2012

LUGAR	ESTACION				CLASIFICACION VEHICULAR EN PORCIENTO										COORDENADAS					
	KM	TE	SC	TDPA	M	A	B	C2	C3	T3S2	T3S3	T3S2R4	OTROS	A	B	C	K'	D	LATITUD	LONGITUD
San Gregorio	0.00	3	0	8753	0.7	88.4	2.5	5.2	0.5	0.8	0.1	0.9	0.9	89.1	2.5	8.4	0.075	0.511	19.244733	-99.054638
X. C. Milpa Alta - San Lorenzo Tlacoyucan	9.00	3	0	7112	1.0	87.0	2.5	5.6	0.4	2.7	0.3	0.1	0.4	88.0	2.5	9.5	0.103	0.500	19.180614	-99.029583
Lim. Edos. Term. D. F. Ppia. Mex.	18.80																			
Lim. Edos. Term. Mex. Ppia. Mor.	28.50																			
T. Der. San Felipe Neri	33.80	1	0	6387	0.8	83.7	5.5	4.9	1.0	2.0	1.0	0.3	0.8	84.5	5.5	10.0	0.099	0.507	19.045175	-98.935533
T. Der. Tlalnepantla	40.50	3	0	5202	1.0	87.3	2.1	4.9	0.6	2.1	0.8	0.3	0.9	88.3	2.1	9.6	0.094	0.527	19.004177	-98.990124
Tlayacapan	48.50	3	0	9536	2.1	86.7	2.7	3.2	0.3	3.2	0.7	0.2	0.9	88.8	2.7	8.5	0.077	0.502	18.940673	-98.974914

DISTRITO FEDERAL

5 CARR: San Gregorio - Oaxtepec

CLAVE: 00901

RUTA: MEX-113

AÑO: 2012

LUGAR	ESTACION				CLASIFICACION VEHICULAR EN PORCIENTO										COORDENADAS					
	KM	TE	SC	TDPA	M	A	B	C2	C3	T3S2	T3S3	T3S2R4	OTROS	A	B	C	K'	D	LATITUD	LONGITUD
T. Der. Yautepec	53.00	3	0	12838	1.9	88.2	2.2	4.1	0.3	2.3	0.8	0.1	0.1	90.1	2.2	7.7	0.078	0.505	18.920742	-98.970910
Oaxtepec	56.00																			

6 CARR: México - Cuernavaca (Cuota)

CLAVE: 00041

RUTA: MEX-095D

AÑO: 2012

LUGAR	ESTACION				CLASIFICACION VEHICULAR EN PORCIENTO										COORDENADAS					
	KM	TE	SC	TDPA	M	A	B	C2	C3	T3S2	T3S3	T3S2R4	OTROS	A	B	C	K'	D	LATITUD	LONGITUD
México	0.00																			
T. C. México - Cuernavaca (Libre)	18.65	3	1	22895	0.3	90.1	2.9	3.0	0.5	0.8	1.4	0.6	0.4	90.4	2.9	6.7	0.107	0.500	19.272075	-99.164133
T. C. México - Cuernavaca (Libre)	18.65	3	2	22894	0.5	89.1	3.1	3.5	0.6	0.8	1.5	0.5	0.4	89.6	3.1	7.3	0.102	0.500	19.272074	-99.164133
Caseta de Cobro Tlalpan	23.36	2	1	16713	0.3	85.5	6.7	1.7	1.1	2.4	0.7	1.3	0.3	85.8	6.7	7.5	0.145	0.500	19.241966	-99.148261
Caseta de Cobro Tlalpan	23.36	2	2	16712	0.3	85.5	6.7	1.7	1.1	2.4	0.7	1.3	0.3	85.8	6.7	7.5	0.145	0.500	19.241966	-99.148261
Lim. Edos. Term. D. F. Ppia. Mor.	47.09																			
T. Izq. Cuautla	70.50	1	1	19576	0.6	89.4	3.1	2.2	0.7	1.8	1.2	0.7	0.3	90.0	3.1	6.9	0.136	0.530	19.012645	-99.165276
T. Izq. Cuautla	70.50	1	2	20100	0.5	88.6	3.3	2.5	0.7	2.0	1.3	0.8	0.3	89.1	3.3	7.6	0.196	0.530	19.012645	-99.165276
T. Izq. Libramiento de Cuernavaca	79.26	1	1	19010	0.8	89.6	2.7	3.0	0.6	1.2	1.2	0.6	0.3	90.4	2.7	6.9	0.158	0.504	18.981718	-99.228770
T. Izq. Libramiento de Cuernavaca	79.26	1	2	18719	0.6	89.3	2.8	3.3	0.6	1.2	1.3	0.6	0.3	89.9	2.8	7.3	0.168	0.504	18.981718	-99.228770
T. C. México - Cuernavaca (Libre)	80.26																			

7 CARR: México - Pachuca (Cuota)

CLAVE: 00432

RUTA: MEX-085D

AÑO: 2012

LUGAR	ESTACION				CLASIFICACION VEHICULAR EN PORCIENTO										COORDENADAS					
	KM	TE	SC	TDPA	M	A	B	C2	C3	T3S2	T3S3	T3S2R4	OTROS	A	B	C	K'	D	LATITUD	LONGITUD
T. C. México - Pachuca (Libre)	0.00																			
Lim. Edos. Term. D. F. Ppia. Mex.	9.86																			
Caseta de Cobro Ojo de Agua	25.00	2	1	24827	0.3	84.8	5.9	5.4	1.6	1.4	0.2	0.4	0.0	85.1	5.9	9.0	0.081	0.500	19.618818	-99.029462
Caseta de Cobro Ojo de Agua	25.00	2	2	24826	0.3	84.8	5.9	5.4	1.6	1.4	0.2	0.4	0.0	85.1	5.9	9.0	0.081	0.500	19.618818	-99.029462
Caseta de Cobro Ojo de Agua	25.00	3	1	21019	0.8	84.4	4.8	4.9	1.8	1.5	0.8	0.5	0.5	85.2	4.8	10.0	0.083	0.514	19.621537	-99.027993
Caseta de Cobro Ojo de Agua	25.00	3	2	22188	0.6	85.0	4.4	5.1	1.4	1.7	0.8	0.5	0.5	85.6	4.4	10.0	0.081	0.514	19.621561	-99.028279
T. Izq. Tecámac	35.62	3	1	15608	0.8	81.4	3.6	6.8	2.1	2.9	1.0	0.8	0.6	82.2	3.6	14.2	0.070	0.508	19.717969	-98.959972
T. Izq. Tecámac	35.62	3	2	16095	0.7	81.4	3.4	6.1	2.3	3.5	1.1	0.9	0.6	82.1	3.4	14.5	0.075	0.508	19.718043	-98.960155
Lim. Edos. Term. Mex. Ppia. Hgo.	49.60																			
X. C. Otumba - Tizayuca	53.45	1	1	14615	0.8	83.4	3.8	6.5	1.2	2.1	1.1	0.6	0.5	84.2	3.8	12.0	0.086	0.508	19.827116	-98.949481
X. C. Otumba - Tizayuca	53.45	1	2	14132	0.6	83.0	3.4	6.9	1.4	2.4	1.2	0.6	0.5	83.6	3.4	13.0	0.082	0.508	19.827126	-98.949639
T. C. México - Pachuca (Libre)	60.50	1	1	19196	0.6	84.0	4.0	6.9	1.1	1.9	0.6	0.6	0.3	84.6	4.0	11.4	0.085	0.504	19.874227	-98.939686

DISTRITO FEDERAL

7 CARR: México - Pachuca (Cuota)

CLAVE: 00432

RUTA: MEX-085D

AÑO: 2012

LUGAR	ESTACION				CLASIFICACION VEHICULAR EN PORCIENTO														COORDENADAS	
	KM	TE	SC	TDPA	M	A	B	C2	C3	T3S2	T3S3	T3S2R4	OTROS	A	B	C	K'	D	LATITUD	LONGITUD
T. C. México - Pachuca (Libre)	60.50	1	2	19504	0.7	82.0	4.8	7.4	1.3	2.2	0.7	0.6	0.3	82.7	4.8	12.5	0.083	0.504	19.874227	-98.939687

8 CARR: México - Puebla (Cuota)

CLAVE: 00450

RUTA: MEX-150D

AÑO: 2012

LUGAR	ESTACION				CLASIFICACION VEHICULAR EN PORCIENTO														COORDENADAS	
	KM	TE	SC	TDPA	M	A	B	C2	C3	T3S2	T3S3	T3S2R4	OTROS	A	B	C	K'	D	LATITUD	LONGITUD
México	0.00																			
Lim. Edos. Term. D. F. Ppia. Mex.	17.71																			
Ent. Morelos	18.00	3	1	56630	0.9	83.2	4.1	4.1	0.9	2.8	3.2	0.4	0.4	84.1	4.1	11.8	0.063	0.502	19.353200	-98.989213
Ent. Morelos	18.00	3	2	56253	1.5	81.2	4.3	4.5	0.9	3.3	3.5	0.4	0.4	82.7	4.3	13.0	0.062	0.502	19.353900	-98.989572
Av. Las Torres (Eje 6)	19.27	1	1	60506	1.0	88.0	1.8	2.9	0.9	1.9	1.9	0.8	0.8	89.0	1.8	9.2	0.066	0.500	19.347177	-98.982897
Av. Las Torres (Eje 6)	19.27	1	2	60609	1.0	86.8	1.9	3.3	1.0	2.1	2.1	0.8	1.0	87.8	1.9	10.3	0.058	0.500	19.347288	-98.982819
Av. Las Torres (Eje 6)	19.27	3	1	62755	0.8	86.1	2.6	4.7	1.0	1.7	1.8	0.6	0.7	86.9	2.6	10.5	0.064	0.513	19.341353	-98.977462
Av. Las Torres (Eje 6)	19.27	3	2	59460	0.8	84.6	2.7	5.1	1.2	2.1	2.0	0.6	0.9	85.4	2.7	11.9	0.061	0.513	19.341243	-98.977095
Eje 10 Sur	22.80	1	1	73804	1.2	82.4	2.7	6.4	1.0	2.4	2.3	0.8	0.8	83.6	2.7	13.7	0.069	0.506	19.326957	-98.962494
Eje 10 Sur	22.80	1	2	72179	0.7	81.3	3.1	6.7	1.1	2.8	2.5	0.8	1.0	82.0	3.1	14.9	0.060	0.506	19.328107	-98.963436
Eje 10 Sur	22.80	3	1	66794	1.3	82.8	1.9	6.3	1.1	2.5	2.3	1.0	0.8	84.1	1.9	14.0	0.066	0.505	19.315225	-98.948595
Eje 10 Sur	22.80	3	2	68097	0.9	81.7	2.0	7.0	1.1	2.8	2.6	1.0	0.9	82.6	2.0	15.4	0.065	0.505	19.315100	-98.948066
X. C. Santa Bárbara - Izúcar de Matamoros	32.14	1	1	47706	1.4	82.3	3.7	6.5	2.1	2.0	0.3	0.8	0.9	83.7	3.7	12.6	0.063	0.505	19.292671	-98.887006
X. C. Santa Bárbara - Izúcar de Matamoros	32.14	1	2	46811	1.5	80.8	4.1	6.9	2.4	2.2	0.3	0.9	0.9	82.3	4.1	13.6	0.061	0.505	19.292671	-98.887006
X. C. Santa Bárbara - Izúcar de Matamoros	32.14	3	1	9672	1.3	79.7	3.8	6.8	1.4	3.2	1.3	1.7	0.8	81.0	3.8	15.2	0.077	0.531	19.293913	-98.879308
X. C. Santa Bárbara - Izúcar de Matamoros	32.14	3	2	9940	1.4	78.3	4.2	7.4	1.5	3.3	1.3	1.7	0.9	79.7	4.2	16.1	0.064	0.531	19.293915	-98.879315
Caseta de Cobro San Marcos	33.30	2	1	15026	0.1	74.2	7.9	6.9	3.8	5.2	0.3	1.3	0.3	74.3	7.9	17.8	0.068	0.500	19.296361	-98.870726
Caseta de Cobro San Marcos	33.30	2	2	15026	0.1	74.2	7.9	6.9	3.8	5.2	0.3	1.3	0.3	74.3	7.9	17.8	0.068	0.500	19.296361	-98.870726
T. Izq. Río Frío	63.79	3	1	13451	0.6	78.4	3.6	6.7	2.8	3.8	1.6	1.6	0.9	79.0	3.6	17.4	0.061	0.514	19.351218	-98.665568
T. Izq. Río Frío	63.79	3	2	14250	0.5	76.8	4.0	7.0	3.3	4.2	1.6	1.7	0.9	77.3	4.0	18.7	0.091	0.514	19.351363	-98.665659
Lim. Edos. Term. Mex. Ppia. Pue.	63.85																			
T. Izq. Tlaxcala	90.61	1	1	31101	1.6	72.2	8.6	7.4	2.7	4.4	1.0	1.4	0.7	73.8	8.6	17.6	0.088	0.517	19.268795	-98.426636
T. Izq. Tlaxcala	90.61	1	2	30944	1.1	70.1	9.1	8.9	2.8	4.7	1.1	1.4	0.8	71.2	9.1	19.7	0.076	0.517	19.268795	-98.426636
T. Izq. Tlaxcala	90.61	3	1	24947	1.6	69.2	5.7	7.5	3.0	7.3	1.9	3.1	0.7	70.8	5.7	23.5	0.069	0.512	19.261877	-98.417232
T. Izq. Tlaxcala	90.61	3	2	24922	1.1	66.6	5.9	8.7	3.3	8.2	2.1	3.3	0.8	67.7	5.9	26.4	0.074	0.512	19.261877	-98.417232
Caseta de Cobro San Martín Texmelucan	91.00	2	1	21356	0.1	70.8	8.1	5.1	4.2	7.3	0.9	3.1	0.4	70.9	8.1	21.0	0.068	0.500	19.241098	-98.385680
Caseta de Cobro San Martín Texmelucan	91.00	2	2	21355	0.1	70.8	8.1	5.1	4.2	7.3	0.9	3.1	0.4	70.9	8.1	21.0	0.068	0.500	19.241098	-98.385680
Lim. Edos. Term. Pue. Ppia. Tlax.	103.00																			
Lim. Edos. Term. Tlax. Ppia. Pue.	107.00																			

DISTRITO FEDERAL

10 CARR : México - Querétaro (Cuota)

CLAVE: 00411

RUTA: MEX-057-MEX-057D

AÑO : 2012

LUGAR	ESTACION				CLASIFICACION VEHICULAR EN PORCIENTO										COORDENADAS					
	KM	TE	SC	TDPA	M	A	B	C2	C3	T3S2	T3S3	T3S2R4	OTROS	A	B	C	K'	D	LATITUD	LONGITUD
T. Der. Tepeji del Río	69.36	1	1	26352	0.8	69.1	5.6	7.8	2.4	9.2	2.2	2.2	0.7	69.9	5.6	24.5	0.079	0.505	19.875006	-99.336647
T. Der. Tepeji del Río	69.36	1	2	26893	0.6	66.2	6.2	8.3	2.8	10.4	2.2	2.5	0.8	66.8	6.2	27.0	0.090	0.505	19.871246	-99.338734
T. Der. Tepeji del Río	69.36	3	1	24170	0.6	64.0	7.1	6.8	3.6	11.9	2.8	2.7	0.5	64.6	7.1	28.3	0.072	0.508	19.908041	-99.352534
T. Der. Tepeji del Río	69.36	3	2	25004	0.4	60.9	7.9	7.4	4.0	12.8	3.3	2.8	0.5	61.3	7.9	30.8	0.101	0.508	19.908041	-99.352534
T. Izq. Jilotepec	83.75	1	1	20595	0.8	65.5	6.8	7.5	3.2	11.3	1.5	2.7	0.7	66.3	6.8	26.9	0.091	0.521	19.974998	-99.435909
T. Izq. Jilotepec	83.75	1	2	22432	0.6	61.8	7.6	8.3	3.3	13.0	1.7	2.8	0.9	62.4	7.6	30.0	0.116	0.521	19.975213	-99.437025
T. Izq. Jilotepec	83.75	3	1	24425	1.6	75.5	3.8	7.0	2.7	4.3	2.0	2.3	0.8	77.1	3.8	19.1	0.072	0.523	19.987090	-99.448827
T. Izq. Jilotepec	83.75	3	2	24493	1.4	74.2	4.0	7.1	3.1	4.6	2.3	2.5	0.8	75.6	4.0	20.4	0.064	0.523	19.986814	-99.449027
Lim. Edos. Term. Hgo. Ppia. Mex.	86.00																			
X. C. Jilotepec - Maravillas	107.00	1	1	21764	1.4	66.4	4.2	6.8	3.2	11.1	2.9	3.1	0.9	67.8	4.2	28.0	0.070	0.504	20.082498	-99.625571
X. C. Jilotepec - Maravillas	107.00	1	2	21430	1.3	62.6	4.5	7.9	3.4	12.6	3.2	3.5	1.0	63.9	4.5	31.6	0.066	0.504	20.082473	-99.625609
X. C. Jilotepec - Maravillas	107.00	3	1	21905	1.6	63.0	5.5	7.6	3.4	11.8	3.1	3.1	0.9	64.6	5.5	29.9	0.073	0.523	20.083211	-99.631376
X. C. Jilotepec - Maravillas	107.00	3	2	21020	1.8	58.0	6.7	8.2	3.9	13.7	3.2	3.6	0.9	59.8	6.7	33.5	0.062	0.523	20.082506	-99.633397
T. Izq. Aculco	125.00	1	1	23721	1.2	73.1	5.4	9.2	1.4	3.3	2.7	3.1	0.6	74.3	5.4	20.3	0.062	0.501	20.095296	-99.690372
T. Izq. Aculco	125.00	1	2	23660	1.3	72.2	5.6	8.9	1.6	3.7	3.0	3.1	0.6	73.5	5.6	20.9	0.065	0.501	20.095078	-99.690686
T. Izq. Aculco	125.00	3	1	22865	1.2	58.0	7.0	8.1	5.0	11.8	3.5	4.7	0.7	59.2	7.0	33.8	0.062	0.500	20.110082	-99.707318
T. Izq. Aculco	125.00	3	2	22886	1.4	54.2	7.1	9.2	5.5	12.8	4.0	5.1	0.7	55.6	7.1	37.3	0.063	0.500	20.109429	-99.706474
Lim. Edos. Term. Mex. Ppia. Qro.	145.50																			
Caseta de Cobro Palmillas	145.80	2	1	21813	0.1	56.7	3.6	7.2	7.2	18.1	1.7	4.7	0.7	56.8	3.6	39.6	0.077	0.500	20.296103	-99.928994
Caseta de Cobro Palmillas	145.80	2	2	21813	0.1	56.7	3.6	7.2	7.2	18.1	1.7	4.7	0.7	56.8	3.6	39.6	0.077	0.500	20.296103	-99.928994
T. Izq. Toluca	148.50	1	1	19378	1.2	65.1	5.7	5.6	3.7	12.3	2.9	2.6	0.9	66.3	5.7	28.0	0.075	0.510	20.290613	-99.918781
T. Izq. Toluca	148.50	1	2	20170	1.0	61.5	6.3	6.6	4.2	13.5	3.2	2.7	1.0	62.5	6.3	31.2	0.076	0.510	20.290245	-99.919140
T. Izq. Toluca	148.50	3	1	26614	1.3	62.9	5.9	7.6	4.3	10.5	3.2	3.6	0.7	64.2	5.9	29.9	0.067	0.505	20.307607	-99.934151
T. Izq. Toluca	148.50	3	2	26092	1.2	60.0	6.0	8.7	4.7	11.5	3.4	3.8	0.7	61.2	6.0	32.8	0.062	0.505	20.306878	-99.935062
T. Der. Poniente San Juan del Río	164.10	3	1	18696	1.3	75.3	3.5	6.0	2.9	5.4	2.7	2.2	0.7	76.6	3.5	19.9	0.077	0.503	20.374166	-99.994876
T. Der. Poniente San Juan del Río	164.10	3	2	18896	1.4	72.8	3.9	6.9	3.1	5.5	3.2	2.5	0.7	74.2	3.9	21.9	0.061	0.503	20.373663	-99.994771
T. Izq. Acámbaro	170.45	3	1	34508	0.8	65.5	6.4	9.9	3.0	8.5	2.7	2.3	0.9	66.3	6.4	27.3	0.064	0.500	20.444677	-100.075336
T. Izq. Acámbaro	170.45	3	2	34530	0.8	62.4	6.7	10.8	3.5	9.1	3.0	2.7	1.0	63.2	6.7	30.1	0.069	0.500	20.449057	-100.081331
T. Der. Libramiento de Querétaro a San Luis Potosí	207.00	1	1	40340	0.8	76.0	2.8	10.2	1.3	4.0	2.6	1.4	0.9	76.8	2.8	20.4	0.078	0.500	20.578031	-100.340086
T. Der. Libramiento de Querétaro a San Luis Potosí	207.00	1	2	40305	0.7	73.8	3.2	11.2	1.3	4.4	2.9	1.5	1.0	74.5	3.2	22.3	0.076	0.500	20.582372	-100.343510
T. Der. Libramiento de Querétaro a San Luis Potosí	207.00	3	1	45965	0.6	68.7	6.2	14.9	1.9	4.5	2.0	1.1	0.1	69.3	6.2	24.5	0.074	0.512	20.578879	-100.377917
T. Der. Libramiento de Querétaro a San Luis Potosí	207.00	3	2	43765	0.7	68.0	7.1	13.4	2.2	5.1	2.2	1.2	0.1	68.7	7.1	24.2	0.080	0.512	20.578247	-100.379342
Querétaro	211.60																			

DISTRITO FEDERAL

11 CARR: Chalco - Mixquic

CLAVE: 00171

RUTA: EM-DF

AÑO: 2012

LUGAR	ESTACION				CLASIFICACION VEHICULAR EN PORCIENTO													COORDENADAS		
	KM	TE	SC	TDPA	M	A	B	C2	C3	T3S2	T3S3	T3S2R4	OTROS	A	B	C	K'	D	LATITUD	LONGITUD
Chalco	0.00	3	1	11720	3.8	90.9	0.1	1.9	0.4	0.9	1.6	0.1	0.3	94.7	0.1	5.2	0.068	0.507	19.240534	-98.909132
Chalco	0.00	3	2	12053	3.5	91.0	0.1	2.1	0.4	0.9	1.6	0.1	0.3	94.5	0.1	5.4	0.072	0.507	19.240542	-98.909124
Lim. Edos. Term. Mex. Ppia. D. F.	8.00																			
Mixquic	10.00	1	0	5882	4.1	85.6	0.2	4.8	0.5	3.6	0.5	0.1	0.6	89.7	0.2	10.1	0.072	0.525	19.224694	-98.945188

12 CARR: Chalco - Tláhuac

CLAVE: 00170

RUTA: EM-DF

AÑO: 2012

LUGAR	ESTACION				CLASIFICACION VEHICULAR EN PORCIENTO													COORDENADAS		
	KM	TE	SC	TDPA	M	A	B	C2	C3	T3S2	T3S3	T3S2R4	OTROS	A	B	C	K'	D	LATITUD	LONGITUD
Chalco	0.00	3	1	10981	2.5	88.4	2.3	5.2	0.4	0.7	0.4	0.0	0.1	90.9	2.3	6.8	0.087	0.524	19.249557	-98.919890
Chalco	0.00	3	2	9961	3.1	87.4	2.5	5.3	0.4	0.8	0.4	0.0	0.1	90.5	2.5	7.0	0.083	0.524	19.249559	-98.919883
Lim. Edos. Term. Mex. Ppia. D. F.	7.50																			
Tláhuac	12.00	1	0	15404	3.1	84.6	2.3	8.4	0.5	0.4	0.6	0.0	0.1	87.7	2.3	10.0	0.086	0.501	19.264330	-98.992458

13 CARR: T. C. (México - Mixquic) - San Pablo Atlazalpan

CLAVE: 00044

RUTA: EM-106-DF

AÑO: 2012

LUGAR	ESTACION				CLASIFICACION VEHICULAR EN PORCIENTO													COORDENADAS		
	KM	TE	SC	TDPA	M	A	B	C2	C3	T3S2	T3S3	T3S2R4	OTROS	A	B	C	K'	D	LATITUD	LONGITUD
T. C. México - Mixquic	0.00	3	0	6314	3.6	87.1	1.0	3.3	0.2	2.5	1.5	0.1	0.7	90.7	1.0	8.3	0.072	0.502	19.209485	-98.967245
Lim. Edos. Term. D. F. Ppia. Mex.	2.00																			
San Pablo Atlazalpan	7.00																			

14 CARR: Xalatlaco - El Ajusco

CLAVE: 00017

RUTA: EM-DF

AÑO: 2012

LUGAR	ESTACION				CLASIFICACION VEHICULAR EN PORCIENTO													COORDENADAS		
	KM	TE	SC	TDPA	M	A	B	C2	C3	T3S2	T3S3	T3S2R4	OTROS	A	B	C	K'	D	LATITUD	LONGITUD
T. C. Ent. Cruz de La Misión - San Nicolás Coatepec	0.00	3	0	2192	1.9	83.4	1.3	6.8	1.1	3.0	0.9	0.5	1.1	85.3	1.3	13.4	0.080	0.510	19.164685	-99.407235
Lim. Edos. Term. Mex. Ppia. D. F.	17.70																			
T. C. Circuito del Ajusco	27.60	1	0	969	1.9	83.6	0.2	11.2	0.8	1.5	0.7	0.0	0.1	85.5	0.2	14.3	0.156	0.501	19.207251	-99.276504

15 CARR: La Venta - Chamapa (Cuota)

CLAVE: 15003

RUTA: EM-D

AÑO: 2012

LUGAR	ESTACION				CLASIFICACION VEHICULAR EN PORCIENTO													COORDENADAS		
	KM	TE	SC	TDPA	M	A	B	C2	C3	T3S2	T3S3	T3S2R4	OTROS	A	B	C	K'	D	LATITUD	LONGITUD
Plaza de Cobro La Venta	0.10	2	1	10536	0.0	89.4	1.1	3.3	1.9	3.1	0.4	0.6	0.2	89.4	1.1	9.5	0.090	0.500	19.355452	-99.304607

DISTRITO FEDERAL

15 CARR: La Venta - Chamapa (Cuota)

CLAVE: 15003

RUTA: EM-D

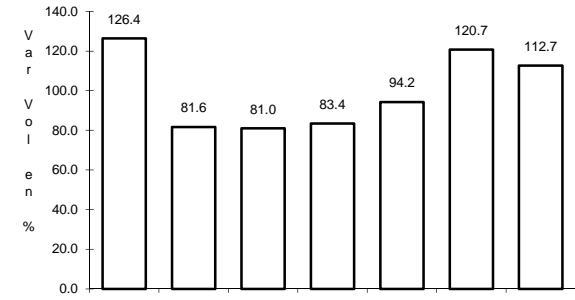
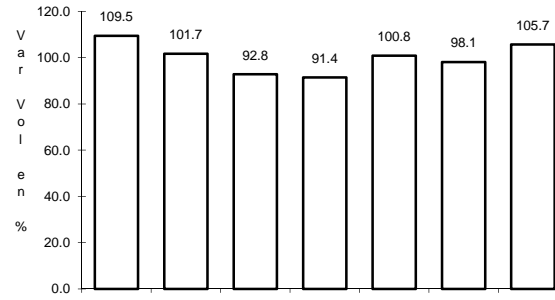
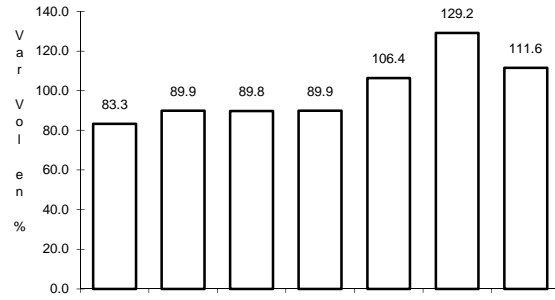
AÑO: 2012

L U G A R	E S T A C I O N				C L A S I F I C A C I O N V E H I C U L A R E N P O R C I E N T O														C O O R D E N A D A S	
	KM	TE	SC	TDPA	M	A	B	C2	C3	T3S2	T3S3	T3S2R4	OTROS	A	B	C	K'	D	LATITUD	LONGITUD
Plaza de Cobro La Venta	0.10	2	2	10536	0.0	89.4	1.1	3.3	1.9	3.1	0.4	0.6	0.2	89.4	1.1	9.5	0.090	0.500	19.355452	-99.304607

1 CARR: México - Cuernavaca (Libre)

CLAVE: 00040

RUTA: MEX-095



Km: 28.78

Tipo: 1

Sent: 1

Km: 28.78

Tipo: 1

Sent: 2

Km: 51.40

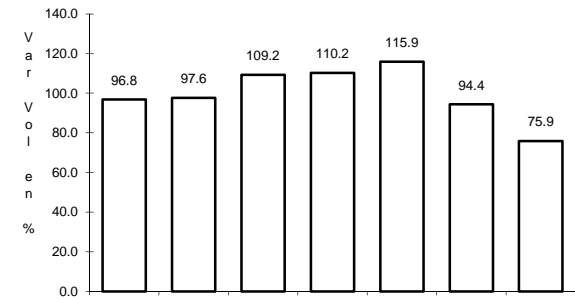
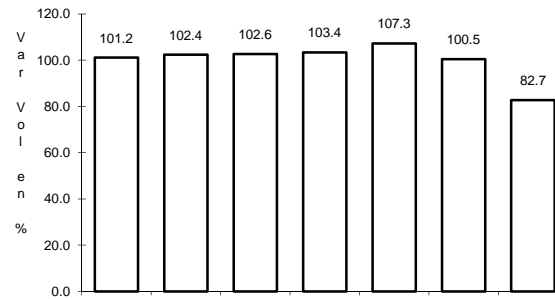
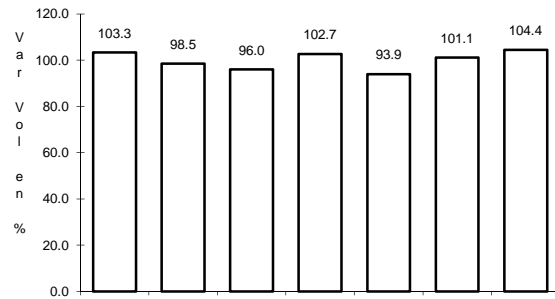
Tipo: 3

Sent: 0

2 CARR: México - Pachuca (Libre)

CLAVE: 00431

RUTA: MEX-085



Km: 26.93

Tipo: 1

Sent: 0

Km: 86.50

Tipo: 1

Sent: 1

Km: 86.50

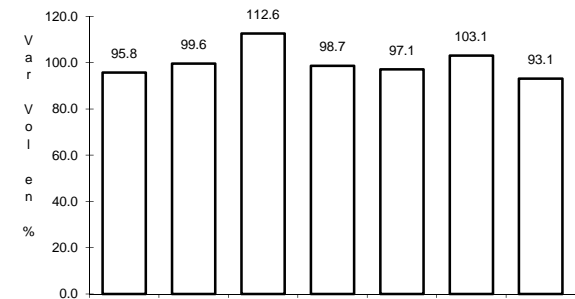
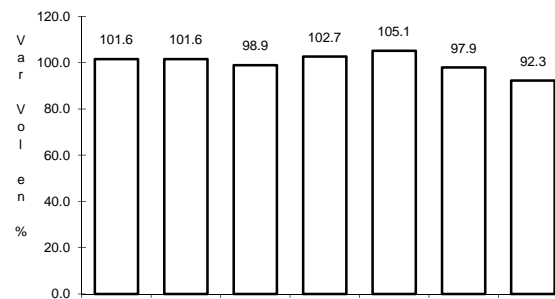
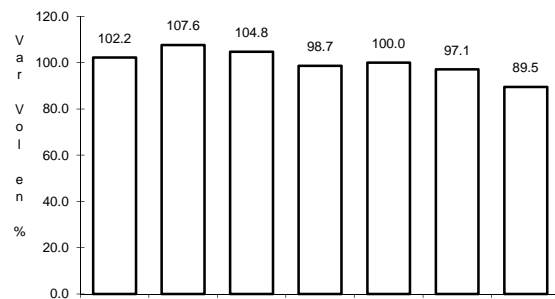
Tipo: 1

Sent: 2

3 CARR: México - Puebla (Libre)

CLAVE: 00449

RUTA: MEX-190



Km: 28.85

Tipo: 1

Sent: 1

Km: 28.85

Tipo: 1

Sent: 2

Km: 62.06

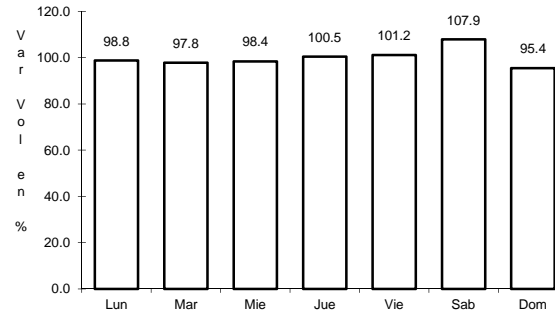
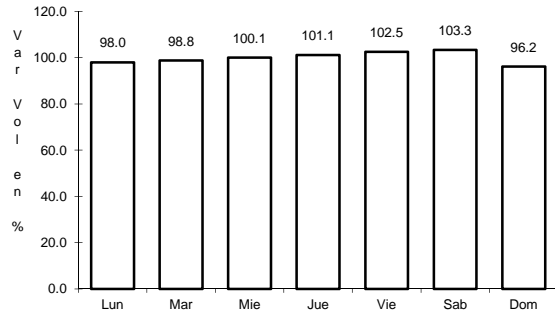
Tipo: 1

Sent: 0

4 CARR: México - Toluca

CLAVE: 00447

RUTA: MEX-015



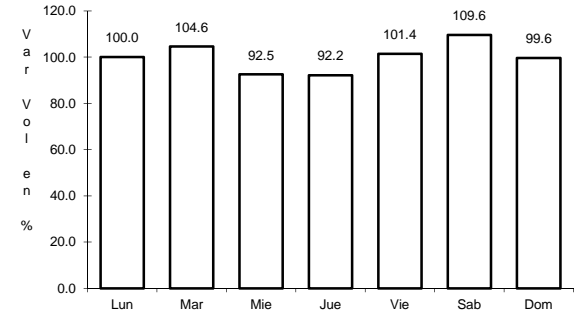
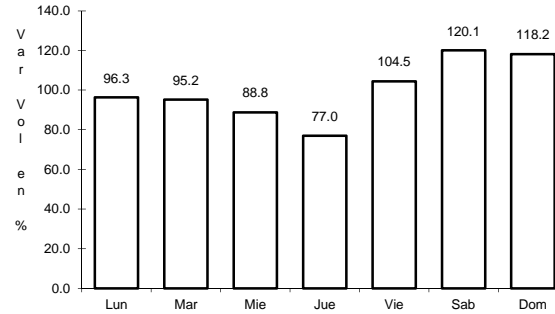
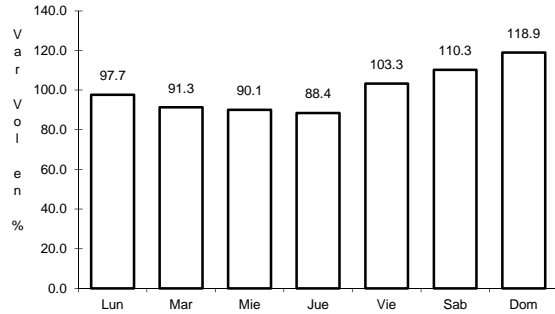
Km: 12.84 Tipo: 3 Sent: 1

Km: 12.84 Tipo: 3 Sent: 2

5 CARR: San Gregorio - Oaxtepec

CLAVE: 00901

RUTA: MEX-113



Km: 0.00 Tipo: 3 Sent: 0

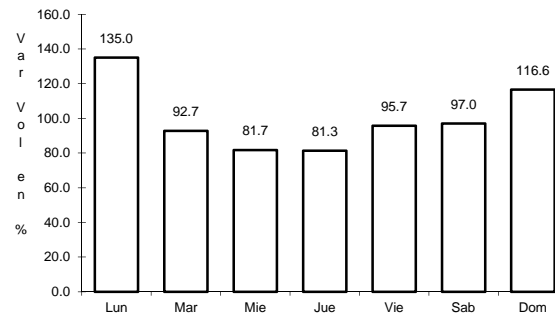
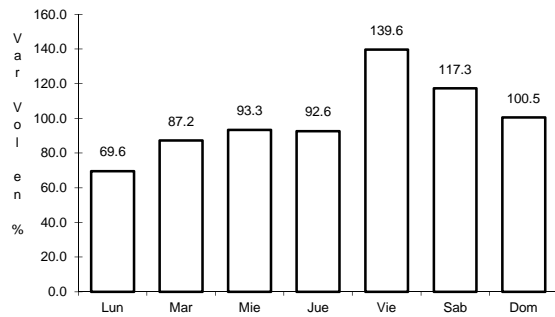
Km: 33.80 Tipo: 1 Sent: 0

Km: 53.00 Tipo: 3 Sent: 0

6 CARR: México - Cuernavaca (Cuota)

CLAVE: 00041

RUTA: MEX-095D



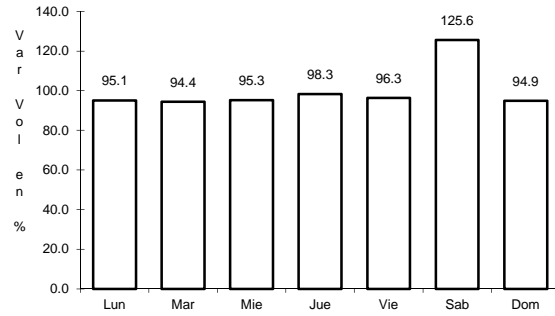
Km: 18.65 Tipo: 3 Sent: 1

Km: 18.65 Tipo: 3 Sent: 2

7 CARR: México - Pachuca (Cuota)

CLAVE: 00432

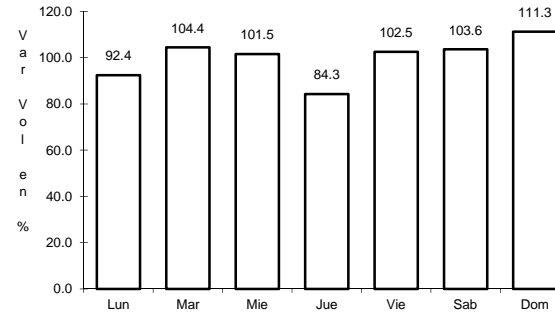
RUTA: MEX-085D



Km: 25.00

Tipo: 3

Sent: 1



Km: 25.00

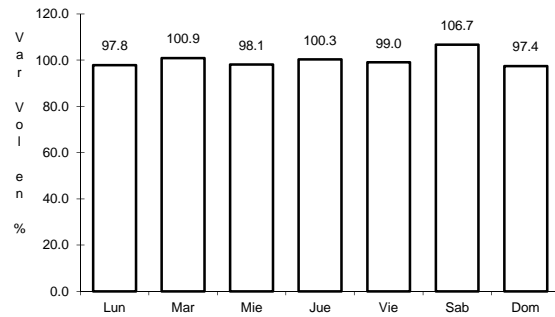
Tipo: 3

Sent: 2

8 CARR: México - Puebla (Cuota)

CLAVE: 00450

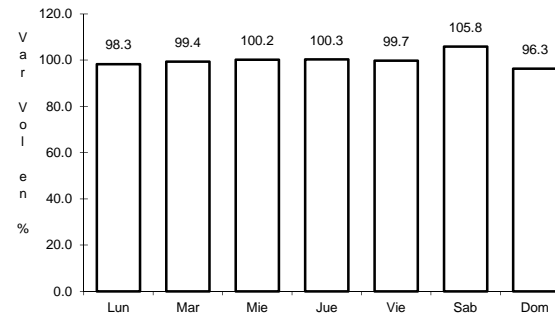
RUTA: MEX-150D



Km: 18.00

Tipo: 3

Sent: 1



Km: 18.00

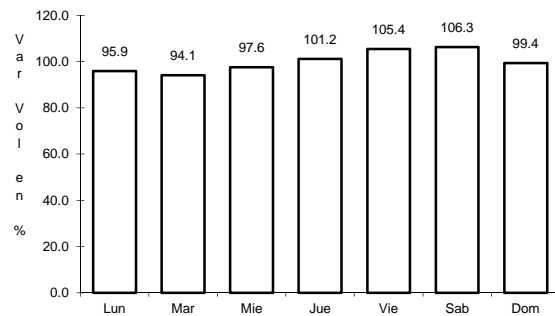
Tipo: 3

Sent: 2

9 CARR: México - Toluca (Cuota)

CLAVE: 00446

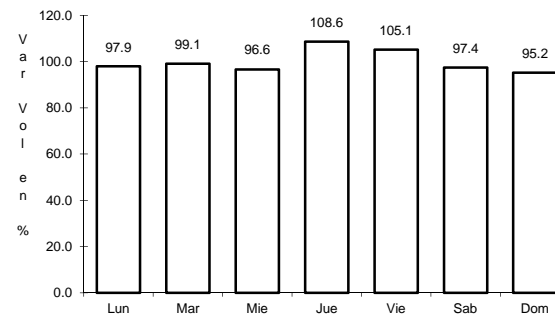
RUTA: MEX-134D



Km: 0.00

Tipo: 3

Sent: 1



Km: 0.00

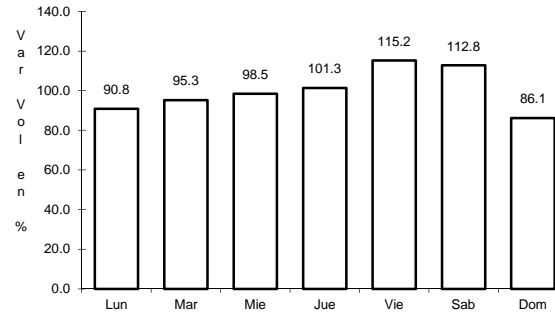
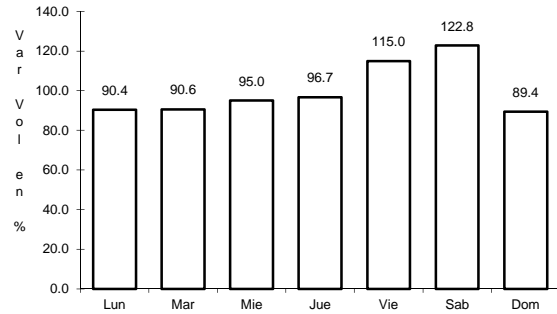
Tipo: 3

Sent: 2

10 CARR: México - Querétaro (Cuota)

CLAVE: 00411

RUTA: MEX-057-MEX-057D



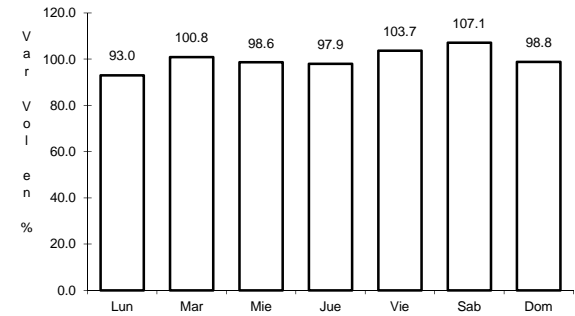
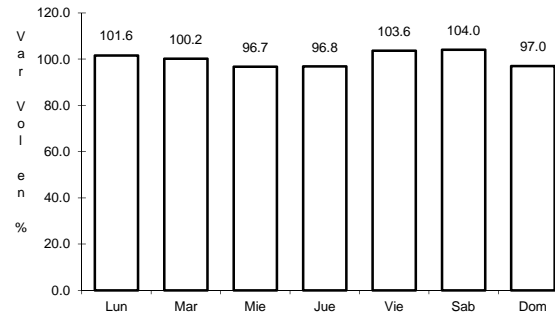
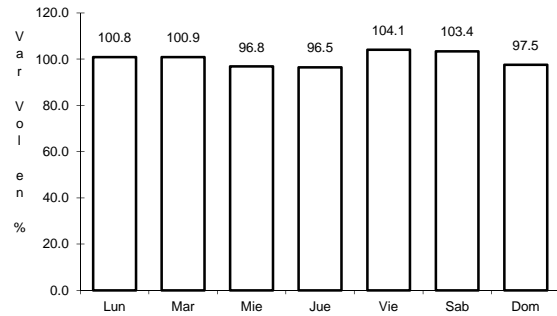
Km: 56.18 Tipo: 1 Sent: 1

Km: 56.18 Tipo: 1 Sent: 2

11 CARR: Chalco - Mixquic

CLAVE: 00171

RUTA: EM-DF



Km: 0.00 Tipo: 3 Sent: 1

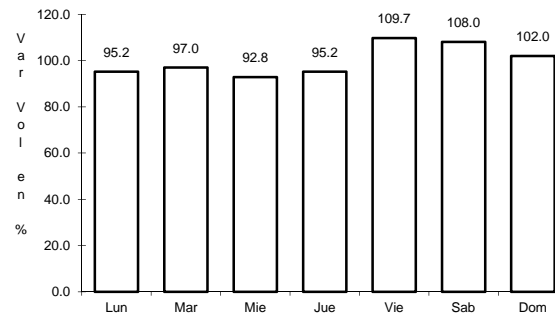
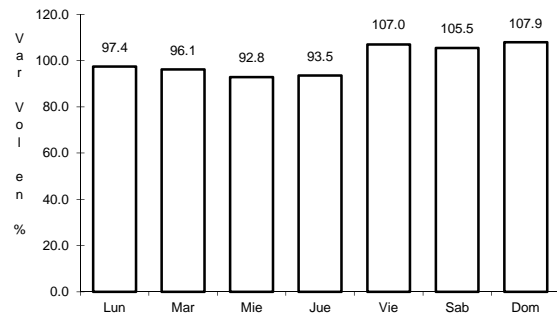
Km: 0.00 Tipo: 3 Sent: 2

Km: 10.00 Tipo: 1 Sent: 0

12 CARR: Chalco - Tláhuac

CLAVE: 00170

RUTA: EM-DF



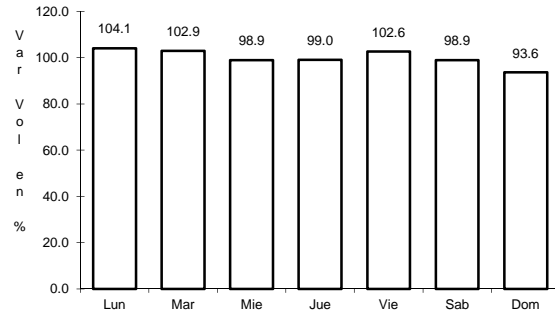
Km: 0.00 Tipo: 3 Sent: 1

Km: 0.00 Tipo: 3 Sent: 2

13 CARR: T. C. (México - Mixquic) - San Pablo Atlazalpan

CLAVE: 00044

RUTA: EM-106-DF



Km: 0.00

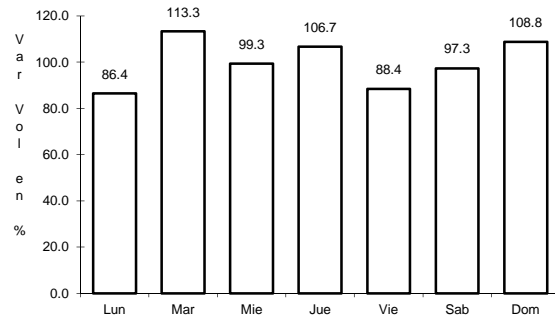
Tipo: 3

Sent: 0

14 CARR: Xalatlaco - El Ajusco

CLAVE: 00017

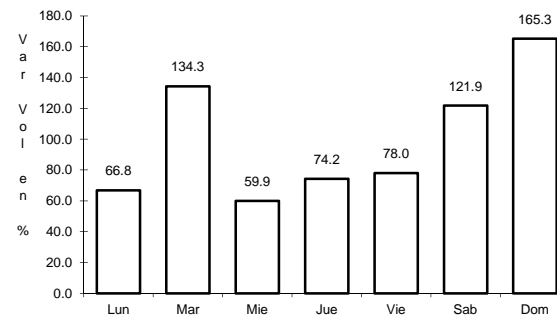
RUTA: EM-DF



Km: 0.00

Tipo: 3

Sent: 0



Km: 27.60

Tipo: 1

Sent: 0