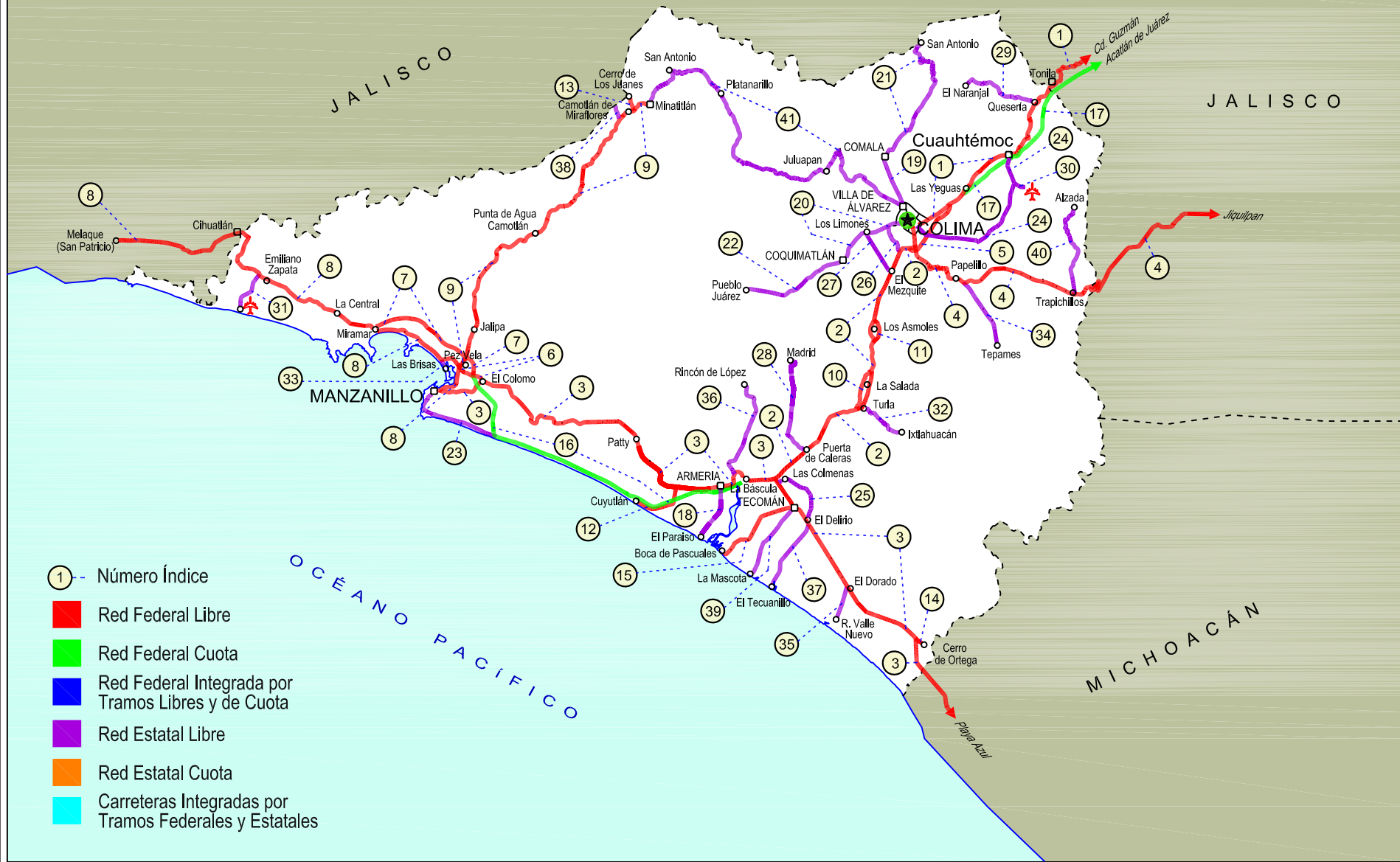


COLIMA

NO. INDICE	CARRETERA		ruta
---RED FEDERAL LIBRE---			
1	Cd. Guzmán - Colima		MEX-054
2	Colima - Ent. Tecomán		MEX-110
3	Ent. Playa Azul - Manzanillo		MEX-200
4	Jiquilpan - Colima		MEX-110
5	Libramiento de Colima		MEX-054
6	Libramiento de Manzanillo (Libre)		MEX-200
7	Libramiento de Manzanillo Norte		MEX-200
8	Manzanillo - Puerto Vallarta		MEX-200
9	Minatitlán - Ent. Pez Vela		MEX-098
10	Paso por La Salada		MEX-110
11	Paso por Los Asmoles		MEX-110
12	Ramal a Cuyutlán		MEX-200
13	Ramal Cerro de Los Juanes		MEX-098
14	Ramal Cerro de Ortega		MEX-200
15	Tecomán - Boca de Pascuales		MEX-200
---RED FEDERAL DE CUOTA---			
16	Armería - Manzanillo (Cuota)		MEX-200D
17	Guadalajara - Colima (Cuota)		MEX-054D
---RED ESTATAL LIBRE---			
18	Armería - Playa El Paraíso		COL
19	Colima - Comala		COL-016
20	Colima - Coquimatlán		COL-034
21	Comala - San Antonio		COL-016
22	Coquimatlán - Pueblo Juárez		COL-034
23	Costera Laguna de Cuyutlán		COL
24	Cuauhtémoc - Colima		COL-019
25	Libramiento de Tecomán		COL
26	Libramiento Poniente de Colima		COL
27	Los Limones - Loma de Juárez		COL
28	Puerta de Caleras - Madrid		COL-014
29	Quesería - El Naranjal		COL-001
30	Ramal a Aeropuerto de Colima		COL
31	Ramal a Aeropuerto Manzanillo		COL
32	Ramal a Ixtlahuacán		COL-005
33	Ramal a Las Brisas		COL
34	Ramal a Los Tepames		COL-004
35	Ramal a Rancho Valle Nuevo		COL
36	Ramal a Rincón de López		COL
37	Ramal a Tecuanillo		COL-009
38	Ramal Camotlán de Miraflores		COL
39	Tecomán - La Mascota		COL
40	Trapichillos - Estación Alzada		COL-003
41	Villa de Álvarez - Minatitlán		COL

06 COLIMA

SECRETARÍA DE COMUNICACIONES Y TRANSPORTES
DIRECCIÓN GENERAL DE SERVICIOS TÉCNICOS



COLIMA

1 CARR: Cd. Guzmán - Colima

CLAVE: 00117

RUTA: MEX-054

AÑO: 2012

LUGAR	ESTACION				CLASIFICACION VEHICULAR EN PORCIENTO										COORDENADAS					
	KM	TE	SC	TDPA	M	A	B	C2	C3	T3S2	T3S3	T3S2R4	OTROS	A	B	C	K'	D	LATITUD	LONGITUD
Cd. Guzmán	0.00	3	1	8289	0.7	81.3	1.3	11.5	1.6	1.5	1.4	0.2	0.5	82.0	1.3	16.7	0.091	0.503	19.677456	-103.475068
Cd. Guzmán	0.00	3	2	8405	0.6	79.8	1.4	12.4	1.7	1.7	1.7	0.2	0.5	80.4	1.4	18.2	0.098	0.503	19.677448	-103.475064
T. Izq. Zapotiltic	4.35	3	0	5113	0.8	76.2	1.5	13.2	3.0	3.4	1.4	0.2	0.3	77.0	1.5	21.5	0.089	0.511	19.650040	-103.473045
T. Der. Tepozal y Nevado de Colima	10.70	1	0	4493	0.7	78.3	3.1	9.6	2.8	3.5	1.5	0.2	0.3	79.0	3.1	17.9	0.085	0.515	19.558846	-103.440289
Atenquique	31.90	1	0	2332	0.8	81.0	2.4	7.6	2.5	3.8	1.3	0.0	0.6	81.8	2.4	15.8	0.101	0.535	19.529985	-103.434508
Atenquique	31.90	3	0	2288	0.7	83.1	2.3	6.2	2.4	3.4	1.2	0.0	0.7	83.8	2.3	13.9	0.091	0.540	19.526993	-103.438773
Lim. Edos. Term. Jal. Ppia. Col.	56.50																			
T. Der. Quesería	58.35	1	0	6091	0.8	85.2	2.6	7.6	0.9	2.1	0.5	0.0	0.3	86.0	2.6	11.4	0.085	0.506	19.392490	-103.564816
Cuahtémoc	66.25	1	0	4895	0.7	84.4	2.6	8.7	0.9	2.0	0.4	0.0	0.3	85.1	2.6	12.3	0.091	0.521	19.326378	-103.594761
Cuahtémoc	66.25	3	0	5353	0.9	84.8	2.4	8.5	0.9	2.2	0.2	0.0	0.1	85.7	2.4	11.9	0.097	0.503	19.323934	-103.612039
El Trapiche	76.55	3	1	12809	0.7	80.2	1.5	6.3	2.3	3.3	1.7	3.4	0.6	80.9	1.5	17.6	0.084	0.530	19.282457	-103.662050
El Trapiche	76.55	3	2	14437	0.9	77.5	1.8	7.0	2.6	3.7	1.9	3.9	0.7	78.4	1.8	19.8	0.089	0.530	19.282455	-103.662047
T. Izq. Libramiento de Colima	78.05	1	1	14766	0.6	82.0	1.5	5.4	1.6	3.5	2.1	2.6	0.7	82.6	1.5	15.9	0.082	0.513	19.268362	-103.675883
T. Izq. Libramiento de Colima	78.05	1	2	14036	0.7	80.9	1.6	5.9	1.7	3.6	2.2	2.7	0.7	81.6	1.6	16.8	0.095	0.513	19.268361	-103.675888
T. C. Cuahtémoc - Colima	83.40																			

2 CARR: Colima - Ent. Tecomán

CLAVE: 06119

RUTA: MEX-110

AÑO: 2012

LUGAR	ESTACION				CLASIFICACION VEHICULAR EN PORCIENTO										COORDENADAS					
	KM	TE	SC	TDPA	M	A	B	C2	C3	T3S2	T3S3	T3S2R4	OTROS	A	B	C	K'	D	LATITUD	LONGITUD
T. C. Jiquilpan - Colima	0.00	3	1	14599	1.7	76.4	2.4	8.0	1.9	3.6	2.9	2.3	0.8	78.1	2.4	19.5	0.076	0.509	19.212835	-103.724929
T. C. Jiquilpan - Colima	0.00	3	2	15113	1.4	74.4	2.5	9.0	2.1	4.2	3.0	2.5	0.9	75.8	2.5	21.7	0.076	0.509	19.212846	-103.724931
T. Izq. Los Asmoles	13.00	3	1	9814	0.8	75.0	3.1	8.8	1.7	4.2	2.5	3.3	0.6	75.8	3.1	21.1	0.080	0.501	19.101954	-103.776915
T. Izq. Los Asmoles	13.00	3	2	9766	0.7	72.2	3.3	9.8	2.0	4.7	2.8	3.9	0.6	72.9	3.3	23.8	0.092	0.501	19.101955	-103.776916
T. Der. Caleras	34.55	1	1	10073	0.4	77.6	2.5	7.1	2.1	4.0	2.3	3.1	0.9	78.0	2.5	19.5	0.079	0.500	18.979023	-103.856195
T. Der. Caleras	34.55	1	2	10069	0.8	75.3	2.9	7.4	2.3	4.3	2.6	3.5	0.9	76.1	2.9	21.0	0.075	0.500	18.979024	-103.856195
T. C. Ent. Playa Azul - Manzanillo	40.10	1	1	10538	0.5	77.4	2.2	7.4	2.1	3.8	2.9	2.9	0.8	77.9	2.2	19.9	0.079	0.501	18.948280	-103.893270
T. C. Ent. Playa Azul - Manzanillo	40.10	1	2	10489	0.8	74.8	2.4	8.0	2.3	4.3	3.2	3.2	1.0	75.6	2.4	22.0	0.082	0.501	18.948275	-103.893272

3 CARR: Ent. Playa Azul - Manzanillo

CLAVE: 00495

RUTA: MEX-200

AÑO: 2012

LUGAR	ESTACION				CLASIFICACION VEHICULAR EN PORCIENTO										COORDENADAS					
	KM	TE	SC	TDPA	M	A	B	C2	C3	T3S2	T3S3	T3S2R4	OTROS	A	B	C	K'	D	LATITUD	LONGITUD
T. C. Carapan - Playa Azul	0.00	3	0	3832	1.7	80.7	3.7	7.1	1.6	2.4	2.0	0.5	0.3	82.4	3.7	13.9	0.078	0.500	18.020571	-102.342236
Caleta de Campos	50.24	1	0	1621	1.7	78.9	3.5	8.9	2.2	2.2	2.1	0.4	0.1	80.6	3.5	15.9	0.086	0.501	18.077353	-102.745854

COLIMA

3 CARR : Ent. Playa Azul - Manzanillo

CLAVE: 00495

RUTA: MEX-200

AÑO : 2012

LUGAR	ESTACION				CLASIFICACION VEHICULAR EN PORCIENTO													COORDENADAS		
	KM	TE	SC	TDPA	M	A	B	C2	C3	T3S2	T3S3	T3S2R4	OTROS	A	B	C	K'	D	LATITUD	LONGITUD
Tizupan	106.60	1	0	725	1.6	78.4	3.6	8.9	2.5	3.1	1.9	0.0	0.0	80.0	3.6	16.4	0.083	0.514	18.226653	-103.126330
Maruata	149.75	1	0	1166	1.6	77.0	4.8	7.8	1.5	2.6	3.7	0.3	0.7	78.6	4.8	16.6	0.088	0.507	18.273415	-103.341893
Maruata	149.75	3	0	989	3.3	73.3	3.2	9.6	1.2	4.0	5.0	0.3	0.1	76.6	3.2	20.2	0.097	0.500	18.279083	-103.353737
T. Der. Aquila	190.10	3	0	2386	2.4	70.4	5.4	6.3	2.0	7.1	5.4	0.1	0.9	72.8	5.4	21.8	0.079	0.503	18.566513	-103.623376
Lim. Edos. Term. Mich. Ppia. Col.	229.60																			
Cerro de Ortega	233.20	1	0	4876	2.6	73.5	4.4	5.3	2.1	6.0	5.6	0.0	0.5	76.1	4.4	19.5	0.084	0.519	18.744667	-103.724028
El Balcón	242.95	1	0	5513	2.1	71.9	3.0	8.1	2.0	5.9	5.8	0.2	1.0	74.0	3.0	23.0	0.083	0.520	18.783097	-103.771102
El Balcón	242.95	3	0	5481	1.5	73.1	2.9	7.7	2.3	5.6	5.6	0.3	1.0	74.6	2.9	22.5	0.077	0.507	18.785288	-103.777162
Cofradía de Morelos	252.45	1	0	7696	2.2	73.0	3.5	9.5	3.2	3.6	4.2	0.2	0.6	75.2	3.5	21.3	0.079	0.502	18.860118	-103.834944
Cofradía de Morelos	252.45	3	1	4887	2.5	75.5	4.2	8.2	2.6	1.4	4.7	0.2	0.7	78.0	4.2	17.8	0.102	0.505	18.872089	-103.842774
Cofradía de Morelos	252.45	3	2	4980	2.6	73.1	4.9	8.6	2.7	1.6	5.6	0.1	0.8	75.7	4.9	19.4	0.102	0.505	18.872132	-103.842800
T. C. Colima - Ent. Tecomán	263.75	1	1	5619	2.4	71.4	3.8	11.5	2.0	3.9	4.1	0.2	0.7	73.8	3.8	22.4	0.100	0.504	18.892146	-103.855851
T. C. Colima - Ent. Tecomán	263.75	1	2	5526	2.5	68.2	4.1	12.8	2.3	4.5	4.6	0.2	0.8	70.7	4.1	25.2	0.106	0.504	18.892178	-103.855858
T. Der. Rincón de López	269.25	1	0	6204	2.6	62.3	3.3	12.0	3.6	9.5	5.9	0.1	0.7	64.9	3.3	31.8	0.074	0.512	18.951007	-103.946348
Armería	272.50	1	0	6021	2.4	65.3	3.2	9.3	3.8	9.2	6.0	0.1	0.7	67.7	3.2	29.1	0.068	0.505	18.937790	-103.950992
T. Izq. Cuyutlán	278.17	1	0	5423	1.8	72.5	3.6	5.3	3.4	6.0	6.3	0.3	0.8	74.3	3.6	22.1	0.077	0.530	18.935604	-104.018729
Santa Rita	292.50	1	0	5602	1.8	60.9	4.1	7.4	4.1	11.5	9.0	0.2	1.0	62.7	4.1	33.2	0.070	0.508	19.009551	-104.082783
Santa Rita	292.50	3	0	6709	3.6	66.3	3.8	7.6	3.5	8.2	5.8	0.3	0.9	69.9	3.8	26.3	0.073	0.502	19.013212	-104.102895
Las Nuevas Juntas	310.65	1	0	6026	2.3	64.6	3.7	8.6	4.3	8.8	6.4	0.4	0.9	66.9	3.7	29.4	0.081	0.504	19.042961	-104.218612
T. Der. Libramiento de Manzanillo (Libre)	312.65	1	0	10236	3.8	65.0	3.1	9.3	4.0	7.5	6.2	0.2	0.9	68.8	3.1	28.1	0.078	0.501	19.055443	-104.235277
T. Der. Libramiento de Manzanillo (Libre)	312.65	3	0	4899	4.5	77.0	4.1	7.2	1.8	3.1	1.7	0.1	0.5	81.5	4.1	14.4	0.080	0.510	19.055712	-104.243065
Manzanillo	321.12	1	0	6987	4.7	78.0	4.3	7.3	0.9	3.1	0.7	0.3	0.7	82.7	4.3	13.0	0.073	0.502	19.049464	-104.291989

4 CARR : Jiquilpan - Colima

CLAVE: 00156

RUTA: MEX-110

AÑO : 2012

LUGAR	ESTACION				CLASIFICACION VEHICULAR EN PORCIENTO													COORDENADAS		
	KM	TE	SC	TDPA	M	A	B	C2	C3	T3S2	T3S3	T3S2R4	OTROS	A	B	C	K'	D	LATITUD	LONGITUD
Jiquilpan	0.00	3	0	5251	0.7	78.5	4.1	6.5	3.8	3.7	1.7	0.4	0.6	79.2	4.1	16.7	0.089	0.511	19.995673	-102.745095
San José de Gracia	37.93	1	0	4432	1.8	81.5	5.2	7.0	1.6	2.3	0.4	0.0	0.2	83.3	5.2	11.5	0.084	0.504	20.000331	-103.015360
Lim. Edos. Term. Mich. Ppia. Jal.	41.00																			
Mazamitla	48.65	1	0	3377	0.5	83.1	1.2	10.2	2.0	2.2	0.5	0.0	0.3	83.6	1.2	15.2	0.090	0.504	19.938069	-103.015004
Mazamitla	48.65	3	0	3971	0.6	78.5	1.0	9.7	3.0	3.3	2.2	0.7	1.0	79.1	1.0	19.9	0.082	0.507	19.923628	-103.046441
T. Izq. Tamazula de Gordiano (2º Acceso)	96.70	3	0	6812	1.4	80.9	0.6	7.7	3.0	3.0	1.9	0.7	0.8	82.3	0.6	17.1	0.075	0.501	19.682870	-103.262462
T. Der. Cd. Guzmán	108.50	3	0	3367	0.9	76.8	1.2	11.0	3.9	2.8	2.2	0.6	0.6	77.7	1.2	21.1	0.091	0.505	19.645223	-103.335525
Tecalitlán	132.00	3	0	2134	0.8	84.4	0.3	8.3	4.0	1.2	0.5	0.2	0.3	85.2	0.3	14.5	0.099	0.504	19.462004	-103.319723

COLIMA

4 CARR: Jiquilpan - Colima

CLAVE: 00156

RUTA: MEX-110

AÑO: 2012

LUGAR	ESTACION				CLASIFICACION VEHICULAR EN PORCIENTO													COORDENADAS		
	KM	TE	SC	TDPA	M	A	B	C2	C3	T3S2	T3S3	T3S2R4	OTROS	A	B	C	K'	D	LATITUD	LONGITUD
T. Der. Atenquique	137.67	3	0	1364	0.6	75.8	1.9	13.0	4.0	2.0	2.0	0.2	0.5	76.4	1.9	21.7	0.112	0.510	19.457538	-103.347694
Pihuamo	168.19	3	0	2333	0.7	81.6	0.3	10.0	3.4	2.0	1.6	0.0	0.4	82.3	0.3	17.4	0.098	0.508	19.253677	-103.388604
Lim. Edos. Term. Jal. Ppia. Col.	189.60																			
T. Der. Estación Alzada	198.60	3	0	1632	1.1	82.3	1.7	6.8	3.6	2.3	1.2	0.1	0.9	83.4	1.7	14.9	0.095	0.510	19.160781	-103.528878
T. Izq. Los Tepames	214.20	1	0	2085	1.2	82.6	2.2	6.4	2.3	2.6	1.6	0.3	0.8	83.8	2.2	14.0	0.094	0.503	19.174753	-103.658030
X. C. Libramiento de Colima	220.00	1	0	7062	4.4	78.9	3.2	5.8	1.1	3.4	1.8	0.5	0.9	83.3	3.2	13.5	0.086	0.501	19.208523	-103.721028
Colima	222.00	1	1	10388	3.0	88.4	3.1	3.7	0.5	0.6	0.5	0.1	0.1	91.4	3.1	5.5	0.089	0.501	19.216980	-103.721849
Colima	222.00	1	2	10356	2.5	88.4	3.2	4.0	0.5	0.7	0.5	0.1	0.1	90.9	3.2	5.9	0.094	0.501	19.216982	-103.721848

5 CARR: Libramiento de Colima

CLAVE: 06573

RUTA: MEX-054

AÑO: 2012

LUGAR	ESTACION				CLASIFICACION VEHICULAR EN PORCIENTO													COORDENADAS		
	KM	TE	SC	TDPA	M	A	B	C2	C3	T3S2	T3S3	T3S2R4	OTROS	A	B	C	K'	D	LATITUD	LONGITUD
T. C. Cd. Guzmán - Colima	0.00	3	1	6681	1.3	72.7	2.9	6.8	2.7	5.1	3.1	4.5	0.9	74.0	2.9	23.1	0.072	0.518	19.259444	-103.683632
T. C. Cd. Guzmán - Colima	0.00	3	2	7185	1.6	70.2	3.0	7.4	3.0	5.7	3.2	4.9	1.0	71.8	3.0	25.2	0.105	0.518	19.259445	-103.683631
T. C. Colima - Ent. Tecomán	9.00	1	1	13404	1.8	79.6	4.1	4.9	1.6	3.3	1.9	2.1	0.7	81.4	4.1	14.5	0.077	0.518	19.218918	-103.714878
T. C. Colima - Ent. Tecomán	9.00	1	2	12497	1.2	78.7	4.2	5.3	1.8	3.5	2.2	2.4	0.7	79.9	4.2	15.9	0.079	0.518	19.218920	-103.714879

6 CARR: Libramiento de Manzanillo (Libre)

CLAVE: 06574

RUTA: MEX-200

AÑO: 2012

LUGAR	ESTACION				CLASIFICACION VEHICULAR EN PORCIENTO													COORDENADAS		
	KM	TE	SC	TDPA	M	A	B	C2	C3	T3S2	T3S3	T3S2R4	OTROS	A	B	C	K'	D	LATITUD	LONGITUD
T. C. Ent. Playa Azul - Manzanillo	0.00	3	0	7546	4.1	66.6	2.0	7.9	4.8	7.4	5.2	1.1	0.9	70.7	2.0	27.3	0.074	0.509	19.057118	-104.243117
T. C. Manzanillo - Puerto Vallarta	6.30	1	1	6430	5.0	70.8	3.1	6.7	3.9	4.1	2.6	2.8	1.0	75.8	3.1	21.1	0.084	0.503	19.072120	-104.279004
T. C. Manzanillo - Puerto Vallarta	6.30	1	2	6504	4.7	68.8	3.5	7.8	4.1	4.6	2.7	2.8	1.0	73.5	3.5	23.0	0.095	0.503	19.072119	-104.279003

7 CARR: Libramiento de Manzanillo Norte

CLAVE: 06122

RUTA: MEX-200

AÑO: 2012

LUGAR	ESTACION				CLASIFICACION VEHICULAR EN PORCIENTO													COORDENADAS		
	KM	TE	SC	TDPA	M	A	B	C2	C3	T3S2	T3S3	T3S2R4	OTROS	A	B	C	K'	D	LATITUD	LONGITUD
T. C. Libramiento de Manzanillo (Libre)	0.00																			
T. C. Minatitlán - Ent. Pez Vela	3.00	3	0	14045	3.2	78.2	1.3	6.7	2.8	4.7	1.5	0.7	0.9	81.4	1.3	17.3	0.085	0.525	19.095709	-104.276954
T. C. Manzanillo - Puerto Vallarta	19.00	1	0	3580	2.2	79.0	3.3	5.2	5.1	2.7	1.0	0.5	1.0	81.2	3.3	15.5	0.101	0.511	19.127191	-104.396168

COLIMA

8 CARR : Manzanillo - Puerto Vallarta

CLAVE: 00070

RUTA: MEX-200

AÑO : 2012

LUGAR	ESTACION				CLASIFICACION VEHICULAR EN PORCIENTO										COORDENADAS					
	KM	TE	SC	TDPA	M	A	B	C2	C3	T3S2	T3S3	T3S2R4	OTROS	A	B	C	K'	D	LATITUD	LONGITUD
Manzanillo	0.00	3	1	18092	6.4	84.3	2.5	6.0	0.2	0.1	0.4	0.0	0.1	90.7	2.5	6.8	0.077	0.505	19.055074	-104.308221
Manzanillo	0.00	3	2	17755	7.4	82.2	2.7	6.9	0.2	0.1	0.4	0.0	0.1	89.6	2.7	7.7	0.072	0.505	19.055080	-104.308209
T. Der. Minatitlán	3.14	1	1	21458	9.5	79.1	0.9	4.8	3.7	0.7	1.1	0.0	0.2	88.6	0.9	10.5	0.089	0.515	19.065823	-104.288339
T. Der. Minatitlán	3.14	1	2	20188	9.3	77.8	1.1	5.5	4.2	0.7	1.2	0.0	0.2	87.1	1.1	11.8	0.077	0.515	19.065815	-104.288340
Santiago	13.24	1	1	9332	2.7	83.7	2.5	7.1	0.5	1.5	1.1	0.0	0.9	86.4	2.5	11.1	0.071	0.511	19.116139	-104.351167
Santiago	13.24	1	2	9752	2.9	82.5	2.8	7.2	0.6	1.7	1.3	0.0	1.0	85.4	2.8	11.8	0.073	0.511	19.116000	-104.351250
Santiago	13.24	3	1	6117	2.1	84.2	2.0	8.2	0.4	1.4	1.1	0.1	0.5	86.3	2.0	11.7	0.086	0.516	19.119425	-104.361394
Santiago	13.24	3	2	5749	2.2	83.4	2.1	8.4	0.4	1.6	1.3	0.1	0.5	85.6	2.1	12.3	0.073	0.516	19.119425	-104.361393
San Juan de Cuatro Vientos	39.04	3	0	5653	2.9	78.7	2.8	10.1	1.6	2.5	0.9	0.2	0.3	81.6	2.8	15.6	0.088	0.506	19.192974	-104.538908
T. Izq. Aeropuerto Manzanillo	40.55	3	0	5639	4.0	71.5	3.1	10.8	4.4	3.8	1.9	0.2	0.3	75.5	3.1	21.4	0.084	0.504	19.195694	-104.552430
Lim. Edos. Term. Col. Ppia. Jal.	43.50																			
Cihuatlán	47.92	1	0	6261	7.7	74.8	2.0	8.1	1.7	4.1	0.9	0.2	0.5	82.5	2.0	15.5	0.077	0.509	19.235039	-104.551427
Cihuatlán	47.92	3	0	7858	5.1	78.2	1.8	8.7	1.4	3.5	0.7	0.2	0.4	83.3	1.8	14.9	0.082	0.512	19.230815	-104.580480
T. Izq. San Francisco	50.18	3	0	7786	2.6	78.5	1.8	8.8	2.0	3.5	1.0	0.7	1.1	81.1	1.8	17.1	0.081	0.505	19.214867	-104.620887
Melaque	61.64	1	0	10773	6.5	76.5	0.7	8.1	1.0	5.2	0.9	0.2	0.9	83.0	0.7	16.3	0.076	0.502	19.228615	-104.692563
Melaque	61.64	3	0	8058	7.1	75.7	0.6	10.6	1.4	3.5	0.6	0.2	0.3	82.8	0.6	16.6	0.086	0.502	19.239434	-104.711859
T. Izq. Tenacatita	90.44	3	0	2181	3.2	79.0	1.7	10.2	2.0	2.3	1.1	0.4	0.1	82.2	1.7	16.1	0.087	0.503	19.347548	-104.880648
T. Der. Tomatlán	177.64	1	0	1895	1.4	77.2	2.2	10.9	2.6	2.9	1.9	0.5	0.4	78.6	2.2	19.2	0.090	0.503	19.870204	-105.330006
T. Der. Tomatlán	177.64	3	0	2192	4.0	78.2	1.1	9.6	1.8	3.2	1.5	0.4	0.2	82.2	1.1	16.7	0.084	0.503	19.876564	-105.336042
T. Izq. El Tuito	230.64	3	0	2417	2.1	79.7	1.8	11.2	0.9	2.5	1.1	0.4	0.3	81.8	1.8	16.4	0.100	0.506	20.331323	-105.315641
Puerto Vallarta	273.64	1	0	8520	1.8	81.5	1.0	9.9	0.5	3.2	0.9	0.3	0.9	83.3	1.0	15.7	0.091	0.502	20.575229	-105.248537

9 CARR : Minatitlán - Ent. Pez Vela

CLAVE: 06015

RUTA: MEX-098

AÑO : 2012

LUGAR	ESTACION				CLASIFICACION VEHICULAR EN PORCIENTO										COORDENADAS					
	KM	TE	SC	TDPA	M	A	B	C2	C3	T3S2	T3S3	T3S2R4	OTROS	A	B	C	K'	D	LATITUD	LONGITUD
Minatitlán	0.00																			
T. Der. Jalipa	49.50	1	0	2108	6.3	67.4	4.7	3.8	6.6	4.1	2.7	3.8	0.6	73.7	4.7	21.6	0.086	0.524	19.130329	-104.264316
T. Der. Jalipa	49.50	3	0	4287	5.6	72.5	3.6	3.9	5.6	4.0	2.6	1.4	0.8	78.1	3.6	18.3	0.082	0.503	19.123277	-104.262874
T. C. Manzanillo - Puerto Vallarta	58.50	1	1	6205	1.3	72.3	3.5	3.0	5.3	6.8	3.3	3.5	1.0	73.6	3.5	22.9	0.090	0.521	19.085016	-104.282281
T. C. Manzanillo - Puerto Vallarta	58.50	1	2	6756	1.2	69.6	4.1	3.1	6.0	7.4	3.6	4.0	1.0	70.8	4.1	25.1	0.078	0.521	19.085016	-104.282281

COLIMA

10 CARR: Paso por La Salada

CLAVE: 06121

RUTA: MEX-110

AÑO: 2012

LUGAR	ESTACION				CLASIFICACION VEHICULAR EN PORCIENTO														COORDENADAS	
	KM	TE	SC	TDPA	M	A	B	C2	C3	T3S2	T3S3	T3S2R4	OTROS	A	B	C	K'	D	LATITUD	LONGITUD
La Salada	0.00	3	0	2346	0.9	85.9	4.6	3.9	1.8	1.4	1.3	0.0	0.2	86.8	4.6	8.6	0.082	0.500	19.067569	-103.777083
T. C. Ramal a Ixtlahuacán	6.00																			

11 CARR: Paso por Los Asmoles

CLAVE: 06120

RUTA: MEX-110

AÑO: 2012

LUGAR	ESTACION				CLASIFICACION VEHICULAR EN PORCIENTO														COORDENADAS	
	KM	TE	SC	TDPA	M	A	B	C2	C3	T3S2	T3S3	T3S2R4	OTROS	A	B	C	K'	D	LATITUD	LONGITUD
T. C. Colima - Ent. Tecomán	0.00																			
Los Asmoles	1.80	3	0	2100	0.7	90.0	3.1	3.3	0.0	1.4	1.5	0.0	0.0	90.7	3.1	6.2	0.067	0.505	19.129295	-103.773866
T. C. Colima - Ent. Tecomán	2.90																			

12 CARR: Ramal a Cuyutlán

CLAVE: 06225

RUTA: MEX-200

AÑO: 2012

LUGAR	ESTACION				CLASIFICACION VEHICULAR EN PORCIENTO														COORDENADAS	
	KM	TE	SC	TDPA	M	A	B	C2	C3	T3S2	T3S3	T3S2R4	OTROS	A	B	C	K'	D	LATITUD	LONGITUD
T. C. Ent. Playa Azul - Manzanillo	0.00	3	0	676	4.5	79.0	5.1	7.1	1.9	1.2	1.1	0.0	0.1	83.5	5.1	11.4	0.104	0.580	18.933623	-104.019802
Cuyutlán	7.00	1	0	558	9.9	78.8	3.0	5.9	1.5	0.6	0.3	0.0	0.0	88.7	3.0	8.3	0.107	0.512	18.913818	-104.058799

13 CARR: Ramal Cerro de Los Juanes

CLAVE: 06009

RUTA: MEX-098

AÑO: 2012

LUGAR	ESTACION				CLASIFICACION VEHICULAR EN PORCIENTO														COORDENADAS	
	KM	TE	SC	TDPA	M	A	B	C2	C3	T3S2	T3S3	T3S2R4	OTROS	A	B	C	K'	D	LATITUD	LONGITUD
T. C. Minatitlán - Ent. Pez Vela	0.00	3	0	893	0.8	83.8	4.8	7.5	0.6	1.8	0.6	0.0	0.1	84.6	4.8	10.6	0.138	0.501	19.378073	-104.079028
Cerro de Los Juanes	3.00																			

14 CARR: Ramal Cerro de Ortega

CLAVE: 06009

RUTA: MEX-200

AÑO: 2012

LUGAR	ESTACION				CLASIFICACION VEHICULAR EN PORCIENTO														COORDENADAS	
	KM	TE	SC	TDPA	M	A	B	C2	C3	T3S2	T3S3	T3S2R4	OTROS	A	B	C	K'	D	LATITUD	LONGITUD
T. C. Ent. Playa Azul - Manzanillo	0.00	3	0	2606	9.6	80.1	3.4	3.9	0.9	1.5	0.5	0.0	0.1	89.7	3.4	6.9	0.095	0.511	18.754451	-103.722420
Cerro de Ortega	1.00																			

COLIMA

15 CARR: Tecmán - Boca de Pascuales

CLAVE: 06226

RUTA: MEX-200

AÑO: 2012

LUGAR	ESTACION				CLASIFICACION VEHICULAR EN PORCIENTO														COORDENADAS	
	KM	TE	SC	TDPA	M	A	B	C2	C3	T3S2	T3S3	T3S2R4	OTROS	A	B	C	K'	D	LATITUD	LONGITUD
Tecmán	0.00	3	0	3144	14.3	71.2	4.1	6.0	0.9	2.6	0.4	0.1	0.4	85.5	4.1	10.4	0.095	0.505	18.907383	-103.891949
Boca de Pascuales	12.00																			

16 CARR: Armería - Manzanillo (Cuota)

CLAVE: 06585

RUTA: MEX-200D

AÑO: 2012

LUGAR	ESTACION				CLASIFICACION VEHICULAR EN PORCIENTO														COORDENADAS	
	KM	TE	SC	TDPA	M	A	B	C2	C3	T3S2	T3S3	T3S2R4	OTROS	A	B	C	K'	D	LATITUD	LONGITUD
T. C. Ent. Playa Azul - Manzanillo	0.00																			
T. Izq. Playa Paraíso	3.50	3	1	3525	0.4	71.5	4.3	5.0	2.8	3.4	1.7	10.3	0.6	71.9	4.3	23.8	0.091	0.507	18.928297	-103.968906
T. Izq. Playa Paraíso	3.50	3	2	3434	0.5	69.4	4.6	5.5	2.8	3.6	1.8	11.2	0.6	69.9	4.6	25.5	0.113	0.507	18.928297	-103.968906
T. Izq. Cuyutlán	17.58	3	1	3152	0.5	68.4	4.6	5.6	2.6	4.6	2.2	10.6	0.9	68.9	4.6	26.5	0.089	0.505	18.926334	-104.078492
T. Izq. Cuyutlán	17.58	3	2	3093	0.7	67.9	5.2	5.7	2.9	4.3	2.1	10.4	0.8	68.6	5.2	26.2	0.093	0.505	18.926335	-104.078496
Caseta de Cobro Cuyutlán	18.00	2	1	2898	0.0	67.4	4.3	2.4	3.6	5.4	2.2	13.0	1.7	67.4	4.3	28.3	0.096	0.500	18.927735	-104.081626
Caseta de Cobro Cuyutlán	18.00	2	2	2898	0.0	67.4	4.3	2.4	3.6	5.4	2.2	13.0	1.7	67.4	4.3	28.3	0.096	0.500	18.927735	-104.081626
T. C. Ent. Playa Azul - Manzanillo	44.00	3	1	3823	0.6	70.6	4.3	6.7	2.6	3.9	1.9	8.6	0.8	71.2	4.3	24.5	0.086	0.512	19.053354	-104.268495
T. C. Ent. Playa Azul - Manzanillo	44.00	3	2	3644	0.4	69.8	4.5	6.5	2.8	4.1	2.1	8.9	0.9	70.2	4.5	25.3	0.101	0.512	19.053316	-104.268520
T. C. Libramiento de Manzanillo (Libre)	46.00																			

17 CARR: Guadalajara - Colima (Cuota)

CLAVE: 00118

RUTA: MEX-054D

AÑO: 2012

LUGAR	ESTACION				CLASIFICACION VEHICULAR EN PORCIENTO														COORDENADAS	
	KM	TE	SC	TDPA	M	A	B	C2	C3	T3S2	T3S3	T3S2R4	OTROS	A	B	C	K'	D	LATITUD	LONGITUD
T. C. Ent. Santa Cruz - Melaque	0.00																			
Caseta de Cobro Acatlán	0.20	2	1	4234	0.1	71.5	4.7	3.8	3.9	4.7	2.1	8.0	1.2	71.6	4.7	23.7	0.084	0.500	20.410694	-103.558333
Caseta de Cobro Acatlán	0.20	2	2	4233	0.1	71.5	4.7	3.8	3.9	4.7	2.1	8.0	1.2	71.6	4.7	23.7	0.084	0.500	20.410694	-103.558333
Caseta de Cobro Acatlán	0.20	3	1	4833	0.2	68.8	3.1	7.7	3.9	5.1	3.3	7.4	0.5	69.0	3.1	27.9	0.088	0.510	20.410875	-103.558508
Caseta de Cobro Acatlán	0.20	3	2	4645	0.3	69.1	3.3	6.9	3.9	5.2	3.8	7.1	0.4	69.4	3.3	27.3	0.080	0.510	20.410876	-103.558511
T. Izq. San Marcos	10.80	1	1	4720	0.2	68.3	3.9	7.5	3.9	5.4	2.9	7.6	0.3	68.5	3.9	27.6	0.083	0.511	20.302682	-103.558951
T. Izq. San Marcos	10.80	1	2	4925	0.1	69.0	3.9	6.8	4.1	5.7	3.0	7.1	0.3	69.1	3.9	27.0	0.078	0.511	20.301686	-103.558600
T. Der. Usmajac	67.80	1	1	6653	0.2	69.7	3.6	7.2	4.4	5.4	3.0	6.2	0.3	69.9	3.6	26.5	0.072	0.508	19.885306	-103.516872
T. Der. Usmajac	67.80	1	2	6432	0.2	69.8	3.9	7.1	4.1	5.3	3.3	6.1	0.2	70.0	3.9	26.1	0.085	0.508	19.885307	-103.516873
T. Izq. Cd. Guzmán	86.70	1	1	6064	0.1	68.4	3.5	7.9	4.6	5.4	3.2	6.5	0.4	68.5	3.5	28.0	0.093	0.501	19.705136	-103.499505
T. Izq. Cd. Guzmán	86.70	1	2	6099	0.2	68.9	3.6	7.3	4.2	5.6	3.6	6.1	0.5	69.1	3.6	27.3	0.091	0.501	19.705136	-103.499505
Caseta de Cobro San Marcos	122.50	2	1	4013	0.1	63.0	3.8	4.3	5.9	7.9	3.9	9.1	2.0	63.1	3.8	33.1	0.084	0.500	19.433636	-103.494843
Caseta de Cobro San Marcos	122.50	2	2	4013	0.1	63.0	3.8	4.3	5.9	7.9	3.9	9.1	2.0	63.1	3.8	33.1	0.084	0.500	19.433636	-103.494843

COLIMA

17 CARR: Guadalajara - Colima (Cuota)

CLAVE: 00118

RUTA: MEX-054D

AÑO: 2012

LUGAR	ESTACION				CLASIFICACION VEHICULAR EN PORCIENTO													COORDENADAS			
	KM	TE	SC	TDPA	M	A	B	C2	C3	T3S2	T3S3	T3S2R4	OTROS	A	B	C	K'	D	LATITUD	LONGITUD	
Lim. Edos. Term. Jal. Ppia. Col.	129.50																				
T. C. Cd. Guzmán - Colima	148.00																				

18 CARR: Armería - Playa El Paraíso

CLAVE: 06580

RUTA: COL

AÑO: 2012

LUGAR	ESTACION				CLASIFICACION VEHICULAR EN PORCIENTO													COORDENADAS		
	KM	TE	SC	TDPA	M	A	B	C2	C3	T3S2	T3S3	T3S2R4	OTROS	A	B	C	K'	D	LATITUD	LONGITUD
T. C. Ent. Playa Azul - Manzanillo	0.00	3	0	2832	10.9	77.9	2.3	5.1	1.3	1.9	0.4	0.0	0.2	88.8	2.3	8.9	0.113	0.503	18.925073	-103.964016
Playa Paraíso	7.50	1	0	1231	9.8	75.8	2.5	11.3	0.0	0.6	0.0	0.0	0.0	85.6	2.5	11.9	0.113	0.505	18.878998	-103.989037

19 CARR: Colima - Comala

CLAVE: 06016

RUTA: COL-016

AÑO: 2012

LUGAR	ESTACION				CLASIFICACION VEHICULAR EN PORCIENTO													COORDENADAS			
	KM	TE	SC	TDPA	M	A	B	C2	C3	T3S2	T3S3	T3S2R4	OTROS	A	B	C	K'	D	LATITUD	LONGITUD	
Colima	0.00																				
Villa Álvarez	3.00	3	1	9865	4.2	84.9	2.5	5.0	0.3	1.9	0.5	0.5	0.2	89.1	2.5	8.4	0.103	0.508	19.287243	-103.746029	
Villa Álvarez	3.00	3	2	9559	3.8	84.3	2.7	5.5	0.3	2.1	0.5	0.6	0.2	88.1	2.7	9.2	0.090	0.508	19.287248	-103.746026	
Comala	10.00																				

20 CARR: Colima - Coquimatlán

CLAVE: 06034

RUTA: COL-034

AÑO: 2012

LUGAR	ESTACION				CLASIFICACION VEHICULAR EN PORCIENTO													COORDENADAS			
	KM	TE	SC	TDPA	M	A	B	C2	C3	T3S2	T3S3	T3S2R4	OTROS	A	B	C	K'	D	LATITUD	LONGITUD	
Colima	0.00																				
T. Der. Villa Álvarez	3.00	3	1	11533	4.4	86.0	1.9	6.3	0.6	0.4	0.4	0.0	0.0	90.4	1.9	7.7	0.092	0.503	19.242412	-103.753076	
T. Der. Villa Álvarez	3.00	3	2	11663	4.0	85.3	2.2	7.1	0.6	0.4	0.4	0.0	0.0	89.3	2.2	8.5	0.089	0.503	19.242407	-103.753076	
Coquimatlán	11.00	1	1	11248	5.9	87.3	2.1	3.4	0.5	0.5	0.2	0.0	0.1	93.2	2.1	4.7	0.094	0.500	19.219315	-103.800430	
Coquimatlán	11.00	1	2	11231	5.5	87.0	2.3	3.8	0.5	0.5	0.3	0.0	0.1	92.5	2.3	5.2	0.075	0.500	19.219314	-103.800430	

21 CARR: Comala - San Antonio

CLAVE: 06030

RUTA: COL-016

AÑO: 2012

LUGAR	ESTACION				CLASIFICACION VEHICULAR EN PORCIENTO													COORDENADAS		
	KM	TE	SC	TDPA	M	A	B	C2	C3	T3S2	T3S3	T3S2R4	OTROS	A	B	C	K'	D	LATITUD	LONGITUD
Comala	0.00	3	0	4406	3.4	85.2	3.5	4.6	0.7	1.3	0.6	0.3	0.4	88.6	3.5	7.9	0.082	0.534	19.331393	-103.750424
Suchitlán	10.00	1	0	3336	2.8	86.9	3.4	4.2	0.3	1.9	0.3	0.0	0.2	89.7	3.4	6.9	0.140	0.511	19.377370	-103.716444

COLIMA

21 CARR: Comala - San Antonio

CLAVE: 06030

RUTA: COL-016

AÑO: 2012

LUGAR	ESTACION	CLASIFICACION VEHICULAR EN PORCIENTO													COORDENADAS							
		KM	TE	SC	TDPA	M	A	B	C2	C3	T3S2	T3S3	T3S2R4	OTROS	A	B	C	K'	D	LATITUD	LONGITUD	
San Antonio	20.50																					

22 CARR: Coquimatlán - Pueblo Juárez

CLAVE: 06029

RUTA: COL-034

AÑO: 2012

LUGAR	ESTACION	CLASIFICACION VEHICULAR EN PORCIENTO													COORDENADAS						
		KM	TE	SC	TDPA	M	A	B	C2	C3	T3S2	T3S3	T3S2R4	OTROS	A	B	C	K'	D	LATITUD	LONGITUD
Coquimatlán	0.00	3	0	2660	6.6	80.8	2.1	7.7	0.6	1.6	0.3	0.0	0.3	87.4	2.1	10.5	0.081	0.503	19.198523	-103.815830	
Pueblo Juárez	16.00																				

23 CARR: Costera Laguna de Cuyutlán

CLAVE: 06010

RUTA: COL

AÑO: 2012

LUGAR	ESTACION	CLASIFICACION VEHICULAR EN PORCIENTO													COORDENADAS					
		KM	TE	SC	TDPA	M	A	B	C2	C3	T3S2	T3S3	T3S2R4	OTROS	A	B	C	K'	D	LATITUD
T. C. Armería - Manzanillo (Cuota)	0.00	3	0	3000	7.9	75.0	2.9	6.1	1.4	2.7	1.6	1.4	1.0	82.9	2.9	14.2	0.078	0.502	18.999277	-104.250126
Manzanillo	13.00	1	0	5652	5.6	79.8	3.1	5.8	0.6	3.1	1.4	0.1	0.5	85.4	3.1	11.5	0.099	0.500	19.033873	-104.330758

24 CARR: Cuauhtémoc - Colima

CLAVE: 06019

RUTA: COL-019

AÑO: 2012

LUGAR	ESTACION	CLASIFICACION VEHICULAR EN PORCIENTO													COORDENADAS						
		KM	TE	SC	TDPA	M	A	B	C2	C3	T3S2	T3S3	T3S2R4	OTROS	A	B	C	K'	D	LATITUD	LONGITUD
Cuauhtémoc	0.00	3	0	6276	0.9	91.4	1.1	2.3	0.8	2.0	0.7	0.4	0.4	92.3	1.1	6.6	0.097	0.508	19.318623	-103.602968	
X. C. Libramiento de Colima	19.50	1	1	14196	5.3	88.3	2.8	2.6	0.2	0.3	0.4	0.0	0.1	93.6	2.8	3.6	0.084	0.507	19.236169	-103.700843	
X. C. Libramiento de Colima	19.50	1	2	14604	5.3	87.4	3.3	3.0	0.2	0.3	0.4	0.0	0.1	92.7	3.3	4.0	0.080	0.507	19.236170	-103.700830	
Colima	22.40																				

25 CARR: Libramiento de Tecmán

CLAVE: 06122

RUTA: COL

AÑO: 2012

LUGAR	ESTACION	CLASIFICACION VEHICULAR EN PORCIENTO													COORDENADAS					
		KM	TE	SC	TDPA	M	A	B	C2	C3	T3S2	T3S3	T3S2R4	OTROS	A	B	C	K'	D	LATITUD
T. C. Ent. Playa Azul - Manzanillo	0.00	3	1	2320	7.0	63.3	4.4	7.5	3.7	10.5	2.6	0.5	0.5	70.3	4.4	25.3	0.090	0.501	18.899473	-103.858445
T. C. Ent. Playa Azul - Manzanillo	0.00	3	2	2306	6.8	60.5	4.7	8.8	4.1	11.2	3.0	0.5	0.4	67.3	4.7	28.0	0.095	0.501	18.899461	-103.858442
T. C. Ent. Playa Azul - Manzanillo	7.90	1	1	2813	4.6	64.3	3.6	5.9	3.2	9.7	6.1	1.8	0.8	68.9	3.6	27.5	0.111	0.503	18.942321	-103.890262
T. C. Ent. Playa Azul - Manzanillo	7.90	1	2	2784	4.5	63.5	3.9	5.4	3.5	9.5	6.9	1.8	1.0	68.0	3.9	28.1	0.080	0.503	18.942321	-103.890262

COLIMA

26 CARR: Libramiento Poniente de Colima

CLAVE: 06122

RUTA: COL

AÑO: 2012

LUGAR	ESTACION				CLASIFICACION VEHICULAR EN PORCIENTO														COORDENADAS	
	KM	TE	SC	TDPA	M	A	B	C2	C3	T3S2	T3S3	T3S2R4	OTROS	A	B	C	K'	D	LATITUD	LONGITUD
T. C. Colima - Ent. Tecomán	0.00	3	1	6420	3.3	83.2	2.0	4.9	2.4	1.2	1.5	0.9	0.6	86.5	2.0	11.5	0.087	0.518	19.216661	-103.744646
T. C. Colima - Ent. Tecomán	0.00	3	2	6912	2.5	83.3	2.0	5.1	2.5	1.4	1.6	0.9	0.7	85.8	2.0	12.2	0.113	0.518	19.216662	-103.744648
T. C. Colima - Coquimatlán	6.00																			

27 CARR: Los Limones - Loma de Juárez

CLAVE: 06122

RUTA: COL

AÑO: 2012

LUGAR	ESTACION				CLASIFICACION VEHICULAR EN PORCIENTO														COORDENADAS	
	KM	TE	SC	TDPA	M	A	B	C2	C3	T3S2	T3S3	T3S2R4	OTROS	A	B	C	K'	D	LATITUD	LONGITUD
Los Limones	0.00																			
T. C. Colima - Ent. Tecomán	2.00	1	0	2228	3.5	83.8	4.2	3.8	1.3	1.9	1.4	0.0	0.1	87.3	4.2	8.5	0.094	0.504	19.189305	-103.751497

28 CARR: Puerta de Caleras - Madrid

CLAVE: 06014

RUTA: COL-014

AÑO: 2012

LUGAR	ESTACION				CLASIFICACION VEHICULAR EN PORCIENTO														COORDENADAS	
	KM	TE	SC	TDPA	M	A	B	C2	C3	T3S2	T3S3	T3S2R4	OTROS	A	B	C	K'	D	LATITUD	LONGITUD
T. C. Colima - Ent. Tecomán	0.00	3	0	3323	7.0	69.3	1.2	6.0	3.8	4.1	4.6	2.9	1.1	76.3	1.2	22.5	0.082	0.501	18.978487	-103.859680
Madrid	14.00																			

29 CARR: Quesería - El Naranjal

CLAVE: 06001

RUTA: COL-001

AÑO: 2012

LUGAR	ESTACION				CLASIFICACION VEHICULAR EN PORCIENTO														COORDENADAS	
	KM	TE	SC	TDPA	M	A	B	C2	C3	T3S2	T3S3	T3S2R4	OTROS	A	B	C	K'	D	LATITUD	LONGITUD
Quesería	0.00	3	0	1323	2.1	86.3	0.1	9.8	0.6	1.1	0.0	0.0	0.0	88.4	0.1	11.5	0.120	0.502	19.390186	-103.584739
El Naranjal	10.00	1	0	461	4.5	86.7	0.1	7.3	0.7	0.5	0.2	0.0	0.0	91.2	0.1	8.7	0.255	0.503	19.411616	-103.652353

30 CARR: Ramal a Aeropuerto de Colima

CLAVE: 06224

RUTA: COL

AÑO: 2012

LUGAR	ESTACION				CLASIFICACION VEHICULAR EN PORCIENTO														COORDENADAS	
	KM	TE	SC	TDPA	M	A	B	C2	C3	T3S2	T3S3	T3S2R4	OTROS	A	B	C	K'	D	LATITUD	LONGITUD
T. C. Cuauhtémoc - Colima	0.00	3	0	1140	1.1	92.0	0.1	6.4	0.0	0.3	0.1	0.0	0.0	93.1	0.1	6.8	0.279	0.500	19.292185	-103.595473
Aeropuerto de Colima	1.00																			

COLIMA

36 CARR: Ramal a Rincón de López

CLAVE: 06578

RUTA: COL

AÑO: 2012

LUGAR	ESTACION				CLASIFICACION VEHICULAR EN PORCIENTO														COORDENADAS	
	KM	TE	SC	TDPA	M	A	B	C2	C3	T3S2	T3S3	T3S2R4	OTROS	A	B	C	K'	D	LATITUD	LONGITUD
T. C. Ent. Playa Azul - Manzanillo	0.00	3	0	4932	10.7	74.3	2.2	6.5	0.6	3.8	0.9	0.2	0.8	85.0	2.2	12.8	0.079	0.503	18.953691	-103.947717
Rincón de López	14.00																			

37 CARR: Ramal a Tecuanillo

CLAVE: 06009

RUTA: COL-009

AÑO: 2012

LUGAR	ESTACION				CLASIFICACION VEHICULAR EN PORCIENTO														COORDENADAS	
	KM	TE	SC	TDPA	M	A	B	C2	C3	T3S2	T3S3	T3S2R4	OTROS	A	B	C	K'	D	LATITUD	LONGITUD
T. C. Ent. Playa Azul - Manzanillo	0.00	3	0	1789	12.8	73.1	1.6	8.9	1.6	1.7	0.3	0.0	0.0	85.9	1.6	12.5	0.088	0.522	18.890336	-103.855394
Tecuanillo	10.00																			

38 CARR: Ramal Camotlán de Miraflores

CLAVE: 06009

RUTA: COL

AÑO: 2012

LUGAR	ESTACION				CLASIFICACION VEHICULAR EN PORCIENTO														COORDENADAS	
	KM	TE	SC	TDPA	M	A	B	C2	C3	T3S2	T3S3	T3S2R4	OTROS	A	B	C	K'	D	LATITUD	LONGITUD
T. C. Minatitlán - Ent. Pez Vela	0.00	3	0	1850	8.7	77.0	4.4	5.7	0.4	2.4	0.8	0.1	0.5	85.7	4.4	9.9	0.084	0.525	19.217711	-104.233423
Camotlán de Miraflores	1.00																			

39 CARR: Tecmán - La Mascota

CLAVE: 06572

RUTA: COL

AÑO: 2012

LUGAR	ESTACION				CLASIFICACION VEHICULAR EN PORCIENTO														COORDENADAS	
	KM	TE	SC	TDPA	M	A	B	C2	C3	T3S2	T3S3	T3S2R4	OTROS	A	B	C	K'	D	LATITUD	LONGITUD
Tecmán	0.00	3	0	1642	10.4	80.1	1.1	2.2	1.9	1.5	0.1	1.9	0.8	90.5	1.1	8.4	0.121	0.531	18.895792	-103.887473
La Mascota	11.00																			

40 CARR: Trapichillos - Estación Alzada

CLAVE: 06003

RUTA: COL-003

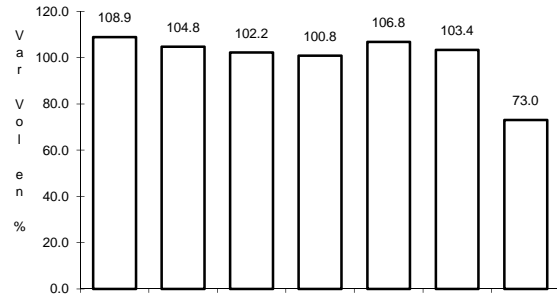
AÑO: 2012

LUGAR	ESTACION				CLASIFICACION VEHICULAR EN PORCIENTO														COORDENADAS	
	KM	TE	SC	TDPA	M	A	B	C2	C3	T3S2	T3S3	T3S2R4	OTROS	A	B	C	K'	D	LATITUD	LONGITUD
T. C. Jiquilpan - Colima	0.00	3	0	272	1.2	73.9	1.7	8.1	4.7	2.2	7.4	0.0	0.8	75.1	1.7	23.2	0.170	0.505	19.162196	-103.524966
Estación Alzada	12.50	1	0	398	1.6	75.2	2.9	6.5	2.2	3.2	7.1	0.1	1.2	76.8	2.9	20.3	0.179	0.528	19.251128	-103.531485

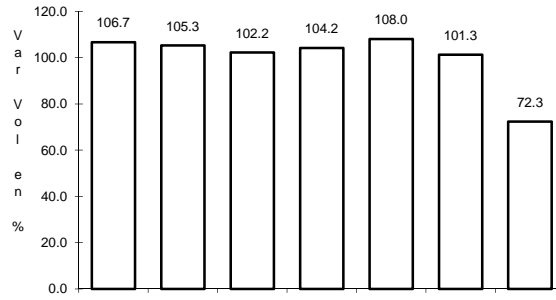
1 CARR: Cd. Guzmán - Colima

CLAVE: 00117

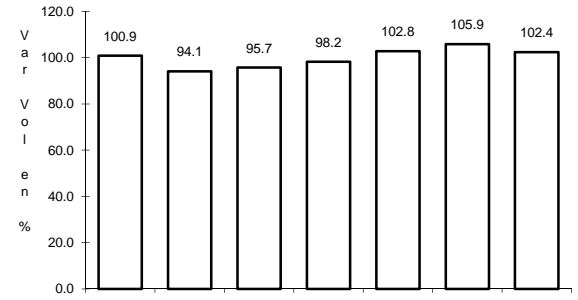
RUTA: MEX-054



Km: 0.00 Tipo: 3 Sent: 1



Km: 0.00 Tipo: 3 Sent: 2

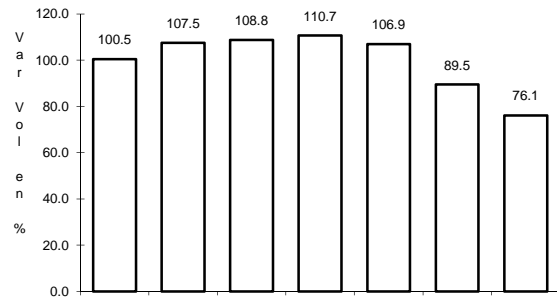


Km: 58.35 Tipo: 1 Sent: 0

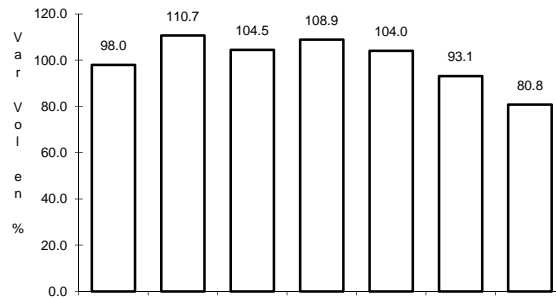
2 CARR: Colima - Ent. Tecomán

CLAVE: 06119

RUTA: MEX-110



Km: 0.00 Tipo: 3 Sent: 1

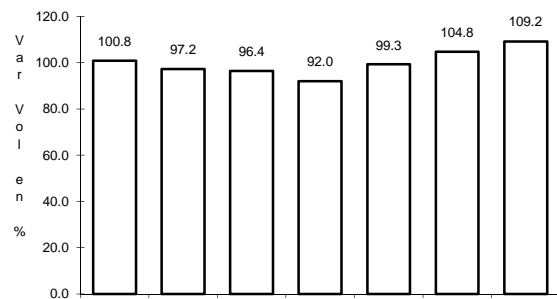


Km: 0.00 Tipo: 3 Sent: 2

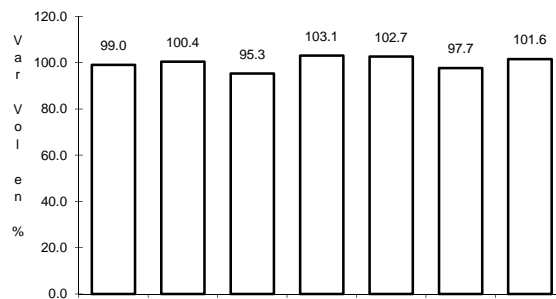
3 CARR: Ent. Playa Azul - Manzanillo

CLAVE: 00495

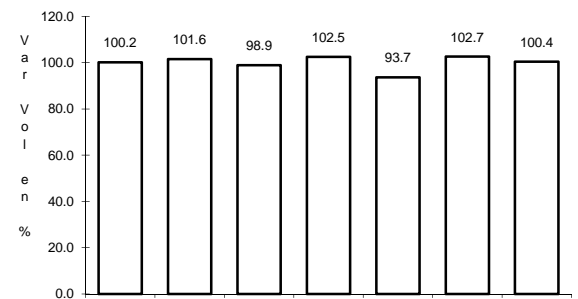
RUTA: MEX-200



Km: 0.00 Tipo: 3 Sent: 0



Km: 190.10 Tipo: 3 Sent: 0

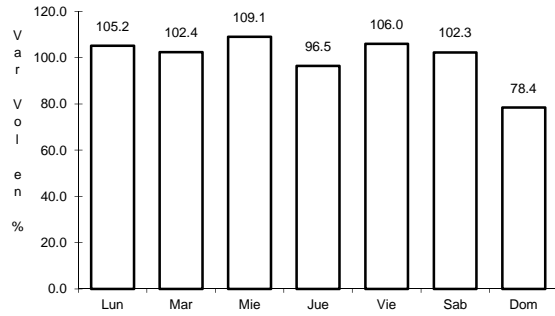


Km: 321.12 Tipo: 1 Sent: 0

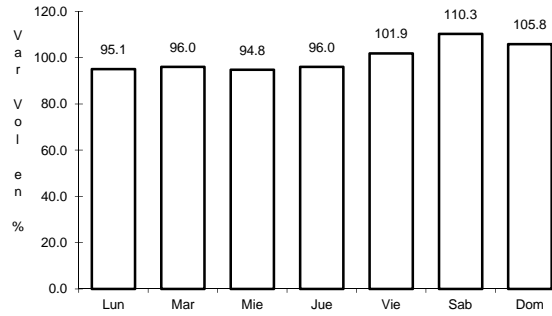
7 CARR: Libramiento de Manzanillo Norte

CLAVE: 06122

RUTA: MEX-200



Km: 3.00 Tipo: 3 Sent: 0

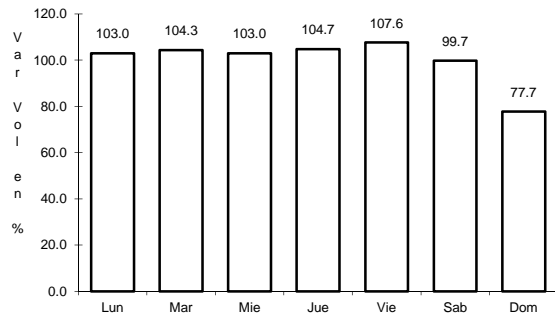


Km: 19.00 Tipo: 1 Sent: 0

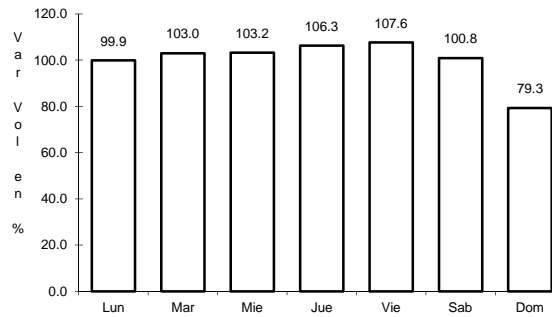
8 CARR: Manzanillo - Puerto Vallarta

CLAVE: 00070

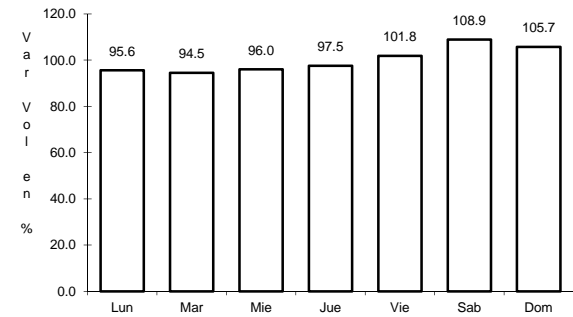
RUTA: MEX-200



Km: 0.00 Tipo: 3 Sent: 1



Km: 0.00 Tipo: 3 Sent: 2

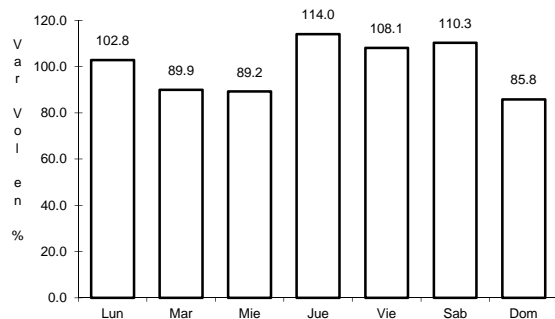


Km: 273.64 Tipo: 1 Sent: 0

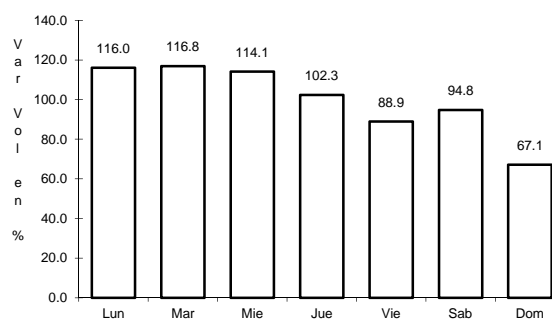
9 CARR: Minatitlán - Ent. Pez Vela

CLAVE: 06015

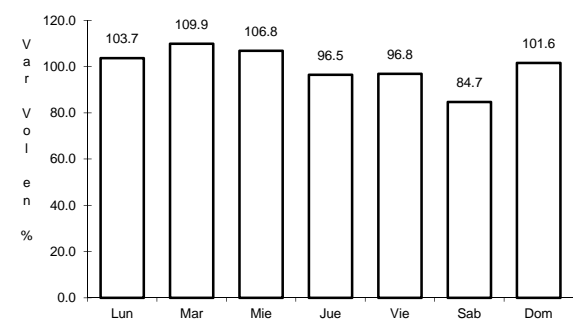
RUTA: MEX-098



Km: 49.50 Tipo: 1 Sent: 0



Km: 58.50 Tipo: 1 Sent: 1

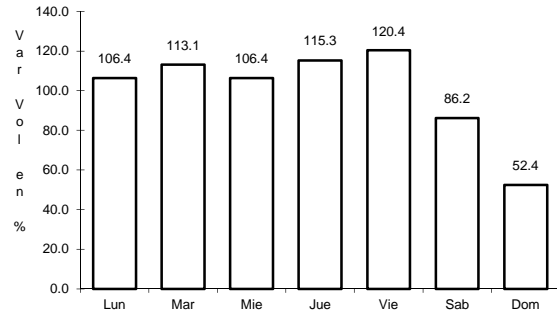


Km: 58.50 Tipo: 1 Sent: 2

13 CARR: Ramal Cerro de Los Juanes

CLAVE: 06009

RUTA: MEX-098



Km: 0.00

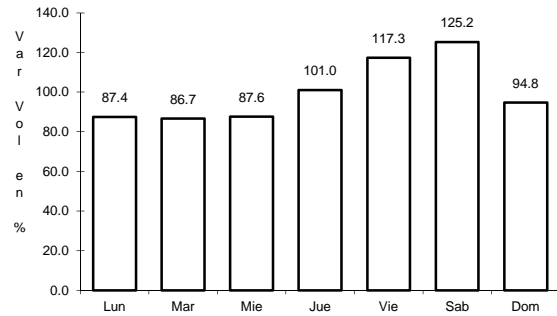
Tipo: 3

Sent: 0

14 CARR: Ramal Cerro de Ortega

CLAVE: 06009

RUTA: MEX-200



Km: 0.00

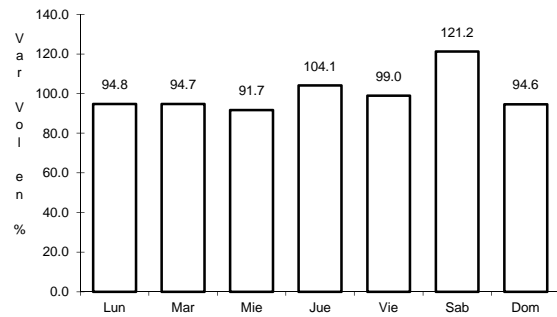
Tipo: 3

Sent: 0

15 CARR: Tecomán - Boca de Pascuales

CLAVE: 06226

RUTA: MEX-200



Km: 0.00

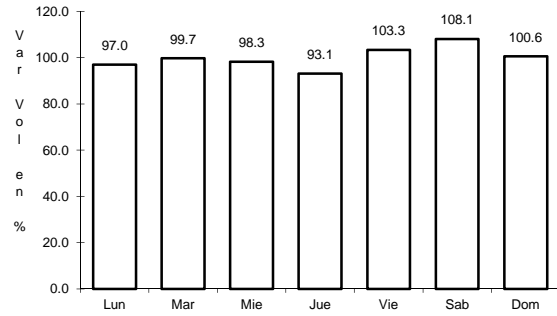
Tipo: 3

Sent: 0

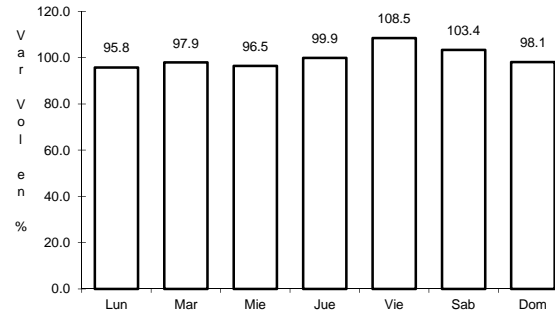
19 CARR: Colima - Comala

CLAVE: 06016

RUTA: COL-016



Km: 3.00 Tipo: 3 Sent: 1

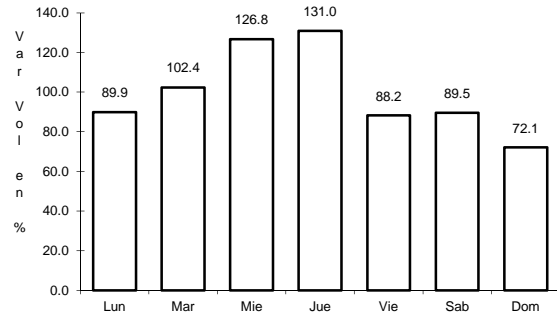


Km: 3.00 Tipo: 3 Sent: 2

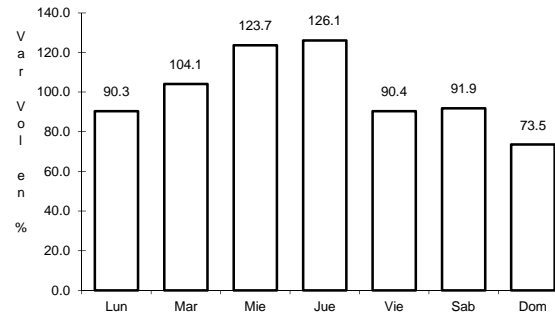
20 CARR: Colima - Coquimatlán

CLAVE: 06034

RUTA: COL-034



Km: 3.00 Tipo: 3 Sent: 1

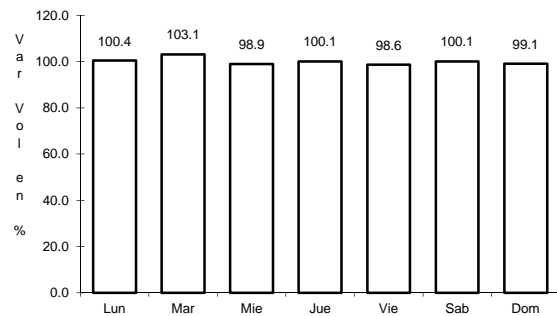


Km: 3.00 Tipo: 3 Sent: 2

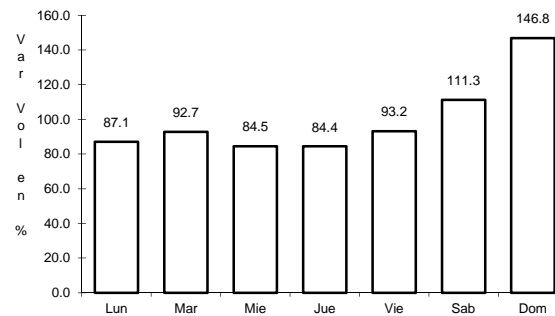
21 CARR: Comala - San Antonio

CLAVE: 06030

RUTA: COL-016



Km: 0.00 Tipo: 3 Sent: 0

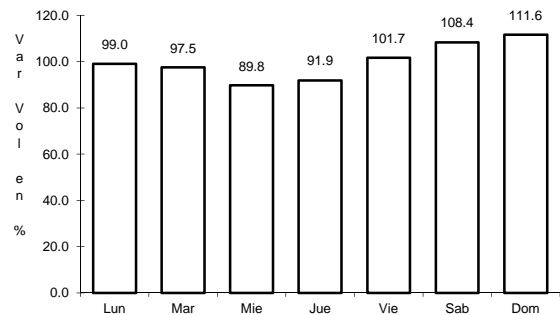


Km: 10.00 Tipo: 1 Sent: 0

22 CARR: Coquimatlán - Pueblo Juárez

CLAVE: 06029

RUTA: COL-034

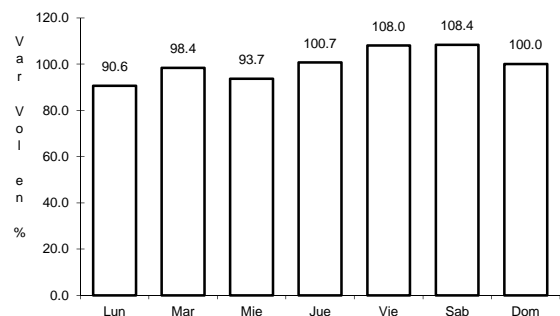


Km: 0.00 Tipo: 3 Sent: 0

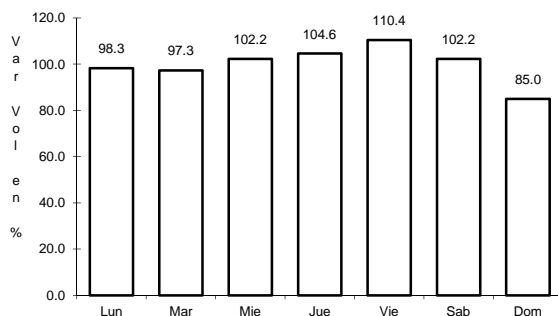
23 CARR: Costera Laguna de Cuyutlán

CLAVE: 06010

RUTA: COL



Km: 0.00 Tipo: 3 Sent: 0

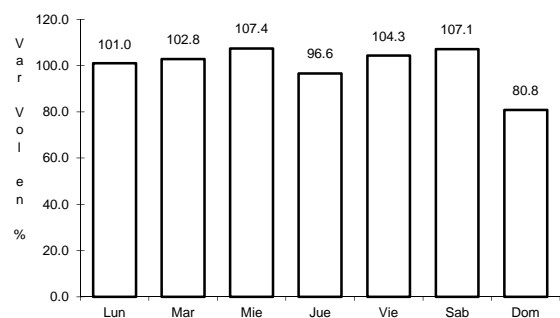


Km: 13.00 Tipo: 1 Sent: 0

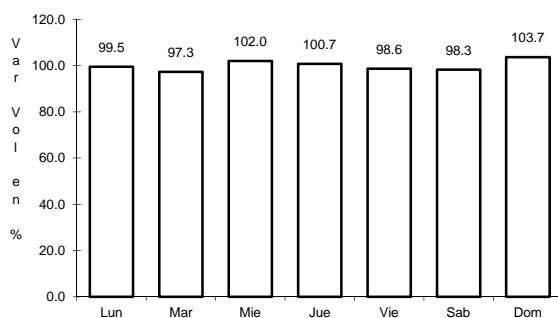
24 CARR: Cuauhtémoc - Colima

CLAVE: 06019

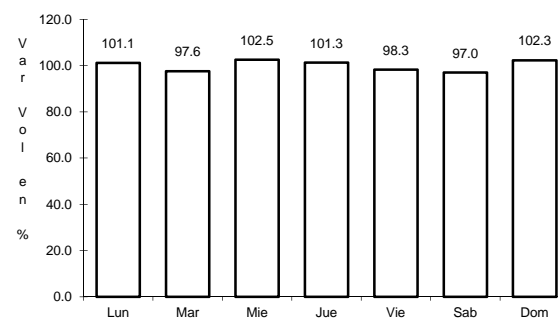
RUTA: COL-019



Km: 0.00 Tipo: 3 Sent: 0



Km: 19.50 Tipo: 1 Sent: 1

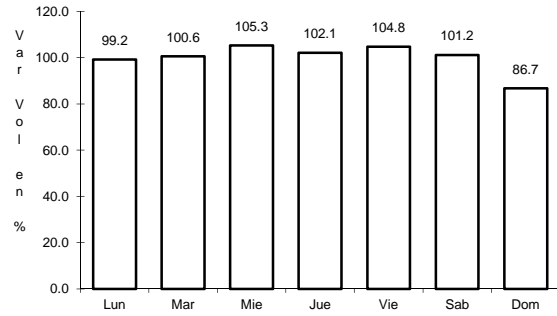


Km: 19.50 Tipo: 1 Sent: 2

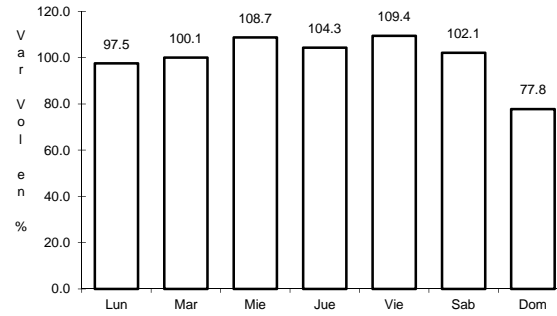
25 CARR: Libramiento de Tecomán

CLAVE: 06122

RUTA: COL



Km: 0.00 Tipo: 3 Sent: 1

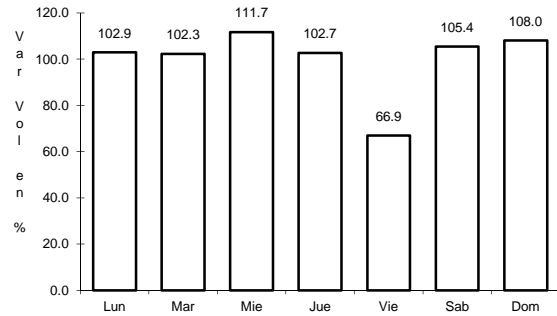


Km: 0.00 Tipo: 3 Sent: 2

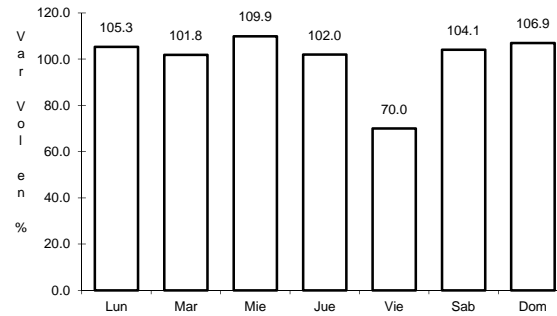
26 CARR: Libramiento Poniente de Colima

CLAVE: 06122

RUTA: COL



Km: 0.00 Tipo: 3 Sent: 1

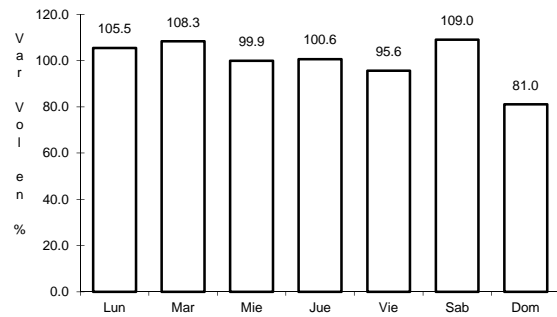


Km: 0.00 Tipo: 3 Sent: 2

27 CARR: Los Limones - Loma de Juárez

CLAVE: 06122

RUTA: COL

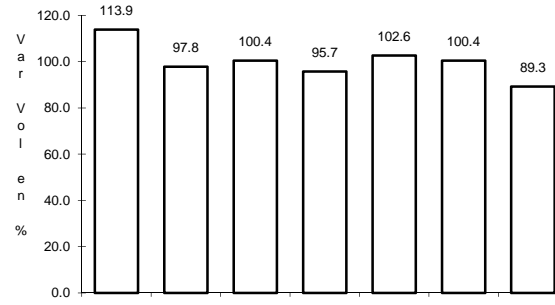
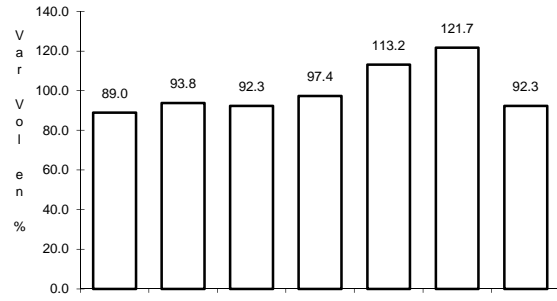


Km: 2.00 Tipo: 1 Sent: 0

31 CARR: Ramal a Aeropuerto Manzanillo

CLAVE: 06582

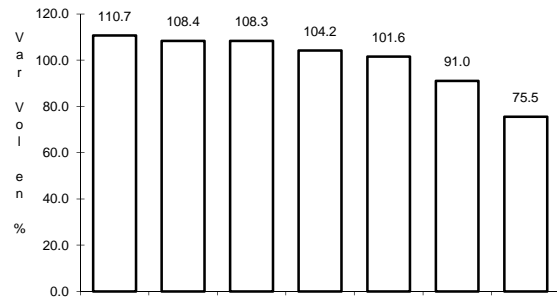
RUTA: COL



32 CARR: Ramal a Ixtlahuacán

CLAVE: 06577

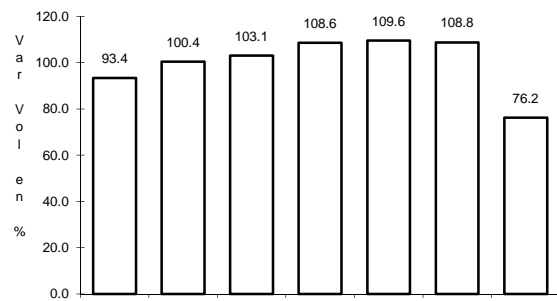
RUTA: COL-005



33 CARR: Ramal a Las Brisas

CLAVE: 06571

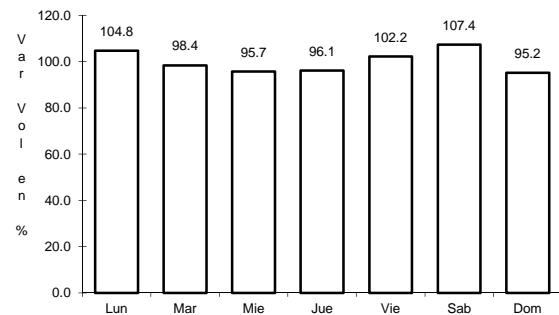
RUTA: COL



34 CARR: Ramal a Los Tepames

CLAVE: 06004

RUTA: COL-004



Km: 0.00

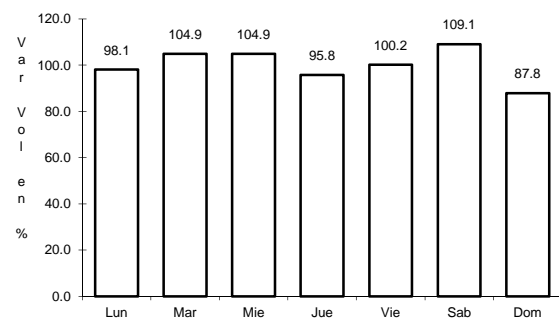
Tipo: 3

Sent: 0

35 CARR: Ramal a Rancho Valle Nuevo

CLAVE: 06583

RUTA: COL



Km: 0.00

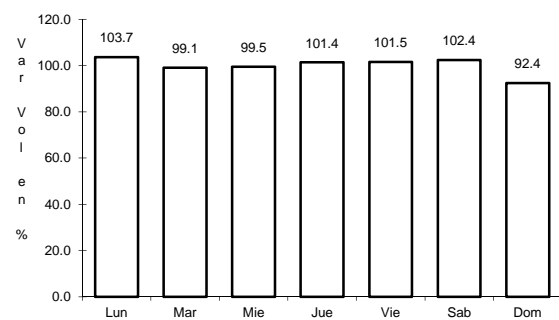
Tipo: 3

Sent: 0

36 CARR: Ramal a Rincón de López

CLAVE: 06578

RUTA: COL



Km: 0.00

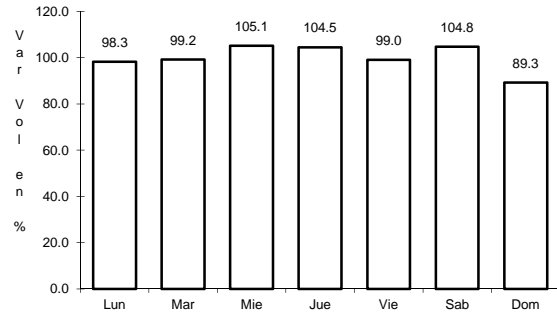
Tipo: 3

Sent: 0

37 CARR: Ramal a Tecuanillo

CLAVE: 06009

RUTA: COL-009



Km: 0.00

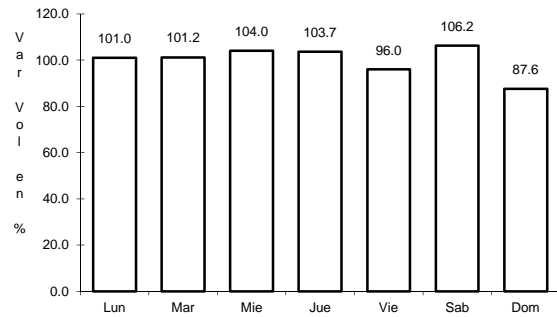
Tipo: 3

Sent: 0

38 CARR: Ramal Camotlán de Miraflores

CLAVE: 06009

RUTA: COL



Km: 0.00

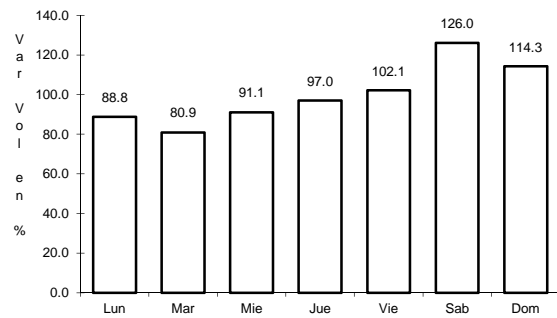
Tipo: 3

Sent: 0

39 CARR: Tecomán - La Mascota

CLAVE: 06572

RUTA: COL



Km: 0.00

Tipo: 3

Sent: 0

