



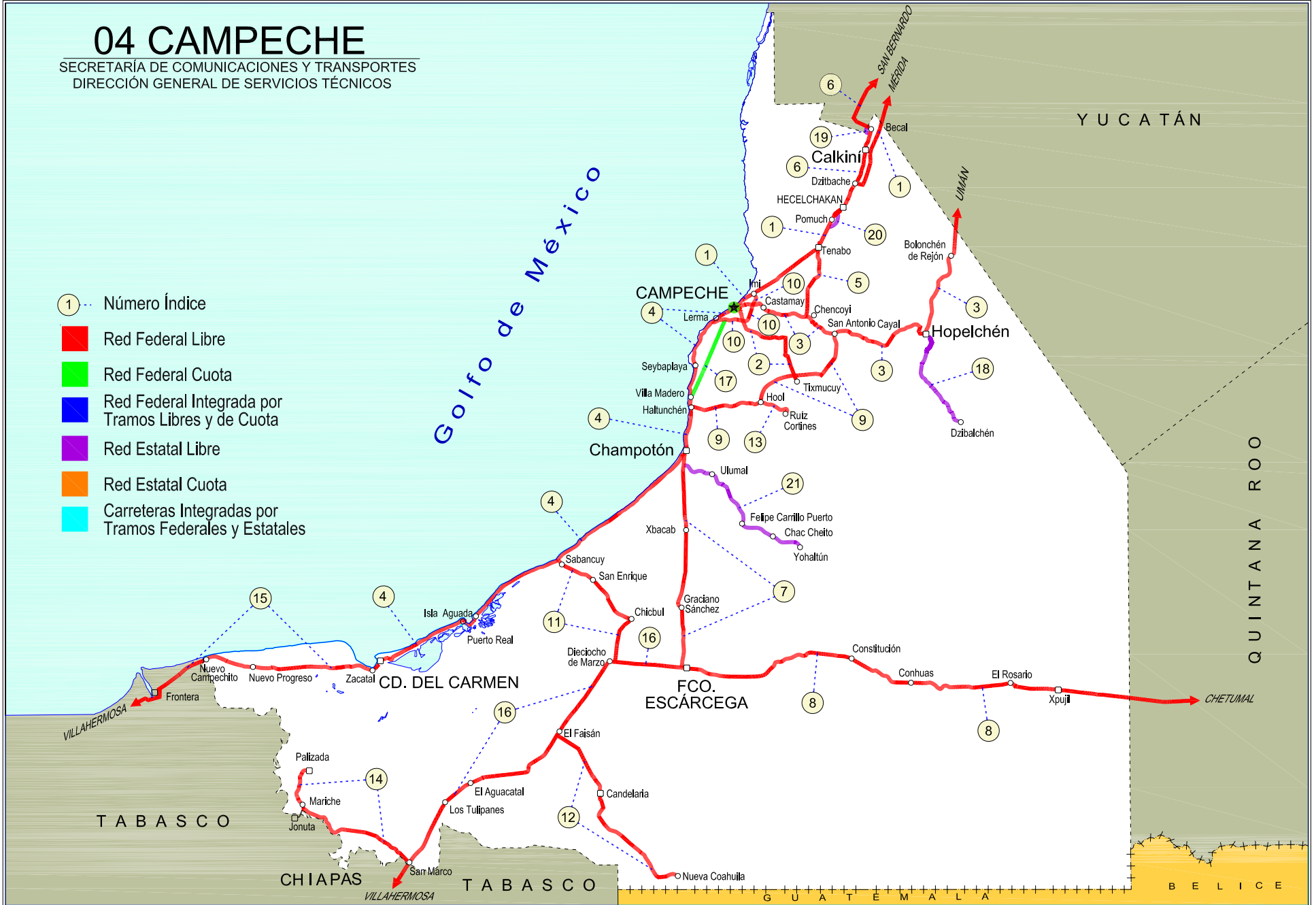
CAMPECHE

NO. INDICE	CARRETERA	RUTA
---RED FEDERAL LIBRE---		
1	Campeche - Mérida	MEX-180
2	Campeche - Tixmucuy	MEX-180
3	Campeche - Umán	MEX-261
4	Cd. del Carmen - Campeche	MEX-180
5	Chencoyi - Tenabo	MEX-180
6	Dzitzbalché - Ent. San Bernardo	MEX-180
7	Francisco Escárcega - Champotón	MEX-201
8	Francisco Escárcega - Chetumal	MEX-186
9	Haltunchén - San Antonio Cayal	MEX-180
10	Libramiento de Campeche	MEX-180
11	Presidente Díaz Ordaz - Sabancuy	MEX-186
12	Ramal a Nuevo Coahuila	MEX-186
13	Ramal a Ruíz Cortines	MEX-180
14	San Marco - Palizada	MEX-186
15	Villahermosa - Cd. del Carmen	MEX-180
16	Villahermosa - Francisco Escárcega	MEX-186
---RED FEDERAL DE CUOTA---		
17	Champotón - Campeche (Cuota)	MEX-180D
---RED ESTATAL LIBRE---		
18	Hopelchén - Dzibalchén	CAM-261
19	Libramiento de Becal	CAM
20	Libramiento de Pomuch	CAM
21	T. C. (Francisco Escárcega - Champotón) - Yohaltún	CAM

04 CAMPECHE

SECRETARÍA DE COMUNICACIONES Y TRANSPORTES
DIRECCIÓN GENERAL DE SERVICIOS TÉCNICOS

- ① Número Índice
- Red Federal Libre
- Red Federal Cuota
- Red Federal Integrada por Tramos Libres y de Cuota
- Red Estatal Libre
- Red Estatal Cuota
- Carreteras Integradas por Tramos Federales y Estatales



CAMPECHE

1 CARR : Campeche - Mérida

CLAVE: 00066

RUTA: MEX-180

AÑO : 2012

LUGAR	ESTACION				CLASIFICACION VEHICULAR EN PORCIENTO														COORDENADAS	
	KM	TE	SC	TDPA	M	A	B	C2	C3	T3S2	T3S3	T3S2R4	OTROS	A	B	C	K'	D	LATITUD	LONGITUD
Campeche	0.00	3	1	4182	4.1	86.4	3.3	4.9	0.4	0.5	0.2	0.1	0.1	90.5	3.3	6.2	0.108	0.503	19.874291	-90.492784
Campeche	0.00	3	2	4233	3.9	85.7	3.8	5.2	0.4	0.5	0.3	0.1	0.1	89.6	3.8	6.6	0.084	0.503	19.874291	-90.492784
T. Der. Libramiento de Campeche	7.00	3	0	9593	2.9	74.6	4.1	5.1	1.7	6.6	1.4	3.1	0.5	77.5	4.1	18.4	0.072	0.502	19.892837	-90.461528
Tenabo	40.00	1	1	6943	1.7	77.1	3.4	6.9	1.7	4.1	1.2	3.5	0.4	78.8	3.4	17.8	0.097	0.501	20.024786	-90.247006
Tenabo	40.00	1	2	6914	1.7	76.0	3.6	7.5	1.8	4.6	1.2	3.2	0.4	77.7	3.6	18.7	0.084	0.501	20.024786	-90.247006
T. Der. Libramiento de Pomuch (2º Acceso)	50.00	3	0	8064	1.8	73.0	4.7	7.3	1.5	6.4	1.1	3.8	0.4	74.8	4.7	20.5	0.074	0.506	20.151085	-90.161792
Lim. Edos. Term. Camp. Ppia. Yuc.	96.96																			
Kopomá	124.29	3	1	3832	0.8	80.6	2.2	5.4	2.4	4.4	1.2	2.5	0.5	81.4	2.2	16.4	0.088	0.518	20.662998	-89.890293
Kopomá	124.29	3	2	4123	0.6	79.9	2.5	5.0	2.5	4.6	1.4	2.9	0.6	80.5	2.5	17.0	0.093	0.518	20.663089	-89.890450
T. Der. Libramiento de Chocholá (1º Acceso)	137.89	1	1	2151	0.4	77.9	3.0	6.6	2.9	4.3	1.2	3.2	0.5	78.3	3.0	18.7	0.081	0.509	20.733320	-89.839445
T. Der. Libramiento de Chocholá (1º Acceso)	137.89	1	2	2074	0.7	75.3	3.4	7.1	3.4	4.6	1.3	3.6	0.6	76.0	3.4	20.6	0.089	0.509	20.733401	-89.839610
T. Izq. Umán	146.99	3	1	3775	0.6	78.9	2.9	5.9	2.4	4.0	1.4	3.3	0.6	79.5	2.9	17.6	0.081	0.513	20.797826	-89.809595
T. Izq. Umán	146.99	3	2	3587	0.7	76.9	3.4	6.2	2.6	4.5	1.3	3.6	0.8	77.6	3.4	19.0	0.097	0.513	20.797826	-89.809595
X. C. Campeche - Umán	160.49	1	1	3808	0.5	74.3	3.8	6.8	3.6	4.7	1.3	4.1	0.9	74.8	3.8	21.4	0.081	0.511	20.835960	-89.755325
X. C. Campeche - Umán	160.49	1	2	3638	0.6	73.4	3.6	6.7	4.0	4.9	1.4	4.5	0.9	74.0	3.6	22.4	0.078	0.511	20.836162	-89.755651
T. C. Periférico de Mérida	171.21																			

2 CARR : Campeche - Tixmucuy

CLAVE: 04575

RUTA: MEX-180

AÑO : 2012

LUGAR	ESTACION				CLASIFICACION VEHICULAR EN PORCIENTO														COORDENADAS	
	KM	TE	SC	TDPA	M	A	B	C2	C3	T3S2	T3S3	T3S2R4	OTROS	A	B	C	K'	D	LATITUD	LONGITUD
Campeche	0.00	3	1	3931	8.8	78.4	3.5	6.1	1.1	1.0	0.5	0.4	0.2	87.2	3.5	9.3	0.088	0.511	19.809695	-90.505946
Campeche	0.00	3	2	4114	8.4	77.7	3.8	6.8	1.1	1.1	0.5	0.4	0.2	86.1	3.8	10.1	0.096	0.511	19.809696	-90.505947
X. C. Libramiento de Campeche	4.00	3	0	3975	8.4	78.2	3.9	5.8	1.0	1.9	0.4	0.1	0.3	86.6	3.9	9.5	0.084	0.505	19.789106	-90.500633
X. C. Haltunchén - Cayal	39.00	1	0	1103	4.2	82.4	4.4	5.9	1.3	1.2	0.4	0.2	0.0	86.6	4.4	9.0	0.098	0.507	19.605152	-90.319446
Tixmucuy	42.00	1	0	432	10.4	77.5	2.4	6.2	2.1	1.3	0.1	0.0	0.0	87.9	2.4	9.7	0.115	0.500	19.586642	-90.317999

3 CARR : Campeche - Umán

CLAVE: 00164

RUTA: MEX-261

AÑO : 2012

LUGAR	ESTACION				CLASIFICACION VEHICULAR EN PORCIENTO														COORDENADAS	
	KM	TE	SC	TDPA	M	A	B	C2	C3	T3S2	T3S3	T3S2R4	OTROS	A	B	C	K'	D	LATITUD	LONGITUD
Campeche	0.00																			
X. C. Libramiento de Campeche	7.00	1	0	4759	6.5	82.2	2.2	4.2	0.7	3.2	0.4	0.2	0.4	88.7	2.2	9.1	0.081	0.524	19.849927	-90.476428
X. C. Libramiento de Campeche	7.00	3	0	2075	5.6	79.7	4.6	5.8	0.7	2.4	0.7	0.1	0.4	85.3	4.6	10.1	0.083	0.503	19.849853	-90.466572
T. Izq. Tenabo	30.88	1	0	1241	4.8	80.7	4.6	6.4	1.1	1.5	0.6	0.1	0.2	85.5	4.6	9.9	0.095	0.505	19.804973	-90.279646

CAMPECHE

5 CARR: Chencoyi - Tenabo

CLAVE: 04576

RUTA: MEX-180

AÑO: 2012

LUGAR	ESTACION				CLASIFICACION VEHICULAR EN PORCIENTO													COORDENADAS		
	KM	TE	SC	TDPA	M	A	B	C2	C3	T3S2	T3S3	T3S2R4	OTROS	A	B	C	K'	D	LATITUD	LONGITUD
T. C. Campeche - Umán	0.00																			
Tenabo	28.00	1	0	728	11.4	76.7	0.4	5.5	2.7	1.6	0.2	1.5	0.0	88.1	0.4	11.5	0.087	0.502	20.028491	-90.226653

6 CARR: Dzitbalché - Ent. San Bernardo

CLAVE: 00162

RUTA: MEX-180

AÑO: 2012

LUGAR	ESTACION				CLASIFICACION VEHICULAR EN PORCIENTO													COORDENADAS		
	KM	TE	SC	TDPA	M	A	B	C2	C3	T3S2	T3S3	T3S2R4	OTROS	A	B	C	K'	D	LATITUD	LONGITUD
T. C. Campeche - Mérida	0.00																			
T. Izq. Libramiento de Becal (1º Acceso)	12.33	1	0	2787	13.3	76.1	2.3	6.0	0.6	1.4	0.1	0.0	0.2	89.4	2.3	8.3	0.081	0.527	20.424740	-90.031795
T. Izq. Libramiento de Becal (2º Acceso)	15.41	3	0	1474	12.5	76.0	2.5	6.6	1.0	1.3	0.1	0.0	0.0	88.5	2.5	9.0	0.082	0.501	20.451304	-90.041280
Lim. Edos. Term. Camp. Ppia. Yuc.	15.80																			
Halachó	21.08	1	0	1436	12.8	75.9	1.8	7.4	0.9	1.1	0.1	0.0	0.0	88.7	1.8	9.5	0.083	0.501	20.467784	-90.064306
T. Izq. Libramiento de Maxcanú (1º Acceso)	35.60	1	0	2256	16.9	65.3	1.7	12.6	1.6	1.2	0.2	0.4	0.1	82.2	1.7	16.1	0.079	0.502	20.577250	-90.035490
T. Der. Muna	40.36	3	0	4362	5.3	74.4	1.7	14.7	1.5	1.6	0.2	0.4	0.2	79.7	1.7	18.6	0.111	0.521	20.603985	-89.972116
Ent. San Bernardo	41.53																			

7 CARR: Francisco Escárcega - Champotón

CLAVE: 04103

RUTA: MEX-201

AÑO: 2012

LUGAR	ESTACION				CLASIFICACION VEHICULAR EN PORCIENTO													COORDENADAS		
	KM	TE	SC	TDPA	M	A	B	C2	C3	T3S2	T3S3	T3S2R4	OTROS	A	B	C	K'	D	LATITUD	LONGITUD
Francisco Escárcega	0.00	3	0	2156	1.7	65.1	5.2	8.6	3.7	7.0	3.2	4.4	1.1	66.8	5.2	28.0	0.070	0.505	18.626754	-90.741663
T. Izq. Ley Federal de La Reforma Agraria	51.40	1	0	2770	1.6	68.6	3.2	7.9	2.9	9.3	2.2	3.6	0.7	70.2	3.2	26.6	0.080	0.504	19.063286	-90.725174
T. Der. Ulumal y Patzajol	77.00	1	0	3124	2.4	68.7	3.8	9.0	2.5	7.1	2.3	3.3	0.9	71.1	3.8	25.1	0.071	0.506	19.295990	-90.732042
Champotón	81.40	1	0	4573	3.7	74.7	2.0	7.7	2.1	5.4	1.6	2.2	0.6	78.4	2.0	19.6	0.078	0.505	19.318049	-90.728977

8 CARR: Francisco Escárcega - Chetumal

CLAVE: 00093

RUTA: MEX-186

AÑO: 2012

LUGAR	ESTACION				CLASIFICACION VEHICULAR EN PORCIENTO													COORDENADAS		
	KM	TE	SC	TDPA	M	A	B	C2	C3	T3S2	T3S3	T3S2R4	OTROS	A	B	C	K'	D	LATITUD	LONGITUD
Francisco Escárcega	0.00	3	0	2987	2.7	75.1	4.1	5.6	2.2	5.2	1.3	2.7	1.1	77.8	4.1	18.1	0.069	0.504	18.604159	-90.718698
Adolfo López Mateos	41.50	1	0	2182	2.4	71.0	5.9	6.9	2.0	6.0	1.7	3.4	0.7	73.4	5.9	20.7	0.081	0.506	18.639535	-90.306074
T. Der. Silvituc	55.70	1	0	2287	2.8	75.3	3.5	7.5	1.2	4.5	1.6	2.4	1.2	78.1	3.5	18.4	0.075	0.566	18.650974	-90.272694
T. Der. Silvituc	55.70	3	0	1769	1.8	66.6	7.1	8.5	1.9	7.7	1.8	3.9	0.7	68.4	7.1	24.5	0.075	0.539	18.649506	-90.262121
Conhuás	100.00	1	0	1823	1.6	65.6	7.5	8.5	2.0	8.3	1.6	4.3	0.6	67.2	7.5	25.3	0.078	0.544	18.540435	-89.918584
Xpujil	155.73	1	0	2573	1.1	75.5	4.8	6.9	1.5	5.6	1.2	2.6	0.8	76.6	4.8	18.6	0.079	0.538	18.508942	-89.405067

CAMPECHE

8 CARR : Francisco Escárcega - Chetumal

CLAVE: 00093

RUTA: MEX-186

AÑO: 2012

LUGAR	ESTACION				CLASIFICACION VEHICULAR EN PORCIENTO													COORDENADAS		
	KM	TE	SC	TDPA	M	A	B	C2	C3	T3S2	T3S3	T3S2R4	OTROS	A	B	C	K'	D	LATITUD	LONGITUD
Lim. Edos. Term. Camp. Ppia. Qroo.	179.90																			
Nicolás Bravo	206.01	1	0	2234	1.7	71.5	5.4	7.7	2.3	6.4	1.4	3.0	0.6	73.2	5.4	21.4	0.080	0.532	18.458406	-88.941216
Nicolás Bravo	206.01	3	0	2866	1.5	73.3	4.5	8.2	1.9	5.7	1.7	2.5	0.7	74.8	4.5	20.7	0.078	0.510	18.459154	-88.917411
T. Izq. Morocoy	214.90	1	0	2284	1.1	73.6	5.0	7.5	1.9	6.4	1.1	2.9	0.5	74.7	5.0	20.3	0.077	0.529	18.478751	-88.817149
T. Izq. Morocoy	214.90	3	0	2388	0.9	74.0	5.0	7.7	1.9	6.0	1.2	2.8	0.5	74.9	5.0	20.1	0.076	0.518	18.478825	-88.814817
T. Der. Unión	247.50	1	0	4507	2.3	76.9	3.1	7.6	1.2	5.5	1.2	1.7	0.5	79.2	3.1	17.7	0.077	0.526	18.504969	-88.527416
T. Der. Unión	247.50	3	0	6040	3.3	76.5	2.4	7.3	1.0	6.2	1.1	1.2	1.0	79.8	2.4	17.8	0.076	0.518	18.506002	-88.519374
T. Izq. Fpe. Carrillo Puerto	255.15	1	0	6296	1.7	81.6	2.6	4.6	2.1	4.7	1.0	1.2	0.5	83.3	2.6	14.1	0.079	0.504	18.526121	-88.469284
T. Der. Subteniente López	268.57	1	1	6565	1.5	87.3	1.5	6.4	0.8	1.1	0.7	0.3	0.4	88.8	1.5	9.7	0.106	0.501	18.518027	-88.384421
T. Der. Subteniente López	268.57	1	2	6596	1.8	85.8	1.6	7.3	0.8	1.2	0.8	0.3	0.4	87.6	1.6	10.8	0.098	0.501	18.518030	-88.384426
T. Izq. Av. Insurgentes	270.00	1	1	10225	2.4	88.0	2.3	3.9	0.7	1.0	1.0	0.2	0.5	90.4	2.3	7.3	0.092	0.504	18.513507	-88.363081
T. Izq. Av. Insurgentes	270.00	1	2	10045	2.1	87.3	2.6	4.4	0.7	1.2	1.0	0.2	0.5	89.4	2.6	8.0	0.088	0.504	18.513506	-88.363081
T. Izq. Av. Insurgentes	270.00	3	1	5318	2.0	88.0	2.3	5.5	0.6	0.8	0.3	0.2	0.3	90.0	2.3	7.7	0.077	0.511	18.510344	-88.353188
T. Izq. Av. Insurgentes	270.00	3	2	5083	2.4	87.2	2.4	5.6	0.8	0.8	0.3	0.2	0.3	89.6	2.4	8.0	0.091	0.511	18.510343	-88.353187
Chetumal	277.36	1	1	7684	3.3	88.2	2.5	3.2	0.5	1.7	0.4	0.1	0.1	91.5	2.5	6.0	0.085	0.510	18.501608	-88.321063
Chetumal	277.36	1	2	7391	3.3	86.6	3.7	3.6	0.5	1.7	0.4	0.1	0.1	89.9	3.7	6.4	0.089	0.510	18.501608	-88.321063

9 CARR : Haltunchén - San Antonio Cayal

CLAVE: 04009

RUTA: MEX-180

AÑO: 2012

LUGAR	ESTACION				CLASIFICACION VEHICULAR EN PORCIENTO													COORDENADAS		
	KM	TE	SC	TDPA	M	A	B	C2	C3	T3S2	T3S3	T3S2R4	OTROS	A	B	C	K'	D	LATITUD	LONGITUD
T. C. Cd. del Carmen - Campeche	0.00	3	0	1244	6.4	81.9	2.4	4.1	2.9	1.2	0.4	0.7	0.0	88.3	2.4	9.3	0.088	0.510	19.498876	-90.699129
Sihochac	14.00	3	0	816	11.1	72.6	4.1	6.6	2.4	1.5	0.6	1.1	0.0	83.7	4.1	12.2	0.104	0.509	19.501642	-90.574935
X. C. China - Tixmucuy	47.10	1	0	561	5.2	76.5	0.6	10.1	3.3	1.9	1.0	1.3	0.1	81.7	0.6	17.7	0.105	0.530	19.603538	-90.323149
Edzna	59.00	1	0	1095	3.5	83.2	2.7	4.6	2.3	1.6	1.1	0.8	0.2	86.7	2.7	10.6	0.103	0.505	19.604082	-90.228253
T. Der. Pichucalco	60.00	3	0	417	11.2	76.4	2.6	5.1	2.4	1.2	0.6	0.5	0.0	87.6	2.6	9.8	0.094	0.512	19.609892	-90.219703
San Antonio Cayal	79.00	1	0	408	8.4	76.4	2.1	5.9	2.4	1.3	2.3	1.0	0.2	84.8	2.1	13.1	0.120	0.519	19.739176	-90.174427

10 CARR : Libramiento de Campeche

CLAVE: 04573

RUTA: MEX-180

AÑO: 2012

LUGAR	ESTACION				CLASIFICACION VEHICULAR EN PORCIENTO													COORDENADAS		
	KM	TE	SC	TDPA	M	A	B	C2	C3	T3S2	T3S3	T3S2R4	OTROS	A	B	C	K'	D	LATITUD	LONGITUD
Ent. Lerma	0.00	3	0	3230	4.3	78.3	5.4	6.0	2.0	2.3	1.2	0.3	0.2	82.6	5.4	12.0	0.093	0.505	19.790428	-90.615118
X. C. Campeche - Umán	21.00	1	0	5567	1.2	73.1	3.8	5.9	2.3	6.7	1.8	4.3	0.9	74.3	3.8	21.9	0.072	0.516	19.844525	-90.470566
T. C. Campeche - Mérida	26.00	1	0	6090	1.7	65.0	4.5	9.6	3.3	8.2	1.9	4.9	0.9	66.7	4.5	28.8	0.074	0.517	19.888948	-90.464524

CAMPECHE

11 CARR: Presidente Díaz Ordaz - Sabancuy

CLAVE: 04570

RUTA: MEX-186

AÑO: 2012

LUGAR	ESTACION				CLASIFICACION VEHICULAR EN PORCIENTO													COORDENADAS		
	KM	TE	SC	TDPA	M	A	B	C2	C3	T3S2	T3S3	T3S2R4	OTROS	A	B	C	K'	D	LATITUD	LONGITUD
T. C. Villahermosa - Francisco Escárcega	0.00	3	0	1265	6.4	79.6	2.3	6.5	1.3	1.7	0.9	1.2	0.1	86.0	2.3	11.7	0.086	0.508	18.633177	-90.982631
Chicbul	18.00	1	0	1429	8.7	77.9	1.9	6.2	1.5	1.7	0.5	1.3	0.3	86.6	1.9	11.5	0.093	0.506	18.770395	-90.931259
T. C. Cd. del Carmen - Campeche	57.00	1	0	1611	3.8	80.5	2.7	7.9	1.2	2.3	0.8	0.6	0.2	84.3	2.7	13.0	0.085	0.505	18.988139	-91.189446

12 CARR: Ramal a Nuevo Coahuila

CLAVE: 04015

RUTA: MEX-186

AÑO: 2012

LUGAR	ESTACION				CLASIFICACION VEHICULAR EN PORCIENTO													COORDENADAS		
	KM	TE	SC	TDPA	M	A	B	C2	C3	T3S2	T3S3	T3S2R4	OTROS	A	B	C	K'	D	LATITUD	LONGITUD
T. C. Villahermosa - Francisco Escárcega	0.00	3	0	950	5.2	83.2	1.1	5.4	1.7	1.5	1.0	0.8	0.1	88.4	1.1	10.5	0.092	0.500	18.376770	-91.194713
Candelaria	28.00	3	0	1989	5.4	83.9	1.4	5.9	1.0	1.9	0.3	0.1	0.1	89.3	1.4	9.3	0.087	0.502	18.176673	-91.053172
Reforma	44.50	3	0	1004	5.6	82.8	1.6	6.9	1.2	1.4	0.3	0.2	0.0	88.4	1.6	10.0	0.117	0.508	18.074518	-91.026527
T. Izq. Pedro Baranda	54.80	1	0	748	7.1	81.2	1.6	6.9	1.4	1.2	0.3	0.3	0.0	88.3	1.6	10.1	0.096	0.507	17.969288	-90.906820
T. Izq. Pedro Baranda	54.80	3	0	614	6.9	82.9	1.6	5.0	1.5	1.3	0.4	0.4	0.0	89.8	1.6	8.6	0.112	0.508	17.967178	-90.904561
Nuevo Coahuila	70.00	1	0	603	7.4	82.9	1.0	4.8	1.4	1.9	0.1	0.1	0.4	90.3	1.0	8.7	0.100	0.506	17.893709	-90.783461

13 CARR: Ramal a Ruíz Cortines

CLAVE: 04101

RUTA: MEX-180

AÑO: 2012

LUGAR	ESTACION				CLASIFICACION VEHICULAR EN PORCIENTO													COORDENADAS		
	KM	TE	SC	TDPA	M	A	B	C2	C3	T3S2	T3S3	T3S2R4	OTROS	A	B	C	K'	D	LATITUD	LONGITUD
Hool	0.00																			
T. Der. Hool	1.00	3	0	161	20.3	64.5	2.5	12.3	0.4	0.0	0.0	0.0	0.0	84.8	2.5	12.7	0.134	0.501	19.509303	-90.431554
Ruíz Cortines	12.00																			

14 CARR: San Marco - Palizada

CLAVE: 00490

RUTA: MEX-186

AÑO: 2012

LUGAR	ESTACION				CLASIFICACION VEHICULAR EN PORCIENTO													COORDENADAS		
	KM	TE	SC	TDPA	M	A	B	C2	C3	T3S2	T3S3	T3S2R4	OTROS	A	B	C	K'	D	LATITUD	LONGITUD
T. C. Villahermosa - Francisco Escárcega	0.00	3	0	628	2.5	74.7	6.7	6.6	6.1	1.8	0.9	0.7	0.0	77.2	6.7	16.1	0.091	0.502	17.942479	-91.735188
Lim. Edos. Term. Tab. Ppia. Camp.	1.50																			
T. Izq. Jonuta	46.20	1	0	604	3.2	74.2	2.7	7.1	7.9	1.4	1.1	2.4	0.0	77.4	2.7	19.9	0.101	0.500	18.126042	-92.106765
T. Izq. Jonuta	46.20	3	0	782	3.3	77.8	2.7	7.7	4.9	1.5	0.6	1.5	0.0	81.1	2.7	16.2	0.096	0.500	18.131669	-92.113558
Palizada	68.00																			

CAMPECHE

15 CARR: Villahermosa - Cd. del Carmen

CLAVE: 00064

RUTA: MEX-180

AÑO: 2012

LUGAR	ESTACION				CLASIFICACION VEHICULAR EN PORCIENTO													COORDENADAS		
	KM	TE	SC	TDPA	M	A	B	C2	C3	T3S2	T3S3	T3S2R4	OTROS	A	B	C	K'	D	LATITUD	LONGITUD
Villahermosa	0.00																			
T. Izq. Cd. Industrial	4.30	3	1	24341	1.7	89.0	1.5	3.0	1.2	1.5	0.8	0.8	0.5	90.7	1.5	7.8	0.068	0.520	18.037988	-92.901583
T. Izq. Cd. Industrial	4.30	3	2	22493	1.8	88.0	1.6	3.3	1.3	1.7	1.0	0.8	0.5	89.8	1.6	8.6	0.074	0.520	18.037987	-92.901594
Macultepec	18.60	1	1	9382	1.1	88.0	1.8	3.6	1.4	1.4	0.8	1.4	0.5	89.1	1.8	9.1	0.071	0.506	18.142962	-92.864260
Macultepec	18.60	1	2	9161	1.5	85.9	2.1	4.2	1.6	1.6	0.9	1.6	0.6	87.4	2.1	10.5	0.072	0.506	18.142959	-92.864261
Macultepec	18.60	3	1	7204	0.8	86.4	1.7	4.1	1.2	3.6	0.8	1.2	0.2	87.2	1.7	11.1	0.088	0.508	18.167246	-92.858511
Macultepec	18.60	3	2	7426	0.8	85.6	1.9	4.4	1.3	3.7	0.9	1.2	0.2	86.4	1.9	11.7	0.075	0.508	18.167246	-92.858509
El Espino	33.20	1	0	7972	0.5	79.5	1.7	6.0	2.5	4.5	1.4	2.9	1.0	80.0	1.7	18.3	0.074	0.514	18.238981	-92.829620
El Espino	33.20	3	0	9143	0.6	80.0	1.4	6.7	2.1	3.5	1.8	2.9	1.0	80.6	1.4	18.0	0.067	0.501	18.254526	-92.832050
T. Izq. El Bellote	49.67	3	0	8049	0.9	79.3	1.2	5.7	3.8	4.1	1.2	3.1	0.7	80.2	1.2	18.6	0.073	0.520	18.399266	-92.798928
Frontera	74.59	1	0	8506	2.1	79.4	1.4	5.9	2.4	4.2	1.1	2.7	0.8	81.5	1.4	17.1	0.074	0.504	18.513577	-92.662834
Frontera	74.59	3	0	5802	1.6	79.2	1.6	5.5	2.1	4.1	1.8	3.2	0.9	80.8	1.6	17.6	0.084	0.501	18.540512	-92.634828
T. Izq. Escolleras	78.00	3	0	5288	1.2	78.3	1.4	6.8	2.5	4.1	1.2	3.8	0.7	79.5	1.4	19.1	0.079	0.520	18.561521	-92.602602
Puente San Pedro	96.50	3	0	4707	0.8	80.6	1.5	6.3	2.4	4.1	1.1	2.5	0.7	81.4	1.5	17.1	0.092	0.510	18.641240	-92.463838
Lim. Edos. Term. Tab. Ppia. Camp.	99.75																			
Nuevo Campechito	100.00	3	0	4500	1.3	61.0	6.0	11.8	3.8	6.7	2.5	5.8	1.1	62.3	6.0	31.7	0.081	0.503	18.642548	-92.456790
Nuevo Progreso	116.57	1	0	4365	1.2	61.3	6.7	11.8	3.1	6.9	2.0	5.9	1.1	62.5	6.7	30.8	0.077	0.503	18.626613	-92.327295
Puente Zacatal	162.41	2	0	5144	0.4	71.0	7.0	5.6	3.4	5.4	1.1	5.6	0.5	71.4	7.0	21.6	0.077	0.500	18.641877	-92.460302
Zacatal	163.17	1	0	4560	1.0	62.3	6.9	10.7	2.6	7.5	2.4	5.8	0.8	63.3	6.9	29.8	0.076	0.502	18.619487	-91.882554
Cd. del Carmen	167.50																			

16 CARR: Villahermosa - Francisco Escárcega

CLAVE: 00092

RUTA: MEX-186

AÑO: 2012

LUGAR	ESTACION				CLASIFICACION VEHICULAR EN PORCIENTO													COORDENADAS		
	KM	TE	SC	TDPA	M	A	B	C2	C3	T3S2	T3S3	T3S2R4	OTROS	A	B	C	K'	D	LATITUD	LONGITUD
Villahermosa	0.00	3	1	13176	1.3	81.5	1.9	9.4	1.6	2.4	0.9	0.9	0.1	82.8	1.9	15.3	0.078	0.502	18.001208	-92.890671
Villahermosa	0.00	3	2	13281	1.5	79.9	2.1	9.9	1.8	2.7	1.0	1.0	0.1	81.4	2.1	16.5	0.077	0.502	18.001208	-92.890671
T. Izq. Aeropuerto (Alta)	12.00	1	1	12145	1.0	85.4	1.3	5.1	1.4	3.0	1.4	0.8	0.6	86.4	1.3	12.3	0.076	0.506	17.983784	-92.827903
T. Izq. Aeropuerto (Baja)	12.00	1	1	1233	14.4	76.2	0.4	4.0	1.4	2.2	0.6	0.5	0.3	90.6	0.4	9.0	0.090	0.517	17.983715	-92.827977
T. Izq. Aeropuerto (Alta)	12.00	1	2	11835	1.0	83.9	1.4	5.4	1.6	3.5	1.6	0.9	0.7	84.9	1.4	13.7	0.084	0.506	17.983845	-92.827811
T. Izq. Aeropuerto (Baja)	12.00	1	2	1150	11.2	78.8	0.4	4.4	1.5	2.2	0.7	0.5	0.3	90.0	0.4	9.6	0.086	0.517	17.984015	-92.827747
Puente Grijalva	17.60	2	1	7629	0.0	80.4	4.4	4.6	3.4	4.1	1.2	0.4	1.5	80.4	4.4	15.2	0.079	0.500	17.947556	-92.785240
Puente Grijalva	17.60	2	2	7629	0.0	80.4	4.4	4.6	3.4	4.1	1.2	0.4	1.5	80.4	4.4	15.2	0.079	0.500	17.947556	-92.785240
X. C. Cacaos - La Granja	32.46	1	1	7803	0.8	79.7	2.1	7.5	2.0	4.4	1.7	1.2	0.6	80.5	2.1	17.4	0.078	0.502	17.828590	-92.717350
X. C. Cacaos - La Granja	32.46	1	2	7732	0.8	78.0	2.1	8.5	2.2	4.6	1.8	1.3	0.7	78.8	2.1	19.1	0.084	0.502	17.828578	-92.717334

CAMPECHE

16 CARR: Villahermosa - Francisco Escárcega

CLAVE: 00092

RUTA: MEX-186

AÑO: 2012

LUGAR	ESTACION				CLASIFICACION VEHICULAR EN PORCIENTO														COORDENADAS	
	KM	TE	SC	TDPA	M	A	B	C2	C3	T3S2	T3S3	T3S2R4	OTROS	A	B	C	K'	D	LATITUD	LONGITUD
X. C. Cacaos - La Granja	32.46	3	1	5513	0.7	77.6	2.7	7.8	2.6	4.8	1.5	1.7	0.6	78.3	2.7	19.0	0.078	0.501	17.820890	-92.712863
X. C. Cacaos - La Granja	32.46	3	2	5537	0.8	75.8	2.7	8.5	3.1	5.1	1.6	1.8	0.6	76.6	2.7	20.7	0.088	0.501	17.820890	-92.712863
X. C. Jalapa - Jonuta	40.00	3	1	6737	0.8	76.2	2.8	9.2	2.7	4.8	1.4	1.6	0.5	77.0	2.8	20.2	0.075	0.501	17.776372	-92.675438
X. C. Jalapa - Jonuta	40.00	3	2	6768	0.7	74.7	2.9	9.7	2.7	5.5	1.5	1.8	0.5	75.4	2.9	21.7	0.078	0.501	17.776369	-92.675440
T. Izq. Macuspana	46.20	1	1	5524	1.2	74.2	2.0	13.0	1.6	4.5	1.4	1.6	0.5	75.4	2.0	22.6	0.081	0.506	17.743997	-92.633907
T. Izq. Macuspana	46.20	1	2	5658	1.5	71.5	2.3	14.1	2.0	4.7	1.6	1.8	0.5	73.0	2.3	24.7	0.088	0.506	17.743893	-92.633935
T. Izq. Macuspana	46.20	3	1	4587	1.4	73.9	3.5	7.8	3.6	5.1	1.9	2.2	0.6	75.3	3.5	21.2	0.074	0.508	17.735962	-92.623584
T. Izq. Macuspana	46.20	3	2	4445	1.7	71.2	3.7	8.0	4.2	6.0	2.1	2.4	0.7	72.9	3.7	23.4	0.082	0.508	17.735739	-92.623537
X. C. Estación Macuspana - Vernet	54.30	1	0	8027	1.7	74.0	3.5	7.6	2.7	6.2	1.7	1.7	0.9	75.7	3.5	20.8	0.076	0.508	17.708928	-92.571094
T. Der. Chivalito (Est. Pino Suárez)	70.00	1	0	7021	1.6	73.9	1.6	7.1	3.0	7.0	2.0	3.0	0.8	75.5	1.6	22.9	0.076	0.500	17.669113	-92.441763
T. Der. Chivalito (Est. Pino Suárez)	70.00	3	1	3309	1.2	77.9	1.4	6.0	3.4	5.3	1.9	2.1	0.8	79.1	1.4	19.5	0.076	0.519	17.666100	-92.432251
T. Der. Chivalito (Est. Pino Suárez)	70.00	3	2	3573	1.1	76.0	1.6	6.3	3.6	6.0	2.2	2.4	0.8	77.1	1.6	21.3	0.101	0.519	17.666166	-92.432246
T. Der. Estación Zopo	71.00	1	0	6131	1.0	75.6	1.1	7.0	2.5	6.3	2.3	3.5	0.7	76.6	1.1	22.3	0.085	0.503	17.672267	-92.415225
T. Der. Estación Zopo	71.00	3	1	3268	1.0	78.8	1.4	6.5	1.8	5.2	1.8	2.9	0.6	79.8	1.4	18.8	0.075	0.505	17.675476	-92.410187
T. Der. Estación Zopo	71.00	3	2	3327	1.2	76.2	1.7	7.1	1.9	6.0	2.0	3.3	0.6	77.4	1.7	20.9	0.082	0.505	17.675521	-92.410347
Lim. Edos. Term. Tab. Ppia. Chis.	76.90																			
T. Izq. Bonanza	88.00	1	0	5906	1.6	62.8	4.0	13.1	2.9	9.2	2.4	3.2	0.8	64.4	4.0	31.6	0.072	0.500	17.698665	-92.264189
T. Izq. Jonuta	101.00	1	0	5799	1.7	61.6	2.9	19.4	1.9	6.5	1.9	3.3	0.8	63.3	2.9	33.8	0.078	0.502	17.697872	-92.136904
T. Izq. Jonuta	101.00	3	0	5696	0.7	68.9	4.0	8.8	2.8	9.2	1.8	3.0	0.8	69.6	4.0	26.4	0.081	0.509	17.697714	-92.128941
X. C. Catazajá - Palenque	114.00	1	0	5377	0.8	67.2	3.9	9.3	3.4	9.0	2.2	3.2	1.0	68.0	3.9	28.1	0.077	0.528	17.710254	-92.016420
X. C. Catazajá - Palenque	114.00	3	0	5486	0.7	65.0	5.0	11.2	3.2	8.2	2.1	3.7	0.9	65.7	5.0	29.3	0.082	0.507	17.712378	-92.010208
T. Der. Emiliano Zapata	134.70	1	0	6855	0.5	70.0	1.4	9.3	3.2	9.4	2.0	3.5	0.7	70.5	1.4	28.1	0.073	0.503	17.771550	-91.834994
T. Der. Emiliano Zapata	134.70	3	0	4495	1.1	69.7	1.0	8.0	4.2	8.3	2.6	4.1	1.0	70.8	1.0	28.2	0.073	0.512	17.778577	-91.823817
Lim. Edos. Term. Chis. Ppia. Tab.	140.70																			
Puente Usumacinta	145.20	2	0	3449	0.0	63.2	4.5	6.3	5.4	12.7	1.9	1.3	4.7	63.2	4.5	32.3	0.079	0.500	17.859876	-91.783607
T. Izq. Palizada	154.05	1	0	2680	1.6	61.8	5.7	8.2	3.3	10.6	2.7	4.9	1.2	63.4	5.7	30.9	0.077	0.509	17.939462	-91.735977
T. Izq. Palizada	154.05	3	0	2587	0.7	63.9	4.4	9.1	4.4	9.9	2.9	3.9	0.8	64.6	4.4	31.0	0.074	0.516	17.948868	-91.727775
Lim. Edos. Term. Tab. Ppia. Camp.	154.60																			
T. Der. Candelaria	233.40	1	0	2897	1.3	63.7	3.7	9.5	4.0	10.1	2.3	4.6	0.8	65.0	3.7	31.3	0.069	0.522	18.371204	-91.203010
T. Der. Felipe Ángeles	253.00	1	0	3246	0.8	64.5	2.8	10.2	5.7	8.2	2.4	4.7	0.7	65.3	2.8	31.9	0.068	0.503	18.504354	-91.106132
T. Izq. Sabancuy	274.10	1	0	3659	5.9	57.4	4.6	8.9	4.4	8.7	3.2	5.8	1.1	63.3	4.6	32.1	0.072	0.501	18.629563	-90.987582
Francisco Escárcega	297.04	1	0	6579	2.5	70.0	3.9	9.7	2.1	7.0	1.6	2.4	0.8	72.5	3.9	23.6	0.071	0.517	18.609222	-90.767402

CAMPECHE

17 CARR: Champotón - Campeche (Cuota)

CLAVE: 04014

RUTA: MEX-180D

AÑO: 2012

LUGAR	ESTACION				CLASIFICACION VEHICULAR EN PORCIENTO													COORDENADAS		
	KM	TE	SC	TDPA	M	A	B	C2	C3	T3S2	T3S3	T3S2R4	OTROS	A	B	C	K'	D	LATITUD	LONGITUD
T. C. Cd. del Carmen - Campeche	0.00	3	1	2711	0.3	73.7	3.9	6.6	2.3	5.8	1.6	4.9	0.9	74.0	3.9	22.1	0.088	0.504	19.511881	-90.700081
T. C. Cd. del Carmen - Campeche	0.00	3	2	2752	0.4	70.5	4.4	7.9	2.7	6.1	1.8	5.3	0.9	70.9	4.4	24.7	0.083	0.504	19.511881	-90.700080
Caseta de Cobro Seybaplaya	14.50	2	1	2718	0.2	70.1	4.5	4.9	4.0	7.7	1.6	6.2	0.8	70.3	4.5	25.2	0.088	0.500	19.636271	-90.671557
Caseta de Cobro Seybaplaya	14.50	2	2	2717	0.2	70.1	4.5	4.9	4.0	7.7	1.6	6.2	0.8	70.3	4.5	25.2	0.088	0.500	19.636271	-90.671557
T. C. Libramiento de Campeche	39.00	1	1	3405	0.6	77.1	3.8	5.9	1.9	4.8	1.4	3.9	0.6	77.7	3.8	18.5	0.083	0.505	19.795430	-90.530763
T. C. Libramiento de Campeche	39.00	1	2	3339	0.5	75.8	4.2	6.9	2.0	5.2	1.5	3.3	0.6	76.3	4.2	19.5	0.099	0.505	19.795430	-90.530762

18 CARR: Hopelchén - Dzibalchén

CLAVE: 04572

RUTA: CAM-261

AÑO: 2012

LUGAR	ESTACION				CLASIFICACION VEHICULAR EN PORCIENTO													COORDENADAS		
	KM	TE	SC	TDPA	M	A	B	C2	C3	T3S2	T3S3	T3S2R4	OTROS	A	B	C	K'	D	LATITUD	LONGITUD
Hopelchén	0.00	3	0	1157	6.6	73.2	2.2	14.0	1.4	1.3	0.5	0.8	0.0	79.8	2.2	18.0	0.083	0.502	19.729225	-89.834838
Dzibalchén	41.00																			

19 CARR: Libramiento de Becal

CLAVE: 04010

RUTA: CAM

AÑO: 2012

LUGAR	ESTACION				CLASIFICACION VEHICULAR EN PORCIENTO													COORDENADAS		
	KM	TE	SC	TDPA	M	A	B	C2	C3	T3S2	T3S3	T3S2R4	OTROS	A	B	C	K'	D	LATITUD	LONGITUD
T. C. Dzitbalché - Ent. San Bernardo (1° Acceso)	0.00																			
T. C. Campeche - Mérida (2° Acceso)	2.30	1	0	1179	12.8	78.0	1.2	5.9	0.8	1.1	0.1	0.0	0.1	90.8	1.2	8.0	0.088	0.518	20.441924	-90.034686

20 CARR: Libramiento de Pomuch

CLAVE: 04579

RUTA: CAM

AÑO: 2012

LUGAR	ESTACION				CLASIFICACION VEHICULAR EN PORCIENTO													COORDENADAS		
	KM	TE	SC	TDPA	M	A	B	C2	C3	T3S2	T3S3	T3S2R4	OTROS	A	B	C	K'	D	LATITUD	LONGITUD
T. C. Campeche - Mérida (1° Acceso)	0.00	3	0	6869	1.0	73.2	3.8	5.9	2.4	7.1	1.6	3.9	1.1	74.2	3.8	22.0	0.070	0.507	20.122577	-90.175945
T. C. Campeche - Mérida (2° Acceso)	4.10																			

21 CARR: T. C. (Francisco Escárcega - Champotón) - Yohaltún

CLAVE: 04581

RUTA: CAM

AÑO: 2012

LUGAR	ESTACION				CLASIFICACION VEHICULAR EN PORCIENTO													COORDENADAS		
	KM	TE	SC	TDPA	M	A	B	C2	C3	T3S2	T3S3	T3S2R4	OTROS	A	B	C	K'	D	LATITUD	LONGITUD
T. C. Francisco Escárcega - Champotón	0.00	3	0	1294	13.2	75.4	0.4	7.8	0.8	1.0	0.2	1.0	0.2	88.6	0.4	11.0	0.092	0.501	19.299062	-90.728513
Felipe Carrillo Puerto	36.50	1	0	564	12.2	77.4	2.2	5.1	1.0	1.1	0.4	0.6	0.0	89.6	2.2	8.2	0.099	0.503	19.113421	-90.516425
Felipe Carrillo Puerto	36.50	3	0	588	12.7	76.7	2.2	5.1	1.1	1.5	0.2	0.5	0.0	89.4	2.2	8.4	0.097	0.507	19.085637	-90.509986

CAMPECHE

21 CARR: T.C. (Francisco Escárcega - Champotón) - Yohaltún

CLAVE: 04581

RUTA: CAM

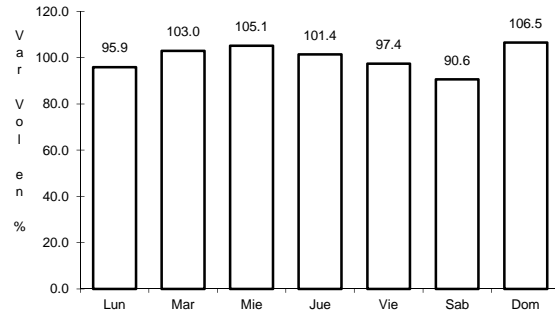
AÑO: 2012

L U G A R	E S T A C I O N				C L A S I F I C A C I O N V E H I C U L A R E N P O R C I E N T O											C O O R D E N A D A S				
	KM	TE	SC	TDPA	M	A	B	C2	C3	T3S2	T3S3	T3S2R4	OTROS	A	B	C	K'	D	LATITUD	LONGITUD
Yohaltún	70.60																			

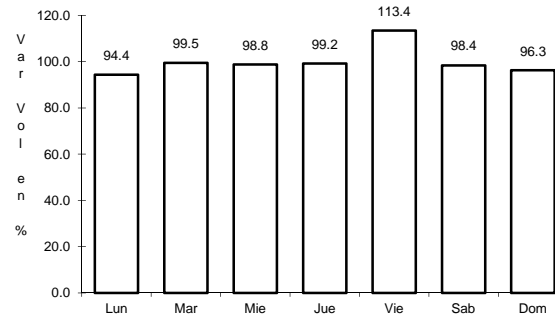
4 CARR: Cd. del Carmen - Campeche

CLAVE: 04065

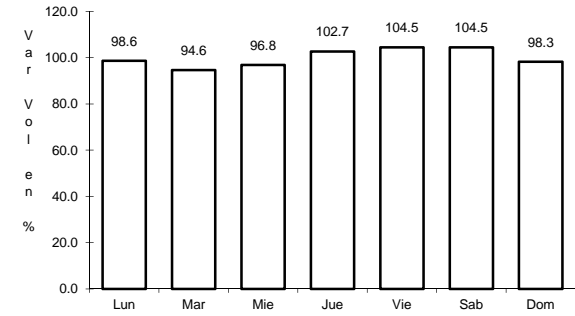
RUTA: MEX-180



Km: 0.00 Tipo: 3 Sent: 1



Km: 0.00 Tipo: 3 Sent: 2

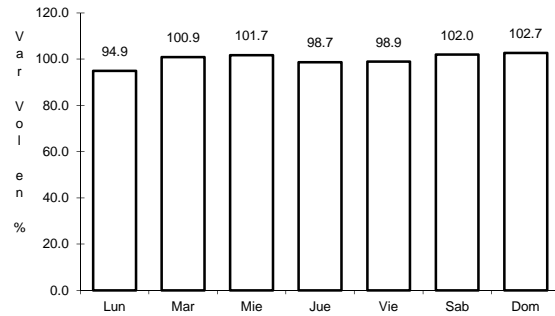


Km: 141.80 Tipo: 1 Sent: 0

5 CARR: Chencoyi - Tenabo

CLAVE: 04576

RUTA: MEX-180

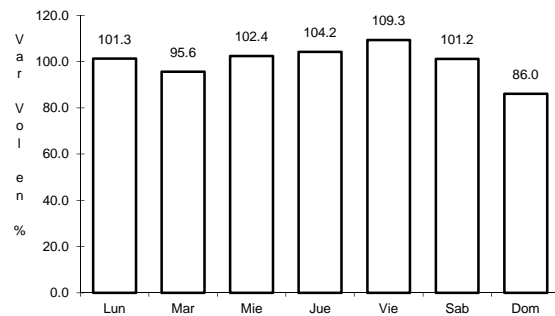


Km: 28.00 Tipo: 1 Sent: 0

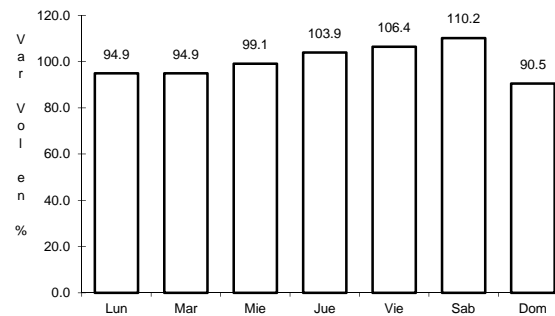
6 CARR: Dzitbalché - Ent. San Bernardo

CLAVE: 00162

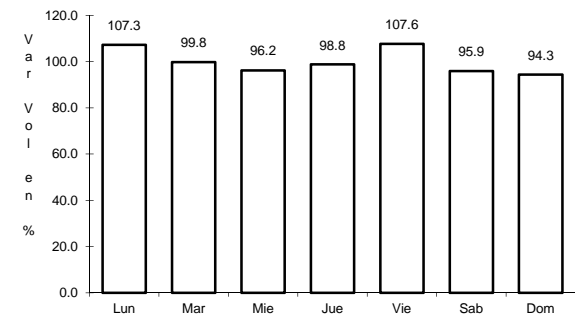
RUTA: MEX-180



Km: 12.33 Tipo: 1 Sent: 0



Km: 21.08 Tipo: 1 Sent: 0

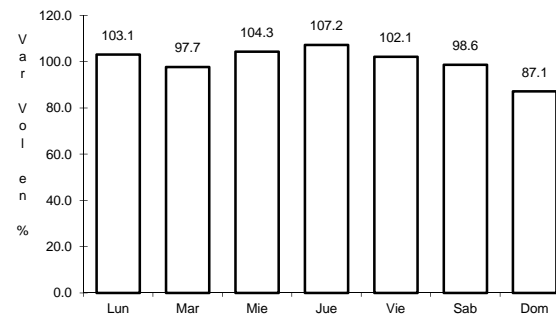
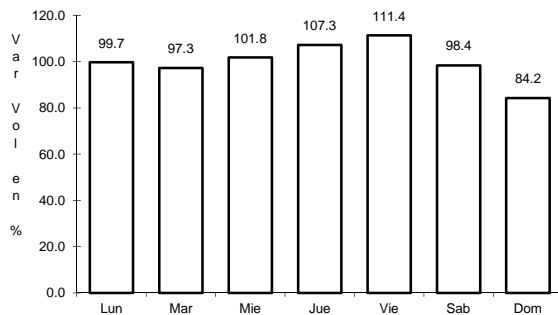
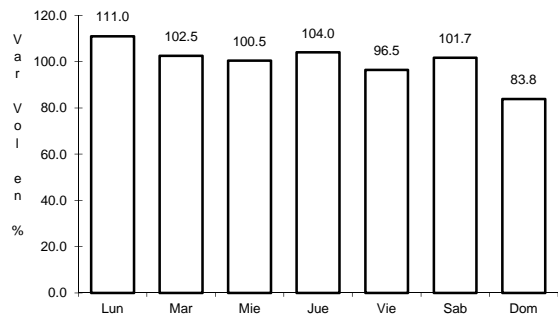


Km: 40.36 Tipo: 3 Sent: 0

7 CARR: Francisco Escárcega - Champotón

CLAVE: 04103

RUTA: MEX-201



Km: 0.00 Tipo: 3 Sent: 0

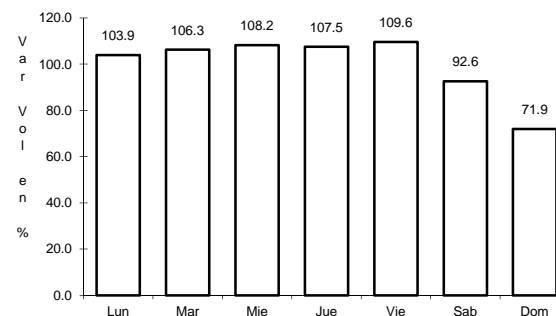
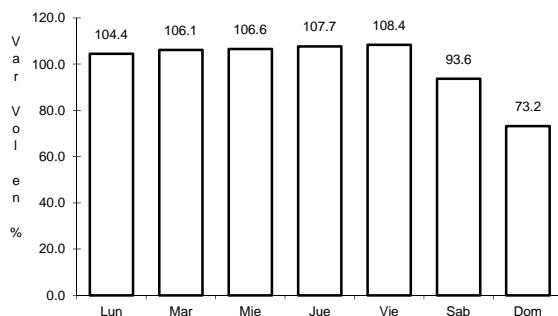
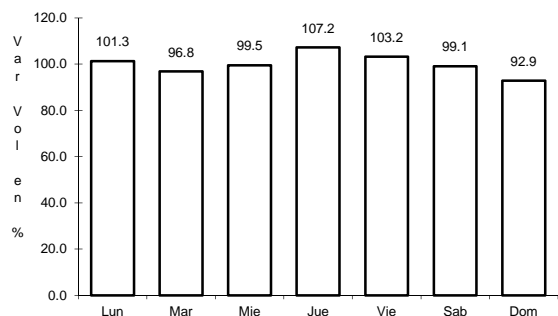
Km: 51.40 Tipo: 1 Sent: 0

Km: 81.40 Tipo: 1 Sent: 0

8 CARR: Francisco Escárcega - Chetumal

CLAVE: 00093

RUTA: MEX-186



Km: 0.00 Tipo: 3 Sent: 0

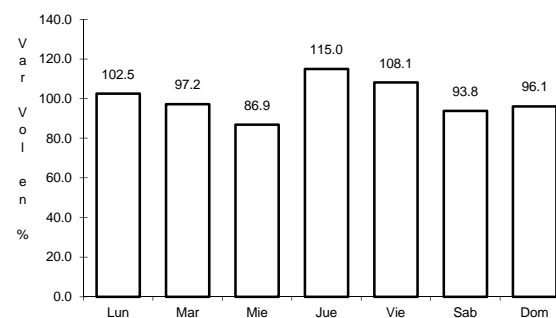
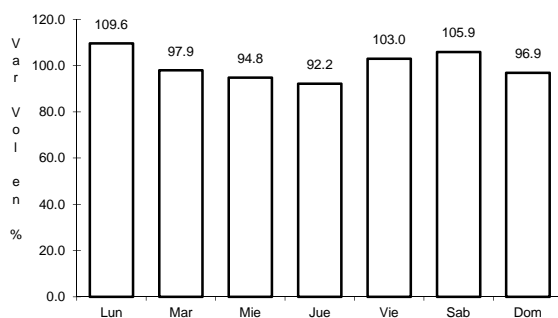
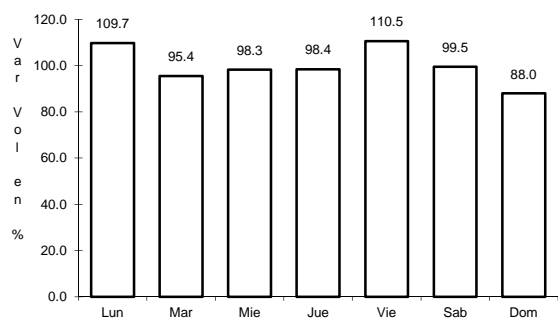
Km: 277.36 Tipo: 1 Sent: 1

Km: 277.36 Tipo: 1 Sent: 2

9 CARR: Haltunchén - San Antonio Cayal

CLAVE: 04009

RUTA: MEX-180



Km: 0.00 Tipo: 3 Sent: 0

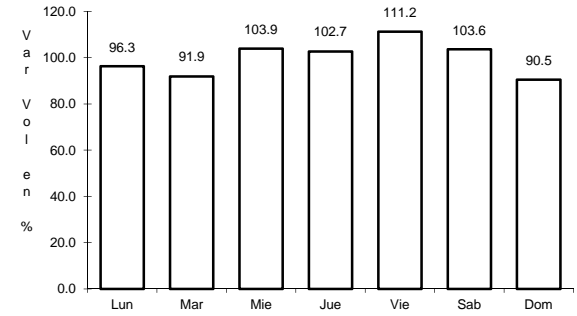
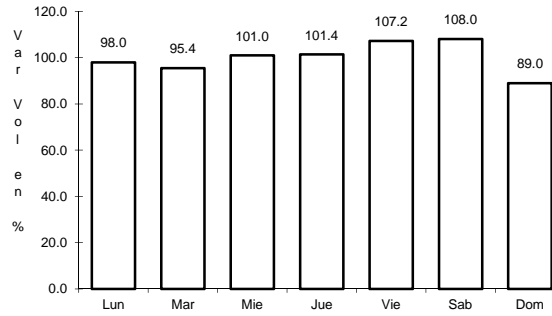
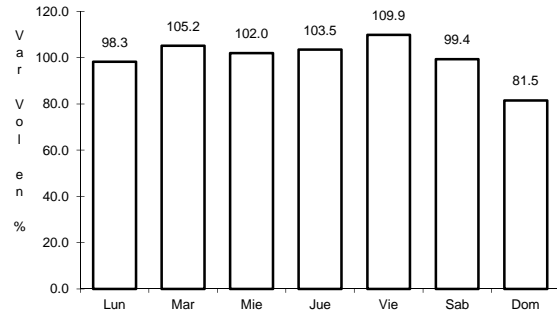
Km: 47.10 Tipo: 1 Sent: 0

Km: 79.00 Tipo: 1 Sent: 0

10 CARR: Libramiento de Campeche

CLAVE: 04573

ruta: MEX-180



Km: 0.00 Tipo: 3 Sent: 0

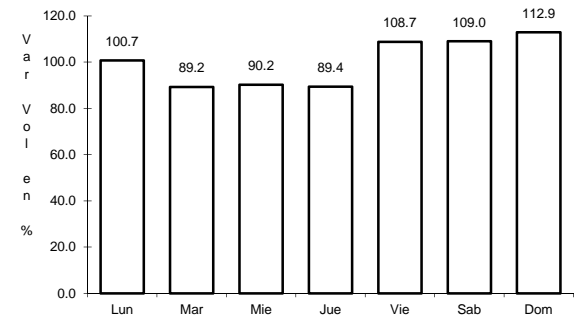
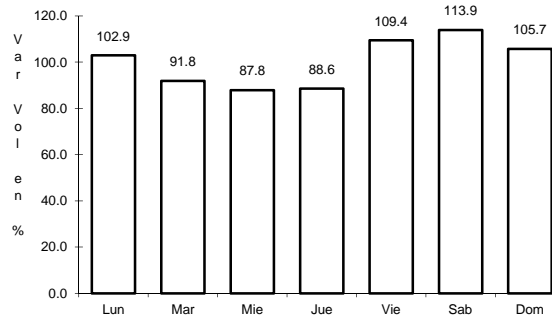
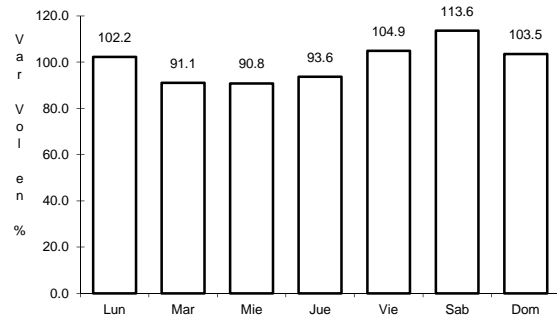
Km: 21.00 Tipo: 1 Sent: 0

Km: 26.00 Tipo: 1 Sent: 0

11 CARR: Presidente Díaz Ordaz - Sabancuy

CLAVE: 04570

ruta: MEX-186



Km: 0.00 Tipo: 3 Sent: 0

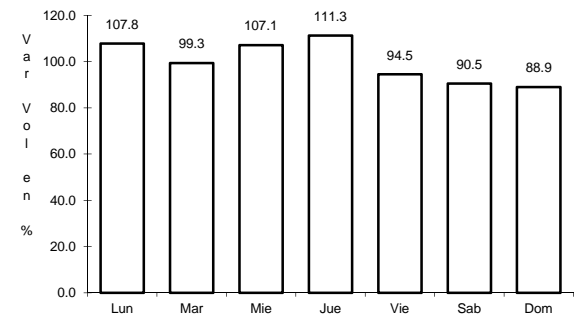
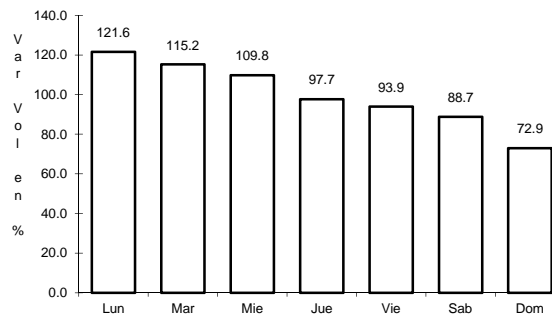
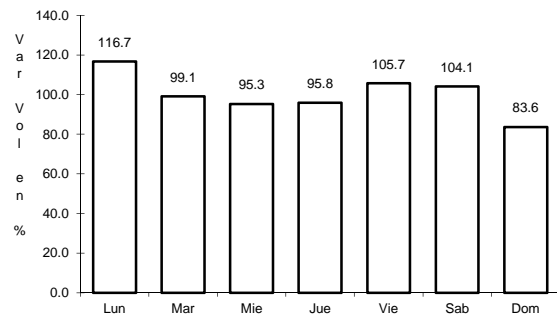
Km: 18.00 Tipo: 1 Sent: 0

Km: 57.00 Tipo: 1 Sent: 0

12 CARR: Ramal a Nuevo Coahuila

CLAVE: 04015

ruta: MEX-186



Km: 0.00 Tipo: 3 Sent: 0

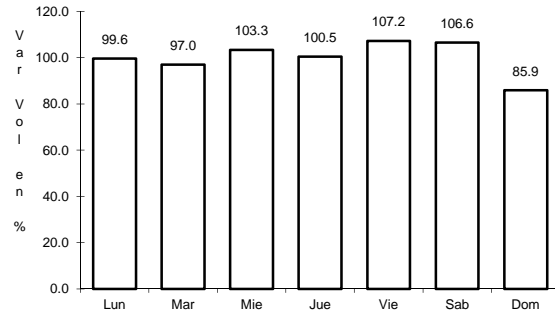
Km: 44.50 Tipo: 3 Sent: 0

Km: 70.00 Tipo: 1 Sent: 0

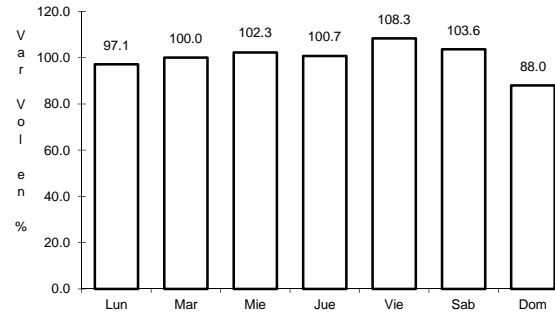
16 CARR: Villahermosa - Francisco Escárcega

CLAVE: 00092

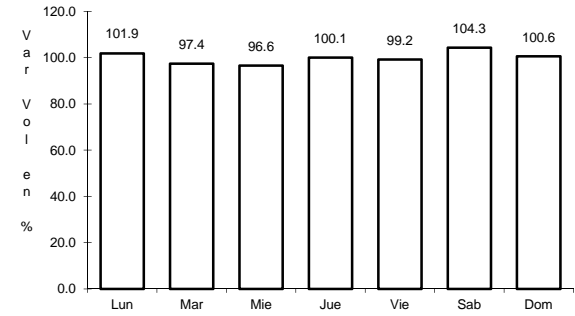
ruta: MEX-186



Km: 0.00 Tipo: 3 Sent: 1



Km: 0.00 Tipo: 3 Sent: 2

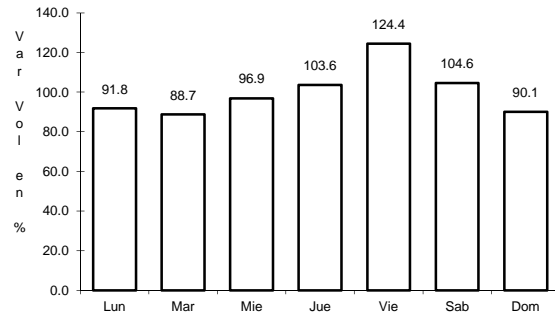


Km: 297.04 Tipo: 1 Sent: 0

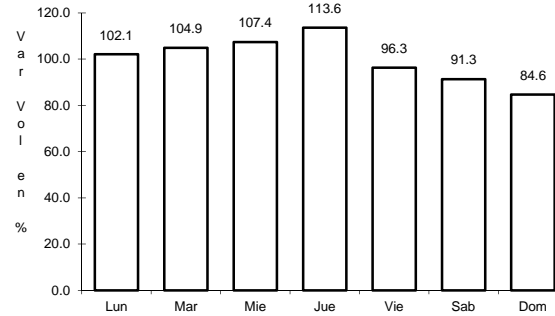
17 CARR: Champotón - Campeche (Cuota)

CLAVE: 04014

ruta: MEX-180D



Km: 0.00 Tipo: 3 Sent: 1

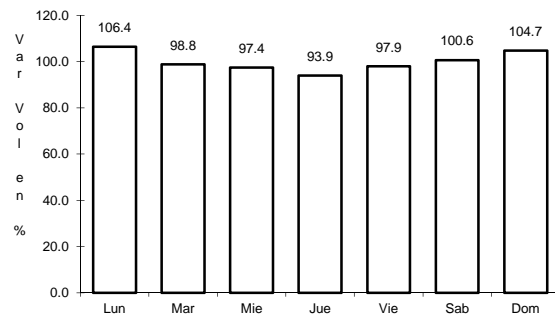


Km: 0.00 Tipo: 3 Sent: 2

18 CARR: Hopelchén - Dzibalchén

CLAVE: 04572

ruta: CAM-261



Km: 0.00 Tipo: 3 Sent: 0

