



BAJA CALIFORNIA SUR

NO. INDICE	CARRETERA	ruta
---RED FEDERAL LIBRE---		
1	Cabo San Lucas - La Paz	MEX-001
2	Cd. Constitución - Puerto San Carlos	MEX-001
3	Cd. Insurgentes - Loreto	MEX-001
4	Ent. Punta Prieta - Guerrero Negro	MEX-001
5	La Paz - Cd. Insurgentes	MEX-001
6	La Paz - Pichilingue	MEX-001
7	Libramiento de Cabo San Lucas	MEX-001
8	Loreto - Santa Rosalía	MEX-001
9	Ramal a Aeropuerto de La Paz	MEX-001
10	Ramal a Aeropuerto de Los Cabos	MEX-001
11	Ramal a Los Paredones	MEX-001
12	Ramal a Miraflores	MEX-001
13	Ramal a Puerto Escondido	MEX-001
14	Ramal a San Ignacio	MEX-001
15	Ramal a Santiago	MEX-001
16	Ramal Aeropista San Ignacio	MEX-001
17	Ramal Aeropista Santa Rosalía	MEX-001
18	San Pedro - Cabo San Lucas	MEX-019
19	Santa Rosalía - Guerrero Negro	MEX-001
---RED FEDERAL DE CUOTA---		
20	Libramiento San José del Cabo - Aeropuerto Los Cabos (Cuota)	MEX-001D
---RED ESTATAL LIBRE---		
21	Cd. Insurgentes - La Purísima	BCS-001
22	Cd. Insurgentes - Pto. Adolfo López Mateos	BCS
23	Ent. Campo Fisher - Punta Abreojos	BCS
24	La Paz - Ensenada de Muertos	BCS-246
25	Libramiento de La Paz	BCS
26	Libramiento Norte de La Paz	BCS
27	Ramal a Benito Juárez	BCS
28	Ramal a Ejido Ley Federal de Aguas Número Cuatro	BCS
29	Ramal a El Carrizal	BCS
30	Ramal a Guerrero Negro	BCS
31	Ramal a La Ribera	BCS
32	Ramal a Melitón Albáñez	BCS
33	Ramal a Santa Catarina	BCS
---CARRETERAS INTEGRADAS POR TRAMOS FEDERALES Y ESTATALES---		
34	Ramal a Bahía de Tortugas	MEX-001-BCS
35	Ramal a Ejido Ley Federal de Aguas Número Dos	BCS-MEX-001
36	Ramal a Ley Federal de Aguas Número Cinco	BCS-MEX-001
37	Ramal a San Juan de La Costa	BCS-163-MEX-001

03 BAJA CALIFORNIA SUR

SECRETARÍA DE COMUNICACIONES Y TRANSPORTES
DIRECCIÓN GENERAL DE SERVICIOS TÉCNICOS



- ① --- Número Índice
- Red Federal Libre
- Red Federal Cuota
- Red Federal Integrada por Tramos Libres y de Cuota
- Red Estatal Libre
- Red Estatal Cuota
- Carreteras Integradas por Tramos Federales y Estatales

BAJA CALIFORNIA SUR

1 CARR: Cabo San Lucas - La Paz

CLAVE: 03102

RUTA: MEX-001

AÑO: 2012

LUGAR	ESTACION				CLASIFICACION VEHICULAR EN PORCIENTO										COORDENADAS					
	KM	TE	SC	TDPA	M	A	B	C2	C3	T3S2	T3S3	T3S2R4	OTROS	A	B	C	K'	D	LATITUD	LONGITUD
Cabo San Lucas	0.00	3	1	16594	0.8	86.8	3.5	7.2	0.8	0.5	0.4	0.0	0.0	87.6	3.5	8.9	0.074	0.501	22.901640	-109.896185
Cabo San Lucas	0.00	3	2	16515	1.3	84.7	4.0	8.2	0.9	0.5	0.4	0.0	0.0	86.0	4.0	10.0	0.071	0.501	22.901649	-109.896192
El Tule	13.00	3	1	10968	0.9	88.2	4.0	5.8	0.6	0.2	0.3	0.0	0.0	89.1	4.0	6.9	0.091	0.506	22.972961	-109.784315
El Tule	13.00	3	2	11253	0.7	87.9	4.3	6.0	0.6	0.2	0.3	0.0	0.0	88.6	4.3	7.1	0.088	0.506	22.972961	-109.784315
San José del Cabo	33.00	1	1	16355	1.2	90.6	0.9	5.4	0.9	0.5	0.5	0.0	0.0	91.8	0.9	7.3	0.087	0.500	23.021264	-109.719745
San José del Cabo	33.00	1	2	16327	1.0	90.1	1.1	5.9	0.9	0.5	0.5	0.0	0.0	91.1	1.1	7.8	0.090	0.500	23.021267	-109.719747
San José del Cabo	33.00	3	1	20288	1.0	87.7	2.6	7.1	0.5	0.3	0.6	0.1	0.1	88.7	2.6	8.7	0.071	0.534	23.073943	-109.706022
San José del Cabo	33.00	3	2	23253	0.9	86.7	2.7	8.0	0.6	0.3	0.6	0.1	0.1	87.6	2.7	9.7	0.091	0.534	23.073940	-109.706019
T. Der. Santa Catarina	41.00	1	1	12893	4.1	82.5	2.7	7.6	0.9	0.5	0.8	0.5	0.4	86.6	2.7	10.7	0.080	0.510	23.132097	-109.710758
T. Der. Santa Catarina	41.00	1	2	13429	5.4	80.5	3.2	7.6	0.9	0.5	0.9	0.6	0.4	85.9	3.2	10.9	0.074	0.510	23.132098	-109.710757
T. Izq. Aeropuerto	43.46	1	1	10206	0.8	88.4	3.4	4.9	0.7	1.0	0.6	0.0	0.2	89.2	3.4	7.4	0.079	0.508	23.153479	-109.708668
T. Izq. Aeropuerto	43.46	1	2	10547	0.6	87.3	3.8	5.6	0.7	1.2	0.6	0.0	0.2	87.9	3.8	8.3	0.076	0.508	23.153478	-109.708666
Santa Anita	46.00	1	0	6891	1.1	80.9	5.2	6.7	1.5	3.2	0.7	0.3	0.4	82.0	5.2	12.8	0.092	0.500	23.169174	-109.706136
Santa Anita	46.00	3	0	4304	1.0	83.4	2.3	6.1	2.1	3.0	1.1	0.5	0.5	84.4	2.3	13.3	0.113	0.505	23.185186	-109.706170
T. Izq. Miraflores	71.50	3	0	2317	0.8	82.4	3.2	5.1	1.5	3.1	2.0	0.9	1.0	83.2	3.2	13.6	0.086	0.510	23.372999	-109.751527
T. Izq. Santiago	84.00	3	0	2584	0.5	83.0	4.2	5.8	1.0	3.9	0.9	0.6	0.1	83.5	4.2	12.3	0.105	0.504	23.476963	-109.694352
La Cueva	95.20	3	0	2476	0.7	84.4	3.4	5.8	1.2	3.0	0.8	0.5	0.2	85.1	3.4	11.5	0.095	0.500	23.565466	-109.677720
T. Der. Bahía de Las Palmas	110.00	3	0	3584	1.0	85.0	3.2	6.3	0.6	2.9	0.5	0.3	0.2	86.0	3.2	10.8	0.083	0.500	23.679532	-109.708213
San Bartolo	128.50	1	0	1961	1.2	84.0	3.5	5.0	1.1	3.6	0.9	0.6	0.1	85.2	3.5	11.3	0.106	0.505	23.742904	-109.825071
San Antonio	156.00	3	0	1875	1.1	79.9	4.6	5.6	1.7	4.2	1.1	1.3	0.5	81.0	4.6	14.4	0.088	0.504	23.808965	-110.061323
El Triunfo	162.80	1	0	1946	0.8	80.0	4.6	6.5	1.6	4.0	1.1	1.2	0.2	80.8	4.6	14.6	0.111	0.510	23.805731	-110.103527
T. Izq. Todos Santos	184.40	3	1	3322	0.4	86.7	0.9	6.3	1.3	2.7	1.0	0.4	0.3	87.1	0.9	12.0	0.111	0.502	23.889498	-110.257184
T. Izq. Todos Santos	184.40	3	2	3291	0.4	85.3	1.1	6.8	1.4	3.2	1.2	0.4	0.2	85.7	1.1	13.2	0.098	0.502	23.889495	-110.257184
San Pedro	191.00	1	1	3501	0.5	85.9	0.8	6.7	1.6	2.2	1.1	0.7	0.5	86.4	0.8	12.8	0.090	0.508	23.905222	-110.259512
San Pedro	191.00	1	2	3388	0.7	84.6	0.9	7.0	1.8	2.5	1.3	0.8	0.4	85.3	0.9	13.8	0.085	0.508	23.905220	-110.259498
San Pedro	191.00	3	1	4005	0.5	84.9	1.0	6.5	1.7	3.3	1.3	0.6	0.2	85.4	1.0	13.6	0.092	0.502	23.943553	-110.278239
San Pedro	191.00	3	2	3968	0.5	84.0	1.1	6.7	1.8	3.6	1.3	0.8	0.2	84.5	1.1	14.4	0.098	0.502	23.943553	-110.278238
Limite Zona Urbana de La Paz	211.00	1	1	7287	5.5	83.9	0.7	5.4	0.6	1.5	1.3	0.5	0.6	89.4	0.7	9.9	0.076	0.510	24.051703	-110.302054
Limite Zona Urbana de La Paz	211.00	1	2	7578	1.1	87.4	0.8	5.9	0.6	1.6	1.5	0.5	0.6	88.5	0.8	10.7	0.077	0.510	24.051703	-110.302054
La Paz	213.00																			

BAJA CALIFORNIA SUR

2 CARR: Cd. Constitución - Puerto San Carlos

CLAVE: 03231

RUTA: MEX-001

AÑO: 2012

LUGAR	ESTACION				CLASIFICACION VEHICULAR EN PORCIENTO														COORDENADAS	
	KM	TE	SC	TDPA	M	A	B	C2	C3	T3S2	T3S3	T3S2R4	OTROS	A	B	C	K'	D	LATITUD	LONGITUD
Cd. Constitución	0.00	3	0	2904	0.5	81.5	1.7	11.2	0.9	3.2	0.5	0.1	0.4	82.0	1.7	16.3	0.084	0.501	25.039166	-111.678877
T. Der. Benito Juárez	10.00	1	0	2078	0.4	80.9	1.5	12.7	1.0	2.9	0.4	0.0	0.2	81.3	1.5	17.2	0.090	0.503	25.036447	-111.767169
T. Der. Benito Juárez	10.00	3	0	1797	0.5	83.0	1.1	11.5	0.9	2.4	0.5	0.0	0.1	83.5	1.1	15.4	0.090	0.503	25.035146	-111.770255
Puerto San Carlos	57.70																			

3 CARR: Cd. Insurgentes - Loreto

CLAVE: 03092

RUTA: MEX-001

AÑO: 2012

LUGAR	ESTACION				CLASIFICACION VEHICULAR EN PORCIENTO														COORDENADAS	
	KM	TE	SC	TDPA	M	A	B	C2	C3	T3S2	T3S3	T3S2R4	OTROS	A	B	C	K'	D	LATITUD	LONGITUD
Cd. Insurgentes	0.00	3	0	2596	0.3	79.5	2.6	8.3	0.7	6.1	1.7	0.5	0.3	79.8	2.6	17.6	0.091	0.506	25.259167	-111.766944
T. Izq. Ley Federal de Aguas Número Uno	7.00	3	0	1308	0.6	70.5	2.2	11.8	1.2	9.7	2.6	1.1	0.3	71.1	2.2	26.7	0.092	0.508	25.334860	-111.631664
T. Der. Ley Federal de Aguas Número Dos	17.00	3	0	1588	0.6	75.0	1.7	9.6	1.3	8.4	2.5	0.8	0.1	75.6	1.7	22.7	0.089	0.507	25.316524	-111.659465
T. Der. Puerto Agua Verde	65.00	1	0	1233	0.6	71.0	2.0	9.2	1.7	11.0	3.0	1.1	0.4	71.6	2.0	26.4	0.089	0.512	25.607973	-111.316748
T. Der. Puerto Agua Verde	65.00	3	0	1273	0.6	71.5	2.0	10.4	1.4	10.0	2.9	0.9	0.3	72.1	2.0	25.9	0.085	0.506	25.610272	-111.313023
El Ligüi	84.50	1	0	1533	0.3	68.5	2.9	15.7	1.3	7.9	2.4	0.8	0.2	68.8	2.9	28.3	0.102	0.503	25.734366	-111.271199
T. Der. Puerto Escondido	95.40	1	0	1495	0.2	73.3	2.3	11.5	1.2	8.2	2.3	0.7	0.3	73.5	2.3	24.2	0.098	0.515	25.799092	-111.326760
T. Der. Puerto Escondido	95.40	3	0	1734	0.2	74.8	2.1	11.2	1.1	7.4	2.1	0.9	0.2	75.0	2.1	22.9	0.095	0.508	25.804811	-111.328975
Nopoló	109.50	1	0	2446	0.5	76.8	2.4	11.0	1.0	5.5	1.9	0.6	0.3	77.3	2.4	20.3	0.083	0.503	25.935693	-111.368933
T. Der. Aeropuerto de Loreto	117.30	1	0	3449	0.3	79.4	1.2	11.3	0.9	4.9	1.2	0.5	0.3	79.7	1.2	19.1	0.100	0.505	25.986692	-111.367091
T. Der. Loreto	120.00	1	0	4164	0.3	82.4	1.0	10.7	0.9	3.4	1.0	0.3	0.0	82.7	1.0	16.3	0.100	0.507	25.998556	-111.366709

4 CARR: Ent. Punta Prieta - Guerrero Negro

CLAVE: 00321

RUTA: MEX-001

AÑO: 2012

LUGAR	ESTACION				CLASIFICACION VEHICULAR EN PORCIENTO														COORDENADAS	
	KM	TE	SC	TDPA	M	A	B	C2	C3	T3S2	T3S3	T3S2R4	OTROS	A	B	C	K'	D	LATITUD	LONGITUD
Parador Punta Prieta	0.00	3	0	872	0.7	49.9	2.8	12.2	1.6	30.1	2.1	0.3	0.3	50.6	2.8	46.6	0.116	0.546	29.042808	-114.152497
Rosarito	50.60	3	0	972	0.7	51.0	2.3	12.2	2.6	28.4	2.1	0.3	0.4	51.7	2.3	46.0	0.110	0.534	28.630056	-114.023444
Tanatán	70.10	3	0	867	0.7	52.2	2.4	13.1	1.3	27.1	2.5	0.3	0.4	52.9	2.4	44.7	0.100	0.539	28.454743	-113.995837
Tampico	105.00	1	0	1144	0.5	56.7	2.2	13.3	1.4	23.8	1.7	0.3	0.1	57.2	2.2	40.6	0.095	0.532	28.216232	-114.000232
Lim. Edos. Term. B.C. Ppia. B.C.S. (Paralelo 28)	128.56																			
Ent. Guerrero Negro	130.00	1	0	2036	0.5	74.8	1.1	7.5	1.0	13.6	1.1	0.1	0.3	75.3	1.1	23.6	0.100	0.519	27.971701	-114.013689

BAJA CALIFORNIA SUR

5 CARR : La Paz - Cd. Insurgentes

CLAVE: 03101

RUTA: MEX-001

AÑO : 2012

LUGAR	ESTACION				CLASIFICACION VEHICULAR EN PORCIENTO														COORDENADAS	
	KM	TE	SC	TDPA	M	A	B	C2	C3	T3S2	T3S3	T3S2R4	OTROS	A	B	C	K'	D	LATITUD	LONGITUD
La Paz	0.00	3	1	9740	0.8	84.7	2.0	4.7	0.5	2.5	3.6	0.5	0.7	85.5	2.0	12.5	0.074	0.502	24.121246	-110.337275
La Paz	0.00	3	2	9826	0.8	83.8	2.1	4.9	0.5	2.8	3.8	0.5	0.8	84.6	2.1	13.3	0.077	0.502	24.121246	-110.337275
T. Izq. Aeropuerto	8.90	1	1	9738	1.0	87.0	0.9	7.0	1.0	1.5	0.9	0.3	0.4	88.0	0.9	11.1	0.079	0.508	24.111094	-110.354687
T. Izq. Aeropuerto	8.90	1	2	10043	0.9	86.3	1.0	7.4	1.0	1.7	1.0	0.3	0.4	87.2	1.0	11.8	0.086	0.508	24.111094	-110.354686
T. Izq. Aeropuerto	8.90	3	1	7756	0.8	84.9	0.9	9.2	1.0	1.9	0.7	0.2	0.4	85.7	0.9	13.4	0.080	0.505	24.104488	-110.369193
T. Izq. Aeropuerto	8.90	3	2	7599	1.1	83.4	0.9	9.8	1.2	2.2	0.8	0.2	0.4	84.5	0.9	14.6	0.076	0.505	24.104489	-110.369194
El Centenario	13.50	3	1	3306	1.0	82.3	1.7	8.8	1.7	3.0	0.8	0.5	0.2	83.3	1.7	15.0	0.107	0.507	24.113793	-110.424877
El Centenario	13.50	3	2	3396	1.0	80.4	1.9	10.3	1.7	3.1	0.9	0.5	0.2	81.4	1.9	16.7	0.105	0.507	24.113793	-110.424877
T. Der. San Juan de La Costa	17.00	1	0	5894	0.8	77.0	1.2	11.4	1.9	5.3	1.2	0.7	0.5	77.8	1.2	21.0	0.081	0.501	24.118340	-110.432250
T. Der. San Juan de La Costa	17.00	3	0	2619	0.3	64.9	2.4	16.9	3.1	8.2	2.5	1.2	0.5	65.2	2.4	32.4	0.105	0.501	24.119784	-110.438532
T. Der. Alfredo V. Bonfil	24.00	3	0	2593	0.2	72.6	1.3	10.0	3.4	8.5	2.4	1.2	0.4	72.8	1.3	25.9	0.093	0.501	24.088745	-110.522306
T. Izq. El Conejo	79.60	1	0	2326	0.2	68.8	1.9	13.7	2.3	9.0	2.5	1.2	0.4	69.0	1.9	29.1	0.101	0.507	24.179326	-110.941304
T. Izq. El Conejo	79.60	3	0	2334	0.2	71.5	1.5	11.3	2.2	9.5	2.4	1.1	0.3	71.7	1.5	26.8	0.099	0.500	24.189849	-110.945715
El Ciento Veintiocho	118.20	1	0	2254	1.5	69.8	1.9	11.6	2.2	8.2	2.7	1.2	0.9	71.3	1.9	26.8	0.086	0.509	24.463294	-111.208755
Santa Rita	156.70	1	0	2454	5.1	69.1	2.5	9.1	2.0	7.0	3.0	1.5	0.7	74.2	2.5	23.3	0.082	0.502	24.584636	-111.457780
Santa Rita	156.70	3	0	2460	0.4	67.9	3.3	18.4	1.3	4.7	2.2	0.9	0.9	68.3	3.3	28.4	0.099	0.502	24.595099	-111.472066
Cd. Constitución	213.00	1	0	4994	0.4	80.2	1.8	7.6	1.6	5.4	1.7	0.8	0.5	80.6	1.8	17.6	0.082	0.513	25.012865	-111.664204
Cd. Constitución	213.00	3	1	3818	0.8	82.8	1.4	8.7	1.3	3.0	1.1	0.3	0.6	83.6	1.4	15.0	0.081	0.507	25.058278	-111.685325
Cd. Constitución	213.00	3	2	3708	0.7	81.8	1.6	9.4	1.4	3.1	1.2	0.3	0.5	82.5	1.6	15.9	0.085	0.507	25.058291	-111.685327
T. Der. Ley Federal de Aguas Número Cuatro	229.00	1	1	2670	0.3	80.0	0.9	12.4	1.2	3.4	1.1	0.4	0.3	80.3	0.9	18.8	0.083	0.512	25.195170	-111.748660
T. Der. Ley Federal de Aguas Número Cuatro	229.00	1	2	2804	0.4	78.3	0.9	13.5	1.3	4.0	1.0	0.4	0.2	78.7	0.9	20.4	0.082	0.512	25.195262	-111.748580
Cd. Insurgentes	236.50	1	1	2512	0.4	81.8	0.8	10.8	1.1	3.6	0.8	0.4	0.3	82.2	0.8	17.0	0.086	0.503	25.242798	-111.770608
Cd. Insurgentes	236.50	1	2	2540	0.4	80.5	0.9	12.0	1.2	3.7	0.8	0.3	0.2	80.9	0.9	18.2	0.080	0.503	25.242799	-111.770607

6 CARR : La Paz - Pichilingue

CLAVE: 03230

RUTA: MEX-001

AÑO : 2012

LUGAR	ESTACION				CLASIFICACION VEHICULAR EN PORCIENTO														COORDENADAS	
	KM	TE	SC	TDPA	M	A	B	C2	C3	T3S2	T3S3	T3S2R4	OTROS	A	B	C	K'	D	LATITUD	LONGITUD
La Paz	0.00	3	1	4572	1.7	89.6	1.8	5.0	0.4	1.0	0.3	0.0	0.2	91.3	1.8	6.9	0.141	0.508	24.180522	-110.302296
La Paz	0.00	3	2	4713	1.7	89.1	2.0	5.3	0.4	1.0	0.3	0.0	0.2	90.8	2.0	7.2	0.083	0.508	24.180522	-110.302296
Escuela Técnica Pesquera	9.30	3	0	1586	0.9	77.0	0.7	8.0	4.8	2.9	4.2	1.3	0.2	77.9	0.7	21.4	0.105	0.518	24.229978	-110.308616
Pichilingue	17.00	1	0	2210	0.7	74.9	1.1	8.7	4.0	7.2	1.5	1.0	0.9	75.6	1.1	23.3	0.143	0.505	24.274553	-110.325550

BAJA CALIFORNIA SUR

11 CARR: Ramal a Los Paredones

CLAVE: 03407

RUTA: MEX-001

AÑO: 2012

LUGAR	ESTACION				CLASIFICACION VEHICULAR EN PORCIENTO														COORDENADAS	
	KM	TE	SC	TDPA	M	A	B	C2	C3	T3S2	T3S3	T3S2R4	OTROS	A	B	C	K'	D	LATITUD	LONGITUD
T. C. Cd. Santa Rosalía - Guerrero Negro	0.00	3	0	826	2.5	90.5	0.2	4.0	0.8	1.7	0.1	0.0	0.2	93.0	0.2	6.8	0.097	0.503	27.300975	-112.899614
Paredones	1.40																			

12 CARR: Ramal a Miraflores

CLAVE: 03407

RUTA: MEX-001

AÑO: 2012

LUGAR	ESTACION				CLASIFICACION VEHICULAR EN PORCIENTO														COORDENADAS	
	KM	TE	SC	TDPA	M	A	B	C2	C3	T3S2	T3S3	T3S2R4	OTROS	A	B	C	K'	D	LATITUD	LONGITUD
T. C. Cabo San Lucas - La Paz	0.00	3	1	1037	0.1	88.5	0.3	9.5	1.1	0.5	0.0	0.0	0.0	88.6	0.3	11.1	0.124	0.519	23.370833	-109.754417
T. C. Cabo San Lucas - La Paz	0.00	3	2	961	0.1	87.5	0.3	10.6	1.1	0.4	0.0	0.0	0.0	87.6	0.3	12.1	0.138	0.519	23.370860	-109.754421
Miraflores	2.20																			

13 CARR: Ramal a Puerto Escondido

CLAVE: 03407

RUTA: MEX-001

AÑO: 2012

LUGAR	ESTACION				CLASIFICACION VEHICULAR EN PORCIENTO														COORDENADAS	
	KM	TE	SC	TDPA	M	A	B	C2	C3	T3S2	T3S3	T3S2R4	OTROS	A	B	C	K'	D	LATITUD	LONGITUD
T. C. Cd. Insurgentes - Loreto	0.00	3	0	323	0.9	76.6	1.6	19.9	0.5	0.5	0.0	0.0	0.0	77.5	1.6	20.9	0.144	0.503	25.805832	-111.321052
Puerto Escondido	2.50																			

14 CARR: Ramal a San Ignacio

CLAVE: 03413

RUTA: MEX-001

AÑO: 2012

LUGAR	ESTACION				CLASIFICACION VEHICULAR EN PORCIENTO														COORDENADAS	
	KM	TE	SC	TDPA	M	A	B	C2	C3	T3S2	T3S3	T3S2R4	OTROS	A	B	C	K'	D	LATITUD	LONGITUD
T. C. Santa Rosalía - Guerrero Negro	0.00	3	0	1798	1.6	87.1	0.3	8.2	1.1	1.5	0.1	0.0	0.1	88.7	0.3	11.0	0.092	0.505	27.300268	-112.893973
San Ignacio	2.70																			

15 CARR: Ramal a Santiago

CLAVE: 03051

RUTA: MEX-001

AÑO: 2012

LUGAR	ESTACION				CLASIFICACION VEHICULAR EN PORCIENTO														COORDENADAS	
	KM	TE	SC	TDPA	M	A	B	C2	C3	T3S2	T3S3	T3S2R4	OTROS	A	B	C	K'	D	LATITUD	LONGITUD
T. C. Cabo San Lucas - La Paz	0.00	3	1	607	0.2	89.1	2.0	7.6	0.5	0.4	0.2	0.0	0.0	89.3	2.0	8.7	0.107	0.505	23.474267	-109.695872
T. C. Cabo San Lucas - La Paz	0.00	3	2	619	0.2	87.4	2.6	8.9	0.4	0.3	0.2	0.0	0.0	87.6	2.6	9.8	0.108	0.505	23.474267	-109.695872
Santiago	2.30																			

BAJA CALIFORNIA SUR

16 CARR: Ramal Aeropista San Ignacio

CLAVE: 03051

RUTA: MEX-001

AÑO: 2012

LUGAR	ESTACION				CLASIFICACION VEHICULAR EN PORCIENTO														COORDENADAS	
	KM	TE	SC	TDPA	M	A	B	C2	C3	T3S2	T3S3	T3S2R4	OTROS	A	B	C	K'	D	LATITUD	LONGITUD
T. C. Cd. Santa Rosalía - Guerrero Negro	0.00	3	0	335	0.0	100.0	0.0	0.0	0.0	0.0	0.0	0.0	0.0	100.0	0.0	0.0	0.210	0.505	27.295193	-112.937758
San Ignacio	0.90																			

17 CARR: Ramal Aeropista Santa Rosalía

CLAVE: 03051

RUTA: MEX-001

AÑO: 2012

LUGAR	ESTACION				CLASIFICACION VEHICULAR EN PORCIENTO														COORDENADAS	
	KM	TE	SC	TDPA	M	A	B	C2	C3	T3S2	T3S3	T3S2R4	OTROS	A	B	C	K'	D	LATITUD	LONGITUD
T. C. Cd. Santa Rosalía - Guerrero Negro	0.00	3	0	307	0.1	41.6	0.0	21.3	37.0	0.0	0.0	0.0	0.0	41.7	0.0	58.3	0.113	0.501	27.394111	-112.306083
Santa Rosalía	2.00																			

18 CARR: San Pedro - Cabo San Lucas

CLAVE: 03003

RUTA: MEX-019

AÑO: 2012

LUGAR	ESTACION				CLASIFICACION VEHICULAR EN PORCIENTO														COORDENADAS	
	KM	TE	SC	TDPA	M	A	B	C2	C3	T3S2	T3S3	T3S2R4	OTROS	A	B	C	K'	D	LATITUD	LONGITUD
T. C. Cabo San Lucas - La Paz	0.00	3	1	2427	0.5	88.0	1.1	4.5	1.0	3.1	0.9	0.4	0.5	88.5	1.1	10.4	0.083	0.506	23.880105	-110.253884
T. C. Cabo San Lucas - La Paz	0.00	3	2	2488	0.7	86.2	1.3	5.0	1.1	3.6	1.1	0.4	0.6	86.9	1.3	11.8	0.083	0.506	23.880114	-110.253880
T. Der. Melitón Albáñez	16.00	1	1	2235	0.4	87.8	1.7	4.0	1.3	3.0	1.1	0.6	0.1	88.2	1.7	10.1	0.082	0.508	23.660963	-110.223023
T. Der. Melitón Albáñez	16.00	1	2	2307	0.5	86.8	1.7	4.2	1.6	3.3	1.2	0.6	0.1	87.3	1.7	11.0	0.092	0.508	23.660957	-110.223018
T. Der. Melitón Albáñez	16.00	3	1	2223	0.7	87.2	2.3	3.6	1.3	2.9	1.1	0.6	0.3	87.9	2.3	9.8	0.081	0.507	23.643123	-110.226831
T. Der. Melitón Albáñez	16.00	3	2	2158	0.6	85.6	2.5	4.1	1.6	3.5	1.2	0.7	0.2	86.2	2.5	11.3	0.087	0.507	23.643134	-110.226834
Todos Santos	52.00	1	0	6587	0.7	85.4	1.5	4.0	1.0	4.8	1.4	0.7	0.5	86.1	1.5	12.4	0.083	0.512	23.461207	-110.219094
Todos Santos	52.00	3	0	5538	0.5	85.7	1.4	5.0	1.5	4.1	1.0	0.5	0.3	86.2	1.4	12.4	0.087	0.502	23.440261	-110.219495
El Pescadero	62.00	1	1	2887	1.5	87.2	1.3	4.2	1.5	2.5	1.0	0.5	0.3	88.7	1.3	10.0	0.094	0.514	23.380644	-110.182331
El Pescadero	62.00	1	2	2871	0.4	87.3	1.4	4.8	1.6	2.8	1.1	0.4	0.2	87.7	1.4	10.9	0.081	0.514	23.380644	-110.182331
El Pescadero	62.00	3	1	2141	0.8	79.7	5.4	6.1	2.2	4.1	1.0	0.5	0.2	80.5	5.4	14.1	0.102	0.519	23.354800	-110.165773
El Pescadero	62.00	3	2	2081	0.7	78.8	5.5	6.6	2.3	4.6	0.9	0.4	0.2	79.5	5.5	15.0	0.095	0.519	23.354800	-110.165773
Migriño	102.50	1	1	1639	1.1	79.4	5.1	6.3	1.9	3.6	1.8	0.6	0.2	80.5	5.1	14.4	0.090	0.502	23.060071	-110.096975
Migriño	102.50	1	2	1627	0.9	77.2	5.8	6.8	2.2	3.8	2.1	0.9	0.3	78.1	5.8	16.1	0.088	0.502	23.060071	-110.096975
Cabo San Lucas	131.00	1	1	5759	0.8	81.2	4.8	6.6	3.4	1.4	1.5	0.1	0.2	82.0	4.8	13.2	0.081	0.500	22.914996	-109.963772
Cabo San Lucas	131.00	1	2	5767	1.0	80.2	5.1	6.7	3.5	1.6	1.6	0.1	0.2	81.2	5.1	13.7	0.081	0.500	22.914996	-109.963772

BAJA CALIFORNIA SUR

19 CARR: Santa Rosalía - Guerrero Negro

CLAVE: 03095

RUTA: MEX-001

AÑO: 2012

LUGAR	ESTACION				CLASIFICACION VEHICULAR EN PORCIENTO														COORDENADAS	
	KM	TE	SC	TDPA	M	A	B	C2	C3	T3S2	T3S3	T3S2R4	OTROS	A	B	C	K'	D	LATITUD	LONGITUD
Santa Rosalía	0.00	3	0	3889	0.5	70.8	1.4	16.9	3.6	4.9	1.0	0.4	0.5	71.3	1.4	27.3	0.087	0.506	27.360357	-112.278101
Cuesta Infiernillo	12.00	1	0	1195	0.6	56.7	2.5	15.9	7.8	13.3	2.3	0.4	0.5	57.3	2.5	40.2	0.092	0.520	27.386566	-112.352831
Cuesta Infiernillo	12.00	3	0	1060	0.8	62.5	2.4	12.5	2.3	14.8	3.3	0.5	0.9	63.3	2.4	34.3	0.101	0.525	27.385120	-112.383779
T. Izq. San Ignacio	73.60	1	0	2593	0.9	82.2	1.0	6.0	1.7	6.0	1.2	0.4	0.6	83.1	1.0	15.9	0.081	0.501	27.301355	-112.889729
T. Izq. San Ignacio	73.60	3	0	2705	1.1	81.0	1.1	7.0	1.5	6.0	1.3	0.4	0.6	82.1	1.1	16.8	0.090	0.512	27.302028	-112.894528
T. Izq. Punta Abreojos	95.70	1	0	1008	0.8	61.7	3.0	13.7	2.4	15.5	2.3	0.5	0.1	62.5	3.0	34.5	0.118	0.526	27.328203	-113.116213
T. Izq. Punta Abreojos	95.70	3	0	886	0.7	61.1	2.9	14.6	2.7	15.0	2.4	0.5	0.1	61.8	2.9	35.3	0.100	0.524	27.330284	-113.117127
Los Ángeles	117.90	1	0	1269	0.7	62.0	2.2	14.3	4.8	12.5	2.1	0.8	0.6	62.7	2.2	35.1	0.081	0.527	27.477752	-113.291991
Los Ángeles	117.90	3	0	1638	0.4	61.6	2.3	16.1	5.0	12.6	1.5	0.3	0.2	62.0	2.3	35.7	0.099	0.517	27.491007	-113.299427
T. Izq. Vizcaíno	144.00	1	0	2689	0.3	74.1	1.9	7.1	3.4	11.1	1.5	0.2	0.4	74.4	1.9	23.7	0.089	0.513	27.634281	-113.378642
T. Izq. Vizcaíno	144.00	3	0	1951	0.7	65.7	3.1	12.7	2.3	11.9	2.4	0.2	1.0	66.4	3.1	30.5	0.079	0.511	27.659374	-113.390661
T. Der. El Arco	189.00	1	0	1462	0.5	63.1	2.3	12.0	1.9	18.1	1.5	0.4	0.2	63.6	2.3	34.1	0.093	0.517	27.851776	-113.764933
T. Der. El Arco	189.00	3	0	1486	0.5	64.2	2.3	12.6	1.8	16.6	1.3	0.4	0.3	64.7	2.3	33.0	0.087	0.519	27.854913	-113.773088
Ent. Guerrero Negro	216.85	1	0	1832	0.5	66.0	2.0	13.7	1.7	14.3	1.1	0.4	0.3	66.5	2.0	31.5	0.082	0.512	27.965050	-114.009944

20 CARR: Libramiento San José del Cabo - Aeropuerto Los Cabos (Cuota)

CLAVE: 03392

RUTA: MEX-001D

AÑO: 2012

LUGAR	ESTACION				CLASIFICACION VEHICULAR EN PORCIENTO														COORDENADAS	
	KM	TE	SC	TDPA	M	A	B	C2	C3	T3S2	T3S3	T3S2R4	OTROS	A	B	C	K'	D	LATITUD	LONGITUD
T. C. Cabo San Lucas - La Paz	0.00	3	0	3535	0.2	90.8	2.5	5.8	0.5	0.0	0.0	0.0	0.2	91.0	2.5	6.5	0.102	0.501	23.047608	-109.711286
Caseta de Cobro Los Cabos	1.52	2	0	2461	0.1	98.6	1.1	0.2	0.0	0.0	0.0	0.0	0.0	98.7	1.1	0.2	0.102	0.500	23.049954	-109.719556
Aeropuerto de Los Cabos	19.50																			

21 CARR: Cd. Insurgentes - La Purísima

CLAVE: 03005

RUTA: BCS-001

AÑO: 2012

LUGAR	ESTACION				CLASIFICACION VEHICULAR EN PORCIENTO														COORDENADAS	
	KM	TE	SC	TDPA	M	A	B	C2	C3	T3S2	T3S3	T3S2R4	OTROS	A	B	C	K'	D	LATITUD	LONGITUD
Cd. Insurgentes	0.00	3	0	2327	0.3	80.9	1.6	12.5	1.7	2.3	0.5	0.1	0.1	81.2	1.6	17.2	0.087	0.505	25.271520	-111.783884
Ignacio Zaragoza	18.00	1	0	1648	0.3	80.9	1.8	12.5	1.8	2.3	0.4	0.0	0.0	81.2	1.8	17.0	0.084	0.501	25.389563	-111.838498
Ignacio Zaragoza	18.00	3	1	733	0.2	82.3	1.9	10.9	2.1	2.2	0.3	0.0	0.1	82.5	1.9	15.6	0.110	0.511	25.403042	-111.844817
Ignacio Zaragoza	18.00	3	2	701	0.4	80.9	1.8	12.2	1.9	2.3	0.4	0.0	0.1	81.3	1.8	16.9	0.101	0.511	25.403042	-111.844817
T. Izq. Santo Domingo	28.70	1	0	810	0.1	81.5	1.7	13.3	1.6	1.2	0.6	0.0	0.0	81.6	1.7	16.7	0.096	0.503	25.502042	-111.890555
Francisco Villa	64.00	3	0	245	0.6	75.5	1.8	17.5	2.6	1.1	0.9	0.0	0.0	76.1	1.8	22.1	0.139	0.510	25.802169	-112.029574
La Purísima	107.00	1	0	345	0.3	94.2	0.2	4.6	0.5	0.2	0.0	0.0	0.0	94.5	0.2	5.3	0.139	0.503	26.180068	-112.081916

BAJA CALIFORNIA SUR

22 CARR: Cd. Insurgentes - Pto. Adolfo López Mateos

CLAVE: 03404

RUTA: BCS

AÑO: 2012

LUGAR	ESTACION				CLASIFICACION VEHICULAR EN PORCIENTO													COORDENADAS		
	KM	TE	SC	TDPA	M	A	B	C2	C3	T3S2	T3S3	T3S2R4	OTROS	A	B	C	K'	D	LATITUD	LONGITUD
T. C. Cd. Insurgentes - La Purísima	0.00	3	0	794	0.2	80.0	3.4	13.0	0.8	2.5	0.1	0.0	0.0	80.2	3.4	16.4	0.110	0.506	25.274328	-111.787604
Puerto Adolfo López Mateos	35.50	1	0	898	0.8	85.0	2.0	9.7	1.1	1.4	0.0	0.0	0.0	85.8	2.0	12.2	0.119	0.502	25.192963	-112.102220

23 CARR: Ent. Campo Fisher - Punta Abrejos

CLAVE: 03411

RUTA: BCS

AÑO: 2012

LUGAR	ESTACION				CLASIFICACION VEHICULAR EN PORCIENTO													COORDENADAS		
	KM	TE	SC	TDPA	M	A	B	C2	C3	T3S2	T3S3	T3S2R4	OTROS	A	B	C	K'	D	LATITUD	LONGITUD
T. C. Santa Rosalía - Paralelo 28	0.00	3	0	206	0.9	80.3	0.7	12.3	3.1	2.2	0.2	0.0	0.3	81.2	0.7	18.1	0.192	0.506	27.327926	-113.117355
Punta Abrejos	88.00																			

24 CARR: La Paz - Ensenada de Muertos

CLAVE: 03103

RUTA: BCS-246

AÑO: 2012

LUGAR	ESTACION				CLASIFICACION VEHICULAR EN PORCIENTO													COORDENADAS		
	KM	TE	SC	TDPA	M	A	B	C2	C3	T3S2	T3S3	T3S2R4	OTROS	A	B	C	K'	D	LATITUD	LONGITUD
La Paz	0.00	3	0	3560	1.5	87.4	1.7	6.0	1.1	1.8	0.2	0.1	0.2	88.9	1.7	9.4	0.094	0.502	24.114149	-110.293326
T. Izq. El Sargento	45.00	1	0	1569	0.5	83.6	2.5	10.4	1.8	0.9	0.3	0.0	0.0	84.1	2.5	13.4	0.107	0.507	23.982609	-109.994480
T. Izq. El Sargento	45.00	3	0	1609	0.5	86.2	2.4	8.4	1.5	0.8	0.2	0.0	0.0	86.7	2.4	10.9	0.098	0.504	23.981687	-109.991991
Ensenada de Muertos	57.50	1	0	269	5.2	83.9	1.4	7.1	1.4	1.0	0.0	0.0	0.0	89.1	1.4	9.5	0.186	0.530	24.001352	-109.839518

25 CARR: Libramiento de La Paz

CLAVE: 03004

RUTA: BCS

AÑO: 2012

LUGAR	ESTACION				CLASIFICACION VEHICULAR EN PORCIENTO													COORDENADAS		
	KM	TE	SC	TDPA	M	A	B	C2	C3	T3S2	T3S3	T3S2R4	OTROS	A	B	C	K'	D	LATITUD	LONGITUD
T. C. Cabo San Lucas - La Paz	0.00	3	0	14210	0.8	87.1	2.0	4.4	1.7	2.5	0.9	0.4	0.2	87.9	2.0	10.1	0.072	0.504	24.107771	-110.312726
T. C. La Paz - Cd. Insurgentes	10.00																			

26 CARR: Libramiento Norte de La Paz

CLAVE: 03006

RUTA: BCS

AÑO: 2012

LUGAR	ESTACION				CLASIFICACION VEHICULAR EN PORCIENTO													COORDENADAS		
	KM	TE	SC	TDPA	M	A	B	C2	C3	T3S2	T3S3	T3S2R4	OTROS	A	B	C	K'	D	LATITUD	LONGITUD
T. C. La Paz - Pichilingue	0.00	3	0	2352	0.7	62.7	1.4	7.6	8.8	11.0	4.3	2.6	0.9	63.4	1.4	35.2	0.098	0.535	24.232136	-110.300296
T. C. La Paz - Ensenada de Muertos	18.80	1	0	10362	0.9	68.0	2.6	7.7	7.6	7.4	2.8	2.1	0.9	68.9	2.6	28.5	0.107	0.515	24.123282	-110.291562
T. C. La Paz - Ensenada de Muertos	18.80	3	0	6468	1.1	77.9	2.9	6.5	2.0	4.4	2.8	1.7	0.7	79.0	2.9	18.1	0.079	0.509	24.105612	-110.369133
T. C. Cabo San Lucas - La Paz	20.70	1	0	9420	5.1	79.5	2.5	4.3	1.3	3.4	2.2	0.8	0.9	84.6	2.5	12.9	0.074	0.519	24.113920	-110.308683

BAJA CALIFORNIA SUR

27 CARR: Ramal a Benito Juárez

CLAVE: 03405

RUTA: BCS

AÑO: 2012

LUGAR	ESTACION				CLASIFICACION VEHICULAR EN PORCIENTO														COORDENADAS	
	KM	TE	SC	TDPA	M	A	B	C2	C3	T3S2	T3S3	T3S2R4	OTROS	A	B	C	K'	D	LATITUD	LONGITUD
T. C. Cd. Constitución - Puerto San Carlos	0.00	3	0	785	0.1	87.4	3.0	5.6	1.3	2.3	0.2	0.0	0.1	87.5	3.0	9.5	0.111	0.501	25.037232	-111.769529
Benito Juárez	11.50	1	0	803	0.2	87.3	3.0	5.9	1.1	2.0	0.4	0.0	0.1	87.5	3.0	9.5	0.107	0.504	25.110126	-111.821132

28 CARR: Ramal a Ejido Ley Federal de Aguas Número Cuatro

CLAVE: 03007

RUTA: BCS

AÑO: 2012

LUGAR	ESTACION				CLASIFICACION VEHICULAR EN PORCIENTO														COORDENADAS	
	KM	TE	SC	TDPA	M	A	B	C2	C3	T3S2	T3S3	T3S2R4	OTROS	A	B	C	K'	D	LATITUD	LONGITUD
T. C. La Paz - Cd. Insurgentes	0.00	3	0	701	0.6	82.4	0.9	10.0	2.2	3.2	0.7	0.0	0.0	83.0	0.9	16.1	0.088	0.517	25.198493	-111.747447
Ejido Ley Federal de Aguas Número Cuatro	19.20																			

29 CARR: Ramal a El Carrizal

CLAVE: 03050

RUTA: BCS

AÑO: 2012

LUGAR	ESTACION				CLASIFICACION VEHICULAR EN PORCIENTO														COORDENADAS	
	KM	TE	SC	TDPA	M	A	B	C2	C3	T3S2	T3S3	T3S2R4	OTROS	A	B	C	K'	D	LATITUD	LONGITUD
T. C. San Pedro - Cabo San Lucas	0.00	3	0	466	0.9	91.8	0.5	4.8	0.7	1.1	0.1	0.0	0.1	92.7	0.5	6.8	0.109	0.505	23.833246	-110.249499
Carrizal	10.00																			

30 CARR: Ramal a Guerrero Negro

CLAVE: 03395

RUTA: BCS

AÑO: 2012

LUGAR	ESTACION				CLASIFICACION VEHICULAR EN PORCIENTO														COORDENADAS	
	KM	TE	SC	TDPA	M	A	B	C2	C3	T3S2	T3S3	T3S2R4	OTROS	A	B	C	K'	D	LATITUD	LONGITUD
T. C. Santa Rosalía - Guerrero Negro	0.00	3	0	2831	0.2	83.9	1.3	10.1	1.2	2.6	0.4	0.2	0.1	84.1	1.3	14.6	0.088	0.513	27.967544	-114.018033
Guerrero Negro	4.50																			

31 CARR: Ramal a La Ribera

CLAVE: 03406

RUTA: BCS

AÑO: 2012

LUGAR	ESTACION				CLASIFICACION VEHICULAR EN PORCIENTO														COORDENADAS	
	KM	TE	SC	TDPA	M	A	B	C2	C3	T3S2	T3S3	T3S2R4	OTROS	A	B	C	K'	D	LATITUD	LONGITUD
T. C. Cabo San Lucas - La Paz	0.00	3	0	1370	0.7	88.0	2.1	7.5	0.7	0.8	0.1	0.0	0.1	88.7	2.1	9.2	0.086	0.503	23.544612	-109.661983
La Ribera	12.00																			

BAJA CALIFORNIA SUR

37 CARR: Ramal a San Juan de La Costa

CLAVE: 03403

RUTA: BCS-163-MEX-001

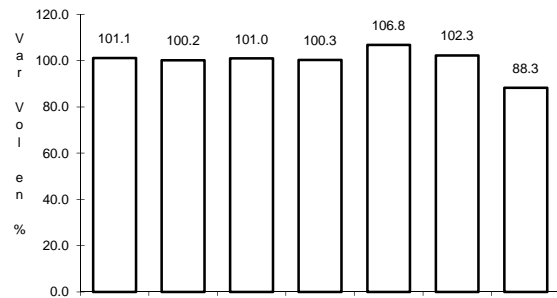
AÑO: 2012

L U G A R	E S T A C I O N				C L A S I F I C A C I O N V E H I C U L A R E N P O R C I E N T O														C O O R D E N A D A S	
	KM	TE	SC	TDPA	M	A	B	C2	C3	T3S2	T3S3	T3S2R4	OTROS	A	B	C	K'	D	LATITUD	LONGITUD
T. C. La Paz - Cd. Insurgentes	0.00	3	0	980	0.5	76.8	0.5	18.2	2.6	1.3	0.1	0.0	0.0	77.3	0.5	22.2	0.143	0.519	24.122021	-110.438813
Puerto Cajete	23.00	3	0	617	0.4	74.1	0.8	20.9	2.3	1.1	0.4	0.0	0.0	74.5	0.8	24.7	0.134	0.504	24.250901	-110.608855
San Juan de La Costa	40.70	1	0	514	0.6	76.5	0.5	16.3	3.7	1.3	0.6	0.1	0.4	77.1	0.5	22.4	0.101	0.518	24.366402	-110.687412

1 CARR: Cabo San Lucas - La Paz

CLAVE: 03102

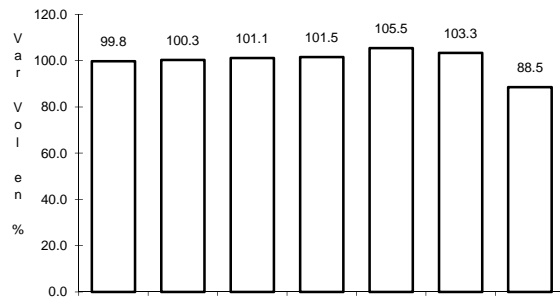
RUTA: MEX-001



Km: 0.00

Tipo: 3

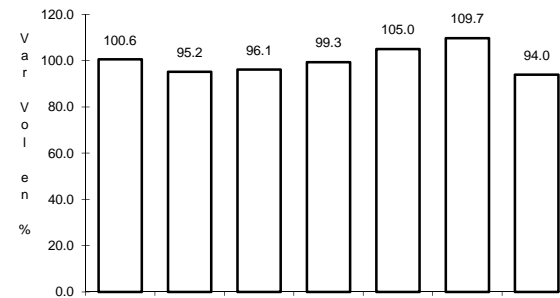
Sent: 1



Km: 0.00

Tipo: 3

Sent: 2



Km: 110.00

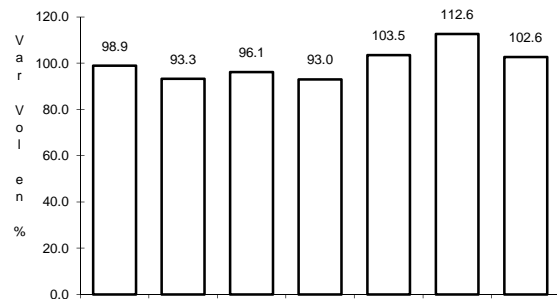
Tipo: 3

Sent: 0

2 CARR: Cd. Constitución - Puerto San Carlos

CLAVE: 03231

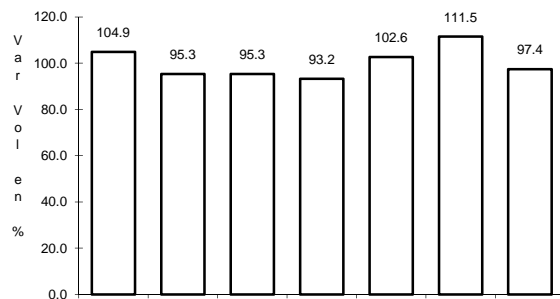
RUTA: MEX-001



Km: 0.00

Tipo: 3

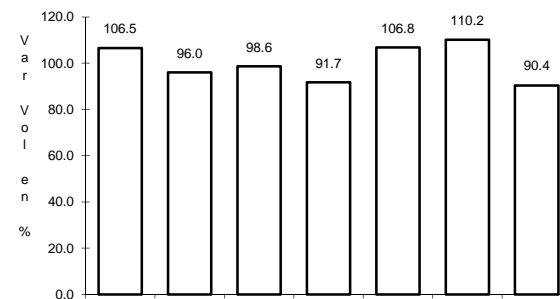
Sent: 0



Km: 10.00

Tipo: 1

Sent: 0



Km: 10.00

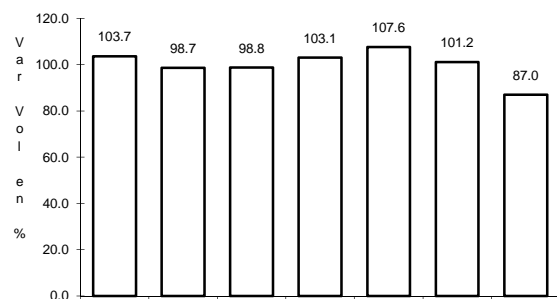
Tipo: 3

Sent: 0

3 CARR: Cd. Insurgentes - Loreto

CLAVE: 03092

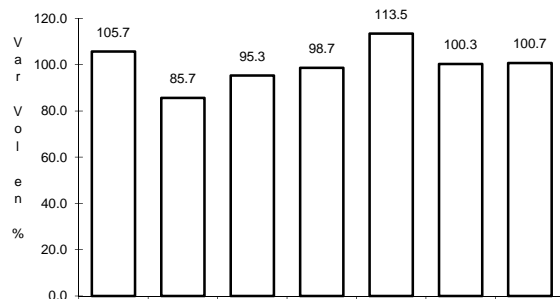
RUTA: MEX-001



Km: 0.00

Tipo: 3

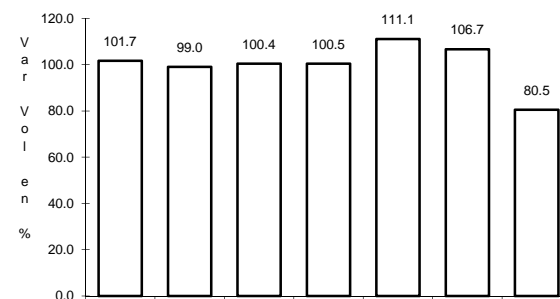
Sent: 0



Km: 65.00

Tipo: 1

Sent: 0



Km: 120.00

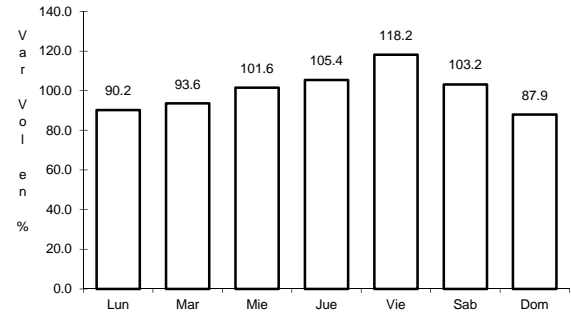
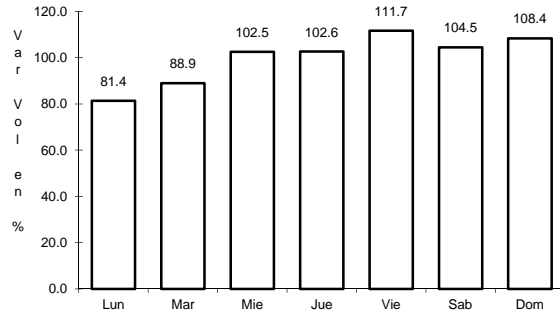
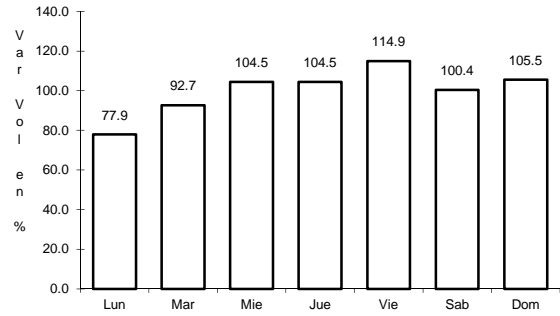
Tipo: 1

Sent: 0

4 CARR: Ent. Punta Prieta - Guerrero Negro

CLAVE: 00321

RUTA: MEX-001



Km: 0.00 Tipo: 3 Sent: 0

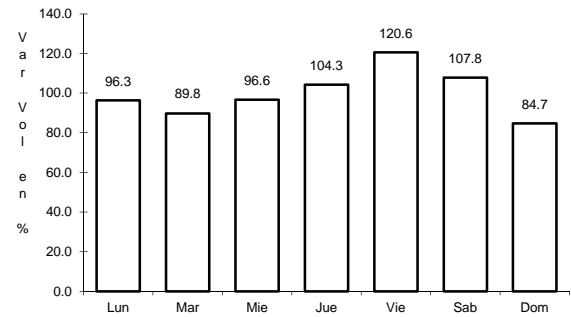
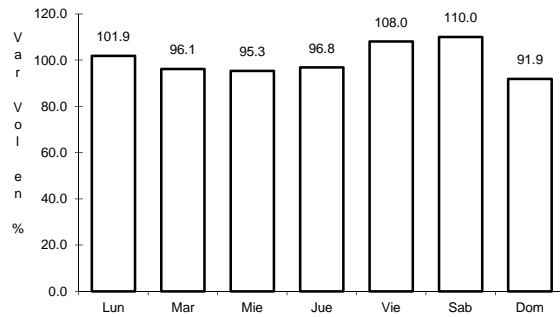
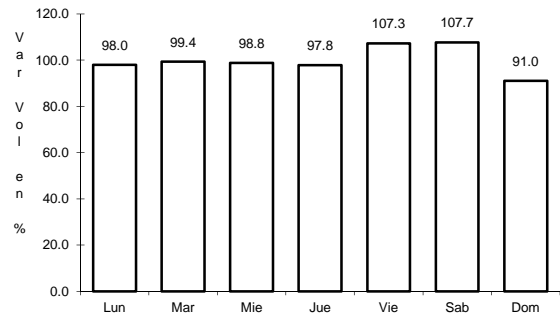
Km: 70.10 Tipo: 3 Sent: 0

Km: 130.00 Tipo: 1 Sent: 0

5 CARR: La Paz - Cd. Insurgentes

CLAVE: 03101

RUTA: MEX-001



Km: 0.00 Tipo: 3 Sent: 1

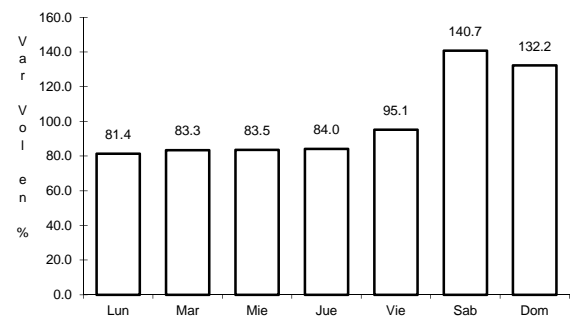
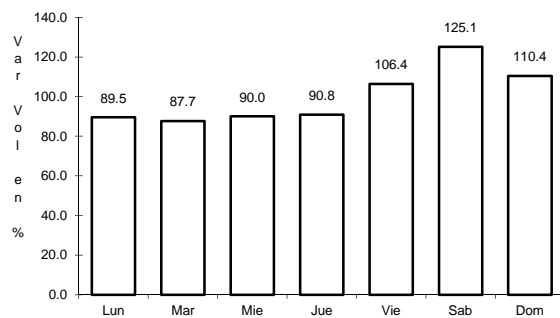
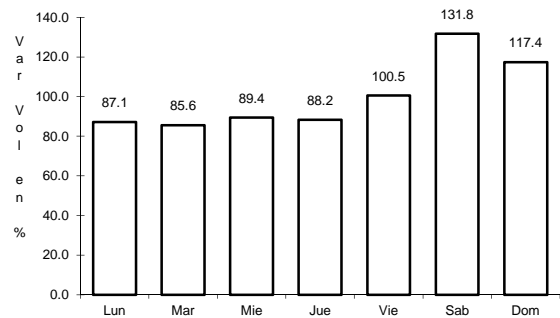
Km: 0.00 Tipo: 3 Sent: 2

Km: 118.20 Tipo: 1 Sent: 0

6 CARR: La Paz - Pichilingue

CLAVE: 03230

RUTA: MEX-001



Km: 0.00 Tipo: 3 Sent: 1

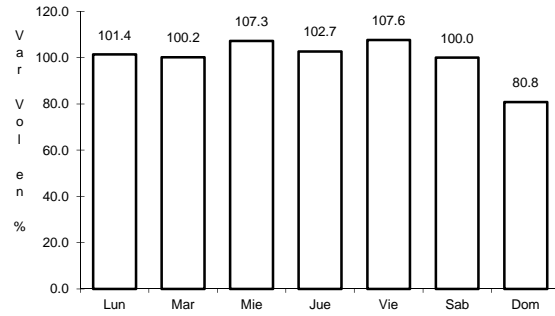
Km: 0.00 Tipo: 3 Sent: 2

Km: 17.00 Tipo: 1 Sent: 0

7 CARR: Libramiento de Cabo San Lucas

CLAVE: 03100

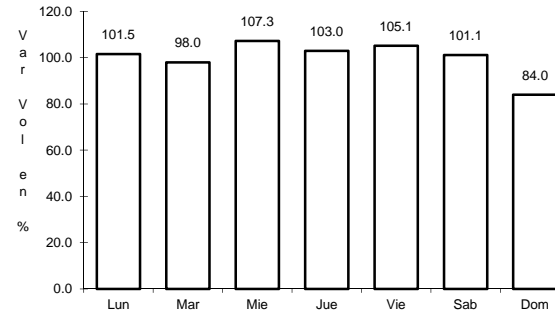
RUTA: MEX-001



Km: 0.00

Tipo: 3

Sent: 1



Km: 0.00

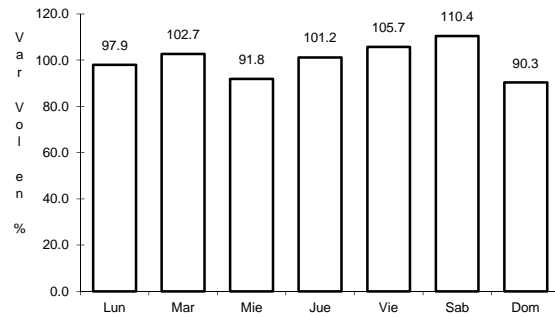
Tipo: 3

Sent: 2

8 CARR: Loreto - Santa Rosalía

CLAVE: 03393

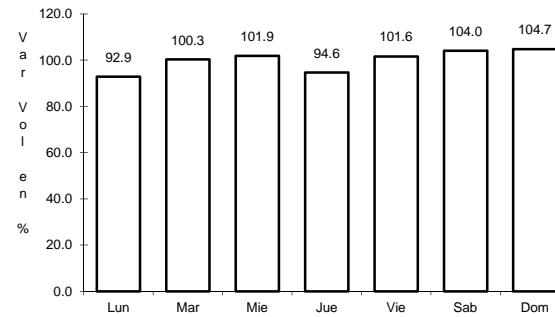
RUTA: MEX-001



Km: 0.00

Tipo: 3

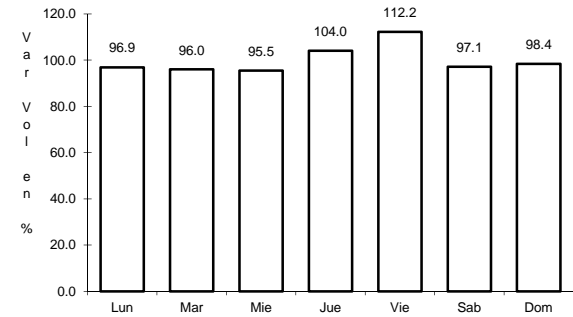
Sent: 0



Km: 135.00

Tipo: 1

Sent: 0



Km: 197.00

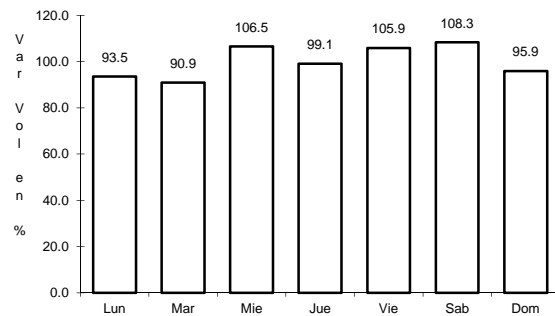
Tipo: 1

Sent: 0

9 CARR: Ramal a Aeropuerto de La Paz

CLAVE: 03396

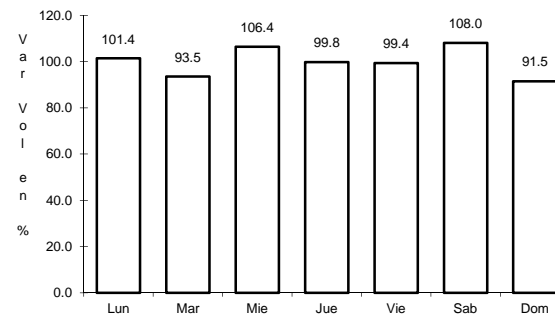
RUTA: MEX-001



Km: 0.00

Tipo: 3

Sent: 1



Km: 0.00

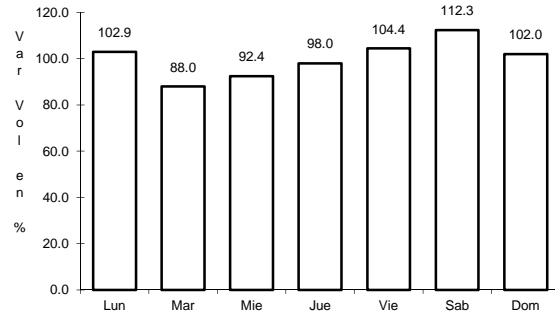
Tipo: 3

Sent: 2

10 CARR: Ramal a Aeropuerto de Los Cabos

CLAVE: 03394

RUTA: MEX-001



Km: 0.00

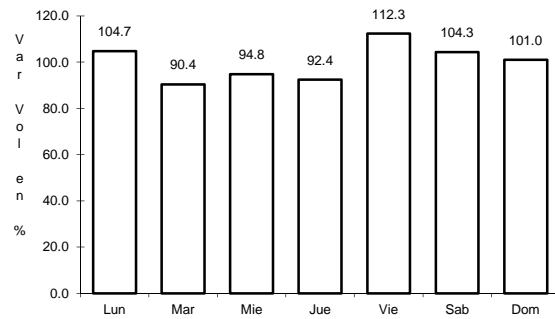
Tipo: 3

Sent: 0

11 CARR: Ramal a Los Paredones

CLAVE: 03407

RUTA: MEX-001



Km: 0.00

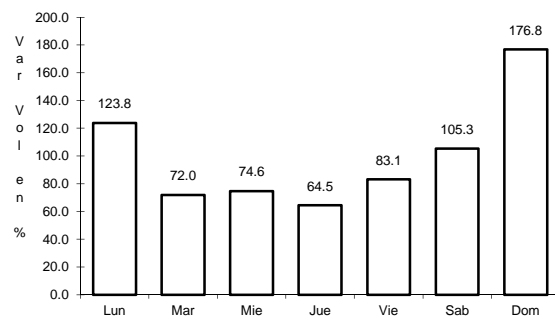
Tipo: 3

Sent: 0

12 CARR: Ramal a Miraflores

CLAVE: 03407

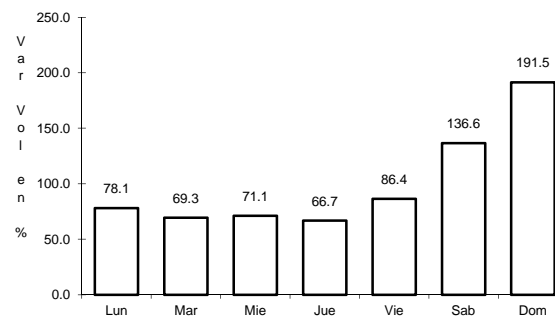
RUTA: MEX-001



Km: 0.00

Tipo: 3

Sent: 1



Km: 0.00

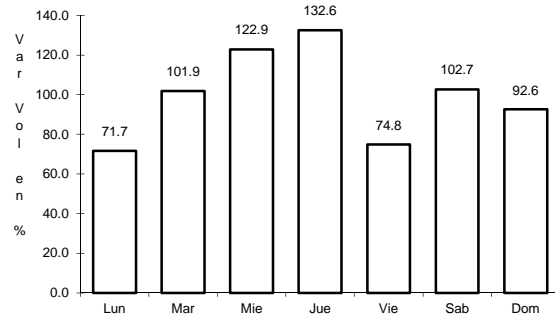
Tipo: 3

Sent: 2

16 CARR: Ramal Aeropista San Ignacio

CLAVE: 03051

RUTA: MEX-001



Km: 0.00

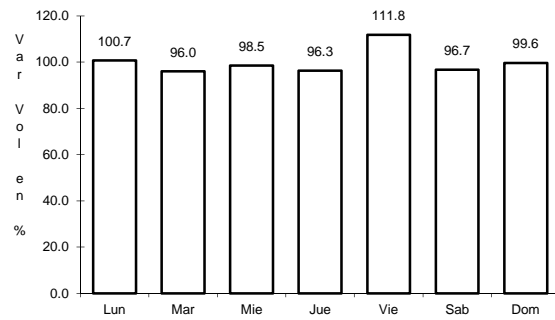
Tipo: 3

Sent: 0

17 CARR: Ramal Aeropista Santa Rosalía

CLAVE: 03051

RUTA: MEX-001



Km: 0.00

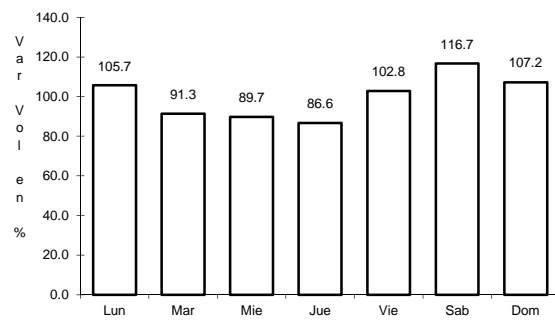
Tipo: 3

Sent: 0

18 CARR: San Pedro - Cabo San Lucas

CLAVE: 03003

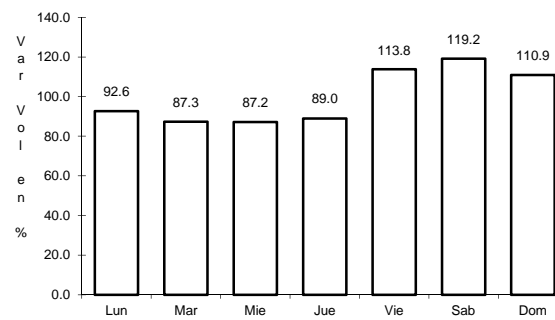
RUTA: MEX-019



Km: 0.00

Tipo: 3

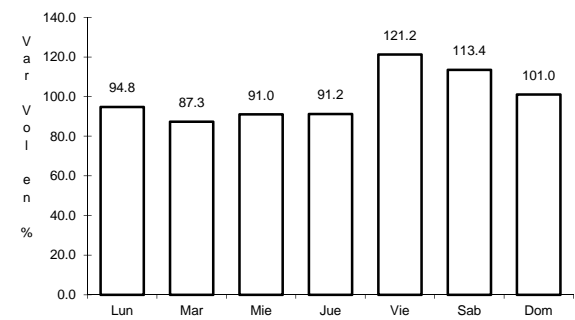
Sent: 1



Km: 0.00

Tipo: 3

Sent: 2



Km: 52.00

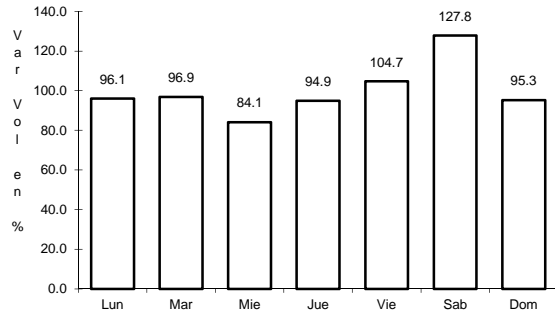
Tipo: 1

Sent: 0

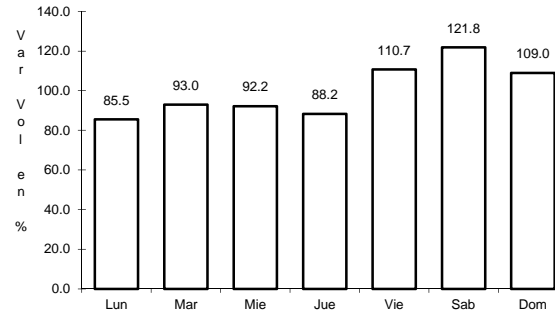
22 CARR: Cd. Insurgentes - Pto. Adolfo López Mateos

CLAVE: 03404

RUTA: BCS



Km: 0.00 Tipo: 3 Sent: 0

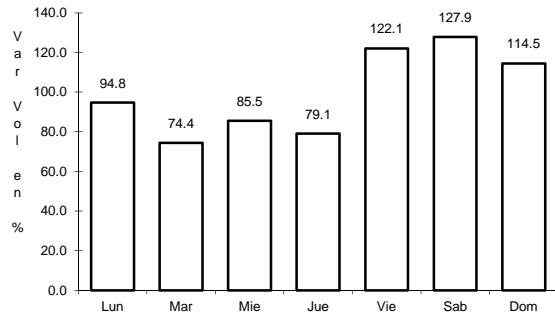


Km: 35.50 Tipo: 1 Sent: 0

23 CARR: Ent. Campo Fisher - Punta Abreojos

CLAVE: 03411

RUTA: BCS

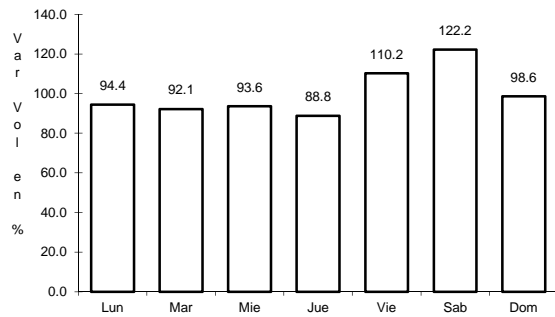


Km: 0.00 Tipo: 3 Sent: 0

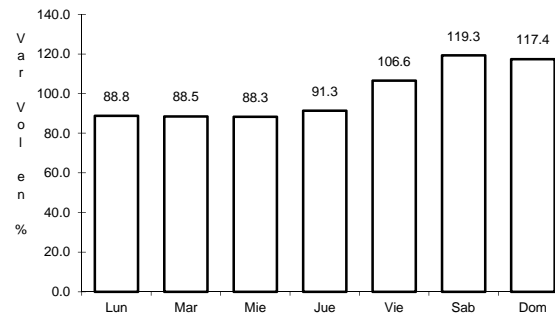
24 CARR: La Paz - Ensenada de Muertos

CLAVE: 03103

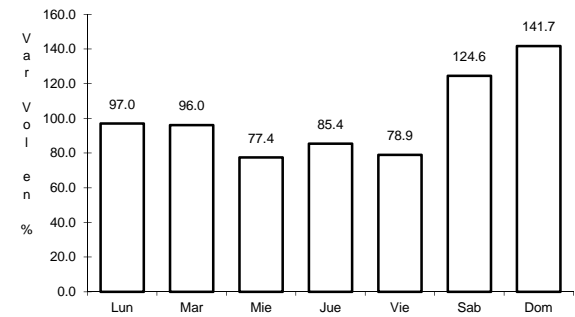
RUTA: BCS-246



Km: 0.00 Tipo: 3 Sent: 0



Km: 45.00 Tipo: 1 Sent: 0

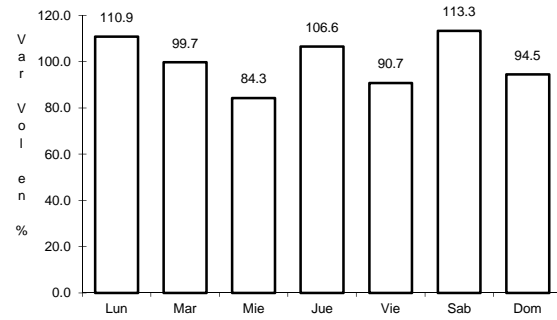


Km: 57.50 Tipo: 1 Sent: 0

28 CARR: Ramal a Ejido Ley Federal de Aguas Número Cuatro

CLAVE: 03007

RUTA: BCS



Km: 0.00

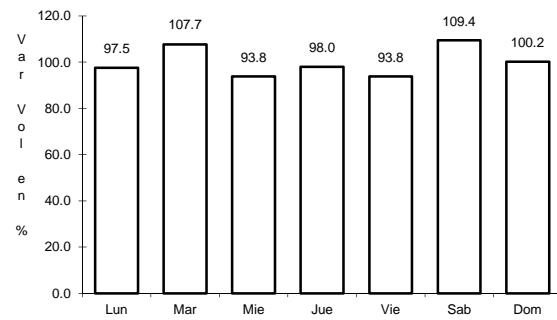
Tipo: 3

Sent: 0

29 CARR: Ramal a El Carrizal

CLAVE: 03050

RUTA: BCS



Km: 0.00

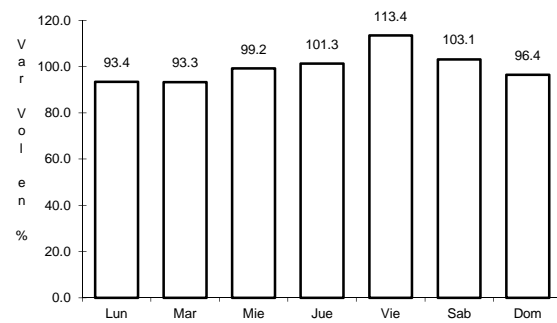
Tipo: 3

Sent: 0

30 CARR: Ramal a Guerrero Negro

CLAVE: 03395

RUTA: BCS



Km: 0.00

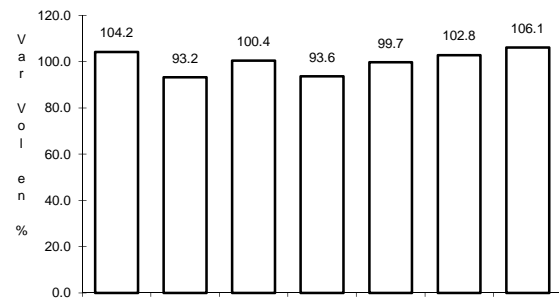
Tipo: 3

Sent: 0

31 CARR: Ramal a La Ribera

CLAVE: 03406

RUTA: BCS



Km: 0.00

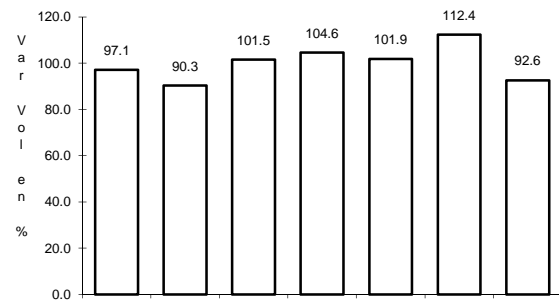
Tipo: 3

Sent: 0

32 CARR: Ramal a Melitón Albáñez

CLAVE: 03407

RUTA: BCS



Km: 0.00

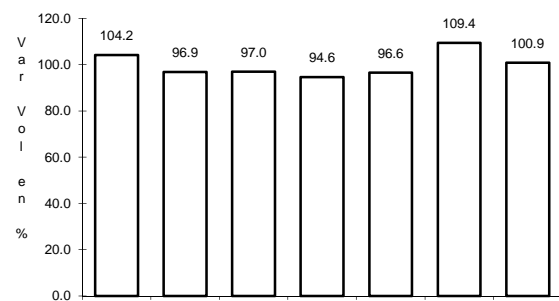
Tipo: 3

Sent: 0

33 CARR: Ramal a Santa Catarina

CLAVE: 03052

RUTA: BCS



Km: 0.00

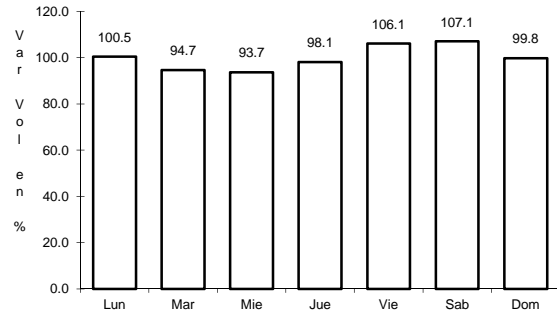
Tipo: 3

Sent: 0

34 CARR: Ramal a Bahía de Tortugas

CLAVE: 03397

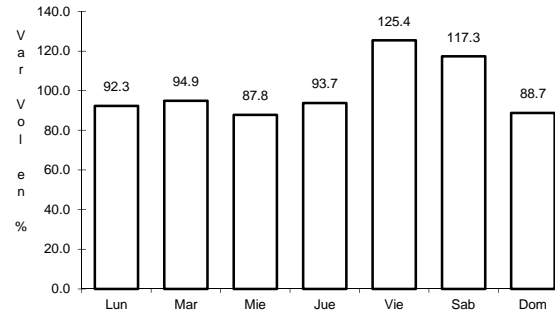
RUTA: MEX-001-BCS



Km: 0.00

Tipo: 3

Sent: 0



Km: 6.00

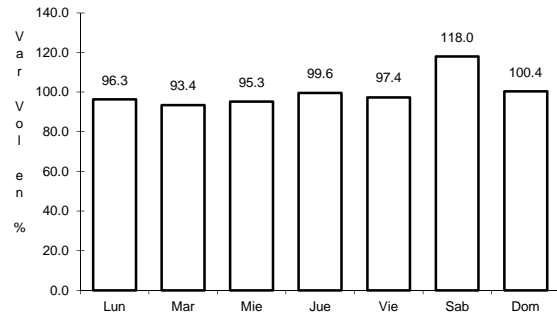
Tipo: 3

Sent: 0

35 CARR: Ramal a Ejido Ley Federal de Aguas Número Dos

CLAVE: 03050

RUTA: BCS-MEX-001



Km: 0.00

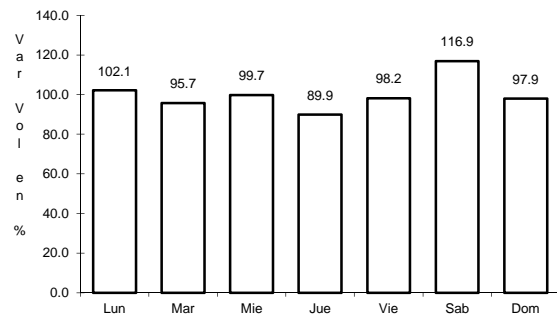
Tipo: 3

Sent: 0

36 CARR: Ramal a Ley Federal de Aguas Número Cinco

CLAVE: 03407

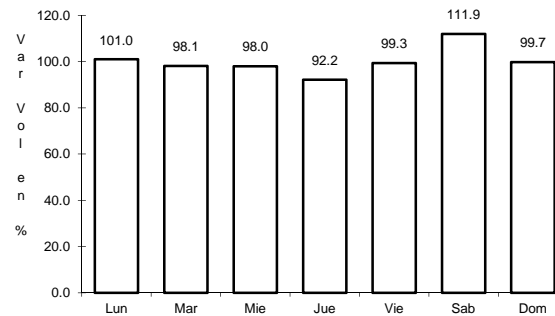
RUTA: BCS-MEX-001



Km: 0.00

Tipo: 3

Sent: 1

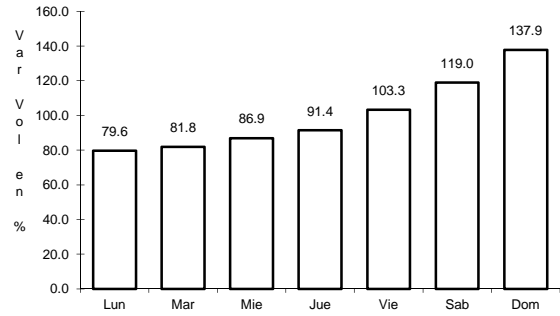


Km: 0.00

Tipo: 3

Sent: 2

37 CARR: Ramal a San Juan de La Costa

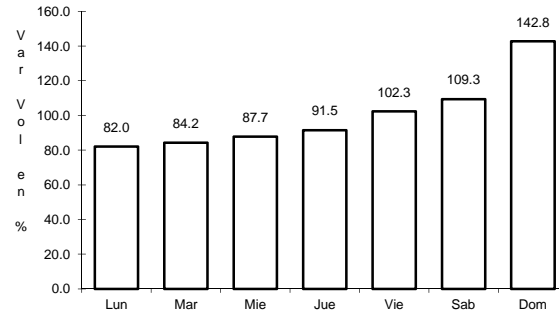


Km: 0.00

Tipo: 3

Sent: 0

CLAVE: 03403

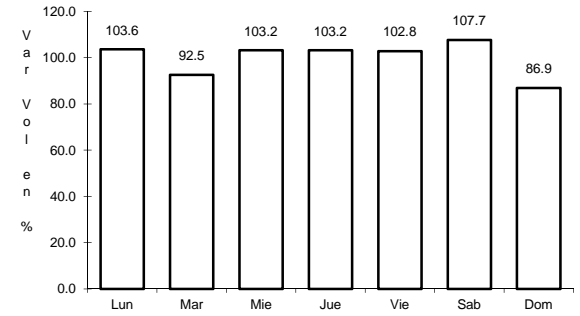


Km: 23.00

Tipo: 3

Sent: 0

RUTA: BCS-163-MEX-001



Km: 40.70

Tipo: 1

Sent: 0