

# BAJA CALIFORNIA

NO. INDICE	CARRETERA	RUTA
---RED FEDERAL LIBRE---		
1	Ensenada - El Chinero	MEX-003
2	Ensenada - Lázaro Cárdenas	MEX-001
3	Ent. Punta Prieta - Bahía de Los Ángeles	MEX-001
4	Ent. Punta Prieta - Guerrero Negro	MEX-001
5	Lázaro Cárdenas - Ent. Punta Prieta	MEX-001
6	Mexicali - San Felipe	MEX-005
7	Ramal a Aeropuerto de Mexicali	MEX-002
8	Ramal a Santa María	MEX-001
9	San Felipe - Chapala	MEX-005
10	Sonoita - Mexicali	MEX-002
11	Tecate - El Sauzal	MEX-003
12	Tijuana - Ensenada (Libre)	MEX-001
---RED FEDERAL DE CUOTA---		
13	El Centinela - La Rumorosa (Cuota)	MEX-002D
14	La Rumorosa - Tecate (Cuota)	MEX-002D
15	Libramiento de Mexicali (Cuota)	MEX-002D
16	Libramiento de Tecate (Cuota)	MEX-002D
17	Tecate - Tijuana (Cuota)	MEX-002D
18	Tijuana - Ensenada (Cuota)	MEX-001D
---RED FEDERAL INTEGRADA POR TRAMOS LIBRES Y DE CUOTA---		
19	Mexicali - Tijuana	MEX-002D-MEX
---RED ESTATAL LIBRE---		
20	Algodones - Ent. Islas Agrarias Grupo B	BC-008
21	Corredor Tijuana 2000	BC
22	Ejido Benito Juárez - Ejido Chiapas	BC-061
23	Ejido Monterrey - Mazón	BC-003
24	El Faro - Estación Coahuila	BC-004
25	Ent. Santa Rosa - Ent. Pachuca	BC-006
26	La Puerta - T. C. (Mexicali - Estación Coahuila)	BC-010
27	Mexicali - Algodones	BC-002
28	Mexicali - Estación Coahuila	BC-001
29	Mexicali - Progreso	BC-005

# 02 BAJA CALIFORNIA

SECRETARÍA DE COMUNICACIONES Y TRANSPORTES  
DIRECCIÓN GENERAL DE SERVICIOS TÉCNICOS

ESTADOS UNIDOS DE NORTE AMÉRICA



BAJA CALIFORNIA

1 CARR: Ensenada - El Chinero

CLAVE: 02009

RUTA: MEX-003

AÑO: 2012

LUGAR	ESTACION				CLASIFICACION VEHICULAR EN PORCIENTO														COORDENADAS	
	KM	TE	SC	TDPA	M	A	B	C2	C3	T3S2	T3S3	T3S2R4	OTROS	A	B	C	K'	D	LATITUD	LONGITUD
Ensenada	0.00	3	0	5687	0.5	68.2	5.4	18.4	1.2	3.5	1.9	0.2	0.7	68.7	5.4	25.9	0.086	0.502	31.869453	-116.543560
Ojos Negros	38.50	1	0	1929	0.3	78.1	1.6	9.6	0.7	5.3	3.6	0.1	0.7	78.4	1.6	20.0	0.084	0.521	31.888875	-116.280488
San Salvador	60.50	1	0	835	0.5	70.3	2.2	11.8	0.6	6.5	7.4	0.1	0.6	70.8	2.2	27.0	0.095	0.547	31.835881	-116.063514
Héroes de La Independencia	93.00	3	0	969	0.3	74.3	1.2	9.8	0.7	7.3	6.0	0.1	0.3	74.6	1.2	24.2	0.091	0.543	31.601605	-115.874465
Leyes de Reforma	103.00	3	0	912	0.3	72.0	0.5	9.5	0.7	6.9	9.6	0.1	0.4	72.3	0.5	27.2	0.088	0.529	31.530275	-115.816970
Lazáro Cárdenas	122.00	3	0	918	0.2	74.5	1.4	9.2	0.5	7.6	6.0	0.2	0.4	74.7	1.4	23.9	0.113	0.549	31.396031	-115.705649
Francisco R. Serrano	137.50	3	0	727	0.2	65.5	1.4	12.2	1.1	9.4	9.2	0.1	0.9	65.7	1.4	32.9	0.092	0.522	31.337070	-115.571205
El Chinero	196.00	1	0	551	0.3	64.8	1.7	13.1	1.0	9.5	8.9	0.2	0.5	65.1	1.7	33.2	0.098	0.505	31.419705	-115.068087

2 CARR: Ensenada - Lázaró Cárdenas

CLAVE: 02098

RUTA: MEX-001

AÑO: 2012

LUGAR	ESTACION				CLASIFICACION VEHICULAR EN PORCIENTO														COORDENADAS	
	KM	TE	SC	TDPA	M	A	B	C2	C3	T3S2	T3S3	T3S2R4	OTROS	A	B	C	K'	D	LATITUD	LONGITUD
Ensenada	0.00	3	1	25284	0.7	84.0	0.4	10.1	0.4	1.5	2.1	0.2	0.6	84.7	0.4	14.9	0.079	0.500	31.800931	-116.594647
Ensenada	0.00	3	2	25326	2.1	81.5	0.4	10.7	0.4	1.7	2.4	0.2	0.6	83.6	0.4	16.0	0.079	0.500	31.800927	-116.594657
T. Der. Aeropuerto	13.50	3	1	11790	0.8	77.2	2.7	9.6	1.1	3.7	3.2	0.7	1.0	78.0	2.7	19.3	0.078	0.513	31.800665	-116.594886
T. Der. Aeropuerto	13.50	3	2	12432	0.9	74.7	3.1	10.7	1.1	4.4	3.2	0.9	1.0	75.6	3.1	21.3	0.089	0.513	31.800665	-116.594886
T. Der. La Bufadora	21.16	1	1	12443	0.4	83.2	0.5	9.9	0.5	3.0	1.6	0.2	0.7	83.6	0.5	15.9	0.092	0.523	31.737567	-116.582173
T. Der. La Bufadora	21.16	1	2	11371	0.5	82.4	0.5	10.1	0.5	3.3	1.7	0.2	0.8	82.9	0.5	16.6	0.077	0.523	31.737570	-116.582172
T. Der. La Bufadora	21.16	3	0	12846	0.8	73.9	1.1	17.0	0.5	5.3	1.0	0.1	0.3	74.7	1.1	24.2	0.082	0.501	31.702815	-116.557981
Santo Tomás	52.00	1	0	4670	1.0	58.5	1.8	19.4	1.2	13.9	2.4	0.6	1.2	59.5	1.8	38.7	0.079	0.501	31.584999	-116.420561
Misión San Vicente	90.00	1	0	3853	0.6	65.0	1.5	14.3	1.2	15.0	1.5	0.2	0.7	65.6	1.5	32.9	0.089	0.501	31.331771	-116.251991
El Salado	104.50	1	0	3502	1.2	64.0	2.0	11.9	1.2	16.8	1.8	0.4	0.7	65.2	2.0	32.8	0.098	0.512	31.239030	-116.171179
Punta Colonet	128.00	1	0	5557	0.3	72.9	2.7	8.8	0.9	12.6	1.0	0.3	0.5	73.2	2.7	24.1	0.080	0.503	31.077351	-116.207921
Punta Colonet	128.00	3	0	4850	0.3	67.7	4.0	12.9	1.1	11.8	1.4	0.2	0.6	68.0	4.0	28.0	0.080	0.500	31.054275	-116.209234
Camalú	159.00	1	0	5333	0.3	74.4	3.2	9.7	0.9	8.5	1.5	0.4	1.1	74.7	3.2	22.1	0.079	0.503	30.850195	-116.070266
Colonia Vicente Guerrero (Lazáro Cárdenas)	172.40	3	0	11618	0.2	79.0	2.6	8.8	0.6	6.5	1.0	0.3	1.0	79.2	2.6	18.2	0.078	0.501	30.702758	-115.985389
San Quintín	193.00	1	0	13262	0.3	82.1	2.6	8.5	0.5	4.4	1.1	0.2	0.3	82.4	2.6	15.0	0.081	0.508	30.593584	-115.951860
San Quintín	193.00	3	0	18132	0.3	87.3	2.0	7.5	0.3	2.1	0.4	0.0	0.1	87.6	2.0	10.4	0.078	0.501	30.554208	-115.939846
Lazáro Cárdenas	196.00																			

## BAJA CALIFORNIA

3 CARR: Ent. Punta Prieta - Bahía de Los Ángeles

CLAVE: 02322

RUTA: MEX-001

AÑO: 2012

LUGAR	ESTACION				CLASIFICACION VEHICULAR EN PORCIENTO										COORDENADAS					
	KM	TE	SC	TDPA	M	A	B	C2	C3	T3S2	T3S3	T3S2R4	OTROS	A	B	C	K'	D	LATITUD	LONGITUD
Parador Punta Prieta	0.00	3	0	122	1.7	72.8	0.7	21.2	3.0	0.3	0.3	0.0	0.0	74.5	0.7	24.8	0.157	0.501	29.045555	-114.148634
Bahía de Los Ángeles	68.00	1	0	194	2.3	66.3	0.4	26.1	4.4	0.3	0.2	0.0	0.0	68.6	0.4	31.0	0.130	0.502	28.964447	-113.568257

4 CARR: Ent. Punta Prieta - Guerrero Negro

CLAVE: 00321

RUTA: MEX-001

AÑO: 2012

LUGAR	ESTACION				CLASIFICACION VEHICULAR EN PORCIENTO										COORDENADAS					
	KM	TE	SC	TDPA	M	A	B	C2	C3	T3S2	T3S3	T3S2R4	OTROS	A	B	C	K'	D	LATITUD	LONGITUD
Parador Punta Prieta	0.00	3	0	872	0.7	49.9	2.8	12.2	1.6	30.1	2.1	0.3	0.3	50.6	2.8	46.6	0.116	0.546	29.042808	-114.152497
Rosarito	50.60	3	0	972	0.7	51.0	2.3	12.2	2.6	28.4	2.1	0.3	0.4	51.7	2.3	46.0	0.110	0.534	28.630056	-114.023444
Tanatán	70.10	3	0	867	0.7	52.2	2.4	13.1	1.3	27.1	2.5	0.3	0.4	52.9	2.4	44.7	0.100	0.539	28.454743	-113.995837
Tampico	105.00	1	0	1144	0.5	56.7	2.2	13.3	1.4	23.8	1.7	0.3	0.1	57.2	2.2	40.6	0.095	0.532	28.216232	-114.000232
Lim. Edos. Term. B.C. Ppia. B.C.S. (Paralelo 28)	128.56																			
Ent. Guerrero Negro	130.00	1	0	2036	0.5	74.8	1.1	7.5	1.0	13.6	1.1	0.1	0.3	75.3	1.1	23.6	0.100	0.519	27.971701	-114.013689

5 CARR: Lázaro Cárdenas - Ent. Punta Prieta

CLAVE: 02319

RUTA: MEX-001

AÑO: 2012

LUGAR	ESTACION				CLASIFICACION VEHICULAR EN PORCIENTO										COORDENADAS					
	KM	TE	SC	TDPA	M	A	B	C2	C3	T3S2	T3S3	T3S2R4	OTROS	A	B	C	K'	D	LATITUD	LONGITUD
Lázaro Cárdenas	0.00	3	0	12326	0.4	82.4	3.0	10.0	0.4	2.9	0.7	0.0	0.2	82.8	3.0	14.2	0.076	0.515	30.518822	-115.928801
Rosario de Arriba	53.70	1	0	1392	0.4	54.6	3.5	15.5	1.1	20.0	4.0	0.2	0.7	55.0	3.5	41.5	0.093	0.503	30.066068	-115.731235
Rosario de Arriba	53.70	3	0	2556	0.5	71.5	1.4	11.6	0.7	12.1	1.6	0.1	0.5	72.0	1.4	26.6	0.086	0.501	30.073703	-115.706137
T. Der. Emiliano Zapata	80.00	3	0	885	0.4	55.6	2.8	8.7	1.2	24.4	5.3	0.4	1.2	56.0	2.8	41.2	0.101	0.516	30.028949	-115.538750
San Agustín	140.00	1	0	864	0.2	48.5	2.7	10.4	1.4	31.1	5.2	0.3	0.2	48.7	2.7	48.6	0.094	0.508	29.922046	-114.979945
San Agustín	140.00	3	0	1430	0.3	46.6	2.8	12.1	2.2	31.7	4.0	0.1	0.2	46.9	2.8	50.3	0.101	0.505	29.921581	-114.974599
San Luis	173.00	1	0	1443	0.4	48.7	3.3	13.3	1.2	30.9	1.9	0.2	0.1	49.1	3.3	47.6	0.103	0.505	29.734673	-114.726026
Rancho Chapala	222.80	1	0	813	0.3	49.1	2.7	7.8	1.7	35.3	2.4	0.4	0.3	49.4	2.7	47.9	0.124	0.501	29.386879	-114.383696
Parador Punta Prieta	275.66	1	0	822	0.5	46.4	3.0	12.1	1.8	33.0	2.9	0.1	0.2	46.9	3.0	50.1	0.095	0.502	29.049019	-114.153398

6 CARR: Mexicali - San Felipe

CLAVE: 02096

RUTA: MEX-005

AÑO: 2012

LUGAR	ESTACION				CLASIFICACION VEHICULAR EN PORCIENTO										COORDENADAS					
	KM	TE	SC	TDPA	M	A	B	C2	C3	T3S2	T3S3	T3S2R4	OTROS	A	B	C	K'	D	LATITUD	LONGITUD
Mexicali	0.00	3	1	9066	0.5	84.8	0.8	8.3	1.6	2.7	0.9	0.2	0.2	85.3	0.8	13.9	0.081	0.502	32.510509	-115.400880
Mexicali	0.00	3	2	9140	0.3	84.4	0.9	8.3	1.7	3.0	1.0	0.2	0.2	84.7	0.9	14.4	0.120	0.502	32.510508	-115.400879
La Puerta	32.00	1	1	3610	0.3	83.2	1.6	5.9	2.0	4.6	1.5	0.4	0.5	83.5	1.6	14.9	0.092	0.501	32.340830	-115.331752

BAJA CALIFORNIA

6 CARR: Mexicali - San Felipe

CLAVE: 02096

RUTA: MEX-005

AÑO: 2012

LUGAR	ESTACION				CLASIFICACION VEHICULAR EN PORCIENTO													COORDENADAS		
	KM	TE	SC	TDPA	M	A	B	C2	C3	T3S2	T3S3	T3S2R4	OTROS	A	B	C	K'	D	LATITUD	LONGITUD
La Puerta	32.00	1	2	3598	0.3	81.6	1.7	6.8	2.2	4.9	1.7	0.4	0.4	81.9	1.7	16.4	0.152	0.501	32.340831	-115.331752
T. Izq. Estación Coahuila	39.00	1	1	3016	0.1	82.9	1.6	6.3	2.0	4.0	2.5	0.2	0.4	83.0	1.6	15.4	0.097	0.526	32.276617	-115.322085
T. Izq. Estación Coahuila	39.00	1	2	3040	0.2	80.7	1.7	7.0	2.2	4.6	2.9	0.3	0.4	80.9	1.7	17.4	0.077	0.526	32.276577	-115.322086
T. Izq. Estación Coahuila	39.00	3	0	5107	0.1	79.5	1.3	5.2	4.2	6.1	3.1	0.2	0.3	79.6	1.3	19.1	0.093	0.502	32.266495	-115.321515
El Chinero	141.00	1	0	1755	0.1	62.0	0.7	22.5	1.4	8.1	4.7	0.2	0.3	62.1	0.7	37.2	0.086	0.509	31.441914	-115.053849
El Chinero	141.00	3	0	1662	0.2	71.8	0.9	20.0	1.3	3.9	1.5	0.1	0.3	72.0	0.9	27.1	0.086	0.510	31.426149	-115.046456
San Felipe	189.60	1	1	3067	0.4	84.2	0.5	11.8	0.7	0.7	1.1	0.1	0.5	84.6	0.5	14.9	0.085	0.523	31.046716	-114.870762
San Felipe	189.60	1	2	3059	0.3	83.2	0.5	13.0	0.5	0.8	1.1	0.1	0.5	83.5	0.5	16.0	0.082	0.523	31.046716	-114.870762

7 CARR: Ramal a Aeropuerto de Mexicali

CLAVE: 02321

RUTA: MEX-002

AÑO: 2012

LUGAR	ESTACION				CLASIFICACION VEHICULAR EN PORCIENTO													COORDENADAS		
	KM	TE	SC	TDPA	M	A	B	C2	C3	T3S2	T3S3	T3S2R4	OTROS	A	B	C	K'	D	LATITUD	LONGITUD
T. C. Mexicali - Estación Coahuila	0.00	3	0	10357	0.9	87.8	0.4	6.0	1.6	2.3	0.4	0.2	0.4	88.7	0.4	10.9	0.083	0.504	32.651869	-115.346490
Aeropuerto	10.00	1	0	4725	0.3	86.4	0.2	9.7	0.2	2.7	0.3	0.0	0.2	86.7	0.2	13.1	0.102	0.504	32.628498	-115.253130
T. C. Algodones - Islas Agrarias Grupo B	12.10																			

8 CARR: Ramal a Santa María

CLAVE: 02506

RUTA: MEX-001

AÑO: 2012

LUGAR	ESTACION				CLASIFICACION VEHICULAR EN PORCIENTO													COORDENADAS		
	KM	TE	SC	TDPA	M	A	B	C2	C3	T3S2	T3S3	T3S2R4	OTROS	A	B	C	K'	D	LATITUD	LONGITUD
T. C. Lazáro Cárdenas - Punta Prieta	0.00	3	0	2513	1.6	79.8	4.8	12.5	0.3	0.6	0.3	0.0	0.1	81.4	4.8	13.8	0.100	0.501	30.392280	-115.870598
T. C. Lazáro Cárdenas - Parador Punta Prieta	9.50																			

9 CARR: San Felipe - Chapala

CLAVE: 02503

RUTA: MEX-005

AÑO: 2012

LUGAR	ESTACION				CLASIFICACION VEHICULAR EN PORCIENTO													COORDENADAS		
	KM	TE	SC	TDPA	M	A	B	C2	C3	T3S2	T3S3	T3S2R4	OTROS	A	B	C	K'	D	LATITUD	LONGITUD
San Felipe	0.00	3	1	735	1.2	83.5	1.1	12.1	1.1	0.6	0.2	0.0	0.2	84.7	1.1	14.2	0.092	0.513	30.997840	-114.836305
San Felipe	0.00	3	2	774	1.6	81.7	1.3	13.2	1.2	0.6	0.2	0.0	0.2	83.3	1.3	15.4	0.081	0.513	30.997841	-114.836305
Playa Curbina	75.46	3	0	705	2.5	67.2	2.9	21.8	1.7	2.6	1.3	0.0	0.0	69.7	2.9	27.4	0.157	0.521	30.363362	-114.643104
T. C. Lazáro Cárdenas - Parador Punta Prieta	213.00																			

## BAJA CALIFORNIA

10 CARR : Sonoita - Mexicali

CLAVE: 00081

RUTA: MEX-002

AÑO : 2012

LUGAR	ESTACION				CLASIFICACION VEHICULAR EN PORCIENTO										COORDENADAS					
	KM	TE	SC	TDPA	M	A	B	C2	C3	T3S2	T3S3	T3S2R4	OTROS	A	B	C	K'	D	LATITUD	LONGITUD
Sonoita	0.00	3	0	4762	1.3	62.6	5.1	7.3	2.1	14.7	2.8	3.1	1.0	63.9	5.1	31.0	0.067	0.535	31.875673	-112.851187
Los Vidrios	58.75	3	0	3046	1.5	47.4	6.4	6.9	5.7	22.4	4.4	4.3	1.0	48.9	6.4	44.7	0.058	0.504	32.037199	-113.450416
San Luis Río Colorado	191.80	1	0	3502	0.5	46.5	7.7	6.4	4.1	25.1	3.5	5.1	1.1	47.0	7.7	45.3	0.077	0.509	32.450215	-114.672121
San Luis Río Colorado	191.80	3	1	9231	1.1	55.5	5.5	5.9	3.4	20.0	3.2	4.5	0.9	56.6	5.5	37.9	0.085	0.505	32.488497	-114.797638
San Luis Río Colorado	191.80	3	2	9065	0.9	50.5	5.9	6.9	3.8	22.7	3.5	4.9	0.9	51.4	5.9	42.7	0.075	0.505	32.488488	-114.797622
Lim. Edos. Term. Son. Ppia. B.C.	203.69																			
X. C. Mexicali - Algodones	206.78	1	1	9682	0.9	81.8	3.4	5.0	1.2	4.5	1.2	1.1	0.9	82.7	3.4	13.9	0.073	0.502	32.497955	-114.829809
X. C. Mexicali - Algodones	206.78	1	2	9767	0.8	80.6	3.6	5.4	1.0	5.0	1.4	1.2	1.0	81.4	3.6	15.0	0.076	0.502	32.497952	-114.829810
X. C. Mexicali - Algodones	206.78	3	1	8143	0.3	81.5	2.2	6.9	0.7	5.9	0.9	1.2	0.4	81.8	2.2	16.0	0.076	0.520	32.505861	-114.853571
X. C. Mexicali - Algodones	206.78	3	2	8284	0.3	79.2	2.4	8.0	0.8	6.6	1.0	1.3	0.4	79.5	2.4	18.1	0.080	0.520	32.505862	-114.853573
T. Izq. Ejido Hermosillo	214.80	3	1	6581	0.3	80.2	2.5	5.4	1.8	7.1	0.9	1.3	0.5	80.5	2.5	17.0	0.083	0.520	32.527295	-114.928408
T. Izq. Ejido Hermosillo	214.80	3	2	7116	0.2	78.2	3.0	6.2	1.7	7.7	1.0	1.5	0.5	78.4	3.0	18.6	0.085	0.520	32.527295	-114.928408
Ejido Monterrey	228.63	3	1	9498	0.4	74.7	4.0	11.9	0.9	5.2	1.3	1.0	0.6	75.1	4.0	20.9	0.078	0.511	32.552125	-115.087641
Ejido Monterrey	228.63	3	2	9100	0.4	71.0	4.2	13.9	1.0	6.2	1.4	1.2	0.7	71.4	4.2	24.4	0.086	0.511	32.552126	-115.087636
X. C. Mexicali - Algodones	256.47	1	1	12833	0.4	81.4	2.5	8.5	0.8	2.8	2.6	0.5	0.5	81.8	2.5	15.7	0.076	0.501	32.565566	-115.326641
X. C. Mexicali - Algodones	256.47	1	2	12775	0.3	79.9	2.6	9.5	0.8	3.1	2.8	0.5	0.5	80.2	2.6	17.2	0.079	0.501	32.565565	-115.326639
T. C. Mexicali - San Felipe	265.12																			

11 CARR : Tecate - El Sauzal

CLAVE: 02097

RUTA: MEX-003

AÑO : 2012

LUGAR	ESTACION				CLASIFICACION VEHICULAR EN PORCIENTO										COORDENADAS					
	KM	TE	SC	TDPA	M	A	B	C2	C3	T3S2	T3S3	T3S2R4	OTROS	A	B	C	K'	D	LATITUD	LONGITUD
Tecate	0.00	3	0	8003	0.7	88.0	1.0	3.0	0.8	3.9	1.8	0.5	0.3	88.7	1.0	10.3	0.088	0.506	32.541014	-116.627069
T. Der. Valle de Las Palmas	27.80	1	0	3344	0.7	84.3	1.1	3.4	1.0	4.8	2.8	1.2	0.7	85.0	1.1	13.9	0.101	0.513	32.377299	-116.614373
El Tezterazo	48.80	3	0	2283	0.8	77.6	2.4	6.7	1.0	8.4	1.6	1.1	0.4	78.4	2.4	19.2	0.105	0.537	32.288598	-116.530149
T. Izq. San Marcos	63.50	1	0	2022	0.4	72.4	3.2	9.9	1.0	8.6	2.9	0.9	0.7	72.8	3.2	24.0	0.114	0.533	32.196567	-116.488876
El Porvenir Guadalupe	74.80	3	0	3922	0.4	79.3	2.4	8.1	0.8	6.4	1.6	0.6	0.4	79.7	2.4	17.9	0.125	0.521	32.096190	-116.561568
Las Palmas	85.00	1	0	3673	0.4	77.8	3.0	9.1	0.9	6.0	1.7	0.6	0.5	78.2	3.0	18.8	0.121	0.518	32.042879	-116.600992
San Antonio de Las Minas	93.90	1	1	2785	0.3	81.3	3.4	9.2	0.7	3.3	1.2	0.3	0.3	81.6	3.4	15.0	0.125	0.512	31.986033	-116.645880
San Antonio de Las Minas	93.90	1	2	2926	0.3	78.9	4.1	10.5	0.7	3.5	1.4	0.3	0.3	79.2	4.1	16.7	0.140	0.512	31.986039	-116.645877
El Sauzal	104.53	1	1	4363	0.3	84.0	4.4	6.0	0.6	3.0	1.0	0.3	0.4	84.3	4.4	11.3	0.128	0.507	31.911735	-116.692414
El Sauzal	104.53	1	2	4495	0.3	82.3	5.1	6.4	0.7	3.4	1.1	0.3	0.4	82.6	5.1	12.3	0.140	0.507	31.911735	-116.692414

BAJA CALIFORNIA

12 CARR: Tijuana - Ensenada (Libre)

CLAVE: 02099

RUTA: MEX-001

AÑO: 2012

LUGAR	ESTACION				CLASIFICACION VEHICULAR EN PORCIENTO										COORDENADAS					
	KM	TE	SC	TDPA	M	A	B	C2	C3	T3S2	T3S3	T3S2R4	OTROS	A	B	C	K'	D	LATITUD	LONGITUD
Tijuana	0.00																			
X. C. Tijuana - San Miguel (Cuota)	22.00	1	1	21411	0.5	87.9	1.4	3.9	0.6	1.8	2.9	0.3	0.7	88.4	1.4	10.2	0.080	0.507	32.382024	-117.057471
X. C. Tijuana - San Miguel (Cuota)	22.00	1	2	22045	0.5	87.0	1.4	4.2	0.6	2.0	3.2	0.3	0.8	87.5	1.4	11.1	0.068	0.507	32.382033	-117.057477
Rosarito	25.94	1	1	11090	0.8	87.0	1.1	3.7	0.1	2.0	3.8	0.7	0.8	87.8	1.1	11.1	0.090	0.503	32.371215	-117.060748
Rosarito	25.94	1	2	11206	0.8	85.7	1.1	4.1	0.1	2.2	4.4	0.7	0.9	86.5	1.1	12.4	0.071	0.503	32.371221	-117.060746
Rosarito	25.94	3	1	6864	0.5	90.1	1.3	4.7	0.6	1.5	0.8	0.2	0.3	90.6	1.3	8.1	0.109	0.506	32.291539	-117.037022
Rosarito	25.94	3	2	6700	0.4	89.4	1.3	5.3	0.6	1.6	0.9	0.2	0.3	89.8	1.3	8.9	0.107	0.506	32.291539	-117.037022
T. Izq. Autopista	46.12	1	1	5298	0.7	86.1	1.5	5.4	0.7	3.6	0.7	0.4	0.9	86.8	1.5	11.7	0.109	0.505	32.230390	-116.921922
T. Izq. Autopista	46.12	1	2	5399	0.7	85.7	1.6	5.2	0.8	4.0	0.7	0.4	0.9	86.4	1.6	12.0	0.078	0.505	32.230390	-116.921922
Población Plaza Santa María	56.98	1	0	1357	1.2	86.5	1.2	5.9	0.4	4.0	0.7	0.0	0.1	87.7	1.2	11.1	0.139	0.538	32.144332	-116.892143
La Misión	64.98	1	0	2614	0.9	82.5	3.3	6.3	1.0	5.2	0.3	0.1	0.4	83.4	3.3	13.3	0.098	0.504	32.098747	-116.876540
T. Izq. Colonia Guadalupe	82.90	1	0	1784	0.9	80.0	4.1	5.6	1.1	7.2	0.6	0.1	0.4	80.9	4.1	15.0	0.099	0.514	31.992482	-116.747875
Ent. San Miguel	95.80	1	0	1755	0.8	81.0	2.4	6.2	0.9	7.4	0.7	0.2	0.4	81.8	2.4	15.8	0.096	0.501	31.913593	-116.731206
El Sauzal	102.00	3	1	18508	0.6	85.3	2.5	6.9	0.7	2.8	0.8	0.2	0.2	85.9	2.5	11.6	0.100	0.501	31.881035	-116.683502
El Sauzal	102.00	3	2	18433	0.6	86.9	2.2	5.1	0.8	3.1	0.9	0.2	0.2	87.5	2.2	10.3	0.087	0.501	31.881035	-116.683504
Ensenada	110.00																			

13 CARR: El Centinela - La Rumorosa (Cuota)

CLAVE: 02011

RUTA: MEX-002D

AÑO: 2012

LUGAR	ESTACION				CLASIFICACION VEHICULAR EN PORCIENTO										COORDENADAS					
	KM	TE	SC	TDPA	M	A	B	C2	C3	T3S2	T3S3	T3S2R4	OTROS	A	B	C	K'	D	LATITUD	LONGITUD
Ent. El Centinela	20.30																			
Laguna Salada	25.00	1	1	4948	0.5	74.1	4.0	6.3	2.1	9.5	1.5	1.1	0.9	74.6	4.0	21.4	0.090	0.514	32.577251	-115.736042
Laguna Salada	25.00	1	2	5236	0.4	72.8	4.4	6.3	2.3	10.0	1.6	1.2	1.0	73.2	4.4	22.4	0.112	0.514	32.577333	-115.735921
La Rumorosa	67.60	1	1	2349	0.8	71.9	1.1	5.7	2.4	13.5	2.3	1.3	1.0	72.7	1.1	26.2	0.126	0.516	32.543239	-116.047974
La Rumorosa	67.60	1	2	2375	0.7	70.0	1.2	6.1	2.6	14.7	2.4	1.3	1.0	70.7	1.2	28.1	0.108	0.516	32.543231	-116.047983

14 CARR: La Rumorosa - Tecate (Cuota)

CLAVE: 02011

RUTA: MEX-002D

AÑO: 2012

LUGAR	ESTACION				CLASIFICACION VEHICULAR EN PORCIENTO										COORDENADAS					
	KM	TE	SC	TDPA	M	A	B	C2	C3	T3S2	T3S3	T3S2R4	OTROS	A	B	C	K'	D	LATITUD	LONGITUD
La Rumorosa	0.00	3	1	3469	0.6	76.6	6.0	4.4	1.4	6.4	1.0	2.6	1.0	77.2	6.0	16.8	0.089	0.514	32.549914	-116.065378
La Rumorosa	0.00	3	2	3277	0.7	74.0	7.0	4.4	1.6	7.6	1.1	2.7	0.9	74.7	7.0	18.3	0.092	0.514	32.549914	-116.065375
Caseta de Cobro El Hongo	30.56	2	1	2857	0.1	77.3	7.5	3.2	1.1	7.2	0.4	2.7	0.5	77.4	7.5	15.1	0.087	0.500	32.521903	-116.319783
Caseta de Cobro El Hongo	30.56	2	2	2856	0.1	77.3	7.5	3.2	1.1	7.2	0.4	2.7	0.5	77.4	7.5	15.1	0.087	0.500	32.521903	-116.319783





BAJA CALIFORNIA

18 CARR: Tijuana - Ensenada (Cuota)

CLAVE: 02100

RUTA: MEX-001D

AÑO: 2012

LUGAR	ESTACION				CLASIFICACION VEHICULAR EN PORCIENTO										COORDENADAS					
	KM	TE	SC	TDPA	M	A	B	C2	C3	T3S2	T3S3	T3S2R4	OTROS	A	B	C	K'	D	LATITUD	LONGITUD
Tijuana	0.00																			
T. Der. Playas de Tijuana	7.50	3	1	5627	0.5	88.8	3.4	6.2	0.4	0.6	0.1	0.0	0.0	89.3	3.4	7.3	0.108	0.507	32.529048	-117.108201
T. Der. Playas de Tijuana	7.50	3	2	5469	0.4	87.4	3.9	7.1	0.4	0.7	0.1	0.0	0.0	87.8	3.9	8.3	0.091	0.507	32.529048	-117.108200
Caseta de Cobro Playas de Tijuana	9.70	2	1	4894	0.5	97.0	1.0	0.5	0.4	0.6	0.0	0.0	0.0	97.5	1.0	1.5	0.100	0.500	32.514031	-117.109509
Caseta de Cobro Playas de Tijuana	9.70	2	2	4894	0.5	97.0	1.0	0.5	0.4	0.6	0.0	0.0	0.0	97.5	1.0	1.5	0.100	0.500	32.514031	-117.109509
X. C. Tijuana - Ensenada	29.50	1	1	6648	0.5	89.8	2.1	6.4	0.8	0.4	0.0	0.0	0.0	90.3	2.1	7.6	0.115	0.506	32.381606	-117.057620
X. C. Tijuana - Ensenada	29.50	1	2	6804	0.5	89.0	2.3	6.9	0.9	0.4	0.0	0.0	0.0	89.5	2.3	8.2	0.090	0.506	32.381605	-117.057620
X. C. Tijuana - Ensenada	29.50	3	1	6058	0.5	89.5	1.9	4.9	0.8	1.2	0.7	0.1	0.4	90.0	1.9	8.1	0.087	0.557	32.369566	-117.057661
X. C. Tijuana - Ensenada	29.50	3	2	6510	0.5	88.5	2.1	5.5	0.9	1.2	0.8	0.1	0.4	89.0	2.1	8.9	0.085	0.557	32.369566	-117.057663
Caseta de Cobro Rosarito	35.43	2	1	4738	0.3	89.5	2.7	2.5	0.4	3.9	0.1	0.4	0.2	89.8	2.7	7.5	0.100	0.500	32.311054	-117.044308
Caseta de Cobro Rosarito	35.43	2	2	4737	0.3	89.5	2.7	2.5	0.4	3.9	0.1	0.4	0.2	89.8	2.7	7.5	0.100	0.500	32.311054	-117.044308
T. Der. La Misión	66.44	3	1	5565	0.3	77.0	1.9	12.9	0.9	5.4	0.5	0.6	0.5	77.3	1.9	20.8	0.101	0.502	32.115907	-116.884330
T. Der. La Misión	66.44	3	2	5610	0.3	74.0	2.3	14.7	0.9	6.2	0.5	0.6	0.5	74.3	2.3	23.4	0.123	0.502	32.115907	-116.884330
Caseta de Cobro Ensenada	98.60	2	1	5442	0.2	85.8	2.5	3.5	0.8	6.0	0.4	0.6	0.2	86.0	2.5	11.5	0.100	0.500	31.903093	-116.732720
Caseta de Cobro Ensenada	98.60	2	2	5441	0.2	85.8	2.5	3.5	0.8	6.0	0.4	0.6	0.2	86.0	2.5	11.5	0.100	0.500	31.903093	-116.732720
T. C. Tijuana - Ensenada (Libre)	99.00																			

19 CARR: Mexicali - Tijuana

CLAVE: 02082

RUTA: MEX-002D-MEX

AÑO: 2012

LUGAR	ESTACION				CLASIFICACION VEHICULAR EN PORCIENTO										COORDENADAS					
	KM	TE	SC	TDPA	M	A	B	C2	C3	T3S2	T3S3	T3S2R4	OTROS	A	B	C	K'	D	LATITUD	LONGITUD
Mexicali	0.00																			
Colonia Progreso	7.80	3	1	6170	0.5	77.8	4.4	5.8	2.9	6.0	1.1	0.8	0.7	78.3	4.4	17.3	0.088	0.515	32.585659	-115.597115
Colonia Progreso	7.80	3	2	6241	0.3	74.8	4.7	6.9	3.5	6.9	1.2	0.9	0.8	75.1	4.7	20.2	0.143	0.515	32.585660	-115.597115
Laguna Salada	25.00	1	1	4948	0.5	74.1	4.0	6.3	2.1	9.5	1.5	1.1	0.9	74.6	4.0	21.4	0.090	0.514	32.577251	-115.736042
Laguna Salada	25.00	1	2	5236	0.4	72.8	4.4	6.3	2.3	10.0	1.6	1.2	1.0	73.2	4.4	22.4	0.112	0.514	32.577333	-115.735921
La Rumorosa	67.60	1	1	2349	0.8	71.9	1.1	5.7	2.4	13.5	2.3	1.3	1.0	72.7	1.1	26.2	0.126	0.516	32.543239	-116.047974
La Rumorosa	67.60	1	2	2375	0.7	70.0	1.2	6.1	2.6	14.7	2.4	1.3	1.0	70.7	1.2	28.1	0.108	0.516	32.543231	-116.047983
T. Der. Estación de Microondas	69.62	3	0	3177	0.6	65.4	1.9	6.4	1.5	18.0	3.0	2.1	1.1	66.0	1.9	32.1	0.092	0.517	32.509855	-116.091497
Agua Hechicera	87.00	1	0	3117	0.6	64.0	1.7	6.7	2.3	18.6	3.0	2.0	1.1	64.6	1.7	33.7	0.085	0.511	32.497103	-116.222538
El Encinal	112.15	1	0	4681	0.4	70.9	2.1	8.9	1.0	12.0	2.4	1.2	1.1	71.3	2.1	26.6	0.111	0.503	32.558006	-116.439454
Tecate	132.00	1	1	6209	0.6	80.8	2.0	9.2	0.8	5.1	0.7	0.5	0.3	81.4	2.0	16.6	0.087	0.501	32.564152	-116.580749
Tecate	132.00	1	2	6226	0.6	80.1	2.2	8.7	0.9	5.9	0.8	0.5	0.3	80.7	2.2	17.1	0.097	0.501	32.564156	-116.580754
Tecate	132.00	3	1	10268	0.8	86.4	2.7	4.0	1.6	3.1	0.2	0.3	0.9	87.2	2.7	10.1	0.078	0.506	32.553958	-116.663581
Tecate	132.00	3	2	10034	0.7	85.3	2.9	4.5	1.9	3.3	0.2	0.3	0.9	86.0	2.9	11.1	0.084	0.506	32.553958	-116.663583

## BAJA CALIFORNIA

19 CARR: Mexicali - Tijuana

CLAVE: 02082

RUTA: MEX-002D-MEX

AÑO: 2012

LUGAR	ESTACION				CLASIFICACION VEHICULAR EN PORCIENTO														COORDENADAS		
	KM	TE	SC	TDPA	M	A	B	C2	C3	T3S2	T3S3	T3S2R4	OTROS	A	B	C	K'	D	LATITUD	LONGITUD	
Presa Abelardo L. Rodríguez	165.00	3	0	6718	0.9	86.5	2.8	5.1	0.7	3.1	0.7	0.0	0.2	87.4	2.8	9.8	0.085	0.525	32.452184	-116.910503	
Tijuana	182.60																				

20 CARR: Algodones - Ent. Islas Agrarias Grupo B

CLAVE: 02006

RUTA: BC-008

AÑO: 2012

LUGAR	ESTACION				CLASIFICACION VEHICULAR EN PORCIENTO														COORDENADAS	
	KM	TE	SC	TDPA	M	A	B	C2	C3	T3S2	T3S3	T3S2R4	OTROS	A	B	C	K'	D	LATITUD	LONGITUD
Algodones	0.00	3	0	3852	0.5	88.6	0.2	8.8	0.3	1.4	0.1	0.0	0.1	89.1	0.2	10.7	0.082	0.512	32.704337	-114.741318
T. Izq. Cd. Morelos	14.00	1	0	3627	0.3	87.2	0.1	10.0	0.5	1.4	0.4	0.0	0.1	87.5	0.1	12.4	0.086	0.514	32.666073	-114.848114
Mérida	20.30	3	0	2026	0.4	85.7	0.3	11.2	0.6	1.5	0.2	0.0	0.1	86.1	0.3	13.6	0.082	0.502	32.664493	-114.924924
T. Izq. Ejido Lazáro Cárdenas	31.50	1	0	2701	0.3	85.9	0.3	11.2	0.5	1.4	0.2	0.0	0.2	86.2	0.3	13.5	0.086	0.500	32.638747	-114.987521
Islas Agrarias Grupo B	55.50	1	0	3969	0.4	85.4	3.1	7.3	0.3	1.4	0.8	0.3	1.0	85.8	3.1	11.1	0.080	0.548	32.615292	-115.265920

21 CARR: Corredor Tijuana 2000

CLAVE: 02006

RUTA: BC

AÑO: 2012

LUGAR	ESTACION				CLASIFICACION VEHICULAR EN PORCIENTO														COORDENADAS	
	KM	TE	SC	TDPA	M	A	B	C2	C3	T3S2	T3S3	T3S2R4	OTROS	A	B	C	K'	D	LATITUD	LONGITUD
T. C. Mexicali - Tijuana (Cuota)	0.00	3	1	12618	0.7	85.5	1.5	5.9	0.9	3.1	1.3	0.4	0.7	86.2	1.5	12.3	0.112	0.514	32.539271	-116.856413
T. C. Mexicali - Tijuana (Cuota)	0.00	3	2	13330	0.6	84.2	1.7	6.4	1.0	3.5	1.4	0.4	0.8	84.8	1.7	13.5	0.126	0.514	32.539271	-116.856413
T. C. Mexicali - Tijuana	11.00	1	1	4784	1.1	79.0	3.3	3.9	2.9	6.3	1.4	1.5	0.6	80.1	3.3	16.6	0.087	0.511	32.460092	-116.841073
T. C. Mexicali - Tijuana	11.00	1	2	4587	1.3	78.9	3.7	4.4	3.5	5.4	1.6	0.6	0.6	80.2	3.7	16.1	0.099	0.511	32.460095	-116.841072
T. C. Tijuana - San Miguel (Cuota)	40.00	1	1	3187	0.3	83.2	1.0	4.2	3.6	4.8	1.0	1.4	0.5	83.5	1.0	15.5	0.158	0.512	32.288525	-117.022160
T. C. Tijuana - San Miguel (Cuota)	40.00	1	2	3036	0.4	81.5	1.1	4.6	4.0	5.4	0.9	1.6	0.5	81.9	1.1	17.0	0.216	0.512	32.288534	-117.022163

22 CARR: Ejido Benito Juárez - Ejido Chiapas

CLAVE: 02501

RUTA: BC-061

AÑO: 2012

LUGAR	ESTACION				CLASIFICACION VEHICULAR EN PORCIENTO														COORDENADAS	
	KM	TE	SC	TDPA	M	A	B	C2	C3	T3S2	T3S3	T3S2R4	OTROS	A	B	C	K'	D	LATITUD	LONGITUD
Ejido Benito Juárez	0.00	3	0	3068	0.5	87.1	2.4	6.6	0.2	2.8	0.2	0.1	0.1	87.6	2.4	10.0	0.082	0.500	32.559423	-114.992993
Ejido México	7.00	1	0	1328	0.7	85.7	3.7	7.7	0.4	1.2	0.2	0.2	0.2	86.4	3.7	9.9	0.123	0.501	32.519673	-114.979544
Ejido Chiapas	10.56	1	0	1270	0.3	87.0	2.6	8.4	0.2	1.3	0.1	0.0	0.1	87.3	2.6	10.1	0.101	0.501	32.499812	-114.965155

BAJA CALIFORNIA

23 CARR: Ejido Monterrey - Mazón

CLAVE: 02004

RUTA: BC-003

AÑO: 2012

LUGAR	ESTACION				CLASIFICACION VEHICULAR EN PORCIENTO										COORDENADAS					
	KM	TE	SC	TDPA	M	A	B	C2	C3	T3S2	T3S3	T3S2R4	OTROS	A	B	C	K'	D	LATITUD	LONGITUD
T. C. Sonoita - Mexicali	0.00	3	0	6677	0.2	79.9	2.3	10.1	1.6	4.5	0.6	0.3	0.5	80.1	2.3	17.6	0.072	0.507	32.549252	-115.074842
X. C. Mexicali - Algodones	15.16	1	0	5303	0.2	80.2	2.5	9.5	0.9	4.9	0.8	0.2	0.8	80.4	2.5	17.1	0.086	0.505	32.420310	-115.067303
X. C. Mexicali - Algodones	15.16	3	0	7968	0.2	79.3	2.6	9.8	0.8	5.7	0.7	0.2	0.7	79.5	2.6	17.9	0.090	0.502	32.414132	-115.066959
Guadalupe Victoria	30.47	1	0	9528	0.4	79.5	3.6	10.7	1.7	3.2	0.5	0.2	0.2	79.9	3.6	16.5	0.118	0.504	32.295065	-115.088821
Mazón	35.00	1	0	7301	0.5	81.7	4.7	6.2	1.7	3.4	0.7	0.3	0.8	82.2	4.7	13.1	0.088	0.504	32.246901	-115.110978

24 CARR: El Faro - Estación Coahuila

CLAVE: 02013

RUTA: BC-004

AÑO: 2012

LUGAR	ESTACION				CLASIFICACION VEHICULAR EN PORCIENTO										COORDENADAS					
	KM	TE	SC	TDPA	M	A	B	C2	C3	T3S2	T3S3	T3S2R4	OTROS	A	B	C	K'	D	LATITUD	LONGITUD
T. C. Mexicali - San Felipe	0.00	3	0	4266	0.5	79.0	4.0	5.5	3.8	3.7	2.2	0.7	0.6	79.5	4.0	16.5	0.080	0.510	32.273493	-115.310645
X. C. Mexicali - Estación Coahuila	16.30	1	0	4979	0.5	75.1	6.9	6.7	2.1	5.9	1.7	0.3	0.8	75.6	6.9	17.5	0.088	0.512	32.239600	-115.177353
X. C. Mexicali - Estación Coahuila	16.30	3	0	7953	0.4	82.9	4.6	4.3	0.6	4.5	1.3	0.6	0.8	83.3	4.6	12.1	0.084	0.504	32.239357	-115.157605
T. Izq. Carr. Ejido Monterrey - Mazón	26.70	3	0	6127	0.4	79.0	3.9	4.4	2.9	6.7	1.1	0.6	1.0	79.4	3.9	16.7	0.077	0.514	32.239424	-115.102081
Francisco Murguía	30.00	3	0	4558	0.5	80.9	3.5	5.6	2.0	4.5	1.7	0.5	0.8	81.4	3.5	15.1	0.084	0.510	32.243859	-115.056849
Estación Coahuila	34.50	1	0	6342	0.4	78.9	5.6	6.3	2.0	4.7	1.0	0.3	0.8	79.3	5.6	15.1	0.081	0.506	32.208009	-115.012618

25 CARR: Ent. Santa Rosa - Ent. Pachuca

CLAVE: 02015

RUTA: BC-006

AÑO: 2012

LUGAR	ESTACION				CLASIFICACION VEHICULAR EN PORCIENTO										COORDENADAS					
	KM	TE	SC	TDPA	M	A	B	C2	C3	T3S2	T3S3	T3S2R4	OTROS	A	B	C	K'	D	LATITUD	LONGITUD
T. C. Sonoita - Mexicali	0.00	3	0	7176	0.3	84.9	0.2	9.8	0.5	3.3	0.4	0.1	0.5	85.2	0.2	14.6	0.081	0.503	32.558585	-115.020395
Paredones	10.90	3	0	6574	0.4	85.0	0.4	9.3	0.4	3.7	0.3	0.1	0.4	85.4	0.4	14.2	0.081	0.501	32.609423	-114.923832
Cd. Morelos	18.00	3	0	8295	0.6	86.1	0.2	8.3	0.4	3.8	0.4	0.0	0.2	86.7	0.2	13.1	0.088	0.500	32.637123	-114.845999
T. C. Mexicali - Algodones	23.22																			

26 CARR: La Puerta - T. C. (Mexicali - Estación Coahuila)

CLAVE: 02502

RUTA: BC-010

AÑO: 2012

LUGAR	ESTACION				CLASIFICACION VEHICULAR EN PORCIENTO										COORDENADAS					
	KM	TE	SC	TDPA	M	A	B	C2	C3	T3S2	T3S3	T3S2R4	OTROS	A	B	C	K'	D	LATITUD	LONGITUD
T. C. Mexicali - San Felipe	0.00																			
Zakamoto	4.60	1	0	2564	0.5	86.8	3.1	5.6	0.7	2.7	0.3	0.0	0.3	87.3	3.1	9.6	0.113	0.509	32.325651	-115.288593
Nayarit	9.00	3	0	2838	0.7	85.1	2.0	6.0	1.1	1.8	1.8	0.7	0.8	85.8	2.0	12.2	0.084	0.510	32.313163	-115.236437
T. C. Mexicali - Estación Coahuila	15.00																			

## BAJA CALIFORNIA

27 CARR: Mexicali - Algodones

CLAVE: 02012

RUTA: BC-002

AÑO: 2012

LUGAR	ESTACION				CLASIFICACION VEHICULAR EN PORCIENTO												COORDENADAS			
	KM	TE	SC	TDPA	M	A	B	C2	C3	T3S2	T3S3	T3S2R4	OTROS	A	B	C	K'	D	LATITUD	LONGITUD
T. C. Mexicali - San Felipe	0.00																			
Ejido Puebla	12.00	3	0	9770	0.8	80.8	4.5	6.8	2.1	2.6	1.2	0.5	0.7	81.6	4.5	13.9	0.083	0.504	32.556193	-115.360301
T. C. Geotérmica - Estación Delta	31.50	1	0	6055	0.2	83.1	2.6	8.8	1.8	2.5	0.5	0.1	0.4	83.3	2.6	14.1	0.089	0.506	32.424148	-115.261523
X. C. Mexicali - Estación Coahuila	37.70	1	0	4632	0.4	84.4	1.6	8.8	1.0	2.9	0.4	0.1	0.4	84.8	1.6	13.6	0.086	0.514	32.419097	-115.196844
X. C. Mexicali - Estación Coahuila	37.70	3	0	7174	0.3	80.9	2.4	8.2	0.5	5.9	0.6	0.2	1.0	81.2	2.4	16.4	0.080	0.503	32.419194	-115.190903
X. C. Ejido Monterrey - Mazón	49.65	1	0	5280	0.3	80.5	3.7	9.1	1.0	4.0	0.6	0.2	0.6	80.8	3.7	15.5	0.087	0.508	32.418547	-115.070041
X. C. Ejido Monterrey - Mazón	49.65	3	0	2428	0.1	83.0	3.9	9.0	1.1	2.3	0.3	0.1	0.2	83.1	3.9	13.0	0.088	0.504	32.418501	-115.065458
T. Izq. Tres de Marzo	60.50	1	0	1262	0.6	84.9	2.6	8.0	1.6	1.6	0.4	0.1	0.2	85.5	2.6	11.9	0.102	0.501	32.468194	-114.944806
X. C. Sonoita - Mexicali	72.00	1	0	1135	1.3	83.3	2.7	8.6	0.1	2.9	0.7	0.2	0.2	84.6	2.7	12.7	0.088	0.504	32.501671	-114.847579
X. C. Sonoita - Mexicali	72.00	3	0	3672	0.5	87.0	1.2	8.1	1.1	1.7	0.3	0.0	0.1	87.5	1.2	11.3	0.079	0.508	32.505850	-114.843197
Pachuca	83.00	1	0	3509	0.4	86.1	1.3	8.4	1.1	2.1	0.4	0.0	0.2	86.5	1.3	12.2	0.083	0.510	32.604162	-114.829559
Algodones	94.46	1	0	2869	0.6	87.0	2.2	7.8	0.7	1.5	0.1	0.0	0.1	87.6	2.2	10.2	0.089	0.522	32.702912	-114.731129

28 CARR: Mexicali - Estación Coahuila

CLAVE: 02016

RUTA: BC-001

AÑO: 2012

LUGAR	ESTACION				CLASIFICACION VEHICULAR EN PORCIENTO												COORDENADAS			
	KM	TE	SC	TDPA	M	A	B	C2	C3	T3S2	T3S3	T3S2R4	OTROS	A	B	C	K'	D	LATITUD	LONGITUD
Mexicali	0.00	3	1	12726	0.8	84.8	3.3	4.8	1.6	3.7	0.6	0.1	0.3	85.6	3.3	11.1	0.088	0.510	32.652817	-115.371888
Mexicali	0.00	3	2	13253	0.8	83.5	3.7	5.2	1.7	4.0	0.7	0.1	0.3	84.3	3.7	12.0	0.096	0.510	32.652817	-115.371888
T. Izq. Aeropuerto	11.30	1	1	9740	0.8	84.8	1.4	6.9	1.7	3.4	0.5	0.1	0.4	85.6	1.4	13.0	0.093	0.508	32.652967	-115.358339
T. Izq. Aeropuerto	11.30	1	2	9420	0.9	83.4	1.5	7.7	1.9	3.6	0.5	0.1	0.4	84.3	1.5	14.2	0.093	0.508	32.652967	-115.358339
Islas Agrarias Grupo a	14.10	1	0	11186	0.6	82.8	1.5	6.5	0.8	5.7	0.8	0.3	1.0	83.4	1.5	15.1	0.080	0.510	32.613974	-115.344295
X. C. Sonoita - Mexicali	30.79	1	0	4693	0.2	84.7	3.2	5.5	0.4	4.8	0.6	0.2	0.4	84.9	3.2	11.9	0.080	0.507	32.555391	-115.214913
X. C. Sonoita - Mexicali	30.79	3	0	6184	0.5	84.1	3.7	5.5	1.2	3.4	0.6	0.4	0.6	84.6	3.7	11.7	0.076	0.516	32.549600	-115.214995
Ejido Nuevo León	46.83	1	0	5296	0.2	83.8	0.3	10.1	0.5	3.6	0.6	0.2	0.7	84.0	0.3	15.7	0.078	0.505	32.421320	-115.192413
Ejido Nuevo León	46.83	3	0	6073	0.3	75.5	0.3	8.4	0.5	4.7	9.3	0.2	0.8	75.8	0.3	23.9	0.103	0.516	32.406726	-115.194869
T. Der. La Puerta	60.26	1	0	5879	0.3	86.0	0.4	7.5	1.0	3.8	0.5	0.1	0.4	86.3	0.4	13.3	0.093	0.507	32.313980	-115.189649
X. C. El Faro - Estación Coahuila	71.30	1	0	1975	0.5	89.1	1.7	4.7	1.1	1.9	0.5	0.1	0.4	89.6	1.7	8.7	0.080	0.509	32.242742	-115.167434
T. Der. Leona Vicario	80.50	1	0	554	1.6	85.5	0.0	5.7	2.0	1.4	2.6	0.1	1.1	87.1	0.0	12.9	0.103	0.509	32.214746	-115.167477
Estación Coahuila	96.65	1	0	1214	0.6	86.2	3.2	5.7	1.8	1.5	0.7	0.0	0.3	86.8	3.2	10.0	0.089	0.505	32.184904	-115.013708

BAJA CALIFORNIA

29 CARR: Mexicali - Progreso

CLAVE: 02507

RUTA: BC-005

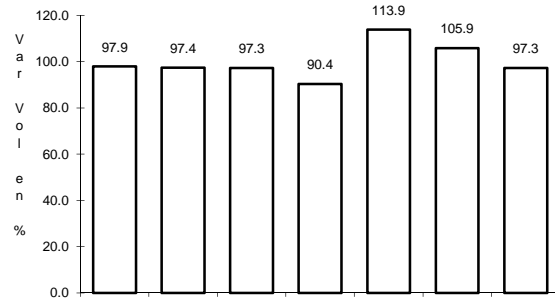
AÑO: 2012

LUGAR	ESTACION				CLASIFICACION VEHICULAR EN PORCIENTO														COORDENADAS	
	KM	TE	SC	TDPA	M	A	B	C2	C3	T3S2	T3S3	T3S2R4	OTROS	A	B	C	K'	D	LATITUD	LONGITUD
T. C. Mexicali - Tijuana	0.00																			
Progreso	15.30	1	0	3291	1.5	82.5	3.4	5.4	1.6	3.4	1.3	0.0	0.9	84.0	3.4	12.6	0.075	0.505	32.596256	-115.575435

## 1 CARR: Ensenada - El Chineró

CLAVE: 02009

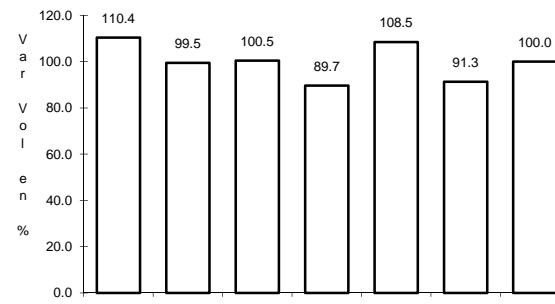
RUTA: MEX-003



Km: 0.00

Tipo: 3

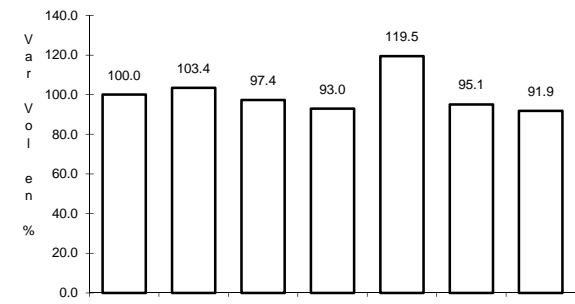
Sent: 0



Km: 93.00

Tipo: 3

Sent: 0



Km: 196.00

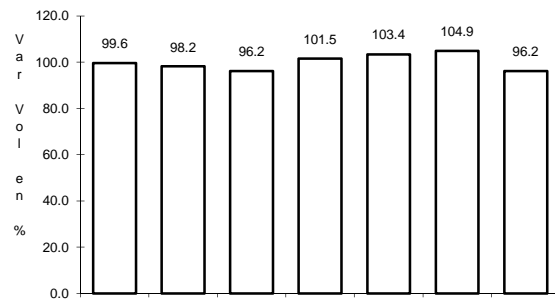
Tipo: 1

Sent: 0

## 2 CARR: Ensenada - Lázaro Cárdenas

CLAVE: 02098

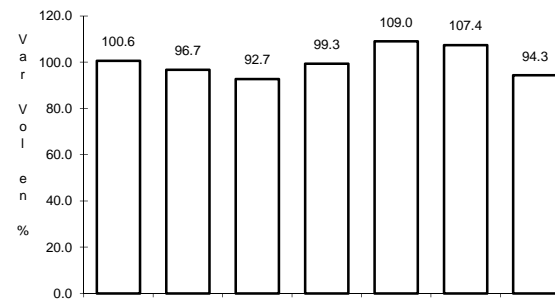
RUTA: MEX-001



Km: 0.00

Tipo: 3

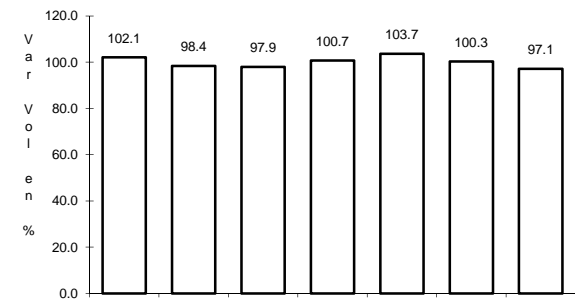
Sent: 1



Km: 0.00

Tipo: 3

Sent: 2



Km: 193.00

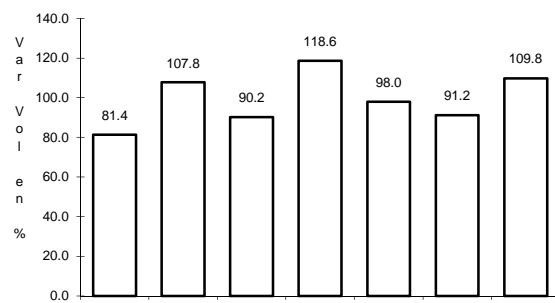
Tipo: 3

Sent: 0

## 3 CARR: Ent. Punta Prieta - Bahía de Los Ángeles

CLAVE: 02322

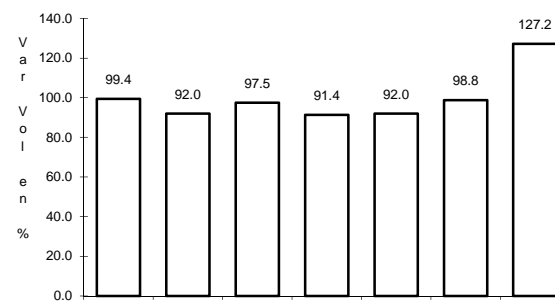
RUTA: MEX-001



Km: 0.00

Tipo: 3

Sent: 0



Km: 68.00

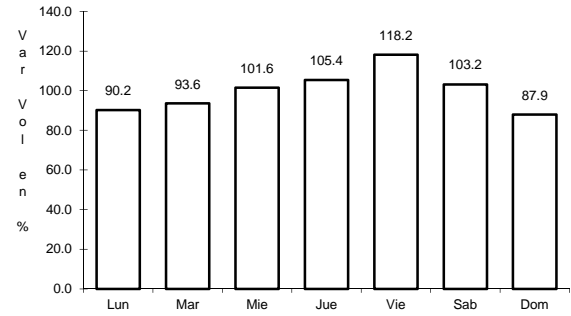
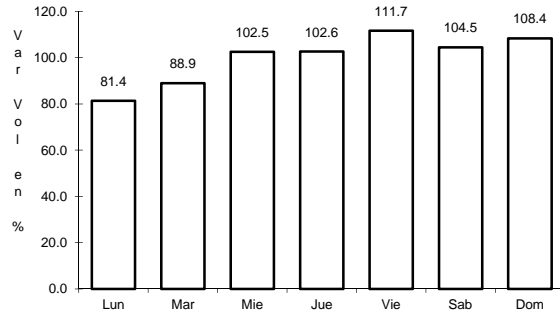
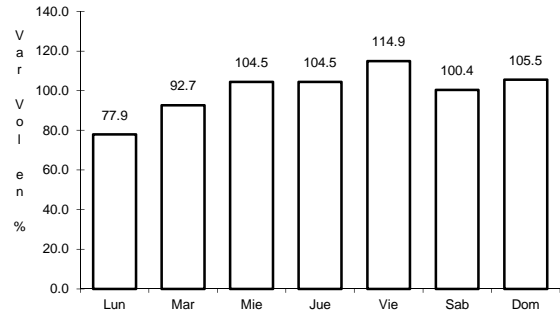
Tipo: 1

Sent: 0

4 CARR: Ent. Punta Prieta - Guerrero Negro

CLAVE: 00321

RUTA: MEX-001



Km: 0.00                      Tipo: 3                      Sent: 0

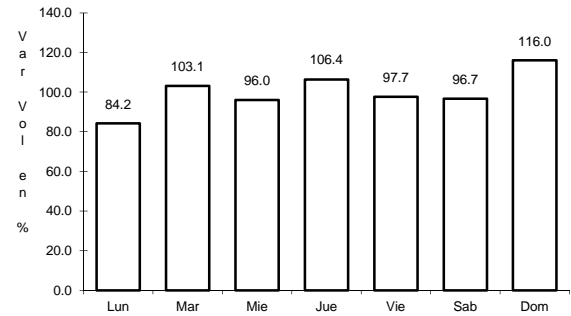
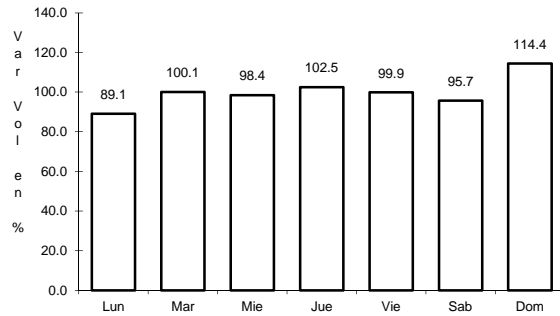
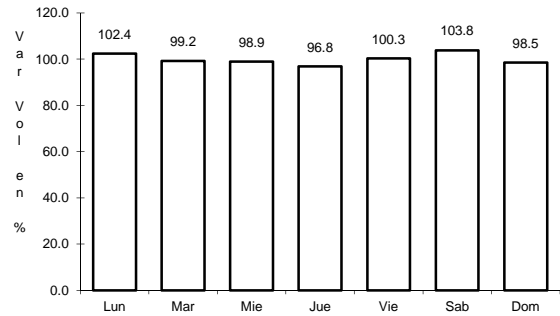
Km: 70.10                      Tipo: 3                      Sent: 0

Km: 130.00                      Tipo: 1                      Sent: 0

5 CARR: Lázaro Cárdenas - Ent. Punta Prieta

CLAVE: 02319

RUTA: MEX-001



Km: 0.00                      Tipo: 3                      Sent: 0

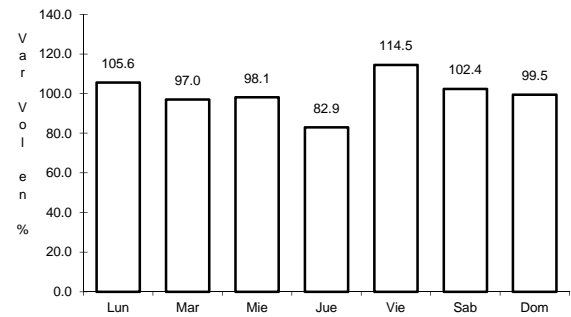
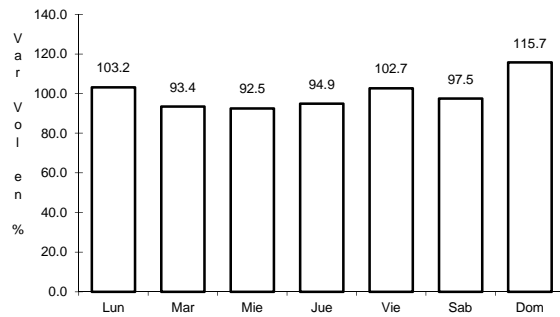
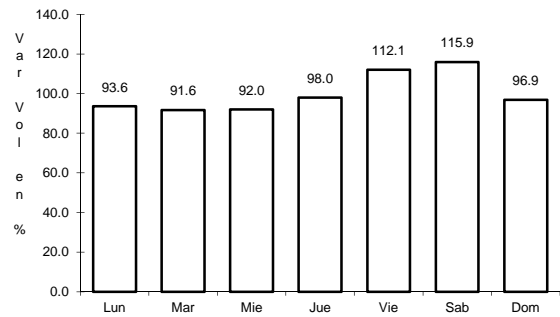
Km: 140.00                      Tipo: 1                      Sent: 0

Km: 275.66                      Tipo: 1                      Sent: 0

6 CARR: Mexicali - San Felipe

CLAVE: 02096

RUTA: MEX-005



Km: 0.00                      Tipo: 3                      Sent: 1

Km: 0.00                      Tipo: 3                      Sent: 2

Km: 141.00                      Tipo: 1                      Sent: 0

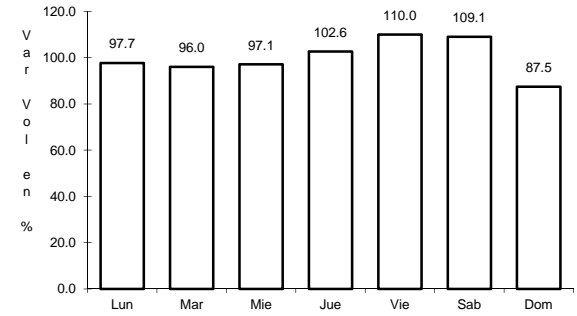
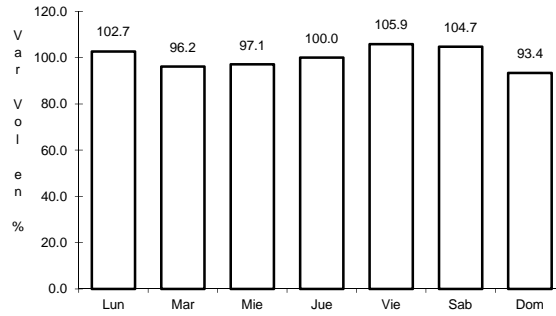
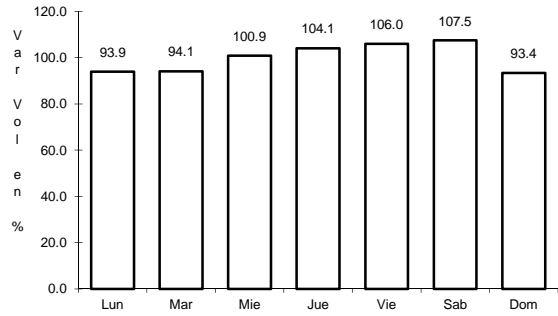




10 CARR: Sonoita - Mexicali

CLAVE: 00081

RUTA: MEX-002



Km: 0.00                      Tipo: 3                      Sent: 0

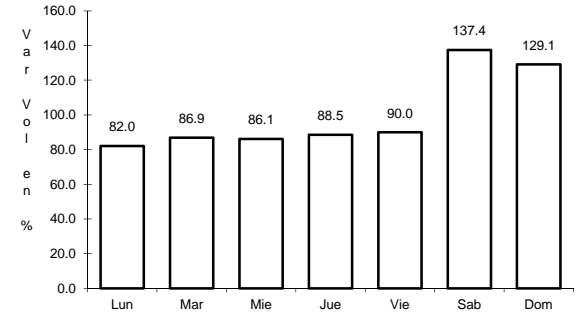
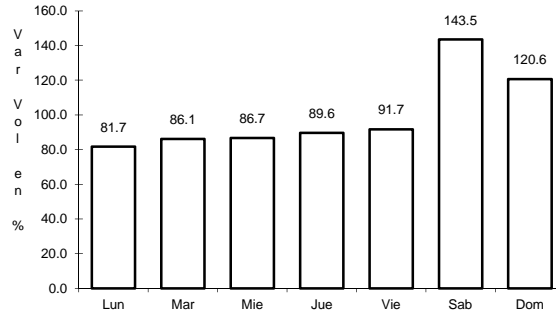
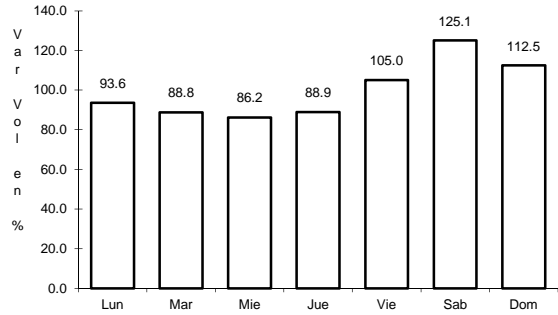
Km: 256.47                      Tipo: 1                      Sent: 1

Km: 256.47                      Tipo: 1                      Sent: 2

11 CARR: Tecate - El Sauzal

CLAVE: 02097

RUTA: MEX-003



Km: 0.00                      Tipo: 3                      Sent: 0

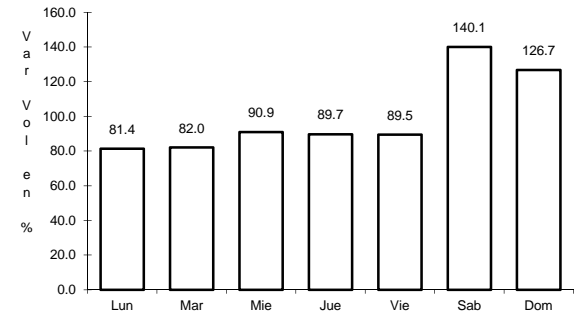
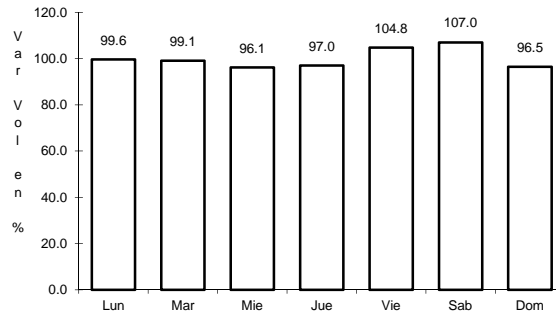
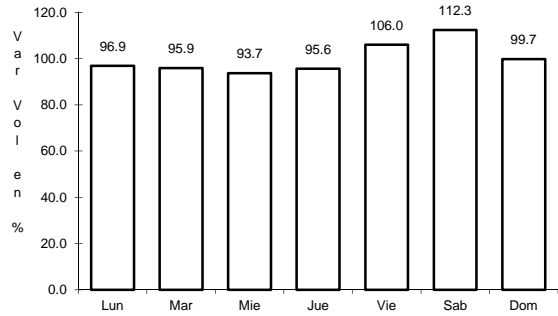
Km: 104.53                      Tipo: 1                      Sent: 1

Km: 104.53                      Tipo: 1                      Sent: 2

12 CARR: Tijuana - Ensenada (Libre)

CLAVE: 02099

RUTA: MEX-001



Km: 22.00                      Tipo: 1                      Sent: 1

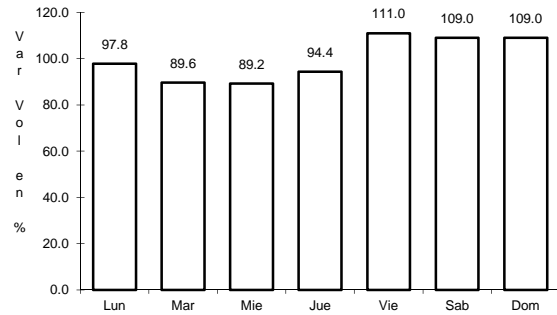
Km: 22.00                      Tipo: 1                      Sent: 2

Km: 56.98                      Tipo: 1                      Sent: 0

## 13 CARR: El Centinela - La Rumorosa (Cuota)

CLAVE: 02011

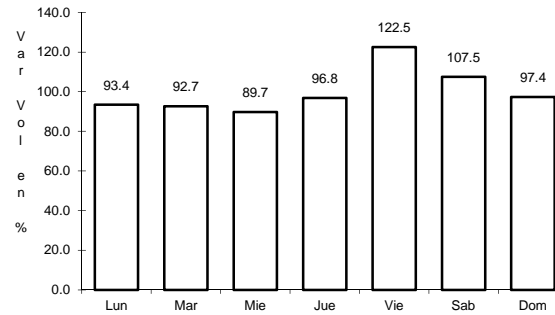
RUTA: MEX-002D



Km: 25.00

Tipo: 1

Sent: 1



Km: 25.00

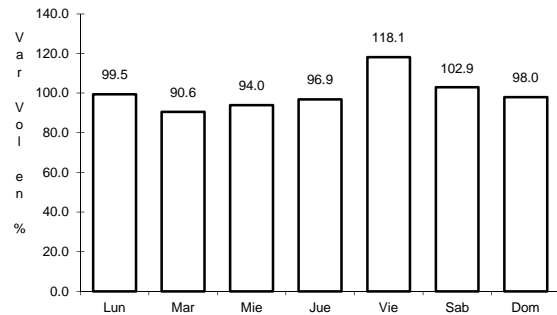
Tipo: 1

Sent: 2

## 14 CARR: La Rumorosa - Tecate (Cuota)

CLAVE: 02011

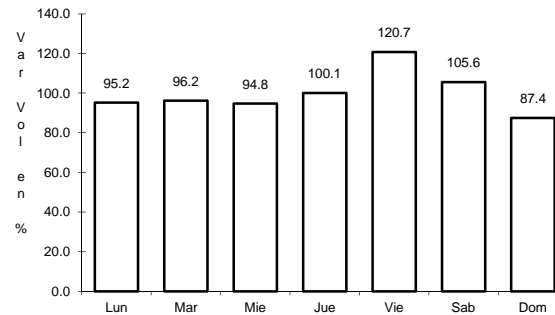
RUTA: MEX-002D



Km: 0.00

Tipo: 3

Sent: 1



Km: 0.00

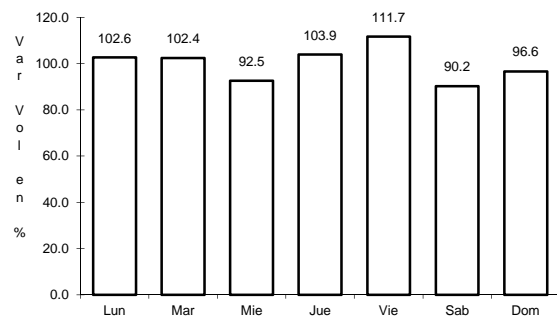
Tipo: 3

Sent: 2

## 15 CARR: Libramiento de Mexicali (Cuota)

CLAVE: 02319

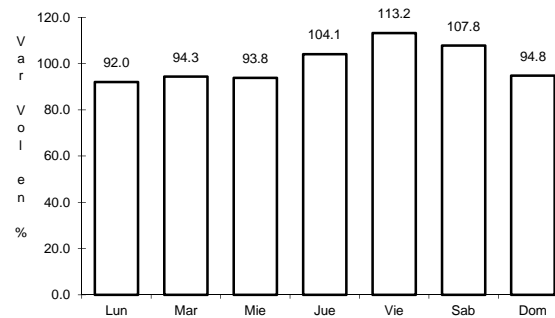
RUTA: MEX-002D



Km: 0.00

Tipo: 3

Sent: 0



Km: 41.00

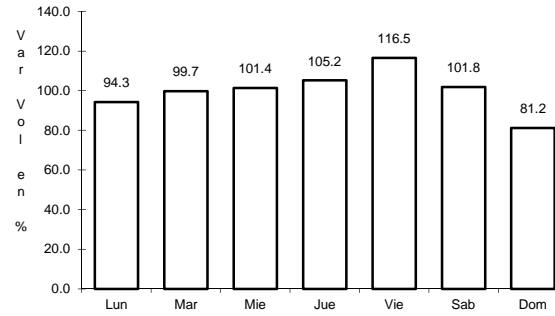
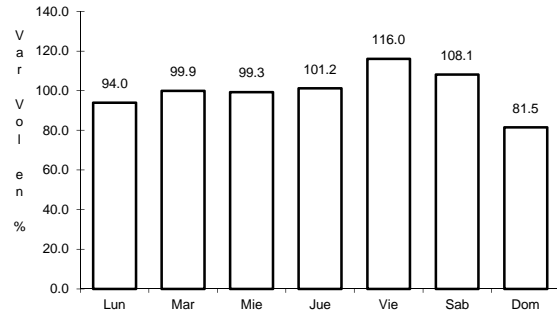
Tipo: 1

Sent: 0

17 CARR: Tecate - Tijuana (Cuota)

CLAVE: 02011

RUTA: MEX-002D



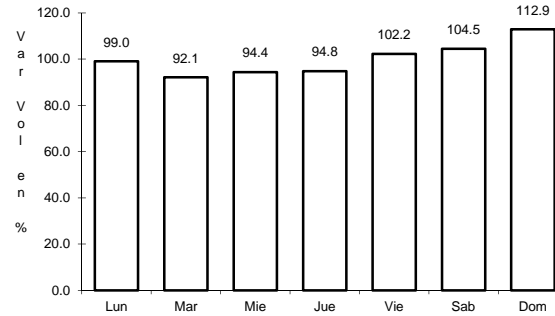
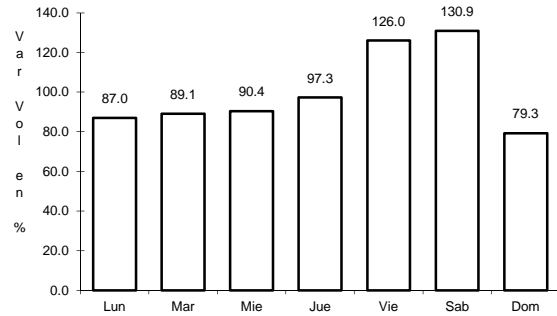
Km: 147.60      Tipo: 3      Sent: 1

Km: 147.60      Tipo: 3      Sent: 2

18 CARR: Tijuana - Ensenada (Cuota)

CLAVE: 02100

RUTA: MEX-001D



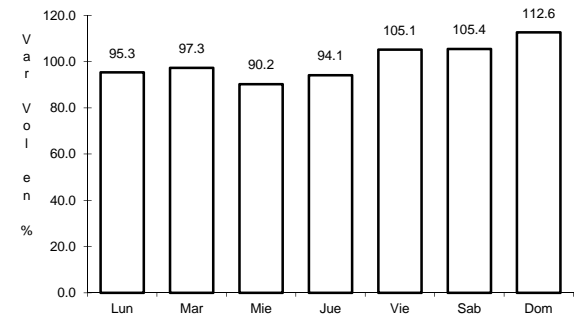
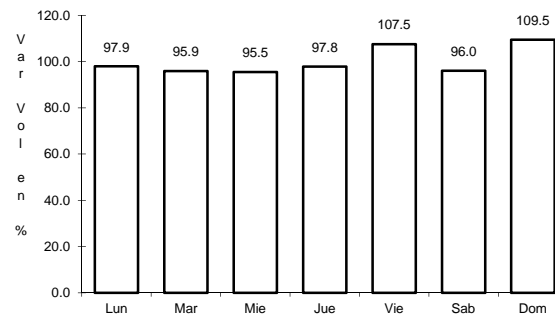
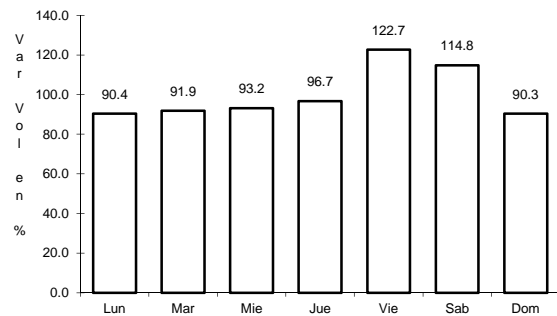
Km: 7.50      Tipo: 3      Sent: 1

Km: 7.50      Tipo: 3      Sent: 2

19 CARR: Mexicali - Tijuana

CLAVE: 02082

RUTA: MEX-002D-MEX



Km: 7.80      Tipo: 3      Sent: 1

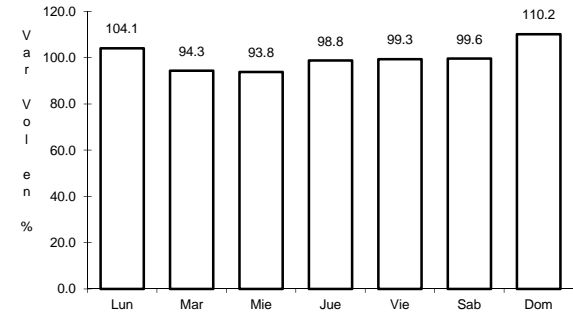
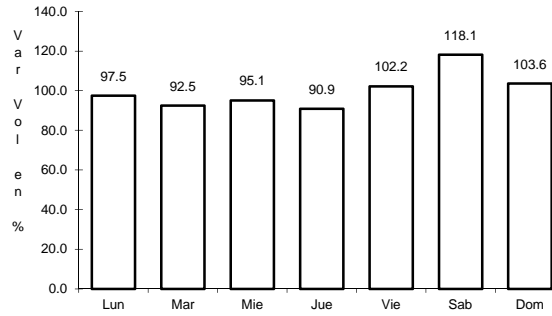
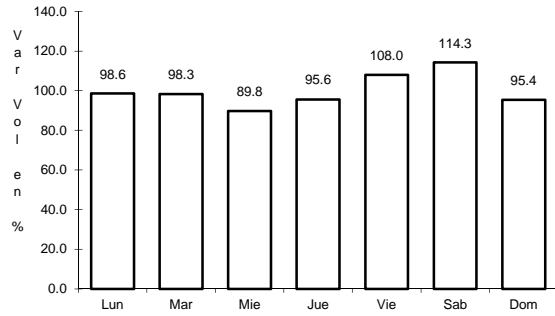
Km: 7.80      Tipo: 3      Sent: 2

Km: 165.00      Tipo: 3      Sent: 0

20 CARR: Algodones - Ent. Islas Agrarias Grupo B

CLAVE: 02006

RUTA: BC-008



Km: 0.00      Tipo: 3      Sent: 0

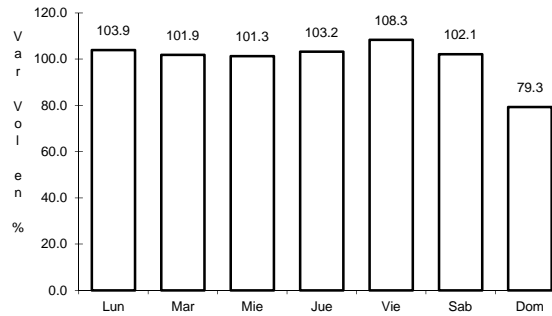
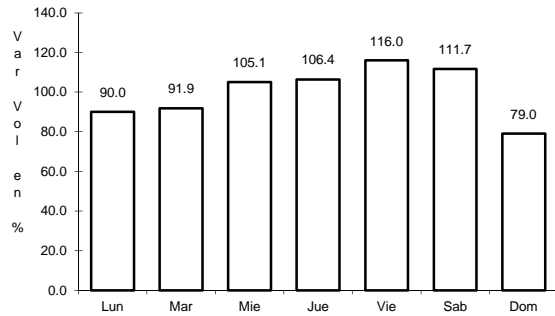
Km: 31.50      Tipo: 1      Sent: 0

Km: 55.50      Tipo: 1      Sent: 0

21 CARR: Corredor Tijuana 2000

CLAVE: 02006

RUTA: BC



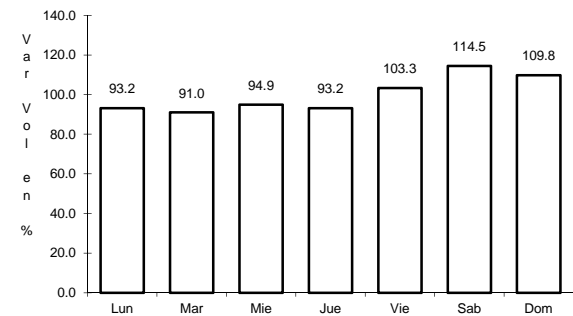
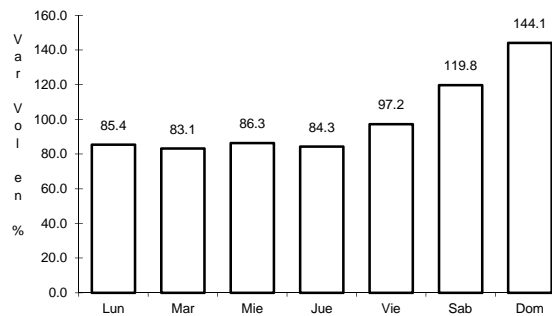
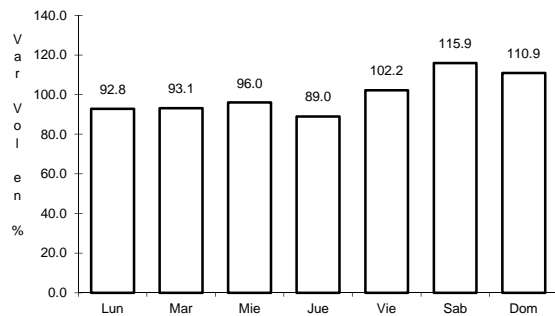
Km: 0.00      Tipo: 3      Sent: 1

Km: 0.00      Tipo: 3      Sent: 2

22 CARR: Ejido Benito Juárez - Ejido Chiapas

CLAVE: 02501

RUTA: BC-061



Km: 0.00      Tipo: 3      Sent: 0

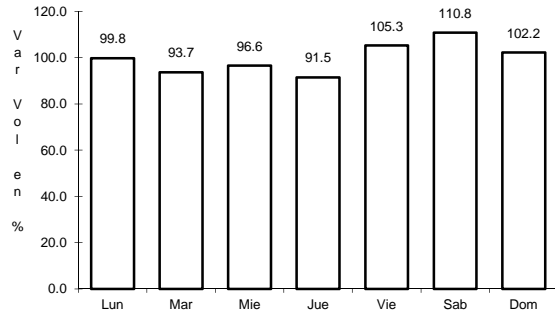
Km: 7.00      Tipo: 1      Sent: 0

Km: 10.56      Tipo: 1      Sent: 0

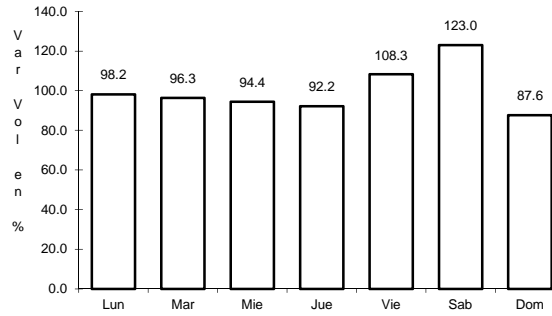
23 CARR: Ejido Monterrey - Mazón

CLAVE: 02004

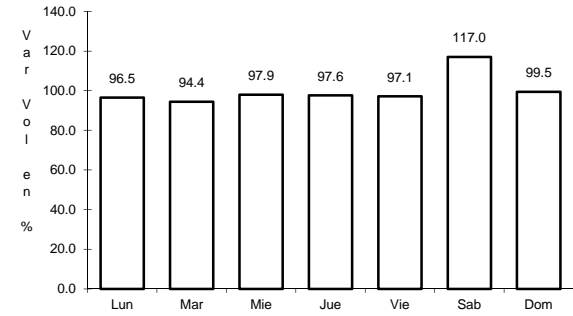
RUTA: BC-003



Km: 0.00                      Tipo: 3                      Sent: 0



Km: 15.16                      Tipo: 3                      Sent: 0

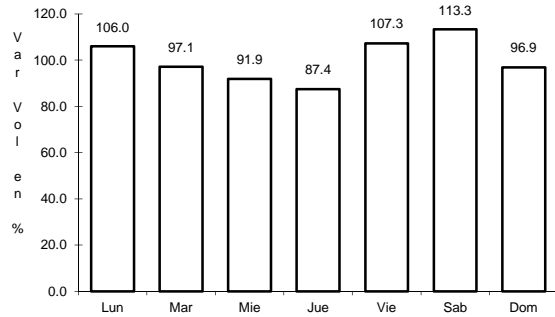


Km: 35.00                      Tipo: 1                      Sent: 0

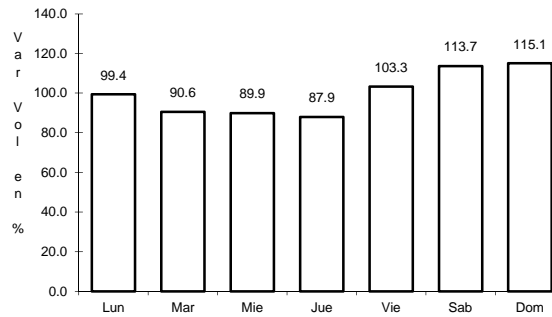
24 CARR: El Faro - Estación Coahuila

CLAVE: 02013

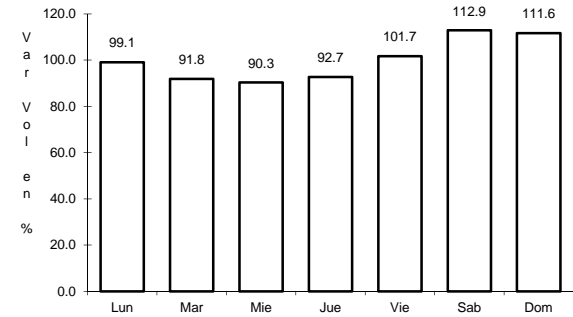
RUTA: BC-004



Km: 0.00                      Tipo: 3                      Sent: 0



Km: 16.30                      Tipo: 1                      Sent: 0

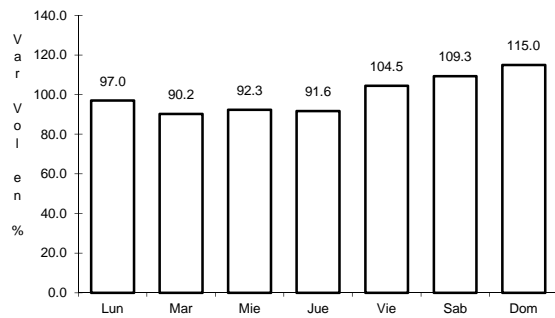


Km: 34.50                      Tipo: 1                      Sent: 0

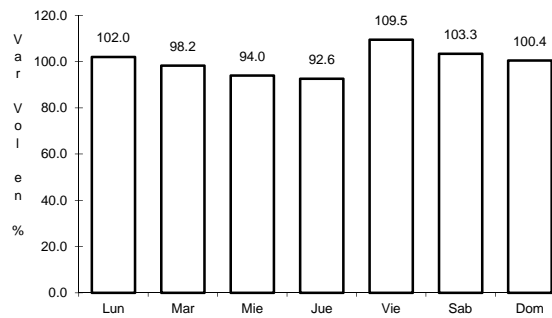
25 CARR: Ent. Santa Rosa - Ent. Pachuca

CLAVE: 02015

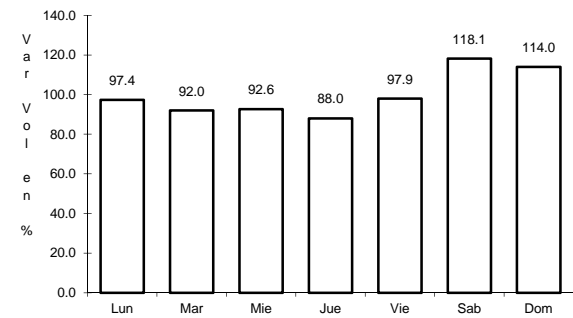
RUTA: BC-006



Km: 0.00                      Tipo: 3                      Sent: 0



Km: 10.90                      Tipo: 3                      Sent: 0

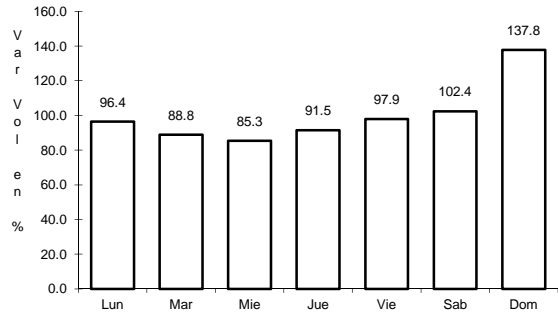


Km: 18.00                      Tipo: 3                      Sent: 0

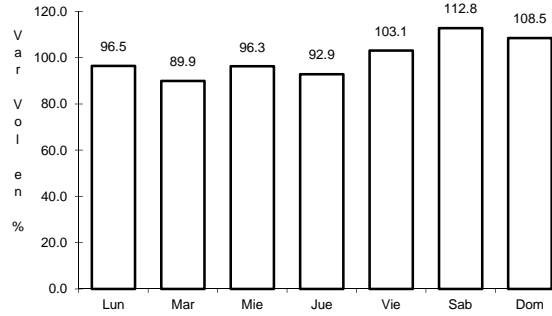
26 CARR: La Puerta - T. C. (Mexicali - Estación Coahuila)

CLAVE: 02502

RUTA: BC-010



Km: 4.60      Tipo: 1      Sent: 0

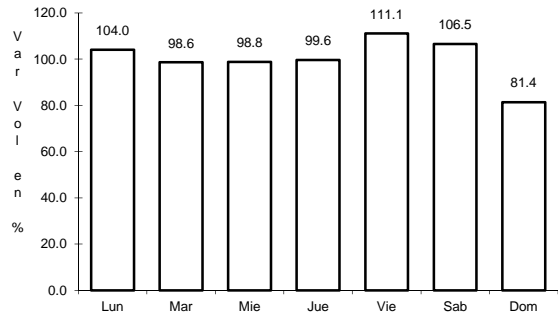


Km: 9.00      Tipo: 3      Sent: 0

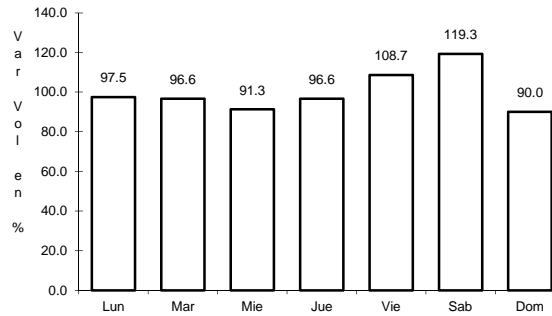
27 CARR: Mexicali - Algodones

CLAVE: 02012

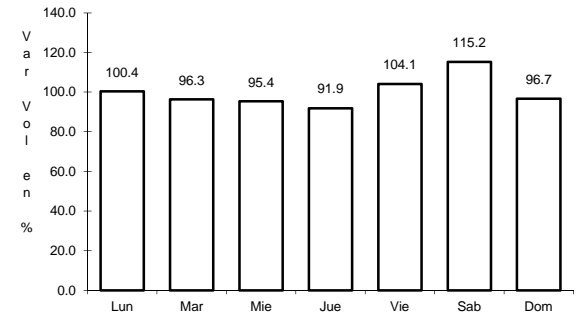
RUTA: BC-002



Km: 12.00      Tipo: 3      Sent: 0



Km: 49.65      Tipo: 1      Sent: 0

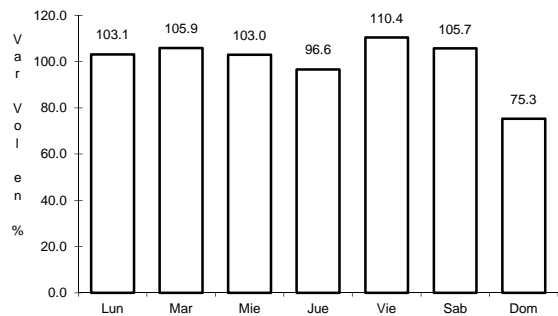


Km: 94.46      Tipo: 1      Sent: 0

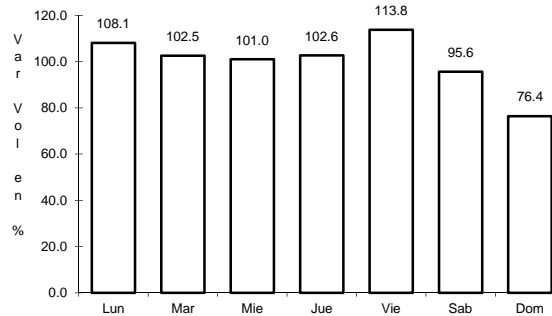
28 CARR: Mexicali - Estación Coahuila

CLAVE: 02016

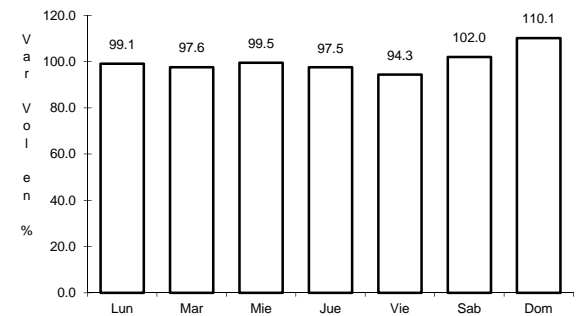
RUTA: BC-001



Km: 0.00      Tipo: 3      Sent: 1



Km: 0.00      Tipo: 3      Sent: 2

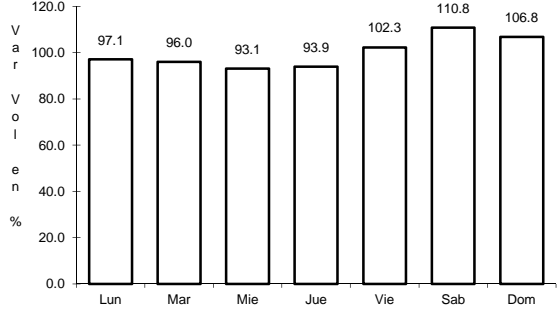


Km: 96.65      Tipo: 1      Sent: 0

29 CARR: Mexicali - Progreso

CLAVE: 02507

RUTA: BC-005



Km: 15.30

Tipo: 1

Sent: 0