

# AGUASCALIENTES

NO. INDICE	CARRETERA	ruta
---RED FEDERAL LIBRE---		
1	Acceso a Pabellón de Arteaga	MEX-045
2	Aguascalientes - Jalpa	MEX-070
3	Aguascalientes - Zacatecas	MEX-045
4	El Retoño - Ent. Asturias	MEX-070
5	Ent. Penitenciaria - Villa Hidalgo	MEX-071
6	Ent. Rivier - San Marcos	MEX-066
7	León - Aguascalientes	MEX-045
8	Libramiento Rincón de Romos	MEX-045
9	Ojo Caliente - Malpaso	MEX-070
10	Ojuelos - Aguascalientes	MEX-070
11	Providencia - Luis Moya	MEX-071
12	Ramal a Aeropuerto de Aguascalientes	MEX-045
13	Rincón de Romos - Ciénega Grande	MEX-039
---RED ESTATAL LIBRE---		
14	Aguascalientes - Ent. Cd. de Los Niños	AGS
15	Aguascalientes - Jesús María	AGS-095
16	Aguascalientes - José María Morelos	AGS
17	Carboneras - Villa Juárez	AGS-004
18	Cosío - Santa María de La Paz	AGS
19	Crucero Ojo de Agua de Crucitas - Santa Rosa	AGS
20	El Tanque - San José de La Ordeña	AGS
21	El Taray - T. C.(Ramal Aeropuerto de Aguascalientes)	AGS-002
22	Ent. Arellano - El Retoño	AGS
23	Ent. Buenavista - Gracias a Dios	AGS
24	Ent. El Novillo - Villa Juárez	AGS-005
25	Ent. La Calavera - Ent. San Pedro	AGS-043
26	Ent. La Chirida - San Francisco de Los Romo	AGS
27	Ent. Pabellón de Art. - San José de Gracia	AGS-019
28	Ent. Pabellón de Arteaga - California	AGS
29	Ent. Rincón de Romos - La Boquilla	AGS
30	Ent. San Carlos - Ent. El Milagro	AGS-010
31	Ent. San Felipe - Jesús María	AGS
32	Ent. San Isidro - Ent. El Salitre	AGS-016
33	Est. Coyotes - Ent. San Bartolo	AGS-069
34	Fracc. Ojo Caliente - El Conejal	AGS-079
35	Jesús María - Palomas	AGS-018
36	La Panadera - Palo Alto	AGS-017
37	La Punta - Mesillas	AGS-026
38	La Rinconada - El Terrero del Refugio	AGS-007
39	Las Norias de Ojo Caliente - La Luz	AGS-068
40	Libramiento San Francisco de Los Romo	AGS
41	Pabellón de Hidalgo - Rincón de Romos	AGS
42	Pilotos - Los Campos	AGS-030
43	Pocitos - Granja Miravalle	AGS-053
44	Ramal a San Pedro Piedra Gorda	ZAC-AGS
45	San Gil - Jarillas	AGS-012-ZAC
46	San Isidro El Grande - Bajío de San José	AGS-036
47	San Rafael - Villa García	AGS-ZAC
48	Santa Rosa - Pabellón de Hidalgo	AGS
49	T. Caldera - Ent. Ojo de Agua de Los Montes	AGS
50	Viñedos de California - Adolfo López Mateos	AGS
---RED ESTATAL DE CUOTA---		
51	Libramiento Sur de Aguascalientes (Cuota)	AGS-D
---CARRETERAS INTEGRADAS POR TRAMOS FEDERALES Y ESTATALES---		
52	Guadalupe - Cosío	MEX-ZAC

# 01 AGUASCALIENTES

SECRETARÍA DE COMUNICACIONES Y TRANSPORTES  
DIRECCIÓN GENERAL DE SERVICIOS TÉCNICOS

① --- Número Índice

- Red Federal Libre
- Red Federal Cuota
- Red Federal Integrada por Tramos Libres y de Cuota
- Red Estatal Libre
- Red Estatal Cuota
- Carreteras Integradas por Tramos Federales y Estatales



AGUASCALIENTES

1 CARR: Acceso a Pabellón de Arteaga

CLAVE: 01113

RUTA: MEX-045

AÑO: 2012

LUGAR	ESTACION				CLASIFICACION VEHICULAR EN PORCIENTO										COORDENADAS					
	KM	TE	SC	TDPA	M	A	B	C2	C3	T3S2	T3S3	T3S2R4	OTROS	A	B	C	K'	D	LATITUD	LONGITUD
T. C. Aguascalientes - Zacatecas (Baja)	0.00	3	1	950	11.1	80.3	3.3	3.8	0.8	0.6	0.1	0.0	0.0	91.4	3.3	5.3	0.092	0.502	22.146467	-102.291400
T. C. Aguascalientes - Zacatecas (Alta)	0.00	3	1	5456	1.0	91.9	2.0	3.2	0.6	0.6	0.6	0.0	0.1	92.9	2.0	5.1	0.085	0.502	22.146537	-102.291415
T. C. Aguascalientes - Zacatecas (Baja)	0.00	3	2	845	8.1	82.8	3.6	4.0	1.0	0.4	0.1	0.0	0.0	90.9	3.6	5.5	0.099	0.502	22.146766	-102.291532
T. C. Aguascalientes - Zacatecas (Alta)	0.00	3	2	5352	0.8	91.2	2.2	3.5	0.7	0.7	0.8	0.0	0.1	92.0	2.2	5.8	0.094	0.502	22.146684	-102.291471
Pabellón de Arteaga	1.80	1	1	6301	1.1	92.3	2.3	2.7	0.3	0.6	0.5	0.0	0.2	93.4	2.3	4.3	0.079	0.548	22.147271	-102.282242
Pabellón de Arteaga	1.80	1	2	6497	1.4	91.9	2.3	2.9	0.3	0.6	0.4	0.0	0.2	93.3	2.3	4.4	0.081	0.548	22.147368	-102.282275
T. C. Providencia - Luis Moya	4.70																			

2 CARR: Aguascalientes - Jalpa

CLAVE: 00095

RUTA: MEX-070

AÑO: 2012

LUGAR	ESTACION				CLASIFICACION VEHICULAR EN PORCIENTO										COORDENADAS					
	KM	TE	SC	TDPA	M	A	B	C2	C3	T3S2	T3S3	T3S2R4	OTROS	A	B	C	K'	D	LATITUD	LONGITUD
Aguascalientes	0.00	3	1	8569	1.5	86.4	3.9	5.5	1.3	0.7	0.4	0.1	0.2	87.9	3.9	8.2	0.094	0.501	21.875723	-102.341039
Aguascalientes	0.00	3	2	8596	1.3	85.5	4.3	6.0	1.5	0.8	0.4	0.1	0.1	86.8	4.3	8.9	0.093	0.501	21.875542	-102.341121
T. Der. Jesús María	7.30	1	1	8103	0.6	85.7	4.0	5.2	1.5	1.2	0.9	0.3	0.6	86.3	4.0	9.7	0.085	0.504	21.881143	-102.361779
T. Der. Jesús María	7.30	1	2	8227	0.9	84.3	4.1	5.7	1.6	1.4	1.0	0.3	0.7	85.2	4.1	10.7	0.086	0.504	21.881227	-102.361502
T. Izq. Villa Hidalgo	7.80	3	1	5729	0.2	88.1	3.8	5.7	1.0	0.7	0.3	0.1	0.1	88.3	3.8	7.9	0.126	0.501	21.884304	-102.373134
T. Izq. Villa Hidalgo	7.80	3	2	5697	0.2	87.2	3.7	6.7	1.0	0.7	0.3	0.1	0.1	87.4	3.7	8.9	0.100	0.501	21.884092	-102.373150
Libramiento Poniente de Aguascalientes	11.00	1	1	5468	0.3	87.3	4.1	5.5	1.2	0.8	0.4	0.1	0.3	87.6	4.1	8.3	0.083	0.501	21.889813	-102.394554
Libramiento Poniente de Aguascalientes	11.00	1	2	5449	0.3	86.6	4.3	5.8	1.3	0.9	0.4	0.1	0.3	86.9	4.3	8.8	0.080	0.501	21.890010	-102.394493
Libramiento Poniente de Aguascalientes	11.00	3	1	4897	0.4	86.1	4.1	5.5	1.4	1.4	0.5	0.1	0.5	86.5	4.1	9.4	0.081	0.501	21.892416	-102.403349
Libramiento Poniente de Aguascalientes	11.00	3	2	4917	0.3	85.1	4.2	6.1	1.6	1.6	0.5	0.1	0.5	85.4	4.2	10.4	0.086	0.501	21.892191	-102.403391
T. Der. Gracias a Dios	20.00	3	0	7049	0.2	87.5	2.1	6.5	1.4	1.5	0.4	0.1	0.3	87.7	2.1	10.2	0.090	0.504	21.887235	-102.464389
T. Izq. Malpaso	45.10	1	0	6096	0.3	88.1	2.5	5.3	1.2	1.4	0.5	0.1	0.6	88.4	2.5	9.1	0.083	0.522	21.882000	-102.658977
T. Der. Presa La Codorniz	49.30	3	1	8306	0.2	89.9	2.2	5.1	0.6	1.0	0.6	0.1	0.3	90.1	2.2	7.7	0.085	0.500	21.863697	-102.692508
T. Der. Presa La Codorniz	49.30	3	2	8307	0.6	89.3	2.0	5.4	0.6	1.1	0.6	0.1	0.3	89.9	2.0	8.1	0.086	0.500	21.863587	-102.692416
Calvillo	52.30	3	1	4728	0.4	89.4	1.6	5.6	1.1	1.0	0.5	0.1	0.3	89.8	1.6	8.6	0.086	0.502	21.839145	-102.739990
Calvillo	52.30	3	2	4775	0.3	88.7	1.8	6.1	1.2	1.0	0.5	0.1	0.3	89.0	1.8	9.2	0.088	0.502	21.839118	-102.739852
T. Der. Jaltiche de Abajo	63.80	3	0	5140	0.5	87.1	1.5	5.6	2.2	2.2	0.6	0.1	0.2	87.6	1.5	10.9	0.111	0.529	21.773342	-102.803515
Lim. Edos. Term. Ags. Ppia. Zac.	65.66																			
T. C. Guadalajara - Zacatecas	91.10	1	0	4108	0.3	86.2	2.1	5.1	2.3	2.6	0.8	0.1	0.5	86.5	2.1	11.4	0.095	0.509	21.649225	-102.969529



AGUASCALIENTES

4 CARR: El Retoño - Ent. Asturias

CLAVE: 01124

RUTA: MEX-070

AÑO: 2012

LUGAR	ESTACION				CLASIFICACION VEHICULAR EN PORCIENTO										COORDENADAS					
	KM	TE	SC	TDPA	M	A	B	C2	C3	T3S2	T3S3	T3S2R4	OTROS	A	B	C	K'	D	LATITUD	LONGITUD
El Retoño	0.00	3	0	545	3.1	78.3	3.7	10.5	2.4	1.3	0.7	0.0	0.0	81.4	3.7	14.9	0.116	0.546	21.841628	-102.162885
Ent. Asturias	8.40	1	0	1240	3.6	83.2	3.3	4.2	3.6	1.4	0.5	0.0	0.2	86.8	3.3	9.9	0.109	0.519	21.860753	-102.219836

5 CARR: Ent. Penitenciaría - Villa Hidalgo

CLAVE: 00120

RUTA: MEX-071

AÑO: 2012

LUGAR	ESTACION				CLASIFICACION VEHICULAR EN PORCIENTO										COORDENADAS					
	KM	TE	SC	TDPA	M	A	B	C2	C3	T3S2	T3S3	T3S2R4	OTROS	A	B	C	K'	D	LATITUD	LONGITUD
T. C. Aguascalientes - Jalpa	0.00	3	0	3964	1.0	73.1	2.9	15.2	2.5	3.5	1.2	0.3	0.3	74.1	2.9	23.0	0.103	0.502	21.880135	-102.368919
T. Izq. El Niágara	9.20	3	0	2767	0.6	85.3	3.9	6.0	1.2	1.6	0.6	0.1	0.7	85.9	3.9	10.2	0.108	0.524	21.803088	-102.392841
El Taray	27.00	3	0	2937	0.4	85.2	4.8	7.0	0.8	1.2	0.4	0.0	0.2	85.6	4.8	9.6	0.122	0.508	21.726692	-102.508026
Lim. Edos. Term. Ags. Ppia. Jal.	29.58																			
Villa Hidalgo	38.00	1	0	3217	0.5	90.1	0.5	5.4	1.1	1.6	0.7	0.0	0.1	90.6	0.5	8.9	0.092	0.517	21.696968	-102.566647

6 CARR: Ent. Rivier - San Marcos

CLAVE: 00285

RUTA: MEX-066

AÑO: 2012

LUGAR	ESTACION				CLASIFICACION VEHICULAR EN PORCIENTO										COORDENADAS					
	KM	TE	SC	TDPA	M	A	B	C2	C3	T3S2	T3S3	T3S2R4	OTROS	A	B	C	K'	D	LATITUD	LONGITUD
T. C. Aguascalientes - Zacatecas	0.00	3	1	5071	1.5	86.2	3.3	5.3	1.6	0.9	0.7	0.2	0.3	87.7	3.3	9.0	0.121	0.519	21.961833	-102.283318
T. C. Aguascalientes - Zacatecas	0.00	3	2	4707	2.0	84.2	3.8	6.0	1.7	1.1	0.7	0.2	0.3	86.2	3.8	10.0	0.132	0.519	21.961833	-102.283318
T. Izq. El Tepetate	10.50	3	0	7515	0.5	83.8	4.7	5.3	1.6	3.0	0.4	0.4	0.3	84.3	4.7	11.0	0.088	0.501	21.999843	-102.193721
T. Der. Jilotepec	23.60	3	0	6741	0.6	83.2	5.1	6.4	1.4	2.3	0.6	0.1	0.3	83.8	5.1	11.1	0.077	0.509	22.056088	-102.098392
Villa Juárez	30.00	3	0	8602	0.8	83.3	5.1	4.8	1.1	3.9	0.4	0.1	0.5	84.1	5.1	10.8	0.089	0.501	22.100368	-102.063968
Ciénega Grande	41.50	1	0	6758	1.4	82.3	5.9	5.4	1.3	2.8	0.5	0.1	0.3	83.7	5.9	10.4	0.082	0.501	22.187082	-102.020473
Ciénega Grande	41.50	3	0	5847	0.9	82.9	5.7	5.8	1.3	2.7	0.3	0.1	0.3	83.8	5.7	10.5	0.089	0.500	22.200292	-102.015254
Lim. Edos. Term. Ags. Ppia. Zac.	45.75																			
San Marcos	56.00	1	0	7262	3.1	83.3	3.3	4.1	0.5	4.4	0.5	0.1	0.7	86.4	3.3	10.3	0.088	0.501	22.277338	-101.954902

7 CARR: León - Aguascalientes

CLAVE: 00167

RUTA: MEX-045

AÑO: 2012

LUGAR	ESTACION				CLASIFICACION VEHICULAR EN PORCIENTO										COORDENADAS					
	KM	TE	SC	TDPA	M	A	B	C2	C3	T3S2	T3S3	T3S2R4	OTROS	A	B	C	K'	D	LATITUD	LONGITUD
León	0.00																			
T. Der. Libramiento de León	11.00	1	1	6238	1.1	89.9	0.6	4.7	1.2	0.8	1.0	0.3	0.4	91.0	0.6	8.4	0.105	0.507	21.170561	-101.733027
T. Der. Libramiento de León	11.00	1	2	6406	1.0	88.9	0.6	5.5	1.3	0.9	1.1	0.2	0.5	89.9	0.6	9.5	0.103	0.507	21.170561	-101.733027
T. Der. Libramiento de León	11.00	3	1	6878	1.2	73.9	2.2	12.0	2.2	3.8	3.0	0.8	0.9	75.1	2.2	22.7	0.087	0.516	21.174196	-101.736823

## AGUASCALIENTES

7 CARR: León - Aguascalientes

CLAVE: 00167

RUTA: MEX-045

AÑO: 2012

LUGAR	ESTACION				CLASIFICACION VEHICULAR EN PORCIENTO													COORDENADAS		
	KM	TE	SC	TDPA	M	A	B	C2	C3	T3S2	T3S3	T3S2R4	OTROS	A	B	C	K'	D	LATITUD	LONGITUD
T. Der. Libramiento de León	11.00	3	2	6785	0.9	71.6	2.3	13.2	2.6	4.5	3.1	0.8	1.0	72.5	2.3	25.2	0.090	0.516	21.174196	-101.736823
T. Izq. Centro de León	12.00	3	0	12975	1.4	72.5	4.1	8.0	3.4	5.0	3.6	1.0	1.0	73.9	4.1	22.0	0.070	0.504	21.192640	-101.748486
Lim. Edos. Term. Gto. Ppia. Jal.	17.88																			
X. C. San Luis Potosí - Lagos de Moreno	44.18	1	0	12080	1.8	73.0	4.2	9.5	2.0	6.5	1.4	0.5	1.1	74.8	4.2	21.0	0.084	0.516	21.367680	-101.900732
Encarnación de Díaz	88.20	1	0	6398	1.1	77.5	2.1	8.1	3.2	4.5	1.7	0.6	1.2	78.6	2.1	19.3	0.085	0.502	21.502260	-102.212203
T. Izq. Libramiento de Encarnación de Díaz	89.18	3	0	9564	0.4	70.4	3.9	9.4	4.0	7.8	2.6	0.7	0.8	70.8	3.9	25.3	0.080	0.515	21.551171	-102.244172
Lim. Edos. Term. Jal. Ppia. Ags.	103.30																			
T. Izq. Aeropuerto de Aguascalientes	110.15	1	1	8760	0.4	71.0	4.9	8.3	2.7	6.5	2.2	3.2	0.8	71.4	4.9	23.7	0.103	0.509	21.712422	-102.278504
T. Izq. Aeropuerto de Aguascalientes	110.15	1	2	9081	0.3	68.0	5.3	9.0	3.0	7.7	2.4	3.4	0.9	68.3	5.3	26.4	0.091	0.509	21.712545	-102.278588
T. Izq. Aeropuerto de Aguascalientes	111.00	3	1	14181	0.6	74.7	4.2	7.1	3.2	5.6	1.7	2.4	0.5	75.3	4.2	20.5	0.088	0.502	21.728339	-102.276655
T. Izq. Aeropuerto de Aguascalientes	111.00	3	2	14048	0.5	72.0	4.8	8.2	3.4	6.4	1.8	2.4	0.5	72.5	4.8	22.7	0.088	0.502	21.728295	-102.276890
Libramiento Poniente de Aguascalientes	116.50	1	1	12754	0.5	76.5	3.5	6.6	2.9	5.1	1.9	2.1	0.9	77.0	3.5	19.5	0.086	0.506	21.765517	-102.277517
Libramiento Poniente de Aguascalientes	116.50	1	2	13038	0.3	74.8	3.9	7.4	3.1	5.6	1.7	2.3	0.9	75.1	3.9	21.0	0.088	0.506	21.767111	-102.277883
Libramiento Poniente de Aguascalientes	116.50	3	1	12330	0.4	77.0	4.2	8.0	2.2	4.4	1.4	1.6	0.8	77.4	4.2	18.4	0.087	0.505	21.774468	-102.278962
Libramiento Poniente de Aguascalientes	116.50	3	2	12107	0.3	75.1	4.5	8.3	2.5	4.9	1.6	1.9	0.9	75.4	4.5	20.1	0.089	0.505	21.775112	-102.279114
T. Der. Estación Arellano	118.40	3	1	14034	0.7	81.0	3.1	6.5	2.2	3.8	0.9	1.3	0.5	81.7	3.1	15.2	0.098	0.504	21.803043	-102.283591
T. Der. Estación Arellano	118.40	3	2	14249	0.8	78.4	3.7	7.6	2.4	4.0	1.1	1.5	0.5	79.2	3.7	17.1	0.094	0.504	21.803064	-102.283879
Aguascalientes	129.38	1	1	20184	0.9	81.6	3.2	7.3	1.8	3.1	0.8	1.1	0.2	82.5	3.2	14.3	0.103	0.535	21.824829	-102.287520
Aguascalientes	129.38	1	2	19303	0.6	81.0	3.5	7.1	2.0	3.4	1.0	1.2	0.2	81.6	3.5	14.9	0.118	0.535	21.824878	-102.287300

8 CARR: Libramiento Rincón de Romos

CLAVE: 00167

RUTA: MEX-045

AÑO: 2012

LUGAR	ESTACION				CLASIFICACION VEHICULAR EN PORCIENTO													COORDENADAS		
	KM	TE	SC	TDPA	M	A	B	C2	C3	T3S2	T3S3	T3S2R4	OTROS	A	B	C	K'	D	LATITUD	LONGITUD
T. C. Aguascalientes - Zacatecas	0.00	3	0	10110	0.6	64.2	5.2	8.3	3.2	9.7	3.8	4.3	0.7	64.8	5.2	30.0	0.084	0.503	22.194203	-102.294642
T. C. Aguascalientes - Zacatecas	10.00	1	0	9858	0.5	62.5	5.9	8.4	3.1	10.8	3.6	4.8	0.4	63.0	5.9	31.1	0.083	0.501	22.271344	-102.308268

9 CARR: Ojo Caliente - Malpaso

CLAVE: 01123

RUTA: MEX-070

AÑO: 2012

LUGAR	ESTACION				CLASIFICACION VEHICULAR EN PORCIENTO													COORDENADAS		
	KM	TE	SC	TDPA	M	A	B	C2	C3	T3S2	T3S3	T3S2R4	OTROS	A	B	C	K'	D	LATITUD	LONGITUD
T. C. Aguascalientes - Jalpa	0.00	3	0	2399	1.1	88.1	3.2	4.3	0.4	2.4	0.2	0.1	0.2	89.2	3.2	7.6	0.086	0.503	21.881044	-102.670377
Malpaso	3.10	1	0	2031	2.4	88.9	2.5	4.1	0.1	1.8	0.1	0.0	0.1	91.3	2.5	6.2	0.097	0.504	21.862072	-102.667487

AGUASCALIENTES

10 CARR : Ojuelos - Aguascalientes

CLAVE: 00094

RUTA: MEX-070

AÑO : 2012

LUGAR	ESTACION				CLASIFICACION VEHICULAR EN PORCIENTO													COORDENADAS		
	KM	TE	SC	TDPA	M	A	B	C2	C3	T3S2	T3S3	T3S2R4	OTROS	A	B	C	K'	D	LATITUD	LONGITUD
Ojuelos	0.00	3	0	3646	0.5	69.5	2.3	13.3	2.5	7.4	2.1	1.8	0.6	70.0	2.3	27.7	0.100	0.502	21.876455	-101.604752
Matancillas	6.92	3	0	3192	1.6	73.0	2.7	7.1	3.1	8.4	1.8	1.5	0.8	74.6	2.7	22.7	0.096	0.508	21.879446	-101.662180
Vergel	40.70	3	0	3591	0.3	72.5	2.3	11.4	2.8	6.8	1.8	1.6	0.5	72.8	2.3	24.9	0.103	0.504	21.768462	-101.940081
Lim. Edos. Term. Jal. Ppia. Ags.	57.20																			
T. Der. Palo Alto	60.80	1	0	5340	0.4	75.3	3.2	10.3	2.5	5.2	1.5	1.2	0.4	75.7	3.2	21.1	0.097	0.503	21.818280	-102.092019
San Isidro	61.00	3	0	6899	0.5	79.3	3.5	7.6	2.3	4.4	1.1	0.8	0.5	79.8	3.5	16.7	0.087	0.504	21.823177	-102.107357
El Retoño	68.00	1	0	6799	0.3	79.2	4.9	6.4	2.3	4.8	1.1	0.5	0.5	79.5	4.9	15.6	0.092	0.510	21.839270	-102.156535
T. C. El Retoño - Asturias	78.00	1	1	5136	0.5	86.2	3.7	4.5	2.0	1.9	0.7	0.3	0.2	86.7	3.7	9.6	0.119	0.505	21.859357	-102.217231
T. C. El Retoño - Asturias	78.00	1	2	5236	0.7	84.9	4.1	4.9	2.1	2.0	0.8	0.3	0.2	85.6	4.1	10.3	0.102	0.505	21.859155	-102.217292
T. C. El Retoño - Asturias	78.00	3	1	7036	0.8	84.9	4.1	5.1	1.8	1.8	0.9	0.3	0.3	85.7	4.1	10.2	0.115	0.506	21.861097	-102.223835
T. C. El Retoño - Asturias	78.00	3	2	7200	0.9	83.6	4.4	5.5	2.0	2.0	1.0	0.3	0.3	84.5	4.4	11.1	0.093	0.506	21.860917	-102.223869
Salto del Ojo Caliente	81.00	1	1	16890	3.0	85.8	3.0	3.8	1.1	1.6	1.2	0.2	0.3	88.8	3.0	8.2	0.082	0.501	21.867169	-102.241936
Salto del Ojo Caliente	81.00	1	2	16812	1.7	85.9	3.3	4.3	1.2	1.8	1.3	0.2	0.3	87.6	3.3	9.1	0.085	0.501	21.866916	-102.242399

11 CARR : Providencia - Luis Moya

CLAVE: 00112

RUTA: MEX-071

AÑO : 2012

LUGAR	ESTACION				CLASIFICACION VEHICULAR EN PORCIENTO													COORDENADAS		
	KM	TE	SC	TDPA	M	A	B	C2	C3	T3S2	T3S3	T3S2R4	OTROS	A	B	C	K'	D	LATITUD	LONGITUD
T. C. Aguascalientes - Zacatecas	0.00	3	0	4908	0.8	77.4	3.4	5.2	2.7	3.7	2.7	3.5	0.6	78.2	3.4	18.4	0.080	0.501	22.060701	-102.273816
T. Izq. Pabellón de Arteaga	12.10	1	0	4297	0.7	78.4	3.4	5.1	3.0	2.6	2.6	3.8	0.4	79.1	3.4	17.5	0.084	0.521	22.145367	-102.250756
T. Der. Villa Juárez	14.90	3	0	4986	0.9	78.9	3.7	5.2	2.5	3.0	2.3	3.0	0.5	79.8	3.7	16.5	0.083	0.510	22.180444	-102.245147
X. C. Rincón de Romos - Ciénega Grande	21.22	3	0	4739	1.0	82.0	0.7	9.6	2.3	2.5	0.8	0.8	0.3	83.0	0.7	16.3	0.085	0.513	22.230959	-102.241414
X. C. La Punta - Mesillas	30.35	3	0	3074	1.3	81.7	0.3	9.5	2.5	2.4	1.3	0.7	0.3	83.0	0.3	16.7	0.086	0.517	22.318008	-102.233755
San Jacinto	34.25	3	0	2405	3.0	78.0	0.5	9.8	3.0	2.5	1.6	1.1	0.5	81.0	0.5	18.5	0.086	0.525	22.353273	-102.232671
Lim. Edos. Term. Ags. Ppia. Zac.	37.50																			
Luis Moya	43.50	1	0	3809	1.3	82.0	0.7	9.6	1.5	2.9	1.0	0.6	0.4	83.3	0.7	16.0	0.096	0.516	22.427305	-102.246792

12 CARR : Ramal a Aeropuerto de Aguascalientes

CLAVE: 01116

RUTA: MEX-045

AÑO : 2012

LUGAR	ESTACION				CLASIFICACION VEHICULAR EN PORCIENTO													COORDENADAS		
	KM	TE	SC	TDPA	M	A	B	C2	C3	T3S2	T3S3	T3S2R4	OTROS	A	B	C	K'	D	LATITUD	LONGITUD
T. C. León - Aguascalientes	0.00																			
Aeropuerto	6.10	1	1	1157	0.5	95.9	1.0	2.5	0.0	0.1	0.0	0.0	0.0	96.4	1.0	2.6	0.138	0.501	21.705841	-102.311025
Aeropuerto	6.10	1	2	1162	0.7	95.5	1.1	2.6	0.0	0.1	0.0	0.0	0.0	96.2	1.1	2.7	0.162	0.501	21.705808	-102.310841





AGUASCALIENTES

17 CARR: Carboneras - Villa Juárez

CLAVE: 01111

RUTA: AGS-004

AÑO: 2012

LUGAR	ESTACION				CLASIFICACION VEHICULAR EN PORCIENTO														COORDENADAS	
	KM	TE	SC	TDPA	M	A	B	C2	C3	T3S2	T3S3	T3S2R4	OTROS	A	B	C	K'	D	LATITUD	LONGITUD
Carboneras	0.00	3	0	1343	1.7	82.9	4.9	6.4	1.6	1.3	1.0	0.2	0.0	84.6	4.9	10.5	0.090	0.513	22.174705	-102.243470
Clavellinas	14.00	1	0	954	1.9	83.6	4.5	7.1	1.5	1.0	0.3	0.1	0.0	85.5	4.5	10.0	0.112	0.527	22.138421	-102.146316
Ent. Villa Juárez	23.10	1	0	2803	1.3	84.9	4.2	6.7	0.9	1.5	0.3	0.1	0.1	86.2	4.2	9.6	0.094	0.502	22.102720	-102.063956

18 CARR: Cosío - Santa María de La Paz

CLAVE: 01132

RUTA: AGS

AÑO: 2012

LUGAR	ESTACION				CLASIFICACION VEHICULAR EN PORCIENTO														COORDENADAS	
	KM	TE	SC	TDPA	M	A	B	C2	C3	T3S2	T3S3	T3S2R4	OTROS	A	B	C	K'	D	LATITUD	LONGITUD
T. C. Aguascalientes - Zacatecas	0.00	3	0	705	9.4	77.4	4.6	6.9	0.7	0.8	0.1	0.0	0.1	86.8	4.6	8.6	0.085	0.500	22.372459	-102.296146
Santa María de La Paz	5.60																			

19 CARR: Crucero Ojo de Agua de Crucitas - Santa Rosa

CLAVE: 01140

RUTA: AGS

AÑO: 2012

LUGAR	ESTACION				CLASIFICACION VEHICULAR EN PORCIENTO														COORDENADAS	
	KM	TE	SC	TDPA	M	A	B	C2	C3	T3S2	T3S3	T3S2R4	OTROS	A	B	C	K'	D	LATITUD	LONGITUD
T. C. Ent. La Calavera - Ent. San Pedro	0.00	3	0	603	2.2	87.5	3.2	5.1	1.1	0.8	0.1	0.0	0.0	89.7	3.2	7.1	0.098	0.501	21.939639	-101.977744
Santa Rosa	5.00																			

20 CARR: El Tanque - San José de La Ordeña

CLAVE: 01143

RUTA: AGS

AÑO: 2012

LUGAR	ESTACION				CLASIFICACION VEHICULAR EN PORCIENTO														COORDENADAS	
	KM	TE	SC	TDPA	M	A	B	C2	C3	T3S2	T3S3	T3S2R4	OTROS	A	B	C	K'	D	LATITUD	LONGITUD
T. C. Aguascalientes - José María Morelos	0.00	3	0	1279	3.2	84.3	3.7	6.1	1.4	1.0	0.3	0.0	0.0	87.5	3.7	8.8	0.112	0.501	21.959844	-102.214144
San José de La Ordeña	8.50																			

21 CARR: El Taray - T. C.(Ramal Aeropuerto de Aguascalientes)

CLAVE: 01121

RUTA: AGS-002

AÑO: 2012

LUGAR	ESTACION				CLASIFICACION VEHICULAR EN PORCIENTO														COORDENADAS	
	KM	TE	SC	TDPA	M	A	B	C2	C3	T3S2	T3S3	T3S2R4	OTROS	A	B	C	K'	D	LATITUD	LONGITUD
T. C. Ent. Penitenciaria - Villa Hidalgo	0.00	3	0	636	1.9	86.9	1.1	7.7	0.9	0.8	0.6	0.0	0.1	88.8	1.1	10.1	0.119	0.532	21.735081	-102.490593
T. C. Ramal Aeropuerto de Aguascalientes	22.00	1	1	603	3.1	84.1	2.6	6.4	2.4	0.7	0.2	0.4	0.1	87.2	2.6	10.2	0.168	0.502	21.724134	-102.315888
T. C. Ramal Aeropuerto de Aguascalientes	22.00	1	2	599	2.1	84.1	2.7	6.6	2.8	0.7	0.2	0.6	0.2	86.2	2.7	11.1	0.127	0.502	21.724300	-102.315983

## AGUASCALIENTES

22 CARR: Ent. Arellano - El Retoño

CLAVE: 01121

RUTA: AGS

AÑO: 2012

LUGAR	ESTACION				CLASIFICACION VEHICULAR EN PORCIENTO										COORDENADAS					
	KM	TE	SC	TDPA	M	A	B	C2	C3	T3S2	T3S3	T3S2R4	OTROS	A	B	C	K'	D	LATITUD	LONGITUD
T. C. León - Aguascalientes	0.00	3	0	4275	3.5	75.7	1.9	7.9	3.1	5.2	0.9	1.1	0.7	79.2	1.9	18.9	0.086	0.507	21.800029	-102.276782
T. Izq. Villa Jesús Terán (Calvillito)	12.20	1	0	1418	4.6	73.7	3.7	7.0	3.3	4.6	1.2	1.6	0.3	78.3	3.7	18.0	0.103	0.503	21.816808	-102.189389
T. Izq. Villa Jesús Terán (Calvillito)	12.20	3	0	1246	3.7	71.5	3.2	9.9	4.0	4.2	1.4	1.7	0.4	75.2	3.2	21.6	0.105	0.506	21.820273	-102.184312
T. C. Ojuelos - Aguascalientes	15.92	1	0	1058	1.8	75.1	3.6	7.5	4.5	4.5	1.3	1.0	0.7	76.9	3.6	19.5	0.095	0.540	21.839149	-102.160334

23 CARR: Ent. Buenavista - Gracias a Dios

CLAVE: 01138

RUTA: AGS

AÑO: 2012

LUGAR	ESTACION				CLASIFICACION VEHICULAR EN PORCIENTO										COORDENADAS					
	KM	TE	SC	TDPA	M	A	B	C2	C3	T3S2	T3S3	T3S2R4	OTROS	A	B	C	K'	D	LATITUD	LONGITUD
T. C. Aguascalientes - Jalpa	0.00	3	0	692	0.7	91.6	1.4	5.7	0.1	0.4	0.0	0.0	0.1	92.3	1.4	6.3	0.096	0.504	21.891117	-102.462313
Gracias a Dios	6.30																			

24 CARR: Ent. El Novillo - Villa Juárez

CLAVE: 01103

RUTA: AGS-005

AÑO: 2012

LUGAR	ESTACION				CLASIFICACION VEHICULAR EN PORCIENTO										COORDENADAS					
	KM	TE	SC	TDPA	M	A	B	C2	C3	T3S2	T3S3	T3S2R4	OTROS	A	B	C	K'	D	LATITUD	LONGITUD
T. C. Ent. La Calavera - Ent. San Pedro	0.00																			
Villa Juárez	12.60	1	0	1557	3.3	84.6	3.8	4.2	1.4	1.7	0.4	0.1	0.5	87.9	3.8	8.3	0.091	0.513	22.094402	-102.062225

25 CARR: Ent. La Calavera - Ent. San Pedro

CLAVE: 01102

RUTA: AGS-043

AÑO: 2012

LUGAR	ESTACION				CLASIFICACION VEHICULAR EN PORCIENTO										COORDENADAS					
	KM	TE	SC	TDPA	M	A	B	C2	C3	T3S2	T3S3	T3S2R4	OTROS	A	B	C	K'	D	LATITUD	LONGITUD
T. C. Ojuelos - Aguascalientes	0.00	3	0	2893	1.6	84.8	1.5	8.1	2.2	1.6	0.1	0.0	0.1	86.4	1.5	12.1	0.086	0.507	21.823705	-102.091042
T. Der. Palo Alto	15.00	1	0	2765	2.2	81.8	3.9	7.9	1.4	2.0	0.4	0.2	0.2	84.0	3.9	12.1	0.097	0.502	21.917050	-101.972191
T. Der. Palo Alto	15.00	3	0	2428	2.8	81.2	3.5	7.7	1.4	2.5	0.5	0.1	0.3	84.0	3.5	12.5	0.096	0.504	21.923931	-101.970816
T. Izq. Ent. El Novillo - Villa Juárez	28.10	1	0	2117	1.9	82.6	3.4	8.5	1.4	1.7	0.4	0.1	0.0	84.5	3.4	12.1	0.143	0.513	22.009973	-101.994702
T. Izq. Ent. El Novillo - Villa Juárez	28.10	3	0	1812	1.5	86.0	3.7	5.8	1.1	1.5	0.3	0.0	0.1	87.5	3.7	8.8	0.096	0.512	22.011879	-101.993599
Pilotos	33.50	3	0	1804	3.9	82.5	3.4	5.9	1.0	2.2	0.7	0.1	0.3	86.4	3.4	10.2	0.123	0.529	22.041148	-101.961404
T. C. Rivier - San Marcos	47.60	1	0	2803	1.0	83.8	3.7	7.5	1.5	1.7	0.5	0.1	0.2	84.8	3.7	11.5	0.086	0.508	22.135193	-102.039618

AGUASCALIENTES

26 CARR: Ent. La Chirida - San Francisco de Los Romo

CLAVE: 01016

RUTA: AGS

AÑO: 2012

LUGAR	ESTACION				CLASIFICACION VEHICULAR EN PORCIENTO													COORDENADAS		
	KM	TE	SC	TDPA	M	A	B	C2	C3	T3S2	T3S3	T3S2R4	OTROS	A	B	C	K'	D	LATITUD	LONGITUD
T. C. Jesús María - Palomas	0.00																			
San Francisco de Los Romo	1.50	1	0	2995	9.8	72.5	4.2	5.9	3.2	2.7	1.2	0.2	0.3	82.3	4.2	13.5	0.087	0.520	22.067863	-102.282716

27 CARR: Ent. Pabellón de Art. - San José de Gracia

CLAVE: 01031

RUTA: AGS-019

AÑO: 2012

LUGAR	ESTACION				CLASIFICACION VEHICULAR EN PORCIENTO													COORDENADAS		
	KM	TE	SC	TDPA	M	A	B	C2	C3	T3S2	T3S3	T3S2R4	OTROS	A	B	C	K'	D	LATITUD	LONGITUD
T. C. Aguascalientes - Zacatecas	0.00	3	1	2925	2.8	83.8	3.9	5.0	2.7	0.8	0.7	0.1	0.2	86.6	3.9	9.5	0.108	0.513	22.146257	-102.297948
T. C. Aguascalientes - Zacatecas	0.00	3	2	2776	1.2	84.1	4.4	5.5	3.1	0.7	0.7	0.1	0.2	85.3	4.4	10.3	0.089	0.513	22.146077	-102.297941
T. Der. La Cieneguita	10.00	1	1	1550	1.0	87.2	4.9	6.1	0.6	0.2	0.0	0.0	0.0	88.2	4.9	6.9	0.140	0.511	22.140444	-102.379908
T. Der. La Cieneguita	10.00	1	2	1561	1.1	85.7	5.6	6.8	0.6	0.2	0.0	0.0	0.0	86.8	5.6	7.6	0.109	0.511	22.140198	-102.379916
San José de Gracia	13.80	1	1	1476	1.1	88.2	3.9	5.1	0.6	0.6	0.2	0.1	0.2	89.3	3.9	6.8	0.133	0.505	22.144068	-102.403880
San José de Gracia	13.80	1	2	1447	1.1	86.9	4.3	6.0	0.6	0.6	0.2	0.1	0.2	88.0	4.3	7.7	0.119	0.505	22.143967	-102.403953

28 CARR: Ent. Pabellón de Arteaga - California

CLAVE: 01137

RUTA: AGS

AÑO: 2012

LUGAR	ESTACION				CLASIFICACION VEHICULAR EN PORCIENTO													COORDENADAS		
	KM	TE	SC	TDPA	M	A	B	C2	C3	T3S2	T3S3	T3S2R4	OTROS	A	B	C	K'	D	LATITUD	LONGITUD
T.C. Aguascalientes - Zacatecas	0.00	3	0	6228	1.1	86.9	2.6	3.0	0.9	3.6	0.9	0.4	0.6	88.0	2.6	9.4	0.095	0.501	22.106190	-102.274555
Pabellón de Arteaga	5.60	3	0	2451	3.5	86.8	2.1	3.6	1.4	1.9	0.3	0.1	0.3	90.3	2.1	7.6	0.104	0.531	22.153882	-102.275636
X. C. Rincón de Romos - Cienega Grande	13.30	1	0	1856	3.5	86.1	3.3	3.5	1.2	1.8	0.4	0.0	0.2	89.6	3.3	7.1	0.101	0.530	22.224474	-102.278513
X. C. Rincón de Romos - Cienega Grande	13.30	3	0	1362	7.1	80.6	4.0	4.5	1.7	1.6	0.4	0.0	0.1	87.7	4.0	8.3	0.087	0.507	22.227033	-102.278439
Ejido California	20.50	1	0	651	7.1	79.3	3.4	5.3	3.3	1.1	0.5	0.0	0.0	86.4	3.4	10.2	0.109	0.533	22.278778	-102.257827

29 CARR: Ent. Rincón de Romos - La Boquilla

CLAVE: 01139

RUTA: AGS

AÑO: 2012

LUGAR	ESTACION				CLASIFICACION VEHICULAR EN PORCIENTO													COORDENADAS		
	KM	TE	SC	TDPA	M	A	B	C2	C3	T3S2	T3S3	T3S2R4	OTROS	A	B	C	K'	D	LATITUD	LONGITUD
T. C. Aguascalientes - Zacatecas	0.00	3	0	1670	5.3	84.4	2.1	5.6	0.6	1.6	0.2	0.0	0.2	89.7	2.1	8.2	0.080	0.505	22.243176	-102.317999
La Boquilla	6.90																			



AGUASCALIENTES

35 CARR: Jesús María - Palomas

CLAVE: 01018

RUTA: AGS-018

AÑO: 2012

LUGAR	ESTACION				CLASIFICACION VEHICULAR EN PORCIENTO													COORDENADAS		
	KM	TE	SC	TDPA	M	A	B	C2	C3	T3S2	T3S3	T3S2R4	OTROS	A	B	C	K'	D	LATITUD	LONGITUD
Jesús María	0.00	3	0	5026	3.0	81.9	4.1	4.6	1.0	3.2	0.8	0.4	1.0	84.9	4.1	11.0	0.089	0.511	21.970985	-102.340569
Valladolid	7.30	3	0	3456	2.7	82.3	2.7	5.7	2.6	2.5	1.0	0.1	0.4	85.0	2.7	12.3	0.093	0.510	22.026164	-102.314383
Palomas	21.70	1	0	1615	5.3	78.8	4.6	6.5	2.3	1.5	0.9	0.0	0.1	84.1	4.6	11.3	0.100	0.506	22.104023	-102.275999

36 CARR: La Panadera - Palo Alto

CLAVE: 01105

RUTA: AGS-017

AÑO: 2012

LUGAR	ESTACION				CLASIFICACION VEHICULAR EN PORCIENTO													COORDENADAS		
	KM	TE	SC	TDPA	M	A	B	C2	C3	T3S2	T3S3	T3S2R4	OTROS	A	B	C	K'	D	LATITUD	LONGITUD
T. C. Aguascalientes - Jalpa	0.00	3	0	5166	1.6	84.0	2.5	4.8	0.2	5.4	0.5	0.1	0.9	85.6	2.5	11.9	0.090	0.501	21.865280	-102.694310
T. Izq. La Ordeña	8.40	3	0	2181	1.4	90.6	1.7	4.2	0.4	1.0	0.3	0.1	0.3	92.0	1.7	6.3	0.102	0.513	21.923514	-102.701305
La Labor	12.80	3	0	1316	1.1	89.3	3.1	5.0	0.5	0.9	0.1	0.0	0.0	90.4	3.1	6.5	0.115	0.523	21.967363	-102.688661
Palo Alto	23.30	1	0	319	1.0	88.4	1.6	7.9	0.3	0.6	0.2	0.0	0.0	89.4	1.6	9.0	0.118	0.503	22.038315	-102.681220

37 CARR: La Punta - Mesillas

CLAVE: 01104

RUTA: AGS-026

AÑO: 2012

LUGAR	ESTACION				CLASIFICACION VEHICULAR EN PORCIENTO													COORDENADAS		
	KM	TE	SC	TDPA	M	A	B	C2	C3	T3S2	T3S3	T3S2R4	OTROS	A	B	C	K'	D	LATITUD	LONGITUD
T. C. Aguascalientes - Zacatecas	0.00	3	0	1412	3.2	87.5	0.2	4.8	1.3	1.5	0.6	0.7	0.2	90.7	0.2	9.1	0.085	0.504	22.317793	-102.289784
X. C. Providencia - Luis Moya	6.50	3	0	1575	1.5	91.1	0.1	5.2	0.7	1.2	0.2	0.0	0.0	92.6	0.1	7.3	0.090	0.507	22.313700	-102.233002
Mesillas	13.50	1	0	708	4.9	88.8	0.0	5.4	0.2	0.4	0.2	0.0	0.1	93.7	0.0	6.3	0.097	0.515	22.312692	-102.173950

38 CARR: La Rinconada - El Terrero del Refugio

CLAVE: 01133

RUTA: AGS-007

AÑO: 2012

LUGAR	ESTACION				CLASIFICACION VEHICULAR EN PORCIENTO													COORDENADAS		
	KM	TE	SC	TDPA	M	A	B	C2	C3	T3S2	T3S3	T3S2R4	OTROS	A	B	C	K'	D	LATITUD	LONGITUD
T. C. Aguascalientes - Jalpa	0.00	3	0	1129	4.2	89.7	1.2	3.3	0.4	1.2	0.0	0.0	0.0	93.9	1.2	4.9	0.093	0.502	21.790643	-102.799773
El Terrero del Refugio	15.00																			

39 CARR: Las Norias de Ojo Caliente - La Luz

CLAVE: 01122

RUTA: AGS-068

AÑO: 2012

LUGAR	ESTACION				CLASIFICACION VEHICULAR EN PORCIENTO													COORDENADAS		
	KM	TE	SC	TDPA	M	A	B	C2	C3	T3S2	T3S3	T3S2R4	OTROS	A	B	C	K'	D	LATITUD	LONGITUD
Las Norias de Ojo Caliente	0.00	3	0	4342	4.0	82.7	4.8	5.6	0.8	1.8	0.2	0.0	0.1	86.7	4.8	8.5	0.116	0.504	21.891483	-102.211782
T. Der. Sandoval	10.50	3	0	2432	1.2	88.3	4.1	4.8	0.6	0.9	0.1	0.0	0.0	89.5	4.1	6.4	0.128	0.507	21.914509	-102.120018
La Luz	27.60	1	0	1189	2.3	88.6	3.2	4.4	0.4	0.8	0.3	0.0	0.0	90.9	3.2	5.9	0.114	0.508	21.998723	-101.999636



AGUASCALIENTES

44 CARR: Ramal a San Pedro Piedra Gorda

CLAVE: 00553

RUTA: ZAC-AGS

AÑO: 2012

LUGAR	ESTACION				CLASIFICACION VEHICULAR EN PORCIENTO														COORDENADAS	
	KM	TE	SC	TDPA	M	A	B	C2	C3	T3S2	T3S3	T3S2R4	OTROS	A	B	C	K'	D	LATITUD	LONGITUD
San Pedro Piedra Gorda	9.00	1	0	1745	1.2	85.0	4.3	6.2	1.4	1.5	0.2	0.1	0.1	86.2	4.3	9.5	0.091	0.500	22.452482	-102.337958

45 CARR: San Gil - Jarillas

CLAVE: 00527

RUTA: AGS-012-ZAC

AÑO: 2012

LUGAR	ESTACION				CLASIFICACION VEHICULAR EN PORCIENTO														COORDENADAS	
	KM	TE	SC	TDPA	M	A	B	C2	C3	T3S2	T3S3	T3S2R4	OTROS	A	B	C	K'	D	LATITUD	LONGITUD
T. C. Rincón de Romos - Ciénega Grande	0.00	3	0	1611	5.2	83.5	0.5	6.9	1.2	1.4	0.9	0.0	0.4	88.7	0.5	10.8	0.079	0.512	22.213207	-102.022945
Guadalupe de Atlas	5.40	1	0	1774	2.8	82.5	0.6	7.2	0.6	3.6	1.6	0.4	0.7	85.3	0.6	14.1	0.093	0.503	22.264308	-102.028044
Lim. Edos. Term. Ags. Ppia. Zac.	10.00																			
Lim. Edos. Term. Zac. Ppia. Ags.	11.30																			
Jarillas	12.00																			

46 CARR: San Isidro El Grande - Bajío de San José

CLAVE: 00526

RUTA: AGS-036

AÑO: 2012

LUGAR	ESTACION				CLASIFICACION VEHICULAR EN PORCIENTO														COORDENADAS	
	KM	TE	SC	TDPA	M	A	B	C2	C3	T3S2	T3S3	T3S2R4	OTROS	A	B	C	K'	D	LATITUD	LONGITUD
T. C. Ojuelos - Aguascalientes	0.00	3	0	1060	1.9	77.2	4.2	6.4	4.1	2.4	1.1	2.5	0.2	79.1	4.2	16.7	0.114	0.503	21.817334	-102.104780
Ent. San Bartolo	11.50	3	0	2162	2.6	82.3	4.6	4.8	3.7	1.4	0.6	0.0	0.0	84.9	4.6	10.5	0.095	0.504	21.746918	-102.172308
Lim. Edos. Term. Ags. Ppia. Jal.	17.50																			
Bajío de San José	22.50																			

47 CARR: San Rafael - Villa García

CLAVE: 00525

RUTA: AGS-ZAC

AÑO: 2012

LUGAR	ESTACION				CLASIFICACION VEHICULAR EN PORCIENTO														COORDENADAS	
	KM	TE	SC	TDPA	M	A	B	C2	C3	T3S2	T3S3	T3S2R4	OTROS	A	B	C	K'	D	LATITUD	LONGITUD
T. C. Ent. La Calavera - Ent. San Pedro	0.00	3	0	2790	3.0	86.6	3.5	4.5	0.7	1.4	0.2	0.0	0.1	89.6	3.5	6.9	0.098	0.505	22.116580	-102.011190
Lim. Edos. Term. Ags. Ppia. Zac.	3.00																			
Villa García	10.00	1	0	4150	6.8	82.1	3.4	4.0	1.1	2.0	0.3	0.0	0.3	88.9	3.4	7.7	0.100	0.504	22.145831	-101.959548

48 CARR: Santa Rosa - Pabellón de Hidalgo

CLAVE: 01135

RUTA: AGS

AÑO: 2012

LUGAR	ESTACION				CLASIFICACION VEHICULAR EN PORCIENTO														COORDENADAS	
	KM	TE	SC	TDPA	M	A	B	C2	C3	T3S2	T3S3	T3S2R4	OTROS	A	B	C	K'	D	LATITUD	LONGITUD
T. C. Aguascalientes - Zacatecas	0.00	3	0	2181	2.4	86.8	3.1	3.7	1.5	1.5	0.6	0.1	0.3	89.2	3.1	7.7	0.095	0.502	22.157269	-102.297742
Pabellón de Hidalgo	5.10																			



## AGUASCALIENTES

49 CARR: T. Caldera - Ent. Ojo de Agua de Los Montes

CLAVE: 01137

RUTA: AGS

AÑO: 2012

LUGAR	ESTACION				CLASIFICACION VEHICULAR EN PORCIENTO													COORDENADAS		
	KM	TE	SC	TDPA	M	A	B	C2	C3	T3S2	T3S3	T3S2R4	OTROS	A	B	C	K'	D	LATITUD	LONGITUD
T. C. Carboneras - Villa Juárez	0.00	3	0	976	1.8	74.9	4.2	5.8	4.2	1.7	6.2	0.3	0.9	76.7	4.2	19.1	0.100	0.515	22.163059	-102.198580
Arroyo Hondo Acceso 1	3.60	1	0	1075	1.6	79.0	3.1	5.7	3.3	0.9	5.8	0.2	0.4	80.6	3.1	16.3	0.121	0.517	22.186298	-102.188442
Arroyo Hondo Acceso 2	4.90	3	0	6369	2.1	74.7	4.7	5.5	3.3	1.9	6.3	0.5	1.0	76.8	4.7	18.5	0.102	0.521	22.194328	-102.195476
X. C. Rincón de Romos - Cienega Grande	8.60	1	0	1067	1.5	79.7	3.0	5.2	3.0	1.1	5.8	0.2	0.5	81.2	3.0	15.8	0.120	0.518	22.221397	-102.183908
X. C. Rincón de Romos - Cienega Grande	8.60	3	0	480	2.7	74.4	4.3	5.4	4.0	1.5	6.6	0.1	1.0	77.1	4.3	18.6	0.105	0.506	22.224710	-102.183286
T. C. La Punta - Mesillas	19.00	1	0	584	4.1	84.6	2.3	4.0	3.6	1.4	0.0	0.0	0.0	88.7	2.3	9.0	0.084	0.505	22.310578	-102.199815

50 CARR: Viñedos de California - Adolfo López Mateos

CLAVE: 01137

RUTA: AGS

AÑO: 2012

LUGAR	ESTACION				CLASIFICACION VEHICULAR EN PORCIENTO													COORDENADAS		
	KM	TE	SC	TDPA	M	A	B	C2	C3	T3S2	T3S3	T3S2R4	OTROS	A	B	C	K'	D	LATITUD	LONGITUD
T. C. Providencia - Luis Moya	0.00	3	0	2209	1.8	83.4	4.3	5.7	1.6	2.0	0.7	0.1	0.4	85.2	4.3	10.5	0.089	0.503	22.150644	-102.246969
Adolfo López Mateos	5.00																			

51 CARR: Libramiento Sur de Aguascalientes (Cuota)

CLAVE: 00167

RUTA: AGS-D

AÑO: 2012

LUGAR	ESTACION				CLASIFICACION VEHICULAR EN PORCIENTO													COORDENADAS		
	KM	TE	SC	TDPA	M	A	B	C2	C3	T3S2	T3S3	T3S2R4	OTROS	A	B	C	K'	D	LATITUD	LONGITUD
T. C. León - Aguascalientes	0.00	3	0	3670	0.4	63.6	4.5	7.2	7.8	7.3	4.1	4.3	0.8	64.0	4.5	31.5	0.083	0.508	21.772273	-102.284018
T. C. Aguascalientes - Jalpa	21.00	1	0	1343	0.7	71.6	3.0	11.3	5.5	4.8	2.0	0.7	0.4	72.3	3.0	24.7	0.103	0.500	21.886738	-102.401824

52 CARR: Guadalupe - Cosío

CLAVE: 32579

RUTA: MEX-ZAC

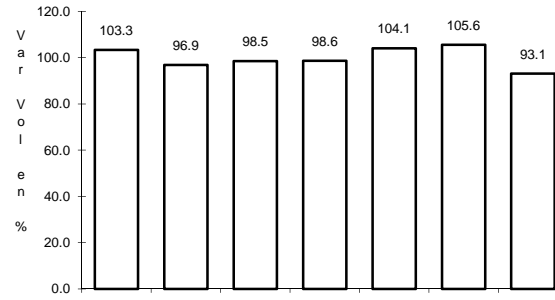
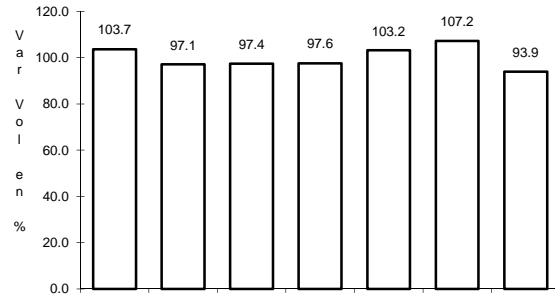
AÑO: 2012

LUGAR	ESTACION				CLASIFICACION VEHICULAR EN PORCIENTO													COORDENADAS		
	KM	TE	SC	TDPA	M	A	B	C2	C3	T3S2	T3S3	T3S2R4	OTROS	A	B	C	K'	D	LATITUD	LONGITUD
T. C. Aguascalientes - Zacatecas	0.00	3	0	7449	0.7	80.4	6.0	7.3	1.7	2.1	0.9	0.5	0.4	81.1	6.0	12.9	0.098	0.501	22.393223	-102.306056
Lim. Edos. Term. Ags. Ppia. Zac.	6.79																			
T. C. Ent. Cuauhtémoc - Ent. Osiris Cuota	12.96	3	0	1245	0.7	85.2	4.9	6.5	0.9	1.3	0.3	0.2	0.0	85.9	4.9	9.2	0.102	0.508	22.485333	-102.360882
T. C. Libramiento de Guadalupe - Zacatecas (Baja)	58.93	1	1	1144	2.6	81.9	5.8	7.3	1.1	0.6	0.4	0.1	0.2	84.5	5.8	9.7	0.127	0.537	22.734627	-102.495615
T. C. Libramiento de Guadalupe - Zacatecas (Alta)	58.93	1	1	4073	0.7	91.0	2.1	3.6	0.9	0.7	0.6	0.2	0.2	91.7	2.1	6.2	0.100	0.522	22.734600	-102.495793
T. C. Libramiento de Guadalupe - Zacatecas (Baja)	58.93	1	2	1324	2.1	80.4	6.7	8.4	1.2	0.6	0.3	0.1	0.2	82.5	6.7	10.8	0.096	0.537	22.734305	-102.495940
T. C. Libramiento de Guadalupe - Zacatecas (Alta)	58.93	1	2	3732	0.9	90.1	2.4	3.9	1.0	0.7	0.6	0.2	0.2	91.0	2.4	6.6	0.100	0.522	22.734337	-102.495774

1 CARR: Acceso a Pabellón de Arteaga

CLAVE: 01113

RUTA: MEX-045



Km: 1.80

Tipo: 1

Sent: 1

Km: 1.80

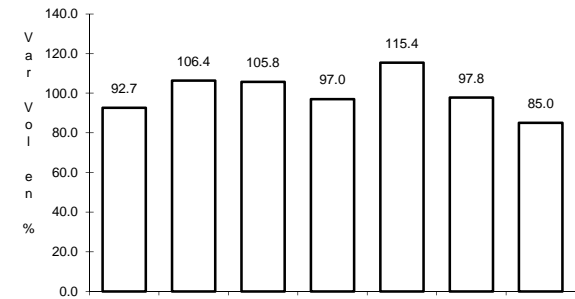
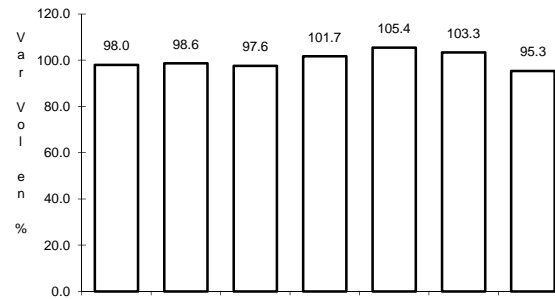
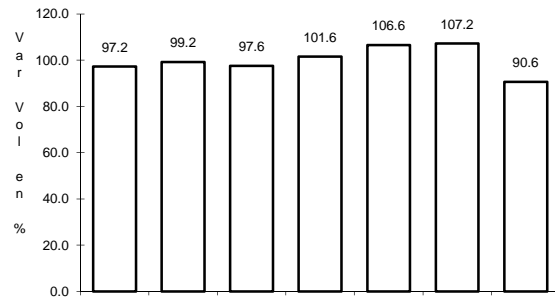
Tipo: 1

Sent: 2

2 CARR: Aguascalientes - Jalpa

CLAVE: 00095

RUTA: MEX-070



Km: 0.00

Tipo: 3

Sent: 1

Km: 0.00

Tipo: 3

Sent: 2

Km: 91.10

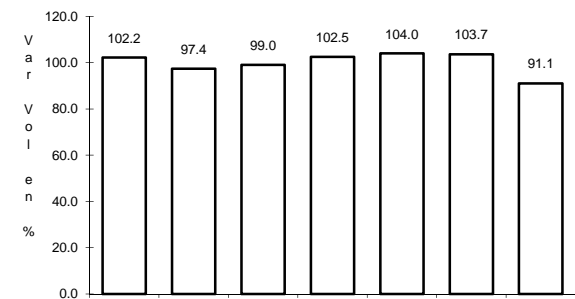
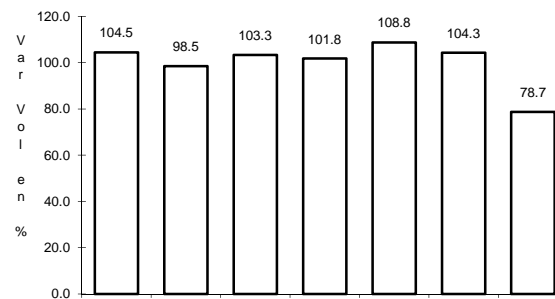
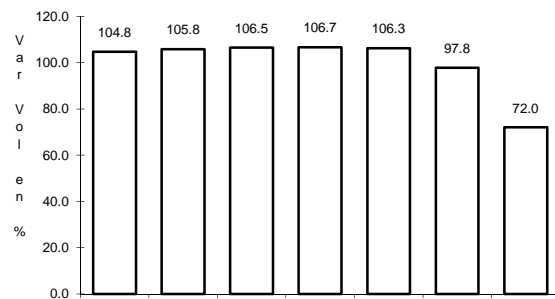
Tipo: 1

Sent: 0

3 CARR: Aguascalientes - Zacatecas

CLAVE: 00524

RUTA: MEX-045



Km: 6.00

Tipo: 1

Sent: 1

Km: 6.00

Tipo: 1

Sent: 2

Km: 40.90

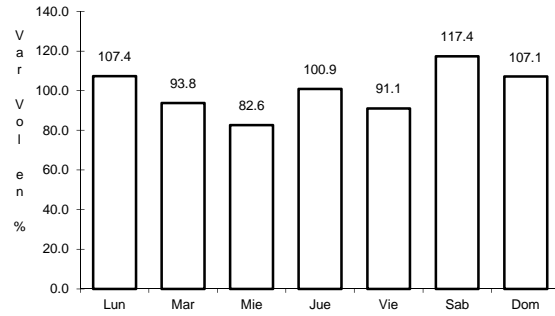
Tipo: 3

Sent: 0

## 4 CARR: El Retoño - Ent. Asturias

CLAVE: 01124

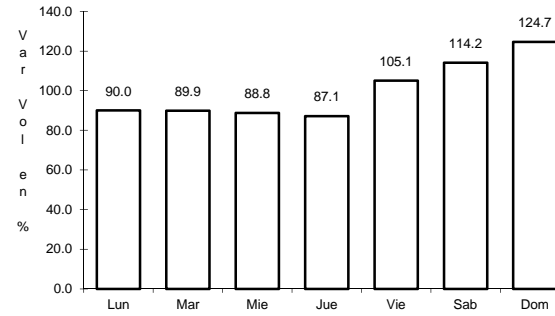
RUTA: MEX-070



Km: 0.00

Tipo: 3

Sent: 0



Km: 8.40

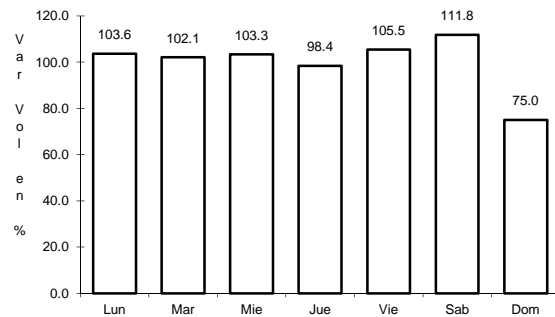
Tipo: 1

Sent: 0

## 5 CARR: Ent. Penitenciaría - Villa Hidalgo

CLAVE: 00120

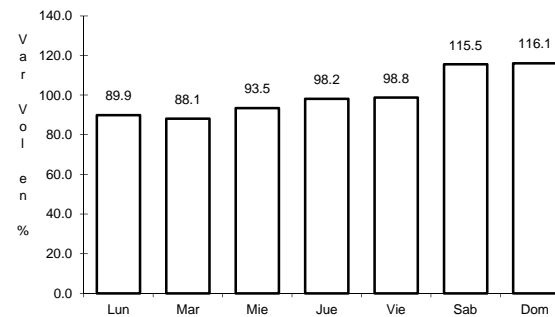
RUTA: MEX-071



Km: 0.00

Tipo: 3

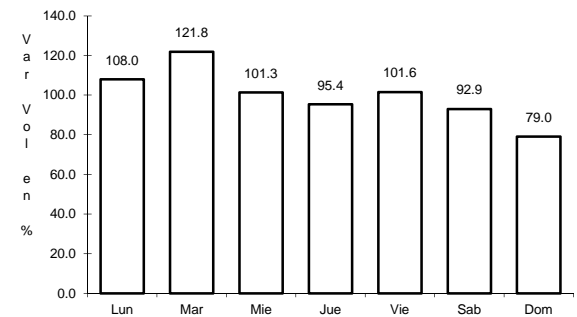
Sent: 0



Km: 27.00

Tipo: 3

Sent: 0



Km: 38.00

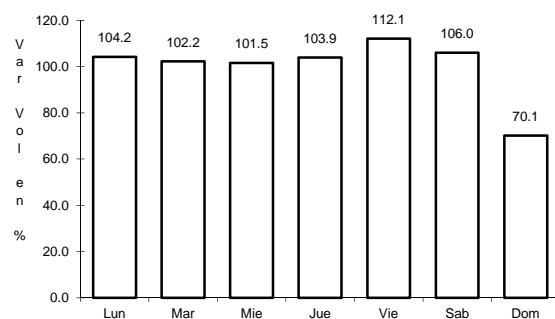
Tipo: 1

Sent: 0

## 6 CARR: Ent. Rivier - San Marcos

CLAVE: 00285

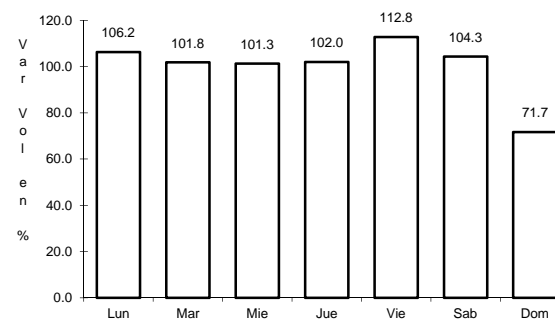
RUTA: MEX-066



Km: 0.00

Tipo: 3

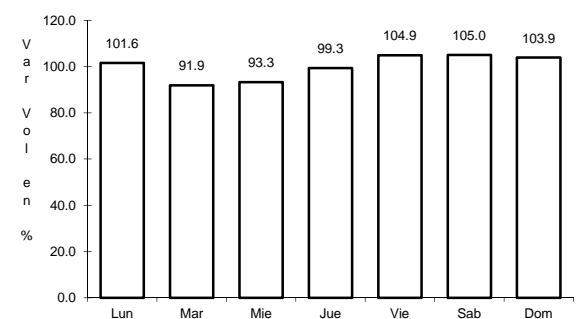
Sent: 1



Km: 0.00

Tipo: 3

Sent: 2



Km: 56.00

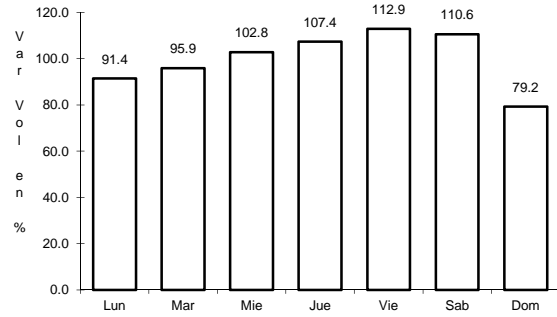
Tipo: 1

Sent: 0

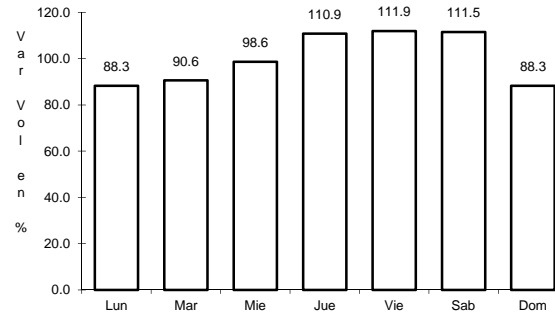
7 CARR: León - Aguascalientes

CLAVE: 00167

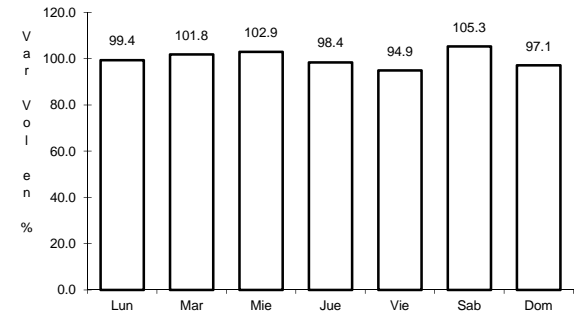
RUTA: MEX-045



Km: 11.00      Tipo: 1      Sent: 1



Km: 11.00      Tipo: 1      Sent: 2

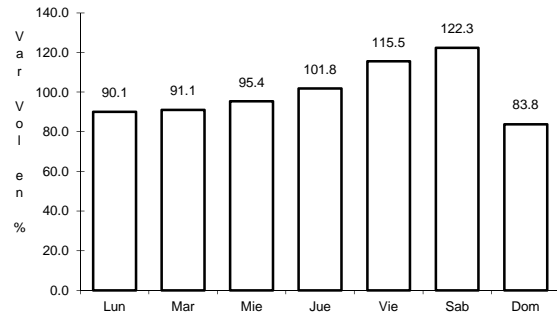


Km: 88.20      Tipo: 1      Sent: 0

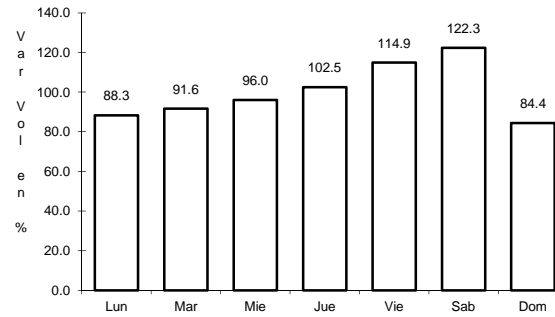
8 CARR: Libramiento Rincón de Romos

CLAVE: 00167

RUTA: MEX-045



Km: 0.00      Tipo: 3      Sent: 0

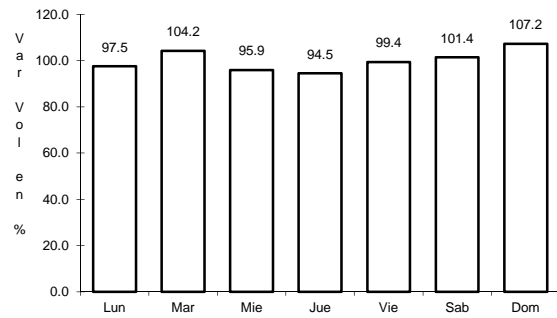


Km: 10.00      Tipo: 1      Sent: 0

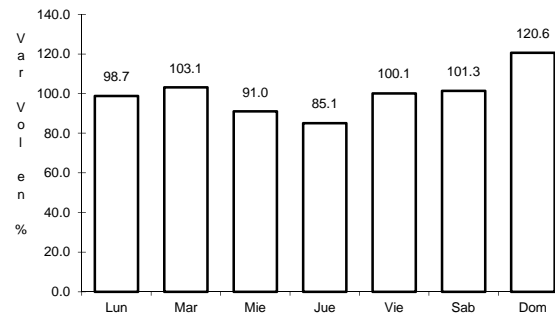
9 CARR: Ojo Caliente - Malpaso

CLAVE: 01123

RUTA: MEX-070



Km: 0.00      Tipo: 3      Sent: 0



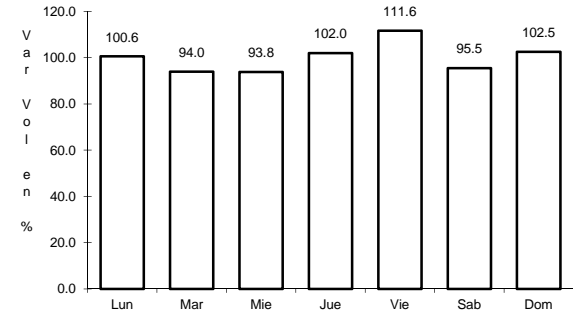
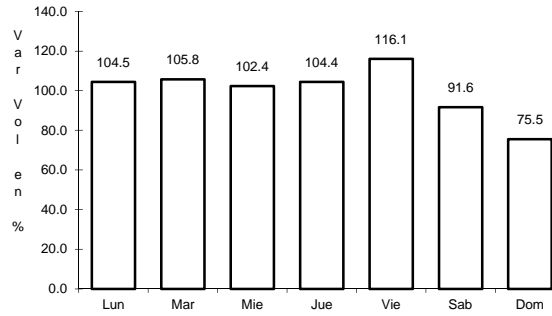
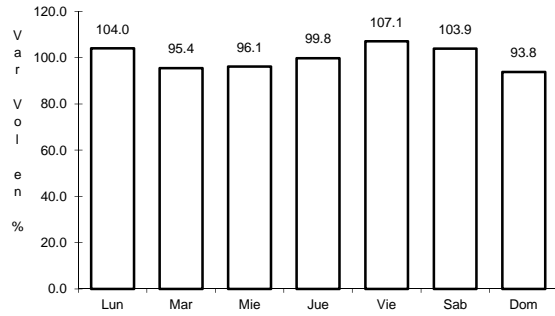
Km: 3.10      Tipo: 1      Sent: 0



13 CARR: Rincón de Romos - Ciénega Grande

CLAVE: 01002

RUTA: MEX-039



Km: 0.00                      Tipo: 3                      Sent: 0

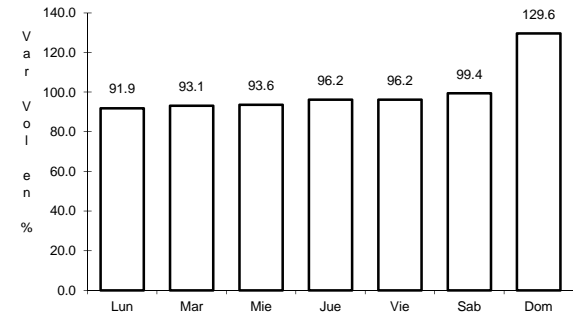
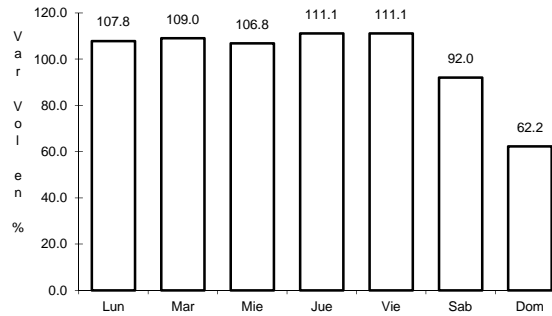
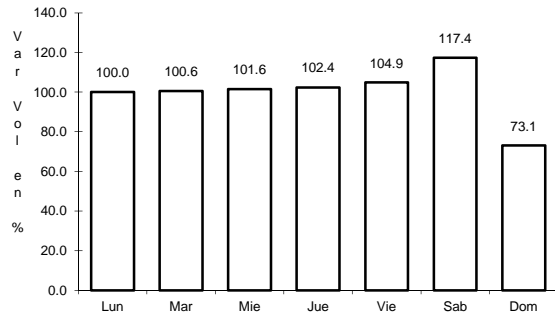
Km: 15.00                      Tipo: 3                      Sent: 0

Km: 36.00                      Tipo: 1                      Sent: 0

14 CARR: Aguascalientes - Ent. Cd. de Los Niños

CLAVE: 01130

RUTA: AGS



Km: 0.00                      Tipo: 3                      Sent: 1

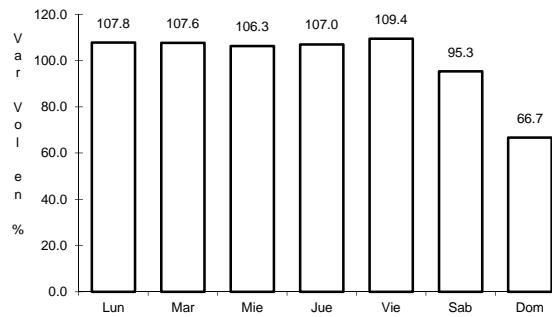
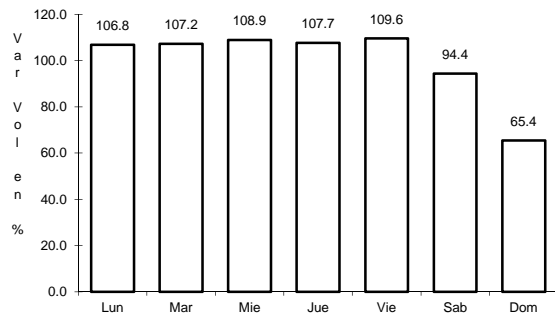
Km: 0.00                      Tipo: 3                      Sent: 2

Km: 8.00                      Tipo: 1                      Sent: 0

15 CARR: Aguascalientes - Jesús María

CLAVE: 01112

RUTA: AGS-095



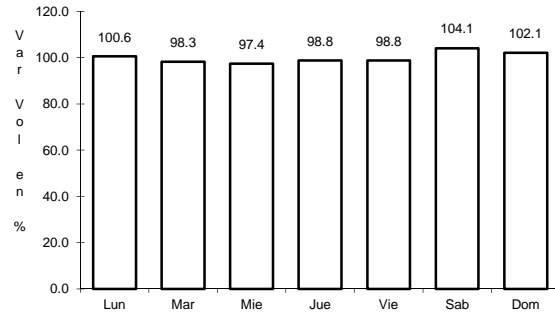
Km: 3.30                      Tipo: 3                      Sent: 1

Km: 3.30                      Tipo: 3                      Sent: 2

## 16 CARR: Aguascalientes - José María Morelos

CLAVE: 01131

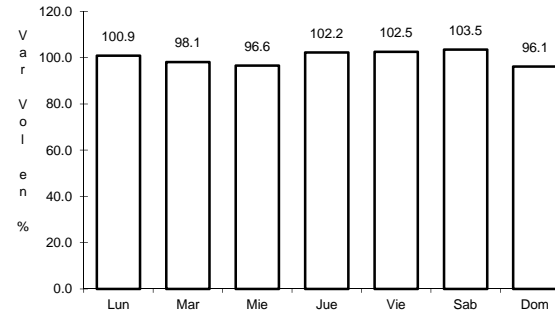
RUTA: AGS



Km: 0.00

Tipo: 3

Sent: 0



Km: 8.00

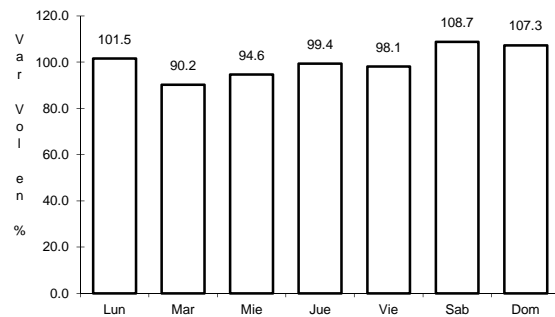
Tipo: 3

Sent: 0

## 17 CARR: Carboneras - Villa Juárez

CLAVE: 01111

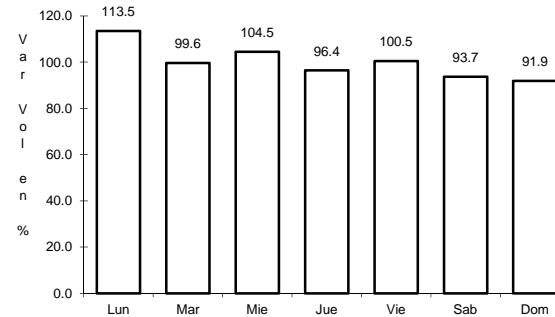
RUTA: AGS-004



Km: 0.00

Tipo: 3

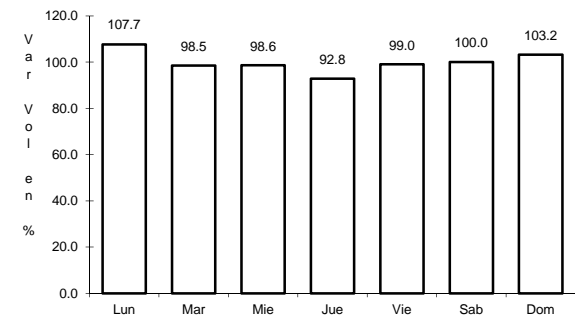
Sent: 0



Km: 14.00

Tipo: 1

Sent: 0



Km: 23.10

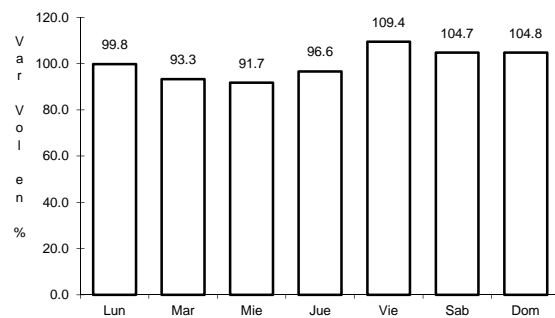
Tipo: 1

Sent: 0

## 18 CARR: Cosío - Santa María de La Paz

CLAVE: 01132

RUTA: AGS



Km: 0.00

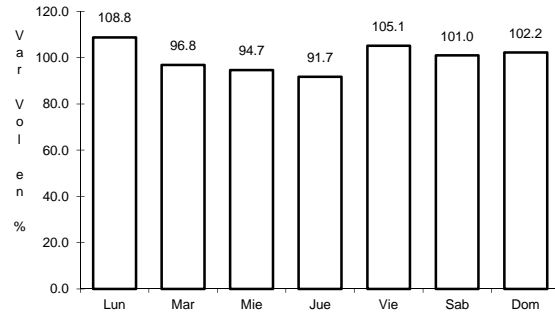
Tipo: 3

Sent: 0

19 CARR: Crucero Ojo de Agua de Crucitas - Santa Rosa

CLAVE: 01140

RUTA: AGS



Km: 0.00

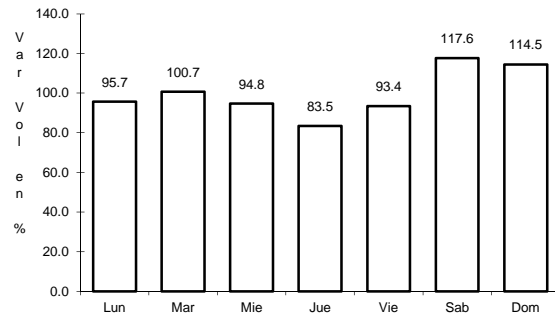
Tipo: 3

Sent: 0

20 CARR: El Tanque - San José de La Ordeña

CLAVE: 01143

RUTA: AGS



Km: 0.00

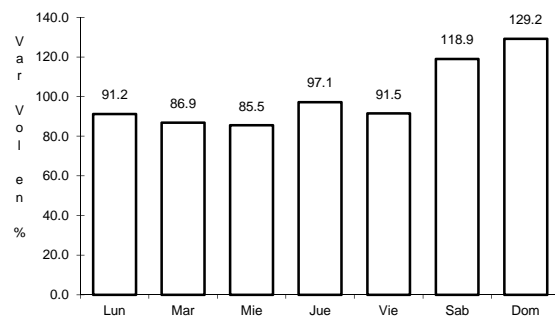
Tipo: 3

Sent: 0

21 CARR: El Taray - T. C.(Ramal Aeropuerto de Aguascalientes)

CLAVE: 01121

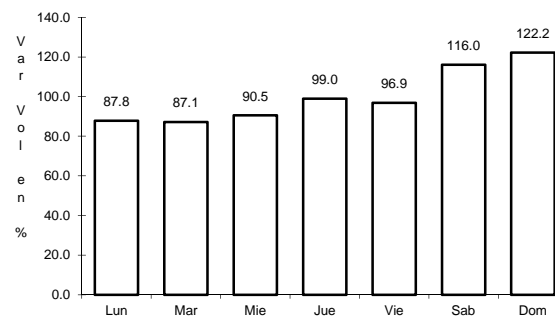
RUTA: AGS-002



Km: 0.00

Tipo: 3

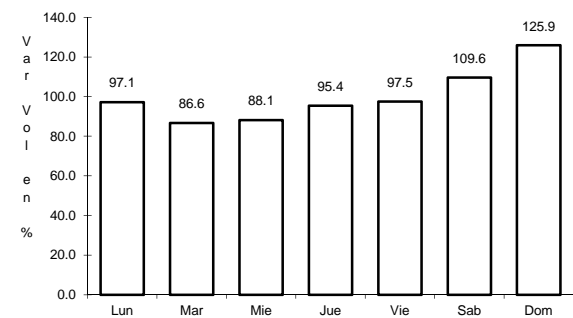
Sent: 0



Km: 22.00

Tipo: 1

Sent: 1



Km: 22.00

Tipo: 1

Sent: 2

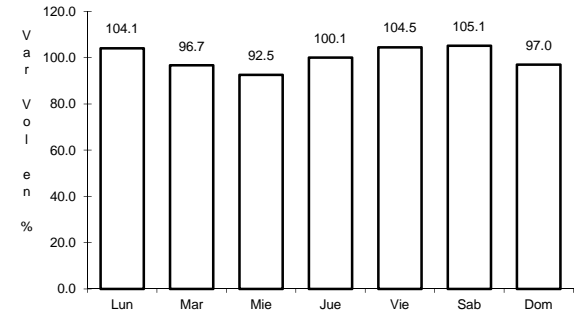
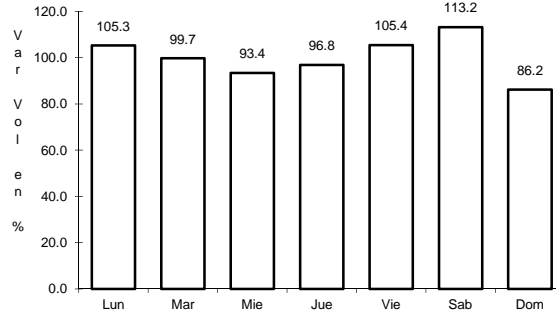
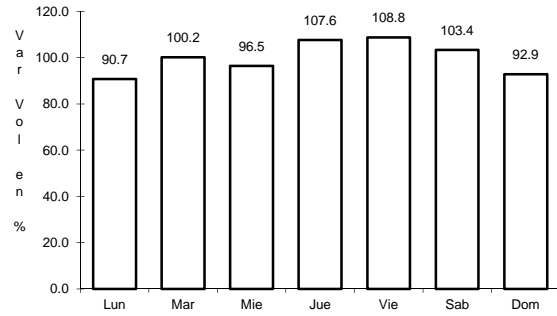




25 CARR: Ent. La Calavera - Ent. San Pedro

CLAVE: 01102

RUTA: AGS-043



Km: 0.00      Tipo: 3      Sent: 0

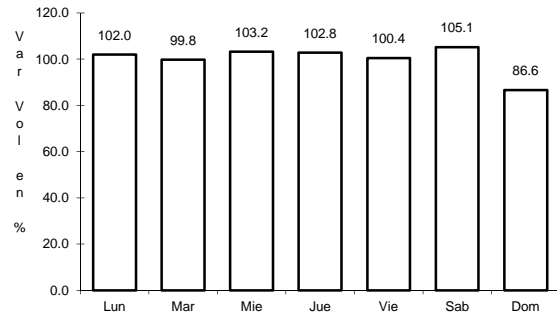
Km: 28.10      Tipo: 1      Sent: 0

Km: 47.60      Tipo: 1      Sent: 0

26 CARR: Ent. La Chirida - San Francisco de Los Romo

CLAVE: 01016

RUTA: AGS

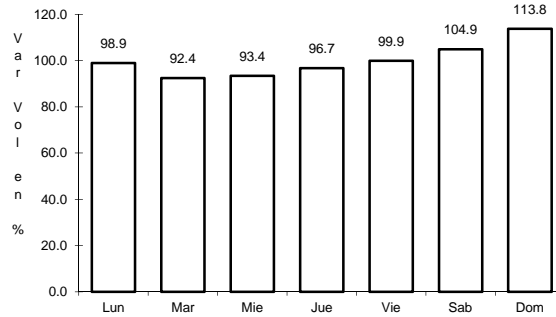
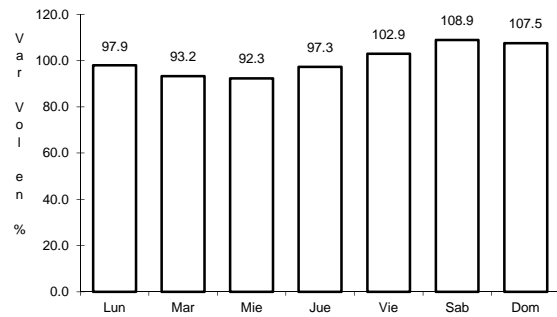


Km: 1.50      Tipo: 1      Sent: 0

27 CARR: Ent. Pabellón de Art. - San José de Gracia

CLAVE: 01031

RUTA: AGS-019



Km: 0.00      Tipo: 3      Sent: 1

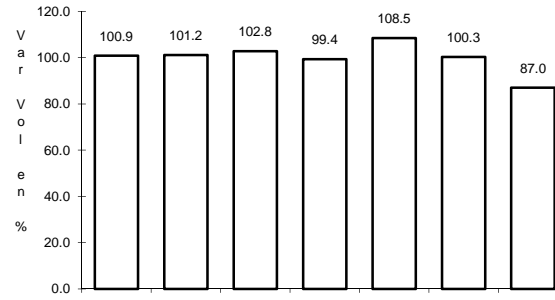
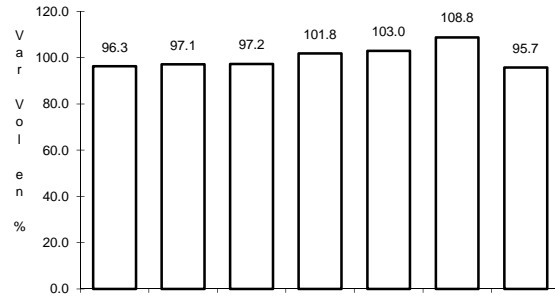
Km: 0.00      Tipo: 3      Sent: 2



31 CARR: Ent. San Felipe - Jesús María

CLAVE: 01144

RUTA: AGS



Km: 0.00

Tipo: 3

Sent: 0

Km: 12.70

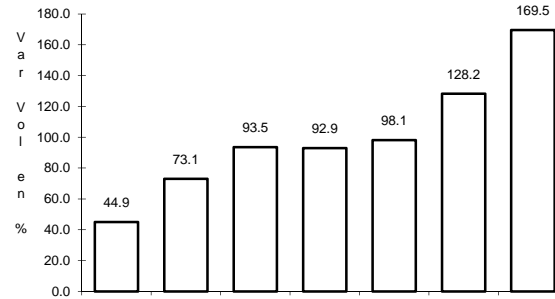
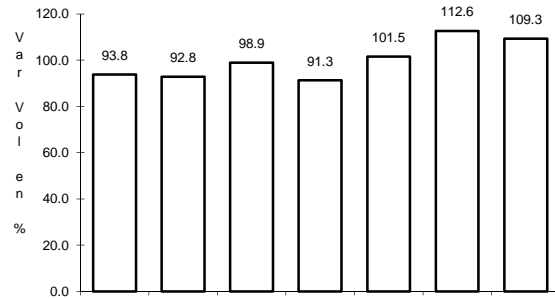
Tipo: 1

Sent: 0

32 CARR: Ent. San Isidro - Ent. El Salitre

CLAVE: 01142

RUTA: AGS-016



Km: 0.00

Tipo: 3

Sent: 0

Km: 20.40

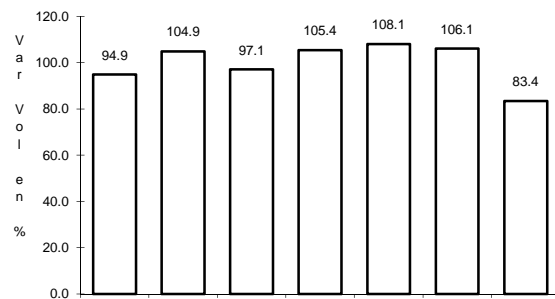
Tipo: 1

Sent: 0

33 CARR: Est. Coyotes - Ent. San Bartolo

CLAVE: 01134

RUTA: AGS-069



Km: 0.00

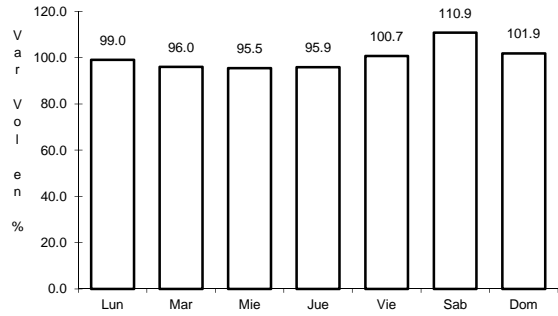
Tipo: 3

Sent: 0

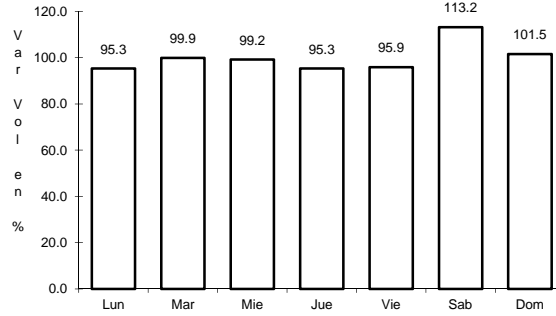
34 CARR: Fracc. Ojo Caliente - El Conejal

CLAVE: 01129

RUTA: AGS-079



Km: 3.50      Tipo: 1      Sent: 0

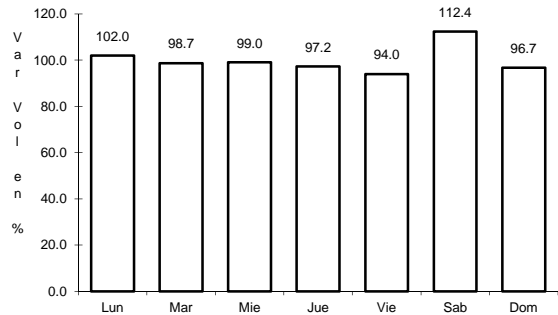


Km: 3.50      Tipo: 3      Sent: 0

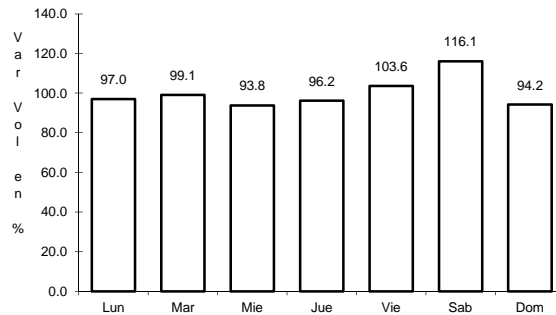
35 CARR: Jesús María - Palomas

CLAVE: 01018

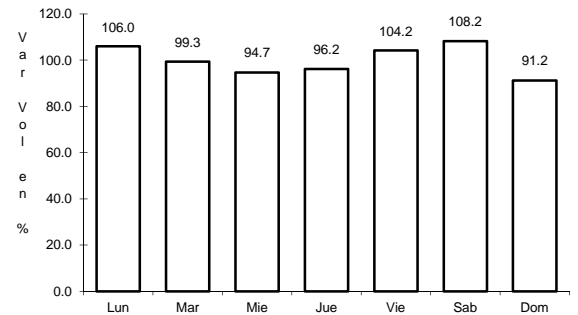
RUTA: AGS-018



Km: 0.00      Tipo: 3      Sent: 0



Km: 7.30      Tipo: 3      Sent: 0

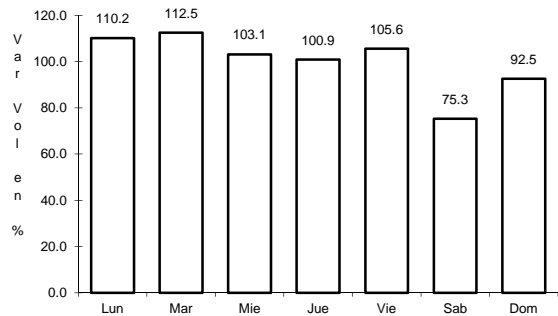


Km: 21.70      Tipo: 1      Sent: 0

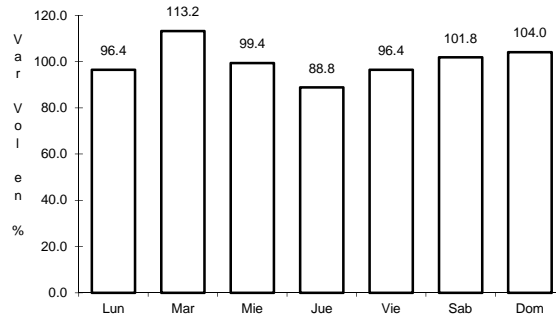
36 CARR: La Panadera - Palo Alto

CLAVE: 01105

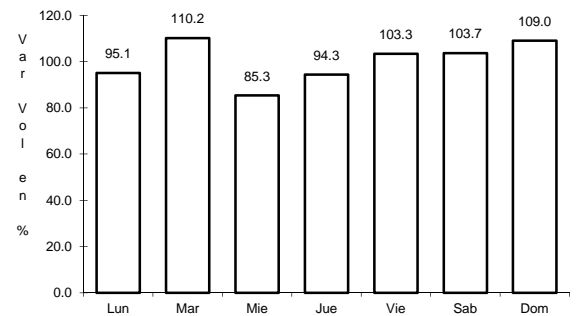
RUTA: AGS-017



Km: 0.00      Tipo: 3      Sent: 0



Km: 12.80      Tipo: 3      Sent: 0

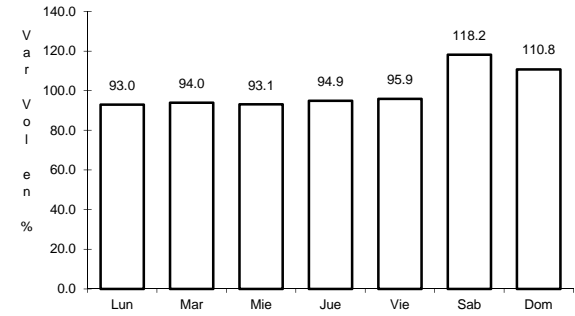
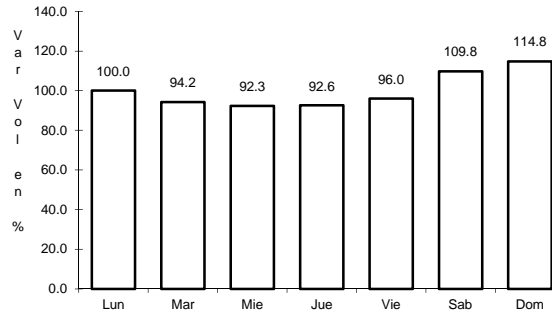
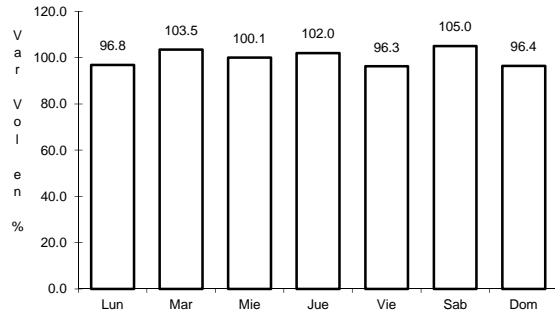


Km: 23.30      Tipo: 1      Sent: 0

37 CARR: La Punta - Mesillas

CLAVE: 01104

RUTA: AGS-026



Km: 0.00                      Tipo: 3                      Sent: 0

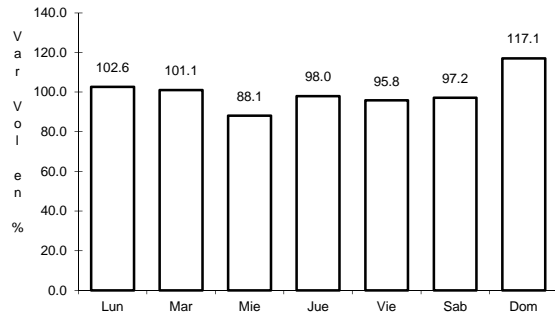
Km: 6.50                      Tipo: 3                      Sent: 0

Km: 13.50                      Tipo: 1                      Sent: 0

38 CARR: La Rinconada - El Terrero del Refugio

CLAVE: 01133

RUTA: AGS-007

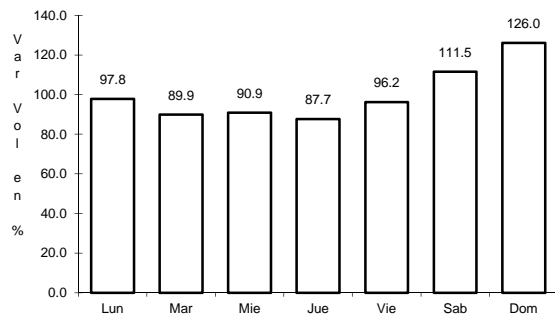


Km: 0.00                      Tipo: 3                      Sent: 0

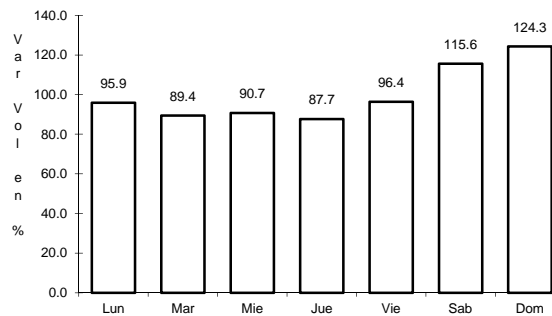
39 CARR: Las Norias de Ojo Caliente - La Luz

CLAVE: 01122

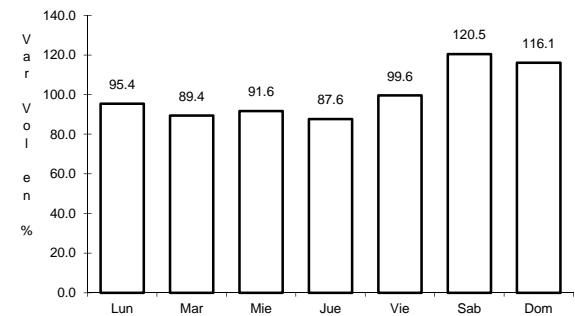
RUTA: AGS-068



Km: 0.00                      Tipo: 3                      Sent: 0



Km: 10.50                      Tipo: 3                      Sent: 0

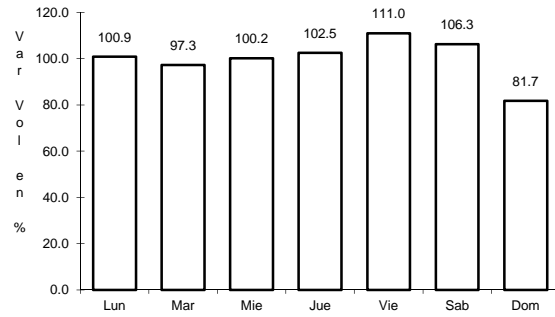


Km: 27.60                      Tipo: 1                      Sent: 0

## 40 CARR: Libramiento San Francisco de Los Romo

CLAVE: 01137

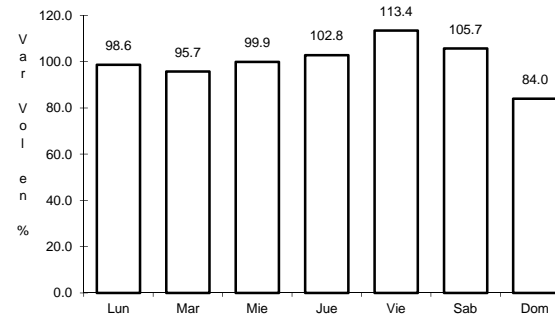
RUTA: AGS



Km: 0.00

Tipo: 3

Sent: 1



Km: 0.00

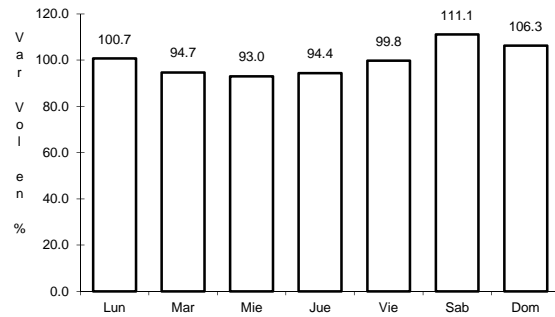
Tipo: 3

Sent: 2

## 41 CARR: Pabellón de Hidalgo - Rincón de Romos

CLAVE: 01136

RUTA: AGS



Km: 0.00

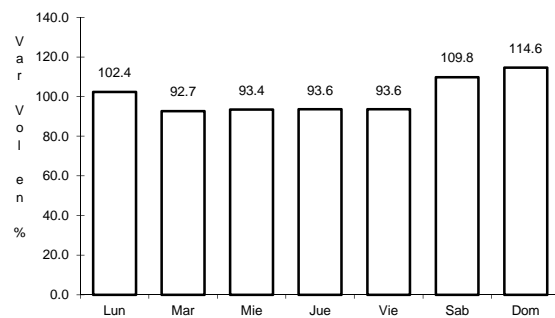
Tipo: 3

Sent: 0

## 42 CARR: Pilotos - Los Campos

CLAVE: 00007

RUTA: AGS-030



Km: 0.00

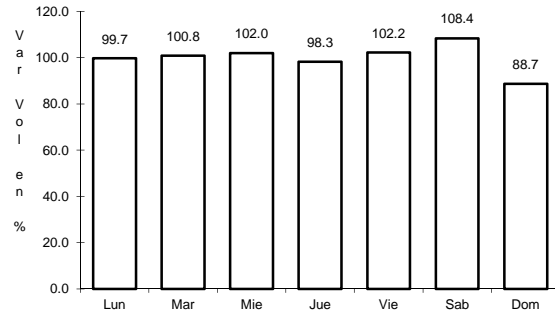
Tipo: 3

Sent: 0

43 CARR: Pocitos - Granja Miravalle

CLAVE: 01109

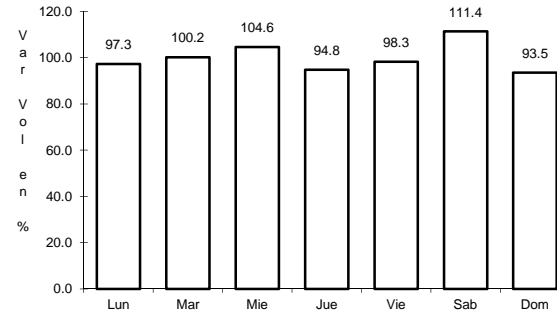
RUTA: AGS-053



Km: 1.50

Tipo: 3

Sent: 0



Km: 5.70

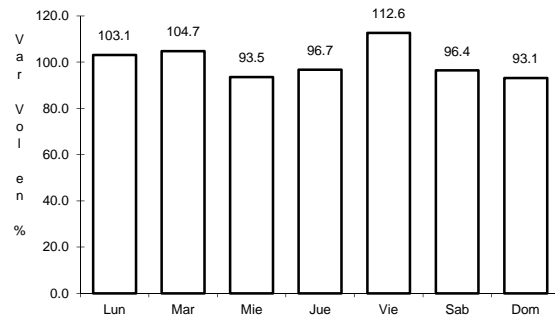
Tipo: 1

Sent: 0

44 CARR: Ramal a San Pedro Piedra Gorda

CLAVE: 00553

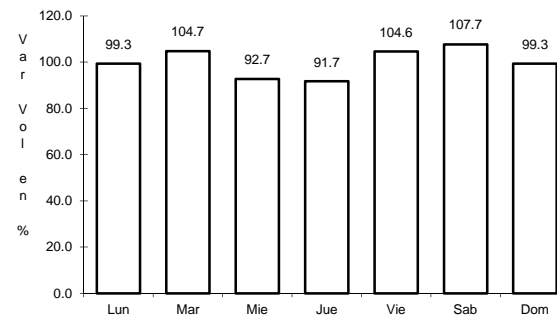
RUTA: ZAC-AGS



Km: 0.00

Tipo: 3

Sent: 0



Km: 9.00

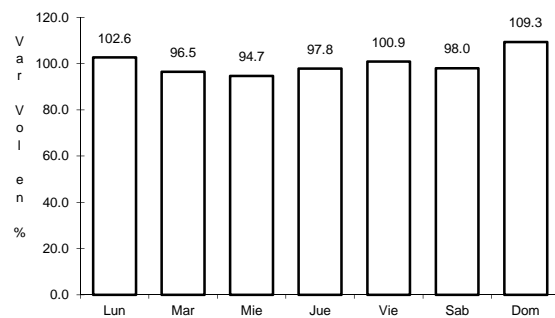
Tipo: 1

Sent: 0

45 CARR: San Gil - Jarillas

CLAVE: 00527

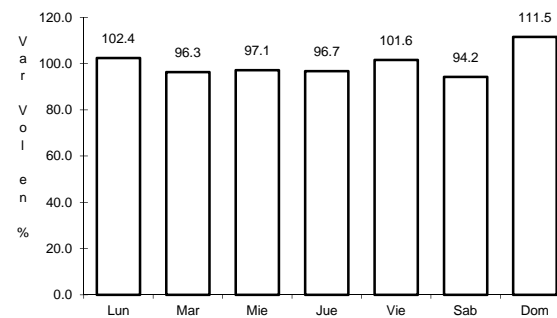
RUTA: AGS-012-ZAC



Km: 0.00

Tipo: 3

Sent: 0



Km: 5.40

Tipo: 1

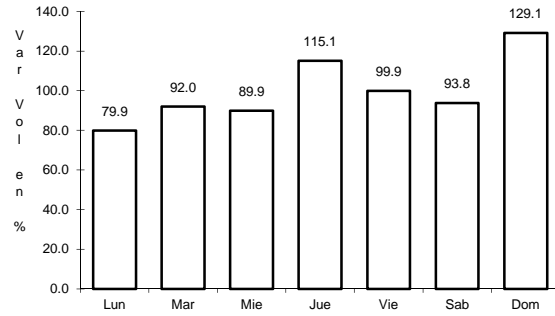
Sent: 0



46 CARR: San Isidro El Grande - Bajío de San José

CLAVE: 00526

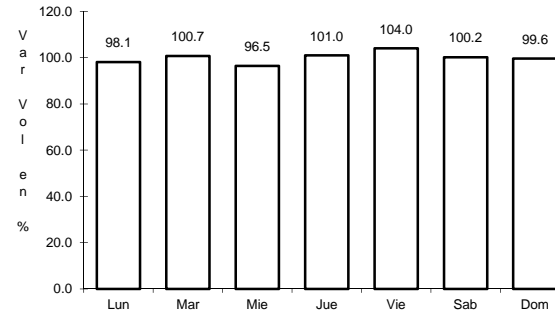
RUTA: AGS-036



Km: 0.00

Tipo: 3

Sent: 0



Km: 11.50

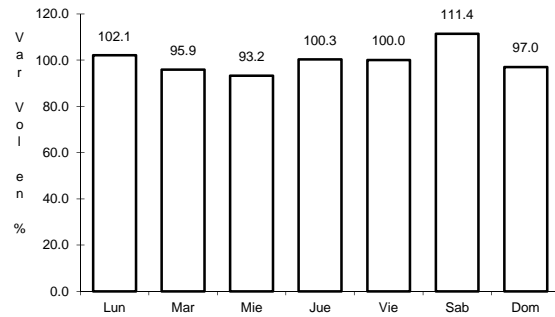
Tipo: 3

Sent: 0

47 CARR: San Rafael - Villa García

CLAVE: 00525

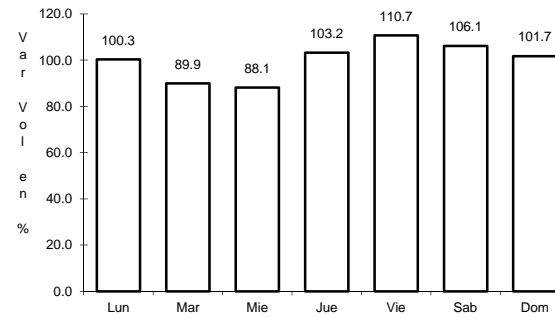
RUTA: AGS-ZAC



Km: 0.00

Tipo: 3

Sent: 0



Km: 10.00

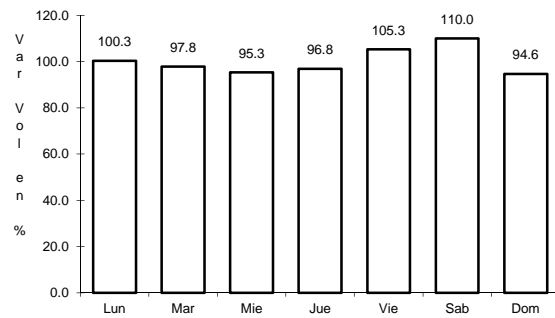
Tipo: 1

Sent: 0

48 CARR: Santa Rosa - Pabellón de Hidalgo

CLAVE: 01135

RUTA: AGS



Km: 0.00

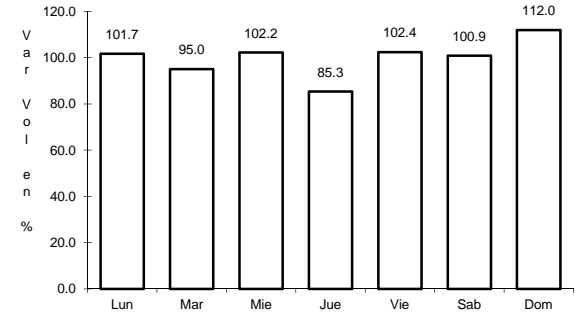
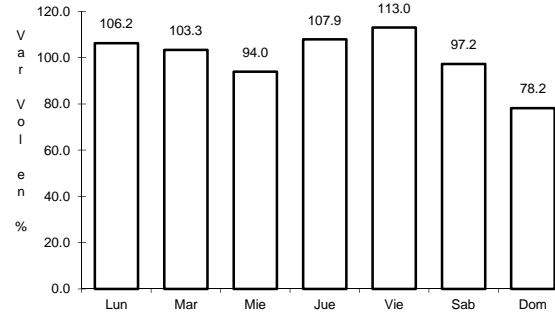
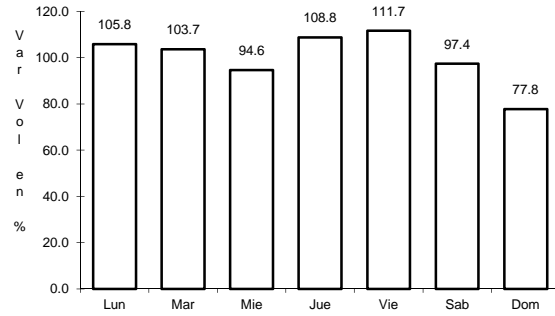
Tipo: 3

Sent: 0

49 CARR: T. Caldera - Ent. Ojo de Agua de Los Montes

CLAVE: 01137

RUTA: AGS



Km: 0.00                      Tipo: 3                      Sent: 0

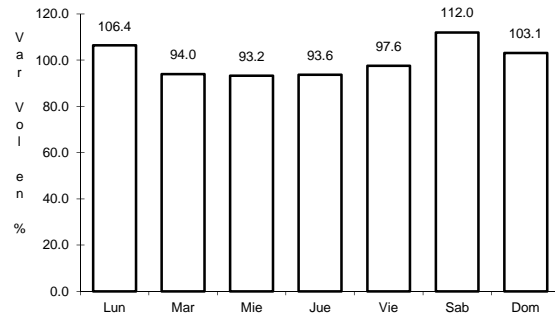
Km: 8.60                      Tipo: 1                      Sent: 0

Km: 19.00                      Tipo: 1                      Sent: 0

50 CARR: Viñedos de California - Adolfo López Mateos

CLAVE: 01137

RUTA: AGS

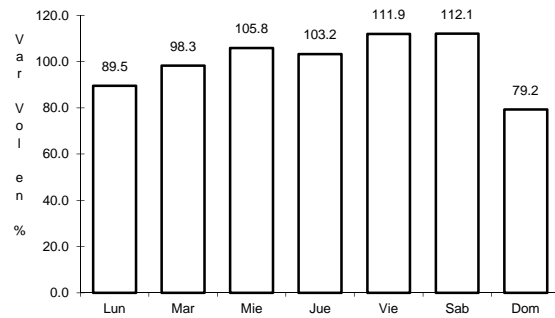


Km: 0.00                      Tipo: 3                      Sent: 0

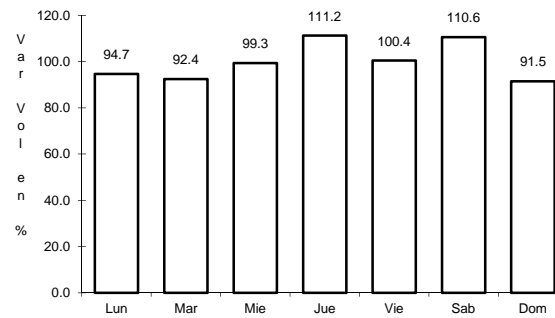
51 CARR: Libramiento Sur de Aguascalientes (Cuota)

CLAVE: 00167

RUTA: AGS-D

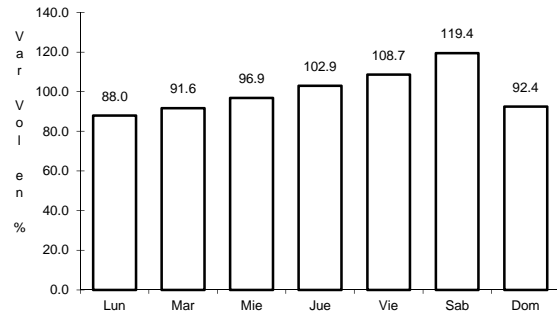


Km: 0.00                      Tipo: 3                      Sent: 0



Km: 21.00                      Tipo: 1                      Sent: 0

52 CARR: Guadalupe - Cosío

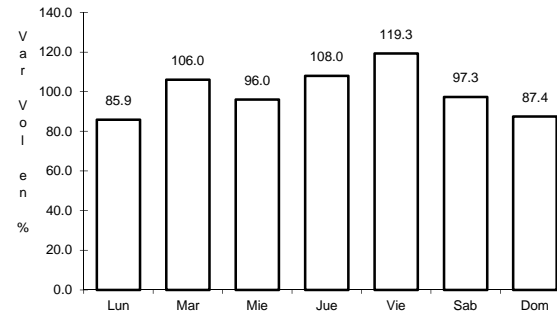


Km: 0.00

Tipo: 3

Sent: 0

CLAVE: 32579



Km: 12.96

Tipo: 3

Sent: 0

RUTA: MEX-ZAC