

ZACATECAS

**---RED FEDERAL LIBRE---**

1	AGUASCALIENTES - JALPA	MEX-070
2	AGUASCALIENTES - ZACATECAS	MEX-045
3	CARBONERA - T. C. (ENT. MORELOS - SALTILLO)	MEX-062
4	ENT. LA CHICHARRONA - CUENCAME	MEX-049
5	ENT. MORELOS - SALTILLO	MEX-054
6	ENT. RIVIER - SAN MARCOS	MEX-025
7	ENT. TESISTAN - ENT. MALPASO	MEX-023
8	FRESNILLO - VALPARAISO	MEX-044
9	GUADALAJARA - ZACATECAS	MEX-054
10	JEREZ - FRESNILLO	MEX
11	LIBRAMIENTO DE GUADALUPE - ZACATECAS	MEX
12	PROVIDENCIA - LUIS MOYA	MEX-071
13	RAMAL A AEROPUERTO ZACATECAS	MEX
14	RAMAL A CONCEPCION DEL ORO	MEX
15	RAMAL A FRANCISCO MURGUIA (NIEVES)	MEX-114
16	RAMAL A GRAL. PANFILO NATERA	MEX
17	RAMAL A VILLA DE COS	MEX
18	SAN LUIS POTOSI - ENT. ARCINAS	MEX-049
19	SAN LUIS POTOSI - LAGOS DE MORENO	MEX-070-080
20	ZACATECAS - DURANGO	MEX-045

**---RED FEDERAL DE CUOTA---**

21	ENT. CUAUHEMOC - ENT. OSIRIS (CUOTA)	MEX-045D
22	LIBRAMIENTO CALERA DE VICTOR ROSALES (CUOTA)	MEX-045D
23	LIBRAMIENTO DE FRESNILLO (CUOTA)	MEX-045D

**---RED ESTATAL LIBRE---**

24	CALERA DE VICTOR ROSALES - SANTIAGUILLO	ZAC-016
25	CIENEGUILLAS - ZACATECAS	ZAC
26	CORRAL DE PIEDRAS - TLALTENANGO	ZAC
27	ENT. OJO CALIENTE - ENT. OJUELOS DE JALISCO	ZAC
28	FRESNILLO - ENT. BAÑON	ZAC
29	FRESNILLO - PLATEROS	ZAC-022
30	RAMAL A LORETO	ZAC
31	RAMAL A NOCHISTLAN	ZAC
32	RAMAL A SAN PEDRO PIEDRA GORDA	ZAC-AGS
33	SAN GIL - JARILLAS	AGS-012-ZAC
34	SAN RAFAEL - VILLA GARCIA	AGS-ZAC
35	SANTA MONICA - POZO DE GAMBOA	ZAC
36	SOMBRETERE - GONZALEZ ORTEGA	ZAC

**---RED ESTATAL DE CUOTA---**

37	LIBRAMIENTO NORESTE DE ZACATECAS (CUOTA)	ZAC-D
----	--	-------

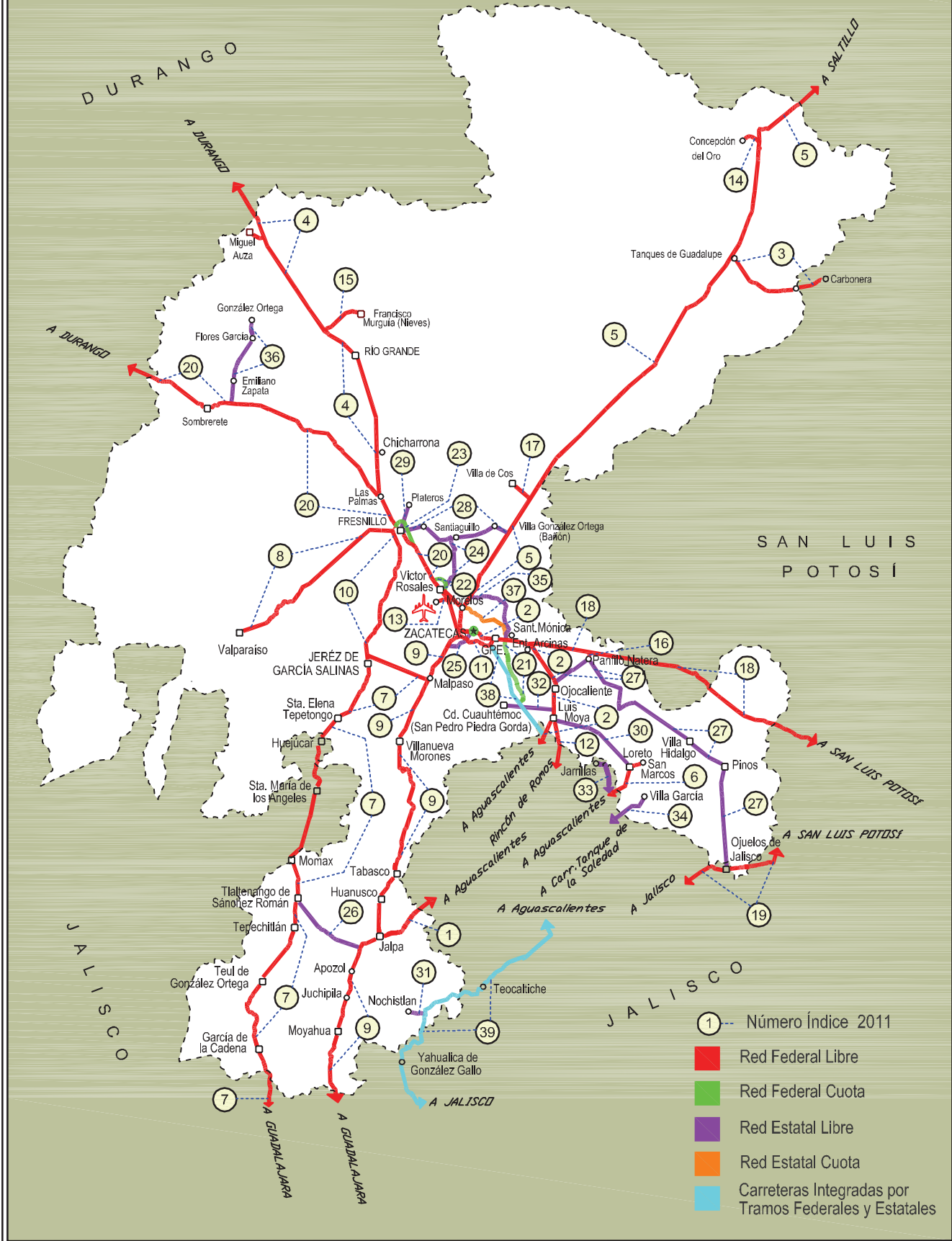
**---CARRETERAS INTEGRADAS POR TRAMOS FEDERALES Y ESTATALES---**

38	COSIO - GUADALUPE	MEX-ZAC
39	TEPATITLAN - JARALILLO	MEX-JAL-ZAC

# 32 ZACATECAS

SECRETARÍA DE COMUNICACIONES Y TRANSPORTES  
DIRECCIÓN GENERAL DE SERVICIOS TÉCNICOS

COAHUILA



ZACATECAS

1 CARR: AGUASCALIENTES - JALPA

CLAVE: 00095

RUTA: MEX-070

AÑO: 2010

LUGAR	ESTACION				CLASIFICACION VEHICULAR EN PORCIENTO								COORDENADAS						
	KM	TE	SC	TDPA	A	B	C2	C3	T3S2	T3S3	T3S2R4	OTROS	A	B	C	K'	D	LATITUD	LONGITUD
AGUASCALIENTES	0.00	3	1	9704	85.7	2.5	2.4	1.1	5.0	1.7	0.7	0.9	85.7	2.5	11.8	0.080	0.554	21.874343	-102.335577
AGUASCALIENTES	0.00	3	2	10047	86.8	3.1	2.2	1.0	4.3	1.2	0.5	0.9	86.8	3.1	10.1	0.087	0.554	21.874343	-102.335577
T. IZQ. VILLA HIDALGO	7.80	3	0	10443	87.3	3.3	2.7	1.5	3.5	0.8	0.4	0.5	87.3	3.3	9.4	0.075	0.502	21.883530	-102.370679
T. DER. GRACIAS A DIOS	20.00	3	0	6847	87.0	3.1	2.4	1.8	3.6	0.8	0.5	0.8	87.0	3.1	9.9	0.076	0.500	21.887650	-102.462650
T. IZQ. MALPASO	45.10	1	0	5529	88.0	3.0	2.7	1.2	3.2	0.7	0.3	0.9	88.0	3.0	9.0	0.077	0.507	21.881846	-102.658104
T. DER. PRESA LA CODORNIZ	49.30	3	1	8600	87.7	2.5	3.3	1.5	3.0	1.0	0.5	0.5	87.7	2.5	9.8	0.075	0.533	21.863910	-102.692398
T. DER. PRESA LA CODORNIZ	49.30	3	2	7540	87.0	2.9	2.8	1.2	3.5	1.3	0.4	0.9	87.0	2.9	10.1	0.077	0.533	21.863677	-102.692339
CALVILLO	52.30	3	0	8499	86.7	2.8	2.9	1.2	3.7	1.4	0.4	0.9	86.7	2.8	10.5	0.075	0.503	21.839108	-102.740064
T. DER. JALTICHE DE ABAJO	63.80	3	0	5200	86.8	3.6	2.8	2.0	2.2	1.4	0.5	0.7	86.8	3.6	9.6	0.076	0.502	21.775302	-102.802869
LIM. EDOS. TERM. AGS. PPIA. ZAC.	65.66																		
T. C. GUADALAJARA - ZACATECAS	91.10	1	0	4951	82.1	7.4	2.4	2.1	3.2	1.6	1.0	0.2	82.1	7.4	10.5	0.064	0.503	21.649150	-102.969564

2 CARR: AGUASCALIENTES - ZACATECAS

CLAVE: 00524

RUTA: MEX-045

AÑO: 2010

LUGAR	ESTACION				CLASIFICACION VEHICULAR EN PORCIENTO								COORDENADAS						
	KM	TE	SC	TDPA	A	B	C2	C3	T3S2	T3S3	T3S2R4	OTROS	A	B	C	K'	D	LATITUD	LONGITUD
AGUASCALIENTES	0.00																		
T. IZQ. POCITOS	6.00	1	1	20028	78.8	4.2	3.0	3.1	6.3	2.4	1.3	0.9	78.8	4.2	17.0	0.065	0.508	21.919908	-102.291610
T. IZQ. POCITOS	6.00	1	2	19412	79.0	4.5	3.0	2.9	6.2	2.2	1.3	0.9	79.0	4.5	16.5	0.065	0.508	21.919908	-102.291610
T. DER. LORETO	9.83	3	1	16786	78.9	4.2	3.0	3.1	6.2	2.4	1.3	0.9	78.9	4.2	16.9	0.075	0.502	21.964730	-102.289613
T. DER. LORETO	9.83	3	2	16920	79.0	4.5	3.0	2.9	6.2	2.2	1.3	0.9	79.0	4.5	16.5	0.068	0.502	21.964663	-102.290041
SANTA FE	16.00	3	1	15483	79.2	3.9	2.5	3.0	7.3	2.1	0.9	1.1	79.2	3.9	16.9	0.083	0.515	22.016106	-102.285996
SANTA FE	16.00	3	2	16421	79.4	3.5	3.1	3.2	7.0	2.0	1.0	0.8	79.4	3.5	17.1	0.071	0.515	22.016265	-102.286089
SAN FRANCISCO DE LOS ROMO	22.73	1	1	5685	82.0	3.7	2.6	2.7	5.3	2.2	0.7	0.8	82.0	3.7	14.3	0.079	0.515	22.070978	-102.274295
SAN FRANCISCO DE LOS ROMO	22.73	1	2	5349	82.4	4.0	2.1	2.5	5.4	2.1	0.8	0.7	82.4	4.0	13.6	0.077	0.515	22.071042	-102.274380
T. DER. ESTACION PABELLON	31.00	1	1	10487	80.6	3.0	3.2	4.7	4.5	1.7	1.5	0.8	80.6	3.0	16.4	0.072	0.502	22.139954	-102.290074
T. DER. ESTACION PABELLON	31.00	1	2	10591	80.7	3.2	3.3	4.8	4.4	1.5	1.3	0.8	80.7	3.2	16.1	0.073	0.502	22.140011	-102.289968
T. DER. ESTACION PABELLON	31.00	3	1	9386	80.5	3.3	3.5	4.6	4.4	1.8	1.2	0.7	80.5	3.3	16.2	0.071	0.500	22.151733	-102.294875
T. DER. ESTACION PABELLON	31.00	3	2	9367	80.5	3.2	3.3	4.7	4.5	1.8	1.3	0.7	80.5	3.2	16.3	0.071	0.500	22.151634	-102.294936
RINCON DE ROMOS	40.90	3	0	5739	85.4	3.8	4.3	1.4	1.5	2.0	1.1	0.5	85.4	3.8	10.8	0.072	0.501	22.239064	-102.317281
LA PUNTA	51.00	1	0	11550	84.7	4.2	3.6	1.5	2.2	2.3	1.2	0.3	84.7	4.2	11.1	0.069	0.501	22.320668	-102.294794
COSIO	56.00	3	0	10504	86.1	3.7	3.0	1.7	1.9	2.4	1.0	0.2	86.1	3.7	10.2	0.077	0.521	22.371867	-102.298108
LIM. EDOS. TERM. AGS. PPIA. ZAC.	62.67																		
LUIS MOYA	65.80	3	0	6113	82.6	3.7	3.6	3.1	3.4	1.6	1.3	0.7	82.6	3.7	13.7	0.072	0.505	22.450861	-102.255583
T. DER. SAN LUIS POTOSI	100.00	1	0	6199	77.3	3.2	2.1	2.3	7.5	3.2	4.0	0.4	77.3	3.2	19.5	0.070	0.504	22.714918	-102.327371

ZACATECAS

2 CARR: AGUASCALIENTES - ZACATECAS

CLAVE: 00524

RUTA: MEX-045

AÑO: 2010

LUGAR	ESTACION				CLASIFICACION VEHICULAR EN PORCIENTO								COORDENADAS						
	KM	TE	SC	TDPA	A	B	C2	C3	T3S2	T3S3	T3S2R4	OTROS	A	B	C	K'	D	LATITUD	LONGITUD
T. DER. SAN LUIS POTOSI	100.00	3	1	5525	74.2	3.9	2.5	3.9	7.9	2.9	4.4	0.3	74.2	3.9	21.9	0.068	0.504	22.730049	-102.338243
T. DER. SAN LUIS POTOSI	100.00	3	2	5624	74.7	3.0	2.8	3.9	7.9	2.8	4.2	0.7	74.7	3.0	22.3	0.072	0.504	22.730049	-102.338243
T. IZQ. AGUASCALIENTES (CUOTA)	113.50	1	1	9251	79.0	3.1	3.6	2.6	5.7	2.9	2.5	0.6	79.0	3.1	17.9	0.077	0.504	22.751083	-102.450156
T. IZQ. AGUASCALIENTES (CUOTA)	113.50	1	2	9116	78.5	3.6	3.7	2.7	6.2	2.0	2.7	0.6	78.5	3.6	17.9	0.073	0.504	22.751083	-102.450156
T. IZQ. LIBRAMIENTO DE GUADALUPE Y ZACATECAS	118.20	1	1	13773	79.2	4.2	2.9	2.0	6.1	1.5	3.3	0.8	79.2	4.2	16.6	0.070	0.514	22.750709	-102.494898
T. IZQ. LIBRAMIENTO DE GUADALUPE Y ZACATECAS	118.20	1	2	13714	78.7	4.4	2.8	1.8	6.6	1.7	3.2	0.8	78.7	4.4	16.9	0.077	0.514	22.750709	-102.494898
ZACATECAS	126.84																		

3 CARR: CARBONERA - T. C. (ENT. MORELOS - SALTILLO)

CLAVE: 00218

RUTA: MEX-062

AÑO: 2010

LUGAR	ESTACION				CLASIFICACION VEHICULAR EN PORCIENTO								COORDENADAS						
	KM	TE	SC	TDPA	A	B	C2	C3	T3S2	T3S3	T3S2R4	OTROS	A	B	C	K'	D	LATITUD	LONGITUD
CARBONERA	0.00	3	0	1908	79.7	6.5	6.8	1.7	2.4	1.5	0.7	0.7	79.7	6.5	13.8	0.093	0.523	23.698167	-100.620139
CEDRAL	18.00	1	0	3585	77.8	7.0	7.2	1.6	3.2	1.8	0.6	0.8	77.8	7.0	15.2	0.095	0.500	23.813803	-100.714145
CEDRAL	18.00	3	0	3715	80.6	6.0	5.5	2.1	2.8	1.5	0.8	0.7	80.6	6.0	13.4	0.067	0.503	23.828563	-100.736764
LIM. EDOS. TERM. S.L.P. PPIA. ZAC.	79.20																		
T. C. ENT. MORELOS - SALTILLO	112.00	1	0	1293	86.0	3.6	4.6	2.5	1.2	1.1	0.5	0.5	86.0	3.6	10.4	0.081	0.501	24.157515	-101.494044

4 CARR: ENT. LA CHICHARRONA - CUENCAME

CLAVE: 00152

RUTA: MEX-049

AÑO: 2010

LUGAR	ESTACION				CLASIFICACION VEHICULAR EN PORCIENTO								COORDENADAS						
	KM	TE	SC	TDPA	A	B	C2	C3	T3S2	T3S3	T3S2R4	OTROS	A	B	C	K'	D	LATITUD	LONGITUD
ENT. LA CHICHARRONA	0.00	3	1	3648	65.5	4.8	3.5	4.5	11.5	5.2	4.3	0.7	65.5	4.8	29.7	0.072	0.519	23.304895	-102.958666
ENT. LA CHICHARRONA	0.00	3	2	3940	65.5	4.7	3.4	4.8	11.5	5.3	4.2	0.6	65.5	4.7	29.8	0.075	0.519	23.310304	-102.958879
T. DER. CAÑITAS DE FELIPE PESCADOR	25.86	1	1	3354	66.3	4.6	3.7	4.7	10.0	4.7	5.3	0.7	66.3	4.6	29.1	0.064	0.509	23.523509	-102.959499
T. DER. CAÑITAS DE FELIPE PESCADOR	25.86	1	2	3473	65.7	4.4	3.8	4.8	10.1	4.8	5.4	1.0	65.7	4.4	29.9	0.064	0.509	23.524170	-102.959843
RIO GRANDE	60.00	1	0	5900	66.2	4.7	3.8	4.2	10.2	5.1	4.6	1.2	66.2	4.7	29.1	0.077	0.504	23.793405	-103.016954
RIO GRANDE	60.00	3	0	6225	66.1	4.1	3.0	4.3	11.4	4.9	5.2	1.0	66.1	4.1	29.8	0.079	0.512	23.871083	-103.084834
T. DER. NIEVES	78.00	3	0	5294	65.8	5.4	3.5	4.4	10.4	4.1	5.6	0.8	65.8	5.4	28.8	0.064	0.513	23.924719	-103.160623
X. C. JUAN ALDAMA - MIGUEL AUZA	124.50	1	0	6950	65.3	5.6	3.7	4.8	10.6	4.0	5.4	0.6	65.3	5.6	29.1	0.060	0.504	24.272397	-103.400248
X. C. JUAN ALDAMA - MIGUEL AUZA	124.50	3	0	7420	66.4	5.6	3.3	4.1	10.3	4.0	5.2	1.1	66.4	5.6	28.0	0.073	0.508	24.289639	-103.407371
LIM. EDOS. TERM. ZAC. PPIA. DGO.	134.30																		
T. DER. SANTA CLARA	144.00	1	0	5073	67.1	5.3	3.3	4.1	10.5	3.8	4.8	1.1	67.1	5.3	27.6	0.064	0.510	24.431451	-103.483456
T. DER. SANTA CLARA	144.00	3	0	4941	66.5	5.7	3.5	4.0	9.8	3.9	5.5	1.1	66.5	5.7	27.8	0.065	0.510	24.442087	-103.490455
CUENCAME	199.10	1	0	4380	65.1	5.5	3.5	4.2	11.0	4.2	5.4	1.1	65.1	5.5	29.4	0.076	0.522	24.860530	-103.698495

ZACATECAS

5 CARR: ENT. MORELOS - SALTILLO

CLAVE: 00149

RUTA: MEX-054

AÑO: 2010

LUGAR	ESTACION				CLASIFICACION VEHICULAR EN PORCIENTO								COORDENADAS						
	KM	TE	SC	TDPA	A	B	C2	C3	T3S2	T3S3	T3S2R4	OTROS	A	B	C	K'	D	LATITUD	LONGITUD
T. C. ZACATECAS - DURANGO	0.00	3	0	6151	66.2	6.2	5.7	6.1	9.7	3.1	2.5	0.5	66.2	6.2	27.6	0.060	0.501	22.869018	-102.619522
T. DER. STA. MONICA	11.00	1	0	5436	66.2	6.2	5.9	6.0	9.8	2.9	2.5	0.5	66.2	6.2	27.6	0.068	0.516	22.940574	-102.568099
T. DER. STA. MONICA	11.00	3	0	5066	66.6	6.2	5.3	6.0	10.0	3.1	2.3	0.5	66.6	6.2	27.2	0.065	0.516	22.950431	-102.559108
T. IZQ. VILLA DE COSS	53.90	1	0	5065	64.5	6.6	6.2	6.2	10.3	3.3	2.4	0.5	64.5	6.6	28.9	0.074	0.506	23.265040	-102.333144
T. IZQ. VILLA DE COSS	53.90	3	0	4274	66.6	6.0	5.5	6.0	10.1	3.1	2.2	0.5	66.6	6.0	27.4	0.070	0.501	23.273848	-102.326825
SIERRA VIEJA	85.50	3	0	3282	65.7	6.2	5.7	6.4	9.8	3.2	2.5	0.5	65.7	6.2	28.1	0.073	0.516	23.503275	-102.124380
T. DER. MAJOMA	144.50	3	0	2873	66.3	6.3	5.7	5.9	9.9	3.0	2.4	0.5	66.3	6.3	27.4	0.070	0.520	23.880705	-101.733813
T. DER. SAN TIBURCIO	185.25	1	0	2980	65.6	5.9	5.8	6.3	10.5	3.1	2.3	0.5	65.6	5.9	28.5	0.069	0.508	24.156759	-101.496244
T. DER. SAN TIBURCIO	185.25	3	0	2937	65.7	6.6	5.9	6.0	9.7	3.1	2.5	0.5	65.7	6.6	27.7	0.066	0.507	24.159747	-101.494037
T. IZQ. CONCEPCION DEL ORO	240.00	1	0	6508	64.9	6.2	5.6	6.5	10.5	3.2	2.6	0.5	64.9	6.2	28.9	0.073	0.506	24.619126	-101.383332
T. IZQ. CONCEPCION DEL ORO	240.00	3	0	4312	66.0	6.3	5.6	6.1	10.0	3.0	2.5	0.5	66.0	6.3	27.7	0.071	0.512	24.626050	-101.381587
LIM. EDOS. TERM. ZAC. PPIA. COAH.	266.50																		
AGUA NUEVA	322.00	1	0	4262	66.0	6.4	5.6	6.0	9.9	3.2	2.4	0.5	66.0	6.4	27.6	0.075	0.507	25.180910	-101.094436
T. DER. LA TRINIDAD	333.00	3	0	10906	66.6	6.3	5.5	6.3	9.3	3.1	2.4	0.5	66.6	6.3	27.1	0.064	0.502	25.270515	-101.091130
X. C. LIBRAMIENTO DE SALTILLO	348.00	1	1	10232	65.5	6.3	5.9	6.1	10.0	3.2	2.5	0.5	65.5	6.3	28.2	0.091	0.502	25.371672	-101.013836
X. C. LIBRAMIENTO DE SALTILLO	348.00	1	2	10329	64.7	6.7	6.0	6.4	10.2	3.1	2.4	0.5	64.7	6.7	28.6	0.092	0.502	25.371672	-101.013836
SALTILLO	354.00	1	1	11534	66.1	6.3	5.6	6.0	10.1	3.1	2.3	0.5	66.1	6.3	27.6	0.060	0.519	25.397396	-101.001660
SALTILLO	354.00	1	2	11869	64.4	6.5	6.1	6.5	10.3	3.2	2.5	0.5	64.4	6.5	29.1	0.061	0.519	25.397396	-101.001660

6 CARR: ENT. RIVIER - SAN MARCOS

CLAVE: 00285

RUTA: MEX-025

AÑO: 2010

LUGAR	ESTACION				CLASIFICACION VEHICULAR EN PORCIENTO								COORDENADAS						
	KM	TE	SC	TDPA	A	B	C2	C3	T3S2	T3S3	T3S2R4	OTROS	A	B	C	K'	D	LATITUD	LONGITUD
T. C. AGUASCALIENTES - ZACATECAS	0.00	3	0	9170	85.7	3.1	3.7	2.1	3.1	1.0	0.6	0.7	85.7	3.1	11.2	0.061	0.550	21.962492	-102.288218
T. IZQ. EL TEPETATE	10.50	3	0	6770	86.2	3.4	4.0	1.9	3.0	0.4	0.4	0.7	86.2	3.4	10.4	0.077	0.502	21.999976	-102.196921
T. DER. JILOTEPEC	23.60	3	0	6727	86.5	3.7	2.5	2.4	2.9	0.7	0.5	0.8	86.5	3.7	9.8	0.072	0.501	22.053174	-102.100455
VILLA JUAREZ	30.00	3	0	7947	86.5	3.6	2.6	2.5	2.8	0.7	0.5	0.8	86.5	3.6	9.9	0.067	0.502	22.100075	-102.064117
CIENEGA GRANDE	41.50	1	0	7027	86.0	3.2	4.0	1.7	3.1	0.7	0.4	0.9	86.0	3.2	10.8	0.073	0.500	22.181665	-102.021977
CIENEGA GRANDE	41.50	3	0	5997	86.4	3.0	4.2	1.8	2.7	0.6	0.5	0.8	86.4	3.0	10.6	0.078	0.504	22.195742	-102.017929
LIM. EDOS. TERM. AGS. PPIA. ZAC.	45.75																		
SAN MARCOS	56.00	1	0	7535	86.6	2.9	4.0	1.9	2.7	0.6	0.5	0.8	86.6	2.9	10.5	0.081	0.503	22.276222	-101.957127

ZACATECAS

7 CARR: ENT. TESISTAN - ENT. MALPASO

CLAVE: 00584

RUTA: MEX-023

AÑO: 2010

LUGAR	ESTACION				CLASIFICACION VEHICULAR EN PORCIENTO								COORDENADAS						
	KM	TE	SC	TDPA	A	B	C2	C3	T3S2	T3S3	T3S2R4	OTROS	A	B	C	K'	D	LATITUD	LONGITUD
T. C. GUADALAJARA - TESISTAN	0.00	3	0	8305	88.4	2.5	5.4	2.0	1.0	0.6	0.0	0.1	88.4	2.5	9.1	0.085	0.506	20.787209	-103.461456
LIM. EDOS. TERM. JAL. PPIA. ZAC.	42.00																		
GARCIA DE LA CADENA	54.00	1	0	1494	86.8	2.9	6.3	2.2	1.1	0.6	0.0	0.1	86.8	2.9	10.3	0.072	0.508	21.195238	-103.465292
TLALTENANGO DE SANCHEZ ROMAN	147.50	3	0	3726	87.5	2.8	6.0	2.0	1.0	0.6	0.0	0.1	87.5	2.8	9.7	0.075	0.502	21.798391	-103.298929
MOMAX	165.00	3	0	2679	87.4	2.8	5.8	2.1	1.1	0.7	0.0	0.1	87.4	2.8	9.8	0.067	0.505	21.932189	-103.309920
LIM. EDOS. TERM. ZAC. PPIA. JAL.	171.80																		
COLOTLAN	175.00	1	0	2697	87.5	2.7	6.1	2.0	1.0	0.6	0.0	0.1	87.5	2.7	9.8	0.098	0.503	22.096472	-103.269247
LIM. EDOS. TERM. JAL. PPIA. ZAC.	209.90																		
LIM. EDOS. TERM. ZAC. PPIA. JAL.	214.80																		
LIM. EDOS. TERM. JAL. PPIA. ZAC.	223.95																		
TEPETONGO	235.00	3	0	3405	88.2	2.5	5.8	1.9	0.9	0.6	0.0	0.1	88.2	2.5	9.3	0.076	0.513	22.467038	-103.141407
JEREZ DE GARCIA SALINAS	249.00	1	0	5138	87.6	2.8	5.8	2.1	1.0	0.6	0.0	0.1	87.6	2.8	9.6	0.069	0.511	22.612930	-103.010204
T. C. GUADALAJARA - ZACATECAS	275.00	1	0	5216	87.6	2.7	5.9	2.1	1.0	0.6	0.0	0.1	87.6	2.7	9.7	0.071	0.502	22.616343	-102.760430

8 CARR: FRESNILLO - VALPARAISO

CLAVE: 32547

RUTA: MEX-044

AÑO: 2010

LUGAR	ESTACION				CLASIFICACION VEHICULAR EN PORCIENTO								COORDENADAS						
	KM	TE	SC	TDPA	A	B	C2	C3	T3S2	T3S3	T3S2R4	OTROS	A	B	C	K'	D	LATITUD	LONGITUD
FRESNILLO	0.00	3	0	7327	82.0	3.9	3.5	2.2	3.9	1.4	2.1	1.0	82.0	3.9	14.1	0.078	0.500	23.173687	-102.915119
T. IZQ. GUANAJUATO	24.50	1	0	2262	83.5	4.5	4.4	1.5	1.6	1.9	1.5	1.1	83.5	4.5	12.0	0.058	0.502	23.098038	-103.090733
T. IZQ. SOMBRERETILLO	45.00	3	0	1477	82.6	5.3	4.7	1.6	1.9	1.5	1.5	0.9	82.6	5.3	12.1	0.070	0.505	23.000660	-103.209481
T. IZQ. SAN JOSE DE LLANETES	55.00	3	0	1376	81.9	5.3	5.1	2.0	1.7	1.8	1.5	0.7	81.9	5.3	12.8	0.068	0.501	22.924757	-103.295145
T. IZQ. LOBATOS	71.00	3	0	1930	82.6	5.0	4.7	1.6	2.1	1.6	1.6	0.8	82.6	5.0	12.4	0.062	0.508	22.837319	-103.409700
VALPARAISO	90.00	1	0	2422	83.4	4.5	4.1	1.2	2.8	1.7	1.3	1.0	83.4	4.5	12.1	0.060	0.503	22.795061	-103.544813

9 CARR: GUADALAJARA - ZACATECAS

CLAVE: 00150

RUTA: MEX-054

AÑO: 2010

LUGAR	ESTACION				CLASIFICACION VEHICULAR EN PORCIENTO								COORDENADAS						
	KM	TE	SC	TDPA	A	B	C2	C3	T3S2	T3S3	T3S2R4	OTROS	A	B	C	K'	D	LATITUD	LONGITUD
GUADALAJARA	0.00																		
X. PERIFERICO GUADALAJARA	6.19	3	0	13382	81.0	4.3	7.0	2.2	1.4	0.8	0.7	2.6	81.0	4.3	14.7	0.075	0.504	20.759605	-103.382645
T. DER. IXTLAHUACAN DEL RIO	49.46	3	0	4102	78.6	5.8	5.5	3.6	2.5	1.3	0.7	2.0	78.6	5.8	15.6	0.077	0.520	20.869333	-103.238726
LIM. EDOS. TERM. JAL. PPIA. ZAC.	76.49																		
T. IZQ. MOYAHUA	106.43	1	0	2626	67.6	2.7	12.5	9.4	5.0	2.4	0.0	0.4	67.6	2.7	29.7	0.065	0.504	21.259666	-103.158025
APOZOL	129.28	1	0	4118	68.9	2.5	11.6	9.1	5.1	2.4	0.0	0.4	68.9	2.5	28.6	0.069	0.504	21.460875	-103.091101

ZACATECAS

9 CARR: GUADALAJARA - ZACATECAS

CLAVE: 00150

RUTA: MEX-054

AÑO: 2010

LUGAR	ESTACION				CLASIFICACION VEHICULAR EN PORCIENTO								COORDENADAS						
	KM	TE	SC	TDPA	A	B	C2	C3	T3S2	T3S3	T3S2R4	OTROS	A	B	C	K'	D	LATITUD	LONGITUD
JALPA	159.39	1	0	2288	67.1	2.6	12.1	10.0	5.3	2.5	0.0	0.4	67.1	2.6	30.3	0.056	0.503	21.615469	-102.993404
TABASCO	189.40	1	0	3289	66.8	2.8	12.7	9.6	5.3	2.4	0.0	0.4	66.8	2.8	30.4	0.065	0.504	21.842930	-102.933807
TABASCO	189.40	3	0	3210	68.7	2.5	11.7	9.3	5.0	2.4	0.0	0.4	68.7	2.5	28.8	0.075	0.508	21.882410	-102.909059
VILLANUEVA	255.70	3	0	3618	66.4	2.8	12.4	10.1	5.2	2.7	0.0	0.4	66.4	2.8	30.8	0.084	0.507	22.377917	-102.880657
T. IZQ. JEREZ DE GARCIA SALINAS	289.13	1	0	3864	68.7	2.4	11.9	9.1	5.0	2.5	0.0	0.4	68.7	2.4	28.9	0.064	0.501	22.615096	-102.756682
T. IZQ. JEREZ DE GARCIA SALINAS	289.13	3	0	6741	68.4	2.6	12.2	8.8	5.1	2.5	0.0	0.4	68.4	2.6	29.0	0.078	0.504	22.621034	-102.753475
T. C. ZACATECAS - DURANGO	311.83	1	0	10880	67.0	2.6	12.3	10.1	5.1	2.5	0.0	0.4	67.0	2.6	30.4	0.087	0.504	22.771112	-102.631691

10 CARR: JEREZ - FRESNILLO

CLAVE: 32542

RUTA: MEX

AÑO: 2010

LUGAR	ESTACION				CLASIFICACION VEHICULAR EN PORCIENTO								COORDENADAS						
	KM	TE	SC	TDPA	A	B	C2	C3	T3S2	T3S3	T3S2R4	OTROS	A	B	C	K'	D	LATITUD	LONGITUD
JEREZ	0.00	3	0	2268	85.0	4.9	4.3	1.5	2.1	0.9	0.6	0.7	85.0	4.9	10.1	0.071	0.502	22.682170	-103.016453
T. C. ENT. FRESNILLO - VALPARAISO	60.00	1	0	3440	85.2	4.8	4.3	2.0	1.8	0.7	0.4	0.8	85.2	4.8	10.0	0.070	0.505	23.161924	-102.884351

11 CARR: LIBRAMIENTO DE GUADALUPE - ZACATECAS

CLAVE: 32582

RUTA: MEX

AÑO: 2010

LUGAR	ESTACION				CLASIFICACION VEHICULAR EN PORCIENTO								COORDENADAS						
	KM	TE	SC	TDPA	A	B	C2	C3	T3S2	T3S3	T3S2R4	OTROS	A	B	C	K'	D	LATITUD	LONGITUD
T. C. AGUASCALIENTES - ZACATECAS	0.00	3	0	13485	62.9	4.2	6.0	4.2	9.5	4.7	7.5	1.0	62.9	4.2	32.9	0.063	0.504	22.740854	-102.503851
X.C. CIENEGUILLAS - ZACATECAS	13.00	3	0	10944	61.2	4.4	6.4	4.4	9.3	5.0	7.9	1.4	61.2	4.4	34.4	0.072	0.505	22.757051	-102.597819
T. C. ZACATECAS - DURANGO	17.50	1	0	11585	63.0	4.7	6.3	4.3	6.7	5.9	7.9	1.2	63.0	4.7	32.3	0.082	0.555	22.771504	-102.614851

12 CARR: PROVIDENCIA - LUIS MOYA

CLAVE: 00112

RUTA: MEX-071

AÑO: 2010

LUGAR	ESTACION				CLASIFICACION VEHICULAR EN PORCIENTO								COORDENADAS						
	KM	TE	SC	TDPA	A	B	C2	C3	T3S2	T3S3	T3S2R4	OTROS	A	B	C	K'	D	LATITUD	LONGITUD
T. C. AGUASCALIENTES - ZACATECAS	0.00	3	0	4694	81.3	3.6	2.3	2.9	3.3	3.3	2.9	0.4	81.3	3.6	15.1	0.083	0.513	22.060817	-102.273373
T. IZQ. PABELLON DE ARTEAGA	12.10	1	0	3796	82.5	3.4	2.4	2.4	2.8	2.9	2.9	0.7	82.5	3.4	14.1	0.073	0.501	22.145474	-102.250824
T. DER. VILLA JUAREZ	14.90	3	0	5462	80.5	4.5	2.8	3.2	4.3	3.3	0.7	0.7	80.5	4.5	15.0	0.067	0.502	22.192015	-102.244260
X. C. RINCON DE ROMOS - CIENEGA GRANDE	21.22	3	0	4269	82.7	3.3	2.7	2.9	3.4	2.2	2.0	0.8	82.7	3.3	14.0	0.075	0.505	22.231645	-102.241287
X. C. LA PUNTA - MESILLAS	30.35	3	0	3743	83.8	3.2	2.6	2.6	3.0	2.1	2.2	0.5	83.8	3.2	13.0	0.063	0.500	22.318030	-102.233643
SAN JACINTO	34.25	3	0	2526	83.2	2.9	3.1	2.7	2.5	2.5	2.3	0.8	83.2	2.9	13.9	0.057	0.504	22.354520	-102.232743
LIM. EDOS. TERM. AGS. PPIA. ZAC.	37.50																		
LUIS MOYA	43.50	1	0	4553	86.9	3.3	2.1	1.7	3.0	1.2	1.2	0.6	86.9	3.3	9.8	0.057	0.500	22.426665	-102.246675



ZACATECAS

13 CARR: RAMAL A AEROPUERTO ZACATECAS

CLAVE: 32546

RUTA: MEX

AÑO: 2010

LUGAR	ESTACION				CLASIFICACION VEHICULAR EN PORCIENTO								COORDENADAS						
	KM	TE	SC	TDPA	A	B	C2	C3	T3S2	T3S3	T3S2R4	OTROS	A	B	C	K'	D	LATITUD	LONGITUD
T. C. ZACATECAS - DURANGO	0.00	3	0	1587	94.3	2.1	0.9	1.1	0.3	0.3	0.4	0.6	94.3	2.1	3.6	0.079	0.504	22.912327	-102.672652
AEROPUERTO	1.95																		

14 CARR: RAMAL A CONCEPCION DEL ORO

CLAVE: 32565

RUTA: MEX

AÑO: 2010

LUGAR	ESTACION				CLASIFICACION VEHICULAR EN PORCIENTO								COORDENADAS						
	KM	TE	SC	TDPA	A	B	C2	C3	T3S2	T3S3	T3S2R4	OTROS	A	B	C	K'	D	LATITUD	LONGITUD
T. C. ENT. MORELOS - SALTILLO	0.00	3	0	5041	83.1	4.6	5.9	2.3	0.6	0.9	1.9	0.7	83.1	4.6	12.3	0.071	0.520	24.621894	-101.392103
CONCEPCION DEL ORO	3.20																		

15 CARR: RAMAL A FRANCISCO MURGUIA (NIEVES)

CLAVE: 32541

RUTA: MEX-114

AÑO: 2010

LUGAR	ESTACION				CLASIFICACION VEHICULAR EN PORCIENTO								COORDENADAS						
	KM	TE	SC	TDPA	A	B	C2	C3	T3S2	T3S3	T3S2R4	OTROS	A	B	C	K'	D	LATITUD	LONGITUD
T. C. ENT. LA CHICHARRONA - CUENCAME	0.00	3	0	1751	80.2	7.9	5.4	2.6	1.6	0.5	1.1	0.7	80.2	7.9	11.9	0.093	0.508	23.924885	-103.155662
FRANCISCO MURGUIA (NIEVES)	17.40																		

16 CARR: RAMAL A GRAL. PANFILO NATERA

CLAVE: 32559

RUTA: MEX

AÑO: 2010

LUGAR	ESTACION				CLASIFICACION VEHICULAR EN PORCIENTO								COORDENADAS						
	KM	TE	SC	TDPA	A	B	C2	C3	T3S2	T3S3	T3S2R4	OTROS	A	B	C	K'	D	LATITUD	LONGITUD
T. C. SAN LUIS POTOSI - ENT. ARCINAS	0.00	3	0	3822	87.2	4.5	1.7	1.5	3.3	0.6	1.0	0.2	87.2	4.5	8.3	0.083	0.507	22.679451	-102.106576
GRAL. PANFILO NATERA	1.50																		

17 CARR: RAMAL A VILLA DE COS

CLAVE: 32564

RUTA: MEX

AÑO: 2010

LUGAR	ESTACION				CLASIFICACION VEHICULAR EN PORCIENTO								COORDENADAS						
	KM	TE	SC	TDPA	A	B	C2	C3	T3S2	T3S3	T3S2R4	OTROS	A	B	C	K'	D	LATITUD	LONGITUD
T. C. ENT. MORELOS - SALTILLO	0.00	3	0	3487	86.1	2.9	3.9	1.4	1.2	1.8	2.0	0.7	86.1	2.9	11.0	0.075	0.502	23.275073	-102.333471
VILLA DE COS	3.30	1	0	5515	85.9	2.5	4.1	1.7	1.6	1.9	1.9	0.4	85.9	2.5	11.6	0.073	0.505	23.289858	-102.343727



ZACATECAS

20 CARR: ZACATECAS - DURANGO

CLAVE: 00544

RUTA: MEX-045

AÑO: 2010

LUGAR	ESTACION				CLASIFICACION VEHICULAR EN PORCIENTO								COORDENADAS						
	KM	TE	SC	TDPA	A	B	C2	C3	T3S2	T3S3	T3S2R4	OTROS	A	B	C	K'	D	LATITUD	LONGITUD
T. IZQ. GUADALAJARA	6.40	3	1	10651	77.5	4.0	3.5	2.5	5.5	2.0	3.8	1.2	77.5	4.0	18.5	0.071	0.507	22.783556	-102.626979
T. IZQ. GUADALAJARA	6.40	3	2	10361	77.0	4.1	3.5	2.2	6.3	1.9	3.9	1.1	77.0	4.1	18.9	0.067	0.507	22.783562	-102.627094
T. DER. SALTILLO (T. MORELOS)	15.00	3	1	9506	65.7	5.3	4.4	6.1	7.5	3.9	6.3	0.8	65.7	5.3	29.0	0.058	0.502	22.866054	-102.628683
T. DER. SALTILLO (T. MORELOS)	15.00	3	2	9448	65.9	5.2	4.5	6.0	7.4	4.2	6.2	0.6	65.9	5.2	28.9	0.060	0.502	22.861358	-102.648170
VICTOR ROSALES	28.00	1	1	8044	62.8	5.4	4.2	7.2	7.7	4.8	7.2	0.7	62.8	5.4	31.8	0.079	0.506	22.929962	-102.685419
VICTOR ROSALES	28.00	1	2	8250	65.9	5.3	5.0	5.1	7.2	3.9	6.9	0.7	65.9	5.3	28.8	0.090	0.506	22.930010	-102.685759
GRAL. ENRIQUE ESTRADA	34.60	3	1	9667	70.1	5.6	4.6	3.0	8.7	3.1	4.0	0.9	70.1	5.6	24.3	0.066	0.507	23.010174	-102.750714
GRAL. ENRIQUE ESTRADA	34.60	3	2	9396	72.3	5.7	4.5	2.7	7.3	3.4	3.4	0.7	72.3	5.7	22.0	0.071	0.507	23.010661	-102.751111
FRESNILLO	58.50	1	1	6889	75.8	6.3	2.9	3.2	6.5	2.6	2.1	0.6	75.8	6.3	17.9	0.087	0.510	23.162264	-102.853313
FRESNILLO	58.50	1	2	7171	76.9	6.4	2.4	3.4	5.6	2.4	2.0	0.9	76.9	6.4	16.7	0.078	0.510	23.159595	-102.852074
ENT. LA CHICHARRONA	74.30	1	1	6636	68.5	3.8	3.2	5.4	9.8	4.0	4.7	0.6	68.5	3.8	27.7	0.070	0.519	23.285842	-102.949627
ENT. LA CHICHARRONA	74.30	1	2	6592	68.8	3.9	3.4	5.3	9.4	3.7	4.7	0.8	68.8	3.9	27.3	0.067	0.519	23.284041	-102.948981
ENT. LA CHICHARRONA	74.30	3	0	5568	69.7	3.9	3.7	4.7	9.2	3.5	4.4	0.9	69.7	3.9	26.4	0.082	0.502	23.308067	-102.964830
T. DER. SAIN ALTO	121.00	3	0	2844	72.0	3.7	3.5	4.3	8.4	3.3	4.0	0.8	72.0	3.7	24.3	0.080	0.510	23.581068	-103.274188
T. IZQ. SOMBRERETE (2º ACCESO)	161.50	3	0	4788	72.6	3.6	3.5	3.2	8.8	3.6	3.7	1.0	72.6	3.6	23.8	0.069	0.504	23.644910	-103.648738
LIM. EDOS. TERM. ZAC. PPIA. DGO.	190.08																		
X. C. VICENTE GUERRERO - VILLA UNION	206.98	1	0	2845	76.1	5.8	6.9	2.6	4.1	2.8	0.0	1.7	76.1	5.8	18.1	0.096	0.522	23.745843	-103.977433
X. C. VICENTE GUERRERO - VILLA UNION	206.98	3	0	3837	80.8	4.6	6.0	2.2	2.0	1.4	0.0	3.0	80.8	4.6	14.6	0.088	0.527	23.744268	-103.995815
T. IZQ. GRACEROS	210.00	1	0	3533	77.9	5.0	5.9	3.6	3.7	2.4	0.0	1.5	77.9	5.0	17.1	0.091	0.505	23.747896	-104.036253
AMADO NERVO	231.51	1	0	3144	77.0	4.3	6.4	2.6	4.9	2.5	0.0	2.3	77.0	4.3	18.7	0.091	0.511	23.839662	-104.181316
AMADO NERVO	231.51	3	0	4339	77.5	4.4	6.3	3.6	3.7	2.8	0.0	1.7	77.5	4.4	18.1	0.101	0.505	23.845021	-104.209757
NOMBRE DE DIOS	236.80	1	0	4185	74.8	4.6	7.9	3.0	4.1	2.8	0.0	2.8	74.8	4.6	20.6	0.105	0.515	23.843777	-104.223411
NOMBRE DE DIOS	236.80	3	0	4892	80.6	4.3	5.6	2.7	3.3	2.0	0.0	1.5	80.6	4.3	15.1	0.086	0.516	23.854887	-104.252502
T. DER. CONSTANCIA	240.60	3	0	4318	79.6	3.9	5.9	2.0	3.7	2.8	0.0	2.1	79.6	3.9	16.5	0.078	0.522	23.874807	-104.276078
T. DER. TUITAN	250.80	3	0	4048	77.1	6.1	5.5	2.8	3.3	2.6	0.0	2.6	77.1	6.1	16.8	0.096	0.511	23.929762	-104.336093
T. DER. INDEPENDENCIA Y LIBERTAD	261.70	1	0	4301	81.3	5.2	4.4	1.6	3.2	2.9	0.0	1.4	81.3	5.2	13.5	0.112	0.520	23.991366	-104.372343
T. DER. INDEPENDENCIA Y LIBERTAD	261.70	3	0	4775	74.0	5.7	6.2	4.1	4.1	3.3	0.0	2.6	74.0	5.7	20.3	0.092	0.505	24.003740	-104.382620
T. IZQ. PARRAS DE LA FUENTE	276.60	3	1	2761	84.0	2.6	3.9	2.5	2.4	1.6	0.0	3.0	84.0	2.6	13.4	0.137	0.505	24.022816	-104.540739
T. IZQ. PARRAS DE LA FUENTE	276.60	3	2	2705	82.9	2.1	4.5	2.1	3.0	2.3	0.0	3.1	82.9	2.1	15.0	0.110	0.505	24.022816	-104.540739
T. DER. PERIFERICO DURANGO	278.80	1	1	3431	90.8	2.0	2.8	1.3	1.4	0.3	0.0	1.4	90.8	2.0	7.2	0.114	0.512	24.018743	-104.504733
T. DER. PERIFERICO DURANGO	278.80	1	2	3505	88.6	1.4	3.6	1.4	1.7	1.1	0.0	2.2	88.6	1.4	10.0	0.091	0.512	24.018743	-104.504733
DURANGO	287.30	1	1	4555	82.5	3.1	4.7	2.0	3.1	1.7	0.0	2.9	82.5	3.1	14.4	0.102	0.503	24.029565	-104.604849
DURANGO	287.30	1	2	4613	81.0	3.4	5.2	2.1	3.3	2.2	0.0	2.8	81.0	3.4	15.6	0.108	0.503	24.029565	-104.604849







ZACATECAS

34 CARR: SAN RAFAEL - VILLA GARCIA

CLAVE: 00525

RUTA: AGS-ZAC

AÑO: 2010

LUGAR	ESTACION				CLASIFICACION VEHICULAR EN PORCIENTO								COORDENADAS						
	KM	TE	SC	TDPA	A	B	C2	C3	T3S2	T3S3	T3S2R4	OTROS	A	B	C	K'	D	LATITUD	LONGITUD
VILLA GARCIA	10.00	1	0	2774	86.7	4.5	2.3	0.7	2.9	1.3	1.0	0.6	86.7	4.5	8.8	0.074	0.502	22.147776	-101.958698

35 CARR: SANTA MONICA - POZO DE GAMBOA

CLAVE: 32568

RUTA: ZAC

AÑO: 2010

LUGAR	ESTACION				CLASIFICACION VEHICULAR EN PORCIENTO								COORDENADAS						
	KM	TE	SC	TDPA	A	B	C2	C3	T3S2	T3S3	T3S2R4	OTROS	A	B	C	K'	D	LATITUD	LONGITUD
T. C. AGUASCALIENTES - ZACATECAS	0.00	3	0	5917	81.9	4.3	4.5	3.7	3.0	1.3	1.2	0.1	81.9	4.3	13.8	0.073	0.511	22.759008	-102.422201
TACOALECHE	7.60	3	0	4354	79.9	4.0	4.3	4.0	3.1	1.9	1.9	0.9	79.9	4.0	16.1	0.062	0.516	22.808100	-102.407410
POZO DE GAMBOA	34.50																		

36 CARR: SOMBRERETE - GONZALEZ ORTEGA

CLAVE:

RUTA: ZAC

AÑO: 2010

LUGAR	ESTACION				CLASIFICACION VEHICULAR EN PORCIENTO								COORDENADAS						
	KM	TE	SC	TDPA	A	B	C2	C3	T3S2	T3S3	T3S2R4	OTROS	A	B	C	K'	D	LATITUD	LONGITUD
T.C. ZACATECAS - DURANGO	0.00	3	0	796	86.4	4.6	2.8	1.5	2.0	1.0	0.3	1.4	86.4	4.6	9.0	0.104	0.508	23.658623	-103.543674
GONZALEZ ORTEGA	38.70	1	0	707	87.6	4.3	2.4	1.4	1.5	1.1	0.6	1.1	87.6	4.3	8.1	0.095	0.514	23.954148	-103.451419

37 CARR: LIBRAMIENTO NORESTE DE ZACATECAS (CUOTA)

CLAVE:

RUTA: ZAC-D

AÑO: 2010

LUGAR	ESTACION				CLASIFICACION VEHICULAR EN PORCIENTO								COORDENADAS						
	KM	TE	SC	TDPA	A	B	C2	C3	T3S2	T3S3	T3S2R4	OTROS	A	B	C	K'	D	LATITUD	LONGITUD
T.C. AGUASCALIENTES - ZACATECAS	0.00	3	0	4173	64.4	6.1	3.7	7.2	9.5	4.4	4.4	0.3	64.4	6.1	29.5	0.075	0.517	22.756367	-102.458745
T.C. ENT. MORELOS - SALTILLO	21.00	1	0	2434	60.3	6.2	3.6	9.4	10.3	5.6	4.2	0.4	60.3	6.2	33.5	0.095	0.505	22.853049	-102.618553

38 CARR: COSIO - GUADALUPE

CLAVE:

RUTA: MEX-ZAC

AÑO: 2010

LUGAR	ESTACION				CLASIFICACION VEHICULAR EN PORCIENTO								COORDENADAS						
	KM	TE	SC	TDPA	A	B	C2	C3	T3S2	T3S3	T3S2R4	OTROS	A	B	C	K'	D	LATITUD	LONGITUD
T. C. AGUASCALIENTES - ZACATECAS	0.00	3	0	6964	90.3	3.6	2.9	1.4	1.2	0.1	0.3	0.2	90.3	3.6	6.1	0.064	0.505	22.381556	-102.300778
LIM. EDOS. TERM. AGS. PPIA. ZAC.	6.79																		
T.C.(ENT. CUAUHEMOC - ENT. OSIRIS (CUOTA))	12.96	3	0	1326	89.8	3.6	2.8	1.8	1.0	0.3	0.4	0.3	89.8	3.6	6.6	0.085	0.507	22.485358	-102.360925
T.C. LIBRAMIENTO DE GUADALUPE - ZACATECAS	58.93	1	0	13118	90.1	3.3	2.6	1.7	1.7	0.3	0.2	0.1	90.1	3.3	6.6	0.080	0.516	22.735417	-102.495916

ZACATECAS

39 CARR: TEPATITLAN - JARALILLO

CLAVE: 00146

RUTA: MEX-JAL-ZAC

AÑO: 2010

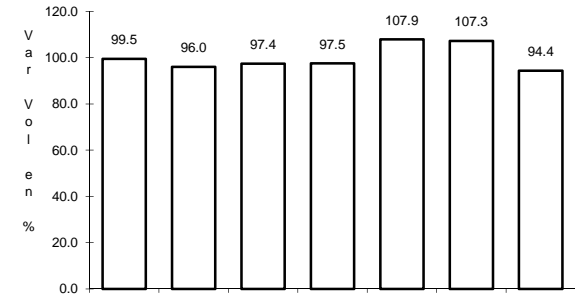
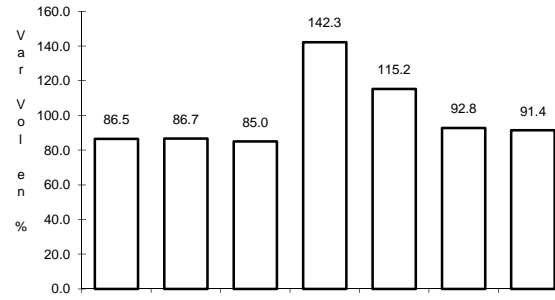
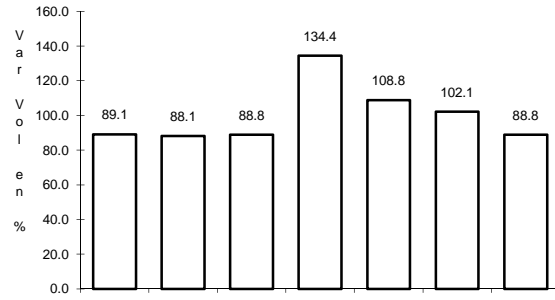
L U G A R	E S T A C I O N				C L A S I F I C A C I O N V E H I C U L A R E N P O R C I E N T O								C O O R D E N A D A S						
	KM	TE	SC	TDPA	A	B	C2	C3	T3S2	T3S3	T3S2R4	OTROS	A	B	C	K'	D	LATITUD	LONGITUD
T. C. LAGOS DE MORENO - ZAPOTLANEJO	0.00	3	0	5148	84.2	2.3	5.3	2.6	3.6	1.0	0.0	1.0	84.2	2.3	13.5	0.090	0.511	20.783147	-102.786498
T. IZO. MEZCALA	22.40	3	0	1378	90.8	2.1	4.8	1.2	0.3	0.1	0.0	0.7	90.8	2.1	7.1	0.123	0.511	20.961656	-102.815921
YAHUALICA DE GONZALEZ GALLO	57.40	3	0	2997	85.4	3.1	6.6	2.3	0.9	0.3	0.0	1.4	85.4	3.1	11.5	0.095	0.521	21.191766	-102.884155
T. DER. MEXTICACAN	72.45	3	0	1392	91.7	1.9	3.9	1.3	0.4	0.2	0.0	0.6	91.7	1.9	6.4	0.103	0.542	21.251675	-102.803772
LIM. EDOS. TERM. JAL. PPIA. ZAC.	83.50																		
LIM. EDOS. TERM. ZAC. PPIA. JAL.	106.00																		
TEOCALTICHE	111.00	1	0	3207	88.6	2.8	4.6	1.2	1.2	0.5	0.0	1.1	88.6	2.8	8.6	0.084	0.538	21.425777	-102.589565
TEOCALTICHE	111.00	3	0	3661	91.5	1.9	2.5	1.2	1.0	0.6	0.0	1.3	91.5	1.9	6.6	0.073	0.511	21.454917	-102.556023
T. C. LEON - AGUASCALIENTES	157.00	1	0	2663	90.5	1.2	4.1	1.0	1.3	0.8	0.0	1.1	90.5	1.2	8.3	0.076	0.507	21.642819	-102.279190



1 CARR: AGUASCALIENTES - JALPA

CLAVE: 00095

ruta: MEX-070



Km: 0.00 Tipo: 3 Sent: 1

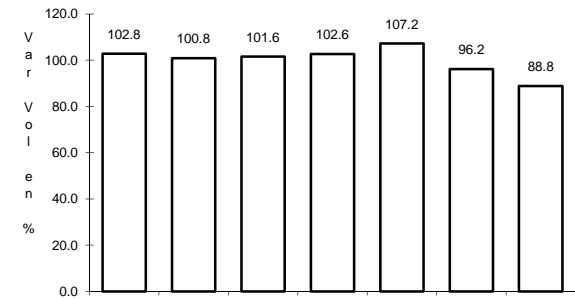
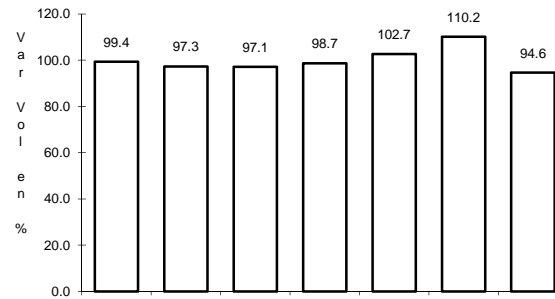
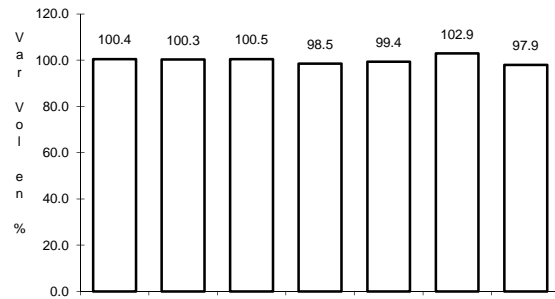
Km: 0.00 Tipo: 3 Sent: 2

Km: 91.10 Tipo: 1 Sent: 0

2 CARR: AGUASCALIENTES - ZACATECAS

CLAVE: 00524

ruta: MEX-045



Km: 6.00 Tipo: 1 Sent: 1

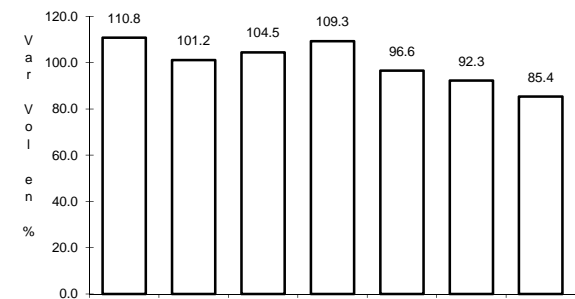
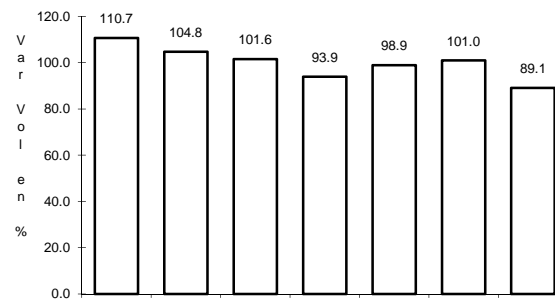
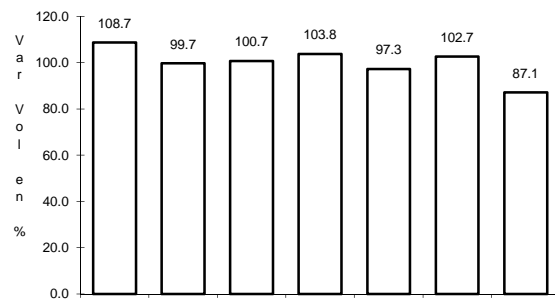
Km: 6.00 Tipo: 1 Sent: 2

Km: 100.00 Tipo: 1 Sent: 0

3 CARR: CARBONERA - T. C. (ENT. MORELOS - SALTILLO)

CLAVE: 00218

ruta: MEX-062



Km: 0.00 Tipo: 3 Sent: 0

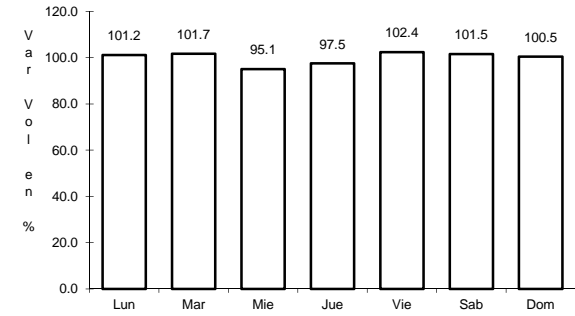
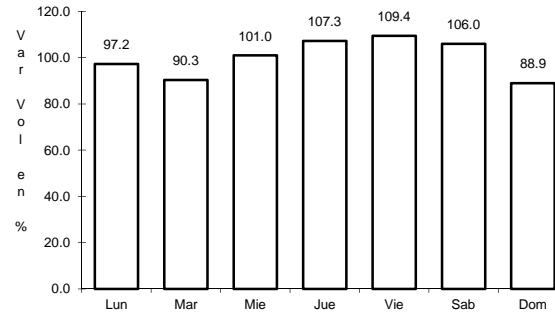
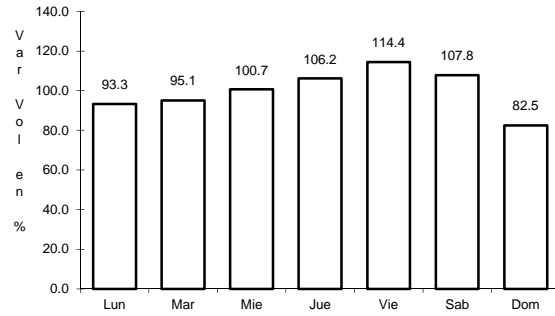
Km: 18.00 Tipo: 3 Sent: 0

Km: 112.00 Tipo: 1 Sent: 0

4 CARR: ENT. LA CHICHARRONA - CUENCAME

CLAVE: 00152

RUTA: MEX-049



Km: 0.00      Tipo: 3      Sent: 1

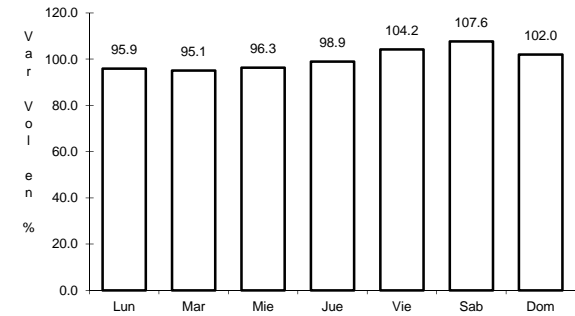
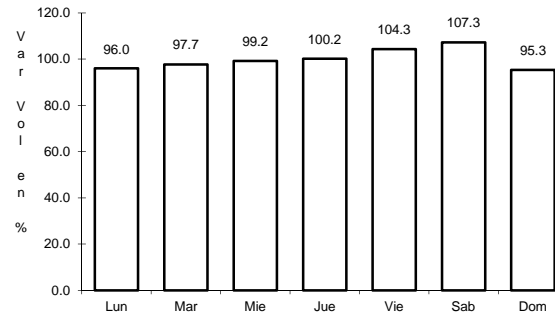
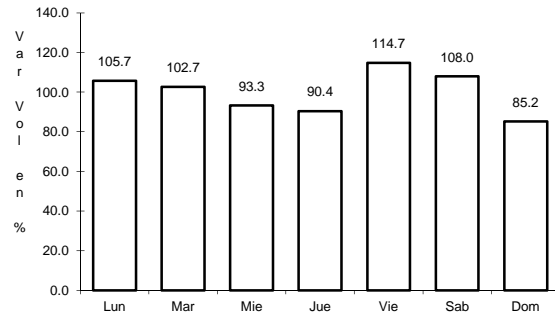
Km: 0.00      Tipo: 3      Sent: 2

Km: 199.10      Tipo: 1      Sent: 0

5 CARR: ENT. MORELOS - SALTILLO

CLAVE: 00149

RUTA: MEX-054



Km: 0.00      Tipo: 3      Sent: 0

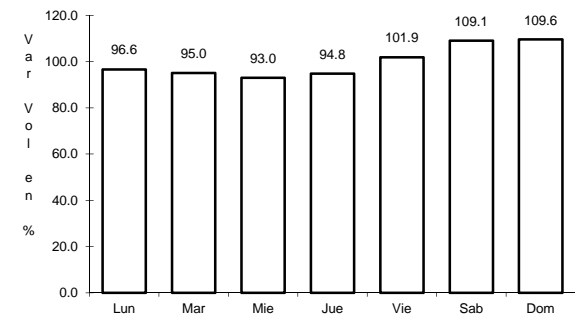
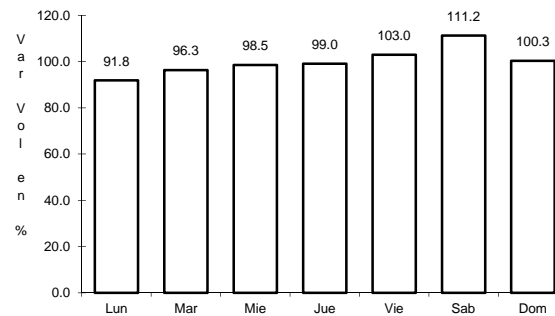
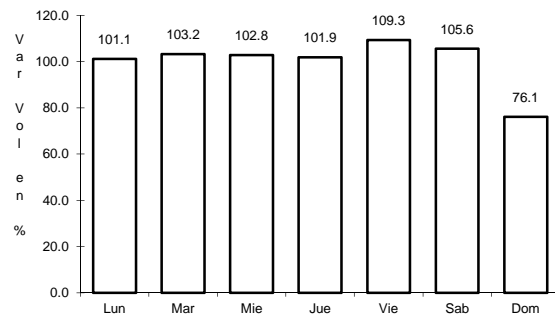
Km: 354.00      Tipo: 1      Sent: 1

Km: 354.00      Tipo: 1      Sent: 2

6 CARR: ENT. RIVIER - SAN MARCOS

CLAVE: 00285

RUTA: MEX-025



Km: 0.00      Tipo: 3      Sent: 0

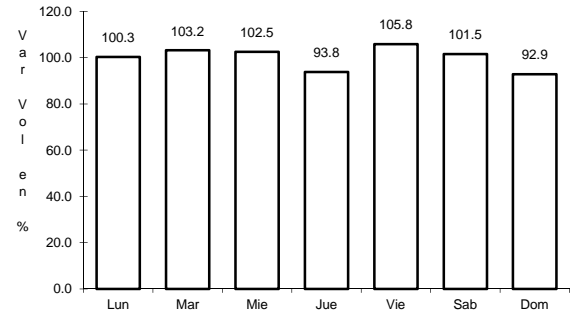
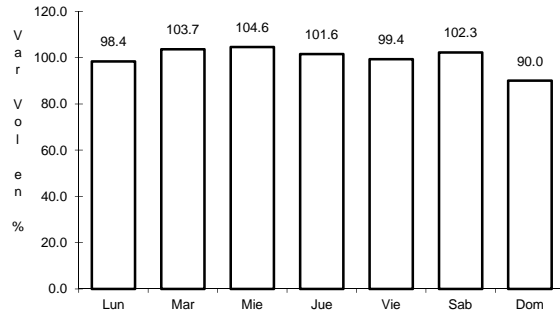
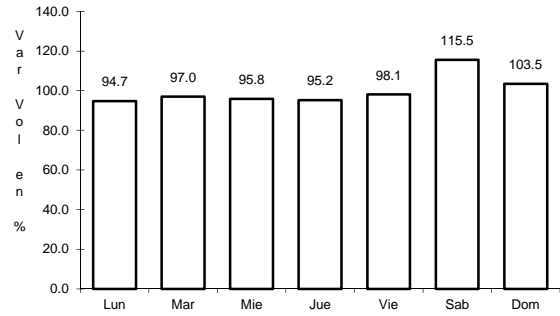
Km: 30.00      Tipo: 3      Sent: 0

Km: 56.00      Tipo: 1      Sent: 0

7 CARR: ENT. TESISTAN - ENT. MALPASO

CLAVE: 00584

ruta: MEX-023



Km: 0.00      Tipo: 3      Sent: 0

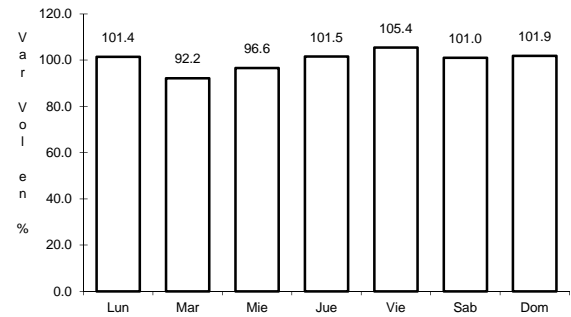
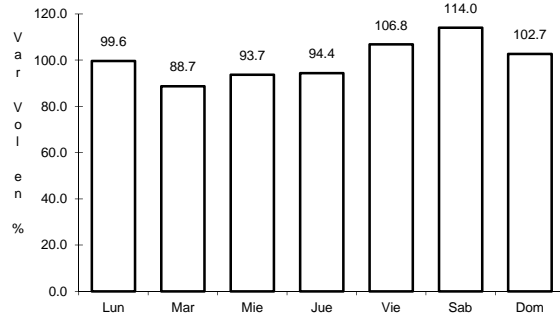
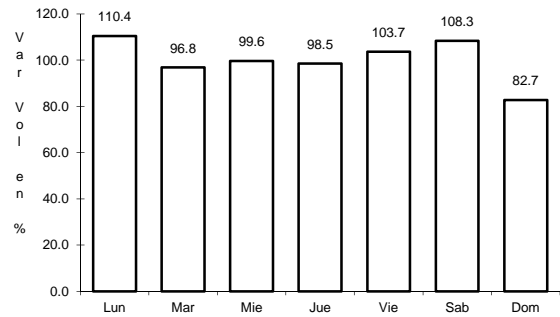
Km: 147.50      Tipo: 3      Sent: 0

Km: 275.00      Tipo: 1      Sent: 0

8 CARR: FRESNILLO - VALPARAISO

CLAVE: 32547

ruta: MEX-044



Km: 0.00      Tipo: 3      Sent: 0

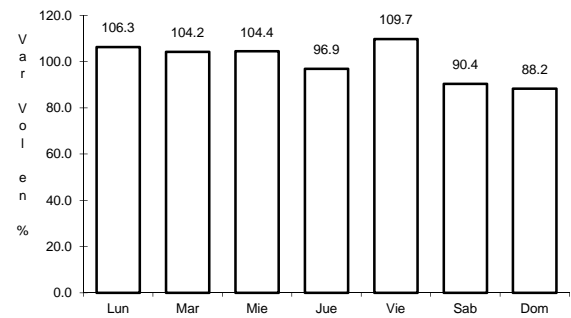
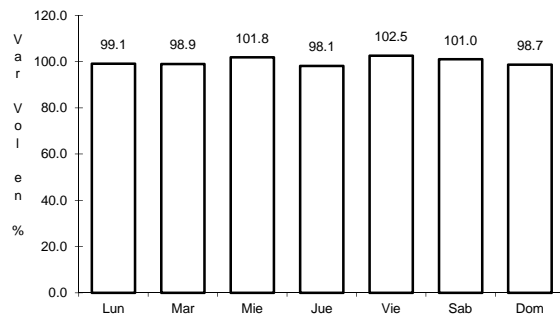
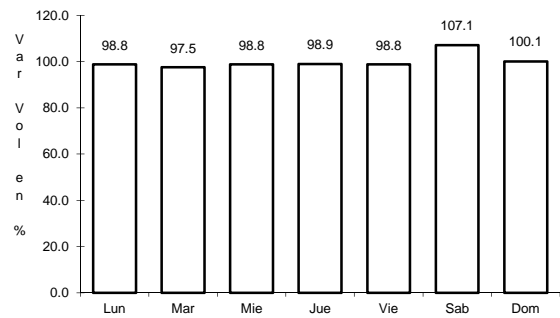
Km: 45.00      Tipo: 3      Sent: 0

Km: 90.00      Tipo: 1      Sent: 0

9 CARR: GUADALAJARA - ZACATECAS

CLAVE: 00150

ruta: MEX-054



Km: 6.19      Tipo: 3      Sent: 0

Km: 159.39      Tipo: 1      Sent: 0

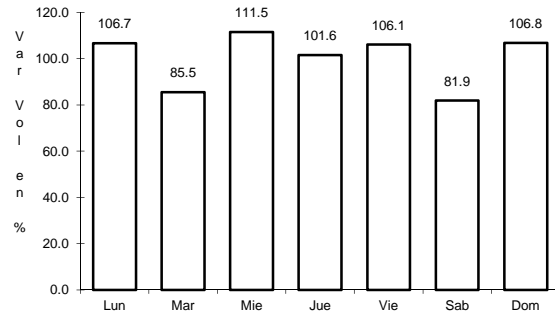
Km: 311.83      Tipo: 1      Sent: 0



13 CARR: RAMAL A AEROPUERTO ZACATECAS

CLAVE: 32546

RUTA: MEX



Km: 0.00

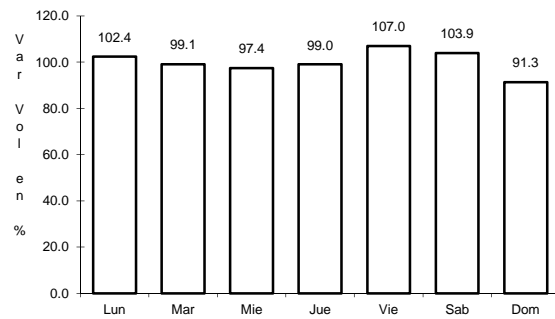
Tipo: 3

Sent: 0

14 CARR: RAMAL A CONCEPCION DEL ORO

CLAVE: 32565

RUTA: MEX



Km: 0.00

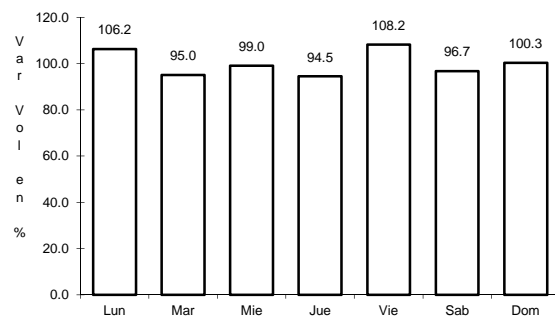
Tipo: 3

Sent: 0

15 CARR: RAMAL A FRANCISCO MURGUIA (NIEVES)

CLAVE: 32541

RUTA: MEX-114



Km: 0.00

Tipo: 3

Sent: 0

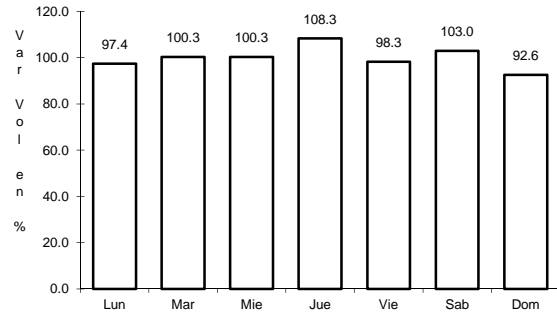




24 CARR: CALERA DE VICTOR ROSALES - SANTIAGUILLO

CLAVE: 32016

ruta: ZAC-016

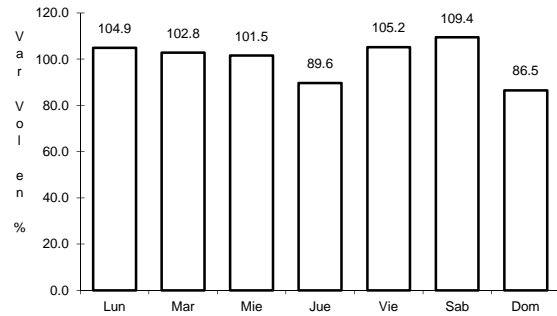


Km: 0.00      Tipo: 3      Sent: 0

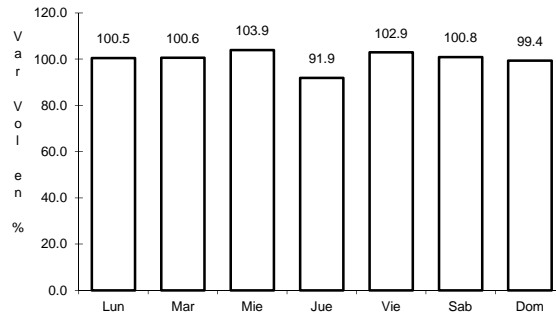
25 CARR: CIENEGUILLAS - ZACATECAS

CLAVE: 32579

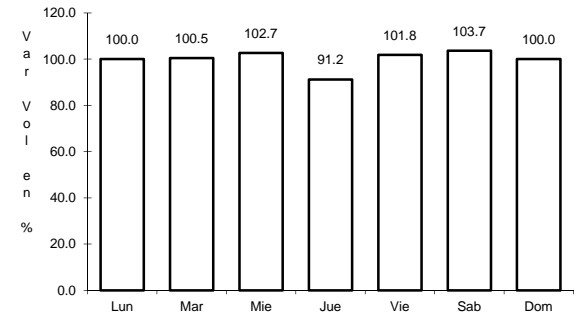
ruta: ZAC



Km: 0.00      Tipo: 3      Sent: 0



Km: 7.70      Tipo: 3      Sent: 1

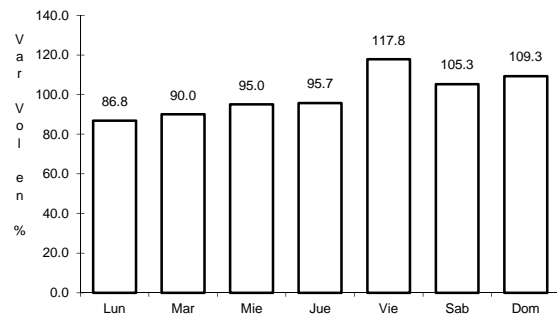


Km: 7.70      Tipo: 3      Sent: 2

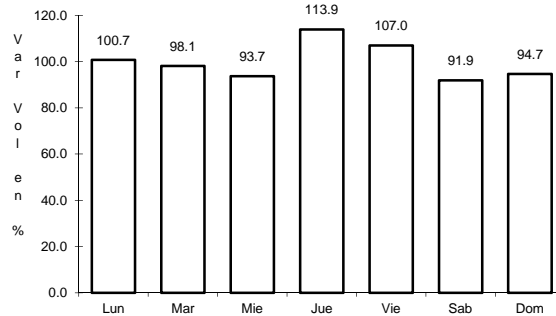
26 CARR: CORRAL DE PIEDRAS - TLALTENANGO

CLAVE:

ruta: ZAC



Km: 0.00      Tipo: 3      Sent: 0



Km: 57.10      Tipo: 1      Sent: 0

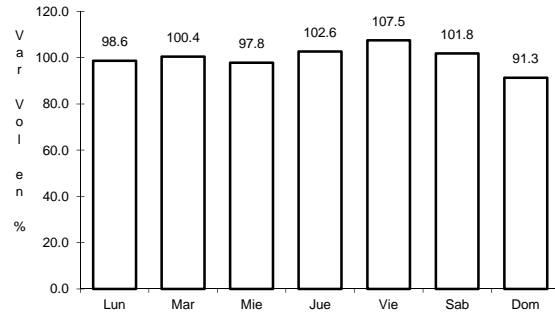




30 CARR: RAMAL A LORETO

CLAVE: 32067

RUTA: ZAC



Km: 0.00

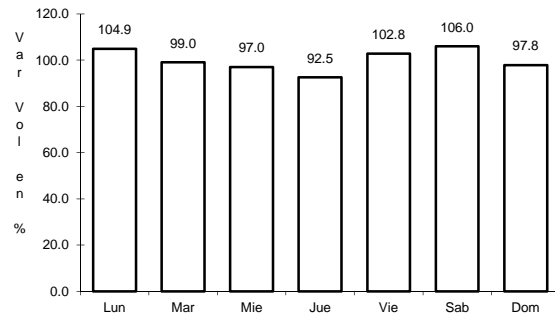
Tipo: 3

Sent: 0

31 CARR: RAMAL A NOCHISTLAN

CLAVE: 32545

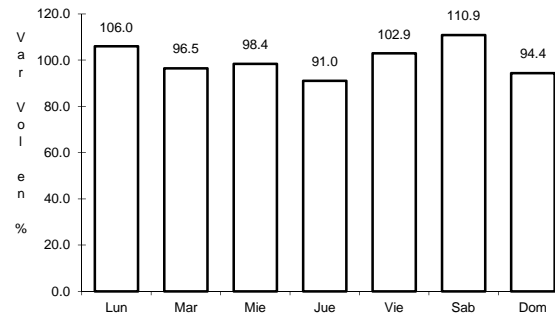
RUTA: ZAC



Km: 0.00

Tipo: 3

Sent: 0



Km: 5.70

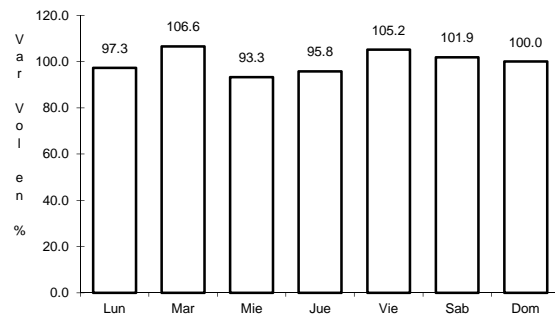
Tipo: 1

Sent: 0

32 CARR: RAMAL A SAN PEDRO PIEDRA GORDA

CLAVE: 00553

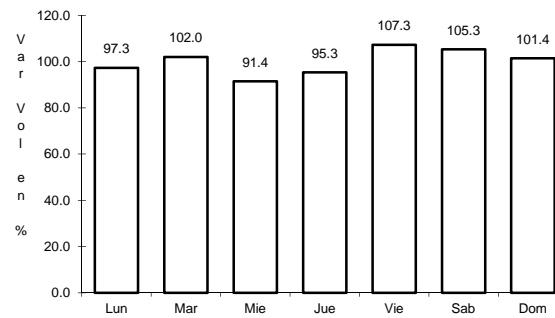
RUTA: ZAC-AGS



Km: 0.00

Tipo: 3

Sent: 0



Km: 9.00

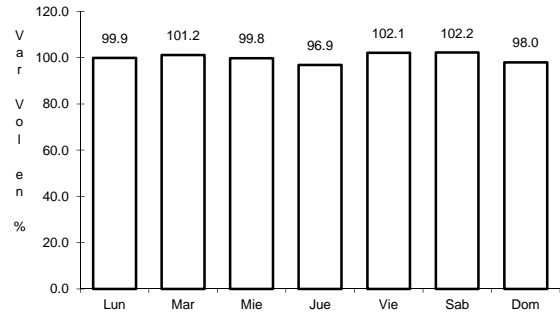
Tipo: 1

Sent: 0





39 CARR: TEPATITLAN - JARALILLO

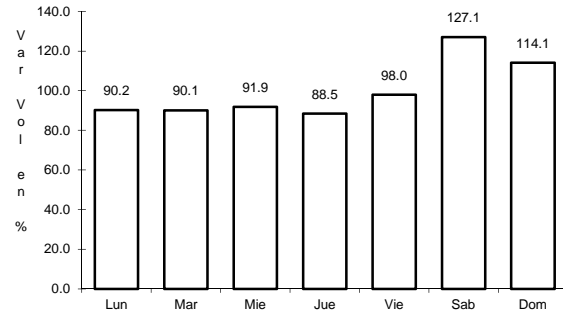


Km: 0.00

Tipo: 3

Sent: 0

CLAVE: 00146

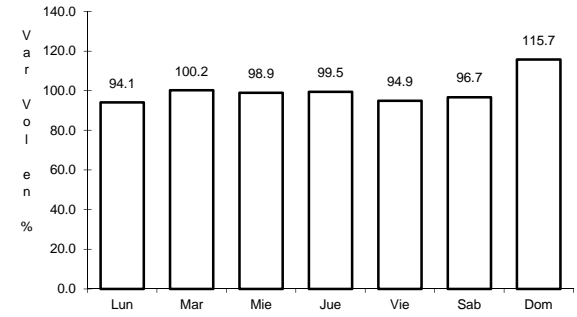


Km: 72.45

Tipo: 3

Sent: 0

RUTA: MEX-JAL-ZAC



Km: 157.00

Tipo: 1

Sent: 0