

YUCATAN

---RED FEDERAL LIBRE---

1	CAMPECHE - MERIDA	MEX-180
2	CAMPECHE - UMAN	MEX-261
3	CANSAHCAB - TIZIMIN	MEX-176
4	CONKAL - PUERTO CHICXULUB	MEX
5	DZITBALCHE - ENT. SAN BERNARDO	MEX-265
6	ENT. POXILA - MERIDA	MEX
7	HUNUCMA - SISAL	MEX-025
8	LIBRAMIENTO DE PROGRESO	MEX
9	MERIDA - CELESTUN	MEX-281
10	MERIDA - DZILAM DE BRAVO	MEX-178
11	MERIDA - PROGRESO	MEX-261
12	MERIDA - PUERTO JUAREZ	MEX-180
13	MERIDA - TEKANTO	MEX
14	MUNA - FELIPE CARRILLO PUERTO	MEX-184
15	RAMAL A PANABA	MEX
16	TEYA -PETO	MEX
17	TZUCACAB - SANTA ROSA	MEX
18	VALLADOLID - FELIPE CARRILLO PUERTO	MEX-295
19	VALLADOLID - RIO LAGARTOS	MEX-295

---RED FEDERAL DE CUOTA---

20	KANTUNIL - CANCUN (CUOTA)	MEX-180D
----	---------------------------	----------

---RED ESTATAL LIBRE---

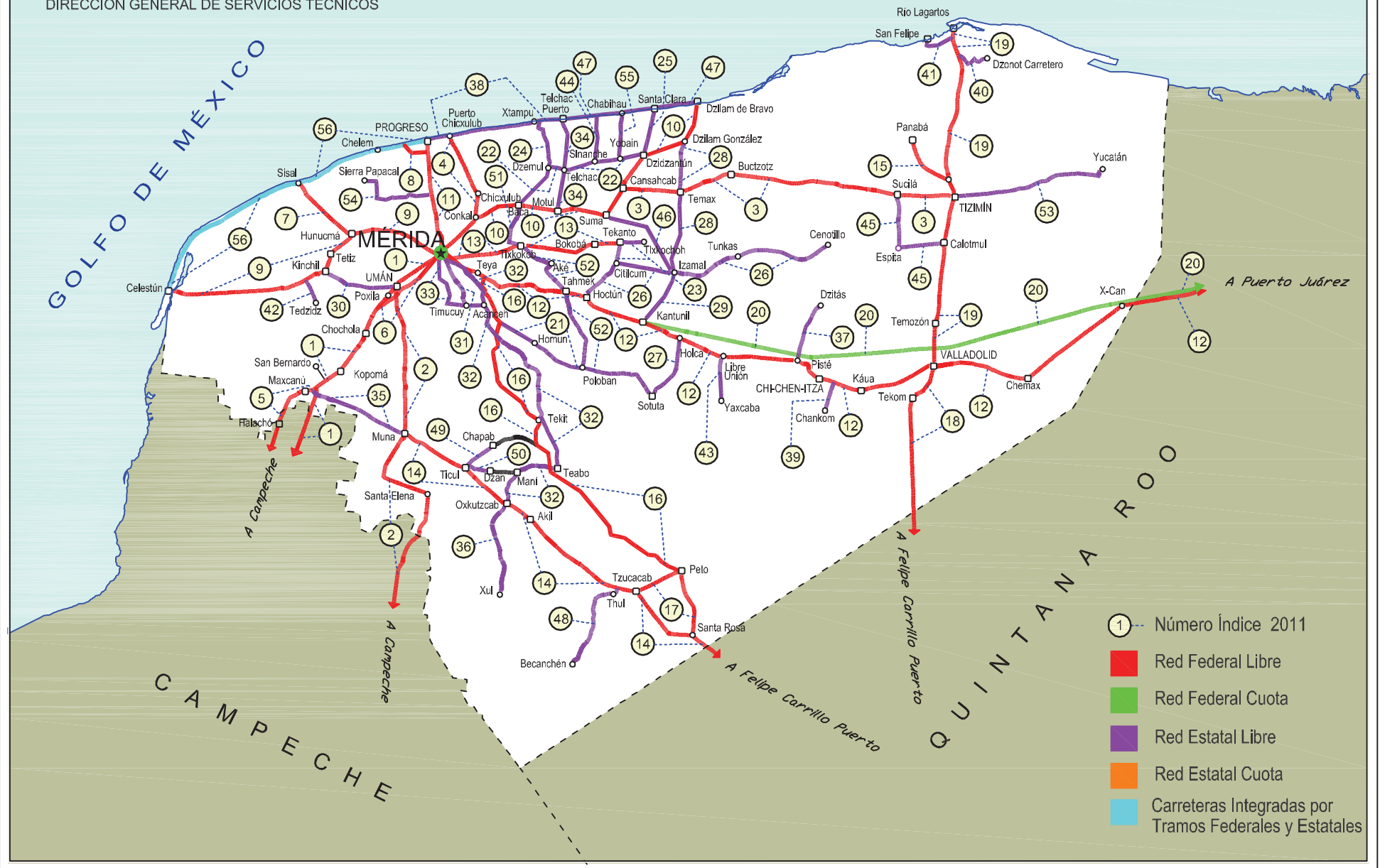
21	ACANCEH - ESTACION POLOBAN	YUC
22	BACA - DZIDZANTUN	YUC
23	CITILCUM - TIXKOCHOH	YUC
24	DZEMUL - XTAMPU	YUC
25	DZIDZANTUN - SANTA CLARA	YUC
26	HOCTUN - CENOTILLO	YUC-011
27	HOLCA - SOTUTA	YUC
28	IZAMAL - DZILAM GONZALEZ	YUC
29	KANTUNIL - IZAMAL	YUC
30	KINCHIL - UMAN	YUC
31	MERIDA - ACANCEH	YUC
32	MERIDA - OXKUTZCAB	YUC-018
33	MERIDA - TIMUCUY	YUC
34	MOTUL - PUERTO TELCHAC	YUC-172
35	MUNA - MAXCANU	YUC
36	OXKUTZCAB - XUL	YUC-031
37	PISTE - DZITAS	YUC-013
38	PROGRESO - TELCHAC PUERTO	YUC-027
39	RAMAL A CHANKOM	YUC
40	RAMAL A DZONOT CARRETERO	YUC
41	RAMAL A SAN FELIPE	YUC
42	RAMAL A TEDZIDZ	YUC
43	RAMAL A YAXCABA	YUC-289
44	SINANCHE - XITIBCANUL	YUC
45	SUCILA - CALOTMUL	YUC
46	SUMA - IZAMAL	YUC-081
47	TELCHAC PUERTO - DZILAM DE BRAVO	YUC
48	THUL - BECANCHEN	YUC-281
49	TICUL - CHAPAB	YUC
50	TICUL - DZAN	YUC
51	TIXKOKOB - BACA	YUC
52	TIXKOKOB - SOTUTA	YUC
53	TIZIMIN - YUCATAN	YUC
54	YAXCHE - SIERRA PAPACAL	YUC
55	YOBAIN - CHABIAU	YUC

---CARRETERAS INTEGRADAS POR TRAMOS FEDERALES Y ESTATALES---

56	PROGRESO - CELESTUN	MEX-YUC
----	---------------------	---------

31 YUCATÁN

SECRETARÍA DE COMUNICACIONES Y TRANSPORTES
DIRECCIÓN GENERAL DE SERVICIOS TÉCNICOS



- ① - Número Índice 2011
- Red Federal Libre
- Red Federal Cuota
- Red Estatal Libre
- Red Estatal Cuota
- Carreteras Integradas por Tramos Federales y Estatales

YUCATAN

1 CARR: CAMPECHE - MERIDA

CLAVE: 00066

RUTA: MEX-180

AÑO: 2010

LUGAR	ESTACION				CLASIFICACION VEHICULAR EN PORCIENTO								COORDENADAS						
	KM	TE	SC	TDPA	A	B	C2	C3	T3S2	T3S3	T3S2R4	OTROS	A	B	C	K'	D	LATITUD	LONGITUD
CAMPECHE	0.00	3	1	3025	77.4	5.3	4.6	2.9	4.8	1.0	3.6	0.4	77.4	5.3	17.3	0.074	0.508	19.890338	-90.468097
CAMPECHE	0.00	3	2	3120	77.0	5.5	4.5	3.1	5.1	1.0	3.4	0.4	77.0	5.5	17.5	0.072	0.508	19.890338	-90.468097
T. DER. LIBRAMIENTO DE CAMPECHE	7.00	3	0	7872	76.9	5.6	4.9	2.9	4.8	1.0	3.5	0.4	76.9	5.6	17.5	0.078	0.505	19.891933	-90.462338
TENABO	40.00	1	0	6165	77.0	5.6	4.8	3.1	4.8	0.9	3.4	0.4	77.0	5.6	17.4	0.084	0.508	20.030413	-90.230013
T. DER. LIBRAMIENTO DE POMUCH (2° ACCESO)	50.00	3	0	6681	76.8	5.5	4.8	3.1	5.0	1.0	3.4	0.4	76.8	5.5	17.7	0.077	0.501	20.149263	-90.163513
LIM. EDOS. TERM. CAMP. PPIA. YUC.	96.96																		
KOPOMA	124.29	3	0	6056	69.8	5.0	7.0	5.1	6.6	1.3	4.9	0.3	69.8	5.0	25.2	0.068	0.501	20.662001	-89.890946
T. DER. LIBRAMIENTO DE CHOCHOLA (1° ACCESO)	137.89	1	0	6577	71.6	4.5	6.6	4.8	6.5	1.3	4.4	0.3	71.6	4.5	23.9	0.077	0.501	20.734868	-89.838657
T. IZQ. UMAN	146.99	3	0	5051	70.9	4.7	6.8	4.7	6.8	1.2	4.6	0.3	70.9	4.7	24.4	0.066	0.503	20.797663	-89.809641
X. C. CAMPECHE - UMAN	160.49	1	0	5756	69.8	5.1	7.0	5.2	6.5	1.4	4.7	0.3	69.8	5.1	25.1	0.067	0.500	20.836566	-89.753718
T. C. PERIFERICO DE MERIDA	171.21																		

2 CARR: CAMPECHE - UMAN

CLAVE: 00164

RUTA: MEX-261

AÑO: 2010

LUGAR	ESTACION				CLASIFICACION VEHICULAR EN PORCIENTO								COORDENADAS						
	KM	TE	SC	TDPA	A	B	C2	C3	T3S2	T3S3	T3S2R4	OTROS	A	B	C	K'	D	LATITUD	LONGITUD
CAMPECHE	0.00																		
X. C. LIBRAMIENTO DE CAMPECHE	7.00	1	0	4146	82.9	2.8	5.7	2.8	1.5	3.8	0.4	0.1	82.9	2.8	14.3	0.080	0.501	19.850519	-90.470521
X. C. LIBRAMIENTO DE CAMPECHE	7.00	3	0	1729	81.8	2.9	5.8	3.1	1.6	4.3	0.4	0.1	81.8	2.9	15.3	0.080	0.502	19.849345	-90.465738
T. IZQ. TENABO	30.88	1	0	1211	82.5	2.9	5.5	2.9	1.6	4.1	0.4	0.1	82.5	2.9	14.6	0.078	0.501	19.804698	-90.275290
T. IZQ. TENABO	30.88	3	0	1220	82.3	2.9	5.7	2.8	1.6	4.2	0.4	0.1	82.3	2.9	14.8	0.077	0.501	19.804532	-90.273139
T. DER. EDZNA	44.51	1	0	1093	82.7	2.6	5.7	2.9	1.5	4.1	0.4	0.1	82.7	2.6	14.7	0.075	0.501	19.743675	-90.178079
T. DER. EDZNA	44.51	3	0	1017	82.8	2.6	5.6	2.9	1.5	4.1	0.4	0.1	82.8	2.6	14.6	0.077	0.502	19.744500	-90.173077
HOPELCHEN	84.88	1	0	1324	82.0	2.9	5.7	3.0	1.7	4.2	0.4	0.1	82.0	2.9	15.1	0.095	0.519	19.752606	-89.854478
BOLONCHEN DE REJON	117.88	3	0	714	82.4	2.9	5.8	2.8	1.6	4.0	0.4	0.1	82.4	2.9	14.7	0.091	0.516	20.007031	-89.736023
LIM. EDOS. TERM. CAMP. PPIA. YUC.	126.88																		
T. DER. SAYIL	140.88	1	0	631	82.1	2.8	6.0	2.9	1.6	4.1	0.4	0.1	82.1	2.8	15.1	0.089	0.506	20.211467	-89.665906
SANTA ELENA	158.88	1	0	841	83.0	2.7	5.5	2.9	1.6	3.8	0.4	0.1	83.0	2.7	14.3	0.086	0.503	20.318666	-89.643248
T. IZQ. RUINAS DE UXMAL	172.48	1	0	651	83.0	2.6	5.4	3.0	1.5	4.0	0.4	0.1	83.0	2.6	14.4	0.057	0.501	20.362922	-89.766857
MUNA	187.43	1	0	1147	82.9	2.7	5.5	3.0	1.5	3.9	0.4	0.1	82.9	2.7	14.4	0.092	0.507	20.460925	-89.725142
MUNA	187.43	3	0	3102	82.6	2.6	6.0	2.8	1.5	4.0	0.4	0.1	82.6	2.6	14.8	0.073	0.503	20.512171	-89.709087
XPETEN	225.38	1	0	3988	81.7	2.8	6.2	3.1	1.6	4.1	0.4	0.1	81.7	2.8	15.5	0.074	0.503	20.804204	-89.734507
UMAN	230.83	1	0	2903	82.5	2.7	5.9	2.9	1.6	3.9	0.4	0.1	82.5	2.7	14.8	0.062	0.501	20.868042	-89.746231

YUCATAN

3 CARR: CANSAHCAB - TIZIMIN

CLAVE: 31014

RUTA: MEX-176

AÑO: 2010

LUGAR	ESTACION				CLASIFICACION VEHICULAR EN PORCIENTO								COORDENADAS						
	KM	TE	SC	TDPA	A	B	C2	C3	T3S2	T3S3	T3S2R4	OTROS	A	B	C	K'	D	LATITUD	LONGITUD
CANSAHCAB	0.00	3	0	2190	80.0	2.7	7.1	2.8	3.3	1.5	1.8	0.8	80.0	2.7	17.3	0.091	0.502	21.156897	-89.079424
TEMAX	16.73	3	0	1924	79.0	2.9	6.7	3.2	3.7	1.4	2.5	0.6	79.0	2.9	18.1	0.094	0.506	21.154637	-88.917611
BUCTZOTZ	32.92	3	0	1902	79.5	3.0	6.5	3.0	3.7	1.2	2.5	0.6	79.5	3.0	17.5	0.102	0.534	21.200036	-88.777079
TIZIMIN	99.14	1	0	2423	80.1	3.6	6.6	2.3	3.3	1.2	2.4	0.5	80.1	3.6	16.3	0.078	0.505	21.149936	-88.189326

4 CARR: CONKAL - PUERTO CHICXULUB

CLAVE: 31004

RUTA: MEX

AÑO: 2010

LUGAR	ESTACION				CLASIFICACION VEHICULAR EN PORCIENTO								COORDENADAS						
	KM	TE	SC	TDPA	A	B	C2	C3	T3S2	T3S3	T3S2R4	OTROS	A	B	C	K'	D	LATITUD	LONGITUD
CONKAL	0.00	3	0	3273	86.3	2.4	3.7	1.4	2.9	1.5	1.2	0.6	86.3	2.4	11.3	0.070	0.500	21.089720	-89.519629
PUERTO CHICXULUB	27.00	1	0	1109	86.9	2.5	3.2	0.9	2.6	1.5	1.8	0.6	86.9	2.5	10.6	0.092	0.509	21.286755	-89.601528

5 CARR: DZITBALCHE - ENT. SAN BERNARDO

CLAVE: 00162

RUTA: MEX-265

AÑO: 2010

LUGAR	ESTACION				CLASIFICACION VEHICULAR EN PORCIENTO								COORDENADAS						
	KM	TE	SC	TDPA	A	B	C2	C3	T3S2	T3S3	T3S2R4	OTROS	A	B	C	K'	D	LATITUD	LONGITUD
T. C. CAMPECHE - MERIDA	0.00																		
T. IZQ. LIBRAMIENTO DE BECAL (1º ACCESO)	12.33	1	0	2728	85.6	4.5	6.0	1.8	1.1	0.2	0.3	0.5	85.6	4.5	9.9	0.072	0.508	20.423037	-90.032412
T. IZQ. LIBRAMIENTO DE BECAL (2º ACCESO)	15.41	3	0	3120	85.3	4.4	5.8	1.6	1.2	0.5	0.7	0.5	85.3	4.4	10.3	0.067	0.503	20.450528	-90.040117
LIM. EDOS. TERM. CAMP. PPIA. YUC.	15.80																		
HALACHO	21.08	1	0	4519	82.3	6.9	4.2	3.5	1.2	1.1	0.2	0.6	82.3	6.9	10.8	0.068	0.502	20.469707	-90.067022
T. IZQ. LIBRAMIENTO DE MAXCANU (1º ACCESO)	35.60	1	0	3479	80.1	5.5	6.1	3.4	2.7	1.5	0.2	0.5	80.1	5.5	14.4	0.077	0.501	20.584237	-90.019069
T. DER. MUNA	40.36	3	0	3656	81.7	4.6	6.2	3.7	1.4	1.4	0.2	0.8	81.7	4.6	13.7	0.066	0.501	20.601926	-89.975188
T. C. CAMPECHE - MERIDA	41.53																		

6 CARR: ENT. POXILA - MERIDA

CLAVE: 31003

RUTA: MEX

AÑO: 2010

LUGAR	ESTACION				CLASIFICACION VEHICULAR EN PORCIENTO								COORDENADAS						
	KM	TE	SC	TDPA	A	B	C2	C3	T3S2	T3S3	T3S2R4	OTROS	A	B	C	K'	D	LATITUD	LONGITUD
T. C. CAMPECHE - MERIDA	0.00																		
UMAN	9.46	1	0	4654	82.0	3.5	4.8	3.4	2.8	0.9	1.7	0.9	82.0	3.5	14.5	0.064	0.502	20.866597	-89.757833
X. PERIFERICO MERIDA	16.37	1	1	8754	85.5	3.6	3.9	2.8	1.3	1.0	1.5	0.4	85.5	3.6	10.9	0.073	0.523	20.920409	-89.696707
X. PERIFERICO MERIDA	16.37	1	2	8832	84.6	3.4	4.6	2.7	1.5	1.2	1.5	0.5	84.6	3.4	12.0	0.081	0.523	20.920691	-89.696650
MERIDA	25.70	1	1	15402	81.4	4.0	5.5	3.6	2.2	2.1	0.7	0.5	81.4	4.0	14.6	0.076	0.527	20.941235	-89.661497
MERIDA	25.70	1	2	15035	81.9	4.1	5.2	3.4	2.1	1.9	0.8	0.6	81.9	4.1	14.0	0.077	0.527	20.941466	-89.661494

YUCATAN

7 CARR: HUNUCMA - SISAL

CLAVE: 31021

RUTA: MEX-025

AÑO: 2010

LUGAR	ESTACION				CLASIFICACION VEHICULAR EN PORCIENTO								COORDENADAS						
	KM	TE	SC	TDPA	A	B	C2	C3	T3S2	T3S3	T3S2R4	OTROS	A	B	C	K'	D	LATITUD	LONGITUD
HUNUCMA	0.00	3	0	1304	86.0	0.9	8.8	1.1	1.1	0.1	0.1	1.9	86.0	0.9	13.1	0.090	0.504	21.029045	-89.894686
SISAL	23.20	1	0	1425	90.7	3.3	4.5	0.4	0.4	0.1	0.2	0.4	90.7	3.3	6.0	0.125	0.504	21.160625	-90.029569

8 CARR: LIBRAMIENTO DE PROGRESO

CLAVE: 31631

RUTA: MEX

AÑO: 2010

LUGAR	ESTACION				CLASIFICACION VEHICULAR EN PORCIENTO								COORDENADAS						
	KM	TE	SC	TDPA	A	B	C2	C3	T3S2	T3S3	T3S2R4	OTROS	A	B	C	K'	D	LATITUD	LONGITUD
T. C. MERIDA - PROGRESO	0.00	3	0	4748	85.8	4.2	3.5	1.3	1.8	1.1	1.9	0.4	85.8	4.2	10.0	0.088	0.506	21.258188	-89.664958
YUCALPETEN	6.50	1	0	4222	85.5	4.4	3.5	1.8	1.6	1.0	1.6	0.6	85.5	4.4	10.1	0.080	0.503	21.270986	-89.712562

9 CARR: MERIDA - CELESTUN

CLAVE: 31025

RUTA: MEX-281

AÑO: 2010

LUGAR	ESTACION				CLASIFICACION VEHICULAR EN PORCIENTO								COORDENADAS						
	KM	TE	SC	TDPA	A	B	C2	C3	T3S2	T3S3	T3S2R4	OTROS	A	B	C	K'	D	LATITUD	LONGITUD
MERIDA	0.00	3	1	9993	81.4	4.0	5.5	3.6	2.2	2.1	0.7	0.5	81.4	4.0	14.6	0.067	0.501	20.987457	-89.660040
MERIDA	0.00	3	2	10029	81.9	4.1	5.2	3.4	2.1	1.9	0.8	0.6	81.9	4.1	14.0	0.064	0.501	20.987332	-89.660242
X. PERIFERICO DE MERIDA	5.10	1	1	13640	80.3	6.5	5.6	1.5	3.0	1.0	1.2	0.9	80.3	6.5	13.2	0.073	0.502	20.993662	-89.670359
X. PERIFERICO DE MERIDA	5.10	1	2	13736	80.6	6.9	5.7	1.3	2.4	1.2	1.1	0.8	80.6	6.9	12.5	0.076	0.502	20.993662	-89.670359
X. PERIFERICO DE MERIDA	5.10	3	0	26406	80.8	6.0	6.3	2.3	1.6	1.0	1.6	0.4	80.8	6.0	13.2	0.078	0.510	20.999230	-89.679314
HUNUCMA	26.00	1	0	2270	83.6	5.0	5.8	1.4	0.9	0.2	2.3	0.8	83.6	5.0	11.4	0.075	0.500	21.027007	-89.851739
HUNUCMA	26.00	3	0	1694	83.5	5.1	5.9	1.6	0.9	0.5	1.8	0.7	83.5	5.1	11.4	0.083	0.508	21.003377	-89.884702
KINCHIL	40.00	3	0	1185	81.5	5.8	7.6	1.2	0.6	0.8	1.9	0.6	81.5	5.8	12.7	0.081	0.503	20.911776	-89.962776
T. IZQ. SAN MATEO	67.00	1	0	853	81.1	5.1	8.7	1.0	1.6	0.4	1.8	0.3	81.1	5.1	13.8	0.059	0.511	20.859849	-90.187113
CELESTUN	89.00	1	0	746	86.0	3.6	3.3	3.6	1.2	1.2	0.5	0.6	86.0	3.6	10.4	0.099	0.507	20.857405	-90.380494

10 CARR: MERIDA - DZILAM DE BRAVO

CLAVE: 31001

RUTA: MEX-178

AÑO: 2010

LUGAR	ESTACION				CLASIFICACION VEHICULAR EN PORCIENTO								COORDENADAS						
	KM	TE	SC	TDPA	A	B	C2	C3	T3S2	T3S3	T3S2R4	OTROS	A	B	C	K'	D	LATITUD	LONGITUD
MERIDA	0.00																		
X. PERIFERICO DE MERIDA	5.90	1	1	6273	86.9	3.2	5.0	0.6	3.3	0.3	0.4	0.3	86.9	3.2	9.9	0.072	0.530	21.019861	-89.568174
X. PERIFERICO DE MERIDA	5.90	1	2	7085	86.6	3.4	5.7	0.8	2.7	0.4	0.2	0.2	86.6	3.4	10.0	0.076	0.530	21.019870	-89.568178
X. PERIFERICO DE MERIDA	5.90	3	0	5108	86.2	2.5	4.4	1.1	3.9	0.7	0.5	0.7	86.2	2.5	11.3	0.070	0.503	21.024375	-89.563808
CONKAL	18.00	1	0	4864	90.7	2.4	3.1	0.6	1.4	0.6	0.5	0.7	90.7	2.4	6.9	0.077	0.501	21.050680	-89.538140
BACA	34.40	1	0	4516	88.8	3.0	3.4	1.5	1.7	0.5	0.4	0.7	88.8	3.0	8.2	0.076	0.500	21.108976	-89.409387

YUCATAN

10 CARR: MERIDA - DZILAM DE BRAVO

CLAVE: 31001

RUTA: MEX-178

AÑO: 2010

LUGAR	ESTACION				CLASIFICACION VEHICULAR EN PORCIENTO								COORDENADAS						
	KM	TE	SC	TDPA	A	B	C2	C3	T3S2	T3S3	T3S2R4	OTROS	A	B	C	K'	D	LATITUD	LONGITUD
MOTUL	44.00	1	0	5545	85.9	2.6	3.6	2.6	2.7	1.0	1.1	0.5	85.9	2.6	11.5	0.061	0.501	21.097662	-89.311782
MOTUL	44.00	3	0	4160	86.0	2.5	3.7	2.5	2.7	0.8	1.1	0.7	86.0	2.5	11.5	0.065	0.501	21.115930	-89.270226
CANSAHCAB	68.00	3	0	1475	90.5	1.7	3.5	2.2	1.0	0.2	0.4	0.5	90.5	1.7	7.8	0.084	0.503	21.165896	-89.100661
DZIDZANTUN	80.00	1	0	1317	88.2	2.7	4.4	2.1	0.8	0.8	0.5	0.5	88.2	2.7	9.1	0.079	0.503	21.239107	-89.048641
DZILAM DE BRAVO	105.00	1	0	1195	89.1	2.9	3.2	1.4	1.0	0.9	0.7	0.8	89.1	2.9	8.0	0.105	0.504	21.383526	-88.893641

11 CARR: MERIDA - PROGRESO

CLAVE: 31091

RUTA: MEX-261

AÑO: 2010

LUGAR	ESTACION				CLASIFICACION VEHICULAR EN PORCIENTO								COORDENADAS						
	KM	TE	SC	TDPA	A	B	C2	C3	T3S2	T3S3	T3S2R4	OTROS	A	B	C	K'	D	LATITUD	LONGITUD
T. C. MERIDA - DZILAM DE BRAVO	0.00																		
PERIFERICO MERIDA	5.40	1	1	13361	83.8	4.5	2.6	0.8	5.1	1.4	1.2	0.6	83.8	4.5	11.7	0.078	0.512	21.046182	-89.629659
PERIFERICO MERIDA	5.40	1	2	14018	83.7	4.7	2.3	0.5	5.9	1.1	1.2	0.6	83.7	4.7	11.6	0.080	0.512	21.046275	-89.629825
T. IZQ. DZITYA	10.40	1	1	14145	83.2	4.1	2.3	0.6	6.2	1.5	1.6	0.5	83.2	4.1	12.7	0.078	0.506	21.052280	-89.630636
T. IZQ. DZITYA	10.40	1	2	14475	83.4	4.0	3.0	0.6	4.7	1.6	1.9	0.8	83.4	4.0	12.6	0.078	0.506	21.051460	-89.630903
T. IZQ. DZITYA	10.40	3	1	12785	83.5	3.9	4.1	1.0	4.1	1.0	1.8	0.6	83.5	3.9	12.6	0.082	0.508	21.083576	-89.636402
T. IZQ. DZITYA	10.40	3	2	13193	83.6	3.8	3.9	1.0	4.0	1.4	1.7	0.6	83.6	3.8	12.6	0.086	0.508	21.083576	-89.636402
PROGRESO	35.04	1	0	13260	83.1	3.9	3.8	1.6	3.3	1.9	1.6	0.8	83.1	3.9	13.0	0.076	0.500	21.268176	-89.660633

12 CARR: MERIDA - PUERTO JUAREZ

CLAVE: 00067

RUTA: MEX-180

AÑO: 2010

LUGAR	ESTACION				CLASIFICACION VEHICULAR EN PORCIENTO								COORDENADAS						
	KM	TE	SC	TDPA	A	B	C2	C3	T3S2	T3S3	T3S2R4	OTROS	A	B	C	K'	D	LATITUD	LONGITUD
MERIDA	0.00																		
X. PERIFERICO DE MERIDA	5.60	1	1	7168	79.7	4.9	5.4	3.2	2.1	1.0	3.4	0.3	79.7	4.9	15.4	0.078	0.506	20.957310	-89.571542
X. PERIFERICO DE MERIDA	5.60	1	2	6992	78.5	4.9	6.0	3.3	2.4	1.0	3.6	0.3	78.5	4.9	16.6	0.080	0.506	20.957310	-89.571542
X. PERIFERICO DE MERIDA	5.60	3	1	5565	79.5	4.7	5.9	3.2	2.2	1.0	3.2	0.3	79.5	4.7	15.8	0.088	0.519	20.953846	-89.564770
X. PERIFERICO DE MERIDA	5.60	3	2	5147	78.8	5.0	6.2	3.2	2.2	1.0	3.3	0.3	78.8	5.0	16.2	0.088	0.519	20.953846	-89.564770
TEYA	13.00	1	1	5746	78.2	5.3	5.8	3.4	2.4	1.0	3.6	0.3	78.2	5.3	16.5	0.081	0.508	20.936590	-89.532120
TEYA	13.00	1	2	5565	79.7	4.6	5.8	3.2	2.1	1.0	3.3	0.3	79.7	4.6	15.7	0.079	0.508	20.936590	-89.532120
T. DER. SEYE	28.79	1	0	7786	77.6	5.2	6.3	3.5	2.4	1.0	3.7	0.3	77.6	5.2	17.2	0.070	0.502	20.891581	-89.379521
T. DER. SEYE	28.79	3	0	7700	78.3	5.1	6.1	3.2	2.4	1.0	3.6	0.3	78.3	5.1	16.6	0.085	0.502	20.891738	-89.374260
TAHMEK	42.00	1	0	7704	78.5	4.7	6.3	3.4	2.4	1.0	3.4	0.3	78.5	4.7	16.8	0.079	0.504	20.875700	-89.271417
T. IZQ. HOCTUN (1° ACCESO)	46.65	1	0	5119	79.9	4.4	5.8	3.0	2.2	1.0	3.4	0.3	79.9	4.4	15.7	0.066	0.502	20.867858	-89.215663
T. IZQ. HOCTUN (2° ACCESO)	48.62	1	0	4530	78.8	4.8	6.2	3.2	2.4	1.0	3.3	0.3	78.8	4.8	16.4	0.074	0.500	20.858735	-89.202526

YUCATAN

12 CARR: MERIDA - PUERTO JUAREZ

CLAVE: 00067

RUTA: MEX-180

AÑO: 2010

LUGAR	ESTACION				CLASIFICACION VEHICULAR EN PORCIENTO								COORDENADAS						
	KM	TE	SC	TDPA	A	B	C2	C3	T3S2	T3S3	T3S2R4	OTROS	A	B	C	K'	D	LATITUD	LONGITUD
T. IZQ. HOCTUN (2° ACCESO)	48.62	3	0	6311	79.3	4.8	6.0	3.2	2.2	1.0	3.2	0.3	79.3	4.8	15.9	0.080	0.505	20.854245	-89.195731
KANTUNIL	67.28	3	0	2577	78.5	5.0	6.2	3.2	2.2	1.0	3.6	0.3	78.5	5.0	16.5	0.081	0.501	20.791134	-89.018866
LIBRE UNION	92.91	1	0	2369	79.5	4.6	6.0	3.1	2.1	1.0	3.4	0.3	79.5	4.6	15.9	0.085	0.509	20.708092	-88.814378
LIBRE UNION	92.91	3	0	2215	79.1	4.9	5.8	3.1	2.4	1.0	3.4	0.3	79.1	4.9	16.0	0.085	0.509	20.707041	-88.795491
PISTE	116.30	3	0	4382	79.0	4.9	5.8	3.3	2.4	1.0	3.3	0.3	79.0	4.9	16.1	0.078	0.507	20.693344	-88.582391
CHICHEN ITZA	118.64	1	0	5198	76.0	8.7	3.3	1.3	1.7	1.4	7.5	0.1	76.0	8.7	15.3	0.073	0.501	20.687941	-88.576199
CHICHEN ITZA	118.64	3	0	4073	75.3	8.8	3.4	1.4	1.8	1.5	7.7	0.1	75.3	8.8	15.9	0.066	0.507	20.669823	-88.558081
T. DER. CHANKOM	127.00	1	0	3769	75.0	9.2	3.6	1.4	1.8	1.4	7.5	0.1	75.0	9.2	15.8	0.064	0.504	20.642640	-88.490181
T. DER. CHANKOM	127.00	3	0	3356	74.7	9.1	3.6	1.4	1.7	1.5	7.9	0.1	74.7	9.1	16.2	0.073	0.515	20.641509	-88.486611
VALLADOLID	160.68	1	0	3755	76.0	8.6	3.3	1.3	1.7	1.4	7.6	0.1	76.0	8.6	15.4	0.057	0.505	20.676623	-88.243386
T. DER. CHEMAX	189.79	3	0	4061	75.8	8.7	3.4	1.5	1.6	1.4	7.5	0.1	75.8	8.7	15.5	0.063	0.501	20.663937	-87.926105
X-CAN	225.00	3	0	2804	76.4	8.2	3.4	1.3	1.6	1.4	7.6	0.1	76.4	8.2	15.4	0.060	0.511	20.860292	-87.657857
LIM. EDOS. TERM. YUC. PPIA. QROO.	230.40																		
NUEVO X-CAN	231.90	3	0	3035	75.5	8.5	3.6	1.4	1.7	1.4	7.8	0.1	75.5	8.5	16.0	0.063	0.506	20.871550	-87.591090
ZARAGOZA	239.00	1	0	3780	75.0	8.9	3.6	1.5	1.7	1.4	7.8	0.1	75.0	8.9	16.1	0.057	0.502	20.880536	-87.537827
VICENTE GUERRERO	261.00	1	0	3246	84.0	3.6	6.0	2.7	2.0	0.8	0.7	0.2	84.0	3.6	12.4	0.069	0.505	20.940866	-87.332034
LEONA VICARIO	275.50	1	0	4125	84.8	3.3	5.6	2.7	1.9	0.8	0.7	0.2	84.8	3.3	11.9	0.084	0.501	20.979698	-87.226589
LEONA VICARIO	275.50	3	0	4673	84.4	3.7	5.8	2.5	1.9	0.8	0.7	0.2	84.4	3.7	11.9	0.067	0.503	20.992523	-87.191206
T. DER. ALFREDO V. BONFIL	310.00	1	1	7666	84.1	3.6	6.0	2.6	2.0	0.8	0.7	0.2	84.1	3.6	12.3	0.065	0.500	21.138324	-86.898570
T. DER. ALFREDO V. BONFIL	310.00	1	2	7652	84.3	3.5	5.9	2.7	1.9	0.8	0.7	0.2	84.3	3.5	12.2	0.069	0.500	21.138325	-86.898570
PUERTO JUAREZ	321.41																		

13 CARR: MERIDA - TEKANTO

CLAVE: 31587

RUTA: MEX

AÑO: 2010

LUGAR	ESTACION				CLASIFICACION VEHICULAR EN PORCIENTO								COORDENADAS						
	KM	TE	SC	TDPA	A	B	C2	C3	T3S2	T3S3	T3S2R4	OTROS	A	B	C	K'	D	LATITUD	LONGITUD
T. C. MERIDA - PUERTO JUAREZ	0.00																		
X. PERIFERICO DE MERIDA	5.70	1	0	6189	81.2	7.5	4.2	0.7	3.2	1.2	1.1	0.9	81.2	7.5	11.3	0.068	0.502	20.961348	-89.569634
T. DER. TIXPEHUAL	13.25	1	0	4580	81.4	7.6	3.9	1.4	2.4	1.2	1.1	1.0	81.4	7.6	11.0	0.080	0.510	20.976461	-89.462906
T. DER. TIXPEHUAL	13.25	3	0	3035	82.8	7.6	3.7	1.0	1.2	1.4	1.2	1.1	82.8	7.6	9.6	0.080	0.511	20.991896	-89.440901
TIXKOKOB	21.00	1	0	3024	84.6	7.2	3.3	0.9	1.6	1.2	0.8	0.4	84.6	7.2	8.2	0.092	0.519	21.004280	-89.419998
TIXKOKOB	21.00	3	0	2362	84.8	7.2	3.3	0.6	1.6	1.5	0.7	0.3	84.8	7.2	8.0	0.099	0.506	21.000795	-89.379219
CACALCHEN	38.00	1	0	1167	86.4	7.7	3.3	0.4	0.1	1.0	0.4	0.7	86.4	7.7	5.9	0.099	0.511	20.985193	-89.242522
TEKANTO	51.00	1	0	886	83.9	7.8	3.7	0.7	0.7	0.7	1.8	0.7	83.9	7.8	8.3	0.093	0.520	21.010241	-89.121069

YUCATAN

14 CARR: MUNA - FELIPE CARRILLO PUERTO

CLAVE: 00148

RUTA: MEX-184

AÑO: 2010

LUGAR	ESTACION				CLASIFICACION VEHICULAR EN PORCIENTO								COORDENADAS						
	KM	TE	SC	TDPA	A	B	C2	C3	T3S2	T3S3	T3S2R4	OTROS	A	B	C	K'	D	LATITUD	LONGITUD
MUNA	0.00	3	0	3869	82.3	4.2	5.4	1.1	3.2	1.8	1.0	1.0	82.3	4.2	13.5	0.075	0.500	20.480338	-89.701068
TICUL	19.10	1	0	3551	84.5	4.0	5.3	1.2	1.5	1.6	1.1	0.8	84.5	4.0	11.5	0.061	0.502	20.404032	-89.568960
TICUL	19.10	3	0	3727	83.4	4.3	5.6	1.2	2.2	1.5	0.9	0.9	83.4	4.3	12.3	0.071	0.501	20.373880	-89.518133
OXKUTZCAB	40.50	3	0	3742	84.7	4.3	5.3	0.6	2.6	1.0	0.6	0.9	84.7	4.3	11.0	0.067	0.504	20.294069	-89.398674
TEKAX	53.90	3	0	2743	82.8	4.1	6.1	0.6	3.1	1.9	0.8	0.6	82.8	4.1	13.1	0.073	0.505	20.189033	-89.269205
TZUCACAB	86.60	1	0	1737	88.6	3.5	3.6	1.7	0.9	0.6	0.1	1.0	88.6	3.5	7.9	0.079	0.504	20.080568	-89.066369
TZUCACAB	86.60	3	0	1222	88.2	2.6	4.6	1.8	0.5	0.7	0.9	0.7	88.2	2.6	9.2	0.080	0.500	20.065314	-89.038407
SANTA ROSA	109.60	3	0	1902	82.2	4.9	4.8	3.2	1.4	1.8	1.0	0.7	82.2	4.9	12.9	0.087	0.502	19.948258	-88.881570
LIM. EDOS. TERM. YUC. PPIA. QROO.	117.00																		
DZIUCHE	118.00	1	0	1865	84.0	4.5	4.0	2.1	1.9	0.8	2.3	0.4	84.0	4.5	11.5	0.081	0.504	19.905807	-88.820133
DZIUCHE	118.00	3	0	2415	82.5	4.6	3.3	2.6	1.8	1.9	2.6	0.7	82.5	4.6	12.9	0.077	0.517	19.893332	-88.806439
JOSE MARIA MORELOS	138.60	1	0	2369	83.0	3.6	4.2	2.8	3.1	1.6	1.4	0.3	83.0	3.6	13.4	0.070	0.501	19.763496	-88.724287
JOSE MARIA MORELOS	138.60	3	0	2554	83.0	5.1	5.8	1.7	1.5	0.5	1.9	0.5	83.0	5.1	11.9	0.074	0.524	19.742825	-88.700773
POLYUC	161.94	1	0	2099	81.1	5.2	5.2	3.7	1.3	1.7	1.4	0.4	81.1	5.2	13.7	0.080	0.502	19.611663	-88.571820
POLYUC	161.94	3	0	1416	86.9	2.5	3.4	1.7	3.4	0.1	1.7	0.3	86.9	2.5	10.6	0.065	0.502	19.609498	-88.554542
T. DER. DZULA	178.11	3	0	1230	84.0	4.9	5.1	3.0	0.3	0.5	1.4	0.8	84.0	4.9	11.1	0.085	0.502	19.643630	-88.408245
FELIPE CARRILLO PUERTO	216.97	1	0	1965	81.8	5.7	4.8	2.6	1.5	1.9	1.4	0.3	81.8	5.7	12.5	0.091	0.504	19.584034	-88.056518

15 CARR: RAMAL A PANABA

CLAVE: 31609

RUTA: MEX

AÑO: 2010

LUGAR	ESTACION				CLASIFICACION VEHICULAR EN PORCIENTO								COORDENADAS						
	KM	TE	SC	TDPA	A	B	C2	C3	T3S2	T3S3	T3S2R4	OTROS	A	B	C	K'	D	LATITUD	LONGITUD
T. C. VALLADOLID - RIO LAGARTOS	0.00	3	0	1120	82.6	4.1	0.7	1.8	3.5	4.8	1.7	0.8	82.6	4.1	13.3	0.096	0.506	21.193947	-88.169551
PANABA	18.00	1	0	981	82.6	4.5	0.6	1.9	2.5	5.9	0.7	1.3	82.6	4.5	12.9	0.092	0.506	21.285030	-88.268898

16 CARR: TEYA - PETO

CLAVE:

RUTA: MEX

AÑO: 2010

LUGAR	ESTACION				CLASIFICACION VEHICULAR EN PORCIENTO								COORDENADAS						
	KM	TE	SC	TDPA	A	B	C2	C3	T3S2	T3S3	T3S2R4	OTROS	A	B	C	K'	D	LATITUD	LONGITUD
T.C. MERIDA - PUERTO JUAREZ	0.00																		
SAN ANTONIO TEHITZ	3.80	3	0	4753	74.5	1.9	6.7	3.3	3.8	2.4	6.5	0.9	74.5	1.9	23.6	0.058	0.507	20.888591	-89.508226
T. IZQ. TEABO	69.05	1	1	1672	80.0	2.7	4.3	2.4	2.8	0.6	6.4	0.8	80.0	2.7	17.3	0.069	0.520	20.404919	-89.306688
T. IZQ. TEABO	69.05	1	2	1622	78.3	2.6	4.5	3.7	2.9	0.9	6.5	0.6	78.3	2.6	19.1	0.062	0.520	20.405178	-89.306539
T. IZQ. TIXMEHUAC	97.10	1	0	1665	79.1	1.9	3.7	3.4	3.3	1.8	6.2	0.6	79.1	1.9	19.0	0.084	0.530	20.230434	-89.129424
PETO	120.70	1	0	2291	79.8	1.8	3.1	4.7	3.0	1.5	5.4	0.7	79.8	1.8	18.4	0.068	0.505	20.122426	-88.949505

YUCATAN

20 CARR: KANTUNIL - CANCUN (CUOTA)

CLAVE: 00071

RUTA: MEX-180D

AÑO: 2010

LUGAR	ESTACION				CLASIFICACION VEHICULAR EN PORCIENTO								COORDENADAS						
	KM	TE	SC	TDPA	A	B	C2	C3	T3S2	T3S3	T3S2R4	OTROS	A	B	C	K'	D	LATITUD	LONGITUD
T. C. MERIDA - PUERTO JUAREZ	0.00																		
CASETA DE COBRO PISTE	51.00	1	1	1203	79.7	7.8	2.4	1.0	1.3	0.6	6.9	0.3	79.7	7.8	12.5	0.090	0.504	20.729205	-88.585642
CASETA DE COBRO PISTE	51.00	1	2	1185	79.1	8.0	2.4	1.0	1.4	0.6	7.2	0.3	79.1	8.0	12.9	0.088	0.504	20.729958	-88.587030
CASETA DE COBRO "X-CAN"	155.00	1	1	1697	80.2	7.8	2.4	0.9	1.2	0.6	6.6	0.3	80.2	7.8	12.0	0.078	0.502	20.876610	-87.638765
CASETA DE COBRO "X-CAN"	155.00	1	2	1683	80.0	7.8	2.5	0.9	1.3	0.6	6.6	0.3	80.0	7.8	12.2	0.081	0.502	20.876703	-87.640739
LIM. EDOS. TERM. YUC. PPIA. QROO.	160.00																		
T. C. MERIDA - PUERTO JUAREZ	292.00	1	1	1234	80.1	7.7	2.3	0.9	1.3	0.6	6.8	0.3	80.1	7.7	12.2	0.099	0.503	21.095084	-86.980430
T. C. MERIDA - PUERTO JUAREZ	292.00	1	2	1247	80.9	7.2	2.4	1.0	1.2	0.6	6.4	0.3	80.9	7.2	11.9	0.099	0.503	21.095304	-86.980593
T. C. REFORMA AGRARIA - PUERTO JUAREZ	308.10	1	0	1508	79.7	7.6	2.5	1.0	1.3	0.6	7.0	0.3	79.7	7.6	12.7	0.101	0.508	21.019721	-86.858128

21 CARR: ACANCEH - ESTACION POLOBAN

CLAVE: 31615

RUTA: YUC

AÑO: 2010

LUGAR	ESTACION				CLASIFICACION VEHICULAR EN PORCIENTO								COORDENADAS						
	KM	TE	SC	TDPA	A	B	C2	C3	T3S2	T3S3	T3S2R4	OTROS	A	B	C	K'	D	LATITUD	LONGITUD
ACANCEH	0.00	3	0	1480	82.3	4.2	6.5	3.2	1.3	1.5	0.5	0.5	82.3	4.2	13.5	0.067	0.502	20.808524	-89.439047
HOMUN	20.00	3	0	572	81.3	3.3	5.5	3.4	3.0	2.2	0.8	0.5	81.3	3.3	15.4	0.094	0.518	20.735593	-89.270675
ESTACION POLOBAN	24.40	1	0	750	84.0	3.8	4.8	2.0	2.1	2.2	0.8	0.3	84.0	3.8	12.2	0.096	0.526	20.727027	-89.227130

22 CARR: BACA - DZIDZANTUN

CLAVE: 31591

RUTA: YUC

AÑO: 2010

LUGAR	ESTACION				CLASIFICACION VEHICULAR EN PORCIENTO								COORDENADAS						
	KM	TE	SC	TDPA	A	B	C2	C3	T3S2	T3S3	T3S2R4	OTROS	A	B	C	K'	D	LATITUD	LONGITUD
BACA	0.00	3	0	1828	86.8	5.6	3.3	1.2	1.0	0.6	0.5	1.0	86.8	5.6	7.6	0.086	0.501	21.122120	-89.394338
DZEMUL	15.00	1	0	1342	88.2	5.5	3.2	1.2	0.5	0.4	0.5	0.5	88.2	5.5	6.3	0.080	0.503	21.198371	-89.319207
DZEMUL	15.00	3	0	1224	86.6	5.7	3.8	1.4	0.8	0.5	0.7	0.5	86.6	5.7	7.7	0.088	0.500	21.209151	-89.297992
PUEBLO TELCHAC	19.10	1	0	1370	86.8	6.0	3.8	1.3	0.9	0.5	0.3	0.4	86.8	6.0	7.2	0.080	0.503	21.205554	-89.281106
SINANCHE	29.10	3	0	866	87.3	4.5	3.5	2.8	1.1	0.3	0.2	0.3	87.3	4.5	8.2	0.070	0.507	21.225760	-89.176183
DZIDZANTUN	43.00	1	0	655	89.1	5.4	0.8	1.6	1.4	0.4	0.7	0.6	89.1	5.4	5.5	0.073	0.504	21.244687	-89.055200

23 CARR: CITILCUM - TIXKOCHOH

CLAVE: 31064

RUTA: YUC

AÑO: 2010

LUGAR	ESTACION				CLASIFICACION VEHICULAR EN PORCIENTO								COORDENADAS						
	KM	TE	SC	TDPA	A	B	C2	C3	T3S2	T3S3	T3S2R4	OTROS	A	B	C	K'	D	LATITUD	LONGITUD
CITILCUM	0.00	3	0	942	85.1	4.0	3.4	3.8	1.8	0.3	0.7	0.9	85.1	4.0	10.9	0.093	0.514	20.957354	-89.115971
TEKANTO	7.00	1	0	953	85.4	4.5	6.8	2.3	0.1	0.2	0.4	0.3	85.4	4.5	10.1	0.095	0.515	21.001001	-89.105135

YUCATAN

23 CARR: CITILCUM - TIXKOCHOH

CLAVE: 31064

RUTA: YUC

AÑO: 2010

LUGAR	ESTACION				CLASIFICACION VEHICULAR EN PORCIENTO								COORDENADAS						
	KM	TE	SC	TDPA	A	B	C2	C3	T3S2	T3S3	T3S2R4	OTROS	A	B	C	K'	D	LATITUD	LONGITUD
TIXKOCHOH	10.00	1	0	417	84.6	4.3	6.6	1.8	1.9	0.0	0.5	0.3	84.6	4.3	11.1	0.115	0.521	21.013912	-89.088275

24 CARR: DZEMUL - XTAMPU

CLAVE: 31608

RUTA: YUC

AÑO: 2010

LUGAR	ESTACION				CLASIFICACION VEHICULAR EN PORCIENTO								COORDENADAS						
	KM	TE	SC	TDPA	A	B	C2	C3	T3S2	T3S3	T3S2R4	OTROS	A	B	C	K'	D	LATITUD	LONGITUD
DZEMUL	0.00	3	0	358	89.1	3.8	3.2	3.0	0.2	0.3	0.2	0.2	89.1	3.8	7.1	0.078	0.509	21.213018	-89.321293
XTAMPU	10.00	1	0	486	90.6	2.6	3.2	2.4	0.3	0.4	0.3	0.2	90.6	2.6	6.8	0.082	0.500	21.331664	-89.348665

25 CARR: DZIDZANTUN - SANTA CLARA

CLAVE: 31592

RUTA: YUC

AÑO: 2010

LUGAR	ESTACION				CLASIFICACION VEHICULAR EN PORCIENTO								COORDENADAS						
	KM	TE	SC	TDPA	A	B	C2	C3	T3S2	T3S3	T3S2R4	OTROS	A	B	C	K'	D	LATITUD	LONGITUD
DZIDZANTUN	0.00	3	0	670	91.4	3.1	1.8	2.3	0.2	0.2	0.5	0.5	91.4	3.1	5.5	0.078	0.501	21.259564	-89.041260
SANTA CLARA	14.00	1	0	636	91.2	2.7	1.9	2.6	0.3	0.4	0.4	0.5	91.2	2.7	6.1	0.085	0.508	21.371594	-89.014312

26 CARR: HOCTUN - CENOTILLO

CLAVE: 31011

RUTA: YUC-011

AÑO: 2010

LUGAR	ESTACION				CLASIFICACION VEHICULAR EN PORCIENTO								COORDENADAS						
	KM	TE	SC	TDPA	A	B	C2	C3	T3S2	T3S3	T3S2R4	OTROS	A	B	C	K'	D	LATITUD	LONGITUD
HOCTUN	0.00	3	0	2921	87.2	3.4	4.7	1.3	1.2	1.7	0.2	0.3	87.2	3.4	9.4	0.076	0.510	20.878521	-89.190865
CITILCUM	13.20	3	0	2369	86.9	3.5	6.9	1.0	0.7	0.1	0.7	0.2	86.9	3.5	9.6	0.084	0.503	20.950656	-89.109605
IZAMAL	24.00	3	0	1534	86.5	3.2	6.4	0.9	1.1	0.4	0.8	0.7	86.5	3.2	10.3	0.092	0.502	20.933559	-89.003250
TUNKAS	55.20	3	0	555	87.8	3.3	4.9	1.3	1.9	0.1	0.5	0.2	87.8	3.3	8.9	0.076	0.512	20.915804	-88.735821
CENOTILLO	70.90	1	0	763	87.1	3.1	5.8	1.0	1.2	0.3	1.3	0.2	87.1	3.1	9.8	0.077	0.504	20.964416	-88.620739

27 CARR: HOLCA - SOTUTA

CLAVE: 31626

RUTA: YUC

AÑO: 2010

LUGAR	ESTACION				CLASIFICACION VEHICULAR EN PORCIENTO								COORDENADAS						
	KM	TE	SC	TDPA	A	B	C2	C3	T3S2	T3S3	T3S2R4	OTROS	A	B	C	K'	D	LATITUD	LONGITUD
T. C. MERIDA - PUERTO JUAREZ	0.00	3	0	872	83.9	4.0	6.7	1.0	2.2	1.6	0.3	0.3	83.9	4.0	12.1	0.085	0.510	20.749430	-88.930519
TIBOLON	10.00	3	0	760	84.2	4.3	5.8	1.3	2.0	1.9	0.2	0.3	84.2	4.3	11.5	0.084	0.525	20.659402	-88.950148
SOTUTA	20.00	1	0	827	83.0	4.2	6.2	1.0	3.8	1.3	0.1	0.4	83.0	4.2	12.8	0.087	0.510	20.605710	-89.003728

YUCATAN

28 CARR: IZAMAL - DZILAM GONZALEZ

CLAVE: 31605

RUTA: YUC

AÑO: 2010

LUGAR	ESTACION				CLASIFICACION VEHICULAR EN PORCIENTO								COORDENADAS						
	KM	TE	SC	TDPA	A	B	C2	C3	T3S2	T3S3	T3S2R4	OTROS	A	B	C	K'	D	LATITUD	LONGITUD
IZAMAL	0.00	3	0	1219	87.6	3.0	3.3	3.3	1.3	0.4	0.6	0.5	87.6	3.0	9.4	0.074	0.501	20.943330	-89.007905
TEMAX	30.00	1	0	735	84.8	4.2	4.9	3.9	0.7	1.0	0.1	0.4	84.8	4.2	11.0	0.075	0.503	21.132235	-88.938912
DZILAM GONZALEZ	43.00	1	0	496	91.5	1.1	3.0	2.4	0.1	1.3	0.2	0.4	91.5	1.1	7.4	0.077	0.506	21.271072	-88.931234

29 CARR: KANTUNIL - IZAMAL

CLAVE: 31012

RUTA: YUC

AÑO: 2010

LUGAR	ESTACION				CLASIFICACION VEHICULAR EN PORCIENTO								COORDENADAS						
	KM	TE	SC	TDPA	A	B	C2	C3	T3S2	T3S3	T3S2R4	OTROS	A	B	C	K'	D	LATITUD	LONGITUD
KANTUNIL	0.00	3	0	760	74.7	5.7	6.7	4.7	4.2	1.8	1.5	0.7	74.7	5.7	19.6	0.089	0.502	20.807699	-89.028843
IZAMAL	17.80	1	0	1445	76.7	6.3	6.4	3.3	3.6	1.9	1.1	0.7	76.7	6.3	17.0	0.075	0.505	20.920477	-89.013293

30 CARR: KINCHIL - UMAN

CLAVE: 31009

RUTA: YUC

AÑO: 2010

LUGAR	ESTACION				CLASIFICACION VEHICULAR EN PORCIENTO								COORDENADAS						
	KM	TE	SC	TDPA	A	B	C2	C3	T3S2	T3S3	T3S2R4	OTROS	A	B	C	K'	D	LATITUD	LONGITUD
KINCHIL	0.00	3	0	1185	84.2	5.2	5.7	1.6	0.8	1.2	0.5	0.8	84.2	5.2	10.6	0.099	0.505	20.911082	-89.937158
UMAN	26.00																		

31 CARR: MERIDA - ACANCEH

CLAVE: 31023

RUTA: YUC

AÑO: 2010

LUGAR	ESTACION				CLASIFICACION VEHICULAR EN PORCIENTO								COORDENADAS						
	KM	TE	SC	TDPA	A	B	C2	C3	T3S2	T3S3	T3S2R4	OTROS	A	B	C	K'	D	LATITUD	LONGITUD
MERIDA	0.00	3	0	5688	79.3	2.9	5.4	1.1	5.7	1.8	3.3	0.5	79.3	2.9	17.8	0.084	0.514	20.936868	-89.584490
UXEC TAMAN	11.00	1	0	3255	81.7	4.1	4.9	3.0	2.8	0.9	1.8	0.8	81.7	4.1	14.2	0.066	0.505	20.870206	-89.584900
UXEC TAMAN	11.00	3	0	3732	81.9	4.1	4.9	2.9	2.8	0.9	1.8	0.7	81.9	4.1	14.0	0.070	0.508	20.866889	-89.577288
TIMUCUY	20.00	3	0	2007	84.2	3.7	4.8	1.6	3.0	1.0	1.0	0.7	84.2	3.7	12.1	0.103	0.506	20.812197	-89.507553
ACANCEH	26.00	1	0	1556	84.3	4.3	4.8	1.9	2.0	1.1	0.9	0.7	84.3	4.3	11.4	0.105	0.504	20.812520	-89.473833

32 CARR: MERIDA - OXKUTZCAB

CLAVE: 31018

RUTA: YUC-018

AÑO: 2010

LUGAR	ESTACION				CLASIFICACION VEHICULAR EN PORCIENTO								COORDENADAS						
	KM	TE	SC	TDPA	A	B	C2	C3	T3S2	T3S3	T3S2R4	OTROS	A	B	C	K'	D	LATITUD	LONGITUD
MERIDA	0.00	3	0	9230	78.8	4.9	5.4	1.3	6.6	1.0	1.4	0.6	78.8	4.9	16.3	0.086	0.503	20.944851	-89.582726
KANACIN	5.97	1	0	5957	78.1	2.5	6.9	2.1	6.1	2.1	1.5	0.7	78.1	2.5	19.4	0.059	0.501	20.939681	-89.568176
ACANCEH	20.39	1	0	4425	78.3	2.4	7.1	2.1	5.8	2.1	1.5	0.7	78.3	2.4	19.3	0.078	0.500	20.829394	-89.474341

YUCATAN

32 CARR: MERIDA - OXKUTZCAB

CLAVE: 31018

RUTA: YUC-018

AÑO: 2010

LUGAR	ESTACION				CLASIFICACION VEHICULAR EN PORCIENTO								COORDENADAS						
	KM	TE	SC	TDPA	A	B	C2	C3	T3S2	T3S3	T3S2R4	OTROS	A	B	C	K'	D	LATITUD	LONGITUD
ACANCEH	20.39	3	0	1018	82.3	3.4	5.4	2.6	2.5	2.0	1.0	0.8	82.3	3.4	14.3	0.078	0.507	20.792894	-89.459217
TECOH	29.30	1	0	1507	80.9	4.7	5.4	2.7	2.5	1.2	1.9	0.7	80.9	4.7	14.4	0.075	0.502	20.764385	-89.468433
TEKIT	61.70	1	0	1402	78.0	3.2	5.8	3.1	6.7	1.3	1.1	0.8	78.0	3.2	18.8	0.077	0.501	20.539629	-89.353002
MANI	98.20	1	0	922	78.7	3.0	6.4	1.1	6.4	2.4	1.0	1.0	78.7	3.0	18.3	0.073	0.514	20.396606	-89.365014
MANI	98.20	3	0	992	78.9	5.5	5.2	1.3	4.3	2.8	1.1	0.9	78.9	5.5	15.6	0.085	0.502	20.373161	-89.397202
OXKUTZCAB	109.30	1	0	1380	79.2	4.9	5.3	1.3	6.3	1.1	1.1	0.8	79.2	4.9	15.9	0.084	0.501	20.326917	-89.415843

33 CARR: MERIDA - TIMUCUY

CLAVE: 31024

RUTA: YUC

AÑO: 2010

LUGAR	ESTACION				CLASIFICACION VEHICULAR EN PORCIENTO								COORDENADAS						
	KM	TE	SC	TDPA	A	B	C2	C3	T3S2	T3S3	T3S2R4	OTROS	A	B	C	K'	D	LATITUD	LONGITUD
MERIDA	0.00	3	0	7002	86.6	3.6	4.2	1.1	1.4	1.2	1.1	0.8	86.6	3.6	9.8	0.069	0.512	20.902045	-89.600125
TEKIK DE REGIL	15.10	1	0	1450	85.6	2.5	4.4	2.5	1.4	1.1	1.7	0.8	85.6	2.5	11.9	0.076	0.511	20.822221	-89.559700
TEKIK DE REGIL	15.10	3	0	3187	85.0	2.7	4.4	2.7	1.5	1.3	1.4	1.0	85.0	2.7	12.3	0.074	0.504	20.815815	-89.555466
TIMUCUY	18.65	1	0	2650	85.6	2.9	5.8	1.0	1.2	1.7	1.0	0.8	85.6	2.9	11.5	0.074	0.508	20.812516	-89.524362

34 CARR: MOTUL - PUERTO TELCHAC

CLAVE: 31006

RUTA: YUC-172

AÑO: 2010

LUGAR	ESTACION				CLASIFICACION VEHICULAR EN PORCIENTO								COORDENADAS						
	KM	TE	SC	TDPA	A	B	C2	C3	T3S2	T3S3	T3S2R4	OTROS	A	B	C	K'	D	LATITUD	LONGITUD
MOTUL	0.00	3	0	4542	81.7	7.8	4.6	1.8	1.6	1.0	0.8	0.7	81.7	7.8	10.5	0.081	0.500	21.118186	-89.281001
PUEBLO TELCHAC	12.00	3	0	1589	83.8	7.2	4.7	1.7	0.2	1.1	0.7	0.6	83.8	7.2	9.0	0.065	0.506	21.216087	-89.271346
PUERTO TELCHAC	28.00																		

35 CARR: MUNA - MAXCANU

CLAVE: 31053

RUTA: YUC

AÑO: 2010

LUGAR	ESTACION				CLASIFICACION VEHICULAR EN PORCIENTO								COORDENADAS						
	KM	TE	SC	TDPA	A	B	C2	C3	T3S2	T3S3	T3S2R4	OTROS	A	B	C	K'	D	LATITUD	LONGITUD
MUNA	0.00	3	0	814	81.7	7.7	4.8	1.1	1.7	0.7	1.7	0.6	81.7	7.7	10.6	0.093	0.506	20.490825	-89.735737
OPICHEN	17.00	3	0	754	79.9	8.6	3.9	1.0	2.7	1.2	1.9	0.8	79.9	8.6	11.5	0.093	0.505	20.554819	-89.869570
T. C. CAMPECHE - MERIDA	31.00	1	0	845	82.2	8.3	5.4	0.8	0.7	0.6	1.4	0.6	82.2	8.3	9.5	0.080	0.517	20.583452	-89.970572

YUCATAN

36 CARR: OXKUTZCAB - XUL

CLAVE: 31051

RUTA: YUC-031

AÑO: 2010

LUGAR	ESTACION				CLASIFICACION VEHICULAR EN PORCIENTO								COORDENADAS						
	KM	TE	SC	TDPA	A	B	C2	C3	T3S2	T3S3	T3S2R4	OTROS	A	B	C	K'	D	LATITUD	LONGITUD
OXKUTZCAB	0.00	3	0	1620	86.0	2.8	3.8	3.2	1.1	1.6	0.9	0.6	86.0	2.8	11.2	0.086	0.506	20.287555	-89.424378
EMILIANO ZAPATA	10.00	3	0	1328	85.5	2.7	3.7	3.8	0.8	1.6	1.3	0.6	85.5	2.7	11.8	0.093	0.509	20.222566	-89.465590
XUL	25.00	1	0	1139	85.5	2.6	4.3	3.3	0.8	1.4	1.1	1.0	85.5	2.6	11.9	0.076	0.509	20.110658	-89.456721

37 CARR: PISTE - DZITAS

CLAVE: 31013

RUTA: YUC-013

AÑO: 2010

LUGAR	ESTACION				CLASIFICACION VEHICULAR EN PORCIENTO								COORDENADAS						
	KM	TE	SC	TDPA	A	B	C2	C3	T3S2	T3S3	T3S2R4	OTROS	A	B	C	K'	D	LATITUD	LONGITUD
PISTE	0.00	3	0	1095	81.1	5.2	5.7	1.0	3.5	1.1	1.8	0.6	81.1	5.2	13.7	0.082	0.501	20.708410	-88.586269
DZITAS	18.00	1	0	607	81.3	5.0	5.0	1.1	3.6	1.5	1.6	0.9	81.3	5.0	13.7	0.096	0.505	20.839909	-88.533854

38 CARR: PROGRESO - TELCHAC PUERTO

CLAVE: 31616

RUTA: YUC-027

AÑO: 2010

LUGAR	ESTACION				CLASIFICACION VEHICULAR EN PORCIENTO								COORDENADAS						
	KM	TE	SC	TDPA	A	B	C2	C3	T3S2	T3S3	T3S2R4	OTROS	A	B	C	K'	D	LATITUD	LONGITUD
PROGRESO	0.00	3	1	1493	91.3	2.8	1.4	1.4	1.1	0.6	1.0	0.4	91.3	2.8	5.9	0.082	0.505	21.276155	-89.657827
PROGRESO	0.00	3	2	1523	90.1	2.9	1.4	2.0	1.1	0.9	0.8	0.8	90.1	2.9	7.0	0.078	0.505	21.276160	-89.657825
CHICXULUB PUERTO	6.00	1	1	1242	90.2	2.0	2.8	1.4	0.9	1.0	0.8	0.9	90.2	2.0	7.8	0.083	0.500	21.288471	-89.604482
CHICXULUB PUERTO	6.00	1	2	1244	90.2	2.1	2.7	1.4	0.8	1.0	0.9	0.9	90.2	2.1	7.7	0.089	0.500	21.288471	-89.604481
CHICXULUB PUERTO	6.00	3	0	2599	91.1	1.9	2.3	1.1	1.1	1.0	0.7	0.8	91.1	1.9	7.0	0.080	0.502	21.296493	-89.577362
XTAMPU	20.00	1	0	852	92.3	2.0	1.2	1.5	0.0	2.0	0.4	0.6	92.3	2.0	5.7	0.077	0.502	21.332609	-89.352300
XTAMPU	20.00	3	0	1346	90.6	2.0	1.9	1.3	1.1	1.2	1.2	0.7	90.6	2.0	7.4	0.085	0.502	21.333708	-89.344737
TELCHAC PUERTO	33.00	1	0	983	90.2	2.4	2.1	1.2	2.1	0.8	0.8	0.4	90.2	2.4	7.4	0.087	0.501	21.340702	-89.283175

39 CARR: RAMAL A CHANKOM

CLAVE: 31049

RUTA: YUC

AÑO: 2010

LUGAR	ESTACION				CLASIFICACION VEHICULAR EN PORCIENTO								COORDENADAS						
	KM	TE	SC	TDPA	A	B	C2	C3	T3S2	T3S3	T3S2R4	OTROS	A	B	C	K'	D	LATITUD	LONGITUD
T. C. MERIDA - PUERTO JUAREZ	0.00	3	0	1059	86.3	2.9	4.0	1.7	1.2	1.8	1.3	0.8	86.3	2.9	10.8	0.072	0.504	20.640962	-88.488883
CHANKOM	9.00	1	0	765	88.5	2.6	3.0	1.3	1.3	1.5	1.2	0.6	88.5	2.6	8.9	0.082	0.506	20.582368	-88.508098

YUCATAN

40 CARR: RAMAL A DZONOT CARRETERO

CLAVE: 31614

RUTA: YUC

AÑO: 2010

LUGAR	ESTACION				CLASIFICACION VEHICULAR EN PORCIENTO								COORDENADAS						
	KM	TE	SC	TDPA	A	B	C2	C3	T3S2	T3S3	T3S2R4	OTROS	A	B	C	K'	D	LATITUD	LONGITUD
T. C. VALLADOLID - RIO LAGARTOS	0.00	3	0	339	89.5	3.6	0.9	2.0	1.7	1.6	0.0	0.7	89.5	3.6	6.9	0.080	0.509	21.380410	-88.142304
DZONOT CARRETERO	35.00																		

41 CARR: RAMAL A SAN FELIPE

CLAVE: 31628

RUTA: YUC

AÑO: 2010

LUGAR	ESTACION				CLASIFICACION VEHICULAR EN PORCIENTO								COORDENADAS						
	KM	TE	SC	TDPA	A	B	C2	C3	T3S2	T3S3	T3S2R4	OTROS	A	B	C	K'	D	LATITUD	LONGITUD
T. C. VALLADOLID - RIO LAGARTOS	0.00	3	0	581	87.4	6.4	0.5	1.5	1.4	1.1	1.0	0.7	87.4	6.4	6.2	0.090	0.508	21.572329	-88.160821
SAN FELIPE	7.20	1	0	515	88.3	6.0	0.7	1.5	1.4	0.8	0.6	0.7	88.3	6.0	5.7	0.076	0.511	21.553294	-88.233260

42 CARR: RAMAL A TEDZIDZ

CLAVE: 31600

RUTA: YUC

AÑO: 2010

LUGAR	ESTACION				CLASIFICACION VEHICULAR EN PORCIENTO								COORDENADAS						
	KM	TE	SC	TDPA	A	B	C2	C3	T3S2	T3S3	T3S2R4	OTROS	A	B	C	K'	D	LATITUD	LONGITUD
T. C. MERIDA - CELESTUM	0.00																		
TEDZIDZ	6.00	1	0	310	86.4	7.1	3.4	1.9	0.2	0.2	0.2	0.6	86.4	7.1	6.5	0.077	0.504	20.843162	-89.975022

43 CARR: RAMAL A YAXCABA

CLAVE: 31111

RUTA: YUC-289

AÑO: 2010

LUGAR	ESTACION				CLASIFICACION VEHICULAR EN PORCIENTO								COORDENADAS						
	KM	TE	SC	TDPA	A	B	C2	C3	T3S2	T3S3	T3S2R4	OTROS	A	B	C	K'	D	LATITUD	LONGITUD
T. C. MERIDA - PUERTO JUAREZ	0.00	3	0	681	88.2	2.9	3.1	1.0	1.6	1.5	1.0	0.7	88.2	2.9	8.9	0.084	0.506	20.694070	-88.811909
YAXCABA	18.00	1	0	632	85.8	3.4	3.7	1.2	2.1	1.5	1.6	0.7	85.8	3.4	10.8	0.103	0.509	20.560094	-88.825259

44 CARR: SINANCHE - XITIBCANUL

CLAVE: 31619

RUTA: YUC

AÑO: 2010

LUGAR	ESTACION				CLASIFICACION VEHICULAR EN PORCIENTO								COORDENADAS						
	KM	TE	SC	TDPA	A	B	C2	C3	T3S2	T3S3	T3S2R4	OTROS	A	B	C	K'	D	LATITUD	LONGITUD
SINANCHE	0.00	3	0	474	93.2	2.6	1.8	0.9	0.0	0.0	1.2	0.3	93.2	2.6	4.2	0.072	0.503	21.233254	-89.184557
XITIBCANUL	7.00	1	0	329	92.5	3.2	3.4	0.0	0.0	0.0	0.9	0.0	92.5	3.2	4.3	0.076	0.504	21.349939	-89.172271

YUCATAN

49 CARR: TICUL - CHAPAB

CLAVE: 31623

RUTA: YUC

AÑO: 2010

LUGAR	ESTACION				CLASIFICACION VEHICULAR EN PORCIENTO								COORDENADAS						
	KM	TE	SC	TDPA	A	B	C2	C3	T3S2	T3S3	T3S2R4	OTROS	A	B	C	K'	D	LATITUD	LONGITUD
TICUL	0.00	3	0	1420	84.7	2.7	3.2	1.5	1.6	3.5	2.0	0.8	84.7	2.7	12.6	0.092	0.512	20.409730	-89.524832
CHAPAB	8.00	1	0	1133	86.3	2.6	3.2	1.7	0.8	2.6	1.8	1.0	86.3	2.6	11.1	0.086	0.503	20.451466	-89.464778

50 CARR: TICUL - DZAN

CLAVE: 31621

RUTA: YUC

AÑO: 2010

LUGAR	ESTACION				CLASIFICACION VEHICULAR EN PORCIENTO								COORDENADAS						
	KM	TE	SC	TDPA	A	B	C2	C3	T3S2	T3S3	T3S2R4	OTROS	A	B	C	K'	D	LATITUD	LONGITUD
TICUL	0.00																		
T. IZQ. LIBRAMIENTO DE TICUL	2.50	3	0	2381	85.7	4.6	2.8	2.0	1.4	1.8	1.0	0.7	85.7	4.6	9.7	0.088	0.501	20.395548	-89.516625
DZAN	7.00	1	0	1510	86.9	4.6	2.8	1.5	1.3	1.0	1.1	0.8	86.9	4.6	8.5	0.085	0.502	20.390338	-89.480132

51 CARR: TIXKOKOB - BACA

CLAVE: 31010

RUTA: YUC

AÑO: 2010

LUGAR	ESTACION				CLASIFICACION VEHICULAR EN PORCIENTO								COORDENADAS						
	KM	TE	SC	TDPA	A	B	C2	C3	T3S2	T3S3	T3S2R4	OTROS	A	B	C	K'	D	LATITUD	LONGITUD
TIXKOKOB	0.00	3	0	2693	88.2	2.0	3.2	2.8	0.7	1.3	1.4	0.4	88.2	2.0	9.8	0.089	0.519	21.007216	-89.416482
BACA	15.00	1	0	1778	89.0	2.1	4.1	1.3	0.7	1.0	0.9	0.9	89.0	2.1	8.9	0.080	0.501	21.098168	-89.398099

52 CARR: TIXKOKOB - SOTUTA

CLAVE: 31106

RUTA: YUC

AÑO: 2010

LUGAR	ESTACION				CLASIFICACION VEHICULAR EN PORCIENTO								COORDENADAS						
	KM	TE	SC	TDPA	A	B	C2	C3	T3S2	T3S3	T3S2R4	OTROS	A	B	C	K'	D	LATITUD	LONGITUD
TIXKOKOB	0.00	3	0	1521	87.7	7.4	2.3	0.7	0.6	0.6	0.3	0.4	87.7	7.4	4.9	0.088	0.510	20.997105	-89.379518
TAHMEK	24.00	3	0	838	88.5	5.4	0.5	0.7	0.5	1.6	2.1	0.7	88.5	5.4	6.1	0.084	0.506	20.863655	-89.255444
HOCABA	31.00	3	0	571	85.9	5.8	1.1	0.9	0.9	1.8	2.8	0.8	85.9	5.8	8.3	0.091	0.504	20.808217	-89.238905
HUHI	43.00	1	0	488	86.0	6.3	1.6	1.2	1.1	0.8	2.3	0.7	86.0	6.3	7.7	0.080	0.509	20.724367	-89.172972
SOTUTA	65.00	1	0	476	82.4	5.6	2.7	2.3	1.1	2.7	2.2	1.0	82.4	5.6	12.0	0.086	0.511	20.602981	-89.020865

53 CARR: TIZIMIN - YUCATAN

CLAVE: 31588

RUTA: YUC

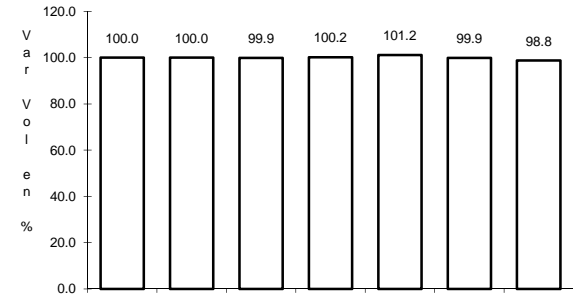
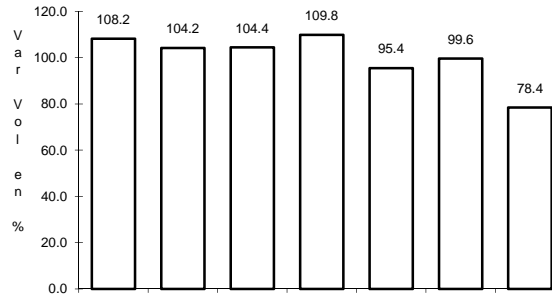
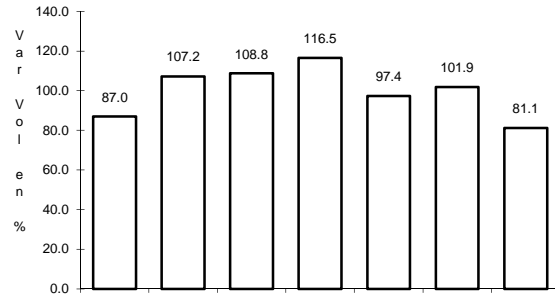
AÑO: 2010

LUGAR	ESTACION				CLASIFICACION VEHICULAR EN PORCIENTO								COORDENADAS						
	KM	TE	SC	TDPA	A	B	C2	C3	T3S2	T3S3	T3S2R4	OTROS	A	B	C	K'	D	LATITUD	LONGITUD
TIZIMIN	0.00	3	0	2530	85.6	2.9	5.0	1.4	3.3	0.1	0.8	0.9	85.6	2.9	11.5	0.068	0.513	21.148202	-88.123571
T. DER. BUENAVENTURA	30.00	3	0	1599	87.0	2.9	4.7	3.1	1.4	0.3	0.2	0.4	87.0	2.9	10.1	0.077	0.500	21.179913	-87.922631
YUCATAN	46.50	1	0	1708	86.7	2.9	3.3	1.6	1.4	1.3	2.1	0.7	86.7	2.9	10.4	0.075	0.501	21.204111	-87.725988

1 CARR: CAMPECHE - MERIDA

CLAVE: 00066

RUTA: MEX-180



Km: 0.00 Tipo: 3 Sent: 1

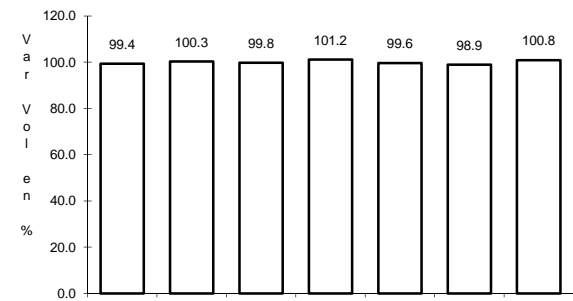
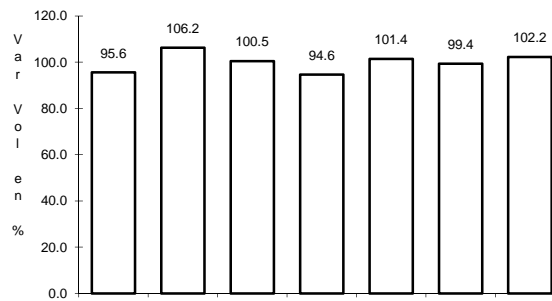
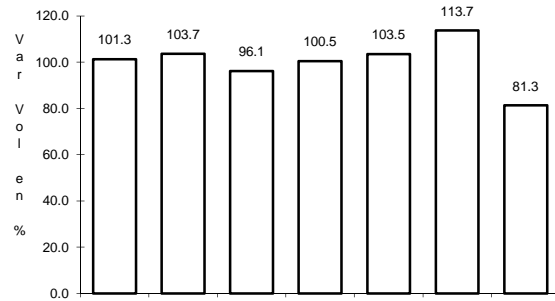
Km: 0.00 Tipo: 3 Sent: 2

Km: 160.49 Tipo: 1 Sent: 0

2 CARR: CAMPECHE - UMAN

CLAVE: 00164

RUTA: MEX-261



Km: 7.00 Tipo: 1 Sent: 0

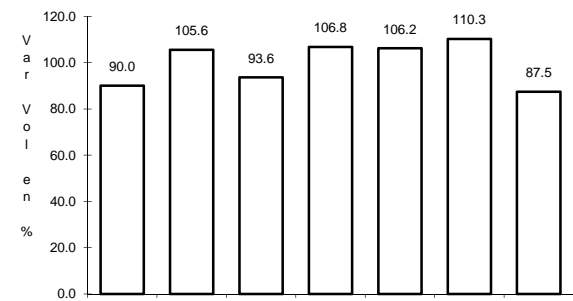
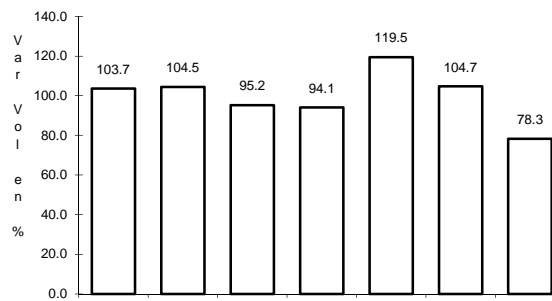
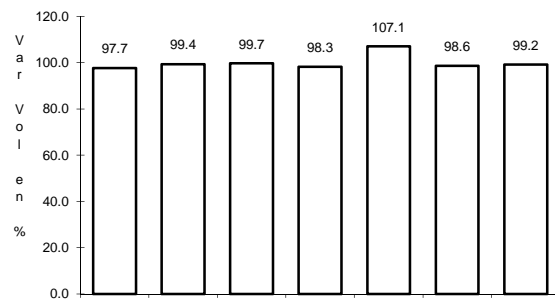
Km: 117.88 Tipo: 3 Sent: 0

Km: 230.83 Tipo: 1 Sent: 0

3 CARR: CANSAHCAB - TIZIMIN

CLAVE: 31014

RUTA: MEX-176



Km: 0.00 Tipo: 3 Sent: 0

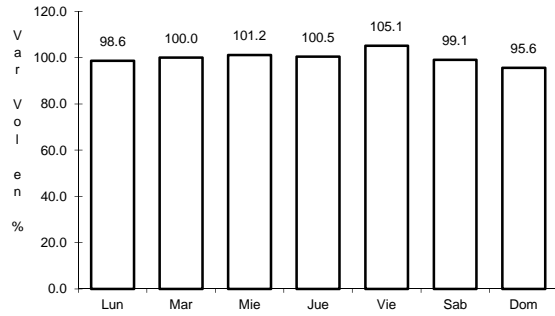
Km: 32.92 Tipo: 3 Sent: 0

Km: 99.14 Tipo: 1 Sent: 0

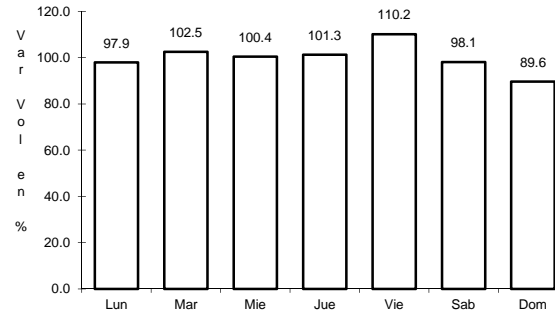
4 CARR: CONKAL - PUERTO CHICXULUB

CLAVE: 31004

ruta: MEX



Km: 0.00 Tipo: 3 Sent: 0

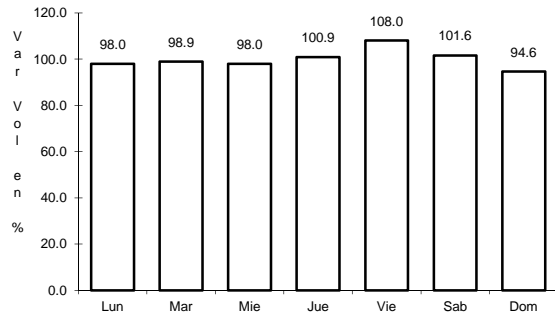


Km: 27.00 Tipo: 1 Sent: 0

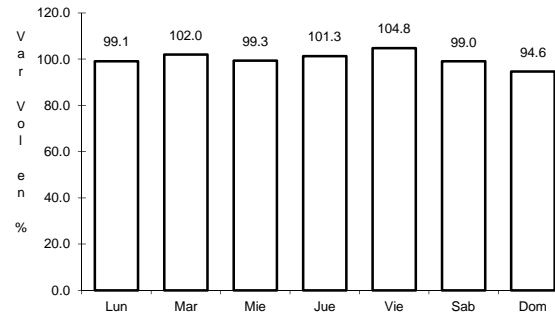
5 CARR: DZITBALCHE - ENT. SAN BERNARDO

CLAVE: 00162

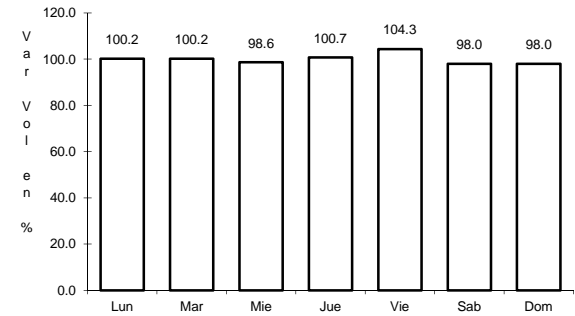
ruta: MEX-265



Km: 12.33 Tipo: 1 Sent: 0



Km: 21.08 Tipo: 1 Sent: 0

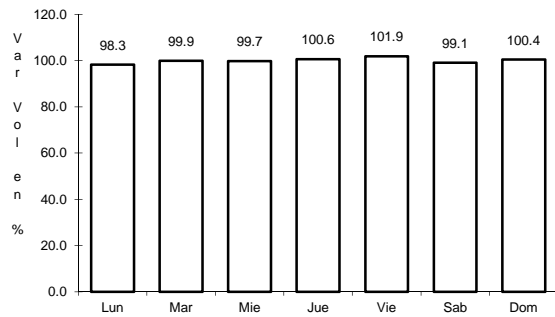


Km: 40.36 Tipo: 3 Sent: 0

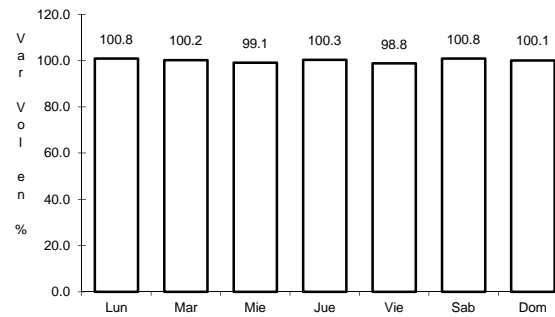
6 CARR: ENT. POXILA - MERIDA

CLAVE: 31003

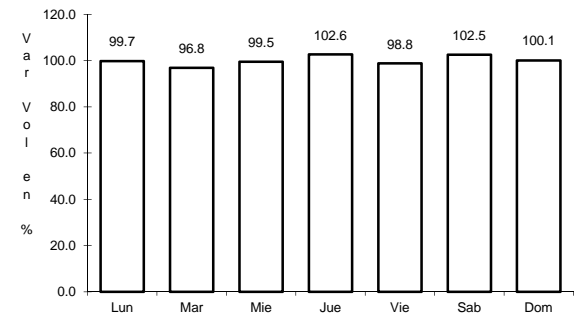
ruta: MEX



Km: 9.46 Tipo: 1 Sent: 0



Km: 25.70 Tipo: 1 Sent: 1

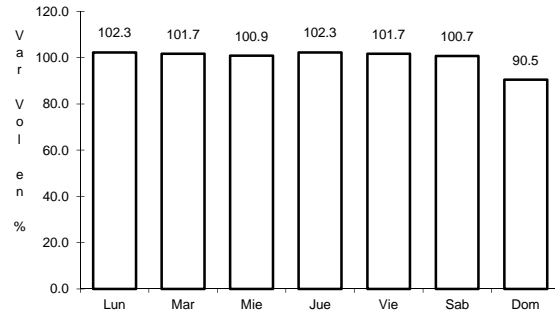


Km: 25.70 Tipo: 1 Sent: 2

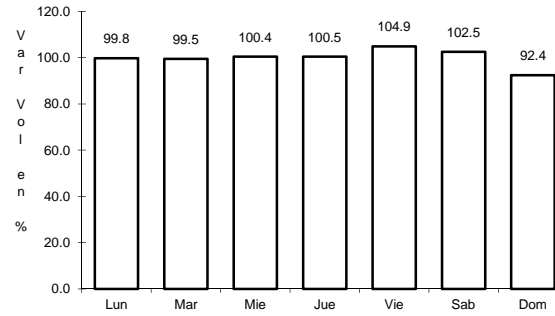
10 CARR: MERIDA - DZILAM DE BRAVO

CLAVE: 31001

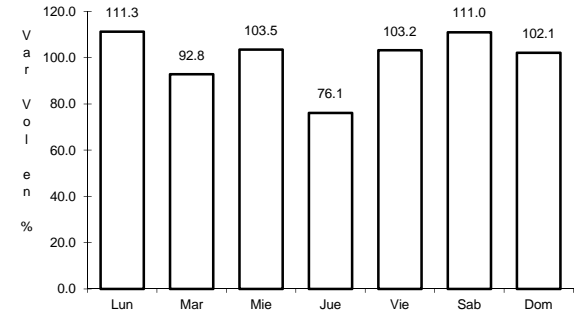
RUTA: MEX-178



Km: 5.90 Tipo: 1 Sent: 1



Km: 5.90 Tipo: 1 Sent: 2

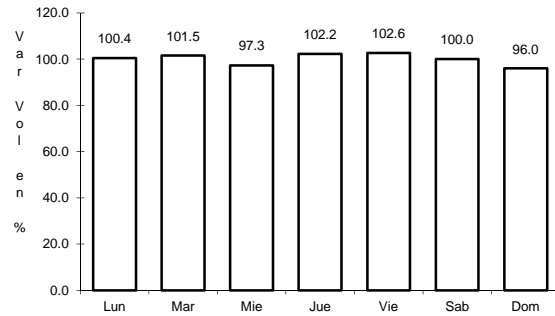


Km: 105.00 Tipo: 1 Sent: 0

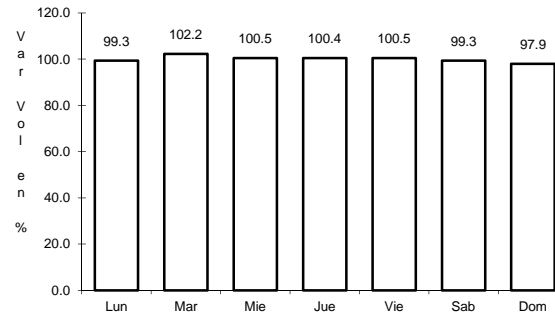
11 CARR: MERIDA - PROGRESO

CLAVE: 31091

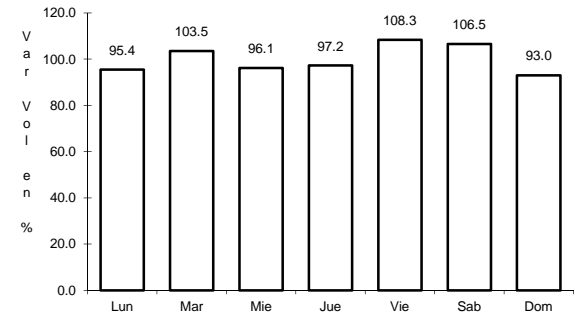
RUTA: MEX-261



Km: 5.40 Tipo: 1 Sent: 1



Km: 5.40 Tipo: 1 Sent: 2

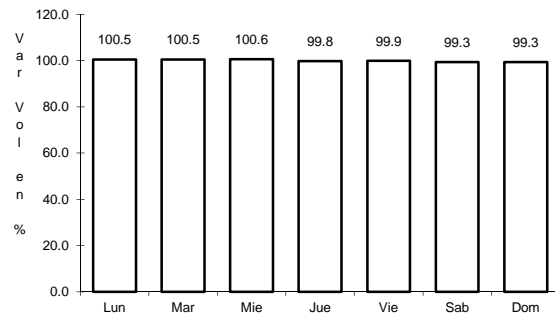


Km: 35.04 Tipo: 1 Sent: 0

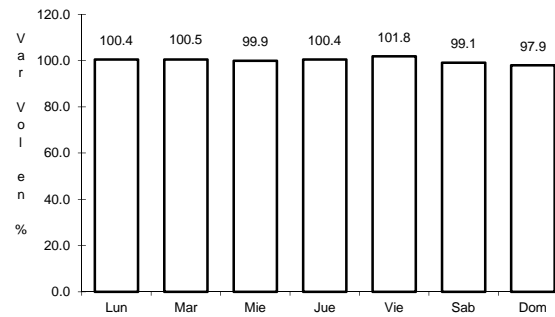
12 CARR: MERIDA - PUERTO JUAREZ

CLAVE: 00067

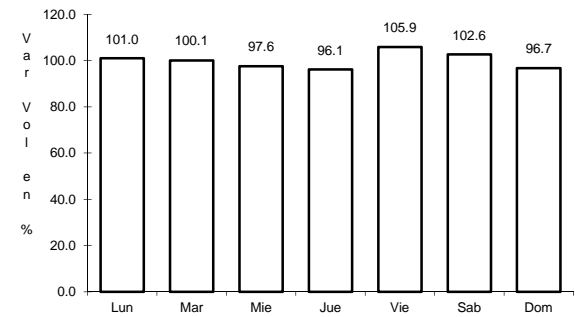
RUTA: MEX-180



Km: 5.60 Tipo: 1 Sent: 1



Km: 5.60 Tipo: 1 Sent: 2

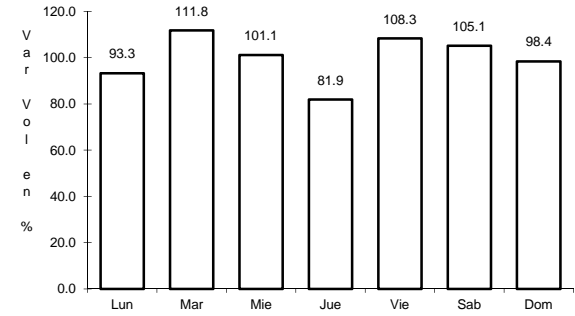
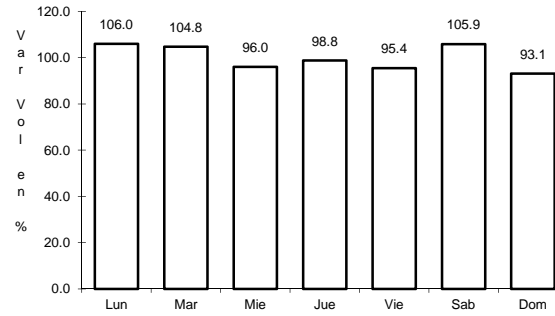
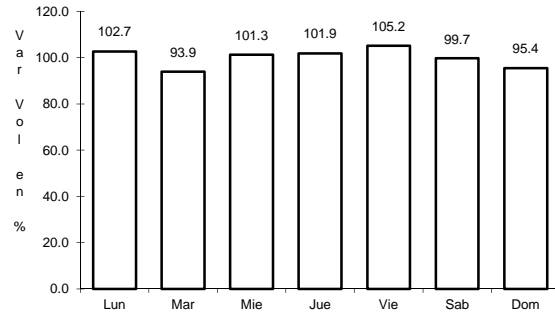


Km: 275.50 Tipo: 3 Sent: 0

13 CARR: MERIDA - TEKANTO

CLAVE: 31587

ruta: MEX



Km: 5.70 Tipo: 1 Sent: 0

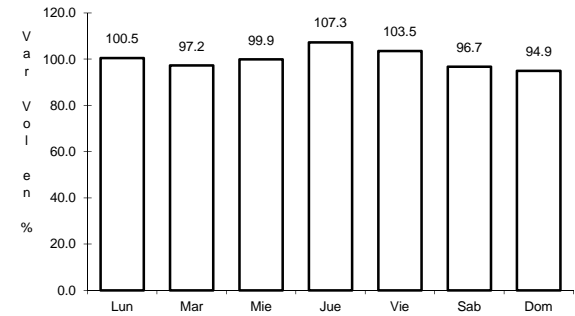
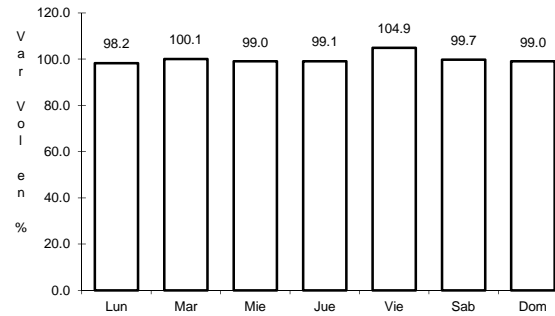
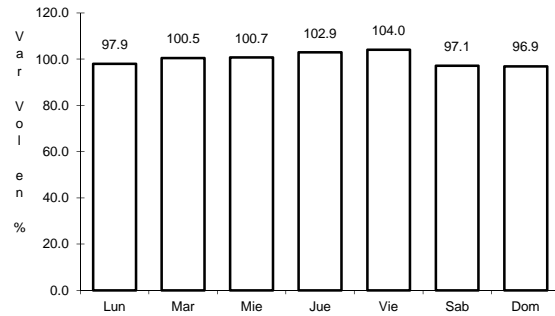
Km: 21.00 Tipo: 1 Sent: 0

Km: 51.00 Tipo: 1 Sent: 0

14 CARR: MUNA - FELIPE CARRILLO PUERTO

CLAVE: 00148

ruta: MEX-184



Km: 0.00 Tipo: 3 Sent: 0

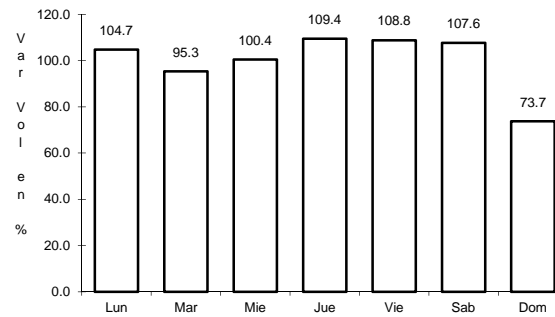
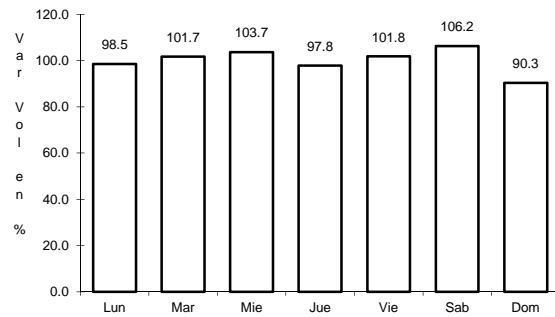
Km: 109.60 Tipo: 3 Sent: 0

Km: 216.97 Tipo: 1 Sent: 0

15 CARR: RAMAL A PANABA

CLAVE: 31609

ruta: MEX



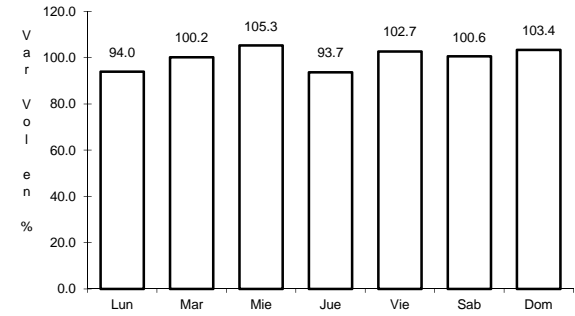
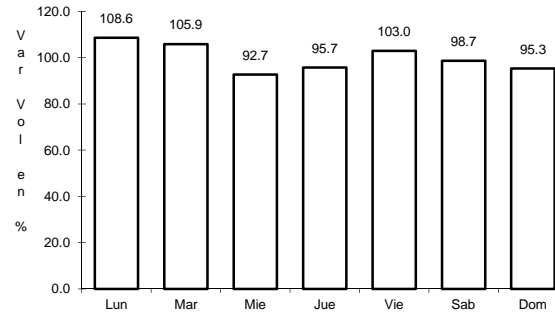
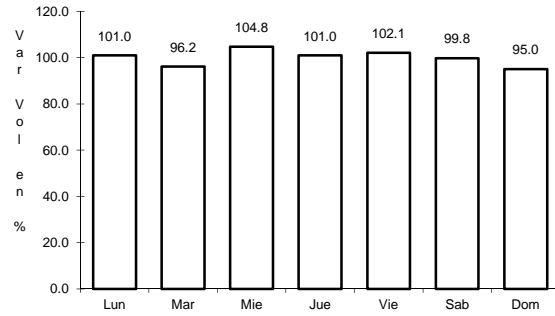
Km: 0.00 Tipo: 3 Sent: 0

Km: 18.00 Tipo: 1 Sent: 0

16 CARR: TEYA -PETO

CLAVE:

RUTA: MEX



Km: 3.80 Tipo: 3 Sent: 0

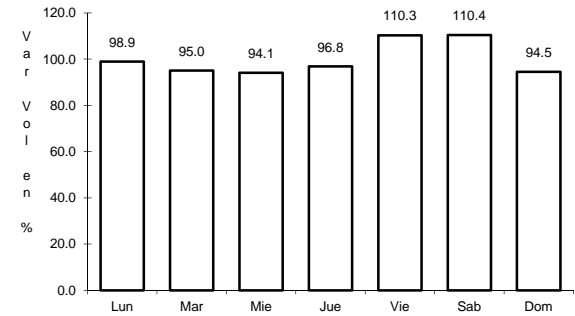
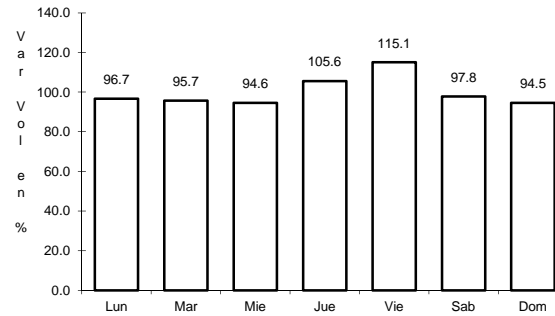
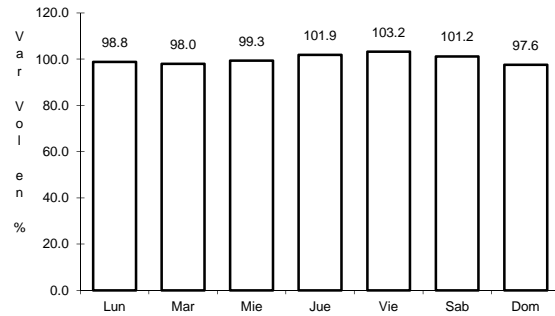
Km: 97.10 Tipo: 1 Sent: 0

Km: 120.70 Tipo: 1 Sent: 0

17 CARR: TZUCACAB - SANTA ROSA

CLAVE: 31017

RUTA: MEX



Km: 0.00 Tipo: 3 Sent: 0

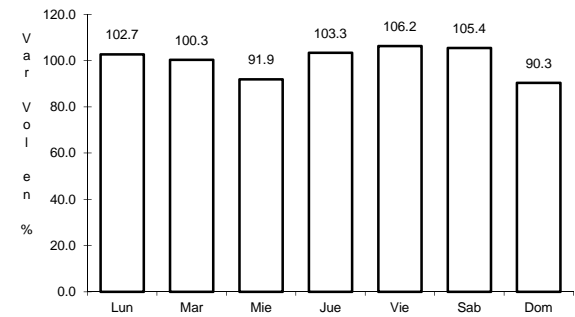
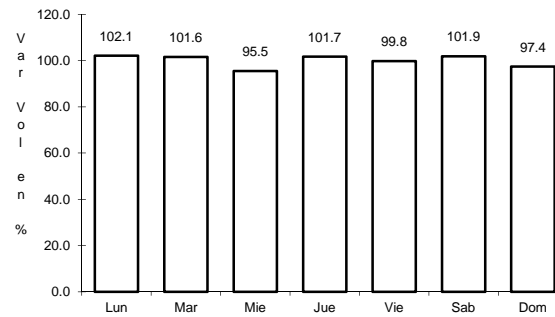
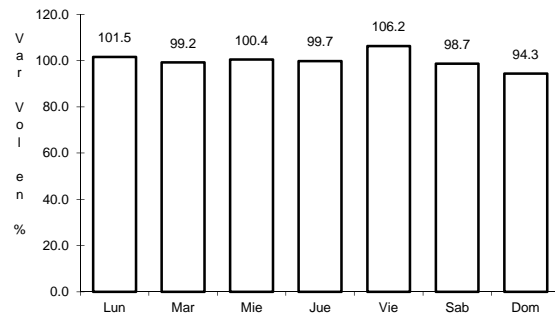
Km: 16.00 Tipo: 3 Sent: 0

Km: 34.50 Tipo: 1 Sent: 0

18 CARR: VALLADOLID - FELIPE CARRILLO PUERTO

CLAVE: 00010

RUTA: MEX-295



Km: 0.00 Tipo: 3 Sent: 0

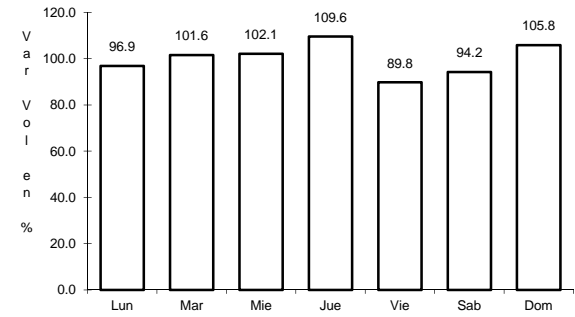
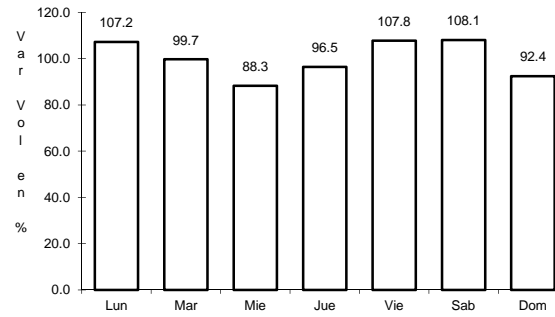
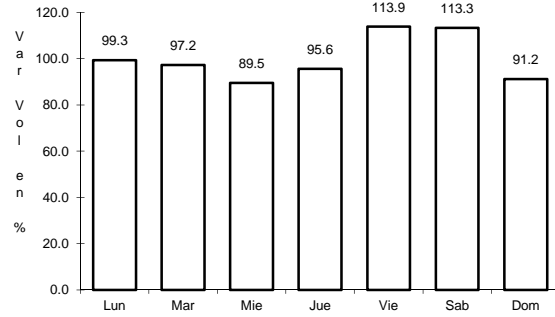
Km: 65.00 Tipo: 1 Sent: 0

Km: 147.70 Tipo: 1 Sent: 0

19 CARR: VALLADOLID - RIO LAGARTOS

CLAVE: 31035

ruta: MEX-295



Km: 0.00 Tipo: 3 Sent: 1

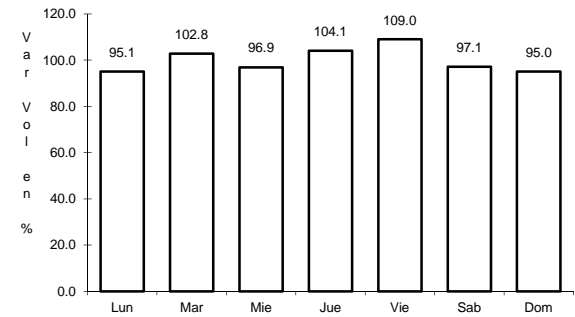
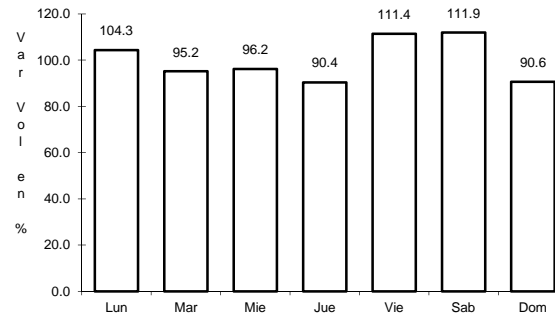
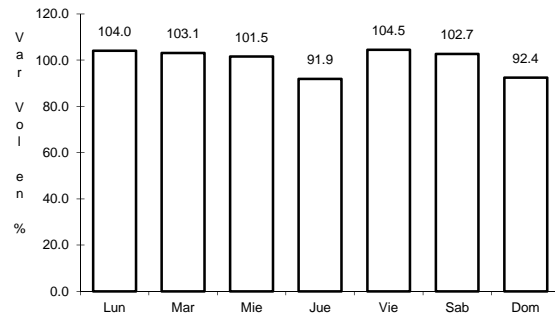
Km: 0.00 Tipo: 3 Sent: 2

Km: 79.90 Tipo: 1 Sent: 0

20 CARR: KANTUNIL - CANCUN (CUOTA)

CLAVE: 00071

ruta: MEX-180D



Km: 51.00 Tipo: 1 Sent: 1

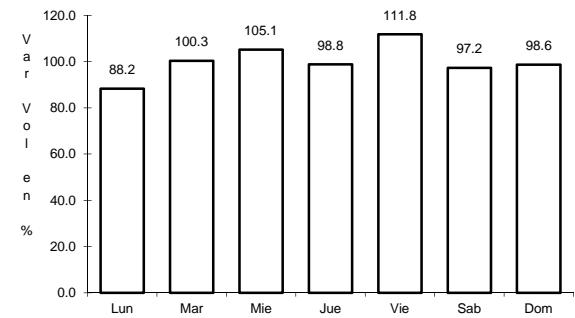
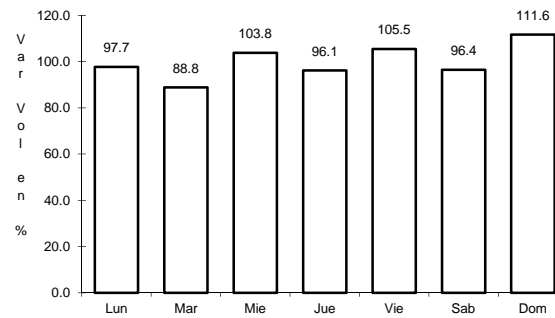
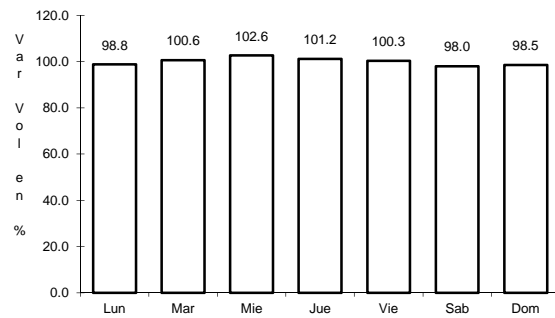
Km: 51.00 Tipo: 1 Sent: 2

Km: 308.10 Tipo: 1 Sent: 0

21 CARR: ACANCEH - ESTACION POLOBAN

CLAVE: 31615

ruta: YUC



Km: 0.00 Tipo: 3 Sent: 0

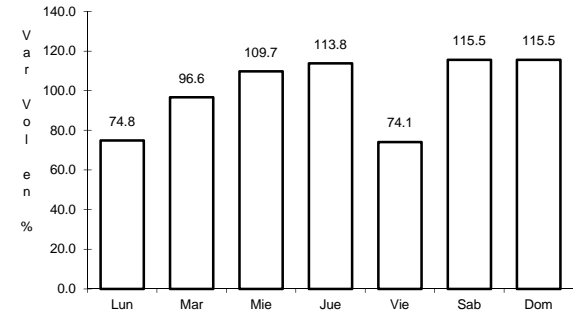
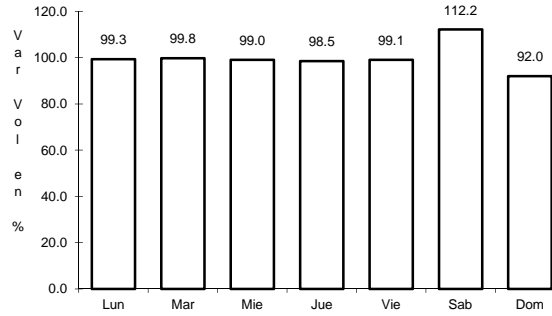
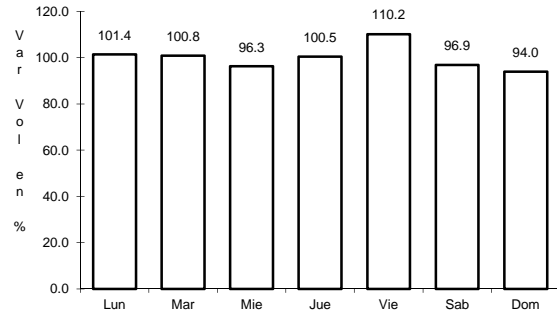
Km: 20.00 Tipo: 3 Sent: 0

Km: 24.40 Tipo: 1 Sent: 0

22 CARR: BACA - DZIDZANTUN

CLAVE: 31591

RUTA: YUC



Km: 0.00 Tipo: 3 Sent: 0

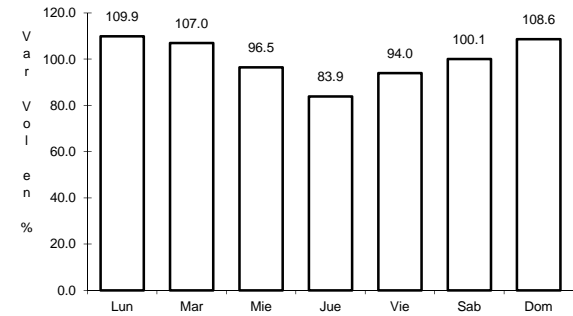
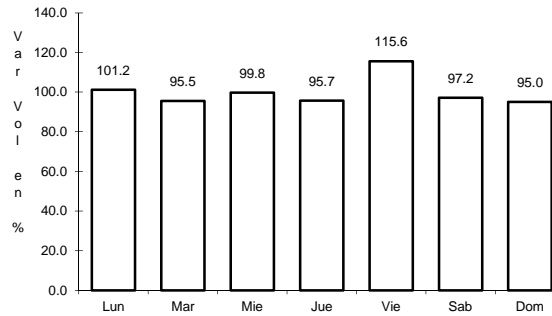
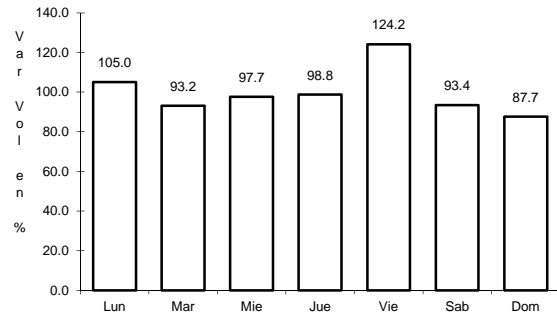
Km: 19.10 Tipo: 1 Sent: 0

Km: 43.00 Tipo: 1 Sent: 0

23 CARR: CITILCUM - TIXKOCHOH

CLAVE: 31064

RUTA: YUC



Km: 0.00 Tipo: 3 Sent: 0

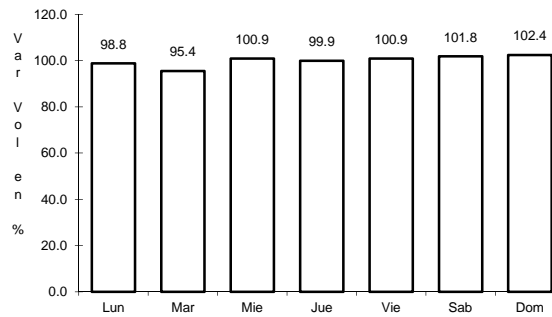
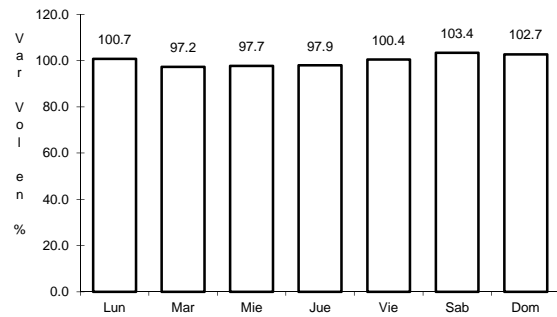
Km: 7.00 Tipo: 1 Sent: 0

Km: 10.00 Tipo: 1 Sent: 0

24 CARR: DZEMUL - XTAMPU

CLAVE: 31608

RUTA: YUC



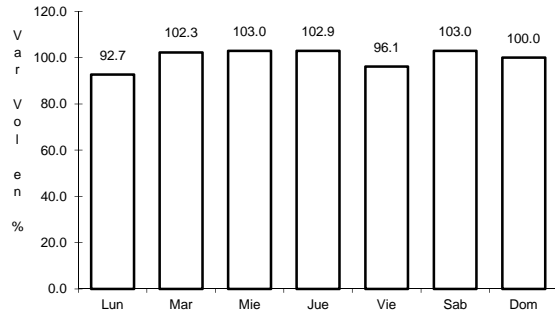
Km: 0.00 Tipo: 3 Sent: 0

Km: 10.00 Tipo: 1 Sent: 0

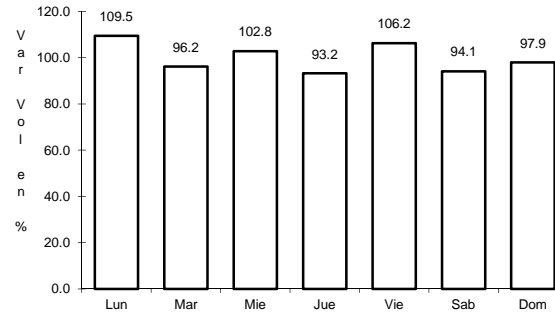
25 CARR: DZIDZANTUN - SANTA CLARA

CLAVE: 31592

RUTA: YUC



Km: 0.00 Tipo: 3 Sent: 0

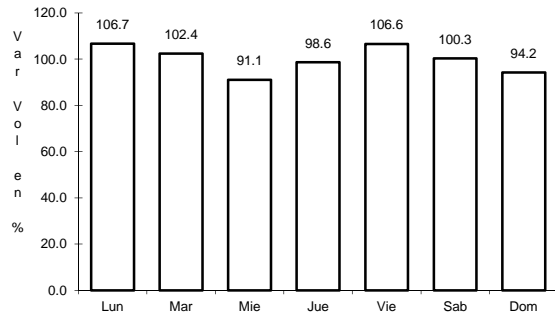


Km: 14.00 Tipo: 1 Sent: 0

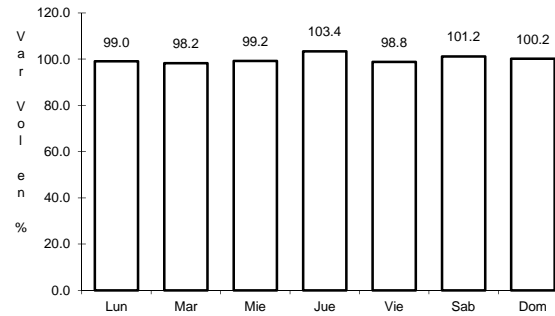
26 CARR: HOCTUN - CENOTILLO

CLAVE: 31011

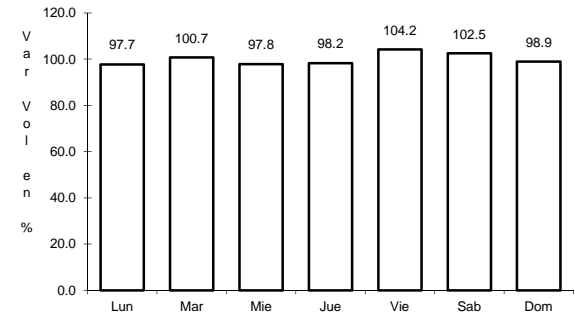
RUTA: YUC-011



Km: 0.00 Tipo: 3 Sent: 0



Km: 24.00 Tipo: 3 Sent: 0

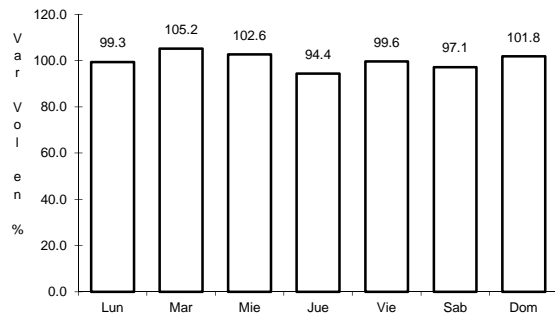


Km: 70.90 Tipo: 1 Sent: 0

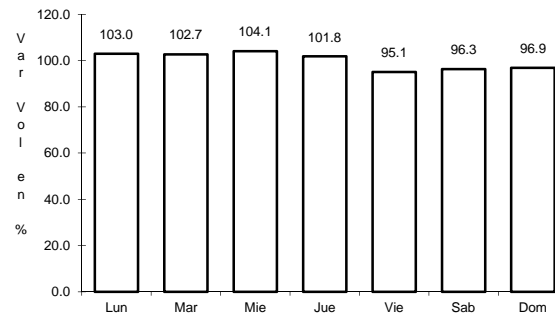
27 CARR: HOLCA - SOTUTA

CLAVE: 31626

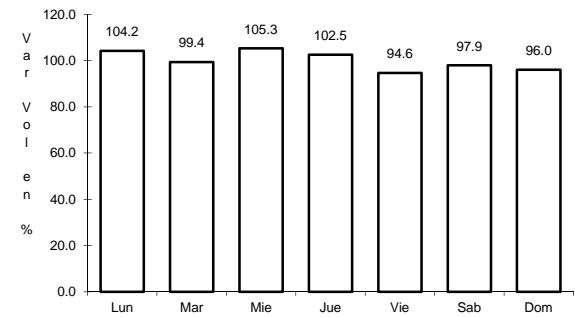
RUTA: YUC



Km: 0.00 Tipo: 3 Sent: 0



Km: 10.00 Tipo: 3 Sent: 0

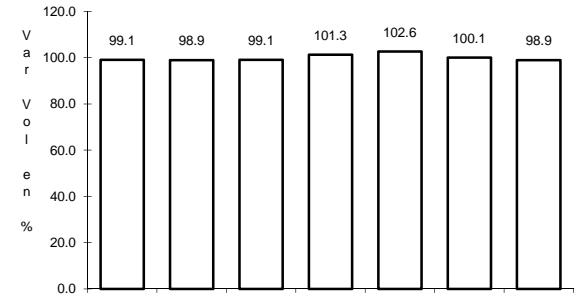
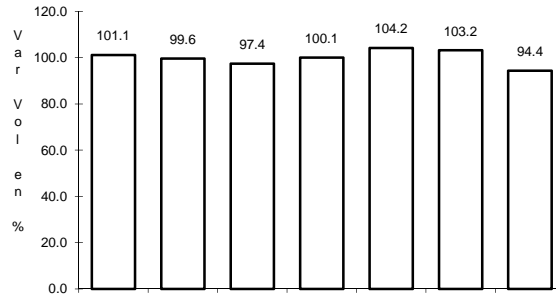
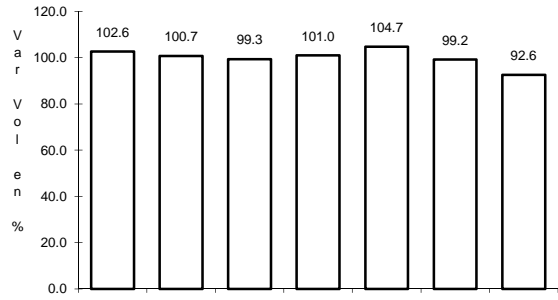


Km: 20.00 Tipo: 1 Sent: 0

31 CARR: MERIDA - ACANCEH

CLAVE: 31023

RUTA: YUC



Km: 0.00

Tipo: 3

Sent: 0

Km: 11.00

Tipo: 1

Sent: 0

Km: 26.00

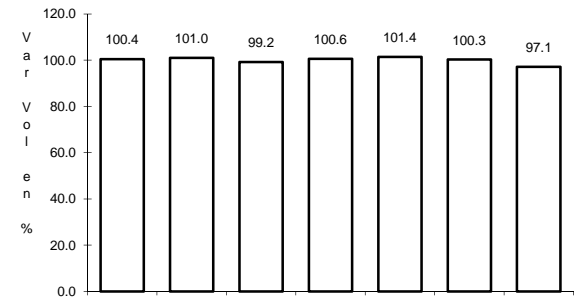
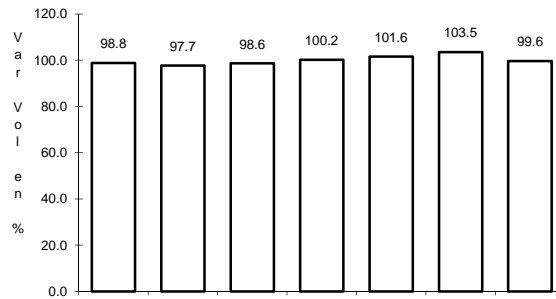
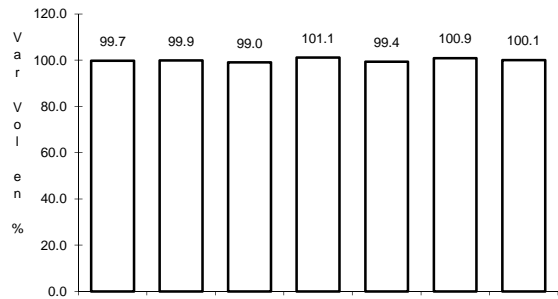
Tipo: 1

Sent: 0

32 CARR: MERIDA - OXKUTZCAB

CLAVE: 31018

RUTA: YUC-018



Km: 0.00

Tipo: 3

Sent: 0

Km: 61.70

Tipo: 1

Sent: 0

Km: 109.30

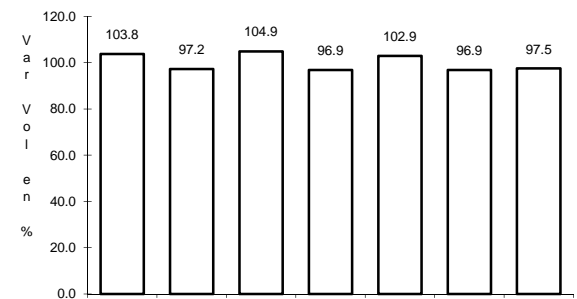
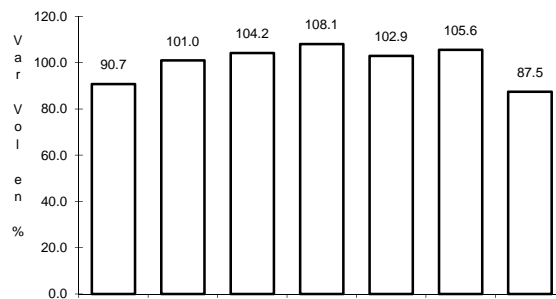
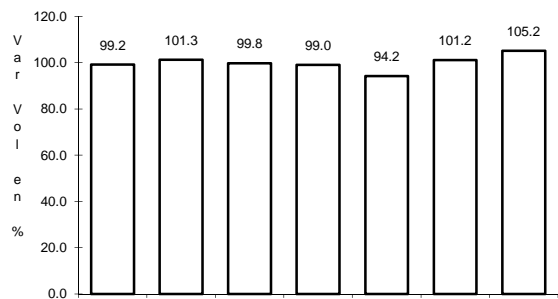
Tipo: 1

Sent: 0

33 CARR: MERIDA - TIMUCUY

CLAVE: 31024

RUTA: YUC



Km: 0.00

Tipo: 3

Sent: 0

Km: 15.10

Tipo: 1

Sent: 0

Km: 18.65

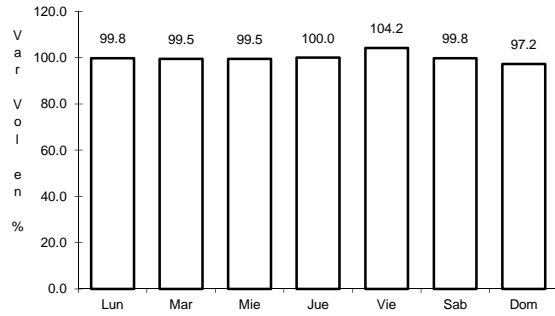
Tipo: 1

Sent: 0

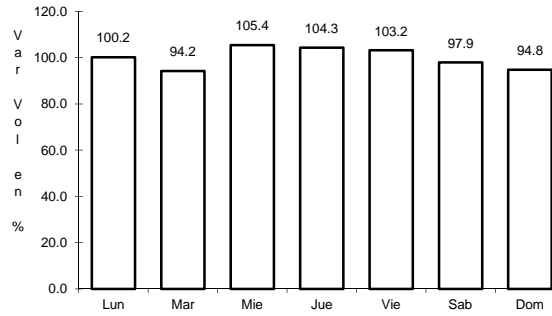
34 CARR: MOTUL - PUERTO TELCHAC

CLAVE: 31006

RUTA: YUC-172



Km: 0.00 Tipo: 3 Sent: 0

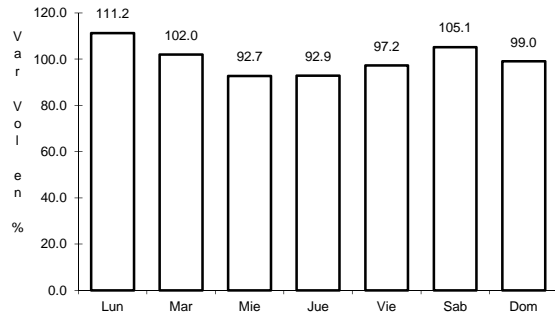


Km: 12.00 Tipo: 3 Sent: 0

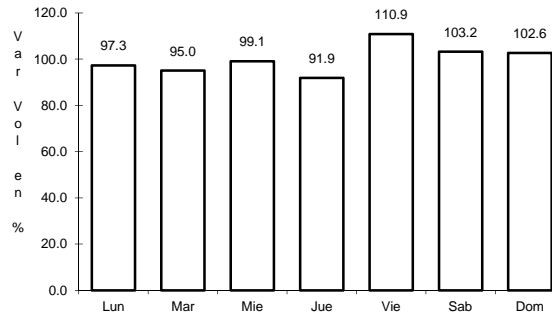
35 CARR: MUNA - MAXCANU

CLAVE: 31053

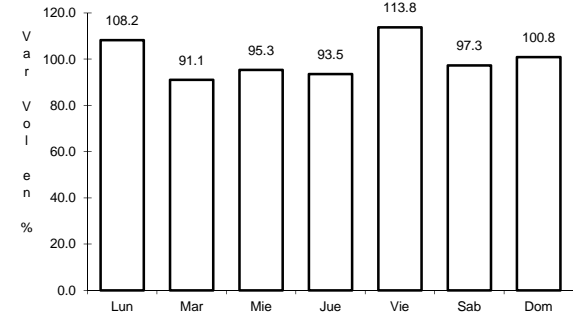
RUTA: YUC



Km: 0.00 Tipo: 3 Sent: 0



Km: 17.00 Tipo: 3 Sent: 0

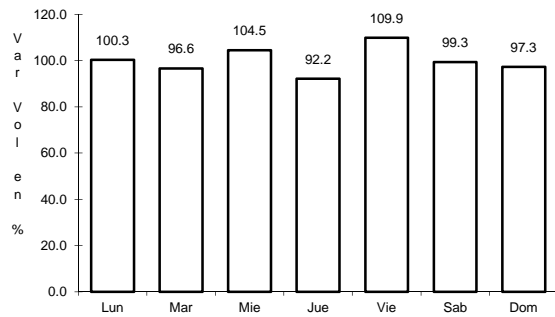


Km: 31.00 Tipo: 1 Sent: 0

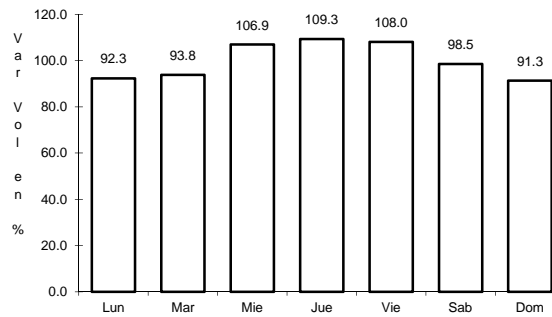
36 CARR: OXKUTZCAB - XUL

CLAVE: 31051

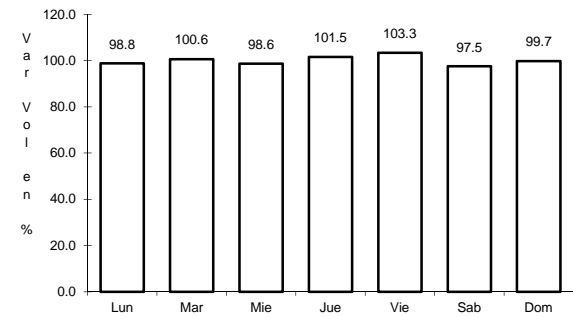
RUTA: YUC-031



Km: 0.00 Tipo: 3 Sent: 0



Km: 10.00 Tipo: 3 Sent: 0

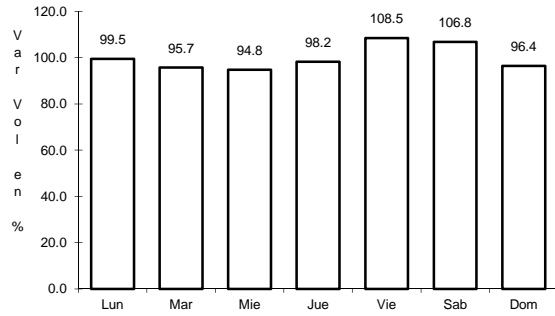


Km: 25.00 Tipo: 1 Sent: 0

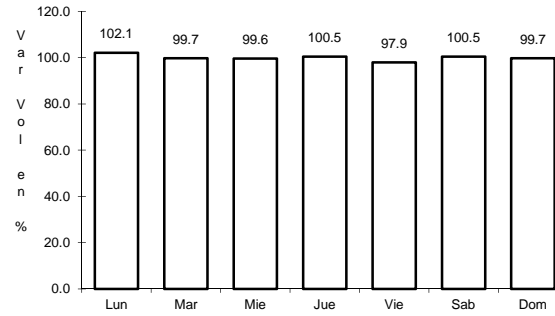
37 CARR: PISTE - DZITAS

CLAVE: 31013

ruta: YUC-013



Km: 0.00 Tipo: 3 Sent: 0

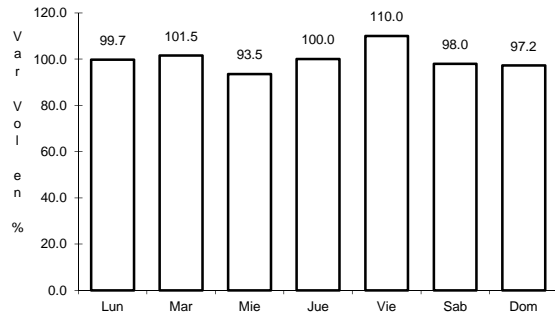


Km: 18.00 Tipo: 1 Sent: 0

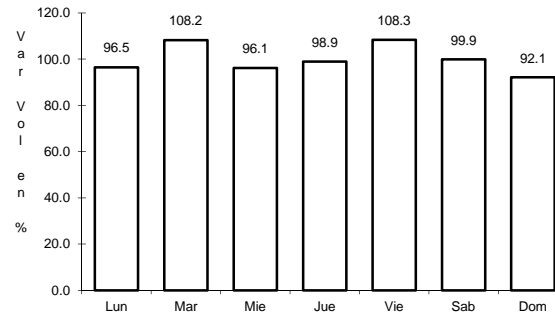
38 CARR: PROGRESO - TELCHAC PUERTO

CLAVE: 31616

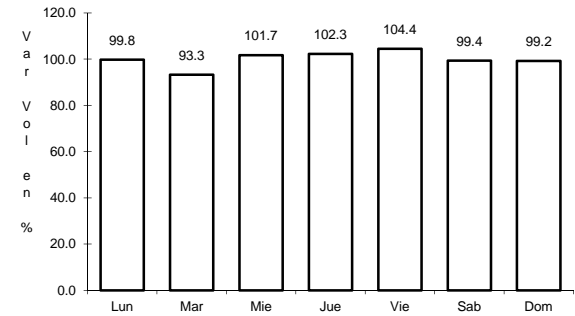
ruta: YUC-027



Km: 0.00 Tipo: 3 Sent: 1



Km: 0.00 Tipo: 3 Sent: 2

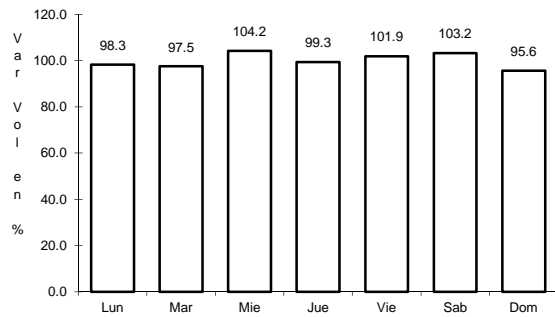


Km: 33.00 Tipo: 1 Sent: 0

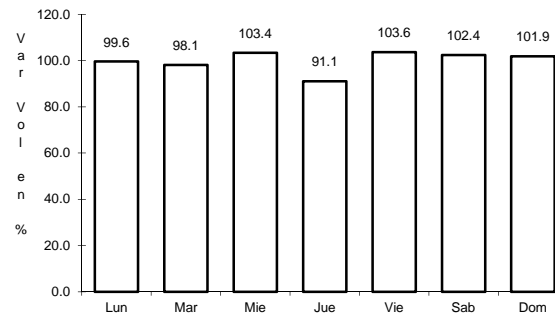
39 CARR: RAMAL A CHANKOM

CLAVE: 31049

ruta: YUC



Km: 0.00 Tipo: 3 Sent: 0

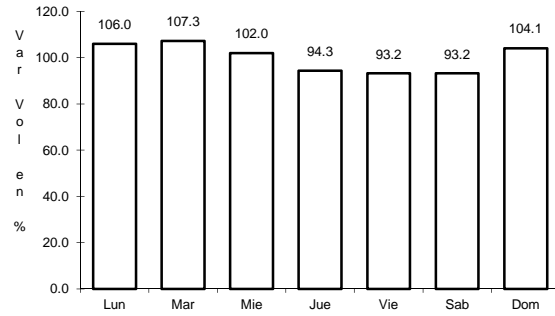


Km: 9.00 Tipo: 1 Sent: 0

40 CARR: RAMAL A DZONOT CARRETERO

CLAVE: 31614

RUTA: YUC



Km: 0.00

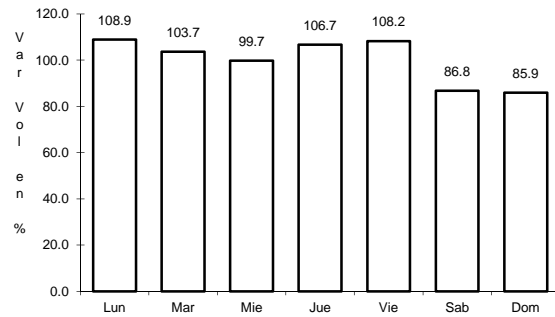
Tipo: 3

Sent: 0

41 CARR: RAMAL A SAN FELIPE

CLAVE: 31628

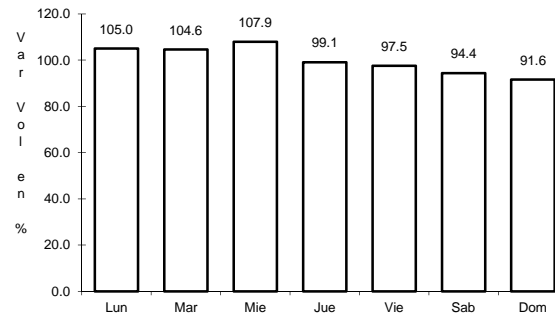
RUTA: YUC



Km: 0.00

Tipo: 3

Sent: 0



Km: 7.20

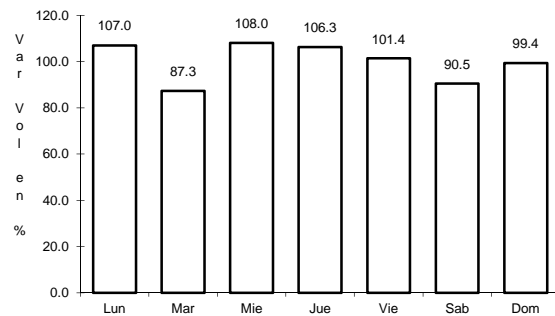
Tipo: 1

Sent: 0

42 CARR: RAMAL A TEDZIDZ

CLAVE: 31600

RUTA: YUC



Km: 6.00

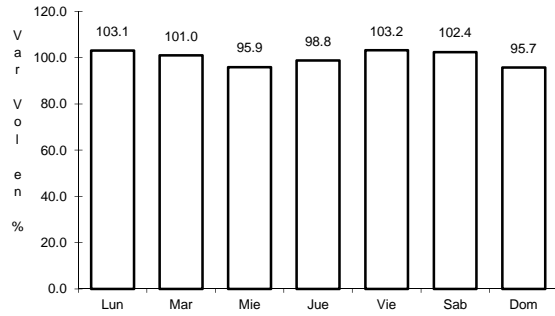
Tipo: 1

Sent: 0

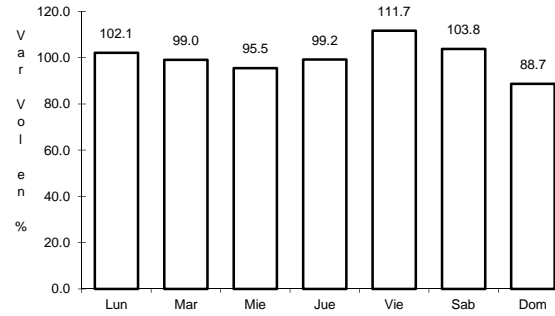
49 CARR: TICUL - CHAPAB

CLAVE: 31623

RUTA: YUC



Km: 0.00 Tipo: 3 Sent: 0

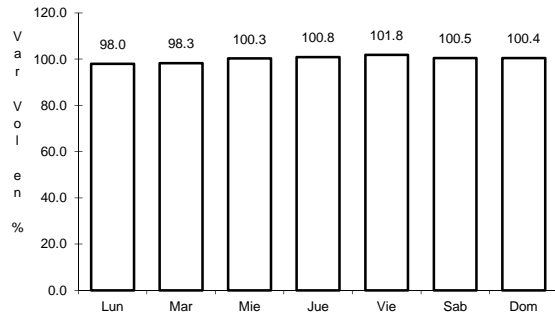


Km: 8.00 Tipo: 1 Sent: 0

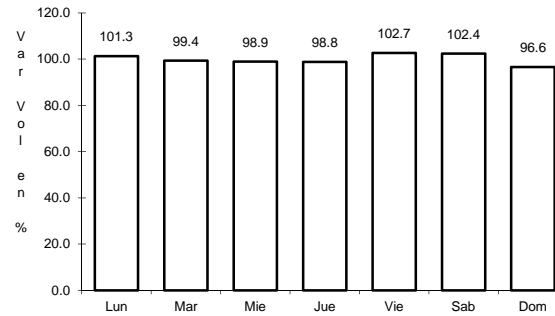
50 CARR: TICUL - DZAN

CLAVE: 31621

RUTA: YUC



Km: 2.50 Tipo: 3 Sent: 0

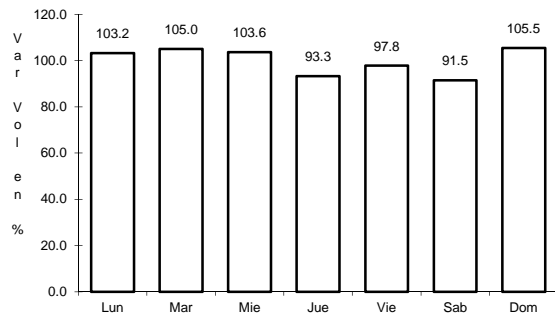


Km: 7.00 Tipo: 1 Sent: 0

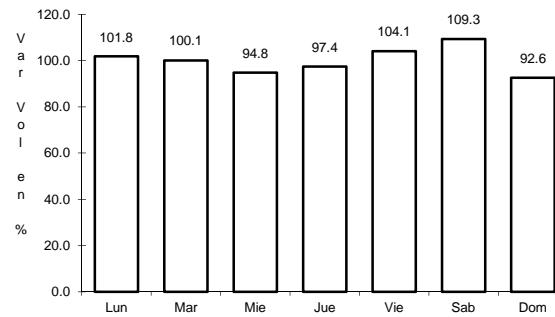
51 CARR: TIXKOKOB - BACA

CLAVE: 31010

RUTA: YUC



Km: 0.00 Tipo: 3 Sent: 0

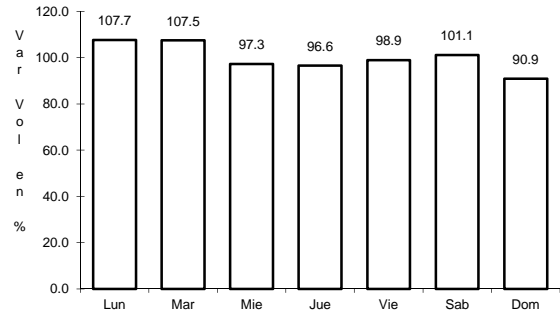


Km: 15.00 Tipo: 1 Sent: 0

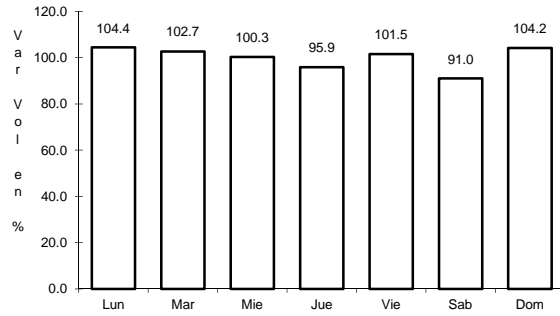
52 CARR: TIXKOKOB - SOTUTA

CLAVE: 31106

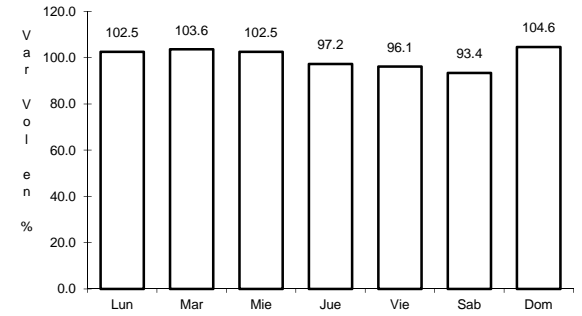
RUTA: YUC



Km: 0.00 Tipo: 3 Sent: 0



Km: 31.00 Tipo: 3 Sent: 0

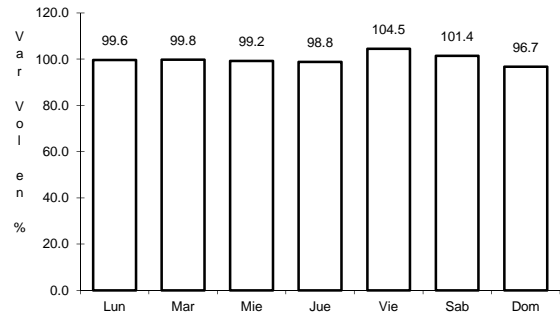


Km: 65.00 Tipo: 1 Sent: 0

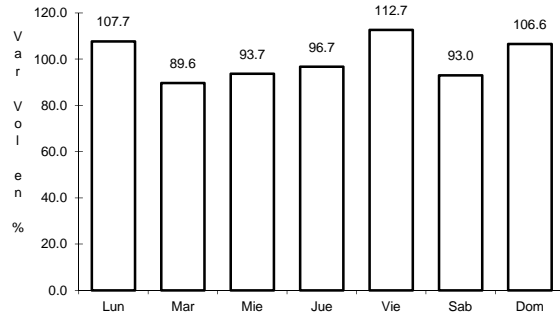
53 CARR: TIZIMIN - YUCATAN

CLAVE: 31588

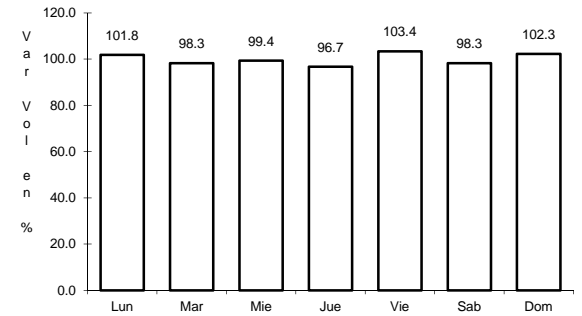
RUTA: YUC



Km: 0.00 Tipo: 3 Sent: 0



Km: 30.00 Tipo: 3 Sent: 0

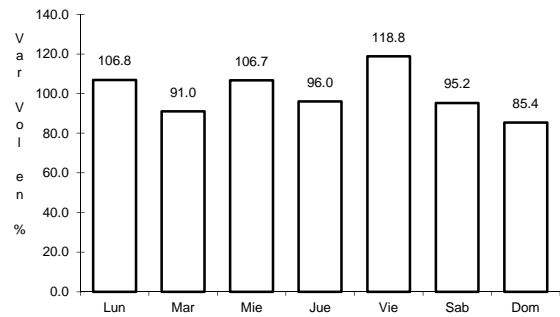


Km: 46.50 Tipo: 1 Sent: 0

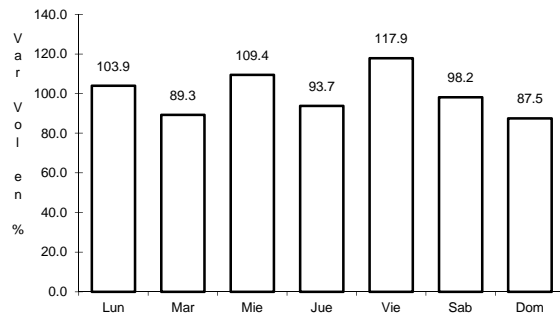
54 CARR: YAXCHE - SIERRA PAPACAL

CLAVE: 31620

RUTA: YUC



Km: 0.00 Tipo: 3 Sent: 0



Km: 12.00 Tipo: 1 Sent: 0

