

VERACRUZ

No. INDICE	CARRETERA	ruta	No. INDICE	CARRETERA	ruta
<b>---RED FEDERAL LIBRE---</b>			<b>---RED ESTATAL LIBRE---</b>		
1	ALAMO - HUEJUTLA DE REYES	MEX-102	43	LA TINAJA - COSOLEACAQUE (CUOTA)	MEX-145D
2	ALAZAN - CANOAS	MEX-127	44	LAS CHOAPAS - OCOZOCOAUTLA (CUOTA)	MEX-187D
3	ALTOTONGA - TLAPACOYAN	MEX	45	LIBRAMIENTO DE CARDEL	MEX-180D
4	BUENAVISTA - TUXTEPEC	MEX-175	46	LIBRAMIENTO PEROTE (CUOTA)	MEX-D
5	CD. ALEMÁN - SAYULA	MEX-145	47	LIBRAMIENTO PLAN DEL RIO (CUOTA)	MEX-D
6	CD. VALLES - TAMPICO	MEX-070	48	NUEVO TEAPA - COSOLEACAQUE (CUOTA)	MEX-145D
7	COATZACOALCOS - SALINA CRUZ	MEX-185	49	PUEBLA - CORDOBA (CUOTA)	MEX-150D
8	COATZACOALCOS - VILLAHERMOSA	MEX-180	50	TEJOCOTAL - TIHUATLAN (CUOTA)	MEX-130D
9	CORDOBA - ENT. BOTICARIA	MEX-150	51	TIHUATLAN - EL PALMAR (CUOTA)	MEX-180D
10	COSOLEACAQUE - SOTEAPAN	MEX	52	TIHUATLAN - TUXPAM (CUOTA)	MEX-132D
11	FORTIN - CONEJOS	MEX-125	<b>---RED ESTATAL LIBRE---</b>		
12	LA GRANJA - TEMASCAL	MEX	53	BANDERILLA - MARTINEZ DE LA TORRE	VER-065
13	LA TINAJA - SANTA CRUZ	MEX-145	54	BENITO JUAREZ - AGUA DULCE	TAB-VER
14	LIBRAMIENTO DE CUITLAHUAC	MEX	55	ENT. LA LAGUNA - ENT. EL CALLEJON	VER
15	LIBRAMIENTO DE YANGA	MEX	56	JOSE CARDEL - PLAYA CHACHALACAS	VER
16	LIBRAMIENTO RINCONADA	MEX	57	LAS TRANCAS - COATEPEC	VER
17	MINATITLAN - COATZACOALCOS (VIA CANTICA)	MEX-172	58	LIBRAMIENTO DE ACAYUCAN	VER
18	ORIZABA - ZONGOLICA	MEX-123	59	LIBRAMIENTO DE CORDOBA - PEÑUELA	VER
19	PACHUCA - TEMPOAL	MEX-105	60	LIBRAMIENTO DE TUXPAM	VER
20	PACHUCA - TUXPAM	MEX-130	61	MATA DE ESPINO - IGNACIO DE LA LLAVE	VER
21	PAPANTLA - EL CHOTE	MEX	62	MATA REDONDA - JOACHIN	VER-095
22	PASO DEL TORO - ACAYUCAN	MEX-180	63	NUEVO TEAPA - AGUA DULCE	VER
23	POZA RICA - VERACRUZ	MEX-180	64	PEÑUELA - SANTA RITA	VER
24	RAMAL A ANTON LIZARDO	MEX	65	POZA RICA - CAZONES	VER-075
25	RAMAL A EL HIGO	MEX	66	PUEBLO VIEJO - T. C. (CD. VALLES - TAMPICO)	VER
26	RAMAL A HUEYAPAN DE OCAMPO	MEX	67	PUERTO RICO - TOTUTLA	VER
27	RAMAL A PUENTE TAMPICO	MEX-180	68	RAMAL A ACTOPAN	VER
28	RAMAL A TECOLUTLA	MEX	69	RAMAL A AGUA DULCE	VER
29	RAMAL A ZAPOTLALILLO	MEX	70	RAMAL A CHONTLA	VER
30	SAN HIPOLITO - XALAPA	MEX-140	71	RAMAL A ESTACION OCHOA	VER
31	SAN PABLO VILLA DE MITLA - T. C. (TUXTEPEC - PALOMARES)	MEX-179	72	RAMAL A JAMAPA	VER
32	TAMARINDO - JOSE CARDEL	MEX	73	RAMAL A JESUS CARRANZA	VER
33	TEHUACAN - CORDOBA	MEX-150	74	RAMAL A SUCHILAPAN	VER
34	TEZIUTLAN - NAUTLA	MEX-129	75	RAMAL A ZEMPOALA	VER-192
35	TEZIUTLAN - PEROTE	MEX-131	76	SAN ALEJO - HUAYACOCOTLA	HGO-051-VER-113
36	TIHUATLAN - CASTILLO DE TEAYO	MEX	77	SAN SEBASTIAN - CHICONTEPEC	VER-083
37	TIHUATLAN - POTRERO DEL LLANO	MEX	78	SANTIAGO TUXTLA - PLAYA VICENTE	VER
38	TUXPAM - TAMPICO	MEX-180	79	SIERRA DE AGUA - MAGUEYITOS	VER
39	TUXTEPEC - ENT. PALOMARES	MEX-147	80	T. C. (COATZACOALCOS - VILLAHERMOSA) - LAS CHOAPAS	VER
40	XALAPA - VERACRUZ	MEX-140	81	TUXPAM - BARRA DE TUXPAM	VER
<b>---RED FEDERAL DE CUOTA---</b>			82	XALAPA - COATEPEC	VER
41	AMOZOC - PEROTE (CUOTA)	MEX-140D	<b>---CARRETERAS INTEGRADAS POR TRAMOS FEDERALES Y ESTATALES---</b>		
42	CORDOBA - VERACRUZ (CUOTA)	MEX-150D	83	PASO DEL TORO - LAGUNA DE SAN JULIAN	MEX-VER
			84	POZA RICA - MARIA DE LA TORRE	MEX-127-VER

# 30 VERACRUZ

SECRETARÍA DE COMUNICACIONES Y TRANSPORTES  
DIRECCIÓN GENERAL DE SERVICIOS TÉCNICOS



VERACRUZ

1 CARR: ALAMO - HUEJUTLA DE REYES

CLAVE: 00116

RUTA: MEX-102

AÑO: 2010

LUGAR	ESTACION				CLASIFICACION VEHICULAR EN PORCIENTO								COORDENADAS						
	KM	TE	SC	TDPA	A	B	C2	C3	T3S2	T3S3	T3S2R4	OTROS	A	B	C	K'	D	LATITUD	LONGITUD
T. C. TIHUATLAN - POTRERO DEL LLANO	0.00	3	0	2437	85.4	3.7	1.7	1.4	3.3	1.6	2.5	0.4	85.4	3.7	10.9	0.071	0.514	20.946488	-97.718530
BENITO JUAREZ	73.00	1	0	1288	89.8	3.3	3.8	0.5	0.9	0.9	0.3	0.5	89.8	3.3	6.9	0.075	0.513	20.882250	-98.198383
T. DER. CHICONTEPEC DE TEJADA	78.00	3	0	927	85.2	4.8	4.4	1.8	1.5	0.8	1.2	0.3	85.2	4.8	10.0	0.073	0.512	20.924463	-98.222644
LIM. EDOS. TERM. VER. PPIA. HGO.	78.70																		
T. C. PACHUCA - TEMPOAL (HUEJUTLA DE REYES)	110.00																		

2 CARR: ALAZAN - CANOAS

CLAVE: 30141

RUTA: MEX-127

AÑO: 2010

LUGAR	ESTACION				CLASIFICACION VEHICULAR EN PORCIENTO								COORDENADAS						
	KM	TE	SC	TDPA	A	B	C2	C3	T3S2	T3S3	T3S2R4	OTROS	A	B	C	K'	D	LATITUD	LONGITUD
T. C. TUXPAM - TAMPICO	0.00	3	0	6337	82.7	7.1	4.1	2.7	1.4	1.1	0.5	0.4	82.7	7.1	10.2	0.077	0.504	21.100793	-97.750802
ENT. SAN SEBASTIAN - CHICONTEPEC	48.27	1	0	1967	81.9	7.4	4.3	2.9	1.4	1.2	0.5	0.4	81.9	7.4	10.7	0.089	0.504	21.213265	-98.125456
ENT. SAN SEBASTIAN - CHICONTEPEC	48.27	3	0	2171	81.8	7.5	4.5	2.8	1.4	1.1	0.5	0.4	81.8	7.5	10.7	0.069	0.511	21.219548	-98.134537
TANTOYUCA	66.34	1	0	3365	81.5	7.9	4.3	2.9	1.4	1.1	0.5	0.4	81.5	7.9	10.6	0.078	0.509	21.332995	-98.213481
TANTOYUCA	66.34	3	0	4731	81.2	7.9	4.3	3.1	1.5	1.1	0.5	0.4	81.2	7.9	10.9	0.064	0.518	21.369325	-98.230217
T. C. PACHUCA - TEMPOAL	91.00	1	0	4376	81.9	7.4	4.3	3.0	1.4	1.1	0.5	0.4	81.9	7.4	10.7	0.068	0.508	21.487380	-98.353541
T. IZQ. TEMPOAL DE SANCHEZ (ACCESO 1)	91.40	3	0	4161	81.5	7.7	4.3	3.0	1.4	1.2	0.5	0.4	81.5	7.7	10.8	0.060	0.510	21.514609	-98.373246
T. IZQ. TEMPOAL DE SANCHEZ (ACCESO 2)	92.60	3	0	2880	81.6	7.3	4.7	3.0	1.4	1.1	0.5	0.4	81.6	7.3	11.1	0.065	0.511	21.526081	-98.379599
PANUCO	160.00	1	0	4428	81.1	8.0	4.6	2.9	1.4	1.1	0.5	0.4	81.1	8.0	10.9	0.057	0.503	22.041634	-98.202747
PANUCO	160.00	3	0	7011	82.2	7.4	4.2	2.9	1.4	1.0	0.5	0.4	82.2	7.4	10.4	0.065	0.500	22.066603	-98.168833
CASETA DE COBRO PUENTE PANUCO	172.10	2	0	5144	81.8	7.5	4.4	2.9	1.4	1.1	0.5	0.4	81.8	7.5	10.7			22.148705	-98.144903
T. C. CD. VALLES - TAMPICO	173.355	1	0	4531	82.0	7.7	4.2	2.9	1.3	1.0	0.5	0.4	82.0	7.7	10.3	0.068	0.504	22.153109	-98.148440

3 CARR: ALTOTONGA - TLAPACOYAN

CLAVE: 30741

RUTA: MEX

AÑO: 2010

LUGAR	ESTACION				CLASIFICACION VEHICULAR EN PORCIENTO								COORDENADAS						
	KM	TE	SC	TDPA	A	B	C2	C3	T3S2	T3S3	T3S2R4	OTROS	A	B	C	K'	D	LATITUD	LONGITUD
T. C. TEZIUTLAN - PEROTE	0.00																		
ATZALAN	3.00	1	0	4241	82.6	4.3	5.2	2.1	2.9	1.2	1.1	0.6	82.6	4.3	13.1	0.057	0.504	19.785586	-97.243626
TLAPACOYAN	32.10	1	0	3118	82.6	4.5	4.3	2.0	3.5	1.4	1.0	0.7	82.6	4.5	12.9	0.057	0.508	19.941607	-97.217252

VERACRUZ

4 CARR: BUENAVISTA - TUXTEPEC

CLAVE: 00624

RUTA: MEX-175

AÑO: 2010

LUGAR	ESTACION				CLASIFICACION VEHICULAR EN PORCIENTO								COORDENADAS						
	KM	TE	SC	TDPA	A	B	C2	C3	T3S2	T3S3	T3S2R4	OTROS	A	B	C	K'	D	LATITUD	LONGITUD
T. C. PASO DEL TORO - ACAYUCAN	0.00	3	0	1452	78.0	8.6	4.9	3.0	2.3	0.4	0.3	2.5	78.0	8.6	13.4	0.056	0.521	18.713506	-95.637976
PUENTE TLACOTALPAN	1.55	2	0	7884	78.2	8.2	5.1	3.0	2.3	0.4	0.3	2.5	78.2	8.2	13.6			18.704596	-95.641294
TLACOTALPAN	18.00	1	0	1705	77.8	8.8	4.9	3.0	2.3	0.4	0.3	2.5	77.8	8.8	13.4	0.071	0.523	18.612220	-95.649847
TLACOTALPAN	18.00	3	0	1524	77.7	8.5	4.8	3.3	2.3	0.4	0.3	2.7	77.7	8.5	13.8	0.064	0.512	18.616686	-95.669630
CARLOS A. CARRILLO	56.00	1	0	3865	77.8	8.6	4.9	3.2	2.3	0.4	0.3	2.5	77.8	8.6	13.6	0.064	0.500	18.378424	-95.749716
COSAMALOAPAN	60.00	1	0	9699	78.7	8.1	4.7	2.9	2.3	0.4	0.3	2.6	78.7	8.1	13.2	0.065	0.501	18.365722	-95.776284
COSAMALOAPAN	60.00	3	0	6427	76.4	9.0	5.4	3.3	2.5	0.4	0.3	2.7	76.4	9.0	14.6	0.065	0.501	18.352923	-95.805927
T. C. LA TINAJA - SANTA CRUZ	107.00	1	0	3108	77.6	8.8	5.0	3.0	2.3	0.4	0.3	2.6	77.6	8.8	13.6	0.071	0.501	18.168632	-96.089333
T. C. CD. ALEMAN - SAYULA	108.92	1	0	3008	77.1	9.1	4.9	3.1	2.4	0.4	0.3	2.7	77.1	9.1	13.8	0.068	0.517	18.168335	-96.093361
T. C. CD. ALEMAN - SAYULA	108.92	3	0	5927	78.4	8.2	4.8	3.1	2.2	0.4	0.3	2.6	78.4	8.2	13.4	0.062	0.506	18.169103	-96.104068
LIM. EDOS. TERM. VER. PPIA. OAX.	115.00																		
PUENTE CARACOL	117.20	2	0	5902	77.6	8.7	5.0	3.1	2.3	0.4	0.3	2.6	77.6	8.7	13.7			18.133058	-96.136687
TUXTEPEC	121.25	1	0	6976	78.1	8.4	4.9	3.1	2.2	0.4	0.3	2.6	78.1	8.4	13.5	0.063	0.502	18.110852	-96.134718

5 CARR: CD. ALEMAN - SAYULA

CLAVE: 00301

RUTA: MEX-145

AÑO: 2010

LUGAR	ESTACION				CLASIFICACION VEHICULAR EN PORCIENTO								COORDENADAS						
	KM	TE	SC	TDPA	A	B	C2	C3	T3S2	T3S3	T3S2R4	OTROS	A	B	C	K'	D	LATITUD	LONGITUD
CD. ALEMAN	0.00	3	0	5138	45.1	3.6	9.1	15.9	18.8	2.7	1.7	3.1	45.1	3.6	51.3	0.063	0.509	18.183794	-96.093476
LIM. EDOS. TERM. VER. PPIA. OAX.	1.80																		
PUENTE PAPALOAPAN	3.50	2	0	4198	45.7	3.7	9.1	15.2	19.0	2.6	1.7	3.0	45.7	3.7	50.6			18.159461	-96.096585
T. IZQ. LOMA BONITA	36.70	1	0	8380	46.8	3.6	8.9	14.8	18.4	2.6	1.8	3.1	46.8	3.6	49.6	0.067	0.502	18.095109	-95.880368
T. DER. VILLA AZUETA	41.50	1	0	6178	46.8	3.4	8.9	15.1	18.8	2.4	1.7	2.9	46.8	3.4	49.8	0.069	0.505	18.091212	-95.781121
LIM. EDOS. TERM. OAX. PPIA. VER.	43.16																		
T. IZQ. TESECHOACAN	56.70	1	0	5857	45.2	3.8	9.3	15.9	18.4	2.6	1.7	3.1	45.2	3.8	51.0	0.068	0.508	18.127709	-95.655382
X. C. SANTIAGO TUXTLA - PLAYA VICENTE	71.40	1	0	5300	46.5	3.6	9.1	14.8	18.5	2.8	1.7	3.0	46.5	3.6	49.9	0.072	0.501	18.068381	-95.533248
SAN JUAN EVANGELISTA	118.35	1	0	5023	45.4	3.7	9.7	15.6	18.4	2.5	1.7	3.0	45.4	3.7	50.9	0.075	0.503	17.911101	-95.132034
SAYULA DE ALEMAN	136.40	1	0	4841	44.5	3.9	8.9	15.9	19.5	2.7	1.6	3.0	44.5	3.9	51.6	0.059	0.501	17.886681	-94.961580

6 CARR: CD. VALLES - TAMPICO

CLAVE: 00138

RUTA: MEX-070

AÑO: 2010

LUGAR	ESTACION				CLASIFICACION VEHICULAR EN PORCIENTO								COORDENADAS						
	KM	TE	SC	TDPA	A	B	C2	C3	T3S2	T3S3	T3S2R4	OTROS	A	B	C	K'	D	LATITUD	LONGITUD
CD. VALLES	0.00	3	0	8254	77.0	5.0	4.9	6.5	3.2	2.1	1.0	0.3	77.0	5.0	18.0	0.085	0.503	21.976010	-98.959224
T. DER. SANTA ELENA	15.25	3	0	7275	77.2	5.2	4.7	6.5	3.1	2.1	0.9	0.3	77.2	5.2	17.6	0.066	0.501	21.961420	-98.877242

VERACRUZ

6 CARR: CD. VALLES - TAMPICO

CLAVE: 00138

RUTA: MEX-070

AÑO: 2010

LUGAR	ESTACION				CLASIFICACION VEHICULAR EN PORCIENTO								COORDENADAS						
	KM	TE	SC	TDPA	A	B	C2	C3	T3S2	T3S3	T3S2R4	OTROS	A	B	C	K'	D	LATITUD	LONGITUD
TAMUIN	29.60	1	0	5627	81.5	3.8	4.1	4.1	2.4	2.1	1.6	0.4	81.5	3.8	14.7	0.078	0.506	21.995327	-98.780067
EBANO	79.00	1	0	9609	76.1	5.8	5.3	2.9	4.7	2.8	2.2	0.2	76.1	5.8	18.1	0.075	0.506	22.204314	-98.405376
EBANO	79.00	3	0	5419	75.9	6.0	5.1	2.9	4.8	2.8	2.3	0.2	75.9	6.0	18.1	0.063	0.510	22.211433	-98.359856
LIM. EDOS. TERM. S.L.P. PPIA. VER.	83.57																		
T. DER. PANUCO	103.00	1	0	4927	76.7	5.9	4.8	2.8	4.4	2.9	2.3	0.2	76.7	5.9	17.4	0.068	0.524	22.155961	-98.154669
T. DER. PANUCO	103.00	3	0	6163	76.6	5.8	4.9	3.0	4.5	2.7	2.3	0.2	76.6	5.8	17.6	0.075	0.508	22.159426	-98.148012
T. C. ANAHUAC - EL PRIETO	128.40	1	0	7199	82.7	5.2	2.8	2.1	3.3	1.5	2.1	0.3	82.7	5.2	12.1	0.071	0.512	22.213459	-97.953828
T. C. ANAHUAC - EL PRIETO	128.40	3	1	6308	83.3	5.0	2.8	1.9	3.2	1.4	2.1	0.3	83.3	5.0	11.7	0.067	0.504	22.216457	-97.941442
T. C. ANAHUAC - EL PRIETO	128.40	3	2	6413	82.5	5.1	2.9	2.1	3.4	1.5	2.2	0.3	82.5	5.1	12.4	0.067	0.504	22.216457	-97.941442
LIM. EDOS. TERM. VER. PPIA. TAMP.	133.81																		
TAMPICO	138.00	1	0	15214	83.6	4.6	2.7	2.0	3.4	1.3	2.1	0.3	83.6	4.6	11.8	0.056	0.509	22.226269	-97.873854

7 CARR: COATZACOALCOS - SALINA CRUZ

CLAVE: 00147

RUTA: MEX-185

AÑO: 2010

LUGAR	ESTACION				CLASIFICACION VEHICULAR EN PORCIENTO								COORDENADAS						
	KM	TE	SC	TDPA	A	B	C2	C3	T3S2	T3S3	T3S2R4	OTROS	A	B	C	K'	D	LATITUD	LONGITUD
COATZACOALCOS	0.00	3	1	9871	82.5	3.8	5.4	1.4	3.5	1.6	0.9	0.9	82.5	3.8	13.7	0.068	0.505	18.096254	-94.460268
COATZACOALCOS	0.00	3	2	10087	82.3	3.9	5.2	1.5	3.7	1.6	1.0	0.8	82.3	3.9	13.8	0.068	0.505	18.096254	-94.460268
T. C. NUEVO TEAPA - COSOLEACAQUE	21.00	1	1	9811	81.0	3.2	5.7	1.1	4.2	1.5	2.7	0.6	81.0	3.2	15.8	0.064	0.502	18.025379	-94.536578
T. C. NUEVO TEAPA - COSOLEACAQUE	21.00	1	2	9895	81.1	3.1	6.2	1.0	3.5	1.4	2.9	0.8	81.1	3.1	15.8	0.066	0.502	18.031560	-94.529686
MINATITLAN	21.60	3	1	8280	77.8	5.6	6.2	2.6	2.9	2.1	2.3	0.5	77.8	5.6	16.6	0.075	0.506	18.001546	-94.592934
MINATITLAN	21.60	3	2	8414	79.0	4.3	5.8	3.1	2.9	1.3	3.1	0.5	79.0	4.3	16.7	0.076	0.506	18.001546	-94.592934
COSOLEACAQUE	31.50	1	0	13249	81.6	4.8	3.1	2.5	2.8	2.9	1.9	0.4	81.6	4.8	13.6	0.065	0.502	18.006929	-94.622720
JALTIPAN DE MORELOS	38.60	3	0	10188	82.4	3.6	4.3	2.6	2.3	2.6	1.8	0.4	82.4	3.6	14.0	0.061	0.501	17.961547	-94.730489
ACAYUCAN	59.60	1	0	10836	81.6	4.2	3.1	1.9	2.7	3.6	2.3	0.6	81.6	4.2	14.2	0.063	0.501	17.952767	-94.886433
SAYULA DE ALEMAN	71.00	1	0	13197	81.2	5.1	2.8	2.5	2.3	3.1	2.6	0.4	81.2	5.1	13.7	0.064	0.501	17.884856	-94.959112
SAYULA DE ALEMAN	71.00	3	0	6495	82.1	4.2	3.0	2.5	3.4	2.1	2.2	0.5	82.1	4.2	13.7	0.058	0.501	17.875826	-94.966099
CAMPO NUEVO	94.50	3	0	5113	77.2	5.2	6.3	2.9	2.2	2.9	2.3	1.0	77.2	5.2	17.6	0.076	0.502	17.700051	-95.073275
T. IZO. JESUS CARRANZA	126.80	1	0	3972	84.3	3.2	3.8	2.5	2.6	1.1	1.9	0.6	84.3	3.2	12.5	0.077	0.507	17.438452	-95.077988
T. IZO. JESUS CARRANZA	126.80	3	0	4376	81.9	5.3	2.6	2.6	2.1	0.9	4.1	0.5	81.9	5.3	12.8	0.070	0.503	17.432313	-95.076531
LIM. EDOS. TERM. VER. PPIA. OAX.	139.90																		
T. DER. TUXTEPEC	166.20	1	0	4580	72.2	6.5	4.2	2.7	5.8	2.6	5.3	0.7	72.2	6.5	21.3	0.078	0.502	17.144786	-95.063706
T. DER. TUXTEPEC	166.20	3	0	4257	72.4	5.9	4.2	2.9	5.3	2.8	5.6	0.9	72.4	5.9	21.7	0.077	0.505	17.132177	-95.060076
T. DER. ESTACION MOGOÑE	182.15	1	0	4268	72.2	6.1	4.4	2.3	5.6	2.7	6.2	0.5	72.2	6.1	21.7	0.078	0.501	17.011941	-95.010468
T. DER. MATIAS ROMERO	196.00	1	0	6765	70.1	5.8	5.7	2.9	6.6	2.9	5.3	0.7	70.1	5.8	24.1	0.068	0.501	16.887504	-95.014110

VERACRUZ

7 CARR: COATZACOALCOS - SALINA CRUZ

CLAVE: 00147

RUTA: MEX-185

AÑO: 2010

LUGAR	ESTACION				CLASIFICACION VEHICULAR EN PORCIENTO								COORDENADAS						
	KM	TE	SC	TDPA	A	B	C2	C3	T3S2	T3S3	T3S2R4	OTROS	A	B	C	K'	D	LATITUD	LONGITUD
T. DER. BARRIO DE LA SOLEDAD	203.05	1	0	6984	70.7	6.3	6.7	2.3	7.1	3.0	3.1	0.8	70.7	6.3	23.0	0.081	0.501	16.817727	-95.033423
T. IZQ. SAN PEDRO TAPANATEPEC (2º ACCESO)	241.70	3	0	5507	69.9	6.8	6.4	2.1	6.9	3.6	3.8	0.5	69.9	6.8	23.3	0.087	0.503	16.543881	-94.952859
JUCHITAN DE ZARAGOZA	255.55	3	0	8955	68.4	6.3	8.5	2.1	6.6	3.1	4.5	0.5	68.4	6.3	25.3	0.067	0.502	16.437655	-95.032051
SANTO DOMINGO TEHUANTEPEC	283.95	3	0	15118	66.9	6.0	9.5	1.6	6.6	2.8	6.0	0.6	66.9	6.0	27.1	0.072	0.504	16.317021	-95.238160
SALINA CRUZ	302.35	1	1	11911	65.4	5.8	8.8	1.2	8.9	2.8	6.8	0.3	65.4	5.8	28.8	0.083	0.504	16.226048	-95.209846
SALINA CRUZ	302.35	1	2	12107	66.7	5.6	8.0	1.7	9.5	2.6	5.4	0.5	66.7	5.6	27.7	0.082	0.504	16.226048	-95.209846

8 CARR: COATZACOALCOS - VILLAHERMOSA

CLAVE: 00528

RUTA: MEX-180

AÑO: 2010

LUGAR	ESTACION				CLASIFICACION VEHICULAR EN PORCIENTO								COORDENADAS						
	KM	TE	SC	TDPA	A	B	C2	C3	T3S2	T3S3	T3S2R4	OTROS	A	B	C	K'	D	LATITUD	LONGITUD
COATZACOALCOS	0.00																		
CASETA DE COBRO PTE. COATZACOALCOS	3.00	1	0	15542	79.8	3.9	5.9	3.1	3.6	1.3	2.0	0.4	79.8	3.9	16.3	0.064	0.505	18.117647	-94.415737
X. C. PAJARITOS - NANCHITAL	6.53	1	0	17647	80.2	3.7	6.0	2.9	3.6	1.2	2.0	0.4	80.2	3.7	16.1	0.066	0.502	18.105228	-94.398324
X. C. PAJARITOS - NANCHITAL	6.53	3	0	10940	80.2	3.8	5.9	3.0	3.4	1.3	2.0	0.4	80.2	3.8	16.0	0.081	0.500	18.097009	-94.383696
T. DER. PUENTE ANTONIO DOVALI JAIMES	14.60	1	0	8224	80.4	3.8	5.8	2.9	3.4	1.3	2.0	0.4	80.4	3.8	15.8	0.078	0.501	18.077120	-94.327387
T. DER. PUENTE ANTONIO DOVALI JAIMES	14.60	3	1	6943	79.9	4.0	5.8	3.1	3.4	1.3	2.1	0.4	79.9	4.0	16.1	0.083	0.504	18.073100	-94.316132
T. DER. PUENTE ANTONIO DOVALI JAIMES	14.60	3	2	7069	81.0	3.7	5.6	2.9	3.2	1.3	1.9	0.4	81.0	3.7	15.3	0.079	0.504	18.073100	-94.316132
T. DER. LAS CHOAPAS	36.00	3	0	6933	81.0	3.7	5.5	2.7	3.4	1.3	2.0	0.4	81.0	3.7	15.3	0.077	0.500	18.051420	-94.116255
LIM. EDOS. TERM. VER. PPIA. TAB.	41.48																		
T. IZQ. VILLA LA VENTA	47.26	3	0	3302	80.1	3.8	6.1	2.9	3.5	1.3	1.9	0.4	80.1	3.8	16.1	0.077	0.506	18.061778	-94.038444
T. IZQ. CAMPO MAGALLANES	65.20	1	0	3385	80.0	4.1	5.7	3.0	3.5	1.3	2.0	0.4	80.0	4.1	15.9	0.085	0.518	18.073996	-93.878942
T. IZQ. CAMPO MAGALLANES	65.20	3	0	5038	79.4	3.9	6.2	3.1	3.5	1.4	2.1	0.4	79.4	3.9	16.7	0.058	0.511	18.073213	-93.876190
PICO DE ORO	88.50	1	0	5047	80.2	3.9	5.8	2.8	3.6	1.3	2.0	0.4	80.2	3.9	15.9	0.069	0.503	18.017416	-93.692226
PICO DE ORO	88.50	3	0	4948	80.1	3.9	5.8	3.1	3.4	1.3	2.0	0.4	80.1	3.9	16.0	0.059	0.517	18.020169	-93.671820
CARDENAS	122.10	1	1	9874	80.1	3.9	5.9	2.8	3.5	1.3	2.1	0.4	80.1	3.9	16.0	0.079	0.518	17.999067	-93.398465
CARDENAS	122.10	1	2	10620	80.1	4.0	5.7	3.1	3.5	1.2	2.0	0.4	80.1	4.0	15.9	0.080	0.518	17.999067	-93.398465
CARDENAS	122.10	3	1	10620	79.6	4.1	5.7	3.1	3.7	1.3	2.1	0.4	79.6	4.1	16.3	0.074	0.514	17.999256	-93.348176
CARDENAS	122.10	3	2	11226	79.8	4.0	6.1	3.0	3.4	1.3	2.0	0.4	79.8	4.0	16.2	0.077	0.514	17.999275	-93.348115
T. IZQ. SAMARIA	132.50	3	1	11587	79.5	4.1	6.2	2.9	3.5	1.3	2.1	0.4	79.5	4.1	16.4	0.074	0.518	17.996565	-93.275568
T. IZQ. SAMARIA	132.50	3	2	12447	80.2	4.0	5.9	2.9	3.4	1.2	2.0	0.4	80.2	4.0	15.8	0.079	0.518	18.000030	-93.268870
CUCUYULAPA	134.80	1	1	10876	79.9	3.7	6.1	2.9	3.6	1.3	2.1	0.4	79.9	3.7	16.4	0.080	0.502	17.999014	-93.261412
CUCUYULAPA	134.80	1	2	10777	79.7	4.0	5.7	3.2	3.5	1.4	2.1	0.4	79.7	4.0	16.3	0.076	0.502	17.999004	-93.261406
T. DER. LA REFORMA	148.80	1	1	14092	79.9	3.9	6.0	3.0	3.4	1.4	2.0	0.4	79.9	3.9	16.2	0.071	0.505	17.975722	-93.143113
T. DER. LA REFORMA	148.80	1	2	13835	80.4	3.7	5.8	2.9	3.5	1.3	2.0	0.4	80.4	3.7	15.9	0.073	0.505	17.975699	-93.143130

VERACRUZ

8 CARR: COATZACOALCOS - VILLAHERMOSA

CLAVE: 00528

RUTA: MEX-180

AÑO: 2010

LUGAR	ESTACION				CLASIFICACION VEHICULAR EN PORCIENTO								COORDENADAS						
	KM	TE	SC	TDPA	A	B	C2	C3	T3S2	T3S3	T3S2R4	OTROS	A	B	C	K'	D	LATITUD	LONGITUD
T. DER. LA REFORMA	148.80	3	1	15250	81.2	3.6	5.3	2.8	3.5	1.2	2.0	0.4	81.2	3.6	15.2	0.071	0.510	17.973973	-93.117452
T. DER. LA REFORMA	148.80	3	2	15872	80.6	4.0	5.4	3.0	3.5	1.2	1.9	0.4	80.6	4.0	15.4	0.070	0.510	17.973971	-93.117461
VILLAHERMOSA	171.15	1	1	21239	85.6	2.4	4.8	2.5	2.8	0.6	1.2	0.1	85.6	2.4	12.0	0.074	0.513	17.988670	-92.974865
VILLAHERMOSA	171.15	1	2	22409	85.6	2.3	4.8	2.4	2.9	0.7	1.2	0.1	85.6	2.3	12.1	0.073	0.513	17.988667	-92.974879

9 CARR: CORDOBA - ENT. BOTICARIA

CLAVE: 30525

RUTA: MEX-150

AÑO: 2010

LUGAR	ESTACION				CLASIFICACION VEHICULAR EN PORCIENTO								COORDENADAS						
	KM	TE	SC	TDPA	A	B	C2	C3	T3S2	T3S3	T3S2R4	OTROS	A	B	C	K'	D	LATITUD	LONGITUD
CORDOBA	0.00	3	1	5483	82.6	11.0	3.7	1.7	0.5	0.3	0.1	0.1	82.6	11.0	6.4	0.060	0.503	18.866281	-96.903676
CORDOBA	0.00	3	2	5582	82.3	10.9	4.0	1.8	0.5	0.3	0.1	0.1	82.3	10.9	6.8	0.057	0.503	18.866281	-96.903676
T. DER. LIB. DE YANGA (1er. ACCESO)	13.50	1	0	12783	83.2	10.3	3.8	1.7	0.5	0.3	0.1	0.1	83.2	10.3	6.5	0.064	0.506	18.837345	-96.815733
T. DER. LIBRAMIENTO DE CUITLAHUAC (1º ACCESO)	24.65	1	0	11436	82.5	10.7	4.1	1.7	0.5	0.3	0.1	0.1	82.5	10.7	6.8	0.070	0.504	18.818294	-96.743093
ENT. LA TINAJA	59.80	1	0	7205	83.0	10.7	3.6	1.7	0.5	0.3	0.1	0.1	83.0	10.7	6.3	0.061	0.501	18.761760	-96.470284
T. DER. IGNACIO DE LA LLAVE	77.08	3	0	5860	82.5	11.2	3.7	1.6	0.5	0.3	0.1	0.1	82.5	11.2	6.3	0.075	0.500	18.834882	-96.316703
PASO DEL TORO	109.87	3	0	8993	82.1	11.2	4.0	1.7	0.5	0.3	0.1	0.1	82.1	11.2	6.7	0.082	0.505	19.032367	-96.138046
T. DER. ANTON LIZARDO	118.92	3	1	10038	83.1	10.5	3.8	1.6	0.5	0.3	0.1	0.1	83.1	10.5	6.4	0.083	0.511	19.098987	-96.106177
T. DER. ANTON LIZARDO	118.92	3	2	10483	82.7	10.7	4.0	1.6	0.5	0.3	0.1	0.1	82.7	10.7	6.6	0.077	0.511	19.099147	-96.106642
ENT. BOTICARIA	126.48	1	1	15912	81.9	11.4	3.9	1.8	0.5	0.3	0.1	0.1	81.9	11.4	6.7	0.082	0.505	19.144129	-96.125256
ENT. BOTICARIA	126.48	1	2	15569	82.7	10.6	4.0	1.7	0.5	0.3	0.1	0.1	82.7	10.6	6.7	0.088	0.505	19.144142	-96.125276

10 CARR: COSOLEACAQUE - SOTEAPAN

CLAVE: 30068

RUTA: MEX

AÑO: 2010

LUGAR	ESTACION				CLASIFICACION VEHICULAR EN PORCIENTO								COORDENADAS						
	KM	TE	SC	TDPA	A	B	C2	C3	T3S2	T3S3	T3S2R4	OTROS	A	B	C	K'	D	LATITUD	LONGITUD
T. C. COATZACOALCOS - SALINA CRUZ	0.00	3	0	5057	82.4	3.2	3.6	2.2	3.2	2.9	2.1	0.4	82.4	3.2	14.4	0.064	0.508	17.988489	-94.659672
SOTEAPAN	43.50	1	0	1471	83.4	3.1	2.7	2.2	2.9	2.8	2.5	0.4	83.4	3.1	13.5	0.082	0.502	18.226079	-94.879664

11 CARR: FORTIN - CONEJOS

CLAVE: 30143

RUTA: MEX-125

AÑO: 2010

LUGAR	ESTACION				CLASIFICACION VEHICULAR EN PORCIENTO								COORDENADAS						
	KM	TE	SC	TDPA	A	B	C2	C3	T3S2	T3S3	T3S2R4	OTROS	A	B	C	K'	D	LATITUD	LONGITUD
FORTIN	0.00	3	0	9319	83.1	4.4	7.2	3.4	1.3	0.4	0.1	0.1	83.1	4.4	12.5	0.064	0.501	18.909814	-96.999220
COSCOMATEPEC	23.30	1	0	7196	82.8	4.4	7.3	3.6	1.3	0.4	0.1	0.1	82.8	4.4	12.8	0.071	0.506	19.059712	-97.041632
COSCOMATEPEC	23.30	3	0	5645	83.6	4.1	6.9	3.4	1.4	0.4	0.1	0.1	83.6	4.1	12.3	0.072	0.503	19.080261	-97.036399





VERACRUZ

15 CARR: LIBRAMIENTO DE YANGA

CLAVE: 30737

RUTA: MEX

AÑO: 2010

LUGAR	ESTACION				CLASIFICACION VEHICULAR EN PORCIENTO								COORDENADAS						
	KM	TE	SC	TDPA	A	B	C2	C3	T3S2	T3S3	T3S2R4	OTROS	A	B	C	K'	D	LATITUD	LONGITUD
T. C. CORDOBA - ENT. BOTICARIA (1° ACCESO)	0.00	3	0	11628	66.9	10.5	4.6	5.7	6.9	3.6	1.3	0.5	66.9	10.5	22.6	0.061	0.501	18.833610	-96.807216
T. C. CORDOBA - ENT. BOTICARIA (2° ACCESO)	2.60																		

16 CARR: LIBRAMIENTO RINCONADA

CLAVE:

RUTA: MEX

AÑO: 2010

LUGAR	ESTACION				CLASIFICACION VEHICULAR EN PORCIENTO								COORDENADAS						
	KM	TE	SC	TDPA	A	B	C2	C3	T3S2	T3S3	T3S2R4	OTROS	A	B	C	K'	D	LATITUD	LONGITUD
T.C. JALAPA - VERACRUZ	0.00	3	1	9405	79.9	2.2	5.2	2.2	4.7	1.5	3.5	0.8	79.9	2.2	17.9	0.065	0.502	19.366629	-96.577115
T.C. JALAPA - VERACRUZ	0.00	3	2	9346	80.0	2.3	5.3	2.0	4.8	1.4	3.4	0.8	80.0	2.3	17.7	0.062	0.502	19.366630	-96.577100
T.C. JALAPA - VERACRUZ	5.00																		

17 CARR: MINATITLAN - COATZACOALCOS (VIA CANTICA)

CLAVE: 30007

RUTA: MEX-172

AÑO: 2010

LUGAR	ESTACION				CLASIFICACION VEHICULAR EN PORCIENTO								COORDENADAS						
	KM	TE	SC	TDPA	A	B	C2	C3	T3S2	T3S3	T3S2R4	OTROS	A	B	C	K'	D	LATITUD	LONGITUD
MINATITLAN	0.00	3	0	11749	83.0	5.2	6.4	3.2	1.1	0.8	0.2	0.1	83.0	5.2	11.8	0.061	0.504	18.026832	-94.558054
COATZACOALCOS	29.30	1	0	8243	83.3	5.2	6.3	3.2	1.0	0.7	0.2	0.1	83.3	5.2	11.5	0.076	0.517	18.134409	-94.526824

18 CARR: ORIZABA - ZONGOLICA

CLAVE: 30708

RUTA: MEX-123

AÑO: 2010

LUGAR	ESTACION				CLASIFICACION VEHICULAR EN PORCIENTO								COORDENADAS						
	KM	TE	SC	TDPA	A	B	C2	C3	T3S2	T3S3	T3S2R4	OTROS	A	B	C	K'	D	LATITUD	LONGITUD
ORIZABA	0.00	3	0	5816	71.6	7.7	5.8	7.9	2.9	1.9	1.9	0.3	71.6	7.7	20.7	0.075	0.507	18.830577	-97.090557
ZONGOLICA	37.50	1	0	1472	72.6	7.6	6.4	7.5	1.6	1.7	2.3	0.3	72.6	7.6	19.8	0.077	0.501	18.665411	-97.003721

19 CARR: PACHUCA - TEMPOAL

CLAVE: 00113

RUTA: MEX-105

AÑO: 2010

LUGAR	ESTACION				CLASIFICACION VEHICULAR EN PORCIENTO								COORDENADAS						
	KM	TE	SC	TDPA	A	B	C2	C3	T3S2	T3S3	T3S2R4	OTROS	A	B	C	K'	D	LATITUD	LONGITUD
PACHUCA	0.00	3	0	5826	73.9	9.4	6.7	4.3	1.8	2.5	0.9	0.5	73.9	9.4	16.7	0.071	0.502	20.130616	-98.715759
T. DER. OMITLAN DE JUAREZ (1° ACCESO)	18.20	1	0	7741	75.7	8.6	6.2	4.0	1.6	2.5	0.9	0.5	75.7	8.6	15.7	0.079	0.517	20.157436	-98.657686
ATOTONILCO EL GRANDE	33.85	3	0	5950	74.7	9.0	6.3	4.2	1.7	2.7	0.9	0.5	74.7	9.0	16.3	0.064	0.508	20.298770	-98.679375
T. IZQ. METZTITLAN	63.70	1	0	4257	74.8	9.0	6.4	4.2	1.7	2.5	0.9	0.5	74.8	9.0	16.2	0.067	0.523	20.467586	-98.673419
T. IZQ. METZTITLAN	63.70	3	0	4390	74.4	9.2	6.6	4.0	1.7	2.7	0.9	0.5	74.4	9.2	16.4	0.059	0.506	20.475518	-98.671003
METZQUITITLAN	75.00	1	0	4459	74.2	9.1	6.5	4.2	1.7	2.8	1.0	0.5	74.2	9.1	16.7	0.081	0.505	20.529041	-98.642386

VERACRUZ

19 CARR: PACHUCA - TEMPOAL

CLAVE: 00113

RUTA: MEX-105

AÑO: 2010

LUGAR	ESTACION				CLASIFICACION VEHICULAR EN PORCIENTO								COORDENADAS						
	KM	TE	SC	TDPA	A	B	C2	C3	T3S2	T3S3	T3S2R4	OTROS	A	B	C	K'	D	LATITUD	LONGITUD
T. IZQ. ZACUALTIPAN	96.50	1	0	6329	74.5	9.1	6.6	4.1	1.7	2.6	0.9	0.5	74.5	9.1	16.4	0.064	0.512	20.646467	-98.639330
T. IZQ. ZACUALTIPAN	96.50	3	0	3447	76.0	8.2	6.2	4.0	1.7	2.5	0.9	0.5	76.0	8.2	15.8	0.084	0.501	20.662797	-98.662910
X. C. MOLANGO - XOCHICOATLAN	129.80	1	0	3100	74.4	8.6	7.0	4.0	1.8	2.8	0.9	0.5	74.4	8.6	17.0	0.067	0.512	20.788532	-98.724518
X. C. MOLANGO - XOCHICOATLAN	129.80	3	0	3076	74.4	9.1	6.7	4.1	1.8	2.5	0.9	0.5	74.4	9.1	16.5	0.071	0.510	20.793932	-98.726027
T. IZQ. TEPEHUACAN DE GUERRERO	157.70	1	0	2196	74.0	8.9	6.8	4.3	1.9	2.6	1.0	0.5	74.0	8.9	17.1	0.081	0.505	20.964421	-98.681099
TEHUETLAN	199.20	1	0	2145	74.3	9.2	6.6	4.3	1.6	2.6	0.9	0.5	74.3	9.2	16.5	0.068	0.504	21.058290	-98.514838
T. IZQ. HUEJUTLA (1° ACCESO)	214.60	1	0	8889	74.4	9.3	6.4	4.1	1.7	2.7	0.9	0.5	74.4	9.3	16.3	0.062	0.509	21.130556	-98.408496
T. IZQ. HUEJUTLA (1° ACCESO)	214.60	3	0	9784	75.6	8.6	6.1	4.0	1.7	2.6	0.9	0.5	75.6	8.6	15.8	0.069	0.513	21.156762	-98.411922
LIM. EDOS. TERM. HGO. PPIA. VER.	217.20																		
T. C. ALAZAN - CANOAS	260.68	1	0	2206	75.4	8.8	6.5	3.8	1.6	2.5	0.9	0.5	75.4	8.8	15.8	0.063	0.501	21.491016	-98.358847

20 CARR: PACHUCA - TUXPAM

CLAVE: 00608

RUTA: MEX-130

AÑO: 2010

LUGAR	ESTACION				CLASIFICACION VEHICULAR EN PORCIENTO								COORDENADAS						
	KM	TE	SC	TDPA	A	B	C2	C3	T3S2	T3S3	T3S2R4	OTROS	A	B	C	K'	D	LATITUD	LONGITUD
PACHUCA	0.00																		
X. C. LIBRAMIENTO DE PACHUCA	2.60	3	1	20286	70.9	9.7	7.2	4.2	4.1	2.6	1.1	0.2	70.9	9.7	19.4	0.065	0.503	20.080458	-98.711271
X. C. LIBRAMIENTO DE PACHUCA	2.60	3	2	20040	70.5	9.7	7.3	4.2	4.3	2.7	1.1	0.2	70.5	9.7	19.8	0.065	0.503	20.080150	-98.711066
T. IZQ. PACHUQUILLA (1° ACCESO)	7.00	1	1	9917	71.1	9.8	6.9	4.4	4.0	2.6	1.0	0.2	71.1	9.8	19.1	0.079	0.504	20.078465	-98.710151
T. IZQ. PACHUQUILLA (1° ACCESO)	7.00	1	2	10084	70.6	9.8	7.3	4.4	3.9	2.7	1.1	0.2	70.6	9.8	19.6	0.073	0.504	20.078440	-98.710050
T. IZQ. PACHUQUILLA (2° ACCESO)	10.50	1	1	5875	70.2	10.3	7.5	4.1	4.1	2.5	1.1	0.2	70.2	10.3	19.5	0.076	0.502	20.067463	-98.684173
T. IZQ. PACHUQUILLA (2° ACCESO)	10.50	1	2	5818	70.8	9.9	7.1	4.4	4.0	2.5	1.1	0.2	70.8	9.9	19.3	0.076	0.502	20.067463	-98.684173
T. DER. CD. SAHAGUN	16.59	1	0	7225	71.1	9.6	7.1	4.2	4.1	2.6	1.1	0.2	71.1	9.6	19.3	0.062	0.502	20.061231	-98.634262
T. C. VENTA DE CARPIO - TULANCINGO	36.45	1	1	6725	70.4	9.7	7.5	4.2	4.3	2.6	1.1	0.2	70.4	9.7	19.9	0.065	0.513	20.056101	-98.460104
T. C. VENTA DE CARPIO - TULANCINGO	36.45	1	2	6374	69.9	10.4	7.1	4.5	4.1	2.7	1.1	0.2	69.9	10.4	19.7	0.063	0.513	20.056111	-98.460101
T. C. VENTA DE CARPIO - TULANCINGO	36.45	3	0	23898	70.9	10.0	7.1	4.1	4.1	2.5	1.1	0.2	70.9	10.0	19.1	0.066	0.505	20.063485	-98.438806
T. IZQ. LIBRAMIENTO DE TULANCINGO	53.70	3	0	13807	70.9	10.2	7.0	4.0	4.1	2.6	1.0	0.2	70.9	10.2	18.9	0.059	0.507	20.151632	-98.285071
T. IZQ. HUAYACOCOTLA	66.42	3	0	9539	69.6	10.3	7.5	4.4	4.3	2.6	1.1	0.2	69.6	10.3	20.1	0.067	0.502	20.158060	-98.277094
LIM. EDOS. TERM. HGO. PPIA. PUE.	83.18																		
T. DER. HUAUCHINANGO (1° ACCESO)	94.00	1	0	12007	70.6	9.4	7.6	4.2	4.2	2.7	1.1	0.2	70.6	9.4	20.0	0.062	0.501	20.169044	-98.074304
T. DER. HUAUCHINANGO (2° ACCESO)	100.00	3	0	8249	70.1	10.4	7.4	4.2	4.0	2.6	1.1	0.2	70.1	10.4	19.5	0.070	0.505	20.184685	-98.045792
VILLA AVILA CAMACHO	141.75	1	0	7484	69.9	9.8	7.8	4.5	4.1	2.6	1.1	0.2	69.9	9.8	20.3	0.066	0.506	20.383490	-97.884226
VILLA AVILA CAMACHO	141.75	3	0	7577	69.8	10.6	7.3	4.4	4.1	2.5	1.1	0.2	69.8	10.6	19.6	0.061	0.508	20.392420	-97.875581
PIEDRAS NEGRAS	158.70	1	0	8282	70.0	10.4	7.5	4.3	4.0	2.5	1.1	0.2	70.0	10.4	19.6	0.065	0.506	20.464040	-97.707018
T. IZQ. VENUSTIANO CARRANZA	174.10	3	0	7205	71.2	9.7	7.1	4.2	3.9	2.6	1.1	0.2	71.2	9.7	19.1	0.068	0.504	20.477405	-97.646447

VERACRUZ

20 CARR: PACHUCA - TUXPAM

CLAVE: 00608

RUTA: MEX-130

AÑO: 2010

LUGAR	ESTACION				CLASIFICACION VEHICULAR EN PORCIENTO								COORDENADAS						
	KM	TE	SC	TDPA	A	B	C2	C3	T3S2	T3S3	T3S2R4	OTROS	A	B	C	K'	D	LATITUD	LONGITUD
LIM. EDOS. TERM. PUE. PPIA. VER.	180.00																		
T. DER. POZA RICA	197.00	1	0	15503	70.6	9.9	7.1	4.2	4.3	2.6	1.1	0.2	70.6	9.9	19.5	0.077	0.504	20.531330	-97.488378
T. DER. POZA RICA	197.00	3	0	18200	71.5	9.5	6.9	4.2	4.0	2.6	1.1	0.2	71.5	9.5	19.0	0.063	0.501	20.567413	-97.481218
TIHUATLAN	217.00	1	0	10079	69.9	10.2	7.4	4.2	4.4	2.6	1.1	0.2	69.9	10.2	19.9	0.072	0.509	20.694993	-97.525703
TIHUATLAN	217.00	3	0	8266	68.9	10.8	7.5	4.5	4.3	2.7	1.1	0.2	68.9	10.8	20.3	0.063	0.505	20.721895	-97.525204
TUXPAM	247.00	1	0	8026	70.8	9.6	7.4	4.2	4.0	2.7	1.1	0.2	70.8	9.6	19.6	0.073	0.502	20.951155	-97.399060

21 CARR: PAPANTLA - EL CHOTE

CLAVE: 30740

RUTA: MEX

AÑO: 2010

LUGAR	ESTACION				CLASIFICACION VEHICULAR EN PORCIENTO								COORDENADAS						
	KM	TE	SC	TDPA	A	B	C2	C3	T3S2	T3S3	T3S2R4	OTROS	A	B	C	K'	D	LATITUD	LONGITUD
PAPANTLA	0.00	3	0	5154	80.3	4.2	9.6	0.4	2.8	0.8	1.1	0.8	80.3	4.2	15.5	0.075	0.501	20.430391	-97.333783
EL CHOTE	8.60																		

22 CARR: PASO DEL TORO - ACAYUCAN

CLAVE: 30527

RUTA: MEX-180

AÑO: 2010

LUGAR	ESTACION				CLASIFICACION VEHICULAR EN PORCIENTO								COORDENADAS						
	KM	TE	SC	TDPA	A	B	C2	C3	T3S2	T3S3	T3S2R4	OTROS	A	B	C	K'	D	LATITUD	LONGITUD
PASO DEL TORO	0.00	3	0	10059	84.2	4.6	5.9	3.1	1.2	0.6	0.3	0.1	84.2	4.6	11.2	0.068	0.502	19.020165	-96.131027
SALINAS	25.30	1	0	6189	85.1	4.4	5.4	2.9	1.2	0.6	0.3	0.1	85.1	4.4	10.5	0.078	0.501	18.891867	-95.944281
ALVARADO	48.60	1	0	5879	84.4	4.4	5.8	3.1	1.3	0.6	0.3	0.1	84.4	4.4	11.2	0.068	0.501	18.780220	-95.776691
PUENTE ALVARADO	49.57	2	0	4952	80.8	7.6	5.9	3.1	1.6	0.6	0.1	0.3	80.8	7.6	11.6			18.769901	-95.744541
T. DER. PUENTE TLACOTALPAN	64.96	1	0	4952	85.0	4.4	5.5	3.0	1.1	0.6	0.3	0.1	85.0	4.4	10.6	0.077	0.504	18.719746	-95.642630
CD. LERDO DE TEJADA	81.70	3	0	7744	85.0	4.4	5.6	2.9	1.1	0.6	0.3	0.1	85.0	4.4	10.6	0.067	0.500	18.626003	-95.510694
SANTIAGO TUXTLA	119.35	1	0	3907	84.9	4.1	5.7	3.1	1.2	0.6	0.3	0.1	84.9	4.1	11.0	0.063	0.502	18.471911	-95.298314
SANTIAGO TUXTLA	119.35	3	0	6386	84.7	4.2	5.9	3.0	1.2	0.6	0.3	0.1	84.7	4.2	11.1	0.064	0.507	18.464483	-95.292950
CATEMACO	146.40	1	0	9862	84.7	4.5	5.5	3.1	1.2	0.6	0.3	0.1	84.7	4.5	10.8	0.080	0.503	18.427456	-95.123049
CATEMACO	146.40	3	0	4313	84.8	4.4	5.6	3.0	1.2	0.6	0.3	0.1	84.8	4.4	10.8	0.063	0.512	18.412631	-95.121789
ACAYUCAN	225.04	1	0	8456	84.4	4.2	6.0	3.2	1.2	0.6	0.3	0.1	84.4	4.2	11.4	0.077	0.502	17.972500	-94.919600

23 CARR: POZA RICA - VERACRUZ

CLAVE: 30146

RUTA: MEX-180

AÑO: 2010

LUGAR	ESTACION				CLASIFICACION VEHICULAR EN PORCIENTO								COORDENADAS						
	KM	TE	SC	TDPA	A	B	C2	C3	T3S2	T3S3	T3S2R4	OTROS	A	B	C	K'	D	LATITUD	LONGITUD
T. C. PACHUCA - TUXPAM	0.00	3	0	19451	70.6	5.3	5.7	4.4	7.0	2.8	1.8	2.4	70.6	5.3	24.1	0.065	0.505	20.541327	-97.473158

VERACRUZ

23 CARR: POZA RICA - VERACRUZ

CLAVE: 30146

RUTA: MEX-180

AÑO: 2010

LUGAR	ESTACION				CLASIFICACION VEHICULAR EN PORCIENTO								COORDENADAS						
	KM	TE	SC	TDPA	A	B	C2	C3	T3S2	T3S3	T3S2R4	OTROS	A	B	C	K'	D	LATITUD	LONGITUD
T. IZQ. SANTA AGUEDA	8.38	3	0	14486	69.5	5.3	6.4	4.6	7.1	2.7	1.9	2.5	69.5	5.3	25.2	0.079	0.506	20.502188	-97.411968
PAPANTLA	23.00	3	0	4114	70.0	5.4	6.1	4.5	6.9	2.8	1.8	2.5	70.0	5.4	24.6	0.064	0.507	20.449607	-97.297069
T. IZQ. GUTIERREZ ZAMORA	51.43	3	0	8679	69.3	5.2	6.5	4.7	7.2	2.8	1.8	2.5	69.3	5.2	25.5	0.061	0.507	20.441903	-97.089215
PUENTE TECOLUTLA	52.80	2	0	6535	70.3	5.2	6.0	4.4	7.1	2.7	1.8	2.5	70.3	5.2	24.5			20.437808	-97.086446
T. DER. MARTINEZ DE LA TORRE	93.01	1	0	8288	72.7	5.9	5.3	3.5	6.0	2.1	1.7	2.8	72.7	5.9	21.4	0.064	0.507	20.236105	-96.793651
NAUTLA	96.15	1	0	6190	72.7	5.7	5.6	3.4	6.0	1.9	1.8	2.9	72.7	5.7	21.6	0.070	0.502	20.212389	-96.781871
NAUTLA	96.15	3	0	5381	72.3	5.7	5.6	3.4	6.1	2.2	1.8	2.9	72.3	5.7	22.0	0.080	0.506	20.200687	-96.761625
PUENTE NAUTLA	97.00	2	0	5908	72.3	5.8	5.4	3.4	6.3	2.1	1.8	2.9	72.3	5.8	21.9			20.210122	-96.778626
VEGA DE ALATORRE	122.45	1	0	5636	73.2	5.7	5.1	3.5	6.0	2.0	1.8	2.7	73.2	5.7	21.1	0.062	0.516	20.031482	-96.656100
T. DER. PLAN DE LAS HAYAS	158.81	1	0	5209	72.7	5.8	5.3	3.4	6.2	1.9	1.8	2.9	72.7	5.8	21.5	0.075	0.501	19.788047	-96.438177
T. DER. ZEMPOALA	205.86	1	1	6399	78.2	4.7	4.3	2.8	4.0	1.5	4.2	0.3	78.2	4.7	17.1	0.065	0.502	19.441570	-96.378025
T. DER. ZEMPOALA	205.86	1	2	6448	78.1	5.2	4.4	2.7	3.7	1.5	4.1	0.3	78.1	5.2	16.7	0.060	0.502	19.441570	-96.378025
T. DER. JOSE CARDEL	214.73	1	0	16737	78.3	5.1	4.6	2.6	3.7	1.4	4.0	0.3	78.3	5.1	16.6	0.066	0.502	19.394860	-96.382919
T. DER. JOSE CARDEL (CUOTA)	214.73	3	1	10993	78.2	4.8	4.3	2.6	4.0	1.4	4.4	0.3	78.2	4.8	17.0	0.075	0.501	19.360867	-96.350864
T. DER. JOSE CARDEL (CUOTA)	214.73	3	2	10937	79.2	4.6	4.0	2.6	3.9	1.4	4.0	0.3	79.2	4.6	16.2	0.074	0.501	19.360891	-96.350889
CASETA DE COBRO LA ANTIGUA	222.47	2	0	15059	78.4	4.9	4.3	2.7	3.8	1.4	4.2	0.3	78.4	4.9	16.7			19.320379	-96.310727
SAN JULIAN (CUOTA)	234.67	3	1	6972	78.6	4.9	4.4	2.6	3.7	1.4	4.1	0.3	78.6	4.9	16.5	0.078	0.511	19.247675	-96.262346
SAN JULIAN (CUOTA)	234.67	3	2	6929	78.9	4.9	4.2	2.7	3.6	1.3	4.1	0.3	78.9	4.9	16.2	0.076	0.511	19.246790	-96.262026
VERACRUZ (CUOTA)	241.00	1	1	13166	78.9	4.9	4.1	2.6	3.6	1.4	4.2	0.3	78.9	4.9	16.2	0.080	0.500	19.221921	-96.228946
VERACRUZ (CUOTA)	241.00	1	2	13175	78.7	4.7	4.4	2.6	3.8	1.4	4.1	0.3	78.7	4.7	16.6	0.078	0.500	19.221915	-96.228953

24 CARR: RAMAL A ANTON LIZARDO

CLAVE: 30277

RUTA: MEX

AÑO: 2010

LUGAR	ESTACION				CLASIFICACION VEHICULAR EN PORCIENTO								COORDENADAS						
	KM	TE	SC	TDPA	A	B	C2	C3	T3S2	T3S3	T3S2R4	OTROS	A	B	C	K'	D	LATITUD	LONGITUD
T. C. CORDOBA - ENT. BOTICARIA	0.00	3	0	8966	79.8	4.8	4.6	0.9	2.9	2.0	4.6	0.4	79.8	4.8	15.4	0.066	0.503	19.086833	-96.101999
ANTON LIZARDO	15.00	1	0	4509	80.2	5.3	3.6	1.2	2.8	2.0	4.2	0.7	80.2	5.3	14.5	0.065	0.503	19.057925	-95.998290

25 CARR: RAMAL A EL HIGO

CLAVE: 30013

RUTA: MEX

AÑO: 2010

LUGAR	ESTACION				CLASIFICACION VEHICULAR EN PORCIENTO								COORDENADAS						
	KM	TE	SC	TDPA	A	B	C2	C3	T3S2	T3S3	T3S2R4	OTROS	A	B	C	K'	D	LATITUD	LONGITUD
T. C. TEMPOAL - CANOAS	0.00	3	0	2079	79.0	2.9	4.3	4.4	3.3	2.5	2.8	0.8	79.0	2.9	18.1	0.064	0.501	21.761959	-98.344010
EL HIGO	13.00	1	0	2758	83.1	3.2	3.9	2.1	3.3	1.7	2.2	0.5	83.1	3.2	13.7	0.082	0.509	21.776572	-98.442070

VERACRUZ

26 CARR: RAMAL A HUEYAPAN DE OCAMPO

CLAVE:

RUTA: MEX

AÑO: 2010

LUGAR	ESTACION				CLASIFICACION VEHICULAR EN PORCIENTO								COORDENADAS						
	KM	TE	SC	TDPA	A	B	C2	C3	T3S2	T3S3	T3S2R4	OTROS	A	B	C	K'	D	LATITUD	LONGITUD
T.C. PASO DEL TORO - ACAYUCAN	0.00	3	0	2762	84.4	10.2	2.1	0.1	2.3	0.3	0.2	0.4	84.4	10.2	5.4	0.074	0.502	18.147768	-95.164788
HUEYAPAN	2.00																		

27 CARR: RAMAL A PUENTE TAMPICO

CLAVE:

RUTA: MEX-180

AÑO: 2010

LUGAR	ESTACION				CLASIFICACION VEHICULAR EN PORCIENTO								COORDENADAS						
	KM	TE	SC	TDPA	A	B	C2	C3	T3S2	T3S3	T3S2R4	OTROS	A	B	C	K'	D	LATITUD	LONGITUD
T.C. TUXPAN - TAMPICO	0.00	3	1	4134	76.2	2.0	5.5	1.9	7.2	3.5	3.1	0.6	76.2	2.0	21.8	0.064	0.507	22.174796	-97.828275
T.C. TUXPAN - TAMPICO	0.00	3	2	4018	71.6	2.6	6.1	2.6	7.9	5.1	3.3	0.8	71.6	2.6	25.8	0.061	0.507	22.174796	-97.828275
PUENTE TAMPICO	6.00																		

28 CARR: RAMAL A TECOLUTLA

CLAVE: 30531

RUTA: MEX

AÑO: 2010

LUGAR	ESTACION				CLASIFICACION VEHICULAR EN PORCIENTO								COORDENADAS						
	KM	TE	SC	TDPA	A	B	C2	C3	T3S2	T3S3	T3S2R4	OTROS	A	B	C	K'	D	LATITUD	LONGITUD
GUTIERREZ ZAMORA	0.00	3	0	4490	70.8	5.1	8.0	2.1	6.8	3.9	2.7	0.6	70.8	5.1	24.1	0.091	0.516	20.470442	-97.081227
TECOLUTLA	11.50	1	0	3873	72.9	4.6	7.9	2.4	5.7	3.6	2.1	0.8	72.9	4.6	22.5	0.069	0.522	20.477465	-97.019181

29 CARR: RAMAL A ZAPOTLALILLO

CLAVE: 30734

RUTA: MEX

AÑO: 2010

LUGAR	ESTACION				CLASIFICACION VEHICULAR EN PORCIENTO								COORDENADAS						
	KM	TE	SC	TDPA	A	B	C2	C3	T3S2	T3S3	T3S2R4	OTROS	A	B	C	K'	D	LATITUD	LONGITUD
T. C. PACHUCA - TUXPAM	0.00	3	0	6294	67.4	2.8	5.7	4.3	8.1	3.8	7.6	0.3	67.4	2.8	29.8	0.071	0.503	20.664778	-97.523986
ZAPOTLALILLO	4.00																		

30 CARR: SAN HIPOLITO - XALAPA

CLAVE: 00486

RUTA: MEX-140

AÑO: 2010

LUGAR	ESTACION				CLASIFICACION VEHICULAR EN PORCIENTO								COORDENADAS						
	KM	TE	SC	TDPA	A	B	C2	C3	T3S2	T3S3	T3S2R4	OTROS	A	B	C	K'	D	LATITUD	LONGITUD
T. C. PUEBLA - TEHUACAN	0.00	3	0	10411	72.5	3.0	7.1	5.2	4.8	2.7	4.4	0.3	72.5	3.0	24.5	0.061	0.506	18.931718	-97.857666
X. C. PUEBLA - CORDOBA (CUOTA)	7.86	3	0	17324	72.7	3.0	6.9	5.0	5.0	2.8	4.3	0.3	72.7	3.0	24.3	0.061	0.515	18.977545	-97.804184
SAN SALVADOR EL SECO	35.35	1	0	7775	71.8	3.0	7.4	5.2	5.1	2.7	4.5	0.3	71.8	3.0	25.2	0.068	0.503	19.126737	-97.654359
ZACATEPEC	54.20	1	0	10317	71.0	3.1	7.7	5.1	5.4	2.6	4.8	0.3	71.0	3.1	25.9	0.063	0.502	19.258826	-97.536114
ZACATEPEC	54.20	3	1	6075	72.7	2.8	7.1	5.2	5.0	2.6	4.3	0.3	72.7	2.8	24.5	0.066	0.500	19.273745	-97.527465
ZACATEPEC	54.20	3	2	6084	71.0	3.2	7.5	5.2	5.3	2.6	4.9	0.3	71.0	3.2	25.8	0.067	0.500	19.273745	-97.527465

VERACRUZ

30 CARR: SAN HIPOLITO - XALAPA

CLAVE: 00486

RUTA: MEX-140

AÑO: 2010

LUGAR	ESTACION				CLASIFICACION VEHICULAR EN PORCIENTO								COORDENADAS						
	KM	TE	SC	TDPA	A	B	C2	C3	T3S2	T3S3	T3S2R4	OTROS	A	B	C	K'	D	LATITUD	LONGITUD
ALCHICHICA	80.00	3	1	5547	70.4	3.1	7.9	5.5	5.1	2.7	5.0	0.3	70.4	3.1	26.5	0.063	0.502	19.457443	-97.384842
ALCHICHICA	80.00	3	2	5591	72.4	2.9	7.0	5.1	5.1	2.6	4.6	0.3	72.4	2.9	24.7	0.067	0.502	19.457443	-97.384843
LIM. EDOS. TERM. PUE. PPIA. VER.	83.25																		
SAN ANTONIO LIMON	89.60	1	0	8321	72.3	2.9	7.4	5.2	4.9	2.6	4.4	0.3	72.3	2.9	24.8	0.069	0.502	19.494221	-97.354329
PEROTE	101.70	1	0	10083	71.9	3.0	7.5	5.0	5.3	2.6	4.4	0.3	71.9	3.0	25.1	0.061	0.501	19.551893	-97.262162
PEROTE	101.70	3	0	10415	71.4	3.0	7.3	5.2	5.2	2.8	4.8	0.3	71.4	3.0	25.6	0.072	0.504	19.576614	-97.231112
T. IZQ. VILLA ALDAMA	109.50	1	0	8206	70.6	3.1	7.8	5.4	5.1	2.8	4.9	0.3	70.6	3.1	26.3	0.063	0.509	19.614886	-97.189524
BANDERILLA	145.00	1	0	13447	71.7	2.9	7.3	5.2	5.4	2.7	4.5	0.3	71.7	2.9	25.4	0.066	0.509	19.590406	-96.959882
T. IZQ. NAOLINCO	146.00	3	1	10728	71.5	3.0	7.1	5.4	5.3	2.7	4.7	0.3	71.5	3.0	25.5	0.071	0.517	19.595007	-96.949928
T. IZQ. NAOLINCO	146.00	3	2	11498	72.6	2.9	7.3	5.2	4.7	2.7	4.3	0.3	72.6	2.9	24.5	0.076	0.517	19.595020	-96.949939
XALAPA	151.20	1	1	15163	72.1	2.9	6.9	5.3	5.3	2.7	4.5	0.3	72.1	2.9	25.0	0.077	0.503	19.578998	-96.928974
XALAPA	151.20	1	2	15000	70.5	3.2	7.8	5.3	5.4	2.9	4.6	0.3	70.5	3.2	26.3	0.074	0.503	19.578994	-96.928982

31 CARR: SAN PABLO VILLA DE MITLA - T. C. (TUXTEPEC - PALOMARES)

CLAVE: 00106

RUTA: MEX-179

AÑO: 2010

LUGAR	ESTACION				CLASIFICACION VEHICULAR EN PORCIENTO								COORDENADAS						
	KM	TE	SC	TDPA	A	B	C2	C3	T3S2	T3S3	T3S2R4	OTROS	A	B	C	K'	D	LATITUD	LONGITUD
T. C. OAXACA - TEHUANTEPEC	0.00	3	0	1640	82.8	5.9	5.6	2.7	1.6	0.3	0.3	0.8	82.8	5.9	11.3	0.087	0.509	16.917781	-96.385600
SAN PEDRO Y SAN PABLO AYUTLA	55.00	1	0	1240	84.3	6.4	4.6	2.1	0.9	0.5	0.2	1.0	84.3	6.4	9.3	0.085	0.505	17.018660	-96.080813
T. DER. ZACATEPEC	90.00	1	0	1258	85.8	5.7	4.2	2.0	1.0	0.3	0.2	0.8	85.8	5.7	8.5	0.097	0.502	17.148383	-96.035379
LIM. EDOS. TERM. OAX. PPIA. VER.	217.70																		
T. C. TUXTEPEC - ENT. PALOMARES	238.70	1	0	2036	81.3	6.2	8.1	1.0	1.1	1.3	0.5	0.5	81.3	6.2	12.5	0.083	0.508	17.702459	-95.734835

32 CARR: TAMARINDO - JOSE CARDEL

CLAVE: 30193

RUTA: MEX

AÑO: 2010

LUGAR	ESTACION				CLASIFICACION VEHICULAR EN PORCIENTO								COORDENADAS						
	KM	TE	SC	TDPA	A	B	C2	C3	T3S2	T3S3	T3S2R4	OTROS	A	B	C	K'	D	LATITUD	LONGITUD
TAMARINDO	0.00	3	1	6345	78.2	4.6	2.7	2.8	4.9	2.1	4.3	0.4	78.2	4.6	17.2	0.072	0.502	19.339968	-96.484627
TAMARINDO	0.00	3	2	6387	78.8	4.5	2.4	2.6	4.4	2.2	4.4	0.7	78.8	4.5	16.7	0.073	0.502	19.339968	-96.484628
JOSE CARDEL	14.25	1	1	5335	79.6	5.2	3.4	2.3	3.8	1.4	3.6	0.7	79.6	5.2	15.2	0.074	0.504	19.363976	-96.399987
JOSE CARDEL	14.25	1	2	5427	79.7	5.1	3.4	2.1	4.0	1.6	3.5	0.6	79.7	5.1	15.2	0.074	0.504	19.364051	-96.400052





VERACRUZ

35 CARR: TEZIUTLAN - PEROTE

CLAVE: 00209

RUTA: MEX-131

AÑO: 2010

LUGAR	ESTACION				CLASIFICACION VEHICULAR EN PORCIENTO								COORDENADAS						
	KM	TE	SC	TDPA	A	B	C2	C3	T3S2	T3S3	T3S2R4	OTROS	A	B	C	K'	D	LATITUD	LONGITUD
JALACINGO	12.50	3	0	4882	79.5	4.8	5.7	2.0	3.8	1.6	2.1	0.5	79.5	4.8	15.7	0.070	0.508	19.788793	-97.294813
T. IZO. ATZALAN	23.00	3	0	6585	73.6	4.7	6.3	2.8	5.0	1.6	5.4	0.6	73.6	4.7	21.7	0.079	0.508	19.777741	-97.250667
T. IZO. ALTOTONGA II	26.90	3	0	6320	75.6	5.2	6.7	3.3	4.3	1.9	2.4	0.6	75.6	5.2	19.2	0.065	0.513	19.747754	-97.245218
T. IZO. VILLA ALDAMA	37.60	3	0	5651	74.3	5.4	5.9	4.9	3.8	1.7	3.4	0.6	74.3	5.4	20.3	0.058	0.506	19.661170	-97.246919
PEROTE	49.10	1	0	5846	76.0	5.7	6.5	2.7	4.4	1.7	2.2	0.8	76.0	5.7	18.3	0.072	0.508	19.587447	-97.248384

36 CARR: TIHUATLAN - CASTILLO DE TEAYO

CLAVE: 30700

RUTA: MEX

AÑO: 2010

LUGAR	ESTACION				CLASIFICACION VEHICULAR EN PORCIENTO								COORDENADAS						
	KM	TE	SC	TDPA	A	B	C2	C3	T3S2	T3S3	T3S2R4	OTROS	A	B	C	K'	D	LATITUD	LONGITUD
T. C. TIHUATLAN - POTRERO DEL LLANO	0.00	3	0	2604	87.4	4.4	3.4	1.5	2.2	0.5	0.3	0.3	87.4	4.4	8.2	0.068	0.503	20.719883	-97.549871
CASTILLO DE TEAYO	23.00																		

37 CARR: TIHUATLAN - POTRERO DEL LLANO

CLAVE: 30132

RUTA: MEX

AÑO: 2010

LUGAR	ESTACION				CLASIFICACION VEHICULAR EN PORCIENTO								COORDENADAS						
	KM	TE	SC	TDPA	A	B	C2	C3	T3S2	T3S3	T3S2R4	OTROS	A	B	C	K'	D	LATITUD	LONGITUD
TIHUATLAN	0.00	3	0	7149	77.1	4.3	3.6	3.1	5.7	2.8	2.9	0.5	77.1	4.3	18.6	0.068	0.501	20.720196	-97.549467
ALAMO	31.60	1	0	9206	77.2	4.0	3.7	3.2	5.6	2.9	3.0	0.4	77.2	4.0	18.8	0.067	0.505	20.895275	-97.670884
ALAMO	31.60	3	0	9672	76.3	4.7	4.3	3.0	5.6	2.3	3.5	0.3	76.3	4.7	19.0	0.069	0.519	20.917423	-97.683071
T. C. ALAZAN - CANOAS	51.70	1	0	6220	77.7	4.2	3.7	2.8	5.9	2.1	3.3	0.3	77.7	4.2	18.1	0.065	0.502	21.093520	-97.752330

38 CARR: TUXPAM - TAMPICO

CLAVE: 00529

RUTA: MEX-180

AÑO: 2010

LUGAR	ESTACION				CLASIFICACION VEHICULAR EN PORCIENTO								COORDENADAS						
	KM	TE	SC	TDPA	A	B	C2	C3	T3S2	T3S3	T3S2R4	OTROS	A	B	C	K'	D	LATITUD	LONGITUD
TUXPAM	0.00	3	0	4987	71.1	5.0	6.5	2.8	7.4	3.1	3.7	0.4	71.1	5.0	23.9	0.059	0.506	20.955054	-97.462405
T. IZO. LA LAJUELA	28.70	1	0	3609	71.6	4.9	6.2	2.9	7.4	3.0	3.6	0.4	71.6	4.9	23.5	0.062	0.503	21.073836	-97.643322
T. IZO. TEMPOAL DE SANCHEZ	45.20	1	0	3710	70.5	5.3	6.3	3.1	7.6	3.1	3.7	0.4	70.5	5.3	24.2	0.062	0.501	21.079162	-97.726715
CERRO AZUL	56.66	1	0	8136	71.1	5.2	6.2	2.8	7.6	3.0	3.7	0.4	71.1	5.2	23.7	0.060	0.500	21.178439	-97.751615
T. IZO. NARANJOS	78.60	1	0	9061	70.6	5.3	6.3	3.1	7.5	3.3	3.5	0.4	70.6	5.3	24.1	0.064	0.505	21.334644	-97.695533
T. IZO. NARANJOS	78.60	3	0	8182	70.4	5.0	6.8	3.0	7.4	3.3	3.7	0.4	70.4	5.0	24.6	0.063	0.504	21.368628	-97.685013
T. DER. OZULUAMA	124.42	1	0	6028	67.8	5.3	5.9	3.8	8.7	4.0	4.3	0.2	67.8	5.3	26.9	0.078	0.501	21.671505	-97.859942
T. DER. OZULUAMA	124.42	3	0	5604	68.1	5.2	5.8	3.7	8.8	4.2	4.0	0.2	68.1	5.2	26.7	0.066	0.517	21.683667	-97.856077
TAMPICO ALTO	177.80	1	0	6480	67.9	5.4	5.6	3.7	9.0	4.0	4.2	0.2	67.9	5.4	26.7	0.063	0.502	22.117546	-97.804496

VERACRUZ

38 CARR: TUXPAM - TAMPICO

CLAVE: 00529

RUTA: MEX-180

AÑO: 2010

LUGAR	ESTACION				CLASIFICACION VEHICULAR EN PORCIENTO								COORDENADAS						
	KM	TE	SC	TDPA	A	B	C2	C3	T3S2	T3S3	T3S2R4	OTROS	A	B	C	K'	D	LATITUD	LONGITUD
TAMPICO ALTO	177.80	3	0	6886	68.6	5.4	5.7	3.6	8.3	4.2	4.0	0.2	68.6	5.4	26.0	0.069	0.507	22.107189	-97.803404
VILLA CUAUHEMOC	186.85	1	0	6391	69.1	5.3	5.7	3.4	8.3	3.8	4.2	0.2	69.1	5.3	25.6	0.064	0.509	22.192080	-97.834426
VILLA CUAUHEMOC	186.85	3	0	5329	67.6	5.5	6.0	3.8	8.5	4.1	4.3	0.2	67.6	5.5	26.9	0.063	0.509	22.174194	-97.833306
LIM. EDOS. TERM. VER. PPIA. TAMPS. (RIO PANUCO)	189.82																		
TAMPICO	191.43	1	1	5949	68.9	5.1	5.5	3.5	8.5	4.0	4.3	0.2	68.9	5.1	26.0	0.074	0.504	22.214721	-97.824515
TAMPICO	191.43	1	2	6043	68.0	5.2	5.8	3.6	8.7	4.1	4.4	0.2	68.0	5.2	26.8	0.077	0.504	22.214721	-97.824515

39 CARR: TUXTEPEC - ENT. PALOMARES

CLAVE: 00180

RUTA: MEX-147

AÑO: 2010

LUGAR	ESTACION				CLASIFICACION VEHICULAR EN PORCIENTO								COORDENADAS						
	KM	TE	SC	TDPA	A	B	C2	C3	T3S2	T3S3	T3S2R4	OTROS	A	B	C	K'	D	LATITUD	LONGITUD
T. C. TUXTEPEC - OAXACA	0.00	3	0	3949	77.6	6.5	6.7	2.3	4.0	1.0	1.5	0.4	77.6	6.5	15.9	0.079	0.505	18.035841	-96.158763
X. C. EL RODEO - REFORMA	15.20	3	0	2424	75.1	6.1	6.9	3.5	4.5	1.9	1.3	0.7	75.1	6.1	18.8	0.080	0.502	17.950373	-96.071149
LIM. EDOS. TERM. OAX. PPIA. VER.	40.00																		
X. C. PLAYA VICENTE - EL TOMATE	48.16	1	0	1924	76.8	6.1	6.8	3.4	3.6	1.9	0.9	0.5	76.8	6.1	17.1	0.084	0.513	17.783678	-95.833311
X. C. PLAYA VICENTE - EL TOMATE	48.16	3	0	2585	77.7	5.8	6.5	3.1	3.9	1.6	1.1	0.3	77.7	5.8	16.5	0.080	0.501	17.783160	-95.830295
T. DER. XOCHIAPA	65.00	3	0	1573	80.1	5.5	5.3	1.9	4.1	1.1	1.6	0.4	80.1	5.5	14.4	0.085	0.502	17.703040	-95.733258
T. IZQ. SAN JUAN EVANGELISTA	81.20	1	0	1323	77.9	5.1	6.7	2.5	4.4	1.1	1.6	0.7	77.9	5.1	17.0	0.074	0.502	17.616137	-95.636469
LIM. EDOS. TERM. VER. PPIA. OAX.	87.00																		
MARIA LOMBARDO DE CASO	110.50	1	0	2356	82.7	5.2	3.4	2.0	3.8	1.3	1.2	0.4	82.7	5.2	12.1	0.082	0.505	17.452671	-95.433224
T. C. COATZACOALCOS - SALINA CRUZ	175.00	1	0	1510	81.8	5.0	3.2	1.6	4.2	1.9	1.9	0.4	81.8	5.0	13.2	0.085	0.503	17.138793	-95.065711

40 CARR: XALAPA - VERACRUZ

CLAVE: 30526

RUTA: MEX-140

AÑO: 2010

LUGAR	ESTACION				CLASIFICACION VEHICULAR EN PORCIENTO								COORDENADAS						
	KM	TE	SC	TDPA	A	B	C2	C3	T3S2	T3S3	T3S2R4	OTROS	A	B	C	K'	D	LATITUD	LONGITUD
XALAPA	0.00	3	1	27329	78.2	5.2	4.8	3.0	3.3	1.9	3.4	0.2	78.2	5.2	16.6	0.058	0.502	19.512093	-96.874627
XALAPA	0.00	3	2	27087	78.0	5.2	4.7	3.3	3.5	1.8	3.3	0.2	78.0	5.2	16.8	0.061	0.502	19.515287	-96.878552
T. DER. COATEPEC	4.14	3	1	11965	78.7	5.4	4.4	3.0	3.3	1.7	3.3	0.2	78.7	5.4	15.9	0.074	0.501	19.508095	-96.867047
T. DER. COATEPEC	4.14	3	2	12031	78.2	5.7	4.5	3.0	3.3	1.8	3.3	0.2	78.2	5.7	16.1	0.073	0.501	19.508101	-96.867042
CORRAL FALSO	17.40	3	1	8330	77.5	5.5	4.9	3.1	3.5	1.8	3.5	0.2	77.5	5.5	17.0	0.078	0.504	19.457980	-96.748859
CORRAL FALSO	17.40	3	2	8183	77.1	5.7	5.0	3.1	3.6	1.9	3.4	0.2	77.1	5.7	17.2	0.072	0.504	19.458250	-96.749667
T. IZQ. ACTOPAN	38.62	3	1	7858	77.4	5.8	4.8	3.1	3.5	1.8	3.4	0.2	77.4	5.8	16.8	0.074	0.500	19.389668	-96.608221
T. IZQ. ACTOPAN	38.62	3	2	7862	77.4	5.5	4.7	3.4	3.5	1.8	3.5	0.2	77.4	5.5	17.1	0.079	0.500	19.389664	-96.608363
T. IZQ. JOSE CARDEL	53.82	1	1	7756	65.3	11.1	8.2	6.9	4.1	2.5	1.8	0.1	65.3	11.1	23.6	0.084	0.511	19.338984	-96.496691



VERACRUZ

42 CARR: CORDOBA - VERACRUZ (CUOTA)

CLAVE: 30066

RUTA: MEX-150D

AÑO: 2010

LUGAR	ESTACION				CLASIFICACION VEHICULAR EN PORCIENTO								COORDENADAS						
	KM	TE	SC	TDPA	A	B	C2	C3	T3S2	T3S3	T3S2R4	OTROS	A	B	C	K'	D	LATITUD	LONGITUD
T. C. CORDOBA - ENT. BOTICARIA	0.00																		
CASETA DE COBRO CUITLAHUAC	14.14	1	0	11102	62.3	8.0	4.4	4.3	7.5	2.3	10.2	1.0	62.3	8.0	29.7			18.839397	-96.746790
CASETA DE COBRO CUITLAHUAC	14.14	2	0	11204	62.8	7.9	4.3	4.3	7.4	2.2	10.1	1.0	62.8	7.9	29.3			18.839397	-96.746790
CASETA DE COBRO CUITLAHUAC	14.14	3	0	11020	62.1	8.0	4.4	4.4	7.5	2.3	10.3	1.0	62.1	8.0	29.9			18.839397	-96.746790
CASETA DE COBRO PASO DEL TORO	89.90	1	0	9450	70.4	7.3	3.8	2.4	5.3	1.8	8.1	0.9	70.4	7.3	22.3			19.081775	-96.198448
CASETA DE COBRO PASO DEL TORO	89.90	2	0	14573	77.5	5.2	4.1	2.3	3.8	1.2	5.3	0.6	77.5	5.2	17.3			19.081775	-96.198448
CASETA DE COBRO PASO DEL TORO	89.90	3	0	10966	84.9	5.9	4.1	2.0	1.6	0.3	1.0	0.2	84.9	5.9	9.2			19.081775	-96.198448
T. C. JALAPA - VERACRUZ	98.00																		

43 CARR: LA TINAJA - COSOLEACAQUE (CUOTA)

CLAVE: 30144

RUTA: MEX-145D

AÑO: 2010

LUGAR	ESTACION				CLASIFICACION VEHICULAR EN PORCIENTO								COORDENADAS						
	KM	TE	SC	TDPA	A	B	C2	C3	T3S2	T3S3	T3S2R4	OTROS	A	B	C	K'	D	LATITUD	LONGITUD
T. C. CORDOBA - VERACRUZ (CUOTA)	0.00																		
CASETA DE COBRO COSAMALOAPAN	83.36	1	0	7957	53.2	8.8	4.1	5.5	11.4	3.8	12.3	0.9	53.2	8.8	38.0			18.335024	-95.822200
CASETA DE COBRO COSAMALOAPAN	83.36	2	0	9261	58.4	7.9	4.1	4.9	10.0	3.3	10.7	0.7	58.4	7.9	33.7			18.335024	-95.822200
CASETA DE COBRO COSAMALOAPAN	83.36	3	0	8748	57.0	7.9	4.2	5.1	10.4	3.4	11.2	0.8	57.0	7.9	35.1			18.335024	-95.822200
CASETA DE COBRO ACAYUCAN (SAYULA)	188.00	1	0	7427	53.2	8.9	4.1	5.1	11.4	3.6	12.7	1.0	53.2	8.9	37.9			17.909977	-94.937353
CASETA DE COBRO ACAYUCAN (SAYULA)	188.00	2	0	11364	56.7	7.3	4.6	5.8	11.2	3.5	10.0	0.9	56.7	7.3	36.0			17.909977	-94.937353
CASETA DE COBRO ACAYUCAN (SAYULA)	188.00	3	1	4863	59.6	5.8	4.7	6.0	11.0	3.4	8.6	0.9	59.6	5.8	34.6	0.067	0.505	17.910536	-94.929049
CASETA DE COBRO ACAYUCAN (SAYULA)	188.00	3	2	4764	57.2	5.9	5.0	5.8	11.7	3.8	9.6	1.0	57.2	5.9	36.9	0.070	0.505	17.910536	-94.929049
T. C. COATZACOALCOS - SALINA CRUZ	228.10																		
T.C. COATZACOALCOS - SALINA CRUZ	228.10	1	1	3358	58.7	6.1	4.9	5.8	11.1	3.5	9.0	0.9	58.7	6.1	35.2	0.067	0.512	18.000978	-94.596781
T.C. COATZACOALCOS - SALINA CRUZ	228.10	1	2	3195	57.0	6.2	4.6	6.3	11.3	3.8	9.8	1.0	57.0	6.2	36.8	0.067	0.512	18.000978	-94.596781

44 CARR: LAS CHOAPAS - OCOZOCOAUTLA (CUOTA)

CLAVE: 00077

RUTA: MEX-187D

AÑO: 2010

LUGAR	ESTACION				CLASIFICACION VEHICULAR EN PORCIENTO								COORDENADAS						
	KM	TE	SC	TDPA	A	B	C2	C3	T3S2	T3S3	T3S2R4	OTROS	A	B	C	K'	D	LATITUD	LONGITUD
T. C. COATZACOALCOS - VILLAHERMOSA	0.00	3	0	5308	60.7	4.9	5.4	6.7	8.2	2.4	10.7	1.0	60.7	4.9	34.4	0.069	0.516	18.064035	-94.247071
CASETA DE COBRO LAS CHOAPAS	16.80	1	0	2944	59.5	5.1	5.3	7.2	8.7	2.5	10.7	1.0	59.5	5.1	35.4			17.944788	-94.172378
CASETA DE COBRO LAS CHOAPAS	16.80	2	0	4152	46.0	6.5	5.6	9.2	12.2	3.9	15.2	1.4	46.0	6.5	47.5			17.944788	-94.172378
CASETA DE COBRO LAS CHOAPAS	16.80	3	0	2118	45.8	6.8	5.6	9.1	12.0	4.4	14.9	1.4	45.8	6.8	47.4			17.944788	-94.172378
CASETA DE COBRO MALPASITO	128.00	1	0	1977	45.5	7.1	5.8	9.2	12.1	3.5	15.5	1.3	45.5	7.1	47.4			17.349102	-93.586412
CASETA DE COBRO MALPASITO	128.00	2	0	2714	54.2	6.6	6.6	7.7	9.6	3.0	11.3	1.0	54.2	6.6	39.2			17.349102	-93.586412

VERACRUZ

44 CARR: LAS CHOAPAS - OCOZOCOAUTLA (CUOTA)

CLAVE: 00077

RUTA: MEX-187D

AÑO: 2010

LUGAR	ESTACION				CLASIFICACION VEHICULAR EN PORCIENTO								COORDENADAS						
	KM	TE	SC	TDPA	A	B	C2	C3	T3S2	T3S3	T3S2R4	OTROS	A	B	C	K'	D	LATITUD	LONGITUD
CASETA DE COBRO MALPASITO	128.00	3	0	2691	54.1	6.6	6.6	7.7	9.6	3.0	11.4	1.0	54.1	6.6	39.3			17.349102	-93.586412
LIM. EDOS. TERM. VER. PPIA. CHIS.	130.00																		
T. IZQ. MALPASO	141.865	1	0	2882	53.2	6.7	6.9	7.5	10.0	3.1	11.6	1.0	53.2	6.7	40.1	0.075	0.502	17.261253	-93.570153
CASETA DE COBRO OCOZOCOAUTLA	182.20	2	0	3685	62.7	5.4	7.0	6.0	7.4	2.4	8.3	0.8	62.7	5.4	31.9			16.863216	-93.407000
T. C. TAPANATEPEC - TUXTLA GUTIERREZ	197.50	1	0	4103	63.1	5.2	7.1	6.0	7.3	2.4	8.1	0.8	63.1	5.2	31.7	0.092	0.500	16.772960	-93.319105

45 CARR: LIBRAMIENTO DE CARDEL

CLAVE: 30729

RUTA: MEX-180D

AÑO: 2010

LUGAR	ESTACION				CLASIFICACION VEHICULAR EN PORCIENTO								COORDENADAS						
	KM	TE	SC	TDPA	A	B	C2	C3	T3S2	T3S3	T3S2R4	OTROS	A	B	C	K'	D	LATITUD	LONGITUD
T. C. TAMARINDO - CARDEL	0.00	3	0	6465	72.8	3.9	3.4	4.2	5.6	2.6	7.2	0.3	72.8	3.9	23.3	0.073	0.500	19.371976	-96.387035
T. C. POZA RICA - VERACRUZ	2.50																		

46 CARR: LIBRAMIENTO PEROTE (CUOTA)

CLAVE:

RUTA: MEX-D

AÑO: 2010

LUGAR	ESTACION				CLASIFICACION VEHICULAR EN PORCIENTO								COORDENADAS						
	KM	TE	SC	TDPA	A	B	C2	C3	T3S2	T3S3	T3S2R4	OTROS	A	B	C	K'	D	LATITUD	LONGITUD
T.C. SAN HIPOLITO - JALAPA	0.00	3	0	2543	53.3	4.7	6.0	10.4	14.2	5.3	5.6	0.5	53.3	4.7	42.0	0.064	0.500	19.535661	-97.298332
T.C. SAN HIPOLITO - JALAPA	17.80																		

47 CARR: LIBRAMIENTO PLAN DEL RIO (CUOTA)

CLAVE:

RUTA: MEX-D

AÑO: 2010

LUGAR	ESTACION				CLASIFICACION VEHICULAR EN PORCIENTO								COORDENADAS						
	KM	TE	SC	TDPA	A	B	C2	C3	T3S2	T3S3	T3S2R4	OTROS	A	B	C	K'	D	LATITUD	LONGITUD
T.C. JALAPA - VERACRUZ	0.00	3	1	3055	75.2	3.6	3.9	3.3	5.5	2.2	5.8	0.5	75.2	3.6	21.2	0.075	0.504	19.440371	-96.705133
T.C. JALAPA - VERACRUZ	0.00	3	2	3099	75.3	3.5	3.8	3.4	5.5	2.2	5.8	0.5	75.3	3.5	21.2	0.075	0.504	19.440350	-96.705140
T.C. JALAPA - VERACRUZ	12.00																		

48 CARR: NUEVO TEAPA - COSOLEACAQUE (CUOTA)

CLAVE:

RUTA: MEX-145D

AÑO: 2010

LUGAR	ESTACION				CLASIFICACION VEHICULAR EN PORCIENTO								COORDENADAS						
	KM	TE	SC	TDPA	A	B	C2	C3	T3S2	T3S3	T3S2R4	OTROS	A	B	C	K'	D	LATITUD	LONGITUD
T. C. COATZACOALCOS - VILLAHERMOSA	0.00	3	1	4056	52.1	3.4	7.1	9.5	13.0	4.6	1.7	8.6	52.1	3.4	44.5	0.075	0.503	18.070792	-94.321608
T. C. COATZACOALCOS - VILLAHERMOSA	0.00	3	2	4012	52.4	3.6	6.6	9.3	13.2	4.7	1.7	8.5	52.4	3.6	44.0	0.073	0.503	18.070792	-94.321608
CASETA DE COBRO PUENTE ANTONIO DOVALI JAIME	6.50	2	0	11408	52.6	3.4	6.9	9.1	13.3	4.8	1.7	8.2	52.6	3.4	44.0			18.013415	-94.396799

VERACRUZ

48 CARR: NUEVO TEAPA - COSOLEACAQUE (CUOTA)

CLAVE:

RUTA: MEX-145D

AÑO: 2010

LUGAR	ESTACION				CLASIFICACION VEHICULAR EN PORCIENTO								COORDENADAS						
	KM	TE	SC	TDPA	A	B	C2	C3	T3S2	T3S3	T3S2R4	OTROS	A	B	C	K'	D	LATITUD	LONGITUD
ENT. LA TINAJA - COSOLEACAQUE	34.00	1	1	8905	52.9	3.3	6.8	8.8	14.0	4.7	1.6	7.9	52.9	3.3	43.8	0.065	0.507	18.017969	-94.539413
ENT. LA TINAJA - COSOLEACAQUE	34.00	1	2	9151	52.5	3.5	7.1	9.3	13.3	4.6	1.7	8.0	52.5	3.5	44.0	0.062	0.507	18.017969	-94.539413

49 CARR: PUEBLA - CORDOBA (CUOTA)

CLAVE: 00485

RUTA: MEX-150D

AÑO: 2010

LUGAR	ESTACION				CLASIFICACION VEHICULAR EN PORCIENTO								COORDENADAS						
	KM	TE	SC	TDPA	A	B	C2	C3	T3S2	T3S3	T3S2R4	OTROS	A	B	C	K'	D	LATITUD	LONGITUD
PUEBLA	0.00	3	1	21794	70.4	7.7	5.5	5.3	5.2	1.3	4.0	0.6	70.4	7.7	21.9	0.069	0.507	19.069625	-98.128524
PUEBLA	0.00	3	2	22440	69.5	8.4	5.4	5.5	4.9	1.3	4.4	0.6	69.5	8.4	22.1	0.066	0.507	19.069708	-98.128503
T. DER. AMOZOC (CASETA DE COBRO)	21.55	1	1	15439	70.5	8.2	5.6	5.0	4.9	1.2	4.0	0.6	70.5	8.2	21.3	0.083	0.503	19.050776	-98.035497
T. DER. AMOZOC (CASETA DE COBRO)	21.55	1	2	15611	69.3	8.1	5.5	5.7	5.3	1.4	4.1	0.6	69.3	8.1	22.6	0.076	0.503	19.050776	-98.035497
T. DER. AMOZOC (CASETA DE COBRO)	21.55	3	1	11760	69.6	7.5	5.1	5.1	5.3	1.3	5.4	0.7	69.6	7.5	22.9	0.071	0.502	19.048033	-98.026540
T. DER. AMOZOC (CASETA DE COBRO)	21.55	3	2	11867	67.4	8.6	5.4	5.2	6.0	1.4	5.2	0.8	67.4	8.6	24.0	0.075	0.502	19.048033	-98.026540
T. IZQ. ACATZINGO	47.10	1	1	13387	68.4	8.3	5.0	5.3	5.6	1.4	5.3	0.7	68.4	8.3	23.3	0.069	0.509	18.978967	-97.816465
T. IZQ. ACATZINGO	47.10	1	2	12926	68.6	7.8	5.2	5.2	5.8	1.3	5.4	0.7	68.6	7.8	23.6	0.067	0.509	18.978967	-97.816465
T. IZQ. ACATZINGO	47.10	3	1	11221	69.9	7.9	4.8	5.0	5.4	1.3	5.0	0.7	69.9	7.9	22.2	0.068	0.503	18.973220	-97.800100
T. IZQ. ACATZINGO	47.10	3	2	11068	68.8	8.4	4.9	4.8	5.8	1.3	5.3	0.7	68.8	8.4	22.8	0.066	0.503	18.973417	-97.800023
T. DER. TECAMACHALCO	62.10	1	1	11330	53.6	6.5	5.7	8.7	13.3	2.7	8.4	1.1	53.6	6.5	39.9	0.067	0.506	18.931780	-97.683780
T. DER. TECAMACHALCO	62.10	1	2	11083	54.4	6.1	5.9	8.6	13.3	2.6	8.0	1.1	54.4	6.1	39.5	0.067	0.506	18.931959	-97.683749
T. DER. TECAMACHALCO	62.10	3	1	10402	52.8	6.4	6.2	8.8	13.5	2.6	8.5	1.2	52.8	6.4	40.8	0.078	0.503	18.929072	-97.677310
T. DER. TECAMACHALCO	62.10	3	2	10289	53.1	6.6	6.2	8.8	13.1	2.6	8.5	1.1	53.1	6.6	40.3	0.065	0.503	18.929267	-97.677247
T. DER. OAXACA (CUOTA)	83.85	1	1	8721	53.6	6.2	5.9	9.0	13.5	2.7	8.0	1.1	53.6	6.2	40.2	0.066	0.500	18.828060	-97.497216
T. DER. OAXACA (CUOTA)	83.85	1	2	8734	52.8	7.0	6.3	8.9	13.0	2.7	8.2	1.1	52.8	7.0	40.2	0.066	0.500	18.828248	-97.497178
CASETA DE COBRO ESPERANZA	99.50	1	0	14897	53.5	6.6	6.0	8.7	13.2	2.6	8.3	1.1	53.5	6.6	39.9			18.870773	-97.385953
CASETA DE COBRO ESPERANZA	99.50	3	0	11453	57.8	8.1	5.1	7.2	9.2	2.1	9.4	1.1	57.8	8.1	34.1			18.870773	-97.385953
LIM. EDOS. TERM. PUE. PPIA. VER.	111.40																		
T. DER. CD. MENDOZA	142.40	1	1	8791	72.2	5.2	4.8	5.3	6.5	1.3	4.2	0.5	72.2	5.2	22.6	0.067	0.502	18.813937	-97.193942
T. DER. CD. MENDOZA	142.40	1	2	8861	73.6	5.0	4.6	5.1	5.9	1.3	4.0	0.5	73.6	5.0	21.4	0.065	0.502	18.814127	-97.194000
T. DER. CD. MENDOZA	142.40	3	1	9079	72.9	5.5	4.6	4.8	6.2	1.3	4.2	0.5	72.9	5.5	21.6	0.066	0.504	18.813428	-97.187410
T. DER. CD. MENDOZA	142.40	3	2	9209	72.9	5.2	4.8	5.3	5.8	1.4	4.1	0.5	72.9	5.2	21.9	0.065	0.504	18.813582	-97.187366
T. IZQ. ORIZABA	157.05	3	1	13026	72.0	5.3	4.8	5.4	6.3	1.4	4.3	0.5	72.0	5.3	22.7	0.075	0.500	18.832639	-97.087667
T. IZQ. ORIZABA	157.05	3	2	13035	71.0	5.8	5.0	5.6	6.3	1.4	4.4	0.5	71.0	5.8	23.2	0.071	0.500	18.832750	-97.087556
CASETA DE COBRO FORTIN DE LAS FLORES	168.20	1	0	32724	72.4	5.4	4.8	5.2	6.1	1.4	4.2	0.5	72.4	5.4	22.2			18.907152	-96.999435
CASETA DE COBRO FORTIN DE LAS FLORES	168.20	3	0	20801	63.3	7.0	5.3	6.4	8.9	2.0	6.3	0.8	63.3	7.0	29.7			18.907152	-96.999435
CORDOBA	174.87	1	1	13885	62.6	7.5	5.4	6.4	8.7	2.0	6.6	0.8	62.6	7.5	29.9	0.067	0.503	18.893326	-96.975842

VERACRUZ

49 CARR: PUEBLA - CORDOBA (CUOTA)

CLAVE: 00485

RUTA: MEX-150D

AÑO: 2010

LUGAR	ESTACION				CLASIFICACION VEHICULAR EN PORCIENTO								COORDENADAS						
	KM	TE	SC	TDPA	A	B	C2	C3	T3S2	T3S3	T3S2R4	OTROS	A	B	C	K'	D	LATITUD	LONGITUD
CORDOBA	174.87	1	2	14037	63.4	7.0	5.2	6.4	9.1	1.9	6.2	0.8	63.4	7.0	29.6	0.068	0.503	18.893326	-96.975842

50 CARR: TEJOCOTAL - TIHUATLAN (CUOTA)

CLAVE:

RUTA: MEX-130D

AÑO: 2010

LUGAR	ESTACION				CLASIFICACION VEHICULAR EN PORCIENTO								COORDENADAS						
	KM	TE	SC	TDPA	A	B	C2	C3	T3S2	T3S3	T3S2R4	OTROS	A	B	C	K'	D	LATITUD	LONGITUD
TEJOCOTAL	0.00																		
LIM. EDOS. TERM. HGO. PPIA. PUE.	1.10																		
CASETA DE COBRO NUEVO NECAXA	17.00	2	0	6219	73.9	4.7	6.6	5.9	4.8	2.1	1.7	0.3	73.9	4.7	21.4			20.186719	-98.029735
NUEVO NECAXA	18.00	1	0	6333	74.9	4.8	6.1	5.9	4.4	2.0	1.6	0.3	74.9	4.8	20.3	0.071	0.511	20.181982	-98.026666

51 CARR: TIHUATLAN - EL PALMAR (CUOTA)

CLAVE: 30009

RUTA: MEX-180D

AÑO: 2010

LUGAR	ESTACION				CLASIFICACION VEHICULAR EN PORCIENTO								COORDENADAS						
	KM	TE	SC	TDPA	A	B	C2	C3	T3S2	T3S3	T3S2R4	OTROS	A	B	C	K'	D	LATITUD	LONGITUD
T. C. TIHUATLAN - TUXPAN (CUOTA)	0.00																		
CASETA DE COBRO TOTOMOXTLA	37.10	2	0	3978	66.7	1.9	5.3	5.1	10.2	4.1	6.3	0.4	66.7	1.9	31.4			20.461959	-97.245982
T. C. POZA RICA - VERACRUZ	37.20																		

52 CARR: TIHUATLAN - TUXPAM (CUOTA)

CLAVE: 30008

RUTA: MEX-132D

AÑO: 2010

LUGAR	ESTACION				CLASIFICACION VEHICULAR EN PORCIENTO								COORDENADAS						
	KM	TE	SC	TDPA	A	B	C2	C3	T3S2	T3S3	T3S2R4	OTROS	A	B	C	K'	D	LATITUD	LONGITUD
T. C. PACHUCA - ENT. CAÑADA RICA	0.00																		
CASETA DE COBRO PUENTE TUXPAM	32.80	2	0	4900	80.2	11.9	4.3	1.7	0.8	0.5	0.5	0.1	80.2	11.9	7.9			20.918966	-97.415848
TUXPAM	37.50																		

53 CARR: BANDERILLA - MARTINEZ DE LA TORRE

CLAVE: 30065

RUTA: VER-065

AÑO: 2010

LUGAR	ESTACION				CLASIFICACION VEHICULAR EN PORCIENTO								COORDENADAS						
	KM	TE	SC	TDPA	A	B	C2	C3	T3S2	T3S3	T3S2R4	OTROS	A	B	C	K'	D	LATITUD	LONGITUD
T. C. SAN HIPOLITO - JALAPA	0.00	3	0	6965	78.9	6.6	4.8	2.7	4.4	1.0	1.0	0.6	78.9	6.6	14.5	0.074	0.501	19.595819	-96.953305
NAOLINCO	22.00	1	0	3525	77.6	7.3	4.4	2.0	3.9	3.8	0.4	0.6	77.6	7.3	15.1	0.072	0.510	19.655436	-96.884217
MISANTLA	68.00	1	0	2130	78.0	6.2	4.7	2.1	4.1	4.1	0.2	0.6	78.0	6.2	15.8	0.074	0.500	19.932390	-96.833263
MISANTLA	68.00	3	0	4065	79.4	6.9	4.8	2.4	3.2	2.1	0.9	0.3	79.4	6.9	13.7	0.073	0.506	19.946687	-96.861106

VERACRUZ

53 CARR: BANDERILLA - MARTINEZ DE LA TORRE

CLAVE: 30065

RUTA: VER-065

AÑO: 2010

LUGAR	ESTACION				CLASIFICACION VEHICULAR EN PORCIENTO								COORDENADAS						
	KM	TE	SC	TDPA	A	B	C2	C3	T3S2	T3S3	T3S2R4	OTROS	A	B	C	K'	D	LATITUD	LONGITUD
MARTINEZ DE LA TORRE	102.00	1	0	4682	80.8	4.1	4.4	2.5	4.8	1.8	1.0	0.6	80.8	4.1	15.1	0.101	0.516	20.058223	-97.029120

54 CARR: BENITO JUAREZ - AGUA DULCE

CLAVE: 00202

RUTA: TAB-VER

AÑO: 2010

LUGAR	ESTACION				CLASIFICACION VEHICULAR EN PORCIENTO								COORDENADAS						
	KM	TE	SC	TDPA	A	B	C2	C3	T3S2	T3S3	T3S2R4	OTROS	A	B	C	K'	D	LATITUD	LONGITUD
BENITO JUAREZ	0.00	3	0	1683	85.2	4.4	4.9	1.8	1.9	0.2	0.9	0.7	85.2	4.4	10.4	0.068	0.503	18.168639	-93.915500
LA VENTA	18.00	1	0	2977	85.4	4.5	4.2	1.7	1.7	0.6	1.0	0.9	85.4	4.5	10.1	0.073	0.506	18.111407	-94.038660
LA VENTA	18.00	3	0	3145	81.6	4.8	6.4	3.6	1.4	0.4	1.1	0.7	81.6	4.8	13.6	0.075	0.504	18.113501	-94.050274
LIM. EDOS. TERM. TAB. PPIA. VER.	26.00																		

55 CARR: ENT. LA LAGUNA - ENT. EL CALLEJON

CLAVE: 30705

RUTA: VER

AÑO: 2010

LUGAR	ESTACION				CLASIFICACION VEHICULAR EN PORCIENTO								COORDENADAS						
	KM	TE	SC	TDPA	A	B	C2	C3	T3S2	T3S3	T3S2R4	OTROS	A	B	C	K'	D	LATITUD	LONGITUD
T. C. PASO DEL TORO - ACAYUCAN	0.00	3	0	3289	84.8	6.9	3.3	1.5	2.4	0.6	0.2	0.3	84.8	6.9	8.3	0.079	0.505	18.971924	-96.070971
T. C. MATA ESPINO - IGNACIO DE LA LLAVE	33.00	1	0	2638	82.6	6.8	3.9	1.3	3.1	0.8	0.8	0.7	82.6	6.8	10.6	0.082	0.503	18.749546	-96.138218

56 CARR: JOSE CARDEL - PLAYA CHACHALACAS

CLAVE: 30038

RUTA: VER

AÑO: 2010

LUGAR	ESTACION				CLASIFICACION VEHICULAR EN PORCIENTO								COORDENADAS						
	KM	TE	SC	TDPA	A	B	C2	C3	T3S2	T3S3	T3S2R4	OTROS	A	B	C	K'	D	LATITUD	LONGITUD
JOSE CARDEL	0.00	3	0	6492	81.1	7.1	4.5	4.7	0.5	1.1	0.4	0.6	81.1	7.1	11.8	0.056	0.510	19.378983	-96.372801
PLAYA CHACHALACAS	8.00	1	0	2262	79.2	8.1	4.6	4.9	1.0	1.3	0.3	0.6	79.2	8.1	12.7	0.071	0.505	19.419214	-96.328666

57 CARR: LAS TRANCAS - COATEPEC

CLAVE: 30717

RUTA: VER

AÑO: 2010

LUGAR	ESTACION				CLASIFICACION VEHICULAR EN PORCIENTO								COORDENADAS						
	KM	TE	SC	TDPA	A	B	C2	C3	T3S2	T3S3	T3S2R4	OTROS	A	B	C	K'	D	LATITUD	LONGITUD
LAS TRANCAS	0.00	3	0	8293	76.3	6.5	2.6	3.4	3.9	2.1	4.6	0.6	76.3	6.5	17.2	0.072	0.503	19.502345	-96.860719
T. IZQ. TOTUTLA	11.20	1	0	2878	76.7	6.6	3.1	2.7	3.2	2.1	5.0	0.6	76.7	6.6	16.7	0.062	0.502	19.438710	-96.897970
COATEPEC	19.10	1	0	6554	76.6	6.6	3.4	2.0	5.3	2.3	3.2	0.6	76.6	6.6	16.8	0.076	0.506	19.449510	-96.940152





VERACRUZ

63 CARR: NUEVO TEAPA - AGUA DULCE

CLAVE:

RUTA: VER

AÑO: 2010

LUGAR	ESTACION				CLASIFICACION VEHICULAR EN PORCIENTO								COORDENADAS						
	KM	TE	SC	TDPA	A	B	C2	C3	T3S2	T3S3	T3S2R4	OTROS	A	B	C	K'	D	LATITUD	LONGITUD
NUEVO TEAPA	0.00																		
AGUA DULCE	25.00	1	0	844	74.6	5.4	6.9	1.7	4.8	3.4	2.6	0.6	74.6	5.4	20.0	0.075	0.530	18.136361	-94.167917

64 CARR: PEÑUELA - SANTA RITA

CLAVE: 30058

RUTA: VER

AÑO: 2010

LUGAR	ESTACION				CLASIFICACION VEHICULAR EN PORCIENTO								COORDENADAS						
	KM	TE	SC	TDPA	A	B	C2	C3	T3S2	T3S3	T3S2R4	OTROS	A	B	C	K'	D	LATITUD	LONGITUD
PEÑUELA	0.00	3	0	7984	79.6	4.5	6.9	3.5	2.3	1.6	1.2	0.4	79.6	4.5	15.9	0.075	0.500	18.863593	-96.877148
PASO DEL MACHO	20.00	3	0	2731	79.2	4.1	6.8	3.9	2.6	1.6	1.3	0.5	79.2	4.1	16.7	0.078	0.504	18.979220	-96.719900
VILLA TEJEDA	38.00	1	0	1305	82.2	4.2	5.3	3.6	2.5	0.6	0.9	0.7	82.2	4.2	13.6	0.087	0.509	19.031514	-96.616679
SOLEDAD DOBLADO	65.00	1	0	2508	83.1	3.6	6.0	2.5	3.1	0.5	0.9	0.3	83.1	3.6	13.3	0.069	0.510	19.051465	-96.431987
SOLEDAD DOBLADO	65.00	3	0	2717	83.2	3.4	5.9	1.5	3.2	0.9	1.3	0.6	83.2	3.4	13.4	0.082	0.501	19.048192	-96.404158
T. C. JALAPA - VERACRUZ	71.00	1	0	5277	84.0	2.5	4.9	1.6	3.3	1.0	2.1	0.6	84.0	2.5	13.5	0.083	0.502	19.182888	-96.261441

65 CARR: POZA RICA - CAZONES

CLAVE: 30075

RUTA: VER-075

AÑO: 2010

LUGAR	ESTACION				CLASIFICACION VEHICULAR EN PORCIENTO								COORDENADAS						
	KM	TE	SC	TDPA	A	B	C2	C3	T3S2	T3S3	T3S2R4	OTROS	A	B	C	K'	D	LATITUD	LONGITUD
POZA RICA	0.00	3	0	8375	79.0	5.4	7.2	3.8	1.4	1.6	1.3	0.3	79.0	5.4	15.6	0.073	0.507	20.590061	-97.423433
CAZONES	24.00																		

66 CARR: PUEBLO VIEJO - T. C. (CD. VALLES - TAMPICO)

CLAVE: 30017

RUTA: VER

AÑO: 2010

LUGAR	ESTACION				CLASIFICACION VEHICULAR EN PORCIENTO								COORDENADAS						
	KM	TE	SC	TDPA	A	B	C2	C3	T3S2	T3S3	T3S2R4	OTROS	A	B	C	K'	D	LATITUD	LONGITUD
PUEBLO VIEJO	0.00	3	0	5100	57.0	3.4	9.8	4.0	12.5	5.5	7.0	0.8	57.0	3.4	39.6	0.078	0.503	22.206417	-97.856500
T. C. CD. VALLES - TAMPICO	11.00	1	0	4690	58.4	3.6	9.5	3.3	12.3	4.7	7.2	1.0	58.4	3.6	38.0	0.078	0.504	22.209706	-97.946446

67 CARR: PUERTO RICO - TOTUTLA

CLAVE: 30067

RUTA: VER

AÑO: 2010

LUGAR	ESTACION				CLASIFICACION VEHICULAR EN PORCIENTO								COORDENADAS						
	KM	TE	SC	TDPA	A	B	C2	C3	T3S2	T3S3	T3S2R4	OTROS	A	B	C	K'	D	LATITUD	LONGITUD
T. C. LAS TRANCAS - COATEPEC	0.00	3	0	3188	84.1	5.9	8.1	1.4	0.3	0.1	0.0	0.1	84.1	5.9	10.0	0.063	0.503	19.437389	-96.898277
TUZAMAPAN	4.20	3	0	3268	83.6	6.1	8.4	1.4	0.3	0.1	0.0	0.1	83.6	6.1	10.3	0.062	0.503	19.399789	-96.869011
TOTUTLA	57.40	1	0	3266	84.3	5.9	8.0	1.3	0.3	0.1	0.0	0.1	84.3	5.9	9.8	0.076	0.509	19.216483	-96.972712

VERACRUZ

67 CARR: PUERTO RICO - TOTUTLA

CLAVE: 30067

RUTA: VER

AÑO: 2010

LUGAR	ESTACION				CLASIFICACION VEHICULAR EN PORCIENTO										COORDENADAS				
	KM	TE	SC	TDPA	A	B	C2	C3	T3S2	T3S3	T3S2R4	OTROS	A	B	C	K'	D	LATITUD	LONGITUD
T. C. FORTIN - CONEJOS	58.00																		

68 CARR: RAMAL A ACTOPAN

CLAVE: 30739

RUTA: VER

AÑO: 2010

LUGAR	ESTACION				CLASIFICACION VEHICULAR EN PORCIENTO										COORDENADAS				
	KM	TE	SC	TDPA	A	B	C2	C3	T3S2	T3S3	T3S2R4	OTROS	A	B	C	K'	D	LATITUD	LONGITUD
T. C. JALAPA - VERACRUZ	0.00	3	0	1519	84.3	2.6	2.0	0.4	5.6	2.9	1.3	0.9	84.3	2.6	13.1	0.091	0.502	19.399404	-96.616091
ACTOPAN	19.00	1	0	2500	84.9	2.8	2.9	0.7	4.7	2.2	1.2	0.6	84.9	2.8	12.3	0.079	0.517	19.509309	-96.609601

69 CARR: RAMAL A AGUA DULCE

CLAVE: 30231

RUTA: VER

AÑO: 2010

LUGAR	ESTACION				CLASIFICACION VEHICULAR EN PORCIENTO										COORDENADAS				
	KM	TE	SC	TDPA	A	B	C2	C3	T3S2	T3S3	T3S2R4	OTROS	A	B	C	K'	D	LATITUD	LONGITUD
T. C. COATZACOALCOS - VILLAHERMOSA	0.00	3	0	5193	82.5	3.6	6.5	0.9	3.2	1.0	1.5	0.8	82.5	3.6	13.9	0.076	0.502	18.059142	-94.138938
TONALA	21.00																		

70 CARR: RAMAL A CHONTLA

CLAVE: 30728

RUTA: VER

AÑO: 2010

LUGAR	ESTACION				CLASIFICACION VEHICULAR EN PORCIENTO										COORDENADAS				
	KM	TE	SC	TDPA	A	B	C2	C3	T3S2	T3S3	T3S2R4	OTROS	A	B	C	K'	D	LATITUD	LONGITUD
T. C. TUXPAM - TAMPICO	0.00	3	0	2177	84.0	5.1	4.2	0.9	3.6	0.3	1.5	0.4	84.0	5.1	10.9	0.079	0.509	21.361642	-97.704292
CHONTLA	32.00																		

71 CARR: RAMAL A ESTACION OCHOA

CLAVE: 30712

RUTA: VER

AÑO: 2010

LUGAR	ESTACION				CLASIFICACION VEHICULAR EN PORCIENTO										COORDENADAS				
	KM	TE	SC	TDPA	A	B	C2	C3	T3S2	T3S3	T3S2R4	OTROS	A	B	C	K'	D	LATITUD	LONGITUD
T. C. CD. VALLES - TAMPICO	0.00	3	0	5231	80.2	4.2	4.7	2.6	3.4	2.8	1.9	0.2	80.2	4.2	15.6	0.069	0.502	22.218249	-98.001826
ESTACION OCHOA	9.00																		

72 CARR: RAMAL A JAMAPA

CLAVE: 30744

RUTA: VER

AÑO: 2010

LUGAR	ESTACION				CLASIFICACION VEHICULAR EN PORCIENTO										COORDENADAS				
	KM	TE	SC	TDPA	A	B	C2	C3	T3S2	T3S3	T3S2R4	OTROS	A	B	C	K'	D	LATITUD	LONGITUD
T. C. JALAPA - VERACRUZ	0.00	3	1	7939	70.4	4.5	15.9	3.8	1.5	1.2	2.1	0.6	70.4	4.5	25.1	0.068	0.503	19.136056	-96.142176

VERACRUZ

72 CARR: RAMAL A JAMAPA

CLAVE: 30744

RUTA: VER

AÑO: 2010

LUGAR	ESTACION				CLASIFICACION VEHICULAR EN PORCIENTO								COORDENADAS						
	KM	TE	SC	TDPA	A	B	C2	C3	T3S2	T3S3	T3S2R4	OTROS	A	B	C	K'	D	LATITUD	LONGITUD
T. C. JALAPA - VERACRUZ	0.00	3	2	8045	70.6	4.6	15.7	3.5	1.4	1.2	2.2	0.8	70.6	4.6	24.8	0.065	0.503	19.136057	-96.142176
MEDELLIN	10.00	1	0	8402	68.9	5.6	16.3	3.5	2.6	1.1	1.3	0.7	68.9	5.6	25.5	0.070	0.500	19.065472	-96.160194
JAMAPA	20.00	1	0	2152	69.0	5.5	16.1	3.6	2.4	1.4	1.2	0.8	69.0	5.5	25.5	0.090	0.515	19.038645	-96.228199

73 CARR: RAMAL A JESUS CARRANZA

CLAVE: 30720

RUTA: VER

AÑO: 2010

LUGAR	ESTACION				CLASIFICACION VEHICULAR EN PORCIENTO								COORDENADAS						
	KM	TE	SC	TDPA	A	B	C2	C3	T3S2	T3S3	T3S2R4	OTROS	A	B	C	K'	D	LATITUD	LONGITUD
T. C. COATZACOALCOS - SALINA CRUZ	0.00	3	0	1929	82.0	5.7	8.6	0.3	1.4	0.2	0.9	0.9	82.0	5.7	12.3	0.083	0.505	17.436032	-95.076551
JESUS CARRANZA	6.00																		

74 CARR: RAMAL A SUCHILAPAN

CLAVE: 30721

RUTA: VER

AÑO: 2010

LUGAR	ESTACION				CLASIFICACION VEHICULAR EN PORCIENTO								COORDENADAS						
	KM	TE	SC	TDPA	A	B	C2	C3	T3S2	T3S3	T3S2R4	OTROS	A	B	C	K'	D	LATITUD	LONGITUD
T. C. COATZACOALCOS - SALINA CRUZ	0.00	3	0	1076	81.6	4.3	10.9	0.9	0.9	0.2	0.5	0.7	81.6	4.3	14.1	0.083	0.529	17.365368	-95.047156
SUCHILAPAN	8.00																		

75 CARR: RAMAL A ZEMPOALA

CLAVE: 30192

RUTA: VER-192

AÑO: 2010

LUGAR	ESTACION				CLASIFICACION VEHICULAR EN PORCIENTO								COORDENADAS						
	KM	TE	SC	TDPA	A	B	C2	C3	T3S2	T3S3	T3S2R4	OTROS	A	B	C	K'	D	LATITUD	LONGITUD
T. C. POZA RICA - VERACRUZ	0.00	3	0	4733	82.0	4.3	3.2	0.3	3.0	0.3	6.4	0.5	82.0	4.3	13.7	0.063	0.503	19.435438	-96.388122
ZEMPOALA	4.00																		

76 CARR: SAN ALEJO - HUAYACOCOTLA

CLAVE: 00132

RUTA: HGO-051-VER-113

AÑO: 2010

LUGAR	ESTACION				CLASIFICACION VEHICULAR EN PORCIENTO								COORDENADAS						
	KM	TE	SC	TDPA	A	B	C2	C3	T3S2	T3S3	T3S2R4	OTROS	A	B	C	K'	D	LATITUD	LONGITUD
T. C. PACHUCA - TUXPAM	0.00	3	0	5109	79.7	4.8	6.6	2.2	2.6	1.7	1.8	0.6	79.7	4.8	15.5	0.097	0.511	20.154239	-98.288292
METEPEC	11.80	3	0	3886	83.7	3.6	3.4	2.5	2.7	1.8	2.0	0.3	83.7	3.6	12.7	0.075	0.502	20.242742	-98.330881
AGUA BLANCA	29.48	3	0	2537	83.7	3.6	3.5	3.0	2.1	2.4	1.3	0.4	83.7	3.6	12.7	0.070	0.506	20.354487	-98.369149
LIM. EDOS. TERM. HGO. PPIA. VER.	36.48																		
HUAYACOCOTLA	66.00	1	0	1686	80.9	2.9	11.6	1.1	1.8	0.7	0.4	0.6	80.9	2.9	16.2	0.061	0.521	20.527309	-98.493060



VERACRUZ

82 CARR: XALAPA - COATEPEC

CLAVE: 30718

RUTA: VER

AÑO: 2010

LUGAR	ESTACION				CLASIFICACION VEHICULAR EN PORCIENTO								COORDENADAS						
	KM	TE	SC	TDPA	A	B	C2	C3	T3S2	T3S3	T3S2R4	OTROS	A	B	C	K'	D	LATITUD	LONGITUD
XALAPA	0.00	3	1	12693	90.3	6.0	3.3	0.3	0.1	0.0	0.0	0.0	90.3	6.0	3.7	0.078	0.505	19.508834	-96.932459
XALAPA	0.00	3	2	12466	90.8	5.5	3.3	0.3	0.1	0.0	0.0	0.0	90.8	5.5	3.7	0.083	0.505	19.508833	-96.932459
COATEPEC	9.50	1	1	11369	91.0	5.6	3.0	0.3	0.1	0.0	0.0	0.0	91.0	5.6	3.4	0.077	0.505	19.467918	-96.945748
COATEPEC	9.50	1	2	11586	91.4	5.3	2.9	0.3	0.1	0.0	0.0	0.0	91.4	5.3	3.3	0.081	0.505	19.466840	-96.945924

83 CARR: PASO DEL TORO - LAGUNA DE SAN JULIAN

CLAVE: 30745

RUTA: MEX-VER

AÑO: 2010

LUGAR	ESTACION				CLASIFICACION VEHICULAR EN PORCIENTO								COORDENADAS						
	KM	TE	SC	TDPA	A	B	C2	C3	T3S2	T3S3	T3S2R4	OTROS	A	B	C	K'	D	LATITUD	LONGITUD
PASO DEL TORO	0.00	3	0	7567	72.2	2.6	9.8	5.9	4.5	2.6	2.0	0.4	72.2	2.6	25.2	0.076	0.506	19.027189	-96.140414
X. C. JALAPA - VERACRUZ	24.80	1	0	10525	72.2	2.4	10.1	5.8	4.8	2.3	2.0	0.4	72.2	2.4	25.4	0.073	0.503	19.185510	-96.273353
X. C. JALAPA - VERACRUZ	24.80	3	0	11051	72.7	2.3	10.2	5.5	4.6	2.4	1.9	0.4	72.7	2.3	25.0	0.070	0.500	19.191861	-96.275250
X. C. POZA RICA - VERACRUZ	32.50	3	0	10959	74.1	2.4	9.3	5.2	4.3	2.3	2.0	0.4	74.1	2.4	23.5	0.071	0.500	19.245056	-96.257860
LAGUNA DE SAN JULIAN	34.00																		

84 CARR: POZA RICA - MARIA DE LA TORRE

CLAVE: 30234

RUTA: MEX-127-VER

AÑO: 2010

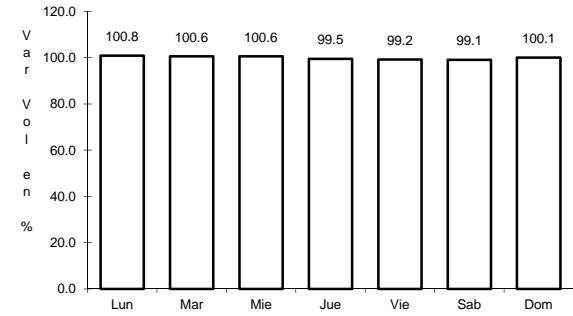
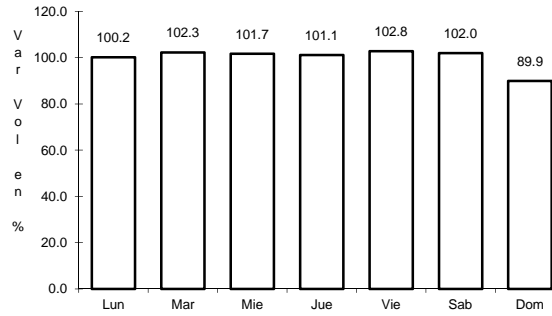
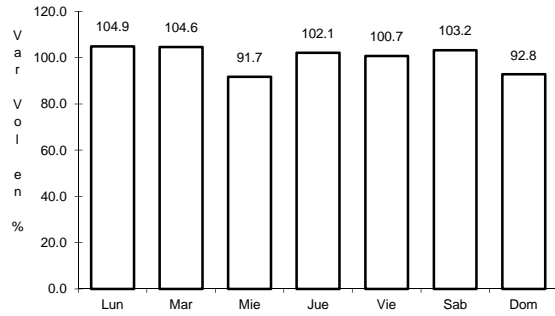
LUGAR	ESTACION				CLASIFICACION VEHICULAR EN PORCIENTO								COORDENADAS						
	KM	TE	SC	TDPA	A	B	C2	C3	T3S2	T3S3	T3S2R4	OTROS	A	B	C	K'	D	LATITUD	LONGITUD
POZA RICA	0.00	3	1	10490	74.3	10.5	12.4	2.5	0.2	0.1	0.0	0.0	74.3	10.5	15.2	0.072	0.507	20.519207	-97.468420
POZA RICA	0.00	3	2	10790	72.5	11.3	13.4	2.5	0.2	0.1	0.0	0.0	72.5	11.3	16.2	0.071	0.507	20.519207	-97.468420
COATZINTLA	5.00	1	0	7143	74.6	10.9	12.0	2.2	0.2	0.1	0.0	0.0	74.6	10.9	14.5	0.063	0.500	20.492832	-97.469265
T. IZQ. PAPANTLA	19.80	1	0	5171	73.3	10.7	13.3	2.4	0.2	0.1	0.0	0.0	73.3	10.7	16.0	0.073	0.517	20.430280	-97.369795
T. IZQ. PAPANTLA	19.80	3	0	3527	72.7	11.0	13.5	2.5	0.2	0.1	0.0	0.0	72.7	11.0	16.3	0.076	0.506	20.429004	-97.363682
SAN ANDRES	41.80	1	0	2058	73.4	10.8	13.1	2.4	0.2	0.1	0.0	0.0	73.4	10.8	15.8	0.083	0.500	20.399515	-97.215102
SAN ANDRES	41.80	3	0	1683	72.6	11.0	13.7	2.4	0.2	0.1	0.0	0.0	72.6	11.0	16.4	0.088	0.501	20.392336	-97.208106
MARIA DE LA TORRE	81.00	1	0	3409	72.3	10.9	13.9	2.6	0.2	0.1	0.0	0.0	72.3	10.9	16.8	0.078	0.504	20.133791	-96.997313



4 CARR: BUENAVISTA - TUXTEPEC

CLAVE: 00624

RUTA: MEX-175



Km: 0.00      Tipo: 3      Sent: 0

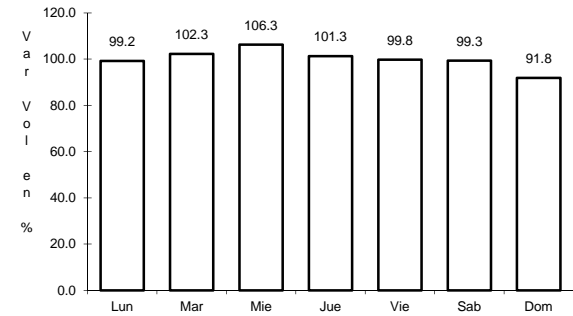
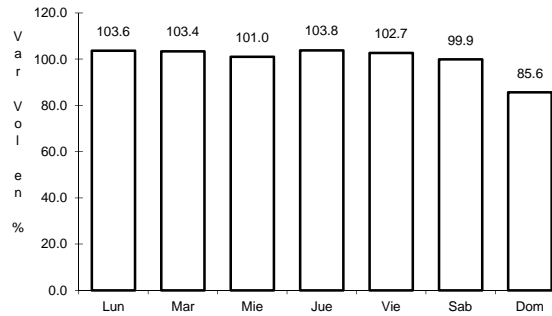
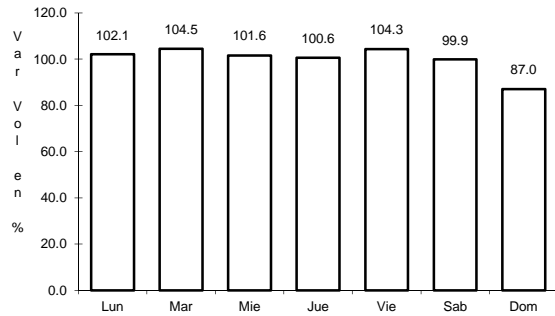
Km: 60.00      Tipo: 1      Sent: 0

Km: 121.25      Tipo: 1      Sent: 0

5 CARR: CD. ALEMAN - SAYULA

CLAVE: 00301

RUTA: MEX-145



Km: 0.00      Tipo: 3      Sent: 0

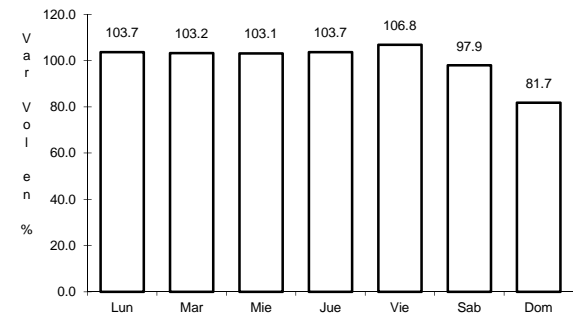
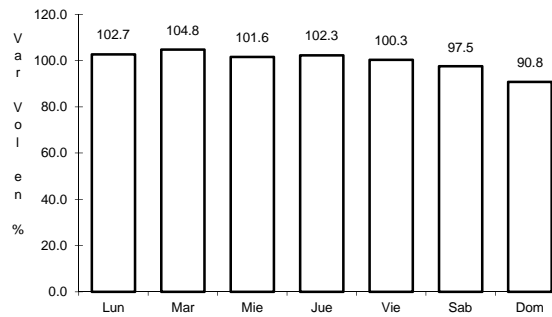
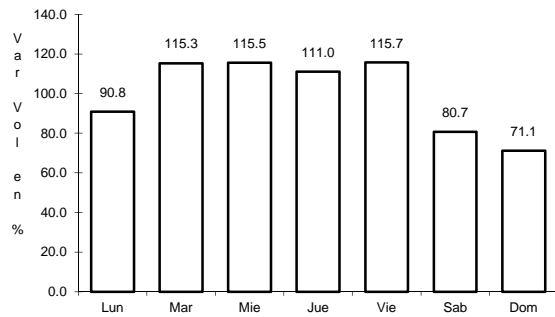
Km: 71.40      Tipo: 1      Sent: 0

Km: 136.40      Tipo: 1      Sent: 0

6 CARR: CD. VALLES - TAMPICO

CLAVE: 00138

RUTA: MEX-070



Km: 0.00      Tipo: 3      Sent: 0

Km: 79.00      Tipo: 1      Sent: 0

Km: 138.00      Tipo: 1      Sent: 0





















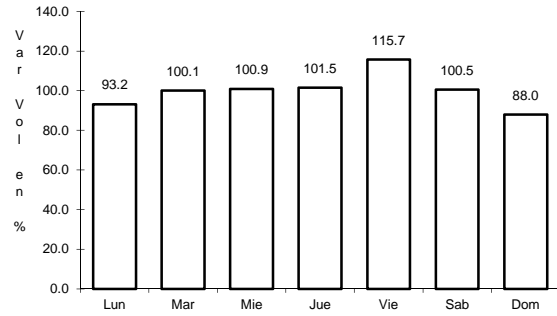




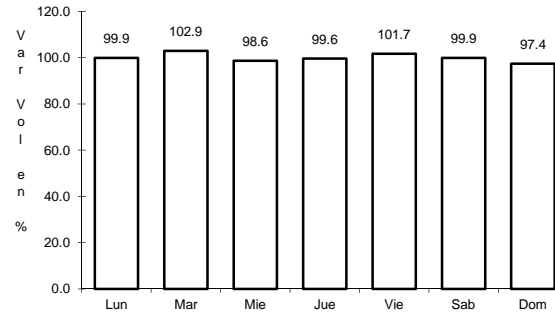
37 CARR: TIHUATLAN - POTRERO DEL LLANO

CLAVE: 30132

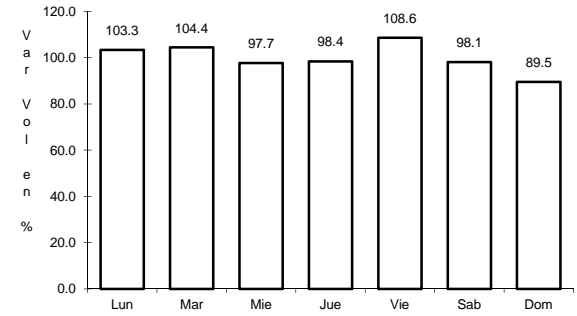
ruta: MEX



Km: 0.00      Tipo: 3      Sent: 0



Km: 31.60      Tipo: 1      Sent: 0

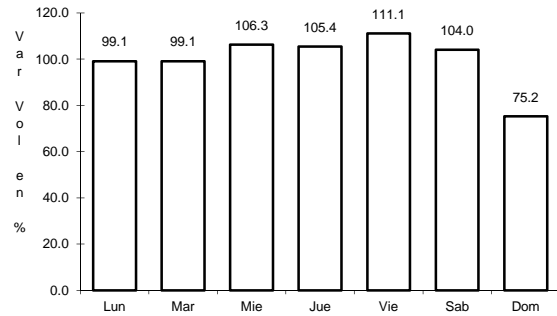


Km: 51.70      Tipo: 1      Sent: 0

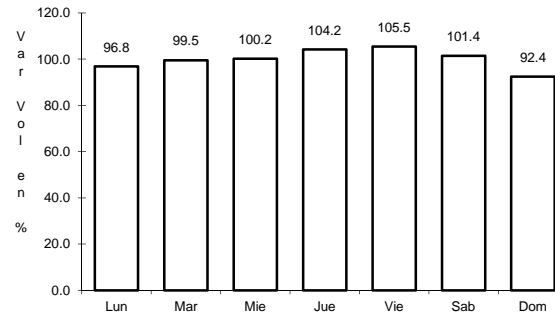
38 CARR: TUXPAM - TAMPICO

CLAVE: 00529

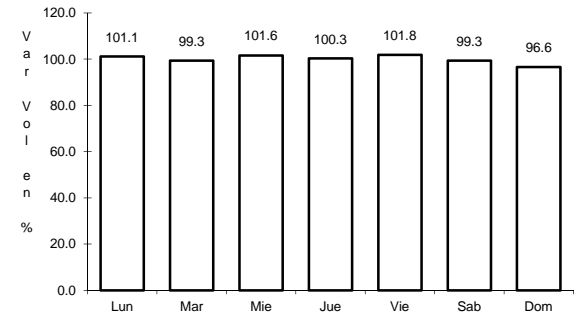
ruta: MEX-180



Km: 0.00      Tipo: 3      Sent: 0



Km: 124.42      Tipo: 1      Sent: 0

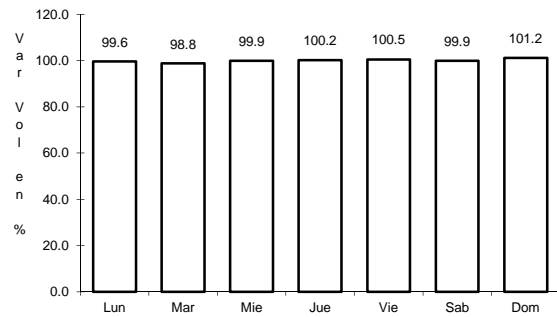


Km: 191.43      Tipo: 1      Sent: 2

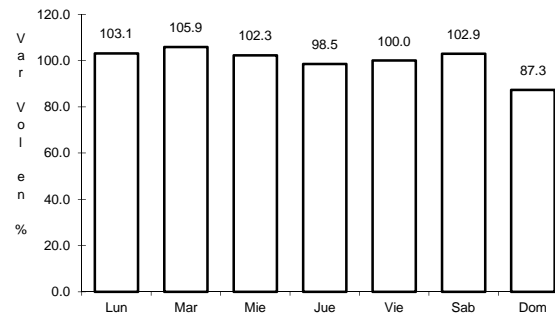
39 CARR: TUXTEPEC - ENT. PALOMARES

CLAVE: 00180

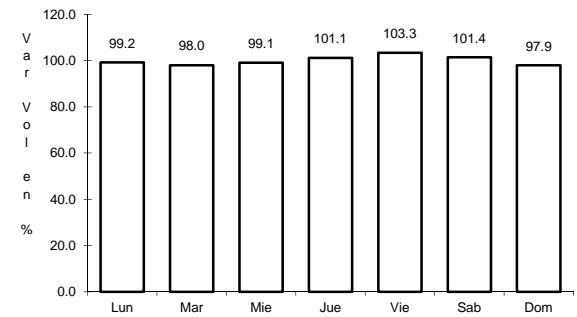
ruta: MEX-147



Km: 0.00      Tipo: 3      Sent: 0



Km: 81.20      Tipo: 1      Sent: 0

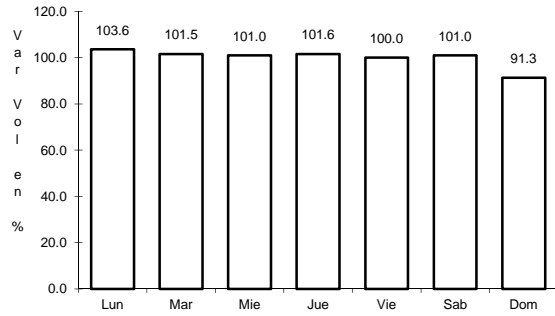


Km: 175.00      Tipo: 1      Sent: 0

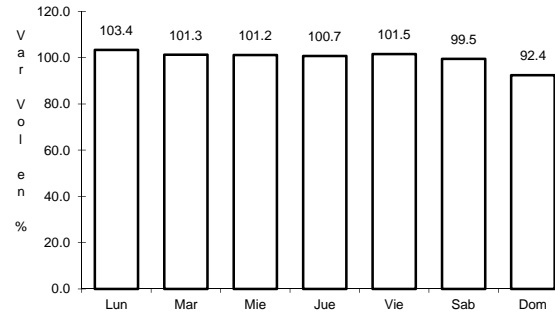
40 CARR: XALAPA - VERACRUZ

CLAVE: 30526

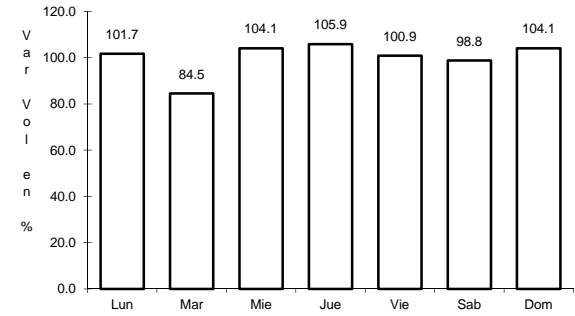
RUTA: MEX-140



Km: 0.00      Tipo: 3      Sent: 1



Km: 0.00      Tipo: 3      Sent: 2

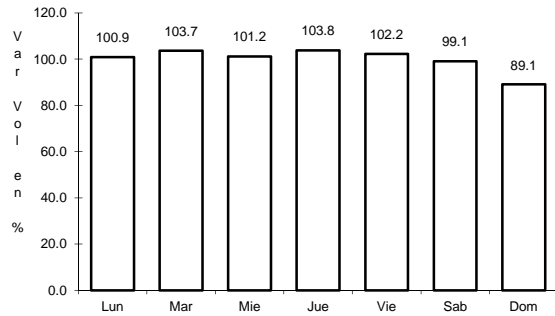


Km: 58.52      Tipo: 3      Sent: 0

41 CARR: AMOZOC - PEROTE (CUOTA)

CLAVE:

RUTA: MEX-140D

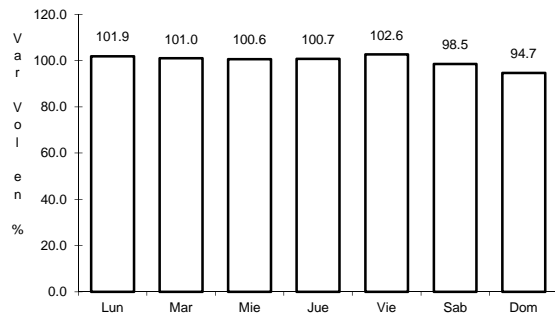


Km: 0.00      Tipo: 3      Sent: 0

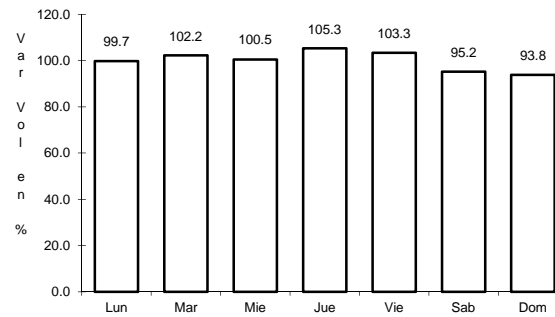
43 CARR: LA TINAJA - COSOLEACAQUE (CUOTA)

CLAVE: 30144

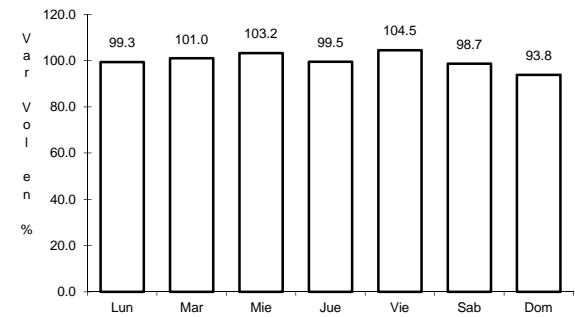
RUTA: MEX-145D



Km: 188.00      Tipo: 3      Sent: 1



Km: 188.00      Tipo: 3      Sent: 2



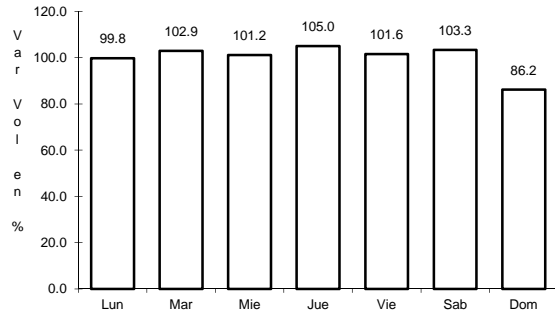
Km: 228.10      Tipo: 1      Sent: 1



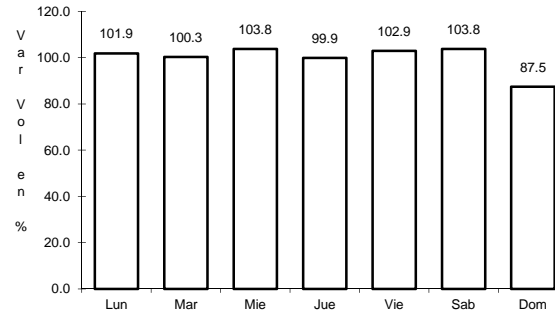
47 CARR: LIBRAMIENTO PLAN DEL RIO (CUOTA)

CLAVE:

RUTA: MEX-D



Km: 0.00      Tipo: 3      Sent: 1

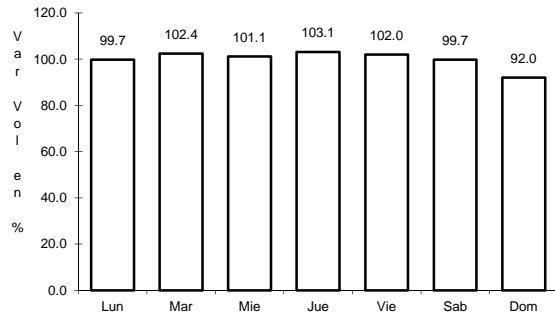


Km: 0.00      Tipo: 3      Sent: 2

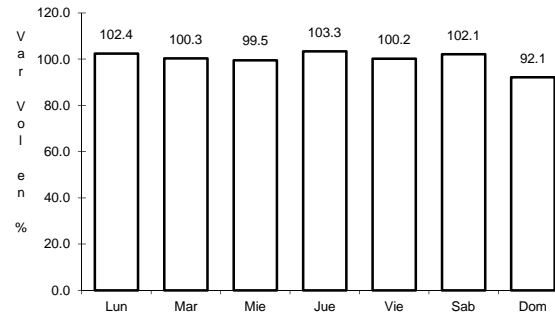
48 CARR: NUEVO TEAPA - COSOLEACAQUE (CUOTA)

CLAVE:

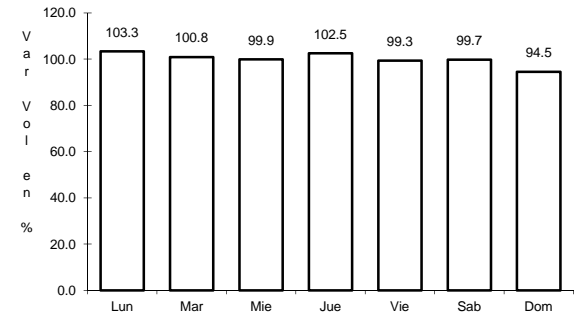
RUTA: MEX-145D



Km: 0.00      Tipo: 3      Sent: 1



Km: 0.00      Tipo: 3      Sent: 2

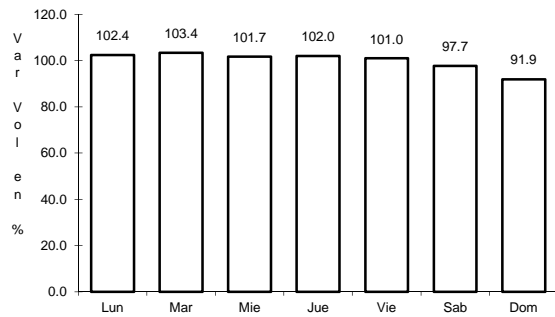


Km: 34.00      Tipo: 1      Sent: 1

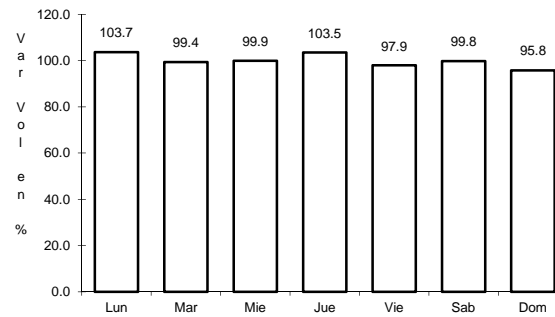
49 CARR: PUEBLA - CORDOBA (CUOTA)

CLAVE: 00485

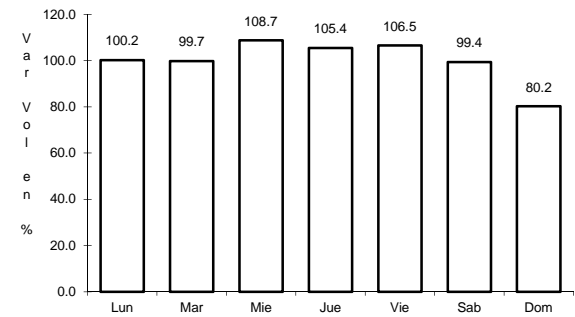
RUTA: MEX-150D



Km: 0.00      Tipo: 3      Sent: 1



Km: 0.00      Tipo: 3      Sent: 2

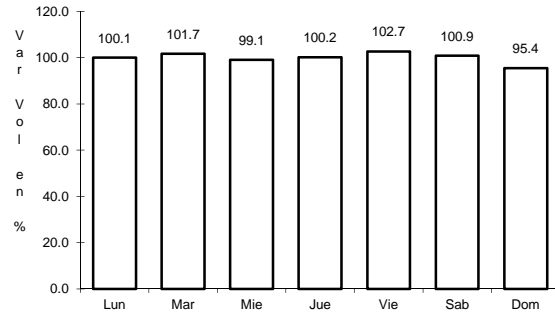


Km: 174.87      Tipo: 1      Sent: 1

50 CARR: TEJOCOTAL - TIHUATLAN (CUOTA)

CLAVE:

ruta: MEX-130D



Km: 18.00

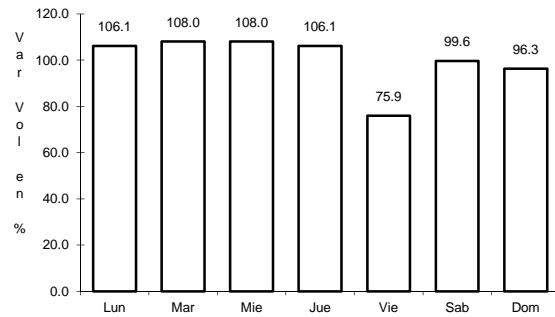
Tipo: 1

Sent: 0

53 CARR: BANDERILLA - MARTINEZ DE LA TORRE

CLAVE: 30065

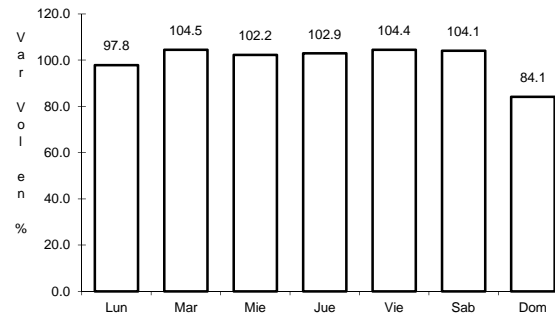
ruta: VER-065



Km: 0.00

Tipo: 3

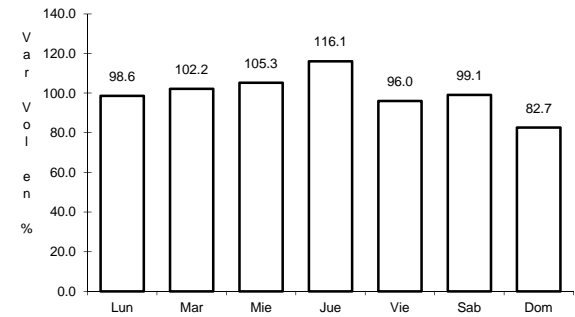
Sent: 0



Km: 68.00

Tipo: 1

Sent: 0



Km: 102.00

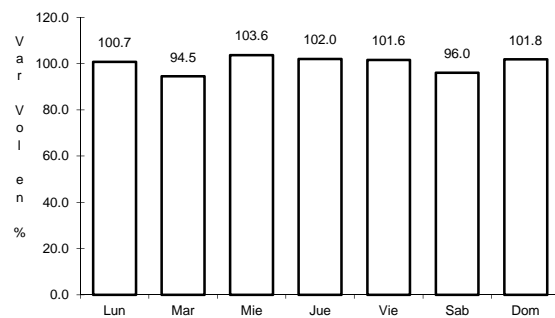
Tipo: 1

Sent: 0

54 CARR: BENITO JUAREZ - AGUA DULCE

CLAVE: 00202

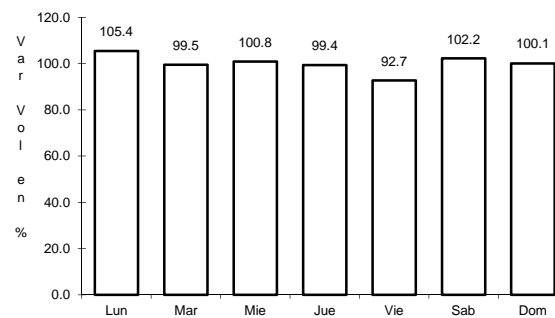
ruta: TAB-VER



Km: 0.00

Tipo: 3

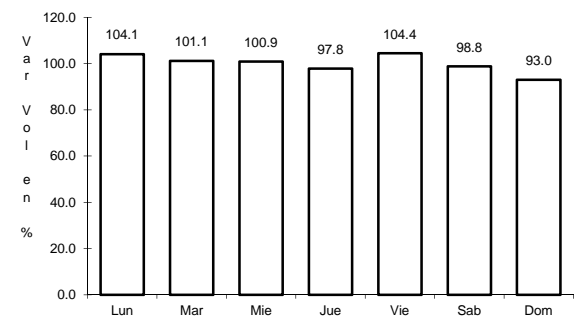
Sent: 0



Km: 18.00

Tipo: 1

Sent: 0



Km: 18.00

Tipo: 3

Sent: 0

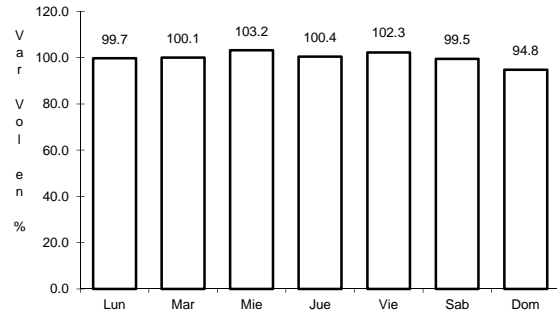




58 CARR: LIBRAMIENTO DE ACAYUCAN

CLAVE: 30736

ruta: VER

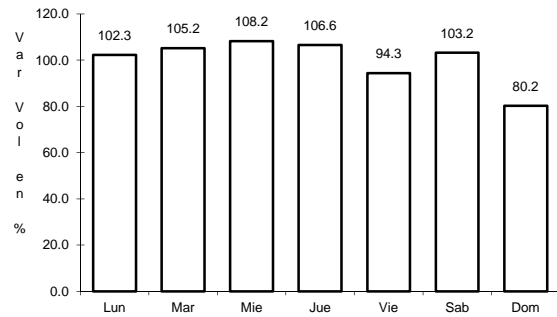


Km: 3.10      Tipo: 1      Sent: 0

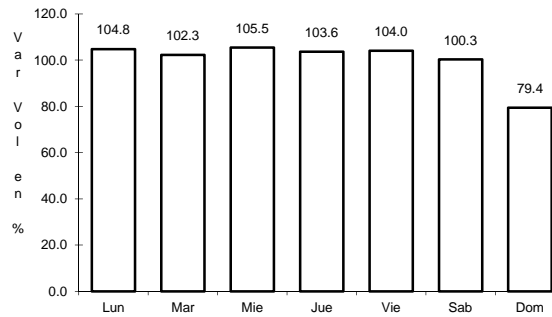
59 CARR: LIBRAMIENTO DE CORDOBA - PEÑUELA

CLAVE: 30742

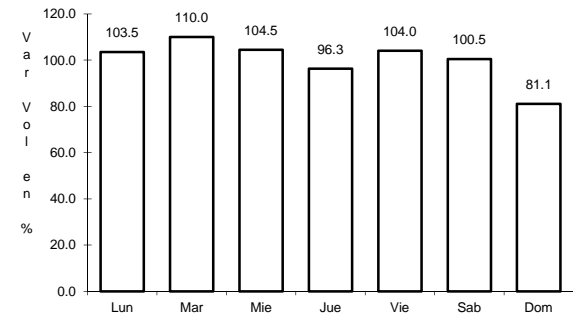
ruta: VER



Km: 0.00      Tipo: 3      Sent: 1



Km: 0.00      Tipo: 3      Sent: 2

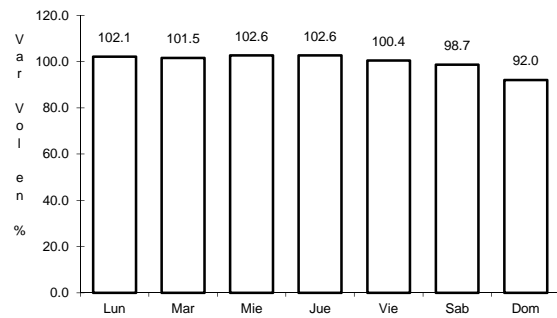


Km: 9.20      Tipo: 1      Sent: 1

60 CARR: LIBRAMIENTO DE TUXPAM

CLAVE: 30714

ruta: VER



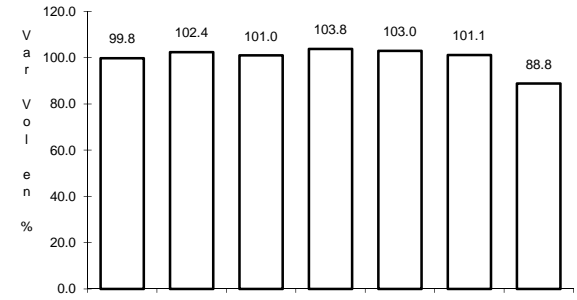
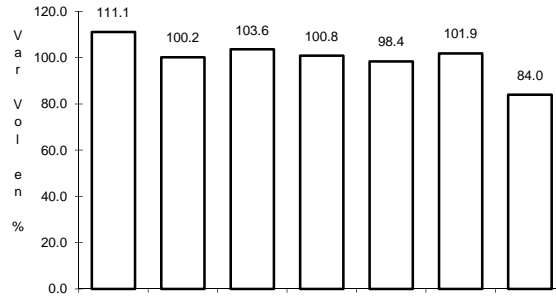
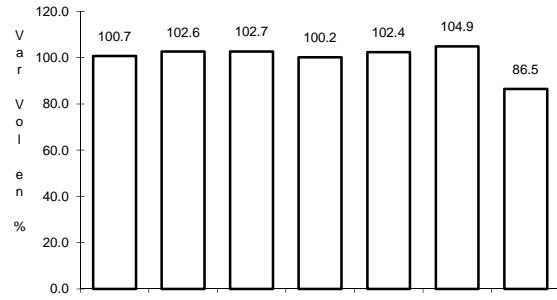
Km: 0.00      Tipo: 3      Sent: 0



64 CARR: PEÑUELA - SANTA RITA

CLAVE: 30058

RUTA: VER



Km: 0.00

Tipo: 3

Sent: 0

Km: 38.00

Tipo: 1

Sent: 0

Km: 71.00

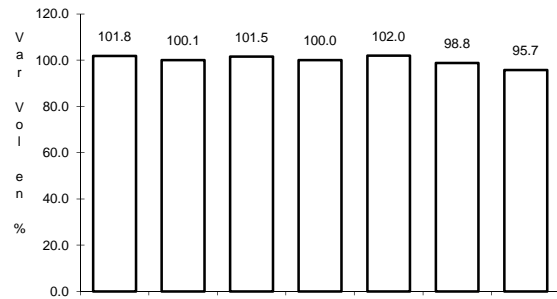
Tipo: 1

Sent: 0

65 CARR: POZA RICA - CAZONES

CLAVE: 30075

RUTA: VER-075



Km: 0.00

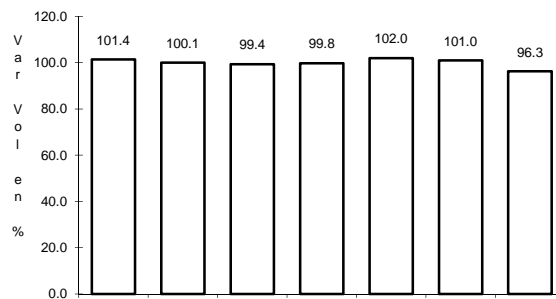
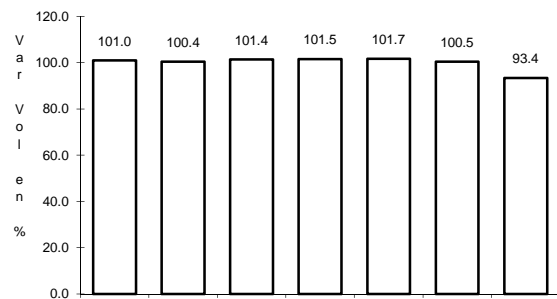
Tipo: 3

Sent: 0

66 CARR: PUEBLO VIEJO - T. C. (CD. VALLES - TAMPICO)

CLAVE: 30017

RUTA: VER



Km: 0.00

Tipo: 3

Sent: 0

Km: 11.00

Tipo: 1

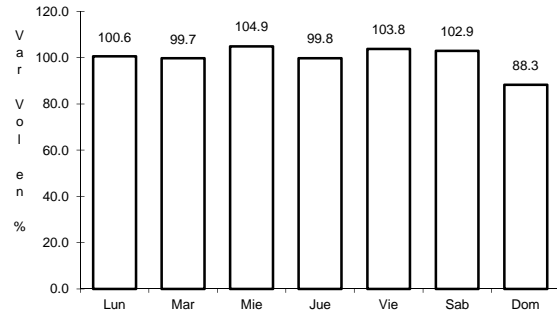
Sent: 0



70 CARR: RAMAL A CHONTLA

CLAVE: 30728

ruta: VER



Km: 0.00

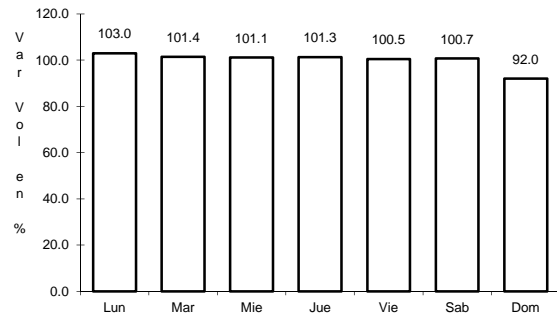
Tipo: 3

Sent: 0

71 CARR: RAMAL A ESTACION OCHOA

CLAVE: 30712

ruta: VER



Km: 0.00

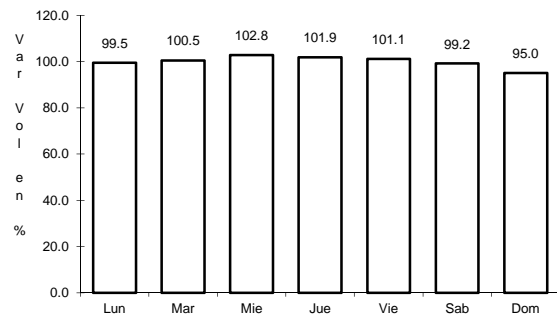
Tipo: 3

Sent: 0

72 CARR: RAMAL A JAMAPA

CLAVE: 30744

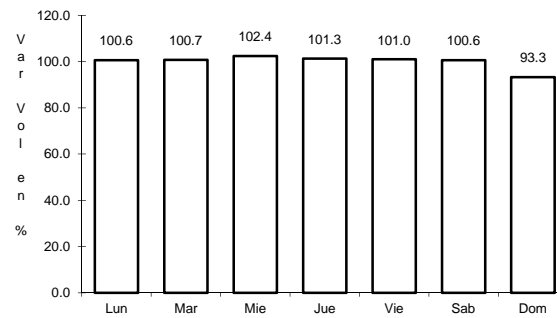
ruta: VER



Km: 0.00

Tipo: 3

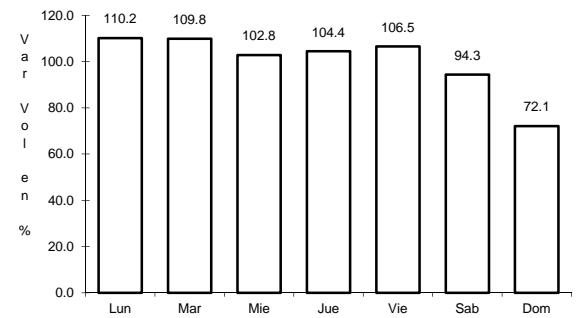
Sent: 1



Km: 0.00

Tipo: 3

Sent: 2



Km: 20.00

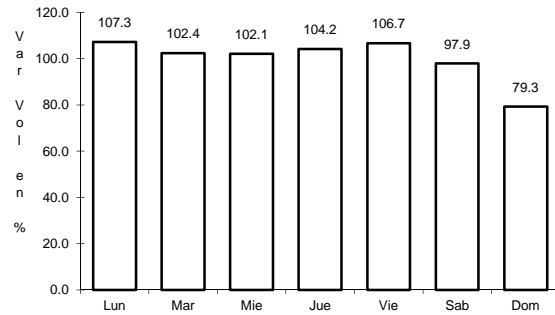
Tipo: 1

Sent: 0

73 CARR: RAMAL A JESUS CARRANZA

CLAVE: 30720

RUTA: VER



Km: 0.00

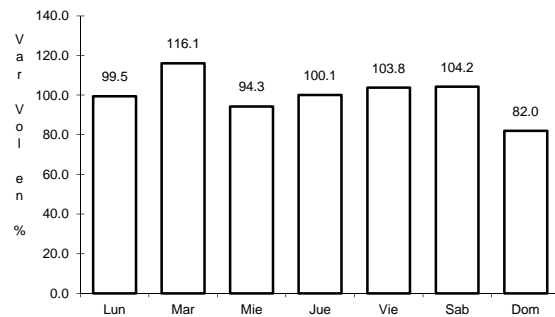
Tipo: 3

Sent: 0

74 CARR: RAMAL A SUCHILAPAN

CLAVE: 30721

RUTA: VER



Km: 0.00

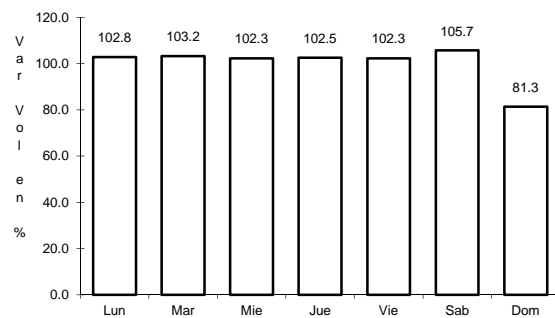
Tipo: 3

Sent: 0

75 CARR: RAMAL A ZEMPOALA

CLAVE: 30192

RUTA: VER-192



Km: 0.00

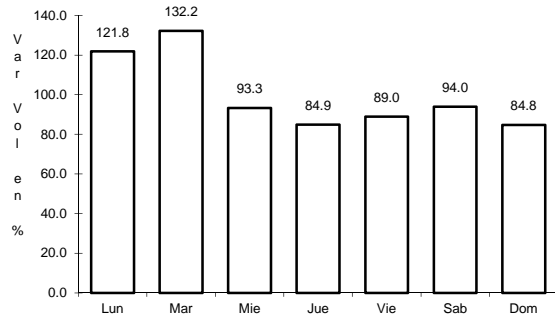
Tipo: 3

Sent: 0

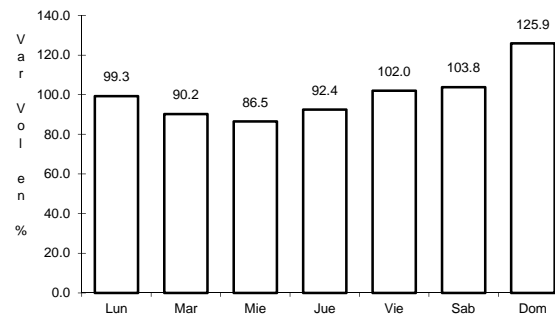
76 CARR: SAN ALEJO - HUAYACOCOTLA

CLAVE: 00132

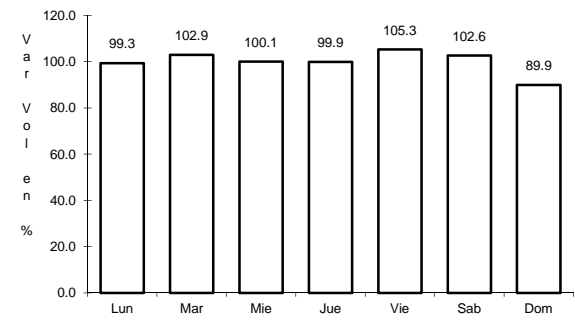
RUTA: HGO-051-VER-113



Km: 0.00      Tipo: 3      Sent: 0



Km: 29.48      Tipo: 3      Sent: 0

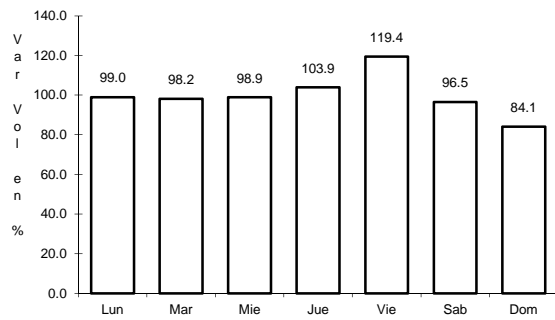


Km: 66.00      Tipo: 1      Sent: 0

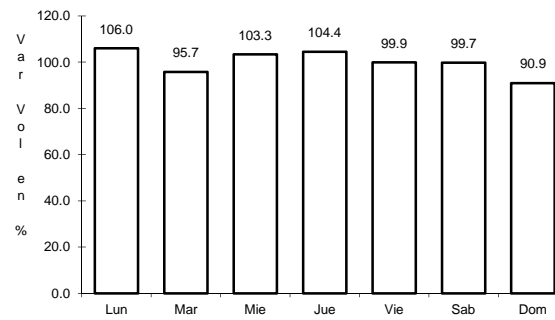
77 CARR: SAN SEBASTIAN - CHICONTEPEC

CLAVE: 30083

RUTA: VER-083



Km: 0.00      Tipo: 3      Sent: 0

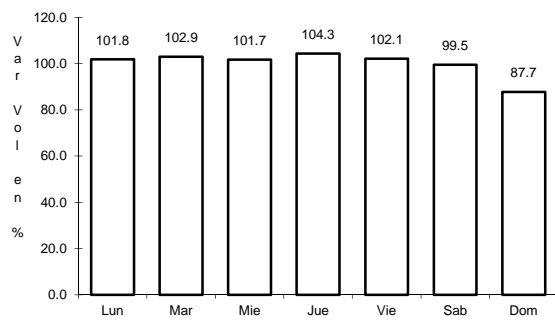


Km: 36.24      Tipo: 1      Sent: 0

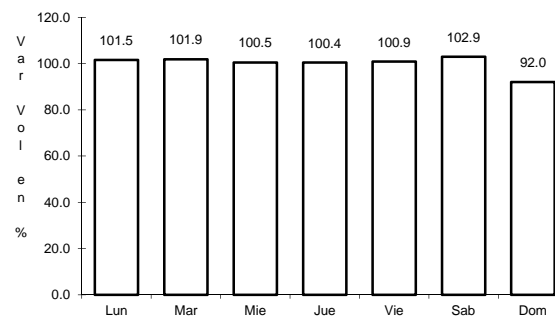
78 CARR: SANTIAGO TUXTLA - PLAYA VICENTE

CLAVE: 30025

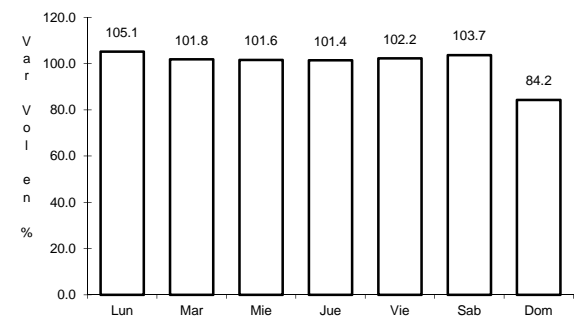
RUTA: VER



Km: 0.00      Tipo: 3      Sent: 0



Km: 59.80      Tipo: 1      Sent: 0



Km: 106.00      Tipo: 1      Sent: 0

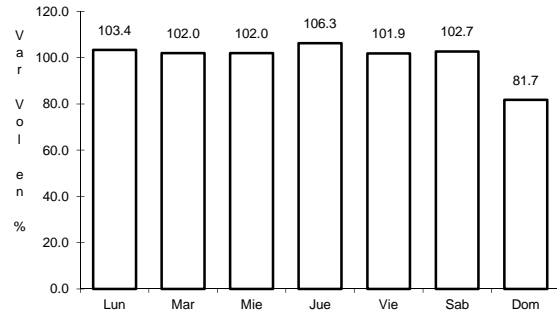




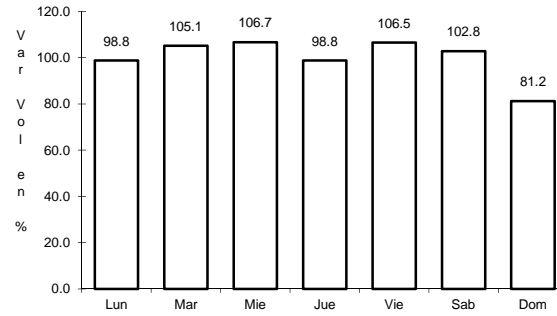
82 CARR: XALAPA - COATEPEC

CLAVE: 30718

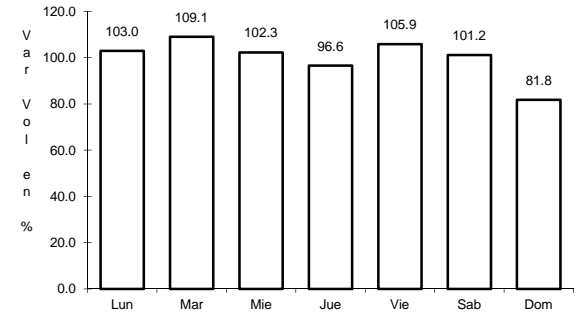
ruta: VER



Km: 0.00      Tipo: 3      Sent: 1



Km: 0.00      Tipo: 3      Sent: 2

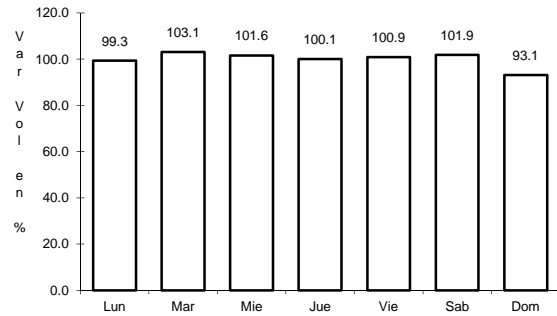


Km: 9.50      Tipo: 1      Sent: 1

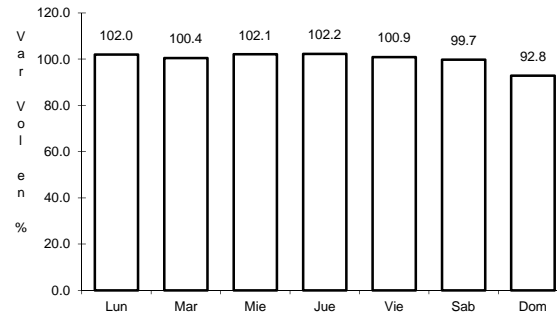
83 CARR: PASO DEL TORO - LAGUNA DE SAN JULIAN

CLAVE: 30745

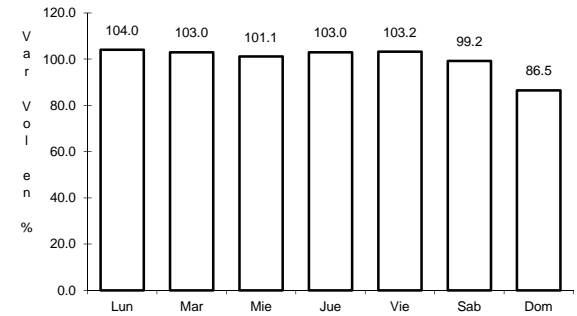
ruta: MEX-VER



Km: 0.00      Tipo: 3      Sent: 0



Km: 24.80      Tipo: 1      Sent: 0

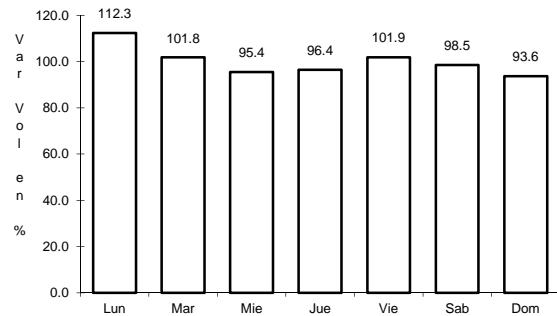


Km: 32.50      Tipo: 3      Sent: 0

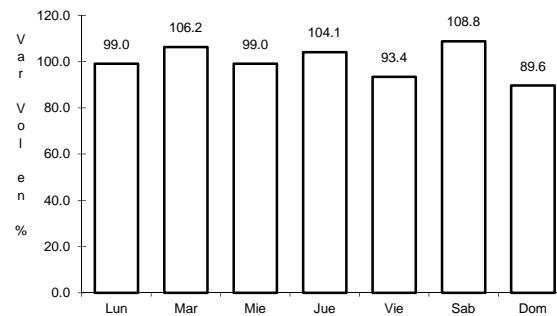
84 CARR: POZA RICA - MARIA DE LA TORRE

CLAVE: 30234

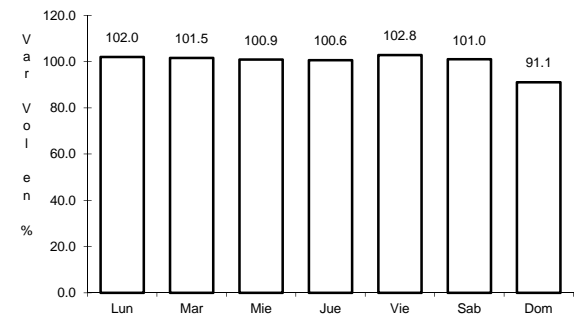
ruta: MEX-127-VER



Km: 0.00      Tipo: 3      Sent: 1



Km: 0.00      Tipo: 3      Sent: 2



Km: 81.00      Tipo: 1      Sent: 0