

TLAXCALA

**---RED FEDERAL LIBRE---**

1	AMOZOC - TEZIUTLAN	MEX-129
2	APIZACO - SAN PABLO APETATITLAN	MEX
3	APIZACO - TEJOCOTAL	MEX-119
4	HUAMANTLA - LA VENTA	MEX
5	HUAMANTLA - TERRENATE	MEX
6	LIBRAMIENTO DE APIZACO	MEX
7	LIBRAMIENTO HUAMANTLA	MEX
8	LIBRAMIENTO HUEYOTLIPAN	MEX
9	LOS REYES - ZACATEPEC	MEX-136
10	PUEBLA - BELEM	MEX-121
11	PUEBLA - TLAXCALA	MEX-119
12	RAMAL A SAN FELIPE DE HIDALGO	MEX
13	SAN MARTIN TEXMELUCAN - TLAXCALA	MEX-117
14	TETLATLAHUCA - SANTA ANA CHIAUTEMPAN	MEX-119
15	TLAXCALA - BELEM	MEX
16	VILLA ALTA - T. C. (PUEBLA - TLAXCALA)	MEX

**---RED FEDERAL DE CUOTA---**

17	AMOZOC - PEROTE (CUOTA)	MEX-140D
18	ARCO NORTE CD. MEXICO (CUOTA)	MEX-D
19	MEXICO - PUEBLA (CUOTA)	MEX-150D
20	SAN MARTIN TEXMELUCAN - OCOTOXCO (CUOTA)	MEX-117D

**---RED ESTATAL LIBRE---**

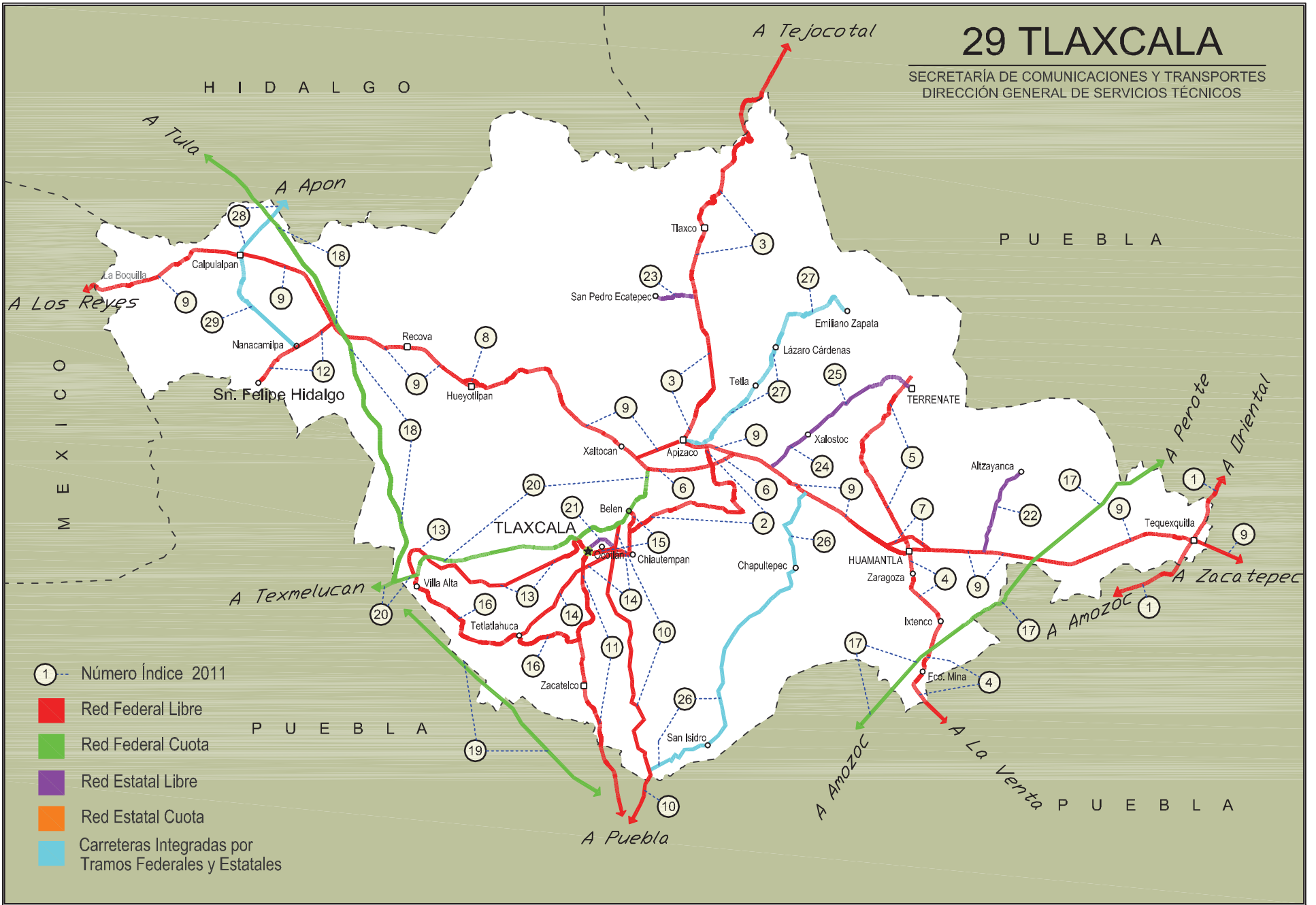
21	LIBRAMIENTO DE OCOTLAN	TLAX
22	RAMAL A ALTZAYANCA DE HIDALGO	TLAX
23	RAMAL A SAN PEDRO ECATEPEC	TLAX
24	RAMAL A XALOSTOC	TLAX
25	XALOSTOC - TERRENATE	TLAX

**---CARRETERAS INTEGRADAS POR TRAMOS FEDERALES Y ESTATALES---**

26	ACOCOTLA - VICENTE GUERRERO	MEX-TLAX
27	APIZACO - EMILIANO ZAPATA	TLAX-MEX
28	CALPULALPAN - EL OCOTE	MEX-HGO
29	CALPULALPAN - NANACAMILPA	TLAX-MEX

# 29 TLAXCALA

SECRETARÍA DE COMUNICACIONES Y TRANSPORTES  
DIRECCIÓN GENERAL DE SERVICIOS TÉCNICOS



TLAXCALA

1 CARR: AMOZOC - TEZIUTLAN

CLAVE: 00210

RUTA: MEX-129

AÑO: 2010

LUGAR	ESTACION				CLASIFICACION VEHICULAR EN PORCIENTO								COORDENADAS						
	KM	TE	SC	TDPA	A	B	C2	C3	T3S2	T3S3	T3S2R4	OTROS	A	B	C	K'	D	LATITUD	LONGITUD
AMOZOC	0.00																		
X. C. PUEBLA - CORDOBA (CUOTA)	1.40	3	0	11568	72.3	11.9	8.4	3.9	1.8	1.4	0.1	0.2	72.3	11.9	15.8	0.061	0.504	19.050883	-98.028229
ACAJETE	12.00	3	0	9150	70.8	12.8	8.6	4.4	1.7	1.4	0.1	0.2	70.8	12.8	16.4	0.061	0.505	19.115407	-97.946446
RAFAEL LARA GRAJALES	35.50	1	0	2274	71.8	12.4	8.3	4.1	1.7	1.4	0.1	0.2	71.8	12.4	15.8	0.062	0.504	19.236652	-97.808043
RAFAEL LARA GRAJALES	35.50	3	0	2409	71.4	11.8	8.8	4.4	1.9	1.4	0.1	0.2	71.4	11.8	16.8	0.062	0.502	19.231250	-97.786255
LIM. EDOS. TERM. PUE. PPIA. TLAX.	50.54																		
X. C. LOS REYES - ZACATEPEC	56.31	1	0	4537	73.1	11.3	8.1	4.1	1.7	1.4	0.1	0.2	73.1	11.3	15.6	0.060	0.505	19.321720	-97.649553
LIM. EDOS. TERM. TLAX. PPIA. PUE.	60.22																		
ORIENTAL	62.62	1	0	4827	70.7	13.1	8.5	4.2	1.7	1.5	0.1	0.2	70.7	13.1	16.2	0.058	0.501	19.366293	-97.628189
ORIENTAL	62.62	3	0	5508	72.6	11.7	8.0	4.3	1.7	1.4	0.1	0.2	72.6	11.7	15.7	0.064	0.505	19.383444	-97.618987
LIBRES	76.35	3	0	5522	71.4	12.0	8.7	4.3	1.8	1.5	0.1	0.2	71.4	12.0	16.6	0.063	0.511	19.482089	-97.673899
T. IZQ. ZACAPOAXTLA	114.80	1	0	6936	71.8	12.2	8.4	4.2	1.8	1.3	0.1	0.2	71.8	12.2	16.0	0.066	0.507	19.762196	-97.566570
T. IZQ. ZACAPOAXTLA	114.80	3	0	9401	72.2	11.8	8.4	4.2	1.8	1.3	0.1	0.2	72.2	11.8	16.0	0.063	0.502	19.764486	-97.565043
TEZIUTLAN	157.80	1	0	10874	71.3	12.1	8.7	4.4	1.8	1.4	0.1	0.2	71.3	12.1	16.6	0.060	0.501	19.817472	-97.379694

2 CARR: APIZACO - SAN PABLO APETATITLAN

CLAVE: 29035

RUTA: MEX

AÑO: 2010

LUGAR	ESTACION				CLASIFICACION VEHICULAR EN PORCIENTO								COORDENADAS						
	KM	TE	SC	TDPA	A	B	C2	C3	T3S2	T3S3	T3S2R4	OTROS	A	B	C	K'	D	LATITUD	LONGITUD
T. C. LOS REYES - ZACATEPEC	0.00	3	0	6339	89.9	2.4	2.2	0.4	2.6	0.7	1.4	0.4	89.9	2.4	7.7	0.065	0.501	19.412419	-98.119047
T. DER. TECNOLOGICO	0.55	3	0	6737	89.8	2.4	2.2	0.4	2.7	0.7	1.4	0.4	89.8	2.4	7.8	0.070	0.513	19.404865	-98.117317
CUAXOMULCO	9.10	3	0	2236	90.6	2.5	2.2	0.1	2.2	0.6	1.1	0.7	90.6	2.5	6.9	0.062	0.501	19.355859	-98.106267
SANTA CRUZ TLAXCALA	14.50	3	0	5308	88.5	3.3	2.8	0.2	2.6	0.2	1.5	0.9	88.5	3.3	8.2	0.063	0.500	19.353432	-98.158143
T. IZQ. CONTLA	18.90	1	0	7995	87.2	3.1	2.2	0.1	4.9	0.6	1.4	0.5	87.2	3.1	9.7	0.058	0.502	19.339268	-98.184880
SAN PABLO APETATITLAN	20.00	1	0	11866	86.5	3.4	2.4	0.2	4.3	1.0	1.6	0.6	86.5	3.4	10.1	0.060	0.504	19.335785	-98.190190

3 CARR: APIZACO - TEJOCOTAL

CLAVE: 00430

RUTA: MEX-119

AÑO: 2010

LUGAR	ESTACION				CLASIFICACION VEHICULAR EN PORCIENTO								COORDENADAS						
	KM	TE	SC	TDPA	A	B	C2	C3	T3S2	T3S3	T3S2R4	OTROS	A	B	C	K'	D	LATITUD	LONGITUD
APIZACO	0.00	3	0	11581	75.9	5.2	7.3	1.0	5.7	1.1	3.2	0.6	75.9	5.2	18.9	0.079	0.505	19.427196	-98.136617
T. DER. TETLA	6.60	3	0	13332	74.8	4.9	7.7	1.3	5.6	1.3	3.8	0.6	74.8	4.9	20.3	0.065	0.503	19.469295	-98.111801
T. IZQ. ATLANGATEPEC	12.15	1	0	9817	77.3	4.4	7.8	1.3	3.6	1.2	3.6	0.8	77.3	4.4	18.3	0.061	0.501	19.509902	-98.117542
TLAXCO	23.91	1	0	8422	78.7	4.1	7.3	1.4	3.4	1.3	3.1	0.7	78.7	4.1	17.2	0.060	0.506	19.583795	-98.130369
TLAXCO	23.91	3	0	5152	76.3	4.3	8.1	1.8	3.6	1.4	4.0	0.5	76.3	4.3	19.4	0.061	0.506	19.626500	-98.124657



TLAXCALA

7 CARR: LIBRAMIENTO HUAMANTLA

CLAVE:

RUTA: MEX

AÑO: 2010

LUGAR	ESTACION				CLASIFICACION VEHICULAR EN PORCIENTO								COORDENADAS						
	KM	TE	SC	TDPA	A	B	C2	C3	T3S2	T3S3	T3S2R4	OTROS	A	B	C	K'	D	LATITUD	LONGITUD
T.C. LOS REYES - ZACATEPEC	0.00	3	1	4579	56.9	4.5	3.6	6.5	10.5	7.9	9.6	0.5	56.9	4.5	38.6	0.066	0.503	19.324443	-97.932271
T.C. LOS REYES - ZACATEPEC	0.00	3	2	4522	56.8	4.4	3.7	6.6	10.9	7.5	9.4	0.7	56.8	4.4	38.8	0.064	0.503	19.324443	-97.932271
T.C. LOS REYES - ZACATEPEC	4.60	1	1	4712	57.6	4.2	3.8	6.2	10.7	7.6	9.2	0.7	57.6	4.2	38.2	0.063	0.509	19.320559	-97.911591
T.C. LOS REYES - ZACATEPEC	4.60	1	2	4537	57.6	4.4	3.7	6.3	10.9	7.5	9.3	0.3	57.6	4.4	38.0	0.066	0.509	19.320559	-97.911591

8 CARR: LIBRAMIENTO HUEYOTLIPAN

CLAVE:

RUTA: MEX

AÑO: 2010

LUGAR	ESTACION				CLASIFICACION VEHICULAR EN PORCIENTO								COORDENADAS						
	KM	TE	SC	TDPA	A	B	C2	C3	T3S2	T3S3	T3S2R4	OTROS	A	B	C	K'	D	LATITUD	LONGITUD
T.C. LOS REYES - ZACATEPEC	0.00	3	0	8470	52.0	3.1	8.6	5.8	19.7	5.3	4.5	1.0	52.0	3.1	44.9	0.069	0.504	19.476067	-98.353948
T.C. LOS REYES - ZACATEPEC	2.70	1	0	8555	52.2	3.4	9.0	5.5	19.2	5.4	4.5	0.8	52.2	3.4	44.4	0.070	0.502	19.472358	-98.338573

9 CARR: LOS REYES - ZACATEPEC

CLAVE: 00052

RUTA: MEX-136

AÑO: 2010

LUGAR	ESTACION				CLASIFICACION VEHICULAR EN PORCIENTO								COORDENADAS						
	KM	TE	SC	TDPA	A	B	C2	C3	T3S2	T3S3	T3S2R4	OTROS	A	B	C	K'	D	LATITUD	LONGITUD
T. C. MEXICO - PUEBLA (LIBRE)	0.00																		
T. IZQ. LA MAGDALENA	3.35	3	1	40669	65.5	4.6	6.4	5.0	12.3	3.0	2.8	0.4	65.5	4.6	29.9	0.061	0.500	19.375843	-98.943467
T. IZQ. LA MAGDALENA	3.35	3	2	40588	65.4	4.6	6.4	5.0	12.6	2.8	2.8	0.4	65.4	4.6	30.0	0.062	0.500	19.375853	-98.943448
T. IZQ. CHIMALHUACAN	8.45	1	1	22484	67.1	4.3	6.2	4.8	11.5	2.8	2.9	0.4	67.1	4.3	28.6	0.058	0.501	19.413378	-98.920231
T. IZQ. CHIMALHUACAN	8.45	1	2	22609	66.6	4.5	6.0	4.7	12.2	2.7	2.9	0.4	66.6	4.5	28.9	0.062	0.501	19.413378	-98.920228
T. C. SAN BERNARDINO - TEPEXPAN	17.00	3	1	16610	65.4	4.6	6.3	5.4	12.0	2.9	3.0	0.4	65.4	4.6	30.0	0.068	0.500	19.484609	-98.885935
T. C. SAN BERNARDINO - TEPEXPAN	17.00	3	2	16591	65.8	4.6	6.5	5.3	11.9	2.8	2.7	0.4	65.8	4.6	29.6	0.072	0.500	19.484472	-98.885952
TEXCOCO	23.02	3	1	11285	65.0	4.6	6.8	5.1	12.3	2.9	2.9	0.4	65.0	4.6	30.4	0.066	0.529	19.524088	-98.863656
TEXCOCO	23.02	3	2	10043	67.4	4.2	5.9	4.9	11.7	2.8	2.7	0.4	67.4	4.2	28.4	0.068	0.529	19.524072	-98.863672
T. IZQ. TEPETLAOXTOC	30.03	1	1	13092	65.6	4.2	6.3	5.4	12.5	2.9	2.7	0.4	65.6	4.2	30.2	0.065	0.502	19.545935	-98.826179
T. IZQ. TEPETLAOXTOC	30.03	1	2	12981	67.1	4.5	6.3	4.9	11.5	2.6	2.7	0.4	67.1	4.5	28.4	0.064	0.502	19.545806	-98.826148
T. DER. TOTOLAPAN	42.00	3	0	10146	64.9	4.4	6.6	4.9	13.0	2.9	2.9	0.4	64.9	4.4	30.7	0.067	0.501	19.556917	-98.730528
LIM. EDOS. TERM. MEX. PPIA. TLAX.	43.15																		
CALPULALPAN	59.58	3	0	11522	66.9	4.1	6.1	4.7	12.1	2.8	2.9	0.4	66.9	4.1	29.0	0.065	0.502	19.588240	-98.550948
T. DER. NANACAMILPA	71.76	3	0	12497	65.3	4.6	6.6	5.4	12.0	2.9	2.8	0.4	65.3	4.6	30.1	0.061	0.502	19.526193	-98.479961
HUEYOTLIPAN	88.21	3	0	12700	66.3	4.5	6.1	4.8	12.2	2.9	2.8	0.4	66.3	4.5	29.2	0.061	0.501	19.469505	-98.341360
XALTOCAN	108.10	1	0	15314	66.8	4.3	6.3	5.0	11.8	2.8	2.6	0.4	66.8	4.3	28.9	0.060	0.502	19.424670	-98.217284
APIZACO	117.74	1	1	16296	66.0	4.4	6.3	5.2	11.9	2.9	2.9	0.4	66.0	4.4	29.6	0.068	0.523	19.414058	-98.161856
APIZACO	117.74	1	2	17846	67.2	4.3	6.1	5.2	11.5	2.7	2.6	0.4	67.2	4.3	28.5	0.070	0.523	19.414058	-98.161856

TLAXCALA

9 CARR: LOS REYES - ZACATEPEC

CLAVE: 00052

RUTA: MEX-136

AÑO: 2010

LUGAR	ESTACION				CLASIFICACION VEHICULAR EN PORCIENTO								COORDENADAS						
	KM	TE	SC	TDPA	A	B	C2	C3	T3S2	T3S3	T3S2R4	OTROS	A	B	C	K'	D	LATITUD	LONGITUD
APIZACO	117.74	3	0	18578	65.2	4.4	6.5	5.3	12.4	2.8	3.0	0.4	65.2	4.4	30.4	0.061	0.501	19.413309	-98.134629
T. DER. CUAXOMULCO	119.85	3	0	14265	65.2	4.7	6.2	5.3	12.5	2.9	2.8	0.4	65.2	4.7	30.1	0.059	0.505	19.413231	-98.115286
T. IZQ. XALOSTOC	126.67	3	1	8310	66.4	4.5	6.0	5.2	11.9	2.7	2.9	0.4	66.4	4.5	29.1	0.065	0.503	19.389518	-98.052532
T. IZQ. XALOSTOC	126.67	3	2	8223	66.5	4.4	6.3	5.1	11.7	2.8	2.8	0.4	66.5	4.4	29.1	0.068	0.503	19.389518	-98.052532
T. IZQ. LIBRAMIENTO DE HUAMANTLA	141.70	1	1	7782	65.6	4.4	6.4	5.0	12.2	3.0	3.0	0.4	65.6	4.4	30.0	0.065	0.504	19.319454	-97.943901
T. IZQ. LIBRAMIENTO DE HUAMANTLA	141.70	1	2	7891	67.2	4.0	6.1	4.8	12.1	2.6	2.8	0.4	67.2	4.0	28.8	0.065	0.504	19.319454	-97.943901
HUAMANTLA	143.02	3	0	9274	66.2	4.4	6.0	5.4	12.1	2.8	2.7	0.4	66.2	4.4	29.4	0.065	0.503	19.316749	-97.911664
T. DER. CUAPIAXTLA	159.40	1	0	10098	64.4	4.7	6.6	5.4	12.8	2.8	2.9	0.4	64.4	4.7	30.9	0.059	0.505	19.302975	-97.776890
X. C. AMOZOC - TEZIUTLAN	173.47	1	0	10891	66.3	4.3	6.2	5.2	12.1	2.7	2.8	0.4	66.3	4.3	29.4	0.069	0.501	19.326513	-97.650702
X. C. AMOZOC - TEZIUTLAN	173.47	3	0	8458	67.4	4.2	6.3	4.9	11.5	2.6	2.7	0.4	67.4	4.2	28.4	0.067	0.501	19.321262	-97.643466
LIM. EDOS. TERM. TLAX. PPIA. PUE.	177.57																		
ZACATEPEC	187.67	1	0	7938	64.8	4.4	6.7	5.2	13.0	2.7	2.8	0.4	64.8	4.4	30.8	0.068	0.501	19.269904	-97.540594

10 CARR: PUEBLA - BELEM

CLAVE: 00055

RUTA: MEX-121

AÑO: 2010

LUGAR	ESTACION				CLASIFICACION VEHICULAR EN PORCIENTO								COORDENADAS						
	KM	TE	SC	TDPA	A	B	C2	C3	T3S2	T3S3	T3S2R4	OTROS	A	B	C	K'	D	LATITUD	LONGITUD
T. C. PUEBLA - TLAXCALA	0.00																		
X. C. PUEBLA - CORDOBA (CUOTA)	4.00	3	1	19490	79.6	3.8	4.1	2.3	4.1	2.7	2.5	0.9	79.6	3.8	16.6	0.078	0.510	19.088381	-98.185411
X. C. PUEBLA - CORDOBA (CUOTA)	4.00	3	2	18749	79.6	3.9	4.3	2.2	4.3	2.5	2.4	0.8	79.6	3.9	16.5	0.074	0.510	19.088460	-98.185590
LIM. EDOS. TERM. PUE. PPIA. TLAX.	6.60																		
LIM. EDOS. TERM. TLAX. PPIA. PUE.	8.40																		
LIM. EDOS. TERM. PUE. PPIA. TLAX.	9.50																		
T. IZQ. ZACATELCO	16.70	1	1	11353	79.3	4.5	4.7	1.4	3.4	2.7	3.5	0.5	79.3	4.5	16.2	0.080	0.516	19.206486	-98.196113
T. IZQ. ZACATELCO	16.70	1	2	10644	81.1	4.2	3.8	1.3	3.6	2.8	2.8	0.4	81.1	4.2	14.7	0.079	0.516	19.206443	-98.196219
X. C. TLAXCALA - BELEM	28.80	1	1	15426	79.8	4.3	5.5	1.0	3.4	2.7	2.8	0.5	79.8	4.3	15.9	0.067	0.534	19.312998	-98.203677
X. C. TLAXCALA - BELEM	28.80	1	2	13472	78.9	4.4	5.8	1.8	3.2	2.9	2.5	0.5	78.9	4.4	16.7	0.068	0.534	19.313065	-98.203618
T. C. SAN MARTIN TEXMELUCAN - OCOTOXCO (CUOTA)	34.90																		

11 CARR: PUEBLA - TLAXCALA

CLAVE: 00475

RUTA: MEX-119

AÑO: 2010

LUGAR	ESTACION				CLASIFICACION VEHICULAR EN PORCIENTO								COORDENADAS						
	KM	TE	SC	TDPA	A	B	C2	C3	T3S2	T3S3	T3S2R4	OTROS	A	B	C	K'	D	LATITUD	LONGITUD
PUEBLA	0.00																		
X. C. PUEBLA - CORDOBA (CUOTA)	5.41	3	1	17756	76.6	2.8	3.2	2.3	6.0	3.9	4.7	0.5	76.6	2.8	20.6	0.067	0.500	19.089788	-98.206193

TLAXCALA

11 CARR: PUEBLA - TLAXCALA

CLAVE: 00475

RUTA: MEX-119

AÑO: 2010

LUGAR	ESTACION				CLASIFICACION VEHICULAR EN PORCIENTO								COORDENADAS						
	KM	TE	SC	TDPA	A	B	C2	C3	T3S2	T3S3	T3S2R4	OTROS	A	B	C	K'	D	LATITUD	LONGITUD
X. C. PUEBLA - CORDOBA (CUOTA)	5.41	3	2	17776	76.7	2.7	3.2	2.2	5.9	3.8	4.8	0.7	76.7	2.7	20.6	0.067	0.500	19.089788	-98.206193
LIM. EDOS. TERM. PUE. PPIA. TLAX.	11.83																		
PANZACOLA	13.14	3	0	18123	79.7	2.7	3.8	0.8	5.3	1.7	5.4	0.6	79.7	2.7	17.6	0.066	0.502	19.152155	-98.223688
SAN TORIBIO XICOHTZINGO	16.10	3	0	17359	81.8	4.5	3.7	0.6	3.7	1.2	4.0	0.5	81.8	4.5	13.7	0.063	0.507	19.186763	-98.237907
ZACATELCO	20.78	1	0	17502	81.8	4.6	3.9	0.5	4.1	1.1	3.3	0.7	81.8	4.6	13.6	0.059	0.500	19.208041	-98.240566
T. IZO. SAN MARTIN TEXMELUCAN	22.99	1	0	15875	82.9	4.8	4.2	0.5	2.8	1.5	2.9	0.4	82.9	4.8	12.3	0.072	0.500	19.234038	-98.242998
T. DER. TEPEYANCO (2° ACCESO)	24.97	3	0	13286	85.4	3.3	3.1	0.4	3.8	1.3	2.3	0.4	85.4	3.3	11.3	0.070	0.504	19.259469	-98.231494
T. DER. OCOTLAN	32.45	1	1	8304	85.7	3.5	3.2	0.6	4.1	1.1	1.1	0.7	85.7	3.5	10.8	0.069	0.506	19.302674	-98.241075
T. DER. OCOTLAN	32.45	1	2	8123	87.4	3.2	2.4	0.7	3.5	1.1	1.0	0.7	87.4	3.2	9.4	0.064	0.506	19.302678	-98.241256
TLAXCALA	33.22	1	1	8006	81.0	2.9	2.0	0.8	4.6	2.4	5.4	0.9	81.0	2.9	16.1	0.068	0.505	19.311823	-98.240068
TLAXCALA	33.22	1	2	7862	81.3	2.7	2.3	0.7	4.5	2.2	5.6	0.7	81.3	2.7	16.0	0.072	0.505	19.312045	-98.240126

12 CARR: RAMAL A SAN FELIPE DE HIDALGO

CLAVE: 29565

RUTA: MEX

AÑO: 2010

LUGAR	ESTACION				CLASIFICACION VEHICULAR EN PORCIENTO								COORDENADAS						
	KM	TE	SC	TDPA	A	B	C2	C3	T3S2	T3S3	T3S2R4	OTROS	A	B	C	K'	D	LATITUD	LONGITUD
T. C. LOS REYES - ZACATEPEC	0.00	3	0	2408	80.5	3.7	8.2	1.8	2.5	1.4	1.0	0.9	80.5	3.7	15.8	0.069	0.502	19.527471	-98.482058
SAN FELIPE DE HIDALGO	10.50	1	0	1808	80.6	3.9	7.8	1.5	2.6	1.4	1.5	0.7	80.6	3.9	15.5	0.064	0.501	19.471286	-98.554548

13 CARR: SAN MARTIN TEXMELUCAN - TLAXCALA

CLAVE: 00158

RUTA: MEX-117

AÑO: 2010

LUGAR	ESTACION				CLASIFICACION VEHICULAR EN PORCIENTO								COORDENADAS						
	KM	TE	SC	TDPA	A	B	C2	C3	T3S2	T3S3	T3S2R4	OTROS	A	B	C	K'	D	LATITUD	LONGITUD
SAN MARTIN TEXMELUCAN	0.00	3	0	13929	81.6	4.4	6.5	2.2	2.9	1.2	0.9	0.3	81.6	4.4	14.0	0.079	0.517	19.288045	-98.422473
X. C. SAN MARTIN TEXMELUCAN - OCOTOXCO (CUOTA)	1.65	1	0	15292	83.4	3.9	4.3	2.1	2.5	1.9	1.3	0.6	83.4	3.9	12.7	0.064	0.507	19.291607	-98.411894
LIM. EDOS. TERM. PUE. PPIA. TLAX.	2.84																		
T. DER. TEPETITLA	3.45	3	0	10147	85.7	3.6	4.1	0.6	2.8	1.7	1.0	0.5	85.7	3.6	10.7	0.077	0.504	19.294356	-98.402824
SAN DIEGO XOCOYUCAN	7.21	3	0	6085	85.2	3.8	2.8	0.8	4.8	0.7	1.3	0.6	85.2	3.8	11.0	0.058	0.504	19.308274	-98.364045
T. DER. PANOTLA	19.72	1	0	7608	84.3	3.9	3.7	0.9	4.7	0.5	1.4	0.6	84.3	3.9	11.8	0.074	0.554	19.319401	-98.275674
T. DER. PANOTLA	19.72	3	0	9313	84.4	3.4	2.9	1.2	5.2	0.6	1.5	0.8	84.4	3.4	12.2	0.064	0.507	19.319595	-98.269903
TOTOLAC	21.38	1	0	6625	82.2	3.7	3.0	1.1	6.7	0.9	1.9	0.5	82.2	3.7	14.1	0.075	0.508	19.322262	-98.261135
TOTOLAC	21.38	3	0	7981	82.6	3.9	3.5	1.0	6.2	0.9	1.4	0.5	82.6	3.9	13.5	0.073	0.503	19.328748	-98.248342
TLAXCALA	24.81	1	0	15183	81.5	4.2	4.1	1.2	5.9	1.0	1.6	0.5	81.5	4.2	14.3	0.066	0.506	19.320129	-98.245202



TLAXCALA

14 CARR: TETLATLAHUCA - SANTA ANA CHIAUTEMPAN

CLAVE:

RUTA: MEX-119

AÑO: 2010

LUGAR	ESTACION				CLASIFICACION VEHICULAR EN PORCIENTO								COORDENADAS						
	KM	TE	SC	TDPA	A	B	C2	C3	T3S2	T3S3	T3S2R4	OTROS	A	B	C	K'	D	LATITUD	LONGITUD
TETLATLAHUCA	0.00																		
SAN BARTOLOME TENENGO	2.39	1	0	3518	87.3	3.1	3.4	0.6	4.1	0.5	0.7	0.3	87.3	3.1	9.6	0.070	0.504	19.246442	-98.296835
SAN DAMIAN TEXOLOC	5.50	1	0	3912	87.7	2.9	3.3	0.4	3.9	0.8	0.6	0.4	87.7	2.9	9.4	0.069	0.511	19.273896	-98.284636
T. IZO. CUAUHTELULPAN	9.63	1	0	7953	86.6	3.2	3.9	0.3	4.2	0.5	0.9	0.4	86.6	3.2	10.2	0.065	0.500	19.289048	-98.251080
SANTA ANA CHIAUTEMPAN	16.00																		

15 CARR: TLAXCALA - BELEM

CLAVE: 29389

RUTA: MEX

AÑO: 2010

LUGAR	ESTACION				CLASIFICACION VEHICULAR EN PORCIENTO								COORDENADAS						
	KM	TE	SC	TDPA	A	B	C2	C3	T3S2	T3S3	T3S2R4	OTROS	A	B	C	K'	D	LATITUD	LONGITUD
TLAXCALA	0.00																		
T. DER. OCOTLAN	3.91	1	1	15896	90.3	2.2	1.4	0.6	1.6	2.5	0.9	0.5	90.3	2.2	7.5	0.068	0.517	19.321372	-98.209856
T. DER. OCOTLAN	3.91	1	2	14844	89.5	2.4	1.8	0.7	1.9	1.9	1.3	0.5	89.5	2.4	8.1	0.065	0.517	19.321398	-98.209684
X. C. PUEBLA - BELEM	4.55	1	1	16844	77.8	4.1	4.5	1.5	6.5	3.8	1.1	0.7	77.8	4.1	18.1	0.063	0.515	19.319178	-98.206221
X. C. PUEBLA - BELEM	4.55	1	2	17897	77.3	4.0	4.9	1.6	7.7	2.8	0.9	0.8	77.3	4.0	18.7	0.062	0.515	19.319156	-98.205989
SANTA ANA CHIAUTEMPAN	5.82	1	1	9455	79.4	4.2	5.1	1.8	6.2	1.2	1.3	0.8	79.4	4.2	16.4	0.068	0.500	19.316675	-98.201790
SANTA ANA CHIAUTEMPAN	5.82	1	2	9447	79.2	4.5	5.4	1.7	6.4	1.0	1.1	0.7	79.2	4.5	16.3	0.066	0.500	19.316533	-98.201471
T. DER. IXCOTLA	7.19	3	1	7838	83.0	3.9	3.0	1.9	4.4	1.6	1.3	0.9	83.0	3.9	13.1	0.063	0.500	19.326771	-98.193896
T. DER. IXCOTLA	7.19	3	2	7842	83.9	3.3	3.0	1.7	4.4	1.6	1.4	0.7	83.9	3.3	12.8	0.064	0.500	19.326783	-98.194026
BELEM	10.06	1	0	7799	82.9	3.2	4.4	1.3	4.1	1.8	1.3	1.0	82.9	3.2	13.9	0.062	0.500	19.338254	-98.193452

16 CARR: VILLA ALTA - T. C. (PUEBLA - TLAXCALA)

CLAVE: 29566

RUTA: MEX

AÑO: 2010

LUGAR	ESTACION				CLASIFICACION VEHICULAR EN PORCIENTO								COORDENADAS						
	KM	TE	SC	TDPA	A	B	C2	C3	T3S2	T3S3	T3S2R4	OTROS	A	B	C	K'	D	LATITUD	LONGITUD
T. C. SAN MARTIN TEXMELUCAN - TLAXCALA	0.00	3	0	6020	82.9	2.6	2.9	1.3	5.5	1.3	2.9	0.6	82.9	2.6	14.5	0.076	0.508	19.284863	-98.401696
NATIVITAS	10.50	3	0	7460	83.5	2.8	3.1	1.8	4.8	1.4	2.2	0.4	83.5	2.8	13.7	0.060	0.507	19.239026	-98.304743
T. C. PUEBLA - TLAXCALA	22.05	1	0	7307	88.7	2.4	2.7	1.4	1.5	1.2	1.6	0.5	88.7	2.4	8.9	0.070	0.507	19.234875	-98.244403

17 CARR: AMOZOC - PEROTE (CUOTA)

CLAVE:

RUTA: MEX-140D

AÑO: 2010

LUGAR	ESTACION				CLASIFICACION VEHICULAR EN PORCIENTO								COORDENADAS						
	KM	TE	SC	TDPA	A	B	C2	C3	T3S2	T3S3	T3S2R4	OTROS	A	B	C	K'	D	LATITUD	LONGITUD
T.C. PUEBLA - CORDOBA (CUOTA)	0.00	3	0	6222	84.5	5.8	3.4	2.4	1.5	0.6	1.7	0.1	84.5	5.8	9.7	0.064	0.500	19.067517	-98.066250
CASETA DE COBRO AMOZOC	0.68	2	0	7945	83.8	6.0	3.7	2.4	1.5	0.7	1.8	0.1	83.8	6.0	10.2			19.063599	-98.069029

TLAXCALA

17 CARR: AMOZOC - PEROTE (CUOTA)

CLAVE:

RUTA: MEX-140D

AÑO: 2010

LUGAR	ESTACION				CLASIFICACION VEHICULAR EN PORCIENTO								COORDENADAS						
	KM	TE	SC	TDPA	A	B	C2	C3	T3S2	T3S3	T3S2R4	OTROS	A	B	C	K'	D	LATITUD	LONGITUD
LIM. EDOS. TERM. PUE. PPIA. TLAX.	20.08																		
LIM. EDOS. TERM. TLAX. PPIA. PUE.	30.50																		
LIM. EDOS. TERM. PUE. PPIA. TLAX.	31.26																		
LIM. EDOS. TERM. TLAX. PPIA. PUE.	33.86																		
LIM. EDOS. TERM. PUE. PPIA. TLAX.	38.93																		
CASETA DE COBRO CUAPIAXTLA	44.00	1	0	7721	85.5	5.3	3.8	2.3	1.5	0.7	0.8	0.1	85.5	5.3	9.2			19.304158	-97.805312
CASETA DE COBRO CUAPIAXTLA	44.00	2	0	8892	83.3	4.7	4.1	2.9	1.9	0.9	2.1	0.1	83.3	4.7	12.0			19.304158	-97.805312
CASETA DE COBRO CUAPIAXTLA	44.00	3	0	6391	83.8	4.8	3.7	2.7	1.8	0.8	2.3	0.1	83.8	4.8	11.4			19.304158	-97.805312
LIM. EDOS. TERM. TLAX. PPIA. PUE.	53.52																		
LIM. EDOS. TERM. PUE. PPIA. VER.	90.36																		
T.C. LIB. DE PEROTE	105.00																		

18 CARR: ARCO NORTE CD. MEXICO (CUOTA)

CLAVE:

RUTA: MEX-D

AÑO: 2010

LUGAR	ESTACION				CLASIFICACION VEHICULAR EN PORCIENTO								COORDENADAS						
	KM	TE	SC	TDPA	A	B	C2	C3	T3S2	T3S3	T3S2R4	OTROS	A	B	C	K'	D	LATITUD	LONGITUD
T. C. TOLUCA - PALMILLAS	0.00																		
X. C. MEXICO - QUERETARO (CUOTA)	54.00																		
CASETA DE COBRO QUERETARO	55.00	2	0	8135	61.0	2.7	4.5	7.3	12.3	4.6	6.6	1.0	61.0	2.7	36.3			19.998390	-99.489809
LIM. EDOS. TERM. MEX. PPIA. HGO.	60.72																		
CASETA DE COBRO TULA II	70.00	3	0	7997	60.1	2.6	4.8	7.5	12.3	4.9	6.7	1.1	60.1	2.6	37.3			20.070946	-99.370148
CASETA DE COBRO TULA I	80.00	3	0	9964	68.8	2.5	4.1	5.8	9.4	3.6	5.0	0.8	68.8	2.5	28.7			20.099148	-99.283199
CASETA DE COBRO ATITALAQUIA	88.00	3	0	9914	68.2	2.8	4.2	5.8	9.5	3.6	5.1	0.8	68.2	2.8	29.0			20.066576	-99.220815
LIM. EDOS. TERM. HGO. PPIA. MEX.	95.75																		
CASETA DE COBRO AJOLOAPAN	110.00	3	0	10108	68.8	2.7	4.0	5.7	9.4	3.5	5.1	0.8	68.8	2.7	28.5			19.955955	-99.054357
LIM. EDOS. TERM. MEX. PPIA. HGO.	115.89																		
CASETA DE COBRO PACHUCA	129.00	3	0	7912	62.4	2.3	4.7	7.2	11.6	4.3	6.5	1.0	62.4	2.3	35.3			19.929644	-98.892436
LIM. EDOS. TERM. HGO. PPIA. MEX.	143.98																		
CASETA DE COBRO TULANCINGO	153.00	3	0	9251	64.8	2.7	4.7	6.6	10.7	3.6	6.0	0.9	64.8	2.7	32.5			19.833559	-98.700185
CASETA DE COBRO SAHAGUN	165.00	3	0	9261	64.7	2.8	4.8	6.6	10.7	3.6	5.9	0.9	64.7	2.8	32.5			19.756104	-98.629143
LIM. EDOS. TERM. MEX. PPIA. HGO.	166.53																		
LIM. EDOS. TERM. HGO. PPIA. TLAX.	180.98																		
CASETA DE COBRO CALPULAPAN	182.345	3	0	10521	64.8	2.6	5.0	6.7	10.8	3.7	5.5	0.9	64.8	2.6	32.6			19.620074	-98.548525
CASETA DE COBRO SANCTORUM	196.50	3	0	10201	64.1	3.2	5.4	6.8	11.0	3.0	5.6	0.9	64.1	3.2	32.7			19.514239	-98.468601
CASETA DE COBRO SAN MARTIN TEXMELUCAN	222.00	2	0	10201	64.1	3.2	5.4	6.8	11.0	3.0	5.6	0.9	64.1	3.2	32.7			19.301905	-98.409628



TLAXCALA

20 CARR: SAN MARTIN TEXMELUCAN - OCOTOXCO (CUOTA)

CLAVE: 00212

RUTA: MEX-117D

AÑO: 2010

LUGAR	ESTACION				CLASIFICACION VEHICULAR EN PORCIENTO								COORDENADAS						
	KM	TE	SC	TDPA	A	B	C2	C3	T3S2	T3S3	T3S2R4	OTROS	A	B	C	K'	D	LATITUD	LONGITUD
CASETA DE COBRO SAN MARTIN TEXMELUCAN	5.45	2	0	6937	81.3	9.8	3.8	1.5	1.8	0.6	1.1	0.1	81.3	9.8	8.9			19.301568	-98.404044
X. C. SAN MARTIN TEXMELUCAN - TLAXCALA (TREBOL)	24.75	1	1	11832	81.3	9.8	4.0	1.4	1.7	0.6	1.1	0.1	81.3	9.8	8.9	0.064	0.501	19.325362	-98.250453
X. C. SAN MARTIN TEXMELUCAN - TLAXCALA (TREBOL)	24.75	1	2	11768	81.0	9.7	4.0	1.6	1.9	0.6	1.1	0.1	81.0	9.7	9.3	0.066	0.501	19.325538	-98.250549
X. C. SAN MARTIN TEXMELUCAN - TLAXCALA (TREBOL)	24.75	3	1	11466	80.7	10.4	3.8	1.4	1.8	0.6	1.2	0.1	80.7	10.4	8.9	0.066	0.524	19.327411	-98.245757
X. C. SAN MARTIN TEXMELUCAN - TLAXCALA (TREBOL)	24.75	3	2	11560	81.7	9.6	3.7	1.4	1.8	0.6	1.1	0.1	81.7	9.6	8.7	0.076	0.524	19.327594	-98.245873
T. IZO. TIZATLAN	29.00	3	1	18557	81.1	9.9	3.8	1.5	1.9	0.6	1.1	0.1	81.1	9.9	9.0	0.076	0.505	19.337762	-98.213995
T. IZO. TIZATLAN	29.00	3	2	18945	81.8	9.5	3.7	1.5	1.8	0.6	1.0	0.1	81.8	9.5	8.7	0.071	0.505	19.337666	-98.213989
T. DER. SAN PABLO APETATITLAN	31.65	3	1	18243	81.9	9.2	3.8	1.5	1.8	0.6	1.1	0.1	81.9	9.2	8.9	0.070	0.501	19.346633	-98.196047
T. DER. SAN PABLO APETATITLAN	31.65	3	2	18289	80.7	9.9	4.1	1.6	1.8	0.6	1.2	0.1	80.7	9.9	9.4	0.065	0.501	19.346710	-98.196101
OCOTOXCO	35.20	1	1	18935	81.9	9.7	3.5	1.4	1.7	0.6	1.1	0.1	81.9	9.7	8.4	0.071	0.503	19.384796	-98.178107
OCOTOXCO	35.20	1	2	18707	80.7	10.2	3.9	1.6	1.8	0.6	1.1	0.1	80.7	10.2	9.1	0.067	0.503	19.384804	-98.178212

21 CARR: LIBRAMIENTO DE OCOTLAN

CLAVE:

RUTA: TLAX

AÑO: 2010

LUGAR	ESTACION				CLASIFICACION VEHICULAR EN PORCIENTO								COORDENADAS						
	KM	TE	SC	TDPA	A	B	C2	C3	T3S2	T3S3	T3S2R4	OTROS	A	B	C	K'	D	LATITUD	LONGITUD
T. C. TLAXCALA - BELEM	0.00	3	0	7632	75.2	6.6	4.9	2.8	5.4	2.5	2.2	0.4	75.2	6.6	18.2	0.065	0.501	19.319387	-98.209627
T. C. TLAXCALA - BELEM	5.50																		

22 CARR: RAMAL A ALTZAYANCA DE HIDALGO

CLAVE: 29562

RUTA: TLAX

AÑO: 2010

LUGAR	ESTACION				CLASIFICACION VEHICULAR EN PORCIENTO								COORDENADAS						
	KM	TE	SC	TDPA	A	B	C2	C3	T3S2	T3S3	T3S2R4	OTROS	A	B	C	K'	D	LATITUD	LONGITUD
T. C. LOS REYES - ZACATEPEC	0.00	3	0	2151	88.2	2.2	5.4	1.1	1.5	0.4	0.6	0.6	88.2	2.2	9.6	0.073	0.505	19.320645	-97.845627
XICOTENCATL	6.50	3	0	2086	87.5	3.9	5.6	0.8	1.2	0.1	0.4	0.5	87.5	3.9	8.6	0.074	0.524	19.358527	-97.831494
ALTZAYANCA DE HIDALGO	15.00	1	0	1998	88.7	3.6	5.1	0.4	1.1	0.2	0.6	0.3	88.7	3.6	7.7	0.066	0.506	19.423218	-97.803091

23 CARR: RAMAL A SAN PEDRO ECATEPEC

CLAVE: 29561

RUTA: TLAX

AÑO: 2010

LUGAR	ESTACION				CLASIFICACION VEHICULAR EN PORCIENTO								COORDENADAS						
	KM	TE	SC	TDPA	A	B	C2	C3	T3S2	T3S3	T3S2R4	OTROS	A	B	C	K'	D	LATITUD	LONGITUD
T. C. APIZACO - TEJOCOTAL	0.00	3	0	1418	81.2	1.9	14.4	0.8	1.0	0.2	0.2	0.3	81.2	1.9	16.9	0.068	0.507	19.514542	-98.119704
SAN PEDRO ECATEPEC	4.60	1	0	1476	82.6	1.8	13.0	0.7	1.1	0.2	0.3	0.3	82.6	1.8	15.6	0.081	0.502	19.517763	-98.150579

TLAXCALA

24 CARR: RAMAL A XALOSTOC

CLAVE: 29563

RUTA: TLAX

AÑO: 2010

LUGAR	ESTACION				CLASIFICACION VEHICULAR EN PORCIENTO								COORDENADAS						
	KM	TE	SC	TDPA	A	B	C2	C3	T3S2	T3S3	T3S2R4	OTROS	A	B	C	K'	D	LATITUD	LONGITUD
T. C. LOS REYES - ZACATEPEC	0.00	3	0	7591	81.5	2.9	5.7	0.4	5.1	1.6	2.3	0.5	81.5	2.9	15.6	0.069	0.507	19.396015	-98.057011
XALOSTOC	2.50	1	0	5945	83.0	2.7	5.4	0.3	4.6	1.1	2.4	0.5	83.0	2.7	14.3	0.076	0.515	19.400422	-98.051569

25 CARR: XALOSTOC - TERRENATE

CLAVE: 29390

RUTA: TLAX

AÑO: 2010

LUGAR	ESTACION				CLASIFICACION VEHICULAR EN PORCIENTO								COORDENADAS						
	KM	TE	SC	TDPA	A	B	C2	C3	T3S2	T3S3	T3S2R4	OTROS	A	B	C	K'	D	LATITUD	LONGITUD
XALOSTOC	0.00	3	0	2432	84.4	6.6	5.9	0.6	1.6	0.4	0.3	0.2	84.4	6.6	9.0	0.086	0.502	19.418376	-98.031033
SAN FRANCISCO TEOMETITLA	7.10	3	0	954	86.1	6.3	4.9	0.7	0.9	0.4	0.4	0.3	86.1	6.3	7.6	0.093	0.500	19.451156	-97.988185
T. C. HUAMANTLA - TERRENATE	17.50	1	0	1083	87.6	6.1	3.9	0.6	0.6	0.2	0.6	0.4	87.6	6.1	6.3	0.082	0.501	19.466292	-97.929640

26 CARR: ACOCOTLA - VICENTE GUERRERO

CLAVE: 29560

RUTA: MEX-TLAX

AÑO: 2010

LUGAR	ESTACION				CLASIFICACION VEHICULAR EN PORCIENTO								COORDENADAS						
	KM	TE	SC	TDPA	A	B	C2	C3	T3S2	T3S3	T3S2R4	OTROS	A	B	C	K'	D	LATITUD	LONGITUD
T. C. LOS REYES - ZACATEPEC	0.00	3	0	1249	80.2	6.3	4.9	0.5	4.8	1.3	1.8	0.2	80.2	6.3	13.5	0.061	0.506	19.370848	-98.028965
T. C. PUEBLA - BELEM	37.70	1	0	6851	77.4	2.7	2.8	3.4	7.1	2.7	3.6	0.3	77.4	2.7	19.9	0.073	0.502	19.112715	-98.176321

27 CARR: APIZACO - EMILIANO ZAPATA

CLAVE: 29033

RUTA: TLAX-MEX

AÑO: 2010

LUGAR	ESTACION				CLASIFICACION VEHICULAR EN PORCIENTO								COORDENADAS						
	KM	TE	SC	TDPA	A	B	C2	C3	T3S2	T3S3	T3S2R4	OTROS	A	B	C	K'	D	LATITUD	LONGITUD
APIZACO	0.00	3	0	7209	90.1	2.1	5.3	0.4	1.4	0.2	0.3	0.2	90.1	2.1	7.8	0.065	0.506	19.417329	-98.130199
CAPULA	16.00	1	0	3114	89.5	2.4	4.9	0.7	1.5	0.1	0.3	0.6	89.5	2.4	8.1	0.067	0.508	19.529907	-98.041031
EMILIANO ZAPATA	37.00	1	0	1542	91.1	2.6	2.9	0.2	1.6	0.8	0.4	0.4	91.1	2.6	6.3	0.079	0.516	19.551355	-97.917291

28 CARR: CALPULALPAN - EL OCOTE

CLAVE: 00054

RUTA: MEX-HGO

AÑO: 2010

LUGAR	ESTACION				CLASIFICACION VEHICULAR EN PORCIENTO								COORDENADAS						
	KM	TE	SC	TDPA	A	B	C2	C3	T3S2	T3S3	T3S2R4	OTROS	A	B	C	K'	D	LATITUD	LONGITUD
CALPULALPAN	0.00	3	0	7944	77.4	4.4	7.9	2.5	3.4	2.2	1.7	0.5	77.4	4.4	18.2	0.068	0.503	19.594566	-98.573466
LIM. EDOS. TERM. TLAX. PPIA. HGO.	5.00																		
APAN	19.58	3	1	3370	82.7	3.8	6.1	2.0	2.8	1.8	0.5	0.3	82.7	3.8	13.5	0.069	0.510	19.717083	-98.456583
APAN	19.58	3	2	3235	82.2	3.9	6.1	1.8	2.7	1.9	0.9	0.5	82.2	3.9	13.9	0.069	0.510	19.717083	-98.456583
TEPEAPULCO	34.92	3	0	5043	86.3	3.9	5.5	1.1	1.8	0.2	0.7	0.5	86.3	3.9	9.8	0.070	0.501	19.801038	-98.562082

TLAXCALA

28 CARR: CALPULALPAN - EL OCOTE

CLAVE: 00054

RUTA: MEX-HGO

AÑO: 2010

L U G A R	E S T A C I O N				C L A S I F I C A C I O N V E H I C U L A R E N P O R C I E N T O								C O O R D E N A D A S						
	KM	TE	SC	TDPA	A	B	C2	C3	T3S2	T3S3	T3S2R4	OTROS	A	B	C	K'	D	LATITUD	LONGITUD
X. C. VENTA DE CARPIO - TULANCINGO	51.18	1	0	3047	83.7	4.7	5.2	2.6	1.2	1.2	0.9	0.5	83.7	4.7	11.6	0.070	0.501	19.919249	-98.577729
X. C. VENTA DE CARPIO - TULANCINGO	51.18	3	0	1915	87.5	3.2	4.8	1.4	1.6	0.2	0.8	0.5	87.5	3.2	9.3	0.078	0.506	19.927659	-98.582841
EL OCOTE	70.44	1	0	2904	88.8	4.2	1.6	1.8	1.2	0.5	1.1	0.8	88.8	4.2	7.0	0.065	0.505	20.045045	-98.618871

29 CARR: CALPULALPAN - NANACAMILPA

CLAVE: 29034

RUTA: TLAX-MEX

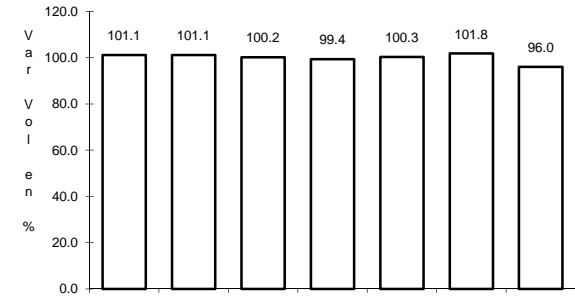
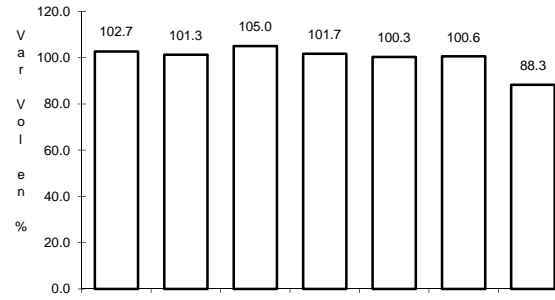
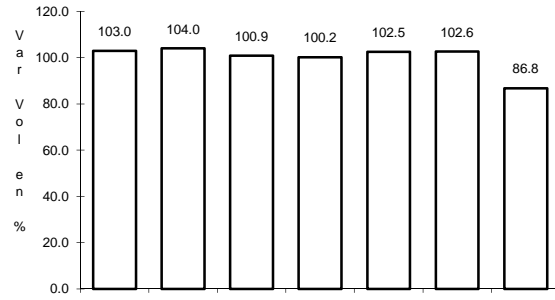
AÑO: 2010

L U G A R	E S T A C I O N				C L A S I F I C A C I O N V E H I C U L A R E N P O R C I E N T O								C O O R D E N A D A S						
	KM	TE	SC	TDPA	A	B	C2	C3	T3S2	T3S3	T3S2R4	OTROS	A	B	C	K'	D	LATITUD	LONGITUD
CALPULALPAN	0.00	3	0	2247	87.7	2.4	4.7	0.1	2.5	0.0	2.6	0.0	87.7	2.4	9.9	0.064	0.503	19.568314	-98.568210
NANACAMILPA	15.50	1	0	2141	87.4	2.5	4.9	0.1	2.5	0.0	2.6	0.0	87.4	2.5	10.1	0.071	0.508	19.497440	-98.533322

1 CARR: AMOZOC - TEZIUTLAN

CLAVE: 00210

RUTA: MEX-129



Km: 1.40

Tipo: 3

Sent: 0

Km: 76.35

Tipo: 3

Sent: 0

Km: 157.80

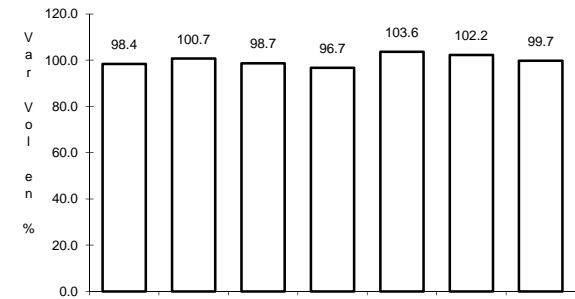
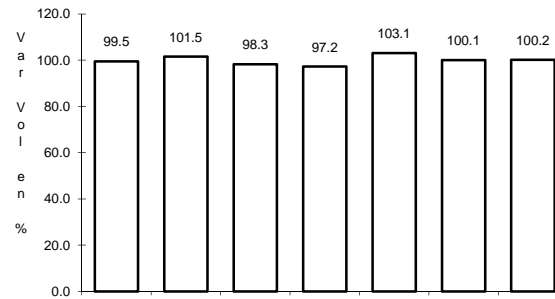
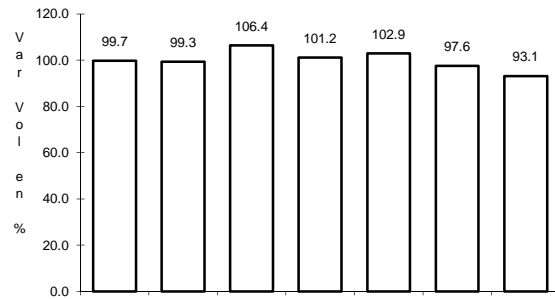
Tipo: 1

Sent: 0

2 CARR: APIZACO - SAN PABLO APETATITLAN

CLAVE: 29035

RUTA: MEX



Km: 0.00

Tipo: 3

Sent: 0

Km: 9.10

Tipo: 3

Sent: 0

Km: 20.00

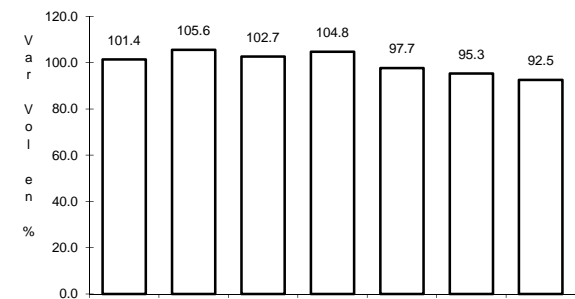
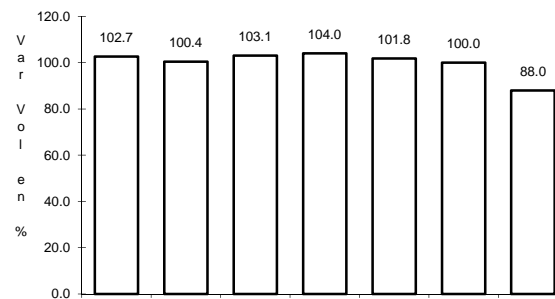
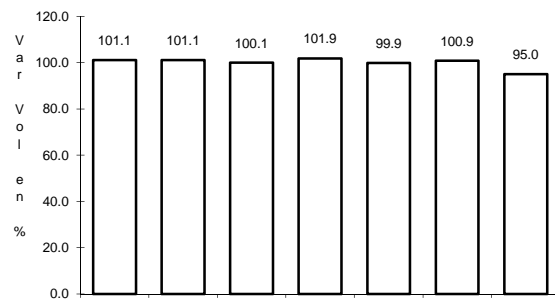
Tipo: 1

Sent: 0

3 CARR: APIZACO - TEJOCOTAL

CLAVE: 00430

RUTA: MEX-119



Km: 0.00

Tipo: 3

Sent: 0

Km: 52.20

Tipo: 1

Sent: 0

Km: 113.15

Tipo: 1

Sent: 0





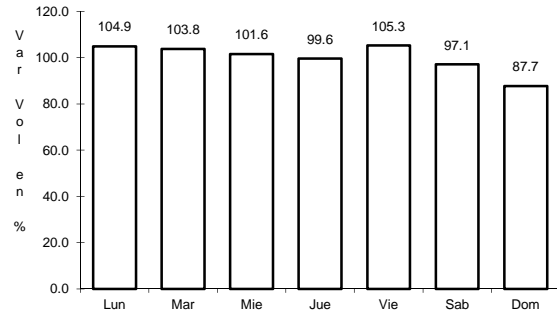




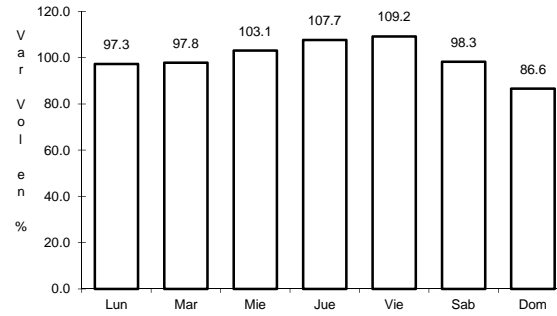
13 CARR: SAN MARTIN TEXMELUCAN - TLAXCALA

CLAVE: 00158

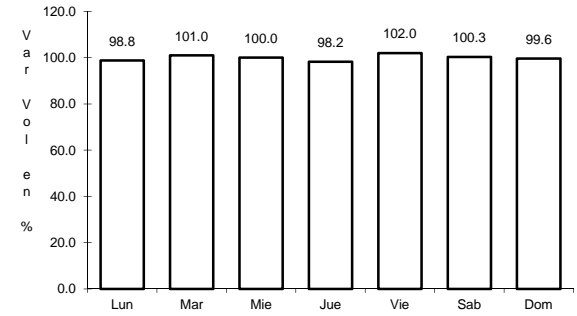
RUTA: MEX-117



Km: 0.00      Tipo: 3      Sent: 0



Km: 19.72      Tipo: 1      Sent: 0

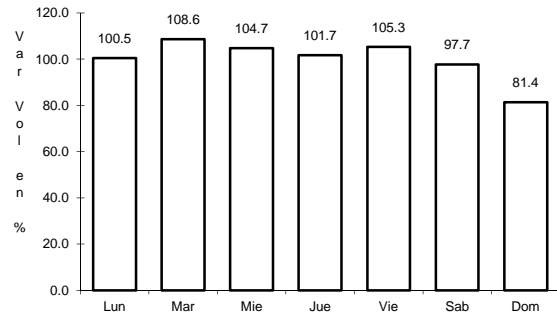


Km: 24.81      Tipo: 1      Sent: 0

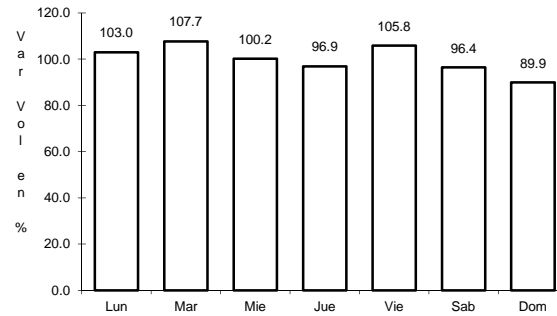
14 CARR: TETLATLAHUCA - SANTA ANA CHIAUTEMPAN

CLAVE:

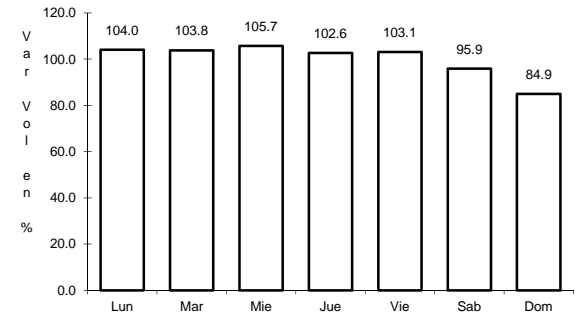
RUTA: MEX-119



Km: 2.39      Tipo: 1      Sent: 0



Km: 5.50      Tipo: 1      Sent: 0

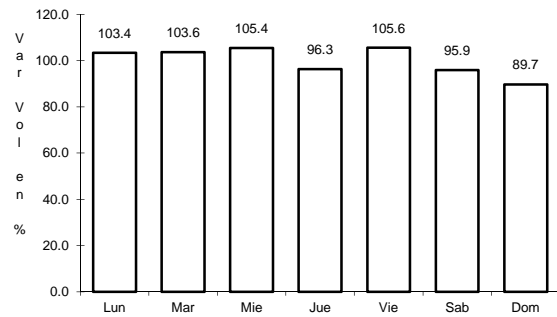


Km: 9.63      Tipo: 1      Sent: 0

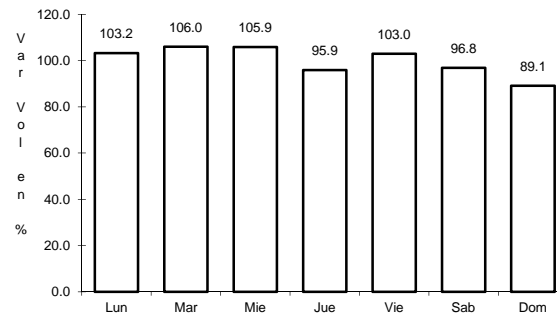
15 CARR: TLAXCALA - BELEM

CLAVE: 29389

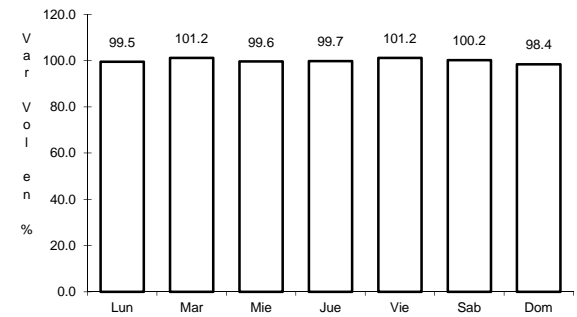
RUTA: MEX



Km: 3.91      Tipo: 1      Sent: 1



Km: 3.91      Tipo: 1      Sent: 2

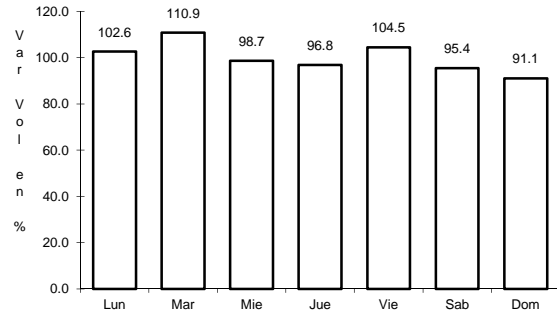


Km: 10.06      Tipo: 1      Sent: 0

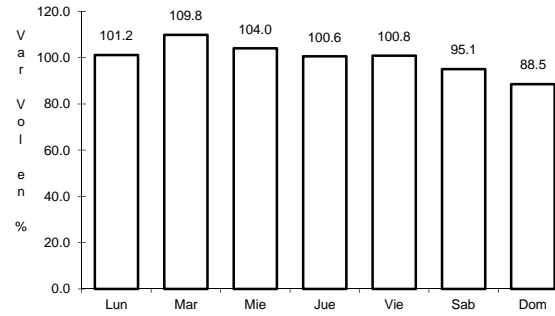
16 CARR: VILLA ALTA - T. C. (PUEBLA - TLAXCALA)

CLAVE: 29566

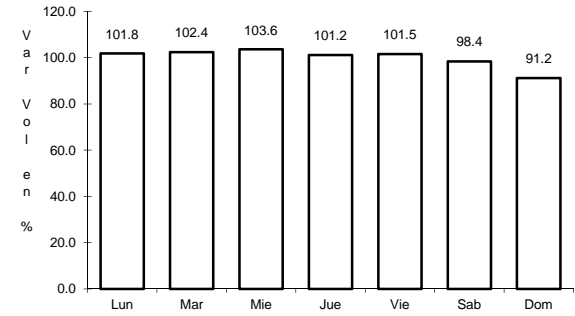
RUTA: MEX



Km: 0.00      Tipo: 3      Sent: 0



Km: 10.50      Tipo: 3      Sent: 0

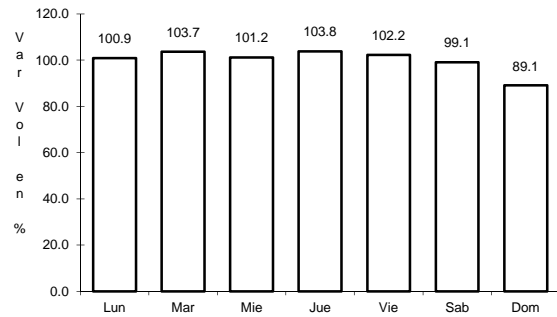


Km: 22.05      Tipo: 1      Sent: 0

17 CARR: AMOZOC - PEROTE (CUOTA)

CLAVE:

RUTA: MEX-140D

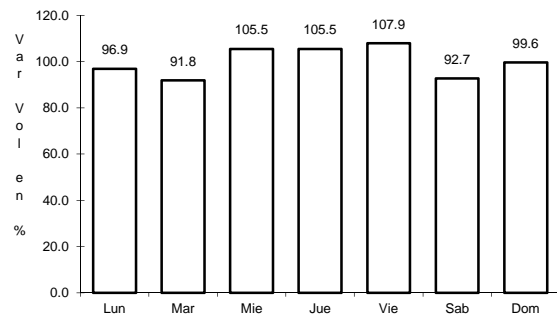


Km: 0.00      Tipo: 3      Sent: 0

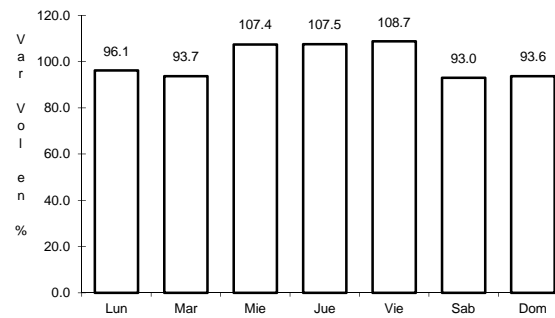
19 CARR: MEXICO - PUEBLA (CUOTA)

CLAVE: 00450

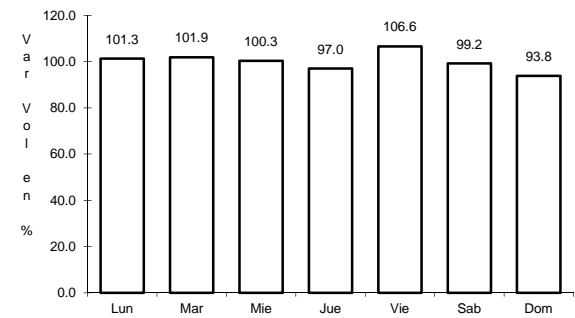
RUTA: MEX-150D



Km: 20.00      Tipo: 3      Sent: 1



Km: 20.00      Tipo: 3      Sent: 2



Km: 90.61      Tipo: 3      Sent: 1

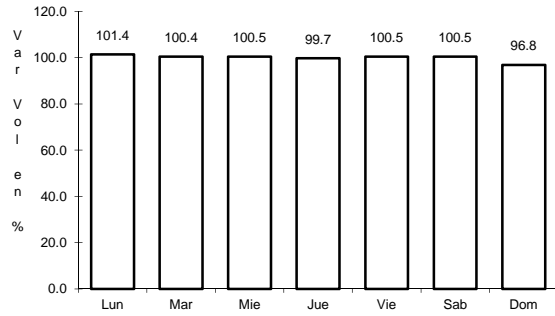




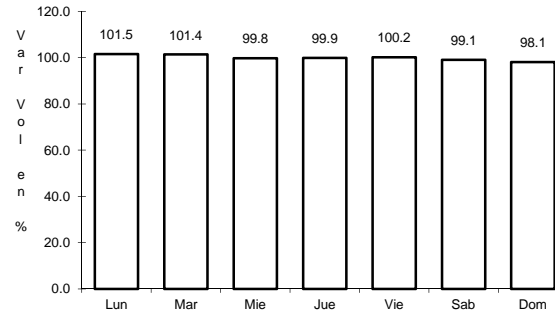
26 CARR: ACOCOTLA - VICENTE GUERRERO

CLAVE: 29560

RUTA: MEX-TLAX



Km: 0.00      Tipo: 3      Sent: 0

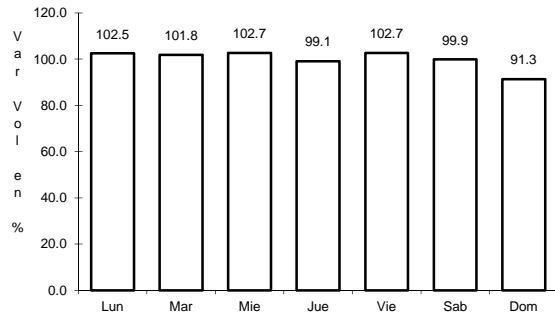


Km: 37.70      Tipo: 1      Sent: 0

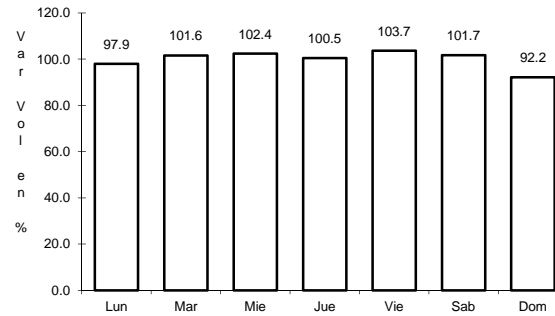
27 CARR: APIZACO - EMILIANO ZAPATA

CLAVE: 29033

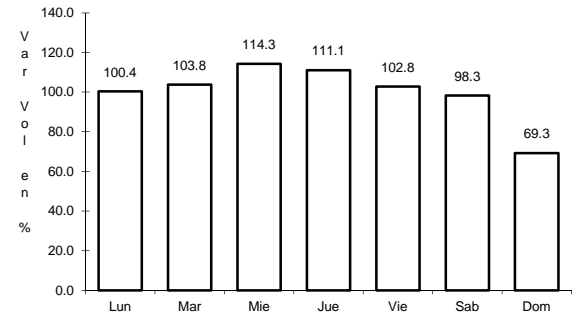
RUTA: TLAX-MEX



Km: 0.00      Tipo: 3      Sent: 0



Km: 16.00      Tipo: 1      Sent: 0

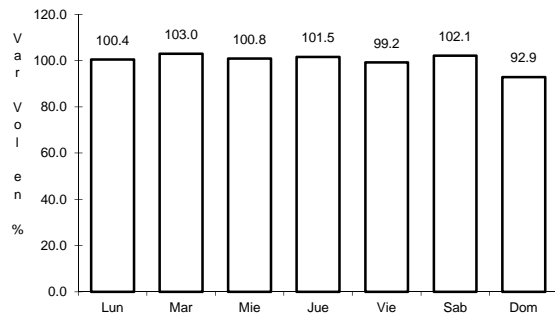


Km: 37.00      Tipo: 1      Sent: 0

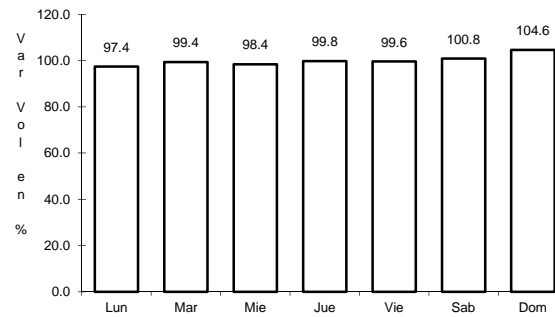
28 CARR: CALPULALPAN - EL OCOTE

CLAVE: 00054

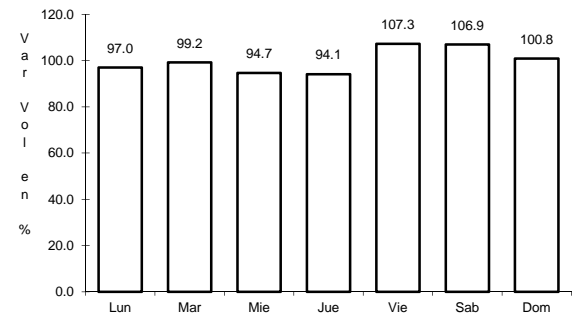
RUTA: MEX-HGO



Km: 0.00      Tipo: 3      Sent: 0



Km: 34.92      Tipo: 3      Sent: 0



Km: 70.44      Tipo: 1      Sent: 0

