

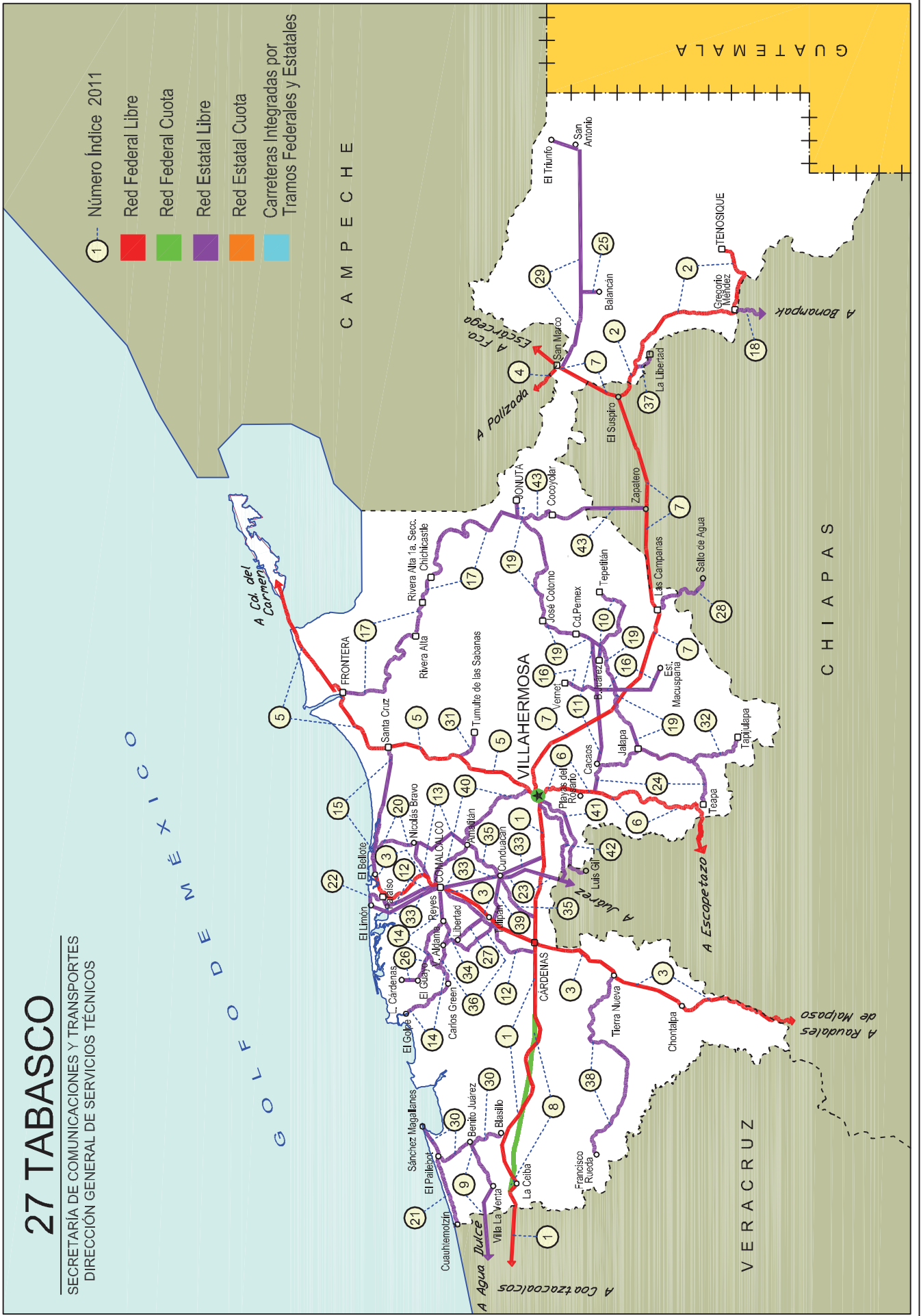
TABASCO

No. INDICE	CARRETERA	RUTA
	<b>---RED FEDERAL LIBRE---</b>	
1	COATZACOALCOS - VILLAHERMOSA	MEX-180
2	EL SUSPIRO - TENOSIQUE	MEX-203
3	MALPASO - EL BELLOTE	MEX-187
4	SAN MARCO - PALIZADA	MEX-217
5	VILLAHERMOSA - CD. DEL CARMEN	MEX-180
6	VILLAHERMOSA - ESCOPETAZO	MEX-195
7	VILLAHERMOSA - FRANCISCO ESCARCEGA	MEX-186
	<b>---RED FEDERAL DE CUOTA---</b>	
8	AGUA DULCE - CARDENAS (CUOTA)	MEX-184D
	<b>---RED ESTATAL LIBRE---</b>	
9	BENITO JUAREZ - AGUA DULCE	TAB-VER
10	BENITO JUAREZ - TEPETITAN	TAB
11	CACAOS - LA GRANJA	TAB
12	CARDENAS - PARAISO	TAB
13	CHICHICAPA - ENT. LA LIBERTAD	TAB
14	COMALCALCO - EL GOLPE	TAB
15	EL BELLOTE - SANTA CRUZ	TAB
16	ESTACION MACUSPANA - VERNET	TAB-041
17	FRONTERA - T. C. (JALAPA - JONUTA)	TAB
18	GREGORIO MENDEZ MAGAÑA - REFORMA DE OCAMPO	CHIS
19	JALAPA - JONUTA	TAB
20	NICOLAS BRAVO - T. C. (EL BELLOTE - SANTA CRUZ)	TAB
21	PAILEBOT - CUAUHEMOTZIN	TAB
22	PARAISO - EL LIMON	TAB
23	PASO DE CUNDUACAN - ESTACION JUAREZ	TAB-CHIS
24	PLAYAS DEL ROSARIO - TEAPA	TAB-001
25	RAMAL A BALANCAN	TAB
26	RAMAL A LAZARO CARDENAS	TAB
27	RAMAL A LIBERTAD	TAB
28	RAMAL A SALTO DEL AGUA	TAB-CHIS
29	RAMAL A SAN ANTONIO	TAB
30	RAMAL A SANCHEZ MAGALLANES	TAB
31	RAMAL A TAMULTE DE LAS SABANAS	TAB
32	RAMAL A TAPIJULAPA	TAB
33	REFORMA - DOS BOCAS	TAB
34	REYES HERNANDEZ - VILLA ALDAMA	TAB
35	SAMARIA - AMATITAN	TAB
36	T. C. (CARDENAS - PARAISO) - CARLOS GREEN	TAB
37	T. C. (EL SUSPIRO - TENOSIQUE) - LA LIBERTAD	CHIS-TAB
38	TIERRA NUEVA - FRANCISCO RUEDA	TAB
39	TULIPAN - CUNDUACAN	TAB
40	VILLAHERMOSA - COMALCALCO	TAB
41	VILLAHERMOSA - LUIS GIL PEREZ	TAB
42	VILLAHERMOSA - T. C. (P. DE CUNDUACAN - ESTACION JUAREZ)	TAB
43	ZAPATERO - T. C. (JALAPA - JONUTA)	CHIS-TAB

# 27 TABASCO

SECRETARÍA DE COMUNICACIONES Y TRANSPORTES  
DIRECCIÓN GENERAL DE SERVICIOS TÉCNICOS

- 1 Número Índice 2011
- Red Federal Libre
- Red Federal Cuota
- Red Estatal Libre
- Red Estatal Cuota
- Carreteras Integradas por Tramos Federales y Estatales





TABASCO

2 CARR: EL SUSPIRO - TENOSIQUE

CLAVE: 00276

RUTA: MEX-203

AÑO: 2010

LUGAR	ESTACION				CLASIFICACION VEHICULAR EN PORCIENTO								COORDENADAS						
	KM	TE	SC	TDPA	A	B	C2	C3	T3S2	T3S3	T3S2R4	OTROS	A	B	C	K'	D	LATITUD	LONGITUD
EMILIANO ZAPATA	8.61	3	0	4933	85.5	4.5	4.3	1.8	2.7	0.4	0.2	0.6	85.5	4.5	10.0	0.072	0.506	17.727889	-91.758083
T. DER. LA LIBERTAD	12.10	3	0	2995	86.7	4.7	3.6	1.7	2.2	0.4	0.3	0.4	86.7	4.7	8.6	0.075	0.501	17.723595	-91.744303
T. IZO. BALANCAN	32.60	1	0	2211	86.4	4.9	3.3	1.8	2.3	0.5	0.2	0.6	86.4	4.9	8.7	0.086	0.503	17.633364	-91.601941
T. IZO. BALANCAN	32.60	3	0	2201	84.5	6.7	3.5	2.0	1.9	0.4	0.3	0.7	84.5	6.7	8.8	0.067	0.505	17.631261	-91.601133
ESTACION ZAPATA	53.00	1	0	2064	87.0	5.8	4.2	1.4	1.1	0.1	0.1	0.3	87.0	5.8	7.2	0.092	0.506	17.459397	-91.598020
ESTACION ZAPATA	53.00	3	0	2519	82.9	8.2	5.3	1.7	1.4	0.1	0.0	0.4	82.9	8.2	8.9	0.081	0.503	17.456009	-91.587230
TENOSIQUE	75.30																		

3 CARR: MALPASO - EL BELLOTE

CLAVE: 00137

RUTA: MEX-187

AÑO: 2010

LUGAR	ESTACION				CLASIFICACION VEHICULAR EN PORCIENTO								COORDENADAS						
	KM	TE	SC	TDPA	A	B	C2	C3	T3S2	T3S3	T3S2R4	OTROS	A	B	C	K'	D	LATITUD	LONGITUD
PRESA MALPASO	0.00																		
LIM. EDOS. TERM. CHIS. PPIA. TAB.	43.99																		
LIM. EDOS. TERM. TAB. PPIA. CHIS.	44.59																		
LIM. EDOS. TERM. CHIS. PPIA. TAB.	45.26																		
LIM. EDOS. TERM. TAB. PPIA. CHIS.	45.63																		
LIM. EDOS. TERM. CHIS. PPIA. TAB.	55.04																		
MACABIL (LA ESTRELLA)	70.12	1	0	2481	84.3	3.4	6.4	2.0	2.2	0.9	0.3	0.5	84.3	3.4	12.3	0.085	0.505	17.624736	-93.500832
ESTACION CHONTALPA	75.69	1	0	4556	83.4	3.7	5.5	2.0	3.6	0.9	0.2	0.7	83.4	3.7	12.9	0.059	0.507	17.659389	-93.482657
ESTACION CHONTALPA	75.69	3	0	4949	84.5	3.8	5.4	1.2	2.1	1.4	0.9	0.7	84.5	3.8	11.7	0.072	0.505	17.674764	-93.476234
T. IZO. FRANCISCO RUEDA	90.49	1	0	3741	85.6	4.0	3.6	1.9	2.7	1.0	0.9	0.3	85.6	4.0	10.4	0.073	0.502	17.787672	-93.439115
T. IZO. FRANCISCO RUEDA	90.49	3	0	6068	84.4	4.9	3.7	1.9	2.8	1.2	0.6	0.5	84.4	4.9	10.7	0.080	0.504	17.792321	-93.436256
HUIMANGUILLO	98.03	1	0	7340	81.9	5.7	2.6	3.4	2.7	1.1	2.4	0.2	81.9	5.7	12.4	0.068	0.507	17.819472	-93.401432
HUIMANGUILLO	98.03	3	0	9505	76.1	4.5	7.6	7.8	2.4	0.9	0.2	0.5	76.1	4.5	19.4	0.071	0.503	17.845532	-93.397406
CARDENAS	117.56	1	0	10537	78.6	3.9	7.0	5.7	2.9	1.4	0.1	0.4	78.6	3.9	17.5	0.071	0.529	17.951421	-93.362384
CARDENAS	117.56	3	0	10401	65.1	5.2	15.0	5.4	5.9	1.4	1.2	0.8	65.1	5.2	29.7	0.076	0.501	18.024507	-93.366820
TULIPAN	134.70	3	0	7584	75.1	4.9	3.5	6.2	5.0	1.7	3.2	0.4	75.1	4.9	20.0	0.061	0.501	18.125666	-93.291571
T. DER. CUNDUACAN	141.70	1	0	7659	74.1	4.2	6.5	4.9	4.8	2.2	2.7	0.6	74.1	4.2	21.7	0.089	0.503	18.139928	-93.271618
T. DER. CUNDUACAN	141.70	3	0	7377	76.2	5.0	3.4	3.9	4.9	3.1	3.0	0.5	76.2	5.0	18.8	0.067	0.501	18.143677	-93.268922
T. DER. JALPA	153.50	1	0	8385	80.3	5.2	3.8	1.0	5.5	1.1	2.7	0.4	80.3	5.2	14.5	0.079	0.502	18.244100	-93.211500
T. DER. JALPA	153.50	3	0	11903	79.4	4.7	3.1	1.4	5.6	1.3	4.0	0.5	79.4	4.7	15.9	0.079	0.500	18.248708	-93.213392
PARAISO	176.85	1	1	9364	81.4	4.9	5.6	0.3	4.7	1.0	1.4	0.7	81.4	4.9	13.7	0.069	0.501	18.377086	-93.221976
PARAISO	176.85	1	2	9402	81.1	4.2	6.2	0.7	4.3	1.1	1.5	0.9	81.1	4.2	14.7	0.067	0.501	18.377086	-93.221976
PARAISO	176.85	3	1	8299	82.5	4.7	4.8	0.2	4.6	1.0	1.7	0.5	82.5	4.7	12.8	0.081	0.500	18.406133	-93.204918

TABASCO

3 CARR: MALPASO - EL BELLOTE

CLAVE: 00137

RUTA: MEX-187

AÑO: 2010

LUGAR	ESTACION				CLASIFICACION VEHICULAR EN PORCIENTO								COORDENADAS						
	KM	TE	SC	TDPA	A	B	C2	C3	T3S2	T3S3	T3S2R4	OTROS	A	B	C	K'	D	LATITUD	LONGITUD
PARAISO	176.85	3	2	8315	83.1	4.3	4.7	0.2	4.5	1.0	1.7	0.5	83.1	4.3	12.6	0.082	0.500	18.406133	-93.204918
CEIBA	182.00	3	0	5951	82.1	4.0	5.3	0.4	4.7	1.0	1.9	0.6	82.1	4.0	13.9	0.079	0.501	18.417129	-93.171318
EL BELLOTE	185.47																		

4 CARR: SAN MARCO - PALIZADA

CLAVE: 00490

RUTA: MEX-217

AÑO: 2010

LUGAR	ESTACION				CLASIFICACION VEHICULAR EN PORCIENTO								COORDENADAS						
	KM	TE	SC	TDPA	A	B	C2	C3	T3S2	T3S3	T3S2R4	OTROS	A	B	C	K'	D	LATITUD	LONGITUD
T. C. VILLAHERMOSA - FRANCISCO ESCARCEGA	0.00	3	0	1286	83.7	4.9	4.2	3.2	1.9	1.0	0.6	0.5	83.7	4.9	11.4	0.081	0.509	17.943113	-91.736030
LIM. EDOS. TERM. TAB. PPIA. CAMP.	1.50																		
T. IZQ. JONUTA	46.20	1	0	635	82.9	8.5	3.7	1.0	1.1	1.4	0.7	0.7	82.9	8.5	8.6	0.080	0.508	18.127230	-92.111284
T. IZQ. JONUTA	46.20	3	0	1097	83.9	9.2	3.0	1.4	0.3	0.6	1.1	0.5	83.9	9.2	6.9	0.077	0.510	18.128818	-92.113016
PALIZADA	68.00																		

5 CARR: VILLAHERMOSA - CD. DEL CARMEN

CLAVE: 00064

RUTA: MEX-180

AÑO: 2010

LUGAR	ESTACION				CLASIFICACION VEHICULAR EN PORCIENTO								COORDENADAS						
	KM	TE	SC	TDPA	A	B	C2	C3	T3S2	T3S3	T3S2R4	OTROS	A	B	C	K'	D	LATITUD	LONGITUD
VILLAHERMOSA	0.00																		
T. IZQ. CD. INDUSTRIAL	4.30	3	1	14231	89.7	2.3	3.2	1.5	1.3	0.6	1.3	0.1	89.7	2.3	8.0	0.069	0.503	18.037154	-92.901536
T. IZQ. CD. INDUSTRIAL	4.30	3	2	14047	89.3	2.4	3.3	1.6	1.3	0.6	1.4	0.1	89.3	2.4	8.3	0.070	0.503	18.037154	-92.901536
MACULTEPEC	18.60	1	0	13228	89.0	2.6	3.3	1.6	1.4	0.6	1.4	0.1	89.0	2.6	8.4	0.072	0.524	18.142286	-92.864539
MACULTEPEC	18.60	3	0	13058	89.3	2.4	3.2	1.6	1.4	0.6	1.4	0.1	89.3	2.4	8.3	0.069	0.503	18.149758	-92.862749
EL ESPINO	33.20	1	0	4797	81.6	0.7	5.4	3.4	4.1	1.2	3.3	0.3	81.6	0.7	17.7	0.079	0.513	18.239454	-92.830011
EL ESPINO	33.20	3	0	5554	80.5	0.8	6.1	3.3	4.3	1.2	3.5	0.3	80.5	0.8	18.7	0.080	0.503	18.255497	-92.831898
T. IZQ. EL BELLOTE	49.67	3	0	5815	80.9	0.7	5.9	3.2	4.4	1.2	3.4	0.3	80.9	0.7	18.4	0.086	0.504	18.395224	-92.798238
FRONTERA	74.59	1	0	7734	80.8	0.8	5.9	3.1	4.4	1.2	3.5	0.3	80.8	0.8	18.4	0.076	0.500	18.513469	-92.660991
FRONTERA	74.59	3	0	3856	81.1	0.8	5.7	3.4	4.2	1.2	3.3	0.3	81.1	0.8	18.1	0.080	0.502	18.541069	-92.633878
T. IZQ. ESCOLLERAS	78.00	3	0	3860	79.9	0.8	6.2	3.3	4.6	1.2	3.7	0.3	79.9	0.8	19.3	0.083	0.506	18.574202	-92.586035
PUENTE SAN PEDRO	96.50	3	0	3756	80.3	0.8	6.0	3.4	4.3	1.2	3.7	0.3	80.3	0.8	18.9	0.086	0.507	18.641359	-92.463339
LIM. EDOS. TERM. TAB. PPIA. CAMP.	99.75																		
NUEVO CAMPECHITO	100.00	1	0	4332	81.2	0.8	5.7	3.3	4.2	1.2	3.3	0.3	81.2	0.8	18.0	0.082	0.501	18.642431	-92.457951
NUEVO PROGRESO	116.57	1	0	3556	73.5	7.0	4.9	3.3	4.7	1.0	5.2	0.4	73.5	7.0	19.5	0.071	0.502	18.626477	-92.325692
PUENTE ZACATAL	162.4102	2	0	4602	73.1	7.0	5.1	3.2	4.9	1.1	5.2	0.4	73.1	7.0	19.9			18.641877	-92.460302
ZACATAL	163.17	1	0	3856	72.6	6.9	5.1	3.2	5.2	1.1	5.5	0.4	72.6	6.9	20.5	0.086	0.500	18.616479	-91.874506

TABASCO

5 CARR: VILLAHERMOSA - CD. DEL CARMEN

CLAVE: 00064

RUTA: MEX-180

AÑO: 2010

LUGAR	ESTACION				CLASIFICACION VEHICULAR EN PORCIENTO								COORDENADAS						
	KM	TE	SC	TDPA	A	B	C2	C3	T3S2	T3S3	T3S2R4	OTROS	A	B	C	K'	D	LATITUD	LONGITUD
CD. DEL CARMEN	167.50																		

6 CARR: VILLAHERMOSA - ESCOPETAZO

CLAVE: 00104

RUTA: MEX-195

AÑO: 2010

LUGAR	ESTACION				CLASIFICACION VEHICULAR EN PORCIENTO								COORDENADAS						
	KM	TE	SC	TDPA	A	B	C2	C3	T3S2	T3S3	T3S2R4	OTROS	A	B	C	K'	D	LATITUD	LONGITUD
VILLAHERMOSA	0.00	3	1	8263	81.2	0.0	8.5	3.8	3.5	1.9	1.0	0.1	81.2	0.0	18.8	0.077	0.504	17.950669	-92.914257
VILLAHERMOSA	0.00	3	2	8218	81.4	0.0	8.5	3.8	3.6	1.8	0.8	0.1	81.4	0.0	18.6	0.076	0.504	17.950677	-92.914239
PARRILLA	10.00	1	1	16698	82.2	0.0	7.8	3.7	3.5	1.8	0.9	0.1	82.2	0.0	17.8	0.077	0.515	17.914519	-92.923001
PARRILLA	10.00	1	2	15742	82.5	0.0	7.8	3.6	3.3	1.9	0.8	0.1	82.5	0.0	17.5	0.074	0.515	17.914513	-92.923000
PARRILLA	10.00	3	1	14887	81.6	0.0	8.2	3.7	3.5	2.0	0.9	0.1	81.6	0.0	18.4	0.063	0.503	17.890878	-92.923323
PARRILLA	10.00	3	2	15084	80.7	0.0	8.8	3.7	3.6	2.1	1.0	0.1	80.7	0.0	19.3	0.064	0.503	17.890893	-92.923305
T. IZQ. SUBTE. GARCIA	20.00	3	0	6977	81.0	0.0	8.5	3.8	3.7	2.0	0.9	0.1	81.0	0.0	19.0	0.073	0.502	17.822306	-92.929466
LA ARENA	44.00	1	0	4795	81.6	0.0	8.4	3.6	3.5	1.9	0.9	0.1	81.6	0.0	18.4	0.068	0.505	17.657604	-92.953734
T. IZQ. TEAPA	54.80	1	0	7340	81.2	0.0	8.3	3.9	3.6	2.0	0.9	0.1	81.2	0.0	18.8	0.065	0.503	17.573374	-92.957683
T. IZQ. TEAPA	54.80	3	0	4648	82.5	0.0	8.0	3.5	3.3	1.8	0.8	0.1	82.5	0.0	17.5	0.085	0.519	17.568451	-92.959721
LIM. EDOS. TERM. TAB. PPIA. CHIS.	61.42																		
PICHUCALCO	76.00	1	0	3216	81.5	0.0	8.3	3.8	3.5	1.9	0.9	0.1	81.5	0.0	18.5	0.066	0.502	17.520338	-93.100887
PICHUCALCO	76.00	3	0	2849	81.9	0.0	8.0	3.7	3.4	2.0	0.9	0.1	81.9	0.0	18.1	0.084	0.500	17.499239	-93.104699
SOLUSUCHIAPA	112.00	1	0	1836	82.2	0.0	8.1	3.5	3.4	1.8	0.9	0.1	82.2	0.0	17.8	0.083	0.501	17.428098	-93.038442
SOLUSUCHIAPA	112.00	3	0	1522	81.3	0.0	8.6	3.8	3.5	1.8	0.9	0.1	81.3	0.0	18.7	0.090	0.505	17.422083	-93.027136
RAYON	146.00	1	0	1464	81.1	0.0	8.6	3.7	3.5	2.0	1.0	0.1	81.1	0.0	18.9	0.087	0.512	17.209031	-93.011894
JITOTOL	197.79	1	0	1319	82.4	0.0	7.8	3.7	3.4	1.7	0.9	0.1	82.4	0.0	17.6	0.085	0.504	17.074011	-92.864792
BOCHIL	211.00	1	0	2300	80.7	0.0	8.7	3.9	3.8	1.9	0.9	0.1	80.7	0.0	19.3	0.060	0.501	16.988534	-92.876200
IXTAPA	247.00	1	0	2497	82.5	0.0	7.8	3.5	3.4	1.9	0.8	0.1	82.5	0.0	17.5	0.068	0.502	16.807537	-92.909699
ESCOPELAZO	259.00	1	0	2478	81.8	0.0	8.4	3.5	3.5	1.9	0.8	0.1	81.8	0.0	18.2	0.070	0.507	16.759600	-92.943797

7 CARR: VILLAHERMOSA - FRANCISCO ESCARCEGA

CLAVE: 00092

RUTA: MEX-186

AÑO: 2010

LUGAR	ESTACION				CLASIFICACION VEHICULAR EN PORCIENTO								COORDENADAS						
	KM	TE	SC	TDPA	A	B	C2	C3	T3S2	T3S3	T3S2R4	OTROS	A	B	C	K'	D	LATITUD	LONGITUD
VILLAHERMOSA	0.00	3	1	9796	76.6	6.5	5.7	3.6	4.0	1.4	1.7	0.5	76.6	6.5	16.9	0.071	0.508	18.000985	-92.890791
VILLAHERMOSA	0.00	3	2	10119	76.5	6.6	5.8	3.4	3.9	1.5	1.8	0.5	76.5	6.6	16.9	0.081	0.508	18.000962	-92.890832
T. IZQ. AEROPUERTO	12.00	1	1	11312	75.9	6.7	5.9	3.6	4.1	1.5	1.8	0.5	75.9	6.7	17.4	0.077	0.513	17.984677	-92.829192
T. IZQ. AEROPUERTO	12.00	1	2	10736	75.5	7.0	6.2	3.4	3.9	1.6	1.9	0.5	75.5	7.0	17.5	0.075	0.513	17.984589	-92.829126

TABASCO

7 CARR: VILLAHERMOSA - FRANCISCO ESCARCEGA

CLAVE: 00092

RUTA: MEX-186

AÑO: 2010

LUGAR	ESTACION				CLASIFICACION VEHICULAR EN PORCIENTO								COORDENADAS						
	KM	TE	SC	TDPA	A	B	C2	C3	T3S2	T3S3	T3S2R4	OTROS	A	B	C	K'	D	LATITUD	LONGITUD
PUENTE GRIJALVA	17.60	2	0	13978	80.4	4.9	4.4	3.2	3.9	1.2	0.5	1.5	80.4	4.9	14.7			17.947556	-92.785240
X. C. CACAOS - LA GRANJA	32.46	1	0	10589	76.8	6.2	6.0	3.3	4.0	1.5	1.7	0.5	76.8	6.2	17.0	0.084	0.500	17.832499	-92.719217
X. C. CACAOS - LA GRANJA	32.46	3	1	4291	76.4	6.4	6.0	3.4	4.0	1.5	1.8	0.5	76.4	6.4	17.2	0.080	0.503	17.822640	-92.713871
X. C. CACAOS - LA GRANJA	32.46	3	2	4341	75.6	6.9	5.8	3.6	4.1	1.6	1.9	0.5	75.6	6.9	17.5	0.082	0.503	17.822645	-92.713860
X. C. JALAPA - JONUTA	40.00	3	0	6757	77.6	0.2	7.1	4.3	6.0	2.0	2.3	0.5	77.6	0.2	22.2	0.075	0.501	17.779879	-92.680278
T. IZQ. MACUSPANA	46.20	1	1	3452	79.0	0.2	6.6	3.8	5.9	1.8	2.2	0.5	79.0	0.2	20.8	0.070	0.513	17.743274	-92.633180
T. IZQ. MACUSPANA	46.20	1	2	3368	78.6	0.2	6.8	4.0	5.9	1.8	2.2	0.5	78.6	0.2	21.2	0.070	0.513	17.743274	-92.633180
T. IZQ. MACUSPANA	46.20	3	0	7849	78.7	0.2	6.5	4.2	5.8	1.8	2.3	0.5	78.7	0.2	21.1	0.063	0.513	17.735839	-92.623605
X. C. ESTACION MACUSPANA - VERNET	54.30	1	0	7356	78.6	0.2	6.7	4.1	6.0	1.8	2.1	0.5	78.6	0.2	21.2	0.079	0.504	17.708483	-92.569934
T. DER. CHIVALITO (EST. PINO SUAREZ)	70.00	1	0	6487	79.2	0.2	6.4	4.0	5.7	1.8	2.2	0.5	79.2	0.2	20.6	0.066	0.569	17.669121	-92.441752
T. DER. CHIVALITO (EST. PINO SUAREZ)	70.00	3	0	7261	78.5	0.2	6.7	4.2	5.8	1.8	2.3	0.5	78.5	0.2	21.3	0.059	0.506	17.667572	-92.436508
T. DER. ESTACION ZOPO	71.00	1	0	6546	78.9	0.2	6.4	4.0	5.9	1.9	2.2	0.5	78.9	0.2	20.9	0.069	0.500	17.672227	-92.415215
T. DER. ESTACION ZOPO	71.00	3	0	7763	80.1	0.2	6.1	4.0	5.3	1.8	2.0	0.5	80.1	0.2	19.7	0.084	0.504	17.675463	-92.410257
LIM. EDOS. TERM. TAB. PPIA. CHIS.	76.90																		
T. IZQ. BONANZA	88.00	1	0	5520	78.4	0.2	6.3	4.4	6.1	1.9	2.2	0.5	78.4	0.2	21.4	0.068	0.506	17.699583	-92.255833
T. IZQ. JONUTA	101.00	1	0	4432	79.3	0.2	6.2	3.9	6.0	1.7	2.2	0.5	79.3	0.2	20.5	0.080	0.503	17.697773	-92.133498
T. IZQ. JONUTA	101.00	3	0	4616	77.9	0.2	6.8	4.4	6.1	1.9	2.2	0.5	77.9	0.2	21.9	0.090	0.515	17.697790	-92.131168
X. C. CATAZAJA - PALENQUE	114.00	1	0	4625	78.5	0.2	6.6	4.2	5.8	1.9	2.3	0.5	78.5	0.2	21.3	0.085	0.503	17.710055	-92.017402
X. C. CATAZAJA - PALENQUE	114.00	3	0	4709	79.5	0.2	6.6	3.9	5.4	1.7	2.2	0.5	79.5	0.2	20.3	0.076	0.504	17.711874	-92.011533
T. DER. EMILIANO ZAPATA	134.70	1	0	4229	78.3	0.2	6.4	4.2	6.2	1.9	2.3	0.5	78.3	0.2	21.5	0.078	0.506	17.771564	-91.834593
T. DER. EMILIANO ZAPATA	134.70	3	0	3812	78.4	0.2	6.9	4.3	5.6	1.8	2.3	0.5	78.4	0.2	21.4	0.079	0.509	17.778449	-91.823833
LIM. EDOS. TERM. CHIS. PPIA. TAB.	140.70																		
PUENTE USUMACINTA	145.20	2	0	3068	61.9	5.2	6.3	5.2	13.2	1.9	1.5	4.8	61.9	5.2	32.9			17.859876	-91.783607
T. IZQ. PALIZADA	154.05	1	0	2734	79.6	0.2	6.3	4.0	5.5	1.8	2.1	0.5	79.6	0.2	20.2	0.075	0.506	17.938910	-91.736358
T. IZQ. PALIZADA	154.05	3	0	2974	78.1	0.2	6.6	4.4	6.0	1.9	2.3	0.5	78.1	0.2	21.7	0.085	0.501	17.942286	-91.733541
LIM. EDOS. TERM. TAB. PPIA. CAMP.	154.60																		
T. DER. CANDELARIA	233.40	1	0	4221	78.6	0.2	6.9	4.0	5.9	1.8	2.1	0.5	78.6	0.2	21.2	0.081	0.502	18.373406	-91.201642
T. DER. FELIPE ANGELES	253.00	1	0	2882	79.7	0.2	6.2	3.9	5.6	1.8	2.1	0.5	79.7	0.2	20.1	0.063	0.502	18.504203	-91.106366
T. IZQ. SABANCUY	274.10	1	0	3251	78.2	0.2	6.9	4.1	5.9	1.9	2.3	0.5	78.2	0.2	21.6	0.086	0.504	18.629412	-90.985892
FRANCISCO ESCARCEGA	297.04	1	0	4650	79.8	0.2	6.4	4.0	5.4	1.7	2.0	0.5	79.8	0.2	20.0	0.060	0.501	18.609265	-90.767310



TABASCO

8 CARR: AGUA DULCE - CARDENAS (CUOTA)

CLAVE:

RUTA: MEX-184D

AÑO: 2010

LUGAR	ESTACION				CLASIFICACION VEHICULAR EN PORCIENTO								COORDENADAS						
	KM	TE	SC	TDPA	A	B	C2	C3	T3S2	T3S3	T3S2R4	OTROS	A	B	C	K'	D	LATITUD	LONGITUD
ENT. LA CEIBA	45.00																		
CASETA DE COBRO LA VENTA	73.20	1	0	7369	65.3	5.3	4.2	4.2	9.5	2.4	8.3	0.8	65.3	5.3	29.4			18.030449	-93.812995
CASETA DE COBRO LA VENTA	73.20	2	0	7465	65.5	5.3	4.2	4.2	9.4	2.4	8.2	0.8	65.5	5.3	29.2			18.029934	-93.813103
CASETA DE COBRO LA VENTA	73.20	3	0	6753	63.9	5.8	4.1	4.2	9.8	2.4	9.0	0.8	63.9	5.8	30.3			18.029934	-93.813103
ENT. CHONTALPA	99.112																		

9 CARR: BENITO JUAREZ - AGUA DULCE

CLAVE: 00202

RUTA: TAB-VER

AÑO: 2010

LUGAR	ESTACION				CLASIFICACION VEHICULAR EN PORCIENTO								COORDENADAS						
	KM	TE	SC	TDPA	A	B	C2	C3	T3S2	T3S3	T3S2R4	OTROS	A	B	C	K'	D	LATITUD	LONGITUD
BENITO JUAREZ	0.00	3	0	1683	85.2	4.4	4.9	1.8	1.9	0.2	0.9	0.7	85.2	4.4	10.4	0.068	0.503	18.168639	-93.915500
LA VENTA	18.00	1	0	2977	85.4	4.5	4.2	1.7	1.7	0.6	1.0	0.9	85.4	4.5	10.1	0.073	0.506	18.111407	-94.038660
LA VENTA	18.00	3	0	3145	81.6	4.8	6.4	3.6	1.4	0.4	1.1	0.7	81.6	4.8	13.6	0.075	0.504	18.113501	-94.050274
LIM. EDOS. TERM. TAB. PPIA. VER.	26.00																		

10 CARR: BENITO JUAREZ - TEPETITAN

CLAVE: 27204

RUTA: TAB

AÑO: 2010

LUGAR	ESTACION				CLASIFICACION VEHICULAR EN PORCIENTO								COORDENADAS						
	KM	TE	SC	TDPA	A	B	C2	C3	T3S2	T3S3	T3S2R4	OTROS	A	B	C	K'	D	LATITUD	LONGITUD
BENITO JUAREZ	0.00																		
X. C. JALAPA - JONUTA	1.50	3	0	3339	89.3	3.3	2.4	0.3	3.0	0.3	0.8	0.6	89.3	3.3	7.4	0.065	0.501	17.824242	-92.513545
LIMBANO BLANDIN	18.50	1	0	941	89.4	3.8	3.2	0.8	0.9	0.7	0.8	0.4	89.4	3.8	6.8	0.064	0.518	17.755138	-92.415503
LIMBANO BLANDIN	18.50	3	0	748	88.0	4.1	3.6	0.8	1.2	1.1	0.7	0.5	88.0	4.1	7.9	0.064	0.501	17.761614	-92.403838
TEPETITAN	20.00	1	0	1810	86.9	4.0	3.3	0.5	3.5	0.9	0.5	0.4	86.9	4.0	9.1	0.090	0.509	17.814067	-92.377171

11 CARR: CACAOS - LA GRANJA

CLAVE: 27002

RUTA: TAB

AÑO: 2010

LUGAR	ESTACION				CLASIFICACION VEHICULAR EN PORCIENTO								COORDENADAS						
	KM	TE	SC	TDPA	A	B	C2	C3	T3S2	T3S3	T3S2R4	OTROS	A	B	C	K'	D	LATITUD	LONGITUD
CACAOS	0.00	3	0	2201	86.5	4.0	2.2	1.9	1.2	2.7	0.7	0.8	86.5	4.0	9.5	0.079	0.511	17.828598	-92.855078
X. C. VILLAHERMOSA - FRANCISCO ESCARCEGA	16.00	3	0	3833	83.7	4.3	5.3	1.0	1.9	2.3	0.9	0.6	83.7	4.3	12.0	0.069	0.501	17.828435	-92.710182
T. C. JALAPA - JONUTA	39.00	1	0	4834	82.0	4.9	5.6	0.9	3.0	1.7	1.2	0.7	82.0	4.9	13.1	0.076	0.506	17.846068	-92.502577

TABASCO

12 CARR: CARDENAS - PARAISO

CLAVE: 27117

RUTA: TAB

AÑO: 2010

LUGAR	ESTACION				CLASIFICACION VEHICULAR EN PORCIENTO								COORDENADAS						
	KM	TE	SC	TDPA	A	B	C2	C3	T3S2	T3S3	T3S2R4	OTROS	A	B	C	K'	D	LATITUD	LONGITUD
T. C. COATZACOALCOS - VILLAHERMOSA	0.00	3	0	5458	89.9	3.3	2.5	3.0	0.2	0.5	0.2	0.4	89.9	3.3	6.8	0.066	0.500	18.007607	-93.382259
T. IZO. EL GOLPE	22.00	1	0	1747	89.8	3.5	2.2	3.2	0.3	0.3	0.2	0.5	89.8	3.5	6.7	0.063	0.501	18.112732	-93.307507
T. IZO. EL GOLPE	22.00	3	0	1774	89.8	2.7	2.8	3.6	0.3	0.0	0.2	0.6	89.8	2.7	7.5	0.079	0.503	18.114138	-93.305864
COMALCALCO	37.00	3	0	5781	87.7	3.4	1.0	1.2	3.9	1.1	1.2	0.5	87.7	3.4	8.9	0.055	0.501	18.284018	-93.216994
PARAISO	52.00	1	0	4839	81.8	2.7	3.6	1.6	5.0	1.3	3.2	0.8	81.8	2.7	15.5	0.067	0.503	18.392050	-93.227945

13 CARR: CHICHICAPA - ENT. LA LIBERTAD

CLAVE: 27100

RUTA: TAB

AÑO: 2010

LUGAR	ESTACION				CLASIFICACION VEHICULAR EN PORCIENTO								COORDENADAS						
	KM	TE	SC	TDPA	A	B	C2	C3	T3S2	T3S3	T3S2R4	OTROS	A	B	C	K'	D	LATITUD	LONGITUD
CHICHICAPA	0.00	3	0	2388	79.7	6.6	10.1	0.2	1.6	0.3	0.5	1.0	79.7	6.6	13.7	0.091	0.508	18.277395	-93.178642
NICOLAS BRAVO	10.00	3	0	2574	78.9	6.4	10.3	0.5	1.5	0.8	0.8	0.8	78.9	6.4	14.7	0.091	0.507	18.316030	-93.096387
ENT. LA LIBERTAD	18.00	1	0	3023	77.5	6.3	10.2	0.7	2.6	0.7	1.0	1.0	77.5	6.3	16.2	0.075	0.505	18.296811	-93.132251

14 CARR: COMALCALCO - EL GOLPE

CLAVE: 27102

RUTA: TAB

AÑO: 2010

LUGAR	ESTACION				CLASIFICACION VEHICULAR EN PORCIENTO								COORDENADAS						
	KM	TE	SC	TDPA	A	B	C2	C3	T3S2	T3S3	T3S2R4	OTROS	A	B	C	K'	D	LATITUD	LONGITUD
T. C. MALPASO - BELLOTE	0.00																		
COMALCALCO	0.00	3	0	10288	81.3	3.2	3.8	0.5	5.8	1.9	2.7	0.8	81.3	3.2	15.5	0.070	0.501	18.247488	-93.244503
TECOLUTILLA	15.00	1	0	4387	85.8	4.0	3.3	0.7	4.3	0.3	1.0	0.6	85.8	4.0	10.2	0.074	0.514	18.268084	-93.314939
TECOLUTILLA	15.00	3	0	3683	86.7	4.1	3.5	0.7	3.3	0.2	1.0	0.5	86.7	4.1	9.2	0.075	0.501	18.286765	-93.344205
T. DER. LAZARO CARDENAS	20.00	3	0	1728	83.7	3.9	3.5	1.4	3.3	2.1	1.1	1.0	83.7	3.9	12.4	0.076	0.505	18.281105	-93.382265
CARLOS GREEN	24.00	3	0	2569	87.3	3.0	2.8	0.5	4.1	0.7	0.9	0.7	87.3	3.0	9.7	0.072	0.501	18.232724	-93.459173
EL GOLPE	34.00	1	0	912	87.4	3.0	2.9	0.8	3.8	0.8	0.7	0.6	87.4	3.0	9.6	0.087	0.503	18.334793	-93.537127

15 CARR: EL BELLOTE - SANTA CRUZ

CLAVE: 27105

RUTA: TAB

AÑO: 2010

LUGAR	ESTACION				CLASIFICACION VEHICULAR EN PORCIENTO								COORDENADAS						
	KM	TE	SC	TDPA	A	B	C2	C3	T3S2	T3S3	T3S2R4	OTROS	A	B	C	K'	D	LATITUD	LONGITUD
BELLOTE	0.00	3	0	3164	87.4	3.5	2.9	1.1	2.4	1.4	1.0	0.3	87.4	3.5	9.1	0.074	0.506	18.426536	-93.123324
T. DER. CHICHICAPA	8.00	3	0	2596	86.4	3.6	3.1	1.0	2.9	1.2	1.1	0.7	86.4	3.6	10.0	0.077	0.505	18.424056	-93.072342
IGNACIO ALLENDE	35.00	1	0	2551	81.0	3.0	5.6	0.4	6.2	1.5	1.6	0.7	81.0	3.0	16.0	0.069	0.512	18.384448	-92.855239
IGNACIO ALLENDE	35.00	3	0	2882	81.2	3.1	5.8	1.0	5.5	0.5	2.2	0.7	81.2	3.1	15.7	0.092	0.504	18.382580	-92.824565
SANTA CRUZ	40.00	1	0	2417	80.9	4.5	5.7	0.5	5.5	0.6	1.8	0.5	80.9	4.5	14.6	0.077	0.509	18.387496	-92.803138

TABASCO

16 CARR: ESTACION MACUSPANA - VERNET

CLAVE: 27091

RUTA: TAB-041

AÑO: 2010

LUGAR	ESTACION				CLASIFICACION VEHICULAR EN PORCIENTO								COORDENADAS						
	KM	TE	SC	TDPA	A	B	C2	C3	T3S2	T3S3	T3S2R4	OTROS	A	B	C	K'	D	LATITUD	LONGITUD
ESTACION MACUSPANA	0.00																		
X. C. VILLAHERMOSA - FRANCISCO ESCARCEGA	11.00	1	0	1477	83.9	4.8	3.9	4.1	0.3	1.2	1.2	0.6	83.9	4.8	11.3	0.074	0.505	17.704349	-92.569871
X. C. VILLAHERMOSA - FRANCISCO ESCARCEGA	11.00	3	0	1746	83.8	6.9	5.2	0.7	2.1	0.0	0.8	0.5	83.8	6.9	9.3	0.085	0.504	17.710899	-92.568801
BELEM	20.50	1	1	4165	86.0	5.1	4.5	0.8	2.4	0.1	0.5	0.6	86.0	5.1	8.9	0.077	0.502	17.775206	-92.607064
BELEM	20.50	1	2	4115	86.2	4.9	4.8	0.9	2.0	0.4	0.4	0.4	86.2	4.9	8.9	0.078	0.502	17.775206	-92.607064
BELEM	20.50	3	0	2388	84.8	5.0	5.1	1.4	2.1	0.5	0.5	0.6	84.8	5.0	10.2	0.079	0.510	17.793937	-92.607075
X. C. CACAOS - LA GRANJA	25.50	3	0	1657	85.6	5.2	4.3	0.6	2.7	0.0	1.0	0.6	85.6	5.2	9.2	0.086	0.503	17.839214	-92.606763
VERNET	32.50	1	0	2181	85.7	5.4	4.2	0.7	2.5	0.3	0.5	0.7	85.7	5.4	8.9	0.079	0.528	17.916578	-92.598295

17 CARR: FRONTERA - T. C. (JALAPA - JONUTA)

CLAVE: 27081

RUTA: TAB

AÑO: 2010

LUGAR	ESTACION				CLASIFICACION VEHICULAR EN PORCIENTO								COORDENADAS						
	KM	TE	SC	TDPA	A	B	C2	C3	T3S2	T3S3	T3S2R4	OTROS	A	B	C	K'	D	LATITUD	LONGITUD
FRONTERA	0.00																		
X. C. VILLAHERMOSA - CD. DEL CARMEN	1.00	3	0	957	85.8	5.2	2.0	3.6	1.0	1.2	0.6	0.6	85.8	5.2	9.0	0.069	0.509	18.511648	-92.649290
T. C. JALAPA - JONUTA	123.00	1	0	1845	85.8	5.1	2.1	3.8	1.3	0.8	0.8	0.3	85.8	5.1	9.1	0.070	0.506	18.103094	-92.175739

18 CARR: GREGORIO MENDEZ MAGAÑA - REFORMA DE OCAMPO

CLAVE: 00103

RUTA: CHIS

AÑO: 2010

LUGAR	ESTACION				CLASIFICACION VEHICULAR EN PORCIENTO								COORDENADAS						
	KM	TE	SC	TDPA	A	B	C2	C3	T3S2	T3S3	T3S2R4	OTROS	A	B	C	K'	D	LATITUD	LONGITUD
GREGORIO MENDEZ MAGAÑA	0.00	3	0	814	83.9	4.8	3.9	4.1	0.3	1.2	1.2	0.6	83.9	4.8	11.3	0.068	0.505	17.447329	-91.595957
LIM. EDOS. TERM. TAB. PPIA. CHIS.	3.00																		
T. C. BENEMERITO DE LAS AMERICAS - PALENQUE	21.00	1	0	1792	84.3	4.7	4.0	0.0	4.5	1.4	0.8	0.3	84.3	4.7	11.0	0.069	0.502	17.322031	-91.694062
REFORMA DE OCAMPO	22.00																		

19 CARR: JALAPA - JONUTA

CLAVE: 27107

RUTA: TAB

AÑO: 2010

LUGAR	ESTACION				CLASIFICACION VEHICULAR EN PORCIENTO								COORDENADAS						
	KM	TE	SC	TDPA	A	B	C2	C3	T3S2	T3S3	T3S2R4	OTROS	A	B	C	K'	D	LATITUD	LONGITUD
JALAPA	0.00	3	0	2621	86.1	5.1	5.4	0.2	1.8	0.3	0.3	0.8	86.1	5.1	8.8	0.092	0.526	17.721964	-92.805721
X. C. VILLAHERMOSA - FRANCISCO ESCARCEGA	15.00	1	0	1914	86.1	5.7	4.6	1.6	1.2	0.0	0.1	0.7	86.1	5.7	8.2	0.068	0.513	17.780744	-92.684877
X. C. VILLAHERMOSA - FRANCISCO ESCARCEGA	15.00	3	0	1719	86.2	5.8	4.6	0.5	1.4	0.4	0.6	0.5	86.2	5.8	8.0	0.066	0.503	17.782123	-92.680090
BELEM	24.00	1	0	1368	86.2	4.6	5.3	0.9	1.4	0.4	0.1	1.1	86.2	4.6	9.2	0.061	0.504	17.782222	-92.620438
T. IZQ. CACAOS	39.00	1	0	3412	84.6	5.1	4.9	1.1	3.0	0.4	0.3	0.6	84.6	5.1	10.3	0.070	0.505	17.844383	-92.501488

TABASCO

19 CARR: JALAPA - JONUTA

CLAVE: 27107

RUTA: TAB

AÑO: 2010

LUGAR	ESTACION				CLASIFICACION VEHICULAR EN PORCIENTO								COORDENADAS						
	KM	TE	SC	TDPA	A	B	C2	C3	T3S2	T3S3	T3S2R4	OTROS	A	B	C	K'	D	LATITUD	LONGITUD
CD. PEMEX	43.00	1	1	5402	83.9	5.3	4.9	0.3	3.8	0.9	0.4	0.5	83.9	5.3	10.8	0.075	0.502	17.878975	-92.484734
CD. PEMEX	43.00	1	2	5368	83.8	5.4	4.9	0.5	3.9	0.5	0.5	0.5	83.8	5.4	10.8	0.078	0.502	17.878975	-92.484734
CD. PEMEX	43.00	3	0	3588	85.6	5.3	5.2	0.2	2.7	0.0	0.3	0.7	85.6	5.3	9.1	0.065	0.502	17.897591	-92.482760
JONUTA	97.50	1	0	2151	88.8	4.5	2.3	1.6	1.1	0.7	0.6	0.4	88.8	4.5	6.7	0.079	0.504	18.097407	-92.147558

20 CARR: NICOLAS BRAVO - T. C. (EL BELLOTE - SANTA CRUZ)

CLAVE: 27010

RUTA: TAB

AÑO: 2010

LUGAR	ESTACION				CLASIFICACION VEHICULAR EN PORCIENTO								COORDENADAS						
	KM	TE	SC	TDPA	A	B	C2	C3	T3S2	T3S3	T3S2R4	OTROS	A	B	C	K'	D	LATITUD	LONGITUD
NICOLAS BRAVO	0.00	3	0	1278	82.2	3.6	3.6	3.6	4.6	0.9	0.6	0.9	82.2	3.6	14.2	0.075	0.508	18.293475	-93.145229
T. C. BELLOTE - SANTA CRUZ	22.00	1	0	1319	82.6	3.1	3.9	4.0	4.4	0.8	0.4	0.8	82.6	3.1	14.3	0.092	0.513	18.425288	-93.076116

21 CARR: PAILEBOT - CUAUHTEMOTZIN

CLAVE: 27112

RUTA: TAB

AÑO: 2010

LUGAR	ESTACION				CLASIFICACION VEHICULAR EN PORCIENTO								COORDENADAS						
	KM	TE	SC	TDPA	A	B	C2	C3	T3S2	T3S3	T3S2R4	OTROS	A	B	C	K'	D	LATITUD	LONGITUD
PAILEBOT	0.00	3	0	933	88.7	6.1	1.8	0.9	0.7	0.7	0.4	0.7	88.7	6.1	5.2	0.086	0.508	18.258500	-93.950639
CUAUHTEMOTZIN	23.00	1	0	425	89.1	6.0	1.8	1.0	0.4	0.8	0.3	0.6	89.1	6.0	4.9	0.089	0.507	18.205583	-94.120417

22 CARR: PARAISO - EL LIMON

CLAVE: 27108

RUTA: TAB

AÑO: 2010

LUGAR	ESTACION				CLASIFICACION VEHICULAR EN PORCIENTO								COORDENADAS						
	KM	TE	SC	TDPA	A	B	C2	C3	T3S2	T3S3	T3S2R4	OTROS	A	B	C	K'	D	LATITUD	LONGITUD
PARAISO	0.00	3	0	5271	74.4	4.3	3.4	1.3	6.4	6.6	2.7	0.9	74.4	4.3	21.3	0.085	0.504	18.400497	-93.217647
LIMON	6.00	1	0	6924	75.7	4.1	3.3	1.2	5.8	5.5	3.5	0.9	75.7	4.1	20.2	0.076	0.510	18.405102	-93.215808

23 CARR: PASO DE CUNDUACAN - ESTACION JUAREZ

CLAVE: 00588

RUTA: TAB-CHIS

AÑO: 2010

LUGAR	ESTACION				CLASIFICACION VEHICULAR EN PORCIENTO								COORDENADAS						
	KM	TE	SC	TDPA	A	B	C2	C3	T3S2	T3S3	T3S2R4	OTROS	A	B	C	K'	D	LATITUD	LONGITUD
PASO DE CUNDUACAN	0.00	3	0	6851	79.3	3.6	6.9	1.5	5.4	1.5	1.3	0.5	79.3	3.6	17.1	0.072	0.506	17.961503	-93.138004
LIM. EDOS. TERM. TAB. PPIA. CHIS.	9.00																		
SANTA TERESA 2° SECC.	18.00	3	0	3233	85.1	5.4	2.1	2.1	1.5	1.9	1.2	0.7	85.1	5.4	9.5	0.077	0.501	17.768516	-93.169579
ESTACION JUAREZ	57.80	1	0	2776	84.2	5.5	2.7	1.9	1.5	2.2	0.8	1.2	84.2	5.5	10.3	0.082	0.521	17.611176	-93.173270

TABASCO

24 CARR: PLAYAS DEL ROSARIO - TEAPA

CLAVE: 27203

RUTA: TAB-001

AÑO: 2010

LUGAR	ESTACION				CLASIFICACION VEHICULAR EN PORCIENTO								COORDENADAS						
	KM	TE	SC	TDPA	A	B	C2	C3	T3S2	T3S3	T3S2R4	OTROS	A	B	C	K'	D	LATITUD	LONGITUD
T. C. VILLAHERMOSA - ESCOPETAZO	0.00	3	0	5068	81.3	6.1	2.9	2.7	3.3	2.3	0.7	0.7	81.3	6.1	12.6	0.073	0.506	17.838374	-92.918338
CACAOS	7.00	1	0	4244	87.0	3.5	2.0	1.6	2.7	0.9	1.6	0.7	87.0	3.5	9.5	0.069	0.501	17.826313	-92.859484
CACAOS	7.00	3	0	3596	86.7	3.6	1.9	1.7	3.1	0.8	1.3	0.9	86.7	3.6	9.7	0.063	0.507	17.824452	-92.849708
JALAPA	23.00	1	0	4273	87.0	4.2	1.4	0.6	2.9	1.9	1.5	0.5	87.0	4.2	8.8	0.075	0.505	17.730709	-92.815766
JALAPA	23.00	3	0	3459	86.0	4.1	1.6	1.4	3.5	1.5	1.0	0.9	86.0	4.1	9.9	0.075	0.506	17.709578	-92.807579
T. IZQ. TACOTALPA	39.00	1	0	2471	85.4	4.2	2.6	2.6	2.0	1.2	1.2	0.8	85.4	4.2	10.4	0.087	0.503	17.594700	-92.833088
T. IZQ. TACOTALPA	39.00	3	0	3195	86.7	3.1	2.3	1.3	3.4	1.6	0.8	0.8	86.7	3.1	10.2	0.067	0.505	17.592421	-92.834620
TEAPA	54.00	1	0	4274	87.6	3.3	2.0	1.5	2.9	1.1	0.8	0.8	87.6	3.3	9.1	0.077	0.504	17.551488	-92.944346

25 CARR: RAMAL A BALANCAN

CLAVE: 27078

RUTA: TAB

AÑO: 2010

LUGAR	ESTACION				CLASIFICACION VEHICULAR EN PORCIENTO								COORDENADAS						
	KM	TE	SC	TDPA	A	B	C2	C3	T3S2	T3S3	T3S2R4	OTROS	A	B	C	K'	D	LATITUD	LONGITUD
T. C. EL SUSPIRO - TENOSIQUE	0.00	3	0	1578	81.7	5.4	4.4	1.3	1.4	3.6	1.4	0.8	81.7	5.4	12.9	0.067	0.503	17.632968	-91.600286
BALANCAN	24.00	1	0	1908	82.2	4.9	5.1	1.4	1.1	3.0	1.7	0.6	82.2	4.9	12.9	0.078	0.502	17.830339	-91.531141

26 CARR: RAMAL A LAZARO CARDENAS

CLAVE: 27208

RUTA: TAB

AÑO: 2010

LUGAR	ESTACION				CLASIFICACION VEHICULAR EN PORCIENTO								COORDENADAS						
	KM	TE	SC	TDPA	A	B	C2	C3	T3S2	T3S3	T3S2R4	OTROS	A	B	C	K'	D	LATITUD	LONGITUD
T. C. COMALCALCO - EL GOLPE	0.00	3	0	1652	84.1	4.1	2.4	3.2	3.0	1.3	1.5	0.4	84.1	4.1	11.8	0.076	0.501	18.284727	-93.382069
LAZARO CARDENAS	14.00	1	0	1475	84.8	4.9	2.1	3.1	2.7	1.1	1.0	0.3	84.8	4.9	10.3	0.086	0.511	18.330815	-93.438811

27 CARR: RAMAL A LIBERTAD

CLAVE: 27205

RUTA: TAB

AÑO: 2010

LUGAR	ESTACION				CLASIFICACION VEHICULAR EN PORCIENTO								COORDENADAS						
	KM	TE	SC	TDPA	A	B	C2	C3	T3S2	T3S3	T3S2R4	OTROS	A	B	C	K'	D	LATITUD	LONGITUD
T. C. CARDENAS - PARAISO	0.00	3	0	4013	88.5	3.8	2.4	2.3	1.6	0.3	0.6	0.5	88.5	3.8	7.7	0.078	0.501	18.115194	-93.307883
LIBERTAD	8.50	1	0	3169	89.5	3.0	2.6	1.9	1.6	0.4	0.5	0.5	89.5	3.0	7.5	0.072	0.501	18.174012	-93.359559

28 CARR: RAMAL A SALTO DEL AGUA

CLAVE: 00069

RUTA: TAB-CHIS

AÑO: 2010

LUGAR	ESTACION				CLASIFICACION VEHICULAR EN PORCIENTO								COORDENADAS						
	KM	TE	SC	TDPA	A	B	C2	C3	T3S2	T3S3	T3S2R4	OTROS	A	B	C	K'	D	LATITUD	LONGITUD
T. C. VILLAHERMOSA - FRANCISCO ESCARCEGA	0.00	3	0	825	84.8	3.8	4.0	3.8	0.2	0.3	2.0	1.1	84.8	3.8	11.4	0.088	0.518	17.672135	-92.413434

TABASCO

28 CARR: RAMAL A SALTO DEL AGUA

CLAVE: 00069

RUTA: TAB-CHIS

AÑO: 2010

LUGAR	ESTACION				CLASIFICACION VEHICULAR EN PORCIENTO								COORDENADAS						
	KM	TE	SC	TDPA	A	B	C2	C3	T3S2	T3S3	T3S2R4	OTROS	A	B	C	K'	D	LATITUD	LONGITUD
LIM. EDOS. TERM. TAB. PPIA. CHIS.	12.00																		
SALTO DEL AGUA	17.00	1	0	872	85.8	3.9	3.7	2.4	1.3	1.2	1.1	0.6	85.8	3.9	10.3	0.107	0.518	17.559271	-92.353806

29 CARR: RAMAL A SAN ANTONIO

CLAVE: 27003

RUTA: TAB

AÑO: 2010

LUGAR	ESTACION				CLASIFICACION VEHICULAR EN PORCIENTO								COORDENADAS						
	KM	TE	SC	TDPA	A	B	C2	C3	T3S2	T3S3	T3S2R4	OTROS	A	B	C	K'	D	LATITUD	LONGITUD
T. C. VILLAHERMOSA - FRANCISCO ESCARCEGA	0.00	3	0	522	81.6	3.4	5.2	1.6	2.7	2.7	2.2	0.6	81.6	3.4	15.0	0.061	0.528	17.928280	-91.742249
T. DER. BALANCAN	24.00	1	0	906	80.2	3.1	7.5	1.1	2.6	2.6	1.9	1.0	80.2	3.1	16.7	0.075	0.508	17.872006	-91.535195
T. DER. BALANCAN	24.00	3	0	1691	80.8	5.3	6.2	1.7	1.4	2.1	1.8	0.7	80.8	5.3	13.9	0.098	0.508	17.872010	-91.529147
EL TRIUNFO	72.00																		

30 CARR: RAMAL A SANCHEZ MAGALLANES

CLAVE: 27016

RUTA: TAB

AÑO: 2010

LUGAR	ESTACION				CLASIFICACION VEHICULAR EN PORCIENTO								COORDENADAS						
	KM	TE	SC	TDPA	A	B	C2	C3	T3S2	T3S3	T3S2R4	OTROS	A	B	C	K'	D	LATITUD	LONGITUD
T. C. COATZACOALCOS - VILLAHERMOSA	0.00	3	0	1536	86.5	6.5	3.1	1.7	0.7	0.4	0.3	0.8	86.5	6.5	7.0	0.086	0.506	18.078437	-93.879107
CAMPO MAGALLANES	13.00	1	0	1284	82.9	4.3	5.4	3.5	1.4	1.4	0.3	0.8	82.9	4.3	12.8	0.097	0.504	18.159268	-93.908675
CAMPO MAGALLANES	13.00	3	0	1708	82.0	3.4	5.7	5.9	1.6	0.9	0.2	0.3	82.0	3.4	14.6	0.084	0.501	18.181410	-93.912159
SANCHEZ MAGALLANES	33.00	1	0	1229	87.2	3.1	2.6	3.4	1.6	0.4	1.0	0.7	87.2	3.1	9.7	0.098	0.503	18.283235	-93.881755

31 CARR: RAMAL A TAMULTE DE LAS SABANAS

CLAVE: 27080

RUTA: TAB

AÑO: 2010

LUGAR	ESTACION				CLASIFICACION VEHICULAR EN PORCIENTO								COORDENADAS						
	KM	TE	SC	TDPA	A	B	C2	C3	T3S2	T3S3	T3S2R4	OTROS	A	B	C	K'	D	LATITUD	LONGITUD
T. C. VILLAHERMOSA - CD. DEL CARMEN	0.00	3	0	2508	90.8	2.7	2.8	0.4	1.8	0.3	0.4	0.8	90.8	2.7	6.5	0.083	0.504	18.199596	-92.823246
TAMULTE DE LAS SABANAS	7.00																		

32 CARR: RAMAL A TAPIJULAPA

CLAVE: 27200

RUTA: TAB

AÑO: 2010

LUGAR	ESTACION				CLASIFICACION VEHICULAR EN PORCIENTO								COORDENADAS						
	KM	TE	SC	TDPA	A	B	C2	C3	T3S2	T3S3	T3S2R4	OTROS	A	B	C	K'	D	LATITUD	LONGITUD
T. C. PLAYAS DEL ROSARIO - TEAPA	0.00	3	0	2540	84.9	3.8	3.9	1.3	3.3	1.3	0.6	0.9	84.9	3.8	11.3	0.094	0.507	17.576394	-92.837212
TAPIJULAPA	20.00	1	0	1570	83.3	4.1	4.8	1.9	3.8	1.3	0.3	0.5	83.3	4.1	12.6	0.089	0.508	17.457890	-92.785689

TABASCO

33 CARR: REFORMA - DOS BOCAS

CLAVE:

RUTA: TAB

AÑO: 2010

LUGAR	ESTACION				CLASIFICACION VEHICULAR EN PORCIENTO								COORDENADAS						
	KM	TE	SC	TDPA	A	B	C2	C3	T3S2	T3S3	T3S2R4	OTROS	A	B	C	K'	D	LATITUD	LONGITUD
REFORMA	0.00	3	0	12580	79.3	3.5	6.7	1.5	4.2	1.5	3.0	0.3	79.3	3.5	17.2	0.071	0.502	17.975122	-93.128967
DOS BOCAS	53.00	1	0	7482	81.7	4.0	2.9	1.6	3.6	2.8	3.2	0.2	81.7	4.0	14.3	0.067	0.502	18.425630	-93.208864

34 CARR: REYES HERNANDEZ - VILLA ALDAMA

CLAVE: 27119

RUTA: TAB

AÑO: 2010

LUGAR	ESTACION				CLASIFICACION VEHICULAR EN PORCIENTO								COORDENADAS						
	KM	TE	SC	TDPA	A	B	C2	C3	T3S2	T3S3	T3S2R4	OTROS	A	B	C	K'	D	LATITUD	LONGITUD
REYES HERNANDEZ	0.00	3	0	2823	81.5	5.0	3.2	0.2	5.2	1.2	3.1	0.6	81.5	5.0	13.5	0.085	0.504	18.243313	-93.258219
T. C. (CARDENAS - PARAISO) - CARLOS GREEN	9.00	1	0	2615	81.4	4.8	3.1	0.6	5.0	1.1	3.2	0.8	81.4	4.8	13.8	0.098	0.508	18.236790	-93.340258

35 CARR: SAMARIA - AMATITAN

CLAVE: 27114

RUTA: TAB

AÑO: 2010

LUGAR	ESTACION				CLASIFICACION VEHICULAR EN PORCIENTO								COORDENADAS						
	KM	TE	SC	TDPA	A	B	C2	C3	T3S2	T3S3	T3S2R4	OTROS	A	B	C	K'	D	LATITUD	LONGITUD
T. C. COATZACOALCOS - VILLAHERMOSA	0.00	3	0	3485	81.9	3.3	6.6	1.7	2.8	1.8	1.3	0.6	81.9	3.3	14.8	0.068	0.509	18.004532	-93.274190
CUNDUACAN	17.00	1	0	4346	83.9	4.2	3.6	1.4	4.3	1.1	1.0	0.5	83.9	4.2	11.9	0.090	0.505	18.054461	-93.192157
CUNDUACAN	17.00	3	0	3243	82.0	4.9	4.1	1.3	4.7	1.2	1.1	0.7	82.0	4.9	13.1	0.094	0.505	18.079929	-93.170136
AMATITAN	31.40	1	0	4778	82.1	5.7	2.5	2.3	4.4	1.0	1.5	0.5	82.1	5.7	12.2	0.064	0.515	18.171117	-93.087595

36 CARR: T. C. (CARDENAS - PARAISO) - CARLOS GREEN

CLAVE: 27111

RUTA: TAB

AÑO: 2010

LUGAR	ESTACION				CLASIFICACION VEHICULAR EN PORCIENTO								COORDENADAS						
	KM	TE	SC	TDPA	A	B	C2	C3	T3S2	T3S3	T3S2R4	OTROS	A	B	C	K'	D	LATITUD	LONGITUD
T. C. MALPASO - EL BELLOTE	0.00																		
T. C. CARDENAS - PARAISO	0.00	3	0	2710	90.2	3.3	1.6	1.1	1.3	0.4	1.2	0.9	90.2	3.3	6.5	0.080	0.503	18.108339	-93.321504
T. DER. REYES HERNANDEZ	12.50	3	0	4149	81.5	4.2	3.4	8.2	1.3	0.1	1.0	0.3	81.5	4.2	14.3	0.081	0.503	18.241577	-93.362331
CARLOS GREEN	15.70	1	0	1662	85.4	5.4	2.2	1.8	1.4	1.9	1.6	0.3	85.4	5.4	9.2	0.092	0.501	18.233156	-93.441820

37 CARR: T. C. (EL SUSPIRO - TENOSIQUE) - LA LIBERTAD

CLAVE: 00062

RUTA: CHIS-TAB

AÑO: 2010

LUGAR	ESTACION				CLASIFICACION VEHICULAR EN PORCIENTO								COORDENADAS						
	KM	TE	SC	TDPA	A	B	C2	C3	T3S2	T3S3	T3S2R4	OTROS	A	B	C	K'	D	LATITUD	LONGITUD
T. C. EL SUSPIRO - TENOSIQUE	0.00	3	0	1797	81.3	5.4	1.8	2.8	6.4	1.8	0.2	0.3	81.3	5.4	13.3	0.082	0.502	17.722150	-91.744674
LIM. EDOS. TERM. TAB. PPIA. CHIS.	8.00																		
LA LIBERTAD	10.00	1	0	1365	77.8	6.9	3.7	2.6	4.4	3.3	1.1	0.2	77.8	6.9	15.3	0.102	0.504	17.690541	-91.724694

TABASCO

38 CARR: TIERRA NUEVA - FRANCISCO RUEDA

CLAVE: 27110

RUTA: TAB

AÑO: 2010

LUGAR	ESTACION				CLASIFICACION VEHICULAR EN PORCIENTO								COORDENADAS						
	KM	TE	SC	TDPA	A	B	C2	C3	T3S2	T3S3	T3S2R4	OTROS	A	B	C	K'	D	LATITUD	LONGITUD
TIERRA NUEVA	0.00	3	0	2010	88.0	4.3	3.5	1.6	1.2	0.7	0.1	0.6	88.0	4.3	7.7	0.075	0.501	17.799591	-93.452356
OCUAPAN	14.00	3	0	789	90.8	3.0	3.9	0.6	0.1	1.6	0.0	0.0	90.8	3.0	6.2	0.093	0.510	17.829634	-93.511051
T. IZO. ENCOMENDADERO	31.00	1	0	831	83.3	5.6	7.7	1.3	0.2	0.8	0.6	0.5	83.3	5.6	11.1	0.091	0.510	17.795778	-93.626500
T. IZO. ENCOMENDADERO	31.00	3	0	837	80.7	5.4	8.1	1.1	1.2	1.6	0.9	1.0	80.7	5.4	13.9	0.092	0.511	17.791888	-93.629306
FRANCISCO RUEDA	71.00	1	0	824	77.4	5.2	7.4	0.4	0.5	6.9	1.5	0.7	77.4	5.2	17.4	0.093	0.526	17.835757	-93.921189

39 CARR: TULIPAN - CUNDUACAN

CLAVE: 27115

RUTA: TAB

AÑO: 2010

LUGAR	ESTACION				CLASIFICACION VEHICULAR EN PORCIENTO								COORDENADAS						
	KM	TE	SC	TDPA	A	B	C2	C3	T3S2	T3S3	T3S2R4	OTROS	A	B	C	K'	D	LATITUD	LONGITUD
T. C. MALPASO - BELLOTE	0.00	3	0	5565	73.3	3.4	8.3	6.2	4.0	2.9	1.2	0.7	73.3	3.4	23.3	0.061	0.505	18.113188	-93.292784
T. DER. MOTE	14.00	1	0	6492	84.4	5.3	4.8	2.1	1.0	0.9	1.1	0.4	84.4	5.3	10.3	0.074	0.502	18.059417	-93.211278
CUNDUACAN	15.00	1	0	3431	83.4	5.4	4.9	2.0	1.0	1.5	1.6	0.2	83.4	5.4	11.2	0.064	0.518	18.054660	-93.197006

40 CARR: VILLAHERMOSA - COMALCALCO

CLAVE: 27021

RUTA: TAB

AÑO: 2010

LUGAR	ESTACION				CLASIFICACION VEHICULAR EN PORCIENTO								COORDENADAS						
	KM	TE	SC	TDPA	A	B	C2	C3	T3S2	T3S3	T3S2R4	OTROS	A	B	C	K'	D	LATITUD	LONGITUD
T. C. VILLAHERMOSA - CD. DEL CARMEN	0.00	3	1	7865	94.9	1.8	2.1	1.0	0.1	0.1	0.0	0.0	94.9	1.8	3.3	0.086	0.503	18.032301	-92.927329
T. C. VILLAHERMOSA - CD. DEL CARMEN	0.00	3	2	7945	94.8	1.9	2.1	1.0	0.1	0.1	0.0	0.0	94.8	1.9	3.3	0.083	0.503	18.033557	-92.930357
SALOYA	13.00	1	0	10085	94.8	1.8	2.2	1.0	0.1	0.1	0.0	0.0	94.8	1.8	3.4	0.076	0.500	18.095924	-92.942520
SALOYA	13.00	3	0	9468	94.3	2.1	2.3	1.1	0.1	0.1	0.0	0.0	94.3	2.1	3.6	0.068	0.506	18.100030	-92.948150
NACAJUCA	21.00	1	0	8279	94.5	2.0	2.2	1.1	0.1	0.1	0.0	0.0	94.5	2.0	3.5	0.079	0.502	18.154448	-93.010961
NACAJUCA	21.00	3	1	4692	94.7	1.9	2.2	1.0	0.1	0.1	0.0	0.0	94.7	1.9	3.4	0.078	0.504	18.177557	-93.025676
NACAJUCA	21.00	3	2	4772	94.9	1.9	2.0	1.0	0.1	0.1	0.0	0.0	94.9	1.9	3.2	0.078	0.504	18.177557	-93.025676
JALPA DE MENDEZ	27.00	3	0	8481	94.8	1.9	2.1	1.0	0.1	0.1	0.0	0.0	94.8	1.9	3.3	0.060	0.513	18.180017	-93.085708
CUPILCO	40.00	1	0	3897	94.9	1.9	2.1	0.9	0.1	0.1	0.0	0.0	94.9	1.9	3.2	0.071	0.502	18.236193	-93.125483
CUPILCO	40.00	3	0	4069	94.7	1.9	2.2	1.0	0.1	0.1	0.0	0.0	94.7	1.9	3.4	0.076	0.506	18.242310	-93.128130
CHICHICAPA	46.50	1	0	4570	94.9	1.9	2.1	0.9	0.1	0.1	0.0	0.0	94.9	1.9	3.2	0.082	0.503	18.262227	-93.175485
T. C. MALPASO - BELLOTE	50.70	1	0	7587	94.7	2.0	2.1	1.0	0.1	0.1	0.0	0.0	94.7	2.0	3.3	0.081	0.502	18.248004	-93.209022



TABASCO

41 CARR: VILLAHERMOSA - LUIS GIL PEREZ

CLAVE: 27206

RUTA: TAB

AÑO: 2010

LUGAR	ESTACION				CLASIFICACION VEHICULAR EN PORCIENTO								COORDENADAS						
	KM	TE	SC	TDPA	A	B	C2	C3	T3S2	T3S3	T3S2R4	OTROS	A	B	C	K'	D	LATITUD	LONGITUD
VILLAHERMOSA	0.00	3	0	7626	82.0	4.9	3.8	2.7	2.8	2.4	1.1	0.3	82.0	4.9	13.1	0.073	0.500	17.963515	-92.963556
LUIS GIL PEREZ	22.00	1	0	2332	82.1	5.7	4.0	1.8	3.0	2.2	0.9	0.3	82.1	5.7	12.2	0.081	0.507	17.888388	-93.067314

42 CARR: VILLAHERMOSA - T. C. (P. DE CUNDUACAN - ESTACION JUAREZ)

CLAVE: 27106

RUTA: TAB

AÑO: 2010

LUGAR	ESTACION				CLASIFICACION VEHICULAR EN PORCIENTO								COORDENADAS						
	KM	TE	SC	TDPA	A	B	C2	C3	T3S2	T3S3	T3S2R4	OTROS	A	B	C	K'	D	LATITUD	LONGITUD
VILLAHERMOSA	0.00	3	0	14777	75.4	4.3	5.4	0.8	6.5	3.3	3.6	0.7	75.4	4.3	20.3	0.058	0.503	17.968077	-92.975054
SAN JOAQUIN	4.00	3	0	12735	80.4	3.1	4.2	1.0	5.6	1.8	3.4	0.5	80.4	3.1	16.5	0.061	0.504	17.929263	-92.984333
T. IZQ. LUIS GIL PEREZ	19.00	3	0	3239	81.9	5.4	4.4	1.0	4.3	1.5	1.0	0.5	81.9	5.4	12.7	0.077	0.515	17.898680	-93.068910
T. C. PASO DE CUNDUACAN - ESTACION JUAREZ	25.20	1	0	1932	79.5	5.0	4.9	1.8	5.9	1.4	0.9	0.6	79.5	5.0	15.5	0.076	0.511	17.907982	-93.122257

43 CARR: ZAPATERO - T. C. (JALAPA - JONUTA)

CLAVE: 00061

RUTA: CHIS-TAB

AÑO: 2010

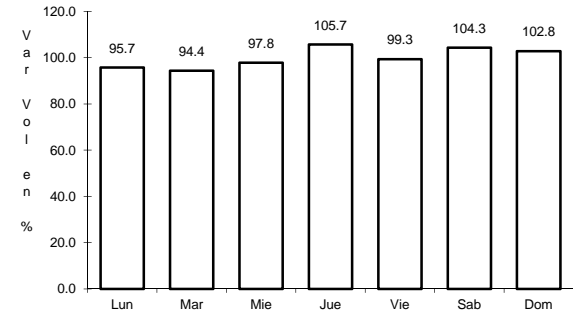
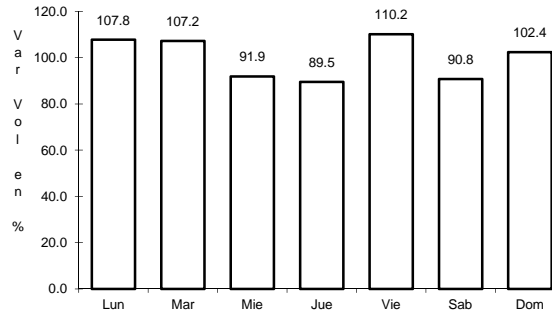
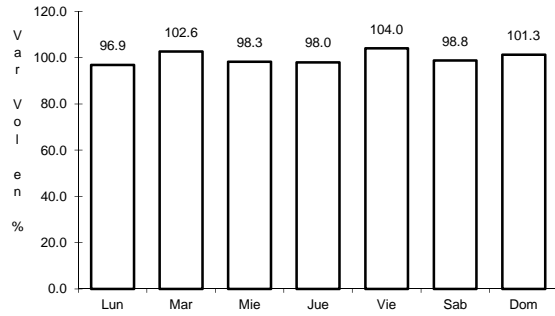
LUGAR	ESTACION				CLASIFICACION VEHICULAR EN PORCIENTO								COORDENADAS						
	KM	TE	SC	TDPA	A	B	C2	C3	T3S2	T3S3	T3S2R4	OTROS	A	B	C	K'	D	LATITUD	LONGITUD
T. C. VILLAHERMOSA - FRANCISCO ESCARCEGA	0.00	3	0	1683	84.9	2.4	5.9	1.0	1.8	2.8	1.0	0.2	84.9	2.4	12.7	0.069	0.506	17.699059	-92.131863
LIM. EDOS. TERM. CHIS. PPIA. TAB.	16.00																		
T. C. JALAPA - JONUTA	41.00	1	0	1165	90.6	2.4	3.3	1.6	0.6	0.5	0.3	0.7	90.6	2.4	7.0	0.082	0.509	18.021416	-92.157138



4 CARR: SAN MARCO - PALIZADA

CLAVE: 00490

RUTA: MEX-217



Km: 0.00      Tipo: 3      Sent: 0

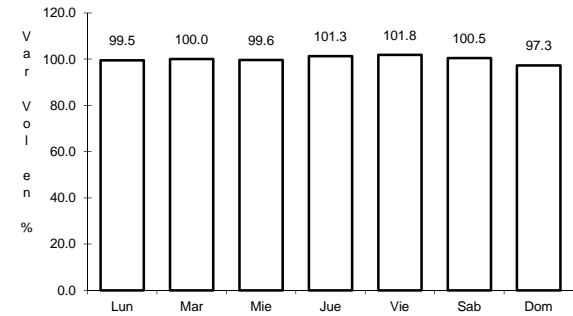
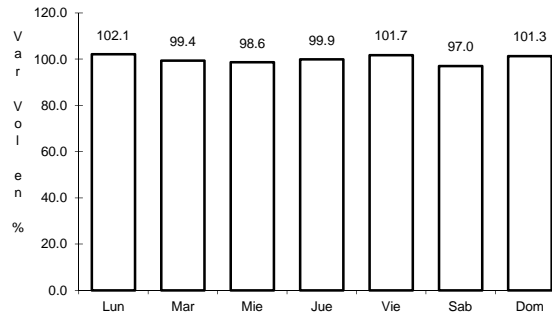
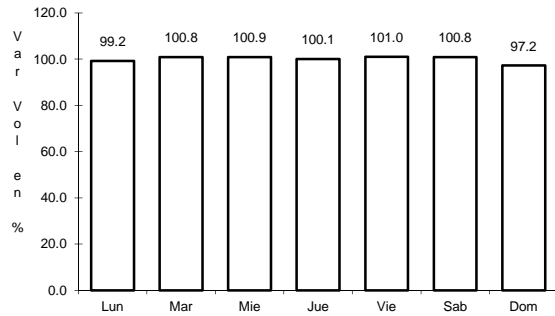
Km: 46.20      Tipo: 1      Sent: 0

Km: 46.20      Tipo: 3      Sent: 0

5 CARR: VILLAHERMOSA - CD. DEL CARMEN

CLAVE: 00064

RUTA: MEX-180



Km: 4.30      Tipo: 3      Sent: 1

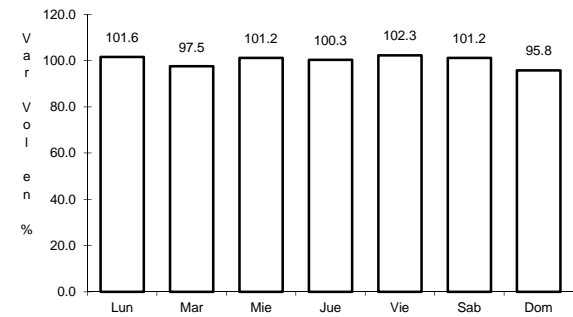
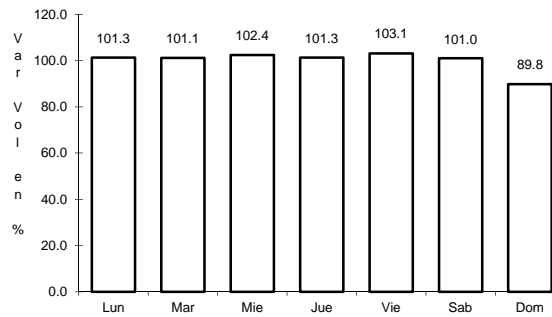
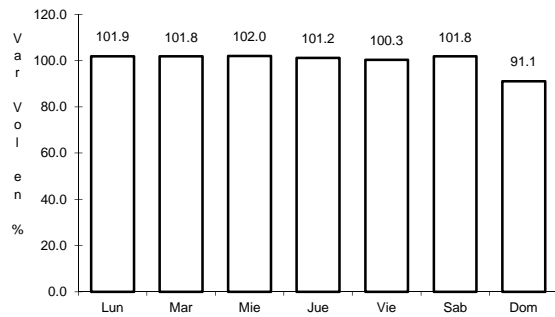
Km: 4.30      Tipo: 3      Sent: 2

Km: 163.17      Tipo: 1      Sent: 0

6 CARR: VILLAHERMOSA - ESCOPETAZO

CLAVE: 00104

RUTA: MEX-195



Km: 0.00      Tipo: 3      Sent: 1

Km: 0.00      Tipo: 3      Sent: 2

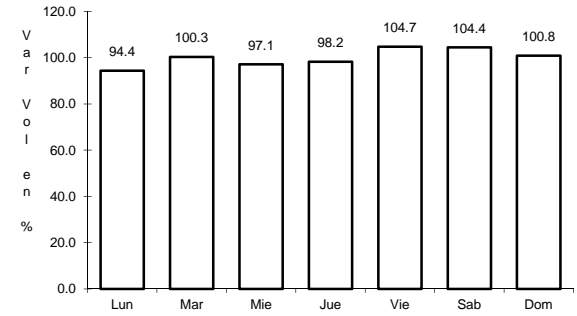
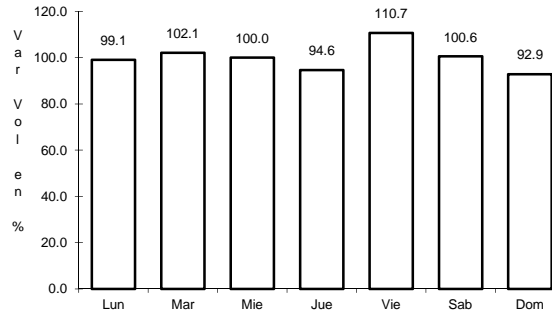
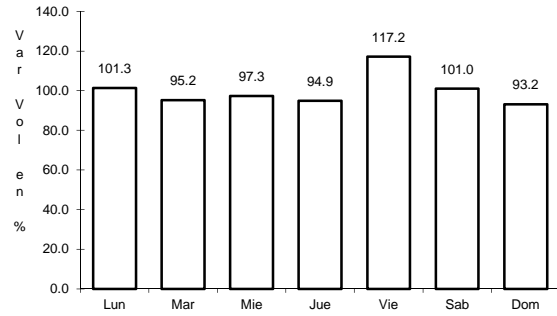
Km: 259.00      Tipo: 1      Sent: 0



11 CARR: CACAOS - LA GRANJA

CLAVE: 27002

RUTA: TAB



Km: 0.00      Tipo: 3      Sent: 0

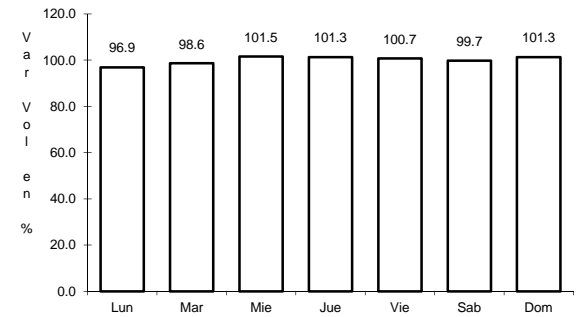
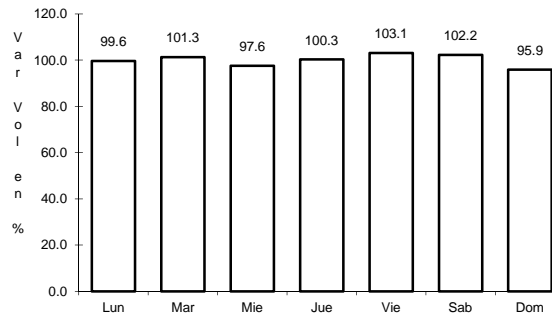
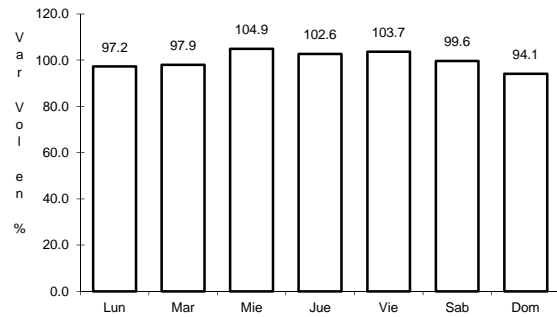
Km: 16.00      Tipo: 3      Sent: 0

Km: 39.00      Tipo: 1      Sent: 0

12 CARR: CARDENAS - PARAISO

CLAVE: 27117

RUTA: TAB



Km: 0.00      Tipo: 3      Sent: 0

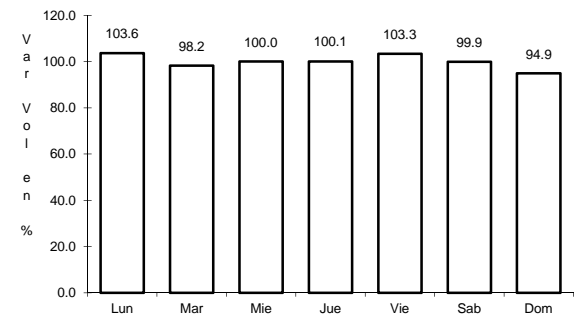
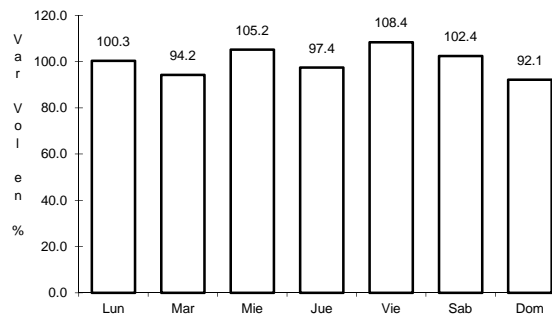
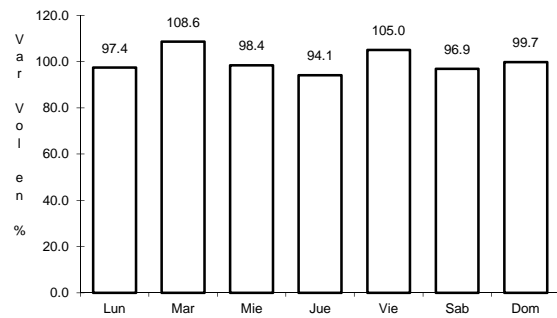
Km: 37.00      Tipo: 3      Sent: 0

Km: 52.00      Tipo: 1      Sent: 0

13 CARR: CHICHICAPA - ENT. LA LIBERTAD

CLAVE: 27100

RUTA: TAB



Km: 0.00      Tipo: 3      Sent: 0

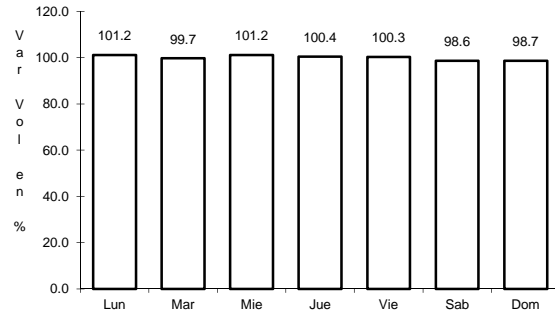
Km: 10.00      Tipo: 3      Sent: 0

Km: 18.00      Tipo: 1      Sent: 0

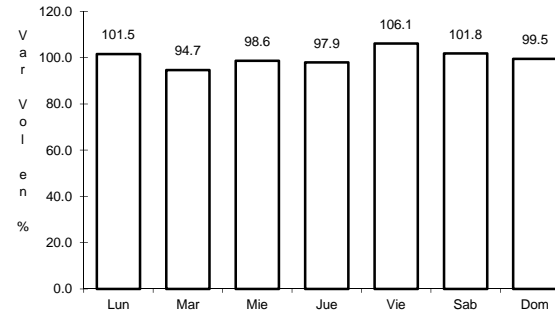
14 CARR: COMALCALCO - EL GOLPE

CLAVE: 27102

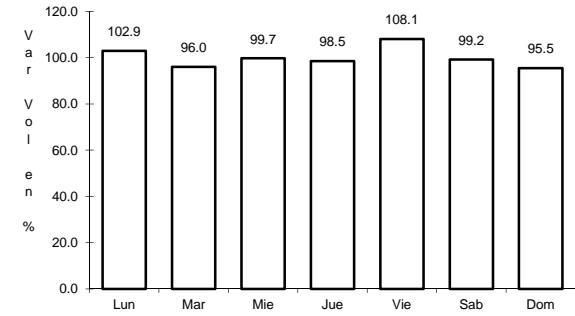
RUTA: TAB



Km: 0.00      Tipo: 3      Sent: 0



Km: 15.00      Tipo: 1      Sent: 0

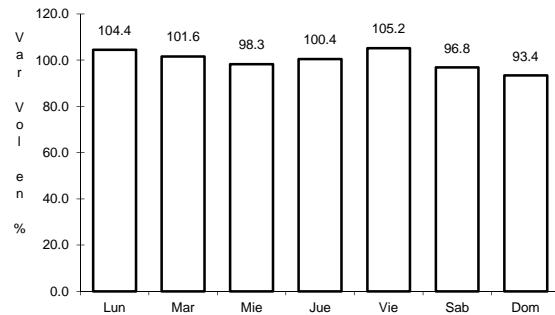


Km: 34.00      Tipo: 1      Sent: 0

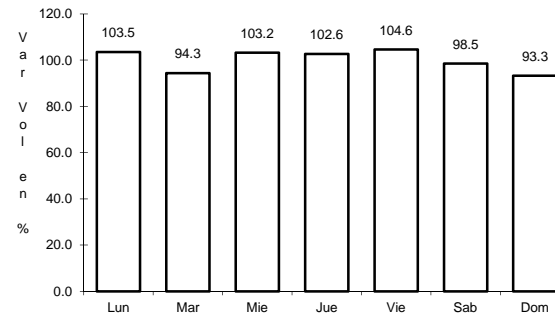
15 CARR: EL BELLOTE - SANTA CRUZ

CLAVE: 27105

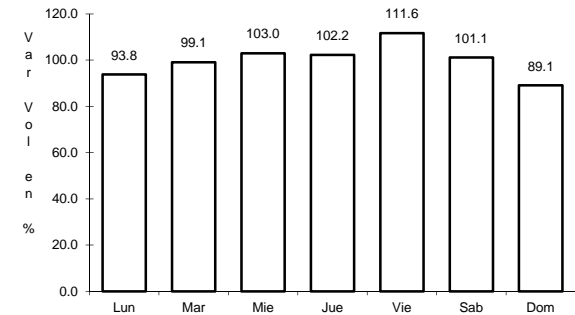
RUTA: TAB



Km: 0.00      Tipo: 3      Sent: 0



Km: 35.00      Tipo: 1      Sent: 0

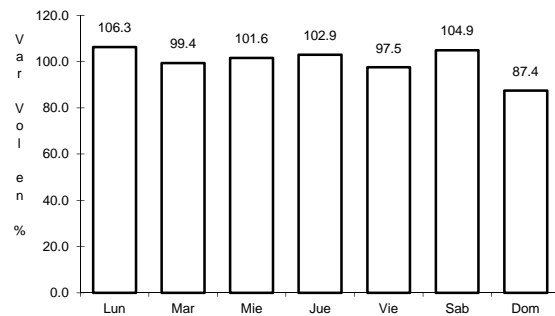


Km: 40.00      Tipo: 1      Sent: 0

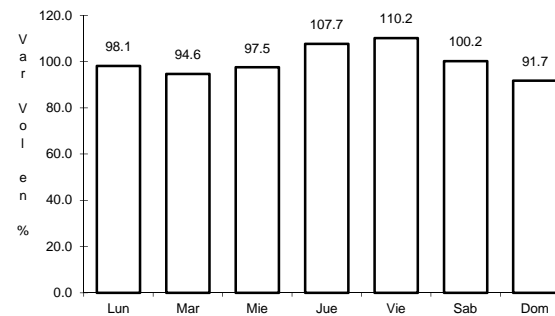
16 CARR: ESTACION MACUSPANA - VERNET

CLAVE: 27091

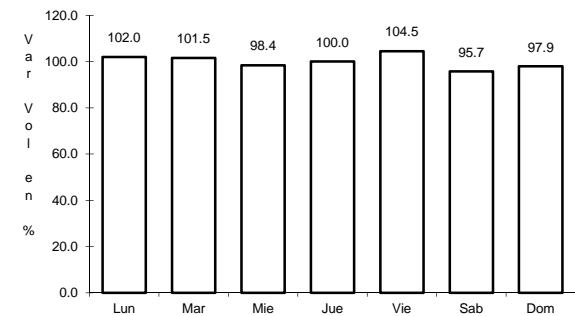
RUTA: TAB-041



Km: 11.00      Tipo: 1      Sent: 0



Km: 20.50      Tipo: 3      Sent: 0



Km: 32.50      Tipo: 1      Sent: 0













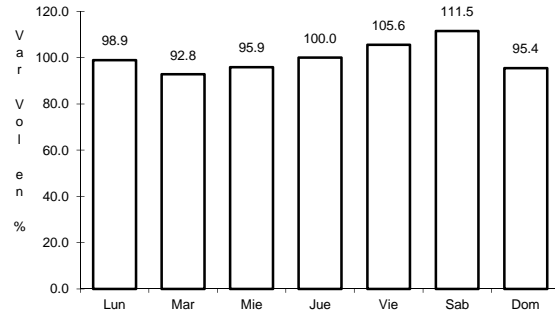




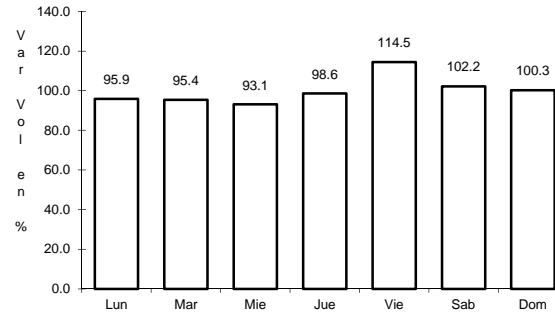
38 CARR: TIERRA NUEVA - FRANCISCO RUEDA

CLAVE: 27110

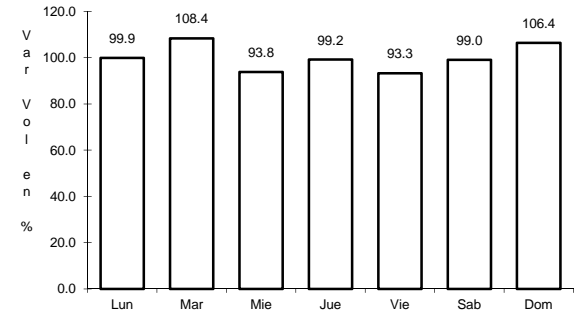
RUTA: TAB



Km: 0.00      Tipo: 3      Sent: 0



Km: 31.00      Tipo: 1      Sent: 0

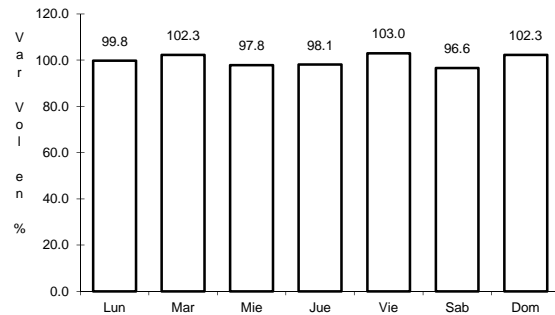


Km: 71.00      Tipo: 1      Sent: 0

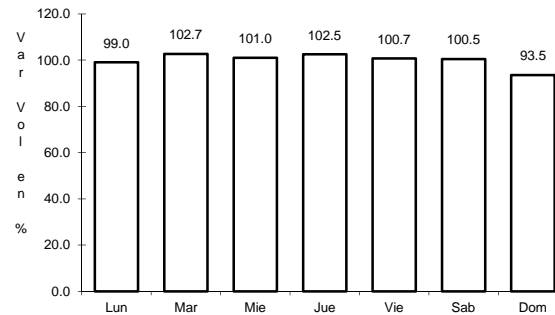
39 CARR: TULIPAN - CUNDUACAN

CLAVE: 27115

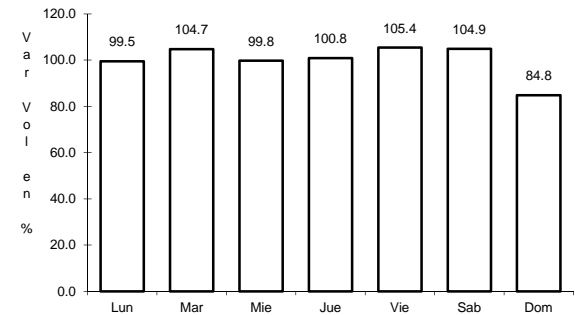
RUTA: TAB



Km: 0.00      Tipo: 3      Sent: 0



Km: 14.00      Tipo: 1      Sent: 0

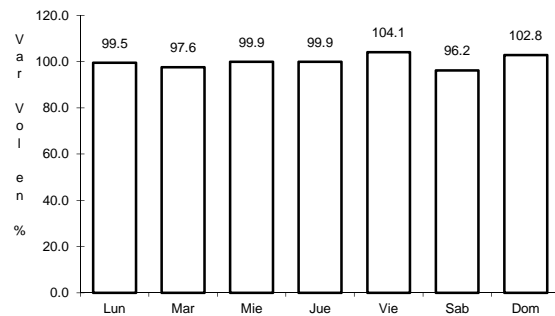


Km: 15.00      Tipo: 1      Sent: 0

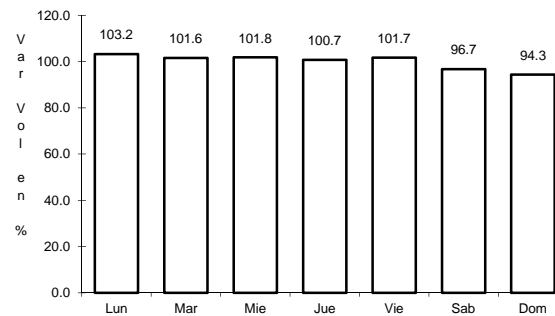
40 CARR: VILLAHERMOSA - COMALCALCO

CLAVE: 27021

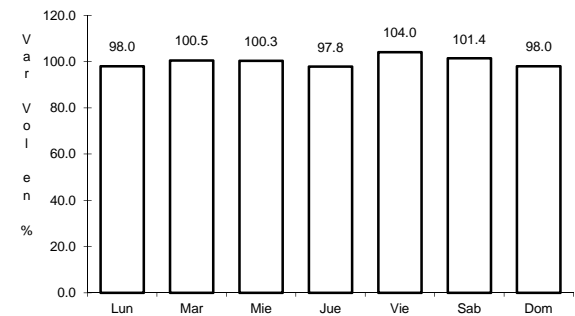
RUTA: TAB



Km: 0.00      Tipo: 3      Sent: 1



Km: 0.00      Tipo: 3      Sent: 2



Km: 50.70      Tipo: 1      Sent: 0

