

SONORA

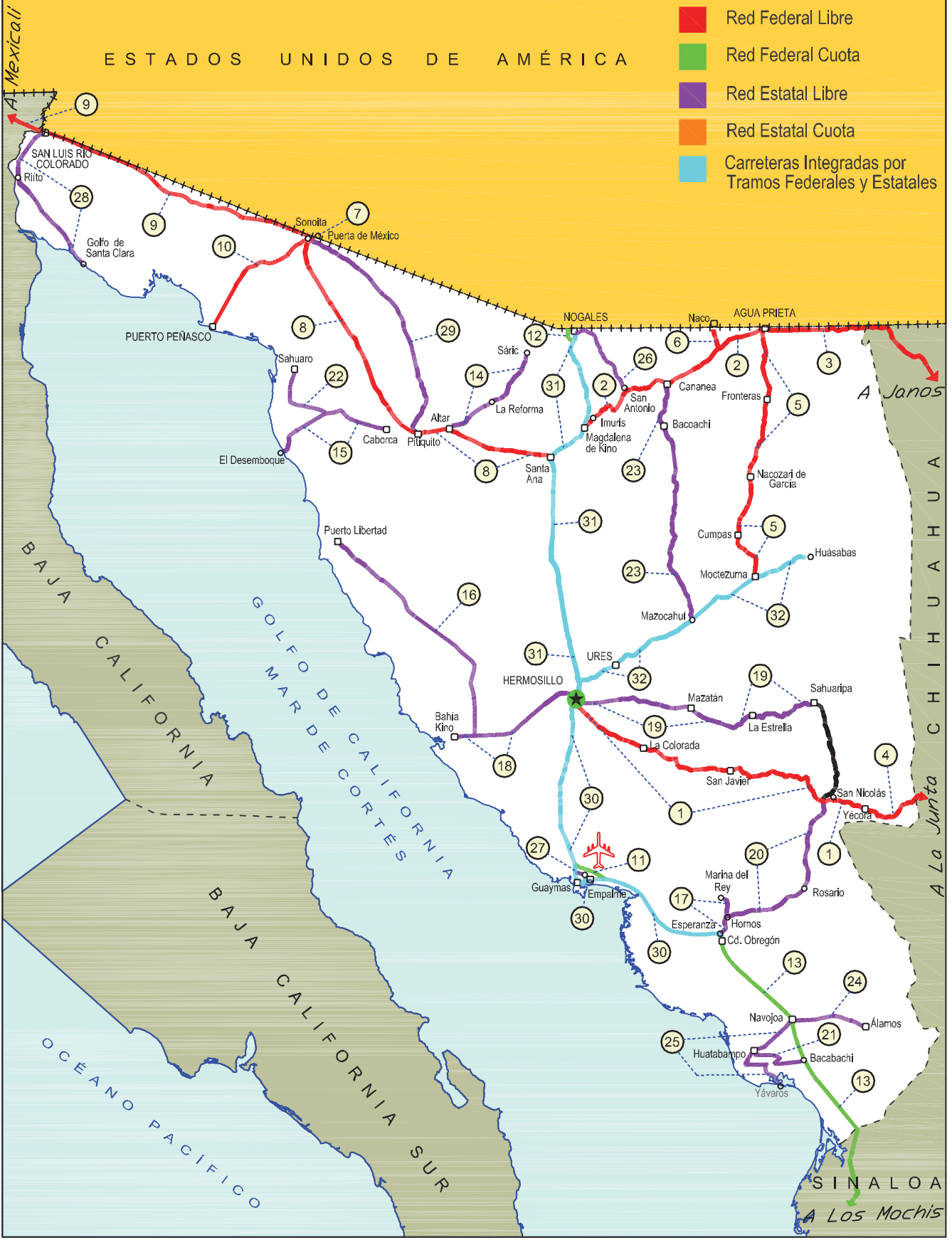
| No. INDICE | CARRETERA | RUTA |
|---|--|--------------|
| ---RED FEDERAL LIBRE--- | | |
| 1 | HERMOSILLO - YECORA | MEX-016 |
| 2 | IMURIS - AGUA PRIETA | MEX-002 |
| 3 | JANOS - AGUA PRIETA | MEX-002 |
| 4 | LA JUNTA - YECORA | MEX-016 |
| 5 | MOCTEZUMA - AGUA PRIETA | MEX-017 |
| 6 | RAMAL A NACO | MEX |
| 7 | RAMAL A PUERTA DE MEXICO | MEX |
| 8 | SANTA ANA - SONOITA | MEX-002 |
| 9 | SONOITA - MEXICALI | MEX-002 |
| 10 | SONOITA - PUERTO PEÑASCO | MEX-008 |
| ---RED FEDERAL DE CUOTA--- | | |
| 11 | LIBRAMIENTO DE EMPALME - GUAYMAS (CUOTA) | MEX-015D |
| 12 | LIBRAMIENTO DE NOGALES (CUOTA) | MEX-15D |
| 13 | LOS MOCHIS - CD. OBREGON (CUOTA) | MEX-015D |
| ---RED ESTATAL LIBRE--- | | |
| 14 | ALTAR - SARIC | SON-064 |
| 15 | CABORCA - EL DESEMBOQUE | SON-037 |
| 16 | CALLE 36 NORTE - PUERTO DE LA LIBERTAD | SON-029 |
| 17 | ESPERANZA - PRESA ALVARO OBREGON | SON-117 |
| 18 | HERMOSILLO - BAHIA KINO | SON-100 |
| 19 | HERMOSILLO - SAHUARIPA | SON-020 |
| 20 | HORNOS - SAN NICOLAS | SON-012 |
| 21 | HUATABAMPO - BACABACHI | SON-176 |
| 22 | LA ALAMEDA - EL SAHUARO | SON-037 |
| 23 | MAZOCAHUI - CANANEA | SON-118 |
| 24 | NAVOJOA - ALAMOS | SON-013 |
| 25 | NAVOJOA - YAVAROS | SON-056 |
| 26 | NOGALES - SAN ANTONIO | SON |
| 27 | RAMAL A AEROPUERTO DE GUAYMAS | SON |
| 28 | SAN LUIS RIO COLORADO - GOLFO DE SANTA CLARA | SON-040 |
| 29 | SONOITA - PITIQUITO | SON |
| ---CARRETERAS INTEGRADAS POR TRAMOS FEDERALES Y ESTATALES--- | | |
| 30 | CD. OBREGON - HERMOSILLO | MEX-015D-015 |
| 31 | HERMOSILLO - NOGALES | MEX-015D-015 |
| 32 | T. C. (HERMOSILLO - NOGALES) - HUASABAS | MEX-014-SON |

26 SONORA

SECRETARÍA DE COMUNICACIONES Y TRANSPORTES
DIRECCIÓN GENERAL DE SERVICIOS TÉCNICOS

①--- Número Índice 2011

- Red Federal Libre
- Red Federal Cuota
- Red Estatal Libre
- Red Estatal Cuota
- Carreteras Integradas por Tramos Federales y Estatales



SONORA

1 CARR: HERMOSILLO - YECORA

CLAVE: 26251

RUTA: MEX-016

AÑO: 2010

| LUGAR | ESTACION | | | | CLASIFICACION VEHICULAR EN PORCIENTO | | | | | | | | COORDENADAS | | | | | | |
|--------------------------------|----------|----|----|------|--------------------------------------|-----|-----|-----|------|------|--------|-------|-------------|-----|------|-------|-------|-----------|-------------|
| | KM | TE | SC | TDPA | A | B | C2 | C3 | T3S2 | T3S3 | T3S2R4 | OTROS | A | B | C | K' | D | LATITUD | LONGITUD |
| T. C. CD. OBREGON - HERMOSILLO | 0.00 | | | | | | | | | | | | | | | | | | |
| T. IZQ. SAHUARIPA | 4.00 | 3 | 1 | 2735 | 75.2 | 0.8 | 7.3 | 2.4 | 3.4 | 7.3 | 0.6 | 3.0 | 75.2 | 0.8 | 24.0 | 0.085 | 0.515 | 29.000717 | -110.907790 |
| T. IZQ. SAHUARIPA | 4.00 | 3 | 2 | 2904 | 73.6 | 0.9 | 7.1 | 2.6 | 3.7 | 8.0 | 0.6 | 3.5 | 73.6 | 0.9 | 25.5 | 0.090 | 0.515 | 29.000717 | -110.907790 |
| LA COLORADA | 47.00 | 3 | 0 | 1523 | 78.6 | 0.7 | 8.3 | 0.7 | 6.6 | 4.1 | 0.3 | 0.7 | 78.6 | 0.7 | 20.7 | 0.107 | 0.520 | 28.808647 | -110.575895 |
| TECORIPA | 138.00 | 3 | 0 | 602 | 78.8 | 0.7 | 8.4 | 0.6 | 6.6 | 3.9 | 0.3 | 0.7 | 78.8 | 0.7 | 20.5 | 0.100 | 0.566 | 28.621358 | -109.944469 |
| YECORA | 250.60 | | | | | | | | | | | | | | | | | | |

2 CARR: IMURIS - AGUA PRIETA

CLAVE: 26079

RUTA: MEX-002

AÑO: 2010

| LUGAR | ESTACION | | | | CLASIFICACION VEHICULAR EN PORCIENTO | | | | | | | | COORDENADAS | | | | | | |
|-----------------|----------|----|----|------|--------------------------------------|-----|-----|-----|------|------|--------|-------|-------------|-----|------|-------|-------|-----------|-------------|
| | KM | TE | SC | TDPA | A | B | C2 | C3 | T3S2 | T3S3 | T3S2R4 | OTROS | A | B | C | K' | D | LATITUD | LONGITUD |
| IMURIS | 0.00 | 3 | 0 | 5088 | 57.8 | 0.0 | 6.8 | 2.8 | 23.7 | 2.9 | 5.5 | 0.5 | 57.8 | 0.0 | 42.2 | 0.089 | 0.506 | 30.801901 | -110.827471 |
| T. DER. CANANEA | 80.93 | 1 | 0 | 5642 | 56.7 | 0.0 | 6.9 | 2.9 | 24.4 | 3.1 | 5.5 | 0.5 | 56.7 | 0.0 | 43.3 | 0.089 | 0.506 | 31.011221 | -110.316546 |
| T. DER. CANANEA | 80.93 | 3 | 0 | 6036 | 57.5 | 0.0 | 7.1 | 2.6 | 24.1 | 3.0 | 5.2 | 0.5 | 57.5 | 0.0 | 42.5 | 0.072 | 0.503 | 31.004467 | -110.246267 |
| AGUA PRIETA | 164.67 | 1 | 0 | 4875 | 57.3 | 0.0 | 7.0 | 2.9 | 23.4 | 3.2 | 5.7 | 0.5 | 57.3 | 0.0 | 42.7 | 0.075 | 0.507 | 31.311781 | -109.588733 |

3 CARR: JANOS - AGUA PRIETA

CLAVE: 00220

RUTA: MEX-002

AÑO: 2010

| LUGAR | ESTACION | | | | CLASIFICACION VEHICULAR EN PORCIENTO | | | | | | | | COORDENADAS | | | | | | |
|-----------------------------------|----------|----|----|------|--------------------------------------|-----|-----|-----|------|------|--------|-------|-------------|-----|------|-------|-------|-----------|-------------|
| | KM | TE | SC | TDPA | A | B | C2 | C3 | T3S2 | T3S3 | T3S2R4 | OTROS | A | B | C | K' | D | LATITUD | LONGITUD |
| T. C. CD. JUAREZ - JANOS | 0.00 | 3 | 0 | 4095 | 56.7 | 0.0 | 5.5 | 3.2 | 23.9 | 3.4 | 6.7 | 0.6 | 56.7 | 0.0 | 43.3 | 0.071 | 0.502 | 30.889822 | -108.211243 |
| LOS MIMBRES | 56.00 | 3 | 0 | 2214 | 56.9 | 0.0 | 5.4 | 3.1 | 23.3 | 3.8 | 6.9 | 0.6 | 56.9 | 0.0 | 43.1 | 0.082 | 0.502 | 31.226869 | -108.558922 |
| LIM. EDOS. TERM. CHIH. PPIA. SON. | 78.00 | | | | | | | | | | | | | | | | | | |
| AGUA PRIETA | 160.00 | 1 | 0 | 3071 | 56.2 | 0.0 | 5.6 | 3.0 | 24.3 | 3.7 | 6.6 | 0.6 | 56.2 | 0.0 | 43.8 | 0.069 | 0.529 | 31.327921 | -109.490080 |

4 CARR: LA JUNTA - YECORA

CLAVE: 00065

RUTA: MEX-016

AÑO: 2010

| LUGAR | ESTACION | | | | CLASIFICACION VEHICULAR EN PORCIENTO | | | | | | | | COORDENADAS | | | | | | |
|-----------------------------------|----------|----|----|------|--------------------------------------|-----|-----|-----|------|------|--------|-------|-------------|-----|------|-------|-------|-----------|-------------|
| | KM | TE | SC | TDPA | A | B | C2 | C3 | T3S2 | T3S3 | T3S2R4 | OTROS | A | B | C | K' | D | LATITUD | LONGITUD |
| T. C. CHIHUAHUA - MADERA | 0.00 | 3 | 0 | 3438 | 90.1 | 2.0 | 3.8 | 1.2 | 1.2 | 0.6 | 0.0 | 1.1 | 90.1 | 2.0 | 7.9 | 0.092 | 0.506 | 28.474428 | -107.317259 |
| T. IZQ. SAN JUANITO | 16.00 | 1 | 0 | 1903 | 84.6 | 2.3 | 5.5 | 2.5 | 2.9 | 1.2 | 0.0 | 1.0 | 84.6 | 2.3 | 13.1 | 0.110 | 0.504 | 28.388470 | -107.439274 |
| T. IZQ. SAN JUANITO | 16.00 | 3 | 0 | 1257 | 89.1 | 2.6 | 4.2 | 1.5 | 1.2 | 0.6 | 0.1 | 0.7 | 89.1 | 2.6 | 8.3 | 0.095 | 0.511 | 28.390037 | -107.440513 |
| TONACHIC | 70.00 | 3 | 0 | 1227 | 88.0 | 3.1 | 4.7 | 1.5 | 1.6 | 0.4 | 0.0 | 0.7 | 88.0 | 3.1 | 8.9 | 0.095 | 0.506 | 28.352700 | -107.850534 |
| LIM. EDOS. TERM. CHIH. PPIA. SON. | 190.00 | | | | | | | | | | | | | | | | | | |
| YECORA | 253.00 | 1 | 0 | 1074 | 88.8 | 2.8 | 5.9 | 0.9 | 0.9 | 0.3 | 0.1 | 0.3 | 88.8 | 2.8 | 8.4 | 0.079 | 0.540 | 28.367908 | -108.919380 |

SONORA

5 CARR: MOCTEZUMA - AGUA PRIETA

CLAVE: 26027

RUTA: MEX-017

AÑO: 2010

| LUGAR | ESTACION | | | | CLASIFICACION VEHICULAR EN PORCIENTO | | | | | | | | COORDENADAS | | | | | | |
|----------------------------|----------|----|----|------|--------------------------------------|-----|-----|-----|------|------|--------|-------|-------------|-----|------|-------|-------|-----------|-------------|
| | KM | TE | SC | TDPA | A | B | C2 | C3 | T3S2 | T3S3 | T3S2R4 | OTROS | A | B | C | K' | D | LATITUD | LONGITUD |
| MOCTEZUMA | 0.00 | 3 | 0 | 2043 | 85.5 | 0.0 | 4.9 | 2.8 | 3.5 | 1.2 | 1.7 | 0.4 | 85.5 | 0.0 | 14.5 | 0.096 | 0.523 | 29.825842 | -109.676914 |
| NACAZARI DE GARCIA | 81.00 | 3 | 0 | 2231 | 85.3 | 0.0 | 5.0 | 3.0 | 3.3 | 1.3 | 1.7 | 0.4 | 85.3 | 0.0 | 14.7 | 0.073 | 0.511 | 30.391183 | -109.696211 |
| TURICACHI | 111.00 | 1 | 0 | 3070 | 86.0 | 0.0 | 4.6 | 3.0 | 3.2 | 1.2 | 1.6 | 0.4 | 86.0 | 0.0 | 14.0 | 0.079 | 0.503 | 30.655390 | -109.596353 |
| T. C. IMURIS - AGUA PRIETA | 197.60 | 1 | 0 | 4065 | 85.1 | 0.0 | 5.3 | 2.8 | 3.4 | 1.3 | 1.7 | 0.4 | 85.1 | 0.0 | 14.9 | 0.082 | 0.505 | 31.299216 | -109.581639 |

6 CARR: RAMAL A NACO

CLAVE: 26579

RUTA: MEX

AÑO: 2010

| LUGAR | ESTACION | | | | CLASIFICACION VEHICULAR EN PORCIENTO | | | | | | | | COORDENADAS | | | | | | |
|----------------------------|----------|----|----|------|--------------------------------------|-----|-----|-----|------|------|--------|-------|-------------|-----|------|-------|-------|-----------|-------------|
| | KM | TE | SC | TDPA | A | B | C2 | C3 | T3S2 | T3S3 | T3S2R4 | OTROS | A | B | C | K' | D | LATITUD | LONGITUD |
| T. C. IMURIS - AGUA PRIETA | 0.00 | 3 | 0 | 1661 | 85.7 | 3.9 | 6.7 | 2.1 | 1.0 | 0.2 | 0.0 | 0.4 | 85.7 | 3.9 | 10.4 | 0.123 | 0.507 | 31.205841 | -109.908528 |
| NACO | 14.00 | | | | | | | | | | | | | | | | | | |

7 CARR: RAMAL A PUERTA DE MEXICO

CLAVE: 26577

RUTA: MEX

AÑO: 2010

| LUGAR | ESTACION | | | | CLASIFICACION VEHICULAR EN PORCIENTO | | | | | | | | COORDENADAS | | | | | | |
|--------------------------|----------|----|----|------|--------------------------------------|-----|-----|-----|------|------|--------|-------|-------------|-----|-----|-------|-------|-----------|-------------|
| | KM | TE | SC | TDPA | A | B | C2 | C3 | T3S2 | T3S3 | T3S2R4 | OTROS | A | B | C | K' | D | LATITUD | LONGITUD |
| T. C. SONOYTA - MEXICALI | 0.00 | 3 | 0 | 8851 | 96.1 | 1.6 | 1.1 | 0.3 | 0.4 | 0.1 | 0.0 | 0.4 | 96.1 | 1.6 | 2.3 | 0.086 | 0.506 | 31.866582 | -112.839545 |
| FRONTERA E.U.A | 3.30 | | | | | | | | | | | | | | | | | | |

8 CARR: SANTA ANA - SONOITA

CLAVE: 26080

RUTA: MEX-002

AÑO: 2010

| LUGAR | ESTACION | | | | CLASIFICACION VEHICULAR EN PORCIENTO | | | | | | | | COORDENADAS | | | | | | |
|----------------------------|----------|----|----|-------|--------------------------------------|-----|-----|-----|------|------|--------|-------|-------------|-----|------|-------|-------|-----------|-------------|
| | KM | TE | SC | TDPA | A | B | C2 | C3 | T3S2 | T3S3 | T3S2R4 | OTROS | A | B | C | K' | D | LATITUD | LONGITUD |
| SANTA ANA | 0.00 | 3 | 0 | 10767 | 61.0 | 2.2 | 3.8 | 4.4 | 21.7 | 2.3 | 3.8 | 0.8 | 61.0 | 2.2 | 36.8 | 0.064 | 0.508 | 30.550575 | -111.120975 |
| ALTAR | 72.80 | 1 | 0 | 9035 | 61.2 | 2.4 | 4.1 | 4.3 | 21.3 | 2.2 | 3.7 | 0.8 | 61.2 | 2.4 | 36.4 | 0.068 | 0.504 | 30.703306 | -111.820444 |
| ALTAR | 72.80 | 3 | 0 | 8072 | 58.8 | 2.6 | 3.9 | 4.8 | 22.9 | 2.4 | 3.7 | 0.9 | 58.8 | 2.6 | 38.6 | 0.060 | 0.504 | 30.713689 | -111.851936 |
| T. IZQ. ESTACION PITIQUITO | 94.28 | 1 | 0 | 10189 | 60.9 | 2.3 | 3.8 | 4.5 | 21.7 | 2.3 | 3.7 | 0.8 | 60.9 | 2.3 | 36.8 | 0.062 | 0.506 | 30.688562 | -112.032368 |
| CABORCA | 103.83 | 1 | 0 | 12412 | 60.9 | 2.3 | 3.9 | 4.4 | 21.8 | 2.2 | 3.7 | 0.8 | 60.9 | 2.3 | 36.8 | 0.057 | 0.507 | 30.712307 | -112.130798 |
| COZON | 180.30 | 1 | 0 | 5520 | 61.5 | 2.5 | 4.0 | 4.7 | 20.4 | 2.3 | 3.8 | 0.8 | 61.5 | 2.5 | 36.0 | 0.056 | 0.517 | 31.283513 | -112.534755 |
| SONOYTA | 253.70 | 1 | 0 | 5305 | 58.9 | 2.5 | 4.2 | 4.8 | 22.8 | 2.3 | 3.7 | 0.8 | 58.9 | 2.5 | 38.6 | 0.063 | 0.514 | 31.852056 | -112.857442 |

SONORA

9 CARR: SONOITA - MEXICALI

CLAVE: 00081

RUTA: MEX-002

AÑO: 2010

| LUGAR | ESTACION | | | | CLASIFICACION VEHICULAR EN PORCIENTO | | | | | | | | COORDENADAS | | | | | | |
|----------------------------------|----------|----|----|-------|--------------------------------------|-----|-----|-----|------|------|--------|-------|-------------|-----|------|-------|-------|-----------|-------------|
| | KM | TE | SC | TDPA | A | B | C2 | C3 | T3S2 | T3S3 | T3S2R4 | OTROS | A | B | C | K' | D | LATITUD | LONGITUD |
| SONOITA | 0.00 | 3 | 0 | 8445 | 54.6 | 2.8 | 3.6 | 3.5 | 26.4 | 3.1 | 5.3 | 0.7 | 54.6 | 2.8 | 42.6 | 0.067 | 0.504 | 31.875483 | -112.851102 |
| LOS VIDRIOS | 58.75 | 3 | 0 | 7028 | 53.8 | 3.0 | 3.8 | 3.7 | 26.8 | 3.1 | 5.1 | 0.7 | 53.8 | 3.0 | 43.2 | 0.065 | 0.504 | 32.028271 | -113.425716 |
| SAN LUIS RIO COLORADO | 191.80 | 1 | 0 | 7339 | 53.3 | 2.9 | 3.8 | 3.5 | 27.2 | 3.2 | 5.4 | 0.7 | 53.3 | 2.9 | 43.8 | 0.066 | 0.503 | 32.455352 | -114.688905 |
| SAN LUIS RIO COLORADO | 191.80 | 3 | 1 | 7924 | 53.6 | 2.9 | 3.6 | 3.7 | 27.3 | 3.2 | 5.0 | 0.7 | 53.6 | 2.9 | 43.5 | 0.069 | 0.505 | 32.488636 | -114.798416 |
| SAN LUIS RIO COLORADO | 191.80 | 3 | 2 | 8069 | 56.0 | 2.8 | 3.5 | 3.5 | 25.5 | 2.9 | 5.1 | 0.7 | 56.0 | 2.8 | 41.2 | 0.071 | 0.505 | 32.488636 | -114.798416 |
| LIM. EDOS. TERM. SON. PPIA. B.C. | 203.69 | | | | | | | | | | | | | | | | | | |
| X. C. MEXICALI - ALGODONES | 206.78 | 1 | 1 | 10243 | 54.2 | 3.0 | 3.5 | 3.5 | 26.9 | 3.1 | 5.1 | 0.7 | 54.2 | 3.0 | 42.8 | 0.062 | 0.507 | 32.501174 | -114.840176 |
| X. C. MEXICALI - ALGODONES | 206.78 | 1 | 2 | 10518 | 53.7 | 2.8 | 3.7 | 3.6 | 27.3 | 3.1 | 5.1 | 0.7 | 53.7 | 2.8 | 43.5 | 0.063 | 0.507 | 32.501168 | -114.840177 |
| X. C. MEXICALI - ALGODONES | 206.78 | 3 | 1 | 8321 | 53.0 | 3.1 | 3.6 | 3.6 | 27.6 | 3.1 | 5.2 | 0.8 | 53.0 | 3.1 | 43.9 | 0.068 | 0.504 | 32.507780 | -114.862309 |
| X. C. MEXICALI - ALGODONES | 206.78 | 3 | 2 | 8471 | 53.3 | 3.0 | 3.5 | 3.4 | 27.8 | 3.1 | 5.2 | 0.7 | 53.3 | 3.0 | 43.7 | 0.059 | 0.504 | 32.507780 | -114.862309 |
| T. IZO. EJIDO HERMOSILLO | 214.80 | 3 | 1 | 7370 | 54.1 | 2.8 | 3.7 | 3.7 | 26.7 | 3.0 | 5.3 | 0.7 | 54.1 | 2.8 | 43.1 | 0.060 | 0.506 | 32.527384 | -114.928535 |
| T. IZO. EJIDO HERMOSILLO | 214.80 | 3 | 2 | 7537 | 54.2 | 2.9 | 3.7 | 3.4 | 26.7 | 3.1 | 5.3 | 0.7 | 54.2 | 2.9 | 42.9 | 0.064 | 0.506 | 32.527384 | -114.928535 |
| EJIDO MONTERREY | 228.63 | 3 | 1 | 9631 | 53.1 | 3.0 | 3.7 | 3.5 | 27.6 | 3.2 | 5.2 | 0.7 | 53.1 | 3.0 | 43.9 | 0.059 | 0.506 | 32.551980 | -115.086653 |
| EJIDO MONTERREY | 228.63 | 3 | 2 | 9859 | 51.8 | 2.9 | 3.6 | 3.6 | 29.1 | 3.0 | 5.3 | 0.7 | 51.8 | 2.9 | 45.3 | 0.062 | 0.506 | 32.551980 | -115.086653 |
| X. C. MEXICALI - ALGODONES | 256.47 | 1 | 1 | 11766 | 53.6 | 2.8 | 3.5 | 3.7 | 27.6 | 3.2 | 4.9 | 0.7 | 53.6 | 2.8 | 43.6 | 0.072 | 0.507 | 32.565150 | -115.325789 |
| X. C. MEXICALI - ALGODONES | 256.47 | 1 | 2 | 12108 | 54.6 | 2.8 | 3.7 | 3.4 | 26.8 | 3.2 | 4.8 | 0.7 | 54.6 | 2.8 | 42.6 | 0.071 | 0.507 | 32.565150 | -115.325789 |
| T. C. MEXICALI - SAN FELIPE | 265.12 | | | | | | | | | | | | | | | | | | |

10 CARR: SONOITA - PUERTO PEÑASCO

CLAVE: 26232

RUTA: MEX-008

AÑO: 2010

| LUGAR | ESTACION | | | | CLASIFICACION VEHICULAR EN PORCIENTO | | | | | | | | COORDENADAS | | | | | | |
|----------------|----------|----|----|------|--------------------------------------|-----|-----|-----|------|------|--------|-------|-------------|-----|-----|-------|-------|-----------|-------------|
| | KM | TE | SC | TDPA | A | B | C2 | C3 | T3S2 | T3S3 | T3S2R4 | OTROS | A | B | C | K' | D | LATITUD | LONGITUD |
| SONOITA | 0.00 | 3 | 0 | 3028 | 94.2 | 0.0 | 3.6 | 1.1 | 0.8 | 0.2 | 0.1 | 0.0 | 94.2 | 0.0 | 5.8 | 0.101 | 0.501 | 31.862390 | -112.876176 |
| PUERTO PEÑASCO | 100.40 | | | | | | | | | | | | | | | | | | |

11 CARR: LIBRAMIENTO DE EMPALME - GUAYMAS (CUOTA)

CLAVE: 26256

RUTA: MEX-015D

AÑO: 2010

| LUGAR | ESTACION | | | | CLASIFICACION VEHICULAR EN PORCIENTO | | | | | | | | COORDENADAS | | | | | | |
|--------------------------------|----------|----|----|------|--------------------------------------|-----|-----|-----|------|------|--------|-------|-------------|-----|------|-------|-------|-----------|-------------|
| | KM | TE | SC | TDPA | A | B | C2 | C3 | T3S2 | T3S3 | T3S2R4 | OTROS | A | B | C | K' | D | LATITUD | LONGITUD |
| T. C. CD. OBREGON - HERMOSILLO | 0.00 | 3 | 1 | 2746 | 76.6 | 5.5 | 5.8 | 2.8 | 4.7 | 2.1 | 0.0 | 2.5 | 76.6 | 5.5 | 17.9 | 0.078 | 0.507 | 27.954249 | -110.750877 |
| T. C. CD. OBREGON - HERMOSILLO | 0.00 | 3 | 2 | 2821 | 76.6 | 6.0 | 6.1 | 2.1 | 4.8 | 2.1 | 0.0 | 2.3 | 76.6 | 6.0 | 17.4 | 0.082 | 0.507 | 27.954249 | -110.750877 |
| T. C. CD. OBREGON - HERMOSILLO | 21.50 | 1 | 1 | 2876 | 72.3 | 2.5 | 6.2 | 3.7 | 10.5 | 2.6 | 0.0 | 2.2 | 72.3 | 2.5 | 25.2 | 0.075 | 0.509 | 28.038245 | -110.933326 |
| T. C. CD. OBREGON - HERMOSILLO | 21.50 | 1 | 2 | 2981 | 73.4 | 2.8 | 5.8 | 2.4 | 9.6 | 2.7 | 0.2 | 3.1 | 73.4 | 2.8 | 23.8 | 0.074 | 0.509 | 28.038245 | -110.933326 |

SONORA

12 CARR: LIBRAMIENTO DE NOGALES (CUOTA)

CLAVE: 26100

RUTA: MEX-15D

AÑO: 2010

| LUGAR | ESTACION | | | | CLASIFICACION VEHICULAR EN PORCIENTO | | | | | | | | COORDENADAS | | | | | | |
|----------------------------|----------|----|----|------|--------------------------------------|-----|-----|-----|------|------|--------|-------|-------------|-----|------|-------|-------|-----------|-------------|
| | KM | TE | SC | TDPA | A | B | C2 | C3 | T3S2 | T3S3 | T3S2R4 | OTROS | A | B | C | K' | D | LATITUD | LONGITUD |
| T. C. HERMOSILLO - NOGALES | 0.00 | 3 | 1 | 2575 | 22.9 | 0.0 | 7.0 | 3.2 | 66.8 | 0.1 | 0.0 | 0.0 | 22.9 | 0.0 | 77.1 | 0.104 | 0.513 | 31.234466 | -110.967798 |
| T. C. HERMOSILLO - NOGALES | 0.00 | 3 | 2 | 2711 | 23.7 | 0.0 | 7.4 | 3.4 | 65.4 | 0.1 | 0.0 | 0.0 | 23.7 | 0.0 | 76.3 | 0.098 | 0.513 | 31.234466 | -110.967798 |
| CASETA DE COBRO NOGALES | 4.50 | 2 | 0 | 3581 | 24.4 | 0.0 | 7.0 | 3.3 | 65.2 | 0.1 | 0.0 | 0.0 | 24.4 | 0.0 | 75.6 | | | 31.247637 | -110.972542 |
| FRONTERA E.U.A. | 12.50 | 1 | 1 | 1697 | 25.3 | 0.0 | 7.3 | 3.4 | 63.9 | 0.1 | 0.0 | 0.0 | 25.3 | 0.0 | 74.7 | 0.141 | 0.528 | 31.330210 | -110.966490 |
| FRONTERA E.U.A. | 12.50 | 1 | 2 | 1725 | 23.7 | 0.0 | 6.6 | 3.3 | 66.3 | 0.1 | 0.0 | 0.0 | 23.7 | 0.0 | 76.3 | 0.143 | 0.528 | 31.330210 | -110.966490 |

13 CARR: LOS MOCHIS - CD. OBREGON (CUOTA)

CLAVE: 00452

RUTA: MEX-015D

AÑO: 2010

| LUGAR | ESTACION | | | | CLASIFICACION VEHICULAR EN PORCIENTO | | | | | | | | COORDENADAS | | | | | | |
|---|----------|----|----|------|--------------------------------------|-----|-----|-----|------|------|--------|-------|-------------|-----|------|-------|-------|-----------|-------------|
| | KM | TE | SC | TDPA | A | B | C2 | C3 | T3S2 | T3S3 | T3S2R4 | OTROS | A | B | C | K' | D | LATITUD | LONGITUD |
| T. C. TOPOLOBAMPO - CHOIX | 0.00 | 3 | 1 | 7403 | 53.6 | 8.8 | 3.7 | 3.5 | 20.8 | 2.0 | 6.8 | 0.8 | 53.6 | 8.8 | 37.6 | 0.095 | 0.503 | 25.833427 | -108.973202 |
| T. C. TOPOLOBAMPO - CHOIX | 0.00 | 3 | 2 | 7503 | 52.7 | 9.2 | 4.0 | 3.6 | 20.7 | 2.0 | 7.0 | 0.8 | 52.7 | 9.2 | 38.1 | 0.077 | 0.503 | 25.833427 | -108.973202 |
| T. IZQ. AHOME | 17.13 | 3 | 1 | 5985 | 52.9 | 9.8 | 3.9 | 3.8 | 20.0 | 2.2 | 6.6 | 0.8 | 52.9 | 9.8 | 37.3 | 0.073 | 0.502 | 25.944175 | -109.052801 |
| T. IZQ. AHOME | 17.13 | 3 | 2 | 6033 | 53.1 | 8.7 | 3.9 | 3.4 | 21.1 | 2.2 | 6.8 | 0.8 | 53.1 | 8.7 | 38.2 | 0.078 | 0.502 | 25.944175 | -109.052801 |
| T. IZQ. COHUIBAMPO | 19.00 | 1 | 1 | 7317 | 54.7 | 8.8 | 3.7 | 3.6 | 19.7 | 2.1 | 6.6 | 0.8 | 54.7 | 8.8 | 36.5 | 0.071 | 0.505 | 25.958519 | -109.053403 |
| T. IZQ. COHUIBAMPO | 19.00 | 1 | 2 | 7466 | 53.1 | 9.4 | 4.1 | 3.5 | 20.1 | 2.2 | 6.8 | 0.8 | 53.1 | 9.4 | 37.5 | 0.062 | 0.505 | 25.958519 | -109.053403 |
| T. IZQ. COHUIBAMPO | 19.00 | 3 | 1 | 7366 | 54.1 | 9.2 | 3.8 | 3.7 | 19.7 | 2.1 | 6.6 | 0.8 | 54.1 | 9.2 | 36.7 | 0.070 | 0.504 | 25.961045 | -109.052868 |
| T. IZQ. COHUIBAMPO | 19.00 | 3 | 2 | 7478 | 53.3 | 9.5 | 3.7 | 3.7 | 20.3 | 2.2 | 6.5 | 0.8 | 53.3 | 9.5 | 37.2 | 0.066 | 0.504 | 25.961045 | -109.052868 |
| POBLADO CHICO | 50.00 | 3 | 1 | 5488 | 53.9 | 9.3 | 3.8 | 3.6 | 19.9 | 2.0 | 6.7 | 0.8 | 53.9 | 9.3 | 36.8 | 0.063 | 0.509 | 26.225300 | -109.055153 |
| POBLADO CHICO | 50.00 | 3 | 2 | 5696 | 53.8 | 8.6 | 3.9 | 3.7 | 20.6 | 2.1 | 6.5 | 0.8 | 53.8 | 8.6 | 37.6 | 0.067 | 0.509 | 26.225300 | -109.055153 |
| T. DER. EL FUERTE | 54.80 | 1 | 1 | 6089 | 52.2 | 9.6 | 4.0 | 3.7 | 21.1 | 2.1 | 6.5 | 0.8 | 52.2 | 9.6 | 38.2 | 0.070 | 0.503 | 26.264626 | -109.044175 |
| T. DER. EL FUERTE | 54.80 | 1 | 2 | 6171 | 54.7 | 8.7 | 3.8 | 3.7 | 19.7 | 2.1 | 6.5 | 0.8 | 54.7 | 8.7 | 36.6 | 0.076 | 0.503 | 26.264626 | -109.044175 |
| T. DER. EL FUERTE | 54.80 | 3 | 1 | 5621 | 52.8 | 9.7 | 3.8 | 3.6 | 20.2 | 2.2 | 6.9 | 0.8 | 52.8 | 9.7 | 37.5 | 0.075 | 0.505 | 26.275959 | -109.040930 |
| T. DER. EL FUERTE | 54.80 | 3 | 2 | 5740 | 53.9 | 9.2 | 3.6 | 3.7 | 19.9 | 2.1 | 6.8 | 0.8 | 53.9 | 9.2 | 36.9 | 0.072 | 0.505 | 26.275959 | -109.040930 |
| LIM. EDOS. TERM. SIN. PPIA. SON. | 69.80 | | | | | | | | | | | | | | | | | | |
| T. IZQ. HUATABAMPO | 128.50 | 1 | 1 | 2822 | 54.5 | 9.0 | 3.7 | 3.3 | 20.4 | 2.1 | 6.3 | 0.7 | 54.5 | 9.0 | 36.5 | 0.086 | 0.506 | 26.836537 | -109.366129 |
| T. IZQ. HUATABAMPO | 128.50 | 1 | 2 | 2892 | 54.1 | 9.4 | 3.6 | 3.4 | 20.1 | 2.2 | 6.4 | 0.8 | 54.1 | 9.4 | 36.5 | 0.081 | 0.506 | 26.836537 | -109.366129 |
| CASETA DE COBRO ESTACION DON (LA JAULA) | 129.90 | 2 | 0 | 4695 | 53.7 | 9.2 | 3.8 | 3.6 | 20.2 | 2.1 | 6.6 | 0.8 | 53.7 | 9.2 | 37.1 | | | 26.849800 | -109.373287 |
| NAVOJOA | 155.00 | 1 | 1 | 5448 | 53.4 | 9.1 | 3.8 | 3.5 | 20.7 | 2.0 | 6.7 | 0.8 | 53.4 | 9.1 | 37.5 | 0.106 | 0.506 | 27.037603 | -109.436192 |
| NAVOJOA | 155.00 | 1 | 2 | 5591 | 54.8 | 8.9 | 3.8 | 3.5 | 20.0 | 1.9 | 6.3 | 0.8 | 54.8 | 8.9 | 36.3 | 0.082 | 0.506 | 27.037603 | -109.436192 |
| NAVOJOA | 155.00 | 3 | 1 | 5391 | 53.2 | 9.2 | 3.7 | 3.6 | 20.8 | 2.1 | 6.6 | 0.8 | 53.2 | 9.2 | 37.6 | 0.071 | 0.507 | 27.103928 | -109.447873 |
| NAVOJOA | 155.00 | 3 | 2 | 5547 | 54.9 | 9.5 | 3.7 | 3.4 | 19.4 | 2.0 | 6.3 | 0.8 | 54.9 | 9.5 | 35.6 | 0.070 | 0.507 | 27.103928 | -109.447873 |
| T. IZQ. VILLA JUAREZ | 167.25 | 3 | 1 | 4593 | 60.7 | 7.9 | 3.8 | 2.9 | 16.6 | 1.6 | 5.8 | 0.7 | 60.7 | 7.9 | 31.4 | 0.079 | 0.502 | 27.155309 | -109.507639 |
| T. IZQ. VILLA JUAREZ | 167.25 | 3 | 2 | 4629 | 59.9 | 7.9 | 3.9 | 3.2 | 16.9 | 1.6 | 5.9 | 0.7 | 59.9 | 7.9 | 32.2 | 0.072 | 0.502 | 27.155309 | -109.507639 |
| CASETA DE COBRO FUNDICION | 195.80 | 2 | 0 | 5781 | 60.8 | 8.0 | 3.9 | 3.0 | 16.0 | 1.6 | 6.0 | 0.7 | 60.8 | 8.0 | 31.2 | | | 27.320379 | -109.719785 |

SONORA

13 CARR: LOS MOCHIS - CD. OBREGON (CUOTA)

CLAVE: 00452

RUTA: MEX-015D

AÑO: 2010

| LUGAR | ESTACION | | | | CLASIFICACION VEHICULAR EN PORCIENTO | | | | | | | | COORDENADAS | | | | | | |
|-------------------|----------|----|----|-------|--------------------------------------|-----|-----|-----|------|------|--------|-------|-------------|-----|------|-------|-------|-----------|-------------|
| | KM | TE | SC | TDPA | A | B | C2 | C3 | T3S2 | T3S3 | T3S2R4 | OTROS | A | B | C | K' | D | LATITUD | LONGITUD |
| T. DER. FUNDICION | 196.30 | 1 | 1 | 4096 | 61.5 | 8.0 | 3.8 | 3.0 | 15.4 | 1.5 | 6.1 | 0.7 | 61.5 | 8.0 | 30.5 | 0.072 | 0.503 | 27.322207 | -109.722186 |
| T. DER. FUNDICION | 196.30 | 1 | 2 | 4153 | 61.0 | 7.7 | 3.7 | 3.1 | 16.1 | 1.6 | 6.1 | 0.7 | 61.0 | 7.7 | 31.3 | 0.076 | 0.503 | 27.322207 | -109.722186 |
| CD. OBREGON | 222.70 | 1 | 1 | 10931 | 60.2 | 8.1 | 4.2 | 3.3 | 15.9 | 1.6 | 5.9 | 0.8 | 60.2 | 8.1 | 31.7 | 0.085 | 0.511 | 27.462833 | -109.903635 |
| CD. OBREGON | 222.70 | 1 | 2 | 11441 | 60.6 | 7.7 | 4.0 | 3.1 | 16.1 | 1.7 | 6.1 | 0.7 | 60.6 | 7.7 | 31.7 | 0.085 | 0.511 | 27.462833 | -109.903635 |

14 CARR: ALTAR - SARIC

CLAVE: 26233

RUTA: SON-064

AÑO: 2010

| LUGAR | ESTACION | | | | CLASIFICACION VEHICULAR EN PORCIENTO | | | | | | | | COORDENADAS | | | | | | |
|---------------------------|----------|----|----|------|--------------------------------------|-----|-----|-----|------|------|--------|-------|-------------|-----|-----|-------|-------|-----------|-------------|
| | KM | TE | SC | TDPA | A | B | C2 | C3 | T3S2 | T3S3 | T3S2R4 | OTROS | A | B | C | K' | D | LATITUD | LONGITUD |
| T. C. SANTA ANA - SONOYTA | 0.00 | 3 | 0 | 2080 | 90.2 | 1.7 | 4.3 | 1.9 | 1.0 | 0.2 | 0.1 | 0.6 | 90.2 | 1.7 | 8.1 | 0.084 | 0.528 | 30.723686 | -111.829552 |
| SARIC | 68.00 | 1 | 0 | 672 | 92.6 | 1.1 | 4.5 | 1.1 | 0.3 | 0.2 | 0.0 | 0.2 | 92.6 | 1.1 | 6.3 | 0.124 | 0.511 | 31.097287 | -111.390718 |

15 CARR: CABORCA - EL DESEMBOQUE

CLAVE: 26225

RUTA: SON-037

AÑO: 2010

| LUGAR | ESTACION | | | | CLASIFICACION VEHICULAR EN PORCIENTO | | | | | | | | COORDENADAS | | | | | | |
|-------------------------------------|----------|----|----|------|--------------------------------------|-----|-----|-----|------|------|--------|-------|-------------|-----|------|-------|-------|-----------|-------------|
| | KM | TE | SC | TDPA | A | B | C2 | C3 | T3S2 | T3S3 | T3S2R4 | OTROS | A | B | C | K' | D | LATITUD | LONGITUD |
| CABORCA | 0.00 | 3 | 0 | 7398 | 86.7 | 2.3 | 4.8 | 1.6 | 2.3 | 0.5 | 0.0 | 1.8 | 86.7 | 2.3 | 11.0 | 0.083 | 0.506 | 30.708531 | -112.182023 |
| T. DER. PRODUCTORA NAL. DE SEMILLAS | 4.20 | 3 | 0 | 5392 | 87.1 | 2.6 | 4.4 | 1.7 | 1.7 | 0.5 | 0.0 | 2.0 | 87.1 | 2.6 | 10.3 | 0.078 | 0.510 | 30.704039 | -112.205724 |
| T. IZQ. RAMAL EL DESEO | 6.90 | 3 | 0 | 4061 | 83.4 | 3.6 | 5.6 | 2.2 | 2.2 | 1.2 | 0.0 | 1.8 | 83.4 | 3.6 | 13.0 | 0.087 | 0.506 | 30.703193 | -112.210251 |
| T. DER. EL SAHUARO | 61.20 | 3 | 0 | 1377 | 94.0 | 0.9 | 2.9 | 0.7 | 0.8 | 0.2 | 0.0 | 0.5 | 94.0 | 0.9 | 5.1 | 0.099 | 0.507 | 30.801185 | -112.719825 |
| EL DESEMBOQUE | 102.30 | | | | | | | | | | | | | | | | | | |

16 CARR: CALLE 36 NORTE - PUERTO DE LA LIBERTAD

CLAVE: 26117

RUTA: SON-029

AÑO: 2010

| LUGAR | ESTACION | | | | CLASIFICACION VEHICULAR EN PORCIENTO | | | | | | | | COORDENADAS | | | | | | |
|-------------------------------|----------|----|----|------|--------------------------------------|-----|-----|-----|------|------|--------|-------|-------------|-----|------|-------|-------|-----------|-------------|
| | KM | TE | SC | TDPA | A | B | C2 | C3 | T3S2 | T3S3 | T3S2R4 | OTROS | A | B | C | K' | D | LATITUD | LONGITUD |
| T. C. HERMOSILLO - BAHIA KINO | 0.00 | 3 | 0 | 527 | 86.3 | 3.2 | 6.8 | 1.7 | 1.2 | 0.3 | 0.1 | 0.4 | 86.3 | 3.2 | 10.5 | 0.133 | 0.509 | 28.835879 | -111.714243 |
| CASAS GRANDES | 45.00 | 3 | 0 | 364 | 87.5 | 4.0 | 5.9 | 1.6 | 0.1 | 0.3 | 0.1 | 0.5 | 87.5 | 4.0 | 8.5 | 0.135 | 0.530 | 29.184874 | -111.718024 |
| PUERTO DE LA LIBERTAD | 156.00 | | | | | | | | | | | | | | | | | | |

17 CARR: ESPERANZA - PRESA ALVARO OBREGON

CLAVE: 26242

RUTA: SON-117

AÑO: 2010

| LUGAR | ESTACION | | | | CLASIFICACION VEHICULAR EN PORCIENTO | | | | | | | | COORDENADAS | | | | | | |
|-----------|----------|----|----|------|--------------------------------------|-----|-----|-----|------|------|--------|-------|-------------|-----|-----|-------|-------|-----------|-------------|
| | KM | TE | SC | TDPA | A | B | C2 | C3 | T3S2 | T3S3 | T3S2R4 | OTROS | A | B | C | K' | D | LATITUD | LONGITUD |
| ESPERANZA | 0.00 | 3 | 0 | 5636 | 86.5 | 4.4 | 3.7 | 1.2 | 1.9 | 1.3 | 0.0 | 1.0 | 86.5 | 4.4 | 9.1 | 0.132 | 0.502 | 27.585584 | -109.916578 |

SONORA

21 CARR: HUATABAMPO - BACABACHI

CLAVE: 26237

RUTA: SON-176

AÑO: 2010

| LUGAR | ESTACION | | | | CLASIFICACION VEHICULAR EN PORCIENTO | | | | | | | | COORDENADAS | | | | | | |
|--|----------|----|----|------|--------------------------------------|-----|-----|-----|------|------|--------|-------|-------------|-----|-----|-------|-------|-----------|-------------|
| | KM | TE | SC | TDPA | A | B | C2 | C3 | T3S2 | T3S3 | T3S2R4 | OTROS | A | B | C | K' | D | LATITUD | LONGITUD |
| HUATABAMPO | 0.00 | 3 | 0 | 4289 | 87.3 | 3.4 | 4.1 | 1.8 | 1.8 | 0.8 | 0.0 | 0.8 | 87.3 | 3.4 | 9.3 | 0.096 | 0.501 | 26.825258 | -109.600304 |
| T. C. LOS MOCHIS - CD. OBREGON (CUOTA) | 29.00 | 1 | 0 | 2250 | 85.2 | 5.0 | 5.3 | 1.4 | 1.5 | 0.6 | 0.0 | 1.0 | 85.2 | 5.0 | 9.8 | 0.078 | 0.502 | 26.838768 | -109.369520 |

22 CARR: LA ALAMEDA - EL SAHUARO

CLAVE: 26234

RUTA: SON-037

AÑO: 2010

| LUGAR | ESTACION | | | | CLASIFICACION VEHICULAR EN PORCIENTO | | | | | | | | COORDENADAS | | | | | | |
|-------------------------------|----------|----|----|------|--------------------------------------|-----|-----|-----|------|------|--------|-------|-------------|-----|------|-------|-------|-----------|-------------|
| | KM | TE | SC | TDPA | A | B | C2 | C3 | T3S2 | T3S3 | T3S2R4 | OTROS | A | B | C | K' | D | LATITUD | LONGITUD |
| T. C. CABORCA - EL DESEMBOQUE | 0.00 | 3 | 0 | 1711 | 93.1 | 0.2 | 4.8 | 1.1 | 0.4 | 0.1 | 0.0 | 0.3 | 93.1 | 0.2 | 6.7 | 0.112 | 0.523 | 30.812438 | -112.727695 |
| ESTACION EL SAHUARO | 47.00 | 1 | 0 | 1560 | 86.6 | 2.0 | 5.5 | 3.2 | 1.3 | 0.3 | 0.1 | 1.0 | 86.6 | 2.0 | 11.4 | 0.087 | 0.501 | 31.043629 | -112.942685 |

23 CARR: MAZOCAHUI - CANANEA

CLAVE: 26118

RUTA: SON-118

AÑO: 2010

| LUGAR | ESTACION | | | | CLASIFICACION VEHICULAR EN PORCIENTO | | | | | | | | COORDENADAS | | | | | | |
|------------------------------|----------|----|----|------|--------------------------------------|-----|-----|-----|------|------|--------|-------|-------------|-----|-----|-------|-------|-----------|-------------|
| | KM | TE | SC | TDPA | A | B | C2 | C3 | T3S2 | T3S3 | T3S2R4 | OTROS | A | B | C | K' | D | LATITUD | LONGITUD |
| T. C. HERMOSILLO - MOCTEZUMA | 0.00 | 3 | 0 | 943 | 90.5 | 1.8 | 4.9 | 0.8 | 0.7 | 0.5 | 0.1 | 0.7 | 90.5 | 1.8 | 7.7 | 0.101 | 0.516 | 29.549094 | -110.122047 |
| BAVIACORA | 15.20 | 3 | 0 | 2133 | 87.1 | 4.5 | 5.4 | 1.1 | 0.6 | 0.5 | 0.0 | 0.8 | 87.1 | 4.5 | 8.4 | 0.121 | 0.520 | 29.728027 | -110.166916 |
| ARIZPE | 98.00 | 1 | 0 | 1109 | 86.6 | 3.8 | 6.7 | 1.6 | 0.6 | 0.3 | 0.0 | 0.4 | 86.6 | 3.8 | 9.6 | 0.101 | 0.501 | 30.331415 | -110.175038 |
| T. C. IMURIS - AGUA PRIETA | 204.00 | 1 | 0 | 1630 | 93.4 | 0.3 | 3.1 | 1.3 | 1.0 | 0.4 | 0.0 | 0.5 | 93.4 | 0.3 | 6.3 | 0.102 | 0.553 | 30.986932 | -110.258471 |

24 CARR: NAVOJOA - ALAMOS

CLAVE: 26240

RUTA: SON-013

AÑO: 2010

| LUGAR | ESTACION | | | | CLASIFICACION VEHICULAR EN PORCIENTO | | | | | | | | COORDENADAS | | | | | | |
|---------|----------|----|----|------|--------------------------------------|-----|-----|-----|------|------|--------|-------|-------------|-----|------|-------|-------|-----------|-------------|
| | KM | TE | SC | TDPA | A | B | C2 | C3 | T3S2 | T3S3 | T3S2R4 | OTROS | A | B | C | K' | D | LATITUD | LONGITUD |
| NAVOJOA | 0.00 | 3 | 0 | 4350 | 83.3 | 4.8 | 6.0 | 2.4 | 1.7 | 0.6 | 0.0 | 1.2 | 83.3 | 4.8 | 11.9 | 0.100 | 0.512 | 27.074164 | -109.403206 |
| ALAMOS | 52.80 | 1 | 0 | 2036 | 85.1 | 3.8 | 5.8 | 2.2 | 1.3 | 0.3 | 0.1 | 1.4 | 85.1 | 3.8 | 11.1 | 0.110 | 0.506 | 27.032033 | -108.953492 |

25 CARR: NAVOJOA - YAVAROS

CLAVE: 26229

RUTA: SON-056

AÑO: 2010

| LUGAR | ESTACION | | | | CLASIFICACION VEHICULAR EN PORCIENTO | | | | | | | | COORDENADAS | | | | | | |
|---------|----------|----|----|------|--------------------------------------|-----|-----|-----|------|------|--------|-------|-------------|-----|------|-------|-------|-----------|-------------|
| | KM | TE | SC | TDPA | A | B | C2 | C3 | T3S2 | T3S3 | T3S2R4 | OTROS | A | B | C | K' | D | LATITUD | LONGITUD |
| NAVOJOA | 0.00 | 3 | 0 | 5771 | 81.3 | 3.3 | 5.7 | 2.1 | 4.0 | 1.8 | 0.0 | 1.8 | 81.3 | 3.3 | 15.4 | 0.086 | 0.509 | 27.040589 | -109.466499 |
| YAVAROS | 55.00 | 1 | 0 | 1592 | 90.7 | 2.4 | 3.9 | 1.4 | 0.7 | 0.3 | 0.1 | 0.5 | 90.7 | 2.4 | 6.9 | 0.100 | 0.519 | 26.705221 | -109.543147 |

SONORA

26 CARR: NOGALES - SAN ANTONIO

CLAVE: 26110

RUTA: SON

AÑO: 2010

| LUGAR | ESTACION | | | | CLASIFICACION VEHICULAR EN PORCIENTO | | | | | | | | COORDENADAS | | | | | | |
|-------------|----------|----|----|------|--------------------------------------|-----|-----|-----|------|------|--------|-------|-------------|-----|------|-------|-------|-----------|-------------|
| | KM | TE | SC | TDPA | A | B | C2 | C3 | T3S2 | T3S3 | T3S2R4 | OTROS | A | B | C | K' | D | LATITUD | LONGITUD |
| NOGALES | 0.00 | | | | | | | | | | | | | | | | | | |
| SAN ANTONIO | 58.00 | 1 | 0 | 1934 | 75.2 | 3.5 | 7.0 | 2.6 | 7.7 | 3.2 | 0.0 | 0.8 | 75.2 | 3.5 | 21.3 | 0.093 | 0.514 | 30.977487 | -110.579691 |

27 CARR: RAMAL A AEROPUERTO DE GUAYMAS

CLAVE: 26568

RUTA: SON

AÑO: 2010

| LUGAR | ESTACION | | | | CLASIFICACION VEHICULAR EN PORCIENTO | | | | | | | | COORDENADAS | | | | | | |
|--------------------------------|----------|----|----|------|--------------------------------------|-----|-----|-----|------|------|--------|-------|-------------|-----|-----|-------|-------|-----------|-------------|
| | KM | TE | SC | TDPA | A | B | C2 | C3 | T3S2 | T3S3 | T3S2R4 | OTROS | A | B | C | K' | D | LATITUD | LONGITUD |
| T. C. CD. OBREGON - HERMOSILLO | 0.00 | 3 | 0 | 2471 | 91.6 | 1.7 | 3.2 | 1.6 | 1.2 | 0.5 | 0.0 | 0.2 | 91.6 | 1.7 | 6.7 | 0.090 | 0.511 | 27.952706 | -110.930426 |
| AEROPUERTO DE GUAYMAS | 3.00 | | | | | | | | | | | | | | | | | | |

28 CARR: SAN LUIS RIO COLORADO - GOLFO DE SANTA CLARA

CLAVE: 26226

RUTA: SON-040

AÑO: 2010

| LUGAR | ESTACION | | | | CLASIFICACION VEHICULAR EN PORCIENTO | | | | | | | | COORDENADAS | | | | | | |
|-----------------------|----------|----|----|------|--------------------------------------|-----|-----|-----|------|------|--------|-------|-------------|-----|-----|-------|-------|-----------|-------------|
| | KM | TE | SC | TDPA | A | B | C2 | C3 | T3S2 | T3S3 | T3S2R4 | OTROS | A | B | C | K' | D | LATITUD | LONGITUD |
| SAN LUIS RIO COLORADO | 0.00 | 3 | 0 | 5360 | 87.8 | 2.7 | 4.0 | 1.5 | 1.7 | 0.7 | 0.1 | 1.5 | 87.8 | 2.7 | 9.5 | 0.072 | 0.508 | 32.433494 | -114.854583 |
| T. IZQ. LAGUNITAS | 25.50 | 3 | 0 | 4314 | 88.9 | 2.0 | 4.4 | 1.9 | 1.3 | 0.5 | 0.0 | 1.0 | 88.9 | 2.0 | 9.1 | 0.093 | 0.505 | 32.316454 | -114.952510 |
| GOLFO DE SANTA CLARA | 114.30 | 1 | 0 | 1655 | 94.5 | 1.5 | 2.3 | 0.4 | 0.7 | 0.2 | 0.0 | 0.4 | 94.5 | 1.5 | 4.0 | 0.101 | 0.514 | 31.705764 | -114.522694 |

29 CARR: SONOITA - PITIQUITO

CLAVE: 26022

RUTA: SON

AÑO: 2010

| LUGAR | ESTACION | | | | CLASIFICACION VEHICULAR EN PORCIENTO | | | | | | | | COORDENADAS | | | | | | |
|-----------|----------|----|----|------|--------------------------------------|-----|-----|-----|------|------|--------|-------|-------------|-----|------|-------|-------|-----------|-------------|
| | KM | TE | SC | TDPA | A | B | C2 | C3 | T3S2 | T3S3 | T3S2R4 | OTROS | A | B | C | K' | D | LATITUD | LONGITUD |
| SONOYTA | 0.00 | 3 | 0 | 1687 | 90.4 | 2.4 | 4.0 | 1.8 | 0.7 | 0.1 | 0.0 | 0.6 | 90.4 | 2.4 | 7.2 | 0.084 | 0.523 | 31.854519 | -112.826855 |
| PITIQUITO | 170.00 | 1 | 0 | 1030 | 84.5 | 3.3 | 7.2 | 2.3 | 1.1 | 0.4 | 0.1 | 1.1 | 84.5 | 3.3 | 12.2 | 0.086 | 0.504 | 30.722288 | -112.094743 |

30 CARR: CD. OBREGON - HERMOSILLO

CLAVE: 26444

RUTA: MEX-015D-015

AÑO: 2010

| LUGAR | ESTACION | | | | CLASIFICACION VEHICULAR EN PORCIENTO | | | | | | | | COORDENADAS | | | | | | |
|---------------------------|----------|----|----|------|--------------------------------------|------|-----|-----|------|------|--------|-------|-------------|------|------|-------|-------|-----------|-------------|
| | KM | TE | SC | TDPA | A | B | C2 | C3 | T3S2 | T3S3 | T3S2R4 | OTROS | A | B | C | K' | D | LATITUD | LONGITUD |
| CD. OBREGON | 0.00 | | | | | | | | | | | | | | | | | | |
| ESPERANZA | 7.96 | 1 | 1 | 8454 | 53.9 | 10.5 | 3.6 | 3.4 | 19.7 | 1.7 | 6.4 | 0.8 | 53.9 | 10.5 | 35.6 | 0.070 | 0.504 | 27.560324 | -109.927198 |
| ESPERANZA | 7.96 | 1 | 2 | 8575 | 52.6 | 11.1 | 3.9 | 3.3 | 19.5 | 1.7 | 7.0 | 0.9 | 52.6 | 11.1 | 36.3 | 0.090 | 0.504 | 27.560324 | -109.927198 |
| ESPERANZA | 7.96 | 3 | 1 | 5770 | 52.1 | 10.7 | 3.8 | 3.3 | 20.7 | 1.7 | 6.9 | 0.8 | 52.1 | 10.7 | 37.2 | 0.074 | 0.503 | 27.596439 | -109.931603 |
| ESPERANZA | 7.96 | 3 | 2 | 5833 | 52.5 | 10.9 | 3.8 | 3.2 | 20.1 | 1.8 | 6.9 | 0.8 | 52.5 | 10.9 | 36.6 | 0.068 | 0.503 | 27.596439 | -109.931603 |
| CASETA DE COBRO ESPERANZA | 10.70 | 2 | 0 | 4748 | 53.2 | 11.0 | 3.7 | 3.3 | 19.6 | 1.7 | 6.7 | 0.8 | 53.2 | 11.0 | 35.8 | | | 27.603715 | -109.939118 |

SONORA

30 CARR: CD. OBREGON - HERMOSILLO

CLAVE: 26444

RUTA: MEX-015D-015

AÑO: 2010

| LUGAR | ESTACION | | | | CLASIFICACION VEHICULAR EN PORCIENTO | | | | | | | | COORDENADAS | | | | | | |
|--------------------------------|----------|----|----|-------|--------------------------------------|------|-----|-----|------|------|--------|-------|-------------|------|------|-------|-------|-----------|-------------|
| | KM | TE | SC | TDPA | A | B | C2 | C3 | T3S2 | T3S3 | T3S2R4 | OTROS | A | B | C | K' | D | LATITUD | LONGITUD |
| T. DER. ESTACION CORRAL | 13.80 | 1 | 1 | 3629 | 52.8 | 11.4 | 3.7 | 3.2 | 19.4 | 1.6 | 7.1 | 0.8 | 52.8 | 11.4 | 35.8 | 0.064 | 0.504 | 27.615850 | -109.951502 |
| T. DER. ESTACION CORRAL | 13.80 | 1 | 2 | 3576 | 52.5 | 10.7 | 3.8 | 3.4 | 20.3 | 1.7 | 6.8 | 0.8 | 52.5 | 10.7 | 36.8 | 0.073 | 0.504 | 27.615850 | -109.951502 |
| T. DER. ESTACION CORRAL | 13.80 | 3 | 1 | 3114 | 52.8 | 11.6 | 3.7 | 3.5 | 19.3 | 1.7 | 6.6 | 0.8 | 52.8 | 11.6 | 35.6 | 0.070 | 0.500 | 27.618385 | -109.963354 |
| T. DER. ESTACION CORRAL | 13.80 | 3 | 2 | 3120 | 53.8 | 11.5 | 3.7 | 3.2 | 18.7 | 1.7 | 6.6 | 0.8 | 53.8 | 11.5 | 34.7 | 0.072 | 0.500 | 27.618385 | -109.963354 |
| T. IZQ. BACUM | 25.46 | 1 | 1 | 2802 | 52.1 | 11.6 | 3.9 | 3.4 | 19.4 | 1.8 | 7.0 | 0.8 | 52.1 | 11.6 | 36.3 | 0.067 | 0.507 | 27.600446 | -110.067806 |
| T. IZQ. BACUM | 25.46 | 1 | 2 | 2882 | 54.5 | 10.6 | 3.8 | 3.1 | 18.8 | 1.6 | 6.8 | 0.8 | 54.5 | 10.6 | 34.9 | 0.070 | 0.507 | 27.600446 | -110.067806 |
| T. IZQ. BACUM | 25.46 | 3 | 1 | 4228 | 54.3 | 10.8 | 3.6 | 3.1 | 19.4 | 1.6 | 6.4 | 0.8 | 54.3 | 10.8 | 34.9 | 0.073 | 0.509 | 27.597400 | -110.085023 |
| T. IZQ. BACUM | 25.46 | 3 | 2 | 4391 | 53.3 | 10.6 | 3.9 | 3.3 | 19.4 | 1.8 | 6.9 | 0.8 | 53.3 | 10.6 | 36.1 | 0.083 | 0.509 | 27.597400 | -110.085023 |
| VICAM | 47.28 | 3 | 1 | 4319 | 52.6 | 11.1 | 3.6 | 3.4 | 20.1 | 1.8 | 6.6 | 0.8 | 52.6 | 11.1 | 36.3 | 0.071 | 0.502 | 27.651875 | -110.312343 |
| VICAM | 47.28 | 3 | 2 | 4353 | 54.5 | 10.4 | 3.6 | 3.1 | 19.1 | 1.6 | 6.9 | 0.8 | 54.5 | 10.4 | 35.1 | 0.081 | 0.502 | 27.651875 | -110.312343 |
| T. IZQ. POTAM | 57.40 | 1 | 1 | 4458 | 51.7 | 11.2 | 3.8 | 3.2 | 20.4 | 1.8 | 7.1 | 0.8 | 51.7 | 11.2 | 37.1 | 0.077 | 0.503 | 27.696232 | -110.365322 |
| T. IZQ. POTAM | 57.40 | 1 | 2 | 4518 | 52.9 | 10.9 | 3.7 | 3.5 | 19.7 | 1.7 | 6.8 | 0.8 | 52.9 | 10.9 | 36.2 | 0.081 | 0.503 | 27.696232 | -110.365322 |
| T. IZQ. POTAM | 57.40 | 3 | 1 | 4147 | 51.6 | 11.2 | 3.6 | 3.5 | 20.8 | 1.7 | 6.8 | 0.8 | 51.6 | 11.2 | 37.2 | 0.068 | 0.506 | 27.704221 | -110.370926 |
| T. IZQ. POTAM | 57.40 | 3 | 2 | 4241 | 54.0 | 10.7 | 3.5 | 3.3 | 19.6 | 1.6 | 6.5 | 0.8 | 54.0 | 10.7 | 35.3 | 0.083 | 0.506 | 27.704221 | -110.370926 |
| T. DER. LIBRAMIENTO DE GUAYMAS | 107.80 | 1 | 1 | 5564 | 74.0 | 1.9 | 3.7 | 3.1 | 12.3 | 1.5 | 2.9 | 0.6 | 74.0 | 1.9 | 24.1 | 0.069 | 0.505 | 27.951230 | -110.734950 |
| T. DER. LIBRAMIENTO DE GUAYMAS | 107.80 | 1 | 2 | 5676 | 74.8 | 1.8 | 3.7 | 2.9 | 12.0 | 1.4 | 2.8 | 0.6 | 74.8 | 1.8 | 23.4 | 0.076 | 0.505 | 27.951230 | -110.734950 |
| T. DER. LIBRAMIENTO DE GUAYMAS | 107.80 | 3 | 0 | 6579 | 73.9 | 1.8 | 3.8 | 3.1 | 12.5 | 1.5 | 2.8 | 0.6 | 73.9 | 1.8 | 24.3 | 0.080 | 0.503 | 27.952132 | -110.763058 |
| EMPALME | 115.02 | 1 | 0 | 6412 | 73.1 | 1.9 | 3.8 | 3.2 | 12.8 | 1.6 | 3.0 | 0.6 | 73.1 | 1.9 | 25.0 | 0.074 | 0.511 | 27.952932 | -110.795723 |
| EMPALME | 115.02 | 3 | 1 | 7008 | 75.1 | 1.8 | 3.8 | 2.9 | 11.4 | 1.4 | 3.0 | 0.6 | 75.1 | 1.8 | 23.1 | 0.078 | 0.500 | 27.955183 | -110.827295 |
| EMPALME | 115.02 | 3 | 2 | 7018 | 75.5 | 1.7 | 3.6 | 2.8 | 11.4 | 1.5 | 2.9 | 0.6 | 75.5 | 1.7 | 22.8 | 0.076 | 0.500 | 27.955183 | -110.827295 |
| T. IZQ. SAN CARLOS | 133.00 | 1 | 1 | 5909 | 74.2 | 1.8 | 3.8 | 3.1 | 12.2 | 1.5 | 2.8 | 0.6 | 74.2 | 1.8 | 24.0 | 0.079 | 0.502 | 27.982699 | -110.939848 |
| T. IZQ. SAN CARLOS | 133.00 | 1 | 2 | 5950 | 74.8 | 1.7 | 3.5 | 3.1 | 12.2 | 1.4 | 2.7 | 0.6 | 74.8 | 1.7 | 23.5 | 0.089 | 0.502 | 27.982699 | -110.939848 |
| T. IZQ. SAN CARLOS | 133.00 | 3 | 1 | 3523 | 74.2 | 1.8 | 3.6 | 3.1 | 12.2 | 1.6 | 2.9 | 0.6 | 74.2 | 1.8 | 24.0 | 0.084 | 0.509 | 27.996677 | -110.938613 |
| T. IZQ. SAN CARLOS | 133.00 | 3 | 2 | 3658 | 75.2 | 1.7 | 3.5 | 3.0 | 11.7 | 1.4 | 2.9 | 0.6 | 75.2 | 1.7 | 23.1 | 0.083 | 0.509 | 27.996677 | -110.938613 |
| T. IZQ. BAHIA KINO | 171.30 | 1 | 1 | 4780 | 71.4 | 6.7 | 3.6 | 0.2 | 11.7 | 2.2 | 3.7 | 0.5 | 71.4 | 6.7 | 21.9 | 0.082 | 0.504 | 28.316812 | -111.041857 |
| T. IZQ. BAHIA KINO | 171.30 | 1 | 2 | 4863 | 71.6 | 6.5 | 3.7 | 0.2 | 11.7 | 2.2 | 3.6 | 0.5 | 71.6 | 6.5 | 21.9 | 0.084 | 0.504 | 28.316812 | -111.041857 |
| T. IZQ. BAHIA KINO | 171.30 | 3 | 1 | 4392 | 73.4 | 6.0 | 3.3 | 0.2 | 10.9 | 2.3 | 3.4 | 0.5 | 73.4 | 6.0 | 20.6 | 0.081 | 0.505 | 28.325419 | -111.042015 |
| T. IZQ. BAHIA KINO | 171.30 | 3 | 2 | 4487 | 72.5 | 6.3 | 3.6 | 0.2 | 11.3 | 2.2 | 3.4 | 0.5 | 72.5 | 6.3 | 21.2 | 0.076 | 0.505 | 28.325419 | -111.042015 |
| HERMOSILLO | 251.00 | 1 | 1 | 15132 | 71.9 | 6.5 | 3.5 | 0.2 | 11.4 | 2.3 | 3.7 | 0.5 | 71.9 | 6.5 | 21.6 | 0.061 | 0.507 | 29.005789 | -110.966020 |
| HERMOSILLO | 251.00 | 1 | 2 | 15574 | 72.6 | 6.2 | 3.6 | 0.2 | 11.2 | 2.3 | 3.4 | 0.5 | 72.6 | 6.2 | 21.2 | 0.067 | 0.507 | 29.005789 | -110.966020 |

SONORA

31 CARR: HERMOSILLO - NOGALES

CLAVE: 26445

RUTA: MEX-015D-015

AÑO: 2010

| LUGAR | ESTACION | | | | CLASIFICACION VEHICULAR EN PORCIENTO | | | | | | | | COORDENADAS | | | | | | |
|--------------------------------|----------|----|----|-------|--------------------------------------|-----|-----|-----|------|------|--------|-------|-------------|-----|------|-------|-------|-----------|-------------|
| | KM | TE | SC | TDPA | A | B | C2 | C3 | T3S2 | T3S3 | T3S2R4 | OTROS | A | B | C | K' | D | LATITUD | LONGITUD |
| HERMOSILLO | 0.00 | 3 | 1 | 12461 | 69.6 | 5.6 | 3.1 | 1.7 | 13.6 | 1.4 | 4.4 | 0.6 | 69.6 | 5.6 | 24.8 | 0.078 | 0.518 | 29.113678 | -110.912283 |
| HERMOSILLO | 0.00 | 3 | 2 | 13365 | 68.0 | 5.8 | 3.4 | 1.8 | 14.4 | 1.5 | 4.5 | 0.6 | 68.0 | 5.8 | 26.2 | 0.079 | 0.518 | 29.113678 | -110.912283 |
| T. DER. URES | 8.60 | 1 | 1 | 10133 | 69.1 | 5.9 | 3.2 | 1.6 | 13.9 | 1.4 | 4.3 | 0.6 | 69.1 | 5.9 | 25.0 | 0.077 | 0.501 | 29.154793 | -110.909563 |
| T. DER. URES | 8.60 | 1 | 2 | 10156 | 68.4 | 5.8 | 3.0 | 1.8 | 14.7 | 1.5 | 4.2 | 0.6 | 68.4 | 5.8 | 25.8 | 0.079 | 0.501 | 29.154793 | -110.909563 |
| T. DER. URES | 8.60 | 3 | 1 | 5407 | 69.1 | 5.9 | 3.1 | 1.7 | 13.8 | 1.6 | 4.2 | 0.6 | 69.1 | 5.9 | 25.0 | 0.070 | 0.502 | 29.174393 | -110.916857 |
| T. DER. URES | 8.60 | 3 | 2 | 5450 | 67.3 | 6.1 | 3.2 | 1.9 | 14.6 | 1.6 | 4.7 | 0.6 | 67.3 | 6.1 | 26.6 | 0.071 | 0.502 | 29.174393 | -110.916857 |
| CASETA DE COBRO HERMOSILLO | 15.20 | 2 | 0 | 8973 | 68.4 | 5.9 | 3.2 | 1.8 | 14.2 | 1.5 | 4.4 | 0.6 | 68.4 | 5.9 | 25.7 | | | 29.220739 | -110.930200 |
| T. DER. PESQUEIRA | 32.39 | 3 | 1 | 5040 | 68.6 | 5.8 | 3.3 | 1.9 | 13.9 | 1.5 | 4.4 | 0.6 | 68.6 | 5.8 | 25.6 | 0.073 | 0.507 | 29.373850 | -110.972852 |
| T. DER. PESQUEIRA | 32.39 | 3 | 2 | 5193 | 68.3 | 6.0 | 3.2 | 1.8 | 14.4 | 1.4 | 4.3 | 0.6 | 68.3 | 6.0 | 25.7 | 0.072 | 0.507 | 29.373850 | -110.972852 |
| T. DER. CARBO | 68.90 | 1 | 1 | 6710 | 68.4 | 5.5 | 3.3 | 1.8 | 14.6 | 1.6 | 4.2 | 0.6 | 68.4 | 5.5 | 26.1 | 0.071 | 0.502 | 29.684664 | -111.042385 |
| T. DER. CARBO | 68.90 | 1 | 2 | 6768 | 69.2 | 5.8 | 3.0 | 1.8 | 13.9 | 1.5 | 4.2 | 0.6 | 69.2 | 5.8 | 25.0 | 0.073 | 0.502 | 29.684664 | -111.042385 |
| T. DER. CARBO | 68.90 | 3 | 1 | 5239 | 67.3 | 6.3 | 3.2 | 1.9 | 14.7 | 1.6 | 4.4 | 0.6 | 67.3 | 6.3 | 26.4 | 0.071 | 0.503 | 29.692743 | -111.043998 |
| T. DER. CARBO | 68.90 | 3 | 2 | 5294 | 67.1 | 6.3 | 3.2 | 1.8 | 15.1 | 1.5 | 4.4 | 0.6 | 67.1 | 6.3 | 26.6 | 0.066 | 0.503 | 29.691430 | -111.044017 |
| T. IZQ. BENJAMIN HILL | 125.40 | 1 | 1 | 5226 | 63.2 | 6.6 | 4.5 | 3.8 | 16.2 | 1.8 | 3.4 | 0.5 | 63.2 | 6.6 | 30.2 | 0.071 | 0.508 | 30.166236 | -111.097237 |
| T. IZQ. BENJAMIN HILL | 125.40 | 1 | 2 | 5389 | 65.4 | 6.5 | 4.1 | 3.6 | 15.1 | 1.6 | 3.2 | 0.5 | 65.4 | 6.5 | 28.1 | 0.073 | 0.508 | 30.166236 | -111.097237 |
| T. IZQ. BENJAMIN HILL | 125.40 | 3 | 1 | 5198 | 64.2 | 6.6 | 4.3 | 3.4 | 15.6 | 1.8 | 3.6 | 0.5 | 64.2 | 6.6 | 29.2 | 0.070 | 0.505 | 30.176298 | -111.097356 |
| T. IZQ. BENJAMIN HILL | 125.40 | 3 | 2 | 5293 | 64.8 | 6.3 | 4.2 | 3.4 | 16.0 | 1.6 | 3.2 | 0.5 | 64.8 | 6.3 | 28.9 | 0.072 | 0.505 | 30.176298 | -111.097356 |
| SANTA ANA | 167.27 | 1 | 1 | 5532 | 72.1 | 3.4 | 3.9 | 0.2 | 12.9 | 2.2 | 4.6 | 0.7 | 72.1 | 3.4 | 24.5 | 0.071 | 0.509 | 30.520686 | -111.109388 |
| SANTA ANA | 167.27 | 1 | 2 | 5734 | 72.8 | 3.5 | 3.6 | 0.2 | 12.2 | 2.2 | 4.8 | 0.7 | 72.8 | 3.5 | 23.7 | 0.072 | 0.509 | 30.520796 | -111.109927 |
| SANTA ANA | 167.27 | 3 | 1 | 5094 | 73.6 | 3.3 | 3.4 | 0.2 | 12.1 | 2.2 | 4.5 | 0.7 | 73.6 | 3.3 | 23.1 | 0.080 | 0.506 | 30.548043 | -111.111720 |
| SANTA ANA | 167.27 | 3 | 2 | 5220 | 73.9 | 3.3 | 3.3 | 0.2 | 11.9 | 2.2 | 4.5 | 0.7 | 73.9 | 3.3 | 22.8 | 0.091 | 0.506 | 30.548104 | -111.111886 |
| MAGDALENA DE KINO | 182.70 | 1 | 1 | 4413 | 73.2 | 3.5 | 3.5 | 0.2 | 12.1 | 2.2 | 4.6 | 0.7 | 73.2 | 3.5 | 23.3 | 0.070 | 0.508 | 30.617970 | -110.996545 |
| MAGDALENA DE KINO | 182.70 | 1 | 2 | 4559 | 72.6 | 3.5 | 3.7 | 0.2 | 12.3 | 2.3 | 4.7 | 0.7 | 72.6 | 3.5 | 23.9 | 0.077 | 0.508 | 30.617970 | -110.996545 |
| MAGDALENA DE KINO | 182.70 | 3 | 1 | 4126 | 74.0 | 3.2 | 3.6 | 0.2 | 11.5 | 2.2 | 4.6 | 0.7 | 74.0 | 3.2 | 22.8 | 0.077 | 0.507 | 30.650535 | -110.942407 |
| MAGDALENA DE KINO | 182.70 | 3 | 2 | 4242 | 73.4 | 3.3 | 3.4 | 0.2 | 12.2 | 2.1 | 4.7 | 0.7 | 73.4 | 3.3 | 23.3 | 0.079 | 0.507 | 30.650535 | -110.942407 |
| IMURIS | 209.00 | 1 | 1 | 5494 | 72.9 | 3.4 | 3.7 | 0.2 | 12.0 | 2.3 | 4.8 | 0.7 | 72.9 | 3.4 | 23.7 | 0.093 | 0.503 | 30.775718 | -110.857115 |
| IMURIS | 209.00 | 1 | 2 | 5568 | 74.3 | 3.2 | 3.3 | 0.2 | 11.7 | 2.2 | 4.4 | 0.7 | 74.3 | 3.2 | 22.5 | 0.095 | 0.503 | 30.775753 | -110.857275 |
| T. DER. AGUA PRIETA | 209.50 | 3 | 1 | 4887 | 73.8 | 3.2 | 3.5 | 0.2 | 11.8 | 2.1 | 4.7 | 0.7 | 73.8 | 3.2 | 23.0 | 0.083 | 0.504 | 30.789670 | -110.850959 |
| T. DER. AGUA PRIETA | 209.50 | 3 | 2 | 4968 | 73.3 | 3.3 | 3.7 | 0.2 | 11.9 | 2.1 | 4.8 | 0.7 | 73.3 | 3.3 | 23.4 | 0.097 | 0.504 | 30.789670 | -110.850959 |
| T. IZQ. SARIC | 255.90 | 1 | 1 | 5576 | 73.7 | 3.2 | 3.8 | 0.2 | 11.6 | 2.2 | 4.6 | 0.7 | 73.7 | 3.2 | 23.1 | 0.091 | 0.507 | 31.176124 | -110.967196 |
| T. IZQ. SARIC | 255.90 | 1 | 2 | 5744 | 74.1 | 3.1 | 3.4 | 0.2 | 11.9 | 2.0 | 4.6 | 0.7 | 74.1 | 3.1 | 22.8 | 0.091 | 0.507 | 31.176124 | -110.967196 |
| T. IZQ. SARIC | 255.90 | 3 | 1 | 5942 | 73.5 | 3.1 | 3.6 | 0.2 | 12.3 | 2.2 | 4.4 | 0.7 | 73.5 | 3.1 | 23.4 | 0.090 | 0.502 | 31.187923 | -110.972192 |
| T. IZQ. SARIC | 255.90 | 3 | 2 | 5991 | 74.4 | 3.2 | 3.5 | 0.2 | 11.2 | 2.2 | 4.6 | 0.7 | 74.4 | 3.2 | 22.4 | 0.095 | 0.502 | 31.187923 | -110.972192 |
| T. IZQ. LIBRAMIENTO DE NOGALES | 270.60 | 1 | 1 | 6792 | 72.9 | 3.2 | 3.8 | 0.2 | 12.4 | 2.3 | 4.5 | 0.7 | 72.9 | 3.2 | 23.9 | 0.100 | 0.506 | 31.208225 | -110.975020 |
| T. IZQ. LIBRAMIENTO DE NOGALES | 270.60 | 1 | 2 | 6949 | 73.7 | 3.2 | 3.7 | 0.2 | 11.9 | 2.2 | 4.4 | 0.7 | 73.7 | 3.2 | 23.1 | 0.084 | 0.506 | 31.208225 | -110.975020 |

SONORA

31 CARR: HERMOSILLO - NOGALES

CLAVE: 26445

RUTA: MEX-015D-015

AÑO: 2010

| LUGAR | ESTACION | | | | CLASIFICACION VEHICULAR EN PORCIENTO | | | | | | | | COORDENADAS | | | | | | |
|--------------------------------|----------|----|----|-------|--------------------------------------|-----|-----|-----|------|------|--------|-------|-------------|-----|------|-------|-------|-----------|-------------|
| | KM | TE | SC | TDPA | A | B | C2 | C3 | T3S2 | T3S3 | T3S2R4 | OTROS | A | B | C | K' | D | LATITUD | LONGITUD |
| T. IZQ. LIBRAMIENTO DE NOGALES | 270.60 | 3 | 1 | 8027 | 72.4 | 3.5 | 3.6 | 0.2 | 12.2 | 2.4 | 5.0 | 0.7 | 72.4 | 3.5 | 24.1 | 0.082 | 0.500 | 31.229161 | -110.968413 |
| T. IZQ. LIBRAMIENTO DE NOGALES | 270.60 | 3 | 2 | 8039 | 72.0 | 3.3 | 3.9 | 0.2 | 12.5 | 2.4 | 5.0 | 0.7 | 72.0 | 3.3 | 24.7 | 0.088 | 0.500 | 31.229161 | -110.968413 |
| NOGALES | 277.00 | 1 | 1 | 11483 | 72.4 | 3.2 | 3.6 | 0.2 | 12.6 | 2.2 | 5.0 | 0.8 | 72.4 | 3.2 | 24.4 | 0.083 | 0.509 | 31.244614 | -110.959505 |
| NOGALES | 277.00 | 1 | 2 | 11891 | 74.3 | 3.3 | 3.4 | 0.2 | 11.3 | 2.2 | 4.6 | 0.7 | 74.3 | 3.3 | 22.4 | 0.081 | 0.509 | 31.244614 | -110.959505 |

32 CARR: T. C. (HERMOSILLO - NOGALES) - HUASABAS

CLAVE: 26231

RUTA: MEX-014-SON

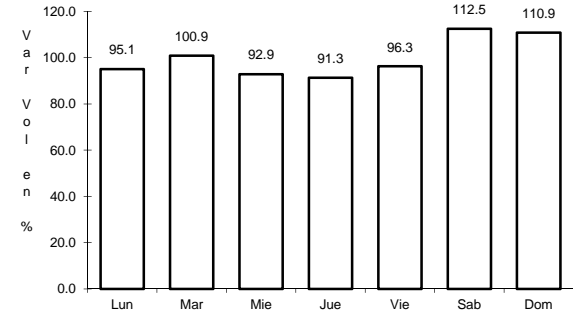
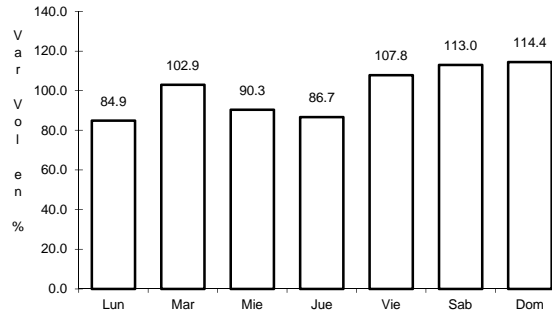
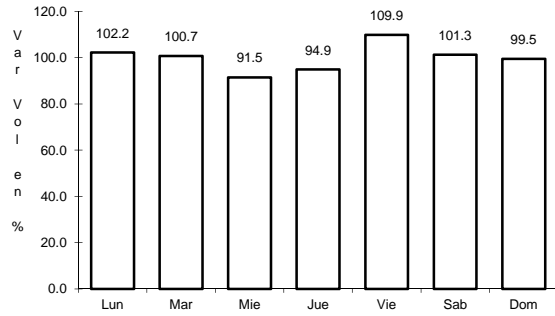
AÑO: 2010

| LUGAR | ESTACION | | | | CLASIFICACION VEHICULAR EN PORCIENTO | | | | | | | | COORDENADAS | | | | | | |
|----------------------------|----------|----|----|------|--------------------------------------|-----|-----|-----|------|------|--------|-------|-------------|-----|-----|-------|-------|-----------|-------------|
| | KM | TE | SC | TDPA | A | B | C2 | C3 | T3S2 | T3S3 | T3S2R4 | OTROS | A | B | C | K' | D | LATITUD | LONGITUD |
| T. C. HERMOSILLO - NOGALES | 0.00 | 3 | 0 | 6605 | 92.8 | 1.7 | 3.4 | 0.0 | 1.2 | 0.8 | 0.0 | 0.1 | 92.8 | 1.7 | 5.5 | 0.099 | 0.501 | 29.167164 | -110.905204 |
| URES | 62.00 | 3 | 0 | 3639 | 92.6 | 1.8 | 3.5 | 0.0 | 1.2 | 0.8 | 0.0 | 0.1 | 92.6 | 1.8 | 5.6 | 0.088 | 0.505 | 29.432136 | -110.356540 |
| MAZOCAHUI | 97.50 | 3 | 0 | 1308 | 92.4 | 1.8 | 3.7 | 0.0 | 1.2 | 0.8 | 0.0 | 0.1 | 92.4 | 1.8 | 5.8 | 0.099 | 0.510 | 29.544412 | -110.119088 |
| MOCTEZUMA | 165.00 | 1 | 0 | 1528 | 92.6 | 1.8 | 3.5 | 0.0 | 1.2 | 0.8 | 0.0 | 0.1 | 92.6 | 1.8 | 5.6 | 0.079 | 0.512 | 29.798782 | -109.691558 |
| MOCTEZUMA | 165.00 | 3 | 0 | 1727 | 92.7 | 1.8 | 3.4 | 0.0 | 1.2 | 0.8 | 0.0 | 0.1 | 92.7 | 1.8 | 5.5 | 0.086 | 0.501 | 29.801534 | -109.670859 |
| HUASABAS | 212.50 | 1 | 0 | 919 | 92.7 | 1.8 | 3.4 | 0.0 | 1.2 | 0.8 | 0.0 | 0.1 | 92.7 | 1.8 | 5.5 | 0.146 | 0.511 | 29.916855 | -109.315456 |

4 CARR: LA JUNTA - YECORA

CLAVE: 00065

ruta: MEX-016



Km: 0.00 Tipo: 3 Sent: 0

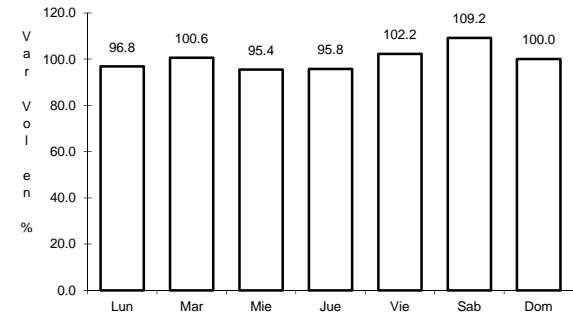
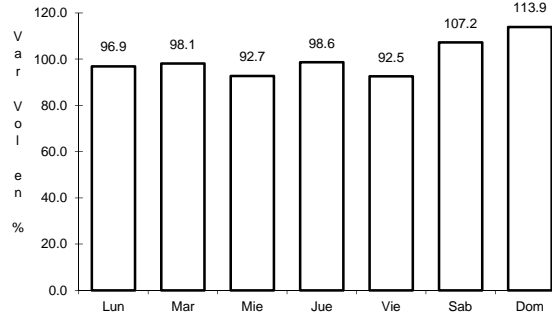
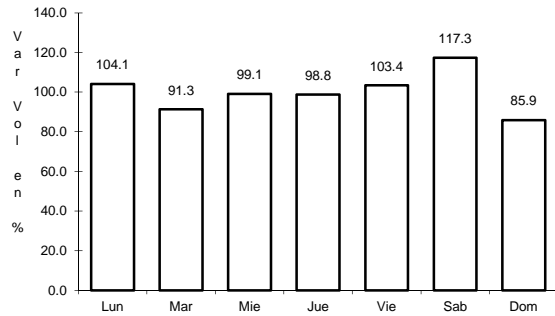
Km: 70.00 Tipo: 3 Sent: 0

Km: 253.00 Tipo: 1 Sent: 0

5 CARR: MOCTEZUMA - AGUA PRIETA

CLAVE: 26027

ruta: MEX-017



Km: 0.00 Tipo: 3 Sent: 0

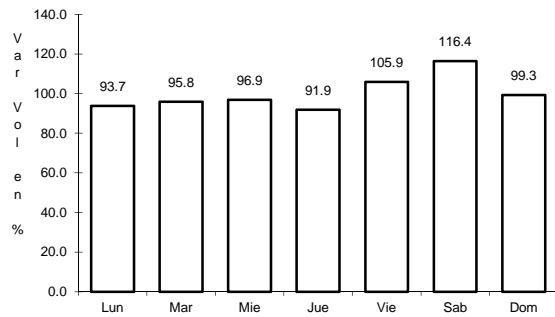
Km: 81.00 Tipo: 3 Sent: 0

Km: 197.60 Tipo: 1 Sent: 0

6 CARR: RAMAL A NACO

CLAVE: 26579

ruta: MEX

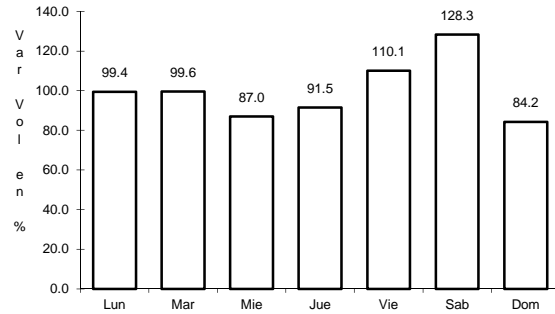


Km: 0.00 Tipo: 3 Sent: 0

10 CARR: SONOITA - PUERTO PEÑASCO

CLAVE: 26232

RUTA: MEX-008

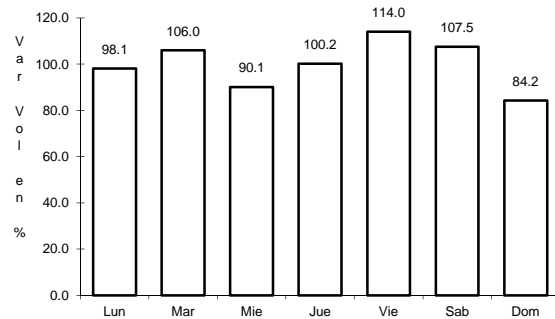


Km: 0.00 Tipo: 3 Sent: 0

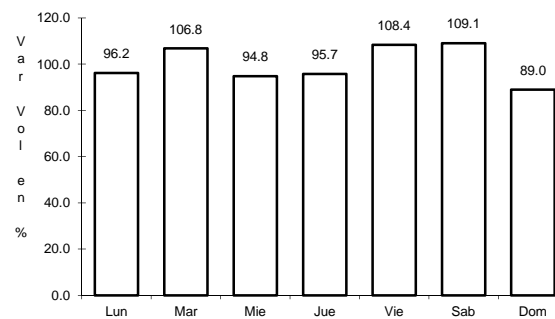
11 CARR: LIBRAMIENTO DE EMPALME - GUAYMAS (CUOTA)

CLAVE: 26256

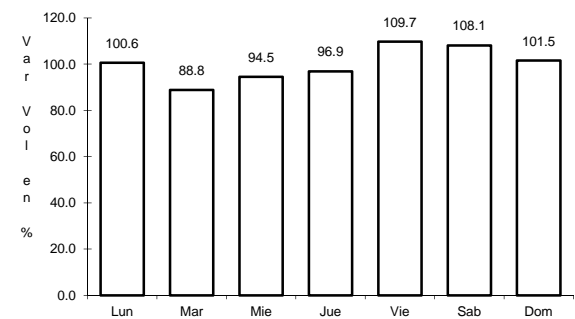
RUTA: MEX-015D



Km: 0.00 Tipo: 3 Sent: 1



Km: 0.00 Tipo: 3 Sent: 2

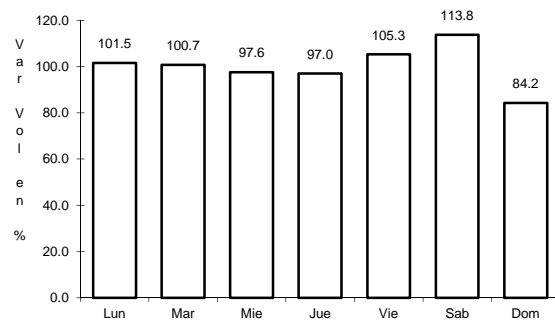


Km: 21.50 Tipo: 1 Sent: 1

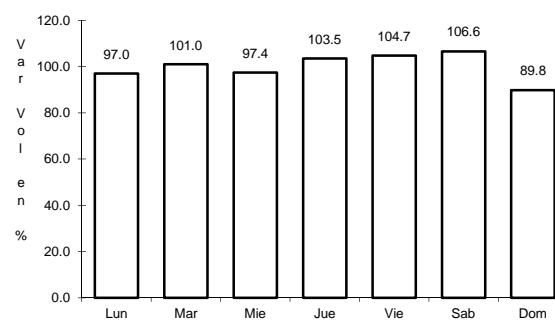
12 CARR: LIBRAMIENTO DE NOGALES (CUOTA)

CLAVE: 26100

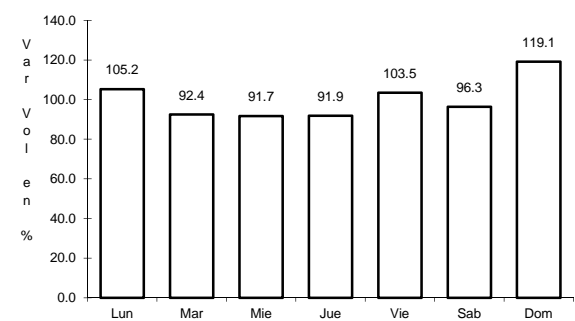
RUTA: MEX-15D



Km: 0.00 Tipo: 3 Sent: 1



Km: 0.00 Tipo: 3 Sent: 2

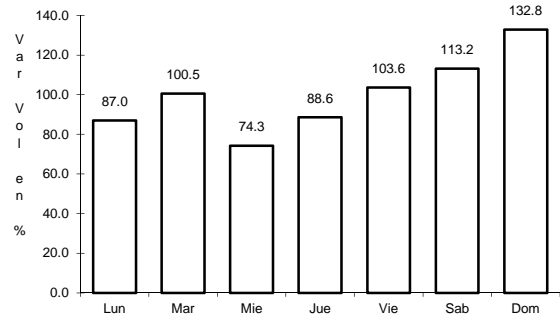


Km: 12.50 Tipo: 1 Sent: 1

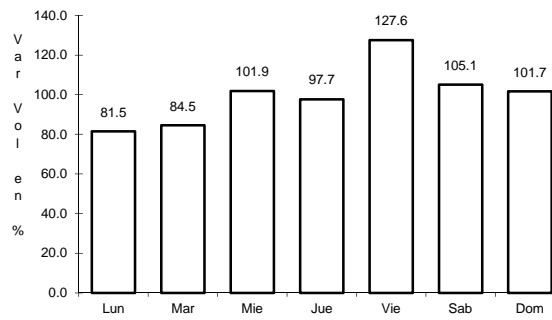
16 CARR: CALLE 36 NORTE - PUERTO DE LA LIBERTAD

CLAVE: 26117

RUTA: SON-029



Km: 0.00 Tipo: 3 Sent: 0

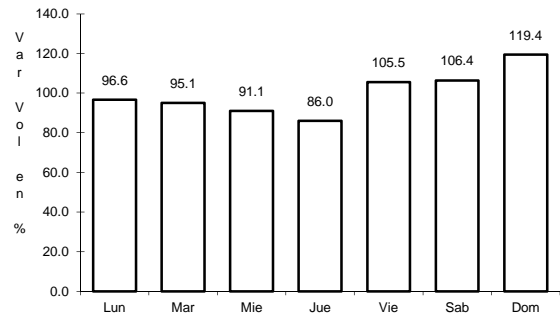


Km: 45.00 Tipo: 3 Sent: 0

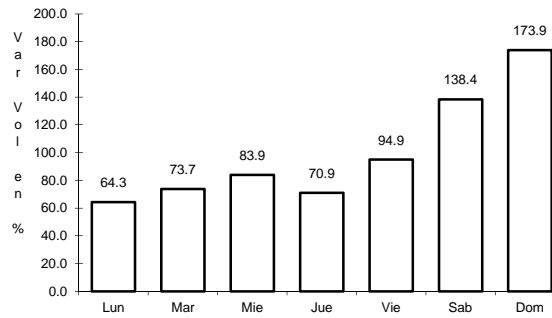
17 CARR: ESPERANZA - PRESA ALVARO OBREGON

CLAVE: 26242

RUTA: SON-117



Km: 0.00 Tipo: 3 Sent: 0

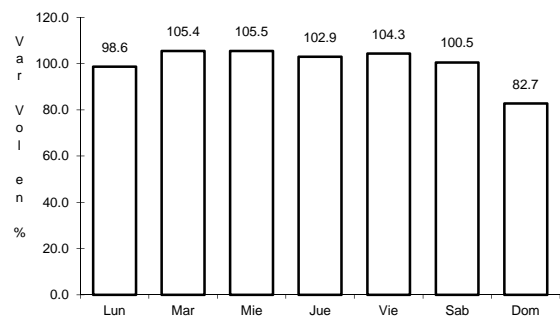


Km: 17.00 Tipo: 3 Sent: 0

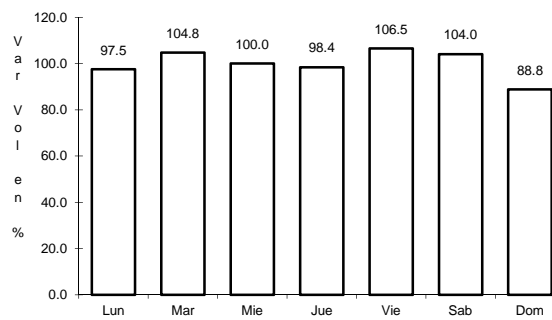
18 CARR: HERMOSILLO - BAHIA KINO

CLAVE: 26109

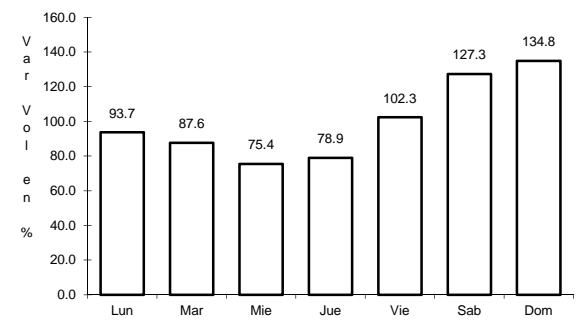
RUTA: SON-100



Km: 0.00 Tipo: 3 Sent: 1



Km: 0.00 Tipo: 3 Sent: 2

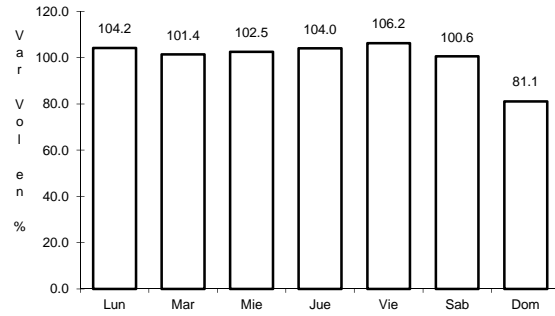


Km: 106.50 Tipo: 1 Sent: 0

25 CARR: NAVOJOA - YAVAROS

CLAVE: 26229

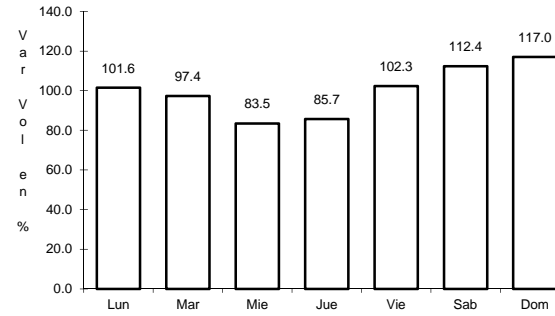
RUTA: SON-056



Km: 0.00

Tipo: 3

Sent: 0



Km: 55.00

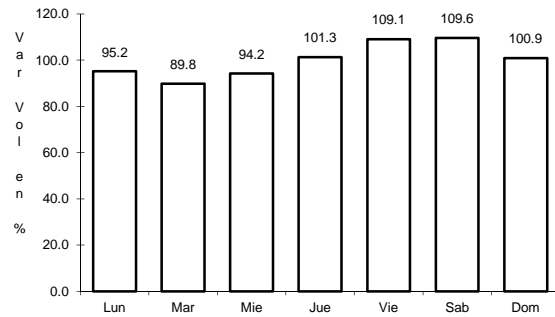
Tipo: 1

Sent: 0

26 CARR: NOGALES - SAN ANTONIO

CLAVE: 26110

RUTA: SON



Km: 58.00

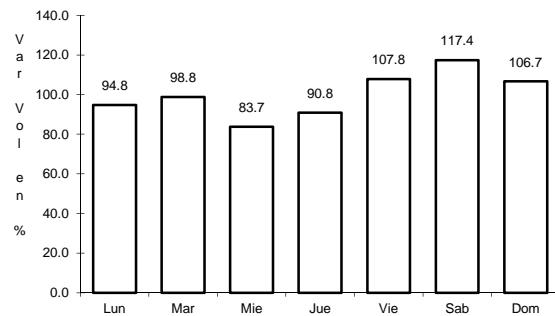
Tipo: 1

Sent: 0

27 CARR: RAMAL A AEROPUERTO DE GUAYMAS

CLAVE: 26568

RUTA: SON



Km: 0.00

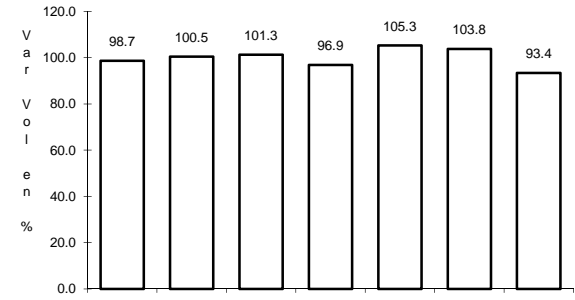
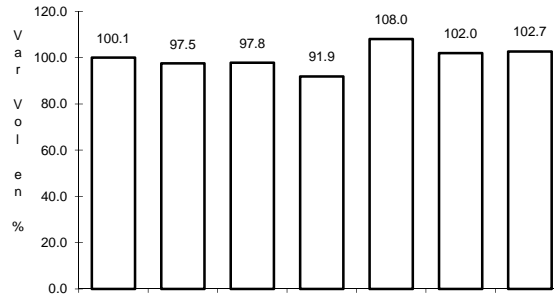
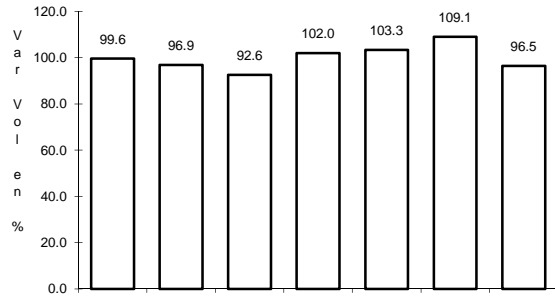
Tipo: 3

Sent: 0

31 CARR: HERMOSILLO - NOGALES

CLAVE: 26445

RUTA: MEX-015D-015



Km: 0.00

Tipo: 3

Sent: 1

Km: 0.00

Tipo: 3

Sent: 2

Km: 277.00

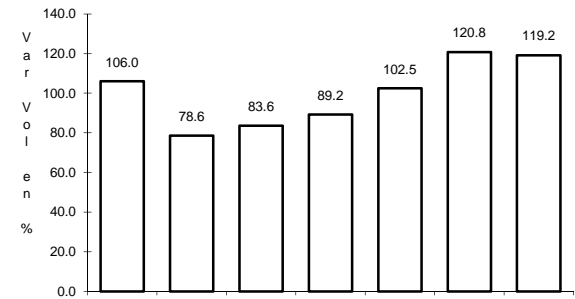
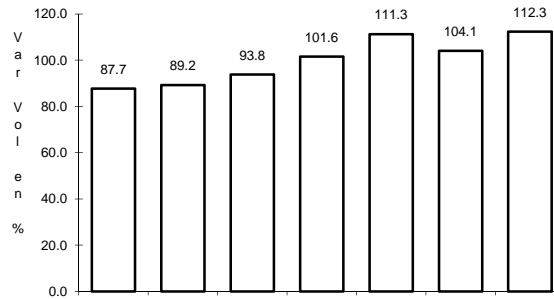
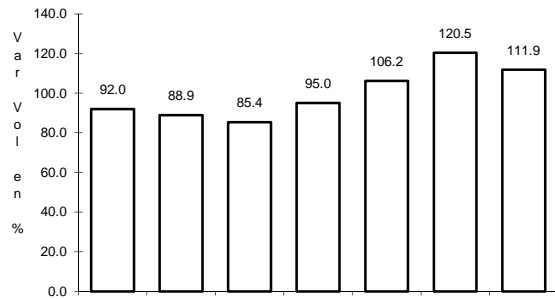
Tipo: 1

Sent: 1

32 CARR: T. C. (HERMOSILLO - NOGALES) - HUASABAS

CLAVE: 26231

RUTA: MEX-014-SON



Km: 0.00

Tipo: 3

Sent: 0

Km: 97.50

Tipo: 3

Sent: 0

Km: 212.50

Tipo: 1

Sent: 0