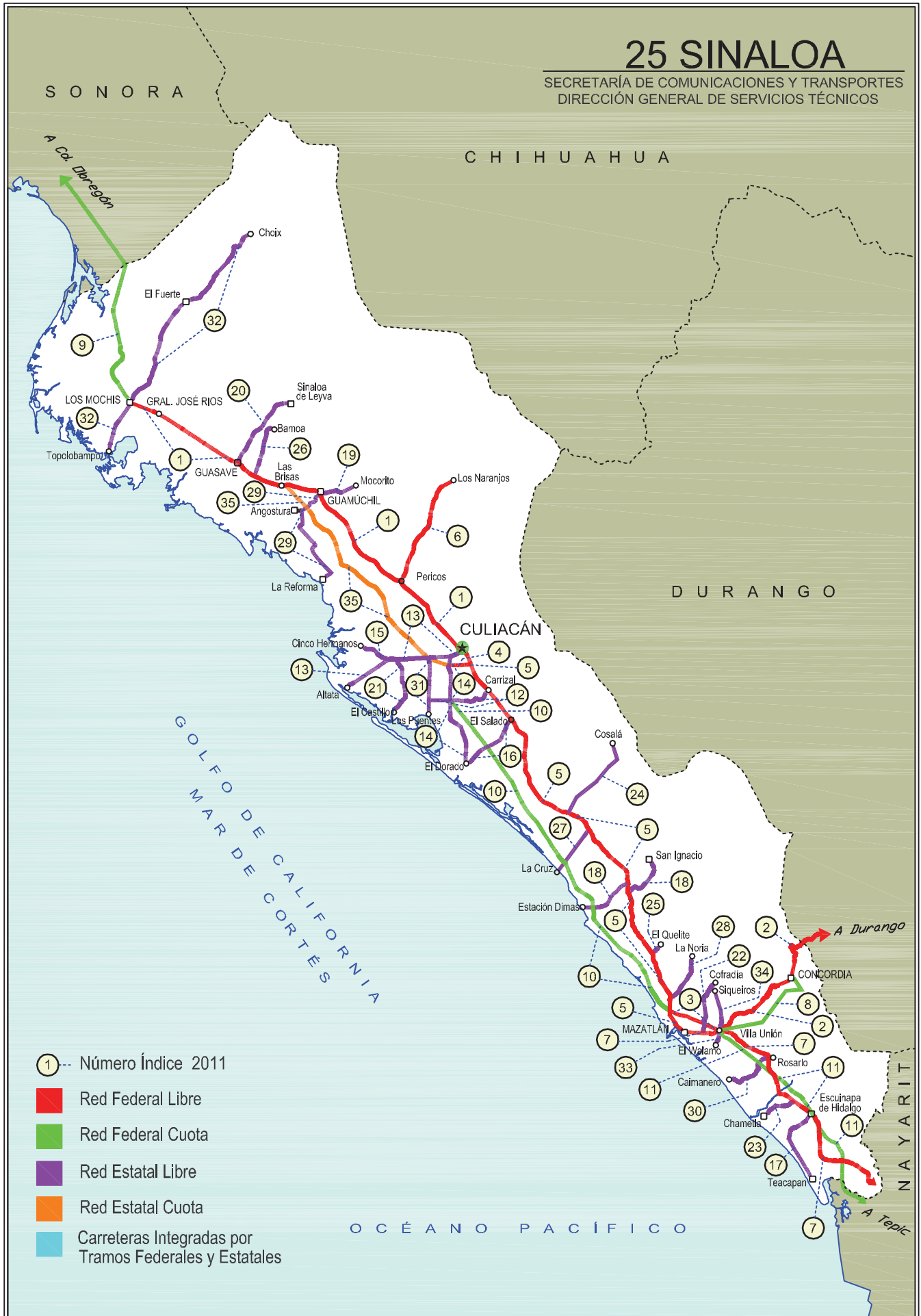


SINALOA

No. INDICE	CARRETERA	RUTA
	---RED FEDERAL LIBRE---	
1	CULIACAN - LOS MOCHIS	MEX-015
2	DURANGO - VILLA UNION	MEX-040
3	LIBRAMIENTO DE MAZATLAN	MEX
4	LIBRAMIENTO SUR DE CULIACAN	MEX
5	MAZATLAN - CULIACAN	MEX-015
6	PERICOS - LOS NARANJOS	MEX-024
7	TEPIC - MAZATLAN	MEX-015
	---RED FEDERAL DE CUOTA---	
8	DURANGO - VILLA UNION (CUOTA)	MEX-040D
9	LOS MOCHIS - CD. OBREGON (CUOTA)	MEX-015D
10	MAZATLAN - CULIACAN (CUOTA)	MEX-015D
11	TEPIC - MAZATLAN (CUOTA)	MEX-015D
	---RED ESTATAL LIBRE---	
12	CARRIZAL - CAMPO ANIBAL	SIN-019
13	CULIACAN - ALTATA	SIN-030
14	CULIACAN - EL DORADO	SIN-005
15	EL LIMONCITO - CINCO HERMANOS	SIN-016
16	EL SALADO - EL DORADO	SIN-010
17	ESCUINAPA DE HIDALGO - TEACAPAN	SIN-001
18	ESTACION DIMAS - SAN IGNACIO	SIN-006
19	GUAMUCHIL - MOCORITO	SIN-021
20	GUASAVE - SINALOA DE LEYVA	SIN-023
21	NAVOLATO - EL CASTILLO	SIN-004
22	POZOLE - COFRADIA	SIN-080
23	RAMAL A CHAMETLA	SIN-002
24	RAMAL A COSALA	SIN-008
25	RAMAL A EL QUELITE	SIN-060
26	RAMAL A ESTACION BAMOA	SIN-022
27	RAMAL A LA CRUZ	SIN
28	RAMAL A LA NORIA	SIN
29	RAMAL A LA REFORMA	SIN-004
30	ROSARIO - CAIMANERO	SIN-003
31	SAN PEDRO - CAMPO ANIBAL	SIN
32	TOPOLOBAMPO - CHOIX	SIN-023
33	VILLA UNION - EL WALAMO	SIN-081
34	VILLA UNION - SIQUEIROS	SIN-063
	---RED ESTATAL DE CUOTA---	
35	CULIACAN - LAS BRISAS (CUOTA)	SIN-001D

25 SINALOA

SECRETARÍA DE COMUNICACIONES Y TRANSPORTES
DIRECCIÓN GENERAL DE SERVICIOS TÉCNICOS



SINALOA

1 CARR: CULIACAN - LOS MOCHIS

CLAVE: 25502

RUTA: MEX-015

AÑO: 2010

LUGAR	ESTACION				CLASIFICACION VEHICULAR EN PORCIENTO								COORDENADAS						
	KM	TE	SC	TDPA	A	B	C2	C3	T3S2	T3S3	T3S2R4	OTROS	A	B	C	K'	D	LATITUD	LONGITUD
CULIACAN	0.00																		
T. DER. LOS MONZONES	4.00	1	1	7524	78.3	4.5	6.1	3.1	5.8	1.2	0.7	0.3	78.3	4.5	17.2	0.091	0.503	24.834663	-107.433496
T. DER. LOS MONZONES	4.00	1	2	7436	77.1	4.3	6.8	3.2	6.3	1.2	0.8	0.3	77.1	4.3	18.6	0.100	0.503	24.834663	-107.433496
CASETA DE COBRO PUENTE CULIACAN	22.00	2	0	6842	77.0	5.5	4.6	2.5	8.2	1.1	0.4	0.7	77.0	5.5	17.5			24.811495	-107.410223
T. DER. PRESA LOPEZ MATEOS	27.20	3	0	7468	76.6	5.6	4.5	2.5	8.5	1.2	0.4	0.7	76.6	5.6	17.8	0.091	0.503	24.992459	-107.566809
X. C. PERICOS - LOS NARANJOS	43.60	3	0	7088	77.4	5.2	4.4	2.4	8.3	1.2	0.4	0.7	77.4	5.2	17.4	0.074	0.509	25.094073	-107.696621
GUAMUCHIL	104.70	1	0	7761	65.3	6.2	4.8	4.5	13.1	2.0	1.2	2.9	65.3	6.2	28.5	0.097	0.508	25.428183	-108.058265
GUAMUCHIL	104.70	3	0	10036	62.9	6.6	5.0	4.6	14.4	2.1	1.3	3.1	62.9	6.6	30.5	0.072	0.502	25.468229	-108.091349
T. IZQ. AUT. CULIACAN - LAS BRISAS	121.20	1	0	10879	66.0	6.3	4.6	4.2	12.9	2.0	1.1	2.9	66.0	6.3	27.7	0.074	0.508	25.489754	-108.223373
T. IZQ. AUT. CULIACAN - LAS BRISAS	121.20	3	1	5918	64.2	6.6	4.8	4.6	13.8	1.9	1.2	2.9	64.2	6.6	29.2	0.076	0.502	25.487062	-108.248307
T. IZQ. AUT. CULIACAN - LAS BRISAS	121.20	3	2	5967	64.0	6.5	4.6	4.4	14.2	2.0	1.2	3.1	64.0	6.5	29.5	0.071	0.502	25.487062	-108.248307
T. DER. ESTACION BAMOA	133.17	3	1	6362	64.3	6.4	4.9	4.2	13.9	2.1	1.1	3.1	64.3	6.4	29.3	0.078	0.502	25.520265	-108.364368
T. DER. ESTACION BAMOA	133.17	3	2	6411	64.0	6.3	4.9	4.5	14.0	2.1	1.2	3.0	64.0	6.3	29.7	0.071	0.502	25.520265	-108.364368
CASETA DE COBRO PUENTE SINALOA	136.00	2	0	9652	64.6	6.4	4.7	4.5	13.6	2.0	1.2	3.0	64.6	6.4	29.0			25.577762	-108.455850
GUASAVE	146.28	3	1	9391	63.1	6.7	4.6	4.5	14.6	2.1	1.2	3.2	63.1	6.7	30.2	0.075	0.503	25.587117	-108.487626
GUASAVE	146.28	3	2	9494	65.0	6.4	4.5	4.2	13.9	2.0	1.1	2.9	65.0	6.4	28.6	0.075	0.503	25.587117	-108.487626
T. IZQ. LOS MOCHIS (1º ACCESO)	201.97	1	0	20127	63.8	6.6	4.9	4.8	13.5	2.1	1.2	3.1	63.8	6.6	29.6	0.083	0.503	25.807584	-108.956076
T. IZQ. LOS MOCHIS (1º ACCESO)	201.97	3	0	18301	64.6	6.5	4.8	4.3	13.6	2.1	1.1	3.0	64.6	6.5	28.9	0.082	0.507	25.819397	-108.963104
T. C. TOPOLOBAMPO - CHOIX	205.21																		

2 CARR: DURANGO - VILLA UNION

CLAVE: 00083

RUTA: MEX-040

AÑO: 2010

LUGAR	ESTACION				CLASIFICACION VEHICULAR EN PORCIENTO								COORDENADAS						
	KM	TE	SC	TDPA	A	B	C2	C3	T3S2	T3S3	T3S2R4	OTROS	A	B	C	K'	D	LATITUD	LONGITUD
DURANGO	0.00	3	0	4941	86.9	2.3	5.5	1.9	0.9	1.1	0.0	1.4	86.9	2.3	10.8	0.098	0.505	23.995309	-104.720615
T. DER. PINO	22.86	3	0	4225	81.0	3.4	5.8	2.9	3.5	1.5	0.4	1.5	81.0	3.4	15.6	0.071	0.512	23.964380	-104.826048
T. IZQ. ESTACION NAVIOS	58.42	3	0	1958	76.3	3.9	8.2	3.8	3.5	1.7	0.5	2.1	76.3	3.9	19.8	0.094	0.525	23.897687	-105.049663
LLANO GRANDE	77.23	1	0	2180	79.8	3.0	7.2	3.9	3.9	1.2	0.1	0.9	79.8	3.0	17.2	0.072	0.508	23.870360	-105.189260
EL SALTO	99.76	3	0	2953	80.1	4.1	6.5	3.1	2.4	1.6	0.2	2.0	80.1	4.1	15.8	0.077	0.506	23.777992	-105.388295
LA CIUDAD	145.50	1	0	2005	82.9	4.1	5.3	1.9	2.3	1.0	0.2	2.3	82.9	4.1	13.0	0.071	0.509	23.731839	-105.669430
LA CIUDAD	145.50	3	0	1388	81.8	4.6	6.8	2.0	2.1	1.1	0.1	1.5	81.8	4.6	13.6	0.081	0.522	23.727235	-105.692019
LIM. EDOS. TERM. DGO. PPIA. SIN.	198.50																		
T. C. TEPIC - MAZATLAN	294.40	1	0	7754	68.9	7.8	7.7	3.5	7.5	1.4	2.6	0.6	68.9	7.8	23.3	0.083	0.505	23.202584	-106.201750

SINALOA

6 CARR: PERICOS - LOS NARANJOS

CLAVE: 25598

RUTA: MEX-024

AÑO: 2010

LUGAR	ESTACION				CLASIFICACION VEHICULAR EN PORCIENTO								COORDENADAS						
	KM	TE	SC	TDPA	A	B	C2	C3	T3S2	T3S3	T3S2R4	OTROS	A	B	C	K'	D	LATITUD	LONGITUD
PERICOS	0.00	3	0	2238	89.0	2.3	3.6	1.4	2.0	0.8	0.0	0.9	89.0	2.3	8.7	0.116	0.501	25.094698	-107.684288
BADIRAGUATO	37.50	1	0	1864	91.7	1.8	3.2	1.8	0.6	0.3	0.1	0.5	91.7	1.8	6.5	0.106	0.517	25.349087	-107.558543
NARANJOS	66.00																		

7 CARR: TEPIC - MAZATLAN

CLAVE: 00500

RUTA: MEX-015

AÑO: 2010

LUGAR	ESTACION				CLASIFICACION VEHICULAR EN PORCIENTO								COORDENADAS						
	KM	TE	SC	TDPA	A	B	C2	C3	T3S2	T3S3	T3S2R4	OTROS	A	B	C	K'	D	LATITUD	LONGITUD
TEPIC	0.00	3	1	8291	77.9	4.8	4.6	3.0	6.8	1.0	1.7	0.2	77.9	4.8	17.3	0.078	0.505	21.512258	-104.906429
TEPIC	0.00	3	2	8470	77.7	5.0	4.8	3.1	6.4	1.1	1.7	0.2	77.7	5.0	17.3	0.083	0.505	21.512258	-104.906429
T. IZQ. LIBRAMIENTO DE TEPIC	2.56	1	1	11186	78.1	4.8	4.7	3.1	6.4	1.0	1.7	0.2	78.1	4.8	17.1	0.068	0.505	21.521925	-104.924243
T. IZQ. LIBRAMIENTO DE TEPIC	2.56	1	2	11391	76.8	5.1	4.8	3.2	6.8	1.2	1.9	0.2	76.8	5.1	18.1	0.064	0.505	21.521925	-104.924243
T. IZQ. AUT. TEPIC - ENT. SAN BLAS (CUOTA)	3.70	3	0	8129	77.4	4.9	4.8	3.2	6.6	1.1	1.8	0.2	77.4	4.9	17.7	0.074	0.502	21.533186	-104.931728
LOS OTATES	19.80	3	0	8183	77.3	4.9	4.9	3.1	6.7	1.2	1.7	0.2	77.3	4.9	17.8	0.076	0.500	21.635713	-104.969455
T. IZQ. JUMATAN	28.52	1	0	7140	77.5	5.0	4.8	3.2	6.5	1.0	1.8	0.2	77.5	5.0	17.5	0.063	0.509	21.669918	-105.023261
T. IZQ. JUMATAN	28.52	3	1	7860	78.0	4.8	4.4	3.0	6.7	1.1	1.8	0.2	78.0	4.8	17.2	0.067	0.502	21.667908	-105.030929
T. IZQ. JUMATAN	28.52	3	2	7924	77.5	4.8	4.9	3.0	6.8	1.1	1.7	0.2	77.5	4.8	17.7	0.073	0.502	21.667908	-105.030929
T. IZQ. SAN BLAS	33.54	1	1	6527	77.8	4.7	4.6	3.2	6.6	1.1	1.8	0.2	77.8	4.7	17.5	0.094	0.511	21.683062	-105.045642
T. IZQ. SAN BLAS	33.54	1	2	6813	78.5	4.4	4.5	3.2	6.3	1.1	1.8	0.2	78.5	4.4	17.1	0.099	0.511	21.683062	-105.045642
T. IZQ. VILLA HIDALGO	48.12	1	0	12510	77.6	4.7	4.9	3.1	6.6	1.1	1.8	0.2	77.6	4.7	17.7	0.058	0.507	21.805057	-105.101892
T. IZQ. VILLA HIDALGO	48.12	3	0	10970	77.1	4.8	4.8	3.3	6.9	1.1	1.8	0.2	77.1	4.8	18.1	0.062	0.505	21.809732	-105.103792
T. IZQ. SANTIAGO IXCUINTLA	56.42	1	0	10992	77.9	4.9	4.7	3.1	6.4	1.1	1.7	0.2	77.9	4.9	17.2	0.073	0.508	21.853605	-105.151665
T. IZQ. SANTIAGO IXCUINTLA	56.42	3	0	10455	78.7	4.6	4.4	3.0	6.4	1.0	1.7	0.2	78.7	4.6	16.7	0.078	0.506	21.859368	-105.155968
T. IZQ. TUXPAN	70.60	1	0	13091	77.9	4.6	4.6	3.1	6.7	1.1	1.8	0.2	77.9	4.6	17.5	0.060	0.504	21.944057	-105.217791
T. IZQ. TUXPAN	70.60	3	0	13664	77.4	4.9	4.9	3.1	6.5	1.1	1.9	0.2	77.4	4.9	17.7	0.057	0.507	21.951730	-105.221050
T. DER. ROSAMORADA	90.70	3	0	11035	76.5	5.1	5.0	3.2	7.1	1.1	1.8	0.2	76.5	5.1	18.4	0.065	0.504	22.120927	-105.218078
TIERRA GENEROSA	110.40	1	0	7541	77.7	4.8	4.8	3.1	6.4	1.2	1.8	0.2	77.7	4.8	17.5	0.061	0.503	22.292708	-105.272507
T. DER. ACAPONETA	136.52	1	0	10784	78.6	4.0	5.9	3.2	6.7	1.4	0.1	0.1	78.6	4.0	17.4	0.062	0.502	22.478327	-105.385826
T. DER. ACAPONETA	136.52	3	0	5338	79.4	3.6	5.6	3.1	6.5	1.6	0.1	0.1	79.4	3.6	17.0	0.074	0.514	22.492194	-105.383865
LIM. EDOS. TERM. NAY. PPIA. SIN.	144.60																		
ESCUINAPA DE HIDALGO	200.00	1	0	4517	80.1	3.9	5.6	3.0	5.8	1.4	0.1	0.1	80.1	3.9	16.0	0.080	0.506	22.833206	-105.762901
ESCUINAPA DE HIDALGO	200.00	3	0	4731	78.6	4.0	5.8	3.1	6.8	1.5	0.1	0.1	78.6	4.0	17.4	0.082	0.509	22.837427	-105.788612
ROSARIO	221.71	1	0	12104	78.7	4.0	6.0	3.1	6.4	1.6	0.1	0.1	78.7	4.0	17.3	0.056	0.502	22.997162	-105.851018
ROSARIO	221.71	3	0	3427	79.3	3.9	5.7	3.0	6.4	1.5	0.1	0.1	79.3	3.9	16.8	0.094	0.515	23.002960	-105.867634
T. DER. DURANGO	267.99	1	0	3481	68.0	7.2	7.2	4.2	8.4	2.8	1.6	0.6	68.0	7.2	24.8	0.084	0.515	23.189465	-106.204150

SINALOA

7 CARR:TEPIC - MAZATLAN

CLAVE: 00500

RUTA: MEX-015

AÑO: 2010

LUGAR	ESTACION				CLASIFICACION VEHICULAR EN PORCIENTO								COORDENADAS						
	KM	TE	SC	TDPA	A	B	C2	C3	T3S2	T3S3	T3S2R4	OTROS	A	B	C	K'	D	LATITUD	LONGITUD
T. DER. DURANGO	267.99	3	0	6386	69.5	6.4	7.2	4.0	8.0	2.8	1.5	0.6	69.5	6.4	24.1	0.075	0.513	23.189262	-106.211818
VILLA UNION	269.52	3	0	14501	68.3	6.6	7.8	4.1	8.2	2.9	1.5	0.6	68.3	6.6	25.1	0.065	0.503	23.192248	-106.229539
T. DER. LIBRAMIENTO DE MAZATLAN	288.87	1	1	13893	68.8	6.8	7.5	4.0	7.9	3.0	1.4	0.6	68.8	6.8	24.4	0.076	0.501	23.225635	-106.383632
T. DER. LIBRAMIENTO DE MAZATLAN	288.87	1	2	13956	68.3	6.8	7.7	4.0	8.2	2.9	1.5	0.6	68.3	6.8	24.9	0.080	0.501	23.225635	-106.383632
MAZATLAN	292.00																		

8 CARR: DURANGO - VILLA UNION (CUOTA)

CLAVE:

RUTA: MEX-040D

AÑO: 2010

LUGAR	ESTACION				CLASIFICACION VEHICULAR EN PORCIENTO								COORDENADAS						
	KM	TE	SC	TDPA	A	B	C2	C3	T3S2	T3S3	T3S2R4	OTROS	A	B	C	K'	D	LATITUD	LONGITUD
LIBRAMIENTO DE DURANGO	0.00	3	0	2316	81.5	2.8	3.9	3.2	6.7	1.6	0.3	0.0	81.5	2.8	15.7	0.081	0.507	24.006442	-104.730541
CASETA DE COBRO DURANGO	20.00	2	0	2144	81.3	2.8	4.0	3.4	6.6	1.6	0.3	0.0	81.3	2.8	15.9			24.131744	-104.534063
ENT. OTINAPA	22.85	1	0	2150	80.3	3.0	4.3	3.7	6.8	1.6	0.3	0.0	80.3	3.0	16.7	0.083	0.509	23.978392	-104.958978
LIM. EDOS. TERM. DGO. PPIA. SIN.	135.75																		
CONCORDIA	188.35	3	0	794	80.5	2.8	4.2	3.5	7.0	1.7	0.3	0.0	80.5	2.8	16.7	0.151	0.556	23.254903	-106.053769
VILLA UNION	208.35	1	0	967	80.9	2.9	4.2	3.5	6.6	1.6	0.3	0.0	80.9	2.9	16.2	0.126	0.542	23.197960	-106.170960

9 CARR: LOS MOCHIS - CD. OBREGON (CUOTA)

CLAVE: 00452

RUTA: MEX-015D

AÑO: 2010

LUGAR	ESTACION				CLASIFICACION VEHICULAR EN PORCIENTO								COORDENADAS						
	KM	TE	SC	TDPA	A	B	C2	C3	T3S2	T3S3	T3S2R4	OTROS	A	B	C	K'	D	LATITUD	LONGITUD
T. C. TOPOLOBAMPO - CHOIX	0.00	3	1	7403	53.6	8.8	3.7	3.5	20.8	2.0	6.8	0.8	53.6	8.8	37.6	0.095	0.503	25.833427	-108.973202
T. C. TOPOLOBAMPO - CHOIX	0.00	3	2	7503	52.7	9.2	4.0	3.6	20.7	2.0	7.0	0.8	52.7	9.2	38.1	0.077	0.503	25.833427	-108.973202
T. IZQ. AHOME	17.13	3	1	5985	52.9	9.8	3.9	3.8	20.0	2.2	6.6	0.8	52.9	9.8	37.3	0.073	0.502	25.944175	-109.052801
T. IZQ. AHOME	17.13	3	2	6033	53.1	8.7	3.9	3.4	21.1	2.2	6.8	0.8	53.1	8.7	38.2	0.078	0.502	25.944175	-109.052801
T. IZQ. COHUIBAMPO	19.00	1	1	7317	54.7	8.8	3.7	3.6	19.7	2.1	6.6	0.8	54.7	8.8	36.5	0.071	0.505	25.958519	-109.053403
T. IZQ. COHUIBAMPO	19.00	1	2	7466	53.1	9.4	4.1	3.5	20.1	2.2	6.8	0.8	53.1	9.4	37.5	0.062	0.505	25.958519	-109.053403
T. IZQ. COHUIBAMPO	19.00	3	1	7366	54.1	9.2	3.8	3.7	19.7	2.1	6.6	0.8	54.1	9.2	36.7	0.070	0.504	25.961045	-109.052868
T. IZQ. COHUIBAMPO	19.00	3	2	7478	53.3	9.5	3.7	3.7	20.3	2.2	6.5	0.8	53.3	9.5	37.2	0.066	0.504	25.961045	-109.052868
POBLADO CHICO	50.00	3	1	5488	53.9	9.3	3.8	3.6	19.9	2.0	6.7	0.8	53.9	9.3	36.8	0.063	0.509	26.225300	-109.055153
POBLADO CHICO	50.00	3	2	5696	53.8	8.6	3.9	3.7	20.6	2.1	6.5	0.8	53.8	8.6	37.6	0.067	0.509	26.225300	-109.055153
T. DER. EL FUERTE	54.80	1	1	6089	52.2	9.6	4.0	3.7	21.1	2.1	6.5	0.8	52.2	9.6	38.2	0.070	0.503	26.264626	-109.044175
T. DER. EL FUERTE	54.80	1	2	6171	54.7	8.7	3.8	3.7	19.7	2.1	6.5	0.8	54.7	8.7	36.6	0.076	0.503	26.264626	-109.044175
T. DER. EL FUERTE	54.80	3	1	5621	52.8	9.7	3.8	3.6	20.2	2.2	6.9	0.8	52.8	9.7	37.5	0.075	0.505	26.275959	-109.040930
T. DER. EL FUERTE	54.80	3	2	5740	53.9	9.2	3.6	3.7	19.9	2.1	6.8	0.8	53.9	9.2	36.9	0.072	0.505	26.275959	-109.040930

SINALOA

9 CARR: LOS MOCHIS - CD. OBREGON (CUOTA)

CLAVE: 00452

RUTA: MEX-015D

AÑO: 2010

LUGAR	ESTACION				CLASIFICACION VEHICULAR EN PORCIENTO								COORDENADAS						
	KM	TE	SC	TDPA	A	B	C2	C3	T3S2	T3S3	T3S2R4	OTROS	A	B	C	K'	D	LATITUD	LONGITUD
LIM. EDOS. TERM. SIN. PPIA. SON.	69.80																		
T. IZQ. HUATABAMPO	128.50	1	1	2822	54.5	9.0	3.7	3.3	20.4	2.1	6.3	0.7	54.5	9.0	36.5	0.086	0.506	26.836537	-109.366129
T. IZQ. HUATABAMPO	128.50	1	2	2892	54.1	9.4	3.6	3.4	20.1	2.2	6.4	0.8	54.1	9.4	36.5	0.081	0.506	26.836537	-109.366129
CASETA DE COBRO ESTACION DON (LA JAULA)	129.90	2	0	4695	53.7	9.2	3.8	3.6	20.2	2.1	6.6	0.8	53.7	9.2	37.1			26.849800	-109.373287
NAVOJOA	155.00	1	1	5448	53.4	9.1	3.8	3.5	20.7	2.0	6.7	0.8	53.4	9.1	37.5	0.106	0.506	27.037603	-109.436192
NAVOJOA	155.00	1	2	5591	54.8	8.9	3.8	3.5	20.0	1.9	6.3	0.8	54.8	8.9	36.3	0.082	0.506	27.037603	-109.436192
NAVOJOA	155.00	3	1	5391	53.2	9.2	3.7	3.6	20.8	2.1	6.6	0.8	53.2	9.2	37.6	0.071	0.507	27.103928	-109.447873
NAVOJOA	155.00	3	2	5547	54.9	9.5	3.7	3.4	19.4	2.0	6.3	0.8	54.9	9.5	35.6	0.070	0.507	27.103928	-109.447873
T. IZQ. VILLA JUAREZ	167.25	3	1	4593	60.7	7.9	3.8	2.9	16.6	1.6	5.8	0.7	60.7	7.9	31.4	0.079	0.502	27.155309	-109.507639
T. IZQ. VILLA JUAREZ	167.25	3	2	4629	59.9	7.9	3.9	3.2	16.9	1.6	5.9	0.7	59.9	7.9	32.2	0.072	0.502	27.155309	-109.507639
CASETA DE COBRO FUNDICION	195.80	2	0	5781	60.8	8.0	3.9	3.0	16.0	1.6	6.0	0.7	60.8	8.0	31.2			27.320379	-109.719785
T. DER. FUNDICION	196.30	1	1	4096	61.5	8.0	3.8	3.0	15.4	1.5	6.1	0.7	61.5	8.0	30.5	0.072	0.503	27.322207	-109.722186
T. DER. FUNDICION	196.30	1	2	4153	61.0	7.7	3.7	3.1	16.1	1.6	6.1	0.7	61.0	7.7	31.3	0.076	0.503	27.322207	-109.722186
CD. OBREGON	222.70	1	1	10931	60.2	8.1	4.2	3.3	15.9	1.6	5.9	0.8	60.2	8.1	31.7	0.085	0.511	27.462833	-109.903635
CD. OBREGON	222.70	1	2	11441	60.6	7.7	4.0	3.1	16.1	1.7	6.1	0.7	60.6	7.7	31.7	0.085	0.511	27.462833	-109.903635

10 CARR: MAZATLAN - CULIACAN (CUOTA)

CLAVE: 25045

RUTA: MEX-015D

AÑO: 2010

LUGAR	ESTACION				CLASIFICACION VEHICULAR EN PORCIENTO								COORDENADAS						
	KM	TE	SC	TDPA	A	B	C2	C3	T3S2	T3S3	T3S2R4	OTROS	A	B	C	K'	D	LATITUD	LONGITUD
T. C. TEPIC - MAZATLAN	0.00																		
ENT. VENADILLO	0.00	3	1	2621	60.4	11.3	2.5	2.1	15.4	3.0	4.7	0.6	60.4	11.3	28.3	0.090	0.501	23.293895	-106.410287
ENT. VENADILLO	0.00	3	2	2631	59.3	12.5	2.6	2.3	15.1	2.9	4.7	0.6	59.3	12.5	28.2	0.090	0.501	23.293895	-106.410287
CASETA DE COBRO MARMOL	25.15	3	1	2473	59.0	11.6	2.7	2.2	16.0	3.0	4.9	0.6	59.0	11.6	29.4	0.091	0.514	23.487719	-106.587406
CASETA DE COBRO MARMOL	25.15	3	2	2616	58.7	12.2	2.8	2.2	15.7	2.9	4.9	0.6	58.7	12.2	29.1	0.073	0.514	23.487719	-106.587406
CASETA DE COBRO COSTA RICA	187.80	2	0	5085	58.8	11.9	2.3	2.2	15.3	2.6	5.5	1.4	58.8	11.9	29.3			24.570246	-107.430303
CASETA DE COBRO COSTA RICA	187.80	3	1	2831	58.0	12.3	2.4	2.1	15.7	2.5	5.5	1.5	58.0	12.3	29.7	0.073	0.503	24.578581	-107.436898
CASETA DE COBRO COSTA RICA	187.80	3	2	2865	59.7	11.3	2.3	2.2	15.3	2.6	5.2	1.4	59.7	11.3	29.0	0.080	0.503	24.578581	-107.436898
T. C. LIBRAMIENTO SUR DE CULIACAN	205.00	1	1	11485	59.9	11.5	2.2	2.1	14.8	2.6	5.5	1.4	59.9	11.5	28.6	0.091	0.502	24.740182	-107.454049
T. C. LIBRAMIENTO SUR DE CULIACAN	205.00	1	2	11571	59.5	12.0	2.1	2.2	15.2	2.4	5.2	1.4	59.5	12.0	28.5	0.092	0.502	24.740182	-107.454049

SINALOA

11 CARR:TEPIC - MAZATLAN (CUOTA)

CLAVE:

RUTA: MEX-015D

AÑO: 2010

LUGAR	ESTACION				CLASIFICACION VEHICULAR EN PORCIENTO								COORDENADAS						
	KM	TE	SC	TDPA	A	B	C2	C3	T3S2	T3S3	T3S2R4	OTROS	A	B	C	K'	D	LATITUD	LONGITUD
TEPIC	0.00																		
CASETA DE COBRO "EL PICHON"	4.70	1	1	4502	72.4	7.9	4.0	3.5	7.7	1.0	3.1	0.4	72.4	7.9	19.7	0.071	0.506	21.549200	-104.952689
CASETA DE COBRO "EL PICHON"	4.70	1	2	4615	73.3	7.8	3.7	3.4	7.4	1.0	3.0	0.4	73.3	7.8	18.9	0.073	0.506	21.549200	-104.952689
T. C. TEPIC - MAZATLAN	21.00	1	1	4278	74.0	7.2	4.0	3.3	7.2	1.0	2.9	0.4	74.0	7.2	18.8	0.105	0.504	21.663613	-105.027581
T. C. TEPIC - MAZATLAN	21.00	1	2	4352	74.0	7.7	4.0	3.2	6.9	1.0	2.8	0.4	74.0	7.7	18.3	0.106	0.504	21.663613	-105.027581
CRUCERO DE SAN BLAS	24.50	3	0	3713	73.5	7.5	3.8	3.4	7.3	1.0	3.1	0.4	73.5	7.5	19.0	0.080	0.513	21.714189	-105.060432
ENT. SAN BLAS	25.00	1	1	1966	74.6	7.5	3.7	3.1	6.9	0.9	2.9	0.4	74.6	7.5	17.9	0.099	0.506	21.688805	-105.048016
ENT. SAN BLAS	25.00	1	2	2015	72.7	8.1	4.1	3.6	7.3	1.0	2.8	0.4	72.7	8.1	19.2	0.102	0.506	21.688721	-105.048267
CASETA DE COBRO ESTACION RUIZ	54.70	1	0	3462	57.9	8.2	3.8	5.4	14.4	2.3	7.1	0.9	57.9	8.2	33.9			21.951755	-105.115928
CASETA DE COBRO ESTACION RUIZ	54.70	3	0	4562	66.0	6.5	3.8	4.9	11.0	1.8	5.3	0.7	66.0	6.5	27.5			21.951755	-105.115928
EST. RUIZ	54.90	1	0	5093	65.9	6.2	3.8	4.7	11.4	1.8	5.5	0.7	65.9	6.2	27.9	0.072	0.501	21.947450	-105.112239
EST. RUIZ	54.90	3	0	4594	64.0	7.0	3.8	5.2	11.7	1.9	5.7	0.7	64.0	7.0	29.0	0.086	0.507	21.955615	-105.119185
CASETA DE COBRO ACAPONETA	73.40	1	0	2851	58.3	10.8	3.5	4.5	12.1	2.1	7.8	0.9	58.3	10.8	30.9			22.454352	-105.419106
CASETA DE COBRO ACAPONETA	73.40	2	0	3220	59.8	10.7	3.6	4.6	11.2	2.1	7.2	0.8	59.8	10.7	29.5			22.454352	-105.419106
CASETA DE COBRO ACAPONETA	73.40	3	0	2954	58.3	10.9	3.7	4.5	12.0	2.1	7.6	0.9	58.3	10.9	30.8			22.454352	-105.419106
ROSAMORADA	73.50	1	0	4330	57.6	11.1	3.9	4.7	11.6	2.2	8.0	0.9	57.6	11.1	31.3	0.071	0.509	22.084607	-105.210895
ROSAMORADA	73.50	3	0	4071	59.7	10.5	3.8	4.6	11.4	2.0	7.1	0.9	59.7	10.5	29.8	0.083	0.505	22.091857	-105.220105
ACAPONETA	120.20	1	0	3880	57.1	11.4	3.9	4.5	12.2	2.1	7.9	0.9	57.1	11.4	31.5	0.069	0.523	22.448114	-105.418865
ACAPONETA	120.20	3	0	3669	57.2	11.3	3.6	4.4	12.6	2.1	7.9	0.9	57.2	11.3	31.5	0.074	0.515	22.457164	-105.428945
LIM. EDOS. TERM. NAY. PPIA. SIN.	132.80																		
CASETA DE COBRO ROSARIO	199.486	1	0	3490	51.8	10.4	3.6	4.0	18.9	2.2	8.2	0.9	51.8	10.4	37.8			22.984689	-105.877932
CASETA DE COBRO ROSARIO	199.486	2	0	4127	55.5	11.4	3.6	3.6	16.2	1.9	7.0	0.8	55.5	11.4	33.1			22.984689	-105.877932
CASETA DE COBRO ROSARIO	199.486	3	0	4046	55.3	11.3	3.5	3.5	16.5	2.0	7.1	0.8	55.3	11.3	33.4			22.984689	-105.877932
ESCUINAPA DE HIDALGO	208.60	1	0	3607	56.2	11.2	3.4	3.6	15.5	2.0	7.3	0.8	56.2	11.2	32.6	0.070	0.524	22.851735	-105.747490
ESCUINAPA DE HIDALGO	208.60	3	0	3547	55.0	11.1	3.5	3.6	16.3	2.1	7.6	0.8	55.0	11.1	33.9	0.075	0.534	22.863270	-105.758695
ROSARIO	220.68	1	0	3540	54.6	11.8	3.6	3.7	16.2	2.1	7.2	0.8	54.6	11.8	33.6	0.076	0.520	22.975348	-105.866590
ROSARIO	220.68	3	0	4824	53.5	11.7	3.5	3.5	17.6	2.0	7.4	0.8	53.5	11.7	34.8	0.065	0.535	22.989225	-105.883415
VILLA UNION	240.90	1	0	4973	54.1	11.8	3.7	3.3	17.0	1.9	7.4	0.8	54.1	11.8	34.1	0.075	0.515	23.186030	-106.174326

12 CARR: CARRIZAL - CAMPO ANIBAL

CLAVE: 25585

RUTA: SIN-019

AÑO: 2010

LUGAR	ESTACION				CLASIFICACION VEHICULAR EN PORCIENTO								COORDENADAS						
	KM	TE	SC	TDPA	A	B	C2	C3	T3S2	T3S3	T3S2R4	OTROS	A	B	C	K'	D	LATITUD	LONGITUD
T. C. MAZATLAN - CULIACAN	0.00	3	0	1581	85.5	2.9	4.6	2.0	2.6	1.2	0.0	1.2	85.5	2.9	11.6	0.123	0.514	24.636111	-107.273028
X. C. CULIACAN - EL DORADO	29.20	1	0	6450	87.2	3.8	5.0	1.7	1.2	0.4	0.0	0.7	87.2	3.8	9.0	0.080	0.515	24.590272	-107.440385

SINALOA

12 CARR: CARRIZAL - CAMPO ANIBAL

CLAVE: 25585

RUTA: SIN-019

AÑO: 2010

LUGAR	ESTACION				CLASIFICACION VEHICULAR EN PORCIENTO								COORDENADAS						
	KM	TE	SC	TDPA	A	B	C2	C3	T3S2	T3S3	T3S2R4	OTROS	A	B	C	K'	D	LATITUD	LONGITUD
X. C. CULIACAN - EL DORADO	29.20	3	0	4888	90.9	2.0	3.8	1.4	1.0	0.3	0.0	0.6	90.9	2.0	7.1	0.086	0.505	24.599346	-107.450511
T. C. SAN PEDRO - CAMPO ANIBAL	32.00	1	0	5585	89.4	1.9	4.2	1.1	1.6	0.7	0.0	1.1	89.4	1.9	8.7	0.085	0.502	24.590214	-107.541180

13 CARR: CULIACAN - ALTATA

CLAVE: 25013

RUTA: SIN-030

AÑO: 2010

LUGAR	ESTACION				CLASIFICACION VEHICULAR EN PORCIENTO								COORDENADAS						
	KM	TE	SC	TDPA	A	B	C2	C3	T3S2	T3S3	T3S2R4	OTROS	A	B	C	K'	D	LATITUD	LONGITUD
CULIACAN	0.00																		
T. IZQ. EL DORADO	6.20	1	1	19807	86.5	2.7	5.4	1.3	1.8	1.0	0.0	1.3	86.5	2.7	10.8	0.073	0.505	24.778880	-107.440300
T. IZQ. EL DORADO	6.20	1	2	20169	86.2	2.5	4.4	2.0	1.4	1.1	0.0	2.4	86.2	2.5	11.3	0.067	0.505	24.778880	-107.440300
T. IZQ. EL DORADO	6.20	3	1	22901	87.3	1.9	5.5	1.3	2.1	0.7	0.0	1.2	87.3	1.9	10.8	0.066	0.508	24.775713	-107.449491
T. IZQ. EL DORADO	6.20	3	2	23617	87.6	2.7	4.7	1.2	1.5	0.6	0.0	1.7	87.6	2.7	9.7	0.070	0.508	24.775713	-107.449491
T. IZQ. AEROPUERTO	8.70	3	1	18355	89.4	2.1	4.5	1.3	1.2	0.3	0.0	1.2	89.4	2.1	8.5	0.080	0.511	24.775068	-107.469135
T. IZQ. AEROPUERTO	8.70	3	2	19169	88.7	1.6	5.5	1.0	1.5	0.6	0.0	1.1	88.7	1.6	9.7	0.074	0.511	24.775068	-107.469135
NAVOLATO	32.40	1	1	7321	87.8	1.8	5.3	2.0	1.3	0.7	0.0	1.1	87.8	1.8	10.4	0.095	0.503	24.757309	-107.679857
NAVOLATO	32.40	1	2	7220	87.2	1.8	5.9	1.8	1.6	0.8	0.0	0.9	87.2	1.8	11.0	0.103	0.503	24.757309	-107.679857
NAVOLATO	32.40	3	0	10659	88.7	2.1	4.5	1.3	1.3	0.7	0.0	1.4	88.7	2.1	9.2	0.092	0.505	24.756394	-107.728042
T. DER. 5 HERMANOS	38.20	3	0	5377	92.1	1.5	3.8	1.0	0.8	0.3	0.0	0.5	92.1	1.5	6.4	0.123	0.505	24.755680	-107.739357
ALTATA	67.00	1	0	4057	91.6	1.6	4.7	1.2	0.5	0.2	0.0	0.2	91.6	1.6	6.8	0.176	0.507	24.643895	-107.925549

14 CARR: CULIACAN - EL DORADO

CLAVE: 25044

RUTA: SIN-005

AÑO: 2010

LUGAR	ESTACION				CLASIFICACION VEHICULAR EN PORCIENTO								COORDENADAS						
	KM	TE	SC	TDPA	A	B	C2	C3	T3S2	T3S3	T3S2R4	OTROS	A	B	C	K'	D	LATITUD	LONGITUD
T. C. CULIACAN - ALTATA	0.00	3	1	14707	83.9	3.2	5.5	2.5	2.2	1.2	0.0	1.5	83.9	3.2	12.9	0.091	0.500	24.765057	-107.448019
T. C. CULIACAN - ALTATA	0.00	3	2	14683	81.0	4.2	6.7	2.7	2.5	1.3	0.0	1.6	81.0	4.2	14.8	0.093	0.500	24.765057	-107.448019
X. C. CARRIZAL - CAMPO ANIBAL	21.35	1	1	6063	86.3	3.0	4.8	1.2	2.5	1.1	0.0	1.1	86.3	3.0	10.7	0.089	0.502	24.602251	-107.444590
X. C. CARRIZAL - CAMPO ANIBAL	21.35	1	2	6023	83.9	2.3	4.1	2.0	3.5	1.6	0.0	2.6	83.9	2.3	13.8	0.101	0.502	24.602251	-107.444590
X. C. CARRIZAL - CAMPO ANIBAL	21.35	3	0	5054	88.2	1.6	4.9	1.2	1.7	0.9	0.0	1.5	88.2	1.6	10.2	0.097	0.511	24.582602	-107.444621
EL DORADO	55.00	1	0	4289	93.4	1.3	2.4	1.1	0.7	0.3	0.0	0.8	93.4	1.3	5.3	0.101	0.504	24.341653	-107.370605

SINALOA

15 CARR: EL LIMONCITO - CINCO HERMANOS

CLAVE: 25016

RUTA: SIN-016

AÑO: 2010

LUGAR	ESTACION				CLASIFICACION VEHICULAR EN PORCIENTO								COORDENADAS						
	KM	TE	SC	TDPA	A	B	C2	C3	T3S2	T3S3	T3S2R4	OTROS	A	B	C	K'	D	LATITUD	LONGITUD
T. C. CULIACAN - ALTATA	0.00	3	0	2436	94.5	0.4	2.4	0.7	0.7	0.2	0.0	1.1	94.5	0.4	5.1	0.114	0.514	24.759222	-107.740235
CINCO HERMANOS	16.00	1	0	850	94.3	1.3	2.7	1.1	0.1	0.2	0.1	0.2	94.3	1.3	4.4	0.113	0.526	24.809105	-107.856944

16 CARR: EL SALADO - EL DORADO

CLAVE: 25010

RUTA: SIN-010

AÑO: 2010

LUGAR	ESTACION				CLASIFICACION VEHICULAR EN PORCIENTO								COORDENADAS						
	KM	TE	SC	TDPA	A	B	C2	C3	T3S2	T3S3	T3S2R4	OTROS	A	B	C	K'	D	LATITUD	LONGITUD
T. C. MAZATLAN - CULIACAN	0.00	3	0	2344	93.2	1.2	3.6	0.9	0.5	0.1	0.0	0.5	93.2	1.2	5.6	0.094	0.507	24.507195	-107.164557
EL DORADO	31.00	1	0	3720	90.9	1.3	5.5	1.4	0.5	0.1	0.0	0.3	90.9	1.3	7.8	0.097	0.513	24.329925	-107.349721

17 CARR: ESCUINAPA DE HIDALGO - TEACAPAN

CLAVE: 25001

RUTA: SIN-001

AÑO: 2010

LUGAR	ESTACION				CLASIFICACION VEHICULAR EN PORCIENTO								COORDENADAS						
	KM	TE	SC	TDPA	A	B	C2	C3	T3S2	T3S3	T3S2R4	OTROS	A	B	C	K'	D	LATITUD	LONGITUD
ESCUINAPA DE HIDALGO	0.00	3	0	3876	82.2	3.3	5.2	2.3	4.1	2.0	0.0	0.9	82.2	3.3	14.5	0.099	0.523	22.820146	-105.789110
TEACAPAN	41.00	1	0	1992	80.3	3.1	5.9	2.0	5.1	2.4	0.0	1.2	80.3	3.1	16.6	0.096	0.502	22.545271	-105.740456

18 CARR: ESTACION DIMAS - SAN IGNACIO

CLAVE: 25007

RUTA: SIN-006

AÑO: 2010

LUGAR	ESTACION				CLASIFICACION VEHICULAR EN PORCIENTO								COORDENADAS						
	KM	TE	SC	TDPA	A	B	C2	C3	T3S2	T3S3	T3S2R4	OTROS	A	B	C	K'	D	LATITUD	LONGITUD
DIMAS	0.00																		
X. C. MAZATLAN - CULIACAN	23.15	1	0	851	88.9	3.1	4.2	1.9	0.3	0.9	0.1	0.6	88.9	3.1	8.0	0.099	0.520	23.838382	-106.616995
X. C. MAZATLAN - CULIACAN	23.15	3	0	1852	93.2	1.5	3.2	1.1	0.3	0.3	0.0	0.4	93.2	1.5	5.3	0.110	0.511	23.790754	-106.610336
SAN IGNACIO	56.00	1	0	1132	92.0	1.9	3.7	1.5	0.1	0.4	0.0	0.4	92.0	1.9	6.1	0.116	0.507	23.927371	-106.430207

19 CARR: GUAMUCHIL - MOCORITO

CLAVE: 25021

RUTA: SIN-021

AÑO: 2010

LUGAR	ESTACION				CLASIFICACION VEHICULAR EN PORCIENTO								COORDENADAS						
	KM	TE	SC	TDPA	A	B	C2	C3	T3S2	T3S3	T3S2R4	OTROS	A	B	C	K'	D	LATITUD	LONGITUD
GUAMUCHIL	0.00	3	0	5410	86.9	2.7	4.3	2.0	1.8	0.8	0.0	1.5	86.9	2.7	10.4	0.084	0.510	25.458375	-108.058585
MOCORITO	17.00	1	0	4571	86.4	2.9	5.5	1.9	1.9	0.6	0.0	0.8	86.4	2.9	10.7	0.108	0.505	25.476484	-107.933385

SINALOA

20 CARR: GUASAVE - SINALOA DE LEYVA

CLAVE: 25023

RUTA: SIN-023

AÑO: 2010

LUGAR	ESTACION				CLASIFICACION VEHICULAR EN PORCIENTO								COORDENADAS						
	KM	TE	SC	TDPA	A	B	C2	C3	T3S2	T3S3	T3S2R4	OTROS	A	B	C	K'	D	LATITUD	LONGITUD
GUASAVE	0.00																		
X. C. CULIACAN - LOS MOCHIS	1.15	3	1	3887	91.6	0.9	2.4	1.0	2.4	1.1	0.0	0.6	91.6	0.9	7.5	0.078	0.506	25.593040	-108.457143
X. C. CULIACAN - LOS MOCHIS	1.15	3	2	3984	87.3	1.6	4.0	1.2	3.2	1.5	0.0	1.2	87.3	1.6	11.1	0.084	0.506	25.593040	-108.457143
SINALOA DE LEYVA	74.50	1	0	3889	86.2	3.3	4.9	1.4	2.0	1.1	0.0	1.1	86.2	3.3	10.5	0.089	0.520	25.829393	-108.233413

21 CARR: NAVOLATO - EL CASTILLO

CLAVE: 25004

RUTA: SIN-004

AÑO: 2010

LUGAR	ESTACION				CLASIFICACION VEHICULAR EN PORCIENTO								COORDENADAS						
	KM	TE	SC	TDPA	A	B	C2	C3	T3S2	T3S3	T3S2R4	OTROS	A	B	C	K'	D	LATITUD	LONGITUD
NAVOLATO	0.00	3	0	4560	88.5	3.1	4.3	1.4	1.5	0.4	0.0	0.8	88.5	3.1	8.4	0.099	0.509	24.738660	-107.685227
EL CASTILLO	29.00	1	0	1183	89.0	3.0	5.3	1.7	0.6	0.1	0.0	0.3	89.0	3.0	8.0	0.172	0.504	24.551588	-107.702156

22 CARR: POZOLE - COFRADIA

CLAVE: 25080

RUTA: SIN-080

AÑO: 2010

LUGAR	ESTACION				CLASIFICACION VEHICULAR EN PORCIENTO								COORDENADAS						
	KM	TE	SC	TDPA	A	B	C2	C3	T3S2	T3S3	T3S2R4	OTROS	A	B	C	K'	D	LATITUD	LONGITUD
T. C. TEPIC - MAZATLAN	0.00	3	0	3211	86.9	1.8	5.3	1.7	1.8	0.8	0.0	1.7	86.9	1.8	11.3	0.080	0.522	23.194406	-106.259869
COFRADIA	9.10	1	0	957	91.7	1.9	3.8	1.1	0.7	0.2	0.1	0.5	91.7	1.9	6.4	0.100	0.513	23.325332	-106.255656

23 CARR: RAMAL A CHAMETLA

CLAVE: 25002

RUTA: SIN-002

AÑO: 2010

LUGAR	ESTACION				CLASIFICACION VEHICULAR EN PORCIENTO								COORDENADAS						
	KM	TE	SC	TDPA	A	B	C2	C3	T3S2	T3S3	T3S2R4	OTROS	A	B	C	K'	D	LATITUD	LONGITUD
T. C. TEPIC - MAZATLAN	0.00	3	0	2636	88.7	2.4	3.5	1.6	1.8	0.8	0.0	1.2	88.7	2.4	8.9	0.075	0.505	22.933559	-105.831571
CHAMETLA	15.00	1	0	1873	88.9	3.6	4.4	1.6	0.8	0.2	0.0	0.5	88.9	3.6	7.5	0.122	0.507	22.882810	-105.952274

24 CARR: RAMAL A COSALA

CLAVE: 25008

RUTA: SIN-008

AÑO: 2010

LUGAR	ESTACION				CLASIFICACION VEHICULAR EN PORCIENTO								COORDENADAS						
	KM	TE	SC	TDPA	A	B	C2	C3	T3S2	T3S3	T3S2R4	OTROS	A	B	C	K'	D	LATITUD	LONGITUD
T. C. MAZATLAN - CULIACAN	0.00	3	0	1451	89.5	2.4	4.2	1.6	0.6	0.3	0.0	1.4	89.5	2.4	8.1	0.120	0.541	24.070897	-106.800404
COSALA	53.00	1	0	970	93.0	2.0	2.8	1.1	0.4	0.2	0.1	0.4	93.0	2.0	5.0	0.141	0.527	24.407946	-106.708764

SINALOA

25 CARR: RAMAL A EL QUELITE

CLAVE: 25060

RUTA: SIN-060

AÑO: 2010

LUGAR	ESTACION				CLASIFICACION VEHICULAR EN PORCIENTO								COORDENADAS						
	KM	TE	SC	TDPA	A	B	C2	C3	T3S2	T3S3	T3S2R4	OTROS	A	B	C	K'	D	LATITUD	LONGITUD
T. C. MAZATLAN - CULIACAN	0.00	3	0	1004	91.9	3.0	2.8	1.2	0.5	0.1	0.1	0.4	91.9	3.0	5.1	0.140	0.519	23.531894	-106.502807
EL QUELITE	6.00	1	0	1169	93.7	1.7	2.6	1.0	0.5	0.3	0.0	0.2	93.7	1.7	4.6	0.128	0.513	23.552388	-106.471164

26 CARR: RAMAL A ESTACION BAMOA

CLAVE: 25022

RUTA: SIN-022

AÑO: 2010

LUGAR	ESTACION				CLASIFICACION VEHICULAR EN PORCIENTO								COORDENADAS						
	KM	TE	SC	TDPA	A	B	C2	C3	T3S2	T3S3	T3S2R4	OTROS	A	B	C	K'	D	LATITUD	LONGITUD
T. C. CULIACAN - LOS MOCHIS	0.00	3	0	2937	92.5	1.5	3.1	1.4	0.6	0.3	0.0	0.6	92.5	1.5	6.0	0.071	0.513	25.518192	-108.356386
ESTACION BAMOA	22.50	1	0	2186	92.3	1.5	2.7	1.7	0.8	0.3	0.0	0.7	92.3	1.5	6.2	0.078	0.513	25.692737	-108.312147

27 CARR: RAMAL A LA CRUZ

CLAVE: 25043

RUTA: SIN

AÑO: 2010

LUGAR	ESTACION				CLASIFICACION VEHICULAR EN PORCIENTO								COORDENADAS						
	KM	TE	SC	TDPA	A	B	C2	C3	T3S2	T3S3	T3S2R4	OTROS	A	B	C	K'	D	LATITUD	LONGITUD
T. C. MAZATLAN - CULIACAN	0.00	3	0	2528	93.6	1.8	2.6	0.5	0.5	0.2	0.0	0.8	93.6	1.8	4.6	0.087	0.521	24.054309	-106.797088
LA CRUZ	18.00	1	0	2869	93.8	0.4	3.6	0.5	0.5	0.2	0.0	1.0	93.8	0.4	5.8	0.083	0.519	23.937046	-106.875924

28 CARR: RAMAL A LA NORIA

CLAVE: 25592

RUTA: SIN

AÑO: 2010

LUGAR	ESTACION				CLASIFICACION VEHICULAR EN PORCIENTO								COORDENADAS						
	KM	TE	SC	TDPA	A	B	C2	C3	T3S2	T3S3	T3S2R4	OTROS	A	B	C	K'	D	LATITUD	LONGITUD
T. C. MAZATLAN - CULIACAN	0.00	3	0	1856	92.0	1.5	3.3	1.9	0.8	0.2	0.0	0.3	92.0	1.5	6.5	0.101	0.511	23.350043	-106.411775
LA NORIA	25.50	1	0	803	92.5	1.9	4.1	0.9	0.1	0.2	0.1	0.2	92.5	1.9	5.6	0.116	0.558	23.502334	-106.320341

29 CARR: RAMAL A LA REFORMA

CLAVE: 25041

RUTA: SIN-004

AÑO: 2010

LUGAR	ESTACION				CLASIFICACION VEHICULAR EN PORCIENTO								COORDENADAS						
	KM	TE	SC	TDPA	A	B	C2	C3	T3S2	T3S3	T3S2R4	OTROS	A	B	C	K'	D	LATITUD	LONGITUD
T. C. CULIACAN - LOS MOCHIS	0.00	3	0	10746	90.3	2.0	3.2	1.3	1.5	0.5	0.0	1.2	90.3	2.0	7.7	0.079	0.507	25.447131	-108.084011
T. DER. LA ANGOSTURA	14.00	3	0	2401	92.9	1.5	3.3	0.8	0.7	0.2	0.0	0.6	92.9	1.5	5.6	0.086	0.512	25.367010	-108.142801
LA REFORMA	60.00	1	0	3355	91.1	1.7	4.3	1.2	0.8	0.2	0.0	0.7	91.1	1.7	7.2	0.088	0.522	25.085834	-108.049115

SINALOA

30 CARR: ROSARIO - CAIMANERO

CLAVE: 25003

RUTA: SIN-003

AÑO: 2010

LUGAR	ESTACION				CLASIFICACION VEHICULAR EN PORCIENTO								COORDENADAS						
	KM	TE	SC	TDPA	A	B	C2	C3	T3S2	T3S3	T3S2R4	OTROS	A	B	C	K'	D	LATITUD	LONGITUD
ROSARIO	0.00	3	0	2748	86.6	3.2	5.3	2.5	1.0	0.2	0.0	1.2	86.6	3.2	10.2	0.095	0.509	22.983617	-105.874820
CAIMANERO	30.00	1	0	1994	91.4	2.6	4.1	0.9	0.5	0.2	0.0	0.3	91.4	2.6	6.0	0.157	0.515	22.880049	-106.069079

31 CARR: SAN PEDRO - CAMPO ANIBAL

CLAVE: 25600

RUTA: SIN

AÑO: 2010

LUGAR	ESTACION				CLASIFICACION VEHICULAR EN PORCIENTO								COORDENADAS						
	KM	TE	SC	TDPA	A	B	C2	C3	T3S2	T3S3	T3S2R4	OTROS	A	B	C	K'	D	LATITUD	LONGITUD
T. C. CULIACAN - ALTATA	0.00	3	0	2824	92.4	1.3	3.0	1.0	1.3	0.3	0.0	0.7	92.4	1.3	6.3	0.097	0.514	24.768084	-107.547427
CAMPO ANIBAL	24.50	1	0	1656	92.8	1.4	3.3	1.2	0.5	0.4	0.1	0.3	92.8	1.4	5.8	0.119	0.505	24.557015	-107.543289
LOS PUENTES	26.50																		

32 CARR: TOPOLOBAMPO - CHOIX

CLAVE: 25032

RUTA: SIN-023

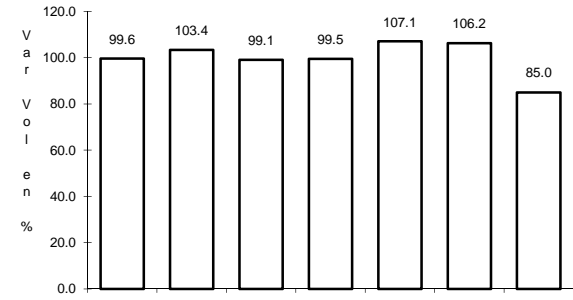
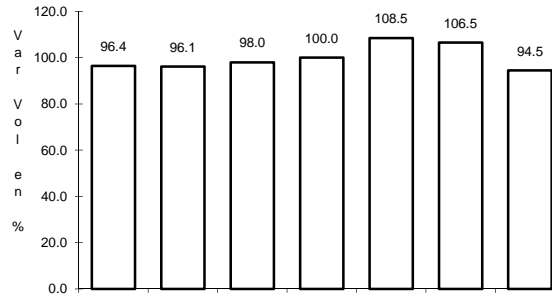
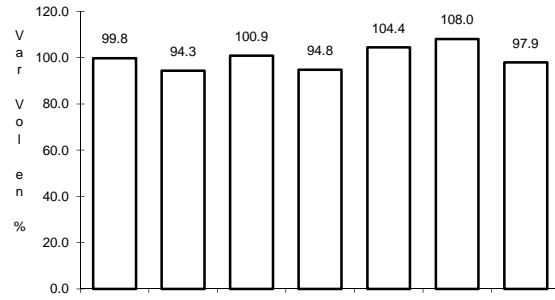
AÑO: 2010

LUGAR	ESTACION				CLASIFICACION VEHICULAR EN PORCIENTO								COORDENADAS						
	KM	TE	SC	TDPA	A	B	C2	C3	T3S2	T3S3	T3S2R4	OTROS	A	B	C	K'	D	LATITUD	LONGITUD
TOPOLOBAMPO	0.00	3	1	2821	82.1	4.0	5.7	2.6	2.6	1.7	0.0	1.3	82.1	4.0	13.9	0.088	0.511	25.608020	-109.057384
TOPOLOBAMPO	0.00	3	2	2944	85.1	3.7	5.2	1.1	2.4	1.4	0.0	1.1	85.1	3.7	11.2	0.105	0.511	25.608020	-109.057384
LOS MOCHIS	24.00	1	1	9125	84.0	2.9	4.5	1.9	2.8	1.8	0.0	2.1	84.0	2.9	13.1	0.082	0.504	25.749196	-109.005440
LOS MOCHIS	24.00	1	2	9291	86.9	2.9	4.6	1.3	1.9	1.2	0.0	1.2	86.9	2.9	10.2	0.075	0.504	25.749196	-109.005440
X. C. LOS MOCHIS - CD. OBREGON (CUOTA)	29.00	1	1	8001	83.8	4.0	5.7	1.4	2.3	1.5	0.0	1.3	83.8	4.0	12.2	0.081	0.503	25.824561	-108.970710
X. C. LOS MOCHIS - CD. OBREGON (CUOTA)	29.00	1	2	8100	84.9	3.1	6.4	1.3	1.9	1.2	0.0	1.2	84.9	3.1	12.0	0.085	0.503	25.824352	-108.971346
X. C. LOS MOCHIS - CD. OBREGON (CUOTA)	29.00	3	1	6451	85.8	3.9	4.5	1.3	1.9	0.9	0.0	1.7	85.8	3.9	10.3	0.097	0.507	25.836174	-108.966535
X. C. LOS MOCHIS - CD. OBREGON (CUOTA)	29.00	3	2	6645	87.0	2.5	5.0	1.6	1.7	0.8	0.0	1.4	87.0	2.5	10.5	0.078	0.507	25.836174	-108.966535
SAN BLAS	65.00	1	1	7886	84.2	3.7	4.7	2.2	2.7	1.4	0.0	1.1	84.2	3.7	12.1	0.107	0.503	26.063112	-108.778498
SAN BLAS	65.00	1	2	7803	84.9	3.4	4.3	2.2	2.7	1.4	0.0	1.1	84.9	3.4	11.7	0.101	0.503	26.063112	-108.778498
SAN BLAS	65.00	3	1	7375	88.8	1.9	4.2	1.1	1.5	1.1	0.0	1.4	88.8	1.9	9.3	0.105	0.501	26.092389	-108.755616
SAN BLAS	65.00	3	2	7346	89.3	1.9	3.4	1.2	2.0	1.1	0.0	1.1	89.3	1.9	8.8	0.094	0.501	26.092389	-108.755616
EL FUERTE	107.70	1	0	6420	87.4	3.0	4.4	1.3	2.1	0.9	0.0	0.9	87.4	3.0	9.6	0.079	0.502	26.398583	-108.624022
EL FUERTE	107.70	3	0	3279	93.7	1.4	1.7	0.6	1.2	0.5	0.0	0.9	93.7	1.4	4.9	0.103	0.514	26.421672	-108.606701
CHOIX	159.00	1	0	2715	91.7	1.3	3.8	0.9	1.0	0.6	0.0	0.7	91.7	1.3	7.0	0.097	0.508	26.694944	-108.333245

1 CARR: CULIACAN - LOS MOCHIS

CLAVE: 25502

ruta: MEX-015



Km: 4.00

Tipo: 1

Sent: 1

Km: 4.00

Tipo: 1

Sent: 2

Km: 201.97

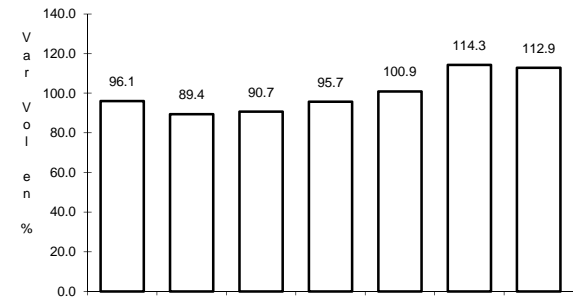
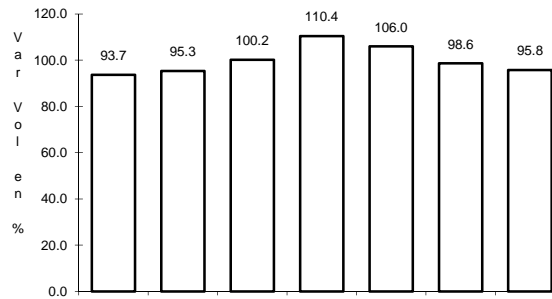
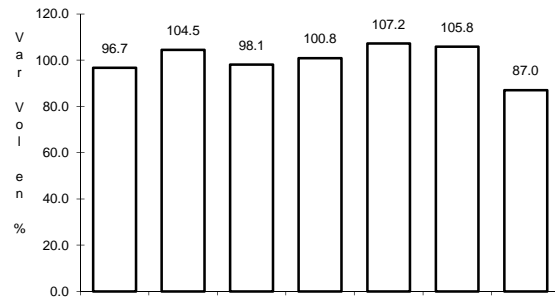
Tipo: 3

Sent: 0

2 CARR: DURANGO - VILLA UNION

CLAVE: 00083

ruta: MEX-040



Km: 0.00

Tipo: 3

Sent: 0

Km: 145.50

Tipo: 1

Sent: 0

Km: 294.40

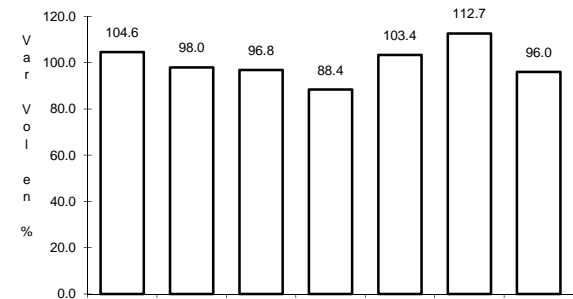
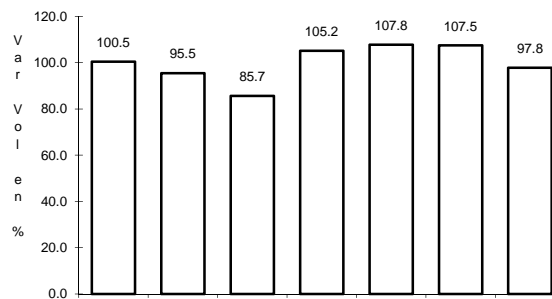
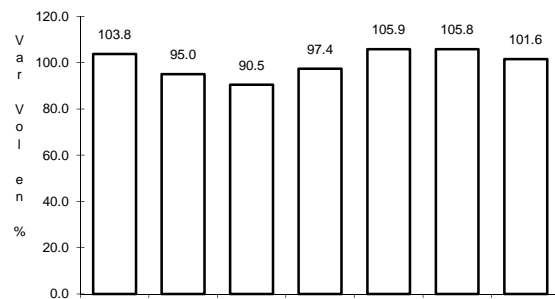
Tipo: 1

Sent: 0

3 CARR: LIBRAMIENTO DE MAZATLAN

CLAVE: 25604

ruta: MEX



Km: 0.00

Tipo: 3

Sent: 1

Km: 0.00

Tipo: 3

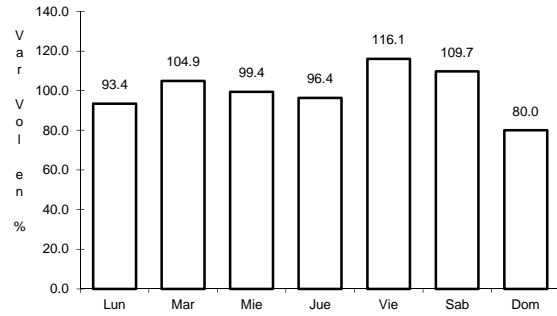
Sent: 2

Km: 5.40

Tipo: 1

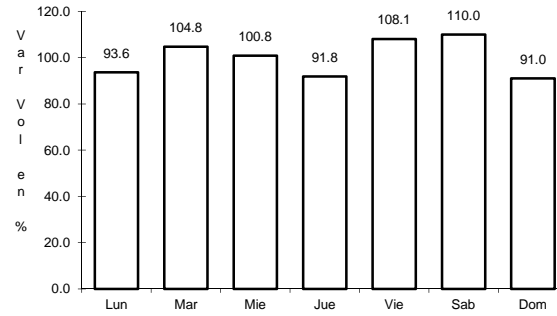
Sent: 1

13 CARR: CULIACAN - ALTATA



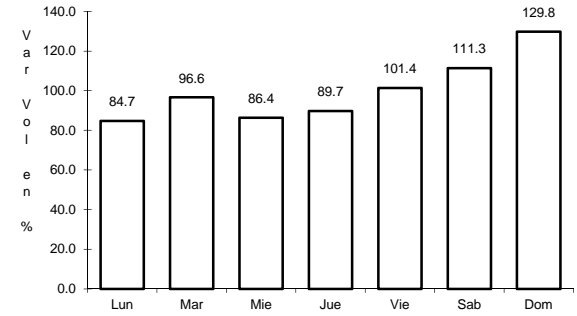
Km: 6.20 Tipo: 1 Sent: 1

CLAVE: 25013



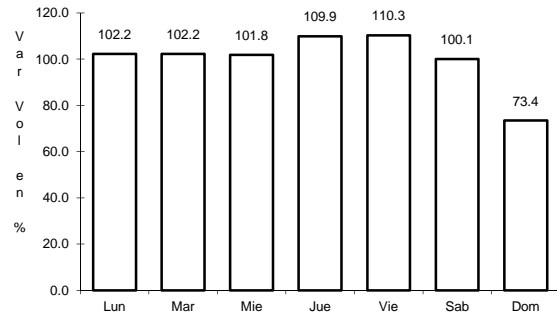
Km: 6.20 Tipo: 1 Sent: 2

RUTA: SIN-030



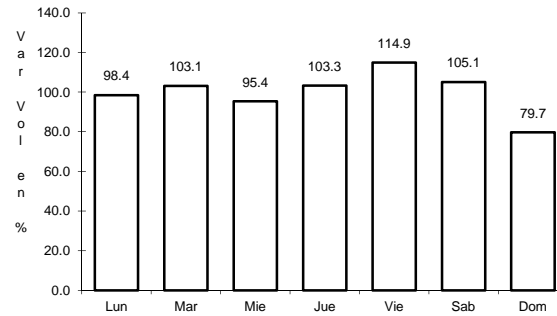
Km: 67.00 Tipo: 1 Sent: 0

14 CARR: CULIACAN - EL DORADO



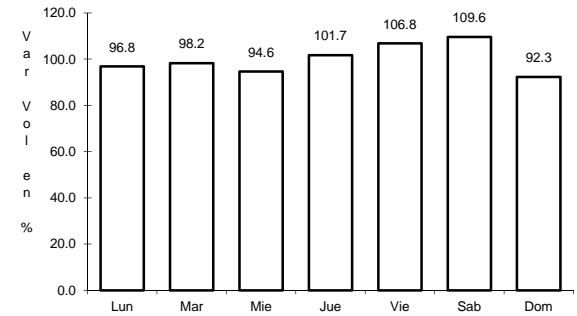
Km: 0.00 Tipo: 3 Sent: 1

CLAVE: 25044



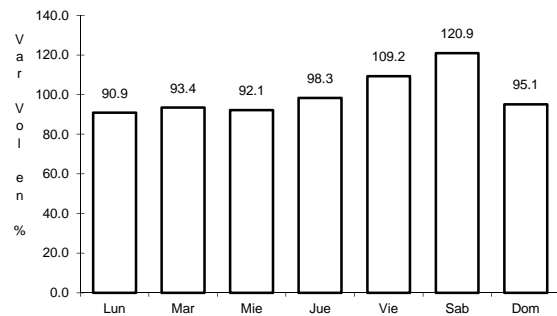
Km: 0.00 Tipo: 3 Sent: 2

RUTA: SIN-005



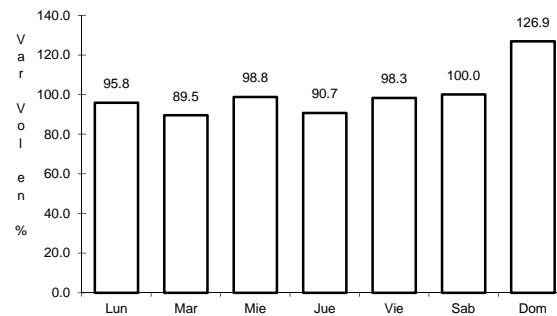
Km: 55.00 Tipo: 1 Sent: 0

15 CARR: EL LIMONCITO - CINCO HERMANOS



Km: 0.00 Tipo: 3 Sent: 0

CLAVE: 25016



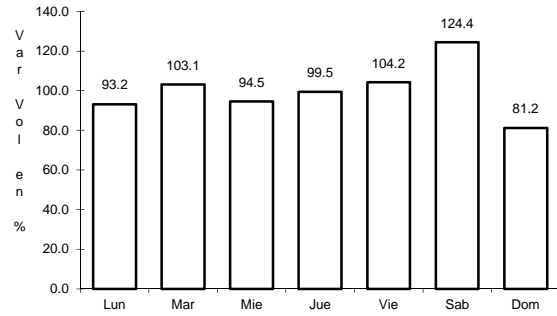
Km: 16.00 Tipo: 1 Sent: 0

RUTA: SIN-016

22 CARR: POZOLE - COFRADIA

CLAVE: 25080

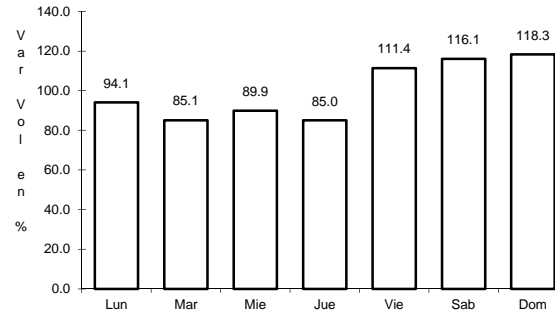
RUTA: SIN-080



Km: 0.00

Tipo: 3

Sent: 0



Km: 9.10

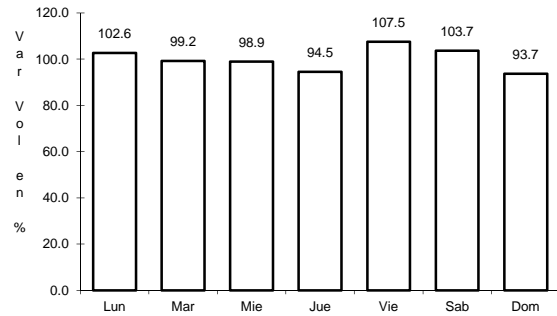
Tipo: 1

Sent: 0

23 CARR: RAMAL A CHAMETLA

CLAVE: 25002

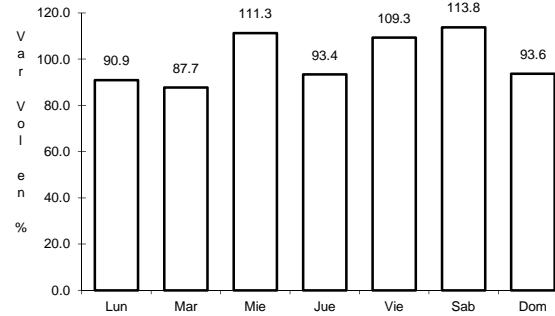
RUTA: SIN-002



Km: 0.00

Tipo: 3

Sent: 0



Km: 15.00

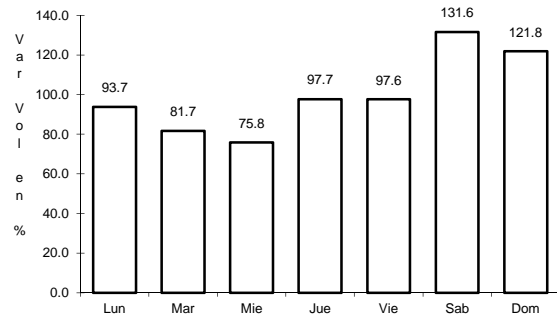
Tipo: 1

Sent: 0

24 CARR: RAMAL A COSALA

CLAVE: 25008

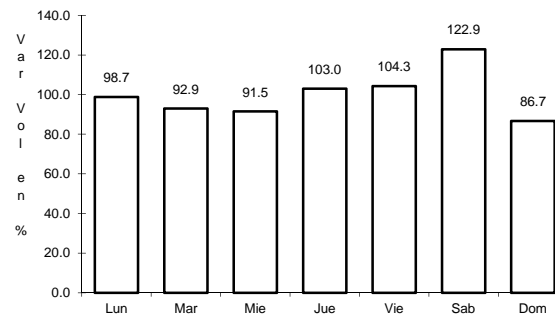
RUTA: SIN-008



Km: 0.00

Tipo: 3

Sent: 0



Km: 53.00

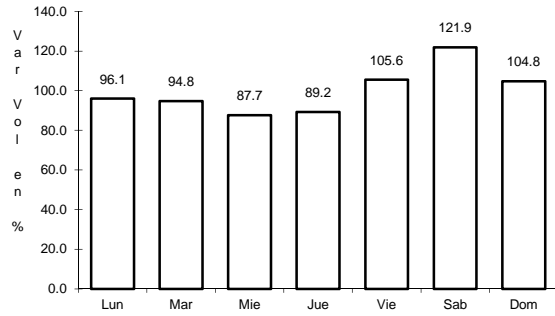
Tipo: 1

Sent: 0

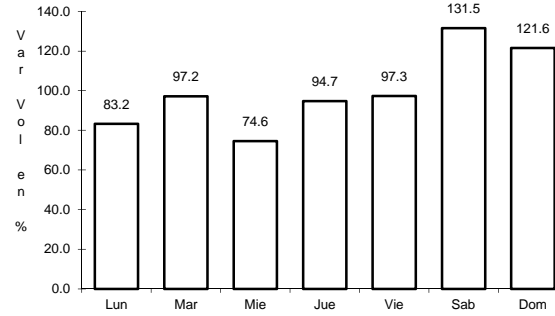
28 CARR: RAMAL A LA NORIA

CLAVE: 25592

ruta: SIN



Km: 0.00 Tipo: 3 Sent: 0

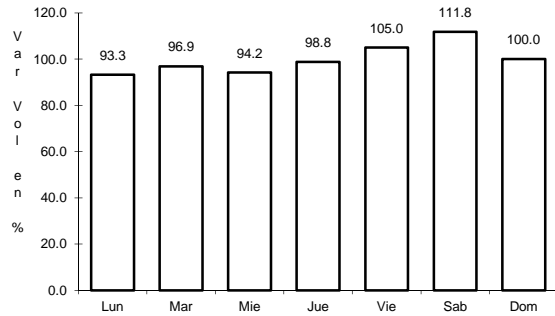


Km: 25.50 Tipo: 1 Sent: 0

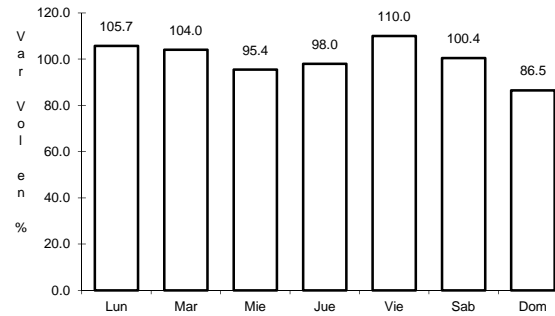
29 CARR: RAMAL A LA REFORMA

CLAVE: 25041

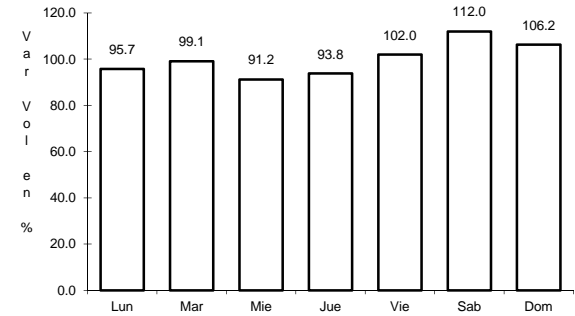
ruta: SIN-004



Km: 0.00 Tipo: 3 Sent: 0



Km: 14.00 Tipo: 3 Sent: 0

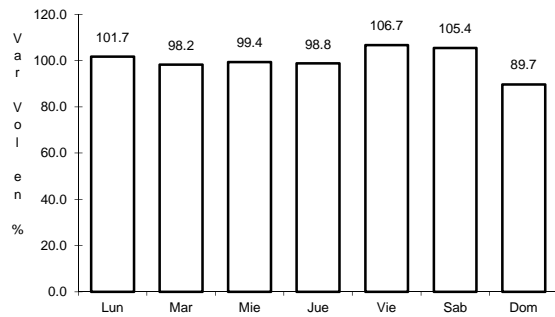


Km: 60.00 Tipo: 1 Sent: 0

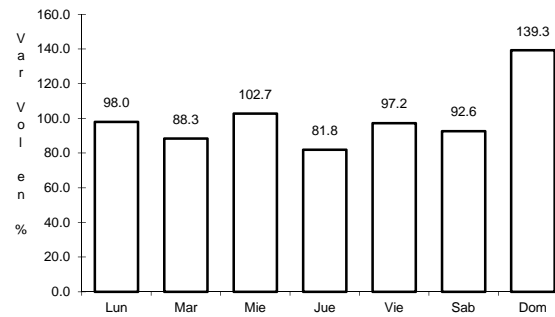
30 CARR: ROSARIO - CAIMANERO

CLAVE: 25003

ruta: SIN-003



Km: 0.00 Tipo: 3 Sent: 0

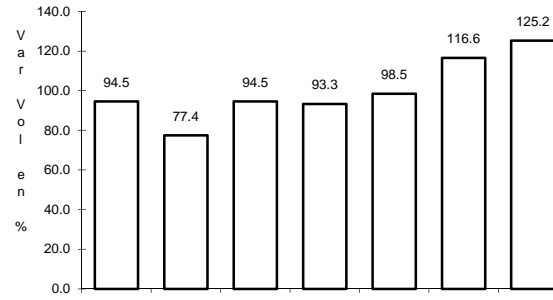
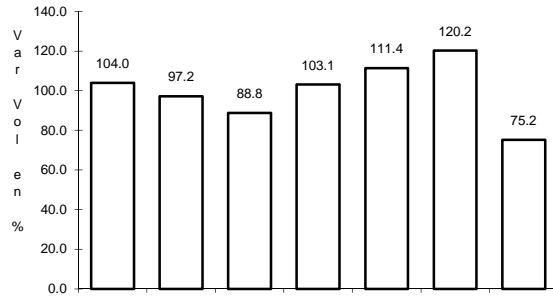


Km: 30.00 Tipo: 1 Sent: 0

31 CARR: SAN PEDRO - CAMPO ANIBAL

CLAVE: 25600

RUTA: SIN



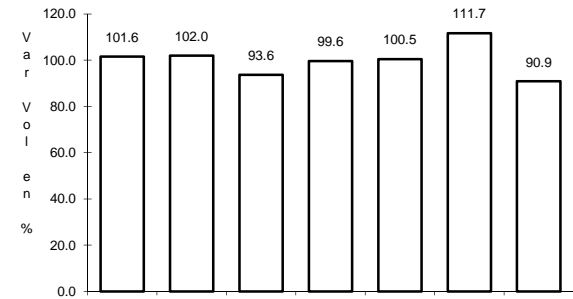
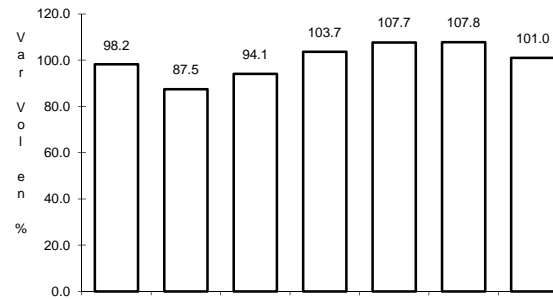
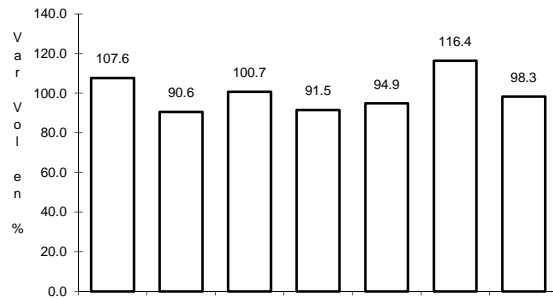
Km: 0.00 Tipo: 3 Sent: 0

Km: 24.50 Tipo: 1 Sent: 0

32 CARR: TOPOLOBAMPO - CHOIX

CLAVE: 25032

RUTA: SIN-023



Km: 0.00 Tipo: 3 Sent: 1

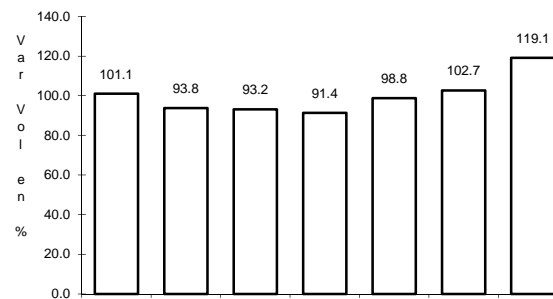
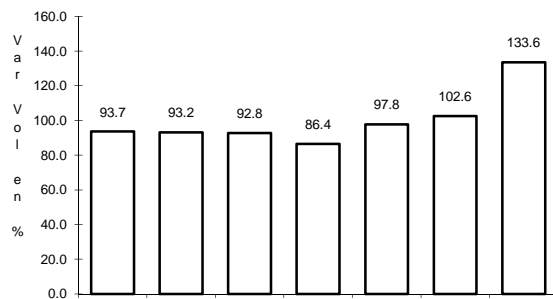
Km: 0.00 Tipo: 3 Sent: 2

Km: 159.00 Tipo: 1 Sent: 0

33 CARR: VILLA UNION - EL WALAMO

CLAVE: 25081

RUTA: SIN-081



Km: 0.00 Tipo: 3 Sent: 0

Km: 7.00 Tipo: 1 Sent: 0

