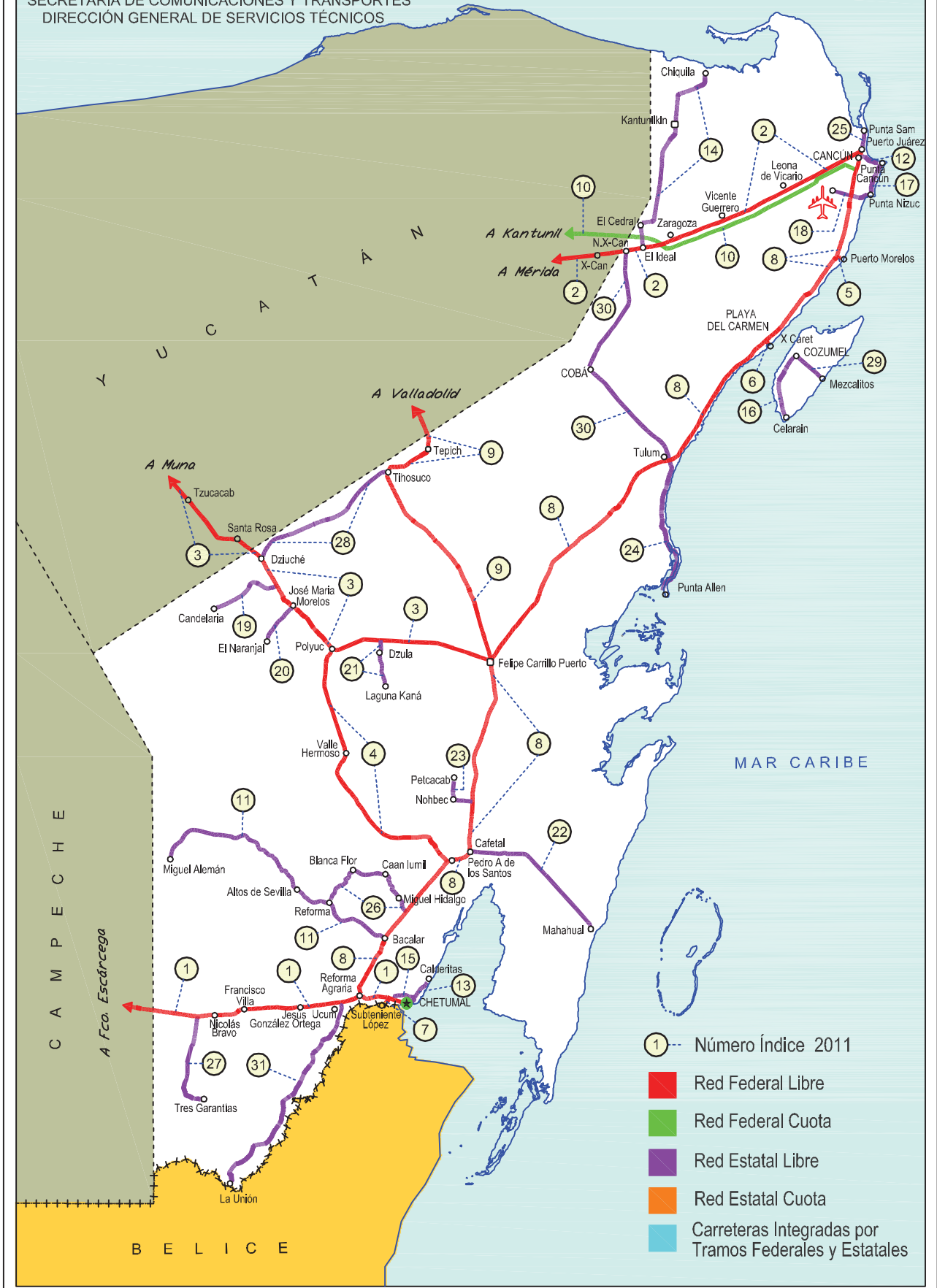


QUINTANA ROO

No. INDICE	CARRETERA	RUTA
	---RED FEDERAL LIBRE---	
1	FRANCISCO ESCARCEGA - CHETUMAL	MEX-186
2	MERIDA - PUERTO JUAREZ	MEX-180
3	MUNA - FELIPE CARRILLO PUERTO	MEX-184
4	POLYUC - T. C. (REFORMA AGRARIA - PUERTO JUAREZ)	MEX-293
5	RAMAL A PUERTO MORELOS	MEX
6	RAMAL A PUNTA PIEDRA	MEX
7	RAMAL A SUBTENIENTE LOPEZ	MEX
8	REFORMA AGRARIA - PUERTO JUAREZ	MEX-307
9	VALLADOLID - FELIPE CARRILLO PUERTO	MEX-295
	---RED FEDERAL DE CUOTA---	
10	KANTUNIL - CANCUN (CUOTA)	MEX-180D
	---RED ESTATAL LIBRE---	
11	BACALAR - MIGUEL ALEMAN	QR
12	CANCUN - PUNTA CANCUN	QR
13	CHETUMAL - CALDERITAS	QR-004
14	EL IDEAL - CHIQUILA	QR-005
15	LIBRAMIENTO DE CHETUMAL	QR
16	PERIMETRAL COZUMEL	QR
17	PUNTA NIZUC - CANCUN	QR
18	RAMAL A AEROPUERTO CANCUN	QR
19	RAMAL A CANDELARIA	QR
20	RAMAL A EL NARANJAL	QR
21	RAMAL A LAGUNA DE KANA	QR
22	RAMAL A MAHAHUAL	QR
23	RAMAL A PETCACAB	QR-018
24	RAMAL A PUNTA ALLEN	QR-015
25	RAMAL A PUNTA SAM	QR
26	RAMAL A REFORMA	QR-016
27	RAMAL A TRES GARANTIAS	QR
28	TIHOSUCO - DZIUCHE	QR
29	TRANSVERSAL DE COZUMEL	QR
30	TULUM - NUEVO X-CAN	QR
31	UCUM - UNION	QR

23 QUINTANA ROO

SECRETARÍA DE COMUNICACIONES Y TRANSPORTES
DIRECCIÓN GENERAL DE SERVICIOS TÉCNICOS



- ① Número Índice 2011
- Red Federal Libre
- Red Federal Cuota
- Red Estatal Libre
- Red Estatal Cuota
- Carreteras Integradas por Tramos Federales y Estatales

QUINTANA ROO

1 CARR: FRANCISCO ESCARCEGA - CHETUMAL

CLAVE: 00093

RUTA: MEX-186

AÑO: 2010

LUGAR	ESTACION				CLASIFICACION VEHICULAR EN PORCIENTO								COORDENADAS						
	KM	TE	SC	TDPA	A	B	C2	C3	T3S2	T3S3	T3S2R4	OTROS	A	B	C	K'	D	LATITUD	LONGITUD
FRANCISCO ESCARCEGA	0.00	3	0	4951	77.7	4.9	4.5	2.2	4.6	1.6	3.9	0.6	77.7	4.9	17.4	0.068	0.502	18.603932	-90.716808
ADOLFO LOPEZ MATEOS	41.50	1	0	1929	79.8	3.5	2.9	3.7	3.6	2.6	3.4	0.5	79.8	3.5	16.7	0.056	0.501	18.639314	-90.305387
T. DER. SILVITUC	55.70	1	0	1788	79.2	3.7	2.9	3.7	3.8	2.6	3.6	0.5	79.2	3.7	17.1	0.065	0.501	18.650961	-90.272570
T. DER. SILVITUC	55.70	3	0	1523	79.5	3.6	3.0	3.8	3.8	2.5	3.3	0.5	79.5	3.6	16.9	0.058	0.501	18.649509	-90.261855
CONHUAS	100.00	1	0	1615	79.2	3.8	3.1	3.6	3.7	2.6	3.5	0.5	79.2	3.8	17.0	0.063	0.501	18.540276	-89.916232
XPUJIL	155.73	1	0	2102	80.0	3.6	2.7	3.4	3.7	2.6	3.5	0.5	80.0	3.6	16.4	0.062	0.501	18.508996	-89.405390
LIM. EDOS. TERM. CAMP. PPIA. OROO.	179.90																		
NICOLAS BRAVO	206.01	1	0	2029	79.5	3.7	2.9	3.6	3.7	2.6	3.5	0.5	79.5	3.7	16.8	0.070	0.504	18.458362	-88.944031
NICOLAS BRAVO	206.01	3	0	2231	79.3	3.4	3.0	3.9	3.6	2.5	3.6	0.7	79.3	3.4	17.3	0.072	0.504	18.459177	-88.916888
T. IZQ. MOROCOY	214.90	1	0	1882	81.3	3.4	2.2	3.3	4.4	2.0	3.2	0.2	81.3	3.4	15.3	0.082	0.500	18.478776	-88.818023
T. IZQ. MOROCOY	214.90	3	0	2085	83.1	3.4	2.7	3.3	2.7	2.1	2.4	0.3	83.1	3.4	13.5	0.063	0.501	18.478827	-88.815173
T. DER. UNION	247.50	1	0	2638	82.5	3.7	2.8	3.3	2.7	2.2	2.5	0.3	82.5	3.7	13.8	0.086	0.503	18.505122	-88.527013
T. DER. UNION	247.50	3	0	4501	83.0	3.5	2.7	3.4	2.7	2.1	2.3	0.3	83.0	3.5	13.5	0.085	0.500	18.506010	-88.519622
T. IZQ. FPE. CARRILLO PUERTO	255.15	1	0	3674	83.2	3.5	2.7	3.3	2.6	2.2	2.2	0.3	83.2	3.5	13.3	0.076	0.502	18.525836	-88.469861
T. DER. SUBTENIENTE LOPEZ	268.57	1	0	11697	83.2	3.5	2.6	3.2	2.6	2.1	2.5	0.3	83.2	3.5	13.3	0.075	0.501	18.518083	-88.383799
T. IZQ. AV. INSURGENTES	270.00	1	1	3812	82.3	3.5	2.9	3.6	2.8	2.1	2.5	0.3	82.3	3.5	14.2	0.080	0.508	18.513099	-88.362160
T. IZQ. AV. INSURGENTES	270.00	1	2	3777	83.6	3.5	2.5	3.2	2.5	2.1	2.3	0.3	83.6	3.5	12.9	0.079	0.508	18.513099	-88.362160
T. IZQ. AV. INSURGENTES	270.00	3	1	5270	83.1	3.4	2.5	3.2	2.8	2.2	2.5	0.3	83.1	3.4	13.5	0.070	0.501	18.510849	-88.354713
T. IZQ. AV. INSURGENTES	270.00	3	2	5242	83.2	3.3	2.6	3.2	2.8	2.2	2.4	0.3	83.2	3.3	13.5	0.069	0.501	18.510849	-88.354713
CHETUMAL	277.36	1	1	5986	82.8	3.5	2.6	1.7	3.6	2.4	2.9	0.5	82.8	3.5	13.7	0.084	0.500	18.502090	-88.322130
CHETUMAL	277.36	1	2	5986	82.5	3.4	2.4	1.8	3.6	2.6	3.0	0.7	82.5	3.4	14.1	0.086	0.500	18.502090	-88.322130

2 CARR: MERIDA - PUERTO JUAREZ

CLAVE: 00067

RUTA: MEX-180

AÑO: 2010

LUGAR	ESTACION				CLASIFICACION VEHICULAR EN PORCIENTO								COORDENADAS						
	KM	TE	SC	TDPA	A	B	C2	C3	T3S2	T3S3	T3S2R4	OTROS	A	B	C	K'	D	LATITUD	LONGITUD
MERIDA	0.00																		
X. PERIFERICO DE MERIDA	5.60	1	1	7168	79.7	4.9	5.4	3.2	2.1	1.0	3.4	0.3	79.7	4.9	15.4	0.078	0.506	20.957310	-89.571542
X. PERIFERICO DE MERIDA	5.60	1	2	6992	78.5	4.9	6.0	3.3	2.4	1.0	3.6	0.3	78.5	4.9	16.6	0.080	0.506	20.957310	-89.571542
X. PERIFERICO DE MERIDA	5.60	3	1	5565	79.5	4.7	5.9	3.2	2.2	1.0	3.2	0.3	79.5	4.7	15.8	0.088	0.519	20.953846	-89.564770
X. PERIFERICO DE MERIDA	5.60	3	2	5147	78.8	5.0	6.2	3.2	2.2	1.0	3.3	0.3	78.8	5.0	16.2	0.088	0.519	20.953846	-89.564770
TEYA	13.00	1	1	5746	78.2	5.3	5.8	3.4	2.4	1.0	3.6	0.3	78.2	5.3	16.5	0.081	0.508	20.936590	-89.532120
TEYA	13.00	1	2	5565	79.7	4.6	5.8	3.2	2.1	1.0	3.3	0.3	79.7	4.6	15.7	0.079	0.508	20.936590	-89.532120
T. DER. SEYE	28.79	1	0	7786	77.6	5.2	6.3	3.5	2.4	1.0	3.7	0.3	77.6	5.2	17.2	0.070	0.502	20.891581	-89.379521
T. DER. SEYE	28.79	3	0	7700	78.3	5.1	6.1	3.2	2.4	1.0	3.6	0.3	78.3	5.1	16.6	0.085	0.502	20.891738	-89.374260

QUINTANA ROO

2 CARR: MERIDA - PUERTO JUAREZ

CLAVE: 00067

RUTA: MEX-180

AÑO: 2010

LUGAR	ESTACION				CLASIFICACION VEHICULAR EN PORCIENTO								COORDENADAS						
	KM	TE	SC	TDPA	A	B	C2	C3	T3S2	T3S3	T3S2R4	OTROS	A	B	C	K'	D	LATITUD	LONGITUD
TAHMEK	42.00	1	0	7704	78.5	4.7	6.3	3.4	2.4	1.0	3.4	0.3	78.5	4.7	16.8	0.079	0.504	20.875700	-89.271417
T. IZO. HOCTUN (1° ACCESO)	46.65	1	0	5119	79.9	4.4	5.8	3.0	2.2	1.0	3.4	0.3	79.9	4.4	15.7	0.066	0.502	20.867858	-89.215663
T. IZO. HOCTUN (2° ACCESO)	48.62	1	0	4530	78.8	4.8	6.2	3.2	2.4	1.0	3.3	0.3	78.8	4.8	16.4	0.074	0.500	20.858735	-89.202526
T. IZO. HOCTUN (2° ACCESO)	48.62	3	0	6311	79.3	4.8	6.0	3.2	2.2	1.0	3.2	0.3	79.3	4.8	15.9	0.080	0.505	20.854245	-89.195731
KANTUNIL	67.28	3	0	2577	78.5	5.0	6.2	3.2	2.2	1.0	3.6	0.3	78.5	5.0	16.5	0.081	0.501	20.791134	-89.018866
LIBRE UNION	92.91	1	0	2369	79.5	4.6	6.0	3.1	2.1	1.0	3.4	0.3	79.5	4.6	15.9	0.085	0.509	20.708092	-88.814378
LIBRE UNION	92.91	3	0	2215	79.1	4.9	5.8	3.1	2.4	1.0	3.4	0.3	79.1	4.9	16.0	0.085	0.509	20.707041	-88.795491
PISTE	116.30	3	0	4382	79.0	4.9	5.8	3.3	2.4	1.0	3.3	0.3	79.0	4.9	16.1	0.078	0.507	20.693344	-88.582391
CHICHEN ITZA	118.64	1	0	5198	76.0	8.7	3.3	1.3	1.7	1.4	7.5	0.1	76.0	8.7	15.3	0.073	0.501	20.687941	-88.576199
CHICHEN ITZA	118.64	3	0	4073	75.3	8.8	3.4	1.4	1.8	1.5	7.7	0.1	75.3	8.8	15.9	0.066	0.507	20.669823	-88.558081
T. DER. CHANKOM	127.00	1	0	3769	75.0	9.2	3.6	1.4	1.8	1.4	7.5	0.1	75.0	9.2	15.8	0.064	0.504	20.642640	-88.490181
T. DER. CHANKOM	127.00	3	0	3356	74.7	9.1	3.6	1.4	1.7	1.5	7.9	0.1	74.7	9.1	16.2	0.073	0.515	20.641509	-88.486611
VALLADOLID	160.68	1	0	3755	76.0	8.6	3.3	1.3	1.7	1.4	7.6	0.1	76.0	8.6	15.4	0.057	0.505	20.676623	-88.243386
T. DER. CHEMAX	189.79	3	0	4061	75.8	8.7	3.4	1.5	1.6	1.4	7.5	0.1	75.8	8.7	15.5	0.063	0.501	20.663937	-87.926105
X-CAN	225.00	3	0	2804	76.4	8.2	3.4	1.3	1.6	1.4	7.6	0.1	76.4	8.2	15.4	0.060	0.511	20.860292	-87.657857
LIM. EDOS. TERM. YUC. PPIA. QROO.	230.40																		
NUEVO X-CAN	231.90	3	0	3035	75.5	8.5	3.6	1.4	1.7	1.4	7.8	0.1	75.5	8.5	16.0	0.063	0.506	20.871550	-87.591090
ZARAGOZA	239.00	1	0	3780	75.0	8.9	3.6	1.5	1.7	1.4	7.8	0.1	75.0	8.9	16.1	0.057	0.502	20.880536	-87.537827
VICENTE GUERRERO	261.00	1	0	3246	84.0	3.6	6.0	2.7	2.0	0.8	0.7	0.2	84.0	3.6	12.4	0.069	0.505	20.940866	-87.332034
LEONA VICARIO	275.50	1	0	4125	84.8	3.3	5.6	2.7	1.9	0.8	0.7	0.2	84.8	3.3	11.9	0.084	0.501	20.979698	-87.226589
LEONA VICARIO	275.50	3	0	4673	84.4	3.7	5.8	2.5	1.9	0.8	0.7	0.2	84.4	3.7	11.9	0.067	0.503	20.992523	-87.191206
T. DER. ALFREDO V. BONFIL	310.00	1	1	7666	84.1	3.6	6.0	2.6	2.0	0.8	0.7	0.2	84.1	3.6	12.3	0.065	0.500	21.138324	-86.898570
T. DER. ALFREDO V. BONFIL	310.00	1	2	7652	84.3	3.5	5.9	2.7	1.9	0.8	0.7	0.2	84.3	3.5	12.2	0.069	0.500	21.138325	-86.898570
PUERTO JUAREZ	321.41																		

3 CARR: MUNA - FELIPE CARRILLO PUERTO

CLAVE: 00148

RUTA: MEX-184

AÑO: 2010

LUGAR	ESTACION				CLASIFICACION VEHICULAR EN PORCIENTO								COORDENADAS						
	KM	TE	SC	TDPA	A	B	C2	C3	T3S2	T3S3	T3S2R4	OTROS	A	B	C	K'	D	LATITUD	LONGITUD
MUNA	0.00	3	0	3869	82.3	4.2	5.4	1.1	3.2	1.8	1.0	1.0	82.3	4.2	13.5	0.075	0.500	20.480338	-89.701068
TICUL	19.10	1	0	3551	84.5	4.0	5.3	1.2	1.5	1.6	1.1	0.8	84.5	4.0	11.5	0.061	0.502	20.404032	-89.568960
TICUL	19.10	3	0	3727	83.4	4.3	5.6	1.2	2.2	1.5	0.9	0.9	83.4	4.3	12.3	0.071	0.501	20.373880	-89.518133
OXXUTZCAB	40.50	3	0	3742	84.7	4.3	5.3	0.6	2.6	1.0	0.6	0.9	84.7	4.3	11.0	0.067	0.504	20.294069	-89.398674
TEKAX	53.90	3	0	2743	82.8	4.1	6.1	0.6	3.1	1.9	0.8	0.6	82.8	4.1	13.1	0.073	0.505	20.189033	-89.269205
TZUCACAB	86.60	1	0	1737	88.6	3.5	3.6	1.7	0.9	0.6	0.1	1.0	88.6	3.5	7.9	0.079	0.504	20.080568	-89.066369

QUINTANA ROO

6 CARR: RAMAL A PUNTA PIEDRA

CLAVE: 23575

RUTA: MEX

AÑO: 2010

LUGAR	ESTACION				CLASIFICACION VEHICULAR EN PORCIENTO								COORDENADAS						
	KM	TE	SC	TDPA	A	B	C2	C3	T3S2	T3S3	T3S2R4	OTROS	A	B	C	K'	D	LATITUD	LONGITUD
T. C. REFORMA AGRARIA - PUERTO JUAREZ	0.00	3	0	15249	83.6	2.8	6.3	2.4	1.3	1.4	1.7	0.5	83.6	2.8	13.6	0.058	0.500	20.627250	-87.083056
PUNTA PIEDRA (PLAYA DEL CARMEN)	1.50																		

7 CARR: RAMAL A SUBTENIENTE LOPEZ

CLAVE: 23567

RUTA: MEX

AÑO: 2010

LUGAR	ESTACION				CLASIFICACION VEHICULAR EN PORCIENTO								COORDENADAS						
	KM	TE	SC	TDPA	A	B	C2	C3	T3S2	T3S3	T3S2R4	OTROS	A	B	C	K'	D	LATITUD	LONGITUD
T. C. FRANCISCO ESCARCEGA - CHETUMAL	0.00	3	0	6438	85.5	3.9	5.2	2.6	0.9	0.7	0.6	0.6	85.5	3.9	10.6	0.076	0.508	18.509503	-88.378901
SUBTENIENTE LOPEZ	3.00																		

8 CARR: REFORMA AGRARIA - PUERTO JUAREZ

CLAVE: 23132

RUTA: MEX-307

AÑO: 2010

LUGAR	ESTACION				CLASIFICACION VEHICULAR EN PORCIENTO								COORDENADAS						
	KM	TE	SC	TDPA	A	B	C2	C3	T3S2	T3S3	T3S2R4	OTROS	A	B	C	K'	D	LATITUD	LONGITUD
T. C. FRANCISCO ESCARCEGA - CHETUMAL	0.00	3	0	6492	82.5	4.4	4.4	2.0	3.3	0.6	2.0	0.8	82.5	4.4	13.1	0.061	0.500	18.534583	-88.467262
BACALAR	19.15	1	0	3547	80.8	4.9	4.6	2.2	3.8	0.7	2.1	0.9	80.8	4.9	14.3	0.074	0.501	18.663607	-88.401670
BACALAR	19.15	3	0	2931	81.6	4.7	4.5	2.0	3.6	0.7	2.1	0.8	81.6	4.7	13.7	0.070	0.504	18.694720	-88.388298
T. IZQ. REFORMA	22.24	3	0	4088	81.9	4.6	4.7	2.0	3.3	0.7	2.0	0.8	81.9	4.6	13.5	0.059	0.506	18.708902	-88.383760
T. IZQ. LAZARO CARDENAS	56.30	1	0	2648	82.7	4.3	4.5	1.9	3.3	0.7	1.9	0.7	82.7	4.3	13.0	0.073	0.502	18.943401	-88.187963
T. IZQ. LAZARO CARDENAS	56.30	3	0	1879	81.9	4.8	4.6	1.9	3.3	0.7	2.0	0.8	81.9	4.8	13.3	0.070	0.501	18.949187	-88.182355
T. IZQ. CHACCHOBEN	70.80	1	0	1750	81.6	4.5	4.7	2.0	3.6	0.7	2.1	0.8	81.6	4.5	13.9	0.077	0.502	19.012273	-88.111211
T. IZQ. CHACCHOBEN	70.80	3	0	1528	82.1	4.8	4.3	1.9	3.4	0.7	2.0	0.8	82.1	4.8	13.1	0.087	0.502	19.037571	-88.110081
T. IZQ. NOH-BEC	81.94	1	0	1476	82.2	4.4	4.4	2.0	3.4	0.7	2.1	0.8	82.2	4.4	13.4	0.082	0.503	19.131302	-88.105438
T. IZQ. NOH-BEC	81.94	3	0	1508	82.1	4.5	4.4	2.1	3.4	0.7	2.0	0.8	82.1	4.5	13.4	0.091	0.501	19.137091	-88.105093
FELIPE CARRILLO PUERTO	132.00	1	0	1992	81.3	4.6	4.8	2.1	3.6	0.7	2.1	0.8	81.3	4.6	14.1	0.071	0.515	19.556986	-88.043416
FELIPE CARRILLO PUERTO	132.00	3	0	2791	82.5	4.6	4.4	1.8	3.5	0.7	1.8	0.7	82.5	4.6	12.9	0.088	0.506	19.596863	-88.034173
TULUM PUEBLO	227.00	1	0	3091	82.3	4.7	4.2	1.9	3.5	0.7	1.9	0.8	82.3	4.7	13.0	0.079	0.508	20.205731	-87.479463
T. IZQ. COBA	229.19	1	0	12726	82.4	4.2	4.5	2.0	3.4	0.7	2.0	0.8	82.4	4.2	13.4	0.084	0.500	20.213039	-87.456484
T. IZQ. COBA	229.19	3	0	10544	81.0	4.7	4.9	2.1	3.7	0.7	2.0	0.9	81.0	4.7	14.3	0.077	0.501	20.216177	-87.447105
X. C. TULUM - AEROPUERTO	231.19	3	0	9372	82.0	4.5	4.4	2.1	3.4	0.7	2.1	0.8	82.0	4.5	13.5	0.068	0.501	20.220431	-87.433546
T. DER. XEL-HA	244.80	1	0	8348	89.0	4.7	3.0	1.4	1.0	0.2	0.6	0.1	89.0	4.7	6.3	0.082	0.500	20.315205	-87.367487
T. DER. AKUMAL	254.44	1	0	9872	89.2	4.8	2.8	1.3	1.0	0.2	0.6	0.1	89.2	4.8	6.0	0.080	0.505	20.392735	-87.322979
PLAYA DEL CARMEN	289.70	1	1	9011	90.0	4.3	2.7	1.2	0.9	0.2	0.6	0.1	90.0	4.3	5.7	0.094	0.500	20.605679	-87.109935
PLAYA DEL CARMEN	289.70	1	2	8994	89.7	4.3	2.9	1.3	0.9	0.2	0.6	0.1	89.7	4.3	6.0	0.088	0.500	20.605679	-87.109935
PLAYA DEL CARMEN	295.00	3	1	11005	89.8	4.3	2.8	1.3	0.9	0.2	0.6	0.1	89.8	4.3	5.9	0.087	0.500	20.661230	-87.057904

QUINTANA ROO

8 CARR: REFORMA AGRARIA - PUERTO JUAREZ

CLAVE: 23132

RUTA: MEX-307

AÑO: 2010

LUGAR	ESTACION				CLASIFICACION VEHICULAR EN PORCIENTO								COORDENADAS						
	KM	TE	SC	TDPA	A	B	C2	C3	T3S2	T3S3	T3S2R4	OTROS	A	B	C	K'	D	LATITUD	LONGITUD
PLAYA DEL CARMEN	295.00	3	2	11010	89.8	4.3	2.8	1.3	0.9	0.2	0.6	0.1	89.8	4.3	5.9	0.091	0.500	20.661230	-87.057904
T. DER. PUERTO MORELOS	321.48	1	1	8951	89.2	5.8	2.6	1.2	0.7	0.2	0.3	0.0	89.2	5.8	5.0	0.089	0.501	20.838233	-86.909877
T. DER. PUERTO MORELOS	321.48	1	2	8995	89.5	5.6	2.6	1.1	0.7	0.2	0.3	0.0	89.5	5.6	4.9	0.090	0.501	20.838233	-86.909877
T. DER. PUERTO MORELOS	321.48	3	1	10899	89.6	5.6	2.5	1.2	0.6	0.2	0.3	0.0	89.6	5.6	4.8	0.091	0.501	20.864619	-86.894148
T. DER. PUERTO MORELOS	321.48	3	2	10834	89.8	5.5	2.5	1.1	0.6	0.2	0.3	0.0	89.8	5.5	4.7	0.089	0.501	20.864619	-86.894148
T. IZQ. AEROPUERTO CANCUN	341.50	1	1	11931	89.1	6.0	2.6	1.1	0.7	0.2	0.3	0.0	89.1	6.0	4.9	0.087	0.509	21.028483	-86.852678
T. IZQ. AEROPUERTO CANCUN	341.50	1	2	11522	89.4	5.8	2.6	1.1	0.6	0.2	0.3	0.0	89.4	5.8	4.8	0.093	0.509	21.028483	-86.852678
T. IZQ. AEROPUERTO CANCUN	341.50	3	1	15624	89.1	6.0	2.5	1.2	0.7	0.2	0.3	0.0	89.1	6.0	4.9	0.086	0.501	21.039748	-86.850038
T. IZQ. AEROPUERTO CANCUN	341.50	3	2	15682	88.9	5.8	2.8	1.3	0.7	0.2	0.3	0.0	88.9	5.8	5.3	0.089	0.501	21.039748	-86.850038
T. IZQ. ALFREDO V. BONFIL	348.22	1	1	15392	91.9	5.1	1.9	0.7	0.2	0.1	0.1	0.0	91.9	5.1	3.0	0.090	0.501	21.085024	-86.842962
T. IZQ. ALFREDO V. BONFIL	348.22	1	2	15423	91.5	5.3	2.1	0.7	0.2	0.1	0.1	0.0	91.5	5.3	3.2	0.093	0.501	21.085024	-86.842962
CANCUN	355.48	1	1	18854	92.2	4.7	2.0	0.7	0.2	0.1	0.1	0.0	92.2	4.7	3.1	0.090	0.533	21.107932	-86.839378
CANCUN	355.48	1	2	16510	91.5	5.3	2.0	0.8	0.2	0.1	0.1	0.0	91.5	5.3	3.2	0.096	0.533	21.107932	-86.839379
T. C. MERIDA - PUERTO JUAREZ	357.48																		

9 CARR: VALLADOLID - FELIPE CARRILLO PUERTO

CLAVE: 00010

RUTA: MEX-295

AÑO: 2010

LUGAR	ESTACION				CLASIFICACION VEHICULAR EN PORCIENTO								COORDENADAS						
	KM	TE	SC	TDPA	A	B	C2	C3	T3S2	T3S3	T3S2R4	OTROS	A	B	C	K'	D	LATITUD	LONGITUD
VALLADOLID	0.00	3	0	3757	88.3	3.0	7.4	0.5	0.6	0.1	0.1	0.0	88.3	3.0	8.7	0.072	0.500	20.673845	-88.204283
CHICHIMILA	6.90	3	0	2369	88.7	3.2	6.8	0.5	0.6	0.1	0.1	0.0	88.7	3.2	8.1	0.073	0.505	20.623587	-88.231026
TEKOM	12.05	3	0	1389	89.2	2.9	6.6	0.5	0.6	0.1	0.1	0.0	89.2	2.9	7.9	0.081	0.502	20.590646	-88.265423
TIXCACALCUPUL	19.80	3	0	759	89.0	3.0	6.7	0.5	0.6	0.1	0.1	0.0	89.0	3.0	8.0	0.111	0.506	20.527886	-88.271384
LIM. EDOS. TERM. YUC. PPIA. QROO.	46.00																		
TEPICH	51.40	1	0	703	89.3	2.8	6.6	0.5	0.6	0.1	0.1	0.0	89.3	2.8	7.9	0.081	0.500	20.251440	-88.255018
TIHOSUCO	65.00	1	0	634	88.8	3.1	6.8	0.5	0.6	0.1	0.1	0.0	88.8	3.1	8.1	0.096	0.512	20.193499	-88.363545
TIHOSUCO	65.00	3	0	730	89.3	3.0	6.4	0.5	0.6	0.1	0.1	0.0	89.3	3.0	7.7	0.092	0.519	20.187604	-88.388742
T. IZQ. SAN FELIPE BERRIOZABAL	99.00	1	0	469	88.3	3.1	7.3	0.5	0.6	0.1	0.1	0.0	88.3	3.1	8.6	0.092	0.514	19.962314	-88.241468
T. IZQ. SAN FELIPE BERRIOZABAL	99.00	3	0	666	89.4	2.8	6.5	0.5	0.6	0.1	0.1	0.0	89.4	2.8	7.8	0.096	0.505	19.961372	-88.240451
SEÑOR	116.50	1	0	977	89.1	2.8	6.8	0.5	0.6	0.1	0.1	0.0	89.1	2.8	8.1	0.088	0.501	19.848779	-88.141996
SEÑOR	116.50	3	0	986	89.5	2.8	6.4	0.5	0.6	0.1	0.1	0.0	89.5	2.8	7.7	0.076	0.504	19.833255	-88.131919
FELIPE CARRILLO PUERTO	147.70	1	0	1142	88.3	3.1	7.3	0.5	0.6	0.1	0.1	0.0	88.3	3.1	8.6	0.098	0.513	19.593367	-88.050323

QUINTANA ROO

10 CARR: KANTUNIL - CANCUN (CUOTA)

CLAVE: 00071

RUTA: MEX-180D

AÑO: 2010

LUGAR	ESTACION				CLASIFICACION VEHICULAR EN PORCIENTO								COORDENADAS						
	KM	TE	SC	TDPA	A	B	C2	C3	T3S2	T3S3	T3S2R4	OTROS	A	B	C	K'	D	LATITUD	LONGITUD
T. C. MERIDA - PUERTO JUAREZ	0.00																		
CASETA DE COBRO PISTE	51.00	1	1	1203	79.7	7.8	2.4	1.0	1.3	0.6	6.9	0.3	79.7	7.8	12.5	0.090	0.504	20.729205	-88.585642
CASETA DE COBRO PISTE	51.00	1	2	1185	79.1	8.0	2.4	1.0	1.4	0.6	7.2	0.3	79.1	8.0	12.9	0.088	0.504	20.729958	-88.587030
CASETA DE COBRO "X-CAN"	155.00	1	1	1697	80.2	7.8	2.4	0.9	1.2	0.6	6.6	0.3	80.2	7.8	12.0	0.078	0.502	20.876610	-87.638765
CASETA DE COBRO "X-CAN"	155.00	1	2	1683	80.0	7.8	2.5	0.9	1.3	0.6	6.6	0.3	80.0	7.8	12.2	0.081	0.502	20.876703	-87.640739
LIM. EDOS. TERM. YUC. PPIA. QROO.	160.00																		
T. C. MERIDA - PUERTO JUAREZ	292.00	1	1	1234	80.1	7.7	2.3	0.9	1.3	0.6	6.8	0.3	80.1	7.7	12.2	0.099	0.503	21.095084	-86.980430
T. C. MERIDA - PUERTO JUAREZ	292.00	1	2	1247	80.9	7.2	2.4	1.0	1.2	0.6	6.4	0.3	80.9	7.2	11.9	0.099	0.503	21.095304	-86.980593
T. C. REFORMA AGRARIA - PUERTO JUAREZ	308.10	1	0	1508	79.7	7.6	2.5	1.0	1.3	0.6	7.0	0.3	79.7	7.6	12.7	0.101	0.508	21.019721	-86.858128

11 CARR: BACALAR - MIGUEL ALEMAN

CLAVE:

RUTA: QR

AÑO: 2010

LUGAR	ESTACION				CLASIFICACION VEHICULAR EN PORCIENTO								COORDENADAS						
	KM	TE	SC	TDPA	A	B	C2	C3	T3S2	T3S3	T3S2R4	OTROS	A	B	C	K'	D	LATITUD	LONGITUD
T. C. (REFORMA AGRARIA - PUERTO JUAREZ)	0.00																		
REFORMA	21.00	3	0	1020	85.4	3.4	3.2	3.1	1.4	1.6	1.0	0.9	85.4	3.4	11.2	0.070	0.507	18.813198	-88.577915
ALTOS DE SEVILLA	31.00	1	0	794	83.7	3.5	3.6	3.3	1.8	2.0	1.0	1.1	83.7	3.5	12.8	0.067	0.509	18.848189	-88.674161
ALTOS DE SEVILLA	31.00	3	0	539	87.6	3.2	2.4	2.7	1.2	1.1	1.2	0.6	87.6	3.2	9.2	0.087	0.507	18.856059	-88.678237
MIGUEL ALEMAN	110.00																		

12 CARR: CANCUN - PUNTA CANCUN

CLAVE: 23581

RUTA: QR

AÑO: 2010

LUGAR	ESTACION				CLASIFICACION VEHICULAR EN PORCIENTO								COORDENADAS						
	KM	TE	SC	TDPA	A	B	C2	C3	T3S2	T3S3	T3S2R4	OTROS	A	B	C	K'	D	LATITUD	LONGITUD
CANCUN	0.00	3	1	26562	85.0	4.0	5.3	2.1	1.5	1.1	0.3	0.7	85.0	4.0	11.0	0.069	0.506	21.157072	-86.815356
CANCUN	0.00	3	2	25956	85.3	4.2	5.2	1.9	1.4	1.1	0.4	0.5	85.3	4.2	10.5	0.070	0.506	21.157076	-86.815339
PUNTA CANCUN	8.00	1	1	14710	84.2	3.9	5.4	2.1	1.6	1.1	0.5	1.2	84.2	3.9	11.9	0.076	0.522	21.134791	-86.755796
PUNTA CANCUN	8.00	1	2	16081	84.6	3.8	5.5	2.0	1.5	1.3	0.6	0.7	84.6	3.8	11.6	0.077	0.522	21.134790	-86.755796

13 CARR: CHETUMAL - CALDERITAS

CLAVE: 23004

RUTA: QR-004

AÑO: 2010

LUGAR	ESTACION				CLASIFICACION VEHICULAR EN PORCIENTO								COORDENADAS						
	KM	TE	SC	TDPA	A	B	C2	C3	T3S2	T3S3	T3S2R4	OTROS	A	B	C	K'	D	LATITUD	LONGITUD
CHETUMAL	0.00	3	1	3607	83.8	3.6	4.3	2.7	3.0	1.9	0.4	0.3	83.8	3.6	12.6	0.062	0.502	18.537248	-88.275103
CHETUMAL	0.00	3	2	3574	84.2	3.6	4.2	2.9	2.9	1.9	0.1	0.2	84.2	3.6	12.2	0.057	0.502	18.537248	-88.275103

QUINTANA ROO

28 CARR: TIHOSUCO - DZIUCHE

CLAVE: 23576

RUTA: QR

AÑO: 2010

LUGAR	ESTACION				CLASIFICACION VEHICULAR EN PORCIENTO								COORDENADAS						
	KM	TE	SC	TDPA	A	B	C2	C3	T3S2	T3S3	T3S2R4	OTROS	A	B	C	K'	D	LATITUD	LONGITUD
T. C. VALLADOLID - FELIPE CARRILLO PUERTO	0.00	3	0	553	82.8	2.4	3.8	4.3	1.5	2.3	2.3	0.6	82.8	2.4	14.8	0.081	0.501	20.177132	-88.398227
DZIUCHE	60.50	1	0	642	88.4	1.9	3.3	1.5	1.7	0.3	2.1	0.8	88.4	1.9	9.7	0.086	0.503	19.903757	-88.809935

29 CARR: TRANSVERSAL DE COZUMEL

CLAVE:

RUTA: QR

AÑO: 2010

LUGAR	ESTACION				CLASIFICACION VEHICULAR EN PORCIENTO								COORDENADAS						
	KM	TE	SC	TDPA	A	B	C2	C3	T3S2	T3S3	T3S2R4	OTROS	A	B	C	K'	D	LATITUD	LONGITUD
COZUMEL	0.00	3	0	3547	98.3	1.2	0.2	0.0	0.0	0.0	0.0	0.3	98.3	1.2	0.5	0.065	0.537	20.481585	-86.913322
MEZCALITOS	14.00																		

30 CARR: TULUM - NUEVO X-CAN

CLAVE: 23570

RUTA: QR

AÑO: 2010

LUGAR	ESTACION				CLASIFICACION VEHICULAR EN PORCIENTO								COORDENADAS						
	KM	TE	SC	TDPA	A	B	C2	C3	T3S2	T3S3	T3S2R4	OTROS	A	B	C	K'	D	LATITUD	LONGITUD
T. C. REFORMA AGRARIA - PUERTO JUAREZ	0.00	3	0	4706	87.7	3.9	3.2	1.9	1.5	0.5	0.7	0.6	87.7	3.9	8.4	0.091	0.504	20.216107	-87.453963
T. IZQ. RUINAS COBA	42.95	1	0	1433	88.2	3.7	3.2	1.8	1.3	0.5	0.7	0.6	88.2	3.7	8.1	0.071	0.507	20.505777	-87.716221
T. IZQ. RUINAS COBA	42.95	3	0	473	87.4	3.8	3.6	1.9	1.5	0.5	0.7	0.6	87.4	3.8	8.8	0.135	0.501	20.509999	-87.717124
NUEVO X-CAN	87.40	1	0	391	87.7	3.9	3.3	1.9	1.4	0.5	0.7	0.6	87.7	3.9	8.4	0.082	0.507	20.861928	-87.600753

31 CARR: UCUM - UNION

CLAVE: 23571

RUTA: QR

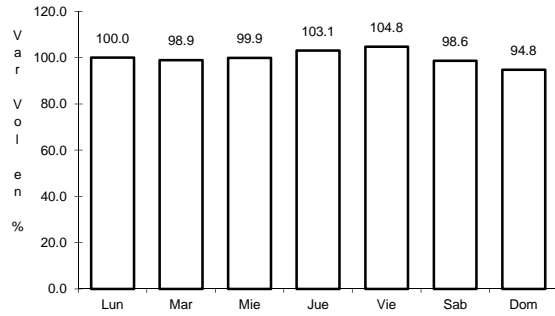
AÑO: 2010

LUGAR	ESTACION				CLASIFICACION VEHICULAR EN PORCIENTO								COORDENADAS						
	KM	TE	SC	TDPA	A	B	C2	C3	T3S2	T3S3	T3S2R4	OTROS	A	B	C	K'	D	LATITUD	LONGITUD
UCUM	0.00	3	0	2115	83.1	3.7	2.1	2.7	3.1	4.0	0.6	0.7	83.1	3.7	13.2	0.067	0.501	18.496209	-88.520922
T. DER. INGENIO ALVARO OBREGON	31.00	1	0	1401	86.3	4.0	5.4	2.6	0.5	0.8	0.1	0.3	86.3	4.0	9.7	0.080	0.500	18.249904	-88.650116
T. DER. INGENIO ALVARO OBREGON	31.00	3	0	1202	82.4	5.0	4.1	4.0	2.3	1.5	0.5	0.2	82.4	5.0	12.6	0.088	0.507	18.245162	-88.652492
T. DER. U. A. GALERAS	75.00	1	0	1032	85.9	5.1	3.6	1.6	1.0	1.5	0.6	0.7	85.9	5.1	9.0	0.083	0.501	17.990955	-88.846354
T. DER. U. A. GALERAS	75.00	3	0	973	84.0	4.6	4.3	2.4	1.7	1.9	0.7	0.4	84.0	4.6	11.4	0.094	0.501	17.987612	-88.850994
UNION	88.00	1	0	496	82.2	4.7	5.1	2.8	2.0	2.1	0.8	0.3	82.2	4.7	13.1	0.073	0.506	17.907553	-88.881664

4 CARR: POLYUC - T. C. (REFORMA AGRARIA - PUERTO JUAREZ)

CLAVE: 23014

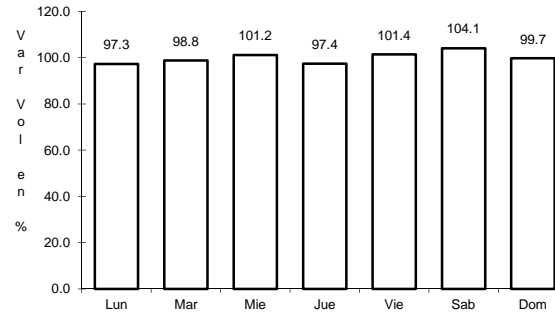
RUTA: MEX-293



Km: 0.00

Tipo: 3

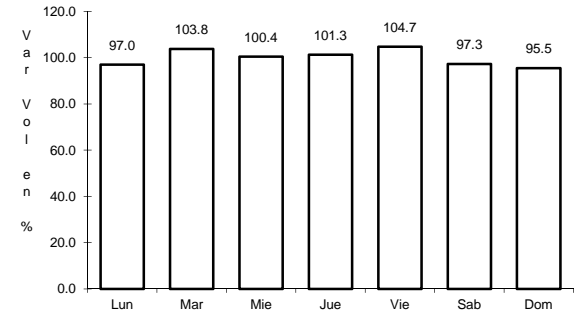
Sent: 0



Km: 50.00

Tipo: 3

Sent: 0



Km: 99.00

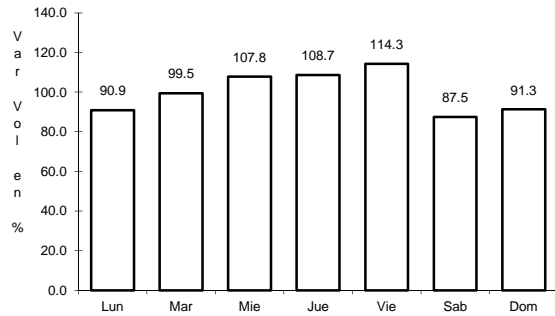
Tipo: 1

Sent: 0

5 CARR: RAMAL A PUERTO MORELOS

CLAVE: 23569

RUTA: MEX



Km: 0.00

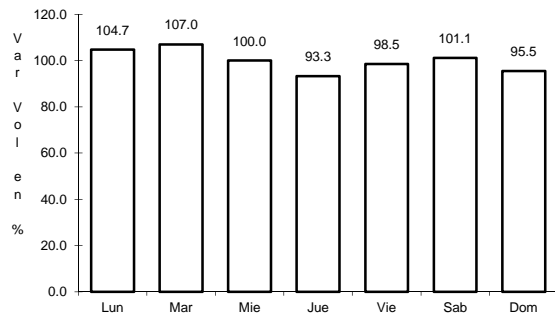
Tipo: 3

Sent: 0

6 CARR: RAMAL A PUNTA PIEDRA

CLAVE: 23575

RUTA: MEX



Km: 0.00

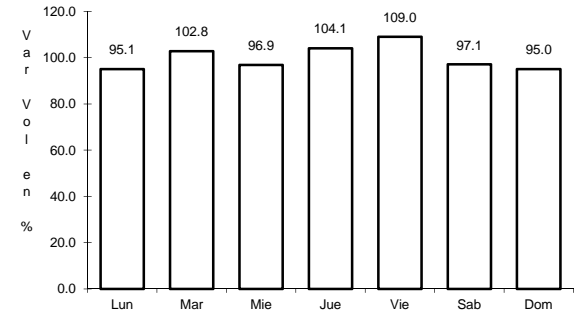
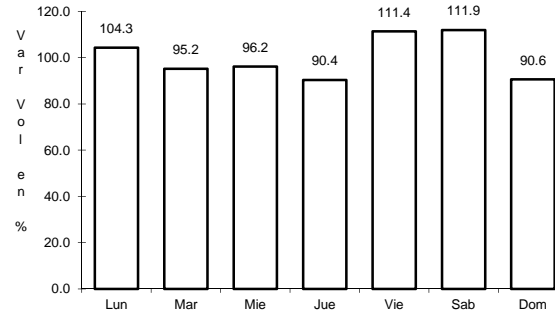
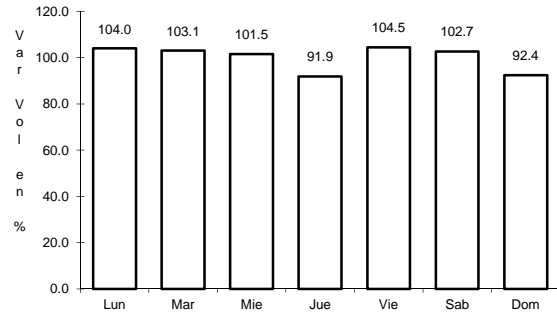
Tipo: 3

Sent: 0

10 CARR: KANTUNIL - CANCUN (CUOTA)

CLAVE: 00071

RUTA: MEX-180D



Km: 51.00

Tipo: 1

Sent: 1

Km: 51.00

Tipo: 1

Sent: 2

Km: 308.10

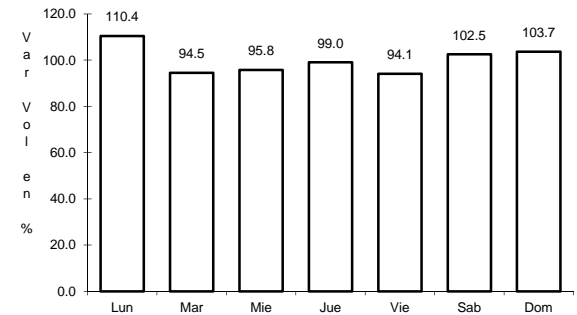
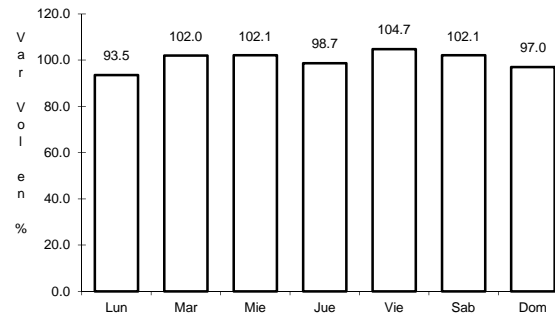
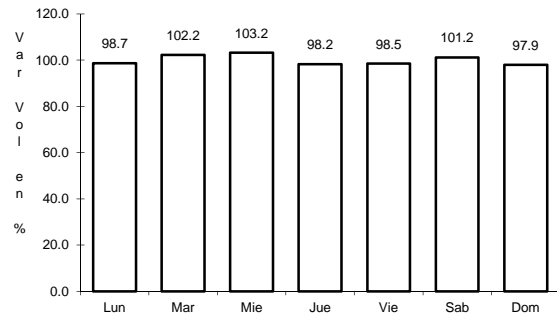
Tipo: 1

Sent: 0

11 CARR: BACALAR - MIGUEL ALEMAN

CLAVE:

RUTA: QR



Km: 21.00

Tipo: 3

Sent: 0

Km: 31.00

Tipo: 1

Sent: 0

Km: 31.00

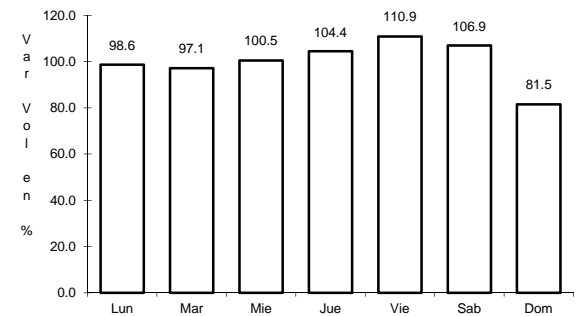
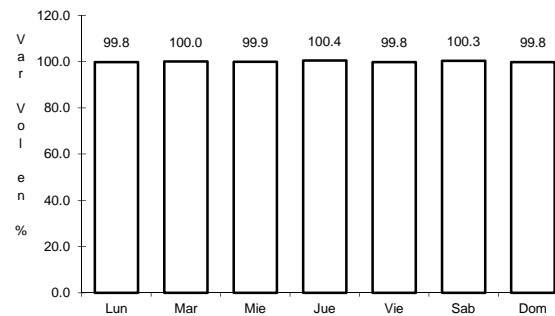
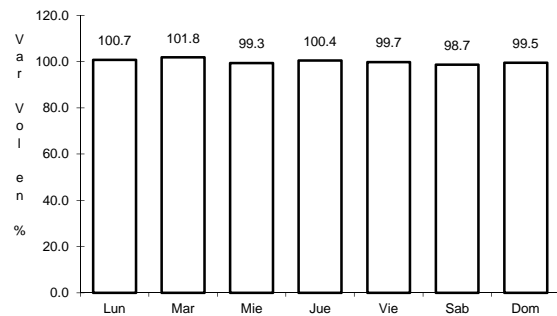
Tipo: 3

Sent: 0

12 CARR: CANCUN - PUNTA CANCUN

CLAVE: 23581

RUTA: QR



Km: 0.00

Tipo: 3

Sent: 1

Km: 0.00

Tipo: 3

Sent: 2

Km: 8.00

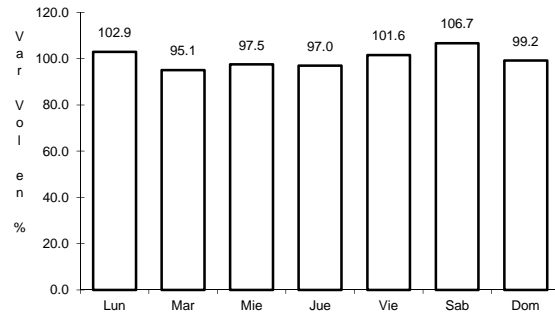
Tipo: 1

Sent: 1

19 CARR: RAMAL A CANDELARIA

CLAVE: 23027

RUTA: QR



Km: 0.00

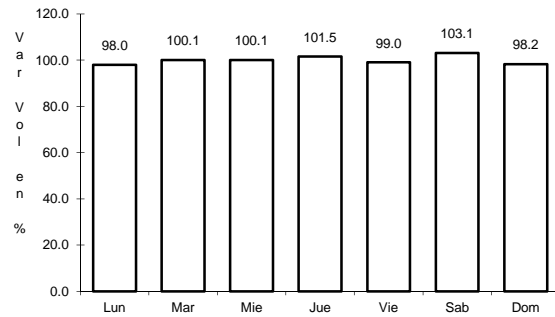
Tipo: 3

Sent: 0

20 CARR: RAMAL A EL NARANJAL

CLAVE: 23579

RUTA: QR



Km: 0.00

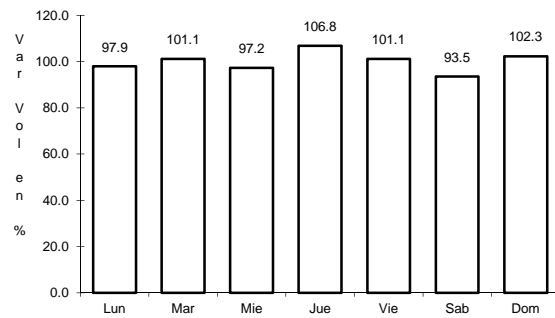
Tipo: 3

Sent: 0

21 CARR: RAMAL A LAGUNA DE KANA

CLAVE: 23213

RUTA: QR



Km: 0.00

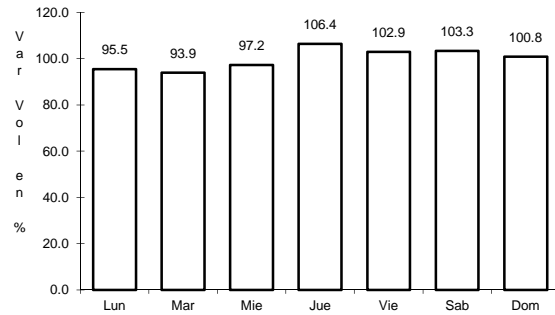
Tipo: 3

Sent: 0

22 CARR: RAMAL A MAHAHUAL

CLAVE: 23583

RUTA: QR



Km: 0.00

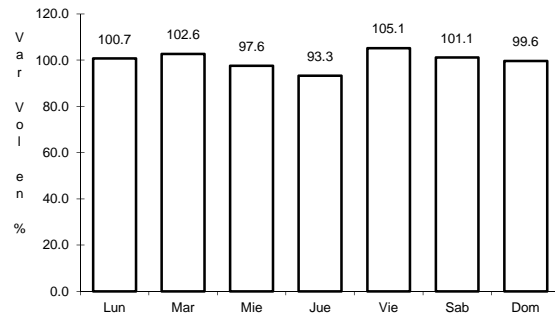
Tipo: 3

Sent: 0

23 CARR: RAMAL A PETCACAB

CLAVE: 23018

RUTA: QR-018



Km: 0.00

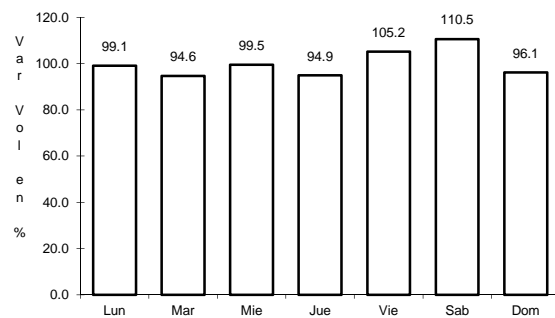
Tipo: 3

Sent: 0

24 CARR: RAMAL A PUNTA ALLEN

CLAVE: 23015

RUTA: QR-015



Km: 0.00

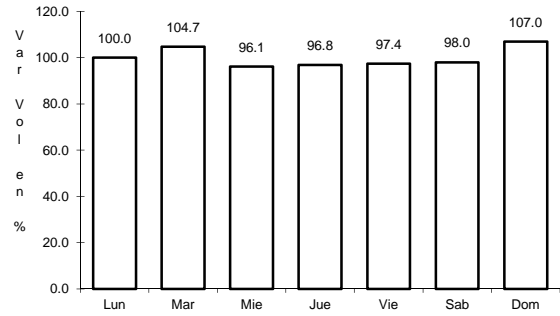
Tipo: 3

Sent: 0

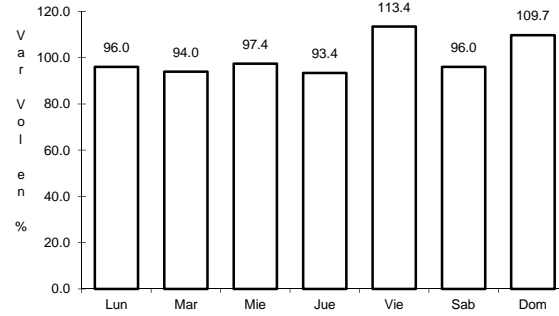
28 CARR: TIHOSUCO - DZIUCHE

CLAVE: 23576

RUTA: QR



Km: 0.00 Tipo: 3 Sent: 0

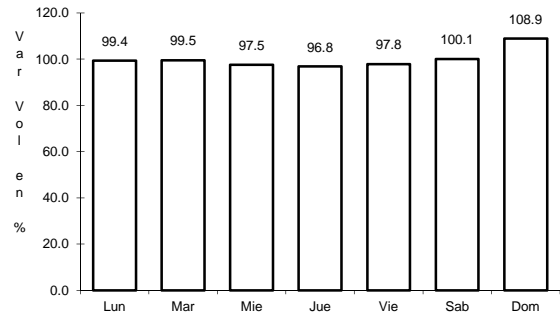


Km: 60.50 Tipo: 1 Sent: 0

29 CARR: TRANSVERSAL DE COZUMEL

CLAVE:

RUTA: QR

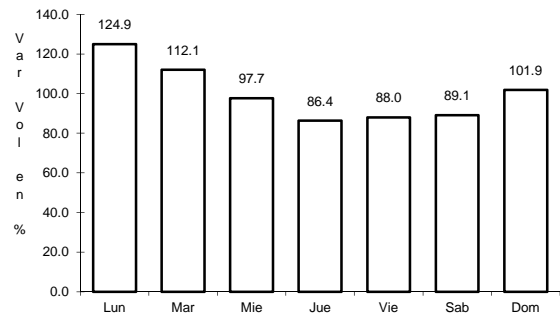


Km: 0.00 Tipo: 3 Sent: 0

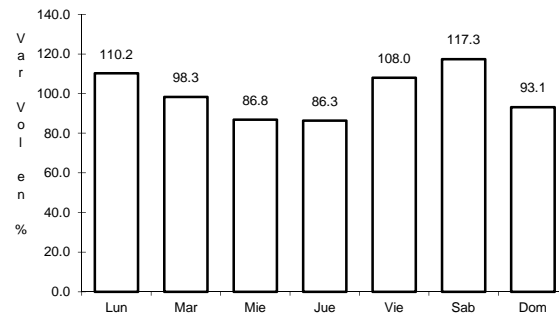
30 CARR: TULUM - NUEVO X-CAN

CLAVE: 23570

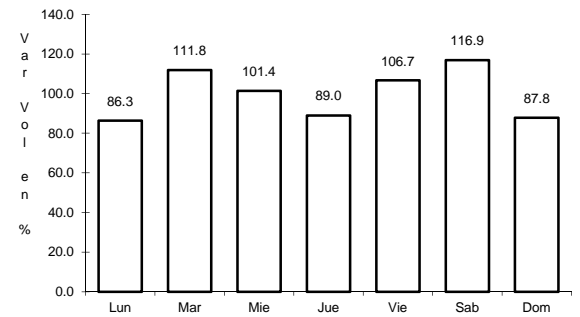
RUTA: QR



Km: 0.00 Tipo: 3 Sent: 0

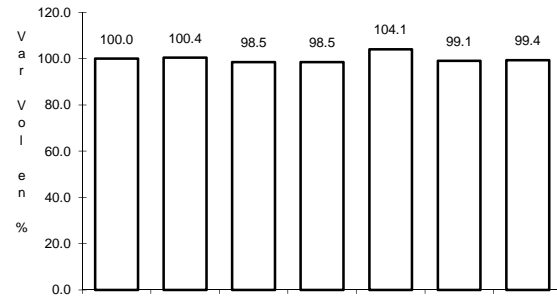


Km: 42.95 Tipo: 1 Sent: 0



Km: 87.40 Tipo: 1 Sent: 0

31 CARR: UCUM - UNION

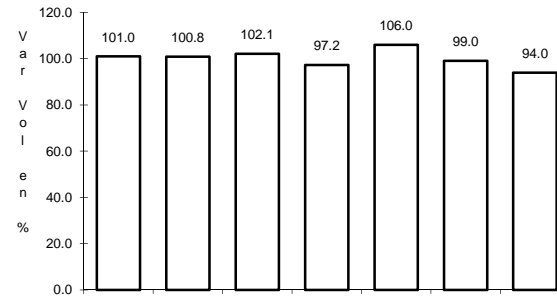


Km: 0.00

Tipo: 3

Sent: 0

CLAVE: 23571

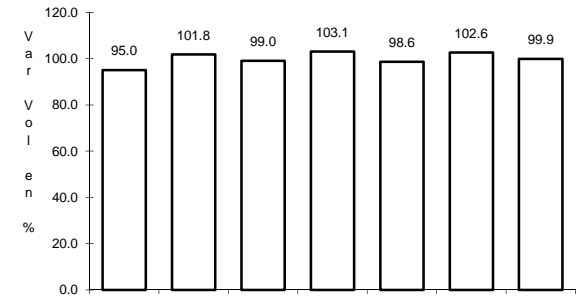


Km: 31.00

Tipo: 1

Sent: 0

RUTA: QR



Km: 88.00

Tipo: 1

Sent: 0