



PUEBLA


No. INDICE	CARRETERA	RUTA
<b>---RED FEDERAL LIBRE---</b>		
1	AMOZOC - TEZIUTLAN	MEX-129
2	APIZACO - TEJOCOTAL	MEX-119
3	LOS REYES - ZACATEPEC	MEX-136
4	MEXICO - PUEBLA (LIBRE)	MEX-150
5	PACHUCA - TUXPAM	MEX-130
6	PUEBLA - BELEM	MEX-121
7	PUEBLA - HUAJUAPAN DE LEON	MEX-190
8	PUEBLA - TEHUACAN	MEX-150
9	PUEBLA - TLAXCALA	MEX-119
10	RAMAL A NUEVO NECAXA	MEX
11	SAN HIPOLITO - XALAPA	MEX-140
12	SAN MARTIN TEXMELUCAN - TLAXCALA	MEX-117
13	SAN SALVADOR EL SECO - AZUMBILLA	MEX-144
14	SANTA BARBARA - IZUCAR DE MATAMOROS	MEX-115-160
15	TEHUACAN - CORDOBA	MEX-150
16	TEHUACAN - HUAJUAPAN DE LEON	MEX-125
17	TEZIUTLAN - NAUTLA	MEX-129
18	TEZIUTLAN - PEROTE	MEX-131
19	ZACATEPEC - ORIENTAL	MEX
<b>---RED FEDERAL DE CUOTA---</b>		
20	AMOZOC - PEROTE (CUOTA)	MEX-140D
21	CUACNOPALAN - OAXACA (CUOTA)	MEX-135D
22	ENT. TULANCINGO - TEJOCOTAL (CUOTA)	MEX-132D
23	MEXICO - PUEBLA (CUOTA)	MEX-150D
24	PUEBLA - CORDOBA (CUOTA)	MEX-150D
25	SAN MARTIN TEXMELUCAN - OCOTOXCO (CUOTA)	MEX-117D
26	TEJOCOTAL - TIHUATLAN (CUOTA)	MEX-130D
<b>---RED ESTATAL LIBRE---</b>		
27	AMAYUCA - IZUCAR DE MATAMOROS	MOR-031-PUE
28	AZUMBILLA - ALCOMUNGA	PUE
29	CHOLULA - PUEBLA (VIA QUETZALCOATL)	PUE
30	CUAPIAXTLA - ACATLAN DE OSORIO	PUE
31	IZUCAR DE MATAMOROS - TEPEXI DE RODRIGUEZ	PUE
32	RAMAL A AEROPUERTO HNOS. SERDAN	PUE
33	RAMAL A JOLALPAN	MOR-PUE
34	RAMAL A TETELA DE OCAMPO	PUE
35	RAMAL A ZIHUATEUTLA	PUE
36	RAMAL A ZOQUITLAN	PUE
37	SAN JUAN IXCAQUIXTLA - PINO SUAREZ	PUE
38	TECAMACHALCO - CAÑADA MORELOS	PUE
39	TECAMACHALCO - QUECHOLAC	PUE
40	ZACATLAN - ZAPOTITLAN	PUE
<b>---RED ESTATAL DE CUOTA---</b>		
41	ATLIXCO - JANTETELCO (CUOTA)	PUE-D
42	LIBRES - TEZIUTLAN (CUOTA)	PUE-D
43	PUEBLA - ATLIXCO (CUOTA)	PUE-D
44	TLAXCO - TEJOCOTAL (CUOTA)	PUE-D
<b>---CARRETERAS INTEGRADAS POR TRAMOS FEDERALES Y ESTATALES---</b>		
45	RAMAL A TULCINGO DEL VALLE	PUE-MEX-093
46	TEHUACAN - HUITZO	PUE-MEX-135
47	TEOTITLAN DE FLORES MAGON - TUXTEPEC	OAX-PUE-MEX-182

# 21 PUEBLA

SECRETARÍA DE COMUNICACIONES Y TRANSPORTES  
DIRECCIÓN GENERAL DE SERVICIOS TÉCNICOS

 Número Índice 2011

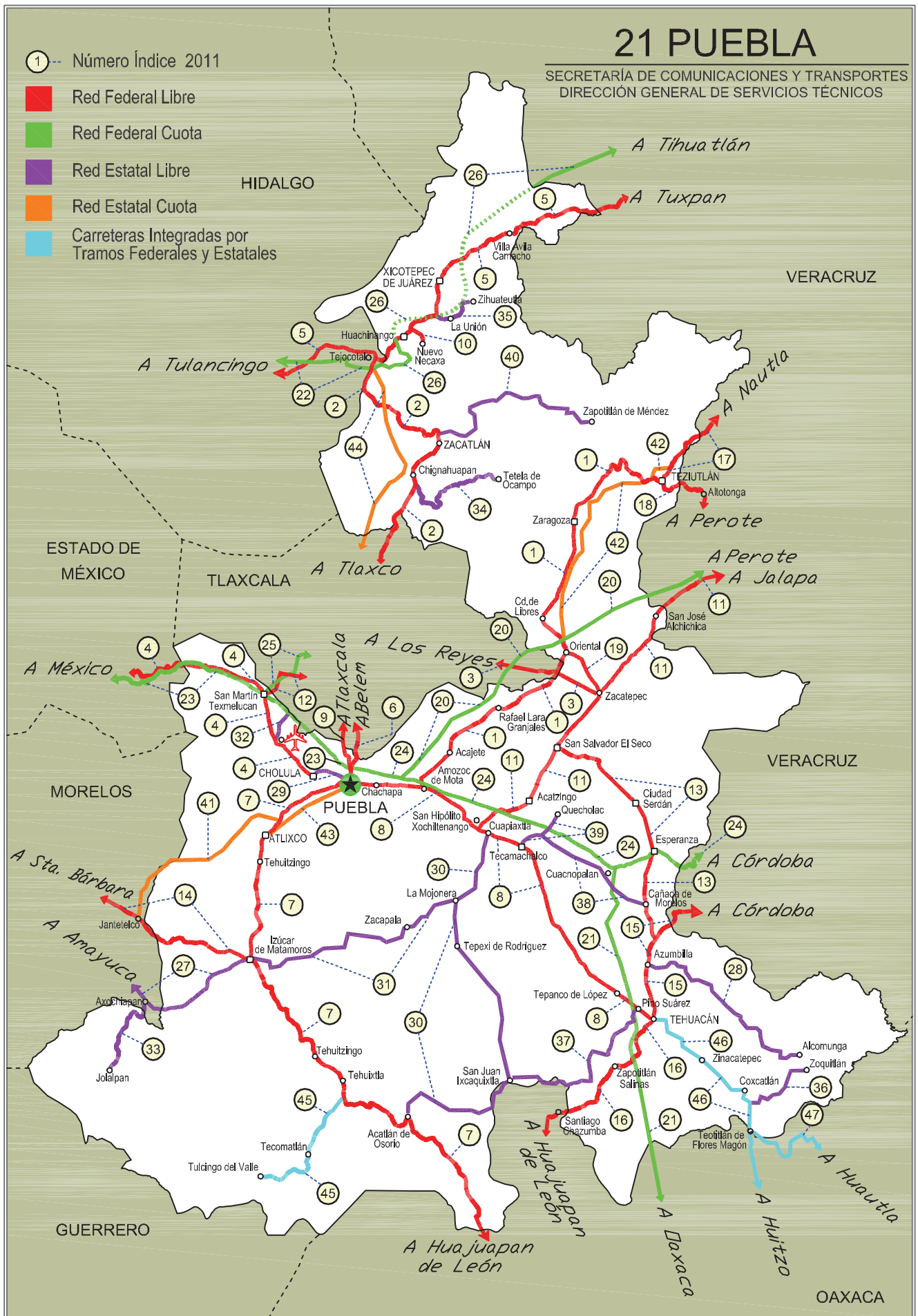
 Red Federal Libre

 Red Federal Cuota

 Red Estatal Libre

 Red Estatal Cuota

 Carreteras Integradas por  
Tramos Federales y Estatales





PUEBLA

3 CARR: LOS REYES - ZACATEPEC

CLAVE: 00052

RUTA: MEX-136

AÑO: 2010

LUGAR	ESTACION				CLASIFICACION VEHICULAR EN PORCIENTO								COORDENADAS						
	KM	TE	SC	TDPA	A	B	C2	C3	T3S2	T3S3	T3S2R4	OTROS	A	B	C	K'	D	LATITUD	LONGITUD
T. IZO. LA MAGDALENA	3.35	3	1	40669	65.5	4.6	6.4	5.0	12.3	3.0	2.8	0.4	65.5	4.6	29.9	0.061	0.500	19.375843	-98.943467
T. IZO. LA MAGDALENA	3.35	3	2	40588	65.4	4.6	6.4	5.0	12.6	2.8	2.8	0.4	65.4	4.6	30.0	0.062	0.500	19.375853	-98.943448
T. IZO. CHIMALHUACAN	8.45	1	1	22484	67.1	4.3	6.2	4.8	11.5	2.8	2.9	0.4	67.1	4.3	28.6	0.058	0.501	19.413378	-98.920231
T. IZO. CHIMALHUACAN	8.45	1	2	22609	66.6	4.5	6.0	4.7	12.2	2.7	2.9	0.4	66.6	4.5	28.9	0.062	0.501	19.413378	-98.920228
T. C. SAN BERNARDINO - TEPEXPAN	17.00	3	1	16610	65.4	4.6	6.3	5.4	12.0	2.9	3.0	0.4	65.4	4.6	30.0	0.068	0.500	19.484609	-98.885935
T. C. SAN BERNARDINO - TEPEXPAN	17.00	3	2	16591	65.8	4.6	6.5	5.3	11.9	2.8	2.7	0.4	65.8	4.6	29.6	0.072	0.500	19.484472	-98.885952
TEXCOCO	23.02	3	1	11285	65.0	4.6	6.8	5.1	12.3	2.9	2.9	0.4	65.0	4.6	30.4	0.066	0.529	19.524088	-98.863656
TEXCOCO	23.02	3	2	10043	67.4	4.2	5.9	4.9	11.7	2.8	2.7	0.4	67.4	4.2	28.4	0.068	0.529	19.524072	-98.863672
T. IZO. TEPETLAOXTOC	30.03	1	1	13092	65.6	4.2	6.3	5.4	12.5	2.9	2.7	0.4	65.6	4.2	30.2	0.065	0.502	19.545935	-98.826179
T. IZO. TEPETLAOXTOC	30.03	1	2	12981	67.1	4.5	6.3	4.9	11.5	2.6	2.7	0.4	67.1	4.5	28.4	0.064	0.502	19.545806	-98.826148
T. DER. TOTOLAPAN	42.00	3	0	10146	64.9	4.4	6.6	4.9	13.0	2.9	2.9	0.4	64.9	4.4	30.7	0.067	0.501	19.556917	-98.730528
LIM. EDOS. TERM. MEX. PPIA. TLAX.	43.15																		
CALPULALPAN	59.58	3	0	11522	66.9	4.1	6.1	4.7	12.1	2.8	2.9	0.4	66.9	4.1	29.0	0.065	0.502	19.588240	-98.550948
T. DER. NANACAMILPA	71.76	3	0	12497	65.3	4.6	6.6	5.4	12.0	2.9	2.8	0.4	65.3	4.6	30.1	0.061	0.502	19.526193	-98.479961
HUEYOTLIPAN	88.21	3	0	12700	66.3	4.5	6.1	4.8	12.2	2.9	2.8	0.4	66.3	4.5	29.2	0.061	0.501	19.469505	-98.341360
XALTOCAN	108.10	1	0	15314	66.8	4.3	6.3	5.0	11.8	2.8	2.6	0.4	66.8	4.3	28.9	0.060	0.502	19.424670	-98.217284
APIZACO	117.74	1	1	16296	66.0	4.4	6.3	5.2	11.9	2.9	2.9	0.4	66.0	4.4	29.6	0.068	0.523	19.414058	-98.161856
APIZACO	117.74	1	2	17846	67.2	4.3	6.1	5.2	11.5	2.7	2.6	0.4	67.2	4.3	28.5	0.070	0.523	19.414058	-98.161856
APIZACO	117.74	3	0	18578	65.2	4.4	6.5	5.3	12.4	2.8	3.0	0.4	65.2	4.4	30.4	0.061	0.501	19.413309	-98.134629
T. DER. CUAXOMULCO	119.85	3	0	14265	65.2	4.7	6.2	5.3	12.5	2.9	2.8	0.4	65.2	4.7	30.1	0.059	0.505	19.413231	-98.115286
T. IZO. XALOSTOC	126.67	3	1	8310	66.4	4.5	6.0	5.2	11.9	2.7	2.9	0.4	66.4	4.5	29.1	0.065	0.503	19.389518	-98.052532
T. IZO. XALOSTOC	126.67	3	2	8223	66.5	4.4	6.3	5.1	11.7	2.8	2.8	0.4	66.5	4.4	29.1	0.068	0.503	19.389518	-98.052532
T. IZO. LIBRAMIENTO DE HUAMANTLA	141.70	1	1	7782	65.6	4.4	6.4	5.0	12.2	3.0	3.0	0.4	65.6	4.4	30.0	0.065	0.504	19.319454	-97.943901
T. IZO. LIBRAMIENTO DE HUAMANTLA	141.70	1	2	7891	67.2	4.0	6.1	4.8	12.1	2.6	2.8	0.4	67.2	4.0	28.8	0.065	0.504	19.319454	-97.943901
HUAMANTLA	143.02	3	0	9274	66.2	4.4	6.0	5.4	12.1	2.8	2.7	0.4	66.2	4.4	29.4	0.065	0.503	19.316749	-97.911664
T. DER. CUAPIAXTLA	159.40	1	0	10098	64.4	4.7	6.6	5.4	12.8	2.8	2.9	0.4	64.4	4.7	30.9	0.059	0.505	19.302975	-97.776890
X. C. AMOZOC - TEZIUTLAN	173.47	1	0	10891	66.3	4.3	6.2	5.2	12.1	2.7	2.8	0.4	66.3	4.3	29.4	0.069	0.501	19.326513	-97.650702
X. C. AMOZOC - TEZIUTLAN	173.47	3	0	8458	67.4	4.2	6.3	4.9	11.5	2.6	2.7	0.4	67.4	4.2	28.4	0.067	0.501	19.321262	-97.643466
LIM. EDOS. TERM. TLAX. PPIA. PUE.	177.57																		
ZACATEPEC	187.67	1	0	7938	64.8	4.4	6.7	5.2	13.0	2.7	2.8	0.4	64.8	4.4	30.8	0.068	0.501	19.269904	-97.540594

PUEBLA

4 CARR: MEXICO - PUEBLA (LIBRE)

CLAVE: 00449

RUTA: MEX-150

AÑO: 2010

LUGAR	ESTACION				CLASIFICACION VEHICULAR EN PORCIENTO								COORDENADAS						
	KM	TE	SC	TDPA	A	B	C2	C3	T3S2	T3S3	T3S2R4	OTROS	A	B	C	K'	D	LATITUD	LONGITUD
MEXICO	0.00																		
LIM. EDOS. TERM. DF. PPIA. MEX.	18.66																		
T. DER. CHALCO	28.85	1	1	29749	77.3	5.2	5.2	3.8	4.3	3.0	0.7	0.5	77.3	5.2	17.5	0.061	0.514	19.310998	-98.904164
T. DER. CHALCO	28.85	1	2	28130	77.1	5.1	5.0	3.7	4.7	3.4	0.6	0.4	77.1	5.1	17.8	0.067	0.514	19.310998	-98.904164
T. DER. CHALCO	28.85	3	1	10498	76.7	5.0	5.4	3.4	3.6	3.7	1.7	0.5	76.7	5.0	18.3	0.070	0.534	19.312461	-98.896713
T. DER. CHALCO	28.85	3	2	10299	76.8	4.9	5.3	3.3	3.5	3.9	1.8	0.5	76.8	4.9	18.3	0.079	0.534	19.312461	-98.896713
IXTAPALUCA	31.06	3	0	26955	77.4	5.1	6.5	2.9	3.9	2.9	1.0	0.3	77.4	5.1	17.5	0.067	0.513	19.316135	-98.873811
T. DER. C. MEXICO - PUEBLA (CUOTA) (RIO FRIO)	62.06	1	0	5058	79.8	6.2	5.4	1.7	3.1	2.0	1.1	0.7	79.8	6.2	14.0	0.088	0.563	19.347284	-98.673345
T. DER. C. MEXICO - PUEBLA (CUOTA) (RIO FRIO)	62.06	3	0	3591	77.4	6.1	5.6	3.3	4.1	1.9	0.8	0.8	77.4	6.1	16.5	0.065	0.525	19.352991	-98.663091
LIM. EDOS. TERM. MEX. PPIA. PUE.	62.98																		
SAN MARTIN TEXMELUCAN	70.00	1	0	11140	82.4	5.3	4.9	2.2	2.1	1.7	0.8	0.6	82.4	5.3	12.3	0.059	0.505	19.304105	-98.455175
X. C. MEXICO - PUEBLA (CUOTA)	74.10	3	0	16458	80.5	5.4	6.3	2.4	2.2	2.0	0.9	0.3	80.5	5.4	14.1	0.060	0.508	19.265670	-98.430821
HUEJOTZINGO	88.00	1	0	11788	81.4	5.4	5.2	1.9	3.7	1.3	0.7	0.4	81.4	5.4	13.2	0.071	0.506	19.174764	-98.414240
HUEJOTZINGO	88.00	3	0	13097	81.2	5.3	5.4	1.8	3.4	1.5	0.8	0.6	81.2	5.3	13.5	0.065	0.504	19.148787	-98.397997
T. IZQ. AEROPUERTO	92.80	1	1	6320	81.6	5.5	5.2	1.9	3.2	1.3	0.9	0.4	81.6	5.5	12.9	0.061	0.501	19.136336	-98.377211
T. IZQ. AEROPUERTO	92.80	1	2	6341	81.0	5.6	5.1	1.9	3.3	1.7	1.0	0.4	81.0	5.6	13.4	0.060	0.501	19.136407	-98.377151
T. DER. CHOLULA	101.00	1	0	17845	81.1	5.2	5.0	1.8	4.4	1.0	0.9	0.6	81.1	5.2	13.7	0.069	0.507	19.074140	-98.319047
T. DER. CHOLULA	101.00	3	1	12616	81.4	5.4	5.8	2.2	2.4	1.4	0.8	0.6	81.4	5.4	13.2	0.070	0.506	19.070026	-98.312313
T. DER. CHOLULA	101.00	3	2	12293	82.2	5.1	5.3	2.3	2.7	1.1	0.7	0.6	82.2	5.1	12.7	0.067	0.506	19.070093	-98.312276
PUEBLA	131.00																		

5 CARR: PACHUCA - TUXPAM

CLAVE: 00608

RUTA: MEX-130

AÑO: 2010

LUGAR	ESTACION				CLASIFICACION VEHICULAR EN PORCIENTO								COORDENADAS						
	KM	TE	SC	TDPA	A	B	C2	C3	T3S2	T3S3	T3S2R4	OTROS	A	B	C	K'	D	LATITUD	LONGITUD
PACHUCA	0.00																		
X. C. LIBRAMIENTO DE PACHUCA	2.60	3	1	20286	70.9	9.7	7.2	4.2	4.1	2.6	1.1	0.2	70.9	9.7	19.4	0.065	0.503	20.080458	-98.711271
X. C. LIBRAMIENTO DE PACHUCA	2.60	3	2	20040	70.5	9.7	7.3	4.2	4.3	2.7	1.1	0.2	70.5	9.7	19.8	0.065	0.503	20.080150	-98.711066
T. IZQ. PACHUQUILLA (1° ACCESO)	7.00	1	1	9917	71.1	9.8	6.9	4.4	4.0	2.6	1.0	0.2	71.1	9.8	19.1	0.079	0.504	20.078465	-98.710151
T. IZQ. PACHUQUILLA (1° ACCESO)	7.00	1	2	10084	70.6	9.8	7.3	4.4	3.9	2.7	1.1	0.2	70.6	9.8	19.6	0.073	0.504	20.078440	-98.710050
T. IZQ. PACHUQUILLA (2° ACCESO)	10.50	1	1	5875	70.2	10.3	7.5	4.1	4.1	2.5	1.1	0.2	70.2	10.3	19.5	0.076	0.502	20.067463	-98.684173
T. IZQ. PACHUQUILLA (2° ACCESO)	10.50	1	2	5818	70.8	9.9	7.1	4.4	4.0	2.5	1.1	0.2	70.8	9.9	19.3	0.076	0.502	20.067463	-98.684173
T. DER. CD. SAHAGUN	16.59	1	0	7225	71.1	9.6	7.1	4.2	4.1	2.6	1.1	0.2	71.1	9.6	19.3	0.062	0.502	20.061231	-98.634262
T. C. VENTA DE CARPIO - TULANCINGO	36.45	1	1	6725	70.4	9.7	7.5	4.2	4.3	2.6	1.1	0.2	70.4	9.7	19.9	0.065	0.513	20.056101	-98.460104
T. C. VENTA DE CARPIO - TULANCINGO	36.45	1	2	6374	69.9	10.4	7.1	4.5	4.1	2.7	1.1	0.2	69.9	10.4	19.7	0.063	0.513	20.056111	-98.460101



PUEBLA

7 CARR: PUEBLA - HUAJUAPAN DE LEON

CLAVE: 00049

RUTA: MEX-190

AÑO: 2010

LUGAR	ESTACION				CLASIFICACION VEHICULAR EN PORCIENTO								COORDENADAS						
	KM	TE	SC	TDPA	A	B	C2	C3	T3S2	T3S3	T3S2R4	OTROS	A	B	C	K'	D	LATITUD	LONGITUD
PUEBLA	0.00	3	1	13670	80.7	6.3	6.3	1.8	2.1	1.3	1.0	0.5	80.7	6.3	13.0	0.071	0.512	19.033147	-98.263682
PUEBLA	0.00	3	2	14322	80.9	6.2	6.4	1.6	2.0	1.3	0.9	0.7	80.9	6.2	12.9	0.073	0.512	19.033147	-98.263682
ATLIXCO	29.88	1	0	14396	81.6	5.9	5.2	2.0	3.0	1.2	0.6	0.5	81.6	5.9	12.5	0.075	0.502	18.930537	-98.407087
ATLIXCO	29.88	3	0	13628	78.1	6.2	6.4	2.9	3.3	1.5	1.1	0.5	78.1	6.2	15.7	0.068	0.504	18.879843	-98.435850
TEPEOJUMA	51.90	1	0	9609	76.8	6.1	7.6	3.3	2.9	1.6	1.3	0.4	76.8	6.1	17.1	0.065	0.505	18.730877	-98.449040
IZUCAR DE MATAMOROS	67.00	1	0	10764	80.6	4.1	5.8	2.4	3.3	1.5	1.6	0.7	80.6	4.1	15.3	0.067	0.502	18.631284	-98.469077
T. DER. CUAUTLA	70.00	3	0	9425	81.1	4.2	5.1	2.2	3.5	2.1	1.4	0.4	81.1	4.2	14.7	0.064	0.505	18.579623	-98.450177
TEHUITZINGO	113.30	1	0	5091	82.2	3.8	4.6	2.1	3.7	1.3	1.8	0.5	82.2	3.8	14.0	0.067	0.504	18.339985	-98.285124
ACATLAN DE OSORIO	154.20	1	0	6651	82.8	4.4	5.7	0.8	3.3	1.0	1.6	0.4	82.8	4.4	12.8	0.064	0.500	18.184770	-98.057445
CHILA	192.30	3	0	2447	83.0	5.8	4.4	2.4	2.2	0.6	1.2	0.4	83.0	5.8	11.2	0.061	0.500	17.967139	-97.864359
LIM. EDOS. TERM. PUE. PPIA. OAX.	200.30																		
T. IZQ. LAS PALMAS	202.10	1	0	2108	80.3	4.8	8.9	1.4	1.1	0.8	1.7	1.0	80.3	4.8	14.9	0.070	0.503	17.882204	-97.836514
HUAJUAPAN DE LEON	219.30	1	0	2605	81.1	4.1	8.3	1.3	2.8	0.5	1.3	0.6	81.1	4.1	14.8	0.081	0.502	17.835609	-97.790114

8 CARR: PUEBLA - TEHUACAN

CLAVE: 21047

RUTA: MEX-150

AÑO: 2010

LUGAR	ESTACION				CLASIFICACION VEHICULAR EN PORCIENTO								COORDENADAS						
	KM	TE	SC	TDPA	A	B	C2	C3	T3S2	T3S3	T3S2R4	OTROS	A	B	C	K'	D	LATITUD	LONGITUD
PUEBLA	0.00																		
T. IZQ. A ENLACE CON AUT. PUEBLA - CORDOBA	5.83	3	1	18714	80.5	4.1	4.3	2.4	3.5	2.3	2.2	0.7	80.5	4.1	15.4	0.061	0.502	19.045925	-98.103802
T. IZQ. A ENLACE CON AUT. PUEBLA - CORDOBA	5.83	3	2	18543	80.7	3.9	4.2	2.3	3.9	2.0	2.4	0.6	80.7	3.9	15.4	0.066	0.502	19.045925	-98.103802
CHACHAPA	8.40	3	1	13857	74.3	3.5	8.5	4.0	4.9	2.5	1.6	0.7	74.3	3.5	22.2	0.071	0.500	19.043952	-98.079702
CHACHAPA	8.40	3	2	13867	74.2	3.6	8.3	4.2	4.7	2.7	1.7	0.6	74.2	3.6	22.2	0.067	0.500	19.043952	-98.079702
AMAZOC	17.86	1	1	10139	72.3	3.3	10.4	4.3	4.4	2.8	1.6	0.9	72.3	3.3	24.4	0.068	0.513	19.042141	-98.048942
AMAZOC	17.86	1	2	10091	72.0	3.4	10.4	4.2	4.5	2.9	1.7	0.9	72.0	3.4	24.6	0.065	0.513	19.042141	-98.048942
AMAZOC	17.86	3	0	17569	79.1	2.5	8.6	2.6	3.2	2.1	1.2	0.7	79.1	2.5	18.4	0.070	0.506	19.038513	-98.034025
TEPEACA	35.30	1	0	17062	78.5	3.8	5.6	3.7	2.7	1.2	3.7	0.8	78.5	3.8	17.7	0.063	0.509	18.987826	-97.914517
TEPEACA	35.30	3	0	15828	79.3	3.4	6.5	3.2	3.1	2.2	1.6	0.7	79.3	3.4	17.3	0.064	0.508	18.952439	-97.893457
T. IZQ. ACATZINGO	41.80	3	0	16445	73.7	2.8	3.5	4.0	5.6	3.1	6.5	0.8	73.7	2.8	23.5	0.057	0.505	18.923654	-97.857289
T. DER. SAN JUAN IXCAQUIXTLA	45.25	1	0	17388	72.6	2.2	3.6	3.8	7.1	2.9	6.9	0.9	72.6	2.2	25.2	0.059	0.502	18.919181	-97.833473
T. DER. SAN JUAN IXCAQUIXTLA	45.25	3	0	18067	79.2	2.9	5.1	2.2	4.0	1.1	4.9	0.6	79.2	2.9	17.9	0.057	0.501	18.917854	-97.830227
TECAMACHALCO	57.40	1	0	17287	75.7	3.1	4.8	1.9	7.8	1.7	4.2	0.8	75.7	3.1	21.2	0.064	0.504	18.890210	-97.752538
TECAMACHALCO	57.40	3	0	12297	80.5	2.8	3.5	1.7	5.0	1.3	4.4	0.8	80.5	2.8	16.7	0.061	0.502	18.866498	-97.713618
TEPANCO DE LOPEZ	97.40	1	0	6121	80.1	3.2	4.7	2.6	4.7	1.4	2.5	0.8	80.1	3.2	16.7	0.058	0.502	18.560893	-97.567369
TEPANCO DE LOPEZ	97.40	3	0	6940	78.7	3.7	6.8	2.4	4.3	1.2	2.1	0.8	78.7	3.7	17.6	0.061	0.508	18.550478	-97.551485



PUEBLA

8 CARR: PUEBLA - TEHUACAN

CLAVE: 21047

RUTA: MEX-150

AÑO: 2010

LUGAR	ESTACION				CLASIFICACION VEHICULAR EN PORCIENTO								COORDENADAS						
	KM	TE	SC	TDPA	A	B	C2	C3	T3S2	T3S3	T3S2R4	OTROS	A	B	C	K'	D	LATITUD	LONGITUD
T. C. TEHUACAN - CORDOBA	115.70	1	0	12416	77.9	2.3	6.6	2.5	6.0	1.5	2.9	0.3	77.9	2.3	19.8	0.057	0.506	18.481006	-97.445636
TEHUACAN	117.00																		

9 CARR: PUEBLA - TLAXCALA

CLAVE: 00475

RUTA: MEX-119

AÑO: 2010

LUGAR	ESTACION				CLASIFICACION VEHICULAR EN PORCIENTO								COORDENADAS						
	KM	TE	SC	TDPA	A	B	C2	C3	T3S2	T3S3	T3S2R4	OTROS	A	B	C	K'	D	LATITUD	LONGITUD
PUEBLA	0.00																		
X. C. PUEBLA - CORDOBA (CUOTA)	5.41	3	1	17756	76.6	2.8	3.2	2.3	6.0	3.9	4.7	0.5	76.6	2.8	20.6	0.067	0.500	19.089788	-98.206193
X. C. PUEBLA - CORDOBA (CUOTA)	5.41	3	2	17776	76.7	2.7	3.2	2.2	5.9	3.8	4.8	0.7	76.7	2.7	20.6	0.067	0.500	19.089788	-98.206193
LIM. EDOS. TERM. PUE. PPIA. TLAX.	11.83																		
PANZACOLA	13.14	3	0	18123	79.7	2.7	3.8	0.8	5.3	1.7	5.4	0.6	79.7	2.7	17.6	0.066	0.502	19.152155	-98.223688
SAN TORIBIO XICOHTZINGO	16.10	3	0	17359	81.8	4.5	3.7	0.6	3.7	1.2	4.0	0.5	81.8	4.5	13.7	0.063	0.507	19.186763	-98.237907
ZACATELCO	20.78	1	0	17502	81.8	4.6	3.9	0.5	4.1	1.1	3.3	0.7	81.8	4.6	13.6	0.059	0.500	19.208041	-98.240566
T. IZO. SAN MARTIN TEXMELUCAN	22.99	1	0	15875	82.9	4.8	4.2	0.5	2.8	1.5	2.9	0.4	82.9	4.8	12.3	0.072	0.500	19.234038	-98.242998
T. DER. TEPEYANCO (2° ACCESO)	24.97	3	0	13286	85.4	3.3	3.1	0.4	3.8	1.3	2.3	0.4	85.4	3.3	11.3	0.070	0.504	19.259469	-98.231494
T. DER. OCOTLAN	32.45	1	1	8304	85.7	3.5	3.2	0.6	4.1	1.1	1.1	0.7	85.7	3.5	10.8	0.069	0.506	19.302674	-98.241075
T. DER. OCOTLAN	32.45	1	2	8123	87.4	3.2	2.4	0.7	3.5	1.1	1.0	0.7	87.4	3.2	9.4	0.064	0.506	19.302678	-98.241256
TLAXCALA	33.22	1	1	8006	81.0	2.9	2.0	0.8	4.6	2.4	5.4	0.9	81.0	2.9	16.1	0.068	0.505	19.311823	-98.240068
TLAXCALA	33.22	1	2	7862	81.3	2.7	2.3	0.7	4.5	2.2	5.6	0.7	81.3	2.7	16.0	0.072	0.505	19.312045	-98.240126

10 CARR: RAMAL A NUEVO NECAXA

CLAVE: 21592

RUTA: MEX

AÑO: 2010

LUGAR	ESTACION				CLASIFICACION VEHICULAR EN PORCIENTO								COORDENADAS						
	KM	TE	SC	TDPA	A	B	C2	C3	T3S2	T3S3	T3S2R4	OTROS	A	B	C	K'	D	LATITUD	LONGITUD
T. C. PACHUCA - ENT. CAÑADA RICA	0.00																		
NUEVO NECAXA	1.50	1	0	2552	83.1	4.5	2.6	1.2	3.9	1.4	2.6	0.7	83.1	4.5	12.4	0.076	0.514	20.219104	-97.999566

11 CARR: SAN HIPOLITO - XALAPA

CLAVE: 00486

RUTA: MEX-140

AÑO: 2010

LUGAR	ESTACION				CLASIFICACION VEHICULAR EN PORCIENTO								COORDENADAS						
	KM	TE	SC	TDPA	A	B	C2	C3	T3S2	T3S3	T3S2R4	OTROS	A	B	C	K'	D	LATITUD	LONGITUD
T. C. PUEBLA - TEHUACAN	0.00	3	0	10411	72.5	3.0	7.1	5.2	4.8	2.7	4.4	0.3	72.5	3.0	24.5	0.061	0.506	18.931718	-97.857666
X. C. PUEBLA - CORDOBA (CUOTA)	7.86	3	0	17324	72.7	3.0	6.9	5.0	5.0	2.8	4.3	0.3	72.7	3.0	24.3	0.061	0.515	18.977545	-97.804184
SAN SALVADOR EL SECO	35.35	1	0	7775	71.8	3.0	7.4	5.2	5.1	2.7	4.5	0.3	71.8	3.0	25.2	0.068	0.503	19.126737	-97.654359

PUEBLA

11 CARR: SAN HIPOLITO - XALAPA

CLAVE: 00486

RUTA: MEX-140

AÑO: 2010

LUGAR	ESTACION				CLASIFICACION VEHICULAR EN PORCIENTO								COORDENADAS						
	KM	TE	SC	TDPA	A	B	C2	C3	T3S2	T3S3	T3S2R4	OTROS	A	B	C	K'	D	LATITUD	LONGITUD
ZACATEPEC	54.20	1	0	10317	71.0	3.1	7.7	5.1	5.4	2.6	4.8	0.3	71.0	3.1	25.9	0.063	0.502	19.258826	-97.536114
ZACATEPEC	54.20	3	1	6075	72.7	2.8	7.1	5.2	5.0	2.6	4.3	0.3	72.7	2.8	24.5	0.066	0.500	19.273745	-97.527465
ZACATEPEC	54.20	3	2	6084	71.0	3.2	7.5	5.2	5.3	2.6	4.9	0.3	71.0	3.2	25.8	0.067	0.500	19.273745	-97.527465
ALCHICHICA	80.00	3	1	5547	70.4	3.1	7.9	5.5	5.1	2.7	5.0	0.3	70.4	3.1	26.5	0.063	0.502	19.457443	-97.384842
ALCHICHICA	80.00	3	2	5591	72.4	2.9	7.0	5.1	5.1	2.6	4.6	0.3	72.4	2.9	24.7	0.067	0.502	19.457443	-97.384843
LIM. EDOS. TERM. PUE. PPIA. VER.	83.25																		
SAN ANTONIO LIMON	89.60	1	0	8321	72.3	2.9	7.4	5.2	4.9	2.6	4.4	0.3	72.3	2.9	24.8	0.069	0.502	19.494221	-97.354329
PEROTE	101.70	1	0	10083	71.9	3.0	7.5	5.0	5.3	2.6	4.4	0.3	71.9	3.0	25.1	0.061	0.501	19.551893	-97.262162
PEROTE	101.70	3	0	10415	71.4	3.0	7.3	5.2	5.2	2.8	4.8	0.3	71.4	3.0	25.6	0.072	0.504	19.576614	-97.231112
T. IZQ. VILLA ALDAMA	109.50	1	0	8206	70.6	3.1	7.8	5.4	5.1	2.8	4.9	0.3	70.6	3.1	26.3	0.063	0.509	19.614886	-97.189524
BANDERILLA	145.00	1	0	13447	71.7	2.9	7.3	5.2	5.4	2.7	4.5	0.3	71.7	2.9	25.4	0.066	0.509	19.590406	-96.959882
T. IZQ. NAOLINCO	146.00	3	1	10728	71.5	3.0	7.1	5.4	5.3	2.7	4.7	0.3	71.5	3.0	25.5	0.071	0.517	19.595007	-96.949928
T. IZQ. NAOLINCO	146.00	3	2	11498	72.6	2.9	7.3	5.2	4.7	2.7	4.3	0.3	72.6	2.9	24.5	0.076	0.517	19.595020	-96.949939
XALAPA	151.20	1	1	15163	72.1	2.9	6.9	5.3	5.3	2.7	4.5	0.3	72.1	2.9	25.0	0.077	0.503	19.578998	-96.928974
XALAPA	151.20	1	2	15000	70.5	3.2	7.8	5.3	5.4	2.9	4.6	0.3	70.5	3.2	26.3	0.074	0.503	19.578994	-96.928982

12 CARR: SAN MARTIN TEXMELUCAN - TLAXCALA

CLAVE: 00158

RUTA: MEX-117

AÑO: 2010

LUGAR	ESTACION				CLASIFICACION VEHICULAR EN PORCIENTO								COORDENADAS						
	KM	TE	SC	TDPA	A	B	C2	C3	T3S2	T3S3	T3S2R4	OTROS	A	B	C	K'	D	LATITUD	LONGITUD
SAN MARTIN TEXMELUCAN	0.00	3	0	13929	81.6	4.4	6.5	2.2	2.9	1.2	0.9	0.3	81.6	4.4	14.0	0.079	0.517	19.288045	-98.422473
X. C. SAN MARTIN TEXMELUCAN - OCOTOXCO (CUOTA)	1.65	1	0	15292	83.4	3.9	4.3	2.1	2.5	1.9	1.3	0.6	83.4	3.9	12.7	0.064	0.507	19.291607	-98.411894
LIM. EDOS. TERM. PUE. PPIA. TLAX.	2.84																		
T. DER. TEPETITLA	3.45	3	0	10147	85.7	3.6	4.1	0.6	2.8	1.7	1.0	0.5	85.7	3.6	10.7	0.077	0.504	19.294356	-98.402824
SAN DIEGO XOCOYUCAN	7.21	3	0	6085	85.2	3.8	2.8	0.8	4.8	0.7	1.3	0.6	85.2	3.8	11.0	0.058	0.504	19.308274	-98.364045
T. DER. PANOTLA	19.72	1	0	7608	84.3	3.9	3.7	0.9	4.7	0.5	1.4	0.6	84.3	3.9	11.8	0.074	0.554	19.319401	-98.275674
T. DER. PANOTLA	19.72	3	0	9313	84.4	3.4	2.9	1.2	5.2	0.6	1.5	0.8	84.4	3.4	12.2	0.064	0.507	19.319595	-98.269903
TOTOLAC	21.38	1	0	6625	82.2	3.7	3.0	1.1	6.7	0.9	1.9	0.5	82.2	3.7	14.1	0.075	0.508	19.322262	-98.261135
TOTOLAC	21.38	3	0	7981	82.6	3.9	3.5	1.0	6.2	0.9	1.4	0.5	82.6	3.9	13.5	0.073	0.503	19.328748	-98.248342
TLAXCALA	24.81	1	0	15183	81.5	4.2	4.1	1.2	5.9	1.0	1.6	0.5	81.5	4.2	14.3	0.066	0.506	19.320129	-98.245202

PUEBLA

13 CARR: SAN SALVADOR EL SECO - AZUMBILLA

CLAVE: 21004

RUTA: MEX-144

AÑO: 2010

LUGAR	ESTACION				CLASIFICACION VEHICULAR EN PORCIENTO								COORDENADAS						
	KM	TE	SC	TDPA	A	B	C2	C3	T3S2	T3S3	T3S2R4	OTROS	A	B	C	K'	D	LATITUD	LONGITUD
SAN SALVADOR EL SECO	0.00	3	0	5360	73.3	1.5	9.0	6.5	4.1	3.0	2.3	0.3	73.3	1.5	25.2	0.065	0.510	19.129735	-97.635658
CD. SERDAN	29.00	3	0	5799	74.5	2.0	7.1	4.9	3.2	3.4	4.5	0.4	74.5	2.0	23.5	0.064	0.502	18.980507	-97.440835
X. C. PUEBLA - CORDOBA (CUOTA)	45.94	3	0	4676	73.4	2.6	5.7	4.5	6.6	3.2	3.6	0.4	73.4	2.6	24.0	0.071	0.512	18.868138	-97.389219
T. C. TEHUACAN - CORDOBA	73.67	1	0	3350	72.8	2.1	8.2	6.6	5.1	2.5	2.4	0.3	72.8	2.1	25.1	0.072	0.512	18.647518	-97.391179

14 CARR: SANTA BARBARA - IZUCAR DE MATAMOROS

CLAVE: 00451

RUTA: MEX-115-160

AÑO: 2010

LUGAR	ESTACION				CLASIFICACION VEHICULAR EN PORCIENTO								COORDENADAS						
	KM	TE	SC	TDPA	A	B	C2	C3	T3S2	T3S3	T3S2R4	OTROS	A	B	C	K'	D	LATITUD	LONGITUD
T. C. MEXICO - PUEBLA (LIBRE)	0.00	3	1	16555	78.6	4.1	4.7	1.5	4.9	3.6	2.1	0.5	78.6	4.1	17.3	0.071	0.515	19.310959	-98.896970
T. C. MEXICO - PUEBLA (LIBRE)	0.00	3	2	16456	78.5	4.4	4.8	1.6	4.8	3.4	1.9	0.6	78.5	4.4	17.1	0.065	0.515	19.310959	-98.896970
X. C. MEXICO - PUEBLA (CUOTA)	3.61	3	1	28455	78.0	4.1	4.2	1.5	5.5	5.0	1.3	0.4	78.0	4.1	17.9	0.071	0.500	19.285247	-98.880524
X. C. MEXICO - PUEBLA (CUOTA)	3.61	3	2	28434	78.6	3.8	4.8	1.6	5.2	4.0	1.5	0.5	78.6	3.8	17.6	0.069	0.500	19.285247	-98.880524
CHALCO	8.00	3	1	19900	77.8	4.2	5.3	1.4	6.5	2.2	1.9	0.7	77.8	4.2	18.0	0.073	0.504	19.250490	-98.875605
CHALCO	8.00	3	2	20794	79.8	4.3	4.4	1.2	5.8	2.1	1.6	0.8	79.8	4.3	15.9	0.070	0.504	19.250490	-98.875605
T. DER. JUCHITEPEC	12.46	3	1	11099	79.3	4.6	5.7	1.7	4.3	2.1	1.9	0.4	79.3	4.6	16.1	0.065	0.504	19.239108	-98.854441
T. DER. JUCHITEPEC	12.46	3	2	11270	81.6	4.5	4.1	1.4	3.9	1.9	2.0	0.6	81.6	4.5	13.9	0.067	0.504	19.239108	-98.854441
TLALMANALCO	20.51	3	0	17702	73.9	4.5	5.7	1.8	7.3	3.9	2.2	0.7	73.9	4.5	21.6	0.056	0.509	19.199139	-98.799344
AMECAMECA DE JUAREZ	28.00	1	0	22595	73.3	4.5	6.0	1.5	8.5	3.4	2.1	0.7	73.3	4.5	22.2	0.062	0.522	19.144970	-98.774785
AMECAMECA DE JUAREZ	34.00	3	1	7379	73.6	4.2	6.4	1.3	7.8	3.7	2.3	0.7	73.6	4.2	22.2	0.064	0.500	19.111627	-98.776439
AMECAMECA DE JUAREZ	34.00	3	2	7420	73.7	4.1	6.5	1.5	7.4	3.7	2.5	0.6	73.7	4.1	22.2	0.059	0.500	19.111627	-98.776439
T. IZQ. OZUMBA (1º ACCESO)	38.81	1	0	19928	73.8	4.2	6.5	2.1	6.5	3.6	2.7	0.6	73.8	4.2	22.0	0.060	0.509	19.059039	-98.786572
TEPETLIXPA	42.29	3	0	17099	74.9	4.0	6.2	2.6	5.5	3.9	2.0	0.9	74.9	4.0	21.1	0.068	0.503	19.018126	-98.824390
LIM. EDOS. TERM. MEX. PPIA. MOR.	51.70																		
T. DER. ATLATLAHUACAN	58.95	1	0	10111	79.6	3.9	4.4	1.6	4.3	3.9	1.9	0.4	79.6	3.9	16.5	0.068	0.508	18.930034	-98.886748
T. IZQ. TETELA DEL VOLCAN	62.99	1	0	13888	77.5	4.8	4.5	1.8	4.5	4.1	1.8	1.0	77.5	4.8	17.7	0.058	0.510	18.899955	-98.906982
T. IZQ. LIBRAMIENTO DE CUAUTLA (1º ACCESO)	67.00	1	1	11623	79.8	3.8	4.0	1.2	4.3	4.1	1.9	0.9	79.8	3.8	16.4	0.068	0.509	18.879682	-98.920645
T. IZQ. LIBRAMIENTO DE CUAUTLA (1º ACCESO)	67.00	1	2	11465	78.6	4.0	4.3	1.3	4.5	4.3	2.0	1.0	78.6	4.0	17.4	0.062	0.509	18.879681	-98.920644
T. DER. LA PERA	68.90	3	1	14698	79.3	3.8	4.3	1.5	4.4	3.6	2.1	1.0	79.3	3.8	16.9	0.072	0.502	18.853826	-98.936498
T. DER. LA PERA	68.90	3	2	14570	78.4	4.3	4.7	1.6	4.6	3.9	1.9	0.6	78.4	4.3	17.3	0.080	0.502	18.853826	-98.936498
T. IZQ. LIBRAMIENTO DE CUAUTLA (2º ACCESO)	77.05	3	1	11977	78.3	4.5	4.6	1.6	4.4	3.7	1.8	1.1	78.3	4.5	17.2	0.081	0.505	18.785164	-98.904587
T. IZQ. LIBRAMIENTO DE CUAUTLA (2º ACCESO)	77.05	3	2	11848	77.7	4.3	4.7	1.7	4.9	4.1	1.9	0.7	77.7	4.3	18.0	0.070	0.505	18.785164	-98.904587
T. DER. TLAYECAC	85.06	3	1	8507	77.2	4.2	4.4	1.6	5.3	3.8	2.1	1.4	77.2	4.2	18.6	0.069	0.504	18.761523	-98.883682
T. DER. TLAYECAC	85.06	3	2	8189	77.6	4.3	4.7	1.6	4.6	4.2	1.9	1.1	77.6	4.3	18.1	0.080	0.504	18.761523	-98.883682
T. IZQ. AMAYUCA	91.36	3	0	11161	76.6	4.3	4.8	2.2	4.8	4.2	2.1	1.0	76.6	4.3	19.1	0.065	0.508	18.712431	-98.783234





PUEBLA

20 CARR: AMOZOC - PEROTE (CUOTA)

CLAVE:

RUTA: MEX-140D

AÑO: 2010

LUGAR	ESTACION				CLASIFICACION VEHICULAR EN PORCIENTO								COORDENADAS						
	KM	TE	SC	TDPA	A	B	C2	C3	T3S2	T3S3	T3S2R4	OTROS	A	B	C	K'	D	LATITUD	LONGITUD
T.C. PUEBLA - CORDOBA (CUOTA)	0.00	3	0	6222	84.5	5.8	3.4	2.4	1.5	0.6	1.7	0.1	84.5	5.8	9.7	0.064	0.500	19.067517	-98.066250
CASETA DE COBRO AMOZOC	0.68	2	0	7945	83.8	6.0	3.7	2.4	1.5	0.7	1.8	0.1	83.8	6.0	10.2			19.063599	-98.069029
LIM. EDOS. TERM. PUE. PPIA. TLAX.	20.08																		
LIM. EDOS. TERM. TLAX. PPIA. PUE.	30.50																		
LIM. EDOS. TERM. PUE. PPIA. TLAX.	31.26																		
LIM. EDOS. TERM. TLAX. PPIA. PUE.	33.86																		
LIM. EDOS. TERM. PUE. PPIA. TLAX.	38.93																		
CASETA DE COBRO CUAPIAXTLA	44.00	1	0	7721	85.5	5.3	3.8	2.3	1.5	0.7	0.8	0.1	85.5	5.3	9.2			19.304158	-97.805312
CASETA DE COBRO CUAPIAXTLA	44.00	2	0	8892	83.3	4.7	4.1	2.9	1.9	0.9	2.1	0.1	83.3	4.7	12.0			19.304158	-97.805312
CASETA DE COBRO CUAPIAXTLA	44.00	3	0	6391	83.8	4.8	3.7	2.7	1.8	0.8	2.3	0.1	83.8	4.8	11.4			19.304158	-97.805312
LIM. EDOS. TERM. TLAX. PPIA. PUE.	53.52																		
LIM. EDOS. TERM. PUE. PPIA. VER.	90.36																		
T.C. LIB. DE PEROTE	105.00																		

21 CARR: CUACNOPALAN - OAXACA (CUOTA)

CLAVE: 00109

RUTA: MEX-135D

AÑO: 2010

LUGAR	ESTACION				CLASIFICACION VEHICULAR EN PORCIENTO								COORDENADAS						
	KM	TE	SC	TDPA	A	B	C2	C3	T3S2	T3S3	T3S2R4	OTROS	A	B	C	K'	D	LATITUD	LONGITUD
T. C. PUEBLA - CORDOBA (CUOTA)	0.00	3	0	6636	73.7	7.7	5.9	4.4	4.0	0.9	3.0	0.4	73.7	7.7	18.6	0.077	0.501	18.817637	-97.491196
T. C. PUEBLA - TEHUACAN	40.00	3	0	3668	74.2	7.2	5.9	4.4	4.0	1.0	2.9	0.4	74.2	7.2	18.6	0.083	0.508	18.483438	-97.456581
CASETA DE COBRO TEHUACAN	41.048	2	0	7810	74.7	7.3	5.6	4.4	3.8	0.9	2.9	0.4	74.7	7.3	18.0			18.487160	-97.456032
CASETA DE COBRO MIAHUATLAN	71.415	2	0	4382	69.7	8.3	6.3	6.4	4.3	1.3	3.3	0.4	69.7	8.3	22.0			18.264654	-97.315569
LIM. EDOS. TERM. PUE. PPIA. OAX.	83.50																		
CASETA DE COBRO COIXTLAHUACA	141.30	2	0	4258	69.4	8.7	6.2	6.3	4.5	1.2	3.3	0.4	69.4	8.7	21.9			17.726231	-97.351913
CASETA DE COBRO HUITZO	220.00	1	0	5949	77.4	6.5	5.3	4.4	3.0	0.9	2.2	0.3	77.4	6.5	16.1			17.274916	-96.915367
CASETA DE COBRO HUITZO	220.00	2	0	6478	79.0	6.0	5.0	4.1	2.8	0.8	2.0	0.3	79.0	6.0	15.0			17.274916	-96.915367
CASETA DE COBRO HUITZO	220.00	3	0	6070	79.1	6.3	4.7	4.0	2.8	0.7	2.1	0.3	79.1	6.3	14.6			17.274916	-96.915367
T. C. HUAJUAPAN DE LEON - OAXACA	242.70																		

22 CARR: ENT. TULANCINGO - TEJOCOTAL (CUOTA)

CLAVE: 00026

RUTA: MEX-132D

AÑO: 2010

LUGAR	ESTACION				CLASIFICACION VEHICULAR EN PORCIENTO								COORDENADAS						
	KM	TE	SC	TDPA	A	B	C2	C3	T3S2	T3S3	T3S2R4	OTROS	A	B	C	K'	D	LATITUD	LONGITUD
T. C. PACHUCA - TUXPAM	0.00	3	0	7114	76.9	5.6	5.4	4.8	3.9	1.8	1.4	0.2	76.9	5.6	17.5	0.087	0.512	20.065316	-98.447085
CASETA DE COBRO SAN ALEJO (TEJOCOTAL)	37.00	1	0	8153	76.8	5.4	5.5	4.8	4.1	1.8	1.4	0.2	76.8	5.4	17.8			20.146456	-98.286954

PUEBLA

22 CARR: ENT. TULANCINGO - TEJOCOTAL (CUOTA)

CLAVE: 00026

RUTA: MEX-132D

AÑO: 2010

LUGAR	ESTACION				CLASIFICACION VEHICULAR EN PORCIENTO								COORDENADAS						
	KM	TE	SC	TDPA	A	B	C2	C3	T3S2	T3S3	T3S2R4	OTROS	A	B	C	K'	D	LATITUD	LONGITUD
CASETA DE COBRO SAN ALEJO (TEJOCOTAL)	37.00	2	0	10306	77.5	4.4	5.9	4.9	3.8	2.0	1.3	0.2	77.5	4.4	18.1			20.146456	-98.286954
CASETA DE COBRO SAN ALEJO (TEJOCOTAL)	37.00	3	0	7881	75.9	4.7	5.6	5.2	4.4	2.3	1.6	0.3	75.9	4.7	19.4			20.146456	-98.286954
TEJOCOTAL	39.40																		

23 CARR: MEXICO - PUEBLA (CUOTA)

CLAVE: 00450

RUTA: MEX-150D

AÑO: 2010

LUGAR	ESTACION				CLASIFICACION VEHICULAR EN PORCIENTO								COORDENADAS						
	KM	TE	SC	TDPA	A	B	C2	C3	T3S2	T3S3	T3S2R4	OTROS	A	B	C	K'	D	LATITUD	LONGITUD
MEXICO	0.00																		
LIM. EDOS. TERM. D.F. PPIA. MEX.	17.71																		
T. IZO. LOS REYES	20.00	3	1	60901	83.7	4.8	5.3	2.7	2.2	0.4	0.7	0.2	83.7	4.8	11.5	0.077	0.510	19.350377	-98.986289
T. IZO. LOS REYES	20.00	3	2	63465	83.9	4.8	5.0	2.7	2.3	0.4	0.7	0.2	83.9	4.8	11.3	0.080	0.510	19.350377	-98.986289
CASETA DE COBRO CHALCO	32.00	1	0	76791	83.9	4.6	5.2	2.7	2.3	0.4	0.7	0.2	83.9	4.6	11.5			19.292069	-98.881723
X. C. SANTA BARBARA - IZUCAR DE MATAMOROS	32.14	1	1	43936	83.2	4.7	5.6	2.7	2.5	0.4	0.7	0.2	83.2	4.7	12.1	0.079	0.508	19.292644	-98.887311
X. C. SANTA BARBARA - IZUCAR DE MATAMOROS	32.14	1	2	45351	84.3	4.6	4.9	2.6	2.3	0.4	0.7	0.2	84.3	4.6	11.1	0.068	0.508	19.292644	-98.887311
X. C. SANTA BARBARA - IZUCAR DE MATAMOROS	32.14	3	1	18117	76.3	8.3	6.5	3.5	3.3	0.3	1.4	0.4	76.3	8.3	15.4	0.077	0.505	19.293945	-98.879151
X. C. SANTA BARBARA - IZUCAR DE MATAMOROS	32.14	3	2	17974	75.8	8.6	6.8	3.4	3.3	0.3	1.4	0.4	75.8	8.6	15.6	0.070	0.505	19.293945	-98.879151
CASETA DE COBRO SAN MARCOS	33.30	2	0	27450	75.1	8.6	7.0	3.7	3.4	0.3	1.5	0.4	75.1	8.6	16.3			19.296361	-98.870726
LIM. EDOS. TERM. MEX. PPIA. PUE.	63.20																		
T. IZO. RIO FRIO	63.79	3	1	12298	75.3	8.5	6.6	3.8	3.5	0.3	1.6	0.4	75.3	8.5	16.2	0.080	0.533	19.352145	-98.662908
T. IZO. RIO FRIO	63.79	3	2	12849	74.5	8.9	7.2	3.7	3.5	0.3	1.5	0.4	74.5	8.9	16.6	0.098	0.533	19.352145	-98.662908
T. IZO. TLAXCALA	90.61	1	1	15484	73.3	7.9	5.0	4.0	5.6	0.9	2.8	0.5	73.3	7.9	18.8	0.067	0.509	19.276193	-98.440898
T. IZO. TLAXCALA	90.61	1	2	16040	71.4	8.7	5.1	4.1	6.2	1.0	3.0	0.5	71.4	8.7	19.9	0.063	0.509	19.276218	-98.440905
T. IZO. TLAXCALA	90.61	3	1	15866	71.5	8.1	5.6	4.4	6.1	0.9	2.9	0.5	71.5	8.1	20.4	0.075	0.515	19.260772	-98.416126
T. IZO. TLAXCALA	90.61	3	2	14945	71.6	8.5	5.0	4.2	6.1	0.9	3.2	0.5	71.6	8.5	19.9	0.084	0.515	19.260835	-98.416076
CASETA DE COBRO SAN MARTIN TEXMELUCAN	91.00	2	0	38271	72.1	8.3	5.2	4.2	5.8	0.9	3.0	0.5	72.1	8.3	19.6			19.241098	-98.385680
LIM. EDOS. TERM. PUE. PPIA. TLAX.	103.00																		
LIM. EDOS. TERM. TLAX. PPIA. PUE.	107.00																		
T. C. PUEBLA - TLAXCALA	124.90																		

24 CARR: PUEBLA - CORDOBA (CUOTA)

CLAVE: 00485

RUTA: MEX-150D

AÑO: 2010

LUGAR	ESTACION				CLASIFICACION VEHICULAR EN PORCIENTO								COORDENADAS						
	KM	TE	SC	TDPA	A	B	C2	C3	T3S2	T3S3	T3S2R4	OTROS	A	B	C	K'	D	LATITUD	LONGITUD
PUEBLA	0.00	3	1	21794	70.4	7.7	5.5	5.3	5.2	1.3	4.0	0.6	70.4	7.7	21.9	0.069	0.507	19.069625	-98.128524

PUEBLA

24 CARR: PUEBLA - CORDOBA (CUOTA)

CLAVE: 00485

RUTA: MEX-150D

AÑO: 2010

LUGAR	ESTACION				CLASIFICACION VEHICULAR EN PORCIENTO								COORDENADAS						
	KM	TE	SC	TDPA	A	B	C2	C3	T3S2	T3S3	T3S2R4	OTROS	A	B	C	K'	D	LATITUD	LONGITUD
PUEBLA	0.00	3	2	22440	69.5	8.4	5.4	5.5	4.9	1.3	4.4	0.6	69.5	8.4	22.1	0.066	0.507	19.069708	-98.128503
T. DER. AMOZOC (CASETA DE COBRO)	21.55	1	1	15439	70.5	8.2	5.6	5.0	4.9	1.2	4.0	0.6	70.5	8.2	21.3	0.083	0.503	19.050776	-98.035497
T. DER. AMOZOC (CASETA DE COBRO)	21.55	1	2	15611	69.3	8.1	5.5	5.7	5.3	1.4	4.1	0.6	69.3	8.1	22.6	0.076	0.503	19.050776	-98.035497
T. DER. AMOZOC (CASETA DE COBRO)	21.55	3	1	11760	69.6	7.5	5.1	5.1	5.3	1.3	5.4	0.7	69.6	7.5	22.9	0.071	0.502	19.048033	-98.026540
T. DER. AMOZOC (CASETA DE COBRO)	21.55	3	2	11867	67.4	8.6	5.4	5.2	6.0	1.4	5.2	0.8	67.4	8.6	24.0	0.075	0.502	19.048033	-98.026540
T. IZQ. ACATZINGO	47.10	1	1	13387	68.4	8.3	5.0	5.3	5.6	1.4	5.3	0.7	68.4	8.3	23.3	0.069	0.509	18.978967	-97.816465
T. IZQ. ACATZINGO	47.10	1	2	12926	68.6	7.8	5.2	5.2	5.8	1.3	5.4	0.7	68.6	7.8	23.6	0.067	0.509	18.978967	-97.816465
T. IZQ. ACATZINGO	47.10	3	1	11221	69.9	7.9	4.8	5.0	5.4	1.3	5.0	0.7	69.9	7.9	22.2	0.068	0.503	18.973220	-97.800100
T. IZQ. ACATZINGO	47.10	3	2	11068	68.8	8.4	4.9	4.8	5.8	1.3	5.3	0.7	68.8	8.4	22.8	0.066	0.503	18.973417	-97.800023
T. DER. TECAMACHALCO	62.10	1	1	11330	53.6	6.5	5.7	8.7	13.3	2.7	8.4	1.1	53.6	6.5	39.9	0.067	0.506	18.931780	-97.683780
T. DER. TECAMACHALCO	62.10	1	2	11083	54.4	6.1	5.9	8.6	13.3	2.6	8.0	1.1	54.4	6.1	39.5	0.067	0.506	18.931959	-97.683749
T. DER. TECAMACHALCO	62.10	3	1	10402	52.8	6.4	6.2	8.8	13.5	2.6	8.5	1.2	52.8	6.4	40.8	0.078	0.503	18.929072	-97.677310
T. DER. TECAMACHALCO	62.10	3	2	10289	53.1	6.6	6.2	8.8	13.1	2.6	8.5	1.1	53.1	6.6	40.3	0.065	0.503	18.929267	-97.677247
T. DER. OAXACA (CUOTA)	83.85	1	1	8721	53.6	6.2	5.9	9.0	13.5	2.7	8.0	1.1	53.6	6.2	40.2	0.066	0.500	18.828060	-97.497216
T. DER. OAXACA (CUOTA)	83.85	1	2	8734	52.8	7.0	6.3	8.9	13.0	2.7	8.2	1.1	52.8	7.0	40.2	0.066	0.500	18.828248	-97.497178
CASETA DE COBRO ESPERANZA	99.50	1	0	14897	53.5	6.6	6.0	8.7	13.2	2.6	8.3	1.1	53.5	6.6	39.9			18.870773	-97.385953
CASETA DE COBRO ESPERANZA	99.50	3	0	11453	57.8	8.1	5.1	7.2	9.2	2.1	9.4	1.1	57.8	8.1	34.1			18.870773	-97.385953
LIM. EDOS. TERM. PUE. PPIA. VER.	111.40																		
T. DER. CD. MENDOZA	142.40	1	1	8791	72.2	5.2	4.8	5.3	6.5	1.3	4.2	0.5	72.2	5.2	22.6	0.067	0.502	18.813937	-97.193942
T. DER. CD. MENDOZA	142.40	1	2	8861	73.6	5.0	4.6	5.1	5.9	1.3	4.0	0.5	73.6	5.0	21.4	0.065	0.502	18.814127	-97.194000
T. DER. CD. MENDOZA	142.40	3	1	9079	72.9	5.5	4.6	4.8	6.2	1.3	4.2	0.5	72.9	5.5	21.6	0.066	0.504	18.813428	-97.187410
T. DER. CD. MENDOZA	142.40	3	2	9209	72.9	5.2	4.8	5.3	5.8	1.4	4.1	0.5	72.9	5.2	21.9	0.065	0.504	18.813582	-97.187366
T. IZQ. ORIZABA	157.05	3	1	13026	72.0	5.3	4.8	5.4	6.3	1.4	4.3	0.5	72.0	5.3	22.7	0.075	0.500	18.832639	-97.087667
T. IZQ. ORIZABA	157.05	3	2	13035	71.0	5.8	5.0	5.6	6.3	1.4	4.4	0.5	71.0	5.8	23.2	0.071	0.500	18.832750	-97.087556
CASETA DE COBRO FORTIN DE LAS FLORES	168.20	1	0	32724	72.4	5.4	4.8	5.2	6.1	1.4	4.2	0.5	72.4	5.4	22.2			18.907152	-96.999435
CASETA DE COBRO FORTIN DE LAS FLORES	168.20	3	0	20801	63.3	7.0	5.3	6.4	8.9	2.0	6.3	0.8	63.3	7.0	29.7			18.907152	-96.999435
CORDOBA	174.87	1	1	13885	62.6	7.5	5.4	6.4	8.7	2.0	6.6	0.8	62.6	7.5	29.9	0.067	0.503	18.893326	-96.975842
CORDOBA	174.87	1	2	14037	63.4	7.0	5.2	6.4	9.1	1.9	6.2	0.8	63.4	7.0	29.6	0.068	0.503	18.893326	-96.975842

25 CARR: SAN MARTIN TEXMELUCAN - OCOTOXCO (CUOTA)

CLAVE: 00212

RUTA: MEX-117D

AÑO: 2010

LUGAR	ESTACION				CLASIFICACION VEHICULAR EN PORCIENTO								COORDENADAS						
	KM	TE	SC	TDPA	A	B	C2	C3	T3S2	T3S3	T3S2R4	OTROS	A	B	C	K'	D	LATITUD	LONGITUD
T. C. MEXICO - PUEBLA (CUOTA)	0.00																		
X. C. SAN MARTIN TEXMELUCAN - TLAXCALA	1.80	1	0	6929	81.9	9.1	3.9	1.5	1.8	0.6	1.1	0.1	81.9	9.1	9.0	0.070	0.505	19.290010	-98.419465



PUEBLA

25 CARR: SAN MARTIN TEXMELUCAN - OCOTOXCO (CUOTA)

CLAVE: 00212

RUTA: MEX-117D

AÑO: 2010

LUGAR	ESTACION				CLASIFICACION VEHICULAR EN PORCIENTO								COORDENADAS						
	KM	TE	SC	TDPA	A	B	C2	C3	T3S2	T3S3	T3S2R4	OTROS	A	B	C	K'	D	LATITUD	LONGITUD
LIM. EDOS. TERM. PUE. PPIA. TLAX.	4.05																		
CASETA DE COBRO SAN MARTIN TEXMELUCAN	5.45	2	0	6937	81.3	9.8	3.8	1.5	1.8	0.6	1.1	0.1	81.3	9.8	8.9			19.301568	-98.404044
X. C. SAN MARTIN TEXMELUCAN - TLAXCALA (TREBOL)	24.75	1	1	11832	81.3	9.8	4.0	1.4	1.7	0.6	1.1	0.1	81.3	9.8	8.9	0.064	0.501	19.325362	-98.250453
X. C. SAN MARTIN TEXMELUCAN - TLAXCALA (TREBOL)	24.75	1	2	11768	81.0	9.7	4.0	1.6	1.9	0.6	1.1	0.1	81.0	9.7	9.3	0.066	0.501	19.325538	-98.250549
X. C. SAN MARTIN TEXMELUCAN - TLAXCALA (TREBOL)	24.75	3	1	11466	80.7	10.4	3.8	1.4	1.8	0.6	1.2	0.1	80.7	10.4	8.9	0.066	0.524	19.327411	-98.245757
X. C. SAN MARTIN TEXMELUCAN - TLAXCALA (TREBOL)	24.75	3	2	11560	81.7	9.6	3.7	1.4	1.8	0.6	1.1	0.1	81.7	9.6	8.7	0.076	0.524	19.327594	-98.245873
T. IZQ. TIZATLAN	29.00	3	1	18557	81.1	9.9	3.8	1.5	1.9	0.6	1.1	0.1	81.1	9.9	9.0	0.076	0.505	19.337762	-98.213995
T. IZQ. TIZATLAN	29.00	3	2	18945	81.8	9.5	3.7	1.5	1.8	0.6	1.0	0.1	81.8	9.5	8.7	0.071	0.505	19.337666	-98.213989
T. DER. SAN PABLO APETATITLAN	31.65	3	1	18243	81.9	9.2	3.8	1.5	1.8	0.6	1.1	0.1	81.9	9.2	8.9	0.070	0.501	19.346633	-98.196047
T. DER. SAN PABLO APETATITLAN	31.65	3	2	18289	80.7	9.9	4.1	1.6	1.8	0.6	1.2	0.1	80.7	9.9	9.4	0.065	0.501	19.346710	-98.196101
OCOTOXCO	35.20	1	1	18935	81.9	9.7	3.5	1.4	1.7	0.6	1.1	0.1	81.9	9.7	8.4	0.071	0.503	19.384796	-98.178107
OCOTOXCO	35.20	1	2	18707	80.7	10.2	3.9	1.6	1.8	0.6	1.1	0.1	80.7	10.2	9.1	0.067	0.503	19.384804	-98.178212

26 CARR: TEJOCOTAL - TIHUATLAN (CUOTA)

CLAVE:

RUTA: MEX-130D

AÑO: 2010

LUGAR	ESTACION				CLASIFICACION VEHICULAR EN PORCIENTO								COORDENADAS						
	KM	TE	SC	TDPA	A	B	C2	C3	T3S2	T3S3	T3S2R4	OTROS	A	B	C	K'	D	LATITUD	LONGITUD
TEJOCOTAL	0.00																		
LIM. EDOS. TERM. HGO. PPIA. PUE.	1.10																		
CASETA DE COBRO NUEVO NECAXA	17.00	2	0	6219	73.9	4.7	6.6	5.9	4.8	2.1	1.7	0.3	73.9	4.7	21.4			20.186719	-98.029735
NUEVO NECAXA	18.00	1	0	6333	74.9	4.8	6.1	5.9	4.4	2.0	1.6	0.3	74.9	4.8	20.3	0.071	0.511	20.181982	-98.026666

27 CARR: AMAYUCA - IZUCAR DE MATAMOROS

CLAVE: 00030

RUTA: MOR-031-PUE

AÑO: 2010

LUGAR	ESTACION				CLASIFICACION VEHICULAR EN PORCIENTO								COORDENADAS						
	KM	TE	SC	TDPA	A	B	C2	C3	T3S2	T3S3	T3S2R4	OTROS	A	B	C	K'	D	LATITUD	LONGITUD
AMAYUCA	0.00																		
X. C. SANTA BARBARA - IZUCAR DE MATAMOROS	0.66	3	1	6063	83.6	2.8	3.5	3.3	2.7	2.7	0.4	1.0	83.6	2.8	13.6	0.069	0.503	18.713912	-98.796802
X. C. SANTA BARBARA - IZUCAR DE MATAMOROS	0.66	3	2	6003	81.2	4.6	3.4	3.7	2.4	2.3	1.1	1.3	81.2	4.6	14.2	0.071	0.503	18.713912	-98.796802
JONACATEPEC	3.84	3	0	5565	81.6	4.6	3.6	3.3	3.4	1.7	0.8	1.0	81.6	4.6	13.8	0.077	0.506	18.655202	-98.816260
T. DER. TEPALCINGO	14.50	3	0	6719	81.0	4.2	3.9	3.8	4.0	1.8	1.0	0.3	81.0	4.2	14.8	0.071	0.501	18.609047	-98.838192
AXOCHIAPAN	29.50	1	0	4507	82.9	4.3	5.5	2.2	3.0	1.1	0.2	0.8	82.9	4.3	12.8	0.071	0.501	18.515720	-98.785460
AXOCHIAPAN	29.50	3	1	3018	83.6	4.8	5.4	2.3	1.5	1.0	0.4	1.0	83.6	4.8	11.6	0.067	0.511	18.493974	-98.748228
AXOCHIAPAN	29.50	3	2	2892	83.4	5.0	5.1	2.6	1.7	0.9	0.4	0.9	83.4	5.0	11.6	0.060	0.511	18.493974	-98.748228
BARRANCA DEL MUERTO	38.40	3	0	2720	84.5	5.3	4.6	2.4	1.1	1.0	0.5	0.6	84.5	5.3	10.2	0.064	0.511	18.477461	-98.729705

PUEBLA

27 CARR: AMAYUCA - IZUCAR DE MATAMOROS

CLAVE: 00030

RUTA: MOR-031-PUE

AÑO: 2010

LUGAR	ESTACION				CLASIFICACION VEHICULAR EN PORCIENTO								COORDENADAS						
	KM	TE	SC	TDPA	A	B	C2	C3	T3S2	T3S3	T3S2R4	OTROS	A	B	C	K'	D	LATITUD	LONGITUD
LIM. EDOS. TERM. MOR. PPIA. PUE.	40.00																		
T. DER. CHIETLA	53.00	1	0	5788	84.2	5.4	4.8	2.3	1.0	1.3	0.6	0.4	84.2	5.4	10.4	0.067	0.508	18.526812	-98.585386
X. C. SANTA BARBARA - IZUCAR DE MATAMOROS	67.50	1	0	8537	84.6	5.3	4.7	2.1	1.2	1.1	0.4	0.6	84.6	5.3	10.1	0.069	0.505	18.596860	-98.487896
X. C. SANTA BARBARA - IZUCAR DE MATAMOROS	67.50	3	0	15744	83.1	5.8	5.1	2.2	1.3	1.4	0.5	0.6	83.1	5.8	11.1	0.072	0.503	18.601134	-98.473317
IZUCAR DE MATAMOROS	69.00																		

28 CARR: AZUMBILLA - ALCOMUNGA

CLAVE: 21001

RUTA: PUE

AÑO: 2010

LUGAR	ESTACION				CLASIFICACION VEHICULAR EN PORCIENTO								COORDENADAS						
	KM	TE	SC	TDPA	A	B	C2	C3	T3S2	T3S3	T3S2R4	OTROS	A	B	C	K'	D	LATITUD	LONGITUD
T. C. TEHUACAN - CORDOBA	0.00	3	0	1568	85.4	3.3	6.4	1.8	2.3	0.2	0.3	0.3	85.4	3.3	11.3	0.080	0.520	18.635006	-97.397242
ALCOMUNGA	65.00																		

29 CARR: CHOLULA - PUEBLA (VIA QUETZALCOATL)

CLAVE: 21203

RUTA: PUE

AÑO: 2010

LUGAR	ESTACION				CLASIFICACION VEHICULAR EN PORCIENTO								COORDENADAS						
	KM	TE	SC	TDPA	A	B	C2	C3	T3S2	T3S3	T3S2R4	OTROS	A	B	C	K'	D	LATITUD	LONGITUD
CHOLULA	0.00	3	1	16833	83.5	3.7	5.7	2.7	1.4	1.8	1.0	0.2	83.5	3.7	12.8	0.082	0.506	19.059687	-98.293890
CHOLULA	0.00	3	2	17237	83.7	3.6	5.8	2.5	1.2	1.7	1.2	0.3	83.7	3.6	12.7	0.092	0.506	19.059723	-98.293450
PUEBLA	12.00	1	1	20436	84.9	4.3	4.5	2.5	1.2	1.5	0.8	0.3	84.9	4.3	10.8	0.071	0.504	19.059712	-98.240427
PUEBLA	12.00	1	2	20106	84.3	4.2	4.4	2.6	1.3	1.9	1.1	0.2	84.3	4.2	11.5	0.069	0.504	19.059797	-98.240421

30 CARR: CUAPIAXTLA - ACATLAN DE OSORIO

CLAVE: 21014

RUTA: PUE

AÑO: 2010

LUGAR	ESTACION				CLASIFICACION VEHICULAR EN PORCIENTO								COORDENADAS						
	KM	TE	SC	TDPA	A	B	C2	C3	T3S2	T3S3	T3S2R4	OTROS	A	B	C	K'	D	LATITUD	LONGITUD
T. C. PUEBLA - TEHUACAN	0.00	3	0	6489	84.6	2.3	3.6	2.0	4.0	1.4	1.6	0.5	84.6	2.3	13.1	0.061	0.513	18.917247	-97.832957
MOLCAXAC	23.18	1	0	3993	83.6	2.7	3.7	2.4	4.1	1.9	1.1	0.5	83.6	2.7	13.7	0.074	0.504	18.742673	-97.907866
TEPEXI DE RODRIGUEZ	45.35	1	0	3073	84.6	2.9	4.1	2.5	2.9	0.9	1.4	0.7	84.6	2.9	12.5	0.071	0.509	18.587701	-97.928827
TEPEXI DE RODRIGUEZ	45.35	3	0	3757	84.5	2.7	4.3	1.7	3.7	1.0	1.6	0.5	84.5	2.7	12.8	0.070	0.511	18.572654	-97.928230
SAN JUAN IXCAQUIXTLA	63.35	1	0	3435	80.9	5.7	3.9	2.5	2.3	1.6	2.5	0.6	80.9	5.7	13.4	0.074	0.507	18.470052	-97.841966
ACATLAN DE OSORIO	127.00	1	0	2358	83.0	5.8	4.4	2.4	2.2	0.6	1.2	0.4	83.0	5.8	11.2	0.064	0.507	18.235615	-98.033965





PUEBLA

41 CARR: ATLIXCO - JANTETELCO (CUOTA)

CLAVE:

RUTA: PUE-D

AÑO: 2010

LUGAR	ESTACION				CLASIFICACION VEHICULAR EN PORCIENTO								COORDENADAS						
	KM	TE	SC	TDPA	A	B	C2	C3	T3S2	T3S3	T3S2R4	OTROS	A	B	C	K'	D	LATITUD	LONGITUD
T.C. PUEBLA - IZUCAR DE MATAMOROS	0.00	3	0	2337	83.0	2.9	2.7	5.6	2.0	0.9	2.2	0.7	83.0	2.9	14.1	0.065	0.506	18.942304	-98.398742
LIM. EDOS. TERM. PUE. PPIA. MOR.	48.60																		
T.C. SANTA BARABARA - IZUCAR DE MATAMOROS	54.90	1	0	5229	78.7	3.6	4.7	5.5	3.0	0.8	3.0	0.7	78.7	3.6	17.7	0.066	0.503	18.705819	-98.767558

42 CARR: LIBRES - TEZIUTLAN (CUOTA)

CLAVE:

RUTA: PUE-D

AÑO: 2010

LUGAR	ESTACION				CLASIFICACION VEHICULAR EN PORCIENTO								COORDENADAS						
	KM	TE	SC	TDPA	A	B	C2	C3	T3S2	T3S3	T3S2R4	OTROS	A	B	C	K'	D	LATITUD	LONGITUD
T.C. LIBRES - TEZIUTLAN	0.00	3	0	3771	75.1	4.0	7.1	3.1	4.8	3.6	1.9	0.4	75.1	4.0	20.9	0.068	0.502	19.428000	-97.635306
TEZIUTLAN	88.00																		

43 CARR: PUEBLA - ATLIXCO (CUOTA)

CLAVE: 21585

RUTA: PUE-D

AÑO: 2010

LUGAR	ESTACION				CLASIFICACION VEHICULAR EN PORCIENTO								COORDENADAS						
	KM	TE	SC	TDPA	A	B	C2	C3	T3S2	T3S3	T3S2R4	OTROS	A	B	C	K'	D	LATITUD	LONGITUD
PUEBLA	0.00	3	1	18764	84.9	4.3	5.4	2.4	1.9	0.3	0.4	0.4	84.9	4.3	10.8	0.069	0.500	19.001227	-98.277451
PUEBLA	0.00	3	2	18736	85.1	4.4	5.2	2.5	1.7	0.3	0.5	0.3	85.1	4.4	10.5	0.067	0.500	19.001431	-98.276761
ATLIXCO	25.30	1	1	4694	82.7	8.9	3.3	2.1	1.4	0.9	0.4	0.3	82.7	8.9	8.4	0.074	0.506	18.923169	-98.403358
ATLIXCO	25.30	1	2	4799	81.4	8.8	3.5	2.0	2.7	0.7	0.5	0.4	81.4	8.8	9.8	0.068	0.506	18.923169	-98.403358

44 CARR: TLAXCO - TEJOCOTAL (CUOTA)

CLAVE:

RUTA: PUE-D

AÑO: 2010

LUGAR	ESTACION				CLASIFICACION VEHICULAR EN PORCIENTO								COORDENADAS						
	KM	TE	SC	TDPA	A	B	C2	C3	T3S2	T3S3	T3S2R4	OTROS	A	B	C	K'	D	LATITUD	LONGITUD
T.C. APAN - TLAXCO	0.00	3	0	2563	84.9	4.3	6.4	1.8	0.9	0.6	0.6	0.5	84.9	4.3	10.8	0.077	0.511	19.607573	-98.156655
T.C. TEJOCOTAL-TIHUATLAN (CUOTA)	72.00																		

45 CARR: RAMAL A TULCINGO DEL VALLE

CLAVE: 21578

RUTA: PUE-MEX-093

AÑO: 2010

LUGAR	ESTACION				CLASIFICACION VEHICULAR EN PORCIENTO								COORDENADAS						
	KM	TE	SC	TDPA	A	B	C2	C3	T3S2	T3S3	T3S2R4	OTROS	A	B	C	K'	D	LATITUD	LONGITUD
T. C. PUEBLA - HUAJUAPAN DE LEON	0.00	3	0	3116	81.5	6.7	4.9	1.6	2.7	0.7	1.1	0.8	81.5	6.7	11.8	0.073	0.509	18.247904	-98.220779
T. IZQ. PIAXTLA	7.31	3	0	2466	79.4	7.9	5.9	1.7	2.2	1.2	1.0	0.7	79.4	7.9	12.7	0.065	0.510	18.194445	-98.268323
TECOMATLAN	21.01	3	0	2657	80.8	7.5	5.8	1.5	2.0	0.8	0.8	0.8	80.8	7.5	11.7	0.068	0.505	18.099816	-98.312812
TULCINGO DEL VALLE	43.00	1	0	2224	79.4	8.4	6.3	1.2	2.3	0.9	0.9	0.6	79.4	8.4	12.2	0.074	0.516	18.044587	-98.422790

PUEBLA

46 CARR: TEHUACAN - HUITZO

CLAVE: 00211

RUTA: PUE-MEX-135

AÑO: 2010

LUGAR	ESTACION				CLASIFICACION VEHICULAR EN PORCIENTO								COORDENADAS						
	KM	TE	SC	TDPA	A	B	C2	C3	T3S2	T3S3	T3S2R4	OTROS	A	B	C	K'	D	LATITUD	LONGITUD
TEHUACAN	0.00	3	0	6906	80.6	3.5	14.0	1.4	0.2	0.3	0.0	0.0	80.6	3.5	15.9	0.061	0.506	18.460167	-97.370500
T. DER. SAN GABRIEL CHILAC	14.40	1	0	7062	81.5	3.4	13.2	1.4	0.2	0.3	0.0	0.0	81.5	3.4	15.1	0.062	0.517	18.405028	-97.329917
SAN SEBASTIAN ZINACATEPEC	23.00	3	0	4643	81.6	3.5	13.0	1.4	0.2	0.3	0.0	0.0	81.6	3.5	14.9	0.070	0.507	18.325489	-97.229865
LIM. EDOS. TERM. PUE. PPIA. OAX.	60.895																		
TEOTITLAN DEL CAMINO	63.15	3	0	2114	80.9	3.7	13.6	1.3	0.2	0.3	0.0	0.0	80.9	3.7	15.4	0.068	0.503	18.122092	-97.073766
SANTA MARIA TECOMAVACA	88.34	1	0	1117	80.2	3.6	14.3	1.4	0.2	0.3	0.0	0.0	80.2	3.6	16.2	0.085	0.501	17.964551	-97.035133
SANTA MARIA TECOMAVACA	88.34	3	0	1392	81.3	3.6	13.2	1.4	0.2	0.3	0.0	0.0	81.3	3.6	15.1	0.079	0.507	17.948864	-97.021681
T. IZQ. CUICATLAN	118.80	1	0	1484	80.9	3.6	13.5	1.5	0.2	0.3	0.0	0.0	80.9	3.6	15.5	0.088	0.501	17.793844	-96.959877
T. IZQ. NACALTEPEC	169.84	1	0	1327	80.6	3.8	13.6	1.5	0.2	0.3	0.0	0.0	80.6	3.8	15.6	0.084	0.501	17.505960	-96.934104
T. C. HUAJUAPAN DE LEON - OAXACA	202.70	1	0	2559	80.4	3.7	13.9	1.5	0.2	0.3	0.0	0.0	80.4	3.7	15.9	0.081	0.501	17.287558	-96.903690

47 CARR: TEOTITLAN DE FLORES MAGON - TUXTEPEC

CLAVE: 00108

RUTA: OAX-PUE-MEX-182

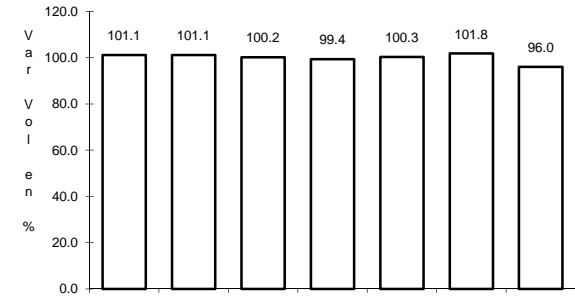
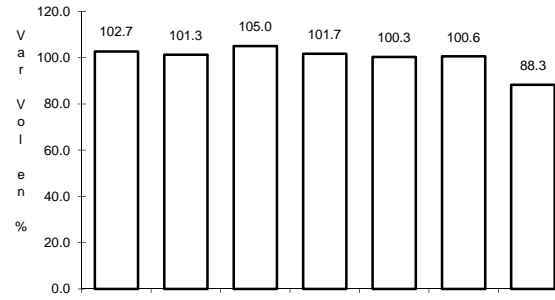
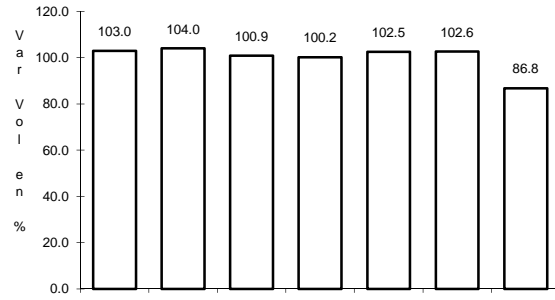
AÑO: 2010

LUGAR	ESTACION				CLASIFICACION VEHICULAR EN PORCIENTO								COORDENADAS						
	KM	TE	SC	TDPA	A	B	C2	C3	T3S2	T3S3	T3S2R4	OTROS	A	B	C	K'	D	LATITUD	LONGITUD
TEOTITLAN DEL CAMINO	0.00	3	0	1764	81.3	5.9	7.6	3.5	0.5	0.3	0.3	0.6	81.3	5.9	12.8	0.075	0.505	18.140164	-97.062675
LIM. EDOS. TERM. OAX. PPIA. PUE.	2.00																		
LIM. EDOS. TERM. PUE. PPIA. OAX.	10.00																		
HUAUTLA	65.00	1	0	993	80.9	6.1	7.7	3.8	0.6	0.3	0.3	0.3	80.9	6.1	13.0	0.078	0.517	18.124860	-96.847385
SAN FELIPE JALAPA DE DIAZ	140.00	3	0	2749	81.5	4.2	7.7	3.7	1.6	0.4	0.4	0.5	81.5	4.2	14.3	0.071	0.501	18.082411	-96.521453
TUXTEPEC	185.00	1	0	6150	80.5	3.6	8.3	3.7	2.0	0.5	0.6	0.8	80.5	3.6	15.9	0.076	0.503	18.086063	-96.152908

1 CARR: AMOZOC - TEZIUTLAN

CLAVE: 00210

RUTA: MEX-129



Km: 1.40

Tipo: 3

Sent: 0

Km: 76.35

Tipo: 3

Sent: 0

Km: 157.80

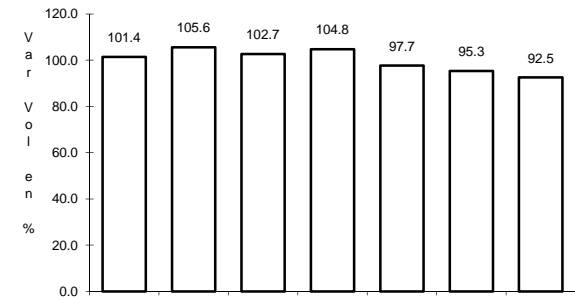
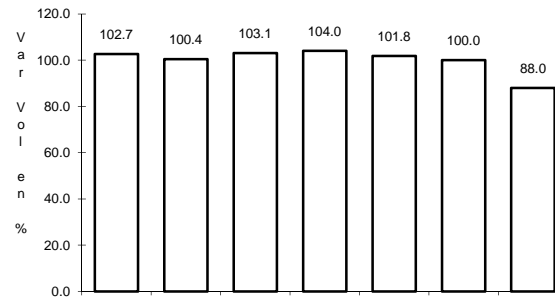
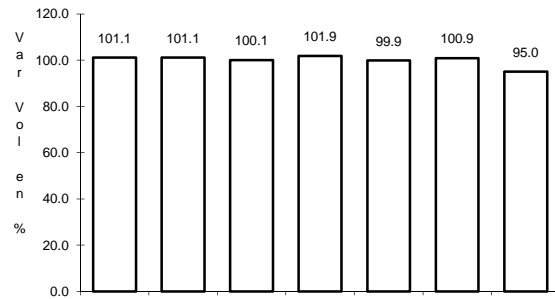
Tipo: 1

Sent: 0

2 CARR: APIZACO - TEJOCOTAL

CLAVE: 00430

RUTA: MEX-119



Km: 0.00

Tipo: 3

Sent: 0

Km: 52.20

Tipo: 1

Sent: 0

Km: 113.15

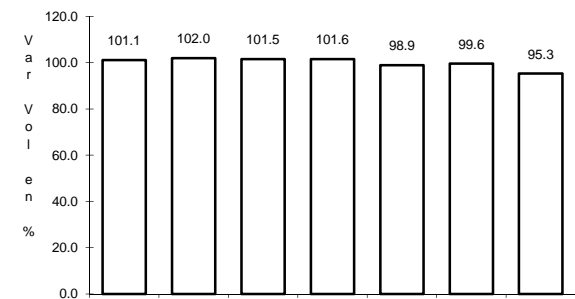
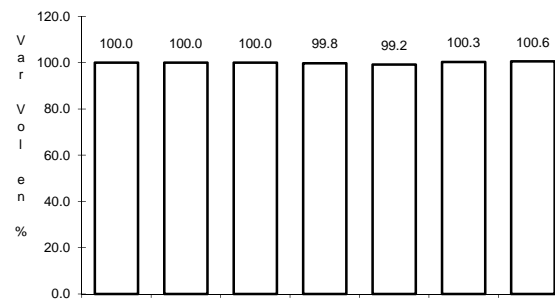
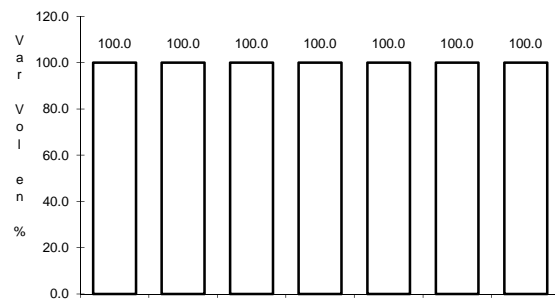
Tipo: 1

Sent: 0

3 CARR: LOS REYES - ZACATEPEC

CLAVE: 00052

RUTA: MEX-136



Km: 3.35

Tipo: 3

Sent: 1

Km: 3.35

Tipo: 3

Sent: 2

Km: 187.67

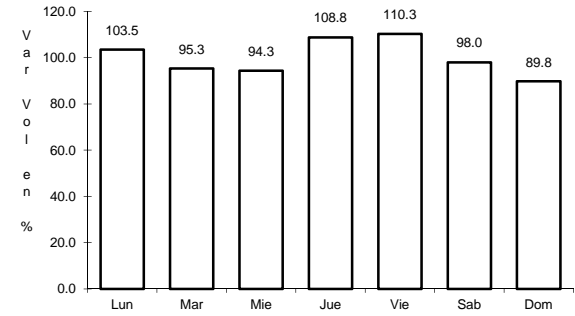
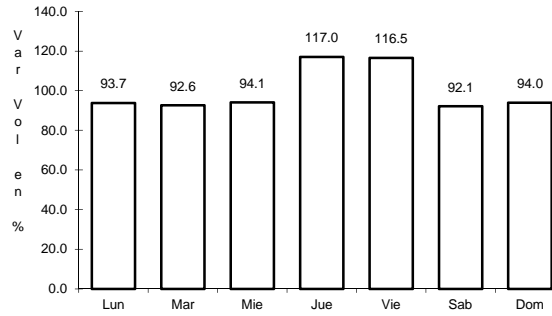
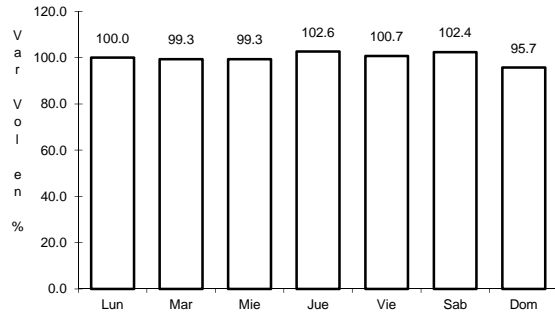
Tipo: 1

Sent: 0

4 CARR: MEXICO - PUEBLA (LIBRE)

CLAVE: 00449

RUTA: MEX-150



Km: 28.85

Tipo: 1

Sent: 1

Km: 28.85

Tipo: 1

Sent: 2

Km: 101.00

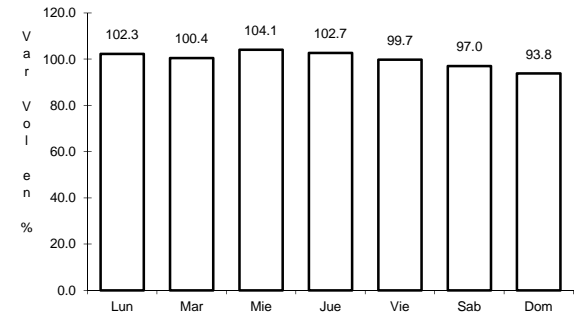
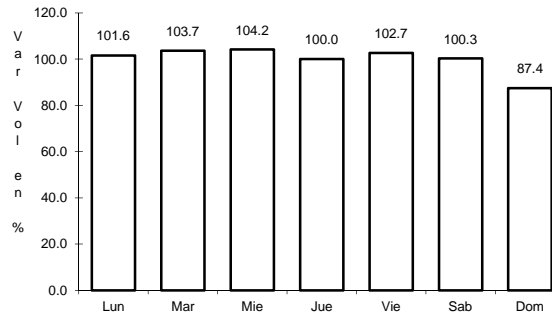
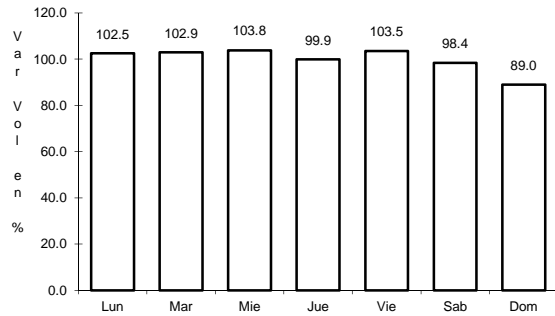
Tipo: 1

Sent: 0

5 CARR: PACHUCA - TUXPAM

CLAVE: 00608

RUTA: MEX-130



Km: 2.60

Tipo: 3

Sent: 1

Km: 2.60

Tipo: 3

Sent: 2

Km: 247.00

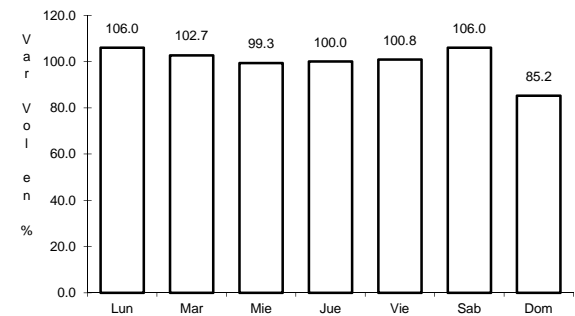
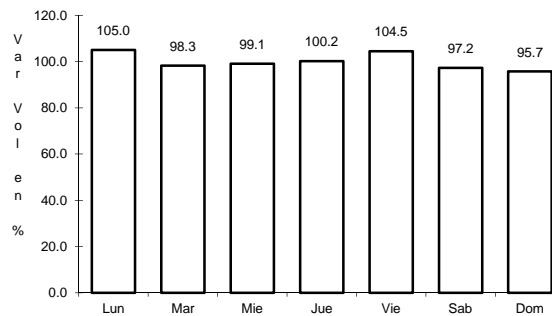
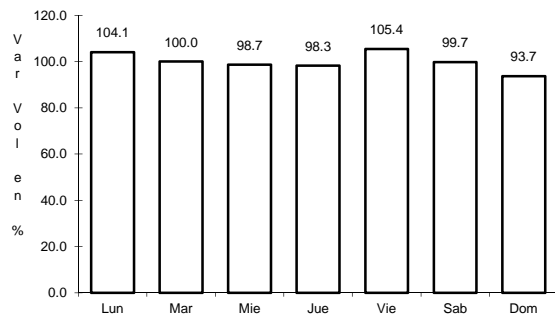
Tipo: 1

Sent: 0

6 CARR: PUEBLA - BELEM

CLAVE: 00055

RUTA: MEX-121



Km: 4.00

Tipo: 3

Sent: 1

Km: 4.00

Tipo: 3

Sent: 2

Km: 28.80

Tipo: 1

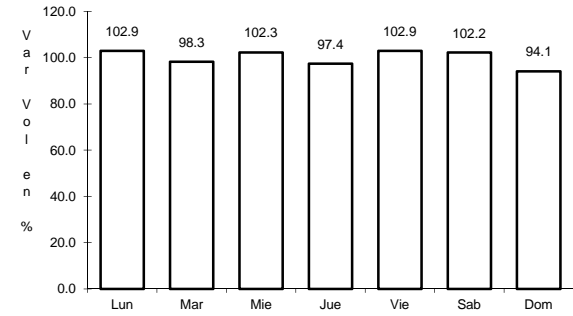
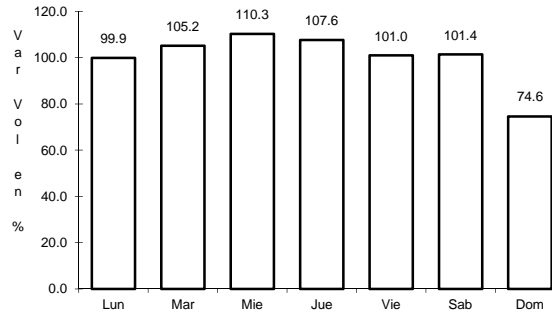
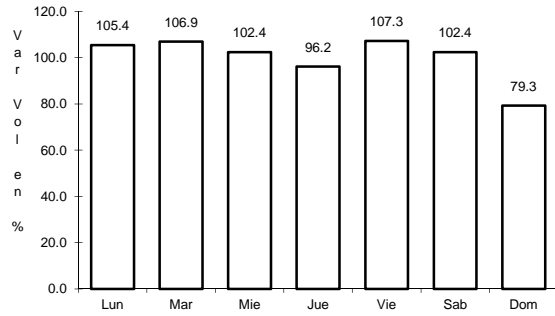
Sent: 1



7 CARR: PUEBLA - HUAJUAPAN DE LEON

CLAVE: 00049

RUTA: MEX-190



Km: 0.00

Tipo: 3

Sent: 1

Km: 0.00

Tipo: 3

Sent: 2

Km: 219.30

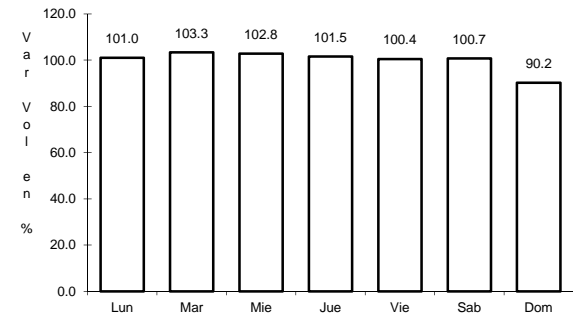
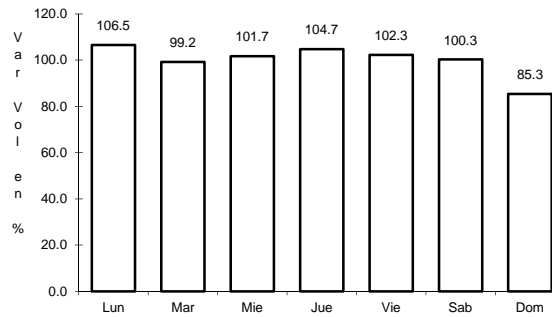
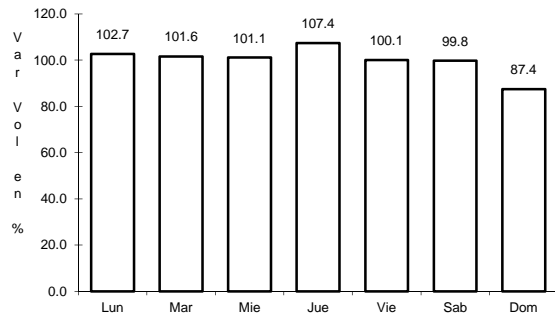
Tipo: 1

Sent: 0

8 CARR: PUEBLA - TEHUACAN

CLAVE: 21047

RUTA: MEX-150



Km: 5.83

Tipo: 3

Sent: 1

Km: 5.83

Tipo: 3

Sent: 2

Km: 115.70

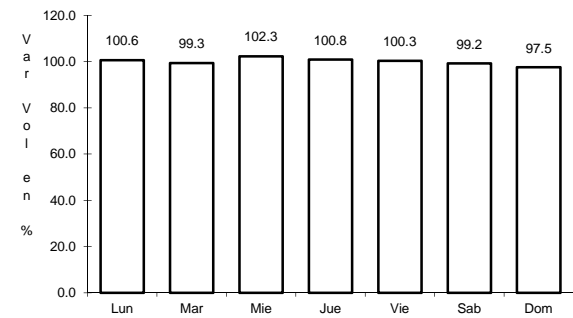
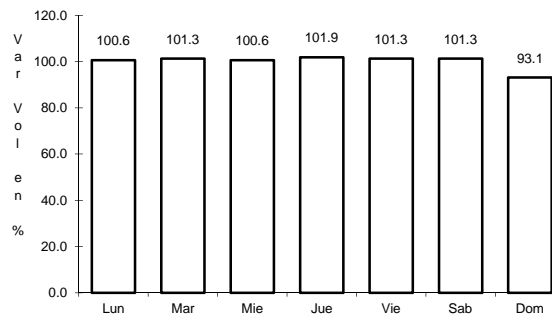
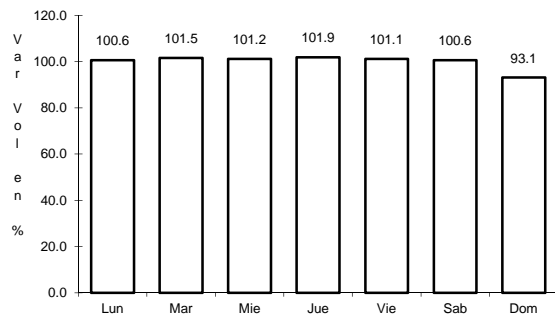
Tipo: 1

Sent: 0

9 CARR: PUEBLA - TLAXCALA

CLAVE: 00475

RUTA: MEX-119



Km: 5.41

Tipo: 3

Sent: 1

Km: 5.41

Tipo: 3

Sent: 2

Km: 24.97

Tipo: 3

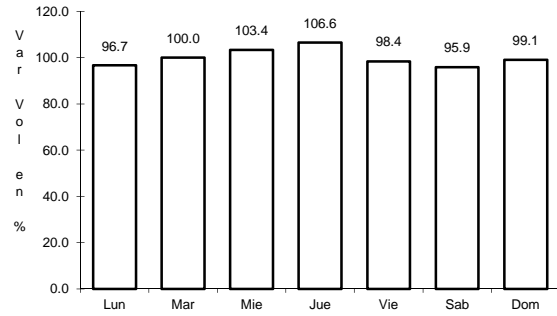
Sent: 0



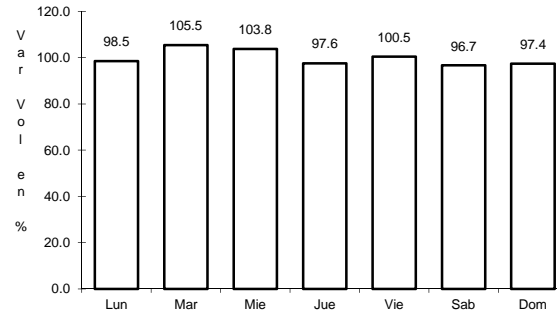
13 CARR: SAN SALVADOR EL SECO - AZUMBILLA

CLAVE: 21004

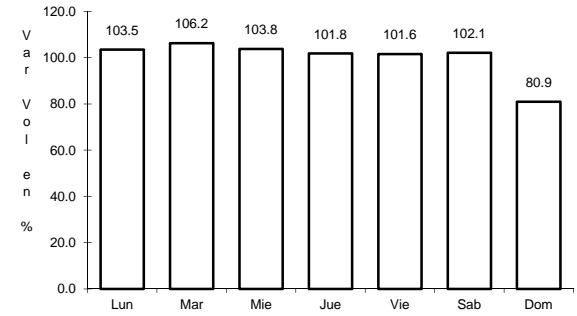
ruta: MEX-144



Km: 0.00      Tipo: 3      Sent: 0



Km: 45.94      Tipo: 3      Sent: 0

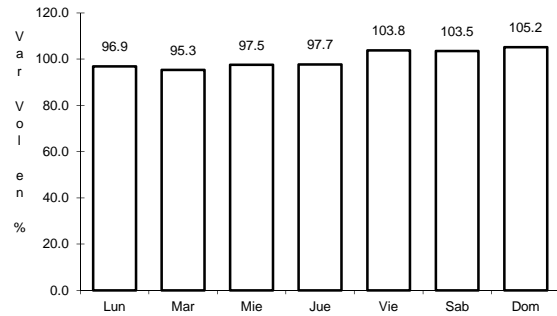


Km: 73.67      Tipo: 1      Sent: 0

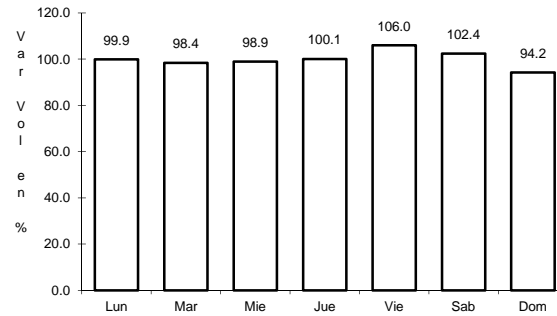
14 CARR: SANTA BARBARA - IZUCAR DE MATAMOROS

CLAVE: 00451

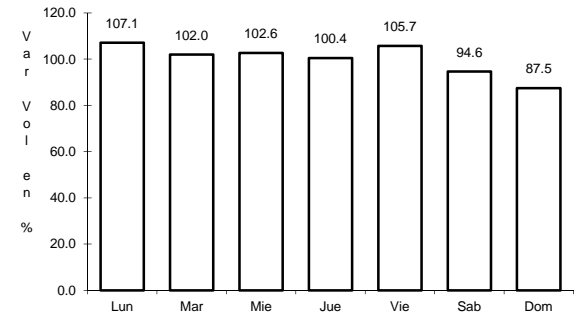
ruta: MEX-115-160



Km: 0.00      Tipo: 3      Sent: 1



Km: 0.00      Tipo: 3      Sent: 2

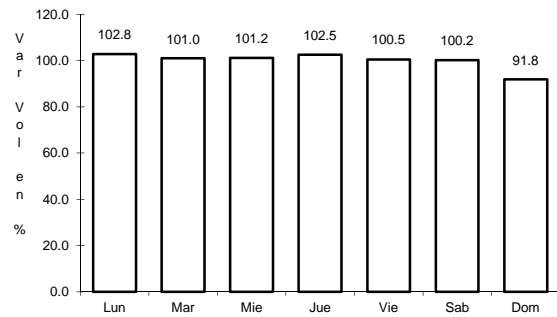


Km: 134.99      Tipo: 3      Sent: 0

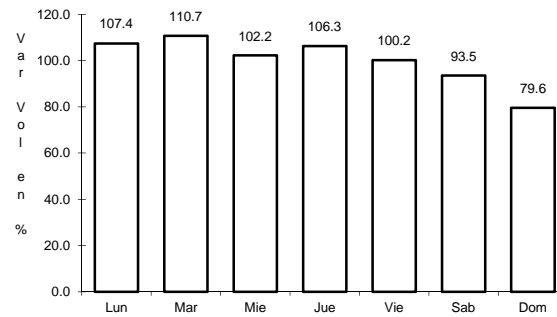
15 CARR: TEHUACAN - CORDOBA

CLAVE: 00534

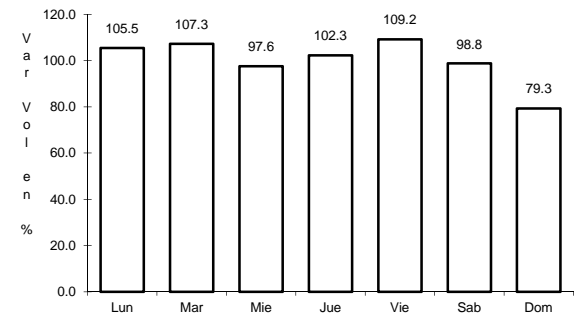
ruta: MEX-150



Km: 0.00      Tipo: 3      Sent: 0



Km: 86.76      Tipo: 1      Sent: 1

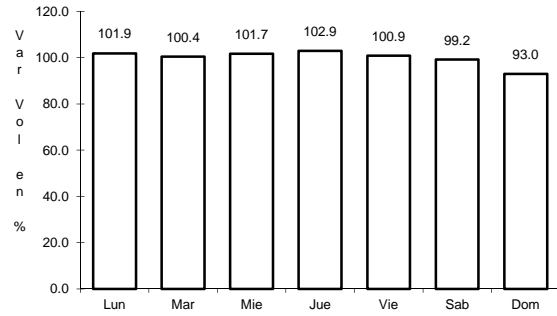


Km: 86.76      Tipo: 1      Sent: 2

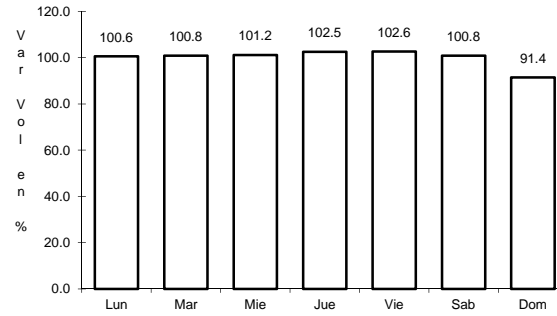
16 CARR: TEHUACAN - HUAJUAPAN DE LEON

CLAVE: 00211

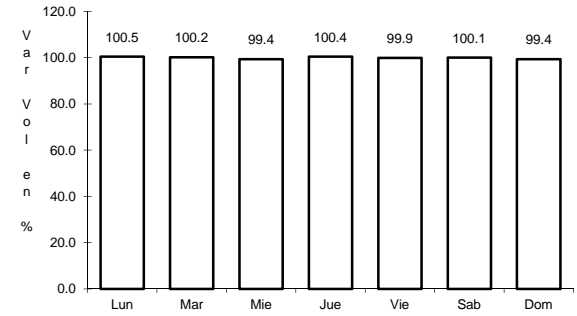
RUTA: MEX-125



Km: 0.00      Tipo: 3      Sent: 1



Km: 0.00      Tipo: 3      Sent: 2

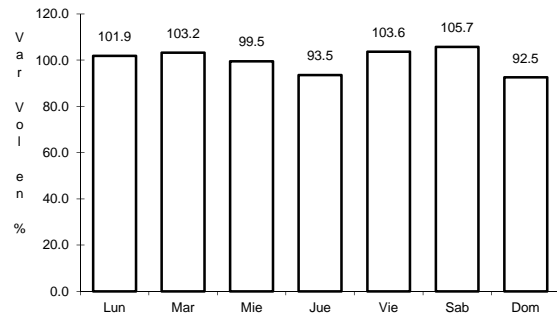


Km: 119.40      Tipo: 1      Sent: 0

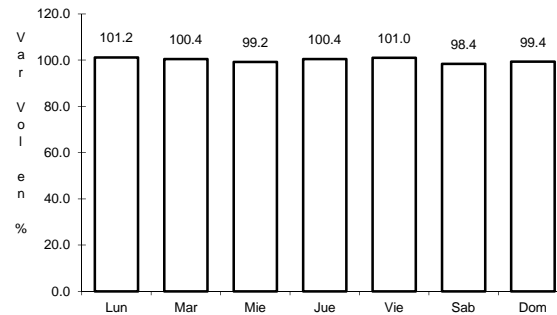
17 CARR: TEZIUTLAN - NAUTLA

CLAVE: 00144

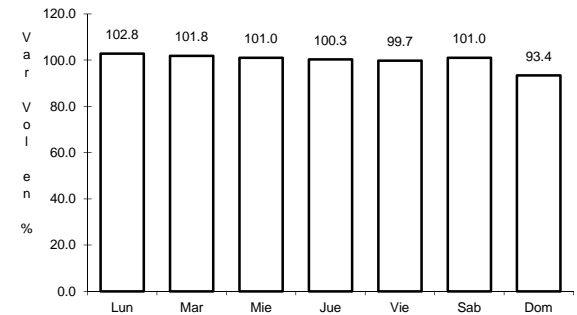
RUTA: MEX-129



Km: 0.00      Tipo: 3      Sent: 0



Km: 58.00      Tipo: 3      Sent: 0

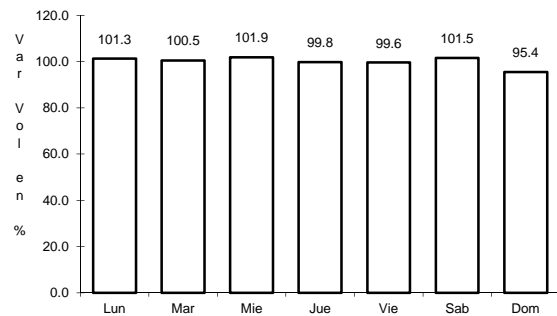


Km: 93.20      Tipo: 1      Sent: 0

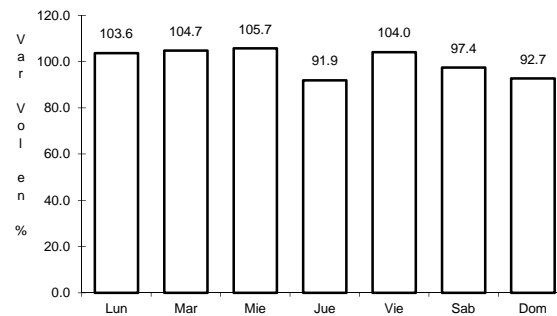
18 CARR: TEZIUTLAN - PEROTE

CLAVE: 00209

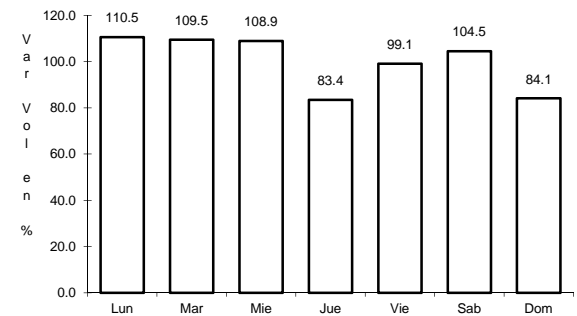
RUTA: MEX-131



Km: 0.00      Tipo: 3      Sent: 0



Km: 23.00      Tipo: 3      Sent: 0

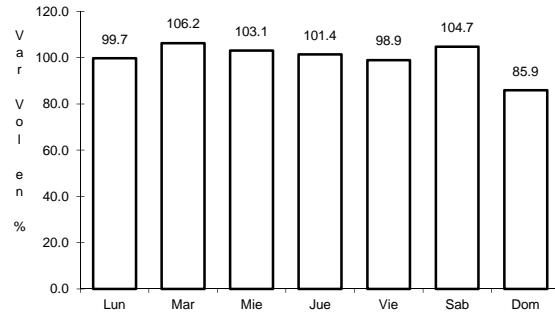


Km: 49.10      Tipo: 1      Sent: 0

19 CARR: ZACATEPEC - ORIENTAL

CLAVE: 21189

RUTA: MEX



Km: 0.00

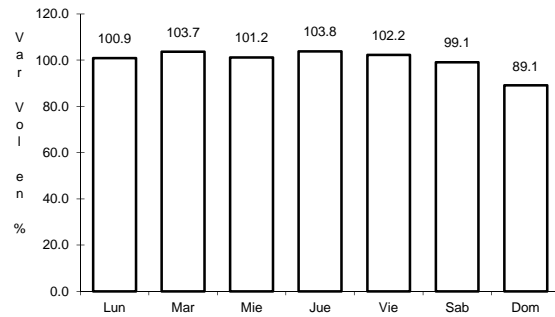
Tipo: 3

Sent: 0

20 CARR: AMOZOC - PEROTE (CUOTA)

CLAVE:

RUTA: MEX-140D



Km: 0.00

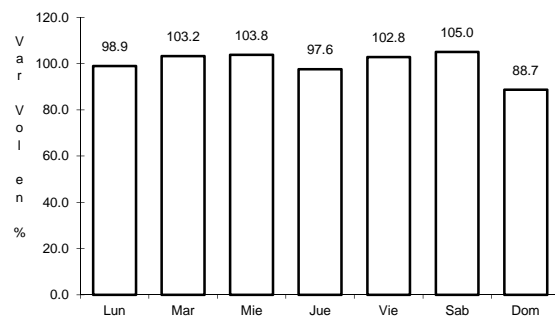
Tipo: 3

Sent: 0

21 CARR: CUACNOPALAN - OAXACA (CUOTA)

CLAVE: 00109

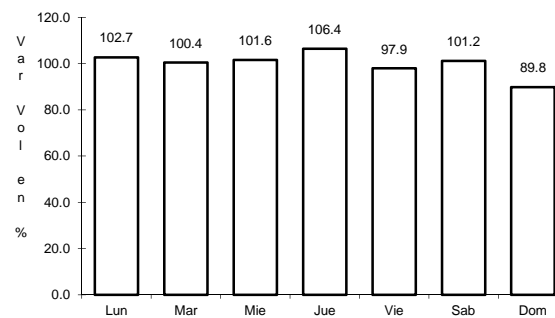
RUTA: MEX-135D



Km: 0.00

Tipo: 3

Sent: 0



Km: 40.00

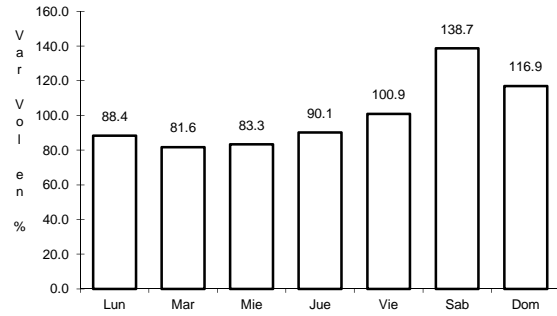
Tipo: 3

Sent: 0

22 CARR: ENT. TULANCINGO - TEJOCOTAL (CUOTA)

CLAVE: 00026

RUTA: MEX-132D



Km: 0.00

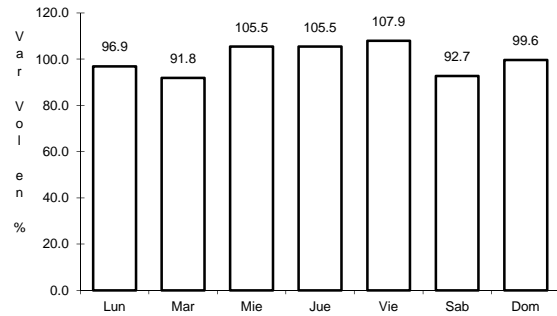
Tipo: 3

Sent: 0

23 CARR: MEXICO - PUEBLA (CUOTA)

CLAVE: 00450

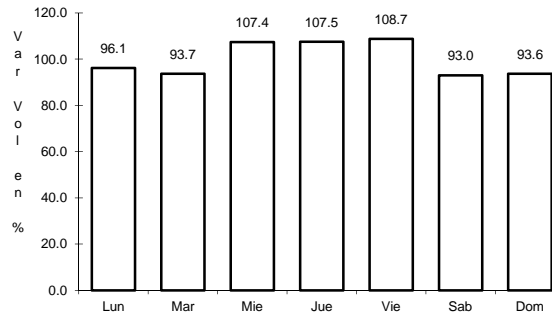
RUTA: MEX-150D



Km: 20.00

Tipo: 3

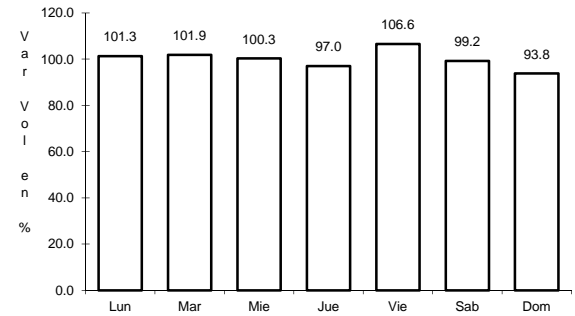
Sent: 1



Km: 20.00

Tipo: 3

Sent: 2



Km: 90.61

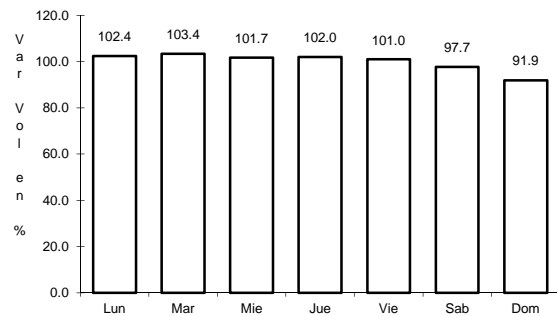
Tipo: 3

Sent: 1

24 CARR: PUEBLA - CORDOBA (CUOTA)

CLAVE: 00485

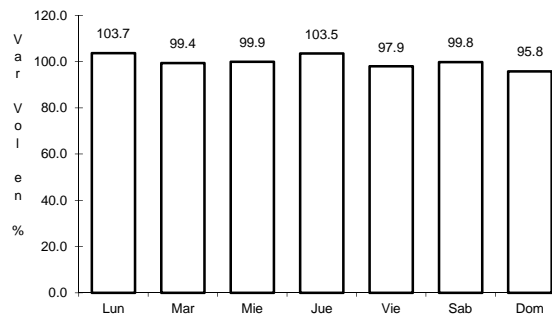
RUTA: MEX-150D



Km: 0.00

Tipo: 3

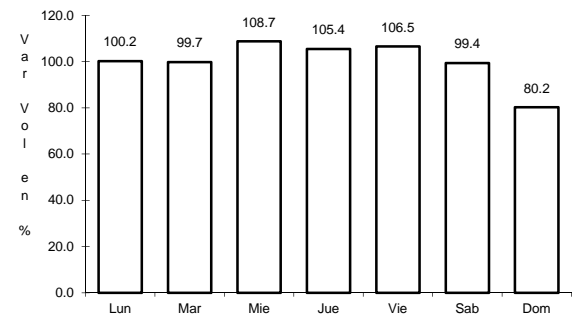
Sent: 1



Km: 0.00

Tipo: 3

Sent: 2



Km: 174.87

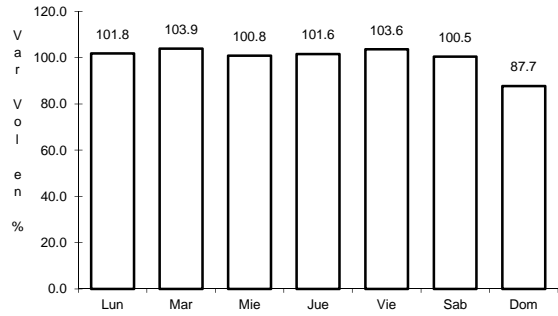
Tipo: 1

Sent: 1

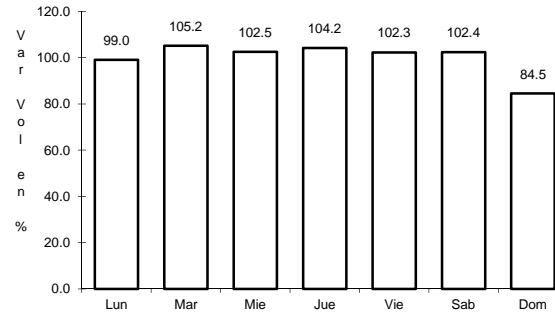
25 CARR: SAN MARTIN TEXMELUCAN - OCOTOXCO (CUOTA)

CLAVE: 00212

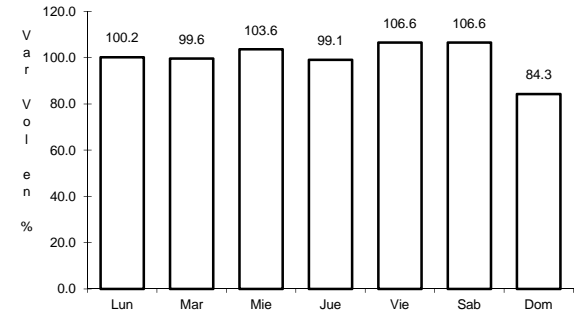
RUTA: MEX-117D



Km: 1.80 Tipo: 1 Sent: 0



Km: 35.20 Tipo: 1 Sent: 1

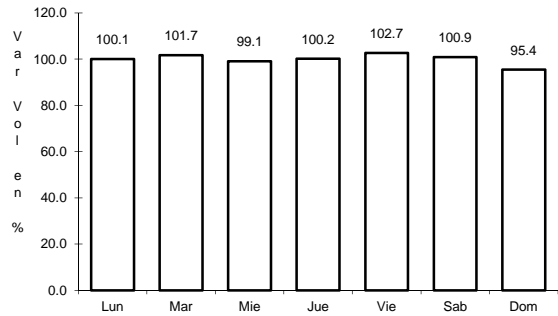


Km: 35.20 Tipo: 1 Sent: 2

26 CARR: TEJOCOTAL - TIHUATLAN (CUOTA)

CLAVE:

RUTA: MEX-130D

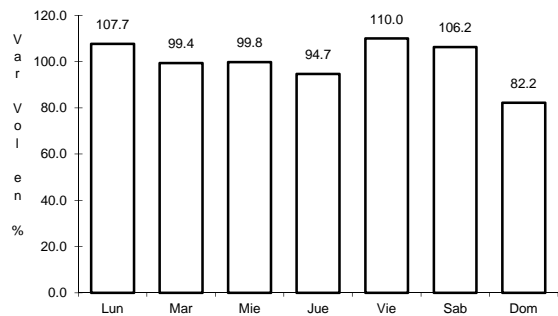


Km: 18.00 Tipo: 1 Sent: 0

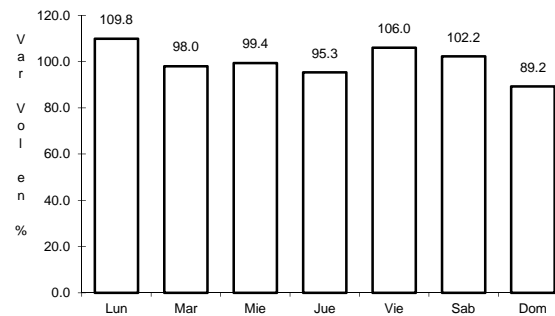
27 CARR: AMAYUCA - IZUCAR DE MATAMOROS

CLAVE: 00030

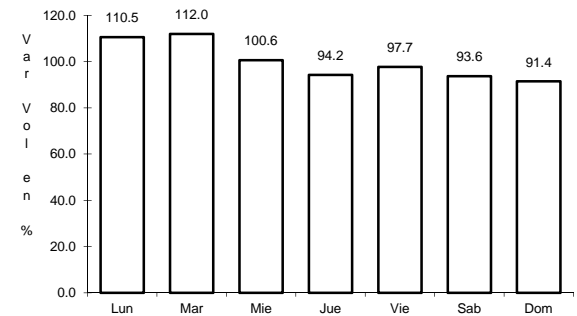
RUTA: MOR-031-PUE



Km: 0.66 Tipo: 3 Sent: 1



Km: 0.66 Tipo: 3 Sent: 2

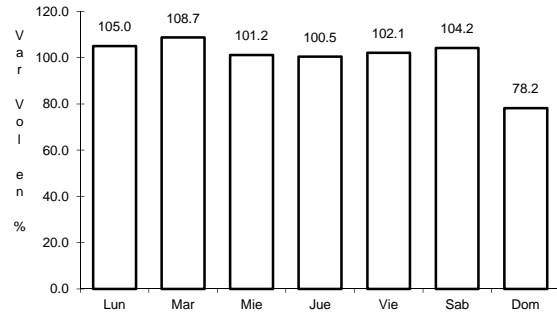


Km: 67.50 Tipo: 3 Sent: 0

28 CARR: AZUMBILLA - ALCOMUNGA

CLAVE: 21001

RUTA: PUE



Km: 0.00

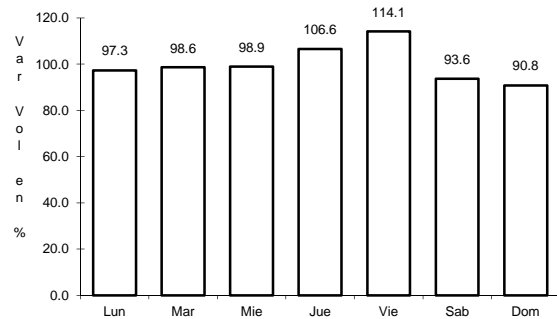
Tipo: 3

Sent: 0

29 CARR: CHOLULA - PUEBLA (VIA QUETZALCOATL)

CLAVE: 21203

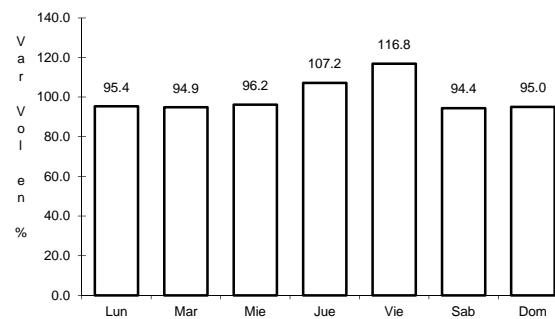
RUTA: PUE



Km: 0.00

Tipo: 3

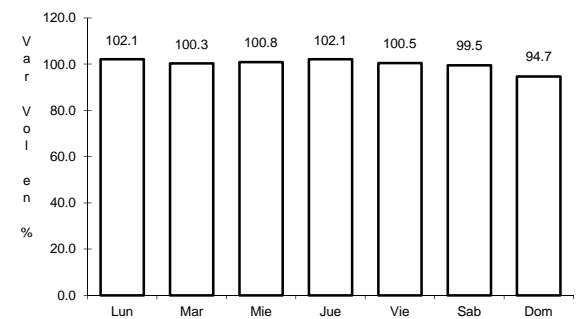
Sent: 1



Km: 0.00

Tipo: 3

Sent: 2



Km: 12.00

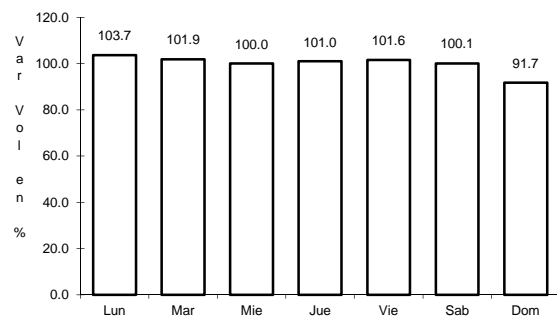
Tipo: 1

Sent: 1

30 CARR: CUAPIAXTLA - ACATLAN DE OSORIO

CLAVE: 21014

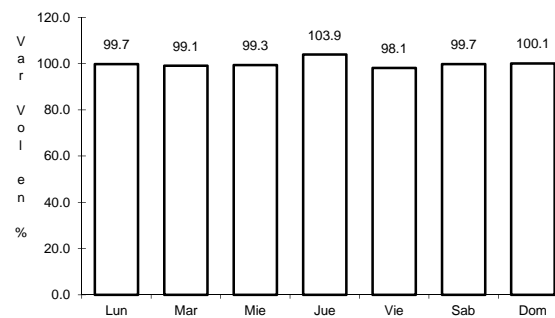
RUTA: PUE



Km: 0.00

Tipo: 3

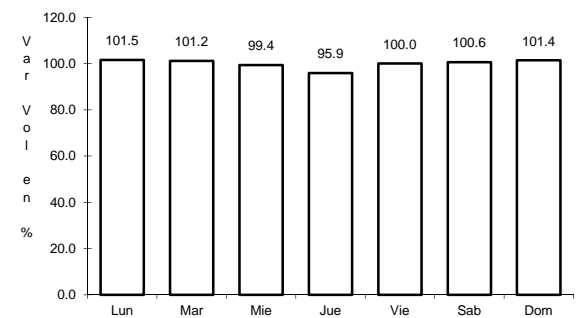
Sent: 0



Km: 63.35

Tipo: 1

Sent: 0



Km: 127.00

Tipo: 1

Sent: 0



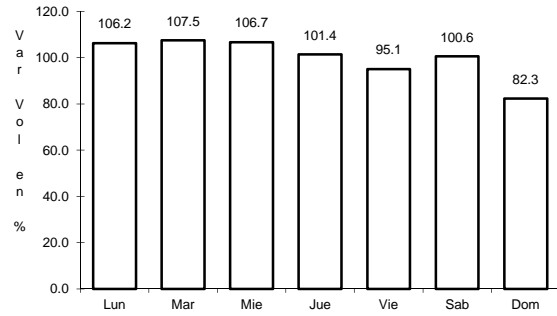




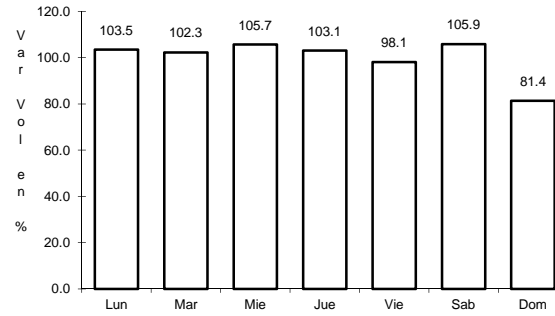
37 CARR: SAN JUAN IXCAQUIXTLA - PINO SUAREZ

CLAVE:

RUTA: PUE



Km: 42.80      Tipo: 1      Sent: 0

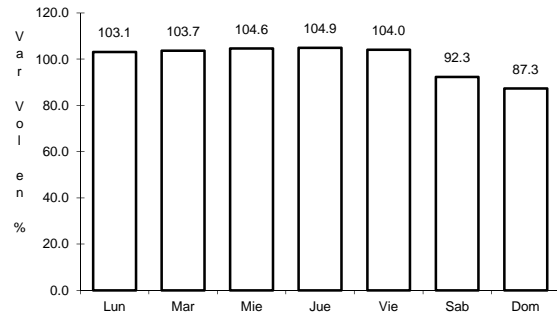


Km: 47.10      Tipo: 1      Sent: 0

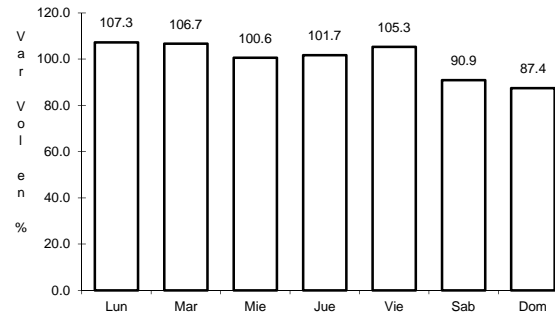
38 CARR: TECAMACHALCO - CAÑADA MORELOS

CLAVE: 21002

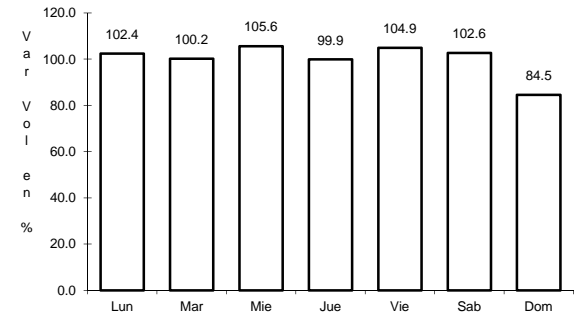
RUTA: PUE



Km: 0.00      Tipo: 3      Sent: 0



Km: 8.00      Tipo: 1      Sent: 0

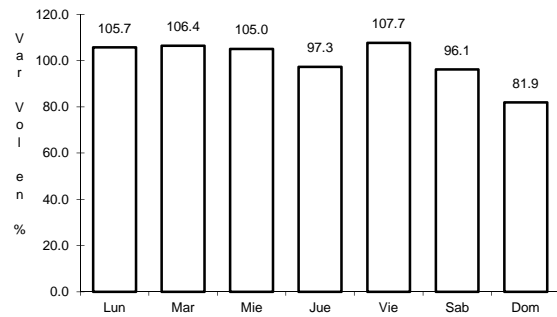


Km: 44.46      Tipo: 1      Sent: 0

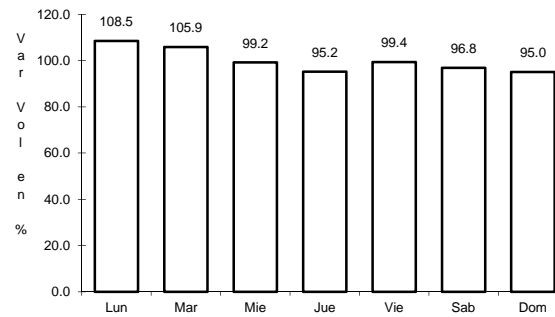
39 CARR: TECAMACHALCO - QUECHOLAC

CLAVE:

RUTA: PUE



Km: 7.80      Tipo: 1      Sent: 0

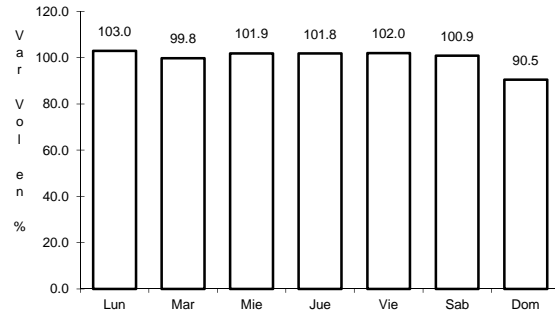


Km: 7.80      Tipo: 3      Sent: 0

40 CARR: ZACATLAN - ZAPOTITLAN

CLAVE: 21580

RUTA: PUE



Km: 0.00

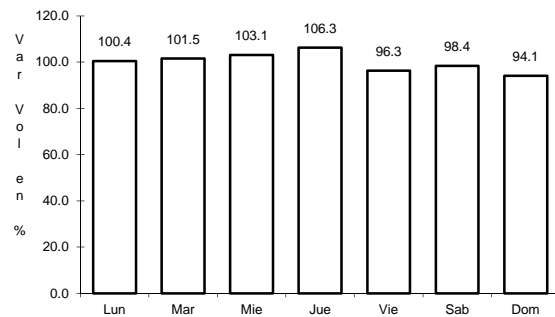
Tipo: 3

Sent: 0

41 CARR: ATLIXCO - JANTETELCO (CUOTA)

CLAVE:

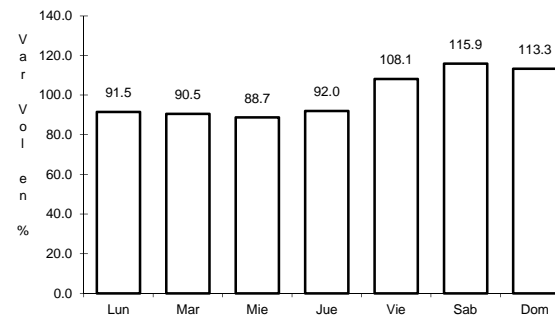
RUTA: PUE-D



Km: 0.00

Tipo: 3

Sent: 0



Km: 54.90

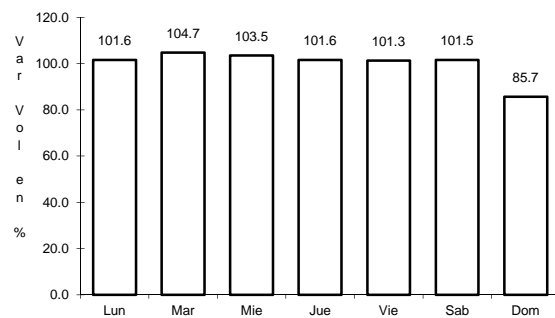
Tipo: 1

Sent: 0

42 CARR: LIBRES - TEZIUTLAN (CUOTA)

CLAVE:

RUTA: PUE-D



Km: 0.00

Tipo: 3

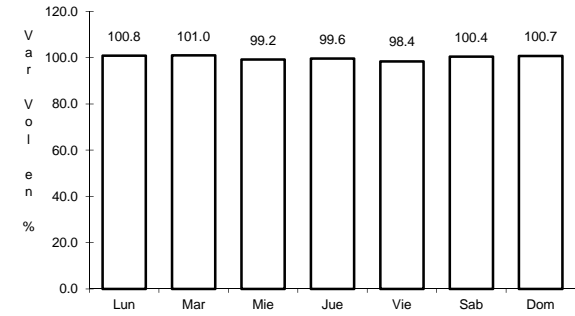
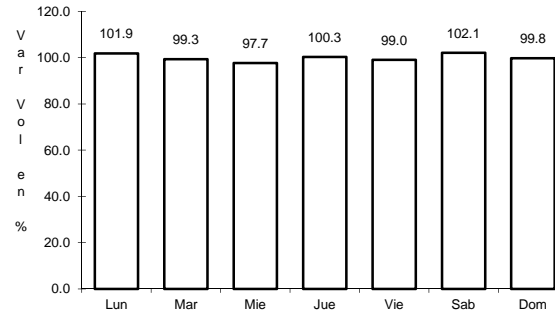
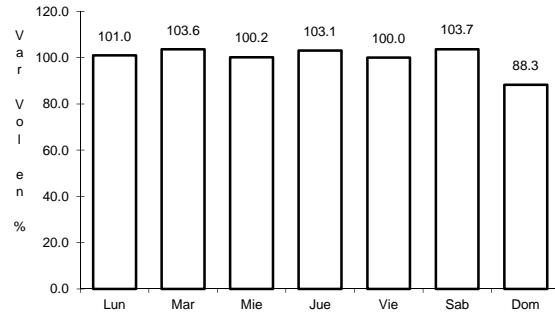
Sent: 0



46 CARR: TEHUACAN - HUITZO

CLAVE: 00211

RUTA: PUE-MEX-135



Km: 0.00      Tipo: 3      Sent: 0

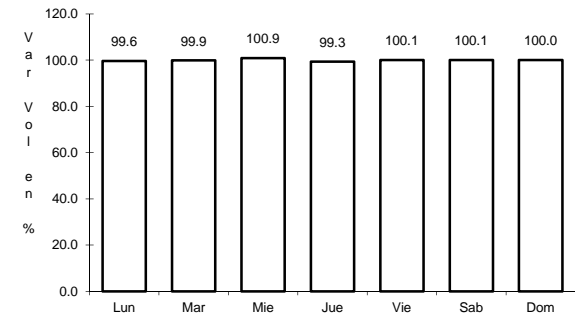
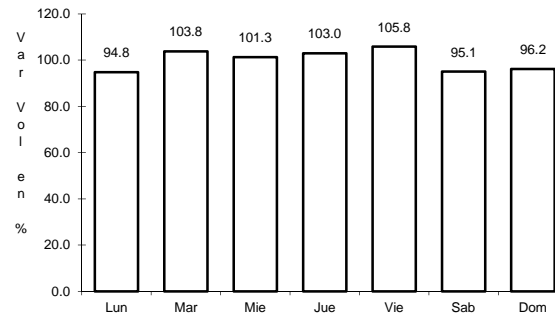
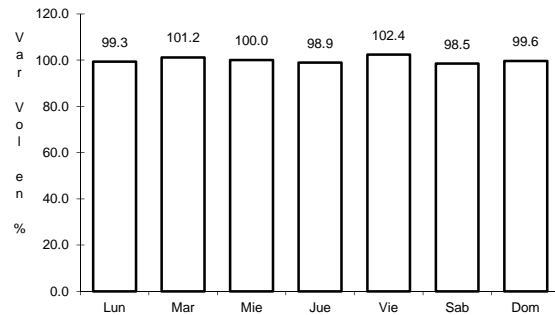
Km: 118.80      Tipo: 1      Sent: 0

Km: 202.70      Tipo: 1      Sent: 0

47 CARR: TEOTITLAN DE FLORES MAGON - TUXTEPEC

CLAVE: 00108

RUTA: OAX-PUE-MEX-182



Km: 0.00      Tipo: 3      Sent: 0

Km: 65.00      Tipo: 1      Sent: 0

Km: 185.00      Tipo: 1      Sent: 0