

OAXACA

---RED FEDERAL LIBRE---

1	BUENAVISTA - TUXTEPEC	MEX-175
2	CD. ALEMÁN - SAYULA	MEX-145
3	COATZACOALCOS - SALINA CRUZ	MEX-185
4	HUAJUAPAN DE LEÓN - OAXACA	MEX-190
5	JUCHITÁN - IXTEPEC	MEX
6	LA GRANJA - TEMASCAL	MEX
7	LA VENTOSA - SAN PEDRO TAPANATEPEC	MEX-190
8	LAS CRUCES - PINOTEPA NACIONAL	MEX-200
9	OAXACA - PUERTO ÁNGEL	MEX-175
10	OAXACA - TEHUANTEPEC	MEX-190
11	PUEBLA - HUAJUAPAN DE LEÓN	MEX-190
12	RAMAL A ASUNCIÓN IXTALTEPEC	MEX
13	SAN PABLO VILLA DE MITLA - T. C. (TUXTEPEC - PALOMARES)	MEX-179
14	SANTIAGO PINOTEPA NACIONAL - SALINA CRUZ	MEX-200
15	TAPANATEPEC - TALISMAN	MEX-200
16	TAPANATEPEC - TUXTLA GUTIERREZ	MEX-190
17	TEHUACÁN - HUAJUAPAN DE LEÓN	MEX-125
18	TUXTEPEC - ENT. PALOMARES	MEX-147
19	TUXTEPEC - T. C. (OAXACA - TEHUANTEPEC)	MEX-175
20	YUCUDÁA - SANTIAGO PINOTEPA NACIONAL	MEX-125

---RED FEDERAL DE CUOTA---

21	CUACNOPALÁN - OAXACA (CUOTA)	MEX-135D
22	LA VENTOSA - SALINA CRUZ (CUOTA)	MEX-185D

---RED ESTATAL LIBRE---

23	HUAJUAPAN DE LEÓN - EL CARRIZAL	OAX
24	LOMA BONITA - MIXTÁN	OAX
25	RAMAL A REFORMA DE PINEDA	OAX
26	RAMAL A UNIÓN HIDALGO	OAX

---CARRETERAS INTEGRADAS POR TRAMOS FEDERALES Y ESTATALES---

27	T. C. (OAXACA - PUERTO ÁNGEL) - PUERTO ESCONDIDO	MEX-OAX-161
28	TEHUACÁN - HUITZO	PUE-MEX-135
29	TEOTITLÁN DE FLORES MAGÓN - TUXTEPEC	OAX-PUE-MEX-182

20 OAXACA

SECRETARÍA DE COMUNICACIONES Y TRANSPORTES
DIRECCIÓN GENERAL DE SERVICIOS TÉCNICOS



- ① --- Número Índice 2011
- Red Federal Libre
- Red Federal Cuota
- Red Estatal Libre
- Red Estatal Cuota
- Carreteras Integradas por Tramos Federales y Estatales

OAXACA

1 CARR: BUENAVISTA - TUXTEPEC

CLAVE: 00624

RUTA: MEX-175

AÑO: 2010

LUGAR	ESTACION				CLASIFICACION VEHICULAR EN PORCIENTO								COORDENADAS						
	KM	TE	SC	TDPA	A	B	C2	C3	T3S2	T3S3	T3S2R4	OTROS	A	B	C	K'	D	LATITUD	LONGITUD
T. C. PASO DEL TORO - ACAYUCAN	0.00	3	0	1452	78.0	8.6	4.9	3.0	2.3	0.4	0.3	2.5	78.0	8.6	13.4	0.056	0.521	18.713506	-95.637976
PUENTE TLACOTALPAN	1.55	2	0	7884	78.2	8.2	5.1	3.0	2.3	0.4	0.3	2.5	78.2	8.2	13.6			18.704596	-95.641294
TLACOTALPAN	18.00	1	0	1705	77.8	8.8	4.9	3.0	2.3	0.4	0.3	2.5	77.8	8.8	13.4	0.071	0.523	18.612220	-95.649847
TLACOTALPAN	18.00	3	0	1524	77.7	8.5	4.8	3.3	2.3	0.4	0.3	2.7	77.7	8.5	13.8	0.064	0.512	18.616686	-95.669630
CARLOS A. CARRILLO	56.00	1	0	3865	77.8	8.6	4.9	3.2	2.3	0.4	0.3	2.5	77.8	8.6	13.6	0.064	0.500	18.378424	-95.749716
COSAMALOAPAN	60.00	1	0	9699	78.7	8.1	4.7	2.9	2.3	0.4	0.3	2.6	78.7	8.1	13.2	0.065	0.501	18.365722	-95.776284
COSAMALOAPAN	60.00	3	0	6427	76.4	9.0	5.4	3.3	2.5	0.4	0.3	2.7	76.4	9.0	14.6	0.065	0.501	18.352923	-95.805927
T. C. LA TINAJA - SANTA CRUZ	107.00	1	0	3108	77.6	8.8	5.0	3.0	2.3	0.4	0.3	2.6	77.6	8.8	13.6	0.071	0.501	18.168632	-96.089333
T. C. CD. ALEMAN - SAYULA	108.92	1	0	3008	77.1	9.1	4.9	3.1	2.4	0.4	0.3	2.7	77.1	9.1	13.8	0.068	0.517	18.168335	-96.093361
T. C. CD. ALEMAN - SAYULA	108.92	3	0	5927	78.4	8.2	4.8	3.1	2.2	0.4	0.3	2.6	78.4	8.2	13.4	0.062	0.506	18.169103	-96.104068
LIM. EDOS. TERM. VER. PPIA. OAX.	115.00																		
PUENTE CARACOL	117.20	2	0	5902	77.6	8.7	5.0	3.1	2.3	0.4	0.3	2.6	77.6	8.7	13.7			18.133058	-96.136687
TUXTEPEC	121.25	1	0	6976	78.1	8.4	4.9	3.1	2.2	0.4	0.3	2.6	78.1	8.4	13.5	0.063	0.502	18.110852	-96.134718

2 CARR: CD. ALEMAN - SAYULA

CLAVE: 00301

RUTA: MEX-145

AÑO: 2010

LUGAR	ESTACION				CLASIFICACION VEHICULAR EN PORCIENTO								COORDENADAS						
	KM	TE	SC	TDPA	A	B	C2	C3	T3S2	T3S3	T3S2R4	OTROS	A	B	C	K'	D	LATITUD	LONGITUD
CD. ALEMAN	0.00	3	0	5138	45.1	3.6	9.1	15.9	18.8	2.7	1.7	3.1	45.1	3.6	51.3	0.063	0.509	18.183794	-96.093476
LIM. EDOS. TERM. VER. PPIA. OAX.	1.80																		
PUENTE PAPALOAPAN	3.50	2	0	4198	45.7	3.7	9.1	15.2	19.0	2.6	1.7	3.0	45.7	3.7	50.6			18.159461	-96.096585
T. IZQ. LOMA BONITA	36.70	1	0	8380	46.8	3.6	8.9	14.8	18.4	2.6	1.8	3.1	46.8	3.6	49.6	0.067	0.502	18.095109	-95.880368
T. DER. VILLA AZUETA	41.50	1	0	6178	46.8	3.4	8.9	15.1	18.8	2.4	1.7	2.9	46.8	3.4	49.8	0.069	0.505	18.091212	-95.781121
LIM. EDOS. TERM. OAX. PPIA. VER.	43.16																		
T. IZQ. TESECHOACAN	56.70	1	0	5857	45.2	3.8	9.3	15.9	18.4	2.6	1.7	3.1	45.2	3.8	51.0	0.068	0.508	18.127709	-95.655382
X. C. SANTIAGO TUXTLA - PLAYA VICENTE	71.40	1	0	5300	46.5	3.6	9.1	14.8	18.5	2.8	1.7	3.0	46.5	3.6	49.9	0.072	0.501	18.068381	-95.533248
SAN JUAN EVANGELISTA	118.35	1	0	5023	45.4	3.7	9.7	15.6	18.4	2.5	1.7	3.0	45.4	3.7	50.9	0.075	0.503	17.911101	-95.132034
SAYULA DE ALEMAN	136.40	1	0	4841	44.5	3.9	8.9	15.9	19.5	2.7	1.6	3.0	44.5	3.9	51.6	0.059	0.501	17.886681	-94.961580

3 CARR: COATZACOALCOS - SALINA CRUZ

CLAVE: 00147

RUTA: MEX-185

AÑO: 2010

LUGAR	ESTACION				CLASIFICACION VEHICULAR EN PORCIENTO								COORDENADAS						
	KM	TE	SC	TDPA	A	B	C2	C3	T3S2	T3S3	T3S2R4	OTROS	A	B	C	K'	D	LATITUD	LONGITUD
COATZACOALCOS	0.00	3	1	9871	82.5	3.8	5.4	1.4	3.5	1.6	0.9	0.9	82.5	3.8	13.7	0.068	0.505	18.096254	-94.460268
COATZACOALCOS	0.00	3	2	10087	82.3	3.9	5.2	1.5	3.7	1.6	1.0	0.8	82.3	3.9	13.8	0.068	0.505	18.096254	-94.460268

OAXACA

3 CARR: COATZACOALCOS - SALINA CRUZ

CLAVE: 00147

RUTA: MEX-185

AÑO: 2010

LUGAR	ESTACION				CLASIFICACION VEHICULAR EN PORCIENTO								COORDENADAS						
	KM	TE	SC	TDPA	A	B	C2	C3	T3S2	T3S3	T3S2R4	OTROS	A	B	C	K'	D	LATITUD	LONGITUD
T. C. NUEVO TEAPA - COSOLEACAQUE	21.00	1	1	9811	81.0	3.2	5.7	1.1	4.2	1.5	2.7	0.6	81.0	3.2	15.8	0.064	0.502	18.025379	-94.536578
T. C. NUEVO TEAPA - COSOLEACAQUE	21.00	1	2	9895	81.1	3.1	6.2	1.0	3.5	1.4	2.9	0.8	81.1	3.1	15.8	0.066	0.502	18.031560	-94.529686
MINATITLAN	21.60	3	1	8280	77.8	5.6	6.2	2.6	2.9	2.1	2.3	0.5	77.8	5.6	16.6	0.075	0.506	18.001546	-94.592934
MINATITLAN	21.60	3	2	8414	79.0	4.3	5.8	3.1	2.9	1.3	3.1	0.5	79.0	4.3	16.7	0.076	0.506	18.001546	-94.592934
COSOLEACAQUE	31.50	1	0	13249	81.6	4.8	3.1	2.5	2.8	2.9	1.9	0.4	81.6	4.8	13.6	0.065	0.502	18.006929	-94.622720
JALTIPAN DE MORELOS	38.60	3	0	10188	82.4	3.6	4.3	2.6	2.3	2.6	1.8	0.4	82.4	3.6	14.0	0.061	0.501	17.961547	-94.730489
ACAYUCAN	59.60	1	0	10836	81.6	4.2	3.1	1.9	2.7	3.6	2.3	0.6	81.6	4.2	14.2	0.063	0.501	17.952767	-94.886433
SAYULA DE ALEMAN	71.00	1	0	13197	81.2	5.1	2.8	2.5	2.3	3.1	2.6	0.4	81.2	5.1	13.7	0.064	0.501	17.884856	-94.959112
SAYULA DE ALEMAN	71.00	3	0	6495	82.1	4.2	3.0	2.5	3.4	2.1	2.2	0.5	82.1	4.2	13.7	0.058	0.501	17.875826	-94.966099
CAMPO NUEVO	94.50	3	0	5113	77.2	5.2	6.3	2.9	2.2	2.9	2.3	1.0	77.2	5.2	17.6	0.076	0.502	17.700051	-95.073275
T. IZQ. JESUS CARRANZA	126.80	1	0	3972	84.3	3.2	3.8	2.5	2.6	1.1	1.9	0.6	84.3	3.2	12.5	0.077	0.507	17.438452	-95.077988
T. IZQ. JESUS CARRANZA	126.80	3	0	4376	81.9	5.3	2.6	2.6	2.1	0.9	4.1	0.5	81.9	5.3	12.8	0.070	0.503	17.432313	-95.076531
LIM. EDOS. TERM. VER. PPIA. OAX.	139.90																		
T. DER. TUXTEPEC	166.20	1	0	4580	72.2	6.5	4.2	2.7	5.8	2.6	5.3	0.7	72.2	6.5	21.3	0.078	0.502	17.144786	-95.063706
T. DER. TUXTEPEC	166.20	3	0	4257	72.4	5.9	4.2	2.9	5.3	2.8	5.6	0.9	72.4	5.9	21.7	0.077	0.505	17.132177	-95.060076
T. DER. ESTACION MOGOÑE	182.15	1	0	4268	72.2	6.1	4.4	2.3	5.6	2.7	6.2	0.5	72.2	6.1	21.7	0.078	0.501	17.011941	-95.010468
T. DER. MATIAS ROMERO	196.00	1	0	6765	70.1	5.8	5.7	2.9	6.6	2.9	5.3	0.7	70.1	5.8	24.1	0.068	0.501	16.887504	-95.014110
T. DER. BARRIO DE LA SOLEDAD	203.05	1	0	6984	70.7	6.3	6.7	2.3	7.1	3.0	3.1	0.8	70.7	6.3	23.0	0.081	0.501	16.817727	-95.033423
T. IZQ. SAN PEDRO TAPANATEPEC (2º ACCESO)	241.70	3	0	5507	69.9	6.8	6.4	2.1	6.9	3.6	3.8	0.5	69.9	6.8	23.3	0.087	0.503	16.543881	-94.952859
JUCHITAN DE ZARAGOZA	255.55	3	0	8955	68.4	6.3	8.5	2.1	6.6	3.1	4.5	0.5	68.4	6.3	25.3	0.067	0.502	16.437655	-95.032051
SANTO DOMINGO TEHUANTEPEC	283.95	3	0	15118	66.9	6.0	9.5	1.6	6.6	2.8	6.0	0.6	66.9	6.0	27.1	0.072	0.504	16.317021	-95.238160
SALINA CRUZ	302.35	1	1	11911	65.4	5.8	8.8	1.2	8.9	2.8	6.8	0.3	65.4	5.8	28.8	0.083	0.504	16.226048	-95.209846
SALINA CRUZ	302.35	1	2	12107	66.7	5.6	8.0	1.7	9.5	2.6	5.4	0.5	66.7	5.6	27.7	0.082	0.504	16.226048	-95.209846

4 CARR: HUAJUAPAN DE LEON - OAXACA

CLAVE: 20056

RUTA: MEX-190

AÑO: 2010

LUGAR	ESTACION				CLASIFICACION VEHICULAR EN PORCIENTO								COORDENADAS						
	KM	TE	SC	TDPA	A	B	C2	C3	T3S2	T3S3	T3S2R4	OTROS	A	B	C	K'	D	LATITUD	LONGITUD
HUAJUAPAN DE LEON	0.00																		
T. IZQ. TEHUACAN	1.35	1	0	8814	89.5	3.2	4.5	1.5	0.6	0.3	0.3	0.1	89.5	3.2	7.3	0.075	0.501	17.813364	-97.765976
T. IZQ. TEHUACAN	1.35	3	0	5705	89.7	2.9	4.5	1.6	0.6	0.3	0.3	0.1	89.7	2.9	7.4	0.080	0.501	17.803717	-97.759376
TAMAZULAPAN	38.61	1	0	3004	89.4	3.1	4.5	1.7	0.6	0.3	0.3	0.1	89.4	3.1	7.5	0.064	0.501	17.674741	-97.577113
TAMAZULAPAN	38.61	3	0	3611	89.7	3.0	4.4	1.6	0.6	0.3	0.3	0.1	89.7	3.0	7.3	0.071	0.500	17.671373	-97.564853
T. IZQ. SANTIAGO TEJUPAN	49.62	3	0	2423	89.3	3.1	4.6	1.7	0.6	0.3	0.3	0.1	89.3	3.1	7.6	0.087	0.502	17.657772	-97.473992
T. DER. TLAXIACO	61.43	3	0	2608	89.7	3.1	4.3	1.6	0.6	0.3	0.3	0.1	89.7	3.1	7.2	0.062	0.503	17.573531	-97.423372

OAXACA

4 CARR: HUAJUAPAN DE LEON - OAXACA

CLAVE: 20056

RUTA: MEX-190

AÑO: 2010

LUGAR	ESTACION				CLASIFICACION VEHICULAR EN PORCIENTO								COORDENADAS						
	KM	TE	SC	TDPA	A	B	C2	C3	T3S2	T3S3	T3S2R4	OTROS	A	B	C	K'	D	LATITUD	LONGITUD
ASUNCION NOCHIXTLAN	90.40	1	0	4872	89.4	3.1	4.6	1.6	0.6	0.3	0.3	0.1	89.4	3.1	7.5	0.079	0.501	17.463863	-97.253647
T. IZQ. TEHUACAN	161.73	1	0	3170	89.6	3.0	4.6	1.5	0.6	0.3	0.3	0.1	89.6	3.0	7.4	0.066	0.501	17.285585	-96.915915
T. IZQ. TEHUACAN	161.73	3	0	4258	90.2	3.0	4.0	1.5	0.6	0.3	0.3	0.1	90.2	3.0	6.8	0.079	0.501	17.284796	-96.900100
T. DER. TLALTINANGO	170.29	1	0	5934	89.1	3.2	4.8	1.6	0.6	0.3	0.3	0.1	89.1	3.2	7.7	0.077	0.501	17.246782	-96.849608
T. DER. TLALTINANGO	170.29	3	0	6000	89.4	3.0	4.6	1.7	0.6	0.3	0.3	0.1	89.4	3.0	7.6	0.085	0.503	17.244400	-96.844189
T. DER. NAZARENO ETLA	179.23	3	1	10510	89.8	3.0	4.3	1.6	0.6	0.3	0.3	0.1	89.8	3.0	7.2	0.076	0.503	17.169536	-96.788828
T. DER. NAZARENO ETLA	179.23	3	2	10635	89.2	3.2	4.5	1.7	0.7	0.3	0.3	0.1	89.2	3.2	7.6	0.075	0.503	17.169535	-96.788825
T. AUT. CUACNOPALAN - OAXACA	181.80	3	1	15615	89.1	3.4	4.5	1.7	0.6	0.3	0.3	0.1	89.1	3.4	7.5	0.071	0.514	17.143025	-96.777859
T. AUT. CUACNOPALAN - OAXACA	181.80	3	2	14765	89.3	3.2	4.5	1.7	0.6	0.3	0.3	0.1	89.3	3.2	7.5	0.075	0.514	17.143024	-96.777860
OAXACA	190.60	1	1	19877	89.8	3.1	4.2	1.6	0.6	0.3	0.3	0.1	89.8	3.1	7.1	0.063	0.528	17.096319	-96.749581
OAXACA	190.60	1	2	19518	90.4	2.8	4.0	1.5	0.6	0.3	0.3	0.1	90.4	2.8	6.8	0.067	0.528	17.096319	-96.749581

5 CARR: JUCHITAN - IXTEPEC

CLAVE: 20359

RUTA: MEX

AÑO: 2010

LUGAR	ESTACION				CLASIFICACION VEHICULAR EN PORCIENTO								COORDENADAS						
	KM	TE	SC	TDPA	A	B	C2	C3	T3S2	T3S3	T3S2R4	OTROS	A	B	C	K'	D	LATITUD	LONGITUD
JUCHITAN DE ZARAGOZA	0.00																		
X. C. COATZACOALCOS - SALINA CRUZ	0.15	3	0	9847	87.7	3.6	5.9	0.2	0.9	0.5	0.5	0.7	87.7	3.6	8.7	0.069	0.501	16.449097	-95.026199
IXTEPEC	16.00	1	1	3706	86.5	4.4	6.5	0.5	1.0	0.2	0.4	0.5	86.5	4.4	9.1	0.069	0.501	16.541161	-95.082341
IXTEPEC	16.00	1	2	3722	86.7	4.1	6.7	0.5	1.0	0.1	0.5	0.4	86.7	4.1	9.2	0.069	0.501	16.541161	-95.082341

6 CARR: LA GRANJA - TEMASCAL

CLAVE: 00275

RUTA: MEX

AÑO: 2010

LUGAR	ESTACION				CLASIFICACION VEHICULAR EN PORCIENTO								COORDENADAS						
	KM	TE	SC	TDPA	A	B	C2	C3	T3S2	T3S3	T3S2R4	OTROS	A	B	C	K'	D	LATITUD	LONGITUD
T. C. LA TINAJA - SANTA CRUZ	0.00	3	0	3320	85.1	3.5	4.0	2.4	2.7	0.5	1.2	0.6	85.1	3.5	11.4	0.066	0.502	18.352977	-96.261721
LIM. EDOS. TERM. VER. PPIA. OAX.	5.00																		
TEMASCAL	23.00	1	0	1883	88.1	5.1	3.3	1.4	1.2	0.2	0.2	0.5	88.1	5.1	6.8	0.083	0.511	18.252796	-96.395476

7 CARR: LA VENTOSA - SAN PEDRO TAPANATEPEC

CLAVE: 20059

RUTA: MEX-190

AÑO: 2010

LUGAR	ESTACION				CLASIFICACION VEHICULAR EN PORCIENTO								COORDENADAS						
	KM	TE	SC	TDPA	A	B	C2	C3	T3S2	T3S3	T3S2R4	OTROS	A	B	C	K'	D	LATITUD	LONGITUD
LA VENTOSA	0.00	3	0	4977	71.1	4.0	6.2	5.6	6.5	4.6	1.6	0.4	71.1	4.0	24.9	0.082	0.501	16.550169	-94.944370
T. IZQ. NILTEPEC	38.01	3	0	3959	70.6	3.8	5.7	5.1	6.1	4.2	4.1	0.4	70.6	3.8	25.6	0.060	0.501	16.558231	-94.605699

OAXACA

7 CARR: LA VENTOSA - SAN PEDRO TAPANATEPEC

CLAVE: 20059

RUTA: MEX-190

AÑO: 2010

LUGAR	ESTACION				CLASIFICACION VEHICULAR EN PORCIENTO								COORDENADAS						
	KM	TE	SC	TDPA	A	B	C2	C3	T3S2	T3S3	T3S2R4	OTROS	A	B	C	K'	D	LATITUD	LONGITUD
SANTO DOMINGO ZANATEPEC	68.25	3	0	4004	68.5	3.9	6.7	5.9	5.6	5.6	3.4	0.4	68.5	3.9	27.6	0.058	0.501	16.476300	-94.345386
SAN PEDRO TAPANATEPEC	91.80	1	0	4266	72.3	4.2	6.4	3.0	5.0	5.1	3.7	0.3	72.3	4.2	23.5	0.056	0.502	16.380141	-94.198929

8 CARR: LAS CRUCES - PINOTEPA NACIONAL

CLAVE: 00073

RUTA: MEX-200

AÑO: 2010

LUGAR	ESTACION				CLASIFICACION VEHICULAR EN PORCIENTO								COORDENADAS						
	KM	TE	SC	TDPA	A	B	C2	C3	T3S2	T3S3	T3S2R4	OTROS	A	B	C	K'	D	LATITUD	LONGITUD
T. C. CHILPANCINGO - ACAPULCO	0.00	3	1	16785	75.1	6.0	3.0	2.0	4.4	4.2	4.7	0.6	75.1	6.0	18.9	0.062	0.520	16.885646	-99.832875
T. C. CHILPANCINGO - ACAPULCO	0.00	3	2	15484	76.5	6.1	3.3	1.8	4.0	3.1	4.5	0.7	76.5	6.1	17.4	0.066	0.520	16.885646	-99.832875
T. DER. PUERTO MARQUES	4.62	1	1	16669	79.9	4.8	3.5	2.1	3.0	3.3	2.7	0.7	79.9	4.8	15.3	0.066	0.501	16.865051	-99.810249
T. DER. PUERTO MARQUES	4.62	1	2	16769	81.3	3.9	2.9	1.7	3.5	4.0	2.1	0.6	81.3	3.9	14.8	0.061	0.501	16.865051	-99.810249
T. DER. PUERTO MARQUES	4.62	3	0	9546	81.8	3.9	2.6	1.8	3.0	3.8	2.3	0.8	81.8	3.9	14.3	0.078	0.501	16.851991	-99.794580
SAN MARCOS	58.90	1	0	8395	80.6	3.7	4.3	1.3	3.1	3.6	2.7	0.7	80.6	3.7	15.7	0.069	0.502	16.783574	-99.398298
NEXPA	84.96	3	0	7400	83.4	3.6	3.9	1.8	1.5	3.2	1.9	0.7	83.4	3.6	13.0	0.067	0.502	16.768509	-99.185527
T. IZQ. COPALA (1° ACCESO)	117.50	1	0	4358	81.3	3.4	4.2	2.8	3.8	1.5	2.5	0.5	81.3	3.4	15.3	0.071	0.501	16.606889	-98.985093
T. IZQ. COPALA (1° ACCESO)	117.50	3	0	4764	82.5	3.1	3.9	2.9	4.3	1.0	1.5	0.8	82.5	3.1	14.4	0.070	0.500	16.604804	-98.980931
T. IZQ. OMETEPEC	175.88	1	0	3662	84.6	3.3	3.6	2.7	2.9	1.0	1.1	0.8	84.6	3.3	12.1	0.081	0.500	16.655291	-98.503135
CUAJINICUILAPA	200.60	3	0	4760	82.8	4.3	4.1	2.5	2.9	1.1	1.6	0.7	82.8	4.3	12.9	0.068	0.501	16.465657	-98.400795
LIM. EDOS. TERM. GRO. PPIA. OAX.	207.80																		
T. IZQ. SAN PEDRO ORIZABA	215.00	3	0	1508	86.3	2.3	2.3	2.5	2.8	2.1	1.0	0.7	86.3	2.3	11.4	0.084	0.502	16.442490	-98.341614
T. IZQ. TLAXIACO	245.47	1	0	2592	84.4	2.5	3.5	2.5	2.9	2.0	1.2	1.0	84.4	2.5	13.1	0.091	0.501	16.382363	-98.099214
T. IZQ. TLAXIACO	245.47	3	0	4739	84.7	2.6	3.4	1.3	2.8	2.7	1.9	0.6	84.7	2.6	12.7	0.080	0.502	16.370292	-98.088645
PINOTEPA NACIONAL	252.50																		

9 CARR: OAXACA - PUERTO ANGEL

CLAVE: 20091

RUTA: MEX-175

AÑO: 2010

LUGAR	ESTACION				CLASIFICACION VEHICULAR EN PORCIENTO								COORDENADAS						
	KM	TE	SC	TDPA	A	B	C2	C3	T3S2	T3S3	T3S2R4	OTROS	A	B	C	K'	D	LATITUD	LONGITUD
OAXACA	0.00	3	1	14142	90.7	2.4	5.6	0.9	0.3	0.1	0.0	0.0	90.7	2.4	6.9	0.076	0.541	17.032238	-96.712924
OAXACA	0.00	3	2	16698	90.8	2.5	5.3	1.0	0.3	0.1	0.0	0.0	90.8	2.5	6.7	0.070	0.541	17.032252	-96.712915
T. DER. AEROPUERTO	10.46	1	1	13957	90.2	2.5	5.9	1.0	0.3	0.1	0.0	0.0	90.2	2.5	7.3	0.070	0.517	17.007497	-96.712886
T. DER. AEROPUERTO	10.46	1	2	14950	91.0	2.6	5.0	1.0	0.3	0.1	0.0	0.0	91.0	2.6	6.4	0.068	0.517	17.007500	-96.712870
T. DER. PUERTO ESCONDIDO	19.07	1	0	15742	90.4	2.6	5.6	1.0	0.3	0.1	0.0	0.0	90.4	2.6	7.0	0.079	0.501	16.932104	-96.704068
T. DER. PUERTO ESCONDIDO	19.07	3	0	8411	90.4	2.6	5.6	1.0	0.3	0.1	0.0	0.0	90.4	2.6	7.0	0.083	0.502	16.926122	-96.701264
OCOTLAN	35.67	3	0	6363	90.5	2.6	5.5	1.0	0.3	0.1	0.0	0.0	90.5	2.6	6.9	0.087	0.500	16.756872	-96.680342

OAXACA

9 CARR: OAXACA - PUERTO ANGEL

CLAVE: 20091

RUTA: MEX-175

AÑO: 2010

LUGAR	ESTACION				CLASIFICACION VEHICULAR EN PORCIENTO								COORDENADAS						
	KM	TE	SC	TDPA	A	B	C2	C3	T3S2	T3S3	T3S2R4	OTROS	A	B	C	K'	D	LATITUD	LONGITUD
EJUTLA DE CRESPO	64.04	1	0	3092	90.2	2.6	5.8	1.0	0.3	0.1	0.0	0.0	90.2	2.6	7.2	0.088	0.501	16.606070	-96.738029
EJUTLA DE CRESPO	64.04	3	0	2212	90.7	2.7	5.2	1.0	0.3	0.1	0.0	0.0	90.7	2.7	6.6	0.082	0.501	16.515123	-96.736211
MAHUATLAN DE PORFIRIO DIAZ	100.64	3	0	1421	90.6	2.5	5.5	1.0	0.3	0.1	0.0	0.0	90.6	2.5	6.9	0.080	0.501	16.285374	-96.583938
SAN MIGUEL SUCHIXTEPEC	144.00	1	0	1449	90.3	2.6	5.7	1.0	0.3	0.1	0.0	0.0	90.3	2.6	7.1	0.086	0.506	16.103249	-96.471781
CANDELARIA LOXICHA	195.00	1	0	1066	90.5	2.7	5.4	1.0	0.3	0.1	0.0	0.0	90.5	2.7	6.8	0.091	0.501	15.930659	-96.482674
SAN PEDRO POCHUTLA	238.00	1	0	3244	91.1	2.4	5.1	1.0	0.3	0.1	0.0	0.0	91.1	2.4	6.5	0.070	0.506	15.765890	-96.463251
PUERTO ANGEL	245.40	1	0	4017	90.6	2.5	5.5	1.0	0.3	0.1	0.0	0.0	90.6	2.5	6.9	0.080	0.504	15.683960	-96.482662

10 CARR: OAXACA - TEHUANTEPEC

CLAVE: 20057

RUTA: MEX-190

AÑO: 2010

LUGAR	ESTACION				CLASIFICACION VEHICULAR EN PORCIENTO								COORDENADAS						
	KM	TE	SC	TDPA	A	B	C2	C3	T3S2	T3S3	T3S2R4	OTROS	A	B	C	K'	D	LATITUD	LONGITUD
OAXACA	0.00	3	1	12853	89.2	2.8	4.9	1.1	0.5	0.7	0.7	0.1	89.2	2.8	8.0	0.080	0.535	17.067848	-96.688150
OAXACA	0.00	3	2	12866	90.0	2.5	4.5	1.0	0.5	0.7	0.7	0.1	90.0	2.5	7.5	0.080	0.535	17.067848	-96.688150
T. IZQ. GUELATAO	8.69	3	1	9721	89.5	2.6	4.8	1.1	0.5	0.7	0.7	0.1	89.5	2.6	7.9	0.078	0.504	17.064469	-96.676208
T. IZQ. GUELATAO	8.69	3	2	9563	88.9	2.9	5.0	1.1	0.5	0.8	0.7	0.1	88.9	2.9	8.2	0.079	0.504	17.064469	-96.676208
TEOTITLAN DEL VALLE	26.50	1	0	10442	89.3	2.6	5.0	1.1	0.5	0.7	0.7	0.1	89.3	2.6	8.1	0.074	0.501	16.996508	-96.528220
T. DER. TLACOLULA	33.64	1	0	6730	89.1	2.8	4.9	1.2	0.5	0.7	0.7	0.1	89.1	2.8	8.1	0.089	0.501	16.970599	-96.489184
T. IZQ. VILLA DE MITLA	42.66	1	0	3860	89.1	2.6	5.2	1.1	0.5	0.7	0.7	0.1	89.1	2.6	8.3	0.070	0.503	16.921253	-96.405973
T. IZQ. VILLA DE MITLA	42.66	3	0	3949	88.9	2.8	5.1	1.2	0.5	0.7	0.7	0.1	88.9	2.8	8.3	0.066	0.500	16.912056	-96.397711
SAN PEDRO TOTOLAPAN	81.00	1	0	2569	89.1	2.7	5.0	1.2	0.5	0.7	0.7	0.1	89.1	2.7	8.2	0.087	0.504	16.672275	-96.306642
T. IZQ. NEJAPA DE MADERO	127.00	1	0	2223	89.9	2.7	4.5	1.0	0.5	0.6	0.7	0.1	89.9	2.7	7.4	0.074	0.500	16.616914	-96.036039
LA REFORMA	184.62	1	0	1861	89.6	2.6	4.7	1.1	0.5	0.7	0.7	0.1	89.6	2.6	7.8	0.089	0.504	16.399485	-95.767440
LA REFORMA	184.62	3	0	2051	89.8	2.7	4.6	1.0	0.5	0.6	0.7	0.1	89.8	2.7	7.5	0.085	0.500	16.398400	-95.761173
T. DER. MAGDALENA TEQUISISTLAN	206.66	1	0	2248	89.4	2.6	5.0	1.0	0.5	0.7	0.7	0.1	89.4	2.6	8.0	0.080	0.507	16.415786	-95.599454
T. IZQ. JALAPA DE MARQUEZ	224.60	3	0	4386	89.7	2.5	4.7	1.1	0.5	0.7	0.7	0.1	89.7	2.5	7.8	0.078	0.502	16.433141	-95.434113
TEHUANTEPEC	250.60	1	0	6931	88.7	2.9	5.2	1.2	0.5	0.7	0.7	0.1	88.7	2.9	8.4	0.073	0.501	16.328941	-95.262285

11 CARR: PUEBLA - HUAJUAPAN DE LEON

CLAVE: 00049

RUTA: MEX-190

AÑO: 2010

LUGAR	ESTACION				CLASIFICACION VEHICULAR EN PORCIENTO								COORDENADAS						
	KM	TE	SC	TDPA	A	B	C2	C3	T3S2	T3S3	T3S2R4	OTROS	A	B	C	K'	D	LATITUD	LONGITUD
PUEBLA	0.00	3	1	13670	80.7	6.3	6.3	1.8	2.1	1.3	1.0	0.5	80.7	6.3	13.0	0.071	0.512	19.033147	-98.263682
PUEBLA	0.00	3	2	14322	80.9	6.2	6.4	1.6	2.0	1.3	0.9	0.7	80.9	6.2	12.9	0.073	0.512	19.033147	-98.263682
ATLIXCO	29.88	1	0	14396	81.6	5.9	5.2	2.0	3.0	1.2	0.6	0.5	81.6	5.9	12.5	0.075	0.502	18.930537	-98.407087

OAXACA

11 CARR: PUEBLA - HUAJUAPAN DE LEON

CLAVE: 00049

RUTA: MEX-190

AÑO: 2010

LUGAR	ESTACION				CLASIFICACION VEHICULAR EN PORCIENTO								COORDENADAS						
	KM	TE	SC	TDPA	A	B	C2	C3	T3S2	T3S3	T3S2R4	OTROS	A	B	C	K'	D	LATITUD	LONGITUD
ATLIXCO	29.88	3	0	13628	78.1	6.2	6.4	2.9	3.3	1.5	1.1	0.5	78.1	6.2	15.7	0.068	0.504	18.879843	-98.435850
TEPEOJUMA	51.90	1	0	9609	76.8	6.1	7.6	3.3	2.9	1.6	1.3	0.4	76.8	6.1	17.1	0.065	0.505	18.730877	-98.449040
IZUCAR DE MATAMOROS	67.00	1	0	10764	80.6	4.1	5.8	2.4	3.3	1.5	1.6	0.7	80.6	4.1	15.3	0.067	0.502	18.631284	-98.469077
T. DER. CUAUTLA	70.00	3	0	9425	81.1	4.2	5.1	2.2	3.5	2.1	1.4	0.4	81.1	4.2	14.7	0.064	0.505	18.579623	-98.450177
TEHUITZINGO	113.30	1	0	5091	82.2	3.8	4.6	2.1	3.7	1.3	1.8	0.5	82.2	3.8	14.0	0.067	0.504	18.339985	-98.285124
ACATLAN DE OSORIO	154.20	1	0	6651	82.8	4.4	5.7	0.8	3.3	1.0	1.6	0.4	82.8	4.4	12.8	0.064	0.500	18.184770	-98.057445
CHILA	192.30	3	0	2447	83.0	5.8	4.4	2.4	2.2	0.6	1.2	0.4	83.0	5.8	11.2	0.061	0.500	17.967139	-97.864359
LIM. EDOS. TERM. PUE. PPIA. OAX.	200.30																		
T. IZQ. LAS PALMAS	202.10	1	0	2108	80.3	4.8	8.9	1.4	1.1	0.8	1.7	1.0	80.3	4.8	14.9	0.070	0.503	17.882204	-97.836514
HUAJUAPAN DE LEON	219.30	1	0	2605	81.1	4.1	8.3	1.3	2.8	0.5	1.3	0.6	81.1	4.1	14.8	0.081	0.502	17.835609	-97.790114

12 CARR: RAMAL A ASUNCION IXTALTEPEC

CLAVE: 20624

RUTA: MEX

AÑO: 2010

LUGAR	ESTACION				CLASIFICACION VEHICULAR EN PORCIENTO								COORDENADAS						
	KM	TE	SC	TDPA	A	B	C2	C3	T3S2	T3S3	T3S2R4	OTROS	A	B	C	K'	D	LATITUD	LONGITUD
T. C. COATZACOALCOS - SALINA CRUZ	0.00	3	0	6773	78.3	5.4	5.4	3.9	2.4	1.4	2.5	0.7	78.3	5.4	16.3	0.068	0.501	16.438566	-95.034963
ASUNCION IXTALTEPEC	9.70	1	0	4562	76.7	6.0	5.8	3.8	2.8	1.8	2.4	0.7	76.7	6.0	17.3	0.073	0.504	16.501249	-95.064505

13 CARR: SAN PABLO VILLA DE MITLA - T. C. (TUXTEPEC - PALOMARES)

CLAVE: 00106

RUTA: MEX-179

AÑO: 2010

LUGAR	ESTACION				CLASIFICACION VEHICULAR EN PORCIENTO								COORDENADAS						
	KM	TE	SC	TDPA	A	B	C2	C3	T3S2	T3S3	T3S2R4	OTROS	A	B	C	K'	D	LATITUD	LONGITUD
T. C. OAXACA - TEHUANTEPEC	0.00	3	0	1640	82.8	5.9	5.6	2.7	1.6	0.3	0.3	0.8	82.8	5.9	11.3	0.087	0.509	16.917781	-96.385600
SAN PEDRO Y SAN PABLO AYUTLA	55.00	1	0	1240	84.3	6.4	4.6	2.1	0.9	0.5	0.2	1.0	84.3	6.4	9.3	0.085	0.505	17.018660	-96.080813
T. DER. ZACATEPEC	90.00	1	0	1258	85.8	5.7	4.2	2.0	1.0	0.3	0.2	0.8	85.8	5.7	8.5	0.097	0.502	17.148383	-96.035379
LIM. EDOS. TERM. OAX. PPIA. VER.	217.70																		
T. C. TUXTEPEC - ENT. PALOMARES	238.70	1	0	2036	81.3	6.2	8.1	1.0	1.1	1.3	0.5	0.5	81.3	6.2	12.5	0.083	0.508	17.702459	-95.734835

14 CARR: SANTIAGO PINOTEPANACIONAL - SALINA CRUZ

CLAVE: 20074

RUTA: MEX-200

AÑO: 2010

LUGAR	ESTACION				CLASIFICACION VEHICULAR EN PORCIENTO								COORDENADAS						
	KM	TE	SC	TDPA	A	B	C2	C3	T3S2	T3S3	T3S2R4	OTROS	A	B	C	K'	D	LATITUD	LONGITUD
SANTIAGO PINOTEPANACIONAL	0.00	3	0	3352	81.1	3.9	6.0	1.2	3.6	1.4	2.0	0.8	81.1	3.9	15.0	0.077	0.501	16.335126	-98.039331
SAN ANDRES HUAXPALTEPEC	18.07	3	0	2721	80.2	4.2	5.9	1.7	3.0	2.3	2.0	0.7	80.2	4.2	15.6	0.082	0.503	16.324487	-97.905499
SAN JOSE DEL PROGRESO	59.51	1	0	2854	80.0	3.7	6.5	1.4	3.8	2.3	1.7	0.6	80.0	3.7	16.3	0.083	0.502	16.098963	-97.701024

OAXACA

14 CARR: SANTIAGO PINOTEPA NACIONAL - SALINA CRUZ

CLAVE: 20074

RUTA: MEX-200

AÑO: 2010

LUGAR	ESTACION				CLASIFICACION VEHICULAR EN PORCIENTO								COORDENADAS						
	KM	TE	SC	TDPA	A	B	C2	C3	T3S2	T3S3	T3S2R4	OTROS	A	B	C	K'	D	LATITUD	LONGITUD
T. IZQ. TUTUTEPEC	65.85	3	0	3836	81.2	4.3	5.4	1.2	2.8	2.7	1.6	0.8	81.2	4.3	14.5	0.078	0.503	16.080412	-97.636173
T. IZQ. BAJOS DE CHILA	131.94	1	0	3020	80.1	4.5	6.2	1.5	2.6	1.9	2.7	0.5	80.1	4.5	15.4	0.080	0.500	15.918793	-97.129426
PUERTO ESCONDIDO	141.54	1	0	5287	78.8	4.2	6.5	1.6	2.8	1.4	4.2	0.5	78.8	4.2	17.0	0.071	0.501	15.873303	-97.095379
PUERTO ESCONDIDO	141.54	3	0	4805	75.2	4.1	7.2	1.3	3.8	1.9	5.9	0.6	75.2	4.1	20.7	0.060	0.502	15.825443	-97.020392
X. C. OAXACA - PUERTO ANGEL	209.95	1	0	4153	80.5	3.8	7.6	1.2	3.1	1.1	2.1	0.6	80.5	3.8	15.7	0.075	0.502	15.731574	-96.482170
X. C. OAXACA - PUERTO ANGEL	209.95	3	0	3176	81.6	3.5	6.3	1.3	3.6	1.6	1.6	0.5	81.6	3.5	14.9	0.080	0.502	15.729415	-96.471889
SALINA CRUZ	394.00																		

15 CARR: TAPANATEPEC - TALISMAN

CLAVE: 00075

RUTA: MEX-200

AÑO: 2010

LUGAR	ESTACION				CLASIFICACION VEHICULAR EN PORCIENTO								COORDENADAS						
	KM	TE	SC	TDPA	A	B	C2	C3	T3S2	T3S3	T3S2R4	OTROS	A	B	C	K'	D	LATITUD	LONGITUD
TAPANATEPEC	0.00	3	0	4290	75.5	5.2	4.4	1.9	7.7	2.3	2.5	0.5	75.5	5.2	19.3	0.067	0.503	16.346226	-94.190627
LIM. EDOS. TERM. OAX. PPIA. CHIS.	25.90																		
T. DER. EMILIANO ZAPATA	26.20	1	0	4630	74.3	6.4	4.8	2.7	8.0	1.9	1.1	0.8	74.3	6.4	19.3	0.067	0.504	16.216260	-94.050315
T. DER. EMILIANO ZAPATA	26.20	3	0	3402	74.2	6.3	5.3	2.5	8.4	1.5	0.8	1.0	74.2	6.3	19.5	0.061	0.504	16.214682	-94.040186
ARRIAGA	45.00	1	0	4744	76.7	6.3	5.3	1.1	7.5	1.1	1.2	0.8	76.7	6.3	17.0	0.067	0.503	16.221895	-93.941985
ARRIAGA	45.00	3	1	3997	76.2	6.4	4.7	1.3	7.8	1.3	1.5	0.8	76.2	6.4	17.4	0.081	0.500	16.234881	-93.880572
ARRIAGA	45.00	3	2	3994	75.8	6.3	4.8	1.6	7.9	1.3	1.7	0.6	75.8	6.3	17.9	0.074	0.500	16.234881	-93.880572
T. DER. PUERTO ARISTA	73.00	3	1	2304	69.7	6.2	5.4	3.4	8.3	1.9	4.1	1.0	69.7	6.2	24.1	0.066	0.513	16.055879	-93.734418
T. DER. PUERTO ARISTA	73.00	3	2	2422	68.6	6.3	5.2	3.5	9.4	2.3	4.2	0.5	68.6	6.3	25.1	0.065	0.513	16.055879	-93.734418
T. DER. LOS PATOS	114.75	1	0	2718	71.0	6.2	5.5	2.2	8.3	2.7	3.2	0.9	71.0	6.2	22.8	0.090	0.501	15.841290	-93.437883
T. DER. LOS PATOS	114.75	3	0	2771	69.7	6.1	6.7	2.5	8.1	2.7	3.6	0.6	69.7	6.1	24.2	0.079	0.502	15.830454	-93.429818
PIJIAPAN	144.45	1	0	4565	73.5	6.3	5.7	2.2	6.2	2.9	2.6	0.6	73.5	6.3	20.2	0.077	0.501	15.701840	-93.217354
T. DER. MAPASTEPEC	188.85	3	0	3297	75.5	6.2	5.0	1.8	5.6	2.9	2.3	0.7	75.5	6.2	18.3	0.080	0.501	15.455047	-92.881892
T. DER. ESTACION SOCONUSCO	213.30	1	0	6065	76.2	6.0	4.7	1.4	6.1	2.5	2.4	0.7	76.2	6.0	17.8	0.061	0.502	15.339191	-92.712685
T. DER. ESTACION SOCONUSCO	213.30	3	0	5824	78.1	5.4	5.6	1.9	4.2	2.1	1.9	0.8	78.1	5.4	16.5	0.066	0.501	15.329810	-92.701325
HUIXTLA	250.50	1	0	6267	78.9	5.8	6.0	0.7	4.0	1.8	2.2	0.6	78.9	5.8	15.3	0.079	0.500	15.147420	-92.473939
HUIXTLA	250.50	3	1	4613	80.3	5.4	4.8	0.8	4.1	1.7	2.1	0.8	80.3	5.4	14.3	0.077	0.505	15.137977	-92.453501
HUIXTLA	250.50	3	2	4525	79.6	5.6	5.1	1.3	3.6	2.1	1.9	0.8	79.6	5.6	14.8	0.081	0.505	15.137977	-92.453501
T. IZQ. HAMBURGO	262.70	3	1	3829	78.1	5.9	5.2	1.8	3.9	2.2	2.3	0.6	78.1	5.9	16.0	0.084	0.505	15.105767	-92.431320
T. IZQ. HAMBURGO	262.70	3	2	3910	78.3	4.9	4.5	1.9	3.6	2.0	4.1	0.7	78.3	4.9	16.8	0.080	0.505	15.105767	-92.431320
T. IZQ. HUEHUETAN	273.70	1	1	4848	77.6	4.8	4.7	1.6	3.8	2.7	4.2	0.6	77.6	4.8	17.6	0.079	0.503	15.016261	-92.402878
T. IZQ. HUEHUETAN	273.70	1	2	4553	77.6	4.9	6.7	1.1	4.5	1.9	2.6	0.7	77.6	4.9	17.5	0.083	0.502	15.016261	-92.402878
TAPACHULA	292.25	1	1	7809	77.1	5.6	6.8	1.1	4.2	1.7	2.7	0.8	77.1	5.6	17.3	0.073	0.501	14.908533	-92.330118

OAXACA

15 CARR: TAPANATEPEC - TALISMAN

CLAVE: 00075

RUTA: MEX-200

AÑO: 2010

LUGAR	ESTACION				CLASIFICACION VEHICULAR EN PORCIENTO								COORDENADAS						
	KM	TE	SC	TDPA	A	B	C2	C3	T3S2	T3S3	T3S2R4	OTROS	A	B	C	K'	D	LATITUD	LONGITUD
TAPACHULA	292.25	1	2	7503	78.8	5.8	5.6	0.8	3.9	1.9	2.5	0.7	78.8	5.8	15.4	0.069	0.503	14.908533	-92.330118
T. DER. CD. HIDALGO	302.75	1	0	2641	76.9	5.8	5.8	0.4	5.8	2.1	2.5	0.7	76.9	5.8	17.3	0.073	0.500	14.911668	-92.197950
TUXTLA CHICO	307.00	1	0	8190	77.4	6.1	5.9	0.7	4.6	2.1	2.5	0.7	77.4	6.1	16.5	0.073	0.501	14.936829	-92.160956
TALISMAN	310.77	1	0	3807	78.5	7.0	5.5	0.9	3.5	2.0	2.3	0.3	78.5	7.0	14.5	0.080	0.503	14.959892	-92.151591

16 CARR: TAPANATEPEC - TUXTLA GUTIERREZ

CLAVE: 00060

RUTA: MEX-190

AÑO: 2010

LUGAR	ESTACION				CLASIFICACION VEHICULAR EN PORCIENTO								COORDENADAS						
	KM	TE	SC	TDPA	A	B	C2	C3	T3S2	T3S3	T3S2R4	OTROS	A	B	C	K'	D	LATITUD	LONGITUD
TAPANATEPEC	0.00	3	0	2088	74.5	6.9	11.8	2.7	2.0	1.1	0.6	0.4	74.5	6.9	18.6	0.078	0.502	16.371451	-94.182616
LIM. EDOS. TERM. OAX. PPIA. CHIS.	17.90																		
RIZO DE ORO	26.60	1	0	2220	74.5	6.8	11.8	2.8	2.0	1.1	0.6	0.4	74.5	6.8	18.7	0.078	0.504	16.473173	-94.088739
T. DER. ARRIAGA	56.80	1	0	4557	74.3	6.9	11.8	2.9	2.0	1.1	0.6	0.4	74.3	6.9	18.8	0.076	0.502	16.569856	-93.848240
T. DER. ARRIAGA	56.80	3	0	4880	73.9	7.2	12.1	2.8	1.9	1.1	0.6	0.4	73.9	7.2	18.9	0.066	0.502	16.574066	-93.841748
T. DER. JIQUIPILAS	82.00	1	0	6268	79.9	7.3	6.8	2.3	1.4	1.8	0.4	0.1	79.9	7.3	12.8	0.086	0.500	16.687865	-93.667156
T. DER. JIQUIPILAS	82.00	3	0	5351	80.9	7.3	6.3	2.0	1.4	1.6	0.4	0.1	80.9	7.3	11.8	0.084	0.500	16.685432	-93.635183
OCOZOCOAUTLA	123.29	1	0	6213	80.4	4.9	5.9	3.2	2.2	1.0	2.3	0.1	80.4	4.9	14.7	0.064	0.502	16.772062	-93.391196
OCOZOCOAUTLA	123.29	3	0	7740	80.1	5.1	5.5	3.4	2.4	1.1	2.3	0.1	80.1	5.1	14.8	0.061	0.500	16.757883	-93.362445
T. IZQ. AEROPUERTO	132.70	1	0	8525	79.2	5.3	5.8	3.5	2.3	1.2	2.6	0.1	79.2	5.3	15.5	0.059	0.500	16.752997	-93.340146
T. IZQ. BERRIOZABAL (1° ACCESO)	136.40	1	0	6937	78.5	5.5	6.4	3.5	2.4	1.1	2.5	0.1	78.5	5.5	16.0	0.081	0.500	16.767617	-93.295164
T. IZQ. BERRIOZABAL (1° ACCESO)	136.40	3	0	7003	78.9	5.5	6.0	3.4	2.3	1.2	2.6	0.1	78.9	5.5	15.6	0.080	0.501	16.769227	-93.277987
T. IZQ. SAN FERNANDO	151.70	1	1	9301	80.2	4.9	5.8	3.1	2.2	1.1	2.6	0.1	80.2	4.9	14.9	0.084	0.508	16.770359	-93.196719
T. IZQ. SAN FERNANDO	151.70	1	2	8997	79.6	4.8	6.2	3.4	2.4	1.1	2.4	0.1	79.6	4.8	15.6	0.089	0.508	16.770359	-93.196719
TUXTLA GUTIERREZ	159.00	1	1	8551	79.4	5.2	5.9	3.4	2.4	1.1	2.5	0.1	79.4	5.2	15.4	0.071	0.503	16.767800	-93.193083
TUXTLA GUTIERREZ	159.00	1	2	8646	80.6	4.8	5.6	3.2	2.3	1.0	2.4	0.1	80.6	4.8	14.6	0.072	0.503	16.767800	-93.193083

17 CARR: TEHUACAN - HUAJUAPAN DE LEON

CLAVE: 00211

RUTA: MEX-125

AÑO: 2010

LUGAR	ESTACION				CLASIFICACION VEHICULAR EN PORCIENTO								COORDENADAS						
	KM	TE	SC	TDPA	A	B	C2	C3	T3S2	T3S3	T3S2R4	OTROS	A	B	C	K'	D	LATITUD	LONGITUD
TEHUACAN	0.00	3	1	5786	79.0	4.9	8.4	1.2	3.9	1.5	0.5	0.6	79.0	4.9	16.1	0.074	0.507	18.436897	-97.401355
TEHUACAN	0.00	3	2	5945	79.4	5.0	8.6	1.3	3.0	1.6	0.5	0.6	79.4	5.0	15.6	0.074	0.507	18.436775	-97.401283
ZAPOTITLAN SALINAS	28.00	1	0	2207	80.8	4.6	7.9	1.7	3.0	1.0	0.4	0.6	80.8	4.6	14.6	0.073	0.519	18.331223	-97.468283
LIM. EDOS. TERM. PUE. PPIA. OAX.	55.80																		
SANTIAGO CHAZUMBA	63.02	1	0	1163	85.7	4.3	4.4	2.1	0.6	0.9	1.3	0.7	85.7	4.3	10.0	0.071	0.501	18.198599	-97.679624

OAXACA

17 CARR: TEHUACAN - HUAJUAPAN DE LEON

CLAVE: 00211

RUTA: MEX-125

AÑO: 2010

LUGAR	ESTACION				CLASIFICACION VEHICULAR EN PORCIENTO								COORDENADAS						
	KM	TE	SC	TDPA	A	B	C2	C3	T3S2	T3S3	T3S2R4	OTROS	A	B	C	K'	D	LATITUD	LONGITUD
SANTIAGO CHAZUMBA	63.02	3	0	1150	86.4	3.1	4.0	2.5	1.7	0.9	0.7	0.7	86.4	3.1	10.5	0.083	0.504	18.184783	-97.679616
T. IZO. SANTA MARIA CAMOTLAN	103.13	1	0	1382	87.7	3.9	3.3	1.2	1.0	1.3	0.9	0.7	87.7	3.9	8.4	0.070	0.501	17.905969	-97.693249
T. C. HUAJUAPAN DE LEON - OAXACA	119.40	1	0	5634	88.5	4.0	3.2	1.2	1.1	1.0	0.7	0.3	88.5	4.0	7.5	0.078	0.502	17.821154	-97.759819

18 CARR: TUXTEPEC - ENT. PALOMARES

CLAVE: 00180

RUTA: MEX-147

AÑO: 2010

LUGAR	ESTACION				CLASIFICACION VEHICULAR EN PORCIENTO								COORDENADAS						
	KM	TE	SC	TDPA	A	B	C2	C3	T3S2	T3S3	T3S2R4	OTROS	A	B	C	K'	D	LATITUD	LONGITUD
T. C. TUXTEPEC - OAXACA	0.00	3	0	3949	77.6	6.5	6.7	2.3	4.0	1.0	1.5	0.4	77.6	6.5	15.9	0.079	0.505	18.035841	-96.158763
X. C. EL RODEO - REFORMA	15.20	3	0	2424	75.1	6.1	6.9	3.5	4.5	1.9	1.3	0.7	75.1	6.1	18.8	0.080	0.502	17.950373	-96.071149
LIM. EDOS. TERM. OAX. PPIA. VER.	40.00																		
X. C. PLAYA VICENTE - EL TOMATE	48.16	1	0	1924	76.8	6.1	6.8	3.4	3.6	1.9	0.9	0.5	76.8	6.1	17.1	0.084	0.513	17.783678	-95.833311
X. C. PLAYA VICENTE - EL TOMATE	48.16	3	0	2585	77.7	5.8	6.5	3.1	3.9	1.6	1.1	0.3	77.7	5.8	16.5	0.080	0.501	17.783160	-95.830295
T. DER. XOCHIAPA	65.00	3	0	1573	80.1	5.5	5.3	1.9	4.1	1.1	1.6	0.4	80.1	5.5	14.4	0.085	0.502	17.703040	-95.733258
T. IZO. SAN JUAN EVANGELISTA	81.20	1	0	1323	77.9	5.1	6.7	2.5	4.4	1.1	1.6	0.7	77.9	5.1	17.0	0.074	0.502	17.616137	-95.636469
LIM. EDOS. TERM. VER. PPIA. OAX.	87.00																		
MARIA LOMBARDO DE CASO	110.50	1	0	2356	82.7	5.2	3.4	2.0	3.8	1.3	1.2	0.4	82.7	5.2	12.1	0.082	0.505	17.452671	-95.433224
T. C. COATZACOALCOS - SALINA CRUZ	175.00	1	0	1510	81.8	5.0	3.2	1.6	4.2	1.9	1.9	0.4	81.8	5.0	13.2	0.085	0.503	17.138793	-95.065711

19 CARR: TUXTEPEC - T. C. (OAXACA - TEHUANTEPEC)

CLAVE: 20090

RUTA: MEX-175

AÑO: 2010

LUGAR	ESTACION				CLASIFICACION VEHICULAR EN PORCIENTO								COORDENADAS						
	KM	TE	SC	TDPA	A	B	C2	C3	T3S2	T3S3	T3S2R4	OTROS	A	B	C	K'	D	LATITUD	LONGITUD
TUXTEPEC	0.00	3	1	8429	80.3	3.1	7.5	3.3	2.6	1.5	1.3	0.4	80.3	3.1	16.6	0.064	0.505	18.058485	-96.150527
TUXTEPEC	0.00	3	2	8247	79.3	3.0	7.4	3.2	3.9	1.4	1.4	0.4	79.3	3.0	17.7	0.065	0.505	18.058485	-96.150527
T. IZO. PALOMARES	5.75	3	0	4973	78.2	7.0	4.9	3.2	3.1	1.1	1.9	0.6	78.2	7.0	14.8	0.077	0.501	18.034454	-96.164764
SAN JOSE CHILTEPEC	17.93	3	0	2981	82.1	3.8	4.4	3.1	3.0	1.6	1.5	0.5	82.1	3.8	14.1	0.082	0.500	17.943708	-96.173148
VALLE NACIONAL	47.07	1	0	2411	81.0	3.1	7.0	3.0	2.8	1.3	1.4	0.4	81.0	3.1	15.9	0.081	0.505	17.780835	-96.291216
VALLE NACIONAL	47.07	3	0	1685	78.4	3.3	8.7	2.6	3.4	1.6	1.3	0.7	78.4	3.3	18.3	0.081	0.502	17.767329	-96.310965
LA ESPERANZA	79.85	3	0	413	81.7	4.0	7.8	2.2	0.9	1.2	1.6	0.6	81.7	4.0	14.3	0.104	0.501	17.624301	-96.366383
PUERTA DEL SOL	125.00	3	0	470	82.0	3.8	7.9	2.2	0.9	1.1	1.5	0.6	82.0	3.8	14.2	0.087	0.507	17.527262	-96.510760
T. DER. IXTEPEJI	181.39	3	0	1434	80.4	6.8	7.6	1.5	0.8	2.0	0.5	0.4	80.4	6.8	12.8	0.081	0.501	17.238093	-96.564485
T. IZO. YUVILA	193.67	1	0	1492	77.3	7.6	8.6	1.7	2.1	1.8	0.3	0.6	77.3	7.6	15.1	0.085	0.501	17.177485	-96.605234
T. C. OAXACA - TEHUANTEPEC	212.70	1	1	4915	76.6	8.6	7.9	2.1	1.9	1.9	0.4	0.6	76.6	8.6	14.8	0.066	0.508	17.067913	-96.676625
T. C. OAXACA - TEHUANTEPEC	212.70	1	2	4761	80.2	6.8	7.1	1.9	1.3	1.6	0.5	0.6	80.2	6.8	13.0	0.068	0.508	17.067913	-96.676625

OAXACA

23 CARR: HUAJUAPAN DE LEON - EL CARRIZAL

CLAVE:

RUTA: OAX

AÑO: 2010

LUGAR	ESTACION				CLASIFICACION VEHICULAR EN PORCIENTO								COORDENADAS						
	KM	TE	SC	TDPA	A	B	C2	C3	T3S2	T3S3	T3S2R4	OTROS	A	B	C	K'	D	LATITUD	LONGITUD
HUAJUAPAN DE LEON	0.00	3	0	1509	89.4	2.4	3.5	1.8	1.2	0.9	0.3	0.5	89.4	2.4	8.2	0.066	0.507	17.779636	-97.789762
SAN MIGUEL TLACOTEPEC	83.60	1	0	1421	87.8	2.6	3.6	2.1	1.6	1.2	0.4	0.7	87.8	2.6	9.6	0.065	0.507	17.462143	-98.010039
SANTIAGO JUXTLAHUACA	100.00																		
SANTIAGO JUXTLAHUACA	100.00	1	0	1432	88.9	2.8	3.6	1.5	1.7	0.8	0.3	0.4	88.9	2.8	8.3	0.069	0.509	17.352008	-98.014610
PUTLA	130.00	1	0	1491	89.8	2.5	3.4	1.7	1.2	0.7	0.3	0.4	89.8	2.5	7.7	0.068	0.502	17.154929	-97.894041
EL CARRIZAL	131.30																		

24 CARR: LOMA BONITA - MIXTAN

CLAVE: 20043

RUTA: OAX

AÑO: 2010

LUGAR	ESTACION				CLASIFICACION VEHICULAR EN PORCIENTO								COORDENADAS						
	KM	TE	SC	TDPA	A	B	C2	C3	T3S2	T3S3	T3S2R4	OTROS	A	B	C	K'	D	LATITUD	LONGITUD
LOMA BONITA	0.00																		
X. C. CD. ALEMAN - SAYULA	1.00	1	1	4478	77.7	5.6	5.8	1.1	2.6	4.7	1.7	0.8	77.7	5.6	16.7	0.083	0.505	18.098071	-95.877443
X. C. CD. ALEMAN - SAYULA	1.00	1	2	4577	77.9	5.3	6.1	1.2	2.4	4.9	1.6	0.6	77.9	5.3	16.8	0.080	0.505	18.098071	-95.877443
X. C. CD. ALEMAN - SAYULA	1.00	3	0	2421	83.2	4.9	3.8	1.9	2.2	2.2	0.9	0.9	83.2	4.9	11.9	0.055	0.501	18.095241	-95.876552
T. IZQ. AEROPUERTO	12.00	3	0	898	83.8	4.7	3.2	3.3	1.9	2.0	0.4	0.7	83.8	4.7	11.5	0.071	0.504	18.013895	-95.869052
MIXTAN	27.00																		

25 CARR: RAMAL A REFORMA DE PINEDA

CLAVE: 20010

RUTA: OAX

AÑO: 2010

LUGAR	ESTACION				CLASIFICACION VEHICULAR EN PORCIENTO								COORDENADAS						
	KM	TE	SC	TDPA	A	B	C2	C3	T3S2	T3S3	T3S2R4	OTROS	A	B	C	K'	D	LATITUD	LONGITUD
T. C. LA VENTOSA - SAN PEDRO TAPANATEPEC	0.00	3	0	965	87.3	7.5	3.4	0.2	0.4	0.4	0.3	0.5	87.3	7.5	5.2	0.082	0.500	16.491435	-94.427695
REFORMA DE PINEDA	12.00																		

26 CARR: RAMAL A UNION HIDALGO

CLAVE: 20044

RUTA: OAX

AÑO: 2010

LUGAR	ESTACION				CLASIFICACION VEHICULAR EN PORCIENTO								COORDENADAS						
	KM	TE	SC	TDPA	A	B	C2	C3	T3S2	T3S3	T3S2R4	OTROS	A	B	C	K'	D	LATITUD	LONGITUD
T. C. LA VENTOSA - SAN PEDRO TAPANATEPEC	0.00	3	1	1064	70.7	9.2	5.8	5.1	4.6	3.8	0.2	0.6	70.7	9.2	20.1	0.070	0.502	16.573212	-94.816447
T. C. LA VENTOSA - SAN PEDRO TAPANATEPEC	0.00	3	2	1055	72.0	8.8	5.7	5.6	4.2	2.5	0.6	0.6	72.0	8.8	19.2	0.075	0.502	16.573212	-94.816447
UNION HIDALGO	12.00																		
UNION HIDALGO	12.00	1	0	980	77.9	6.7	4.5	4.5	3.5	2.2	0.2	0.5	77.9	6.7	15.4	0.091	0.502	16.487968	-94.832516

OAXACA

27 CARR: T. C. (OAXACA - PUERTO ANGEL) - PUERTO ESCONDIDO

CLAVE: 20009

RUTA: MEX-OAX-161

AÑO: 2010

LUGAR	ESTACION				CLASIFICACION VEHICULAR EN PORCIENTO								COORDENADAS						
	KM	TE	SC	TDPA	A	B	C2	C3	T3S2	T3S3	T3S2R4	OTROS	A	B	C	K'	D	LATITUD	LONGITUD
T. C. OAXACA - PUERTO ANGEL	0.00	3	0	7544	82.4	8.6	6.7	1.7	0.2	0.3	0.0	0.1	82.4	8.6	9.0	0.070	0.502	16.925326	-96.707297
T. IZQ. SAN PABLO HUIXTEPEC	16.80	1	0	4423	82.5	8.4	6.7	1.8	0.2	0.3	0.0	0.1	82.5	8.4	9.1	0.080	0.505	16.832407	-96.788651
T. IZQ. SAN PABLO HUIXTEPEC	16.80	3	0	4313	83.1	8.0	6.4	1.9	0.2	0.3	0.0	0.1	83.1	8.0	8.9	0.082	0.503	16.828121	-96.788950
T. DER. EL TRAPICHE	30.00	1	0	3162	82.9	7.9	6.8	1.8	0.2	0.3	0.0	0.1	82.9	7.9	9.2	0.077	0.507	16.761435	-96.856473
T. DER. EL TRAPICHE	30.00	3	0	3182	82.9	7.9	6.9	1.7	0.2	0.3	0.0	0.1	82.9	7.9	9.2	0.076	0.514	16.760432	-96.859186
T. DER. COFRADIA SAN PEDRO	53.00	3	0	1252	82.9	8.0	6.7	1.8	0.2	0.3	0.0	0.1	82.9	8.0	9.1	0.081	0.501	16.601016	-96.891464
SOLA DE VEGA	78.40	3	0	1190	82.1	8.5	7.0	1.8	0.2	0.3	0.0	0.1	82.1	8.5	9.4	0.076	0.506	16.509158	-96.984184
T. DER. YALOTEPEC	134.50	1	0	938	82.3	8.6	6.6	1.9	0.2	0.3	0.0	0.1	82.3	8.6	9.1	0.080	0.505	16.256226	-97.151538
SAN GABRIEL MIXTEPEC	208.00	1	0	856	82.4	8.2	7.0	1.8	0.2	0.3	0.0	0.1	82.4	8.2	9.4	0.070	0.506	16.108973	-97.066026
PUERTO ESCONDIDO	248.00	1	0	7913	82.6	8.3	6.8	1.7	0.2	0.3	0.0	0.1	82.6	8.3	9.1	0.070	0.501	15.881206	-97.079162

28 CARR: TEHUACAN - HUITZO

CLAVE: 00211

RUTA: PUE-MEX-135

AÑO: 2010

LUGAR	ESTACION				CLASIFICACION VEHICULAR EN PORCIENTO								COORDENADAS						
	KM	TE	SC	TDPA	A	B	C2	C3	T3S2	T3S3	T3S2R4	OTROS	A	B	C	K'	D	LATITUD	LONGITUD
TEHUACAN	0.00	3	0	6906	80.6	3.5	14.0	1.4	0.2	0.3	0.0	0.0	80.6	3.5	15.9	0.061	0.506	18.460167	-97.370500
T. DER. SAN GABRIEL CHILAC	14.40	1	0	7062	81.5	3.4	13.2	1.4	0.2	0.3	0.0	0.0	81.5	3.4	15.1	0.062	0.517	18.405028	-97.329917
SAN SEBASTIAN ZINACATEPEC	23.00	3	0	4643	81.6	3.5	13.0	1.4	0.2	0.3	0.0	0.0	81.6	3.5	14.9	0.070	0.507	18.325489	-97.229865
LIM. EDOS. TERM. PUE. PPIA. OAX.	60.895																		
TEOTITLAN DEL CAMINO	63.15	3	0	2114	80.9	3.7	13.6	1.3	0.2	0.3	0.0	0.0	80.9	3.7	15.4	0.068	0.503	18.122092	-97.073766
SANTA MARIA TECOMAVACA	88.34	1	0	1117	80.2	3.6	14.3	1.4	0.2	0.3	0.0	0.0	80.2	3.6	16.2	0.085	0.501	17.964551	-97.035133
SANTA MARIA TECOMAVACA	88.34	3	0	1392	81.3	3.6	13.2	1.4	0.2	0.3	0.0	0.0	81.3	3.6	15.1	0.079	0.507	17.948864	-97.021681
T. IZQ. CUICATLAN	118.80	1	0	1484	80.9	3.6	13.5	1.5	0.2	0.3	0.0	0.0	80.9	3.6	15.5	0.088	0.501	17.793844	-96.959877
T. IZQ. NACALTEPEC	169.84	1	0	1327	80.6	3.8	13.6	1.5	0.2	0.3	0.0	0.0	80.6	3.8	15.6	0.084	0.501	17.505960	-96.934104
T. C. HUAJUAPAN DE LEON - OAXACA	202.70	1	0	2559	80.4	3.7	13.9	1.5	0.2	0.3	0.0	0.0	80.4	3.7	15.9	0.081	0.501	17.287558	-96.903690

29 CARR: TEOTITLAN DE FLORES MAGON - TUXTEPEC

CLAVE: 00108

RUTA: OAX-PUE-MEX-182

AÑO: 2010

LUGAR	ESTACION				CLASIFICACION VEHICULAR EN PORCIENTO								COORDENADAS						
	KM	TE	SC	TDPA	A	B	C2	C3	T3S2	T3S3	T3S2R4	OTROS	A	B	C	K'	D	LATITUD	LONGITUD
TEOTITLAN DEL CAMINO	0.00	3	0	1764	81.3	5.9	7.6	3.5	0.5	0.3	0.3	0.6	81.3	5.9	12.8	0.075	0.505	18.140164	-97.062675
LIM. EDOS. TERM. OAX. PPIA. PUE.	2.00																		
LIM. EDOS. TERM. PUE. PPIA. OAX.	10.00																		
HUAUTLA	65.00	1	0	993	80.9	6.1	7.7	3.8	0.6	0.3	0.3	0.3	80.9	6.1	13.0	0.078	0.517	18.124860	-96.847385
SAN FELIPE JALAPA DE DIAZ	140.00	3	0	2749	81.5	4.2	7.7	3.7	1.6	0.4	0.4	0.5	81.5	4.2	14.3	0.071	0.501	18.082411	-96.521453

OAXACA

29 CARR: TEOTITLAN DE FLORES MAGON - TUXTEPEC

CLAVE: 00108

RUTA: OAX-PUE-MEX-182

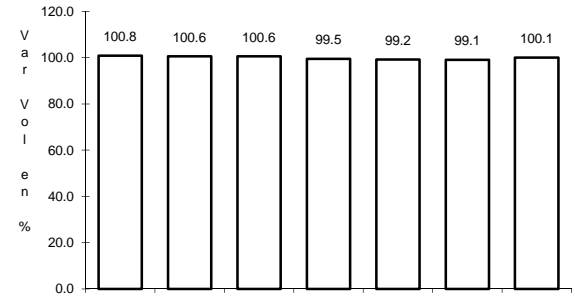
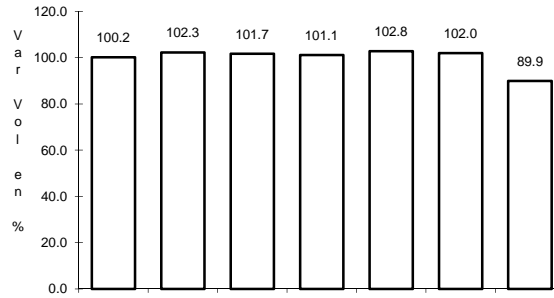
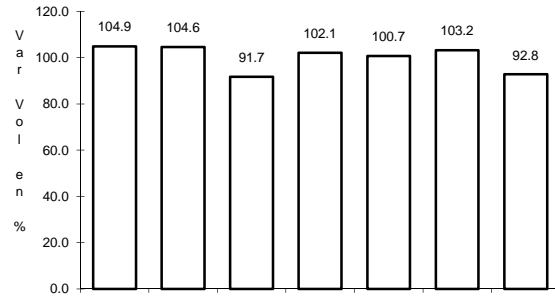
AÑO: 2010

L U G A R	E S T A C I O N				C L A S I F I C A C I O N V E H I C U L A R E N P O R C I E N T O								C O O R D E N A D A S						
	KM	TE	SC	TDPA	A	B	C2	C3	T3S2	T3S3	T3S2R4	OTROS	A	B	C	K'	D	LATITUD	LONGITUD
TUXTEPEC	185.00	1	0	6150	80.5	3.6	8.3	3.7	2.0	0.5	0.6	0.8	80.5	3.6	15.9	0.076	0.503	18.086063	-96.152908

1 CARR: BUENAVISTA - TUXTEPEC

CLAVE: 00624

ruta: MEX-175



Km: 0.00

Tipo: 3

Sent: 0

Km: 60.00

Tipo: 1

Sent: 0

Km: 121.25

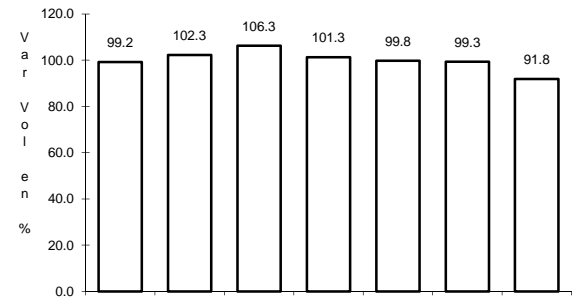
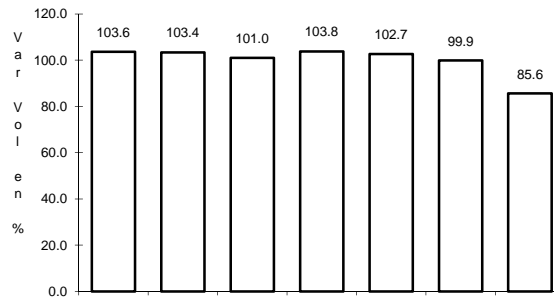
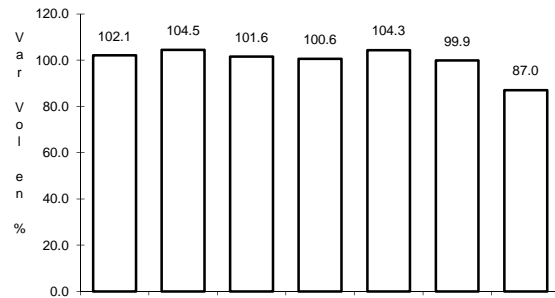
Tipo: 1

Sent: 0

2 CARR: CD. ALEMAN - SAYULA

CLAVE: 00301

ruta: MEX-145



Km: 0.00

Tipo: 3

Sent: 0

Km: 71.40

Tipo: 1

Sent: 0

Km: 136.40

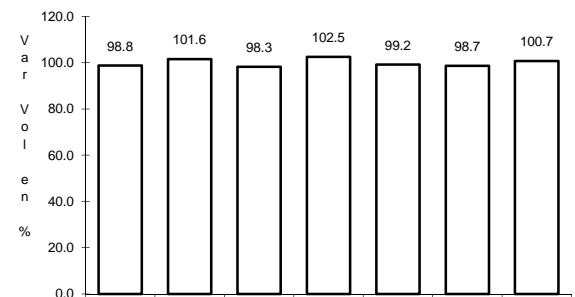
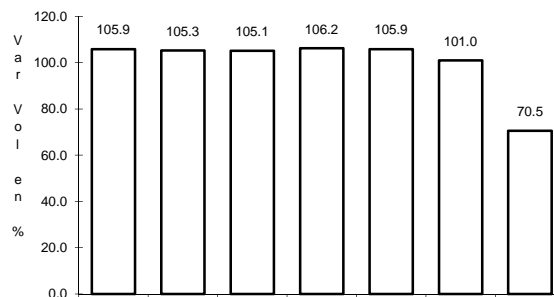
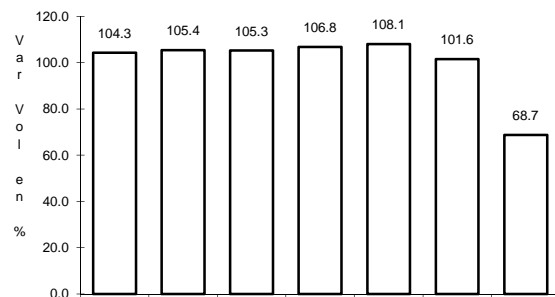
Tipo: 1

Sent: 0

3 CARR: COATZACOALCOS - SALINA CRUZ

CLAVE: 00147

ruta: MEX-185



Km: 0.00

Tipo: 3

Sent: 1

Km: 0.00

Tipo: 3

Sent: 2

Km: 283.95

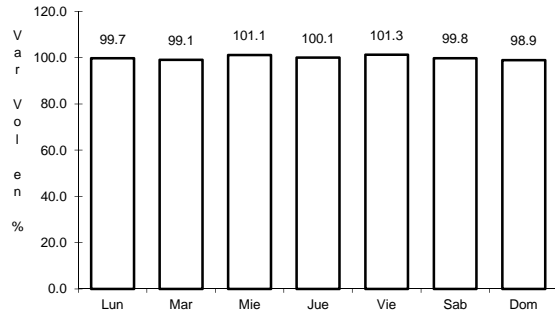
Tipo: 3

Sent: 0

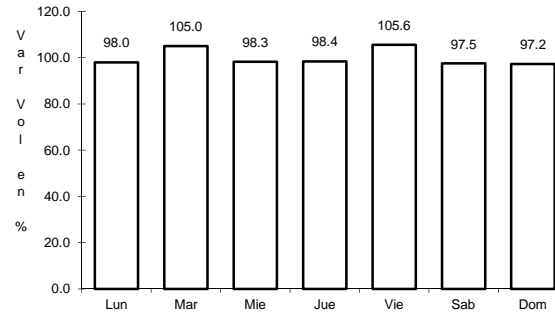
4 CARR: HUAJUAPAN DE LEON - OAXACA

CLAVE: 20056

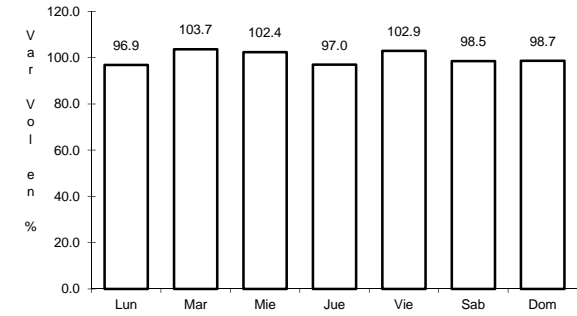
RUTA: MEX-190



Km: 1.35 Tipo: 1 Sent: 0



Km: 190.60 Tipo: 1 Sent: 1

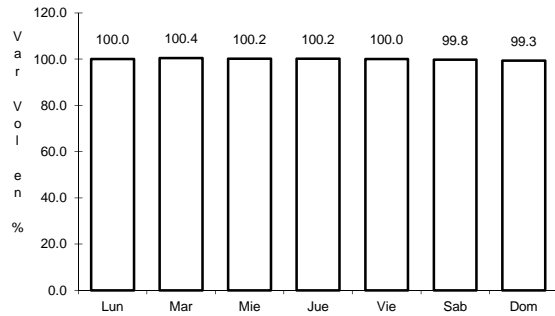


Km: 190.60 Tipo: 1 Sent: 2

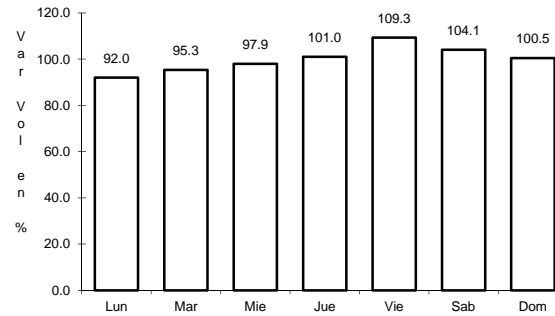
5 CARR: JUCHITAN - IXTEPEC

CLAVE: 20359

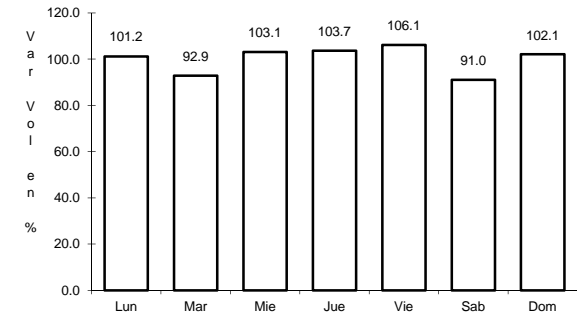
RUTA: MEX



Km: 0.15 Tipo: 3 Sent: 0



Km: 16.00 Tipo: 1 Sent: 1

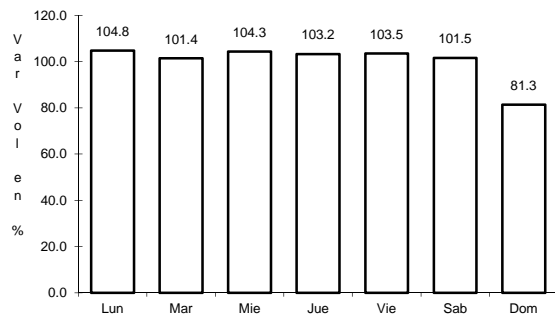


Km: 16.00 Tipo: 1 Sent: 2

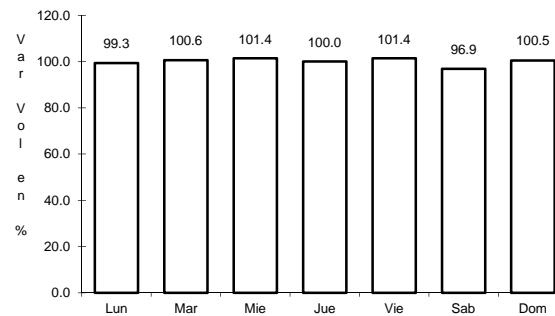
6 CARR: LA GRANJA - TEMASCAL

CLAVE: 00275

RUTA: MEX



Km: 0.00 Tipo: 3 Sent: 0

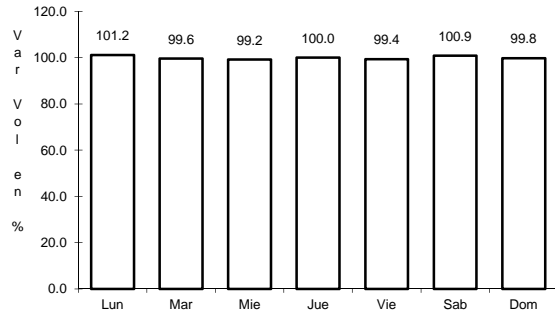


Km: 23.00 Tipo: 1 Sent: 0

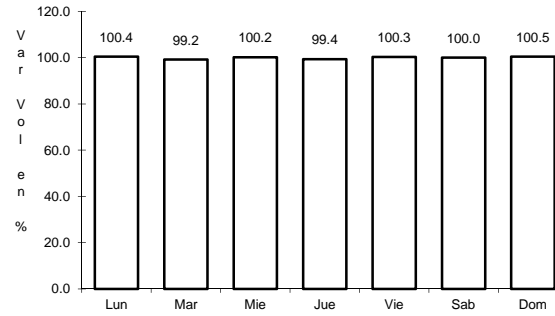
7 CARR: LA VENTOSA - SAN PEDRO TAPANATEPEC

CLAVE: 20059

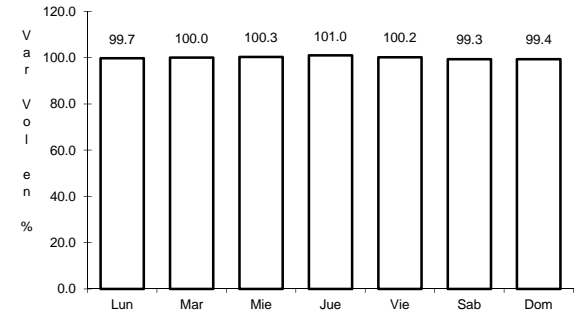
ruta: MEX-190



Km: 0.00 Tipo: 3 Sent: 0



Km: 38.01 Tipo: 3 Sent: 0

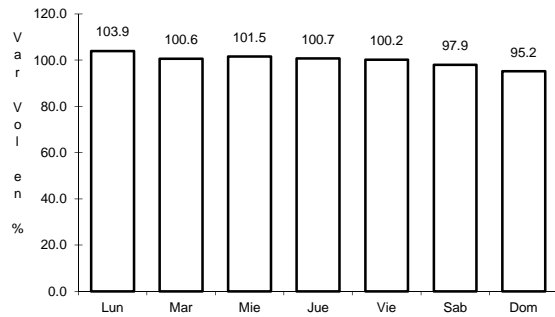


Km: 91.80 Tipo: 1 Sent: 0

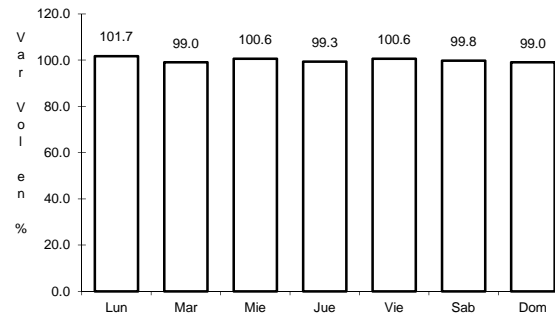
8 CARR: LAS CRUCES - PINOTEPA NACIONAL

CLAVE: 00073

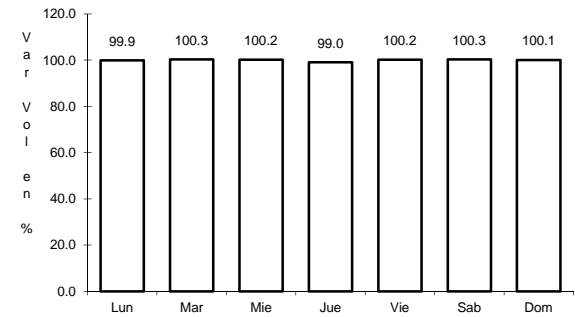
ruta: MEX-200



Km: 0.00 Tipo: 3 Sent: 1



Km: 0.00 Tipo: 3 Sent: 2

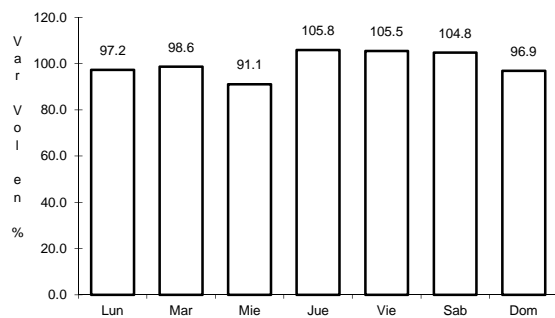


Km: 245.47 Tipo: 3 Sent: 0

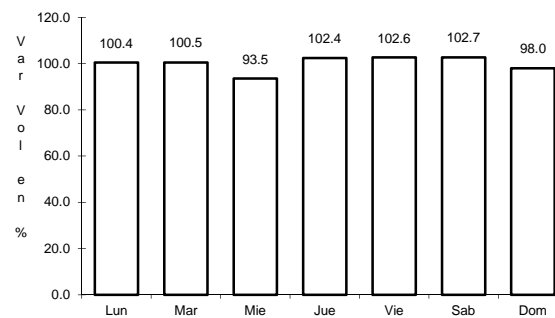
9 CARR: OAXACA - PUERTO ANGEL

CLAVE: 20091

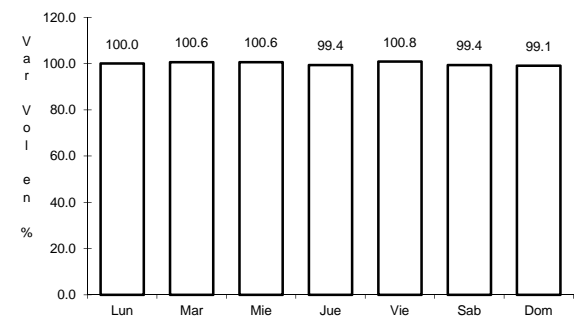
ruta: MEX-175



Km: 0.00 Tipo: 3 Sent: 1



Km: 0.00 Tipo: 3 Sent: 2

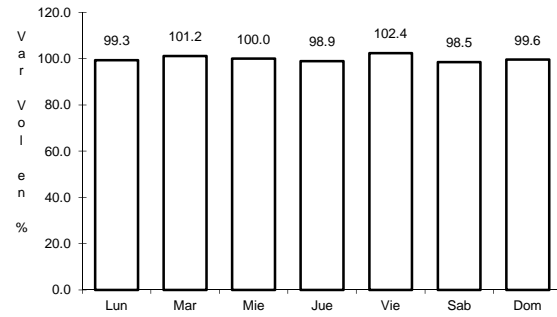


Km: 245.40 Tipo: 1 Sent: 0

29 CARR: TEOTITLAN DE FLORES MAGON - TUXTEPEC

CLAVE: 00108

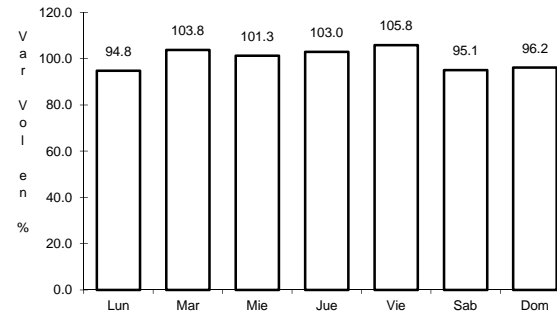
RUTA: OAX-PUE-MEX-182



Km: 0.00

Tipo: 3

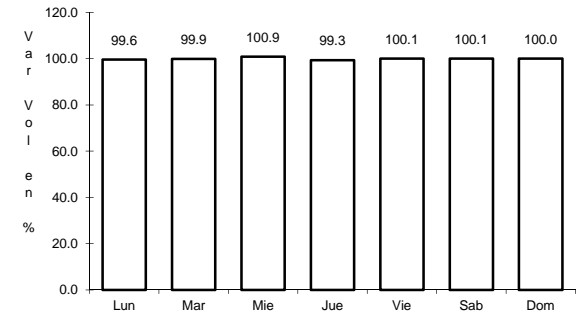
Sent: 0



Km: 65.00

Tipo: 1

Sent: 0



Km: 185.00

Tipo: 1

Sent: 0