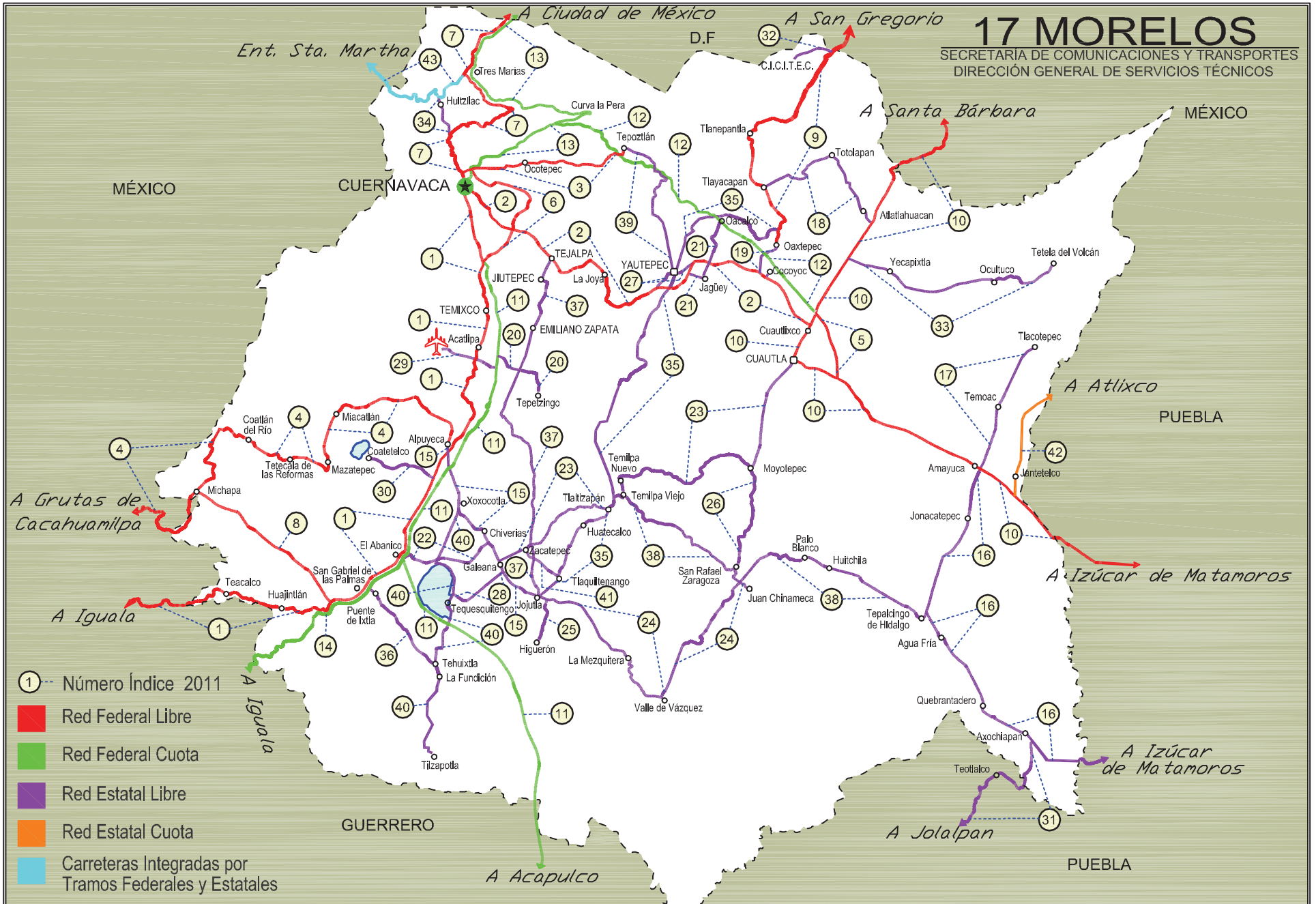


MORELOS

No. INDICE	CARRETERA	RUTA
<b>---RED FEDERAL LIBRE---</b>		
1	CUERNAVACA - CHILPANCINGO	MEX-095
2	CUERNAVACA - CUAUTLIXCO	MEX-160
3	CUERNAVACA - TEPOZTLAN	MEX-162
4	ENT. ALPUYECA - GRUTAS DE CACAHUAMILPA	MEX-166
5	LIBRAMIENTO DE CUAUTLA	MEX
6	LIBRAMIENTO DE CUERNAVACA	MEX-095
7	MEXICO - CUERNAVACA (LIBRE)	MEX-095
8	RAMAL A MICHAPA	MEX-103
9	SAN GREGORIO - OAXTEPEC	MEX-142
10	SANTA BARBARA - IZUCAR DE MATAMOROS	MEX-115-160
<b>---RED FEDERAL DE CUOTA---</b>		
11	CUERNAVACA - ACAPULCO (CUOTA)	MEX-095D
12	LA PERA - CUAUTLA (CUOTA)	MEX-160D
13	MEXICO - CUERNAVACA (CUOTA)	MEX-095D
14	PUENTE DE IXTLA - IGUALA (CUOTA)	MEX-D
<b>---RED ESTATAL LIBRE---</b>		
15	ALPUYECA - JOJUTLA	MOR-021
16	AMAYUCA - IZUCAR DE MATAMOROS	MOR-031-PUE
17	AMAYUCA - TLACOTEPEC	MOR-017
18	ATLATLAHUCAN - TLAYACAPAN	MOR-002
19	COCOYOC - OAXTEPEC	MOR
20	ENT. C. (CUERNAVACA - ACAPULCO CUOTA) - TEPETZINGO	MOR
21	ENT. C. (CUERNAVACA - CUAUTLIXCO) - OACALCO	MOR
22	ENT. CHIVERIAS - ENT. EL ABANICO	MOR
23	GALEANA - CUAUTLA	MOR-004
24	JOJUTLA - CHINAMECA	MOR
25	JOJUTLA - EL HIGUERON	MOR-039
26	MOYOTEPEC - SAN RAFAEL	MOR
27	PASO POR YAUTEPEC	MOR
28	PILARES - T. C. (XOXOCOTLA - TILZAPOTLA)	MOR-008
29	RAMAL A AEROPUERTO DE CUERNAVACA	MOR
30	RAMAL A COATETELCO	MOR
31	RAMAL A JOLALPAN	MOR-PUE
32	RAMAL A JUCHITEPEC	EM
33	RAMAL A TETELA DEL VOLCAN	MOR-010
34	T. C. (MEXICO - CUERNAVACA (LIBRE)) - HUITZILAC	MOR
35	T. C. (SAN GREGORIO - OAXTEPEC) - JOJUTLA	MOR-002
36	TEHUXTLA - PUENTE DE IXTLA	MOR
37	TEJALPA - JOJUTLA	MOR-014
38	TEMILPA - TEPALCINGO	MOR-009
39	TEPOZTLAN - YAUTEPEC	MOR-013
40	XOXOCOTLA - TILZAPOTLA	MOR-006
41	ZACATEPEC - TLAQUILTENANGO	MOR
<b>---RED ESTATAL DE CUOTA---</b>		
42	ATLIXCO - JANTETELCO (CUOTA)	PUE-D
<b>---CARRETERAS INTEGRADAS POR TRAMOS FEDERALES Y ESTATALES---</b>		
43	TRES MARIAS - SANTA MARTHA	MEX-106-EM

# 17 MORELOS

SECRETARÍA DE COMUNICACIONES Y TRANSPORTES  
DIRECCIÓN GENERAL DE SERVICIOS TÉCNICOS



- ① --- Número Índice 2011
- Red Federal Libre
  - Red Federal Cuota
  - Red Estatal Libre
  - Red Estatal Cuota
  - Carreteras Integradas por Tramos Federales y Estatales

MORELOS

1 CARR: CUERNAVACA - CHILPANCINGO

CLAVE: 00042

RUTA: MEX-095

AÑO: 2010

LUGAR	ESTACION				CLASIFICACION VEHICULAR EN PORCIENTO								COORDENADAS						
	KM	TE	SC	TDPA	A	B	C2	C3	T3S2	T3S3	T3S2R4	OTROS	A	B	C	K'	D	LATITUD	LONGITUD
CUERNAVACA	0.00																		
TEMIXCO	9.80	1	0	20428	89.1	3.4	5.2	0.8	0.9	0.4	0.2	0.0	89.1	3.4	7.5	0.070	0.509	18.871324	-99.226718
TEMIXCO	9.80	3	1	12631	89.1	3.5	5.1	0.8	0.9	0.4	0.2	0.0	89.1	3.5	7.4	0.059	0.505	18.849120	-99.223187
TEMIXCO	9.80	3	2	12878	89.5	3.3	5.1	0.7	0.8	0.4	0.2	0.0	89.5	3.3	7.2	0.060	0.505	18.849120	-99.223187
ACATLIPA	12.43	1	1	10751	89.0	3.5	5.3	0.8	0.8	0.4	0.2	0.0	89.0	3.5	7.5	0.072	0.504	18.828887	-99.227954
ACATLIPA	12.43	1	2	10924	88.7	3.6	5.4	0.8	0.9	0.4	0.2	0.0	88.7	3.6	7.7	0.073	0.504	18.828887	-99.227954
ACATLIPA	12.43	3	1	7289	89.2	3.3	5.3	0.8	0.8	0.4	0.2	0.0	89.2	3.3	7.5	0.069	0.507	18.815952	-99.233086
ACATLIPA	12.43	3	2	7484	88.2	3.7	5.7	0.8	1.0	0.4	0.2	0.0	88.2	3.7	8.1	0.072	0.507	18.815952	-99.233086
T. IZQ. XOCHITEPEC (REAL DEL PUENTE)	16.05	3	1	5250	89.5	3.1	5.3	0.7	0.8	0.4	0.2	0.0	89.5	3.1	7.4	0.068	0.513	18.797050	-99.241180
T. IZQ. XOCHITEPEC (REAL DEL PUENTE)	16.05	3	2	5528	88.9	3.5	5.2	0.9	0.9	0.4	0.2	0.0	88.9	3.5	7.6	0.060	0.513	18.797050	-99.241180
X. C. ALPUYECA - JOJUTLA	24.15	1	0	14385	89.1	3.5	5.1	0.8	0.9	0.4	0.2	0.0	89.1	3.5	7.4	0.068	0.502	18.735342	-99.258377
T. DER. COATETELCO	28.00	3	0	8670	89.6	3.2	4.9	0.8	0.9	0.4	0.2	0.0	89.6	3.2	7.2	0.060	0.501	18.702953	-99.276855
T. DER. MICHAPA	44.36	1	0	6755	76.9	2.6	6.7	5.9	3.9	2.1	1.8	0.1	76.9	2.6	20.5	0.069	0.502	18.612063	-99.356120
T. IZQ. CUERNAVACA - IGUALA (CUOTA)	46.93	1	0	6564	77.1	2.6	7.0	5.6	3.7	2.2	1.7	0.1	77.1	2.6	20.3	0.056	0.503	18.604934	-99.377081
T. IZQ. CUERNAVACA - IGUALA (CUOTA)	46.93	3	0	4873	77.7	2.5	6.7	5.7	3.5	2.2	1.6	0.1	77.7	2.5	19.8	0.058	0.505	18.603195	-99.381806
HUAJINTLA	52.00	3	0	3737	77.8	2.4	6.7	5.5	3.5	2.3	1.7	0.1	77.8	2.4	19.8	0.066	0.509	18.612854	-99.430725
LIM. EDOS. TERM. MOR. PPIA. GRO.	57.10																		
T. DER. IXTAPAN DE LA SAL (AXIXINTLA)	63.47	1	0	2491	77.0	2.6	6.9	5.6	3.6	2.4	1.8	0.1	77.0	2.6	20.4	0.064	0.505	18.606906	-99.498287
TAXCO	89.90	3	0	5610	77.4	2.5	6.9	5.6	3.5	2.3	1.7	0.1	77.4	2.5	20.1	0.074	0.503	18.540564	-99.612106
IGUALA	119.63	1	0	6790	78.1	2.5	6.4	5.6	3.6	2.1	1.6	0.1	78.1	2.5	19.4	0.061	0.507	18.371823	-99.529148
T. IZQ. PUENTE DE IXTLA	123.98	3	0	13030	77.6	2.5	6.6	5.8	3.4	2.2	1.8	0.1	77.6	2.5	19.9	0.061	0.501	18.320207	-99.499066
T. DER. SABANA GRANDE	144.95	1	0	8081	77.8	2.5	6.7	5.8	3.3	2.2	1.6	0.1	77.8	2.5	19.7	0.063	0.501	18.163507	-99.552389
T. DER. TECUESCONTITLAN	146.78	1	0	10335	77.6	2.5	6.6	5.8	3.6	2.1	1.7	0.1	77.6	2.5	19.9	0.067	0.500	18.131081	-99.555636
T. DER. MEZCALA	173.14	1	0	6921	77.0	2.6	6.6	5.8	3.9	2.3	1.7	0.1	77.0	2.6	20.4	0.064	0.501	17.944113	-99.586821
T. DER. FILO DE CABALLO	189.89	3	0	7444	77.6	2.5	6.4	5.9	3.7	2.1	1.7	0.1	77.6	2.5	19.9	0.066	0.501	17.794934	-99.566877
CHILPANCINGO	223.70	1	1	10180	77.9	2.5	6.5	5.8	3.4	2.1	1.7	0.1	77.9	2.5	19.6	0.078	0.501	17.585264	-99.516042
CHILPANCINGO	223.70	1	2	10223	77.3	2.6	6.4	5.8	3.6	2.4	1.8	0.1	77.3	2.6	20.1	0.074	0.501	17.585264	-99.516042

2 CARR: CUERNAVACA - CUAUTLIXCO

CLAVE: 17199

RUTA: MEX-160

AÑO: 2010

LUGAR	ESTACION				CLASIFICACION VEHICULAR EN PORCIENTO								COORDENADAS						
	KM	TE	SC	TDPA	A	B	C2	C3	T3S2	T3S3	T3S2R4	OTROS	A	B	C	K'	D	LATITUD	LONGITUD
CUERNAVACA	0.00																		
T. IZQ. CIVAC PONIENTE	7.78	1	1	35328	90.3	1.7	5.1	1.3	0.7	0.7	0.2	0.0	90.3	1.7	8.0	0.068	0.509	18.909643	-99.180637
T. IZQ. CIVAC PONIENTE	7.78	1	2	34076	90.8	1.8	4.6	1.2	0.7	0.7	0.2	0.0	90.8	1.8	7.4	0.060	0.509	18.909643	-99.180637

MORELOS

2 CARR: CUERNAVACA - CUAUTLIXCO

CLAVE: 17199

RUTA: MEX-160

AÑO: 2010

LUGAR	ESTACION				CLASIFICACION VEHICULAR EN PORCIENTO								COORDENADAS						
	KM	TE	SC	TDPA	A	B	C2	C3	T3S2	T3S3	T3S2R4	OTROS	A	B	C	K'	D	LATITUD	LONGITUD
T. IZQ. CIVAC PONIENTE	7.78	3	1	27032	90.7	1.8	4.7	1.2	0.7	0.7	0.2	0.0	90.7	1.8	7.5	0.064	0.500	18.901718	-99.173472
T. IZQ. CIVAC PONIENTE	7.78	3	2	26979	89.7	1.9	5.3	1.4	0.8	0.7	0.2	0.0	89.7	1.9	8.4	0.060	0.500	18.901718	-99.173472
X. C. TEJALPA - JOJUTLA	9.70	3	1	18551	90.2	1.8	5.0	1.3	0.7	0.8	0.2	0.0	90.2	1.8	8.0	0.062	0.509	18.896414	-99.168161
X. C. TEJALPA - JOJUTLA	9.70	3	2	19251	90.0	1.9	5.2	1.3	0.7	0.7	0.2	0.0	90.0	1.9	8.1	0.070	0.509	18.896414	-99.168161
T. IZQ. YAUTEPEC (1° ACCESO)	24.75	1	1	8766	90.5	1.8	4.7	1.4	0.7	0.7	0.2	0.0	90.5	1.8	7.7	0.085	0.500	18.867787	-99.085080
T. IZQ. YAUTEPEC (1° ACCESO)	24.75	1	2	8753	90.4	1.9	4.7	1.4	0.7	0.7	0.2	0.0	90.4	1.9	7.7	0.079	0.500	18.867787	-99.085080
X. C. (SAN GREGORIO - OAXTEPEC) - JOJUTLA	27.10	1	1	9149	90.7	1.8	4.7	1.2	0.7	0.7	0.2	0.0	90.7	1.8	7.5	0.098	0.510	18.871008	-99.070602
X. C. (SAN GREGORIO - OAXTEPEC) - JOJUTLA	27.10	1	2	9526	90.6	1.8	4.7	1.3	0.7	0.7	0.2	0.0	90.6	1.8	7.6	0.085	0.510	18.871113	-99.070710
X. C. (SAN GREGORIO - OAXTEPEC) - JOJUTLA	27.10	3	1	8285	90.4	1.8	4.9	1.3	0.7	0.7	0.2	0.0	90.4	1.8	7.8	0.083	0.508	18.873645	-99.058104
X. C. (SAN GREGORIO - OAXTEPEC) - JOJUTLA	27.10	3	2	8568	90.4	1.9	4.9	1.2	0.7	0.7	0.2	0.0	90.4	1.9	7.7	0.082	0.508	18.873645	-99.058104
T. IZQ. OAXTEPEC	36.11	3	1	6145	90.3	1.9	4.9	1.3	0.7	0.7	0.2	0.0	90.3	1.9	7.8	0.078	0.507	18.884692	-98.985260
T. IZQ. OAXTEPEC	36.11	3	2	6152	90.5	1.8	5.0	1.2	0.6	0.7	0.2	0.0	90.5	1.8	7.7	0.086	0.507	18.884712	-98.985189
T. C. SANTA BARBARA - IZUCAR DE MATAMOROS	43.15	1	1	11719	90.9	1.7	4.7	1.2	0.6	0.7	0.2	0.0	90.9	1.7	7.4	0.061	0.509	18.862870	-98.961376
T. C. SANTA BARBARA - IZUCAR DE MATAMOROS	43.15	1	2	11807	90.5	1.8	4.8	1.3	0.7	0.7	0.2	0.0	90.5	1.8	7.7	0.063	0.509	18.863144	-98.961287

3 CARR: CUERNAVACA - TEPOZTLAN

CLAVE: 17198

RUTA: MEX-162

AÑO: 2010

LUGAR	ESTACION				CLASIFICACION VEHICULAR EN PORCIENTO								COORDENADAS						
	KM	TE	SC	TDPA	A	B	C2	C3	T3S2	T3S3	T3S2R4	OTROS	A	B	C	K'	D	LATITUD	LONGITUD
T. C. MEXICO - CUERNAVACA (LIBRE)	0.00																		
OCOTEPEC	2.83	1	1	8415	88.5	8.5	2.8	0.2	0.0	0.0	0.0	0.0	88.5	8.5	3.0	0.079	0.520	18.967625	-99.230583
OCOTEPEC	2.83	1	2	9128	89.4	7.7	2.7	0.2	0.0	0.0	0.0	0.0	89.4	7.7	2.9	0.076	0.520	18.967625	-99.230583
AHUATEPEC	4.16	3	0	8261	88.6	8.5	2.7	0.2	0.0	0.0	0.0	0.0	88.6	8.5	2.9	0.086	0.504	18.973808	-99.176422
X. C. LA PERA - CUAUTLA	16.34	1	0	7939	88.2	8.7	2.9	0.2	0.0	0.0	0.0	0.0	88.2	8.7	3.1	0.062	0.505	18.982160	-99.110536
TEPOZTLAN	18.20	1	0	8740	88.3	8.6	2.9	0.2	0.0	0.0	0.0	0.0	88.3	8.6	3.1	0.071	0.502	18.982919	-99.107812

4 CARR: ENT. ALPUYECA - GRUTAS DE CACAHUAMILPA

CLAVE: 00421

RUTA: MEX-166

AÑO: 2010

LUGAR	ESTACION				CLASIFICACION VEHICULAR EN PORCIENTO								COORDENADAS						
	KM	TE	SC	TDPA	A	B	C2	C3	T3S2	T3S3	T3S2R4	OTROS	A	B	C	K'	D	LATITUD	LONGITUD
T. C. CUERNAVACA - CHILPANCINGO	0.00	3	0	6282	88.4	4.1	2.2	0.7	3.2	0.4	0.5	0.5	88.4	4.1	7.5	0.063	0.500	18.748404	-99.257538
MIACATLAN	14.95	3	1	4436	90.3	4.1	2.2	0.9	1.5	0.1	0.6	0.3	90.3	4.1	5.6	0.083	0.516	18.755375	-99.363845
MIACATLAN	14.95	3	2	4158	88.4	4.0	2.3	0.8	3.4	0.2	0.5	0.4	88.4	4.0	7.6	0.081	0.516	18.755375	-99.363845
MAZATEPEC	18.28	3	0	8163	86.9	3.9	3.2	1.3	3.1	0.5	0.7	0.4	86.9	3.9	9.2	0.067	0.505	18.722790	-99.368199
TETECALA	25.05	3	0	6068	85.2	3.2	6.0	1.4	2.6	0.1	1.0	0.5	85.2	3.2	11.6	0.066	0.502	18.728867	-99.405101

MORELOS

4 CARR: ENT. ALPUYECA - GRUTAS DE CACAHUAMILPA

CLAVE: 00421

RUTA: MEX-166

AÑO: 2010

LUGAR	ESTACION				CLASIFICACION VEHICULAR EN PORCIENTO								COORDENADAS						
	KM	TE	SC	TDPA	A	B	C2	C3	T3S2	T3S3	T3S2R4	OTROS	A	B	C	K'	D	LATITUD	LONGITUD
COATLAN DEL RIO	29.80	3	0	4170	93.3	2.8	1.7	0.6	0.4	0.3	0.4	0.5	93.3	2.8	3.9	0.084	0.502	18.748130	-99.444152
MICHAPA	41.26	1	0	2437	86.3	3.1	4.6	1.5	2.7	0.2	1.2	0.4	86.3	3.1	10.6	0.071	0.516	18.708475	-99.473687
LIM. EDOS. TERM. MOR. PPIA. GRO.	42.40																		
T. C. TOLUCA - AXIXINTLA	48.65																		

5 CARR: LIBRAMIENTO DE CUAUTLA

CLAVE: 17309

RUTA: MEX

AÑO: 2010

LUGAR	ESTACION				CLASIFICACION VEHICULAR EN PORCIENTO								COORDENADAS						
	KM	TE	SC	TDPA	A	B	C2	C3	T3S2	T3S3	T3S2R4	OTROS	A	B	C	K'	D	LATITUD	LONGITUD
T. C. SANTA BARBARA - IZUCAR DE MATAMOROS	0.00	3	1	11042	81.8	3.2	2.0	2.5	5.0	1.7	2.9	0.9	81.8	3.2	15.0	0.083	0.521	18.848160	-98.933165
T. C. SANTA BARBARA - IZUCAR DE MATAMOROS	0.00	3	2	11987	82.0	3.2	2.0	2.4	5.3	1.6	2.6	0.9	82.0	3.2	14.8	0.079	0.521	18.848159	-98.933165
T. C. SANTA BARBARA - IZUCAR DE MATAMOROS	4.00																		

6 CARR: LIBRAMIENTO DE CUERNAVACA

CLAVE: 17400

RUTA: MEX-095

AÑO: 2010

LUGAR	ESTACION				CLASIFICACION VEHICULAR EN PORCIENTO								COORDENADAS						
	KM	TE	SC	TDPA	A	B	C2	C3	T3S2	T3S3	T3S2R4	OTROS	A	B	C	K'	D	LATITUD	LONGITUD
T. C. MEXICO - CUERNAVACA (CUOTA)	0.00																		
X. C. CUERNAVACA - CUAUTLIXCO	10.54	1	1	36091	82.6	1.0	2.4	0.9	7.2	3.7	1.3	0.9	82.6	1.0	16.4	0.057	0.507	18.927878	-99.202053
X. C. CUERNAVACA - CUAUTLIXCO	10.54	1	2	35033	82.3	1.2	2.6	0.9	7.3	3.5	1.3	0.9	82.3	1.2	16.5	0.059	0.507	18.927878	-99.202053
X. C. CUERNAVACA - CUAUTLIXCO	10.54	3	1	38085	80.3	1.1	3.1	1.2	8.0	3.9	1.4	1.0	80.3	1.1	18.6	0.063	0.503	18.916555	-99.205020
X. C. CUERNAVACA - CUAUTLIXCO	10.54	3	2	37645	79.0	1.2	3.4	1.3	8.5	4.0	1.6	1.0	79.0	1.2	19.8	0.064	0.503	18.916555	-99.205020
T. C. CUERNAVACA - CHILPANCINGO	11.70																		

7 CARR: MEXICO - CUERNAVACA (LIBRE)

CLAVE: 00040

RUTA: MEX-095

AÑO: 2010

LUGAR	ESTACION				CLASIFICACION VEHICULAR EN PORCIENTO								COORDENADAS						
	KM	TE	SC	TDPA	A	B	C2	C3	T3S2	T3S3	T3S2R4	OTROS	A	B	C	K'	D	LATITUD	LONGITUD
MEXICO	0.00																		
T. IZQ. SAN MIGUEL TOPILEJO	28.78	1	0	18408	81.0	7.2	2.1	0.9	5.7	1.8	0.7	0.6	81.0	7.2	11.8	0.064	0.530	19.212499	-99.154160
T. IZQ. SAN MIGUEL TOPILEJO	28.78	3	0	14551	80.8	7.2	2.3	1.3	5.6	1.3	0.9	0.6	80.8	7.2	12.0	0.059	0.506	19.210703	-99.155100
LIM. EDOS. TERM. D.F. PPIA. MOR.	45.44																		
T. DER. ZEMPOALA	51.40	3	0	6729	80.3	7.5	2.4	1.3	5.9	1.2	0.7	0.7	80.3	7.5	12.2	0.096	0.506	19.052522	-99.243412
T. IZQ. COAJOMULCO	57.12	3	0	6671	80.6	7.1	2.4	1.5	5.2	1.5	1.0	0.7	80.6	7.1	12.3	0.069	0.502	19.026997	-99.209718
T. DER. HUITZILAC	64.20	3	0	10934	80.6	7.0	2.5	1.0	5.2	2.1	0.9	0.7	80.6	7.0	12.4	0.083	0.508	19.000783	-99.257717

MORELOS

7 CARR: MEXICO - CUERNAVACA (LIBRE)

CLAVE: 00040

RUTA: MEX-095

AÑO: 2010

LUGAR	ESTACION				CLASIFICACION VEHICULAR EN PORCIENTO								COORDENADAS						
	KM	TE	SC	TDPA	A	B	C2	C3	T3S2	T3S3	T3S2R4	OTROS	A	B	C	K'	D	LATITUD	LONGITUD
T. IZO. TEPOZTLAN	71.36	3	1	10258	80.1	6.8	2.6	1.3	5.0	2.4	1.1	0.7	80.1	6.8	13.1	0.075	0.511	18.963931	-99.246729
T. IZO. TEPOZTLAN	71.36	3	2	10717	80.9	5.9	2.4	1.1	5.7	2.3	0.8	0.9	80.9	5.9	13.2	0.077	0.511	18.963931	-99.246729
CUERNAVACA	75.42																		

8 CARR: RAMAL A MICHAPA

CLAVE: 17303

RUTA: MEX-103

AÑO: 2010

LUGAR	ESTACION				CLASIFICACION VEHICULAR EN PORCIENTO								COORDENADAS						
	KM	TE	SC	TDPA	A	B	C2	C3	T3S2	T3S3	T3S2R4	OTROS	A	B	C	K'	D	LATITUD	LONGITUD
T. C. CUERNAVACA - CHILPANCINGO	0.00	3	0	3538	86.8	2.0	3.9	1.6	3.4	1.1	0.8	0.4	86.8	2.0	11.2	0.068	0.506	18.615386	-99.366278
MICHAPA	16.22	1	0	2573	84.4	2.9	3.7	1.5	4.6	1.8	0.6	0.5	84.4	2.9	12.7	0.075	0.507	18.701334	-99.476896

9 CARR: SAN GREGORIO - OAXTEPEC

CLAVE: 00901

RUTA: MEX-142

AÑO: 2010

LUGAR	ESTACION				CLASIFICACION VEHICULAR EN PORCIENTO								COORDENADAS						
	KM	TE	SC	TDPA	A	B	C2	C3	T3S2	T3S3	T3S2R4	OTROS	A	B	C	K'	D	LATITUD	LONGITUD
SAN GREGORIO	0.00	3	0	8496	93.0	1.5	5.0	0.4	0.1	0.0	0.0	0.0	93.0	1.5	5.5	0.056	0.505	19.244804	-99.054653
X. C. MILPA ALTA - SAN LORENZO TLACOYUCAN	9.00	3	0	6949	93.3	1.4	4.8	0.4	0.1	0.0	0.0	0.0	93.3	1.4	5.3	0.067	0.507	19.180138	-99.029136
LIM. EDOS. TERM. D.F. PPIA. MEX.	18.80																		
LIM. EDOS. TERM. MEX. PPIA. MOR.	28.50																		
T. DER. SAN FELIPE NERI	33.80	1	0	4115	93.1	1.4	5.0	0.4	0.1	0.0	0.0	0.0	93.1	1.4	5.5	0.065	0.503	19.035434	-98.941887
T. DER. TLALNEPANTLA	40.50	3	0	5075	92.8	1.5	5.2	0.4	0.1	0.0	0.0	0.0	92.8	1.5	5.7	0.060	0.501	19.004422	-98.990278
TLAYACAPAN	48.50	3	0	6507	92.8	1.5	5.2	0.4	0.1	0.0	0.0	0.0	92.8	1.5	5.7	0.063	0.501	18.939974	-98.974432
T. DER. YAUTEPEC	53.00	3	0	11526	92.9	1.6	5.0	0.4	0.1	0.0	0.0	0.0	92.9	1.6	5.5	0.063	0.506	18.919497	-98.970495
OAXTEPEC	56.00																		

10 CARR: SANTA BARBARA - IZUCAR DE MATAMOROS

CLAVE: 00451

RUTA: MEX-115-160

AÑO: 2010

LUGAR	ESTACION				CLASIFICACION VEHICULAR EN PORCIENTO								COORDENADAS						
	KM	TE	SC	TDPA	A	B	C2	C3	T3S2	T3S3	T3S2R4	OTROS	A	B	C	K'	D	LATITUD	LONGITUD
T. C. MEXICO - PUEBLA (LIBRE)	0.00	3	1	16555	78.6	4.1	4.7	1.5	4.9	3.6	2.1	0.5	78.6	4.1	17.3	0.071	0.515	19.310959	-98.896970
T. C. MEXICO - PUEBLA (LIBRE)	0.00	3	2	16456	78.5	4.4	4.8	1.6	4.8	3.4	1.9	0.6	78.5	4.4	17.1	0.065	0.515	19.310959	-98.896970
X. C. MEXICO - PUEBLA (CUOTA)	3.61	3	1	28455	78.0	4.1	4.2	1.5	5.5	5.0	1.3	0.4	78.0	4.1	17.9	0.071	0.500	19.285247	-98.880524
X. C. MEXICO - PUEBLA (CUOTA)	3.61	3	2	28434	78.6	3.8	4.8	1.6	5.2	4.0	1.5	0.5	78.6	3.8	17.6	0.069	0.500	19.285247	-98.880524
CHALCO	8.00	3	1	19900	77.8	4.2	5.3	1.4	6.5	2.2	1.9	0.7	77.8	4.2	18.0	0.073	0.504	19.250490	-98.875605
CHALCO	8.00	3	2	20794	79.8	4.3	4.4	1.2	5.8	2.1	1.6	0.8	79.8	4.3	15.9	0.070	0.504	19.250490	-98.875605

MORELOS

10 CARR: SANTA BARBARA - IZUCAR DE MATAMOROS

CLAVE: 00451

RUTA: MEX-115-160

AÑO: 2010

LUGAR	ESTACION				CLASIFICACION VEHICULAR EN PORCIENTO								COORDENADAS						
	KM	TE	SC	TDPA	A	B	C2	C3	T3S2	T3S3	T3S2R4	OTROS	A	B	C	K'	D	LATITUD	LONGITUD
T. DER. JUCHITEPEC	12.46	3	1	11099	79.3	4.6	5.7	1.7	4.3	2.1	1.9	0.4	79.3	4.6	16.1	0.065	0.504	19.239108	-98.854441
T. DER. JUCHITEPEC	12.46	3	2	11270	81.6	4.5	4.1	1.4	3.9	1.9	2.0	0.6	81.6	4.5	13.9	0.067	0.504	19.239108	-98.854441
TLALMANALCO	20.51	3	0	17702	73.9	4.5	5.7	1.8	7.3	3.9	2.2	0.7	73.9	4.5	21.6	0.056	0.509	19.199139	-98.799344
AMECAMECA DE JUAREZ	28.00	1	0	22595	73.3	4.5	6.0	1.5	8.5	3.4	2.1	0.7	73.3	4.5	22.2	0.062	0.522	19.144970	-98.774785
AMECAMECA DE JUAREZ	34.00	3	1	7379	73.6	4.2	6.4	1.3	7.8	3.7	2.3	0.7	73.6	4.2	22.2	0.064	0.500	19.111627	-98.776439
AMECAMECA DE JUAREZ	34.00	3	2	7420	73.7	4.1	6.5	1.5	7.4	3.7	2.5	0.6	73.7	4.1	22.2	0.059	0.500	19.111627	-98.776439
T. IZQ. OZUMBA (1° ACCESO)	38.81	1	0	19928	73.8	4.2	6.5	2.1	6.5	3.6	2.7	0.6	73.8	4.2	22.0	0.060	0.509	19.059039	-98.786572
TEPETLIXPA	42.29	3	0	17099	74.9	4.0	6.2	2.6	5.5	3.9	2.0	0.9	74.9	4.0	21.1	0.068	0.503	19.018126	-98.824390
LIM. EDOS. TERM. MEX. PPIA. MOR.	51.70																		
T. DER. ATLATLAHUACAN	58.95	1	0	10111	79.6	3.9	4.4	1.6	4.3	3.9	1.9	0.4	79.6	3.9	16.5	0.068	0.508	18.930034	-98.886748
T. IZQ. TETELA DEL VOLCAN	62.99	1	0	13888	77.5	4.8	4.5	1.8	4.5	4.1	1.8	1.0	77.5	4.8	17.7	0.058	0.510	18.899955	-98.906982
T. IZQ. LIBRAMIENTO DE CUAUTLA (1° ACCESO)	67.00	1	1	11623	79.8	3.8	4.0	1.2	4.3	4.1	1.9	0.9	79.8	3.8	16.4	0.068	0.509	18.879682	-98.920645
T. IZQ. LIBRAMIENTO DE CUAUTLA (1° ACCESO)	67.00	1	2	11465	78.6	4.0	4.3	1.3	4.5	4.3	2.0	1.0	78.6	4.0	17.4	0.062	0.509	18.879681	-98.920644
T. DER. LA PERA	68.90	3	1	14698	79.3	3.8	4.3	1.5	4.4	3.6	2.1	1.0	79.3	3.8	16.9	0.072	0.502	18.853826	-98.936498
T. DER. LA PERA	68.90	3	2	14570	78.4	4.3	4.7	1.6	4.6	3.9	1.9	0.6	78.4	4.3	17.3	0.080	0.502	18.853826	-98.936498
T. IZQ. LIBRAMIENTO DE CUAUTLA (2° ACCESO)	77.05	3	1	11977	78.3	4.5	4.6	1.6	4.4	3.7	1.8	1.1	78.3	4.5	17.2	0.081	0.505	18.785164	-98.904587
T. IZQ. LIBRAMIENTO DE CUAUTLA (2° ACCESO)	77.05	3	2	11848	77.7	4.3	4.7	1.7	4.9	4.1	1.9	0.7	77.7	4.3	18.0	0.070	0.505	18.785164	-98.904587
T. DER. TLAYECAC	85.06	3	1	8507	77.2	4.2	4.4	1.6	5.3	3.8	2.1	1.4	77.2	4.2	18.6	0.069	0.504	18.761523	-98.883682
T. DER. TLAYECAC	85.06	3	2	8189	77.6	4.3	4.7	1.6	4.6	4.2	1.9	1.1	77.6	4.3	18.1	0.080	0.504	18.761523	-98.883682
T. IZQ. AMAYUCA	91.36	3	0	11161	76.6	4.3	4.8	2.2	4.8	4.2	2.1	1.0	76.6	4.3	19.1	0.065	0.508	18.712431	-98.783234
T. DER. TENANGO	102.96	3	0	3916	76.0	4.3	4.7	2.3	4.8	4.4	2.0	1.5	76.0	4.3	19.7	0.066	0.509	18.664333	-98.726220
LIM. EDOS. TERM. MOR. PPIA. PUE.	103.23																		
X. C. AMAYUCA - IZUCAR DE MATAMOROS	134.99	1	0	7941	77.4	4.7	5.9	1.4	4.5	3.8	1.9	0.4	77.4	4.7	17.9	0.061	0.503	18.612163	-98.495320
X. C. AMAYUCA - IZUCAR DE MATAMOROS	134.99	3	0	10010	77.1	4.4	5.3	1.6	5.9	3.4	1.8	0.5	77.1	4.4	18.5	0.072	0.504	18.594802	-98.476271
T. C. PUEBLA - HUAJUAPAN DE LEON	138.14																		

11 CARR: CUERNAVACA - ACAPULCO (CUOTA)

CLAVE: 00045

RUTA: MEX-095D

AÑO: 2010

LUGAR	ESTACION				CLASIFICACION VEHICULAR EN PORCIENTO								COORDENADAS						
	KM	TE	SC	TDPA	A	B	C2	C3	T3S2	T3S3	T3S2R4	OTROS	A	B	C	K'	D	LATITUD	LONGITUD
CUERNAVACA	0.00	3	1	29314	88.9	4.8	2.1	1.5	1.2	0.7	0.7	0.1	88.9	4.8	6.3	0.061	0.501	18.882486	-99.229665
CUERNAVACA	0.00	3	2	29171	89.2	4.5	2.2	1.4	1.2	0.7	0.7	0.1	89.2	4.5	6.3	0.062	0.501	18.882486	-99.229665
CASETA DE COBRO CENTRAL DE ABASTOS	4.00	1	0	44333	88.9	4.8	2.2	1.4	1.2	0.7	0.7	0.1	88.9	4.8	6.3			18.837505	-99.215412
CASETA DE COBRO AEROPUERTO	14.80	1	0	40022	88.2	5.2	2.2	1.4	1.3	0.8	0.8	0.1	88.2	5.2	6.6			18.802321	-99.221288
T. DER. ACATLIPA	15.00	3	1	19043	88.2	5.3	2.1	1.4	1.3	0.8	0.8	0.1	88.2	5.3	6.5	0.075	0.507	18.844000	-99.218063



MORELOS

11 CARR: CUERNAVACA - ACAPULCO (CUOTA)

CLAVE: 00045

RUTA: MEX-095D

AÑO: 2010

LUGAR	ESTACION				CLASIFICACION VEHICULAR EN PORCIENTO								COORDENADAS						
	KM	TE	SC	TDPA	A	B	C2	C3	T3S2	T3S3	T3S2R4	OTROS	A	B	C	K'	D	LATITUD	LONGITUD
T. DER. ACATLIPA	15.00	3	2	18491	88.0	5.3	2.2	1.4	1.3	0.9	0.8	0.1	88.0	5.3	6.7	0.078	0.507	18.844000	-99.218063
CASETA DE COBRO ALPUYECA	24.95	1	1	9591	82.1	8.7	2.4	2.1	2.4	0.9	1.1	0.3	82.1	8.7	9.2	0.058	0.508	18.724591	-99.258258
CASETA DE COBRO ALPUYECA	24.95	1	2	9283	82.2	9.1	2.2	1.9	2.3	0.9	1.1	0.3	82.2	9.1	8.7	0.058	0.508	18.724591	-99.258258
CASETA DE COBRO ALPUYECA	24.95	2	0	18991	81.9	9.2	2.3	2.1	2.2	0.9	1.1	0.3	81.9	9.2	8.9			18.723677	-99.260113
CASETA DE COBRO ALPUYECA	24.95	3	1	6544	80.1	9.4	2.2	2.6	2.7	1.2	1.4	0.4	80.1	9.4	10.5	0.065	0.510	18.720405	-99.263787
CASETA DE COBRO ALPUYECA	24.95	3	2	6797	80.7	8.8	2.2	2.6	2.8	1.1	1.4	0.4	80.7	8.8	10.5	0.062	0.510	18.720405	-99.263787
LIM. EDOS. TERM. MOR. PPIA. GRO.	52.05																		
CASETA DE COBRO PASO MORELOS	89.43	1	1	3679	84.6	8.5	1.6	0.8	2.2	0.5	1.5	0.3	84.6	8.5	6.9	0.075	0.502	18.238236	-99.213922
CASETA DE COBRO PASO MORELOS	89.43	1	2	3705	83.8	9.0	1.7	0.9	2.3	0.5	1.5	0.3	83.8	9.0	7.2	0.073	0.502	18.238236	-99.213922
CASETA DE COBRO PASO MORELOS	89.43	2	0	7686	84.9	8.2	1.7	0.8	2.1	0.6	1.4	0.3	84.9	8.2	6.9			18.231549	-99.215620
CASETA DE COBRO PASO MORELOS	89.43	3	0	7377	84.7	8.4	1.6	0.8	2.1	0.6	1.5	0.3	84.7	8.4	6.9			18.231549	-99.215620
CASETA DE COBRO PALO BLANCO	199.77	1	1	4197	84.8	8.5	1.5	0.8	2.1	0.6	1.4	0.3	84.8	8.5	6.7	0.075	0.518	17.427336	-99.471077
CASETA DE COBRO PALO BLANCO	199.77	1	2	4187	84.8	8.4	1.5	0.8	2.1	0.6	1.5	0.3	84.8	8.4	6.8	0.073	0.518	17.427336	-99.471077
X. C. CHILPANCINGO - ACAPULCO (TIERRA COLORADA)	231.69	1	1	3819	84.4	8.7	1.6	0.8	2.1	0.5	1.5	0.4	84.4	8.7	6.9	0.064	0.562	17.182711	-99.551732
X. C. CHILPANCINGO - ACAPULCO (TIERRA COLORADA)	231.69	1	2	3747	83.3	9.7	1.7	0.8	2.0	0.5	1.6	0.4	83.3	9.7	7.0	0.058	0.562	17.182711	-99.551732
CASETA DE COBRO LA VENTA	276.10	1	1	3874	83.4	10.0	1.4	0.7	2.1	0.5	1.6	0.3	83.4	10.0	6.6	0.069	0.501	16.929161	-99.799581
CASETA DE COBRO LA VENTA	276.10	1	2	3861	83.8	9.4	1.5	0.7	2.2	0.5	1.6	0.3	83.8	9.4	6.8	0.068	0.501	16.929161	-99.799581
T. C. CHILPANCINGO - ACAPULCO (ENT. LA VENTA)	277.16	1	1	3610	82.6	10.6	1.5	0.7	2.1	0.5	1.7	0.3	82.6	10.6	6.8	0.065	0.513	16.923213	-99.811289
T. C. CHILPANCINGO - ACAPULCO (ENT. LA VENTA)	277.16	1	2	3543	83.3	10.0	1.4	0.7	2.2	0.5	1.6	0.3	83.3	10.0	6.7	0.065	0.513	16.923213	-99.811289

12 CARR: LA PERA - CUAUTLA (CUOTA)

CLAVE: 17161

RUTA: MEX-160D

AÑO: 2010

LUGAR	ESTACION				CLASIFICACION VEHICULAR EN PORCIENTO								COORDENADAS						
	KM	TE	SC	TDPA	A	B	C2	C3	T3S2	T3S3	T3S2R4	OTROS	A	B	C	K'	D	LATITUD	LONGITUD
LA PERA	0.00	3	0	9886	88.3	5.1	2.1	1.2	1.3	0.5	1.3	0.2	88.3	5.1	6.6	0.063	0.511	19.008911	-99.161140
CASETA DE COBRO TEPOZTLAN	7.958	2	0	10402	87.6	5.6	2.2	1.2	1.4	0.5	1.3	0.2	87.6	5.6	6.8			18.986649	-99.113040
CASETA DE COBRO OACALCO	21.208	2	0	10740	87.4	5.2	2.8	1.3	1.4	0.5	1.2	0.2	87.4	5.2	7.4			18.931091	-99.025566
X. C. COCOYOC - OAXTEPEC	27.00	3	1	14282	87.4	5.3	2.7	1.3	1.4	0.5	1.2	0.2	87.4	5.3	7.3	0.063	0.515	18.895218	-98.976755
X. C. COCOYOC - OAXTEPEC	27.00	3	2	15154	87.8	4.9	2.8	1.2	1.4	0.5	1.2	0.2	87.8	4.9	7.3	0.063	0.515	18.893194	-98.975472
T. C. SANTA BARBARA - IZUCAR DE MATAMOROS	34.16	1	1	13253	87.7	5.0	2.8	1.2	1.4	0.5	1.2	0.2	87.7	5.0	7.3	0.077	0.520	18.857788	-98.943207
T. C. SANTA BARBARA - IZUCAR DE MATAMOROS	34.16	1	2	12217	88.0	4.8	2.8	1.2	1.3	0.5	1.2	0.2	88.0	4.8	7.2	0.071	0.520	18.857788	-98.943207

MORELOS

13 CARR: MEXICO - CUERNAVACA (CUOTA)

CLAVE: 00041

RUTA: MEX-095D

AÑO: 2010

LUGAR	ESTACION				CLASIFICACION VEHICULAR EN PORCIENTO								COORDENADAS						
	KM	TE	SC	TDPA	A	B	C2	C3	T3S2	T3S3	T3S2R4	OTROS	A	B	C	K'	D	LATITUD	LONGITUD
MEXICO	0.00																		
T. C. MEXICO - CUERNAVACA (LIBRE)	18.65	3	1	15547	85.9	7.4	1.8	1.0	2.0	0.6	1.1	0.2	85.9	7.4	6.7	0.101	0.525	19.272205	-99.164040
T. C. MEXICO - CUERNAVACA (LIBRE)	18.65	3	2	17161	86.2	7.0	1.7	1.1	2.1	0.6	1.1	0.2	86.2	7.0	6.8	0.095	0.525	19.272205	-99.164040
CASETA DE COBRO TLALPAN	23.36	2	0	32742	86.9	6.7	1.6	1.0	2.0	0.6	1.0	0.2	86.9	6.7	6.4			19.241966	-99.148261
LIM. EDOS. TERM. D.F. PPIA. MOR.	47.09																		
CASETA DE COBRO TRES MARIAS	53.00	3	0	34947	87.4	6.3	1.7	1.0	1.9	0.6	0.9	0.2	87.4	6.3	6.3			19.056207	-99.241103
T. IZQ. CUAUTLA	70.50	1	1	20696	87.0	6.4	1.8	1.0	2.1	0.6	0.9	0.2	87.0	6.4	6.6	0.058	0.516	19.013169	-99.163400
T. IZQ. CUAUTLA	70.50	1	2	19395	86.9	6.6	1.7	1.0	2.1	0.6	0.9	0.2	86.9	6.6	6.5	0.064	0.516	19.013169	-99.163400
T. IZQ. LIBRAMIENTO DE CUERNAVACA	79.26	1	1	18363	87.6	6.0	1.7	1.0	1.9	0.6	1.0	0.2	87.6	6.0	6.4	0.058	0.511	18.978177	-99.231322
T. IZQ. LIBRAMIENTO DE CUERNAVACA	79.26	1	2	17558	87.4	6.3	1.7	1.0	1.9	0.6	0.9	0.2	87.4	6.3	6.3	0.065	0.511	18.978177	-99.231322
T. C. MEXICO - CUERNAVACA (LIBRE)	80.26																		

14 CARR: PUENTE DE IXTLA - IGUALA (CUOTA)

CLAVE: 00043

RUTA: MEX-D

AÑO: 2010

LUGAR	ESTACION				CLASIFICACION VEHICULAR EN PORCIENTO								COORDENADAS						
	KM	TE	SC	TDPA	A	B	C2	C3	T3S2	T3S3	T3S2R4	OTROS	A	B	C	K'	D	LATITUD	LONGITUD
T. C. CUERNAVACA - ACAPULCO (CUOTA)	0.00																		
T. IZQ. PUENTE DE IXTLA	2.00	3	0	7282	71.1	5.5	6.1	7.4	4.2	3.2	1.8	0.7	71.1	5.5	23.4	0.065	0.509	18.626726	-99.328808
T. DER. AMACUZAC	9.63	3	0	8506	72.3	5.1	6.3	6.7	4.2	3.1	1.7	0.6	72.3	5.1	22.6	0.067	0.501	18.596952	-99.376305
LIM. EDOS. TERM. MOR. PPIA. GRO.	18.20																		
T. IZQ. BUENAVISTA	33.58	3	0	5106	70.9	5.3	6.5	7.5	4.2	3.2	1.7	0.7	70.9	5.3	23.8	0.063	0.510	18.457144	-99.434921
CASETA DE COBRO IGUALA	59.14	2	0	4939	71.3	5.4	6.4	7.1	4.2	3.1	1.8	0.7	71.3	5.4	23.3			18.336197	-99.508361
T. DER. IGUALA	59.50	1	0	4926	71.7	5.4	6.5	7.0	4.0	2.9	1.8	0.7	71.7	5.4	22.9	0.068	0.504	18.357893	-99.514587
T. C. CUERNAVACA - CHILPANCINGO	62.80																		

15 CARR: ALPUYECA - JOJUTLA

CLAVE: 17021

RUTA: MOR-021

AÑO: 2010

LUGAR	ESTACION				CLASIFICACION VEHICULAR EN PORCIENTO								COORDENADAS						
	KM	TE	SC	TDPA	A	B	C2	C3	T3S2	T3S3	T3S2R4	OTROS	A	B	C	K'	D	LATITUD	LONGITUD
T. C. CUERNAVACA - CHILPANCINGO	0.00																		
X. C. CUERNAVACA - IGUALA (CUOTA)	2.20	1	0	9661	84.7	4.1	3.1	1.2	3.7	0.9	1.4	0.9	84.7	4.1	11.2	0.066	0.502	18.729650	-99.261308
XOXOCOTLA	7.70	1	1	5235	87.1	3.7	3.5	0.7	2.7	0.7	0.9	0.7	87.1	3.7	9.2	0.068	0.504	18.694969	-99.250000
XOXOCOTLA	7.70	1	2	5326	89.0	3.8	2.2	0.5	2.4	0.6	0.7	0.8	89.0	3.8	7.2	0.071	0.504	18.694969	-99.250000
T. IZQ. ZACATEPEC	11.94	1	1	8496	87.4	4.1	2.8	0.6	2.9	0.7	0.9	0.6	87.4	4.1	8.5	0.060	0.511	18.648963	-99.216825
T. IZQ. ZACATEPEC	11.94	1	2	8136	87.2	4.1	3.0	0.5	3.0	0.6	0.6	1.0	87.2	4.1	8.7	0.061	0.511	18.648963	-99.216825

MORELOS

15 CARR: ALPUYECA - JOJUTLA

CLAVE: 17021

RUTA: MOR-021

AÑO: 2010

LUGAR	ESTACION				CLASIFICACION VEHICULAR EN PORCIENTO								COORDENADAS						
	KM	TE	SC	TDPA	A	B	C2	C3	T3S2	T3S3	T3S2R4	OTROS	A	B	C	K'	D	LATITUD	LONGITUD
JOJUTLA	17.15	1	1	9272	85.7	4.8	2.0	0.5	4.9	0.7	0.7	0.7	85.7	4.8	9.5	0.067	0.500	18.627506	-99.205668
JOJUTLA	17.15	1	2	9257	86.0	4.8	2.4	0.5	4.6	0.4	0.6	0.7	86.0	4.8	9.2	0.064	0.500	18.627506	-99.205668

16 CARR: AMAYUCA - IZUCAR DE MATAMOROS

CLAVE: 00030

RUTA: MOR-031-PUE

AÑO: 2010

LUGAR	ESTACION				CLASIFICACION VEHICULAR EN PORCIENTO								COORDENADAS						
	KM	TE	SC	TDPA	A	B	C2	C3	T3S2	T3S3	T3S2R4	OTROS	A	B	C	K'	D	LATITUD	LONGITUD
AMAYUCA	0.00																		
X. C. SANTA BARBARA - IZUCAR DE MATAMOROS	0.66	3	1	6063	83.6	2.8	3.5	3.3	2.7	2.7	0.4	1.0	83.6	2.8	13.6	0.069	0.503	18.713912	-98.796802
X. C. SANTA BARBARA - IZUCAR DE MATAMOROS	0.66	3	2	6003	81.2	4.6	3.4	3.7	2.4	2.3	1.1	1.3	81.2	4.6	14.2	0.071	0.503	18.713912	-98.796802
JONACATEPEC	3.84	3	0	5565	81.6	4.6	3.6	3.3	3.4	1.7	0.8	1.0	81.6	4.6	13.8	0.077	0.506	18.655202	-98.816260
T. DER. TEPALCINGO	14.50	3	0	6719	81.0	4.2	3.9	3.8	4.0	1.8	1.0	0.3	81.0	4.2	14.8	0.071	0.501	18.609047	-98.838192
AXOCHIAPAN	29.50	1	0	4507	82.9	4.3	5.5	2.2	3.0	1.1	0.2	0.8	82.9	4.3	12.8	0.071	0.501	18.515720	-98.785460
AXOCHIAPAN	29.50	3	1	3018	83.6	4.8	5.4	2.3	1.5	1.0	0.4	1.0	83.6	4.8	11.6	0.067	0.511	18.493974	-98.748228
AXOCHIAPAN	29.50	3	2	2892	83.4	5.0	5.1	2.6	1.7	0.9	0.4	0.9	83.4	5.0	11.6	0.060	0.511	18.493974	-98.748228
BARRANCA DEL MUERTO	38.40	3	0	2720	84.5	5.3	4.6	2.4	1.1	1.0	0.5	0.6	84.5	5.3	10.2	0.064	0.511	18.477461	-98.729705
LIM. EDOS. TERM. MOR. PPIA. PUE.	40.00																		
T. DER. CHIETLA	53.00	1	0	5788	84.2	5.4	4.8	2.3	1.0	1.3	0.6	0.4	84.2	5.4	10.4	0.067	0.508	18.526812	-98.585386
X. C. SANTA BARBARA - IZUCAR DE MATAMOROS	67.50	1	0	8537	84.6	5.3	4.7	2.1	1.2	1.1	0.4	0.6	84.6	5.3	10.1	0.069	0.505	18.596860	-98.487896
X. C. SANTA BARBARA - IZUCAR DE MATAMOROS	67.50	3	0	15744	83.1	5.8	5.1	2.2	1.3	1.4	0.5	0.6	83.1	5.8	11.1	0.072	0.503	18.601134	-98.473317
IZUCAR DE MATAMOROS	69.00																		

17 CARR: AMAYUCA - TLACOTEPEC

CLAVE: 17020

RUTA: MOR-017

AÑO: 2010

LUGAR	ESTACION				CLASIFICACION VEHICULAR EN PORCIENTO								COORDENADAS						
	KM	TE	SC	TDPA	A	B	C2	C3	T3S2	T3S3	T3S2R4	OTROS	A	B	C	K'	D	LATITUD	LONGITUD
AMAYUCA	0.00	3	0	5817	93.8	2.8	1.6	0.6	0.3	0.1	0.4	0.4	93.8	2.8	3.4	0.069	0.503	18.728467	-98.790262
TEMOAC	5.50	3	0	3305	94.6	2.5	1.4	0.7	0.1	0.1	0.4	0.2	94.6	2.5	2.9	0.099	0.509	18.776689	-98.775853
ZACUALPAN DE AMILPAS	7.50	1	0	3539	93.5	2.3	2.0	0.9	0.3	0.2	0.3	0.5	93.5	2.3	4.2	0.074	0.516	18.785231	-98.771125
TLACOTEPEC	12.00	1	0	1623	93.6	3.2	1.1	0.2	0.4	0.3	0.4	0.8	93.6	3.2	3.2	0.091	0.505	18.809400	-98.758519

MORELOS

18 CARR: ATLATLAHUCAN - TLAYACAPAN

CLAVE: 17301

RUTA: MOR-002

AÑO: 2010

LUGAR	ESTACION				CLASIFICACION VEHICULAR EN PORCIENTO								COORDENADAS						
	KM	TE	SC	TDPA	A	B	C2	C3	T3S2	T3S3	T3S2R4	OTROS	A	B	C	K'	D	LATITUD	LONGITUD
T. C. SANTA BARBARA - IZUCAR DE MATAMOROS	0.00																		
ATLATLAHUCAN	1.50	1	1	3328	85.0	4.8	3.4	2.4	2.3	1.5	0.1	0.5	85.0	4.8	10.2	0.056	0.501	18.930366	-98.889344
ATLATLAHUCAN	1.50	1	2	3344	84.9	5.1	3.1	2.4	2.3	1.6	0.2	0.4	84.9	5.1	10.0	0.057	0.501	18.930366	-98.889344
TOTOLAPAN	7.00	1	0	2728	85.1	5.1	3.7	2.3	1.6	1.6	0.2	0.4	85.1	5.1	9.8	0.062	0.502	18.976023	-98.914401
TLAYACAPAN	15.50	1	0	4074	87.7	5.4	1.7	0.9	2.3	1.6	0.1	0.3	87.7	5.4	6.9	0.074	0.500	18.961666	-98.973226

19 CARR: COCOYOC - OAXTEPEC

CLAVE: 17001

RUTA: MOR

AÑO: 2010

LUGAR	ESTACION				CLASIFICACION VEHICULAR EN PORCIENTO								COORDENADAS						
	KM	TE	SC	TDPA	A	B	C2	C3	T3S2	T3S3	T3S2R4	OTROS	A	B	C	K'	D	LATITUD	LONGITUD
COCOYOC	0.00	3	1	10993	84.8	3.5	1.5	1.6	4.9	2.1	1.1	0.5	84.8	3.5	11.7	0.063	0.502	18.886991	-98.985412
COCOYOC	0.00	3	2	10899	85.2	3.4	1.6	1.4	4.7	2.0	1.2	0.5	85.2	3.4	11.4	0.065	0.502	18.898391	-98.985036
OAXTEPEC	3.92	1	0	13041	88.8	3.6	2.4	1.6	0.8	1.0	1.4	0.4	88.8	3.6	7.6	0.072	0.504	18.902504	-98.978046

20 CARR: ENT. C. (CUERNAVACA - ACAPULCO CUOTA) - TEPETZINGO

CLAVE:

RUTA: MOR

AÑO: 2010

LUGAR	ESTACION				CLASIFICACION VEHICULAR EN PORCIENTO								COORDENADAS						
	KM	TE	SC	TDPA	A	B	C2	C3	T3S2	T3S3	T3S2R4	OTROS	A	B	C	K'	D	LATITUD	LONGITUD
ENT. C. (CUERNAVACA - ACAPULCO CUOTA)	0.00	3	0	4213	82.0	3.3	7.9	0.9	3.4	0.6	1.1	0.8	82.0	3.3	14.7	0.072	0.508	18.813658	-99.217714
TEPETZINGO	5.50	1	0	3267	83.7	3.2	7.2	0.4	3.2	0.6	1.1	0.6	83.7	3.2	13.1	0.069	0.504	18.788166	-99.180536

21 CARR: ENT. C. (CUERNAVACA - CUAUTLIXCO) - OACALCO

CLAVE:

RUTA: MOR

AÑO: 2010

LUGAR	ESTACION				CLASIFICACION VEHICULAR EN PORCIENTO								COORDENADAS						
	KM	TE	SC	TDPA	A	B	C2	C3	T3S2	T3S3	T3S2R4	OTROS	A	B	C	K'	D	LATITUD	LONGITUD
ENT. C. (CUERNAVACA - CUAUTLIXCO)	0.00	3	0	1518	84.4	2.2	5.4	2.9	2.7	1.6	0.4	0.4	84.4	2.2	13.4	0.082	0.509	18.876145	-99.052195
OACALCO	10.00	1	0	3347	81.3	4.9	6.4	3.1	2.1	1.2	0.5	0.5	81.3	4.9	13.8	0.069	0.504	18.903986	-99.034382

22 CARR: ENT. CHIVERIAS - ENT. EL ABANICO

CLAVE: 17302

RUTA: MOR

AÑO: 2010

LUGAR	ESTACION				CLASIFICACION VEHICULAR EN PORCIENTO								COORDENADAS						
	KM	TE	SC	TDPA	A	B	C2	C3	T3S2	T3S3	T3S2R4	OTROS	A	B	C	K'	D	LATITUD	LONGITUD
T. C. ALPUYECA - JOJUTLA	0.00	3	0	3445	81.6	4.7	2.7	3.3	2.8	3.3	0.9	0.7	81.6	4.7	13.7	0.063	0.502	18.657681	-99.227647
X. C. XOXOCOTLA - TILZAPOTLA	5.56	3	0	2695	81.5	4.6	3.1	3.9	1.7	3.4	1.4	0.4	81.5	4.6	13.9	0.094	0.557	18.644321	-99.271713
T. C. CUERNAVACA - ACAPULCO (CUOTA)	14.50	1	0	3603	81.6	5.2	2.9	3.7	2.2	3.0	0.9	0.5	81.6	5.2	13.2	0.075	0.515	18.646151	-99.290062

MORELOS

23 CARR: GALEANA - CUAUTLA

CLAVE: 17004

RUTA: MOR-004

AÑO: 2010

LUGAR	ESTACION				CLASIFICACION VEHICULAR EN PORCIENTO								COORDENADAS						
	KM	TE	SC	TDPA	A	B	C2	C3	T3S2	T3S3	T3S2R4	OTROS	A	B	C	K'	D	LATITUD	LONGITUD
GALEANA	0.00	3	1	9255	96.9	0.4	2.4	0.2	0.0	0.1	0.0	0.0	96.9	0.4	2.7	0.068	0.503	18.647450	-99.202973
GALEANA	0.00	3	2	9384	97.0	0.4	2.3	0.2	0.0	0.1	0.0	0.0	97.0	0.4	2.6	0.066	0.503	18.647450	-99.202973
ZACATEPEC	4.00	3	0	4291	96.8	0.4	2.5	0.2	0.0	0.1	0.0	0.0	96.8	0.4	2.8	0.077	0.513	18.658781	-99.182230
TLALTIZAPAN	13.10	3	0	2396	96.8	0.4	2.5	0.2	0.0	0.1	0.0	0.0	96.8	0.4	2.8	0.081	0.506	18.698369	-99.112293
T. DER. CHINAMECA	16.06	3	0	1480	96.8	0.4	2.5	0.2	0.0	0.1	0.0	0.0	96.8	0.4	2.8	0.074	0.518	18.704036	-99.106307
MOYOTEPEC	34.00	1	0	2560	97.0	0.4	2.3	0.2	0.0	0.1	0.0	0.0	97.0	0.4	2.6	0.065	0.506	18.727419	-99.001345
VILLA DE AYALA	38.62	1	0	4854	96.8	0.4	2.5	0.2	0.0	0.1	0.0	0.0	96.8	0.4	2.8	0.064	0.503	18.759051	-98.984521
T. IZQ. ANENECUILCO	40.50	1	0	7105	96.7	0.4	2.6	0.2	0.0	0.1	0.0	0.0	96.7	0.4	2.9	0.083	0.511	18.784857	-98.979958
CUAUTLA	46.00	1	1	6335	97.0	0.4	2.3	0.2	0.0	0.1	0.0	0.0	97.0	0.4	2.6	0.074	0.507	18.796731	-98.970761
CUAUTLA	46.00	1	2	6153	96.9	0.4	2.4	0.2	0.0	0.1	0.0	0.0	96.9	0.4	2.7	0.074	0.507	18.796731	-98.970761

24 CARR: JOJUTLA - CHINAMECA

CLAVE: 17310

RUTA: MOR

AÑO: 2010

LUGAR	ESTACION				CLASIFICACION VEHICULAR EN PORCIENTO								COORDENADAS						
	KM	TE	SC	TDPA	A	B	C2	C3	T3S2	T3S3	T3S2R4	OTROS	A	B	C	K'	D	LATITUD	LONGITUD
JOJUTLA	0.00	3	0	1722	93.2	3.1	1.1	0.6	0.3	0.3	0.8	0.6	93.2	3.1	3.7	0.087	0.505	18.611799	-99.168611
T. C. TEMILPA - TEPALCINGO	32.00	1	0	849	93.2	3.2	0.9	0.3	0.6	0.4	1.0	0.4	93.2	3.2	3.6	0.060	0.504	18.623551	-99.006982
CHINAMECA	34.00																		

25 CARR: JOJUTLA - EL HIGUERON

CLAVE: 17039

RUTA: MOR-039

AÑO: 2010

LUGAR	ESTACION				CLASIFICACION VEHICULAR EN PORCIENTO								COORDENADAS						
	KM	TE	SC	TDPA	A	B	C2	C3	T3S2	T3S3	T3S2R4	OTROS	A	B	C	K'	D	LATITUD	LONGITUD
JOJUTLA	0.00	3	0	7298	92.9	3.2	1.2	0.1	0.5	0.6	1.1	0.4	92.9	3.2	3.9	0.058	0.505	18.610004	-99.173260
EL HIGUERON	4.50	1	0	4535	93.8	3.2	1.2	0.2	0.4	0.2	0.7	0.3	93.8	3.2	3.0	0.067	0.508	18.588754	-99.176921

26 CARR: MOYOTEPEC - SAN RAFAEL

CLAVE: 17306

RUTA: MOR

AÑO: 2010

LUGAR	ESTACION				CLASIFICACION VEHICULAR EN PORCIENTO								COORDENADAS						
	KM	TE	SC	TDPA	A	B	C2	C3	T3S2	T3S3	T3S2R4	OTROS	A	B	C	K'	D	LATITUD	LONGITUD
T. C. GALEANA - CUAUTLA	0.00	3	0	1287	88.7	2.1	3.5	1.7	1.3	1.1	1.2	0.4	88.7	2.1	9.2	0.072	0.500	18.715535	-98.990333
T. C. TEMILPA - TEPALCINGO	7.50	1	0	1995	89.5	2.4	3.4	1.3	0.6	1.0	1.2	0.6	89.5	2.4	8.1	0.080	0.513	18.638428	-99.008802



MORELOS

32 CARR: RAMAL A JUCHITEPEC

CLAVE:

RUTA: EM

AÑO: 2010

LUGAR	ESTACION				CLASIFICACION VEHICULAR EN PORCIENTO								COORDENADAS						
	KM	TE	SC	TDPA	A	B	C2	C3	T3S2	T3S3	T3S2R4	OTROS	A	B	C	K'	D	LATITUD	LONGITUD
ENT. C. (SAN GREGORIO - OAXTEPEC)	0.00	3	0	2441	84.0	3.1	5.6	2.1	2.2	1.1	0.8	1.1	84.0	3.1	12.9	0.079	0.507	19.114835	-98.927580
JUCHITEPEC	6.51																		

33 CARR: RAMAL A TETELA DEL VOLCAN

CLAVE: 17010

RUTA: MOR-010

AÑO: 2010

LUGAR	ESTACION				CLASIFICACION VEHICULAR EN PORCIENTO								COORDENADAS						
	KM	TE	SC	TDPA	A	B	C2	C3	T3S2	T3S3	T3S2R4	OTROS	A	B	C	K'	D	LATITUD	LONGITUD
T. C. SANTA BARBARA - IZUCAR DE MATAMOROS	0.00	3	1	4533	93.6	1.4	3.1	0.6	0.3	0.1	0.5	0.4	93.6	1.4	5.0	0.075	0.502	18.892908	-98.898164
T. C. SANTA BARBARA - IZUCAR DE MATAMOROS	0.00	3	2	4488	93.6	1.2	3.3	0.6	0.3	0.1	0.5	0.4	93.6	1.2	5.2	0.075	0.502	18.892908	-98.898164
YECAPIXTLA	5.50	3	0	3607	93.8	1.5	2.8	0.5	0.2	0.4	0.5	0.3	93.8	1.5	4.7	0.081	0.505	18.870550	-98.848273
OCUITUCO	15.00	1	0	3332	92.1	1.8	3.9	0.4	0.4	0.5	0.5	0.4	92.1	1.8	6.1	0.061	0.513	18.878209	-98.781322
TETELA DEL VOLCAN	22.00	1	0	3374	95.0	1.0	1.9	0.8	0.4	0.3	0.3	0.3	95.0	1.0	4.0	0.063	0.505	18.884983	-98.736843

34 CARR: T. C. (MEXICO - CUERNAVACA (LIBRE)) - HUITZILAC

CLAVE:

RUTA: MOR

AÑO: 2010

LUGAR	ESTACION				CLASIFICACION VEHICULAR EN PORCIENTO								COORDENADAS						
	KM	TE	SC	TDPA	A	B	C2	C3	T3S2	T3S3	T3S2R4	OTROS	A	B	C	K'	D	LATITUD	LONGITUD
T.C. MEXICO - CUERNAVACA (LIBRE)	0.00	3	0	6065	86.8	5.0	3.2	0.8	2.4	1.1	0.3	0.4	86.8	5.0	8.2	0.061	0.535	19.011174	-99.263191
HUITZILAC	4.00	1	0	4919	87.4	5.2	3.1	0.8	2.2	0.8	0.1	0.4	87.4	5.2	7.4	0.068	0.521	19.021643	-99.266239

35 CARR: T. C. (SAN GREGORIO - OAXTEPEC) - JOJUTLA

CLAVE: 17002

RUTA: MOR-002

AÑO: 2010

LUGAR	ESTACION				CLASIFICACION VEHICULAR EN PORCIENTO								COORDENADAS						
	KM	TE	SC	TDPA	A	B	C2	C3	T3S2	T3S3	T3S2R4	OTROS	A	B	C	K'	D	LATITUD	LONGITUD
T. C. SAN GREGORIO - OAXTEPEC	0.00	3	0	5032	89.6	2.5	2.7	0.3	2.9	0.5	1.1	0.4	89.6	2.5	7.9	0.068	0.505	18.921544	-98.972102
X. C. LA PERA - CUAUTLA	7.50	3	0	4047	91.5	2.9	2.8	0.5	0.1	0.9	0.9	0.4	91.5	2.9	5.6	0.082	0.512	18.928350	-99.025675
YAUTEPEC	14.00	1	0	6788	89.8	2.5	2.9	0.6	2.0	1.1	0.4	0.7	89.8	2.5	7.7	0.076	0.504	18.900221	-99.057804
YAUTEPEC	14.00	3	0	6354	90.6	2.6	2.7	0.4	1.6	0.8	0.6	0.7	90.6	2.6	6.8	0.065	0.516	18.871617	-99.066472
TICUMAN	32.30	1	0	3738	90.6	2.6	2.4	0.3	1.5	1.0	0.7	0.9	90.6	2.6	6.8	0.062	0.505	18.768401	-99.116976
X. C. GALEANA - CUAUTLA	40.50	3	0	4923	89.0	3.0	3.4	0.4	1.6	1.0	1.2	0.4	89.0	3.0	8.0	0.074	0.502	18.678725	-99.129413
TLAQUILTENANGO	50.50	1	0	5422	90.6	2.5	2.7	0.4	1.5	0.9	1.0	0.4	90.6	2.5	6.9	0.071	0.510	18.658482	-99.151310
JOJUTLA	53.50	1	0	10202	90.9	2.6	2.5	0.4	1.5	1.0	0.7	0.4	90.9	2.6	6.5	0.063	0.503	18.622238	-99.170116

MORELOS

36 CARR: TEHUXTLA - PUENTE DE IXTLA

CLAVE: 17307

RUTA: MOR

AÑO: 2010

LUGAR	ESTACION				CLASIFICACION VEHICULAR EN PORCIENTO								COORDENADAS						
	KM	TE	SC	TDPA	A	B	C2	C3	T3S2	T3S3	T3S2R4	OTROS	A	B	C	K'	D	LATITUD	LONGITUD
TEHUXTLA	0.00	3	0	2115	89.5	1.6	4.6	2.2	1.1	0.2	0.3	0.5	89.5	1.6	8.9	0.082	0.511	18.565500	-99.278976
PUENTE DE IXTLA	9.60	1	0	3045	89.6	1.7	4.5	2.4	0.9	0.5	0.2	0.2	89.6	1.7	8.7	0.092	0.503	18.604725	-99.313316
T. C. CUERNAVACA - CHILPANCINGO	10.60																		

37 CARR: TEJALPA - JOJUTLA

CLAVE: 17014

RUTA: MOR-014

AÑO: 2010

LUGAR	ESTACION				CLASIFICACION VEHICULAR EN PORCIENTO								COORDENADAS						
	KM	TE	SC	TDPA	A	B	C2	C3	T3S2	T3S3	T3S2R4	OTROS	A	B	C	K'	D	LATITUD	LONGITUD
T. C. CUERNAVACA - CUAUTLIXCO	0.00																		
JIUTEPEC	1.97	3	0	10605	77.9	7.1	6.9	1.5	3.1	2.0	0.8	0.7	77.9	7.1	15.0	0.069	0.501	18.865349	-99.174491
EMILIANO ZAPATA	7.00	3	1	6438	79.5	5.8	7.1	1.4	3.6	1.8	0.2	0.6	79.5	5.8	14.7	0.062	0.501	18.815949	-99.191851
EMILIANO ZAPATA	7.00	3	2	6450	78.8	6.0	7.3	1.8	3.8	1.1	0.3	0.9	78.8	6.0	15.2	0.065	0.501	18.815949	-99.191851
T. IZQ. CHICONCUAC	14.50	1	1	6013	80.7	5.4	6.8	1.7	3.4	0.7	0.4	0.9	80.7	5.4	13.9	0.070	0.509	18.793351	-99.201791
T. IZQ. CHICONCUAC	14.50	1	2	6241	80.8	5.6	7.1	1.5	3.0	0.8	0.3	0.9	80.8	5.6	13.6	0.072	0.509	18.793351	-99.201791
T. IZQ. CHICONCUAC	14.50	3	1	7568	80.7	5.3	7.6	1.8	3.0	0.9	0.2	0.5	80.7	5.3	14.0	0.072	0.509	18.771185	-99.211315
T. IZQ. CHICONCUAC	14.50	3	2	7851	80.8	5.6	7.4	1.6	2.7	1.0	0.3	0.6	80.8	5.6	13.6	0.064	0.509	18.771185	-99.211315
X. C. ZACATEPEC - TLAQUILTENANGO	32.90	1	0	6790	88.2	2.6	2.8	2.2	1.5	1.1	1.2	0.4	88.2	2.6	9.2	0.072	0.502	18.649432	-99.184271
JOJUTLA	35.00	1	0	7612	81.3	5.7	7.6	1.3	2.4	1.0	0.2	0.5	81.3	5.7	13.0	0.081	0.516	18.629003	-99.185077

38 CARR: TEMILPA - TEPALCINGO

CLAVE: 17009

RUTA: MOR-009

AÑO: 2010

LUGAR	ESTACION				CLASIFICACION VEHICULAR EN PORCIENTO								COORDENADAS						
	KM	TE	SC	TDPA	A	B	C2	C3	T3S2	T3S3	T3S2R4	OTROS	A	B	C	K'	D	LATITUD	LONGITUD
T. C. GALEANA - CUAUTLA	0.00	3	0	1790	82.1	5.1	4.0	3.0	1.9	3.0	0.3	0.6	82.1	5.1	12.8	0.069	0.514	18.691734	-99.098613
TEPALCINGO	40.50	1	0	2141	85.2	4.0	4.0	1.9	2.7	1.3	0.4	0.5	85.2	4.0	10.8	0.075	0.501	18.603405	-98.852013

39 CARR: TEPOZTLAN - YAUTEPEC

CLAVE: 17013

RUTA: MOR-013

AÑO: 2010

LUGAR	ESTACION				CLASIFICACION VEHICULAR EN PORCIENTO								COORDENADAS						
	KM	TE	SC	TDPA	A	B	C2	C3	T3S2	T3S3	T3S2R4	OTROS	A	B	C	K'	D	LATITUD	LONGITUD
TEPOZTLAN	0.00	3	0	3558	91.1	1.9	2.0	1.0	3.3	0.4	0.1	0.2	91.1	1.9	7.0	0.078	0.515	18.969217	-99.075341
YAUTEPEC	14.82	1	0	5751	90.6	2.1	2.0	0.8	3.0	0.7	0.4	0.4	90.6	2.1	7.3	0.077	0.506	18.890980	-99.061757



MORELOS

40 CARR: XOXOCOTLA - TILZAPOTLA

CLAVE: 17005

RUTA: MOR-006

AÑO: 2010

LUGAR	ESTACION				CLASIFICACION VEHICULAR EN PORCIENTO								COORDENADAS						
	KM	TE	SC	TDPA	A	B	C2	C3	T3S2	T3S3	T3S2R4	OTROS	A	B	C	K'	D	LATITUD	LONGITUD
XOXOCOTLA	0.00	3	1	2455	82.1	6.5	3.2	1.6	2.8	2.2	1.0	0.6	82.1	6.5	11.4	0.097	0.509	18.680244	-99.252108
XOXOCOTLA	0.00	3	2	2369	83.4	6.7	3.1	1.3	2.1	1.9	1.1	0.4	83.4	6.7	9.9	0.087	0.509	18.680244	-99.252108
TEHUXTLA	19.50	1	0	4843	82.8	6.4	3.2	1.6	2.7	1.7	1.1	0.5	82.8	6.4	10.8	0.072	0.503	18.568359	-99.269068
TEHUXTLA	19.50	3	0	4254	81.4	6.2	2.9	2.6	3.2	1.8	1.4	0.5	81.4	6.2	12.4	0.062	0.501	18.545898	-99.269734
TILZAPOTLA	29.50	1	0	3707	82.2	6.8	3.1	2.5	1.9	1.7	1.5	0.3	82.2	6.8	11.0	0.061	0.501	18.525389	-99.278023

41 CARR: ZACATEPEC - TLAQUILTENANGO

CLAVE: 17300

RUTA: MOR

AÑO: 2010

LUGAR	ESTACION				CLASIFICACION VEHICULAR EN PORCIENTO								COORDENADAS						
	KM	TE	SC	TDPA	A	B	C2	C3	T3S2	T3S3	T3S2R4	OTROS	A	B	C	K'	D	LATITUD	LONGITUD
ZACATEPEC	0.00	3	0	6742	81.3	4.5	5.6	2.6	2.2	2.4	1.0	0.4	81.3	4.5	14.2	0.065	0.504	18.647462	-99.186765
TLAQUILTENANGO	4.08	1	0	4141	82.5	4.0	4.9	2.7	2.2	2.2	1.1	0.4	82.5	4.0	13.5	0.084	0.514	18.644352	-99.179486

42 CARR: ATLIXCO - JANTETELCO (CUOTA)

CLAVE:

RUTA: PUE-D

AÑO: 2010

LUGAR	ESTACION				CLASIFICACION VEHICULAR EN PORCIENTO								COORDENADAS						
	KM	TE	SC	TDPA	A	B	C2	C3	T3S2	T3S3	T3S2R4	OTROS	A	B	C	K'	D	LATITUD	LONGITUD
T.C. PUEBLA - IZUCAR DE MATAMOROS	0.00	3	0	2337	83.0	2.9	2.7	5.6	2.0	0.9	2.2	0.7	83.0	2.9	14.1	0.065	0.506	18.942304	-98.398742
LIM. EDOS. TERM. PUE. PPIA. MOR.	48.60																		
T.C. SANTA BARABARA - IZUCAR DE MATAMOROS	54.90	1	0	5229	78.7	3.6	4.7	5.5	3.0	0.8	3.0	0.7	78.7	3.6	17.7	0.066	0.503	18.705819	-98.767558

43 CARR: TRES MARIAS - SANTA MARTHA

CLAVE: 00172

RUTA: MEX-106-EM

AÑO: 2010

LUGAR	ESTACION				CLASIFICACION VEHICULAR EN PORCIENTO								COORDENADAS						
	KM	TE	SC	TDPA	A	B	C2	C3	T3S2	T3S3	T3S2R4	OTROS	A	B	C	K'	D	LATITUD	LONGITUD
TRES MARIAS	0.00	3	0	5052	81.2	5.0	6.4	3.0	2.1	1.2	0.6	0.5	81.2	5.0	13.8	0.066	0.508	19.047376	-99.250251
LAGUNA DE ZEMPOALA	14.00																		
LIM. EDOS. TERM. MOR. PPIA. MEX.	14.50																		
SANTA MARTHA	28.35	1	0	2146	78.9	6.7	5.5	3.5	1.7	2.1	1.1	0.5	78.9	6.7	14.4	0.082	0.509	19.063129	-99.379544

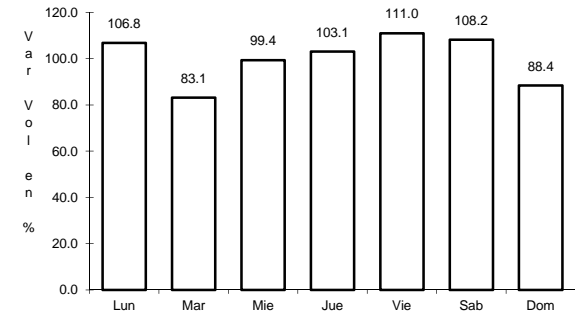
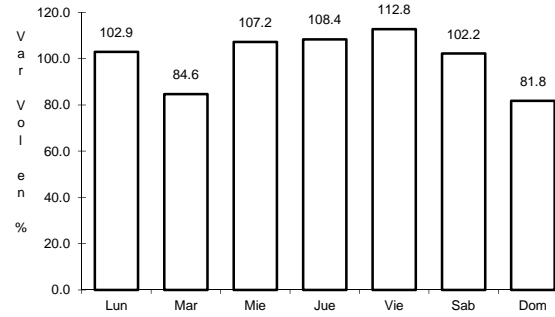
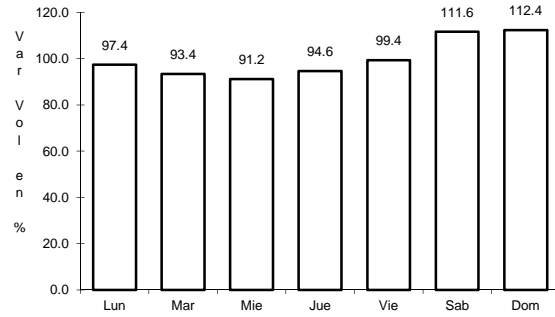




7 CARR: MEXICO - CUERNAVACA (LIBRE)

CLAVE: 00040

RUTA: MEX-095



Km: 28.78      Tipo: 1      Sent: 0

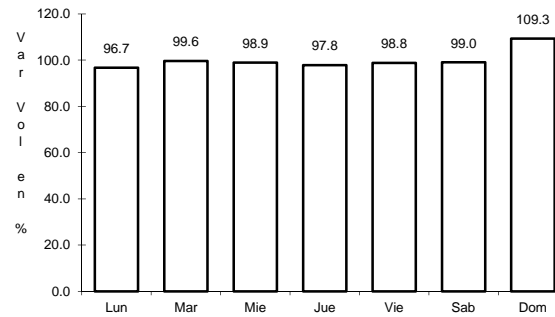
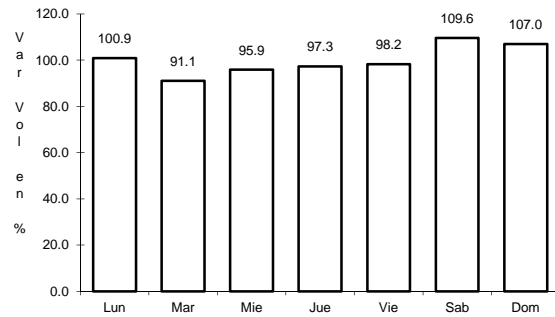
Km: 71.36      Tipo: 3      Sent: 1

Km: 71.36      Tipo: 3      Sent: 2

8 CARR: RAMAL A MICHAPA

CLAVE: 17303

RUTA: MEX-103



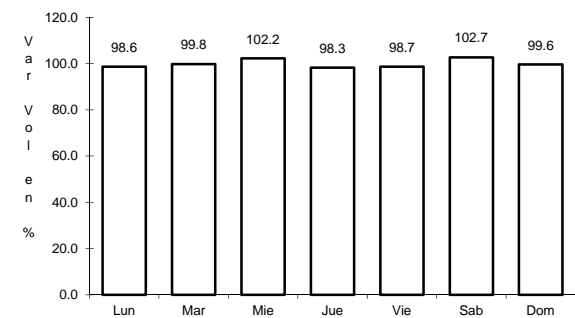
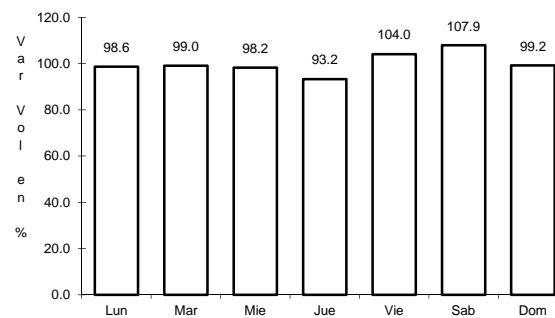
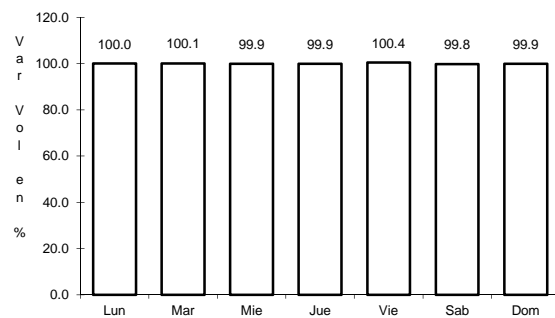
Km: 0.00      Tipo: 3      Sent: 0

Km: 16.22      Tipo: 1      Sent: 0

9 CARR: SAN GREGORIO - OAXTEPEC

CLAVE: 00901

RUTA: MEX-142



Km: 0.00      Tipo: 3      Sent: 0

Km: 33.80      Tipo: 1      Sent: 0

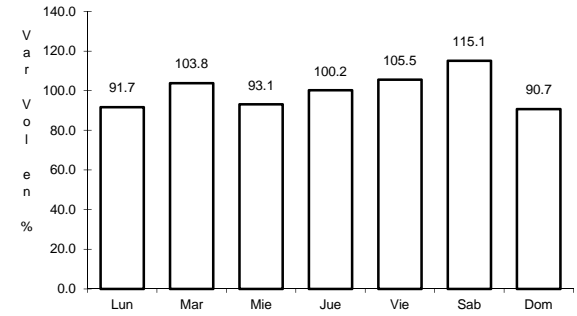
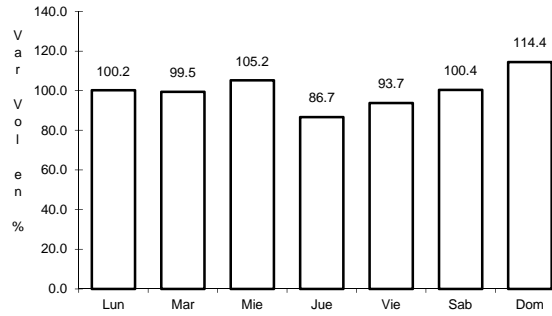
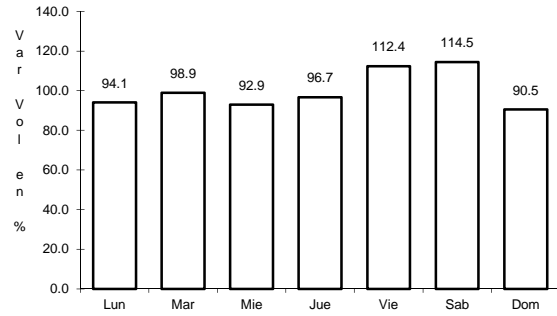
Km: 53.00      Tipo: 3      Sent: 0



13 CARR: MEXICO - CUERNAVACA (CUOTA)

CLAVE: 00041

RUTA: MEX-095D



Km: 18.65      Tipo: 3      Sent: 1

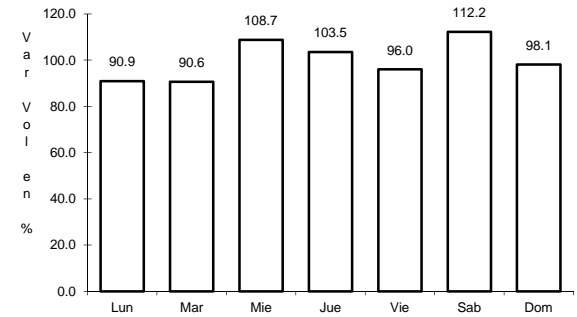
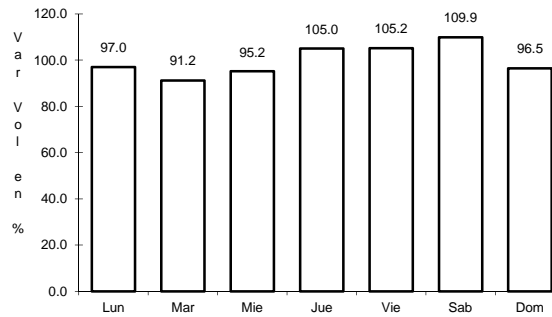
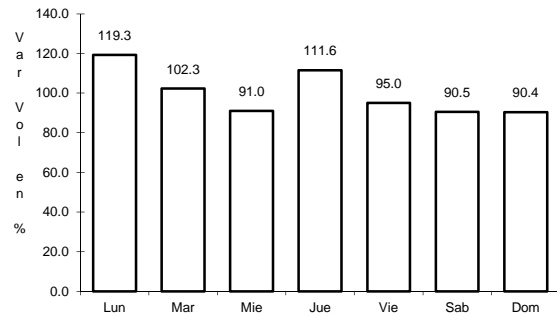
Km: 18.65      Tipo: 3      Sent: 2

Km: 79.26      Tipo: 1      Sent: 1

14 CARR: PUENTE DE IXTLA - IGUALA (CUOTA)

CLAVE: 00043

RUTA: MEX-D



Km: 2.00      Tipo: 3      Sent: 0

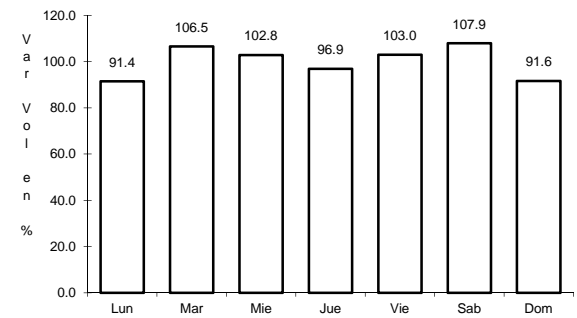
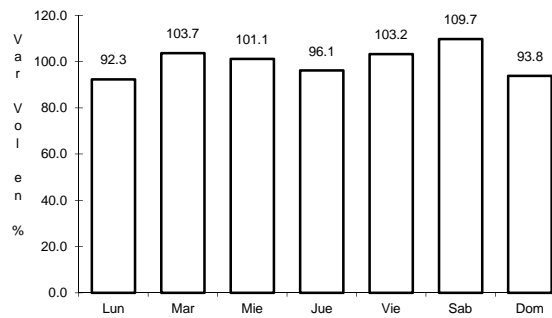
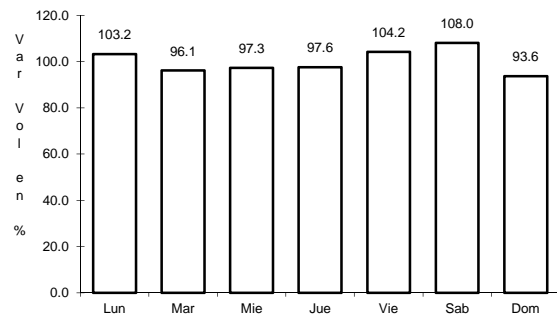
Km: 33.58      Tipo: 3      Sent: 0

Km: 59.50      Tipo: 1      Sent: 0

15 CARR: ALPUYECA - JOJUTLA

CLAVE: 17021

RUTA: MOR-021



Km: 2.20      Tipo: 1      Sent: 0

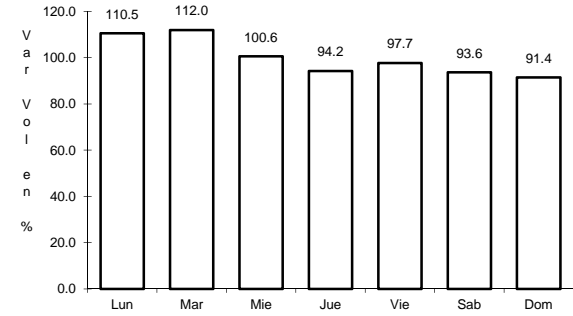
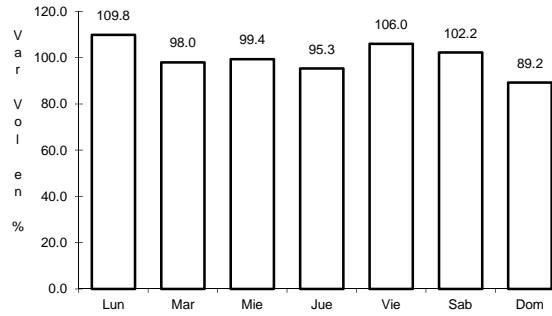
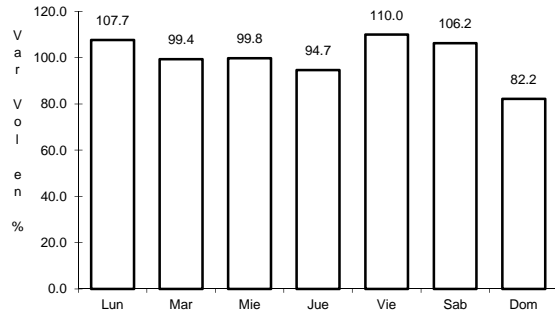
Km: 17.15      Tipo: 1      Sent: 1

Km: 17.15      Tipo: 1      Sent: 2

16 CARR: AMAYUCA - IZUCAR DE MATAMOROS

CLAVE: 00030

ruta: MOR-031-PUE



Km: 0.66 Tipo: 3 Sent: 1

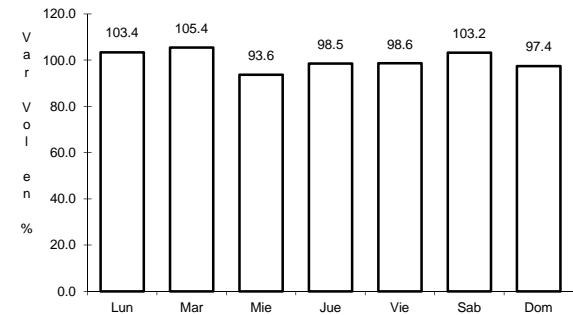
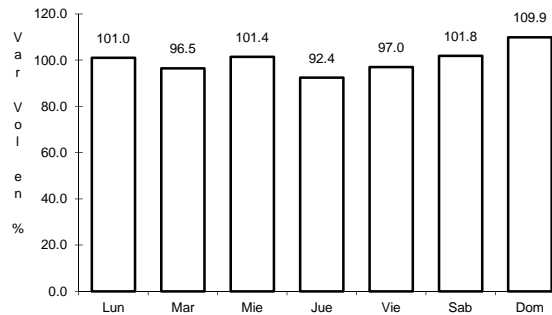
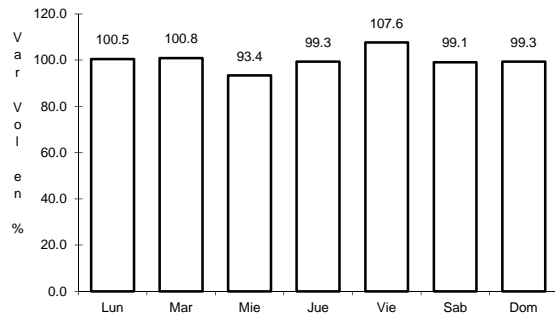
Km: 0.66 Tipo: 3 Sent: 2

Km: 67.50 Tipo: 3 Sent: 0

17 CARR: AMAYUCA - TLACOTEPEC

CLAVE: 17020

ruta: MOR-017



Km: 0.00 Tipo: 3 Sent: 0

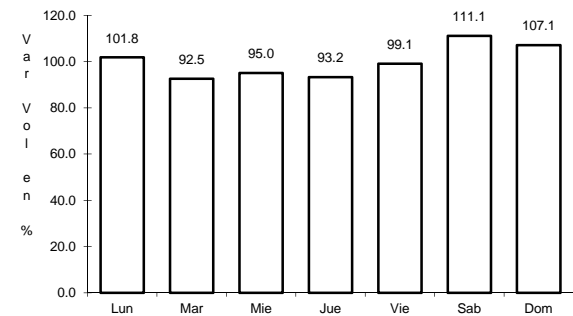
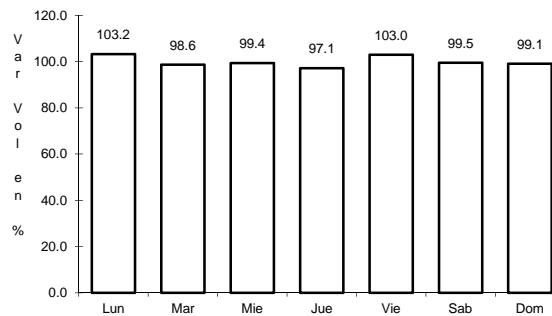
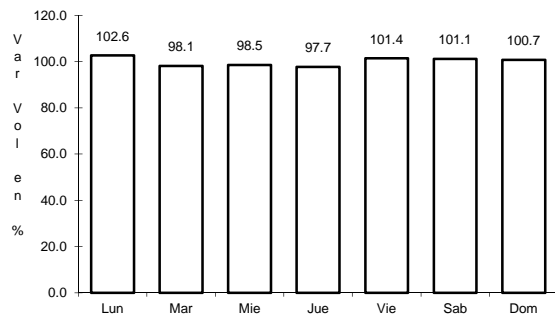
Km: 5.50 Tipo: 3 Sent: 0

Km: 12.00 Tipo: 1 Sent: 0

18 CARR: ATLATLAHUCAN - TLAYACAPAN

CLAVE: 17301

ruta: MOR-002



Km: 1.50 Tipo: 1 Sent: 1

Km: 1.50 Tipo: 1 Sent: 2

Km: 15.50 Tipo: 1 Sent: 0

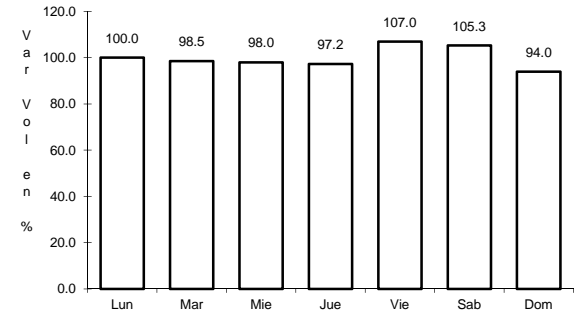
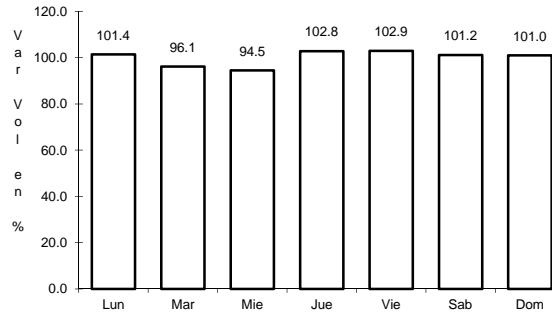
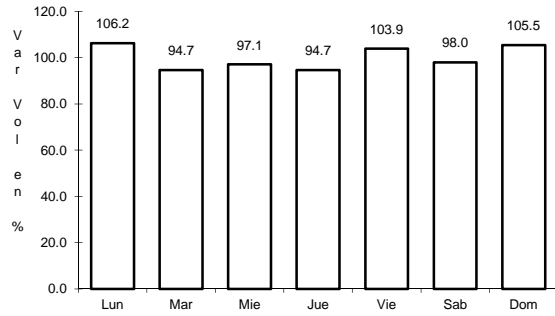




22 CARR: ENT. CHIVERIAS - ENT. EL ABANICO

CLAVE: 17302

RUTA: MOR



Km: 0.00      Tipo: 3      Sent: 0

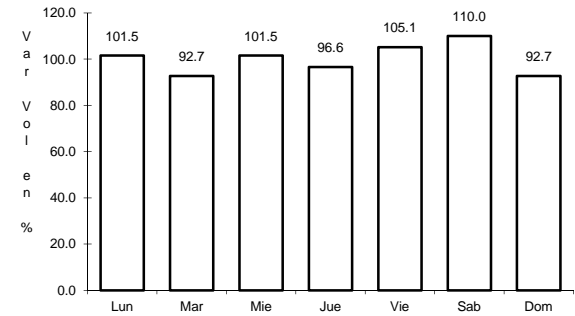
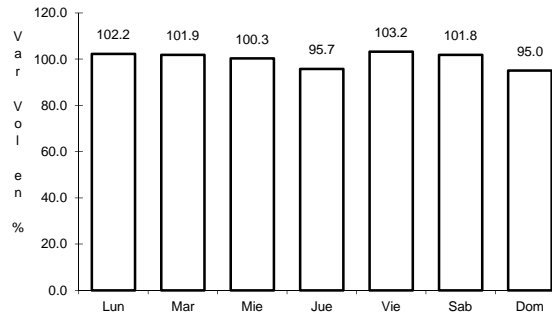
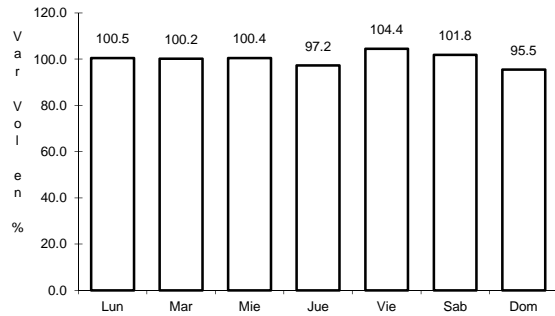
Km: 5.56      Tipo: 3      Sent: 0

Km: 14.50      Tipo: 1      Sent: 0

23 CARR: GALEANA - CUAUTLA

CLAVE: 17004

RUTA: MOR-004



Km: 0.00      Tipo: 3      Sent: 1

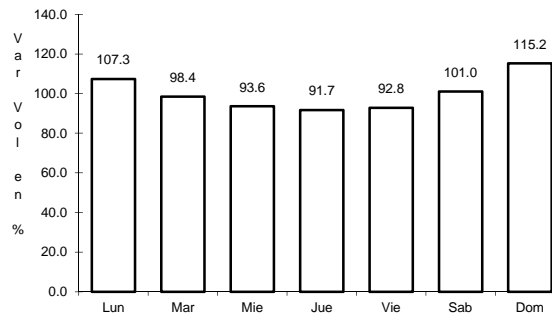
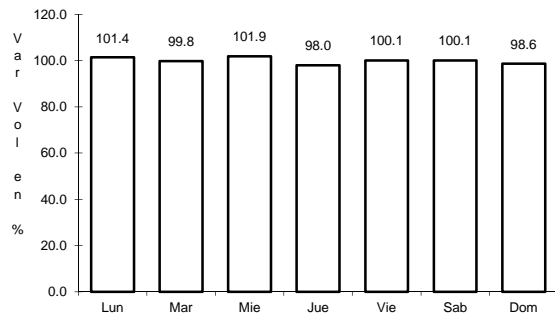
Km: 0.00      Tipo: 3      Sent: 2

Km: 40.50      Tipo: 1      Sent: 0

24 CARR: JOJUTLA - CHINAMECA

CLAVE: 17310

RUTA: MOR



Km: 0.00      Tipo: 3      Sent: 0

Km: 32.00      Tipo: 1      Sent: 0

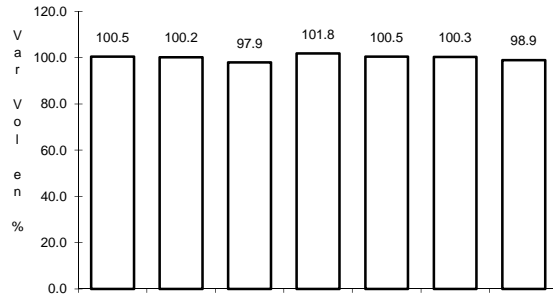




31 CARR: RAMAL A JOLALPAN

CLAVE: 00143

RUTA: MOR-PUE



Km: 0.00

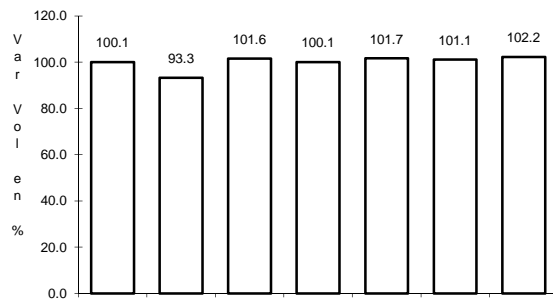
Tipo: 3

Sent: 0

32 CARR: RAMAL A JUCHITEPEC

CLAVE:

RUTA: EM



Km: 0.00

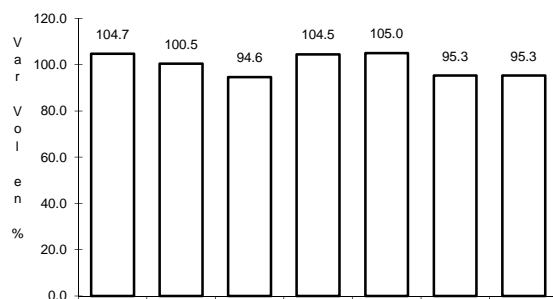
Tipo: 3

Sent: 0

33 CARR: RAMAL A TETELA DEL VOLCAN

CLAVE: 17010

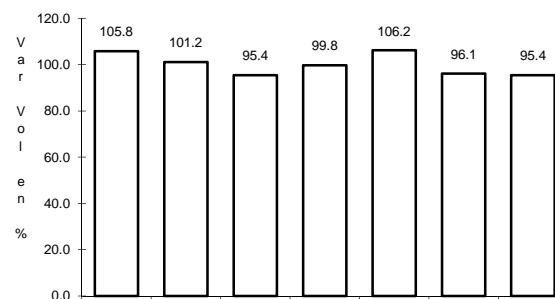
RUTA: MOR-010



Km: 0.00

Tipo: 3

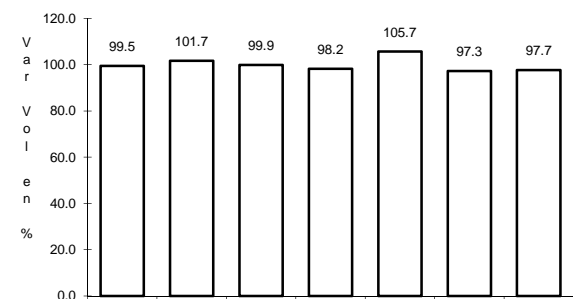
Sent: 1



Km: 0.00

Tipo: 3

Sent: 2



Km: 22.00

Tipo: 1

Sent: 0



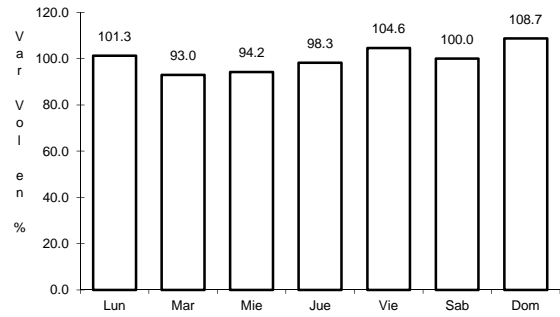




43 CARR: TRES MARIAS - SANTA MARTHA

CLAVE: 00172

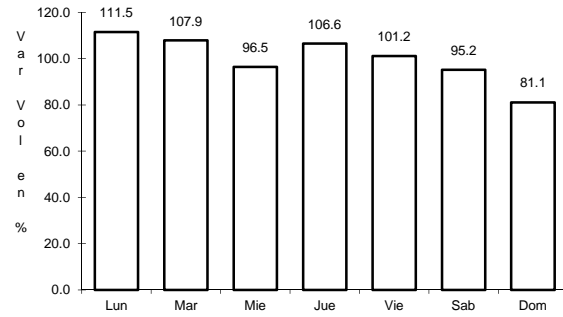
RUTA: MEX-106-EM



Km: 0.00

Tipo: 3

Sent: 0



Km: 28.35

Tipo: 1

Sent: 0