

JALISCO

---RED FEDERAL LIBRE---

1	AMECA - MASCOTA	MEX-090
2	ATENQUIQUE - SAN PEDRO	MEX
3	CD. GUZMAN - COLIMA	MEX-054
4	DOLORES HIDALGO - OJUELOS DE JALISCO	MEX-051
5	ENT. PENITENCIARIA - VILLA HIDALGO	MEX-071
6	ENT. SANTA CRUZ - MELAQUE	MEX-080
7	ENT. TESISTAN - ENT. MALPASO	MEX-023
8	GUADALAJARA - ENT. JOCOTEPEC	MEX-023
9	GUADALAJARA - TEPIC	MEX-015
10	GUADALAJARA - TESISTAN	MEX-023
11	GUADALAJARA - ZACATECAS	MEX-054
12	IRAPUATO - ZAPOTLANEJO	MEX-090
13	JIQUILPAN - COLIMA	MEX-110
14	JIQUILPAN - GUADALAJARA	MEX-015
15	LAGOS DE MORENO - GUADALAJARA	MEX-080
16	LEON - AGUASCALIENTES	MEX-045
17	MANUEL DOBLADO - LA PIEDAD	MEX-037
18	MANZANILLO - PUERTO VALLARTA	MEX-200
19	OJUELOS - AGUASCALIENTES	MEX-070
20	RAMAL A AMECA	MEX
21	RAMAL A TOMATLAN	MEX
22	SAN LUIS POTOSI - LAGOS DE MORENO	MEX-070-080
23	SANTA ROSA - LA BARCA	MEX-035
24	T. C. (JIQUILPAN - COLIMA) - EST. HUESCALAPA	MEX
25	TEPIC - PUERTO VALLARTA	MEX-200

---RED FEDERAL DE CUOTA---

26	ACATLAN DE JUAREZ - EL TRAPICHE (CUOTA)	MEX-054D
27	ATLACOMULCO - ZAPOTLANEJO (CUOTA)	MEX-015D
28	GUADALAJARA - TEPIC (CUOTA)	MEX-015D
29	LEON - AGUASCALIENTES (CUOTA)	MEX-045D
30	ZAPOTLANEJO - GUADALAJARA (CUOTA)	MEX-015D
31	ZAPOTLANEJO - LAGOS DE MORENO (CUOTA)	MEX-080D

---RED ESTATAL LIBRE---

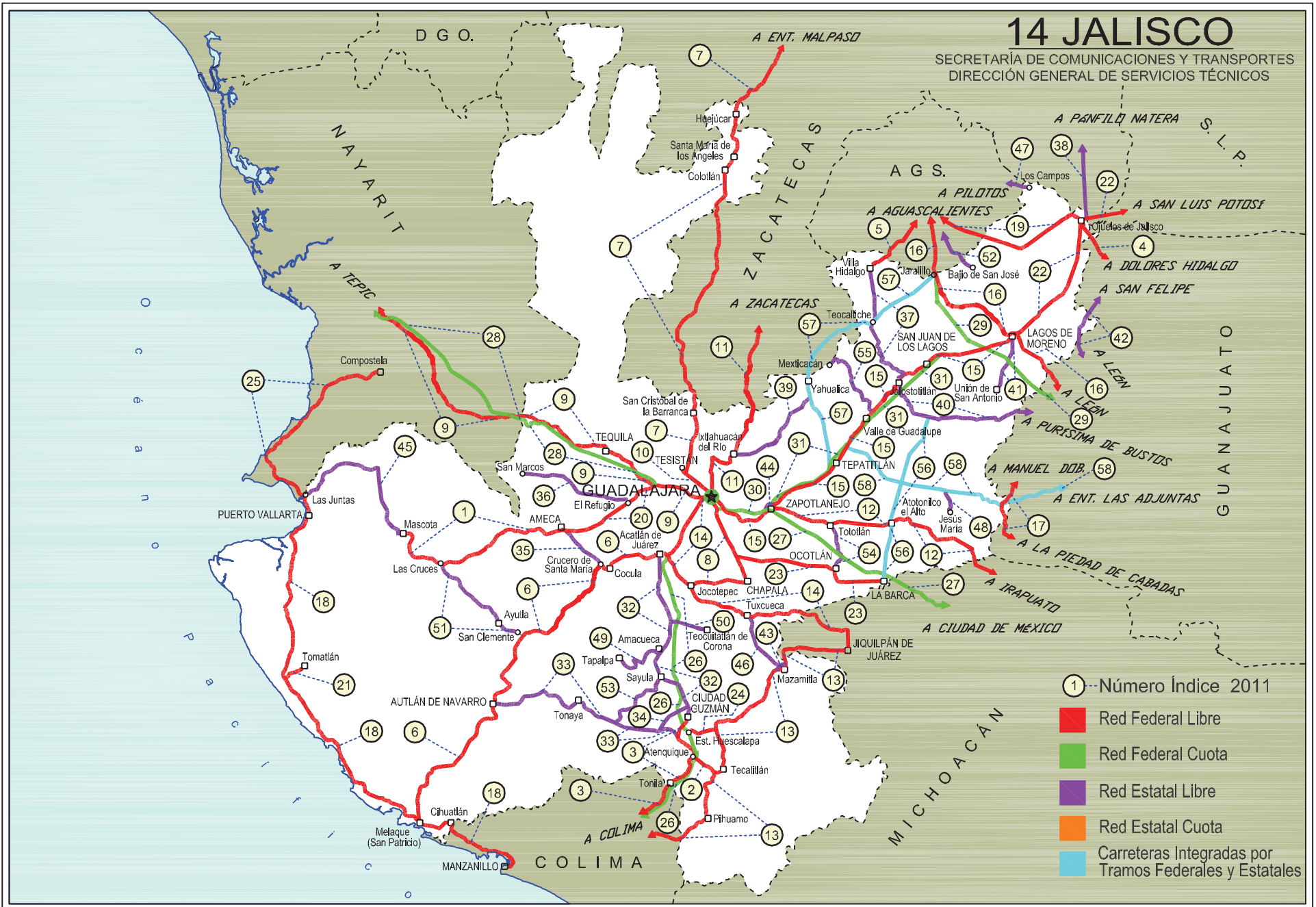
32	ACATLAN DE JUAREZ - CD. GUZMAN	JAL
33	AUTLAN DE NAVARRO - T. C. (ACATLAN DE J. - COLIMA)	JAL
34	CD. GUZMAN - T.C. (AUTLAN DE NAVARRO - T.C. (ACATLAN DE JUAREZ- COLIMA))	JAL
35	CRUCERO DE SANTA MARIA - AMECA	JAL
36	EL REFUGIO - SAN MARCOS	JAL-004
37	ENT. JALOSTOTITLAN - VILLA HIDALGO	JAL-009
38	ENT. OJO CALIENTE - ENT. OJUELOS DE JALISCO	ZAC
39	IXTLAHUACAN DEL RIO - T. C. (TEPATITLAN - JARALILLO)	JAL
40	JALOSTOTITLAN - PURISIMA DE BUSTOS	JAL-GTO
41	LAGOS DE MORENO - UNION DE SAN ANTONIO	JAL
42	LEON - SAN FELIPE TORRES MOCHAS	GTO
43	LIBRAMIENTO DE MAZAMITLA	JAL
44	LIBRAMIENTO DE ZAPOTLANEJO	JAL
45	MASCOTA - PUERTO VALLARTA	JAL
46	MAZAMITLA - TUXCUECA	JAL
47	PILOTOS - LOS CAMPOS	AGS-030
48	RAMAL A JESUS MARIA	JAL-004
49	RAMAL A TAPALPA	JAL-022
50	RAMAL A TEOCUIATLAN DE CORONA	JAL
51	SAN CLEMENTE - ENT. LAS CRUCES	JAL
52	SAN ISIDRO EL GRANDE - BAJIO DE SAN JOSE	AGS-036
53	SAYULA - VENUSTIANO CARRANZA	JAL
54	TOTOTLAN - OCOTLAN	JAL
55	VALLE DE GUADALUPE - MEXTICACAN	JAL

---CARRETERAS INTEGRADAS POR TRAMOS FEDERALES Y ESTATALES---

56	SAN MIGUEL EL ALTO - LA BARCA	JAL-005-MEX-071
57	TEPATITLAN - JARALILLO	MEX-JAL-ZAC
58	TEPATITLAN - LAS ADJUNTAS	JAL/MEX-084

14 JALISCO

SECRETARÍA DE COMUNICACIONES Y TRANSPORTES
DIRECCIÓN GENERAL DE SERVICIOS TÉCNICOS



JALISCO

4 CARR: DOLORES HIDALGO - OJUELOS DE JALISCO

CLAVE: 00107

RUTA: MEX-051

AÑO: 2010

LUGAR	ESTACION				CLASIFICACION VEHICULAR EN PORCIENTO								COORDENADAS						
	KM	TE	SC	TDPA	A	B	C2	C3	T3S2	T3S3	T3S2R4	OTROS	A	B	C	K'	D	LATITUD	LONGITUD
DOLORES HIDALGO	0.00	3	0	4252	82.4	5.4	5.3	1.1	1.2	1.9	2.5	0.2	82.4	5.4	12.2	0.086	0.501	21.179726	-100.949040
X. C. LEON - SAN FELIPE	51.38	1	0	3013	81.0	4.8	4.7	3.1	3.5	1.6	1.0	0.3	81.0	4.8	14.2	0.078	0.506	21.454343	-101.200060
X. C. LEON - SAN FELIPE	51.38	3	0	2660	80.3	5.3	5.2	3.2	3.6	0.8	1.0	0.6	80.3	5.3	14.4	0.068	0.522	21.498144	-101.234325
T. IZQ. OCAMPO	87.47	3	0	2287	75.3	6.4	6.4	4.6	4.3	1.8	0.9	0.3	75.3	6.4	18.3	0.063	0.508	21.659265	-101.482608
LIM. EDOS. TERM. GTO. PPIA. JAL.	104.10																		
T. C. SAN LUIS POTOSI - LAGOS DE MORENO	113.49	1	0	1783	83.2	3.9	4.9	3.1	2.6	1.1	0.0	1.2	83.2	3.9	12.9	0.089	0.516	21.855857	-101.592800

5 CARR: ENT. PENITENCIARIA - VILLA HIDALGO

CLAVE: 00120

RUTA: MEX-071

AÑO: 2010

LUGAR	ESTACION				CLASIFICACION VEHICULAR EN PORCIENTO								COORDENADAS						
	KM	TE	SC	TDPA	A	B	C2	C3	T3S2	T3S3	T3S2R4	OTROS	A	B	C	K'	D	LATITUD	LONGITUD
T. C. AGUASCALIENTES - JALPA	0.00	3	0	3616	85.1	2.8	6.0	2.1	2.3	1.0	0.3	0.4	85.1	2.8	12.1	0.107	0.510	21.881012	-102.368866
T. IZQ. EL NIAGARA	9.20	3	0	2554	87.8	3.4	3.2	2.1	1.7	0.6	0.4	0.8	87.8	3.4	8.8	0.119	0.540	21.803345	-102.392569
EL TARAY	27.00	3	0	2638	88.0	2.8	3.2	2.9	1.4	0.6	0.6	0.5	88.0	2.8	9.2	0.110	0.502	21.728704	-102.497953
LIM. EDOS. TERM. AGS. PPIA. JAL.	29.58																		
VILLA HIDALGO	38.00	1	0	3101	88.3	2.8	4.3	1.8	0.8	0.4	0.0	1.6	88.3	2.8	8.9	0.103	0.504	21.684889	-102.574846

6 CARR: ENT. SANTA CRUZ - MELAQUE

CLAVE: 14118

RUTA: MEX-080

AÑO: 2010

LUGAR	ESTACION				CLASIFICACION VEHICULAR EN PORCIENTO								COORDENADAS						
	KM	TE	SC	TDPA	A	B	C2	C3	T3S2	T3S3	T3S2R4	OTROS	A	B	C	K'	D	LATITUD	LONGITUD
T. C. JIQUILPAN - GUADALAJARA	0.00																		
T. IZQ. ACATLAN DE JUAREZ (1° ACCESO)	4.80	3	0	8577	87.3	2.2	4.8	1.3	1.8	1.1	0.0	1.5	87.3	2.2	10.5	0.082	0.506	20.432225	-103.590996
T. IZQ. ACATLAN DE JUAREZ (2° ACCESO)	7.60	3	0	7610	87.6	2.1	4.9	1.2	1.7	1.1	0.0	1.4	87.6	2.1	10.3	0.082	0.513	20.421945	-103.611506
COCULA	35.00	1	0	9683	88.6	2.4	4.5	1.1	1.7	1.0	0.0	0.7	88.6	2.4	9.0	0.076	0.512	20.379773	-103.816916
COCULA	35.00	3	0	8647	88.1	2.1	4.6	1.3	1.7	1.1	0.0	1.1	88.1	2.1	9.8	0.085	0.502	20.373777	-103.841218
TECOLTLAN	73.31	3	0	4102	85.7	2.8	4.9	1.7	2.7	0.6	0.0	1.6	85.7	2.8	11.5	0.082	0.522	20.186385	-104.040792
T. DER. AYUTLA	103.28	3	0	4681	87.4	2.6	4.7	1.9	1.6	0.7	0.0	1.1	87.4	2.6	10.0	0.083	0.503	20.071220	-104.228550
T. IZQ. EL GRULLO	138.60	3	0	3652	88.4	2.3	4.1	1.2	2.0	0.8	0.0	1.2	88.4	2.3	9.3	0.081	0.520	19.850512	-104.283980
AUTLAN DE NAVARRO	153.20	3	0	5305	88.4	2.4	4.0	1.2	2.0	0.8	0.0	1.2	88.4	2.4	9.2	0.074	0.513	19.740400	-104.360111
ESTACION MAESTRA SAN PATRICIO	257.10	2	0	5251	87.1	2.9	3.9	1.6	2.1	0.7	0.0	1.7	87.1	2.9	10.0	0.082	0.505	19.242493	-104.710242
T. C. MANZANILLO - PUERTO VALLARTA	257.40	1	0	3778	91.2	1.6	3.1	1.0	1.1	0.7	0.0	1.3	91.2	1.6	7.2	0.076	0.512	19.240253	-104.709967

JALISCO

7 CARR: ENT. TESISTAN - ENT. MALPASO

CLAVE: 00584

RUTA: MEX-023

AÑO: 2010

LUGAR	ESTACION				CLASIFICACION VEHICULAR EN PORCIENTO								COORDENADAS						
	KM	TE	SC	TDPA	A	B	C2	C3	T3S2	T3S3	T3S2R4	OTROS	A	B	C	K'	D	LATITUD	LONGITUD
T. C. GUADALAJARA - TESISTAN	0.00	3	0	8305	88.4	2.5	5.4	2.0	1.0	0.6	0.0	0.1	88.4	2.5	9.1	0.085	0.506	20.787209	-103.461456
LIM. EDOS. TERM. JAL. PPIA. ZAC.	42.00																		
GARCIA DE LA CADENA	54.00	1	0	1494	86.8	2.9	6.3	2.2	1.1	0.6	0.0	0.1	86.8	2.9	10.3	0.072	0.508	21.195238	-103.465292
TLALTENANGO DE SANCHEZ ROMAN	147.50	3	0	3726	87.5	2.8	6.0	2.0	1.0	0.6	0.0	0.1	87.5	2.8	9.7	0.075	0.502	21.798391	-103.298929
MOMAX	165.00	3	0	2679	87.4	2.8	5.8	2.1	1.1	0.7	0.0	0.1	87.4	2.8	9.8	0.067	0.505	21.932189	-103.309920
LIM. EDOS. TERM. ZAC. PPIA. JAL.	171.80																		
COLOTLAN	175.00	1	0	2697	87.5	2.7	6.1	2.0	1.0	0.6	0.0	0.1	87.5	2.7	9.8	0.098	0.503	22.096472	-103.269247
LIM. EDOS. TERM. JAL. PPIA. ZAC.	209.90																		
LIM. EDOS. TERM. ZAC. PPIA. JAL.	214.80																		
LIM. EDOS. TERM. JAL. PPIA. ZAC.	223.95																		
TEPETONGO	235.00	3	0	3405	88.2	2.5	5.8	1.9	0.9	0.6	0.0	0.1	88.2	2.5	9.3	0.076	0.513	22.467038	-103.141407
JEREZ DE GARCIA SALINAS	249.00	1	0	5138	87.6	2.8	5.8	2.1	1.0	0.6	0.0	0.1	87.6	2.8	9.6	0.069	0.511	22.612930	-103.010204
T. C. GUADALAJARA - ZACATECAS	275.00	1	0	5216	87.6	2.7	5.9	2.1	1.0	0.6	0.0	0.1	87.6	2.7	9.7	0.071	0.502	22.616343	-102.760430

8 CARR: GUADALAJARA - ENT. JOCOTEPEC

CLAVE: 14222

RUTA: MEX-023

AÑO: 2010

LUGAR	ESTACION				CLASIFICACION VEHICULAR EN PORCIENTO								COORDENADAS						
	KM	TE	SC	TDPA	A	B	C2	C3	T3S2	T3S3	T3S2R4	OTROS	A	B	C	K'	D	LATITUD	LONGITUD
GUADALAJARA	0.00																		
X. PERIFERICO GUADALAJARA	4.14	3	1	33448	78.0	5.3	5.7	3.3	3.7	2.2	0.1	1.7	78.0	5.3	16.7	0.065	0.505	20.586428	-103.319626
X. PERIFERICO GUADALAJARA	4.14	3	2	34141	73.0	5.6	6.7	3.8	5.6	2.5	0.4	2.4	73.0	5.6	21.4	0.070	0.505	20.586428	-103.319626
T. DER. AEROPUERTO	11.38	3	1	20493	83.0	3.4	4.9	2.1	3.4	1.5	0.2	1.5	83.0	3.4	13.6	0.080	0.511	20.529016	-103.292299
T. DER. AEROPUERTO	11.38	3	2	21425	79.9	4.5	5.6	1.3	4.5	1.8	0.4	2.0	79.9	4.5	15.6	0.072	0.511	20.529016	-103.292299
T. IZQ. OCOTLAN	28.50	1	1	14719	83.9	2.4	4.6	2.2	3.5	1.3	0.6	1.5	83.9	2.4	13.7	0.095	0.507	20.419510	-103.235564
T. IZQ. OCOTLAN	28.50	1	2	14313	82.6	1.3	7.0	1.3	3.0	2.5	0.3	2.0	82.6	1.3	16.1	0.099	0.507	20.419510	-103.235564
T. IZQ. OCOTLAN	28.50	3	1	6788	88.1	1.9	3.1	2.1	1.9	1.1	0.2	1.6	88.1	1.9	10.0	0.114	0.502	20.410156	-103.231675
T. IZQ. OCOTLAN	28.50	3	2	6726	88.6	2.4	4.5	1.1	1.2	0.5	0.2	1.5	88.6	2.4	9.0	0.158	0.502	20.410156	-103.231675
CHAPALA	48.50	1	1	4649	89.7	1.6	3.6	1.8	0.9	0.4	0.2	1.8	89.7	1.6	8.7	0.110	0.501	20.309409	-103.192916
CHAPALA	48.50	1	2	4621	88.1	2.4	4.1	1.1	1.1	0.6	0.4	2.2	88.1	2.4	9.5	0.155	0.501	20.309409	-103.192916
CHAPALA	48.50	3	0	10490	91.6	1.2	3.6	1.1	0.8	0.4	0.2	1.1	91.6	1.2	7.2	0.084	0.503	20.292382	-103.207362
T. C. JIQUILPAN - GUADALAJARA	76.50	1	1	4128	86.6	2.6	5.5	1.9	1.3	0.5	0.2	1.4	86.6	2.6	10.8	0.104	0.505	20.278632	-103.445561
T. C. JIQUILPAN - GUADALAJARA	76.50	1	2	4042	86.5	2.0	6.8	1.9	0.8	0.5	0.2	1.3	86.5	2.0	11.5	0.113	0.505	20.278632	-103.445561

JALISCO

9 CARR: GUADALAJARA - TEPIC

CLAVE: 00031

RUTA: MEX-015

AÑO: 2010

LUGAR	ESTACION				CLASIFICACION VEHICULAR EN PORCIENTO								COORDENADAS						
	KM	TE	SC	TDPA	A	B	C2	C3	T3S2	T3S3	T3S2R4	OTROS	A	B	C	K'	D	LATITUD	LONGITUD
GUADALAJARA	0.00																		
T. DER. BASE AEREA No. 2	8.30	3	1	17637	81.5	2.9	4.0	2.4	3.4	1.3	1.4	3.1	81.5	2.9	15.6	0.085	0.513	20.705504	-103.463428
T. DER. BASE AEREA No. 2	8.30	3	2	18611	80.7	3.9	5.2	2.5	2.9	1.4	0.5	2.9	80.7	3.9	15.4	0.088	0.513	20.705504	-103.463428
T. IZQ. LA PRIMAVERA	20.50	1	1	14969	82.7	2.0	5.1	2.8	4.6	1.6	0.2	1.0	82.7	2.0	15.3	0.093	0.513	20.733014	-103.602612
T. IZQ. LA PRIMAVERA	20.50	1	2	14197	76.8	2.2	7.7	3.3	5.3	2.1	0.5	2.1	76.8	2.2	21.0	0.096	0.513	20.733014	-103.602612
EL ARENAL	36.20	1	0	12052	73.2	2.8	7.3	6.7	6.4	3.2	0.2	0.2	73.2	2.8	24.0	0.071	0.502	20.771706	-103.684107
TEQUILA	57.50	3	0	9453	73.9	2.8	7.2	6.0	6.5	3.2	0.2	0.2	73.9	2.8	23.3	0.073	0.506	20.894922	-103.836419
MAGDALENA	76.80	3	0	7760	58.7	4.1	10.6	9.6	12.5	3.8	0.2	0.5	58.7	4.1	37.2	0.079	0.505	20.925900	-103.997977
LIM. EDOS. TERM. JAL. PPIA. NAY.	123.09																		
IXTLAN DEL RIO	138.84	1	0	8766	83.0	3.5	5.8	2.3	3.6	1.3	0.1	0.4	83.0	3.5	13.5	0.071	0.505	21.030655	-104.357736
IXTLAN DEL RIO	138.84	3	0	7966	82.4	3.6	6.3	2.4	3.6	1.2	0.1	0.4	82.4	3.6	14.0	0.084	0.508	21.037066	-104.393676
AHUACATLAN	152.00	1	0	9726	82.4	3.7	5.8	2.3	4.0	1.3	0.1	0.4	82.4	3.7	13.9	0.066	0.508	21.054529	-104.476570
AHUACATLAN	152.00	3	0	8428	82.1	3.7	6.0	2.5	3.9	1.3	0.1	0.4	82.1	3.7	14.2	0.065	0.511	21.058061	-104.486846
T. IZQ. AMADO NERVO	167.32	1	0	9620	82.0	3.7	6.1	2.5	3.8	1.4	0.1	0.4	82.0	3.7	14.3	0.068	0.503	21.127607	-104.599972
T. IZQ. COMPOSTELA	175.50	1	0	10998	82.3	3.7	6.1	2.3	3.8	1.3	0.1	0.4	82.3	3.7	14.0	0.078	0.503	21.190311	-104.638255
T. IZQ. COMPOSTELA	175.50	3	0	9721	82.2	3.6	6.0	2.4	4.0	1.3	0.1	0.4	82.2	3.6	14.2	0.059	0.504	21.196314	-104.644968
T. DER. SANTA MARIA DEL ORO	196.00	1	0	10530	81.6	3.9	6.1	2.5	4.1	1.3	0.1	0.4	81.6	3.9	14.5	0.073	0.504	21.323776	-104.669505
T. DER. SANTA MARIA DEL ORO	196.00	3	0	7668	82.2	3.5	6.2	2.5	3.9	1.2	0.1	0.4	82.2	3.5	14.3	0.072	0.510	21.329941	-104.672367
SAN CAYETANO	215.90	3	0	9775	81.9	3.7	6.1	2.6	3.9	1.3	0.1	0.4	81.9	3.7	14.4	0.072	0.507	21.454854	-104.821432
T. IZQ. LIBRAMIENTO DE TEPIC	219.10	1	1	12889	79.2	3.5	6.5	2.0	4.6	2.7	0.0	1.5	79.2	3.5	17.3	0.066	0.506	21.467638	-104.840492
T. IZQ. LIBRAMIENTO DE TEPIC	219.10	1	2	13176	80.3	4.2	5.9	2.5	4.4	1.5	0.0	1.2	80.3	4.2	15.5	0.068	0.506	21.467638	-104.840492
T. IZQ. LIBRAMIENTO DE TEPIC	219.10	3	1	10771	81.3	3.4	5.6	3.1	3.0	1.8	0.0	1.8	81.3	3.4	15.3	0.083	0.504	21.470665	-104.848948
T. IZQ. LIBRAMIENTO DE TEPIC	219.10	3	2	10599	79.4	4.6	6.9	2.7	3.2	1.8	0.0	1.4	79.4	4.6	16.0	0.084	0.504	21.470665	-104.848948
T. IZQ. AEROPUERTO DE TEPIC	222.85	1	0	11615	79.4	4.1	5.3	2.0	5.9	2.0	0.0	1.3	79.4	4.1	16.5	0.079	0.500	21.446571	-104.811292
TEPIC	224.80	1	1	16908	80.7	4.7	5.5	2.4	3.6	1.6	0.0	1.5	80.7	4.7	14.6	0.065	0.503	21.471640	-104.851799
TEPIC	224.80	1	2	16718	78.3	5.8	6.4	2.4	4.3	1.2	0.0	1.6	78.3	5.8	15.9	0.075	0.503	21.471640	-104.851799

10 CARR: GUADALAJARA - TESISTAN

CLAVE: 14012

RUTA: MEX-023

AÑO: 2010

LUGAR	ESTACION				CLASIFICACION VEHICULAR EN PORCIENTO								COORDENADAS						
	KM	TE	SC	TDPA	A	B	C2	C3	T3S2	T3S3	T3S2R4	OTROS	A	B	C	K'	D	LATITUD	LONGITUD
T. C. GUADALAJARA - ZACATECAS	0.00																		
X. PERIFERICO GUADALAJARA	9.00	3	1	9194	76.4	5.8	4.0	2.7	5.4	1.5	1.4	2.8	76.4	5.8	17.8	0.073	0.514	20.745524	-103.413394
X. PERIFERICO GUADALAJARA	9.00	3	2	9709	75.0	5.9	6.1	2.3	6.3	2.2	0.4	1.8	75.0	5.9	19.1	0.105	0.514	20.745524	-103.413394
T. DER. SAN CRISTOBAL DE LA BARRANCA	17.50	1	1	10004	82.8	3.5	4.9	3.1	1.7	0.8	1.0	2.2	82.8	3.5	13.7	0.074	0.505	20.779036	-103.459529

JALISCO

10 CARR: GUADALAJARA - TESISTAN

CLAVE: 14012

RUTA: MEX-023

AÑO: 2010

LUGAR	ESTACION				CLASIFICACION VEHICULAR EN PORCIENTO								COORDENADAS						
	KM	TE	SC	TDPA	A	B	C2	C3	T3S2	T3S3	T3S2R4	OTROS	A	B	C	K'	D	LATITUD	LONGITUD
T. DER. SAN CRISTOBAL DE LA BARRANCA	17.50	1	2	10225	85.0	2.9	4.4	2.7	1.4	0.9	1.0	1.7	85.0	2.9	12.1	0.086	0.505	20.779036	-103.459529
TESISTAN	19.00	1	1	6011	74.5	7.3	6.0	4.7	3.2	2.0	0.6	1.7	74.5	7.3	18.2	0.081	0.502	20.789272	-103.473538
TESISTAN	19.00	1	2	6069	79.3	5.5	4.8	3.5	3.2	1.4	0.4	1.9	79.3	5.5	15.2	0.088	0.502	20.789272	-103.473538

11 CARR: GUADALAJARA - ZACATECAS

CLAVE: 00150

RUTA: MEX-054

AÑO: 2010

LUGAR	ESTACION				CLASIFICACION VEHICULAR EN PORCIENTO								COORDENADAS						
	KM	TE	SC	TDPA	A	B	C2	C3	T3S2	T3S3	T3S2R4	OTROS	A	B	C	K'	D	LATITUD	LONGITUD
GUADALAJARA	0.00																		
X. PERIFERICO GUADALAJARA	6.19	3	0	13382	81.0	4.3	7.0	2.2	1.4	0.8	0.7	2.6	81.0	4.3	14.7	0.075	0.504	20.759605	-103.382645
T. DER. IXTLAHUACAN DEL RIO	49.46	3	0	4102	78.6	5.8	5.5	3.6	2.5	1.3	0.7	2.0	78.6	5.8	15.6	0.077	0.520	20.869333	-103.238726
LIM. EDOS. TERM. JAL. PPIA. ZAC.	76.49																		
T. IZQ. MOYAHUA	106.43	1	0	2626	67.6	2.7	12.5	9.4	5.0	2.4	0.0	0.4	67.6	2.7	29.7	0.065	0.504	21.259666	-103.158025
APOZOL	129.28	1	0	4118	68.9	2.5	11.6	9.1	5.1	2.4	0.0	0.4	68.9	2.5	28.6	0.069	0.504	21.460875	-103.091101
JALPA	159.39	1	0	2288	67.1	2.6	12.1	10.0	5.3	2.5	0.0	0.4	67.1	2.6	30.3	0.056	0.503	21.615469	-102.993404
TABASCO	189.40	1	0	3289	66.8	2.8	12.7	9.6	5.3	2.4	0.0	0.4	66.8	2.8	30.4	0.065	0.504	21.842930	-102.933807
TABASCO	189.40	3	0	3210	68.7	2.5	11.7	9.3	5.0	2.4	0.0	0.4	68.7	2.5	28.8	0.075	0.508	21.882410	-102.909059
VILLANUEVA	255.70	3	0	3618	66.4	2.8	12.4	10.1	5.2	2.7	0.0	0.4	66.4	2.8	30.8	0.084	0.507	22.377917	-102.880657
T. IZQ. JEREZ DE GARCIA SALINAS	289.13	1	0	3864	68.7	2.4	11.9	9.1	5.0	2.5	0.0	0.4	68.7	2.4	28.9	0.064	0.501	22.615096	-102.756682
T. IZQ. JEREZ DE GARCIA SALINAS	289.13	3	0	6741	68.4	2.6	12.2	8.8	5.1	2.5	0.0	0.4	68.4	2.6	29.0	0.078	0.504	22.621034	-102.753475
T. C. ZACATECAS - DURANGO	311.83	1	0	10880	67.0	2.6	12.3	10.1	5.1	2.5	0.0	0.4	67.0	2.6	30.4	0.087	0.504	22.771112	-102.631691

12 CARR: IRAPUATO - ZAPOTLANEJO

CLAVE: 00114

RUTA: MEX-090

AÑO: 2010

LUGAR	ESTACION				CLASIFICACION VEHICULAR EN PORCIENTO								COORDENADAS						
	KM	TE	SC	TDPA	A	B	C2	C3	T3S2	T3S3	T3S2R4	OTROS	A	B	C	K'	D	LATITUD	LONGITUD
IRAPUATO	0.00																		
T. IZQ. QUERETARO - IRAPUATO (CUOTA)	2.78	1	1	14457	64.1	6.2	7.6	4.6	10.6	3.2	2.8	0.9	64.1	6.2	29.7	0.077	0.504	20.653305	-101.370577
T. IZQ. QUERETARO - IRAPUATO (CUOTA)	2.78	1	2	14201	63.2	6.4	7.9	4.7	10.9	3.3	2.7	0.9	63.2	6.4	30.4	0.080	0.504	20.653305	-101.370577
T. IZQ. QUERETARO - IRAPUATO (CUOTA)	2.78	3	1	11317	63.0	6.0	8.0	5.0	11.1	2.9	3.1	0.9	63.0	6.0	31.0	0.087	0.501	20.646803	-101.376175
T. IZQ. QUERETARO - IRAPUATO (CUOTA)	2.78	3	2	11347	61.3	6.6	8.7	5.2	11.5	2.7	2.9	1.1	61.3	6.6	32.1	0.086	0.501	20.646803	-101.376175
T. DER. CUERAMARO	15.00	3	1	13053	62.4	6.8	7.3	5.1	11.5	2.6	3.0	1.3	62.4	6.8	30.8	0.065	0.501	20.558081	-101.449950
T. DER. CUERAMARO	15.00	3	2	12979	62.4	6.7	6.5	5.5	12.1	2.7	3.4	0.7	62.4	6.7	30.9	0.067	0.501	20.558087	-101.449946
ABASOLO	30.00	1	1	9213	63.6	6.4	7.9	4.5	10.2	3.0	3.3	1.1	63.6	6.4	30.0	0.079	0.505	20.471961	-101.502989
ABASOLO	30.00	1	2	9017	62.5	6.9	7.2	5.9	10.3	2.8	3.4	1.0	62.5	6.9	30.6	0.075	0.505	20.471957	-101.502993

JALISCO

12 CARR: IRAPUATO - ZAPOTLANEJO

CLAVE: 00114

RUTA: MEX-090

AÑO: 2010

LUGAR	ESTACION				CLASIFICACION VEHICULAR EN PORCIENTO								COORDENADAS						
	KM	TE	SC	TDPA	A	B	C2	C3	T3S2	T3S3	T3S2R4	OTROS	A	B	C	K'	D	LATITUD	LONGITUD
ABASOLO	30.00	3	1	8685	63.2	6.3	7.4	5.3	10.1	3.1	3.4	1.2	63.2	6.3	30.5	0.084	0.514	20.450678	-101.552200
ABASOLO	30.00	3	2	8226	64.3	6.2	7.3	5.3	9.8	3.1	3.0	1.0	64.3	6.2	29.5	0.081	0.514	20.450678	-101.552200
PENJAMO	50.65	1	1	8999	63.7	6.9	7.1	5.6	9.3	2.9	3.4	1.1	63.7	6.9	29.4	0.069	0.504	20.436820	-101.692273
PENJAMO	50.65	1	2	8869	64.6	6.8	7.2	5.5	9.1	2.7	3.0	1.1	64.6	6.8	28.6	0.074	0.504	20.436823	-101.692264
PENJAMO	50.65	3	0	19057	62.9	7.4	7.5	5.4	9.7	2.9	3.2	1.0	62.9	7.4	29.7	0.072	0.507	20.412869	-101.732980
T. DER. MANUEL DOBLADO	83.87	1	0	15543	63.6	6.8	7.4	4.9	9.8	3.0	3.4	1.1	63.6	6.8	29.6	0.062	0.508	20.363183	-101.989053
LIM. EDOS. TERM. GTO. PPIA. MICH.	85.01																		
LA PIEDAD	87.00	3	0	15410	63.3	7.0	8.8	5.2	8.3	3.5	3.3	0.6	63.3	7.0	29.7	0.073	0.502	20.356147	-102.060403
T. IZQ. YURECUARO	100.00	3	0	5571	67.5	6.7	7.1	5.2	6.3	3.6	3.0	0.6	67.5	6.7	25.8	0.065	0.507	20.376306	-102.115143
LIM. EDOS. TERM. MICH. PPIA. JAL.	102.10																		
DEGOLLADO	105.40	1	0	6566	76.0	6.9	6.3	3.5	3.8	1.3	0.3	1.9	76.0	6.9	17.1	0.076	0.517	20.425677	-102.128181
AYOTLAN	134.00	1	0	5608	79.0	5.4	6.2	3.3	3.1	1.2	0.2	1.6	79.0	5.4	15.6	0.093	0.515	20.520728	-102.326488
ATOTONILCO EL ALTO	157.00	1	0	6167	79.7	5.1	6.0	3.1	3.2	1.2	0.2	1.5	79.7	5.1	15.2	0.076	0.515	20.556044	-102.493738
ATOTONILCO EL ALTO	157.00	3	0	9099	84.8	4.5	4.7	1.9	1.6	0.6	0.4	1.5	84.8	4.5	10.7	0.086	0.502	20.545735	-102.518874
X. C. SAN MIGUEL EL ALTO - LA BARCA	158.60	3	0	9347	80.4	3.6	5.6	3.3	3.4	1.5	0.4	1.8	80.4	3.6	16.0	0.087	0.502	20.539765	-102.537930
T. IZQ. OCOTLAN	188.00	1	0	8123	81.1	4.5	5.6	2.7	3.2	1.3	0.3	1.3	81.1	4.5	14.4	0.083	0.503	20.546847	-102.780724
T. DER. LIBRAMIENTO ZAPOTLANEJO	215.80	1	0	12498	82.9	6.1	4.9	1.7	1.4	0.6	0.2	2.2	82.9	6.1	11.0	0.072	0.505	20.621887	-103.043306
T. DER. LIBRAMIENTO ZAPOTLANEJO	215.80	3	1	6304	81.5	6.9	4.6	2.8	1.4	0.8	0.5	1.5	81.5	6.9	11.6	0.084	0.511	20.622360	-103.055947
T. DER. LIBRAMIENTO ZAPOTLANEJO	215.80	3	2	6593	82.5	5.9	4.2	2.9	0.9	0.6	0.6	2.4	82.5	5.9	11.6	0.077	0.511	20.622360	-103.055947
ZAPOTLANEJO	217.60																		

13 CARR: JIQUILPAN - COLIMA

CLAVE: 00156

RUTA: MEX-110

AÑO: 2010

LUGAR	ESTACION				CLASIFICACION VEHICULAR EN PORCIENTO								COORDENADAS						
	KM	TE	SC	TDPA	A	B	C2	C3	T3S2	T3S3	T3S2R4	OTROS	A	B	C	K'	D	LATITUD	LONGITUD
JIQUILPAN	0.00	3	0	5100	88.0	4.7	3.2	1.2	1.3	0.5	0.6	0.5	88.0	4.7	7.3	0.077	0.510	19.995716	-102.745099
SAN JOSE DE GRACIA	37.93	1	0	3759	83.0	4.8	3.4	3.0	2.9	1.0	1.2	0.7	83.0	4.8	12.2	0.072	0.508	19.998854	-103.017786
LIM. EDOS. TERM. MICH. PPIA. JAL.	41.00																		
MAZAMITLA	48.65	1	0	3303	88.2	3.0	4.7	1.7	0.9	0.5	0.0	1.0	88.2	3.0	8.8	0.104	0.503	19.921061	-103.017746
MAZAMITLA	48.65	3	0	3404	88.1	2.0	5.0	1.7	1.5	0.5	0.0	1.2	88.1	2.0	9.9	0.083	0.516	19.921698	-103.022637
T. IZQ. TAMAZULA DE GORDIANO (2º ACCESO)	96.70	3	0	6987	87.6	1.6	4.5	1.9	2.1	0.6	0.0	1.7	87.6	1.6	10.8	0.092	0.507	19.697699	-103.229453
T. DER. CD. GUZMAN	108.50	3	0	5628	86.8	1.8	4.8	1.3	2.8	0.8	0.0	1.7	86.8	1.8	11.4	0.083	0.504	19.644722	-103.335347
TECALITLAN	132.00	3	0	3258	89.7	2.1	3.9	1.2	1.2	0.4	0.0	1.5	89.7	2.1	8.2	0.084	0.521	19.462507	-103.318477
T. DER. ATENQUIQUE	137.67	3	0	2682	90.1	3.5	3.3	1.3	0.7	0.4	0.0	0.7	90.1	3.5	6.4	0.091	0.503	19.452790	-103.351576
PIHUAMO	168.19	3	0	2891	94.1	2.0	2.1	0.7	0.5	0.2	0.0	0.4	94.1	2.0	3.9	0.104	0.518	19.265129	-103.384036

JALISCO

13 CARR: JIQUILPAN - COLIMA

CLAVE: 00156

RUTA: MEX-110

AÑO: 2010

LUGAR	ESTACION				CLASIFICACION VEHICULAR EN PORCIENTO								COORDENADAS						
	KM	TE	SC	TDPA	A	B	C2	C3	T3S2	T3S3	T3S2R4	OTROS	A	B	C	K'	D	LATITUD	LONGITUD
LIM. EDOS. TERM. JAL. PPIA. COL.	189.60																		
T. DER. ESTACION ALZADA	198.60	3	0	1799	83.8	4.0	4.1	1.6	3.7	1.2	1.3	0.3	83.8	4.0	12.2	0.071	0.504	19.160440	-103.526850
T. IZQ. LOS TEPAMES	214.20	1	0	2109	83.0	2.9	6.0	1.6	3.3	1.6	0.9	0.7	83.0	2.9	14.1	0.074	0.504	19.173744	-103.660186
X. C. LIBRAMIENTO DE COLIMA	220.00	1	0	6534	83.2	3.7	5.3	1.4	3.5	1.3	0.9	0.7	83.2	3.7	13.1	0.077	0.504	19.208607	-103.721194
COLIMA	222.00	1	0	9448	85.2	3.3	4.8	1.2	2.7	1.5	0.8	0.5	85.2	3.3	11.5	0.072	0.501	19.214194	-103.721472

14 CARR: JIQUILPAN - GUADALAJARA

CLAVE: 00429

RUTA: MEX-015

AÑO: 2010

LUGAR	ESTACION				CLASIFICACION VEHICULAR EN PORCIENTO								COORDENADAS						
	KM	TE	SC	TDPA	A	B	C2	C3	T3S2	T3S3	T3S2R4	OTROS	A	B	C	K'	D	LATITUD	LONGITUD
JIQUILPAN	0.00	3	1	7122	82.5	5.3	3.5	1.5	4.0	1.4	1.3	0.5	82.5	5.3	12.2	0.103	0.506	20.006848	-102.717156
JIQUILPAN	0.00	3	2	7287	81.6	5.7	3.7	1.6	4.0	1.3	1.3	0.8	81.6	5.7	12.7	0.091	0.506	20.006848	-102.717156
SAHUAYO	7.00	1	1	9156	81.8	5.4	3.7	1.6	3.9	1.5	1.4	0.7	81.8	5.4	12.8	0.078	0.502	20.038160	-102.716772
SAHUAYO	7.00	1	2	9074	81.3	4.8	3.9	1.6	4.3	1.6	1.9	0.6	81.3	4.8	13.9	0.072	0.502	20.038160	-102.716772
COJUMATLAN DE REGULES	25.94	3	0	3313	80.6	4.6	4.2	2.7	3.5	1.6	2.2	0.6	80.6	4.6	14.8	0.069	0.508	20.127354	-102.852678
LIM. EDOS. TERM. MICH. PPIA. JAL.	36.11																		
TUXCUECA	65.29	1	0	2788	85.4	3.4	5.2	1.9	2.1	1.0	0.0	1.0	85.4	3.4	11.2	0.085	0.513	20.150734	-103.182553
T. DER. JOCOTEPEC	98.22	1	0	5218	93.7	1.2	2.6	1.0	0.7	0.3	0.0	0.5	93.7	1.2	5.1	0.083	0.510	20.276034	-103.446197
ENT. SANTA CRUZ	118.96	1	0	9065	87.6	3.0	5.5	1.0	1.1	0.6	0.0	1.2	87.6	3.0	9.4	0.079	0.502	20.420599	-103.550977
ENT. SANTA CRUZ	118.96	3	1	13541	84.2	3.7	5.2	1.4	2.3	1.1	0.0	2.1	84.2	3.7	12.1	0.106	0.511	20.435080	-103.549406
ENT. SANTA CRUZ	118.96	3	2	14134	85.2	2.4	6.1	2.0	1.7	0.9	0.0	1.7	85.2	2.4	12.4	0.088	0.511	20.435080	-103.549406
X. PERIFERICO GUADALAJARA	140.00	1	1	22453	84.2	3.0	4.4	2.4	2.4	1.2	0.3	2.1	84.2	3.0	12.8	0.075	0.502	20.611302	-103.429164
X. PERIFERICO GUADALAJARA	140.00	1	2	22609	83.8	3.0	5.5	2.2	2.6	1.0	0.1	1.8	83.8	3.0	13.2	0.073	0.502	20.611302	-103.429164
T. C. GUADALAJARA - TEPIC	166.00																		

15 CARR: LAGOS DE MORENO - GUADALAJARA

CLAVE: 14115

RUTA: MEX-080

AÑO: 2010

LUGAR	ESTACION				CLASIFICACION VEHICULAR EN PORCIENTO								COORDENADAS						
	KM	TE	SC	TDPA	A	B	C2	C3	T3S2	T3S3	T3S2R4	OTROS	A	B	C	K'	D	LATITUD	LONGITUD
LAGOS DE MORENO	0.00	3	1	4718	53.1	7.2	9.1	6.5	13.3	3.9	6.2	0.7	53.1	7.2	39.7	0.079	0.504	21.334466	-101.965595
LAGOS DE MORENO	0.00	3	2	4639	53.1	7.1	8.5	7.1	13.7	3.5	6.3	0.7	53.1	7.1	39.8	0.085	0.504	21.334466	-101.965595
SAN JUAN DE LOS LAGOS	44.36	1	0	6607	54.0	6.8	8.4	7.1	13.2	3.6	6.2	0.7	54.0	6.8	39.2	0.075	0.507	21.260357	-102.319589
SAN JUAN DE LOS LAGOS	44.36	3	0	4940	54.2	6.6	8.8	6.6	13.6	3.8	5.7	0.7	54.2	6.6	39.2	0.097	0.505	21.235722	-102.348556
T. DER. TEOCALICHE	60.30	3	0	5575	52.3	7.2	8.7	6.7	13.9	3.9	6.6	0.7	52.3	7.2	40.5	0.068	0.506	21.196251	-102.445457
JALOSTOTITLAN	63.50	3	0	4934	53.2	7.0	8.9	7.1	13.2	3.8	6.1	0.7	53.2	7.0	39.8	0.085	0.523	21.156623	-102.477569

JALISCO

15 CARR: LAGOS DE MORENO - GUADALAJARA

CLAVE: 14115

RUTA: MEX-080

AÑO: 2010

LUGAR	ESTACION				CLASIFICACION VEHICULAR EN PORCIENTO								COORDENADAS						
	KM	TE	SC	TDPA	A	B	C2	C3	T3S2	T3S3	T3S2R4	OTROS	A	B	C	K'	D	LATITUD	LONGITUD
T. IZQ. ARANDAS	108.05	3	0	10398	83.1	2.9	7.4	2.6	2.5	1.2	0.1	0.2	83.1	2.9	14.0	0.081	0.503	20.884399	-102.712549
TEPATITLAN DE MORELOS	117.35	1	0	13857	83.2	3.1	7.3	2.7	2.3	1.1	0.1	0.2	83.2	3.1	13.7	0.072	0.501	20.828687	-102.748566
ZAPOTLANEJO	159.46	3	0	15201	83.7	3.0	6.7	2.7	2.4	1.2	0.1	0.2	83.7	3.0	13.3	0.076	0.502	20.614166	-103.081441
X. C. ATLACOMULCO - ZAPOTLANEJO (CUOTA)	165.10	3	0	11122	82.5	3.1	7.7	2.8	2.4	1.2	0.1	0.2	82.5	3.1	14.4	0.081	0.505	20.592512	-103.109265
T. IZQ. EL SALTO	174.00	3	1	5933	83.0	3.0	7.4	2.7	2.4	1.2	0.1	0.2	83.0	3.0	14.0	0.092	0.505	20.572863	-103.189597
T. IZQ. EL SALTO	174.00	3	2	6042	82.5	3.3	7.4	2.9	2.4	1.2	0.1	0.2	82.5	3.3	14.2	0.094	0.505	20.572863	-103.189597
T. DER. TONALA	186.17	1	1	8962	83.3	3.1	7.2	2.6	2.3	1.2	0.1	0.2	83.3	3.1	13.6	0.074	0.503	20.610246	-103.277378
T. DER. TONALA	186.17	1	2	8842	83.0	3.1	7.4	2.7	2.3	1.2	0.1	0.2	83.0	3.1	13.9	0.096	0.503	20.610246	-103.277378
GUADALAJARA	201.00																		

16 CARR: LEON - AGUASCALIENTES

CLAVE: 00167

RUTA: MEX-045

AÑO: 2010

LUGAR	ESTACION				CLASIFICACION VEHICULAR EN PORCIENTO								COORDENADAS						
	KM	TE	SC	TDPA	A	B	C2	C3	T3S2	T3S3	T3S2R4	OTROS	A	B	C	K'	D	LATITUD	LONGITUD
LEON	0.00																		
T. DER. LIBRAMIENTO DE LEON	11.00	1	0	10449	81.3	3.6	3.5	3.4	4.4	1.3	1.6	0.9	81.3	3.6	15.1	0.063	0.512	21.160688	-101.724324
T. DER. LIBRAMIENTO DE LEON	11.00	3	0	9900	81.1	3.3	3.5	3.5	4.5	1.7	1.5	0.9	81.1	3.3	15.6	0.087	0.528	21.174506	-101.737185
T. IZQ. CENTRO DE LEON	12.00	3	0	5880	80.7	3.9	3.8	2.1	4.8	2.1	1.6	1.0	80.7	3.9	15.4	0.084	0.501	21.179550	-101.741908
LIM. EDOS. TERM. GTO. PPIA. JAL.	17.875																		
X. C. SAN LUIS POTOSI - LAGOS DE MORENO	44.18	1	0	8504	75.3	5.5	7.3	3.4	4.1	2.0	0.6	1.8	75.3	5.5	19.2	0.074	0.501	21.355447	-101.896417
ENCARNACION DE DIAZ	88.20	1	0	8787	79.6	4.3	6.0	2.0	3.7	2.0	0.4	2.0	79.6	4.3	16.1	0.069	0.504	21.505600	-102.223988
T. IZQ. LIBRAMIENTO DE ENCARNACION DE DIAZ	89.18	3	0	7019	81.8	3.8	4.9	2.1	3.4	2.0	0.2	1.8	81.8	3.8	14.4	0.088	0.502	21.542086	-102.238670
LIM. EDOS. TERM. JAL. PPIA. AGS.	103.30																		
T. IZQ. AEROPUERTO DE AGUASCALIENTES	110.15	1	1	8361	70.6	4.7	8.7	3.1	7.3	2.2	2.6	0.8	70.6	4.7	24.7	0.082	0.500	21.716582	-102.277558
T. IZQ. AEROPUERTO DE AGUASCALIENTES	110.15	1	2	8365	68.3	4.2	9.0	3.5	8.0	3.1	3.1	0.8	68.3	4.2	27.5	0.088	0.500	21.716582	-102.277558
T. IZQ. AEROPUERTO DE AGUASCALIENTES	111.00	3	1	11209	69.8	4.1	8.5	3.9	8.0	2.2	2.7	0.8	69.8	4.1	26.1	0.067	0.505	21.728021	-102.276877
T. IZQ. AEROPUERTO DE AGUASCALIENTES	111.00	3	2	11453	70.3	4.5	9.3	3.4	7.2	2.2	2.5	0.6	70.3	4.5	25.2	0.073	0.505	21.728021	-102.276877
T. DER. ESTACION ARELLANO	118.40	3	1	13086	72.6	3.6	9.0	2.4	7.6	2.4	1.5	0.9	72.6	3.6	23.8	0.081	0.508	21.804540	-102.284126
T. DER. ESTACION ARELLANO	118.40	3	2	12698	72.3	3.8	8.6	3.0	7.7	2.2	1.5	0.9	72.3	3.8	23.9	0.091	0.508	21.804540	-102.284126
AGUASCALIENTES	129.38	1	1	18525	74.5	4.4	8.2	2.0	6.2	2.6	1.2	0.9	74.5	4.4	21.1	0.067	0.507	21.822244	-102.287078
AGUASCALIENTES	129.38	1	2	17986	73.9	4.0	7.8	2.4	6.9	2.5	1.6	0.9	73.9	4.0	22.1	0.067	0.507	21.822244	-102.287078

JALISCO

17 CARR: MANUEL DOBLADO - LA PIEDAD

CLAVE: 11028

RUTA: MEX-037

AÑO: 2010

LUGAR	ESTACION				CLASIFICACION VEHICULAR EN PORCIENTO								COORDENADAS						
	KM	TE	SC	TDPA	A	B	C2	C3	T3S2	T3S3	T3S2R4	OTROS	A	B	C	K'	D	LATITUD	LONGITUD
MANUEL DOBLADO	0.00	3	0	3818	83.1	3.8	5.9	3.8	2.0	1.0	0.1	0.3	83.1	3.8	13.1	0.076	0.501	20.714052	-101.938617
LIM. EDOS. TERM. GTO. PPIA. JAL.	11.00																		
LIM. EDOS. TERM. JAL. PPIA. GTO.	23.00																		
T. DER. SAN JOSE DE LA PAZ	29.00	1	0	2372	83.3	3.8	6.0	3.6	1.9	1.0	0.1	0.3	83.3	3.8	12.9	0.071	0.508	20.584432	-101.980616
T. DER. SAN JOSE DE LA PAZ	29.00	3	0	2220	83.8	3.5	5.5	3.9	1.9	1.0	0.1	0.3	83.8	3.5	12.7	0.071	0.511	20.582322	-101.978166
T. C. IRAPUATO - GUADALAJARA	45.00	1	0	5106	83.0	3.8	6.0	3.8	2.0	1.0	0.1	0.3	83.0	3.8	13.2	0.069	0.523	20.360980	-102.002945

18 CARR: MANZANILLO - PUERTO VALLARTA

CLAVE: 00070

RUTA: MEX-200

AÑO: 2010

LUGAR	ESTACION				CLASIFICACION VEHICULAR EN PORCIENTO								COORDENADAS						
	KM	TE	SC	TDPA	A	B	C2	C3	T3S2	T3S3	T3S2R4	OTROS	A	B	C	K'	D	LATITUD	LONGITUD
MANZANILLO	0.00	3	1	13769	83.1	2.5	8.8	4.1	0.9	0.5	0.0	0.1	83.1	2.5	14.4	0.063	0.507	19.054917	-104.308000
MANZANILLO	0.00	3	2	13413	83.4	2.5	8.8	3.9	0.8	0.5	0.0	0.1	83.4	2.5	14.1	0.061	0.507	19.054917	-104.308000
T. DER. MINATITLAN	3.14	1	1	14789	82.8	2.5	8.8	4.4	0.9	0.5	0.0	0.1	82.8	2.5	14.7	0.057	0.505	19.074078	-104.284561
T. DER. MINATITLAN	3.14	1	2	15106	82.7	2.6	9.1	4.1	0.9	0.5	0.0	0.1	82.7	2.6	14.7	0.065	0.505	19.074078	-104.284561
SANTIAGO	13.24	1	1	8488	82.0	2.8	9.3	4.3	1.0	0.5	0.0	0.1	82.0	2.8	15.2	0.081	0.509	19.115722	-104.348778
SANTIAGO	13.24	1	2	8807	82.2	2.6	9.5	4.2	0.9	0.5	0.0	0.1	82.2	2.6	15.2	0.075	0.509	19.115722	-104.348778
SANTIAGO	13.24	3	1	4386	82.7	2.5	9.0	4.3	0.9	0.5	0.0	0.1	82.7	2.5	14.8	0.079	0.513	19.118972	-104.362750
SANTIAGO	13.24	3	2	4475	83.3	2.6	8.5	4.1	0.9	0.5	0.0	0.1	83.3	2.6	14.1	0.074	0.513	19.118972	-104.362750
SAN JUAN DE CUATRO VIENTOS	39.04	3	0	6594	82.9	2.4	9.0	4.3	0.8	0.5	0.0	0.1	82.9	2.4	14.7	0.072	0.510	19.192111	-104.537722
T. IZQ. AEROPUERTO MANZANILLO	40.55	3	0	5768	81.5	2.7	9.8	4.5	0.9	0.5	0.0	0.1	81.5	2.7	15.8	0.067	0.504	19.197556	-104.555972
LIM. EDOS. TERM. COL. PPIA. JAL.	43.50																		
CIHUATLAN	47.92	1	0	7582	83.5	2.5	8.4	4.1	0.9	0.5	0.0	0.1	83.5	2.5	14.0	0.071	0.512	19.236662	-104.554095
CIHUATLAN	47.92	3	0	8036	83.2	2.5	8.8	4.0	0.9	0.5	0.0	0.1	83.2	2.5	14.3	0.072	0.508	19.232298	-104.577156
T. IZQ. SAN FRANCISCO	50.18	3	0	6199	82.7	2.5	8.8	4.5	0.9	0.5	0.0	0.1	82.7	2.5	14.8	0.080	0.509	19.214841	-104.620986
MELAQUE	61.64	1	0	9110	83.0	2.6	8.6	4.4	0.8	0.5	0.0	0.1	83.0	2.6	14.4	0.077	0.501	19.228480	-104.695493
MELAQUE	61.64	3	0	5715	81.7	2.8	9.6	4.4	0.9	0.5	0.0	0.1	81.7	2.8	15.5	0.078	0.501	19.239082	-104.711585
T. IZQ. TENACATITA	90.44	3	0	3079	81.8	2.9	9.2	4.6	0.9	0.5	0.0	0.1	81.8	2.9	15.3	0.087	0.501	19.347431	-104.880307
T. DER. TOMATLAN	177.64	1	0	3092	90.6	3.0	2.9	1.3	0.7	1.1	0.3	0.1	90.6	3.0	6.4	0.082	0.504	19.973861	-105.320585
T. DER. TOMATLAN	177.64	3	0	3357	89.8	3.3	3.3	1.3	0.7	1.2	0.3	0.1	89.8	3.3	6.9	0.074	0.512	19.976635	-105.319780
T. IZQ. EL TUITO	230.64	3	0	3772	90.6	3.2	2.9	1.2	0.7	1.0	0.3	0.1	90.6	3.2	6.2	0.073	0.502	20.329492	-105.316999
PUERTO VALLARTA	273.64	1	0	7478	90.2	3.3	3.0	1.3	0.7	1.1	0.3	0.1	90.2	3.3	6.5	0.090	0.503	20.591745	-105.242501

JALISCO

19 CARR: OJUELOS - AGUASCALIENTES

CLAVE: 00094

RUTA: MEX-070

AÑO: 2010

LUGAR	ESTACION				CLASIFICACION VEHICULAR EN PORCIENTO								COORDENADAS						
	KM	TE	SC	TDPA	A	B	C2	C3	T3S2	T3S3	T3S2R4	OTROS	A	B	C	K'	D	LATITUD	LONGITUD
OJUELOS	0.00	3	0	3730	86.6	2.8	4.7	1.8	2.2	1.0	0.0	0.9	86.6	2.8	10.6	0.093	0.505	21.874970	-101.603337
MATANCILLAS	6.92	3	0	2898	82.4	3.9	4.8	2.1	3.8	1.6	0.0	1.4	82.4	3.9	13.7	0.082	0.507	21.886956	-101.650006
VERGEL	40.70	3	0	3805	80.1	3.7	5.0	3.0	4.6	2.2	0.0	1.4	80.1	3.7	16.2	0.079	0.506	21.766343	-101.934350
LIM. EDOS. TERM. JAL. PPIA. AGS.	57.20																		
T. DER. PALO ALTO	60.80	1	0	5301	80.7	4.3	4.0	2.3	5.2	2.7	0.2	0.6	80.7	4.3	15.0	0.067	0.508	21.818084	-102.091687
SAN ISIDRO	61.00	3	0	6611	79.3	3.6	3.8	3.3	5.7	3.0	0.7	0.6	79.3	3.6	17.1	0.071	0.502	21.821145	-102.101082
EL RETOÑO	68.00	1	0	5783	81.3	3.8	4.2	2.6	5.1	1.8	0.8	0.4	81.3	3.8	14.9	0.078	0.504	21.839037	-102.155634
T. C. EL RETOÑO - ASTURIAS	78.00	1	0	9403	80.1	3.5	4.9	2.5	4.9	2.7	0.6	0.8	80.1	3.5	16.4	0.067	0.501	21.860329	-102.221055
T. C. EL RETOÑO - ASTURIAS	78.00	3	0	12167	82.5	4.0	3.4	1.9	4.8	1.9	0.5	1.0	82.5	4.0	13.5	0.079	0.500	21.843473	-102.168903
SALTO DEL OJO CALIENTE	81.00	1	1	10327	81.8	3.7	3.7	2.3	4.6	2.2	0.4	1.3	81.8	3.7	14.5	0.083	0.550	21.866111	-102.239387
SALTO DEL OJO CALIENTE	81.00	1	2	10718	80.1	3.6	5.5	2.0	5.1	2.0	0.5	1.2	80.1	3.6	16.3	0.080	0.550	21.866111	-102.239387

20 CARR: RAMAL A AMECA

CLAVE: 14223

RUTA: MEX

AÑO: 2010

LUGAR	ESTACION				CLASIFICACION VEHICULAR EN PORCIENTO								COORDENADAS						
	KM	TE	SC	TDPA	A	B	C2	C3	T3S2	T3S3	T3S2R4	OTROS	A	B	C	K'	D	LATITUD	LONGITUD
T. C. GUADALAJARA - TEPIC	0.00	3	0	10656	84.8	3.6	6.1	2.6	1.1	0.4	0.0	1.4	84.8	3.6	11.6	0.095	0.506	20.729688	-103.610934
TALA	15.00	3	0	7994	86.8	2.3	6.2	1.7	0.7	0.4	0.0	1.9	86.8	2.3	10.9	0.085	0.508	20.664419	-103.722967
AMECA	53.00	1	0	9883	87.1	2.5	5.8	1.8	0.9	0.5	0.0	1.4	87.1	2.5	10.4	0.077	0.512	20.534780	-104.023219

21 CARR: RAMAL A TOMATLAN

CLAVE: 14558

RUTA: MEX

AÑO: 2010

LUGAR	ESTACION				CLASIFICACION VEHICULAR EN PORCIENTO								COORDENADAS						
	KM	TE	SC	TDPA	A	B	C2	C3	T3S2	T3S3	T3S2R4	OTROS	A	B	C	K'	D	LATITUD	LONGITUD
T. C. MANZANILLO - PUERTO VALLARTA	0.00	3	0	2401	90.5	2.1	3.8	1.1	0.8	0.3	0.0	1.4	90.5	2.1	7.4	0.093	0.501	19.879532	-105.331348
TOMATLAN	13.00	1	0	3930	92.0	1.4	4.0	0.9	0.4	0.2	0.0	1.1	92.0	1.4	6.6	0.077	0.503	19.929702	-105.258982

22 CARR: SAN LUIS POTOSI - LAGOS DE MORENO

CLAVE: 00133

RUTA: MEX-070-080

AÑO: 2010

LUGAR	ESTACION				CLASIFICACION VEHICULAR EN PORCIENTO								COORDENADAS						
	KM	TE	SC	TDPA	A	B	C2	C3	T3S2	T3S3	T3S2R4	OTROS	A	B	C	K'	D	LATITUD	LONGITUD
SAN LUIS POTOSI	0.00	3	1	11762	70.3	2.6	7.1	5.9	8.5	3.7	1.1	0.8	70.3	2.6	27.1	0.077	0.501	22.133899	-101.030894
SAN LUIS POTOSI	0.00	3	2	11820	71.4	2.6	7.2	5.7	7.9	3.4	1.1	0.7	71.4	2.6	26.0	0.073	0.501	22.133904	-101.030880
X. PERIFERICO SAN LUIS POTOSI	8.41	3	0	8447	70.9	2.7	7.1	5.8	8.0	3.7	1.0	0.8	70.9	2.7	26.4	0.069	0.512	22.129055	-101.038610
EL TEPETATE	41.90	1	0	5366	69.7	2.9	7.5	5.8	8.5	3.7	1.1	0.8	69.7	2.9	27.4	0.080	0.507	22.023957	-101.226608

JALISCO

22 CARR: SAN LUIS POTOSI - LAGOS DE MORENO

CLAVE: 00133

RUTA: MEX-070-080

AÑO: 2010

LUGAR	ESTACION				CLASIFICACION VEHICULAR EN PORCIENTO								COORDENADAS						
	KM	TE	SC	TDPA	A	B	C2	C3	T3S2	T3S3	T3S2R4	OTROS	A	B	C	K'	D	LATITUD	LONGITUD
EL TEPETATE	41.90	3	0	2545	70.7	2.9	7.4	5.5	8.0	3.6	1.1	0.8	70.7	2.9	26.4	0.076	0.506	22.011020	-101.244603
VILLA DE ARRIAGA	61.90	3	0	2114	68.8	2.8	7.8	5.8	8.8	4.0	1.2	0.8	68.8	2.8	28.4	0.076	0.506	21.902803	-101.395046
LIM. EDOS. TERM. S.L.P. PPIA. ZAC.	70.23																		
LIM. EDOS. TERM. ZAC. PPIA. JAL.	82.94																		
OJUELOS DE JALISCO	83.20	1	0	6985	79.3	4.5	6.1	3.2	3.2	2.0	0.9	0.8	79.3	4.5	16.2	0.064	0.510	21.875574	-101.572502
OJUELOS DE JALISCO	83.20	3	0	5401	80.3	4.3	6.0	2.8	3.1	2.0	0.8	0.7	80.3	4.3	15.4	0.061	0.508	21.853960	-101.593920
X. C. LEON - AGUASCALIENTES	146.90	1	0	6382	79.9	4.4	6.0	2.9	3.2	2.0	0.9	0.7	79.9	4.4	15.7	0.073	0.512	21.376605	-101.892836
LAGOS DE MORENO	150.00																		

23 CARR: SANTA ROSA - LA BARCA

CLAVE: 14007

RUTA: MEX-035

AÑO: 2010

LUGAR	ESTACION				CLASIFICACION VEHICULAR EN PORCIENTO								COORDENADAS						
	KM	TE	SC	TDPA	A	B	C2	C3	T3S2	T3S3	T3S2R4	OTROS	A	B	C	K'	D	LATITUD	LONGITUD
SANTA ROSA	0.00	3	0	22870	83.7	2.1	5.7	2.5	3.0	1.3	0.0	1.7	83.7	2.1	14.2	0.055	0.504	20.414169	-103.229256
T. IZQ. PONCITLAN	32.00	1	0	9312	85.8	4.0	3.3	1.6	2.6	1.0	0.0	1.7	85.8	4.0	10.2	0.071	0.510	20.380265	-102.948820
OCOTLAN	49.00	3	0	9048	84.4	4.4	3.4	2.0	3.0	1.4	0.0	1.4	84.4	4.4	11.2	0.068	0.505	20.316682	-102.774394
JAMAY	62.00	1	0	8035	85.1	4.1	2.8	1.3	3.1	1.8	0.0	1.8	85.1	4.1	10.8	0.068	0.505	20.293048	-102.727146
JAMAY	62.00	3	0	7955	83.1	4.5	3.3	2.4	3.5	1.9	0.0	1.3	83.1	4.5	12.4	0.064	0.508	20.294649	-102.698785
LA BARCA	79.00	1	0	7970	81.2	3.5	4.7	2.7	3.7	1.7	0.0	2.5	81.2	3.5	15.3	0.079	0.505	20.291833	-102.564239

24 CARR: T. C. (JIQUILPAN - COLIMA) - EST. HUESCALAPA

CLAVE: 14225

RUTA: MEX

AÑO: 2010

LUGAR	ESTACION				CLASIFICACION VEHICULAR EN PORCIENTO								COORDENADAS						
	KM	TE	SC	TDPA	A	B	C2	C3	T3S2	T3S3	T3S2R4	OTROS	A	B	C	K'	D	LATITUD	LONGITUD
T. C. JIQUILPAN - COLIMA	0.00	3	0	4965	86.0	3.0	5.9	1.6	1.5	1.0	0.0	1.0	86.0	3.0	11.0	0.081	0.509	19.645911	-103.337022
ZAPOTILTIC	9.48	3	0	3962	88.8	1.9	4.8	1.7	1.3	0.7	0.0	0.8	88.8	1.9	9.3	0.099	0.509	19.632489	-103.432104
T. C. CD.GUZMAN - COLIMA	18.79	1	0	7848	90.8	2.1	3.6	1.2	1.0	0.4	0.0	0.9	90.8	2.1	7.1	0.078	0.501	19.651047	-103.471279

25 CARR: TEPIC - PUERTO VALLARTA

CLAVE: 00068

RUTA: MEX-200

AÑO: 2010

LUGAR	ESTACION				CLASIFICACION VEHICULAR EN PORCIENTO								COORDENADAS						
	KM	TE	SC	TDPA	A	B	C2	C3	T3S2	T3S3	T3S2R4	OTROS	A	B	C	K'	D	LATITUD	LONGITUD
TEPIC	0.00	3	1	12917	81.4	4.2	4.1	2.6	3.5	1.8	1.2	1.2	81.4	4.2	14.4	0.065	0.508	21.491760	-104.895559
TEPIC	0.00	3	2	13345	81.8	4.2	3.9	2.7	3.4	1.7	1.1	1.2	81.8	4.2	14.0	0.065	0.508	21.491760	-104.895559
LIMITE DE ZONA URBANA TEPIC	1.80	3	1	11382	81.0	4.2	4.0	2.9	3.4	2.0	1.2	1.3	81.0	4.2	14.8	0.077	0.501	21.473262	-104.889662

JALISCO

25 CARR: TEPIC - PUERTO VALLARTA

CLAVE: 00068

RUTA: MEX-200

AÑO: 2010

LUGAR	ESTACION				CLASIFICACION VEHICULAR EN PORCIENTO								COORDENADAS						
	KM	TE	SC	TDPA	A	B	C2	C3	T3S2	T3S3	T3S2R4	OTROS	A	B	C	K'	D	LATITUD	LONGITUD
LIMITE DE ZONA URBANA TEPIC	1.80	3	2	11437	81.9	4.0	4.1	2.7	3.4	1.7	1.1	1.1	81.9	4.0	14.1	0.081	0.501	21.473262	-104.889662
X. C. LIBRAMIENTO DE TEPIC	3.90	3	1	10293	80.7	4.3	4.3	2.9	3.4	1.9	1.2	1.3	80.7	4.3	15.0	0.073	0.505	21.467821	-104.888064
X. C. LIBRAMIENTO DE TEPIC	3.90	3	2	10489	82.5	4.1	3.7	2.5	3.2	1.8	1.1	1.1	82.5	4.1	13.4	0.084	0.505	21.467821	-104.888064
JALISCO	7.15	3	0	12043	82.5	3.9	3.8	2.6	3.2	1.8	1.0	1.2	82.5	3.9	13.6	0.069	0.505	21.434928	-104.899822
T. IZQ. EMILIANO ZAPATA	18.40	3	0	6921	81.0	4.5	4.0	2.7	3.5	1.9	1.1	1.3	81.0	4.5	14.5	0.077	0.506	21.364007	-104.918655
T. IZQ. COMPOSTELA (1° ACCESO)	35.80	1	0	6080	81.1	4.3	4.2	2.8	3.4	1.8	1.2	1.2	81.1	4.3	14.6	0.080	0.503	21.256404	-104.901565
T. IZQ. COMPOSTELA (1° ACCESO)	35.80	3	0	4081	82.2	4.2	3.9	2.5	3.3	1.7	1.0	1.2	82.2	4.2	13.6	0.081	0.518	21.247657	-104.903904
LAS VARAS	71.30	1	0	8511	87.0	5.1	3.5	1.7	1.1	0.9	0.6	0.1	87.0	5.1	7.9	0.096	0.510	21.188136	-105.121969
LAS VARAS	71.30	3	0	8584	87.0	5.0	3.6	1.7	1.1	0.9	0.6	0.1	87.0	5.0	8.0	0.103	0.502	21.171198	-105.149915
T. DER. RINCON DE GUAYABITOS	94.50	1	1	5277	86.9	5.2	3.6	1.6	1.1	0.9	0.6	0.1	86.9	5.2	7.9	0.072	0.502	21.027432	-105.260585
T. DER. RINCON DE GUAYABITOS	94.50	1	2	5312	86.7	5.3	3.5	1.8	1.1	0.9	0.6	0.1	86.7	5.3	8.0	0.075	0.502	21.027432	-105.260585
T. DER. RINCON DE GUAYABITOS	94.50	3	0	9764	86.9	5.1	3.5	1.8	1.1	0.9	0.6	0.1	86.9	5.1	8.0	0.084	0.506	21.009809	-105.271677
T. DER. SAYULITA	122.91	1	0	8191	86.9	5.1	3.7	1.7	1.1	0.8	0.6	0.1	86.9	5.1	8.0	0.090	0.506	20.866115	-105.426307
T. DER. SAYULITA	122.91	3	0	7732	86.6	5.5	3.5	1.7	1.1	0.9	0.6	0.1	86.6	5.5	7.9	0.097	0.505	20.859907	-105.424649
T. DER. CRUZ DE JUANACAXTLE	137.30	3	1	5037	87.0	5.3	3.4	1.6	1.1	0.9	0.6	0.1	87.0	5.3	7.7	0.111	0.504	20.763956	-105.363275
T. DER. CRUZ DE JUANACAXTLE	137.30	3	2	5116	86.9	5.2	3.4	1.8	1.1	0.9	0.6	0.1	86.9	5.2	7.9	0.121	0.504	20.763956	-105.363275
BUCERIAS	140.81	1	1	7669	83.0	5.5	4.7	2.9	1.6	1.1	0.9	0.3	83.0	5.5	11.5	0.092	0.504	20.762102	-105.348910
BUCERIAS	140.81	1	2	7790	83.5	5.3	4.5	2.8	1.6	1.1	0.9	0.3	83.5	5.3	11.2	0.096	0.504	20.762102	-105.348910
LIM. EDOS. TERM. NAY. PPIA. JAL.	152.60																		
T. DER. AEROPUERTO DIAZ ORDAZ	158.37	1	1	13873	82.7	5.5	4.9	2.9	1.6	1.1	1.0	0.3	82.7	5.5	11.8	0.113	0.501	20.679447	-105.245747
T. DER. AEROPUERTO DIAZ ORDAZ	158.37	1	2	13803	84.0	5.0	4.3	2.8	1.6	1.1	0.9	0.3	84.0	5.0	11.0	0.125	0.501	20.679447	-105.245747
T. DER. AEROPUERTO DIAZ ORDAZ	158.37	3	1	10673	82.7	5.8	4.7	2.9	1.6	1.1	0.9	0.3	82.7	5.8	11.5	0.093	0.510	20.670451	-105.249321
T. DER. AEROPUERTO DIAZ ORDAZ	158.37	3	2	11124	83.5	5.4	4.4	2.7	1.7	1.1	0.9	0.3	83.5	5.4	11.1	0.099	0.510	20.670451	-105.249321
PUERTO VALLARTA	166.88																		

26 CARR: ACATLAN DE JUAREZ - EL TRAPICHE (CUOTA)

CLAVE: 00118

RUTA: MEX-054D

AÑO: 2010

LUGAR	ESTACION				CLASIFICACION VEHICULAR EN PORCIENTO								COORDENADAS						
	KM	TE	SC	TDPA	A	B	C2	C3	T3S2	T3S3	T3S2R4	OTROS	A	B	C	K'	D	LATITUD	LONGITUD
T. C. ENT. SANTA CRUZ - MELAUQUE	0.00																		
CASETA DE COBRO "ACATLAN"	0.20	3	1	4015	75.8	4.3	3.4	3.7	3.6	1.6	7.0	0.6	75.8	4.3	19.9	0.075	0.517	20.412059	-103.558106
CASETA DE COBRO "ACATLAN"	0.20	3	2	4187	75.4	4.6	3.4	3.5	3.7	1.5	7.3	0.6	75.4	4.6	20.0	0.095	0.517	20.412059	-103.558106
T. IZQ. SAN MARCOS	10.80	1	1	4620	75.7	4.3	3.5	3.7	3.9	1.6	6.7	0.6	75.7	4.3	20.0	0.097	0.509	20.300062	-103.558476
T. IZQ. SAN MARCOS	10.80	1	2	4796	75.4	4.4	3.6	3.8	3.8	1.5	6.9	0.6	75.4	4.4	20.2	0.095	0.509	20.300062	-103.558476
T. DER. USMAJAC	67.80	1	1	5463	75.0	4.6	3.4	3.7	3.7	1.5	7.5	0.6	75.0	4.6	20.4	0.079	0.506	19.882765	-103.516977

JALISCO

26 CARR: ACATLAN DE JUAREZ - EL TRAPICHE (CUOTA)

CLAVE: 00118

RUTA: MEX-054D

AÑO: 2010

LUGAR	ESTACION				CLASIFICACION VEHICULAR EN PORCIENTO								COORDENADAS						
	KM	TE	SC	TDPA	A	B	C2	C3	T3S2	T3S3	T3S2R4	OTROS	A	B	C	K'	D	LATITUD	LONGITUD
T. DER. USMAJAC	67.80	1	2	5595	75.6	4.4	3.4	3.7	3.7	1.6	7.0	0.6	75.6	4.4	20.0	0.079	0.506	19.882765	-103.516977
T. IZO. CD. GUZMAN	86.70	1	0	5691	67.2	3.5	3.9	5.4	6.8	3.3	8.6	1.3	67.2	3.5	29.3	0.069	0.505	19.706392	-103.500094
CASETA DE COBRO SAN MARCOS	122.50	2	0	7921	66.4	3.5	4.1	5.6	6.9	3.5	8.7	1.3	66.4	3.5	30.1			19.433636	-103.494843
LIM. EDOS. TERM. JAL. PPIA. COL.	129.50																		
T. C. CD. GUZMAN - COLIMA	148.00																		

27 CARR: ATLACOMULCO - ZAPOTLANEJO (CUOTA)

CLAVE: 00018

RUTA: MEX-015D

AÑO: 2010

LUGAR	ESTACION				CLASIFICACION VEHICULAR EN PORCIENTO								COORDENADAS						
	KM	TE	SC	TDPA	A	B	C2	C3	T3S2	T3S3	T3S2R4	OTROS	A	B	C	K'	D	LATITUD	LONGITUD
T. C. TOLUCA - PALMILLAS	0.00																		
CASETA DE COBRO SAN JUANICO	3.76	2	0	7699	81.6	6.9	4.2	2.8	2.3	0.7	1.2	0.3	81.6	6.9	11.5			19.830594	-99.905264
LIM. EDOS. TERM. MEX. PPIA. MICH.	21.20																		
CASETA DE COBRO CONTEPEC	33.10	2	0	7471	80.1	6.3	4.8	3.4	2.7	0.9	1.4	0.4	80.1	6.3	13.6			19.876112	-100.177002
CASETA DE COBRO ZINAPECUARO	102.017	1	0	6439	82.3	6.5	3.6	2.2	2.7	0.7	1.6	0.4	82.3	6.5	11.2			19.901803	-100.788575
CASETA DE COBRO ZINAPECUARO	102.017	2	0	7114	82.9	6.0	3.6	2.2	2.6	0.7	1.6	0.4	82.9	6.0	11.1			19.901803	-100.788575
CASETA DE COBRO ZINAPECUARO	102.017	3	0	6629	82.3	6.3	3.6	2.3	2.7	0.7	1.7	0.4	82.3	6.3	11.4			19.901803	-100.788575
CASETA DE COBRO PANINDICUARIO	207.00	1	0	5490	80.8	5.6	4.1	2.9	3.6	0.7	1.9	0.4	80.8	5.6	13.6			19.972227	-101.756953
CASETA DE COBRO PANINDICUARIO	207.00	2	0	5820	81.1	5.4	4.1	2.9	3.5	0.7	1.9	0.4	81.1	5.4	13.5			19.972227	-101.756953
CASETA DE COBRO PANINDICUARIO	207.00	3	0	4838	80.4	6.1	4.0	2.7	3.7	0.6	2.1	0.4	80.4	6.1	13.5			19.972227	-101.756953
CASETA DE COBRO ECUANDUREO	260.00	1	0	6131	80.3	5.6	4.3	3.1	3.7	0.8	1.8	0.4	80.3	5.6	14.1			20.175038	-102.191318
CASETA DE COBRO ECUANDUREO	260.00	2	0	8122	79.7	6.9	4.1	3.0	3.5	0.8	1.7	0.3	79.7	6.9	13.4			20.175038	-102.191318
CASETA DE COBRO ECUANDUREO	260.00	3	0	6667	78.9	7.0	4.2	3.1	3.9	0.8	1.8	0.3	78.9	7.0	14.1			20.175038	-102.191318
LIM. EDOS. TERM. MICH. PPIA. JAL.	297.00																		
CASETA DE COBRO OCOTLAN	326.00	1	0	10534	67.0	5.1	4.7	4.4	10.1	2.2	5.7	0.8	67.0	5.1	27.9			20.405873	-102.738901
CASETA DE COBRO OCOTLAN	326.00	2	0	11366	68.9	4.7	4.6	4.2	9.5	2.0	5.4	0.7	68.9	4.7	26.4			20.405873	-102.738901
CASETA DE COBRO OCOTLAN	326.00	3	0	9650	71.2	5.4	4.7	3.6	7.9	1.2	5.3	0.7	71.2	5.4	23.4			20.405873	-102.738901
T. C. ZAPOTLANEJO - GUADALAJARA (CUOTA)	375.00																		

28 CARR: GUADALAJARA - TEPIC (CUOTA)

CLAVE: 00033

RUTA: MEX-015D

AÑO: 2010

LUGAR	ESTACION				CLASIFICACION VEHICULAR EN PORCIENTO								COORDENADAS						
	KM	TE	SC	TDPA	A	B	C2	C3	T3S2	T3S3	T3S2R4	OTROS	A	B	C	K'	D	LATITUD	LONGITUD
T. C. GUADALAJARA - TEPIC (LIBRE)	0.00																		
CASETA DE COBRO ARENAL	10.96	2	0	9227	69.4	11.6	2.6	2.6	8.3	1.4	3.5	0.6	69.4	11.6	19.0			20.778732	-103.662440

JALISCO

31 CARR: ZAPOTLANEJO - LAGOS DE MORENO (CUOTA)

CLAVE: 14116

RUTA: MEX-080D

AÑO: 2010

LUGAR	ESTACION				CLASIFICACION VEHICULAR EN PORCIENTO								COORDENADAS						
	KM	TE	SC	TDPA	A	B	C2	C3	T3S2	T3S3	T3S2R4	OTROS	A	B	C	K'	D	LATITUD	LONGITUD
T. C. ZAPOTLANEJO - GUADALAJARA (CUOTA)	0.00	3	1	6341	66.2	8.6	4.2	4.1	9.1	1.5	5.6	0.7	66.2	8.6	25.2	0.072	0.511	20.622920	-103.095751
T. C. ZAPOTLANEJO - GUADALAJARA (CUOTA)	0.00	3	2	6059	68.5	7.7	3.5	3.9	8.6	1.5	5.7	0.6	68.5	7.7	23.8	0.070	0.511	20.622920	-103.095751
T. DER. A ZAPOTLANEJO	7.50																		
CASETA DE COBRO TEPATITLAN	41.512	1	0	11612	67.1	8.3	3.8	3.8	9.1	1.5	5.7	0.7	67.1	8.3	24.6			20.824623	-102.795030
CASETA DE COBRO TEPATITLAN	41.512	2	0	12158	66.4	8.0	3.9	4.0	9.6	1.8	5.6	0.7	66.4	8.0	25.6			20.824623	-102.795030
CASETA DE COBRO TEPATITLAN	41.512	3	0	10463	63.6	8.0	4.1	4.3	11.0	2.1	6.1	0.8	63.6	8.0	28.4			20.824623	-102.795030
CASETA DE COBRO JALOSTOTITLAN	90.80	1	0	8718	60.4	8.9	4.4	4.7	11.8	1.9	6.8	1.1	60.4	8.9	30.7			21.117548	-102.457996
CASETA DE COBRO JALOSTOTITLAN	90.80	2	0	9294	61.7	9.0	4.4	4.5	11.1	1.8	6.4	1.1	61.7	9.0	29.3			21.117548	-102.457996
CASETA DE COBRO SAN JUAN DE LOS LAGOS	90.80	3	0	9154	60.7	9.9	4.2	4.6	11.3	1.8	6.4	1.1	60.7	9.9	29.4			21.225653	-102.313735
CASETA DE COBRO JALOSTOTITLAN	90.80	3	0	8721	60.0	9.4	4.4	4.7	11.8	1.9	6.7	1.1	60.0	9.4	30.6			21.117548	-102.457996
EL DESPERDICIO	118.91																		

32 CARR: ACATLAN DE JUAREZ - CD. GUZMAN

CLAVE: 14221

RUTA: JAL

AÑO: 2010

LUGAR	ESTACION				CLASIFICACION VEHICULAR EN PORCIENTO								COORDENADAS						
	KM	TE	SC	TDPA	A	B	C2	C3	T3S2	T3S3	T3S2R4	OTROS	A	B	C	K'	D	LATITUD	LONGITUD
T. C. ENT. SANTA CRUZ - MELAQUE	0.00	3	0	6443	86.7	2.7	5.1	1.6	1.9	0.8	0.1	1.1	86.7	2.7	10.6	0.077	0.507	20.409999	-103.593869
TECHALUTA	42.00	3	0	4705	86.4	2.2	5.2	1.1	2.0	1.1	0.2	1.8	86.4	2.2	11.4	0.071	0.508	20.066331	-103.548511
T. DER. AMACUECA	52.00	1	0	3173	86.5	2.2	5.1	1.1	1.9	1.1	0.2	1.9	86.5	2.2	11.3	0.090	0.512	20.003672	-103.580427
SAYULA	65.34	1	0	4585	89.4	1.7	4.0	1.7	1.4	0.8	0.0	1.0	89.4	1.7	8.9	0.098	0.505	19.893824	-103.589181
SAYULA	65.34	3	0	4488	87.4	2.0	4.8	2.0	1.4	0.9	0.0	1.5	87.4	2.0	10.6	0.100	0.506	19.876897	-103.578999
CD. GUZMAN	94.30																		

33 CARR: AUTLAN DE NAVARRO - T. C. (ACATLAN DE J. - COLIMA)

CLAVE: 14589

RUTA: JAL

AÑO: 2010

LUGAR	ESTACION				CLASIFICACION VEHICULAR EN PORCIENTO								COORDENADAS						
	KM	TE	SC	TDPA	A	B	C2	C3	T3S2	T3S3	T3S2R4	OTROS	A	B	C	K'	D	LATITUD	LONGITUD
AUTLAN DE NAVARRO	0.00	3	0	6046	89.6	1.2	4.3	1.7	1.0	0.4	0.0	1.8	89.6	1.2	9.2	0.088	0.511	19.766569	-104.344941
EL GRULLO	16.00	3	0	4216	92.9	0.9	3.3	1.2	0.9	0.3	0.0	0.5	92.9	0.9	6.2	0.094	0.520	19.804678	-104.198774
T. IZQ. SAYULA	70.00	1	0	2268	92.2	1.0	3.3	1.2	1.5	0.3	0.0	0.5	92.2	1.0	6.8	0.094	0.517	19.684248	-103.805185
T. IZQ. SAYULA	70.00	3	0	2288	89.2	1.4	5.0	1.4	1.4	0.6	0.0	1.0	89.2	1.4	9.4	0.097	0.529	19.679716	-103.796064
T. C. CD. GUZMAN - COLIMA	106.00	1	0	4418	92.1	1.4	3.8	1.1	0.7	0.3	0.0	0.6	92.1	1.4	6.5	0.106	0.509	19.560054	-103.444399

JALISCO

34 CARR: CD. GUZMAN - T.C. (AUTLAN DE NAVARRO - T.C. (ACATLAN DE JUAREZ-

CLAVE:

RUTA: JAL

AÑO: 2010

LUGAR	ESTACION				CLASIFICACION VEHICULAR EN PORCIENTO								COORDENADAS						
	KM	TE	SC	TDPA	A	B	C2	C3	T3S2	T3S3	T3S2R4	OTROS	A	B	C	K'	D	LATITUD	LONGITUD
CD. GUZMAN	0.00	3	0	3678	92.8	0.8	3.7	1.0	0.6	0.2	0.0	0.9	92.8	0.8	6.4	0.110	0.516	19.671889	-103.480621
T.C. AUTLAN DE NAVARRO - T.C. (ACATLAN DE JUAREZ- COLIMA)	9.50	1	0	2990	91.9	1.1	4.3	1.0	0.8	0.3	0.0	0.6	91.9	1.1	7.0	0.092	0.507	19.626214	-103.521916

35 CARR: CRUCERO DE SANTA MARIA - AMECA

CLAVE: 14573

RUTA: JAL

AÑO: 2010

LUGAR	ESTACION				CLASIFICACION VEHICULAR EN PORCIENTO								COORDENADAS						
	KM	TE	SC	TDPA	A	B	C2	C3	T3S2	T3S3	T3S2R4	OTROS	A	B	C	K'	D	LATITUD	LONGITUD
CRUCERO DE SANTA MARIA	0.00	3	0	4313	89.9	3.2	4.0	1.0	0.6	0.2	0.0	1.1	89.9	3.2	6.9	0.090	0.505	20.387395	-103.867676
SAN MARTIN HIDALGO	10.00	3	0	2732	92.9	1.4	3.8	1.0	0.4	0.1	0.0	0.4	92.9	1.4	5.7	0.107	0.526	20.442743	-103.939992
T. C. RAMAL A AMECA	26.00	1	0	3475	92.7	2.0	3.6	1.0	0.4	0.1	0.0	0.2	92.7	2.0	5.3	0.100	0.523	20.531524	-104.024024

36 CARR: EL REFUGIO - SAN MARCOS

CLAVE: 14027

RUTA: JAL-004

AÑO: 2010

LUGAR	ESTACION				CLASIFICACION VEHICULAR EN PORCIENTO								COORDENADAS						
	KM	TE	SC	TDPA	A	B	C2	C3	T3S2	T3S3	T3S2R4	OTROS	A	B	C	K'	D	LATITUD	LONGITUD
T. C. RAMAL A AMECA	0.00	3	0	7777	91.9	1.9	3.5	0.9	0.7	0.2	0.0	0.9	91.9	1.9	6.2	0.076	0.502	20.659985	-103.733677
T. IZQ. AHUALULCO DE MERCADO	24.50	1	0	6600	91.8	2.0	3.7	1.2	0.4	0.2	0.0	0.7	91.8	2.0	6.2	0.085	0.503	20.695323	-103.956705
T. IZQ. AHUALULCO DE MERCADO	24.50	3	0	5175	91.3	2.1	4.1	1.0	0.5	0.2	0.0	0.8	91.3	2.1	6.6	0.086	0.509	20.714601	-103.977598
SAN MARCOS	54.00	1	0	2369	91.2	2.4	4.5	1.2	0.3	0.1	0.0	0.3	91.2	2.4	6.4	0.098	0.508	20.783068	-104.192685

37 CARR: ENT. JALOSTOTITLAN - VILLA HIDALGO

CLAVE: 14009

RUTA: JAL-009

AÑO: 2010

LUGAR	ESTACION				CLASIFICACION VEHICULAR EN PORCIENTO								COORDENADAS						
	KM	TE	SC	TDPA	A	B	C2	C3	T3S2	T3S3	T3S2R4	OTROS	A	B	C	K'	D	LATITUD	LONGITUD
T. C. LAGOS DE MORENO - ZAPOTLANEJO	0.00	3	0	3354	84.8	2.7	5.2	2.4	2.1	1.2	0.0	1.6	84.8	2.7	12.5	0.090	0.517	21.201009	-102.441528
TEOCALTICHE	36.00	1	0	2203	91.9	1.6	2.7	1.5	0.7	0.5	0.0	1.1	91.9	1.6	6.5	0.084	0.523	21.424708	-102.585630
TEOCALTICHE	36.00	3	0	3089	88.0	3.1	4.8	1.4	1.1	0.6	0.0	1.0	88.0	3.1	8.9	0.102	0.517	21.452560	-102.572407
VILLA HIDALGO	63.00	1	0	4701	89.4	1.8	4.5	1.5	1.1	0.4	0.0	1.3	89.4	1.8	8.8	0.088	0.512	21.662252	-102.593682

38 CARR: ENT. OJO CALIENTE - ENT. OJUELOS DE JALISCO

CLAVE: 00126

RUTA: ZAC

AÑO: 2010

LUGAR	ESTACION				CLASIFICACION VEHICULAR EN PORCIENTO								COORDENADAS						
	KM	TE	SC	TDPA	A	B	C2	C3	T3S2	T3S3	T3S2R4	OTROS	A	B	C	K'	D	LATITUD	LONGITUD
T. C. AGUASCALIENTES - ZACATECAS	0.00	3	0	2353	86.7	3.4	2.4	1.2	3.3	1.6	1.1	0.3	86.7	3.4	9.9	0.087	0.501	22.601098	-102.246998
GRAL. PANFILO NATERA	16.00	3	0	1963	87.0	3.3	2.6	1.2	3.1	1.5	0.9	0.4	87.0	3.3	9.7	0.077	0.503	22.656735	-102.106016

JALISCO

38 CARR: ENT. OJO CALIENTE - ENT. OJUELOS DE JALISCO

CLAVE: 00126

RUTA: ZAC

AÑO: 2010

LUGAR	ESTACION				CLASIFICACION VEHICULAR EN PORCIENTO								COORDENADAS						
	KM	TE	SC	TDPA	A	B	C2	C3	T3S2	T3S3	T3S2R4	OTROS	A	B	C	K'	D	LATITUD	LONGITUD
LIM. EDOS. TERM. ZAC. PPIA. JAL.	134.00																		
T. C. SAN LUIS POTOSI - LAGOS DE MORENO	137.00																		

39 CARR: IXTLAHUACAN DEL RIO - T. C. (TEPATITLAN - JARALILLO)

CLAVE: 14582

RUTA: JAL

AÑO: 2010

LUGAR	ESTACION				CLASIFICACION VEHICULAR EN PORCIENTO								COORDENADAS						
	KM	TE	SC	TDPA	A	B	C2	C3	T3S2	T3S3	T3S2R4	OTROS	A	B	C	K'	D	LATITUD	LONGITUD
IXTLAHUACAN DEL RIO	0.00	3	0	3750	89.0	2.2	4.8	1.8	0.9	0.3	0.0	1.0	89.0	2.2	8.8	0.091	0.517	20.855535	-103.239019
CUQUIO	27.00	1	0	2921	87.9	1.7	7.0	1.6	0.5	0.2	0.0	1.1	87.9	1.7	10.4	0.089	0.512	20.916346	-103.044799
T. C. TEPATITLAN - JARALILLO	52.00	1	0	2144	89.5	1.7	4.8	2.5	0.3	0.1	0.0	1.1	89.5	1.7	8.8	0.090	0.504	21.156273	-102.893691

40 CARR: JALOSTOTITLAN - PURISIMA DE BUSTOS

CLAVE: 00142

RUTA: JAL-GTO

AÑO: 2010

LUGAR	ESTACION				CLASIFICACION VEHICULAR EN PORCIENTO								COORDENADAS						
	KM	TE	SC	TDPA	A	B	C2	C3	T3S2	T3S3	T3S2R4	OTROS	A	B	C	K'	D	LATITUD	LONGITUD
JALOSTOTITLAN	0.00	3	0	3672	88.8	5.3	2.7	1.0	0.9	0.3	0.0	1.0	88.8	5.3	5.9	0.099	0.503	21.156083	-102.464177
SAN MIGUEL EL ALTO	19.00	3	0	4159	87.1	4.1	3.8	2.3	0.9	0.4	0.0	1.4	87.1	4.1	8.8	0.085	0.513	21.028896	-102.386730
SAN DIEGO DE ALEJANDRIA	63.00	3	0	3240	84.2	3.6	5.2	2.7	1.7	1.0	0.0	1.6	84.2	3.6	12.2	0.100	0.527	21.000024	-101.988087
LIM. EDOS. TERM. JAL. PPIA. GTO.	66.00																		
PURISIMA DE BUSTOS	78.00	1	0	3481	81.4	6.6	5.8	2.2	1.5	1.2	0.4	0.9	81.4	6.6	12.0	0.062	0.506	21.015834	-101.893903

41 CARR: LAGOS DE MORENO - UNION DE SAN ANTONIO

CLAVE: 14581

RUTA: JAL

AÑO: 2010

LUGAR	ESTACION				CLASIFICACION VEHICULAR EN PORCIENTO								COORDENADAS						
	KM	TE	SC	TDPA	A	B	C2	C3	T3S2	T3S3	T3S2R4	OTROS	A	B	C	K'	D	LATITUD	LONGITUD
LAGOS DE MORENO	0.00	3	0	7492	90.6	1.7	4.1	1.3	0.7	0.2	0.0	1.4	90.6	1.7	7.7	0.096	0.508	21.340660	-101.927778
UNION DE SAN ANTONIO	27.00	1	0	2073	90.9	2.2	4.0	1.7	0.5	0.1	0.0	0.6	90.9	2.2	6.9	0.097	0.508	21.140060	-101.995644

42 CARR: LEON - SAN FELIPE TORRES MOCHAS

CLAVE: 11036

RUTA: GTO

AÑO: 2010

LUGAR	ESTACION				CLASIFICACION VEHICULAR EN PORCIENTO								COORDENADAS						
	KM	TE	SC	TDPA	A	B	C2	C3	T3S2	T3S3	T3S2R4	OTROS	A	B	C	K'	D	LATITUD	LONGITUD
LEON	0.00	3	1	12742	65.5	7.5	6.9	3.8	7.7	5.1	3.0	0.5	65.5	7.5	27.0	0.073	0.502	21.169718	-101.664335
LEON	0.00	3	2	12857	66.4	7.1	6.1	3.4	8.1	5.2	3.2	0.5	66.4	7.1	26.5	0.074	0.502	21.169700	-101.664351
X. C. LIBRAMIENTO DE LEON	6.50	3	0	11182	66.3	7.4	6.7	3.5	7.0	4.9	3.3	0.9	66.3	7.4	26.3	0.073	0.508	21.200958	-101.673298

JALISCO

42 CARR: LEON - SAN FELIPE TORRES MOCHAS

CLAVE: 11036

RUTA: GTO

AÑO: 2010

LUGAR	ESTACION				CLASIFICACION VEHICULAR EN PORCIENTO								COORDENADAS						
	KM	TE	SC	TDPA	A	B	C2	C3	T3S2	T3S3	T3S2R4	OTROS	A	B	C	K'	D	LATITUD	LONGITUD
LIM. EDOS. TERM. GTO. PPIA. JAL.	17.00																		
LIM. EDOS. TERM. JAL. PPIA. GTO.	38.00																		
SAN FELIPE TORRES MOCHAS	98.00	1	0	6832	66.1	6.8	6.6	3.4	8.2	5.3	3.1	0.5	66.1	6.8	27.1	0.065	0.506	21.428289	-101.237851

43 CARR: LIBRAMIENTO DE MAZAMITLA

CLAVE: 14014

RUTA: JAL

AÑO: 2010

LUGAR	ESTACION				CLASIFICACION VEHICULAR EN PORCIENTO								COORDENADAS						
	KM	TE	SC	TDPA	A	B	C2	C3	T3S2	T3S3	T3S2R4	OTROS	A	B	C	K'	D	LATITUD	LONGITUD
T. C. JIQUILPAN - COLIMA	0.00																		
T. C. JIQUILPAN - COLIMA	3.00	1	0	3597	90.4	2.5	3.1	1.5	1.1	0.4	0.0	1.0	90.4	2.5	7.1	0.076	0.510	19.924781	-103.039212

44 CARR: LIBRAMIENTO DE ZAPOTLANEJO

CLAVE: 14013

RUTA: JAL

AÑO: 2010

LUGAR	ESTACION				CLASIFICACION VEHICULAR EN PORCIENTO								COORDENADAS						
	KM	TE	SC	TDPA	A	B	C2	C3	T3S2	T3S3	T3S2R4	OTROS	A	B	C	K'	D	LATITUD	LONGITUD
T. C. LAGOS DE MORENO - ZAPOTLANEJO	0.00	3	0	14304	68.2	9.1	7.1	3.7	6.5	3.0	0.4	2.0	68.2	9.1	22.7	0.072	0.505	20.653319	-103.039868
T. C. IRAPUATO - GUADALAJARA	1.80	1	1	7527	79.8	6.6	4.8	3.4	2.8	1.1	0.3	1.2	79.8	6.6	13.6	0.081	0.502	20.627904	-103.052242
T. C. IRAPUATO - GUADALAJARA	1.80	1	2	7575	78.3	7.1	4.8	2.3	3.4	1.2	0.8	2.1	78.3	7.1	14.6	0.073	0.502	20.627904	-103.052242

45 CARR: MASCOTA - PUERTO VALLARTA

CLAVE:

RUTA: JAL

AÑO: 2010

LUGAR	ESTACION				CLASIFICACION VEHICULAR EN PORCIENTO								COORDENADAS						
	KM	TE	SC	TDPA	A	B	C2	C3	T3S2	T3S3	T3S2R4	OTROS	A	B	C	K'	D	LATITUD	LONGITUD
MASCOTA	0.00	3	0	3352	92.8	0.7	3.1	1.2	0.7	0.3	0.0	1.2	92.8	0.7	6.5	0.076	0.509	20.540135	-104.806522
PUERTO VALLARTA	98.00	1	0	15305	76.6	1.3	9.4	0.6	3.6	0.8	0.2	7.5	76.6	1.3	22.1	0.092	0.521	20.700234	-105.235568

46 CARR: MAZAMITLA - TUXCUECA

CLAVE: 14011

RUTA: JAL

AÑO: 2010

LUGAR	ESTACION				CLASIFICACION VEHICULAR EN PORCIENTO								COORDENADAS						
	KM	TE	SC	TDPA	A	B	C2	C3	T3S2	T3S3	T3S2R4	OTROS	A	B	C	K'	D	LATITUD	LONGITUD
MAZAMITLA	0.00	3	0	2360	89.5	2.9	4.4	1.3	0.8	0.3	0.0	0.8	89.5	2.9	7.6	0.111	0.506	19.924146	-103.044728
T. C. JIQUILPAN - GUADALAJARA	42.00	1	0	2694	85.1	4.5	5.6	2.4	0.7	0.3	0.0	1.4	85.1	4.5	10.4	0.096	0.508	20.151260	-103.186473

JALISCO

52 CARR: SAN ISIDRO EL GRANDE - BAJIO DE SAN JOSE

CLAVE: 00526

RUTA: AGS-036

AÑO: 2010

LUGAR	ESTACION				CLASIFICACION VEHICULAR EN PORCIENTO								COORDENADAS						
	KM	TE	SC	TDPA	A	B	C2	C3	T3S2	T3S3	T3S2R4	OTROS	A	B	C	K'	D	LATITUD	LONGITUD
T. C. OJUELOS - AGUASCALIENTES	0.00	3	0	1071	81.4	7.6	3.1	3.1	2.0	1.0	1.2	0.6	81.4	7.6	11.0	0.078	0.506	21.817485	-102.104645
ENT. SAN BARTOLO	11.50	3	0	1573	82.5	7.4	3.4	2.7	1.8	0.3	1.4	0.5	82.5	7.4	10.1	0.076	0.502	21.746110	-102.172524
LIM. EDOS. TERM. AGS. PPIA. JAL.	17.50																		
BAJIO DE SAN JOSE	22.50																		

53 CARR: SAYULA - VENUSTIANO CARRANZA

CLAVE: 14585

RUTA: JAL

AÑO: 2010

LUGAR	ESTACION				CLASIFICACION VEHICULAR EN PORCIENTO								COORDENADAS						
	KM	TE	SC	TDPA	A	B	C2	C3	T3S2	T3S3	T3S2R4	OTROS	A	B	C	K'	D	LATITUD	LONGITUD
T. C. ACATLAN DE JUAREZ - CD. GUZMAN	0.00																		
SAYULA	1.70	3	0	1904	91.9	1.5	3.1	1.5	0.8	0.3	0.0	0.9	91.9	1.5	6.6	0.090	0.521	19.864658	-103.607389
VENUSTIANO CARRANZA	42.00	1	0	667	90.4	2.2	4.8	1.3	0.6	0.2	0.1	0.4	90.4	2.2	7.4	0.135	0.518	19.744963	-103.757002

54 CARR: TOTOTLAN - OCOTLAN

CLAVE: 14583

RUTA: JAL

AÑO: 2010

LUGAR	ESTACION				CLASIFICACION VEHICULAR EN PORCIENTO								COORDENADAS						
	KM	TE	SC	TDPA	A	B	C2	C3	T3S2	T3S3	T3S2R4	OTROS	A	B	C	K'	D	LATITUD	LONGITUD
TOTOTLAN	0.00	3	0	3899	86.9	3.1	3.9	2.0	1.7	1.0	0.0	1.4	86.9	3.1	10.0	0.081	0.514	20.530019	-102.784745
OCOTLAN	26.00	1	0	6229	85.6	2.8	4.4	1.8	2.8	1.1	0.0	1.5	85.6	2.8	11.6	0.079	0.504	20.374314	-102.765009

55 CARR: VALLE DE GUADALUPE - MEXTICACAN

CLAVE: 14593

RUTA: JAL

AÑO: 2010

LUGAR	ESTACION				CLASIFICACION VEHICULAR EN PORCIENTO								COORDENADAS						
	KM	TE	SC	TDPA	A	B	C2	C3	T3S2	T3S3	T3S2R4	OTROS	A	B	C	K'	D	LATITUD	LONGITUD
T. C. LAGOS DE MORENO - ZAPOTLANEJO	0.00	3	0	1469	92.1	0.5	4.6	1.3	0.3	0.1	0.0	1.1	92.1	0.5	7.4	0.120	0.516	21.049681	-102.585187
MEXTICACAN	43.00	1	0	912	93.1	0.4	4.8	0.9	0.1	0.2	0.1	0.4	93.1	0.4	6.5	0.116	0.549	21.266172	-102.769209

56 CARR: SAN MIGUEL EL ALTO - LA BARCA

CLAVE: 14005

RUTA: JAL-005-MEX-071

AÑO: 2010

LUGAR	ESTACION				CLASIFICACION VEHICULAR EN PORCIENTO								COORDENADAS						
	KM	TE	SC	TDPA	A	B	C2	C3	T3S2	T3S3	T3S2R4	OTROS	A	B	C	K'	D	LATITUD	LONGITUD
T. C. JALOSTOTITLAN - PURISIMA DE BUSTOS	0.00	3	0	3227	86.4	2.7	4.0	1.7	2.6	1.2	0.0	1.4	86.4	2.7	10.9	0.085	0.515	20.989466	-102.331402
X. C. TEPATITLAN - LAS ADJUNTAS	36.00	1	0	4862	87.7	1.7	4.4	1.1	2.5	1.2	0.0	1.4	87.7	1.7	10.6	0.072	0.514	20.724405	-102.453465
X. C. TEPATITLAN - LAS ADJUNTAS	36.00	3	0	4472	85.5	3.5	3.9	1.3	2.9	1.6	0.0	1.3	85.5	3.5	11.0	0.090	0.517	20.717672	-102.455735
ATOTONILCO EL ALTO	58.60	1	0	5067	86.2	3.9	4.3	2.3	1.0	1.0	0.0	1.3	86.2	3.9	9.9	0.084	0.512	20.570290	-102.512613

JALISCO

56 CARR: SAN MIGUEL EL ALTO - LA BARCA

CLAVE: 14005

RUTA: JAL-005-MEX-071

AÑO: 2010

LUGAR	ESTACION				CLASIFICACION VEHICULAR EN PORCIENTO								COORDENADAS						
	KM	TE	SC	TDPA	A	B	C2	C3	T3S2	T3S3	T3S2R4	OTROS	A	B	C	K'	D	LATITUD	LONGITUD
ATOTONILCO EL ALTO	58.60	3	0	4707	84.6	3.4	4.5	2.5	1.9	1.0	0.0	2.1	84.6	3.4	12.0	0.075	0.505	20.537667	-102.531903
LA BARCA	90.00	1	0	11360	82.6	3.8	5.2	2.9	2.7	1.2	0.0	1.6	82.6	3.8	13.6	0.071	0.504	20.305230	-102.540391

57 CARR: TEPATITLAN - JARALILLO

CLAVE: 00146

RUTA: MEX-JAL-ZAC

AÑO: 2010

LUGAR	ESTACION				CLASIFICACION VEHICULAR EN PORCIENTO								COORDENADAS						
	KM	TE	SC	TDPA	A	B	C2	C3	T3S2	T3S3	T3S2R4	OTROS	A	B	C	K'	D	LATITUD	LONGITUD
T. C. LAGOS DE MORENO - ZAPOTLANEJO	0.00	3	0	5148	84.2	2.3	5.3	2.6	3.6	1.0	0.0	1.0	84.2	2.3	13.5	0.090	0.511	20.783147	-102.786498
T. IZQ. MEZCALA	22.40	3	0	1378	90.8	2.1	4.8	1.2	0.3	0.1	0.0	0.7	90.8	2.1	7.1	0.123	0.511	20.961656	-102.815921
YAHUALICA DE GONZALEZ GALLO	57.40	3	0	2997	85.4	3.1	6.6	2.3	0.9	0.3	0.0	1.4	85.4	3.1	11.5	0.095	0.521	21.191766	-102.884155
T. DER. MEXTICACAN	72.45	3	0	1392	91.7	1.9	3.9	1.3	0.4	0.2	0.0	0.6	91.7	1.9	6.4	0.103	0.542	21.251675	-102.803772
LIM. EDOS. TERM. JAL. PPIA. ZAC.	83.50																		
LIM. EDOS. TERM. ZAC. PPIA. JAL.	106.00																		
TEOCALTICHE	111.00	1	0	3207	88.6	2.8	4.6	1.2	1.2	0.5	0.0	1.1	88.6	2.8	8.6	0.084	0.538	21.425777	-102.589565
TEOCALTICHE	111.00	3	0	3661	91.5	1.9	2.5	1.2	1.0	0.6	0.0	1.3	91.5	1.9	6.6	0.073	0.511	21.454917	-102.556023
T. C. LEON - AGUASCALIENTES	157.00	1	0	2663	90.5	1.2	4.1	1.0	1.3	0.8	0.0	1.1	90.5	1.2	8.3	0.076	0.507	21.642819	-102.279190

58 CARR: TEPATITLAN - LAS ADJUNTAS

CLAVE: 00141

RUTA: JAL/MEX-084

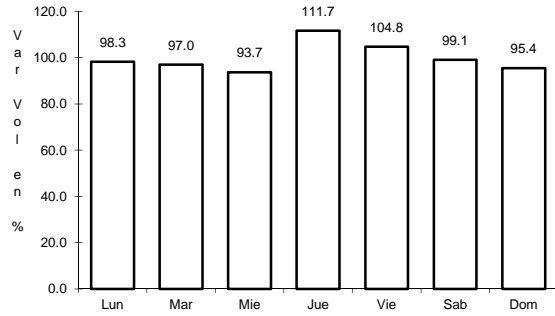
AÑO: 2010

LUGAR	ESTACION				CLASIFICACION VEHICULAR EN PORCIENTO								COORDENADAS						
	KM	TE	SC	TDPA	A	B	C2	C3	T3S2	T3S3	T3S2R4	OTROS	A	B	C	K'	D	LATITUD	LONGITUD
T. C. LAGOS DE MORENO - ZAPOTLANEJO	0.00	3	1	3262	85.8	2.9	4.7	2.0	1.8	1.4	0.1	1.3	85.8	2.9	11.3	0.082	0.503	20.885787	-102.707307
T. C. LAGOS DE MORENO - ZAPOTLANEJO	0.00	3	2	3226	88.1	2.2	5.0	1.9	1.2	0.5	0.0	1.1	88.1	2.2	9.7	0.083	0.503	20.885787	-102.707307
X. C. SAN MIGUEL EL ALTO - LA BARCA	34.00	3	1	4546	81.0	7.1	6.4	1.1	1.5	1.0	0.0	1.9	81.0	7.1	11.9	0.090	0.507	20.720764	-102.450182
X. C. SAN MIGUEL EL ALTO - LA BARCA	34.00	3	2	4674	81.4	6.9	5.2	2.0	2.1	1.1	0.0	1.3	81.4	6.9	11.7	0.092	0.507	20.720764	-102.450182
ARANDAS	46.00	3	0	6106	83.7	5.8	4.8	1.9	1.5	0.9	0.0	1.4	83.7	5.8	10.5	0.092	0.505	20.701915	-102.326072
T. DER. JESUS MARIA	58.00	3	0	3111	82.9	5.0	5.6	1.9	2.2	1.1	0.0	1.3	82.9	5.0	12.1	0.084	0.514	20.684055	-102.222280
X. C. MANUEL DOBLADO - LA PIEDAD	91.00	1	0	1333	87.6	2.4	3.0	1.6	2.4	1.5	1.2	0.3	87.6	2.4	10.0	0.062	0.505	20.621467	-101.991030
LIM. EDOS. TERM. JAL. PPIA. GTO.	95.00																		
T. C. MUNGUIA - LAS ADJUNTAS	100.00	1	0	1352	89.6	2.4	2.7	1.3	2.0	1.0	0.8	0.2	89.6	2.4	8.0	0.062	0.507	20.653373	-101.886852

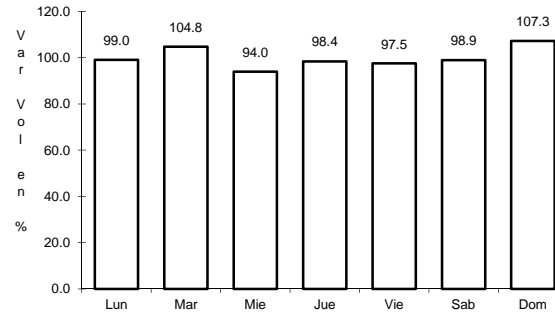
4 CARR: DOLORES HIDALGO - OJUELOS DE JALISCO

CLAVE: 00107

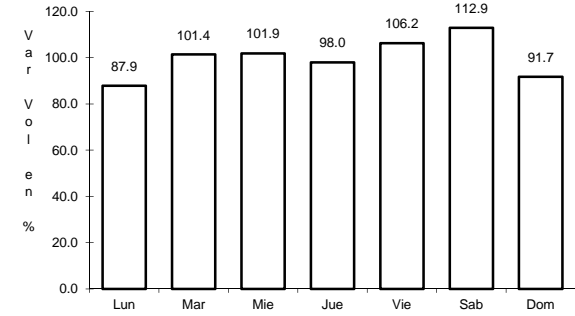
RUTA: MEX-051



Km: 0.00 Tipo: 3 Sent: 0



Km: 51.38 Tipo: 1 Sent: 0

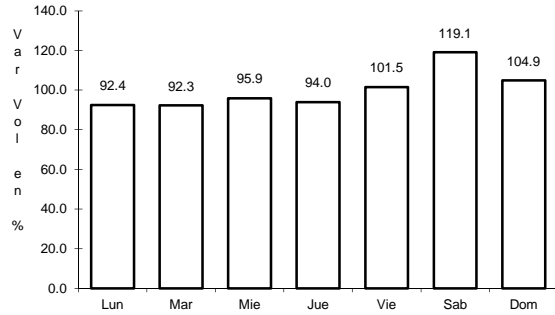


Km: 113.49 Tipo: 1 Sent: 0

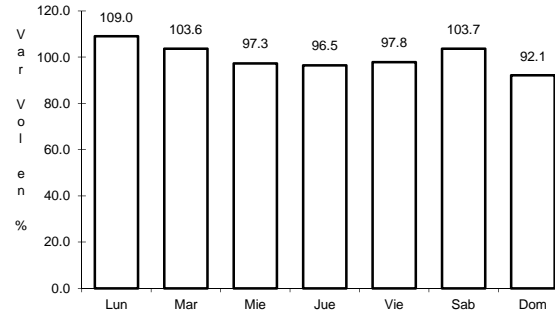
5 CARR: ENT. PENITENCIARIA - VILLA HIDALGO

CLAVE: 00120

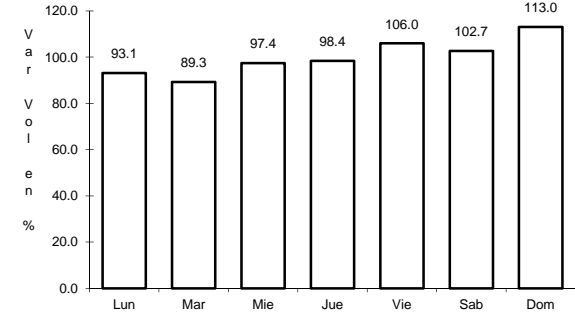
RUTA: MEX-071



Km: 0.00 Tipo: 3 Sent: 0



Km: 27.00 Tipo: 3 Sent: 0

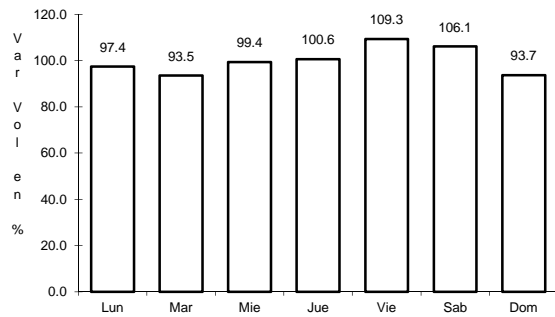


Km: 38.00 Tipo: 1 Sent: 0

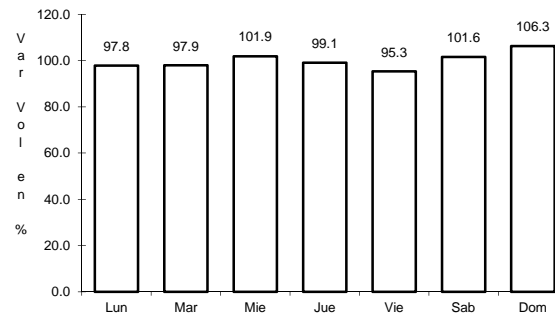
6 CARR: ENT. SANTA CRUZ - MELAQUE

CLAVE: 14118

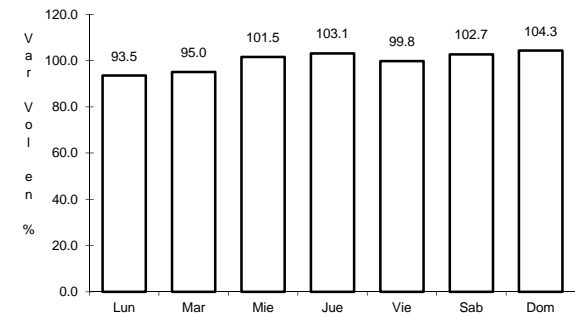
RUTA: MEX-080



Km: 4.80 Tipo: 3 Sent: 0



Km: 153.20 Tipo: 3 Sent: 0

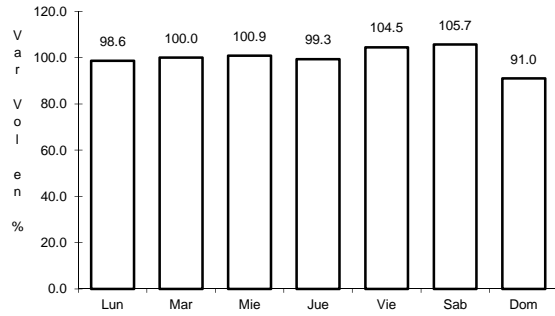


Km: 257.40 Tipo: 1 Sent: 0

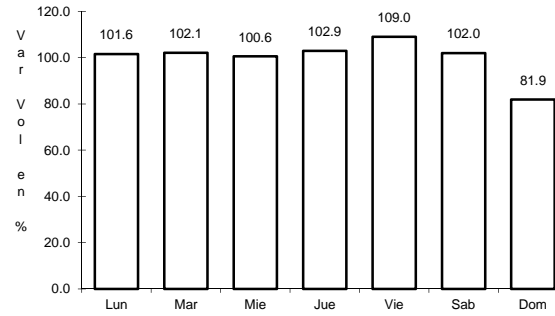
10 CARR: GUADALAJARA - TESISTAN

CLAVE: 14012

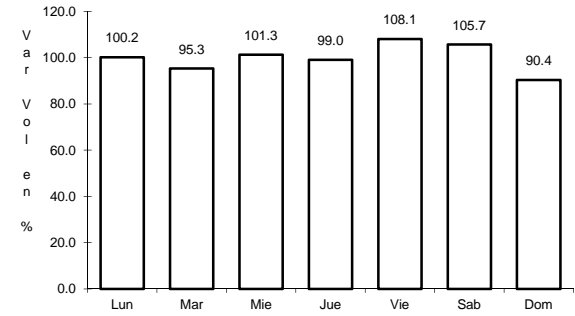
ruta: MEX-023



Km: 9.00 Tipo: 3 Sent: 1



Km: 9.00 Tipo: 3 Sent: 2

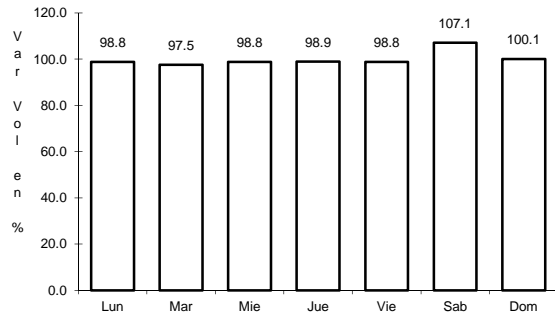


Km: 19.00 Tipo: 1 Sent: 1

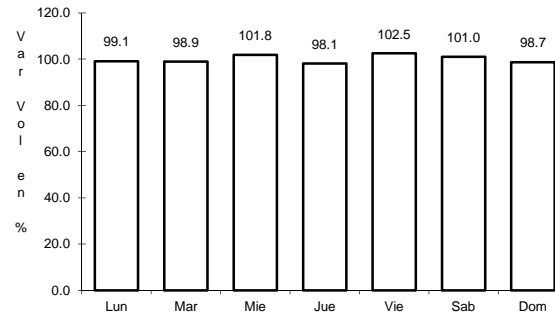
11 CARR: GUADALAJARA - ZACATECAS

CLAVE: 00150

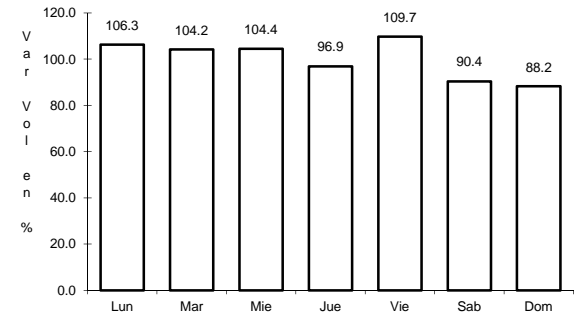
ruta: MEX-054



Km: 6.19 Tipo: 3 Sent: 0



Km: 159.39 Tipo: 1 Sent: 0

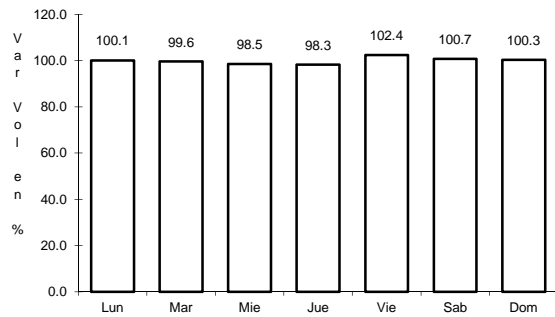


Km: 311.83 Tipo: 1 Sent: 0

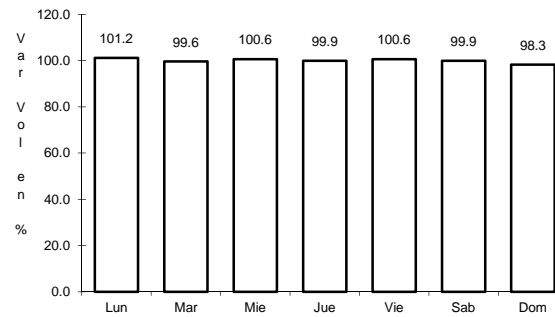
12 CARR: IRAPUATO - ZAPOTLANEJO

CLAVE: 00114

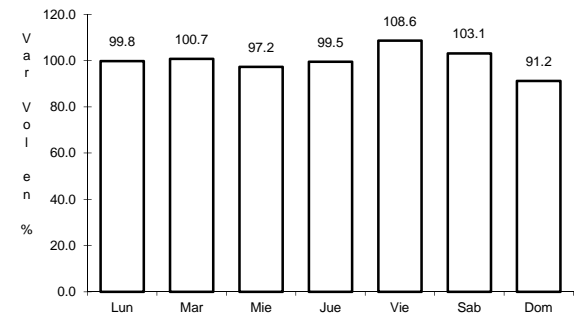
ruta: MEX-090



Km: 2.78 Tipo: 1 Sent: 1



Km: 2.78 Tipo: 1 Sent: 2

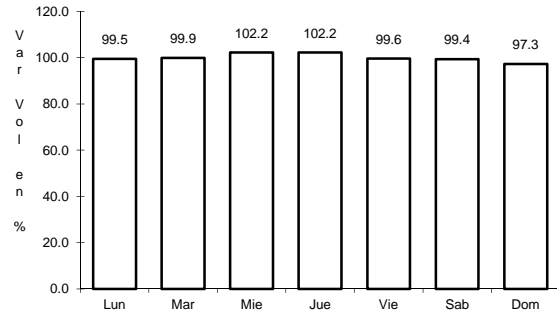


Km: 215.80 Tipo: 1 Sent: 0

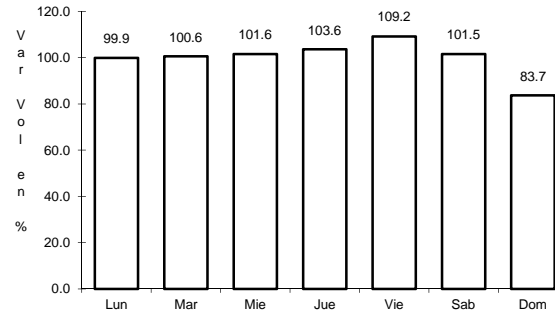
16 CARR: LEON - AGUASCALIENTES

CLAVE: 00167

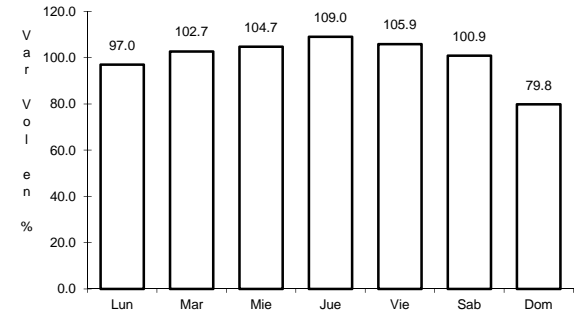
RUTA: MEX-045



Km: 11.00 Tipo: 1 Sent: 0



Km: 129.38 Tipo: 1 Sent: 1

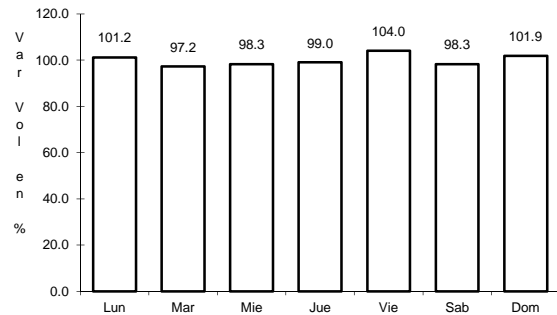


Km: 129.38 Tipo: 1 Sent: 2

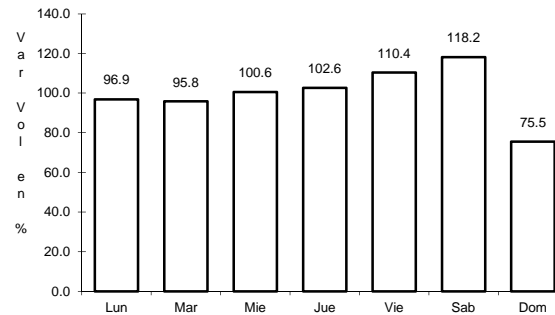
17 CARR: MANUEL DOBLADO - LA PIEDAD

CLAVE: 11028

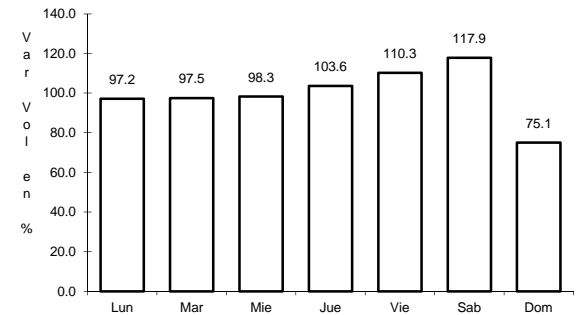
RUTA: MEX-037



Km: 0.00 Tipo: 3 Sent: 0



Km: 29.00 Tipo: 1 Sent: 0

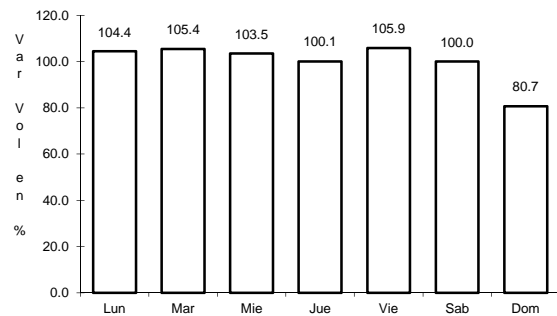


Km: 45.00 Tipo: 1 Sent: 0

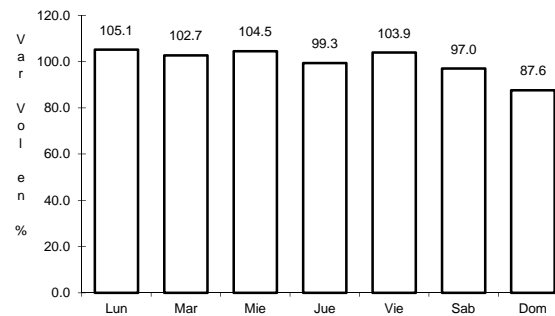
18 CARR: MANZANILLO - PUERTO VALLARTA

CLAVE: 00070

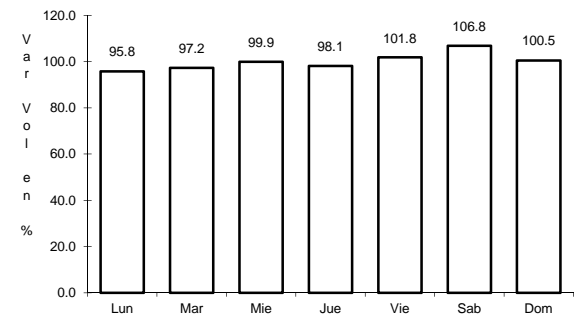
RUTA: MEX-200



Km: 0.00 Tipo: 3 Sent: 1



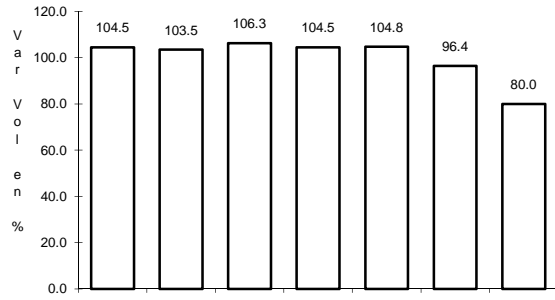
Km: 0.00 Tipo: 3 Sent: 2



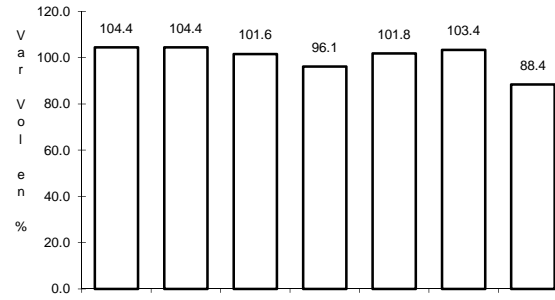
Km: 273.64 Tipo: 1 Sent: 0

34 CARR: CD. GUZMAN - T.C. (AUTLAN DE NAVARRO - T.C. (ACATLAN) CLAVE:

RUTA: JAL



Km: 0.00 Tipo: 3 Sent: 0

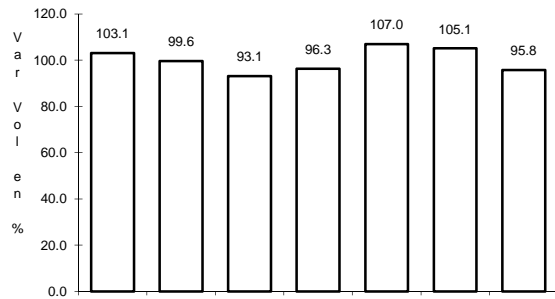


Km: 9.50 Tipo: 1 Sent: 0

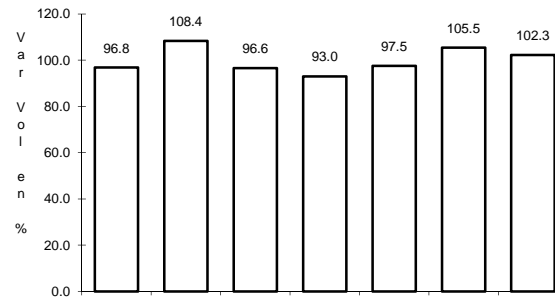
35 CARR: CRUCERO DE SANTA MARIA - AMECA

CLAVE: 14573

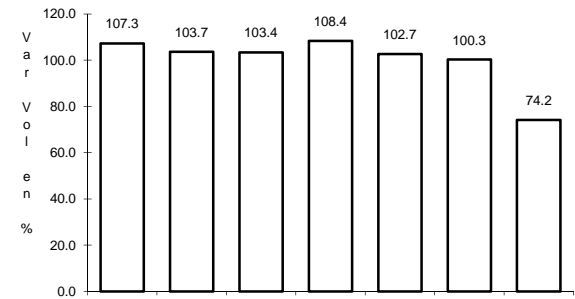
RUTA: JAL



Km: 0.00 Tipo: 3 Sent: 0



Km: 10.00 Tipo: 3 Sent: 0

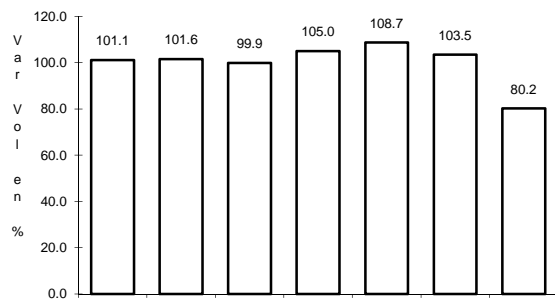


Km: 26.00 Tipo: 1 Sent: 0

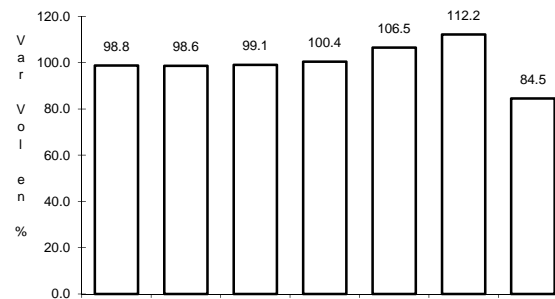
36 CARR: EL REFUGIO - SAN MARCOS

CLAVE: 14027

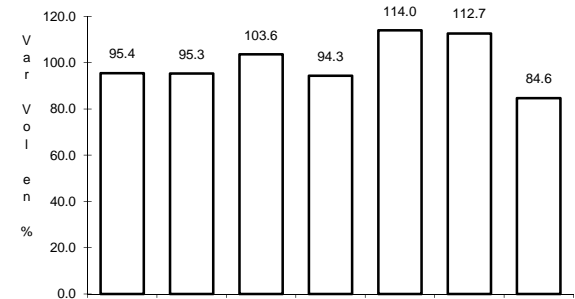
RUTA: JAL-004



Km: 0.00 Tipo: 3 Sent: 0



Km: 24.50 Tipo: 1 Sent: 0

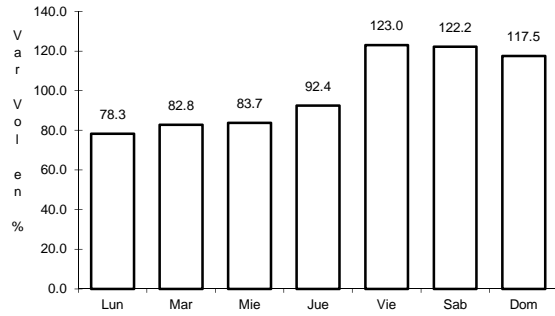


Km: 54.00 Tipo: 1 Sent: 0

46 CARR: MAZAMITLA - TUXCUECA

CLAVE: 14011

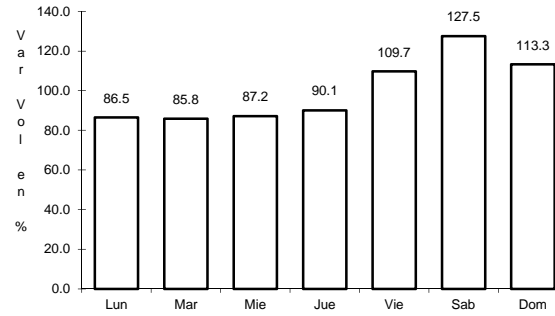
RUTA: JAL



Km: 0.00

Tipo: 3

Sent: 0



Km: 42.00

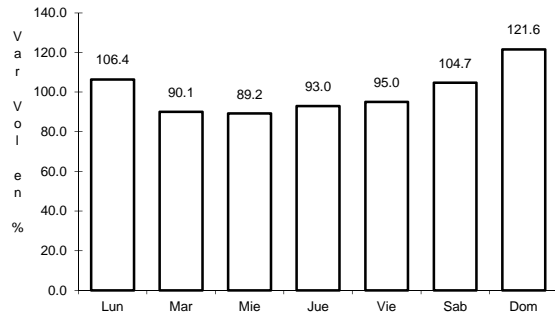
Tipo: 1

Sent: 0

47 CARR: PILOTOS - LOS CAMPOS

CLAVE: 00007

RUTA: AGS-030



Km: 0.00

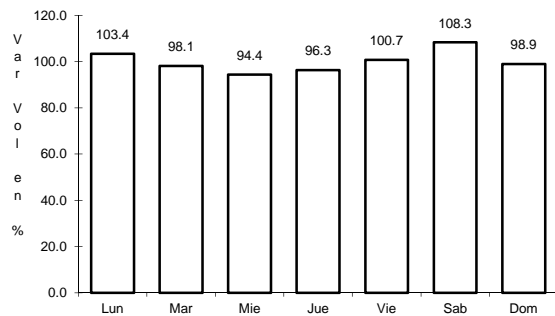
Tipo: 3

Sent: 0

48 CARR: RAMAL A JESUS MARIA

CLAVE: 14004

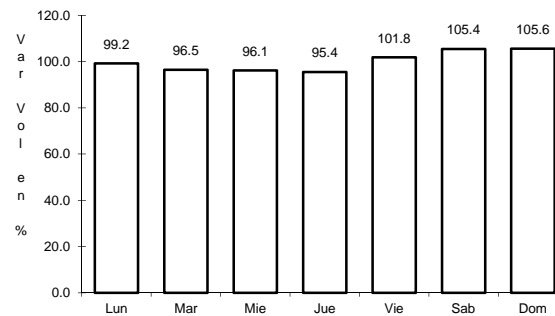
RUTA: JAL-004



Km: 0.00

Tipo: 3

Sent: 0



Km: 9.00

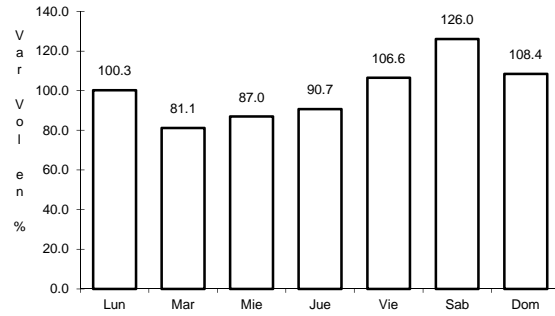
Tipo: 1

Sent: 0

49 CARR: RAMAL A TAPALPA

CLAVE: 14022

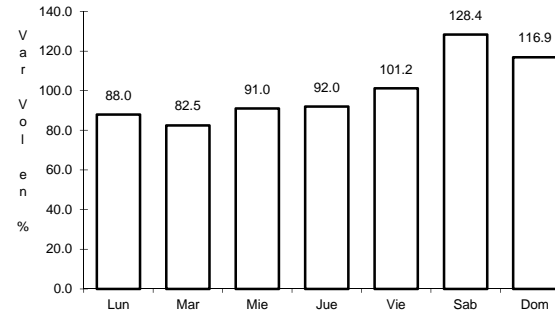
RUTA: JAL-022



Km: 0.00

Tipo: 3

Sent: 0



Km: 32.00

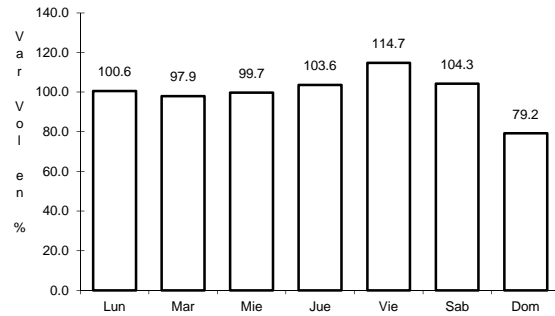
Tipo: 1

Sent: 0

50 CARR: RAMAL A TEOCUITATLAN DE CORONA

CLAVE: 14566

RUTA: JAL



Km: 0.00

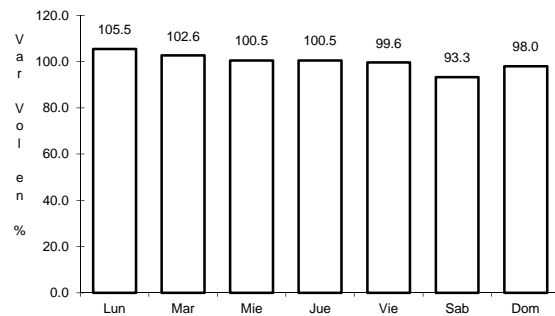
Tipo: 3

Sent: 0

51 CARR: SAN CLEMENTE - ENT. LAS CRUCES

CLAVE: 14070

RUTA: JAL



Km: 0.00

Tipo: 3

Sent: 0

