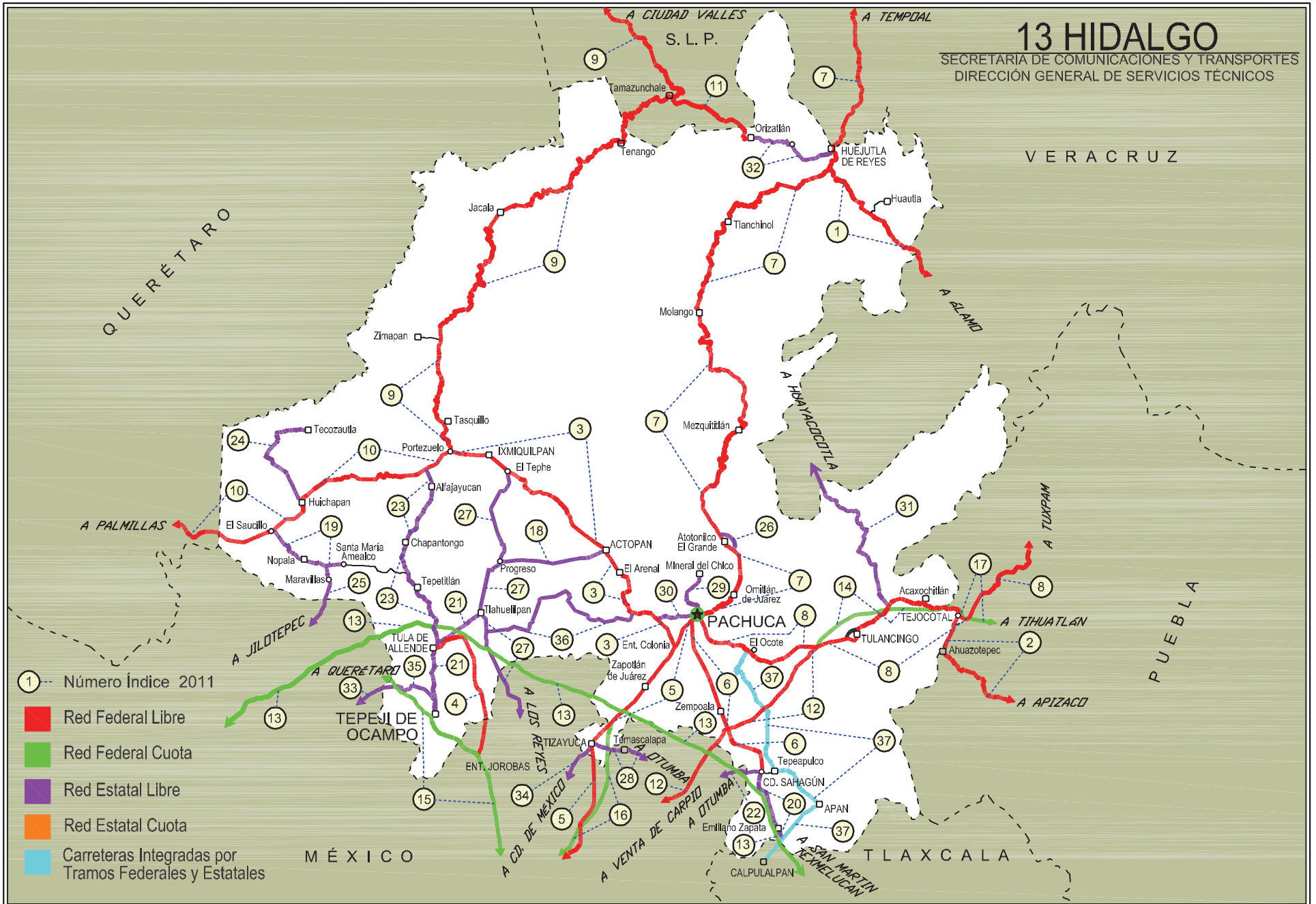


HIDALGO

No. INDICE	CARRETERA	RUTA
<b>---RED FEDERAL LIBRE---</b>		
1	ALAMO - HUEJUTLA DE REYES	MEX-102
2	APIZACO - TEJOCOTAL	MEX-119
3	ENT. COLONIA - PORTEZUELO	MEX-085
4	ENT. JOROBAS - TULA	MEX-087
5	MEXICO - PACHUCA (LIBRE)	MEX-085
6	PACHUCA - CD. SAHAGUN	MEX
7	PACHUCA - TEMPOAL	MEX-105
8	PACHUCA - TUXPAM	MEX-130
9	PORTEZUELO - CD. VALLES	MEX-085
10	PORTEZUELO - PALMILLAS	MEX-045
11	TAMAZUNCHALE - SAN FELIPE ORIZATLAN	MEX-102
12	VENTA DE CARPIO - T. C. (PACHUCA - TUXPAM)	MEX-132
<b>---RED FEDERAL DE CUOTA---</b>		
13	ARCO NORTE CD. MEXICO (CUOTA)	MEX-D
14	ENT. TULANCINGO - TEJOCOTAL (CUOTA)	MEX-132D
15	MEXICO - QUERETARO (CUOTA)	MEX-057-MEX-057D
16	MEXICO - TIZAYUCA (CUOTA)	MEX-085D
17	TEJOCOTAL - TIHUATLAN (CUOTA)	MEX-130D
<b>---RED ESTATAL LIBRE---</b>		
18	ACTOPAN - PROGRESO	HGO
19	EL SAUCILLO - AMEALCO	HGO-103
20	ENT. EMILIANO ZAPATA - CD. SAHAGUN	HGO
21	ENT. TEPEJI DEL RIO - TLAHUELILPAN	HGO-017
22	ENT. TOLMAN - CD. SAHAGUN	EM-009-HGO
23	FRANCISCO I. MADERO - TULA DE ALLENDE	HGO
24	HUICHAPAN - TECOZAUTLA	HGO-030
25	JILOTEPEC - MARAVILLAS	EM-HGO
26	LIBRAMIENTO DE ATOTONILCO EL GRANDE	HGO
27	LOS REYES - EL TEPHE	EM-HGO
28	OTUMBA - TIZAYUCA	EM-HGO
29	RAMAL A EL CHICO	HGO
30	RAMAL A PACHUCA	HGO
31	SAN ALEJO - HUAYACOCOTLA	HGO-051-VER-113
32	SAN FELIPE ORIZATLAN - HUEJUTLA DE REYES	HGO
33	SANTO DOMINGO - T. C. (MEXICO - QUERETARO (CUOTA))	EM-011-HGO
34	T. C. (LOS REYES - EL TEPHE) - TIZAYUCA	EM-HGO
35	TEPEJI DEL RIO - T.C. (MEXICO - QUERETARO)	HGO
36	TLAHUELILPAN - SAN AGUSTIN TLAXIACA	HGO
<b>---CARRETERAS INTEGRADAS POR TRAMOS FEDERALES Y ESTATALES---</b>		
37	CALPULALPAN - EL OCOTE	MEX-HGO

# 13 HIDALGO

SECRETARÍA DE COMUNICACIONES Y TRANSPORTES  
DIRECCIÓN GENERAL DE SERVICIOS TÉCNICOS



## HIDALGO

1 CARR: ALAMO - HUEJUTLA DE REYES

CLAVE: 00116

RUTA: MEX-102

AÑO: 2010

LUGAR	ESTACION				CLASIFICACION VEHICULAR EN PORCIENTO								COORDENADAS						
	KM	TE	SC	TDPA	A	B	C2	C3	T3S2	T3S3	T3S2R4	OTROS	A	B	C	K'	D	LATITUD	LONGITUD
T. C. TIHUATLAN - POTRERO DEL LLANO	0.00	3	0	2437	85.4	3.7	1.7	1.4	3.3	1.6	2.5	0.4	85.4	3.7	10.9	0.071	0.514	20.946488	-97.718530
BENITO JUAREZ	73.00	1	0	1288	89.8	3.3	3.8	0.5	0.9	0.9	0.3	0.5	89.8	3.3	6.9	0.075	0.513	20.882250	-98.198383
T. DER. CHICONTEPEC DE TEJADA	78.00	3	0	927	85.2	4.8	4.4	1.8	1.5	0.8	1.2	0.3	85.2	4.8	10.0	0.073	0.512	20.924463	-98.222644
LIM. EDOS. TERM. VER. PPIA. HGO.	78.70																		
T. C. PACHUCA - TEMPOAL (HUEJUTLA DE REYES)	110.00																		

2 CARR: APIZACO - TEJOCOTAL

CLAVE: 00430

RUTA: MEX-119

AÑO: 2010

LUGAR	ESTACION				CLASIFICACION VEHICULAR EN PORCIENTO								COORDENADAS						
	KM	TE	SC	TDPA	A	B	C2	C3	T3S2	T3S3	T3S2R4	OTROS	A	B	C	K'	D	LATITUD	LONGITUD
APIZACO	0.00	3	0	11581	75.9	5.2	7.3	1.0	5.7	1.1	3.2	0.6	75.9	5.2	18.9	0.079	0.505	19.427196	-98.136617
T. DER. TETLA	6.60	3	0	13332	74.8	4.9	7.7	1.3	5.6	1.3	3.8	0.6	74.8	4.9	20.3	0.065	0.503	19.469295	-98.111801
T. IZQ. ATLANGATEPEC	12.15	1	0	9817	77.3	4.4	7.8	1.3	3.6	1.2	3.6	0.8	77.3	4.4	18.3	0.061	0.501	19.509902	-98.117542
TLAXCO	23.91	1	0	8422	78.7	4.1	7.3	1.4	3.4	1.3	3.1	0.7	78.7	4.1	17.2	0.060	0.506	19.583795	-98.130369
TLAXCO	23.91	3	0	5152	76.3	4.3	8.1	1.8	3.6	1.4	4.0	0.5	76.3	4.3	19.4	0.061	0.506	19.626500	-98.124657
LIM. EDOS. TERM. TLAX. PPIA. PUE.	34.45																		
T. DER. TETELA DE OCAMPO	52.20	1	0	6643	75.5	4.1	8.7	1.7	3.9	1.2	4.3	0.6	75.5	4.1	20.4	0.062	0.514	19.802802	-98.025536
ZACATLAN	71.25	1	0	8984	74.5	4.4	9.2	1.6	5.1	1.0	3.8	0.4	74.5	4.4	21.1	0.067	0.502	19.914540	-97.958574
LIM. EDOS. TERM. PUE. PPIA. HGO.	110.45																		
T. C. PACHUCA - TUXPAM	113.15	1	0	5141	72.1	4.1	10.0	2.0	6.0	1.8	3.8	0.2	72.1	4.1	23.8	0.069	0.500	20.120956	-98.129713

3 CARR: ENT. COLONIA - PORTEZUELO

CLAVE: 13257

RUTA: MEX-085

AÑO: 2010

LUGAR	ESTACION				CLASIFICACION VEHICULAR EN PORCIENTO								COORDENADAS						
	KM	TE	SC	TDPA	A	B	C2	C3	T3S2	T3S3	T3S2R4	OTROS	A	B	C	K'	D	LATITUD	LONGITUD
ENT. COLONIA	0.00	3	1	11163	72.3	6.8	3.7	3.6	7.0	2.6	3.5	0.5	72.3	6.8	20.9	0.071	0.500	20.060621	-98.786933
ENT. COLONIA	0.00	3	2	11183	72.5	6.7	3.9	3.4	7.1	2.7	3.3	0.4	72.5	6.7	20.8	0.075	0.500	20.060622	-98.786913
T. DER. PACHUCA	8.34	3	1	15316	69.6	6.8	4.3	3.1	6.5	2.9	6.2	0.6	69.6	6.8	23.6	0.067	0.505	20.127348	-98.837253
T. DER. PACHUCA	8.34	3	2	15646	70.3	6.4	4.1	3.1	6.4	3.0	6.2	0.5	70.3	6.4	23.3	0.072	0.505	20.127355	-98.837230
ACTOPAN	34.13	1	1	9054	80.5	3.5	3.2	1.9	6.2	2.3	1.9	0.5	80.5	3.5	16.0	0.073	0.546	20.249978	-98.932644
ACTOPAN	34.13	1	2	10893	80.9	3.6	3.1	1.7	6.5	2.1	1.6	0.5	80.9	3.6	15.5	0.073	0.546	20.249941	-98.932608
ACTOPAN	34.13	3	1	8213	72.6	5.6	3.0	2.7	6.5	3.7	5.4	0.5	72.6	5.6	21.8	0.068	0.501	20.284817	-98.968127
ACTOPAN	34.13	3	2	8240	72.9	5.5	3.1	2.6	6.4	3.6	5.6	0.3	72.9	5.5	21.6	0.071	0.501	20.284834	-98.968127
T. IZQ. TULA	68.20	1	1	6018	67.8	3.6	4.6	2.7	6.5	6.6	7.8	0.4	67.8	3.6	28.6	0.069	0.556	20.439921	-99.165723
T. IZQ. TULA	68.20	1	2	6144	67.6	3.7	4.3	2.9	6.2	6.8	7.9	0.6	67.6	3.7	28.7	0.072	0.556	20.439980	-99.165646

HIDALGO

3 CARR: ENT. COLONIA - PORTEZUELO

CLAVE: 13257

RUTA: MEX-085

AÑO: 2010

LUGAR	ESTACION				CLASIFICACION VEHICULAR EN PORCIENTO								COORDENADAS						
	KM	TE	SC	TDPA	A	B	C2	C3	T3S2	T3S3	T3S2R4	OTROS	A	B	C	K'	D	LATITUD	LONGITUD
IXMIQUILPAN	75.20	1	1	8151	82.5	3.3	3.5	1.9	3.6	4.0	0.9	0.3	82.5	3.3	14.2	0.065	0.519	20.459895	-99.190220
IXMIQUILPAN	75.20	1	2	8192	82.5	3.2	3.5	2.1	3.4	4.1	0.9	0.3	82.5	3.2	14.3	0.069	0.519	20.460035	-99.190253
IXMIQUILPAN	75.20	3	1	5579	84.4	4.3	2.6	2.5	3.3	1.3	1.0	0.6	84.4	4.3	11.3	0.070	0.506	20.479327	-99.239068
IXMIQUILPAN	75.20	3	2	5713	84.3	4.3	2.8	2.3	3.1	1.5	1.1	0.6	84.3	4.3	11.4	0.075	0.506	20.479311	-99.239333
PORTEZUELO	82.00																		

4 CARR: ENT. JOROBAS - TULA

CLAVE: 00159

RUTA: MEX-087

AÑO: 2010

LUGAR	ESTACION				CLASIFICACION VEHICULAR EN PORCIENTO								COORDENADAS						
	KM	TE	SC	TDPA	A	B	C2	C3	T3S2	T3S3	T3S2R4	OTROS	A	B	C	K'	D	LATITUD	LONGITUD
T. C. MEXICO - QUERETARO (CUOTA)	0.00	3	1	7484	67.2	3.6	6.9	2.2	11.7	3.8	3.9	0.7	67.2	3.6	29.2	0.086	0.511	19.831018	-99.245839
T. C. MEXICO - QUERETARO (CUOTA)	0.00	3	2	7809	66.8	3.8	7.3	2.3	11.9	3.4	3.7	0.8	66.8	3.8	29.4	0.077	0.511	19.830994	-99.245840
LIM. EDOS. TERM. MEX. PPIA. HGO.	5.90																		
T. DER. ATOTONILCO	21.50	1	0	9405	67.9	2.6	6.9	2.6	11.3	4.2	3.8	0.7	67.9	2.6	29.5	0.072	0.503	19.956523	-99.244600
TULA DE ALLENDE	37.70	1	0	7357	67.7	2.5	6.5	2.3	11.5	4.4	4.5	0.6	67.7	2.5	29.8	0.084	0.502	20.054343	-99.307531

5 CARR: MEXICO - PACHUCA (LIBRE)

CLAVE: 00431

RUTA: MEX-085

AÑO: 2010

LUGAR	ESTACION				CLASIFICACION VEHICULAR EN PORCIENTO								COORDENADAS						
	KM	TE	SC	TDPA	A	B	C2	C3	T3S2	T3S3	T3S2R4	OTROS	A	B	C	K'	D	LATITUD	LONGITUD
MEXICO	0.00																		
LIM. EDOS. TERM. D.F. PPIA. MEX.	9.89																		
T. DER. PIRAMIDES	26.93	1	0	43499	73.4	4.8	1.4	3.1	8.2	4.1	4.5	0.5	73.4	4.8	21.8	0.063	0.501	19.613001	-99.018175
VENTA DE CARPIO	27.00	3	1	22342	73.2	4.3	1.6	3.2	8.4	4.2	4.6	0.5	73.2	4.3	22.5	0.065	0.504	19.626293	-99.002922
VENTA DE CARPIO	27.00	3	2	22219	73.0	4.5	1.7	3.3	8.3	4.1	4.5	0.6	73.0	4.5	22.5	0.066	0.504	19.626293	-99.002922
T. DER. AUTOPISTA MEXICO - TECAMAC (CUOTA)	37.52	1	1	15368	75.9	3.6	1.8	1.5	6.0	3.9	6.9	0.4	75.9	3.6	20.5	0.073	0.504	19.660827	-99.004422
T. DER. AUTOPISTA MEXICO - TECAMAC (CUOTA)	37.52	1	2	15284	75.7	3.9	1.9	1.4	6.2	4.0	6.4	0.5	75.7	3.9	20.4	0.073	0.504	19.660827	-99.004422
T. IZQ. ZUMPANGO	44.68	1	0	21444	75.5	3.9	2.6	1.7	5.8	3.7	6.1	0.7	75.5	3.9	20.6	0.071	0.502	19.764907	-98.973524
T. IZQ. ZUMPANGO	44.68	3	1	7518	75.6	3.9	2.6	2.2	5.6	4.2	5.0	0.9	75.6	3.9	20.5	0.064	0.502	19.773029	-98.973181
T. IZQ. ZUMPANGO	44.68	3	2	7575	75.9	3.8	2.7	2.1	5.4	4.4	5.0	0.7	75.9	3.8	20.3	0.067	0.502	19.773029	-98.973186
LIM. EDOS. TERM. MEX. PPIA. HGO.	49.30																		
TIZAYUCA	52.50	3	0	8579	80.9	6.6	3.4	1.9	1.9	2.3	2.3	0.7	80.9	6.6	12.5	0.064	0.503	19.857939	-98.968696
T. C. MEXICO - TIZAYUCA (CUOTA)	61.00	3	1	13870	80.1	6.8	3.6	1.9	1.9	2.5	2.4	0.8	80.1	6.8	13.1	0.103	0.501	19.893538	-98.933092
T. C. MEXICO - TIZAYUCA (CUOTA)	61.00	3	2	13838	80.5	6.9	3.5	2.0	1.8	2.3	2.3	0.7	80.5	6.9	12.6	0.103	0.501	19.893638	-98.932981
ENT. COLONIA	83.97	1	1	16143	81.4	6.5	2.3	2.5	0.3	3.0	3.4	0.6	81.4	6.5	12.1	0.085	0.501	20.051531	-98.789041

HIDALGO

5 CARR: MEXICO - PACHUCA (LIBRE)

CLAVE: 00431

RUTA: MEX-085

AÑO: 2010

LUGAR	ESTACION				CLASIFICACION VEHICULAR EN PORCIENTO								COORDENADAS						
	KM	TE	SC	TDPA	A	B	C2	C3	T3S2	T3S3	T3S2R4	OTROS	A	B	C	K'	D	LATITUD	LONGITUD
ENT. COLONIA	83.97	1	2	16218	81.6	6.6	2.1	2.5	0.2	2.9	3.5	0.6	81.6	6.6	11.8	0.087	0.501	20.051489	-98.789033
X. C. LIBRAMIENTO DE PACHUCA	86.50	1	1	16271	79.8	8.3	2.1	3.5	1.1	1.8	2.8	0.6	79.8	8.3	11.9	0.088	0.516	20.070156	-98.779528
X. C. LIBRAMIENTO DE PACHUCA PACHUCA	86.50 94.00	1	2	17344	79.9	8.4	2.2	3.4	1.0	1.6	2.9	0.6	79.9	8.4	11.7	0.090	0.516	20.070164	-98.779512

6 CARR: PACHUCA - CD. SAHAGUN

CLAVE: 13088

RUTA: MEX

AÑO: 2010

LUGAR	ESTACION				CLASIFICACION VEHICULAR EN PORCIENTO								COORDENADAS						
	KM	TE	SC	TDPA	A	B	C2	C3	T3S2	T3S3	T3S2R4	OTROS	A	B	C	K'	D	LATITUD	LONGITUD
PACHUCA	0.00	3	1	5267	81.9	2.8	6.5	2.4	2.6	2.2	1.1	0.5	81.9	2.8	15.3	0.084	0.504	20.062888	-98.743999
PACHUCA	0.00	3	2	5175	82.1	2.9	6.4	2.1	2.4	2.5	1.0	0.6	82.1	2.9	15.0	0.084	0.504	20.062812	-98.744208
T. DER. PALMA GORDA	11.00	1	1	7240	81.5	3.1	5.8	2.0	3.8	1.8	1.4	0.6	81.5	3.1	15.4	0.058	0.501	20.041452	-98.733910
T. DER. PALMA GORDA	11.00	1	2	7202	80.7	3.8	5.7	2.1	4.4	1.7	1.2	0.4	80.7	3.8	15.5	0.056	0.501	20.041446	-98.733894
X. C. VENTA DE CARPIO - TULANCINGO	29.40	1	1	6303	80.0	3.4	6.0	2.5	5.0	1.7	1.0	0.4	80.0	3.4	16.6	0.077	0.503	19.903104	-98.673431
X. C. VENTA DE CARPIO - TULANCINGO	29.40	1	2	6223	76.0	3.9	6.9	3.3	6.2	2.3	1.0	0.4	76.0	3.9	20.1	0.079	0.503	19.903119	-98.673437
X. C. VENTA DE CARPIO - TULANCINGO CD. SAHAGUN	29.40 44.70	3	0	11132	80.7	3.5	6.1	2.9	3.4	1.8	1.2	0.4	80.7	3.5	15.8	0.067	0.504	19.869888	-98.661069

7 CARR: PACHUCA - TEMPOAL

CLAVE: 00113

RUTA: MEX-105

AÑO: 2010

LUGAR	ESTACION				CLASIFICACION VEHICULAR EN PORCIENTO								COORDENADAS						
	KM	TE	SC	TDPA	A	B	C2	C3	T3S2	T3S3	T3S2R4	OTROS	A	B	C	K'	D	LATITUD	LONGITUD
PACHUCA	0.00	3	0	5826	73.9	9.4	6.7	4.3	1.8	2.5	0.9	0.5	73.9	9.4	16.7	0.071	0.502	20.130616	-98.715759
T. DER. OMITLAN DE JUAREZ (1° ACCESO)	18.20	1	0	7741	75.7	8.6	6.2	4.0	1.6	2.5	0.9	0.5	75.7	8.6	15.7	0.079	0.517	20.157436	-98.657686
ATOTONILCO EL GRANDE	33.85	3	0	5950	74.7	9.0	6.3	4.2	1.7	2.7	0.9	0.5	74.7	9.0	16.3	0.064	0.508	20.298770	-98.679375
T. IZQ. METZTITLAN	63.70	1	0	4257	74.8	9.0	6.4	4.2	1.7	2.5	0.9	0.5	74.8	9.0	16.2	0.067	0.523	20.467586	-98.673419
T. IZQ. METZTITLAN	63.70	3	0	4390	74.4	9.2	6.6	4.0	1.7	2.7	0.9	0.5	74.4	9.2	16.4	0.059	0.506	20.475518	-98.671003
METZQUITITLAN	75.00	1	0	4459	74.2	9.1	6.5	4.2	1.7	2.8	1.0	0.5	74.2	9.1	16.7	0.081	0.505	20.529041	-98.642386
T. IZQ. ZACUALTIPAN	96.50	1	0	6329	74.5	9.1	6.6	4.1	1.7	2.6	0.9	0.5	74.5	9.1	16.4	0.064	0.512	20.646467	-98.639330
T. IZQ. ZACUALTIPAN	96.50	3	0	3447	76.0	8.2	6.2	4.0	1.7	2.5	0.9	0.5	76.0	8.2	15.8	0.084	0.501	20.662797	-98.662910
X. C. MOLANGO - XOCHICOATLAN	129.80	1	0	3100	74.4	8.6	7.0	4.0	1.8	2.8	0.9	0.5	74.4	8.6	17.0	0.067	0.512	20.788532	-98.724518
X. C. MOLANGO - XOCHICOATLAN	129.80	3	0	3076	74.4	9.1	6.7	4.1	1.8	2.5	0.9	0.5	74.4	9.1	16.5	0.071	0.510	20.793932	-98.726027
T. IZQ. TEPEHUACAN DE GUERRERO	157.70	1	0	2196	74.0	8.9	6.8	4.3	1.9	2.6	1.0	0.5	74.0	8.9	17.1	0.081	0.505	20.964421	-98.681099
TEHUETLAN	199.20	1	0	2145	74.3	9.2	6.6	4.3	1.6	2.6	0.9	0.5	74.3	9.2	16.5	0.068	0.504	21.058290	-98.514838
T. IZQ. HUEJUTLA (1° ACCESO)	214.60	1	0	8889	74.4	9.3	6.4	4.1	1.7	2.7	0.9	0.5	74.4	9.3	16.3	0.062	0.509	21.130556	-98.408496

HIDALGO

7 CARR: PACHUCA - TEMPOAL

CLAVE: 00113

RUTA: MEX-105

AÑO: 2010

LUGAR	ESTACION				CLASIFICACION VEHICULAR EN PORCIENTO								COORDENADAS						
	KM	TE	SC	TDPA	A	B	C2	C3	T3S2	T3S3	T3S2R4	OTROS	A	B	C	K'	D	LATITUD	LONGITUD
T. IZQ. HUEJUTLA (1° ACCESO)	214.60	3	0	9784	75.6	8.6	6.1	4.0	1.7	2.6	0.9	0.5	75.6	8.6	15.8	0.069	0.513	21.156762	-98.411922
LIM. EDOS. TERM. HGO. PPIA. VER.	217.20																		
T. C. ALAZAN - CANOAS	260.68	1	0	2206	75.4	8.8	6.5	3.8	1.6	2.5	0.9	0.5	75.4	8.8	15.8	0.063	0.501	21.491016	-98.358847

8 CARR: PACHUCA - TUXPAM

CLAVE: 00608

RUTA: MEX-130

AÑO: 2010

LUGAR	ESTACION				CLASIFICACION VEHICULAR EN PORCIENTO								COORDENADAS						
	KM	TE	SC	TDPA	A	B	C2	C3	T3S2	T3S3	T3S2R4	OTROS	A	B	C	K'	D	LATITUD	LONGITUD
PACHUCA	0.00																		
X. C. LIBRAMIENTO DE PACHUCA	2.60	3	1	20286	70.9	9.7	7.2	4.2	4.1	2.6	1.1	0.2	70.9	9.7	19.4	0.065	0.503	20.080458	-98.711271
X. C. LIBRAMIENTO DE PACHUCA	2.60	3	2	20040	70.5	9.7	7.3	4.2	4.3	2.7	1.1	0.2	70.5	9.7	19.8	0.065	0.503	20.080150	-98.711066
T. IZQ. PACHUQUILLA (1° ACCESO)	7.00	1	1	9917	71.1	9.8	6.9	4.4	4.0	2.6	1.0	0.2	71.1	9.8	19.1	0.079	0.504	20.078465	-98.710151
T. IZQ. PACHUQUILLA (1° ACCESO)	7.00	1	2	10084	70.6	9.8	7.3	4.4	3.9	2.7	1.1	0.2	70.6	9.8	19.6	0.073	0.504	20.078440	-98.710050
T. IZQ. PACHUQUILLA (2° ACCESO)	10.50	1	1	5875	70.2	10.3	7.5	4.1	4.1	2.5	1.1	0.2	70.2	10.3	19.5	0.076	0.502	20.067463	-98.684173
T. IZQ. PACHUQUILLA (2° ACCESO)	10.50	1	2	5818	70.8	9.9	7.1	4.4	4.0	2.5	1.1	0.2	70.8	9.9	19.3	0.076	0.502	20.067463	-98.684173
T. DER. CD. SAHAGUN	16.59	1	0	7225	71.1	9.6	7.1	4.2	4.1	2.6	1.1	0.2	71.1	9.6	19.3	0.062	0.502	20.061231	-98.634262
T. C. VENTA DE CARPIO - TULANCINGO	36.45	1	1	6725	70.4	9.7	7.5	4.2	4.3	2.6	1.1	0.2	70.4	9.7	19.9	0.065	0.513	20.056101	-98.460104
T. C. VENTA DE CARPIO - TULANCINGO	36.45	1	2	6374	69.9	10.4	7.1	4.5	4.1	2.7	1.1	0.2	69.9	10.4	19.7	0.063	0.513	20.056111	-98.460101
T. C. VENTA DE CARPIO - TULANCINGO	36.45	3	0	23898	70.9	10.0	7.1	4.1	4.1	2.5	1.1	0.2	70.9	10.0	19.1	0.066	0.505	20.063485	-98.438806
T. IZQ. LIBRAMIENTO DE TULANCINGO	53.70	3	0	13807	70.9	10.2	7.0	4.0	4.1	2.6	1.0	0.2	70.9	10.2	18.9	0.059	0.507	20.151632	-98.285071
T. IZQ. HUAYACOCOTLA	66.42	3	0	9539	69.6	10.3	7.5	4.4	4.3	2.6	1.1	0.2	69.6	10.3	20.1	0.067	0.502	20.158060	-98.277094
LIM. EDOS. TERM. HGO. PPIA. PUE.	83.18																		
T. DER. HUAUCHINANGO (1° ACCESO)	94.00	1	0	12007	70.6	9.4	7.6	4.2	4.2	2.7	1.1	0.2	70.6	9.4	20.0	0.062	0.501	20.169044	-98.074304
T. DER. HUAUCHINANGO (2° ACCESO)	100.00	3	0	8249	70.1	10.4	7.4	4.2	4.0	2.6	1.1	0.2	70.1	10.4	19.5	0.070	0.505	20.184685	-98.045792
VILLA AVILA CAMACHO	141.75	1	0	7484	69.9	9.8	7.8	4.5	4.1	2.6	1.1	0.2	69.9	9.8	20.3	0.066	0.506	20.383490	-97.884226
VILLA AVILA CAMACHO	141.75	3	0	7577	69.8	10.6	7.3	4.4	4.1	2.5	1.1	0.2	69.8	10.6	19.6	0.061	0.508	20.392420	-97.875581
PIEDRAS NEGRAS	158.70	1	0	8282	70.0	10.4	7.5	4.3	4.0	2.5	1.1	0.2	70.0	10.4	19.6	0.065	0.506	20.464040	-97.707018
T. IZQ. VENUSTIANO CARRANZA	174.10	3	0	7205	71.2	9.7	7.1	4.2	3.9	2.6	1.1	0.2	71.2	9.7	19.1	0.068	0.504	20.477405	-97.646447
LIM. EDOS. TERM. PUE. PPIA. VER.	180.00																		
T. DER. POZA RICA	197.00	1	0	15503	70.6	9.9	7.1	4.2	4.3	2.6	1.1	0.2	70.6	9.9	19.5	0.077	0.504	20.531330	-97.488378
T. DER. POZA RICA	197.00	3	0	18200	71.5	9.5	6.9	4.2	4.0	2.6	1.1	0.2	71.5	9.5	19.0	0.063	0.501	20.567413	-97.481218
TIHUATLAN	217.00	1	0	10079	69.9	10.2	7.4	4.2	4.4	2.6	1.1	0.2	69.9	10.2	19.9	0.072	0.509	20.694993	-97.525703
TIHUATLAN	217.00	3	0	8266	68.9	10.8	7.5	4.5	4.3	2.7	1.1	0.2	68.9	10.8	20.3	0.063	0.505	20.721895	-97.525204
TUXPAM	247.00	1	0	8026	70.8	9.6	7.4	4.2	4.0	2.7	1.1	0.2	70.8	9.6	19.6	0.073	0.502	20.951155	-97.399060

HIDALGO

9 CARR: PORTEZUELO - CD. VALLES

CLAVE: 00023

RUTA: MEX-085

AÑO: 2010

LUGAR	ESTACION				CLASIFICACION VEHICULAR EN PORCIENTO								COORDENADAS						
	KM	TE	SC	TDPA	A	B	C2	C3	T3S2	T3S3	T3S2R4	OTROS	A	B	C	K'	D	LATITUD	LONGITUD
PORTEZUELO	0.00	3	0	5278	79.3	6.6	5.2	7.3	0.7	0.5	0.0	0.4	79.3	6.6	14.1	0.062	0.501	20.490857	-99.301841
T. DER. TASQUILLO (2º ACCESO)	10.50	1	0	3477	79.4	6.4	5.1	7.5	0.7	0.5	0.0	0.4	79.4	6.4	14.2	0.058	0.501	20.551154	-99.323835
T. IZQ. ZIMAPAN (1º ACCESO)	32.00	1	0	3950	80.9	6.0	4.8	6.7	0.7	0.5	0.0	0.4	80.9	6.0	13.1	0.079	0.503	20.703390	-99.334905
T. IZQ. ZIMAPAN (1º ACCESO)	32.00	3	0	1713	80.7	6.0	5.1	6.6	0.7	0.5	0.0	0.4	80.7	6.0	13.3	0.069	0.517	20.706207	-99.336273
LA ESTANCIA	41.00	3	0	1401	80.8	6.3	4.6	6.7	0.7	0.5	0.0	0.4	80.8	6.3	12.9	0.066	0.506	20.777845	-99.309597
TRANCAS	51.00	3	0	1812	79.3	6.3	5.2	7.6	0.7	0.5	0.0	0.4	79.3	6.3	14.4	0.061	0.501	20.797577	-99.266845
JACALA	98.60	3	0	1911	80.5	6.4	4.6	6.9	0.7	0.5	0.0	0.4	80.5	6.4	13.1	0.081	0.501	21.002971	-99.184803
ZACATE GRANDE	143.10	1	0	1316	80.1	6.0	5.2	7.1	0.7	0.5	0.0	0.4	80.1	6.0	13.9	0.066	0.500	21.117745	-99.002977
T. IZQ. PISAFLORES	154.00	3	0	1831	79.2	6.5	5.4	7.3	0.7	0.5	0.0	0.4	79.2	6.5	14.3	0.090	0.500	21.153192	-98.938918
LIM. EDOS. TERM. HGO. PPIA. S.L.P.	168.63																		
TAMAZUNCHALE	192.80	1	0	4133	79.3	6.5	5.2	7.4	0.7	0.5	0.0	0.4	79.3	6.5	14.2	0.076	0.501	21.260393	-98.801525
T. IZQ. XILITLA	228.75	1	0	4302	80.6	6.1	4.9	6.8	0.7	0.5	0.0	0.4	80.6	6.1	13.3	0.071	0.505	21.441511	-98.924566
T. IZQ. XILITLA	228.75	3	0	3929	79.6	6.6	5.1	7.1	0.7	0.5	0.0	0.4	79.6	6.6	13.8	0.073	0.506	21.445484	-98.928758
T. IZQ. AQUISMON	252.50	1	0	4583	79.8	6.2	5.3	7.1	0.7	0.5	0.0	0.4	79.8	6.2	14.0	0.079	0.504	21.621901	-98.987549
AGUA HEDIONDA	265.00	1	0	4626	80.1	6.4	4.8	7.1	0.7	0.5	0.0	0.4	80.1	6.4	13.5	0.069	0.506	21.727747	-98.964029
CD. VALLES	300.00	1	0	7942	79.7	6.2	5.0	7.5	0.7	0.5	0.0	0.4	79.7	6.2	14.1	0.073	0.503	21.957194	-98.999543

10 CARR: PORTEZUELO - PALMILLAS

CLAVE: 00194

RUTA: MEX-045

AÑO: 2010

LUGAR	ESTACION				CLASIFICACION VEHICULAR EN PORCIENTO								COORDENADAS						
	KM	TE	SC	TDPA	A	B	C2	C3	T3S2	T3S3	T3S2R4	OTROS	A	B	C	K'	D	LATITUD	LONGITUD
PORTEZUELO	0.00	3	0	8036	78.4	12.0	0.4	0.6	3.8	1.8	2.6	0.4	78.4	12.0	9.6	0.062	0.501	20.486225	-99.310650
JONACAPA	29.41	3	0	7891	79.4	10.9	0.2	0.5	3.7	1.9	2.5	0.9	79.4	10.9	9.7	0.072	0.501	20.434347	-99.538329
HUICHAPAN	45.10	1	0	7800	79.2	9.3	2.5	0.5	3.9	1.7	2.1	0.8	79.2	9.3	11.5	0.067	0.501	20.391394	-99.639742
T. IZQ. NOPALA	56.15	1	0	6988	77.2	8.9	3.1	1.8	4.1	1.7	2.5	0.7	77.2	8.9	13.9	0.068	0.501	20.318611	-99.712648
LIM. EDOS. TERM. HGO. PPIA. QRO.	71.40																		
PALMILLAS	80.00	1	0	8186	79.3	7.4	3.3	1.4	3.9	2.1	2.1	0.5	79.3	7.4	13.3	0.071	0.508	20.326921	-99.932542

11 CARR: TAMAZUNCHALE - SAN FELIPE ORIZATLAN

CLAVE: 00609

RUTA: MEX-102

AÑO: 2010

LUGAR	ESTACION				CLASIFICACION VEHICULAR EN PORCIENTO								COORDENADAS						
	KM	TE	SC	TDPA	A	B	C2	C3	T3S2	T3S3	T3S2R4	OTROS	A	B	C	K'	D	LATITUD	LONGITUD
T. C. PORTEZUELO - CD. VALLES	0.00	3	0	8185	87.7	3.5	2.4	1.1	2.3	1.2	1.2	0.6	87.7	3.5	8.8	0.066	0.504	21.251222	-98.762115
LIM. EDOS. TERM. S.L.P. PPIA. HGO.	18.50																		
SAN FELIPE ORIZATLAN	27.10	1	0	3049	86.2	4.1	2.8	1.1	2.6	1.0	1.5	0.7	86.2	4.1	9.7	0.072	0.510	21.164464	-98.610690





HIDALGO

13 CARR: ARCO NORTE CD. MEXICO (CUOTA)

CLAVE:

RUTA: MEX-D

AÑO: 2010

LUGAR	ESTACION				CLASIFICACION VEHICULAR EN PORCIENTO								COORDENADAS						
	KM	TE	SC	TDPA	A	B	C2	C3	T3S2	T3S3	T3S2R4	OTROS	A	B	C	K'	D	LATITUD	LONGITUD
CASETA DE COBRO PACHUCA	129.00	3	0	7912	62.4	2.3	4.7	7.2	11.6	4.3	6.5	1.0	62.4	2.3	35.3			19.929644	-98.892436
LIM. EDOS. TERM. HGO. PPIA. MEX.	143.98																		
CASETA DE COBRO TULANCINGO	153.00	3	0	9251	64.8	2.7	4.7	6.6	10.7	3.6	6.0	0.9	64.8	2.7	32.5			19.833559	-98.700185
CASETA DE COBRO SAHAGUN	165.00	3	0	9261	64.7	2.8	4.8	6.6	10.7	3.6	5.9	0.9	64.7	2.8	32.5			19.756104	-98.629143
LIM. EDOS. TERM. MEX. PPIA. HGO.	166.53																		
LIM. EDOS. TERM. HGO. PPIA. TLAX.	180.98																		
CASETA DE COBRO CALPULALPAN	182.345	3	0	10521	64.8	2.6	5.0	6.7	10.8	3.7	5.5	0.9	64.8	2.6	32.6			19.620074	-98.548525
CASETA DE COBRO SANCTORUM	196.50	3	0	10201	64.1	3.2	5.4	6.8	11.0	3.0	5.6	0.9	64.1	3.2	32.7			19.514239	-98.468601
CASETA DE COBRO SAN MARTIN TEXMELUCAN	222.00	2	0	10201	64.1	3.2	5.4	6.8	11.0	3.0	5.6	0.9	64.1	3.2	32.7			19.301905	-98.409628
T. C. SAN MARTIN TEXMELUCAN - OCOTOXCO (CUOTA)	222.44																		

14 CARR: ENT. TULANCINGO - TEJOCOTAL (CUOTA)

CLAVE: 00026

RUTA: MEX-132D

AÑO: 2010

LUGAR	ESTACION				CLASIFICACION VEHICULAR EN PORCIENTO								COORDENADAS						
	KM	TE	SC	TDPA	A	B	C2	C3	T3S2	T3S3	T3S2R4	OTROS	A	B	C	K'	D	LATITUD	LONGITUD
T. C. PACHUCA - TUXPAM	0.00	3	0	7114	76.9	5.6	5.4	4.8	3.9	1.8	1.4	0.2	76.9	5.6	17.5	0.087	0.512	20.065316	-98.447085
CASETA DE COBRO SAN ALEJO (TEJOCOTAL)	37.00	1	0	8153	76.8	5.4	5.5	4.8	4.1	1.8	1.4	0.2	76.8	5.4	17.8			20.146456	-98.286954
CASETA DE COBRO SAN ALEJO (TEJOCOTAL)	37.00	2	0	10306	77.5	4.4	5.9	4.9	3.8	2.0	1.3	0.2	77.5	4.4	18.1			20.146456	-98.286954
CASETA DE COBRO SAN ALEJO (TEJOCOTAL)	37.00	3	0	7881	75.9	4.7	5.6	5.2	4.4	2.3	1.6	0.3	75.9	4.7	19.4			20.146456	-98.286954
TEJOCOTAL	39.40																		

15 CARR: MEXICO - QUERETARO (CUOTA)

CLAVE: 00411

RUTA: MEX-057-MEX-057D

AÑO: 2010

LUGAR	ESTACION				CLASIFICACION VEHICULAR EN PORCIENTO								COORDENADAS						
	KM	TE	SC	TDPA	A	B	C2	C3	T3S2	T3S3	T3S2R4	OTROS	A	B	C	K'	D	LATITUD	LONGITUD
MEXICO	0.00																		
LIM. EDOS. TERM. D.F. PPIA. MEX.	11.30																		
CASETA DE COBRO TEPOTZOTLAN	43.01	2	0	44648	67.6	5.6	6.8	4.8	11.2	1.1	2.5	0.4	67.6	5.6	26.8			19.715358	-99.207587
ENT. JOROBAS	56.18	1	1	30395	67.5	5.5	7.0	5.0	11.0	1.1	2.5	0.4	67.5	5.5	27.0	0.070	0.506	19.822613	-99.246170
ENT. JOROBAS	56.18	1	2	29636	66.4	5.6	7.1	5.1	11.7	1.1	2.6	0.4	66.4	5.6	28.0	0.071	0.506	19.822618	-99.246166
ENT. JOROBAS	56.18	3	1	27017	67.1	5.7	6.6	4.9	11.6	1.1	2.6	0.4	67.1	5.7	27.2	0.073	0.502	19.829119	-99.257183
ENT. JOROBAS	56.18	3	2	26818	68.0	5.2	6.6	4.8	11.4	1.1	2.5	0.4	68.0	5.2	26.8	0.073	0.502	19.829132	-99.257174
LIM. EDOS. TERM. MEX. PPIA. HGO.	59.85																		
T. DER. TEPEJI DEL RIO	69.36	1	1	23011	57.1	4.7	7.0	7.4	16.9	1.9	4.4	0.6	57.1	4.7	38.2	0.089	0.509	19.878429	-99.339888
T. DER. TEPEJI DEL RIO	69.36	1	2	23839	58.5	4.4	6.9	7.1	16.7	1.7	4.1	0.6	58.5	4.4	37.1	0.085	0.509	19.876556	-99.341227

HIDALGO

15 CARR: MEXICO - QUERETARO (CUOTA)

CLAVE: 00411

RUTA: MEX-057-MEX-057D

AÑO: 2010

LUGAR	ESTACION				CLASIFICACION VEHICULAR EN PORCIENTO								COORDENADAS						
	KM	TE	SC	TDPA	A	B	C2	C3	T3S2	T3S3	T3S2R4	OTROS	A	B	C	K'	D	LATITUD	LONGITUD
T. DER. TEPEJI DEL RIO	69.36	3	1	20857	58.8	4.5	6.9	6.8	16.4	1.7	4.3	0.6	58.8	4.5	36.7	0.071	0.501	19.897399	-99.349002
T. DER. TEPEJI DEL RIO	69.36	3	2	20914	57.7	4.5	6.8	7.0	17.2	1.7	4.5	0.6	57.7	4.5	37.8	0.078	0.501	19.897525	-99.349069
T. IZQ. JILOTEPEC	83.75	1	1	15216	57.7	4.5	7.1	7.0	16.7	1.9	4.5	0.6	57.7	4.5	37.8	0.086	0.503	19.969823	-99.429886
T. IZQ. JILOTEPEC	83.75	1	2	15017	57.2	4.4	7.2	7.1	17.1	1.9	4.5	0.6	57.2	4.4	38.4	0.077	0.503	19.969491	-99.430084
T. IZQ. JILOTEPEC	83.75	3	1	15348	58.7	4.3	7.0	7.2	15.9	1.8	4.5	0.6	58.7	4.3	37.0	0.067	0.500	19.985802	-99.444881
T. IZQ. JILOTEPEC	83.75	3	2	15377	57.8	4.6	7.1	7.5	16.2	1.9	4.3	0.6	57.8	4.6	37.6	0.070	0.500	19.985899	-99.444757
LIM. EDOS. TERM. HGO. PPIA. MEX.	86.00																		
X. C. JILOTEPEC - MARAVILLAS	107.00	1	1	17368	58.2	4.5	6.7	6.8	16.9	1.8	4.5	0.6	58.2	4.5	37.3	0.069	0.502	20.082716	-99.625099
X. C. JILOTEPEC - MARAVILLAS	107.00	1	2	17541	56.9	4.6	7.1	6.9	17.3	1.8	4.8	0.6	56.9	4.6	38.5	0.071	0.502	20.082759	-99.626396
X. C. JILOTEPEC - MARAVILLAS	107.00	3	1	15552	56.9	4.7	6.8	7.1	17.6	1.9	4.4	0.6	56.9	4.7	38.4	0.074	0.531	20.082771	-99.634031
X. C. JILOTEPEC - MARAVILLAS	107.00	3	2	17593	58.3	4.3	6.6	7.4	16.8	1.7	4.3	0.6	58.3	4.3	37.4	0.069	0.531	20.082497	-99.633379
T. IZQ. ACULCO	125.00	1	1	20609	58.1	4.3	6.7	7.4	16.5	1.8	4.6	0.6	58.1	4.3	37.6	0.067	0.502	20.095339	-99.691017
T. IZQ. ACULCO	125.00	1	2	20449	57.4	4.4	7.1	7.6	16.6	1.8	4.5	0.6	57.4	4.4	38.2	0.071	0.502	20.095504	-99.690828
T. IZQ. ACULCO	125.00	3	1	19521	56.9	4.4	7.4	7.1	17.3	1.8	4.5	0.6	56.9	4.4	38.7	0.081	0.501	20.109274	-99.705413
T. IZQ. ACULCO	125.00	3	2	19427	57.6	4.4	6.7	7.4	16.9	1.8	4.6	0.6	57.6	4.4	38.0	0.084	0.501	20.109173	-99.705426
LIM. EDOS. TERM. MEX. PPIA. QRO.	145.50																		
CASETA DE COBRO PALMILLAS	145.80	2	0	42075	58.0	4.5	6.9	7.2	16.5	1.8	4.5	0.6	58.0	4.5	37.5			20.296103	-99.928994
T. IZQ. TOLUCA	148.50	1	1	15551	57.4	4.5	6.7	7.4	16.9	1.8	4.7	0.6	57.4	4.5	38.1	0.068	0.525	20.293284	-99.924772
T. IZQ. TOLUCA	148.50	1	2	17216	57.4	4.6	6.8	7.2	17.2	1.8	4.4	0.6	57.4	4.6	38.0	0.064	0.525	20.293284	-99.924772
T. IZQ. TOLUCA	148.50	3	1	20756	56.6	4.7	7.0	7.7	17.3	1.8	4.3	0.6	56.6	4.7	38.7	0.058	0.520	20.306857	-99.934387
T. IZQ. TOLUCA	148.50	3	2	22522	59.3	4.1	6.4	7.0	16.6	1.7	4.3	0.6	59.3	4.1	36.6	0.059	0.520	20.306834	-99.934974
T. DER. PONIENTE SAN JUAN DEL RIO	164.10	3	1	26029	58.7	4.5	7.0	7.4	15.6	1.7	4.5	0.6	58.7	4.5	36.8	0.072	0.503	20.373440	-99.994201
T. DER. PONIENTE SAN JUAN DEL RIO	164.10	3	2	26373	58.0	4.7	7.3	7.1	16.1	1.8	4.4	0.6	58.0	4.7	37.3	0.072	0.503	20.373440	-99.994201
T. IZQ. ACAMBARO	170.45	3	1	23891	57.2	4.7	6.9	7.5	16.9	1.8	4.4	0.6	57.2	4.7	38.1	0.075	0.503	20.444776	-100.076049
T. IZQ. ACAMBARO	170.45	3	2	24184	57.9	4.2	7.2	6.9	17.1	1.7	4.4	0.6	57.9	4.2	37.9	0.070	0.503	20.444776	-100.076049
T. DER. LIBRAMIENTO DE QUERETARO A SAN LUIS POTOSI	207.00	1	1	25694	57.5	4.5	7.1	7.4	16.4	1.8	4.7	0.6	57.5	4.5	38.0	0.085	0.517	20.588187	-100.350777
T. DER. LIBRAMIENTO DE QUERETARO A SAN LUIS POTOSI	207.00	1	2	27450	59.4	4.3	6.4	7.2	16.1	1.8	4.2	0.6	59.4	4.3	36.3	0.087	0.517	20.588187	-100.350777
T. DER. LIBRAMIENTO DE QUERETARO A SAN LUIS POTOSI	207.00	3	1	30421	57.7	4.2	6.9	7.3	17.2	1.8	4.3	0.6	57.7	4.2	38.1	0.076	0.502	20.578427	-100.378707
T. DER. LIBRAMIENTO DE QUERETARO A SAN LUIS POTOSI QUERETARO	207.00 211.60	3	2	32501	59.3	4.4	7.0	6.7	15.6	1.8	4.6	0.6	59.3	4.4	36.3	0.075	0.502	20.578427	-100.378707

HIDALGO

16 CARR: MEXICO - TIZAYUCA (CUOTA)

CLAVE: 00432

RUTA: MEX-085D

AÑO: 2010

LUGAR	ESTACION				CLASIFICACION VEHICULAR EN PORCIENTO								COORDENADAS						
	KM	TE	SC	TDPA	A	B	C2	C3	T3S2	T3S3	T3S2R4	OTROS	A	B	C	K'	D	LATITUD	LONGITUD
T. C. MEXICO - PACHUCA (LIBRE)	0.00																		
LIM. EDOS. TERM. D.F. PPIA. MEX.	9.86																		
CASETA DE COBRO SAN CRISTOBAL	21.00	1	0	99997	89.5	4.8	3.4	1.3	0.7	0.1	0.2	0.0	89.5	4.8	5.7			19.587792	-99.042025
CASETA DE COBRO REVOLUCION	22.80	1	0	75509	88.5	4.6	4.1	1.5	0.9	0.1	0.3	0.0	88.5	4.6	6.9			19.602793	-99.038090
ENT. MORELOS	23.28	3	1	19537	88.2	4.8	4.2	1.5	0.9	0.1	0.3	0.0	88.2	4.8	7.0	0.076	0.512	19.624145	-99.027017
ENT. MORELOS	23.28	3	2	18624	88.6	4.5	4.1	1.5	0.9	0.1	0.3	0.0	88.6	4.5	6.9	0.072	0.512	19.624172	-99.026962
CASETA DE COBRO OJO DE AGUA	25.00	2	0	62434	85.4	6.3	4.7	1.7	1.4	0.2	0.3	0.0	85.4	6.3	8.3			19.618818	-99.029462
T. IZQ. TECAMAC	35.62	3	1	12435	84.7	6.6	5.0	1.7	1.5	0.2	0.3	0.0	84.7	6.6	8.7	0.115	0.501	19.717616	-98.960486
T. IZQ. TECAMAC	35.62	3	2	12377	85.5	6.2	4.8	1.6	1.4	0.2	0.3	0.0	85.5	6.2	8.3	0.108	0.501	19.717609	-98.960491
LIM. EDOS. TERM. MEX. PPIA. HGO.	49.60																		
X. C. OTUMBA - TIZAYUCA	53.45	1	1	13372	85.6	6.2	4.7	1.7	1.3	0.2	0.3	0.0	85.6	6.2	8.2	0.115	0.507	19.810335	-98.945744
X. C. OTUMBA - TIZAYUCA	53.45	1	2	12982	86.0	5.9	4.7	1.6	1.3	0.2	0.3	0.0	86.0	5.9	8.1	0.108	0.507	19.810335	-98.945741
T. C. MEXICO - PACHUCA (LIBRE)	60.50	1	1	13210	84.9	6.4	5.0	1.8	1.4	0.2	0.3	0.0	84.9	6.4	8.7	0.109	0.515	19.882952	-98.937543
T. C. MEXICO - PACHUCA (LIBRE)	60.50	1	2	12435	85.5	6.5	4.4	1.7	1.4	0.2	0.3	0.0	85.5	6.5	8.0	0.110	0.515	19.882993	-98.937542

17 CARR: TEJOCOTAL - TIHUATLAN (CUOTA)

CLAVE:

RUTA: MEX-130D

AÑO: 2010

LUGAR	ESTACION				CLASIFICACION VEHICULAR EN PORCIENTO								COORDENADAS						
	KM	TE	SC	TDPA	A	B	C2	C3	T3S2	T3S3	T3S2R4	OTROS	A	B	C	K'	D	LATITUD	LONGITUD
TEJOCOTAL	0.00																		
LIM. EDOS. TERM. HGO. PPIA. PUE.	1.10																		
CASETA DE COBRO NUEVO NECAXA	17.00	2	0	6219	73.9	4.7	6.6	5.9	4.8	2.1	1.7	0.3	73.9	4.7	21.4			20.186719	-98.029735
NUEVO NECAXA	18.00	1	0	6333	74.9	4.8	6.1	5.9	4.4	2.0	1.6	0.3	74.9	4.8	20.3	0.071	0.511	20.181982	-98.026666

18 CARR: ACTOPAN - PROGRESO

CLAVE: 13038

RUTA: HGO

AÑO: 2010

LUGAR	ESTACION				CLASIFICACION VEHICULAR EN PORCIENTO								COORDENADAS						
	KM	TE	SC	TDPA	A	B	C2	C3	T3S2	T3S3	T3S2R4	OTROS	A	B	C	K'	D	LATITUD	LONGITUD
ACTOPAN	0.00	3	1	8282	87.9	3.5	2.6	1.4	3.1	0.5	0.5	0.5	87.9	3.5	8.6	0.066	0.503	20.266339	-98.955106
ACTOPAN	0.00	3	2	8168	87.4	3.6	2.7	1.5	3.2	0.4	0.4	0.8	87.4	3.6	9.0	0.069	0.503	20.266373	-98.955180
PROGRESO	23.90	1	1	5893	87.5	3.2	2.9	1.2	3.0	0.8	0.7	0.7	87.5	3.2	9.3	0.069	0.500	20.245089	-99.175883
PROGRESO	23.90	1	2	5882	87.7	3.3	2.8	1.1	2.9	0.7	0.8	0.7	87.7	3.3	9.0	0.069	0.500	20.245180	-99.175955

HIDALGO

19 CARR: EL SAUCILLO - AMEALCO

CLAVE: 13103

RUTA: HGO-103

AÑO: 2010

LUGAR	ESTACION				CLASIFICACION VEHICULAR EN PORCIENTO								COORDENADAS						
	KM	TE	SC	TDPA	A	B	C2	C3	T3S2	T3S3	T3S2R4	OTROS	A	B	C	K'	D	LATITUD	LONGITUD
T. C. PORTEZUELO - PALMILLAS	0.00	3	0	3227	84.7	6.0	3.1	1.6	2.6	0.4	0.9	0.7	84.7	6.0	9.3	0.082	0.502	20.311204	-99.714020
NOPALA	11.00	1	1	1464	81.7	9.4	2.6	1.6	2.7	0.5	1.1	0.4	81.7	9.4	8.9	0.094	0.500	20.254519	-99.654856
NOPALA	11.00	1	2	1465	84.4	6.7	2.7	1.5	2.6	0.3	1.1	0.7	84.4	6.7	8.9	0.096	0.500	20.254540	-99.654839
NOPALA	11.00	3	0	2502	84.4	4.1	2.7	2.0	3.2	1.9	1.1	0.6	84.4	4.1	11.5	0.074	0.526	20.245250	-99.635778
AMEALCO	21.40	1	0	1718	83.1	5.3	3.1	1.9	2.9	2.2	1.0	0.5	83.1	5.3	11.6	0.077	0.508	20.239448	-99.563117

20 CARR: ENT. EMILIANO ZAPATA - CD. SAHAGUN

CLAVE: 13255

RUTA: HGO

AÑO: 2010

LUGAR	ESTACION				CLASIFICACION VEHICULAR EN PORCIENTO								COORDENADAS						
	KM	TE	SC	TDPA	A	B	C2	C3	T3S2	T3S3	T3S2R4	OTROS	A	B	C	K'	D	LATITUD	LONGITUD
T. C. CALPULALPAN - EL OCOTE	0.00																		
EMILIANO ZAPATA	2.70	1	1	3863	83.6	3.4	3.9	3.6	2.0	1.6	1.5	0.4	83.6	3.4	13.0	0.087	0.506	19.645230	-98.540643
EMILIANO ZAPATA	2.70	1	2	3953	82.9	3.8	4.0	3.7	2.0	1.7	1.4	0.5	82.9	3.8	13.3	0.086	0.506	19.645286	-98.540621
T. IZQ. OTUMBA	14.00	1	1	4201	71.3	4.4	5.9	3.6	8.0	2.6	3.8	0.4	71.3	4.4	24.3	0.067	0.513	19.743577	-98.583837
T. IZQ. OTUMBA	14.00	1	2	4418	74.6	4.2	5.1	3.4	7.2	2.0	3.0	0.5	74.6	4.2	21.2	0.066	0.513	19.743558	-98.583827
CD. SAHAGUN	17.98	1	1	5525	77.6	4.1	4.2	2.9	6.0	2.0	2.7	0.5	77.6	4.1	18.3	0.073	0.505	19.763036	-98.587590
CD. SAHAGUN	17.98	1	2	5422	78.4	3.6	5.1	1.5	5.8	2.4	2.6	0.6	78.4	3.6	18.0	0.073	0.505	19.763038	-98.587595

21 CARR: ENT. TEPEJI DEL RIO - TLAHUELILPAN

CLAVE: 13017

RUTA: HGO-017

AÑO: 2010

LUGAR	ESTACION				CLASIFICACION VEHICULAR EN PORCIENTO								COORDENADAS						
	KM	TE	SC	TDPA	A	B	C2	C3	T3S2	T3S3	T3S2R4	OTROS	A	B	C	K'	D	LATITUD	LONGITUD
T. C. MEXICO - QUERETARO (CUOTA)	0.00																		
T. IZQ. TEPEJI DEL RIO	3.00	3	0	10074	84.7	1.9	3.8	1.4	3.0	2.6	1.9	0.7	84.7	1.9	13.4	0.074	0.501	19.940365	-99.339261
TULA DE ALLENDE	18.00	1	0	7275	84.1	2.2	3.3	1.5	3.3	2.9	2.1	0.6	84.1	2.2	13.7	0.068	0.500	20.034902	-99.345262
TLAHUELILPA DE OCAMPO	32.00	1	1	5666	84.5	2.6	3.4	1.2	3.7	2.3	1.5	0.8	84.5	2.6	12.9	0.078	0.505	20.128199	-99.241253
TLAHUELILPA DE OCAMPO	32.00	1	2	5773	84.4	2.7	3.5	1.1	3.8	2.5	1.4	0.6	84.4	2.7	12.9	0.081	0.505	20.128166	-99.241217

22 CARR: ENT. TOLMAN - CD. SAHAGUN

CLAVE: 00119

RUTA: EM-009-HGO

AÑO: 2010

LUGAR	ESTACION				CLASIFICACION VEHICULAR EN PORCIENTO								COORDENADAS						
	KM	TE	SC	TDPA	A	B	C2	C3	T3S2	T3S3	T3S2R4	OTROS	A	B	C	K'	D	LATITUD	LONGITUD
T. C. VENTA DE CARPIO - TULANCINGO	0.00	3	0	10189	79.9	4.2	4.6	1.3	4.6	1.8	2.8	0.8	79.9	4.2	15.9	0.069	0.512	19.714545	-98.791006
OTUMBA	5.00	3	0	5812	79.6	4.0	5.1	1.3	4.6	1.4	3.5	0.5	79.6	4.0	16.4	0.073	0.505	19.710361	-98.743305
T. DER. JALTEPEC	21.00	3	0	6333	78.8	4.2	5.5	2.6	4.3	2.1	1.9	0.6	78.8	4.2	17.0	0.067	0.506	19.749583	-98.653407

HIDALGO

22 CARR: ENT. TOLMAN - CD. SAHAGUN

CLAVE: 00119

RUTA: EM-009-HGO

AÑO: 2010

LUGAR	ESTACION				CLASIFICACION VEHICULAR EN PORCIENTO								COORDENADAS						
	KM	TE	SC	TDPA	A	B	C2	C3	T3S2	T3S3	T3S2R4	OTROS	A	B	C	K'	D	LATITUD	LONGITUD
LIM. EDOS. TERM. MEX. PPIA. HGO.	25.00																		
CD. SAHAGUN	32.00	1	0	4562	80.1	4.3	6.4	1.9	3.4	1.9	1.5	0.5	80.1	4.3	15.6	0.072	0.509	19.752413	-98.603384

23 CARR: FRANCISCO I. MADERO - TULA DE ALLENDE

CLAVE: 13043

RUTA: HGO

AÑO: 2010

LUGAR	ESTACION				CLASIFICACION VEHICULAR EN PORCIENTO								COORDENADAS						
	KM	TE	SC	TDPA	A	B	C2	C3	T3S2	T3S3	T3S2R4	OTROS	A	B	C	K'	D	LATITUD	LONGITUD
T. C. PORTEZUELO - PALMILLAS	0.00	3	0	3158	89.3	7.5	0.6	1.1	0.8	0.2	0.3	0.2	89.3	7.5	3.2	0.087	0.506	20.438519	-99.358793
GRAL. PEDRO MARIA ANAYA	38.20	1	0	3793	80.5	8.0	4.7	1.3	3.6	1.4	0.2	0.3	80.5	8.0	11.5	0.076	0.501	20.155851	-99.356134
T. C. (MEXICO - QUERETARO) - TLAHUELILPA DE OCAMPO	52.70	1	0	5230	78.8	7.7	4.8	1.7	4.5	1.6	0.3	0.6	78.8	7.7	13.5	0.077	0.501	20.068581	-99.331220

24 CARR: HUICHAPAN - TECOZAUTLA

CLAVE: 13030

RUTA: HGO-030

AÑO: 2010

LUGAR	ESTACION				CLASIFICACION VEHICULAR EN PORCIENTO								COORDENADAS						
	KM	TE	SC	TDPA	A	B	C2	C3	T3S2	T3S3	T3S2R4	OTROS	A	B	C	K'	D	LATITUD	LONGITUD
HUICHAPAN	0.00	3	0	5010	83.5	2.4	7.3	1.4	3.5	1.1	0.1	0.7	83.5	2.4	14.1	0.060	0.503	20.383115	-99.659433
TECOZAUTLA	30.85																		

25 CARR: JILOTEPEC - MARAVILLAS

CLAVE: 00015

RUTA: EM-HGO

AÑO: 2010

LUGAR	ESTACION				CLASIFICACION VEHICULAR EN PORCIENTO								COORDENADAS						
	KM	TE	SC	TDPA	A	B	C2	C3	T3S2	T3S3	T3S2R4	OTROS	A	B	C	K'	D	LATITUD	LONGITUD
JILOTEPEC	0.00	3	0	6011	82.5	5.8	4.6	1.1	3.4	1.2	1.0	0.4	82.5	5.8	11.7	0.077	0.504	19.954140	-99.549666
X. C. MEXICO - QUERETARO (CUOTA)	21.30	1	0	1557	81.2	6.2	4.9	1.2	2.7	1.9	1.2	0.7	81.2	6.2	12.6	0.076	0.510	20.081603	-99.630422
X. C. MEXICO - QUERETARO (CUOTA)	21.30	3	0	2329	81.6	6.0	4.3	1.3	3.2	1.4	1.2	1.0	81.6	6.0	12.4	0.073	0.507	20.098133	-99.626265
ACAZUCHITLAN	29.00	1	0	2633	80.5	6.4	3.9	1.5	3.3	2.0	1.3	1.1	80.5	6.4	13.1	0.073	0.506	20.144420	-99.599381
LIM. EDOS. TERM. MEX. PPIA. HGO.	29.30																		
MARAVILLAS	36.40	1	0	1623	80.8	6.3	3.9	1.5	3.2	2.0	1.2	1.1	80.8	6.3	12.9	0.079	0.511	20.197022	-99.584001
T. C. EL SAUCILLO - AMEALCO	40.00	1	0	1759	81.3	6.3	3.6	1.5	3.2	1.9	1.2	1.0	81.3	6.3	12.4	0.087	0.537	20.234827	-99.595428

26 CARR: LIBRAMIENTO DE ATOTONILCO EL GRANDE

CLAVE: 13238

RUTA: HGO

AÑO: 2010

LUGAR	ESTACION				CLASIFICACION VEHICULAR EN PORCIENTO								COORDENADAS						
	KM	TE	SC	TDPA	A	B	C2	C3	T3S2	T3S3	T3S2R4	OTROS	A	B	C	K'	D	LATITUD	LONGITUD
T. C. PACHUCA - TEMPOAL (1er ACCESO)	0.00	3	0	5452	79.0	3.7	7.7	2.3	3.6	1.2	2.0	0.5	79.0	3.7	17.3	0.069	0.515	20.272810	-98.646932

HIDALGO

26 CARR: LIBRAMIENTO DE ATOTONILCO EL GRANDE

CLAVE: 13238

RUTA: HGO

AÑO: 2010

LUGAR	ESTACION				CLASIFICACION VEHICULAR EN PORCIENTO								COORDENADAS						
	KM	TE	SC	TDPA	A	B	C2	C3	T3S2	T3S3	T3S2R4	OTROS	A	B	C	K'	D	LATITUD	LONGITUD
T. C. PACHUCA - TEMPOAL (2do ACCESO)	6.30	1	0	5964	78.7	3.2	7.9	2.2	3.6	1.4	2.3	0.7	78.7	3.2	18.1	0.067	0.515	20.297563	-98.676895

27 CARR: LOS REYES - EL TEPHE

CLAVE: 00021

RUTA: EM-HGO

AÑO: 2010

LUGAR	ESTACION				CLASIFICACION VEHICULAR EN PORCIENTO								COORDENADAS						
	KM	TE	SC	TDPA	A	B	C2	C3	T3S2	T3S3	T3S2R4	OTROS	A	B	C	K'	D	LATITUD	LONGITUD
T. C. MEXICO - PACHUCA (LIBRE)	0.00																		
LOS REYES	1.35	3	1	7576	79.3	4.9	5.6	5.9	1.1	2.5	0.2	0.5	79.3	4.9	15.8	0.069	0.500	19.769774	-98.996657
LOS REYES	1.35	3	2	7578	79.3	4.5	5.8	5.4	1.0	2.9	0.4	0.7	79.3	4.5	16.2	0.070	0.500	19.769764	-98.996650
ZUMPANGO	15.35	1	1	7344	79.4	4.9	5.9	1.3	4.6	2.6	0.6	0.7	79.4	4.9	15.7	0.071	0.539	19.792149	-99.072524
ZUMPANGO	15.35	1	2	7527	79.4	4.9	5.9	1.2	4.5	2.6	0.7	0.8	79.4	4.9	15.7	0.068	0.539	19.792162	-99.072534
ZUMPANGO	15.35	3	0	12340	79.0	4.9	5.5	1.2	5.3	2.9	0.5	0.7	79.0	4.9	16.1	0.077	0.502	19.820643	-99.115098
TEQUIXQUIAC	29.00	1	0	8339	76.6	5.8	6.1	1.5	6.4	2.1	1.1	0.4	76.6	5.8	17.6	0.074	0.513	19.902227	-99.144290
APAXCO	39.00	3	1	4085	74.3	5.1	6.6	3.0	5.9	2.5	1.9	0.7	74.3	5.1	20.6	0.075	0.502	19.987862	-99.182814
APAXCO	39.00	3	2	4114	74.4	5.3	6.6	3.0	5.8	2.4	1.7	0.8	74.4	5.3	20.3	0.076	0.502	19.987906	-99.182779
LIM. EDOS. TERM. MEX. PPIA. HGO.	40.00																		
T. IZQ. ATOTONILCO (1º ACCESO)	42.00	1	0	7405	78.8	6.0	5.2	1.8	3.2	2.0	2.2	0.8	78.8	6.0	15.2	0.066	0.500	19.997455	-99.187583
TLAXCOAPAN	52.00	3	0	8604	78.8	5.9	5.0	1.5	4.6	1.9	1.6	0.7	78.8	5.9	15.3	0.073	0.500	20.104666	-99.221705
TLAHUELILPA DE OCAMPO	60.00	3	1	6546	81.2	6.1	4.7	1.4	4.2	1.1	1.0	0.3	81.2	6.1	12.7	0.082	0.514	20.136471	-99.234858
TLAHUELILPA DE OCAMPO	60.00	3	2	6935	81.4	5.7	4.5	1.5	3.8	1.5	1.1	0.5	81.4	5.7	12.9	0.085	0.514	20.136478	-99.234798
PROGRESO	72.00	1	1	8310	82.1	5.5	4.6	1.3	3.3	1.5	1.2	0.5	82.1	5.5	12.4	0.071	0.565	20.232741	-99.202494
PROGRESO	72.00	1	2	6389	82.1	5.3	4.7	1.7	3.1	1.4	1.0	0.7	82.1	5.3	12.6	0.068	0.565	20.232784	-99.202493
EL TEPHE	97.00	1	0	5963	81.3	4.0	1.6	1.3	4.8	3.4	3.1	0.5	81.3	4.0	14.7	0.068	0.507	20.433662	-99.171956

28 CARR: OTUMBA - TIZAYUCA

CLAVE: 00012

RUTA: EM-HGO

AÑO: 2010

LUGAR	ESTACION				CLASIFICACION VEHICULAR EN PORCIENTO								COORDENADAS						
	KM	TE	SC	TDPA	A	B	C2	C3	T3S2	T3S3	T3S2R4	OTROS	A	B	C	K'	D	LATITUD	LONGITUD
OTUMBA	0.00	3	0	5099	74.5	6.2	5.8	6.0	3.2	1.9	1.9	0.5	74.5	6.2	19.3	0.077	0.502	19.709540	-98.757980
X. C. VENTA DE CARPIO - TULANCINGO	6.00	3	0	3260	71.1	5.6	7.1	4.7	4.1	2.8	3.9	0.7	71.1	5.6	23.3	0.087	0.508	19.755331	-98.756723
TEMASCALAPA	26.50	3	0	3389	75.2	6.3	6.4	4.5	3.1	1.4	2.4	0.7	75.2	6.3	18.5	0.073	0.501	19.830287	-98.916718
LIM. EDOS. TERM. MEX. PPIA. HGO.	29.00																		
TIZAYUCA	37.10	1	1	4041	82.1	6.5	1.5	1.4	4.3	1.4	1.9	0.9	82.1	6.5	11.4	0.095	0.513	19.838188	-98.962287
TIZAYUCA	37.10	1	2	3833	81.9	6.5	1.2	1.5	4.8	1.4	1.8	0.9	81.9	6.5	11.6	0.088	0.513	19.838198	-98.962300

HIDALGO

29 CARR: RAMAL A EL CHICO

CLAVE: 13256

RUTA: HGO

AÑO: 2010

LUGAR	ESTACION				CLASIFICACION VEHICULAR EN PORCIENTO								COORDENADAS						
	KM	TE	SC	TDPA	A	B	C2	C3	T3S2	T3S3	T3S2R4	OTROS	A	B	C	K'	D	LATITUD	LONGITUD
T. C. PACHUCA - TEMPOAL	0.00	3	0	1529	82.4	4.5	3.7	1.7	2.3	2.2	2.5	0.7	82.4	4.5	13.1	0.056	0.505	20.140483	-98.723791
MINERAL EL CHICO	21.00	1	0	978	82.9	3.5	3.0	1.8	2.9	2.4	2.7	0.8	82.9	3.5	13.6	0.086	0.504	20.211072	-98.726679

30 CARR: RAMAL A PACHUCA

CLAVE: 13254

RUTA: HGO

AÑO: 2010

LUGAR	ESTACION				CLASIFICACION VEHICULAR EN PORCIENTO								COORDENADAS						
	KM	TE	SC	TDPA	A	B	C2	C3	T3S2	T3S3	T3S2R4	OTROS	A	B	C	K'	D	LATITUD	LONGITUD
T. C. COLONIA - PORTEZUELO	0.00	3	1	10184	90.3	2.6	1.6	1.0	2.6	0.9	0.9	0.1	90.3	2.6	7.1	0.055	0.500	20.119914	-98.823068
T. C. COLONIA - PORTEZUELO	0.00	3	2	10183	90.5	2.4	1.5	1.1	2.5	1.0	0.8	0.2	90.5	2.4	7.1	0.064	0.500	20.119950	-98.823024
PACHUCA	10.00																		

31 CARR: SAN ALEJO - HUAYACOCOTLA

CLAVE: 00132

RUTA: HGO-051-VER-113

AÑO: 2010

LUGAR	ESTACION				CLASIFICACION VEHICULAR EN PORCIENTO								COORDENADAS						
	KM	TE	SC	TDPA	A	B	C2	C3	T3S2	T3S3	T3S2R4	OTROS	A	B	C	K'	D	LATITUD	LONGITUD
T. C. PACHUCA - TUXPAM	0.00	3	0	5109	79.7	4.8	6.6	2.2	2.6	1.7	1.8	0.6	79.7	4.8	15.5	0.097	0.511	20.154239	-98.288292
METEPEC	11.80	3	0	3886	83.7	3.6	3.4	2.5	2.7	1.8	2.0	0.3	83.7	3.6	12.7	0.075	0.502	20.242742	-98.330881
AGUA BLANCA	29.48	3	0	2537	83.7	3.6	3.5	3.0	2.1	2.4	1.3	0.4	83.7	3.6	12.7	0.070	0.506	20.354487	-98.369149
LIM. EDOS. TERM. HGO. PPIA. VER.	36.48																		
HUAYACOCOTLA	66.00	1	0	1686	80.9	2.9	11.6	1.1	1.8	0.7	0.4	0.6	80.9	2.9	16.2	0.061	0.521	20.527309	-98.493060

32 CARR: SAN FELIPE ORIZATLAN - HUEJUTLA DE REYES

CLAVE: 13258

RUTA: HGO

AÑO: 2010

LUGAR	ESTACION				CLASIFICACION VEHICULAR EN PORCIENTO								COORDENADAS						
	KM	TE	SC	TDPA	A	B	C2	C3	T3S2	T3S3	T3S2R4	OTROS	A	B	C	K'	D	LATITUD	LONGITUD
SAN FELIPE ORIZATLAN	0.00	3	0	3550	82.5	5.4	3.2	1.4	4.8	0.5	1.6	0.6	82.5	5.4	12.1	0.093	0.509	21.172490	-98.596458
HUEJUTLA DE REYES	25.00	1	0	3435	82.7	5.2	3.4	1.3	4.8	0.2	1.6	0.8	82.7	5.2	12.1	0.074	0.508	21.135187	-98.437352

33 CARR: SANTO DOMINGO - T. C. (MEXICO - QUERETARO (CUOTA))

CLAVE: 00433

RUTA: EM-011-HGO

AÑO: 2010

LUGAR	ESTACION				CLASIFICACION VEHICULAR EN PORCIENTO								COORDENADAS						
	KM	TE	SC	TDPA	A	B	C2	C3	T3S2	T3S3	T3S2R4	OTROS	A	B	C	K'	D	LATITUD	LONGITUD
T. C. TOLUCA - PALMILLAS	0.00	3	0	3416	85.8	3.2	5.4	1.1	1.9	1.7	0.6	0.3	85.8	3.2	11.0	0.086	0.502	19.621584	-99.775667
X. C. LOS REYES - IXTLAHUACA	6.11	3	0	3389	83.0	6.6	4.8	1.5	1.5	1.5	0.4	0.7	83.0	6.6	10.4	0.071	0.501	19.656558	-99.727121
X. C. VILLA DEL CARBON - ATLACOMULCO	23.94	3	0	4549	85.1	4.0	4.6	1.8	1.9	1.1	0.5	1.0	85.1	4.0	10.9	0.058	0.508	19.789513	-99.702869



HIDALGO

33 CARR: SANTO DOMINGO - T. C. (MEXICO - QUERETARO (CUOTA))

CLAVE: 00433

RUTA: EM-011-HGO

AÑO: 2010

LUGAR	ESTACION				CLASIFICACION VEHICULAR EN PORCIENTO								COORDENADAS						
	KM	TE	SC	TDPA	A	B	C2	C3	T3S2	T3S3	T3S2R4	OTROS	A	B	C	K'	D	LATITUD	LONGITUD
T. DER. CHAPA DE MOTA	42.70	1	0	6306	84.2	4.0	4.9	1.5	3.2	1.2	0.5	0.5	84.2	4.0	11.8	0.083	0.502	19.925861	-99.582528
LIM. EDOS. TERM. MEX. PPIA. HGO.	63.34																		
T. C. MEXICO - QUERETARO (CUOTA)	65.84	1	0	6124	85.4	4.2	3.8	1.3	3.3	0.9	0.5	0.6	85.4	4.2	10.4	0.072	0.501	19.978702	-99.441375

34 CARR: T. C. (LOS REYES - EL TEPHE) - TIZAYUCA

CLAVE: 00014

RUTA: EM-HGO

AÑO: 2010

LUGAR	ESTACION				CLASIFICACION VEHICULAR EN PORCIENTO								COORDENADAS						
	KM	TE	SC	TDPA	A	B	C2	C3	T3S2	T3S3	T3S2R4	OTROS	A	B	C	K'	D	LATITUD	LONGITUD
T. C. LOS REYES - EL TEPHE	0.00	3	0	3839	86.2	3.3	3.3	2.7	1.8	1.7	0.3	0.7	86.2	3.3	10.5	0.070	0.500	19.783742	-99.025965
LIM. EDOS. TERM. MEX. PPIA. HGO.	6.50																		
TIZAYUCA	8.00	1	0	2818	87.5	2.5	3.5	1.8	1.7	2.1	0.5	0.4	87.5	2.5	10.0	0.076	0.501	19.826130	-98.990308

35 CARR: TEPEJI DEL RIO - T.C. (MEXICO - QUERETARO)

CLAVE: 13104

RUTA: HGO

AÑO: 2010

LUGAR	ESTACION				CLASIFICACION VEHICULAR EN PORCIENTO								COORDENADAS						
	KM	TE	SC	TDPA	A	B	C2	C3	T3S2	T3S3	T3S2R4	OTROS	A	B	C	K'	D	LATITUD	LONGITUD
T. C. ENT. TEPEJI DEL RIO - TLAHUELILPA DE OCAMPO	0.00	3	0	5208	80.0	3.9	3.3	3.2	3.2	3.5	2.2	0.7	80.0	3.9	16.1	0.082	0.500	19.943639	-99.341842
T. C. (MEXICO - QUERETARO)	12.40	1	0	3731	79.7	3.5	3.4	3.6	3.3	3.3	2.5	0.7	79.7	3.5	16.8	0.074	0.501	19.977508	-99.435641

36 CARR: TLAHUELILPAN - SAN AGUSTIN TLAXIACA

CLAVE: 13435

RUTA: HGO

AÑO: 2010

LUGAR	ESTACION				CLASIFICACION VEHICULAR EN PORCIENTO								COORDENADAS						
	KM	TE	SC	TDPA	A	B	C2	C3	T3S2	T3S3	T3S2R4	OTROS	A	B	C	K'	D	LATITUD	LONGITUD
TLAHUELILPAN	0.00	3	0	1881	85.3	5.7	3.1	1.6	1.5	1.3	1.1	0.4	85.3	5.7	9.0	0.075	0.501	20.127671	-99.229632
IGNACIO ZARAGOZA	25.50	3	0	2647	84.2	5.9	3.1	1.4	2.5	1.5	1.1	0.3	84.2	5.9	9.9	0.062	0.523	20.130634	-98.994701
T. C. LA COLONIA - PORTEZUELO	48.00	1	0	6041	84.2	6.9	2.8	1.3	1.1	2.1	1.1	0.5	84.2	6.9	8.9	0.077	0.501	20.121394	-98.886033

37 CARR: CALPULALPAN - EL OCOTE

CLAVE: 00054

RUTA: MEX-HGO

AÑO: 2010

LUGAR	ESTACION				CLASIFICACION VEHICULAR EN PORCIENTO								COORDENADAS						
	KM	TE	SC	TDPA	A	B	C2	C3	T3S2	T3S3	T3S2R4	OTROS	A	B	C	K'	D	LATITUD	LONGITUD
CALPULALPAN	0.00	3	0	7944	77.4	4.4	7.9	2.5	3.4	2.2	1.7	0.5	77.4	4.4	18.2	0.068	0.503	19.594566	-98.573466
LIM. EDOS. TERM. TLAX. PPIA. HGO.	5.00																		
APAN	19.58	3	1	3370	82.7	3.8	6.1	2.0	2.8	1.8	0.5	0.3	82.7	3.8	13.5	0.069	0.510	19.717083	-98.456583
APAN	19.58	3	2	3235	82.2	3.9	6.1	1.8	2.7	1.9	0.9	0.5	82.2	3.9	13.9	0.069	0.510	19.717083	-98.456583

HIDALGO

37 CARR: CALPULALPAN - EL OCOTE

CLAVE: 00054

RUTA: MEX-HGO

AÑO: 2010

L U G A R	E S T A C I O N				C L A S I F I C A C I O N V E H I C U L A R								E N P O R C I E N T O				C O O R D E N A D A S		
	KM	TE	SC	TDPA	A	B	C2	C3	T3S2	T3S3	T3S2R4	OTROS	A	B	C	K'	D	LATITUD	LONGITUD
TEPEAPULCO	34.92	3	0	5043	86.3	3.9	5.5	1.1	1.8	0.2	0.7	0.5	86.3	3.9	9.8	0.070	0.501	19.801038	-98.562082
X. C. VENTA DE CARPIO - TULANCINGO	51.18	1	0	3047	83.7	4.7	5.2	2.6	1.2	1.2	0.9	0.5	83.7	4.7	11.6	0.070	0.501	19.919249	-98.577729
X. C. VENTA DE CARPIO - TULANCINGO	51.18	3	0	1915	87.5	3.2	4.8	1.4	1.6	0.2	0.8	0.5	87.5	3.2	9.3	0.078	0.506	19.927659	-98.582841
EL OCOTE	70.44	1	0	2904	88.8	4.2	1.6	1.8	1.2	0.5	1.1	0.8	88.8	4.2	7.0	0.065	0.505	20.045045	-98.618871

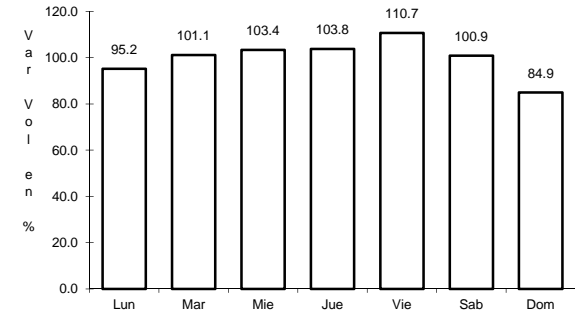
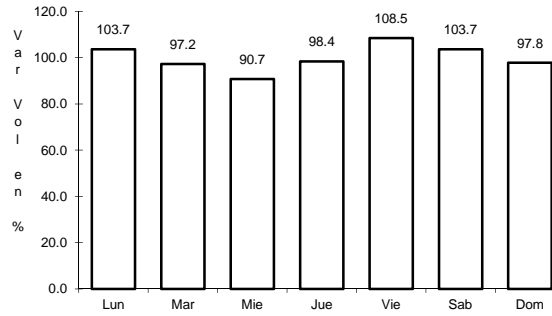
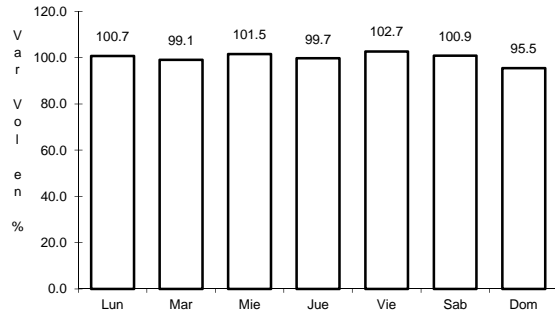




7 CARR: PACHUCA - TEMPOAL

CLAVE: 00113

RUTA: MEX-105



Km: 0.00

Tipo: 3

Sent: 0

Km: 129.80

Tipo: 1

Sent: 0

Km: 260.68

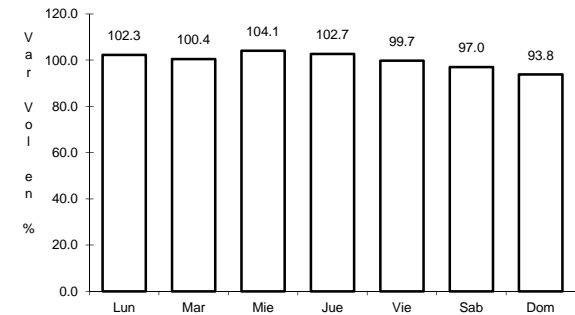
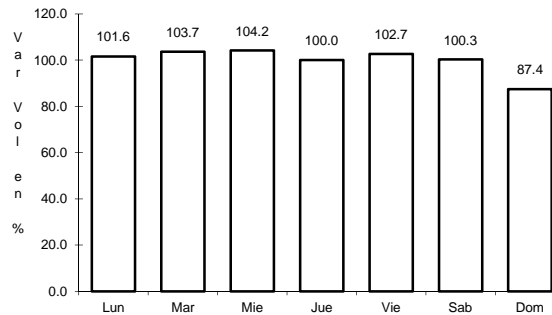
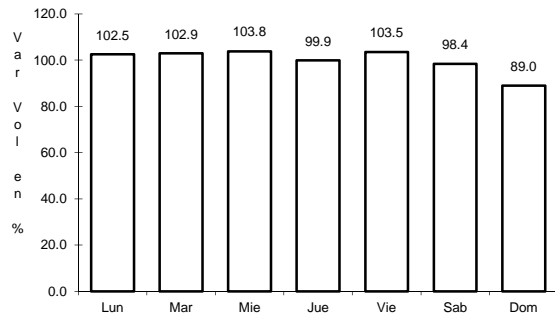
Tipo: 1

Sent: 0

8 CARR: PACHUCA - TUXPAM

CLAVE: 00608

RUTA: MEX-130



Km: 2.60

Tipo: 3

Sent: 1

Km: 2.60

Tipo: 3

Sent: 2

Km: 247.00

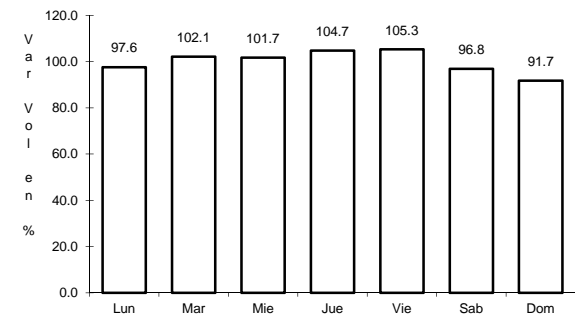
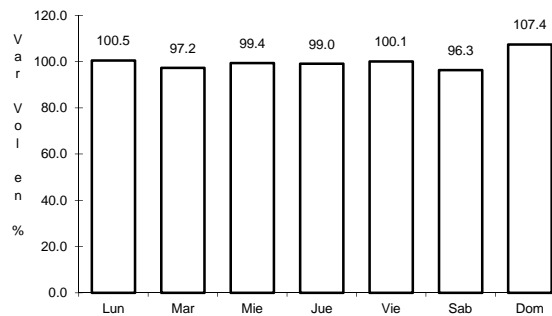
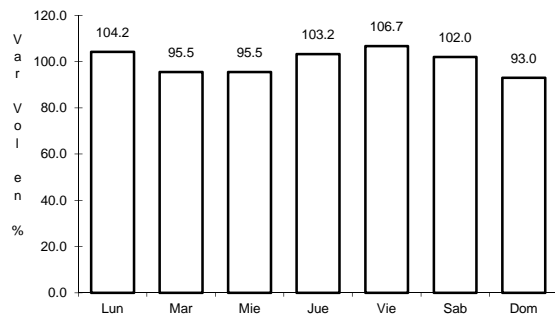
Tipo: 1

Sent: 0

9 CARR: PORTEZUELO - CD. VALLES

CLAVE: 00023

RUTA: MEX-085



Km: 0.00

Tipo: 3

Sent: 0

Km: 154.00

Tipo: 3

Sent: 0

Km: 300.00

Tipo: 1

Sent: 0

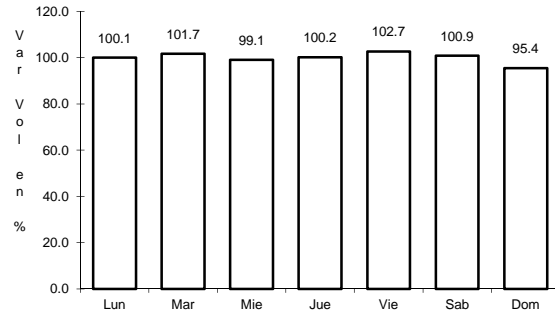




17 CARR: TEJOCOTAL - TIHUATLAN (CUOTA)

CLAVE:

RUTA: MEX-130D



Km: 18.00

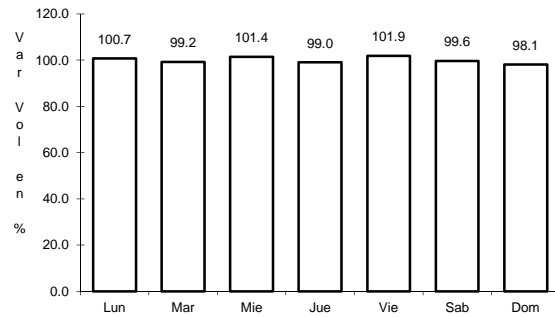
Tipo: 1

Sent: 0

18 CARR: ACTOPAN - PROGRESO

CLAVE: 13038

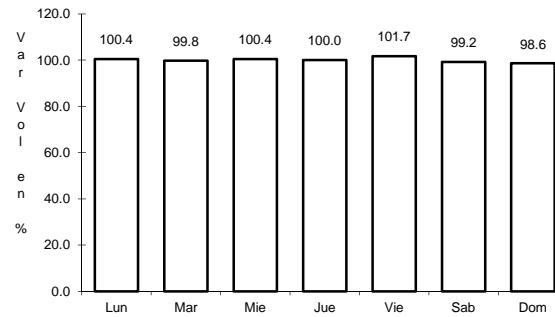
RUTA: HGO



Km: 0.00

Tipo: 3

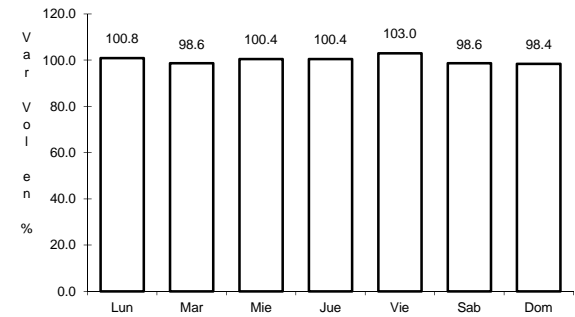
Sent: 1



Km: 0.00

Tipo: 3

Sent: 2



Km: 23.90

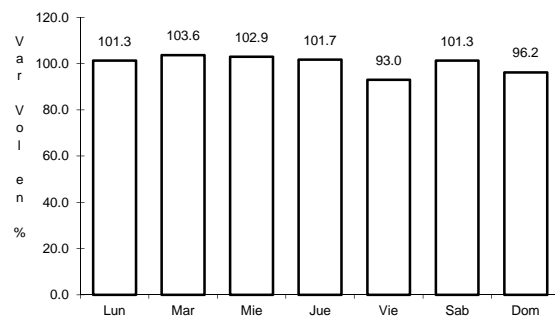
Tipo: 1

Sent: 1

19 CARR: EL SAUCILLO - AMEALCO

CLAVE: 13103

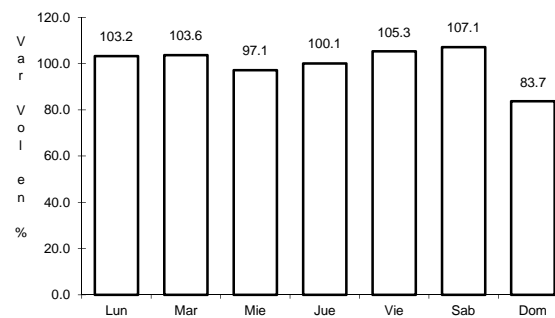
RUTA: HGO-103



Km: 0.00

Tipo: 3

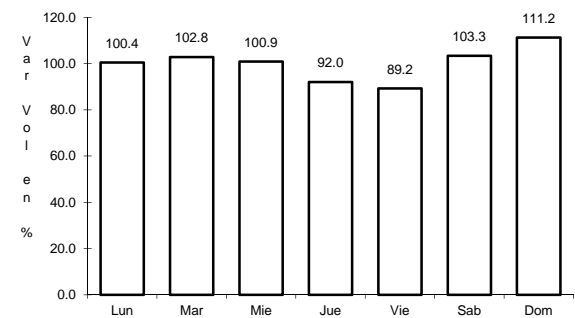
Sent: 0



Km: 11.00

Tipo: 3

Sent: 0



Km: 21.40

Tipo: 1

Sent: 0









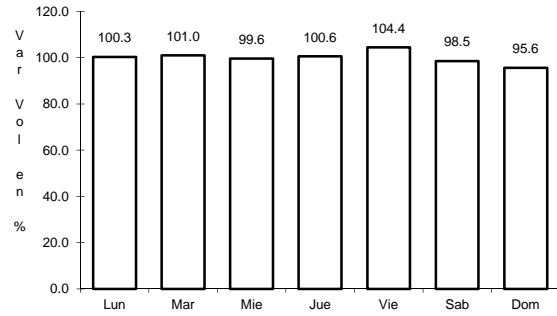




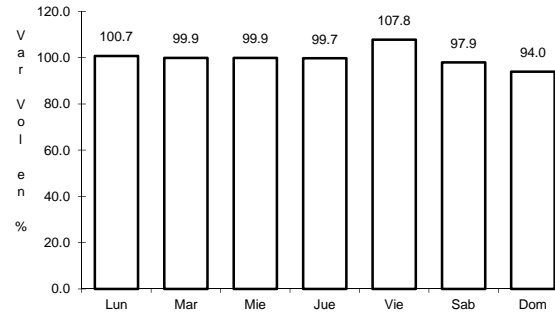
35 CARR: TEPEJI DEL RIO - T.C. (MEXICO - QUERETARO)

CLAVE: 13104

RUTA: HGO



Km: 0.00      Tipo: 3      Sent: 0

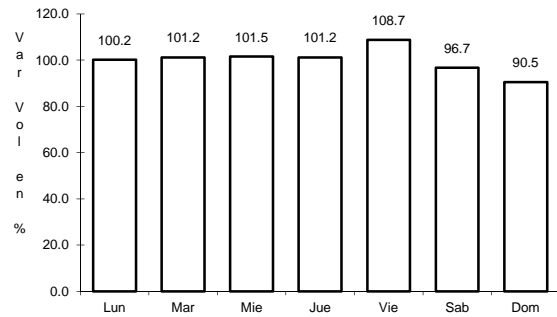


Km: 12.40      Tipo: 1      Sent: 0

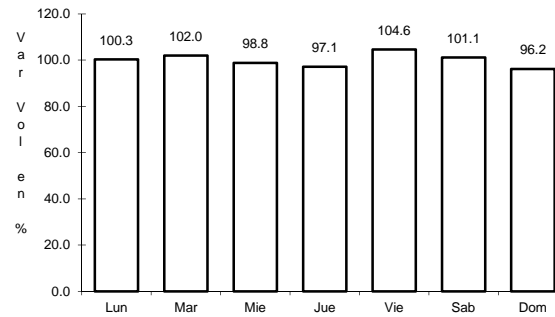
36 CARR: TLAHUELILPAN - SAN AGUSTIN TLAXIACA

CLAVE: 13435

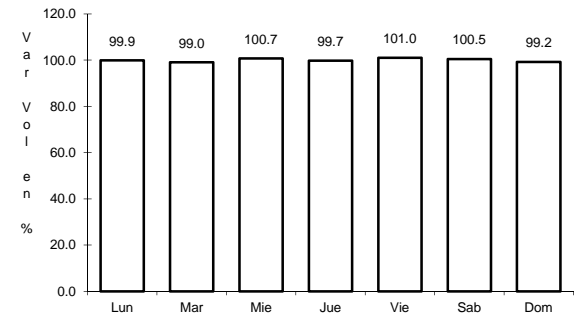
RUTA: HGO



Km: 0.00      Tipo: 3      Sent: 0



Km: 25.50      Tipo: 3      Sent: 0

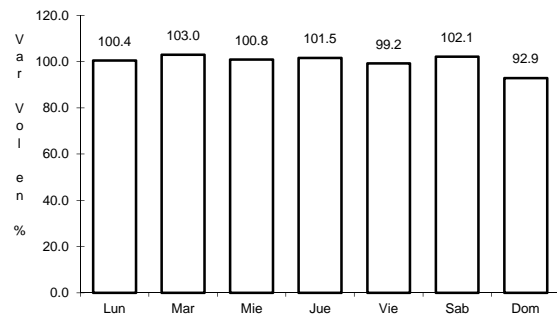


Km: 48.00      Tipo: 1      Sent: 0

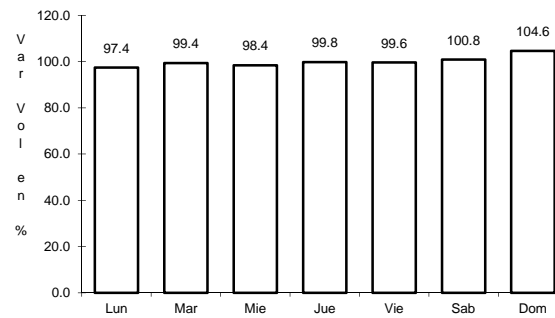
37 CARR: CALPULALPAN - EL OCOTE

CLAVE: 00054

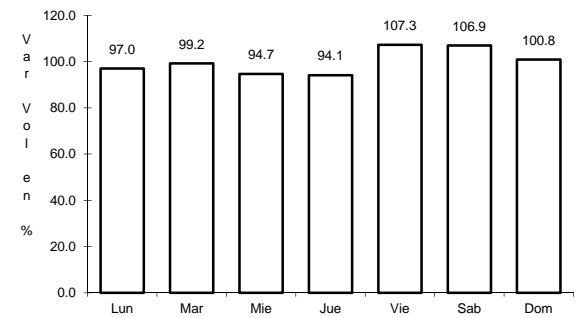
RUTA: MEX-HGO



Km: 0.00      Tipo: 3      Sent: 0



Km: 34.92      Tipo: 3      Sent: 0



Km: 70.44      Tipo: 1      Sent: 0